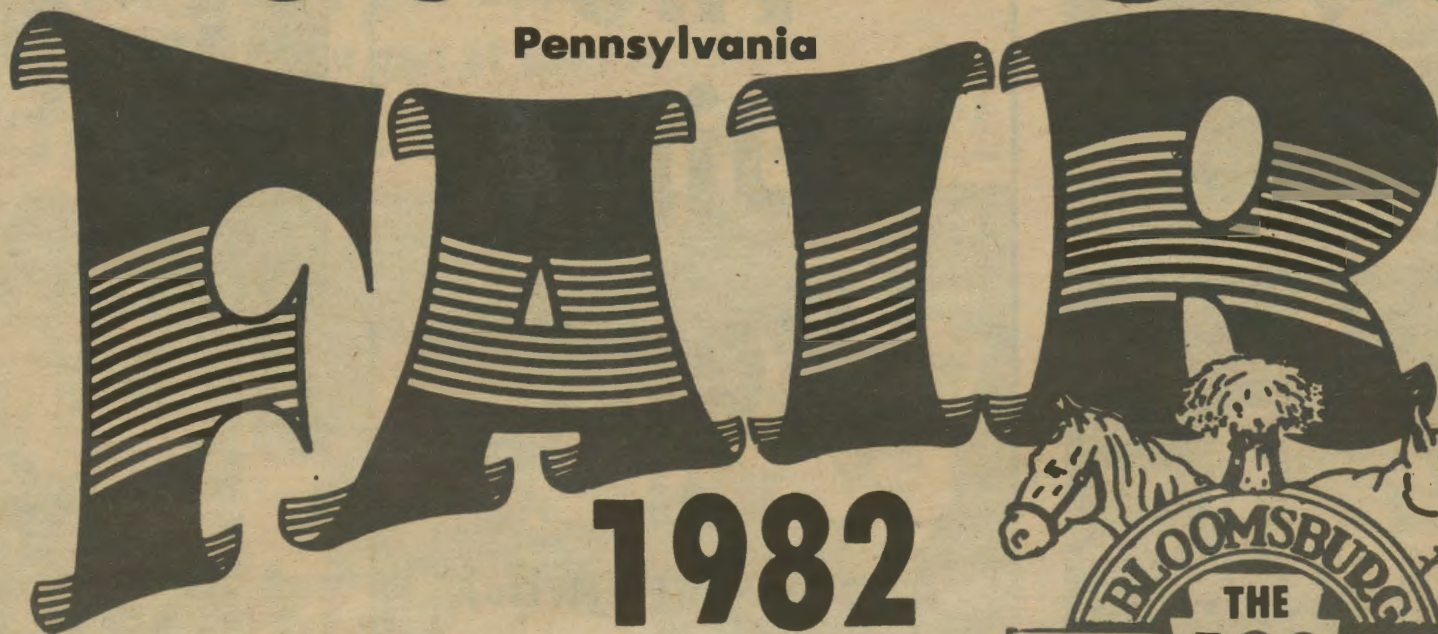


PENNSYLVANIA'S LARGEST SIX-DAY FAIR

BLOOMSBURG

Pennsylvania



1982

September 27 thru October 2



Day and Night

Rain or Shine

Special Pre-Fair Country and Western Music Show, Saturday Night, September 25

See Page 3

SPECTACULAR ENTERTAINMENT

Monday, September 27

Senior Citizen's Day



THE LENNON SISTERS

SPECIAL GUEST STAR



JIM STAFFORD

Shows at 5:00 and 7:30 P.M.

Tuesday, September 28



ENGELBERT

1st Show 6:00 P.M.
2nd Show 8:30 P.M.

and
STEWIE
STONE

Wednesday, September 29



R. C. BANNON



LOUISE MANDRELL



MARTY ROBBINS

FIRST SHOW
6:00 P.M.

SECOND SHOW
8:30 P.M.

Ticket Information and Coupon On Page 4

SPECIAL COUNTRY AND WESTERN MUSIC SHOW — SATURDAY, SEPT. 25 — SEE PAGE 3

Thursday, September 30



BOXCAR WILLIE



TOM T. HALL

Shows At 6:00 P.M. and 8:30 P.M.

Friday, October 1

The Dirt Band

Also Another Artist

1st Show 6:00 P.M. 2nd Show 8:30 P.M.

Saturday, October 2



JOHN SCHNEIDER

Bo Duke in "The Dukes of Hazzard"

Shows At 6:00 P.M. and 8:30 P.M.

DAILY ATTRACTIONS 1982

DAILY ATTRACTIONS — 1982
Admission Gates to Fairgrounds open daily 7 a.m. to 9 p.m.

Exhibition Buildings open daily 9 a.m. to 10 p.m.

Grandstand Gates open approximately 1 hour before each event.

Grandstand Ticket Office (see Coupon on page 4 for Office Hours)

SATURDAY, SEPTEMBER 25

4-H and Vocational Horse Show.

1:00 P.M. — All-Pro Rodeo — Grandstand

8:00 P.M. — "Country and Western Music Show" starring David Frizzell & Shelly West, Ronnie McDowell, Faron Young.

SUNDAY, SEPTEMBER 26

7:00 P.M. — Vesper Services — Grandstand

Judging — Registered Dogs, Arts and Crafts, Hobbies.

MONDAY, SEPTEMBER 27

Senior Citizens DAY. Free admission to Fairgrounds for Senior Citizens 65 and over showing Medicare Card or other proof.

Judging Rabbits, Flowers, Agriculture, 4-H Homemaking, 4-H Agriculture, Dairy Goats, 4-H Dairy Cattle, Poultry.

12 noon — Stake Harness Racing

1:00 P.M. — F. F. A. Demonstrations — School Building

5:00 P.M. — Grandstand Stage Show starring The Lennon Sisters and Special Guest Star Jim Stafford.

7:30 P.M. — Second Show — Lennon Sisters and Jim Stafford.

TUESDAY, SEPTEMBER 28

Judging Cattle (Aryshires, Brown Swiss, Guernseys, Jerseys) Beef Cattle, 4-H and Vocational Steers, School Exhibits.

9:00 A.M. — F. H. A. Demonstrations — School Exhibit Building.

12 noon — Stake Harness Racing.

6:00 P.M. — Grandstand Stage Show starring Englebert Humperdinck and Stewie Stone.

8:30 P.M. — Second Show — Englebert Humperdinck and Stewie Stone.

WEDNESDAY, SEPTEMBER 29

Judging Cattle — Holstein-Friesian.

12 noon — Stake Harness Racing.

4:30 P.M. — Pennsylvania State Lottery Drawing. West End of Antique Farm Museum.

6:00 P.M. — Grandstand Stage Show featuring R. C. Bannon, Louise Mandrell and Marty Robbins.

8:30 P.M. — Second Show — R. C. Bannon, Louise Mandrell, Marty Robbins.

THURSDAY, SEPTEMBER 30

Judging — Sheep

10:00 A.M. — Open Horse Show — Arena.

12 noon — Stake Harness Racing.

6:00 P.M. — Grandstand Stage Show starring Boxcar Willie and Tom T. Hall.

7:30 P.M. — 4-H Baby Beef Sale — Arena.

8:30 P.M. — Second Show — Boxcar Willie and Tom T. Hall.

FRIDAY, OCTOBER 1

10:00 A.M. — Horse Pulling Contest — Arena

12:30 P.M. — George Marshman's National Championship Demolition Derby.

6:00 P.M. — Grandstand Stage Show — The Dirt Band and another Artist.

8:30 P.M. — Second Show — The Dirt Band and another Artist.

SATURDAY, OCTOBER 2

10:00 A.M. — Pony Pulling Contest — Arena

11:00 A.M. — Log Sawing and Chopping Contests — Bandshell.

12 noon — Time Trials — Midget Auto Races.

12:30 P.M. — Midget Auto Races featuring Nationally famous drivers and cars.

6:00 P.M. — Grandstand Stage Show starring John Schneider.

8:30 P.M. — Second Show — John Schneider.

Tuesday through Saturday

Middle Earth Marionettes near Gate 3 — Free.

Wednesday through Saturday

Concerts by Spring Garden Band. 6:30 P.M. — Bandshell

Friday and Saturday, October 1 and 2

The Group Sunrise at Bandshell.

ALL WEEK

Monday through Saturday

Reithoffer's Carnival — "The Aristocrat of Show Business" — on the biggest Midway in the East. Special ride prices on Tuesday and Friday until 5 P.M. Unlimited Rides for \$4.95 between the hours of 3 P.M. and 8 P.M.

Kiddieland at Western End of Fairgrounds. Antique Farm Machinery Museum. Historic Restored School House.

Petting Zoo — Western End of Fairgrounds (free). Clowns and other Free entertainment.

Puppet Show (Free) — Bandshell.

Mr. Slim also Band Concerts — Monday through Friday — Bandshell. Western End of Fairgrounds.

EXHIBITS — Farm and Garden Products, Food, Hobbies, Needlework, Livestock, Poultry, Rabbits, 4-H, F. F. A., F. H. A., Flowers, Garden Clubs, Granges. Parking for over 16,000 cars. Free transportation to and from Parking Lots to Entrance Gates.

Save and Bring this Calendar with you.

Pre-View '82 Spectacular

On Saturday, Sept. 25 the Bloomsburg Fair Unofficially gets underway with the Prefair Country and Western Show. This year entertainment will be the Ronnie McDowell Show, starring Ronnie McDowell, Faron Young and the David Frizzell and Shelly West duo. In the afternoon at 1 p.m. there will be an All-Pro Rodeo.

The fair officially gets started on Monday, which is Senior Citizens Day. Entertainer Jim Stafford will display his many talents as an actor, comedian, composer, and musician. Voted as the "Top New Male Vocalist" in 1974 with such hits as "My Girl Bill" and "Spiders and Snakes", Stafford will be joined by the charm and warmth of four beautiful young women known as the Lennon Sisters. They will be performing two shows at 5 and 7:30 p.m.

"My audiences are very important to me, I never want anyone to see me perform and then walk away feeling unsatisfied. I always try to do my best whenever I am on stage," explains Englebert (Engelbert Humperdinck) who will be performing with Stewie Stone at 6 and 8:30 p.m., Tuesday, September 28.

Wednesday, Sept. 29 will be a real country lovers treat with such talents as Marty Robbins, R. C. Bannon and Louise Mandrell. Marty Robbins, "Super Legend" Singer, Composer, Musician, Race Driver and Businessman. He was the first country artist to win the coveted Grammy Award for composing.

R. C. Bannon has been called by Record World, "one of the most refreshing new talents to emerge from Nashville in some time". And when he recorded "Reunited" with his wife and constant duet partner Louise Mandrell, it became a song that was nominated by the Academy of Country Music as "Duet of the Year". These two shows at 6 and 8:30 p.m. will bring a little bit of the Nashville country into Bloomsburg.

America's Favorite Hobo will be in town on Thursday night. Wearing overalls, threadbare jacket and tattered hat, Boxcar Willie will perform his magic that has made him the 60th member of the Grand Ole Opry.

With a trainyard as a backyard, Boxcar Willie grew up listening to the whistles of the trains all his life and knows his realistic imitation of the whistle has become his trademark.

Along with boxcar Willie, is Tom T. Hall a songwriter who has written songs on topics as sneaky snakes and old dogs to beer and miracles. Appropriately nicknamed "The Storyteller" he is one of America's great balladeers capturing in song the time-old story of human life. Shows will be at 6 and 8:30 p.m.

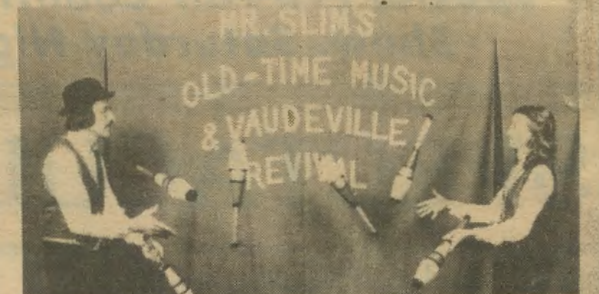
On Friday Oct. 1, at 12:30 p.m. there will be a Demolition Derby in which many local people try their luck at driving and destroying. The entertainment for Friday night will be The Dirt Band and another Artist.

Saturday is the annual Midget Auto Races, Time trials begin at 12 noon with the races beginning at 12:30 p.m. Reserved seats at the Grandstand are \$5 and bleacher seats are \$4.

Saturday night the Bloomsburg Fair presents one of the most talented and popular young entertainers today. His name, John Schneider, or better known as Bo Duke from the hit CBS-TV series "The Dukes of Hazzard". But, he is not only a skillful actor, he's an accomplished singer-musician, magician and stunt car driver as well.

The ticket office opens August 2, 11 a.m. - 5 p.m. everyday except Saturdays. So come on out and enjoy one of the best fairs ever.

All Week Monday thru Friday



MR. SLIM (R. W. BACON) and L. J. NEWTON

Music • Song • Dance • Comedy • Juggling
Free on Band Shell 4 Times Daily
One of America's Most Unique Touring Shows.

Masters of Cermonies

Saturday, Sept. 25
Monday, Sept. 27

Wed., Thurs., Fri., Sat.
Sept. 29 to Oct. 2



CHARLIE SLAVIN



EDDIE JAYE

For further information, catalog of premiums, and entry blanks for any of the departments, write in care of the Superintendent (see list on page 3), Bloomsburg Fair, Box 479 Bloomsburg, Pa. 17815.

SPECIAL PRE-FAIR COUNTRY and WESTERN MUSIC SHOW

SATURDAY, SEPTEMBER 25 —

ONE SHOW ONLY AT 8:00 P.M.

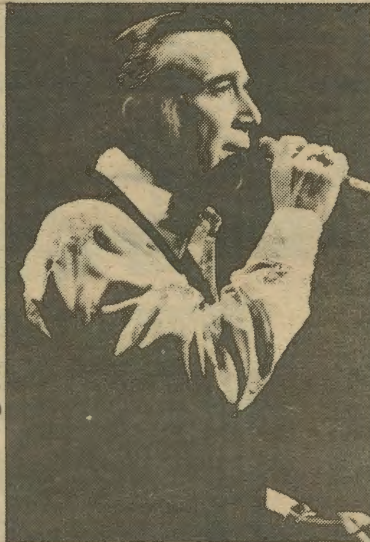
"THE RONNIE McDOWELL SHOW"



DAVID FRIZZELL and
SHELLY WEST



RONNIE McDOWELL



FARON YOUNG

New Sensation at Bloomsburg Fair ALL-PRO GENUINE RODEO



SATURDAY, SEPTEMBER 25 — 1 P.M.

Grandstand Reserved Seats \$5.00

Fair Officers and Directors

Clark B. Patterson, President; Gene M. Leiby, Treasurer; Frederick T. Trump, Secretary; Cortez K. Hartman, Superintendent of Grandstand; W. O. Diehl, Superintendent of Agriculture; Paul H. Drumm, Superintendent of Police and Parking; J. Fred Giger, Superintendent of Livestock; M. Paul Whitenight, Superintendent of Concessions; Paul E. Flick, Race Secretary; Willard H. Kile, Sr., Superintendent of Ticket Collectors; Wilmer K. Kitchen, Superintendent of Arts and Crafts; William E. Streater, Superintendent of Flower Show; Earl E. Davis, G. Edward Deily, Michael F. Coleman, Auditors; C. Harold Bankes, Publicity and Advertising Director.

Order Grandstand Reserved
Seat Tickets Early. Use
Coupon on Page 4.

ADMISSION PRICES

Admission to Grounds
Day or Night — \$1.00

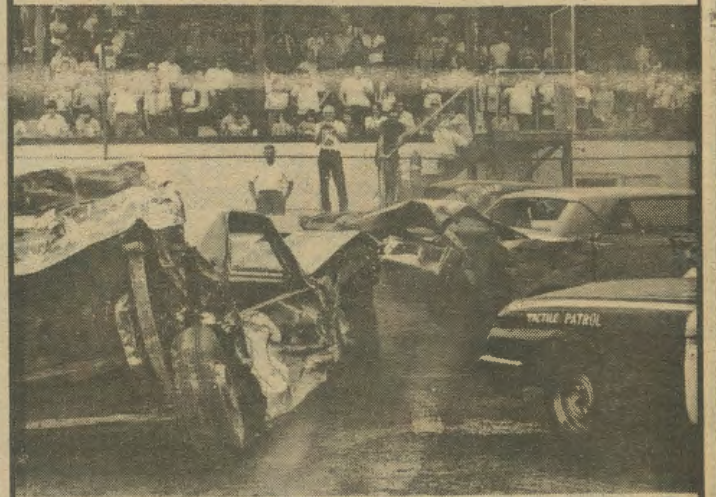
Children — High School Age and Under, Mon. thru
Fri. - Free - Sat. 12 and Under Free

Automobile Parking — Day or Night \$2.00

GRANDSTAND ADMISSION

Reserved Seats, Evenings (except Tues., Sept. 28)	\$6.00
Reserved Seats on Track, Evenings (except Tues., Sept. 28)	\$7.00
Reserved Seats, Tues. Evening, Sept. 28	\$8.00
Reserved Seats on Track, Tues. Evening, Sept. 28	\$9.00
All Pro Rodeo, Sat., Sept. 25 — Reserved Seats	\$5.00
Demolition Derby, Fri., Oct. 1 — Reserved Seats	\$4.00
Demolition Derby, Fri., Oct. 1 — Bleacher Seats	\$3.00
Auto Races, Sat., Oct. 2 — Reserved Seats	\$5.00
Auto Races, Sat., Oct. 2 — Bleacher Seats	\$4.00
No Admission to the Grandstand for Horse Races, Mon., Tues., Wed. and Thurs. afternoon.	

DEMOLITION DERBY



FRIDAY, OCTOBER 1 — 12:30 P.M.

RESERVED SEATS (GRANDSTAND) \$4.00
- BLEACHER SEATS \$3.00

What to See...

It's almost time for the Bloomsburg Fair, rated as the largest six-day fair in the United States and Canada.

And this year fairgoers can experience some of the beauty and grace that is on exhibit here at Bloomsburg. Starting on the main Promenade which features five large permanent brick buildings that house thousands of exhibits including flowers, fruits and vegetables, arts and crafts, hobbies and school projects.

Horticulture Hall fills the air with the fragrance of your favorite flowers and household plants. Here on display is row after row of every kind of house plants and flowers imaginable, with special arrangements set up by Garden Clubs.

Agriculture Hall has been completely renovated and had an addition built on to offer more space to display the season's best fruits, grains, and vegetables. A favorite attraction is to view the giant pumpkins and squash brought in by some of the state's largest farms. Taking up the center isle are exhibits by Grange Organizations depicting the best of his year's harvest. W. O. Diehl is Superintendent of Agriculture.

Next in line is the building devoted to arts and crafts. On exhibit here is clothing, rugs, quilts, needlework, art work, ceramics and hundreds of other interesting displays. Also located here is the Hobby Show and the fairs Sewing contest put on by Wilmer K. Kitchen, Superintendent of Arts and Crafts.

The Industrial Building is next. Housed here is the best achievements in the business

and industry field, with many manufactures displaying the newest furnishings and equipment for the household or business.

The last building on the promenade is the School Exhibit building. This building is used to display the achievements of elementary and secondary school pupils, their art works, hobbies, F.F.A. and F.H.A. work, shop exhibits and 4-H work.

Along the southwestern midway are modern buildings housing prize-winning animals including cattle, sheep and goats. These buildings are open all day to visitors free of charge. A large modern Arena provides for judging and special events, such as the Horse and Pony Pulling Contests.

A favorite among the youngsters as well as adults are the hundreds of rabbits that are on display at the Rabbit Show. There are also 236 breeds of Bantam and Chickens for show in the Poultry Show located near the western end of the Grandstand.

Nearby in pens are many breeds of turkeys, ducks, and geese. The Registered Dog Show offers a chance to see all varieties of dogs, including some that are very rare.

A new dimension of the Fair this year is "Kiddieland" which would move these rides away from the east end of the fairgrounds.

Along with Kiddieland, there will be more free entertainment at the band shelter and free entrance to the Grandstand for the afternoon horse racing.

So, bring the family and enjoy a day walking on the all weather midways of the largest fairgrounds in Pennsylvania.

HARNESS RACING PROGRAM

FREE ADMISSION TO GRANDSTAND



MONDAY, SEPT. 27 - RACE 12:00 NOON

TROT - N/W \$2,000 Life Time	\$1000.00 ADDED
PACE - N/W \$2,000 Life Time	\$1000.00 ADDED
TROT - 2 Yr. Colts Bl. Fair Stake No. 36	\$5996.00
TROT - 3 Yr. Colts Bl. Fair Stake No. 35	\$5260.00

TUESDAY, SEPT. 28 - 1st RACE 12:00 NOON

TROT - N/W \$8,000 Life Time	\$1,000.00 ADDED
Inv. Pace Powder Puff (All Girl Drivers)	\$1000.00
PACE - 2 Yr. Fillies Bl. Fair Stake No. 36	\$6800.00Q
TROT - 2 Yr. Fillies Bl. Fair Stake No. 36	\$5950.00
PACE - 3 Yr. Colts Bl. Fair Stake No. 35	\$5760.00

WEDNESDAY, SEPT. 29 - 1st RACE 12:00 NOON

PACE - N/W \$8,000 Life Time	\$1000.00 ADDED
PACE - 3 Yr. Fillies Bl. Fair Stake No. 35	\$5637.00
TROT - 3 Yr. Fillies Bl. Fair Stake No. 35	\$5337.00
PACE - 2 Yr. Colts Bl. Fair Stake No. 36	\$6696.00
TROT - 3 Yr. Penna. Sire Stake	\$3000.00 EST.

THURSDAY, SEPT. 30 - 1st RACE 12:00 NOON

PACE - FREE FOR ALL	\$1000.00 ADDED
TROT - FREE FOR ALL	\$1000.00 ADDED
PACE - 2 Yr. Penna. Sire Stake	\$3000.00 EST.
TROT - 2 Yr. Penna. Sire Stake	\$3000.00 EST.
PACE - 3 Yr. Penna. Sire Stake	\$3000.00 EST.

Bloomsgburg Fair

BLOOMSBURG, PENNSYLVANIA
SEPTEMBER 27 Thru OCTOBER 2, 1981

**TO ORDER
Choice
GRAND STAND
SEATS
FILL OUT
AND MAIL
THIS
COUPON**

Mail Orders, with remittance and self-addressed stamped envelope to: Cortez K. Hartman, Box 479, Bloomsburg, Pa. 17815.

Mail orders will be filled in the order in which they are received. No telephone orders will be accepted until Monday, September 27, 1981. Holders of tickets for the 8:30 p.m. show each evening will be admitted free to the grounds after 7 p.m.

All ticket orders must be received 4 days before any engagement or they will be held at ticket office for you to pick up.

Grandstand tickets can also be purchased at the Fair Ground Box Office, Fifth Street Gate Entrance.

OFFICE HOURS:

Starting Aug. 2nd—
Daily from 11 a.m. to 5 p.m. including Saturdays.

Starting Aug. 30th—
Daily from 11 a.m. to 5 p.m.
(except Labor Day) and Sat. 9 a.m. to 6 p.m.

Saturday and Sunday, September 25th & 26th
9 a.m. to 7 p.m.

Fair Week — 9 a.m. to 9 p.m.

ALL TRACK AND BLEACHER SEATS ARE UNCOVERED

Circle Date and Time followed by number of tickets for all events

HORSE RACING

Mon., Tues., Wed., Thurs. — 12:00 Noon
NO CHARGE FOR GRANDSTAND

Sat., Sept. 25 — 1:00 P.M. ALL PRO RODEO

All Seats Reserved — Grandstand

Tickets: \$5.00

Friday, Oct. 1 — 12:30 P.M. DEMOLITION DERBY
Grandstand \$4.00
Bleacher \$3.00

Saturday, Oct. 2 — 12:30 P.M. MIDGET AUTO RACES
Time Trials 12 Noon

Grandstand \$5.00
Bleacher \$4.00

PRE-FAIR COUNTRY MUSIC SHOW
FRIZZELL & WEST, RONNIE McDOWELL &
FARON YOUNG

Saturday, Sept. 25 — 8:00 P.M.

Track \$7.00 Grandstand \$6.00

LENNON SISTERS - JIM STAFFORD

Track \$7.00

Grandstand \$6.00

Monday,

Sept. 27th

1st Show 5:00 p.m.

2nd Show 7:30 p.m.

ENGELBERT HUMPERDINCK - STEWIE STONE

Tues.,

Sept. 28

1st Show 6:00 p.m.

2nd Show 8:30 p.m.

LOUISE MANDRELL, R. C. BANNON & MARTY ROBBINS

Track \$7.00

Grandstand \$6.00

Wed.,

Sept. 29

1st Show 6:00 p.m.

2nd Show 8:30 p.m.

BOX CAR WILLIE, TOM T. HALL

Track \$7.00

Grandstand \$6.00

Thurs.,

Sept. 30

1st Show 6:00 p.m.

2nd Show 8:30 p.m.

THE DIRT BAND — Also Another Artist.

Track

Grandstand

Fri.,

Oct. 1

1st Show 6:00 p.m.

2nd Show 8:30 p.m.

JOHN SCHNEIDER

Track \$7.00

Grandstand \$6.00

Sat.,

Oct. 2

1st Show 6:00 p.m.

2nd Show 8:30 p.m.

NAME (Print)

ADDRESS (Street)

CITY STATE..... ZIP CODE

OFFICE USE ONLY—DO NOT WRITE BELOW

Received Filled By Mailed Section & Row Ticket Numbers

MIDGET AUTO RACES

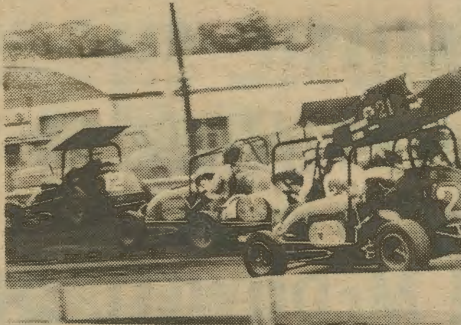
**SATURDAY
OCTOBER 2**

Time Trials 12 Noon
**RACES START
12:30 P.M.**

**30 LAP
FEATURE RACE**

**3 Ten Lap Races
1 Four Lap
Novelty Race**

**10 Lap Consolation
Race (non-winners)**



Order grandstand Tickets Early — Use Coupon At Left
Reserve Seats \$5.00 (No Refund)
Bleacher Seats \$4.00

Students Free

The Fair Association will grant Free Admission to the grounds for students of High School Age and under, Monday through Friday. On Saturday (October 2) Free Admission will be granted to students 12 years of age and under.

TRAMS PROVIDE Free Transportation from the Automobile Parking Lots to the Fair's Entrance Gates.

The Bloomsburg Fair offers thousands of exhibits — Educational, Agriculture, Fruit, Livestock, Poultry, Home Making, Arts and Crafts, Hobbies, Floral and Farm Implements. All exhibits are housed in permanent brick buildings and No Admission Charge is made.



STAKE HARNES RACING

Monday Thru Thursday

Featuring the Top 2 and 3
Year Olds in the Nation

Powder Puff — All Girls

Invitational Race — Tuesday

Pa. Sire Stakes — Wednesday & Thursday

Special Acts Between Races

POST TIME
12:00
NOON

FREE
ADMISSION
TO
GRANDSTAND

REITHOFFER'S CARNIVAL

"The Aristocrat of
Show Business"

ON THE
BIGGEST
MIDWAY

IN THE EAST

VISIT KIDDLAND
WESTERN END
OF FAIRGROUNDS