

# BLOOMSBURG

SUPPLEMENT TO: THE SCRANTONIAN-SUNDAY INDEPENDENT



## NOW ENTERING INTO OUR 124th GREAT YEAR!

### SEPTEMBER 25 thru SEPTEMBER 30 1978

DAY AND NIGHT

RAIN OR SHINE



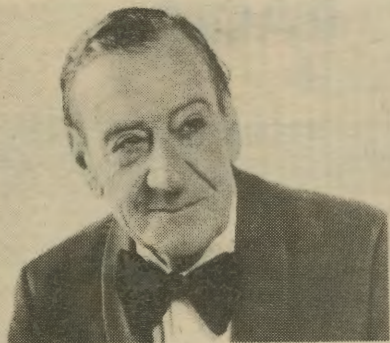
## BLOOMSBURG FAIR'S

# WIDE WORLD OF ENTERTAINMENT

MONDAY, SEPTEMBER 25

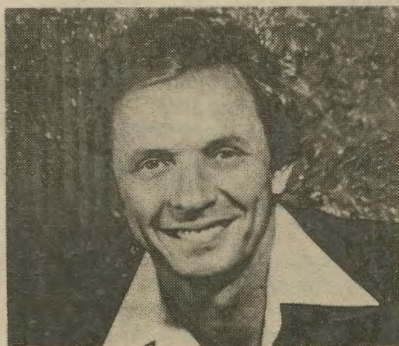


The Sensational  
**ANITA BRYANT**



Presenting Guy Lombardo's Royal Canadians Featuring  
**LEBERT LOMBARDO**  
1st Show 5:00 P.M., 2nd Show 7:30 P.M.

TUESDAY, SEPTEMBER 26

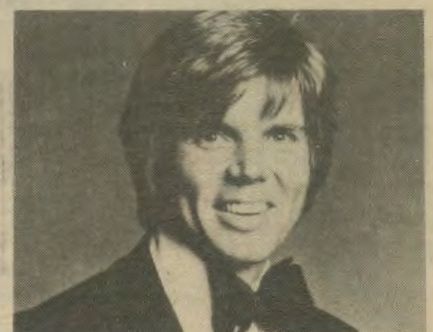


The One and Only  
**MEL TILLIS**



Epic Recording Star  
**JODY MILLER**  
1st Show 6:00 P.M., 2nd Show 8:30 P.M.

WEDNESDAY, SEPTEMBER 27



Film and Recording Star  
**JOHN DAVIDSON**

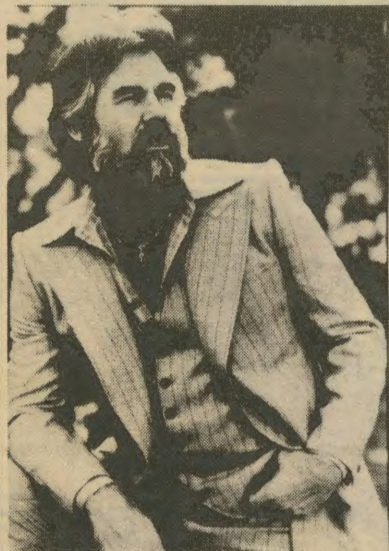


The Dynamic  
**SUNSHINE EXPRESS**  
1st Show 6:00 P.M., 2nd Show 8:30 P.M.

# SPECIAL GRAND OLE OPRY SPECTACULAR

SATURDAY, SEPTEMBER 23 ONE SHOW ONLY—8:00 P.M.  
SEE PAGE 3

**THURSDAY, SEPTEMBER 28**



**Kenny Rogers**

**ONE OF AMERICA'S GREATEST ENTERTAINERS  
SHOW TIMES**

**1st Show 6:00 P.M., 2nd Show 8:30 P.M.**

**FRIDAY, SEPTEMBER 29**

**HEE-HAW HITS THE FAIR!**



**BUCK OWENS**

**THE STARS OF ONE OF TV'S  
MOST LOVED SHOWS  
1st Show 6:00 P.M.  
2nd Show 8:30 P.M.**



**The HAGER BROTHERS**



**SUSAN RAYE**



**GEORGE LINDSAY**

**SATURDAY, SEPTEMBER 30**



**RECORDING AND TV STAR  
GOLD RECORD WINNER  
ANNE MURRAY**



**THE BEST POP VOCALS TO BE  
HEARD ON THE PLANET — VARIETY  
B. J. THOMAS**

**SHOWTIMES**

**1st Show at:  
6:00 P.M.**

**2nd Show at:  
8:30 P.M.**

**Agriculture**

Located on the main promenade, Agriculture Hall houses the fruits and labors of the farm and products from the country kitchen. In spacious displays can be found the finest from the fields — grains, fruits and vegetables. From the country kitchen are such mouth-watering products as bread, pastries, canned and dried products, butter, preserves and homecured delicacies.

The center isles in Agriculture Hall are devoted to large displays of this year's harvest by various Grange Organizations from throughout the State. According to John C. Creasy, Superintendent of the Department, entries will be received up to Friday, September 22 at 4 p.m. Exhibits may be set-up Saturday and Sunday, September 23 and 24 from 9 a.m. to 5 p.m.

**Arts and Crafts**

The Arts and Crafts building on the main promenade contains the handiwork and talents of many artists and craftsmen. Included are paintings, photography, ceramics, hand-crafts and furniture. Also displayed are the best from the home sewing center. Many intricate patchwork quilts, crocheted coverings, knitting and needlework objects are displayed, as well as many articles of clothing. Everything is of exceptional quality, never before exhibited and must be the personal work of the exhibitor.

Entries in this Department are open to residents of Pennsylvania only. Wilmer K. Kitchen, Superintendent, reminds all interested in entering articles that the deadline for entries is Friday, September 22 at 4 p.m.

**Sewing Contest**

Great interest in Bloomsburg Fair's Sewing Contest, always attracts many individual entries from a wide area.

Five classes are included in the Contest and all five must be entered to be eligible for the Grand Prize. The classes are ladies dress, stuffed toy, luncheon set or crib quilt, man's shirt or pajamas, and kitchen apron and one potholder.

The Grand Prize is a GE Light N Easy Spray Steam & Dry Iron and Electric Scissors.

**Flower Show**

Horticulture Hall, which contains the Flower Show, is the most fragrant building on the Fairgrounds. Located on the main promenade, near the main office, the Flower Show features practically every variety of cut flowers and house plants.

The Flower Show plays to a packed capacity crowd every day of the Fair and spectators are always well rewarded.

Keen competition accompanies the displays of local Garden Clubs, a favorite feature of the Flower Show. This year's General Theme, selected by William E. Streater, Superintendent of the Department, is "The West Comes to 'Bloom'!". The Mantel arrangement depicts "Trading Post Treasures"; the Tall Pedestal features "High Noon"; the Low Pedestal "Geronimo" and the Table arrangements depicts "Chuck Wagon Chow".

A Special Garden Club class, The Shadow Box, features each Club's own interpretation of "Flower Power!".

**Destruction Derby**

Friday afternoon's featured Grandstand attraction is the "Crash 'Em For Cash" National Championship Destruction Derby. Always a packed Grandstand event, under the personal direction of Veteran promoter George Marshman, the action gets underway at 12:30 p.m., Friday, September 29. All seats are General Admission, so come early for best selection.

There will be four elimination events limited to twenty-five cars each and a grand finale made up of the four elimination heat winners and four more that put on the best show or tried the hardest determined by the reaction of the crowd. Also, four cars, one out of each heat, will be picked by the officials making a total of twelve cars with only one winning, the last man running.

**Students Free**

The Fair Association will grant Free Admission to the grounds for students of High School Age and under, Monday through Friday. On Saturday (September 30) Free Admission will be granted to students 12 years of age and under.

**ALL WEEK**

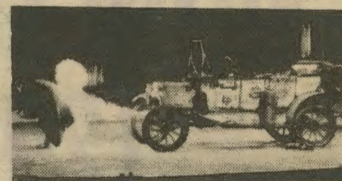
Afternoon Grandstand & Grounds



**Non-Stop Entertainment  
GLENN HAYWOOD  
& FRESHIE**



**Laugh with  
CHASE & PARK**



**Madcap Motor Mix-Up  
COOK'S COMEDY CAR**



**Great Family Fun  
CIMSE'S RUSSIAN  
WOLFHOUNDS & POMERANIANS**



**10 Foot of Fun  
PETE THE CLOWN**

**Trams Provided**

Free transportation will be provided to fair goers from the automobile parking lot to the Fair's entrance gates.

**MIDGET AUTO RACES**

**SATURDAY,  
SEPTEMBER 30**

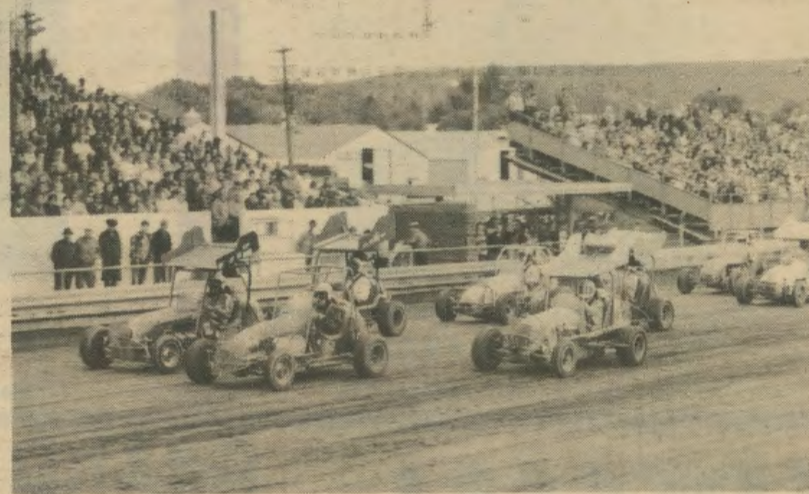
**time trials 12 NOON  
RACES START 1:00 P.M.**

**30 LAP  
FEATURE RACE**

**3 Ten Lap Races**

**1 Four Lap  
Novelty Race**

**10 Lap Consolation  
Race (non-winners)**



**Order Grandstand Tickets Early — Use Coupon on Page 4**

**RESERVED SEATS \$4.00**

(No Refunds)

**BLEACHER SEATS \$3.00**

## ADMISSION PRICES

**Admission to Grounds**

**Day or Night — \$1.00**

**Children — High School Age and Under,  
Mon. thru Fri. Free — Sat. 12 and Under Free**  
**Automobile Parking — Day or Night \$2.00**

### GRANDSTAND ADMISSION

General Admission, Afternoons	\$1.50
Reserved Seats, Afternoons	2.00
Reserved Seats, Evenings	5.00
Chair Seats on Track, Evenings	6.00
Auto Races, Saturday, All Reserved	4.00
Auto Races, Saturday, Bleachers	3.00
Demolition Derby, Fri. Afternoon	
General Admission	3.00

## Poultry, Turkeys, Rabbits

Hundreds of different breeds are featured in the Poultry Show and both Bantams and Large Fowl are eligible from Pennsylvania exhibitors and birds.

Each Exhibitor will be limited to eighty birds in each class — large fowl and bantams.

In addition to first, second and third prizes, the Fair offers \$5.00 in cash and a Blue Ribbon for the best male and female in the Show in both Standard Large Fowl and Bantam breeds.

Entries close Wednesday, August 30 at 4 p.m. Birds must be cooped beginning at 12 noon.

Saturday and Sunday, September 23 and 24. Judging begins Tuesday, September 26.

Hoffman's Turkey Farm, Catawissa, Pa. will furnish Turkeys for the Turkey Exhibit.

Rabbits are always a favorite attraction resulting in more classes eligible this year. The latest rules of the American Rabbit Breeders Association will govern the Show. Special awards of \$5.00 each are given for the best Doe and best Buck in the Show.

John C. Klingerman, Superintendent of Poultry and Pet Stock, should be contacted for complete information and entry blanks.

## Livestock One Of Top Fair Features

Located in a rural farming and dairy environment it is only natural for the Bloomsburg Fair to place great emphasis on Livestock. Prize-winning cattle, swine, sheep and dairy goats make up a large segment of the Fair. Modern buildings and a spacious Arena provide accommodations for livestock and ample space for judging and spectators.

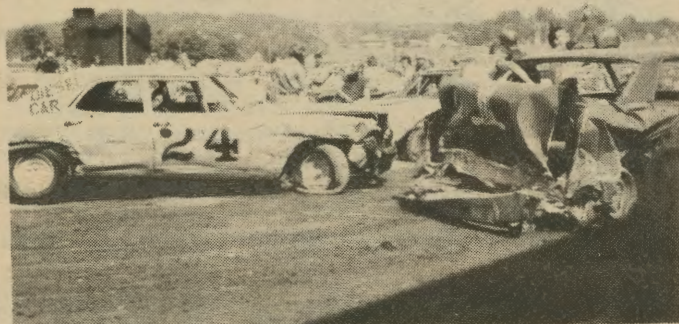
Entries in all Livestock Departments close Wednesday, September 6 and are limited to Pennsylvania owned animals.

The Premium List carries all eligible breeds and the premium money offered in each classification.

A copy of the Premium List together with Entry Forms, is available by writing to J. Fred Giger, Superintendent of Livestock, 328 Ridge Road, Bloomsburg, Pa. 17815.

**REITHOFFER'S CARNIVAL**  
*"The Aristocrat of Show Business"*  
**ON THE BIGGEST MIDWAY**

## DESTRUCTION DERBY



**Friday, Sept. 29 — 12:30 P.M.**

# SATURDAY, SEPTEMBER 23



**JIM ED BROWN**



**HELEN CORNELIUS**



**DOTTIE WEST**



**LITTLE JIMMY DICKENS**

# GRAND OLE OPRY SPECTACULAR!

**THE GRAND OLE OPRY arrives at the Bloomsburg Fairgrounds Saturday and you're invited! Featuring the spectacular duo of Jim Ed Brown and Helen Cornelius . . . country music's sunshine girl Dottie West . . . and Grand Ole Opry's own Little Jimmy Dickens! Come on out for country fun!**

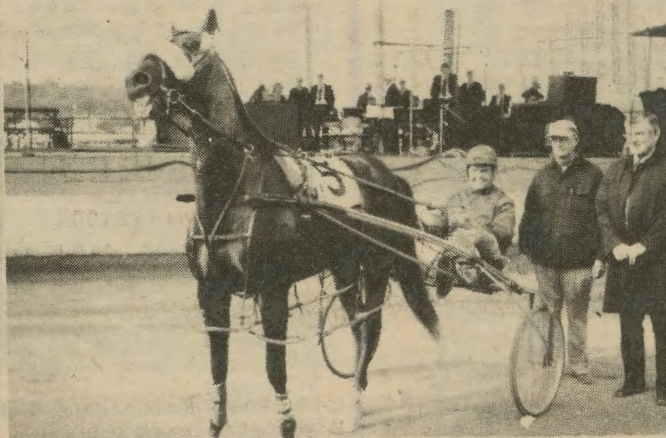
**ONE SHOW ONLY! SHOWTIME AT 8:00 P.M.**

## STAKE HARNESS RACING

**Monday Thru Thursday**

POST TIME  
MON. 12:00  
NOON

POST TIME  
TUES., WED.,  
THURS.  
1:00 P.M.



Joel Hanover, Winner 1977 Two-Year-Old Pace for Colts. Time 2:07

**Featuring the Top 2 and 3 Year Olds in the Nation**

**Pa. Sire Stakes — Wednesday & Thursday**  
**See Page 4 For Complete Program**

**Special Acts Between Races**

## Fair Officers and Directors

Clark B. Patterson, President; Gene M. Leiby, Treasurer; Frederick T. Trump, Secretary; W. O. Diehl, Superintendent of Grandstand; Paul H. Drumm, Superintendent of Police and Parking; John C. Klingerman, Superintendent of Poultry, Pet Stock and Schools; John C. Creasy, Superintendent of Agriculture; J. Fred Giger, Superintendent of Livestock; M. Paul Whitenight, Superintendent of Concessions; Robert F. Norman, Race Secretary; Willard H. Kilgus, Sr., Superintendent of Ticket Takers; Wilmer K. Kitchen, Superintendent of Arts and Crafts; William E. Streater, Superintendent of Flower Show; Earl E. Davis, G. Edward Deily and Donald R. Whitner, Auditors. C. Harold Bankes, Publicity and Advertising Director.

**Order Grandstand Reserved Seat Tickets Early. Use Coupon on Page 4.**

**TO ORDER  
Choice  
GRAND STAND  
SEATS  
FILL OUT  
AND MAIL  
THIS  
COUPON**

Mail Orders, with remittance and self-addressed stamped envelope to  
W.O. Diehl, Box 479, Bloomsburg, Pa. 17815  
Mail orders will be filled in the order in which they are received. No  
telephone orders will be accepted until Monday, September 25, 1978.  
Holders of tickets for the 8:30 p.m. show each evening will be admitted  
Free to the grounds after 7 p.m.  
Grandstand tickets can also be purchased at the Fair Ground Box Office,  
Fifth Street Gate Entrance.

**OFFICE HOURS**

Phone 717-784-0845 During Office Hours Only

**AUGUST** — Every Tuesday and Thursday — 12 Noon to 5 p.m.  
Saturdays — 3 p.m. to 7 p.m.

**SEPTEMBER** — Beginning September 5. Saturdays — 9 a.m. to 5 p.m.  
Monday thru Friday — 3 p.m. to 7 p.m.  
Sunday, September 24th 9 a.m. to 7 p.m.  
Fair Week 9 a.m. to 9 p.m.

**ALL TRACK AND BLEACHER SEATS ARE UNCOVERED**

Circle Date and Time followed by No. of tickets for all events  
**HORSE RACING — Price \$2.00**

Mon.	Tues.	Wed.	Thurs.
12 Noon	1 P.M.	1 P.M.	1 P.M.

**Fri., Sept. 29, 12:30 p.m. — DEMOLITION DERBY — \$3.00**  
All Seats General Admission

**Saturday, Sept. 30 — MIDGET AUTO RACES — 12 Noon No Refunds**  
Grandstand \$4.00 Bleacher Seats \$3.00

**GRAND OLE OPRY SPECTACULAR**  
Saturday, September 23 — 8:00 P.M.

Track \$6.00 Grandstand \$5.00

**ANITA BRYANT — GUY LOMBARDO, ORCHESTRA**

Monday Sept. 25	Track	Grandstand
1st Show — 5:00 p.m.	\$6.00	\$5.00
2nd Show — 7:30 p.m.		

**MEL TILLIS AND JODY MILLER**

Tuesday Sept. 26	Track	Grandstand
1st Show — 6:00 p.m.	\$6.00	\$5.00
2nd Show — 8:30 p.m.		

**JOHN DAVIDSON AND SUNSHINE EXPRESS**

Wednesday Sept. 27	Track	Grandstand
1st Show — 6:00 p.m.	\$6.00	\$5.00
2nd Show — 8:30 p.m.		

**KENNY ROGERS**

Thursday Sept. 28	Track	Grandstand
1st Show — 6:00 p.m.	\$6.00	\$5.00
2nd Show — 8:30 p.m.		

**"STARS OF HEE HAW"**  
BUCK OWENS — HAGGER BROTHERS  
GEORGE LINDSEY — SUSAN RAYE

Friday Sept. 29	Track	Grandstand
1st Show — 6:00 p.m.	\$6.00	\$5.00
2nd Show — 8:30 p.m.		

**B. J. THOMAS AND ANNE MURRAY**

Saturday Sept. 30	Track	Grandstand
1st Show — 6:00 p.m.	\$6.00	\$5.00
2nd Show — 8:30 p.m.		

NAME (Print) .....  
ADDRESS (Street).....  
CITY ..... Zip Code .....

**OFFICE USE ONLY — DO NOT WRITE BELOW**

Received	Filled	By	Mailed	Section & Row	Ticket Numbers

**Calendar of Events**

Admission Gates to Fairgrounds open daily 7 a.m. to 9 p.m.  
Exhibition Buildings open daily 9 a.m. to 10 p.m.  
Grandstand Gates open approximately 1 hour before each event.

**SATURDAY, SEPTEMBER 23**  
4-H and Vocational Horse Show — Performance Class.

8:00 P.M. — "Grand Ole Opry Spectacular" starring Jim Ed Brown, Helen Cornelius, Dottie West and Little Jimmy Dickens

**SUNDAY, SEPTEMBER 24**  
9:00 A.M. — Judging Registered Dogs, Arts, Crafts and Hobbies

7:00 P.M. — Vesper Services — Grandstand. Speaker Dr. Herman Steumfle, President of Gettysburg Lutheran Seminary

**MONDAY, SEPTEMBER 25**  
Senior Citizens Day. Free admission to Fairgrounds for Senior Citizens 65 and over showing Medicare Card or other proof.

9:00 A.M. — Judging — Rabbits, Flowers, Agriculture, 4-H Homemaking, 4-H Agriculture

12:00 Noon — Stake Harness Racing

5:00 P.M. — Grandstand Stage Show starring Anita Bryant and presenting Guy Lombardo's Royal Canadians

7:30 P.M. — Second Show — Anita Bryant and Guy Lombardo's Royal Canadians

**TUESDAY, SEPTEMBER 26**  
Judging Cattle (Aryshires, Guernseys, Jerseys), Beef Cattle, Swine, Dairy Goats, Poultry, 4-H Cattle, School Exhibits

1:00 P.M. — Stake Harness Racing  
6:00 P.M. — Grandstand Stage Show starring Mel Tillis and Jody Miller

8:30 P.M. — Second Show — Mel Tillis and Jody Miller

**WEDNESDAY, SEPTEMBER 27**  
Judging — Cattle (Brown Swiss, Holstein-Friesian, Milking Short-horns

1:00 P.M. — Stake Harness Racing  
4:30 P.M. — Pennsylvania State Lottery Drawing, West End of Farm Museum

6:00 P.M. — Grandstand Stage Show starring John Davidson and The Sunshine Express

8:30 P.M. — Second Show — John Davidson and The Sunshine Express

**THURSDAY, SEPTEMBER 28**  
9:00 A.M. — Sheep Judging  
11:00 A.M. — Appaloosa Horse Show — Arena

1:00 P.M. — Stake Harness Racing  
6:00 P.M. — Grandstand Stage Show starring Kenny Rogers

7:30 P.M. — 4-H Baby Beef Sale — Arena  
8:30 P.M. — Second Show starring Kenny Rogers

**FRIDAY, SEPTEMBER 29**  
10:00 A.M. — Horse Pulling Contest — Arena

12:30 P.M. — George Marshman's National Championship Destruction Derby — Grandstand

6:00 P.M. — Grandstand Stage Show featuring Stars of HEE-HAW, Buck Owens, Hager Brothers, Susan Raye, George Lindsey

8:30 P.M. — Second Show featuring Stars of HEE-HAW

**SATURDAY, SEPTEMBER 30**

10:00 A.M. — Pony Pulling Contest — Arena

11:00 A.M. — Log Sawing Contest  
12:00 Noon — Time Trials — Midget Auto Races

1:00 P.M. — Midget Auto Races featuring Nationally famous drivers and cars

6:00 P.M. — Grandstand Stage Show starring Anne Murray and B. J. Thomas

8:30 P.M. — Second Show — Anne Murray and B. J. Thomas

**ALL WEEK  
Monday thru Saturday**

Reithoffer's Carnival "The Aristocrat of Show Business" — on the biggest Midway in the East, special ride prices on Tuesday and Friday until 5 P.M.

Antique Farm Machinery Museum  
Historic Restored School House  
Petting Zoo (Free) Western End of Fairgrounds

New Puppet Show (Free) — Bandshell

Band Concerts — Monday thru Friday — Bandshell, Western End of Fairgrounds

EXHIBITS — Farm and Garden Products, Food, Hobbies, Needlework, Livestock, Poultry, Rabbits, 4-H, F.F.A., F.H.A., Flowers

Parking for over 16,000 cars. Free transportation to and from Parking Lots to Entrance Gates.  
Save and Bring this Calendar of Events With You to the Fair

**Midget Auto Races**

Saturday, September 30, the final day of Fair, always brings record-breaking crowds to see Midget Auto Racing. You'd better get to the Grandstand early. Time trials begin at 12 noon, and the flag comes down for the first race promptly at 1:00 p.m.

The races this year again will be under the direction and promotion of George Marshman who for the last 14 years has presented the race fans top flight races with some of the top name midget drivers in the country.

The race program will consist of three (10 lap) qualifying heats, a four-lap Novelty Race, a Consolation race of 10 laps and the feature race which is the Bobby Marshman Memorial Race. This feature event of 30 laps on the half mile track will have all of those qualified competing for the coveted trophy.

**Senior Citizens**

Monday, September 25 will be "Senior Citizens Day". Senior Citizens 65 years of age and over will be given Free Admission to the Fairgrounds. A Medicare Card or other proof of age must be shown.

**Horse and Pony Pulling Contests**

Two days of pulling contests brings many people to the Arena, located at the Western end of the Fairgrounds, to see the brute power of these fine animals. The Horse Pulling Contest begins at 10 a.m. on Friday, September 29. Cash prizes up to \$110.00 will be given in each of two classes. Drivers on the sleds loaded with sandbags must get their teams to pull in a continuous forward motion the official distance of 16 feet. Shorter lengths will not be used except to determine winners if two or more teams fail to pull the 16 feet.

Many of the same rules apply to the Pony Pulling Contest, Saturday, September 30 at 10 a.m., also in the Arena. One major exception is that the official pull for ponies is 10 feet. Cash prizes range from \$75.00 for first to \$15.00 for fifth in each of the two classes.

**Registered Dog Show**

A very popular feature of the Bloomsburg Fair is the Registered Dog Show, open to anyone wishing to enter their particular breed.

All dogs entered must show proof of registration at the time of entry. No entry or pen fee is charged.

Since this is an Amateur and Breeders Show, and not a Point Show, you may advertise your kennels and sell dogs at no charge.

Trophies are awarded to first place winners. Special award of trophy and ribbon for best dog and best puppy in the Show.

Closing date for entries is September 10. Judging will take place Sunday, September 25 at 9 a.m.

Entry blanks are available from the Show Manager, Ray E. Gross, 540 Valley Road, Bloomsburg, Pa. 17815.

**Appaloosa Horse Show**

On Thursday, September 28 the Central Pennsylvania Appaloosa Association will sponsor a show of the beautiful Spotted Indian horses, known as the Appaloosa. This is a Western Type Riding Show and will be held in the Arena beginning at 11 a.m.

**Hobby Show**

Entries for the Hobby Show, located in the Arts & Crafts building, must be set-up by the exhibitor on Saturday, September 23 between the hours of 9 a.m. and 4 p.m. Nineteen Classes are listed in the Premium List for the Hobby Show. For more information or a copy of the Premium List write to the Superintendent of Arts & Crafts. Reservations must be made by September 5.

**For further information, catalog of premiums, and entry blanks for any of the departments, write in care of the Superintendent (see list of officers on Page 3), Bloomsburg Fair, Box 479, Bloomsburg, Pa. 17815.**

**HARNES RACING PROGRAM**

**MONDAY, SEPTEMBER 25 - Post Time 12:00 P.M.**  
TROT NW \$2,000 Life Time..... \$1,000.00 added  
PACE NW \$2,000 Life Time..... \$1,000.00 added  
TROT 2 Yr. Colts Bl. Fair Stake No. 33 ... \$5,542.00  
TROT 3 Yr. Colts Bl. Fair Stake No. 32 ... \$4,957.00

**TUESDAY, SEPTEMBER 26 - Post Time 1:00 P.M.**  
TROT NW \$8,000 Life Time..... \$1,000.00 added  
PACE 2 Yr. Fillies Bl. Fair Stake No. 33 .. \$8,273.00  
TROT 2 Yr. Fillies Bl. Fair Stake No. 33 .. \$5,598.00  
PACE 3 Yr. Colts Bl. Fair Stake No. 32 ... \$6,247.00

**WEDNESDAY, SEPTEMBER 27-Post Time 1:00 P.M.**  
PACE NW \$8,000 Life Time..... \$1,000.00 added  
PACE 3 Yr. Fillies Bl. Fair Stake No. 32 .. \$6,243.00  
TROT 3 Yr. Fillies Bl. Fair Stake No. 32 .. \$5,443.00  
PACE 2 Yr. Colts Bl. Fair Stake No. 33 ... \$8,292.00  
TROT 3 Yr. Penna. Sire Stake ..... \$3,000.00 EST.

**THURSDAY, SEPTEMBER 28 - Post Time 1:00 P.M.**  
PACE Free For All ..... \$1,000.00 added  
TROT Free For All ..... \$1,000.00 added  
PACE 2 Yr. Penna. Sire Stake ..... \$3,000.00 EST.  
TROT 2 Yr. Penna. Sire Stake ..... \$3,000.00 EST.  
PACE 3 Yr. Penna. Sire Stake ..... \$3,000.00 EST.

The Above Bloomsburg Fair Stake purses are the exact purses paid in 1977. Cents excepted.