

1964

BLOOMSBURG

PENNA.

**6 DAYS
6 NIGHTS**

FAIR

**MONDAY, SEPT. 28
THRU
SATURDAY, OCT. 3**

A
BARNES CARRUTHERS
MUSICAL

A Musical Spectacular
Featuring
**"THE BEST OF
EVERYTHING"**

THE BIG SHOW

THE BIG SHOW does not carry a story line as such, however, a very clever, and thoroughly delightful script, has been written to provide the show with a continuity format, which enhances greatly THE PARADE OF TOP TALENT.

MONDAY-TUESDAY-WEDNESDAY

ALL ON THE SAME SHOW
THREE STARS OF THE LAWRENCE WELK SHOW

SEPTEMBER 28, 29, 30

MONDAY — ONE SHOW ONLY AT 7:30 P. M.

Tuesday and Wednesday — Two shows each night, 6:45 and 9:15 P. M.

THURSDAY-FRIDAY-SATURDAY

ALL IN ONE BIG ACT
THREE STARS OF MOVIES AND TELEVISION

OCTOBER 1, 2, 3

TWO SHOWS EACH NIGHT
AT 6:45 AND 9:15 P. M.



JO ANN CASTLE
"Old Time Piano Player"



**BOBBY BURGESS
and
BARBARA BOYLAN**
Featured Dancers of the
Lawrence Welk TV Show



MYRON FLOREN
"Featured Accordionist"



**BERYL
DAVIS**

**CONNIE
HAINES**

**JANE
RUSSELL**

Three Beautiful Girls and Wonderful Voices Blended
Into One Sensational Attraction.

BULK RATE
U. S. POSTAGE
PAID
Non-Profit Org.
Permit No. 39
Bloomsburg, Pa.

Rural Star Route
P. O. Boxholder

**TO
BUY
ADVANCE SALE
TICKETS**

See
Panel on inside
Page 3



HARNESS RACES—TUES. THRU FRI. AFTERNOONS
1963 TWO-YEAR-OLD PACE WINNER

MONDAY SEPTEMBER 28 Thru SATURDAY OCTOBER 3

ALL IN THE BIG NIGHT SHOW FEATURING "THE BEST OF EVERYTHING"



JO ANN CASTLE



BOBBY BURGESS and BARBARA BOYLAN



JANE RUSSELL

CONNIE HAINES

BERYL DAVIS



DICK ALBES



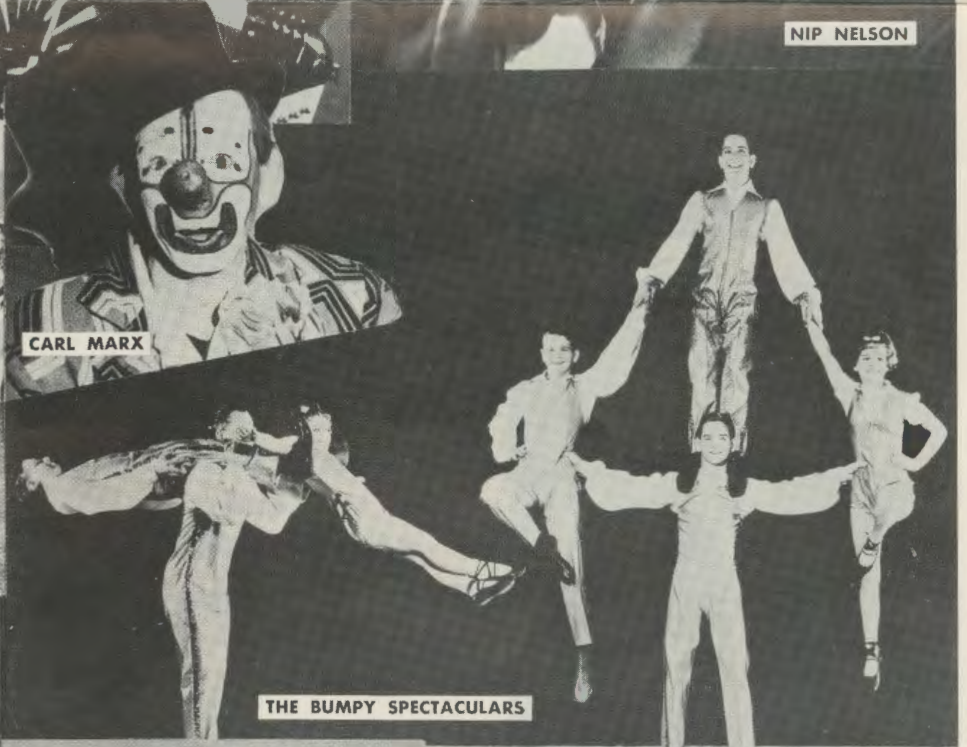
MYRON FLOREN



NIP NELSON



MANHATTAN ROCKETTES



CARL MARX

THE BUMPY SPECTACULARS



CHAI NE DANCERS



THE ASHTONS and SHIRLEY

TWO TORREANIS



MONDAY SEPTEMBER 28 Thru SATURDAY OCTOBER 3

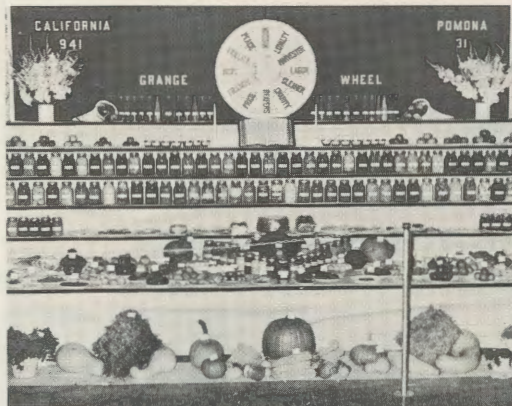
The Great Bloomsburg Fair offers thousands of exhibits — Educational, Agricultural, Fruit, Livestock, Poultry, Dog, Home Making, Arts and Crafts, Hobbies, Floral, and Farm Implements. The picture story on the following pages shows the magnitude and scope of features you will see at the Great Bloomsburg Fair. All exhibits are housed in permanent buildings and no admission charge is made. Entertainment is also provided daily in the open air arena by high school bands from throughout the state.



4-H Baby Beef



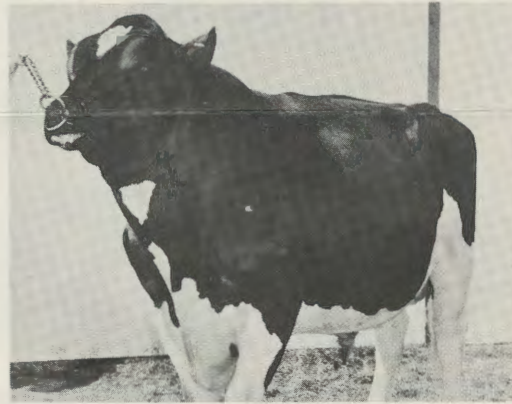
Farm Machinery Row



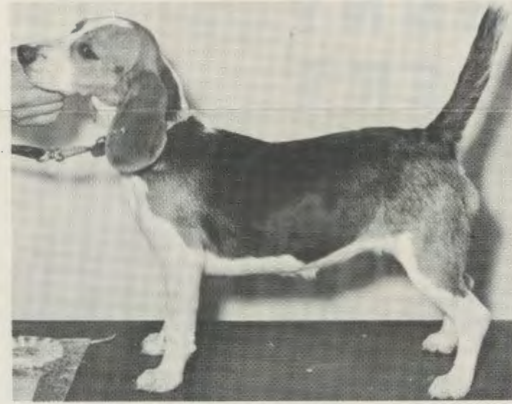
Grange Exhibits—Fruit Homemaking Dept.



Horse Pulling Contest Thursday, October 1



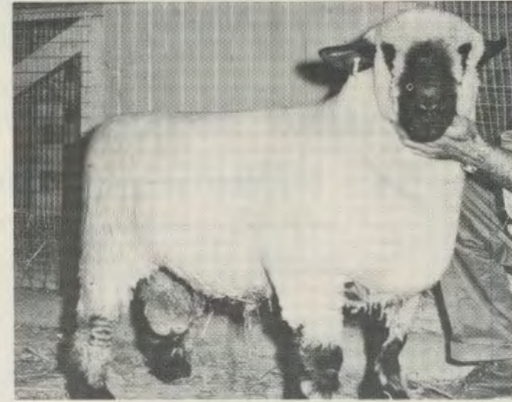
LIVESTOCK SHOW
1963 Champion Holstein Bull



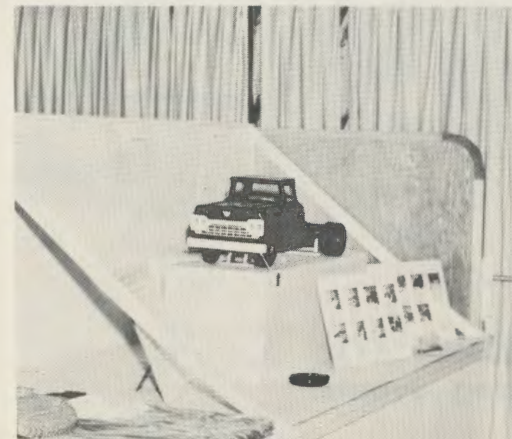
DOG SHOW
Champion Puppy—1963



FLOWER SHOW



Registered Sheep
Champion Hampshire Ram—1963



HOBBY SHOW

FAIR DIRECTORS, PERSONNEL

J. Howard Deily, president; L. A. Zimmer, vice-president; D. R. Kressler, secretary; O. Evans Shipman, treasurer; M. Paul White-night, superintendent of concessions and farm implements; Arthur R. Appleman, Jr., superintendent of parking and police; John F. Boyer, superintendent of agriculture, fruit and home making; J. Fred Giger, superintendent of livestock; Cortez C. Hartman, superintendent of grandstand; George R. Pugh, superintendent of home arts and crafts and hobby show; James C. Stradling, superintendent of flower show; Maynard P. Mordan, race secretary; L. A. Zimmer, superintendent of ticket takers. Publicity and Advertising, C. Harold Bankes. Auditors, J. Harold McMahan, H. Max Pennington, G. Edward Deily. Night Show Producer, Barnes-Carruthers Theatrical Enterprises, Inc., Chicago, Ill.

HARNESS RACING PROGRAM

TUESDAY, SEPTEMBER 29—1:30 P. M.

(Trot) NW of \$1,500.00	Est. \$ 1,000
2 yr. Pace, Fillies, Stake No. 19	Est. \$ 9,500
3 yr. Trot, Colts, Stake No. 18	Est. \$ 7,500
(Pace) NW of \$15,000.00	Est. \$ 1,000

WEDNESDAY, SEPTEMBER 30—1:30 P. M.

(Pace) NW of \$1,500.00	Est. \$ 1,000
2 yr. Trot, Fillies, Stake No. 19	Est. \$ 8,000
3 yr. Pace, Colts, Stake No. 18	Est. \$11,000
2 yr. Trot, Colts, Stake No. 19	Est. \$ 9,500

THURSDAY, OCTOBER 1—1:30 P. M.

Free-For-All Trot	Est. \$ 1,000
2 yr. Pace, Colts, Stake No. 19	Est. \$12,500
3 yr. Trot, Fillies, Stake No. 18	Est. \$ 7,000
3 yr. Pace, Fillies, Stake No. 18	Est. \$ 7,500

FRIDAY, OCTOBER 2—1:30 P. M.

(Pace) NW of \$5,000.00	Est. \$ 1,000
(Trot) NW of \$10,000.00	Est. \$ 1,000
Free-For-All Pace	Est. \$ 1,000

TO ORDER
Choice
GRAND STAND SEATS
FILL OUT AND MAIL THIS COUPON

To CORTEZ C. HARTMAN, Supt. of Grandstand
Box 479, BLOOMSBURG, PENNA.

Mailing of tickets will start September 14, 1964. No telephone orders will be accepted until Monday, September 28, 1964. Mail orders will be filled in the order in which they are received. Make remittance payable to Bloomsburg Fair. Include a self-addressed stamped envelope. Holders of tickets for the 9:15 p. m. Show (Tues., Wed., Thurs., Fri., and Sat. evenings) will be admitted Free to the grounds after 7:30 p. m.

YOU CAN ALSO BUY TICKETS AT FAIR GROUND BOX OFFICE STARTING SEPT. 12 HOURS: SATURDAYS 9 A. M.—5 P. M. MONDAY THRU FRIDAY: 3 P. M.—9 P. M.

The enclosed remittance of \$_____ is to cover cost of Grandstand Reserve Seat Tickets as indicated below:

Reserved Seats for Afternoon Harness Races & Vaudeville Acts
No. Wanted _____ @ \$1.50 each.
 Tues. Wed. Thur. Fri.
Mark an (x) in square above for day wanted.

Reserved Seats for Midget Auto Races
No. Wanted _____ @ \$3.00 each (Saturday Afternoon)

Reserved Seats for Night Revue
No. Wanted _____ @ \$1.50 each.

Mon. Eve. (7:30 p. m.)	} Featuring Stars from the Lawrence Welk Show
Tues. Eve. (6:45 p. m.)	
Tues. Eve. (9:15 p. m.)	
Wed. Eve. (6:45 p. m.)	} Featuring Jane Russell
Wed. Eve. (9:15 p. m.)	
Thur. Eve. (6:45 p. m.)	} Connie Haines
Thur. Eve. (9:15 p. m.)	
Fri. Eve. (6:45 p. m.)	} Beryl Davis
Fri. Eve. (9:15 p. m.)	
Sat. Eve. (6:45 p. m.)	
Sat. Eve. (9:15 p. m.)	

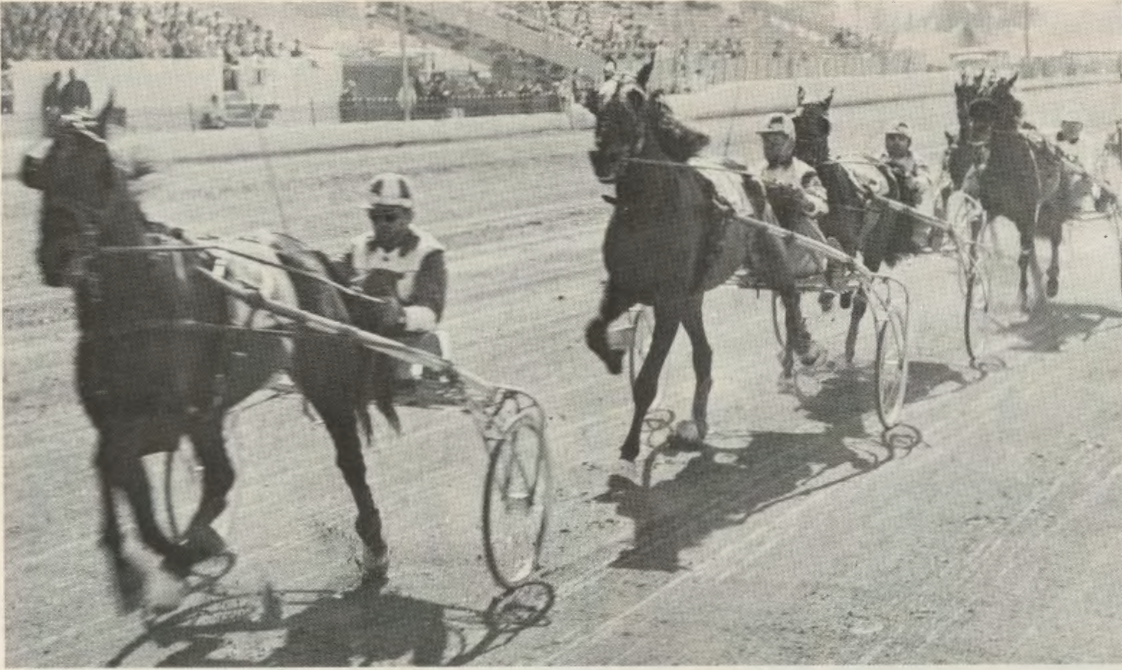
Chair Seats on track Tues., Wed., Thur., Fri. & Sat.—\$1.50 each

NAME (Print) _____
ADDRESS (Street) _____
CITY _____

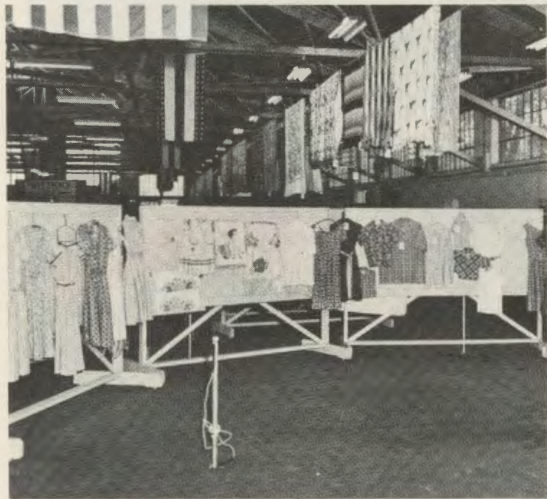
Enclose remittance and a self-addressed envelope.
OFFICE USE ONLY—DO NOT WRITE BELOW

Received	Filled	By	Mailed	Section Row	Ticket Numbers

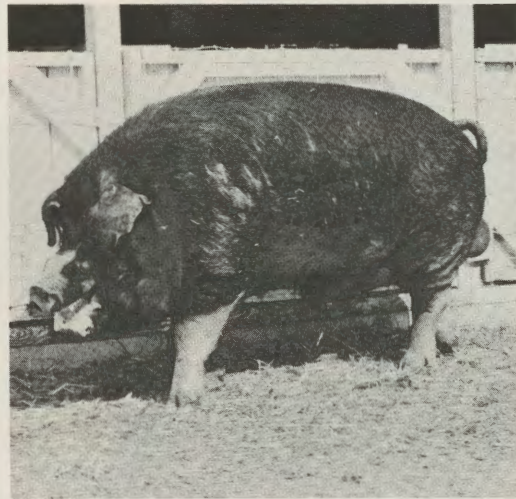
MONDAY SEPTEMBER 28 Thru SATURDAY OCTOBER 3



STAKE HARNESS RACING—TUESDAY THRU FRIDAY
Smart Rodney—Two-year-old Trotter



Home Arts and Crafts



SWINE SHOW
1963 Champion Poland China Boar



MIDGET AUTO RACES
Saturday Afternoon, October 3—1 P. M.

JOHNNY RIVERS DIVING MULES EVERY AFTERNOON AND NIGHT

Program of Events

1964 BLOOMSBURG FAIR, Sept. 28 to Oct. 3

TICKET INFORMATION

ADMISSION TO FAIRGROUNDS. 60 cents (Day or Night) (children under 14 Free).
ADMISSION TO PARKING LOT: 50 cents (Day or Night).
ADMISSION TO GRANDSTAND: General Admission, Paddock, or Bleachers \$1.00; Reserved Seats (Day or Night) \$1.50; Saturday Auto Races (All Seats Reserved) \$3.00; Auto Races (Bleachers) \$2.00; Auto Races (Paddock) \$1.50; Chair Seats on Track except Monday Night \$1.50.

SPECIAL CHILDREN'S DAYS

Tuesday, September 29th — Columbia County
Thursday, October 1st — Counties of Northeast
Friday, October 2nd — Counties of Southwest

VESPER SERVICES

Sunday, September 27th — 7:00 P. M.

HARNESS RACING PROGRAM

Tuesday Through Friday — 1:30 P. M.
Following Friday's Race Program, Cavalcade of High School Bands and Parade of Prize Winning Livestock (Two Features for One Admission Price)
See Page 3 for complete race program

MIDGET AUTO RACES

Saturday, October 3
Time Trials 1:00 P. M. Races Start 2:00 P. M.

Reithoffer's Shows and Rides on the Biggest Midway in the East

GRANDSTAND NIGHT SHOW

Monday, September 28 (one show only) 7:30 P. M.
Tuesday and Wednesday, September 29 and 30
Two Shows Each Night—6:45 and 9:15 P. M.

Featuring

Bobby Burgess
Barbara Boylan
Jo Ann Castle
Myron Floren
Stars of the Lawrence Welk Show
Plus the Complete Grandstand Show

Thursday — Friday — Saturday
October 1-2-3

Two Shows Each Night — 6:45 and 9:15 P. M.

Featuring

Jane Russell
Connie Haines
Beryl Davis
Three Great Hollywood Stars
Plus the Complete Grandstand Show

EXHIBITS

Horses and Cattle
Registered Beef Breeds
Registered Sheep
Bloomsburg Fair
Sewing Contest
Grange Exhibits
Home Arts and Crafts
Registered Swine
Poultry — Rabbits
Hobby Show — Flower Show
Agriculture Exhibits — Fruit
— Home Making
School Exhibits — 4-H Clubs
Dog Show

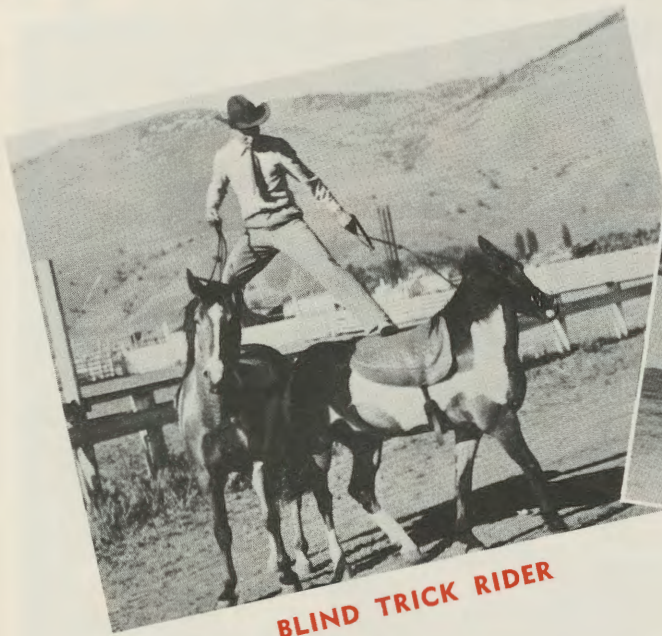
JUDGING

Milking Shorthorns, 4-H Baby Beef, Brown Swiss — Tuesday, September 29
Guernseys, Holstein-Friesian, Ayrshires, Jerseys—Wednesday, September 30.
Aberdeen-Angus, Herefords—Thursday, October 1
Horse Pulling Contest—Thursday, October 1
Sheep—Thursday, October 1
Swine—Tuesday, September 29
Dogs—Wednesday, September 30
Bantam Fanciers Show—Tuesday, September 29

Gene Holter's WILD ANIMAL SHOW

SPECIAL 2½ HOUR SHOW — MONDAY AFTERNOON, SEPT. 28

ADULTS \$1.00 — CHILDREN (under 14 — 50 cents) — No Reserved Seats



BLIND TRICK RIDER



RACING OSTRICHES



RACING CAMELS

Wild Animal acts also presented every afternoon between racing events.

THE SHOW OF THE YEAR! THE GREATEST ANIMAL SHOW ON EARTH!

MONDAY SEPTEMBER 28 Thru SATURDAY OCTOBER 3