



Traci Capwell and Debbie Markowitz



Jim Mitchell, Debbie Markowitz,
and Scott Hall

University play group to feature two productions

LOCK HAVEN — The University Players, Lock Haven University's student theatre group, will undertake two major productions for the 1988-89 academic year.

William Shakespeare's "The Taming of the Shrew" will be the fall production by the Players under the direction of John B. Gordon, chairman of Speech Communication and Theatre Department.

Performances are scheduled for Nov. 16 to 19.

Denise L. Warner, an instructor in the department, will direct the players in the spring production of Marsha Norman's "Getting Out."

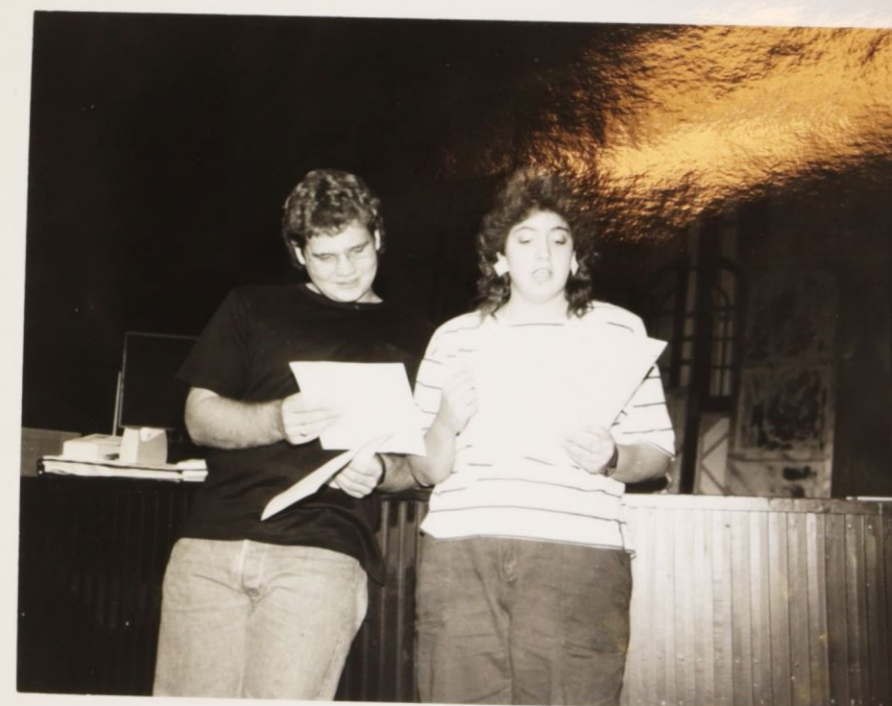
The play focuses on the lives of female prison inmates and their expectations of the world after incarceration.

For more information about tickets or specially priced ticket packages for high school classes, contact Gordon at (717) 893-2131.

"The Taming of the Shrew" Auditions



Left to right: Mark Thomas, Dave Lexner,
and Cory Kusher



Assistant Stage Manager - Steve Chicanas
Stage Manager - Lory Fedor



center- John Gordon and Lara Gordon.



"Taming of the Shrew" - first night auditions
center - Olen Steinhaver and Chris Leppo.



center - Jennifer Helfgott and Helen Haglich

Curtis - Christopher Leppo

Joseph - Traci Capwell *AC*

Nicholas - Shara Windsor *SW*

Peter - Robin Knox *RK*

Phillip - Jennifer Pandick *JP*

Nathaniel - Kevin McInnery *KM*

Sugarsop - Courtney Schaefer *CS*

Officer - Armando Calalero *AC*

PLEASE INITIAL BESIDE YOUR NAME.

THANK YOU ALL FOR YOUR TIME AND TALENTS. IT HAS BEEN A
VERY HARD JOB CASTING THE SHOW. YOU ALL GAVE A LOT AT
AUDITIONS.

FIRST READ-THROUGH IS TONIGHT, SEPTEMBER 15, AT 7:00 P.M.,
IN SLOAN THEATRE. PLEASE BE ON TIME AND CHECK IN WITH OUR
STAGE MANAGER, LORI FEDOR WHEN YOU ARRIVE.

*****AUDITIONS FOR ONE-ACTS ARE**

SEPTEMBER 20, 21 & 22

5:00 P.M.

SLOAN 321

SEE POSTERS FOR MORE INFORMATION.

J. GORDON

J. Gordon

CAST

"THE TAMING OF THE SHREW"

Introduction

Sly - David Lexner *DL*

Hostess - Jennifer Helfgott *JH*

Lord - Jim Mitchell (double cast see below) *JM*

Huntsman #1 - Pat Moore *PM*

Huntsman #2 - Perry Gruver *PG*

Servant #1 - Helen Haglich *HH*

Servant #2 - George Tobler *GT*

Servant #3 - Angelina Cantolina *AC*

Page - Dusty Graves *DG*

SHREW

Baptista - Matt Lovlie *ML*

Katherina - Louise Kagan *LK*

Bianca - Shell Callahan *SC*

Petruchio - Mark Thomas *MT*

Grumio - Corey Kusher *CK*

Hortensio - Olen Steinhaver *OS*

Gremio - Dan Mahoney *DM*

Lucentio - Steve Middleton *SM*

Tranio - Sanjiva Cooke *SC*

Biodello - Scott Hall *SH*

Vincentio - Jim Mitchell *JM*

The Pedant - Brian Smith *BS*

The Widow - Deb Markowitz *DM*

The Tailor - Joe Garrison *JG*

The Haberdasher - Armondo Calballero *AC*



SEPTEMBER 21, 1988
PRESS RELEASE #88-196

NEWS/INFORMATION

FOR IMMEDIATE RELEASE

CONTACT: Rebecca Rosser
Director of Public Relations
(717) 893-2021

ACTORS CAST IN FIRST UNIVERSITY PLAYERS PRODUCTION OF THE YEAR

September 21, 1988 (Lock Haven University) -- A total of 32 parts have been cast for the Lock Haven University Players production of "The Taming of the Shrew" scheduled to open on Thursday, November 17.

Cast in parts for the "Shrew" introduction are:

David Lexner, as Sly
Jennifer Helfgott, as the hostess
Jim Mitchell, as the lord
Pat Moore, as a huntsman
Perry Gruver, as a huntsman
Helen Haglich, as a servant
George Tobler,, as a servant
Angelina Cantolina, as a servant
Dusty Graves, as the page

Cast in the "Shrew" are:

Matt Lovlie, as Baptista
Louise Kagan, as Katherina
Shell Callahan, as Bianca
Mark Thomas, as Petruchio
Corey Kusher, as Grumio
Olen Steinhaver, as Hortensio
Dan Mahoney, as Gremio
Steve Middleton, as Lucentio
Sanjiva Cooke, as Tranio
Scott Hall, as Biondello
Jim Mitchell, as Vincentio (double role)
Brian Smith, as the Pedant
Deb Markowitz, as the widow
Joe Garrison, as the tailor
Armondo Calballero, as the haberdasher
Christopher Leppo, as Curtis
Traci Capwell, as Joseph



SEPTEMBER 22, 1988
PRESS RELEASE #88-195

NEWS/INFORMATION

FOR IMMEDIATE RELEASE

CONTACT: Rebecca Rosser
Director of Public Relations
(717) 893-2021

AUDITIONS FOR "SHREW" PRODUCTION ATTRACT A MYRIAD OF UNIVERSITY STUDENTS

September 22, 1988 (Lock Haven University) -- Auditions for the University Players fall production of "The Taming of The Shrew," scheduled for November 17, 18 and 19, were held recently with student actors required to do everything from "frustrated screams to dancing to the Beach Boys."

It was all part of casting the play by William Shakespeare, according to the production's director, John B. Gordon, chairman of the University's Speech Communication and Theatre Department.

"I was extremely pleased with the turnout of 22 men and 16 women auditioning," he added.

"The job in casting was very difficult for this production," he indicated noting the quality of talent available has vastly improved.

But even for seasoned stage veterans, like student Mark Thomas who has been featured in the Players "The Crucible" and "Play on," auditioning can still give a person the "heebiegeebies."

"If you get through auditions without getting an ulcer, that's half of it," Thomas noted.

Sara Windsor, as Nicholas
Robin Knox, as Peter
Jennifer Pandich, as Phillip
Kevin McInnery, as Nathaniel
Cortney Schaefer, as Sugarsop
Armando Calalero, as the officer

-30-

Auditions for "Shrew" invited some new talent, mainly in the form of freshmen students.

Freshmen Pat Moore was successful in landing the part of a huntsman, but as a newcomer to the stage, he said, "auditioning is the most fun I've ever experienced outside of visiting the dentist."

A total of 20 men and 10 women were cast in the parts for the production which is sponsored by the Student Cooperative Council, Inc.

This year, the University Players and Gordon are continuing to include extensive research in developing the production.

This week, cast and crew members will hear Virginia A. Martin, an associate professor of English, who will discuss sex roles in society, past and present.

Judy Brink, Ph.D., assistant professor of anthropology and social work, will make a presentation on "peasant life and city dwellers" and the interaction between the two.

A new faculty member this fall, Peter Mellon will discuss the technical applications which will be used in staging "Shrew," with Denise Warner of the Department discussing costume design, and Gordon on directing the play.

"The Taming of the Shrew" is one of two productions to be undertaken by the University Players this year. The other, "Getting Out," will be the spring production in Sloan Theatre.

For ticket information, contact the Student Cooperative Council Business Office at 893-2332.

-30-

The Taming of the

Shrew

LECTURE SERIES

TUESDAY 9/20 at 7:00

1: Virginia Martin -

"Past & Present Attitudes on Sex
Roles and the Problems They Play
in Producing Shakespeare"

2: Dr. Judy Brink -

"Interaction Between Peasant Life
and City Dwellers"

THURSDAY 9/22 at 7:00

1: Peter Mellon -

"The Technical Side of the Show"

2: Denise Warner -

"Concepts of Costume Design"

3: John Gordon -

"Thoughts from the Director's Chair"

SLOAN THEATRE

LHU holds fall auditions

LOCK HAVEN — Auditions for the University Players fall production of "The Taming of the Shrew," scheduled for Nov. 17, 18, and 19, were recently held with student actors required to do everything from "frustrated screams to dancing to the Beach Boys."

It was all part of casting the play by William Shakespeare, according to the production's director, John B. Gordon, chairman of the university's speech communication and theatre department.

"I was extremely pleased with the turnout of 22 men and 16 women auditioning," he added.

"The job in casting was very difficult for this production," he indicated, noting the quality of talent available has vastly improved.

But even for seasoned stage veterans, like student Mark Thomas, who has been featured in the Players' "The Crucible" and "Play On," auditioning can still give a person the "heebiegeebies."

"If you get through auditions without getting an ulcer, that's half of it," Thomas noted.

Auditions for "The Shrew" invited some new talent, mainly in the form of freshmen students.

Freshmen Pat Moore was successful in landing the part of a huntsman, but as a newcomer to the stage, he said, "Auditioning is the most fun I've ever experienced outside of visiting the dentist."

The "Shrew" hits town

By Jeanne Ruczhak
Features Reporter

Travel back in time to an English inn approximately year 1690.

Lock Haven University's actors and actresses will present William Shakespeare's original version of "The Taming of the Shrew" on November 17, 18, and 19, at 8:00 p.m., in the main theater in Sloan Auditorium.

The original script includes an induction where Sly, a drunken beggar, is conned into believing he is a nobleman. A play within a play begins, and people off the street gather to perform "The Taming of the Shrew" for Sly.

Mr. John Gordon, Chairman of the Speech, Communication, and Theater Department, is also the director of LHU's fall play.

"The Taming of the Shrew" deals mainly with Petruchio taming his wife Katherine's, independent behavior at a time when women were expected to succumb to men, obeying them without question.

However, the play ends ironically with Petruchio and Katherine understanding each other in their own private way.

"The Taming of the Shrew", chosen by Gordon because of his love for Shakespeare and his desire to share that love with others, will be done a little differently than most people know it.

It will be performed, "stylistically the way a touring company would have performed it at that time," said Gordon.

One challenge everyone involved with the play must overcome is making the

production with live animals including; chickens, two nanny goats, and dogs on the stage. There will be dog auditions to determine which pets will be more cooperative on stage with everything going on.

Anyone interested in helping with animal training or any other aspect of the play is encouraged to contact either Mr. Gordon or Denise Warner. Both professors have offices in Sloan.

Cast in the induction are: David Lexner as Sly, Jim Mitchell as the Lord, Jim Mitchell as Vincentio, Pat Moore and Perry Grewer as the two huntsman, Jennifer Helgroff as the hostess, Dusty Graves as the page, and Helen Haglich, George Tobler, Angelina Gantolina as the three servants.

Starring in the play within the play are: Matt Lovlie as Baptista, Louise Kagan as Katherine, Shell Callahan as Bianca, Mark Thomas as Petruchio, Corey Kushner as Grumio, Olen Steinhauer as Hortensio, Dan Mahoney as Gremio, Steve Middleton as Lucientio, Sanjiva Cooke as Tranio, Scott Hall as Biondello, Brian Smith as the pendant, Deb Markowitz as the widow, Joe Garrison as the tailor, Armando Caliballero as both the Haberdasher and the officer, and Christopher Leppo, Traci Capwell, Shara Windsor, Robin Knox, Jennifer Pandich, Kevin McInnery, and Courtney Schaefer as servants in Petruchio's house.

In conjunction with "The Taming of the Shrew", the Speech, Communication, and Theater Departments hosted several lectures on related topics to issues that arise in the play.



OCTOBER 21, 1988

PRESS RELEASE #88-221

NEWS/INFORMATION

FOR IMMEDIATE RELEASE

CONTACT: Rebecca Rosser
Director of Public Relations
(717) 893-2021

FOR THIS UNIVERSITY PLAYERS PART, THE LINES ARE RUFF

October 21, 1988 (Lock Haven University) -- Auditions for dogs will be held Thursday, October 27's Sloan Theatre for casting in the University Players production of "The Taming of the Shrew."

Between the hours of 6:30 and 7:30 p.m., you are invited to bring your dog to audition if he or she meets certain requirements.

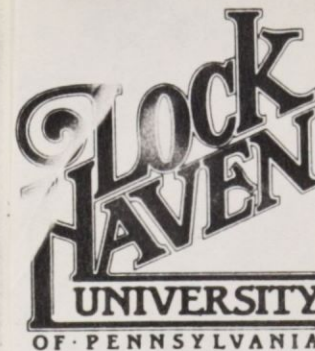
Needed are two large hunting dogs, preferably Greyhounds, Wolfhounds or Mastiffs. Also needed is one small lap dog to be carried--a Pekinese, Yorkshire Terrier or similar.

The large dogs will be required to stand quietly at the side of their handlers while on stage and work well on a lead. The small dog will be carried on and off the stage.

Full rehearsals for the cast begin November 14 at 7 p.m. Dogs will be able to return home by 8:20 each evening.

Performances of the University Players production of "The Taming of the Shrew" are scheduled November 17, 18 and 19.

-30-



Lock Haven, PA 17745

PRESS RELEASE

The University Players and the Department of Speech Communication and Theatre announce dog auditions for their upcoming production of William Sheakespear's "THE TAMING OF THE SHREW." Auditions will be held in the Sloan Fine Arts Center Theatre, Lock Haven University, on October 27, from 6:30 to 7:30 p.m. They are interested in auditioning dogs that will meet these requirements:

2 large hunting dogs (Greyhounds, Wolfhounds or Mastiffs)

1 small lap dog to be carried (Pekingese, Yorkshire Terrier, etc.)

Large dogs will be required to stand/quietly at the side of their handlers while on stage and work well on a lead. The small dog will be carried on and off the stage.

Evening performance dates are November 16, 17, 18 and 19, at 8 p.m. in the Sloan Theatre; a morning performance, at the same place, will also be given the morning of the 18th, at 10:15.

First rehearsals with the full cast will begin November 14, at 7 p.m. The dogs will be free to return home by 8:20 every evening unless they wish to remain for curtain calls.

Everyone looks forward to meeting you and your dog.

Press Release

The Taming of the Shrew

The University Players' fall production of "The Taming of the Shrew" by William Shakespeare will take on a new twist. Not only will the cast include 20 men and 10 women but in addition three goats, two dogs and a crate of chickens.

The setting for the Lock Haven University production is an inn yard or stable in front of a tavern of the 1680's. The live stock includes Midnight, Patches and Michelle, goats provided by the Selleck family of Jersey Shore, PA. Wot and Gwen, retired racing greyhounds owned by Van Igou of Blanchard, PA, will play noble lord's hunting hounds. The crate of chickens will be on temporary loan from Dr. Blair Carbaugh's Bio Lab of the the Biological Sciences Department of Lock Haven University.

Director John Gordon stated "casting the animals was a very interesting process...we wanted to see how the animals would react to loud music and the bright lights of the stage."

These animals are all part of Gordon's concept for the "Shrew." Inn yards were for centuries used as locations for touring acting companies to present their plays. Animals were moved aside or even incorporated into the scenes.

The animals will make their stage debut November 17, 18 & 19 in Sloan Theatre, Sloan Fine Arts Center on the Campus of Lock Haven University.

Wanted! Dogs, Dogs, Dogs!

Large hunting dogs are needed for "The Taming of the Shrew". (Greyhounds, wolfhounds, & mastiffs). Auditions will be held from 6:30 - 7:30 pm on Oct. 27 in Sloan Theatre.



OCTOBER 10, 1988

PRESS RELEASE # 88-209

NEWS/INFORMATION

FOR IMMEDIATE RELEASE

CONTACT: Rebecca Rosser
Director of Public Relations
(717) 893-2021

COLUMBIA CROSS ROADS' RESIDENT CAST IN LOCK HAVEN UNIVERSITY
STAGE PRODUCTION

October 10, 1988 (Lock Haven University) -- The University Players of Lock Haven University will stage a production of "The Taming of the Shrew," a play by William Shakespeare, this fall.

The stage production will be held in John Sloan Theatre at Lock Haven University November 17 through 19 at 8:00 p.m.

Shelley Patricia Callahan, the daughter of John and Beth Callahan of Barnstable, Massachusetts, will play the part of Bianca.

Callahan is a freshman at Lock Haven University.

She has had previous theatrical experience in the musical "LuAnne."

-30-

PREPARED BY: Connie Burgess, Student Assistant



OCTOBER 10, 1988

PRESS RELEASE # 88-209

NEWS/INFORMATION

FOR IMMEDIATE RELEASE

CONTACT: Rebecca Rosser
Director of Public Relations
(717) 893-2021

BARNSTABLE RESIDENTS' DAUGHTER CAST IN LOCK HAVEN UNIVERSITY
STAGE PRODUCTION

October 10, 1988 (Lock Haven University) -- The University Players of Lock Haven University will stage a production of "The Taming of the Shrew," a play by William Shakespeare, this fall.

The stage production will be held in John Sloan Theatre at Lock Haven University November 17 through 19 at 8:00 p.m.

Shelley Patricia Callahan, the daughter of John and Beth Callahan of Barnstable, Massachusetts, will play the part of Bianca.

Callahan is a freshman at Lock Haven University.

She has had previous theatrical experience in the musical "LuAnne."

-30-

PREPARED BY: Connie Burgess, Student Assistant

The Express
November 7, 1988

"Shrew" to be performed

LOCK HAVEN — Over 50 carpenters, seamstresses and lighting technicians are hard at work these days reconstructing a modern version of the stage used by William Shakespeare for the production of "The Taming of the Shrew."

The students and staff are putting the final touches on the set for the Nov. 17, 18, and 19 production by the University Players.

Overseeing the construction is university professor Peter Mellen, a new faculty member in the department of speech communication and theatre.

Mellen indicated that the well-equipped scene shop helped "breathe new life into director John B. Gordon's concept for 'Shrew'."

He praised the talent and hard work of the student staff, including shop assistant Robert Watkins, in building the stage settings.

Denise Warner, costume designer for the production this fall, is busy guiding the work of another 30 students involved in creating the costumes.

Hours are spent creating an individual costume, including designing the make-up and hair for each player, making certain they are consistent with that of the Elizabethan era.

Tickets for the University Players production of "The Taming of the Shrew" are \$2.50 for adults, \$1 for children 12 and younger, and free to all Lock Haven University students.

For additional ticket information, contact the university at 893-2332.



OCTOBER 10, 1988

PRESS RELEASE # 88-209

NEWS/INFORMATION

FOR IMMEDIATE RELEASE

CONTACT: Rebecca Rosser
Director of Public Relations
(717) 893-2021

ELVITIGALA FLATS' COOKE CAST IN LOCK HAVEN UNIVERSITY

STAGE PRODUCTION

October 10, 1988 (Lock Haven University) -- The University Players of Lock Haven University will stage a production of "The Taming of the Shrew," a play by William Shakespeare, this fall.

The stage production will be held in John Sloan Theatre at Lock Haven University November 17 through 19 at 8:00 p.m.

Sanjiva Cooke, the son of Visakha
Cooke of Elvitigala Flats,
Sri Lanka, will play the part of Tranio

A management science major, Cooke is a freshman at Lock Haven University.

Some of his previous theatrical roles include Saul in "Play On," Antonio in "Merchant of Venice" and Camus in "Caligula."

-30-

PREPARED BY: Connie Burgess, Student Assistant



Lock Haven, PA 17745

November 7, 1988

Dear Alumnus,

This semester Lock Haven University Players will present "The Taming of the Shrew." Currently the cast and crew are hard at work rehearsing scenes, building sets and making costumes for our production an experience you may well remember, being a part of the 1956 company of "Shrew."

We are inviting the participants of the 1956 production to join us for our production.

We would like to reserve a complimentary ticket for you for Saturday evening, November 19, at 8:00 p.m. To reserve your ticket, call our Alumni Office here at Lock Haven University during business hours - 717-893-2021 - and tell Kathy you'll be attending. We will set a ticket aside for you. We are eager to see what you think of our performance.

We look forward to seeing you on November 19th.

Sincerely,

John B. Gordon, Chairman
Speech Communication/Theatre Department

JBG:pm

P.S. Enclosed please find a copy of the program and the names of those we were able to contact. Drop us a line even if you can't attend. We would love to hear from you and hear also about your remembrances of your work in theatre at Lock Haven.

*Best
John G.*

THE TAMING OF THE SHREW

*Sent to Rossen
11/7/88 10:30 a.m.*

Exchange Students and Presidential Scholars, Honors Program come together to put on "Shrew".

This year's cast list of "The Taming of the Shrew" includes a wide diversity of backgrounds. Director John Gordon says, "I don't ever remember working with such a diverse group of bright and creative students. It is wonderful how much they bring to the show".

The cast of thirty includes one member from England, Anne-Louise Kagan; one from Sri Lanka, Sanjiva Cooke, three from Scotland, Robin Knox, Kevin McKinney and Sarah Windsor. The cast also includes three presidential scholars, Joe Garrison, Brian Smith and Debbie Markowitz. Additionally, two L.H.U. honors students, Angelina Cantelina and Perry Gruver.

Sanjiva Cooke, was seen last spring on Stage as Soul in "Play On!" This semester he directed the one-act play "The Breakfast Table". About acting Sanjiva says, "Getting up in front of people and really enjoying what you can do is a big thrill!" Regarding Shakespeare Cooke believes, "Doing Shakespeare, it stretches you. The best way to understand his plays is by performing them."

The Scottish contingent of the cast find it a little odd to do Shakespeare in America. "It's strange to hear Shakespeare done with an American accent," says Robin Knox. "But it also works" adds Sarah Windsor.

To Louise Kagan, English exchange Theatre major says, "As Kate, I have had to lose my English accent in certain parts of the play so American audiences can understand what I'm saying".

Just because your nose is in a book doesn't mean it's stuck there as five presidential scholars and honors students prove, "I believe the reason there are so many of us involved in the production is because you need the same dedication in theatre as you do in your studies", says Debbie Markowitz. Brian Smith feels you need to be well rounded, "Taking an interest in art, music, and theatre has a lot to do with why we are presidential scholars and honors students."

What does this all mean? It means that theatre isn't just something for a select few. Nor is it something that necessarily has to hurt your academics. It can actually help. Shakespeare is international, something for everybody and the L.H.U. production is proof. It is diverse, fun, and sparkles with energy, "The Taming of the Shrew" will play in Sloan Theatre, November 17, 18, at 8:00 p.m.

1. KENNETH BARLOW
50 FLAMINGO ROAD
HATBORO, PA 19040
2. GENE BEAVER - 1960 GRAD.
27 DOYLE COURT
CHEEKTOWAGA, NY 14225
3. HELEN (FONTANA) BECHDEL
349 E. CURTIN STREET
BELLEFONTE, PA 16823
4. BONITA (MORRISON) DEIBERT
957 RAYMEE DRIVE
LANCASTER, PA 17601
5. MARY LOU (AYERS) FLICKINGER
56104 DIAMONDHEAD DR. E
BAY ST. LOUIS, MS 39520
6. FRANK GENO
113 PLYMOUTH RD
SPRINGFIELD, PA 19064
7. ANTHONY GENO
113 FRIENDSHIP RD
DREXEL HILL, PA 19026
8. ROBERT HALL
210 LAKEWOOD AVENUE
BAYVILLE, NJ 08721
9. JANE (HUBLER) MARRA
P.O. BOX 31, SYCAMORE HILL
SPOTSYLVANIA, VA 22553
10. MARY (FONTANA) MISCH
12 TUCKER
LENOX, MA 01240
11. DONALD MEYER
205 RHONDA DRIVE
YORK, PA 17404
12. GAYE (BENNETT) PEZZOLI
5117 KISSELL AVENUE
ALTOONA, PA 16601
13. HARRY PRICE
425 EAST FIR STREET
HOLLIDAYSBURG, PA 16648
14. RUTH (SHONTZ) NOTESTINE
2 WINDING WAY
LEWISTOWN, PA 17044
15. NICK TSAMAULTALES
1900 PALM BAY RD, N.E.
PALM BAY, FL 32905

16. JAMES YOXTHEIMER
11809 CHERRY GROVE DRIVE
GAITHERSBURG, MD 20878
17. LORRAINE (GITCH) WENDERS
901 W ROLLER COASTER RD
TUCSON, AZ 85704

ADDRESSES UNKNOWN

1. BRUCE BECHDEL
2. EUGENE BEAVER
3. PENNY COCHRANE
4. FRED CALTERYAHN
5. JOANN CUMMINGS
6. PRISCILLA GARRETT
7. GEORGE GOOD
8. NANCY KLINGENSMITH
9. BARBARA MILLIARD
10. JEAN MOORE
11. JACQUELINE WERTZ

Cast (in order of appearance)

Lucentio	Bruce Bechdel	<u>Production Staff</u>	Stage Manager: Ruth Shontz
Tranio	Tom Walker	Assistant Stage Manager: Darlene McCartney	
Baptista	Donald Meyer	<u>Costumes</u>	
Katherine	Helen Fontana	Bonita Morrison	
Bianca	Sandra Schoch	Penny Cochrane	
Gremio	Walter Melbourne	Mary Lou Ayers	
Mortensio	Nick Tsamautalis	Lorraine Gitch	
Biondello	Robert Hall	Joann Cummings	
Petruchio	Harry Price	Priscilla Garrett	
Grumio	Eugene Beaver	Stage Crew	
Curtis	Fred Calter Yahn	Mary Lou Ayers	
Seamstress	Gaye Bennett	Priscilla Garrett	
Vincentio	Kenneth Barlow		
Pedant	Charles Kelly		
Widow	Judith Love		
Wedding Guests	Joann Cummings James Yoxtheimer		
<u>Ten-minute Intermission</u>			
A voluntary silver offering will be accepted in the lobby.			
		<u>Lighting Crew</u>	
		Frank Geno	
		Tony Geno	
		George Good	
		<u>Properties</u>	
		Nancy Klingensmith	
		Jane Hubler	
		Jean Moore	
		Mary Fontana	
		<u>Construction Staff</u>	
		Priscilla Garrett	
		Mary Lou Ayers	
		Robert Hall	
		Harry Price	
		Gene Beaver	
		Helen Fontana	
		Sandra Schoch	
		Barbara Milliard	
		Jacqueline Wertz	
		Donald Meyer	
		Kenneth Barlow	
		Ruth Shontz	
		Ton Walker	
		Fred Calter Yahn	
		Walter Melbourne	
		<u>Promotion Staff</u>	
		Publicity Manager	
		Lorraine Gitch	
		<u>Publicity Crew</u>	
		Nick Tsamautales	
		Barbara Ratcliffe	
		Jean Moore	
		<u>House Staff</u>	
		House Manager	
		Idell Kittle	
		<u>Ushers</u>	
		Patricia Hopkins	
		Jane Cingle	
		Katherine Dietrich	

"TAME YOUR SHREW"

Send your favorite "shrew"
(male ^{or} female) to be tamed.

Nov. 10 8:00 - 10:00 p.m.
in all halls.

25¢ to send someone to be
tamed for 15 minutes.

25¢ to be set free.

25¢ to find out who sent you
to be tamed.

Sponsored by R.H.A. and
UNIVERSITY PLAYERS

NEWS FROM THE HAVEN

AUDITIONS FOR "SHREW" PRODUCTION ATTRACT A MYRIAD OF UNIVERSITY STUDENTS

Auditions for the University Players fall production of "The Taming of The Shrew," scheduled for November 17, 18 and 19, were held recently with student actors required to do everything from "frustrated screams to dancing to the Beach Boys."

It was all part of casting the play by William Shakespeare, according to the production's director, John B. Gordon, chairman of the University's Speech Communication and Theatre Department.

"I was extremely pleased with the turnout of 22 men and 16 women auditioning," he added.

"The job in casting was very difficult for this production," he indicated noting the quality of talent available has vastly improved.

But even for seasoned stage veterans, like student Mark Thomas who has been featured in the Players "The Crucible" and "Play On," auditioning can still give a person the "heebiegeebees."

"If you get through auditions without getting an ulcer, that's half of it," Thomas noted.

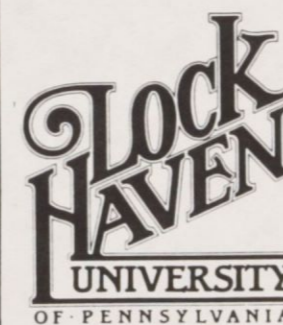
Auditions for "Shrew" invited some new talent, mainly in the form of freshmen students.

Freshman Pat Moore was successful in landing the part of a huntsman, but as a newcomer to the stage, he said, "auditioning is the most fun I've ever experienced outside of visiting the dentist."

A total of 20 men and 10 women were cast in the parts for the production which is sponsored by the Student Cooperative Council, Inc.

"The Taming of The Shrew" is one of two productions to be undertaken by the University Players this year. The other, "Getting Out," will be the spring production in Sloan Theatre.

For ticket information, contact the Student Cooperative Council Business Office at 893-2332.



SENIOR PHOTOS FIRST TIME IN EIGHT YEARS

For the first time in eight years, University seniors will have the opportunity to have their photos taken and included in a student directory, a project sponsored by The Haven League.

Monday, November 7, in the Student Cooperative Council, Inc., Business Office, students will be able to schedule an appointment for senior pictures.

The actual photographs will be taken Monday, November 14



STUDENTS ABROAD THIS SEMESTER

A record number of Lock Haven University students are taking advantage of the institution's partnership and exchange programs abroad this semester, this according to John W. Johnston, the associate dean of international studies.

A total of 40 University students are abroad now studying at the Universidad de las Americas Puebla (Puebla, Mexico), St. Andrews College (Glasgow, Scotland), Glasgow College of Technology (Glasgow, Scotland), Trent Polytechnic (Nottingham, England), the University of Paderborn (Paderborn, West Germany) and the University of Zagreb (Zagreb, Yugoslavia).

In addition, students are studying at Nara University (Nara, Japan), Tunghai University (Taichung, Taiwan) and Nanjing University (Nanjing, China).

Another 27 University students are completing their student teaching in Australia, Austria, Belgium, Ecuador, England, Scotland and West Germany.

through Wednesday, November 16 with November 17 blocked out as an extra day for the photographer if more appointments are necessary.

As a special incentive to students, the University will make available a student directory containing the portrait of each student photographed—the senior class. At least 200 students must be photographed in order for the University to offer the directory.

Proceeds from the senior photo project will benefit The Haven League projects on behalf of the Class of '89.

A \$3 sitting fee is the only charge to students who wish to have their photo taken and included in the student directory.

SOCKY'S RESTAURANT

404 Erie Ave.
Renovo, PA 17764
923-0318

THANKSGIVING DAY

Roast Turkey and Filling
Baked Ham & Raisin Sauce
Mashed & Sweet Potatoes
Creamed Corn
String Beans
Salad Bar and Dessert Bar
Included with Dinner

Legal Beverages
FRIDAYS & SATURDAYS
5:00 P.M. to 10:00 P.M.

Full Menu & Salad Bar

HEY! Want to Have Some FAMILY FUN?

Music by Sonny & The Troubadors

Come and See Us
at the Old Barn on Rt. 64 at Bill Tressler's for

O Round and ☐ Square Dances

EVERY SATURDAY—8:00 to 11:00

Open for Bookings Call 717-726-4741 (leave message)
717-748-6392 & 717-769-5391

Couples: \$4.00 Singles: \$2.50
12 to 16: \$1.50 Under 12 Free

NO ALCOHOLIC BEVERAGES ON GROUNDS

4 Eagle Eye Lock Haven University, Friday, November 11, 1988

In the theatre..... *Shrew* UPDATE

Approximately 700 high school students are expected to attend two special performances, Wednesday, November 16, at 8 p.m. and Friday November 18 at 10:15 a.m., of the Lock Haven University Player's production of *The Taming of the Shrew*.

This is the fourth year that the Players have invited area high schools to the campus for a special event.

In past performances, there wasn't enough room to accomodate all the high school students attending.

"We simply ran out of room," states

Director John Gordon. "We had 15 schools request space and had to turn away 7 of them."

The schools that will attend are: Lock Haven, Indian Valley, Shamokin, Moshanon, Currensville, Lewisburg, Northern Potter and Williamsburg.

Regular public performances of *The Taming of the Shrew* are November 17, 18, and 19 at 8 p.m. at the Sloane Theatre, in the Sloane Fine Arts Center.

For ticket information, contact the University at 893-2332.

How to go dutch and still treat.



© 1988 General Foods Corp.

General Foods International Coffees

F.V.I.

University Players is a non-profit organization with both Federal and State tax exemption numbers.

Music performance will begin at 7:30 p.m. and end at 8:00 p.m. For this total of one and one-half hours, the University Players will pay \$200.00. Our check will be presented to your group at the end of your last performance on November 19, 1988.

© 2006 The Authors
Journal compilation © 2006 Blackwell Publishing Ltd

© 2006 The Authors
Journal compilation © 2006 Blackwell Publishing Ltd

Peter Puggin and H.
 well the left
 1. Symbion
 2. Campbell
 3. Old master
 4. Judging Ameri
 5. 1968
 6. 1970
 7. 1971
 8. 1972
 9. 1973
 10. 1974
 11. 1975
 12. 1976
 13. 1977
 14. 1978
 15. 1979
 16. 1980
 17. 1981
 18. 1982
 19. 1983
 20. 1984
 21. 1985
 22. 1986
 23. 1987
 24. 1988
 25. 1989
 26. 1990
 27. 1991
 28. 1992
 29. 1993
 30. 1994
 31. 1995
 32. 1996
 33. 1997
 34. 1998
 35. 1999
 36. 2000
 37. 2001
 38. 2002
 39. 2003
 40. 2004
 41. 2005
 42. 2006
 43. 2007
 44. 2008
 45. 2009
 46. 2010
 47. 2011
 48. 2012
 49. 2013
 50. 2014
 51. 2015
 52. 2016
 53. 2017
 54. 2018
 55. 2019
 56. 2020
 57. 2021
 58. 2022
 59. 2023
 60. 2024
 61. 2025
 62. 2026
 63. 2027
 64. 2028
 65. 2029
 66. 2030
 67. 2031
 68. 2032
 69. 2033
 70. 2034
 71. 2035
 72. 2036
 73. 2037
 74. 2038
 75. 2039
 76. 2040
 77. 2041
 78. 2042
 79. 2043
 80. 2044
 81. 2045
 82. 2046
 83. 2047
 84. 2048
 85. 2049
 86. 2050
 87. 2051
 88. 2052
 89. 2053
 90. 2054
 91. 2055
 92. 2056
 93. 2057
 94. 2058
 95. 2059
 96. 2060
 97. 2061
 98. 2062
 99. 2063
 100. 2064
 101. 2065
 102. 2066
 103. 2067
 104. 2068
 105. 2069
 106. 2070
 107. 2071
 108. 2072
 109. 2073
 110. 2074
 111. 2075
 112. 2076
 113. 2077
 114. 2078
 115. 2079
 116. 2080
 117. 2081
 118. 2082
 119. 2083
 120. 2084
 121. 2085
 122. 2086
 123. 2087
 124. 2088
 125. 2089
 126. 2090
 127. 2091
 128. 2092
 129. 2093
 130. 2094
 131. 2095
 132. 2096
 133. 2097
 134. 2098
 135. 2099
 136. 2100
 137. 2101
 138. 2102
 139. 2103
 140. 2104
 141. 2105
 142. 2106
 143. 2107
 144. 2108
 145. 2109
 146. 2110
 147. 2111
 148. 2112
 149. 2113
 150. 2114
 151. 2115
 152. 2116
 153. 2117
 154. 2118
 155. 2119
 156. 2120
 157. 2121
 158. 2122
 159. 2123
 160. 2124
 161. 2125
 162. 2126
 163. 2127
 164. 2128
 165. 2129
 166. 2130
 167. 2131
 168. 2132
 169. 2133
 170. 2134
 171. 2135
 172. 2136
 173. 2137
 174. 2138
 175. 2139
 176. 2140
 177. 2141
 178. 2142
 179. 2143
 180. 2144
 181. 2145
 182. 2146
 183. 2147
 184. 2148
 185. 2149
 186. 2150
 187. 2151
 188. 2152
 189. 2153
 190. 2154
 191. 2155
 192. 2156
 193. 2157
 194. 2158
 195. 2159
 196. 2160
 197. 2161
 198. 2162
 199. 2163
 200. 2164
 201. 2165
 202. 2166
 203. 2167
 204. 2168
 205. 2169
 206. 2170
 207. 2171
 208. 2172
 209. 2173
 210. 2174
 211. 2175
 212. 2176
 213. 2177
 214. 2178
 215. 2179
 216. 2180
 217. 2181
 218. 2182
 219. 2183
 220. 2184
 221. 2185
 222. 2186
 223. 2187
 224. 2188
 225. 2189
 226. 2190
 227. 2191
 228. 2192
 229. 2193
 230. 2194
 231. 2195
 232. 2196
 233. 2197
 234. 2198
 235. 2199
 236. 2200
 237. 2201
 238. 2202
 239. 2203
 240. 2204
 241. 2205
 242. 2206
 243. 2207
 244. 2208
 245. 2209
 246. 2210
 247. 2211
 248. 2212
 249. 2213
 250. 2214
 251. 2215
 252. 2216
 253. 2217
 254. 2218
 255. 2219
 256. 2220
 257. 2221
 258. 2222
 259. 2223
 260. 2224
 261. 2225
 262. 2226
 263. 2227
 264. 2228
 265. 2229
 266. 2230
 267. 2231
 268. 2232
 269. 2233
 270. 2234
 271. 2235
 272. 2236
 273. 2237
 274. 2238
 275. 2239
 276. 2240
 277. 2241
 278. 2242
 279. 2243
 280. 2244
 281. 2245
 282. 2246
 283. 2247
 284. 2248
 285. 2249
 286. 2250
 287. 2251
 288. 2252
 289. 2253
 290. 2254
 291. 2255
 292. 2256
 293. 2257
 294. 2258
 295. 2259
 296. 2260
 297.

November 17, 18 and 19
Sloan Theatre

THE UNIVERSITY PLAYERS

each mailbox on campus

**THE LOCK HAVEN UNIVERSITY
1988-89 ARTIST SERIES**

William Shakespeare's
THE TAMING OF THE SHREW
November 17, 18 and 19
8 p.m.— Sloan Theatre

Adults, \$2.50
Children (under age 12), \$1
Non-University Students, \$1
Lock Haven University Students with
Valid ID, No Charge

Tickets are available in the Student
Cooperative Council, Inc. (SCC),
Business Office in the Parsons Union
Building between the hours of 8 a.m.
and 4 p.m. Remaining tickets will be sold
at the door.

Tickets may be reserved by calling
893-2332.

The Artist Series and University Players
productions are funded through the Stu-
dent Cooperative Council, Inc.

Non-Profit
Organization
U.S. Postage
PAID
Lock Haven, PA
Permit No. 92



William Shakespeare's
THE TAMING OF THE SHREW



'73 graduates and former roommates Cheryl Spitz Pietsch, left, and Nancy Nice Roop, right, were two of those attending the Virginia alumni reception in November. Pietsch resides in Crownsville and Roop in Manassas, Virginia.



LOCK HAVEN UNIVERSITY

The University has taken on a different look with the introduction of a new institutional logo last November — the mark, which is likely to represent Lock Haven through the year 2000.

Representatives of The Haven League, the undergraduate alumni and development group of seniors who serve as University ambassadors, unveiled the new logo at ceremonies in the Sloan Gallery.

The new mark, designed by the Lorish Company of West Reading, Pennsylvania, was selected following a six-month process involving input from University alumni, faculty, staff members and students.

The logo, which will be incorporated into all University publications over the course of the year, replaces the Lock Haven printstyle mark used since 1976.

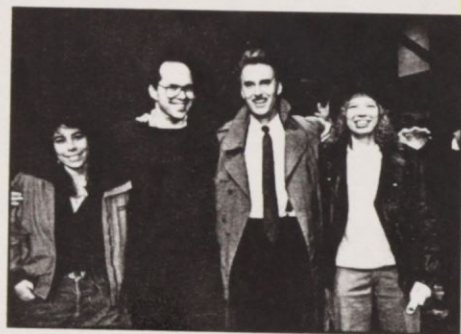
Virginia Alumni Group's First Annual Reunion Turns Out 45 in Falls Church

The University hosted a number of successful alumni events across the Eastern United States, most recently a reunion for graduates now living in Virginia.

A total of 45 graduates gathered at the Falls Church, Virginia, Ramada Inn this past November to meet with Alumni Association President Thomas E. Elling, '66, and the University's director of alumni and external relations, James C. Reeser, '64.

The alumni attending the Falls Church program enjoyed the latest video production highlighting University programs as well as an informal reception designed to renew old friendships and establish some new contacts.

This was the first in what is hoped will become an annual alumni meeting for Virginians.



Grads Return for University Players "Shrew" Production

The University Players fall production, "The Taming of the Shrew," provided the perfect backdrop for theatre enthusiasts and alumni to get together. The graduates — all active in the theatre while University students — met with the cast and crew.

Some of those attending the Saturday evening performance included, left to right, Robin L. Quinn, '78, of Sparta, New Jersey, Brian M. Stoppee, '77, of Richmond, Virginia, Kim T. Coon, '76, of Everett, Pennsylvania and Marsha A. Adams, '81, of Mount Carmel, Pennsylvania.

Earlier, 26 alumni met at the Holiday Inn, Trevese, Pennsylvania, to reorganize the Delaware Valley Chapter.

Another 42 graduates, along with family and friends, were part of a Lock Haven University night to watch a Harrisburg Senators baseball game. University President Craig Dean Willis and Reeser represented the University during the Harrisburg trip, along with John W. Johnston, the University's associate dean for international studies.

Alumni Weekend '89 Events Include Luncheon, Reunions

Mark your calendar now and be sure to attend Alumni Weekend '89, Saturday, June 17.

Along with the traditional alumni luncheon, five new members will be named to the University's Roll of Service.

Alumni Weekend '89 festivities will also include a number of other presentations such as the naming of the University's Distinguished Educator, Distinguished Service and Alumni Achievement awards.

The Class of '39 will hold a 50th reunion during the event, and the Class of '64, their 25th reunion.

Last year's alumni gathering attracted a record 225 graduates from 11 states. The event offers an excellent opportunity to get together with classmates, friends and former instructors.

... Last year's alumni gathering attracted a record 225 graduates from 11 states ...

Residence hall housing for those returning to campus for Alumni Weekend '89 will be made available free of charge.

Additional information regarding Alumni Weekend '89 activities and reunions will be announced closer to the date.

The Express, Lock Haven, Pa., Saturday, November 12, 1988 3

THE LOCK HAVEN UNIVERSITY 1988-89 ARTIST SERIES



William Shakespeare's THE TAMING OF THE SHREW

November 17, 18 and 19
Sloan Theatre 8 P.M.

THE UNIVERSITY PLAYERS

Adults, \$2.50 Children (under age 12) \$1
Non-University Students, \$1
Lock Haven University Students with Valid ID, No Charge

Tickets are available in the Student Cooperative Council, Inc. (SCC), Business Office in the Parsons Union Building between the hours of 8 a.m. and 4 p.m. Remaining tickets will be sold at the door. Tickets may be reserved by calling 893-2332.

The Artist Series and University Players productions are funded through the Student Cooperative Council, Inc.

November 15, 1988

Mr. John B. Gordon, Chairman
Speech Communication/Theatre Department
Lock Haven University of Pennsylvania
Lock Haven, Pennsylvania 17745

Dear Mr. Gordon:

How delighted I was to receive your communique and copy of the program of "Taming of the Shrew". It brought back some delightful memories of my years at LHSTC. The camaraderie shared by a play cast is indeed a unique experience.

I especially remember making props for "Taming"; namely, a papier-mâché stuffed pig and 12 golden goblets for the banquet scene. Mary Fontana, Joanne Cummings & I worked diligently on that project in the foyer of Russell Hall (the only women's dorm on campus at that time). We spray painted the goblets with gold paint and in doing so, I sprayed my tennis shoes inadvertently to which Mary Fontana quipped, "that's the goodness coming out of your sole (soul), Janie!"

I wish that I could be with you on your opening night; however, it is really too far to travel for a weekend and that is the same afternoon on which my 17 year-old son is having 4 wisdom teeth extracted. My best wishes to you and the cast.

Break a leg!

Jane Hubler Manna

P.O. Box 31 "Sycamore Hill"
Spotsylvania, Virginia 22553

James L. Yoxtheimer
11809 Cherry Grove Drive
Gaithersburg, MD 20878
November 14, 1988

John B. Gordon
Lock Haven University
Lock Haven, PA
17745

Dear Mr. Gordon:

Thank you for your kind invitation to this year's University Players presentation of "The Taming of the Shrew". Unfortunately, due to previous commitments I shall be unable to accept the invitation.

I recall with fond memories our production of 'Shrew' in 1956 and it was, if I do say so, excellent.

My best wishes to the Players for a successful production.

Yours truly,

James L. Yoxtheimer
James L. Yoxtheimer.

College Players - 1954

- Vice President - 1955
- President - 1956
- President - 1957

Alpha Psi Omega - Charter Member - 1955

- Secretary - 1956
- Cast Director (President) - 1957



Lock Haven, PA 17745

FILE UP BUDGET

November 17, 1988

Dear LaRose, Young and Wheeler:

This letter is to acknowledge your time and efforts in the production of **The Taming of the Shrew**, and your contribution of \$250.00. (The difference between your fee of \$450.00 for three nights against the \$200.00 we will be paying to for your services.)

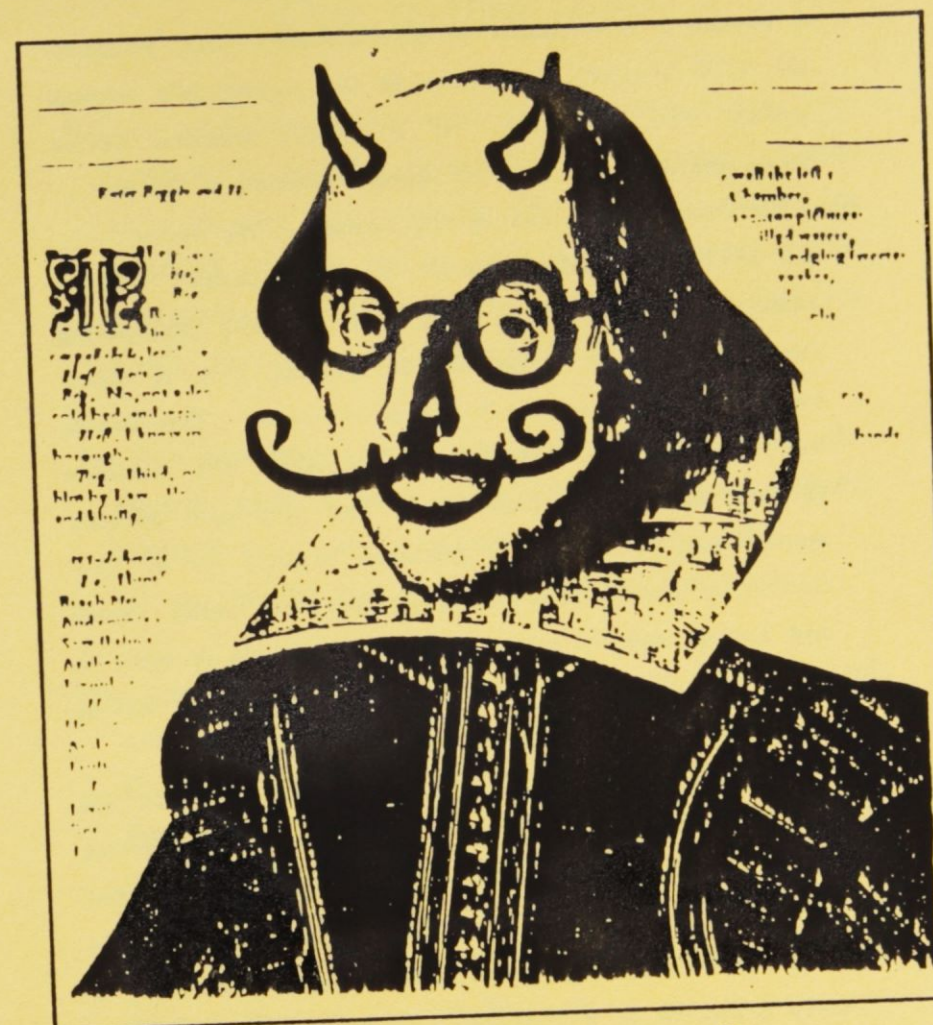
Your contribution is deeply appreciated by the University, the Department of Speech Communication and Theatre and the University Players.

Sincerely,

John B. Gordon, Chair

Speech Communication/Theatre

THE LOCK HAVEN UNIVERSITY



William Shakespeare's THE TAMING OF THE SHREW

November 17, 18 and 19
Sloan Theatre

THE UNIVERSITY PLAYERS

by William Shakespeare



Louise Kagan as Katharina
with her parents from England

Shakespeare's Words

This evening's performance of Shakespeare's THE TAMING OF THE SHREW gives voice to the playwright's original words. The "induction" is a unique framing device Shakespeare uses to give an added dimension to the plot.

Like his other early comedies, *The Taming of the Shrew* (c. 1592-1594) looks forward to Shakespeare's mature comic drama in several ways. By skillfully juxtaposing two plots and an induction, or framing plot, it offers contrasting views on the battle of the sexes. This debate on the nature of the love relationship will continue through many later comedies. The play also adroitly manipulates the device of mistaken identity, as in *The Comedy of Errors*, inverting appearance and reality, dream and waking, and the master-servant relationship in order to create a transformed Saturnalian world anticipating that of *A Midsummer Night's Dream* and *Twelfth Night*.

The Induction sets up the theme of illusion, using an old motif known as "The Sleeper Awakened." This device frames the main action of the play, giving to it an added perspective. *The Taming of the Shrew* purports in fact to be a play within a play, an entertainment devised by a witty nobleman as a practical joke on a drunken tinker, Christopher Sly. The jest is to convince Sly that he is not Sly at all, but an aristocrat suffering delusions. Outlandishly dressed in new finery, Sly is invited to witness a play selected to lift his spirits after his sleeping illness of some 15 years, "a goodly nap." The play he watches is *The Taming of a Shrew*; the play with which we are more commonly familiar.

Our Setting 1680

Before you stands an innyard of "The Goose and Gander," a country tavern inn. The innyard serves as a stable for passing travelers, a place for livestock to feed and on occasion a place for public assembly. Rural inns are the secular center for public exchange and community interaction.

To this inn have come men to drink a pot of ale, country girls to work in the kitchens, a lord and his hunting party and eventually a company of actors touring the provinces looking for work.

The theatre scene of London 1680's is in financial and artistic disarray. To survive, this company tours the countryside looking for work wherever they can find it. They have a broad variety of plays to choose from, but have found Shakespeare's comedies to be a good drawing card. They will, if they find work at this inn, transform this innyard into a theatre that is likened to the theatres of Shakespeare's day some 100 years earlier.

Will this company find work? How will an English country innyard be transformed into the streets of an Italian city? How will the locals react to their production? There may be more here than meets the eye.



Jennifer Helfgott as
the Hostess

CAST "THE TAMING OF THE SHREW"

Induction

Sly.....	David Lexner
Hostess.....	Jennifer Helfgott
Lord.....	Jim Mitchell
Huntsman #1.....	Pat Moore
Huntsman #2.....	Perry Gruver
Servant #1.....	Helen Haglich
Servant #2.....	George Tobler
Servant #3.....	Angelina Cantolina
Page.....	Dusty Graves

SHREW

Baptista.....	Matt Lovlie
Katharina.....	Louise Kagan
Bianca.....	Michelle Callahan
Petruchio.....	Mark Thomas
Grumio.....	Corey Kusher
Hortensio.....	Olen Steinhauer
Gremio.....	Dan Mahoney
Lucentio.....	Steve Middleton
Tranio.....	Sanjiva Cooke
Biondello.....	Scott Hall
Vincentio.....	Jim Mitchell
The Pedant.....	Brian Smith
The Widow.....	Deb Markowitz
The Tailor.....	Joe Garrison
The Haberdasher.....	Armondo Caballero
Curtis.....	Christopher Leppo
Joseph.....	Traci Capwell
Nicholas.....	Sara Windsor
Peter.....	Robin Knox
Phillip.....	Jennifer Pandich
Nathaniel.....	Kevin McInney
Gregory.....	Cortney Schaefer
Officer.....	Armando Caballero
Goat #1.....	Michelle
Goat #2.....	Patches
Goat #3.....	Midnight
Hunting Dog #1.....	Wot
Hunting Dog #2.....	Gwen
Lap Dog.....	Sukoshi

Scene: Padua, and Petruchio's country house in Italy.

STAFF

Director.....	John Gordon
Costume Design.....	Denise Warner
Scenic Design.....	John Gordon
Lighting Design.....	Peter Mellen and Scott Kincaid
Technical Direction.....	Peter Mellen
Sound.....	Brian Smith and Steve Zoldi*
Producer.....	Debbie Markowitz
Stage Manager.....	Lori Fedor*
Assistant Stage Manager.....	Stephen Chianos
Scene Shop Foreman.....	Bob Watkins
House Managers.....	Jeanne Ruczhak and Susan Cowan
Properties.....	Shannon Pringle and Pat Moore
Lights.....	Troy Smith, Vance Gallagher and Scott Kincaid

Set Construction Crew

Doug Styka	Christopher Strawmier	Jim Holt
Phillip Fox	Bob Young	Lew Sadowski
Thomas Seelig	Stephen Butaitis	Scott Yaunches
Thomas Ferrari	Kevin Matthews	Tim Ziegenfuss
James Patterson	Tammy Masters	Michael Deutsch
Scott Toman	Darrell Chavis	John Horner

Promotions

Michele Charmello	Susan Cowan	Jeanne Ruczhak
Marion Clark	Arnell Lingenfelter	Pam Rehm
Kevin Lapata		

Costume Crew

Michael Adornetto	Laura Boyd	Sheri Brown
Connie Burgess	Diane Dietrick	Ginger Kolb
Michelle McCann	Kristin Neary	Ranae Kwiatkowski
Chris Riggs	Dawn Schnitzer	Angela Sparks
Doreen Vigliotta	Dawn Zipay	

Makeup Design/Crew

Barb McNitt	Aileen Querry	Dina Rahnia
-------------	---------------	-------------

Seamsters

Chris Rosanelli	Mark Thomas	Tammy Wagner
-----------------	-------------	--------------

There will be a ten-minute intermission following Act-I.



(above) Assistant Stage manager Steve Chianos and Brian Smith as the Pedant (below) Mark Thomas as Petruchio and Corey Kusher as Grumio



Bibliographical Information

Armondo Caballero is a freshman Theatre major from Miromour, Florida. This is his first stage role at LHU.

Michelle Callahan is a second semester freshman. This is her first play at LHU. While attending Troy High School she appeared in the musical Luanne.

Angellna Cantollna is a freshman Secondary Education English major. She was seen earlier this semester as the love struck Juliet in When Shakespeare's Ladies Meet.

Traci Capwell, sophomore, debuts in Shrew after a few flirtations with theatre at LHU. Now she has stars in her eyes and some day hopes to work with The Muppet Show and Sesame Street.

Sanjiva Cooke* is a freshman international student. Last spring he played Saul in Play On! He recently directed The Breakfast Table in the Countdown Theatre. He has also played in a dozen productions in his home country of Sri Lanka.

Joe Garrison* appeared in both of last year's major productions as Cheevers in The Crucible and the cigar smoking Lou in Play On! Joe is a Broadcast/Journalism major from Mountaintop, PA.

Dusty Graves is a freshman Physical Education major from Connecticut. This is his first production at LHU.

Perry Andrew Gruver is a freshmen Engineering major. This is his first production at LHU. His interest in performance was inspired by a love of ballet.

Helen A Hagllich* is a senior majoring in English from Eastontown, NJ. She has recently appeared in Play On! and When Shakespeare's Ladies Meet. She is currently president of the University Players.

Scott Hall is a Speech Communication and Theatre major from York, PA. As a freshman this is his first production at LHU.

Jennifer Helfgott is an Elementary Education major from Broomall, PA. This is her first experience in theatre.

Anna-Louise Kagan is an international exchange student from Trent Polytechnic, Nottingham, England, majoring in Theatre and Art. Her theatre experience ranges from Shakespeare to contemporary drama. Her last major role was as Dulcie in The Boyfriend.

Robin Knox is a Management Science major from Ayrshire, Scotland. His only theatrical experience was in high school portraying "Joseph" in a Christmas play.

Cory Kusher is a freshman Theatre major from Davidsville, PA. This is Corey's first production at LHU.

Christopher Leppo is a first semester freshman majoring in Economics with a Marketing emphasis. His life ambition is to work in the international business world.

David Lexner is a second semester freshman who recently appeared in The Breakfast Table. Shrew marks his sixth production at LHU.

Mathew A. Loville* is enjoying his second acting role at LHU. Last Year's portrayal as Francis Nurse in The Crucible lit a fire under him and this past summer he went on to perform at the Millbrook Playhouse in Hair and had the lead in the children's play Sleeping Beauty.

Dan Mahoney is a sophomore Secondary Education English major. He played Thomas Putnam in The Crucible. Dan is at present co-writing material for an evening of stand-up comedy to be produced this spring at LHU.

Debbie Markowitz* is a second semester junior double major in Theatre and Management Sciences. This summer she interned as stage manager at the Idaho Repertory Theatre. In the past at Lock Haven University she played Tolnetta in The Imaginary Invalid. She is currently president of Alpha Psi Omega.

Kevin McInnery is a Management Science major from Glasgow, Scotland. Kevin's first theatre experience was in elementary school where he played "an oriental gentleman."

Stephen Middleton is a sophomore transfer student majoring in Theatre at the University. This is his first production at LHU. In high school he played Rob Mubely in Plaza Suite.



Perry Grover as Huntsman #2,
Steve Middleton as Lucentio, and
Dan Mahoney as Gremio

Jim Mitchell is a senior Psychology major. Jim has traveled on exchange programs to Poland and England. In the spring he will be on an exchange to Scotland. His roles here at LHU have included Danforth in The Crucible and the Priest of Zeus in Oedipus the King.

Pat Moore is a freshman from McSherrystown, PA. This is his first theatre experience at LHU.

Jennifer Pandich* is a sophomore, dual majoring in English and History. She has both acted and stage managed at LHU as well as directed a studio production in the Countdown Theatre at LHU.

Cortney Elizabeth Schaefer is a Speech Communication major from Chafont, Pa. She is making her LHU debut in Shrew.

Brian Smith* after running sound for The Crucible and Play on! last year, makes his on stage debut as the Pedant. He is a sophomore Journalism major.

Olen Steinhauer, freshman, from Atlanta, Georgia has appeared in The White Sheep of the Family and Our Town in Richmond, Virginia.

Mark Thomas* is a junior Broadcasting major from Easton, PA. Mark played John Proctor in last year's production of The Crucible. Mark plans a career in theatre and broadcasting.

George Tobler is a freshman majoring in Management Science. This is his first appearance on the LHU stage.

Sara Windsor is a Management Science major and exchange student from Glasgow College, Scotland. Her previous acting experience was as Titania in A Midsummer's Nights Dream.

*Members of Alpha Psi Omega, an honorary dramatic fraternity at Lock Haven University since 1941.

SELECTED READINGS

Bean, John C. "Comic Structure and the Humanizing of Kate in The Taming of the Shrew." In The Woman's Part: Feminist Criticism of Shakespeare, ed. Carolyn Ruth Swift Lenz, Gayle Green, and Carol Thomas Neely. Urbana Chicago, and London: University of Illinois Press, 1980.

Berry, Ralph. "The Rules of the Game." Shakespeare's Comedies: Explorations in Form. Princeton, N.J.: Princeton University Press, 1972.

Charlton, H. B. "The Taming of the Shrew." Shakespearian Comedy, 1938. Rpt. London: Methuen; New York: Barnes and Noble, 1966.

Evans, Bertrand. Shakespeare's Comedies, pp. 24-32. Oxford: Clarendon Press, 1960.

Garber, Marjorie B. "Dream and Structure: The Taming of the Shrew." Dream in Shakespeare: From Metaphor to Metamorphosis. New Haven and London: Yale University Press, 1974.

Hibbard, G. R. "The Taming of the Shrew: A Social Comedy." In Shakespearean Essays, ed. Norman Sanders and Alwin Thaler. Knoxville, Tennessee: University of Tennessee Press, 1964.

Huston, J. Dennis. "Enter the Hero: The Power of the Play in The Taming of the Shrew." Shakespeare's Comedies of Play. New York: Columbia University Press, 1981.

Kahn, Coppelia. "The Taming of the Shrew: Shakespeare's Mirror of marriage." Modern Language Studies 5 (1975): 88-102. Rpt. in "Coming of Age: Marriage and Manhood in Romeo and Juliet and The Taming of the Shrew." Man's Estate: Masculine Identity in Shakespeare. Berkeley: University of California Press, 1981.

Leggatt, Alexander. "The Taming of the Shrew." Shakespeare's Comedy of Love. London: Methuen; New York: Barnes and Noble, 1974.

Nevo, Ruth. "Kate of Kate Hall." Comic Transformations in Shakespeare. London and New York: Methuen, 1980.

Shaw, George Bernard. "The Taming of the Shrew." In Shaw on Shakespeare, ed. Edwin Wilson. New York: E. P. Dutton, 1961.



(above) Jeanne Ruczhan, Peter Mellen, and Scott Kincaid

(below) Peter Mellen



Special Thanks To:

Bridget Todd

Blair Carbaugh

Larry Selleck and Family

Members and Officers of University Players

Members of Alpha Psi Omega

Pam Blesh

Glenn Hosterman

Denise Warner

Rebecca Rosser

Van Igou

PreShow Music Provided by:

"LaRose, Young and Wheeler"



"GETTING OUT"

by Marsha Norman

AUDITIONS

FOR THE UNIVERSITY PLAYERS' SPRING PRODUCTION

"GETTING OUT"

by Marsha Norman

WILL BE HELD IN SLOAN 336 AT 7:00 P.M.

NOVEMBER 29, 30 AND DECEMBER 1

THERE ARE ROLES FOR FIVE MEN AND SEVEN WOMEN.



Traci Capwell as Joseph



Shelly Callahan as Bianca



Sara Windsor as Nicholas



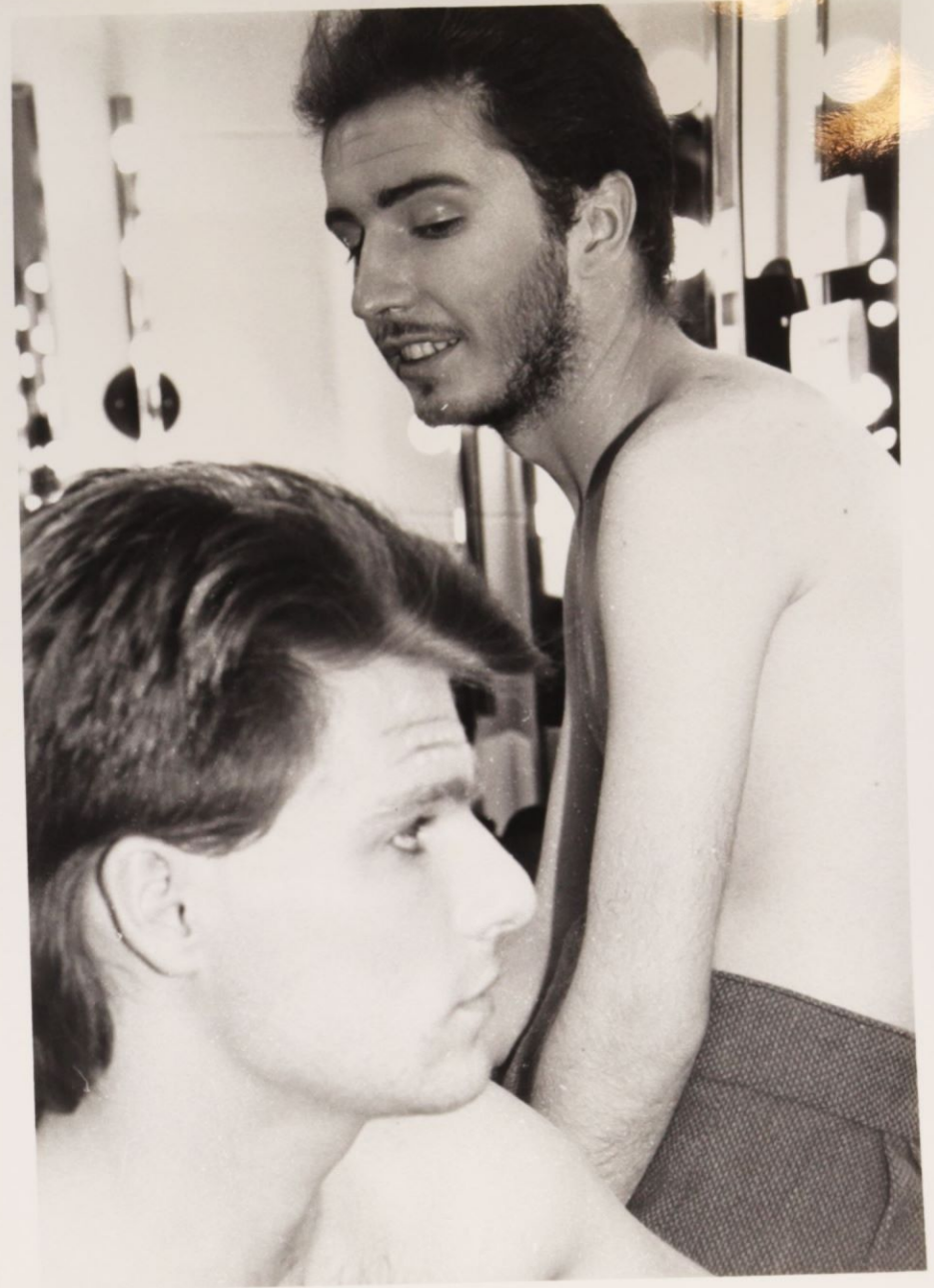
1 to r : Helen Haglich as Servant #1 , Angelina Cantolina as Servant #2 and Mark Thomas as Petruchio



Dusty Graves as the Page (above)



Jeff Hilty and Dusty Graves
as the Page



Matthew Lovlie as Baptista
and
Robin Knox as Peter



From left to right: Brian Smith, Peter Mellen, Denise Warner, Jim Mitchell, Lara Gordon, Traci Capwell and Jennifer Pandich.

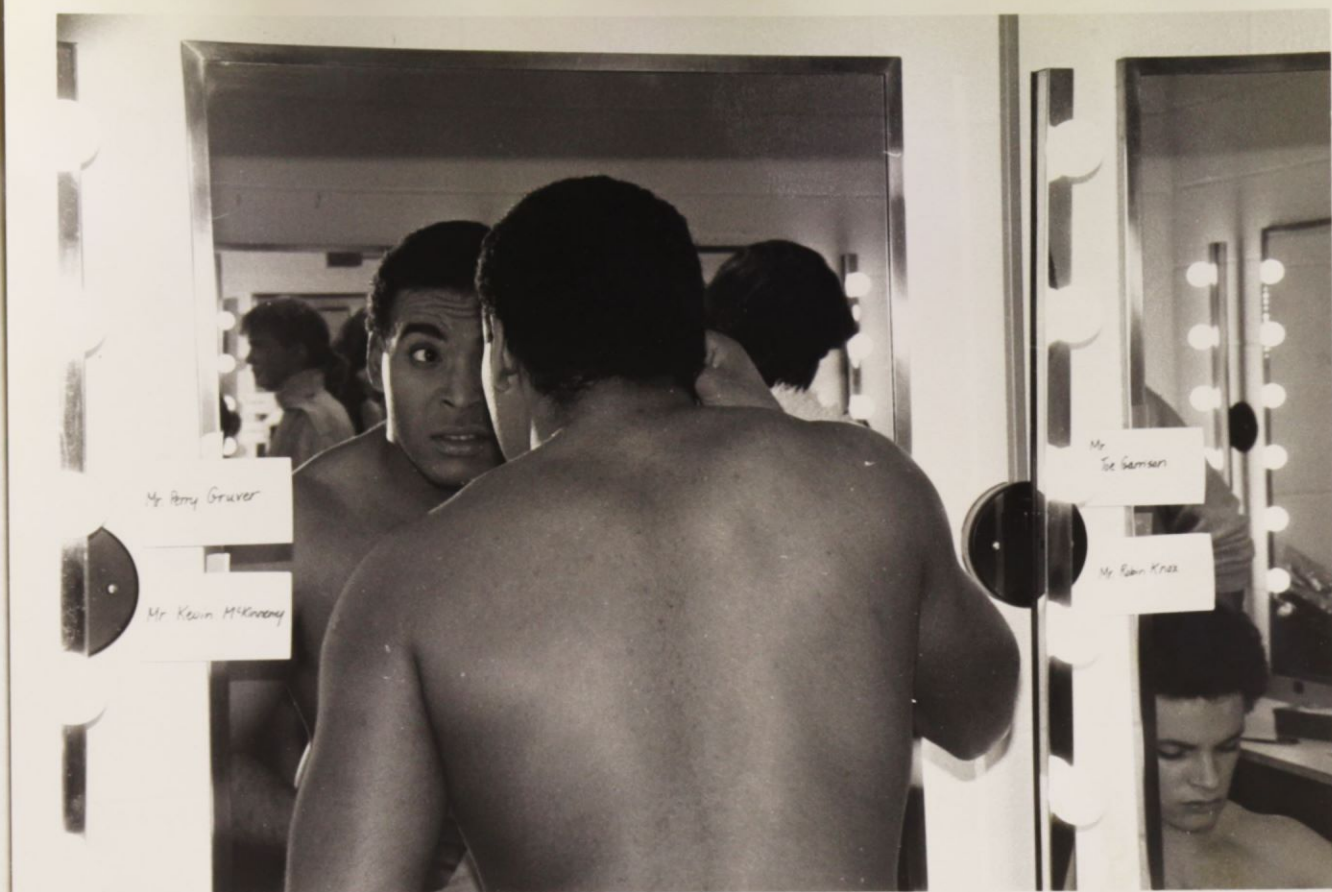
(Below) - Medieval Musicians - la Rose, Young and Wheeler



(above) - Courtney Schaefer as Gregory

(below) - Jennifer Pandich as Phillip





(above) Armando Caballero as the Haberdasher
 (below) Dave Hexner as Sly, Joe Garrison as the Taylor
 and Armando Caballero.



Jake, the running crew and Anna-Juise Kagan as Kate (above)
 (below) Sanjiva as Tranio and Denise Warner, costume designer





(above) Mark Thomas as Petruchio and Corey Kusher as Grumio.

(below) Mark Thomas and Anna-Louise Kagan as Kate.



(above) Dusty Graves as the Page, left to right → George Tobler as Servant #2, Helen Haglich as Servant #1, Dave Lexner as Sly, Angelina Cantolina as Servant #3 and Jim Mitchell as the Lord.

(below) Scott Hall as Biondello, Steve Middleton as Lucentio and Sanjiva Cooke as Tranio.





The "Shrew" Cast



(above)
Shelly Callahan as Bianca
and Louise Kagan as
Kate.

(below) Matthew Lovlie as
Baptista, Louise Kagan
and Shelly Callahan.





(above) Olen Steinhaver as Hortensio, Shelly Callahan as Bianca and Dan Mahoney as Gremio.

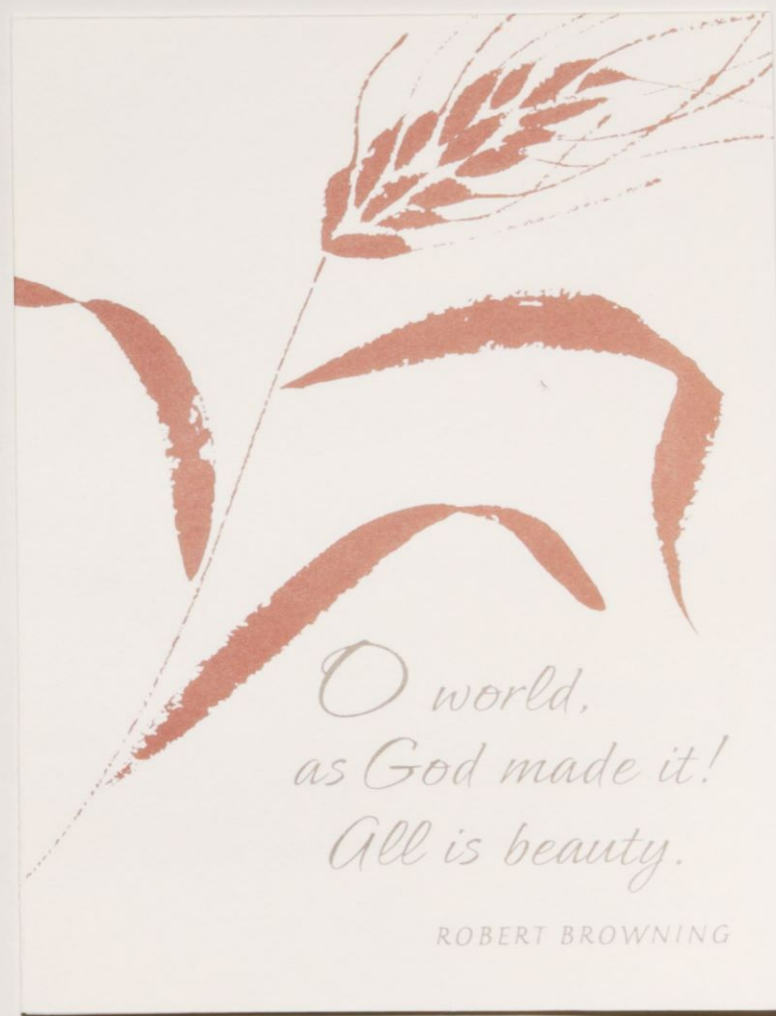
(below) Steve Middleton as Lucentio, Pat Moore as the Servant, Shelly Callahan and Olen Steinhaver.



(above) Louise Kagan as Kate, Mark Thomas as Petruchio, Joe Garrison as the Tailor, Olen Steinhaver as Hortensio, Corey Kusher as Grumio and Armando Caballero as the Haberdasher.



(left) Olen Steinhaver and Debbie Markowitz as the Widow.



Nov. 18, 1988

Dear John—

My special thanks to you & the Crews & the Cast & everyone who helped you put on such an EXCELLENT performance last night! I truly enjoyed all of you & the play!

Sincerely—

Dee Bernhardt
(Campus Minister)

I didn't pay for a ticket, so please put this toward the NEXT smash hit ☺!

11/18/88

John:

Just had to let you know how much I enjoyed the Taming of the Shrew.

It was by far one of the best I've seen at Sloan.

Congratulations to you and your students for some good theater.

Tommy Barzosa



Lock Haven, PA 17745

November 21, 1988

TO: John Gordon
Denise Warner
Peter Mellen

and

The ENTIRE cast and crew of "Taming of the Shrew"

I never expected to see a performance of Shakespeare on this campus that played three nights to houses packed with people so thoroughly involved in the performance. I enjoyed every minute of it, and so did everybody else at the Saturday night performance I attended. Costumes were magnificent, and the set and technical support were so skilfully put together that we weren't aware just how smoothly it all happened.

In the few times I did allow my attention to be distracted briefly, I looked around to see the reaction of the audience. People were intent, they were responsive, and they were with you through the double meanings, the little bawdy asides, and the farcical touches that the cast pulled off so well. I'm no expert, but Shakespeare surely didn't get his reputation by putting on the barren, "pure" performances we are sometimes treated to in the name of "authenticity." I think Shakespeare would have applauded your production as enthusiastically as we, the audience, did.

Thank you for a production that was exciting, educational, and FUN!

Sincerely,

Russ Nelson
Music Department



Lock Haven, PA 17745

11/21/88

John,

My sincerest congratulations to you on the occasion of your triumph with Shakespeare. It was a landmark event in the cultural history of this institution, and thus a great tribute to you and your staff and students.

Peg and I enjoyed the production immensely.

tack was also evident from Lori McCawley, Steve Lee, Bobbi Jo Eastman, and Shaun Lawrence. Alternates were Chris Perry and Mandi Erway.

Scott Morgan and twins Scott and Matt Barnett led scoring from the sophomore table, with help from Brett Erway and Sherry Kalkbrenner and bench support from Chad Watson and Alan Cornell.

Instructor Len Kibbe and the history elective class put a tremendous amount of work into the program, and it never fails to stir enthusiasm.

-NoPo-

English teacher Judy Frederick, who teaches the Shakespeare elective, arranged for 50 of her students to go to Lock Haven University last Friday to see *The Taming of the Shrew*.

-NoPo-

Eight Northern Potter seniors were hosts last week to eight seniors from Dover High School in south-central Pennsylvania. Travis Cowburn, Steve Lee, Shaun Lawrence, and Jason Reiman hosted the boys while Sue Nardone, Sis Potocki, Lynne McNeely and Lori McCawley hosted the girls.

The visitors and their hosts covered the gamut of sight-seeing possibilities in Potter County and enjoyed a variety of culinary and recreational experiences as well as educational ones.

In the spring the eight hosts will become guests of the Dover students and will get the opportunity to attend a school about the size of all five of Potter County's high schools put together.

-NoPo-

Varsity Club members are gearing up for a busy basketball season. Jason Reiman has been elected president of this year's club; Travis Cowburn is vice president; Jenny Erway is secretary, and Amy McCawley is treasurer.

Sixteen club members received varsity jackets this year. They include seniors: Monique Cowburn, Sandy Jordan, Lynne McNeely, Chris Perry and Bill Baker; juniors: Renee Calcote, Michelle Clark, Shane Graves, Bob Briggs, Joel Kosa, Amy McCawley, Jeff Pirrung and Justin Reiman; and sophomores: Alan Cornell, Brett Erway and Matt Phelps.

PANTHER PRINTS

P4396

Jeff Pirrung led the juniors to victory last Monday afternoon in the annual fall current events quiz. The juniors scored 730 points in the competition, edging out the seniors with 660 points and setting a strong example for the rookie team of sophomores who did well with 320.

The junior team also featured Justin Reiman, Joel Kosa, Amy Erway, and Dale Stokes, with Andy Morley and Terri Andrews primed as alternates.

Steve Flewellyn seemed to captain the senior team, but a well-balanced at-

John Gordon

Visited university

SHAMOKIN — Shamokin Area High School speech arts class students were guests of the theatre department of Lock Haven University last week when they attended a Shakespearean production, "The Taming of the Shrew."

John Gordon, director of theater at the university, arranged the visit. Admission was free. During intermission, light refreshments were served to the students. Students were accompanied by Emily Anderson, speech arts instructor.

Those attending were: Scott Benedict, Michele Christ, Jennifer Deroba, Kim Domanski, Marcy Fiorey, Marianne Goguts, Jim Hartman, David Kopitsky, Dennis Madden, Shelly May, Angela Pomponio.

Chanda Renn, Susan Richie, Mary Kay Snyder, Tammy Sosnoski, Kim Varano, Lori Balon, Kim Long, Adil Chbani, John Mace, Kelly McCord, Michelle Metrocavage, Rob Scheetz, Sherry Seroski, Julie Smith, Joe Tarr, Robert Wheary, Marsha Wisloski and Brian Young.

Quick Note

To: *John Andon*
From: REBECCA ROSSER
Subject:

Date: 11/7
cc:

"Shrew" shots by
your people -
- for your files.

Thanks!
Rebecca

LOCK HAVEN UNIVERSITY

University Players' Officers 1988-89

President - Helen Haglich

Vice President - Mark Thomas

Secretary/Treasurer - Lory Fedor

Fund Raiser Chairman - Joe Garrison / Kevin Lopata

Members at Large -

Debbie Markowitz / Courtney Schaefer
Maureen Campbell



CK HA



