

AUDITIONS FOR



THE CRUCIBLE

7:00 P.M.

SLOAN THEATRE

SEPTEMBER 9, 10 & 11, 1987

ROLES FOR: 10 MEN & 10 WOMEN

SCRIPTS ON RESERVE IN STEVENSON LIBRARY

A PRODUCTION OF THE UNIVERSITY PLAYERS

THE CRUCIBLE

cast

Betty Parris...
 Reverend Samuel Parris...
 Tituba...
 Abigail Williams...
 Susanna Wallcott...
 Mrs. Ann Putnam...
 Thomas Putnam...
 Mercy Lewis...
 Mary Warren...
 John Proctor...
 Rebecca Nurse...
 Giles Corey...
 Reverend John Hale...
 Elizabeth Proctor...
 Francis Nurse...
 Ezekiel Cheever...
 John Willard...
 Judge Hathorne...
 Deputy-Governor Danforth...
 Sarah Good...
 Hopkins...
A.S.M.

Marie Sandy
 Thomm Yost
 Barbara Ruetschi
 Elizabeth Wright
 Debbie Markowitz
 Angela Sparks
 Joe Jones
 Jennifer Sharp
 Jakki Howsare
 Mark Thomas
 Helen Haglich
 Stephen Chianos
 Steve Schulz
 Melissa Lewis
 Matthew Lovlie
 Joe Garrison
 Jr. Price
 Steve Zoldi
 Jim Mitchell
 Bess Barnes
 Bruce Pendleton
 Jennifer Pandich

(Please initial in the 1st column to show that you accept the part. Get a script on Monday morning from Bridget Todd in Sloan 107.)

I had a hard time choosing a cast for this play. There were many excellent readings. I hope that I'll have another chance to work with those of you who tried out and showed such energy and interest. There'll be other plays this semester -- Studio Productions -- and I know that you'll try out for parts in these plays which are an essential part of our program. Thank you for putting in your valuable time and sharing your talents with us.

John Jordan

To the Cast: Congratulations! You have just signed up for a lot of hard work -- rewarding work. Production dates are November 19, 20 & 21. First read-through -- Monday, September 14, Room 321 Sloan Fine Arts Center at 6:30 p.m.

At 6:30 p.m. your measurements for your costume will be taken. Do not be late. **Men**, do not get your hair cut.

D.W.'s copy

CONTACT SHEET FOR "THE CRUCIBLE"

NAME	PHONE	ADDRESS
Sarah Bess Barnes	3557	304A North Hall
Giles Stephen Chianos	3604	430 North Hall
Cheever Joe Garrison	3528	201b North Hall
Rebecca Helen Haglich	3663	313 McEntire Hall
Mary Jakki Howsare	3890	Gross Hall (Box B)
Putnam Dan M. Joe Jones	3257 3. + 78	144 Woolridge Hall
Eliz. Melissa Lewis	748 - 4634	301 S. Fairview St.
Nurse Matthew A. Lovlie	748 - 7282	83 Susquehanna Ave.
Susanna Bebbie Markowitz	3510	501 Hemlock Rd.
Danforth Jim Mitchell	3488	321A Gross Hall
ASM Jennifer Pandich	3611	505A North Hall
SM Bruce Pendleton	3397	306 High Hall
Willard Jr. Price	3103	101 Smith Hall
Tituba Barbara Ruetschi	748 - 3997	22 S. Highland St.
Betty Marie Sandy	3453	211B Gross Hall
Hale Steve Schulz	748 - 6989	140 1/2 E. Water St.
Mercy Jennifer Sharp	3565	312A North Hall
Ann Angela Sparks	3255	427 Gross Hall
Proctor Mark Thomas	3738	503 McEntire Hall
Abigail Elizabeth Wright	3793	708 McEntire Hall
Parris Thomm Yost	748 - 5555	RD #1, Box 29 se
Hawthorn Stephen Zoldi	3175	140 Smith Hall

see me!
 John Jordan

THE CRUCIBLE

Director.....	John Gordon.....	2131
S.M.	Bruce Pendleton.....	3397
A.S.M.	Jennifer Pandich.....	3611
Lighting Designer.....	Scott Kincaid.....	3728
Set Designer.....	John Gordon.....	2131
Costume Designer.....	Denise Warner.....	2126
Costumer.....	Betty Edwards.....	2144
Properties.....	Tina	3694
M.E.	Craig Young.....	3881
Sound.....	Gina Calhoun.....	748-2227
Promotions.....	Helen Haglich.....	3663
	Melissa Lewis.....	748-4634
	Debbie Markowitz.....	3510
	Barbara Ruetschi.....	748-3997
Producer.....	Denise Warner.....	2126

EAGLE

EYE



Vol. 34 No. 6 12 Pages
Friday, October 2, 1987

University Players begin rehearsals

By Helen Haglich
Art Columnist

The University Players and the Theater Department are already busy working on the fall mainstage production of Arthur Miller's drama, "The Crucible."

Professor John Gordon, chairman of the Speech/Theater Department, is directing and designing the set. Professor Denise Warner is producing the show and designing the costumes.

"The Crucible" is a play about the Salem Witch Trials that occurred in Massachusetts during the seventeenth century.

The cast includes: Bess Barnes, Stephen Chianos, Joe Garrison, Helen Haglich, Jakki Howsare, Melissa Lewis and Matt Lovlie.

Also in the cast are: Dan Mahoney, Debbie Markowitz, Jim Mitchell, Junior Price, Barbara Reutschi, and Marie Sandy.

Additionally, Steve Schultz, Jennifer Sharp, Angela Sparks, Mark Thomas, Elizabeth Wright, Thomm Yost, and Stephen Zoldi are in the cast.

"The Crucible" will be presented on November 19, 20, and 21 at 8 p.m. in the Sloan Theater. Admission is free with validated student I.D.

News from LHU

Staff and faculty aid theater research

Faculty and staff members helped with the research of Lock Haven University College Players' production of *The Crucible*, scheduled for November 19-21.

The University's Sallie I. Sadler, an instructor in the psychology department, along with Donald E. Day, Ph.D., of the department of history, political science, economics and management science, and Robert S. Bravard, the director of library services, drew from their own areas of expertise to help the

actors and crew in their research of the Arthur Miller play.

Set during the time of the Salem witch-hunts in 1692, the play depicts how mass hysteria can take over a culture and how widespread fear can affect the populous.

Sadler's presentations, "Hysteria and its Psychological Impact on Others," and "Repression and Its Consequences," both helped to illustrate to the students in the production how tensions and fears mounted during the witch-hunts.

Day, discussing "When the Devil was Real," "Church and State Against the Devil" and "European Christians Cleanse the New World," brought into perspective the fears of early settlers.

Bravard, in his presentations, titled "Puritan Life vs. Devil Death — A Life of Only Black and White" and "McCarthy's Witch Hunts and the Never Ending Cycle," added to the study and showed how the same type of hysteria happened in modern times.

The three University representatives were the first to participate in a pre-production workshop of this nature, according to John B. Gordon, chairman of the speech communication and theatre department.

According to Gordon, this approach, which integrates the academic of learning experience and the theatre experience, enriches the performer or crew member to a much greater degree and enhances their stage work.

The Express, Lock Haven, Pa., Tuesday, October 6, 1987 ~ 5

LHU faculty and staff aid in players research of play

LOCK HAVEN — Cast members of the Lock Haven University College Players' production of "The Crucible" have faculty and staff members to thank for adding to the otherwise routine research the actors undertake before appearing on stage.

The university's Sallie I. Sadler, an instructor in the Psychology Department, along with Donald E. Day, Ph.D., of the Department of History, Political Science, Economics and Management Science, and Robert S. Bravard, the director of library services, have all added to the forthcoming production, scheduled for Nov. 19 through 21.

In making presentations to the cast and crew of the Arthur Miller play, the three drew from their own areas of expertise to help the actors and crew in their research.

Set during the time of the Salem witch-hunts in 1692, the play depicts how mass hysteria can take over a culture and how widespread fear can affect the populous.

Sadler's presentations, "Hysteria and its Psychological Impact on Others," and "Repression and Its Consequences," both helped to illustrate, to the students in the production, how tensions and fears continued to mount during the witch-hunts.

Day, discussing "When the Devil was Real," "Church and State Against the Devil" and "European Christians

Cleanse the New World," brought into perspective the fears of early settlers.

Bravard, in his presentations, titled "Puritan Life vs. Devil Death — A Life of Only Black and White" and "McCarthy's Witch Hunts and the Never Ending Cycle," added to the study and showed how the same type of hysteria happened in modern times.

The three university representatives were the first to participate in a pre-production workshop of this nature, according to John B. Gordon, chairman of the Speech Communication and Theatre Department.

According to Gordon, this approach, which integrates the academic or learning experience and the theatre experience, enriches the performer or crew member to a much greater degree and enhances what they "take out" of their stage work.



NEWS

Public Relations Office
Lock Haven University
Lock Haven, Pa. 17745
717-893-2323

OCTOBER 23, 1987

PRESS RELEASE # 564

CONTACT: REBECCA ROSSER
DIRECTOR OF PUBLIC RELATIONS

UNIVERSITY STAR SEARCH TO REUNITE THEATRE PLAYERS AND ENTHUSIASTS

October 23, 1987 (Lock Haven University) -- The Lock Haven University College Players will introduce their second 50 years of performing excellence with the production of Arthur Miller's "The Crucible."

The play, under the direction of Chairman of the Speech Communication and Theatre Department John B. Gordon, will be performed during three shows, November 19-21.

Gordon, having recently completed a research project to catalog the University's first 50 years in theatre, is now trying to locate all of those cast members who had roles in the institution's premier production, "You and I."

According to Gordon, many of the cast members from the 1936 production now live outside of Pennsylvania. But, he adds, the incentive of rekindling those old memories and moments on stage will help bring them back to Lock Haven for the November event.

Beyond the "You and I" cast, the University is extending an invitation to all alumni who have taken part in theatre productions over the years, Gordon said.

The idea is to spark the same type of interest in the theatre as was common to productions staged in the 1930s and 1940s, according to Gordon.

"We hope to celebrate the next half-century with crowded theatre performances, hundreds of news articles and advertisements, dozens of volunteer cast and crew members and, again, dances and banquets

Friday, October 23, 1987, Lock Haven University, Eagle Eye 5

ES FEATURES FEATURES

"The Crucible" is not one-man show

By Helen Haglich
Arts Columnist

This semester's mainstage production of "The Crucible" is a tremendous project, requiring the involvement of a large number of people.

Theater Workshop classes play roles in all aspects of the production, such as acting, costumes, makeup, and set construction. In addition, several students that aren't enrolled in Theater Workshop are participating in the preparation of the play.

Professor Denise Warner, producer of the play, heads the production staff which meets weekly to report on the progress individuals have made in getting the show together.

The students on the production staff are: Scott Kincaid, Lighting Designer; Tina Bieser, Properties; Craig Young, Master Electrician; Gina Calhoun, Sound; Melissa Lewis, Debbie Markowitz, Barbara Ruetschi, and Helen Haglich, Promotions.

Director and Set Designer Professor John Gordon works closely with the stage managers, Bruce Pendleton and Jennifer Pandich. They organize the cast, make sure everything and everyone is in place, call cues and do almost anything else that needs to be done. They are present at all rehearsals, and, next to the director and the producer, they probably do more work than anyone else involved in the show.

Anyone interested in being a part of theater at LHU should check the theater call board on the first floor of Sloan for announcements about new productions and meetings of the University Players.

reminiscent of the early days."

As part of the reunion season, Gordon has offered to open the theatre archives for alumni and friends who, too, are searching for stage associates.

Alumni and friends are encouraged to offer their expertise in building the archives by forwarding additional news articles, photographs, programs or other items relating to the University theatre.

For more information on the Lock Haven University theatre archives or on the theatre reunion now being coordinated, contact Gordon at (717) 893-2131.

Interested parties may also write Gordon at Lock Haven University, Lock Haven, Pennsylvania. The zipcode is 17745.



NEWS

Public Relations Office
Lock Haven University
Lock Haven, Pa. 17745
717-893-2323

OCTOBER 30, 1987

PRESS RELEASE # 602

CONTACT: REBECCA ROSSER
DIRECTOR OF PUBLIC RELATIONS

RE-ENACTMENT HELPS STUDENTS AUTHENTICATE EARLY PURITAN

CHURCH SERVICE TO RESEARCH "CRUCIBLE"

October 30, 1987 (Lock Haven University) -- The Reverend Joseph Erwin, minister of Saint Luke's United Church of Christ, Flemington, will lend his expertise in helping the cast and crew members of Lock Haven University's "The Crucible" by re-enacting a church service in the style of the Reverend Jonathan Edwards.

The service, to take place at the Laurel Run Methodist Church at noon on October 31, will include a historical service and psalms taken from Johnson's famous 1741 sermons, "Sinner in the Hands of an Angry God."

The play's director, John B. Gordon of the University Speech Communication and Theatre Department, stated that the service is not representative of the Church of Christ, and is being staged as an educational offering for the public.

The public is welcomed to attend the Halloween noon-day service. Appropriate to the overall theme in "The Crucible," somber dress is requested.

The Lock Haven University College Players will present Arthur Miller's "The Crucible" November 19 through 21.

THE EXPRESS
OCTOBER 31, 1987

**'Crucible' cast
getting glimpse
of brimstone**

LAUREL RUN — The cast and crew of Lock Haven University's presentation of "The Crucible" will get a historical glimpse of church practice and Early Puritan Theology Saturday at noon in Laurel Run United Methodist Church.

Rev. Joseph Erwin, pastor at Flemington's St. Luke's United Church of Christ, has agreed to present a brief, historical service based on the style of Reverend Jonathan Edwards, and his famous 1741 sermons, "Sinner in the Hands of an Angry God."

The public is welcome to join in the reenactment, but somber dress is required.

The University Players will present Arthur Miller's play Nov. 19-21 at 8 p.m. in the Sloan Theater.

A Related Event

NEWS RELEASE

To give the cast and crew of "The Crucible" a historical glimpse of church practice as depicted by Arthur Miller's narrow view of Early Puritan Theology, I have asked Reverend Joseph Erwin, minister of St. Luke's United Church of Christ in Flemington, to re-enact a brief historical service of sermon and psalms in the style of Reverend Johnathan Edwards. His presentation will be taken from Johnson's famous 1741 sermons, "Sinner in the Hands of an Angry God."

This re-enactment will occur at Laurel Run Methodist Church, 12:00 noon, on October 31. The re-enactment will be open to the public. Somber dress required.

Reverend Erwin has given freely of his time and energy with the understanding that views on theology expressed in this re-enactment are those of Johnathan Edwards and not of his Church or ministry.

We hope you and will join us for this event.

⌘ A man thrown in the
stocks for laughing
in church. ⌘

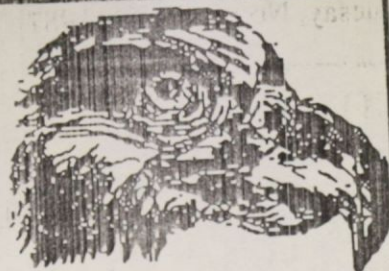
THURSDAY, NOV. 12, 1987
12:15 in front of Price

LOCK HAVEN UNIVERSITY

EAGLE EYE

Parsons Union Building
Lock Haven University
Lock Haven, Pennsylvania
17745

Vol. 34 No. 19 4 Pages
Tuesday, November 17, 1987



"The Crucible"
opens Thursday
at 8 p.m. in
Sloan

Play to open

By Yuichi Tabata
Staff Reporter

The University Players are set for Thursday's opening of their presentation of "The Crucible."

The play, also to be presented on Friday and Saturday, will open at 8 p.m. in Sloan Theater.

"The Crucible" is a fact-based play written by Arthur Miller, which describes the witchcraft hysteria that swept through Massachusetts in 1692.

Professor John Gorden, director of the play, said that "The Crucible" is a well written play that explores many aspects of American history.

"To understand a culture, we have to study what it produces rather than seek to find what it is," said Gorden.

All characters in "The Crucible" actually existed at that time, and the play is based on historical facts.

"The Crucible" lasts approximately for two and a half hours. Admission is free with a validated University I.D. card.

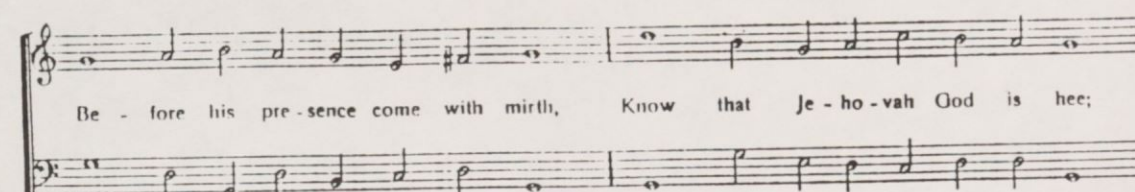
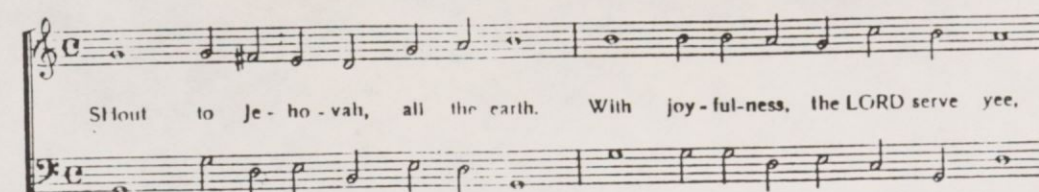
"THE CRUCIBLE"

MUSIC IN AMERICA

15. PSALM 100 (L.M.)

1551

Bay Psalm Book
(Boston, 1698)



²
It's he that made us and not we,
His folk his pastures sheep also.
Into his gates with thanks come ye
With praises to his Court-yards go.

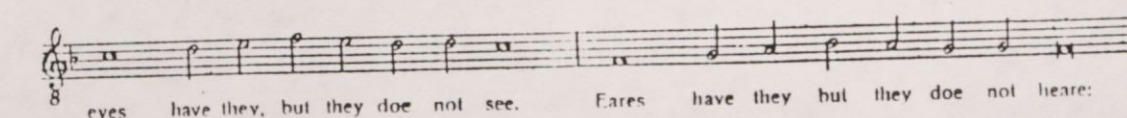
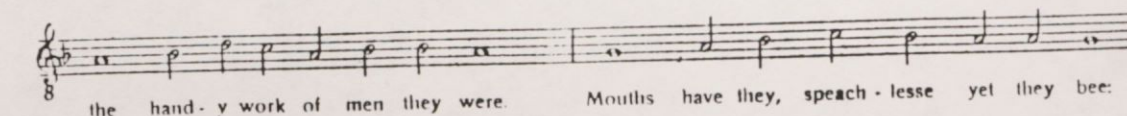
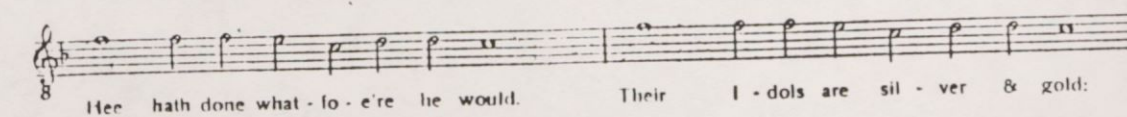
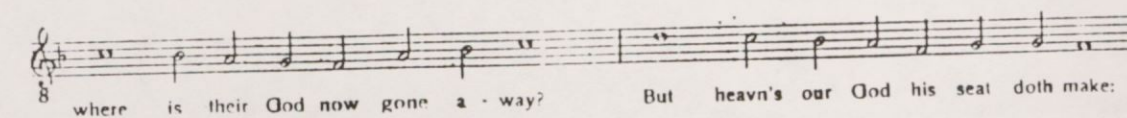
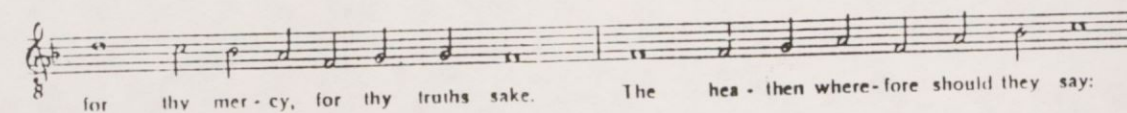
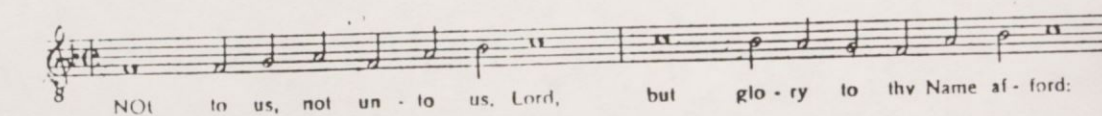
³
Give thanks to him, bless ye his Name
Because Jehovah he is good:
His mercy ever is the same:
His truth throughout all ages stood.
Ps. 100: Bay Psalm Book, 1698

MUSIC IN AMERICA

11. PSALME 115 (12-8s)

1556

Sternhold and Hopkins Psalter
Psalm 113
(London, 1624)



Human injustice.
Mass hysteria.

The Salem
Witch Trials.

The Lock Haven
University
College Players

Present

THE
CRUCIBLE

the play by
ARTHUR
MILLER

November 19, 20, and 21
8 P.M. Sloan Theatre

Adults, \$2.50
Students, children, \$1
(LHU student's FREE with valid ID)

Tickets available at the door.

The Express

November
19-21, 1987

The campus report

A look at news of Lock Haven University, its people and its programs.

"The Crucible" opens tonight

LOCK HAVEN — The play opened on Broadway in 1953, and was first produced by the College players a few years later.

Now, over 30 years have passed and the Lock Haven University College Players will once again produce Arthur Miller's "The Crucible" for the campus and community on November 19, 20 and 21.

Tickets are now on sale in the Student Cooperative Council ticket office and will also be available at the door. The adult ticket price is \$2.50, \$1 for children or students. LHU students with a valid ID are admitted free.

The production will be in the Sloan Fine Arts Center Theatre. Curtain time is 8 p.m. each evening.

According to the play's producer, the university's John B. Gordon, "The Crucible" is very powerful piece of American drama.

The cast and crew of the production have made a special attempt to invite cast and crew members of the university's original production of "The Crucible."

Alumni attending the production are invited backstage to visit with Gordon and the students.

For more information on PIES, offered each fall at the university, contact Oakley at 893-2051.

LHU Homecoming set

LOCK HAVEN — Make plans now to attend the Lock Haven University Homecoming 1988 festivities.

According to the university's interim athletic director, Sharon E. Taylor, homecoming events have been scheduled for the weekend of October 15, 1988.

Additional information on particular events and alumni festivities will be forthcoming, Taylor added.

LHU professor gets chair

LOCK HAVEN — A Lock Haven University professor has been named the chairman of the 1988 South Central Modern Language Association convention to be scheduled in Arlington, Tx.

Isidore Becker, Ph.D., a professor in the university's English, journalism and philosophy department, recently returned from the 1987 convention where he was selected from the delegates to oversee next year's meeting.

At the convention, which was held in Houston, Tx., Becker presented a paper, "The German Romanticists and the Gnostic Tradition." The paper explored the Romantic tradition of Gnosticism in the writings of German idealistic philosophers including Friedrich Wilhelm Josef von Schelling.

Becker joined the university in 1969.

Science teachers improve

LOCK HAVEN — The evening course is called PIES, but the elementary science teachers involved aren't interested in cooking.

In what is known as the Program for Improving Elementary Science (PIES), a total of 19 teachers from Clinton and Lycoming counties are taking part in a 15-week course to help them become more effective instructors.

The group meets each Monday evening on the Lock Haven University campus, according to Donald L. Oakley, Ph.D., the group's instructor and director of PIES.

The coursework includes instruction in the life, earth and physical sciences. Upon completion, each participant is granted three graduate credits paid for entirely through the Pennsylvania Higher Education Assistance Agency (PHEAA).

Oakley indicated PIES offers the elementary teacher valuable hands-on experience along with the convenience of being able to take the update close to home and at a cost that can't be beat.

"We are especially pleased to be able to offer teachers, many of whom are Lock Haven graduates, this service," Oakley commented.

"It is most important that our teachers continually work to strengthen their skilled," he added. "That is precisely what the PIES program can offer teachers in this region."

PIES was developed by the PHEAA to serve the special needs of science and mathematics teachers. It is part of the Pennsylvania Science Teacher Education Program (PA STEP), which is nationally recognized as an exemplary science education program.

Since 1983, over 4,000 Pennsylvania teachers have benefitted from the programs offered at Lock Haven and 14 other institutions with PIES and other science and math courses through PA STEP.

Professor's work published

LOCK HAVEN — A Lock Haven University professor and writer was recently published in the internationally recognized Christian Science Monitor.

Saundra K. Hybels, Ph.D., from the university's English, journalism and philosophy department, penned the article on family farm gardens in Poland.

Hybels visited Poland last spring and wrote the article which details restrictions Polish gardeners face in raising their crops and flowers.

She noted that "most Poles agree, the most satisfying aspect of the garden is working and seeing concrete results."

Her article also advised, "that for workers who have little control or say on the work they do in factories, the garden is an important form of satisfaction."

Gardens in Poland, according to Hybels, are regulated and officially licensed. In 1980, there were 600,000 official garden plots, but the number has grown to about 913,000 today with a waiting list of 700,000.

Bravard, in his presentations, titled "Puritan Life vs. Devil Death--A Life of Only Black and White" and "McCarthy's Witch Hunts and the Never Ending Cycle," added to the study and showed how the same type of hysteria happened in modern times.

The three University representatives were the first to participate in a pre-production workshop of this nature, according to John B. Gordon, chairman of the Speech Communication and Theatre Department.

According to Gordon, this approach, which integrates the academic or learning experience and the theatre experience, enriches the performer or crew member to a much greater degree and enhances what they "take out" of their stage work.



NEWS

Public Relations Office
Lock Haven University
Lock Haven, Pa. 17745
717-893-2323

SEPTEMBER 23, 1987

PRESS RELEASE #568

CONTACT: REBECCA ROSSER
DIRECTOR OF PUBLIC RELATIONS

**UNIVERSITY FACULTY AND STAFF MEMBERS BRING
EXPERTISE TO DEVILISH THEATRE PRODUCTION**

September 23, 1987 (Lock Haven University) -- Cast members of the Lock Haven University College Players' production of "The Crucible" have faculty and staff members to thank for adding to the otherwise routine research the actors undertake before appearing on stage.

The University's Sallie I. Sadler, an instructor in the Psychology Department, along with Donald E. Day, Ph.D., of the Department of History, Political Science, Economics and Management Science, and Robert S. Bravard, the director of library services, have all added to the forthcoming production, scheduled for November 19 through 21.

In making presentations to the cast and crew of the Arthur Miller play, the three drew from their own areas of expertise to help the actors and crew in their research.

Set during the time of the Salem witch-hunts in 1692, the play depicts how mass hysteria can take over a culture and how widespread fear can affect the populous.

Sadler's presentations, "Hysteria and its Psychological Impact on Others," and "Repression and Its Consequences," both helped to illustrate, to the students in the production, how tensions and fears continued to mount during the witch-hunts.

Day, discussing "When the Devil was Real," "Church and State Against the Devil" and "European Christians Cleanse the New World," brought into perspective the fears of early settlers.

Human Injustice. Mass Hysteria.
The Salem Witch Trials.



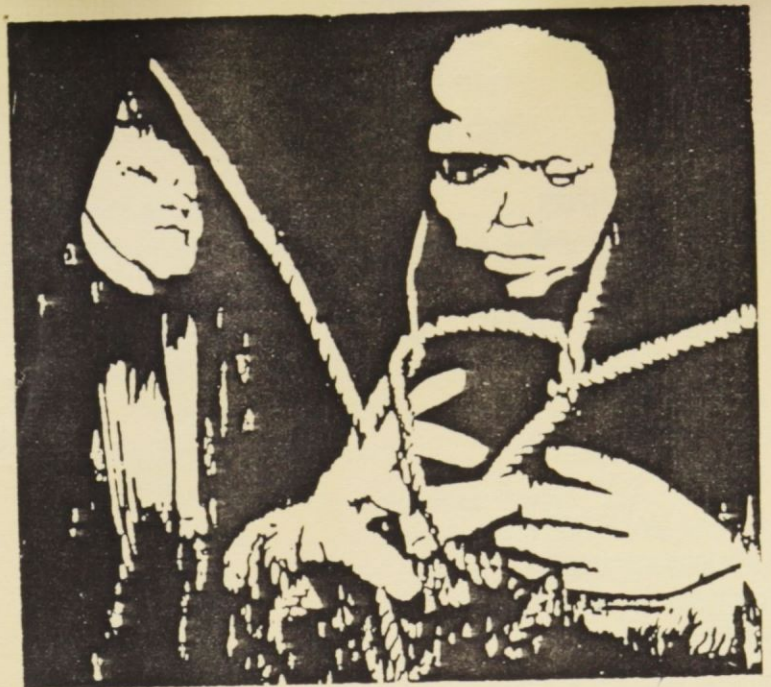
THE CRUCIBLE

(a play by Arthur Miller)

November 19, 20 & 21, 1987

8:00 p.m.

Sloan Theatre



THE CRUCIBLE

by Arthur Miller

Dedicated to the cast and crew of
the 1936 Lock Haven University
production of "YOU & I."

CELEBRATING 50 YEARS OF THEATRE
ARTS AT LOCK HAVEN UNIVERSITY

November 19, 20 & 21, 1987

8:00 p.m.

Sloan Theatre



Steve Schulz
(Rev. John Hale)
and
Barbara Ruetschi
(Tituba)

left to right:

Steve Schulz (Rev. John Hale),

Barbara Ruetschi (Tituba),

Angela Sparks (Ann Putnam),

and Thomm Yost
(Rev. Samuel Parris).



In Review...

EAGLE EYE

NOVEMBER 24, 1987

Cast of "The Crucible" performs to record-breaking crowd last weekend

By Janine Cuccaro
Staff Reporter

Celebrating 50 years of theater arts, the University Players presented Arthur Miller's "The Crucible" last weekend in Sloan Theater.

"The Crucible" is a fact-based play revealing the circumstance and sentiment of the witch trials in Salem, Massachusetts in 1692.

The play, which ran from November 19-21, was dedicated to the cast and crew of the 1936 Lock Haven University production of "You & I."

A 21 person cast and a substantial production staff put in approximately 140 hours of rehearsal to make this year's fall performance a success.

Professor John Gordon, director of "The Crucible," said he has gotten positive feedback concerning the play and attributes much of the success to the students for hard work and commitment in pulling the play together.

He is also very appreciative of the support he has received from the faculty and

staff.

Gordon has directed four productions at the University and has also directed within the city.

The Players performed to a record-breaking crowd of 798 people over the three-day run, just over a hundred short of full seating capacity. Almost three hundred of those in attendance were from outside the University.

In addition, 76 high school and University students, faculty, and special guests were invited to a Wednesday night dress rehearsal.

Despite some technical difficulties with the lighting system, resulting from a malfunction in the computerized system installed in 1982, the play went off without any major problems.

"We've had that system for five years now and it has never worked smoothly through an entire production," said Gordon.

From the start, the cast adapted well to the serious aspect of the play. Even in instances when the audience responded inappropriately, the actors remained in their roles.

Mark Thomas was particularly

convincing in the lead role of John Proctor, one of those erroneously condemned for wizardry.

Also well-received by the audience was the scene between Sarah Goode and Tituba (played by Bess Barnes and Barbara Ruetschi) in the jail as they were waiting for their "master" (Satan) to come and rescue them.

James Price, as John Willard, was likewise greatly appreciated for the moments of comic relief he brought to the play when he was sneaking a drink in the jailhouse.

The only major problem with the production was its length - approximately three hours. Midway through the second act, many in the audience became restless and were waiting for the conclusion at every turn.

Despite this, the last scene between Proctor and his wife remained strong and left a favorable impression.



left to right: Barbara Ruetschi (Tituba)
and Angela Sparks (Ann Putnam)



Elizabeth Wright
(Abigail Williams)
and
Steve Chianios
(Giles Corey)

University Players successful again

Dear Editor:

As a Student Representative on the Student Cooperative Council Senate, I am always looking at how the student activity fees are being spent.

On Friday, November 20, I had the pleasure of attending "The Crucible." The University Players were again in top form with superb acting.

Since the University Players are allocated monies through the SCC (although not enough), it was a pleasant surprise to see a

full house of students getting use of their activity fee.

The one dollar charge was miniscule in comparison to the cost of such an outstanding play. My hat is off to the Players and Professor John Gordon, their director. It is amazing how time and time again the plays of the University Players are so successful on such a limited budget.

Robert V. Rote
Student Cooperative Council Inc.
Cultural Affairs Chairman

