

Shakespeare's 'Taming of Shrew' Lively Show of College Players

It is well worth seeing—the brand of Shakespeare the College Players offer for the last time tonight at Price auditorium.

"The Taming of the Shrew" isn't one of the bard's breathlessly poetic plays—but it's breathless, and the college cast, as directed by Dr. Robert A. McCormick caught every nuance of its vigor, vitality, buffoonery, and slapstick in their opening show.

When they extended the call for tryouts some weeks ago, the College Players said they would welcome candidates who had wrestling or dancing experience.

Vigorous Acting

The reason became evident on stage last night as a virile cast threw itself lustily into Shakespeare's famous farce about the man who married a shrew and tamed her into a sweet, docile, obedient and loving wife.

Miss Helen Fontana as "Kate", and Harry Price as "Petruchio", the man who made a lady out of her, offer a love scene that combines the better qualities of a wrestling match and an adagio dance, against a bright, impressionistic setting.

Lots of Slapstick

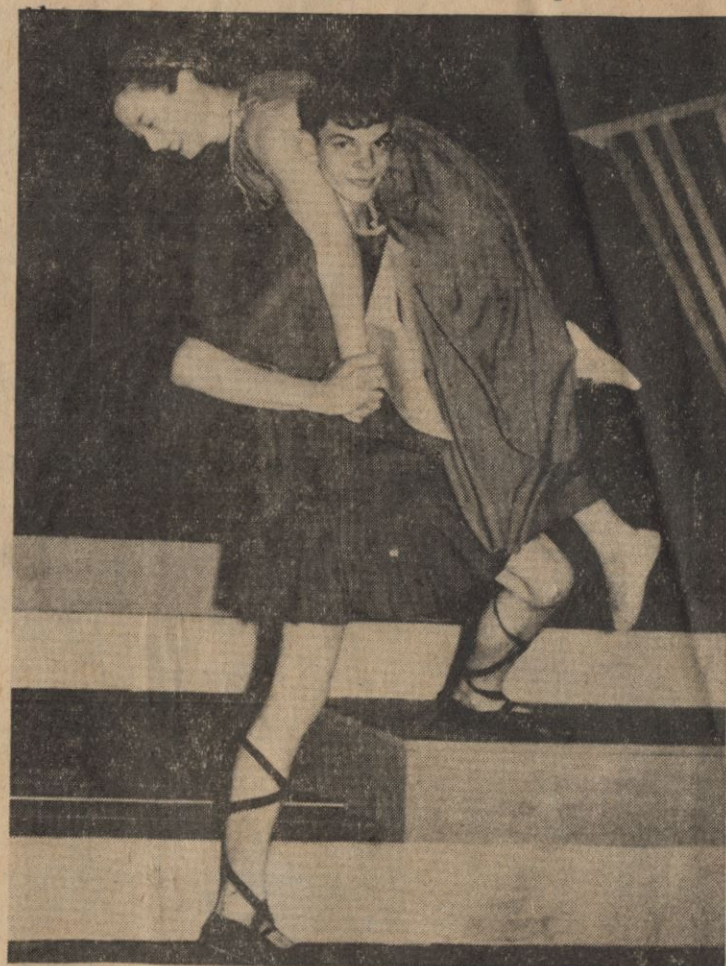
The low-brow comedy that Shakespeare threw in to please the fans in the pit is as good today as ever, and an agile crew of zanies moved it in and out of the drama in unrestrained measure last night, talking all the while in Shakespearean elegance, and running around bare-legged in Graeco-Roman attire.

It would spoil the fun to reveal the last bit of action on the final curtain. But a woman gets the last laugh, be assured.

Repeat Tonight

Lively costume colors, a functional and modernistic set designed with levels to expedite the action make the performance a completely pleasing one to see. There's not a second of dragging. A good hour and a half saw everything started and finished last night.

The College Players make no admission charge for their shows, and present them to stimulate interest in live theatre in Lock Haven. The curtain will



Petruchio Takes a Bride

Harry Price leaps off stage, in the College Players farce, carrying Miss Helen Fontana, "The Taming of the Shrew," who enacts the role of "Kate" Last performance is tonight.

Taming of the Shrew

14—The Lock Haven Express, Lock Haven, Pa.—Thursday, December 6, 1956

Shakespeare's 'Taming of Shrew' Lively Show of College Players

It is well worth seeing—the brand of Shakespeare the College Players offer for the last time tonight at Price auditorium.

"The Taming of the Shrew" isn't one of the bard's breathlessly poetic plays—but it's breathless, and the college cast, as directed by Dr. Robert A. McCormick caught every nuance of its vigor, vitality, buffoonery, and slapstick in their opening show.

When they extended the call for tryouts some weeks ago, the College Players said they would welcome candidates who had wrestling or dancing experience.

Vigorous Acting

The reason became evident on stage last night as a virile cast threw itself lustily into Shakespeare's famous farce about the man who married a shrew and tamed her into a sweet, docile, obedient and loving wife.

Miss Helen Fontana as "Kate", and Harry Price as "Petruchio", the man who made a lady out of her, offer a love scene that combines the better qualities of a wrestling match and an adagio dance, against a bright, impressionistic setting.

Lots of Slapstick

The low-brow comedy that Shakespeare threw in to please the fans in the pit is as good today as ever, and an agile crew of zanies moved it in and out of the drama in unrestrained measure last night, talking all the while in Shakespearean elegance, and running around bare-legged in Graeco-Roman attire.

It would spoil the fun to reveal the last bit of action on the final curtain. But a woman gets the last laugh, be assured.

Repeat Tonight

Lively costume colors, a functional and modernistic set designed with levels to expedite the action make the performance a completely pleasing one to see. There's not a second of dragging. A good hour and a half saw everything started and finished last night.

The College Players make no admission charge for their shows, and present them to stimulate interest in live theatre in Lock Haven. The curtain will go up again tonight at 8.15.



Petruchio Takes a Bride

Harry Price leaps off stage, in the College Players farce, carrying Miss Helen Fontana, "The Taming of the Shrew," who enacts the role of "Kate" Last performance is tonight.





College Players

Present

THE TAMING OF THE SHREW

by

William Shakespeare

Wednesday, December 5
Thursday, December 6
8:15 P.M.

Staged
by

Robert A. McCormick

Costumes
by

Hazel R. Ferguson

Price Auditorium
Lock Haven State Teachers College



Cast
(in order of appearance)

Lucentio	Bruce Bechdel
Tranio	Tom Walker
Baptista	Donald Meyer
Katherine	Helen Fontana
Bianca	Sandra Schoch
Gremio	Walter Melbourne
Hortensio	Nick Tsamautalis
Biondello	Robert Hall
Petruchio	Harry Price
Grumio	Eugene Beaver
Curtis	Fred Calteriyahn
Seamstress	Gaye Bennett
Vincentio	Kenneth Barlow
Pedant	Charles Kelly
Widow	Judith Love
Wedding Guests	Joann Cummings James Yoxtheimer

Ten-minute Intermission

A voluntary silver offering will be accepted in
the lobby.

Production Staff
(in order of appearance)

Stage Manager: Ruth Shontz
Assistant Stage Manager: Darlene McCartney

Costumes Tranio

Bonita Morrison Baptista
Penny Cochrane
Mary Lou Ayers Katherine
Lorraine Gitch
Joann Cummings Bianca
Priscilla Garrett

Stage Crew

Mary Lou Ayers Hortensio
Priscilla Garrett

Biondello

Petruchio

Priscilla Garrett
Mary Lou Ayers Grumio
Robert Hall
Harry Price Curtis
Gene Beaver
Helen Fontana Seamstress
Sandra Schoch

Vincent Walter Melbourne

Pedant

House Staff

Widow

House Manager

Idell Kittle

Ushers

Patricia Hopkins
Jane Cingle
Katherine Dietrich

Lighting Crew Tom Walker

Frank Geno Donald Meyer
Tony Geno
George Good Helen Fontana

Properties Sandra Schoch

Nancy Klingensmith Walter Melbourne
Jane Hubler
Jean Moore Tsamautalis
Mary Fontana Robert Hall

Construction Staff

Barbara Milliard
Jacqueline Wertz Eugene Beaver
Donald Meyer
Kenneth Barlow Fred Calteriyahn
Ruth Shontz
Ton Walker Gaye Bennett
Fred Calteriyahn Kenneth Barlow

Promotion Staff

Publicity Manager

Lorraine Gitch James Yoxtheimer

Publicity Crew

Nick Tsamautales
Barbara Ratcliffe
Jean Moore

