

1953

Capacity Crowds See 'Nativity' at College

The story of the events leading up to the birth of Christ was told twice yesterday to capacity crowds which overflowed Price Auditorium where the annual Teachers College performance of "The Nativity" was given.

The final presentation of the Christmas story will be given this evening at 7:30 in the college auditorium.

Mrs. Hazel Ray Ferguson, of the English department, who wrote the script, departed from the tableau rendition of the Biblical tale which marked previous presentations.

Miracle Play Spirit

The writer and director employed the spirit and technique used in the Medieval miracle plays in bringing the story to life.

The audience responded warmly to the new interpretation which was performed by a cast of 80, including a 57-voice choir under the direction of Russell C. Gillam. Three of the songs were written by Mr. Gillam, director of vocal music.

The opening scene is laid in Heaven where all is excitement as the angel, "Gabriel," announces that the prophecy that the Son of God is to be born would soon be fulfilled. A Heavenly choir, composed of five ethereal angels, enhance the spiritual poignancy of the scene.

Costumes and Settings

Exquisite costumes, and detailed settings, combined with

the effective use of lights, succeeded in making the entire performance a highly professional presentation. The costumes and settings were made by the students, under the direction of Mrs. Ferguson, and with the assistance of Ross E. Nevel, superintendent of buildings and grounds, and his assistant, Clyde Batdorf. David Fetter, Kylerstown, was lighting technician.

The choir, dressed in white surplices, were an arresting sight as they filed into the auditorium, carrying lighted candles and singing their way to their seats on the stage.

Other scenes artfully depicted included the public highway leading to Bethlehem, the shepherds on the hillside, and the adoration before Mary and her Son after his birth in the manger.

Groups to Give 'The Nativity'

Lock Haven, Dec. 5—Lock Haven State Teachers College music and speech groups will present "The Nativity" five times this Christmas season.

Performances will be given Tuesday at Renovo High School at 2:30 and 7:30 p. m. under the sponsorship of the Renovo Rotarians.

"The Nativity" will be presented at the college here Dec. 13 at 4 and 7:30 p. m. and Dec. 14 at 7:30 p. m. Mrs. Hazel Ferguson, associate professor at the teachers college, has written a new script for this year's performance.

The 76 participants will include an a cappella choir directed by Russell Gillam.

Miss Grace Ullemeyer, for a number of years a music instructor at the college, introduced the local presentation of "The Nativity" in 1933. It has been presented each year but one since that time.

Crowds Throng To 'Nativity'

College Yule Program Presented in Renovo

The auditorium of the Renovo High School was overflowing and many persons had to be turned away last night when "The Nativity," annual Christmas presentation by the Teachers College, was given there.

An afternoon performance for the student body also played to a full house with chairs placed in the aisles to accommodate the overflow. Mrs. Hazel R. Ferguson, of the college English department, wrote the script and directed the production, assisted by Russell C. Gillam, director of the choral groups.

The story of the events leading up to the birth of Christ will be given tomorrow at 10 a. m. in Price Auditorium for the college students. The public will have an opportunity to see the familiar Bible story on Sunday, Dec. 13, when it will be retold at two performances, at 4:30 and 7:30 p. m. in the college auditorium. The final presentation will be Monday at 7:30 p. m.

The Renovo performance was sponsored by the Rotary and Lions clubs of that place. A silver offering was taken which was presented to the Renovo Ministerium Association.

The 82 men and women, participating in the story of Christmas, were entertained at dinner at the YMCA with the Rotarians assuming the jobs of waiters. After the evening performance the group was treated to ice cream at the Y.

Lock Haven
Express
Dec 9-1953

Nativity Is Presented Sunday; Nearly A Thousand Attend

Produced Under the Direction of Miss Ullemeyer and Miss Brong

By JANE PLUMPTIS

In all the splendor of the Yule Season the college presented on Sunday, December 12, "The Nativity," the annual Christmas production under the combined supervision of Miss Grace Ullemeyer of the music department and Miss C. Cordella Brong of the speech department. "The Nativity," a much anticipated and colorful production of music and drama was witnessed by several hundred people. The music selected expressed the Christmas story in chronological order from the prophecy to the announcement of the birth of Christ, using the traditional carols and other music. At various time throughout the service was heard the familiar "Dresden Amen," arranged by Richard Wagner as the "Grail" Motive, and using the theme words, "Bring Peace on Earth." Miss Ruth Simon, organist, played the "Pastoral Symphony" from The Messiah by Handel.

The cast included Lois Hahn as Mary, Gerald Sorvelli as Joseph, James Hartle as the Prophet, and Lenore Tidlow as the Central Angel. Four members of the Campus Junior High School represented the Shepherds: Harry Shoemaker, Lewis Baird, Cecil Crider, Hanford Eckman. Kings were John Kyler and Richard Smith. The Angel Cast included Mary Drick, Dorothy Gilson, Audrey Newhard, Ruth Terrill, Kitty Thompson, Marie Winkleman, Mary M. Whitsell, Nancy Rockey, and Audrey Clancy.

Members of the freshman speech class constituted the speech choir. They were Martha Badick, Carolyn Banghart, Minnie Belt, Tutt Beckenbaugh, Lois Biddle, Evelyn Ellzey, Joseph Hutnyan, Edna, Kniffin, Marian Kratzer, Clara Lucas,

Lois McKelvy, Martha Morancik, Miriam Niemond, Lois O'Neill, Josephine Pavlock, Geraldine Petrucci, Le June Pier, Nathan Pletcher, Elsie Preston, Ruth Preston, Ruth Rolin, Lynette Shedden, Veronica Smith, Nancy Welliver, Robert Williams, Frank Yon.

Twenty-five members of the Bel cantos choral club presented the musical portion. They were: first sopranos: Tessie Bartges, Patricia Bodle, Elizabeth Clark, Louise Clark, Marjorie Bossert, Doris Greene, Hope McCartney, Lois Hahn, Peggy Swope, Joan Vogt—second sopranos: Lois Berger, Emile Elliot, June Cochrane, Dorothy Millward, Helene Porter, Faye Yearick, Sara Zubler, Leona Hosmer—altos: Rose Minnie Akeley, Marjorie Binder, Eileen Bullock, Mary Bossert, Alice Kohlhepp, Helen Lawrence, Jane Plompis.

Dr. A. D. Patterson, Mr. Ira Fleming, and Mr. George F. B. Lehman, members of the College faculty, were kings. Nathan Pletcher and Merrill Jones were candle lighters.

The waits attired in the costumes of various nations included the following: Faye Bronson, Ruth Brungard, Fillimena Bonfilio, Grace Davis, Jean Dickey, Jeanette Earon, Eleanor Hardy, Mary Heckart, Catherine Kelley, Marion MacPhee, Frances Slenker, Bernice Smeal, Emily Smart, Louise Wagner.

"The Birthday of the King" was sung by Emile Elliot and chorus, "Cantique de Noel" by Louise Clark and chorus "Sleep, Little Jesus", Lois Hahn; "Christmas Eve", Patricia Bodle; "Shepherds! Shake Off Your Drowsy Sleep", Nathan Pletcher. The quartet, including Joan Vogt, Faye Yearick, Nathan Pletcher, and Merrill Jones, sang "O Night, Peaceful and Blest". The other numbers were "The Virgin at the Crib", by Peggy Swope and chorus; "Jesu Bambino", Tessie Bartges and Chorus; a duet, "Under the Stars", by Hope McCartney and Doris Greene; "Ave Maria", Joan Vogt, Peggy Swope, Hope McCartney, Doris Greene; and "We Three Kings" sung by Mr. Ira Fleming, Dr. A. D. Patterson, and Mr. George F. B. Lehman.

The Bel Canto Choral Club sang "Let All Mortal Flesh Keep Silence", "O Come, O Come, Emmanuel", "Lo, How a Rose E've Blooming", "Being Peace on Earth", "While by My Sheep", "Angels, We Have Heard", "Flash! The Herald Angels Sing", "O Come, All Ye Faithful", "Silent Night", "Through the Dark the Dreamers Came", "Joy to the World".

Messrs. E. R. Nevel and John E. Shaffer were stage managers assisted by a college staff.

The production staff included—costumes: Doris Huffman, assisted by the costume and makeup class

and the costume forum of the College Players; Stage: Eleanor Williams, Kay Johnson, and Ruth Fry. The make-up was in charge of Helen Burgess, chairman, and the forum of the College Players make-up forum, assisted by members of the costume and make-up class.

ing of the
d by the
ng Board,
was held Monday evening, Septem-
ber 20. Plans for future perform-
ances were discussed, and the club
finally reached the decision that
there will be no public performance
this first semester. The student
body will stand a great loss, but
because of present conditions, the
club finds it impossible to function
as in former years.

However, they are carrying on
this semester with a series of one-
act plays, to be presented in as-
sembly. The first of these plays,
to be held in the near future, is
entitled "The Rector", to be direc-
ed by Miss Doris Hoffman, presi-
dent. At this meeting the presi-
dent suggested that full coopera-
tion would be expected from every
member of the club. Any member
of the college interested in joining
The College Players should contact
members of the membership com-
mittee comprised of Doris Hoffman,
chairman, Mary Debo, Jeannette
Earon, Marian MacPhee, Merrill

Rose Min-
holding a
which all
men inter-
ies are in-
ervision of
owing com-
entertain-
Program
s; refresh-
te Earon;
errill Jones,
joining the
ed to come.
to hold a
ag the suc-
cess.

auditorium on the morning of No-
vember 22, we heard a young man's
voice, in clipped stage accent, say in
awe, "Get a load of the projection
in this place!" The girl who was
on the stage pattering around with
the properties, answered in the
same tone, banteringly "you get a
load of it, I—"

We could feel ourselves swelling
with pride, glad that the members
of the Clare Tree Major Company,
a professional group of actors, felt
the same way we did. We are proud
of our stage equipment. We are
also proud of the College Players
who worked very hard to fill the
auditorium (and they did) for "The
Nuremberg Stove." Again the
children crowded into our seven
hundred seats to witness a play
prepared solely for them.

And now the four forums, light-
ing, staging, make-up, and costume,
are working toward the annual per-
formance of "The Nativity." Should
you happen to wander into the
speech rooms you would find cos-
tumes from every country, and ev-
ery age, or tables, chairs, and desks.
And at certain times you would
see members of the costume forum
or costume class, sitting tailor-
fashion, busily sewing in hems or
cutting out gold or silver cloth
for the kings' crowns. What did
we find in the infirmary last week!
A committee of faculty members
who made twenty-eight chair
skirts for the speech choir!

"Where can I find a platform
for the head angel?" "The cyc
curtain is not properly centered!
Mr. Nevel, will you fix it for us?"
"Here's the manger, but where can
we get more straw?" These and
many other baffling questions face
those working on the staging phase
of the production work. What could
we do without Mr. Nevel, who is
both stage and lighting chief for
this production!

The chief worries of the feminine
make-up committee seem to be the
fact that they must put spirit gum
and face hair on their own fair
complexions in order to be prepared
to do a good job on the kings, shep-
herds, Joseph, and the Prophet!

Already the lighting committee
are busy placing spots, looking for
a light for the manger and trying
out color schemes and awe-inspir-
ing effects that help to make "The
Nativity" a memorable occasion.

After observing all this activity,
we've decided
College Playe
part in mak
campus activi

Capacity Crowds See 'Nativity' at College

The story of the events lead-
ing up to the birth of Christ was
told twice yesterday to capacity
crowds which overflowed Price
Auditorium where the annual
Teachers College performance
of "The Nativity" was given.

The final presentation of the
Christmas story will be given
this evening at 7:30 in the col-
lege auditorium.

Mrs. Hazel Ray Ferguson, of
the English department, who
wrote the script, departed from
the tableau rendition of the
Biblical tale which marked pre-
vious presentations.

Miracle Play Spirit

The writer and director em-
ployed the spirit and tech-
nique used in the Medieval mir-
acle plays in bringing the story
to life.

The audience responded warm-
ly to the new interpretation
which was performed by a cast
of 80, including a 57-voice choir
under the direction of Russell
C. Gillam. Three of the songs
were written by Mr. Gillam, di-
rector of vocal music.

The opening scene is laid in
Heaven where all is excitement
as the angel, "Gabriel," an-
nounces that the prophecy that
the Son of God is to be born
would soon be fulfilled. A
Heavenly choir, composed of
five ethereal angels, enhance
the spiritual poignancy of the
scene.

Costumes and Settings

Exquisite costumes, and de-
tailed settings, combined with

the effective use of lights, suc-
ceeded in making the entire
performance a highly profes-
sional presentation. The cos-
tumes and settings were made
by the students, under the direc-
tion of Mrs. Ferguson, and with
the assistance of Ross E. Nevel,
superintendent of buildings and
grounds, and his assistant, Clyde
Batdorf. David Fetter, Kyler-
town, was lighting technician.

The choir, dressed in white
surplices, were an arresting
sight as they filed into the audi-
torium, carrying lighted candles
and singing their way to their
seats on the stage.

Other scenes artfully depicted
included the public highway
leading to Bethlehem, the shep-
herds on the hillside, and the
adoration before Mary and her
Son after his birth in the
manger.

Groups to Give "The Nativity"

Lock Haven, Dec. 5—Lock Ha-
ven State Teachers College music
and speech groups will present
"The Nativity" five times this
Christmas season.

Performances will be given
Tuesday at Renovo High School at
2:30 and 7:30 p. m. under the
sponsorship of the Renovo Rotar-
ians.

"The Nativity" will be present-
ed at the college here Dec. 13 at
4 and 7:30 p. m. and Dec. 14 at
7:30 p. m. Mrs. Hazel Ferguson,
associate professor at the teach-
ers college, has written a new
script for this year's performance.

The 76 participants will include
an a cappella choir directed by
Russell Gillam.

Miss Grace Ullemeyer, for a
number of years a music instruc-
tor at the college, introduced the
local presentation of "The Nativi-
ty" in 1933. It has been presented
each year but one since that
time. *with transport*

Crowds Throng To 'Nativity'

College Yule Program Presented in Renovo

The auditorium of the Re-
novo High School was over-
flowing and many persons had
to be turned away last night
when "The Nativity," annual
Christmas presentation by the
Teachers College, was given
there.

An afternoon performance
for the student body also played
to a full house with chairs
placed in the aisles to accomo-
date the overflow. Mrs. Hazel
R. Ferguson, of the college Eng-
lish department, wrote the
script and directed the produc-
tion, assisted by Russell C. Gill-
am, director of the choral
groups.

The story of the events lead-
ing up to the birth of Christ
will be given tomorrow at 10
a. m. in Price Auditorium for
the college students. The public
will have an opportunity to see
the familiar Bible story on Sun-
day, Dec. 13, when it will be re-
told at two performances, at
4:30 and 7:30 p. m. in the col-
lege auditorium. The final pres-
entation will be Monday at 7:30
p. m.

The Renovo performance was
sponsored by the Rotary and
Lions clubs of that place. A sil-
ver offering was taken which
was presented to the Renovo
Ministerium Association.

The 82 men and women, par-
ticipating in the story of Christ-
mas, were entertained at dinner
at the YMCA with the Rotar-
ians assuming the jobs of wait-
ers. After the evening perform-
ance the group was treated to
ice cream at the Y.

*Lock Haven
Express
Dec 9-1933-3*

Nativity Program Pleases Town And School

On the eve of our second war-time Christmas, the people of Lock Haven still find time to second the angels' message "Peace on earth. Good Will toward men." A more-than-capacity audience witnessed the extravagant spectacle done in pageantry, scripture, and song that was presented in the Lock Haven State Teachers College Auditorium on Sunday, December 13, at 4 o'clock. This year marked the eighth annual presentation of "The Nativity" by students of the Teachers College. This event came about through the efforts of the members of the Speech Department under the direction of Miss C. Cordelia Brong and those of the music department, under the supervision of Miss Grace E. Ullemeyer.

The cast was comprised of approximately eighty persons. The role of the prophet was played by William Hoover; Madonna, Lois Hahn; the central angel, Lenore Tidlow; Joseph, Frank Cessna; shepherds, Girard DelGrippo, Clement Link, Kenneth Hagger and George Barnes. The kings are Frances Staffieri, John Kyler, and Philip Kift.

The angel chorus was made up of the following: Marie Winkleman, Margaret Mary Madden, Audrey Nouhard, Eleanor Williams, Barbara Anne Reese, Kathryn Thompson, Ruth Terrill, Ann Hamilton, and Pathedra Mayes.

The waits, who represented the people through the ages from Bible Times to the modern era were: Ida Barton, Alice Marshall, Lois Seltzer, Mary K. Martin, Louise Wagner, Jeanne Collins Dickey, Jeannette Earon, Josephine Tollivaro, Mary Washburn, Dorothy Weaver, Maizie Byrol, Emilie Day, Lucy Read, and Beatrice Johnson.

The Christmas was told by the Choric Speech Choir, composed of the following: David Barnhardt, Ethel Batley, Lois Biddle, Alice Bubb, Eileen Bullock, Louise Clark, Ann Curran, Edwinna Davis, Mary Debo, Mary Drick, Gladys Goss, Doris Huffman, Leona Hosmer, Russel Judd, Doris Lobb, Marian MacPhee, Dorothy Millward, Arden Mouson, James Peet, Rose Minnie Probst, Veronica Smith, Jean Wright and Joseph Errigo.

The pantomime effect was conveyed to the audience by the use of six tableaux—the "Prophecy," "The Annunciation," "The Manger at Bethlehem," "The Watching Shepherds," "The Adoration of the Shepherds," and "The Adoration of the Magi."

During the intervals of these picture-like presentations, music was sung by the College Choir, the Bel Canto Choral Club, and the Women's Chorus. Members of the College Choir are Eleanor Bechdel, Jane Bechdel, Maxine Bressler, Marjory Dick, Emilie Elliott, Kathryn Draucker, Helen Ferer, Lois Wertz, Elizabeth Wetzler, Louise Clark, Dorothy Millward, William Bitner, Dean Bottorf, Russel Judd, Arden Monson, Edward Montarsi, Harold Pearson, William Ingraham, Rose Minnie Probst, Doris Green, Leona Hosmer, Hope McCartney, Donald Swope. Women's Chorus was composed of Lois Biddle, Ruth Brumgard, Eileen Bullock, Hazel Cryder, Dorothy Gilson, Helena Hamaker, Elizabeth Harrison, Priscilla Hess, Mary Jane Hoffman, Rita Hurd, Doris Lobb, Gertrude Lutz, Ida McDowell, Martha Ruth Miller, Elwidia Muir, Marian Park, Jane Plum-pis, Helene Porter, Lois RaRup, Nancy Rockey, Betty Thompson, and Elizabeth Clark. The candle-bearers were Dean Bottorf and Robert Stetson.

The music expressed the Christmas story in chronological order from the prophecy until the announcement of the birth of Christ, using traditional carols and other songs. At various times throughout the service was heard the familiar "Dresden Amen," arranged by Richard Wagner, as the Grail Motif, using the words of the theme, "Bring Peace on Earth."

The special musical features were "Under the Stars," by Lois Wertz and Elizabeth Wetzler; "Birthday of a King," Dean Bottorf and chorus; "Cantique de Noel," Kathryn Draucker and chorus; "Three Kings," Dean Bottorf, Russel Judd, and Arden Monson; "The Ave Maria," Lois Wertz, Helen Fearar, Hope McCartney, Doris Green; "Sleep, Little Jesus," Lois Hahn; "Jesus Bambino," Emilie Elliott and the Bel Canto Choral Club.

The College Choir sang the following selections: "Lo, How a Rose E'er looming"; "Shepherd, Shake Off Your Drowsy Sleep"; "The Angels' Message"; "The Sleep of Child Jesus"; "What Child Is This?"; The selections sung by the Bel Canto Choral Club were: "While by My Sheep"; "Angels We Have Heard."

The entire group joined in singing "As With Gladness Men of Old"; "Let All Mortal Flesh Keep Silence"; "O Come, O Come Emmanuel"; "Hark the Herald Angels Sing"; "Silent Night"; "O, Come All Ye Faithful." The audience joined them in the recessional hymn, "Joy to the World."

Responsible for the costuming were Chairman Jane Bitner, Gladys Goss, Jeannette Earon, Josephine Tollivaro, Mary Drick and Eleanor Williams. Mary Jean Moyer took care of the makeup, assisted by Helen Burgess, Priscilla Hess, Mary

Jean Moyer, Lois Hahn, Lois Raup, and Kathryn Draucker. Mary Jean Moyer and Jean Madill acted as stage managers, under the direction of Helen Burgess. The lighting effects were done by John Akeley, assisted by James Akeley. The setting was arranged by Mr. E. Ross Nevel and his assistants.

Accompanist for the Nativity was Miss Ruth Simon, alumna member of the Bel Canto Club. Miss Simon used her own Hammond organ, opening with The Pastoral Symphony from the Messiah, by George Friedrich Handel.

The stained glass windows which formed background for the choral groups were new this year, the older ones having suffered from age. They were designed and painted by the art department, supervised by Dr. Bottorf. Those who worked on the project were Mary Jean Moyer, Rita Hurd, Betty Thompson, Priscilla Hess, Helene Hamaker, Jane Bauman, Isabel Calhoun, Ida McDowell, all members of the Art II class, taught by Dr. Bottorf.

New Interpretation of TC's 'Nativity' Given Three Times

The public will have three opportunities to see a new interpretation of "The Nativity" presented by the Teachers College in Price Auditorium. The curtain will go up on the annual Christmas performance tomorrow at 4 and 7:30 p. m. The final presentation will be Monday evening at 7:30.

The story of the events leading up to the birth of Christ was first presented by the college in 1933 under the direction of Miss Grace Ullemeyer. Since then it has been presented annually with the exception of 1950.

This year's script, written by Mrs. Hazel Ray Ferguson, departs from the traditional tableau rendition of the beautiful Biblical tale. The first scene shows the excitement in Heaven just before the star appears over Bethlehem.

Choir of 57 Voices

Other scenes depicted include the public highway leading to Bethlehem, the shepherds on the hill side, and the adoration before Mary and her Son after His birth in the manger.

The cast includes about 80 persons. Several of the numbers sung by the choir of 57 voices were written by Russell C. Gil-lam, director of the choral groups. The costumes and settings were made by students, under the direction of Mrs. Ferguson, and with the assistance of E. Ross Nevel, superintendent of buildings and grounds, and his assistant, Clyde Batdorf.

The part of "Mary" is played by Miss Olga Fetzko of Brooklyn, N. Y. and that of "Joseph"

by Donald Sheely of Lewistown. The innkeeper is Albert Borish, of Bristol, and the beggar Corrin Corbin of Altoona.

The shepherds are Hulbert Jobson, Renovo; Gus Spizziri, Steelton; James Salathe, Bedford; and Leon Reese and Nicholas Salem, both of Coalport. The Wise Men are Edward Mayer, Williamsport; Richard

Marks, this city; and Dean McCreight, Clearfield.

The choir of angels includes Ann Balsinger, Emporium; Reba Baker, Belleville; Sandra Skean, Pottstown; Janice Clark, Beech Creek; and Carolyn Cook, Johnstown. The two travelers are Robert Dunsmore, Phillipsburg; and Wallace Jewell, Bradford.

Others in Cast

"Gabriel" is Frank Minner, Williamsport; keeper of the Heavenly records is Gordor Blake, of Elkland, and his assistant is Nelson Bailey, Selinsgrove.

Among the behind-the-scenes workers are Florence Dick, this city, who is in charge of make-up; and Marilyn Mattson Sharpville; and Donna Messerman, Lewistown, who are in charge of the costumes.

The program was well received when presented earlier this week in Renovo. The story was retold yesterday morning for the students of the college who responded with enthusiasm to the new version of "the most beautiful story ever told."



LOCK HAVEN STORES OPEN

Dec. 14 to 18, Inc.
10 A. M. to 9 P. M.

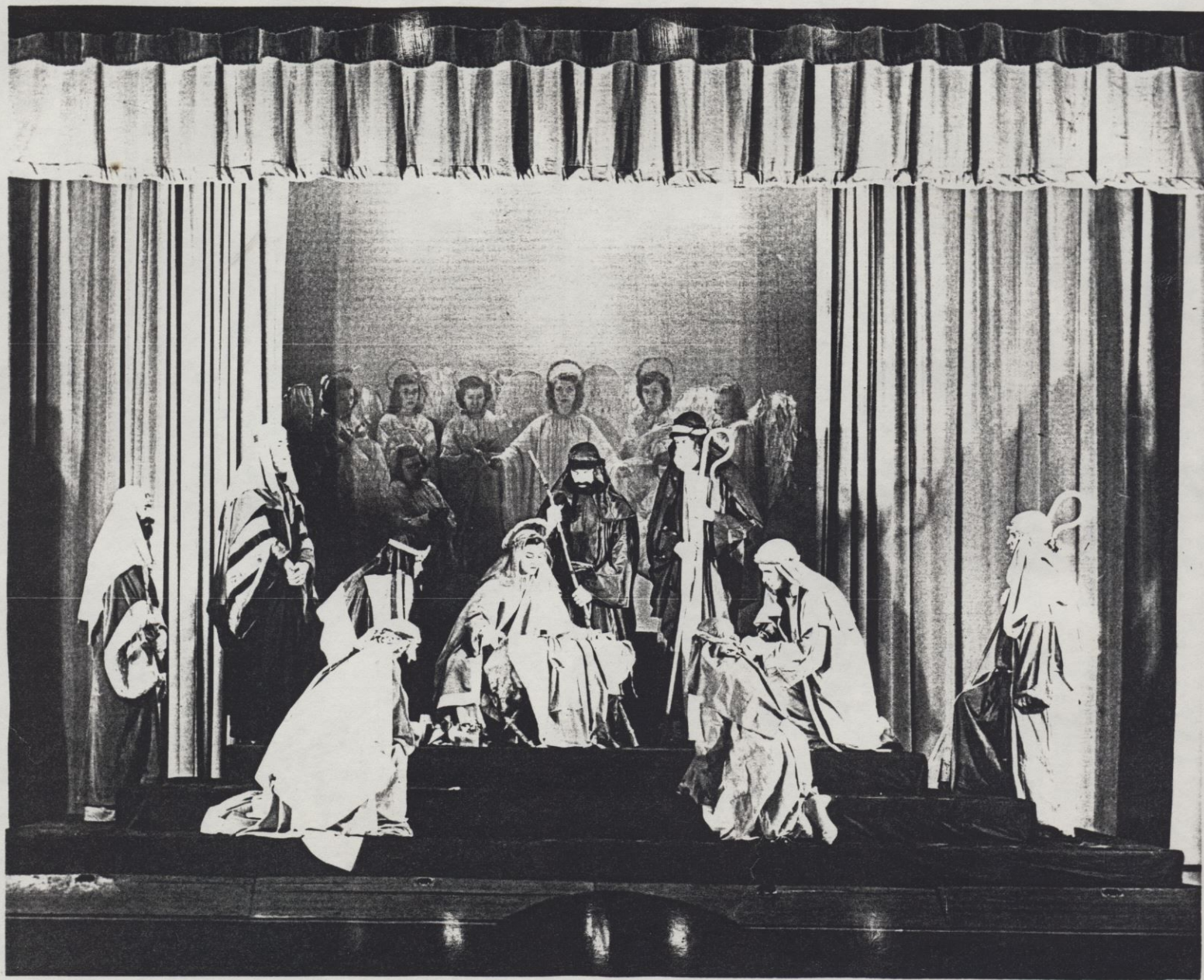
Dec. 19 Open
9 A. M. to 9 P. M.

Chain Food Stores
Will Close at 6
Saturday

Member of Skull And Bone Society

Miss Jean Se, daughter of Mrs. John Warren, Mill Hall, RD, has been elected an associate member of the Skull and Bones, biological society of Albright College, Reading.

A pre-nursing student, Miss Wise, who graduated last year from the Lock Haven High School, is on the Albrightian staff and a member of the Domino Club.



1944

