

1959

Brilliant Act Curtain Sets Motif . . .

College Players Give Outstanding Performance of 1836 Russian Farce

Hours of rehearsal and stagecrafting show up in a stellar performance of "The Inspector General," now being presented at the Lock Haven State Teachers College. Tonight's curtain is at 8.15 at Price auditorium, the last showing of Gogol's Russian classic, as produced by the College Players.

Dr. Irving Deer, director, and the Players have on tap a delightful farce, framed in eye-pleasing sets, and well enacted by a cast of 21. A large audience enjoyed the opening performance last night.

The diversity of detailed caricatures—for this play is a satiric spoof—makes for a constantly entertaining evening of drama.

Act Curtain Sets Theme

What sets the stage is the brilliant act curtain, designed by Dick Williams, and executed on a large canvas by a student staff. This curtain depicts a Russian village, brightly colored and modernistic in design. It establishes a farcical mood, with undercurrents of meaning.

This motif is carried out in interior sets and carefully plotted characterizations of Gogol's 1836 play, as prepared in a modern acting version by John Anderson.

"The Inspector General" is a play to curl the lip in sardonic realization of evil, and the ways of evil as they are revealed in antics that produce warm laughter.

A provincial mayor and his four unsavory henchmen fawn and cringe and propagate more evil, as they woo another rascal they think is "the inspector general." Mouthings pious platitudes, all cry their virtues to the skies.

Price in Leading Role

Gogol's farcical drama gets serious attention from the College Players, each of whom has created a role—as mayor, or henchman, or wife, or townsman—to stand out with distinction in a many-faceted play.

Harry Price as "Hleslovkov," a Lock Haven senior who has starred in College Player shows four years, carries the leading role. His second-act monologue is one of the longest speeches heard at the college in many years. With excellent support in pantomime and supplementary action from his stage associates, he gives a remarkable performance.

Mr. Price has excellent support throughout this play that shows the corruptibility and foolishness of man.

Bruce Smith as mayor, Dave Harris, Charles Kormanski, Bob Schappel as judge, Gordon Titus as postmaster, play their parts to the hilt. Carol Ogden gives a distinction and shrewishness to the part of the mayor's wife, and Rose Marie Cupani, the play's assistant director, does well within the limited framework of the mayor's daughter role.

Several former Gay Pretenders

appeared to advantage on the collegiate scene, including Richard Lipez, as a waiter, and Judi Zell, as a sergeant's wife.

Play Is Period-Piece

Dolores Perucha plays a smaller character role with great felicity. Others in the cast are Sidney Riale, Belford Mills, Bill Parks, Ross Wilson, Primmie Reeves, Raymond Ward, Dick Williams, the scene designer who played the merchant role; Phillipe Delauney, Larry Hartenstein and Robert Johnston.

Credit for the technical directing and settings go to Mrs. Hazel Ray Ferguson, and to Robert Johnston, art adviser. Costuming is colorful, and the the Russian period "between the beginning and end of the Nineteenth Century."

Nov. 11
1959

12—The Lock Haven

Farce-Satire Poses Problem

College Players Offer Unusual Play

The play that will be staged by The College Players next week is more unusual than usual.

"The Inspector General" is certainly one of the funniest of farces. But it was taken so seriously the playwright had to get out of the country before he is imprisoned.

When the play was first performed in St. Petersburg in 1836, the audience was stunned. The play seemed a sharp attack on the existing government. Poor Nikolai Gogol, who did not understand politics, became ill and fled to Paris.

From there he issued confused and apologetic statements, protesting his love for the Czar, the ministers, and indeed every tiny government bureau. When the first shock wore off Russian audiences realized that Gogol was innocent enough. He was satirizing human greed; that his greedy men were government officials was merely accidental.

Warns by Laughter

In "The Inspector General," the zany antics of the characters mean something. They are bumbling. In their befuddlement, they show us our own propensities toward confusion and pettiness. They warn, through pleasant laughter.

"This strange blend of brittle farce and warm satire creates special problems," says the director, Dr. Irving Deer. "The sets must be distorted and yet have a touch of realism. Every detail of the production from the characters to the costumes and properties must fit."

Dates: Nov. 18-19

A wealth of technical problems in "The Inspector General" fall to the technical director, Mrs. Hazel Ray Ferguson, and the art advisor, Robert Johnston.

The play is scheduled for production Nov. 18 and 19 in Price Auditorium.

Tuesday, Nov. 17, 1959



Tense Scene—in Rehearsal - From 'Inspector General'

Harry Price, of Lock Haven, a senior at the Lock Haven State Teachers College, holds center stage in this dramatic interlude from a rehearsal of "The Inspector General." The Gogol farce will be presented Wednesday and Thursday of this week at Price auditorium. Curtain

time is 8.15 p. m. Dr. Irving Deer, director, says "For those who can't afford a Broadway play this month, we recommend the one-time Broadway attraction, showing here at the college."

(Photos by Wilson)



Men and women students from all curricula at the college make up The College Players who will present "The Inspector General." These students are interested in dramatics, and labor hard to achieve their stage successes. A play requires more than 100 hours of rehearsal time, and a like number of hours spent on set building, collecting props and costuming the cast.



Men and women students from all curricula at the college make up The College Players who will present "The Inspector General." These students are interested in dramatics, and labor hard to achieve their stage successes. A play requires more than 100 hours of rehearsal time, and a like number of hours spent on set building, collecting props and costuming the cast.

Nov. 11
1959

12—The Lock Haven Farce-Satire Poses Problem College Players Offer Unusual Play

The play that will be staged by The College Players next week is more unusual than usual. "The Inspector General" is certainly one of the funniest of farces. But it was taken so seriously the playwright had to get out of the country before he is imprisoned.

When the play was first performed in St. Petersburg in 1836, the audience was stunned. The play seemed a sharp attack on the existing government. Poor Nikolai Gogol, who did not understand politics, became ill and fled to Paris.

From there he issued confused and apologetic statements, protesting his love for the Czar, the ministers, and indeed every tiny government bureau. When the first shock wore off Russian audiences realized that Gogol was innocent enough. He was satirizing human greed; that his greedy men were government officials was merely accidental.

Warns by Laughter

In "The Inspector General," the zany antics of the characters mean something. They are humbling. In their befuddlement, they show us our own propensities toward confusion and pettiness. They warn, through pleasant laughter.

"This strange blend of brittle farce and warm satire creates special problems," says the director, Dr. Irving Deer. "The sets must be distorted and yet have a touch of realism. Every detail of the production from the characters to the costumes and properties must fit."

Dates: Nov. 18-19

A wealth of technical problems in "The Inspector General" fall to the technical director, Mrs. Hazel Ray Ferguson, and the art advisor, Robert Johnston.

The play is scheduled for production Nov. 18 and 19 in Price Auditorium.

Brilliant Act Curtain Sets Motif . . .

College Players Give Outstanding Performance of 1836 Russian Farce

Hours of rehearsal and stage-crafting show up in a stellar performance of "The Inspector General," now being presented at the Lock Haven State Teachers College. Tonight's curtain is at 8:15 at Price auditorium, the last showing of Gogol's Russian classic, as produced by the College Players.

Dr. Irving Deer, director, and the Players have on tap a delightful farce, framed in eye-pleasing sets, and well enacted by a cast of 21. A large audience enjoyed the opening performance last night.

The diversity of detailed caricatures—for this play is a satirical spoof—makes for a constantly entertaining evening of drama.

Act Curtain Sets Theme

What sets the stage is the brilliant act curtain, designed by Dick Williams, and executed on a large canvas by a student staff. This curtain depicts a Russian village, brightly colored and modernistic in design. It establishes a farcical mood, with undercurrents of meaning.

This motif is carried out in interior sets and carefully plotted characterizations of Gogol's 1836 play, as prepared in a modern acting version by John Anderson.

"The Inspector General" is a play to curl the lip in sardonic realization of evil, and the ways of evil as they are revealed in antics that produce warm laughter.

A provincial mayor and his four unsavory henchmen fawn and

1959

appeared to advantage on the collegiate scene, including Richard Lipez, as a waiter, and Judi Zell, as a sergeant's wife.

Play Is Period-Piece

Dolores Perucha plays a smaller character role with great felicity. Others in the cast are Sidney Riale, Belford Mills, Bill Parks, Ross Wilson, Primmie Reeves, Raymond Ward, Dick Williams, the scene designer who played the merchant role; Phillippe Delauney, Larry Hartenstein and Robert Johnston.

Credit for the technical directing and settings go to Mrs. Hazel Ray Ferguson, and to Robert Johnston, art adviser. Costuming is colorful, and the the Russian period "between the beginning and end of the Nineteenth Century."

Price in Leading Role

Gogol's farcical drama gets serious attention from the College Players, each of whom has created a role—as mayor, or henchman, or wife, or townsman—to stand out with distinction in a many-faceted play.

Harry Price as "Hleslovok," a Lock Haven senior who has starred in College Player shows four years, carries the leading role. His second-act monologue is one of the longest speeches heard at the college in many years. With excellent support in pantomime and supplementary action from his stage associates, he gives a remarkable performance. Mr. Price has excellent support throughout this play that shows the corruptibility and foolishness of man.

Bruce Smith as mayor, Dave Harris, Charles Kormanski, Bob Schappel as judge, Gordon Titus as postmaster, play their parts to the hilt. Carol Ogden gives a distinction and shrewishness to the part of the mayor's wife, and Rose Marie Cupani, the play's assistant director, does well within the limited framework of the mayor's daughter role.

Several former Gay Pretenders from the Lock Haven High School

Nov
1959

Thu



Russian Village Painted on Act Curtain at College

When the curtains part on Nov. 18 and 19 at Price Auditorium, for the College Players presentation of "The Inspector General," the audience will see an inner act curtain, painted in bold colors, depicting a Russian village. This modern-art curtain for use between acts will dramatically suggest the farcical quality of the play written by Nikolai Gogol, and enacted here by a student cast directed by Dr. Irving Deer.

The stage-craft class, directed by Mrs. Hazel Ray Ferguson, worked two weeks to complete the mammoth curtain. Senior student Dick Williams did the original scale drawing and later transferred the village to 600 square feet of canvas. Robert H. Johnston, of the art department, gave his assistance in the major undertaking. Above, Carolyn Nale, Dick Williams, the artist, Elaine Wikstrom and Bruce Smith work on the curtain.

LOCK HAVEN STATE TEACHERS COLLEGE

ACKNOWLEDGMENTS

WBPZ Broadcasting station

Lock Haven Express

Stein Used Furniture

Burketts Mobile Home Sales

Smith Upholstery

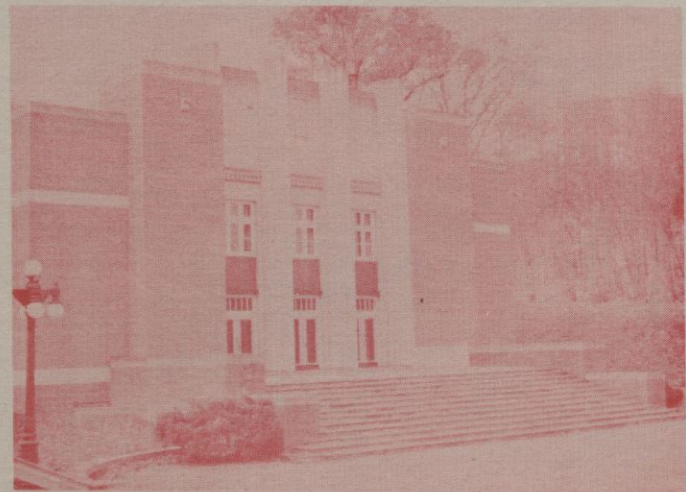
THANK YOU

Mrs. Katherine Glennon

Mrs. Irving Deer

All individuals who helped by lending
properties and costumes

THE COLLEGE PLAYERS WELCOME ANY DONATIONS OF
FURNITURE, COSTUMES AND PROPERTIES.
PHONE 4425



The
COLLEGE PLAYERS
Present

THE INSPECTOR GENERAL

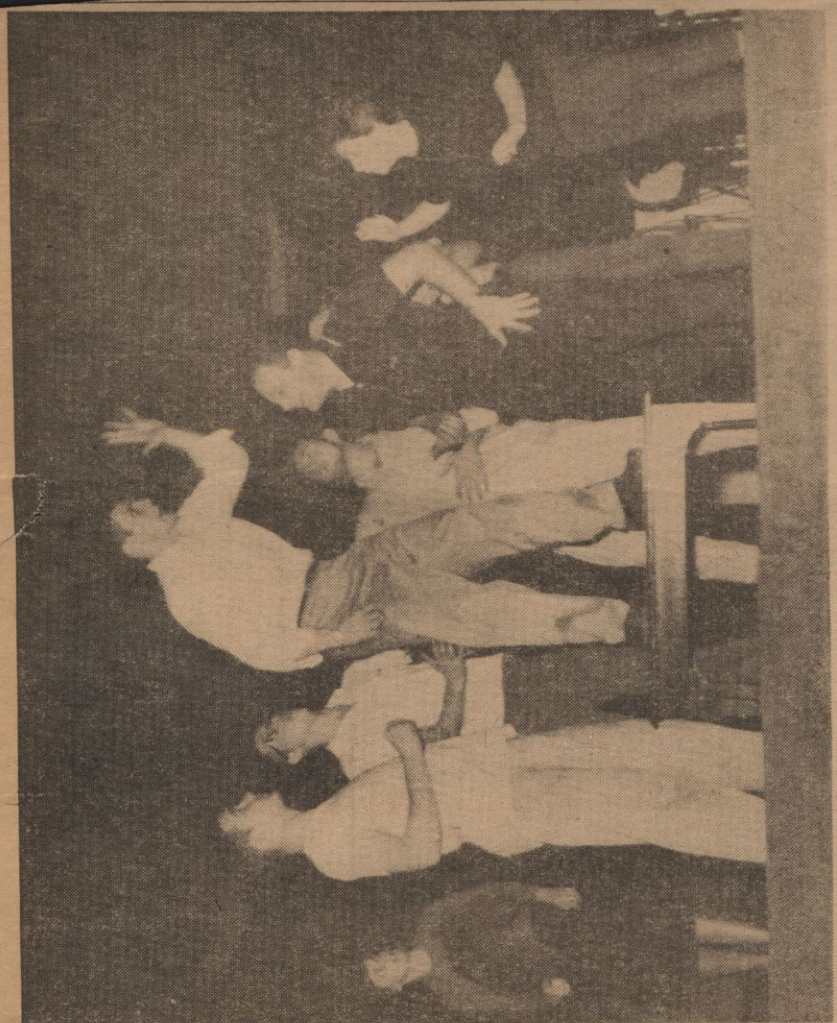
by
Nikolai Gogol
Acting Version
by
John Anderson

PRICE AUDITORIUM
November 18, 19
1959



Dick Williams, in foreground, the artist-creator of "The Inspector General" act curtain, is pictured at work with paint can, transferring his art to canvass. The ungainly size of the curtain proved to be the biggest problem in sewing, painting and hanging. But hanging it is, The College Players expect it to be a real eye-opener for their production next Wednesday and Thursday. (College Photos)

Tuesday, Nov. 17, 1959



Tense Scene—in Rehearsal—From 'Inspector General'

Harry Price, of Lock Haven, a senior at the Lock Haven State Teachers College, holds center stage in this dramatic interlude from a rehearsal of "The Inspector General." The Gogol farce will be presented Wednesday and Thursday of this week at Price auditorium. Curtain time is 8.15 p. m. Dr. Irving Deer, director, says "For those who can't afford a Broadway play this month, we recommend the one-time Broadway attraction, showing here at the college." (Photos by Wilson)

THE INSPECTOR GENERAL

DIRECTED BY IRVING DEER

TECHNICAL DIRECTOR AND SETTINGS BY HAZEL RAY FERGUSON

ART ADVISOR - ROBERT JOHNSTON

CAST

(IN ORDER OF APPEARANCE)

ARTMY FILLIPOVITCH HOSPITAL COMMISSIONER - - - - DAVE HARRIS
LUKE LUKITCH, SCHOOL SUPERINTENDENT - - - - CHARLES KORMANSKI*
MISHKA, A SERVANT - - - - - SIDNEY RIALE
THE MAYOR - - - - - BRUCE SMITH
LYAPKIN-TYAPKIN, THE JUDGE - - - - - BOB SCHAPPELL*
SKEPKIN, THE POSTMASTER - - - - - GORDON TITUS
BOBCHINSKY, A LANDOWNER - - - - - BELFORD MILLS
MRS. DOBCHINSKY - - - - - DOLORES PERUCHA
A CONSTABLE - - - - - BILL PARKS
POLICE CHIEF - - - - - ROSS WILSON
ANNA, THE MAYOR'S WIFE - - - - - CAROL OGDEN*
MARYA, THE MAYOR'S DAUGHTER - - - - - ROSE CUPANI*
OSIP, HLESLOKOV'S SERVANT - - - - - RAYMOND WARD
A WAITER - - - - - RICHARD LIPEZ
IVAN ALEXANDROVITCH HLESLOKOV - - - - - HARRY PRICE*
A MAID - - - - - PRIMMIE REEVES*
A MERCHANT - - - - - DICK WILLIAMS
THE SERGEANT'S WIFE - - - - - JUDI ZELL
LYAPKIN-TYAPKIN'S WIFE - - - - - FELIPE DELAUNEY
GUARDSMAN - - - - - LARRY HARTENSTEIN
INSPECTOR GENERAL - - - - - ROBERT JOHNSTON
OTHER CONSTABLES, OFFICIALS' WIVES, MERCHANTS, ETC.

ACTION AND SCENE

THE ACTION TAKES PLACE IN A PROVINCIAL TOWN IN RUSSIA SOMETIME BETWEEN THE BEGINNING AND THE END OF THE NINETEENTH CENTURY.

ACT I.

EARLY MORNING IN THE MAYOR'S HOUSE

ACT II.

SCENE 1: BEFORE LUNCH, THE SAME DAY, A SMALL ROOM AT THE INN

SCENE 2: AFTER LUNCH, THE SAME DAY, SAME AS ACT I.

ACT III.

SAME AS ACT I., THE FOLLOWING DAY

PRODUCED BY SPECIAL ARRANGEMENT WITH SAMUEL FRENCH

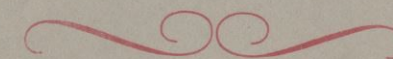
* MEMBERS OF ALPHA PSI OMEGA DRAMATIC FRATERNITY

ABOUT THE PLAY

GOGOL'S WORK REFLECTS A LIFE OF VASTLY DIVERSE AND SOMETIMES CONTRADICTORY ENTHUSIASMS. HE WAS A DREAMER AND A REALIST, A RELIGIOUS MYSTIC AND A SOCIAL SATIRIST, A WRITER OF POETIC FANTASY AND PIE-THROWING FARCE. HE WAS WORLDLY, AMBITIOUS, PROUD AND HARD-WORKING, YET EXCRUCIATINGLY NAIVE AT TIMES.

IN A LESSER TALENT THIS CURIOUS POT-POURRI OF THE NAIVE AND THE MUNDANE WOULD BE SYMPTOMATIC OF THE INSTABILITY IN EARLY NINETEENTH CENTURY RUSSIAN LETTERS. IN GOGOL AT HIS BEST, HOWEVER, A TRUE FUSION TAKES PLACE: THE ULTIMATE LITERARY IDEAL -- DIVERSITY IN UNITY -- IS ACHIEVED.

THIS ARTISTIC FUSION IS EXEMPLIFIED BY THE INSPECTOR GENERAL. THE PLAY IS A BLEND OF THE REALISTIC AND THE UNREALISTIC, THE SOCIALLY SIGNIFICANT AND THE MERELY FARICAL. ITS REALISM STEMS NOT ONLY FROM ITS HARD LOOK AT PROVINCIALISM, BUT ALSO FROM ITS MORAL VISION: UNFLINCHINGLY IT PORTRAYS THE CORRUPTIBILITY AND FOOLISHNESS OF MAN. BUT LIKE ALL TRUE ART, IT TEACHES THROUGH THE IMAGINATION; ITS FARICAL, SATIRICAL AND ALMOST FAIRY-TALE THRUSTS JAR US MOST DELIGHTFULLY OUT OF OUR COMPLACENT PRACTICAL-MINDEDNESS. IT IS ONE OF THOSE RARE LITERARY TREATS WHICH COMBINE TWO GREAT GOALS OF MANKIND: ENLIGHTENMENT AND ENTERTAINMENT.



PRODUCTION STAFF

ASSISTANT DIRECTOR - - - - - ROSE MARIE CUPANI*
STAGE MANAGER - - - WILLIS KOCHER*, PAT BONEBREAK - CO-CHAIRMAN
LIGHTING AND SOUND - - - JOE KELLER*, LINDA GOOD - CO-CHAIRMAN
SCENE DESIGNER - - - - - DICK WILLIAMS
STAGE CREW - - - - - KAY CONFER, KAY GEHRET, DAVE HARRIS
WILLIS KOCHER*, JOE LUCE, CAROLYN
NALE, GRACE THOMAS, JOE VESNESKY,
ELAINE WICKSTROM, SANDRA WILT
PROPERTIES - - - - - PAT BONEBREAK - CHAIRMAN
LINDA YARNALL, SANDRA WILT
COSTUMING - - - - - NANCY GRISSINGER* - CHAIRMAN
BARBARA UNDERWOOD, DONNA KINZER,
WANDA ROHER, MAUREEN DOLAN
MAKE-UP - - - - - IRENE ARSENIU - CHAIRMAN
PAT PELLESCI, MARLENE HEIBERGER, CAROL BILLHARTZ
PUBLICITY - - - - - MICHAEL GRAND* - CHAIRMAN
FRANCES WILLIAMS, LINDA YARNALL, SANDY
KUEBLER, SANDRA MORRIS, JUDI ZELL
PROGRAM - - - - - SANDY KUEBLER - CHAIRMAN
MICHAEL GRAND, BEV VANHORNE, LINDA YARNALL
USHERS - - - - - JACKIE MEINHOLTZ* - CHAIRMAN
MARY CLANCY, YOLANDA SUAREZ,
CAROLE JARVIS, BECKY YOUNG



Russian Village Painted on Act Curtain at College

When the curtains part on Nov. 18 and 19 at Price Auditorium, for the College Players presentation of "The Inspector General," the audience will see an inner act curtain, painted in bold colors, depicting a Russian village. This modern-art curtain for use between acts will dramatically suggest the farcical quality of the play written by Nikolai Gogol, and enacted here by a student cast directed by Dr. Irving Deer.

The stage-craft class, directed by Mrs. Hazel Ray Ferguson, worked two weeks to complete the mammoth curtain. Senior student Dick Williams did the original scale drawing and later transferred the village to 600 square feet of canvass. Robert H. Johnston, of the art department, gave his assistance in the major undertaking. Above, Carolyn Nale, Dick Williams, the artist, Elaine Wikstrom and Bruce Smith work on the curtain.



Dick Williams, in foreground, the artist-creator of "The Inspector General" act curtain, is pictured at work with paint can, transferring his art to canvass. The ungainly size of the curtain proved to be the biggest problem in sewing, painting and hanging. But hanging it is. The College Players expect it to be a real eye-opener for their production next Wednesday and Thursday.

(College Photos)