

THE CAST

(in order of their appearance)

Lovington Peggy Swope
Drizzle Rose Minnie Probst Akeley
Alexander (Spiff) Doris Huffman
Jennie James (Jinx) Patricia Bodle
Sara Rosenthal (Rosey) Doris Greene
Maggie Reed Marion MacPhee
Marion (Minnie) Hall Mary K. Johnson

THE STAFF

Student Director Jeanette Earon
Prompter Eleanor Williams
Stage Manager Lois Biddle
Effects Nathan Pletcher

Publicity and Business:—

Dorothy Millward, chairman; John Kyler, Nathan Pletcher, Martha Badick, Eleanor Hardy, Minnie Belt, Frank Yon, Marion Burkhart, LeJune Pier, Lois O'Neill, Mary K. Johnson, James Hartle, Marion MacPhee, Josephine Pavlock, Jean Madill, Della Jane Grassmeyer, Grayce Chambers, Eileen Bullock, Emily Smart, Jane Plumpis

Costumes:—

Helen Lawrence, chairman; Miriam Park, Catherine Ashcraft, Della Jane Grassmeyer, Maxine Hoffman

Lighting:—

Merrill Jones, chairman; Jean Drye, James Hartle

Stage Construction and Properties:—

Lois Biddle, chairman; Lenore Tidlow, Marion Burkhart, Josephine Pavlock, LeJune Pier, Nathan Pletcher, Lois O'Neill, Filimena Bonfilio, Nancy Welliver, Veronica Smith, Sara Zubler, James Hartle, Helen Lawrence, Marion MacPhee, Eleanor Hardy, Martha Badick, Audrey Neuhard, Mary Margaret Whitsell, Nancy Rockey, Marie Winkleman

THE SCENES

The action takes place in a study-living room in any American college for girls.

Act I

(Sophomore Year)

Scene 1. An evening in April
Scene 2. Early the next morning

Act II

(Junior Year)

Scene 1. An afternoon in October
Scene 2. An evening in February
Scene 3. An evening in May

Act III

(Senior Year)

Scene 1. Sunday afternoon in November
Scene 2. An afternoon in April
Scene 3. Morning in June

ACKNOWLEDGMENTS

Stein's Furniture Store for furniture.
Lock Haven Express and Clinton County Times for publicity.
The Pennsylvania Electric Company for window display.
Jeanie's Campus Corner for tickets.

Miss Grace Ullemeyer and Collegiate Ensemble for musical numbers.

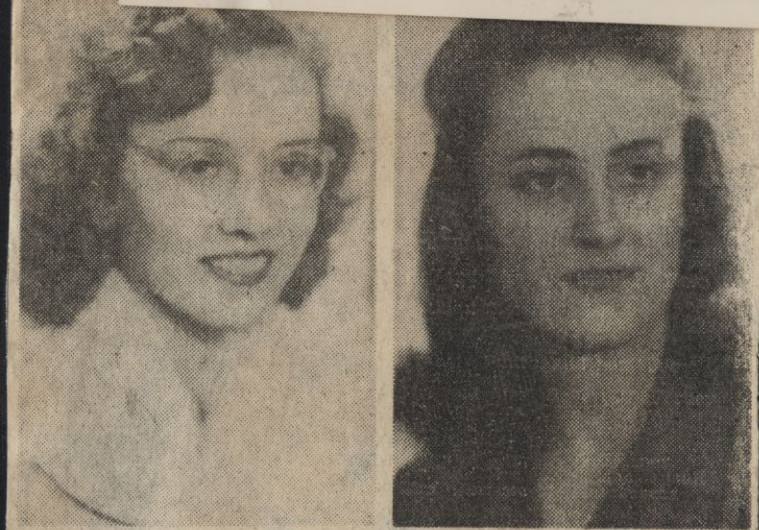
Dr. Edna Bottorf and the art department for posters.

Mr. E. R. Nevel, Mr. J. E. Maggs and Mr. G. E. Kinley for assistance with scenery.

Everybody who assisted in any way with this production.

COLLEGIATE ENSEMBLE

Tessie Bartges, Lois Berger, Lois Hahn, Hope McCartney, Helene Porter, Faye Yearick, Sara Zubler



Two of the Lock Haven young women who had roles in "Brief Music," which was repeated last night at the Teachers College for its second performance, were Miss Peggy Swope, left and Miss Patricia Bodle. Miss Swope, daughter of Mr. and Mrs. H. W. Swope, Jr., played the title role in "Claudia" with the Playmakers last Fall. In "Brief Music," a College Players production, she was the campus beauty, "Lovington."

Miss Bodle, daughter of Mr. and Mrs. James S. Bodle, carried one of the difficult roles in "Brief Music," playing the part of the unpopular and hateful "Jinx." Earlier this year she took the leading role in a one-act college play, "The Eldest," scoring a definite success in the part.

Second Performance Of 'Brief Music'

A good-sized adult audience enjoyed the final performance of "Brief Music," last evening at the Teachers College auditorium. The comedy was given by the College Players under the direction of Miss C. Cordelia Brong.

Afterwards the cast, their parents and friends and members of the faculty enjoyed a reception and refreshments.



What?
BRIEF MUSIC

a comedy of campus capers

Where? The College Auditorium

When? Thursday, March 23, general admission (student night)
Friday, March 24, all seats reserved

Price? Students—28c Adults—55c

Sold at? Frederick's Drug Store and College Book Store

Presented by? THE COLLEGE PLAYERS

For Whom?

YOU!

Friends,

You will be pleased to know that our next dramatic production will be the gay comedy of youth and romance, BRIEF MUSIC by Emmet Lavery, to be presented in the College Auditorium Thursday and Friday evenings, March 23 and 24 at 8:30 P. M. Here is a refreshing heart-warming portrayal of college life that will delight anyone looking for an evening of sheer entertainment.

All seats will be reserved for Friday's performance, and a limited number of general admission tickets will be available for Thursday, student night. Tickets (55c, adults; 28c students) may be purchased at Frederick's Drug Store, at the College Book Store, or from any college student.

Sincerely,

THE COLLEGE PLAYERS

Brief Music
march 23 & 24
1944







THE COLLEGE PLAYERS
of
LOCK HAVEN STATE TEACHERS COLLEGE
present
Brief Music
A COMEDY BY EMMET LAVERY



Directed by Miss C. Cordelia Brong
Assisted by the COLLEGIATE ENSEMBLE
from the Bel Cantos Choral Club, directed by
Miss Grace Ullemeyer

THURSDAY & FRIDAY, MARCH 23 & 24, 1944



Brief Music





BRIEF MUSIC



**Automotive
Supply Co.**

The HUB Store

**Restaurant
Davis**

Don Welch Motor Company

Lock Haven
Pontiac — Packard
BUY MORE BONDS

**Kyler's
Avenue
Cafe**

Stationery
Greeting Cards
Gifts
For Everyone
THE TIMES
"Times Square"

**ALLEGHENY
DAIRY LUNCH**
MEALS
Fountain Service
and Lunches

Regal & Blum
Credit Jewelers
101 E. Main, Lock Haven
Home of Bulova Watches

SHADLE'S
Better Furniture
for Less

**Fred J.
Eisemann
JEWELER**

**M. L. Claster
and Sons**

Building Materials
Bellefonte Avenue

We Serve You Save
Shoes and Hosiery
for all the family
Brown's Boot Shop

Smith & Winter
Lock Haven's
Shopping Center

**Widmann
&
Teah's
Drug Stores**

Grossman's

**Sohmer's
Food Market**

"We Know How"
Office Phone 3322

FROMM'S
Dry Cleaners and Dyers
33 Bellefonte Avenue

**Weidhahn
JEWELERS**

Harvey's
Cor. Jones Street
& Bellefonte Avenue

THE COLLEGE PLAYERS
of
LOCK HAVEN STATE TEACHERS COLLEGE
present
Brief Music
A COMEDY BY EMMET LAVERY



Directed by Miss C. Cordelia Brong

Assisted by the COLLEGIATE ENSEMBLE
from the Bel Cantos Choral Club, directed by
Miss Grace Ullemeyer

THURSDAY & FRIDAY, MARCH 23 & 24, 1944