

april 9, 1965

## BEST PLAY OF THE SEASON

by JAMES SALMOND

Brilliant lighting and costuming, combined with a light, yet distinctive touch of fantasy ushered the College Players' of Lock Haven State to a new era in college theater with its' production of William Shakespeare's *A Midsummer Night's Dream*. Not only was this a new era theatrically but one in community attendance alike. It was the first time the Players' appeared before three capacity audiences. It is not too unreal to predict longer showings of each feature play in the near future.

Several newcomers to the theatre demonstrated their ability in filling difficult roles. Combine this with excellent performers of the past, and a fine director, this production was a fantastic success.

Perhaps the finest perform-

ances of the evening were given by the Rustics. With Oliver Mattas playing the role of Bottom, Wilbur Decker as Quince, Harrison Hamlin as Flute, Rick Torgeson as Starvling, Robert Horak as Snout, and Peter Hurec as Snug, this sextet not only held the production at a peak, but drew wide acclamation from the audience.

Ricardo Reyes played the extremely difficult role of Puck, and did an admirable piece of work in his stage debut.

Keeping the general theme of the show couldn't have been handled better than the performances of George Rhymestine in his role as Oberon, and Pamela Swartz as his fairy queen, Titania. The lighting and general effects of the Sprites and Fairies (Pat Cheek, Paula Stetts, Carol Kupko, Marie Marcotte, Ron Fertile, George Rosenfelter, Ed

Hoffman and Mike Remaley) made these scenes most effective.

Robert Marasa and Franca Moody as Theseus and Hippolyta respectively, brought the show back to the realistic in a very adequate manner, while Thomas O'Brian brought forth the stereotype Philostrate. William Price was a forceful Egeus. His projection was always excellent, making for a diversified cast of characters.

Cast as the confused lovers were Paula VanHorn as Hermia, Mark Wallace as Demetrius, Donald Swartz as Lysander and Doris Geringer as Helena. Miss VanHorn contributed a fiery characterization with interesting tone combinations. Mark Wallace demonstrated an acute stage presence which added greatly to the overall production. Donald Swartz kept many scenes alive with his amusing, terse sentences. Some of the finest verse in the show was delivered by Miss Geringer.

Technically, costuming and lighting must be considered the finest features of the show. The costuming was done by Mrs. Hazel Ray Ferguson and Claudia Wasko. It was a great topic for discussion at intermission. Remarks were made ranging from "beautiful," to "The finest I have ever seen." At least it must be the best costumed show in years and perhaps in the history of the college.

Lighting was designed by Robert L. Peace who must be given a large share of credit for the beautiful job he did. The effective administration of this design was carried out by Ernest Rebstock and Alvie Fetzer.

Taking on a Shakespearian assignment is not an easy task. Dr. Robert McCormick must be sincerely congratulated for the fine production he staged. It was not only a monumental task, but one that faculty, students and members of the community are not likely to forget. We at the college are highly indebted to those who continually strive for excellence in the field of fine arts.

Congratulations again on a superb performance!

april 9, 1965

## BEST PLAY OF THE SEASON

by JAMES SALMOND

Brilliant lighting and costuming, combined with a light, yet distinctive touch of fantasy ushered the College Players' of Lock Haven State to a new era in college theater with its' production of William Shakespeare's *A Midsummer Night's Dream*. Not only was this a new era theatrically but one in community attendance alike. It was the first time the Players' appeared before three capacity audiences. It is not too unreal to predict longer showings of each feature play in the near future.

Several newcomers to the theatre demonstrated their ability in filling difficult roles. Combine this with excellent performers of the past, and a fine director, this production was a fantastic success.

Perhaps the finest perform-

ances of the evening were given by the Rustics. With Oliver Mattas playing the role of Bottom, Wilbur Decker as Quince, Harrison Hamlin as Flute, Rick Torgeson as Starvling, Robert Horak as Snout, and Peter Hurec as Snug, this sextet not only held the production at a peak, but drew wide acclamation from the audience.

Ricardo Reyes played the extremely difficult role of Puck, and did an admirable piece of work in his stage debut.

Keeping the general theme of the show couldn't have been handled better than the performances of George Rhymestine in his role as Oberon, and Pamela Swartz as his fairy queen, Titania. The lighting and general effects of the Sprites and Fairies (Pat Cheek, Paula Stetts, Carol Kupko, Marie Marcotte, Ron Fertile, George Rosenfelter, Ed

Hoffman and Mike Remaley) made these scenes most effective.

Robert Marasa and Franca Moody as Theseus and Hippolyta respectively, brought the show back to the realistic in a very adequate manner, while Thomas O'Brian brought forth the stereotype Philostrate. William Price was a forceful Egeus. His projection was always excellent, making for a diversified cast of characters.

Cast as the confused lovers were Paula VanHorn as Hermia, Mark Wallace as Demetrius, Donald Swartz as Lysander and Doris Geringer as Helena. Miss VanHorn contributed a fiery characterization with interesting tone combinations. Mark Wallace demonstrated an acute stage presence which added greatly to the overall production. Donald Swartz kept many scenes alive with his amusing, terse sentences. Some of the finest verse in the show was delivered by Miss Geringer.

Technically, costuming and lighting must be considered the finest features of the show. The costuming was done by Mrs. Hazel Ray Ferguson and Claudia Wasko. It was a great topic for discussion at intermission. Remarks were made ranging from "beautiful," to "The finest I have ever seen." At least it must be the best costumed show in years and perhaps in the history of the college.

Lighting was designed by Robert L. Peace who must be given a large share of credit for the beautiful job he did. The effective administration of this design was carried out by Ernest Rebstock and Alvie Fetzer.

Taking on a Shakespearian assignment is not an easy task. Dr. Robert McCormick must be sincerely congratulated for the fine production he staged. It was not only a monumental task, but one that faculty, students and members of the community are not likely to forget. We at the college are highly indebted to those who continually strive for excellence in the field of fine arts.

Congratulations again on a superb performance!



# College Players to Present A Shakespearean Farce

"A Midsummer Nights' Dream" will be presented Wednesday and Thursday evenings, March 24 and 25 in Price Auditorium. The admission is free.



Pam Swartz and Skip Mattas rehearse for presentation of "Midsummer Nights Dream."

The College Players of Lock Haven State College will present William Shakespeare's "A Midsummer Nights' Dream" on March 24 and 25 in Price Auditorium. This presentation will be the final of the 1965 Fine Arts Festival series at the college.

The cast of 25 players which was selected by Director Robert McCormick has been in rehearsal since February 14. Director McCormick will give modern treatment to the play through stylized settings and background dance music. The sets call for maximum use of lighting and drapery. Costumes are being done by Hazel Ray Ferguson. Assisting Mrs. Ferguson are Ann Logue, Claudia Wasko, Joanne Capirchio, Ginny Weaver, and Janis Siciliano.

as Hermia, Doris Geringer (Muncy) as Helena, Thomas O'Brian (Altoona) as Philostrate, Wilbur Decker (Altoona) as Quince, Oliver Mattas (Altoona) as Bottom, Harrison Hamlin (Media) as Flute, Peter Hudec (Wildwood, N. J.) as Snug, Richard Torgeson (Carnegie) as Snout, George Rhymestine (Lock Haven) as Oberon, King of the Fairies, Pamela Swartz (Hanover) as Titania, and Ricardo Reyes (So. Connelville) as Robin Goodfellow, the Puck. Eight Dancers will perform to original choreography created by Patricia Cheek of Camp Hill, Pennsylvania. Miss Cheek is a junior.

Mr. Frank Vaughn, Professor of English at Lock Haven State College, will provide music on the organ. Mr. Robert L. Peace of the Cornell Research Institute, Buffalo, New York, will be providing the lighting.

"A Midsummer Nights' Dream" is the first Shakespearean production to be scheduled by the Players since their successful performance of "The Taming of the Shrew" in 1956. The play is in five acts.

The scene for "A Midsummer Nights' Dream" is laid in Athens and a nearby wood. The tale recounts a parental attempt at an arranged marriage, the efforts of the lovers to escape from the arrangement, secret woodland trysts by several pairs of young lovers, mistaken identity in the applications of a love potion, and mischievous entanglements of fairies and mortals. The play, one of William Shakespeare's best works was written sometime between 1594 and 1598 and is reported to have been first performed for a court wedding in the presence of Queen Elizabeth I.

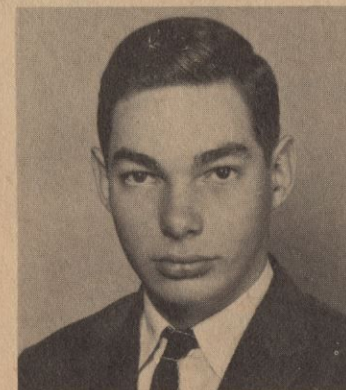
Casting for the production includes Robert Marasa (Riverside, N. J.) as Theseus, Franca Moody (Lock Haven) as Hippolyta, William R. Price (Clearfield) as Egeus, Donald Swartz (Port Royal) as Lysander, Mark Wallace (Allentown) as Demetrius, Paula Van Horn (Easton)

## PLAYERS REHEARSE

*Feb 26, 1965*



Queen Titania



King Oberon

The College Players of Lock Haven State College are presenting a spectacular of spectacles. On March 24 and 25 they will present a production of *A Midsummer Night's Dream* by William Shakespeare. This show will be the first performance of Shakespeare in over eight years at Lock Haven State College.

The cast for the play is a large one, and many of the students will be making their first appearance in a College Player's production. George Rhymestine, playing the role of Oberon, is one such student. Pam Swartz, playing the role of Titania, is, however, an old hand with the College Players.

The play concerns the problems of two young lovers, Hermia and Lysander, played by Paula Van Horn and Donald Swartz, as they meet in the woods outside of Athens in Greece to run away to be married. The plot is complicated with the entrance of Puck, a mischievous spirit serving under



Recently the College Players had their first rehearsal for Shakespeare's "A Midsummer Night's Dream." Members of the cast are row one — W. Decker, M. Wallace. Row two — R. Torgeson, D. Schwartz, P. VanHorn, B. Marasa, D. Geringer, R. Reyes. Row three — H. Hamlin, G. Koch, P. Swartz and Dr. Robert McCormick (at left).

Oberon. Puck, portrayed by Rick Reyes, through magical spells nearly ruins the life of the lovers.

The play itself is exciting and amusing. And the College Players are working at high speed

to make the production the best ever. The public is most cordially invited to the performance of the College Players of Lock Haven State College. Plan to attend early, as a large audience is expected.





## PRODUCTION STAFF

MUSICAL ACCOMPANIMENT ..... Frank Vaughn  
CHOREOGRAPHY ..... Pat Cheek  
STAGE MANAGER ..... William Roy Price  
ASSISTANT STAGE MANAGER ..... Victoria Andrus  
PRODUCTION MANAGER ..... Harry Callahan  
LIGHT DESIGN ..... Robert L. Peace  
LIGHTING ..... Ernest Rebstock, Alvie Fetzer  
WARDROBE MISTRESS ..... Claudia Wasko  
HAIR STYLES ..... Lynn Thompson  
PROPERTIES ..... Pamela Swartz  
HOUSE MANAGER ..... Douglas Dow

## COSTUMES AND MAKE-UP

Janice Siciliano	Pamela Swartz
Joanne Capirchio	Thomas O'Brian
Ann Logue	Delores Zarate

## STAGE CREW

William Dean	Harold Markley
Jackie-Jo Enlow	Arthur Schwieder
Ann Logue	Betty-Jo Shaffer

## CONSTRUCTION CREW

Victoria Andrus	Robert Marafa
Harry Callahan	Oliver Mattas
Mona Mangan	Ricardo Reyes

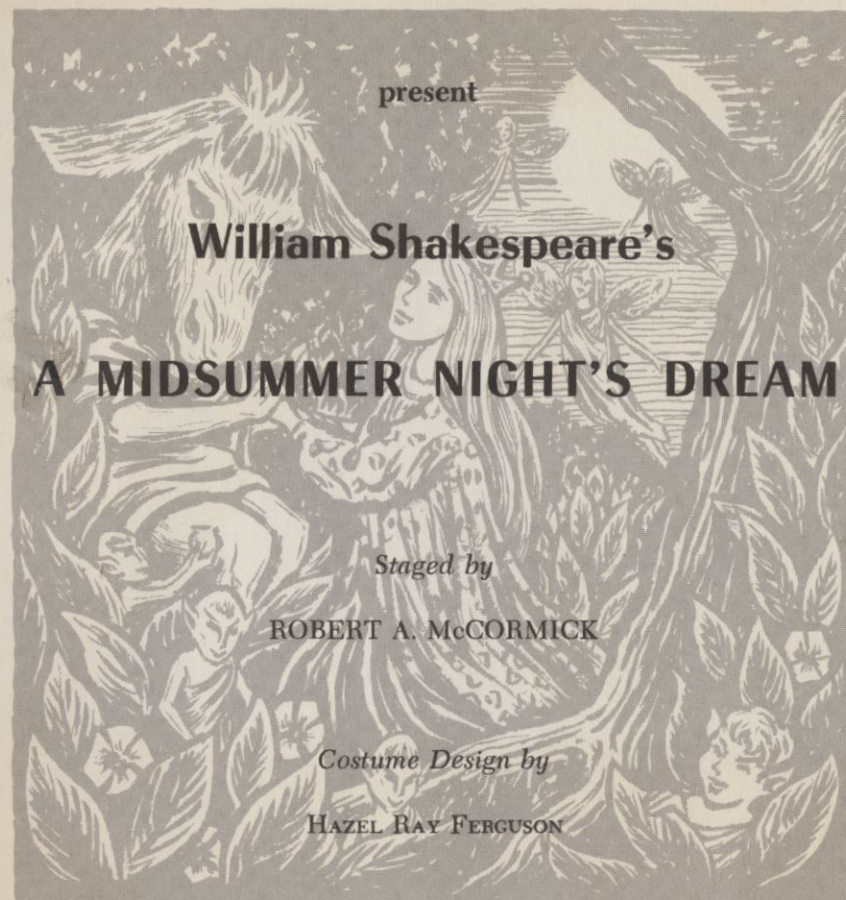
## PARTICIPATING MEMBERS OF ALPHA PSI OMEGA

National Honorary Dramatic Fraternity

Victoria Andrus	Harrison Hamlin
Wilbur Decker	Pamela Swartz

Claudia Wasko

# THE COLLEGE PLAYERS of LOCK HAVEN STATE COLLEGE



PRICE AUDITORIUM

MARCH 24 AND 25

1965

8:15 P.M.



## CAST OF CHARACTERS

(In Order of Appearance)

THESEUS	-	-	-	-	-	-	-	-	Robert Marasa
HIPPOLYTA	-	-	-	-	-	-	-	-	Franca Moody
PHILOSTRATE	-	-	-	-	-	-	-	-	Thomas O'Brian
EGEUS	-	-	-	-	-	-	-	-	William Roy Price
HERMIA	-	-	-	-	-	-	-	-	Paula Van Horn
DEMETRIUS	-	-	-	-	-	-	-	-	Mark Wallace
LYSANDER	-	-	-	-	-	-	-	-	Donald R. Swartz
HELENA	-	-	-	-	-	-	-	-	Doris Jean Geringer
QUINCE	-	-	-	-	-	-	-	-	Wilbur Decker
BOTTOM	-	-	-	-	-	-	-	-	Oliver Mattas
FLUTE	-	-	-	-	-	-	-	-	Harrison Hamlin
STARVELING	-	-	-	-	-	-	-	-	Richard Torgeson
SNOUT	-	-	-	-	-	-	-	-	Robert Horak
SNUG	-	-	-	-	-	-	-	-	Peter Hudec
FAIRY	-	-	-	-	-	-	-	-	Pat Cheek
PUCK	-	-	-	-	-	-	-	-	Ricardo Reyes
OBERON	-	-	-	-	-	-	-	-	George D. Rhymestine
TITANIA	-	-	-	-	-	-	-	-	Pamela Swartz

SPRITES & FAIRIES . . .

Paula Stetts, Carol Kupko, Marie Macotte, Ronald Fertile,  
George Rosenfelder, Ed Hoffman, Mike Remaley



# PLAYERS REHEARSE



Queen Titania



King Oberon

The College Players of Lock Haven State College are presenting a spectacular of spectaculars. On March 24 and 25 they will present a production of *A Midsummer Night's Dream* by William Shakespeare. This show will be the first performance of Shakespeare in over eight years at Lock Haven State College.

The cast for the play is a large one, and many of the students will be making their first appearance in a College Player's production. George Rhymestine, playing the role of Oberon, is one such student. Pam Swartz, playing the role of Titania, is, however, an old hand with the College Players.

The play concerns the problems of two young lovers, Hermia and Lysander, played by Paula Van Horn and Donald Swartz, as they meet in the woods outside of Athens in Greece to run away to be married. The plot is complicated with the entrance of Puck, a mischievous spirit serving under



Recently the College Players had their first rehearsal for Shakespeare's "A Midsummer Night's Dream." Members of the cast are row one — W. Decker, M. Wallace. Row two — R. Torgeson, D. Schwartz, P. VanHorn, B. Marasa, D. Geringer, R. Reyes. Row three — H. Hamlin, G. Koch, P. Swartz and Dr. Robert McCormick (at left).

Oberon. Puck, portrayed by Rick Reyes, through magical spells nearly ruins the life of the lovers.

The play itself is exciting and amusing. And the College Players are working at high speed

to make the production the best ever. The public is most cordially invited to the performance of the College Players of Lock Haven State College. Plan to attend early, as a large audience is expected.

## College Players to Present A Shakespearean Farce



Pam Swartz and Skip Mattas rehearse for presentation of "Midsummer Nights Dream."

The College Players of Lock Haven State College will present William Shakespeare's "A Midsummer Nights' Dream" on March 24 and 25 in Price Auditorium. This presentation will be the final of the 1965 Fine Arts-Festival series at the college.

The cast of 25 players which was selected by Director Robert McCormick has been in rehearsal since February 14. Director McCormick will give modern treatment to the play through stylized settings and background dance music. The sets call for maximum use of lighting and drapery. Costumes are being done by Hazel Ray Ferguson. Assisting Mrs. Ferguson are Ann Logue, Claudia Wasko, Joanne Capirchio, Ginny Weaver, and Janis Siciliano.

as Hermia, Doris Geringer (Muncy) as Helena, Thomas O'Brian (Altoona) as Philostrate, Wilbur Decker (Altoona) as Quince, Oliver Mattas (Altoona) as Bottom, Harrison Hamlin (Media) as Flute, Peter Hudec (Wildwood, N. J.) as Snug, Richard Torgeson (Carnegie) as Snout, George Rhymestine (Lock Haven) as Oberon, King of the Fairies, Pamela Swartz (Hanover) as Titania, and Ricardo Reyes (So. Connelville) as Robin Goodfellow, the Puck. Eight Dancers will perform to original choreography created by Patricia Cheek of Camp Hill, Pennsylvania. Miss Cheek is a junior.

Mr. Frank Vaughn, Professor of English at Lock Haven State College, will provide music on the organ. Mr. Robert L. Peace of the Cornell Research Institute, Buffalo, New York, will be providing the lighting.

"A Midsummer Nights' Dream" will be presented Wednesday and Thursday evenings, March 24 and 25 in Price Auditorium. The admission is free.

"A Midsummer Nights' Dream" is the first Shakespearean production to be scheduled by the Players since their successful performance of "The Taming of the Shrew" in 1956. The play is in five acts.

The scene for "A Midsummer Nights' Dream" is laid in Athens and a nearby wood. The tale recounts a parental attempt at an arranged marriage, the efforts of the lovers to escape from the arrangement, secret woodland trysts by several pairs of young lovers, mistaken identity in the applications of a love potion, and mischievous entanglements of fairies and mortals. The play, one of William Shakespeare's best works was written sometime between 1594 and 1598 and is reported to have been first performed for a court wedding in the presence of Queen Elizabeth I.

Casting for the production includes Robert Marasa (Riverside, N. J.) as Theseus, Franca Moody (Lock Haven) as Hippolyta, William R. Price (Clearfield) as Egeus, Donald Swartz (Port Royal) as Lysander, Mark Wallace (Allentown) as Demetrius, Paula Van Horn (Easton)