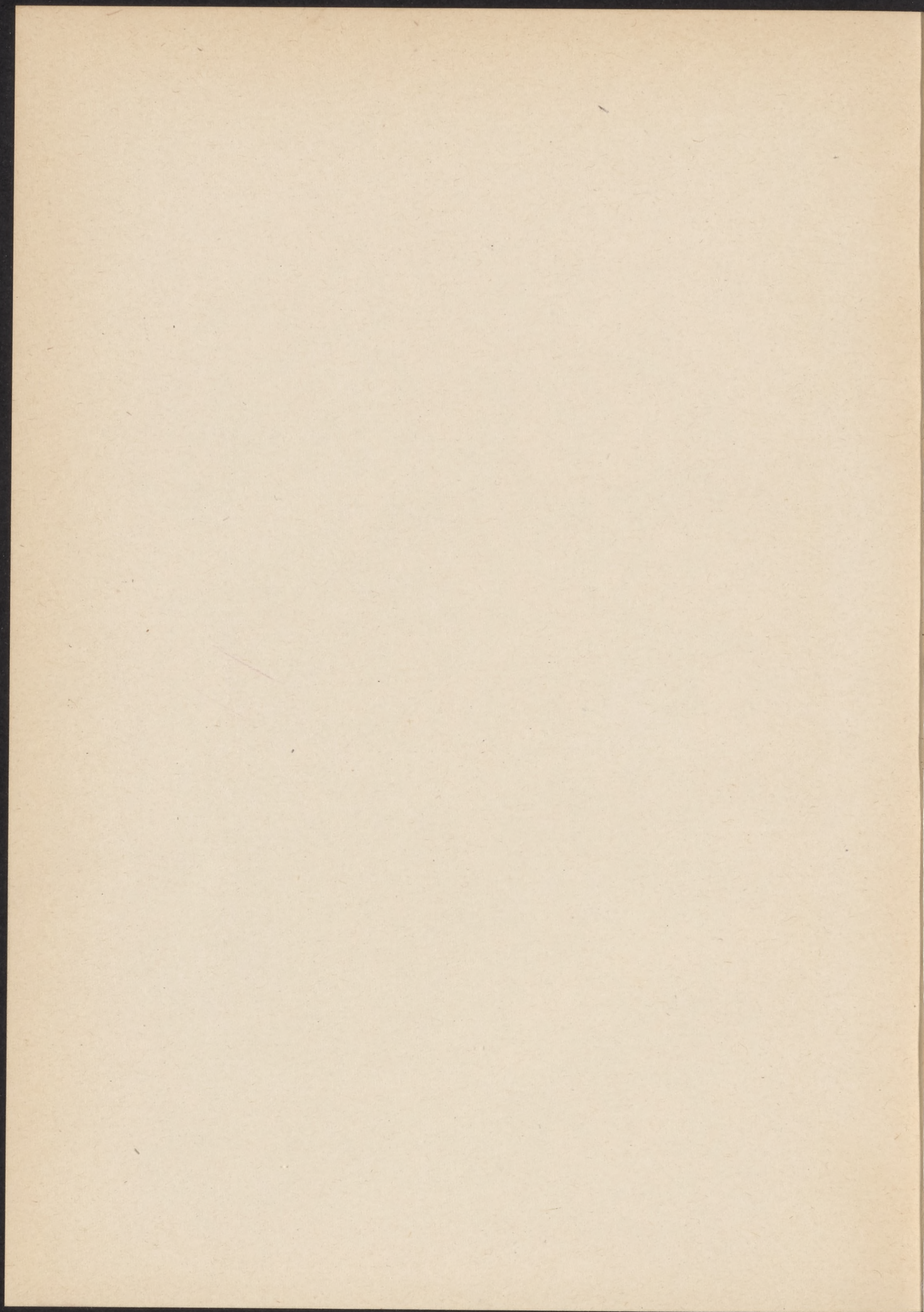


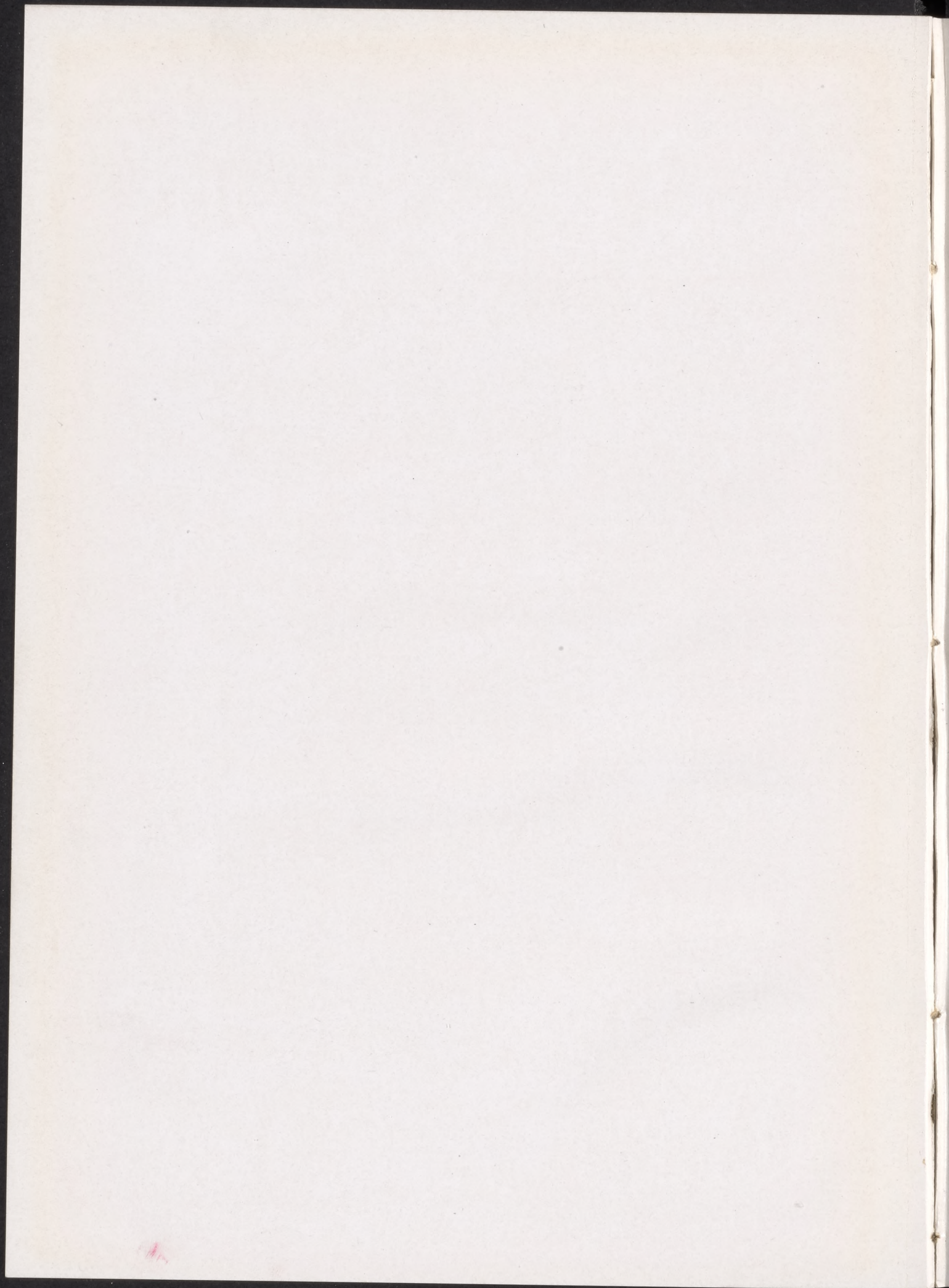


Cum Laude '46

75th
Anniversary

This Copy is the property
of the Shippensburg State
Teachers College. It is
not to be removed from
this office.





Ex Libris



The CUMBERLAND

Presented By

THE SENIOR CLASS

State Teachers College

Shippensburg, Pennsylvania

1946

Volume XXX

75th Anniversary
Edition

E. Eloise Cohen
Editor

Wanda J. Whippo
Business Manager

Editor's Message

It is with a sense of satisfaction and almost conceit that we are proud to present this yearbook to you. The basis of our satisfaction and pride is not that we consider this book to be an exceptional masterpiece in the field of literature nor to be an entirely perfect collection of printed and pictorial material, but instead, a product compiled and presented during a period of suffering from the after-effects of a ravaging war. Added to a difficult post-war period we've also suffered from the usual distress of a limited budget—which, during an inflationary period is comparable to a motorless automobile. It lacks pep.

Despite our inability to obtain essential materials, added to a shortage of incidentals such as an adequate monetary supply, we hope you will share the exuberance of those of us on the editorial staff upon the presentation of this yearbook—despite any shortcomings which may appear.

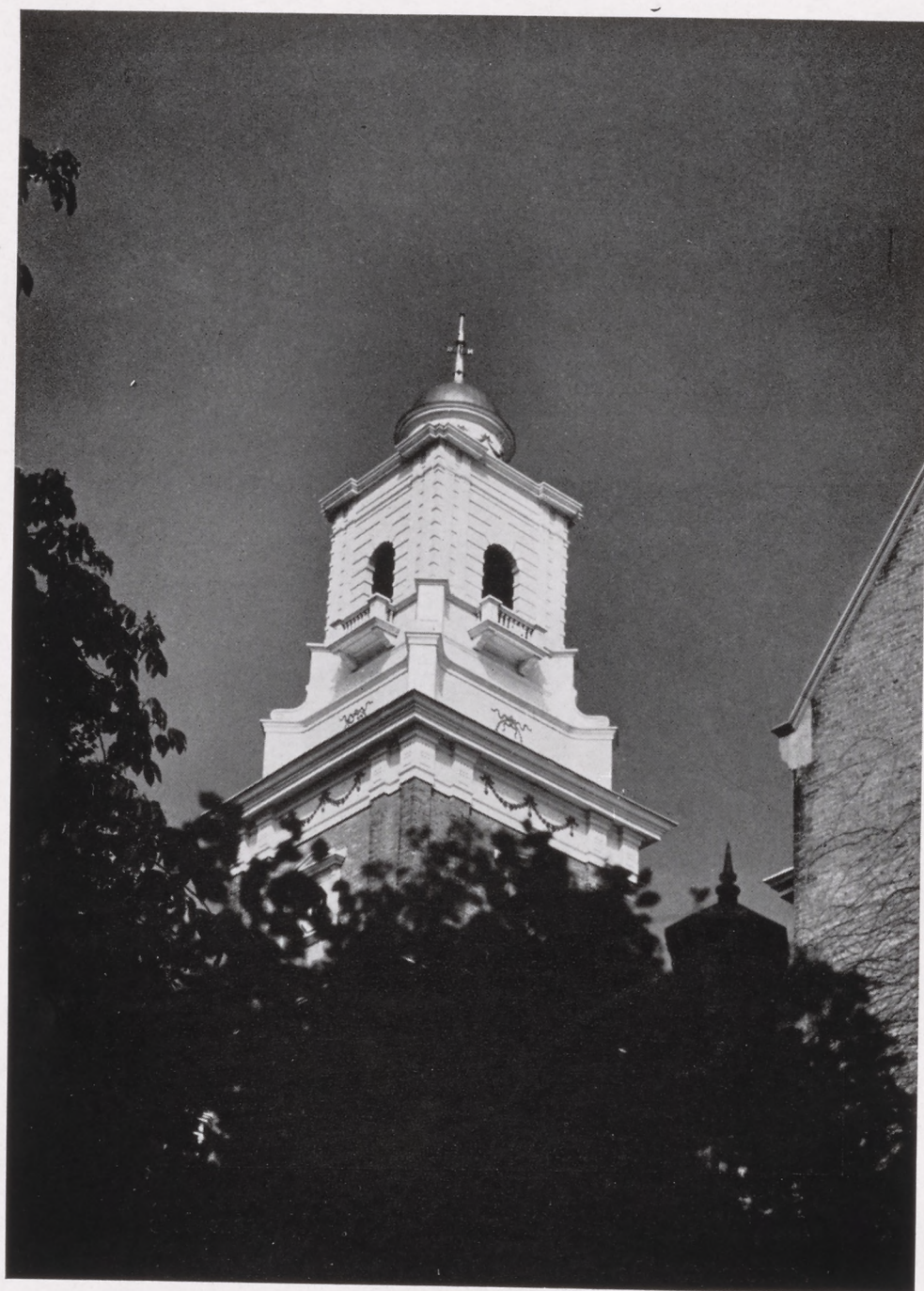
Theme

With due respect to the publicity department of this institution we repeat a fact well impressed upon our minds. This year of our Lord, nineteen hundred and forty-six, is the seventy-fifth anniversary of the founding of the State Teachers College at Shippensburg, Pennsylvania. It has been with this in mind, that any material not concerned with the actual subject matter of a yearbook pertains instead to the seventy-fifth birthday of our Alma Mater.

Dedication



It is with vision and confidence in his complete success as the new president of our Alma Mater, that we dedicate to DR. LEVI GILBERT, this thirtieth edition of the Cumberland.



Alma Mater

In the dear old Cumberland Valley,
'Neath the glowing sky,
Proudly stands our Alma Mater
On the hilltop high.

Mid the waving golden cornfields,
Just beyond the town,
Stand the ivy-covered buildings
As the sun goes down.

When we leave our Alma Mater,
We will praise her name,
Ever live to raise the standards
Of her glorious name.

—CHORUS

Swell the chorus ever louder—
We'll be true to you.
Hail to thee, our Alma Mater
Dear old Red and Blue.

—*Harriet S. Freeby, nee Shelly, 1893.*

A Message from our President



Class of 1946 —

I consider it a high privilege to contribute a few thoughts to this thirtieth yearbook. My class yearbook was the first. I served as a student on the committee, under the leadership of the late Mrs. Harriet Wylie Stewart, that selected the name "CUMBERLAND" for the school yearbook. It is now quite fitting this 75th Anniversary year that we mention Mrs. Stewart because of her interest in the college and her contribution to the history of Pennsylvania.

I am not very well acquainted with the members of this first post-war class. I did not have the pleasure of serving you during the years you have been in college. I do know the class of 1946 came through a hectic war period. The personnel of the class has changed; the instructional staff of the college has changed. Yours has been a stormy period. With many handicaps you have reached the end of your college career. I can only wish for each member the best. May each one find an opportunity to serve his community in keeping with his training and in the spirit of the Master Teacher.

The class of 1946 will celebrate its fifth reunion in 1951. When we celebrate the 100th Anniversary in 1971, it will be your twenty-fifth. It is fine that you have carried the anniversary idea through your yearbook. We are very hopeful that the next twenty-five years will be peaceful years in the world so that the brotherhood of man and the Fatherhood of God will have an opportunity to eliminate wars forever. The teacher will be a big factor in this great work.

LEVI GILBERT,
President.

A Message from our Dean of Instruction



Members of the Graduating Class —

The golden age of the United States lies ahead for those who have faith in the destiny of this country.

Yours is the opportunity to assist in developing new creations of science which will bring health and happiness to the populace of our country, the doctrine of personal worth and excellence of the individual, and greater respect for law and justice in this post-war world.

EARL WRIGHT,

Dean of Instruction.

A Message from our Board of Trustees

Members of the Class of 1946 —

The class of 1946 is graduating under very favorable circumstances. The war is over, teaching positions are available, and the challenge of building a new and better world is animating. It is our job now to help to light the lights all over the world and keep them burning.

The class is favored also by graduating on the seventy-fifth anniversary of the founding of the school. The twenty-fifth anniversary of the Class will be the centennial celebration of the College. This should be an incentive for the class to maintain a functioning organization through the years.

The Board of Trustees of the College is exceedingly anxious to extend the influence of the College and to enrich its program. Plans are now in progress to broaden the curricula and to improve the facilities.

We are depending on our alumni as we have in the past to maintain and increase the influence and services of the College in our State and Nation. Shippensburg's Alumni are noted for their loyalty and have always rallied to the aid of the College when they have been called upon for service.

We solicit the united support of the Class of 1946 in building upon the foundations that have been so well established during the past seventy-five years. Most of you will have the honor and pleasure of participating in the hundredth anniversary, twenty-five years hence. May your Class have a record which you and the College may be justly proud to narrate on that occasion.

RAYMOND G. MOWREY,
President, Board of Trustees.

Table of Contents

Our Changing Campus

Seniors

Classes

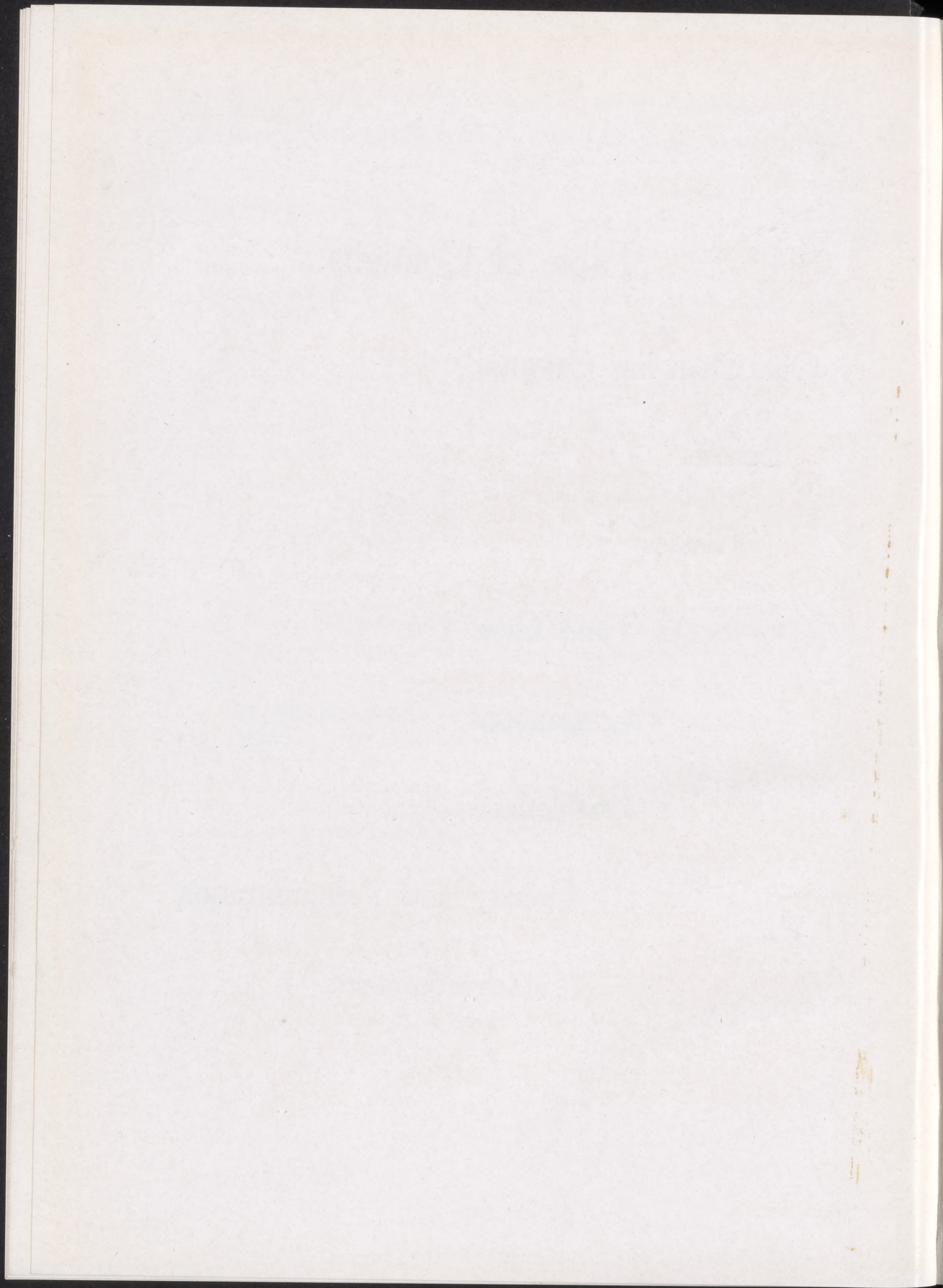
As Time Goes By

Organizations

Athletics

Faculty and Administration

Advertisements

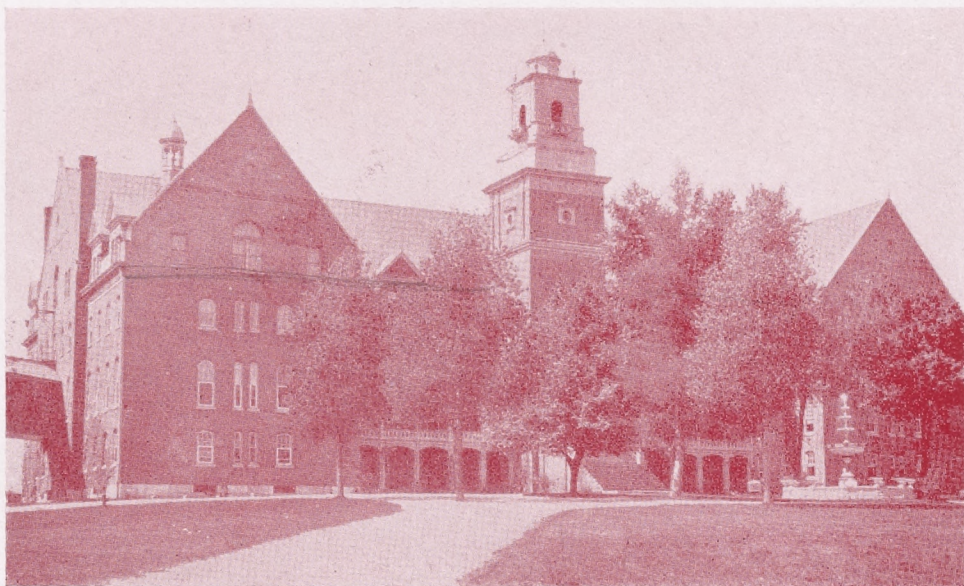
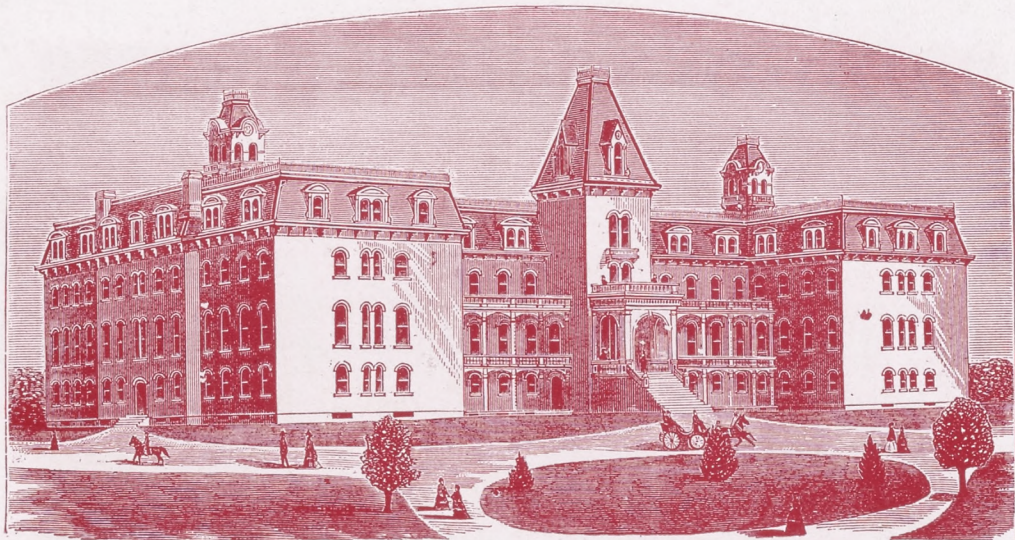


Our
Changing
Campus

Explanation of Building Changes

Upon the occasion of this 75th anniversary of our college, we are attempting in limited space to present concisely and accurately for the annals of time the progressive changes which have taken place on this terrain, the campus of our Alma Mater.

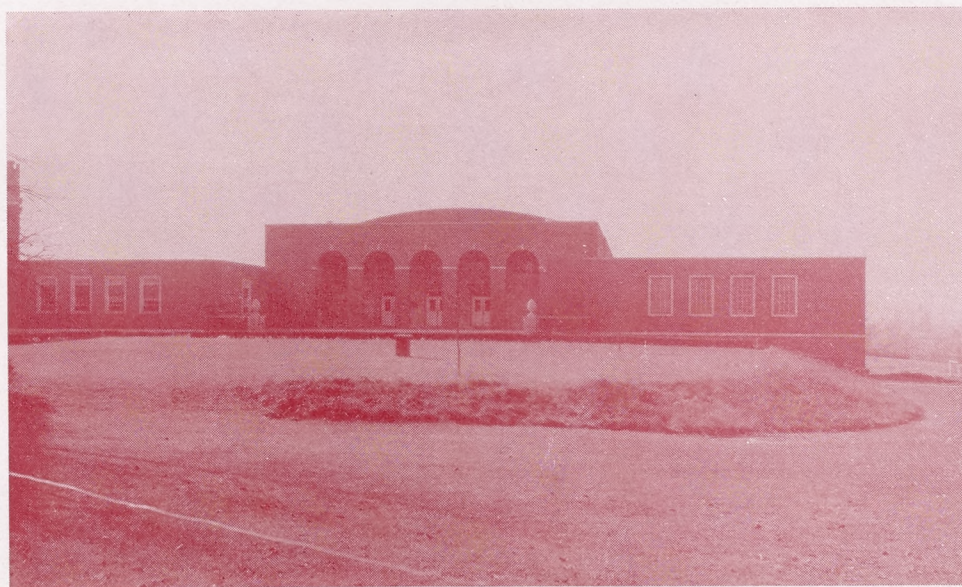
Old Main



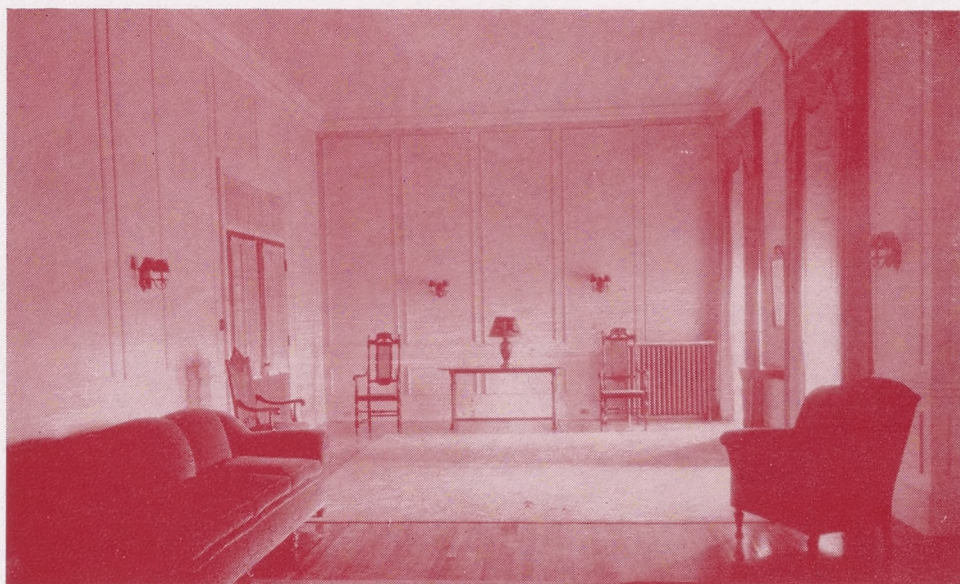
Fountain



Gymnasium



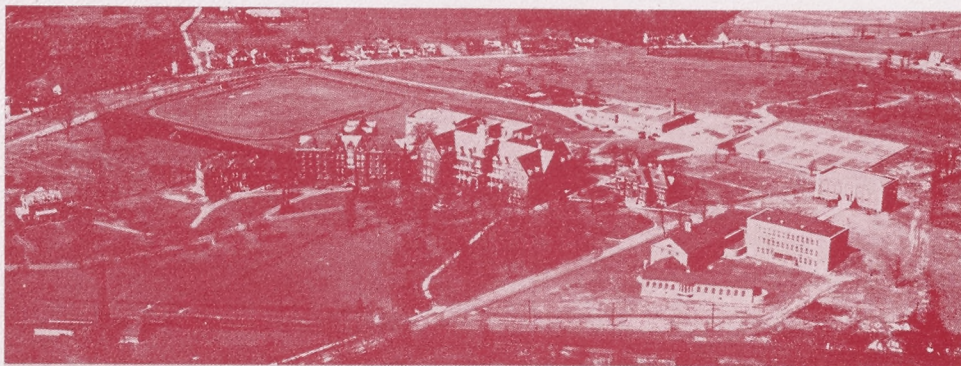
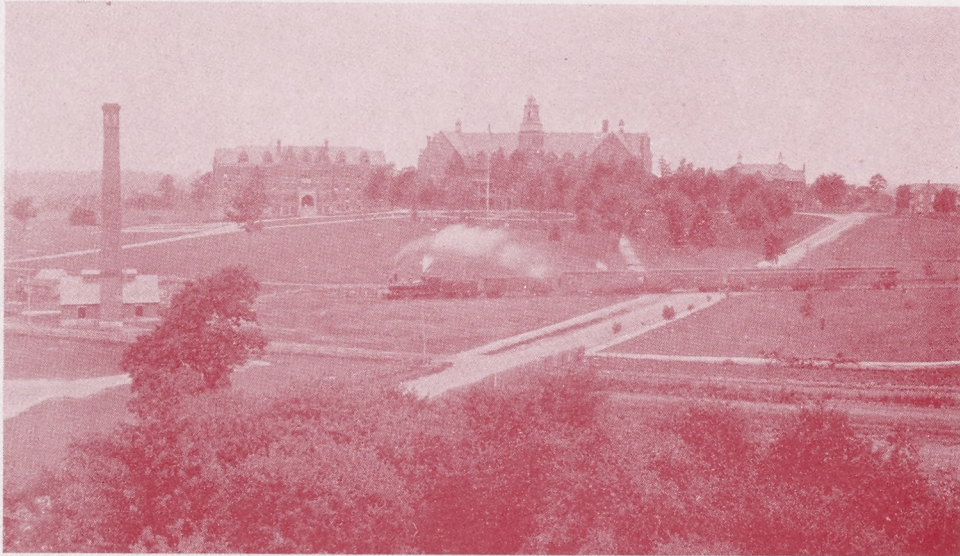
Reception Room



Horton Hall



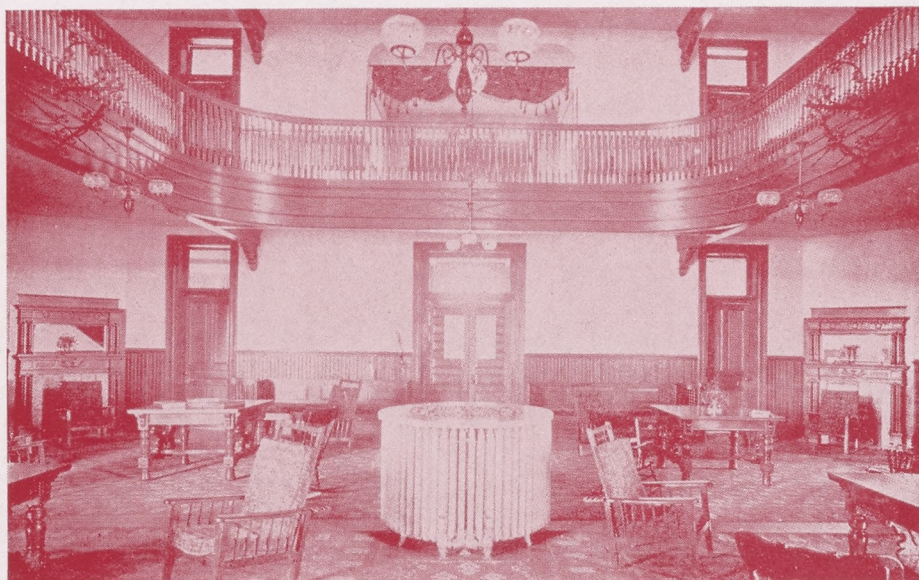
Aerial View of Buildings



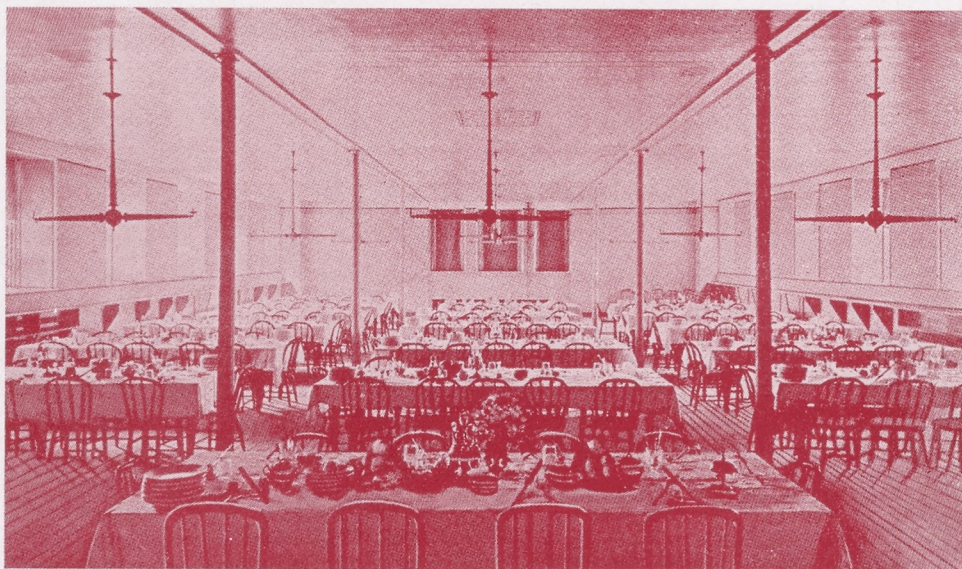
AERIAL VIEW OF THE SHIPPENSBURG CAMPUS

	Heiges Field	Disposal Plant	Archery Range	Utility Building	Tennis Courts	Library
		Alumni Gymnasium	Infirmary	Old Gymnasium		
Shakespearean Theatre	Horton Hall					
President's Residence	Adult and Business Education Building	Old Main			Shearer Hall	
Power Plant					Laboratory School	

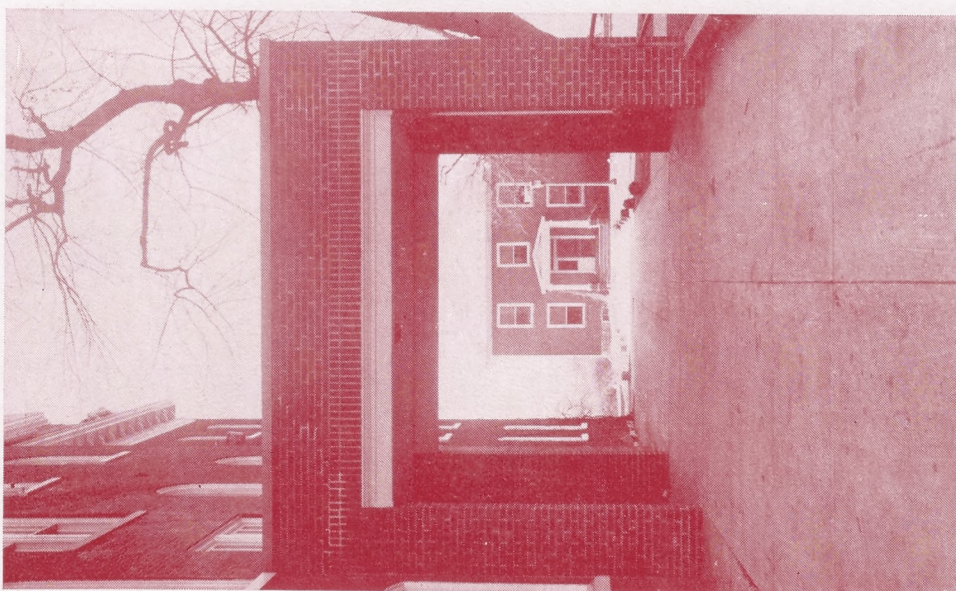
Court of Horton Hall



Dining Room



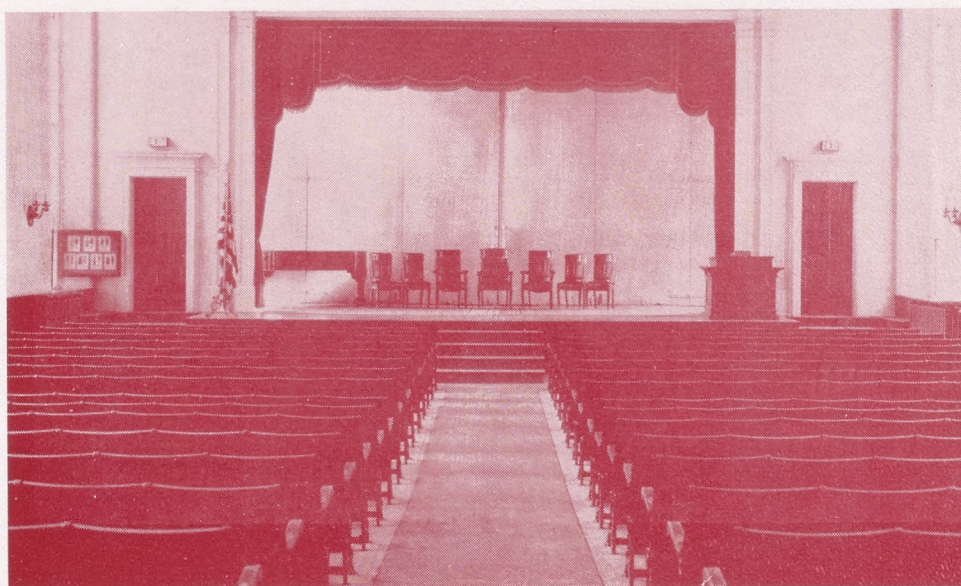
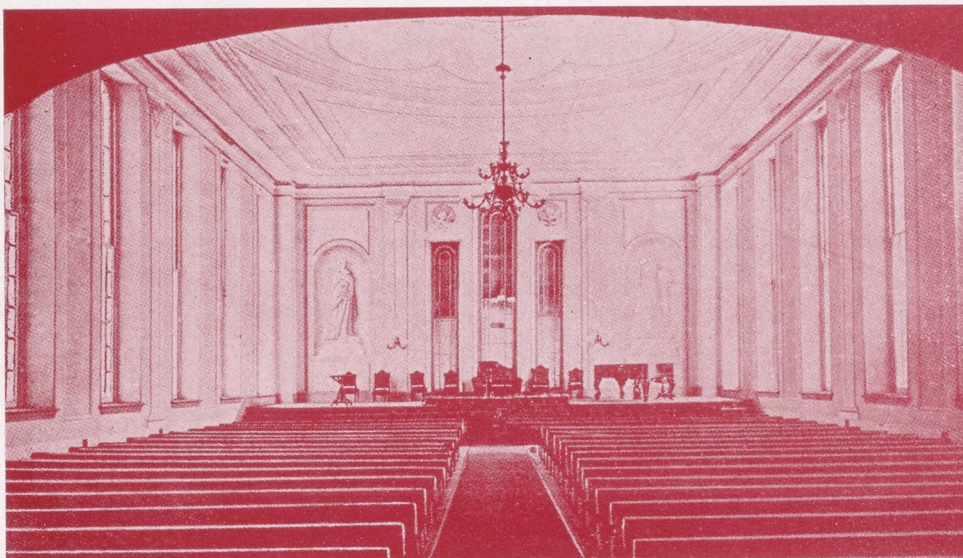
Solomon's Temple



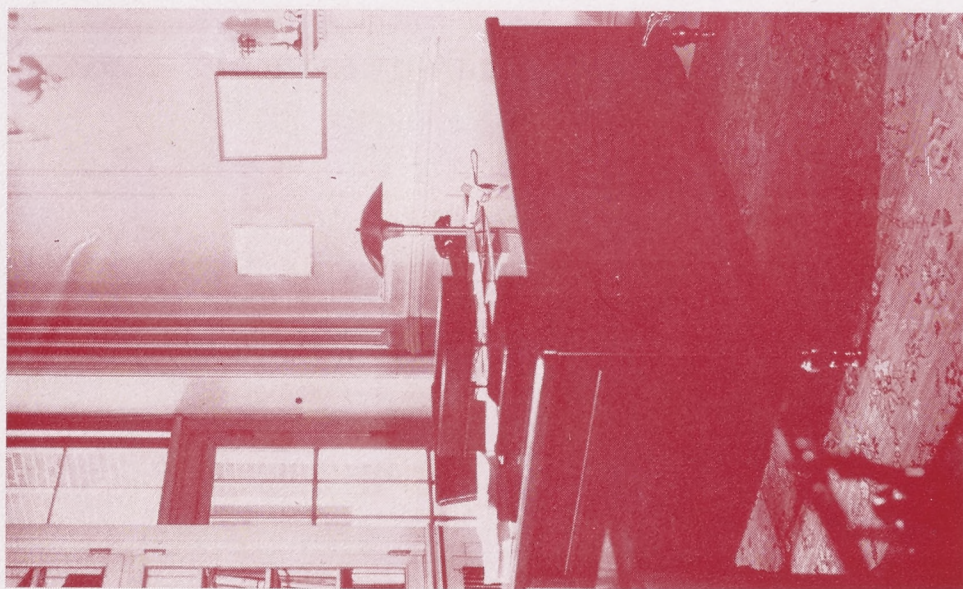
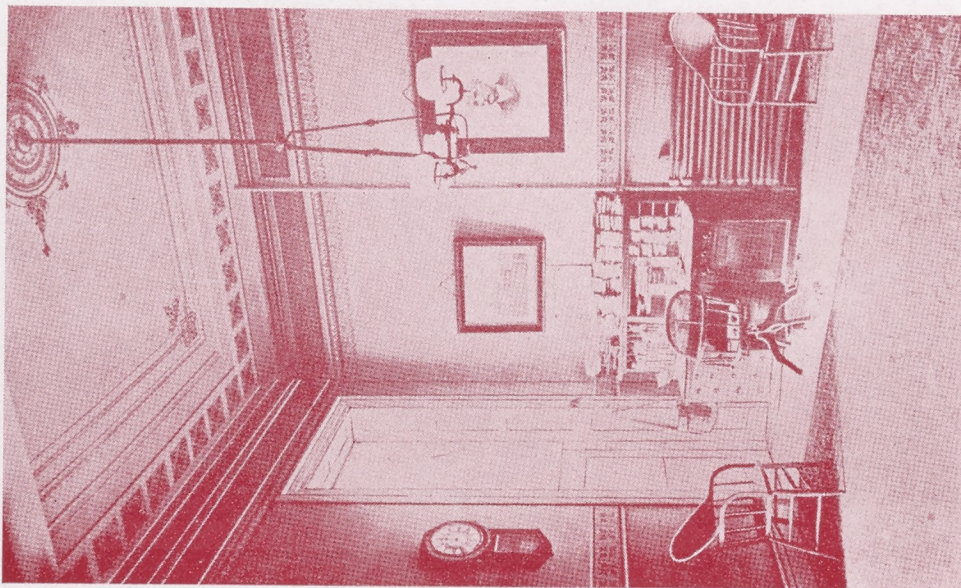
Campus Walk



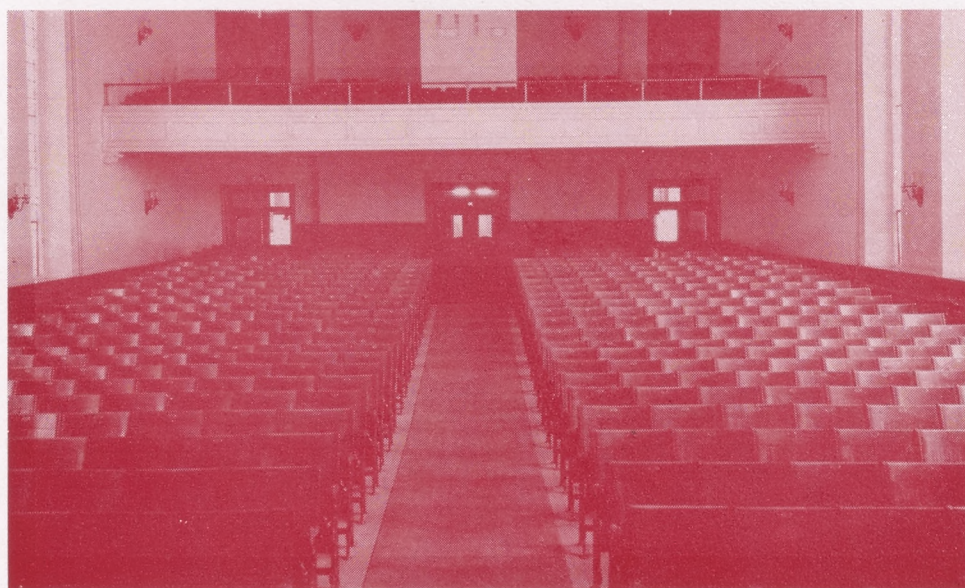
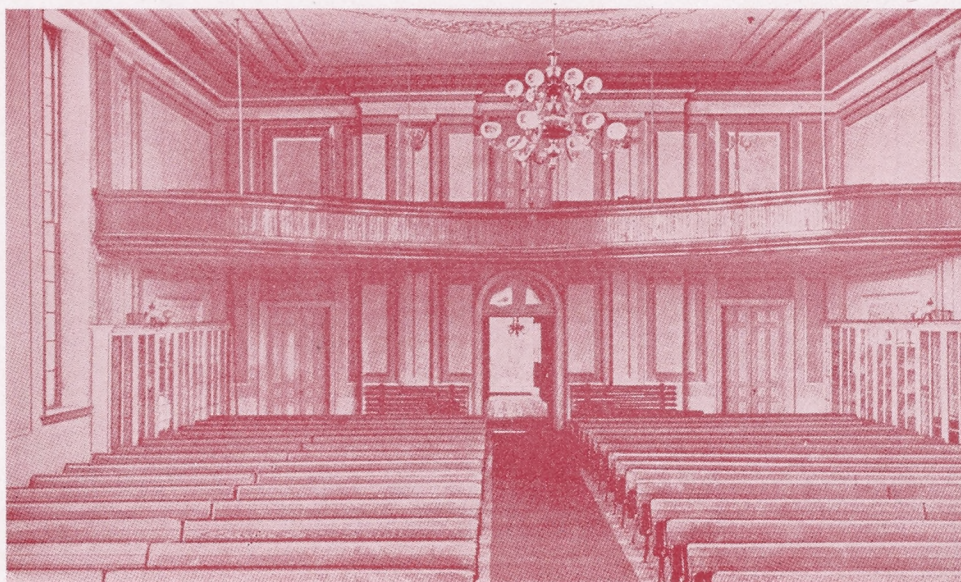
Front View of Chapel



President's Office



Rear View of Chapel



Campus Station



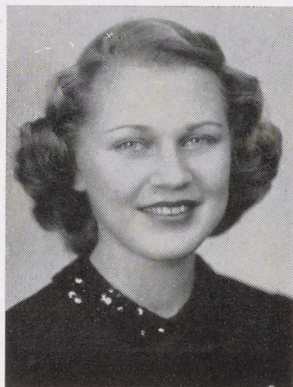
SENIORS



IDA Z. ARMS

Dauphin, Pennsylvania

Mathematics Club, President 1, 2, 3, 4; Women's Athletic Association 1, 2, 3, 4; Spring Sports 1, 2, 3; Table Tennis Club 4; Swimming Club 3, 4; Basketball 1, 2, 4; Campus Reflector Editorial Staff 1, 2, 3, 4, Associate Editor 3; Women's Boarding Student Council 3, 4, Treasurer 4; Campus Christian Association Cabinet 3, 4, Recording Secretary 4; Kappa Delta Pi 3, 4, Historian-Reporter 4; College Defense Council 2, 3; and Secondary Education Club 4.



ELAINE V. ARNOLD

York, Pennsylvania

Boarding Women's Council 1, 3, 4, President 4; Orchestra 1, 2, 3, 4; Cooperative Education Club 1, 2, 3, 4, President 4; Masquers 1, 2, 3, 4; Women's Athletic Association Cabinet 3, 4, Secretary 3, 4; Women's Athletic Association 1, 2, 3, 4; President's Council 4; Cumberland Editorial Staff 4; Kappa Delta Pi 3, 4, Secretary 4; Spring Sports, 1, 2, 3; Swimming 3, 4; 75th Anniversary Planning Committee, Secretary 4; May Day Court 3; and "Merry Wives of Windsor," "Heart of a City," "The Rivals," "Brief Music," "The Man Who Married a Dumb Wife."



BETTY J. BAIRD

Altoona, Pennsylvania

Art Club 1; Bible Club 3; Choral Club 3, 4, President 4; English Club 4; Cooperative Education Club 4; Women's Athletic Association 1, 2, 3, 4, Cabinet 4; Hockey 1, 2, 3, 4; Dancing Club 3, 4; Ping Pong Club 4; Hiking Club Leader 4; Cumberland Business Staff 4; President's Council 4; and Basketball 1, 2.



MIRIAM SHOFF BEDLYON

Lewistown, Pennsylvania

Choral Club 1, 2, 3, 4; Masquers 1, 2; Ping Pong Club 1; and "Brief Music."



WILLIAM W. BEIBLE

Harrisburg, Pennsylvania

Phi Sigma Pi 2, 3, 4; Varsity Club President 2, 3, 4; Basketball (Varsity) Captain 3, 4; Football 1; Track 2; Men's Athletic Council, Vice-President 2, 3, 4; Men's Dormitory Council, Vice-President 1, 2, 3, 4; and Business Education Club 1, 2, 3, 4.



DORIS M. BORN

Everett, Pennsylvania

Table Tennis Club 3; Business Education Club 3; Campus Reflector Business Staff 3; and Swimming Club 3.

PATRICIA J. BOWER

Chambersburg, Pennsylvania

Choral Club 1, 2, 3, 4, Treasurer 2; English Club 1, 2, 3; Women's Athletic Association 1, 2, 3, 4; Varsity Hockey Squad 2, 3, 4; Basketball Officiating 3, 4; Secondary Education Club 4; Day Women's Council 2, 3, 4; and Spring Sports 1, 2, 3, 4.



E. ELOISE COHEN

Allentown, Pennsylvania

Swimming Club 2; International Relations Club 2; Debate Club 2; Tennis Club 2, 3, 4; Masquers 2, 3; Women's Athletic Association 2, 3, 4; Spring Sports 2, 3, 4; Dormitory Women's Council 4; Archery Club 4; Secondary Education Club 4; Varsity Basketball 2, 3, 4; Varsity Hockey 2, 3, 4; Campus Reflector 2, 3, 4, Advertising Manager 2, Managing Editor 3, 4; Cumberland Editor-in-Chief 4; and "Heart of a City."



ROSE CONTINO

York, Pennsylvania

Catholic Club 1, 2, 3, 4, President 3; Cheerleader 1, 2, 3, 4; Swimming Club 1, 2, 3, 4; Women's Athletic Association 1, 2, 3, 4; Cabinet 4; Dancing Club 3, 4, Leader 4; Business Education Club 1, 2, 3, 4; Campus Reflector Business Staff 1, 2, 3; Cumberland Business Staff 4; and Hiking Club 4.



MARTHA A. COOPER

Enhaut, Pennsylvania

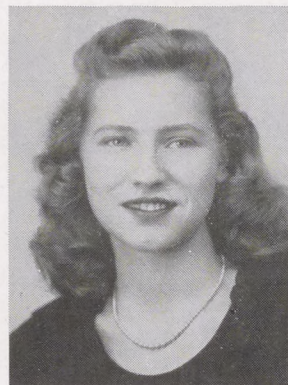
Soccer Captain 1; Hockey 2, 3, Captain 2; Basketball 1, 2, 3, Captain 1, Leader 2; Tennis 1, 2, 3, 4; Volleyball 1, 2, 4, Captain 1, 2; Baseball 1, 2, 4, Captain 1, 2; Hiking 1, 2; Women's Athletic Association Cabinet 1, 2; Campus Reflector Sports Editor 2; and Cumberland Staff Sports Editor 2.



SYLVIA M. EBERSOLE

East Berlin, Pennsylvania

Band 1; Choral Club 2, 3, 4; Swimming Club 1, 2; Women's Athletic Association 3, 4; Dancing Club 4; and Masquers 3, 4.



VIRGINIA M. GARDNER

Chester, Pennsylvania

Cheerleader 1; Masquers 1, 2, 3; Swimming Club 2; Women's Athletic Association 1, 2, 3; Assistant Tennis Club Leader 2; May Queen's Court 2; Basketball 1, 2; and "Berkeley Square."

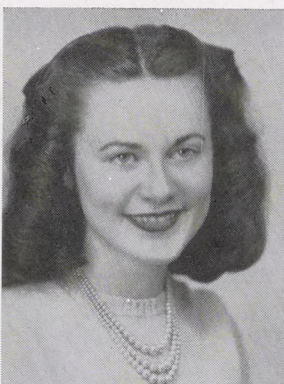




MARY E. GOYT

Shippensburg, Pennsylvania

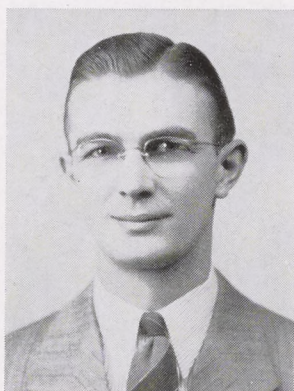
Women's Athletic Association 1, 2, 3, 4, Cabinet 2, 3; Masquers 1; Debate Club 3, 4, Secretary 4; Government Club President 4; English Club 3; Secondary Education Club 4; Cumberland Editorial Staff 4; Spring Sports 2, 3, 4; Basketball Officiating 3, 4; Varsity Hockey Squad 1, 2, 3, 4; Archery Club 4; and "Merry Wives of Windsor."



LILLIAN E. HAAS

Harrisburg, Pennsylvania

Masquers 2, 3, Secretary-Treasurer 3; Campus Christian Association Cabinet 1, 2, 3, President 3; Round Table 1, 2, 3, President 3; Boarding Women's Council Secretary 3; President's Council 3; Campus Reflector Editorial Staff 1, 2, 3; Cumberland Assistant Editor 3; Choral Club 1, 2, 3; Romance Language Club 1, 3; Hockey 1, 2, 3; Tennis Club 1, 2, 3; Bible Club 1; Kappa Delta Pi 3; Class Historian 1, 2; Art Club 1; and "Brief Music," "Man Who Married a Dumb Wife," "Berkeley Square."



EUGENE R. HARTMAN

Gettysburg, Pennsylvania

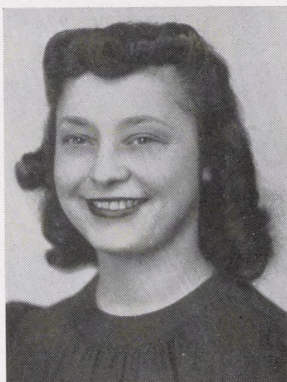
Campus Reflector 1, 2, 3, 4, News Editor 2, Managing Editor 3; Who's Who in American Universities and Colleges 3; President's Council Treasurer 3; President of Class of '43 3; Band 1, 2, 3; Orchestra 1, 2, 3; Basketball 1, 2; Phi Sigma Pi 2, 3, 4; Waiter's Association 2, 3; Masquers 1, 2, 3, 4; and "Berkeley Square."



JEAN MORGAN HARTMAN

Shippensburg, Pennsylvania

Campus Reflector Staff 1, 2, 3, 4; Masquers 1, 2, 3, 4; Women's Athletic Association 1, 2, 3; English Club 2, 3; Cooperative Education Club 2, 3, 4, Vice-President 3, President 4; Art Club 3; Kappa Delta Pi 3, 4; and "Berkeley Square."



DIANA L. HEAGY

Harrisburg, Pennsylvania

Masquers 1, 2, 3, 4; Women's Athletic Association 1, 2, 3, 4; English Club 1; Cooperative Education Club 2, 3, 4, Secretary 4; and Table Tennis Club 3.



MARY HEINTZLEMAN

Fayetteville, Pennsylvania

Class President 4, Vice-President 3, Secretary 1, 2; President's Council 4; Women's Athletic Association Cabinet 2, 3, 4, Secretary 4; Women's Athletic Association 1, 2, 3, 4; Swimming Club 1, 2, 3, 4, Leader 3; Spring Sports 2, 3; Hockey 2, 3; Ping Pong Leader 2; College Athletic Council 4; Dancing Club 3, 4; Campus Reflector Editorial Staff 3, 4; Cumberland Editorial Staff, 4; and Cooperative Education Club 4.

LILLIAN A. JANTON

Philadelphia, Pennsylvania

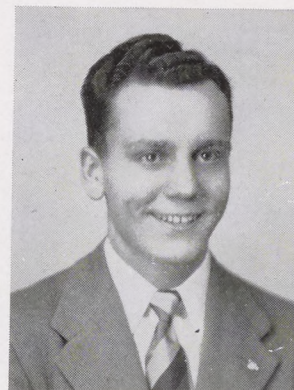
Masquers 1, 2, 3, 4, President 3, 4; President's Council 3, 4; Swimming Club 1, 2, 3, 4, Leader 4; Tennis Club 1, 2, 3, Leader 3; Class Treasurer 2, 3; Women's Athletic Association 1, 2, 3, 4, Cabinet 3, 4; Cumberland Business Staff 4; Spring Sports 2; and "Merry Wives of Windsor," "Heart of a City," "As You Like It," "Brief Music," "The Guardsman."



RAY E. KEGG

Bedford, Pennsylvania

Campus Christian Association 2, 3, 4; Vice-President 3, President 4; Band 1, 2, 3, 4, Vice-President 4; Orchestra 1, 2, 3, 4; Men's Glee Club 1, 2, 3, Secretary 3; Boarding Men's Student Council 4; President's Council 4; Who's Who Among Students of American Universities and Colleges 3; Intramural Basketball and Volleyball 1, 2, 3, 4; Veteran's Club 4; and Secondary Education Club 4.



PHYLLIS L. KINDIG

York, Pennsylvania

Women's Athletic Association 1, 2, 3, 4; Masquers 1, 2, 3, 4; Mathematics Club 1; Swimming Club 3; and "Merry Wives of Windsor," "As You Like It," "The Rivals."



PHYLLIS L. KLUCKER

Carlisle, Pennsylvania

Class Vice-President 2, Treasurer 4; Masquers 1, 2, 3, 4, Secretary-Treasurer 3, Vice-President 4; Women's Athletic Association 1, 2, 3, 4, Cabinet 4; Swimming Club 3; Dancing Club 3, 4; Cumberland Staff 4; Cooperative Education Club 4; and "Heart of a City," "Brief Music," "Merry Wives of Windsor," "Cradle Song," "Berkeley Square."



ROBERT KNOX

Gettysburg, Pennsylvania

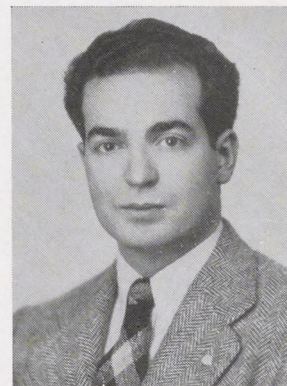
Business Education Club 1, 2, 3, 4, Treasurer 2; Cumberland Subscription Staff 1; Catholic Club 3; Football Team 1; Basketball Team 1; and Campus Reflector Business Manager 1.



CARMELO M. LAMANCUSA

Altoona, Pennsylvania

Masquers 4; Catholic Club 4, President 2, 3; Phi Sigma Pi 2; Art Club 1; and "The Guardsman," "Berkeley Square," "Tovarich," "Outward Bound," "The Man Who Came to Dinner."

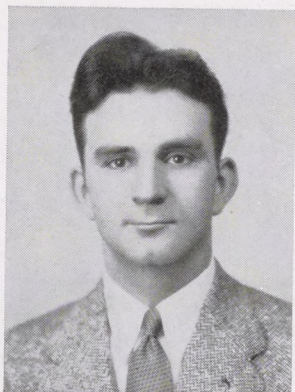




CHARLES E. LEHMAN

Collingdale, Pennsylvania

Phi Sigma Pi 2, 3, 4; Kappa Delta Pi 3, 4; Pi Omega Pi 4; Color Guard 2, 3; Manager of Track 1, 2; Business Education Club 2, 3; Veteran's Club 4; and Class Vice-President 2.



ROLAND E. LONG

Millerstown, Pennsylvania

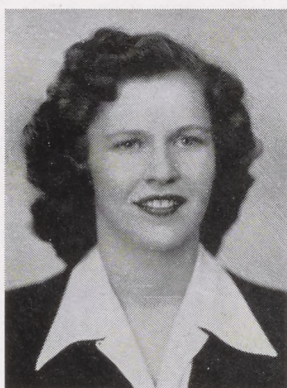
Country Life Club 1, 2; Arts and Crafts Club 1, 2, 4; and Veteran's Club 4.



MARY C. McVITTY

Chambersburg, Pennsylvania

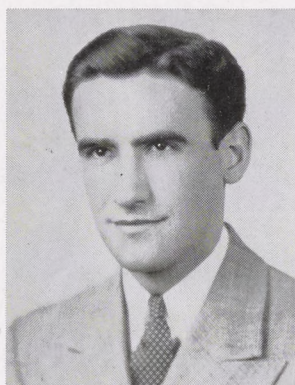
Art 1, 2; Romance Language Club 1, 2, 3, 4; Round Table 3, 4, Vice-President 4; Mathematics Club 1, 2, 3, 4, Secretary 2, 3, Parliamentarian 4; Varsity Hockey 4; Co-operative Education Club 4; Archery Club 4; Spring Sports 1, 2, 3, 4; Women's Athletic Association 1, 2, 3, 4; Bible Club 4; Ping Pong Club 1, 2, 4; Day Women's Council 4; and Hiking Club 1, 2, 4.



JEANNETTE E. MEANS

Shippensburg, Pennsylvania

Women's Athletic Association 1, 2, 3, 4, Cabinet 2, 3, 4; May Day Attendant 1, 4; Cooperative Education Club 4; Spring Sports 2, 3, 4; Cumberland Staff 4; Day Women's Council 1, 2, 3, 4, President 4; Hockey 1, 2, 3; Archery Club 4; Class Secretary 3; Class Vice-President 4; and President's Council 4.



ERNEST E. MELHORN

York, Pennsylvania

Cooperative Education Club 1, 2, 3, 4; English Club 3; Boarding Men's Association 3, President 4; President's Council 3, 4; International Relations Club 2, 3; Philosophy Club 1, 2; and Intramurals 1, 2, 3, 4.



JEAN L. MILLER

Altoona, Pennsylvania

Masquers 2, 3, 4; Choral Club 2, 3, 4; Bible Club 2, 3, Vice-President 2, President 3; Women's Athletic Association 2, 3, 4; Hockey 3, 4; Basketball 2; Swimming Club 3, 4; Spring Sports 2, 3, 4; Dancing Club 3, 4; Campus Christian Association 2, 3, 4, Treasurer 3, Corresponding Secretary 4; Cumberland Advertising Manager 4; Hiking Club 4; and "As You Like It," "Midsummer Night's Dream," "The Voyage of the Wee Red Cap," "The Princess and the Swineherd," "Hyacinths for Christmas."

PEARL MILLER

Pottstown, Pennsylvania

International Relations Club 2, 3, 4, Secretary 4; Business Education Club 2, 3; Gamma Delta Gamma 2, 3, 4, President 4; Social Studies Club 3; Campus Reflector Business Staff 3, 4; and Advertising Manager 4.



RACHEL MILLER

Shippensburg, Pennsylvania

Art Club 1, 2; Basketball 1; Hockey 1, 2; Spring Sports 1, 2, 3; Women's Athletic Association 1, 2, 3, 4; Choral Club 3, 4; and Cooperative Education Club 4.



SARAH SEITZ MILLER

Shippensburg, Pennsylvania

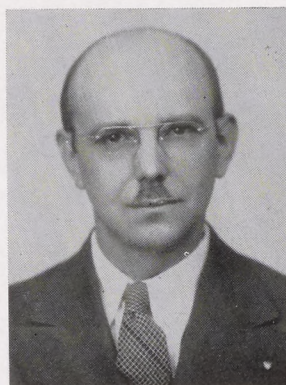
Masquers 1, 2, 3; Business Education Club 1, 2, 3, 4, Historian 3, President 4; Women's Athletic Association 1, 2, 3, 4; President's Council 4, Secretary 4; Swimming Club 2; Pi Omega Pi 4; Kappa Delta Pi 4; Day Women's Council 4; Cumberland Head Typist 4; and "Midsummer Night's Dream."



E. LEE OILER

Newville, Pennsylvania

Business Education Club 4; Government Club 4; Kappa Delta Pi 4; and Pi Omega Pi 4.



ELIZABETH M. OTT

Shippensburg, Pennsylvania

Masquers 1, 2; Campus Reflector Staff 1; Hockey 1, 2, 3, 4, Captain 1, Assistant Leader 3, Leader 4; Choral Club 1, 2, 3, 4, Vice-President 4; Women's Athletic Association 3, 4; Bible Club 3, 4, President 4; Archery 1, 2, President 2; Student Cooperative Association 4, Secretary 4; Cumberland Photography Editor 4; Class Secretary 4; May Day Attendant 2; Day Women's Council 3, Vice-President 3; and Hiking Leader 3.

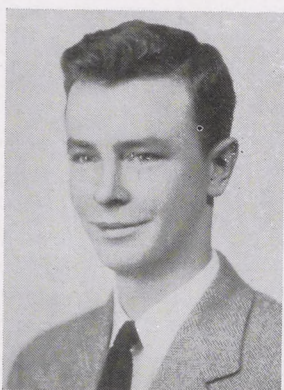


JOHN A. REBOK

Shippensburg, Pennsylvania

Band 1, 2, 3, 4; Men's Glee Club 1, 2, 3, 4; Varsity Club 1, 2, 3, 4; and Tennis Team 1, 2, 3, 4, Captain 4.

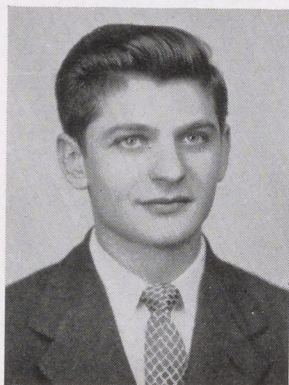




JEREMIAH D. ROHR

Shippensburg, Pennsylvania

Masquers 1, 2, 3, 4; Swimming Club 1, 2; Phi Sigma Pi 2, 3, Parliamentarian 3; English Club 2; Kappa Delta Pi 3, 4; Day Men's Association 4, Secretary 4; and "Tovarich."



THOMAS A. SCHADE

Berrysburg, Pennsylvania

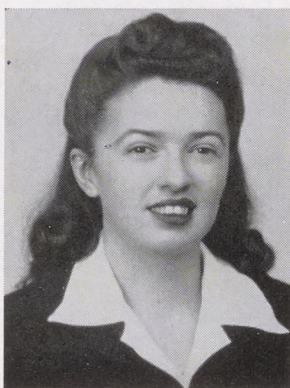
President's Council 1, 2, 3, 4, Treasurer 1, 3, 4; Campus Reflector Editorial Staff 1, 2; Band 1; Orchestra 1, 2, 3, 4, President 2, 3; Campus Christian Association Cabinet 1, 2, 3, 4, President 2, 3, 4; President of Class 1, 2, 3; Who's Who in American Colleges and Universities 2; and Kappa Delta Pi 3, 4, Treasurer 4.



JEANNE R. SHAMBAUGH

Lemoyne, Pennsylvania

Gamma Delta Gamma 4; International Relations Club 4; and English Club 4.



A. ELIZABETH SHEELY

Chambersburg, Pennsylvania

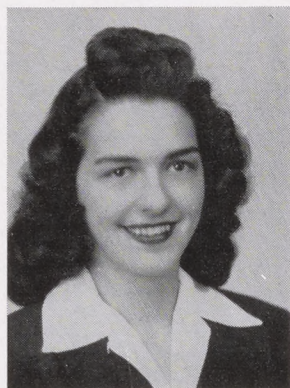
Business Education Club 1, 2, 3, 4; Art Club 2; Ping Pong Club 3; Campus Reflector Business Staff 4; and Cumberland Business Staff 4.



PHYLLIS J. SHELLENBARGER

Altoona, Pennsylvania

Art Club 1; Masquers 1, 2, 3, 4; English Club 2, 3, 4, President 4; Kappa Delta Pi 3, 4, Vice-President 4; Cooperative Club 4; Parliamentarian of Class 3, 4; Student Cooperative Association President 4; President's Council 4; Boarding Women's Council 4; Day Student Council 1; Women's Athletic Association 1, 2, 3, 4, Treasurer 4; Spring Sports 1, 2, 3; Hockey 1, 2, 3; Basketball 1, 2; Swimming Club 1, 2, 3; Cumberland Business Staff 4; and "Cradle Song," "As You Like It," "Mid-Summer Night's Dream," "The Voyage of the Wee Red Cap."



E. LOUISE SINGLEY

Arendtsville, Pennsylvania

Campus Christian Association 1, 2, 3, 4, Treasurer 1, 2; Women's Athletic Association 1, 2, 3, 4, Cabinet 2, 3, 4, President 4; Women's Boarding Council 4, Vice-President 4; International Relations Club 2, 3; Gamma Delta Gamma 2, 3, President 3; Kappa Delta Pi 3, 4, President 4; Orchestra 1, 2, 3, Secretary 3; President's Council 3, 4; Waiter's Association 2, 3, 4, Head Waiter 3, 4; Choral Club 1; Cumberland Editorial Staff 4; Varsity Hockey 2, 3, 4; Dancing Club 4; Varsity Basketball 1, 2, 3, 4, Leader 3; Spring Sports 3; Archery 4; Ping Pong 3; Band 1; College Council of Defense 2, 3; Swimming 3; Masquers 1, 2, 3, 4; and "The Rivals," "Much Ado About Nothing," "As You Like It," "The Man Who Married a Dumb Wife."

MAYNARD W. STATLER

Greencastle, Pennsylvania

Glee Club 2, 3; Country Life Club 2, 3; and
Camera Club 2, 3.



WANDA J. WHIPPO

Altoona, Pennsylvania

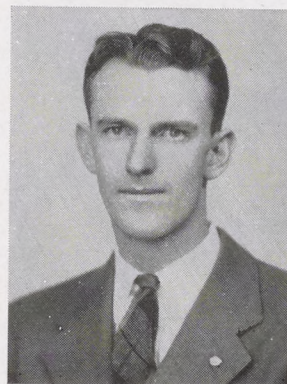
Art Club 1; English Club 4, Secretary-Treasurer 4; Class Historian 3, 4; Pi Omega Pi 4; Women's Athletic Association 1, 2, 3, 4; Spring Sports 1, 2, 3, 4, Leader 4; Hockey 1, 2, 3, 4; Basketball 1, 2; Swimming Club 1, 2, 3; Cumberland Business Manager 4; Campus Reflector Business Staff 2, 4; Dancing Club 4; Choral Club 1, 2, 3, 4; and Business Education Club 1, 2, 3, 4, Vice-President 4.



WILLIAM A. B. YOUNG

Harrisburg, Pennsylvania

Band 1, 2, 4; Orchestra 1, 2; Campus Reflector Business Staff 2, 3; Track 1, 2, 3; Basketball 4; Cross Country 2; Intramural Sports 1, 2, 3, 4; and Civilian Pilot Training 3.



LOIS V. ZIMMERMAN

Mechanicsburg, Pennsylvania

Cheerleader 2, 3; Masquers 2, 3, 4; Spring Sports 1, 2, 3; Hockey 1; Cooperative Education Club 1, 2, 3, 4, Secretary-Treasurer 4; Women's Athletic Association 1, 2, 3, 4; Boarding Women's Council 3, 4; Cumberland Editorial Staff 4; and "Berkeley Square," "The Rivals," "Princess and the Swineherd," "Hyacinths for Christmass."



FRANK E. BASEHOAR

Littlestown, Pennsylvania

Country Life Club 1, 2, 3; President 2; International Relations Club 4; Baseball Team 2; and Varsity Club 2.

ERWIN W. HOWLAND

Shippensburg, Pennsylvania

Band 1, 2, 3, 4; Mathematics Club 1, 2; Basketball 3, 4; and Track 2.

Class History

OFFICERS

<i>President</i>	MARY HEINTZLEMAN
<i>Vice-President</i>	JEANNETTE MEANS
<i>Secretary</i>	ELIZABETH OTT
<i>Treasurer</i>	PHYLLIS KLUCKER
<i>Historian</i>	WANDA WHIPPO
<i>Parliamentarian</i>	PHYLLIS SHELLNBARGER

"We came, we saw, we conquered." These are the immortal words the late Julius Caesar has placed into the annals of time for the explicit benefit of the class of 1946 of S. S. T. C. to use, cherish and present to posterity as a fitting description of a class that has suffered but endured a stormy college life during war-time. Being more explicit, we shall present to you a panorama (alias a bird's eye view) of the ups, downs, and sugar shortages undergone by us as students during the past four years.

It was like this. According to an old axiom, "All good things come in small packages." This constitutes a picture of this dynamic freshmen class as we first stepped upon the campus of S. S. T. C. The campus, with its ivy-covered buildings gave a very picturesque scene, but the fountain was later to become more than a place in which to drown our sorrows in the event any of us had any such intentions.

The first week had much in store for us. First came the Freshmen Mix, the C. C. A. Picnic, the Sophomore Party, and a few tests thrown in for good measure. The football season followed and we had a few huskies to contribute to the team. Then, as all

good things must come to an end, the football season ended, and we set out with a will to conquer in our search for knowledge. An invitation to the Junior Prom interrupted our search, however, but we accepted this as our golden opportunity to break into the social circle.

February brought an abrupt end to all these gala affairs when Uncle Sam decided he needed practically all our men to assist him in fighting and winning a war. Our Freshmen men, not being slackers, joined the army and won the war—but, as we now admit—left the remainder of the class to look forward to a dismal future. Spring arrived with all its beauty, but it was a lonely spring, which was followed by a much needed vacation.

When we returned in our sophomore year, we found the campus as we had left it, swamped with females, and our class proved an utter disgrace, having dwindled to thirty-eight girls and two handsome fellows. But, with only forty of our original seventy enrollment, we persisted in struggling onward. During this year our class leaned toward the conservative side, for letters from our classmates of the previous year

Class History (Continued)

continually reminded us of the grave era through which we were passing. Despite the times and the limited supply of men on the campus, we managed to have a football team. This team proved to be a great morale builder for the coeds as they didn't lose a game that season.

We found many vacancies that year in various clubs and organizations and did well to distinguish ourselves as members of the ruling bodies. During this year also, two of our members, Teddy Janton and Phyl Klucker, did well to distinguish themselves in the Masquers' eventful production of "Heart of a City." Then, before we realized, our sophomore year had terminated and still we remained a small, but dynamic class.

September, 1944, and we eagerly returned to our Alma Mater to see what the fates had stored for us. A quick glance about the campus disclosed — situation unchanged — still an all time low with regard to male population. But, with the hope that better days were to come, we returned to the normal routine. This was our year to shine! The Junior Prom was the main event of the year. We were determined not to have an all-girl affair as all the other social activities on campus seemed to be. We invited the air cadets from Carlisle, sailors from Emmitsburg and asked the sophomore and freshmen classes for financial aid. After many meetings involving long discussions, plenty of headaches, and lots of hard work, the big night finally arrived. Even though many of us had never been aboard an ocean liner, on that night, December 8, we all boarded the S. S.

Shippensburg and danced to the rhythm of Red McCarthy's orchestra. None got seasick and a swell time was had by all—we think. We owe a great deal of thanks to Miss Kauffman and Mr. Krebs for their guidance and helpful suggestions for this affair.

Then, as usual, came finals, with their cramming and black coffee to keep us awake and suddenly again — only too soon — vacation with its rest and serenity.

SENIORS — as the big wheels on the campus (we think) we found we had reached the dreaded plague—student teaching. It was a headache, but we survived and even had time for a few teas, parties, picnics and dances. Then came name cards, announcements, and dashing off applications (not to mention sleepless nights because of this yearbook).

This year, however, was our brightest, because the skies were no longer darkened by war. The G. I.'s were returning, the date room buzzed and suddenly we realized we were to graduate from a CO-ED school.

Thus it was, dear readers. Perhaps your reactions are those of sympathy or maybe entertainment or even delight—but whatever the case may be, you may take it or leave it, for one thing is certain with us—we are leaving you now. We bid a fond farewell to the fountain, the tower, Christmas sings, May Day, Solomon's Temple, the bridge and various other places and events synonymous only with S. S. T. C. It was an interesting and eventful four years to us. "Parting is such sweet sorrow."

Class Will

The class of 1946, in this, our last will and testament, do hereby bequeath our priceless possessions, our outstanding qualities (desirable, undesirable or otherwise), and our countless acquisitions to the dear, dear underclassmen who will follow in our footsteps. We trust that you will profit by these legacies and enjoy all the success, fun and happiness that we have had during these four short years.

Ida Arms wills her love of gym classes to anyone who wants it and Elaine Arnold leaves her orchestra seat to anyone who loathes learning new selections. To Ernie Brindle and Mary's new roommate, Betty Baird wills full responsibility for her sister and claims, "That will be a job for anyone!" Frank Basehoar leaves his baseball playing ability-catcher's mit and all to Dean Wright. Miriam Shoff Bedlyon leaves the key to room 310, fourth floor of Old Main to Millie Prince. William Beible gives "without malice" the esteemed company of "Bull" Muir to whomever will accept it. Doris Born leaves her swimming ability for Barbara Yingling. Polly Breneman is already making good use of the charge account in the bookstore left her by Pat Bower. Eloise Cohen gives her ability for getting into trouble to anyone with the initiative and ingenuity to get

out of it. That gray limousine that has hauled the first floor crowd to so many spaghetti socials, Marty Cooper wills to Jean Wambaugh so she can sell it legally. Rose Contino leaves her dancing feet to all future Eleanor Powells of Shippensburg. (Dottie Zlokas isn't doing bad!)

This looks like a good deal: Sylvia Ebersole leaves her old paper money for Fred Wolfe. Lil Haas wills her seat in chapel, half a dozen mouse traps and a fishing rod to Hazel Brooks. Diana Heagy gives her pitch pipe and best wishes to Miriam Wagner. To Bridgett, Virginia Gardner leaves her undying devotion to the S'burg Tech. Phyllis Drucker is the recipient of Mary Goyt's curls; the rain never hurts them. The Masquers will be pleased to learn that Gene Hartman has willed them his bowlegs, and his better-half, Jeanne Morgan Hartman, wills all her twittering roles in Masquer productions to the most efficient twitterer in the club. Mary Heintzleman leaves the weight she lost in the past four years (believe us, she tried) to anyone who weighs 250 pounds or more.

Erwin Howland wills his Japanese sword to the education courses so that they can commit Hari Kari. Lillian Janton leaves her "Dr. Denton's" to Mike Roll,

Class Will (Continued)

who looked so bewitching in them on April 3. All Ray Kegg has is Kennett Square and that he wants to keep. Phyllis Kindig leaves her beautiful suntans to the crowd that inhabits the back campus from April until June.

Jeanne Eberts will be glad to hear that she will inherit Phyllis Klucker's two-page term paper. Robert Knox wills his date book to Lee McBeth. Carmelo Lamancusa gives his apartment to Jack Stewart and Charles Lehman gives his slim waistline to Donald Abrahamshoff. Choice education books and a smattering of select history-report material will go with the seat in the library which Roland Long wills to Floyd Wolfgang. Mary McVitty wills her vacant 8:15 periods of the past three years to Dorothy Leonard and Hilda Bower. The furniture in the Day Room has been generously donated to Horton Hall by Jeannette Means. Ernest Melhorn leaves his dignified position as tablehead to Charles Goodling. Jean Miller leaves her second grade teaching position to Olive Babcock. Pearl Miller gives her concert tickets to anyone who can stand a trip to Harrisburg in the station wagon. Rachel Miller's cutting of 8:15 classes is willed to Anna Mae Bittinger. Sarah Seitz Miller wills her sleep to Pauline Brenneman.

Lucky Homer Powell will be pleased to learn that Lee Oiler is giving him his moustache cup. Mr. Oiler also owns a certificate in the Married Men's Club which he graciously offers Mr. Shearer.

Elizabeth Ott wills her room in the girl's dorm to any day student who would like to try a little rugged life for a semester. To Pearl Martin and Ann Lightner, Elizabeth Sheeley bequeaths her '31 Chevy to be used while they attend S. T. C. Phyllis Shellenbarger leaves her love of teaching music to Phyllis Drucker. John Rebok gives his punctuality to Leroy Wise. Jerry Rohr's dramatic characterizations go to Rudy Chuchek. Tom Schade leaves his corny jokes to—Sorry; he still hasn't found anyone who'll accept them. Jeanne Shambaugh gives the high school to all secondary majors foolish enough to go through with it. Louise Singley throws her hatred for men to Ann Whyte.

Frank Smith, lucky chap, is willed the ability to stay awake and look alert in any class whatsoever by Maynard Statler. Wanda Whippo gives her typewriter to Mary Baird (since it's in her room most of the time anyway). Bill Young's height goes to Herman Gordon for those basketball games. Lois Zimmerman wills her desire to play a young girl's part in Masquers productions to Mary Koser.

In Witness Whereof, we, the class of 1946 of Shippensburg State Teachers College, do set our hand and seal to this our will, on the twenty-eighth day of May in the year of our Lord, one thousand nine hundred forty six.

Signed, sealed and delivered by:

THE CLASS OF 1946.

Class Prophecy

Greeteengs, Class of 1946! Per-meet me to eentroduce myself. I am Madame la Tinkshe Knowsit, who for a veree small sum weel tell you ze strange meesteries of ze future. Een 1966 you weel be scattered to ze far cornairs of ze earth. Ah, but wait. For you I weel tell all for free. Let us gaze eento ze creestall ball an' see vot she say.—

Ah, first we see a peecture of great success; Ida Arms has dees-covered ze one hundredth eleement! She has call eet ittehgap—spelled backwards, eet spells spaghetti. Her assistant on ze discoveree, was none uder than ze eminent scientist, Dr. Frank Basehoar. Now we see a swank shoppe on Market Street een ze ceety of York, vere Elaine Arnold has oodles and oodles of bracelets to catch ze eye of all you young ladees. Looking een ze weendow I see a handsome naval officaire an' ten leetle vuns. An' zere ees zere muzzer, ze formair Mees Betty Baird.

Now I see a cozee keetchen vere Miriam Bedlyon ees making a cherree pie for zat man Tony. Zese should make heem veree happy. William Beible will be pleezed to hear zat he has a good start een life for he is ze basketball coach at ze college they call Hunter. An' here I see two more

of your classmates. Ze scene ees een Hawaii vere Doris Born and Pearl Miller are conteenuing zere teaching career. Een zees same locality I see Patricia Bower. She weeshed to hop a freight train but vas not fas' enough so she stow away on a freighter eenstead.

Ah, ze creestall ball shows your own alma mater where Eloise Cohen has just been elected ze new dean of women. I see, too, Martha Cooper and Elizabeth Ott wandering aroun' ze campus steel looking for zere secret ambetion. Vy don' vun of you tell zem vere eet ees? Rose Contino and Phyllis Klucker spend aH zere time here too, searching for material for Mess Klucker's novel entitled "The Story That Has Never Been Told" or "Vy Do Zey Bar Ze Door at Eight O'clock?" Now I see a group of jollie teachers who are spending zee hardearned pay for a treep aroun' ze world. Sylvia Ebersole, Diana Heagy, Elizabeth Sheely, Phyllis Kindig, and Jeanne Shambaugh are making a studee of ze secondary education seestem of Utopia. How astoneeshed zey are ven zey read an American newspaper an' see zat Virginia Gardner, zere old classmate, ees now living on ze moon! Zey also read zat two uzzer classmates, Mary Goyt and Erwin Howland are firmly establieeshed een Alaska teach-

Class Prophecy (Continued)

ing ze Eskimow. Ze famed novelist, Gene Hartman, has just become ze proud papa of tweens. Hees wife say zey should be of . . . so . . . eenteresting to rear.

Mary Heintzleman has just completed twenty successful years in the teaching profession. Her goal ees seventy-five years. Lillian Janton has nevaire been able to realize her secret ambeetion. Ze "gentlemen" on your campus weel always be masters of dropping H₂O bags on ze unsuspecting females of your school. Ray Kegg, who has always wanted to be a collector of odd theengs like women, has been safely married for nineteen years. Robert Knox and Carmelo Laman-cusa have just bought a half eenterest een Charles Lehman's huge tractor-trailer truck. Beeznness ees booming! Roland Long, who has hees own queez show, had a contestant last week whose appetite equaled that of Lehman and Wolfgang.

Hm, now I see a large auditorium feelled weeth many people. Tonite, Mees Mary McVitty weel make her debut as a seenger for ze Metropolitan Opera. On ze same program ve weel hear characterizations by zose famous actors, Ernest Melhorn an' Jerry Rohr. William Young is ze owner of zese opera house and next week weel present Thomas Schade in hees famed impersonation of Abraham

Lincoln and John Rebok as Napoleon. Among ze famous people een ze audience I see Jeannette Means, who ees nationally famous as a training teacher in elementary education; Maynard Statler, who has just returned after leading an expedition to ze North Pole, accompanied by Mr. Keith Allan as hees chief meteorologist; and Wanda Whippo, who has estab-leeshed an orphanage for homeless children.

Now I see a local newspapaire. I read zat Lois Zimmerman, principal of the Ness Kindergarten, Louise Singley and Sarah Seitz Miller, both happily married, are veesiting Phyllis Shellenbarger at her horse ranch in Colorado. Eet would be well for Rachel Miller to veesit ze ranch also for zen she could sleep every morning unteel noon.

Ah, ze creestal ees clouding. We mus' hurry. Lee Oiler, I see zat your weesh to become a membaire of ze class of 1946 has come true. Mr. Oiler ees now working for hees master's degree. Now I see dogs, hundreds of zem! They belong to Lil Haas, who has finally estab-leeshed kennels west of Mechanicsburg. Believe eet or not, zey all have ze sad eyes.

Ze creestal has spoken. For all of you eet predicts happiness and success. Go now eento ze world an' make your weeshes come true.

Class Poem

CLASS DOGGEREL

Gone are the days of eight-fifteens;
No more thrilling Masquers' scenes;
Junior Proms and Sophomore Hops
Have gone the way of last year's crops.

Semester finals we can spurn;
Remember how we'd twist and turn?
No more Chapel Wednesday morning—
Miss a few and get a warning!

No more wading in the fountain,
Hiking up to old South Mountain;
Nor ducking well aimed water bags,
Most frequent of the men's dorm gags.

We've had our last of Christmas sings
As from the Tower music rings;
Our campus, garbed in winter white,
Is bright, but in our memories' sight.

May Day courts and Shakespeare plays;
Waitresses carrying heavy trays;
Day and dorm girls having feuds,
Now to us seem passing moods.

Gone are apple-polishing days;
We've reached the point where knowledge pays.
It's now "So long" to Levi's jokes,
Also the art of bumming smokes.

Alma Mater, we leave with regret,
But your inspiration we'll never forget;
As we reminisce, it's with sad refrain
We find we'll never be "Frosh" again.

—*E. Eloise Cohen.*

CLASSES

Class of 1947



OFFICERS

<i>President</i>	ALICE FEAREN
<i>Vice-President</i>	JANE BUTLER
<i>Secretary</i>	HILDA BOWER
<i>Treasurer</i>	MARY BAIRD
<i>Historian</i>	JEAN KRINER
<i>Parliamentarian</i>	LEWIS ZUBOVIC
<i>Class Deans</i> —MISS KIEFFER and MR. SPONSELLER	

Junior Class History

Stunned, dazed, and amazed, we stood in awe, looking over all the big, strange, new buildings back in the fall of 1943. Everything was so different! But upon registering and getting started in our new way of life we found it so much to our liking that we came back for two more years.

As this is supposed to be a class history, we'll begin by relating a few of the highlights of our Freshman year. After awaking from

our daze over the newness of it all, we were aware of the fact that there weren't many of the male species on our campus. However, we had been told about the "good old days" of Shippensburg when men were plentiful and dating couples wandered aimlessly about the campus. We were told that someday soon we, too, would have a part in this daily occurrence.

We decided that the best thing for us to do was to get down to

History (Continued)

work and wait for the day when the afore-mentioned men would once again be found lounging around the Court and the halls of Old Main.

There was much gaiety at our first Prom when the Air Cadets from Dickinson College were our guests. For weeks following the Prom we found numerous air cadets straggling about the campus.

Then came Spring with her common friend, laziness. Ah, but what's this — our girls using the front entrance to get to their classes, and oh my, such weird outfits as they are wearing. But pay no heed, chum, those were just our little freshman girls being initiated into the W. A. A. Last, but not least of the events of our freshman year, we along with the illustrious upperclassmen, of which group we were still a little shy, sweated out those much-feared finals. Then, home for a hard-earned rest.

We entered this institution one year later as supposedly sophisticated sophomores. We felt rather important this year because now at last there was a group behind us, who would have to look up to us. But we got used to the idea of sophistication and once more settled down to the long, hard year ahead. The Prom and the W.A.A. dance went as before except that this time we use the word "Sailors" where formerly were the words "Air Cadets."

This year we were settled enough to become more interested in our Fall and Spring plays, the

Choral Club Concert, and May Day. Following these events came the dreaded final exams; but this time we were a little more sure of ourselves, after having become acclimated to our instructors and their expectations of us.

The school year of 1945-46 is over now and we are more settled than ever and feel that we know where we are heading. Our spirits were boosted at the beginning of this year for two reasons: first, we were finally upperclassmen; second, and most important, we saw our school in the midst of transformation — our ex-servicemen were beginning to arrive on campus to brighten things up considerably.

But do you remember back in December of 1945, how we Juniors were oh, sooooo busy worrying about the Prom. For this year it was our class who should give the traditional affair for the seniors. Naturally, we were anxious to have it as a big event, and after it was over, we did feel just a little proud of our efforts. Our theme was "Winter Wonderland" and Red McCarthy provided the instrumentation. For the next few months, we Juniors rested from such strenuous activities and it was a well deserved rest, too.

So we now are anxiously looking forward to a bigger and better school next year, when we will be the Senior Class. And we feel certain that it will be the "normal year" that we have all been watching and waiting for since our entrance into S. S. T. C.

Class of 1948



OFFICERS

<i>President</i>	LEE MCBETH
<i>Vice-President</i>	ROBERT MILLER
<i>Secretary</i>	DORIS BARNHART
<i>Treasurer</i>	BETTY BULLER
<i>Historian</i>	EVELYN TAYLOR
<i>Parliamentarian</i>	HELEN SMITH

Class Deans—DR. LIENEMANN and MR. GROVE

History

In September of 1945 the class of '48 once again entered the portals of S. S. T. C. We arrived full of ambition, vigor, and eagerness for a year even more successful than when we were "Fresh."

Since we were no longer in this lowly category we did not get the attention and helpful advice we had received last year from the upperclassmen. Instead we found that we were helping to give it to a newer and larger freshman class. We, the Sophs, commonly known as the "wise fools," gave a party for the Freshmen to learn to know them better, to acquaint them better with us and the school, and to give them a few gentle hints to make them feel at home and get in the groove here at Shippensburg.

Remembering all the fun we had in our hayride party of our first year, we decided to have another one. This year it again proved to be just as lively and exciting as in our freshman year.

In the month of November we produced our special Chapel program. It was an old time Minstrel Show. Judging from the hilarious laughter of the audience and the many compliments we received, we were happy to conclude that our entertainment had been successful.

At the beginning of the second semester our class began making plans for the Sophomore Hop. There was quite a question as to whether or not it could be afforded, so after much thought it was agreed upon unanimously that with the hard work and cooperation of all the members of our class it could be done. The date was set as March 16.

During February and until March 16 we were busy making plans, working on various committees, selling tickets, and decorating the gym for the big event. The main attraction of our decorations was the revolving crystal ball with colors and other features appropriate for St. Patrick's Day.

Finally the big night arrived and it was a delightful success. Everyone had a grand time and the Sophomores' bank account swelled from the profits.

Suddenly we realized that spring had arrived and all too soon our second year was over. We are now patiently awaiting the arrival of September, 1946, when we shall again resume our activities at S'burg, this time as members of the Junior Class.

We thank Doctor Lienemann and Mr. Grove for their excellent guidance that led us through an eventful year in 1945-46.

Class of 1949



OFFICERS

<i>President</i>	RICHARD AUSTIN
<i>Vice-President</i>	ELWOOD KITE
<i>Secretary</i>	BARBARA STAUFFER
<i>Treasurer</i>	ANN WHYTE
<i>Historian</i>	DOROTHY RIGHTER
<i>Parliamentarian</i>	CLARENCE LEISINGER

Class Deans—MISS ROLAR and MR. WEAVER

History

On September tenth, nineteen hundred and forty-five, Shippensburg State Teachers College was blessed with ninety-two additions to its family. As usual, the feminine sex dominated the situation. It wasn't long before these "Freshies" found their "Place and Purpose."

The first week amid the ivy-covered buildings was as packed with activities as sardines in a can. The Freshman Mix, the C. C. A. Picnic, the Sophomore Party, the C. C. A. Party, and the Psych. Exams left little time to dream of home. Classes began and then time really flew.

With October came cool breezes and multi-colored leaves, but still no men. We saw much clinging ivy, but few clinging couples.

President Gilbert dropped into S. S. T. C. in time for the Thanksgiving dinner, and in time to wish a nice vacation to each student.

The end of this vacation saw the return of the Freshman Customs to the campus after fourteen years' absence. Why, oh why, did they have to start their hazin this year?

Overnight, it seemed, Christmas arrived with its traditional festivities. The Christmas Party in Horton Hall was a new and delightful experience to the Freshmen, and to Miss Hade, the new Dean of Women. The climax was the tree

sing on the front campus and the cocoa and doughnuts served afterwards in the dining room. Dr. Gilbert proved to be a "Jolly Good Fellow" at this little family gathering.

The vacuum left by semester vacation was filled by the welcome arrival of one hundred ten veterans. Once again S. S. T. C. became co-ed; results — basketball, requests for "date-rooms," prospects for next year's football team, and a renewed interest in education (?).

The future teachers had a brief interlude in their struggle for knowledge when, rigged in their best attire, they danced to the melodies of Frank Taylor's Orchestra at the Sophomore Hop on March 16. The gymnasium must have been greatly surprised to see ladies dancing with men again, instead of with other ladies. Again we interrupted education to patronize the W. A. A. Dance on April 6.

From here on out, we had to put away our gowns and tails and took up more serious tasks. With final exams not far away, an overdose of mental matter was requisite. We set to work with a will and won. We shall return next year, not as the babies of the family, but as Sophomores, and with a great determination to make the second quarter of the four-years run as successful as the first.

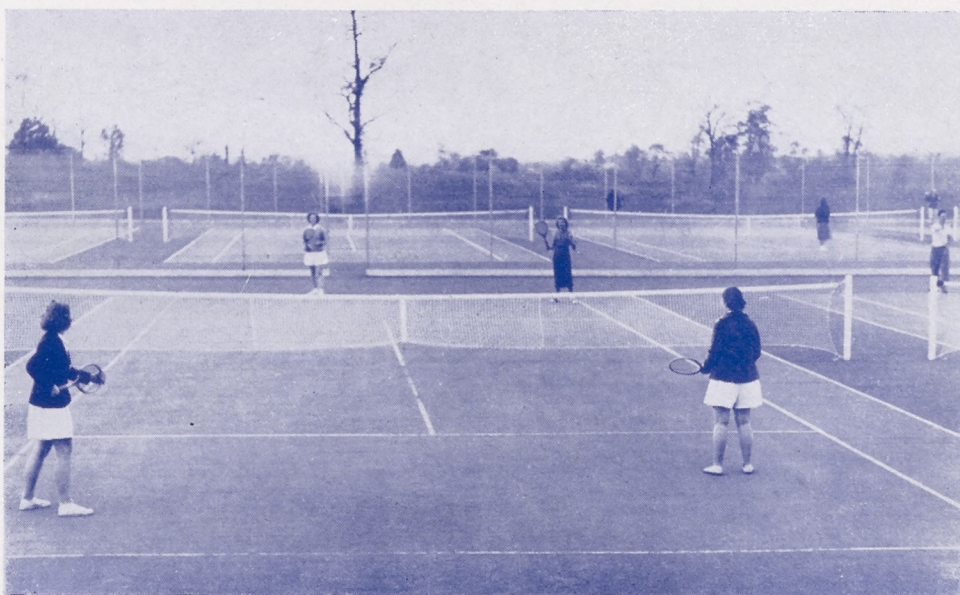


As
Time
Goes
By

Explanation

During the past 75 years, not only the physical features of our campus have changed, but also the manners and appearance of the mortals who have trod upon our sacred ground. On this, our 75th birthday, we bid you look observe the changing aspects of those who have passed through our portals.

Tennis Courts



The Faculty



Athletic Field



Hockey Team



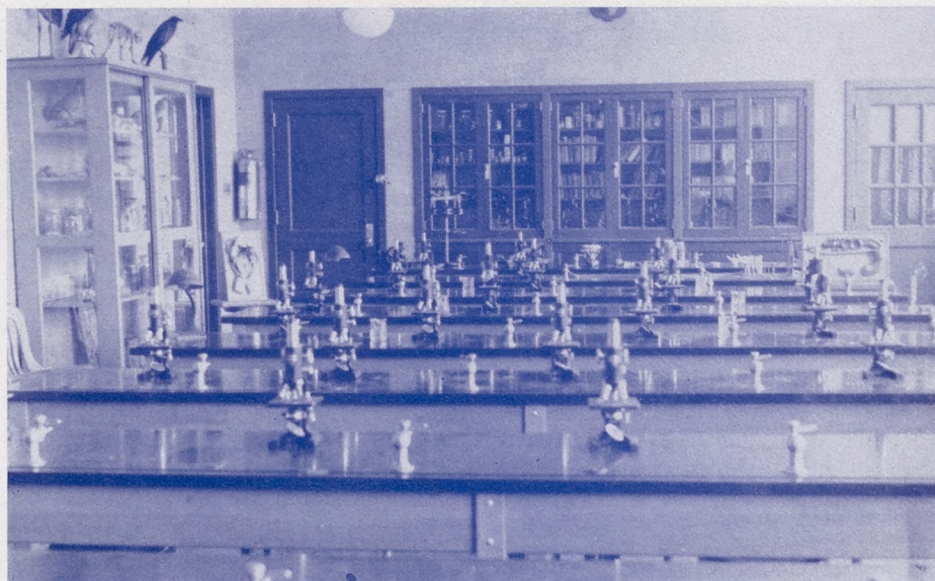
Women's Basketball Team



Men's Basketball Team



Biology Laboratory



Class Drill



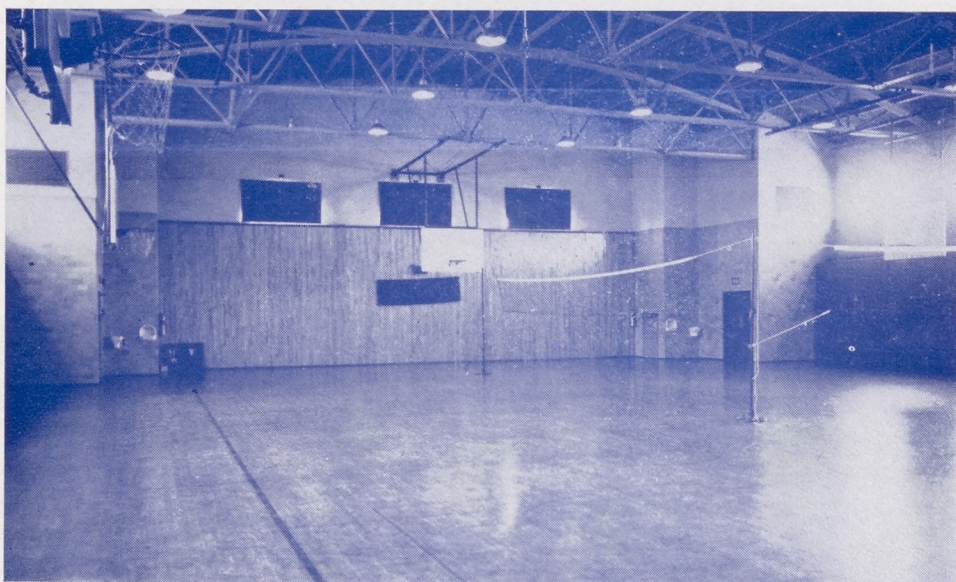
Practice Teaching



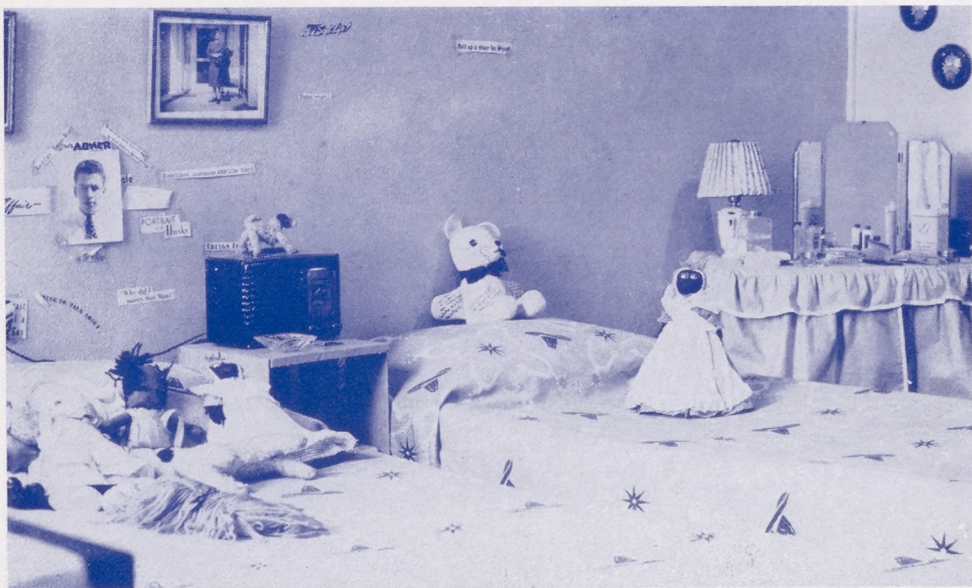
Interior of the Library



Interior of the Gymnasium



Women's Dormitory Room



Men's Dormitory Room



Commercial Class



ORGANIZATIONS

Student Cooperative Association



President PHYLLIS SHELLNBARGER
Secretary ELIZABETH OTT
Adviser MR. JOHN W. LACKHOVE

Business office handles major portion of the work

Under direction of Mr. John W. Lackhove

Determines, collects and distributes yearly activity fee

Guidance of bookstore and cafeteria its business

Entire student body composes its membership

Takes care of gate receipts of lyceum and athletic programs

President's Council

Conglomeration of club presidents

Arranges annual budget

Under leadership of Dr. Gilbert

Concerned with student needs

Unusual talent in organizing

Sets up handbook each year

<i>President</i>	DR. GILBERT
<i>Vice-President</i>	WILLIAM SABO
<i>Secretary</i>	SARAH SEITZ MILLER
<i>Treasurer</i>	THOMAS SCHADE (1st Semester)
	RICHARD AUSTIN (2nd Semester)



Boarding Men's Student Council



<i>President</i>	WILLIAM SABO
<i>Vice-President</i>	WILLIAM BEIBLE
<i>Secretary</i>	LEE MCBETH
<i>Treasurer</i>	HOMER POWELL
<i>Adviser</i>	MR. SHEARER

Insistent of orderliness

Night life prevalent

Makes rules in men's dorm

At times enforces these rules

Tries to keep voices down to shouting

Engages in frequent card tourneys

Specialists at pinochle

Day Men's Student Council

Regulators of authority

Over-stuffed furniture for day use only

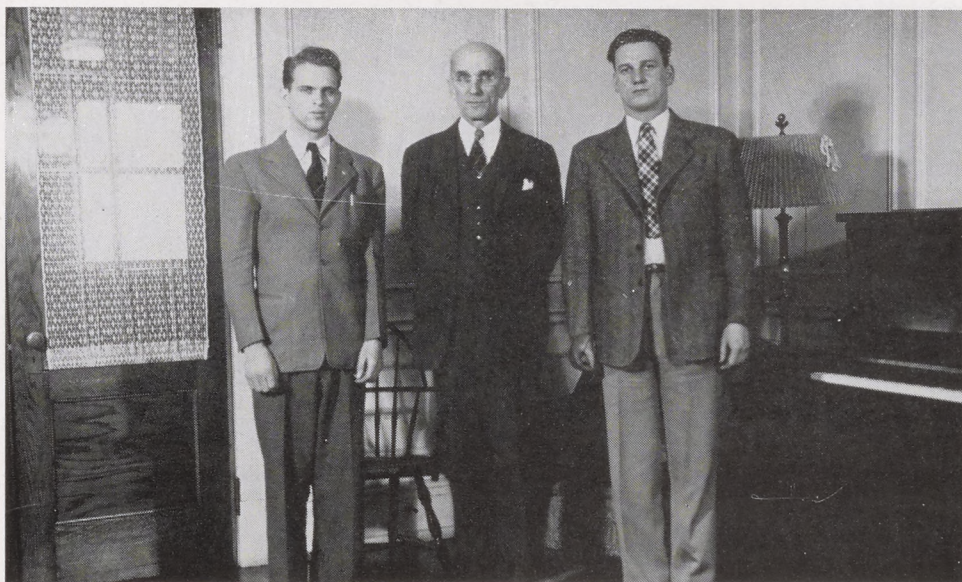
Vanquished rulers of discipline

Enforcers of justice and peace

Reckless responsibility its password

Supervises conduct of the day men

<i>President</i>	JOHN STEWART
<i>Vice-President</i>	FRANK SMITH
<i>Secretary</i>	JERRY ROHR
<i>Treasurer</i>	RAYMOND LEMASTER
<i>Adviser</i>	MR. SHEARER



Boarding Women's Student Council



<i>President</i>	ELAINE ARNOLD
<i>Vice-President</i>	LOUISE SINGLEY
<i>Secretary</i>	LILLIAN HAAS
<i>Treasurer</i>	IDA ARMS
<i>Adviser</i>	MISS NAOMI K. HADE

Horton Hall its domicile

Aims to provide best social standards and attitudes

Receptions and teas are among its functions

Elections held each spring to select its members

Monthly parties sponsored for entire dormitory

Day Women's Student Council

Demons of Old Main

Extra care given stray animals

Note the excitement and confusion

Interested in smoking and playing cards

Zenith of delight is rearranging the furniture

Enforces its rules and regulations

Nix to griping, action is demanded

Specialists in the art of gab

<i>President</i>	JEANNETTE MEANS
<i>Vice-President</i>	DOROTHY LEONARD
<i>Secretary-Treasurer</i>	HILDA BOWER
<i>Adviser</i>	MISS NAOMI K. HADE



Veterans Club



<i>President</i>	WILLIAM BEIBLE
<i>Vice-President</i>	PAUL KOEHLER
<i>Secretary-Treasurer</i>	NILES GROSS
<i>Advisers</i>	DR. LEVI GILBERT
	MR. JOHN LACKHOVE
	MR. HARLING SPONSELLER

Getting used to civilian life

Interested in becoming demilitarized

Just the same as ever, really

Opposed to draft dodgers

Escapes often to the American Legion

Specialty is talking of wine, woman, and song

Secondary Education Club

Proposals for hilarity graciously accepted

Resolves to become efficient teachers

Offers membership to all secondary students

First year of existence for the club

Suggests and discusses secondary education problems

<i>President</i>	PAUL KOEHLER
<i>Vice-President</i>	FRED WOLFE
<i>Secretary-Treasurer</i>	ALICE BRUMBAUGH
<i>Historian-Parliamentarian</i>	LEWIS ZUBOVIC
<i>Sponsors</i>	MR. HARLING E. SPONSELLER
	MR. SIMON S. SHEARER



Kappa Delta Pi



<i>President</i>	LOUISE SINGLEY
<i>Vice-President</i>	PHYLLIS SHELLNBARGER
<i>Secretary</i>	ELAINE ARNOLD
<i>Treasurer</i>	THOMAS SCHADE
<i>Historian</i>	IDA ARMS
<i>Sponsors</i>	MISS ERMA K. ROLAR DR. EARL WRIGHT

Qualifications of scholastic achievement essential for membership

Ultimate goal of earnest students is membership

Initiation is held each fall

Zealous growth under Miss Rolar and Dr. Wright

Kappa Delta Pi local campus branch is Epsilon Epsilon chapter

Includes social and professional events in the yearly program

During the year the group attends the theatre and cultural events

Selective membership makes it a noteworthy organization

Pi Omega Pi

Tellers and bankers of the future

Youthful Roger Babsons

Can balance budgets better

Outstanding business education students

Obstinate toward approximations

No business problem too difficult

Selective membership

<i>President</i>	JOSEPHINE ARCURI
<i>Vice-President</i>	PHYLLIS HOKE LEHMAN
<i>Secretary</i>	MARY JANE ALDINGER
<i>Treasurer-Historian</i>	ADALINE SEITZ
<i>Sponsor</i>	DR. ETTA SKENE



Masquers



President LILLIAN JANTON
Vice-President PHYLLIS KLUCKER
Secretary-Treasurer LILLIAN HAAS
Sponsor MISS MARY E. YORK

The major productions under direction of Miss York

Have outstanding fall, spring, Christmas and chapel plays

Entertainment is one of their aims

Skilled artists, each and everyone

Practical training in dramatic techniques acquired

Insistent of perfection

Appause is their only tangible reward

Never forget Shakespeare on May Day

Seven-fifteen each Tuesday is curtain-time

Choral Club

Weaver's proteges

Affable, attractive, audible

Ready, willing and able to sing

Big concert given each spring

Luscious blending of voices

Exciting to hear

Richness of quality

Satellites of Lily Pons

<i>President</i>	BETTY BAIRD
<i>Vice-President</i>	ELIZABETH OTT
<i>Secretary</i>	ESTHER SOLLENBERGER
<i>Treasurer</i>	HARRIETT SHIVELY
<i>Sponsor</i>	MR. JAMES WEAVER



Band



President JAMES W. KING
Secretary ALETHEA RIDER
Sponsor MR. JAMES WEAVER

Triumphant marches
 Opportune at football games
 Open to anyone who blows a horn
 Tussles to see who is loudest
 Erstwhile followers of MacNamara
 Repeat the last bar, says Mr. Weaver
 Stimulating, satisfying, superb

Orchestra

Melodius perfection

Assemblage of musical artists

Easy to listen to

Symphonies a specialty

Tranquillity of tone

Restful to the ear

Obligato appreciated

<i>President</i>	ELAINE ARNOLD
<i>Secretary</i>	DOROTHY KNEPPER
<i>Sponsor</i>	MR. JAMES WEAVER



Brass Quartette



<i>Baritone</i>	JEANNETTE KURTZ
<i>Cornet</i>	DALE BRINDLE
<i>Cornet</i>	ALETHEA RIDER
<i>Baritone</i>	WILLIAM SABO
<i>Sponsor</i>	MR. JAMES WEAVER

Happy hours constitute happy players

Amorous arias can be heard

Rollicking rhythm and enchanting melody

Music makers for special assemblies

Orchestrations under capable leadership

Nocturnes and notes

Yehudians one and all

String Quartette

Makers of melodious tunes

Enduring young charms

Lullabies and ballads

Old and new tunes and tones

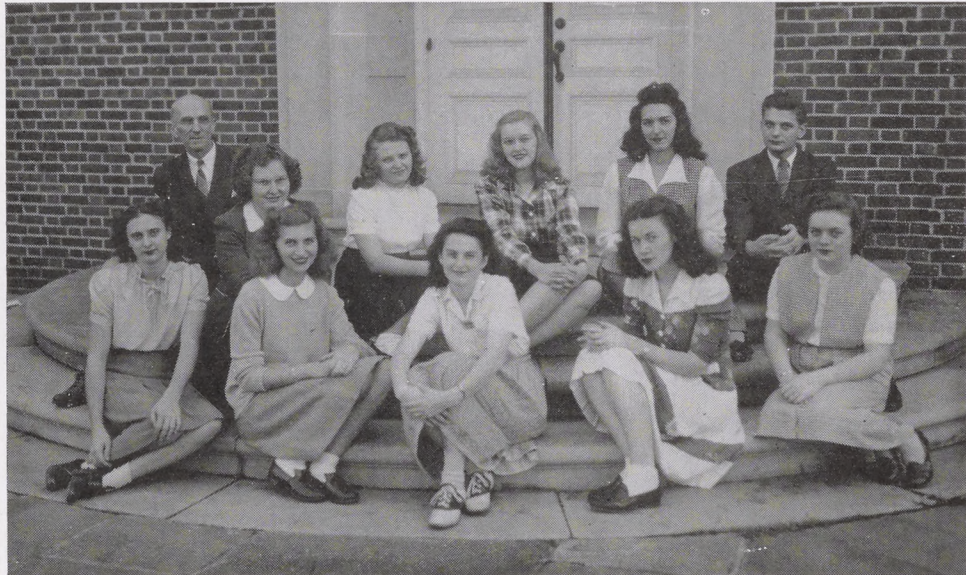
Daily ditties practiced energetically

Yonder echoes from the chapel

<i>Violin</i>	VIRGINIA LEASE
<i>Violin</i>	DORIS KERNS
<i>Violin</i>	CAROLYN FREY
<i>Violon-cello</i>	ELAINE ARNOLD
<i>Sponsor</i>	MR. DONALD ROLAR



Campus Christian Association Cabinet



<i>President</i>	THOMAS SCHADE (1st Semester) LILLIAN HAAS (2nd Semester)
<i>Recording Secretary</i>	IDA ARMS
<i>Corresponding Secretary</i>	JEAN MILLER
<i>Treasurer</i>	SHIRLEY ROBINSON
<i>Sponsor</i>	MR. SIMON S. SHEARER

Services every Sunday evening

Youth fellowship encouraged

Non-sectarian in its religion

Observer of the commandments

Develops high moral ideals

Bible Club

God-fearing Christians

Obeisance is its motto

Small group of girls

Praises sung with greatest joy

Enthusiastic group eager to learn

Leadership in spiritual life

President ELIZABETH OTT
Vice-President RUTH CARST
Secretary MARY JANE SNIDER
Sponsor REV. EDGAR MANHERZ



Catholic Club



<i>President</i>	ELIZABETH BULLER
<i>Vice-President</i>	RICHARD AUSTIN
<i>Secretary</i>	ADELINE GANNARELLI
<i>Treasurer</i>	ANGELO QUARANTA
<i>Moderator</i>	FATHER GAHERTY

Faithful believers in the Catholic doctrines

An energetic and enthusiastic group

Interested in learning fundamentals of Catholicism

Teach Catholic children of Shippensburg

Helping the church in Shippensburg grow

Art Club

Diplomacy in design

Art for art's sake

U name it, they'll draw it

Brush and pen, easels and oils

Erasing prohibited, accuracy its goal

Results unsurpassable

Structure, form, beauty

President ADELINE GANNARELLI
Vice-President CLARA REINHEIMER
Secretary VIRGINIA BEMISDERFER
Sponsor MISS GERTRUDE KAUFFMAN



Cooperative Education Club



<i>President</i>	ELAINE ARNOLD
<i>Vice-President</i>	PHYLLIS J. DRUCKER
<i>Secretary-Treasurer</i>	DIANA HEAGY (1st Semester) LOIS ZIMMERMAN (2nd Semester)
<i>Sponsor</i>	MRS. HARLEY

Progressive schools its main topic

Reports, entertainment and tea formulate programs

One hundred per cent placement its record

Guidance offered by Mrs. Harley

Recitation of poetry popular among this group

Educational trips prove interesting and intriguing

Simple but informative discussion of trips presented

Special invitations for membership given elementary students this year

Business Education Club

Acquaints members with leaders in the business education field

Unusual variety in its social programs

Demonstrated typing speed and accuracy via chapel movie

Its membership open to all business education students

Trip to New York annually for seniors

Organization one of the largest on the campus

Regular meetings interpret business trends and problems

<i>President</i>	SARAH SEITZ MILLER
<i>Vice-President</i>	WANDA WHIPPO
<i>Secretary</i>	ALETHEA RIDER
<i>Treasurer</i>	MARY BAIRD
<i>Historian</i>	IRIS SEITZ
<i>Parliamentarian</i>	RUDOLPH CHUCHECK
<i>Sponsor</i>	DR. ETTA SKENE



Cumberland Editorial Staff



Editor-in-Chief E. ELOISE COHEN

Assistant Editor LILLIAN HAAS

Photography Editor ELIZABETH OTT

Staff ELAINE ARNOLD

MARY GOYT

MARY HEINTZLEMAN

PHYLLIS KLUCKER

JEANNETTE MEANS

LOUISE SINGLEY

LOIS ZIMMERMAN

Sententious

Cumberlanditis victims

Record Class history

Interested in quality

Brainbusters for material

Energetic workers

Seek originality

Cumberland Business Staff

Cash department

Ad seekers

Penny banks; large economy size

Imagination taboo; cold, cash facts

Typists essential

A well organized staff

Launched countrywide program



Business Manager WANDA WHIPPO

Advertising Manager JEAN MILLER

Typist SARAH SEITZ MILLER

Advertising Staff ROSE CONTINO

LILLIAN JANTON

BETTY BAIRD



Campus Reflector Editorial Staff



<i>Editor-in-Chief</i>	PHYLLIS J. DRUCKER
<i>Managing Editor</i>	E. ELOISE COHEN
<i>News Editor</i>	JEAN HENRY
<i>Adviser</i>	MISS ELIZABETH T. NOFTSKER

News of all campus activities

Enterprising writers

Welcomes student views

Souvenir of campus life

Year has been complete success

Campus Reflector Business Staff

Distribution its final task

Organized typing staff

Under direction of Mr. Lackhove

Gets ads and more ads

Has canvassed all of Shippensburg

<i>Business Manager</i>	RUDOLPH CHUCHECK
<i>Advertising Manager</i>	PEARL MILLER (1st Semester)
	ERNEST BRINDLE (2nd Semester)
<i>Circulation Manager</i>	ANN WHYTE
<i>Head Typist</i>	ERMA PATTERSON
<i>Adviser</i>	MR. JOHN W. LACKHOVE



Government Club



President MARY GOYT
Secretary-Treasurer ROBERT MILLER
Parliamentarian JAMES LOVALL
Sponsor DR. VALENTINE

Set up a Congress of its own
Equal rights to all
National affairs its pet topic
All honest, efficient statesmen
Talkative, 'telligent, tolerant
Original, oracular opinions
Represents our future leaders of America
Submit your governmental questions

International Relations Club

Espionage taboo

National affairs among its interests

Victory through understanding

Obsessed with ideals of peace

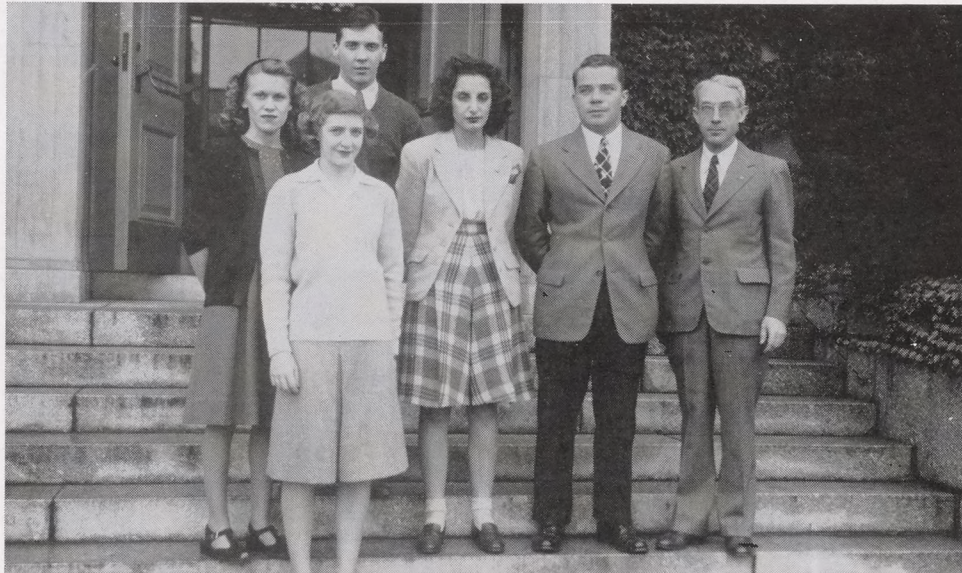
Youth of today — diplomats of tomorrow

Study international affairs

<i>President</i>	WILLIAM SABO
<i>Secretary</i>	PEARL MILLER
<i>Sponsor</i>	DR. ELVIN VALENTINE



Gamma Delta Gamma



<i>President</i>	PEARL MILLER (1st Semester)
	LEROY WISE (2nd Semester)
<i>Secretary</i>	MARY GOYT
<i>Sponsor</i>	DR. ELVIN VALENTINE

Poise and personality developed

Rebellious, rousing rebuttals

Obstinate opposition overcome

Conversationalists all

Organized yarns and yawns

Needle-point decisions

Waitresses

Service with a smile

Accommodations whenever possible

Lift the tray gracefully

Vital to our dorm life

Efficiency their password

Ration the food generously

Head Waitress LOUISE SINGLEY (1st Semester)
ALETHEA RIDER (2nd Semester)



English Club



President PHYLLIS SHELLENBARGER
Vice-President JEAN KRINER
Secretary JANE KLEPSEY TAYLOR (1st Semester)
 WANDA WHIPPO (2nd Semester)
Sponsor MRS. REISNER

Seeks to develop English appreciation

Yorick yarns spun

No Mrs. Malaprops

Observes current productions

Poetry, plays and playwrights

Theater included

Ingenuity in planning programs

Colossal teas

Romance Language Club

Promotes international understanding through language

Home life and customs studied

Interest in rapid conversation methods of Army-Navy

Linguists a la mode

Opportunities for beginning and advanced linguists

Group singing of folk songs

Spanish and French its specialities

<i>President</i>	ANNA FOGELSANGER
<i>Vice-President</i>	NELLIE PLACK
<i>Secretary-Treasurer</i>	LOUREDA STEWART
<i>Sponsor</i>	DR. JANE BEARDWOOD



Round Table Club



President LILLIAN HAAS
Vice-President MARY McVITTY
Secretary ANNA FOGELSANGER
Sponsor MISS ALMA WINTON

Experience in general library procedure

X-ray vision for finding scarce material

Librarians potential

In service for one hour each week

Bookworms deluxe

Routine library desk work

Inclusive is filing, mounting and repairing

Social meeting once a month

Mathematics Club

Addition their specialty
But dividing is also considered
Another asset is subtraction
Competent at multiplication
Union of math majors
Sharp witted, brilliant

<i>President</i>	ROBERT KOCHENOUR
<i>Vice-President</i>	VIRGINIA LEASE
<i>Secretary</i>	JOYCE MYERS
<i>Treasurer</i>	ROSE LUBOLD
<i>Parliamentarian</i>	MARY MCVITTY
<i>Sponsor</i>	MISS NORA KIEFFER



Phi Sigma Chi



<i>President</i>	JOHN STEWART
<i>Vice-President</i>	JAMES KING
<i>Recording Secretary</i>	KENNETH RINEARD
<i>Corresponding Secretary</i>	ERNEST BRINDLE
<i>Treasurer</i>	RUDOLPH CHUCHECK
<i>Parliamentarian</i>	WILLIAM WAGNER
<i>Sergeant-at-Arms</i>	THOMAS HUMELSINE
<i>Sponsors</i>	MR. HARLING SPONSELLER
	MR. KEITH ALLAN
	MR. JAMES WEAVER

Smockers held monthly

Object is service to the college

Caverage for membership

Inside dope unavailable

Annual dinner-dance

Life, laughter

ATHLETICS

Athletic Council



Chairman DR. LEVI GILBERT
Athletic Adviser MR. J. SETH GROVE
Business Manager MR. JOHN W. LACKHOVE

Plans athletic program for the year

Lifts the morale of the school

Athletic council's members are officers of W.A.A. and M.A.A.

Negotiates under leadership of Dr. Gilbert

Not just a figurative organization

Enlivens college life with athletic programs

Regulates and determines athletic policy of the college

Supervises budgeting of the college athletic fund

Women's Athletic Association

Filled with vim, vigor, vitality

Awards presented girls having 500 and 1000 points

In the spring sponsors a formal dance

Requires 150 points for membership

Points earned by participation in two sports

Leisure time spent in the gym

Actionable, active girls

Yearly spring initiation held for new members

<i>President</i>	LOUISE SINGLEY
<i>Vice-President</i>	ALETHEA RIDER
<i>Corresponding Secretary</i>	MARY HEINTZLEMAN
<i>Recording Secretary</i>	ELAINE ARNOLD
<i>Treasurer</i>	PHYLLIS SHELLNBARGER
<i>Sponsor</i>	MRS. MARY BLOOMFIELD



Men's Athletic Association Cabinet



President EARL STROHM
Vice-President WILLIAM BEIBLE
Secretary-Treasurer HERMAN GORDON
Athletic Adviser MR. J. SETH GROVE

Healthy specimens

Engulfed in various sports

Captures feminine hearts

Has had a successful season

Interested in developing winning teams

Encourages extra-curricular sports

Formulates plans for men's athletics

Started after a two-year lapse

Women's Athletic Association Cabinet

Sets up rules for the W. A. A.

Have the smiles of beauty and health

Enthusiastic toward sports

Cabinet governs W. A. A. group

Holds initiation annually

Includes sport leaders and assistants

Envelops Freshmen, Sophomores, Juniors, Seniors

For betterment of sportsmanship

Sponsors yearly formal dance

<i>President</i>	LOUISE SINGLEY
<i>Vice-President</i>	ALETHEA RIDER
<i>Recording Secretary</i>	ELAINE ARNOLD
<i>Corresponding Secretary</i>	MARY HEINTZLEMAN
<i>Treasurer</i>	PHYLLIS SHELLNBARGER
<i>Sponsor</i>	MRS. MARY BLOOMFIELD



Hockey



Leader ELIZABETH OTT
Assistant Leader MARJORIE LAUGHLIN

Biggest year yet!

Undying efforts minus a coach

Libby's "Watch your sticks, please!"

Long drives, short dribbles

Yearning for a goal

Swimming Club

Swimmers all, beginners welcome

Temporary exhaustion overcome by speedy recovery

Ready, willing and able typifies the spirit

Out of breath from water polo

Kicks perfected—crawl, flutter and breast

Ease of manipulation

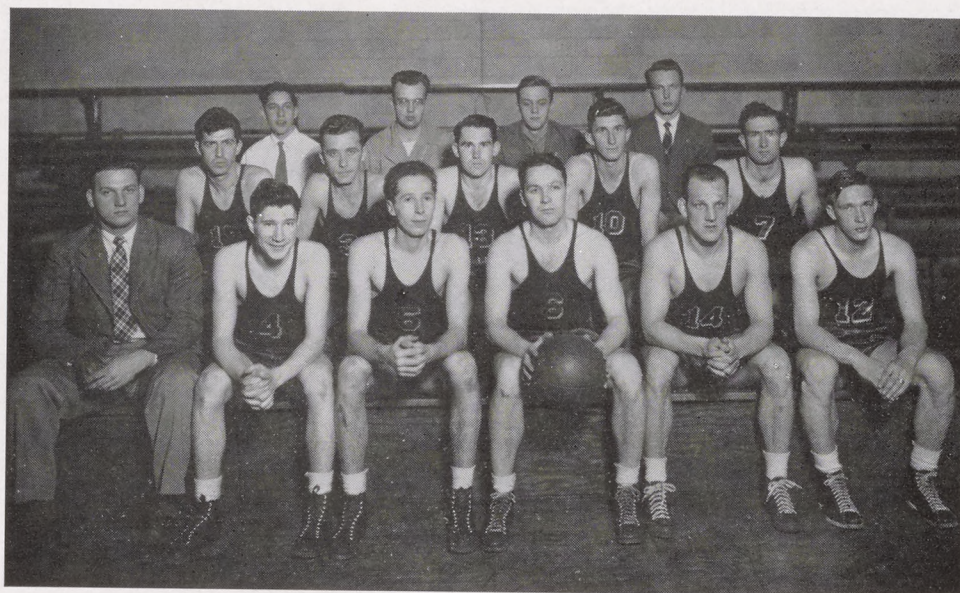
Respiration given only when needed

Swift life savers make good life savers

Leader LILLIAN JANTON
Assistant Leader SHIRLEY ROBINSON
Sponsor MRS. MARY BLOOMFIELD



Men's Basketball



<i>Captain</i>	WILLIAM BEIBLE
<i>Manager</i>	ERNEST BRINDLE
<i>Coach</i>	MR. EDWARD GULIAN
<i>Assistant Coach</i>	JOHN STEWART

Tough schedule met without fear
Over the rim and through the basket
Shippensburg was proud of its record
Sharp shooters describes them
Experts from the foul line
Returned G. I.'s constituted the team
Shoot ringers from the sidelines

Women's Basketball

Down the floor like lightening
Round the rim and in
In the huddle for a signal
Bower and Goyt officiate
Bank their shots
Lots of practice this season
Exceptionally skillful
Remember the L. V. C. - S'burg game
Spectacular on the court

Leader ELSIE ERDMAN
Assistant Leader ARLENE JOHNSON
Coach MRS. MARY BLOOMFIELD



Tennis Club



Leader JEAN HENRY
Assistant Leader MARY KOSER
Sponsor MR. KEITH B. ALLAN

Deft leadership makes deft racqueteers

Eyes on the ball—racquets ready

Unusual form displayed by the members

Court specialists meet every Wednesday afternoon

Effervescent enthusiasm prevalent

Table Tennis Club

Schedules to challenge everyone

Win or lose, they never say quit

All is fair in love and ping pong

The matches are played by experienced players

There is no opponent too tough to conquer

Excel in cuts and curves

Reconsider and challenge the champ

Step right up and try your luck

Leader MARY BAIRD
Assistant Leader HELEN SMITH
Sponsor MRS. MARY BLOOMFIELD



Boys' Bowling



Leader JOHN STEWART

Slingers of the ball not the bull
Tuesday and Thursday meetings
Roll it down the middle
Interested in high scores
Keeper 'em rolling
Experts on strikes and spares

Girls' Bowling

Specialize in strikes and spares

Pin boys kept busy

Always observe the foul line

Reduction of waistlines obvious

Especially fond of cut-rate at the alleys

Leader LOUISE SINGLEY



Dancing



Leader ROSE CONTINO
Assistant Leader PHYLLIS KLUCKER
Sponsor MRS. MARY BLOOMFIELD

Sugar footed suzies—solid senders
Hep cats one and all
Utilizing energy
Foot loose and fancy free
Fool's delight and heaven's paradise
Light hearted, light headed, light footed
Eager beavers
Recordings of Dorsey, James and Miller
Swing and Sway your troubles away

Hiking Club

Trans-campus strolls their limit

Rollicking rovers of Rocky Regions

Always talking a lot about walking

Much talk, very little walk

Professional excuse makers

Effigies of hikers

Rather dance than hike—we know

Sure cure for kinks

Leader BETTY BAIRD

Assistant Leader PAULINE BRENNEMAN

Sponsor MRS. MARY BLOOMFIELD



Spring Sports



Leader WANDA WHIPPO
Assistant Leader JEANNETTE MEANS
Sponsor MRS. MARY BLOOMFIELD

Strike the ball and run
Court courtesy common
Out!! Next batter up!
Rain or sun the game is won
Enjoy keen competition
Razor swiftess cuts the courts
Shooting stars aim high

Cheerleaders

Hep cats all

Undying pep

Roof raisers at athletic contests

Racket and noise their business

Always a cheer for the boys

Human dynamos

Head Cheerleader ELIZABETH OTT

Sponsor MR. JAMES WEAVER



Archery



Leader BETTY BULLER
Assistant Leader GLORIA WENGER
Sponsor MRS. MARY BLOOMFIELD

Aim at the target
Rejoice with a bulls-eye
Regret a miss
Occurs in the springtime
Whiz go the strings

FACULTY
AND
ADMINISTRATION



Dr. Levi Gilbert
President of the College



Dr. Earl Wright
Dean of Instruction



Mr. Keith B. Allan
Geography; Social Studies



Miss Mary Ethel Beamer
Business Education



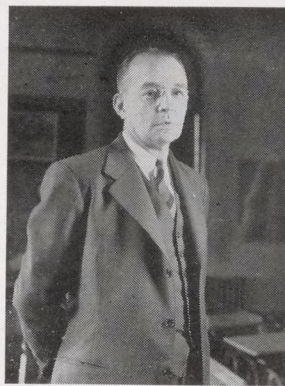
Dr. Jane Beardwood
Languages



Mrs. Mary Bloomfield
Physical Education



Miss Myra Esh
Training Teacher



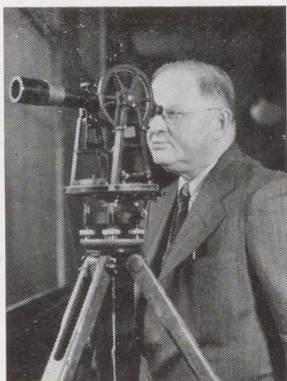
Mr. Charles R. Eurich
Training Teacher



Miss Mary Charlotte Gain
Resident Nurse



Miss Virginia Goodhart
Secretary to the President



Mr. J. Seth Grove
Mathematics



Mr. Edward Gulian
Physical Education



Miss Naomi K. Hade
Dean of Women



Mrs. William P. Harley
Asst. Director of Training



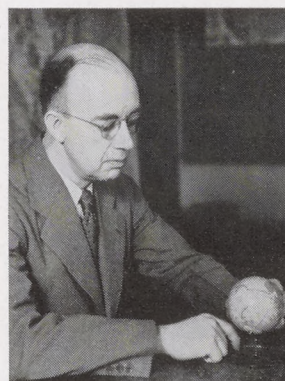
Miss Laura Estella High
Training Teacher



Miss Gertrude E. Kauffman
Art



Miss Nora A. Kieffer
Education



Mr. Leslie C. Krebs
Geography; Visual Education



Mr. John W. Lackhove
Business Manager



Dr. Louise J. Lienemann
Chemistry; Biology



Miss Helen Love
Dietitian



Mrs. Glenn Miller
Training Teacher



Miss Elizabeth T. Noftsker
Registrar



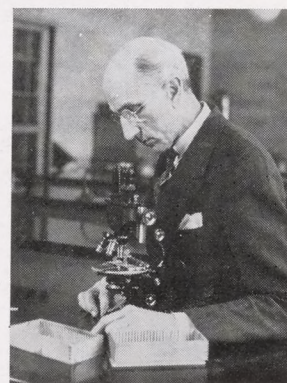
Mrs. J. Edward Riesner
English



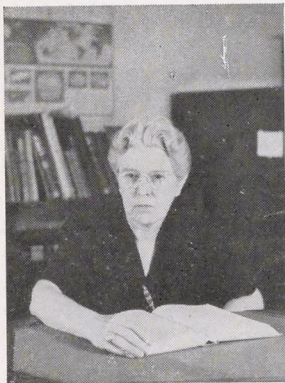
Miss Erma K. Rolar
Social Studies



Mr. Paul Seaton
Business Education



Mr. Simon S. Shearer
Biological Sciences



Dr. Etta C. Skene
Business Education



Miss Thelma E. Small
Training Teacher



Mr. Harling E. Sponseller
Director of Teacher Training



Dr. Elvin L. Valentine
Social Studies



Mr. James C. Weaver
Music



Mr. Harper J. Wentz
Training Teacher



Miss Harriet Willoughby
Training Teacher



Miss Alma Mae Winton
Librarian



Miss Mary E. York
English

Acknowledgments

It is just as necessary to have the utmost cooperation in the editing of a yearbook as it is necessary in the construction of a bridge or in the maintenance of world-wide peace. In order to produce this yearbook we have had just that cooperation. The staff of this book takes this opportunity to thank:

Mr. Laughlin and Mr. Kuhn for their superb photography work.

The Conemaugh Engraving Company in Johnstown for their excellent engravings.

The Hagerstown Bookbinding and Printing Company for their splendid work in the printing and binding of this volume.

Mr. Lackhove for his capable handling of financial and business matters.

Miss Kauffman and Mr. Krebs, our class deans, for their ready assistance whenever needed.

Miss Goodhart and Miss Noftsker for their assistance in compiling necessary statistics from the office.

Mr. and Mrs. Clippinger for their assistance in the mailing and distribution of this yearbook.

ADVERTISEMENTS

Nationally Known Merchandise

For

MEN and BOYS



320 Market Street, Harrisburg

Compliments of

HELMAN and STEVENS

Shoes and Sporting Goods

Carlisle, Pa.

Footwear

Clothing

Haberdashery

WEAVER and GATES

Shippensburg, Pa.

ALLENBERRY

THE CARLISLE INN

THE DAIRY STORE



Carlisle, Pa.

P. A. VAN ALLMAN

Druggist

The Rexall Store

Shippensburg, Pa.

COMPLIMENTS

John H. Kreamer & Company

Harrisburg, Pa.

WHOLESALE BUTTER & EGGS

WEAVER'S CUT RATE

Shippensburg, Pa.

*We carry a complete
line of*
Cosmetics, Candy, Tobacco
Pipes and Remedies

BOGAR LUMBER CO.

Lumber and Millwork



Phone 277
Shippensburg, Pa.

Compliments of

**EYLER'S STATIONERY
STORE**

W. High St.

Carlisle, Pa.

We Examine Eyes and Fit Glasses
To Suit Your Face

Best Quality of Lens and Frames
At Reasonable Prices
For the Quality Used

N. D. STALEY

60 E. King St.

Shippensburg, Pa.

DUTREY'S SHOES

28 N. Hanover St.

Carlisle, Pa.

Phone 122-Y

M. GARFIELD BARBOUR

Funeral Home



Shippensburg, Pa.

Compliments of

**B & W
RESTAURANT**

PAGUE & FEGAN

35 West King Street

Shippensburg, Pa.

Compliments of

***Burkhart's
Restaurant***

BOWMAN & COMPANY

Albert Watson, Proprietor

Carlisle, Pa.

When in need of stylish apparel — shop at Bowman's
Department Store

W E N G E R ' S

Carlisle, Pa.

Compliments of

M. B L U M E N T H A L

MEN'S STORE

Carlisle, Penna.

TEACHERS NEEDED—ALL KINDS, Splendid opportunities are presenting themselves and you should take advantage of them. With our experience we can give you the guidance needed so you can make the most of these opportunities. Write to us immediately.

GREAT AMERICAN TEACHERS AGENCY

Established 1880

Successor to THE PENN EDUCATIONAL BUREAU

66th Year

205 NORTH SEVENTH STREET

ALLENTOWN, PENNA.

Member of National Association of Teachers' Agencies

Kuhn's Studio & Gift Shop

PHOTOGRAPHS

STATIONERY

PHOTO FINISHING

SMALL GIFTS

Greeting Cards for Every Occasion

18 East King Street

Shippensburg, Penna.

Compliments of
**THE TOWN STATIONERY
SHOP**

Shippensburg, Penna.

VICTORY THEATRE

Shippensburg,

Penna.

The
Valley Baking Co., Inc.

SHIPPENSBURG, PENNA.

KRONENBERG'S

A College Store For 88 Years

Carlisle

Pennsylvania

Compliments of
THE TOWNE HOSIERY SHOP
43 W. King St.

"Our Meats Inspected—
Your Health Protected"

J. A. Hargleroad

F. K. Hargleroad

J. A. HARGLEROAD & CO.

Fresh and Cured Meats

Wholesale

Phone 215

Retail

Compliments of

**HIPPENSTEELE'S
GARAGE**

Shippensburg, Penna.

AFTER EACH SESSION
OR AFTER THE GAME

MEET YOUR FRIENDS

AT THE

Sugar Bowl Confectionery

COMPLETE SODA FOUNTAIN SERVICE

BULK AND FANCY BOX CANDIES

LUNCHEONETTE

SHIPPENSBURG, PENNSYLVANIA

H & H GARAGE

Oldsmobile

and

Chevrolet

Shippensburg, Penna.

Compliments of

**LEMASTER'S ATLANTIC
SERVICE**

White Flash Plus,
Oil, Cup Grease,
Tires

R. W. Lemaster

Shippensburg, Penna.

MILLER MOTORS



Sales and Service
204-208 EAST KING STREET
SHIPPENSBURG, PA.
Phone 212

KIRSSIN'S

Head—to—Foot—Outfitters
32 East King Street
Shippensburg, Pa.

**SHIPPENSBURG
HARDWARE CO.**

HARDWARE and SPORTING
GOODS

★
2 EAST KING STREET
Shippensburg, Pa.

**TRAVEL BY
BUS**

For leaving times and convenient
schedules call your local agent
BLUE RIDGE LINES

Home Phone 109-Z Office Phone 71-X

Everything Used in Building

If We Do Not Have It We Will Get It
For You

CHARLES R. McCUNE

Paints, Varnishes, Enamels, Builders
Supplies and Building Material
SHIPPENSBURG, PENNA.

MARTIN'S DRUG STORE

SHIPPENSBURG,
PENNA.

J. L. HOCKERSMITH & SONS

Fancy Groceries
Fruits and Vegetables



14 WEST KING STREET
Shippensburg, Penna.

Phone 211

Compliments
of the

**DULEBOHN CANDY
CO.**

Chambersburg, Penna.

Ludwig & Hunter

Famous For Diamonds Since 1847

Official College Jeweler

84 W. King Street

Shippensburg, Pa.

Compliments of

CAPITOL
and
ROSEDALE THEATRES

Chambersburg, Pa.

Compliments of

THE NEWS - CHRONICLE

Shippensburg, Pa.

Compliments of

THE PEOPLE'S
NATIONAL BANK

R O T H ' S

"Fine Home Furnishings"

Furniture—Rugs—Stoves



Shippensburg, Pa.

JOHNSONIAN SHOES

for MEN

MIRACLE—TREAD SHOES

for WOMEN

GOODHART'S SHOE STORE

SHIPPENSBURG, PA.

Compliments of

G. C. MURPHY CO.

Compliments of
**CRESSLER'S
FRUIT MARKET**

*The
Shirtcraft Company,
Inc.*

★

Shippensburg, Pa.

The First National Bank

Of Shippensburg, Pa.

*Every Service Consistent
With Good Banking*

*Member Federal Deposit
Insurance Corporation*

TEXACO SERVICE STATION

W. B. Brown, Prop.

Marfak Lubrication
Car Washing
Tire Service

Insulated Hanolin and Texaco Oils

★

West King Street

**WARREN'S CLEANERS
& DRYERS**

Quick, Courteous Service

★

Towne Laundry

"Good Food Made Us Famous"

***The Famous Texas
Lunch***

★

7 South Earl Street
Shippensburg, Pa.

Compliments of

**MILLER - REED
DAIRY**

★

Glenn L. Miller

Robert H. Reed

AUTOGRAPHS

AUTOGRAPHS

AUTOGRAPHS

