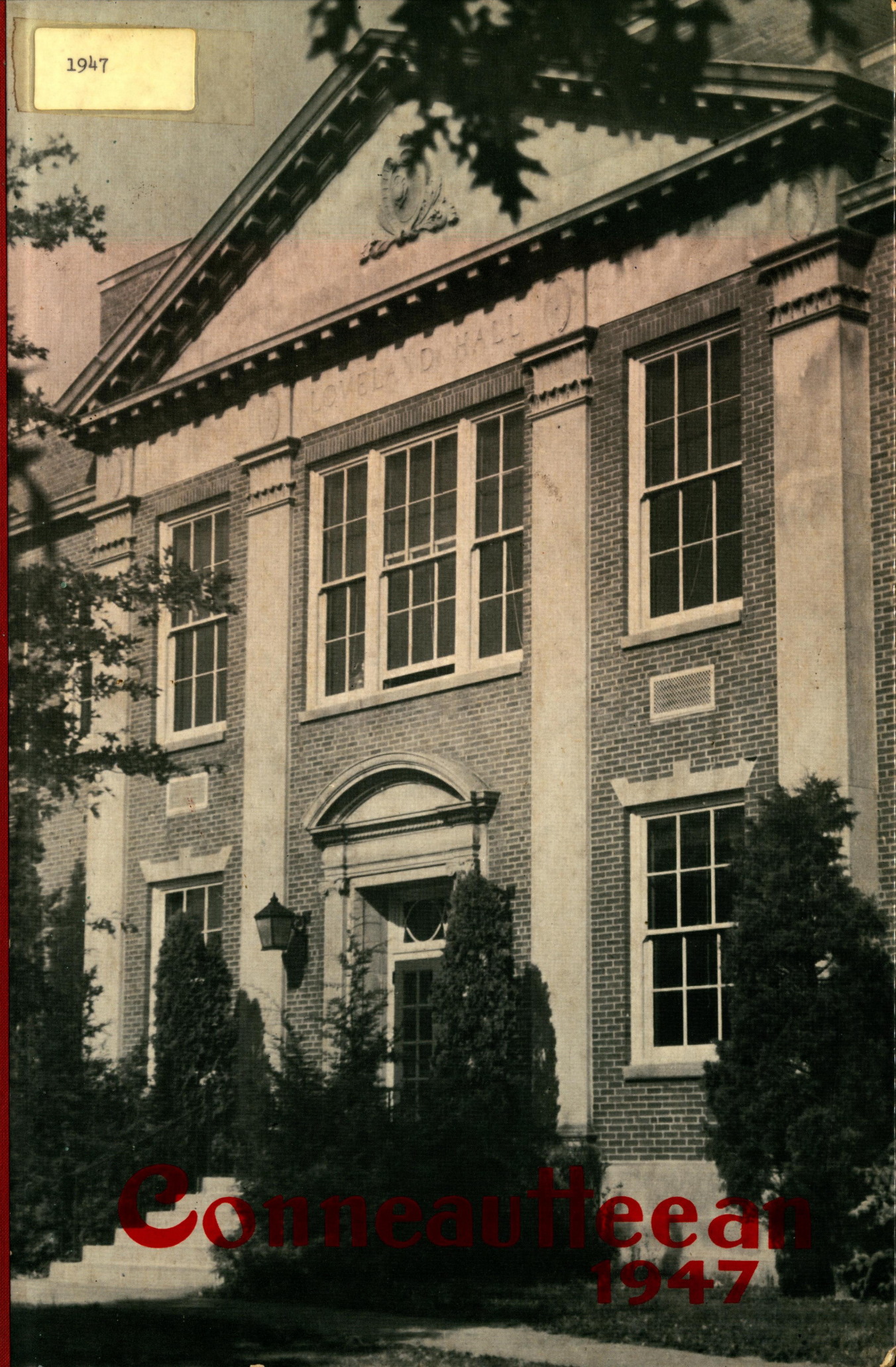


1947



Conneauttean  
1947



COLLEGE ARCHIVES







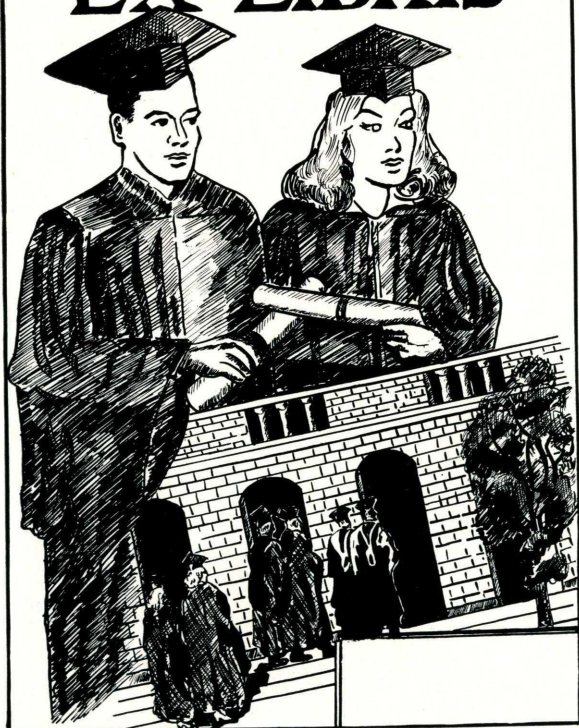








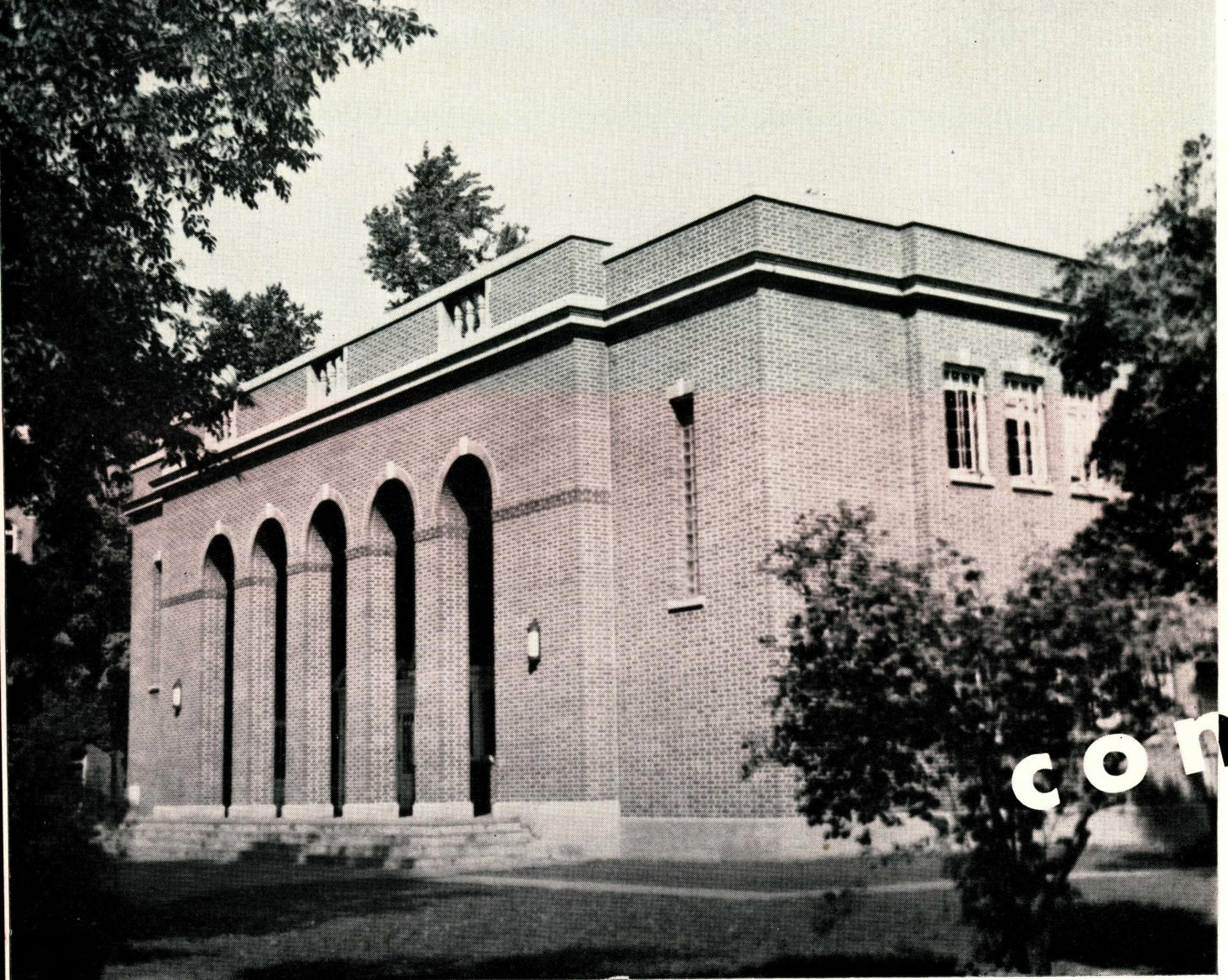
EX LIBRIS













COLLEGE ARCHIVES

# neauttean...

presented  
by  
the  
Junior  
class  
of  
Edinboro  
State  
Teachers  
College



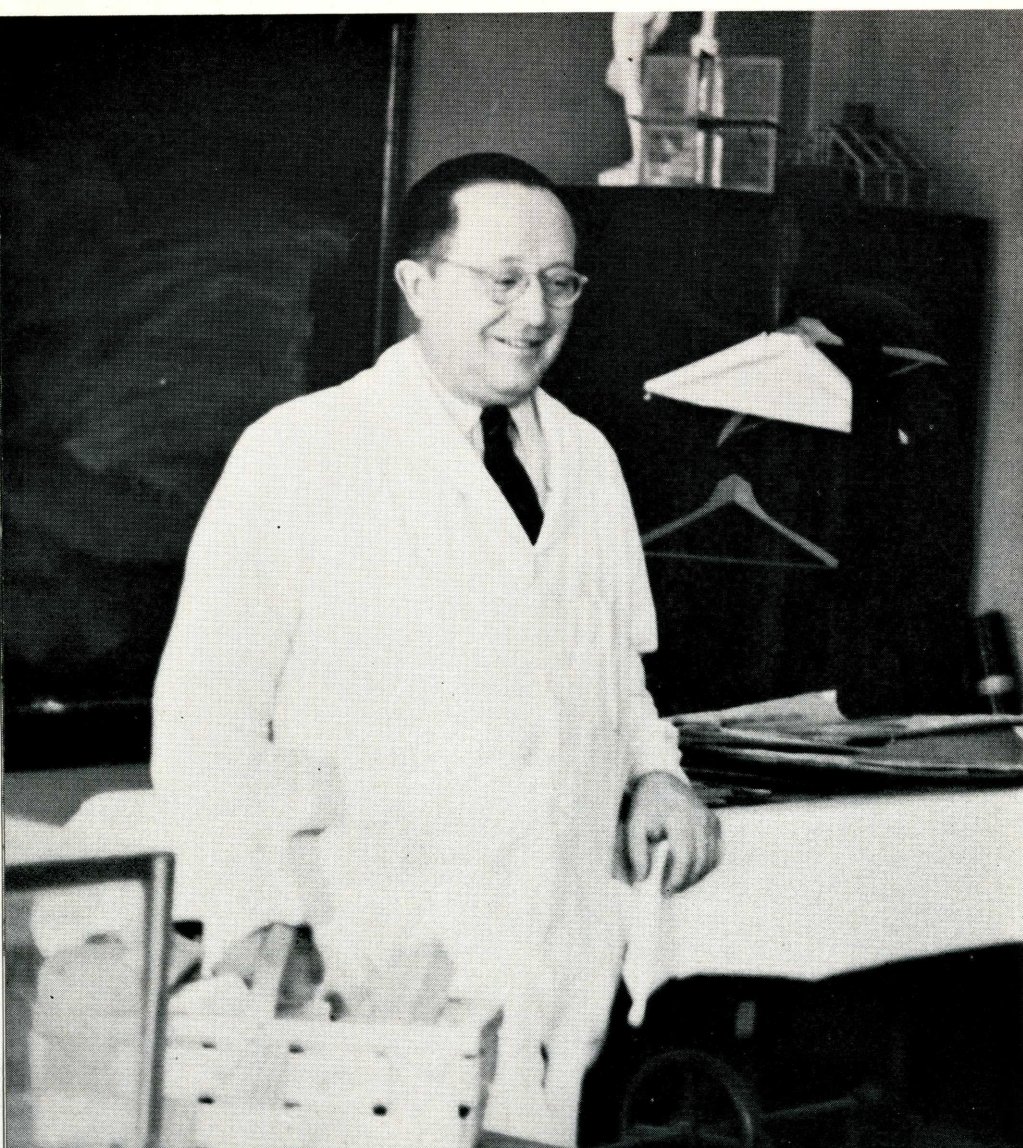
# 1947





**e  
d  
i  
n  
b  
o  
r  
o  
.  
.  
.**







To

"POP" . . .

In recognition of twenty-seven years' service in the field of art education here at Edinboro during which he has helped to build our fine art department, for his constant readiness with wise and friendly counsel in both personal and college matters, we dedicate the 1947 Conneauttean to WALDO F. BATES, JR., a great teacher whose friendliness, patience, and cheerfulness have endeared him to all the students of Edinboro State Teachers College.





On the campus at Edinboro each one of the past several years has seemed to be, at the time we were living it, a most unusual year. Throughout the war we were busily engaged in war efforts of various kinds; we had ground school instruction for aviation; we had Nurse Cadet Corps courses; we were seeing our young men leave for action on world wide war fronts; we witnessed a decline in the number of students on the campus who were interested in becoming teachers in the public schools.



This year we have had perhaps the most exciting and unusual year of all. Edinboro, with all of the other colleges and universities in the United States, is participating in the greatest mass educational experience above high school level that the world has ever seen. We have, for the first time, many more men than women on our campus. We have increased our enrollment more than 400%. We have also had to double our faculty. There have been problems of equipment and a very great problem of securing non-instructional personnel in order that the educational functions of the college might be carried on. The spirit with which all of these problems have been met and which various inconveniences have been suffered has been most commendable.

I wish to express my heartiest appreciation to the members of the faculty, members of the non-instructional staff, and to the entire student body for the cheerful way in which they have gone along. As a result, this college year will be remembered with extreme pleasure and satisfaction as having been one of the best in the long history of Edinboro.

L. H. VAN HOUTEN,

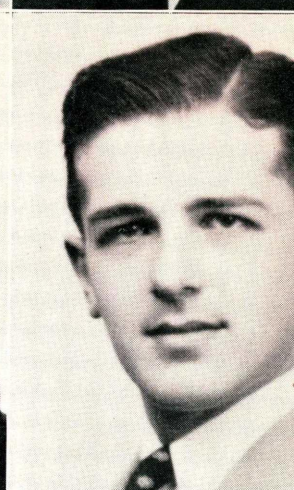
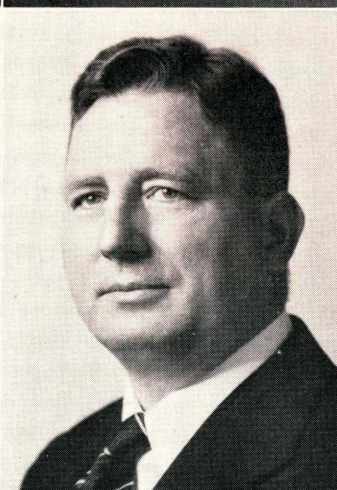
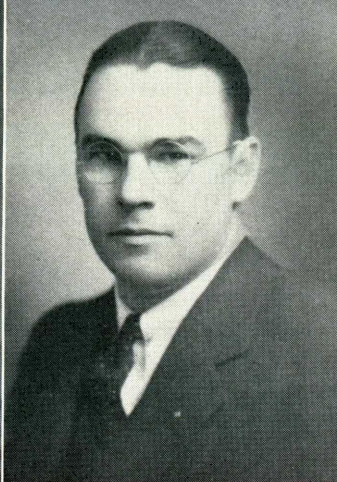
President



# **faculty . . .**

**F**RRIENDLY and understanding, patient and helpful, our faculty form an important chapter in our book of life at Edinboro. Their ranks have kept pace with the increase in the student body to become just "twice as large" and "twice as good."





**First row:** ARTHUR L. McCOMB, M. Ed., Physical Education; LUTHER V. HENDRICKS, Ph.D., Social Studies; PAUL A. LOWDER, M.A., English; JAMES P. COFFMAN, M.S., Chemistry.

**Second row:** ROBERT TAFT, M.A., Social Studies; BRENTFORD R. MACKEY, M.S. in Ed., Engineering Drawing; H. L. OFFNER, Ph.D., Dean of Instruction and Director of Teacher Education; HARRY W. EARLEY, M. Ed., Mathematics.

**Third row:** JOHN C. JOHNSON, Ph.D., Biological Science; C. FRANCES WHITNEY, M.A., Elementary Education and Supervisor of Student Teaching; FRANK L. LABOUNTY, A.M., Social Studies; HELEN McDONNELL, M.A., English.

**Fourth row:** JOHN A. REED, M. Ed., Dean of Men, Physical Education; GEORGE W. NEEL, M.A., Social Studies.





**First row:** H. W. McNEES, M.S., Physical Sciences; ELIZABETH MILLER, M. Ed., Dean of Women; DOROTHY SKINNER, A. M., Art; ERNEST R. LaFOLLETTE, Ph.D., Education.

**Second row:** W. VERNE ZAHNISER, A.M., English; JOANNA BEATTIE, B.S., Dietitian; RUTH MORTON, M.A., English, Assistant Dean of Women; JOHN C. LYNCH, M.A., Chemistry.

**Third row:** V. FREDERICK KOENIG, Ph.D., Modern Languages; NELLIE McCLINTOCK, R.N., Nurse; HAZEL MAE KETCHAM, M.S., Geography; JOHN T. GATZY, Ed. D., Biological Science.







**First row:** B. REGIS HARRISON, Physical Education; ESTHER W. CAMPBELL, A.M., Music; WILLIS R. BOSS, Ph.D., Biological Science, Visual Education; B. WYCLIFFE GRIFFIN, M.A., Social Studies.

**Second row:** CLAIR J. BUTTERFIELD, Ph.D., Education; MILDRED M. FORNESS, A.M., Librarian; AIME H. DOUCETTE, Ed. M., Art; ROYCE R. MALLORY, Ed. M., English.

**Third row:** CHARLES R. BOAK, M.A., English; JUSTINA J. BARON, A.M., Assistant Librarian; JOHN C. HOSHAUER, M.S. Degree, Mathematics; ALFRED J. HALLER, A.M., Art.



**classes . . .**





# seniors . . .

Art bugs, math whizzes, English wits, atom smashers, and history analysts . . . really a versatile bunch, this Class of '47, we will have to admit.

At times their number has been small, but within the last few years the many returning G.I.'s have increased their group. At the same time, other classmates have departed due to the accelerated program and for other various reasons.

Really this class can be proud of the social activities it has sponsored along with its wealth of school functions. Marks of distinction gained by individual students include membership in Alpha Psi Omega, Delta Phi Delta, Mu Kappa Gamma, Who's Who Among Students in American Colleges and Universities, and the Dean's list.

DAVID PHILLIPS

CATHERINE SABLYAK

NICK DESIMONE

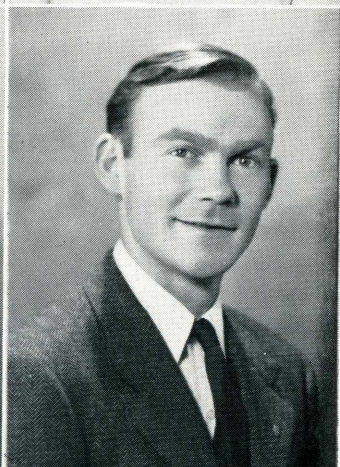
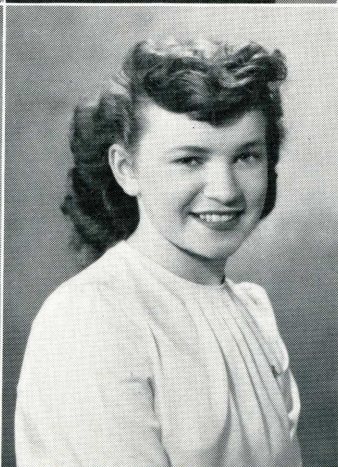
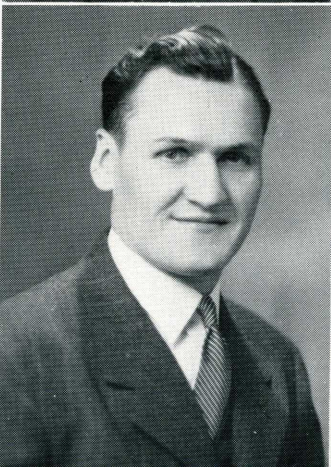
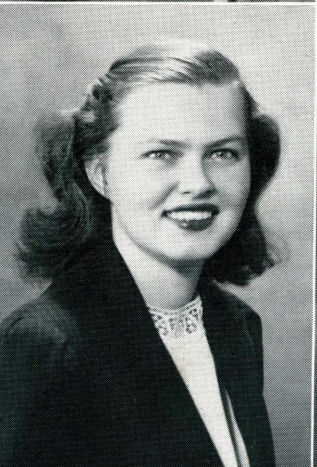
JOYCE WELDON

MADELINE LEDWICK

ELMER ABHAZI

BETTY DEETER

MARSHALL WEBB





DAVID PHILLIPS . . . "Moose" . . . noted for his gridiron work . . . fond of talking . . . a new papa . . . slow-motioned . . . never overworks.

CATHERINE SABLYAK . . . Quiet mannered(?) . . . never worries . . . sterling character . . . optimistic . . . meekness personified . . . always the same.

NICK DESIMONE . . . A live wire . . . friendly . . . a Casanova . . . easy-going . . . fun-loving . . . fond of talking . . . a slow shuffle . . . good-hearted.

JOYCE WELDON . . . A student deluxe . . . assistant in the lab . . . industrious . . . "Where's Grand Valley?" . . . even tempered.

MADELINE LEDWICK . . . A carefree manner . . . knows when to have a good time . . . dramatically inclined . . . answers to "Baby" . . . flirtatious.

MARSHALL WEBB . . . A sports enthusiast . . . Rip Van Winkle II . . . occasional visitor at classes . . . honeymooned in Florida . . . animated.

BETTY DEETER . . . Loads of hair . . . a personality of her own . . . a primper . . . a toss of the head . . . sees the brighter side of life.

ELMER ABAHAZI . . . Tall and athletic . . . an all-around good fellow . . . hastens slowly . . . ambitious . . . a keen student . . . a genial nature.

#### **Class Officers**

President . . . . .	RONALD MCCOY
Vice President . . . . .	NICK DESIMONE
Secretary . . . . .	ANNETTE HENNESS
Treasurer . . . . .	PHYLLIS FOGLE



RONALD MCCOY . . . A Red Raider . . . infrequently visits classes . . . an infectious grin . . . enjoys a good time . . . a good sport.

JEANNE KETCHAM . . . Considerate of others . . . a good dresser . . . energetic and persevering . . . a smile for everyone . . . unruffled in manner.

GEORGE KASONOVIC . . . "The mad artist" . . . tickles the ivories . . . moody . . . a jokester . . . out-spoken . . . why teachers get gray! . . . self-assured.

MARGARET MITCHELL . . . A hard worker . . . added a "Mrs." . . . friendly . . . a fluent talker . . . meditative . . . always worried about studies.

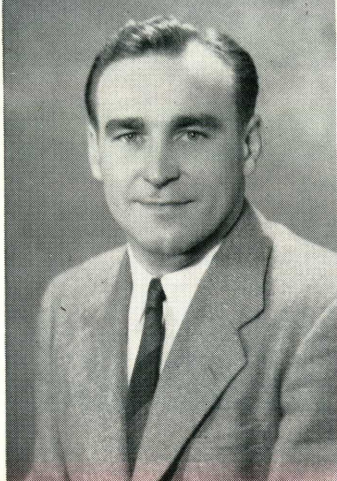
PHYLLIS FOGLE . . . Immaculate in dress . . . an avid reader . . . an ardent worker . . . talkative . . . oh, that giggle! . . . sincere.

HAROLD SCHLINDWEIN . . . Diver deluxe . . . talkative . . . a jovial nature . . . unhurried . . . a small physique . . . a regular fellow.

YVONNE DAVIS . . . Another blonde . . . fond of all sports . . . energetic . . . good natured . . . sociable . . . practical . . . dramatic.

FORREST DOUCETTE . . . Our blonde Romeo . . . a man most people have to look up to . . . loves excitement . . . a photo bug . . . loquacious.





RONALD MCCOY  
PHYLLIS FOGLE

JEANNE KETCHAM  
HAROLD SCHLINDWEIN

GEORGE KASONOVIC  
YVONNE DAVIS

MARGARET MITCHELL  
FORREST DOUCETTE

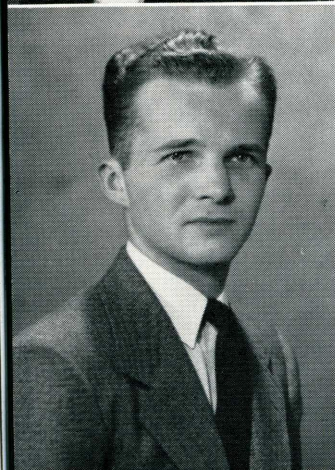


JEANNE SHROUT  
PAUL GUNN

FRANK HOLOWACH  
DORIS STOCKTON

IDABELLE GORDON  
CHESTER EISAMAN

PETER GALL  
JEAN HERSPERGER





JEANNE SHROUT . . . "Just my Bill" . . . tall . . . goes her own way . . . fiery . . . snapping brown eyes . . . full of ambition . . . a high scholastic standing.

FRANK HOLOWACH . . . "The Independent" . . . a flashing smile . . . outspoken . . . an industrious student . . . optimistic . . . a friendly disposition.

IDABELLE GORDON . . . A great homebody . . . a perfect lady . . . exceptionally dependable . . . tastefully dressed . . . serious at times . . . unaffected.

PETER GALL . . . Neat in appearance . . . blushes galore . . . has a capacity for merriment . . . a great golfer . . . an amiable personality.

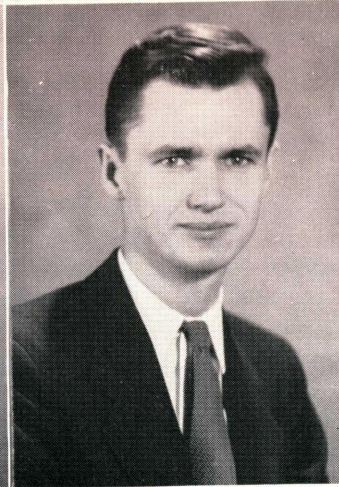
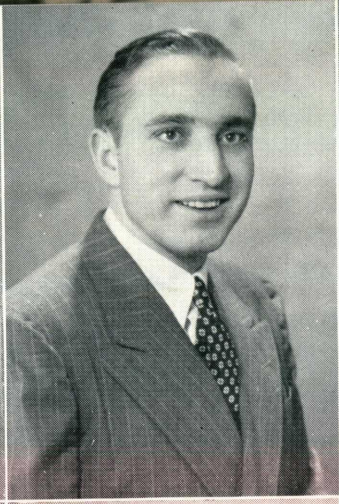
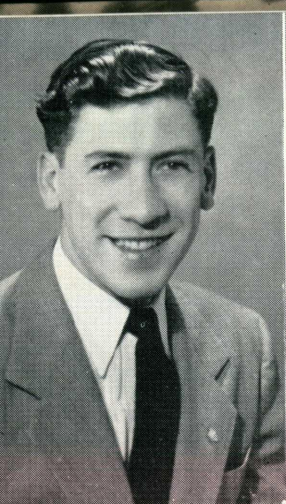
PAUL GUNN . . . A perfect gentleman . . . well-groomed . . . reserved . . . stalwart . . . poised . . . George's pal.

DORIS STOCKTON . . . Lovely brown hair . . . easily fussed . . . conscientious . . . always looks her best . . . talks "a mile a minute."

CHESTER EISAMAN . . . Ready to laugh . . . has curly hair . . . midget-like . . . a new income tax deduction . . . always on the job . . . artistic.

JEAN HERSPERGER . . . Demure . . . eager to please . . . well-groomed . . . soft-spoken . . . calm-mannered . . . on the small side.





JAMES PARKER

HELEN AGER

HOWARD GRIFFIN

DORA NOXON

EMILY HAMMERMEISTER

JAMES BARTOO

DELORES SAYRE

EARL STUBBE



JAMES PARKER . . . Lean and lanky . . . a tease . . . a funster . . . school comes next . . . takes things as they come . . . unperturbed . . . a gool pal.

HELEN AGER . . . A brunette . . . loves to dance . . . knows the latest . . . likes a good time . . . neatly dressed.

HOWARD GRIFFIN . . . Unhurried . . . brawny . . . leisurely mannered . . . not inclined to worry . . . tall and blonde . . . garrulous.

DORA NOXON . . . An up-'n-at-'em Student Council member . . . modest . . . frank . . . independent . . . a gift of gab.

EMILY HAMMERMEISTER . . . A reticent manner . . . polite . . . W.A.A. leader . . . a long 'un . . . easy to please . . . sincere . . . fidelity of purpose.

JAMES BARTOO . . . A mental genius . . . whiz at math . . . unperturbed . . . courteous . . . great height . . . never wastes words . . . trustworthy.

DOLORES SAYRE . . . Original . . . sleepy . . . tall and slim . . . a songbird . . . light-hearted . . . a nimble tongue . . . individualistic . . . jocund.

EARLE STUBBE . . . Slow but sure . . . always ready to oblige . . . a man of few words . . . carries his own responsibilities . . . whole-hearted . . . never a worry.

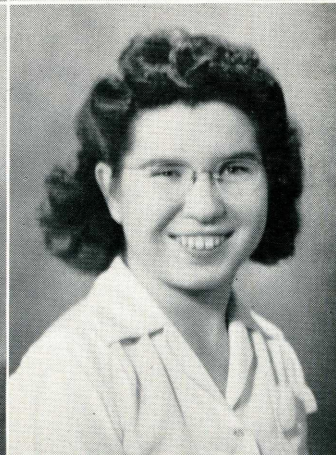
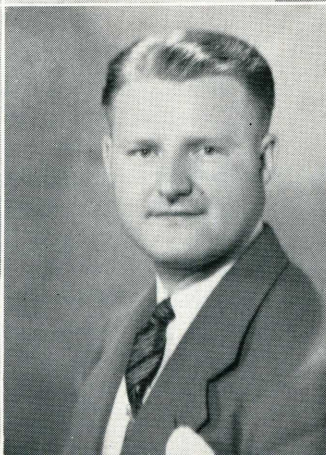
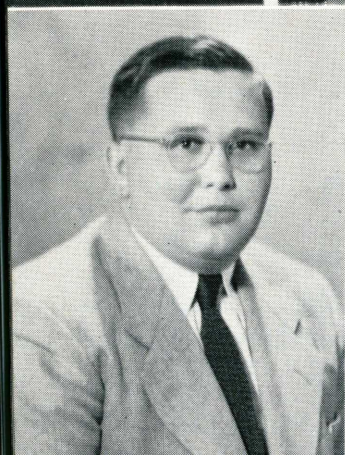


HELEN PUSHCHAK  
WILLIAM DOVE

ANNETTE HENNESS  
MARGARET STORMER

MARTHA BARTOO  
ALOIS STANKIEWICZ

MARJORIE EVANS  
CAROL BROWN





HELEN PUSHCHAK . . . All-around girl . . . good-natured . . . reliable . . . does her best . . . game for anything . . . a contagious laugh . . . a good sport.

ANNETTE HENNESS . . . Carefree . . . impulsive . . . sparkling dark eyes . . . athletic tendencies . . . lively . . . a pleasure seeker . . . mischievous.

MARTHA BARTOO . . . Seen but seldom heard . . . conscientious . . . inconspicuous . . . a serious nature . . . never seen slacking on the job.

MARJORIE EVANS . . . Quick to answer . . . full of fun . . . likes to have a good time . . . a sunny disposition . . . a chatterbox . . . frank.

WILLIAM DOVE . . . A tease . . . never misses any fun . . . a biologist . . . sports enthusiast . . . indifferent to school . . . takes things as they come.

MARGARET STORMER . . . A friend always . . . seldom heard . . . sweet simplicity . . . better late than never . . . a swimming sprout . . . so, so small.

ALOIS STANKIEWIEZ . . . Has his own opinions . . . self-assured . . . an independent worker . . . a dependable student . . . hash slinger . . . carrot top.

CAROL BROWN . . . Adept at the culinary art . . . speaks French . . . a tennis fan . . . a Union City lass . . . shy.

### **Camera Shys Among the Seniors**

JOHN BONNETT

MARY ALICE HARCOURT

ELLA MAE FINNEY

DIANE LESHOK

KATHRYN HALCHIN

HOWARD SPRINGER



# juniors . . .

**Back row:** C. Vlahakis, C. Killingsworth, T. Malinowski, C. Snyder, J. Grube, J. Olsalvsky, J. Spence, P. Gillespie, M. Herr, A. Gollmer. **Middle row:** R. Hall, M. Livingston, L. Rhea, L. Griffin, G. Haughton, L. Johnson, M. Palchuk, C. Carr, W. Steadman, M. Artello, P. Oakey. **Front row:** Mr. Doucette, class advisor; M. Herrick, L. Obert, M. Evans, M. Evanoff, N. Parker, S. Hazen, H. Kuntz.





## **Junior Class . . .**

With September and a scavenger hunt the juniors began their third year together and hibernated until March caught them wildly trying to meet the deadline for their big project, the 1947 "Conneautteeen." March also brought along with spring(?), plans and preparations for the annual Junior-Senior Prom. Finding themselves a wee bit on the debit side, the class pitched in to sponsor a movie, "Gallant Bess," at the local theater. They even went so far as to obtain a special extra movie permission for all women students. After a year jam-packed with activity, the class anxiously awaits arrival of their senior year and student teaching duties.

### **First Semester—Class Officers**

President . . . . . Marjorie Evans  
Vice President . . . . . Mike Evanoff  
Secretary . . . . . Nancy Parker  
Treasurer . . . . . Harry Kuntz

### **Second Semester—Class Officers**

President . . . . . Jane Patterson  
Vice President . . . . . Mary Livingston  
Secretary . . . . . Nancy Parker  
Treasurer . . . . . Harry Kuntz

### **Yearbook Staff:**

Co-Editors—Carol Carr, Louise Johnson  
Photography Editor—Wilma Jean Steadman  
Sports Editor—Frank W. Sitler  
Photographers—Peter Jung, William Riffner  
Business Manager—Romaline Hall  
Business Staff—LeVieve Obert, Connie Killingsworth, Marybelle Herrick,  
Therese Malinowski, Mary Livingston, Mike Evanoff  
Art Editors—Clyde Snyder, Joseph R. Spence, Jr.



# sophomores . . .

Coming into their own as upper classmen, the sophomores monopolized the social calendar for the first few months of this year. With Daisy Mae on the prowl for L'il Abner, the "chase" began, ending with the Sadie Hawkins Dance at Crawford Gym. Frequently, the ambitious sophs sponsored "skirt 'n sweater" hops after the games. The climax of their social program came with the crowning of Queen Wilma Bennett at the Snow Ball.

Several members of the class, Dorothy Peplinski, Jeanne Kennedy, and Marjorie Perkins aided in the publication of the yearbook.

## **Class Officers**

President.....	Dorothy Davies	Secretary.....	Dona Flower
Vice President.....	Gene Myers	Treasurer.....	Bob Bloom
Social Chairman.....		Wilma Fox	





## SOPHOMORES

**Front row:** M. Campbell, M. Armagost, I. Kellogg, W. Fox, D. Flower, G. Myers, D. Davies, B. Bloom, C. Atwater, W. Bennett, B. Buckley, J. MacIvor, E. Theobald. **Second row:** B. Phillips, M. Rozelle, J. Twichell, M. Palmer, J. Follett, B. Gross, D. Peplinski, A. Johnson, N. Spraggon, M. Perkins, F. Weyrauch, K. Bartoo, C. Johnson, M. Noxon, M. Matney, P. Chiocchio, M. Dean. **Third row:** D. Johnson, G. Young, E. Vose, H. DeFlavio, B. Rhall, C. Giordano, G. Barker, P. Zarenko, H. Rose, J. Folmar, J. Plucinski, A. Susi, D. McClure, G. Dennis, V. Ransom, J. Kennedy, M. Gunderman, Dr. Boss.



# freshmen . . .

Arriving in good ole Edinboro last September, the "green" freshies succeeded in planning and carrying out an extravagant social calendar.

To start the ball rolling, there were the usual preliminary functions—get-together parties and dink-sporting. Then the ingenious bunch decided that they must do something really "big", and "big" it was,—after months of planning, the class proudly featured the Sweetheart Ball with Bob Chester on the bandstand.

Due to the great number in the freshman class, Edinboro made "LIFE" . . . (one picture, remember? . . . and after all that posing!).

A great number of the members of this class are Penn State students. We here at Edinboro have enjoyed having them with us this year and will be sorry to see them leave. Good luck to you . . . and to those who stay with us—keep up that fine spirit!





## FRESHMEN

**Top, first row:** T. Miller, R. Wehge, J. Noon, J. Bonney, R. Heyl, C. Eisentrout, T. Lynch, G. Grimshaw, J. Minarovich, R. Doucette, W. Douds, J. Bruckner, H. Hackett, J. Barolak, W. Bechmann, J. Owen. **Second row:** C. Sumner, D. Unangst, R. Webster, R. Shade, D. Mosher, J. Albright, J. Pier, F. Sammons, J. Skehan, G. Kenney, A. LaCombe, W. Horosz, L. Peck, E. Richardson. **Third row:** R. Hall, S. Frazier, J. Douville, R. Bloch, G. Camp, G. Kandra, L. Daley, C. Losh, W. Engstrom, A. MacNally, G. Boak, W. Fairer, E. Carnahan, J. Steffen, J. Russell. **Fourth row:** W. Renshaw, A. Krista, D. Thompson, D. Waldemarson, C. Nuschke, V. Allenson, P. Carlberg, R. Nick, D. Fargo, G. Freeman, J. O'Connor, J. Postlethwait, W. Mattson, R. McGarvey, G. Gustin.

**Below. First row:** B. Ghering, A. Vescio, R. Eisentrout, E. Osborne, M. Rogers, R. Owen, R. Powell, D. Mitchell, R. Wampler, J. Murray, H. Bennett, W. Thomas, H. Stark, B. Glenn, J. Cotter, T. Lucas. **Second row:** E. Sheriff, J. Richards, B. Olds, L. Stanzione, J. Himrod, F. Hanna, M. Jensen, J. Simoni, P. Vradenburg, M. Reader, P. McNarney, F. Kramer, W. Kisthart, M. Gilbody, B. Yocum, P. Thomas, B. Dotts, C. Kuder. **Third row:** F. Nesbitt, W. Mitchell, R. Ebel, M. Eades, J. Snell, M. McConnell, E. Kelly, M. Evans, J. Lytle, G. Quinter, J. Allen, S. Randall, A. Hopfer, D. Waddell, R. Laing, M. Turzanski. **Fourth row:** W. Klein, C. Anderson, P. Yanak, J. Long, R. Bergstrom, J. Bonnell, H. McCoy, D. Horton, D. Porter, W. Crider, G. McManus, R. McFadden, G. Williamson, V. Rydberg, R. Proudfit, A. Wagenknecht, D. Allen.



**Top. First row:** R. Wallace, C. DeLay, R. Armstrong, T. Levi, A. Chundrlek, D. Weis, M. Shores, G. Ody, A. Sitter, H. Newson, J. Barth, V. Rice, J. Brown, P. Dunton, H. Conrader, V. Rodgers. **Second row:** R. Rohrer, F. Sherretts, E. Valla, E. Vasilich, K. Magoon, D. Edwards, P. Price, M. Hebert, L. Braham, P. McLain, A. Pistory, H. Johnson, S. Hill, L. McCartney, L. Byers, J. Hilman, K. MacNeill, R. Bridi, J. Currie. **Third row:** P. Colpo, R. Schantz, N. Hamel, R. Campbell, K. George, V. Batchelor, N. Lalley, J. DuFala, R. Pletcher, D. Strand, F. Filesi, J. Dean, J. MacMillan, V. Salmon, W. Klenck.

**Below. First row:** E. Morrison, R. Kennedy, R. Bonnett, P. Hayes, V. Halchin, L. Herrick, K. Fosburg, P. Kinsley, M. Saxton, D. Hare, T. McCall, B. Raszman, N. Coates, J. Venman, C. Mullen. **Second row:** L. Fobes, A. Sorenson, W. Kososki, R. Young, L. Bowen, B. Hammermeister, M. Gedeon, L. Peck, J. Fordenbacher, M. Holowach, J. Lennox, G. Fox, K. Harvey, J. Jack. **Third row:** C. Bonomi, H. Freeman, D. Magnifico, J. Nichols, R. Zimmer, G. Gamble, A. Babcock, R. Roessner, L. Dorchester, G. McKinney, P. Jung, W. Rhode, W. Seley, M. Cherry.





The opening of the second semester in January brought many new faces to Edinboro. We of the "Conneautteeen" staff regret that we are unable to publish their picture, for we feel that their presence has added a great deal to life on our campus. Included in this group are:

Brannon, Conrad; Byham, George; Caraher, Hugh; Carpenter, Frances; Chadderdon, Byrem; Cicchini, Louis; Church, John; Faulkner, William; Greenwalt, John; Herr, Benjamin; Jackard, Richard; Jinar, George; Jones, Phillip; Marsh, Robert; Murdoch, Edward; Mustoe, William; Nicolls, Clarence; Owen, Charles; Parry, John; Patterson, John; Peckham, John; Reed, Edward; Salvetto, James; Scarlett, Annabelle; Schlag, David; Schlosser, Charles; King, Boyd; Kasonovic, Rudy; Laley, John; Laley, Robert; LaSlavic, Joseph; Leeming, Jeanne; Lloyd, Arthur; Lopus, Wilmer; Lynch, Donald; Snavley, Lyle; Stanzian, Glorioso; Stroebel, Fred; Stull, James; Terputac, Thomas; Thomas, David; Wasum, Grace; Wilkins, Kenneth; Winchester, James; Windoft, Byron.





**activities . . .**









**Seated:** D. Noxon, W. Steadman, M. Jensen.

**Standing:** H. Rose, J. Parker, L. Johnson, J. Owen.

### **Student Council . . .**

Striving for democratic living and government on the Edinboro campus, the Student Faculty Cooperative Government turned out a really successful program.

First thing on the agenda was the Student Council Conference held on our campus under the direction of Chairman Wilma Jean Steadman. Representatives from the Student-Faculty Governments of the Pennsylvania State Teachers Colleges were present at this conference to discuss the common problems found on their campuses.

This year marked a change in the Student Government constitution to provide for a more adequate representation due to the increased size of the student body. This program gives a voice to the various dormitory and off-campus groups. Other innovations included student participation in assemblies and a "saving the grass" campaign.

The group sponsored the "Bowery Brawl" early in the spring, a gala occasion to which the gals took the fellahs—complete with corsages!



## E Club . . .

This year marked the return of the E Club activities to the Edinboro campus. The formal Homecoming Dance held in October to secure support for the Sweater Fund started the ball rolling. In the spring the group sponsored the Alumni-Varsity Basketball Game for the benefit of Carmen Giordano, a Red Raider and E Club member, who was earlier injured in an automobile accident.

The Club presented sweaters to the members, as well as a life ticket to all athletic events at the college. Also, they presented gold basketballs and footballs to the graduating Seniors who have participated in these sports.

### Officers

President.....	Howard Griffin	Secretary.....	Marshall Webb
Vice President.....	Ronald McCoy	Treasurer.....	William Dove

**Front row:** P. Gall, M. Webb, H. Griffin, R. McCoy, J. Bonnett. **Back row:** C. Giodano, A. Susi, J. Parker, D. Phillips.





**Top. First row:** V. Rice, F. Weyrauch, T. Lucas, P. Chiocchio, B. Phillips, K. Kurach, J. Allen, L. McCartney, M. Gilbody, M. Jensen, J. Himrod. **Second row:** D. Flower, K. George, P. Price, L. Byers, V. Batchelor, G. Grimshaw, J. Plucinski, F. Bedogne, T. Lynch, J. Brown, Mr. Bates. **Third row:** B. Rhall, G. Boak, R. Bloch, P. Yanak, N. Bleech, J. Baird, E. Myers, E. Carnahan, R. Korn, J. Grube, W. Murphy.

**Below. First row:** P. Faulk, L. Bowen, M. Eades, G. Dennis, M. Palmer, B. Buckley, Mr. Bates; W. Frazier, C. Killingsworth, J. Simoni, F. Hanna. **Second row:** L. Griffin, M. McConnell, M. Campbell, D. McClure, W. Vafeas, M. Evans, R. Lafferty, C. Snyder, G. Haughton, J. Patterson, W. Bennett, M. Armagost, J. Dunbar. **Third row:** N. Lalley, E. Kelly, M. Evans, L. Deli, L. Sitler, D. Sayre, M. Perkins, G. Kosanovic, H. Schlindwein, C. Eisaman, P. Gunn, W. Kisthart, M. Reader.





### **ScaRab Club . . .**

All art students of the college are members of this organization, the ScaRab Club. The group takes its name from a species of the bug family. Each Monday evening the members trek back to Loveland Hall for a meeting under the guidance of Mr. Waldo F. Bates. The purpose—for the furtherance of the art interests of its members. All facilities of the art department are available on this one night of the week. Students are encouraged to escape from the everyday duty of assignments to indulge in a bit of self-expression . . . be it in oils, pastels, watercolors, or even modeling and jewelry making. The club is not entirely limited to the art students; other students who have a hobby in this field are welcome to attend.

The officers are "Big Bug"—William Frazier; "Little Bug"—Tom Quirk; "Scratches"—Barbara Buckley, and "Eggs"—Marilyn Palmer.





**DELTA PHI DELTA . . .**

**Front row:** L. Sitler, C. Snyder, M. Evans, H. Schlindwein, D. Sayre. **Back row:** C. Eisaman, P. Gunn, G. Kasonovic, Mr. Bates.

**ALPHA PSI OMEGA . . .**

T. Malinowski, J. Spence, Y. Davis.



### **Delta Phi Delta . . .**

Delta Phi Delta, the honorary art fraternity on campus, meets each Monday evening under the supervision of Miss Dorothy Skinner. Its purpose is to foster concentration in specific fields in which the members desire to improve their work.

To be eligible for membership in this national organization, one must be an art student with at least three semesters of work finished. Barriers which add a certain tone of "exclusiveness" to this group are the high scholastic standings required. Art grades must be of a "B" average or above, and other subjects must be of at least a "C" average.

Activities for the year included two pledging services and a diversified exhibition of work by the members and pledges of the organization.

#### **Officers**

President . . . . .	Harold Schlindwein
Secretary . . . . .	Chester Eisaman
Treasurer . . . . .	Marjorie Evans
Corresponding Secretary . . . . .	Delores Sayre
Historian . . . . .	Lois Sittler

### **Alpha Psi Omega . . .**

Early in the year, the Gamma Kappa Cast of Alpha Psi Omega, the national honorary dramatic fraternity on campus, presented to the alumni and faculty members three students for initiation. These students were Yvonne Davis, Joseph R. Spence, Jr., and Therese Malinowski.

Membership in the fraternity requires the earnings of at least fifty points in the field of dramatics, a high scholastic standing and a definite spirit of leadership in college functions.



### DRAMATIC CLUB - "EDINBORO PLAYERS" . . .

**First row:** I. Kellogg, M. Stormer, R. Kennedy, M. Ledwick, Y. Davis, W. Frazier, H. Pushchak, J. Spence, T. Malinowski, J. MacIvor, F. Weyrauch, P. McNarney. **Second row:** E. Kelly, J. Lytle, D. Peplinski, M. Evans, J. Kennedy, N. Spraggon, B. Gross, M. Perkins, D. Davies, L. Johnson, B. Phillips, A. Johnson, G. Dennis, L. Braham, P. Chiocchio, P. Oakey, V. Batchelor, E. Theobald. **Third row:** R. Rohrer, L. Bowen, A. Sorenson, V. Salmon, M. Yapple, L. Peck, G. Barker, P. Zarenko, B. Masters, J. Folmar, C. Snyder, J. Grube, H. Kuntz, J. Plucinski, R. Bonnett, M. Matney, G. Haughton.

### PHOTOGRAPHY CLUB . . .

**First row:** K. Magoon, P. Faulk, R. Murray, B. Hall, P. Zarenko, W. Riffner, G. Freeman, Martha Evans, Marjorie Evans, E. Bossart. **Second row:** E. Sheriff, C. Kuder, A. Wagenknecht, P. Jung, J. Bruckner, W. Klein, J. Olsavsky, P. Pier, A. Weaver, H. Kuntz. **Third row:** R. Korn, R. Proudfit, J. O'Connor, R. Bergstrom, B. Dotts, G. Gustin, W. Frazier, D. Horton, D. Cherry, W. Renshaw, M. Lafferty.





### **Edinboro Players . . .**

On stage in the New Auditorium each Tuesday evening the Edinboro Players strive to stir up fun and new experiences in the way of dramatics. An exceptionally busy year was catalogued for the group in the very beginning. With the old "do or die" spirit the Players succeeded in carrying through all of their undertakings.

Activities for the year included two walking rehearsal presentations, "Did You Say Mink?" and "If Men Played Cards as Women Do", a unique play entitled "The Sacred Well" presented in the college swimming pool, and the big production of the year, a three-act mystery farce by Batson entitled "Ramshackle Inn."

Taking advantage of the diversified dramatic talent on campus, the group twice during the year pledged probationary members—first giving each a reading tryout and then seeing them through certain required tasks necessary to prove their merit as probable members.

#### **First Semester**

President . . . . .	William Frazier
Secretary-Treasurer . . .	Joseph Spence
Advisor . . . . .	Miss Ludgate

#### **Second Semester**

President . . . . .	Helen Pushchak
Vice President . . . . .	William Frazier
Secretary-Treasurer . . .	Marjorie Perkins

### **Photography Club . . .**

Hold that pose! We would like to give a "snappy" shot of the Photo Club.

The event supreme which the "photo bugs" sponsored was a campus snapshot contest. (At the judging of the contest all the rats in the basement of Normal left en masse!) All joking aside, there were some unique pics chosen, many of the best having been published in the "Spectator."

While the main emphasis in the discussions of the Camera club was placed on the principles of the camera, the art of printing, different types of developing, some demonstrative lectures were given on contact-printing, film-developing, and elemental retouching and tinting.

For the first time in the history of the college, the club took an active part in the publication of the "Conneauttean," and did all the photography except individual pictures. Especially helpful in this capacity were Dr. Boss, Harry Kuntz, Peter Jung, and William Riffner.





#### ALPHA DELTA . . .

**First row:** Mrs. Campbell, J. Dunbar, J. Hersperger, W. Steadman, L. Obert, C. Carr, P. Gillespie, W. Bennett, C. Johnson, M. Campbell, Miss Forness. **Second row:** F. Weyrauch, D. Flower, B. Buckley, A. Johnson, D. Peplinski, E. Theobald, D. Davies, N. Spraggon, J. Patterson, G. Haughton, M. Herrick. **Third row:** M. Armagost, J. Webster, R. Hall, M. Palmer, M. Evans, L. Sitler, L. Johnson, M. Perkins, J. Kennedy, M. Livingston, T. Malinowski.

#### KAPPA DELTA PHI . . .

**First row:** D. Young, P. Zarenko, B. Masters, T. Quirk, J. Siegel, H. Schlindwein, A. Juliano, C. Eisaman. **Second row:** R. McCoy, A. Lucia, J. Grube, P. Gunn, E. McCutcheon, G. Lechowicz, W. Morrison, G. Kosanovic. **Third row:** H. Griffin, W. Lindberg, D. Phillips, F. Doucette, C. Giordano, S. Walker, R. Badgeley, A. Susi.



### **Alpha Delta Sorority . . .**

This has been an eventful year for the Alpha Delta sorority. In addition to the usual business meetings held each Monday evening, the sorority has had two formal dinners and dances, a big party for all freshmen women, two rush parties and birthday parties for faculty members. Mothers' Day pledging service and the Alumni breakfast were both planned as spring occasions for this year. The traditional initiation and tribunal meeting planned by the unrelenting "sisters" preceded the formal initiation in which Lucille, Bowen, Lois Braham, Nancy Coates, Bertha Hammermeister, Jean Himrod, Alberta Kilbane, Norma Lalley, Nancy Parker, Virginia Rice, Roberta Rohrer, Jane Venman, and Jeanne Simoni became members.

#### **First Semester—Officers**

President . . . . .	Peg Gillespie
Vice President . . . . .	Wilma Bennett
Secretary . . . . .	Le Vieve Obert
Corresponding } . . . . .	Marjorie Campbell
Secretary } . . . . .	Clea Johnson
Treasurer . . . . .	Carol Carr
Critic . . . . .	Wilma Jean Steadman
Marshall . . . . .	Jean Webster
Faculty Advisor . . . . .	Miss Forness

#### **Second Semester—Officers**

President . . . . .	Marjorie Campbell
Vice President . . . . .	Maryalice Armagost
Secretary . . . . .	Jean Webster
Corresponding } . . . . .	Barbara Buckley
Secretary } . . . . .	Nancy Spraggon
Treasurer . . . . .	Clea Johnson
Critic . . . . .	Peg Gillespie
Marshall . . . . .	Dorothy Peplinski

### **Kappa Delta Phi Fraternity . . .**

The Kappa Delta Phi, national educational fraternity, is represented on the Edinboro campus by the Theta chapter. It has been said that "to be a Kappa Delt is an education in itself."

In planning their activities for the year, the "frat" members interspersed various informal parties and professional meetings on their calendar. These special sessions were enlivened by talks on sports, movies on athletics, and intermural basketball games. The big fling of the year, of course, was the spring banquet and dance, which is an annual formal event.

New members pledged after the picture was taken include: Fred Abbott, Joe Baird, Nestor Bleech, Al Bloch, Robert Bloom, Aldo Bonomi, Camille Bonomi, Thomas Brown, Ted Davenport, Ronald Doucette, John DuFala, Frank Files, William Gaylor, Gerald Jackman, Leonard Karzania, Al Kipela, Leonard Lucia, Robert Roessner, Bill Rhode, Mark Rutledge, Dan Susi, Tony Vescio, John Vinnick, Art Warren, Dale Webster, and Jack Weixel.

#### **Officers**

President . . . . .	Thomas Quirk
Vice President . . . . .	Albert Lucia
Secretary . . . . .	John Siegel
Treasurer . . . . .	Joseph Grube



### PHI SIGMA PI . . .

**Front row:** P. Gall, H. Rose, W. Frazier, J. Parker, J. Spence, M. Webb, D. Weis, J. Fordenbacher, C. Bennett. **Back row:** A. Sorenson, C. Synder, J. Plucinski, Mr. Bates, A. Stankieweiz, R. Connors, W. Mahoney, J. Bonnett.

### MU KAPPA GAMMA . . .

**Front row:** Mrs. Campbell, J. Dunbar, M. Artello, W. Steadman, L. Obert, R. Hall, J. Hersperger, M. Bartoo, Miss Forness. **Back row:** C. Snyder, G. Young, D. Sayre, D. Davies, P. Worster, P. Zarenko, M. Perkins, M. Campbell, J. Webster, K. Bartoo, C. Johnson, P. Gall.





### **Phi Sigma Pi . . .**

The Phi Sigma Pi, national educational and professional fraternity, is represented on the Edinboro campus by the Upsilon chapter. In developing and broadening its purpose of brotherhood, with special emphasis on scholarship and leadership, the Phi Sigs enjoyed a well-planned and exceptionally busy year.

In addition to pledging, the group sponsored numerous activities. Special programs were planned at which instructors and various educators were asked to speak on some specific educational topic.

Pete Gall and Harry Rose represented the chapter at the national convention held in Washington, D.C., early in the year.

A Thanksgiving formal dance was held at the Culbertson Hills Country Club, and wide-scale plans for the spring formal banquet and dance added an air of expectation to group gatherings.

#### **Second Semester—Officers**

President . . . . .	Roy Bennett
Vice President . . . . .	William Frazier
Treasurer . . . . .	Harry Rose
Secretary . . . . .	Adrian Sorenson

### **Mu Kappa Gamma . . .**

The Mu Kappa Gamma is the honorary music fraternity on campus. Members are chosen on the basis of cooperation, scholarship, and membership in campus musical organizations.

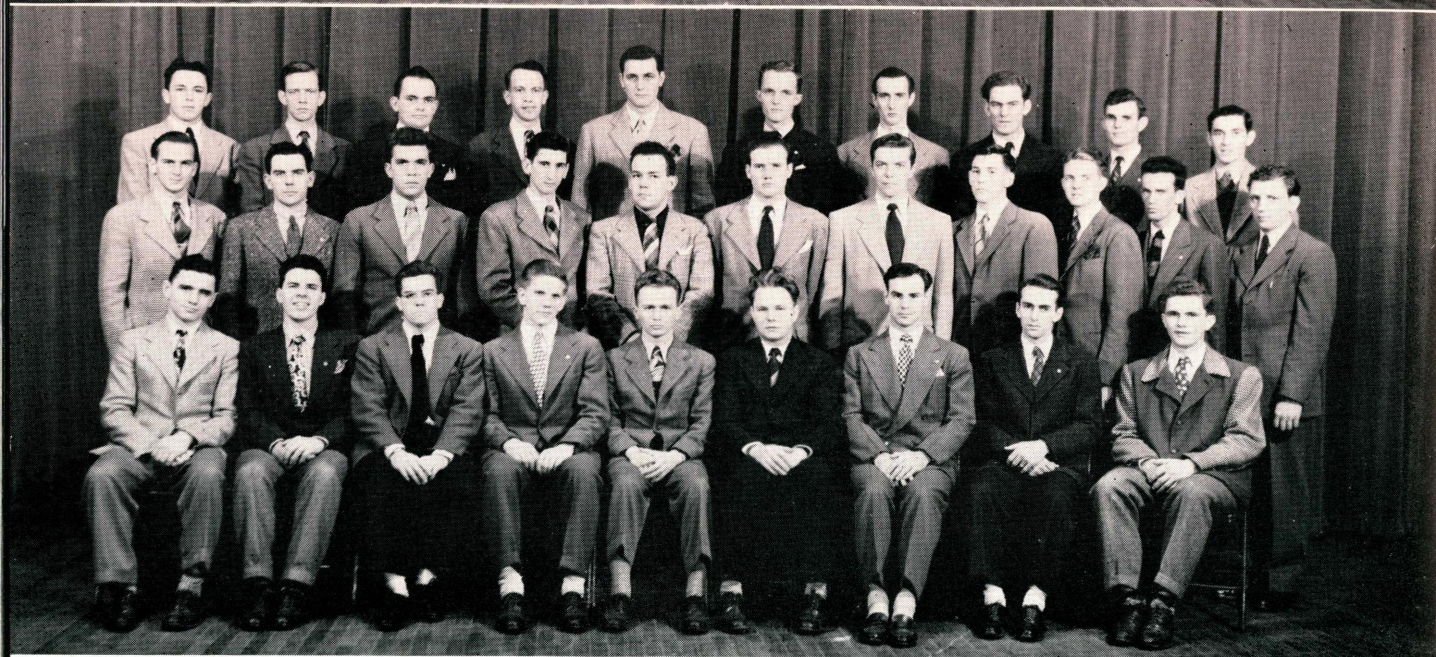
The fraternity sponsored a successful "sing" for students and faculty at Lakeside early in the fall, featuring special numbers by members of the student body.

At their meetings, held once a month, the group enjoys speakers and music appreciation programs. They are attempting to provide a listening and practice room in the New Auditorium for the convenience of the entire student body.

#### **Officers**

President . . . . .	LeVieve Obert
Secretary . . . . .	Romaline Hall
Treasurer . . . . .	Wilma Jean Steadman
Program Chairman . . . . .	Marjorie Campbell





## CHOIR AND MEN'S GLEE CLUB . . .

### CHOIR . . .

**First row:** J. Dunbar, F. Hanna, A. Johnson, C. Johnson, L. Obert, M. Artello, R. Campbell, Mrs. Campbell, F. Kramer, N. Coates, F. Weyrauch, W. Kisthart, B. Yocum, M. Reader, G. McAllister, P. McLain, B. Glenn. **Second row:** G. Quinter, C. Carr, M. Herr, J. Webster, M. Campbell, J. Himrod, W. Steadman, L. Bowen, D. Sayre, P. Worster, C. Atwater, G. Young, M. Billings, K. Bartoo, E. Valla, V. Batchelor, H. Conrader, J. Lytle, N. Hamel, M. Eades, P. Cohen, C. DeLay, R. Hall. **Third row:** R. Rohrer, M. Armagost, A. Millspaw, B. Phillips, E. Vose, D. Davies, M. Perkins, M. Rozelle, M. Palmer, V. Willaman, P. Nippes, J. Skehan, P. Gall, P. Jung, C. Sumner, R. Schantz, R. Carroll, P. Dunton, H. DeFlavio, M. McConnell, E. Wardenga, J. Kennedy, T. Lucas, L. Byrem. **Fourth row:** E. Sheriff, F. Sammons, W. Klenck, D. Unangst, D. Mitchell, R. Strand, L. Daley, A. Lake, L. Peck, P. Zarenko, G. McKinney, W. Mattson, G. Barker, F. Abbott, J. Fordenbacher, J. Baird, T. Davenport, W. Rhode, K. Harvey, C. Snyder, G. Boak, D. Weis, D. Cherry, F. Kratz.

### MEN'S GLEE CLUB . . .

**First row:** V. Willaman, F. Sammons, D. Cherry, D. Unangst, E. Sheriff, C. Sumner, G. Boak, D. Weis, W. Klenck. **Second row:** P. Nippes, J. Skehan, D. Mitchell, R. Strand, P. Jung, W. Mattson, F. Abbott, K. Harvey, C. Snyder, R. Carroll, P. Gall. **Third row:** L. Daley, G. Barker, L. Peck, A. Lake, G. McKinney, J. Baird, J. Fordenbacher, P. Zarenko, T. Davenport, R. Schantz.



### **Choir . . .**

The largest choir in the history of the college began the year with a bang at a weiner roast held on Green Point, Lakeside. Oodles of fun and plenty to eat made the evening a big success for everyone.

Social life over for a time, the group settled down to prepare for the annual Christmas Vesper service, presented to a full house the Sunday afternoon before vacation. That same night, they braved the winter wind and snow to go caroling. It was worth any inconvenience, and the happy ending came with refreshments served in the Rec room.

The St. Patrick's Day spirit brought forth the ingenious "Glocca-Morro" Night Club with floor shows, blues singers, and secluded tables—not to mention barbershop quartettes, piano soloists and specialty dances. Another success for the choir!

The annual Spring Concert, along with the Commencement and Baccalaureate music were the finales to a most eventful choir year.

### **Men's Glee Club . . .**

A supply of tenors, baritones and basses, plus interest and Mrs. Campbell, wound up as the Men's Glee Club, a group which made our musical programs a part of college life to anticipate. They presented special numbers at the Christmas Vesper service as well as the Spring Concert and were a great help in the musical undertakings of the school.



## **BAND AND ORCHESTRA**

### **BAND . . .**

V. Halchin, L. Obert, P. Nippes, D. Hetrick, M. Hebert, W. Klenck, R. Goodwill, E. Valla, K. Bartoo, K. Fosburg, T. Davenport, P. Arris, R. Rockwell, J. Cotter, N. Hamel, L. Dorchester, J. Skehan, F. Doucette, G. Lucacs, J. Pier, A. Hopfer, J. Fordenbacher, A. Mills<sup>paw</sup>, D. Cherry.

### **ORCHESTRA . . .**

L. Obert, B. Phillips, R. Hall, L. Bowen, L. Byers, T. Davenport, W. Klenck, M. Hebert, K. Bartoo, R. Goodwill, E. Valla, D. Hetrick, P. Arris, J. Cotter, F. Doucette, R. Rockwell, J. Pier, G. Lucacs, J. Dunbar, A. Hopfer, D. Cherry, A. Millspaw.





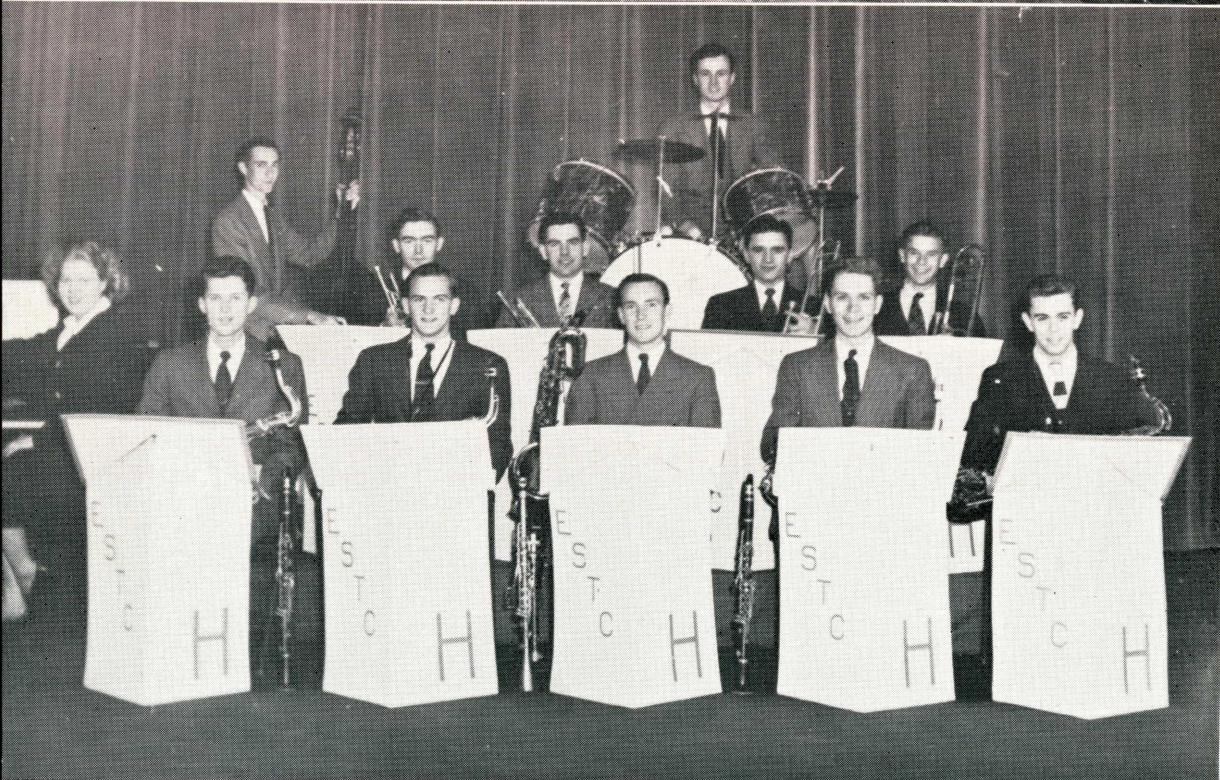
**Band . . .**

The band, under the direction of Mrs. Campbell, has added a great deal to several of our football and basketball games. Their music has brought pep and spirit with it and has made our home games more exciting and eventful. Dick Bonnett served as student director of this organization.

**Orchestra . . .**

The college orchestra as composed of interested students under the direction of Mrs. Campbell. This year marked its rebirth after the lean war years, and we hope that it will continue to grow in the years to come.





### **MIXED ENSEMBLE . . .**

**Front row:** M. Campbell, J. Dunbar, P. Worster, K. Bartoo, L. Obert, C. Johnson. **Back row:** G. Young, J. Webster, E. Sheriff, R. Schantz, L. Peck, J. Baird, P. Jung, P. Gall, D. Davies, P. Dunton.

### **HILANDERS . . .**

**First row:** E. Theobald, piano; G. Hetrick, P. Nippes, R. Goodwill, G. Kandra, D. Hare. **Second row:** J. Fordenbacher, J. Skehan, V. Willaman, R. Steadman. **Third row:** J. Doyle.



### **Mixed Ensemble . . .**

The mixed ensemble is one of the most interesting vocal groups on campus. Its activities are wide and varied, including programs for various community groups both at home and away and variety shows for high schools where prospective Edinboro students are to be found. They presented several interesting numbers at the Vesper Service and also at the Spring Concert.

### **Hilanders . . .**

"Wanted—Musicians to form a dance band." Remember that announcement on the Normal Hall bulletin board? The wanted musicians were found and the dance band was formed, and named the "Hilanders" to relate the group to Edinboro and its Scottish ancestry. Playing for several school functions, the Hilanders soon gained a good reputation for themselves, and were soon sponsoring their own "Two-Bit" dances. Most of the players have had experience in other bands, several in the Army and Navy organizations.



**RADIO CLUB . . .**

**Front row:** M. Matney, M. Turzanski, M. Crownover. **Back row:** J. Minarovich, C. Peterson, B. Neely, G. Williamson, V. Rydberg, R. Steadman.

**CANTERBURY CLUB . . .**

**Front row:** J. MacIvor, J. Bonnett, J. Baird, N. Spraggon, J. Twichell, **Back row:** F. Kratz, C. Bennett, C. Whittier, J. Postlethwait, D. Davies.





### **Radio Club . . .**

A new organization on the Edinboro campus this year is the Radio club, advised by Mr. Lynch. The club meets weekly and is interested in securing an amateur operator's license from the Federal Communications Commission for each of its members.

#### **Officers**

President.....Merl Turzanski  
Vice President....."Bud" Crownover  
Secretary-Treasurer.....Art Jarvis

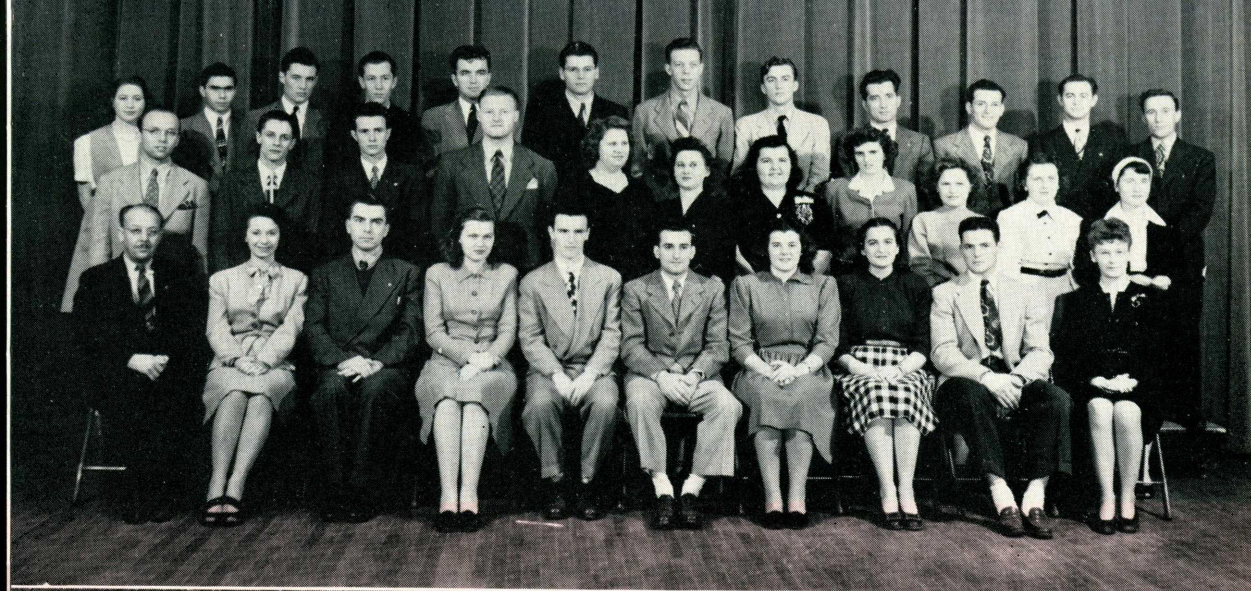
### **Canterbury Club . . .**

The Canterbury club, composed of the Episcopalian students, has had a variety of activities this year. Once a month they held church services and followed them by breakfast with Mr. and Mrs. Bates. (Sounds good, doesn't it?) They held a snow party at the Country Club and reported loads of fun and a good time for all. Special speakers enlivened their meetings and provided matters for discussion.

#### **Officers**

President.....Dick Bonnett  
Vice President.....Mark Rutledge  
Secretary.....Nancy Spraggon  
Treasurer.....Miss Hutchins  
Social Chairman.....Joe Baird





#### NEWMAN CLUB . . .

**First Row:** Mr. Doucette, T. Malinowski, J. Plucinski, M. Ledwick, T. Brown, A. Lucia, D. Peplinski, H. DeFlavio, A. Juliano, A. Chundrlek. **Second row:** T. Lynch, W. Murphy, F. Bedogne, A. Stankieweiz, M. Palchuk, J. Hersperger, H. Pushchak, S. Hill, D. Leshok, R. Kennedy, J. Simoni. **Third row:** P. Chiocchio, F. Filesi, J. Simmons, P. Yanak, N. Bleech, W. Frazier, F. Doucette, E. Myers, F. Matuszewski, L. Lucia, A. Kipela, J. Spence.

#### Y. W. C. A.

**First row:** Miss McDonnell, W. Steadman, M. Stormer, F. Weyrauch, Y. Davis, M. Livingston, M. Rozelle, V. Ransom, B. Gross. **Second row:** R. Hall, K. George, A. Johnson, N. Spraggon, R. Campbell, B. Phillips, C. Johnson, G. Dennis, P. Oakey, J. Follett, L. Obert, A. Gollmer.



### **Newman Club . . .**

The Newman club, the campus organization for Catholic students, meets the first and third Wednesdays of the month in Loveland Hall. Mr. Doucette served as faculty advisor during the first semester, but was relieved by Mr. Lynch for the second semester. The group used as its theme this year "That We May Be One," and had several talks by outside speakers.

#### **Officers**

President.....Tom Brown  
Vice President.....Albert Lucia  
Secretary-Treasurer.....Jeanne Kennedy

### **YWCA . . .**

Following a variety program, the YWCA group had an interesting and eventful year. Under the leadership of Miss McDonnell as faculty advisor, they have sponsored several sings in Haven Hall parlors, attended the local churches in body, and held their regular meetings. Speakers at these meetings have been drawn from the student body and from outside sources, and all have proved worthwhile and interesting to the group.

Early in the year, Mrs. Polly Cuthbertson, Secretary of the Middle Atlantic States Division of the YWCA, visited Edinboro and held several interesting group meetings.

#### **First Semester—Officers**

President.....Yvonne Davis  
Vice President.....Betty Gross  
Corresponding  
Secretary.....Florence Weyrauch  
Treasurer.....Dorothy Edwards  
Music Chairman.....LeVieve Obert  
Song Leader.....Betty Phillips  
Publicity }.....Marian Dean  
                      Virginia Ransom

#### **Second Semester—Officers**

President.....Virginia Ransom  
Vice President.....Mary Jane Rozelle  
Corresponding Secretary.....Lois Braham  
Treasurer.....Dorothy Edwards  
Music Chairman.....Ruth Campbell  
Song Leader.....Betty Phillips  
Publicity }.....Carol Atwater  
                      Polly Price



**SPECTATOR . .**

**Front row:** W. Murphy, M. Webb, J. Spence, E. Osborne, L. Johnson, F. Files. **Back row:** W. Riffner, P. Jung, Mr. Lowder, P. McNarney, J. Lytle, J. McCensky, F. Sammons, R. Bonnett.





### **Spectator . . .**

The "Spectator" grew up this year and emerged "bigger and better" than ever. The increased student body brought more talent to the staff, and they've really been able to do a bang-up job. During the year there were several changes in the staff. John Bonnell stepped up to take over the reins with Joe Spence as co-editor. Marshall Webb resigned his positions as sports editor when he became involved with matrimony and student teaching, and his place was filled by Frank Sitler, as yet unhampered by the latter. Not to be outdone by his colleagues, Pete Jung, a staff photographer, hopped off to California to tie the knot during Easter vacation.

Mr. Lowder, of the English department, has ably assisted the staff in the publication of the college paper.





### ASSEMBLY INFORMALS

#### First row:

LEW SARETT, Poet-Lecturer; DR. BERYL ORRIS, Psychologist.  
with JANE S. LUDGATE, Chairman Lecture Committee.

#### Second row:

DR. PAUL REMUS, Educator; RUTH ENDERS, Dramatist.

#### Third row:

MISS MacCIMMON, Chilean Speaker; DONALD SCOTT  
MORRISON, Dramatist-Pianist.



### **Lectures and Entertainment . . .**

Edinboro has been fortunate in securing several excellent lecture entertainment numbers for assemblies and special evening programs this year. Among the most noted of the artists who have appeared on our platform are Dr. Lew Sarett, poet; Percy Grainger, pianist and composer; Iva Kitchell, dance satirist; and Margaret Webster, Shakespearean actress. The programs indicate a variety of tastes, including speakers on world affairs, dramatists, musicians, artists and a speaker on Indian dances and customs.



**athletics . . .**

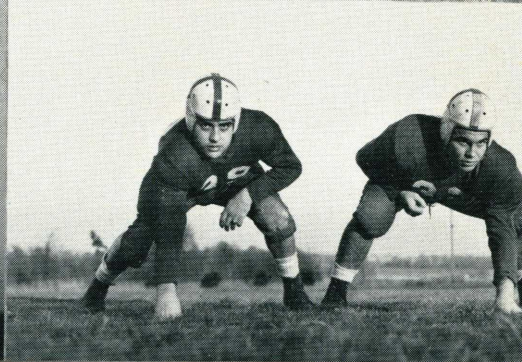
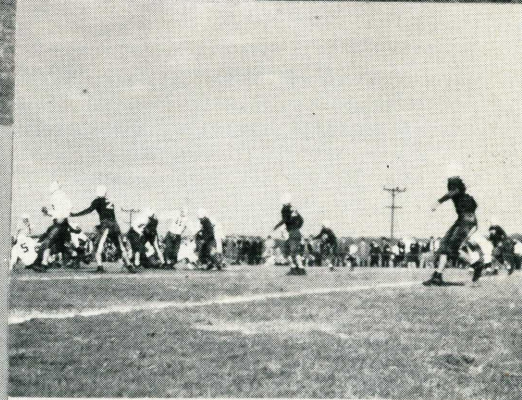
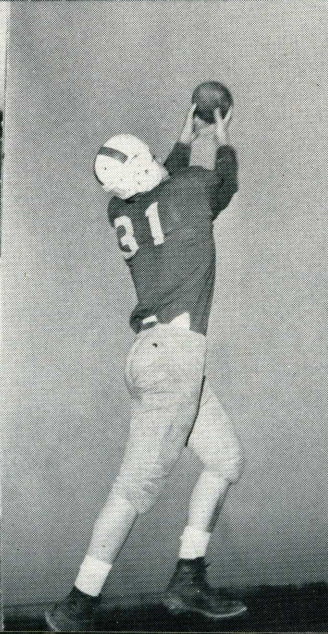
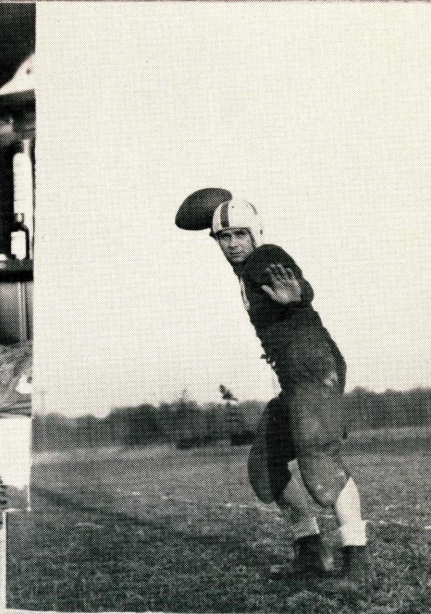
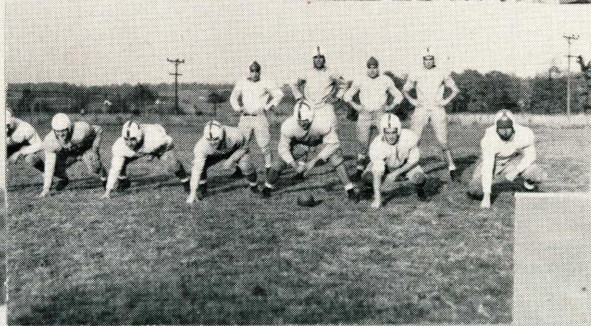
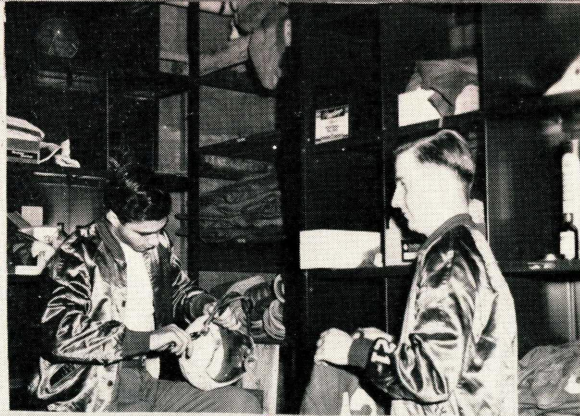
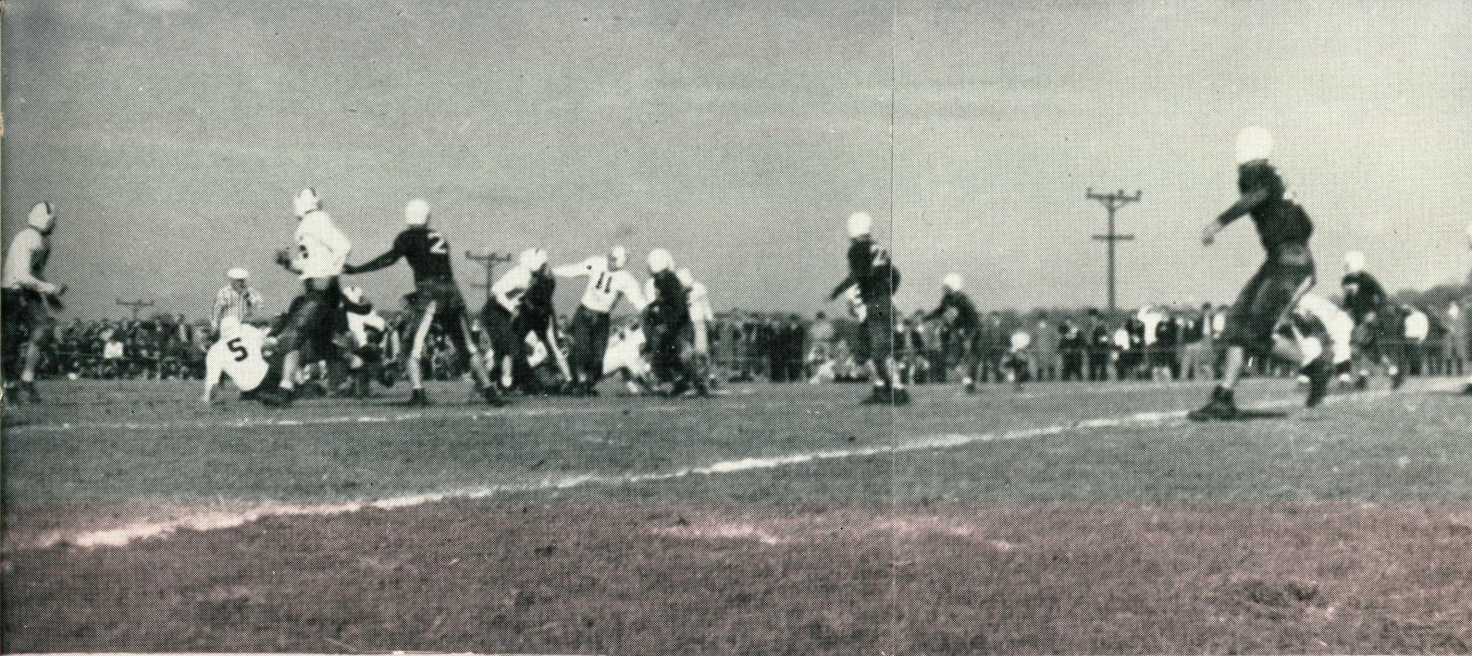






**S**PORTS returned to Edinboro in full force with the increased enrollment. Football . . . Basketball . . . Swimming . . . Wrestling . . . and a new venture, Soccer . . . all added their bit to life at Edinboro.







## Football . . .

The pigskin appeared once again on the Edinboro gridiron last fall. From the first sweaty, torrid game of October 5 to the last chilly one of November 16, the 40-odd men of our school trod the field. Although the season was not much of a success according to the win-loss columns, our losses were not so bad, disregarding the decisive Mansfield and Clarion victories. Our team gained experience, and we're expecting a great season next fall.

Coaches McComb, Reed and Harrison all spent unceasing effort, time, and patience in guiding the team.

The Red Raiders' first game away was a distinct victory for Clarion State Teachers College. Evidently the sultry afternoon dampened our spirits a bit, for we lost by a 50-0 score. Tyson and "Butch" Evanoff were stand-out players for the crimson and white.

The pigskin was at home on the field at New Wilmington when the Raiders played Westminster. A blocked punt in the first two minutes of play won the game for our opponents even though we outplayed them.

The first home game with the Hilltoppers of Alliance was the third loss for the team. Our men ended up on the sadder end of the 20-0 verdict.

Although the ESTC team's spirit was at its peak with the better end of the statistics in their favor, the final score read 7-0 in favor of Thiel. But for a brilliant 47-yard run, the victory would have been ours.

Tom Tyson's touchdown and Mike Dzvonar's extra point constituted the Crimson and White scoring efforts as Mansfield defeated them on our own field. The score was 51-7.

The final game and the final defeat for the Red Raiders was the well-played Slippery Rock game with a score of 19-0.

## Football Finals . . .

	Opponents	Edinboro
Oct. 5—Clarion.....	50	0
Oct. 12—Westminster....	7	0
Oct. 19—Alliance.....	20	0
Oct. 26—Thiel.....	7	0
Nov. 2—Mansfield.....	51	7
Nov. 16—Slippery Rock...	19	0
	<hr/> 154	<hr/> 7



## FOOTBALL TEAM

**First row:** Mascot T. Cochran, M. Dzvonar, M. Boro, W. Kososki, D. Susi, J. Millward, W. Thomas, D. Phillips, L. Mastro, A. Bonomi, S. Nan, H. Diller, M. Evanoff, J. Bonnett. **Second row:** F. Matustewski, F. Lewis, M. Langianese, J. Murray, C. Henry, A. Nicastro, H. Weaver, F. Spoke, M. Langianese, T. Tyson, Cordisco, B. Skelton, W. Gratson, Coach McComb. **Third row:** Coach Reed, J. Rodgers, Coach Harrison, J. Hanaway, J. Hildreth, F. Filesi, J. Retzer, S. Frazier, J. Currie, J. Schmader, F. Young, V. Allenson, V. Rogers, W. DeForrest, N. Wagner, C. Elms, L. Karsznia, C. Giordano.







# **BASKETBALL TEAM**

**Front row:** Coach "Sox" Harrison, R. Strand, M. Dzvonar, R. Bloom, R. McCoy, A. Strand, M. Evanoff, Manager.  
**Back row:** J. Vincich, J. Rogers, A. Babcock, F. Lewis, E. Abahazi, J. Lipchik.





## Basketball . . .

Coach "Sox" Harrison molded his men into a formidable team which won 7 and lost 8 of its games. Averaging 47 points per game, the courtsters completed a fine season, and finished near the top in the final results for the small colleges of Pennsylvania.

Indiana and Slippery Rock were the only two opposing teams who walked away with the victory twice. Fredonia and Fenn College were twice the victims of Edinboro's sharp shooters. Four of our losses were by less than 4 points, and only one (Buffalo State Teachers College) was really decisive.

The Red Raiders swished the net for 707 points as compared with their opponents' 680. Even though the season was a 50% success in the win-loss column we outscored our opponents.

December proved to be a 50-50 month, with the scoreboard registering one loss and one victory. January's four frays, sandwiched around semester exams, were as disastrous as our final grades. The Crimson and White lost three out of four contests, winning only the game with Fenn College contingent.

Almost half the season's games were played in February with four out of the seven being victories. We measured California 63-45, avenged our earlier defeat to Alliance by a 62-55 score, slid by Clarion for a 43-41 win, and trounced Fredonia again 40-37. The three defeats were from Clarion, Indiana, and California.

March brought another victory over Fredonia State Teachers College with a 54-25 score.

Graduation will leave our team minus the capable help of seniors "Bud" McCoy and Elmer Abahazi, but we anticipate a highly successful season for next year.

## Basketball Scores . . .

	Edin- boro	Oppo- nents
Dec. 13 Buffalo State Teachers . .	39	51
Dec. 14 Fredonia State Teachers	54	44
Jan. 11 Alliance . . . . .	44	53
Jan. 17 Indiana State Teachers .	44	45
Jan. 24 Fenn College . . . . .	34	33
Jan. 25 Slippery Rock Teachers	46	51
Feb. 1 California State Tchrs..	63	45
Feb. 4 Clarion State Teachers .	45	46
Feb. 7 Alliance . . . . .	62	65
Feb. 14 Indiana State Teachers..	48	57
Feb. 18 California State Tchrs..	42	45
Feb. 19 Clarion State Teachers .	43	41
Feb. 22 Fenn College . . . . .	40	37
Mar. 1 Fredonia State Teachers	54	25
Mar. 5 Slippery Rock Teachers.	44	52
Won . . . . .	7	
Lost . . . . .	8	

---

707      680



**SWIMMING TEAM . . .**

**Front row:** H. Schlindwein, E. Myers, C. Eisaman, J. Bruckner, A. Warren, R. Young. **Back row:** J. R. Reed, Coach; G. Kosanovic, F. Abbott, W. Lindberg, R. Badgley, S. Long, C. Snyder, Manager.





## Swimming . . .

Eight meets and one exhibition comprised the schedule for the swimming team this year. Coached by Coach McComb and Dean Reed, the team performed creditably although their win-loss finals were not impressive.

Buffalo State Teachers College was the first victim of the Crimson and White swimmers. The Bison were swamped by a 46-28 score in an impressive victory for our men. Both the 300-yard medley relay and the 400-yard free style relay were copped by Raider aqua-men.

Making use of the rest gained during Christmas vacation they deluged their second opponent, Grove City, with a 44-22 score on January 9.

The Allegheny meet jarred the wreath of victory from the heads of the Raiders, but did not shake their confidence. A second defeat by Fenn College made the columns even—two wins and two losses. Again the Edinboro team lost—to Pitt's Panthers, but spectators witnessed top-swimming and the breaking of two pool records.

Slipping on Slippery Rock the Raiders ended up on the wrong side of the 54-21 result, but the Westminster meet brought our scoring up to three wins and five losses.

Captain "Mickey" Schlindwein, with his capable diving and leadership, piloted the men of the squad. He was assisted by Clyde Snyder, manager.

## Swimming Summaries . . .

	Edin- boro	Oppo- nents
Dec. 13 Buffalo State Teachers . .	46	28
Jan. 9 Grove City . . . . .	44	22
Jan. 16 Allegheny . . . . .	24	42
Jan. 18 Fenn College . . . . .	25	50
Jan. 25 Univ. of Pittsburgh . . . .	31	46
Feb. 3 Slippery Rock S. Tchrs. .	21	54
Feb. 22 Westminster . . . . .	47	19

## Exhibition:

Feb. 8 Erie Aquatic Club . . . .	14	46
----------------------------------	----	----





**WRESTLING TEAM . . .**

**Front row:** J. Weixel, G. Smith, L. Karsznia, D. Weis, C. Berg. **Back row:** Coach J. R. Reed, D. Davis, R. Bennett, F. Matuzewski, W. Hunt.



### **Wrestling . . .**

The Edinboro matmen sweated and strained their way through a five-meet season. The team included men for weights of 121 pounds to heavyweights (over 175 pounds). Having had little experience, the team did not expect too much in the way of victories, however, they performed very creditably.

Jack Weixel was the only Edinboro man to turn in a victory in the first tilt with Lock Haven, although Gordon Smith lost a close decision to his opponent.

Waynesburg also measured the Red Raiders in the February 23 match. The contest was decidedly closer than that with Lock Haven, and much improvement was shown.

In February, the Lock Haven team wrestled with our boys here at Edinboro. Once again they were victorious, Jack Weixel being the only winner on our team.

Indiana handed our men their fifth defeat of the season in the finale of March 1. Captain Jack Weixel once more gained the lone tally for ESTC.

Three of our men represented Edinboro at the State Teachers College Wrestling Tournament held at Indiana on March 8. Jack Weixel returned with the 128-pound championship, while Dewey Davis, 155-pound grappler, won second-place honors. Joe LaSlavic was third in the 145-pound class. This was a fine showing and gave credit to the team.

### **Wrestling Results . . .**

	Edin- boro	Oppo- nents
Jan. 19 Lock Haven.....	Lost	
Jan. 23 Waynesburg.....	Lost	
Feb. 7 Lock Haven.....	3	31
Feb. 26 Clarion Teachers.....	13	21
Mar. 1 Indiana Teachers.....	8	24



### **SOCCER TEAM**

**First row:** T. Offerele, A. Gaber, L. Deli, L. Lucia. **Second row:** T. Quirk, C. Berg, T. Quigley, A. Barresi, J. Oliphant, F. Bennett. **Third row:** G. Gamble, W. Roessner, R. Young, B. Masters.





### **Soccer . . .**

Soccer, a new sport to this school, was introduced to ESTC last fall, with Coach McComb and Dr. Offner acting as advisors. Even with the shortage of equipment, co-captains Dick Young and Albert Gaber did a good job of running the team afield.

Two tilts were scheduled and played for two defeats, but the competition was keen. In losing 3-0 to Allegheny and 3-1 to Westminster, our men employed good spirit and an aggressive attitude. Both these games were played away from the home campus, and the student body was unable to observe the plays.

Our men had had little experience in this sport as compared with our opponents, for only three men had previously participated in the game. The outlook is brighter for next fall's six scheduled games, for then experience will also be on our side.

### **Soccer Scores . . .**

	Edinboro	Opponents
Allegheny . . . . .	0	3
Westminster . . . . .	1	3





**WAA COUNCIL**

**Front row:** A. Johnson, W. Fox, B. Hammermeister, M. Palmer, N. Spraggon.

**Back row:** D. Peplinski, B. Gross, E. Theobald, B. Buckley, M. Herr.



### **WAA . . .**

Despite the frosty weather early in the year, the WAA had a tennis tourney underway. Ruth Campbell, a freshman, won the tournament. Taking advantage of the few sunny days the amateur golf enthusiasts practiced up on their drives and then staged a tournament. Roberta Rohrer, a freshman, won the trophy.

All freshmen girls were initiated into the WAA either as a Phi or Delt at a tea given in November. This began the traditional color rush.

Mid-winter activities included competitive feats in basketball, swimming and badminton between the Phi and Delta teams.

Despite the frigid weather and scarcity of snow, the WAA Winter Sports Party held at Culbertson Hills was a great success.

On March 15, Edinboro College played host to Indiana and Grove City. Edinboro won in the closely contested basketball play-offs and copped the victory in the badminton contest. The swimming teams were divided in such a way that more fun was derived and competition between the colleges was eliminated.



## HOCKEY TEAM

**First row:** K. Bartoo, N. Spraggon, M. Palmer, S. Hazen, J. Weldon, A. Henness, B. Deeter, C. Johnson, D. Flower, A. Johnson, D. Peplinski. **Second row:** M. Rozelle, J. Kennedy, M. Reader, J. Simoni, M. Hebert, D. Johnson, M. Gilbody; D. McClure, W. Fox. **Third row:** E. Theobald, E. Bossart, B. Yocum, H. Johnson, N. Coates, G. Prengaman, B. Davis.





## **Hockey . . .**

This year's line-up of hockey players included many three and four-year players. The enthusiastic freshmen gave the upper classmen's team a hard run, for though the "frosh" might have lacked experience, they made up for their inadequacies in this field with fighting spirit.

Fortunately, some much needed sticks finally found their way to ESTC this year, making hockey much more interesting. Equipment helps!

As a result of an invitation requesting that Edinboro send five players to a competitive series of games at Cleveland in November, Betty Deeter and Shirley Hazen received national recognition. They won positions on the Honorary Team of the Great Lakes Unit of the United States Hockey Association.

At the end of this year's season Annette Henness received her four-year hockey award, being the sixth student to receive this recognition in the last eleven years.







A collage of black and white photographs from a 1940s yearbook, tilted at various angles. The photos depict students in various settings: two girls in coats standing together, a girl writing at a desk, a group of students in a kitchen, a large crowd in front of a building, students in a workshop, and a group of boys sitting on the ground. One student wears a sweatshirt that says "WEST STARS".



# Patrons

HUTCH'S HUT

"Our Sandwiches sell without a slogan"

---

Compliments of  
SCHRUE'S DAIRY

---

CULBERTSON HILLS GOLF AND  
COUNTRY CLUB

Edinboro, Pennsylvania

---

MEADVILLE BREAD COMPANY

"The Home of Flavo-Rite"

---

ASHBY, INCORPORATED

*Printers • Lithographers • Publishers • Binders*

423 State Street, Erie, Pa.

---

NATIONAL SERVICE ENGRAVING  
COMPANY

1708 French Street, Erie, Pa.

---

You don't know Edinboro until you know

COOPERS'

---

VALLEY FROSTED FOODS, INC.

"Honor Brand Frosted Foods—40 Fathom Fish

---

Compliments of  
UNITED FRUIT & PRODUCE COMPANY

Erie, Pennsylvania

---

C. A. CURTZE

Wholesale Grocer

Erie, Pennsylvania



# Friends

---

## THE PRENTICE SHOP

Ladies' and Men's Furnishings of Quality

---

## FRANK SCHAUBLE PHOTO STUDIOS

Erie, Pennsylvania

---

## WILLEY BROS.—RED AND WHITE STORE

Headquarters for Quality Foods

---

Compliments of

## SCHAFFNER BROS. COMPANY

Erie, Pennsylvania

---

## THE VILLAGE GIFT SHOP

Distinctive Gifts—Dry Goods

---

General Electric Appliances

## ARTHUR F. SCHULTZ COMPANY

Erie, Pennsylvania

---

## SCHEIDEMANTEL SERVICE STATION

Home Electrical Appliances

---

Compliments of

## ERIE DRY GOODS COMPANY

---

## ZORTMAN'S FLOUR & FEED COMPANY

Home of "better" feed

---

## JORDAN'S

Erie, Pennsylvania

---

Compliments of

## ERIE METER SYSTEMS, INC.

Gasoline and Petroleum Equipment



# Friends

Edinboro's Station of  
AL ADAMS' SERVICE STATION  
Friendly Service

---

Your Headquarters for  
Decca, Columbia, Victor and Capital  
EDINBORO SUPPLY COMPANY

---

Compliments of  
THE BEST THEATRE

---

Ladies' and Men's Furnishings  
SHIELY & HUTCHINGS

---

STATE STREET JEWELERS' ASSOCIATION  
Erie, Pennsylvania

---

EINHEIT ELECTRIC CONSTRUCTION  
COMPANY

*"Wiring by Einherth means Preferred Construction"*

---

EDINBORO CLEANERS  
The place to send your  
Cleaning and Pressing

---

"Where Friends Meet and Eat"  
EDINBORO DAIRY BAR

---

JOLLEYS' PHARMACY  
Try the Drug Store First

---

The Shop of Quality  
BUD'S BARBER SHOP

---

ZINDEL AND STAUFFER  
Edinboro's Pioneer Store



# Contributors

Compliments of  
FIRST NATIONAL BANK OF EDINBORO

---

EDINBORO FLOWER SHOP  
Let us supply your Floral needs

---

WESCHLERS' OF COURSE

---

Best Wishes from the  
SEVIN ART STORE  
Erie, Pennsylvania

---

THE LAWRENCE HOTEL CO., INC.  
Erie, Pennsylvania

---

Compliments of  
J. W. JOHNSON & SON  
Albion, Pennsylvania  
Flour - Feed - Coal - Farm Supplies

---

HELLMAN  
RADIO AND APPLIANCE STORE

---

For Courteous Service visit  
GEORGE'S BARBER SHOP

AVIS' BEAUTY SALON  
Edinboro, Pennsylvania

---

"Fresh Baked Goods Daily"  
EDINBORO HOME BAKERY

---

D. R. STROUP'S  
"Quality Groceries"  
Cambridge Springs, Pennsylvania

---

Compliments of SPRINGS  
FIRST NATIONAL BANK

---

TEWINKLE FOOD MARKET  
Friendly Service  
Howard B. TeWinkle, Prop.

---

Bowl for Health and Pleasure at  
GOURLEY'S BOWLING ALLEYS

---

ERIE WHOLESALE GROCERY COMPANY  
Erie, Pennsylvania

---

Another Friendly Service of  
SCHRUBB'S LAUNDRY  
Cambridge Springs, Pennsylvania



# Contributors

THE HALLE BROS. COMPANY

Erie, Pennsylvania

---

For Music on Records, it's

THE RECORD BAR

Erie, Pennsylvania

---

PERRY E. WOOD

Frosted Malts and Homemade Ice Cream

---

KENNESON BROS. GARAGE

"Quick Service on All Make Cars"

---

Compliments of

McFADDEN'S CROSSROADS DINOR

---

MARKHAM MUSIC COMPANY

Erie, Pennsylvania

---

Get Your Snack at the

SNACK BAR

---

Compliments of

C. WILBUR BILLINGS

Enjoy Good Food and Comfortable

Lodging at

YE OLDE ROBINSON HOUSE

---

Compliments of

THE FIRST NATIONAL BANK

of North East, Pennsylvania

---

SANITARY FARMS DAIRY, INC.

Erie, Pennsylvania

---

Compliments of

THE GIRARD MANUFACTURING

COMPANY

---

Best Wishes from

THE CALABRESE CLUB

Erie, Pennsylvania

---

LORRAINE SMART SHOPS

Home of Original Modes

---

Dairy Bar and Sandwiches

DEL'S LUNCHEONETTE

Erie, Pennsylvania

---

Compliments of

BAUR FLORAL COMPANY

Erie, Pennsylvania



# Contributors

Compliments of the Bus Station

MINNIE BUCHANAN

---

THE WINTER COMPANY

Erie, Pennsylvania

Pianos, Hammond Organs, Radios

---

L. PRESS & COMPANY

Erie, Pennsylvania

---

Best Wishes from the

LAWRENCE

CLEANING & DYEING COMPANY

Erie, Pennsylvania

---

Compliments of

IRVING'S

Erie, Pennsylvania

---

SESSINGHAUS & OSTERGAARD, INC.

Contractors - Engineers

Erie, Pennsylvania

---

Compliments of

FORESTERS BENEFICIAL ASSOCIATION

Erie, Pennsylvania

---

FORD E. O'DELL

Jeweler

Erie, Pennsylvania

Compliments of

SKINNER ENGINE COMPANY

Erie, Pennsylvania

---

Best Wishes from

PERRY SOCIAL CLUB

Erie, Pennsylvania

---

KELLY STUDIOS

Erie, Pennsylvania

---

Compliments of

PALACE HARDWARE HOUSE

Erie, Pennsylvania

---

TRASK, PRESCOTT & RICHARDSON

COMPANY

Erie, Pennsylvania

---

Erie's Largest Shoe Store

LECHNER'S SHOE STORE

---

G. J. GEBHARDT

COAL AND COKE COMPANY

---

HALLER (JACOB) COMPANY

Erie, Pennsylvania



# Contributors

---

CESARE BATTISTI CLUB M. S.

Erie, Pennsylvania

---

---

POLISH ARMY VETERANS OF AMERICA

POST No. 17

Erie, Pennsylvania

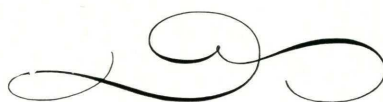
---

---

ERIE LABOR TEMPLE CORPORATION

Erie, Pennsylvania

---





















COLLEGE ARCHIVES



