

1939

1939

The
Conneautlean

COLLEGE ARCHIVES



Mr. Aime Louette

Thanks for your swell help on this
book! You made much of it
possible!

Pete

COLLEGE ARCHIVES

Edinboro State
Teachers College
Edinboro, Pennsylvania

1939

• Ex-Libris . . .



• *The Junior Class*

Presents . . .

Its . . .

Annual . . .

Publication —

1939

EDITOR . . . WALTER NISSEN
BUSINESS MANAGER . LEE JEFFORDS
ART EDITOR . RICHARD PETERSON

The Connaultlean

• We Dedicate . . .

In dedicating this 1939 Conneautteeen to Mr. William A. Wheatley, the Junior Class wishes to honor its good friend, an excellent teacher, and a kindly administrator. Retiring this year as Edinboro's Dean of Instruction, Mr. Wheatley can look back upon many years of fruitful work with young men and young women at Edinboro. A ready listener, an expert counselor, his word of aid was appreciated by all; his was genuine service.

. . . The Junior Class.



. . . Mr. William A. Wheatley •

• Foreword . . .

1939 has been a year of progress on the Edinboro Campus. New buildings, new ideas, new students have joined with the old to make this year progressive from every viewpoint. With this thought in mind and with a firm belief in the future of a grand old college, the 1939 Conneautteean Staff urges you to read into these pages the memories of an eventful year.

Throughout the school year, the Staff has worked to place in your hands this 1939 Conneautteean. With this accomplished, the Staff's work is only partly complete; final completion rests in your enrichment of these words and pictures with the joyful memories of this year's living and studying at Edinboro.

. . . The 1939 Conneautteean Staff.

. . . Contents .

The 1939 Conneautteeen	Page
Dedication	6
Foreword	8
Senior Directory	10
 The College	
Our Buildings	15
Administration	25
 The Students	
Seniors	33
Juniors	40
Sophomores	46
Freshmen	54
 The Year at Edinboro	
Campus Organizations	69
The Raiders	88
Women's Athletic Association	94
Candid Camera	96
Calendar	102

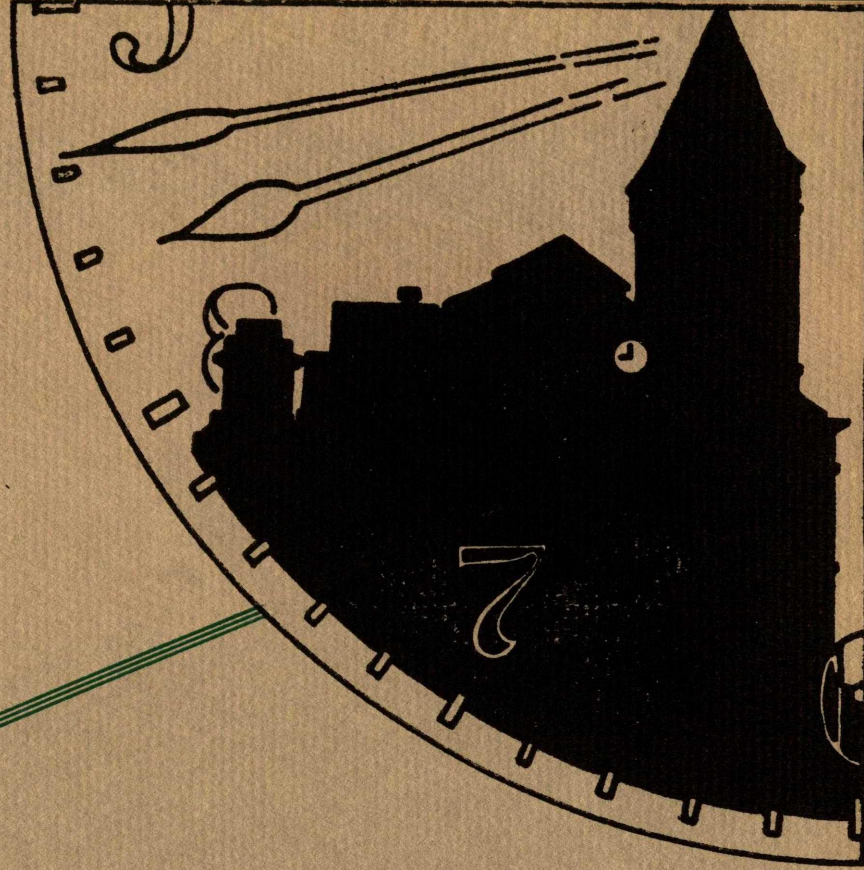
• Senior Directory . . .

	Page		Page
Gilbert E. Bartoo	34	Alice Kruszka	36
George C. Boerstler	34	Alice D. Lynch	36
Orval B. Borton	39	Ruth McFadden	37
Coletta Burkhardt	34	Wilder E. Michael	36
Francis M. Calvin	34	Howard B. Miller	39
Louise M. Carlberg	34	Nina Gale Miller	37
Fred Case	39	Clair K. More	39
Angelo Casella	34	Virginia R. Neale	36
Clement F. Chromik	39	Jack P. Neigenfind	36
Kathryn Cochranides	35	Eleanor C. Nichols	39
Ruth M. Collom	35	Paul E. Pfeiffer	37
Hazel B. Cook	35	Conrad Primavera	37
Arden E. Davies	34	Don Reichel	37
Virginia E. Davis	34	Mary M. Rhinehart	37
Nick Demiankow	34	Virginia L. Rhodaberger	37
Ann Fetkovich	35	John C. Russell	37
Dorothy Fisher	35	Roland A. Sellers	38
Ruth C. Gilbert	36	Keith D. Skelton	38
Chester Gutzler	34	Miriam L. Smith	38
Ruth Hagerson	39	Elnora Storer	37
Joseph Halchin	35	John R. Swift	37
Beatrice M. Hall	36	Maxine Teetsel	38
George Hetra	35	Marjorie A. Welsh	38
Robert L. Hill	35	Averyl W. Wheeling	38
Wayne Hull	35	Mary Louise Whiting	38
Daniel Jackish	35	Rupert Witalis	38
Henry Kirschner	36	John B. Wolfe	38
LorRita B. Kramer	36	Joseph A. Zahniser	38
Nick Krivonak	36		

• Class of 1939 . . .

1939

The College



- *Administration*
- FACULTY
- STAFF
- BUILDINGS . . .

Edinboro •

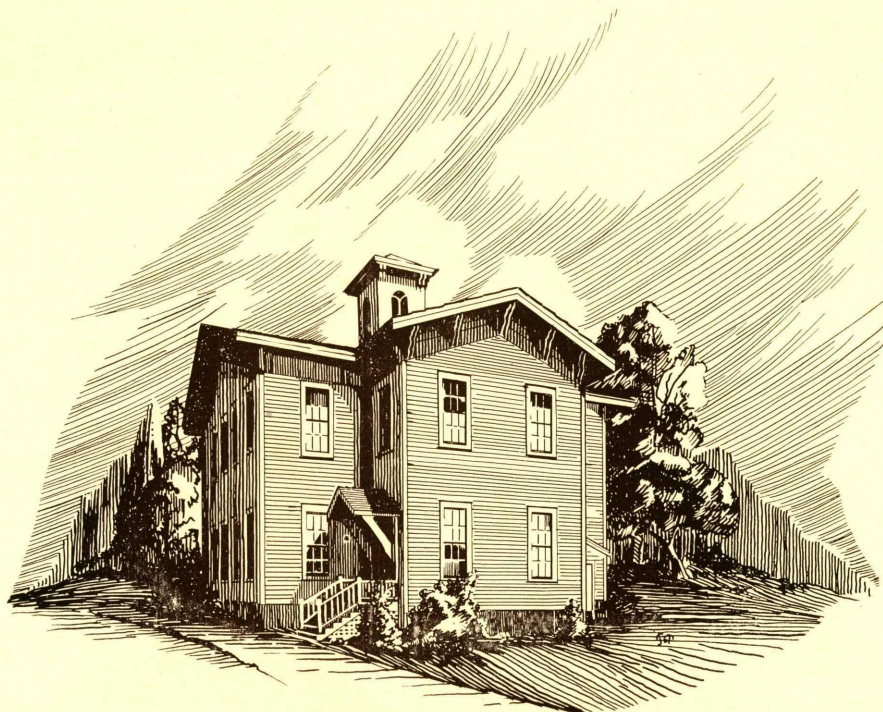
The year of 1939 served to build on the time-honored acres of Edinboro four new buildings which arose from deep holes in the earth to beautiful, modern structures, designed and equipped to provide the best in educational facilities. As they arose, they added much to the present day worth and to the long past traditions of Edinboro State Teachers College.

Enriching three-quarters of a century of growth with these modern physical aids in the educating of teachers for our public schools, the year gave to the College the rewards of faithful, efficient service for which Edinboro has always stood, and in which Edinboro pioneered in 1861. Thus, this growth and progress were just and deserved.

Yet new buildings only lay the foundations for progress in educational thought. They but provide the physical shell into which the knowledges, the skills, and the culture of modern education is inculcated. On these foundations must be realized the educational ideals and aspirations of Educators at Edinboro, as they work with future young men and young women on this campus.

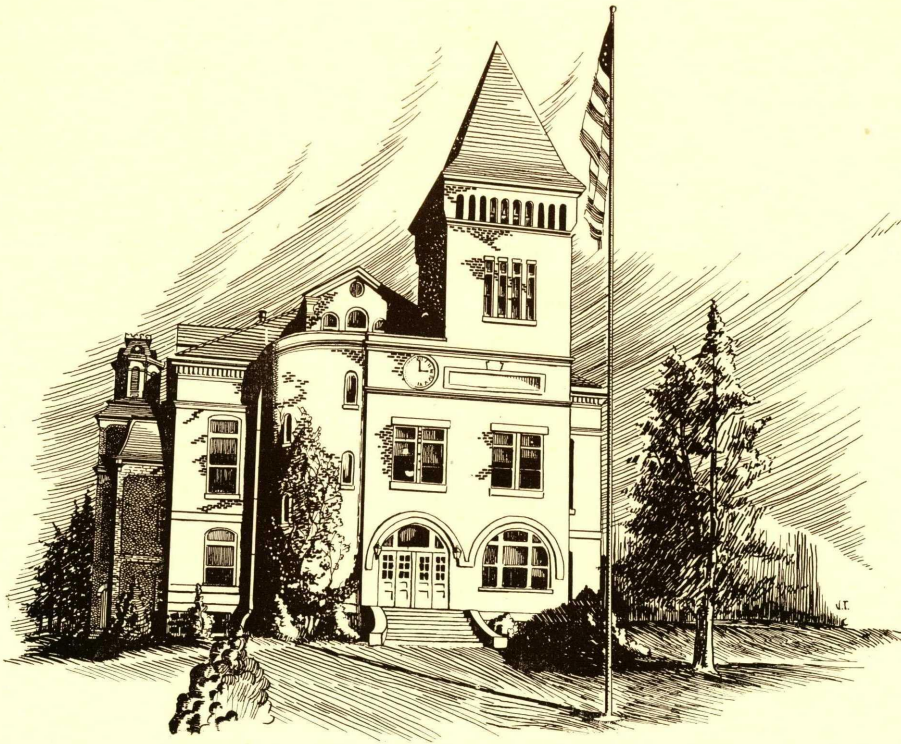
. . . 1939 •

• Music Hall • • •

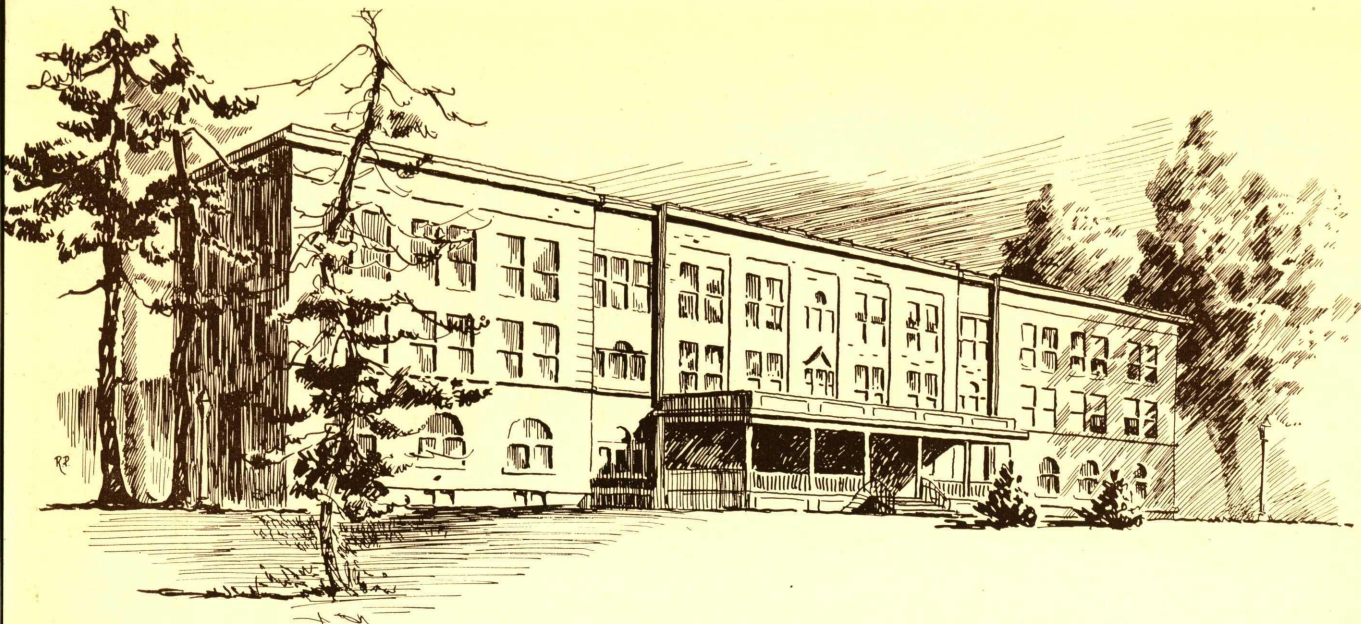


Three-quarters of a century of service to an ever-seeking, discovering youth makes old Music Hall distinctive in the progress of education at Edinboro. Timeworn, full to overflowing with the memories of eager young men and young women, it stands as a reminder of the ideals and aspirations of the pioneers in education who looked to the future and planned for it. Tradition and respect for its antiquity will hold this first building dear to the hearts of those who have studied in it, lived short days around it, and then, as teachers, have gone out to promote the further progress of education in the public schools.

• • • Normal Hall •

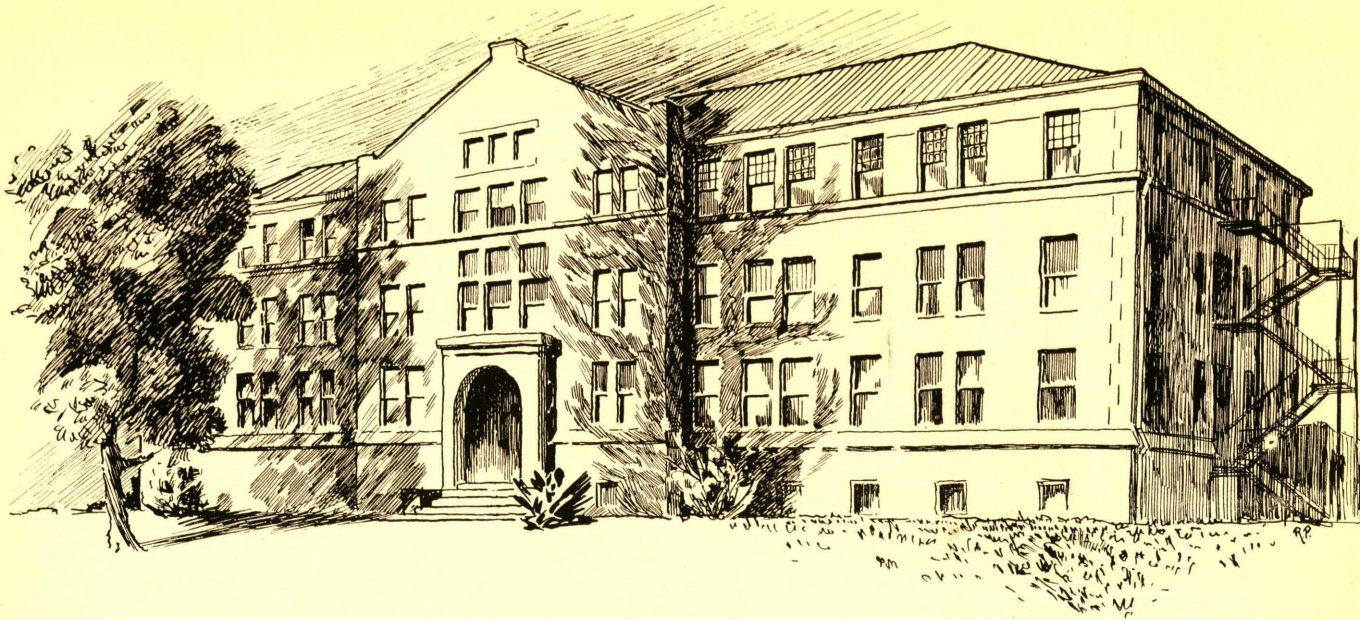


Broad steps lead to the opening doors. With the graciousness of a friendly building, many strange but desiring young persons were welcomed to Edinboro by Normal Hall, the administration building of the college and the place of first contacts. But the first contacts fade into insignificance as the initiated student reads in the Library, hears the spoken word and the musical note in the Auditorium, visits its many classrooms, or chats confidentially with the Dean or the President in their offices. Normal Hall is the center of education at Edinboro.



Haven Hall is the home of the young women of Edinboro; with spacious appointments and a beautiful dining hall used much for social occasions, it is the center of the social life of the Campus. Its banquets, its dances, its all-college sings, its after-dinner games and fun, give it the meanings of full and happy living. From the kitchen with tasty smell, to the last Freshman room on third floor, Haven boasts of life as Edinboro students live it. As non-academic as Normal Hall is scholarly, as useful as it is beautiful, as close to the lives of its young women as it is to the center of the Campus, Haven Hall is life at Edinboro.

• Haven Hall . . .



Reeder Hall, the home of the young men at Edinboro, lends its usefulness to the Campus. A place of diligent study and of pleasant recreation, its many rooms hum with activity throughout the day, and sometimes far into the night. Young men cover its walls with pictures, run through its long halls, lounge in its comfortable chairs, play its several pianos and meet in its club rooms; it serves them well. Could more be said of a building, which by the very nature of its double rooms cultivates friendship and understanding among young men as they make it their home?

. . . Reeder Hall •



With the ScRAab, symbol of the arts, placed high above its beautiful doorway, Loveland Hall invites the art student to enter and to learn. Paints and brushes, skillful hands and soft clay, charcoal and smudged paper, pen and pencil, easel and palette—all meet with the hum of voices and artistic inspiration as Edinboro students create the beautiful, the useful, and the fine within its walls.

Yet Loveland has its classrooms of science and biology; possibly this is significant in that it points out the close relationships fostered at Edinboro between the arts and sciences. Surely Loveland typifies the progressive cooperation of modern education.

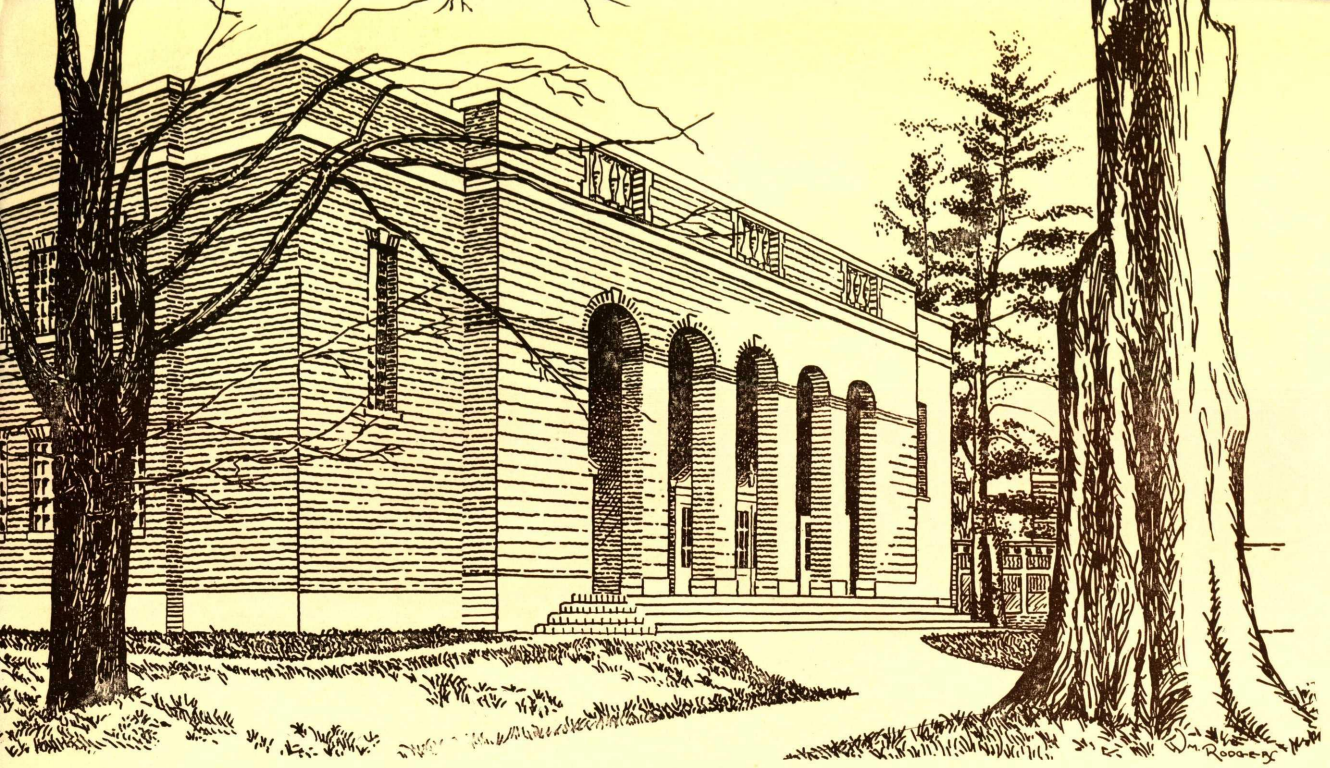
• Loveland Hall . . .



The new Gymnasium, which rose on old tennis courts and vacant field during 1939, is but a promise of the glorious future that lies ahead for athletics at Edinboro. With the Red Raiders already passing down a magnificent heritage of ability and sportsmanship many will be the stirring basketball games played on this broad court. Similarly, great teams will meet in the tile-lined pool. Edinboro women will hold their Play-Days and continue to carry on their broad intra-mural program, one of the best organized in the State. Soon this new building will become a part of each student's everyday life.

Yet, the old Gym will not be forgotten quickly; its traditions and its memories will persist. Some will merge themselves with the new Gymnasium as the years pass.

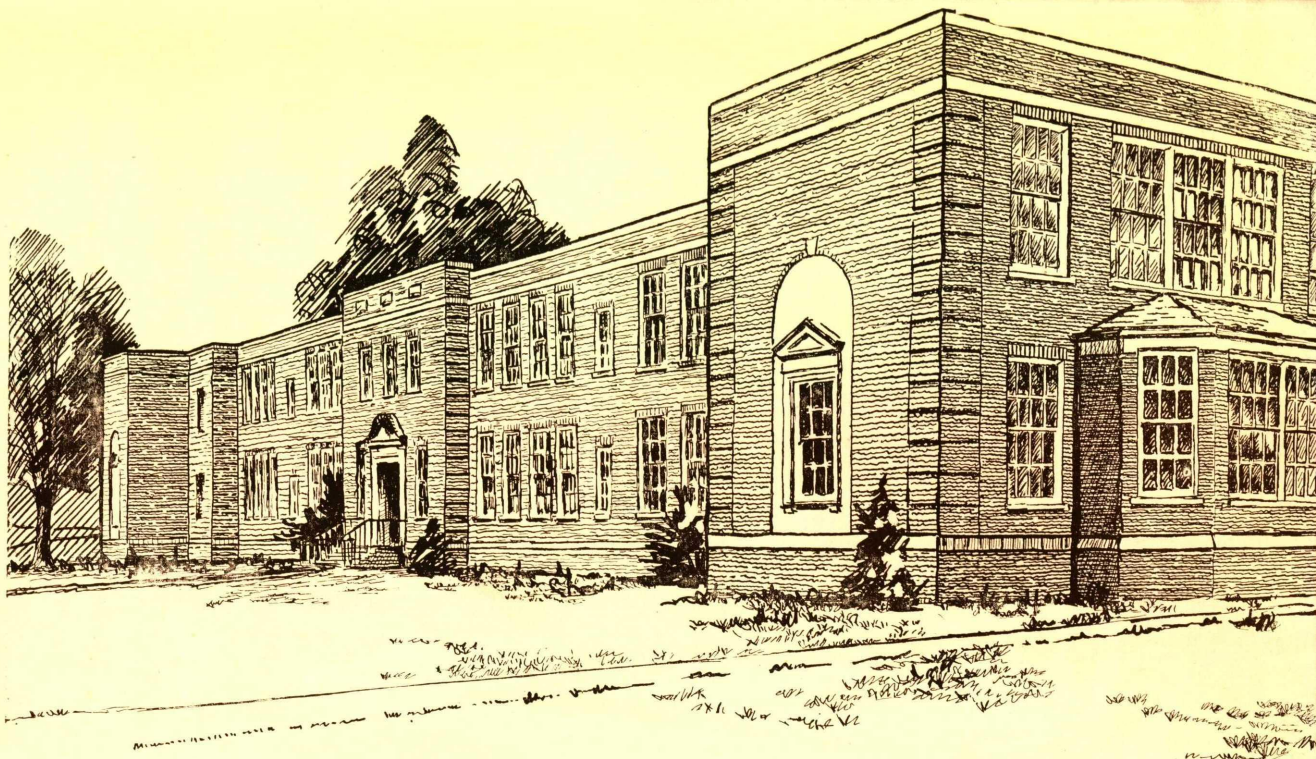
. . . Our New Gymnasium .



Rearing its tall arches between the trees of mid-campus, the new Auditorium will soon become the focal point of culture and entertainment at Edinboro. Its many doors open into tall-columned walls and lofty windows covered over with ceiling murals depicting the development of knowledge. Rare is its magnificent beauty.

In a few short days, great artists will walk across its broad stage; eager audiences will sit in its many seats; anxious students will gather for weekly assemblies; Edinboro Players will give fine dramas. Shortly the new Auditorium will take on the aspects of cultural life.

• Our New Auditorium . . .



Eager pupils meet smiling instructors; helpful critics confer with anxious student-teachers; careful administrators discuss the problems of the Training School—that new building where Edinboro students will meet the cares and joys of student-teaching, the interesting climax to four years of study at Edinboro.

On the east wing of this new building a sandstone plaque states in the terse words of Washington: "Promote then, as an object of primary importance, institutions for the general diffusion of knowledge."

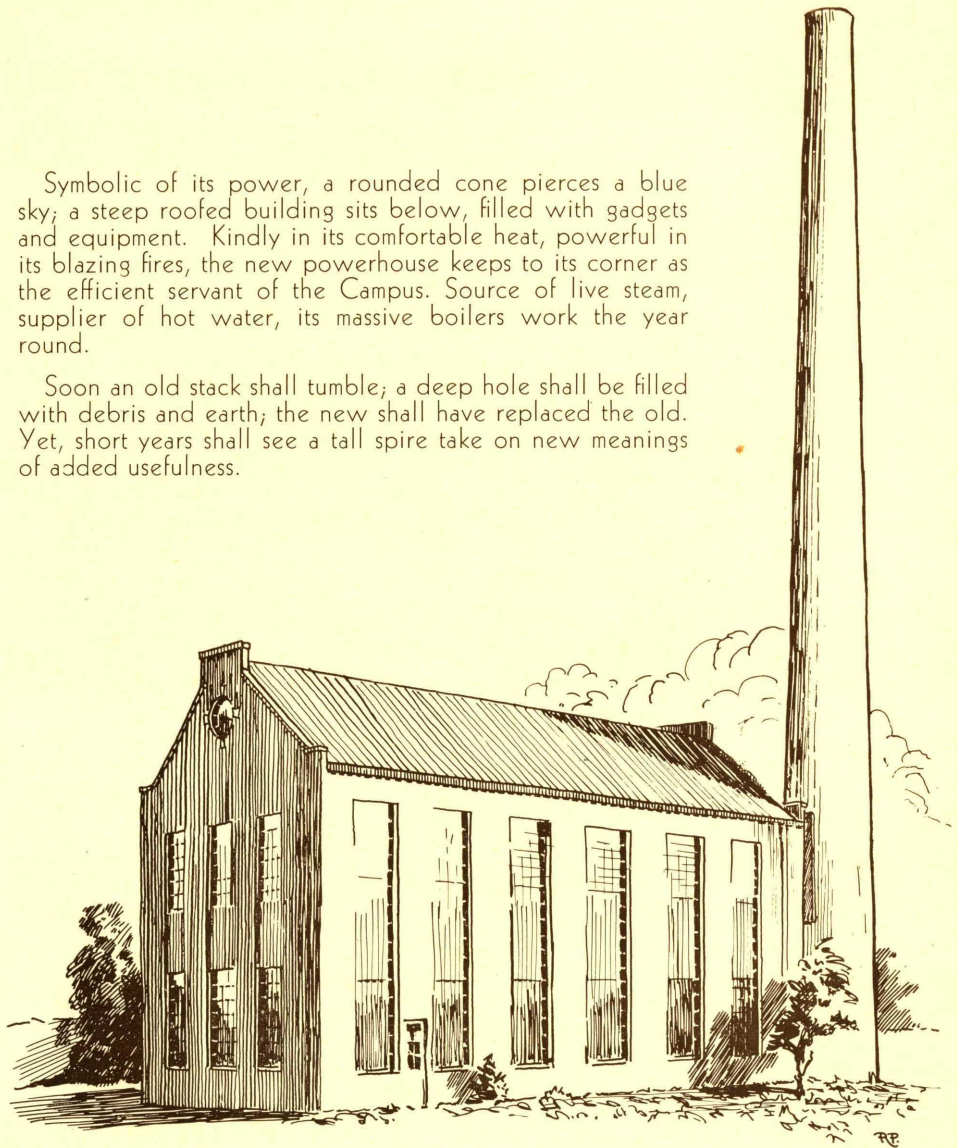
With the new buildings and modern educational methods, Edinboro continues to carry out the ideals of the founders of our democracy.

• • • Our New Training School •

• Our New Powerhouse . . .

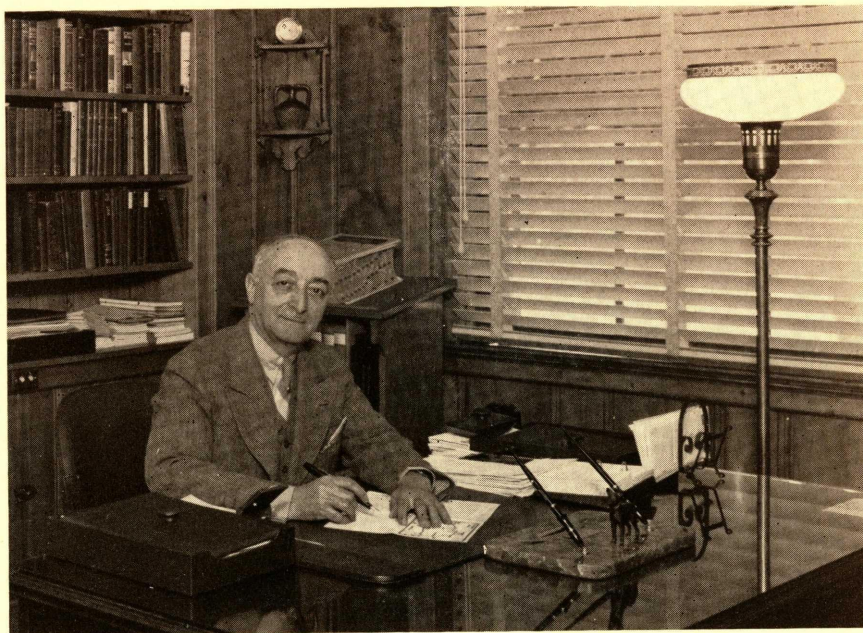
Symbolic of its power, a rounded cone pierces a blue sky; a steep roofed building sits below, filled with gadgets and equipment. Kindly in its comfortable heat, powerful in its blazing fires, the new powerhouse keeps to its corner as the efficient servant of the Campus. Source of live steam, supplier of hot water, its massive boilers work the year round.

Soon an old stack shall tumble; a deep hole shall be filled with debris and earth; the new shall have replaced the old. Yet, short years shall see a tall spire take on new meanings of added usefulness.



. . . The Administration .

• Our President . . .



Dr. Carmon Ross, who has executed the administrative duties of Edinboro State Teachers College during the past five years, has watched the College grow into an expanding educational institution. From his first day of service to the present, Dr. Ross has made the advancement of Edinboro his chief aim; that this aim is being realized is told by this year of progress.

. . . Our Faculty •



With kind words of encouragement, the Edinboro faculty have guided and enriched that essential contact between the student and the realm of books, so necessary to the greatest usefulness of young lives. Aware of the equally useful futures of young men and young women, they have aided and counseled—both in work and in play—so that the Edinboro graduate might become a well-rounded person, an excellent teacher, and a useful citizen.

Dr. Carroll Atkinson was welcomed as Edinboro's newest instructor in 1939.

Instructors not in picture are: Dr. Christensen, Dr. Van Houten, Miss Ludgate, Mr. Offner, Miss Ruttle, Miss Skinner, and Miss Strohecker.

• The Professional Staff . . .

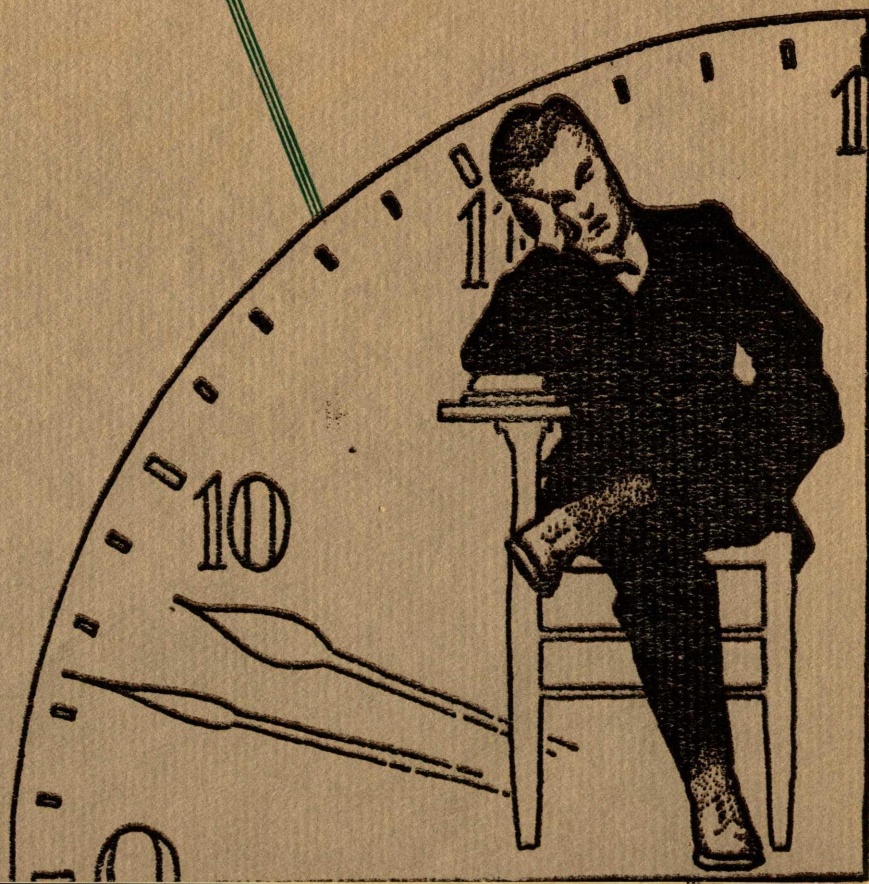
Supplying the necessities of life to our College is the work of Edinboro's professional staff. By efficiently handling the details of food, credits, bills, rooms, and ills, these competent persons made study and living easy and comfortable to Edinboro's undergraduates in 1939.



- Seniors*
• JUNIORS
• SOPHOMORES
• FRESHMEN . .

The Students

1939



. . . The Seniors •

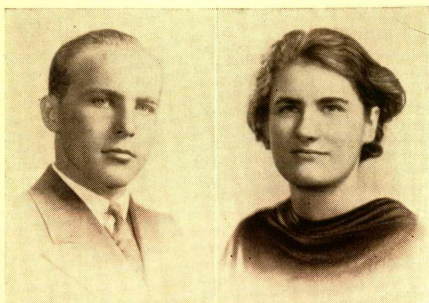
The Senior Class of 1939, living as usual half its year in Campus work and then devoting half to student-teaching, had a final year of singularly divided activity on the Edinboro Campus. That this last year of college life is seemingly broken comes from the fact of student-teaching and student teachers—who are a race apart, filling each day—as every good teacher does—with the work of the classroom and the pupil. Only during Commencement Week, when the academic part of the process of college education is completed do the Seniors get together to enjoy college life as a united class once again.

It was into this one short week of May that the Class of 1939 crowded the activities of the class play, the picnic, the assembly program, and the planting of the Senior Tree and Ivy. It was also during this busy week that the class dedicated a lasting gift to the College as a memorial to itself and its four years at Edinboro.

Keith Skelton, president of the Class of 1939, was helped in his executive duties by vice-president Ruth Gilbert. Secretarial duties were taken care of by Ruth Hagerson and treasury difficulties were looked after by Marjorie Welsh. The Senior Class supplied leadership to the Student Council in the persons of Paul Pfeiffer and Angelo Casella—both of whom served as Council Presidents. Louise Carlberg was a third senior Class representative throughout the year.

The Class of 1939 has finished four years of life at Edinboro. 1939 has been a memorable year—jam-packed with activity and full-laden with memories of a final successful ending to many happy and serious days in College.

Seniors

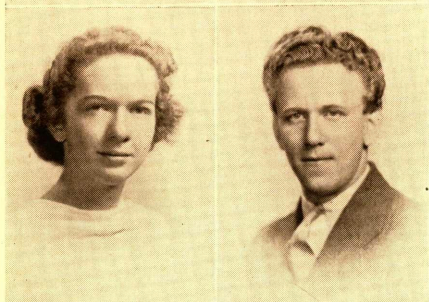


NICK DEMIANKOW
"Demmy"

Secondary—Erie
Varsity Football
"E" Club
Varsity Basketball
Phi Sigma Pi
Horace Mann Club

GILBERTA BARTOO
"Berta"

Secondary—Edinboro

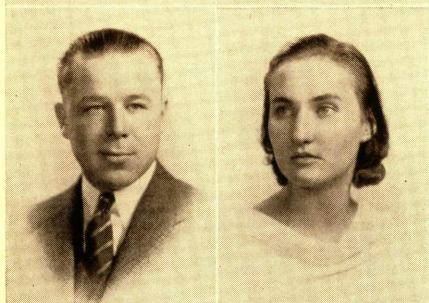


FRANCES CALVIN
"Frannie"

Elementary—Meadville
Horace Mann Club
Rural Problems
Comstock Club
Edinboro Players
Y. W. C. A.

GEORGE BOERSTLER
"Tex"

Art—Johnstown
Phi Sigma Pi
President of Chi Delta Sigma
Delta Phi Delta
ScaRab Club
Y. M. C. A.

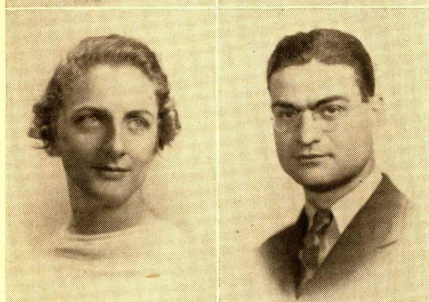


ARDEN DAVIES
"Snake"

Secondary—Johnsonburg
Varsity Football
Kappa Delta Phi
Intra-Mural Basketball
Beta Xi

COLETTA BURKHARDT
"Burky"

Art—Corry
Delta Phi Delta
Edinboro Players
Newman Club
W. A. A.
Photography Club
Orchestra
Choir

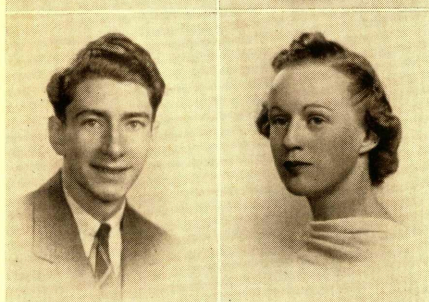


VIRGINIA DAVIS
"Ginny"

Art—Edinboro
Mu Kappa Gamma
Choir

ANGELO CASELLA
"Angie"

Secondary—Erie
Edinboro Players
Horace Mann Club
Rural Problems Club
Kappa Delta Phi
Intra-Mural Sports
Photography Club
President of Student Council
Beta Xi



CHESTER GUTZLER
"Chet"

Secondary—Warren
Chi Delta Sigma
Phi Sigma Pi
Y. M. C. A.
Intra-Mural Sports
Press Club

LOUISE CARLBERG
"Lou"

Elementary—Corry
Alpha Delta
House Council
Student Council
Spectator Staff
W. A. A.
Edinboro Players
Rural Problems Club

Class of 1939

ROBERT HILL
"Bob"

Art—Edinboro
Spectator Staff
ScaRab Club

KATHRYN COCHANIDES
"Kitty"

Elementary—Erie
President of W. A. A.
Edinboro Players
Orchestra
Haven Hall Council
Y. W. C. A.
Varsity Hockey

GEORGE HETRA
"Chief"

Secondary—Farrell
Chi Delta Sigma
Phi Sigma Pi
Y. M. C. A.
Rural Problems Club
Choir
Student Council
Intra-Mural Sports

RUTH COLLOM

Elementary—Meadville
W. A. A.
Edinboro Players
Comstock Club
Y. W. C. A.

WAYNE HULL
"Scientist"

Secondary—Waterford
Y. M. C. A.
Photography Club
Intra-Mural Basketball
Rural Problems Club

HAZEL COOK
"Cookie"

ScaRab Club
Edinboro Players

DOROTHY FISHER
"Dotty"

Secondary—Erie
Edinboro Players
Comstock Club
Rural Problems Club
W. A. A.
Photography Club
Alpha Psi Omega
Y. W. C. A.

JOSEPH HALCHIN
"Joe"

Secondary—Albion
Debating Club
Rural Problems Club
Photography Club

ANN FETKOVICH
"Anniee"

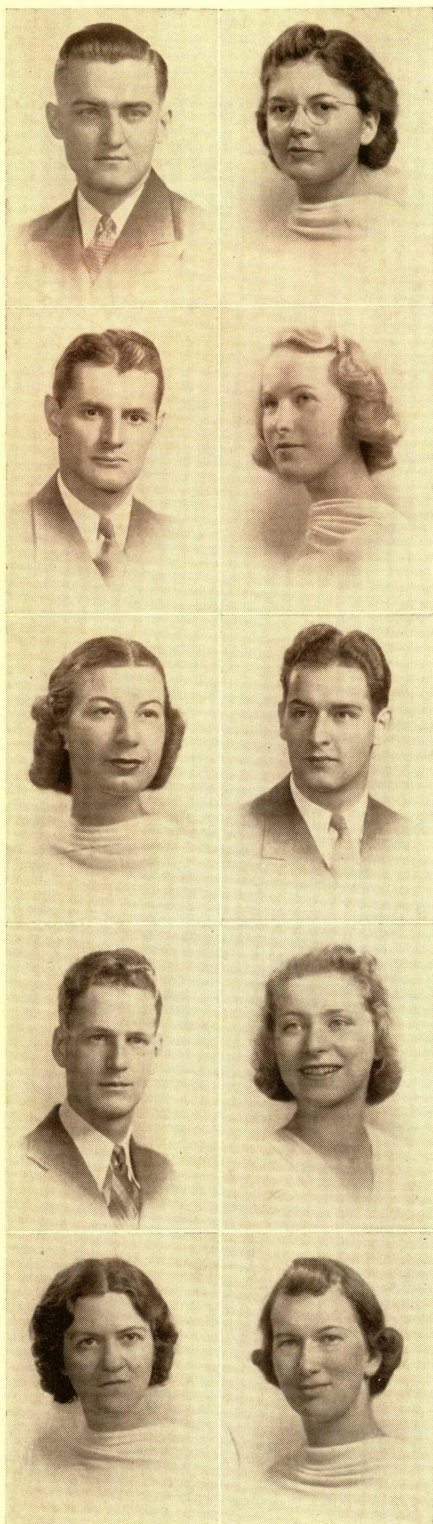
Elementary—West Aliquippa
Comstock Club
Y. W. C. A.
W. A. A.
College Professional Club

DANIEL JACKISH
"Dan"

Secondary—Aliquippa
Phi Sigma Pi
Chi Delta Sigma
Intra-Mural Sports
Varsity Football



Seniors



NICK KRIVONAK

Secondary—Erie
Phi Sigma Pi
Choir
Orchestra
Mu Kappa Gamma
Chi Delta Sigma
Y. M. A. C.
Newman Club
Spectator Staff

RUTH GILBERT

"Ruthie"
Elementary—Guys Mills
Alpha Delta
W. A. A.
Y. W. C. A.
House Council
Student Council
Varsity Basketball

HENRY KIRSCHNER

"Hank"

Secondary—Erie
Varsity Football
Kappa Delta Phi
Intra-Mural Sports

BEATRICE HALL

"Bea"

Secondary—Edinboro
W. A. A.
Y. W. C. A.
Edinboro Players
Alpha Delta
Press Club
Varsity Hockey

LORRITA KRAMER

"Lor"

Art—Erie
ScaRab Club
Edinboro Players

WILDER MICHAEL

"Mike"

Secondary—Cooperstown
Phi Sigma Pi
Choir
Student Council
President of Press Club
Intra-Mural Basketball
Chi Delta Sigma

JACK NEIGENFIND

Secondary—Erie
Beta Xi

ALICE KRUSZKA

"Al"

Art—Cambridge Springs
Delta Phi Delta
Mu Kappa Gamma
Alpha Delta
President of W. A. A.
Ski Club
Newman Club
Choir
Y. W. C. A.
President of House Council
Varsity Hockey
Varsity Basketball

ALICE LYNCH

Secondary—Edinboro

VIRGINIA NEALE

"Gin"

Art—New Wilmington
ScaRab Club
Choir
W. A. A.

Class of 1939

RUTH McFADDEN
"Mickey"

Elementary—Meadville
Alpha Delta
Edinboro Players
Press Club

CONRAD PRIMAVERA
"Spinella"

Art—Brookline
Phi Sigma Pi
Chi Delta Sigma
Cheerleader

PAUL PFEIFFER
"Jackson"

Secondary—Pittsburgh
Varsity Football
Varsity Basketball
President of Beta Xi
Kappa Delta Phi
President of "E" Club
Class President

NINA GALE MILLER
"Nena Mia"

Art—Hooversville
ScaRab Club
W. A. A.
Y. W. C. A.
Choir

DONALD REICHEL
"Don"

Art—Saegerstown
Delta Phi Delta
Kappa Delta Phi
Beta Xi
Varsity Basketball
"E" Club

ELNORA STORER
"Nonie"

Secondary—Corry
President of W. A. A.
Horace Mann Club
Rural Problems Club
Varsity Hockey

VIRGINIA RHODABERGER
"Ginny"

Secondary—Titusville

JOHN RUSSELL

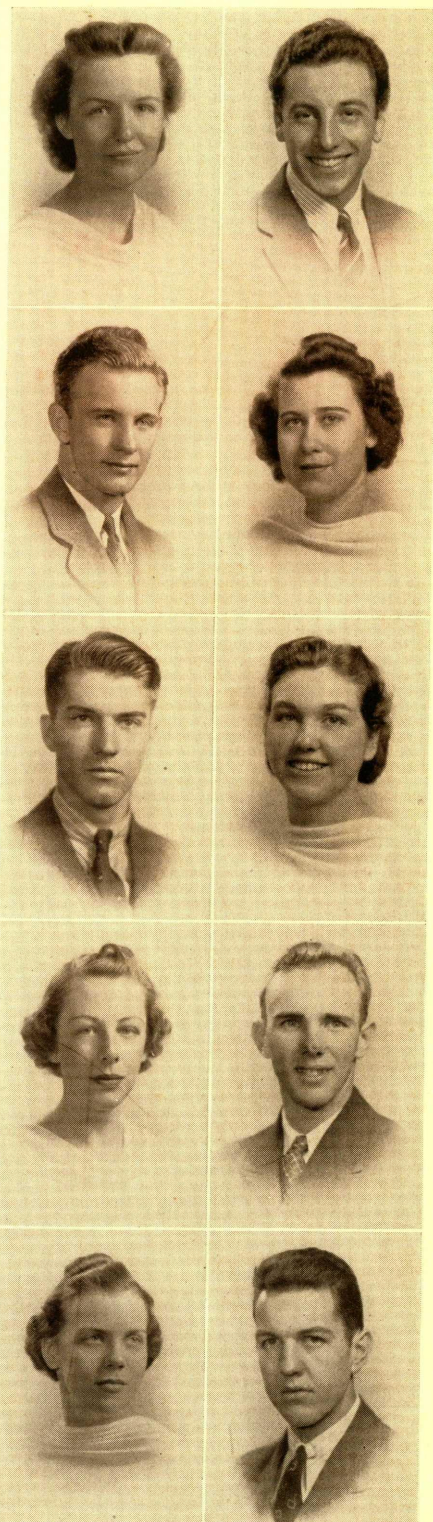
Secondary—McKean
Rural Problems Club

MARY RHINEHART

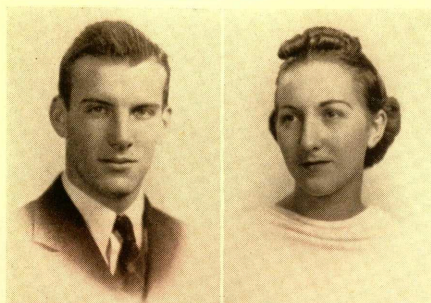
Secondary—Torpedo
W. A. A.
Y. W. C. A.
Edinboro Players
Horace Mann Club
Varsity Hockey

JOHN SWIFT
"Firpo"

Secondary—Edinboro
Beta Xi
Kappa Delta Phi
Editor of Spectator
Editor of 1938 Conneautteean
Choir
Varsity Football
Press Club
High-Pockets Club

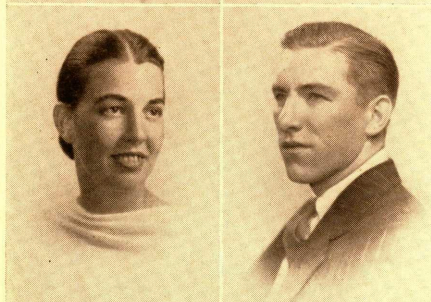


Seniors



KEITH SKELTON

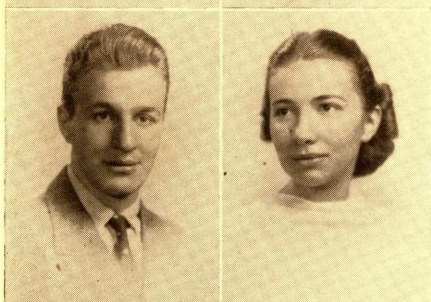
Secondary—Edinboro
Beta Xi
Kappa Delta Phi
Rural Problems Club
President of Edinboro Players
Class President
Conneautteean Staff
Y. M. C. A.
Intra-Mural Sports



MAXINE TEETSEL

"Mickie"

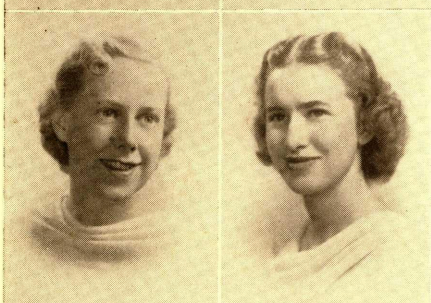
Art—Sayre
President of Delta Phi Delta
W. A. A.
Newman Club
Alpha Psi Omega
Edinboro Players
Varsity Hockey



RUPERT VITALIS

"Rupe"

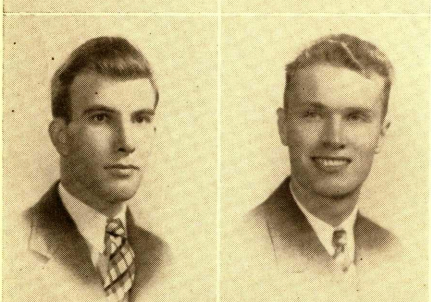
Art—Pittsburgh
ScaRab Club
Newman Club
Varsity Football
Beta Xi
Kappa Delta Phi
Intra-Mural Basketball



MARY LOUISE WHITING

"Mary Lou"

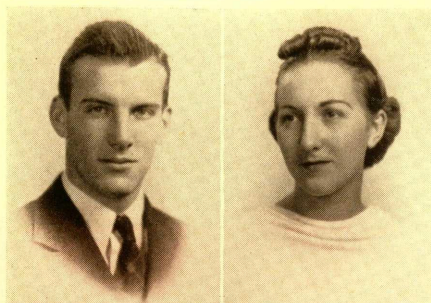
Art—Titusville
ScaRab Club
Alpha Delta
Delta Phi Delta
W. A. A.
Haven Hall Council
Edinboro Players
Varsity Hockey



ROLAND SELLERS

"Roland"

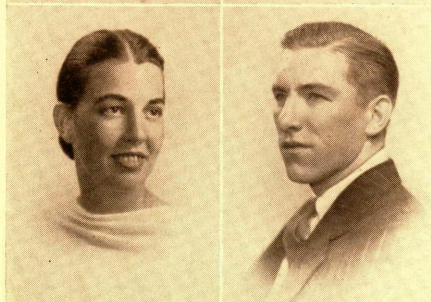
Secondary—Erie
American Chemical Society
Comstock Club
Delta Kappa



MIRIAM SMITH

"Mim"

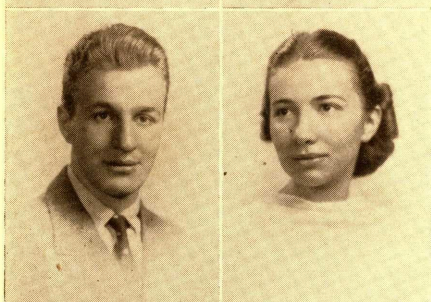
Elementary—North East
W. A. A.
Alpha Delta
Rural Problems Club
Edinboro Players



JOHN WOLFE

"Elmo"

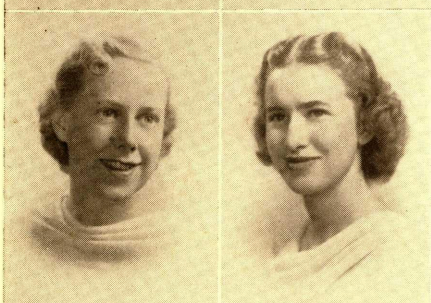
Secondary—Warren
Varsity Basketball
Varsity Football
Press Club
"E" Club



AVERYL WHEELING

"Avie"

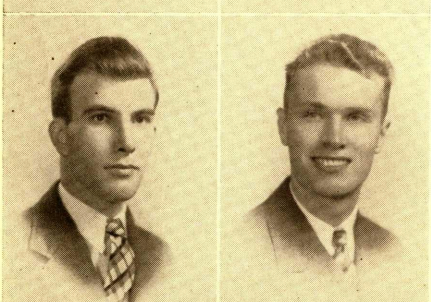
Secondary—Cochranon
Alpha Delta
W. A. A.
Edinboro Players
Alpha Psi Omega
Y. W. C. A.



MARJORIE WELSH

"Marge"

Elementary—Erie
Student Council
Conneautteean Staff
President of Choir
W. A. A.
President of Y. W. C. A.
President of Alpha Delta
Mu Kappa Gamma
Spectator Staff
Organist



JOSEPH ZAHNISER

"Joe"

Secondary—Edinboro
Conneautteean Staff
Editor of Spectator
Varsity Basketball
Student Council
President of Edinboro Players
Orchestra

Class of 1939

RUTH HAGERSON
"Hagy"

Art—Washington
ScaRab Club
Y. W. C. A.
W. A. A.
Delta Phi Delta
Choir
Haven Hall Council
Photography Club
Edinboro Players

FRED CASE
"Casey"

Art—Edinboro
Phi Sigma Pi
ScaRab Club
"E" Club
Varsity Football
Varsity Basketball
Chi Delta Sigma
Phi Sigma Pi

HOWARD MILLER
"Howie"

Secondary—Erie
President of Forum
Rural Problems Club
Kappa Delta Phi

CLEMENT CHROMIK
"Clem"

Secondary—Albion
Y. M. C. A.
Horace Mann Club
Rural Problems Club
Photography Club
Newman Club
Intra-Mural Basketball

CLAIR MORE
"Curly"

Secondary—Erie
Choir

ELEANOR NICHOLS
"Red"

Secondary—Titusville
W. A. A.
Horace Mann Club
Alpha Delta
Conneauttean Staff

ORVAL B. BORTON
"Bill"

Secondary—Sugar Grove
Phi Sigma Pi
Choir

MIRIAM KUHN

Art—Erie

IRMA LAUNER

Elementary—Erie

DOROTHY FRANCIS

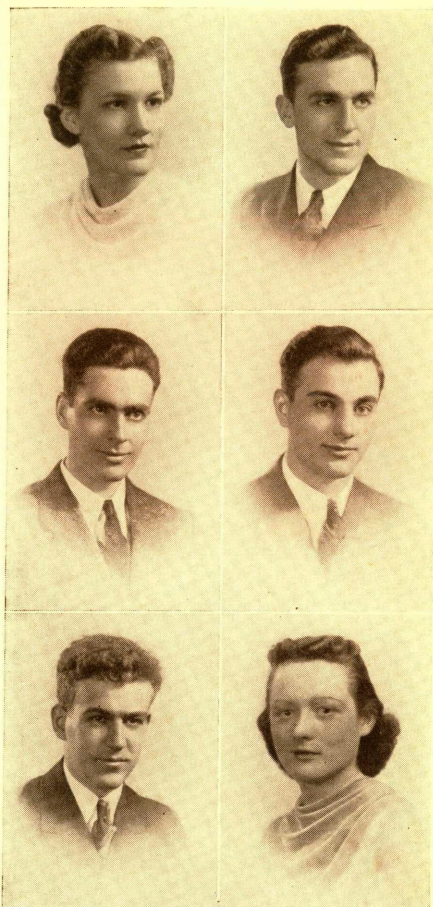
Elementary—Erie

WALTER BILSKI

Secondary—Waterford

ROBERT SCARPITTI

Secondary—Erie



• The Juniors • • •

The Junior Class of 1939 has had an eventful year. Beginning the third year of college life at Edinboro, the Juniors were beset with financial difficulties acquired as Sophomores. At the same time, these Edinboro undergraduates assumed by tradition the major jobs of presenting to the College this 1939 Conneautteean and the annual Junior-Senior Prom. Like the full-fledged juniors that they were, they accepted the responsibilities and proceeded to move forward.

That the beginnings in September were as successful as the ends achieved in May is somewhat doubtful. Yet, after a period in the doldrums of debt and inaction, the "will to do" arrived mysteriously and the Juniors went into action.

First, a Conneautteean editor was elected, Staff chosen, and the yearbook was underway; then, candy-selling and courageous due-collecting enabled the payment of debts; finally a Prom committee began to plan for this important affair; the Juniors started to work in earnest. The ends achieved leave little doubt as to their industry and ability.

Yet, aside from work done in extra-curricular activities, the Juniors were successful in another way for they "moved up" scholastically and next September will enter their last year at Edinboro. Student-teaching and graduation are but a few short days away; yet, the 1939 Juniors will meet them as Seniors of 1940 with the same courage and willingness that saw them through in 1939.

Occupying the President's chair at class meetings on Friday morning once a month was versatile Richard Peterson. Assisting him in working out executive details was vice-president William Rogers. Sarah Kratz kept the minutes of these tumultuous meetings while Adaline Snyder informed the Juniors of their bank balance—if any. At many of these meetings Miss Nelle G. Hudson would sit quietly in the last row until experienced counsel was needed by the 1939 Juniors.

Class of 1940

ELIZABETH BUCKLEY

"Betty"

Elementary—Torpedo
W. A. A.
Horace Mann Club
Edinboro Players

SHIRLEY ARTMAN

"Ann"

Secondary—Jamestown
Press Club
W. A. A.
Conneautteean Staff
Varsity Hockey
Varsity Basketball

EMILY CARPENTER

"Jeep"

Art—Monaca
Mu Kappa Gamma
Alpha Delta
Delta Phi Delta
Student Council
W. A. A.
Y. W. C. A.
Choir

MARGARET DYER

"Marg"

Elementary—Youngsville
Comstock Club
W. A. A.
Y. W. C. A.

JOHN DEMIANKOW

"Demmy"

Secondary—Erie
Band
Orchestra
Intra-Mural Basketball
Horace Mann Club

LAHOMA BLAKESLEE

Elementary—Corry
Rural Problems Club
W. A. A.
Y. W. C. A.

ELLA EVANS

"Ellie"

Art—Nesquehoming
Edinboro Players
ScaRab Club
Newman Club

ANTHONY CUTRI

"Nino"

Secondary—Erie
President of "E" Club
Student Council
Phi Sigma Pi
Horace Mann Club
President of Customs Court
Varsity Football
Intra-Mural Basketball
Y. M. C. A.

MARY GREEN

"Alma"

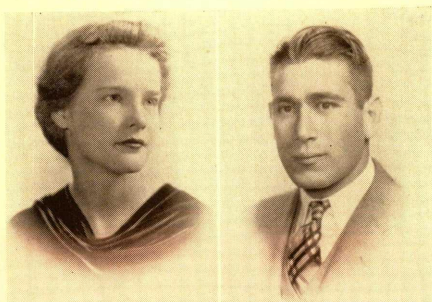
Secondary—Union City
W. A. A.
Horace Mann Club

RICHARD DeREMÉR

Secondary—Utica
Horace Mann Club
Intra-Mural Basketball
Y. M. C. A.
President of Edinboro Players



Juniors

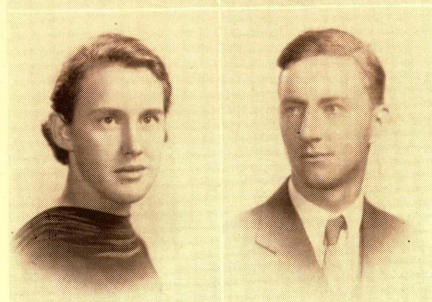


BILLIE GILLESPIE
"William"

Secondary—Erie
Alpha Delta
Edinboro Players
Conneautteean Staff
Horace Mann Club

FRANK PETTINATO
"Petti"

Secondary—Erie
Intra-Mural Basketball
Horace Mann Club



EMILIE HAMMERMEISTER
"Emmy"

Elementary—Springboro
Comstock
Y. W. C. A.
W. A. A.
Varsity Basketball

MATTHEW HALCHIN
"Matt"

Secondary—Albion
Debating Club
Photography Club



WALTER NISSEN
"Editor"

Secondary—Erie
Phi Sigma Pi
Editor of 1939 Conneautteean
Spectator Staff
Debating Club
Y. M. C. A.
Intra-Mural Basketball

KATHRYN VAN TASSEL
"Kay"

Elementary—Corry
W. A. A.
Alpha Delta
Press Club
Choir
Varsity Hockey
Varsity Basketball

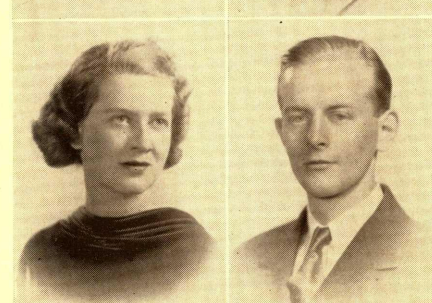


MACIE JOHNSON

Secondary—Corry
W. A. A.
Band
Y. W. C. A.

LEE JEFFORDS
"Jeff"

Secondary—Edinboro
Phi Sigma Pi
President of Horace Mann Club
Y. M. C. A.
Edinboro Players
"E" Club
Intra-Mural Basketball
Conneautteean Staff
Student Council



MARY ALICE LOWRY
"Mary Al"

Elementary—Erie
W. A. A.
Newman Club
Varsity Hockey

CHARLES LEWIS
"Chuck"

Art—Titusville
Phi Sigma Pi
ScaRab Club
Edinboro Players

Class of 1940

PAUL TESS
"Tess"

Secondary—Erie
Band
Orchestra

SARA VIRGINIA KRATZ
"Sally"

Art—Hartsville
W. A. A.
Alpha Delta
Edinboro Players
ScaRab Club
Alpha Psi Omega
Varsity Hockey

SHIRLEY SWIFT
"Shim"

Art—Edinboro
ScaRab Club
Horace Mann Club
Spectator Staff
W. A. A.
Edinboro Players
Conneautteean Staff
Varsity Hockey

LEON MEAD

Art—Cambridge Springs
Kappa Delta Phi
Delta Phi Delta
ScaRab Club
Intra-Mural Basketball
Edinboro Players
Alpha Psi Omega

MARTIN SHIMKO

Art—Windber
Conneautteean Staff
ScaRab Club
Edinboro Players
Newman Club
Phi Sigma Pi

JEANNE STROHECKER
"Sto"

Art—Elwood City
Alpha Delta
Conneautteean Staff
ScaRab Club
President of House Council

WILLIAM RODGERS
"Bill"

Art—Edinboro
Kappa Delta Phi
Delta Phi Delta
Mu Kappa Gamma
ScaRab Club
Conneautteean Artist

HELEN SYLVANDER

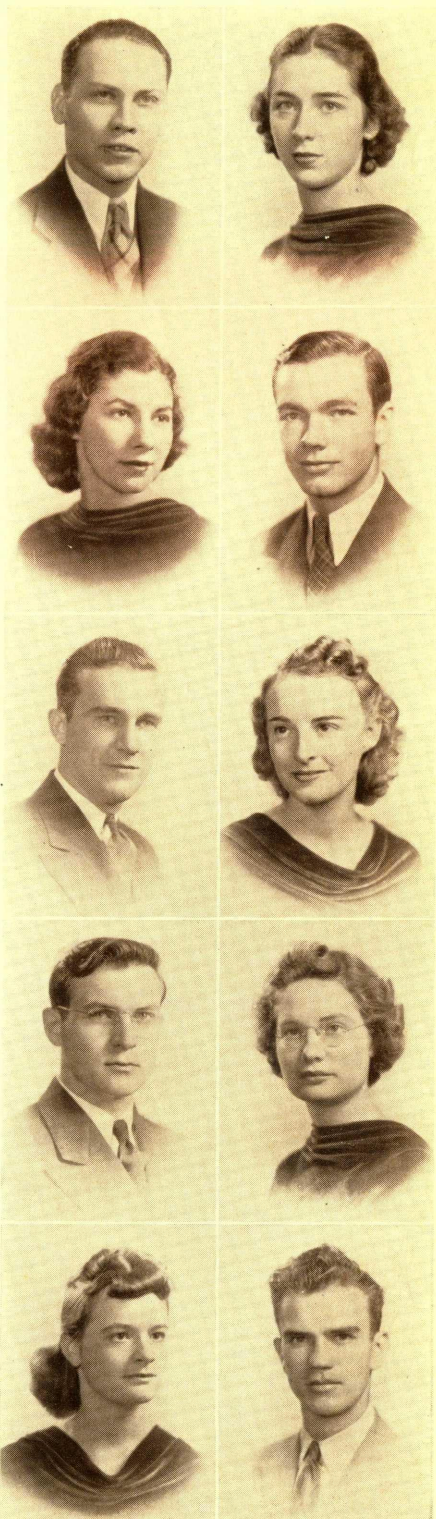
Art—Coraopolis
Alpha Delta
Edinboro Players
Delta Phi Delta
Y. W. C. A.
W. A. A.
ScaRab Club
Varsity Hockey

CATHERINE ROSS
"Kitty"

Art—Edinboro
ScaRab Club
Alpha Delta
W. A. A.
Edinboro Players

RICHARD PETERSON
"Pete"

Art—Erie
Class President
Conneautteean Staff
ScaRab Club
Delta Phi Delta
President of Mu Kappa Gamma
Choir
Kappa Delta Phi
Intra-Mural Basketball
Band





LAURA SHAFER

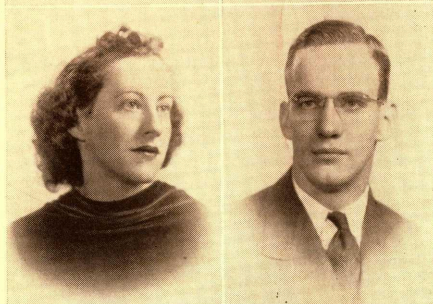
"Larry"

Elementary—Sharpsville
W. A. A.
Y. W. C. A.
Comstock Club

WILLARD YOUNG

"Will"

Secondary—Cranesville
Horace Mann Club
Intra-Mural Basketball
Y. M. C. A.



JEANNE KANHOFER

Elementary—Titusville
Rural Problems Club
W. A. A.

JAMES WOOD

"Jim"

Secondary—Harborcreek
President of Phi Sigma
President of Press Club
"E" Club
Intra-Mural Basketball
Y. M. C. A.
High-Pockets Club



ADALINE SNYDER

Art—Edinboro
Mu Kappa Gamma
Delta Phi Delta
Comstock Club
Y. W. C. A.
Orchestra
W. A. A.

GUY TAYLOR

Art—Pittsburgh
Phi Sigma Pi
ScaRab Club



LONEL WATTERS

"Lon"

Art—Aliquippa
President of Kappa Delta Phi
Edinboro Players
Delta Phi Delta
"E" Club
ScaRab Club
Intra-Mural Basketball
High-Pockets Club

MABEL STEWART

Art—Georgetown



MARY ANNA MCGRAW

Elementary—Titusville
Alpha Delta
Rural Problems Club

RUTH TAYLOR

"Rudy"

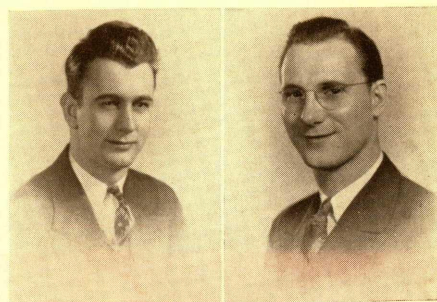
Elementary—Corry
Rural Problems Club
W. A. A.

Class of 1940

THORALD CHARTLEY
"Chuckles"

Elementary—Erie
Y. M. C. A.
Horace Mann Club

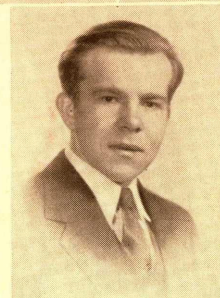
THOMAS WILLIAMSON
"Fag"



Secondary—Erie

JOHN TOMKON
"Tom"

Art—Irwin
ScaRab Club
Edinboro Players
Newman Club
Conneautteean Artist



• • •

ALLISON BEARCE

Art—Erie

AUTUMN BLACKMAN

Elementary—North East

JAMES SCOTT BROWN

Art—Corry

MARY DURAN

Elementary—Cranesville

EUGENE MANLEY

Art—Dunmore

VIRGINIA EVANS

Secondary—Erie

VIRGINIA ANDREWS

Elementary—Erie East

WINTON SOUTHALL

Secondary—Centerville

• The Sophomores • • •

The first Friday of every month is Class Meeting, and we Sophomores—Elementary, Secondary, and Art students—assemble in Mr. Heinaman's room to pool our various interests. Norman Dilley, President, talks up an appetite for business, and treasurer Edwin Ott reports that our Hallowe'en Hop was successful socially, and financially as well. Our Assembly "Variety Program" is worth noting also.

Aside from our accomplishments as a cooperating class unit, we are even more proud of our individual activities. From our ranks varsity athletes were selected, and honorary fraternities have pledged new members. Outside of classes we vocalize, instrumentalize, dramatize and sketch; our art students, assuming the role of puppeteers, produced an original puppet performance. Best of all, we all keep plodding away at our "Soc and Science."

Lawrence Hickman has served as vice president, Eunice Rodgers, secretary, and Elaine Ghering, Donald Brown, and Robert Olson have represented us in Student Council. Charlotte Weaver was elected Conneautteean editor for 1940.

For every year that we of "1941" stay at Edinboro, a new tree will take root on our campus. This we have decreed in remembrance.

And now that we have fulfilled our obligations as Sophomores, we adjourn, hoping to be "Jolly Juniors" next year.

Class of 1941

GRANT ABRAMS
"Abe"

Secondary—Edinboro
Varsity Football
Phi Sigma Pi
Intra-Mural Sports
"E" Club

MARGARET ARTISE
"Margie"

Elementary—North East
Rural Problems Club
W. A. A.

LEAH CRAWFORD

Elementary—Grand Valley
W. A. A.
Y. W. C. A.
Photography Club
Edinboro Players

DORIS WRIGHT

Elementary—Union City
W. A. A.
Choir
Rural Problems Club

RICHARD BENSON
"Dick"

Art—Franklin
Intra-Mural Basketball
Choir
ScaRab Club
Y. M. C. A.
Phi Sigma Pi

MARIE BROWN

Elementary—Bear Lake
W. A. A.
Rural Problems Club

FRANCIS BATES
"Franny"

Art—Edinboro
ScaRab Club
Choir
Photography Club
W. A. A.
Mu Kappa Gamma
Alpha Delta

DALE CRAWFORD
"Wace"

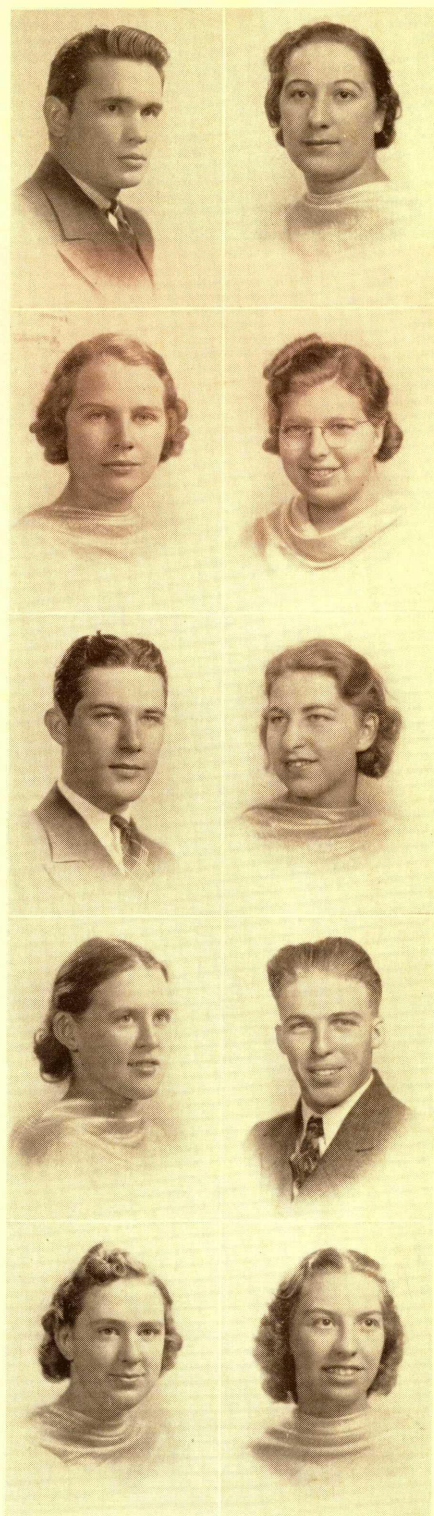
Secondary—Edinboro
Intra-Mural Basketball
Y. M. C. A.

BETTY BLAIR
"Bebe"

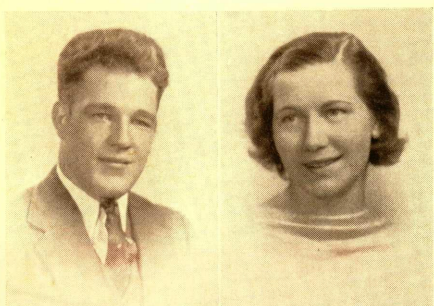
Elementary—Warren
W. A. A.
Y. W. C. A.
Rural Problems Club
Choir

HELEN ANTICO
"Tico"

Art—Butler
Choir
ScaRab Club
Y. W. C. A.
W. A. A.



Sophomores



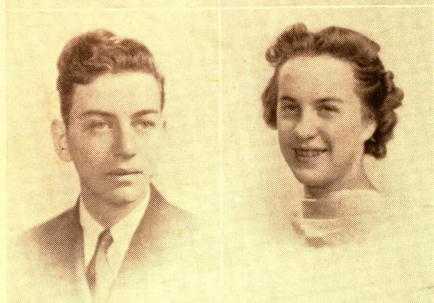
NORMAN DILLEY

"Norm"

Secondary—Franklin
Varsity Football
Phi Sigma Pi
"E" Club
Class President
Y. M. C. A.
Band
Intra-Mural Basketball

MARY CARPENTER

Elementary—Erie
W. A. A.
Spectator Staff
Debating Club



JAMES BROWN

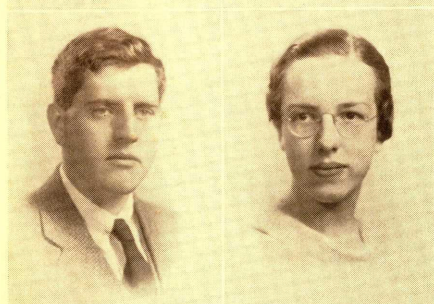
"Don"

Secondary—Erie
Phi Sigma Pi
Edinboro Players
Student Council

ELLEN GRAVES

"Digs"

Art—Sharon
ScaRab Club
W. A. A.
Y. W. C. A.



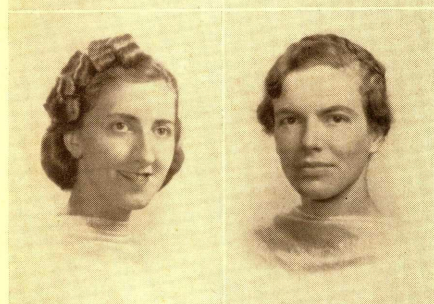
DONALD DALEY

"Don"

Elementary—Edinboro
Debating Club

MARION DAVIES

Elementary—Erie
Choir
Alpha Delta
Rural Problems Club
Y. W. C. A.



BEATRICE CASE

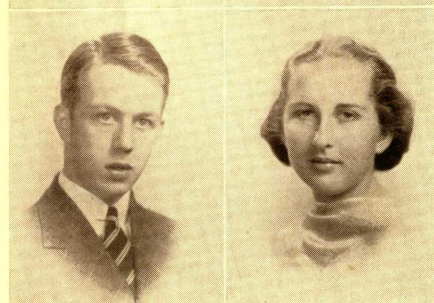
"Bea"

Secondary—Edinboro
Choir
Alpha Delta
Mu Kappa Gamma
W. A. A.
Varsity Basketball

HELEN DAVIS

"Doggie"

Art—Edinboro
President of Choir
Orchestra
Band
Mu Kappa Gamma
Photography Club



WALTER GESIN

"Walt"

Secondary—East Hickory
Horace Mann Club
Y. M. C. A.
Intra-Mural Basketball

ELAINE GHERING

"Wheaties"

Art—Edinboro
Edinboro Players
Student Council
ScaRab Club
Alpha Psi Omega
Alpha Delta
W. A. A.
Varsity Hockey

Class of 1941

GERALDINE HAER

"Jerry"

Elementary—Geneva
Rural Problems Club
W. A. A.
Varsity Basketball

WINNIFRED JACKSON

"Winnie"

Secondary—Titusville
Photography Club

LAWRENCE HICKMAN

"Larry"

Art—West Chester
Phi Sigma Pi
President of ScaRab Club
Choir
Y. M. C. A.

ARDELLE HUBER

"Duchess"

Art—Brookville
ScaRab Club
Edinboro Players
W. A. A.
Varsity Hockey
Alpha Delta
Y. W. C. A.
Choir

VEGA IHSEN

"Wiggs"

Art—Fairview
W. A. A.
Varsity Hockey
Varsity Basketball
ScaRab Club
Choir
Alpha Delta
Orchestra
Mu Kappa Gamma

RUTH HANDLEY

"Irish"

Elementary—Erie
W. A. A.
Varsity Hockey
Y. W. C. A.
Rural Problems Club
Edinboro Players
Alpha Delta

PATRICIA HASTINGS

"Pat"

Elementary—Erie
Rural Problems Club
W. A. A.
Photography Club

MARY ANDERSON

Elementary—Erie
Choir
Comstock Club
Y. W. C. A.
W. A. A.
Varsity Hockey

DANIEL KUSNER

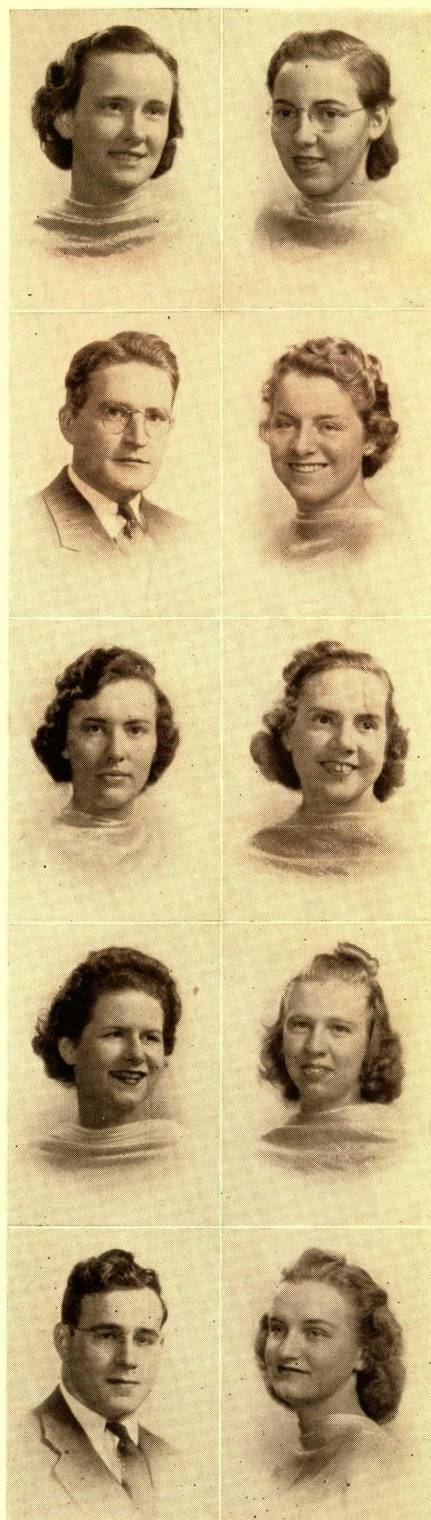
"Dan"

Secondary—Springboro
President of Y. M. C. A.
President of Photography Club
Varsity Football
Phi Sigma Pi
Alpha Psi Omega
Edinboro Players

ANNE KRIVONAK

"Kriv"

Elementary—Erie
Rural Problems Club
Choir
W. A. A.
Varsity Hockey



Sophomores



GENEVA JONES

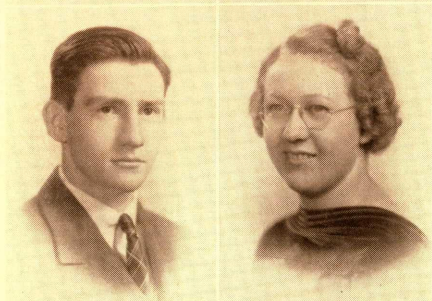
"Neva"

Elementary—Edinboro
Y. W. C. A.
Rural Problems Club
W. A. A.
Varsity Basketball

MYRTLE MORLEY

"Myrt"

Secondary—East Springfield
Y. W. C. A.
W. A. A.
Choir
Band
Orchestra



PHILIP MAHONEY

"Mac"

Secondary—Saegerstown
Horace Mann Club
Newman Club
Intra-Mural Basketball

FRANCES JOHNSON

"Frannie"

Elementary—Erie
Horace Mann Club
Y. W. C. A.
W. A. A.



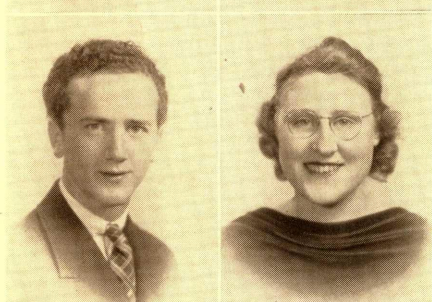
HELEN LESONIK

Elementary—Edinboro
Horace Mann Club
W. A. A.

RUTH MOULD

"Gramma"

Elementary—Corry
Rural Problems Club
W. A. A.



PONZIANO MANNING

"Ponzy"

Art—Brockway
Edinboro Players
Phi Sigma Pi
Y. M. C. A.
ScaRab Club
Newman Club

LEONA SAMPSON

Elementary—Pulaski



ESTHER NEIL

"Vicky"

Elementary—North East
Y. W. C. A.
W. A. A.
Choir
Edinboro Players
Rural Problems Club

DOLORES PROBSTNER

"Probie"

Secondary—Cambridge Springs
W. A. A.
Rural Problems Club
Photography Club

Class of 1941

EUNICE RODGERS

Art—Edinboro
W. A. A.
Varsity Hockey
Y. W. C. A.
Mu Kappa Gamma
Alpha Delta
Choir
SacRab Club

ERNESTEEN PARDEE

"Teene"

Elementary—Venango
Rural Problems Club
Photography Club
Y. W. C. A.
W. A. A.

VIRGINIA PETERS

"Gin"

Elementary—Erie
Rural Problems Club
W. A. A.

HELEN SHINDLEDECKER

"Shindy"

Art—Edinboro
W. A. A.
Varsity Hockey
Choir

DORIS SMITH

Elementary—McKean
Y. W. C. A.
W. A. A.
Rural Problems Club

HELEN SCHRECKENGOST

"Schrecky"

Elementary—Titusville
W. A. A.
Y. W. C. A.
Rural Problems Club

CATHERINE PIERSON

"Kate"

Art—West Springfield
ScaRab Club
W. A. A.
Y. W. C. A.
Varsity Hockey

LOREN WHITNEY

Secondary—West Springfield
President of Debating Club
Y. M. C. A.
Edinboro Players
Band
Orchestra

LAURA MAXWELL

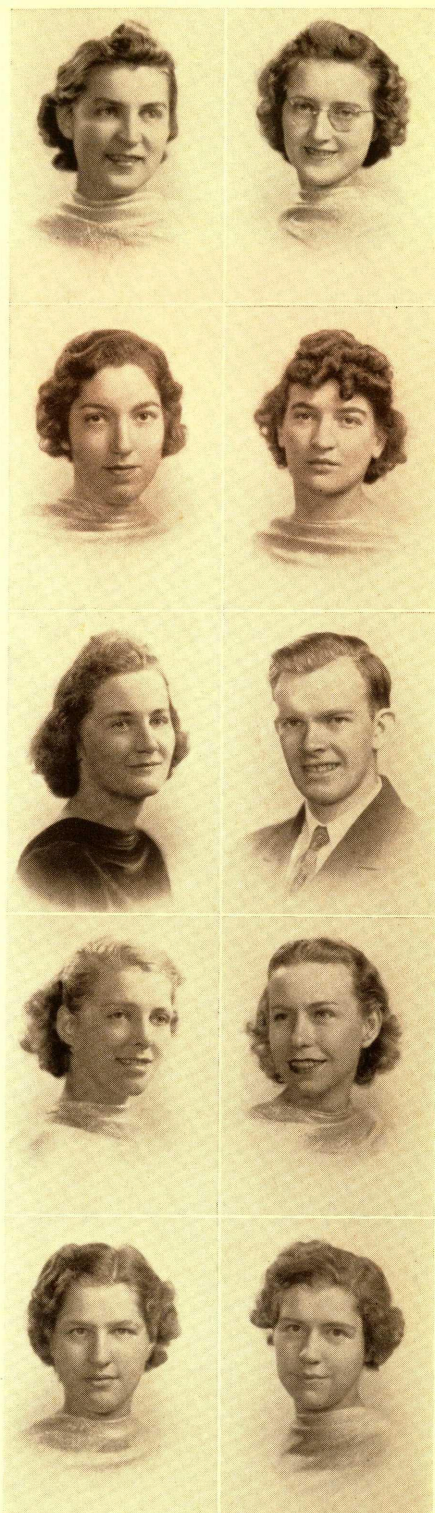
"Lollie"

Art—Greensburg
Choir
Y. W. C. A.
W. A. A.
ScaRab Club

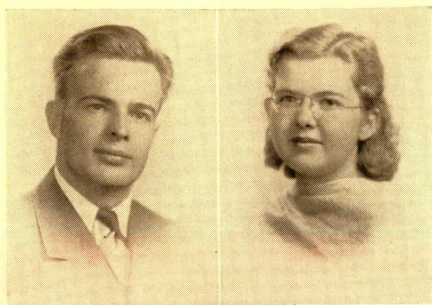
BERNICE SMITH

"Berny"

Elementary—McKean
Y. W. C. A.
W. A. A.
Varsity Basketball
Rural Problems Club



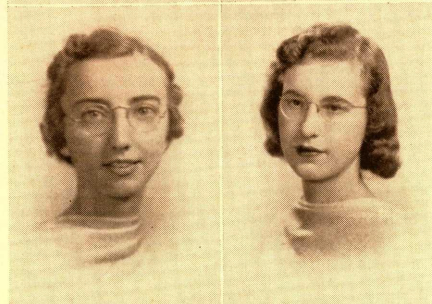
Sophomores



ROBERT OLSON

"Bob"

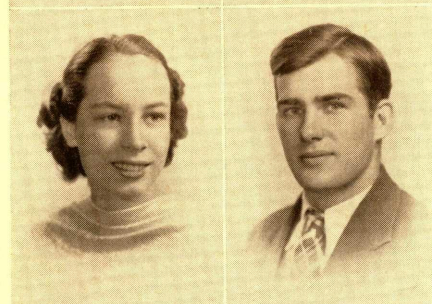
Secondary—Warren
Varsity Football
Intra-Mural Basketball
Press Club
Y. M. C. A.



LOUISE STEIN

"Steiny"

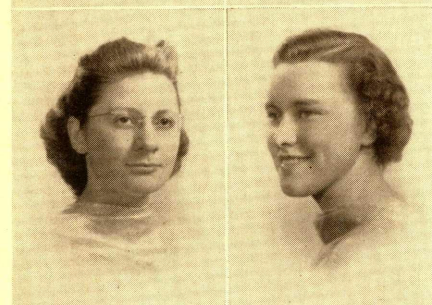
Art—York
ScaRab Club
W. A. A.



WILMA STAFFORD

"Bub"

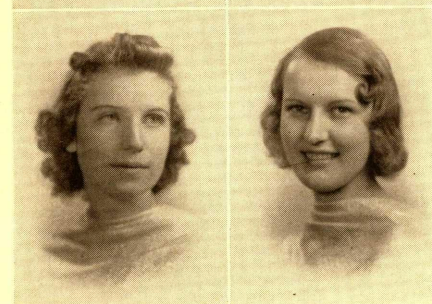
Elementary—Union City
W. A. A.
Choir
Orchestra
President of Comstock Club
Y. W. C. A.



LOUISE VALLANCE

"Val"

Art—Gowanda
Choir
ScaRab Club
Ski Club



FRANCES SKELTON

"Skinny"

Secondary—Edinboro
Choir
Orchestra
Alpha Delta
Mu Kappa Gamma
W. A. A.
Varsity Hockey



EDWIN OTT

"Ed"

Secondary—McKean
Debating Club



HELEN TURNER

Art—Franklin
ScaRab Club
Y. W. C. A.
W. A. A.
Edinboro Players
Alpha Delta
House Council



ETHEL THOMSON

"Tommy"

Elementary—North East
Y. W. C. A.
W. A. A.
Photography Club



JANET WINGARD

"Jan"

Elementary—Shinglehouse
Rural Problems Club
Y. W. C. A.

CHARLOTTE WEAVER

"Judy"

Art—Conneautville
W. A. A.
Varsity Hockey
Y. W. C. A.
ScaRab Club
Edinboro Players
Spectator Staff
Conneauttean Staff

Class of 1941

FRED CASOLI

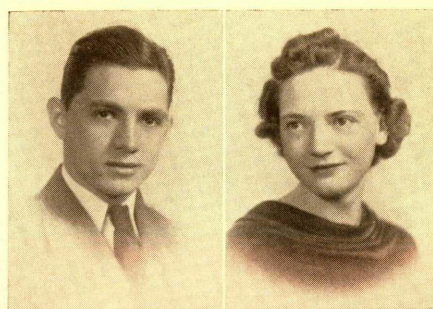
"Casanova"

Secondary—Aliquippa
Press Club
Varsity Basketball
Kappa Delta Phi
"E" Club
Y. M. C. A.

MARY GORDON

"Flash"

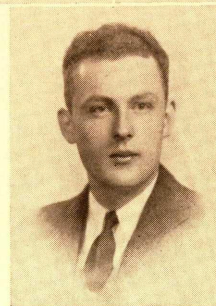
Elementary—Conneautville
W. A. A.
Band
Rural Problems Club



LEO ROLAND

"Leo"

Secondary—Erie
Horace Mann
Newman Club



LEO BEMIS

Elementary—Union City

MADELYN ERVIN

Elementary—Conneautville

RUTH SKELTON

Elementary—Edinboro

KATHERINE ARTELLO

Secondary—Albion

ROBERT LYTLE

Secondary—Warren

JOSEPH NORDER

Secondary—Corry

FLOYD PECK

Secondary—Warren

NICK VOLTICH

Secondary—Aliquippa

• The Freshmen • • •

The Freshman Class of 1939 entered into the spirit and enthusiasm of Edinboro in an admirable manner. After only a few weeks on Campus, this group of beginners sponsored weekly rallies and pre-game bonfires during football season. In fact, the football team itself, boasted several representatives of the class as did the highly successful basketball squad of the Raiders.

Entering actively into the social life of the Campus, the Freshmen presented a formal dance at the outset of the second semester. The class gave its hearty support to all dances and parties sponsored by the upper classes.

Throughout the year, the class has actively participated in intra-mural sports. The Freshman basketball team was runner-up in the Intra-mural League.

Wielding the gavel at class meetings was president Will Schaaf who was aided in his absence by vice-president Bill Volbers. June Howard did the secretarial work and Jean Butler all of the banking in 1939. Jeanne Carlson, Reed Stoops, and Ray Mitcham most capably defended the Freshman cause in Student Council meetings. Dr. L. H. Van Houten and Mr. A. J. Haller served as welcome advisers at many opportune moments.

The most obvious traits of this Class of 1942 were the spirit of fun, initiative, and good-fellowship which has been so consistently displayed throughout the year. That the importance of Edinboro will grow as these college youngsters move forward is known. It is true that these qualities of worthy beginners will serve as a stimulant to a happier and more spirited Edinboro.

Class of 1942

KATHRYN ABBEY
"Kay"

Secondary—Bradford
W. A. A.

HAROLD ARKWRIGHT
"Arky"

Secondary—Erie
Varsity Football
Varsity Basketball
Horace Mann Club

STUART ACKELSON
"Stu"

Secondary—Brentwood
Press Club
Choir
Spectator Staff
Intra-Mural Basketball
Y. M. C. A.
Kappa Delta Phi

MARY BARNES
"Barney"

Elementary—Clarendon
Rural Problems Club
W. A. A.

JOHN BLEECH

Secondary—Warren
Varsity Football
"E" Club
Newman Club
Horace Mann Club
Intra-Mural Basketball

MARY BARBER

Elementary—Erie
Newman Club
Photography Club
W. A. A.

MARIAN APPLEBY
"Pie"

Art—Rixford
ScaRab Club
Y. W. C. A.
W. A. A.

BILL BOHN
"William"

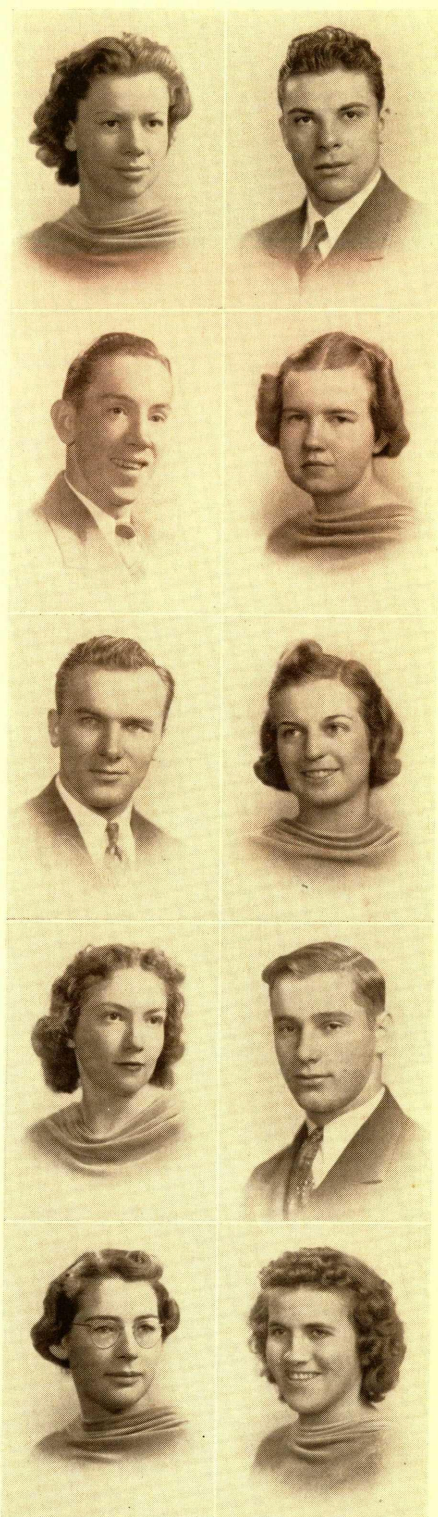
Secondary—Springboro
Intra-Mural Sports
Newman Club
Y. M. C. A.
Horace Mann Club

MARTHA ANDREWS
"Mart"

Elementary—Townville
W. A. A.
Rural Problems Club

IONA BENNETT

Elementary—Corry
W. A. A.
Orchestra



Freshmen



MAXINE BORGER

"Max"

Elementary—Saegerstown
W. A. A.
Rural Problems Club

HAROLD BON

Secondary—Erie
Choir
Photography Club
Y. M. C. A.
Intra-Mural Basketball
Phi Sigma Pi



DORIS VIVIAN BRITTON

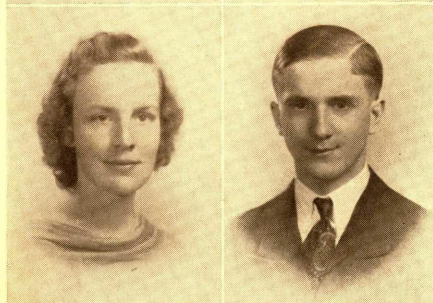
"Dorie"

Elementary—Meadville
W. A. A.
Y. W. C. A.
Photography Club
Choir

ELAYNE BRADLEY

"Epi"

Elementary—Union City
Rural Problems Club
Choir
W. A. A.



JEAN BUTLER

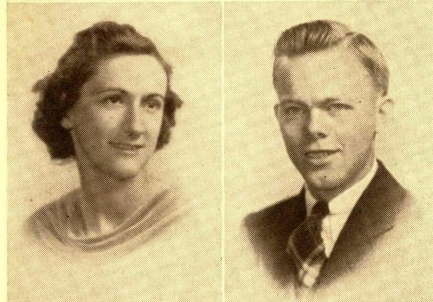
"But"

Art—Montrose
ScaRab Club
Y. W. C. A.
W. A. A.
Edinboro Players

WALTER ELLENBERGER

"Walt"

Secondary—Kittanning



ALICE CARMAN

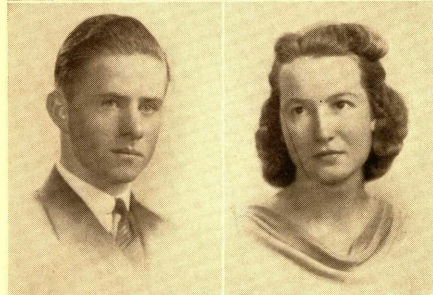
"Pudge"

Elementary—Girard
Rural Problems Club
Y. W. C. A.
W. A. A.
Varsity Basketball

ROY CHRISTENSEN

"Christy"

Art—Erie
Ski Team
Choir
ScaRab Club



OTIS WHITE

"Whizzer"

Secondary—Linesville
Y. M. C. A.
Horace Mann Club
Varsity Basketball

JEAN CARLSON

"Jeani"

Art—Erie
Choir
ScaRab Club
Y. W. C. A.
W. A. A.

Class of 1942

MARY DAVIS

Art—Jamestown
W. A. A.
Choir
Band
Orchestra
ScaRab Club

WESTON COXE
"Wes"

Secondary—Erie
Edinboro Players
Press Club

DONALD CLUTE
"Don"

Art—Mayville
ScaRab Club
Choir

MARIAN DEMMY
"Manny"

Art—Steelton
Edinboro Players
ScaRab Club
Y. W. C. A.
W. A. A.
Cheerleader

HAZEL DENNISON
"Denny"

Secondary—Linesville
Choir
Y. W. C. A.
Rural Problems Club
W. A. A.

STELLA DOBOZINSKI
"Stel"

Secondary—Union City
Newman Club
Comstock Club
W. A. A.
Varsity Basketball

DONALD GRANAHAN
"Granny"

Secondary—Erie
Intra-Mural Basketball
Horace Mann Club

MARIAN DUFFY

Elementary—Erie
Press Club
Y. W. C. A.
W. A. A.
Choir

EVELYN GLENN

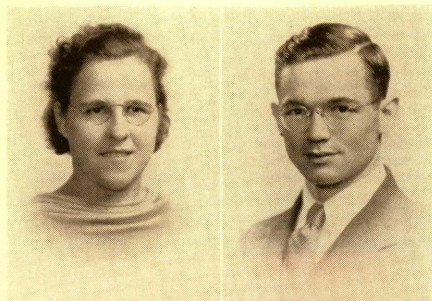
Secondary—Meadville
Press Club
Edinboro Players
Y. W. C. A.
W. A. A.
Choir

MARY EVERALL

Elementary—Stoneboro
Spectator Staff
W. A. A.
Y. W. C. A.
Cheerleader
Press Club



Freshmen

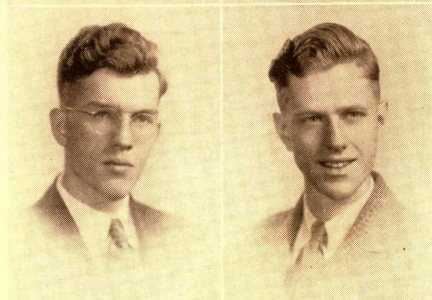


BEATRICE KUSNER
"Bea"

Elementary—Springboro
Y. W. C. A.
W. A. A.
Rural Problems Club

DOMINICK FANANI
"D. J."

Art—Windber
Choir
Edinboro Players
Conneautteean Staff
ScaRab Club
Y. M. C. A.

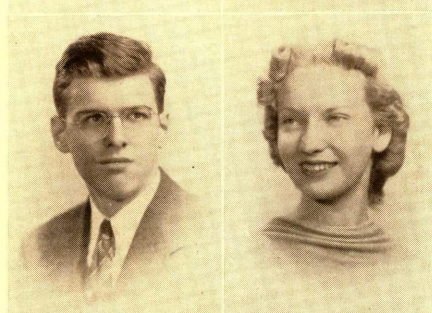


RAYMOND GRAVES
"Ray"

Secondary—Springboro
Phi Sigma Pi
Edinboro Players
Band
Orchestra
Choir
Intra-Mural Basketball

DAVID GRAVES
"Dave"

Secondary—Springboro
Intra-Mural Basketball
Photography Club

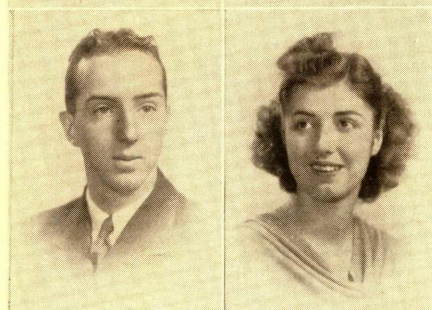


RAYMOND GALLAGHER
"Ray"

Art—Canonsburg
ScaRab Club
Newman Club
Spectator Staff

BETTY GAYLOR

Art—Edinboro
Choir
ScaRab Club
W. A. A.

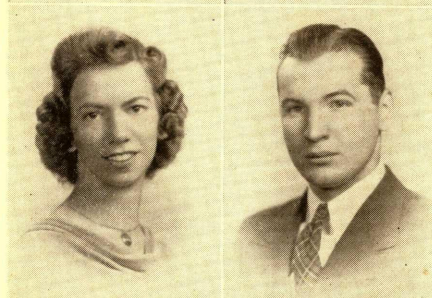


ROBERT HAHN
"Bob"

Art—Manheim
Intra-Mural Basketball
ScaRab Club
Intra-Mural Football

VIRGINIA GRAY
"Ginni"

Elementary—Erie
Press Club
Spectator Staff
Newman Club
Orchestra
W. A. A.



ELLEN HAISTON

Art—Pottstown
W. A. A.
Y. W. C. A.
ScaRab Club
Edinboro Players

JOHN GWILLIAM

Secondary—Cambridge Springs
Phi Sigma Pi
Intra-Mural Sports

Class of 1942

NEAL HARRISON

Secondary—Edinboro
Y. M. C. A.
Horace Mann Club
Choir
Orchestra
Band
Intra-Mural Basketball

MAXINE HERMAN "Max"

Secondary—Saegerstown
Orchestra
Y. W. C. A.
Rural Problems Club
W. A. A.

RUTH HOTCHKISS

Elementary—Springboro

LEON HERPICH "Red"

Secondary—Erie
Varsity Football

JAMES HILL "Jim"

Secondary—Erie
Choir
Band
Orchestra
Intra-Mural Sports

VERNA HILLS "Mumps"

Elementary—East Springfield
Choir
W. A. A.
Y. W. C. A.
Rural Problems Club

MAX LESLIE

Secondary—Cambridge Springs

JUNE HOWARD "Seven"

Art—York
Edinboro Players
Choir
ScaRab Club

WILMA IHSEN "Willy"

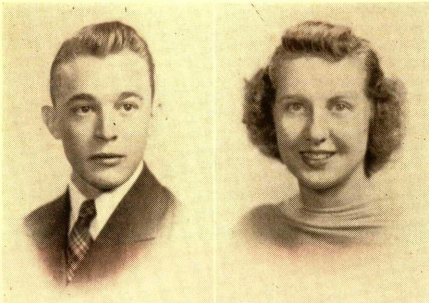
Art—Fairview
ScaRab Club
Choir
W. A. A.
Y. W. C. A.
Edinboro Players

ROBERT KAUFMAN "Bob"

Art—Cambridge Springs
ScaRab Club
Intra-Mural Sports
Skiing Club
Kappa Delta Phi



Freshmen



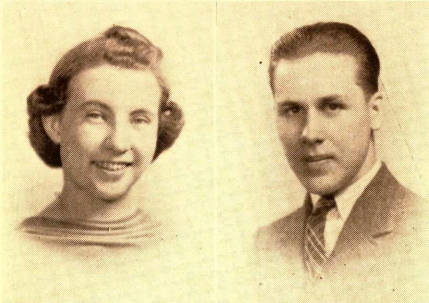
WILLIAM MITCHELL
"Mitch"

Secondary—Erie
Band
Orchestra



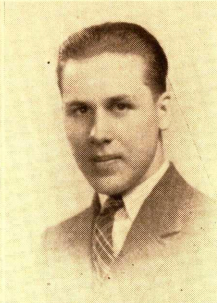
KATHLEEN McCRAY
"Kay"

Elementary—Corry
Edinboro Players
Rural Problems Club
Y. W. C. A.
W. A. A.



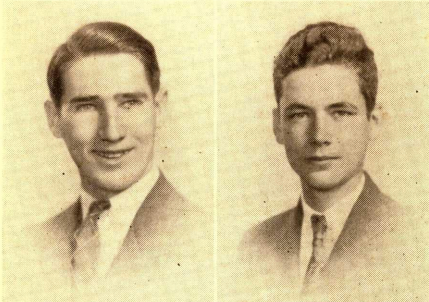
ROBERTA PHILLIPS
"Bobbie"

Secondary—Franklin
Choir
Rural Problems
Y. W. C. A.
W. A. A.



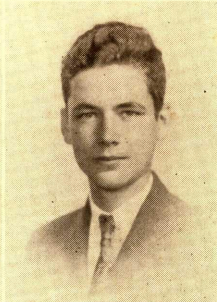
ROBERT McKINNEY
"Bob"

Art—New Castle
Choir
Orchestra
ScaRab Club
Y. M. C. A.
Edinboro Players



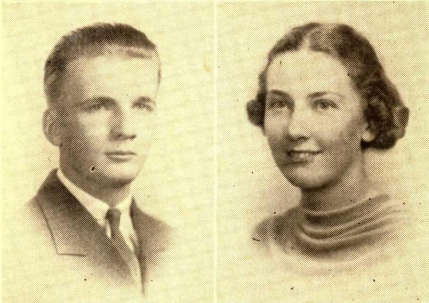
HAROLD POWERS

Secondary—Edinboro
Debating Club
Edinboro Players
Y. M. C. A.
Intra-Mural Sports



WILLIAM PEIFFER
"Pif"

Secondary—Cambridge Springs
Horace Mann Club
Intra-Mural Sports



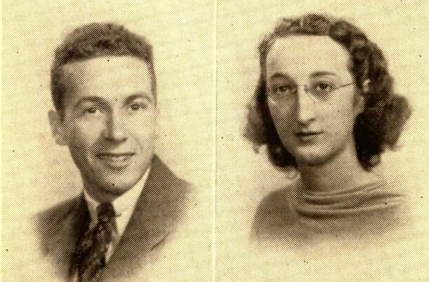
WILLIAM SCHAAF
"Adam"

Secondary—North Girard
Edinboro Players
Newman Club
Class President
Intra-Mural Basketball



JANET McLALLEN
"Jane"

Elementary—Edinboro
Rural Problems Club
W. A. A.



THOMAS SHEETS
"Tommie"

Secondary—Edinboro



HARRIET SAWDEY
"Hi"

Art—Erie
ScaRab Club
Y. W. C. A.
W. A. A.

Class of 1942

STEPHEN LIPCHIK
"Steve"

Secondary—Erie
Phi Sigma Pi
Edinboro Players
Varsity Football
Varsity Basketball

MARGARET LINDQUIST
"Marg"

Elementary—Akeley
Band
Orchestra
Rural Problems Club
Y. W. C. A.
W. A. A.

RAYMOND MITCHAM
"Ray"

Art—Oil City
ScaRab Club
Y. M. C. A.
Choir
Intra-Mural Football

MARJORIE MARTIN
"Marjie"

Art—Erie
W. A. A.
Y. W. C. A.
Band
Orchestra
Choir
ScaRab Club
Edinboro Players

EARLE MADIGAN
"Irish"

Secondary—Linesville
Horace Mann Club
Y. M. C. A.
Edinboro Players
Orchestra
Choir

FLORIAN FLOREK

Secondary—Edinboro
Band
Orchestra
Debating Club

MYER SMITH
"Stumpy"

Secondary—Erie
Varsity Football
Intra-Mural Basketball

NANCY SEAY
"Nan"

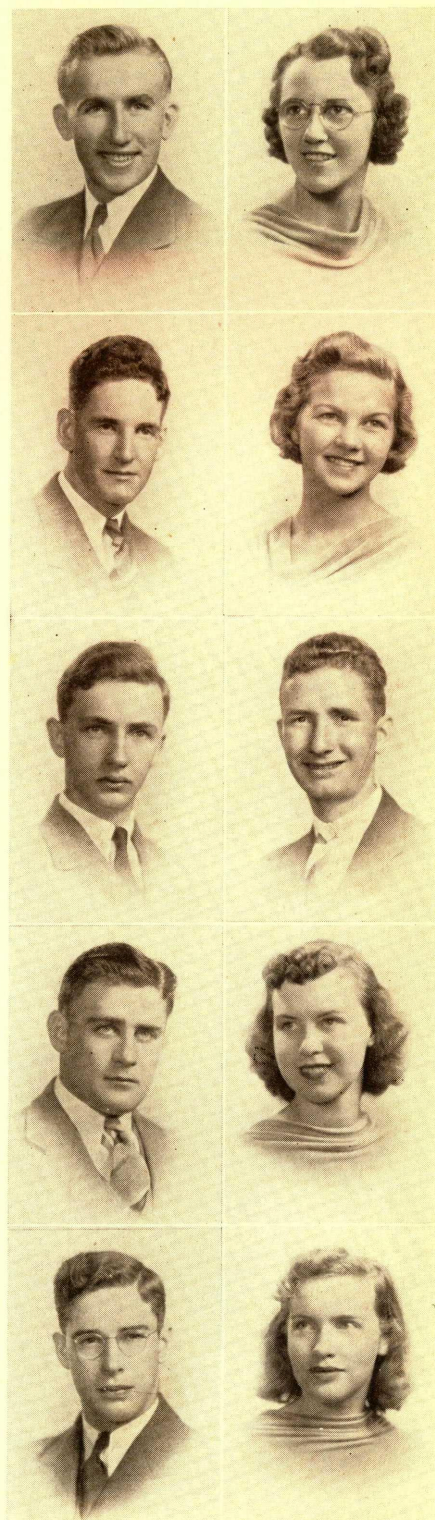
Elementary—Erie
Choir
Press Club
Spectator Staff
Y. W. C. A.
W. A. A.

DON SMITH
"Smitty"

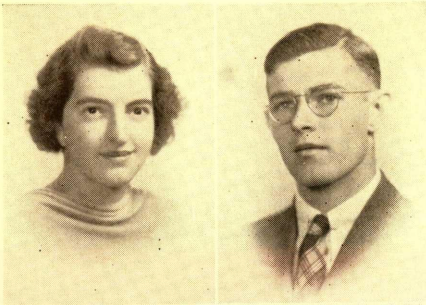
Secondary—Erie
Varsity Football
Varsity Basketball
"E" Club
Edinboro Players

LOUISE SMITH
"Lou"

Art—Oil City
Choir
ScaRab Club
W. A. A.
Y. W. C. A.



Freshmen

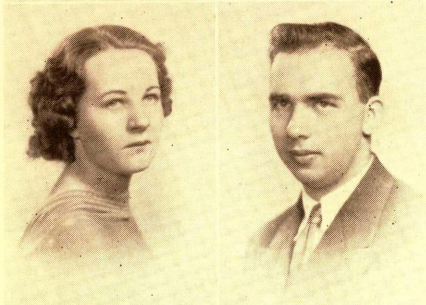


ANNA TUTTLE
"Tiny"

Elementary—Erie
Newman Club
Y. W. C. A.
W. A. A.
Rural Problems Club

DAVID REED
"Dave"

Elementary—McKean
Intra-Mural Basketball
Y. M. C. A.
Horace Mann Club

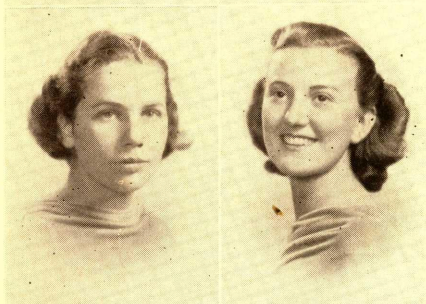


ALYCE TANNEHILL
"Al"

Elementary—Girard

ROBERT ULRICH
"Bob"

Secondary—Harbor Creek
Phi Sigma Pi
Edinboro Players
Band
Horace Mann Club
Varsity Football
Newman Club

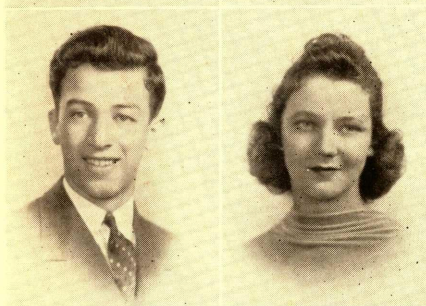


BETSY VINCENT
"Bets"

Art—West Chester
W. A. A.
ScaRab Club
Y. W. C. A.

MARY WASMUTH
"Wassy"

Secondary—Swissdale
Spectator Staff
Press Club
W. A. A.

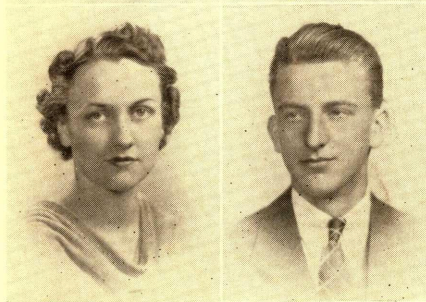


WILLIAM VOLBERS
"Porky"

Secondary—Erie
Kappa Delta Phi
Y. M. C. A.
Press Club
Varsity Basketball
Intra-Mural Football

DOROTHY WILLIAMS
"Dotty"

Elementary—Erie
Y. W. C. A.
W. A. A.
Press Club
Spectator Staff



PHYLLIS WHITE
"Phil"

Secondary—North Girard
W. A. A.
Cheerleader
Rural Problems Club
Edinboro Players

DANIEL WOLCHIK
"Dan"

Secondary—Albion
Intra-Mural Basketball

Class of 1942

MYRA WEIDLE

Elementary—McKean

HAROLD SCHRECKENGOST
"Schrecky"

Secondary—Titusville
Choir
Y. M. C. A.
Phi Sigma Pi
Orchestra
Band
Skiing Club

ELEANOR SPERRY
"Oney"

Elementary—Springboro
Y. W. C. A.
W. A. A.
Comstock Club

REED STOOPS

Secondary—Erie
Student Council
Edinboro Players
Press Club
Spectator Staff
Intra-Mural Basketball
Y. M. C. A.

WILLIAM SNYDER
"Bill"

Art—Erie
ScaRab Club
Choir
Band
Orchestra
Intra-Mural Basketball
Kappa Delta Phi

JESSIE TURBEN
"Jet"

Elementary—Corry
Rural Problems Club
W. A. A.

WANDA ZAJACZEK
"Bunny"

Elementary—Cambridge Springs

ALANSON KINNEY
"Lant"

Secondary—Edinboro
Varsity Football
"E" Club
Edinboro Players

WILFRED SCHEULER
"Willie"

Secondary—Erie
Choir

CARL WEBER

Secondary—Erie
Spectator Staff
Press Club



Freshmen



MARCELLA RECKERT
"More"

Elementary—Farrell
W. A. A.

DORIS HEINTZ
"Dorie"

Art—Erie
W. A. A.
Y. W. C. A.
ScaRab Club
Varsity Basketball

ETHEL GENOSA
"Fait"

Art—Pittsburgh
W. A. A.
ScaRab Club

MARY ESTHER DAILEY
"Med"

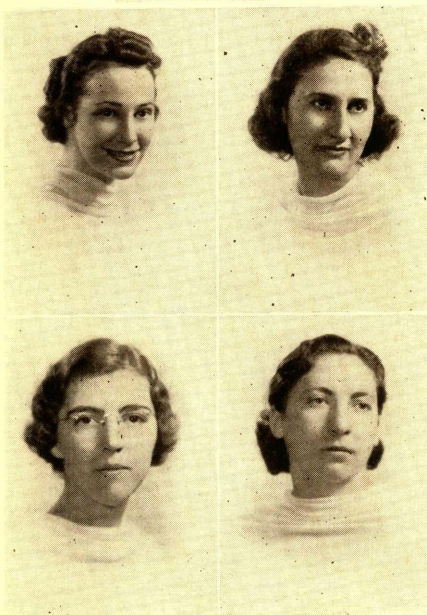
Elementary—Erie
W. A. A.
Edinboro Players



HELEN ALCORN
"Lefty"

Elementary—Union City
W. A. A.
Y. W. C. A.
Photography Club

Post Graduates



CORNELIA MASON

Elementary—Greenville
Choir

SARAH E. GALBO
"Sal"

Elementary—Erie
W. A. A.
Newman Club

MADELINE GILL

Elementary—Meadville

OLIVE FRITZ

Elementary—Hadley

• • •

FRANK SOSCIA
Secondary—Erie

WILLIAM MOELLERD
Secondary—Erie

FRANK FELICE
Secondary—Erie

- *Clubs*
- FRATERNITIES
- PUBLICATIONS
- STUDENT GOVERNMENT

Year at Lomboro



- SPORTS . . .
- FEATURES . .
- INTRAMURALS



• • • Student-Faculty Council

The Student-Faculty Council consists of eight students, two being chosen from each class, who organize with three faculty members to give suggestions, take action, and help direct student activities.

The student body was represented at the state conference of State Teachers' College Student-Faculty Governments by Emily Carpenter and James Brown, student members, Miss Strohecker, Dean of Women, and Mr. Mallory, council faculty adviser. Mr. Brown assisted in drawing up the constitution for the newly formed federation.

The main social event sponsored and planned by the council was the formal dance after the Christmas Dinner, social organization being one of its major duties.

To the old and new students the "Handbook" is an essential item. Miss Emily Carpenter, editor, directed a staff in correcting, making additions and compiling the new book, which is a primary factor in directing students at Edinboro.

The work of this year's Student-Faculty Council will be evident next year and the Council is looking forward to all of its planned activities for the coming year.

Council members during 1st semester: Paul Pfeiffer, Louise Carlburg, Anthony Cutri, Emily Carpenter, James Brown, Elaine Ghering, Reed Stoops, Jean Carlson. New men members, second semester: Angelo Casello, Lee Jeffords, Ray Mitcham and Bob Olson.

Faculty Members: Miss Nelle G. Hudson, Mr. Royce R. Mallory and Dr. E. Leigh Mudge.

OFFICERS:

1st semester; President, Paul Pfeiffer; Vice President, Anthony Cutri; Secretary, Elaine Ghering. 2nd semester; President, Angelo Casello; Vice President, Emily Carpenter; Secretary, Elaine Ghering.

• • • 1939 Conneautteean •



The Conneautteeen Staff . . .

When you sit down to read from this 1939 Conneautteeen, you help to bring to a final conclusion the year's work of the Conneautteeen Staff. Throughout the college year, the Junior Class—annual publishers of this record of the year's activities, have looked forward to the day when you might do just that—sit down and read from the 1939 Conneautteeen.

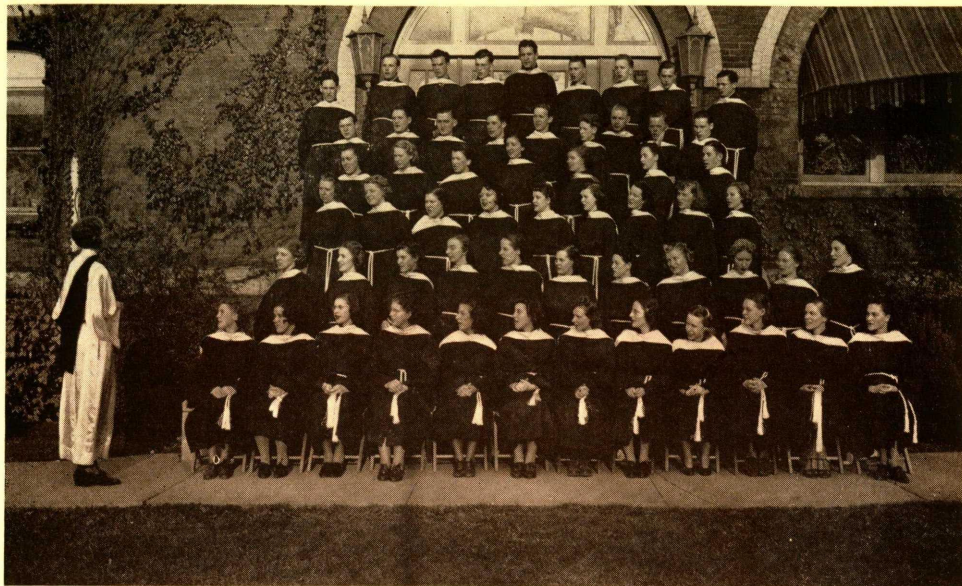
Now, that the goal is achieved and you have read from these pages, it is only permissible that tired editors, harried assistants, and fatigued typists, released from their responsibilities, may relax in the joy and comfort of a job completed.

Too, from the aspirations of early October to the end-results of May, the publication duties of this staff have not been taken lightly. Seriously intent upon producing the best, these unseasoned cubs of the pencil and typewriter joined with the experienced veterans of engraving and printing in building this yearbook. That their efforts have been fruitful is told only by your evaluation of this book as you hurriedly read it now or muse over it in the future.

In recording the work of the Staff, it is only just to say that there are in this publication many unsung heroes—contributing time and effort without a word or picture to identify their assistance. It is to these persons—artists, typists, writers, unseen and unsung—that the editors owe their deepest gratitude. The words "Yes, I will" take on added meanings when spoken by these unknown but essential doers.

The 1939 Conneautteeen Staff, which passes into history as a cooperative efficient group, was composed of: Editor-in-chief, Walter Nissen; Business Manager, Lee Jeffords; Art Editor, Richard Peterson; Special Features Editor, Shirley Artman; Literary Editor, Billie Gillespie; Photography Editor, Martin Shimko; Advertising Manager, Jeanne Strohecker; Sales Manager, Shirley Swift, Sophomore Editor, Charlotte Weaver; and Staff Photographer, D. J. Fanani. Mr. Aime Doucette and Mr. Royce R. Mallory were faculty advisers.

• 1939 Conneautteeen . . .



• • • Choir

The Edinboro A Capella Choir offers to the musically talented students an opportunity for diversified group singing. This was especially true in 1939, when this established musical organization enjoyed a very successful year.

After tryouts in early fall, several Freshmen were admitted to a membership that was the largest in years. Under the direction of Miss Esther Wilson, these new voices were blended with the old to give excellently sung selections.

The Choir's most important musical event of the year was the annual Christmas Concert at Christmas Vespers. In the candle light of the holly-decorated stage and auditorium, the Choir put into music the religious meanings of Christianity. This was made dramatically real by "pictures" on the stage.

Singing at the College Vesper Services once a month in the Auditorium, the Choir contributed the musical portions of these religious programs. This musical organization also left the campus to sing in nearby churches at various times throughout the year.

Aside from its musical activities, the Choir has sponsored several social activities for its members. The Kid Party, at which childish games and clothes are in vogue, is becoming a leading Campus event, growing in popularity each year. A weiner roast was held in early fall.

Smaller musical groups are formed from the membership of the Choir. Men's Quartet, the Double Quartet and the Women's Sextet give opportunity for smaller group singing.

The Choir ended its year by taking a leading part in the Spring Concert of all the campus musical organizations in May. Thus, 1939 was wholly successful.

First and Second semester officers were: Vega Ihsen and Helen Davis, presidents; Eunice Rodgers and Helen Shindledecker, secretaries; Ardelle Huber, Richard Benson, Wilma Ihsen and Neal Harrison, librarians.

• • • 1939 Conneautteean •



The ScaRAb Club • • •

We're all bugs and we're proud of it. Don't misinterpret me, for we belong to the art phylum. But enough of that—our species can be found in any college catalogue.

A "Big Bug" is one who directs and promotes social and educational harmony among the other bugs. You can't expect one to officiate alone, so he has a "Little Bug," "Scratches," and "Eggs" to help him. With a powerful bug dominating and all the other sister and brother bugs cooperating it should mean a successful year, and it does.

Officers for the year were Big Bug, Lawrence Hickman; Little Bug, William Rodgers; Eggs, Eunice Rodgers; and Scratches, Elaine Ghering.

The ScaRAb club has established six new Junior ScaRAb clubs in high schools in two states. We hope through this means to create in many small bugs an appreciation and interest in art.

With brother Witalis bug leading the flight, many brother and sister bugs followed to publish a Senior booklet which will aid in finding new homes for each graduating bug leaving Edinboro.

Brother Peterson bug carried two honors home under his wing from the annual art exhibit—first and third prizes, to be specific. Species Mead and Tomkon flew home with second and fourth, and brother Rodgers and sisters Ghering and Vincent felt honorable mentions. Bugs do have feelers. Congratulations to each exhibitor.

This family history could be continued, for we bugs are very active, but you'll see much of our familiar species on campus. They can be identified by the wing full of drawing boards, puppets, instruments, and anything else they can drop. Don't try to chase them away, for they are a perennial species and they are sure to be back in 1940—stronger than ever. Ouch, something bit me!

• 1939 Conneautteean . . .



• • • The Comstock Club

The Comstock Club has been very active in 1939. For those who wish to learn of the things of nature, it has provided much worthwhile activity. Small in number, it has thus been able to have individual participation of its members.

Throughout the year, each member has followed his interests, which have been many and varied. Such activities have included collecting nature poems, making a detailed study of birds, collecting leaves, and finding and classifying nature stories for children, as well as studying trees and spring flowers.

Along with the regular work of the club, several social functions were held. One of these was a Christmas Party, at which the whole club had an enjoyable time. On Saint Patrick's Day, the group entertained its members at a dinner-meeting. In late Spring the club visited Presque Isle Peninsula at Erie, and combined plant and animal study with a day's picnic.

It is the serious intent of the members of the Comstock Club to be able as teachers to answer the "WHY'S" of little children as they question the facts of nature. This is the long-range purpose of the Comstock Club.

Officers for 1939 were: First Semester—Adaline Snyder, president; Dorothy Fisher, vice-president; Laura Shafer, secretary; Wilma Stafford, treasurer; Second Semester—Wilma Stafford, president; Ruth Collom, vice-president; Laura Shafer, secretary; Stella Doboinski, treasurer. Miss Nelle Hudson and Miss Hazel Mae Ketcham were faculty advisers.

• • • 1939 Conneautteean •



Y. W. C. A . . .

THEME FOR YEAR: "OPEN DOORS"

In September, 1938 the Young Women's Christian Association of Edinboro began its 33rd active year with sixty members enrolled. The Big and Little Sister Tea opened the year's activities.

Of the eighteen meetings held in the "Y" room the most inspiring was the annual Candle Light Service, a joint meeting with the Y. M. C. A. The impressive lighting of the candles as a symbol of the student's decision to "Follow Christ Fully" was the most prominent part of the service. Four students who had attended the Waynesburg Conference gave a summary of religious activities on other campuses.

At various meetings student talks have shown how we as Christians can open new doors of faith, beauty, service, and worship.

All the students on campus assisted in the raising of The China Relief Fund.

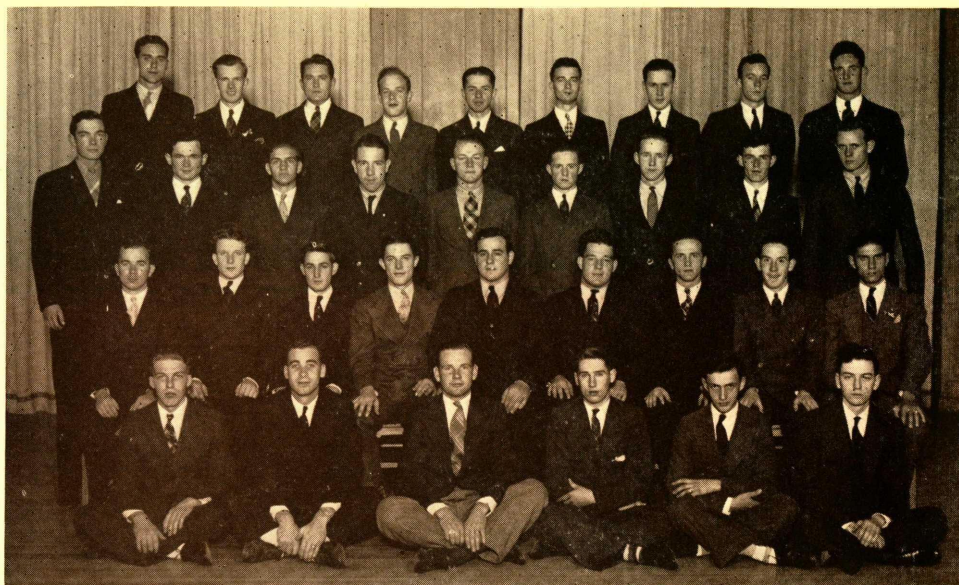
The entire campus purchased Christmas gifts which were wrapped by the "Y" and sent to needy families.

Our motto "Not to be ministered unto, but to minister" has been kept constantly in our minds as we have tried to develop the three elements represented in the triangle;—the mind, the body, and the spirit.

Miss Ludgate and Miss Pettit, our advisers, have kept us constantly mindful of our relationship with the thousands of "Y" girls on campuses all over the country.

The officers were: Helen Sylvander, president; Ruth Handley, vice-president; Eunice Rodgers, secretary and treasurer; Esther Neil, devotional chairman; Emily Carpenter, program chairman; Ethel Thomson, reporter; Vega Ihlen, pianist; Ardelle Huber, advertising chairman.

• 1939 Conneautteean . . .



• • • Y. M. C. A.

Getting off to a good start with an all-college "Get Acquainted" party at the beginning of the school year, the Y. M. C. A. had a successful year in 1939.

Edinboro's Y. M. C. A. was represented at two conventions during the year. The first was at Waynesburg College with Richard Benson and Loren Whitney as local delegates. Dr. E. Leigh Mudge accompanied the young men on this trip. A second convention was attended at Grove City with Daniel Kusner and Norman Dilley as delegates from Edinboro. On both these trips, Y. W. C. A. delegates went with the Y. M. men.

The Club had several other successful events, including a Christmas Party and a few other parties in cooperation with the Y. W. C. A.

Officers for the year were: Daniel Kusner, president; Norman Dilley, vice-president; Richard Benson, secretary-treasurer. Faculty advisers were E. Leigh Mudge and C. W. Ellenberger.

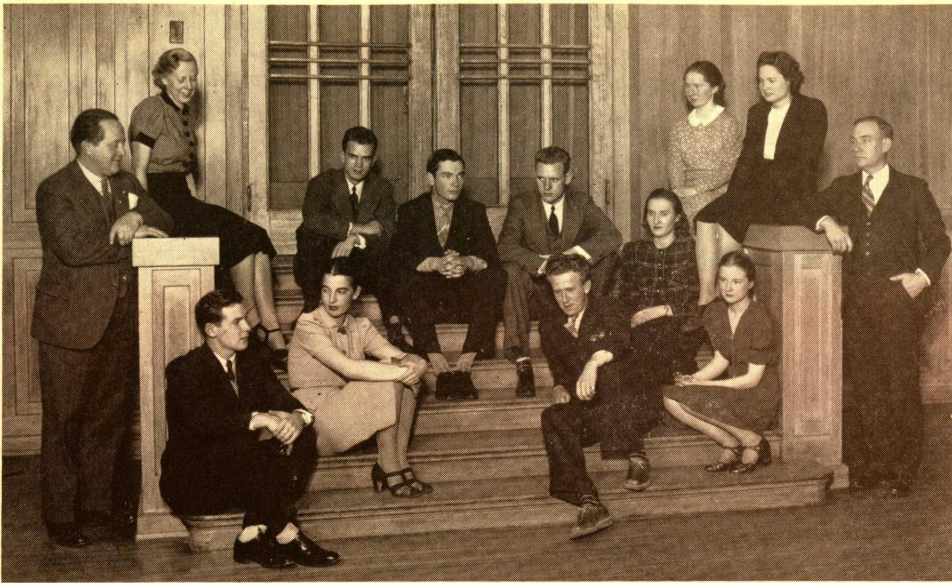
NEWMAN CLUB . . .

The Newman Club provides a religious organization for Catholic students at Edinboro.

Throughout the year, the club members spent much time in planned study of religious subjects. Study meetings were interspersed with social gatherings. During the latter part of the year, several outstanding priests spoke to the group on current matters of religious interest.

Father MacDonald, Assistant Superintendent of Diocesan Schools in Erie, Pa., who is a leader in educational activities, served as Chaplain and friend. Mr. Aime Doucette was faculty adviser.

Club officers were: Mary Alice Lowry, president; Will Schaaf, vice-president; Maxine Teetsel and Anne Krivonak, secretaries; Robert Lytle, treasurer.



Delta Phi Delta • • •

Chi Chapter renewed activities in the fall with the pledging of seven new students, Helen Sylvander, Emily Carpenter, Adaline Snyder, Leon Mead, Lonel Watters, William Rodgers, and Richard Peterson. An attractive tea at Haven Hall followed the pledging services which were held in the afternoon of October 3. November 8, they were formally initiated. This talented and enthusiastic group gave new impetus as well as effective cooperation to our local chapter.

According to customs, we have had three work meetings and one business meeting a month. Members are encouraged to do some sort of creative art work—this for the pure joy which accompanies personal enrichment.

Maxine Teetsel, our delegate to the Convention at Colorado, has offered many pertinent hints concerning the activities and progress of the organization.

It was a pleasure for us to entertain Miss Lila Ross, an art teacher at Plainsville, N. J. on the 13 and 14 of April. Miss Ross, a former member of Phi Chapter, Montana State College, was delighted with her visit on our Campus.

The month of May saw a very successful year for Delta Phi Delta climaxed with our Founder's Day Banquet.

Officers for 1939 were: Maxine Teetsel, president; Ruth Hagerson, vice-president; Coletta Burkhardt, secretary; and Mary Lou Whiting, treasurer.

• 1939 Conneautteean . . .



• • • Alpha Delta

Our ship of Sisterhood has again returned to port—laden with golden memories of many lovely adventures.

The first of these was the Reception Tea in the "cabin" when we anchored and invited the freshmen aboard for tea and a bit of chattering. Launching again, we visited Erie for dinner with the alumni at the Barn and for a pleasant evening at the Play House to celebrate our Tenth Anniversary. We will remember our Thanksgiving and Christmas Parties and our successful pledge week followed by our formal Dinner where we christened some future voyagers and took them with us, homeward. With them we enjoyed our Spring Formal in April and our dinner with our mothers in the quiet waters of May where we met our new mother patronesses. Entering port, we entertained at breakfast, the seniors, who are setting out on the high seas but whom we plan to meet en voyage in years to come.

At the end of another successful voyage we hope to have pleased our Alma Mater in our quest for refinement, perseverance, scholarship, fellowship and courtesy.

Adviser: Miss Forness.

Honorary Members: Miss Wilson, Miss Ober, Miss Strohecker, Miss Pettit, Miss Baron, Mrs. Haller and Jesse Haller.

Members: Francis Bates, Louise Carlberg, Emily Carpenter, Beatrice Case, Marian Davies, Elaine Ghering, Ruth Gilbert, Billie Gillespie, Beatrice Hall, Ruth Handley, Ardelle Huber, Vega Ishen, Sarah Kratz, Alice Kruszka, Mary Ann McGraw, Eleanor Nichols, Eunice Rogers, Catherine Ross, Francis Skelton, Jean Strohecker, Helen Sylvander, Helen Turner, Kathryn VanTassel, Marjorie Welsh, Averyl Wheeling, and Mary Lou Whiting.

• • • 1939 Conneauttean •



Kappa Delta Phi . . .

May will mark the end of one successful year for Theta Chapter, Kappa Delta Phi, and the start of the fifteenth year that Theta Chapter, and its forerunner, Beta Xi, has been outstanding in college social life.

Joining our organization as faculty brothers at the time of its affiliation with a national fraternity were Dr. L. H. Van Houten, Dr. C. J. Christensen, and Mr. H. L. Offner. Mr. Aime Doucette is a Charter member of Delta Chapter at Boston University.

Socially highlighted among the year's activities was the annual Spring Dance, held May 6 at Culbertson Hills Country Club. Many alumni members returned for this occasion.

Theta Chapter, located farthest from Boston, the site of this year's fraternity convention, started off well in its first year by winning the cup given to the chapter having the greatest percentage of its members present. President Lon Watters, Don Reichel, Leon Mead, and Bob Hahn represented Theta Chapter at the get-together in the historic Hub.

The chapter's social program was filled with a theater party and supper for the pledges, a spaghetti supper, and numerous smokers.

Robert Hahn, Myer Smith, William Volbers, Stuart Ackelson, Bob Kaufman, and William Snyder joined Theta as new members. Other members included Lon Watters, president, Leon Mead, vice-president, William Rodgers, secretary, Dick Peterson, treasurer, Robert Lytle, John Swift, Rupert Witalis, Paul Pfeiffer, Darwin Miller, Howard Miller, Keith Skelton, Don Reichel, Angelo Casella, Fred Casoli, and Henry Kirschner.

• 1939 Conneautteean . . .



• • • Phi Sigma Pi

In 1939 Phi Sigma Pi became Edinboro's newest national fraternity when the membership of Chi Delta Sigma celebrated its tenth anniversary by securing affiliations with a national professional education fraternity.

Upsilon Chapter, the twentieth chapter of Phi Sigma Pi was formally installed on October 29, 1938. Nineteen undergraduates were initiated with the following officers: James G. Wood, president; Lawrence Hickman, vice-president; Walter I. Nissen, secretary; Anthony Cutri, assistant secretary; Norman E. Dilley, treasurer; Martin Shimko, historian. Waldo F. Bates, C. W. Ellenberger, A. J. Haller, R. R. Mallory, and H. W. McNees served as faculty advisers in 1939.

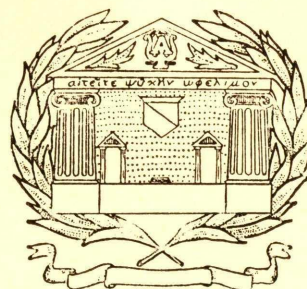
Throughout the year, frequent professional meetings, which aim to advance teaching as a profession, brought guest speakers' views on education to the members of Upsilon Chapter.

In February, six Edinboro men attended the Grand Chapter Convention of Phi Sigma Pi in Cleveland. Walter Nissen was official delegate.

A Formal Spring Dinner-Dance at the Masonic Temple in Erie in May topped the year's social season. A fall dance and several smokers made Upsilon Chapter socially active on Campus.

Pledges to wear the gold and purple in 1939 were: Harold Bon, Nick Demiankow, David Graves, Raymond Graves, John Gwilliam, Stephen Lipchik, Harold Schreckengost, Donald Smith, Frank Soscia and Robert Ulrich. Thus, Phi Sigma Pi completed a successful first year at Edinboro.

• • • 1939 Conneauttean •



Alpha Psi Omega . . .

Gamma Kappa Cast of Alpha Psi Omega Fraternity motto: Seek a Life Useful.

Officers: Grand Director, Gwen Gleeten; Worthy Playwright, Dorothy Jadus; Worthy Business Manager, Robert Scarpitti; Honorable Prompter, Frank Brown.

The Charter for the Gamma Kappa Cast was granted nine years ago this May. During that time sixty-one students at Edinboro have qualified and been accepted into membership in Alpha Psi Omega, the largest national honorary dramatic fraternity in North America. Members of Gamma Kappa Cast are now scattered over the United States and many are actively engaged in Little Theatre work.

The cast meets annually to initiate new members who meet with the dramatic participation and scholastic requirements. Of the seventeen students pledged this year, ten were initiated on March twenty-fourth in Loveland Hall Little Theatre.

These "Neophytes" are now welcomed to the rights and privileges of dramatic participation in any of the 88 casts found in the United States and Canada.

New members honored with membership to Alpha Psi Omega are: Richard DeRemer, Dorothy Fisher, Elaine Ghering, Beatrice Hall, Sarah Kratz, Daniel Kusner, Ruth McFadden, Leon Mead, Maxine Teetsel, Averyl Wheeling and Kathryn Cochanides.

Faculty members are: Jane S. Ludgate, adviser; Waldo Bates, Aime Doucette, Mildred Forness, Royce Mallory, Nettie Mai Ruttle, Dorothy Skinner, Esther Wilson.

• 1939 Conneautteean . . .



• • • Rural Problems

The main purpose of the Rural Problems Club is to study rural communities so that we, as future teachers, may better understand and cope with the educational and cultural problems of these districts.

There were approximately forty members in the club. The number of members in this organization is not limited, and there are no set rules concerning admission to the club other than interest and cooperation, under the leadership of our faculty sponsor, Dr. C. J. Christensen, and the officers.

• • •

The year's activities of the club were furnishing student educational entertainment for rural areas, visiting rural schools with the viewpoint of a prospective teacher, and acquainting the members with rural areas in general.

The officers for the year have been: Martin Schweller, president; Darwin Miller, vice-president; Ruth Taylor, secretary; and Virginia Peters, treasurer.

• • • 1939 Conneauttean •



Spectator Staff . . .

An enthusiastic group of Freshmen joined again with the veteran newsmen in 1939. That there are days of growth ahead for "The Spectator," is seen by the response of these first year students to the urge of pencil and typewriter, of ink and the printing press.

Joseph Norder, Editor-in-chief during the first semester, was succeeded by Joseph Zahniser during the second semester. Staff members were Charlotte Weaver, Stuart Ackelson, Nancy Seay, Virginia Gray, Dorothy Williams, Carl Weber, Mary Wasmuth, Mary Everall, Ray Gallagher and Walter Nissen. Mr. W. Verne Zahniser was faculty adviser.

Throughout 1939, the members of the Press Club have been mostly engaged in writing up press notices about events on the Edinboro Campus, and sending these news stories to hometown papers for publication.

Several interesting speakers gave talks on news-reporting and newspaper make-up, and there were visits to local and city newspaper offices.

Club officers were: James Wood, president; Reed Stoops, vice-president; Shirley Artman, secretary. Mr. W. Verne Zahniser was faculty adviser.

Press Club . . .



The Horace Mann Club is an organization for the purpose of considering current problems of educational interest of Edinboro undergraduates. One of the main objectives of the club is to keep the group informal. Participation of every member is encouraged and open discussion is limited to current subjects that are ordinarily not a part of regular classroom courses in Education.

The most outstanding meeting of 1939 took place when Dr. Matana of Polish Alliance College at Cambridge Springs spoke very interestingly about his recent travels in Poland. After the discussion of professional interest at each meeting, the Club had some social activity which develops friendly atmosphere among the members.

The officers for 1939 were: Lee Jeffords, president; Betty Buckley, vice-president; Billie Gillespie, secretary; and Willard Young, treasurer. Dr. L. H. VanHouten was faculty adviser.

Horace Mann Club

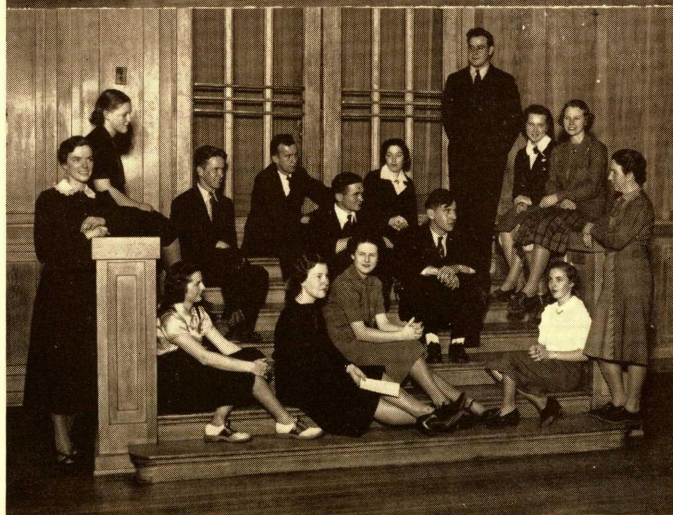


Photo Cubs • •

The Photo Cubs, formerly a part of the Comstock Club, first became an "A" Club in September, 1939.

The Organization has two divisions, the Beginners and the Advanced Groups, which work separately and according to the progress of the members. The students themselves arrange their schedule planning the type of work they want to do. The purpose of the club is to increase the student's knowledge of the camera and its uses, and to serve as a source of indoor and outdoor recreation. The beginners first learn the fundamentals of photography; namely, developing the film, printing the picture, and enlarging, while the advanced group work from the artistic and scientific viewpoint.

Club officers were: Dan Kusner, president; Ethel Thomson, secretary; and Frances Bates, treasurer. Miss Justina Baron was faculty adviser.





Band . . .

This year Edinboro was favored with a small, but very well-organized band. Being our first year of organization, it was sometime before we were able to present our talent before the student body. Under the capable direction of Miss Wilson, we made our first appearance at the Clarion-Edinboro football game. Seemingly through the pep of the band, the Red Raiders came through with a win.

After our first successful venture, we appeared again at several football and basketball games. We also appeared at an Assembly program in March. During Music Week in May, the band, along with the other musical organizations of the college, took part in a Music Week Program.

Director, Miss Wilson: Clarinets: Graves, Hill, Ulrich, Harrison; Saxophones: Demiankow, Snyder; Alto: Lindquist; Librarian, Ulrich; Bass, L. Whitney; Baritone, Davis; Drums, Davis; Trumpets: Tess, Morley, Dilley, Schreckengost, Florek.



• • • Orchestra

In 1939, a new musical group, the Orchestra, was organized under the direction of Miss Esther Wilson. Making its first public appearance at the Christmas Concert of the Choir, the string section played carols in the auditorium while the brass and wood-wind sections played carols from the library tower.

The orchestra played as a unit at the Edinboro Players' performance of "The Late Christopher Bean" in March. It also took part in the Annual Spring Concert of all Campus musical organizations. Its last appearance was at High School Guest Day in May.

After a successful first year, the members are planning a bigger and better orchestra in 1940. Members were: Violins: F. Skelton, R. McKinney, W. Ihsen, C. Burkhardt, M. Herman, E. Glenn, V. Gray, W. Stafford, N. Krivonak; Cello, M. Johnson; Clarinets: J. Hill, R. Graves, N. Harrison; Trumpets: P. Tess, F. Florek, H. Schreckengost, M. Morley; Saxophones: W. Snyder, J. Demiankow; Baritone, H. Davis; Alto horn, M. Lindquist; String bass, M. Martin; Piano, M. Davis; Drums: M. Davis, A. Snyder.

Mu Kappa Gamma • • •

Mu Kappa Gamma, local honorary music fraternity, is enjoying its sixth year on the college campus. Effort is being made to interest other State Teachers Colleges in establishing chapters, of this fraternity.

Members are selected on the basis of musical ability, leadership, scholarship, cooperation, length of service, participation in more than one musical activity, and outstanding contribution to music in the campus.

The purpose of the group is a triple one—to give recognition to those students who are particularly talented in music, to provide a work-nucleus for securing new talent and organizing music clubs, and to permit students interested in music to enjoy social contacts with each other.

To date, the fraternity has honored fifty outstanding music students, and there are at present fifteen active members on campus. They are as follows: Frances Bates, Beatrice Case, Emily Carpenter, Helen Davis, Virginia Davis, Beatrice Hall, Vega Ihsen, Alice Kruszka, Nick Krivonak, Richard Peterson, Eunice Rodgers, Will Rodgers, Frances Skelton, Adaline Snyder, Marjorie Welsh, and Miss Esther Wilson, faculty adviser.

• • • 1939 Conneautteeen •

The Edinboro Players . . .

Rome gave organization to the world, and Edinboro Players are giving an organization to the portion of it known as Edinboro College and vicinity. This organization, first and last, is one of the most active on the campus and in the surrounding country. Not only is it known by those who have attended it, but mothers tell their children about its wonders.

Perhaps this sounds like exaggeration, but to those who know, it is hardly an adequate statement. A real tradition is Edinboro's "Tournament of Plays." Every year, for the last eight years, the players have sponsored the tournament, and each year its fame has increased until today people look forward to this event with the greatest anticipation. The tournament consists of six one-act plays produced and acted on a competitive basis. The tournament of 1938 consisted of the play, "Bread," produced by Lee Jeffords; "The Singapore Spider" produced by Richard DeRemer; "Highness" produced by Lonel Watters; "The Barbarians" produced by Elaine Ghering; "A Dollar" produced by Leon Mead; and "The Wonder Hat" produced by Maxine Teetsel. Miss Teetsel won the directing award; Miss Ghering won for her scenery, which, by the way, was produced by Ponziano Manning who probably did the most effective scenery that has ever been placed on the Edinboro stage. Second prize for directing was won by Miss Ghering, and second prize for scenery went to Leon Mead. For the best acting Daniel Kusner won the laurel and took the bow. His part in "Singapore Spider" was played magnificently. Reed Stoops took second award for his acting in "The Wonder Hat."

At the closing of the Tournament, plans were made immediately for the 1939 season, and the club unanimously selected "The Late Christopher Bean" and Moliere's rollicking comedy, "A Doctor In Spite of Himself." "The Late Christopher Bean" was the first to be produced and met with unparalleled success. Ruth Hagerson, Joe Zahniser, Maxine Teetsel, Billie Gillespie, Daniel Kusner, Lee Jeffords, and Leon Mead wore the purple for their grand performances in this production; however, it might be said that Keith Skelton, director of this play, wore the purple and gold, for he was "the 'Doc'" that made the old "hoss" go.

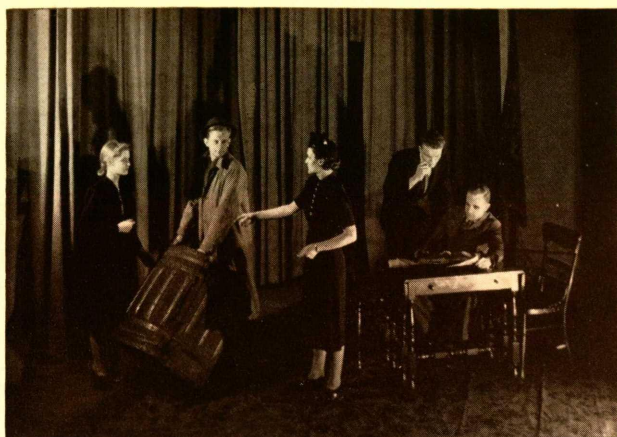
Next on the schedule was "The Doctor in Spite of Himself," written by Moliere and directed by Richard DeRemer. The cast included Raymond Graves, Robert Ulrich, Wilma Ihsen, Robert McKinney, Earle Madigan, Harold Powers, and Esther Neil, all new members who were given their first chance at making good and who certainly did a fine piece of work.

The year could not be complete, however, with all work and no play, so Miss Ludgate gave a "First Nighter" party at her home. It was a huge success, and everyone went home feeling a lot happier and healthier than when they came.

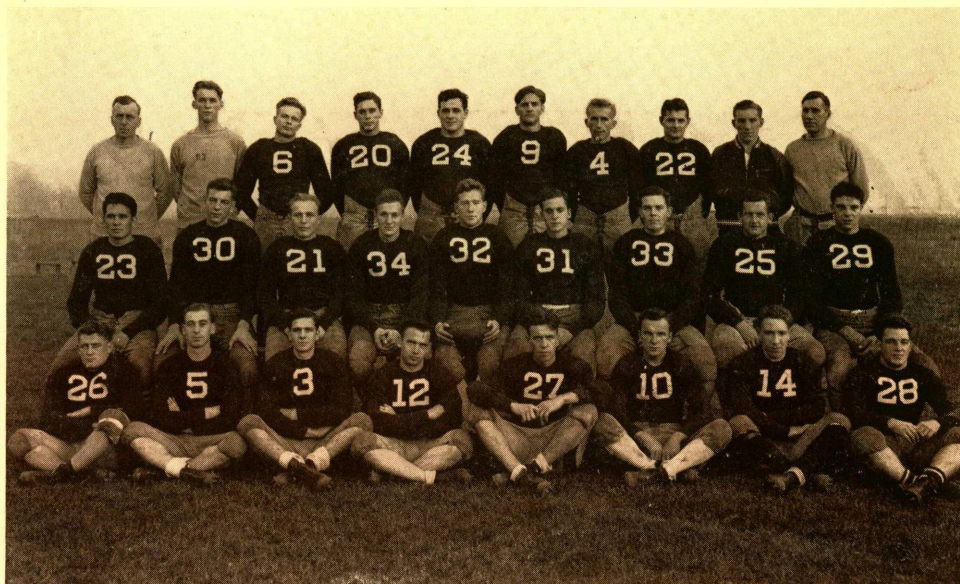
Another highlight of the year was the admission of eleven of the club members to Alpha Psi Omega Honorary Dramatic Fraternity. They were Elaine Ghering, Sara Kratz, Richard DeRemer, Daniel Kusner, Maxine Teetsel, Dorothy Fisher, Ruth McFadden, Averyl Wheeling, Leon Mead, Beatrice Hall, and Kitty Cochanides.

The officers of the club for 1938 were Richard DeRemer, president; Leon Mead, vice-president; Lonel Watters, secretary; and Maxine Teetsel, treasurer. Officers for 1939 are Joe Zahniser, president; Lonel Watters, vice-president; Coletta Burkhardt, secretary; and Lee Jeffords, treasurer.

The year closed with the club still wearing the "Seven League Boots," taking everything in its stride and thanking Miss Jane Ludgate for guiding in all its remarkable success.



. . . 1939 Conneautteean •

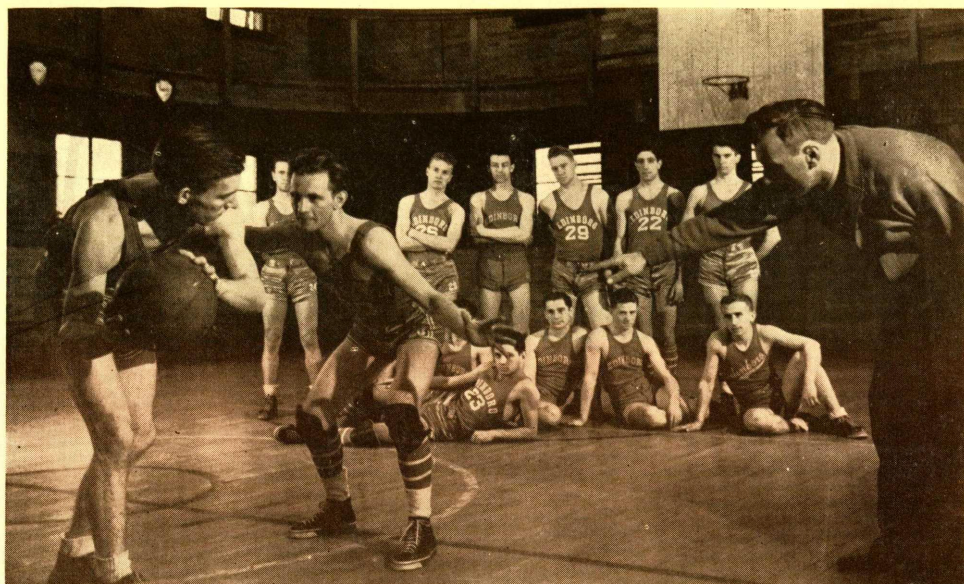


With a 6-2 victory over Clarion on the home field, Coach Harrison's Red Raiders of the gridiron reached a mid-season peak that saw them snatch their only victory of 1939.

Yet four defeats do not mar a record based on sportsmanship and fair-play. That Edinboro lost to California 18-6, Mansfield 13-0, Indiana 13-0 and Westminster 26-6, is not important in itself except to point out that this band of Edinboro athletes fought on regardless of defeat. Green, laden with newcomers, the Raiders were never beaten badly. Could more be said of this valiant squad of 1939?

Lettermen for 1939 were: Abrams, Arkwright, Bemis, Bleech, Case, Cutri, Demiankow, Kinney, Kusner, Lytle, Pelech, D. Smith, M. Smith, Stevenson, Tate, Volitich, Witalis, Wolfe and Peck, manager.

• Football • • •



In 1939, the Red Raiders of Edinboro blazed a new trail of basketball fame as they won nine games and lost only two—one of which was lost by a single point to Clarion, 51-50. A second game was lost, in late season, 43-39 to their ancient rivals, Slippery Rock, after the Raiders had taken the first game of this series 51-34.

Seldom missing the fifty-point mark in victory, the Red and White averaged 49.6 points per game. A national press service rated them tied for fifth place among all colleges of Pennsylvania.

Frank Soscia, a stellar Freshman guard from Erie, was chosen by the Teachers College coaches as a member of the All-State first team. Case, Wolfe and Arkwright were given honorable mention on this team. Several players were chosen by Edinboro opponents as members of their All-Opponent teams. With only two first string men graduating, "Sox" is certain to have another great team in 1940.

• • • Basketball •

• • • Edinboro's

Raiders kick off to Clarion—fine afternoon for football. •

Time out! Raiders enjoy the waterpail •

Tate (22) hits line for a gain, Edinboro ahead 6-0 at halftime •

Raiders march off victorious, 6-2 •

Red Raiders . . .

- Raiders watch one go in as California loses 64-42

- Edinboro brings one down

- Soscia taps one in as Clarion goes down 53-35

- Lettermen reach for the basket



• The Record on the Court • • •

Edinboro	Opponent	
43	Fredonia	37
53	Clarion	35
64	California	42
46	Fredonia	22
54	Indiana	36
50	Clarion	51
51	Slippery Rock	34
54	Alumni	50
45	California	32
39	Slippery Rock	43
47	Indiana	42
546	Total	424

FINAL STATE STANDINGS

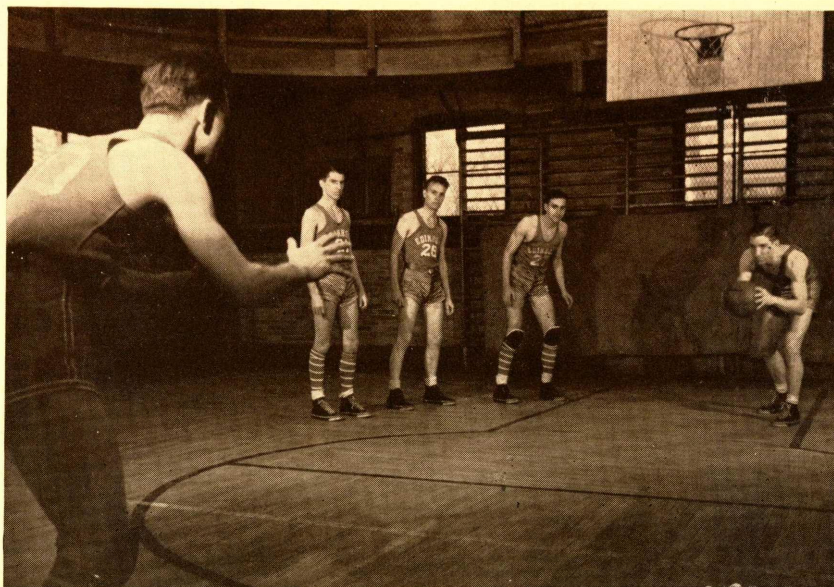
Team	W	L	Pct.
Swarthmore	13	1	.929
Gettysburg	14	2	.875
Franklin-Marshall	12	2	.857
Wyomissing Poly	12	2	.857
Edinboro	9	2	.818
Lock Haven	9	2	.818
Slippery Rock	10	5	.667
Clarion	6	9	.400
Indiana	6	10	.375
California	5	10	.333

INDIVIDUAL SCORING RECORDS

	FG	F	T
Arkwright	54	18	126
Wolfe	45	16	106
Case	35	22	92
Socia	30	20	80
Volitich	30	8	68
Pfeiffer	16	8	40
Lytle	5	2	12
Casoli	3	3	9
Reichel	3	0	6
Volbers	2	0	4
Zahniser	1	0	2
Bohn	0	1	1

• • • Seniors All •

In 1939, five Seniors—all Raider lettermen during some one of their four years on the basketball squad—graduate from Edinboro to leave behind an enviable record on the hardwood court. Fred Case, Paul Pfeiffer, Don Reichel, John Wolfe and Joseph Zahniser played their last games for the Raiders in 1939.



In the basketball squad of 1939, Coach Harrison had seven men of outstanding merit. With a "lot on the ball" they made up the Varsity and compiled a brilliant record. So Edinboro honors its Raider lettermen—Harold Arkwright, Fred Case, Robert Lytle, Paul Pfeiffer, Frank Soscia, Nick Volitich and John Wolfe.



• • • Lettermen •

• Edinboro Women • • •

"PROGRESS IN THE INTELLIGENT CONTROL OF ALL SPORTS"

Sports for the women students at Edinboro, which are organized around the interests of the seasons, vary greatly from Fall, through Winter, and into Spring. Yet this variance in activities at Edinboro makes for a wide and interesting women's sports program as carried on by the W. A. A.

In the Fall season of 1938, twenty girls rode horseback for approximately eight weeks. A horseshow closed the riding season with the first award going to Esther Stein. The girls were tested on four main points of horsemanship: mounting and dismounting, posting and cantering.

In hockey the Edinboro women took top honors in competition with Flora Stone Mather, Oberlin, Western Reserve, Hiram, and Lake Erie Colleges; the Edinboro team was undefeated.

On campus with over ninety women competing, the intramural competition in hockey was decidedly keen. The Phis won in the Phi-Delta Tournament and the powerful Juniors won the inter-class tournament. With the best Freshmen material in years, Miss Ruttle looks forward to more hockey wins next year.

In basketball the Deltas turned the tables on the Phis by winning the court tournament. Again the Juniors came through with victory in the inter-class games, walking off with the tournament title quite easily.

Skiing became of importance in January when the snow and cold weather of winter invaded Edinboro. Varsity teams competed in two events. One was at Kane in which students from three states participated. In this meet, Alice Kruszka won second place in the down-hill Slalom event. The second place of varsity competition was in the Winter Carnival at Allegheny College in which sixteen colleges were represented.

At home, over fifty women used Gusty Hill for several weeks of excellent skiing weather. The Phis were first in the Phi-Delta ski tournament, while the Freshmen took inter-class honors. Skating on the lake and in the cove was popular in the mid-winter.

In indoor activities the usual large number of women participated. Macie Johnson walked off with honors in ping-pong; Virginia Peters swept all before her in shuffleboard; Dolores Probst-

• • • In The W. A. A. •



ner won highest honors in both deck-tennis and paddle-tennis; and Pat Hastings won the tournament championship in badminton.

On March 11th, Edinboro invited Lake Erie, Allegheny, Westminster, and Mercyhurst to a Play-Day at which the women engaged in the following sports: basketball, badminton, ping-pong, and shuffleboard. Allegheny captured first places in shuffleboard and badminton, while Edinboro took first places in basketball and ping-pong. On March 18th, the Edinboro women's honorary varsity basketball team traveled to California State Teachers College to compete with fifteen colleges from Pennsylvania, Maryland, and West Virginia.

In late spring, archery, bicycling, golf, and horseback riding vied with field and track and mushball in major interests. The last important spring event was a telegraphic archery meet in which five colleges competed with Edinboro. In every way throughout 1939, Edinboro teams have offered the utmost in athletic participation for women. Thus, the W. A. A. has lived up to its motto: "A team for every girl and every girl on a team."

In the W. A. A., social activities are emphasized along with athletics. This was especially true in 1939. Social dancing was sponsored this year by the W. A. A. An expert teacher came from Erie regularly for several weeks and taught the techniques of ballroom dancing.

Numerous groups were entertained at Miss Ruttle's home. The parties were in the form of teas, breakfasts, and dinners.

The usual monthly teas were held in the club rooms at irregular intervals throughout the year.

Officers for the year have been: first semester—Kitty Cochanides, president; Ardelle Huber, secretary; Macie Johnson, treasurer; Vega Ihsen, Phi Leader; Beatrice Case, Delta Leader. Second semester—Alice Kruszka, president; Helen Shindledecker, secretary; Macie Johnson, treasurer; Vega Ihsen, Phi Leader; Beatrice Case, Delta Leader.



• • • Candid

It's lecture night!! . . . Julien Bryan tells Mr. Bates about Germany . . . Schrecky looks on . . . Mr. Mallory meets William Lyons Phelps . . . Miss Hillis is entertained at reception in Haven . . . The Cossacks . . . Dr. Sachar speaks . . . Elissa Landi is entertained and chats informally with the students . . . The Auslanders after the Poet's Symposium . . . meeting the Faculty in Haven Lobby . . . Choir members Neale and Graves with Mr. Phelps . . . Representatives of the Choir . . . The Zimmer Harp Trio with baritone Tom Curley on the stage in Normal Hall Auditorium—scene of the 1939 Lecture-Entertainment Course.



Camera . . .

Campus life in organized social units! . . . The Newman Club meets in Loveland . . . Kruszka poses on Gusty Hill . . . "The Barbarians" and Manning's scenery . . . 'tis noon for the waiters . . . Cheerleaders Hastings, Everall, Ackelson, Demmy, and White . . . Puppets perform . . . Kappa Delts entertain Freshmen at Spaghetti Supper . . . Steve Lipchik blows out the light for Phi Sigma Pi . . . Dan Jackish student teaches . . . It's Hallowe'en Ball in the Gym . . . Street dance in town square and victory rally bonfire in the fall air as Edinboro students have fun.



• • • Candid

Campus personnel!! . . . Arky and Bleach—only half his shirt showing—give "Pif" a ride . . . Carlberg, Calvin, and Kramer—three Seniors down town . . . 'tis Cutri, a superman—no strings or glue . . . "Bea" Case helps lead them on a fall afternoon . . . The President—"I'm off for Harrisburg." . . . Scene two of Act I in upper corner . . . Abe studies, sleeps . . . Freshman paddlers on the outlet . . . black stockings and umbrella, Nancy becomes an Alpha Delt . . . a jovial steps-group with Floyd "Football" Gibbons Dilley . . . Just people at Edinboro.



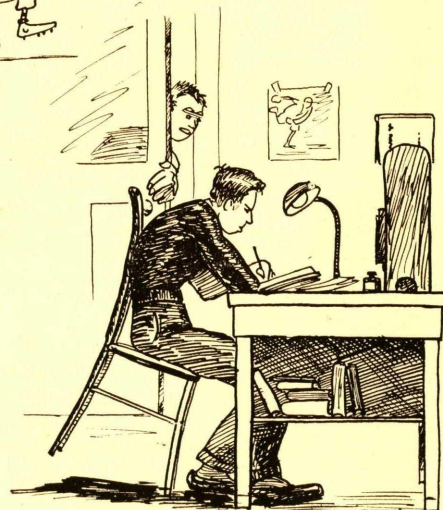
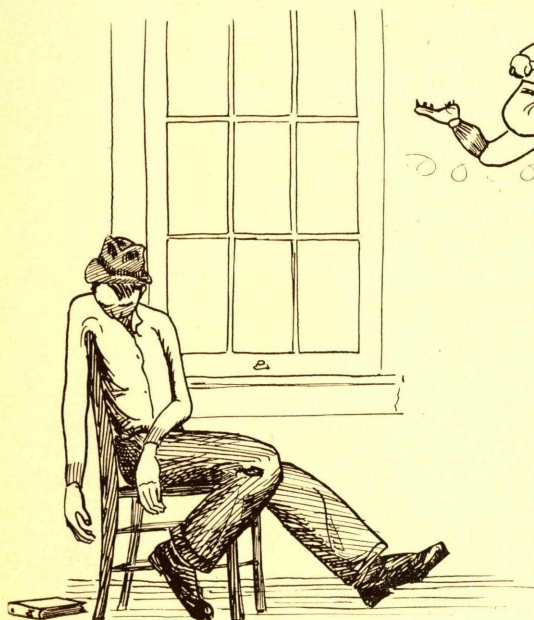
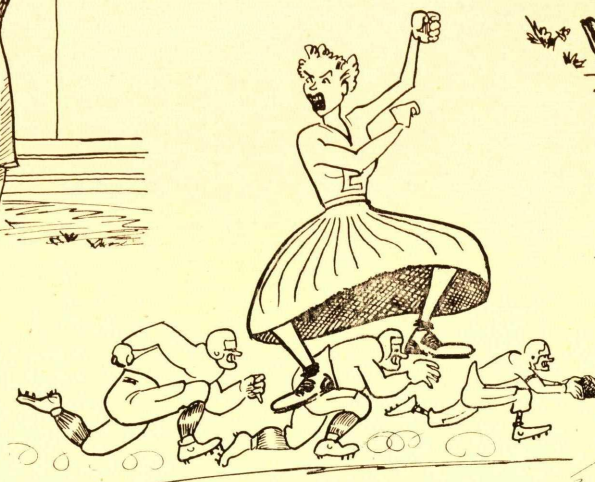
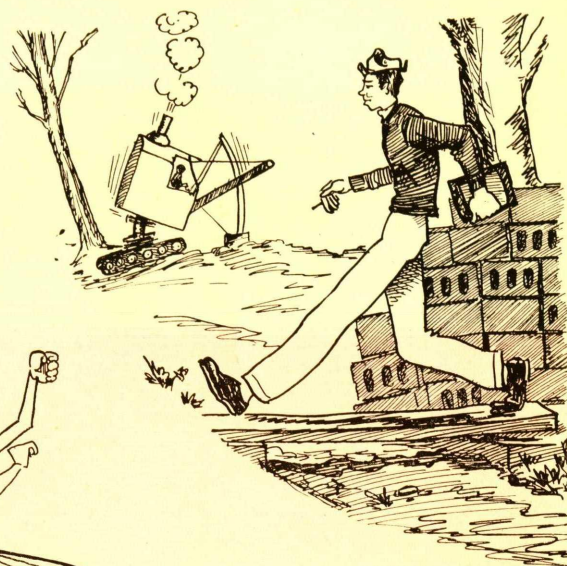
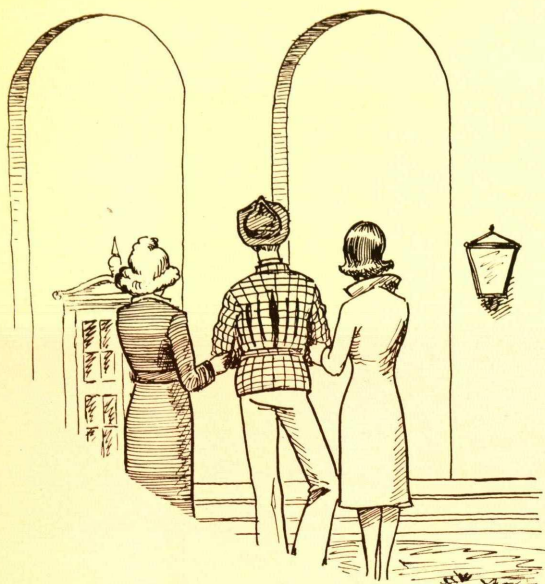
Camera . . .

Happy, healthy Edinboro students !! . . . Skater Abrams with "Denny" on the ice . . . "Chief" Hetra at the lake . . . P.W.A. and the old and new buildings . . . A Campus couple, Mary Lou and "Red" . . . Nissen, the "Editor," leaving Reeder—back way . . . Jolley's, with "Firp" leaving . . . Gesin, Hill and Volbers come back from breakfast . . . Misses Appleby and Gray strolling . . . Steel a'Goin' up . . . Ned mows in early fall . . . figures are "Hank's" specialty . . . "Sox" and "Mac" help out as women athletes finish the race and this page of Candid Camera.



Candid Camera . . .

Contrast of the Seasons! ! . . . Lou Smith and Ellen Haiston make a snowman . . . Hickman, Mitcham, and Olson (with one more unseen) return from the town church amid fall leaves . . . Huber and Anderson laugh on Loveland railing . . . Vega dries lovely hair . . . "Sox," genial Coach, wonders, smiles, and says "I guess so," all at once . . . Watters and Nichols stand aside so that we can see the porch at Haven . . . R. Graves nabs a high one in spring practice . . . Boerstler (it's the walk) and Hickman stroll back to Reeder in Mid-winter . . . Under open umbrella on a sunshiny day, Antico, "Val," and Miss Turner are not deeply concerned with academic life at Edinboro.



... "Bill" Rodgers

The Year . . .

. . . of 1939 .

We stand aside and view the memorable days of the year in September.

14th—Many little "Freshies" sign up for their first year at college.

15th—Upperclassmen return, happy to be back! Oh, yes!

16th—Recitation's old bell calls students to class.

20th—Frosh initiation begins, the boys serenade Haven Hall and scrub the front steps among other things.

21st—Y.W.C.A. sponsors Big and Little Sister Tea.

In October.

1st—First football game with California.

ScaRAb Club holds art exhibit and tea.

8th—Football at Mansfield, we lose 13 to 0.

15th—Parent's Day. Proud Mammias and Papas see how sons and daughters live at Edinboro.

22nd—Homecoming. Edinboro beats Clarion 6-2 in football.

Girl's Hockey Team goes to Lake Erie College for Play Day.

31st—Hallowe'en. Boys serenade the girls, and quite by accident, of course, the fire alarm is sounded!

In November

5th—Westminster football game, 26 to 6 their favor.

Phi Sigma Pi Fraternity sponsors dance.

9th—William Lyon Phelps gives entertaining talk on truth and poetry.

21st—Thanksgiving dinner, social program and dance. Remember the Reeder Hall Chorus "girls" in the "Flat Foot Floogie?"

29th—First three plays of the Tournament of Plays.

In December

17th—The Don Cossacks thrill us again.

21st—Haven Hall girls present Christmas play in Assembly.

Christmas Dinner and Dance.

22nd—Home to unwrap our Christmas gifts.

• • • of 1939 •

In January

- 3rd—Everyone had the “gur-randest” time, thank you!
- 13th—Our Basketball Squad takes over Fredonia.
- 17th—Everybody working like mad to finish up the semester’s work.
- 20th—Once more we pack our extra pair of sox and depart.

In February

- 1st—Delta Phi girls’ basket ball commences. W.A.A. holds ski meet. Peterson, Mead and Tomkon win prizes in the Art Exhibit.
- 3rd—We win the Slippery Rock basket ball game, 51-34.
- 9th—Puppet Shows presented by the Sophomore art class.
- 11th—Fraternity pledging. Kappa Delta Phi pledges six and Phi Sigma Pi pledges ten undergraduates.

In March

- 13th—Alpha Delta Sorority pledges 16 new members.
- 14th—Edinboro Players present “The Late Christopher Bean.”
- 18th—W.A.A. sponsors Play Day. Bowery Brawl happens in Haven.
- 21st—Spring finally catches up with the spring fever cases.
- 25th—Faculty entertain students at a Haven-Hall party.

In April

- 6th to 11th—We enjoy our Easter vacation.
- 22nd—Alpha Delta Spring Formal.
- 29th—The Junior Prom, traditional dance of the College.

In May

- 6th—Kappa Delta Phi Fraternity Dance. High School Guest Day.
- 13th—Phi Sigma Pi Fraternity Dance.
- 20th—Alumni Day. Old Grads return to see a bigger Edinboro.
- 25th—Commencement. For the Seniors, tears of farewell to 1939.

BUILDERS OF A GREATER EDINBORO . . .

Progress is most concretely expressed in a college by increasing its physical equipment. Providing a basis for the expansion of this physical equipment, are beautiful and efficient buildings. Constructed to serve the needs of a growing student body, Edinboro's buildings mark a forward step in the march of progress at a grand old school.

To the builders, whose concentrated efforts were expended in the creation of these units of brick and steel and concrete, the Edinboro student body gives its appreciation. They have built for posterity; their work is the work of progress.

GRAY PRINTING CO., Inc.

DuBois

Printers of the 1939 Conneautteeen

ENGRAVING

National Service Engraving Co.

ERIE

PHOTOGRAPHY

ZAMSKY STUDIOS

Philadelphia and New Haven

QUALITY ROOFING FOR
EDINBORO'S MODERN NEW BUILDINGS

FURNACES--OIL BURNERS

AIR CONDITIONING



GUST KRACK & SON, Inc.

1015 West 18th Street

ERIE

THE EDINBORO BUILDING PROGRAM
WAS STRICTLY A UNION JOB
ALL LABOR WAS REFERRED THROUGH
ERIE BUILDING & CONSTRUCTION
TRADES COUNCIL

Affiliated with the A. F. of L.



HEADQUARTERS
1701-1703 State Street
Erie, Pennsylvania

EDINBORO STUDENTS CHOOSE

ECOMA



Ice Cream

ERIE COUNTY MILK ASSOCIATION

Frank's

AUTO BODY WORKS

WE SPECIALIZE IN REBUILDING
WRECKED CARS

GLASS—TOPS—FRAMES

AXLES—PAINTING—SIMONIZING

24 HOUR TOWING SERVICE

919 East 9th Street

ERIE

Phone—23-016

For Ten Years—We have been at the Crossroads To Serve Edinboro

. . . the College . . . the town . . . And its Visitors

THE CROSSROADS DINER

P. R. GLEETEN, Manager

AN OLD FRIEND OF
EDINBORO STATE TEACHERS COLLEGE
BELIEVES IN THE FUTURE OF

. . . THE COLLEGE

. . . THE TOWN

. . . THIS INSTITUTION

FIRST NATIONAL BANK

EDINBORO

Compliments of

Meyers and Johnson

ARCHITECTS AND ENGINEERS

821 Commerce Building

ERIE

Milloy Lumber Company

LUMBER, MILLWORK

BUILDING SUPPLIES, HARDWARE, PAINTS

PLUMBING, ROOFING, FURNACES

Office, Store and Yards

12th AND CASCADE STREETS

ERIE :: PENNSYLVANIA

SERVING EDINBORO . . .

. . . its students . . . its faculty

. . . its administrators . . . its employees

IS OUR BUSINESS . . .

Buick

G. M. C.

Pontiac

Sales

Service

Storage

Repairs

Gas

"Kendall"

Oil

F. D. Walker
EDINBORO

FIRCH'S

Ma-Made

Bread

"It's the Best"

ARCHITECT FOR THE NEW
AUDITORIUM AT EDINBORO

G. W. Stickle

228 Commerce Building
ERIE

WE SUPPLIED HIGH-GRADE BUILDING MATERIALS
FOR EDINBORO'S BUILDING PROGRAM

Boyd and Schafer

1920 Parade Street
ERIE

WE SERVE EDINBORO . . .

. . . ITS COMMUNITY

. . . ITS COLLEGE

TIRES

BATTERIES

OILS

GASOLINE

If we please you, tell others,

If we displease you, tell us.

Scheidemantel

EDINBORO

Trask, Prescott & Richardson Co.

DEPARTMENT STORE :: :: ERIE, PENNSYLVANIA

Always first quality in each

respective price line.

Trask, Prescott & Richardson Co.

QUALITY MILK FOR
EDINBORO'S TABLES

N. E. SCHRUERS
EDINBORO

Sideline



Gossip

by

RAY PEEBLES
SPORTS EDITOR

For Accurate, Reliable Sport News . . .
Breezy and Diversified Sports Com-
ment . . .

READ THE

Erie Dispatch-Herald

Sports Authority of Northwestern Pennsylvania

"Builders of Edinboro"
BUILDING MOVERS
AND RIGGERS

J. N. Wilson Co.

314 Sassafras Street
ERIE

Enjoy

Sealtest

APPROVED LAKE SHORE
FRO-JOY ICE CREAM

ERIE
PENNSYLVANIA



FOOTWEAR
Ladies' and Men's
FURNISHINGS

H. G. Gillespie
EDINBORO

Printers of
"THE SPECTATOR"
—The College Newspaper

Publishers of
"THE INDEPENDENT"
—The Edinboro Newspaper

**Edinboro Publishing
Company**

The Esso Station

SERVES

EDINBORO STATE TEACHERS
COLLEGE

Orris R. Perry, Mgr.
EDINBORO

EDINBORO'S ONLY

BOOK STORE

College Book Shoppe

M. E. Klingensmith

GROCERIES

ELECTRICAL EQUIPMENT

HARDWARE

—For Edinboro Homes

Zindel and Stauffer
EDINBORO

Meet The Bunch From

EDINBORO STATE

TEACHERS COLLEGE

AT

JOLLEY'S

—Edinboro—

Serving Edinboro With
DEPENDABLE-QUALITY
GROCERIES AND MEATS
and
HONOR-BRAND-FROSTED-FOODS
RED AND WHITE STORE
EDINBORO

FUEL OIL FOR
Edinboro's Furnaces
CRAIG OIL COMPANY
819 Peach Street
ERIE



P. A. Meyer & Sons
Erie's Foremost Clothiers

Wish to congratulate the Conneautteean for its interest in the welfare of the Edinboro State Teachers College, and its kind remarks with regard to the installations of the Nayle-Grip Co. on the new buildings.

National Naylegrip Company, Inc.
1721 Ash Street, Erie, Pa.

WE SERVE EDINBORO
Town and College
PICK UP AND DELIVER

**LIBERTY
DRY CLEANERS**

657 West 26th Street
ERIE

QUALITY ART SUPPLIES
for
EDINBORO ART STUDENTS

SEVIN ART STORE

15 West 7th Street
ERIE

Erie's Newest
CAMERA STORE

Headquarters for
VISUAL EQUIPMENT

KELLY STUDIOS

New Address
14 East 10th Street
ERIE, PENNSYLVANIA

**ERIE SPORT
STORE**

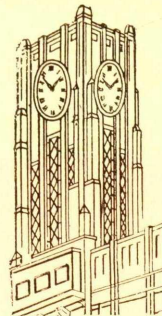
723 State Street

Distributor for
Wilson Sporting Equipment
W. E. LOWER
Owner

Sanitary Farms Milk Is a
Household Word in
Edinboro

**Sanitary Farms
Dairy**

521 East 18th Street
ERIE



BOSTON STORE

ERIE, PENNSYLVANIA

We offer Edinboro The Best in
Motor Freight Service—Right to the
Stockroom Door

**Lyons Transportation
Company, Inc.**

2621 French Street
ERIE

Q
U
A
L
I
T
Y

F
I
R
S
T

The Halle Brothers Co.

116-124 West 10th Street
ERIE

Eat At
EDINBORO COFFEE SHOP

LUNCHES
SODA
CANDY

Mr. A. L. Lynch
(Red)

As the College Progresses
So does our firm—



In Edinboro it's—

ZORTMAN
Flour and Feed Company

We were glad to have been chosen
to install the glass in Edinboro's
New Buildings

Schall Glass Company
1117 Peach Street
ERIE

"HAND TAILORED SUITS"

Modern Clothes Shop
821 State Street
ERIE

Supplying
Edinboro Students
and Sportsmen with
QUALITY SPORTSWEAR
L. PRESS & CO.
1216 State Street
ERIE

GET THAT GREETING CARD
at
COOPER'S
The Student's Store

Discriminating
Edinboro Purchasers
Buy at

Sybrant and Case

MEATS GROCERIES
EDINBORO

Buy Your Bus Tickets
At

United Service Station

E. R. Buchanan, Proprietor
EDINBORO

We Serve Edinboro!
FRESH MEATS . . .
FANCY GROCERIES . . .

CITY MARKET

"Good Work is Our Success"

Eugenia's Beauty Salon

Edinboro Dial—2492

For Your Midnight Lunches
—Fresh Daily—

Edinboro Home Bakery

Frank Liemer, Proprietor
EDINBORO

Serving
THE COLLEGE
THE TOWN
With Everything Electrical

Hostetler's Electrical Service EDINBORO

Compliments of

Park Motor Co.

P. M. Skelton

SAY IT WITH FLOWERS

Edinboro Floral

Flowers for all Occasions

BAKERS

Erie's Oldest and
Newest Men's Store

**Featuring America's Finest
Clothes and Accessories**

FASHION PARK AND
HART SCHAFFNER & MARX
CLOTHES

Palm Beach Suits—Alpacuna Coats
Arrow Shirts—Hickok Belts
Monarch Jackets—Stetson—Mallory and
Knox Hats—Freeman Shoes
Faultless Pajamas

Isaac Baker & Son

State at Seventh

Erie, Penna.

WE SUPPLY

QUALITY CANDY

FOR THE

EDINBORO

"DORMS"

Spaulding & Son

Meadville

Compliments of

A. Koppelman & Son

"Makers of Men's Fine Clothes"

28 West 9th

Erie, Pa.

Dee's Beauty Salon

Edinboro

Phone 2465

L. V. METZ

REGISTERED SURVEYOR

No. 12 West Ninth St.

Erie, Pa.

Office Telephone

22-559

Residence Telephone

67-191

Commercial Blue Print & Supply Company

12 West Ninth Street

Erie, Pa.

Blue Prints

Blue Line Prints

Black Line Prints

Negative Prints

Prints on Cloth

Photostats

Drawing Materials

Tracing Cloths

Tracing Papers

Sensitized Papers

Telephone 22-559

Snyder Candies, Inc.

1523 Peach Street

Erie, Pa.

Distributors of:

PLANTERS HI HAT

PEANUT OIL

CANDIES

CIGARS

We supplied and installed the

following tile work:

THE NEW SWIMMING POOL

Also . . .

All Floors and Walls

Terrazzo work

Slate work

Linoleum work

Erie Mantel & Tile Company, Inc.

1115 Peach Street

Erie

FROM THE PRESS OF
THE GRAY PRINTING COMPANY
DUBOIS, PENNSYLVANIA

COLLEGE ARCHIVES



