

1938

The 1938 CONNEAUTTEAN


COLLEGE ARCHIVES



EX LIBRIS

COLLEGE ARCHIVES

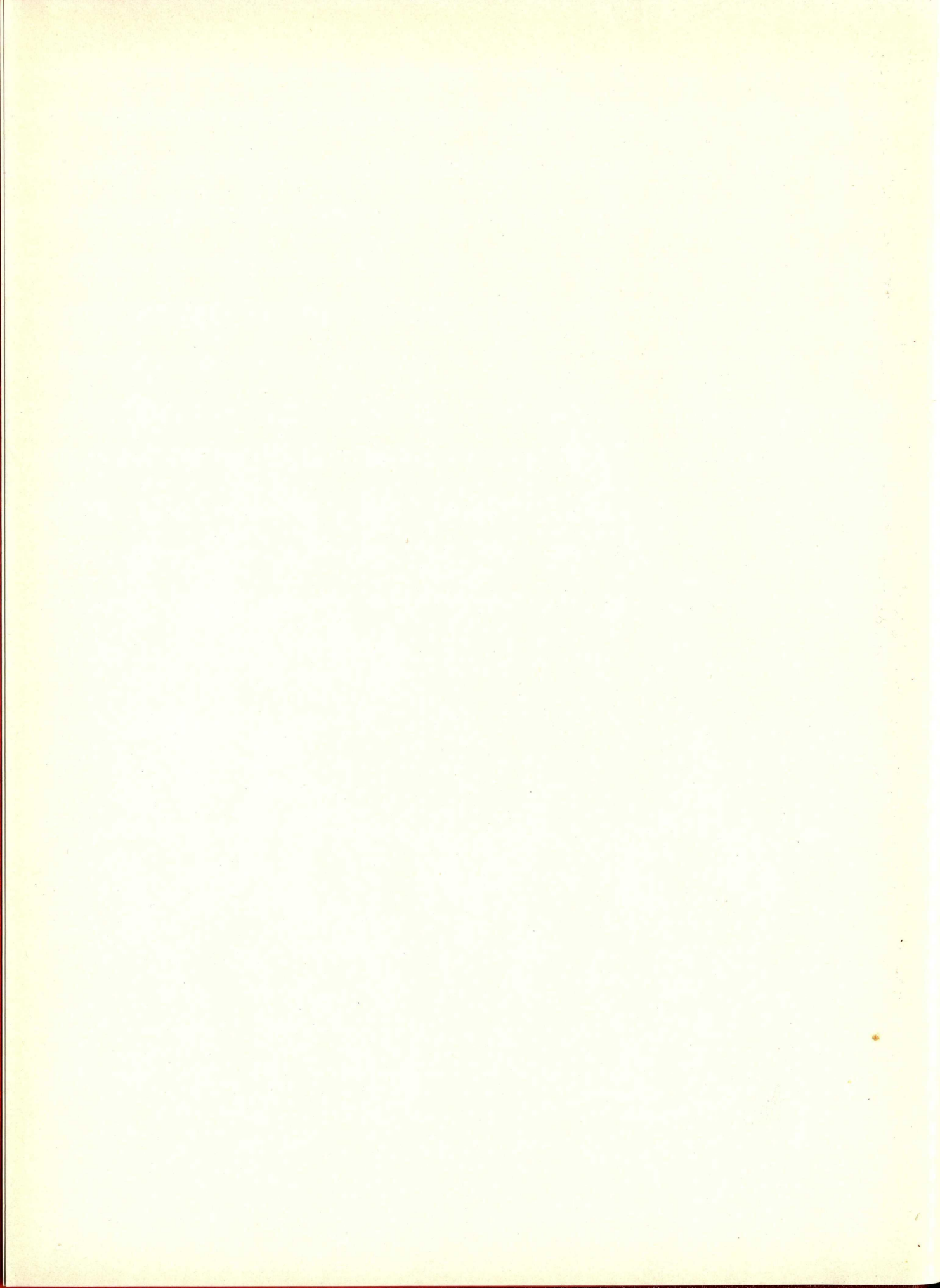
CONFESSIONS OF A JUNIOR CLASS OUTTEAN



— 1938 —

PUBLISHED ANNUALLY BY THE JUNIOR CLASS
STATE TEACHERS COLLEGE
EDINBORO, PENNSYLVANIA

JOHN R. SWIFT, Editor
KEITH D. SKELTON, Business Manager



FOREWORD

There are two temptations which come to a year book staff when it is time to deliver the end product of its work to the students. One is to be dogmatic and say, "Here it is, take it." The other is to offer it, after analyzing it, with the tongue in the cheek and an apology for any shortcomings.

The staff, representing the Junior Class, has tried to present a picture of what has gone on at Edinboro this past year. Static pictures and words frozen in type are at best a poor cross-section of college life, but they represent what can be captured and retained after events are history.

It is with that thought only that we give you the 1938 Conneauttean, hoping that our efforts will help you recapture the vital, fleeting happenings of our year together here.

JOHN R. SWIFT,
Editor.



DR. CARMON ROSS

President

Edinboro State Teachers College

DEDICATION

The Junior Class, realizing and appreciating the work he has done in executing the duties of President of the College during the past four years, respectfully dedicates the 1938 Conneauttean to

Dr. Carmon Ross

NORMAL HALL



THE CAMPUS

The campus at Edinboro, nestled among the stately elms and maples that harken back to the days seventy-seven years ago when our college emerged among the pioneer surroundings of a frontier town, is the setting for our beautiful, old, and majestic red brick buildings. From the tower of Normal Hall to the cement and steel frameworks of the projected buildings which are to set the college out on a new and greater era, the campus is our home for the few years that we stay here.

Sir Walter Scott, in his "Lay of the Last Minstrel," said:

HAVEN HALL

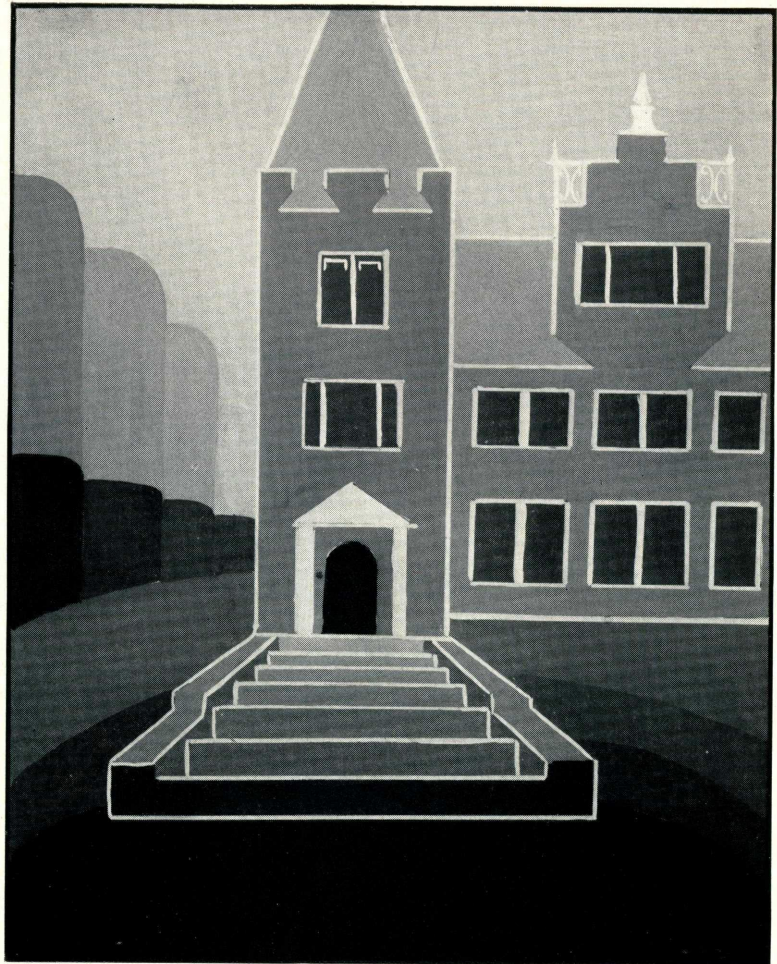


"Breathes there a man, with soul so dead,
Who never to himself hath said,
This is my own, my native land!"

It is with this same thought that we who study, work and play here look upon the campus. Steeped in tradition, Edinboro's past makes our years here richer, so that we in turn may contribute to the happiness of those who will follow us here.

Behind the walls of Normall Hall lies the center of Edinboro. The activities which go on in this Romanesque and French Mansard building are wide and varied. At present, Normal houses the executive and business offices, the library,

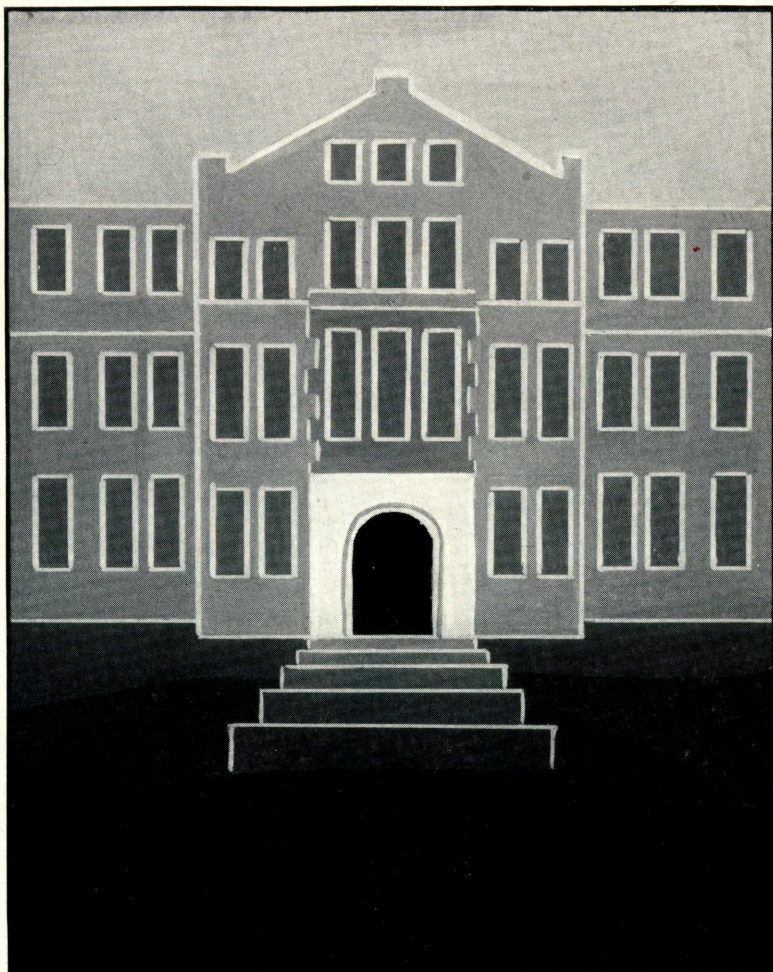
GYMNASIUM



auditorium, and college and demonstration school class rooms. Possibly before another annual is published many of these parts of the college will move to new and more modern quarters. But this will not take from Normal Hall the glory of the past or the prestige it will hold in the future.

When Recitation Hall is razed to clear for the facade of the new auditorium it will mark the passing of one of the most glamorous structures of Edinboro. When it was built it was considered the latest thing in school buildings. It had three large class rooms downstairs, and each had an outside entrance. Then there was the slate roof, bell tower, and long, broad stairs. Today we know

REEDER HALL

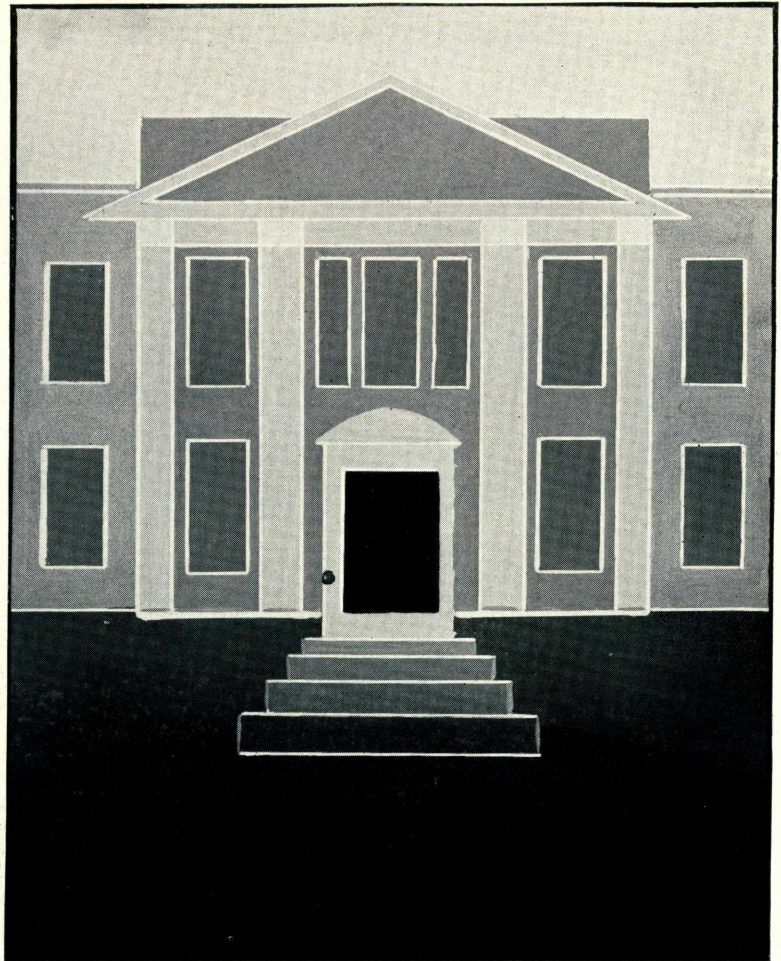


that Recitation is not equipped for good college work and that to keep abreast of the times we must turn to the new, but we know there are many who will not like to see it go.

Haven Hall and Reeder Hall, the girls' and boys' dormitories, will continue to occupy their present places in Edinboro life when the college begins to move into new surroundings. Here the students study, sleep, live, and also just gather around for idle conversation. In Haven is the beautiful dining room. Banquets, ceremonies, and proms are all well appointed here.

The gymnasium never had a name, it has always been called the "gym." It will have a new name

LOVELAND HALL



a year from now—"Old Gym." Countless friendships have been made in the gym, and these will live when the games played have been forgotten. Characters have been molded by the associations and the personal contacts encountered here. These are the heritage of the Gymnasium.

Giant elms, ivy, and weathered red brick buildings with bell towers and slate roofs cannot make a college. It takes these and teachers and students to round out the college. New buildings will make our college plant finer, but the greatest service they can render will be to enrich the experiences of the people who will pass their doors.



ADMINISTRATION

THE FACULTY

Elsewhere among these pages can be found many references to the student body and the individual students, but very little can be found about faculty members. Even though they subordinate, at times, their position to that of the students, they are, nevertheless, all-important to the college.

We have modern facilities for education. We buy the newest textbooks, build new buildings, and try to employ the latest equipment, but without teachers to guide the students in the learning process, all of these would be of little avail.

The faculty at Edinboro is giving to the students the benefit of many years of training in order that the students in turn may go out to teach. Edinboro educates and trains fine teachers, and to the faculty goes the credit for their training and development.

Dr. C. J. Christensen, who came here in the Fall from Cornell University, is the only newcomer to the staff of the college. His special field, Rural Education, is one which is important at Edinboro. The addition of Dr. Christensen to the faculty should mean increased prestige to the college, and it should also mean graduates better fitted to cope with problems in Rural Education.



Top Row—H. L. Offner, B. R. Harrison, H. W. McNees, R. R. Mallory, C. W. Ellenberger, Dr. L. H. Van Houten, A. H. Doucette, W. F. Bates Jr.

Second Row—A. J. Haller, F. S. Heinaman, Miss Nelle G. Hudson, Miss Nettie Mai Ruttle, W. V. Zahnizer, Miss Jane S. Ludgate, Miss Frances Whitney, Dr. E. Leigh Mudge, Dr. C. J. Christensen.

Seated—Dr. C. C. Crawford, Miss Justina Baron, Miss Evelyn Strohecker, Miss Esther Wilson, Dr. Carmon Ross, president; Miss Hazel M. Ketcham, Miss Dorothy Skinner, Miss Mildred Forness, W. A. Wheatley.

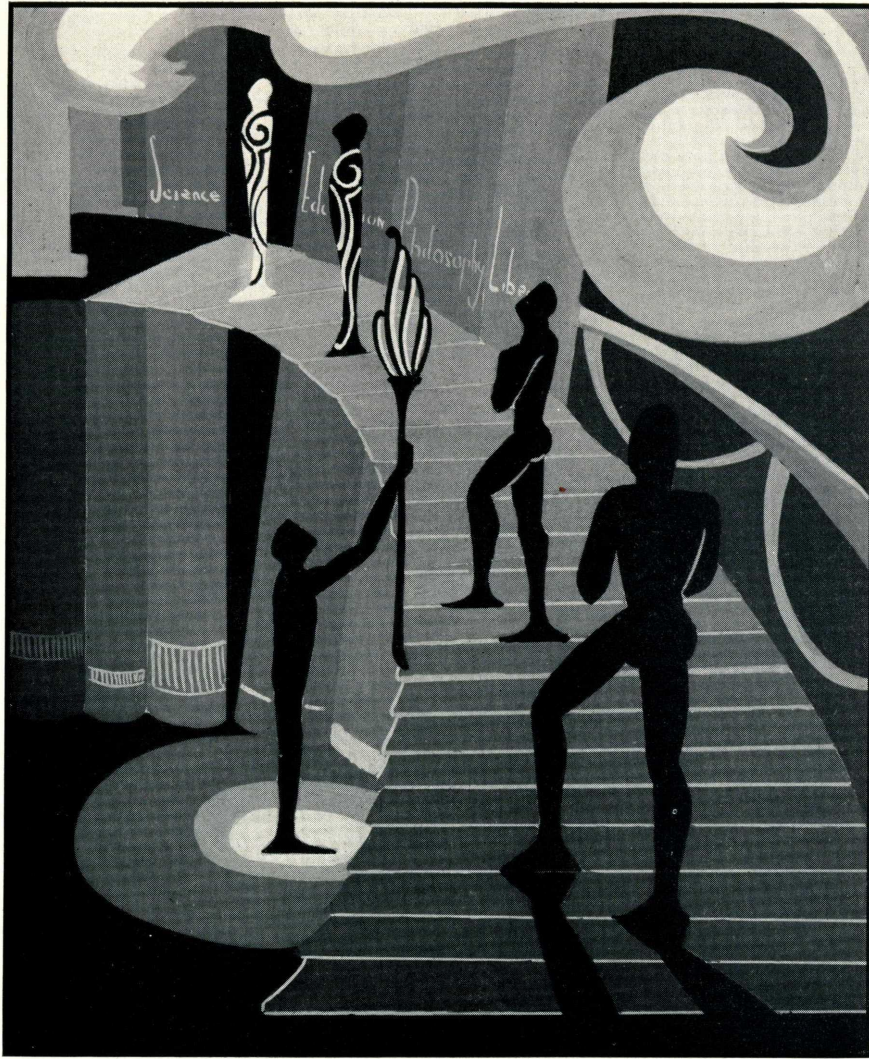
THE PROFESSIONAL STAFF

The Professional Staff is made up of those individuals whose duties are to assist in the administrative and executive work of the college. They keep the college running smoothly, and aid the students and faculty in solving all types of problems.

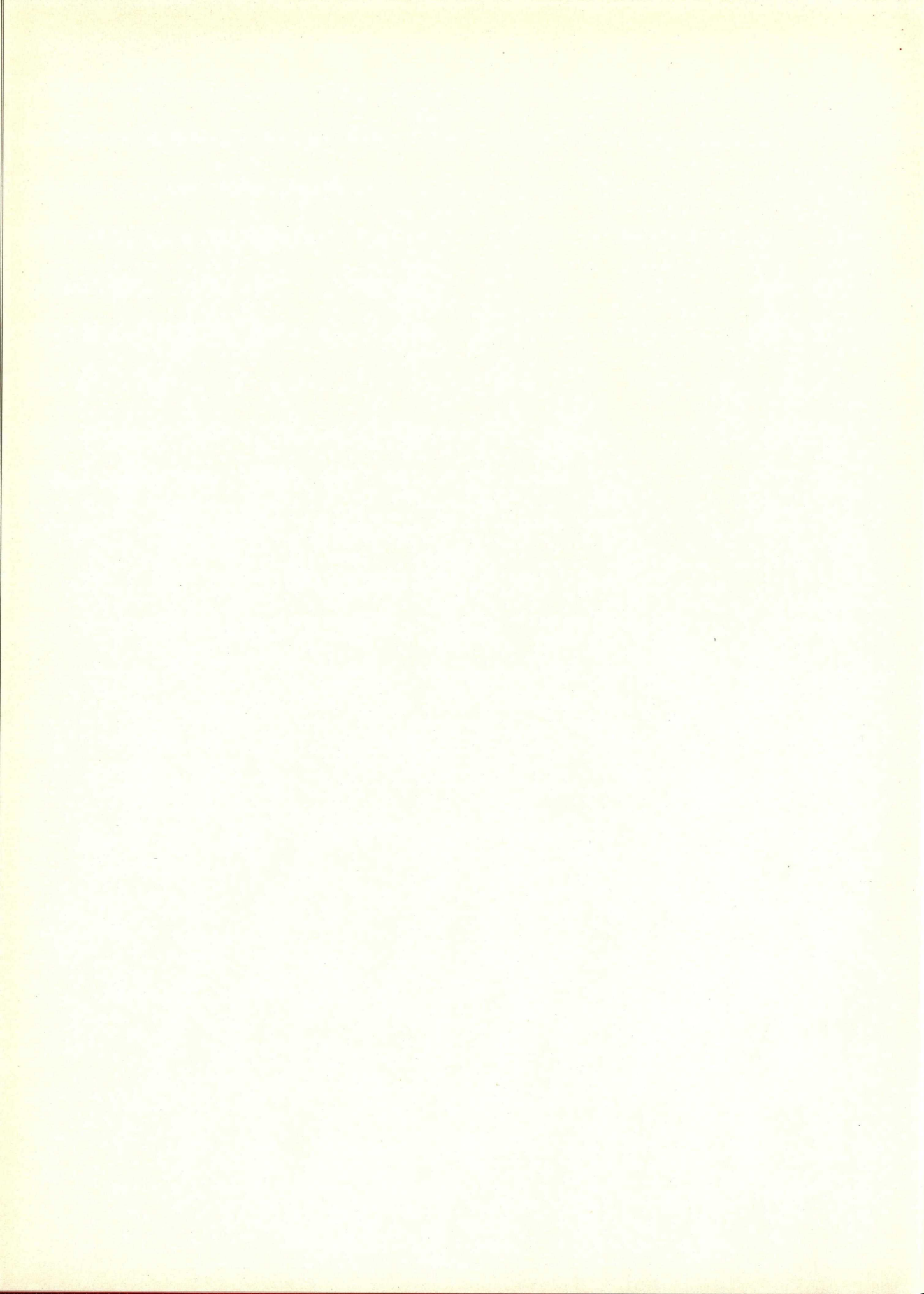
This year there are three newcomers to the staff. They are Miss Sara Pettit, who looks after the appetites of the resident students; Miss Hazel Ober, the new college nurse, and Miss Lucille Perry, assistant to Mrs. Sallee in the bursar's office.

Below is the entire group. Seated—Miss Sara Pettit, Miss Nell Ellenberger, Miss Lucille Perry, Miss Hazel Ober, and Mrs. Sallee. Standing—Miss Gertrude Shaffer and Miss Wilma Ore.





CLASSES



THE SENIOR CLASS

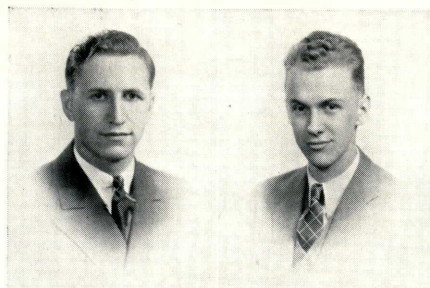
Each year a senior class must pass into history. This year's senior class is distinguished by the fact that its members can celebrate their coming to Edinboro with the president of the college. Both the present senior class and Dr. Carmon Ross had first contact with Edinboro four years ago.

We, as a senior class, feel that though we must leave Edinboro, we will not forget her, nor may we be forgotten. And so we have dedicated a plaque—made by the skillful hands of one of our members—not for our posterity alone, but for the posterity of a grand old building which, like us, has taken its place on this campus for many years. Thus Recitation Hall, which makes way for the new building program, and the Senior Class of 1938 pass into history.

Just as the building program on our campus has been started, likewise we feel that the building of our educational careers is just beginning. We have laid a splendid foundation here at Edinboro—now may we build "more stately mansions" than any architect could ever dream.

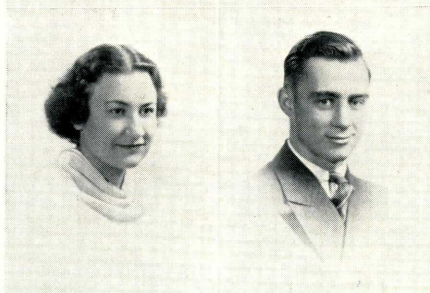
Class officers for the year were James Wilson, president; Darwin Miller, vice president; Elizabeth Hillier, secretary, and Irene Smith, treasurer.

SENIORS



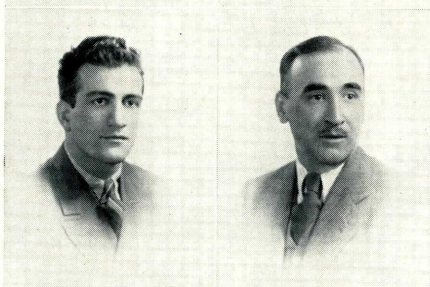
LEE BECK
DuBois—Secondary
Football
E Club
President Y. M. C. A.
Vice-Pres., State Y.M.C.A.
Press Club
Chi Delta Sigma

ROBERT BILLINGS
Edinboro—Secondary
Choir
Press Club
Intra-mural Basketball



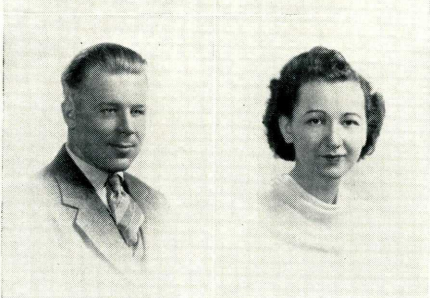
DOROTHY BROOKS
Meadville—Secondary
Choir
W. A. A.
Y. W. C. A.

WILLIAM COYLE
Edinboro—Secondary
Football
Spectator
E Club
Chi Delta Sigma



ALEXANDER CREVAR
Aliquippa—Secondary
Football
Basketball
Beta Xi
Horace Mann
E Club

GARDINER CRISWELL
Columbia—Art
Delta Phi Delta
Chi Delta Sigma
Edinboro Players
Choir
ScaRAb Club



ARDEN DAVIES
Johnsonburg—Secondary
Beta Xi
Football
E Club
Horace Mann

MARY DAVIDOCK
Morea—Art
ScaRAb Club
Newman Club

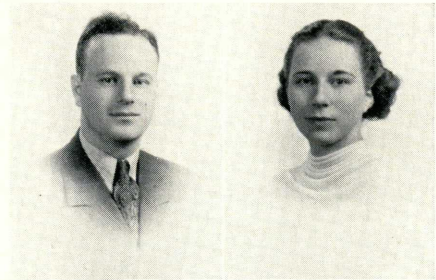
SENIORS

GEORGE GRIGNOL

Erie—Secondary
Horace Mann

BERTHA GLASS

North East—Art
ScaRab Club
Newman Club
Y. W. C. A.
W. A. A.

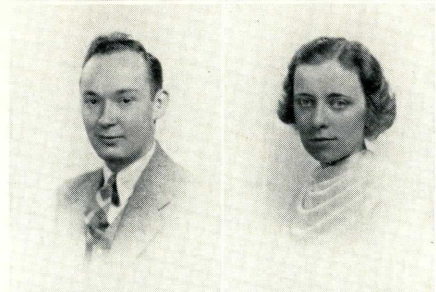


WALTER HALL

Erie—Secondary
Choir
Beta Xi
Intra-mural basketball

LOIS ELIZABETH HILLIER

Cooperstown—Elementary
Y. W. C. A.
W. A. A.
Rural Problems

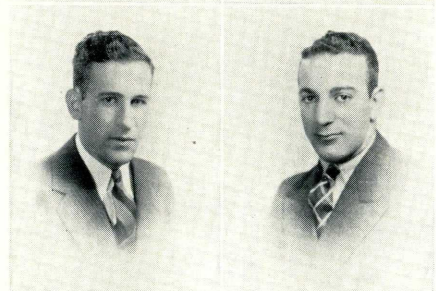


RAYMOND INTRIERI

Erie—Secondary
Football
Basketball
President, Horace Mann
Chi Delta Sigma

RICHARD INTRIERI

Erie—Secondary
Football
Basketball
Chi Delta Sigma
E Club



VIRGINIA LOUISE JONES

Erie—Art
ScaRab Club
Alpha Delta
W. A. A.

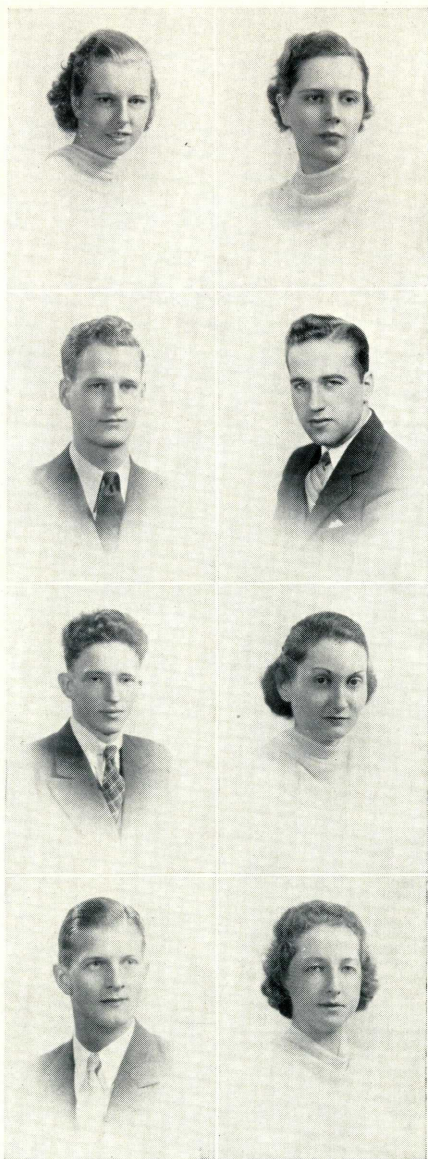
MEREDYTHE KUNKEL

Union City—Secondary
W. A. A.



Conneauttean Nineteen Thirty-eight

SENIORS



VIRGINIA KALTENBACH

Erie—Elementary
W. A. A.
Y. W. C. A.

VERLA LEONARD

Erie—Art
ScaRAb Club
W. A. A.
Delta Phi Delta

JACK NEIGENFIND

Erie—Secondary
Beta Xi

DARWIN MILLER

Meadville—Secondary
Choir
Beta Xi
Intra-mural Basketball
Mu Kappa Gamma

EDWARD NOBLE

Erie—Secondary
Edinboro Players
Press Club
Pres., Student Council
Editor, '37 Conneauttean

RUTH RAMSEY

Ligonier—Elementary
W. A. A.
Choir
Y. W. C. A.

ROBERT SCARPITTI

Erie—Secondary
Edinboro Players
Alpha Psi Omega
Chi Delta Sigma

DOROTHY SNEDDEN

Greensburg—Art
W. A. A.
ScaRAb Club
Choir

SENIORS

ANGELA ROSS

Edinboro—Secondary
Rural Problems
Assistant Coach—Hockey

JEAN RICK

Girard—Secondary
Edinboro Players
W. A. A.
Y. W. C. A.
Comstock Club

MARTIN SCHWELLER

Springboro—Secondary
Choir
Pres., Student Council
Chi Delta Sigma
Mu Kappa Gamma
Y. M. C. A.
Newman Club

IRENE SMITH

Titusville—Secondary
Alpha Delta
Horace Mann
W. A. A.
Y. W. C. A.

DOROTHY SULLIVAN

McKees Rocks—Primary
Rural Problems
Y. W. C. A.
W. A. A.

JAMES SMITH

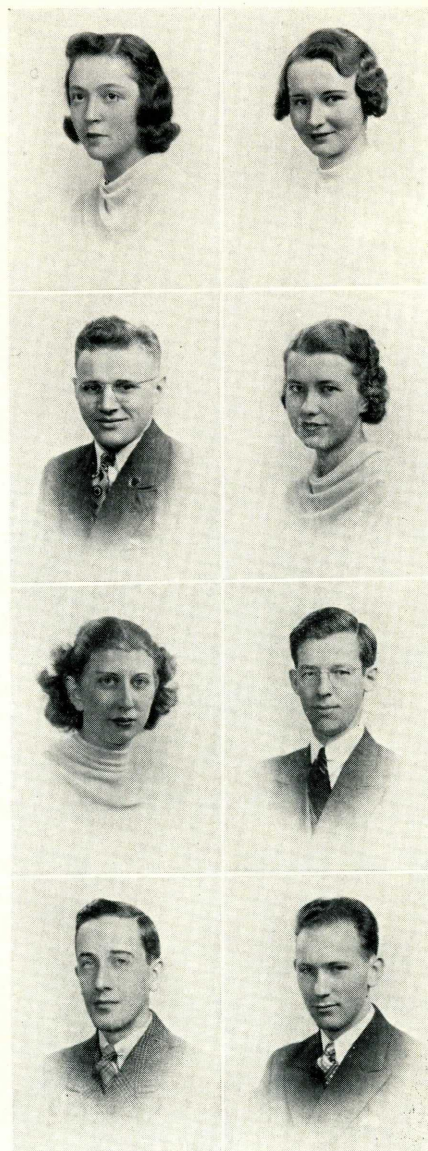
Oil City—Secondary
Choir
Mu Kappa Gamma

GAIL JOSEPH TAYLOR

Erie—Art
Delta Phi Delta
Beta Xi

JAMES WILSON

Erie—Secondary
Choir
Mu Kappa Gamma



Conneauttean Nineteen Thirty-eight

SENIORS



BENJAMIN WILKINS
Edinboro—Secondary
Chi Delta Sigma
Football
E Club

E. BERTRAM SHAFFER
Pittsburgh—Art
ScaRAb Club
Delta Phi Delta
Newman Club
Football
E Club
Beta Xi

LOIS KORB
Pleasantville—Elementary
Choir
Alpha Delta
Basketball

KATHRYN BLANCHARD
Meadville—Elementary

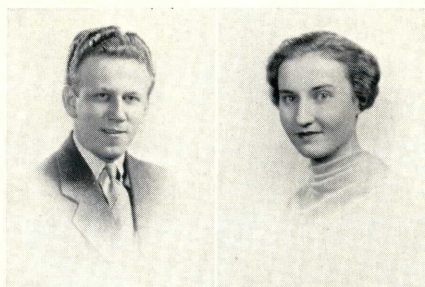
STEPHANIE URBAN
Erie—Secondary
W. A. A.
Press Club

THE JUNIOR CLASS

Traditionally happy-go-lucky, the Junior Class has enjoyed itself in a way that is constructive and educational. Aside from the everyday things that college students are supposed to do, the Juniors have done two things that have contributed definitely to the college life—the Junior-Senior Prom and the Conneauttean. If these two things have been a success, the year has been a success for the class.

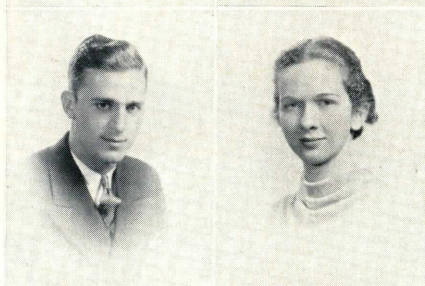
The officers were Paul Pfeiffer, president; Marjorie Welsh, vice president; Mary Louise Whiting, secretary; and Wilder Michael, treasurer; Kathryn Cochanides and Joe Zahnizer, council representatives. The other important duty of a class member—the Prom chairman—was capably executed by Marjorie Welsh, aided by a helpful and willing committee.

JUNIORS



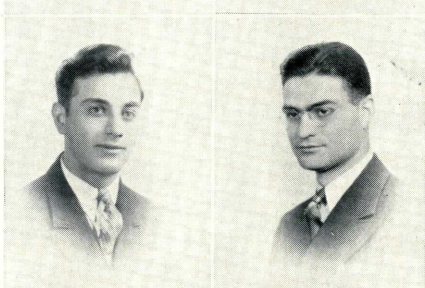
C. GEORGE BOERSTLER
Johnstown—Art
Pres., Chi Delta Sigma
Delta Phi Delta
ScaRab Club

COLETTA BURKHARDT
Corry—Art
Delta Phi Delta
W. A. A.
Edinboro Players
Newman Club



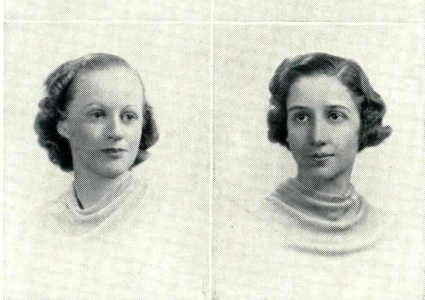
FRED CASE
Edinboro—Art
ScaRab Club
E Club
Football
Chi Delta Sigma

FRANCES CALVIN
Meadville—Primary
Edinboro Players
W. A. A.
Y. W. C. A.



CLEMENT CHROMICK
Edinboro—Secondary
Rural Problems
Horace Mann
Y. M. C. A.
Camera Club

ANGELO CASELLA
Erie—Secondary
Camera Club
Rural Problems
Edinboro Players
Beta Xi



LOUISE CARLBERG
Spartansburg—Elementary
Alpha Delta
Edinboro Players
Rural Problems Club
Haven Hall Council
Spectator

KATHRYN COCHANIDES
Erie—Primary
String Ensemble
Student Council
Y. W. C. A.
W. A. A.
Edinboro Players

JUNIORS

VIRGINIA DAVIS
Edinboro—Art
Mu Kappa Gamma

DOROTHY FISHER
Erie—Secondary
Comstock Club
Rural Problems Club
W. A. A.
Y. W. C. A.
Edinboro Players

HAZEL COOK
Avalon—Art
ScaRAb Club

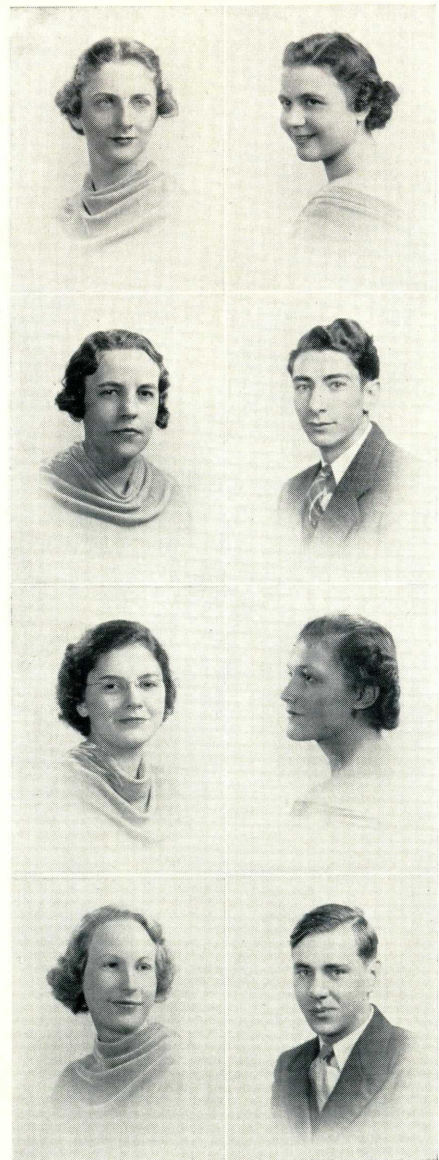
CHESTER GUTZLER
Warren—Secondary
Chi Delta Sigma
Press Club
Y. M. C. A.

RUTH GILBERT
Guys Mills—Intermediate
Y. W. C. A.
Alpha Delta
W. A. A.
Haven Hall Council
Basketball

RUTH HAGERSON
Washington—Art
ScaRAb Club
Delta Phi Delta

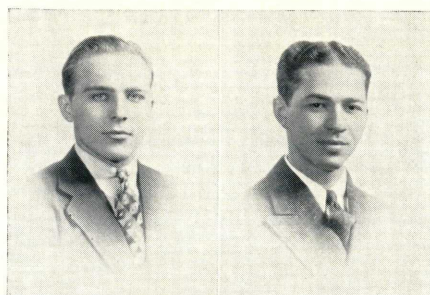
BEATRICE HALL
Edinboro—Secondary
Alpha Delta
Mu Kappa Gamma
Press Club
W. A. A.
Edinboro Players

JOSEPH HALCHIN
Albion—Secondary
Debating Club
Rural Problems
Camera Club



Conneauttean Nineteen Thirty-eight

JUNIORS



NICHOLAS DEMIANKOW

Erie—Secondary
Horace Mann
Press Club
Football
Basketball
E Club



GEORGE HETRA

Farrell—Secondary
Rural Problems
Chi Delta Sigma
Choir
Y. M. C. A.



MARGARET HAMMOND

Erie—Elementary
Choir



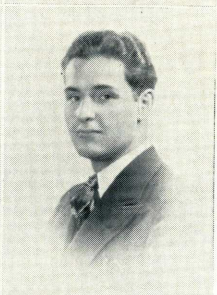
WAYNE HULL

Waterford—Secondary
Camera Club
Rural Problems
Y. M. C. A.



LorITA KRAMER

Erie—Art
ScaRAb Club



WILDER MICHAEL

Cooperstown—Secondary
President, Press Club
Choir
Chi Delta Sigma



HOWARD MILLER

Erie—Secondary
Debating Club
Rural Problems



NINA GALE MILLER

Cairnbrook—Art
Choir
ScaRAb Club

JUNIORS

RUTH McFADDEN

Meadville—Primary
Alpha Delta
Press Club
Edinboro Players

ALICE KRUSZKA

Cambridge Springs—Art
Delta Phi Delta
Mu Kappa Gamma
Alpha Delta
Basketball
Hockey
President, House Council
Newman Club

PAUL PFEIFFER

Pittsburgh—Secondary
President Beta Xi
Basketball
E Club
President, Junior Class

ELEANOR NICHOLS

Titusville—Secondary
W. A. A.
Press Club
Conneauttean

CONRAD PRIMAVERA

Pittsburgh—Art
ScaRab Club
Chi Delta Sigma

MARY M. RHINEHART

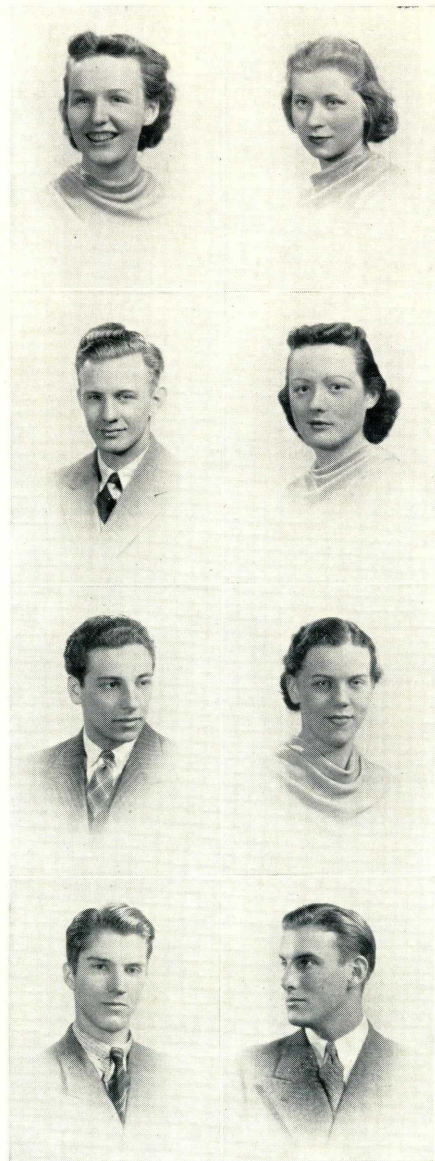
Youngsville—Secondary
W. A. A.
Y. W. C. A.
Rural Problems
Horace Mann

DONALD REICHEL

Saegertown—Art
Delta Phi Delta
Beta Xi
Basketball
E Club

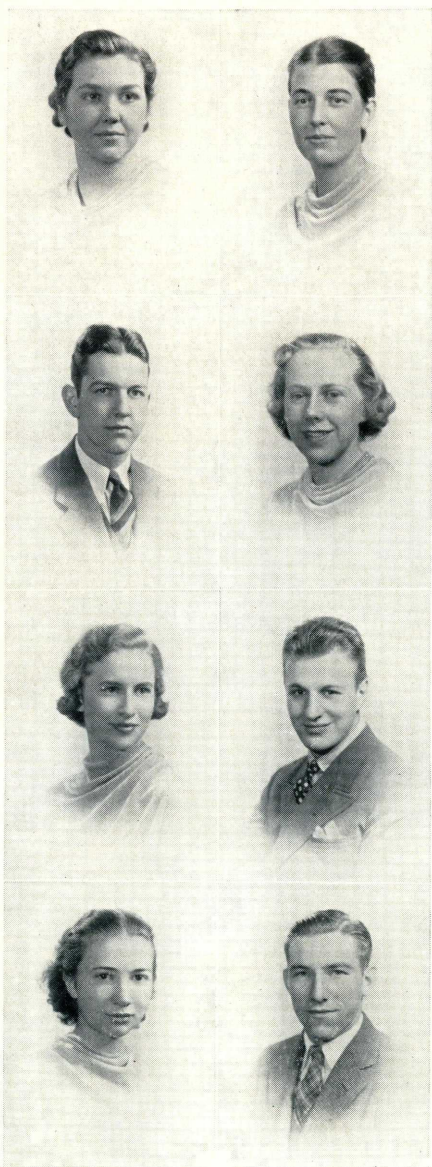
KEITH SKELTON

Edinboro—Secondary
Beta Xi
President, Edinboro Players
Rural Problems
Bus. Mgr., Conneauttean
Y. M. C. A.



Conneauttean Nineteen Thirty-eight

JUNIORS



ELNORA STORER

Corry—Secondary
President, W. A. A.
Rural Problems

MAXINE TEETSEL

Sayre—Art
ScaRAb Club
Delta Phi Delta
Edinboro Players
Newman Club

JOHN R. SWIFT

Edinboro—Secondary
Editor, Conneauttean
Editor, Spectator, '36, '37

MARY LOUISE WHITING

Titusville—Art
Alpha Delta
Delta Phi Delta
W. A. A.
Haven Hall Council

MARJORIE WELSH

Erie—Elementary
Mu Kappa Gamma
President, Alpha Delta
President, Y. W. C. A.
Junior Prom Chairman
W. A. A.

RUPERT WITALIS

Carrick—Art
ScaRAb Club
Newman Club
Football
Beta Xi
Conneauttean

AVERYL WHEELING

Cochranton—Secondary
Alpha Delta
Y. W. C. A. Council
W. A. A.
Edinboro Players

JOHN WOLFE

Warren—Secondary
Press Club
Basketball
Football
E Club

JUNIORS

VIRGINIA NEALE

New Wilmington—Art

ScaRAb Club

Choir

W. A. A.

Y. W. C. A.

F. PENFOLD BROWN

Erie—Art

Delta Phi Delta

Alpha Psi Omega

Conneauttean Staff

JOSEPH ZAHNISER

Edinboro—Secondary

Student Council

Edinboro Players

Basketball

Conneauttean Staff

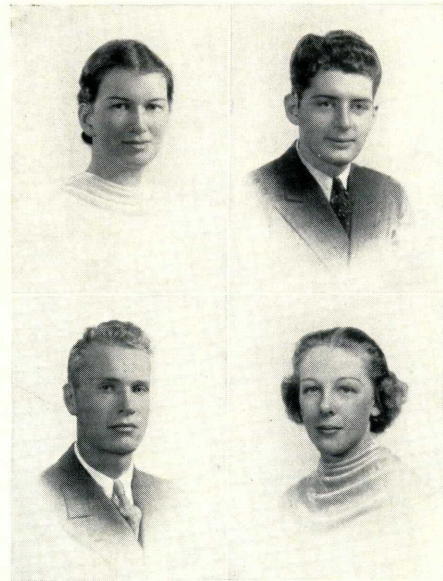
Y. M. C. A.

VIRGINIA RHODABERGER

Titusville—Secondary

W. A. A.

Press Club



ANN FETKOVICH

West Aliquippa—

Intermediate

Comstock Club

Y. W. C. A.

W. A. A.

Conneauttean Nineteen Thirty-eight

SOPHOMORE CLASS

The class of '40 marches on! Socially, scholastically, and athletically the Sophs have proven their worth.

Early in the fall these enthusiastic second year students sponsored a Hop for incoming Freshmen and new students. On Hallowe'en we gave a gala masquerade dance in the gym that was a success in every way.

The Sophomore Class may well be proud of its athletes. Practically the entire girls' varsity hockey team was from the class, and some of the boys of the group were outstanding in football and basketball.

Scholastically, too, the class has left its impression, for fourteen members of the Dean's List were Sophomores.

The last social event was an exclusive Sophomore party held late in the spring as a farewell to those leaving.

The officers for the entire year have been as follows: Leon Mead, president; Richard Peterson, vice president; Sara Kratz, secretary; Shirley Swift, treasurer. Mr. F. S. Heinaman served as class adviser.

This class marks a step forward, for it contains the last of the two-year students. The law now requires three years of college training for elementary teachers.

FRESHMAN CLASS

We are the life blood of Edinboro; we say this with some pride, but without a trace of smugness. We were organized early under the guidance of our advisers, Mr. Haller and Dr. Van Houten. The first semester the officers elected were:

Floyd Peck, president; Norman Dilley, vice president; Frances Smock, secretary; Edward Ott, treasurer; Elaine Ghering, James D. Brown, Student Council.

The second semester officers were:

Norman Dilley, president; Lawrence Hickman, vice president; Vega Ihsen, secretary; Edward Ott, treasurer; Elaine Ghering, James D. Brown, Student Council.

Each of us participates in the various extra-curricular activities, such as Comstock, ScaRAB, Horace Mann Club, and several of us already excel in the Dramatic Club and the various sports the college offers, such as hockey, basketball, tennis, and others.

On the second Arbor Day we planted a dogwood to help replace the trees necessarily cut down for the construction work that has been started this year. We'll all be back next year to enjoy the new buildings and to boost Edinboro!

Underclassmen



VIRGINIA ANDREWS

Erie—Elementary
Sophomore
Y. W. C. A.
Hockey
Basketball
Archery

DORIS BEMIS

Wattsburg—Elementary
Sophomore

SHIRLEY ARTMAN

Jamestown—Secondary
Sophomore
Press Club
Rural Problems
W. A. A.

JANE BENEDICT

Pleasantville—Elementary
Sophomore
W. A. A.
Basketball
Alpha Delta
Y. W. C. A.
Press Club

ELIZABETH BRADFORD

Centerville—Intermediate
Sophomore
W. A. A.
Y. W. C. A.
Comstock Club

MARTHA BENEDICT

Pleasantville—Elementary
Sophomore

EMILY CARPENTER

Monaca—Art
Sophomore
Choir
Mu Kappa Gamma
Alpha Delta
ScaRAb Club
W. A. A.
Y. W. C. A.

LAHOMA BLAKESLEE

Corry—Elementary
Sophomore
Rural Problems
W. A. A.
Y. W. C. A.

Underclassmen

RUTH DIEHL

Meadville—Elementary
Sophomore
Alpha Delta
Y. W. C. A.
Hockey
Press Club
Spectator

RICHARD DeREMÉR

Utica—Secondary
Sophomore

MARY DURAN

Cranesville—Elementary
Sophomore
W. A. A.
Y. W. C. A.
Horace Mann

ELEANOR DAHL

Pittsburgh—Art
Sophomore
ScaRAb Club
W. A. A.
Edinboro Players
Y. W. C. A.

NORMAN ERICKSON

Warren—Secondary
Sophomore

JOHN DEMIANKOW

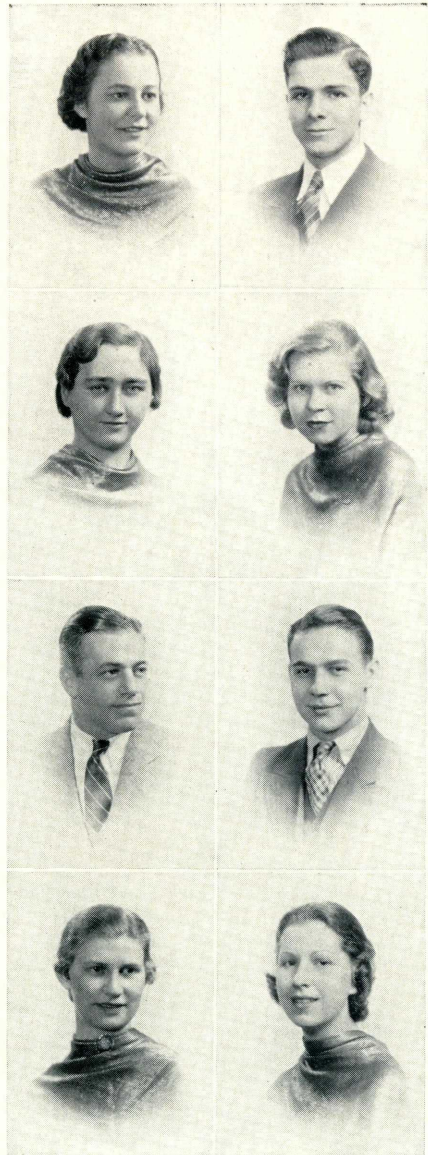
Erie—Secondary
Sophomore

ELIZABETH EVANS

Nesquehoning—Art
Sophomore
ScaRAb Club
W. A. A.
Edinboro Players

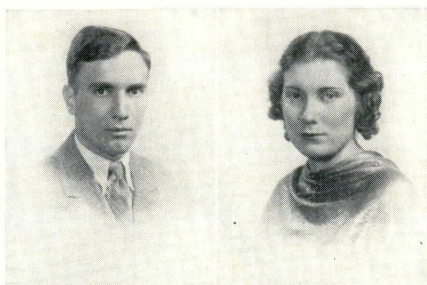
DOROTHY DIMSHO

Vandergrift—Sophomore



Conneauttean Nineteen Thirty-eight

Underclassmen



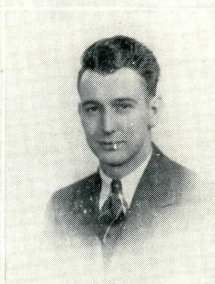
JOHN CLARK
Centerville—Secondary
Sophomore
Chi Delta Sigma
Choir
Y. M. C. A.
Debating Club
Spectator

ELIZABETH BUCKLEY
Torpedo—Elementary
Sophomore
W. A. A.
Y. W. C. A.
Rural Problems



HELEN COUSINS
New Castle—Intermediate
Sophomore
Comstock
W. A. A.
Y. W. C. A.

THORALD CHARTLEY
Erie—Secondary
Sophomore
Y. M. C. A.
Horace Mann
Student Council



ANTHONY CUTRI
Erie—Secondary
Sophomore
Football
Basketball
Spectator
President, Horace Mann
President, E Club
Student Council
Chi Delta Sigma

FRANCES CREACRAFT
Centerville—Elementary
Sophomore
Alpha Delta
W. A. A.
Y. W. C. A.
Comstock Club



HELEN DAVIS
Edinboro—Art
Sophomore
Mu Kappa Gamma
ScaRab Club

RUTH DAVIS
Union City—Elementary
Sophomore



Underclassmen

ELNA ENGLE

Reynoldsville—Elementary
Sophomore
Rural Problems
W. A. A.
Y. W. C. A.

JANET DRAKE

Centerville—Elementary
Sophomore
Y. W. C. A.
W. A. A.
Comstock Club

ALICE FEHLMAN

Russell—Elementary
Sophomore

MARGARET DYER

Youngsville—Primary
Sophomore
W. A. A.
Y. W. C. A.
Comstock

HARRIET GLEASON

Meadville—Elementary
Sophomore

BILLIE GILLESPIE

Erie—Secondary
Sophomore

MARY GREEN

Union City—Secondary
Sophomore
Press Club

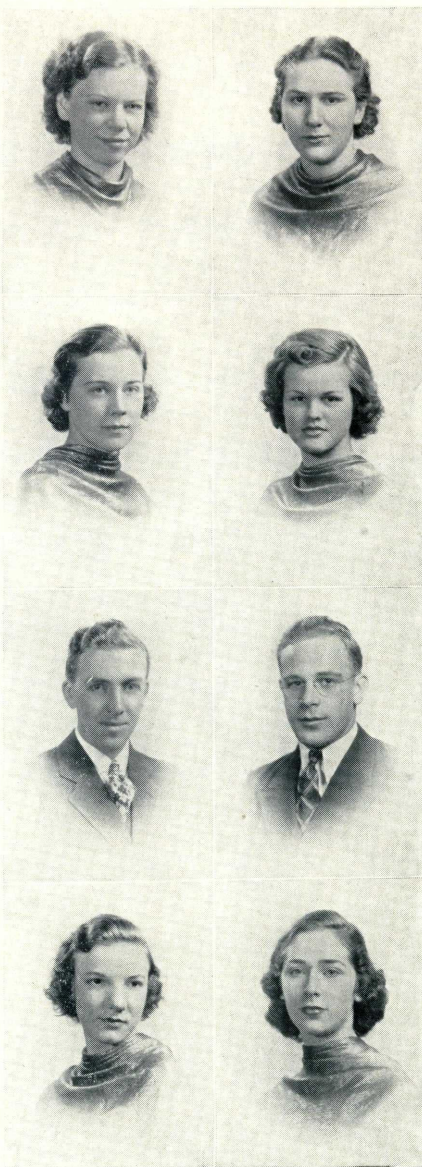
EMILIE HAMMERMEISTER

Springboro—Elementary
Sophomore
W. A. A. Council
Basketball
Y. W. C. A.



Conneauttean Nineteen Thirty-eight

Underclassmen



CLARA HARRINGTON
Sheffield—Elementary
Sophomore

GENEVIEVE HAYS
Conneaut Lake—
Elementary
Sophomore
Alpha Delta
Y. W. C. A.
W. A. A.
Hockey
Comstock Club

ELIZABETH HARRINGTON
Albion—Elementary
Sophomore
W. A. A.
Y. W. C. A.
Volleyball
Comstock

BETTY JO IRVIN
Edinboro—Elementary
Sophomore
Horace Mann
Choir
W. A. A.

CLARENCE HEFT
West Springfield—
Intermediate
Sophomore
Y. M. C. A.
Edinboro Players

LEE JEFFORDS
Edinboro—Secondary
Sophomore
Horace Mann
Edinboro Players
Y. M. C. A.
Football

ETHEL HINKSON
Union City—Elementary
Sophomore
Y. W. C. A.
W. A. A.
Basketball
Comstock

SARA KRATZ
Hartsville—Art
Sophomore
Edinboro Players
ScaRAb Club
Hockey

Underclassmen

MACIE JOHNSON

Corry—Secondary
Sophomore
W. A. A.
Rural Problems
Horace Mann
Brass Ensemble
Y. W. C. A.

MARY ALICE LOWRY

Erie—Elementary
Sophomore
W. A. A.
Newman Club
Press Club

DANIEL KUSNER

Springboro—Secondary
Sophomore
Football
Pres., Comstock Club
Choir
Edinboro Players
Y. M. C. A.
Chi Delta Sigma

LEON MEAD

Union City—Art
Sophomore
ScaRAb Club
Pres., Sophomore Class
Beta Xi
Spectator
Edinboro Players
Intra-mural Basketball

FLORENCE LOUNSBURY

Russell—Elementary
Sophomore

WALTER NISSEN

Erie—Secondary
Sophomore
Chi Delta Sigma
Editor of Spectator
Conneauttean Staff
Debating Club
Y. M. C. A.
Intra-mural Basketball

MARY ANN McGRAW

Titusville—Elementary
Sophomore

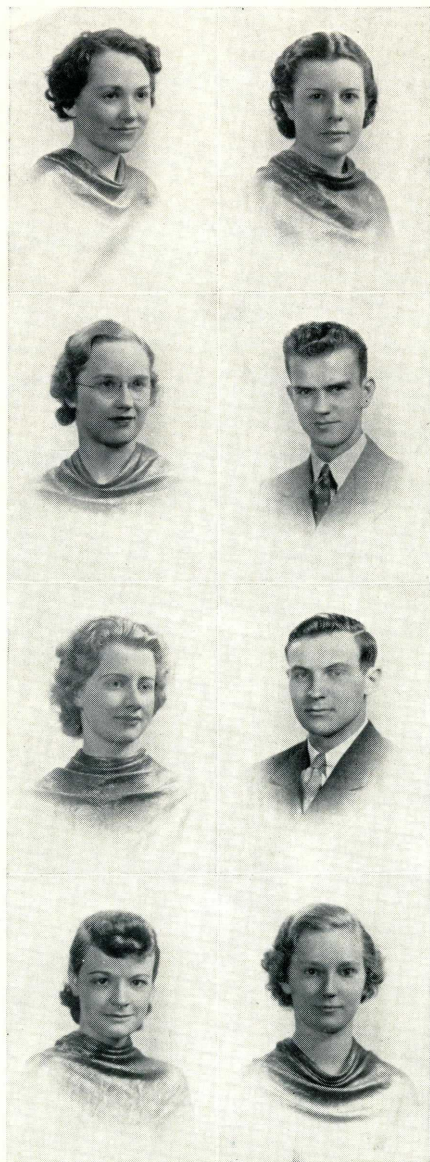
MARJORIE OLIVER

North Girard—Primary
Sophomore
Alpha Delta
Comstock
Edinboro Players
W. A. A.
Y. W. C. A.



Conneauttean Nineteen Thirty-eight

Underclassmen



LOIS NEWHOUSE
North East—Primary
Sophomore
Y. W. C. A.
W. A. A.
Rural Problems

VELMA PECK
Albion—Elementary
Sophomore

ELVIRA OSTROM
Warren—Elementary
Sophomore

RICHARD PETERSON
Erie—Art
Sophomore

RACHAEL RHODES
Cambridge Springs—Elementary
Sophomore
Comstock
Y. W. C. A.
W. A. A.

WILLIAM RODGERS
Mercer—Art
Sophomore
ScaRAb
Beta Xi
Football

CATHERINE ROSS
Edinboro—Art
Sophomore
ScaRAb
Alpha Delta

GERTRUDE SHELDON
Springboro—Elementary
Sophomore
W. A. A.
Y. W. C. A.
Rural Problems

Underclassmen

HELEN DAVIS
Edinboro—Art
Sophomore

HELENE KEEN
Atlantic—Elementary
Sophomore
Y. W. C. A.
W. A. A.
Comstock Club

MARTIN SHIMKO
Windber—Art
Sophomore
ScaRAb
Edinboro Players
Newman Club
Chi Delta Sigma

EVA McCURDY
Titusville—Elementary
Sophomore
W. A. A.
Basketball
Comstock Club
Hockey

NORA LODEME SHIELDS
Edinboro—Elementary
Sophomore

ADALINE SNYDER
Edinboro—Art
Sophomore

LAURA SHAFER
Sharpsville—Elementary
Sophomore
W. A. A.
Y. W. C. A.
Comstock Club

KATHRYN VAN TASSEL
Corry—Elementary
Sophomore
Alpha Delta
Choir
Basketball
Press Club
Y. W. C. A.
W. A. A.



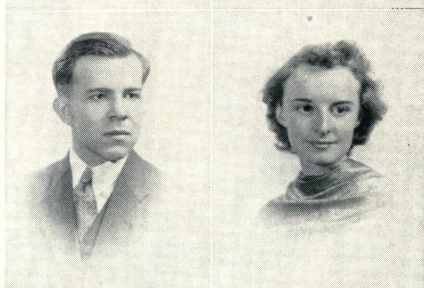
Conneauttean Nineteen Thirty-eight

Underclassmen



RUTH SKELTON
Edinboro—Elementary
Sophomore
Horace Mann

ROSE SWANSON
Edinboro—Elementary
Sophomore



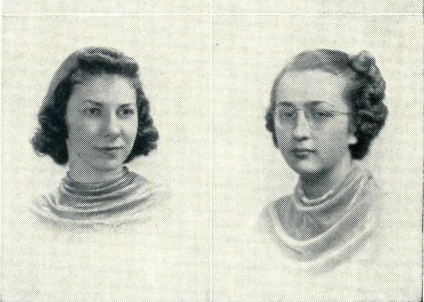
JOHN TOMKON
Irwin—Art
Sophomore
ScaRab
Edinboro Players

JEANNE STROHECKER
Ellwood City—Art
Sophomore
ScaRab
Alpha Delta
Student Council



HELEN SYLVANDER
Coraopolis—Art
Sophomore
ScaRab
Edinboro Players
Alpha Delta
Hockey
Y. W. C. A. Cabinet

VIRGINIA VOSBURGH
Titusville—Elementary
Sophomore
W. A. A.
Y. W. C. A.
Comstock Club



SHIRLEY SWIFT
Edinboro—Art
Sophomore
ScaRab
Edinboro Players
Hockey
Horace Mann

GRACE WATERHOUSE
Cambridge Springs—
Elementary
Sophomore
Y. W. C. A. Cabinet
Comstock Club
Edinboro Players
W. A. A.

Underclassmen

WILLIARD YOUNG

Cranesville—Secondary
Sophomore
Debating Club
Y. M. C. A.
Horace Mann
Intra-mural Basketball

RUTH TAYLOR

Corry—Elementary
Sophomore

NICHOLAS VOLITICH

Aliquippa—Secondary
Sophomore
Football
Basketball
Press Club
Chi Delta Sigma

JANNE WILT

Franklin—Intermediate
Sophomore
W. A. A.
Horace Mann

THOMAS WILLIAMSON

Erie—Secondary
Sophomore

JAMES WOOD

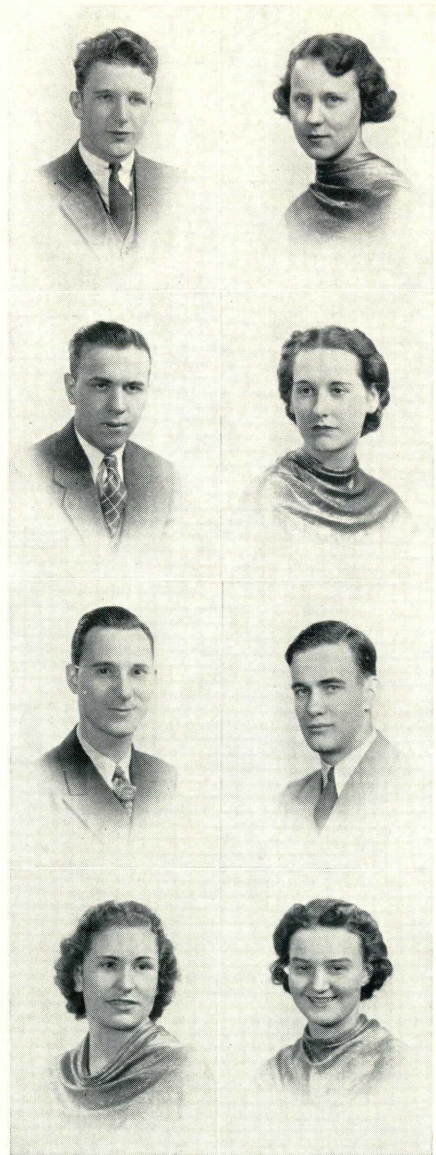
Harbor Creek—Secondary
Sophomore
Press Club
Chi Delta Sigma
Football
Intra-mural Basketball
Y. M. C. A.

CATHERINE WILKINS

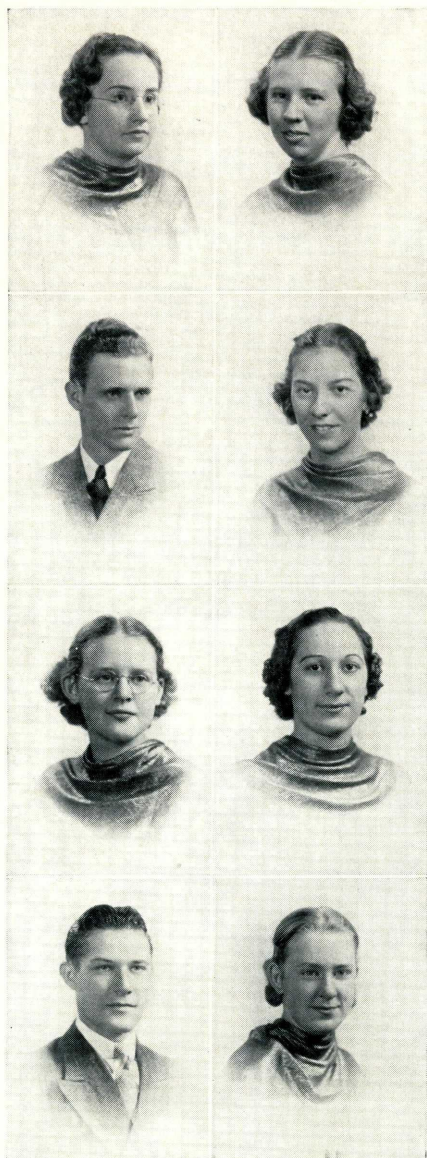
Erie—Elementary
Sophomore
Mu Kappa Gamma
Alpha Delta
Hockey
Y. W. C. A.
Rural Problems

JEAN ALEXANDER

Erie—Secondary
Freshman
Rural Problems
Y. W. C. A.
W. A. A.



Underclassmen



LENA WILLIAMS
Corry—Elementary
Sophomore

MARY ANDERSON
Erie—Primary
Sophomore
Comstock Club
W. A. A.
Y. W. C. A.

LONEL WATTERS
Aliquippa—Art
Sophomore
ScaRAb President
Edinboro Players
E Club
Beta Xi
Intra-mural Basketball

HELEN ANTICO
Butler—Art
Freshman
ScaRAb
Choir
W. A. A.

FRANCES BATES
Edinboro—Art
Freshman
Choir
ScaRAb
W. A. A.

MARGARET ARTISE
North East—Elementary
Freshman
Rural Problems
W. A. A.

RICHARD BENSON
Dempseytown—Art
Freshman
Choir
ScaRAb
Chi Delta Sigma
Intra-mural Basketball

BETTY BLAIR
Warren—Elementary
Freshman
W. A. A.
Rural Problems

Underclassmen

BEATRICE CASE

Edinboro—Secondary
Freshman
Choir
Trio
Basketball
Alpha Delta
W. A. A.

DORIS WRIGHT

Union City—Elementary
Freshman
W. A. A.
Choir
Rural Problems

LEAH CRAWFORD

Grand Valley—Elementary
Freshman
Edinboro Players
Rural Problems
W. A. A.

MARIE BROWN

Lottsville—Elementary
Freshman
Rural Problems
W. A. A.

DONALD DALEY

Edinboro—Elementary
Freshman
Debating Club

ROBERT EDGERTON

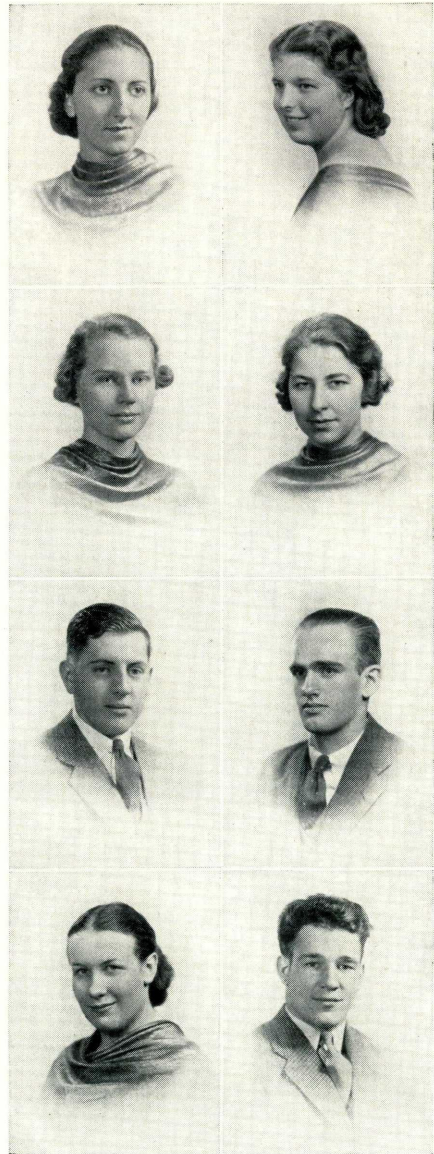
Edinboro—Secondary
Freshman

JEAN KNAPP

Elgin—Art
Freshman
ScaRab
W. A. A.
Y. W. C. A.

NORMAN DILLEY

Franklin—Secondary
Freshman
Football
Chi Delta Sigma
Trumpet Ensemble
Spectator
Y. M. C. A.



Conneauttean Nineteen Thirty-eight

Underclassmen



GENEVA JONES
Edinboro—Elementary
Freshman
Y. W. C. A.
Comstock Club
W. A. A.

ELAINE GHERING
Edinboro—Art
Freshman
ScaRAb
Edinboro Players
Student Council
W. A. A.
Alpha Delta

VEGA IHSEN
Fairview—Art
Freshman
Basketball
Alpha Delta
ScaRAb
Choir

HELEN LESONIK
Edinboro—Elementary
Freshman
Rural Problems
W. A. A.

ARDELLE HUBER
Brookville—Art
Freshman
ScaRAb
Choir
Edinboro Players
W. A. A.
Alpha Delta

GERALDINE HAER
Geneva—Elementary
Freshman
Rural Problems
Y. W. C. A.
W. A. A.

LAWRENCE HICKMAN
West Chester—Art
Freshman
Choir
ScaRAb
Y. M. C. A.
Chi Delta Sigma

RUTH HANDLEY
Erie—Elementary
Freshman
Y. W. C. A.
W. A. A.
Rural Problems
Alpha Delta

Underclassmen

FRANK MANNING

Brockway—Art
Freshman
Choir
ScaRAb
Newman Club
Y. M. C. A.
Chi Delta Sigma

RUTH LESTER

Corry—Art
Freshman
ScaRAb
Choir
W. A. A.
Y. W. C. A.

MYRTLE MORLEY

East Springfield—Secondary
Freshman
Choir
W. A. A.
Y. W. C. A.
Rural Problems
Brass Ensemble

BETTY LESH

Franklin—Primary
Freshman
Y. W. C. A.
Rural Problems
W. A. A.

RUTH MOULD

Corry—Elementary
Freshman
Comstock Club
Rural Problems
W. A. A.

ANNE KRIVONAK

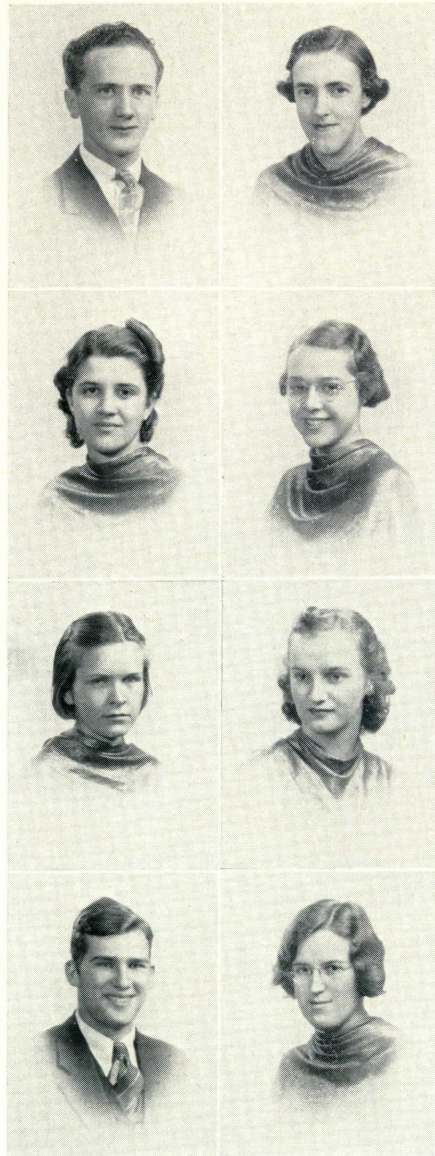
Erie—Elementary
Freshman

EDWIN OTT

Erie—Secondary
Freshman
Debating Club

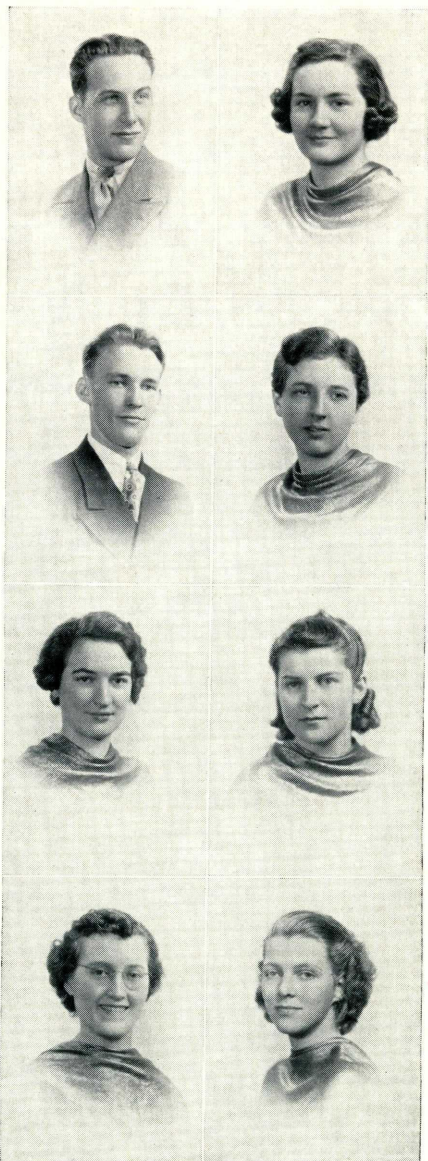
ESTHER NEIL

North East—Elementary
Freshman
Comstock Club
Choir
W. A. A.
Y. W. C. A.



Conneauttean Nineteen Thirty-eight

Underclassmen



HAROLD PACKARD
Pittsburgh—Secondary
Freshman

VIRGINIA PETERS
Erie—Elementary
Freshman
Rural Problems
Y. W. C. A.
W. A. A.

FLOYD PECK
Warren—Secondary
Freshman
Choir
Y. M. C. A.
Football
Edinboro Players

DOLORES PROBSTNER
Cambridge Springs—
Elementary
Freshman
Rural Problems
W. A. A.

CATHERINE PIERSON
West Springfield—Art
Freshman
ScaRab
Y. W. C. A.
Hockey

EUNICE RODGERS
Mercer—Art
Freshman
Choir
W. A. A.
Y. W. C. A.
Trio
Alpha Delta

HELEN SCHRECKENGOST
Titusville—Elementary
Freshman
Y. W. C. A.
W. A. A.
Rural Problems

HELEN SHINDLEDECKER
Edinboro—Art
Freshman
Choir
W. A. A.
ScaRab
Hockey

Underclassmen

LOUIS SHUTRO

Aliquippa—Secondary
Freshman
Football
Chi Delta Sigma
Horace Mann Club

FRANCES SKELTON

Edinboro—Secondary
Freshman
Choir
W. A. A.
String Ensemble
Alpha Delta

DORIS SMITH

McKean—Elementary
Freshman

BERNICE SMITH

McKean—Elementary
Freshman
Y. W. C. A.
W. A. A.
Rural Problems

FRANCES SMOCK

Erie—Elementary
Freshman
Rural Problems
W. A. A.

HELEN TURNER

Franklin—Art
Freshman
ScaRAb
W. A. A.
Y. W. C. A.
Alpha Delta

CHARLOTTE WEAVER

Conneautville—Art
Freshman
ScaRAb
W. A. A.
Y. W. C. A.
Spectator

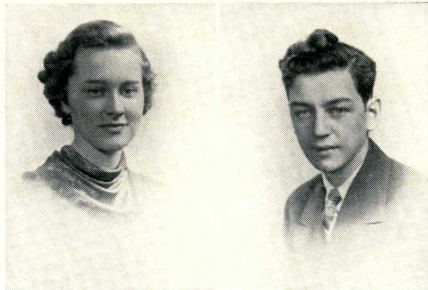
WILMA STAFFORD

Union City—Elementary
Freshman
Comstock Club
Debating Club
Choir
String Ensemble
W. A. A.



Conneauttean Nineteen Thirty-eight

Underclassmen



ETHEL THOMSON
North East—Elementary
Freshman
Comstock Club
W. A. A.

JAMES D. BROWN
Erie—Secondary
Freshman
Edinboro Players
Student Council
Chi Delta Sigma



LOUISE VALLANCE
Towanda, N. Y.—Art
Freshman
ScaRAb
Edinboro Players
Y. W. C. A.
W. A. A.

JANET WINGARD
Shinglehouse—Primary
Freshman
Rural Problems



BETTY MAYES
Meadville—Elementary
Freshman
Rural Problems

MIRIAM SMITH
North East—Elementary
Junior
Alpha Delta
W. A. A.
Y. W. C. A.



ROBERT LYTLE
Warren—Secondary
Sophomore
Basketball
Football
E Club
Newman Club
Beta Xi

WILLIAM PEIFFER
Cambridge Springs—Secondary
Freshman
Debating Club
Intra-mural Athletics



Underclassmen

ANN FETKOVICH

West Aliquippa—Intermediate
Junior

Comstock Club
Y. W. C. A.
W. A. A.

ROBERT OLSON

Warren—Secondary
Freshman

Horace Mann
Y. M. C. A.

RUBY BOYER

Franklin—Elementary
Sophomore

Comstock Club
Y. W. C. A.
W. A. A.

AUTUMN LYONS

Union City—Elementary
Sophomore

WALTER BILSKI

Erie—Secondary
Sophomore

Horace Mann
Edinboro Players

AUTUMN BLACKMAN

North East—Elementary
Sophomore

Choir
Comstock Club
W. A. A.
Alpha Delta

VIOLET VAN EPPS

Union City—Elementary
Sophomore

WALLACE WALKER

Cambridge Springs—Elementary
Sophomore



Conneauttean Nineteen Thirty-eight

Underclassmen



VIOLA ROGERS

Cambridge Springs—Elementary
Sophomore

PHILIP MAHONEY

Meadville—Secondary
Sophomore
Comstock Club
Horace Mann
Y. M. C. A.
Newman Club

ALZORA WRIGHT

Spring Creek—Elementary
Sophomore
Comstock Club
Rural Problems

GRANT ABRAMS

Limestone, N. Y.—Secondary
Freshman
Football
Basketball
Chi Delta Sigma

JUNE KIRKPATRICK

Wilkinsburg—Art
Freshman

MADELINE ERVIN

Guys Mills—Elementary
Sophomore
Rural Problems

KATHERINE ARTELLO

Albion—Secondary
Freshman

JOSEPH NORDER

McKeesport—Special
Freshman

HELEN CALVIN

Hartstown—Primary
Sophomore
Rural Problems

LEO BEMIS

Union City—Elementary
Freshman

LOREN WHITNEY

West Springfield—Secondary
Freshman
Debating Club

FRANK PETTINATO

Erie—Secondary
Sophomore
Horace Mann

FRED CASOLI

Aliquippa—Secondary
Freshman
Basketball

HELEN PROUSE

Wattsburg—Elementary
Sophomore
Y. W. C. A.
Rural Problems

ERNESTEEN PARDEE

Venango—Elementary
Freshman



ACTIVITIES



THE CONNEAUTTEAN STAFF

Every fall it is necessary to choose a group of people who will work throughout the winter and spring months recording the events that occur during the college year. What these people do and how well they are able to record the school events show up in May in the form of the Conneauttean.

No one person could possibly struggle through the maze of detail connected with publishing a year book. The Conneauttean is possible only through the co-operation of everyone from the editor down to the freshman who appeared on time for his picture.

When the book is finally in the hands of the students the staff has discharged its obligation to the college. The way to the end has been rough and not without spots of shrouded vision, but if those for whom the book is published find pleasure in its pages the staff will feel that it can modestly congratulate itself.

John R. Swift, Editor; Keith D. Skelton, Business Manager; F. Penfold Brown, Artist; Joe A. Zahnizer, Photography Editor; Eleanor Nichols, Advertising Manager; Rupert Witalis, Associate Artist; Walter Nissen, Sophomore Assistant Editor; Royce R. Mallory, Faculty Adviser; Miss Dorothy Skinner, Art Adviser.

Edinboro State Teachers College

STUDENT-FACULTY COUNCIL

The purpose of the Student-Faculty Co-operative Council is to take over increasingly the responsibility for organizing and directing student affairs, and to co-operate with the college authorities in matters of student welfare.

Specifically, the duties of the Council are: (1) To organize and direct a social program for the entire student body; (2) To improve and supervise the organization and activities of all student agencies; (3) To act upon submitted requests for the organization of any new student agencies; (4) To provide co-operative standing committees; (5) To co-operate with properly delegated authorities in the assessment, collection, and control of student fees; (6) To hold regular meetings once a month, in addition to special meetings which may be necessary; (7) To recommend penalties for disciplinary cases; (8) To provide for a periodic report to the general student assembly.

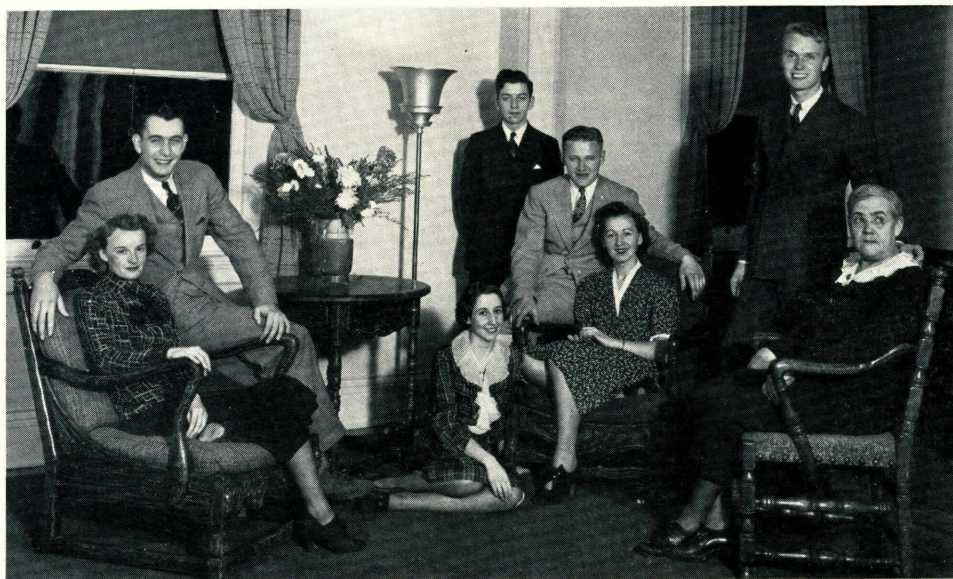
The Student-Faculty Council is composed of eleven members. Eight of these—four men and four women—are students elected by the classes. The other three representatives are members of the faculty. Two—a man and a woman—are elected by the faculty, and the other is appointed by the president of the college.

To be eligible for election, students must be of outstanding character and ability and have a scholastic record of better than a C average.

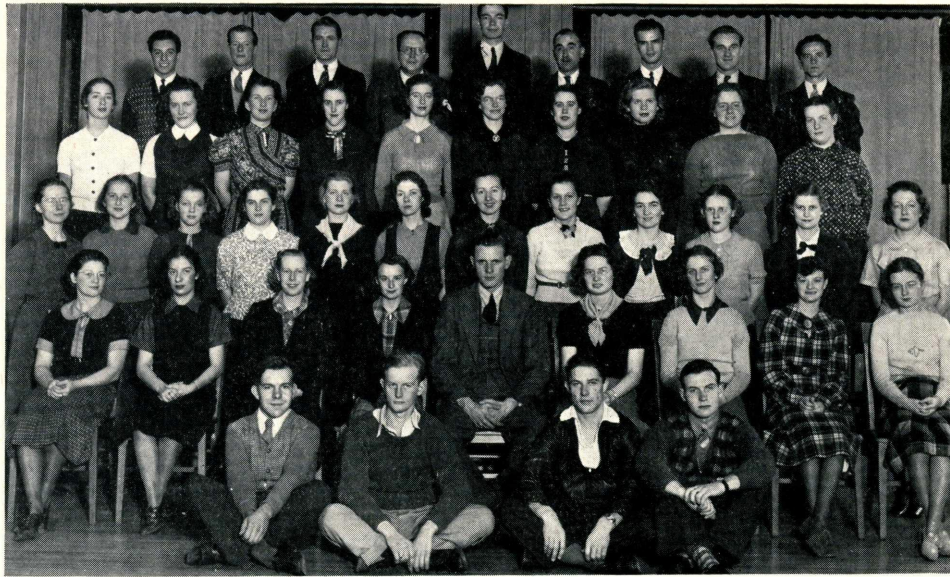
Representing the students the first semester were Martin Schweller, president; Joe Zahnizer, vice president; Kathryn Cochanides, secretary; Mary Davidock, Thorald Chartley, Jean Strohecker, James D. Brown and Elaine Ghering.

Second semester representatives were Edward Noble, president; Joe Zahnizer, vice president; Kathryn Cochanides, secretary; Jean Strohecker, Mary Davidock, Anthony Cutri, Elaine Ghering and James D. Brown.

Faculty members were Miss Nelle G. Hudson, Mr. Royce R. Mallory, Dr. E. Leigh Mudge and Dr. Carmon Ross, ex-officio.



Conneauttean Nineteen Thirty-eight



THE S c a R A b CLUB

The purpose of the ScaRAb Club is to promote fraternal understanding and social harmony among the art students, to assist other organizations in problems referring to art, and to establish Junior ScaRAb Clubs in high schools.

This year the ScaRAbs have done much. Their outstanding achievement was the realization of a long considered plan—that of the establishment of Junior ScaRAb Clubs in surrounding high schools. Nine of these clubs were organized, the first one being at Titusville.

An exhibit of original extra-curricular work of the members was held late in March.

On the social side, brother and sister ScaRAbs have gathered for several informal parties.

The officers for the year have been: Lonel Watters, Big Bug; Rupert Witalis, Little Bug; Jeanne Strohecker, Scratches; Helen Sylvander, Eggs, and Mr. Bates, Adviser Bug.

Edinboro State Teachers College

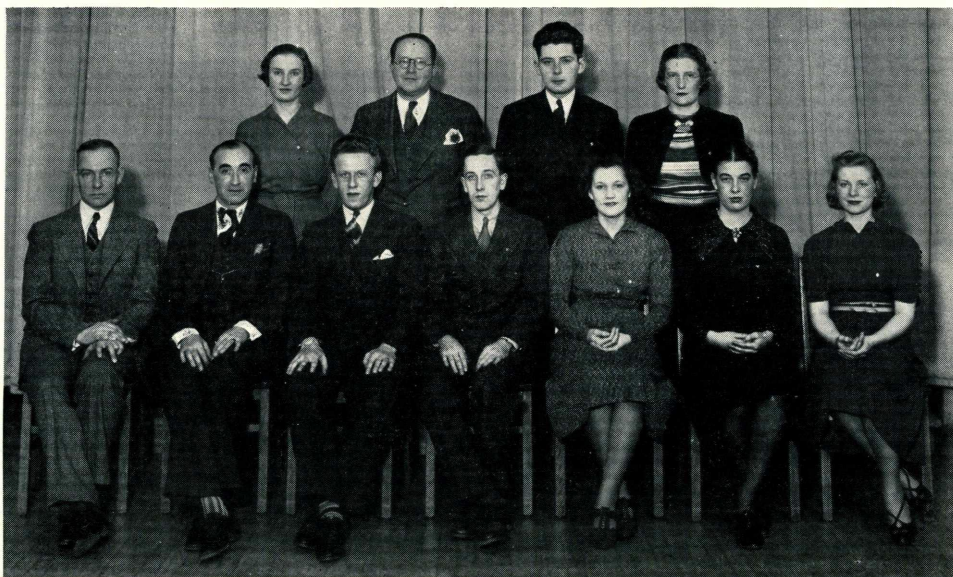
DELTA PHI DELTA

Edinboro State Teachers College has many distinguishing features, of which Chi Chapter of Delta Phi Delta is one of the foremost. It is the only chapter in Pennsylvania and the chapter farthest east of the Alpha Chapter, located at the University of Kansas.

Instituted in 1932, the Chi Chapter has endeavored to maintain the standards and perpetuate the objectives of Delta Phi Delta: "To promote art in America, to recognize scholarship and professional ability, and foster true friendship in a manner worthy of the organization that was designed for capable men and women students of art in our American universities, colleges, and art schools."

Six new members were pledged to Delta Phi Delta this year. They were Alice Kruszka, Ruth Hagerson, Coletta Burkhardt, Louise Snyder, Clarence Boerstler, and Gardiner Criswell. The final initiation services were held in Loveland Hall in December.

Officers of the fraternity for the first semester were Gail Taylor, president; F. Penfold Brown, vice president; Bert Shaffer, secretary, and Maxine Teetsel, treasurer. For the second semester the officers were Gail Taylor, president; Clarence Boerstler, vice president; Ruth Hagerson, secretary; Maxine Teetsel, treasurer, and Gardiner Criswell, historian.



Conneauttean Nineteen Thirty-eight



THE PRESS CLUB

Because of the great interest shown by the students of the college in the organization and development of a club in which the members could obtain experience in collecting, investigating, and writing news, the Press Club was formed under the direction of Mr. W. V. Zahniser.

The club's membership, composed of the young men and women of the college, is open to those students who are interested in journalism and newspaper work. The number of members to this organization is not limited, and there are no set rules concerning admission to the club other than interest and co-operation in carrying out the work of the club.

It is designed to function chiefly as a news agency for reporting news of the college, high school, and town. The material collected by the reporters is organized and written up in news form and issued to the local newspaper, and nearby, out-of-town newspapers. In this way the public is informed of the various activities that are taking place in our college and town.

The purpose of the Press Club is to study the methods and organization of journalistic and newspaper reporting. Meetings are scheduled for the first and third Monday evenings of each month, and at any other time for special events.

Edinboro State Teachers College

RURAL PROBLEMS CLUB

The Rural Problems Club was organized in the fall of 1937 under the guidance of Dr. C. J. Christensen. The members drew up a constitution, naming the organization the "Future Rural Educators' Club." The main objective of this club is to study rural communities so that we, as future teachers, may better understand and cope with the educational and cultural problems of these districts.

The students enthusiastically received the club, for there were approximately forty members. The past activities of the club were furnishing educational entertainment for rural areas and acquainting the members with these areas. While on various trips, the members studied the school as to equipment and general set-up. This was not done from a viewpoint of a critic, but from that of a prospective teacher.

Throughout the year the trips have been very successful. This club is not regarded as a temporary expediency, but as a club that will grow and develop with perfect co-operation of the members under the most conscientious leadership of our sponsor, Dr. Christensen.

Mary Ann McGraw was president; George Hetra, vice president; Louise Carlberg, secretary, and Frances Calvin, treasurer.



Conneauttean Nineteen Thirty-eight



COMSTOCK CLUB

The Comstock Club aims to give to its members an appreciation of Nature. Those who are interested may, through work in its various fields, become nature leaders in summer camps or scout work.

Membership is limited to efficient working units. Individuals may chose to work in the fields in which they are most interested, but must show that they are proficient in such work before credit is given.

Officers for the year, first semester: Daniel Kusner, president; Elizabeth Harrington, vice president; Velma Peck, secretary; Ruth Taylor, treasurer. Second semester: Daniel Kusner, president; Adaline Snyder, vice president; Ethel Thomson, secretary; Genevieve Hays, treasurer.

Faculty advisers are Miss Nelle G. Hudson, Miss Hazel M. Ketcham and Miss Justina Baron.

Edinboro State Teachers College

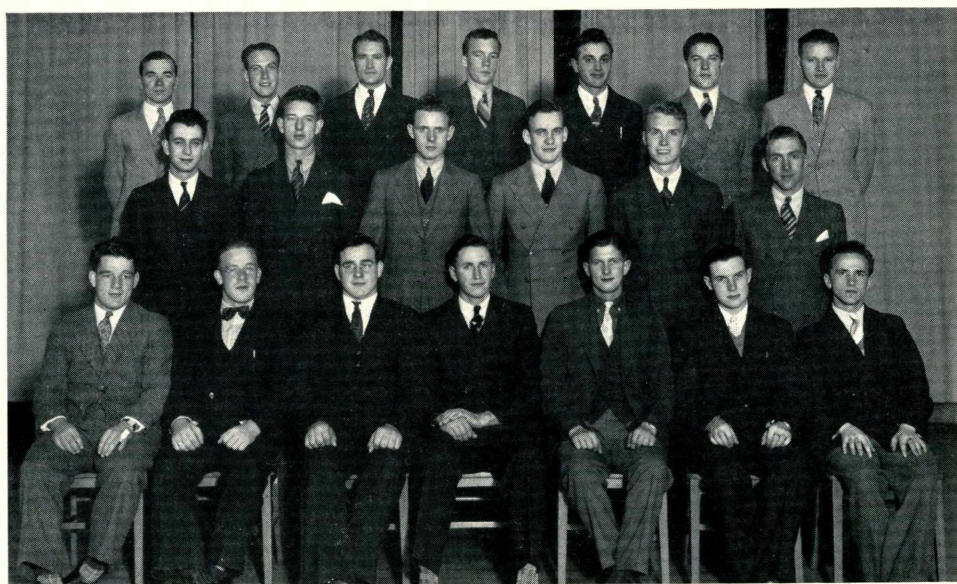
Y. M. C. A.

With thirty members during the year, the Y. M. C. A. was unusually active. Under the leadership of Lee Beck, president; Robert Scarpitti, vice president; Daniel Kusner, secretary-treasurer, and Mr. Charles W. Ellenberger and Dr. E. Leigh Mudge, advisers, an extensive program was carried out.

In October about fifty delegates and faculty sponsors from the Y. M. C. A. organizations of fourteen colleges of Western Pennsylvania gathered at Edinboro for the annual fall conference. The theme of the conference was "Building on a Rock." Rev. Wayne Furman, Erie, and Rev. Will W. Orr, Beaver Falls, gave very valuable addresses to the enthusiastic group.

Memorable events of the year were parties for all men of the college. Eighty persons attended the first one, held at Christmas time. About forty gathered in the "Y" rooms in commemoration of Washington's Birthday. Dr. Carmon Ross, Mr. Royce R. Mallory and Mr. Mark C. Jackson added much to these meetings through inspirational and entertaining talks and a variety of motion pictures.

Further features of the Y. M. C. A. were a scrappy basketball team, managed by Lee Jeffords; a very pleasant party as guests of the college Y. W. C. A., and the attendance of Edinboro delegates at religious conferences held at Lock Haven and Geneva colleges.



Conneauttean Nineteen Thirty-eight



Y. W. C. A.

Beginning with the annual Freshman Tea in the fall, the Young Women's Christian Association activities for 1937-38 were most successful, as the girls planned, worked, played, and worshiped together.

The theme for the year, "Exploration," led the "Y" members into new thoughts and actions. Outstanding speakers were Miss Edith Shearer of the Erie Y. W. C. A., Miss Ober, Miss Pettit, Miss Skinner, Maxine Teetsel, Averyl Wheeling, Nina Miller, Marjorie Oliver, Vega Ihlen and Frances Calvin.

Perhaps the biggest social event of the season was the combined Y. W. - Y. M. Valentine party, directed by Miss Florence McCullough of Erie.

Apart from the usual meetings, the club has sent three members to "Y" conventions. Last October, Marjorie Welsh and Ruth Gilbert attended a State Teachers College Conference at Lock Haven, Pennsylvania. During Christmas vacation, Helen Sylvander went to Oxford, Ohio, as the local delegate to the national convention of the Student Christian Movement.

The cabinet for the year has been: President, Marjorie Welsh; Vice President, Helen Prouse; Secretary-Treasurer, Ruth Gilbert; program chairman, Averyl Wheeling; devotional chairmen, Genevieve Hays, Ruth Handley; social chairmen, Grace Waterhouse, Kathryn Cochranides; advertising, Emily Carpenter, Jean Knapp; pianists, Catherine Wilkins, Vega Ihlen.

Miss Jane S. Ludgate has been the faculty adviser.

Edinboro State Teachers College

A CAPELLA CHOIR

The year 1937-38 was a very successful one for the A Capella Choir. The Christmas cantata, "When the Christ Child Came," which was unusually beautiful in its modern style, was the outstanding event of the year. On two occasions the choir broadcast over Station WLEU of Erie.

At mid-year the group sponsored a successful kid party in the gymnasium. Featuring this unusual event were scooters, lollypops, balloons, and other things of juvenile interest.

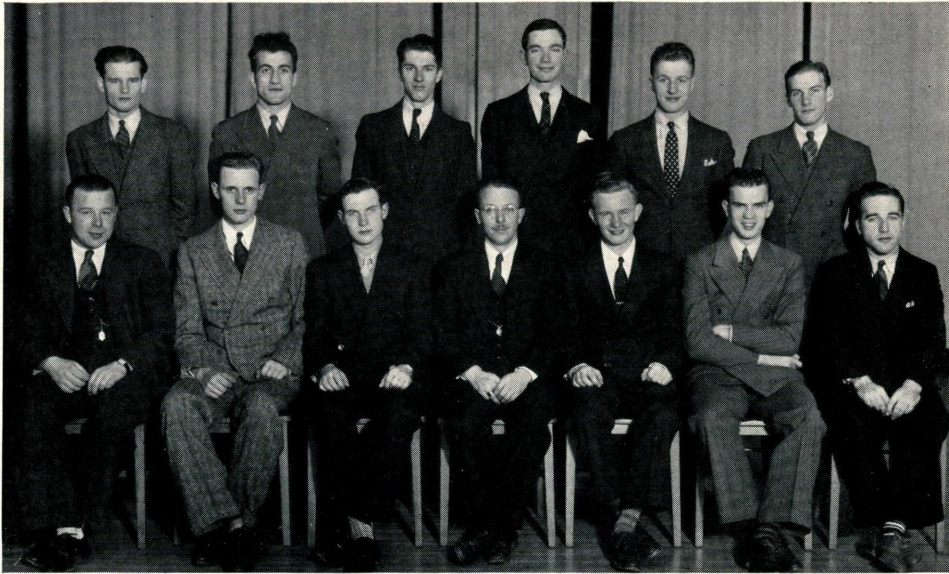
Several other musical organizations, made up widely of members of the choir, were sponsored by the choir. The small ensemble groups included a Freshmen Trio, Girls' Sextet, Double Mixed Quartet, String Ensemble, and Brass Ensemble.

Officers during the first semester were Beatrice Hall, president; Dorothy Snedden, secretary and treasurer, and during the second semester they were Emily Carpenter, president, and Frances Bates, secretary and treasurer.

Members of the choir are Helen Antico, Frances Bates, Richard Bonson, Robert Billings, Autumn Blackman, Dorothy Brooks, Emily Carpenter, Beatrice Case, John Clark, Gardiner Criswell, Helen Davis, Virginia Davis, Mary Gordon, Beatrice Hall, George Hetra, Walter Hall, Lawrence Hickman, Ardelle Huber, Vega Ihsen, Betty Irvin, Anna Krivonak, Alice Kruszka, Daniel Kusner, Ruth Lester, Frank Manning, Wilder Michael, Darwin Miller, Nina Gale Miller, Myrtle Morley, Virginia Neale, Esther Neil, Joseph Norder, Floyd Peck, Richard Peterson, Ruth Ramsey, Eunice Rodgers, William Rodgers, Robert Scarpitti, Martin Schweller, Helen Shindledecker, Frances Skelton, James Smith, Dorothy Snedden, Wilma Stafford, Kathryn Van Tassel, Marjorie Welsh, Katherine Wilkins, James Wilson and Doris Wright.



Conneauttean Nineteen Thirty-eight



KAPPA DELTA PHI

In 1925 Beta Xi came into being as Edinboro's first fraternity. Gradually growing, it became a symbol of good fellowship and brotherhood. Now, thirteen years later, the Beta Xi has seen a rejuvenation in Edinboro life—the new buildings, the broader fields of Edinboro's educational influence—and has taken upon itself a new spirit, too. So again, Beta Xi takes the lead—though by its precedent it assigns itself to oblivion. Beta Xi is no more. In its stead is a new fraternity—the Theta Chapter of Kappa Delta Phi national fraternity.

On the occasion of the annual fraternity Spring Formal dance and banquet, May 14, the formal installation of the Theta Chapter took place. Theta Chapter was installed by our faculty adviser, Mr. Aime Doucette, a charter member of Delta Chapter of Kappa Delta Phi.

We feel that our decision is a timely one, quite in keeping with the principles of progress displayed by Edinboro State Teachers College. The boys of Beta Xi resign their identity to join hands with Kappa Delta Phi in deeper brotherhood. We assume the responsibility, the prestige, and the honor of a national fraternity.

The charter members of Theta Chapter are Paul Pfeiffer, president; William Rodgers, vice president; Richard Peterson, secretary; Lonel Watters, treasurer; Leon Mead, Robert Lytle, Darwin Miller, Walter Hall, Alex Crevar, Angelo Casella, Arden Davies, Donald Reichel, Gail Taylor, Keith Skelton, Rupert Witalis and Max Young.

Edinboro State Teachers College

CHI DELTA SIGMA

With a memorable year's activities, Chi Delta Sigma Fraternity in 1937-38 provided a new standard of achievement through its active participation in college activities of a social, scholastic, and athletic nature. Too, within itself, it progressed greatly, with a decided increase in membership and co-operation among its members.

From the social standpoint, the Spring dance held top honors in the year's activities. Next in importance was the mid-winter Fraternity-Sorority Dance in Haven Hall. A pledge party at Archer's College Inn and a spaghetti supper in Haven Hall also contributed to a well-rounded social program.

In the intra-mural league, Chi Delta Sigma took runner-up honors in basketball, and was also represented in volleyball.

Besides holding a number of important curricular and extra-curricular offices, nine members were on the Dean's List for the first semester.

Officers for the year were George Boerstler, president; Wilder Michael, vice president; George Hetra, secretary; and Lee Beck, treasurer. Advisers to the fraternity were Alfred J. Haller, Royce R. Mallory and H. W. McNees.

Membership in Chi Delta Sigma included Lee Beck, George Boerstler, George Burke, Fred Case, John Clark, Bill Coyle, Norman Erickson, Chester Gutzler, George Hetra, Richard Intrieri, Daniel Jackish, Charles Lewis, Conrad Primavera, Wilder Michael, Martin Schweller, Robert Scarpitti, Martin Shimko, Nick Volitich, Ben Wilkins and James Wood.

New members were Grant Adams, Richard Benson, James D. Brown, James S. Brown, Gardiner C. Criswell, Anthony Cutri, Norman Dilley, Lawrence Hickman, Ray Intrieri, Daniel Kusner, Walter Nissen, Joseph Norder, Frank Manning and Louis Shutro.



Conneauttean Nineteen Thirty-eight



ALPHA DELTA

Dear Diary:

September, 1937—May, 1938.

This has been one grand year, and we shall always remember it. It was the dawn of a new day for us—the morning we had our breakfast for the freshmen girls at 6:30 down by the lake. Then we celebrated our Anniversary and had dinner at The Barn in Erie, followed by a pleasant evening at the Playhouse. We proved ourselves true outdoor women at our pre-Christmas sleigh ride—with true outdoor appetites later at Beatrice's home. Of course, one of our most outstanding social high-lights was the brilliant dance that the sorority and the fraternities held in February. Oh, yes—Miss Strohecker, Miss Ober and Miss Pettit were our honorary members of the year.

With Marjorie Welsh as president, Ruth Gilbert and Beatrice Hall as vice presidents, Emily Carpenter as treasurer, Mary Lou Whiting as recording secretary, Helen Sylvander as corresponding secretary, Louise Carlberg and Ruth Gilbert as critics, and Averyl Wheeling and Genevieve Hays as historians, we have had a memorable year.

Red-letter events included our successful pledge week, followed by the Spring Formal, and the lovely Mothers' Day week-end.

The picture—is for memory.

Yours in Alpha Delta,

A. D.

Alpha Deltas—Jane Benedict, Martha Benedict, Autumn Blackman, Louise Carlberg, Emily Carpenter, Frances Creacraft, Ruth Diehl, Ruth Gilbert, Beatrice Hall, Genevieve Hays, Virginia Jones, Lois Korb, Sara Kratz, Alice Kruszka, Ruth McFadden, Mary Ann McGraw, Eleanor Nichols, Marjorie Oliver, Catherine Ross, Irene Smith, Miriam Smith, Jeanne Strohecker, Helen Sylvander, Kathryn Van Tassel, Marjorie Welsh, Catherine Wilkins and Mary Lou Whiting.

Edinboro State Teachers College

THE SPECTATOR

The Spectator throughout 1937-38 continued to be the news organ of Edinboro State Teachers College. This year the Spectator placed added emphasis on student opinion—the all-important element in college life.

The Spectator appeared with a regularity that is only characteristic of journalistic activities. The paper sponsored a personality contest, which, for the first time, gathered and compiled opinion concerning the much-talked-about student qualities. Also, the Spectator was represented in the intra-mural basketball league.

The Staff: Walter Nissen, Editor-in-Chief; Joseph Norder, Business Manager; Ruth Diehl, Norman Dilley, Louise Carlberg, Charlotte Weaver, Mary Carpenter, John Clark, Dick Peterson, Anthony Cutri, John Demiankow, Leon Mead and Richard Benson. Mr. W. V. Zahniser was faculty adviser.

HORACE MANN

The Horace Mann Club, through the guidance of Dr. L. H. Van Houten, has developed into a prominent and successful organization, which equals other extra-curricular club organizations on the campus. The object of the club is to secure for its members a greater and a more complete understanding of problems which are not generally contacted in classes, but which arise in actual teaching.

The essence of the club is informality. The ordinary meeting is a combination of both business and social affairs. First the professional or serious side is taken up at the meetings, followed by the social program. The latter tends to develop a more friendly atmosphere, which is a characteristic of this club.

Club officers are elected twice a year. For the first semester, Raymond Intrieri served as president, Irene Smith as vice president and Ruth Skelton, secretary. Following them the second semester were Anthony Cutri, president; Lee Jeffords, vice president, and John Demiankow, secretary.

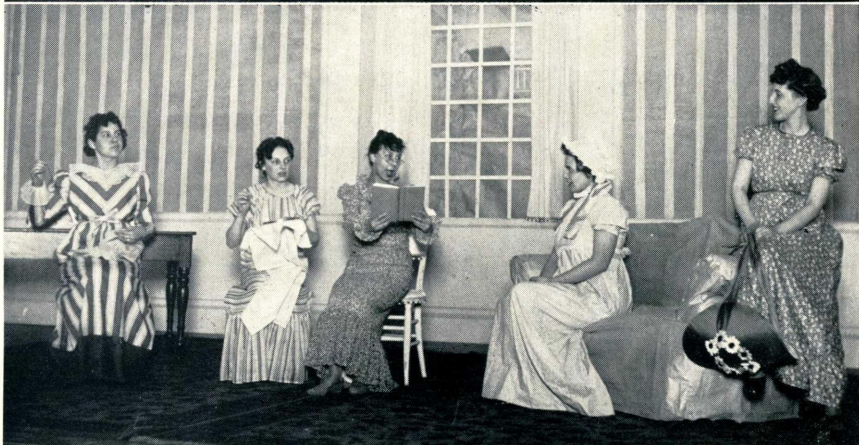
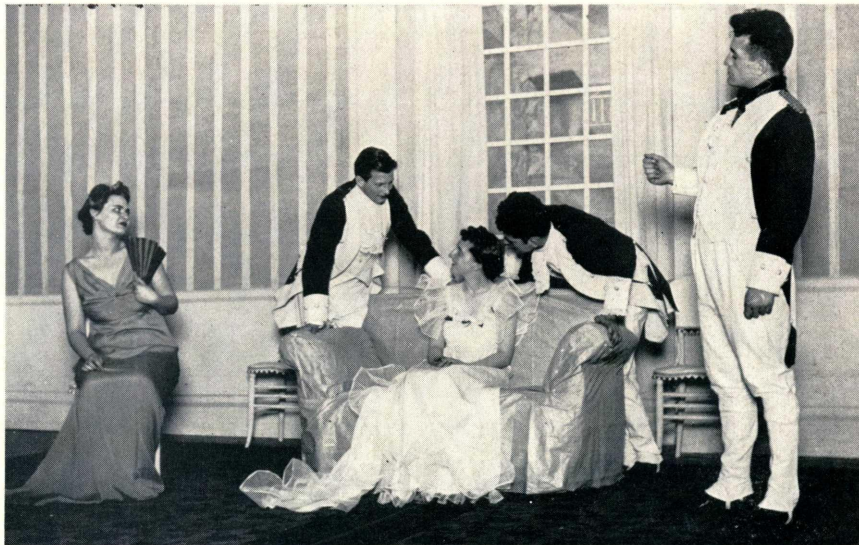
THE DEBATING CLUB

With a larger membership this year the Debating Club was active in giving its members valuable training in public speaking through intra-college debating activities.

The high point of the season was the debate concerning "Resolved, that the several states should adopt a system of unicameral legislation," which was presented to the student body in assembly. Affirmative speakers were John Clark, Wilma Stafford and Loren Whitney. They were opposed on the negative side by Walter Nissen, Matthew Halchin and William Peiffer. Howard Miller was chairman.

John Clark was president of the club and Dr. C. C. Crawford was faculty adviser.

Conneauttean Nineteen Thirty-eight



SCENES FROM "QUALITY STREET" --- 1937

Edinboro State Teachers College

THE EDINBORO PLAYERS

The Edinboro Players, under the direction of Miss Jane Ludgate, produced several interesting plays during the past year. Outstanding among the group's presentations were "The Night of January 16" and the Tournament of one-act plays.

In November the Players presented the murder trial, "The Night of January 16," with Sarah Kratz, Marjorie Oliver, Robert Scarpitti and Clarence Heft playing the leading roles. This production, the first of its kind ever to be attempted at Edinboro, was met by a very enthusiastic audience.

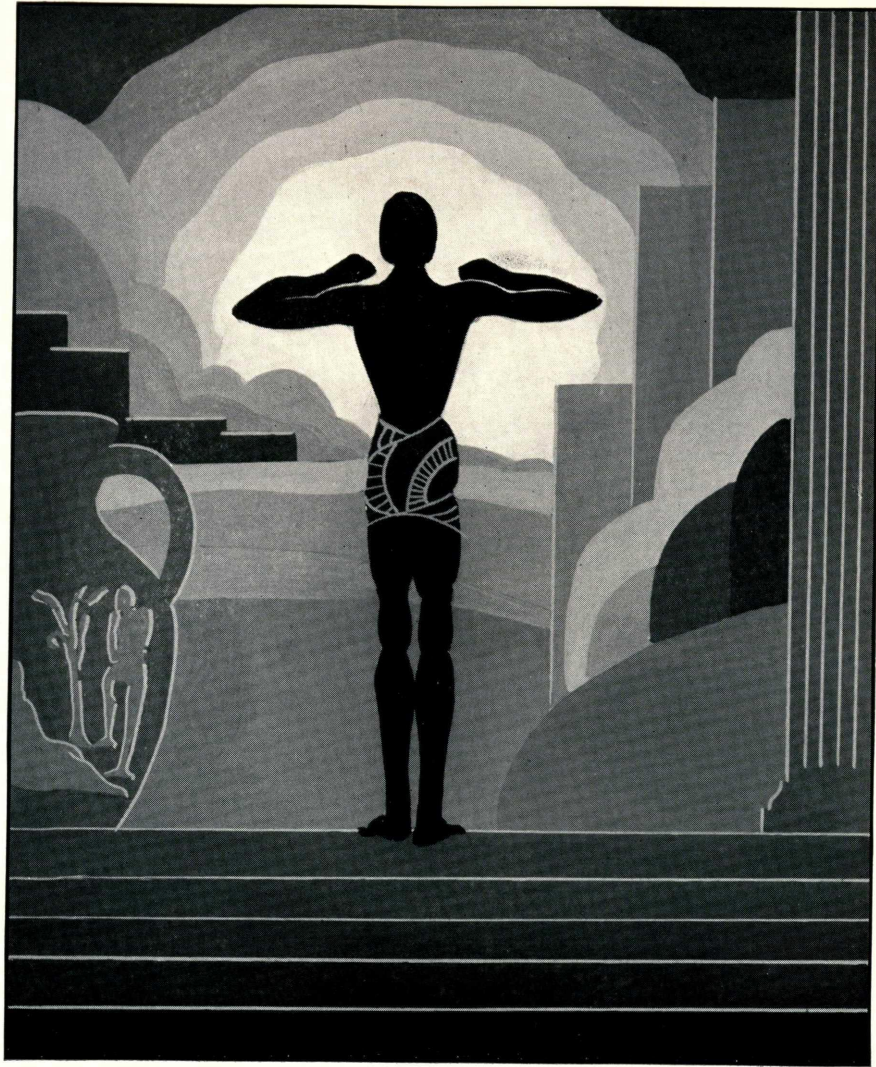
Beatrice Hall, Gardiner C. Criswell, Dorothy Fisher, Jean Rick, Averyl Wheeling and F. Penfold Brown directed plays in the sixth annual Tournament, presented by the Players on March 29 and April 5. As in the past, the Tournament was largely the work of the students, with Miss Ludgate acting only in an advisory capacity. Elaine Ghering won the award for acting, Averyl Wheeling received the prize for directing, and Coletta Burkhardt won the award for the most effective scenery design.

Miss Ludgate represented the Edinboro Players and the Gamma Kappa cast at the convention of Alpha Psi Omega, the national honorary dramatic fraternity, at New York, December 28.

Beatrice Hall and Robert Scarpitti represented the Players at the Theater Conference sponsored by the Division of Dramatics of Pennsylvania State College and the Erie Playhouse. The conference was held in February at the Playhouse.

Early in the year the Players had the pleasure of entertaining Walter Hampden, dean of American actors, who gave a recital of roles from famous plays as a featured number of the lecture-entertainment course.

Conneauttean Nineteen Thirty-eight



ATHLETICS

THE RED RAIDERS



Edinboro State Teachers College

FOOTBALL

Edinboro's nineteen thirty-seven football schedule, consisting of five games, resulted in a scoreless tie and four defeats for the Red and White.

The Red Raiders, making their first appearance of the season on their own gridiron, opposed California, and in holding the Vulcans scoreless Edinboro played the best game of the season. Edinboro's failure to score marred the otherwise interesting game.

In the next game, played on Homecoming Day, Mansfield combined power and deception to penetrate our defense for 33 points while holding Edinboro scoreless.

At Indiana the following week the Raiders remained scoreless and dropped a 31-0 decision to the strong, fast, and capable Indians.

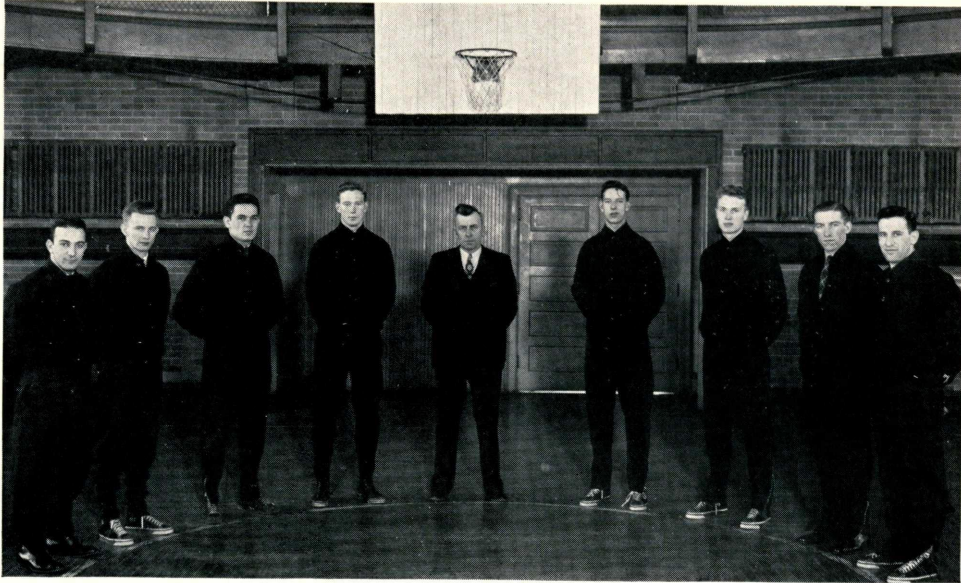
Perhaps the most discouraging game of the year was that which Clarion won, 6-0. Playing in a sea of mud, Edinboro "out-waded" her opponents, but nevertheless came out on the short end of the score.

In order to match an early score made by Westminster at New Wilmington, the Red and White scored its first touchdown of the year. Throughout the first half Edinboro took the offensive, but in the last two periods Westminster broke loose to score three times and bring its total to 28 while holding Edinboro to six.

Lettermen for the season were Re Intrieri, Coyle, Abrams, Jeffords, Shutro, Dilley, Wolfe, Witalis, Volitich, Erickson, Wood, Kusner, Demiankow and Burke. Of these only Re Intrieri and Bill Coyle are seniors.

Conneauttean Nineteen Thirty-eight

THE RED RAIDERS



BASKETBALL

Basketball, Edinboro's most popular varsity sport, provided the college with an unusual number of good games this year. The fifteen-game schedule ended in almost an even split in games won and lost, although the netters dropped the odd game. While losing more games than it won, the team is credited with having an entirely successful season, as five of the contests were lost by less than two points.

THE RECORD

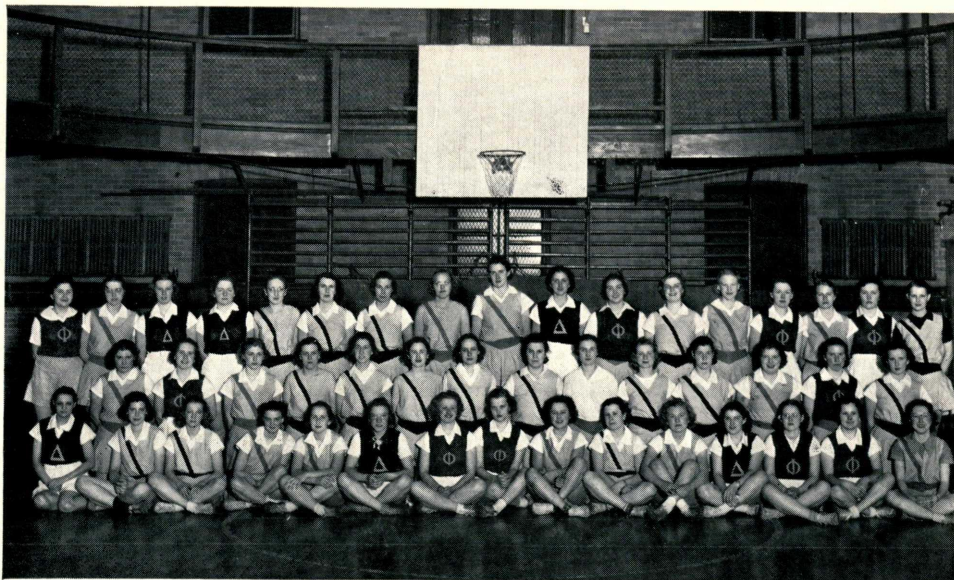
Slippery Rock defeated Edinboro by a 57-56 score in an overtime game at Slippery Rock and smothered hope for revenge by duplicating the feat over the regulation distance here, 42-41.

The Red Raiders split even in a pair of games against each of the three teams, Clarion, Fredonia and California. We won both games from the Ohio College of Chiropody and a single contest from the Alumni and Thiel. Slippery Rock and Indiana were the only teams to twice down the Harrisonmen, while Kent University turned the trick in the only contest of the year between the two schools.

For the year Edinboro outscored its opponents, 628 to 616. The lettermen are Re Intrieri, Ray Intrieri, Volitich, Wolfe, Reichel and Pfeiffer, and of these only the brothers Intrieri are lost to next year's team.

Edinboro	36	Kent	37
Edinboro	46	Alumni	40
Edinboro	44	Fredonia	45
Edinboro	33	Clarion	28
Edinboro	54	Fredonia	41
Edinboro	48	California	44
Edinboro	37	Indiana	55
Edinboro	39	Thiel	34
Edinboro	37	Ohio C. of C.	23
Edinboro	32	California	49
Edinboro	56	Slippery Rock	57
Edinboro	41	Slippery Rock	42
Edinboro	41	Indiana	43
Edinboro	35	Clarion	41
Edinboro	49	Ohio C. of C.	37

Conneauttean Nineteen Thirty-eight



W . A . A .

Under the supervision of Miss Ruttle, the W. A. A. completed another successful year with the co-operation and participation of all the girls. The object of the organization is "progress in the intelligent control of all sports."

High spots of the year were Color Day, Homecoming Day, hockey, basketball, volleyball, ping-pong, shuffleboard, deck-tennis, paddle-tennis, and badminton tournaments. The Phis took all honors on Color Day with a clever parade, the game, and yards of the Delta's colors.

The association had a very busy hockey season, with the Phis winning the tournament. The Sophomores won the inter-class tournament. Homecoming Day the Alumnae played the varsity and showed our girls a nice bit of playing. The team played Lake Erie and Mercyhurst Colleges and also participated in the inter-collegiate play day sponsored by the United States Field Hockey Association, coming out undefeated in all its contests. The varsity was an especially enthusiastic and co-operative group, showing fine sportsmanship and self-control during the entire season.

The varsity members were Andrews, Bemis, Bradford, Cochranides, Diehl, Gleason, Hays, Kruska, Rhinehart, Storer, Teetsel, Whiting and Wilkins.

Edinboro State Teachers College

The Phi Delta basketball tournament resulted in the first victory for the Deltas in this sport in four years. The inter-class games were very interesting and exciting because of the well-matched teams. The Sophomores gained first place, remaining undefeated. The Juniors, with a victory, a tie, and a loss, were second, and the Seniors were third with a win and two losses. Varsity members were Andrews, Artman, Benedict, Case, Davis, Gilbert, Hafer, Hammermeister, Hinkson, Ihlen, Korb, Kruszka, Snedden, McCurdy, Van Tassel. In varsity games against Mercyhurst and Thiel Colleges and in Play Day games at Slippery Rock, the girls were undefeated.

Tournaments were played in ping-pong, deck-tennis, badminton, paddle-tennis, and shuffleboard.

Riding, tennis, golf, and hiking were carried on as Fall sports, but the year was rather disappointing from the standpoint of skiing and tobogganing because of the lack of snow. Mushball, archery, tennis, golf, hiking, bicycling, and track and field were the Spring activities.

The W. A. A. has continued its membership in the United States Field Hockey Association and the Women's Division of the National Amateur Athletic Federation of America. The Association throughout the year has accomplished its aim, "A team for every girl and every girl on a team."



Conneauttean Nineteen Thirty-eight

ACKNOWLEDGEMENT

The business firms whose advertisements follow are friends of the college. These people are in business and have every right to hope to prosper from the large expansion program now being carried on at Edinboro.

In return for the support that these business people have given the college, the college students and faculty should give their support to the businessmen who have the best interests of Edinboro State Teachers' College at heart.

The Junior Class, publishers of this Conneauttean, takes this opportunity to thank those who have bought advertising space in the annual, and hopes that they will grow with the greater Edinboro State Teachers College.

“Growing with Edinboro”

Building Movers and Riggers



J. N. Wilson Company

314 Sassafras Street

ERIE

We Serve

Edinboro State Teachers College

Quality

Products



Lake Shore

"Fro-Joy"

Ice Cream

ERIE

"WHY SHOULD I KEEP MY MONEY IN A CHECKING ACCOUNT?"

The best reason for keeping your money in a checking account is simply this—it benefits you. Your money is safeguarded with all possible diligence. You are relieved of the anxiety to protect it from fire, loss, or theft, until you need it. You have added convenience in your financial transactions.

A checking account saves you time, saves you steps. You can obtain cash when you want it. You can write a check at home, store, or office—during or outside of business hours. You can send your check anywhere safely and conveniently and economically. You have a legal receipt for your files in the form of an endorsed cancelled check. You get an accurate statement of your account every month.

WE INVITE YOU TO OPEN A CHECKING
ACCOUNT AT THIS BANK

THE FIRST NATIONAL BANK
EDINBORO, PA.

Knowing How

*is a fifty-fifty combination of ability
and experience.*

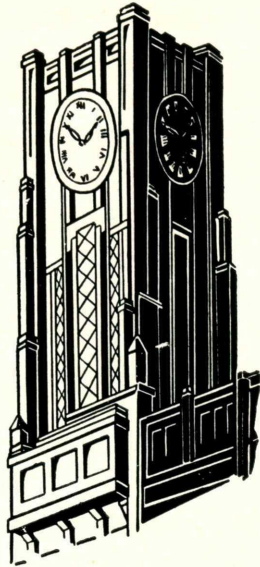
When it comes to photography, we're particular about quality. We fuss with true rendition; we're dotty on the subjects of lighting, color harmony and rhythm of composition. Maybe that's why we get along so well with particular editors and advisers.

An intelligent service endowed with a spirit of friendly co-operation has been the important factor in bringing Zamsky Studios to the position of leadership in the school annual field. Maybe that's why so many schools turned to us this year for their photography. We hope you will turn to us soon, and we invite your inquiry.

ZAMSKY STUDIOS

Photographers to Particular Schools For Over 20 Years

902 CHESTNUT STREET, PHILADELPHIA, PA.
254 YORK STREET, NEW HAVEN, CONN.



BOSTON STORE
Erie, Pa.

Trask, Prescott & Richardson Co.

Department Store



State at Ninth
Erie, Pa.

Success

is often determined by personal appearance and the feeling of confidence it inspires.

PERSONAL APPEARANCE
is always immeasurably benefited by clothes that are made to individual measure. Ordering

**CUSTOM-TAILORED
CLOTHES**

is the best way to attain success through personal appearance.



A. Koppelman & Son
Makers of Men's Fine Clothes
355 West 8th St. Erie, Pa.



Compliments of

Scheidemantel
TIRE
and
BATTERY
SERVICE

EDINBORO, PA.



"Watch the Fords go by."

V - 8

Style—Comfort—Economy
Sales and Service

Park Motor Company

Edinboro, Pa. Phone 2442

COMPLIMENTS OF

Skelton & Fuller

EDINBORO, PA.

COMPLIMENTS OF

CITY MARKET

**FRESH MEATS
and FANCY GROCERIES**

Sardeson's

807 State Street

... the label of fashion

The ESSO STATION

**Expert Lubrication and
Tire Repair Service**

ORRIS R. PERRY, Mgr.

EDINBORO, PA.

Hail, Guest, we know not who thou
art;

If friend, we greet thee heart to
heart;

If stranger, so no longer be—

If foe, our FOOD shall conquer thee.

**The
Crossroads Dinor**

P. R. GLEETEN, Mgr.

**MAY WE
AND EDINBORO**

Grow With Your
Progressive Building
Program

Bertrum C. Kiehl

Mortician

COLLEGE

BARBER SHOP

F. R. STEVENS, Prop.

**Appreciates the Patronage
of Students and Faculty**

**POST OFFICE
RESTAURANT**

Real Italian Spaghetti
and Mexican Chile
Regular Meals Short Orders
624 STATE ST., ERIE, PA.
M. COCHANIDES

F. D. WALKER
BUICK
Sales
G. M. C.
Service
PONTIAC
Storage—Repairs—Tires
Auto Supplies
Gas—"KENDALL"—Oil
EDINBORO, PA.

Charles F. Steiner
CLOTHES
OF DISTINCTION
1404 Turnpike ERIE, PA.

The Erie Sport Store
723 State Street
ERIE, PA.

"Say It With Flowers"
Edinboro Floral
"Flowers By Wire Anywhere"
Cut Flowers, Plants, Corsages,
Palms and Fern Decorations
We Deliver Phone 2272

COMPLIMENTS OF
H. G. GILLESPIE
EDINBORO, PA.

COMPLIMENTS OF
Sybrant & Case
MEATS and GROCERIES
EDINBORO, PA.

MEET
THE
BUNCH
AT
JOLLEY'S

Edinboro Home Bakery

MRS. FRANK LIEMER, Prop.

If It Can Be Baked
We Can Bake It!

EDINBORO, PA.

OUR BEST
WISHES

Edinboro Publishing Co.

EDINBORO, PA.

COMPLIMENTS OF

College Book Shoppe

M. E. Klingensmith

EDINBORO, PA.

Zindel & Stauffer GROCERIES

Electrical Equipment
Hardware

Erie St. Edinboro, Pa.

Everybody Goes To

The Village Gift Shop

YOU ARE WELCOME!

G. U. HOPKINS

EDINBORO, PA.

Dundon Brothers Inc.

Men's
Furnishings and Shoes

Interwoven Hose
Gordon Hosiery

EDINBORO, PA.

Gas That Gives Your Motor
Power and Pep!

SOLVENIZED

Phone 2471

United Service Station

Tobacco—Cigars—Confectionery

E. R. BUCHANAN, Prop.
EDINBORO, PA.

Hostetler's

ELECTRICAL SERVICE

Everything Electrical

C. HOSTETLER

Edinboro, Pa.

Congratulations

To the
CLASS OF 1938

AND
SINCERE WISHES
FOR YOUR
FUTURE SUCCESS

ZORTMAN
FLOUR and FEED
COMPANY

BETWEEN CLASSES,
AFTER THE DANCE,
or THE GAME,

It's Just Across the Corner
To

ARCHER'S
COLLEGE INN

ROSARIO PANCALLO
Expert
Shoe Repairing
EDINBORO, PA.

PATRONIZE
OUR ADVERTISERS

All Lines of Beauty Culture

**Guaranteed
Permanent Waves**

EUGENIA'S
Beauty Salon

Phone 2492

RED & WHITE
Store

**CHOICE
MEATS and GROCERIES**

M. G. MITCHELTREE
and
O. I. McCARTNEY,
Owners

GOOD LUCK

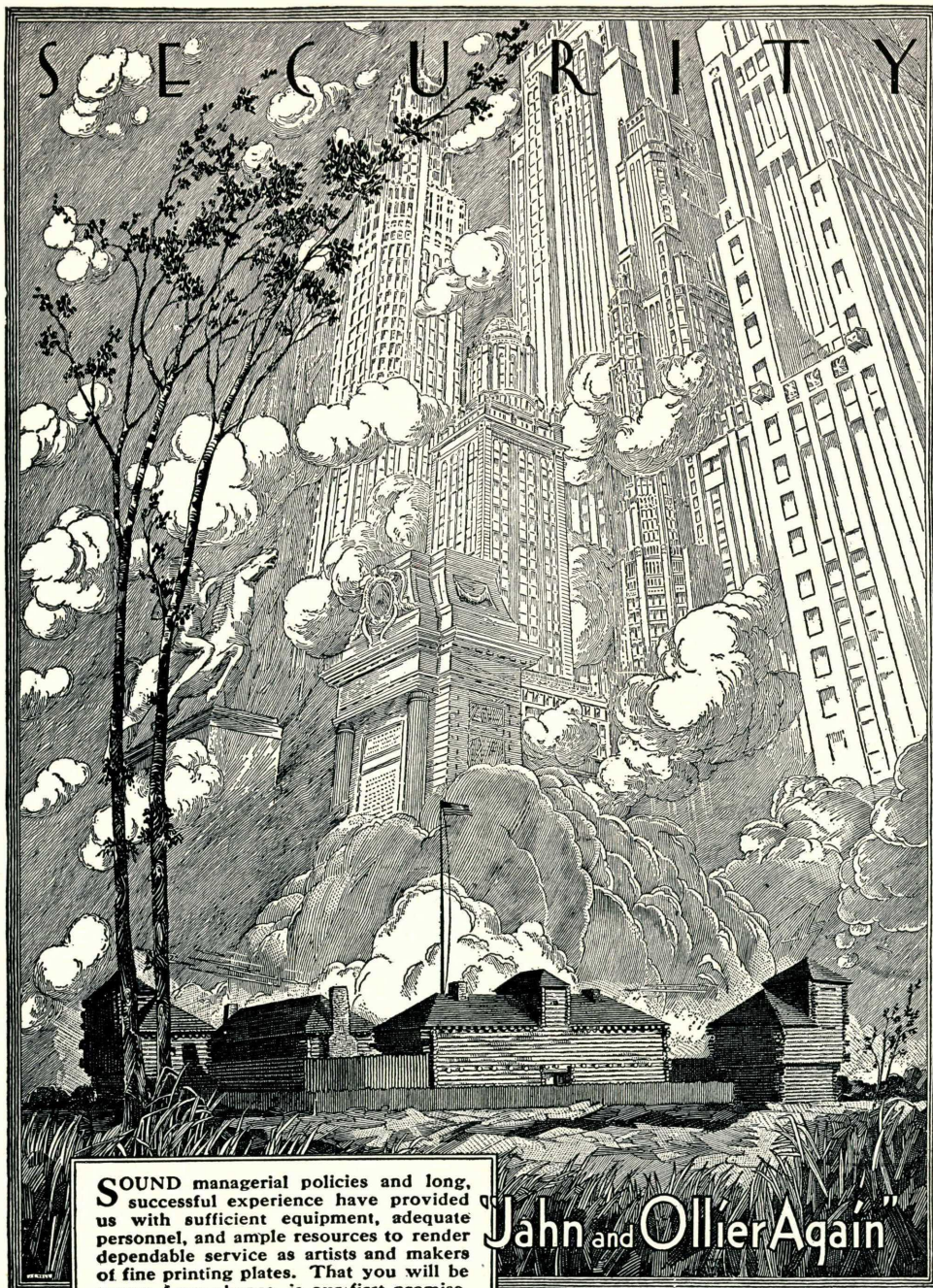
TO the CLASS of 1938

COOPER'S

The Student's Store

COMPLIMENTS OF

A FRIEND



SOUND managerial policies and long, successful experience have provided us with sufficient equipment, adequate personnel, and ample resources to render dependable service as artists and makers of fine printing plates. That you will be secure from chance, is our first promise.

JAHN & OLLIER ENGRAVING CO.
817 West Washington Blvd., - Chicago, Illinois

"Jahn and Ollier Again"

In the foreground - Ft. Dearborn re-erected
in Grant Park on Chicago's lake front.
Illustration by Jahn & Ollier Art Studios.

~ AUTOGRAPHS ~

PRINTING :

Record Printing Co., Butler, Pa.

COLLEGE ARCHIVES

