

1934

CONNEAUTTEAN

1934

PENNSYLVANIA STATE TEACHERS
COLLEGE
AT
EDINBORO

COLLEGE ARCHIVES

COLLEGE ARCHIVES

**THE
CONNEAUTTEAN
1934**



**PENNSYLVANIA
STATE TEACHERS COLLEGE
AT
EDINBORO**

The Old Order Changeth

On the fourth of last April the college was astonished by the announcement that the board of trustees had reluctantly accepted the resignation of our president. The shock was somewhat alleviated by Dr. Crawford's explanation that he was deliberately trying to escape the cares of administrative work that had so mercilessly beset him without cessation for the past seventeen years to return to the work that he most enjoys, class room teaching. Our president leaves behind him a record of administrative work of which he may well be proud, and which has vastly benefited the school. The demand for versatility of talent made by his position has never found him wanting.

Dr. Crawford claims not to be a politician. Yet he has been one perforce, and an excellent one. He is personally affable, has a keen grasp of the intricacies of political maneuvers, and possesses a shrewd understanding of human nature. Only one quality has hampered him—scrupulous honesty.

Our president has possessed throughout his term to a high degree that most necessary quality for successful school work—devotion to the institution and to the ideals for which the college stands. Dr. Crawford has quietly, unobtrusively struggled for the consummation of these ideals. The obstacles in the way have been disheartening. Yet most of us have known nothing of them, for our president is not one to complain in adversity. In his successes we have all shared. We have taken them for granted. His defeats he has borne alone and in silence.

But the quality that our president has in super-abundance, and the one which most endears him to the students, is his personal understanding of student problems. He has never lost the student point of view. He has never been too busy nor too harrassed with his own problems to refuse to share those of somebody else. The most ardent admirers of our president are those who have gone to him for help in time of trouble.

There are many students on campus who have never had the privilege of meeting Dr. Crawford on intimate terms. It is for this reason that we welcome him as a teacher. Freed from the cares of administration, which have taken such an unfair portion of his time and energy, he can meet students on a more intimate level and provide for us an inspiration and an influence that will be more valuable to us as individuals than any amount of routine handled from the executive chair.



To
MISS HAZEL KETCHAM

for her example as a scholar, for her leadership as a teacher,
and for her sympathetic understanding as a friend, this
book is dedicated.



EDINBORO FACULTY AND ADMINISTRATION



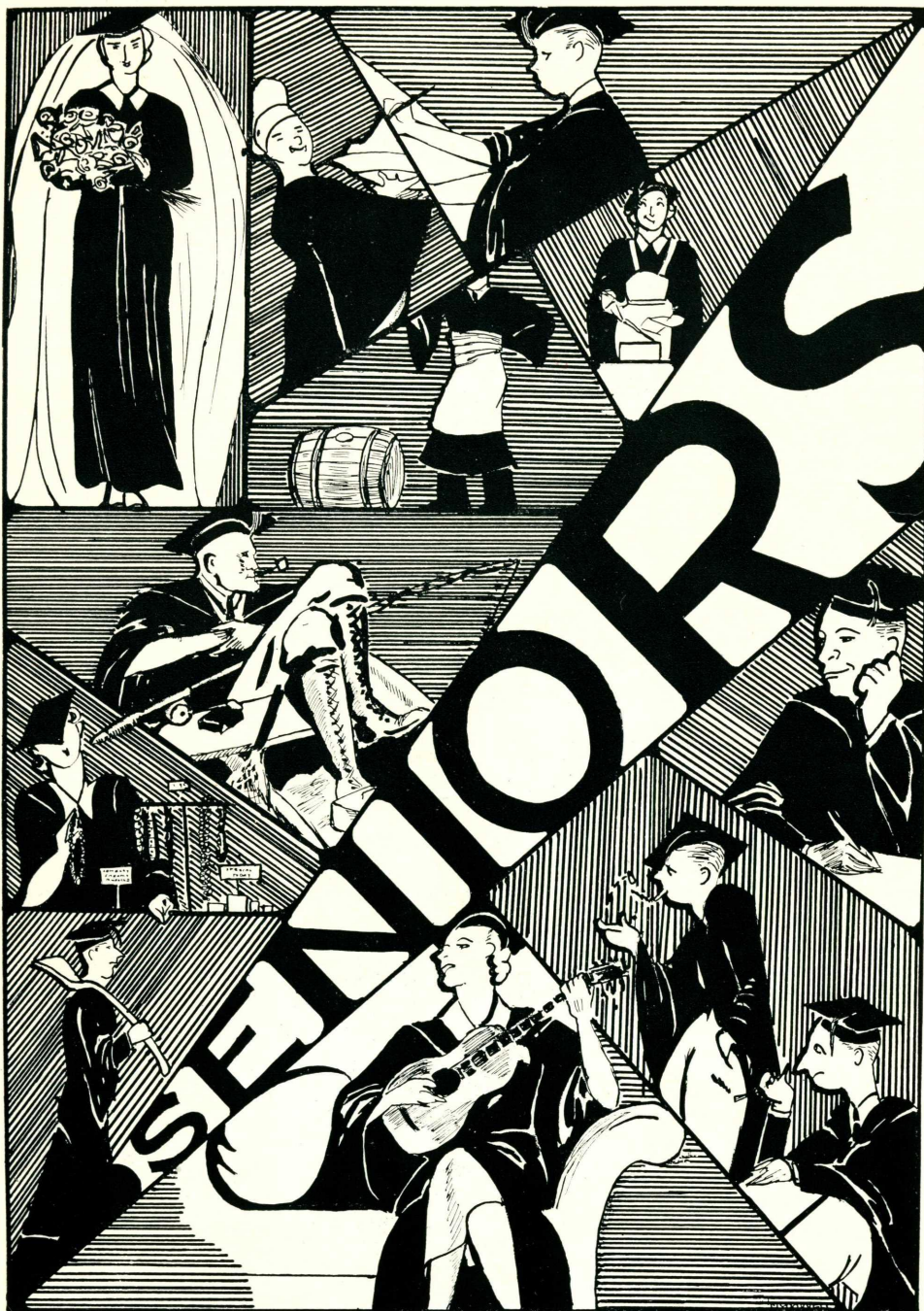
SUPERVISORS OF STUDENT TEACHING

The Faculty and Administration

| | |
|------------------------------|----------------------------------|
| Dr. C. C. Crawford | President |
| E. C. Stillings | Dean of Instruction |
| Waldo F. Bates Jr. | Art |
| Aime Doucette | Art |
| E. Grace Graham | Languages |
| Emma Graham | Supervisor, Elementary Education |
| A. J. Haller | Art |
| B. Regis Harrison | Physical Education, Coach |
| F. S. Heinaman | Education, Mathematics |
| Nelle G. Hudson | Natural Sciences |
| Hazel M. Ketcham | Geography |
| Frank LaBounty | English |
| Jane Ludgate | Dramatics, Literature |

The Faculty and Administration—Continued

| | |
|-----------------------------|------------------------------------|
| Royce Mallory | English, Psychology |
| R. D. McCommons | Supervisor, Art |
| H. W. McNees | Mathematics |
| E. Leigh Mudge | Social Studies, Education |
| H. L. Offner | Supervisor, Secondary Education |
| Nettie M. Ruttle | Physical Education |
| Dorothy Skinner | Art |
| Margaret M. Smith | Social Studies, Physical Education |
| Wallace J. Snyder | Physical Science |
| S. M. Robb | Director, Teacher Training |
| Ellene Sullivan | Dramatics, Literature |
| L. H. VanHouten | Psychology, Education |
| Esther Wilson | Music |
| William Wheatley | Social Sciences, Education |
| W. V. Zahniser | English, Literature |
| Justina Baron | Librarian |
| Mildred Forness | Librarian |
| Harriet Chapman | Secretary to Dr. Crawford |
| Gertrude Schafer | Secretary to Mr. Stillings |
| Mrs. Sallee | Bursar |
| Florence Kunkel | Dean of Women |
| Helen Gillis | Nurse |
| Hazel Wertman | Dietitian |
| Wilma Ore | Bookkeeper |
| Dorothy Veit | Clerk |



Joseph Massa
Warren

Secondary
E. Club; College High;
Spectator; Conneaut-
tean

Ruth Hurd
Ford City

Art
ScaRab; W. A. A.; Stu-
dent Government; Y.
W. C. A.

Ellen Lossie
Harborcreek

Intermediate
W. A. A.; Y. W. C. A.

Frank Novak
Wilkinsburg

Intermediate
Chi Delta Sigma; Glee
Club; Orchestra



Jean Sutherland
Washington

Art
ScaRab; Alpha Delta;
W. A. A.; Glee Club;
Y. W. C. A.; Student
Government; Delta Phi
Delta

Charles Kinter
Waterford

Art
ScaRab; Dramatic
Club; Alpha Psi Ome-
ga; Chi Delta Sigma

Jeannette Hotchkiss
Springboro

Intermediate
Math and Science; Com-
stock

Grace Johnson
Warren

Secondary
W. A. A.; Y. W. C. A.;
College High; Forum

Francis De Sanctis
Edinboro

Secondary
Choir; Dramatic Club;
College High



Wanda Swiecki
Erie

Primary
Glee Club; Y. W. C. A.;
W. A. A.

Helyn Silverthorn
Hopwood

Art
ScaRAb; Puppet Club;
Dramatic Club; W. A.
A.

Elsie Weber
Mercer

Intermediate
W. A. A.; Y. W. C. A.

Jean Finegan
Harborcreek

Intermediate
Y. W. C. A.; Choir;
Glee Club; W. A. A.

Howard Rose
Erie

Secondary
Chi Delta Sigma; Col-
lege High; Forum; E
Club; Normen Club;
Football

Minna Masiroff
Erie

Secondary
Dramatic Club; W. A.
A.; Forum; Choir; Col-
lege High; Y. W. C. A.

Robert McDowell
Pittsville

Art
Beta Xi; ScaRAb; Glee
Club

Mary Vieyra
Erie
Intermediate
W. A. A.; Glee Club;
Choir

John Harvey
Cochranon
Secondary
Chi Delta Sigma; Col-
lege High; Y. M. C. A.

Florence Colegrove
Corry
Secondary
College High; Forum;
W. A. A.; Y. W. C. A.

Audrey Bancroft
Centerville
Intermediate
W. A. A.



Dorothy Mathewson
Edinboro
Primary
W. A. A.; Y. W. C. A.;
Comstock

Lydia Huff
Erie
Intermediate
Dramatic Club; W. A.
A.; Alpha Delta

Kenneth Isackson
Springcreek
Secondary
Math and Science; Y.
M. C. A.

Beatrice Tryon
Titusville
Four Year Inter-
mediate
Y. W. C. A.; W. A. A.;
Glee Club; Forum

Norman Goodwin
Diamond
Secondary

Lucille Cumbler Beck
Steelton
Art
ScaRAB; Spectator
Staff; Alpha Delta; W.
A. A.

Jeannette Seabrooke
Erie
Secondary
Class President, 3, 4;
College High; Forum;
W. A. A.

Esther Evans
Harborcreek
Primary
Y. W. C. A.; Orches-
tra; W. A. A.

Virginia M. Silverthorn
Hopwood
Art
ScaRAB; W. A. A.

Carl Beck
Erie
Secondary
College High; E Club;
Football; Basketball;
Normen Club

Dorothy Lytle
Pleasantville
Secondary
College High; Y. W.
C. A.; Student Govern-
ment; Alpha Delta; W.
A. A.; Forum.

Ross Kitts
Erie
Secondary
Normen Club; Forum;
Football; E Club



Wilma Covert
North East
Intermediate
W. A. A.

Alice Hood
Cambridge Springs
Primary
Choir; Glee Club; W.
A. A.

Frances Griesemer
DuBois
Art
ScaRAb; Delta Phi Del-
ta; W. A. A.; Y. W. C.
A.

Everett Waterhouse
Cambridge Springs
Secondary
Dramatic Club; College
High; Forum; Chi Del-
ta Sigma

John Smith
Aliquippa
Secondary
College High; E Club;
Math and Science; Beta
Xi; Glee Club; Football

Ethel Bauer
Erie
Secondary
College High; Math and
Science; Forum; W. A.
A.

Florence Hill
Warren
Four Year Primary
Y. W. C. A.; W. A. A.;
College High

Wilma Dieter
North East
Secondary
Comstock; Spectator;
Year Book; Press Club;
W. A. A.; College High;
Forum; Secretary 4

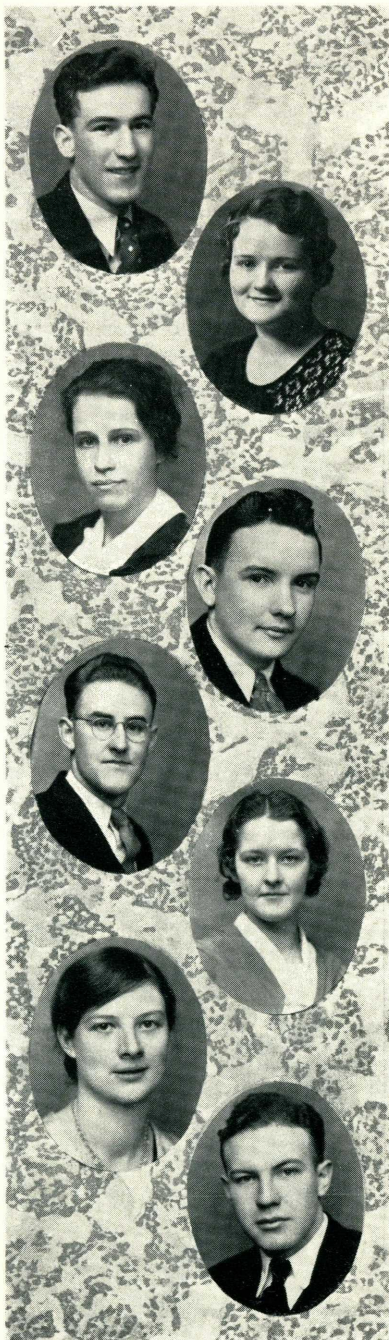


Donald Ellsmore
Conneautville
Intermediate
Forum; Glee Club; Y.
M. C. A.; Choir

Amy Miller
Erie
Secondary
College High; Com-
stock; W. A. A.

Raymond Prussia
Springboro
Intermediate
Glee Club; Y. M. C. A.;
Choir

Florence McWhirter
West Middlesex
Four Year Element-
ary
College High; Y. W. C.
A.; W. A. A.



Laberta Mahoney
Erie
Primary
Dramatic Club; W. A.
A.; Comstock; College
High; Y. W. C. A.

William E. Huff
Erie
Secondary
College High; Math and
Science; Normen Club

Theora L. Barr
Townville
Primary
Glee Club; Orchestra;
Y. W. C. A.

Bruce Smith
Cochranon
Art
Basketball; ScaRAb;
Chi Delta Sigma; E
Club

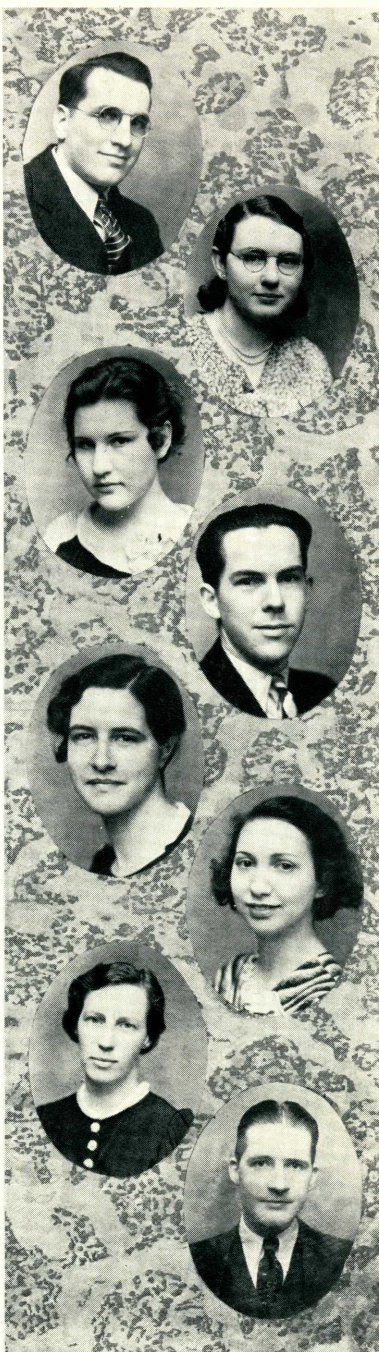
Carl Reppert
Edinboro

Secondary
Y. M. C. A.; Math and
Science; College High;
Dramatic Club; Choir

Virginia Hays
Conneaut Lake
Intermediate
Y. W. C. A.; W. A. A.

Beulah E. Muir
Centerville
Intermediate
Y. W. C. A.; Comstock;
W. A. A.

Marian MacDonald
North East
Art
Y. W. C. A.; Forum;
Puppet Club; ScaRab



Winifred Mitchell
Springcreek
Intermediate
Y. W. C. A.; W. A. A.

Harold Mallery
Edinboro
Secondary
College High; Choir;
Glee Club; Y. M. C. A.;
Math and Science

Frances Clark
Sharon
Primary
Alpha Delta; Y. W. C.
A.; W. A. A.

Harvey Chappell
Sandy Lake
Secondary
College High; Dramatic
Club; Y. M. C. A.; Chi
Delta Sigma

W. Earl Kyle
Butler

Art

Class President, 1; Glee
Club; ScaRab; Dra-
matic Club; Delta Phi
Delta; Alpha Psi Omega

Alta Jensen
Erie

Intermediate

Alpha Delta; W. A. A.;
Glee Club; Y. W. C. A.

Romayne Billings
Edinboro

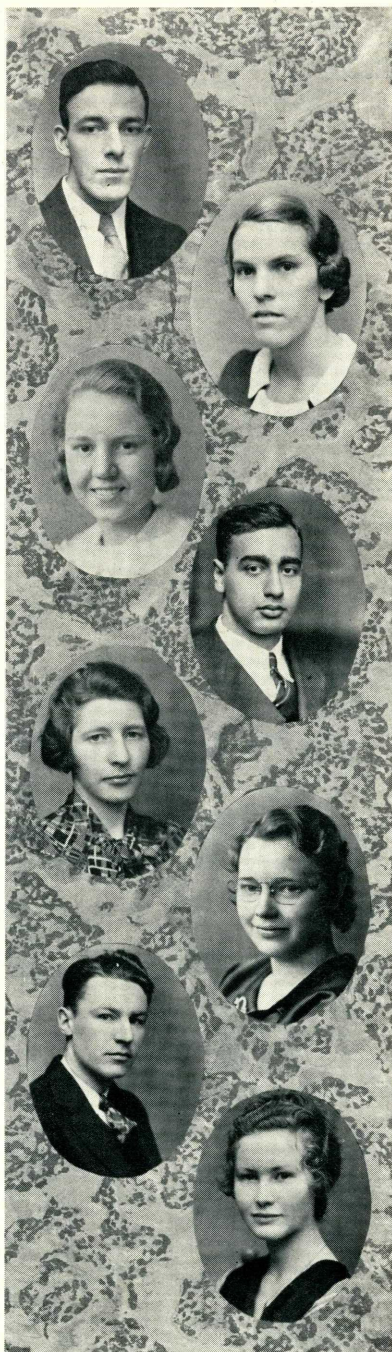
Secondary

College High; W. A. A.

Alden L. Laibe
Meadville

Secondary

Beta Xi; College High;
Glee Club



Mathilda Smith
Oil City
Primary
W. A. A.

David Yomtob
Erie

Secondary

Forum; Spectator Staff;
Dramatic Club; College
High; Normen Club

Lena Shumaker
Cochranton

Secondary

Forum; College High;
W. A. A.; Debating
Team; Y. W. C. A.

Isabel Crawford
Edinboro

Primary

Y. W. C. A.; Glee Club;
W. A. A.; Alpha Delta;
Choir

Wilbur Bauer
Sharon

Art

Glee Club; ScaRab;
Dramatic Club; Specta-
tor

Aurelia Del Porto
Erie

Primary

W. A. A.

Arnold Campbell
Edinboro

Secondary

College High; Beta Xi;
Y. M. C. A.

Edith Randall
Akeley

Primary

W. A. A.



Mary Crozier
Edinboro

Secondary

Dramatic Club; College
High; Choir; Glee Club;
W. A. A.; Vice Pres.,
3; Treasurer, 4

Mary O'Donnell
Conneautville

Intermediate

W. A. A.

Kathryn Kuntz
Stroudsburg

Art

Rifle Club; ScaRab; Y.
W. C. A.; W. A. A.

William Bannister
Erie

Secondary

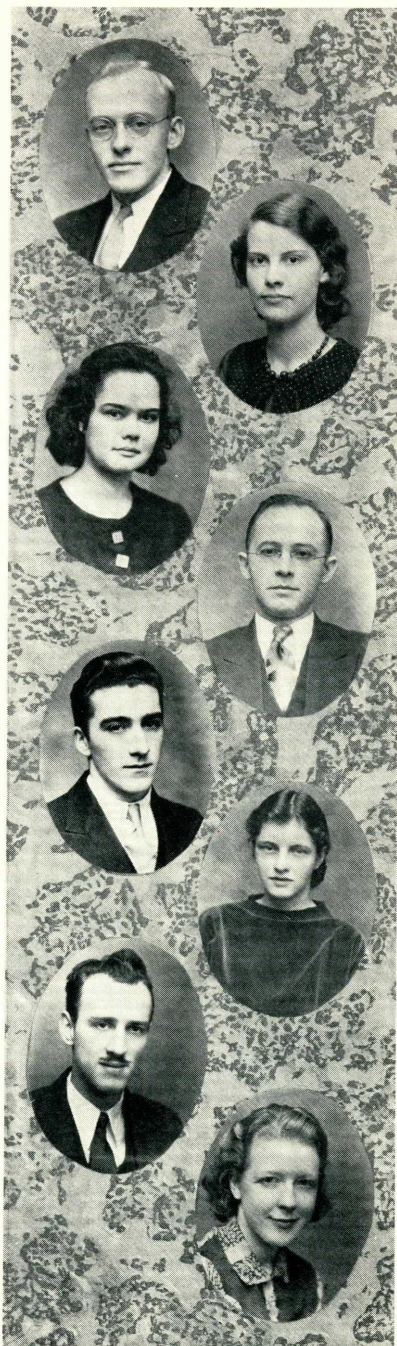
Chi Delta Sigma; Col-
lege High; Comstock;
Y. M. C. A.; Chorus;
Glee Club; Choir; Pres-
ident, 1

Carl Welch
Cambridge Springs
Secondary
Math and Science; Col-
lege High

Virginia Bals
Corry
Art
Alpha Delta; ScaRab;
W. A. A.; Y. W. C. A.;
Student Government

Donald McNamara
Meadville
Intermediate
Spectator; Chi Delta
Sigma; Y. M. C. A.;
Glee Club

Phillip Olmes
Avalon
Art
ScaRab; Beta Xi; Dra-
matic Club; Orchestra;
Band; Glee Club;
Choir; Vice President, 4



Helen Dunton
Edinboro
Intermediate
Y. W. C. A.; W. A. A.

Laban Smith
Guys Mills
Secondary
Chi Delta Sigma; Glee
Club; Dramatic Club;
Y. M. C. A.; Football

Hilda Olmes
Avalon
Secondary
ScaRab; College High;
W. A. A.; Y. W. C. A.;
Alpha Delta

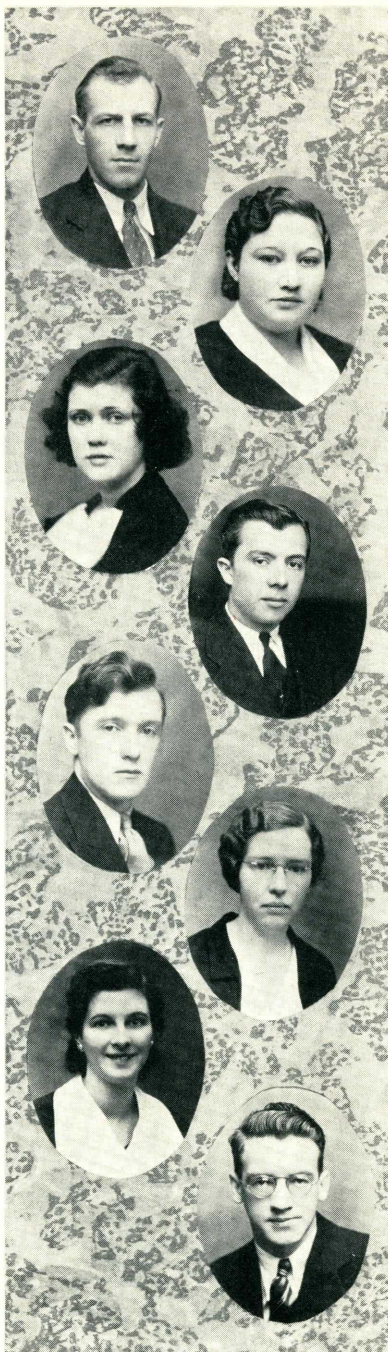
Doris Young
Cranesville
Intermediate
W. A. A.; Math and
Science; Comstock

Victor Kingsley
Cambridge Springs
Secondary
Math and Science; Col-
lege High; Y. M. C. A.

Mary Blackwood
Harborcreek
Intermediate
Y. W. C. A.; W. A. A.

William Holcomb
Centerville
Intermediate
Y. M. C. A.; Chi Delta
Sigma

Imelda Eiswerth
Port Allegheny
Four Year Inter-
mediate
W. A. A.; Student Gov-
ernment; Y. W. C. A.



Josephine Mellon
Meadville
Four Year Inter-
mediate
W. A. A.

Victor Donovan
Erie
Secondary
Chi Delta Sigma; Nor-
men Club; Forum; Col-
lege High; Football;
E Club

Mabel Clark
Titusville
Secondary
Y. W. C. A.; W. A. A.

John Hickey
Erie
Secondary
Forum; College High;
Conneauttean Staff, 2;
Spectator; Dramatic
Club; Chorus; Choir;
Class President, 2, 4

Mildred Stevick
Steelton

Art

ScaRab; Alpha Delta;
W. A. A.; Y. W. C. A.;
Student Government;
Year Book; Secretary 3

Martha Garrett
Erie

Primary

Orchestra; W. A. A.;
Y. W. C. A.

Robert Cunningham
Ohiopyle

Intermediate

Chi Delta Sigma; Y. M.
C. A.; Math and Science

Eva Cochran
Union City

Primary

W. A. A.

Joseph Novak
Wilkinsburg

Intermediate

Chi Delta Sigma; Glee
Club

Sidney Bier
Cambridge Springs

Primary

W. A. A.; Treasurer, 2

Ruth Campbell
Venango

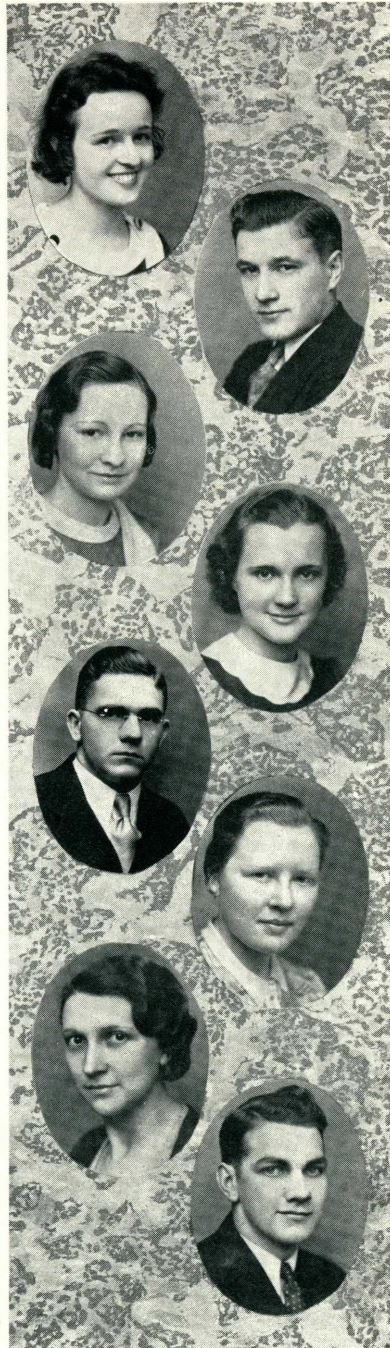
Intermediate

W. A. A.; Glee Club

Oscar Palmquist
Erie

Secondary

Basketball; College
High; E Club; Football
Manager



Eleanor McLallen
Edinboro
Intermediate
Glee Club; W. A. A.;
Y. W. C. A.

William Panitzke
Erie
Secondary
Normen Club

Dorothy Buchanan
Centerville
Intermediate
W. A. A.; Forum; Y.
W. C. A.; Comstock

Kathryn Rogers
Erie
Primary
W. A. A.



Helen Carpenter
Erie
Primary
W. A. A.; Dramatic
Club

Ruth McClintock
Erie
Art
Delta Phi Delta; Sca-
Rab; W. A. A.; Alpha
Delta; Student Govern-
ment

Clarence Swahn
Erie
Secondary
Graduate of University
of Pittsburgh

Velma Lois Rich
Edinboro
Intermediate
W. A. A.; Comstock

Isabel Du Mars
Erie
Primary
W. A. A.; Y. W. C. A.

Elizabeth Klingensmith
Edinboro
Primary
Y. W. C. A.; Glee Club;
W. A. A.; Chorus

Mary Corda
Erie
Primary
Y. W. C. A.; W. A. A.

Winifred McCarthy
Erie
Primary
Dramatic Club; Y. W.
C. A.; W. A. A.



Sam Wheeler
Weedville
Intermediate
Y. M. C. A.; Mixed
Chorus; College High

Ruth Korb
Pleasantville
Primary
W. A. A.

Betty Jobes
Erie
Intermediate
Dramatic Club; W. A.
A.; Choir; Y. W. C. A.

Betty Savage
McKeesport
Primary
W. A. A.; Y. W. C. A.

Doris M. Johnson
Sheffield
Intermediate
Choir; Glee Club; W.
A. A.; Y. W. C. A.

John McCurdy
Titusville
Secondary

Dorothy Wallengren
Daguschahonda
Intermediate
W. A. A.

Sherman Dance
Atglen
Art
ScaRAb; Rifle Club;
Glee Club; Choir; Chi
Delta Sigma



Leon St. John
Edinboro
Intermediate
Glee Club; Beta Xi; Y.
M. C. A.

Ruth Holt
Oil City
Primary
Glee Club; W. A. A.;
Y. W. C. A.

Rebecca Field
Pleasantville
Intermediate
W. A. A.; Glee Club;
Mixed Chorus; Orches-
tra

Marion Pelton
Erie
Four Year Primary
W. A. A.; Y. W. C. A.;
Comstock; Glee Club;
College High

Marilyn Woodburn
Erie

Secondary

Secretary 1; Dramatic
Club; W. A. A.; Col-
lege High

Katherine Flynn
Kinzua

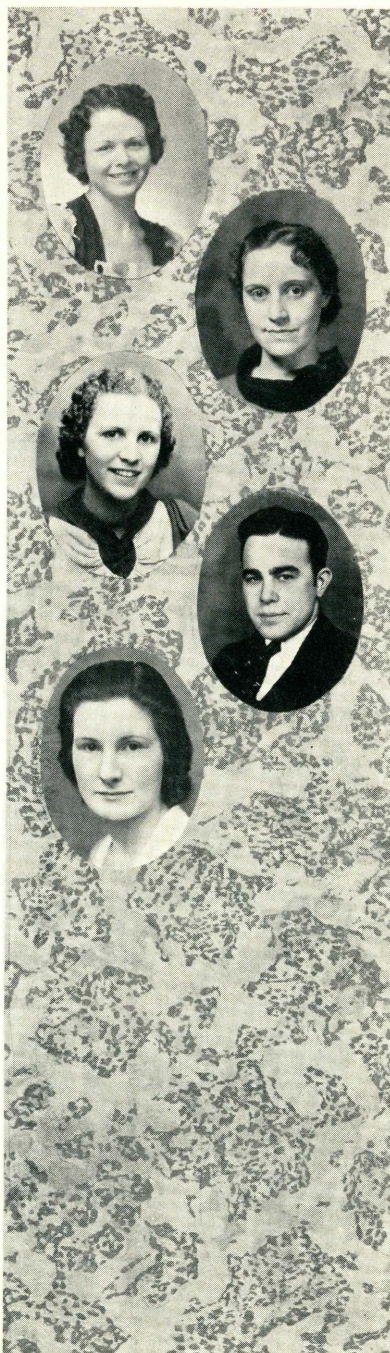
Intermediate

W. A. A.

Anne Antonovich
West Middlesex

Intermediate

W. A. A.



Roberta Strohmeier
Erie

Primary

Y. W. C. A.; W. A. A.

Franklin Meyer
Erie

Secondary

Chi Delta Sigma; Nor-
men Club; College
High; Forum; Basket-
ball

| | | |
|--|---|--|
| Anne Wolford Corry Intermediate Y. W. C. A.; W. A. A. | Dorothy Jennings Sharon Intermediate Y. W. C. A.; W. A. A. | Mione Sturtevant Springboro Intermediate W. A. A.; Y. W. C. A. |
| Elizabeth Sterrett Shippensburg Art W. A. A.; Y. W. C. A.; ScaRab; Glee Club; Orchestra | Kathryn Hendrickson Erie Four Year Inter- mediate Brush and Palette Club; Comstock; W. A. A. | John Mifkovic Erie Secondary College High; Forum; Chi Delta Sigma; Foot- ball; E Club; Normen Club |
| Charlotte McKelvey Spring Creek Intermediate | Joseph Jenkins Punxsutawney Art ScaRab; Dramatic Club; President 3 | Jane Mulheirn Erie Intermediate W. A. A. |
| Florence Samkowski Union City Secondary Forum | Marion Lewis Edinboro Art Delta Phi Delta; Sca- Rab; Glee Club; Dra- matic Club | Paul Hulings Union City Secondary College High; Football; Dramatic Club |
| Marion Donovan Erie Primary | Theresa Donovan Erie Primary | Norman Jeffords Edinboro Intermediate |
| Ruth Peck Wesleyville Intermediate | Mary Jane Riddle Franklin Intermediate | Michael Ferenoe Pittsburgh Art |
| Floyd Malcolmson Oil City Art | Robert Bennett Edinboro Secondary Football | Charles McWhirter West Middlesex Secondary |
| Hazel Schumaker Cochranon Primary | | Katherine Eiler Meadville Art |

Senior Class Officers

Freshmen

First Semester

William Bannister
Marilyn Woodburn
Margaret Otten
David Yomtob

Second Semester

Earl Kyle
Clara Rhodes
Marilyn Woodburn
Anna Koppelman

The Sophomore Year

President—John Hickey
Vice President—William Panitske
Secretary—Jeannette Seabrooke
Treasurer—Dorothy Lytle

As Juniors

President—Jeannette Seabrooke
Vice President—Mary Crozier
Secretary—Mildred Stevick
Treasurer—Ruth Parson

And Now

First Semester

President—John Hickey
Vice President—Phillip Olmes
Secretary—Wilma Dieter
Treasurer—David Yomtob

Second Semester

President—Jeannette Seabrooke
Vice President—John Hickey
Secretary—William Huff
Treasurer—Mary Crozier

History of the Senior Class

Senior class histories are prodigious volumes relating in great detail the entire account of the graduates. Perhaps this class, which started as two distinct groups, one in Erie and one in Edinboro, is entitled to such a complete and explicit valedictory, but let it suffice to say:

As freshmen we were two separate groups, each struggling with the problems of entering college. At Erie Center our orientation was rapid and the parties and receptions that we attended were worth the squandering of our sleep. The same was true in Edinboro. Each group had its leaders. Life in both places for freshmen was very humble.

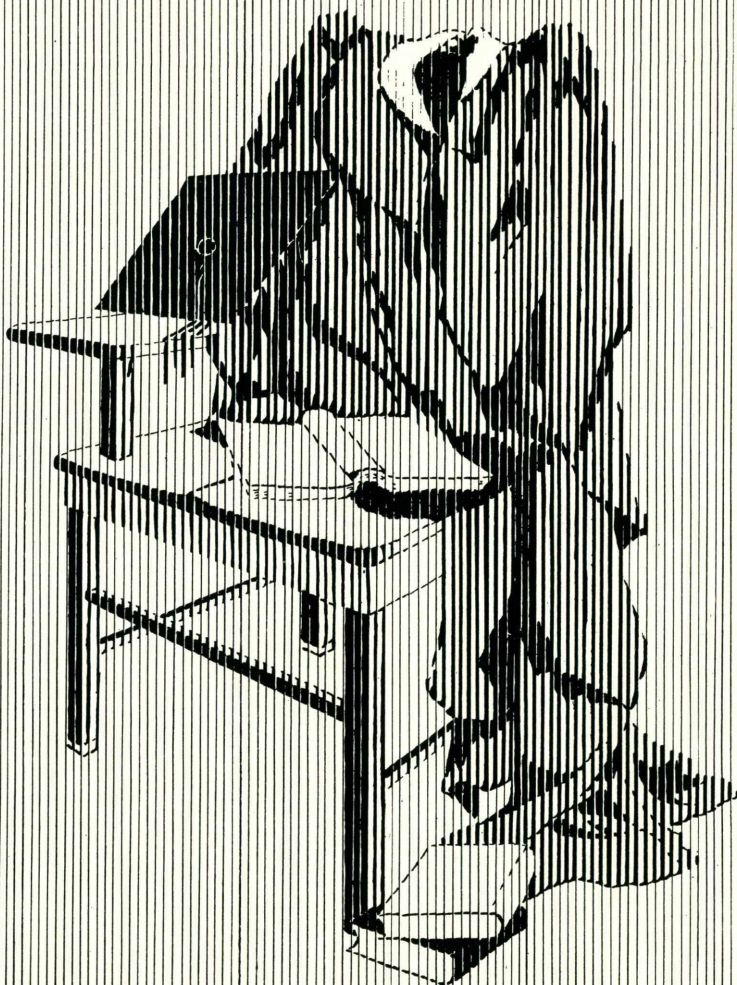
But in our sophomore year, weightier problems confronted us. No more Erie Center. So we began struggling, not with common sophomore difficulties, but with problems of consolidation, for in the amalgamation of two strange groups there is always more or less strife. Some of the Erie students dropped out, and some of those who had started at Edinboro disappeared from the class rolls.

We started the junior year a combined group, coöperating in all major problems. Our big achievement, of course, was the Prom. Our obstacles were numerous. Not the least of them was the depression. But in spite of all hardships we feel we can say, in all honesty, that the Prom was a successful accomplishment.

Then—why then we were seniors, and all of us, early or late, had to go to the dark of student teaching. That was a trial that proved to us of just what sort of stuff we were composed. But life for a senior is more or less rosy, and we superciliously viewed the blunders of the lower classmen, and contemplated the world, and paid, as far as possible, our debts, and awaited this, our graduation day, when we step out to test the kindness of our new surroundings.

IN MEMORIAM

ANNA G. KOPPELMAN



Seniors, Farewell

You of the senior class are leaving Edinboro to take up your life work. You will have been told, by the evening of commencement day by sundry speakers, parents, fellow students, magazine and newspaper editors, and enthusiasts in general that you are going forth to joust with the world; that the prizes of life are yours for the taking. You will have been told, inspirationally and otherwise, that your period of preparation is ended. That life is unfolding before you. That you must begin to live.

But you have been living. Life for most of you began, not this spring, but two decades ago. You have not been preparing for life since then; you have been living it. And you have already passed through one third of the number of years that you may reasonably expect to live.

The big thing occupying the minds of most of you is, "Will I be a success?" Now, you have been successes or failures for one third of your lives. You have largely judged success by the approval or disapprobation of your associates. You are not going into a new world when you graduate from college. Your abilities will not be radically changed. Nor will your associates become more charitable in their judgments. It follows, then, that your degree of success or failure will be about what it has been in school; with the exception that Fate will take a more prominent part in the weaving of the fabric of destiny.

Do not conclude from this that you who did not set the world afire in college are doomed to mediocrity for the duration of your lives. True, you cannot greatly change your abilities. Nor can you have much influence on the criticisms of your contemporaries. But there is one thing that can be changed. That is your outlook, your method of judging success. Happiness comes from our own opinions of ourselves. Our difficulty is that we are inclined to let others create our opinions. If you set your own standards of achievement, and reserve for yourselves the privilege of judging your own success or failure, you will probably be happy, for we are inclined to be lenient in our self criticism.

When success is judged by social approbation, it must be achieved by high personal talents. Few have them. But if the goals you strive for are set by yourselves, and the judgment of your success in attaining them is passed by yourselves instead of by your associates, most of you can be reasonably proud of your achievements. It is of course not easy to become your own critic, to set your own standards, to disregard those judgments of others which serve only to make you unhappy. It is not easy to do this, but most of you are capable of so disciplining yourselves. Few of you can accomplish the alternative. This is as near as we may come to a universal recipe for success.



Juniors

Albert Alessi
Evelyn Anderson
James Barber
Lawrence Behan
Helen Bennett
Dorothy Bonter
Suzanne R. Bower
George Breen
Howard Campbell
Paul S. Cassidy
Mabel K. Clark
Abe L. Cohen
Harold A. Cole
Melvin Cole
Mary Cramm
Edward J. Crowe
Richard Crowe
Helen Cunningham
John Cunningham
Frances Davenport
Esther Davies
George Deimel
George Defazio
Elizabeth Dripps
Antoinette L. Enoch
Andrew Federoff
Samuel Fiorenzo
Margaret E. Fisher
Mary A. Gaylor
Loveen Gladding-Castle
Claire Griffen
John M. Harding
Alice Constance Harper
Arthur L. Hazen
Kathryn C. Heberling
William Holland
Mildred Huebner
Edmund Kijek
Leona Hamilton
Velma Hamilton
Joseph Leson
Samuel Levey

Anna Loya
Mary E. Marsh
Maxine Mattern
Ruth L. McClintock
Jenny E. McCurdy
Esther McDowell
Florence McWhirter
Anne Mellinger
George Merges
Glenn Mickle
Paul W. Millspaw
Harriet J. Morrison
Steve Namit
Neil J. Nelson
George E. Nicholas
Sybil O'Dell
Gerald Owens
Ruth J. Parsons
Karl F. Peterson
Marybelle Pollock
Mary E. Rhodes
Francis Rogers
Florence Samkowski
Oscar W. Schnell
Ralph Scrafford
Beach T. Sherman
Helen G. Smart
Harry Lavern Smiley
Laban Smith
Thelma Smith
Margaret Southern
Edna L. Sternberg
Samuel A. Sullivan
Florence M. Swanson
Kathrine Thomson
John Marlin Way
Gladys Witmer
Alberta Wolcott
Russell Morgan Wood
Garnet G. Wright
Elizabeth Zahniser
Stuart Zahniser



Sophomores

Margaret L. Adler
Wilbur Baldwin
Arthur Barlett
Guy Bennardo
Maryetta Brecht
Elizabeth Bright
Phyllis M. Britton
Ruby L. Busch
Jean M. Campbell
William Coleman
Alice Coppersmith
William Crunick
Donald DeWoody
Virginia Donaldson
Kathryn Dorr
Roland Durst
Lorena May Fox
Della J. Foye
Paul Gaylor
Howard Giddings
Gwendolyn Gleeten
Viola Goode
Margretta Gregg
Leona Grimshaw
Norman W. Grosse
Harold M. Harris
Reid R. Hastie
Frank S. Hawthorne
Charles S. Hershey
Alice E. Houk
Daniel Jackish
Mary L. Johnson
Clifford Jones
Elizabeth Kingsley
Ruth L. Kingsley
Stephen T. Kusner

Emily Lamb
William Lazaro
John H. Leamy
Robert Legters
Robert Lewis
Gerald M. Lynch
Earl W. Lynch
Vernon Mathews
Helen McGogney
Esther McKarney
Jean McQuilkin
Howard B. Miller
Howard Mischler
Ferne L. Morris
Alberta Moyer
Gilbert C. Munz
Mary M. Ow
Marjorie L. Peart
Regina Pulling
Jean E. Rick
Eleanor Rowland
Marea Sherlock
Hubert J. Sherwood
Wade Chester Skelton
Howard Stanford
John P. Streit
Russell Temple
Walter Waleski
Charles W. Wallen
Dolores M. Willey
Carl Wozniak
Archie R. Young
David Yuvelier
Earl Zimmer
Joseph Zipper



Freshman Class Roll

Ann Anderson
William Bahmermann
Winifred Beddows
Grayce Bertram
John Bessor
James R. Billings
Mildred Blakeslee
Mary E. Blanchard
Marjorie Bole
Robert J. Bookmeyer
Henrietta Boss
Josephine M. Boyce
Beatrice Brown
Kathryn L. Bryan
Alice L. Calaway
Helen C. Carnahan
Richard C. Cessna
Marybelle J. Chapman
Thomas S. Clark
Frances Cochranides
Marjorie Detker
Albert DeMarco
Minnie L. Dinges
Mildred Duran
Ann Fetkovich
Mary Fogleboch
Anna M. Forrest
Ellen Gardner
Eleonora Ghering
Harry W. Gill
Gill Graham
John Halchin
James W. Hale
Elsie P. Harrison
Rutherford B. Hayes
Ralph Hazen
Margaret Helfrich
Marguerite Holtz
Robert Hill
Agnes Wolfenden
Marjorie Brown
Ernestine Brown
Edmund Shaffer
Howard Lininger
Ethel Wheeler
Beth Wright
Bill Coyle

Russell Hunter
Lela L. Ingraham
Winifred Joslin
Lois Korb
Harriette Leberman
Charles Legters
Agnes Lilley
Clarence M. McLallen
Ben Miller
Gyla Faye Minnis
Jane M. Montleone
Robert Moorehead
Burton Elmer Noel
Gazelli Palfi
Neil T. Peiffer
Mary H. Regan
Mamie R. Richards
John C. Russell
Martin Schweller
Edna M. Sexton
Herbert L. Shafer
John A. Shepley
Edward Simon
Magdalene Stagl
Maribelle Stewart
Gladys L. Stickle
Chalmer Swift
Stephanie Julia Urban
Lucile Van Dusen
Raymond Van Slyke
Frances M. Walker
Frances Bertha Weber
Helen M. Wickwire
Mary F. Young
Jane Zahniser
Michael Zahorchak
Marjorie J. Zortman
George Grignol
Gail Taylor
Herbert Heberlein
Raymond Johnson
Jack Neigenfind
Anna Clark
Helen Kimmel
Margaret Lackovich
Marjorie Parkman
Dorothy Remaley

Lucky People

Our seniors are to be congratulated upon the fate that has caused them to be graduated from Edinboro State Teachers College. Perhaps there are those in the graduating class who do not consider themselves fortunate in not being able to graduate from a larger school with a more famous name. To them we can only say, "The prospective of the coming years may change your views".

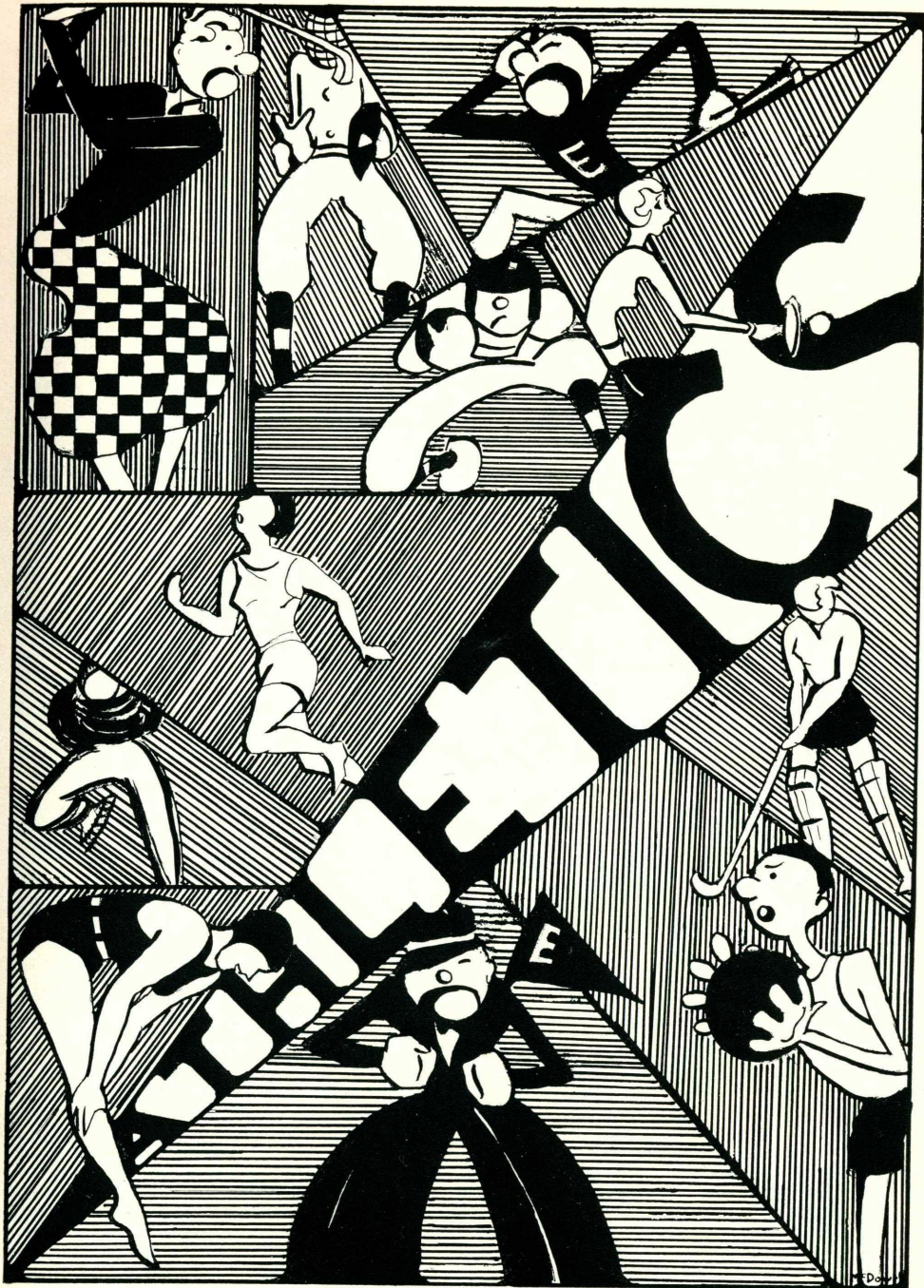
There are schools with more spacious campuses, finer buildings, wealthier students, and more renowned faculties than ours. But it may well be questioned whether any school better prepares its students for living than do the unpretentious Pennsylvania State Teachers Colleges.

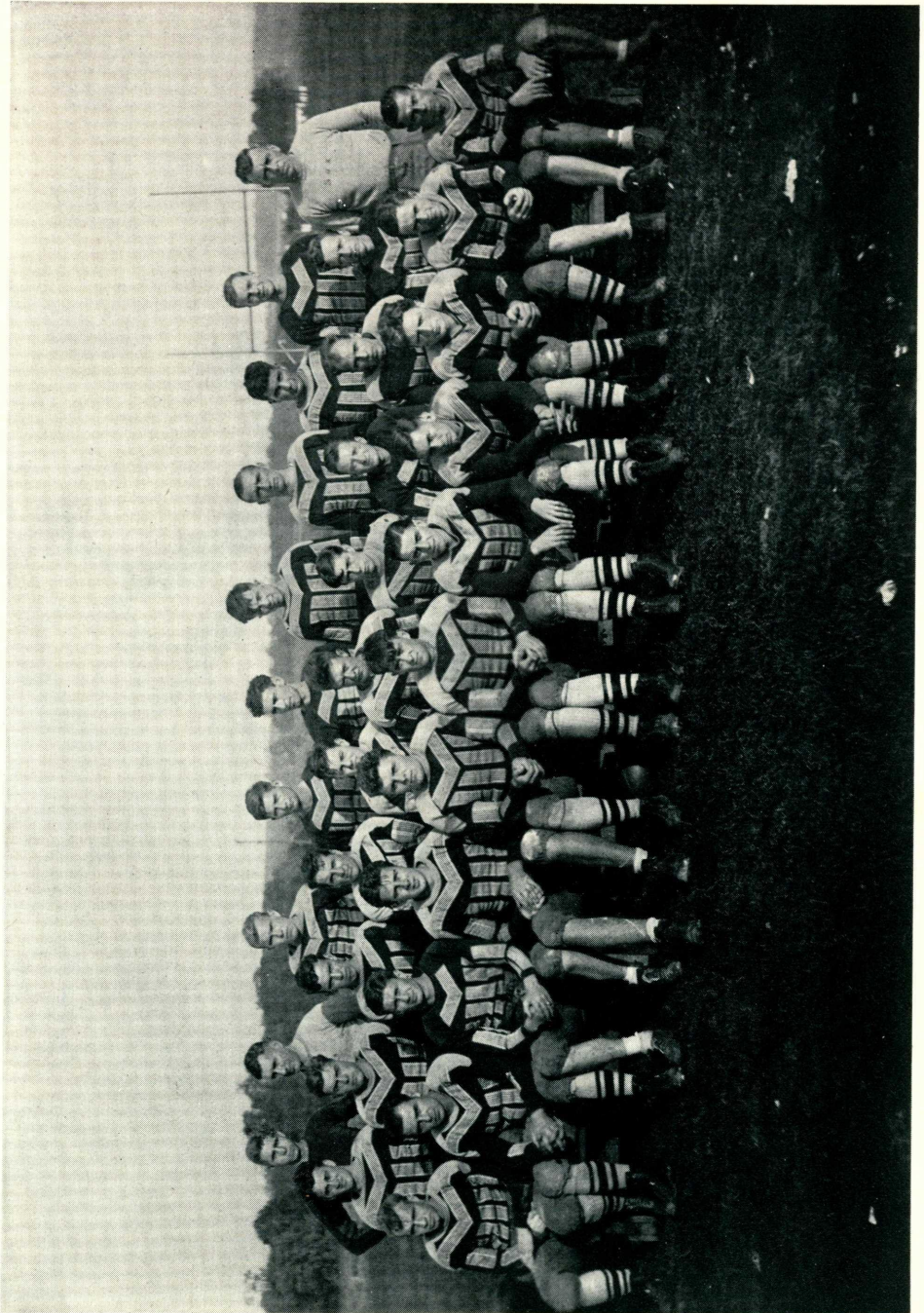
At Edinboro we do not go deeply into any subject, but we cover most phases of human knowledge; and we cover them rather efficiently. At most liberal arts colleges the tendency is to specialize in one or two fields. Specialization is all right for him who wishes to remain a specialist after graduation. But even in that case should he not first have a broad general education, a broad base for the later structure, a foundation such as is provided by the Teachers Colleges?

Outside a limited number of fields there is little need for specialized training, and specialized training which is not put into use is quickly forgotten. If training cannot be used, why go to the trouble of training?

Yes, our seniors are fortunate. They have received a broad usable education. And they have had to work for what they have gotten. Education has not been handed to them on the silver platter of elaborate equipment. Our seniors are less spoiled by educational luxuries and have fewer delusions of grandeur to break than have the graduates of many more pretentious schools.

Our graduates have been studying for four years under conditions somewhat approximating those under which they will work for the rest of their lives. And they go forth with a usable body of knowledge, whether their task is to train children of others in the schools, or children of their own in their homes, or themselves in the daily struggle of existence.





Football

A small squad, crippled by injuries and lack of substitutes, by doggedly fighting on through defeat after defeat made somewhat of a success of an otherwise dismal season, for stubborn fighting spirit takes the sting out of any defeat. There were two bright spots on the schedule, the defeat of Allegheny in the first game of the season and the holding of the powerful Slippery Rock team to a reasonable 12-0 score.

The season opened with Allegheny. The game was played before the largest crowd to see a game on College Field in several seasons. Edinboro won, 7-0 for the second consecutive victory over its next door neighbor. But the victory was not without its cost. The light line and the lighter backfield took a pounding that was to make itself felt in cumulative effect throughout the season, to be forgotten only in that last desperate stand against Slippery Rock.

The next week found a new invader on Edinboro's battleground. And this time the invasion was a success for California went home with a 10-0 victory to its credit.

Grove City was the next opponent. Edinboro was for the only time in the season completely outclassed. Result: Grove City 49, Edinboro 0.

We fared better, but still poorly, at the hands of Indiana. They had not lost a game when they played us. Our pony backfield took another pounding as we lost 15-0.

The next Saturday we came close to victory. Time after time the breaks went against our boys. A last desperate rush was stopped on the goal line, and Clarion's voluntary safety with half a minute to play saved an almost certain score and gave them the game, 6-4.

Thiel's heavy squad gave us another bad afternoon. The team was getting in bad shape by this time and Thiel's smoothly clicking eleven ran riot, 26-0.

Then on Armistice Day came the big game of the year. For the very reason that the team had been unsuccessful in its previous games, loyal Edinboro supporters looked forward to an upset against Slippery Rock. The day of battle arrived. So did eighteen inches of snow, a few frost-bitten alumni, and the big green squad from the south.

Knee-deep in snow, in a freezing wind, Edinboro stopped the visitors at every step throughout most of the game. But the Rocks completed one pass and made one forty yard run, almost the only plays that clicked for them throughout the afternoon. Both went for touchdowns. Trys for extra points were blocked. Not so good, but not so bad either, considering what the dope sheets predicted was in store for us.

The Squad

| | | |
|------------|-------------|------------|
| Benardo * | Hastie | Tucker |
| Beck | Kitts * | Waleski * |
| E. Crowe * | Lazaro | Zahniser |
| Crunick * | Leson * | Zahorchak |
| D. Crowe * | Mischler * | Van Slyke |
| Donovan * | Moorehead | Sherman |
| Gill * | Namit * | J. Smith |
| Fobes * | Peterson * | Reppert |
| Holland * | Temple | Mifkovic * |
| | * Lettermen | |



Basketball

With a veteran squad to pick from, Coach Harrison put a basketball team into competition this year that came near to making a clean sweep of its schedule. In only five games did the opposition prove too tough for the Edinboro team, and two of these games went to the mighty Westminster aggregation and one of them to the Slippery Rock sharpshooters.

The first game of the season was a charity affair in Erie. Our opponents were the Findlay College squad. After a close battle that kept a large crowd on the edges of their seats, Findlay clinched victory by a one point margin, 28-27.

After this unfortunate start, the boys went to Fredonia Normal and redeemed themselves to the tune of 50-22. Clarion provided the next victim, 33-20 on our own court. Then came Westminster.

Having broken even with the Titans in two games last year, Edinboro felt confident of repeating this season. The first game of the home and home series was at Westminster. After a hectic tussle, quite beyond the control of the officials, Westminster conquered, 41-31. The margin of victory was on fouls. The teams were evenly matched in field goals.

The alumni came to Edinboro. We were poor hosts and sent them away on the short end of a 54-20 score.

A week-end trip to the south netted an even break. We nosed out California by three points, 35-32, and lost to Slippery Rock in an overtime period 37-32.

Indiana came north but found the climate unfavorable. Score: 50-34. Fredonia also came to call and fared even worse at the hands of our sturdy yeomen, 54-29.

California was our next visitor. Our boys, unimpressed by California's previous performance, more than doubled the score. 59-25 was the final count.

Westminster again proved a little too strong. Fresh from victories over the strongest teams in the state, they set Edinboro down for the second time, 45-30.

Slippery Rock slipped up this time and after a rough and ready game, returned home on the wrong end of a 46-34 score.

The season culminated with a road trip. We lost the game and the league championship to Indiana by a disputed basket in the final minutes of play. The official score was 38-36. But just to show that they were a good team in spite of their jinx, the fellows ended the season right by taking Clarion into camp 34-36.

Outstanding in their performance this season were the six letter men, Holland, Leson, Palmquist, Cohen, Simon, and Namit. They were capably seconded by a group of promising understudies, who took over several of the local teams on their own during the season. Aside from the letter men the squad consisted of Bruce Smith, who won his letter last year, Scrafford, Crunick, Mischler, Hazen, Billings, Swift, Lininger, and Beck.



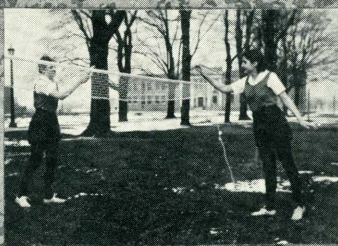
Senior Hockey



Phi Baseball



Phi Skiing Team



Badminton



Phi Track

WOMEN'S ATHLETIC ASSOCIATION



Senior Basketball Team



Inter-class Basketball

WOMEN'S ATHLETIC ASSOCIATION

Women's Athletic Association

The Women's Athletic Association, with the motto, "A team for every girl and every girl on a team", developed this year a group of enthusiastic and skillful players.

Fall activities commenced with hockey. Because of the loss of some of the best players through graduation, the prospects did not look so bright, but the freshmen soon caught the spirit of the game and swung their clubs in championship fashion. One hundred and fifty girls participated in the hockey tournament, and each night full teams could be seen in action. The Deltas proved to have the superior teams and walked away with the honors.

Class competition followed Phi-Delta games. Closely fought battles were staged between all classes. Then in the final match between juniors and seniors, the senior team, consisting of a group that had never practiced together before, produced a championship team.

The outstanding game of the season was that staged against Lake Erie College. This proved to be our only inter-collegiate game. After a strenuous and exciting match we were defeated by a 2-0 score. This, however, evened our standing, each team having a win and a tie to its credit. We regret very much that we could not renew our competition with Mercyhurst College after our three years of friendly rivalry, but Edinboro weather did not permit.

This year volley ball proved that hockey is not the only fall sport in which the spectators are given a thrill. Eighty girls worked hard at this sport, perfecting their serving and batting ability. The Deltas again won their games and the seniors produced the championship class team. This was the first year inter-class volley ball was attempted, and a real battle was waged in each match.

Bowling this year celebrated its second anniversary as a W. A. A. sport. The Phis seem to have a monopoly here as they walked away with the honors for the second year. Fifty girls took part in this activity. Matches were scheduled between the Erie and Edinboro teaching groups with the second semester Erie Phis and Deltas winning both games. The sophomores entered the hall of fame by winning inter-class bowling and handing the senior class its only defeat in inter-class competition.

No sooner had the second semester begun than we were in the midst of basketball season. The matches went in favor of the Phis who won three out of five games, one of which resulted in a tie score. This was the first basketball title won by the Phis in W. A. A. history. Student refereeing was a new feature introduced in this year's tournament.

Inter-class basketball showed the same keen and spirited play as Phi-Delta competition. This week of basketball proved to be the most strenuous of the season. The freshmen, entering the tournament as under dogs, showed what a group of inexperienced but determined players can do. Their only defeat was handed them by the seniors, who took advantage of their last chance to compete in an Edinboro inter-class tournament and won their third championship of the year.

Although snow hindered our hockey, it was a wonderful asset to our skiing and tobogganing tournament. A varied program of events was arranged and spills were few in number. Although the Phis easily walked off with the tournament, a fine exhibition of good form and control in the handling of skis and toboggans was given.

Horseback riding played no small part in W. A. A. activities. This group of girls quickly became accustomed to the sport and by the end of their training period could be rated as fine horsewomen. A horse show was planned in order that these girls might display their skill, but a few feet of snow made this an impossibility.

Spring sports differed from last year in that all coaching was done by students under Miss Ruttle's supervision. Tennis proved to be one of the outstanding events. Over forty girls entered this activity, so a tournament was arranged for the first time in W. A. A. tennis with a prize being given to the player making the most progress in the improvement of her game.

Speedball, a combination of hockey, soccer, and basketball, was enjoyed by a large number of girls. Field and track were also participated in with enthusiasm. By steady and persistent practice many competent performers were developed by the time of the annual meet.

A word of praise is due to Miss Ruttle who has introduced this excellent sports program at Edinboro. It was thoroughly enjoyed by all senior girls, and they wish the organization many more successful years in the future.



Dramatic Club

And the curtain closes on the Edinboro Players' ninth year—a year replete with accomplishments under the capable direction of Miss Jane Stearns Ludgate.

The leadership of Earl Kyle as president for the first semester and of Mary Crozier for the second semester, plus the able assistance of Clifford Jones as secretary and Viola Goode as treasurer, contributed in no small way to the club's achievements.

One three act play and seven one act plays were publicly produced. The classical comedy, "She Stoops to Conquer", by Oliver Goldsmith, was the club's first performance. Beautiful costumes of the colonial period, created under the direction of Miss Dorothy Skinner, added much to the atmosphere of the play.

On February 27, the first half of the annual tournament of one act plays was given. Neihardt's "Eight Hundred Rubles", directed by Charles Kinter; Bartin's "Memory Rose", directed by Dolores Willey; and Hall and Middlemass' "The Valiant", directed by Celia Sampieri composed this group. Two weeks later, "Jazz and Minuet", by Ruth Gioriff, "A Fool of a Man" by Edward Finnegan, and "Thank You, Doctor" by Gilbert Emery, respectively directed by Viola Goode, Richard Crowe and Neil Nelson, completed the tournament. All members participated in at least one phase of production. Gold keys were awarded for excellence in directing to Charles Kinter, '34, in stage setting to Samuel Sullivan, '35, and in acting to Clara Behringer, '37.

In Miss Ludgate's classes in the speech department, from which members may be directly recommended for membership in the Dramatic Club, fifty-two one act plays were staged using considerably over one hundred students as actors.

The club's interesting and valuable weekly meetings were periods of laboratory work in make-up and discussions of stage technique. In spite of the intensity of dramatic work on campus, members found time to hold a theater party at which they visited the Erie Playhouse and saw "Dangerous Corner" by J. B. Priestly.



Dramatic Club—Continued

Two Dramatic Club members produced plays for the Women's Athletic Association. "Not Quite Such a Goose" by Elizabeth Gale was directed by Celia Sampieri and "A Marriage Proposal" by Anton Tchekoff was directed by Clara Behringer.

In addition to being able to boast of having given each of the forty members an opportunity to act, to direct, and to work back-stage, the club is justly proud of three extraordinary accomplishments. First, the acquisition of a club wardrobe. Second, the second performance of "Eight Hundred Rubles" before an audience of one thousand at the Masonic Temple in Erie. Third, the presentation of Oakden and Stuart's "The Luck of Troy", a masque play in the Greek Manner. This unusual performance was made possible by the efforts of Miss Marion Lewis, who created the eight masks and conducted research to assure the authenticity of costumes and setting.

Alpha Psi Omega is the honorary dramatic fraternity. Present members of Edinboro's Gamma Kappa cast, Charles Kinter, Howard Wertman, and Earl Kyle recognize Wilbur Bauer, '34, Clara Behringer, '37, Mary Crozier, '34, Clifford Jones, '35, and Samuel Sullivan, '35, as having the points necessary for membership in the fraternity.

Faculty members of the Alpha Psi Omega, Mr. Bates, Mr. Doucette, Miss Forness, Mr. Mallory, Miss Skinner, and Miss Wilson, assisted by Miss Baron, Mr. Haller, Mr. Zahniser, and Dr. Van Houten, with Miss Ludgate directing, capably enacted Mergue and Hockett's "It Pays To Advertise".



Top row: Mallory, Mathews, Hershey, Ellsmore, St. John, Tucker, A. Hazen.
Middle row: Jones, Stanford, Zimmer (Sec.), Leininger, Zahorchak, Prussia.
Front row: Wood (Pres.), Cassidy (V. Pres.), Merges, Dr. Mudge (advisor), Kusner, R. Hazen, Schweller.

Y. M. C. A.

Activities this year started with a weiner roast at which the freshmen were welcomed to the organization. The next big thing was the provision of a Y. M. room, something that the organization had wanted for years. The fellows donned their old clothes and painted a room on the second floor of the old boys' dorm. It was fittingly dedicated by a service drawn up by Doctor Mudge, with Dean Bates as the main speaker.

During the fall, the Y. M. C. A. coöperated with the Y. W. C. A. in entertaining on our campus the Student Volunteer Movement Conference of the Colleges of Western Pennsylvania and West Virginia.

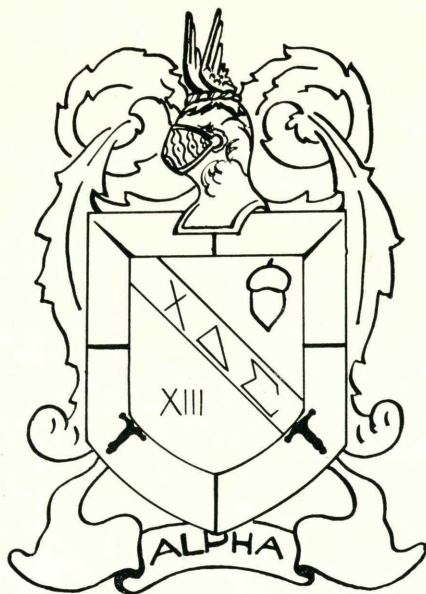
Twelve delegates were sent to the Y. M. C. A. conference at Geneva College, and six delegates to the Y. M. and Y. W. conference at California State Teachers College.

Among the best meetings of the year have been several joint meetings with the Y. W. C. A. The fireside meetings at several of the faculty homes have been very enjoyable.

Programs included several worthwhile speeches given by members of the faculty, ministers of the local churches, and State Y. M. C. A. representatives. Discussion meetings led by student members have also been very interesting.

The Y. M. has sponsored several athletic teams this year. The basketball team has won most of the games that it has played.

The Y. M. C. A. has carried on several worthwhile activities in the interest of the college and its own members. We hope that it will continue its progress.



Chi Delta Sigma

This is the Chi Delta Sigma's sixth year on the Edinboro campus, and this year has been, just as the other five, one of steady progress. In spite of the so-called depression which has burrowed so deeply into many organizations, the spirit of coöperation, willingness, sportsmanship, and fellowship which typifies Chi Delta Sigma has not suffered.

The fraternity's social calendar has not been neglected either. Early in September the members entertained at a house party. This was followed in October by a spaghetti dinner for the pledges. On January thirteenth a dance was held in Loveland hall to honor the new members. On March thirteenth they were given their formal initiation in the presence of the alumni members who were present at their annual meeting which is held on the fraternity's anniversary.

But not all the members' time is spent attending social functions. The members are active in sports, dramatics, and other extra-curricular activities. It might be well to mention also that while most of the brothers' evenings are spent in deep study, occasionally they do take time off for a serenade or a chicken and waffle feed.

OFFICERS

| | |
|--------------------------|----------------|
| President | H. L. Smiley |
| Vice President | O. W. Schnell |
| Secretary | A. C. Alessi |
| Treasurer | E. Lynch |
| House Manager | H. W. Mischler |



Beta Xi Fraternity

The Beta Xi fraternity, the oldest fraternal organization on campus, has gained the reputation of being one of the leaders in every constructive movement.

The fraternity has in its membership, in and out of school, over one hundred men.

This has been a very progressive year for the Beta Xi. It has sponsored many activities and enjoyed much success.

Next year the members will gather to celebrate the tenth birthday of their fraternity.

Whenever jolly good fellows get together, you may be assured that they are Beta Xi men.

MEMBERS

James Barber
Edward Crowe
William Crunick
John Cunningham
George Deimel
Donald DeWoody
Samuel Ferenzio
Paul Gaylor
Reid Hastie
William Holland
Gerald Lynch
Alden Laibe
Joseph Leson
Benjamin Miller
Steve Namit
Burt Noel

Gilbert Osterberg
Phillip Olmes
Francis Rogers
Monte Scott
Beach Sherman
John Smith
Samuel Sullivan
Howard Stanford
Leon St. John
Russell Temple
Raymond Van Slyke
J. Marlin Way
Howard Wertman
William Wallen
Mike Zahorchak
Emil Zetterberg

FACULTY ADVISORS

Amie Doucette

B. Regis Harrison

Frank LaBounty

OFFICERS

| | |
|--------------------------|-----------------|
| President | Edward Crowe |
| Vice President | John Cunningham |
| Secretary | Reid Hastie |
| Treasurer | Carl Wozniak |
| House Manager | George Deimel |

The Normen Club

| | |
|---------------------------|----------------|
| President | Lawrence Behan |
| Vice President | George Defazio |
| Secretary | George Breen |
| Treasurer | John Leamy |
| Faculty Advisor | Mr. Zahniser |

The Normen Club is one of the active social organizations on the campus. It was originally organized to include all the men at the Erie Center of the College. When the Erie Branch was consolidated with the Edinboro school, the Normen Club continued, first as a club for Erie men, then for all men qualifying for membership. Membership is by invitation and is perpetual.

Aside from activity in intermural sports, the club puts on several social functions each year. The three most important affairs are a stag supper and initiation ceremony in the fall, an all school dance just after each Christmas vacation, and a private party for members and their guests in the spring. The first two have already proved successful this year, and the spring party bids fair to be one of the best in the history of the club.

At the beginning of the fall semester, the following were initiated into the Normen Club: Gilbert Graham, John Russell, Russell Hunter, John Shepley, Howard Miller, Howard Stanford, Archie Young.

In addition to the initiates, the members now in school are Jack Streit, Stuart Zahniser, Samuel Levy, David Yomtob, Ross Kitts, Joe Zipper, Gilbert Munz, William Panitske, John Leamy, Lawrence Behan, George Breen, George Defazio, William Huff, Victor Donovan, Franklin Meyer, John Harding, Howard Mischler, Howard Giddings, James Barber, Carl Beck, John Hickey, Earl Kyle, Beach Sherman.

Comstock Club

Officers for this year were Sybil O'dell, president; Leona Grimshaw, vice president; Alice Coppersmith, secretary; Claire Griffen, treasurer, and Miss Hudson, faculty advisor.

The purpose of the club is: to give students a chance to become acquainted with mother nature at home; to cultivate alertness and ability to see and recognize common objects in the plant and animal life of our surroundings; to give an opportunity for study to elementary teachers who wish to teach their nature work from real life as well as from books; and to give training to nature leaders for summer camp work.

In answer to the above calls, this group has become a professional club. There are many divisions to the work, so each individual has a chance to do just what and as much as she wants to do. Each one becomes definitely responsible for her own work only. If students wish, and are successful in all the activities, they become eligible for degree tests, the completion of which places them definitely in the nature leader field qualified for summer camp work.

There are definite stages to be achieved, each of which is recognized by the club. A name is given to each step and the students completing a unit of work automatically become members of a designated group. At the completion of all steps the person becomes a nature leader.

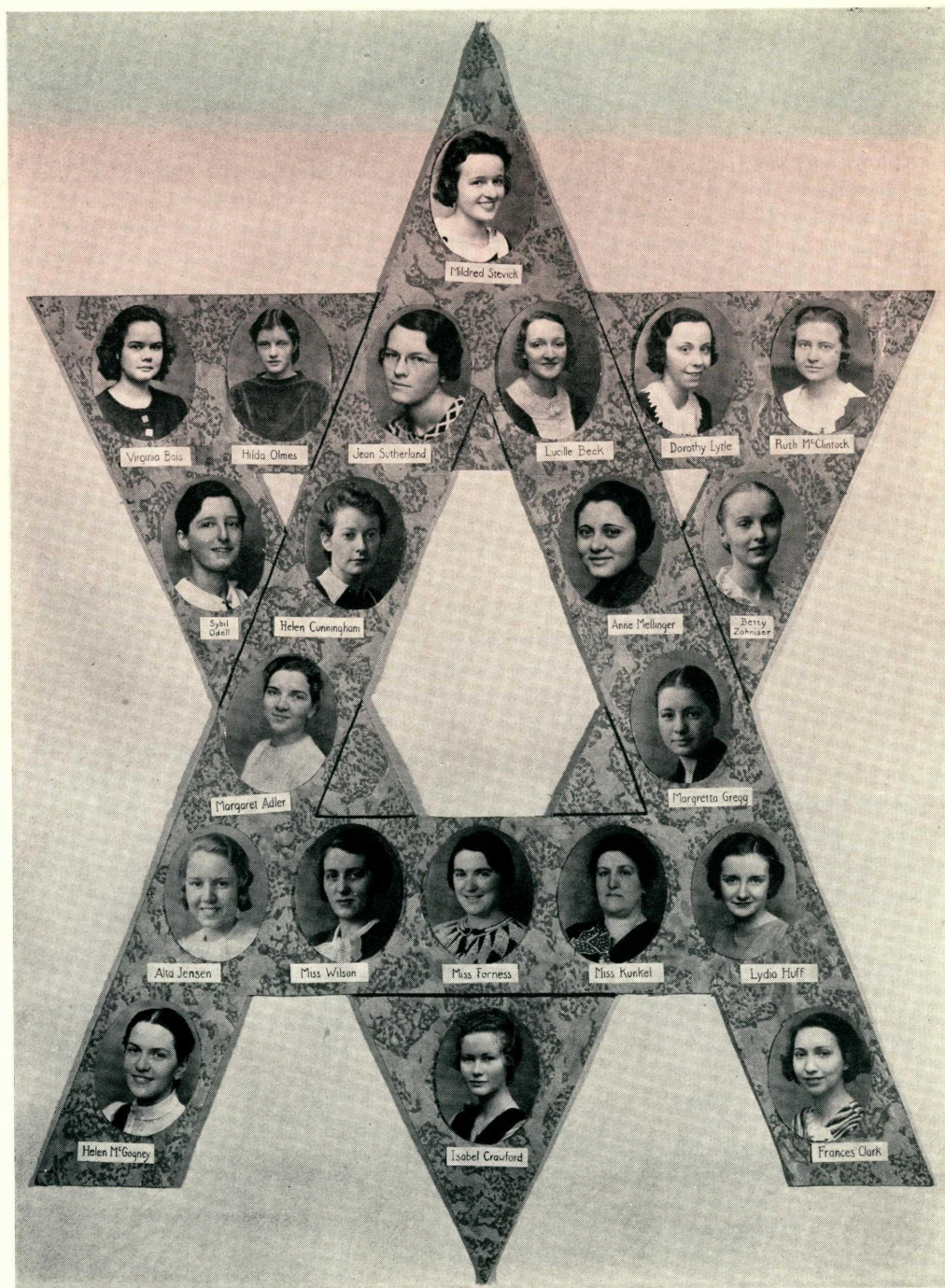
I meant to do my work today—
But a brownbird sang in the apple tree,
And a butterfly flitted across the field,
And all the leaves were calling me.
And the wind went singing over the land,
Tossing the grasses to and fro,
And a rainbow held up its shining head,
So what could I do but laugh and go?

—Richard Le Gallienne.

MEMBERS

Anne Antonovitch
Betty Bright
Dorothy Buchanan
Ruth Campbell
Frances Clark
Alice Coppersmith
Esther Davies
Sara Flaugh
Della Foye
Claire Griffen
Leona Grimshaw
Carrie Goodell
Margaret Goodell
Florence Hill
Ruth Kingsley
Ruth Korb

Jean McQuilken
Dorothy Mathewson
Amy Miller
Buelah Muir
Sybil O'Dell
Mary O'Donnell
Mary Ow
Ruth Peck
Edith Randall
Velma Rich
Mary Rhodes
Thelma Smith
Magdalene Stagi
Nona Warner
Elizabeth Wallett



Alpha Delta Sorority

The spring of 1934 has brought to a close a period of scholastic and social attainment for the members of the Iota chapter of the Alpha Delta sorority.

Early in September, the social calendar was started by a series of teas held at the home of Dr. and Mrs. Crawford. At these occasions a special effort was made to get acquainted with all the new girls and to extend to them a sincere and hearty welcome to Edinboro.

This year brought to the sorority one more anniversary, which added to its span of successful years. For the celebration of this day, a dinner was planned at Hill's restaurant. Alumnae were welcomed back, and wishes for happiness and permanence were extended to the society by its members and friends.

Snow, cold winds, and frost bitten cheeks marked the annual fall Homecoming Day, but the Alpha Deltas succeeded in overwhelming any gloom which might have prevailed by their usual practice of "open house". All alumnae of the school were greeted cordially, and following the football game, the sorority girls served tea and sandwiches to everyone.

On December 22, Loveland Hall was the setting of low lights, soft music, filmy gowns, and dainty refreshments. This week preceding the holidays was the climax of the social whirl on the college campus. Once again the sorority took a prominent part, and entertained its guests at a semi-formal dance.

The new semester ushered in new officers, new activities, and new spirit. The question most pressing at this time was that of new members. After a series of pleasant informal parties the patronesses were decided upon as follows: Mrs. C. C. Crawford, Mrs. W. V. Zahniser, Mrs. A. J. Haller, Mrs. Harold Ghering, and Miss Justina Baron.

The new members were Mary Blanchard, Helen Carnahan, Henrietta Boss, Anne Forrest, Frances Davenport, Alberta Wolcott, Josephine Boyce, Eleanora Ghering, Alice Houk, Suzanne Bower, Marjory Peart, Jean Campbell, Florence Swanson, Clara Behringer, and Elsie Harrison. The Alpha Delta members consider it a privilege to be able to include a group of such high calibre in their filial bonds. The formal initiation took place in the Crawford home, and was supplemented by a formal dinner served at Maple Inn. The evening was concluded by a dance in the College Gymnasium, which was open to all Edinboro students.

Every day is mothers' day, but the Alpha Delta girls had a special day for theirs. On April 14th there were plenty of happy faces when the mothers were made mother patronesses of the sorority. It was a happy day—and one to be remembered, because the custom was first inaugurated at our own State Teachers College at Edinboro.

The event of the year which was anticipated with most pleasure was the annual spring formal. This year it was especially fine, one of the big social events of the school year.

Then, towards the end of the semester, when students generally were very weary, this group of active girls was thrilled by plans for a pleasant week end at Miss Wilson's summer home at Van Buren Point on Lake Erie. A pleasant change from the daily grind.

Here ends the summary of the fetes, accomplishments, and progress of the Iota chapter of the Alpha Delta Sorority. Obviously, the parties were primarily social, but behind them all was the sincere objective of expanding over a greater area the worthwhile purposes of the society and bringing more girls into the permanent bonds of fellowship, love, and service.

Officers are Mildred Stevick, president; Ruth McClintock, vice president; Alta Jensen, recording secretary; and Dorothy Lytle, treasurer. Miss Kunkel and Miss Wilson are honorary members and Miss Forness is faculty advisor.



Delta Phi Delta

Delta Phi Delta, a national honorary art fraternity, was founded at the University of Kansas in 1909 and was made a national society in 1912. The object of the fraternity is to promote art in America; to recognize scholarship; and to foster true friendship. Since May 1909, twenty two chapters have been established in schools of such repute as Chicago Art Institute, University of Southern California, University of Wisconsin, University of Colorado and others. The rapidity with which this group has spread to the far west and to the east is somewhat indicative of the worthwhile service and ever growing strength of the organization. Easternmost of Delta Phi Delta's chapters is our own Chi.

Chi, the twenty second chapter member of Delta Phi Delta, was established on the campus of Edinboro State Teachers College only two years ago. In this short time the local chapter has sponsored many worthwhile affairs both of an educational and of a social nature. Recall the exceptionally fine exhibits posted monthly last year in Loveland which were a part of the American Federation of Arts travelling exhibit. Then, too, a most interesting exchange exhibit from Ohio University's Iota chapter was shown. The intense interest and good hard work which all Chi's members put forth to successfully stage several benefit functions culminated in the sending of the "tall man from Chi", William Earl Kyle, to the national convention held during August 1933 at the Edgewater Beach Hotel in Chicago. As this was the first convention held since the initiation of Chi, the honors which were brought back to Edinboro demonstrate the standing of the newest chapter in this art fraternity of national reputation. These honors included first prize in lettering to Karl Wallen, first prize to Evangeline Mead for a cover design to be used for the national publication known as the "Palette", and first prize to Martha Scalise for the convention program cover design. Jean Sutherland, our president for the second semester, also attended part of the convention sessions.

Locally the chapter endeavors to be an organization to which membership is the ultimate goal of every true-at-heart ScaRab. Membership and active participation in the ScaRab club, the parent of Chi, as well as high scholastic standing, serve as pre-requisites to membership in Delta Phi Delta. Since May 21, 1932, there have been thirty six initiates to our chapter.

The future activities of the chapter will center around the mural decorations for the meeting room depicting the history of art in Pennsylvania's educational development, and studio study in the various media in an effort to produce material for the national exhibit of Delta Phi Delta to be held in Kansas City in 1935. The meeting room is dedicated to Miss Mildred Rice.

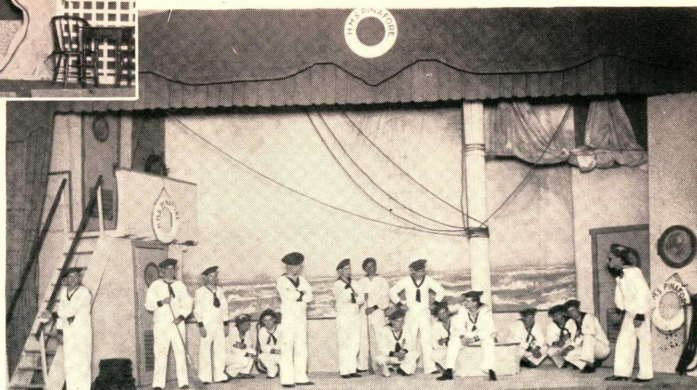
Honorary faculty members are: Mrs. Bates, Miss Rice (organizer), Mr. Haller (advisor), Mr. Bates, Mr. Doucette, Miss Skinner, and Mrs. McCommons.

Graduate members are: Eleanor Beerbower, Virginia Cook, Marguerite Fuller, Evelyn Hay, Mary Hornish, Jane Huselton, Lawrence McVitty, Virgil Mosher, Katherine Pusey, Elizabeth Smith, Karl Wallen, Alice Byler, Joseph Fitzpatrick, Antoinette Haller, Evelyn Heffernan, Verna Huff, Ethel Johnson, Evangeline Mead, Orpha Potts, Martha Scalise, Anne Sullivan, Howard Wertman, Bertha Wheelock, and Marion Lewis.

Undergraduate membership is made up of: William Earl Kyle, Ruth McClintock, Anne Mellinger, Ann Loya, Frances Greismer, and Jean Sutherland.



MISS CHERRY BLOSSOM



PINAFORE

Mixed Chorus

Last September the Boy's Glee Club and the Girl's Glee Club combined to form one group. The first officers of the new organization were William Bannister, president, and Mary Alice Gaylor, secretary-treasurer.

The first semester was spent in rehearsing many selections and in making one public performance, an assembly program. The social event of the semester was a trip to the Playhouse in Erie for a performance there of "Pinafore", an opera which was given last year by the combined Glee Clubs.

Carl Wozniak as president and Alice Houk as secretary-treasurer led the club the second semester, which was given over to the production of the "Mikado", a Gilbert and Sullivan opera.

This group, under the leadership of Miss Wilson, has grown in ability and numbers in the last two years, and prospects are bright for continued development.

PERSONNEL

Anna Anderson
Sydney Bier
Robert Billings
Josephine Boyce
Donald DeWoody
Donald Ellsmore
Andrew Federoff
Mary Foglebach
Anne Forrest
Lorena Fox
Paul Gaylor
James Hale
Elsie Harrison
Margaret Helfrich

Marguerite Holtz
Alice Houk
Anne Hutch
Alta Jensen
Winifred Joslin
Lois Korb
Stephen Kusner
Emily Lamb
Harriet Leberman
Virginia Le Suer
Mary Marsh
Anne Mellinger
Milton McLellan

Esther McKarney
Eleanor McLallen
Ben Miller
Jane Montleone
Jane Morrison
Joseph Novak
Gazella Palfi
Mildred Pratt
Raymond Prussia
Helene Regan
Mamie Richards
Martin Schweller
Mildred Slicker

John Smith
Howard Stanford
Leon St. John
Russell Temple
Lucille Van Dusen
Margaret Vieyra
Gertrude Walker
William Wallen
Alberta Wolcott
Agnes Wolfenden
Carl Wozniak
Garnet Wright
Marjory Zortman

Student Government

Student government at Edinboro is a conjunction of off-campus and dormitory girls for their common government and for the advancement of their common interests.

The officers of the Board of Student Government for the 1933-1934 term were Anne Mellinger, president; Margaret Southern, vice president; Imelda Eisworth, secretary; and Alberta Wolcott, treasurer. All four of these offices are filled each spring previous to the term during which the newly elected officers will serve. In addition to them, the following officers were elected at the first meeting of the house last fall: members at large, Anna Loya and Helen Cunningham, and fire captains, Marion Pelton and Florence Swanson. Also serving on the board were Esther Davies and Margaret Fisher, president and secretary-treasurer respectively of the off-campus girls, and Mary Marsh and Betty Zahniser, members at large of the same organization. At the beginning of the second semester, vacancies were filled by the election of Dorothy Lytle to the post of vice president and the choosing of Ruth Hurd as fire captain.

Last September the student government organization set up certain definite objectives for the year. They were the keeping of definite study hours, provision of opportunities for social contacts, and the cultural development of individuals. These goals were to be accomplished through the sharing of responsibility among all members of the student government group.

With these objectives in mind, the president created four standing committees, appointing the chairmen who in turn selected their co-workers.

The vice president of the board was designated to act as chairman of the social committee, which arranged for the monthly parties for the off-campus girls. A co-chairman was appointed to plan the Tuesday night social hour. This period resulted in a number of very successful seasonal parties.

The secretary was instructed to appoint all proctors and fire captains to aid in the carrying out of the planned study hours. A food chairman with the aid of a different committee each week planned food sales to help defray the expenses of the parties.

An etiquette chairman was appointed to plan the Sunday night lectures on etiquette and to make arrangements for the formal dinners held every second Wednesday night.

This year saw the introduction of the Bowery Ball, a highly successful entertainment which will be repeated every year on the Saturday night preceding Easter vacation.

The student government board provided for dancing in the gymnasium by installing there the radio from Reeder Hall. Also along the musical line were the several serenades given by the Haven Hall girls for the benefit of the other students and the faculty.

It is the belief of the student government board that the best way to develop a proper community spirit is through a continuation of the program as planned for the past year involving a variety of students in a variety of activities.

College Professional Club

The College Professional Club, popularly known as the College High Club, enjoyed the best year of its long existence during the past two semesters. Under the leadership of Helen Cunningham, who had the rare distinction of being unanimously re-elected to office for the second semester, the club quickly became one of the most popular and influential on campus. Great credit must be given to Mr. Wheatly, faculty advisor, whose assistance proved invaluable to the club in its upward climb.

At the regular meetings every two weeks, a great variety of programs was presented, consisting of entertainments and the discussion of professional matters in education that will be of inestimable value for future teachers. At all the meetings standing room only was the rule, and in addition to the regular members there were always several guests present. Among the speakers who discussed educational matters were Mr. Stillings, Miss Kunkel, Father McManaman, and Dr. Van Houten. To these speakers and to the many others, the College Professional Club extends its sincere thanks.

In the social life of the school the College Professional Club was also very active. Besides several parties and a picnic for members, the club sponsored a dance, open to the entire school, just previous to the Christmas vacation. This dance proved to be very popular, and it is hoped that it may become an annual event.

All in all, the past year has been very kind to the College Professional Club, and the old members who will graduate this year hope that the club will continue to higher achievements in 1935 and in the years to follow.



Back row: Mr. Doucette, Emily Lamb, Helen McGogney, Alberta Wolcott, Francis Rogers.
 Middle row: Earl Lynch, Anne Loya, Samuel Sullivan, Sybil Odell, Margretta Gregg.
 Front row: Donald DeWoody, George Nicholas, Reid Hastie.

ScaRab Club

In the fall of 1933 a group of prospective ScaRabs was pushed through the first degree initiation, and later with the bestowing of the "Sacred ScaRabeans" they became full fledged members of the ScaRab Club.

Then came the annual fall breakfast, held at the Doucette residence. Many ScaRabs attended the delightful occasion.

Preceding the thanksgiving holidays, the ScaRabs inaugurated a new event, "ScaRABian Nites", an elaborate and never-to-be-forgotten performance. It proved to be a great success, both socially and financially. So much for 1933.

The new year brought one of the most unique and spectacular events of many winters. On Saturday, February third, in the college gymnasium, the ScaRab Club sponsored its annual ball.

This year it was in the form of a Planetary Ball. For weeks industrious ScaRabs labored with untiring efforts to create the designs for this affair. Their work completed, evening brought an assemblage of members of our solar system, dressed in unique and artistic costumes. Just before intermission a grand march was held in which those competing for prizes appeared before the judges. Henrietta Boss was selected to be queen, and Charles Kinter was chosen king.

OFFICERS

| | |
|-----------------------------|------------------------------------|
| Big Bug | Sam Sullivan |
| Little Bug | George Nicholas |
| Scratches | Sybil Odell |
| Eggs | Anne Loya |
| Guards | Donald DeWoody and Emily Lamb |
| Tylers | Alberta Wolcott and Helen McGogney |
| Headsmen | Francis Rogers and Reid Hastie |
| Wardrobe Mistress | Margretta Gregg |
| Property Manager | Earl Lynch |
| Faculty Advisor | Mr. Doucette |

The Press Club

The Press Club was formed at Edinboro with the coming of the spring semester. It was organized under the direction of John Leamy. It has capably performed the function of getting college news into the home town papers of our students. A staff of ten reporters keep track of all the activities on the campus, and little of note escapes them.

Math and Science Club

This organization is for mathematics and science majors. In its meetings the members discuss interesting and current materials in their fields. Aside from interesting and informative papers presented at the meetings by members, several social functions were held through the year.

College Forum

The Forum is one of the more active organizations at Edinboro. It is a current events club. News of the day is discussed and evaluated. Papers on current economic and political topics are presented. This year was enlivened by a number of debates.

The Spectator

The Spectator, under the editorship of John Hickey and John Leamy, went through its second year a big success. The Spectator developed several good editorial writers. Their comments were clearly presented in an original manner. We have here the makings of an excellent school paper. All that is necessary is frequency added to quality.

Presidents Club

This organization was composed of the presidents of all the organizations on campus. These twenty eight representatives attempted to more closely integrate extra-curricular activities and to act in an advisory capacity in forming school policies relating to the student body. A start was made toward a student government organization which would include the whole school. We expect to see results of this next year.

A Cappella Choir

The A Cappella Choir, organized from the old college choir, made its first year a very successful one. The principal performance was the Christmas vesper service. Aside from this a number of local performances were made. The excellence of the work of this group was acknowledged by invitations for two radio performances over the Erie station.

Y. W. C. A.

The Y. W. was again active this year. A reception and tea for the new students was the first social event of the year. As usual, the Christmas carnival and sale of toys was a huge success. The money was donated to charity. Weekly meetings were held in the Y. W. rooms with excellent student and guest speakers.

Calendar of Events

September—

- 13 Registration. Familiar scenes. Freshman Tea in Haven Hall.
- 14 New faces, new classes, and the usual rush in the Book Shop.
- 20 Boston Symphony Orchestra in the auditorium.
- 26 Collegian's delight—the Community Fair. Merry-go-round, street dance, noise, gaiety.

October—

- 1 Football dance after a thrilling victory.
- 5 Havenites have doggie roast at Billings Point.
- 13 Freshmen are served tea at the home of Doctor Crawford by the Alpha Delta girls.
- 20 Another tea, more girls, more fun, the same sponsors.
- 21 The dramatic club visits the Erie Playhouse.
- 30 A bigger and better football dance.

November—

- 11 Homecoming. Snow, frozen football men, tea in Haven Parlors, Alumni Dinner, Faculty Play, and Alumni Dance.
- 12 Sorority and alumnae have breakfast together.
- 18 Off-campus Girls' Dance.
- 21 Party for the off campus girls in Haven Hall.
- 22 Dramatic Club presents "She Stoops to Conquer".
- 27 Beta Xi men and girls enjoy a long longed for sleigh ride.

December—

- 16 Glee Club sponsors annual Christmas vespers service.
- 17 Alpha Delta, Beta Xi, and Chi Delta Sigma hold a joint serenade and dinner at the Campus.
- 18 Christmas party for all girls in Haven Hall.
- 19 The college students play Santa and bring cheer to the needy. The Y. W. carnival is as big a success as ever.
- 20 The annual Christmas dinner is followed by a dance at which the school is entertained by the College High Professional Club.
- 21 Alpha Delta dance in Loveland.
- 22 Vacation at last!

January—

- 12 A delegation of students leaves to represent the college at an intercollegiate political conference at the University of Pittsburgh.
- 18 Another delegation leaves. This time for the student government conference at Penn State.
- 6 Normen Club dance.
- 13 Chi Delta Sigma pledge dance.
- 19 Mid-year Commencement.
- 20 Clarion basketball team plays here.
- 23 Place seems lonely with our team at Westminster.
- 26 Off-campus girls dine in the Y. W. rooms.
- 27 Frosh party in College Gym.

Calendar of Events—Continued

February—

- 2 Alumni versus varsity. Oh, oh!
- 3 ScaRAb ball—and the question of “what shall I wear?”
- 9-10 The boys are off to the wars again.
- 13 College Hi entertains in Loveland.
- 20 Delta Phi Delta bridge in Haven Hall.
- 22 Presidents meet and eat.
- 23 W. A. A. outdoor sports carnival.
- 27 Dramatic Club Tournament.

March—

- 3 Alpha Delta pledge service.
- Chi Delta Sigma dance in the gym.
- 8 W. A. A. champions dine in Haven Hall.
- 10 Alpha Delta girls dine at Maple Inn, and afterwards give a dance for the college.
- 13 The last part of the Dramatic Club tournament of plays.
- 17 E Club dance.
- 19 Community Play. The college has lots of ideal models.
- 22 Academy Choir is entertained.
- 24 The Bowery Ball. Low lights, empty bottles, onion odors, colored nails, and flashy outfits.
- 27 The House girls entertain the off-campus girls.
- Marks were published. A sad time was had by all.
- 28 The annual athletic show in the gym. Boxing, wrestling, tumbling, shrieking, and a packed house.
- 29 Vacation begins, and we all need it.

April—

- 3 Back to the grind again.
- 4 Our old pal, Bob Gibson performs.
- 7 The glamorous prom.
- 14 Mothers' weekend. Now they know how their daughters live.
- 28 Alpha Delta spring formal.

May—

- 2 The Glee Club presents the “Mikado”.
- 5 Beta Xi spring formal and annual “tux rush”.
- 12 Chi Delta Sigma spring formal.
- 19 Alpha Deltas spend the week-end at Van Buren Point.
- 26 Alumni back in full force for the yearly dance—just as spry as ever.
- 29 Farewell to a group of good students—good pals!

Last Sayings of Famous Seniors

Just as the poets say, "Our life is but a day repeated", so can I say that my four years at Edinboro State Teachers College are as a day repeated—and the majority were happy ones!

—Mary Crozier.

Playtime is over, work begins.

—Leon St. John.

These past four years have not been all drudgery.

—Jeannette Seabrooke.

A new start to a different type of life.

—Sherman E. Dance.

E—ducation
D—egree
I—deals
N—eighbors
B—asketball
O—rganizations
R—ain
O—rders

—Dorothy Lytle.

Sorry folks, the joker played his trump.

—Wilbur Bauer.

Three tall pines—a faculty as inspiring—a campus life as interesting.

—Jean Sutherland.

Fun
Friendship
Fellowship
with companionable and helpful personalities.

—Mildred Stevick.

Edinboro gave me real happiness.

—Franklin Meyer.

The staff of the 1934 Conneauttean presents this book to you with its compliments, and with the sincere hope that you may find your next year at Edinboro or in the exercise of your chosen profession, as pleasant as the last has been.

This book is small, but we have tried to make it representative of all phases of our college life. We rejoice with you where we have succeeded and ask your forbearance where we have failed.

As we finish this little volume and contemplate our work, we find that we have created, quite unconsciously, an allegory. May this little book represent, perhaps, the effect of financial stringency upon ourselves, our spirits a little flattened, our activities a little curtailed, our accomplishments falling short of our ambitions? If that is so, let us hope that the allegory will be carried through to its completion; that our spirits will expand, the scope of our activities will enlarge, our dreams will come true, and our pocketbooks will fatten when in 1935 the Conneauttean is again presented to you, a full-fledged year book.

YOUR STAFF

| | |
|-------------------------------|----------------------------|
| Stuart Zahniser | Editor |
| Margaret Adler | Assistant Editor |
| Anne Mellinger | Business Manager |
| Viola Goode | Assistant Business Manager |
| Raymond Van Slyke | Assistant Business Manager |
| Ben Miller | Assistant Business Manager |
| Mildred Stevick | Women's Sports |
| Marion Pelton | Women's Sports |
| Anne Loya | Art Editor |
| George Diemel | Assistant Art Editor |
| Esther McDowell | Assistant Art Editor |
| Katherine Heberling | Typist |
| Helen Cunningham | Calendar |
| Wilma Dieter | Senior Editor |

The Conneauttean Staff hereby acknowledges its appreciation to the following patrons who so generously contributed to the success of this book:

Campus Lunch Ken and Julia
M. G. Gillaspie—Men's Furnishings
Boston Store
P. A. Meyer and Sons—Clothiers
Gleaton's Cross Roads Dinor
Jolley's Pharmacy
Dundon Brothers—Men's Furnishings
Walker Brothers—Buick Garage
Edinboro Home Bakery
Sevin's Art Store
Zindel and Stauffer—Hardware
Rosario Pancallo—Shoe Repairing
C. Nardi—Shoe Repairing
M. E. Klingensmith—College Book Shop
S. M. Flickinger Co.
Baker's 5c to \$1.00 Store.
Hopkin's Gift Shoppe
City Market
G. V. Hill—Restaurant
Hostetler Electric Co.
Cooper-Swift Co.
Park Motor Co.
City Market

COLLEGE ARCHIVES

