

# BLOOMSBURG UNIVERSITY



**SOFTBALL 1988**

**Pennsylvania Conference Champions**

**1983 • 1984 • 1985 • 1986 • 1987**

## — Bloomsburg University —

Bloomsburg University is a multi-purpose institution of higher education serving the citizens of Pennsylvania as one of the 14 Commonwealth-owned universities. With a commitment to provide a quality, affordable education for all qualified students, Bloomsburg combines the tradition of an institution founded in 1839 with modern learning, living, and recreational programs and facilities. Commonwealth funding provides 55 percent of Bloomsburg's annual operating budget.

Undergraduate students may enroll in degree programs in 64 areas of study in the arts and sciences, business, teacher education, nursing, and health sciences. A program in engineering is offered in conjunction with the Pennsylvania State University, and preparation for post-baccalaureate study at professional schools is offered. Unique educational opportunities are available through advanced placement, study abroad, professional practicum, internships, independent study, and the Department of Developmental Instruction programs.

At the graduate level, the master's degree is offered in 25 areas of study, and there are 10 supervisory certification programs in the field of teacher education.

Extended program offerings provide continuing, life-long learning opportunities for people of all ages and educational interest through non-degree courses, non-credit for work experience.

Enrollment for the fall semester 1987 totalled 6,936 students. There were 5,542 full-time and 900 part-time undergraduates and 122 full-time and 462 part-time graduate students. Instruction is provided by a 367-member faculty.

The university's 173-acre campus overlooks the Town of Bloomsburg and the scenic Susquehanna Valley. Carver Hall, built in 1867, provides a contrast with the modern facilities the include seven residence halls, a library, a 2,000-seat auditorium, student union, dining hall, gymnasium, administration building, five classroom buildings, athletic fields, and recreational areas on the lower campus.

An athletic complex and recreational area occupy the school's 100-acre upper campus. In addition, the James H. McCormick Center for Human Services is the newest building on the lower campus and was used for the first time in the fall of 1985.

Located less than two miles from an Interstate 80 interchange and 22 miles from Interstate 81, Bloomsburg is within one hour's driving time from Wilkes-Barre/Scranton, Hazleton, and Williamsport, 1½ hours from Harrisburg, 2½ hours from Philadelphia, and three hours from New York City. The community is 45 miles from the Avoca International Airport and is serviced by major bus lines.

Bloomsburg has an enviable placement record. Of the 1,104 who graduated in the 1984-85 academic year, 81.4% have meaningful employment or were in graduate school one year later.

Active files of over 25,000 living alumni are kept by the university. Graduates of BU have distinguished themselves in areas including law, medicine (one is a Nobel Laureate), science, architecture, education, industry, and research.

Bloomsburg University is fully accredited by the Middle States Association of Colleges and Schools, The National Council for the Accreditation of Teacher Education, and the Pennsylvania Board of Education.

Bloomsburg University is committed to Affirmative Action and Equal Opportunity. Minorities, women, and other protected class members are urged to pursue educational and employment opportunities at Bloomsburg University.

## Table of Contents

Bloomsburg University .....	Inside Front Cover
To the Media .....	1
Quick Facts and Contacts at BU .....	1
Harry Ausprich, President .....	2
Mary Gardner, Athletic Director .....	2
Jan Hutchinson, Head Coach .....	3
Chris Moyer, Assistant Coach .....	3
Susan Kocher, Assistant Coach .....	3
The Huskies' Staff .....	4
The Huskies' 1988 Outlook .....	5-6
The Huskies' 1988 Roster .....	7
The Huskies' 1988 Players .....	8-12
The Huskies' 1987 Season Results .....	13
The Huskies' 1987 Final Statistics .....	14-15
The Huskies Records Against All Opponents .....	16
The Huskies' Records .....	17-18
The Huskies' Over the Years .....	19
The Huskies' Softball All-Americans .....	20
The Huskies' Area Media Outlets .....	Inside Back Cover
The Huskies' 1988 Schedule .....	Back Cover

## To The Media

For further information concerning Bloomsburg Softball, contact Sports Information Director Jim Hollister, Waller Administration Building, Bloomsburg University, Bloomsburg, PA 17815. (Phone 717-389-4413; 717-784-7756, home).

## Quick Facts and Contacts at BU

**Location:** Bloomsburg, PA 17815

**Enrollment:** 6936

**General Information:** 717-389-4000

**President:** Dr. Harry Ausprich

**Associate Athletic Director:** Mary Gardner

**Colors:** Maroon and Gold

**Nickname:** Huskies

**Home Field:** Lower Campus

**Trainers:** Art Hopkins and Rolene Wagner

(Phone: 717-389-4401)

**Equipment Manager:** Ron Morgan (phone: 717-389-4374)

**Head Softball Coach:** Jan Hutchinson (phone: 717-389-4380)

**Conference:** Pennsylvania

**1987 Overall Record:** 33-10

**1987 Conference Record:** 7-3

## President Harry Ausprich



Dr. Harry Ausprich began his tenure July 15, 1985, as the 16th president of Bloomsburg University. His appointment follows that of former President James H. McCormick, who is currently serving as the Chancellor for the State System of Higher Education, and Dr. Larry W. Jones, who served as President for two years on an acting and interim basis.

Prior to coming to Bloomsburg, Ausprich served at Kent State University as dean of the College of Fine and Professional Arts from 1978 to 1985. While there, he was instrumental in implementing a program in fashion design and merchandising that has gained a national reputation. In addition, he served as dean of the Blossom Festival School Program in cooperation with the Cleveland Orchestra.

In previous years, he served as dean of the Faculty of Arts and later as dean of the Faculty of Arts and Humanities, both at SUNY Buffalo. While at Buffalo, he developed a proposal for a program in dance and for a series of interdisciplinary seminars in the arts. In the early 1970s he worked at the University of Northern Iowa as dean of the College of Humanities and Fine Arts. Classroom teaching experiences and departmental chairperson responsibilities comprised his major assignments at Indiana State University and Memphis State University.

In addition to these administrative responsibilities, Ausprich has had varied professional experiences while serving as a member of the Ohio Humanities Council, the National Fine Arts Commission, the City Planning Commission in Buffalo, the Board of Buffalo Philharmonic Orchestra, and the National Endowment of the Humanities Public Program Committee. He has also served as the speech editor for Holt, Rinehart and Winston, Inc., was a guest lecturer and consultant on faculty development and retraining for the Pennsylvania State Colleges, and has published and delivered papers to numerous professional speech and theater associations.

His academic background includes a bachelor of science degree from New York University, College at Buffalo, a master of science degree from the University of Wisconsin in theater and broadcasting, and a doctorate from Michigan State University in communications and theater.

## Athletic Director Mary Gardner



Mary Gardner took over as Bloomsburg's interim athletic director in January of this year after serving as the university's associate athletic director for one and one-half years. She replaces Roger Sanders, who was the director of athletics for five years before stepping down to resume his classroom duties and concentrate on his responsibilities as head wrestling coach.

Her new duties include directing the university's athletic department which includes overseeing the daily activities of the university's 18 athletic teams, scheduling of events, budget control and fundraising to aid the general athletic scholarship program. She works in close conjunction with the Husky Club and the university's alumni association to help Bloomsburg in its efforts to maintain a highly competitive program within the Pennsylvania Conference and the National Collegiate Athletic Association (NCAA). In addition, Gardner directs the activities in the university's two athletic facilities, Nelson Fieldhouse and Centennial Gymnasium as well as the many athletic practice and playing fields on the university's upper and lower campuses.

Before assuming her athletic administration duties two years ago, she was the head coach of the women's swimming and diving program for 12 seasons and directed the men's swimming and diving unit for one season. Her women's squads posted an overall record of 88-28 in dual meet action and finished as the Pennsylvania State Athletic Conference (PSAC) runnerup six years in a row from 1981 to 1986. She coached 44 performers to multiple All-American honors as the Huskies' coach.

Gardner joined the Bloomsburg faculty in 1974 and initiated the women's swimming and diving program that winter. In just her fifth season as head coach, she directed the team to its lone undefeated season as the Huskies posted a perfect 10-0 mark. In addition, she serves as the school's first field hockey coach and registered a four-year record of 20-12-9. She also serves as the university's Director of Equal Opportunity in Sports (DEOS).

The Hatboro, Pa. native earned her bachelor's and master's degrees from East Stroudsburg where she was a four-year letterwinner in field hockey and swimming. She was a three-time national champion in the breaststroke.



## Head Coach Jan Hutchinson



Jan Hutchinson is beginning her 11th season as Bloomsburg University's head softball coach. With a record of 253-69, she is looking for the school's sixth straight 30-win season. Hutchinson's squads have compiled 175 victories (33-4, 30-4, 35-6, 42-5, 35-11) over the last five years for an 86.6 winning percentage. Last season's team won its fifth-consecutive Pennsylvania State Athletic Conference Championships, and the Huskies will be looking for their ninth-straight appearance in the national tournament under Hutchinson's direction.

In the fall, Hutchinson also serves as the field hockey head coach for Bloomsburg. Her teams have built a winning percentage of .819, while posting a record of 155-29-14, but more importantly, have claimed four national championships in the last seven years, including the Division III title this past season. In 1982, Hutchinson was one of the first coaches ever to lead two teams to national titles in the same year as both the field hockey and softball teams captured AIAW titles.

A native of Newton, N.J., she received her Bachelor of Science degree in 1971 and earned her Master of Education degree in Physical Education in 1979, both from East Stroudsburg University. Prior to coming to Bloomsburg, she was a member of the faculty of Blair Academy in Blairstown, N.J., where she initiated an interscholastic sports program for women and served as head coach of field hockey, basketball, and softball teams.

Mrs. Hutchinson and her husband Tom, who serves as an assistant wrestling coach at Lehigh University, reside in Allentown, Pa.

## Assistant Coach Chris Moyer



Chris Moyer enters her second season as an assistant softball coach at Bloomsburg. She will be in charge of handling the Huskies' pitching staff. Moyer graduated from BU in 1986 with a degree in psychology/sociology. Moyer was a four-year starter for the Huskies and holds multiple season and career pitching records. In addition, Moyer was selected to the GTE/CoSIDA Academic All-American second team in 1986.

Throughout her four seasons (1983-86), Moyer compiled a 40-4 record and holds the school record for fewest losses in a career. She also holds a career records for least hits allowed (159), least runs allowed (44), and least walks allowed (65). Throughout her career, Moyer pitched four

no-hitters.

Moyer also holds season records for least walks allowed with six, lowest earned run average, 0.07, set in 1986 season, and fewest losses with zero.

In her final season as a Bloomsburg pitcher, Moyer had a record of 13-1, giving up just one earned run in 105 innings pitched. Moyer walked only 13 opponent batters while striking out 39.

## Assistant Coach Susan Kocher

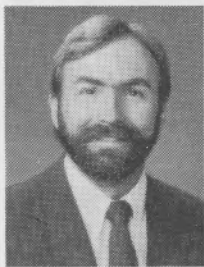


Susan Kocher is in her first season as an assistant coach for the Huskies after completing a fine four-year career in which she was an All-Pennsylvania Conference selection three times and earned All-American honors in her junior and senior seasons. She had a career batting average of .318 with 116 hits in 365 at-bats during her four seasons, spending most of that time as the club's designated hitter. Kocher scored 65 runs and knocked in 71 others.

On the mound, she spent the last three seasons as the Huskies' ace and compiled a record of 71-13 with an earned run average of 0.45. She holds several Bloomsburg season records including games pitched (40), innings pitched (256.2), least hits allowed (26), most wins (30), most shutouts (15), and consecutive hitless innings (24). She also established the school mark for career appearances with 89. Kocher threw eight no-hitters in her four seasons with the squad.

She will team with Moyer to handle the Huskies' pitching staff and, in addition, will provide instruction to the hitters.

## The Huskies' Staff



**Art Hopkins**  
**Head Trainer**

Art is in his fifth year as head trainer at Bloomsburg. He is a licensed physical therapist (LPT) and received his certificate from Hahnemann Hospital in Philadelphia and his undergraduate degree at East Stroudsburg University.



**Rolene Wagner**  
**Assistant Trainer**

Rolene is in her second year as assistant trainer for the Huskies. She is a former teacher and head trainer at Passaic Valley High School in New Jersey. She earned her Masters Degree in Health and Physical Education (MED) from East Stroudsburg University and her undergraduate degree in health and physical education at Lock Haven University where she became a certified athletic trainer in 1978.



**Ron Morgan**  
**Equipment Manager**

Ron Morgan has served as Bloomsburg's equipment manager for the past 14 years. Ron is located in the Nelson Fieldhouse and handles most of Bloomsburg's 18 varsity programs.



**Jim Perry**  
**Team Physician**

Jim Perry is in his sixth year as Bloomsburg's team physician. Perry received his doctorate from the University of Florida and did his orthopedic training at Dartmouth College. He did his sports medicine fellowship at Harvard University. Perry received his undergraduate degree from the United States Air Force Academy in Colorado. He has been a member of the Geisinger Medical Center staff since 1981.



**Kathy Kopach**  
**Team Physician**

Kathy Kopach is in her third year as team physician for Bloomsburg. Kopach received her doctorate from Penn State University and did her residency in orthopedic surgery at Dartmouth College and Geisinger Medical Center. She received her undergraduate degree from Carleton University in Northfield, Minn. She has a private practice in Berwick.

## The Huskies' 1988 Outlook

Opponents on the 1988 Bloomsburg University softball schedule know that coach Jan Hutchinson has "rebuilt" before. This season, Hutchinson has to replace eight seniors including six starters, three of whom earned All-American honors. However, a fine recruiting class, along with several veterans and a pair of transfers that give the unit a solid pitching staff, should make the Huskies a serious contender for their sixth straight Pennsylvania Conference title and a ninth-consecutive national tournament appearance.

The All-American trio, Jean Millen, Susan Kocher, and Kate Denny, helped the Huskies record their sixth-consecutive, 30-win season in 1987 accounting for 130 hits in 399 at-bats, an average of .326. They had a combined 68 runs batted in, scored another 74 times, and led the team in all but one individual offensive category. In addition to being the club's designated hitter, Kocher was the Huskies' leader on the mound recording 30 wins against nine losses and had an earned run average of 0.60.

Also gone are reserve catcher and designated hitter Lori Guitson, shortstop Donna Graupp, third basemen Donna Shief and Lori Pisco, and centerfielder, Joan Lewis.

Providing the most experience and strength in the infield is veteran catcher Cindy Freeland. The senior has already won All-American and CoSIDA/GTE Academic All-American awards in her previous seasons with the team. She will be starting for the Huskies for the fourth-consecutive year. Freeland had 34 hits and four doubles in 126 at-bats a year ago for an average of .270.

"Cindy is without a doubt one of the finest catchers in the country," said Hutchinson. "She has a strong arm and a great sense for pick-offs. She also calls an extremely intelligent game behind the plate."

Behind Freeland will be newcomer Lori Shelly. She has shown exceptional hitting ability and will be called upon to be a designated hitter when she is not behind the plate.

Although newcomers will play a huge role, one of the most experienced positions on the team is the mound corps. Despite the loss of Kocher, the Huskies will have four seasoned pitchers to depend on during the tough 41-game schedule which begins in early March.

Senior Kirsten Upcraft, a transfer from Stephen F. Austin University in Texas, brings three years of experience to the mound and was the number two pitcher for the Lumberjacks when they won the 1986 NCAA Division II championship.

Joining Upcraft on the mound are sophomores Gina Lindenmuth and Julie Robbins. Although they saw limited action last season, both made vast improvement during the off-season and are expected to see more action in 1988. Lindenmuth was 3-1 with an ERA of 0.63, while Robbins was 1-0 with an ERA of 2.03.

Joanna Sulmonetti, a sophomore transfer from George Mason, will add depth to the strong staff. A year ago, she was the number one pitcher for the Patriots.

"We have some strong arms and more quality depth than we've ever had on the mound," said Hutchinson. "All four are capable of going out and giving us a good game."

Sophomore Helen Fausnaught will add maturity to the young infield and will see time at first base along with freshman Patti Camper. Fausnaught played at Lock Haven as a freshman and adds good defensive skills to the right side of the infield. Camper is one of the club's top athletes and could play at several positions but appears to be the leader for the starting berth at first base.

Senior Kim Fey is one of three returning starters and will be expected to be one of the leaders in the infield for the Huskies. Last season, she hit .241 and was third on the team in putouts with 110 at second base. She will be joined by freshman Terry Hosier, who was an All-Metropolitan player in Norfolk, Virginia, in 1987, giving the Huskies two solid players at second.

A trio of freshmen could share time at shortstop with Sandy Herr, Janet Buckheit, and Julie Wolfe all contending for the starting job. Herr will have to catch up with the others after spending the winter as a member of the university's basketball team. Wolfe's early season development could be one of the keys to the Huskies' success and gives the team good coverage up the middle and another solid bat in the

lineup. Herr and Buckheit also have good range and should see playing time as the season progresses. Buckheit is one of only two left-handed batters on this season's squad.

Third base is another position that is up for grabs with another pair of freshmen vying for the starting spot. Diane Tafel and Brenda Lewis give the Huskies good fundamentals and quickness on the corner. Both have the capabilities of being good hitters and possess strong arms.

"The abundance of youth on the left side of the infield means we may need some time to jell," said Hutchinson. "They must learn our defenses and learn to play together as a unit quickly. When the pressure is on, confidence must be one of our strengths, and these players just need some time to develop it."

Some veterans give the Huskies experience in the outfield with senior Kim Vogel and sophomore Cindy Slocum returning with the most playing time from last season. The duo shared time in rightfield with Vogel hitting for a .281 average on 25 hits in 89 at-bats and Slocum picking up 13 hits in 45 at-bats for a .289 average. Sophomore Paula Miller saw very limited time appearing at the plate just 11 times. Freshman Tracy Nilles rounds out a group of four solid performers behind the infield for Hutchinson's team. Vogel has good speed on the basepaths and is one of the Huskies' top bunters, while Slocum has good power at the plate and moves well in the outfield. Miller has improved with a year of experience behind several fine players and will push for a starting berth. When she joins the club after basketball season, Nilles will be the first three-sport athlete at the university in several years. She was a member of the Huskies' national champion field hockey team in the fall. Her bat could also make her a candidate for the designated hitter job.

"We brought in a lot of talent and have one of our more versatile teams in several seasons," said Hutchinson. "How quickly we come together will depend on how well the new people adjust to the system here and whether or not some leaders step forward from the group of veterans."

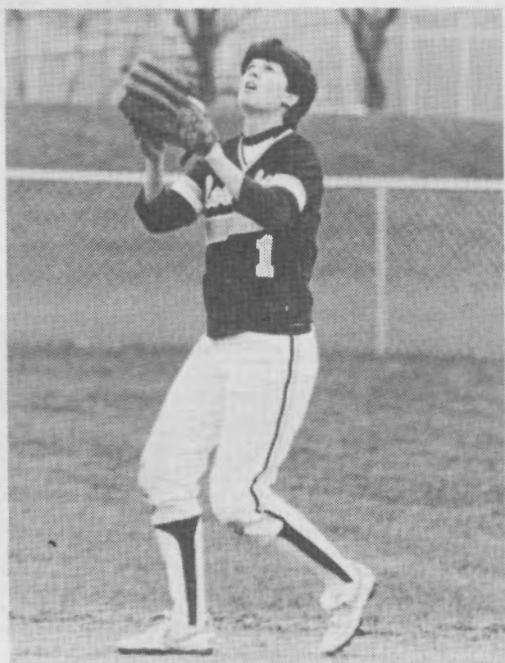




## The Huskies' 1988 Roster

**NUMBER**

W/M	NAME	POS.	CLASS	HOMETOWN (HIGH SCHOOL)
4/4	Janet Buckheit	SS	Fr.	Waterford, CT (Holy Cross)
15/15	Patti Camper	1B	Fr.	Chesapeake, VA (Deep Creek)
11/11	Helen Fausnaught	1B	So.	Danville (Danville)
2/2	Kim Fey	2B	Sr.	Sweet Valley (Lake-Lehman)
19/19	Cindy Freeland	C	Sr.	Wormleysburg (Cedar Cliff)
7/25	Sandy Herr	SS/1B	Fr.	Jonestown (Northern Lebanon)
6/6	Terry Hosier	2B	Fr.	Woodbridge, VA (Gar-Field)
21/21	Brenda Lewis	3B	Fr.	Dalton (Lackawanna Trail)
23/23	Gina Lindenmuth	P	So.	Whitehall (Whitehall)
5/5	Paula Miller	OF	So.	Norfolk, VA (Cherokee)
30/18	Tracy Nilles	OF	Fr.	Kempton (Kutztown)
24/24	Julie Robbins	P	So.	Berwick (Berwick)
22/22	Lori Shelly	C	Fr.	Manheim (Manheim Central)
20/20	Cindy Slocum	OF	So.	Dallas (Lake-Lehman)
9/29	Joanna Sulmonetti	P	So.	Hammonton, NJ (St. Josephs)
8/8	Diane Tafel	3B	Fr.	Churchville (Council Rock)
10/10	Kirsten Upcraft	P	Sr.	State College (State College)
12/12	Kim Vogel	OF	Sr.	Fallsington (Bishop Conwell)
14/14	Julie Wolfe	SS	Fr.	Berwick (Berwick)



## The Huskies' 1988 Players

### JANET BUCKHEIT

Freshman SS  
Waterford, Conn.-Holy Cross H.S.  
Bats: Left Throws: Right  
#4

With experience she could make a valuable contribution to the infield which has just one returning starter. Has solid shortstop skills including a good arm and range. Her competitiveness should help her in the battle for a starting role. Is one of only two left-hand batters on this season's club and has shown some strength at the plate.

Major: *Teacher Education*



### PATTI CAMPER

Freshman 1B  
Chesapeake, Va.-Deep Creek H.S.  
Bats: Right Throws: Right  
#15

A good athlete who could play just about anywhere for the club but will most likely be the Huskies' starting first baseman. A great pair of hands and stretching ability which enables her to handle low throws with relative ease. She has a strong bat and will be depended on to supply some of the power in the lineup. Could be the next in a line of fine players to play at this position for the Huskies.

Major: *Special Education*



### HELEN FAUSNAUGHT

Sophomore 1B  
Danville-Danville H.S.  
Bats: Left Throws: Left  
#11

Biggest obstacle for her to overcome may be missing the last two seasons after transferring from Lock Haven. Hit .279 for the Bald Eagles as a freshman collecting 12 hits in 43 at-bats in 18 games. Has looked solid preseason workouts, and her maturity could be a key for the young infield. Uses good aggressiveness at the plate to her advantage and possesses a consistent glove when in the field. She committed only one error in her one season of playing for a fielding average of .973.

Major: *General Studies*



### KIM FEY

Senior 2B  
Sweet Valley-Lake-Lehman H.S.  
Bats: Right Throws: Right  
#2

Will have to be one of the players to step forward and be one of the leaders on this season's team as the lone returning starter in the infield. Has surprising range and uses good quickness to cover a lot of area in the infield. Was credited with 61 assists a year ago and is one half of a strong pickoff duo with catcher Cindy Freeland. She was one of the three players on the team in double figures in walks with 17 last season and makes good contact at the plate as she had the third-fewest strikeouts among the starters with seven. She is working on improving as a hitter and collected 24 hits in 112 at-bats last season for an average of .241. She used good speed to be the team's stolen base leader with six. She also scored 16 times.

Major: *Elementary Education*



**CINDY FREELAND**

Senior C

Wormleysburg-Cedar Cliff H.S.

Bats: Right Throws: Right

#19

May be the top catcher in Division II and enters her fourth season as the Huskies' starting catcher. Has been an All-American and GTE/CoSIDA Academic All-American in her previous seasons with the club. Possesses a strong arm and a good pickoff throw to any base. Calls an extremely intelligent game and has handled the Huskies' pitching staff masterfully over the past three years. Was second on the team in putouts with 176 in 1987 and committed just three errors in 195 chances. She picked up 34 hits in 126 at-bats last year for an average of .270. Scored 17 runs and knocked in 13 others. Had the fewest strikeouts on the team as she went down swinging just once the entire season. Shares the school record for runs scored in a single game with four.

Major: *Medical Technology***SANDY HERR**

Freshman SS/1B

Jonestown-Northern Lebanon H.S.

Bats: Right Throws: Right

#7/25

Good athlete who can play either shortstop or first base. Has a strong arm, good fundamentals and very good range that allows her to get to most balls hit in her direction. Uses her head well on the basepaths and is a threat to pick up the extra base at any time. In addition, she also can supply the team with some power at the plate, which makes her an asset to the offense. Could be a little behind in the early part of the season after spending the winter as a member of the university's basketball team.

Major: *Biology***TERRY HOSIER**

Freshman 2B

Woodbridge, Va.-Gar-Field H.S.

Bats: Right Throws: Right

#6

Will probably spend the season behind Kim Fey at second base, but has the potential for several good seasons with the squad. A year of experience should help build confidence and improve her bat. She has a good turn at second base and will see time as the season progresses.

Major: *Pre-physical Therapy***BRENDA LEWIS**

Freshman 3B

Dalton-Lackawanna Trail H.S.

Bats: Right Throws: Right

#21

Along with another newcomer, Diane Tafel, gives the Huskies' a pair of solid third base prospects. Her versatility also allows her to move to catcher if necessary. She really likes to challenge batters on defense and uses her strength and quickness to her advantage. Has a good arm to get the ball to first in a hurry and should battle for the starting spot.

Major: *Secondary Education*

**GINA LINDENMUTH**

Sophomore P  
Whitehall-Whitehall H.S.  
Bats: Right Throws: Right  
#23

Her improvement in the offseason should surprise a lot of the Huskies' opponents. Posted a 3-1 mark last season as the team's number two pitcher behind Susan Kocher and had a 0.63 ERA. She pitched in 33.1 innings and allowed just three earned runs. Has improved her speed and already possesses a great drop and curve as well as a solid changeup. Has an entirely different attitude entering this season and should be called upon much more.

Major: *Business Administration*

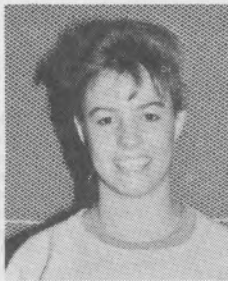


**PAULA MILLER**

Sophomore OF  
Norfolk, VA.-Cherokee H.S.  
Bats: Right Throws: Right  
#5

Was one of the reserve outfielders a year ago but is one of four players that are competing for the three starting spots this season. Her overall game looks vastly improved and her hard work ethic is beginning to pay off. Made just 11 plate appearances last season picking up two hits and scored three runs.

Major: *Business Administration*



**TRACY NILLES**

Freshman OF  
Kempton-Kutztown H.S.  
Bats: Right Throws: Right  
#30/18

The first three-sport athlete for the Huskies in several years as she performed for the national champion field hockey team in the fall and spent the winter as a member of the basketball team. Has good strength, which makes her a real threat at the plate. If she doesn't play in the field, she could fill the role of designated hitter for the team. Will need to catch up after getting a late start this spring.

Major: *Political Science*



**JULIE ROBBINS**

Sophomore P  
Berwick-Berwick H.S.  
Bats: Right Throws: Right  
#24

Saw very limited action on the mound last year for the Huskies pitching 17.2 innings and registering an ERA of 2.03. Appears to have made improvement in the offseason and is expecting to contribute more in this campaign. Doesn't possess overwhelming speed but is getting more movement on the ball, so she must keep it down in the strike zone to be effective. Also has the potential to be a decent hitter.

Major: *Elementary Education*



**LORI SHELLY**  
Freshman C  
Manheim-Manheim Central H.S.  
Bats: Right Throws: Right  
#22

Will spend the season behind Cindy Freeland at catcher but could see a lot of action as the Huskies' designated hitter. Has exceptional hitting ability and can consistently supply the long ball. Should be one of the club's best offensive producers. She moves well and should develop into a top-notch collegiate catcher. Was one of the goalies on the university's national championship field hockey squad.  
Major: *Business Administration*



**CINDY SLOCUM**  
Sophomore OF  
Dallas-Lake-Lehman H.S.  
Bats: Right Throws: Right  
#20

Shared time with Kim Vogel in right field last season but could play in either left or centerfield this year. She will be counted on to be one of the team's power hitters. Hit .289 a year ago with 13 hits in 45 at-bats and knocked in six runs. Is one of the team's better base runners and gets a good jump on balls hit to the outfield.  
Major: *Elementary Education*



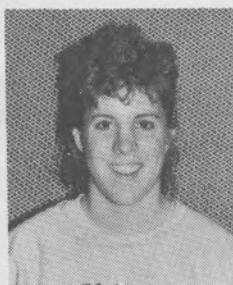
**JOANNA SULMONETTI**  
Sophomore P  
Hammonton, N.J.-St. Josephs  
Bats: Right Throws: Right  
#9/29

In her first season with the Huskies after transferring from George Mason. Was the number one pitcher for the Patriots as a freshman and posted a 9-7 record with an ERA of 3.01. She struck out 53 opponent batters. A hard thrower who possesses a great change up as well as a nice drop and curve. Also had a .303 batting average last season with 18 extra base hits, spending some time as the Patriots' designated hitter.  
Major: *Adult Health*



**DIANE TAFEL**  
Freshman 3B  
Churchville-Council Rock H.S.  
Bats: Right Throws: Right  
#8/8

Joins the Huskies with a solid background from an outstanding high school program. Basic fundamentals are all there in addition to a great arm and good quickness in the infield. Has a good release which enables her to get the ball to first base in a hurry. Has a fairly strong bat but will need to make some improvement at the plate. Will battle with Brenda Lewis for third base.  
Major: *Elementary Education*





**KRISTEN UPCRAFT**

Senior P

State College-State College H.S.

Bats: Right Throws: Right

#10

A transfer student from Stephen F. Austin who is in her final year of eligibility. Was 19-8 in 41 games for the Lumberjacks and registered 12 shutouts. She struck out 134 batters in three seasons and allowed 70 hits in 214 innings. Her career ERA stands at 0.98. Was the number two pitcher for the 1986 Division II national champions. Throws hard and has good movement on the ball. Drop and changeup are her best pitches, while the addition of a solid riser should make her a complete pitcher. Faced extremely tough competition in her first three years which should be a help to her as one of the leaders for the Huskies. How well she overcomes sitting out last season will determine her success.

Major: *Business Administration***KIM VOGEL**

Senior OF

Fallsington-Bishop Conwell H.S.

Bats: Right Throws: Right

#12

Split time in rightfield with Cindy Slocum a year ago but could move to centerfield this season. She hit .281 last season with 25 hits in 89 trips to the plate and scored 20 runs, which was the third best on the team. She also ranked third on the unit with 14 walks. Has very good speed and anticipates well in the outfield. An outstanding base runner and bunter. She can make things happen on the base paths if given the opportunity to run.

Major: *Art Studio***JULIE WOLFE**

Freshman SS

Berwick-Berwick H.S.

Bats: Right Throws: Right

#14

One of the team's best athletes who has very good quickness. Should be an important player right away on both offense and defense. Covers a lot of territory with great range and possesses a strong arm. Looks good at the plate and should supply some offensive punch when it is needed.

Major: *General Studies*

## The Huskies' 1987 Season Results

Date	Opponent	BU	OPP.	
March	14 *East Stroudsburg	7	1	
	15 *Wayne St. (Mich.)	2	1	
	15 *American International	2	7	
	16 *Colgate	6	1	
	16 *Indiana (Pa.)	3	2	
	17 *Furman	0	3	
	17 *Seton Hall	4	0	
	18 *Edinboro	3	0	
		*Edinboro	6	1
	19 *American International	1	0	
	19 *Allegheny	3	1	
	20 *Wayne St.	3	2 (8 innings)	
	29 at Virginia	1	0 (9 innings)	
		at Virginia	1	3
	April	2 SUSQUEHANNA	14	0
5 MANSFIELD		19	0	
		MANSFIELD	6	0
8 at Lock Haven		2	0	
		at Lock Haven	3	0
10-12 at Penn St. Tournament				
		Penn St.	10	0
		C.W. Post	9	1
		Rhode Island	2	1 (10 innings)
		Akron	0	1
		Virginia	3	2
		Penn St.	4	0
14 at Millersville		2	1	
		at Millersville	10	5
16 at Kutztown		1	2	
		at Kutztown	7	0
21 at Shippensburg		1	7	
	at Shippensburg	1	7	
23 ITHACA	3	0		
	ITHACA	9	5	
25 WEST CHESTER	10	0		
	WEST CHESTER	4	0	
May	1-2 at PSAC Championships			
		Lock Haven	0	2
		Indiana (Pa.)	13	0
		Shippensburg	2	0
		Lock Haven	7	1
		Lock Haven	1	0
May	8-9 NCAA EAST REGIONAL			
		Mankato St.	2	3 (12 innings)
		Shippensburg	3	2 (9 innings)
		Mankato St.	2	5

\*-at South Carolina

# The Huskies' 1987 Final Statistics

## Batting Statistics

NAME	AB	R	H	2B	3B	HR	SO	BB	SB	RBI	AVG
Kate Denny	149	34	54	5	2	3	10	6	2	24	.362
Kim Fey	112	16	24	3	1	0	7	17	6	8	.241
Cindy Freeland	126	17	34	4	0	0	1	3	2	13	.270
Donna Graupp	95	16	24	2	0	0	3	9	4	14	.253
Lori Guitson	125	19	32	4	1	0	12	2	2	11	.256
Lisa Hollowell	5	0	1	0	0	0	1	0	0	0	.200
Sue Hartman	12	0	3	1	0	0	1	0	0	5	.250
Susan Kocher	128	19	39	3	0	1	3	7	2	25	.305
Joanie Lewis	105	13	25	5	2	1	14	3	2	14	.238
Gina Lindenmuth	1	0	0	0	0	0	0	0	0	0	.000
Jean Millen	122	21	37	6	1	6	15	31	1	19	.303
Paula Miller	11	3	2	0	0	0	1	0	0	0	.182
Judy Moyer	9	2	2	0	0	0	1	2	0	2	.222
Lori Pisco	13	0	2	0	0	0	1	2	0	0	.154
Julie Robbins	1	0	0	0	0	0	0	0	0	0	.000
Donna Shief	37	7	6	0	0	0	4	6	0	0	.162
Cindy Slocum	45	5	13	0	1	0	9	7	2	6	.289
Kim Vogel	89	20	25	0	0	0	10	14	2	3	.281
<b>Team Totals</b>	<b>1185</b>	<b>192</b>	<b>323</b>	<b>33</b>	<b>8</b>	<b>11</b>	<b>93</b>	<b>109</b>	<b>25</b>	<b>144</b>	<b>.273</b>

### Fielding Statistics

NAME	POS	PO	ASSISTS	ERRORS	AVG
Kate Denny	LF	62	4	2	.971
Kim Fey	2B	110	61	9	.956
Cindy Freeland	C	176	19	3	.985
Donna Graupp	SS	92	93	13	.934
Lori Guitson	C	42	3	0	1.000
Lisa Hollowell	P	2	1	0	1.000
Sue Hartman	1B	16	1	1	.889
Susan Kocher	P	10	74	3	.966
Joanie Lewis	CF	40	7	3	.940
Gina Lindenmuth	P	1	6	0	1.000
Jean Millen	1B	312	29	4	.988
Paula Miller	OF	1	0	1	.500
Judy Moyer	OF	0	0	1	.000
Lori Pisco	3B	1	11	2	.857
Julie Robbins	P	3	6	1	.900
Donna Shief	3B	33	77	4	.965
Cindy Slocum	RF	13	1	0	1.000
Kim Vogel	RF	39	3	1	.977
<b>Team Totals</b>		<b>853</b>	<b>396</b>	<b>48</b>	<b>.963</b>

### Pitcher's Statistics

NAME	W	L	IP	H	R	ER	BB	SO	HP	WP	ERA
Susan Kocher	30	9	256.2	141	43	22	54	159	6	1	.60
Gina Lindenmuth	3	1	33.1	22	5	3	9	10	0	0	.63
Julie Robbins	1	0	17.2	20	6	5	2	6	0	0	2.03
Lisa Hollowell	1	1	19	14	16	14	25	7	7	13	5.16
<b>Team Totals</b>	<b>35</b>	<b>11</b>	<b>326.2</b>	<b>197</b>	<b>70</b>	<b>44</b>	<b>90</b>	<b>182</b>	<b>13</b>	<b>14</b>	<b>.94</b>

## The Huskies' Records Against All-Time Opponents

NAME	W	L	%
Akron (OH)	0	3	.000
Allegheny	1	1	.500
Allentown	1	0	1.000
American Int. (MA)	2	2	.500
Augustana (IL)	1	0	1.000
Baker (KS)	1	0	1.000
Bridgeport (CT)	1	0	1.000
Brockport (NY)	1	1	.500
* Bucknell	6	2	.750
Cal St. Northridge	0	1	.000
Calvin (MD)	1	0	1.000
Catholic University (DC)	2	0	1.000
* Colgate (NY)	1	0	1.000
Drexel	1	0	1.000
* East Stroudsburg	14	2	.875
Eastern Connecticut	1	0	1.000
Eastern Illinois	1	0	1.000
Edinboro	5	0	1.000
Evansville (IN)	1	1	.500
* Fairleigh-Dickinson (NJ)	1	0	1.000
Francis Marion (SC)	1	0	1.000
Franklin & Marshall	2	0	1.000
Furman	4	2	.667
* Indiana (PA)	12	0	1.000
* Ithaca (NY)	8	1	.889
King's (PA)	2	0	1.000
* Kutztown	18	5	.783
* LeMoyne (NY)	2	0	1.000
Liberty Baptist (VA)	2	0	1.000
LIU-C.W. Post (NY)	1	0	1.000
* Lock Haven	16	6	.727
Lowell (MA)	2	0	1.000
Luzerne C.C.C.	6	3	.667
Mankato St. (MN)	1	2	.333
* Mansfield	11	0	1.000
Messiah	2	0	1.000
* Millersville	14	4	.778
Misericordia	4	0	1.000
Navy	2	0	1.000
Northeast Missouri St.	1	0	1.000
Oswego (NY)	2	0	1.000
* Penn State	2	2	.500
Penn State-Ogontz	1	0	1.000
Princeton (NJ)	1	0	1.000
Rhode Island	3	0	1.000
Rider (NJ)	2	0	1.000
Sacred Heart (CT)	2	4	.333
Salisbury St. (MD)	5	2	.714
Sam Houston St. (TX)	1	0	1.000
San Francisco St.	1	0	1.000
Seton Hall (NJ)	5	1	.833
* Shippensburg	18	11	.621
Slippery Rock	3	2	.600
South Carolina	2	0	1.000
Springfield (MA)	3	0	1.000
St. Peters (NJ)	1	0	1.000
Stephen F. Austin (TX)	0	1	.000
Susquehanna	13	4	.765
Trenton St. (NJ)	1	3	.250
University of Scranton	8	4	.667
Villanova	1	0	1.000
Virginia	4	1	.800
Wayne St. (MI)	3	1	.750
* West Chester	8	0	1.000
Wilkes (PA)	8	0	1.000
Winthrop (SC)	1	0	1.000
Wisconsin-River Falls	1	0	1.000
* 1988 Opponents			



# The Huskies' Records

## INDIVIDUAL

### SINGLE GAME:

#### Batting:

At-Bats:	10	Karen Hertzler (vs. Sacred Heart* 23 innings)	5/11-12/84
Hits:	5	Kate Denney (vs. Allentown)	4/12/86
Doubles:	2	Betty Rohrbach (vs. Frank. & Mars.) Carolyn Bartoni (vs. Wilkes)	5/2/81 4/17/80
Triples:	2	Deb Long (vs. Lock Haven)	4/22/82
Home Runs:	2	Jean Millen (vs. Millersville vs. Springfield*)	4/14/84 5/10/86
Bases On Balls:	5	Jean Millen (vs. Fair. Dickinson)	3/12/84
Stolen Bases:	5	Gail Geberich (vs. Susquehanna) Mary Hassenplug (vs. Wilkes) Carolyn Harley (vs. Wilkes)	4/7/80 4/17/81 4/17/81
Sacrifices:	3	Jeannette Mitroka (vs. Shippensburg)	4/22/81
Runs Scored:	4	Gail Geberich (vs. Susquehanna) Kate Denneny (vs. St. Peter's) Karen Hertzler (vs. St. Peter's) Cindy Freeland (vs. St. Peter's)	4/7/80 3/18/85 3/18/85 3/18/85
Runs Batted In:	6	Sally Houser (vs. Bucknell) Donna Graupp (vs. Mansfield)	4/30/80 4/5/87

#### Pitching:

Innings Pitched:	23	Tina Souders (vs Sacred Heart*)	5/11-12/84
Strikeouts:	15	Jill Solinski (vs. Millersville, 7 innings)	4/15/86
	18	Tina Souders (vs. East Stroudsburg, 16 innings)	4/26/84

\*-also NCAA II tournament game record

### SEASON:

#### Batting: (minimum 2 at-bats per game)

At-Bats	149	Kate Denneny	1987
Hits:	57	Suzanne Luna	1986
Doubles:	12	Kate Denneny	1986
Triples:	6	Cheryl Sedlak Suzanne Luna	1982 1985
Home Runs:	8	Jean Millen	1986
Bases On Balls:	31	Jean Millen	1987
Stolen Bases:	14	Roberta Spezialetti	1981
Sacrifices:	14	Anne Schmidt Karen Hertzler	1982 & 1984 1983
Runs Scored:	43	Suzanne Luna	1986
Runs Batted In:	40	Suzanne Luna	1986
Batting Avg.:	.421	Sue Hicks (24 of 57)	1981
	.414	Sally Houser (29 of 70)	1980
	.411	Denise Henderson (44 of 107)	1983
	.406	Karen Hertzler (39 of 96)	1983
	.400	Deb Long (24 of 60)	1981
Slugging Pct.:	.653	Jean Millen	1986

#### Pitching: (minimum 10 appearances)

Games Pitched:	40	Susan Kocher	1987
Innings Pitched:	256.2	Susan Kocher	1987
Least Hits Allowed	26	Susan Kocher	1984
Least Hits per 7 Innings:	0.32	Susan Kocher	1986
Least Runs Allowed:	7	Chris Moyer	1986
Least Runs Allowed per 7 Innings:	0.07	Tina Souders	1982
Least Walks Allowed:	6	Chris Moyer	1986
Least Walks Allowed per 7 Innings:	0.08	Tina Souders	1983
Most Strikeouts:	207	Tina Souders	1983
Lowest Earned Run Average:	0.07	Chris Moyer	1986
Most Wins:	30	Susan Kocher	1987
Fewest Losses:	0	Chris Moyer	1983
Most Shutouts:	15	Tina Souders Susan Kocher	1982 & 1983 1987
Consecutive Hitless Innings:	24	Susan Kocher	1984

**CAREER:****Batting:**

At-Bats:	468	Karen Hertzler	1983-86
Hits:	160	Karen Hertzler	1983-86
Doubles:	24	Kate Denny	1984-87
Triples:	13	Jean Millen	1983-87
Home Runs:	20	Jean Millen	1983-87
Walks:	86	Jean Millen	1983-87
Runs Scored:	129	Karen Hertzler	1983-86
Runs Batted In:	106	Jean Millen	1983-87
Stolen Bases:	34	Karen Hertzler	1983-86
Sacrifices:	47	Anne Schmidt	1981-84
Batting Average:	.342	Karen Hertzler (4 seasons)	1983-86

**Pitching: (minimum 40 appearances)**

Games Pitched:	89	Susan Kocher	1984-87
Innings Pitched:	610	Tina Souders	1981-84
Least Hits Allowed:	159	Chris Moyer	1983-86
Least Runs Allowed:	44	Chris Moyer	1983-86
Least Walks Allowed:	65	Chris Moyer	1983-86
Most Strikeouts:	635	Tina Souders	1981-84
Lowest Earned Run Average:	0.34	Tina Souders	1981-84
Most Wins:	74	Tina Souders (74-11)	1981-84
Fewest Losses:	4	Chris Moyer (40-4)	1983-86
Most Shutouts:	46	Tina Souders	1981-84

**No-Hitters**

1. Judy Major	vs. Franklin & Marshall	5/2/81
2. Tina Souders*	vs. Misericordia	4/16/82
3. Brenda Long/ Tina Souders	vs. Kutztown	4/24/82
4. Tina Souders (1)	vs. Augustana (IL)	5/20/82
5. Chris Moyer	vs. Mansfield	3/31/83
6. Chris Moyer	vs. Kutztown	4/23/83
7. Tina Souders *(2)	vs. Springfield (MA)	5/13/83
8. Susan Kocher	vs. Rider	4/9/84
9. Susan Kocher	vs. Kutztown	4/10/84
10. Susan Kocher	vs. Mansfield	4/12/84
11. Chris Moyer	vs. Mansfield	4/12/84
12. Tina Souders	vs. West Chester	4/28/84
13. Chris Moyer	vs. St. Peter's (NJ)	3/18/85
14. Susan Kocher	vs. West Chester	4/4/85
15. Jill Solinski	vs. Drexel	3/25/86
16. Susan Kocher	vs. Indiana (PA)	4/8/86
17. Susan Kocher	vs. Kutztown	4/13/86
18. Jill Solinski*	vs. Millersville	4/15/86
19. Susan Kocher*	vs. Shippensburg	4/22/86
20. Jill Solinski*(3)	vs. Lowell (MA)	5/9/86
21. Susan Kocher	vs. Lock Haven	4/8/87

\*-perfect game

(1)-pitched at A.I.A.W. III national championship tournament

(2)-pitched at N.C.A.A. II Eastern regional tournament

(3)-pitched at N.C.A.A. II Eastern regional tournament

**Team****SINGLE GAME:**

At-Bats:	49	vs. East Stroudsburg (16 innings)	4/26/84
	46	vs. Marywood (7 innings)	3/26/80
Hits:	21	vs. St. Peter's	3/15/85
Doubles:	4	five times (most recent-vs. Allentown)	4/12/86
Triples:	4	vs. Bucknell	4/27/83
Home Runs:	2	12 times (most recent-vs. Springfield)	5/10/86
Walks:	22	vs. Fairleigh-Dickinson	3/12/84
Runs Scored:	23	vs. St. Peter's	3/15/85
Runs Allowed:	22	vs. Kutztown	5/7/79
Most Runs/ Both Teams:	37	(Kutztown 22 BU 15)	5/7/79
Largest Winning Margin:	23	vs. St. Peter's (23-0)	3/18/85
Largest Losing Margin:	11	vs. Scranton (15-4)	4/20/79
Runs Batted In:	16	vs. Susquehanna	4/7/80
Stolen Bases:	14	two times (most recent vs. Navy)	4/12/81
Sacrifices:	8	vs. Wilkes	5/4/82

**SEASON:**

Wins:	42		1986
Most Consecutive Wins:	37		1986
Most Consecutive Losses:	4	(two times)	1979
At-Bats:	1261		1986
Hits:	366		1986
Doubles:	57		1986
Triples:	19		1983
Home Runs:	19		1986
Walks:	135		1986
Runs Scored:	290		1986
Runs Batted In:	197		1986
Stolen Bases:	106		1980
Sacrifices:	87		1983
Batting Average:	.313		1983
Earned Run Average:	0.32		1984
Shutouts:	31		1986

## Over The Years

1977	1-3	1983	33-4
1978	4-7	1984	30-4
1979	6-11	1985	35-6
1980	17-8	1986	42-5
1981	23-9	1987	35-11
1982	28-4		

11 Seasons: 254-72 77.9%

## Accomplishments Over the Past Six Seasons

- 1982:** 28-4  
EIAIW Regional Champions  
AIAW Division III Champions
- 1983:** 33-4  
Pennsylvania Conference Champions  
NCAA East Regional: Second
- 1984:** 30-4  
Pennsylvania Conference Champions  
NCAA East Regional: Second
- 1985:** 35-6  
Pennsylvania Conference Champions  
NCAA East Regional: Second
- 1986:** 42-5  
Pennsylvania Conference Champions  
NCAA East Regional Champions  
NCAA Division II Championships: Third
- 1987:** 35-11  
Pennsylvania Conference Champions  
NCAA East Regional: Second

## The Huskies' Softball All-Americans



**Tina Souders**  
Pitcher  
1982, 1983, 1984



**Kathy Behan**  
Third Base  
1982



**Denise Henderson**  
Catcher  
1982



**Anne Schmidt**  
Shortstop  
1982



**Karen Hertzler**  
Second Base  
1984, 1986



**Susan Kocher**  
Pitcher  
1986, 1987



**Jean Millen**  
First Base  
1986, 1987



**Kate Denny**  
Outfield  
1987



**Cindy Freeland**  
Catcher  
1987

## The Huskies' Softball Academic All-Americans



**Cindy Freeland**  
Catcher  
1986



**Chris Moyer**  
Pitcher  
1986



**Kate Denny**  
Outfielder  
1987

## BU Area Media Outlets

The purpose of this guide is to provide members of the media with necessary information concerning Bloomsburg softball. Members of the media are always welcome on the Bloomsburg University campus. It would be appreciated if those who plan to cover any of the Huskies' home or away contests would contact the sports information office so that we can make every effort to accommodate your needs and requests.

### Newspapers

Press-Enterprise  
3185 Lackawanna Avenue  
Bloomsburg, PA 17815

Danville News  
14 East Mahoning Street  
Danville, PA 17821

Daily Item  
200 South Market Street  
Sunbury, PA 17801

Milton Standard  
19 Arch Street  
Milton, PA 17847

News-Item  
701 North Rock Street  
Shamokin, PA 17872

Sun-Gazette  
252 West Fourth Street  
Williamsport, PA 17701

The Grit  
208 West Third Street  
Williamsport, PA 17701

Patriot-News  
P.O. Box 2265  
Harrisburg, PA 17051

Standard Speaker  
21 North Wyoming  
Hazleton, PA 18201

### Radio and Television

WHLM Radio  
107 West Main Street  
Bloomsburg, PA 17815

WCNR Radio  
125 West Main Street  
Bloomsburg, PA 17815

WGPM Radio  
Eight East Market Street  
Danville, PA 17821

WILQ Radio  
P.O. Box 1176  
Williamsport, PA 17701

WWPA Radio  
P.O. Box 2168  
Williamsport, PA 17701

WNEP-TV  
Wilkes-Barre Scranton Int. Airport  
Avoca, PA 18641

WBRE-TV  
62 South Franklin Street  
Wilks-Barre, PA 18703

WYOU-TV  
415 Lackawanna Avenue  
Scranton, PA 18503

WGAL-TV  
P.O. Box 7127  
Lancaster, PA 17604

WHTM-TV  
P.O. Box 2775  
Harrisburg, PA 17105

WHP-TV  
P.O. Box 1507  
Harrisburg, PA 17105

### Wire Services

Associated Press  
Suite 250  
One Franklin Plaza  
Philadelphia, PA 19102

United Press International  
1819 JFK Boulevard  
Philadelphia, PA 19103



Jim Doyle, Sports Director  
WHLM RADIO  
"Voice of the Huskies"



John Michaels  
Sports Editor  
Press-Enterprise



## The Huskies' 1988 Schedule

### March

5	*Penn State	10:00 a.m.
	*Florida Southern	3:15 p.m.
6	*Southeast Missouri State	10:00 a.m.
	*Grand Valley State	2:15 p.m.
7	*Lewis	9:30 a.m.
	*Southeast Missouri State	4:00 p.m.
8	*Ashland	9:30 a.m.
	*Army	11:15 a.m.
10	*Western Michigan	9:30 a.m.
	*Detroit	1:00 p.m.
11	*Fairleigh Dickinson	1:00 p.m.
	*Glassboro State	4:30 p.m.
26	at West Chester (2)	1:00 p.m.
27	at St. Joseph's (Pa.) (2)	1:00 p.m.

### April

1	at Indiana (Pa.) (2)	3:00 p.m.
6	at Lock Haven (2)	2:30 p.m.
7	BUCKNELL (2)	3:00 p.m.
9	at Mansfield (2)	1:00 p.m.
10	ARMY	11:00 a.m.
12	SHIPPENSBURG (2)	3:00 p.m.
16	COLGATE (2)	1:00 p.m.
17	MILLERSVILLE (2)	1:00 p.m.
19	East Stroudsburg (2)	3:00 p.m.
21	at Ithaca (2)	3:00 p.m.
23	MT. ST. MARY'S (2)	1:00 p.m.
24	at LeMoyne (2)	1:00 p.m.
26	KUTZTOWN (2)	3:00 p.m.
29-30	at Pennsylvania Conference Championships	