

B
L
O
O
M
S
B
U
R
G

U
N
I
V
E
R
S
I
T
Y



SOFTBALL 1987

Pennsylvania Conference Champions

1983 • 1984 • 1985 • 1986

BLOOMSBURG UNIVERSITY

"A Commitment to Excellence"

Bloomsburg University is a multi-purpose institution of higher education serving the citizens of Pennsylvania as one of the 14 Commonwealth-owned Universities. With a commitment to provide a quality, affordable education for all qualified students, Bloomsburg combines the tradition of an institution founded in 1839 with modern learning, living and recreational programs and facilities. Commonwealth funding provides 55 percent of Bloomsburg's annual operating budget.

Undergraduate students may enroll in degree programs in 64 areas of study in the arts and sciences, business, teacher education, nursing and health sciences. A program in engineering is offered in conjunction with the Pennsylvania State University, and preparation for post-baccalaureate study at professional schools is offered. Unique educational opportunities are available through advanced placement, study abroad, professional practicum, internships, independent study and the Center for Academic Development programs.

At the graduate level, the master's degree is offered in 25 areas of study and there are ten supervisory certification programs in the field of teacher education.

Extended program offerings provide continuing, life-long learning opportunities for people of all ages and educational interest through non-degree courses, non-credit mini-courses offered at off-campus locations and by public service television, and credit for work experience.

Enrollment for the Fall semester, 1985, totalled 6,439 students. There were 5,133 full-time and 769 part-time undergraduates, 108 full-time and 429 part-time graduate students. Instruction is provided by a 367-member faculty.

The University's 173-acre campus overlooks the Town of Bloomsburg and the scenic Susquehanna Valley. Carver Hall, built in 1867, provides a contrast with the modern facilities that include seven residence halls, a library, a 2,000-seat auditorium, student union, dining hall, gymnasium, administration building, five classroom buildings, athletic fields and recreational areas on the lower campus.

An athletic complex and recreational area occupy the school's 100-acre upper campus. In addition, the James H. McCormick Center for Human Services is the newest building on the lower campus and was used for the first time last fall.

Located less than two miles from an Interstate 80 interchange and 22 miles from Interstate 81, Bloomsburg is within one hour's driving time from Wilkes-Barre/Scranton, Hazleton and Williamsport, 1½ hours from Harrisburg, 2½ hours from Philadelphia, and three hours from New York City. The community is 45 miles from the Avoca International Airport and is serviced by major bus lines.

Bloomsburg has an enviable placement record. Of the 1,104 who graduated in the 1984-85 academic year, 81.4% had meaningful employment or were in graduate school one year later.

Active files of over 25,000 living alumni are kept by the University. Graduates of BU have distinguished themselves in areas including law, medicine (one is a Nobel Laureate), science, architecture, education, industry and research.

The Bloomsburg University is fully accredited by the Middle States Association of Colleges and Schools, the National Council for the Accreditation of Teacher Education, and the Pennsylvania State Board of Education.

Table of Contents

Bloomsburg University	Inside Front Cover
<i>"A Commitment to Excellence"</i>	
To the Media	1
Quick Facts and Contacts at BU	1
Harry Ausprich, President	2
Roger Sanders, Athletic Director	2
Jan Hutchinson, Head Coach	3
Chris Moyer, Assistant Coach	3
Outlook	4-5
1987 Roster	6
Player Profiles	7-11
Results from 1986	12
1986 Bloomsburg University Softball Statistics	13-14
Records Against All Opponents	15-16
Bloomsburg University Softball Records	17-19
<i>"Over the Years"</i>	19
Accomplishments over the Past Five Seasons	19
Bloomsburg Softball All-Americans	20
BU Area Media Outlets	Inside Back Cover
1987 Schedule	Back Cover

To the Media

For further information concerning Bloomsburg Softball, contact Sports Information Director Jim Hollister, Waller Administration Building, Bloomsburg University, Bloomsburg, PA 17815. (Phone 717-389-4413, office; 717-784-7756, home).

Quick Facts and Contacts at BU

Location: Bloomsburg, PA 17815

Enrollment: 6757

General Information: 717-389-4000

President: Dr. Harry Ausprich

Athletic Director: Roger Sanders

Associate Athletic Director: Mary Gardner

Athletic Department: 717-389-4354

Colors: Maroon and Gold

Nickname: Huskies

Home Field: Lower Campus

Trainer: Art Hopkins (phone: 717-389-4401)

Equipment Manager: Ron Morgan (phone: 717-389-4374)

Head Softball Coach: Jan Hutchinson (phone: 717-389-4380)

Conference: Pennsylvania

1986 Overall Record: 42-5

1986 Conference Record: 12-0

Harry Ausprich

- President -

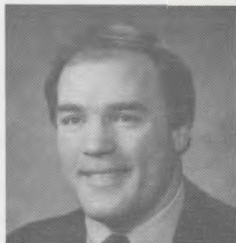
Dr. Harry Ausprich began his tenure July 15, 1985 as the Sixteenth President of Bloomsburg University. His permanent appointment follows that of former President James H. McCormick, who is currently serving as the Chancellor for the State System of Higher Education, and Dr. Larry W. Jones, who served as President two years on an acting and interim basis.



Prior to coming to Bloomsburg, Ausprich served Kent State University as Dean of the College of Fine and Professional Arts from 1978 to 1985. While there he was instrumental in implementing a program in fashion design and merchandising which has gained a national reputation. In addition, he served as Dean of the Blossom Festival School Program in cooperation with the Cleveland Orchestra. In previous years he served as Dean of the Faculty of Arts and later as Dean of the Faculty of Arts and Humanities, both at SUNY Buffalo. While at Buffalo he developed a proposal for a program in dance and for a series of interdisciplinary seminars in the arts. In the early 1970's he worked at the University of Northern Iowa as Dean of the College of Humanities and Fine Arts. Classroom teaching experiences and departmental chairperson responsibilities comprised his major assignments at Indiana State University and Memphis State University.

Roger Sanders

- Athletic Director -



In June of 1982, following 10 years as an associate professor in the Department of Health and Physical Education, Roger Sanders was appointed as Bloomsburg University's Athletic Director.

Under his direction, many new projects have developed within the athletics department. These include: the construction of nine new athletic practice fields on the university's upper campus, an addition to the Redman Stadium pressbox, the acquisition of automobiles from local dealers for use by athletic department personnel in recruiting and scouting trips, an "ox-roast" prior to each season's Homecoming contest, a "facelift," or redecoration, for the Nelson Fieldhouse main arena floor, among many others. He has also spent numerous hours working on a program to build the general athletic scholarship fund through the Husky Club and Alumni Association to aid Bloomsburg in its efforts to maintain a highly competitive program in the Pennsylvania Conference and NCAA Divisions I and II.

In addition to his Athletic Director's duties, Sanders is the head coach of Bloomsburg's highly successful Division I wrestling program. Following the 1986-87 season, his teams had amassed an enviable 163-67-3 record in 13 seasons. During his tenure, the Huskies have captured five Pennsylvania Conference Championships and one Eastern Wrestling League crown. Sanders has coached 37 PC champions and numerous All-Americans, including five national champions.

A native of Fairless Hills, Pa., Sanders earned his Bachelor of Science degree from West Chester University and his master's from Ball State. While a collegiate wrestler at West Chester, Sanders never lost a dual match in four seasons, winning three Middle Atlantic University Division championships and an NCAA College Division crown.

Jan Hutchinson

- Head Coach -

Jan Hutchinson, owning a career record of 212-58, begins her 10th season as Bloomsburg University's head softball coach in search of the school's fifth straight 30-win season. Hutchinson's squads have compiled 140 victories (33-4, 30-4, 35-6, 42-5) over the last four years for an 88.1 winning percentage. Last season's team won its fourth consecutive Pennsylvania Conference Championship and also advanced to the NCAA Division II "Final Four" for the first time.



The Huskies earned a third-place finish in the NCAA Championship Tournament with a victory over Northeast Missouri State, 1-0, in the opening round. Bloomsburg's second-round loss to Stephen F. Austin, 3-1, snapped a school-record 37-game winning streak the team had amassed to that point. The Huskies' season ended with a 5-4 loss to Cal St.-Northridge in the final round. Enroute to the "Final Four," the Huskies rolled through the Pennsylvania Conference Tournament and the NCAA Eastern Regional, outscoring their opponents 35-3. Hutchinson's squad surrendered two runs to Shippensburg in a second-round victory, 11-2, allowing a run in PC post-season play for the first time since the tournament's inception.

Hutchinson, a native of Newton, N.J., received her Bachelor of Science degree in 1971 and earned her Master of Education Degree in Physical Education in 1979, both from East Stroudsburg University. Prior to coming to Bloomsburg, she was a member of the faculty of the Blair Academy in Blairstown, NJ. There she initiated an interscholastic sports program for women and served as head coach of the field hockey, basketball, and softball teams.

In 1982, Hutchinson was one of the first coaches ever to lead two teams to national titles in the same year as both the BU field hockey and softball teams captured AIAW titles. This past season, her field hockey team finished second at the NCAA Division III national championships, losing to Salisbury St. in the championship game.

Chris Moyer

- Assistant Coach -

Chris Moyer enters her first season as an assistant softball coach at Bloomsburg. She will be in charge of handling the Huskies' pitching staff. Moyer graduated from BU in 1986 with a degree in Psychology/Sociology. Moyer was a four-year starter for the Huskies and holds multiple season and career pitching records. In addition, Moyer was selected to the GTE/CoSIDA Academic All-American second team in 1986.

Through her four seasons (1983-86) Moyer compiled a 40-4 record, and holds the school record for fewest losses in a career. She also holds career records for least hits allowed (159), least runs allowed (44) and least walks allowed (65). Throughout her career Moyer pitched four no-hitters.

Moyer also holds season records for least walks allowed with six, lowest earned run average, 0.07, set in the 1986 season, and fewest losses with 0.

In her final season as a Bloomsburg pitcher, Moyer had a record of 13-1, giving up just one earned run in 105 innings pitched. Moyer walked only 13 opponent batters, while striking out 39.

Outlook

Pitching, the one part of her teams that Bloomsburg University head softball coach Jan Hutchinson could always count on may be the biggest question mark for her 1987 squad.

Despite the return of All-American senior Susan Kocher, the Bloomsburg mound corps has been depleted by the loss of CoSIDA/GTE Academic All-American Chris Moyer (13-1; 0.07 earned run average) and Jill Solinski (13-3; 0.73 ERA).

The duo helped Bloomsburg win its fourth-straight Pennsylvania Conference title and record its fifth consecutive 30-win season, along with winning the NCAA Eastern Regional and advancing to the "Final Four."

The Huskies, in racking up a school-record 42 victories last season, benefitted from outstanding pitching as the three-member rotation sported a 0.41 ERA while striking out 323 batters in 327 innings pitched. Bloomsburg limited opponents to 33 runs and surrendered just 124 hits for an opponent batting average of .118.

Although Kocher owned a 0.42 ERA in 1986, amassing a 16-1 record with 154 strikeouts in 117 innings, Hutchinson can't expect her senior hurler to be on the mound for every game.

"Pitching will definitely be the key to our team this season," Hutchinson said. "Although we feel we will be strong again this year, we need a solid contribution from our young pitchers to be successful. Last season we went to the 'Final Four' and the kids have set that as their goal again for this season."

To reach that goal, Hutchinson's team will have to rely on a group of young pitchers who have yet to be tested in college.

Julie Robbins, a redshirt freshman, may have the best chance to make an early contribution to the team after spending all of last season with the team.

"With her year off, she got a chance to make a big improvement in her throwing while adding a drop and a rise to her repertoire," Hutchinson added.

Freshmen Lisa Hallowell and Gina Lindenmuth will also be looked to for pitching support. Hallowell, from Marlton, N.J., has been considered one of the top high school pitchers in New Jersey over the past several seasons. Lindenmuth, from Whitehall, is a strong, control-type pitcher who could take some of the pitching burden off Kocher as well.

Offensively, the Huskies should be solid once again, returning three players who hit over .300 last season. In 1986, the Huskies hit .290 as a team and set numerous team and individual records. However, the big blow to the BU offensive attack was the departure of Suzanne Luna, the team's leader in average (.358), at-bats (148), runs (43), hits (57), total bases (81) and runs batted in (40). Also gone is All-American Karen Hertzler and her .310 average, 40 runs and 45 hits in 140 at-bats.

Among the Huskies' leading returnees is All-American first baseman Jean Millen, a fifth-year senior, who set a Bloomsburg record last season with eight home runs. She also hit .331 with 41 hits, 39 runs scored and 35 rbi's, to go with team highs in triples (4) and walks (25).

Two other keys to the BU offense will be Kocher, who hit .341, and senior Kate Denneny, a .358 hitter with a team-high 12 sacrifices and 13 doubles. The trio of Millen, Kocher and Denneny combined for 134 of the team's 366 hits, along with 108 runs scored, 78 rbi's and an average of .344 as each was among the team's best in almost every offensive category.

Junior catcher Cindy Freeland, a second-team CoSIDA/GTE Academic All-American last season and a two-year starter at Bloomsburg, anchors the Husky defense.

"Cindy calls smart games for our pitchers and rarely lets a ball get by her on defense," Hutchinson noted, "and she also has a very strong arm to second base."

Freeland, who hit .240 and sported a .992 fielding percentage in 1986, will see strong competition from backup Lori Guitson who is expected to return healthy after battling shoulder injuries for the past two years. Guitson adds depth to BU's offensive attack despite hitting just .235 a year ago. Among her 16 hits were three doubles and a triple, to go along with 13 runs scored.

Another veteran defensive performer is senior Donna Graupp, who should remain as the Huskies' starting shortstop for the third straight season. "She has good range and a deceptively strong arm," Hutchinson commented.

Other returnees who should see increased action, especially with the loss of Luna, will be senior outfielders Joan Lewis and Donna Shief. Both players hit .200 last season with Lewis seeing slightly more time than Shief. Lewis scored 20 runs, sixth on the team, while knocking in 14 others. Newcomers to the outfield will be freshmen Paula Miller, Judy Moyer, Tracy Nilles and Cindy Slocum.

Returning in the Bloomsburg infield will be senior Lori Pisco, Millen's backup at first base, and junior Kim Fey, who could compete for the positions left by the graduation of Hertzler and third baseman Kathy Berry. Freshmen Lisa Balestrini and Sue Hartman should also vie for starting infield spots along with junior Kim Vogel, a transfer from Rider, who can play in either the infield or outfield.

Setting their sights on another "Final Four" appearance, the 1987 Huskies will have to fill several large voids in the pitching staff and defense while getting solid performances from the veterans and a few of the newcomers in order to realize their goal.

"Our record may not tell the whole story this season," Hutchinson stated, "especially with the Pennsylvania Conference as tough as it is. Our southern trip will tell us a lot early in the season but we need to gel as a team if we want to go back to the NCAA Championships."



SENIOR OUTFIELDER JOAN LEWIS

1987 Roster

No. W/M	Name	Pos.	Class	Hometown (High School)
13	Lisa Balestrini	IF	Fr.	Wilkes-Barre (Coughlin)
18	Kate Denny	OF	Sr.	Hatboro (Upper Moreland)
1	Kim Fey	IF	Jr.	Sweet Valley (Lake-Lehman)
19/17	Cindy Freeland	C	Jr.	Wormleysburg (Cedar Cliff)
2/15	Donna Graupp	IF	Sr.	Robesonia (Conrad Weiser)
23	Lori Guitson	C	Sr.	Pittston (Pittston Area)
7	Lisa Hallowell	P	Fr.	Marlton, NJ (Cherokee)
14	Sue Hartman	IF	Fr.	Winfield (Mifflinburg)
24	Susan Kocher	P	Sr.	Camp Hill (Cedar Cliff)
9	Joan Lewis	OF	Sr.	Bethlehem (Bethlehem Cath.)
15/26	Gina Lindenmuth	P	Fr.	Whitehall (Whitehall)
21	Jean Millen	IF	Sr.	Whitehall (Whitehall)
5	Paula Miller	OF	Fr.	Norfolk, VA (Cherokee)
4/28	Judy Moyer	OF	Fr.	State College (State College)
16	Tracy Nilles	OF	Fr.	Kutztown (Kutztown)
11	Lori Pisco	IF	Sr.	Minersville (Minersville)
6	Julie Robbins	P	Fr.	Berwick (Berwick)
12/22	Donna Shief	OF	Sr.	Cogan Station (Williamsport)
20	Cindy Slocum	OF	Fr.	Dallas (Lake Lehman)
10	Kim Vogel	OF/IF	Jr.	Fallsington (Bishop Conwell)

Player Profiles



LISA BALESTRINI

Freshman IF
Wilkes-Barre - Coughlin H.S.
Bats: Right Throws: Right
#13

A field hockey player in the fall, she is expected to challenge for the starting second base job left open by the graduation of All-American Karen Hertzler. Has a good arm and throwing motion and is a "natural athlete" according to Hutchinson. Was the backup goalie for the field hockey team.

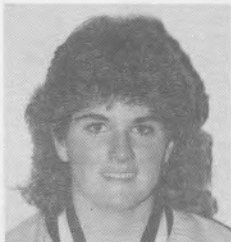
Major: Arts and Sciences

KATE DENNENY

Senior OF
Hatboro - Upper Moreland H.S.
Bats: Right Throws: Right
#18

A fine outfielder who saw action mainly in left field last season but could make the move to center in 1987. Has made only four errors over the last two seasons as a full-time player. Hit .358 a year ago, second on the club, while leading the team in doubles (12) and sacrifices (13) while batting in the second spot. Was second on the team in hits (49) and scored 38 runs with 21 runs batted in. Was also selected to the Pennsylvania Conference All-Star team and the NCAA Division II Midlantic All-Region first team. Her speed on the basepaths could help her adjust to batting in the leadoff spot.

Major: Secondary Education



KIM FEY

Junior IF
Sweet Valley - Lake Lehman H.S.
Bats: Right Throws: Right
#1

A quick fielder who was a member of the BU reserve corps last season but could challenge for a starting infield job following the graduation of All-American second baseman Karen Hertzler and third baseman Kathy Berry. Made just one error in 44 chances in 1987 for a .977 fielding percentage. Had an on-base percentage of .405 last year and was one of five BU players in double figures in walks with 11. Has been a three-year performer for Hutchinson's field hockey team.

Major: Elementary Education

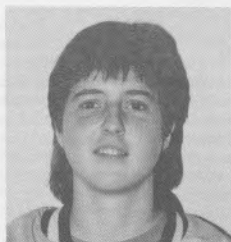


CINDY FREELAND

Junior C
Wormleysburg - Cedar Cliff H.S.
Bats: Right Throws: Right
#19/17

Has been the starting catcher since she arrived at Bloomsburg two seasons ago. According to Hutchinson, Freeland "calls smart games for our pitchers and rarely lets a ball get by her." She has an extremely strong arm to second base and was second on the team in putouts with 236 along with a fielding percentage of .992. Hit 240 a year ago with 23 hits in 96 trips. Was a GTE/CoSIDA second team Academic All-America selection in 1986.

Major: Pre-Med



DONNA GRAUPP

Senior IF

Robesonia - Conrad Weiser H.S.

Bats: Right Throws: Right

#2/15



Should maintain her starting shortstop spot that she's held for the last two seasons. "Has great range with a surprisingly strong arm and gets to a lot of balls," according to Hutchinson. Hit .200 and was third on the team in sacrifices with nine, following a team-leading 13 in 1985. Sported an .894 fielding average in 132 chances last season. May see some action at third base this year. Is a fine all-around athlete who has also been a three-year performer for Hutchinson's field hockey unit.

Major: Elementary Education

LORI GUITSON

Senior C

Pittston - Pittston Area H.S.

Bats: Right Throws: Right

#23

A strong catcher who hopes to return to the starting lineup following a two-season bout with shoulder injuries. Has been a valuable asset during the last two campaigns as a designated hitter and pinch hitter. Expected to return healthy and should challenge two-year starter Cindy Freeland for the starting job behind the plate. Hit just .235 last year following a .264 average in 1985. Scored 13 runs on 16 hits a year ago while sporting a .971 fielding percentage in limited action.

Major: Secondary Education/Math



LISA HALLOWELL

Freshman P

Marlton, NJ - Cherokee H.S.

Bats: Right Throws: Right

#7

One of three freshman pitchers joining the Bloomsburg mound corps in 1987. Considered one of the premiere high school pitchers in New Jersey over the past several seasons. A hard thrower who is working on adding a drop and a rise to her repertoire. Was on the New Jersey Group 4 state championship team as a sophomore.

Major: Arts and Sciences



SUE HARTMAN

Freshman IF

Winfield - Mifflinburg H.S.

Bats: Right Throws: Right

#14

A freshman infielder who should bolster the Bloomsburg reserves. A good athlete who may see action as a backup fielder and pinch hitter. Playing time will depend on her progress throughout the season and her ability to adjust to Hutchinson's system and the quicker pace of college softball.

Major: Biology



SUSAN KOCHER

Senior P

Camp Hill - Cedar Cliff H.S.

Bats: Right Throws: Right

#24

A power pitcher who led the Huskies in victories (16), strikeouts (154) and innings pitched (117) in 1986. Allowed just seven earned runs last season for an earned run average of 0.42. Permitted just 21 walks and 38 hits on the year. Owns a career ERA Of 0.32. Is also a top-notch hitter who was one of five BU starters who hit over .300 in 1986. Her .341 average was third best on the team while recording five doubles, three triples and two home runs among her 44 hits. Was second on the squad in walks (17) and sacrifices (10) while also knocking in 22 runs and scoring 31 others. Also sported a .958 fielding percentage. Chosen as a second team All-American last season along with a selection to both the Pennsylvania Conference All-Star team and the NCAA Division II Midlantic All-Region team.

Major: Mass Communications**JOAN LEWIS**

Senior OF

Bethlehem - Bethlehem Catholic H.S.

Bats: Right Throws: Right

#9

A senior outfielder who may see action in center field. Is a "take-charge player who is a strong defensive performer with good range" according to Hutchinson. Did not make an error in 36 chances last season while seeing limited action. Hitting is expected to improve after a .200 season in 1986. Scored 20 runs and knocked in 16 more while recording just 20 hits. Has yet to make an error in three seasons with the Huskies.

Major: Elementary Education**GINA LINDENMUTH**

Freshman P

Whitehall - Whitehall H.S.

Bats: Right Throws: Right

#15/26

Another incoming freshman hurler who is expected to make a contribution to the team almost immediately. A hard worker who has very strong form and good control. Has a good changeup and drop according to Hutchinson. Hails from the same high school as BU All-American first baseman Jean Millen.

Major: Marketing**JEAN MILLEN**

Senior IF

Whitehall - Whitehall H.S.

Bats: Right Throws: Right

#21

Hutchinson calls her "probably one of the finest players ever at Bloomsburg." Was a first team All-American selection a year ago as a first baseman. Also was chosen to the Pennsylvania Conference All-Star team and the NCAA Division II Midlantic All-Region team. Hit .331 and was Bloomsburg's home run leader with eight, a school record for round-trippers in a season. Also stroked eight doubles and a team-high four triples among her 41 hits. Knocked in 35 runs while scoring 29 others and drawing a team-leading 25 walks. Tied for the team lead in total bases with 81. Owned a .993 fielding percentage, making just two errors in a club-high 278 chances.

Major: Accounting



PAULA MILLER
 Sophomore OF
 Norfolk, VA - Cherokee H.S.
 Bats: Right Throws: Right
 #5

A sophomore transfer from Rider, she is very quick and gets a good jump on the ball defensively. Could see action in the outfield as the season progresses, depending on how well she adjusts to Hutchinson's style of play. Needs some improvement with the bat before she becomes a solid threat at the plate.

Major: Management

JUDY MOYER
 Freshman OF
 Norfolk, VA - Cherokee H.S.
 Bats: Right Throws: Right
 #4/28

Another of Hutchinson's freshmen field hockey players who is making the transition to softball. Despite missing fall practices due to field hockey, she should provide added depth to the Husky outfield and could be one of four players vying for the spot left by the departure of right fielder Suzanne Luna. Her bat should also help the BU offensive attack.

Major: Elementary Education



TRACY NILLES
 Freshman OF
 Kutztown - Kutztown H.S.
 Bats: Right Throws: Left
 #16

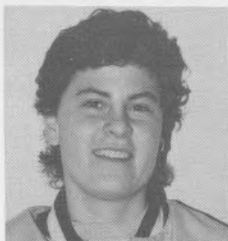
One of three freshman field hockey players who missed fall tryouts but are expected to help the team as the season wears on. An outfielder who is still making the transition, both offensively and defensively, from high school to college softball.

Major: Arts and Sciences

LORI PISCO
 Senior IF
 Minersville - Minersville H.S.
 Bats: Right Throws: Right
 #11

Hit .267 during limited action last season. Is capable of playing either first or third base but usually backs up All-American Jean Millen at first base. Managed to draw seven walks in only 37 plate appearances and had a perfect 1.000 fielding percentage in 70 changes.

Major: Elementary Education



JULIE ROBBINS

Freshman P

Berwick - Berwick H.S.

Bats: Right Throws: Right

#6

A redshirt freshman who got a chance to make a big improvement on her pitching during her year off. Throws a change and a drop among other pitches in her repertoire. Also possesses a good bat and is expected to be a solid threat at the plate.

Major: Arts and Sciences

**DONNA SHIEF**

Senior OF

Cogan Station - Williamsport H.S.

Bats: Right Throws: Right

#12/22

A reserve outfielder who saw limited duty in 1986 but should challenge for one of starting outfield spots this season. May also see action at third base. Hit .200 last season but drew seven walks and scored 10 runs in only 30 at-bats. Also sported a fielding percentage of .923.

Major: Business Education

CINDY SLOCUM

Freshman OF

Dallas - Lake Lehman H.S.

Bats: Right Throws: Right

#20

Another freshman who is expected to make a solid contribution to the team this season. A very strong hitter with good form and an aggressive bat, she may see a lot of playing time. Also a fine outfielder who has great range and comes from a strong high school program at Lake Lehman.

Major: Elementary Education

**KIM VOGEL**

Junior OF/IF

Fallsington - Bishop Conwell H.S.

Bats: Right Throws: Right

#10

A junior transfer from Penn St.-Ogontz, she is another talented newcomer to the BU outfield. A natural athlete who, according to Hutchinson, needs some work on her hitting. She could also see some time as an infielder if the need arises.

Major: Art Studio

Results from 1986

+ Bloomsburg	3	Lowell	0
+ Evansville	7	Bloomsburg	4
+ Bloomsburg	2	Wisconsin-River Falls	0
+ Bloomsburg	5	E. Illinois	2 (8 innings)
+ Bloomsburg	7	Drexel	0
+ Bloomsburg	4	Evansville	1
+ Allegheny	1	Bloomsburg	0 (8 innings)
+ Furman	2	Bloomsburg	1
+ Bloomsburg	5	Furman	1
Bloomsburg	3	VIRGINIA	0
Bloomsburg	10	VIRGINIA	3
BLOOMSBURG	6	Seton Hall	1
BLOOMSBURG	2	Seton Hall	1 (12 innings)
Bloomsburg	14	SUSQUEHANNA	0
Bloomsburg	12	SUSQUEHANNA	0
Bloomsburg	8	EAST STROUDSBURG	0
Bloomsburg	5	EAST STROUDSBURG	0
BLOOMSBURG	3	Indiana (PA)	0
BLOOMSBURG	2	Indiana (PA)	0
BLOOMSBURG	13	Lock Haven	1
BLOOMSBURG	2	Lock Haven	0 (9 innings)
+ + Bloomsburg	9	Kutztown	0
+ + Bloomsburg	18	Villanova	0
+ + Bloomsburg	18	Allentown	1
+ + Bloomsburg	4	Penn State-Ogontz	0
+ + Bloomsburg	6	Kutztown	0
BLOOMSBURG	14	Kutztown	0
BLOOMSBURG	8	Kutztown	0
Bloomsburg	7	MANSFIELD	0
Bloomsburg	19	MANSFIELD	0
BLOOMSBURG	2	Shippensburg	0
BLOOMSBURG	2	Shippensburg	0
BLOOMSBURG	3	Millersville	0
BLOOMSBURG	3	Millersville	0
Bloomsburg	4	WEST CHESTER	0
Bloomsburg	8	WEST CHESTER	1
Bloomsburg	10	ITHACA	0
Bloomsburg	5	ITHACA	0
*Bloomsburg	1	Edinboro	0
*Bloomsburg	11	Shippensburg	2
*Bloomsburg	6	Shippensburg	0
**Bloomsburg	2	Lowell	0
**Bloomsburg	5	Springfield	0
**Bloomsburg	9	Springfield	1
***Bloomsburg	1	Northeast Missouri St.	0
***Stephen F. Austin	3	Bloomsburg	1
***Cal. St.-Northridge	5	Bloomsburg	4

HOME TEAM IN CAPS

+ at Columbia, S.C.

+ + at Philadelphia Softball Association Tournament

 * at Pennsylvania Conference Championships

 ** at NCAA Eastern Regional

 *** at NCAA Championship Tournament

1986 Bloomsburg University Softball Statistics

- Batting -

Name	AB	R	H	2B	3B	HR	SO	BB	SAC	HP	SB	SBA	TB	RBI	AVG.
Karen Hertzler	145	40	45	7	1	1	10	14	6	0	11	14	59	15	.310
Kate Denneny	137	38	49	12	2	3	11	13	13	3	5	5	74	21	.358
Suzanne Luna	148	43	57	11	2	4	7	7	3	1	5	5	81	40	.385
Jean Millen	124	39	41	8	4	8	12	25	6	4	6	6	81	35	.331
Susan Kocher	129	31	44	5	3	2	8	17	10	1	1	1	61	22	.341
Cindy Freeland	96	9	23	1	0	0	9	8	6	0	0	0	24	6	.240
Kathy Berry	105	14	29	5	2	0	7	5	7	0	3	3	38	24	.276
Donna Graupp	75	9	15	1	0	1	6	5	9	0	2	2	20	3	.200
Joan Lewis	100	20	20	1	0	0	16	7	6	0	0	3	21	14	.200
Lori Pisco	30	7	8	1	0	0	7	7	1	0	1	1	9	2	.267
Kim Fey	42	8	6	0	0	0	1	11	1	0	3	3	6	2	.143
Lori Guitson	68	13	16	3	1	0	5	3	5	0	0	0	21	8	.235
Robin Fioretti	10	2	0	0	0	0	3	1	0	0	0	0	0	0	.000
Chris Moyer	5	0	2	0	0	0	0	0	0	0	0	0	2	0	.400
Donna Shief	30	10	6	2	0	0	3	7	1	1	0	0	7	3	.200
Sherri Cooley	17	7	5	0	0	0	2	5	1	0	0	0	0	2	.294
Totals	1261	290	366	57	15	19	107	135	75	10	37	44	504	197	.290

- Pitching -

Name	IP	BF	H	R	E	BB	SO	HB	WP	W	L	ERA
Susan Kocher	117	380	38	9	7	21	154	2	0	16	1	0.42
Chris Moyer	105	360	46	7	1	6	39	0	0	13	1	0.07
Jill Solinski	105	363	41	16	11	26	130	4	11	13	3	0.73
Totals	327	1103	124	33	19	53	323	6	11	42	5	0.41

RECORD: 42-5

- Fielding -

Name	CH	PO	A	E	PCT
Karen Hertzler	184	106	72	6	.967
Kate Denny	28	24	0	4	.857
Suzanne Luna	39	36	3	0	1.000
Jean Millen	278	247	29	2	.993
Susan Kocher	48	18	28	2	.958
Cindy Freeland	259	236	21	2	.992
Kathy Berry	62	19	39	4	.935
Donna Graupp	132	54	64	14	.894
Joan Lewis	36	33	3	0	1.000
Lori Pisco	70	64	6	0	1.000
Kim Fey	44	23	20	1	.977
Lori Guitson	68	62	4	2	.971
Chris Moyer	47	5	41	1	.979
Donna Shief	13	11	1	1	.923
Sherri Cooley	5	5	0	0	1.000
Jill Sollinski	14	5	9	0	1.000
Totals	1327	948	340	39	.971

— Records Against All Opponents —

+ ADELPHI (NY)	first meeting	
+ AKRON (OH)	0-2	.000
ALLEGHENY	first meeting	
Allentown	1-0	1.000
AMERICAN INT. (MA)	1-1	.500
Augustana (IL)	1-0	1.000
Baker (KS)	1-0	1.000
Bridgeport (CT)	1-0	1.000
Brockport (NY)	1-1	.500
Bucknell	6-2	.750
Cal St.-Northridge	0-1	.000
Calvin (MI)	1-0	1.000
Catholic University (DC)	2-0	1.000
COLGATE (NY)	first meeting	
Drexel	1-0	1.000
EAST STROUDSBURG	11-2	.846
Eastern Connecticut	1-0	1.000
EASTERN ILLINOIS	1-0	1.000
EDINBORO	3-0	1.000
Evansville (IN)	1-1	.500
Fairleigh-Dickinson (NJ)	1-0	1.000
Francis Marion (SC)	1-0	1.000
Franklin & Marshall	2-0	1.000
FURMAN	4-1	.800
INDIANA (PA)	10-0	1.000
ITHACA (NY)	6-1	.857
King's (PA)	2-0	1.000
KUTZTOWN	17-4	.809
LeMoyne (NY)	2-0	1.000
Liberty Baptist (VA)	2-0	1.000
+ LIU-C.W. POST (NY)	1-0	1.000
LOCK HAVEN	12-5	.706
Lowell (MA)	2-0	1.000
Luzerne C.C.C.	6-3	.667
Mankato St. (MN)	1-0	1.000
MANSFIELD	9-0	1.000
+ MASSACHUSETTS	first meeting	
Messiah	2-0	1.000
MILLERSVILLE	12-4	.750
Misericordia	4-0	1.000
Navy	2-0	1.000

Northeast Missouri St.	1-0	1.000
Oswego (NY)	2-0	1.000
+ PENN STATE	1-2	.333
Penn State-Ogontz	1-0	1.000
PRINCETON (NJ)	1-0	1.000
+ RHODE ISLAND	1-0	1.000
Rider (NJ)	2-0	1.000
Sacred Heart (CT)	2-4	.333
Salisbury St. (MD)	5-2	.714
Sam Houston St. (TX)	1-0	1.000
San Francisco St.	1-0	1.000
SETON HALL (NJ)	4-0	1.000
SHIPPENSBURG	16-9	.640
Slippery Rock	3-2	.600
South Carolina	2-0	1.000
Springfield (MA)	3-0	1.000
St. Peters (NJ)	1-0	1.000
Stephen F. Austin (TX)	0-1	.000
SUSQUEHANNA	12-4	.750
Trenton St. (NJ)	1-3	.250
University of Scranton	8-4	.667
Villanova	1-0	1.000
+ VIRGINIA	2-0	1.000
VIRGINIA COMMONWEALTH	first meeting	
WAYNE ST. (MI)	1-1	.500
WEST CHESTER	6-0	1.000
Wilkes (PA)	8-0	1.000
Winthrop (SC)	1-0	1.000
Wisconsin-River Falls	1-0	1.000

1987 Opponents in all CAPS

+ Participating in Penn State Tournament



Bloomsburg University

Softball Records

INDIVIDUAL

SINGLE GAME:

Batting:

At-Bats:	10	Karen Hertzler (vs. Sacred Heart* 23 innings)	5/11-12/84
Hits:	5	Kate Denny (vs. Allentown) (nine players have had four hits in a game)	4/12/86
Doubles:	2	Betty Rohrbach (vs. Frank. & Mars.) Carolyn Bartoni (vs. Wilkes)	5/2/81 4/17/80
Triples:	2	Deb Long (vs. Lock Haven)	4/22/82
Home Runs:	2	Jean Millen (vs. Millersville) vs. Springfield*)	4/14/84 5/10/86
Bases On Balls:	5	Jean Millen (vs. Fair. Dickinson)	3/12/84
Stolen Bases:	5	Gail Geberich (vs. Susquehanna) Mary Hassenplug (vs. Wilkes) Carolyn Harley (vs. Wilkes)	4/7/80 4/17/81 4/17/81
Sacrifices:	3	Jeannette Mitroka (vs. Shippensburg)	4/22/81
Runs Scored:	4	Gail Geberich (vs. Susquehanna) Kate Denny (vs. St. Peter's) Karen Hertzler (vs. St. Peter's) Cindy Freeland (vs. St. Peter's)	4/7/80 3/18/85 3/18/85 3/18/85
Runs Batted In:	6	Sally Houser (vs. Bucknell)	4/30/80

Pitching:

Innings Pitched:	23	Tina Souders (vs. Sacred Heart*)	5/11-12/84
Strikeouts:	15	Jill Solinski (vs. Millersville, 7 innings)	4/15/86
	18	Tina Souders (vs. East Stroudsburg, 16 innings)	4/26/84

*-also NCAA II tournament game record

SEASON:

Batting: (minimum 2 at-bats per game)

At-Bats:	145	Suzanne Luna	1986
Hits:	57	Suzanne Luna	1986
Doubles:	12	Kate Denny	1986
Triples:	6	Cheryl Sedlak Suzanne Luna	1982 1985
Home Runs:	8	Jean Millen	1986
Bases On Balls:	25	Jean Millen	1986
Stolen Bases:	14	Roberta Spezialetti	1981
Sacrifices:	14	Anne Schmidt Karen Hertzler	1982 & 1984 1983
Runs Scored:	43	Suzanne Luna	1986
Runs Batted In:	40	Suzanne Luna	1986
Batting Avg.:	.421	Sue Hicks (24 of 57) .414 Sally Houser (29 of 70) .411 Denise Henderson (44 of 107) .406 Karen Hertzler (39 of 96) .400 Deb Long (24 of 60)	1981 1980 1983 1983 1981
Slugging Pct.:	.653	Jean Millen	1986

Pitching: (minimum 10 appearances)

Games Pitched:	27	Tina Souders	1982
Innings Pitched:	172	Tina Souders	1983
Least Hits Allowed:	26	Susan Kocher	1984
Least Hits per 7 Innings:	0.32	Susan Kocher	1986
Least Runs Allowed:	7	Chris Moyer	1986
Least Runs Allowed per 7 Innings:	0.07	Tina Souders	1982
Least Walks Allowed:	6	Chris Moyer	1986
Least Walks Allowed per 7 Innings:	0.08	Tina Souders	1983
Most Strikeouts:	207	Tina Souders	1983
Lowest Earned Run Average:	0.07	Chris Moyer	1986
Most Wins:	22	Tina Souders	1983
Fewest Losses:	0	Chris Moyer	1983
Most Shutouts:	15	Tina Souders	1982 & 1983
Consecutive Hitless Innings:	24	Susan Kocher	1984

CAREER:**Batting:**

At-Bats:	468	Karen Hertzler	1983-86
Hits:	160	Karen Hertzler	1983-86
Doubles:	19	Kate Denny	1984-86
Triples:	12	Cheryl Sedlak	1979-82
		Jean Millen	1983-86
Home Runs:	14	Jean Millen	1983-86
Walks:	60	Karen Hertzler	1983-86
Runs Scored:	129	Karen Hertzler	1983-86
Runs Batted In:	87	Jean Millen	1983-86
Stolen Bases:	34	Karen Hertzler	1983-86
Sacrifices:	47	Anne Schmidt	1981-84
Batting Average:	.342	Karen Hertzler	1983-86
		(4 seasons)	

Pitching: (minimum 40 appearances)

Games Pitched:	87	Tina Souders	1981-84
Innings Pitched:	610	Tina Souders	1981-84
Least Hits Allowed:	159	Chris Moyer	1983-86
Least Runs Allowed:	44	Chris Moyer	1983-86
Least Walks Allowed:	65	Chris Moyer	1983-86
Most Strikeouts:	635	Tina Souders	1981-84
Lowest Earned Run Average:	0.34	Tina Souders	1981-84
Most Wins:	74	Tina Souders	(74-11) 1981-84
Fewest Losses:	4	Chris Moyer	(40-4) 1983-86
Most Shutouts:	46	Tina Souders	1981-84

No-Hitters

1. Judy Major	vs. Franklin & Marshall	5/2/81
2. Tina Souders*	vs. Misericordia	4/16/82
3. Brenda Long/ Tina Souders	vs. Kutztown	4/24/82
4. Tina Souders (1)	vs. Augustana (IL)	5/20/82
5. Chris Moyer	vs. Mansfield	3/31/83
6. Chris Moyer	vs. Kutztown	4/23/83
7. Tina Souders* (2)	vs. Springfield (MA)	5/13/83
8. Susan Kocher	vs. Rider	4/9/84
9. Susan Kocher	vs. Kutztown	4/10/84
10. Susan Kocher	vs. Mansfield	4/12/84
11. Chris Moyer	vs. Mansfield	4/12/84
12. Tina Souders	vs. West Chester	4/28/84
13. Chris Moyer	vs. St. Peter's (NJ)	3/18/85
14. Susan Kocher	vs. West Chester	4/4/85
15. Jill Solinski	vs. Drexel	3/25/86
16. Susan Kocher*	vs. Indiana (PA)	4/8/86
17. Susan Kocher	vs. Kutztown	4/13/86
18. Jill Solinski*	vs. Millersville	4/15/86
19. Susan Kocher*	vs. Shippensburg	4/22/86
20. Jill Solinski* (3)	vs. Lowell (MA)	5/9/86

* - perfect game

(1) - pitched at A.I.A.W. III National championship tournament

(2) - pitched at N.C.A.A. II Eastern regional tournament

(3) - pitched at N.C.A.A. II Eastern regional tournament

Team**SINGLE GAME:**

At-Bats:	49	vs. East Stroudsburg (16 innings)	4/26/84
	46	vs. Marywood (7 innings)	3/26/80
Hits:	21	vs. St. Peter's	3/15/85
Doubles:	4	five times	
		(most recent-vs. Allentown)	4/12/86
Triples:	4	vs. Bucknell	4/27/83
Home Runs:	2	12 times (most recent-vs. Springfield)	5/10/86
Walks:	22	vs. Fairleigh-Dickinson	3/12/84
Runs Scored:	23	vs. St. Peter's	3/15/85
Runs Allowed:	22	vs. Kutztown	5/7/79
Most Runs/ Both Teams:	37	(Kutztown 22 BU 15)	5/7/79
Largest Winning Margin:	23	vs. St. Peter's (23-0)	3/18/85

Largest Losing Margin:	11	vs. Scranton (15-4)	4/20/79
Runs Batted In:	16	vs. Susquehanna	4/7/80
Stolen Bases:	14	two times (most recent vs. Navy)	4/12/81
Sacrifices:	8	vs. Wilkes	5/4/82

SEASON:

Wins:	42	1986
Most Consecutive Wins:	37	1986
Most Consecutive Losses:	4 (two times)	1979
At-Bats:	1261	1986
Hits:	366	1986
Doubles:	57	1986
Triples:	19	1983
Home Runs:	19	1986
Walks:	135	1986
Runs Scored:	290	1986
Runs Batted In:	197	1986
Stolen Bases:	106	1980
Sacrifices:	87	1983
Batting Average:	.313	1983
Earned Run Average:	0.32	1984
Shutouts:	31	1986

Over the Years

1977	1-3	1982	28-4
1978	4-7	1983	33-4
1979	6-11	1984	30-4
1980	17-8	1985	35-6
1981	23-9	1986	42-5
10 seasons: 219-61		78.2%	

Accomplishments Over the Past Five Seasons

1982:	28-4 EIAIW Regional Champions AIAW Division III Champions
1983:	33-4 Pennsylvania Conference Champions NCAA East Regional: Second
1984:	30-4 Pennsylvania Conference Champions NCAA East Regional: Second
1985:	35-6 Pennsylvania Conference Champions NCAA East Regional: Second
1986:	42-5 Pennsylvania Conference Champions NCAA East Regional Champions NCAA Division II Championships: Third

Bloomsburg's Softball All-Americans



Tina Souders
Pitcher
1982, 1983, 1984



Kathy Behan
Third Base
1982



Denise Henderson
Catcher
1982



Anne Schmidt
Shortstop
1982



Karen Hertzler
Second Base
1984, 1986



Susan Kocher
Pitcher
1986

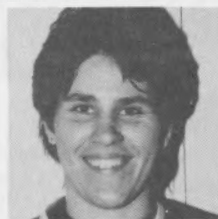


Jean Millen
First Base
1986

1986 CoSIDA/GTE Academic All-Americans



Cindy Freeland
Catcher



Chris Moyer
Pitcher

BU AREA MEDIA OUTLETS

The purpose of this guide is to provide members of the media with necessary information concerning Bloomsburg softball. Members of the media are always welcome on the Bloomsburg University campus. It would be appreciated if those who plan to cover any of the Huskies' home or away contests would contact the sports information office so that we can make every effort to accommodate your needs and requests.

Newspapers

Press-Enterprise
3185 Lackawanna Avenue
Bloomsburg, PA 17815

Danville News
14 East Mahoning Street
Danville, PA 17821

Daily Item
200 South Market Street
Sunbury, PA 17801

Milton Standard
19 Arch Street
Milton, PA 17847

News-Item
701 North Rock Street
Shamokin, PA 17872

Sun Gazette
252 West Fourth Street
Williamsport, PA 17701

The Grit
208 West Third Street
Williamsport, PA 17701

Patriot-News
P.O. Box 2265
Harrisburg, PA 17015

Standard Speaker
21 North Wyoming Street
Hazleton, PA 18201

Radio and Television

WHLM Radio
107 West Main Street
Bloomsburg, PA 17815

WCNR Radio
125 West Main Street
Bloomsburg, PA 17815

WPGM Radio
Eight East Market Street
Danville, PA 17821

WILQ Radio
P.O. Box 1176
Williamsport, PA 17701

WWPA Radio
P.O. Box 2168
Williamsport, PA 17701

WNEP - TV
Wilkes-Barre Scranton Int. Airport
Avoca, PA 18641

WBRE - TV
62 South Franklin Street
Wilkes-Barre, PA 18703

WYOU - TV
415 Lackawanna Avenue
Scranton, PA 18503

WGAL - TV
P.O. Box 7127
Lancaster, PA 17604

WHTM - TV
P.O. Box 2775
Harrisburg, PA 17105

WHP - TV
P.O. Box 1507
Harrisburg, PA 17105

Wire Services

Associated Press
Suite 250
One Franklin Plaza
Philadelphia, PA 19102

United Press International
1819 JFK Boulevard
Philadelphia, PA 19103



**Jim Doyle, Sports Director
WHLM RADIO
"Voice of the Huskies"**



**John Michaels
Sports Editor
Press-Enterprise**

Softball 1987

March	14	East Stroudsburg	Columbia, SC
	15	Wayne St.	Columbia, SC
		American International	
	16	Colgate	Columbia, SC
		Indiana (PA)	
	17	Furman	Columbia, SC
		Seton Hall	
		Princeton	
	18	Edinboro (2)	Columbia, SC
	19	American International	Columbia, SC
		Allegheny	
	20	Wayne St.	Columbia, SC
	28	at Virginia Commonwealth (2)	1:00 p.m.
	29	at Virginia (2)	1:00 p.m.
April	1	at Indiana (PA) (2)	2:30 p.m.
	2	SUSQUEHANNA (2)	3:30 p.m.
	4	EAST STROUDSBURG (2)	1:00 p.m.
	5	MANSFIELD (2)	1:00 p.m.
	8	at Lock Haven (2)	2:30 p.m.
	10-12	at Penn State Tournament	State College, PA
		(Adelphi, Akron, C.W. Post, Massachusetts, Penn State, Rhode Island, Virginia)	
	14	at Millersville (2)	2:30 p.m.
	16	at Kutztown (2)	2:30 p.m.
	21	at Shippensburg (2)	2:00 p.m.
	23	ITHACA (2)	3:00 p.m.
	25	WEST CHESTER (2)	1:00 p.m.
May	1-2	PSAC Championships	Berwick, PA