

ACKNOWLEDGMENTS

Appreciation is expressed to the faculty and staff of Edinboro State College in the preparation of this report. The cover photograph was supplied by the college. We thank members of the publishing staff of the college for their work in producing this report. We are grateful to faculty, department heads and students in furnishing the data essential for a report of this kind.

FOURTH

ANNUAL REPORT

OF THE

VICE PRESIDENT

FOR

ACADEMIC AFFAIRS

EDINBORO STATE COLLEGE
Edinboro, Pennsylvania 16412

ACKNOWLEDGMENTS

Appreciation is expressed to Mrs. Carolyn Hazlewood and Miss Bridget Brickner for their assistance in the compilation of the data for this report. The cover photograph was supplied by Mr. Russell Wood. We thank members of the Duplicating Section of the College for their work in publishing this report. We are grateful to faculty, department heads and others in furnishing the data so essential for a report of this kind.



John K. Fisher
Interim Vice-President for
Academic Affairs



Blair E. Henderson
Acting Assistant Vice-President
for Academic Affairs

EDINBORO STATE COLLEGE ORGANIZATION CHART

1 July 1973

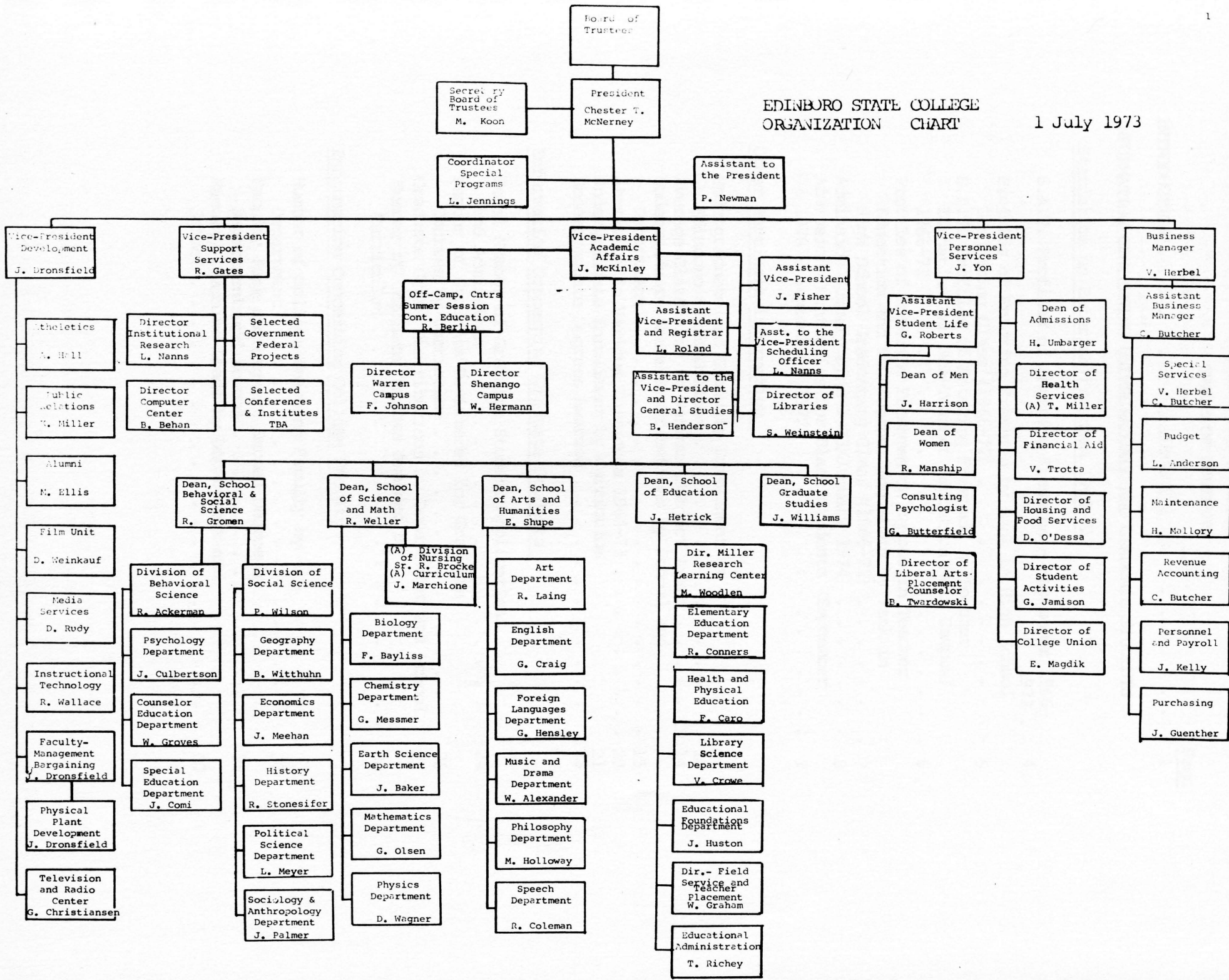


TABLE OF CONTENTS

	<u>Page</u>
INTRODUCTION	1
INFORMATION CONCERNING UNDERGRADUATE AND GRADUATE STUDENTS	
<u>Statistics on Entering Freshmen 1966-71</u>	
S.A.T. Profiles of Entering Freshmen - September 1966-1972	4
Profiles of Entering Freshmen by Rank in High School Graduating Class (1966-72)	5
S.A.T. Profiles of Entering Freshmen in Teacher Education and Non-Teacher Education(Main Campus) 1966-72	6
Profiles of Entering Freshmen(on campus)in Teacher Education and Non-Teacher Education by Rank in High School Graduating Class (1966-72)	7
Admission Summary June 1973/January 1974	8
Admissions Statistics for Black Students (September 1970 - September, 1972)	9
<u>Other Pertinent Information</u>	
Undergraduate and Graduate Enrollment at Edinboro State College	10
Average Class Size in Various Subject Areas	13,14
Undergraduate Grade Distributions by School and Department	15
Attrition in Various Curricula 1966-73	20
Undergraduate Enrollment by Curriculum	21
Undergraduate Degrees Awarded	23
<u>Information Concerning Graduate Students</u>	
Total Number of Graduate Student Applications and Admissions	24
Number of Students Registered for Graduate Courses by Curriculum	25
Graduate Grade Distributions by Department and School	27
Number of Graduate Degrees Awarded by Curriculum	32
<u>Information Concerning College Faculty</u>	
Number of college Teaching Faculty by Department	33
Faculty Rank and Highest Earned Degree by Department and School	35
Faculty Teaching Loads by Department and School	37

	<u>Page</u>
The Advisory Program	45
Faculty Non-Instructional Activities	48
Number of Faculty Engaged in Consultant Work or Field Services	49
Number of Lectures or Talks Delivered by Faculty 1972-73	51
Professional Activities of Art and College Development Faculty	53
Professional Activities of the Music and Drama Department Faculty	54
Number of Publications by Faculty	55
Faculty Committee Membership	57
Faculty Research Activities	59
Number of Faculty Having Various Extra- Class or Non-Teaching Responsibilities	61
Number of Professional Meetings Attended by Faculty	63
Information Concerning Faculty-Student Campus Professional Clubs and Organizations	65

Information Concerning Academic Development

Report of the Academic Development Committee	66
The Educational Development Center	70
Second Educational Congress of Northwest Pennsylvania	72
College Instructional Facilities	73
Selected Motions Passed by the Academic Council	76
Selected Motions Passed by the College Senate	78

INTRODUCTION

This is the fourth in a series of annual academic reports published by the Office of the Vice-President for Academic Affairs. The purpose of these reports is to provide information about various facets of the college that would be of interest to those concerned with its development. In addition they will contain up-to-date information that will be of value in preparing reports for various agencies and groups in the future.

Edinboro State College was established primarily to serve the Northwestern Pennsylvania region. However, students now come from all counties of the state as well as from other states. The college has experienced an accelerating growth rate in both faculty and students over the past five years. As of the Fall of 1972, the college enrolled 7340 students and employed 473 professional staff members.

Until recently the chief objective of the college was the education and preparation of classroom teachers for the schools of the Commonwealth. With the implementation of programs in other disciplines, Edinboro has become a multi-purpose institution of higher learning serving the educational needs of Northwestern Pennsylvania, the Commonwealth, and the nation. The college operates off-campus centers in Farrell and Warren, Pennsylvania, making higher educational opportunity available to a larger number of students. Programs in elementary and secondary education, and in the arts, humanities, and sciences curricula are available at these centers. After two years, students may transfer to the main campus.

The college is organized into 4 branches: Academic Affairs, College Development, Student Personnel Services, and Support Services. Presently the college has five schools: The School of Arts and Humanities, the School of Behavioral and Social Sciences, the School of Education, the School of Science and Mathematics, and the School of Graduate Studies.

DIVISIONS, DEPARTMENTS, AND AREAS CONTAINED WITHIN THE SCHOOLS,
ARE AS FOLLOWS:

School of Arts and Humanities

Art
English
Foreign Languages
Music/Drama
Philosophy
Speech

School of Behavioral and Social
Sciences

Behavioral Sciences Division
Counselor Education
Psychology
Special Education

Social Sciences Division

Economics
Geography
History
Political Science
Sociology/Anthropology

School of Education

Educational Development Center
Educational Foundations
Elementary Education
Health and Physical Education
Library Science
Secondary Education
Field Experiences and Teacher
Placement

School of Science and Mathematics

Biology
Chemistry
Earth Sciences
Mathematics
Nursing Division
Physics
Medical Technology Program

School of Graduate Studies

It is anticipated that Edinboro State College will continue to provide expanded services to the region. Through provision of such services the college can increasingly meet its leadership responsibilities in the years ahead.

FOLLOWING ARE THE PROGRAMS OFFERED AT THE UNDERGRADUATE LEVEL:

SCHOOL OF ARTS AND HUMANITIES

Bachelor of Arts

Art	Music
Drama	Russian
English	Speech Communication
French	Spanish
German	Philosophy

Bachelor of Fine Arts

Art

SCHOOL OF BEHAVIORAL AND SOCIAL SCIENCES

Bachelor of Arts

Anthropology	History	Psychology	Social Services
Economics	Political Science	Social Sciences	(Social Work
Geography	Pre-Law	Sociology	Urban Studies
			Black Studies

SCHOOL OF EDUCATION

Bachelor of Science in Education

Elementary Education:

Grades K-12
Art Education (B.S. in Art Ed.)
Dental Hygiene
Library Science
Music Education
Speech and Hearing
Women's Health and
Physical Education

Secondary Education:

Biology
Chemistry
Communications
Earth and Space Sciences
English
French
General Science
German
Mathematics
Mathematics - Physics
Spanish
Social Studies

SCHOOL OF SCIENCE AND MATHEMATICS

Bachelor of Arts or Bachelor of Science

Biology
Chemistry
Earth Sciences
Geology
Mathematics

Medical Technology
Nursing
Physics
Pre-Dental
Pre-Engineering
Pre-Medical

FOLLOWING ARE THE PROGRAMS OFFERED AT THE GRADUATE LEVEL:

Master of Education

Art
Biological Science
Earth Sciences
Educational Psychology
Elementary Education
Elementary Guidance
English
Mathematics
Mental Retardation
Music
Physical Science
Reading
School Administration
Secondary Guidance
Social Studies

Master of Arts

English
History
Political Science

Master of Science

Biology

CERTIFICATION MAY ALSO BE
OBTAINED AS A SCHOOL PSYCHOLO-
GIST READING SUPERVISOR, AND
GUIDANCE DIRECTOR

**INFORMATION CONCERNING
UNDERGRADUATE AND GRADUATE
STUDENTS**

S.A.T. PROFILES OF ENTERING FRESHMEN (SEPTEMBER 1966-72)*

	<u>1966</u>	<u>1967</u>	<u>1968</u>	<u>1969</u>	<u>1970</u>	<u>1971</u>	<u>1972</u>
Verbal	460	481	493	511	503	501	472
Mathematics	476	476	492	514	507	504	483
TOTAL	936	957	985	1025	1010	1005	955

† * All S.A.T. scores are median scores.

PROFILES OF ENTERING FRESHMEN BY RANK IN HIGH SCHOOL GRADUATING CLASS (1966-72)*

	<u>1966</u>	<u>1967</u>	<u>1968</u>	<u>1969</u>	<u>1970</u>	<u>1971</u>	<u>1972</u>
Upper fifth	31	34	34	41	41	44	38
Second fifth	38	40	38	34	36	29	25
Third fifth	28	25	26	23	17	22	26
Fourth fifth	4	1	2	2	4	4	8
Lower fifth	0	0	0	4	2	1	3

-5-

* Figures are expressed in percentages rounded off to the nearest whole percent.

SCHOLASTIC APTITUDE TEST PROFILES OF ENTERING FRESHMEN IN TEACHER EDUCATION
AND NON-TEACHER EDUCATION (MAIN CAMPUS) 1966-72*

	1966		1967		1968		1969		1970		1971		1972	
	<u>T.E.</u>	<u>N.T.E.</u>	<u>T.E.</u>	<u>N.T.E.</u>	<u>T.E.</u>	<u>N.T.E.</u>	<u>T.E.</u>	<u>N.T.E.</u>	<u>T.E.</u>	<u>N.T.E.</u>	<u>T.E.</u>	<u>N.T.E.</u>	<u>T.E.</u>	<u>N.T.E.</u>
1300 and Above	1	0	0	0	1	1	1	1	0	1	1	0	0	1
1100-1299	11	1	13	14	17	18	12	23	16	14	9	11	10	11
900-1099	53	39	57	62	61	59	71	58	60	66	64	62	49	53
700-899	35	59	30	24	21	22	16	18	22	17	25	26	37	30
Below 700	0	1	0	0	0	0	0	0	2	2	1	1	4	5

*Figures are expressed in percentages rounded off to the nearest whole percent.

**PROFILES OF ENTERING FRESHMEN (ON CAMPUS) IN TEACHER EDUCATION
AND NON-TEACHER EDUCATION BY RANK IN HIGH SCHOOL GRADUATING CLASS (1966-72)***

	<u>1966</u>		<u>1967</u>		<u>1968</u>		<u>1969</u>		<u>1970</u>		<u>1971</u>		<u>1972</u>	
	<u>T.E.</u>	<u>N.T.E.</u>	<u>T.E.</u>	<u>N.T.E.</u>	<u>T.E.</u>	<u>N.T.E.</u>	<u>T.E.</u>	<u>N.T.E.</u>	<u>T.E.</u>	<u>N.T.E.</u>	<u>T.E.</u>	<u>N.T.E.</u>	<u>T.E.</u>	<u>N.T.E.</u>
Upper fifth	34	20	35	28	30	47	39	48	44	34	47	40	41	40
Second fifth	39	32	41	35	42	26	36	26	36	35	31	26	28	22
Third fifth	24	41	23	33	26	23	24	20	15	23	18	28	25	27
Fourth fifth	3	7	1	4	1	4	1	5	4	6	3	5	5	8
Lower fifth	0	0	0	0	0	0	0	1	1	2	1	1	1	3

* Figures are expressed in percentages rounded off to the nearest whole percent.

ADMISSION SUMMARY JUNE 1973/JANUARY 1974

A total of 109 new freshmen were enrolled in the fifth annual June/January class. This is the smallest number of students enrolled in this program since its formation and reflects a trend of non-availability of students for this kind of an admissions offer. The male/female ratio was remarkably even with 54% (59) female and 46% (50) male students enrolled. Diminishing numbers of interested students has caused a somewhat lower aptitude as indicated by college board scores and scholastic ability as represented by high school class rank. The personal qualities of this class, as indicated by counselors and teachers, would indicate that this class is as strong as any given past class.

The 109 freshmen were from 20 counties and represented 80 different high schools throughout Pennsylvania. There were also 3 out-of-state students enrolled in this class. Allegheny county led all others with 43 students enrolled while Westmoreland contributed 10 and McKean added 5 students.

RANK IN HIGH SCHOOL GRADUATING CLASS

	<u>Teacher Education</u>		<u>Liberal Arts</u>	
	0	%	0	%
Upper 1/5				
Upper 2/5	17		5	
Upper 3/5	36		21	
Upper 4/5	40		58	
Upper 5/5	6		16	

S.A.T. PROFILES

	<u>Teacher Education</u>		<u>Liberal Arts</u>	
	0	%	0	%
1099-900	6	%	10	%
899-700	58		74	
Below 700	36		16	

ADMISSIONS STATISTICS FOR BLACK STUDENTS - SEPTEMBER, 1970 - SEPTEMBER, 1972

	<u>1970</u>	<u>1971</u>	<u>1972</u>
NUMBER WHO APPLIED	80	126	127
NUMBER ACCEPTED	61	105	119
NUMBER ENROLLED	51	68	75
NUMBER OF "NO SHOWS"	10	26	23
NUMBER FAILING TO COMPLETE APPLICATION	14	17	6
NUMBER REJECTED	5	4	2

1972

The 127 black applicants represent 3.35 percent of the total of 3784 applications applications processed for the Main Campus. The percentage of black applicants accepted was 93.70 as compared to 31.96 for the total freshman class. The percentage of black individuals who failed to complete their applications was 4.72 as compared with 7.97 percent for the total freshman class. The 23 students who did not report for enrollment ("no shows") represent 19 percent of black students accepted, as compared with 2.10 percent of the total freshman class.

1971

The 126 black applicants represent 3.3 percent of the total of 3858 applications processed for the Main Campus. The percentage of black applicants accepted was 83.3 as compared to 63.97 for the total freshman class. The percentage of black individuals who failed to complete their applications was 13.5 as compared with 3.75 percent for the total freshman class. The 26 students who did not report for enrollment ("no shows") represent 25 percent of black students accepted, as compared with 5.5 percent "no shows" for the total freshman class.

1970

The 80 black applicants represent 2.2 percent of the total of 3593 applications processed for the Main Campus. The percentage of black applicants accepted was 76.2 as compared to 34.4 for the total freshman class. The percentage of black individuals who failed to complete their applications was 17.5 as compared with .86 percent for the total freshman class. The 10 students who did not report for enrollment ("no shows") represent 16.4 percent of black students accepted, as compared with 2.4 percent "no shows" for the total freshman class.

UNDERGRADUATE AND GRADUATE ENROLLMENT AT EDINBORO STATE COLLEGE

	<u>1968</u>	<u>1969</u>	<u>1970</u>	<u>1971</u>	<u>1972</u>
<u>Full Time Undergraduate</u>					
<u>Total Enrolled</u>	5,510	5,816	5,615	5,862	6,025
Black	56	63	110	114	135
Black Percentage	1.01	1.08	1.95	1.94	2.24
<u>Part Time Undergraduate</u>					
<u>Total Enrolled</u>		343	501	352	411
Black				6	
Black Percentage				1.70	
<u>Full Time Graduate</u>					
<u>Total Enrolled</u>		47	56	40	89
Black		1		1	5
Black Percentage		2.12		2.50	5.55

EDINBORO STATE COLLEGE ADMISSIONS STATISTICS FOR BLACK STUDENTS
FOR 1970, 1971, and 1972

	<u>1970</u>	<u>1971</u>	<u>1972</u>
Number of Black Students Enrolled	<u>51</u>	<u>68</u>	<u>75</u>
Per Cent of Freshman Class	4.28	4.51	5.42

INTRODUCTORY COURSES IN VARIOUS SUBJECT AREAS ARE DEFINED AS FOLLOWS:

Art

AE101 Intro. to Art
 ARL11,112 Design I & II
 ARL15,136 Drawing I & II
 ARL22 Art History I

Computer Science

CS117 Elementary Programming

Economics

EC100 Elements of Economics
 EC105 Consumer Economics
 EC110 Accounting I
 EC120 Accounting II
 EC200-220 Princ. of Econ.

Foreign Language

CL101-102 Chinese I & II
 FL101-102 French I & II
 FL103 Reading French
 FL211 Diction for Music Students
 GL101-102 German I & II
 GL103 Reading German I
 GL355 Post WWII German Literature
 RL101-102 Russian I & II
 RL103 Reading Russian I
 RL353 Russian Lit. in Translation
 SL101-102 Spanish I & II

Mathematics

MA101 Foundations of Math
 MA102 Structure of the Number
 System
 MA105 College Algebra
 MA107 Pre-Calculus Math

Physics

SP101-102 Physical Science I & II
 SP103-104 Physics I & II
 SP271 Frontiers in Astronomy

Biology

SB100 Man and Nature
 SB101 Basic Biology
 SB102 Man/Living/Environment
 SB103 Principles of Biology

Drama

DR203 Fund. of Acting
 DR218 Intro. to Theatre

English

ES101-102 English I & II
 ES250 Intro. to Literature of
 Drama
 ES251 Intro. to Fiction
 ES252 Intro. to Poetry

Geography

GE101 World Geography

History

HI101-102 World Civ. I & II
 HI261 History of U.S. I to 1876
 HI262 History of U.S. II from 1876

Music

MU101 Intro. to Music
 MU102 Survey of Music
 MU103 Man and His Music
 MU100- Series Courses in Applied
 Music

Political Science

PO200 Intro to Government
 PO201 American Government

Chemistry

SCI00-101 Principles of Chemistry I & II
 SCI02 Elements of Chemistry I
 SC200-201 General Chemistry I & II

Earth Science

GS101 Earth and Space Science
 GS109 Atmospheric and Space Science
 GS111 General Geology

Elementary

EE275 Early Childhood Education

Health and Physical Education

HP105 Health
 HP01-02-03 Physical Education
 HP122 Intro. & Prin. of H & P.E.
 HP130 Personal Hygiene

Library Science

LS102 Library in the School

Philosophy

PH200 Intro. to Philosophy

Psychology

PS101 General Psychology

Safety Education

SF253 Intro.to Safety Education

Speech

DS107 Fundamentals of Speech -

Sociology/Anthropology

SO200 Principles of Sociology
SO280 Intro. to Anthropology
SS260 Intro. to Law Enforcement

AVERAGE CLASS SIZE IN VARIOUS SUBJECT AREAS*
(First Semester 1972-73)

Area	Total No. of Sections	Total No. of Students	No. of Students in Intro. Courses	No. of Students in Adv. Courses	Avg. No. of Students in:		
					Intro. Courses	Adv. Courses	Combined Courses
Art	128	2888	1374	1514	41	16	22
Biology	49	1241	818	423	30	19	26
Chemistry	23	474	375	99	23	14	20
Chinese	1	13	13	0	13	0	13
Computer Science	6	122	105	17	26	8	24
Drama	10	271	134	137	33	23	27
Earth Science	30	690	508	182	24	20	23
Economics	15	394	290	104	29	21	26
Education	10	207	0	207	0	21	21
Educational Foundations	38	881	0	881	0	23	23
Elementary Education	94	2969	0	2969	0	32	32
English	179	3513	1582	1931	15	26	20
French	13	176	64	112	21	11	13
Geography	37	1119	513	606	39	25	30
German	9	119	65	54	16	11	13
Health & Physical Ed.	91	1850	1651	199	20	22	20
History	60	1739	701	1038	32	27	29
Library Science	15	259	43	216	21	16	17
Mathematics	69	1961	1239	722	33	23	28
Medical Technology	3	51	0	51	0	17	17
Music	156	1561	713	848	10	10	10
Nursing	3	15	0	15	0	5	5
Philosophy	34	1207	887	320	37	32	35
Physics	31	672	640	32	24	8	22
Political Science	30	803	555	248	33	19	27
Psychology	54	1653	623	1030	39	27	31
Russian	6	63	40	23	13	8	10
Safety Education	5	104	58	52	29	17	21
Social Science	4	124	0	124	0	31	31
Social Work	5	107	0	107	0	21	21
Sociology/Anthropology	33	1085	797	288	36	26	33
Spanish	15	268	114	154	28	14	18
Special Education	39	832	0	832	0	21	21
Speech	25	596	408	188	27	19	24
TOTAL	1320	30027	14310 (587)	15723 (733)	24	21	23

All College Average Number of Students Per Section = 23

AVERAGE CLASS SIZE IN VARIOUS SUBJECT AREAS*
(Second Semester 1972-73)

Area	Total No. of Sections	Total No. of Students	No. of Students in Intro. Courses	No. of Students in Adv. Courses	Avg. No. of Students in:		
					Intro. Courses	Adv. Courses	Combined Courses
Art	116	2327	1171	1156	31	15	20
Biology	53	1195	726	469	28	17	22
Chemistry	28	445	292	153	17	14	16
Chinese	1	2	2	0	2	0	2
Computer Science	6	129	117	12	23	12	21
Drama	10	257	76	181	38	22	26
Earth Science	28	594	454	140	24	15	21
Economics	15	404	262	142	37	18	29
Education	7	99	0	99	0	14	14
Educational Foundations	20	993	0	993	0	50	50
Elementary Education	90	2973	0	2973	0	33	33
English	187	3108	1844	1264	15	20	17
French	19	178	72	106	12	8	9
Geography	34	944	506	438	32	24	28
German	11	108	45	63	15	8	10
Health & Physical Education	84	2058	1729	329	26	18	25
History	76	1745	690	1055	26	22	23
Library Science	16	242	18	224	18	15	15
Mathematics	78	1866	950	916	27	21	24
Medical Technology	5	80	0	80	0	16	16
Music	195	1688	725	963	9	9	9
Nursing	6	53	41	12	20	3	9
Philosophy	38	1177	965	212	33	23	31
Physics	32	543	443	100	19	11	17
Political Science	41	837	557	280	25	15	20
Psychology	64	1830	640	1190	30	28	29
Russian	9	82	54	28	13	5	9
Safety Education	7	186	91	95	30	31	26
Social Sciences	4	81	0	81	0	20	20
Social Work	7	134	0	134	0	19	19
Sociology/Anthropology	35	1360	808	552	38	39	39
Spanish	19	262	209	53	17	7	14
Special Education	45	924	0	924	0	21	21
Speech	29	671	427	244	27	19	23
Total	1415	29575	13914 (631)	15661 (784)	22	20	21

All College Average Number of Students Per Section = 21

UNDERGRADUATE GRADE DISTRIBUTIONS BY SCHOOL AND DEPARTMENT*
1970 - 1973

SCHOOL OF ARTS AND HUMANITIES

		1970-71		Summer, 1971			1971-72		Summer, 1972			1972-73	
		1st.sem.	2nd.sem.	Pre	Regular	Post	1st.sem.	2nd.sem.	Pre	Regular	Post	1st.sem.	2nd.sem.
Art	A.	17	21	34	23	43	18	23	40	25	31	20	24
	B.	34	41	44	39	39	37	35	42	40	38	35	36
	C.	32	27	16	31	14	32	28	19	21	19	30	28
	D.	7	6	4	4	3	6	6		3	6	7	5
	F.	6	5		2		5	5		4	4	5	5
English	A.	9	11	14	15	13	10	15	26	13	20	12	12
	B.	29	31	34	31	37	33	33	37	32	23	32	31
	C.	42	42	42	41	37	42	36	24	38	41	40	39
	D.	11	10	7	7	7	9	9	10	12	11	8	9
	F.	6	5	2	4	3	4	5	2	5	4	6	6
Modern Foreign Languages	A.	22	25		18		24	27	80	36		28	27
	B.	29	27		34		29	31	20	28		33	38
	C.	28	29		26		27	24		24		24	23
	D.	11	9		11		10	8				5	5
	F.	8	7		10		7	7		12		5	5
Music and Drama	A.	21	23	33	27	23	19	23	55	30	18	24	23
	B.	36	37	33	35	33	35	32	18	39	27	31	33
	C.	28	29	27	25	38	30	29	18	20	32	29	26
	D.	7	6		9	4	9	8	9	6	14	7	8
	F.	6	4		3		6	6		3	9	6	8
Philosophy	A.	14	13	51	26	25	19	15	17	16	38	13	18
	B.	31	43	29	40	27	46	42	46	33	38	35	39
	C.	42	34	20	29	29	27	31	33	48	15	41	31
	D.	6	4		4	6	4	5			4	4	5
	F.	3	3		1	8	2	3		1	2	3	4

*Percentages of A, B, C, D and F grades do not add to 100% because X, Y and Z grades are not included in these distributions. All figures are rounded off to the nearest whole percent.

		1970-71		Summer, 1971			1971-72		Summer, 1972			1972-73	
		1st.sem.	2nd.sem.	Pre	Regular	Post	1st.sem.	2nd.sem.	Pre	Regular	Post	1st.sem.	2nd.sem.
Speech	A.	10	12		29	25	12	21	21	17	13	18	14
	B.	35	32	38	26	35	35	27	38	36	38	33	41
	C.	39	41	50	29	35	40	38	42	36	33	37	32
	D.	8	9		11	5	6	7		4	8	5	7
	F.	7	4	13	3		5	5		5	8	6	5

SCHOOL OF BEHAVIORAL AND SOCIAL SCIENCES

Behavioral Science Division

Psychology	A.	13	13	20	8	14	12	14	14	14	14	12	16
	B.	30	32	33	28	29	30	28	36	30	32	28	29
	C.	38	40	42	39	44	42	41	40	37	46	42	35
	D.	11	9	2	17	8	10	10	9	12	4	11	12
	F.	5	4	2	8	3	4	6	1	5	4	5	6

Counselor Education	A.	12	12		9	19	13	15		13	21	11	12
	B.	24	25		21	50	26	26		17	29	26	25
	C.	43	48		24	25	40	38		48	33	43	46
	D.	12	10		18	3	14	15		13	17	10	10
	F.	7	4		9	3	6	6		4		7	6

Special Education	A.	16	15	25	15	10	17	19	36	21	41	18	21
	B.	36	39	28	55	68	38	36	29	32	20	43	39
	C.	36	37	38	28	20	35	36	27	34	20	31	33
	D.	8	7	8	2		5	5	4	6		5	4
	F.	2	2	3	3		3	2	2	3	4	2	2

Social Sciences Division

Economics	A.	7	6	6	4	33	9	7	14	13	11	13	9
	B.	22	16	24	19	17	22	23	20	27	67	26	33
	C.	39	38	53	39	50	39	45	54	36	22	38	33
	D.	18	27	16	27		19	16	9	22		15	15
	F.	11	11	2	11		9	7	3			6	9

		1970-71		Summer, 1971			1971-72		Summer, 1972			1972-73	
		1st.sem.	2nd.sem.	Pre	Regular	Post	1st.sem.	2nd.sem.	Pre	Regular	Post	1st.sem.	2nd.sem.
Geography	A.	8	12	20	16	14	10	11	17	19	25	10	15
	B.	24	28	40	33	36	28	34	36	37	52	31	32
	C.	45	39	38	41	34	43	36	47	37	21	43	37
	D.	14	11	2	7	14	10	11		4	2	8	7
	F.	6	8		1	2	6	7		1		7	7
History	A.	7	6	10	10	12	9	8	10	12	5	10	11
	B.	24	26	28	29	31	30	31	34	33	29	29	31
	C.	42	38	43	40	40	40	37	43	37	48	39	36
	D.	15	17	16	16	11	12	14	12	12	13	12	12
	F.	10	10	3	4	6	6	9	1	5	4	8	8
Political Science	A.	6	6	9	7	7	8	10	4	11	10	8	9
	B.	30	25	38	22	34	27	28	25	31	40	26	30
	C.	34	43	38	41	41	41	37	34	37	33	42	41
	D.	17	15	14	18	11	16	14	26	13	17	14	12
	F.	10	9		10	5	6	8	11	8		8	7
Sociology Anthropology	A.	9	12	5	16	10	9	12	25	18	7	9	11
	B.	31	33	21	35	36	29	32	24	33	47	30	28
	C.	39	39	64	44	44	45	43	48	41	43	45	45
	D.	11	9	5	3	8	11	9	1	4	3	10	11
	F.	5	4	4	2	2	3	2	1	1		4	3

SCHOOL OF EDUCATION

Elementary Education	A.	20	22	21	25	21	26	24	33	26	38	27	31
	B.	40	46	49	46	49	45	47	51	49	39	47	44
	C.	33	27	14	23	27	23	24	14	21	21	20	22
	D.	4	3	17	4	2	2	2		2		2	2
	F.	3	2		2		2	2		2		2	1
Health & Physical Education	A.	23	28	40	24	60	28	34	38	37	34	30	28
	B.	39	35	45	50		38	39	54	41	43	40	41
	C.	25	29	13	24	20	26	21	8	17	17	21	21
	D.	6	2	1	1	20	4	2	1	1	3	3	4
	F.	5	3		1		3	2		4	3	4	4

		1970-71		Summer, 1971			1971-72		Summer, 1972			1972-73	
		1st.sem.	2nd.sem.	Pre	Regular	Post	1st.sem.	2nd.sem.	Pre	Regular	Post	1st.sem.	2nd.sem.
Library Science	A.	22	25	20	42	56	26	30	40	29	24	21	30
	B.	41	41	60	38	11	36	45	45	36	35	50	39
	C.	27	25	20	17	33	31	16	15	27	29	25	24
	D.	3	3				2	4		2	6		4
	F.	5	2		2		3	5		3			2
Educational Foundations	A.	10	10	14	11	14	7	14	15	24	14	11	13
	B.	34	34	46	24	38	36	35	55	40	43	38	42
	C.	44	46	38	50	45	48	42	28	29	39	41	38
	D.	6	7		12		4	5	1	5	2	5	2
	F.	4	1		2	2	2	3		2	2	2	3
Field Experiences and Teacher Placement	A.	38	45				44	42				47	19
	B.	55	49		100		51	51				47	34
	C.	6	5				5	5				5	31
	D.												8
	F.												5

SCHOOL OF SCIENCE AND MATHEMATICS

Biology	A.	10	11	15	15	24	12	12	8	17	21	9	13
	B.	25	27	25	28	47	29	28	31	33	36	25	27
	C.	41	38	43	37	20	36	38	44	37	32	36	38
	D.	15	15	15	17	7	13	12	13	11	7	15	12
	F.	6	7	1	4	2	8	7	1	1	3	8	7
Chemistry	A.	14	16		11		19	15	33	12	33	11	15
	B.	21	25	100	27		24	25	44	25	17	24	24
	C.	28	33		26		31	31	11	17	50	28	26
	D.	15	13		19		11	15		17		15	18
	F.	19	12		15		13	12		7		17	14
Earth Science	A.	8	11	8	12	13	11	12	11	13	13	11	15
	B.	21	22	23	24	34	24	24	34	29	30	25	27
	C.	41	48	57	31	42	39	37	30	37	40	35	33
	D.	17	14	8	21	8	17	14	11	14	13	15	15
	F.	9	4	5	12	2	7	11	6	5	4	11	8
Mathematics	A.	13	14	17	19	18	13	13	12	15	19	14	15
	B.	25	26	28	26	28	25	27	25	35	18	23	27
	C.	30	32	40	28	34	30	30	39	28	44	33	29
	D.	16	14	12	13	14	16	15	18	10	15	15	15
	F.	14	13	2	11	6	13	14	1	8	4	12	11

		<u>1970-71</u>		<u>Summer, 1971</u>			<u>1971-72</u>		<u>Summer, 1972</u>			<u>1972-73</u>	
		<u>1st.sem.</u>	<u>2nd.sem.</u>	<u>Pre</u>	<u>Regular</u>	<u>Post</u>	<u>1st.sem.</u>	<u>2nd.sem.</u>	<u>Pre</u>	<u>Regular</u>	<u>Post</u>	<u>1st.sem.</u>	<u>2nd.sem.</u>
Physics	A.	10	12	13	16	15	11	13	17	19	3	13	16
	B.	26	26	20	39	24	25	30	31	41	21	27	32
	C.	41	36	43	33	57	46	39	39	23	56	39	34
	D.	14	17	17	10	4	10	11	11	9	9	11	11
	F.	8	6	7	1		5	5	3	6	9	7	6
<hr/>													
TOTAL COLLEGE	A.	14	16	21	17	21	16	18	23	19	21	17	19
	B.	31	33	37	34	37	34	34	39	36	36	33	34
	C.	35	35	34	33	34	34	32	29	32	32	33	31
	D.	10	9	6	10	6	9	8	6	8	7	8	8
	F.	6	5	1	5	1	5	6	1	4	3	6	5

ATTRITION IN VARIOUS CURRICULA 1966-73*

CURRICULUM	Entered Sept.1966	Graduated May, 1970	Entered Sept.1967	Graduated May,1971	Entered Sept.1968	Graduated May, 1972	Entered Sept.1969	Graduated May, 1973
Art Education	134	74	140	67	161	76	132	80
Dental Hygienist+		1		2				2
Elementary Education	434	303	426	273	496	301	495	312
Health & Physical Education					38	16	30	19
Liberal Arts**	206	59	214	59	372	95	313	127
Library Science	31	14	24	9	24	17	20	12
Medical Technology						8	23	8
Music Education				3	8	8	28	22
Public School Nurset		3		2		1		
Secondary Education***	345	161	341	143	370	156	426	133
Speech & Hearing Therapy++	—	—	—	21	—	21	33	32
Total College	1150	615	1145	579	1469	699	1500	747

* Transfer students are included in the number graduating in various curricula. However, data on entering students do not include transfers. In addition, some students were graduated in curricula that were different than they were originally enrolled in due to internal transfer.

** Liberal Arts
Entered Sept.1969

Liberal Arts Graduated May, 1973 - TOTAL 127

313

Arts and Sciences	42	B.A. Philosophy	3	B.S. Biology	2
B.A. English	2	B.A. Political Science	8	B.S. Chemistry	3
B.A. Geography	6	B.A. Psychology	24	B.S. Geology	6
B.A. History	3	B.A. Sociology	14	B.S. Mathematics	9
B.A. Biology	2	B.A. Mathematics	3		

***Admissions in Secondary Education were not differentiated.

+ The Dental Hygiene program requires a minimum of 64 hours for completion, and the Public School Nursing Program requires a minimum of 60 hours of approved courses for completion. Thus, students in these curricula ordinarily enter at sophomore or junior standing. Since the Public School Nursing program is being discontinued, no more students are being admitted to this program.

++ Speech and Hearing was included in Elementary Education prior to September, 1967.

UNDERGRADUATE ENROLLMENT BY CURRICULUM
SECOND SEMESTER 1972-73

CURRICULUM	<u>Freshman</u>	<u>Sophomore</u>	<u>Junior</u>	<u>Senior</u>	<u>Total</u>
Art Education	145	172	138	129	584
ARTS AND SCIENCES					
Humanities:					
Art	27	21	2	2	52
English	5	4	2	1	12
French	0	0	0	0	0
German	0	0	0	0	0
Philosophy	0	0	0	0	0
Russian	0	1	0	2	3
Spanish	0	0	0	0	0
Speech Communication	14	10	2	1	27
Natural Sciences:					
Biology	24	7	3	1	35
Chemistry	1	4	0	0	5
Math	1	1	1	0	3
Physics	0	2	0	0	2
Social Sciences:					
Anthropology	1	4	1	0	6
Economics	43	15	8	3	69
History	0	7	2	0	9
Political Science	1	12	1	0	14
Psychology	2	11	2	0	15
Social Service	39	27	7	8	81
Black Studies	1	0	0	0	1
Sociology	1	15	1	0	17
Urban Studies	0	1	0	0	1
Criminal Justice	5	2	3	0	10
BACHELOR OF ARTS					
English	22	17	4	9	52
French	5	1	0	0	6
Geography	6	6	7	11	30
German	0	0	0	0	0
History	19	19	6	4	48
Mathematics	14	3	6	4	27
Music	10	3	0	0	13
Philosophy	8	6	10	6	30
Political Science	74	38	13	15	140
Psychology	101	56	47	31	235
Sociology	61	40	17	18	136

CURRICULUM	<u>Freshman</u>	<u>Sophomore</u>	<u>Junior</u>	<u>Senior</u>	<u>Total</u>
BACHELOR OF FINE ARTS					
Art	80	17	5	3	105
BACHELOR OF SCIENCE					
Biology	85	41	15	3	144
Chemistry	11	8	4	3	26
Geology	14	9	12	11	46
Mathematics	30	31	10	10	81
Medical Technology	36	26	22	16	100
Nursing	37	23	1	2	63
Physics	5	1	3	2	11
BACHELOR OF SCIENCE IN EDUCATION					
Elementary Education	354	376	385	451	1566
Library Science	24	25	16	19	84
Music Ed.	41	49	39	33	162
Physical Education /Women	29	26	16	22	93
<u>Secondary Education</u>					
Biology	17	22	34	30	103
Chemistry	1	3	0	6	10
Earth/Space	3	5	3	11	22
English	32	48	59	60	199
French	4	7	5	7	23
Gen. Science	1	0	1	1	3
Geography	0	1	1	8	10
German	3	1	1	4	9
Mathematics	29	43	47	50	169
Mathematics/Physics	1	3	1	0	5
Physics	1	2	1	0	4
Social Studies	65	62	89	67	283
Spanish	12	8	8	9	37
Speech/Hearing	97	69	56	38	260
UNCLASSIFIED	25	7	1	1	34
SPECIAL STUDENTS					60
CERTIFICATION					32
OFF CAMPUS CENTERS					
Shenango					205
Warren					206
TOTAL					5818

UNDERGRADUATE DEGREES AWARDED

	July 1, 1970 - June 30, 1971	July 1, 1971 - June 30, 1972	July 1, 1972 - June 30, 1973
BACHELOR OF ARTS DEGREE			
Arts and Sciences	66	71	50
English	1	6	6
Geography		2	10
History	1	8	5
Philosophy	2	5	4
Political Science	7	15	14
Psychology	23	29	40
Sociology	11	15	27
BACHELOR OF SCIENCE DEGREE			
Biology	3	4	3
Chemistry	2	4	4
Geology	4	6	8
Mathematics	3	4	12
Medical Technology	2	9	11
Physics	2	1	
BACHELOR OF SCIENCE IN EDUCATION DEGREE			
Art	102	116	138
Dental Hygienist	2	1	4
Elementary	473	474	508
Library Science	14	21	20
Music	8	10	25
Women's Health & Physical Ed.		16	25
Public School Nursing	6	11	8
Secondary	256	275	245
Speech & Hearing Therapy	24	28	47
TOTAL	1012	1131	1214

TOTAL NUMBER OF GRADUATE STUDENT APPLICATIONS AND
TOTAL NUMBER OF GRADUATE STUDENT ADMISSIONS
September 1, 1972 - August 31, 1973

<u>CURRICULUM</u>	<u>Total Number of Students Who Applied for Admission</u>	<u>Total Number of Students Accepted for Admission</u>
Art (M.Ed.)	52	42
Biology (M.S.)	23	34
Biological Science (M.Ed.)	8	13
Earth Science (M.Ed.)	17	22
Ed. Psych. (M.Ed.)	108	64
Elem. Ed. (M.Ed.)	163	181
English (M.A.)	18	22
English (M.Ed.)	6	11
Guid. Elem. (M.Ed.)	21	21
Guid. Sec. (M.Ed.)	56	46
History (M.A.)	15	16
Math (M.Ed.)	20	15
Mental Retardation (M.Ed.)	48	58
Music (M.Ed.)	8	9
Physical Sci. (M.Ed.)		1
Political Science (M.A.)	28	15
Reading (M.Ed.)	76	95
Sch. Adm. Elem. (M.Ed.)	16	6
Sch. Adm. Sec. (M.Ed.)	11	9
Social Studies (M.Ed.)	18	17
Rdg. Spec. (Sp. Stud.)	25	14
Rdg. Sup. (Sp. Stud.)	8	5
Sch. Adm. Elem. - Stage I (Adv. Cert.)	9	5
Sch. Adm. Sec. - Stage I (Adv. Cert.)	6	7
Sch. Adm. Elem. - Stage II (Adv. Cert.)		
Sch. Adm. Sec. - Stage II (Adv. Cert.)	3	0
Sch. Psych. - Stage I (Adv. Cert.)	1	2
Sch. Psych. - Stage II (Adv. Cert.)	13	1*
Special Student - Prof. Growth	181	138
Special Student - Transfer	52	46
Special Student - Certification	80	61
TOTAL	1090	976

*This does not include those students who completed Stage I and then applied for admission to Stage II.

Note: In some cases the number of acceptances exceed the number of applications for a given curriculum. This is due to a backlog of applications from the previous year.

NUMBER OF STUDENTS REGISTERED FOR GRADUATE COURSES BY CURRICULUM

<u>CURRICULUM</u>	<u>1971-72</u>			<u>Summer, 1972</u>				<u>1972-73</u>		
	<u>1st.sem.</u>	<u>2nd.sem.</u>	<u>Total</u>	<u>Pre</u>	<u>Regular</u>	<u>Post</u>	<u>Total</u>	<u>1st.sem.</u>	<u>2nd.sem.</u>	<u>Total</u>
<u>Master of Arts</u>										
English	18	13	31	7	16	5	28	22	13	35
History	20	20	40	7	16	7	30	21	17	38
Political Science	8	9	17	2	8	0	10	10	13	23
<u>Master of Science</u>										
Biology	9	14	23	7	20	11	38	20	19	39
<u>Master of Education</u>										
Art	21	20	41	34	52	31	117	42	28	70
Biological Science	8	12	20	16	19	9	44	10	11	21
Earth Science	31	30	61	15	13	3	31	21	15	36
Educational and School Psychology	33	28	61	23	23	15	61	43	45	88
Elementary Education	186	153	339	252	271	204	727	185	161	346
English	21	19	40	22	24	8	54	17	18	35
Guidance (K-12)	0	0	0	0	0	0	0	1	0	1
Elementary Guidance	35	24	59	19	37	12	68	26	25	51
Secondary Guidance	72	60	132	54	71	24	149	64	72	136
Mathematics	29	29	58	6	43	11	60	25	25	50
Mental Retardation	23	28	51	34	46	21	101	49	37	86
Music	16	15	31	7	20	9	36	18	17	35

	<u>1971-72</u>			<u>Summer, 1972</u>			<u>Total</u>	<u>1972-73</u>		
	<u>1st.sem.</u>	<u>2nd.sem.</u>	<u>Total</u>	<u>Pre</u>	<u>Regular</u>	<u>Post</u>		<u>1st.sem.</u>	<u>2nd.sem.</u>	<u>Total</u>

CURRICULUM

School Administration (Elementary)									7	7
School Administration (Secondary)									10	10
Physical Science	8	7	15	6	6	4	16	3	3	6
Reading	61	51	112	52	75	43	170	57	66	123
Social Studies	24	18	42	15	30	10	55	12	15	27
Special Students	71	55	126	90	157	99	346	99	126	225

Non Degree Certification

Advanced Certification School Administration (Elementary)									1	1
Reading Specialist		4	4	1		5	6	7	8	15
Reading Supervisor				1			1	4	1	5
Stage 2 School Psychology	<u>26</u>	<u>22</u>	<u>48</u>	<u>15</u>	<u>20</u>	<u>9</u>	<u>44</u>	<u>26</u>	<u>26</u>	<u>52</u>
TOTAL	720	631	1,351	685	967	540	2192	782	779	1561

GRADUATE GRADE DISTRIBUTIONS BY DEPARTMENT AND SCHOOL*

SCHOOL OF ARTS AND HUMANITIES

DEPARTMENT		Summer 1971			1971-72		Summer 1972			1972-73	
		Pre	Regular	Post	1st.sem.	2nd.sem.	Pre	Regular	Post	1st.sem.	2nd.sem.
Art	A	60	37	45	56	43	51	33	43	41	54
	B	37	59	52	39	29	49	57	57	37	40
	C	3	1	3		7		2		4	6
	F				6						
English	A	52	33	41	58	36	58	30		50	50
	B	39	58	41	35	52	42	61	100	41	44
	C	9	4	12	4	4		4		4	4
	F				2						2
Foreign Languages	A						60				
	B						20				
	C						20				
	F										
Music and Drama	A				65	61	25	53	100	37	61
	B				35	39	75	44		53	36
	C							3		3	3
	F										
Philosophy	A				100	100					
	B										100
	C										
	F										
Speech	A	60	62		71	100	77	100	44	100	100
	B	40	38		14		23		56		
	C										
	F				14						
Totals for School of Arts and Humanities	A	58	38	44	62	47	55	38	48	47	56
	B	37	57	49	34	40	45	54	52	40	39
	C	4	2	5	2	4	0	3		3	4
	F				3						1

* The percentage of X, Y, Z, and R grades is not included.

SCHOOL OF BEHAVIORAL AND SOCIAL SCIENCES

Behavioral Sciences Division

		Summer 1971			1971-72		Summer 1972			1972-73	
		Pre	Regular	Post	1st.sem.	2nd.sem.	Pre	Regular	Post	1st.sem.	2nd.sem.
Counselor Education	A	45	41	59	37	33	38	47	70	38	37
	B	47	55	41	59	55	59	50	26	54	58
	C	8	4		4	5	2	2		5	5
	F						1				
Special Education	A	42	57	51	48	42	42	43	49	32	51
	B	58	43	49	45	50	50	55	51	57	46
	C				5	5	2	2		8	3
	F				1						
Psychology	A	46	43	34	35		42	50	35	20	26
	B	54	57	65	46		58	39	58	71	64
	C			1	16			9	6	5	10
	F				3						
Divisional Total	A	42	44	44	42	37	39	45	47	32	40
	B	53	54	50	52	53	57	50	50	58	55
	C	4	2	6	6	5	2	4	3	7	5
	F				1						

Social Sciences Division

Economics	A										
	B										
	C										
	F										
Geography	A										11
	B										89
	C										
	F										
History	A	21	35	41	39	31	23	32	46	25	29
	B	70	61	59	55	47	77	61	38	60	60
	C	9	2		6	5		7		3	11
	F					6					

DEPARTMENT		Summer 1971			1971-72		Summer 1972			1972-73	
		Pre	Regular	Post	1st.sem.	2nd.sem.	Pre	Regular	Post	1st.sem.	2nd.sem.
Political Science	A		33		36	19	55	25		43	68
	B		53		64	31	36	59		32	25
	C		7				9			11	4
	F										4
Sociology/ Anthropology	A			5				33	38	67	100
	B			32				67	62	29	
	C			63							
	F										
Divisional Total	A	21	35	21	36	28	38	32	41	28	45
	B	70	60	44	59	44	58	59	50	42	47
	C	9	3	33	5	4	4	5		5	7
	F					5					1
School Total	A	38	42	40	41	38	39	42	46	31	41
	B	56	55	49	53	55	57	52	50	55	54
	C	5	2	11	6	5	2	4	2	6	5
	F				1	1					

DEPARTMENT

SCHOOL OF EDUCATION

Elementary	A	55	49	48	43	48	46	44	50	55	46
	B	41	48	52	54	46	53	54	40	39	39
	C		2		2	5	1			4	14
	F				1						1
Educational Foundations	A	38	49	43	42	43	28	52	50	37	31
	B	62	48	47	52	43	66	42	50	50	69
	C				6	2		3		2	
	F				1						
Field Services and Teacher Placement	A		33				100	40			
	B		62					51			100
	C		3					5			
	F		1								
School Administration	A										56
	B										44
	C										
	F										

DEPARTMENT	Summer 1971			1971-72		Summer 1972			1972-73		
	Pre	Regular	Post	1st.sem.	2nd.sem.	Pre	Regular	Post	1st.sem.	2nd.sem.	
Health and Physical Education	A							56			
	B							44			
	C										
	F										
Library Science	A			50				25			
	B							50			
	C			50				25			
	F										
School Total	A	54	47	48	43	46	46	46	50	40	42
	B	42	50	50	52	45	52	51	41	49	47
	C		2	2	4	4	1	1		4	10
	F				1						

SCHOOL OF SCIENCE AND MATHEMATICS

DEPARTMENT

Biology	A	29	43	41	50	44	48	54	75	48	43
	B	65	52	50	45	44	52	43	25	30	51
	C	6	1	9	5			2		7	5
	F		1			2					
Chemistry	A	57	30		25	67	60		80	100	22
	B	28	60		25	22	40		20		44
	C	15	10		42	11					22
	F				8						11
Earth Science	A	38	40	100	63	60	64	50	60	39	59
	B	46	33		33	38	36	50	40	29	38
	C	16	13		5					6	3
	F		7								
Mathematics	A		30	24	38	42		26	100	41	42
	B	100	52	76	43	42		53		26	53
	C		17		11	13		14		28	5
	F				8	3					
Physics	A		41	29	25	25	63	41			25
	B		59	71	75	50	37	49		100	25
	C					25					50
	F										

DEPARTMENT		Summer 1971			1971-72		Summer 1972			1972-73	
		Pre	Regular	Post	1st.sem.	2nd.sem.	Pre	Regular	Post	1st.sem.	2nd.sem.
School Total	A	37	33	35	47	50	53	40	80	43	45
	B	53	55	60	39	40	47	50	20	28	46
	C	10	9	4	11	4		6		12	7
	F		1		4	2				2	2
College Total	A	48	42	42	44	41	45	43	52	39	43
	B	47	53	51	49	48	53	52	43	47	49
	C	3	3	6	5	5	1	3	1	6	7
	F				2	1					1
Administrators not assigned to Departments	A									14	
	B									13	
	C									2	
	F										

NUMBER OF GRADUATE DEGREES AWARDED BY CURRICULUM

<u>CURRICULUM</u>	<u>July 1, 1970- June 30, 1971</u>	<u>July 1, 1971- June 30, 1972</u>	<u>July 1, 1972- June 30, 1973</u>
English (M.A.)	9	4	6
History (M.A.)	5	2	2
Political Science (M.A.)	2	0	3
Art (M.Ed.)	8	11	10
Biological Science (M.Ed.)	9	12	7
Earth Science (M.Ed.)	5	12	11
Educational Psychology (M.Ed.)	9	18	20
School Psychology (M.Ed.)	6	3	2
Elementary Education (M.Ed.)	114	109	114
Guidance and Counseling (M.Ed.)	51	51	44
English (M.Ed.)	13	20	12
Mathematics (M.Ed.)	7	7	10
Mental Retardation (M.Ed.)	12	14	18
Music (M.Ed.)	0	0	10
Physical Science (M.Ed.)	2	6	1
Reading (M.Ed.)	4	25	28
Social Studies (M.Ed.)	12	13	14
Biology (M.S.)	4	6	3
Special Students	0	0	0
Advanced Certificate (School Psychology)	0	4	13

**INFORMATION CONCERNING
COLLEGE FACULTY**

Department	Sept. 1967	Sept. 1968	Sept. 1969	Sept. 1970	Sept. 1971	Sept. 1972
Art	19	29	39	49	41	44
Elementary/Elem. School College School and Special. Ed. Placement	34	37	63	25 Elementary 7 Secondary 6 College School 27 Grad. Study & Placement	76	27
English/Speech	29	31	44	42 English 1 Speech	41	37
Foreign Language	8	22	15	1	7	14
Geography and Earth Science	12	19	19	1	11	7
Health and Physical Education	19	23	22	1	22	20
Literary Culture	1	6	6	1	7	4
Mathematics	12	29	33	13	24	13
Music and Drama	7	24	20	2	28	23
Philosophy	3	7	8	10	1	5
Political and Social Sciences	17	25	31	15 Psychology 9 Chemistry 12 Special. Ed.	20	18

NUMBER OF COLLEGE TEACHING FACULTY BY DEPARTMENT *#
September 1967 - September 1972

<u>Department</u>	<u>Sept.1967</u>	<u>Sept.1968</u>	<u>Sept.1969</u>	<u>Sept.1970</u>	<u>Sept.1971</u>	<u>Sept.1972</u>
Art	19	29	39	42	41	41
Education (Elem. Second. Campus School and Stud. Tch. & Placement)	34	37	63	25 Elementary 7 Secondary 6 Campus School 27 Stud. Tchg. & Placement	26 8 6 25	23 7 6 24
English/Speech	29	32	44	42 English 7 Speech	41 7	37 6
Foreign Language	8	12	15	18	16	14
Geography and Earth Science	12	15	19	12 Geography 8 Earth Sciences	11 8	10 7
Health and Physical Education	10	17	22	21	22	20
Library Science	1	4	6	6	6	4
Mathematics	12	19	23	23	24	23
Music and Drama	7	14	20	21	22	22
Nursing					1	5
Philosophy	5	7	8	10	10	9
Psychology and Special Education	17	25	31	15 Psychology 9 Counselor Educ. 12 Spec. Educ.	14 9 12	14 8 12

<u>Department</u>	<u>Sept.1967</u>	<u>Sept.1968</u>	<u>Sept.1969</u>	<u>Sept.1970</u>	<u>Sept.1971</u>	<u>Sept.1972</u>
Natural Sciences	25	27	37	18 Biology 10 Chemistry 10 Physics	18 10 10	16 9 9
Social Studies	26	33	46	23 History 10 Political Science 3 Economics 11 Soc.Anthrop.	22 10 4 11	19 8 3 11
TOTAL	<u>205</u>	<u>271</u>	<u>373</u>	<u>396</u>	<u>394</u>	<u>367**</u>

Faculty assigned to both on and off-campus teaching are included. Figures for 1966-69 reflect college organization at that time. The information for 1970 indicates departments formed as a result of the administrative reorganization.

* Deans, division chairmen, and part-time faculty are not included in the above.

** Difference due to elimination of faculty on leave without pay or on sabbatical leave.

FACULTY RANK AND HIGHEST EARNED DEGREE BY DEPARTMENT AND SCHOOL
September 1972

SCHOOL OF ARTS AND HUMANITIES

	Rank				Total	Highest Degree Earned		
	Prof.	Assoc.Prof.	Asst.Prof.	Instructor		Doctorate	Masters	Bachelors
Art Department	6	17	18	2	43	7	36	0
English Department	5	13	20	3	41	14	27	0
Foreign Languages Department	5	3	6	1	15	7	7	1
Music & Drama Department	5	3	15	3	26	6	20	0
Philosophy Department	2	3	4	1	10	5	5	0
Speech Department	<u>2</u>	<u>3</u>	<u>2</u>	<u>0</u>	<u>7</u>	<u>5</u>	<u>2</u>	<u>0</u>
TOTALS	25	42	65	10	142	44	97	1

SCHOOL OF BEHAVIORAL AND SOCIAL SCIENCES

DIVISION OF BEHAVIORAL SCIENCE

Counselor Education Department	7	1	1	0	9	8	1	0
Psychology Department	7	4	6	0	17	11	6	0
Special Education	<u>5</u>	<u>7</u>	<u>1</u>	<u>1</u>	<u>14</u>	<u>7</u>	<u>7</u>	<u>0</u>
TOTALS	19	12	8	1	40	26	14	0

DIVISION OF SOCIAL SCIENCE

Economics Department	2	0	2	0	4	2	2	0
Geography Department	4	4	2	0	10	5	5	0
History Department	6	11	5	0	22	11	11	0
Political Science Department	3	6	0	1	10	4	6	0
Sociology/Anthropology Department	<u>1</u>	<u>4</u>	<u>7</u>	<u>1</u>	<u>12</u>	<u>4</u>	<u>8</u>	<u>0</u>
TOTALS	16	25	16	1	58	26	32	0

SCHOOL OF EDUCATION

	Rank				Total	Highest Degree Earned		
	Prof.	Assoc.Prof.	Asst.Prof.	Instructor		Doctorate	Masters	Bachelors
*Elementary Education Department	14	8	11	1	34	21	12	1
Health & Physical Education Department	1	8	9	7	25	2	19	4
Library Science Department	1	1	3	0	5	1	4	0
Secondary Education Department	3	4	1	0	8	4	4	0
Student Teaching & Placement	<u>5</u>	<u>10</u>	<u>10</u>	<u>1</u>	<u>26</u>	<u>8</u>	<u>17</u>	<u>1</u>
TOTALS	24	31	34	9	98	36	56	6

SCHOOL OF SCIENCE AND MATHEMATICS

Biology Department	8	8	4	0	20	13	6	1
Chemistry Department	4	4	2	0	10	8	2	0
Earth Sciences Department	5	3	0	0	8	6	2	0
Mathematics Department	5	14	5	0	24	9	15	0
Nursing	0	4	1	1	6	0	6	0
Physics Department	<u>4</u>	<u>2</u>	<u>5</u>	<u>0</u>	<u>11</u>	<u>6</u>	<u>5</u>	<u>0</u>
TOTALS	26	35	17	1	79	42	36	1

*Includes Campus School

FACULTY TEACHING LOADS BY DEPARTMENT AND SCHOOL
1ST. SEMESTER, 1972-73

SCHOOL OF ARTS & HUMANITIES	TOTAL UNDERGRADUATE STUDENTS TAUGHT	TOTAL GRADUATE STUDENTS TAUGHT	TOTAL STUDENTS TAUGHT	NUMBER OF FACULTY	AVERAGE NO. STUDENTS TAUGHT PER FACULTY	AVERAGE NO. CREDIT HRS. TAUGHT PER FACULTY	AVERAGE NO. CONTACT HRS. PER FACULTY
ART DEPARTMENT	3108	52	3160	40.5	78.	9.8	16.3
FOREIGN LANGUAGE DEPARTMENT	641	0	641	13.5	47.7	9.7	9.7
ENGLISH DEPARTMENT	3482	56	3538	35.25	99.6	11.8	11.8
MUSIC & DRAMA DEPARTMENT	2132	38	2170	22.5	92	12.4	14.2
PHILOSOPHY DEPARTMENT	1207	0	1207	8.5	150	12.	12.
SPEECH DEPARTMENT	<u>609</u>	<u>0</u>	<u>609</u>	<u>6.5</u>	<u>93.6</u>	<u>12.</u>	<u>12.0</u>
TOTAL	11,179	146	11,325	126.75	88.1	11.1	12.6

* The number of faculty in each department was computed on the basis that department heads were given 1/2 load reduction and assistant department heads were given 1/4 load reduction.

FACULTY TEACHING LOADS BY DEPARTMENT AND SCHOOL
1ST.SEMESTER, 1972-73

SCHOOL OF EDUCATION	TOTAL UNDERGRADUATE STUDENTS TAUGHT	TOTAL GRADUATE STUDENTS TAUGHT	TOTAL STUDENTS TAUGHT	NUMBER OF FACULTY	AVERAGE NO. STUDENT'S TAUGHT PER FACULTY	AVERAGE NO. CREDIT HRS. TAUGHT PER FACULTY	AVERAGE NO. CONTACT HRS. PER FACULTY
ELEMENTARY EDUCATION DEPARTMENT	1869	149	2018	22.75	88.7	11.2	14.9
HEALTH & PHYSICAL EDUCATION DEPARTMENT	1978	0	1978	19.	104.1	8.1	11.0
LIBRARY SCIENCE DEPARTMENT	300	0	300	4.75	63.1	11.7	12.4
EDUCATIONAL FOUNDATIONS DEPARTMENT	609	105	714	6.5	109.9	10.9	10.9
FIELD SERVICES & TEACHER PLACEMENT	<u>495</u>	<u>0</u>	<u>495</u>	<u>23.5</u>	<u>21.</u>	<u>14</u>	<u>20</u>
TOTAL	5251	254	5505	76.5	71.9	10.8	15.1

FACULTY TEACHING LOADS BY DEPARTMENT AND SCHOOL
1ST.SEMESTER, 1972-73

SCHOOL OF SCIENCE & MATHEMATICS	TOTAL UNDERGRADUATE STUDENTS TAUGHT	TOTAL GRADUATE STUDENTS TAUGHT	TOTAL STUDENTS TAUGHT	NUMBER OF FACULTY	AVERAGE NO. STUDENTS TAUGHT PER FACULTY	AVERAGE NO. CREDIT HRS. TAUGHT PER FACULTY	AVERAGE NO. CONTACT HRS. PER FACULTY
BIOLOGY DEPARTMENT	1269	39	1308	14.	93.4	12.5	15.9
CHEMISTRY DEPARTMENT	495	1	496	8.5	58.7	10.6	16.2
EARTH SCIENCES DEPARTMENT	659	31	690	7.0	98.5	13.3	17.4
MATHEMATICS DEPARTMENT	2073	29	2102	21.	100.	11.7	11.7
NURSING DEPARTMENT	15	0	15	5.5	5.	1.8	1.8
PHYSICS DEPARTMENT	<u>669</u>	<u>3</u>	<u>672</u>	<u>8.75</u>	<u>76.8</u>	<u>11.7</u>	<u>14.</u>
TOTAL	5180	103	5283	64.75	81.5	10.9	13.11

FACULTY TEACHING LOADS BY DEPARTMENT AND SCHOOL
1ST. SEMESTER, 1972-73

SCHOOL OF BEHAVIORAL & SOCIAL SCIENCES	TOTAL UNDERGRADUATE STUDENTS TAUGHT	TOTAL GRADUATE STUDENTS TAUGHT	TOTAL STUDENTS TAUGHT	NUMBER OF FACULTY	AVERAGE NO. STUDENTS TAUGHT PER FACULTY	AVERAGE NO. CREDIT HRS. TAUGHT PER FACULTY	AVERAGE NO. CONTACT HRS. PER FACULTY
BEHAVIORAL SCIENCES DIVISION							
PSYCHOLOGY DEPARTMENT	1356	203	1559	13	120.	11.4	11.6
COUNSELOR EDUCATION DEPARTMENT	679	97	776	8.5	91.2	10.2	10.2
SPECIAL EDUCATION DEPARTMENT	<u>930</u>	<u>60</u>	<u>990</u>	<u>12.5</u>	<u>79.2</u>	<u>10.1</u>	<u>12.2</u>
TOTAL BEHAVIORAL SCIENCES DIVISION	2965	360	3325	34	96.5	10.27	11.4
SOCIAL SCIENCES DIVISION							
HISTORY DEPARTMENT	1797	45	1842	18.	102.3	11	11
GEOGRAPHY DEPARTMENT	1146	1	1147	9.5	121	12.3	12.3
POLITICAL SCIENCE DEPART- MENT	775	28	803	9.5	84.5	11.6	11.
ECONOMICS DEPARTMENT	394	0	394	3.75	105	12	12
SOCIOLOGY/ANTHROPOLOGY	<u>1135</u>	<u>19</u>	<u>1154</u>	<u>10.5</u>	<u>116</u>	<u>11.4</u>	<u>11.7</u>
TOTAL SOCIAL SCIENCES DIVISION	5247	93	5340	51.25	104.1	11.4	11.4

FACULTY TEACHING LOADS BY DEPARTMENT AND SCHOOL
2nd Semester, 1972-73

SCHOOL OF ARTS & HUMANITIES	TOTAL UNDERGRADUATE STUDENTS TAUGHT	TOTAL GRADUATE STUDENTS TAUGHT	TOTAL STUDENTS TAUGHT	NUMBER OF FACULTY	AVERAGE NO. STUDENTS TAUGHT PER FACULTY	AVERAGE NO. CREDIT HRS. TAUGHT PER FACULTY	AVERAGE NO. CONTACT HRS. PER FACULTY
ART DEPARTMENT	2798	41	2839	40.25	70.5	10.3	18.7
FOREIGN LANGUAGE DEPARTMENT	645	0	645	13.5	47.8	12.8	12.8
ENGLISH DEPARTMENT	3121	42	3163	36.	87.8	11.9	11.9
MUSIC & DRAMA DEPARTMENT	2399	31	2430	20.	121	16.4	19.0
PHILOSOPHY DEPARTMENT	1183	4	1187	9.5	124.9	12.3	12.3
SPEECH DEPARTMENT	<u>647</u>	<u>0</u>	<u>647</u>	<u>6.5</u>	<u>99.5</u>	<u>12.9</u>	<u>12.9</u>
TOTAL	10,793	118	10,911	125.75	86.7	12.3	15.4

FACULTY TEACHING LOADS BY DEPARTMENT AND SCHOOL
2nd Semester; 1972-73

SCHOOL OF EDUCATION	TOTAL UNDERGRADUATE STUDENTS TAUGHT	TOTAL GRADUATE STUDENTS TAUGHT	TOTAL STUDENTS TAUGHT	NUMBER OF FACULTY	AVERAGE NO. STUDENTS TAUGHT PER FACULTY	AVERAGE NO. CREDIT HRS. TAUGHT PER FACULTY	AVERAGE NO. CONTACT HRS. PER FACULTY
ELEMENTARY EDUCATION DEPARTMENT	2004	218	2222	22.25	99.8	9.5	14.0
HEALTH & PHYSICAL EDUCATION DEPARTMENT	2246	0	2246	18.6	120.7	7.6	11.2
LIBRARY SCIENCE DEPARTMENT	312	0	312	4.75	65.6	12	12.
EDUCATIONAL FOUNDATIONS DEPARTMENT	571	66	637	6.0	123.4	9.8	9.8
FIELD SERVICES AND TEACHER PLACEMENT	<u>568</u>	<u>0</u>	<u>568</u>	<u>24.5</u>	<u>23.1</u>	<u>14</u>	<u>20</u>
TOTAL	5701	284	5985	76.1	76.6	11.3	16.6

The relatively low credit hour average for Health & Physical Education is attributable to teaching load credit for coaches.

FACULTY TEACHING LOADS BY DEPARTMENT AND SCHOOL
2nd Semester, 1972-73

SCHOOL OF SCIENCE AND MATHEMATICS	TOTAL UNDERGRADUATE STUDENTS TAUGHT	TOTAL GRADUATE STUDENTS TAUGHT	TOTAL STUDENTS TAUGHT	NUMBER OF FACULTY	AVERAGE NO. STUDENTS TAUGHT PER FACULTY	AVERAGE NO. CREDIT HRS. TAUGHT PER FACULTY	AVERAGE NO. CONTACT HRS. PER FACULTY
BIOLOGY DEPARTMENT	1245	30	1,275	16.5	77.2	10.4	15.
CHEMISTRY DEPARTMENT	430	0	430	9.5	45.2	10.6	15.1
EARTH SCIENCE DEPARTMENT	556	25	581	7	83	12.2	16.2
MATHEMATICS DEPARTMENT	2004	21	2025	21.5	94.1	12.4	12.4
NURSING	53	0	53	5.5	9.6	3.3	3.3
PHYSICS DEPARTMENT	<u>591</u>	<u>4</u>	<u>595</u>	<u>9.5</u>	<u>62.6</u>	<u>12.</u>	<u>15.3</u>
TOTAL	4879	80	4959	69.5	71.3	10.9	13.5

FACULTY TEACHING LOADS BY DEPARTMENT AND SCHOOL
2nd Semester, 1972-73

SCHOOL OF BEHAVIORAL AND SOCIAL SCIENCES	TOTAL UNDERGRADUATE STUDENTS TAUGHT	TOTAL GRADUATE STUDENTS TAUGHT	TOTAL STUDENTS TAUGHT	NUMBER OF FACULTY	AVERAGE NO. STUDENTS TAUGHT PER FACULTY	AVERAGE NO. CREDIT HRS. TAUGHT PER FACULTY	AVERAGE NO. CONTACT HRS. PER FACULTY
BEHAVIORAL SCIENCES DIVISION							
PSYCHOLOGY DEPARTMENT	1625	83	1708	15.25	112	12.2	12.2
COUNSELOR EDUCATION DEPARTMENT	603	204	807	8.5	94.9	12	12
SPECIAL EDUCATION DEPARTMENT	<u>905</u>	<u>175</u>	<u>1080</u>	<u>12.5</u>	<u>86.4</u>	<u>12.3</u>	<u>13.8</u>
TOTAL BEHAVIORAL SCIENCES DIVISION	3133	462	3595	36.25	99.1	12.1	12.6
SOCIAL SCIENCES DIVISION							
HISTORY DEPARTMENT	1852	15	1867	20.25	90.2	12	12
GEOGRAPHY DEPARTMENT	944	0	944	8.5	111	12	12
POLITICAL SCIENCE DEPARTMENT	736	30	766	9.0	85	16	14
ECONOMICS DEPARTMENT	404	0	404	3.75	107.7	12	12
SOCIOLOGY/ANTHROPOLOGY DEPARTMENT	<u>1518</u>	<u>7</u>	<u>1525</u>	<u>12.75</u>	<u>119.5</u>	<u>11.2</u>	<u>11.5</u>
TOTAL SOCIAL SCIENCES DIVISION	5454	52	5506	54.25	100.4	12.5	12.2
SCHOOL TOTAL	8587	514	9101	90.5	100.5	12.3	12.4

THE ADVISORY PROGRAM

Undergraduate

The advisory program, currently supervised by the Assistant to the Vice-President for Academic Affairs provides that each student be assigned a faculty adviser. Advisers are assigned using guidelines provided by the various department chairmen. The entering freshman finds the name of his faculty adviser on his first printed schedule. The adviser posts a schedule on his door indicating the times that he will be available to talk with advisees.

In some cases, a folder is forwarded to the faculty adviser. This folder includes CEEB scores, high school class standing, an evaluation sheet showing courses taken and the grade point average. If such a folder is not forwarded to the adviser, he is expected to start a folder for that student. The faculty adviser retains a copy of each proposed schedule prepared during pre-registration. Likewise, all mid-term and final grade reports that are forwarded to the adviser are filed in the student's folder. If a student copy of the grades is forwarded along with the adviser's copy, the student copy is given to the student upon his request.

Although the role of the adviser focuses primarily on academic planning, it also involves a relationship with the student that encompasses the full range of his adjustment to the college. The adviser - when the situation dictates - is also an understanding listener. The adviser should be a concerned and interested human being who provides a personal link with the college.

UNDERGRADUATE ADVISORY STATISTICS

<u>Department</u>	<u>No. of Faculty Members Having Advisees</u>	<u>No. of Advisees</u>	<u>Avg. No. of Advisees per Faculty Member</u>
Art	33	769	23
Biology	16	433	27
Chemistry	8	55	7
Counselor Education	2	9	4
Earth Science	7	102	15
Economics	4	97	24
Educational Foundations	8	141	18
Elementary Education	30	998	33
English	32	294	9
Geography	9	73	8
Health and Physical Education	13	98	8
History	19	314	17
Library Science	5	116	23
Mathematics	22	309	14
Foreign Languages	10	121	12
Music and Drama	17	273	16
Nursing	5	75	15
Philosophy	8	79	10
Physics	7	30	4
Political Science	9	203	23
Psychology	13	267	21
Sociology	11	321	29
Special Education	11	504	46
Speech	3	50	17
TOTAL	302	5731	15

THE ADVISORY PROGRAM

Graduate

Degree students are assigned to faculty members who teach in the area in which they are majoring. Special students who have not selected a degree program are initially advised by the Dean of Graduate Studies or the Assistant to the Dean of Graduate Studies. After a degree program has been selected these individuals are assigned to faculty members in the areas in which they are taking their graduate degrees.

The following table should be interpreted with caution. Many of the faculty members listed also have undergraduate advisees. Thus, this does not give a completely accurate picture of the total advisory load within departments. In addition, faculty members with small numbers of advisees within particular departments are not reported. This information was obtained by scanning a list of special students and some of these individuals may have been transferred to faculty advisors, but such may not have been indicated on the list.

GRADUATE ADVISORY STATISTICS

<u>Department</u>	<u>No. of Faculty Members Having Advisees</u>	<u>No. of Advisees</u>	<u>Avg. No. of Advisees per Faculty Member</u>
Art	19	124	6.5
Biology	14	99	7.1
Chemistry	6	24	4.0
Counselor Education	8	206	25.7
Earth Sciences	4	51	12.7
Educational Foundations	4	65	16.2
Elementary Education	23	736	32.0
English	9	104	11.5
History	8	108	13.5
Mathematics	16	101	6.3
Music and Drama	3	25	8.3
Physics	3	9	3.0
Political Science	5	33	6.6
School Administration	1	15	15.0
Special Education	6	191	35.0
Speech	1	2	2.0
Total	130	1893	14.5

FACULTY NON-INSTRUCTIONAL ACTIVITIES

In the Spring of 1973 each member of the faculty was contacted with a questionnaire to be returned to the Assistance Vice-President for Academic Affairs. This instrument was designed to obtain information concerning: attendance at professional meetings or conferences; research activities; publications; lectures or talks delivered before various groups; consultant work or field services; committee memberships, and extra-class or non-teaching assignments. Subsequently, follow-up questionnaires were sent to those faculty members who had not responded.

Following is the number of persons from each area who responded to the above instrument:

Administration	18	Library Science	5
Art	27	Library Staff	12
Biology	8	Mathematics	16
Chemistry	9	Music and Drama	18
College Development	6	Modern Foreign Languages	8
Counselor Education	7	Nursing	4
Earth Science	7	Philosophy	8
Economics	4	Physics	9
Educational Foundations	5	Political Science	9
Elementary Education*	23	Psychology	13
English	22	Sociology/ Anthropology	11
Field Experiences and Teacher Placement	21	Special Education	12
Geography	10	Speech	4
Health and Physical Education	16	Student Personnel Staff	17
History	20	Support Services	4
		TOTAL	351

* Includes the Miller Research Learning Center

NUMBER OF FACULTY ENGAGED IN CONSULTANT *
WORK OR FIELD SERVICES
1972/73

<u>Department or Area</u>	<u>Number Rendering Service to:</u>						
	<u>Professional Organizations</u>	<u>School Systems</u>	<u>Colleges or Universities</u>	<u>Companies or Corporations</u>	<u>Local, State Federal Govts.</u>	<u>Community or Civic Groups</u>	<u>Other</u>
Administration	4	4	2	1	1	6	3
Art	7	5	5	0	0	9	2
Biology	3	1	0	1	2	5	1
Chemistry	0	1	1	0	0	2	2
College Development	2	4	2	0	1	2	0
Counselor Education	3	4	2	1	1	2	1
Earth Sciences	3	3	1	2	3	3	0
Economics	0	0	0	0	0	0	0
Educational Foundations	1	3	1	0	0	1	0
Elementary Education	12	18	5	2	3	10	1
English	4	4	1	2	3	3	1
Field Experiences and Teacher Placement	8	15	4	0	4	8	4
Geography	2	1	4	0	2	5	1
Health and Physical Education	7	9	5	0	0	8	1
History	8	2	3	1	2	7	4
Library Science	4	3	2	0	1	2	1
Library Staff	2	1	0	0	0	0	0

* Includes the Miller Research Learning Center

Number Rendering Service to:

<u>Department or Area</u>	<u>Professional Organizations</u>	<u>School Systems</u>	<u>Colleges or Universities</u>	<u>Companies or Corporations</u>	<u>Local, State Federal Govts.</u>	<u>Community or Civic Groups</u>	<u>Other</u>
Mathematics	4	8	1	1	0	5	1
Modern Foreign Languages	0	2	1	2	1	2	3
Music and Drama	5	6	4	2	2	3	2
Nursing	2	0	0	0	0	2	0
Philosophy	5	4	1	1	0	4	1
Physics	2	2	1	1	0	2	1
Political Science	3	2	3	0	5	4	3
Psychology	5	5	2	4	3	4	0
Sociology/Anthrop.	3	3	4	0	0	3	1
Special Education	7	8	1	1	2	5	3
Speech	1	2	1	1	2	2	0
Student Personnel Staff	7	5	8	1	3	11	1
Support Services	0	3	0	1	0	0	1
TOTALS	114	128	65	24	38	128	39

* In several cases individuals are rendering service to agencies in more than one of the above categories.

NUMBER OF LECTURES OR TALKS DELIVERED BY FACULTY 1972-73

<u>Department or Area</u>	<u>Delivered Before:</u>				<u>Delivered In:</u>		
	<u>Professional Groups</u>	<u>Community, Civic or Church Groups</u>	<u>Student Groups</u>	<u>Other</u>	<u>Pennsylvania</u>	<u>States Outside of Pennsylvania</u>	<u>Outside U.S.</u>
Administration	22	27	5	0	49	6	1
Art	12	21	14	3	40	10	1
Biology	7	2	7	0	12	2	0
Chemistry	2	3	2	0	6	1	0
College Development	7	31	2	3	38	5	0
Counselor Education	12	8	3	0	21	2	0
Earth Sciences	2	6	7	0	12	3	0
Economics	1	0	1	0	2	0	0
Educational Foundations	4	1	2	0	7	0	0
Elementary Education	125	15	30	0	156	14	0
English	14	13	13	0	28	12	0
Field Experiences and Teacher Placement	39	34	12	8	99	9	0
Geography	6	13	14	0	30	2	0
Health and Physical Education	15	4	30	1	44	5	1
History	17	12	10	8	42	5	1

*Includes the Miller Research Learning Center

Department or Area

	<u>Delivered Before:</u>				<u>Delivered in:</u>		
	<u>Professional Groups</u>	<u>Community, Civic or Church Groups</u>	<u>Student Groups</u>	<u>Other</u>	<u>Pennsylvania</u>	<u>States Outside of Pennsylvania</u>	<u>Outside -U.S.</u>
Library Science	13	4	3	0	20	0	0
Library Staff	1	1	8	60	69	1	0
Mathematics	11	55	12	0	76	1	0
Modern Foreign Languages	8	3	12	0	20	1	0
Music and Drama	2	1	3	1	9	3	0
Nursing	8	3	1	1	13	0	0
Philosophy	11	6	1	6	20	4	0
Physics	9	9	5	1	19	4	0
Political Science	14	33	2	0	48	1	0
Psychology	9	25	5	1	34	7	1
Sociology/ Anthropology	8	14	9	1	30	2	0
Special Education	16	35	9	1	55	6	0
Speech	3	29	10	7	47	2	0
Student Personnel Staff	17	299	169	0	478	11	0
Support Services	0	0	18	0	18	0	0
TOTALS	415	731	419	102	1569	118	5

PROFESSIONAL ACTIVITIES OF ART DEPARTMENT AND COLLEGE DEVELOPMENT FACULTY *
 SUMMER, 1972 - MAY, 1973

ART DEPARTMENT

	<u>In Pennsylvania</u>	<u>Outside of Pennsylvania</u>	<u>Outside of U.S.A.</u>
Number of Professional Meetings Attended:	26	18	2
Number of Lectures and/or Demonstrations Presented:	29	6	0
Number of Exhibitions or Shows Entered:	79		
Number of Awards or Prizes Won:	6		
Number of Publications: Journal Articles	13		
Books, Monographs, etc.:	3		
Number of Research Projects in Progress:	53		
Funded Personally:	3		
Funded by Edinboro State College:	2		

COLLEGE DEVELOPMENT

Number of Professional Meetings Attended:	17	3	0
Number of Lectures and/or Talks Given:	40	5	0
Number of Productions: Films:	2		
Number of Research Projects in Progress or Completed:	13		
Number of Publications:	8		

PROFESSIONAL ACTIVITIES OF THE MUSIC AND DRAMA DEPARTMENT FACULTY
SUMMER, 1972 - MAY, 1973

Member of the Erie Philharmonic Orchestra 2 staff
 Consultant to Other Schools 1 staff
 Musical Competition Judge 1 staff
 Music Director for Plays 1 staff

	<u>Number of staff</u>	<u>Total Number of Times</u>
Chairman, Director, or Founder of Choirs and/or Choral Festivals	7	19
Director of Bands	1	13
Director of Music Workshop or Lab	2	2
Guest Conductor	2	2
Guest Soloist, Performer, or Recitalist	9	45
Musical Composer	2	17
Play Director	6	37
Professional Appearances	1	1
Stage Director	1	1
Technical Director	1	1

NUMBER OF PUBLICATIONS BY FACULTY
1972-73

<u>Department or Area</u>	<u>Published or Completed and Accepted for Publication</u>				<u>In Progress:</u>					
	<u>Journal</u>	<u>Articles</u>	<u>Books</u>	<u>Monographs</u>	<u>Other</u>	<u>Journal</u>	<u>Articles</u>	<u>Books</u>	<u>Monographs</u>	<u>Other</u>
Administration	1	0	0	0	2	3	0	1	0	2
Art	12	2	0	0	12	2	4	1	0	0
Biology	4	0	0	0	0	4	0	0	0	2
Chemistry	2	0	0	0	0	4	0	0	0	0
College Development	10	10	0	0	18	10	0	0	0	11
Counselor Education	0	0	1	0	0	2	0	0	0	0
Earth Sciences	2	0	0	0	0	5	0	0	0	1
Economics	0	0	0	0	4	0	2	0	0	0
Educational Foundations	0	0	0	0	0	0	0	0	0	1
Elementary Education	2	3	1	1	3	10	7	0	0	7
English	5	2	3	3	15	20	10	1	1	1
Field Experiences and Teacher Placement	2	1	1	1	3	2	0	0	0	3
Geography	2	1	1	1	1	11	4	0	0	1
Health and Physical Education	0	2	0	0	2	0	0	0	0	0
History	6	1	0	0	31	15	3	1	0	8
Library Science	0	0	0	0	0	1	2	0	0	0
Library Staff	4	0	0	0	1	0	0	0	0	0
Mathematics	1	0	0	0	1	8	1	0	0	2

NUMBER OF PUBLICATIONS BY FACULTY
1972-73

Department or Area	Published or Completed and Accepted for Publication				In Progress:					
	Journal	Articles	Books	Monographs	Other	Journal	Articles	Books	Monographs	Other
Modern Foreign Languages	6	1	0	0	23	9	2	1	0	2
Music and Drama	3	0	0	0	4	4	3	0	0	4
Nursing	1	0	0	0	0	3	0	0	0	0
Philosophy	5	1	3	0	0	10	2	1	0	1
Physics	5	0	0	0	0	8	1	1	0	1
Political Science	4	0	0	0	2	2	0	0	0	1
Psychology	3	0	1	0	1	9	0	0	0	0
Sociology/Anthropology	5	0	1	0	1	8	2	2	0	0
Special Education	6	0	0	0	2	8	2	1	0	1
Speech	1	1	1	0	5	1	0	0	0	0
Student Personnel Staff	1	0	0	0	5	11	0	0	0	0
Support Services	1	0	0	0	0	5	0	0	0	0
TOTALS	94	25	13	0	136	175	45	10	0	49

FACULTY COMMITTEE MEMBERSHIP

Department or Area	Department		School		All-College		Academic Council		College Senate	
	Members	Memberships	Members	Memberships	Members	Memberships	Members	Memberships	Members	Memberships
Administration	3	7	8	19	9	30	14	7	12	9
Art	24	70	0	0	6	9	1	0	5	3
Biology	8	24	4	5	4	4	2	0	1	3
Chemistry	5	10	6	6	4	5	1	0	1	1
College Development	2	6	1	2	5	13	0	0	2	5
Counselor Education	6	19	2	2	3	4	0	0	2	5
Earth Sciences	6	13	1	1	4	9	0	0	0	0
Economics	4	5	0	0	2	2	1	0	1	0
Educational Foundations	3	6	3	3	1	2	1	2	0	0
Elementary Education*	20	47	11	19	11	19	0	0	4	5
English	16	38	5	9	11	15	1	0	2	9
Field Experiences and Teacher Placement	18	46	6	10	10	10	1	0	1	2
Geography	9	20	6	2	6	5	1	0	4	3
Health and Physical Education	17	27	4	2	5	10	1	0	3	7
History	18	47	6	6	9	15	2	4	5	1
Library Science	4	7	1	2	2	3	0	0	1	2
Library Staff	5	6	2	2	2	2	0	0	1	3
Mathematics	16	75	4	6	9	14	1	0	3	2
Modern Foreign Languages	4	12	1	1	2	5	2	0	2	2

-57-

* Includes the Miller Research Learning Center

Department or Area	Department		School		All-College		** Academic Council		College Senate	
	Members	Memberships	Members	Memberships	Members	Memberships	Members	Memberships	Members	Memberships
Music and Drama	14	31	2	2	5	7	1	2	2	5
Nursing	3	11	1	1	1	1	0	0	0	0
Philosophy	5	9	1	1	5	7	1	0	2	2
Physics	9	34	4	7	5	11	1	0	2	3
Political Science	7	17	4	5	5	12	0	0	1	2
Psychology	12	31	8	11	12	14	3	2	4	3
Sociology/Anthropology	8	18	2	2	2	2	0	0	4	2
Special Educ.	12	22	5	8	7	8	1	0	3	2
Speech	4	5	2	6	4	3	1	2	1	2
Student Personnel Staff	9	21	7	28	8	17	0	0	3	2
Support Services	0	0	1	1	0	0	0	0	0	0
TOTALS	271	684	106	169	159	258	37	19	72	85

** Each Department Chairman is a member of the Academic Council

FACULTY RESEARCH ACTIVITIES
 Summer, 1972 - May, 1973

Department or Area	Number of: Research Projects	Source of Funding:				Project Status:			
		Not Funded	Edinboro St. College	Federal, State or Other Agencies	Unknown	Planning or Beginning	Partially Complete	Completed or Nearly Completed	Unknown
Administration	26	14	0	9	3	10	5	8	3
Art	57	35	2	0	0	7	19	8	0
Biology	28	10	2	2	0	8	1	5	0
Chemistry	13	6	0	0	0	4	2	2	0
College Development	13	7	4	2	0	0	4	3	6
Counselor Education	8	8	0	0	0	3	5	0	0
Earth Science	14	1	1	4	0	1	3	1	1
Economics	6	6	0	0	0	0	4	1	1
Educational Foundations	6	4	2	0	0	2	0	4	0
Elementary Education	20	11	0	4	5	6	8	6	0
English	33	12	6	3	0	15	10	4	0
Field Experiences and Teacher Placement	8	4	0	2	2	6	2	0	0
Geography	20	9	3	4	4	7	8	4	1
Health & Physical Education	2	1	0	1	0	0	0	2	0
History	29	17	3	2	7	8	18	3	0
Library Science	3	3	0	0	0	1	2	0	0

Department or Area	Number of: Research Projects	Source of Funding:				Project Status:			
		Not Funded	Edinboro St.College	Federal, State or Other Agencies	Unknown	Planning or Beginning	Partially Complete	Completed or Nearly Completed	Unknown
Library Staff	0	0	0	0	0	0	0	0	0
Mathematics	11	10	0	0	1	6	1	4	0
Foreign Languages	6	5	0	0	1	0	2	4	0
Music and Drama	13	9	2	0	2	4	4	5	0
Nursing	2	2	0	0	0	1	0	1	0
Philosophy	29	20	2	0	7	13	9	7	0
Physics	21	10	1	7	3	6	11	4	0
Political Science	12	4	0	4	2	5	6	1	0
Psychology	12	6	1	2	3	7	1	4	0
Sociology/Anthropology	17	7	0	5	0	5	6	5	0
Special Education	25	18	0	6	1	9	8	7	1
Speech	4	3	1	0	0	2	2	0	0
Student Personnel Staff	18	12	1	2	3	6	4	6	19
Support Services	8	5	1	0	0	2	5	1	0
TOTALS	464	259	32	59	44	144	150	99	32

NUMBER OF FACULTY HAVING VARIOUS EXTRA-CLASS*
OR NON-TEACHING RESPONSIBILITIES
SUMMER, 1972 - MAY, 1973

<u>Department or Area</u>	<u>Program Development Coordination or Other Program Responsibilities</u>	<u>Directing or Advising Thesis or Independent Study Projects</u>	<u>Counseling Students</u>	<u>Advising or Sponsoring Student Groups</u>	<u>Other</u>
Administration	11	4	13	6	12
Art	13	21	19	7	8
Biology	8	7	7	2	3
Chemistry	1	6	2	3	1
College Development	3	3	0	2	2
Counselor Education	6	3	5	1	3
Economics	2	1	2	1	0
Earth Science	2	2	5	3	3
Educational Foundations	3	2	4	0	0
Elementary Education**	19	9	18	9	8
English	10	10	15	3	6
Field Experiences and Teacher Placement	5	0	4	1	3
Geography	5	5	7	2	7
Health and Physical Education	4	9	11	10	19
History	9	11	16	6	16

** Includes the Miller Research Learning Center

<u>Department or Area</u>	<u>Program Development Coordination or Other Program Responsibilities</u>	<u>Directing or Advising Thesis or Independent Study Projects</u>	<u>Counseling Students</u>	<u>Advising or Sponsoring Student Groups</u>	<u>Other</u>
Library Science	1	2	3	4	2
Library Staff	1	0	1	2	1
Foreign Languages	4	5	5	4	4
Mathematics	7	4	12	7	9
Music and Drama	5	9	12	12	7
Nursing	4	0	4	1	2
Philosophy	4	6	6	6	2
Physics	8	1	4	2	2
Political Science	7	7	7	1	15
Psychology	7	7	10	6	3
Sociology/Anthropology	6	5	7	1	1
Special Education	9	3	8	7	3
Speech	3	3	2	2	0
Student Personnel Staff	11	1	13	9	1
Support Services	0	1	1	2	0
TOTALS	178	147	223	122	143

62-

** This list does not include duties as department chairman or assistant chairman, service or departmental or college committees, advising students, writing course outlines or catalog statements, or holding office in various organizations.

NUMBER OR PROFESSIONAL MEETINGS ATTENDED BY FACULTY
Summer, 1972 - May, 1973

<u>Department or Area</u>	<u>In State</u>	<u>Out-of-State</u>	<u>Outside of the United States</u>
Administration	87	14	3
Art	20	13	1
Biology	13	4	0
Chemistry	2	4	0
College Development	17	3	0
Counselor Education	16	5	0
Earth Science	6	7	0
Economics	1	0	0
63- Educational Foundations	5	2	0
Elementary Education*	47	8	3
English	10	8	0
Field Experiences and Teacher Placement	68	12	0
Geography	11	5	2
Health and Physical Education	20	9	0
History	25	20	4
Library Science	4	2	0
Library Staff	10	2	0
Mathematics	26	12	0

* Includes the Miller Research Learning Center

NUMBER OR PROFESSIONAL MEETINGS ATTENDED BY FACULTY
 Summer, 1972 - May, 1973

<u>Department or Area</u>	<u>In State</u>	<u>Out-of-State</u>	<u>Outside of the United States</u>
Foreign Languages	11	5	0
Music and Drama	16	5	0
Nursing	9	2	0
Philosophy	10	8	2
Physics	13	7	0
Political Science	24	4	0
Psychology	19	8	1
Sociology/Anthropology	14	7	1
-64- Special Education	20	6	0
Speech	2	1	0
Student Personnel Staff	43	9	0
Support Services	3	4	0
TOTALS	572	196	17

INFORMATION CONCERNING FACULTY-STUDENT
CAMPUS PROFESSIONAL CLUBS AND ORGANIZATIONS

<u>Name</u>	<u>Number of Members*</u>		<u>Frequency of Meetings</u>	<u>Date of Organization</u>	<u>Number of Projects Completed or planned Sept. 1971-June, 1972</u>	<u>Club Programs Number of:</u>	
	<u>Students</u>	<u>Faculty</u>				<u>Lectures or Discussions</u>	<u>Other Activities</u>
Alpha Beta Alpha (Library Science)	79	9	Monthly	April, 1969	6	5	11
Collegiate Players (Theatre)	25	3	Monthly	1925	10	0	10
Council for Exceptional Children (Education)	293	7	Bi-Weekly	Sept., 1961	10	2	6
Debate Team	8	2	Two times a Week	Sept., 1968	12	0	1
Earth Science Club	46	4	Monthly	1965	3	1	5
History Club	40	20	Monthly	---	5	4	4
International Relations Club	271	15	Bi-Weekly	1967	6	6	2
LeCercle Francais	25	4	Bi-Weekly	---	5	3	3
Math Club	27	8	Bi-Weekly	Sept., 1965	5	11	4
National Student Speech and Hearing - Association	64	4	Monthly	1971	9	3	0
PI Delta Epsilon (Journalism)	13	4	Monthly	May, 1965	8	1	8
PSEA (Student) Club	132	2	Monthly	1952	2	0	2
PSI CHI (Co-Sponsor Psychology Club)	21	4	Two times a Year	1971	2	0	2
Psychology Club	60	3	Monthly	1963	2	2	2
Russian Club	40	3	Bi-Weekly	Oct., 1970	8	2	5
Student MENC	53	0	Monthly	1968	1	5	1

REPORT OF THE HONORABLE MEMBERS

TO THE

ACADEMIC COUNCIL AND THE SENATE DEVELOPMENT COMMITTEE

INFORMATION CONCERNING
ACADEMIC
DEVELOPMENT

Dr. Harold Baker	Dr. James McPherson
Dr. James Brantford	Dr. John R. ...
Dr. Richard Green	Dr. Paul ...
Dr. James ...	Dr. Jack ...

May, 1971

REPORT OF THE ACADEMIC DEVELOPMENT COMMITTEE

TO THE

ACADEMIC COUNCIL AND THE COLLEGE DEVELOPMENT COMMITTEE

Dr. Ronald Butler	Dr. James McKinley
Mr. James Dronsfield	Mr. Jack Tohtz
Dr. Richard Gromen	Mr. Saul Weinstein
Dr. James Huston	Dr. Jack Williams
Dr. John K. Fisher, Chairman	

May, 1973

INTRODUCTION

On December 9, 1969 the Academic Development Committee was established as a sub-committee of both the Academic Council and the College Development Committee. Among other responsibilities, this committee was charged with recommending an institutional philosophy for academic development. Subsequently, the committee proposed a philosophy of academic development for Edinboro State College, which was adopted by the Academic Council, the College Development Committee, the College Senate, and the Board of Trustees.

The philosophy, as finally adopted by the above bodies, calls for the establishment of undergraduate and graduate cores. These cores contain those programs and services thought to be essential to the development of the college at the undergraduate and post-baccalaureate levels. These cores would contain programs that currently exist at the college as well as those which have not yet been initiated. As resources become available, programs that are in the core would receive such support as necessary to bring them to adequate levels of functioning. Additional resources would be devoted to the initiation of core programs that have not as yet been established. In the case of programs that are outside the core, these would continue to receive current levels of support, but nothing additional until all programs in the core are brought to adequate levels of support or are initiated. Further, it is anticipated that core and non-core areas be re-evaluated on a regular basis (the committee recommends this be done every 2 years). It is quite possible for some programs to be in the core, but a subsequent evaluation may recommend that they be placed outside the core. Conversely, programs initially recommended as being outside the core may on a later evaluation be recommended for inclusion in the core.

Since the establishment of the above cores necessitated evaluation of existing and proposed programs, guidelines for this were developed by the committee. These were subsequently adopted by the appropriate bodies and are as follows:

- A. Is this program one which provides society with needed knowledge?
- B. Will or do these offerings provide a better balanced academic program for students in existing programs in the college?

- C. Is this a program which attracts or will attract a sufficient number of students to justify its existence? In the case of new programs, would initial and projected enrollment be adequate to justify the program?
- D. Is this a program which attracts or will attract a large number of students so that a balance between large and small enrollments in various curricula will provide a total college program that can be justified economically?
- E. Is this a program with present and/or projected favorable employment opportunities?
- F. Is this a program or offering that will directly assist a person enrolled to advance professionally?
- G. Is this a program that prepares an individual for graduate study?
- H. Is this program one which has high priority in the Commonwealth, in the nation or in the world; for example, as indicated in Commonwealth of Pennsylvania Program Policy Guidelines?
- I. What strength does the college presently have in the area in which the program will be expanded or implemented in terms of staff, equipment, library resources, and physical facilities?
- J. What will be the initial and projected costs for implementing or expanding this program in terms of staff, equipment, supplies, library resources, and physical facilities? What are the national standards, if any, for this program in terms of staff, equipment, supplies, library resources, and physical facilities?
- K. Is this a program that causes or would cause students to enroll at Edinboro State College who otherwise would not do so?

The committee has completed the monumental task of evaluating over 100 programs that currently exist as well as those proposed by the various departments within the college. Each member of the committee rated every program on the above guidelines and a collective judgment was reached by the committee.

The report which follows represents the best judgment of the committee as to the placement of programs in the core and non-core areas at the undergraduate and graduate levels. The committee realizes that there are other areas which may have been explored in terms of possible program implementation e.g. allied health professions. However, much reliance was placed upon departments within the college for guidance as to which areas should be developed within the next several years. The committee wishes to express its appreciation to the numerous individuals who gave so freely of their time and energies in assisting with the development of this report.

UNDERGRADUATE CORE

NON-CORE PROGRAMS

Current Programs

- Art - BFA
- Art.Educ-B.S.in Art Educ.
- Biology - BS
- Secondary Biology - B.S. in Ed.
- Secondary Chemistry - B.S. in Ed.
- Elementary Education - B.S. in Ed.
- English - BA
- Sec.English - B.S. in Ed.
- Sec.English/Comm Arts.B.S. in Ed.
- Sec.Earth/Space Science - B.S. in Ed.
- Geography - BA
- Geology - BS
- History - BA
- Phys.Educ.-B.S.in Ed.
- * Library Science-B.S.in Ed.
- Mathematics - BS
- Sec.Mathematics - BS in Ed.
- Medical Technology - BS
- Elem.Ed./Ment.Retard.
- Music Education - B.S. in Ed.
- * Nursing - BS
- Sec.Physics - B.S. in Ed.
- Pol.Sci. - BA
- Psych. - BA
- Sociology - BA
- Sec.Ed./Ment.Retard.
- Elem.& Sec./Soc. & Emot. Dist.
- Social Work - BA
- Sec.Educ.Social Studies - B.S. in Ed.
- * Sec.Educ.Spanish - B.S. in Ed.
- Speech & Hearing - B.S. in Ed.
- Speech Communication - BA/H
- * Urban Studies - BA/SS

New Programs

- (#) 1. Economics/Accounting BA/SS
- Economics/Gen.Bus. BA/SS
- 3. Criminal Justice BA
- + Environmental Studies BA
- + Technical Arts - Bachelor's
- + Economics - BS

- Anthropology - BA/SS
- Dental Hygiene - B.S. in Ed.
- Sec.French - B.S. in Ed.
- Sec.Gen.Science - B.S. in Ed.
- Music - BA/H
- Spanish - BA
- Humanities - BA
- Sci. & Math - BA
- Social Sciences - BA
- Safety Ed. Cert. (Elem. & Second)
- Sec.Math - Physics (B.S. in Ed.)
- Chemistry - BS
- Physics - BS
- Philosophy - BA
- Economics - BA/SS
- Elem.Ed./Early Childhood Ed.

- ** Black Studies-BA/SS
- ** French - BA
- ** Russian-BA/H
- ** Safety Education-BS
- ** Drama-BA/H
- ** Communications-BA/H

- + Cooperative Engineering Program
- + University Studies - BA

- *** German-BA/H
- *** German-BA
- *** Cinema-Bachelor's
- *** Spanish-BA/H
- *** Biology-BA
- *** Chemistry-BA
- *** Earth Sciences-BA/NS/M
- *** Mathematics - BA
- *** Sec.German - B.S.in Ed.
- *** Physics - BA
- *** Foreign Lang. - B.A./H
- *** English - BA/H

-68-

* Intensive further study is recommended, within the next year, to determine if this program should remain in the core.
 ** Intensive further study is recommended, within the next year, to determine if this program should be initiated or continued.
 *** It is recommended that this program not be initiated or discontinued at the earliest possible date.
 + Program should be initiated at the earliest possible date.

(#) These programs are so vital to the college that they should be implemented immediately, even though other core programs may not be at adequate levels of support.

Note: Although several programs involving the departments of Chemistry, Physics, and Philosophy are placed in the non-core area, the services of these departments are considered to be core services.

GRADUATE CORE

NON CORE PROGRAMS

Current Programs

Biology-MS
 Ed.Psych/Stage I - M.ED.
 Elem.Education-M.Ed.
 * English - MA
 English - M.Ed.
 Elem.Guidance-M.Ed.
 Sec.Guidance-M.Ed.
 History-MA
 Mathematics-M.Ed.
 Mental Retard.- M.Ed.
 * Political Science - MA
 Reading - M.Ed.
 * Elem.School Admin.-M.Ed.
 * Second.School.Admin.- M.Ed.
 School Psych.(certification)
 Social Studies - M.Ed.

New Programs

2. Psychology - M.A.
 4. Rehab.Counseling - M.A.
 5. Speech Path.& Audio. - MA
 + Mathematics - M.S.

Art - M.Ed.
 Biological Sciences - M.Ed.
 Music - M.Ed.
 Earth Sciences - M.Ed.

** Safety Education - M.S.

+ American Studies - M.A.

*** Physical Sciences - M.Ed.

*** Ed.Psych. - M.Ed.

**** Chemistry - M.S.

**** Philosophy - M.A.

**** Student Personnel Couns. - M.Ed.

6

-
- * Intensive further study is recommended, within the next year, to determine if this program should remain in the core.
- ** Intensive further study is recommended, within the next year, to determine if this program should be initiated.
- *** It is recommended that this program be discontinued at the earliest possible date.
- **** It is recommended that these programs not be considered for implementation.
- + It is recommended that this program be initiated at the earliest possible date.

The Educational Development Center

The mission of the Educational Development Center has been approved by the Pennsylvania Department of Education for the study of the interaction among Learner Characteristics, Learning Environment and Learning Outcomes. In pursuance of this mission the current objectives are:

1. To determine and describe interrelationships among learner characteristics, learning environments and learning outcomes.
2. To develop instrumentation which will be useful for obtaining, recording, and using data concerning a student's educational prescription and progress.
3. To disseminate research outcomes statewide via established channels and agencies.

The Center has been active in refining and field testing the effectiveness of a pupil learning characteristics assessment package designed to predict the most effective learning environment in terms of learning goals and process. The assessment package was used as the basis for assigning students in the Eisenhower High School, Warren County School District, to one of four learning environment adaptations in Social Studies. Each class section was composed of prescribed assigned and randomly assigned students. Data analysis is now in process to determine the relative effectiveness of the experimental procedure in expanding learning outcomes.

A three phase program undertaken to promote the exploration of the middle school concept began with a series of seminars of principals of operating or developing middle schools in Erie and Crawford Counties. The second phase involved interdisciplinary staff teams from five participating school districts in a year-long intensive study. This investigation was carried on under the leadership of specialists provided by the Center culminating in a lengthy observation of an operating middle school of recognized quality, followed by an evaluation of the program.

During the course of these activities a third phase provided leadership and assistance to individual school districts through Center resources. The most notable instance was the heavy involvement of the Director in the planning of a series of orientation workshops for the Erie City School District teachers. Six four-day workshops were conducted, during which 216 junior high school teachers explored the forthcoming Erie Middle School conversion under the leadership of Center consultants. A detailed evaluation of each workshop and a total assessment of the effectiveness of the entire project was prepared and reported to the Erie administration by the Edinboro Center.

A program designed to encourage the development of individualized instruction in the six secondary schools of Warren County was also completed during the year. Four teams composed of the curriculum coordinator and the six department chairmen in Mathematics, Science, Social Studies and English worked independently in their respective content areas. At least five seminars and field visits were held by each group, the total program of more than twenty activities all arranged by the Educational Development Center. The project resulted in a master plan in which the individualization of instruction in each of the four content areas was projected separately for the coming year for each of the six schools.

During the course of the year the Assistant Director completed the implementation of a long range education planning model with a detailed manual for staff development and involvement in the planning process. The model and manual were the basis for a feasibility study in a local school district with favorable acceptance and outcomes. The procedure has apparently considerable potential utility for the local school district planning process and decision making. Tentative plans have been drawn for the possible state-wide dissemination of the model.

The Edinboro Educational Development Center has collaborated with the EDC at Wilkes College in conducting a normative survey of institutions for neglected and delinquent children within the Commonwealth as a data base for a Wilkes project. Edinboro has also worked in conjunction with the West Chester-Cheyney EDC in facilitating Erie involvement in an urban education staff development program. In addition it cooperates with state, regional and local educational agencies in planning workshops, conducting seminars, providing technical assistance, carrying out special assignments and maintaining liaison among schools and educators. The Center also serves as program disseminator for the Edinboro State College Miller Research Learning Center via the dual responsibilities of the Director.

The present staff consists of:

Dr. Milton C. Woodlen, Director
Dr. Joseph B. DeAngelis, Assistant Director
Jessie M. Payne, Secretary

SECOND EDUCATIONAL CONGRESS OF NORTHWEST PENNSYLVANIA

The Second Educational Congress of Northwest Pennsylvania was held on May 2, 1973 with 300 government officials from Northwest Pennsylvania in attendance. The theme for the 1973 Congress was "Crisis in Regional Planning: Purpose and Direction," emphasizing the critical need for region-wide planning efforts to support local planning which has taken place in many areas.

The Keynote Address was delivered by Edward Simon, Director of the Pennsylvania State Office of Planning and Development. Other speakers of note were Elwood Hochstetter, Director of the Appalachian Regional program in Pennsylvania; Douglas Nunn, Director of the Urban Studies Institute, University of Louisville; Charles Robinson, Legal Counsel, National Rural Electric Cooperative Association, Washington, D.C., and Irwin Silverman, former Secretary of the Interior and present commissioner of the Hackensack-Meadowlands Commission of New Jersey. Many other state and Federal officials contributed their time and effort to the workshops.

The Congress was once again made possible by a generous community services grant from the Security-Peoples Trust Company, Erie, Sumner H. Nichols, President.

Chairman of this year's Congress was Louis S. Meyer, Chairman, Department of Political Science. Other members of the planning committee were Burton O. Witthuhn, Chairman, Geography Department; Gregory Lessig, Political Science, James D. L. Byrnes, Political Science; Lynn W. Huber, Sociology; Jack L. Culbertson, Chairman, Psychology Department; and Kay Ryall Miller, Public Relations and The Spectator.

COLLEGE INSTRUCTIONAL FACILITIES

The Annual Report of the Vice-President for Academic Affairs (April, 1970) contains a complete listing of the college instructional facilities that were in use at that time. The Annual Report of the Vice-President for Academic Affairs (April, 1971) lists the two buildings that were constructed and occupied after the first report was issued. Since both of the above reports were issued, two additional buildings have been completed and occupied. The Miller Research Learning Center was placed into instructional use in September, 1971 and the New College Union was occupied in September, 1971.

Miller Research Learning Center

This steel frame type building was constructed at a cost of \$1,704,000 and initially occupied in September, 1971. The building contains college classrooms, demonstration facilities, special class and non-class laboratories, conference rooms, offices, lounge facilities, and Audio-Visual, Radio, and TV facilities. It contains a gross area of 45,825 sq. feet in the first floor area.

<u>Room Type</u>	<u>Number</u>	<u>Total Square Feet</u>
Audio-Visual, Radio, TV Facilities	1	400
* Audio-Visual, Radio, TV Facilities Service	2	346
Classrooms	2	3,400
* Classroom Service	1	121
Conference Rooms	4	948
Demonstration Facilities	19	19,218
*Demonstration Facilities Service	5	782
Lounge	1	400
Non-Class Laboratories	6	1,508
Offices	10	1,414
* Office Service	10	1,978
Special Classroom Laboratory	1	1,196
		Total
		31,711 Net Assignable

The Education Classroom Building

This steel frame type building was constructed at a cost of \$1,872,000 and was initially occupied in September, 1972. The building contains classrooms, a Student Placement Office and audio-visual facilities. In its basement and 3 floors, the building contains a total gross area of 42,832 sq. ft.

<u>Room Type</u>	<u>Number</u>	<u>Total Square Feet</u>
Offices	37	5,178
*Office Service	9	642
Classrooms	21	15,190
*Classroom Service	1	160
Conference	4	1219
Special Class Laboratory	1	649
Audio-Visual Facilities	1	669
*Audio-Visual Facilities Service	2	276
Lounges	2	1151
Library Room	1	820
Storage	1	<u>460</u>
Total		26,414 Net Assignable

* A service room is that which directly serves the aforementioned room as an extension of the activities of that room.

PROJECTED FACILITIES

1973-1974

Classroom Office Building

This steel frame type building is being constructed at a cost of approximately \$1,716,000 and will be ready for occupancy in 1973. It will house a portion of the Art Department and will contain an art gallery, museum, offices, and classrooms. In addition this building will house the entire Mathematics Department. In its 3 floors, the building will possess a gross total area of 47,862 sq. feet.

1974-1975

Two 400-Student Dormitories

1976-1977

Library

Administration Building

SELECTED MOTIONS PASSED BY THE ACADEMIC COUNCIL
September, 1972 - July, 1973

July 24, 1973

1. Proposal to change the present B.A. Degree in the Humanities (Art Major) to B.A. Degree in the Humanities (Art History Major).
2. Business programs accepted under Arts & Science/Social Science = BA./SS - AS/SS Umbrella: BA/SS - Economics/Accounting, BA/SS - Economics/General Business, BA/SS - Economics.

May 15, 1973

3. The Council voted to recommend to the President of the College "that the College employ a full-time public relations person."

May 1, 1973

4. Form to be used by students signing up for pass-fail should carry the signature of the student's advisor to indicate that the student is eligible to take the course on a pass-fail basis. Form should carry statement "(Registration period means the add period only)." Form should be in hands of Registrar by the end of the add period.
5. The Council approved a motion to designate ED495, Student Teaching, as a pass-fail only course.

April 3, 1973

6. Changes to B.A. in Psychology Curriculum approved.
 - II. The change specifies that required courses in Psychology be amended to read -
 - * Psychology of conditioning and motivation or Human Learning
 - * Social Psychology or Psychology of Personality
 - Psychology electives amended to read
 - * 15 hours - excluding Educational Psychology
 - III. Free electives reduced from 38 to 35 credits
7. SB490 Independent Study in the Biological Sciences was dropped as a requirement for the B.S. in Biology. These three hours become biology elective credit.

March 20, 1973

8. The proposal was approved to allow credit to be earned by "Competency Examination".
9. Approval was given for the MA program in Political Science.

March 6, 1973

10. The Academic Council voted to include the School Council in the Senate plan for routing of Departmental recommendations to the Curriculum Committee. Further, that departments should explore the feasibility of programs they

wish to have adopted before forwarding them for approval.

February 20, 1973

11. Approval was given for the offering of graduate courses at off-campus sites where need, facilities and the available site will support the academic soundness of each offering.
12. Recommendation approved to accept the Culminating Experience for the Master of Education degree in Mathematics.

December 12, 1972

12. A procedure was approved for the granting of exemptions from the taking of required courses (approved by Senate 13 December 1972).
13. A procedure was approved permitting the auditing of undergraduate courses (approved by Senate 13 December 1972).
14. Proposed Change in Admissions Requirements for the Master's Degree approved.
15. Change in the policy statement of the Graduate Council "if unusual circumstances have prevented an individual from the normal pursuit of his Graduate Studies, he may apply to the Dean of the School of Graduate Studies for an extension of the 5-year time limit. The Dean of the School of Graduate Studies, after consultation with the Department Chairman and the Dean of the School of the student's major, shall determine whether or not a time extension is to be authorized."

November 7, 1972

16. Revised profile of the Graduate Council membership approved.
17. Recommendations of the Graduate Council approved that International students applying for admission to Graduate School of Edinboro State College be required to submit a completed confidential Declaration and Certification of Finances. Further, that a Certificate of Eligibility (For I-20 or DSP-66) not be authorized unless the completed Declaration and Certification of Finances has been submitted to the School of Graduate Studies.

September 12, 1972

18. B.S. in Education - Area of Certification Secondary Education/General Sciences approved. (Approved by Senate October, 1972).

SELECTED MOTIONS PASSED BY COLLEGE SENATE
September 1972 - May, 1973

May 2, 1973

1. The Senate approved the B.S. in Education - Health & Physical Education (women).
2. The Senate approved the cooperative program of collegiate education in the liberal arts and engineering to be initiated with Penn State.
3. The Senate amended Article VII Section G of its constitution to read "Official action may not be taken by the Senate without a quorum present. A quorum shall consist of a majority of the current membership."
4. Changes in the pass-fail system were approved.
 - a. Add to Item 2 (Registration Period means Add Period Only).
 - b. The form "Student Request for a Pass-Fail Grade" should be in the hands of the Registrar by the end of the Add Period. This will go into effect with Pre-Summer Session, 1973. Also, please note that item No. 11 of this policy should have the word "by" inserted between "study" and "the".

April 25, 1973

1. Changes in B.A. Psychology Curriculum were approved. (See item 6 - Academic Council).
2. SB490 Independent Study in the Biological Sciences was dropped as a requirement for the B.S. in Biology.
3. Requirements for the B.A. in Arts and Humanities were approved.

April 4, 1973

1. The Senate established a standing committee of the Senate to be known as the Curriculum Committee.
2. The Senate approved the policy for granting of Credit by Competency Examination.
3. The Senate approved a policy for off-campus graduate instruction.
4. The Senate approved changes in M.A. program in Political Science.
5. The Graduate Calendar for academic year 1973-74 was accepted.
6. It was reported that the Middle States Association had affirmed the accreditation of Edinboro State College.
7. Approval was given that the following sentence should be included at the end of the first paragraph of the college catalog, p.29 (1972-73) dealing with academic suspension: "This does not apply to those students having less than a 1.00 average at the end of their first semester". Also, that the chart showing attempted hours and a minimum q.p.a. shall reflect that a 1.00 q.p.a. is required of students who have attempted between 9 and 23 s.h. Below the chart add "Exceptions to the standards on this chart may be made in cases where ex-

tenuating circumstances are recognized by the Vice-President for Academic Affairs.

8. The Senate approved that -
 - a. The total number of credits of Independent Study a student is allowed to compile should be left to the discretion of his or her faculty advisor; to implement this, the computer numbers 492, 493, and 494 in addition to 490 and 491 shall be allotted to independent study.
 - b. Special IBM grade card be used for reporting the grades of independent studies and that these cards shall require the signatures of the sponsor of the study, the department chairman, and the cooperating faculty member to be considered a valid grade report.
 - c. Chairman of Independent Study be empowered to report independent studies to the Registrar and the appropriate Dean simultaneously.

February 7, 1973

1. Change in Admissions Requirements for Masters Degrees approved. Students who are accepted provisionally will be advised in writing of the conditions applicable to their admission.
2. Policy approved to permit the audit of Undergraduate Courses.
3. International Students applying for admission to Graduate School of Edinboro State College will be required to submit a completed confidential statement "Declaration and Certification of Finances" to the school of Graduate Studies.
4. Policy approved to permit students to secure exemption from required courses.

December 13, 1972

1. Committee on Committees appointed Dr. Glendinning to the Honors and Independent Study Committee upon the resignation of Dr. Cogan.
2. The Off-Campus Centers Committee was abolished.
3. Committee on Committees recommended that the Calendar Committee profile include one faculty representative from each of the four undergraduate schools and the Dean of the Graduate School or his representative.
4. Service on Senate Committees is set at two year terms, except in those instances where the committee profile demands an individual designated by position or office. Reappointment to a committee is not hereby precluded.

December 6, 1972

1. Interpretation and Revision of the Constitution - Article III, Section A2c was amended to read as follows - three students shall be elected by and from the student body. Two shall be full-time undergraduates carrying a minimum of twelve semester hours and one shall be a full-time graduate student carrying a minimum of nine semester hours. Article III, Section A2d was amended by adding after the word, practicable, a student vacancy shall be filled in interim appointment by the Student Government Association President and confirmed by the Congress, such appointment to be affective until a special election or until the April election.

2. The Pass-Fail system was approved.
3. It was decided that paragraph 6 of the grading system pertaining to X grades be amended to read as follows:

Paragraph 6: X grades received during any academic semester or session must be removed during the first four weeks of the next semester in which the student is enrolled. Failure to complete this work in order to remove the X grade will convert the X to an F grade.

November 15, 1972

1. Dr. Nann's final examination schedule was accepted as submitted. A follow-up survey of faculty and students (possibly through the SGA) was directed. An administrative evaluation of the responses was to be made to determine if a change in this examination procedure is warranted. It was noted that the follow-up study would be asking for reactions to the new schedule in comparison with the old.

November 8, 1972

1. A summer calendar was accepted for 1973 Summer Sessions, the sessions to last as follows: 3 weeks - 5 weeks - 3 weeks.

November 1, 1972

1. It was moved that "in order to bring the Promotions Policy Committee in line with the APSCUF contract, members of that committee designated under the heading "F" should be deleted from that Committee."
2. The Committee on Committees recommended that the function for the Promotions Policy Committee be changed from "a standing committee of the Senate which recommends promotions policy (criteria, procedures, and the composition of the Promotions Committee), to add "to the Senate" at the end of the statement.

October 4, 1972

1. The Senate approved the B.A. Degree - Natural Sciences and Mathematics.
2. The Senate approved the B.S. degree in Education - Area of Certification Secondary Education/General Science.
3. The Senate approved revision of B. S. Secondary English Major, B.A. with a major in English, B.A. in Humanities English to bring them into line with General Education requirements.
4. The Senate approved inviting an official observer from each side of the bargaining unit, (APSCUF-PAHE) and management, to the Senate and the Executive Committee with full debate privileges.
5. The Senate directed that the one faculty member on the Disciplinary Committee and the two faculty members on the Judicial Board (one male and one female) be designated for one-year terms by the Committee on Committees for approval by the College Senate.

September 6, 1972

1. Calendar Committee was instructed to prepare legal calendars for the 1973-74 and subsequent academic years and to report to the Senate no later than the regular November meeting.