

SECOND
ANNUAL REPORT

of the
VICE PRESIDENT
for
ACADEMIC AFFAIRS

EDINBORO STATE COLLEGE
Edinboro, Pennsylvania 16412

Library
Philosophy
Department

Library
Miller Research
Learning

ACKNOWLEDGMENTS

Appreciation is expressed to Miss Brigit Brickner, Mrs. Cynthia Cogley, Miss Mary Fundis and Mrs. Carolyn Hazlewood for their assistance in the compilation of the data for this report. The cover photograph was supplied by Mr. Russell Wood. Valuable help in preparation of the cover was rendered by Mrs. Mary Newhall, of the Edinboro Art Department. We thank members of the Duplicating Section of the college, and in particular Mrs. Alma Brown, for their work in publishing this report. We are grateful to faculty, department heads and others in furnishing the data so essential for a report of this kind.

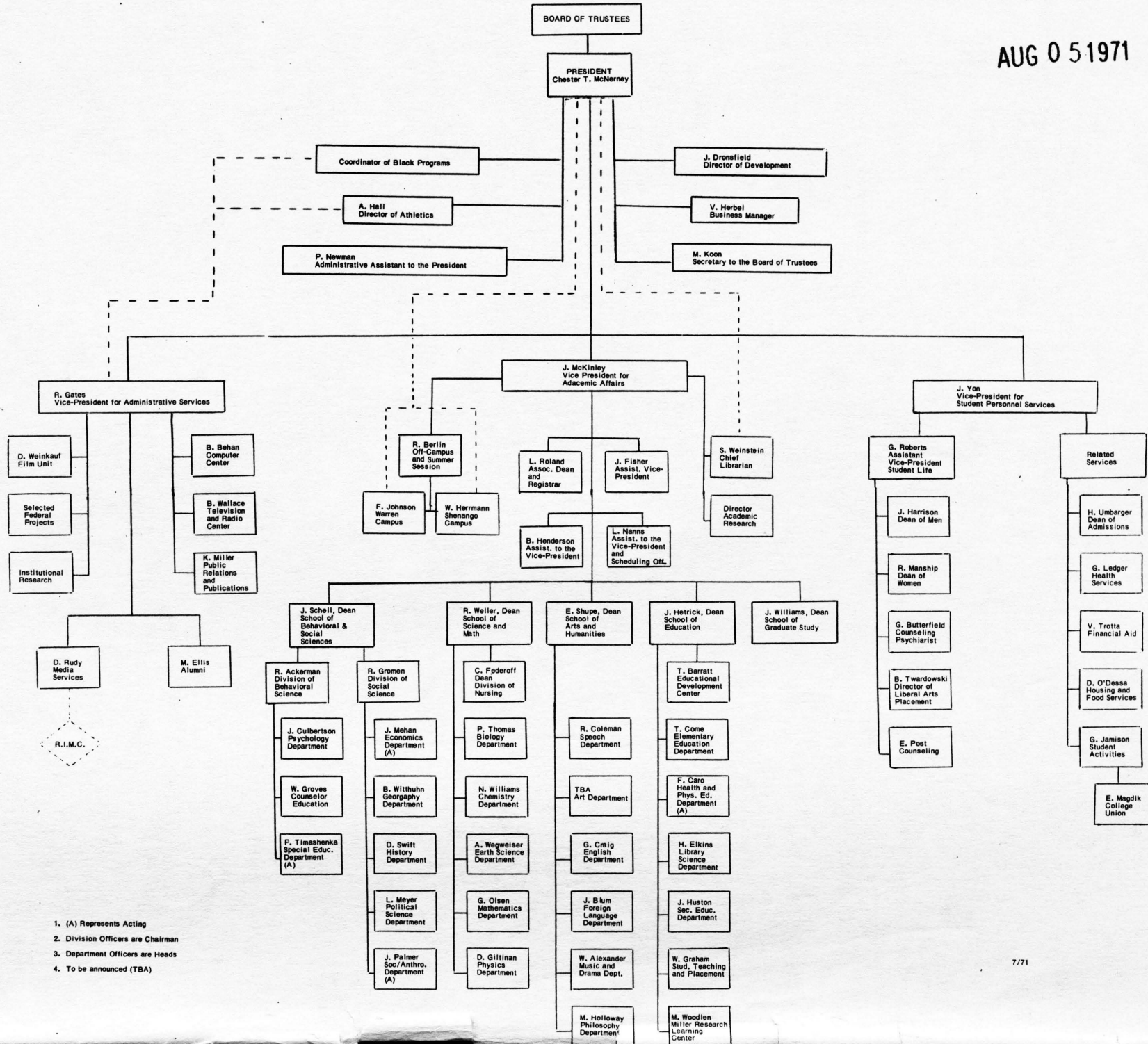
James E. McKinley

James E. McKinley
Vice-President for Academic Affairs

John K. Fisher

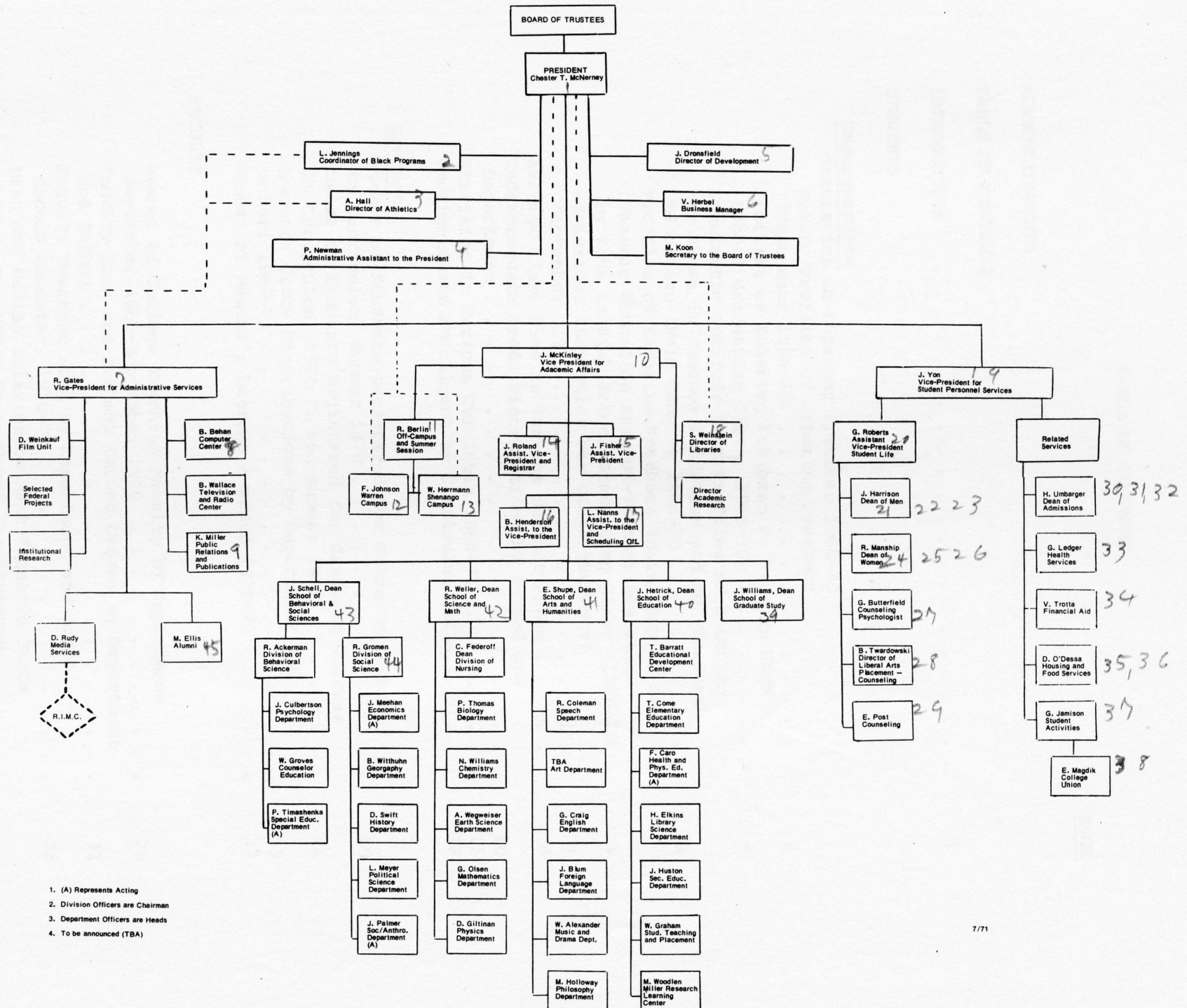
John K. Fisher
Assistant Vice-President for Academic Affairs

AUG 05 1971



1. (A) Represents Acting
2. Division Officers are Chairman
3. Department Officers are Heads
4. To be announced (TBA)

EDINBORO STATE COLLEGE



1. (A) Represents Acting
2. Division Officers are Chairmen
3. Department Officers are Heads
4. To be announced (TBA)

TABLE OF CONTENTS

	<u>PAGE</u>
ACKNOWLEDGMENTS	
TABLE OF CONTENTS	
INTRODUCTION	1
STUDENTS	
<u>Undergraduate</u>	
Statistics on Entering Freshmen 1966-70	
S.A.T. Profiles of Entering Freshmen	
(September 1966-70)	3
Profiles of Entering Freshmen by Rank in High	
School Graduating Class (1966-70)	4
Scholastic Aptitude Test Profiles of Entering	
Freshmen in Teacher Education and Non-Teacher	
Education (Main Campus) 1966-70	5
Profiles of Entering Freshmen (Main Campus) in	
Teacher Education and Non-Teacher Education	
by Rank in High School Graduating Class (1966-70) .	6
Admissions Statistics for Black Students-	
September, 1970	7
Average Class Size in Various Subject Areas	8
Undergraduate Grade Distributions by School and	
Department	10
Attrition in Various Curricula 1965-71	15
Undergraduate Enrollment by Curriculum 1970-71	18
<u>Graduate</u>	
Number of Students Registered for Graduate Courses	
by Curriculum, Summer 1970	19
Number of Students Registered for Graduate Courses	
by Curriculum, 1970-71 and Summer 1971	21
Graduate Grade Distributions by Department and	
School 1969-71	23
Number of Master's Degrees Awarded 1970-71	27
FACULTY	
Number of College Teaching Faculty by Department	
September 1966-September 1970	29
Faculty Rank and Highest Earned Degree by Department	
and School	31
Faculty Teaching Load by Department and School:	
Second Semester, 1970-71	33
Mean and Median Salaries by Rank-Edinboro State	
College Vs. Other State-Owned Institutions	
of Higher Learning	36

Faculty Non-Instructional Activities	37
Number of Faculty Engaged in Consultant Work or Field Services	38
Number of Lectures or Talks Delivered by Faculty . .	40
Professional Activities of Art Department and Administrative Services Faculty	42
Professional Activities of Music and Drama Department Faculty	43
Number of Publications by Faculty	44
Number of Faculty Committee Memberships	46
Faculty Research Activities	48
Number of Faculty Having Various Extra-Class or Non-Teaching Responsibilities	50
Number of Professional Meetings Attended by Faculty.	52
Information Concerning Faculty-Student Campus Professional Clubs and Organizations	54
 ACADEMIC DEVELOPMENT AT EDINBORO STATE COLLEGE 1970-75 . . .	 56
Introduction	56
Programs Approved for Edinboro State College Through 1970-71	57
The Academic Development Committee	59
Philosophy of Academic Development	62
Tentative Guidelines for the Determination of the Placement of Programs in the Undergraduate and Graduate Cores	64
Departmental Program Projections 1971-76	66
 HAMILTON LIBRARY	 68
Acquisitions and Readers Services	68
Annual Library Circulation Statistics	69
Total Funds Expended for Library Materials	70
 THE EDUCATIONAL DEVELOPMENT CENTER	 71
 COLLEGE INSTRUCTIONAL FACILITIES	 73

INTRODUCTION

This is the second in a series of annual academic reports published by the Office of the Vice-President for Academic Affairs. The purpose of these reports is to provide information about various facets of the college that would be of interest to those concerned with its development. In addition they will contain up-to-date information that will be of value in preparing reports for various agencies and groups in the future.

Edinboro State College was established primarily to serve the Northwestern Pennsylvania region. However, students now come from all counties of the state as well as from other states. The college has experienced an accelerating growth rate in both faculty and students over the past five years. As of the Fall of 1970, the college enrolled 6851 students and employed 475 professional staff members.

Until recently the chief objective of the college was the education and preparation of classroom teachers for the schools of the Commonwealth. With the implementation of programs in other disciplines, Edinboro has become a multi-purpose institution of higher learning serving the educational needs of Northwestern Pennsylvania, the Commonwealth, and the nation. The college operates off-campus centers in Farrell and Warren, Pennsylvania, making higher educational opportunity available to a larger number of students. Programs in elementary and secondary education, and in the arts, humanities, and sciences curricula are available at these centers. After two years, students may transfer to the main campus.

In order to better meet the challenge presented by its rapid growth, the college was reorganized in September, 1969 into 3 branches: Academic Affairs, Student Personnel Services, and Administrative Services. Presently the college has five schools: The School of Arts and Humanities, the School of Behavioral and Social Sciences, the School of Education, the School of Science and Mathematics, and the School of Graduate Studies.

Divisions, departments, and areas contained within the schools, are as follows:

School of Arts and Humanities

Art
English
Foreign Languages
Music/Drama
Philosophy
Speech

School of Behavioral and Social Sciences
Behavioral Sciences Division

Counselor Education
Psychology
Special Education and School
Psychology

Social Sciences Division

Economics
Geography
History
Political Science
Sociology/Anthropology

School of Education

Educational Development Center
Elementary Education
Health and Physical Education
Library Science
Secondary Education
Student Teaching and Placement
Division

School of Science and Mathematics

Biology
Chemistry
Earth Sciences
Mathematics
Nursing Division
Physics
Medical Technology Program

School of Graduate Studies

Edinboro State College offers curricula in numerous fields in elementary and secondary education, and in special fields of art education, library science, music, speech and hearing, special education and physical education and health for women. The college offers further service by accepting registered dental hygienists who may earn the Bachelor of Science degree. In the various fields of arts, humanities, and sciences, Bachelor of Arts and/or Bachelor of Science degrees are offered in art, biology, chemistry, drama, economics, English, earth sciences, geography, history, mathematics, music, nursing, philosophy, political science, psychology, physics, social services, German, French, Spanish, geology, social studies, sociology, speech communication and medical technology. The Bachelor of Fine Arts degree is offered in art. Edinboro State College also offers the: Master of Education degree in art, biological science, earth sciences, physical science, English, mathematics, social studies, elementary education, reading, educational psychology, mental retardation, and elementary and secondary guidance and counseling. The Master of Arts degree is offered in English, history, and political science and the Master of Science degree is awarded in Biology. The college offers three post-master's degree programs: guidance director, reading supervisor, and school psychologist. There is also certification as a reading specialist.

It is anticipated that Edinboro State College will continue to provide expanded services to the region. The college plans to offer programs in such diverse fields as international education, business administration and engineering, as well as new graduate programs. Through provision of such services the college can increasingly meet its leadership responsibilities in the years ahead.

**INFORMATION CONCERNING
UNDERGRADUATE AND GRADUATE
STUDENTS**

	1954	1955	1956	1957
Undergraduate	460	481	511	503
Graduate	476	476	514	507
TOTAL	936	957	1025	1010

* All S.A.S. grades are below 2.00.

S.A.T. PROFILES OF ENTERING FRESHMEN (SEPTEMBER 1966-70)*

	<u>1966</u>	<u>1967</u>	<u>1968</u>	<u>1969</u>	<u>1970</u>
Verbal	460	481	493	511	503
Mathematics	476	476	492	514	507
TOTAL	936	957	985	1025	1010

3

* All S.A.T. scores are median scores.

PROFILES OF ENTERING FRESHMEN BY RANK IN HIGH SCHOOL GRADUATING CLASS (1966-70)*

	<u>1966</u>	<u>1967</u>	<u>1968</u>	<u>1969</u>	<u>1970</u>
Upper 1/5	31	34	34	41	41
Upper 2/5	38	40	38	34	36
Upper 3/5	28	25	26	23	17
Upper 4/5	4	1	2	2	4
Upper 5/5	0	0	0	4	2

* Figures are expressed in percentages rounded off to the nearest whole percent.

SCHOLASTIC APTITUDE TEST PROFILES OF ENTERING FRESHMEN IN TEACHER EDUCATION

AND NON-TEACHER EDUCATION (MAIN CAMPUS) 1966-70*

	<u>1966</u>		<u>1967</u>		<u>1968</u>		<u>1969</u>		<u>1970</u>	
	<u>T.E.</u>	<u>N.T.E.</u>	<u>T.E.</u>	<u>N.T.E.</u>	<u>T.E.</u>	<u>N.T.E.</u>	<u>T.E.</u>	<u>N.T.E.</u>	<u>T.E.</u>	<u>N.T.E.</u>
1300 and Above	1	0	0	0	1	1	1	1	0	1
1100-1299	11	1	13	14	17	18	12	23	16	14
900-1099	53	39	57	62	61	59	71	58	60	66
700-899	35	59	30	24	21	22	16	18	22	17
Below 700	0	1	0	0	0	0	0	0	2	2

5

* Figures are expressed in percentages rounded off to the nearest whole percent.

PROFILES OF ENTERING FRESHMEN (ON CAMPUS) IN TEACHER EDUCATION
AND NON-TEACHER EDUCATION BY RANK IN HIGH SCHOOL GRADUATING CLASS (1966-70)*

	<u>1966</u>		<u>1967</u>		<u>1968</u>		<u>1969</u>		<u>1970</u>	
	<u>T.E.</u>	<u>N.T.E.</u>	<u>T.E.</u>	<u>N.T.E.</u>	<u>T.E.</u>	<u>N.T.E.</u>	<u>T.E.</u>	<u>N.T.E.</u>	<u>T.E.</u>	<u>N.T.E.</u>
Upper 1/5	34	20	35	28	30	47	39	48	44	34
Upper 2/5	39	32	41	35	42	26	36	26	36	35
Upper 3/5	24	41	23	33	26	23	24	20	15	23
Upper 4/5	3	7	1	4	1	4	1	5	4	6
Upper 5/5	0	0	0	0	0	0	0	1	1	2

* Figures are expressed in percentages rounded off to the nearest whole percent.

ADMISSIONS STATISTICS FOR BLACK STUDENTS - SEPTEMBER, 1970

NUMBER WHO APPLIED	80
NUMBER ACCEPTED	61
NUMBER ENROLLED	51
NUMBER OF "NO SHOWS"	10
NUMBER FAILING TO COMPLETE APPLICATION	14
NUMBER REJECTED	5

7 The 80 black applicants represent 2.2 percent of the total of 3593 applications processed for the Main Campus. The percentage of black applicants accepted was 76.2 as compared to 34.4 for the total freshman class. The percentage of black individuals who failed to complete their applications was 17.5 as compared with .86 percent for the total freshman class. The 10 students who did not report for enrollment ("no shows") represent 16.4 percent of black students accepted, as compared with 2.4 percent "no shows" for the total freshman class.

AVERAGE CLASS SIZE IN VARIOUS SUBJECT AREAS*
(Second Semester 1970-71)

Area	Total No. of Sections	Total No. of Students	No. of Students in Intro. Courses	No. of Students in Adv. Courses	Avg. No. of Students in:		
					Intro. Courses	Adv. Courses	Combined Courses
Art	106	2156	646	1510	43	17	20
Biology	49	1096	666	430	27	18	22
Chemistry	14	238	33	205	17	17	17
Chinese	2	8	8		4		4
Computer Science	6	133	118	15	30	8	22
Drama	8	115		115		14	14
Earth Sciences	27	571	393	178	23	18	21
Economics	12	270	82	188	27	21	12
Education	32	1026		1026		32	32
Elementary Ed.	80	2105		2105		26	26
English	180	3278	2186	1092	17	21	18
French	14	174	56	118	19	11	12
Geography	38	1056	497	559	41	22	28
German	11	114	50	64	13	9	10
Health	22	623		623		28	28
History	80	2160	1930	230	28	22	27
Library Science	20	239	13	226	13	12	12
Mathematics	68	1281	563	718	23	17	19
Music	84	1307	421	886	32	12	16
Philosophy	34	1027	857	170	34	19	30
Physical Ed.	130	2945	2556	380	22	25	23
Physics	29	487	408	79	19	11	17
Political Science	32	800	587	213	29	18	25
Psychology	73	2227	1396	831	34	26	31
Russian	5	33	16	17	8	6	7
Secondary Ed.	3	97		97		32	32
Social Work	2	82		82		41	41
Sociology/Anthro.	28	772	590	182	30	23	28
Spanish	19	315	103	212	26	14	17
Special Education	7	151		151		22	22
Speech	26	574	463	111	26	14	22

* Introductory Courses in Various Subject Areas are Defined as Follows:

Art

AE 101 Intro. to Art
AR 111-112 Design I & II

Computer Science

CS 117 Elem. Programming

English

ES 101-102 English I & II
ES 201-202 Anglo. Amer. Lit I & II

Health

HP 105 Health

Mathematics

MA 101 Foundations of Math
MA 102 St. of No. System
MA 105 College Algebra
MA 107 College Algebra & Trig.

Physics

SP 101-102 Physical Sci. I & II
SP 103-104 Physics I & II
SP 271 Descriptive Astronomy

Speech

ES 107 Fund. of Speech

Biology

SB 101-102 Basic Biology I & II
SB 103 Principles of Biology

Earth Sciences

GS 101 Earth and Space Sci.

Foreign Language

SL 101-102 Sp. I & II
GL 101-102 Ger. I & II
CL 101-102 Chin. I & II
FL 101-102 French I & II
RL 101-102 Russian I & II

History

HI 101-102 World Civ. I & II
HI 261 History of U.S. I to 1876
HI 262 History of U.S. II from 1876

Music

MU 101 Intro. to Music

Political Science

PO 200 Intro. to Government
PO 201 American Government

Sociology/Anthropology

SO 200 Principles of Sociology
SO 280 Intro. to Anthropology

Chemistry

SC 100-101 Principles of Chemistry I & II

Economics

EC 200-201 Princ. of Econ.

Geography

GE 101 World Geography

Library Science

LS 102 Lib. in the School

Philosophy

PH 200 Intro. to Philosophy

Psychology

PS 101 General Psychology
PS 213 Ed. Psychology

UNDERGRADUATE GRADE DISTRIBUTIONS BY SCHOOL AND DEPARTMENT*
1969- 71

SCHOOL OF ARTS AND HUMANITIES

		<u>1969-70</u>		<u>Summer 1970</u>			<u>1970-71</u>	
		<u>1st.Sem.</u>	<u>2nd.Sem.</u>	<u>Pre</u>	<u>Regular</u>	<u>Post</u>	<u>1st.Sem.</u>	<u>2nd.Sem.</u>
ART	A.	15	16	27	18	40	17	21
	B.	36	37	42	47	37	34	41
	C.	32	32	24	29	18	32	27
	D.	9	8	4	3	3	7	6
	F.	5	5	1	3	1	6	5
ENGLISH	A.	12	11	21	15	11	9	11
	B.	29	34	33	36	33	29	31
	C.	41	38	37	39	38	42	42
	D.	8	8	7	6	8	11	10
	F.	1	6	1	4	7	6	5
MODERN FOREIGN LANGUAGE	A.	16	22		18		22	25
	B.	29	28		24		29	27
	C.	32	29		25		28	29
	D.	11	11		18	100	11	9
	F.	8	7		10		8	7

* Percentages of A,B,C,D, and F grades do not add to 100% because X,Y and Z grades are not included in these distributions. All figures are rounded off to the nearest whole percent.

		1969-70		Summer 1970			1970-71	
		1st.sem.	2nd.sem.	Pre	Regular	Post	1st.sem.	2nd.sem.
MUSIC AND DRAMA	A.	20	27	15	26	30	21	23
	B.	35	33	54	31	37	36	37
	C.	32	29	31	28	26	28	29
	D.	6	5	0	10	7	7	6
	F.	3	4	0	5	0	6	4
PHILOSOPHY	A.	13	15	18	14	7	14	13
	B.	39	38	53	40	31	31	43
	C.	34	37	26	40	49	42	34
	D.	6	4	0	2	7	6	4
	F.	3	3	0	0	0	3	3
SPEECH	A.				29	33	10	12
	B.				42	42	35	32
	C.				26	21	39	41
	D.				1	0	8	9
	F.				1	4	7	4

11

SCHOOL OF BEHAVIORAL AND SOCIAL SCIENCES

Behavioral Science Division

		1969-70		Summer 1970			1970-71	
		1st.sem.	2nd.sem.	Pre	Regular	Post	1st.sem.	2nd.sem.
PSYCHOLOGY	A.		10	14	15	11	13	13
	B.		25	24	30	34	30	32
	C.		44	50	33	42	38	40
	D.		12	9	15	8	11	9
	F.		5	1	4	4	5	4
COUNSELOR EDUCATION	A.		14		10	9	12	12
	B.		19		22	28	24	25
	C.		48		50	41	43	48
	D.		12		14	20	12	10
	F.		6		4	2	7	4
SPEC. EDUC. AND SCHOOL PSYCH.	A.		15	24	12	0	16	15
	B.		31	76	35	100	36	39
	C.		40	0	41	0	36	37
	D.		7	0	8	0	8	7
	F.		5	0	3	0	2	2

<u>Social Sciences Division</u>		<u>1969-70</u>		<u>Summer, 1970</u>			<u>1970-71</u>	
		<u>1st.sem.</u>	<u>2nd.sem.</u>	<u>Pre</u>	<u>Regular</u>	<u>Post</u>	<u>1st.sem.</u>	<u>2nd.sem.</u>
ECONOMICS	A		9		13	44	7	6
	B		25		24	56	22	16
	C		42		28		39	38
	D		16		21		18	27
	F		8		12		11	11
	GEOGRAPHY	A		9	10	17	16	8
	B		25	32	27	24	24	28
	C		42	51	32	53	45	39
	D		16	5	11	6	14	11
	F		8	2	8		6	8
HISTORY	A		8	7	7	8	7	6
	B		26	23	23	18	24	26
	C		35	40	42	36	42	38
	D		16	18	15	23	15	17
	F		12	10	11	15	10	10
	POLITICAL SCIENCE	A		5	5	6	6	6
B			32	33	28	24	30	25
C			38	35	40	42	34	43
D			14	18	22	13	17	15
F			8	5	3	14	10	9
SOC IOL/ANTHROP.		A		7	11	12	11	9
	B		21	24	40	27	31	33
	C		42	48	37	47	39	39
	D		17	14	6	8	11	9
	F		11	1	2	5	5	4

SCHOOL OF EDUCATION

		1969-70		Summer, 1970			1970-71	
		1st.sem.	2nd.sem.	Pre	Reg.	Post	1st.sem.	2nd.sem.
ELEMENTARY EDUCATION	A		19	25	25	22	20	22
	B		37	50	42	40	40	46
	C		36	23	31	31	33	27
	D		5		1	6	4	3
	F		2		1	1	3	2
HEALTH & PHYSICAL EDUCATION	A	25	25	32	27	28	23	28
	B	44	35	54	46	16	39	35
	C	23	29	10	23	36	25	29
	D	2	4			8	6	2
	F	2	4	4	1	4	5	3
LIBRARY SCIENCE	A	29	24	20	26	31	22	25
	B	35	38	47	39	38	41	41
	C	25	29	27	31	25	27	25
	D	4	4		3		3	3
	F	5	4	7	1	6	5	2
SECONDARY EDUCATION	A		9	19	14	5	10	10
	B		35	39	31	46	34	34
	C		45	33	43	46	44	46
	D		7	5	7		6	7
	F		3	1	1	2	4	1
STUDENT TEACHING AND PLACEMENT	A		29			36	38	45
	B		54			54	55	49
	C		15			11	6	5
	D		1					

SCHOOL OF SCIENCE AND MATHEMATICS

		1969-70		Summer, 1970			1970-71	
		<u>1st. sem.</u>	<u>2nd. sem.</u>	<u>Pre.</u>	<u>Reg.</u>	<u>Post</u>	<u>1st. sem.</u>	<u>2nd. sem.</u>
BIOLOGY	A		9	19	8	3	10	11
	B		22	44	33	26	25	27
	C		35	33	37	46	41	38
	D		20		17	20	15	15
	F		12		3	3	6	7
CHEMISTRY	A		7		7		14	16
	B		23	100	20		21	25
	C		37		34		28	33
	D		19		11		15	13
	F		12		25		19	12
EARTH SCIENCE	A		12	12	11	13	8	11
	B		32	28	21	31	21	22
	C		36	51	32	42	41	48
	D		11	3	21	7	17	14
	F		6	6	11	7	9	4
MATHEMATICS	A	12	15	12	11	13	13	14
	B	24	26	41	24	22	25	26
	C	33	31	29	35	45	30	32
	D	14	15	12	15	13	16	14
	F	14	11	3	11	7	14	13
PHYSICS	A		8	11	15	7	10	12
	B		20	9	28	37	26	26
	C		39	59	40	52	41	36
	D		21	14	9		14	17
	F		9	7	6		8	6
TOTAL COLLEGE	A	14	14	17	15	16	14	16
	B	31	32	37	33	32	31	33
	C	36	35	35	35	38	35	35
	D	10	10	7	9	9	10	9
	F	7	6	3	5	5	6	5

*

ATTRITION IN VARIOUS CURRICULA 1965-71

CURRICULUM	Entered Sept. 1965	Graduated May, 1969	Entered Sept. 1966	Graduated May, 1970	Entered Sept. 1967	Graduated May, 1971
Art Education	136	51	134	74	140	67
Elementary Education	393	317	434	303	426	273
Speech & Hr. Therapy**						21
Library Science	30	18	31	14	24	9
Music Education						3
Secondary Education***						
Biology		24	29	19	37	13
Chemistry		1	6	0	6	1
Comp. English		35	92	30	77	32
Comp. Soc. Studies		30	87	41	110	38
Earth & Space Sci.		3	5	3	2	3
French		1	16	2	7	3
General Sci.		1	0	1	1	0
Geography		10	3	8	3	7
German		0	4	1	2	1

* Transfer students are included in the number graduating in various curricula. However, data on entering students do not include transfers. In addition, several students were graduated in curricula that were different than they were originally enrolled in due to internal transfer.

<u>CURRICULUM</u>	<u>Entered Sept. 1965</u>	<u>Graduated May, 1969</u>	<u>Entered Sept. 1966</u>	<u>Graduated May, 1970</u>	<u>Entered Sept. 1967</u>	<u>Graduated May, 1971</u>
Mathematics		37	80	46	70	22
Physics		2	1	3	3	1
Math-Physics		1				1
Spanish		7	22	7	23	9
Dental Hygienist ⁺				1		2
Public School Nurse ⁺		1		3		2
Other						12
TOTAL	<u>325</u>	<u>153</u>	<u>345</u>	<u>165</u>	<u>341</u>	<u>147</u>

LIBERAL ARTS ‡

Arts & Sciences - Humanities

English				2		1
Humanities		8		7		6
Philosophy						1
SUB TOTALS		<u>8</u>	<u>39</u>	<u>9</u>	<u>46</u>	<u>8</u>

Arts & Sciences - Social Sciences

Economics						1
Political Sci.		1		6		4
Psychology		3		8		15

<u>CURRICULUM</u>	<u>Entered</u> <u>Sept. 1965</u>	<u>Graduated</u> <u>May, 1969</u>	<u>Entered</u> <u>Sept. 1966</u>	<u>Graduated</u> <u>May, 1970</u>	<u>Entered</u> <u>Sept. 1967</u>	<u>Graduated</u> <u>May, 1971</u>
Social Sciences		18				9
Social Studies		1		8		
Sociology				8		9
SUB TOTALS		<u>23</u>	<u>96</u>	<u>30</u>	<u>106</u>	<u>38</u>
<u>Arts & Sciences - Natural Sciences/Mathematics</u>						
Biology				1		
Chemistry				1		
Geology				4		
17 Med. Tech.		1				
Nat. Sciences incl. Mathematics		11		14		13
SUB TOTALS		<u>12</u>	<u>71</u>	<u>20</u>	<u>62</u>	<u>13</u>
TOTALS	<u>146</u>	<u>43</u>	<u>206</u>	<u>59</u>	<u>214</u>	<u>59</u>
TOTAL COLLEGE	1030	582	1150	615	1145	579
		<u>56.5%</u>		<u>53.5%</u>		<u>50.6%</u>

** Speech and Hearing was included in Elementary Education prior to September, 1967.

*** Admissions in Secondary Education were not differentiated until September, 1966.

+ The Dental Hygiene program requires a minimum of 64 hours for completion, and the Public School Nursing program requires a minimum of 60 hours of approved courses for completion. Thus, students in these curricula ordinarily enter at sophomore or junior standing. Since the Public School Nursing program is being discontinued, no more students are being admitted to this program.

In non-teacher education entering students were classified as follows:

1965-Liberal Arts (AS)
1966-Liberal Arts (ASH, ASSS, ASNS)
1967-Liberal Arts (ASH, ASSS, ASNS).

UNDERGRADUATE ENROLLMENT BY CURRICULUM 1970-71

<u>Curriculum</u>	<u>Fr.</u>	<u>SOPH.</u>	<u>Jr.</u>	<u>Sr.</u>	<u>Total</u>
Art Education:	183	162	137	99	591
ARTS AND SCIENCES:					
Humanities	75	40	22	12	149
Natural Sciences	106	63	33	27	229
Social Sciences	166	79	63	24	332
BACHELOR OF ARTS:					
English	5	5	2	3	15
Geography	4	1	1	1	7
History	5	4	4	1	14
Philosophy	4	3	5	2	14
Political Science	12	10	10	8	40
Psychology	7	18	14	21	60
Sociology	13	18	12	11	54
Mathematics	2	1			3
BACHELOR OF SCIENCE:					
Nursing	13	2			15
Geology	6	4	4	3	17
Mathematics	10	6	3	4	23
Med. Tech.	33	19	12	2	66
Biology	12	1	2	4	19
Chemistry	2	1	3	2	8
Physics	1	3		3	7
Certification:	13				13
Dental Hygiene:	1	2			3
Elementary Ed.	465	430	435	365	1779
Library Science	26	14	24	12	76
Music Education	47	29	10	6	92
Physical Education					
/Women	28	27	19		74
Public Nursing	19	6			25
SECONDARY EDUCATION:					
English/Speech	80	93	69	55	297
French	9	7	2	5	23
Geography	6	16	20	18	60
German	3	4		2	9
Earth/Sci	6	10	7	4	27
Spanish	18	16	16	11	61
Mathematics	91	65	47	41	244
Sci. of Biology	43	58	40	21	162
Sci. of Chemistry		8	6	3	17
Gen. Science		2	1		3
Sci. of Physics	2	3	2	4	11
Social Studies	168	137	91	76	472
Speech and Hearing	62	47	28	26	163
Special Students	88	49			137
Off Campus Centers:					
Shenango	228 F.T.	78 P.T.			306
Warren	280 F.T.	119 P.T.			399
				TOTAL	6116

NUMBER OF STUDENTS REGISTERED FOR GRADUATE COURSES BY CURRICULUM

SUMMER 1970

<u>CURRICULUM</u>	<u>PRE SESSION</u>	<u>REGULAR SESSION</u>	<u>POST SESSION</u>	<u>TOTAL</u>
<u>Master of Arts</u>				
English	14	23	11	48
History	8	17	3	28
Political Science	4	10	4	18
<u>Master of Education</u>				
Art	30	58	35	123
Biological Science	18	30	10	58
Earth Science	7	37	15	59
Educational Psychology	9	10	10	29
Elementary Education	268	339	212	819
Elementary Guidance	22	40	29	91
English	32	43	15	90
Guidance K-12	18	23	6	47
Mathematics	32	42	12	86
Mental Retardation	29	33	28	90

<u>CURRICULUM</u>	<u>PRE SESSION</u>	<u>REGULAR SESSION</u>	<u>POST SESSION</u>	<u>TOTAL</u>
Physical Science	9	5	5	19
Reading	0	0	2	2
Secondary Guidance	50	64	30	144
School Psychology	10	14	6	24
Social Studies	23	34	13	70
<u>Master of Science</u>				
Biology	0	0	4	4
Special Students	106	160	60	326

NUMBER OF STUDENTS REGISTERED FOR GRADUATE COURSES BY CURRICULUM

CURRICULUM	1970-71			SUMMER 1971		
	<u>1st SEMESTER</u>	<u>2nd SEMESTER</u>	<u>TOTAL</u>	<u>PRE SESSION</u>	<u>REGULAR SESSION</u>	<u>TOTAL</u>
<u>Master of Arts</u>						
English	14	21	35	11	19	30
History	13	13	26	6	14	20
Political Science	11	6	17	1	8	9
<u>Master of Education</u>						
Art	38	29	67	29	59	88
21 Biological Science	20	17	37	14	21	35
Earth Science	26	25	51	14	10	24
Educational & School Psychology	35	26	61	21	23	44
Elementary Education	229	180	409	201	271	472
English	32	23	55	20	33	53
Guidance	106	101	207	64	107	171
Mathematics	35	27	62	9	39	48
Mental Retardation	22	28	50	27	29	56
Physical Science	8	8	16	6	6	12
Reading	33	51	84	40	71	111

<u>CURRICULUM</u>	<u>1st SEMESTER</u>	<u>2nd SEMESTER</u>	<u>TOTAL</u>	<u>PRE SESSION</u>	<u>REGULAR SESSION</u>	<u>TOTAL</u>
Social Studies	18	23	41	18	33	51
<u>Master of Science</u>						
Biology	10	13	23	7	8	15
Special Students	85	72	157	69	110	179
<u>Non Degree Certification</u>						
Reading Specialist		13	13	2	3	5
Reading Supervisor		1	1	5	4	9
Stage 2 School Psychology		13	13	5	8	13

GRADUATE GRADE DISTRIBUTIONS BY DEPARTMENT AND SCHOOL 1969-71

SCHOOL OF ARTS AND HUMANITIES

		1969-70		Summer 1970*	1970-71	
		1st.sem.	2nd.sem.		1st.sem.	2nd.sem.
Art	A	59%	61%	34%	50%	56%
	B	35	34	59	34	37
	C	6	2	7	8	2
	D		2			
	F				3	2
English	A	48%	49%	45%	52%	41%
	B	34	42	51	33	54
	C	7	2	4	3	4
	D		2			
	F	2	2		3	2
Music and Drama	A	46%	64%	59%	100%	
	B	46	36	39		
	C	6		2		
	D					
	F					
Philosophy	A		50%	14%		
	B		25	57		
	C			29		
	D					
	F					
Speech	A				40%	100%
	B				53	
	C				7	
	D					
	F					

SCHOOL OF BEHAVIORAL AND SOCIAL SCIENCES

		<u>1969-70</u>		<u>Summer, 1970</u>	<u>1970-71</u>	
		<u>1st.sem.</u>	<u>2nd.sem.</u>		<u>1st.sem.</u>	<u>2nd.sem.</u>
DIVISION OF SOCIAL SCIENCES						
Economics	A			33%		
	B			67		
	C					
	D					
	F					
History	A	34%	24%	29%	18%	16%
	B	47	71	64	58	75
	C		2	7	6	9
	D					
	F	6			6	
Political Science	A	43%	31%	37%	50%	43%
	B	37	61	56	42	48
	C	6		6		9
	D					
	F	2	4	1	8	
Soc/Anthrop.	A	54%	65%	44%	17%	29%
	B	38	35	54	58	65
	C			3	8	6
	D					
	F					
DIVISION OF BEHAVIORAL SCIENCES						
Counselor Educ.	A		30%	35%	35%	36%
	B		58	57	59	55
	C		12	7	4	7
	D					
	F				1	
Psychology **	A	33%	22%	27%	22%	27%
	B	51	61	63	52	63
	C	8	8	9	19	8
	D					
	F		3		1	1

		<u>1969-70</u>		<u>Summer, 1970</u>	<u>1970-71</u>	
		<u>1st. sem.</u>	<u>2nd. sem.</u>		<u>1st. sem.</u>	<u>2nd. sem.</u>

Special Educ. and
School Psych.

A			58%	48%	45%	54%
B			36	48	44	46
C			3	4	4	
D						
F					2	

SCHOOL OF EDUCATION

Education

A	52%	49%	52%	38%	46%
B	45	47	47	59	51
C	3	2	1	2	2
D					
F					2

Health & Phys. Ed.

A		65%			
B		35			
C					
D					
F					

Library Science

A					60%
B					40
C					
D					
F					

Secondary Educ.

A	29%	36%	31%	47%	40%
B	61	48	65	48	57
C	1	5	4	2	3
D					
F		1			

Student Tch. & Placement

A		55%			
B		45			
C					
D					
F					

SCHOOL OF SCIENCE AND MATHEMATICS

		1969-70		Summer, 1970	1970-71	
		1st. sem.	2nd. sem.		1st. sem.	2nd. sem.
Biology	A	20%	19%	40%	22%	45%
	B	45	68	54	56	49
	C	10	12	6	6	6
	D	5				
	F				6	
Chemistry	A	60%	11%	33%	31%	
	B	40	44	67	46	40
	C		33		23	60
	D					
	F		11			
Earth Science	A	67%	19%	54%	73%	53%
	B	13	71	44	23	47
	C	7	10	2		
	D	13				
	F					
Mathematics	A	48%	40%	38%	35%	27%
	B	44	55	55	59	59
	C	4	5	7	7	9
	D					
	F			1		5
Physics	A	86%	43%	38%	44%	50%
	B	14	52	59	39	33
	C		5	3		17
	D					
	F					
TOTAL COLLEGE	A	43%	39%	39%	38%	41%
	B	44	52	55	51	52
	C	5	5	5	5	5
	D					
	F	1	1		1	1

* Graduate grades are combined for Pre, Regular and Post Summer Sessions

** First Semester 1969-70 includes grades for Psychology, Counselor Education, and Special Education and School Psychology

NUMBER OF MASTER'S DEGREES AWARDED 1970-71

DEGREE	<u>SUMMER 1970</u>	<u>FIRST SEMESTER 1970-71</u>	<u>SECOND SEMESTER 1970-71</u>
<u>Master of Arts</u>			
English	5	2	2
History	4	1	
Political Science	1	1	
<u>Master of Education</u>			
Art	2	1	4
Biological Science	6	1	2
Earth Science	2		1
Educational Psych.	3	1	5
Elementary Education	82	15	18
English	14	1	1
Guidance & Counseling	35	6	11
Mathematics	3	2	1
Mental Retardation	8	3	1
Physical Science	1	1	1
Reading	1		3

DEGREE	<u>SUMMER 1970</u>	<u>FIRST SEMESTER 1970-71</u>	<u>SECOND SEMESTER 1970-71</u>
School Psychology	3	3	
Social Studies	11	1	1
<u>Master of Science</u>			
Biology	2	1	1

INFORMATION CONCERNING

COLLEGE FACULTY

NUMBER OF COLLEGE TEACHING FACULTY BY DEPARTMENT^{#*}
September 1966 - September 1970

<u>Department</u>	<u>Sept.1966</u>	<u>Sept.1967</u>	<u>Sept.1968</u>	<u>Sept.1969</u>	<u>Sept.1970</u>
Art	14	19	29	39	42
Education (Elem.Second. Campus School and Student Tch.& Placement)	29	34	37	63	25 Elementary 7 Secondary 6 Campus School 27 Stud.Tchg. & Placement
English/Speech	25	29	32	44	42 English 7 Speech
Foreign Language	6	8	12	15	18
Geography and Earth Sciences	10	12	15	19	12 Geography 8 Earth Sciences
Health and Physical Education	8	10	17	22	21
Library Science	1	1	4	6	6
Mathematics	11	12	19	23	23
Music and Drama	5	7	14	20	21
Philosophy	3	5	7	8	10
Psychology and Special Education	14	17	25	31	15 Psychology 9 Counselor Educ. 12 Spec.Educ. and School Psych

<u>Department</u>	<u>Sept.1966</u>	<u>Sept.1967</u>	<u>Sept.1968</u>	<u>Sept.1969</u>	<u>Sept. 1970</u>
Natural Sciences	25	25	27	37	18 Biology 10 Chemistry 10 Physics
Social Studies	22	26	33	46	23 History 10 Political Science 3 Economics 11 Soc./Anthrop.
TOTAL	<u>173</u>	<u>205</u>	<u>271</u>	<u>373</u>	<u>396</u>

Faculty assigned to both on and off-campus teaching are included. Figures for 1966-1969 reflect college organization at that time. The information for 1970 indicates departments formed as a result of the administrative reorganization.

* Deans, division chairmen, and part-time faculty are not included in the above.

FACULTY RANK AND HIGHEST EARNED DEGREE BY DEPARTMENT AND SCHOOL
September, 1970

SCHOOL OF ARTS AND HUMANITIES

	Rank				Total	Highest Degree Earned		
	Prof.	Assoc. Prof.	Asst. Prof.	Instructor		Bachelor's	Master's	Doctorate
Art Department	7	12	21	2	42	0	34	8
English Department	5	13	18	6	42	3	30	9
Modern Foreign Language Dept.	5	4	7	2	18	1	8	9
Music & Drama Department	4	4	13	3	24	1	16	7
Philosophy Department	2	2	5	1	10	0	5	5
Speech Department	<u>2</u>	<u>2</u>	<u>2</u>	<u>1</u>	<u>7</u>	<u>0</u>	<u>2</u>	<u>5</u>
TOTALS	25	37	66	15	143	5	95	43

SCHOOL OF BEHAVIORAL AND SOCIAL SCIENCES

DIVISION OF BEHAVIORAL SCIENCE

Counselor Education Department	4	4	0	1	9	0	2	7
Psychology Department	5	4	6	0	15	0	7	8
Special Education & School Psychology	<u>6</u>	<u>4</u>	<u>1</u>	<u>1</u>	<u>12</u>	<u>0</u>	<u>5</u>	<u>7</u>
TOTALS	15	12	7	2	36	0	14	22

DIVISION OF SOCIAL SCIENCE

Economics Department	1	0	2	0	3	0	2	1
Geography Department	4	5	2	1	12	0	6	6
History Department	5	9	5	4	23	0	15	8
Political Science Dept.	5	5	0	0	10	0	4	6
Sociology/Anthropology Dept.	<u>2</u>	<u>3</u>	<u>5</u>	<u>2</u>	<u>12</u>	<u>0</u>	<u>9</u>	<u>3</u>
TOTALS	17	22	14	7	60	0	36	24

SCHOOL OF EDUCATION

	Prof.	Rank			Instructor	Total	Highest Degree Earned		
		Assoc.Prof.	Asst.Prof.				Bachelor's	Master's	Doctorate
*Elementary Education Department	10	8	11		2	31	0	19	12
Health & Physical Education Dept.	1	4	9		11	25	5	18	2
Library Science Dept.	1	0	5		0	6	0	5	1
Secondary Education Dept.	4	2	1		0	7	0	2	5
Student Teaching & Placement	<u>5</u>	<u>10</u>	<u>10</u>		<u>2</u>	<u>27</u>	<u>1</u>	<u>19</u>	<u>7</u>
TOTALS	21	24	36		15	96	6	63	27

SCHOOL OF SCIENCE AND MATHEMATICS

	Biology Department	7	9	0	2	18	1	7	10
32	Chemistry Department	5	2	3	0	10	0	2	8
	Earth Science Department	4	3	1	0	8	0	3	5
	Mathematics Department	3	14	7	1	25	0	19	6
	Physics Department	<u>3</u>	<u>2</u>	<u>5</u>	<u>1</u>	<u>11</u>	<u>0</u>	<u>7</u>	<u>4</u>
	TOTALS	22	30	16	4	72	1	38	33

*Includes Campus School.

FACULTY TEACHING LOAD BY DEPARTMENT AND SCHOOL*
Second Semester, 1970-71

SCHOOL OF ARTS AND HUMANITIES	Total Undergr. Stud.Taught	Total Grad. Stud.Taught	Total Stud. Taught	Number of Faculty	Avg.No. Stud.Taught per Faculty	Avg.No. Cr.Hrs.Taught per Faculty	Avg. No. of Contact Hrs.
Art Dept.	2415	45	2460	38.75	63.5	9.8	15.1
Foreign Language Dept.	656		656	15.25	43.0	10.0	12.1
English Dept.	3278	62	3340	35.25	94.8	12.1	10.6
Music & Drama Dept.	1592		1592	20.25	78.6	11.3	15.7
Philosophy Dept.	1027		1027	8.75	117.4	11.7	11.7
Speech Dept.	<u>574</u>	<u>5</u>	<u>579</u>	<u>6.75</u>	<u>85.8</u>	12.0	12.5
TOTAL	9542	112	9654	125.0	77.2		

* In determining the number of teaching faculty, the department head was counted as 1/2. In the larger departments the heads were counted as 1/2 and the assistant department heads were counted as 3/4. For the School of Education, the Assistant Dean of Education and the Director of the Educational Development Center were not counted in the teaching faculty, and the Principal of the Campus School was counted as 1/2 teaching faculty.

	<u>Total Underg.</u> <u>Stud.Taught</u>	<u>Total Grad.</u> <u>Stud.Taught</u>	<u>Total Stud.</u> <u>Taught</u>	<u>Number of</u> <u>Faculty</u>	<u>Avg. No.</u> <u>Stud.Taught</u> <u>per Faculty</u>	<u>Avg.No.</u> <u>Cr.Hrs.</u> <u>Taught per Faculty</u>	<u>Avg. No.</u> <u>Contact Hrs.</u>
SCHOOL OF BEHAVIORAL AND SOCIAL SCIENCES							
<u>Behavioral Sciences</u> <u>Division</u>							
Psychology Dept.	1272	71	1343	12	111.9	11.25	11.25
Counselor Ed. Dept.	547	185	732	8.5	86.1	9.9	9.9
Special Education & School Psych. Dept.	<u>707</u>	<u>109</u>	<u>816</u>	<u>11.5</u>	<u>70.9</u>	11.0	11.0
TOTAL BEHAVIORAL SCIENCES	2526	365	2891	32	90.3		
<u>Social Sciences</u> <u>Division</u>							
History Dept.	2287	23	2310	20	115.5	11.5	10.7
Geography Dept.	1036		1036	9.5	109.1	12.0	12.0
Political Science Dept.	794	18	812	8.5	95.5	10.9	10.2
Economics Dept.	270		270	2.75	98.2	13.1	13.1
Sociology/Anthropology Dept.	<u>822</u>	<u>17</u>	<u>839</u>	<u>7.75</u>	<u>108.3</u>	11.6	11.6
TOTAL SOCIAL SCIENCES	5209	58	5267	48.5	108.6		

SCHOOL OF EDUCATION	Total Undergr. Stud. Taught	Total Grad. Stud. Taught	Total Stud. Taught	Number of Faculty	Avg. No. Stud. Taught per faculty	Avg. No. Cr. Hrs. Taught per Faculty	Avg. No. Contact Hrs.
Elementary Education Dept.	2104	192	2296	24	95.6	10.8	10.9
Health & Physical Education Dept.	3552		3552	20.25	175.4	6.6	9.3
Library Science Dept.	268		268	5.25	51.0	12.2	12.7
Secondary Education Dept.	748	63	811	6.25	129.7	10.7	10.6
Student Teaching and Placement	<u>419</u>	—	<u>419</u>	<u>25.5</u>	<u>16.4</u>	13.0	18.0
TOTAL	7091	255	7346	81.25	90.4		
SCHOOL OF SCIENCE AND MATHEMATICS							
Biology Department	1083	30	1103	13.0	84.8	9.7	12.0
Chemistry Department	454		454	7.75	58.6	8.8	12.0
Earth Sciences Dept.	568	26	594	7.5	79.2	11.2	16.4
Mathematics Dept.	1419	31	1450	21.5	67.5	11.5	11.0
Phvsics Department	<u>783</u>	<u>7</u>	<u>790</u>	<u>9.0</u>	<u>87.8</u>	8.1	11.3
TOTAL	4307	94	4391	58.75	74.7		

MEAN AND MEDIAN SALARIES BY RANK - 1968-69, 1970-71 *
 EDINBORO STATE COLLEGE VS. PENNSYLVANIA STATE
 OWNED INSTITUTIONS OF HIGHER LEARNING

1968-69

	<u>Edinboro State College</u>		<u>All State Owned</u>	
	<u>Number</u>	<u>Mean Salary</u>	<u>Number</u>	<u>Mean Salary</u>
Professor	51	\$13,560	649	\$13,753
Assoc. Prof.	63	\$10,960	1235	\$11,331
Asst. Prof.	103	\$ 9510	1004	\$ 9526
Instructor	49	\$ 7490	450	\$ 7887

1970-71

	<u>Edinboro State College</u>		<u>All State Owned</u>	
	<u>Number</u>	<u>Mean Salary</u>	<u>Number</u>	<u>Median Salary</u>
Professor	104	\$13,899	833	\$15,433
Assoc. Prof.	132	\$12,190	1439	\$12,989
Asst. Prof.	171	\$ 9,916	1168	\$10,631
Instructor	53	\$ 8,565	350	\$ 8644
Undesignated	9	\$ 3,087	9	\$ 3087

* The above figures are for staff on 9 and 10 month contracts. Data was furnished by the Bureau of Statistics, Department of Education, Harrisburg. Information for 1969-70 was not available.

FACULTY NON-INSTRUCTIONAL ACTIVITIES

In the Spring of 1971, each member of the faculty was contacted with a questionnaire to be returned to the Associate Dean for Academic Affairs. This instrument was designed to obtain information concerning: attendance at professional meetings or conferences; research activities; publications; lectures or talks delivered before various groups; consultant work or field services; committee memberships, and extra-class or non-teaching assignments. Subsequently, follow-up questionnaires were sent to those faculty members who had not responded.

Following is the number of persons from each area who responded to the above instrument:

Administration	16	Philosophy	7
Administrative Services	10	Physics	9
Art	28	Political Science	9
Biology	12	Psychology	13
Chemistry	7	Secondary Education	10
Counselor Education	8	Sociology/Anthropology	10
Earth Sciences	7	Special Educ. & School Psychology	13
Economics	3	Speech	5
Elementary Education *	22	Student Personnel Staff	13
English	27	Student Teaching and Placement	20
Modern Foreign Language	14		
Geography	10		
Health and Physical Education	17		
History	20		
Library Science	5		
Library Staff	11		
Mathematics	23		
Music and Drama	21		
Nursing	2		
	TOTAL		372

*Includes the Campus School

NUMBER OF FACULTY ENGAGED IN CONSULTANT*
WORK OR FIELD SERVICES
Summer, 1970-March, 1971

<u>Department or Area</u>	<u>Number Rendering Service To:</u>				<u>Local, State Federal Govts.</u>	<u>Church or Religious Groups</u>	<u>Community or Civic Groups</u>
	<u>Professional Organizations</u>	<u>School Systems</u>	<u>Colleges or Universities</u>	<u>Companies or Corporations</u>			
Administration		1	1		2	2	
Administrative Services	2	1	2		2		1
Art	1	1	2		3	1	3
Biology	1				1		1
Counselor Education	5	5					1
Earth Sciences					3		
38 Elementary Education*	13	10	1		5	1	
English	1	3	1	1			
Modern Foreign Language				1			1
Geography					1		1
Health and Physical Education			1	1	2		
History					2		3
Library Science	2	1	2				
Library Staff	2						
Mathematics		2		1	1		

*Includes the Campus School

<u>Department or Area</u>	<u>Professional Organizations</u>	<u>School Systems</u>	<u>Colleges or Universities</u>	<u>Companies or Corporations</u>	<u>Local, State Federal Govts.</u>	<u>Church or Religious Groups</u>	<u>Community or Civic Groups</u>
Music and Drama		2	5	3	1	1	1
Nursing	1				1		
Physics	1				1		
Political Science					3		1
Psychology		1		1	1		4
Secondary Education	1	1			2		1
Sociology/Anthropology					2		
39 Special Educ. and School Psychology	1	6	1	1	1	1	4
Speech	1						
Student Personnel Staff	4		1				
Student Teaching and Placement	<u>2</u>	<u>3</u>	<u>—</u>	<u>—</u>	<u>—</u>	<u>—</u>	<u>—</u>
TOTALS	38	37	17	9	34	6	22

*In several cases individuals are rendering service to agencies in more than one of the above categories.

NUMBER OF LECTURES OR TALKS DELIVERED BY FACULTY(Summer, 1970-March, 1971)

<u>Department or Area</u>	<u>Delivered Before:</u>			<u>Delivered In:</u>			
	<u>Professional Groups</u>	<u>Community, Civic or Church Groups</u>	<u>Student Groups</u>	<u>Northwestern Pennsylvania</u>	<u>Pennsylvania</u>	<u>States Outside of Pennsylvania</u>	<u>Outside U.S.</u>
Administration	10	12	6	25	1	1	
Administrative Services	21	2	6	8	5	14	1
Art	18	2	6	14	2	7	2
Biology	2	2	5	7		2	
Chemistry	2				2		
Counselor Education	6	3	3	9	1	2	
40 Earth Sciences	1	3	1	4		1	
Economics		2		2			
Elementary Education*	28	12	3	19	12	11	
English	4	6	12	8	6	7	
Modern Foreign Language	10	6	2	16		1	
Geography		3	3	6			
Health and Physical Education	1	3	16	8		1	
History	3	10	4	14	2	1	
Library Science	1	1	14	14	2		

*Includes the Campus School

<u>Department or Area</u>	<u>Delivered Before:</u>			<u>Delivered In:</u>			
	<u>Professional Groups</u>	<u>Community, Civic or Church Groups</u>	<u>Student Groups</u>	<u>Northwestern Pennsylvania</u>	<u>Pennsylvania</u>	<u>States Outside of Pennsylvania</u>	<u>Outside U.S.</u>
Library Staff		2	47	49			
Mathematics	3	2	9	11		3	
Music and Drama	5	4	7	9	4	3	
Nursing	1	1		2			
Philosophy	7	2	4	11		1	1
Physics	11	2	11	12		2	
Political Science	6	3	1	10			
Psychology	7	11	4	15		7	
Secondary Education	10	5	27	39	3		
Sociology/ Anthropology	7	8	9	20	1	2	1
Special Educ. & School Psychology	7	3	3	9	3	1	
Speech	3	3	3	9			
Student Personnel Staff	2	1	226	113	118		
Student Teaching and Placement	<u>9</u>	<u>5</u>	<u>9</u>	<u>12</u>	<u>3</u>	<u>8</u>	<u> </u>
TOTALS	185	119	431	475	165	75	5

PROFESSIONAL ACTIVITIES OF ART DEPARTMENT AND ADMINISTRATIVE SERVICES FACULTY*
 SUMMER, 1970 - MARCH, 1971

ART DEPARTMENT

	<u>In Northwestern Pa.</u>	<u>In Pa.</u>	<u>Outside of Pa.</u>	<u>Outside of U.S.A.</u>
Number of Professional Meetings Attended:	11	13	15	4
Number of Lectures and/or Demonstrations Presented:	14	2	7	2
Number of Exhibitions or Shows Entered: 36			Number of Awards or Prizes Won: 4	
Number of Publications: Journal Articles 6			Books, Monographs, etc.: 1	
Number of Research Projects in Progress: Funded Personally: 14			Funded by Other Sources: 1	

42

ADMINISTRATIVE SERVICES

	<u>In Pennsylvania</u>	<u>Outside of Pennsylvania</u>	<u>Outside of U.S.A.</u>
Number of Professional Meetings Attended:	29	20	2
Number of Lectures and/or Talks Given: 29			
Number of Student Groups Advised: 2			
Number of Groups receiving Consultant Services: 8			
Number of Productions: Films: 3 Video-Tapes: 3			
Number of Research Projects in Progress or Completed: 6			
Number of Publications: 2			

* Staff members in the above areas responded to the same questionnaire as did faculty from other areas of the college. This instrument did not have sections specifically for the reporting of exhibitions entered, awards won, etc. Thus it is possible that faculty in the above areas entered more shows or exhibitions, won more awards, etc. than the number indicated above.

PROFESSIONAL ACTIVITIES OF THE MUSIC AND DRAMA DEPARTMENT FACULTY
Summer, 1970 - March, 1971

The Music and Drama Faculty responded to the same questionnaire as did faculty from other areas of the college. This instrument did not have sections specifically for the reporting of musical compositions written or performed as well as many other activities relating to the areas of music and drama. Thus, it is possible that the faculty of this department engaged in more activities than are reported. Several activities of faculty in this department are reported in other sections of this document.

Members of the Erie Philharmonic Orchestra - 5 staff

Directors or Chairmen of Choirs and/or Choral Festivals - 5 staff

Guest Soloists, performers, or recitalists - 5 staff

Symphony Orchestra Conductor - 1 staff

Musical Contest Judges - 3 staff

Musical Director for Plays - 1 staff

Musical Composers - 4 staff

Play Directors - 3 staff

NUMBER OF PUBLICATIONS BY FACULTY
June, 1970-June, 1971

<u>Department or Area</u>	<u>Published or Completed and Accepted for Publication</u>			<u>In Progress:</u>		
	<u>Journal Articles</u>	<u>Books</u>	<u>Monographs</u>	<u>Journal Articles</u>	<u>Books</u>	<u>Monographs</u>
Administration	1		3			
Administrative Services	2					
Art	6		1		2	
Biology	3			2		
Chemistry	5					
Counselor Education	2					
Earth Sciences	4	3				1
Economics	1					
Elementary Education	9	1	1			
English	17	5	1			
Foreign Language	5	1		2		
Geography	5	2	1		2	
History	6				1	
Library Staff	8					
Mathematics	9					
Music and Drama	9	1				
Philosophy	9	1				
Physics	2					

<u>Department or Area</u>	<u>Published or Completed and Accepted for Publication</u>			<u>In Progress:</u>		
	<u>Journal Articles</u>	<u>Books</u>	<u>Monographs</u>	<u>Journal Articles</u>	<u>Books</u>	<u>Monographs</u>
Political Science		1	1		1	
Psychology			1			
Secondary Education					1	3
Sociology/Anthropology	3					
Special Educ. and School Psychology	1	1				
Speech	2		2			
45 Student Personnel Staff	1		3			
Student Teaching and Placement	<u>2</u>	—	—	—	—	—
TOTALS	112	16	14	4	7	6

NUMBER OF FACULTY COMMITTEE MEMBERSHIPS

<u>Department or Area</u>	<u>Department</u>	<u>School</u>	<u>All College</u>	<u>Academic Council</u>	<u>College Senate</u>	<u>Division</u>
Administration	2	7	51	17	15	
Administrative Services		1	22	4	11	1
Art	41		16	3	8	
Biology	10	1	9	2		
Chemistry	1	1	6	2		
Counselor Education	3	2	8	1	8	
Earth Sciences	2	4	8	5	8	
46 Elementary Education*	17	7	15	2	11	
English	18	1	7	5	11	
Geography	26	2	6	5	3	
Health and Physical Education	19	3	4	4	11	
History	33	5	13	4	9	
Library Science	11	4	2	1	1	
Library Staff	9		3	1	2	
Mathematics	42	2	13	6	9	

*Includes the Campus School

<u>Department or Area</u>	<u>Department</u>	<u>School</u>	<u>All College</u>	<u>Academic Council</u>	<u>College Senate</u>	<u>Division</u>
Modern Foreign Language	10	1	1	2		
Music and Drama	10	1	6	4	8	
Nursing				1	2	
Philosophy	4		4	2	7	
Physics	19	6	6	2	3	
Political Science	1	3	11	3	2	
Psychology	14	7	5	1	3	
Secondary Education		5	6	6	1	
⁴⁷ Sociology/Anthropology	7	3	2	1	2	3
Special Educ. and School Psychology	19	1	2	2	2	
Speech			1	1		
Student Personnel Staff	12	4	23	4	15	
Student Teaching and Placement	17	5	8	1	5	
	—	—	—	—	—	—
TOTALS	347	76	258	92	157	4

FACULTY RESEARCH ACTIVITIES
 Summer, 1970-March, 1971

<u>Department or Area</u>	<u>Number of:</u>		<u>Source of Funding:</u>			<u>Project Status:</u>			
	<u>Dissertations</u>	<u>Research Projects</u>	<u>Not Funded</u>	<u>Edinboro St. Coll.</u>	<u>Federal State or Other Agencies</u>	<u>Planning or Beginning</u>	<u>Partially Complete</u>	<u>Completed or Nearly Completed</u>	<u>Unknown</u>
Administration	1	5	2	2	2	2		4	
Administrative Services		6	3	2	1		2	4	
Art	1	21	21		1	6	2	9	5
Biology	1	12	8		5	6	4	2	1
Chemistry		2			2	1			1
Counselor Education	2	2	1		3	1		3	
48 Earth Sciences		5	2		3	1		3	1
Economics		1	1					1	
Elementary Education	1	7	6		2	1		7	
English	2	17	18		1	4	6	8	1
Modern Foreign Language	1	7	3		4	1	1	5	
Geography	1	4	5					5	
History	6	8	11	1	2	4	4	4	2
Library Science		1				1			
Library Staff		3	2		1	2		1	
Math	3	8	4	1	5	1	1	8	1

<u>Department or Area</u>	<u>Source of Funding:</u>					<u>Project Status:</u>			
	<u>Number of:</u> <u>Disser-</u> <u>tations</u>	<u>Research</u> <u>Projects</u>	<u>Not</u> <u>Funded</u>	<u>Edinboro</u> <u>St. Coll.</u>	<u>Federal</u> <u>State</u> <u>or Other</u> <u>Agencies</u>	<u>Planning</u> <u>or</u> <u>Beginning</u>	<u>Partially</u> <u>Complete</u>	<u>Completed</u> <u>or</u> <u>Nearly</u> <u>Completed</u>	<u>Unknown</u>
Music and Drama		7	2	1	2	1	2	4	
Philosophy	1	6	3		1		4	3	
Physics		8	4		3		2	6	
Political Science	2	2			3		1	2	1
Psychology		2			2	1		1	
Secondary Education		5			5		2	2	1
Sociology/Anthropology	2	3	1		3		1	4	
49 Special Educ. and School Psychology		6	1	1	4	2		3	1
Speech		3			3			3	
Student Personnel Staff		3			3	2		1	
Student Teaching and Placement	<u>1</u>	<u>3</u>	<u>2</u>	<u>—</u>	<u>2</u>	<u>—</u>	<u>1</u>	<u>3</u>	<u>—</u>
TOTALS	25	157	100	8	63	37	33	96	15

NUMBER OF FACULTY HAVING VARIOUS EXTRA-CLASS*
OR NON-TEACHING RESPONSIBILITIES
Summer, 1970-June, 1971

<u>Department or Area</u>	<u>Program Development Coordination or Other Program Responsibilities</u>	<u>Directing or Advising Thesis or Independent Study Projects</u>	<u>Counseling Students</u>	<u>Advising or Sponsoring Student Groups</u>	<u>Other</u>
Administration	1			1	2
Administrative Services	1			2	1
Art	2	2	1		5
Biology	1			4	2
Chemistry					2
Counselor Education	2	1	2		
Earth Sciences	1			3	
Elementary Education*	2			5	2
English	2	1		3	3
Modern Foreign Language	1	1		3	3
Geography				1	
Health and Physical Education	3			5	3
History	4			2	4
Library Science		1		2	

*Includes the Campus School

<u>Department or Area</u>	<u>Program Development Coordination or Other Program Responsibilities</u>	<u>Directing or Advising Thesis or Independent Study Projects</u>	<u>Counseling Students</u>	<u>Advising or Sponsoring Student Groups</u>	<u>Other</u>
Library Staff			3		
Mathematics	1			4	3
Music and Drama	8			5	3
Nursing				2	
Philosophy	1	1			
Physics		1		2	2
Political Science	2		2	1	
Psychology	1	1	2	2	2
Secondary Education				1	4
Sociology/Anthropology	3			2	1
Special Educ. & School Psychology	4		1	4	3
Speech	1		1	2	1
Student Personnel Staff	1		1	3	2
Student Teaching and Placement	<u>1</u>	<u>—</u>	<u>—</u>	<u>1</u>	<u>1</u>
TOTALS	43	9	13	60	49

*This list does not include duties as department chairman or assistant chairman, service or departmental or college committees, advising students, writing course outlines or catalog statements, or holding office in various organizations.

NUMBER OR PROFESSIONAL MEETINGS ATTENDED BY FACULTY
Summer, 1970 - March, 1971

<u>Department or Area</u>	<u>In State</u>	<u>Out-of-State</u>	<u>Outside of the United States</u>
Administration	25	13	
Administrative Services	29	20	2
Art	24	15	4
Biology	7	9	
Chemistry	4	2	
Counselor Education	9	2	
Earth Sciences	4	11	1
Economics	4		
Elementary Education*	22	19	
English	12	5	1
Modern Foreign Language	15	7	
Geography	3	6	3
Health and Physical Education	16	8	1
History	10	6	
Library Science	8	5	
Library Staff	10	2	
Mathematics	13	8	

*Includes the Campus School

<u>Department or Area</u>	<u>In State</u>	<u>Out-of-State</u>	<u>Outside of the United States</u>
Music and Drama	9	6	
Nursing	11	4	
Philosophy	8	3	
Physics	9	5	
Political Science	5	3	
Psychology	3	5	
Secondary Education	20	3	
Sociology/Anthropology	11	2	
Special Educ. & School Psychology	18	9	
Speech	3	1	
Student Personnel Staff	20	7	
Student Teaching and Placement	<u>14</u>	<u>6</u>	<u>—</u>
TOTALS	346	192	12

INFORMATION CONCERNING FACULTY-STUDENT
CAMPUS PROFESSIONAL CLUBS AND ORGANIZATIONS

<u>Name</u>	<u>Number of Members*</u>		<u>Frequency of Meetings</u>	<u>Date of Organization</u>	<u>Number of Projects Completed or planned Sept. 1970-June, 1971</u>	<u>Club Programs</u>	
	<u>Students</u>	<u>Faculty</u>				<u>Number of: Lectures or Other Discussions</u>	<u>Other Activities</u>
Alpha Beta Alpha (Library Science)	41		Monthly	Feb. 1950	2		2
Alpha Psi Omega	16		Monthly	1930	1		
American Institute for Biological Science	23		Monthly	Dec. 1969		6	3
Art Student League	All Art Students	30	Weekly	Sept. 1969	3	5	3
Beta Beta Beta (Biology)	41		Monthly	Feb. 1950	2		2
Children's Theatre	20		As needed	1967	2		
Collegiate Players (Theatre)	30		Monthly	1925			7
Council for Exceptional Children (Education)	166	13	Monthly	1961	9	2	4
Debate Team	10		Weekly	Sept. 1968	1		8
Earth Science Club	29	8	Monthly		1	4	7
French Club	20	2	Bi-monthly	1965	1		4
Future Teachers of Foreign Languages	50		Monthly	Jan. 1971	1	4	2
German Club	20		Monthly	Sept. 1970		1	1

<u>Name</u>	<u>Number of Members*</u>		<u>Frequency of Meetings</u>	<u>Date of Organization</u>	<u>Number of Projects Completed or Planned Sept. 1970-June, 1971</u>	<u>Club Programs</u>	
	<u>Students</u>	<u>Faculty</u>				<u>Number of: Lectures or Other Discussions</u>	<u>Other Activities</u>
Health & Phys. Ed. Majors (Women)	40		Bi-monthly	1968	4	1	1
History Club	42	18	Monthly	Oct. 1970	3	3	1
Mathematics Club	25	6	Every Third Week	Sept. 1965	1	10	5
Music Educators National Conference	40		Monthly	1968	1	5	1
Mu Kappa Gamma	28	13	Monthly	1936	3	2	
Pi Delta Epsilon (Journalism)	8	2	Monthly	May 1965	2		2
Pi Delta Phi	20	5		May 1971		3	1
Psychology Club	35		Monthly	1961		8	1
Philosophy Club	25	9	Monthly	1969		4	
Russian Club	16		Bi-monthly	Oct. 1970		6	1
Sigma Alpha Eta (Speech & Hearing)	45	1	Monthly	1965	3	2	1
Society of Physics Students	14	1	Monthly	Jan. 1971	1	6	1
Sigma Delta Pi (Spanish Honor Society)	15	1	Monthly	Nov. 1970		4	1

*Organizational activities are for the period September 1, 1970 - June 1, 1971.

ACADEMIC DEVELOPMENT AT EDINBORO STATE COLLEGE
1970-1975

INTRODUCTION

Ten years ago Edinboro State College was a single-purpose institution devoted to the preparation of teachers at undergraduate and graduate levels. Within the past decade it has become a multi-purpose institution, remaining true to its original mission of educating quality teachers for the public schools, and expanding its thrust to prepare individuals in the liberal arts as well.

Edinboro has grown from an enrollment of less than 2000, ten years ago, to nearly 7000 students. The college now offers curricula in numerous fields in elementary and secondary education as well as Bachelor of Arts and Bachelor of Science degrees in many fields in the Arts, sciences, and humanities. At the graduate level, Master of Education and Master of Arts degrees are available in several fields.

Prior to the Fall of 1969 the college was organized primarily in terms of departments. At that time the college was reorganized into five schools (Arts and Humanities, Behavioral and Social Sciences, Education, Science and Mathematics, and Graduate Studies) and divisions of Student Personnel and Administrative Services.

As change sweeps our national and local institutions, Edinboro State College contemplates its future. This document provides background in terms of steps that the college has taken to plan for further academic development in order to fulfill its mission of providing quality service to the residents of the region and the Commonwealth.

PROGRAMS APPROVED FOR EDINBORO STATE COLLEGE ##

THROUGH 1967-68

APPROVED 1968-69

Elementary Education

Bachelor of Science in Education (conc.)

English Mathematics Spanish
 French Music Spch. Correc.
 Geography Science Spec. Ed. (Ment. Ret.)
 Lib. Sci. Social Studies

Secondary Education

Bachelor of Science in Education

Biology Foreign Languages
 Chemistry Mathematics
 Ear. Sp. Sci. Physics
 English General Science
 Geography Social Studies
 Spec. Education*

All Grades Curricula

Bachelor of Science in Education

Dental Hygiene Music Education
 Health & Phys. Ed. (women)
 Library Science Pub. Schl. Nurs.
 Spch. & Hearng. Driver Education*

Bachelor of Science in Art Education

Master of Education

Biological Sci. Guid. & Counseling
 Elem. Education Physical Science
 English Social Studies

Bachelor of Arts/Conc. in Humanities

Art Foreign Languages
 English Music

Bachelor of Arts/Conc. in Nat. Sci. & Math.

Biology Mathematics Earth Sciences
 Chemistry Physics

Bachelor of Arts/Conc. in Soc. Sciences

Geography Psychology Social Studies

Bachelor of Science

Medical Technology Comm. Art Curr.**

Socially & Emotionally
 Maladjusted

Secondary Education

Bachelor of Science in Education

Mathematics - Physics

Master of Education

Art Education Mental Retard.
 Earth Sci. Sec. Guid. & Couns.
 Elem. Guid. & Couns. Schl. Psychol. Certif.
 Guidance Director Certif. #

Bachelor of Arts

English Philosophy Sociology
 Geography Political Science
 History Psychology

Bachelor of Science

Biology Geology Mathematics

Master of Arts

English History Political Science

EDUCATION

ARTS
 and
 SCIENCES

* Taken in addition to some teaching field

** Requires two years for completion

Consists of a minimum of 30 graduate hours beyond the Master's degree.

In the case of some programs, approval is necessary at the state level while others need only to be approved by the various bodies within the college.

APPROVED 1969-70

Elementary Education
Bachelor of Science in Education (conc.)
Early Childhood Education

Master of Education
Mathematics
Reading
Educational Psychology+

Reading Specialist Certification

Reading Supervisor Certification

Bachelor of Arts Conc.
in Humanities
Drama
Speech Communication

Bachelor of Arts Conc.
in Soc. Sciences
Economics
Social Services

Bachelor of Arts
Mathematics

Bachelor of Science
Chemistry
Nursing
Physics

Master of Science
Biology

APPROVED 1970-71

German
Russian

Early Childhood Education

Bachelor of Fine Arts

French
German
Russian
Spanish

Chemistry

+ A minimum of 66 semester hours is required for certification: 30 hrs. for the M.Ed. in Educ. Psych. and 36 additional semester hours.

THE ACADEMIC DEVELOPMENT COMMITTEE

Background

Historically at Edinboro State College, three major bodies have been concerned with college development: The Academic Council, the College Development Committee, and the Graduate Council. The longest established group, the Academic Council, is composed of department chairmen and school deans, and recently its membership was broadened to include two voting student members and the directors of Edinboro's off-campus centers. It is chaired by the Vice-President for Academic Affairs. The Council meets regularly to consider proposals for academic programs that are brought to it by departments of the college. The Graduate Council is a sub-committee of the Academic Council, and it both refers and acts upon matters referred to it by its parent group.

Within a short time after assuming office, Edinboro's president established the College Development Committee. The members of this group include: the College President, The Director of College Development, the Vice-President for Academic Affairs, the Dean of Graduate Studies, the Dean of the School of Education, the Director of the Educational Development Center, and the Chairman of the Philosophy Department. It was later broadened to include the Director of Administrative Services and the Associate Dean for Academic Affairs. This committee has been largely concerned with the physical development of the college and utilization of instructional and other space.

From the above it can be seen that academic development at Edinboro State College has been left largely to individual departmental initiative. Proposals for programs are submitted through departments to the proper bodies for approval. If such proposals are approved, they are then sent to the Department of Education in Harrisburg for further action. This procedure has meant that the departments and schools within the college have tended to broaden their offerings in fields that are reasonably close to themselves in professional interests and outlook.

The Present

The Commonwealth and its agencies are becoming more concerned with the maximum utilization of resources devoted to higher education. The impending Program Planning and Budgeting System (PPBS) has made colleges and universities more aware of the relative costs of various kinds of educational programs and services. This means that each institution now, to a greater extent than ever before, must examine more carefully the resources that it might anticipate in relation to its mission within the Commonwealth.

In light of the increased need to plan more carefully for the utilization of resources, the Academic Council established on December 9, 1969, the Academic Development Committee. This committee is chaired by the Associate Dean for Academic Affairs and is composed of the Vice-President for Academic Affairs, the Chief Librarian and one representative from each of the five schools of the college. Seeking further guidance from the academic arm of the college, the College Development Committee, on January 22, 1970, adopted a motion that the Academic

Development Committee be established as an ad-hoc committee of the College Development Committee. Thus, the Academic Development Committee reports to the College Development Committee as well as to the Academic Council. In this way communication is strengthened between the agencies concerned with the physical and academic development of Edinboro State College.

Since its establishment, the Academic Development Committee has been meeting on a regular basis. A major concern has been to clarify its role within the college. After considerable deliberation, the Committee defined this as follows:

ROLE OF THE COMMITTEE

- A. Develop recommendations about broad institutional goals in terms of institutional philosophy.
 1. Submit these recommendations to the Academic Council and the College Senate for approval.
 2. Submit these recommendations to the College Development Committee for consideration.
- B. Analysis of current status of curricular offerings (e.g. number of students at various stages in various programs, faculty resources and physical facilities devoted to programs, budget, etc.).
- C. Program Development
 1. Request departments and schools to recommend priorities for programs that they wish to initiate.
 2. Receive requests for programs from departments and schools.
 3. Receive requests for programs that are presently beyond the scope of existing departments, divisions, and schools.
 4. Evaluate proposed programs in terms of institutional objectives.
 5. Analyze requests for programs and make recommendations for priorities to the Academic Council and the College Development Committee.

A progress report, including A, B, and C was made to the Academic Council on January 13, 1970, and this group adopted the above as the proper role of the Committee. Subsequently the role of the Academic Development Committee was enlarged to include that of making recommendations to the Administrative Council (the president's advisory group), relative to admissions quotas for the various programs offered by Edinboro State College.

After the above action on the committee's role, work was begun on four major activities:

1. The Committee began to develop recommendations about broad institutional goals in terms of institutional philosophy. Each member, in consultation with individuals from his school, wrote a statement of institutional philosophy as he viewed it. These statements were then discussed within the committee. The Committee studied previous statements of institutional philosophy as contained in the College Bulletin, and the Middle States, and NCATE reports. As a result of these deliberations, a number of philosophical statements relating to institutional development were adopted by the committee.
2. All departments of the college were contacted in order to discover which programs they planned to seek approval for with implementation intended during the 1970-71 school year. They were also requested to list the programs that they planned to seek approval for in the years from 1970-71 through 1974-75. They were also asked to provide information as to progress made in developing programs and to place priorities (1, 2, 3, 4, etc.) for implementation of each of these. In this way the Committee could obtain up-to-date information about departmental program aspirations and priorities.
3. Departments and schools were requested to submit proposed programs, in outline form, to the Committee for evaluation in terms of their compatibility with long-range objectives of the college.
4. Institutional research was conducted to obtain data on faculty resources and physical facilities devoted to various academic programs offered by the college.

PHILOSOPHY OF ACADEMIC DEVELOPMENT

During the 1970-71 School year the Academic Development Committee prepared a statement of philosophy underlying the establishment of academic and related programs at Edinboro State College. In the Spring of 1971 this philosophy was adopted by the Academic Council, the College Senate, and the College Development Committee.

Following is the philosophy as finally adopted:

Introduction

Edinboro State College was established originally to serve Northwestern Pennsylvania chiefly through programs designed to prepare classroom teachers. With the implementation of programs in other disciplines the College has become a multi-purpose institution of higher learning serving the educational needs of Northwestern Pennsylvania, the Commonwealth, and the nation.

The Philosophy

Academic development at Edinboro State College is viewed in terms somewhat analogous to a pyramid effect, in that academic development ordinarily moves from a broad and sound base of undergraduate programs through a narrowing area ultimately encompassing doctoral programs. The relationship between the base and height of the pyramid may change as the goals of the college change. More specifically, the ratio of master's and post master's programs to other programs may increase in time.

The base of the academic pyramid is composed of the minimum number of undergraduate degree programs, other programs, and services necessary to form an essential core of undergraduate studies. It is anticipated that this core will be re-evaluated on a regular basis.

Additional undergraduate degree programs, other programs, and services needed to form this core will be established before there is an expansion of existing undergraduate, post-baccalaureate degree programs, other programs, and services (not a part of this core) and before new degree programs, other programs, and services (not a part of this core) are inaugurated.

In addition, the college will provide the support and coordination needed to bring existing undergraduate degree programs, other programs, and services, which are a part of this core, to a satisfactory level of quality.

At the master's degree level is found the minimum number of degree programs, other programs, and services necessary to form an essential core of graduate studies. It is anticipated that this core will be re-evaluated on a regular basis.

Additional Master's degree programs, other programs, and services needed to form this core will be established before there is an expansion of undergraduate or post baccalaureate degree programs, other programs and services (not a part of this or the undergraduate core) and before new degree programs, other programs and services (not a part of this or the undergraduate core) are inaugurated.

In addition, the college will provide the support and coordination needed to bring existing Master's degree programs, other programs, and services, which are a part of this core, to a satisfactory level of quality.

The undergraduate and graduate degree programs, other programs, and services identified in this core must be adequately developed and supported before Edinboro State College initiates additional post master's programs. Additional degree programs at the post master's level may be considered for implementation only when adequate initial and continued financial support is assured.

TENTATIVE GUIDELINES FOR THE DETERMINATION OF THE PLACEMENT
OF PROGRAMS IN THE UNDERGRADUATE AND GRADUATE
CORES

The Academic Development Committee, after acceptance of the philosophy of academic development, prepared a set of guidelines that would be used to determine placement of programs within the undergraduate and graduate cores. These guidelines were accepted by the College Development Committee. At this time they are still tentative because they have not been acted upon by either the Academic Council or the College Senate.

Following are guidelines that will be used in order to determine the placement of programs within the undergraduate and graduate cores. These guidelines are not presented in priority order, and they do not necessarily carry equal weight. These guidelines will be used by the Academic Development Committee in making recommendations to the Academic Council and the College Development Committee. Judgments relative to programs will be made in terms of how they meet the guidelines on an overall basis.

- A. Is this program one which provides society with needed knowledge?
- B. Will or do these offerings provide a better balanced academic program for students in existing programs in the college?
- C. Is this a program which attracts or will attract a sufficient number of students to justify its existence? In the case of new programs, would initial and projected enrollment be adequate to justify the program?
- D. Is this a program which attracts or will attract a large number of students so that a balance between large and small enrollments in various curricula will provide a total college program that can be justified economically?
- E. Is this a program with present and/or projected favorable employment opportunities?
- F. Is this a program or offering that will directly assist a person enrolled to advance professionally?
- G. Is this a program that prepares an individual for graduate study?
- H. Is this program one which has high priority in the Commonwealth, in the nation or in the world; for example, as indicated in Commonwealth of Pennsylvania Program Policy Guidelines?
- I. What strength does the college presently have in the area in which the program will be expanded or implemented in terms of staff, equipment, library resources, and physical facilities?
- J. What will be the initial and projected costs for implementing or expanding this program in terms of staff, equipment, supplies, library resources, and physical facilities? What are the national standards, if any, for this program in terms of staff, equipment, supplies, library resources, and physical facilities?

K. Is this a program that causes or would cause students to enroll at Edinboro State College who otherwise would not do so?

DEPARTMENTAL PROGRAM PROJECTIONS 1971-76

One of the roles the Academic Development Committee defined for itself was the determination of programs that departments within the college wished to offer and priorities they placed upon them. Accordingly, during the 1969-70 school year the committee contacted each department head and asked for a five-year projection of programs and relative importance that was placed upon each.

In the Fall of 1970 the Department of Education requested that the College forward a five-year projection of academic programs that would be used in the PPBS budget hearings that were being held at that time. The Academic Development Committee was given the responsibility for preparation of the above projection. Since the committee had but a two-week period in which to prepare a response to the above request, there was not sufficient time to conduct studies, develop data, and interact with its parent bodies. Thus, the committee forwarded basically what had been given to it by the departments during 1969-70. In the letter of transmittal the committee emphasized that the above was a projection made by the various departments of the College and had not been officially approved by the various bodies within the College. It was virtually certain that this projection would be modified when the committee had an opportunity to gather the appropriate data and to interact with the College Development committee, the Academic Council, and the College Senate.

The projection found on the following page has been modified, since several programs were approved during 1970-71 school year that had been projected for later years. Approval of programs does not necessarily mean that they will be implemented at the time of approval.

TENTATIVE DEPARTMENTAL PROGRAM PROJECTIONS AND YEARS PLANNED FOR IMPLEMENTATION
1971-76 - Edinboro State College (Prepared November, 1970)

	<u>1971-72</u>	<u>1972-73</u>	<u>1973-74</u>	<u>1974-75</u>	<u>1975-76</u>
UNDER		<u>Bachelor of Science in Ed. (Drama-K-12 cert.)</u>		<u>Bachelor of Applied Arts</u>	
GRADUATE	<u>Bachelor of Arts (Urban Studies)</u>	<u>Bachelor of Music</u> <u>Bachelor of Arts (Art History)</u> (Con.Soc.Sci./ Black Studies)	<u>Bachelor of Arts (Area Studies)</u> (Communications)		
	<u>Bachelor of Science (Business Mgmt.)</u> (Law Enforcement)	<u>Bachelor of Science (Economics) (Computer Science) (Art Therapy)</u> (Safety Educ.) (Sch. Soc.Wrk.) (Soc.Services)	<u>Bachelor of Science (Anthropology)</u>	<u>Bachelor of Science (Engineering)</u> (Physical/Occup.Ther.) (Meteorology)	
GRADUATE	<u>Master of Arts (Geography)</u> (American Studies)	<u>Master of Arts (Gen.Expt.Psvch.)</u> (Coll.Stud.Personnel) (Rehab.Couns.) (Philosophy)	<u>Master of Arts (Sociology)</u> (Clinical or Couns. Psychology)	<u>Master of Arts (Black Studies)</u> (Foreign Languages)	<u>Master of Arts (Economics)</u>
	<u>Master of Science (Physics)</u> (Mathematics)	<u>Master of Science (Physics Teaching)</u>	<u>Master of Science (Nursing)</u> (Earth.Science)	<u>Master of Fine Arts</u>	
	<u>Master of Library Sci.</u>	<u>Master of Pub.Admin.</u>		<u>Master of Social Work</u>	<u>Master of Music</u>
	<u>Master of Education (Educ.Theory & Tech.)</u> (Geography) (Music Education) (Elem.Admin. & Supv.) (Second.Admin. & Supv.)	<u>Master of Education (Foreign Languages)</u> (Speech & Hearing) (Disadvantaged) (Physics) (Chemistry)	<u>Master of Education (Health Education)</u> (Learning Disabilities)	<u>Master of Education (Social-Emotional Maladjustment)</u>	<u>Master of Education (Art Therapy)</u>
		<u>Master of Safety Educ.</u>	<u>Doctor of Education (Special Education)</u> (Guidance & Couns.) (School Psychology) (Elementary Educ.)	<u>Doctor of Education (Art Education)</u> <u>Doctorate (History and/or Soc.Sci.)</u> (English)	<u>Doctor of Education (Art History)</u> (Biology) (Mathematics)
		<u>Post-Master's Program in Art Educ. (30 sem.hrs.)</u>			

HAMILTON LIBRARY *

1969-70

Acquisitions

During the year \$171,121.43 was expended for materials. In this period 20,635 volumes were added and 359 were discarded. As of June 30, 1970 the staff had cataloged 231,691 items. The number of periodical titles increased from 1,414 in 1967-68 to 2,020 ordered for 1969 and 2,630 for 1970. The Serials Collection, on July 1, 1968, included 14,153 bound volumes of journals and 2,660 reels of microfilm. As of July 1, 1970, this collection had been increased to 22,406 bound volumes of journals and 6,438 reels of microfilm (newspapers and journals).

Readers Services

A library open house was held at the beginning of the Fall semester. In addition each faculty member was given a library information package which included information relative to library privileges for faculty members, library ordering procedures, the library handbook, etc. Distribution was made to department heads of title and subject lists of current periodical subscriptions. Statistics relative to an increase in circulation are contained on a subsequent page dealing with the library. Several automated programs were used by the library in this time period. These include total listing of the "Union List of Periodicals, Pennsylvania State College and University Libraries," and individual library listings. The Serials automation programs provide total alphabetical listings of journal subscriptions, dealer lists, and subjects lists. Other programs provide Reserve Listing by author, title, call number, professor, and class number. In addition, the Southeast Asia Collection list is being produced by computer.

* The above information was excerpted from Report of the Director of Libraries: 1969-70.

ANNUAL LIBRARY CIRCULATION STATISTICS*
1966-70

	<u>1966-67</u>	<u>1967-68</u>	<u>1968-69</u>	<u>1969-70</u>
Students	93,730	132,832	159,249	174,554
Faculty	<u>4,408</u>	<u>6,855</u>	<u>9,799</u>	<u>11,140</u>
Total	98,138	139,687	169,048	185,694

* Books charged out for use outside the library.

TOTAL FUNDS EXPENDED FOR LIBRARY MATERIALS

(Excluding Periodicals)

<u>1966-67</u>	<u>1967-68</u>	<u>1968-69</u>	<u>1969-70</u>
\$149,321.18	\$114,778.43	\$179,538.37	\$171,121.00

THE EDUCATIONAL DEVELOPMENT CENTER

Educational Development Center staff for 1970-71 has been: Dr. Thomas K. Barratt, Director; Mr. Joseph B. DeAngelis, Assistant Director; Miss Jessie M. Pavne, Secretary.

The Edinboro State College Educational Development Center assists the public schools in Northwestern Pennsylvania with the planning and operation of research, inservice education programs and curriculum development. In the latter two of these areas the soon-to-be established Intermediate Unit #5 will become increasingly active, and the Educational Development Center will become more deeply involved in educational research and development programs. In all areas the Intermediate Unit Office, the Educational Development Center, the school districts and the Department of Education of the Commonwealth of Pennsylvania will share responsibilities, resources and outcomes of activities.

The Educational Development Center focuses the resources of the College upon the solution of problems in the public schools of the region and, in turn, provides the College with feedback useful in its own curriculum development and service program activities.

The Pennsylvania Department of Education utilized the Center staff for review of RSEA Title I program proposals and program review for the school districts of the Region. The Center also represents the Department in special programs, such as Elementary School Self-Evaluations, interpretation of Educational Quality Assessment results to the districts involved and field research. Dissemination of information concerning changes in education is also a partial responsibility of the Center.

A great part of the activity of the Center is carried on by field visits, conferences, consultations, clinics, and workshops. During this past year there has been cooperation with the SCORE staff, particularly through RITEC, in carrying on inservice education activities with the several thousand teachers of the region.

The SCORE staff, SCD, and International Reading Association have cooperated with the Educational Development Association in working to meet the needs of the membership of that group in terms of inservice education. The Center staff have provided logistical service for EDANP.

During 1970-71 much time has been directed to preparing for research operations to be undertaken in 1971-72, when the Research Learning Center facilities will be available and the Intermediate Unit assumes greater responsibility for inservice work previously carried on in the EDC. This topic has been the basis for individual and group conferences with all school districts of the region. A committee represented by the College and the Intermediate Unit developed an "Application for Approval to Operate an Educational Development Center" as required by the Department of Education of the Commonwealth. This application listed the proposed mission of the Center, for statewide research as "Relationships Between Learning Environment and the Educational Progress

of the Learner". This proposal is one of the five which have, to date, received tentative Department of Education approval. School districts in each of the three counties are helping to develop specific research programs under this proposal's term.

The Educational Development Center staff, in 1970-71 has been involved in conferences and workshops concerning systems analysis for education, contract learning, Belmont, CPIR, and Education Quality Assessment. Information gained through these activities has been used in the promotion of educational changes in schools of the region and in urging the Department of Education of Pennsylvania to promote program development in certain areas of concern.

COLLEGE INSTRUCTIONAL FACILITIES

The Annual Report of the Vice-President for Academic Affairs (April, 1970) contains a complete listing of the college instructional facilities that were in use at that time. Since the above report was issued, two buildings have been completed and occupied. The McComb Field House-Gymnasium was placed into instructional use on October 15, 1970, and the Faculty Annex Building, containing faculty offices, was occupied in the Fall of 1970.

McCOMB FIELDHOUSE-GYMNASIUM This masonry type building was constructed at a cost of \$2,200,000 and initially was occupied in October, 1970. The building contains a gym, swimming pool, wrestling room locker rooms, classrooms, offices, handball courts, and other areas. It contains a total of 85,797 square feet in the first floor and basement areas.

<u>Room Type</u>	<u>Number</u>	<u>Total Square Feet</u>
*Classrooms	2	963
Offices	10	2,027
Storage	4	1,675
Locker and Related	14	7,653
Gymnasium	1	22,264
Swimming Pool	1	11,500
Wrestling	1	3,200
Handball Courts	2	1,640
Corrective	1	1,120
Rifle	1	<u>1,500</u>
	Total Assignable	53,542
	** Total Non-Assignable	<u>32,255</u>
	TOTAL	85,797

* Each of the above classrooms contains 35 student stations.

** Non-assignable space includes halls, rest rooms, and rooms containing heating, ventilating equipment, etc.

FACULTY ANNEX BUILDING This steel building with precast exposed aggregate panels was constructed at a cost of \$260,000 and was initially occupied in September, 1970. It is completely air conditioned and is designed to meet the growing need for faculty office space on the campus. It contains 48 offices, (each of which is 10' x 12') 2 rest rooms, a waiting room, and a reception area.

PROJECTED FACILITIES

The Research Learning Center will be completed and occupied in the Summer of 1971. This will contain an elementary classroom segment, college classrooms, and an educational research segment. This building will be used to coordinate efforts of educators and students from the area and the college. The New College Union will also be completed in the Summer of 1971. It will contain a large campus grill, multipurpose room, large social lounge, 6 bowling lanes, college bookstore, game rooms and office space for the campus newspaper, yearbook, and others. The facilities listed below will be in the planning stage or under construction in the years indicated.

1971-72

Art Classroom Building Two 400-Student Dormitories
Education Classroom Building Utilities, Walks, Roads, and Parking Lots

1972-73

Addition to Athletic Field Behavioral Science Classroom Building
Administration Building Library
Auditorium-Music Classroom Building

1973-74

Addition to Dining Hall Two 400-Student Dormitories
Humanities Classroom Building Two 226-Student Dormitories
Parking Lots