

EDINBORO UNIVERSITY IN ERIE

THE PORRECO CENTER



Coming Fall '07 –
Associate of Science
in Pre-school!

*Academic classes
offered daytime,
evenings and
weekends!*

Spring 2007

OUR MISSION

The mission of Edinboro University is to create and share knowledge by providing access to education and learning experiences for the academic, cultural and personal growth of the students and the larger community we serve.

Edinboro University is committed to lifelong learning and service. Through the Office of Extended Learning, the University strives to:

- Serve the northwestern Pennsylvania area through community service activities;
- Link the University's resources to the needs of the community;
- Provide continuing professional education to business and industry and other area professionals;
- Enhance personal enrichment of the community through non-credit offerings.

We look forward to serving the needs of our family.

GENERAL INFORMATION

Registration: We encourage you to register early. This will prevent the classes you are interested in from being canceled due to low enrollments. Please register at least one week in advance.

Refund and Cancellation Policy: You may cancel one week before class begins to receive a full refund. Classes canceled less than one week will not receive a refund, and you will be responsible for your class fee.

Extended Learning reserves the right to postpone, limit enrollment, cancel, split or combine classes, and change instructors and class locations when necessary.

Incident Weather: In the event of severe weather conditions, students should listen to local radio and television stations for the official closing of the campus. If the University is closed, all off-campus locations will be closed as well.

Instructors: The courses listed in this catalogue are taught either by regular University faculty members or other qualified professional persons from the area. Each possesses a talent, skill or specialized interest, which he/she wishes to share with the community.

For more information about the programs listed in the Extended Learning publication or certificate and contract training needs, call (814) 836-1955 or 1-800-526-0121.

Edinboro University in Erie – The Porreco Center falls within EMTA Routes 21/28. The EMTA bus service is available free to University students throughout the entire EMTA system for Edinboro students with valid University ID cards. Bus schedules are available online at www.emtaerie.com. EMTA RideLine: 452-3515.

POLICY OF NON-DISCRIMINATION AND AFFIRMATIVE ACTION

Edinboro University of Pennsylvania is an equal opportunity education institution and will not discriminate on the basis of race, color, national origin, sex and handicap of its activities, programs or employment practices as required by Title VI, Title IX, Section 504 and the ADA.

For information regarding civil rights or grievance procedures, contact Dr. Erinn Lake, Interim Director of Social Equity and Staff Development, Title VI, Title IX, Section 504, Mc Nerney Hall, Edinboro, PA 16444 (814) 732-2167. For information or assistance regarding services, activities and facilities that are accessible to and usable by persons with a disability, contact Dr. Robert McConnell, Office of Students with Disabilities (814) 732-2462 V/TTY.

Office of Extended Learning
Edinboro University in Erie – The Porreco Center
2951 West 38th Street
Erie, PA 16506-4403
(814) 836-1955 or 814-732-2544
Fax: (814) 833-2085
Office open Monday through Friday, 8:00 am – 7:30 pm

Dr. Frank G. Pogue
President
Edinboro University of Pennsylvania

**Edinboro University in Erie –
The Porreco Center Staff:**

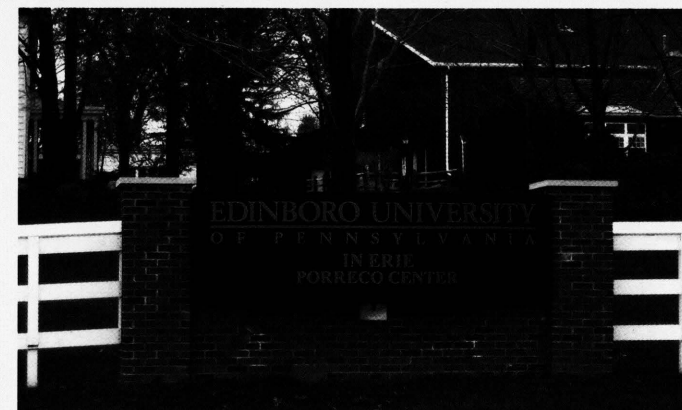
Dr. Terry L. Smith
Dean of Liberal Studies
tsmith@edinboro.edu

Janet L. Bowker
Director and Outreach Coordinator
bowker@edinboro.edu

Beth A. Zewe
Coordinator of Non-Credit Programs
zewe@edinboro.edu

Sabra Jefferson
Office Professional
sjefferson@edinboro.edu

ABOUT EDINBORO UNIVERSITY IN ERIE –THE PORRECO CENTER



BRIEF HISTORY

The rich history of the Porreco estate dates back to the mid-nineteenth century, when a German immigrant, Henry Knobloch, purchased the original 400 acres. The main property stayed in the Knobloch family until 1931, when the first of the Gebauer's took title. Jesse Gebauer became the owner in 1942 while married to Adrian Archbold, grandson of John Archbold, the partner and Standard Oil fortune successor to John D. Rockefeller.

Mrs. Archbold died in 1976, and much of the estate was divided into smaller holdings and sold privately. The core of the property, however, was retained and put on public auction. In 1978, Louis J. Porreco purchased it. In 1986, Mr. Porreco donated the estate to Edinboro University to enhance the quality and convenience of educational offerings in the Erie area.

Today, the renovated estate is used by Edinboro University to provide both credit and non-credit educational opportunities for traditional and non-traditional students, and for holding special events. Various organizations within the community also use the facilities for educational and cultural programming.



ACADEMIC PROGRAMS

Over 10,000 students have taken classes in various programs at the Porreco Center since Edinboro University consolidated its academic offerings at one convenient location more than 19 years ago. Undergraduate courses in such areas as biology and health services, business administration and economics, mathematics and computer science, speech and communication studies, secondary

education, elementary education, English & theatre arts, foreign languages, geosciences, philosophy and history are provided.

In addition, Edinboro University offers graduate and extended learning classes, plus four associate degree programs: Associate of Arts in Criminal Justice, Associate of Arts in Human Services, Associate of Science in Business Administration and an Associate of Arts in Liberal Studies. You may be able to complete a Bachelor of Arts degree in Specialized Studies at Edinboro University in Erie if you have 90 credits from another institution of higher education. New at Edinboro University in Erie – The Porreco Center, earn an Associate of Science in Pre-School Education. Cohort to start Fall 2007 (see Associate Degree section for more information).

The Department of Professional Studies offers graduate coursework at Edinboro University in Erie – The Porreco Center for the following programs in Educational Leadership:

- Master's of Education in Educational Leadership
- Post Master's Principal K-12 Certification
- Post Master's Supervisor of Special Education Certification
- Post Master's Superintendent Letter of Eligibility



And, during the summer, the grounds are alive with the sound of children's voices. The Kids Academy at Porreco is an exciting opportunity for children in grades 1-6 to participate in a wide array of unique learning experiences thanks to Edinboro University in Erie. In addition, Edinboro University is proud to partner with Stairways Behavioral Health in hosting the Annual Stairways Summer Youth Art Program for area students.

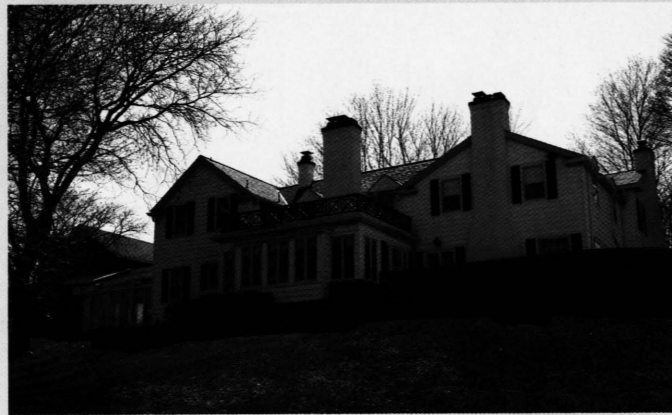
**COMMUNITY & CORPORATE RESOURCE –
LET US HOST YOUR NEXT EVENT!**

In tandem with its role as an academic institution, Edinboro University in Erie also provides facilities for citizens and organizations wishing to hold special events at the Center. Facilities are available for training sessions, retreats, conferences, meetings, receptions, classroom space, videoconferencing and press conferences. In addition, the facility houses a computer lab and distance education classroom.

Edinboro University in Erie's primary academic facility is housed within one of the largest standing barns in Erie County. The renovated interior includes classrooms and a seminar area. The Barn also houses a fully equipped computer lab with 24 computers with Internet capabilities and a distance education classroom.



The Center also houses a converted guest house (The Garden House) which contains classrooms, faculty offices, a library service area with reference materials and direct computer access to Edinboro University's main library catalogue, the largest educational resources center in northwestern Pennsylvania.



Mary Porreco Hall, the original estate mansion and still its centerpiece, has been maintained to preserve its 1800s vintage farmhouse milieu. Among its 12 rooms is a large living area perfect for executive seminars, retreats, conferences, receptions and cultural events, and professional and social gatherings. Mary Porreco Hall also has a library, three small conference or break out rooms, dining and lounge facilities, and a fully equipped kitchen. Special-event catering services are also available.



VIDEOCONFERENCING/DISTANCE EDUCATION CAPABILITIES

Edinboro University in Erie offers videoconferencing capability for meetings, classes or conferences. Utilizing state-of-the-art technology, meetings can be conducted at a distance to save both time and expensive travel costs. A two-way, fully interactive videoconference classroom complete with multiple cameras and computer presentation is available.

For more information about Edinboro University in Erie – The Porreco Center, or to utilize the Center and its facilities, please contact:

Beth A. Zewe
Edinboro University in Erie – The Porreco Center
2951 West 38th Street
Erie, PA 16506-4403
(814) 836-1955 or Fax (814) 833-2085
zewe@edinboro.edu

Edinboro University in Erie – A Community & Corporate Resource

Associate Degrees at Edinboro University in Erie – The Porreco Center

New! Associate of Science in Pre-School Education _____	2
Admissions _____	3
Financial Aid _____	3
Associate of Arts Degree in Criminal Justice _____	4
Associate of Arts Degree in Human Services _____	5
Associate of Science Degree in Business Administration _____	6
Associate of Arts Degree in Liberal Studies _____	7

Graduate Coursework in Educational Leadership Programs

Master's of Education in Educational Leadership _____	7
Post Master's Principal K-12 Certification _____	7
Post Master's Supervision of Special Education Certification _____	7
Post Master's Superintendent Letter of Eligibility _____	7

Accounting Satellite Programs-Pennsylvania Society of Public Accountants _____ 7

Building Inspection – International Code Council (ICC) Training

Residential Code Inspection Series _____	8
Commercial Building Inspection Series _____	8

Child Care Training Programs

Sharing Observations with Parents – Part 1 _____	9
Language Development and Literacy Learning _____	9
Sharing Observations with Parents – Part 2 _____	9
Learning Through Doing: Creating Inquiry Based Math Activities _____	9

Computer Skills Courses

Customized Computer Training _____	10
Introduction to Electronic Spreadsheets (Excel) _____	10

Music Programs

Community Music School _____	10
Concert Band of Northwest Pennsylvania _____	10

Special Programs

15th Annual Edinboro Highland Games _____	11
Intergenerational Center _____	12
Purple Martin Conservation Association _____	13
13th Annual Technology Ingenuity Contest _____	13
13th Annual Kids Academy at Porreco _____	14
Study with us in Scotland! The Art of Education Travel: Developing Creative Portfolios _____	14

Workforce Training Non-Credit Courses

Business and Professional Writing _____	15
Selection/Hiring Process Overview _____	15
The Hiring Process _____	15
Maximizing the New Hire _____	15
The Performance Management Process _____	15

Workforce & Economic Development Network (WEDnet) Guaranteed Free Training

Basic Skills Training _____	16
Information Technology Training _____	16



"BUILDING A PROSPEROUS FUTURE THROUGH ACADEMIC EXCELLENCE AND CIVILITY"

Edinboro University of Pennsylvania introduced a new theme for the 2006-07 academic year to help celebrate the University's 150th anniversary or Sesquicentennial. This theme, "Building a prosperous future through academic excellence and civility," builds upon our commitment to academic excellence and civility while introducing the ideal of prosperity. We believe that excellence in academics and civility will lead to prosperity, not only for members of the Edinboro Family, but also for the region, state, nation and the world we serve.

I am pleased to present this brochure to you and to share information about the degree programs we are offering at Edinboro University in Erie - The Porreco Center. By offering classes at our historic and beautiful facility in Erie, we are reaching out to those of you who live in Erie and prefer to stay at

home while taking classes... those of you who realize that an Edinboro degree can open the doors to a prosperous and productive future, at a fraction of the cost of many other colleges and universities... those of you who, unfortunately, find yourselves unemployed and looking for a new career direction... and even those of you who are returning from military service.

As you'll see on the following pages, a degree from Edinboro University can take you almost anywhere you want to go. It can, indeed, lead to a "prosperous future through academic excellence and civility."

Frank G. Pogue, President
Edinboro University of Pennsylvania
Edinboro University in Erie The Porreco Center

YOU CAN EARN A DEGREE...

- **Associate of Arts in Criminal Justice** - will prepare you for a variety of employment opportunities with the police, the courts, and correctional programs.
- **Associate of Arts in Human Services** - will prepare you for employment in a wide range of mental health and/or human services fields.
- **Associate of Science in Business Administration** - will prepare you for an entry-level position in business, accounting, finance or marketing.
- **Associate of Arts in Liberal Studies** - will enhance your basic skills while giving you the foundation you need for a four-year degree.
- **Associate of Science in Pre-School Education** - Cohort to start Fall 2007.

OR COMPLETE A DEGREE...

You may be able to **complete a Bachelor of Arts degree in Specialized Studies** at Edinboro University in Erie if you have 90 credits from another institution of higher education. Simply contact an academic advisor by calling **814-732-2218** and say "I'd like to complete my degree at Porreco."

NEW AT EDINBORO UNIVERSITY IN ERIE - THE PORRECO CENTER!

Earn an Associate of Science in Pre-School Education Cohort to Start Fall 2007!

Be part of the first "cohort" for this new associate degree. As a cohort, you and your classmates will complete the program together from start to finish. The program offers a very structured schedule so you know what classes you will be taking each academic term. You take two to three classes a semester, including summers, and the group finishes together in the summer of 2010. And the best part is that you will take ALL of the classes in Erie at The Porreco Center!

The cohort is limited to 25 students. Classes will meet on weekends. At press time the schedule was still being finalized, so for more information, please contact The Porreco Center Office at 814-836-1955.

COST AND FINANCIAL AID INFORMATION

(Fall 2006 - Spring 2007)

Full-time undergraduate (per year)	PA Resident	Non-PA Resident
Tuition	\$5,038	\$7,558
Room	3,600	3,600
Board (14-meal plan)	2,118	2,118
Fees:		
Activity	307	307
University Center Assessment	370	370
Health	140	140
Instructional Services (12 credits)	504	504
Instructional Technology	125	188
TOTAL	\$12,202	\$14,785
Part-time Undergraduate Tuition per credit	\$210	\$315

Great News for Out-of-State Students! Edinboro University of Pennsylvania now offers all non-Pennsylvania residents a lower tuition rate beginning with the fall (September) semester of the 2006-2007 school year. The new tuition charge is 150 percent of in-state resident tuition. Previously, non-Pennsylvania students were charged 200 percent of resident tuition. This represents a total savings of \$2,518 per academic year, making an Edinboro University quality education even more affordable to non-Pennsylvania residents.

The cost of books and supplies is approximately \$900 per year, while the cost of personal care items and travel/spending money is estimated at \$2,100 per year. **(All fees are subject to change without notice.)**

More than \$58 million in student financial aid is available to Edinboro University students each year through a variety of grants

(federal aid, Pennsylvania aid, OIG for Ohio students, and assistance from Edinboro University). In addition, an extensive scholarship program has been established, and approximately 900 student jobs are available.

Edinboro University has established a general scholarship fund from which more than 500 scholarships are awarded each year. A wide range of eligibility factors includes curriculum, quality point average, SAT score, class rank, athletic ability, recommendations of professors, and geographic area.

The Edinboro University Financial Aid Code for use on state and federal financial aid applications is 003321. For more information on financial aid or scholarships, call the Edinboro University Financial Aid Office at 814-732-5555 or toll-free at 1-888-611-2680.

For a degree application or for an admissions interview, please contact the

ADMISSIONS OFFICE
Academy Hall
Edinboro University of Pennsylvania
Edinboro, PA 16444

Phone: 1-888-8GO-BORO (888-846-2676) or 814-732-2761

Fax: 814-732-2420

E-mail: eup_admissions@edinboro.edu

Web: www.edinboro.edu

One of the 14 universities in Pennsylvania's State System of Higher Education, Edinboro University is committed to affirmative action for all persons in its educational programs, activities, and employment practices.

Edinboro University in Erie - The Porreco Center offers weekend classes to accommodate your schedule!

ASSOCIATE OF ARTS DEGREE IN CRIMINAL JUSTICE

OVERVIEW

The field of criminal justice encompasses all matters relating to crime. It is concerned with law, criminology, police, courts, corrections, crime control policy and planning. Moreover, it is a rapidly changing field. Modern criminal behavior such as computer theft and embezzlement, terrorism, racketeering and sophisticated political corruption require new technologies and skills for crime control. There is a need for broadly educated personnel with a deep understanding of the criminal justice system and its political, social and economic environments. There is equally a need for modern police skills, from accounting to computer skills and counseling.

A sound degree program in criminal justice must be flexible to prepare undergraduates for a rapidly changing — and exciting — set of occupations. To meet this need, Edinboro University offers a comprehensive program which provides an overview of the criminal justice system and development of essential skills: the Associate of Arts in Criminal Justice



CAREER OPPORTUNITIES

The two-year associate degree program is designed primarily to provide persons currently employed in criminal justice agencies an opportunity to enrich their backgrounds in criminal justice studies and at the same time earn a college degree in the field.

Edinboro's criminal justice program seeks to provide students with a broad understanding of the entire criminal justice system and human behavior rather than a narrow specialization. A wide range of employment opportunities exists with the police, the courts, and correctional programs. The background provided by this degree program may also be valuable for those who decide to seek a four-year bachelor's degree in criminal justice, social work, sociology or political science.

PROGRAM OF STUDY

I. GENERAL EDUCATION REQUIREMENTS	30 sem. hrs.
College Writing Skills (3)	
Specialized College Writing and Research Skills (3)	
Essential Computing I (3)	
Finite Mathematics (3)	
American Government (3)	
Principles of Sociology (3)	
One approved course from four of the following: Core categories: 1, 2, 4, 6 or 7 (12)	
II. CRIMINAL JUSTICE REQUIREMENTS	24 sem. hrs.
A. THE CRIMINAL JUSTICE SYSTEM	12 sem. hrs.
Introduction to Criminal Justice (3)	
Introduction to Policing (3)	
Introduction to Corrections (3)	
Prosecution and the Courts (3)	
To be selected from at least two categories below	12 sem. hrs.
B. LEGAL ASPECTS OF CRIME	
Pennsylvania Criminal Code (3)	
Criminal Procedure and Evidence (3)	
C. SOCIETAL INFLUENCES ON CRIME AND DELINQUENCY	
U.S. Police History (3)	
Organized Crime and Corruption (3)	
Drugs and Human Behavior (3)	
Juvenile Delinquency (3)	
D. Techniques of Dealing with Crime	
Criminal Investigation (3)	
Criminalistics (3)	
Probation, Parole and Community Corrections (3)	
Public Administration (3)	
E. Electives	
Juvenile Justice (3)	
III. ELECTIVES (Open)	6 sem. hrs.
TOTAL	60 sem. hrs.

FOR MORE INFORMATION, CONTACT:
Department of Political Science & Criminal Justice
Edinboro University of Pennsylvania
Edinboro, PA 16444
Phone: 814-732-2409
<http://webs.edinboro.edu/dept/polscience.html>

ASSOCIATE OF ARTS DEGREE IN HUMAN SERVICES

OVERVIEW

The basic premise of this program is that there is a common core of attitudes, skills and knowledge that apply to a variety of settings in the human services. Individuals equipped with these competencies can make effective contributions to agencies involved in mental health, education, welfare, corrections and other areas.

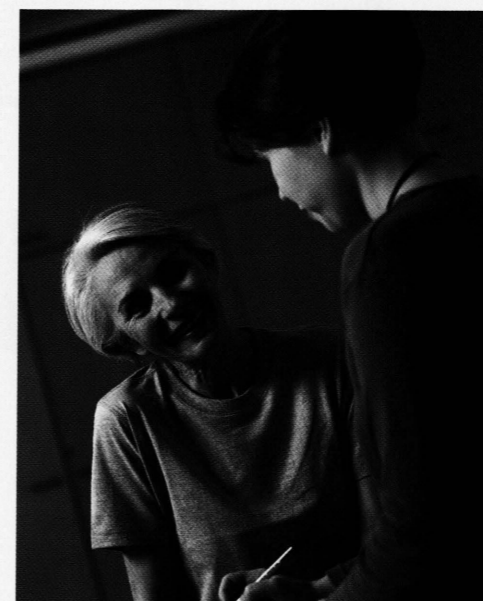
CAREER OPPORTUNITIES

Many health and human services agencies are seeking individuals who have less than a baccalaureate degree, but are sophisticated enough to be effective workers.

This program is concerned with the preparation of individuals as mental health workers, psychiatric aides, social service workers, workers for developmentally disabled, and workers with the elderly. The availability of trained paraprofessionals in these areas could make such services available to the public more efficiently and effectively.

The goal of the program is to educate, in two years, a generalist worker who could move into a wide range of mental health and/or human services fields.

Human services paraprofessionals held several thousand government jobs during the 1990s. Government agencies employ a significant portion of the paraprofessionals to deal with such issues as poverty, crime, public assistance, population policy, social rehabilitation, community development, mental health, racial and ethnic studies, and environmental impact studies.



PROGRAM OF STUDY

I. GENERAL EDUCATION REQUIREMENTS	30 sem. hrs.
College Writing Skills (3)	
Specialized College Writing and Research Skills (3)	
Essential Computing I (3)	
Finite Mathematics (3)	
One approved course from six different Core categories (18)	
II. HUMAN SERVICES AREA REQUIREMENTS	24 sem. hrs.
A. NATURE AND NEED OF SERVICE	9 sem. hrs.
To be selected from the following: Principles of Sociology (3) Contemporary Social Problems (3) Sociology of the Life Cycle (3) Introduction to Social Work (3)	
B. BEHAVIORS, TREATMENTS AND STRATEGIES	9 sem. hrs.
To be selected from the following: Society and the Individual (3) Work and Society (3) Race & Ethnic Relations (3) Human Diversity (3) Introduction to Social Welfare Policy (3)	
C. ELECTIVES IN FIELD	6 sem. hrs.
To be selected from the following: Juvenile Delinquency (3) Sociology of Marriage and Family (3) Medical Social Work (3) Child Welfare (3) Aging and Human Services (3)	
III. FREE ELECTIVES	6 sem. hrs.
TOTAL	60 sem. hrs.

FOR MORE INFORMATION, CONTACT:
Department of Sociology
Edinboro University of Pennsylvania
Edinboro, PA 16444
Phone: 814-732-1593
Fax: 814-732-1632
<http://webs.edinboro.edu/dept/sociology.html>

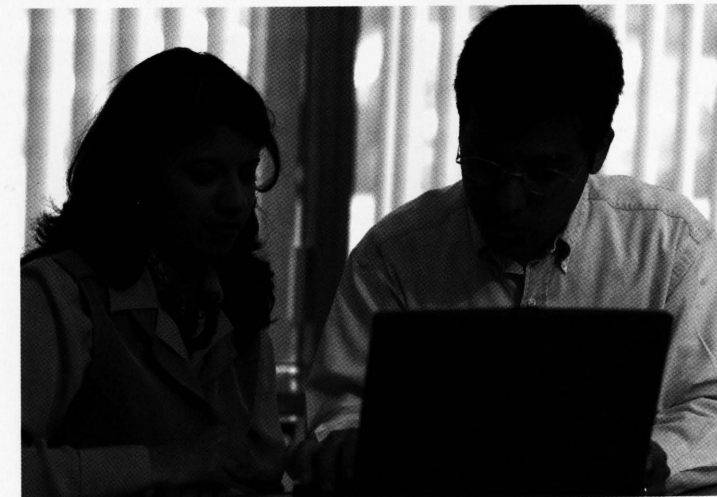
ASSOCIATE OF SCIENCE DEGREE IN BUSINESS ADMINISTRATION

OVERVIEW

The Associate of Science degree in Business Administration prepares students for a variety of professional careers. This degree program is especially designed to provide students with a business degree for entry-level positions in business, for job promotion, or as a bridge toward completion of a bachelor's degree in business administration. Students complete a foundation of business courses that provide thorough exposure to each of the business functions, to economics, to business law, and to the technology used in business.

Students are also required to complete an elective course in business that provides additional expertise in a selected business area. This elective is chosen from courses in advertising and promotion, cost accounting, human resource management, and money and banking.

All of the courses required in the associate degree program also apply to the bachelor's degree in business administration.



CAREER OPPORTUNITIES

The Associate of Science in Business Administration program prepares the student to find employment in various positions in domestic or international businesses including accounting, advertising, finance, financial services, logistics, management, marketing and production.

Business positions are available for graduates in commercial firms, not-for-profit organizations, government agencies and international businesses. Graduates can also choose to be self-employed and are prepared for further study in business administration, accounting, finance, financial services, economics or marketing.

PROGRAM OF STUDY

I. GENERAL EDUCATION REQUIREMENTS 24 sem. hrs.

- College Writing Skills (3)
- Specialized College Writing and Research Skills (3)
- Essential Computing I (3)
- College Algebra (3)
- One approved course from four of the following
Core categories: 1, 2, 3, 4, 5 or 6 (12)

II. BUSINESS FOUNDATION REQUIREMENTS 27 sem. hrs.

- Principles of Accounting I (3)
- Principles of Accounting II (3)
- Information Resources Management* (3)
- Legal and Regulatory Environment of Business (3)
- Principles of Economics: Macro (3)
- Principles of Economics: Micro (3)
- Business Finance I (3)
- Principles of Management (3)
- Principles of Marketing (3)

III. BUSINESS ELECTIVE 3 sem. hrs.

- One of the following courses:
- Cost Accounting
- Money and Banking
- Human Resource Management
- Advertising and Promotion

IV. FREE ELECTIVES 3 sem. hrs.

TOTAL 60 sem. hrs.

FOR MORE INFORMATION, CONTACT:
Department of Business Administration and Economics
Edinboro University of Pennsylvania
Edinboro, PA 16444
Phone: 814-732-2407
Fax: 814-732-1610
<http://webs.edinboro.edu/dept/business.html>

ASSOCIATE OF ARTS DEGREE IN LIBERAL STUDIES

OVERVIEW

The Associate of Arts in Liberal Studies is a flexible two-year degree program designed to meet the needs of a variety of students:

- Students desiring a two-year degree that will enable them to transfer to a four-year institution
- Unemployed workers wanting to develop marketable job skills
- Employed persons seeking retraining or upgrading of knowledge

Up to 15 hours of credit may be awarded for previously completed courses at vocational or technical institutes, and students may be eligible to have their tuition covered by the national vocational training act.

FOR MORE INFORMATION, CONTACT:
Department of Philosophy
Edinboro University of Pennsylvania
Edinboro, PA 16444
Phone: 814-732-2490
Fax: 814-732-2865
<http://webs.edinboro.edu/dept/philosophy.html>

PROGRAM OF STUDY

I. GENERAL EDUCATION REQUIREMENTS 30 sem. hrs.

- College Writing Skills (3)
- Specialized College Writing and Research Skills (3)
- Essential Computing I (3)
- Finite Mathematics (3)
- One approved course from six different
Core categories (18)

II. HUMANITIES TRACK 15-24 sem. hrs.

At least one advanced course from four of seven advanced humanities disciplines: Art, English and Theatre Arts, Foreign Languages, History, Music, Philosophy, or Speech Communications

III. ELECTIVES 6-15 sem. hrs.

To be chosen in close consultation with the program advisor.

TOTAL 60 sem. hrs.

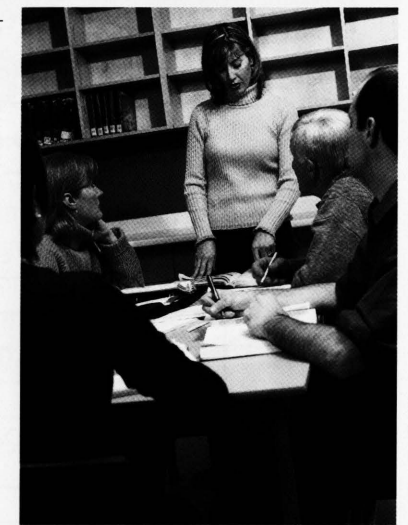
GRADUATE COURSEWORK IN EDUCATIONAL LEADERSHIP PROGRAMS

The **Department of Professional Studies** offers graduate coursework at Edinboro University in Erie – The Porreco Center for the following programs in **Educational Leadership**:

- Master's of Education in Educational Leadership
- Post Master's Principal K-12 Certification
- Post Master's Supervisor of Special Education Certification
- Post Master's Superintendent Letter of Eligibility

Courses for the programs listed above are also available through web-based instruction via the Internet. Graduate Programs in Educational Leadership are designed to be flexible and meet the needs of students who want to pursue advanced degrees or certifications while having a fulltime career.

Please contact Dr. James Bolton (jbolton@edinboro.edu, 814-732-1734) or Dr. Andrew Pushchak (apushchak@edinboro.edu, 814-732-1548) for course offerings and further program information.



ACCOUNTING SATELLITE COURSES - PENNSYLVANIA SOCIETY OF PUBLIC ACCOUNTANTS (8 CPE HOURS)

The 2007 course year begins May, 2007.

Please check the **Pennsylvania Society of Public Accountants** site for the schedule. (www.pspa-state.org)

These satellite classes are presented by the Accounting Continuing Education Professional Network (ACPEN) and are held at Edinboro University in Erie – The Porreco Center. Please register directly with the Pennsylvania Society of Public Accountants by emailing info@pspa-state.org or by calling 1-800-270-3352. Non-members are \$155 for these courses; members are \$110.

International Code Council (ICC), formerly Building Officials Code Administrators International (BOCA), sets guidelines and provides training to "Code Enforcement Officials" (CEOs) of all Pennsylvania municipalities, counties, townships, and cities.

NEED A NEW CAREER? BECOME A BUILDING INSPECTOR!

If you are tired of worrying about company downsizing and lay-offs, or you need to find something else to do, you should consider a career as a building inspector. With the new Pennsylvania Uniform Construction Code implemented in July of 2004, a whole new career field has been created.

PENNSYLVANIA'S ONLY PROVEN COMPREHENSIVE BUILDING INSPECTOR TRAINING PROGRAM

Now available at Edinboro University in Erie – The Porreco Center. All classes are taught by International Code Council instructors using materials/books published by the International Code Council. Classes prepare students to take the Residential Building Inspector, Commercial Building Inspector and Commercial Building Plans Examiner certification tests.

No. Days	Residential Inspection Series (IRC2006)	Dates
1	IRC 2006 - Overview and Code Development Process	April 2, 2007
4	Performing IRC 2006 Building Inspections	April 3-4-5-6, 2007
3	Performing IRC 2006 Plumbing Inspections	April 11-12-13, 2007
3	Performing IRC 2006 Electrical Inspections	April 17-18-19, 2007
4	Performing IRC 2006 Mechanical Inspections	April 23-24-25-26, 2007
2	2006 IECC Residential Provisions	April 31, May 1, 2007
3	Performing IRC 2006 Plan Reviews	May 2-3-4, 2007
Days	Commercial Building Inspection Series (IBC 2006)	Dates
1	Overview of the 2006 IBC and Administration	May 14, 2007
1	Occupancy (Chapter 3)	May 15, 2007
1	Construction Type, Height and Area (Chapters 5 & 6)	May 16, 2007
1	Fire Resistance & Fire Protection (Chapters 7 & 8)	May 22, 2007
1	Hazardous Materials	May 23, 2007
1	Means of Egress (Chapter 10)	May 29, 2007
1	Accessibility (Chapter 11)	May 30, 2007
1	Performing Structural Plan Reviews	June 4, 2007
1	Structural Concepts (Chapters 16, 17 & 22)	June 5, 2007
1	Concrete & Masonry (Chapters 19 & 21)	June 12, 2007
1	Footings & Foundations (Chapter 18)	June 13, 2007
1	Wood Framing (Chapter 23)	June 14, 2007
1	Performing Non-Structural Plan Reviews	June 20, 2007
1	Day Care & Assisted Living, A Design Option	June 21, 2007
1	Overview of the International Fire Code	June 26, 2007
1	Fire Sprinkler Plan Review	June 27, 2007

Series #2 - Residential Code Inspection Series (IRC2003)

Dates: April 2, 3, 4, 5, 6, 11, 12, 13, 17, 18, 19, 23, 24, 25, 26, 31
 May 1, 2, 3, 4
 Time: 9:00 am-4:00 pm
 Cost: \$2,880 for entire series, plus texts (approx. \$600)

Series #2 – Commercial Building Inspection Series (IBC2003)

Dates: May 14, 15, 16, 22, 23, 29, 30
 June 4, 5, 12, 13, 14, 20, 21, 26, 27
 Time: 9:00 am – 4:00 pm
 Cost: \$2,300, plus texts (approx. \$700)

APPROVED FOR OVR FUNDING

Classes can be taken individually or sign up for the entire series. Prices do not include costs for certification testing.

Call 814-836-1955 to register – Edinboro University in Erie – The Porreco Center



The Pennsylvania Department of Public Welfare and Northwest Regional Key Training underwrite training costs for child care training programs at Edinboro University. Each session can be applied toward the Department of Public Welfare's annual six-hour training requirement. Edinboro University is offering 4 sessions this spring.

Registration Cost: \$5 per 3-hour course. The registration fee is non-refundable. Applicants should assume acceptance of registration unless otherwise notified. If a class is filled or canceled, we will notify you. Registration must be made at least one week in advance.

Description of Level Designations:

- Level 1: Designed for entry-level professionals
- Level 2: Designed for those who possess the basic knowledge and skills of DAP
- Level 3: Designed for those who desire to work toward group supervisor or director positions

Sharing Observations with Parents – Part 1

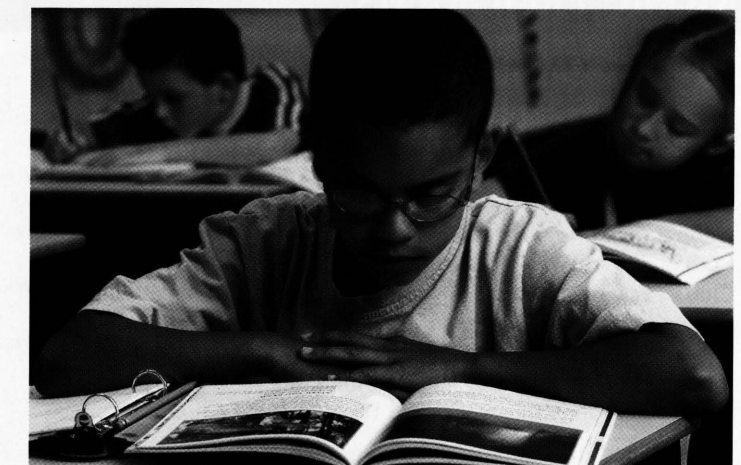
This workshop provides information and training which focuses on sharing observations with parents of the children you care for, your team of caregivers, or school age children in your care. Cathy Shabtai has conducted excellent training sessions in this topic area in the past, and it will be worthwhile training to all.

Date: Tuesday, February 13, 2007
 Time: 5:30-8:30 pm
 Trainer: Cathy Shabtai
 Level: K5C1 Topic Code 53

Language Development and Literacy Learning

Dr. Maureen Walcavich will provide a wonderful workshop providing caregivers with an assortment of activities and training to increase language and literacy development in the early years.

Date: Tuesday, March 6, 2007
 Time: 5:30-8:30 pm
 Trainer: Dr. Maureen Walcavich
 Level: K2C1 Topic Code 13



Sharing Observations with Parents – Part 2

This second of a series of two workshops provides information and training which focuses on sharing observations with parents of the children you care for, your team of caregivers, or the school age children in your care. Cathy Shabtai has conducted excellent training on this topic, and it will be worthwhile training to all.

Date: Tuesday, March 13, 2007
 Time: 5:30-8:30 pm
 Trainer: Cathy Shabtai
 Level: K5C2 Topic Code 53

Learning Through Doing: Creating Inquiry Based Math Activities

This workshop introduces participants to a variety of interactive, engaging activities to stimulate young children's inquiry based math understanding. A variety of handouts will be distributed.

Date: Monday, March 26, 2007
 Time: 5:30-8:30 pm
 Trainer: Dr. Virginia McGinnis
 Level: K2C1 Topic Code 11

CUSTOMIZED COMPUTER TRAINING

Let Edinboro University provide a customized computer training session for your company in Microsoft Word, Excel, Access or PowerPoint. Let us teach your employees how to navigate the Internet, design databases or get them started in basic computer orientation. Please call for more information.

Introduction to Electronic Spreadsheets (Excel)

This workshop provides an introduction to Microsoft Excel spreadsheets. You will learn the basics of spreadsheets and gain hands-on experience using Microsoft Excel. You will learn how to create, edit, and save a basic spreadsheet. Prerequisite: Basic keyboarding and mouse skills. Participants may wish to bring a diskette on which to save their work.

Thursdays, April, 12, 19 & 26 (3 classes), 6:00-8:00 pm

Edinboro University in Erie – The Porreco Center

Instructor: Mr. Sean Bliley, Director of Budgets at Edinboro University

\$150



MUSIC PROGRAMS

COMMUNITY MUSIC SCHOOL

Founded as the Preparatory Division by the Music Department at Edinboro University in the 1970s, the Edinboro University Community Music School was reborn in 2000 with a major expansion. Its mission is to provide music lessons to students without regard to their ability to pay. With this in mind, the Community Music School expanded into Erie at the Boys and Girls Club of Erie, Inc. and at Edinboro University in Erie - The Porreco Center. Currently, we have approximately 200 students studying a full range of musical instruction including wind and brass instruments, Suzuki piano, Suzuki violin, piano, strings, guitar, percussion, Kindermusik, and the Erie Children's Choir.

The facilities at Edinboro University in Erie - The Porreco Center make an ideal setting for the Community Music School. Working closely with the administrative staff at the Porreco Center, offerings include Suzuki piano, violin, voice, piano, and flute lessons. The Porreco Center houses a grand piano for student use, pre- and post-lesson computers, electronic pianos, and teaching studios. Future plans may include a concert hall and dedicated teaching areas for chamber music and lessons.



The Community Music School offers scholarships to over 40% of its students. To fund these activities, a generous grant from the Boys and Girls Club of Erie, Inc. was received in year one. Since then, fundraising efforts have included student fees, private donations, and grants. Please contact the Community Music School to discuss donor opportunities. The Community Music School can be reached at (814) 732-1357 or via e-mail at dburdick@edinboro.edu. The Community Music School website can be found on the Music Department website at <http://www.edinboro.edu>. The staff of the Community Music School includes Dr. Daniel Burdick, Executive Director, and Professor LeAnne Wistrom, Administrative Director. In addition, the staff of the Porreco Center provides crucial assistance and support throughout the year.

CONCERT BAND OF NORTHWEST PENNSYLVANIA FALL CONCERTS

A Scottish Concert

Honoring President Frank Pogue during Edinboro University's Sesquicentennial
Sunday, April 1, 2007, 3:00 pm
Louis C. Cole Auditorium
Edinboro University

Memorial Day Service

Sunday, May 27, 2007, 7:00 pm
Edinboro Cemetery

An Evening in Old Vienna

Wednesday, June 20, 2007, 7:00 pm
Louis C. Cole Auditorium
Edinboro University

Diamond Jubilee Concert for John Philip Sousa

Thursday, July 5, 2007, 7:00 pm
Louis C. Cole Auditorium
Edinboro University

A Salute to Karl L. King

Wednesday, July 11, 2007, 7:00 pm
Louis C. Cole Auditorium
Edinboro University



A Salute to Karl L. King

Wednesday, July 25, 2007, 7:00 pm
Diamond Park in Meadville

A Salute to Karl L. King

Sunday, July 29, 2007, 12:30 pm
Bestor Plaza at The Chautauqua Institution

An Evening in Old Vienna

Wednesday, August 1, 2007, 7:00 pm
Diamond Park in Meadville

Diamond Jubilee Concert for John Philip Sousa

Wednesday, August 8, 2007, 7:00 pm
Diamond Park in Meadville



2007 EDINBORO HIGHLAND GAMES & SCOTTISH FESTIVAL TENTATIVE SCHEDULE

Please note changes due to construction on campus

FRIDAY, MAY 18TH • EDINBORO UNIVERSITY

Music & Tea at Goodell Gardens	Route 6N	4:00-6:00pm
Kilted Mile Run	Scot & Scotland Road	6:30pm
Ed Miller & Chelsea House Orchestra	Cole Auditorium	8:00pm

SATURDAY, MAY 19TH • EDINBORO UNIVERSITY

Highland Dance Competitions	Van Houten or Cole Auditorium	9:00am-4:00pm
Pro/Am Heavy Athletic Competitions	McComb Lawns	9:00am-4:00pm
Bagpipe Band Performances	Lawns or Van Houten Dining Hall	9:00am-4:00pm
Scottish Clan Gathering	Lawns	9:00am-4:00pm
Scottish Village Merchants	Lawns	9:00am-4:00pm
Sheep to Shawl Weaving	Lawns	9:00am-4:00pm
Archery Tournament	Lawns	9:00am-4:00pm
Rugby Tournaments	Practice Fields	9:00am-5:00pm
Fiddle Workshop	Gazebo or Library	10:00am-11:50am
Celtic and Appalachian Music	Lawns or Van Houten Dining Hall	10:00am-4:00pm
Fiddlers' Tent	Lawns	10:00am-4:00pm
Clydesdales & Highland Cattle	Lawns	10:00am-4:00pm
Fire Eater/Story Teller	Lawns	11:00am-3:00pm
Opening Ceremonies & Massed Bands	Lawns	12:30pm
Kids' Games & Castle Jump	Gazebo Lawns	1:00pm-3:00pm
Closing Ceremonies	Lawns	4:30pm
Ceilidh/Dinner Party/Music	Van Houten North	6:00-11:00pm

SUNDAY, MAY 20TH • CAMPBELL POTTERY STORE & GALLERY

Scottish Desserts	Pavilion and Store	11:00am-3:00pm
Chelsea House Orchestra Concert	Pavilion or Store	1:00-2:30pm
Final Bids in Silent Art Auction	Pavilion or Store	2:00pm

INTERGENERATIONAL CENTER

Diebold Center for the Performing Arts (basement) • Edinboro University Campus • Edinboro, PA
(814) 732-2244

The Intergenerational Center at Edinboro University is a group of lifelong learners from the Edinboro area who meet for companionship and a variety of programs/projects, using the resources, knowledge and expertise of many people from the campus and the community. The Center is located in the basement of The Diebold Center for Performing Arts (located next to Reeder Hall on Meadville Street in Edinboro).

Coffee, conversation and card games are quiet times available for you at the Intergenerational Center on Tuesday, Wednesday, and Thursdays, 9:00 am to 3:30 p.m. Participate in RSVP projects, sewing projects, book reviews, lunch and fellowship, nurse screenings, bingo, lectures and educational classes.

MONDAYS	10:00 am	Line Dancing with Lorraine McLaughlin
TUESDAYS	9:30-11:45 am	"Thinking Beyond the Ordinary Discussion Group"
	Noon	Lunch at the University Club
	1:00 pm	Coffee, Conversation, & Cards
WEDNESDAYS	Morning	Edinboro Area Adult Women, Edinboro University Students "Brown Bag With Professors" Presentations & Discussion
	1:00 pm	1st & 3rd Wednesday: "500 Club"
		2nd & 4th Wednesday: Scrabble "stretch the mind"
THURSDAYS	9:15-11:30 am	Annual Emeritus Lecture Series open to the public & students
	1:00 pm	Conversation, Coffee and Cards

Other programs being planned, times to be arranged:
Watercolor Introduction, Beginning Knitting

Don't want to drive to the Center, call the LIFT at 456-2299. LIFT will pick you up at home; bring you to the Center, then back home. Other Center members use the LIFT daily. Try it; you'll like it. Parking: single event – secure a visitor's pass at the Police Department in Earley Hall. Come to the Center daily – see Dr. Stone for a semester pass.

Areas volunteers needed: We need your help to keep our Center activities growing. Any skills you can bring... painting, sewing, game instruction, arts and crafts or just your time for coffee and conversation. Visit the Center for more information.

Schedule: The Center is open Monday through Thursday, from 9:00 am to 3:30 pm. Come join us!

EDINBORO UNIVERSITY EMERITUS SPRING 2007 LECTURE SERIES PRESENTS:

Thursdays, 9:30-11:30 am • The Intergenerational Center

February 8	Mr. Greg Lessig, retired faculty member of Edinboro University's Political Science Department Topic: "Harry Truman"
February 15	Dr. Frank Pogue, President of Edinboro University Topic: "Why the Struggle for Civil Rights Continues to be Essential"
February 22	Dr. James Drane, retired faculty member of Edinboro University's Philosophy Department Topic: "A Philosophy for Life and Death, Challenging Depression"
March 1	Mr. Jeff Pinski, Edinboro University's Publications & Marketing Department Topic: "Ethics and Credibility"
March 8	Dr. Pearl Bartelt, Provost and Vice President for Academic Affairs of Edinboro University Topic: "Gender and Communal Societies"
March 15	Mr. Reid McFarland, Professor/Pastor, retired Topic: "Religion, Revelation, and Drugs"
March 22	Dr. Robert Rhodes, retired faculty member of Edinboro University's Political Science Department Topic: "Why are American Politics so Partisan"
March 29	Dr. Robert Rhodes, retired faculty member of Edinboro University's Political Science Department Topic: "Why are American Politics so Partisan, continued"
April 5	Dr. Edward Abegg, retired faculty member of Edinboro University's Philosophy Department Topic: "Gotcha! - Punishment or Revenge"

Admission to each presentation is free and open to the public.

If you care to do so, after the lectures come to the University Club of VanHouten Dining Hall for lunch.

Parking is available in the parking lot between the Diebold Center for Performing Arts and the Crawford Center.

The entrance to this parking area is from Meadville Street. If you do not have a current parking sticker, stop at the University Police Department on the ground floor of Earley Hall and obtain a visitors sticker so you do not receive a ticket for illegal parking.



PURPLE MARTIN CONSERVATION ASSOCIATION

The Purple Martin Conservation Association is an international, non-profit, tax-exempt organization dedicated to the conservation of the Purple Martin (*Progne subis*) species of bird through scientific research, state-of-the-art wildlife management techniques, and public education. It is supported by membership contributions and product sales. The PMCA is associated with Edinboro University of Pennsylvania through its Office of Extended Learning, which played a valuable role in the formation of the PMCA and continues to provide assistance and logistical support.



Purple Martins are cono-nesting members of the swallow family that spend their winters in Brazil and migrate back to North American breeding grounds in the spring, when the weather warms enough to provide flying insects for their food. The eastern race of Purple Martins is different from all other species of birds in that they no longer nest in the wild. Today, east of the Rocky Mountains, they are totally dependent on people to supply them with houses and gourds for nesting. Unfortunately, Purple Martins are not as common as they were a century ago. The PMCA is working to reverse this trend. Today, the PMCA conducts research

at its colony site on the eastern shore of Edinboro Lake, where as many as 150 pairs of martins nest each year. Over 6,000 members receive its quarterly publication, The Purple Martin Update. Additionally, the PMCA is in touch with over 100,000 Purple Martin enthusiasts throughout North America. By making accurate information on martins available to would-be landlords, designing better martin housing systems, and by conducting scientific research, the PMCA is working to increase the Purple Martins' population throughout its North American breeding range.

For more information about the Purple Martin Conservation Association, please contact:



The Purple Martin
Conservation Association
Tom Ridge Environmental Center
301 Peninsula Drive, Suite 6
Erie, PA 16505
(814) 833-7656
Fax: (814) 833-2451
E-mail: info@purplemartin.org
www.purplemartin.org

13TH ANNUAL TECHNOLOGY INGENUITY CONTEST SATURDAY, MARCH 31, 2007 - COOPER SCIENCE HALL – EDINBORO UNIVERSITY CAMPUS



Edinboro University is pleased to host the thirteenth annual Technology Engineering Contest on Saturday, March 31, 2007, from 9:00 am to 2:45 pm in Cooper Science Hall. The Erie Engineers Societies Council, Northwest Intermediate Unit #5, the Technology Education Association of Pennsylvania (TEAP), and area middle and high schools sponsor this event. The Technology Engineering challenge is designed to provide area students an opportunity to apply their knowledge of math and science to technological problems, and structural, electrical, and civil engineering projects. Through this competition, students gain deeper insight into important scientific and technological concepts. The contest also provides an opportunity to see a variety of

solutions to the same problem and gives students experience in project development, paint drawing, teamwork and public presentations. Approximately 100 students participate each year. This event is divided into three levels: 6th, 7th, and 8th graders, 9th and 10th graders, and 11th and 12th graders. A first, second, and third place is given in each of the four different categories: overall performance, drawings, craftsmanship, and oral/report presentation. The Technology Engineering Challenge also has an overall school trophy. This trophy is presented to the school district that wins the most points over all three levels. This trophy is called the Koehle Cup. This trophy was named after Rudy Koehle, who was a key supporter, developer, and participant in this event. The trophy is kept at the winning school district for a year and returned the following competition.

For more information, please contact your local middle or high school industrial arts teacher.

KIDS ACADEMY AT PORRECO

Mark your calendar. Now in its 13th year, the Kids Academy at Porreco is an exciting opportunity for children to participate in a wide array of unique learning experiences at Edinboro University in Erie – The Porreco Center. Children in grades one through six may register for full-day or half-day programs beginning at 8:30 am and ending at 3:45 pm. Participants are escorted between classes and supervised during lunch. Programs include classes in art, science, math and physical education.

Course Fees: The fee for each full week, full-day program is \$150 for the first child and \$125 for additional children from the same

family. The fee for each half-day (morning or afternoon) is \$100 per week, or \$95 for additional children from the same family in the same week.

Watch for information to be mailed home from school with your child in May, or call our office at 836-1955 to be added to our mailing list.

Week 1: July 23-27, 8:30 am – 3:45 pm

Week 2: July 30-August 3, 8:30 am – 3:45 pm

Edinboro University in Erie – The Porreco Center

STUDY WITH US IN SCOTLAND! THE ART OF EDUCATION TRAVEL: DEVELOPING CREATIVE PORTFOLIOS

SUMMER STUDY ABROAD • EDINBURGH, SCOTLAND

JULY 28-AUGUST 8, 2007

This course focuses on developing creative portfolios for enhancing the education process. Students will combine the travel experience with cycles of interpersonal and group communication, journaling, photography, and art in a study of the symbols and culture of Scotland.

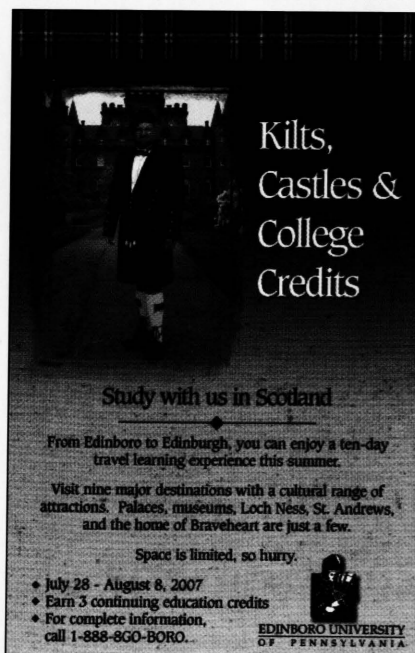
Course objectives:

1. Students will understand the importance of communication in the development of verbal and visual portfolios;
2. Students will know the fundamentals of photography and the uses of photographs in portfolios;
3. Students will have an appreciation for art as it applies to culture and enlightenment;
4. Students will produce an original and interesting portfolio that documents travel and the learning experience;
5. Students will participate in discussions about the enhancement of the Edinboro-Edinburgh relationship;
6. Students will reflect on their own learning as a key to teaching.

SITES INCLUDED IN THE TRAVEL LEARNING EXPERIENCE:

- City of Edinburgh – Royal Mile, Castle, Palace, Museums, Geologic/Historic Sites
 - St. Andrews – University, Golf Courses, Castle, Religious and Historic Sites
 - Pitlochry – “Gateway to the Highlands,” Hiking Trails, Historic Sites
- Stirling – Castle, Wallace Monument, Historic Battle Sites, Highland Games
 - Isle of Skye – Scenic and Historic Sites
 - Inverness – Loch Ness, Historic Sites
- Rosslyn Chapel – Historic and Symbolic Site
 - Sir Walter Scott’s Home and Scot’s View
 - The Edinburgh Military Tattoo

Please call 732-2770 for more information.



Our mission is to assist area businesses with their training needs, while promoting economic growth in the region. As the WEDnetPA Partner in the Northwestern Pennsylvania region, Edinboro University is able to obtain Guaranteed Free Training (GFT) grants for qualifying local businesses. Eligible businesses receive reimbursement for training for a wide range of Basic Skills and Information Technology Training. Many of Edinboro University's credit and non-credit courses can qualify for reimbursement through WEDnetPA.

OUR TRAINING AND SERVICES INCLUDE:

Professional Development • Computer Skills • Customized Programs • Consulting Services • Assessment Services
Strategic Planning for Businesses • Facility Rental for meetings & seminars • Videoconferencing & Satellite Downlinks

NON-CREDIT PROFESSIONAL DEVELOPMENT COURSE:

Business and Professional Writing

All writing boils down to purpose, audience, and style: What does the writer want? Who is the reader? What stylistic choice will satisfy both? Course members will practice reliable methods for composing documents crucial to job performance. Grounded in the questions stated above, these methods will yield pleasing, clear, and substantial texts that do justice to their writers and to your companies. Using work-in-progress as raw material, we will concentrate on document design, paragraph structure and transitions, diction, tone, sentence structure, and common grammatical and mechanical problems. Participants are asked to bring a sample of actual business and professional documents (removing identifying markers) for review.

Monday, March 5, 2007 (1 class) 8:00 am – 3:30 pm

Instructor: John Repp, Edinboro University English & Theatre Arts Department

(half hour for lunch, on your own) \$180

Selection/Hiring Process Overview

This course is of value to anyone who is involved in the Hiring and/or Supervision of new Employees. In today's competitive economy, organizations cannot afford to hire the “wrong” person. This single decision can have the greatest impact on the profitability of an organization & greatly impact the “culture,” morale and ultimate customer satisfaction. The effects of hiring the “wrong person” can lead to a high turnover rate; possible litigation; excessive workers & unemployment claims being filed; newly hired employees quitting within the first month; excessive costs of the hiring process; negatively impact employee morale & customer satisfaction and the ultimate financial success of that organization. In this class, the four (4) phases of the hiring process will be explored.

Phase I	Recruitment/Pre-Screening
Phase II	Interviewing/Selection
Phase III	New Hire-Training/Orientation
Phase IV	New Hire- Evaluation Process

Tuesday, April 10, 2007 (1 class), 9:00-11:00 am

Instructor: David G. Stephany

\$75 (take all 3 Courses on Hiring for \$175)

The Hiring Process

This course is of value to anyone who is involved in the Hiring and/or Supervision of new Employees. In this class, the emphasis will be on “best practices & process” for Recruitment, Pre-Screening & Selection. The following will be reviewed: Identify traits of the ideal candidate; recruitment strategies including effective ads; developing appropriate questions to explore core competencies & targeted capabilities; interviewing options (individual, team, etc.); documentation (applicant appraisal form, status letters to applicants & reference checking forms & tips). Finally, the legalities & best practices for interviewing will be covered.

Tuesday, April 17, 2007 (1 class), 9:00-11:00 am

Instructor: David G. Stephany

\$75 (take all 3 Courses on Hiring for \$175)

Maximizing the New Hire

This course is of value to anyone who is involved in the Hiring and/or Supervision of new Employees. This class will focus on maximizing the new hire. These areas are generally given the least amount of emphasis in the overall Selection Process and can have the greatest impact on the success of the hire. The emphasis in this class will be on best practices, documentation & proven techniques for ensuring that the new hire is properly oriented and trained “on the job.” Finally, the Evaluation Process during the Introductory Period (generally the 1st 90 days) will be reviewed. This will include discussing the process, documentation required & training in conducting the evaluation sessions.

Tuesday, April 24, 2007 (1 class), 9:00-11:00 am

Instructor: David G. Stephany

\$75 (take all 3 Courses on Hiring for \$175)

The Performance Management Process

In this course, the instructor will review the basics of the performance management process, including the forms and the process. An actual role-play of a performance management meeting including the self-appraisal review will occur.

Tuesday, May 1, 2007 (1 class), 8:00am-Noon

Instructor: David G. Stephany

\$150

ATTENTION COMPANIES: Use your Workforce and Economic Development Grant (WEDnet) training dollars.

WORKFORCE AND ECONOMIC DEVELOPMENT NETWORK (WEDnet)

Guaranteed Free Training

Training Pennsylvania's worker for a growing economy available to your company if it meets a few simple guidelines:

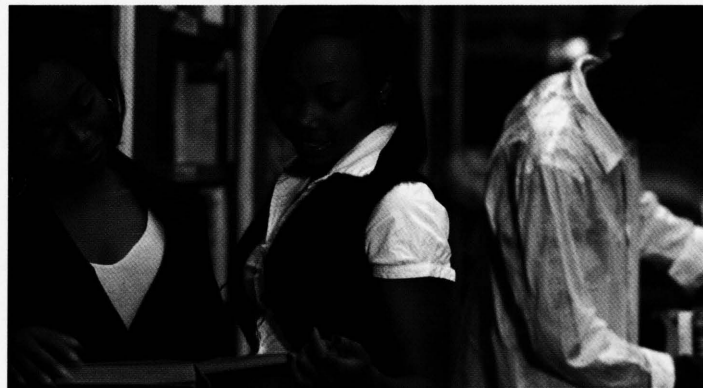
- Must be based in Pennsylvania or have a significant presence in the state
- Offers the employees who will partake in the program at least 150% of the current minimum wage, excluding benefits
- Is not a point-of-sale retail business, training vendor, - government, education or nonprofit entity
- Participates in the program no more than two years in a row and three of the past five years
- Begins training within five months of the grant approval letter
- Funds available July 1

The Commonwealth of Pennsylvania has created the opportunity for certain employers to train employees through two programs offered by the Guaranteed Free Training (GFT) Program. Area manufacturers and companies supporting the manufacturing sector may apply. Point-of-sale business companies are excluded.

The Information Technology Training and Basic Skills Training programs are available to qualified in-state businesses and out-of-state companies relocating to the economic friendly business climate of Pennsylvania.

Qualified companies receive training provided through the Workforce and Economic Development Network of Pennsylvania, known as WEDnetPA. This alliance of 14 State System universities, Pennsylvania's 14 community colleges, the Pennsylvania College of Technology and the North Central Industrial Technical Education Center, Greater Altoona Career and Technology Center, Lancaster County Career and Technology Center, and the University of Pittsburgh at Bradford offers a diverse array of training employers need most.

The Department of Community and Economic Development (DCED) fund this program.



BASIC SKILLS TRAINING

Includes the teaching of a variety of basic and entry-level skills to benefit employees and employers. Basic and entry-level skills are defined according to the type and scope of your business. Employees who participate must be frontline employees and first-level supervisors. Employers must be manufacturing and/or technology-based businesses including Biotech and Environmental-Tech companies. Some of the training elements offered through the program include:

- Communications and teamwork
- Applied mathematics and measurement
- Workplace health and safety
- Problem solving
- Quality assurance
- Business operations
- Computers
- Product and process control
- Workplace behavior skills
- Manufacturing fundamentals including some of the following:
 - Blueprint reading
 - Welding, soldering
 - Tooling, grinding

INFORMATION TECHNOLOGY TRAINING

Includes the teaching of a variety of skills to benefit employees and employers. A simple set of qualifications determines which companies and employees are eligible to receive this benefit. Specific skills are defined according to the type and scope of your business. Employees who participate in the program must be technical workers or information technology professionals; frontline employees or first-level supervisors needing applied manufacturing technology training in a manufacturing company. Some of the training elements offered through the program include:

- Applied manufacturing technology
- E-business/commerce
- Technology support
- Database development
- Software engineering
- Computer programming
- Network administration
- Systems analysis
- Information security
- Management information systems
- Web site design and development

Edinboro University is strongly committed to regional workforce training.

Acting as a licensed education administrator (LEA) for area manufacturers and high-tech companies, Edinboro University has enabled the following firms to submit training applications for current year funding:

Builders Support & Supply	Merit Tool
C & J Industries	Millcreek Paramedic Services
Composiflex	Niagara Plastics
Corry Contract, Inc	Omega Plastics
Corry Laser Technology	Pendleton Tool Company, Inc..
Cost Effective Coating Inc.	Penn Union
Custom Engineering	Plastikos, Inc.
D & E Machining Inc.	Port Erie Plastics
Dad's Products Company	Presbyterian Homes in the Presbytery of Lake Erie
Execumold Inc.	Process & Data Automation
Formtech	Qualsystems
Fralo Industries	R.A. Greig Equipment Company
GeorgeKo Industries	S & S Packaging
Greenleaf Services Corp.	Select Specialty Hospital - Erie
Healthcare Ventures Alliance	Sipco
Highpoint Tool	Sipco Molding Technologies
Industrial Papers Inc.	Solar Atmosphere of Western PA
Industrial Sales & Mfg	South Erie Production Company, Inc.
Janitors Supply Inc.	Targeted Pet Treats, LLC
JJ Moore Sales	Tech Molded Plastics LP
JTM Foods, Inc	Tech Tool & Mold Inc
Lake City Industries	The Sarah A. Reed Retirement Center
Lakeview Forge Company & Erie Tool Works	Titusville Area Hospital
Lamjen Inc.	Venango Machine Co.
Meadville Medical Center	X-Cell Tool & Mold

This program year DCED will commit over **\$1.2 million** in training support to our region to enhance employee skills, improve and retain jobs, and make our companies globally competitive.

Find out if your company can benefit from the Basic Skills Training or Information Technology Training programs offered through WEDnetPA.

Call Don Apel, WEDnet Administrator at (814) 337-7791.

Funds available July 1st.



HOW TO REGISTER FOR NON-CREDIT PROGRAMS

- By Mail: Send completed registration form with payment in full to:
Edinboro University in Erie - The Porreco Center
Office of Extended Learning
2951 West 38th Street
Erie, PA 16506-4403
Payment may be in the form of:
 - Check (made payable to Edinboro University of PA)
 - Money Order
 - Visa, MasterCard, Discover (include information to right)
- By Phone: Call 814-836-1955 or 800-526-0121 Monday through Friday, 8 am to 7:30 pm
- By fax: Fax completed registration form to: 814-833-2085, 24 hours/day, 7 days/week
- In Person: Stop by our office at 2951 West 38th Street, Erie, PA, Monday through Friday, 8 am to 7:30 pm

For more information about the programs listed in the Extended Learning publication or certificate and contract training needs, call (814) 836-1955 or (800) 526-0121.

▼ Cut here and return with payment

Name _____		Social Security No. _____	
Address _____		Day Phone _____	
City _____	State _____	Zip _____	Evening Phone _____
Employer Name _____			
Employer Address _____			

COURSE TITLE(S)	LOCATION	TIME	DAY	FEE

PAYMENT TYPE:	IF PAYING BY VISA, MASTERCARD, OR DISCOVER:	
<input type="checkbox"/> Check	Account # _____	Expiration Date _____
<input type="checkbox"/> Money Order	Signature _____	
<input type="checkbox"/> VISA		
<input type="checkbox"/> MasterCard		
<input type="checkbox"/> Discover		



EDINBORO UNIVERSITY OF PENNSYLVANIA

Dr. Frank G. Pogue, President

EDINBORO UNIVERSITY OF PENNSYLVANIA

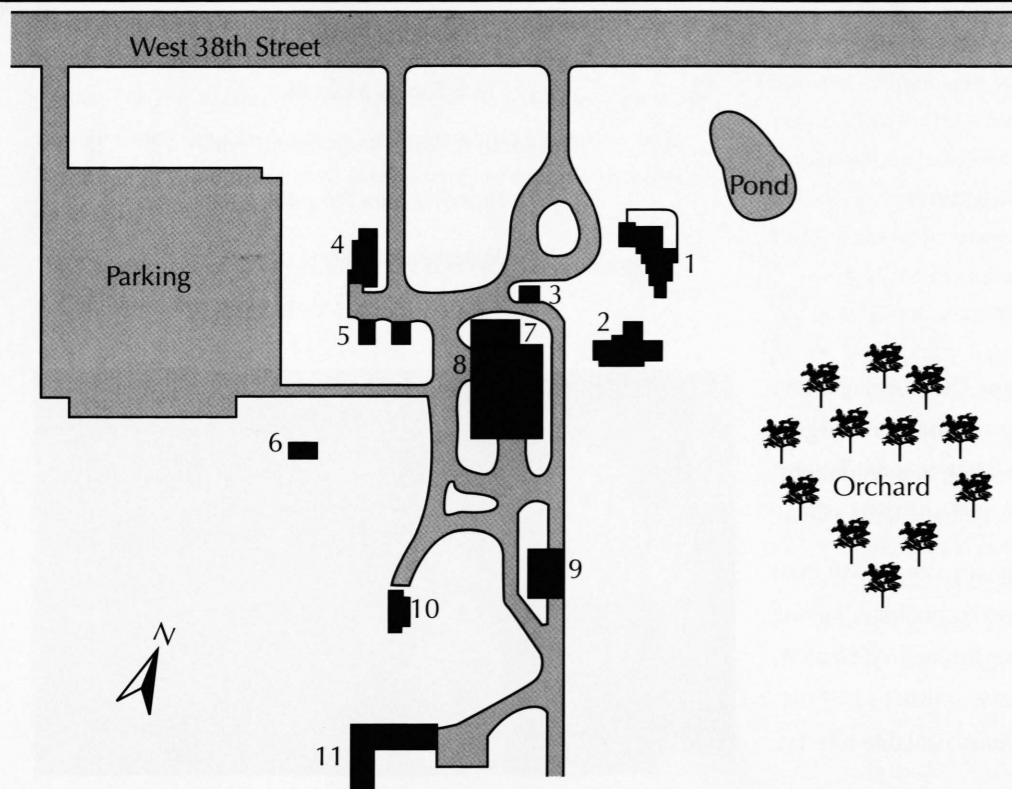
COUNCIL OF TRUSTEES

- Harry K. Thomas, Esq., *Chair*
 Mr. Benedict J. Miceli, *Vice Chair*
 Mr. Harold C. Shields, *Secretary*
 Dr. Joseph G. Cacchione
 Dr. Raymond L. Dombrowski
 The Honorable John R. Evans
 Mr. John E. Horan
 Sr. Catherine M. Manning
 Mrs. Virginia L. McGarvey
 Mr. John A. Pulice
 Mr. Winston C. Alozie, *Student Trustee-Select*
 Dr. Judy G. Hample, *Chancellor (ex officio)*

PRESIDENT'S EXECUTIVE COUNCIL

- Dr. Kenneth Adams, *Interim Dean of Education*
 Dr. R. Scott Baldwin, *Dean of Graduate Studies and Research*
 Dr. Pearl Bartelt, *Provost and Vice President for Academic Affairs*
 Mr. Terrence Carlin, *Associate Vice President for Enrollment and Retention Services*
 Ms. Janet Dean, *University Ombudsperson and Associate Vice President for Human Resources and Faculty Relations*
 Dr. Donald Dilmore, *Associate Vice President for University Libraries*
 Mr. Gordon Herbst, *Vice President for Finance and Administration*
 Dr. Jerry Kiel, *Vice President for Student Affairs and Student Success*
 Dr. Andrew Lawlor, *Associate Vice President for Technology and Communications*
 Dr. Michael Mogavero, *Vice President for Institutional Effectiveness, Planning, and Data Management*
 Mr. Brian Pitzer, *Director of Public Relations*
 Dr. Eric Randall, *Dean of Science, Management and Technology*
 Mr. Kahan Sablo, *Dean of Student Life*
 Ms. Stephanie Cotton-Russell, *Executive Assistant to the President*
 Dr. Terry Smith, *Dean of Liberal Arts*
 Mr. Bruce Whitehair, *Vice President for Development and Marketing*

MAP OF THE PORRECO CENTER



- Mary Porreco Hall (Conference and Seminar Center)
- Garden House (Classrooms 1,2,3)
- Spring House (Evening Administrations Office)
- Caretaker's House (Office of Extended Learning)
- Storage
- Studio
- Classroom 4
- Barn (Classrooms 5,6,7,8,9)
- Carriage House (Storage)
- Summer Cottage
- Future Auditorium



Edinboro University of Pennsylvania
The Porreco Center
Office of Extended Learning
2951 West 38th Street
Erie, PA 16506-4403
139000

NON-PROFIT ORG.
U.S. POSTAGE
PAID
ERIE, PA
PERMIT NO. 490

Mr. David Obringer
LIBRARY
Baron-Forness Library

*Sesquicentennial
Celebration*

Edinboro University of Pennsylvania

150 Years

One of the 14 Universities in Pennsylvania's
State System of Higher Education

Spring 2007