

EDINBORO UNIVERSITY IN ERIE  
**THE PORRECO CENTER**



20  
FALL  
05

# TABLE OF CONTENTS

<b>EDINBORO UNIVERSITY IN ERIE – A COMMUNITY &amp; CORPORATE RESOURCE</b>	
<b>ASSOCIATE DEGREES AT EDINBORO UNIVERSITY IN ERIE – THE PORRECO CENTER</b>	
Edinboro University in Erie – The Porreco Center .....	3
Building A Prosperous Future Through Academic Excellence and Civility .....	4
Degree Completion – Bachelor of Arts in Specialized Studies .....	4
Admissions Office .....	4
Associate of Arts in Criminal Justice .....	5
Associate of Arts in Human Services .....	6
Associate of Science in Business Administration .....	6
Associate of Arts in Liberal Studies .....	7
<b>GRADUATE COURSEWORK IN EDUCATIONAL LEADERSHIP PROGRAMS</b>	
Master’s of Education in Educational Leadership .....	8
Post Master’s Principal K-12 Certification .....	8
Post Master’s Supervisor of Special Education Certification .	8
Post Master’s Superintendent Letter of Eligibility .....	8
<b>ACCOUNTING SATELLITE PROGRAMS-PENNSYLVANIA SOCIETY OF PUBLIC ACCOUNTANTS (8 CPE HRS)</b>	
Accounting & Auditing Update .....	8
Understanding & Responding to Business Fraud-Skills for Controllers & Auditors .....	8
Effective Handling of Tax Audits & Appeals .....	9
Annual Tax Update .....	9
<b>BUILDING INSPECTION - INTERNATIONAL CODE COUNCIL (ICC) TRAINING</b>	
Residential Code Inspection Series 1 & 2 .....	10
Commercial Building Inspection Series 1 & 2 .....	10
<b>CHILD CARE TRAINING PROGRAMS</b>	
Let There Be Music .....	11
Let’s Eat Right, Part 1 .....	11
Basics of Observation .....	11
Make It/Take It Christmas Shoppe .....	11
Let’s Get Moving, Part 2 .....	12
Materials On A Dime .....	12
Connecting Early Mathematical Concepts with Achievement Anchors, Part 1 .....	12
Connecting Early Mathematical Concepts with Achievement Anchors, Part 2 .....	12
<b>COMPUTER SKILLS COURSES</b>	
Basic Computer Hardware .....	13
Customized Computer Training .....	13
Introduction to Electronic Spreadsheets (Excel) .....	13
Introduction to Microsoft Word .....	13
Introduction to Windows 95/98/2000 .....	13
Introduction to Web Design 1 .....	13
<b>FINANCIAL PLANNING &amp; INVESTING COURSES</b>	
Financial Workshop .....	14
Is the Market Taking Advantage of Your Natural Reactions? .....	14
Managing Your Retirement Income .....	14
Retirement Planning .....	14
Six Steps to a Secure Retirement .....	15
Smart Couples Finish Rich™ .....	15
Smart Women Finish Rich™ .....	15
Women & Investing .....	15
<b>MUSIC PROGRAMS</b>	
Community Music School .....	16
Concert Band of Northwest Pennsylvania .....	16
<b>SPECIAL PROGRAMS</b>	
Fall Nights - Edinboro University Planetarium Program ....	16
14 <sup>th</sup> Annual Edinboro Highland Games .....	17
Intergenerational Center .....	17
Purple Martin Conservation Association .....	17
<b>WORKFORCE &amp; ECONOMIC DEVELOPMENT NETWORK (WEDNET)</b>	
<b>GUARANTEED FREE TRAINING</b>	
Basic Skills Training .....	18
Information Technology Training .....	18





**Dr. Frank G. Pogue**  
President  
Edinboro University of Pennsylvania

Edinboro University in Erie –  
The Porreco Center Staff

**Dr. Terry L. Smith**  
Dean of Liberal Arts  
[tsmith@edinboro.edu](mailto:tsmith@edinboro.edu)

**Beth A. Zewe**  
Coordinator of Non-Credit Programs  
[zewe@edinboro.edu](mailto:zewe@edinboro.edu)

**Sabra Jefferson**  
Office Professional  
[sjefferson@edinboro.edu](mailto:sjefferson@edinboro.edu)

## OUR MISSION

The mission of Edinboro University is to create and share knowledge by providing access to education and learning experiences for the academic, cultural and personal growth of the students and the larger community we serve.

Edinboro University is committed to lifelong learning and service. Through the Office of Extended Learning, the University strives to:

- Serve the northwestern Pennsylvania area through community service activities;
- Link the University's resources to the needs of the community;
- Provide continuing professional education to business and industry and other area professionals;
- Enhance personal enrichment of the community through non-credit offerings.

We look forward to serving the needs of our family.

## GENERAL INFORMATION

**Registration:** We encourage you to register early. This will prevent the classes you are interested in from being canceled due to low enrollments. Please register at least one week in advance.

**Refund and Cancellation Policy:** You may cancel one week before class begins to receive a full refund. Classes canceled less than one week before classes begin will not receive a refund, and you will be responsible for your class fee.

Extended Learning reserves the right to postpone, limit enrollment, cancel, split or combine classes, and change instructors and class locations when necessary.

**Incident Weather:** In the event of severe weather conditions, students should listen to local radio and television stations for the official closing of the campus. If the University is closed, all off-campus locations will be closed as well.

**Instructors:** The courses listed in this catalogue are taught either by regular University faculty members or other qualified professional persons from the area. Each possesses a talent, skill or specialized interest, which he/she wishes to share with the community.

For more information about the programs listed in the Extended Learning publication or certificate and contract training needs, call (814) 836-1955 or 1-800-526-0121.

## POLICY OF NON-DISCRIMINATION AND AFFIRMATIVE ACTION

Edinboro University of Pennsylvania is an equal opportunity education institution and will not discriminate on the basis of race, color, national origin, sex and handicap in its activities, programs or employment practices as required by Title VI, Title IX, Section 504 and the ADA.

For information regarding civil rights or grievance procedures, contact Dr. Richard E. Arnold, Associate to the President for Equity, Special Programs, and Staff Development, Title VI, Title IX, Section 504, McNerney Hall, Edinboro, PA 16444 (814) 732-2167. For information or assistance regarding services, activities and facilities that are accessible to and usable by persons with a disability, contact Dr. Robert McConnell, Office of Students with Disabilities (814) 732-2462 V/TTY.

**Office of Extended Learning**  
Edinboro University in Erie – The Porreco Center  
2951 West 38<sup>th</sup> Street • Erie, PA 16506-4403  
(814) 836-1955 • Fax: (814) 833-2085

## ABOUT EDINBORO UNIVERSITY IN ERIE – THE PORRECO CENTER

### BRIEF HISTORY

The rich history of the Porreco estate dates back to the mid-nineteenth century, when a German immigrant, Henry Knobloch, purchased the original 400 acres. The main property stayed in the Knobloch family until 1931, when the first of the Gebauer's took title. Jesse Gebauer became the owner in 1942 while married to Adrian Archbold, grandson of John Archbold, the partner and Standard Oil fortune successor to John D. Rockefeller.

Mrs. Archbold died in 1976, and much of the estate was divided into smaller holdings and sold privately. The core of the property, however, was retained and put on public auction. In 1978, Louis J. Porreco purchased it. In 1986, Mr. Porreco donated the estate to Edinboro University to enhance the quality and convenience of educational offerings in the Erie area.

Today, the renovated estate is used by Edinboro University to provide both credit and non-credit educational opportunities for traditional and non-traditional students, and for holding special events. Various organizations within the community also use the facilities for educational and cultural programming.

### ACADEMIC PROGRAMS

Over 10,000 students have taken classes in various programs at the Porreco Center since Edinboro University consolidated its academic offerings at one convenient location more than 14 years ago. **Undergraduate courses** in such areas as biology and health services, business administration and economics, mathematics and computer science, speech and communication studies, secondary education, elementary education, English & theatre arts, foreign languages, geosciences, philosophy and history are provided.

In addition, Edinboro University offers **graduate and extended learning** classes, plus four associate degree programs: **Associate of Arts in Criminal Justice, Associate of Arts in Human Services, Associate of Science in Business Administration** and an **Associate of Arts in Liberal Studies**. You may be able to **complete a Bachelor of Arts degree in Specialized Studies** at Edinboro University in Erie if you have 90 credits from another institution of higher education.

The **Department of Professional Studies** offers **graduate coursework** at Edinboro University in Erie – The Porreco Center for the following programs in **Educational Leadership**:

- Master's of Education in Educational Leadership
- Post Master's Principal K-12 Certification
- Post Master's Supervisor of Special Education Certification
- Post Master's Superintendent Letter of Eligibility

And, during the summer, the grounds are alive with the sound of children's voices. **The Kids Academy at Porreco** is an exciting opportunity for children in grades 1-6 to participate in a wide array of unique learning experiences thanks to Edinboro University in Erie.

### COMMUNITY & CORPORATE RESOURCE – LET US HOST YOUR NEXT EVENT!

In tandem with its role as an academic institution, Edinboro University in Erie also provides facilities for citizens and organizations wishing to hold **special events** at the Center. Facilities are available for training sessions, retreats, conferences, meetings, receptions, classroom space, videoconferencing and press conferences. In addition, the facility houses a computer lab and distance education classroom.

Edinboro University in Erie's primary academic facility is housed within one of the largest standing barns in Erie County. The renovated interior includes **classrooms** and a **seminar area**. The Barn also houses a fully equipped **computer lab** with 24 computers with Internet capabilities and a **distance education classroom**.

The Center also houses a converted guest house (The Garden House) which contains classrooms, faculty offices, a library service area with reference materials and direct computer access to **Edinboro University's main library catalogue**, the largest educational resources center in northwestern Pennsylvania.

Mary Porreco Hall, the original estate mansion and still its centerpiece, has been maintained to preserve its 1800s vintage farmhouse milieu. Among its 12 rooms is a large living area perfect for **executive seminars, retreats, conferences, receptions and cultural events, and professional and social gatherings**. Mary Porreco Hall also has a library, three small conference or break out rooms, dining and lounge facilities, and a fully equipped kitchen. **Special-event catering services** are also available.

#### **Videoconferencing/Distance Education Capabilities**

Edinboro University in Erie offers videoconferencing capability for meetings, classes or conferences. Utilizing state-of-the-art technology, meetings can be conducted at a distance to save both time and expensive travel costs. A **two-way, fully interactive videoconference classroom** complete with multiple cameras and computer presentation is available.

**For more information about Edinboro University in Erie – The Porreco Center**, or to utilize the Center and its facilities, please contact:

Beth A. Zewe  
Edinboro University in Erie – The Porreco Center  
2951 West 38<sup>th</sup> Street  
Erie, PA 16506-4403  
(814) 836-1955 or Fax (814) 833-2085  
[zewe@edinboro.edu](mailto:zewe@edinboro.edu)

## ASSOCIATE DEGREE PROGRAMS AT EDINBORO UNIVERSITY IN ERIE – THE PORRECO CENTER

### BUILDING A PROSPEROUS FUTURE THROUGH ACADEMIC EXCELLENCE AND CIVILITY



Edinboro University of Pennsylvania recently introduced a new theme – one that will lead us to the 2006-07 academic year when we will celebrate the University's 150th anniversary or Sesquicentennial. This theme, "Building a prosperous future through academic excellence and civility," builds

upon our commitment to academic excellence and civility while introducing the ideal of prosperity. We believe that excellence in academics and civility will lead to prosperity, not only for members of the Edinboro Family, but also for the region, state, nation and the world we serve.

I am pleased to present this brochure to you and to share information about the degree programs we are offering at Edinboro University in Erie – The Porreco Center. By offering classes at our historic and beautiful facility in Erie, we are reaching out to those of you who live in Erie and prefer to stay at home while taking classes...those of you who realize that an Edinboro degree can open the doors to a prosperous and productive future, at a fraction of the cost of many other colleges and universities...those of you who, unfortunately, find yourselves unemployed and looking for a new career direction...and even those of you who are returning from military service.

As you'll see on the following pages, a degree from Edinboro University can take you almost anywhere you want to go. It can, indeed, lead to a "prosperous future through academic excellence and civility."

Dr. Frank G. Pogue  
President, Edinboro University of Pennsylvania  
Edinboro University in Erie The Porreco Center

### YOU CAN EARN A DEGREE...

- **Associate of Arts in Criminal Justice** – will prepare you for a variety of employment opportunities with the police, the courts, and correctional programs.
- **Associate of Arts in Human Services** – will prepare you for employment in a wide range of mental health and/or human services fields.
- **Associate of Science in Business Administration** – will prepare you for an entry-level position in business, accounting, finance or marketing.
- **Associate of Arts in Liberal Studies** – will enhance your basic skills while giving you the foundation you need for a four-year degree.

### OR COMPLETE A DEGREE...

You may be able to complete a Bachelor of Arts degree in Specialized Studies at Edinboro University in Erie if you have 90 credits from another institution of higher education. Simply contact an academic advisor by calling 814-732-2218 and say "I'd like to complete my degree at Porreco."

#### EDINBORO UNIVERSITY OF PENNSYLVANIA

##### ADMISSIONS OFFICE

Biggers House

Edinboro University of Pennsylvania  
Edinboro, PA 16444

Phone: 1-888-8GO-BORO (888-846-2676)

or 814-732-2761

Fax: 814-732-2420

E-mail: eup\_admissions@edinboro.edu

Web: www.edinboro.edu

*One of the 14 universities in Pennsylvania's State System of Higher Education, Edinboro University is committed to affirmative action for all persons in its educational programs, activities, and employment practices.*

## ASSOCIATE OF ARTS DEGREE CRIMINAL JUSTICE

### OVERVIEW

The field of criminal justice encompasses all matters relating to crime. It is concerned with law, criminology, police, courts, corrections, crime control policy and planning. Moreover, it is a rapidly changing field. Modern criminal behavior such as computer theft and embezzlement, terrorism, racketeering and sophisticated political corruption require new technologies and skills for crime control. There is a need for broadly educated personnel with a deep understanding of the criminal justice system and its political, social and economic environments. There is equally a need for modern police skills, from accounting to computer skills and counseling.

A sound degree program in criminal justice must be flexible to prepare undergraduates for a rapidly changing – and exciting – set of occupations. To meet this need, Edinboro University offers a comprehensive program which provides an overview of the criminal justice system and development of essential skills: the Associate of Arts in Criminal Justice.

### CAREER OPPORTUNITIES

The two-year associate degree program is designed primarily to provide persons currently employed in criminal justice agencies an opportunity to enrich their backgrounds in criminal justice studies and at the same time earn a college degree in the field.

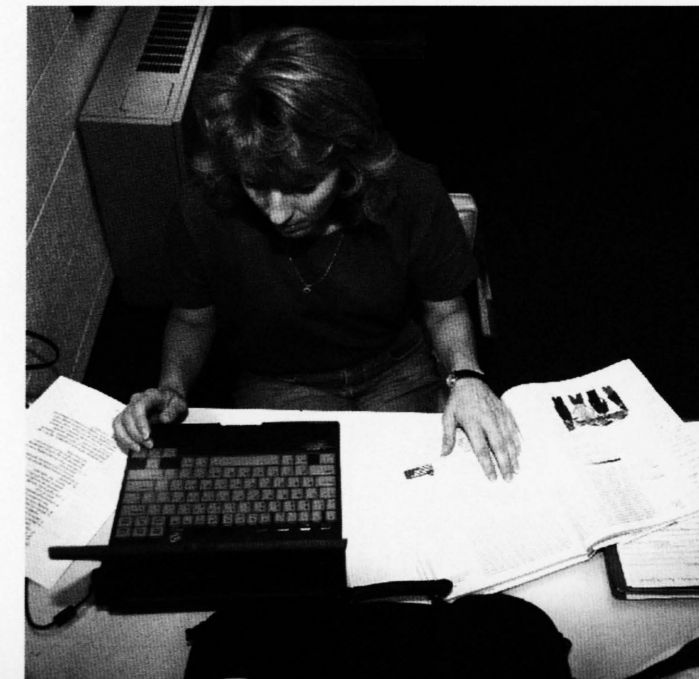
Edinboro's criminal justice program seeks to provide students with a broad understanding of the entire criminal justice system and human behavior rather than a narrow specialization. A wide range of employment opportunities exists with the police, the courts, and correctional programs. The background provided by this degree program may also be valuable for those who decide to seek a four-year bachelor's degree in criminal justice, social work, sociology or political science.

### PROGRAM OF STUDY

- I. GENERAL EDUCATION REQUIREMENTS **30 sem. hrs.**
  - College Writing Skills (3)
  - One approved course from each Core category (21)
  - One approved course from two different Distribution categories (6)
- II. CRIMINAL JUSTICE REQUIREMENTS **30 sem. hrs.**
  - A The Criminal Justice System **18 sem. hrs.**
    - Introduction to Criminal Justice (3)
    - Introduction to Policing (3)
    - Introduction to Corrections (3)

- American Government (3)
  - Prosecution and the Courts (3)
  - Principles of Sociology (3)
- To be selected from at least two categories below **12 sem. hrs.**
- B. Legal Aspects of Crime
    - Pennsylvania Criminal Code (3)
    - Criminal Procedure and Evidence (3)
  - C. Societal Influences on Crime and Delinquency
    - American Urban Development (3)
    - U.S. Police History (3)
    - American State and Local Government (3)
    - Organized Crime and Corruption (3)
    - Drugs and Human Behavior (3)
    - Juvenile Delinquency (3)
  - D. Techniques of Dealing with Crime
    - Criminal Investigation (3)
    - Criminalistics (3)
    - Probation, Parole and Community Corrections (3)
    - Public Administration (3)
  - E. Electives
    - Juvenile Justice (3)
  - F. Field Experience
    - Internship in Criminal Justice (3)
- III. ELECTIVES (Open) **6 sem. hrs.**
- TOTAL 66 sem. hrs.**

**For More Information, Contact:**  
Department of Political Science & Criminal Justice  
Edinboro University of Pennsylvania  
Edinboro, PA 16444  
Phone: 814-732-2409  
<http://webs.edinboro.edu/dept/polscience.html>



## ASSOCIATE OF ARTS DEGREE HUMAN SERVICES

### OVERVIEW

The basic premise of this program is that there is a common core of attitudes, skills and knowledge that apply to a variety of settings in the human services. Individuals equipped with these competencies can make effective contributions to agencies involved in mental health, education, welfare, corrections and other areas.

### CAREER OPPORTUNITIES

Many health and human services agencies are seeking individuals who have less than a baccalaureate degree, but are sophisticated enough to be effective workers.

This program is concerned with the preparation of individuals as mental health workers, psychiatric aides, social service workers, workers for developmentally disabled, and workers with the elderly. The availability of trained paraprofessionals in these areas could make such services available to the public more efficiently and effectively.

The goal of the program is to educate, in two years, a generalist worker who could move into a wide range of mental health and/or human services fields.

Human services paraprofessionals held several thousand government jobs during the 1990s. Government agencies employ a significant portion of the paraprofessionals to deal with such issues as poverty, crime, public assistance, population policy, social rehabilitation, community development, mental health, racial and ethnic studies, and environmental impact studies.

### PROGRAM OF STUDY

- I. GENERAL EDUCATION REQUIREMENTS **30 sem. hrs.**  
College Writing Skills (3)  
One approved course from each Core category (21)  
One approved course from two different Distribution categories (6)
- II. HUMAN SERVICE AREA REQUIREMENTS **24 sem. hrs.**
- A. Nature and Need of Service **9 sem. hrs.**  
To be selected from the following:  
Principles of Sociology (3)  
Contemporary Social Problems (3)  
Sociology of the Life Cycle (3)  
Introduction to Social Work (3)
- B. Behaviors, Treatments and Strategies **9 sem. hrs.**  
To be selected from the following:  
Society and the Individual (3)  
Work and Society (3)

- Race & Ethnic Relations (3)  
Human Diversity (3)  
Introduction to Social Welfare Policy (3)
- C. Electives in Field **6 sem. hrs.**  
To be selected from the following:  
Juvenile Delinquency (3)  
Sociology of Marriage and Family (3)  
Medical Social Work (3)  
Child Welfare (3)  
Aging and Human Services (3)

III. FREE ELECTIVES **6 sem. hrs.**

**TOTAL 60 sem. hrs.**

**For More Information, Contact:**  
Department of Sociology  
Edinboro University of Pennsylvania  
Edinboro, PA 16444  
Phone: 814-732-1593  
Fax: 814-732-1632  
<http://webs.edinboro.edu/dept/sociology.html>

## ASSOCIATE OF SCIENCE DEGREE BUSINESS ADMINISTRATION

### OVERVIEW

The Associate of Science degree in Business Administration prepares students for a variety of professional careers. This degree program is especially designed to provide students with a business degree for entry-level positions in business, for job promotion, or as a bridge toward completion of a bachelor's degree in business administration. Students complete a foundation of business courses that provide thorough exposure to each of the business functions, to economics, to business law, and to the technology used in business.

Students are also required to complete an elective course in business that provides additional expertise in a selected business area. This elective is chosen from courses in advertising and promotion, cost accounting, human resource management, and money and banking.

All of the courses required in the associate degree program also apply to the bachelor's degree in business administration.

### CAREER OPPORTUNITIES

The Associate of Science in Business Administration program prepares the student to find employment in various positions in domestic or international businesses including

accounting, advertising, finance, financial services, logistics, management, marketing and production.

Business positions are available for graduates in commercial firms, not-for-profit organizations, government agencies and international businesses. Graduates can also choose to be self-employed and are prepared for further study in business administration, accounting, finance, financial services, economics or marketing.

### PROGRAM OF STUDY

- I. GENERAL EDUCATION REQUIREMENTS **24 sem. hrs.**
- II. BUSINESS FOUNDATION REQUIREMENTS **27 sem. hrs.**  
Principles of Accounting I (3)  
Principles of Accounting II (3)  
Information Resources Management\* (3)  
Legal and Regulatory Environment of Business (3)  
Principles of Economics: Macro (3)  
Principles of Economics: Micro (3)  
Business Finance I (3)  
Principles of Management (3)  
Principles of Marketing (3)

\* Students who cannot demonstrate competence in word processing and spreadsheet software must take Essentials of Computing I as a General Education Core 7 course or as an elective.

- III. BUSINESS ELECTIVE **3 sem. hrs.**  
One of the following courses:  
Cost Accounting  
Money and Banking  
Human Resource Management  
Advertising and Promotion

- IV. ELECTIVES **6 sem. hrs.**  
College Algebra must be taken as an elective

**TOTAL 60 sem. hrs.**

**For More Information, Contact:**  
Department of Business Administration and Economics  
Edinboro University of Pennsylvania  
Edinboro, PA 16444  
Phone: 814-732-2407  
Fax: 814-732-1610  
<http://webs.edinboro.edu/dept/business.html>

## ASSOCIATE OF ARTS DEGREE LIBERAL STUDIES

### OVERVIEW

The Associate of Arts in Liberal Studies is a flexible two-year degree program designed to meet the needs of a variety of students:

- students desiring a two-year degree that will enable them to transfer to a four-year institution;
- unemployed workers wanting to develop marketable job skills; or
- employed persons seeking retraining or upgrading of knowledge.

Up to 15 hours of credit may be awarded for previously completed courses at vocational or technical institutes, and students may be eligible to have their tuition covered by the national vocational training act.

### PROGRAM OF STUDY

- I. GENERAL EDUCATION REQUIREMENTS **30 sem. hrs.**  
College Writing Skills (3)  
One approved course from each Core category (21)  
One approved course from two different Distribution categories (6)
- II. HUMANITIES TRACK **15-24 sem. hrs.**  
At least one advanced course from four of seven advanced humanities disciplines: Art, English and Theatre Arts, Foreign Languages, History, Music, Philosophy, or Speech Communications
- III. ELECTIVES **6-15 sem. hrs.**  
To be chosen in close consultation with the program advisor.

**TOTAL 60 sem. hrs.**

**For More Information, Contact:**  
Department of Philosophy  
Edinboro University of Pennsylvania  
Edinboro, PA 16444  
Phone: 814-732-2490  
Fax: 814-732-2865  
<http://webs.edinboro.edu/dept/philosophy.html>

## GRADUATE COURSEWORK IN EDUCATIONAL LEADERSHIP PROGRAMS

The Department of Professional Studies offers graduate coursework at Edinboro University in Erie – The Porreco Center for the following programs in Educational Leadership:

- Master's of Education in Educational Leadership
- Post Master's Principal K-12 Certification
- Post Master's Supervisor of Special Education Certification
- Post Master's Superintendent Letter of Eligibility

Courses for the programs listed above are also available through web-based instruction via the Internet. Graduate Programs in Educational Leadership are designed to be flexible and meet the needs of students who want to pursue advanced degrees or certifications while having a fulltime career. Please contact Dr. James Bolton ([jbolton@edinboro.edu](mailto:jbolton@edinboro.edu), 814-732-1734) or Dr. Andrew Pushchak ([apushchak@edinboro.edu](mailto:apushchak@edinboro.edu), 814-732-1538) for course offerings and further program information.

## ACCOUNTING SATELLITE COURSES – PENNSYLVANIA SOCIETY OF PUBLIC ACCOUNTS (8 CPE HOURS)

These satellite classes are presented by the Accounting Continuing Education Professional Network (ACPEN) and are held at Edinboro University in Erie – The Porreco Center. Please register directly with the Pennsylvania Society of Public Accountants by emailing [info@pspa-state.org](mailto:info@pspa-state.org) or by calling 1-800-270-3352. Non-members are \$155 for these courses; members are \$110.

### ACCOUNTING & AUDITING UPDATE

ACPENs 2005 Accounting and Auditing Update will cover the latest accounting, auditing and regulatory standards. It will also explore the new world for corporate accounting and auditing professionals. This year's Accounting and Auditing Update program will include coverage of the most recent issues being addressed by standard setting committees in the areas of accounting and auditing. Final pronouncements along with those issues soon to be a part of the professional literature will be featured, with insightful analysis by a panel made up of expert practitioners with experience in development of new standards. The important changes in the regulatory environment for accountants and auditors in the corporate arena continue. Learn the latest from regulatory and enforcement officials about the new regulatory and oversight structure.

Wednesday, September 21, 10:00 am-6:00 pm (1 class)  
Edinboro University in Erie – The Porreco Center  
\$155 Please register directly with PSPA.

### UNDERSTANDING & RESPONDING TO BUSINESS FRAUD: PRACTICAL SKILLS FOR CONTROLLERS & AUDITORS (CO-SPONSORED WITH THE INSTITUTE OF MANAGEMENT ACCOUNTANTS)

How does fraud affect your organization? Whether you are a nonprofit organization, business owner, controller, CFO, manager, financial statement preparer or auditor, fraud is serious business and its effects can be devastating. This fast moving seminar will provide a comprehensive look at fraud from both the technical, legal and operational perspectives. Particular attention will be directed to "best practices" in implementing SAS 99 and ways management can limit opportunity to commit fraud by establishing and monitoring appropriate controls. In addition, the program will address techniques for conducting inquiries or management and others and common types of fraud. Learn and master, from speaker demonstrations of new key skills, such as audit team brainstorming sessions and interview techniques, to carry out your responsibility to make reasonable efforts to discover fraud. In addition, learn to identify and prevent common types of fraud and the steps every accountant and financial manager can and should take to protect assets and financial statements from fraud.

Wednesday, October 19, 10:00 am-6:00 pm (1 class)  
Edinboro University in Erie – The Porreco Center  
\$155 Please register directly with PSPA.

### EFFECTIVE HANDLING OF TAX AUDITS & APPEALS

This program is designed for practitioners, both the beginner and the experienced. The focus is on the methods and procedures for representing your clients in audit, collection and appeals cases. The focus will be not only your client's rights and your use of correct procedures, but also on the practical and "what works" at each level. Special attention is given to trends and what you can expect for clients in the future. A segment will also address the IRS and Tax Preparer and the new rules. The panel will focus on the practical, with examples and strategies on how to effectively deal with the IRS in a number of different areas.

Wednesday, November 16, 10:00 am-6:00 pm (1 class)  
Edinboro University in Erie – The Porreco Center  
\$155 Please register directly with PSPA.

### ANNUAL TAX UPDATE

The 2001-2004 Tax Acts made important changes to the tax landscape that are just becoming clear. Several provisions of these tax law changes have expiration and phase-out dates that Congress and the President want to make permanent. In addition, controversial Social Security Reforms and Tax Code simplification are also on the state agenda. Status reports complete with explanations will be discussed as appropriate. As always, the IRS and the courts are continuing to interpret the law for practitioners. The Expert ACPEN panel will provide you with the last-best preparation for your tax practice. This is a course we can't tell you exactly what will be discussed – and you wouldn't have it any other way! Our experts will focus on important tax developments that will be in place by December 7, 2005. We can't tell you now what the changes will be but can guarantee the best information anywhere on current tax issues...current to the day of the broadcast! Explore in detail latest statutory, regulatory and judicial developments impacting tax issues. Get the latest details and all the developments in this up-to-the-minute tax program that you won't want to miss.

Wednesday, December 7, 10:00 am-6:00 pm (1 class)  
Edinboro University in Erie – The Porreco Center  
\$155 Please register directly with PSPA.

## BUILDING INSPECTION – INTERNATIONAL CODE COUNCIL (ICC) TRAINING



International Code Council (ICC), formerly Building Officials Code Administrators International (BOCA), sets guidelines and provides training to "Code Enforcement Officials" (CEOs) of all Pennsylvania municipalities, counties, townships, and cities.

### Need a new career?

### Become a Building Inspector!

If you are tired of worrying about company downsizing and lay-offs, or you need to find something else to do, you should consider a career as a building inspector. With the new Pennsylvania Uniform Construction Code implemented in July of 2004, a whole new career field has been created.

#### Pennsylvania's Only Proven Comprehensive Building Inspector Training Program.

Now available at Edinboro University in Erie – The Porreco Center. All classes are taught by International Code Council instructors using materials/books published by the International Code Council. Classes prepare students to take the Residential Building Inspector, Commercial Building Inspector and Commercial Building Plans Examiner certification tests.

## APPROVED FOR OVR FUNDING

No. of Days	Residential Inspection Series (IRC2003)	Dates
1	IRC 2003 - Overview and Code Development Process	Sept 12, 2005 Jan 9, 2006
4	Performing IRC 2003 Building Inspections	Sept 13-16, 2005 Jan 10-13, 2006
3	Performing IRC 2003 Plumbing Inspections	Sept 20-22, 2005 Jan 17-19, 2006
3	Performing IRC 2003 Electrical Inspections	Sept 27-29, 2005 Jan 24-26, 2006
4	Performing IRC 2003 Mechanical Inspections	Oct 4-7, 2005 Jan 31, Feb 1-3, 2006
2	2003 IECC Residential Provisions	Oct 12-13, 2005 Feb 7-8, 2006
3	Performing IRC 2003 Plan Reviews	Oct 18-20, 2005 Feb 14-16, 2006
Commercial Building Inspection Series (IBC 2003)		
1	Overview of the 2003 IBC and Administration	Nov 8, 2005 Mar 7, 2006
1	Occupancy (Chapter 3)	Nov 9, 2005 Mar 8, 2006
1	Construction Type, Height & Area (Chapters 5 & 6)	Nov 10, 2005 Mar 9, 2006
1	Fire Resistance & Fire Protection (Chapters 7 & 8)	Nov 15, 2005 Mar 14, 2006
1	Hazardous Materials	Nov 16, 2005 Mar 15, 2006
1	Means of Egress (Chapter 10)	Nov 21, 2005 Mar 22, 2006
1	Accessibility (Chapter 11)	Nov 22, 2005 Mar 23, 2006
1	Performing Structural Plan Reviews	Nov 28, 2005 Mar 28, 2006
1	Structural Concepts (Chapters 16, 17 & 22)	Nov 29, 2005 Mar 29, 2006
1	Concrete & Masonry (Chapters 19 & 21)	Dec 7, 2005 Apr 4, 2006
1	Footings & Foundations (Chapter 18)	Dec 8, 2005 Apr 5, 2006
1	Wood Framing (Chapter 23)	Dec 9, 2005 Apr 6, 2006
1	Performing Non-Structural Plan Reviews	Dec 13, 2005 Apr 11, 2006
1	Day Care & Assisted Living, A Design Option	Dec 14, 2005 Apr 12, 2006
1	Overview of the International Fire Code	Dec 19, 2005 Apr 19, 2006
1	Fire Sprinkler Plan Review	Dec 20, 2005 Apr 20, 2006

Classes can be taken individually or sign up for the entire series.

Prices do not include costs for certification testing.

Call today to register, 814-836-1955.

Edinboro University in Erie – The Porreco Center

### SERIES # 1 RESIDENTIAL CODE INSPECTION SERIES (IRC2003)

Dates: Sept. 12, 13, 14, 15, 16, 20, 21, 22, 27, 28, 29, Oct. 4, 5, 6, 7, 12, 13, 18, 19, 20

Time: 8:00 am-4:00 pm

Cost: \$2,880 for entire series, plus texts (approx. \$600)

### SERIES #2 - RESIDENTIAL CODE INSPECTION SERIES (IRC2003)

Dates: Jan. 9, 10, 11, 12, 13, 17, 18, 19, 24, 25, 26, 31, Feb. 7, 8, 14, 15, 16

Time: 8:00 am-4:00 pm

Cost: \$2,880 for entire series, plus texts (approx. \$600)

### SERIES #1 - COMMERCIAL BUILDING INSPECTION SERIES (IBC2003)

Dates: Nov. 8, 9, 10, 15, 16, 21, 22, 28, 29, Dec. 7, 8, 9, 13, 14, 19, 20

Time: 8:00 am-4:00 pm

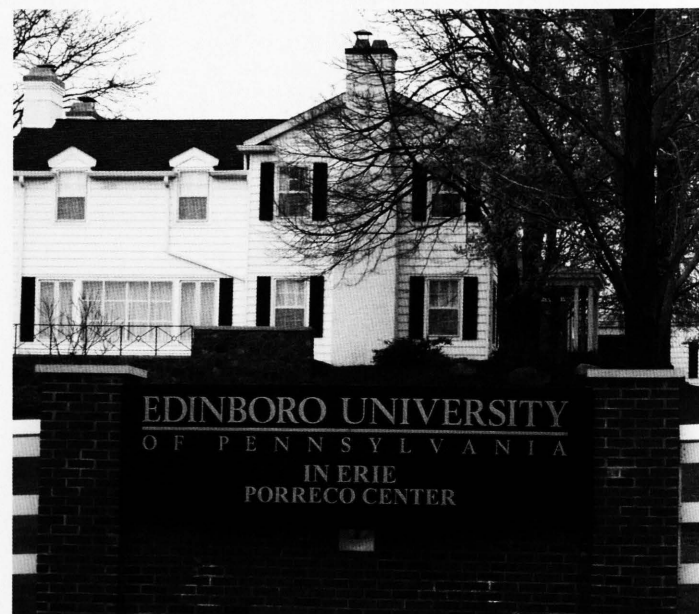
Cost: \$2,300, plus texts (approx. \$700)

### SERIES #2 - COMMERCIAL BUILDING INSPECTION SERIES (IBC2003)

Dates: Mar. 7, 8, 9, 14, 15, 22, 23, 28, 29, Apr. 4, 5, 6, 11, 12, 19, 20

Time: 8:00 am-4:00 pm

Cost: \$2,300, plus texts (approx. \$700)



## CHILD CARE TRAINING PROGRAMS

The Pennsylvania Department of Public Welfare and the PA Pathways Training underwrite training costs for child care training programs at Edinboro University. Each session can be applied toward the Department of Public Welfare's annual six-hour training requirement. Edinboro University is offering 8 sessions this fall.

**Registration Cost: \$5 per 3-hour course. The registration fee is non-refundable.** Applicants should assume acceptance of registration unless otherwise notified. If a class is filled or canceled, we will notify you. Registration cannot be taken over the phone. Registration must be made at least one week in advance.

Description of Level Designations:

Level 1: Designed for entry-level professionals

Level 2: Designed for those who possess the basic knowledge and skills of DAP

Level 3: Designed for those who desire to work toward group supervisor or director positions

### LET THERE BE MUSIC

As any director knows, budgets are limited and funds for purchasing musical instruments are small. This workshop will enable you to make your own musical instruments from items around the center. This is a make-it/take-it workshop in which a demonstration to create wonderful rhythm band instruments and teachers centers around the room to create these instruments.

Date: Saturday, September 10, 2005

Location: Edinboro University in Erie – The Porreco Center Room 8

Time: 9 am-12 noon

Trainer: Linda Caldwell

Audience: Mixed

Level: K2 19:C1 Level 1

### LET'S EAT RIGHT, PART I

This workshop will focus on the physical and emotional dangers of childhood obesity. Participants will learn about the benefits of establishing healthy eating habits from infancy through childhood. A variety of healthy eating tips, recipes and hands-on activities will be demonstrated.

Date: Tuesday, September 20, 2005

Location: Edinboro University in Erie – The Porreco Center Room 2

Time: 5:30-8:30 pm

Trainer: Jennifer McNellie

Audience: Mixed

Level: K7 79:C2 Level 2

### BASICS OF OBSERVATION

This workshop meets the STARS requirement and provides a brief overview of observation and assessment. It provides participants the chance to practice different observation methods.

Date: Saturday, September 17, 2005

Location: Edinboro University in Erie – The Porreco Center Room 8

Time: 9 am-12 noon

Trainer: Julie Huggler

Audience: Mixed

Level: K4 41:C1 Level 1

### MAKE IT/TAKE IT CHRISTMAS SHOPPE

Wouldn't it be great to have a Christmas Shoppe in your center where children could buy wonderful homemade gifts for their parents at Christmas, which would also make a small profit for the center? Now you can learn EZ crafts to make that are virtually cost-free and easy to make by children. A presentation of how to set up and organized the shoppe will be given.

Date: Saturday, October 8, 2005

Location: Edinboro University in Erie – The Porreco Center Room 8

Time: 9 am-12 noon

Trainer: Linda Caldwell

Audience: Home-based Providers

Level: K2 19: C1 Level 1

## LET'S GET MOVING, PART II

This is the second of a two-part workshop concerning students' health. This workshop will further investigate the physical and emotional dangers of childhood obesity and related diseases. Participants will learn about the benefits of physical activity for each developmental stage and the use of children's literature, music, video and educational games that encourage movement will be demonstrated.

Date: Tuesday, October 18, 2005

Location: Edinboro University in Erie – The Porreco Center Room 2

Time: 5:30-8:30 pm

Trainer: Jennifer McNellie

Audience: Mixed

Level: K7 84: C2 Level 2

## MATERIALS ON A DIME

This hands-on workshop is designed to introduce teachers to the construction of theme kits and other materials for their classroom. Perfect for centers with low budgets. Teachers will make materials to bring back to their centers and share.

Date: Saturday, October 22, 2005

Location: Edinboro University in Erie – The Porreco Center Room 8

Time: 9 am-12 noon

Trainer: Julie Huggler

Audience: Mixed

Level: K2 11:C2 Level 2

## CONNECTING EARLY MATHEMATICAL CONCEPTS WITH ACHIEVEMENT ANCHORS, PART I

This is the first part of a two-part workshop, which introduced the participants to the modified Learning Standards, Head Start Standards and the Achievement Anchors in mathematical education. This hands-on workshop will provide participants the opportunity to align standards with meaningful active student engagement.

Date: Monday, November 7, 2005

Location: Edinboro University in Erie – The Porreco Center Room 2

Time: 5:30-8:30 pm

Trainer: Virginia McGinnis

Audience: Mixed

Level: K2 17: C1 Level 1

## CONNECTING EARLY MATHEMATICAL CONCEPTS WITH ACHIEVEMENT ANCHORS, PART II

This is the second part of a two-part workshop, which introduces the participants to the modified Early Learning Standards, Head Start Standards and the Achievement Anchors mathematical education. This hands-on workshop will provide participants the opportunity to align standards with meaningful active student engagement. Many manipulatives will be used to facilitate concept development and student problem solving.

Date: Monday, December 5, 2005

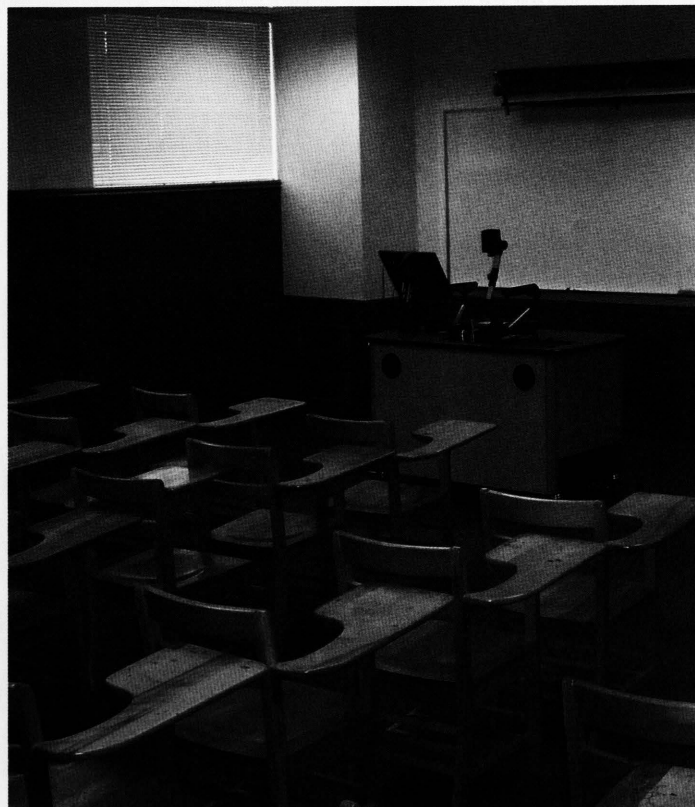
Location: Edinboro University in Erie – The Porreco Center Room 2

Time: 5:30-8:30 pm

Trainer: Virginia McGinnis

Audience: Mixed

Level: K2 17: C2 Level



## COMPUTER SKILLS COURSES

### BASIC COMPUTER HARDWARE

This class will cover troubleshooting, maintenance, and upgrade networking for basic computer hardware. Students will learn how to configure and setup a PC, Update and upgrade BIOS systems, install Local and Network printers, setup different monitors, add or remove hardware components, troubleshoot registry, and most of all how to prevent viruses.

Saturday, September 24 (1 class) 9:00 am-Noon  
Edinboro University in Erie – The Porreco Center

Instructor: Sonny Nouri

\$75

### CUSTOMIZED COMPUTER TRAINING

Let Edinboro University provide a customized computer training session for your company in Microsoft Word, Excel, Access or PowerPoint. Let us teach your employees how to navigate the Internet, design databases or get them started in basic computer orientation. Please call for more information.

### INTRODUCTION TO ELECTRONIC SPREADSHEETS (EXCEL)

This workshop provides an introduction to Microsoft Excel spreadsheets. You will learn the basics of spreadsheets and gain hands-on experience using Microsoft Excel. You will learn how to create, edit, and save a basic spreadsheet. Prerequisite: Basic keyboarding and mouse skills. Participants may wish to bring a diskette on which to save their work.

Please choose one session:

Session 1 – Monday, October 10 (1 class) 9:00 am-Noon

Session 2 – Saturday, October 22 (1 class) 9:00 am-Noon

Edinboro University in Erie – The Porreco Center

Instructor: Elizabeth Richardson

\$75

### INTRODUCTION TO MICROSOFT WORD

Learn word processing basics with Microsoft Word! Skills to be covered include creating, editing, and saving a file; adjusting margins and tabs; using different views; and using spelling and grammar checks. Prerequisite: basic keyboarding and mouse skills. Participants may wish to bring a diskette on which to save their work. Please choose one session:

Session 1 – Saturday, November 12 (1 class) 9:00 am-Noon

Session 2 – Monday, November 14 (1 class) 9:00 am-Noon

Edinboro University in Erie – The Porreco Center

Instructor: Elizabeth Richardson

\$75

### INTRODUCTION TO WINDOWS 95/98/2000

This class will cover how Windows works with your software applications and share files, how to navigate the Windows desktop; how to setup display properties; how to use and setup the Taskbar and file system; how to partition and setup multiple Operating system windows; how to create and remove folder and file properly; how to move/copy or delete files and folders properly; and how to customize user and personal desktops.

Saturday, October 1 (1) class, 9:00 am-Noon

Edinboro University in Erie – The Porreco Center

Instructor: Sonny Nouri

\$75

### INTRODUCTION TO WEB DESIGN 1

Learn to design, create, edit, insert images, save and publish your own Webs. You will learn how to create and implement a page to support graphic images (such as Logos, photographs, and animation), formatted text, create tables and columns and Hyperlink text or images. Also, learn about browser, Internet, Intranet, and URL. Prerequisite: Introduction to Windows 95/98/2000.

Saturdays, October 8 and 15 (2 classes) 9:00 am-Noon

Edinboro University in Erie – The Porreco Center

Instructor: Sonny Nouri

\$150



## FINANCIAL PLANNING & INVESTING COURSES

### FINANCIAL WORKSHOP FOR INDIVIDUAL INVESTORS

This six-week educational workshop will teach individuals how to increase investment income while reducing taxes on those investments. We will learn about the stock market as well as other forms of ownership and loaner ship investments. The class will also cover children's education and retirement. This class is for anyone interested in learning how to maximize their investments and minimize their taxes.

Wednesdays, October 5-November 9 (6 classes), 7:00-10:00 pm  
Edinboro University in Erie – The Porreco Center  
Instructor: Kirk Hamza, Investment Representative, EdwardJones  
\$75, includes financial notebook and textbook

### IS THE MARKET TAKING ADVANTAGE OF YOUR NATURAL REACTIONS

Learning from the mistakes that other investors have made by following their natural reactions will help you see "Beyond Investment Illusions." At this seminar, we'll discuss ways to be less focused on short-term movements of the market and more consistent in your investment strategy. We will discuss:

- Market Volatility
- Risk and Return Strategies
- Assess Allocation

When it comes to your financial future, perception is everything.

Edinboro University in Erie – The Porreco Center  
Wednesday, October 12 (1 class), 7:00-8:00 pm  
Instructor: Colleen Burbules, Financial Advisor, Wachovia Securities  
\$15

### MANAGING YOUR RETIREMENT INCOME

This three-hour workshop will focus on (1) Asset Allocation: What are the trade-offs, risk/return now v. future income; (2) Increasing current and future income: How do I increase my current income? How do I increase my future income? (3) Financial risk of retirement: Outliving your money, inflation, and estate taxes. (4) Taxation of Various Income Sources: Social Security, Pension Plan, 401(k), Traditional IRA, Roth IRA, Dividends from individually owned stock, interest from bonds, and annuities. (5) Cash Flow Management: How do I manage my cash flow? (6) Action Points: Properly allocate assets, increase income, control taxes, and manage cash flow. (7) Start saving today!

Wednesday, September 28 (1 class), 7:00-10:00 pm  
Edinboro University in Erie – The Porreco Center  
Instructor: Kirk Hamza, Investment Representative, EdwardJones  
\$45

### RETIREMENT PLANNING

This three-hour workshop will focus on your (1) retirement goals. The class will cover length of years in retirement, source of retirement income, and how much you will need to save. The workshop will also focus on (2) taxes. Topics covered include saving pre-tax; saving and tax-deferred saving (traditional IRA and Roth IRA); the instructor will review time-tested strategies, such as buying quality investments, including equities in your investment mix, and diversification. In addition, the class will address allocation of assets and will cover the investment pyramid, annual reviews, and how to protect your assets.

Wednesday, September 21 (1 class), 7:00-10:00 pm  
Edinboro University in Erie – The Porreco Center  
Instructor: Kirk Hamza, Investment Representative, EdwardJones  
\$45

### SIX STEPS TO A SECURE RETIREMENT

Join us for a seminar that can help you:

- Prioritize your dreams and goals
- Identify the most important challenges (and the most overlooked)
- Get a handle on where you are today in order to plan for tomorrow
- See if you're on track toward your goals
- Gain confidence that you'll enjoy a secure retirement

Attendees will receive our Six Steps to a Secure Retirement workbook with valuable information to help you gain the confidence for a secure retirement  
Edinboro University in Erie – The Porreco Center  
Thursday, September 15 (1 class), 7:00-8:00 pm  
Instructor: Colleen Burbules, Financial Advisor, Wachovia Securities  
\$15

### SMART COUPLES FINISH RICH™

You're cordially invited to a very important event in your relationship. Smart Couples Finish Rich™ is a revolutionary educational seminar designed to address the unique financial concerns of couples. You will learn how to protect yourself financially; how to really talk about money without fighting; how to take advantage of the new 2002 tax laws; and how to identify your values and make prudent financial decisions as a team. Learn the three biggest retirement account mistakes couples make and how the Latte Factor™ can potentially help you create significant wealth with minor lifestyle changes. Learn how to teach your kids about money and how to use the new 529 college savings plans to save for your children's college education.

Monday, October 24 (1 class), 7-8:30 pm  
Edinboro University in Erie – The Porreco Center  
Instructor: Ralph Linarelli, Jr., CFP, ChFC, Linarelli & Associates with Loesel-Schaaf Financial Advisors  
\$25

### SMART WOMEN FINISH RICH™

This seminar is based on the national bestseller book by David Bach. Smart Women Finish Rich™ is an educational seminar that provides you with seven steps to help you achieve financial security and fund your dreams. If you act upon these simple steps to improve the quality of your dreams, you can act upon these simple steps to improve the quality of your financial life, you will be well on your way to a fuller, richer life! You'll learn how to:

- Put Your Money Where Your Values Are
- Figure Out Where You Stand Financially
- Discover the Power of the Latte Factor™
- Build Financial "Baskets" for Your Retirement, Your Security and Your Dreams

Women have an 85% chance of facing their elder years single, widowed, divorced, or separated, and a majority of them are unaware of money management. Thanks to David Bach, now women from all walks of life can create a secure personal finance system. We are looking to attract women of all status and backgrounds and help them become knowledgeable in the opportunities there are to become financially stable for the future. This seminar is practical and basic with techniques that can be implemented immediately.

Tuesday, November 1 (1 class), 6-7:30 pm  
Edinboro University in Erie – The Porreco Center  
Instructor: Ralph Linarelli, Jr., CFP, ChFC, Linarelli & Associates with Loesel-Schaaf Financial Advisors  
\$25

### WOMEN & INVESTING

Earning money is only half the equation for achieving financial independence. Effectively putting your money to work for you is equally important. Though the size of your household income matters, how you manage the money you have – to meet short-term obligations as well as long-term goals – determines how you live today and in the future. That's why taking control of your finances is so important. Financial independence is achieved by taking the time to develop a strategy! This workshop will discuss:

- Developing an investing strategy
- Planning for retirement
- Caretaking responsibilities

Edinboro University in Erie – The Porreco Center  
Thursday, November 10 (1 class), 7:00-8:00 pm  
Instructor: Colleen Burbules, Financial Advisor, Wachovia Securities  
\$15



## MUSIC PROGRAMS

### COMMUNITY MUSIC SCHOOL

Founded as the Preparatory Division by the Music Department at Edinboro University in the 1970s, the Edinboro University Community Music School was reborn in 2000 with a major expansion. Its mission is to provide music lessons to students without regard to their ability to pay. With this in mind, the Community Music School expanded into Erie at the Boys and Girls Club of Erie, Inc. and at Edinboro University in Erie - The Porreco Center. Currently, we have approximately 200 students studying a full range of musical instruction including wind and brass instruments, Suzuki piano, Suzuki violin, piano, strings, guitar, percussion, Kindermusik, and the Erie Children's Choir.

The facilities at Edinboro University in Erie - The Porreco Center make an ideal setting for the Community Music School. Working closely with the administrative staff at the Porreco Center, offerings include Suzuki piano, violin, voice, piano, and flute lessons. The Porreco Center houses a grand piano for student use, pre- and post-lesson computers, electronic pianos, and teaching studios. Future plans may include a concert hall and dedicated teaching areas for chamber music and lessons.

The Community Music School offers scholarships to over 40% of its students. To fund these activities, a generous grant from the Boys and Girls Club of Erie, Inc. was received in year one. Since then, fundraising efforts have included student fees, private donations, and grants. Please contact the Community Music School to discuss donor opportunities. The Community Music School can be reached at (814) 732-1357 or via e-mail at [dburdick@edinboro.edu](mailto:dburdick@edinboro.edu). The Community Music School website can be found on the Music Department website at <http://www.edinboro.edu>. The staff of the Community Music School includes Dr. Daniel Burdick, Executive Director, and Professor LeAnne Wistrom, Administrative Director. In addition, the staff of the Porreco Center provides crucial assistance and support throughout the year.

### CONCERT BAND OF NORTHWEST PENNSYLVANIA FALL CONCERTS

Monday, September 12, 7:30 pm  
Hirt Auditorium  
*An Evening in Manhattan*

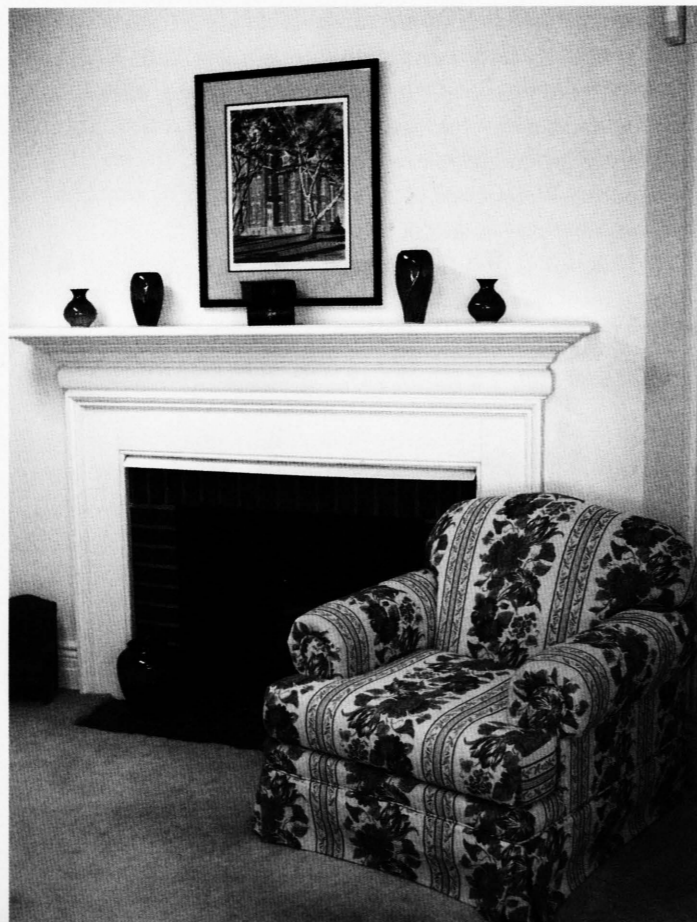
Sunday, November 6, 7:00 pm  
The Penn State Erie College  
A Fall Extravaganza

## SPECIAL PROGRAMS

### FALL NIGHTS – EDINBORO UNIVERSITY PLANETARIUM PROGRAM

Are you moonstruck over the moon? Have you ever pondered the mysteries of the moon? Why is it up during the day? Why does it change its shape and position from night to night? What is the Harvest Moon anyway? How about the stars and constellations...would you like to learn how to identify major constellations from your backyard? If you have answered yes to some or all of these questions, then this course is for you. When you are finished with this course, you will be able to identify several seasonal constellations, stars and deep space objects. You will also know where to look to find the planets and the changing moon.

Edinboro University Planetarium  
Thursdays, September 15-October 6, 4:00-6:00 pm  
(4 classes)  
Instructor: Dr. David Hurd, Director, Edinboro University Planetarium  
\$15



### 14<sup>TH</sup> ANNUAL EDINBORO HIGHLAND GAMES

Edinboro University of Pennsylvania is proud of its rich Scottish heritage. Mark your calendars for the 14<sup>th</sup> Annual Edinboro Highland Games on the campus of Edinboro University May 19, 20 and 21, 2006.

### INTERGENERATIONAL CENTER

Diebold Center for the Performing Arts (basement)  
Edinboro University campus  
Edinboro, PA  
(814) 732-2244

The Intergenerational Center at Edinboro University is a group of lifelong learners from the Edinboro area who meet for companionship and a variety of programs/projects, using the resources, knowledge and expertise of many people from the campus and the community. The Center is located in the basement of The Diebold Center for Performing Arts (located next to Reeder Hall on Meadville Street in Edinboro).

Coffee, conversation and card games are quiet times available for you at the Intergenerational Center on Tuesday, Wednesday, and Thursdays, 9:00 am to 3:30 p.m. Participate in RSVP projects, sewing projects, book reviews, lunch and fellowship, nurse screenings, bingo, lectures and educational classes.

#### Tuesdays

9:15 am "Thinking out of the Ordinary"  
Senior men's discussion group  
1:00 pm Penny Bingo with the Heckers Senior and Students

#### Wednesdays

1:00 pm "500 Clubs," Scrabble & other thought-provoking games & puzzles  
4<sup>th</sup> Wed. Noon Speaker & tureen

#### Thursdays

9:15-11:30 am Annual Emeritus Lecture Series open to the public & students  
1:00 pm Conversation, Coffee and Cards

Don't want to drive to the Center, call the LIFT at 456-2299. LIFT will pick you up at home; bring you to the Center, then back home. Other Center members use the LIFT daily. Try it; you'll like it. Parking: single event - secure a visitor's pass at the Police Department in Earley Hall. Come to the Center daily. See Dr. Stone for a semester pass.

Areas volunteers needed: We need your help to keep our Center activities growing. Any skills you can bring...painting, sewing, game instruction, arts and crafts or just your time for coffee and conversation. Visit the Center for more information.

**Schedule: The Center is open Tuesday through Thursday, from 9:00 am to 3:30 pm. Come join us!**

### PURPLE MARTIN CONSERVATION ASSOCIATION

The Purple Martin Conservation Association is an international, non-profit, tax-exempt organization dedicated to the conservation of the Purple Martin (*Progne subis*) species of bird through scientific research, state-of-the-art wildlife management techniques, and public education. It is supported by membership contributions and product sales. The PMCA is associated with Edinboro University of Pennsylvania through its Office of Extended Learning, which played a valuable role in the formation of the PMCA and continues to provide assistance and logistical support.

Purple Martins are condo-nesting members of the swallow family that spend their winters in Brazil and migrate back to North American breeding grounds in the spring, when the weather warms enough to provide flying insects for their food. The eastern race of Purple Martins is different from all other species of birds in that they no longer nest in the wild. Today, east of the Rocky Mountains, they are totally dependent on people to supply them with houses and gourds for nesting. Unfortunately, Purple Martins are not as common as they were a century ago. The PMCA is working to reverse this trend.

Today, the PMCA conducts research at its colony site on the eastern shore of Edinboro Lake, where as many as 150 pairs of martins nest each year. Over 6,000 members receive its quarterly publication, *The Purple Martin Update*. Additionally, the PMCA is in touch with over 100,000 Purple Martin enthusiasts throughout North America. By making accurate information on martins available to would-be landlords, designing better martin housing systems, and by conducting scientific research, the PMCA is working to increase the Purple Martins' population throughout its North American breeding range.

For more information about the Purple Martin Conservation Association, please contact:



The Purple Martin Conservation Association  
Edinboro University of Pennsylvania  
Edinboro, PA 16444  
814-734-4420  
fax: 814-734-5803  
[www.purplemartin.org](http://www.purplemartin.org)

## WORKFORCE AND ECONOMIC DEVELOPMENT NETWORK (WEDNET)

**Guaranteed Free Training** – Training Pennsylvania's worker for a growing economy available to your company if it meets a few simple guidelines:

- must be based in Pennsylvania or have a significant presence in the state
- offers the employees who will partake in the program at least 150% of the current minimum wage, excluding benefits
- is not a point-of-sale retail business, training vendor, government, education or nonprofit entity
- participates in the program no more than two years in a row and three of the past five years
- begins training within five months of the grant approval letter
- funds Available July 1

The Commonwealth of Pennsylvania has created the opportunity for certain employers to train employees through two programs offered by the Guaranteed Free Training (GFT) Program. Area manufacturers and companies supporting the manufacturing sector may apply. Point-of-sale business companies are excluded.

The Information Technology Training and Basic Skills Training programs are available to qualified in-state businesses and out-of-state companies relocating to the economic friendly business climate of Pennsylvania.

Qualified companies receive training provided through the Workforce and Economic Development Network of Pennsylvania, known as WEDnetPA. This alliance of 14 State System universities, Pennsylvania's 14 community colleges, the Pennsylvania College of Technology and the North Central Industrial Technical Education Center, Greater Altoona Career and Technology Center, Lancaster County Career and Technology Center, and the University of Pittsburgh at Bradford offers a diverse array of training employers need most.

The Department of Community and Economic Development (DCED) fund this program.

## BASIC SKILLS TRAINING

Includes the teaching of a variety of basic and entry-level skills to benefit employees and employers. Basic and entry-level skills are defined according to the type and scope of your business. Employees who participate must be frontline employees and first-level supervisors. Employers must be manufacturing and/or technology-based businesses including Biotech and Environmental-Tech companies. Some of the training elements offered through the program include:

- Communications and teamwork
- Applied mathematics and measurement
- Workplace health and safety
- Problem solving
- Quality assurance
- Business operations
- Computers
- Product and process control
- Workplace behavior skills
- Manufacturing fundamentals including some of the following:
  - Blueprint reading
  - Welding, soldering
  - Tooling, grinding

## INFORMATION TECHNOLOGY TRAINING

Includes the teaching of a variety of skills to benefit employees and employers. A simple set of qualifications determines which companies and employees are eligible to receive this benefit. Specific skills are defined according to the type and scope of your business. Employees who participate in the program must be technical workers or information technology professionals; frontline employees or first-level supervisors needing applied manufacturing technology training in a manufacturing company. Some of the training elements offered through the program include:

- Applied manufacturing technology
- E-business/commerce
- Technology support
- Database development
- Software engineering
- Computer programming
- Network administration
- Systems analysis
- Information security
- Management information systems
- Website design and development

Edinboro University is strongly committed to regional workforce training. Acting as a licensed education administrator (LEA) for area manufacturers and high-tech companies, Edinboro University has enabled the following firms to submit training applications for current year funding:

Accudyn Products, Inc.  
Accuspec Electronics Services II  
Advanced Cast Products, Inc.  
Affinia Brake Parts, Inc.  
American Tinning & Galvanizing Company  
Arrow Electric, Inc.  
Better Baked Foods, Inc.  
Builders Support & Supply, Inc.  
Channelock, Inc.  
Community Health Net (CHN)  
Environmental Coordination Services & Recycling  
Erie Aviation, Inc.  
Erie Ceramic Arts Company, LLC  
Erie Presbyterian Lodge  
Erisco Industries, Inc.  
Excaliber Machine Company  
Formtech Enterprises, Inc.  
Fostermation, Inc.  
Gohrs Printing Services, Inc.  
Great Lakes Manufacturing, Inc.  
Healthcare Venture Alliance  
Ideal Tool Company, Inc.  
Industrial Sales & Manufacturing, Inc.  
Kuhn Tool & Die Company  
Laser Tool, Inc.  
Leech Industries, Inc.  
Lincoln Foundry, Inc.  
Manchester Presbyterian Lodge  
Meadowbrook Dairy  
Merit Tool Company  
Millcreek Paramedic Service, Inc.  
Modern Industries, Inc.  
Molded Fiber Glass Tray Company-Linesville  
Oil City Presbyterian Home  
Omega Plastics, LLC  
Paragon Packaging Products, Inc.  
Pennlake Corporation dba R. Conrader Company  
Penn-Union Corporation  
Qualsystems, Inc.

Rolling Fields, Inc.  
S&S Packaging Products, Inc.  
Schaal Glass/Amerail Systems  
Select Specialty Hospital-Erie  
Snap-Tite Hose, Inc. - Penn Division  
Snap-Tite Hose, Inc. - Union City  
Snap-Tite, Inc. - Erie  
Snap-Tite, Inc. Fluid Components & Autoclave Engineers  
Snap-Tite, Inc. Quick Disconnect & Valve Division  
Snap-Tite, Inc. Solenoid Valve Division  
South Erie Production Company, Inc.  
Springhill/Forestview Healthcare Services  
Sterling Technologies, Inc.  
Suburban Tool & Die Company, Inc.  
Visiting Nurse Association of Erie County  
Warren Company, The  
X-Cell Tool & Mold, Inc.

This program year DCED will commit over **\$1.3 million** in training support to our region to enhance employee skills, improve and retain jobs, and make our companies globally competitive.

Find out if your company can benefit from the Basic Skills Training or Information Technology Training programs offered through WEDnetPA. Call Don Apel, WEDnet Administrators, at (814) 337-7791. **Funds available July 1<sup>st</sup>.**



## HOW TO REGISTER

1. By Mail: Send completed registration form with payment in full to:

Edinboro University in Erie - The Porreco Center  
Office of Extended Learning  
2951 West 38th Street  
Erie, PA 16506-4403

Payment may be in the form of:

- Check (made payable to Edinboro University of PA)
- Money Order
- Visa, MasterCard, Discover (include information to right)

2. By Phone: Call 814-836-1955 or 800-526-0121 Monday through Friday, 8 am to 4:30 pm
3. By Fax: Fax completed registration form to: 814-833-2085, 24 hours/day, 7 days/week
4. In Person: Stop by our office at 2951 West 38th Street, Erie, PA, Monday through Friday, 8 am to 4:30 pm

FOR MORE INFORMATION ABOUT THE PROGRAMS LISTED IN THE EXTENDED LEARNING PUBLICATION OR CERTIFICATE AND CONTRACT TRAINING NEEDS, CALL (814) 836-1955 OR 1(800) 526-0121.

Cut here and return with payment

Name		Social Security No.	
Address		Day Phone	
City	State	Zip	Evening Phone
Employer Name			
Employer Address			
COURSE TITLE			
(S)	LOCATION	TIME	DAY FEE
PAYMENT TYPE: IF PAYING BY VISA, MASTERCARD, OR DISCOVER:			
<input type="checkbox"/> Check			
<input type="checkbox"/> Money Order	Account #	Expiration Date	
<input type="checkbox"/> VISA			
<input type="checkbox"/> MasterCard			
<input type="checkbox"/> Discover	Signature		

## EDINBORO UNIVERSITY OF PENNSYLVANIA

Dr. Frank G. Pogue, *President*

### COUNCIL OF TRUSTEES

Harry K. Thomas, Esq., *Chair*  
Mr. Benedict J. Miceli, *Vice Chair*  
Mr. Harold C. Shields, *Secretary*  
Dr. Raymond L. Dombrowski  
The Honorable John R. Evans  
Mr. John E. Horan  
Mr. C. Richard Johnston  
Sr. Catherine M. Manning  
Mrs. Virginia L. McGarvey  
Mr. John A. Pulice

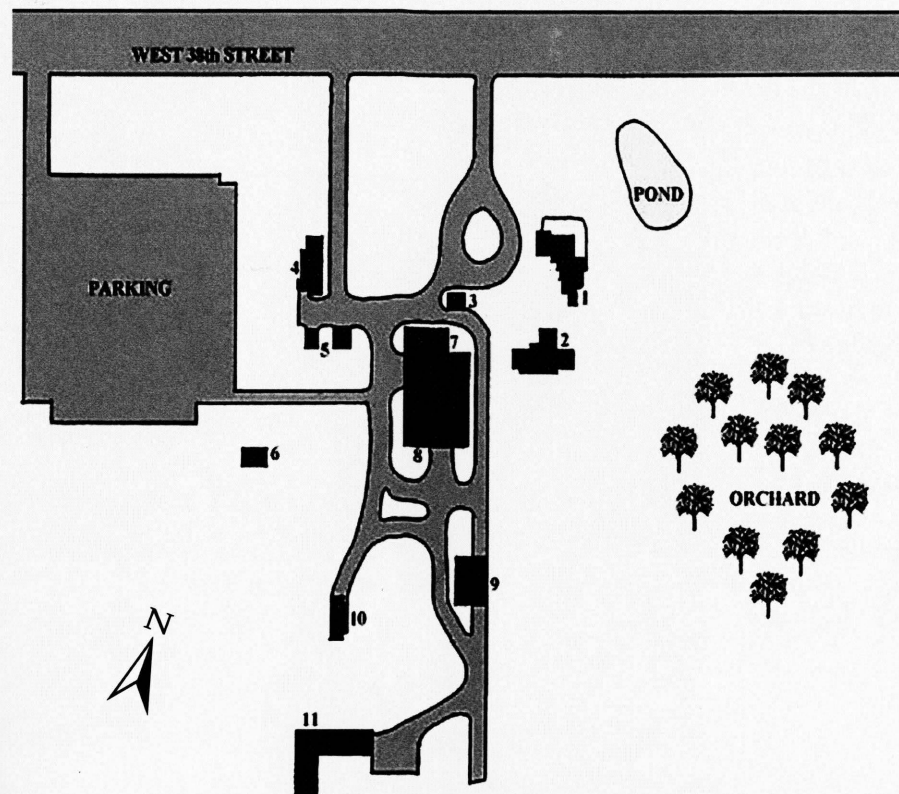
Dr. Judy G. Hample, *Chancellor (ex officio)*

*There is currently one vacancy.*

### PRESIDENT'S EXECUTIVE COUNCIL

Dr. Richard Arnold, *Associate to the President for Equity, Special Programs and Staff Development*  
Dr. R. Scott Baldwin, *Dean of Education*  
Dr. Pearl Bartelt, *Provost and Vice President for Academic Affairs*  
Dr. Mary Margaret Bevevino, *Dean of Graduate Studies and Research*  
Ms. Janet Dean, *University Ombudsperson and Associate Vice President for Human Resources and Faculty Relations*  
Dr. Donald Dilmore, *Associate Vice President for University Libraries*  
Dr. Jerry Kiel, *Vice President for Student Affairs and Student Success*  
Dr. Andrew Lawlor, *Associate Vice President for Technology and Communications*  
Dr. Michael Mogavero, *Vice President for Enrollment Services and University Planning*  
Mr. Brian Pitzer, *Director of Public Relations*  
Dr. Eric Randall, *Dean of Science, Management and Technology*  
Mr. Kahan Sablo, *Dean of Student Life*  
Mr. James Sheehan, *Vice President for Finance and Administration*  
Ms. Emily Sinsabaugh, *Executive to the President for University Communications and Administrative Initiatives*  
Dr. Terry Smith, *Dean of Liberal Arts*  
Mr. Bruce Whitehair, *Vice President for Development and Marketing*

## MAP OF THE PORRECO CENTER



1. Mary Porreco Hall (Conference and Seminar Center)
2. Garden House (Classrooms 1,2,3)
3. Spring House (Evening Administration Office)
4. Caretaker's House (Office of Extended Learning)
5. Storage
6. Studio
7. Classroom 4
8. Barn (Classrooms 5,6,7,8,9)
9. Carriage House (Storage)
10. Summer Cottage
11. Future Auditorium



EDINBORO UNIVERSITY OF PENNSYLVANIA  
THE PORRECO CENTER  
Office of Extended Learning  
2951 West 38th Street  
Erie, PA 16506-4403  
139000

NON-PROFIT ORG.  
U.S. POSTAGE  
PAID  
ERIE, PA  
PERMIT NO. 490

Mr. David Obringer  
LIBRARY  
Baron-Forness Library

*One of the 14 Universities in Pennsylvania's  
State System of Higher Education*

