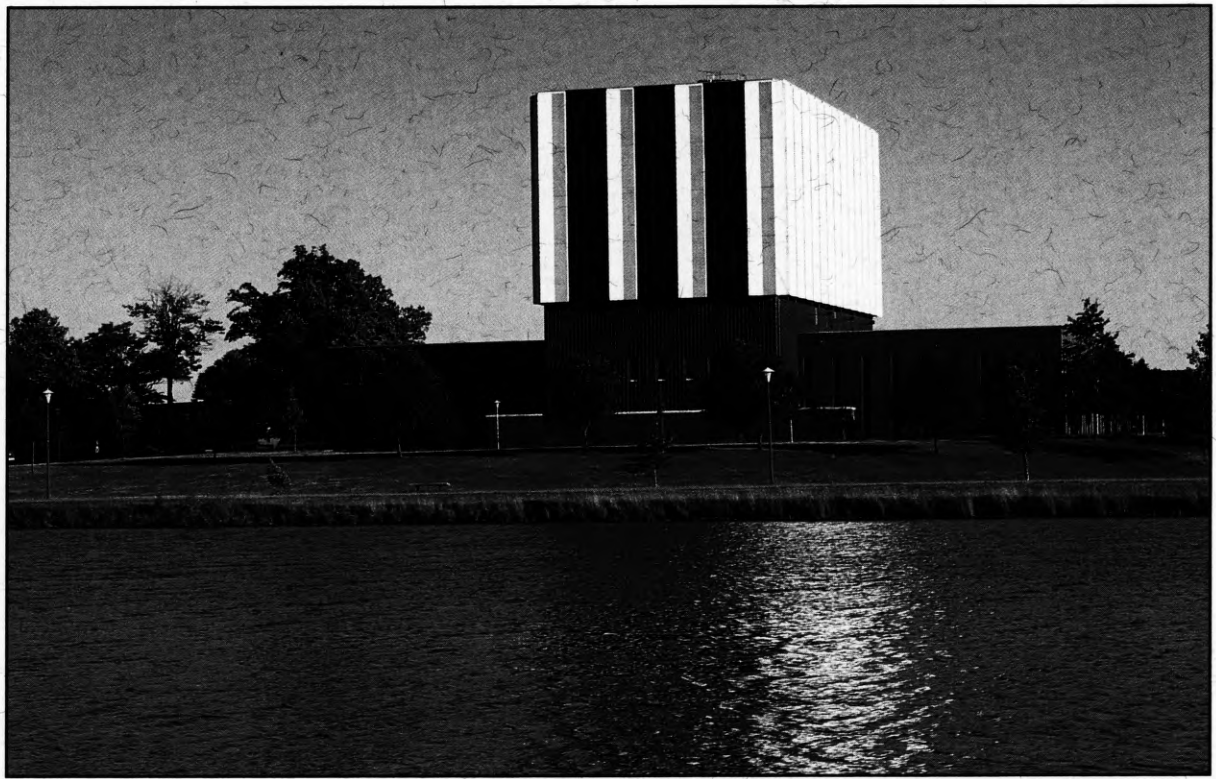


Commencement

**Edinboro University
of Pennsylvania**

May 14, 1995



Commencement Ceremony

Convocation	John F. Fleischauer, Ph.D. <i>Provost and Vice President for Academic Affairs Edinboro University of Pennsylvania</i>
Prelude	Symphonic Wind Ensemble Gary S. Grant, Ph.D., <i>Conductor</i>
Pomp and Circumstance <i>Edward Elgar</i>	ACADEMIC PROCESSIONAL Symphonic Wind Ensemble
Star-Spangled Banner <i>Francis Scott Key</i>	Lucie Herendeen, M.M. Symphonic Wind Ensemble
Invocation	The Rev. Mark Nowak <i>Our Lady of the Lake Catholic Church Edinboro, Pennsylvania</i>
President's Welcome	President Foster F. Diebold <i>Edinboro University of Pennsylvania</i>
America the Beautiful <i>Samuel Ward</i>	University Singers Peter van den Honert, D.M.A., <i>Conductor</i>
Awarding of Honorary Doctorate Eiji Oue	President Foster F. Diebold
Presentation of Candidates	John F. Fleischauer
Conferring of Degrees	President Foster F. Diebold
Alma Mater	Lucie Herendeen Symphonic Wind Ensemble
Benediction	The Rev. Mark Nowak
Fanfare and Recessional <i>Edward Elgar</i>	RECESSIONAL Symphonic Wind Ensemble

The audience is asked to stand during the Processional and Recessional and to join in the singing of the National Anthem and the Alma Mater.

The Commencement Procession

ROTC Color Guard
The University Marshal
The University President
The Trustees of the University
The Platform Party
The University Faculty

Colors Distinctive of the Disciplines and Professions

Apricot.....	Nursing
Dark Blue	Philosophy
Light Blue.....	Education
Peacock Blue.....	Public Administration
Brown	Fine Arts
Citron.....	Social Work
Copper.....	Economics
Crimson.....	Journalism
Drab	Business
Gray	Veterinary Science
Silver Gray	Oratory
Green.....	Medicine
Olive Green.....	Pharmacy
Sage Green	Physical Education
Lemon.....	Library Science
Lilac.....	Dentistry
Maize	Agriculture
Orange.....	Engineering
Pink.....	Music
Salmon Pink.....	Public Health
Purple	Law
Russet.....	Forestry
Scarlet	Theology
White.....	Arts, Letters and Humanities
Golden Yellow	Science

Honors Award Designations

Gold Stoles	Summa Cum Laude
White Stoles	Magna Cum Laude
Red Stoles	Cum Laude
Gold Cords	University Honors Program Graduate
Red Cords	Departmental Honor Graduate

The Ceremonial Mace

The ceremonial mace, a symbol of presidential authority, is carried at the head of the academic procession by the University Marshal, Dr. Bob Wallace. A gift of the Alumni Association, the mace was designed and executed by Professor Henry Katzwinkel and Dr. Seymour Blinderman, former chairman of the Art Department. It was first used at the inauguration of Edinboro State College President Chester T. McNerney, in 1967.

The mace, twenty-seven inches in length, is topped by a sterling silver sphere studded with circular cabochon rubies, secured by bezels. The collar of the mace is inlaid with ebony, alternated with silver relief fleur-de-lis design elements. The cultured pearls mounted in cups encircle the bottom of the collar symbolizing the thirteen state colleges of Pennsylvania. The shaft of the mace is composed of Brazilian rosewood sections, separated by sterling silver rings. The mace is terminated by a cast sterling silver finial; the five cultured pearls represent the existing curricula. The rib-like cone form is terminated by a small silver sphere symbolizing the world.

The metal working processes incorporated in the ceremonial mace include turning, forging, inlaying, stone setting, and lost wax centrifugal casting.

The Presidential Medallion

A symbol of presidential authority, the first presidential medallion was presented to Foster F. Diebold during the May, 1981 commencement ceremonies. It is permanently housed in the president's office and will be presented to successive presidents. Designed and executed by Mr. Henry Katzwinkel, professor of art, the sterling silver medallion consists of a three and one-half inch pectoral pendant featuring on its face the sunken crest of the Commonwealth of Pennsylvania. On the reverse side is the figure of a Gordon Highlander with pipes. To the right of the piper is the Cross of St. Andrew. To the left is the Cross of England. Flanking the figure is the date 1857, the opening year of the University, and garland thistles. In the background are the hills of Scotland, and beneath the piper is an open book, symbol of knowledge.

The pendant descends from a shield containing a triple-towered castle, the symbol of defense, protection, and strength. The collar of the medallion is comprised of a series of two-inch shields, alternately bearing three different designs; the meigle, an interlacing knotwork peculiar to the Pictish school of Celtic art; the Tudor rose design; and "ESC" in interlocking letters on a background of tabby weaving. Connecting each of the collar shields is a Cross of St. George, representing the union of Scotland and England. The entire medallion was fabricated and cast in the cire perdue (lost wax) process.

Academic Vestments

The gown, the cap, and the hood, representing the major components of the academic dress, are a ceremonial inheritance from the medieval universities of the eleventh and twelfth centuries, where dress was the outward sign of privilege and responsibility. The academic dress worn by those participating in today's academic processional symbolizes the level of their academic attainment and the institution they attended.

Gown

Although the gown is more frequently black, certain universities have authorized the use of colored gowns. The bachelor's and master's gowns are fashioned from black serge. The yoke for the bachelor's gown is designed to be worn closed and features long, flowing and pointed sleeves. The master's gown is designed to be worn open or closed. Its sleeves are very long with square ends, and the front part has an arc cut away. The arms protrude through a slit at the elbow. The gown for the doctor's degree is made of wool, serge, or silk with an open front faced with wide velvet panels. The sleeves are loose and bell-shaped with three bars of velvet in black or the color of the discipline in which the doctorate was obtained.

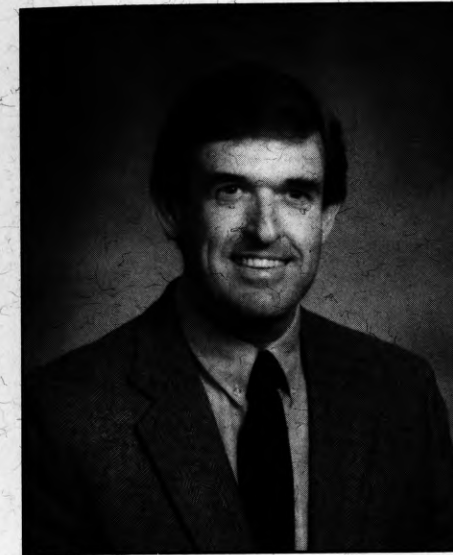
Hood

The most outstanding feature of the academic dress is the hood. It is usually worn only for the master's and the doctor's degrees. The doctor's hood is longer than the master's hood and has distinguished panels. The college or the university granting the degree is indicated by the color of the hood lining. The velvet trim of the hood indicates the field in which the degree was granted.

Cap

The standard cap is the mortarboard, usually the color of the gown. The tassel is black for the baccalaureate and master's degree and is worn over the left front quarter of the cap. The tassel for the doctor's mortarboard is of gold thread. Undergraduates wear the tassel on the right side of the cap until the moment the degree is conferred by the president.

University Marshal



Bob Wallace, Ed.D.

Carrying the ceremonial mace and leading the academic procession at today's Commencement ceremony is Dr. Bob Wallace, professor in the department of speech and communication studies and director of television and media services.

A native of Florida, Dr. Wallace earned a bachelor's degree in broadcasting from the University of Florida in 1962. He received a master's in radio and television from Indiana University (Bloomington) in 1965 and completed his doctorate in communications technology at the University of Pittsburgh in 1976.

His career began while still a student at the University of Florida. In 1961 he was an announcer for WRUF-FM, the campus radio station, and from 1960 to 1962 he served as production assistant for WUFT, the University's television studio. While at Indiana he served as graduate assistant and production assistant in the departments of radio/television and radio and television service.

In 1964-65, Dr. Wallace served as an instructor and producer of radio programs at Okeechobee High School in Florida, before joining the faculty of Edinboro University in 1965.

Among his many professional memberships are Phi Delta Kappa, the executive board of the International Association of Business Communicators, Community Access Producers of Erie, the executive board of the Northwest Pennsylvania ITV Council, the Pennsylvania Learning Resource Association, the Erie Ad Club, Pennsylvania Distance Education Consortium, Society of Professional Journalists, and the Speech Communication Association of Pennsylvania. He also serves as faculty advisor to ENN, the Edinboro News Network, a student-produced weekly news show.

During his distinguished career at Edinboro, Dr. Wallace has combined instructional and administrative responsibilities, teaching speech and broadcast media courses while developing the University's media services department, which trains students in professional television and film production and produces instructional and promotional media for the various University departments. He has served on a number of committees, including the College-Wide Curriculum Committee, the Media Task Force, the Tenure Committee, and the College Senate. He is also a member of the regional selection panel for Community Programming Network National Distribution and a member of the Millcreek School District's Library Advisory Council.

Last year, Dr. Wallace was selected to receive the Governor's Highway Safety Award for contributions made to anti-drinking and driving public service announcements. For the third year in a row, his television production students earned first place in the "Drugged and Drunken Driving" public service announcement competition. In addition to "Best of Show," other student entries won in the categories of best message, best technical, and most original.

Dr. Wallace serves as the University's representative to the Pennsylvania Distance Education Consortium and the Northwest Pennsylvania Regional Broadcasting Council.

President Foster F. Diebold



Foster F. Diebold

Now in his 16th year as president of Edinboro University of Pennsylvania, Foster F. Diebold is the fourteenth chief executive officer of the institution of higher learning that has come to acclaim in the last decade as one of Pennsylvania's and the nation's finest. He has brought a vigorous educational and moral leadership, a strengthening of the spirit of community, a clear sense of direction and purpose, and a dimension of multicultural pluralism and diversity.

Much has been accomplished during President Diebold's tenure. The University has returned to financial health. Significant facilities and grounds improvements have been achieved, with several of the historic structures on campus restored to their original splendor. Academic programs have been emphasized and improved, with more than 100 degree offerings now available. Enrollment gains have been unprecedented in both numbers and academic quality. International linkages have been established with institutions in several other countries, and Edinboro University's program for students with disabilities continues to garner acclaim as one of the finest among all colleges and universities in the United States. Widely recognized as a leader in education both here and abroad, President Diebold has positioned Edinboro University to meet the challenges of the 1990s, as well as those that will face public higher education in the 21st century.

The Orange, New Jersey, native is a graduate of Monmouth College and also holds a master of arts in educational administration from Seton Hall University. He has met coursework requirements for a doctorate in education at Rutgers University and is currently completing the dissertation requirement for the Ph.D. program in higher education at the University of Pittsburgh.

Prior to his presidency of Edinboro University, President Diebold was president of the University of Alaska from 1977 to 1979. Before that, he was executive secretary to the Board of Regents and special assistant to the president of the University of Alaska Statewide System. From 1969 to 1976, he was director of Development and Planning at Kean College in New Jersey and a member of the graduate faculty at that institution; and from 1965 to 1969, he was assistant superintendent of the Neptune Township (New Jersey) Public Schools.

Recognized for his extensive experience in the field of education management, President Diebold's scholarly achievements in the discipline of applied ethics in higher education deserve special mention. The model statement he authored for the American Association of State Colleges and Universities, "Ethical Practices for College Presidents," was unanimously adopted by that professional organization and published as policy for the chief executives of its nearly 400 member institutions nationwide. It is the first formally adopted ethical practices and policy statement for higher education presidents.

For his leadership on an international scale and for his many contributions to the advancement of higher education and enrichment of an emerging culture in Pakistan, President Diebold was decorated with prestigious gold medals from three of the eight Pakistani universities with which Edinboro University maintains formal academic linkages. President Diebold was also honored by the Government of Pakistan with the awarding of the degree of Doctor of Laws (*honoris causa*), presented at the Government House in the City of Karachi. Edinboro also has linkage agreements with institutions in the Peoples' Republic of China, Cuba and in the Kingdom of Morocco.

A staunch advocate of a statewide system of public universities in Pennsylvania, President Diebold supported the enabling legislation for the State System of Higher Education (Act 188 of 1982) and saw the State System come to existence in 1983 as a member of the transition team. He currently serves on the System's Executive Council of Presidents and on the boards of the Pennsylvania Academy for the Profession of Teaching, the Pennsylvania State Athletic Conference, and the Dixon University Center at Harrisburg.

President Diebold's stature in American higher education has been recognized by several high-level appointments. He was named to the National Committee on U.S.-China Relations, the leading national organization devoted to building constructive relationships between the two countries. He was also appointed to the Leadership Council of the Northeast-Midwest Institute, a regional component of the Center for Regional Policy, and to the Pennsylvania Humanities Council, the private, non-profit group promoting statewide public understanding of the humanities.

Honorary Doctorate



Eiji Oue

Eiji Oue, music director and conductor of the Erie Philharmonic Orchestra, has been selected to receive the degree Doctor of Humane Letters (*litterarum humaniorum doctor, honoris causa*) at today's Commencement ceremony.

A native of Hiroshima, Japan, Oue began his musical training at the age of four. He studied conducting with Hideo Saito at the Toho School of Music and with Larry Livingston at the New England Conservatory. In 1978, he was invited to participate in the conducting program at the Tanglewood Music Center. He returned there in 1980 and received the Koussevitzky Memorial Fellowship Prize. The following year he won the Hans Haring First Prize in a conductor's competition at the Salzburg Mozarteum, and in 1982 he made his west coast debut at the Hollywood Bowl with the Los Angeles Philharmonic Institute Orchestra.

Before coming to Erie in 1990, Oue served as associate conductor of the Buffalo Philharmonic Orchestra and music director of the Boston Mozarteum Chamber Orchestra. His conducting career includes the Santa Cecilia Orchestra in Rome, the St. Louis Symphony Orchestra, the Oakland Symphony Orchestra, the Springfield Symphony, the Pro Arte Chamber and Hartford Symphony Orchestras, and the New Japan Philharmonic Orchestra.

Oue also served as principal conductor of the Boston University Tanglewood Institute Young Artists Orchestra and appeared as a guest conductor of the All-Eastern Festival Orchestra, New England Conservatory Symphony and Repertory Orchestras, Oberlin Conservatory Orchestra, and the Florida All-State Orchestra. He completed further studies with several of the most-renowned twentieth century conductors, including Leonard Bernstein, Seiji Ozawa, Andre Previn, Sir Colin Davis, and Kurt Mosur.

In the summer of 1985 Maestro Oue toured internationally with the late Leonard Bernstein, conducting the European Community Youth Orchestra. The tour, dedicated to world peace, performed in Athens, Hiroshima, Vienna and Budapest. In 1990 he once again shared the podium with Bernstein during a summer tour of European cities, including Leningrad, Paris and Milan. That year, Oue also led the London Symphony Orchestra during a tour of Japan, including a performance for the emperor and empress.

Oue's long-time dedication to the training and education of young musicians is evidenced by his active participation with several premier organizations. He served the Greater Boston Youth Symphony Orchestra and the Empire State Youth Orchestra as music director and led the former on several international tours, most recently a concert tour of Japan. He has continued his mission to bring music to the masses by making public appearances throughout the Erie area.

His recordings include Mahler's Symphony No. 1, Bizet's *Carmen*, Holst's *The Planets*, Ravel's *Alborada Del Gracioso*, and Respighi's *Pines of Rome*.

On May 6, 1995, Oue completed his fifth and final season with the Erie Philharmonic before assuming the position of music director of the prestigious Minnesota Orchestra in Minneapolis. After only five seasons in Erie, he leaves the Orchestra much richer - both spiritually and financially.

Oue's doctoral citation reads: "In recognition of your leadership in the arts, which has had positive and profound effects upon the lives of individuals and institutions; for your consummate artistry and compelling advocacy for the arts; for your enthusiastic development of the Erie Philharmonic Orchestra and your many contributions to the enrichment of civic and community life; for your commitment to the training and education of young musicians, which has sustained your work with youth in Erie and around the world; and for your service in the cause of international understanding and world peace through musical expression."

Bachelor of Arts

Anthropology

Susan Leota Bova
Nicole Camaioni
Mary Margaret Goodenow

Art History

Eric David Arth
Nicole Lee Soliday – Cum
Eric Thomas Tidball

Criminal Justice

Shawn T. Bauer
Gregory Allan Blair
Jeffrey Scott Carter
Cloyd Eugene Cavanaugh Jr.
Russell Maurice Cray
Jason Thomas Destein
Matthew James Dugan
John J. Estok – Summa
LeeAnn Marie Felix
Daniel J. Fitzgerald
Sean L. Gibson
Matthew John Gleason
Marlene Elizabeth Gurley
La'Kieva Imoné Heard
Scott William Hemphill
Wade Eugene Hoke Jr.
Brian Kyle Hunt
Gregory Robert Ippolito
Brian Neal Killian
Rhonda E. Kineston
Don David Kurhan
Rodney David Leonard
Matthew Joseph Lewandowski
Beatric Lewis
Wendy Sue Lindsey
Scott Richard Loutzenhiser
Michael M. Mackerley Jr.
Jeffrey Kenneth Meyers
Daniel John Myslewski
Lionel Lee Peterson
Rob L. Rinker
Darcy A. Schmitt – Cum
Felicia Dana Shy
Jodi Lynn Smith
Tricia Jo Somerville
Anthony James Tighe
Douglas Randal Watson – Magna
Kristopher William Worth
James H. Wright

Donald Todd Zerfoss – Cum
Corinna Marie Zipp

Drama

Kimber James Forrester – Magna

English

Christine Denise Bossard – Cum
Jennifer Rose Brough
Kim Petrie Jeffery
Dana Dianne Kuhn
Amy Lynn Martin
Christopher Claude McGonnell –
Magna
Kerri L. Miller
Victoria Ann Sipple
David James Sutor
Mark Edward Webber
Andrew David White

German

Edward Arthur Schmitt Jr.

History

Brandy Nicole Berlin – Magna
Michelle Ferguson – Cum
Verna Jean Frison
Gregory Edward Henning
Nicole R. Lubatti
Ronald David Preisach Jr.
Edward Harry Rock
MaryAnn Catherine Rounds
Khalid Ahmed Said
David John Wingard

Humanities

Jeremy Todd Holt
Scott Alan Munson

Music

Jason Alan Ashbaugh
Christopher Lawrence Hanson
Dana Nicolle Kuhn
Yin Li – Cum
Susan Elizabeth Mahr
Heather Elaine Shamp

Philosophy

Edward Robert Abplanalp
Mark Andrew Moritz

Political Science

Susan Beth Bjornholm
Walter Loren Daughenbaugh – Cum
Jennifer Lynn Harrington
Amy Elizabeth Kennerly
David William Kerstetter – Magna
Michele Lynette Norton – Magna
Glenn John Reeher – Magna
Robert Frank Salas
Eric John Vasquez
Marjorie Emma Williams

Psychology

Rabeena Alli
Tracy Lyn Auell – Cum
Jennifer Lee Baker
Kathleen Marie Balcam
Tracy Anne Brace
Michelle Denise Brozinski
Theresa S. Carey
Andrew Thomas Corbett – Cum
Caterina Rita Cosentino
Suzanne Gail Daniel – Summa
Ernest Dettore III
Susan Jane Diesing
Elaine Dombrowski – Cum
Meredith Truman Haflin
Lisa Marie Herman
Johnmarc Alden Johnson
Erica Renee Kennedy
Pamela Munson Luper – Magna
Gregory Stephen Maziarz
Lori Ann McManus
Amanda Lee Miller
Kenneth Edward Mulford
Leanne Dorthy Orsini
Carolyn Sue Rea – Magna
Wendy Suzanne Scholl
Carla Devon Serafini
Corrine Michele Silvert
Diane Slepowronska – Cum
Dana Marie Tacca
Jennifer Joy Thomas
Tacie Lynn Tonks
Eric James Valko
Stacey Lynn Varner
Heather Michelle Warmus – Cum
Joseph M. Yeager – Summa

Sociology

Kathleen Lenore Baccellieri
Vance S. Hetrick Jr.
Joanne Elizabeth Hunt-Hornstrom
Bonita Klinginsmith Mac Pherson
Nancy Marie Papariella
Carlos Darnell Peterson

Spanish

Tricia Lyn Keisling
Robert Frank Salas

Speech and Hearing Disorders

Cindy Ann Chapman – Cum
Tammy June Graves
Robert Harold Grozalis Jr.
Angela Dee Judge
Colleen Shane Kozak
Jennifer Lynn Krieger
Darcy Renee Meehan
Amy Kim Monheim
Michelle Louise Mori
Kevin J. Patrick – Cum
René Tara Roth
Brian John Sibenac

Speech Communications

Pamela Marie Artman
Jodie Lynne Ayres
Douglas Neal Bartus
Kellie Lynn Broadwater
Mark Thomas Byham
Darla Lynn Chisholm
Ann R. Coleman
Willie Robert Coleman
Todd Michael Dewey
Lynnette Theresa Donihi
Roderick David Edwards
Ronald Jon Gallina
Robert Christopher Gibson
Debra Beth Goldberg
Mary Tracy Gutfreund
Pamela Marie Hinkofer
Bethany Evonne Kendra

David Michael Krasnesky
Michael Joseph Lorentz
Michael Wilhelm Maas
Eric John McNeese
Raymond Patrick Medred
Gaetana Lynn Orsini
Carlos Darnell Peterson
Stephanie Judith Schroeder – Cum
Tabitha Shaffer-Bradley
Jennifer Rebecca Stoddard
Jeffrey Robert Tome
Price A. Williams
Nancy Lynn Young
Jennifer Lynne Yurchuk

Bachelor of Fine Arts

Applied Media Arts

Mathilda Ann Crowe
James Edward Dorans
Jonathan Andrew Grippe – Cum
Niki Lynne Harless – Magna
Victoria Ines Lovett – Cum
Michael William McLaughlin
Stephen Craig Meyer
Matthew P. Straffin
Corinne Elizabeth Stukas – Cum
Edward B. Sutton – Summa
Cherish Christine Thomson
Shelly L. Walker

Fine Arts – Crafts

Christian John Bell
Jessica Lynn Cecere
Jane Signe Dunkley
Anthony Joseph Falgione
Michael Brian Fee
Ali Marie Hedgcock
Christine Marie Miedel
Christine T. Mooney
Brian Lee Thummler – Magna
Michael James Wheeler

Bachelor of Science

Industrial and Trade Leadership

James Scott Preston

Social Work

Michele Rae DiDomenico
Leah Marie DiSanto
Rochelle Lee Emerick – Magna
Jeffrey Scott Garlington
Sean Kearins Hanley
Carol May Hilla
Lauren Anne Kampf – Cum
Terry Lee Kline
Elizabeth MacLellan
Mel Perry – Cum
Melanie Susanne Pietrusinski
Jamie Patricia Pink
Heidi Lynn Young

Associate of Arts

Criminal Justice

Jeffrey Michael Benson
Kristine Marie Miller
Marcella Lynn Otteri

Human Services

Janet Johnson Cappa
Holly Ann Kallay
Bernice Carey Schetter

Liberal Studies

Mohammad Ahasan Habib
Susan Louise Ickes
Darren Jay Niedermeyer
Sharon Ann Watral

University College
Andrew C. Lawlor, Ph.D., Dean

Bachelor of Arts

Specialized Studies

Connie Lee Bradley
John Edward Gilmore – Cum
Lawrence E. Jackson

Adam Richard Kupfer
Jennifer Marion Lowe
Michael S. Master
Timothy Martin McDowell
Cynthia Beth Oluszak

Stefanie Ann Payne
Jason A. Sharp
Talya Solomon – Cum
Timothy Michael Spaeder – Summa
Tamara Lynn Young

School of Science, Management and Technologies
Jerry Covert, Ph.D., Dean

Master of Science

Biology

Roscoe Garfield Bennett IV, B.S., Grove City College, 1991
Paul Donald Steward, B.A., Hiram College, 1989

Master of Science in Nursing

Barbara Sue Anderson, B.S.N., Slippery Rock University of Pennsylvania, 1985
Margaret Brigham Briggs, B.S.N., Villa Maria College, 1986
Margaret Norgang Cornell, B.S.N., SUNY-Buffalo, 1991
Mary Alice Nash, B.S.N., Duquesne University, 1979
Barbara Ann Nunn, B.S.N., SUNY-Buffalo, 1986
Patricia A. Perfetto, B.S.N., Villa Maria College, 1986
Lisa Bendig Pett, B.S., Edinboro University of Pennsylvania, 1989

Bachelor of Arts

Biology

Aaron Douglas Kline
Jennifer Anne Lewis
Thomas Clinton Morgan
Daniel Thomas Nichol II
Todd Allen Sommers

Earth/Space Science

Lesley Christine Baker
James Glenn Henry – Cum

**Environmental Studies/
Geography**

Jesse Jaymes Babay
Mark James Cochran
Eric Nassar Dorr
Christian Joseph E. Emblidge
Linda Marie Fowlie – Summa
Brenda Lee Haylett
Allyson Michelle Lopes
Karen Regina Patrick
Jeffrey Robert Tome

Geography

Stacia A. Birtikidis

Mathematics

Theresa Blair Pechinko
Ronald Ramsey Simmons
Louis Vitale – Magna

**Natural Science and
Mathematics**

Mark A. Clason – Magna
Michelle Lynn Dandoy
Stephanie Ann Harris
Méle M. McFadden
Patrick James Murray
Eric P. Polinski
Harvey Fredrick Ruffin
Dennis B. Scelza
Paul Robert Yochim

Physics

Allen Troy Proper

Bachelor of Science

Biology

Eric Michael Cafini – Cum
Ronald Joseph Gentile – Magna
Scott Charles Grode
Michelle Renee Helm
Douglas Wayne Merritt
Julie Marie Pressler
Steven Troy Shearer
Cynthia Jean Struble

Business Administration

Douglas S. Armstrong
Brian Elliot Baker – Magna
Tammy Jean Benchek
John Leonard Biedzinski
Geoffrey Adam Boehm
Thomas Irwin Eglöf
Jason Myles Epstein
Cheryl Lynn Fisher
Jerome Harry Hammer Jr.
Anny Handayani
Andrew Lynn Hatton
Daniel James Helmbrecht – Summa
Jonathan Karl Hesse
Tracy Jo Hines
Man-Nei Hui – Summa
Yoshiko Ikeda
Harold Robert Jackson Jr. – Cum
Asif Jaffar – Magna
Marcella Chambers Janick
Steven Leroy Jewell
Timothy David Lata
Tyler Brent Luhovey
Amy Lynn Marino – Cum
Gayle Renee Marsh
Michele Schweitzer McCoy
Melissa Peters McHenry
William Edward Montgomery – Cum
Andrew John Mumford – Magna
Julie Ann Nagel
Melinda Susan Newcomer – Cum
Brian Charles Pagana
Lorraine Ruth Revak
Christopher Clayton Sanders

Kelly Lewis Spence – Magna
Tracey Janine Steele – Cum
James F. Symons – Cum
Tze-Kiat Tan – Cum
John Christopher Ward
Linda L. Wertz
Heather Tee Westfall
Donald Raymond Williams
Beichen Wu

Chemistry

Robert James Caskey
Danny Maxwell Devereaux Jr.
Randen Lee Patterson

Computer Science

Jane McFadden Brunner
Edwin Keith Foresman
Daniel J. Heath – Magna
Yuntao S. Liu – Summa
Timothy Allen Mears
Robert Edward Miles Jr.
Mohammad Rashed Bin Mumen
Patrick Gerald Pyne
Pravin Thakur
Zviad A. Tsitsuashvili

Economics

Atsushi Shimo – Magna

Environmental Science

Eric Donald Barnes
Douglas Albert Bell
Denver Joseph Blair – Cum
Daniel Paul Bruner
Charles Edward Byham
Jill Elizabeth Hicks

Geology

Brian R. Bullock
Gregory Alden Carder – Magna
Melissa Ann Doro
Joseph J. Ekl Jr.
Terry Wayne Gebhardt
Scott Alan Sundback
Joseph J. Trasciatti
Melanie Anne Vierkorn

Medical Technology

Penny L. Wells
Christopher L. Zurinski

Nursing

Jenna Christa Basinger
Nancy J. Bennett
Kathleen Denise Brown
Andrea Cancilla
Beth Ann Cannon
Janie Lee Claypool – Cum
Sheri Ann Coletta
Anneka Lynn Cornell
Kimberly W. Edel
Judith Marlene Esser
Carrie Ann Evans
Lynne Ann Gerst
Lisa Hamilton Graff – Summa
C. Ali Griffith
Michael Patrick Hill
Janet Elaine Hutchison
Karen Rae Jacobson
Susan Lynn Jandt
Brett Alan Keyser – Cum
Susan Lynn Kovacsics-Bobosky
Beverly Ann Logue
Monica Shamar Long
Kimberly Beth Lynch
Thelma Rhoads Marcy
Susan Marie Masterson
Pauli A. Matlak
Kendall McHose – Cum
Carla J. McNulty – Cum
Carol Cornish McWilliams – Summa
Melissa Marie Michalczyk
Christina Jane Mills
Lisa L. Murray
Shelly Lynn Myers – Cum
Beth Ann Nagy
Bridgit Lynne Neghiu
Melinda Susan Newcomer – Cum
Sen Thi Nguyen
Loreen Ann O'Connor
Stephanie Gayle Olear
Kay Wynne Partch – Summa
Michelle A. Peters
Heather Lynn Pingel
Gail Lynn Reed
Bunni Lynn Seykoski – Cum
Melanie Suzanne Skolny
Heather Jo Stake
Linda H. Starr

Tanja Elizabeth Stauber
John Carl Stich
Kelly Marie Swanson
Renee Tomko
Kristine Lee Usher – Magna
Teresa Michelle Wagner – Magna
Stephanie Thoms Ward
Deborah Ann Wasson – Summa
Michele L. Wedzikowski – Summa
Lisa Marie Welch
David Earl Wellman
Melissa Ann White – Magna
Sherry Lee Wiley
Stefanie Lyn Young

Nutrition

Kimberly Ann Emanuel
Kristen Ann Koman
Melissa Sue Nyweide

Physics

Patrick David Collins
Eric William Thomas

Associate of Engineering Technology

Biomedical Equipment Technology

Dennis Darrell Carr
Robert Gary Montgomery
Donald G. Mulson Jr.
Donna Marie Rohler
Ronald Jeffrey Sampson

Digital Engineering Technology

Richard L. Dickerson
Vincent Patrick Gladis

Manufacturing Engineering Technology

Robert Alexander Crawford
Travis Douglas Davey
Larry John Drake Jr.
William Paul Horstman Jr.
Edward Theodore Kobierski
Jeffery A. Wilcox

Associate of Science

Computer-Information Processing Technology

Nancy Bebko Richardson

General Business Administration

Hattie Anna Bailey
Melissa René Beauchat
Jennifer Ann Booth
Alma Kay Daley
Beth A. Koskoski
Heidi Ann LaDow
Cecilia Silva Leandro
Wesley Earl McClimans
Kathleen Audrey Mitchell
Kimberley Ann Mumford
Chris Kenith Myers
Judith Ann Thiry
Judith Ann Watkins

School of Education Philip P. Kerstetter, Ph.D., Dean

Master of Arts

Counseling

Mary T. Bates, B.A., Mercyhurst College, 1973
Robin Lynn Borstorff, B.S., Slippery Rock University of Pennsylvania, 1985
Tina Marie Byers, B.A., Edinboro University of Pennsylvania, 1991
Nereida Colón-González, B.A., Edinboro University of Pennsylvania, 1992
Beatrice Crilley, B.S., California University of Pennsylvania, 1976
Rebecca Wolfe Drury, B.S., Edinboro University of Pennsylvania, 1988
Amelia Stevens Dunn, B.A., Edinboro University of Pennsylvania, 1982
Alison Lara Hernandez, B.F.A., Edinboro University of Pennsylvania, 1992
Colleen Marie Feeney, B.A., Mercyhurst College, 1990
Sue Ellen Helmbreck, B.A., Edinboro University of Pennsylvania, 1983
Raymond Russell Jones, B.A., Penn State University-Behrend, 1993
Pamela Lynn Jonischek, B.A., Mercyhurst College, 1993
Lorraine Sue Loper, B.A., Edinboro University of Pennsylvania, 1976
Debbe A. Marcinko, B.S.N., Edinboro University of Pennsylvania, 1986
Polly Marie McAnallen, B.A., University of Pittsburgh-Bradford, 1989
Karen Jeanne McMahan, B.S., Allegheny College, 1991
Maribeth Metcalf, B.A., Clarion University of Pennsylvania, 1986
Susan Ellen Ralston, B.S., Penn State University, 1978
Christian Andrew Ruhl, B.A., Penn State University-Behrend, 1993
Kathleen Marie Seastedt, B.A., SUNY-Fredonia, 1981
Donna Meyer Trusso, B.S., SUNY-Fredonia, 1984
Caryl E. Unsel, B.A., Mercyhurst College, 1992
Janice Mary Vogt, B.S. in Ed., SUNY-Fredonia, 1955
Donna L. Volk, B.A., St. Francis College, 1983

Master of Education

Educational Psychology

Bonnie Jean Connors, B.A., SUNY-Brockport, 1993
Kendra Lynn Custard, B.S. in Ed., Edinboro University of Pennsylvania, 1993
Heidi Sue Deutscher, B.A., Grove City College, 1991
Patricia Lynn Fry, B.S. in Ed., Edinboro University of Pennsylvania, 1990
Chin-Cheng Kao, B.S., National Chung-Hsing University, 1987
Susan Lynn Reisch, B.A., SUNY-Buffalo, 1992

Elementary Education

Samir Dorhmi, B.D., Teacher Training College, 1988
Sarah Waters Gandrud, B.A., Academy of the New Church, 1980
Deborah Jean/Kehoe Kreider, B.A., Edinboro University of Pennsylvania, 1986
Brenda Henry Mongillo, B.S. in Ed., Edinboro University of Pennsylvania, 1987
Claudia Williams Quinn, B.S. in Ed., Mansfield University, 1971

Mentally and Physically Handicapped

Kerry Ann Chuderewicz
Mary Theresa Graziano
Erica Danielle Hite – Cum
Karen Ann O'Brocta

Secondary Education – Biology

Lisa Marie Simonsen – Cum

Secondary Education – Comprehensive English

Stacy Lynn Bower
Brenda Higley Card – Cum
Richard Chad Dailey
Rena Joann Mott – Magna
Ansel John Pierce
Nicole Lynne Willey – Summa
Louise Anne Willman

Secondary Education – Earth/Space Science

Mark Andrew Hopkins
Dave Carman Nowacki

Secondary Education – General Science

Larry Allen Klemm
Candace Joy Lynch

Secondary Education – Mathematics

Sara Marie Berrier – Magna
Cathlene Joanne Criss – Magna
Mark David Von Dingman – Magna
James Wilson McCandless Jr.
Michelle Lynn McCullough – Magna
Debra Lynn Musiak – Cum
Lori Jean Nageotte – Summa
Leslie Ann Palmer – Summa
Christine Mae Pyle – Cum

Secondary Education – Social Science

Melissa Grace Engel
William Charles Holleran III
James David Hornstein
Michael James Jewell
Janet Kay King
Nathan William Leopold
Peter Michael Murphy
Jayme Luke Obenrader – Cum
Christian Michael Riess
Kimberly Baird Schaffner – Summa
Robert Dale Timco – Magna
Martin Anthony Vallecorsa

Secondary Education – Spanish

Rocio Padilla Lomelin

Associate of Science

Pre-School Education

Chris Ellen Crawford
Beth Marie Hrabosky
Susan Lynne Turk

Honors

The following degree candidates have earned at least sixty-four credits as undergraduate students of Edinboro University and have attained the following cumulative averages: Summa Cum Laude, 3.80 to 4.00; Magna Cum Laude, 3.60 to 3.79; and Cum Laude, 3.40 to 3.59.

Summa Cum Laude

Suzanne Gail Daniel
Pamela Renee Elder
John J. Estok
Linda Marie Fowlie
Lisa Hamilton Graff
Daniel James Helmbrecht
Man-Nei Hui
Laurie A. Kantz
Edith Marie Leute
Yuntao S. Liu
Carol Cornish McWilliams
Lori Jean Nageotte

Leslie Ann Palmer
Kay Wynne Partch
Jeanne Scheffner Peck
Kimberly Baird Schaffner
Eric Matthew Scott
Timothy Michael Spaeder
Edward B. Sutton
Jessica Lesley Vincent
Deborah Ann Wasson
Michele L. Wedzikowski
Nicole Lynne Willey
Joseph M. Yeager

Magna Cum Laude

Brian Elliot Baker
Brandy Nicole Berlin
Sara Marie Berrier
Gregory Alden Carder
Mark A. Clason
Cathlene Joanne Criss
Mark David Von Dingman
Rochelle Lee Emerick
Kimber James Forrester
Ronald Joseph Gentile
Susan Lorraine Gobel
Kristi L. Halloran
Niki Lynne Harless
Daniel J. Heath
Rebecca Lynn Hoehn
Susan Lynn Young Howe
Susan Marie Hynes
Asif Jaffar
David William Kerstetter
Lisa Ann Ketterer
Juli Ann Lloyd

Pamela Munson Luper
Michelle Lynn McCullough
Christopher Claude McGonnell
Rena Joann Mott
Andrew John Mumford
Michele Lynette Norton
Natalie Ann Oleson
Carolyn Sue Rea
Glenn John Reeher
Amy Lynn Scott
Atsushi Shimo
Christine Joy Smith
Kelly Lewis Spence
Patricia Ann Strader
Brian Lee Thummler
Robert Dale Timco
Kristine Lee Usher
Louis Vitale
Teresa Michelle Wagner
Douglas Randal Watson
Melissa Ann White

The University does not claim the list of degree candidates or honors designations is absolutely accurate. Students are granted degrees only if they meet all academic and financial requirements.

Cum Laude

Heather Rae Albaugh
Tracy Lyn Auell
Carol Goldinger Baker
Laura Lea Baker
Denver Joseph Blair
Christine Denise Bossard
Patrick Sean Brady
Eric Michael Cafini
Brenda Higley Card
Casey Ann Cass
Cindy Ann Chapman
Janie Lee Claypool
Andrew Thomas Corbett
Jennifer Lynn Craig
Walter Loren Daughenbaugh
Elaine Dombrowski
Stephanie Burger Duda
Dennis Michael Duszynski
Michelle Ferguson
Stephen D. Foster
Deborah Ann Gehringer
John Edward Gilmore
Jonathan Andrew Grippe
Tracey Michelle Harakal
James Glenn Henry
Holly Joy Higgins
Erica Danielle Hite
Harold Robert Jackson Jr.
Lauren Anne Kampf
Brett Alan Keyser
Timothy Scott Landry
Yin Li
Victoria Ines Lovett

Heather Anne Mahoney
Alyson Kae Manges
Amy Lynn Marino
Kendall McHose
Carla J. McNulty
Abby McLaughlin Meissner
William Edward Montgomery
Debra Lynn Musiak
Shelly Lynn Myers
Melinda Susan Newcomer
Sonja Annette Nilson
Jayme Luke Obenrader
Kevin J. Patrick
Mel Perry
Christine Mae Pyle
Wendy Sue Scardino
Darcy A. Schmitt
Stephanie Judith Schroeder
Bunni Lynn Seykoski
Darrell James Shields
Lisa Marie Simonsen
Marcia Rebecca Sivik
Diane Slepowronska
Nicole Lee Soliday
Talya Solomon
Tracey Janine Steele
Corinne Elizabeth Stukas
James F. Symons
Renee Ann Szczesny
Tze-Kiat Tan
Antonia Molli Tanner
Heather Michelle Warmus
Donald Todd Zerfoss

University Honors Program

Brandy Nicole Berlin
Niki Lynne Harless
Man-Nei Hui
Johnmarc Alden Johnson

David William Kerstetter
Amy Lynn Martin
Rena Joann Mott
Nicole Lynne Willey

Chancellor, State System of Higher Education

Dr. James H. McCormick

Board of Governors, State System of Higher Education

F. Eugene Dixon Jr. – *Chair*
Julia B. Ansill – *Vice Chair*
Robert J. O'Hara Jr. – *Vice Chair*
Jennifer Alexander – *Student Representative*
James T. Atherton
Muriel Berman
Jane T. Carroll
Jeffrey W. Coy
Rebecca F. Gross
Jeremy Haugh – *Student Representative*
James A. Hughes
F. Joseph Loeper
Floyd M. Mains
Joseph M. Nespoli
Philip D. Rowe Jr.
Jere W. Schuler
Patrick J. Stapleton
Julius Uehlein
Stephen E. Whitby – *Student Representative*
Charles Zogby

Council of Trustees

Mr. R. Benjamin Wiley – *Chair*
Edith Benson, Esq.
Ms. Joyce Bonello
Mr. John D. Catone
Mr. Edwin D. Dombrowski
Mrs. Susan Hagen
Mrs. Patricia Heasley
Mr. C. Richard Johnston
The Honorable Robert J. Kusse
Harry Thomas, Esq.
Ms. Sonya Lee – *Student Representative*
Dr. James H. McCormick – *Chancellor (ex officio)*

Commencement Committee

John F. Fleischauer – *Provost and Vice President for Academic Affairs*
Chair
William Coleman – *Assistant Vice President for Facilities*
Sherri Galvin – *Assistant to the President*
Gary Jamison – *Director, Student Services*
Gerald Kiel – *Assistant Vice President for Academic Administration*
James Klausman – *Chairman, Department of Music*
Judy Kubeja – *Senior Executive Associate to the Provost*
Patti S. Loomis – *Director of Publications*
Alice Parker – *Administrative Assistant, Office of Records and*
Registration
Lorraine Revak – *Facilities Office and General Services Manager*
Bob Wallace – *Director, TV and Media Services*



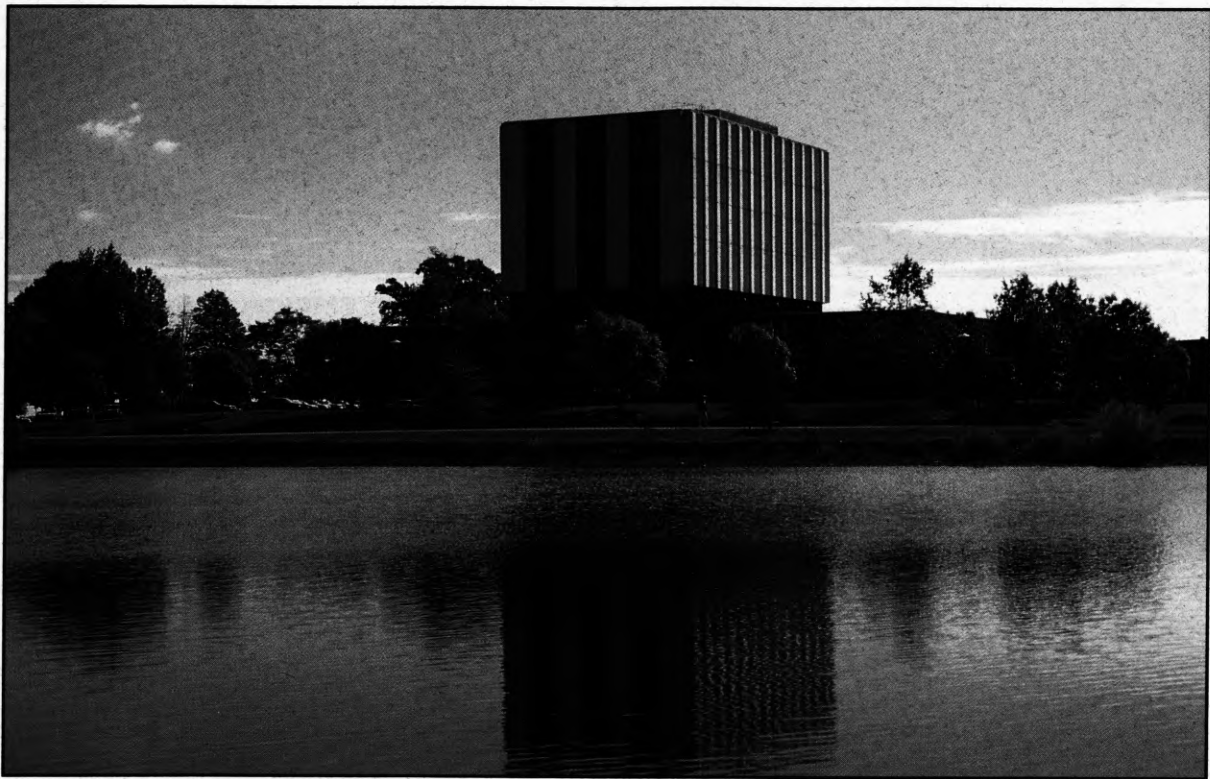
ALMA MATER

*Hail to thee, our Alma Mater glorious;
Fresh wreaths we bring to bind thy brow.
Trials have passed and thou has stood victorious;
Never fairer, never statelier than now.
O Edinboro, Edinboro,
Ever praising thee in song;
While class speeds class as swift years pass,
To thee our hearts belong.*

Commencement

**Edinboro University
of Pennsylvania**

December 10, 1995



Commencement Ceremony

Convocation	Robert C. Weber, Ph.D. <i>Interim Provost and Vice President for Academic Affairs Edinboro University of Pennsylvania</i>	
Prelude	Symphonic Wind Ensemble Gary S. Grant, Ph.D., <i>Conductor</i>	
Pomp and Circumstance	ACADEMIC PROCESSIONAL	Symphonic Wind Ensemble <i>Edward Elgar</i>
Star-Spangled Banner	David Herendeen, D.M.A. Symphonic Wind Ensemble <i>Francis Scott Key</i>	
Invocation	The Rev. Mark Nowak <i>Our Lady of the Lake Catholic Church Edinboro, Pennsylvania</i>	
President's Welcome	President Foster F. Diebold <i>Edinboro University of Pennsylvania</i>	
America the Beautiful	University Chorale Peter van den Honert, D.M.A., <i>Conductor</i> <i>Samuel Ward</i>	
Awarding of Honorary Doctorate	President Foster F. Diebold <i>Louis J. Porreco</i>	
Commencement Address	Philip P. Kerstetter, Ph.D. <i>Dean of Education and Acting Dean of Liberal Arts Edinboro University of Pennsylvania</i>	
Presentation of Candidates	Robert C. Weber	
Conferring of Degrees	President Foster F. Diebold	
Alma Mater	David Herendeen Symphonic Wind Ensemble	
Benediction	The Rev. Mark Nowak	
Fanfare and Recessional	RECESSIONAL	Symphonic Wind Ensemble <i>Edward Elgar</i>

The audience is asked to stand during the Processional and Recessional and to join in the singing of the National Anthem and the Alma Mater.

The gown, the cap, and the hood, representing the major components of the academic dress, are a ceremonial inheritance from the medieval universities of the eleventh and twelfth centuries, where dress was the outward sign of privilege and responsibility. The academic dress worn by those participating in today's academic processional symbolizes the level of their academic attainment and the institution they attended.

Gown

Although the gown is more frequently black, certain universities have authorized the use of colored gowns. The bachelor's and master's gowns are fashioned from black serge. The yoke for the bachelor's gown is designed to be worn closed and features long, flowing and pointed sleeves. The master's gown is designed to be worn open or closed. Its sleeves are very long with square ends, and the front part has an arc cut away. The arms protrude through a slit at the elbow. The gown for the doctor's degree is made of wool, serge, or silk with an open front faced with wide velvet panels. The sleeves are loose and bell-shaped with three bars of velvet in black or the color of the discipline in which the doctorate was obtained.

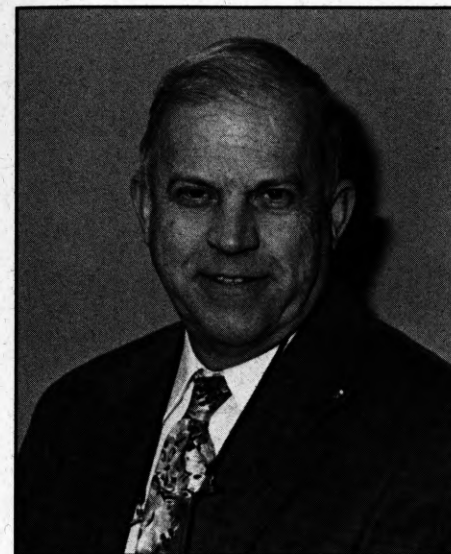
Hood

The most outstanding feature of the academic dress is the hood. It is usually worn only for the master's and the doctor's degrees. The doctor's hood is longer than the master's hood and has distinguished panels. The college or the university granting the degree is indicated by the color of the hood lining. The velvet trim of the hood indicates the field in which the degree was granted.

Cap

The standard cap is the mortarboard, usually the color of the gown. The tassel is black for the baccalaureate and master's degree and is worn over the left front quarter of the cap. The tassel for the doctor's mortarboard is of gold thread. Undergraduates wear the tassel on the right side of the cap until the moment the degree is conferred by the president.

University Marshal



Donald James Renn

Carrying the ceremonial mace and leading the academic procession at today's Commencement ceremony is Donald James Renn, associate professor and chairperson of the department of chemistry.

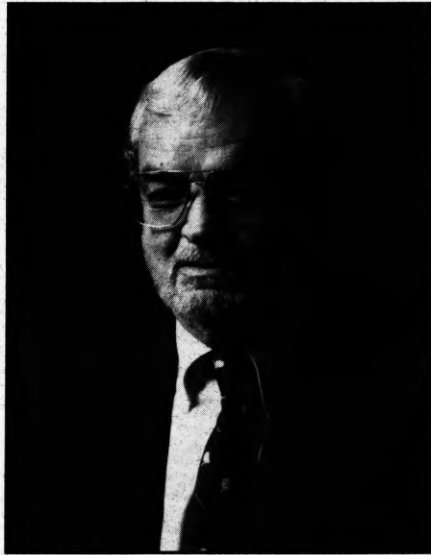
A native of Pennsylvania, Mr. Renn was born in Connellsville and grew up in Rice's Landing. He graduated from Waynesburg College in 1957 with a bachelor's degree in mathematics and served in the U.S. Army from December 1958 to August 1960. After earning a master's degree from Bucknell University in 1965, Mr. Renn taught high school chemistry and general science at Pawling, New York, before coming to Edinboro. He has pursued graduate studies in chemistry and science education at the University of Delaware and the University of Pittsburgh.

During his career at Edinboro University, Mr. Renn has taught a wide variety of chemistry courses, from chemistry orientation to advanced organic chemistry, at both the undergraduate and graduate levels. Now concluding his sixth year as chairperson of the department, he has served on the University-wide curriculum committee for more than 10 years, and is a member of the Commission on the Status of Women. Mr. Renn's professional memberships include the American Chemical Society, serving as treasurer for the local chapter; the National Science Teachers Association; and the Pennsylvania State College Chemistry Conference.

A member of the Free and Accepted Masons, Mr. Renn is a past president of both the Erie section of the Sons of the American Revolution, and the Camping Association of the Presbyteries of Northwestern Pennsylvania. He is also an active member of the First United Presbyterian Church of Edinboro and serves on its Session.

Mr. Renn is married to the former Janet Beverly Morris, a registered nurse and a supervisor at Metro Health Center in Erie. They have three daughters - Janet Dawn Renn Nelson and Julie Nan Renn Tinkey, both of whom are also registered nurses, and Jennifer Nina Renn Berger, fiscal assistant in the University's budget and payroll office. All three are graduates of Edinboro University.

President Foster F. Diebold



Foster F. Diebold

Now in his 17th year as president of Edinboro University of Pennsylvania, Foster F. Diebold is the fourteenth chief executive officer of the institution of higher learning that has come to acclaim in the last decade as one of Pennsylvania's and the nation's finest. He has brought a vigorous educational and moral leadership, a strengthening of the spirit of community, a clear sense of direction and purpose, and a dimension of multicultural pluralism and diversity.

Much has been accomplished during President Diebold's tenure. The University has returned to financial health. Significant facilities and grounds improvements have been achieved, with several of the historic structures on campus restored to their original splendor. Academic programs have been emphasized and improved, with more than 100 degree offerings now available. Enrollment gains have been unprecedented in both numbers and academic quality. International linkages have been established with institutions in several other countries, and Edinboro University's program for students with disabilities continues to garner acclaim as one of the finest among all colleges and universities in the United States. Widely recognized as a leader in education both here and abroad, President Diebold has positioned Edinboro University to meet the challenges of the 1990s, as well as those that will face public higher education in the 21st century.

The Orange, New Jersey, native is a graduate of Monmouth College and also holds a master of arts in educational administration from Seton Hall University. He has met coursework requirements for a doctorate in education at Rutgers University and is currently completing the dissertation requirement for the Ph.D. program in higher education at the University of Pittsburgh.

Prior to his presidency of Edinboro University, President Diebold was president of the University of Alaska from 1977 to 1979. Before that, he was executive secretary to the Board of Regents and special assistant to the president of the University of Alaska Statewide System. From 1969 to 1976, he was director of Development and Planning at Kean College in New Jersey and a member of the graduate faculty at that institution; and from 1965 to 1969, he was assistant superintendent of the Neptune Township (New Jersey) Public Schools.

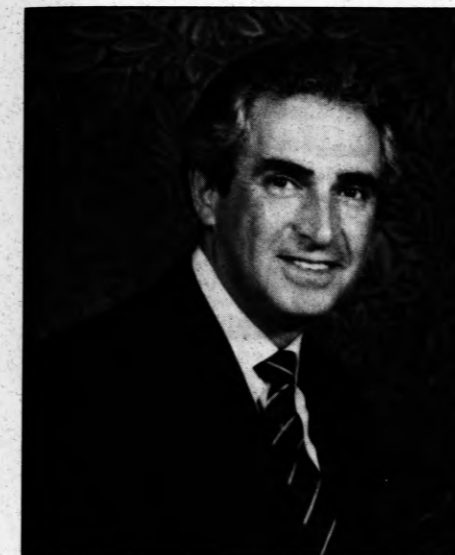
Recognized for his extensive experience in the field of education management, President Diebold's scholarly achievements in the discipline of applied ethics in higher education deserve special mention. The model statement he authored for the American Association of State Colleges and Universities, "Ethical Practices for College Presidents," was unanimously adopted by that professional organization and published as policy for the chief executives of its nearly 400 member institutions nationwide. It is the first formally adopted ethical practices and policy statement for higher education presidents.

For his leadership on an international scale and for his many contributions to the advancement of higher education and enrichment of an emerging culture in Pakistan, President Diebold was decorated with prestigious gold medals from three of the eight Pakistani universities with which Edinboro University maintains formal academic linkages. President Diebold was also honored by the Government of Pakistan with the awarding of the degree of Doctor of Laws (*honoris causa*), presented at the Government House in the City of Karachi. Edinboro also has linkage agreements with institutions in the Peoples' Republic of China, Cuba and in the Kingdom of Morocco.

A staunch advocate of a statewide system of public universities in Pennsylvania, President Diebold supported the enabling legislation for the State System of Higher Education (Act 188 of 1982) and saw the State System come to existence in 1983 as a member of the transition team. He currently serves on the System's Executive Council of Presidents and on the boards of the Pennsylvania Academy for the Profession of Teaching, the Pennsylvania State Athletic Conference, and the Dixon University Center at Harrisburg.

President Diebold's stature in American higher education has been recognized by several high-level appointments. He was named to the National Committee on U.S.-China Relations, the leading national organization devoted to building constructive relationships between the two countries. He was also appointed to the Leadership Council of the Northeast-Midwest Institute, a regional component of the Center for Regional Policy, and to the Pennsylvania Humanities Council, the private, non-profit group promoting statewide public understanding of the humanities.

Honorary Doctorate



Louis J. Porreco

Louis J. Porreco, distinguished Erie businessman and community leader, has been selected to receive the degree of Doctor of Public Service (*Doctor Beneficiorum Publicorum, honoris causa*) at today's Commencement ceremony.

A lifetime resident of Erie, Mr. Porreco graduated from East High School and attended Western Reserve University in Cleveland and Gannon University. His early career included positions as district executive for the Boy Scouts of America in Erie and Millcreek, management of the Greater Erie Chamber of Commerce Tourist and Convention Bureau, and director of public relations for the Chamber of Commerce.

Mr. Porreco served as president of the Erie County Automobile Dealers Association (1970-75), the Erie Municipal Airport Authority (1968-86), and the Miracle Mile Association, Inc. (1970-71). He is a past president and chairman of the French Creek Council of the Boy Scouts of America (1987-90).

In 1987, Mr. Porreco made the largest single contribution to Edinboro University's capital campaign, a 27-acre, \$1.1 million estate in Erie's Millcreek Township. The estate and its 11 buildings have been transformed into the Edinboro University Porreco Extension Center, giving the University the presence and capability in the greater Erie area to offer both undergraduate and graduate coursework, as well as continuing education courses. The property's 12-room main house, named Mary Porreco Hall in honor of Mr. Porreco's aunt, is also used as a conference and seminar facility for business, corporate and civic organizations in the community.

For this singularly generous act of philanthropy, Mr. Porreco was named by *Town and Country* magazine in December 1987 as one of the nation's top philanthropists, and he is also listed in the "Giving USA" 1988 annual for the same honor.

In recognition of his generosity to the University, Edinboro nominated Mr. Porreco for the prestigious Philanthropist of the Year award, a program of the Western Pennsylvania Chapter of the National Society of Fund Raising Executives. He received the award in 1988 at a special banquet in Pittsburgh.

Mr. Porreco's contributions to the Erie area are well known and go beyond his special gift to Edinboro University. He currently serves on the Board of Trustees of Gannon University and the Board of Corporators of the Saint Vincent Foundation for Health and Human Services. A trustee of the Erie Community Foundation, he is also the president of the S.S. Niagara Museum Corporation.

The doctoral citation presented to Lou Porreco reads as follows: *In recognition of your leadership in the cause of civic responsibility, which has had positive and profound effects on the lives of individuals and institutions; for your long-standing support of higher education for the benefit of northwestern Pennsylvania and its citizens; for your commitment to public service as demonstrated by your involvement in and guidance of the municipal infrastructure which fosters community growth and prosperity; and for your entrepreneurial contributions to the development of a stable and productive regional economy.*

Philip P. Kerstetter



Philip P. Kerstetter, Ph.D.

Delivering the Commencement address at today's ceremony is Dr. Philip P. Kerstetter, dean of the School of Education and acting dean of the School of Liberal Arts.

Serving in his dual role since October of this year, Dr. Kerstetter is responsible for the overall administrative leadership of the School of Education and the School of Liberal Arts, including the supervision of academic programming, selection and evaluation of personnel, and management of other resources.

From July 1994 to October 1995, Dr. Kerstetter held the position of dean of the School of Education and coordinator of graduate studies. He joined the Edinboro staff in October 1984 as director of institutional research and planning. In that position, he served as chief planning officer for the University.

Before coming to Edinboro, Dr. Kerstetter held several positions at Gallaudet College in Washington, D.C. From April 1980 to September 1984, he was assistant to the vice president for research. Prior to that he served as assistant to the dean of the research institute and co-director of the Consortium Advisement Program while enrolled in full-time doctoral study.

A native of Danville, Pa., Dr. Kerstetter received a bachelor's degree in philosophy of religion from Bucknell University in June 1969. He earned a master's degree in college counseling and student services at the University of Delaware in May 1971, and completed his Ph.D. in special education administration at Gallaudet College in May 1985. He has had advanced training in database management systems for budgeting, personnel and space allocation applications, and has attended advanced workshops in outcomes assessment, enrollment forecasting techniques, strategic planning issues, and principles of project management.

Often called upon to share his expertise, Dr. Kerstetter has offered many presentations throughout the tri-state region, including "Encouraging University-wide Outcomes Assessment Activities," "Non-Academic Predictors of Academic Success of Entering Freshman Students," "Issues in the Establishment of Cooperative Doctoral Programs," "Computer Support Systems for Administrators," and "Evaluation Strategies for Student Development Programs."

Dr. Kerstetter is the author of numerous articles and the recipient of several grants. A member of the American Association of Higher Education, the American Educational Research Association, the Association for Institutional Research, and the Society for College and University Planning, he also serves as president of the Board of Directors for the Pennsylvania State YMCA, a member of the Thiel College Council of Trustees and the County YMCA Board of Advisors, and judge for the Erie Academic Sports League.

Master's Degrees

Graduate Studies

C. Frederick Abel, Ph.D., Dean

Master of Arts

Art

Marianna Holiday Nowak, B.F.A., Edinboro University of Pennsylvania, 1979
Yn-Rong Pai, B.D., National Hsinchu Teachers College, 1992

Clinical Psychology

Joy Marie Chicolis, B.A., Edinboro University of Pennsylvania, 1992
Bonnie Lee Colantoni-Owens, B.A., Lock Haven University of Pennsylvania, 1992
Cynthia Diane Craig, B.A., Penn State University-Behrend, 1993
Lisa Ann Davison, B.S.N., Villa Maria College, 1986
Andrew Joseph Dimperio, B.A., Edinboro University of Pennsylvania, 1992
Darla Lynn Kelly, B.A., Edinboro University of Pennsylvania, 1992
Marilyn L. Kistner, B.A., Lock Haven University of Pennsylvania, 1991
Clifford D. Kusaj, B.A., California University of Pennsylvania, 1994
Mary Jo Manzi, B.A., Niagara University, 1994
Kristen Ann McLaren, B.A., Allegheny College, 1972
Heather Lynn McLeod, B.A., Edinboro University of Pennsylvania, 1994
Tina R. Norton, B.A., Edinboro University of Pennsylvania, 1994
Naysha Marie Parmelee, B.S., SUNY-Brockport, 1993
Carrie Michelle Paternosh, B.A., Edinboro University of Pennsylvania, 1994
Nancy Elaine Sabol, B.A., Edinboro University of Pennsylvania, 1983
Justine Lynette Skiffey, B.A., Youngstown State University, 1992
Josette Michelle Smith, B.S., University of Pittsburgh, 1990
Darcy Anne Tinkham, B.S., SUNY-Brockport, 1993

Communication Studies

William Hartley Adair, B.A., Edinboro University of Pennsylvania, 1993
* John David Bernard, B.A., Edinboro University of Pennsylvania, 1976
Paul Matthew Colino, B.A., Edinboro University of Pennsylvania, 1994
* Robin Elizabeth Illsley, B.A., Mercyhurst College, 1992
Sherry Louise Kanzius, B.A., Penn State University-Behrend, 1988
Jeffrey Alan Ottney, B.S.Ed., Kent State University, 1987
* Tina Marie Piano, B.A., Edinboro University of Pennsylvania, 1991
* Mary Lynn Price, B.A., Slippery Rock University of Pennsylvania, 1986
Joel Stanley Schwartz, B.A., Thiel College, 1990
* Diane Elaine Surma, B.A., Thiel College, 1978

Counseling

Mark B. Baker, B.S.Ed., Edinboro University of Pennsylvania, 1988
James Joseph Beaulieu, B.A., Alliance College, 1987
Michelle M. Benim, B.A., Penn State University-Behrend, 1994
* Gerald McClure Carter II, B.A., Edinboro University of Pennsylvania, 1992
Kimberley Ann Coughlin, B.A., University of Detroit, 1990
* Samuel Davis Dickerson, B.A., Edinboro University of Pennsylvania, 1993
Gary William Fobes, B.A., Edinboro University of Pennsylvania, 1994
Michael Anthony Frisina, B.A., Edinboro University of Pennsylvania, 1989
* Joseph Kaiser, B.A., Mercyhurst College, 1990
* Beverly L. Kerr, B.A., Edinboro University of Pennsylvania, 1991

- * Kathryn Ann Kitchen, B.A., Morehead State University, 1969
- Jule Beth Klingler, B.A., Edinboro University of Pennsylvania, 1992
- * Michele Marinelli, B.S., Syracuse University, 1992
- * Mary Frances Elizabeth McAndrews, B.A., Shippensburg University of Pennsylvania, 1991
- Andrea Elizabeth Myers, B.A., Mercyhurst College, 1993
- Hillary Jo Oquist, B.A., SUNY-Fredonia, 1994
- Laurel B. Petno, B.A., Calvin College, 1989
- * Tammy Lynn Putnam, B.A., Edinboro University of Pennsylvania, 1993
- Betty A. Rice, B.A., Edinboro University of Pennsylvania, 1993
- Cindy R. Smith, B.A., Mercyhurst College, 1994
- Donald Austin Yard, B.A., Grove City College, 1993
- Rose Anna Yeast, B.A., Edinboro University of Pennsylvania, 1992

Social Sciences

- Scott Charles Anderson, B.A., Edinboro University of Pennsylvania, 1992
 Edward W. Carter Jr., B.A., Edinboro University of Pennsylvania, 1993
 Laura L. Engelhardt, B.A., Edinboro University of Pennsylvania, 1989
 Jolie Kathleen Keegan Said, B.A., Edinboro University of Pennsylvania, 1992

Speech and Language Pathology

- Johanna Marie Gilbert, B.S., SUNY-Buffalo, 1988
 * Maureen C. Klein, B.S., Edinboro University of Pennsylvania, 1973
 Joelle Ann Monoski, B.S., Penn State University, 1993
 * Linda Lou Walford, B.A., Edinboro University of Pennsylvania, 1993

Master of Education

Educational Psychology

- Christine Anne Gatto-Shea, B.A., SUNY-Fredonia, 1988
 Cheryl A. Urban, B.A., Mercyhurst College, 1983
 Thomas E. Vanco, B.S.Ed., Edinboro University of Pennsylvania, 1989

Elementary Education

- * Jennifer Lynn Cyphers, B.S., Edinboro University of Pennsylvania, 1994
- * Dina Marie DeEulio, B.S., Penn State University, 1992
- Marilyn Walker Glotzbecker, B.S.Ed., Slippery Rock University of Pennsylvania, 1975
- * Ann Bunner Joslin, B.A., Westminster, 1971
- Marcail Sue Kightlinger-Manuel, B.S., Penn State University, 1993
- Deborah Jean Kreider, B.A., Edinboro University of Pennsylvania, 1986
- * Julie Ann Peterson, B.S.Ed., California University of Pennsylvania, 1986
- Margaret Mary Sam, B.S., Edinboro University of Pennsylvania, 1982
- Jessica Jeannine Swiech, B.S., Mercyhurst College, 1989
- * Melissa Marie (Siggins) Wyllie, B.S.Ed., Edinboro University of Pennsylvania, 1990

Elementary School Administration

- Christina Maria Cullen, B.S.Ed., Edinboro University of Pennsylvania, 1971
 * Patricia Rodocoy Gilpin, B.S.Ed., Edinboro University of Pennsylvania, 1974
 * Diane Marie Niederriter, B.S.Ed., Slippery Rock University of Pennsylvania, 1985
 Laurie Ann Pendred, B.A., Seton Hill College, 1986
 Peggy L. Stefanovski, B.S., Penn State University, 1981

Reading

- Barbara Jean Adair, B.S., Edinboro University of Pennsylvania, 1993
 * Catherine Elaine Cox, B.S.Ed., Edinboro University of Pennsylvania, 1992
 * Archea Louise Akam Ferrara, B.S.Ed., Edinboro University of Pennsylvania, 1989
 * Lorraine Marion Nelson, B.S., Minot State University, 1993
 Christine Marie Rooney, B.S.Ed., Edinboro University of Pennsylvania, 1990
 * Lisa Mary Snyder, B.S.Ed., Slippery Rock University of Pennsylvania, 1990
 * Christine Ann Williams, B.A., Purdue University, 1990

Secondary School Administration

- * Rosalie P. Constantine, B.A., SUNY-Geneseo, 1968
- Patrick Lawrence Hart, B.A., Edinboro University of Pennsylvania, 1984
- Randall Arlen McCaslin, B.A., Edinboro University of Pennsylvania, 1980
- * Shannon J. Patton, B.A., Westminster College, 1990
- * John A. Wyllie Jr., B.S., Gannon University, 1989
- Chenming Zhang, B.A., Qufu Teacher's College, 1982

Special Education

- * Keturah Turrie Mary Bath, B.A., Fairleigh Dickinson University, 1967
- * Heather Lynn Brownell, B.S., Edinboro University of Pennsylvania, 1993
- Leslie A. Carlson Drumm, B.A., Mercyhurst College, 1985
- * Kathleen Ul Fourspring, B.S.Ed., Edinboro University of Pennsylvania, 1973
- * Susan K. Koscelnik, B.S.S.W., Edinboro University of Pennsylvania, 1986
- * Jerald Donald Matters, B.S., Virginia Commonwealth University, 1986
- Elizabeth J. McAdoo, B.S.Ed., SUNY-Fredonia, 1989
- Jeffrey Francis Orlando, B.S.Ed., Edinboro University of Pennsylvania, 1992
- Beth Ellen Overberg, B.S.Ed., Edinboro University of Pennsylvania, 1993
- * Mitchell W. Price, B.S.Ed., Edinboro University of Pennsylvania, 1992

Master of Fine Arts

- * Geoffrey William Cobb, B.A., SUNY-Potsdam, 1988
- Greg Harrison, B.A., California University of Pennsylvania, 1993
- Pamela Lyons Harrison, B.A., California University of Pennsylvania, 1992
- Patrick Joseph Hiller, B.A., Adrian College, 1991
- Melissa E. Spurgeon, B.F.A., Ohio University, 1992
- Elizabeth Anne Spurlock, B.A., Eastern Kentucky University, 1991
- * Christopher Boyd Thomas, B.A., California University of Pennsylvania, 1985

Master of Science

Biology

- John M. Antonelli, B.S., Edinboro University of Pennsylvania, 1992
 * Paul Donald Steward, B.A., Hiram College, 1989

Master of Science in Nursing

- * Diann Caryn Cooper, B.S.N., Villa Maria College, 1987

* Students who completed degree requirements during Summer 1995.

The University does not claim the list of degree candidates or honors designations is absolutely accurate. Students are granted degrees only if they meet all academic and financial requirements.

Honors

The following degree candidates have earned at least sixty-four credits as undergraduate students of Edinboro University and have attained the following cumulative averages: Summa Cum Laude, 3.80 to 4.00; Magna Cum Laude, 3.60 to 3.79; and Cum Laude, 3.40 to 3.59.

Summa Cum Laude

Michelle R. Benedict
Brian R. Bullock
Kenda Kay Cole
Laurent Couquiaud
Stephen Ronald Crump
Frances T. Donatelli
Marie B. El-Bayeh
Traci Lee Harbula
Robin Lee Holden
Karen Madeline Karle
Kristin Marie Cobucci Kramer
Angela Sue Kukol
Edith Marie Leute
Joseph James Lewis
Sherry Ann Loring

Robert H. Makrush
Jennifer Anne Massey
Brian Patrick McCleary
Lawrence J. Milligan
Valerie G. Mininger
Cheryl Clark Purser
John M. Putman
Jeremy Michael Race
Kimberly D. Kuntz Reid
Brenda Sue Renfro
Cynthia Ann Robinson
Elisavet M. Savva
Claire Anne Smith
Yumi Suzuki
John Donald Wheeler

Magna Cum Laude

Melissa Jane Bahle
Lydia J. Blank
Brian Richard Boyles
Linda Susan Chapman
William Paul Coleman
Robert C. Elchynski
Christopher Anderson Fobes
John D. Fox Jr.
Jamie Lynn Hale
Sheri L. Hoehn
Carl Jay Howell
Kimberly Ann Jaeger
D. Ann Klahr
Hiroaki Kobayashi
Charles Paul Lee

Patricia Louise Lindh
Lu Ann Llewellyn
Craig Wayne McCarrick
Melinda Beth Meyer
Diana Joyce Miller
Yuka Nakao
Mary Etta Owens
Shawn R. Rapp
Julie Alexandria Rupert
Toni Ann Russell
Jennifer L. Rydbom
Ava Maria Sawin
Mark James Wagner
Susan Marie Zanella

Cum Laude

Rhonda Huntley Amoroso
Anastasia Andreou
Jack Edward Ashton II
Trisha Louise Baker
Tammy Fay Barlow
Steven E. Bateman
Shawn Terrance Bauer
Lisa Marie Bokenko
Christina Rae Bonzo
Linda Suzanne Bowersox
Amy Lynne Brodmerkel
James Frederick Brown
Bridget Marie Buly
Kristie Marie Camasi
Michele Lee Casey
Xin Chen
Lisa J. Cobb
Michael Bailey Cole
William Dean Cole
Laura A. Dayton
Gregory Todd Dickerson
Karen Susan Donch
John Gerard Flynn
Ashley Michelle Frase
Maria Lynn Garase
Wendy Anna Gray
Joie Lynn Griswold
Anny Handayani
Debora L. Hatala
Jennifer Lynn Hopkins

Nicole Michelle Jannot
Jennifer Lynn Kaufman
Lisa Eileen Kerr
Kraig Robert Kiehl
Kevin J. Kleps
John Roy Koren
Lisa Ann Krakowski
Shannon Marie Kurdilla
Lorna R. Laska
Kimberly Christine Lefebvre
Laetitia Jo Magno
Stephanie Jean Maloney
Wendy Sue Mears
Ryan Lee Milliron
Amanda Leigh Mitchell
Gary Thomas Morgan Jr.
Jessica Lynn Palmieri
Dawn Marie Pavli
Jennifer Dawn Pelaia
Scott Christian Putnam
Barbara Lynne Rings
Richard Mark Sayer
Rimas Petras Sliazas
Nichole Ann Sobol
Marybeth Stockton
Erin Michelle Tordoff
Joseph James Trasciatti
Cynthia Taylor Urquhart
Scott Robert Von Buseck

University Honors Program

Laurent Couquiaud
Cynthia Ann Robinson

Baccalaureate and Associate Degrees

School of Liberal Arts Philip P. Kerstetter, Ph.D., Acting Dean

Bachelor of Arts

Anthropology

Karie Anne Nelson

Art History

* D. Ann Klahr – Magna
John Anthony Munhall
Andrea M. Querio
Cynthia Ann Robinson – Summa
Linda Sue Shellito

Criminal Justice

* Bernadette Louise Baltakis
* Shawn Terrance Bauer – Cum
* David Russell Baynes
* Beverly Gina Berry
* Ronald David Brown
* Betty J. Bucklew
James Robert Byers
Erin Marie Cahill
Kevin Gary Calkins
Gregory Mark Campbell
* Justin W. Campbell
Alvento Chandler
John W. Clark
* William Dean Cole
Shawn Treacy Collier
* Douglas Louis DeMartino
Brian James DeSanto
Jeffrey L. Downing
* Michael Jermaine Edwards
* Michael Alexander Fehl
* LeeAnn Marie Felix
* Beverly Denise Ford
John D. Fox Jr. – Magna
Maria Lynn Garase – Cum
Adam D. Ginther
Nathaniel David Gonzalez
Michael John Hagerman
La'Kieva Imoné Heard
Michelle M. Hoover
* Chad Edward Kalka

* Kraig Robert Kiehl – Cum
Mark Christopher Kostial
Shannon Marie Kurdilla – Cum
Jeffrey William MacIntosh
Joshua David Maloney
* Michael John Markun
Kevin Patrick Matlock
* Gregory James McClelland
James Anthony McGowan
* Ryan Means
Clifford Jason Metz
Amanda Leigh Mitchell – Cum
Gary Thomas Morgan Jr. – Cum
Diane Louise Oedbauer
* Joseph La'Mar Page
Norman Joseph Paul
Blake V. Potocki
James Douglas Prokop
Scott Christian Putnam – Cum
* Suzanne Louise Sanner
* John Robert Schleihauf
Brady Michael Sexton
* Rimas Petras Sliazas – Cum
Nicholas Allen Sobol
* David Mathew Sokol
Melissa Anne Steczak
Jason Price Stevens
Jesse A. Stills
Michael D. Terry
* Renee Ann Thacker
* Daniel Charles Thiem
Jason James Thomas
Shannon Brandy Trudell
* Troy F. Turk
Barbara Patricia Varga
Sean Lateef Walters
David James Weber
Gregory F. Willig

Drama

Jeffery Lynn Cole

English

Brian Todd Atkinson
Melissa Jane Bahle – Magna
Carol Lee Berry

Deborah Garon
* Susan Rae Howard
Michelle Andrea Rindt

German

Christine Lee Rodnicki

History

Linda Suzanne Bowersox – Cum
Joseph Rosario Bufalino
Joseph James Lewis – Summa
* Mary Ann C. Rounds – Magna
Ryan L. Van Dusen
* Kevin Lawrence Weirich
Ronald Joseph Yeager

Humanities

Danielle Sue Eakin
* Jonathan Michael Greenfield
Rita Kukuda

Music

Betsy Ann Behringer
Jason Joseph Dilliott
* Christopher Anderson Fobes – Magna
Mary Etta Owens – Magna
Noel C. Schwenk
Thomas Augustus Tedder
Cheryl Lynn Travis

Philosophy

Laurent Couquiaud – Summa
* James N. Hoffman
John Donald Wheeler – Summa

Political Science

* Matthew Cestra

Psychology

* Sheron DeShea Anderson
* Lori A. Arduini
* Tammy Fay Barlow – Cum
Melinda S. Barto
Lisa Marie Bokenko – Cum
Christina Rae Bonzo – Cum
Amy Lynne Brodmerkel – Cum
Christine Mare Carter
Ayana Shautise Clark
* Johan Lamont Clay
Laura A. Dayton – Cum
Frances T. Donatelli – Summa
* Robin Denise Ethridge
James Paul Ferguson
Grady Carter Ford
Joie Lynn Griswold – Cum
* Alexis Kristina Guthin
Jodi Denise Harper
Corry Jean Howard
Jennifer Marie Karle
* Lisa Lynn Knechtel
* Kristin Renee Ledbetter
Lori A. Linden
* Otto H. Lukert
Stephanie Jean Maloney – Cum
Danielle Marie Martella
Melissa Myrtle McCartney
Courtney Francis Nagel
Patience L. Neilsen
Jessica Lynn Palmieri – Cum
Lelle N. Porter
Susan Lynne Price
Stacy Lynn Proper-Armstrong
* Cheryl Clark Purser – Summa
Toni Marie Quinzio
Ronalee Ann Sellen
Stephanie Lynn Steis
Carla Ann Vanchieri
* Kimberly Ann Varraux
Jennifer Ann Wiegand
Darrin P. Young
Stacie Marie Yurisc

Russian

Martin E. Senger

Social Science

Joseph Jeffrey Baiera
Bethany Jane Wilson

Sociology

* Lori A. Arduini
* Stephanie Nicol Dawkins
Janine Alyce Lipinski

Speech and Hearing Disorders

* Michelle R. Benedict – Summa
Jennifer Marie Bukowski
Amy Beth Duafala
Stephanie Marie Harvatine
Debora L. Hatala – Cum
Gregory Scott Hilbert
Michelle Renee Hinkle
* Sheri L. Hoehn – Magna
* Beverly Ann Hogan
Dennis Patrick Lavelle Jr.
Gina L. Leoni
Amy J. Moran
Marni Lee Northime
Dawn Lynn Podkul
Kristy Joanne Roberts
* Heather Lynn Switalski

Speech Communications

Froso Michael Andreou
* Nicole Tatyana Auville
Colette Gloria Azzaro
* Brandie Jean Bender
* Eric M. Bender
Rebecca Dianne Borngraber
William B. Clarke
* Michael Bailey Cole – Cum
* Eric Kent Criswell
Jeffrey Lee Cunningham
Otha Payne Davidson
Howard Gerald Dickerson
Jeffrey P. Durand
Andrea Lynn Ebbert
* Susanna Christine Eldred
Carleen Jenelle Graham
Jamie Lynn Hale – Magna
Greg Glen Hengelsberg
James Martin Hoffman
* Dawn Renee Johnson
* Allen Bain Joyner
* Karyn Jean Kimmy
Kevin J. Kleps – Cum
Valerie Ann Labriola
Marcus W. Lang
Jason C. S. Lehman
Jennifer Kuehne Loughman

Lyra Lynn Mesnar
Betsy A. Mihalic
Dawn Marie Morelli
Yuka Nakao – Magna
Cherrell Lynnette Nicholson
Craig J. Norman
Melissa Elizabeth Ramsay
Carol Smith Rendell
Holly J. Schuschu
Kelley Ann Sobek
* Dawn Marie Tomlanovich
* Liana R. Turi
Rachel Jane Tutich
Scott Robert Von Buseck – Cum
Mark James Wagner – Magna
Anders E. Weiss
Christopher Thomas Whiteman

Bachelor of Fine Arts

Applied Media Arts

Sherry Lyn Alverson
* Todd Michael Chiaravalloti
* Joseph Vincent Cioffi
* Gregory Todd Dickerson – Cum
Douglas L. Doolittle
John Gerard Flynn – Cum
* Krista Lynn Geisel
* Jay David Hernishin
Joseph Clifford Herron
Maryjane Margaret Humbert
Heather Ann Kadar
David Michael Maracci
Charles Thomas May Jr.
* Michael Douglas Munro
Dawn Marie Pavli – Cum
Susan L. Protin
* Karrie Ann Romeo
Frances Margaret Simonsen
Yumi Suzuki – Summa
Christopher Michael Tirpak
Shawn Earl Ulery
Phyllis L. Wykoff

Fine Arts – Crafts

Rosanne S. Anderson
Donald F. Barto
Steven E. Bateman – Cum
Lydia J. Blank – Magna
Lisa J. Cobb – Cum
Gary Daniel Fozard
John Roy Koren – Cum

Pamela Bridget Perfilio
Brian Marlin Reid
* Richard Mark Sayer – Cum
Jonathan Amos Sierota
Melinda L. Thomas
Timothy G. Tomlin
Laura Rae Ann Yoder

Bachelor of Science

Social Work

* Kelly Marie Calfo
Nicole Allison Clark
* Wendy M. DeLeo
Karen Susan Donch – Cum
Michelle Lee Fox
Maggie Jo Giedl
Arlene G. Goldberg
Paul David Gordon

Linette R. Jakobowski
Kelly Lynn Jeffries
Karen Madeline Karle – Summa
Frank J. Kasper
Jennifer Lynn Kaufman – Cum
Kimberly Christine Lefebre – Cum
Ann Hallett McIlvaine
* Jenny L. Miller
Valerie G. Minerger – Summa
Alyson Marie Morton
Francine Renee Payne
Jennifer Dawn Pelaia – Cum
* Denise Ann Pepicello
Joanna Lauren Puccio
Julie Elaine Riley
Michele Elaine Rowicki
Kristen Sara Sinneway
Beverly Ann Steck
* Donna Kay VanHorn
* Kelly Jeanne Walters
Mary Linda Wills

University College
Andrew C. Lawlor, Ph.D., Dean

Bachelor of Arts

Specialized Studies

* Tonya Michele Alston
* Joseph E. Davis
* Alice Rita DeMatteo
Billie Joan DeZorzi
Lauren Susan Fontana

Jacqueline Schweighauser Furr
Eric Goldman
Alison Nicole Hayes
Patricia Ann Hoffman
Barbara Ann Jones
Erin Kyle Krayner
* Laetitia Jo Magno – Cum
Robert H. Makrush – Summa

Associate of Arts

Criminal Justice

Amanda Mae Adams
Jeremy D. Bollman
Michael Joseph Gustafson
Geraldine Hathaway
Darren W. Ingham
Jeffrey Todd Mullen
Myra Kathryn Schneider
Michael R. Stockton

Human Services

Laurie V. Hannan
Jamie Lyn Pero
Michele E. Schetter

Liberal Studies

* James Vincent Santo

Sue A. Miller
Lawrence J. Milligan – Summa
John M. Putman – Summa
Denise A. Rich
* Heather Groves Rupert
Scott Thomas Rupert
Colleen Mary Schultz
* Douglas Lyle Thurston

School of Science, Management and Technologies

Michael A. Mogavero, Ph.D., Dean

Bachelor of Arts

Biology

* Thaddeus Peter Marcelli
Richard G. Zink

Environmental Studies/ Geography

Brian Richard Boyles – Magna
Eric Wayne Fisher
Scott Thomas Hollingsworth
* Charles Christopher Kerzman
Daniel E. Lung
Ryan Gates Quiggle
Shawn R. Rapp – Magna
Kelly Joel Ristau
Jenna Michele Rusko
* Kara L. Zalnasky

Geography

David Lee Campolong II
Edward Charles Miller II

Mathematics

Jeffrey William Cancilla
Marie B. El-Bayeh – Summa
* Shirzad Malekabbasi
John Donald Wheeler – Summa

Natural Science and Mathematics

Kevin D. Hoffman
Harvey Fredrick Ruffin

Physics

Stephen J. Barnes

Bachelor of Science

Biology

Mark Allen Blasco
* Madhavi A. Diwanji
Wendy Anna Gray – Cum
Traci Lee Harbula – Summa
Tami Lynn Kloes
* Kristin Marie Cobucci Kramer –
Summa

Business Administration

Gina M. Abbondanza
Celeste Ann Altman
* Anastasia Andreou – Cum
Yoshinobu Asami
Michael Thomas Bartoe
Tyoato Betters
Xin Chen – Cum
William Paul Coleman – Magna
* Deborah Jean Cray
* Daniel David DeZak
Robert C. Elchynski – Magna
Jason Brice Garbic
Geraldine Marie Greene
Sandra J. Grunzel
* Anny Handayani – Cum
Jennifer Rebecca Held
Matthew John Hladio
Douglas James Irwin
* Andrew P. Jannot
Vickie Lynn Janoski
Antar Bernard Johnson
Blair Michael Jones
Zafar Khalil
Robert A. Lawrence
Sherry Ann Loring – Summa
Grant Edward Matthews
Brian Patrick McCleary – Summa
* Melanne Joyce McCloskey
* Wendy Sue Mears – Cum
Ryan Lee Milliron – Cum
Angela Marie Mitterer
Patricia Ann Morrison
Jeffrey Thomas Ohlinger
Robin Linn Palmer
* Anne Rebeiro
Bobbi Jo Reidenbach
Gina Marie Riccardi

* Barbara Lynne Rings – Cum
Jennifer L. Rydbom – Magna
Elisavet M. Savva – Summa
* Paul William Seman
Diane Louise Skelton
Janice H. Skolnick
* Rimas Petras Sliazas – Cum
Serena L. Stake
* Marybeth Stockton – Cum
* Deborah Ann Sult
Jeffrey L. Tanner
* Shannon Rae Tansky
Thomas G. Vogt
* Timothy Allen West
* Selina Nichelle White
Scott Allen Zilhaver

Chemistry

Craig Wayne McCarrick – Magna

Computer Science

Stephen Ronald Crump – Summa
Leo LeRoy LaChance Jr.
Manyu Li
Patrick Gerald Pyne
Malcolm Hamilton Sexsmith
William J. Stouffer
John Raymond Wetsell

Economics

Michael A. Gegogeine
Hiroaki Kobayashi – Magna

Environmental Science

Ben Gaston Crawford
Carrie Sue Eastman
John W. Kast
Angela Sue Kukol – Summa
Vincent J. LePera
* Robert Edmund McHale
Tracey Ann Miller
* Sean Alan Monighan
Wayne David Pelton

Geology

- * Jack Edward Ashton II – Cum
- * Brian R. Bullock – Summa
Kristie Marie Camasi – Cum
James Dodson Coffman
- * Beth Ann McMillen
- * Joseph James Trasciatti – Cum
- * Robert D. Voegele
Arik Christopher Way
- * Kevin Michael Yeager

Medical Technology

- * Milly Lynn Keeler
- * Jody Lee Knapp
- * Jennifer Anne Massey – Summa
- * Penny Lynn Wells
- * Christopher Lee Zurinsky

Nuclear Medicine Technology

- * Scott James Clinefelter
- * Erin Lynn Minihan
- * Connie Lee Moyer
- * Kathy Varrasso

Nursing

- Gaik-Choo Cooling
- * Judith Marlene Esser
Jennifer Lynn Hopkins – Cum
Todd J. Meyer
Rita A. Pellicciari
Edna B. Pett
Brenda Sue Renfro – Summa
Shelly J. Yacobozzi

Bachelor of Science in Nursing

- * Kevin James Burns
- * Catherine A. Collins
- * Carol A. Dudley
- * Dale E. Heron
- * Christine Fay Higley
- * Aimee Elizabeth Kemick
- * Charlene Miller Kuchcinski
- * Yolanda A. McMillan
- * Beth Collins Nowak
- * Christopher Richard O'Stafy
- * Karen Marie Palermo
- * David Douglas Parker
- * Sharon Lynn Parry
- * Sharmila B. Rao
- * Kelli Jo Roschi
- * Terry L. Sadler
- * Stacy Louise Shaffer
- * Todd Anthony Shmigalsky
- * Deanna Marie Tropper
- * Louise Marie Wahonick
- * Guo-Mei Li Wong

Associate of Engineering Technology

Biomedical Equipment Technology

William F. Paulson

Manufacturing Engineering Technology

Robert J. Knapp
David Howard Stockton

Associate of Science

General Business Administration

Margaret Patience Henn
Juliana Marie McCaffery
Susan K. Sheely
* Kim T. Telliho
Bobbie Jean Whitenight
Charlyn J. Wilson

Medical Laboratory Technology

- * Lori Michele Brunner
- * Troy S. Hoffman
- * Karra Rae Leroux
- * Keith Joseph Penberthy
- * Marcia Lee Zaczyk

Bachelor of Science in Art Education

- Lisa Ann Beatty
- Deanne Beth Hinerman
- Krista Jean Kohut
- Lisa Ann Krakowski – Cum
- Stephen Peter Loya
- Danielle Andrea Nick
- Thomas John Rappa
- Warne Burr Riker
- * Steven K. Smith

Bachelor of Science in Education

Elementary Education

- Bridget Marie Adams
- Tracy Michelle Adams
- Karen Pauline Adamson
- * Tamika Allen
- Monica Diane Alward
- * Trisha Louise Baker – Cum
- Susan Jane Batten
- Melissa Penfield Bruner
- Michele Lee Casey – Cum
- * Linda Susan Chapman – Magna
Kara Jean Chermack
Celeste Marie Ciampoli
Kenda Kay Cole – Summa
Daniel William Dinapoli
Dana Marie Drish
Patricia Ann Edminster
Joanna Denise Edwards
- * Tabatha Marie Elias
Patrick Virgil Fannin
Ashley Michelle Frase – Cum
Heather Lynn Gamble
Anissa Marie George
Darlene Marie Graham
Heather Nicole Greene
Richard Max Gudowski II
Georgia Jean Hartle
Marcella Dae Holubowicz
Carl Jay Howell – Magna
Lisa Lynnette Hutchison
Dawn Michelle Iorio

School of Education Philip P. Kerstetter, Ph.D., Dean

- Mary Elizabeth Jackson
- Kimberly Ann Jaeger – Magna
- Nicole Michelle Jannot – Cum
- Andre Craig Jones
- Luellen Elaine Jones
- Kimberly Elizabeth Kroll
- Linda Michelle Lasher
- Charles Paul Lee – Magna
- Melinda Ann Lippert
- Lu Ann Llewellyn – Magna
- Jennifer Lynn Lucas
- Laurie Deann Lytle
- Lisa Dianne Lytle
- Julie Ann Martinez
- Deanna L. Mertz
- Diana Joyce Miller – Magna
- Kimberly Anne Morewood
- Holly René Morrison
- Debra Ann Nelson
- Lisa Louise Nenadovich
- Amy Jennifer Parker
- Tazi Mataya Powell
- Shelly Marie Price
- Jacqueline Sue Reina
- Danielle Eileen Renwick
- Christopher Allan Rhodes
- Julie Alexandria Rupert – Magna
- Toni Ann Russell – Magna
- Marlene Ann Salamon
- Cynthia Sue Searight
- Brenda Louise Sinkko
- Erin Michelle Tordoff – Cum
- Cynthia Taylor Urquhart – Cum
- Paula Arlene Voisin
- Jacquelyn M. Wroblewski
- Rebecca Jean Yokom
- Daniel Scott Zahniser
- Keith Alan Zajac
- Tonya Marie Zang

Elementary Education/ Mentally-Physically Handicapped

- Rhonda Huntley Amoroso – Cum
- Jenifer Rose Aufderheide
- Bridget Marie Buly – Cum
- Rebekah Lynn Cousins
- Dawnne Darleen Foland
- * Leslie Ane Handzel
- * Amanda Leigh Haskins
- Mary Ann Havrilak

- Robin Lee Holden – Summa
- Tina Anne Marie Kless
- Daniel Joseph Klinefelter
- Jo-Ann Krol
- Lorna R. Laska – Cum
- * Edith Marie Leute – Summa
Amanda Marie Miller
Jamie Lyn Pero
Chanda Lynn Pierce
Kimberly D. Kuntz Reid – Summa
Erin Kathleen Rogan
Ava Maria Sawin – Magna
Jill Ann Schubauer
Nichole Ann Sobol – Cum
Susan Marie Zanella – Magna

Health and Physical Education

- Scott Michael Baldi
- Sophie Chimonidou
- Ann Amy Gillespie
- Arthur LeRoy Greishaw Jr.
- Patricia Louise Lindh – Magna
- Timothy Michael O'Keefe
- Brian Robert Page
- Donald Michael Salandra
- Christopher C. Snyder

Mentally and Physically Handicapped

- * Timothy Mark Burkett
- Ronda Ann DeWolf
- Jason J. Harris
- * Aaron Eugene Johnson
- Lisa Eileen Kerr – Cum
- Kara Lyn Kridle
- Thomas Andrew Podpora
- Michelle Helen Roberts
- Claire Anne Smith – Summa

Secondary Education – Biology

- James Frederick Brown – Cum
- Michael Anthony Lariccia

**Secondary Education –
Chemistry**

Jeffrey Lee Hanson
David R. Stoeckle Jr.

**Secondary Education –
Comprehensive English**

Kimberley Faith Heidler
Sharon L. McQuaid
Ame Ann Rohleder
Stephanie Violet Unangst

**Secondary Education –
Earth/Space Science**

* Eric Arlow Hamilton
Christopher Lewis Paris

**Secondary Education –
General Science**

Todd Alan Rose

**Secondary Education –
Mathematics**

Melissa Lynn Allen
Jonathan David Blanchard
Mohammad Ahasan Habib
Melinda Beth Meyer – Magna
* Martin Andrew Rimpa

**Secondary Education –
Social Science**

* Brad Lee Prince
Jeremy Michael Race – Summa
* John William Saunders
Amy Elizabeth Snyder
Connie Lehner Tepe
* Mark Allen Vukelich

Associate of Science

Pre-School Education

Jennifer Leigh DeMichele
Patricia Ann Hart
Barbara Jean Jarrett
Cheryl Denise Santos

**Chancellor, State System of
Higher Education**

James H. McCormick

**Board of Governors, State
System of Higher Education**

F. Eugene Dixon Jr. – *Chair*
Julia B. Ansill – *Vice Chair*
Muriel Berman
Jeffrey W. Coy
Glenn Y. Forney
Eugene W. Hickok Jr.
James A. Hughes
F. Joseph Loeper
Kim E. Lyttle
Amy L. Martin – *Student Representative*
Joseph M. Nespoli
Thomas J. Ridge
Philip D. Rowe Jr.
Elizabeth L. Schmid – *Student Representative*
Jere W. Schuler
Patrick J. Stapleton
Christine J. Toretti
R. Benjamin Wiley

Council of Trustees

R. Benjamin Wiley – *Chair*
John D. Catone
Edwin D. Dombrowski
Susan B. Hagen
Patricia Heasley
C. Richard Johnston
Sonya Lee – *Student Representative*
Benedict J. Miceli
William C. Schulz
Harry K. Thomas
James H. McCormick – *Chancellor (ex officio)*

Commencement Committee

Robert C. Weber – Interim Provost and Vice President for Academic
Affairs – *Chair*
Carol Bolla – Assistant to the President
William Coleman – Assistant Vice President for Facilities
Gary Jamison – Interim Vice President for Student Affairs
Gerald Kiel – Assistant Vice President for Academic Administration
James Klausman – Chairman, Department of Music
Judy Kubeja – Senior Executive Associate to the Provost
Patti S. Loomis – Director of Publications
Alice Parker – Administrative Assistant, Office of Records and
Registration
Lorraine Revak – Facilities Office and General Services Manager
Bob Wallace – Director, TV and Media Services

* Students who completed degree requirements during Summer 1995.

The University does not claim the list of degree candidates or honors designations is absolutely accurate. Students are granted degrees only if they meet all academic and financial requirements.



ALMA MATER

*Hail to thee, our Alma Mater glorious;
Fresh wreaths we bring to bind thy brow.
Trials have passed and thou has stood victorious;
Never fairer, never statelier than now.
O Edinboro, Edinboro,
Ever praising thee in song;
While class speeds class as swift years pass,
To thee our hearts belong.*