
Commencement

December 12, 1993
Edinboro University of Pennsylvania



Commencement Ceremony

Convocation	John F. Fleischauer, Ph.D. <i>Provost and Vice President for Academic Affairs Edinboro University of Pennsylvania</i>	
Prelude	Symphonic Band	
Pomp and Circumstance	ACADEMIC PROCESSIONAL	Symphonic Band
<i>Edward Elgar</i>		
Star-Spangled Banner	University Singers Symphonic Band Tim Cordell, Ph.D., <i>Conductor</i>	
<i>Francis Scott Key</i>		
Invocation	The Rev. Philip Oriole <i>Our Lady of the Lake Catholic Church Edinboro, Pennsylvania</i>	
President's Welcome	President Foster F. Diebold <i>Edinboro University of Pennsylvania</i>	
America the Beautiful	University Singers Symphonic Band Tim Cordell, Ph.D., <i>Conductor</i> Tracy L. Wolstoncroft, <i>Soprano</i>	
<i>Samuel Ward</i>		
Awarding of Honorary Doctorate	President Foster F. Diebold	
<i>Na'im Akbar, Ph.D.</i>		
Commencement Address	Michelle Howard-Vital, Ph.D. <i>Vice Chancellor for Public Service and Extended Education University of North Carolina at Wilmington</i>	
Presentation of Candidates	John F. Fleischauer	
Conferring of Degrees	President Foster F. Diebold	
Alma Mater	David Herendeen, Soloist University Singers	
Benediction	The Rev. Philip Oriole	
Grand March from "Aida"	RECESSIONAL	Symphonic Band
<i>Giuseppe Verdi</i>		

The audience is asked to stand during the Processional and Recessional and to join in the singing of the National Anthem and the Alma Mater.

The Commencement Procession

The University Marshal
The University President
The Trustees of the University
The Platform Party
The University Faculty

Colors Distinctive of the Disciplines and Professions

Apricot.....	Nursing
Dark Blue	Philosophy
Light Blue.....	Education
Peacock Blue.....	Public Administration
Brown	Fine Arts
Citron.....	Social Work
Copper.....	Economics
Crimson.....	Journalism
Drab	Business
Gray	Veterinary Science
Silver Gray	Oratory
Green.....	Medicine
Olive Green.....	Pharmacy
Sage Green	Physical Education
Lemon.....	Library Science
Lilac.....	Dentistry
Maize	Agriculture
Orange.....	Engineering
Pink	Music
Salmon Pink.....	Public Health
Purple	Law
Russet.....	Forestry
Scarlet	Theology
White.....	Arts, Letters and Humanities
Golden Yellow	Science

Honors Award Designations

Gold Stoles	Summa Cum Laude
White Stoles	Magna Cum Laude
Red Stoles	Cum Laude
Gold Cords	University Honors Program Graduate
Red Cords	Departmental Honor Graduate

The Ceremonial Mace

The ceremonial mace, a symbol of presidential authority, is carried at the head of the academic procession by the University Marshal, Jerry J. Dantry. A gift of the Alumni Association, the mace was designed and executed by Professor Henry Katzwinkel and Dr. Seymour Blinderman, former chairman of the Art Department. It was first used at the inauguration of Edinboro State College President Chester T. McNerney, in 1967.

The mace, twenty-seven inches in length, is topped by a sterling silver sphere studded with circular cabochon rubies, secured by bezels. The collar of the mace is inlaid with ebony, alternated with silver relief fleur-de-lis design elements. The cultured pearls mounted in cups encircle the bottom of the collar symbolizing the thirteen state colleges of Pennsylvania. The shaft of the mace is composed of Brazilian rosewood sections, separated by sterling silver rings. The mace is terminated by a cast sterling silver finial; the five cultured pearls represent the existing curricula. The rib-like cone form is terminated by a small silver sphere symbolizing the world.

The metal working processes incorporated in the ceremonial mace include turning, forging, inlaying, stone setting, and lost wax centrifugal casting.

The Presidential Medallion

A symbol of presidential authority, the first presidential medallion was presented to Foster F. Diebold during the May, 1981 commencement ceremonies. It is permanently housed in the president's office and will be presented to successive presidents. Designed and executed by Mr. Henry Katzwinkel, professor of art, the sterling silver medallion consists of a three and one-half inch pectoral pendant featuring on its face the sunken crest of the Commonwealth of Pennsylvania. On the reverse side is the figure of a Gordon Highlander with pipes. To the right of the piper is the Cross of St. Andrew. To the left is the Cross of England. Flanking the figure is the date 1857, the opening year of the University, and garland thistles. In the background are the hills of Scotland, and beneath the piper is an open book, symbol of knowledge.

The pendant descends from a shield containing a triple-towered castle, the symbol of defense, protection, and strength. The collar of the medallion is comprised of a series of two-inch shields, alternately bearing three different designs: the meigle, an interlacing knotwork peculiar to the Pictish school of Celtic art; the Tudor rose design; and "ESC" in interlocking letters on a background of tabby weaving. Connecting each of the collar shields is a Cross of St. George, representing the union of Scotland and England. The entire medallion was fabricated and cast in the cire perdue (lost wax) process.

The gown, the cap, and the hood, representing the major components of the academic dress, are a ceremonial inheritance from the medieval universities of the eleventh and twelfth centuries, where dress was the outward sign of privilege and responsibility. The academic dress worn by those participating in today's academic processional symbolizes the level of their academic attainment and the institution they attended.

Gown

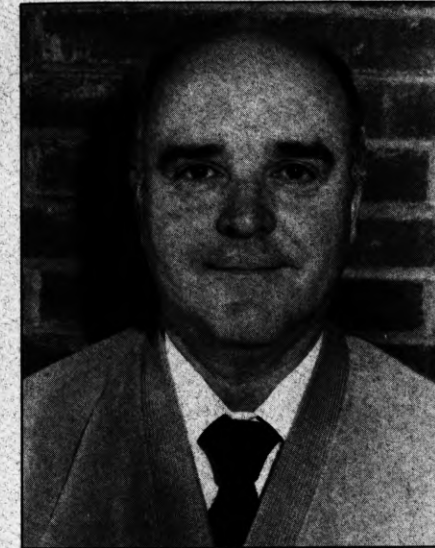
Although the gown is more frequently black, certain universities have authorized the use of colored gowns. The bachelor's and master's gowns are fashioned from black serge. The yoke for the bachelor's gown is designed to be worn closed and features long, flowing and pointed sleeves. The master's gown is designed to be worn open or closed. Its sleeves are very long with square ends, and the front part has an arc cut away. The arms protrude through a slit at the elbow. The gown for the doctor's degree is made of wool, serge, or silk with an open front faced with wide velvet panels. The sleeves are loose and bell-shaped with three bars of velvet in black or the color of the discipline in which the doctorate was obtained.

Hood

The most outstanding feature of the academic dress is the hood. It is usually worn only for the master's and the doctor's degrees. The doctor's hood is longer than the master's hood and has distinguished panels. The college or the university granting the degree is indicated by the color of the hood lining. The velvet trim of the hood indicates the field in which the degree was granted.

Cap

The standard cap is the mortarboard, usually the color of the gown. The tassel is black for the baccalaureate and master's degree and is worn over the left front quarter of the cap. The tassel for the doctor's mortarboard is of gold thread. Undergraduates wear the tassel on the right side of the cap until the moment the degree is conferred by the president.



Jerry J. Dantry

Carrying the ceremonial mace and leading the academic procession at today's Commencement ceremony is Jerry J. Dantry, assistant professor in the department of Educational Services.

A native of Carnegie, Pennsylvania, Dantry earned a bachelor of science in elementary education from Edinboro in 1962 and a master's degree in education from Duquesne University in 1972.

He began his teaching career in 1962 in the Pittsburgh School District, where he taught English. He returned to Edinboro in 1964 to join the faculty of the education department. He taught sixth grade in the campus school in Compton Hall until 1968. For 17 years he was Edinboro's off-campus supervisor for student teaching. During that time he resided and worked in the Pittsburgh area and assisted in admissions, recruiting and alumni activities in addition to supervising student teachers.

Dantry is currently an assistant professor in the educational services department, teaching sophomore field experience and supervising student teachers. He is also the northwest region program coordinator of student programs for the Pennsylvania State Education Association. Last year the PSEA appointed him to its Cadre for the Professional Standards and Practices Commission.

In addition to his academic service, Dantry has been a member of several school boards, including the West Allegheny Board of School Directors, 1981-89; the Allegheny Intermediate Unit Board of Directors, 1983-87; and the Western Hills Special School Joint Committee, 1985-87. He is now president of the Edinboro chapter of Phi Delta Kappa, the professional fraternity for education, and is faculty advisor to the commuter club, Tau Kappa Epsilon, the student chapter of PSEA, and the Secondary Education Association. He has also served on Edinboro University's alumni board of directors and the University Senate, and was homecoming chairman from 1967 to 1969.

Active in community service, Dantry served for several years as a special programs volunteer for the South Hills YMCA. From 1981 to 1985 he was a member of the Special Olympics advisory board of directors, and he served as an area volunteers coordinator for the Jerry Lewis Telethon from 1981 to 1984.

Dantry has twice received the Pennsylvania School Boards Association Achievement Certificate for continuing education in school law as well as the Pennsylvania Department of Education executive academy achievement certificate for continuing education in supervision and evaluation in 1984. Last year the Crawford County Area Vocational-Technical School presented him with a certificate of appreciation. In 1983 he received the West Allegheny Recreation Community's Outstanding Service Award and the Allegheny County Guidance Counselors Association's certificate of appreciation.

Dantry and his wife, Barbara, have two children, Derek and Dina.

President Foster F. Diebold



Foster F. Diebold

Now in his fifteenth year as president of Edinboro University of Pennsylvania, Foster F. Diebold is the fourteenth chief executive officer of the institution of higher learning that has come to acclaim in the last decade as one of Pennsylvania's and the nation's finest. He has brought a vigorous educational and moral leadership, a strengthening of the spirit of community, a clear sense of direction and purpose, and a dimension of multicultural pluralism and diversity.

Much has been accomplished during President Diebold's tenure. The University has returned to financial health. Significant facilities and grounds improvements have been achieved, with several of the historic structures on campus restored to their original splendor. Academic programs have been emphasized and improved, with more than 100 degree offerings now available. Enrollment gains have been unprecedented in both numbers and academic quality. International linkages have been established with institutions in several other countries, and Edinboro University's program for students with disabilities continues to garner acclaim as one of the finest among all colleges and universities in the United States. Widely recognized as a leader in education both here and abroad, President Diebold has positioned Edinboro University to meet the challenges of the 1990s, as well as those that will face public higher education in the 21st century.

The Orange, New Jersey, native is a graduate of Monmouth College and also holds a master of arts in educational administration from Seton Hall University. He has met coursework requirements for a doctorate in education at Rutgers University and is currently completing the dissertation requirement for the Ph.D. program in higher education at the University of Pittsburgh.

Prior to his presidency of Edinboro University, President Diebold was president of the University of Alaska from 1977 to 1979. Before that, he was executive secretary to the Board of Regents and special assistant to the president of the University of Alaska Statewide System. From 1969 to 1976, he was director of Development and Planning at Kean College in New Jersey and a member of the graduate faculty at that institution; and from 1965 to 1969, he was assistant superintendent of the Neptune Township (New Jersey) Public Schools.

Recognized for his extensive experience in the field of education management, President Diebold's scholarly achievements in the discipline of applied ethics in higher education deserve special mention. The model statement he authored for the American Association of State Colleges and Universities, "Ethical Practices for College Presidents," was unanimously adopted by that professional organization and published as policy for the chief executives of its nearly 400 member institutions nationwide. It is the first formally adopted ethical practices and policy statement for higher education presidents.

For his leadership on an international scale and for his many contributions to the advancement of higher education and enrichment of an emerging culture in Pakistan, President Diebold was decorated with prestigious gold medals from three Pakistani universities. The awards for educational eminence were presented during visits to the Edinboro campus by official Pakistani delegations.

President Diebold was also honored by the Government of Pakistan with the awarding of the degree of Doctor of Laws (*honoris causa*), presented at the Government House in the City of Karachi. The ceremony was attended by the presidents of the several Pakistani universities holding linkage agreements with Edinboro University, as well as many high-ranking officials of the Government of Pakistan and U.S. diplomatic officials.

A staunch advocate of a statewide system of public universities in Pennsylvania, President Diebold supported the enabling legislation for the State System of Higher Education (Act 188 of 1982) and saw the State System come to existence in 1983 as a member of the transition team. He currently serves on the System's Executive Council of Presidents and on the boards of the Pennsylvania Academy for the Profession of Teaching, the Pennsylvania State Athletic Conference, and the Dixon University Center at Harrisburg.

President Diebold's stature in American higher education was recognized recently by several high-level appointments. He was named to the National Committee on U.S.-China Relations, the leading national organization devoted to building constructive relationships between the two countries. He was also appointed to the Leadership Council of the Northeast-Midwest Institute, a regional component of the Center for Regional Policy, and to the Pennsylvania Humanities Council, the private, non-profit group promoting statewide public understanding of the humanities.

Honorary Doctorate



Na'im Akbar

Dr. Na'im Akbar has been selected to receive the degree *Litterarum Humaniorum Doctor, Honoris Causa*: Doctor of Humane Letters during today's Commencement ceremony.

Na'im Akbar is a clinical psychologist and assistant professor in the department of psychology at Florida State University in Tallahassee and serves as executive director of his private motivational consulting firm, Mind Productions and Associates. A graduate of the University of Michigan, Akbar received bachelor of arts, master of arts and doctor of philosophy degrees in psychology.

He formerly served as associate professor at Norfolk State University and was chairman of the Morehouse College psychology department for three years. He has served on the boards of a variety of civic and professional organizations, including several terms on the board of the National Association of Black Psychologists, of which he was elected president in 1987-88.

Among Akbar's many honors for his progressive and landmark contributions to his specialized studies of the psychology of the African-American are the Annual Member Award and recognition as a Distinguished Black Psychologist by the National Association of Black Psychologists. He is listed in *Who's Who in Black America* and received the prestigious Community Service Award from the National Association of Black Social Workers. The mayors of Atlantic City, New Jersey (1986), Cleveland, Ohio (1988), and Jackson, Mississippi (1990) declared Na'im Akbar Days in recognition of his accomplishments. He was also the recipient of the Dr. Martin Luther King Jr. Distinguished Scholar Award at Florida State University in 1987.

The author of such widely acclaimed books as *Chains and Images of Psychological Slavery, From Miseducation to Education, The Community of Self, and Visions for Black Men*, Akbar is a member of the *Journal of Black Studies* editorial board. He has also served as associate editor for the *Journal of Black Psychology* for more than 14 years.

Akbar has been interviewed on Tony Brown's Journal, The Geraldo Show, The Oprah Winfrey Show, and BET's Our Voices. Significant articles about him have appeared in *Essence* magazine, *The Washington Post*, *Ebony* Man and a large number of local, national and international newspapers. He has been described as "one of the world's pre-eminent African-American psychologists and a pioneer in the development of an African-centered approach to modern psychology."

Akbar was selected to receive the honorary degree for his "leadership in the causes of education and social responsibility, which have had positive and profound effects on the lives of individuals and institutions; for his commitment to the achievement of all who would try to reach the fulfillment of their potential; for his dedication to human development and the universal acknowledgment of human dignity; for the professional commitment to scholarship which sustains his teaching and research; and for his tireless service in the cause of human understanding."

Michelle Howard-Vital



Michelle Howard-Vital

Delivering the Commencement address at today's ceremony is Dr. Michelle Howard-Vital, vice chancellor for public service and extended education at the University of North Carolina at Wilmington.

Dr. Howard-Vital received bachelor's and master's degrees in English literature and language from the University of Chicago and a doctorate in public policy analysis, specializing in education, from the University of Illinois at Chicago.

She began her career in 1975 as an English instructor at Chicago's Central YMCA Community College. In 1981 she became project coordinator for the Early Outreach Program at the University of Illinois at Chicago, and two years later she was named dean of adult-continuing education for Loop College. In 1986 she was appointed dean at Chicago State University.

In July 1991, Dr. Howard-Vital joined Edinboro University as associate vice president for academic programs and dean of University College. In that position, Howard-Vital worked closely with the University provost and academic deans in the development of academic programs and policies, curriculum and general education revision, articulation agreements with other institutions, and program accreditation. She was co-chair of the University's steering committee that guided Edinboro to a successful 10-year reaccreditation by the Middle States Association of Colleges and Schools earlier this year.

As the dean of Edinboro's University College – the recently formed administrative structure created to enhance services for new and marginally prepared students – Dr. Howard-Vital also oversaw the Center for Advising and Career Services, internship programs, Opportunity College, and programs in the Department of Academic Support Services: Act 101, general studies, tutoring and academic assistance, and freshman outreach.

Michelle Howard-Vital is past president of the University of Chicago chapter of Pi Lambda Theta, a national honor and professional education association. She has served as secretary of the Professional Women's Organization at La Rabida Children's Hospital and Research Center. She is also a member of the National Association for Female Executives, the National University Continuing Education Association, the American Educational Research Association, and former member of the Community Advisory Council of the University of Illinois at Chicago.

Her writings include articles and reviews for the *Journal of Black Studies*, the *Journal of Negro Education*, and *Dean and Director*. She has made presentations on Afro-American Women and Men in Higher Education, Reaching Audiences Through Cable Television, Establishing Linkages Between Education and Business, and Coping Strategies for Black Women. She recently wrote a book review for *SAGE*, a journal of Black women's studies, and prepared two articles for the upcoming *Encyclopedia of African Americans*.

Howard-Vital was named vice chancellor at the University of North Carolina at Wilmington this past October and also serves as associate professor in the UNCW school of education's department of educational design and management.

She and her husband, Geri Vital, have a daughter, Madelyn.

Master's Degrees

Graduate Studies

Philip P. Kerstetter, Ph.D., Dean

Master of Arts

Art

Clinical Psychology

Communication Studies

Counseling

- Theresa Ann Deramo, B.S., Edinboro University of Pennsylvania, 1974
* Matthew F. Ferguson, B.F.A., Edinboro University of Pennsylvania, 1986

- Jill Reneé Corey, B.A., Penn State University/Behrend, 1991
* Janice Ann Douglas-Brooks, B.A., Hope College, 1990
Clara Householder, B.A., Edinboro University of Pennsylvania, 1992
Naureen Ruqia Jaffri, B.A., SUNY-Buffalo, 1992
Joseph John Jozefczyk, B.A., Edinboro University of Pennsylvania, 1991
Debra Marie Ledrick, B.S., Edinboro University of Pennsylvania, 1986
Sharon L. Leuenberger, B.S., John Carroll University, 1989
Betty Jane Lytle, B.A., Edinboro University of Pennsylvania, 1991
Linda Ann Polinski, B.A., Niagara University, 1992
Cheryl Marie Riche, B.A., Edinboro University of Pennsylvania, 1992
David Charles Sanner, B.A., Penn State University/Behrend, 1991
Tara M. Smola, B.A., Edinboro University of Pennsylvania, 1992
Glenn Stephen Stelpstra, B.D., Redeemer College, Ontario, 1990
Matthew D. Szczesny, B.A., Gannon University, 1989
Shelley Anne Taylor, B.A., Edinboro University of Pennsylvania, 1992
Kristin Newman Vaughn, B.S., Juniata College, 1992

- Pamela Dee Alesky, B.A., Edinboro University of Pennsylvania, 1981; M.A., Edinboro University of Pennsylvania, 1984
* Frederick Richard Anzivino, B.A., University of Toledo, 1970
* Dorothy Nonyelum Edoga, B.S., Edinboro University of Pennsylvania, 1989
Shawn Scott Fallon, B.A., Edinboro University of Pennsylvania, 1991
Leroy Miles Jr., B.A., Edinboro University of Pennsylvania, 1989
Geri Roberto Vital, B.A., DePaul University, 1987

- Leigh Courtney Barnes, B.A., Edinboro University of Pennsylvania, 1992
Reuben Z. Butler Jr., B.A., Edinboro University of Pennsylvania, 1985
Jane Elizabeth Chambers, B.S., Empire State College, 1978
Karen A. Gongaware, B.A., Edinboro University of Pennsylvania, 1991
* Gary M. Himes, B.S. in Ed., Miami University-Oxford Campus, 1980
Nicole L. LeCause, B.A., Edinboro University of Pennsylvania, 1991
Guo-Mei Lori Li, B.A., Huazhong University of Science/Technical, 1989
June A. Martin, B.S., University of Pittsburgh, 1985
Jennifer Anne McNellie, B.A., Gannon University, 1990
Lorie Diane Panitzke, B.A., Edinboro University of Pennsylvania, 1987
Nina Maddalon Perino, B.A., Edinboro University of Pennsylvania, 1991
Margaret Lynn Puleo, B.S., Edinboro University of Pennsylvania, 1989
* Joseph William Schmitzer, B.F.A., Edinboro University of Pennsylvania, 1990
Marilyn Truran Simonette, B.S. in Ed., Edinboro University of Pennsylvania, 1974
Norman D. Stanford, B.S., Gannon University, 1987
Pamela L. Stults, B.A., Ohio Northern University, 1985

Social Sciences

- John R. Barton Jr., B.A., Gannon University, 1989
* James Donald Kifer, B.A., Edinboro University of Pennsylvania, 1991
Susan Duelfer Lazzaro, B.A., University of Pittsburgh, 1988
Ira Edward Schulman, B.A., William Paterson College, 1991

Speech and Language Pathology

- * Linda Louise Becker, B.A., Gannon University, 1979
Kimberly Kay Lloyd, B.A., Edinboro University of Pennsylvania, 1992
Brenda Lynn Roberts, B.A., Edinboro University of Pennsylvania, 1992
Jo-Ette L. Schau, B.A., Edinboro University of Pennsylvania, 1991
Melinda Dianne Trocki, B.A., Edinboro University of Pennsylvania, 1992
Michelle Ann Zacherl, B.S., Gannon University, 1990

Master of Education

Educational Psychology

- Diana Lucy DiCarlo, B.S., SUNY-Brockport, 1991
Douglas Carl King, B.A., Edinboro University of Pennsylvania, 1992
Andrew Michael Lavin, B.A., SUNY-Geneseo, 1991
Kristine Jane Payne, B.S., Penn State University, 1992
David Charles Romanowski, B.A., Canisius College, 1992
Kelly Ann Ryan, B.A., Penn State University/Behrend, 1991
Sandra Lynn Schau, B.S. in Ed., Edinboro University of Pennsylvania, 1990

Elementary Education

- * Brenda B. Bennett, B.S. in Ed., Edinboro University of Pennsylvania, 1990
Linda Beth Bloomquist, B.S. in Ed., Edinboro University of Pennsylvania, 1987
* Kerri Sesler Coy, B.S. in Ed., Edinboro University of Pennsylvania, 1984
Samir Dorhmi, B.D., Teacher Training College, 1988
* Brien Patrick Jones-Lantzy, B.A., St. Francis College, 1990
Ann Marie LeCourtois Luce, B.A., University of Guelph, 1990
* Joanne Ruth Lynch, B.S. in Ed., Georgetown College, 1986
* Jeanne Marie McParland, B.S. in Ed., Penn State University, 1987
* Kimberly Joan Owen, B.S. in Ed., SUNY-Geneseo, 1992
Vonnie G. Ryland, B.A., West Virginia Wesleyan College, 1970
Luann Sippy Way, B.M., Muskingum College, 1976
* Elizabeth Brown Zafiroopoulos, B.S. in Ed., Edinboro University of Pennsylvania, 1985

Elementary School Administration

- * David Fendell Green, B.S. in Ed., Edinboro University of Pennsylvania, 1977
* Judith Ann LaBarbera, B.A., SUNY-Fredonia, 1970

Reading

- * Rebecca White Andrews, B.S. in Ed., Edinboro University of Pennsylvania, 1989
Cynthia J. Anthony, B.A., Mercyhurst College, 1989
* Susan Joan Greco, B.S. in Ed., SUNY-Fredonia, 1987
* Deborah Pauline Lenox, B.A., Edinboro University of Pennsylvania, 1988
M. Romayne Martin, B.S., Edinboro University of Pennsylvania, 1992
Judith Ann Misinec, B.A., Kent State University, 1975
* Cristina Maria Pontzer, B.S., Robert Morris College, 1989
* Jeanne Irene Williams, B.S. in Ed., SUNY-Geneseo, 1992
Barbara Kathryn Wyler, B.A., Villa Maria College, 1988

Secondary School Administration

- Max Eugene Alwens, Jr., B.A., Edinboro University of Pennsylvania, 1978
Joseph Dominic Calafato, B.S. in Ed., Edinboro University of Pennsylvania, 1991
* Dennis A. Ewing, B.S., Edinboro University of Pennsylvania, 1967
* Amanda Elaine Hetrick, B.A., Allegheny College, 1988
Thomas Michael Rinke, B.A., Mercyhurst College, 1989
Michael Lee Stahlman, B.S. in Ed., Clarion University of Pennsylvania, 1987
Syed Shabieh Hussain Zaidi, B.S., Pakistan Naval Academy, 1980

Special Education

- * Nicole Renae Bennett, B.S. in Ed., Edinboro University of Pennsylvania, 1991
* Jeanne R. Corey, B.A., Villa Maria College, 1983
* Pia L. Doro, B.A., SUNY-Buffalo, 1990
Karen Marie Gallo, B.A., Edinboro University of Pennsylvania, 1991
Daniel William Kane, B.S. in Ed., Indiana University of Pennsylvania, 1987
Lisa Ann Rose, B.S., Penn State University, 1990
* Gregory A. Sherlock, B.S., SUNY-Fredonia, 1985
* Moria J. Sherlock, B.S. in Ed., SUNY-Fredonia, 1985
Roxane C. Skudlarek, B.S. in Ed., SUNY-Fredonia, 1985
* Cathy Michelle Stoner, B.S., University of Pittsburgh, 1988
* Betty Lou White, B.S. in Ed., Slippery Rock University of Pennsylvania, 1990

Master of Fine Arts

- Liesa Marie Goerlich, B.F.A., University of Toledo, 1991
* Ray Hui Zhang, B.A., Shanghai Teachers University, 1984

Master of Science

Biology

- Diane Marie DeBaise, B.S., Edinboro University of Pennsylvania, 1983
* Anthony Frank Friendly, B.S., Edinboro University of Pennsylvania, 1990
Jeannie Zhao-Ming Huang, B.D., Sun Yat-Sen University of Medical Science, 1986
Sona N. Katti, B.S., Ohio State University, 1992

Master of Science in Nursing

- Dawn Marie Cook, B.S.N., Edinboro University of Pennsylvania, 1986
M. Catharine Canon Davis, B.S.N., Slippery Rock University of Pennsylvania, 1988
Lisa A. Erickson, B.S.N., Niagara University, 1984
Nathan Edgar Everhart, B.S., Edinboro University of Pennsylvania, 1985

* Students who completed degree requirements during Summer 1993

The University does not claim the list of degree candidates is absolutely accurate. Students are granted degrees only if they meet all academic and financial requirements.

Honors

The following degree candidates have earned at least sixty-four credits as undergraduate students of Edinboro University and have attained the following cumulative averages: Summa Cum Laude, 3.80 to 4.00; Magna Cum Laude, 3.60 to 3.79; and Cum Laude, 3.40 to 3.59.

Summa Cum Laude

Salman Arshad	Tammie McLaughlin Kandray
Terri L. Birchard	Paul Joseph Kilanski
Joseph M. Bolash	Jennifer Lin Kolakowski
Mary Alice Carey	Trent Carl Kosterman
Melinda Jane Colburn	John C. Leitze
Marilyn Christine Duran	Joyce Krahe McDonnell
Kristin Lynn Foley	Eric Wright Salva
Susan Christina Giannamore	James Jonathan Slater
Theresa Dirienzo Gray	Darlene Elizabeth Terwilliger
Terri Kay Hansen	Linda Lou Walford
Tawnee Lyn Hopkins	Brenda Schickling Weaver
Vicky Janoski Hrala	Ping-Ki Wong
Todd Michael Jones	

Magna Cum Laude

Michelle M. Artello	Michelle Marie McAvoy
Danialle Marie Burdyshaw	Teresa Ann McCabe
Catherine Mary Chimenti	Scott Robert McNaughton
Scott Alan Dawson	Carter Lee Mook
Lori Helen Dunn	Candee Anne Morris
Sandra Ann Ferri	Lizanne A. Neuch
Chit Ho	John Patrick Parry
Ben Levier Klugh	Chak Kin Poon
Angela Lauren Koskie	Betty A. Rice
Ronald Jochen Lange	Anita Lynn Roland
Melissa Ann Laughlin	TerryAnn Simcheck
Kristy Jean Lucia	Christine Ann Towns
Amy Marie Luther	Duane David Wilkey
Lisa Sementelli Mangoni	Kirt James Zimmerman

Cum Laude

Karen Irene Agurkis	Laura R. Kauffman
Brian T. Babb	Mizuho Koyama
Erika Elizabeth Bahling	Lynette Marie Little
Cheryl Ann Betz	Terrence Alan Lobdell
Jill K. Bolster	Ronald Patrick Lybrook
Leslie Hale Brown	Michele Marie Mack
Andrea Alison Clarke	Dena Lynn Negri
Elizabeth Eve Crandell	Scott Andrew Overhoff
Cathryn G. Denham	Douglas James Pegher
Julie Lynn Dinger	Lisa M. Pelaia
Kelly J. Dunn	Linda Ann Poppen
John Andrew Etling	Ethel Mae Rader
Marilyn A. Free	Brian Jo Raygor
Syed Shariq Ghani	Khan M. Saleheen
Nora Kathleen Gillooly	David Eugene Sallack
Heidi Ann Grosch	Susan Leigh Scherer
Daniel Robert Guzzo	Patricia Sue Schlosser
Barbara Ann Hill	Deborah Ann Strachan
Terry Lee Honey	Roberta Kay Surface
Pamela Beth Hunt	Michael Joseph Vargo
Jason Ignaut	William Jacob White
Michael James	Aileen Lampman Williamson
Jennifer Lynn Johnson	Yuko Yagisawa
Kristy Jean Julian	Karen Lynn Yonko
Sheheryar Kaleem	Beth Ann Zewe
Clinton Lawrence Karlsen	

University Honors Program

Salman Arshad	Khan M. Saleheen
Nora Westcott Pietrasiewicz	Ka Yin Florine Tse

Baccalaureate and Associate Degrees

School of Liberal Arts Robert C. Weber, Ph.D., Dean

Bachelor of Arts

Art History

Joseph M. Bolash – Summa
Susanne Elsie Pettit
Christine Elizabeth Ritz

Criminal Justice

Todd James Baumgardner
Matthew Vincent Berarducci
* Kevin Thomas Borchert
Daniel Patrick Boylan
* Edward W. Carter Jr.
* John Robert Clements
Charles W. Conn Jr.
* Kelly Ann Dambach
* Desiree Laine Farabee
Sandra Ann Ferri – Magna
Michael Charles Fitzgerald
William John Friburger Jr.
* Christopher Stephen Gerancher
Robert Michael Gift
Jodi Lynn Glover
* Daniel Robert Guzzo – Cum
Andrew Anthony Hibbert
David Alan Hiebner
John LeRoy Hildebran
Mark Christopher Johnson
Hope E. Lang
Jeffrey Gary Lewandowski
* Charles Scott Lukitsch
* Tonya Kay McCoy
Scott Robert McNaughton – Magna
* Carter Lee Mook – Magna
Nichole Maree Morohovich
* Eric John Olszewski
John Matthew Otto
* George Franklin Poff
Derrick Charles Russell
* Jamie Allan Russo
Robert Todd Sages
Kimberly Dawn Schulz
* John Daniel Smock

* Michael Robert Snider
* Dennis Charles Sweet
Kirsten Ellen Turowski
* James S. Valvo
* Gary Linn Vener Jr.
* Edward Alan Vollbrecht
Nicole Maria Woods
* Jeffrey Andrew Zavinski

Drama

Amy Kathleen Welker

English

Joseph M. Bolash – Summa
Cheryl Dianne Carter
* Peter Thomas Chiodo Jr.
* Tammy L. Cleaver
James Marasco
Nora Westcott Pietrasiewicz – Cum
Theodore Kenneth Scott
* Robert Gregory Sevold
Dean Mark Wells
Joel B. Wood
Beth Ann Zewe – Cum

History

Patrick Joseph Bova
Kyle Maurtyn Frank
* Todd Michael Jones – Summa
Amy Jo Layland
Raymond Gerald Morrison

Humanities

Diana Carol Garwood

Music

Kevin Leslie Thomas

Philosophy

* Jack Allen Gartner

Political Science

Michael J. Barnes
Corrine Sue Colberg
Catherine Ann Consla
* Kenneth Michael Harvey
Angela Lauren Koskie – Magna
Dennis E. Peden
John J. Reiser

Psychology

Terri Lynne Ayers
* Laura Marie Baker
* Cheryl Ann Betz – Cum
* Rachel Leigh Bigaj
* Shanon Leigh Blankenship
* Arthur Donald Brozell Jr.
Danialle Marie Burdyshaw – Magna
Deborah Ann Burger
Jacqueline Tate Cordell
Paula Rena Crissman
Colleen S. Dobbin
John Andrew Etling – Cum
Kathleen Ann Ferry
Theresa Dirienzo Gray – Summa
Charles Timothy Heberlein
Barbara Ann Hill – Cum
Jason Ignaut – Cum
Heidi Anne Johnson
* Kristy Jean Julian – Cum
* Cindy Ann Kaider
Mathew Scott Kerr
Sarah Kostolansky
Kimberly Jean Kriscunas

Carron Ann Kurpiel
Michelle Anne Lutz
* Eva Bertone McGann
Amy Sue Megahan
* Bridget Anne Miller
Mary Michaels Spillane Modlin
David Scott Motycka
* Erin Kathleen Murfin
* Trisha Marie Myers
* Diane Alice Nolder
* Kathleen Joan Noonan
Teresa Marie Padamonsky
Michael James Painter Jr.
* Sandra Lee Palmer
Douglas James Pegher – Cum
* Cory Patrick Placer
Tammy Lynn Putnam
Ethel Mae Rader
Jacqueline Ratcliff-Nwokeji
Betty A. Rice – Magna
Betty Jean Rich
* Susan Leigh Scherer – Cum
* Jacqueline Ann Schneeweis
* Stacey Renee Sereno
* Traci Lynne Sobol
Charlene Rae Stillwagon
Frederick Louis Suter
Christine Ann Towns – Magna
* Rebecca Wilson

Russian

* James Christian Jackson
Michele Marie Mack – Cum

Social Science

Paul Joseph Kilanski – Summa

Sociology

* Rhoda M. Jenkins
Shane Christopher Kerstetter

Spanish

Jennifer M. Feiock

Specialized Studies

* Andrew Allen Ahr
Timothy G. Chamberlain
Michael R. Edwards
Brian Daniel Fertig
Lucinda Joy Fiel
* Marilyn A. Free – Cum
Eileen Marie Gates
Shawn Edward Grady
Christopher Brad Graham
Debra Irene Hamilton
Douglas Scott Hammer
* Joy Grant Hanmore Jr.
Jo-Lynda Courtright Jackson
* Trent Carl Kosterman – Summa
Eric Alan Lautner
* Mark Joseph Romano
Amy Elizabeth Santicola
Eric Lynn Schrimper
* Todd Richard Szydlak

Speech and Hearing Disorders

Heather Noelle Brooks
Marla M. Chembars
Amy Ann Dunbar
Kelly J. Dunn – Cum
Traci Lynn Durasa
Christina Lynn Edney
Kristin Lynn Foley – Summa
Dana Lynn McGranahan
Kathleen Therese Muroski
Teresa Marie Murphy
Tiffany Marlene Mary O'Connor
Jennifer Kay Perry
* Tracy Kathryn Roberts
Heather Lynn Ruprecht
Susan Ann Smith
Linda Lou Walford – Summa

Speech Communications

William Hartley Adair
* Alyson Marie Amendola
* Anthony A. Bartkowski
Rhena Odessa Berry
* Kevin Michael Bevacqua
James Nelson Beveridge
* Stacy Lynn Blackmer

Christopher David Chiesa
* Renee Diane Clickett
* Kevin Patrick Donovan
Michael Richard Drahuschak
* Mary Margaret Dunton
Kelly Sue Ellis
Joshua Vincent Enders
Amy Louise Flenner
James Adam Flickinger
* Gretchen Jean Gigler
Stephen James Goedert
Kurt William Hanna
Michael Patrick Hayes
Jonell Christine Javorsky
* Linda Rae Konieczki
Tricia Ann Lambright
Bryan William Lewin
Gary Joseph Lhotsky
Mark W. Mason
* Michael McCarthy
Joyce Krahe McDonnell – Summa
* David Michael McNulty
* Jody Lynn Metz
Tara Lee Minyo
* Derek Edward Myers
Steven Edward Neubert
* June Ann Parmarter
* Angela Michelle Phelps
Linda Ann Poppen – Cum
Betty Jean Rich
Cindy Denice Shank
* Jason Jay Shrock
TerryAnn Simcheck – Magna
James Henry Steinhoff
Deborah Ann Strachan – Cum
* Leanne Trapuzzano
Michael Joseph Vargo – Cum
Tara Lee Wanchock
Dennis James Williams
* Paula Jane Williams
Sidney James Wood Jr.
* Daniel Bryan Young
* Stan Zlotkowski

Bachelor of Fine Arts

Amy E. Akers
* Allison Ann Alviti
* Pamela Sue Amsler
* Neal Robert Bauer
* Julie Kristine Becze
Kathleen Elizabeth Blakely
Kim Emily Bloomfield

* Cara Lyn Bucko
 John Michael Burris
 Kimberly Joy Butts
 Gregory Daniel Davis
 Scott Alan Dawson – Magna
 Mary Louise Dickson
 Thomas A. Dracup
 Sarah A. Drumm
 Dawn Ann Dziubaty
 Christine Lee Efler
 * Shannon Lynn Engle
 * Jacqueline Marie Estock
 Valerie Ann Floccare
 Michelle Lynn Gibson
 Nora Kathleen Gillooly – Cum
 Franklin John Grippe
 Heidi Ann Grosch – Cum
 * Brian John Hayes
 William Frank Held
 Pamela Beth Hunt – Cum
 Clinton Lawrence Karlsen – Cum
 * David William Larson
 * Melissa Ann Laughlin – Magna
 * Alison Marie Lee
 Lynette Marie Little – Cum
 Michael Thomas Lubowicki

Jason Ulysess Lynch
 * Patrick Michael Malley
 Jack Peter McCombs
 * Laura A. McCracken
 John W. Nemeth
 Gregory Thomas Olsen
 Lora Rooks Patterson
 Chak Kin Poon – Magna
 * Cynthia Ellen Pyle
 Timothy Robert Rohrbach
 Christopher Ian Schaub
 Christopher Michael Spoto
 Laura Steinbuhler
 Jodie Lynn Walters
 Aileen Lampman Williamson – Cum
 Ping-Ki Wong – Summa
 Yuko Yagisawa – Cum

Bachelor of Science

Social Work

Kimberly Renee Barry
 Jennifer Lynn Bules
 * Susan Lee Burkhart

Suzanne Leigh Collet
 Leah Anne Gies
 Kimberly Kristine Hickey
 Vicky Janoski Hrala – Summa
 Laura R. Kauffman – Cum
 Katrina Marie Mroczkowski
 Amy Ruth Orosz
 Renee Marie Parker
 Ta-Tanisha Camille Perry
 Rebecca J. Serafin
 Alice Lorraine Smyers
 Renee Lyn Turri

Associate of Arts

Criminal Justice

Philip Arthur Ball

Liberal Studies

* Junko Otsuka
 * David Andrew Paul
 Sharon Leigh Pratt

School of Science, Management and Technologies

Jerry Covert, Ph.D., Dean

Bachelor of Arts

Biology

Todd Andrew Erickson
 Timothy David O'Sullivan

Earth/Space Science

* Erik Paul Knuth
 * Fred Carmen Lanzy III
 Michael Anthony Magnetti

Environmental Studies/ Geography

Christopher Allen Bauer
 David Carl Bocci

David Vincent Bussotti
 Michelle Callahan
 Gene Robert Clemente
 * Benjamin David Conaway
 Christopher Mancuso
 * William James McHenry
 Johnathan Robert Penhollow
 * Kathleen Marie Ring
 Matthew Clifford Smith

Geography

Brian T. Babb – Cum
 Robert Buckwalter Jr.
 Christopher John Cristea
 Mizuho Koyama – Cum
 * Satoko Sakikibara
 * Ross Alan Simpson

Mathematics

Jennifer Lee Anderson
 Terry Lee Honey – Cum
 James Allen Kibbey
 Ronald Jochen Lange – Magna
 * Khan M. Saleheen – Cum
 Shing-Ming Wong

Natural Science and Mathematics

Scott Eric Bachar
 James Richard Kopkowski

Physics

* Thomas Alan Brazel
 * Bruce Todd Griffin

Bachelor of Science

Biology

Craig J. Conforti
 Janine Denise DeMario
 Therese Marie Friday
 Susan Michelle Murtha
 Matthew Mantz Nicastro
 James Jonathan Slater – Summa

Business Administration

Scott Emery Adler
 * Desiree E. Alexander
 Julie Ann Anderton
 * Scott Christopher Angus
 C. Anthony Arnt
 Salman Arshad – Summa
 * Jeffrey James Backer
 Terri L. Birchard – Summa
 Scott Alan Bonam
 Patrick Todd Bryson
 * Christopher Thomas Burkhiser
 Bridget Ann Cassel
 Paul Francis Cassidy
 Norbert Thomas Chrzanowski
 Kevin Patrick Comstock
 Christopher Jon Conrady
 James B. Costello
 Christopher Weylin Desiderio
 * Kirk Edward Dietrich
 Christina Maria Dilanni
 Shawn Richard Duffy
 Marilyn Christine Duran – Summa
 John James Fassinger II
 * Aliasghar Shabbir Ferozpurwaua
 * Paula Lynne Fetterolf
 Richard Anthony Filotei
 * Daniel Garrett Flannigan
 Anthony Paul Folino
 Antonio Panfilo Frattaroli
 James Kevin Garde
 Kevin John Gorski
 William Conner Haas-Pogany
 Marla Hank

* Chit Ho – Magna
 Amy Ellen Horton
 Sean Patrick Huddleston
 * Jeffrey David Hutchison
 * Michael James – Cum
 * Jeannine Paula JeanPierre
 Antoine Danyel Jordan
 Sheheryar Kaleem – Cum
 Sharjeel Kharal
 Julie A. Krone
 * Susan Ann Lamacz
 * Georj LeMont Lewis
 Thomas James Maciolek
 Wrentie B. Martin IV
 William Robert Mattis
 Kellie Mary McGowan
 * William Allison McKinney Jr.

Lisa Ann Moran
 Stephen John Nagy
 Jennifer Ann Nairn
 Prawit Navarasuehitr
 * Pamela Jane Nichelson
 * Mark Edward Olesky
 Adam J. Page
 Frank Leo Patszalek
 * John Michael Polaski
 * Kevin Edward Pollard
 Shelly Lynn Pontious
 * Kimberley Ann Powell
 Darrin Lee Rankin
 * Michelle Lee Rice
 * Todd Allen Robertson
 Sheri Lynn Schempp
 Barry J. Skarbek
 * Gregory G. Smay
 Christopher Paul Speranza
 Tisha Renee Stewart
 * Mir M. H. K. Talpur
 Heidi Lin Taylor
 Alvin Edward Thomas III
 Christine Viola
 * Carol Marie Vogt
 Brenda Lee Walters
 Wendy Lynn Weinheimer
 David Aaron Whyte
 Rebecca Carr Wilson
 * Patrick Kelly Wise
 * Anne Robin Zimmerman

Chemistry

Allison Knowles

Computer Science

Esther Vera Alla
 Fauzil Azim
 Timothy Allen Diley
 Thomas M. Dimperio
 Jeffrey Dean Eastman
 Syed Shariq Ghani – Cum
 * Dale Eugene Gould Jr.
 Mark Allen Jackson
 Charles Wilson Jesse
 Douglas James Lias
 Dominic Mario Lombardi
 Charles William Snyder
 Ka Yin Florine Tse – Summa
 Duane David Wilkey – Magna

Economics

* Michael Corey Little

Environmental Science

* Erika Elizabeth Bahling – Cum
 David R. Cunningham
 Scott Andrew Overhoff – Cum
 Jacqueline Ann Silver
 Mark Joseph Soltysiak
 Marc Alan Van Doren

Geology

* Leslie Hale Brown – Cum
 * Eric Jon Chuderewicz
 Russell J. Kanith
 * John Patrick Parry – Magna
 Eric Wright Salva – Summa
 Robert Mitchell Sok II

Medical Technology

* Kelly Robin Teasdale

Nuclear Medicine Technology

- * S. Jean Cody
- * Elizabeth Marie Gray
- * Jennifer Lynn Halberg
- * Stacey Marie Styborski
- * Mary Catherine West

Nursing

Christine Marie Brady
Emily Jean Hirsch
Patricia Lynn Myers

Bachelor of Science in Nursing

- * Angelyn Joy Barron
- * Bernard Robert Cenney
- * Joye Lynn Dado
- * Martha Lyn Dunlavey
- * Dale Lee Griffis
- * Aimee M. Hamilton
- * Elisa Marie Hite-Burdick
- * Kristal Celeste Johnson
- * Kimberly Ann Kent-Brooks
- * Stacy Ann Leretsis
- * Patricia Gayle Mayton
- * Kathryn Camille Meehan Licht
- * Patricia J. Murtagh
- * Casimir John Olszewski Jr.
- * John David Purvis
- * Catherine Ann Rogers
- * Tamara Lynn Trump-Coffy

Associate of Engineering Technology

Biomedical Engineering Technology

David Mark Dreibelbis
David Lawrence Martin
* Ralph Boyd McConaughy
James Scott Preston

Manufacturing Engineering Technology

Shawn R. Gaitaniella

Associate of Science

Computer/Information Processing Technology

- * Brian K. Deal
- Bryce Wade Foreman

General Business Administration

Usman Akbar
Laurie Sue Brown
Shane Paul Clark
* Lee A. Cleary
Kimberly Suzanne Cox
Todd Douglas Daubenspeck
Michael Alexander Fehl
Bryce Wade Foreman
Doreen Michelle Gage
Jonell Christine Javorsky
Brian Paul Lewis
Richard Glenn Moyle Jr.
Scott Andrew Overhoff
Ethel Mae Rader – Cum
* Carol Ann Reagle

Medical Laboratory Technician

- * Mariene Marie Brenner
- * Ellen Eshelman
- * Teri Lynn Hermann
- * Robert Eric Lee
- Laurie M. Owen
- * Mary Elizabeth Plonski
- * Deborah Lee Swanson
- * Terri Sue Voegele

Bachelor of Science in Art Education

Stacey Lynne Belter
Timothy William Blair
Gerald Patrick Clifford
Jamie Brian Gerber
David Mark Hampel
Dorlacy McCoy
Devin Patrick McMurray
Michael Allen Prather
Teri Lee Rexford
Anita Lynn Roland – Magna
Robin Lynn Sadowski
Thomas Albert Shimmin Jr.
Jennifer Ellen Smith
Keri Lynn Trexler
Michelle Leigh Witt

Bachelor of Science in Education

Elementary Education

- Michelle M. Artello – Magna
- * Jill K. Bolster – Cum
- June Diane Box
- Julie Anna Callahan
- Mary Alice Carey – Summa
- Scott William Chambers
- Catherine Mary Chimenti – Magna
- * Andrea Alison Clarke – Cum
- Heather Ann Cook
- * Michael William Cox
- Elizabeth Eve Crandell – Cum
- Crista Renee Cressler
- Jennifer Ann Curry
- Brian E. Cuturilo
- * Denise Lynn Damico
- * Cathryn G. Denham – Cum
- Frank Ernest Deutsch
- Julie Lynn Dinger – Cum
- Wendy Lynn Drago
- Jill Marie Dumanski
- Nancy Susan Dunlap
- Lori Helen Dunn – Magna
- Eric John Eidemueller
- Lisa Annette Engler

School of Education Shirley Stennis-Williams, Ed.D., Dean

Christy Suzanne Geyer
Susan Christina Giannamore – Summa
Carolyn R. Gunby
Terri Kay Hansen – Summa
Paul Thomas Harakal Jr.
Gregg Allen Hartzell
Doreen Marie Hill
* Richele Lee Howard
Jennifer E. Johnson
Jennifer Lynn Johnson – Cum
Shawn Lorraine Jukes
* Jennifer J. Jurysta
Amanda Suzanne Kaminski
* Tammie McLaughlin Kandray – Summa
* Marcia Sue Kearns
Karla A. Khrenovsky
* Jennifer C. Kimmy
Jennifer Lin Kolakowski – Summa
* Dana Ann Lehman
Jennifer Elizabeth Leitenberger
* Sondra Sue Lewis
Mary Joann Light
Jill Ann Litzenburger

- * Terrence Alan Lobdell – Cum
- Kristy Jean Lucia – Magna
- Sally Ann Lukart
- Jennifer Lynn Maker
- Susan Michelle Martin
- Harlan Harrison Mathers
- Michael L. Mayer
- Toni Petrone Mazzocco
- Michelle Marie McAvoy – Magna
- Cara Jennifer McCloskey
- Amy Kathleen Meyer
- * Christina Angela Michos
- Kathleen Marie Migliaccio
- Marci Dee Mileto
- * Jamie L. Miller
- Jody Sue Miller
- Dawn Marie Muffie
- Dena Lynn Negri – Cum
- Lizanne A. Neuch – Magna
- Kim Dione Nissen
- Karen Marie Noto
- Leonard Thomas O'Lare
- Catherine Fromyer Patterson
- Alice Anne Pettit
- * Kelly Denise Pfeifer
- Amy Lynn Powell
- * Robyn Michelle Richey

Norma Jean Roberts
Karen Elaine Rummel
Amber Rae Sardello
Patricia Sue Schlosser – Cum
Susan Mary Shaw
* Theresa Ann Sparber
Melanie Dawn Stanny
Melissa Anne Storey
* Armanda Marie Stovall
Nicole Marie Strickland
Dana Paul Suppa
Daniel Francis Sweeney
Jill Swink
Darlene Elizabeth Terwilliger – Summa
Jamie Anne Timonere
* Michele Jean Traverse
Ashlynn Ann Ulrich
* Kimberly P. Webster-Novicki
Kimberly Sue Wingard
Lisa Michelle Wulkan
Dawn Lisa (Capone) Zahorchak
Christina Zissis

Elementary Education/ Mentally and Physically Handicapped

Tracy Lynn Allen
Dena Lynn Berger
Dawn Marie Bradley
Joel Edward Brown
Melinda Jane Colburn – Summa
Kimberly Ann Dodsworth
Julie Elizabeth Harrison
Pamela R. Harrison
Denise Ann Hoover
Tawnee Lyn Hopkins – Summa
AnneMarie Kapron
Kay Elizabeth Kiser
Heidi Marie Kline
Heather Lynn Kossbiel
Billie Jo Loveridge
Amy Marie Luther – Magna
Lisa Sementelli Mangoni – Magna
* Melanie Elaine Massaro
Teresa Ann McCabe – Magna
Wendy Susan McCarthy
Kelley J. Muldowney
Jennifer Lynne Murray

* Rebecca Marie Penniman
 Elizabeth Anne Sorber
 Jennifer Barbara Strelecki
 Roberta Kay Surface – Cum
 Brenda Schickling Weaver – Summa
 Lori Ann Wick

Health and Physical Education

Karen Lynn Beall
 Susan A. Blasco
 Donald Duane Boyles
 Gwen Carpenter-Rea
 Daniel Lee Daum
 Kevin Micheal Dilts
 Robert Eric Gran
 Tad Matthew Haight
 Todd John Kolson
 Steven Edward Layton
 Scott Edward Mahoney
 Terry Lee McCullough
 Albert Michael McRae
 Kathleen Mary Nyilyk
 * Dawn Michelle Page
 Vincent Thomas Pappalardo
 David Eugene Sallack – Cum
 Andrea Jean Skibinski
 Stuart Lawrence Stanbro
 * Kevin Joseph Sullivan
 Kevin Patrick Winter

Mentally and Physically Handicapped

Barbara Dodick Barlow
 Jennifer Aimee Byrnes
 Susan Jean Call
 Holly Lynn Dachtyl
 Kimberly Sue Long
 Allison Eileen Martin
 Joseph John McMurdy
 Lisa M. Pelaia – Cum

Secondary Education/ Biology

Ben Levier Klugh – Magna
 Candee Anne Morris – Magna
 Brian Jo Raygor – Cum
 Christine Ann Sanders
 Karen Lynn Yonko – Cum

Secondary Education/ Chemistry

Diane Clare Hartmann

Secondary Education/ Comprehensive English

John C. Leitze – Summa
 Sandy Sue Nuhfer
 Rebecca Jeanne Purcell
 Judith Way Scott

Secondary Education/ Earth-Space Science

Joel Alexander Marratta

Secondary Education/ French

Karen Stephanie McKeown

Secondary Education/ Mathematics

Jeffrey Lee Andreano
 Caroline Wendy Bergmark
 Misty Lee Knaus

Lisa Lynne Pence
 Beverly Ann Rodgers
 Mark Constant Szymkiewicz
 Brian Scott Welch

Secondary Education/ General Science

Brian J. Aufman
 * Brian William Heebsh
 * Ronald Patrick Lybrook – Cum

Secondary Education/ Social Studies

Karen Irene Agurkis – Cum
 * Michael Brent Armstrong
 Jennifer Lynn Barch
 * Douglas Owen Catalano
 Donald David Doult
 Angela Marie Holton
 John Joseph Leonard
 * Bryan Scott Midkiff
 Gretchen Maurine Ripple
 * Michael James Simmons
 Richard Shawn Texter
 William Jacob White – Cum
 Kirt James Zimmerman – Magna

Associate of Science

Pre-School Education

Debora Jane Bright
 Debra Lynn Denman
 Meghan M. Hornick
 Debra Sue Knapp
 * Lynda Sue Schonthaler

Chancellor, State System of Higher Education

Dr. James H. McCormick

Board of Governors, State System of Higher Education

F. Eugene Dixon Jr. – *Chairperson*
 Julia B. Ansill – *Vice Chairperson*
 Robert J. O'Hara Jr. – *Vice Chairperson*
 James T. Atherton
 Muriel Berman
 Donald M. Carroll Jr.
 Jeffrey W. Coy
 Rebecca F. Gross
 Irvin J. Hartman Jr.
 James A. Hughes
 F. Joseph Loeper
 Floyd M. Mains
 Janice L. Michaud
 R. David Myers
 Joseph M. Nespoli
 Philip D. Rowe Jr.
 Jere W. Schuler
 Patrick J. Stapleton Jr.
 Julius Uehlein
 Stephen E. Whitby

Council of Trustees

Mr. C. Richard Johnston – *Chairperson*
 Edith Benson, Esq.
 Ms. Joyce Bonello
 Mr. John D. Catone
 Mr. Edwin D. Dombrowski
 Mrs. Susan Hagen
 Mrs. Patricia Heasley
 The Honorable Robert J. Kusse
 Harry Thomas, Esq.
 Mr. R. Benjamin Wiley
 Ms. Sonya Lee – *Student Representative*
 Dr. James H. McCormick – *Chancellor (ex officio)*

Commencement Committee

John F. Fleischauer – Provost and Vice President for Academic Affairs
Chairperson
 William Coleman – Assistant Vice President for Facilities
 Sherri Galvin – Assistant to the President
 Gary Jamison – Director, Student Services
 Gerald Kiel – Acting Dean of Academic Administration
 James Klausman – Chairman, Department of Music
 Judy Kubeja – Executive Assistant to the Provost and Vice President
 for Academic Affairs
 Patti S. Loomis – Director of Publications
 Alice Parker – Office of Records and Registration
 Lorraine Revak – Facilities Office and General Services Manager
 Bob Wallace – Director, Instructional Technology

* Students who completed degree requirements during Summer 1993

The University does not claim the list of degree candidates is absolutely accurate. Students are granted degrees only if they meet all academic and financial requirements.



ALMA MATER

*Hail to thee, our Alma Mater glorious;
Fresh wreaths we bring to bind thy brow.
Trials have passed and thou has stood victorious;
Never fairer, never statelier than now.
O Edinboro, Edinboro,
Ever praising thee in song;
While class speeds class as swift years pass,
To thee our hearts belong.*