

Commencement



Edinboro University of Pennsylvania

May 12, 1991

2:00 p.m.

McComb Fieldhouse

Commencement Ceremony

Convocation	John F. Fleischauer, Ph.D. <i>Provost and Vice President for Academic Affairs Edinboro University of Pennsylvania</i>
Prelude	Symphonic Band
Pomp and Circumstance..... <i>Edward Elgar</i>	ACADEMIC PROCESSIONALSymphonic Band
Star-Spangled Banner..... <i>Francis Scott Key</i>	University Singers Symphonic Band Tim Cordell, <i>Conductor</i>
Invocation.....	The Rev. Ann Schmid <i>First Evangelical Lutheran Church Edinboro, Pennsylvania</i>
President's Welcome	President Foster F. Diebold <i>Edinboro University of Pennsylvania</i>
America the Beautiful	University Singers Symphonic Band Peter van den Honert, <i>Conductor</i>
Awarding of Honorary Doctorate	President Foster F. Diebold I. King Jordan, Ph.D. <i>President, Gallaudet University</i>
Commencement Address	Ernest D. Preate, Jr. <i>Attorney General Commonwealth of Pennsylvania</i>
Presentation of Candidates	John F. Fleischauer
Conferring of Degrees	President Foster F. Diebold
Alma Mater	David Herendeen, Soloist University Singers
Benediction.....	The Rev. Ann Schmid
Grand March from "Aida"	RECESSIONAL.....Symphonic Band <i>Giuseppe Verdi</i>

The audience is asked to stand during the Processional and Recessional and to join in the singing of the National Anthem and the Alma Mater.

The Commencement Procession

The University Marshal
The University President
The Trustees of the University
The Platform Party
The University Faculty

Colors Distinctive of the Disciplines and Professions

Apricot	Nursing
Dark Blue	Philosophy
Light Blue	Education
Peacock Blue.....	Public Administration
Brown	Fine Arts
Citron	Social Work
Copper	Economics
Crimson	Journalism
Drab.....	Business
Gray	Veterinary Science
Silver Gray.....	Oratory
Green	Medicine
Olive Green	Pharmacy
Sage Green.....	Physical Education
Lemon	Library Science
Lilac	Dentistry
Maize.....	Agriculture
Orange.....	Engineering
Pink.....	Music
Salmon Pink	Public Health
Purple.....	Law
Russet	Forestry
Scarlet.....	Theology
White	Arts, Letters and Humanities
Golden Yellow	Science

Honors Award Designations

Gold Stoles	Summa Cum Laude
White Stoles	Magna Cum Laude
Red Stoles	Cum Laude
Gold Cords	University Honors Program Graduate
Red Cords	Departmental Honor Graduate

The Ceremonial Mace

The ceremonial mace, a symbol of presidential authority, is carried at the head of the academic procession by the University Marshal, Dr. Robert Connors. A gift of the Alumni Association, the mace was designed and executed by Henry Katzwinkel and Dr. Seymour Blinderman, former chairman of the Art Department. It was first used at the inauguration of Edinboro State College President Chester T. McNerney, in 1967.

The mace, twenty-seven inches in length, is topped by a sterling silver sphere studded with circular cabachon rubies, secured by bezels. The collar of the mace is inlaid with ebony, alternated with silver relief fleur-de-lis design elements. The cultured pearls mounted in cups encircle the bottom of the collar symbolizing the thirteen state colleges of Pennsylvania. The shaft of the mace is composed of Brazilian rosewood sections, separated by sterling silver rings. The mace is terminated by a cast sterling silver finial; the five cultured pearls represent the existing curricula. The rib-like cone form is terminated by a small silver sphere symbolizing the world.

The metal working processes incorporated in the ceremonial mace include turning, forging, inlaying, stone setting, and lost wax centrifugal casting.

The Presidential Medallion

A symbol of presidential authority, the first presidential medallion was presented to Foster F. Diebold during the May, 1981 commencement ceremonies. It is permanently housed in the president's office and will be presented to successive presidents. Designed and executed by Mr. Henry Katzwinkel, professor of art, the sterling silver medallion consists of a three and one-half inch pectoral pendant featuring on its face the sunken crest of the Commonwealth of Pennsylvania. On the reverse side is the figure of a Gordon Highlander with pipes. To the right of the piper is the Cross of St. Andrew. To the left is the Cross of England. Flanking the figure is the date 1857, the opening year of the University, and garland thistles. In the background are the hills of Scotland, and beneath the piper is an open book, symbol of knowledge.

The pendant descends from a shield containing a triple-towered castle, the symbol of defense, protection, and strength. The collar of the medallion is comprised of a series of two-inch shields, alternately bearing three different designs: the meigle, an interlacing knotwork peculiar to the Pictish school of Celtic art; the Tudor rose design; and "ESC" in interlocking letters on a background of tabby weaving. Connecting each of the collar shields is a Cross of St. George, representing the union of Scotland and England. The entire medallion was fabricated and cast in the *cire perdue* (lost wax) process.

The gown, the cap, and the hood, representing the major components of the academic dress, are a ceremonial inheritance from the medieval universities of the eleventh and twelfth centuries, where dress was the outward sign of privilege and responsibility. The academic dress worn by those participating in today's academic processional symbolizes the level of their academic attainment and the institution they attended.

Gown

Although the gown is more frequently black, certain universities have authorized the use of colored gowns. The bachelor and master gowns are fashioned from black serge. The yoke for the bachelor gown is designed to be worn closed and features long, flowing and pointed sleeves. The master gown is designed to be worn open or closed. Its sleeves are very long with square ends, and the front part has an arc cut away. The arms protrude through a slit at the elbow. The gown for the doctor degree is made of wool, serge, or silk with an open front faced with wide velvet panels. The sleeves are loose and bell-shaped with three bars of velvet in black or the color of the discipline in which the doctorate was obtained.

Hood

The most outstanding feature of the academic dress is the hood. It is usually worn only for the master's and the doctor's degrees. The doctor's hood is longer than the master's hood and has distinguished panels. The college or the university granting the degree is indicated by the color of the hood lining. The velvet trim of the hood indicates the field in which the degree was granted.

Cap

The standard cap is the mortarboard, usually the color of the gown. The tassel is black for the baccalaureate and master degree and is worn over the left front quarter of the cap. The tassel for the doctor's mortarboard is of gold thread. Undergraduates wear the tassel on the right side of the cap until the moment the degree is conferred by the president.



Robert Connors, Ed.D.

Carrying the Ceremonial Mace and leading the academic procession as University Marshal is Dr. Robert E. Connors, professor of elementary education.

Dr. Connors received a bachelor of science degree in elementary and secondary social studies and geography from Edinboro University in 1949, a master of science degree in earth sciences from the Pennsylvania State University in 1952, and a doctorate in education, also from Penn State, in 1959.

Prior to coming to Edinboro University, Dr. Connors taught social studies and geography in both elementary and secondary schools. During his distinguished career at Edinboro, he served in the departments of social studies, geography, and elementary education. A full professor in elementary education for 26 years, he spent 16 years as chairman of the department. In addition, he held the position of director of student teaching and placement and supervised student teachers in elementary, secondary, and special curricula.

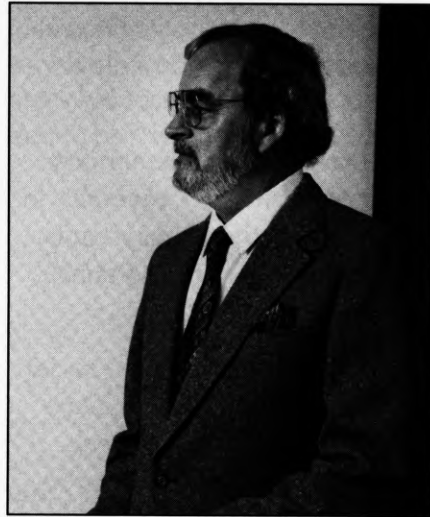
Along with his teaching duties, Dr. Connors directed the elementary education program for 1,600 undergraduate and 400 graduate students. He was instrumental in the development of a College Demonstration School, a reading clinic, and a number of new programs in the area of elementary education.

A guest speaker for hundreds of teacher in-service groups, student groups, and workshops during the past 33 years, Dr. Connors served as consultant to schools and intermediate units throughout northwestern Pennsylvania and was a member of curriculum committees for several area school districts. He was advisor and contributor to the social studies series of "Our Greatest Challenge - The Value Crisis," co-author of a bilingual textbook, transparencies, filmstrip and study prints on Puerto Rico, and the author of a monograph on "Teaching the Basics in Social Studies."

Among the committees of which Dr. Connors has been a member are the Academic Council, Promotions Committee, Graduate Council, Teacher Education Council, and School of Education Council. He also served as chairman of the Curriculum Committee and president of the Faculty Association. Noted for his dedication to education, Dr. Connors has been listed in Who's Who in American Education, and he has received the Outstanding Educators of America Award and a Distinguished Service Award from Edinboro University.

Dr. Robert Connors has earned a high degree of respect from his colleagues and students through his strong dedication to the Edinboro University community over the past 33 years.

President Foster F. Diebold



Foster F. Diebold

Now in his twelfth year as president of Edinboro University of Pennsylvania, Foster F. Diebold is the fourteenth chief executive officer of the institution of higher learning that has come to acclaim in the last decade as one of Pennsylvania's and the nation's finest. He has brought a vigorous educational and moral leadership, a strengthening of the spirit of community, a clear sense of direction and purpose, and a dimension of multicultural pluralism and diversity.

Much has been accomplished during President Diebold's tenure. The University has returned to financial health. Significant facilities and grounds improvements have been achieved, with several of the historic structures on campus restored to their original splendor. Academic programs have been emphasized and improved, with more than 100 degree offerings now available. Enrollment gains have been unprecedented in both numbers and academic quality. International linkages have been established with institutions in several other countries, and Edinboro University's disabled student services program continues to garner acclaim as one of the finest among all colleges and universities in the United States. Widely recognized as a leader in education both here and abroad, President Diebold has positioned Edinboro University to meet the challenges of the 1990s, as well as those that will face public higher education in the 21st century.

The Orange, New Jersey, native is a graduate of Monmouth College and also holds a master of arts in educational administration from Seton Hall University. He has met coursework requirements for a doctorate in education at Rutgers University and is currently completing the dissertation requirement for the Ph.D. program in higher education at the University of Pittsburgh.

Prior to his presidency of Edinboro University, President Diebold was president of the University of Alaska from 1977 to 1979. Before that, he was executive secretary to the Board of Regents and special assistant to the president of the University of Alaska Statewide System. From 1969 to 1976, he was director of Development and Planning at Kean College in New Jersey; and from 1965 to 1969, he was assistant superintendent of the Neptune Township (New Jersey) Public Schools.

Recognized for his extensive experience in the field of education management, President Diebold's principal professional interests include ethics in higher education, budget development and fiscal control, legislative affairs, international education, personnel management and collective bargaining, and institutional advancement.

His scholarly achievements in the discipline of applied ethics in higher education deserve special mention. The model statement he authored for the American Association of State Colleges and Universities, "Ethical Practices for College Presidents," was unanimously adopted by that professional organization and published as policy for the chief executives of its nearly 400 member institutions nationwide. It is the first ethical practices and policy statement known to be published for higher education presidents.

For his leadership and scholarly achievement on an international scale, and for his many contributions to the advancement of higher education and enrichment of an emerging culture in Pakistan, President Diebold was decorated with prestigious gold medals from three Pakistani universities. The awards for educational eminence were presented during visits to the Edinboro campus by official Pakistani delegations.

A staunch advocate of a statewide system of public universities in Pennsylvania, President Diebold supported the enabling legislation for the State System of Higher Education (Act 188 of 1982) and saw the State System come to existence in 1983 as a member of the transition team. He currently serves on the System's Executive Council of Presidents and on the boards of the Pennsylvania Academy for the Profession of Teaching, the Pennsylvania State Athletic Conference, and the University Center at Harrisburg.

Active in community affairs, he serves on the Board of Directors of the Erie Conference on Community Development, and the United Way of Erie County, the Board of Corporators of both St. Vincent Health Center and Hamot Medical Center, and on the Executive Committee of the French Creek Council, Boy Scouts of America. He is also a member of the Marine Bank Advisory Board, the Advisory Board of the McMannis Educational Trust Fund, and the Pittsburgh Plate Glass Corporation Scholarship Review Committee.

Honorary Doctorate



I. King Jordan, Ph.D.

I. King Jordan, president of Gallaudet University, grew up in Glen Riddle, Pa., a small town near Philadelphia. After completing high school in 1962, Dr. Jordan enlisted in the Navy and served four years until injuries received in a motorcycle accident resulted in his profound hearing loss when he was 21 years old.

Dr. Jordan earned a B.A. degree in psychology from Gallaudet College in 1970. He pursued graduate studies in psychology at the University of Tennessee, earning an M.A. in 1971 and a Ph.D. in 1973.

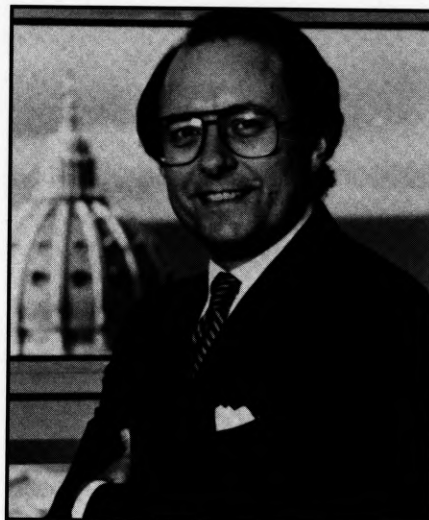
Dr. Jordan returned to Gallaudet and joined the faculty as an assistant professor in the psychology department from 1973 to 1977. Promoted to associate professor in 1977 and to full professor in 1982, he was named dean of the College of Arts and Sciences in 1986. After an historical protest on the University's campus that captured national attention to the needs of deaf people, the Gallaudet University Board of Trustees appointed Dr. Jordan the eighth president of Gallaudet University on March 13, 1988. Dr. Jordan is Gallaudet's first deaf president in the institution's 125-year history.

An active member of a wide range of professional organizations related to both psychology and higher education, Dr. Jordan was instrumental in establishing a special interest group on deafness within the American Educational Research Association and chaired a special interest group on education within the Convention of American Instructors of the Deaf. He presently serves as a member of the Advisory Committee for the National Institute on Deafness.

Dr. Jordan has served as a member of the Research and Education Advisory Panel for the U.S. General Accounting Office and as a consultant on the housing needs of disabled and elderly citizens for the U.S. Department of Housing and Urban Development. Dr. Jordan has made international contributions in education through a number of professional fellowships abroad. He served as a visiting research fellow at Donaldson's School for the Deaf, Edinburgh, Scotland; an exchange scholar, Jagiellonian University, Krakow, Poland; a visiting scholar and lecturer at institutions in Paris, Toulouse and Marseille, France; and as a member of the Gallaudet delegation at the International Conference on the Education of the Deaf, Manchester, England.

Dr. Jordan continues to be an active advocate for deaf, hard of hearing and disabled people. He testifies frequently before Congress and served on the Presidential Transition Committee for the Appointment of Persons with Disabilities, 1989.

For his commitment to public service, his leadership in the causes of education and social responsibility, and his professional commitment to the growth and success of hearing impaired individuals, I. King Jordan will be awarded the honorary degree, Doctor of Public Service, *honoris causa*, at today's commencement ceremony.



Ernest D. Preate, Jr.

Serving as featured speaker for today's Commencement ceremony is Attorney General Ernie Preate, Jr., Pennsylvania's chief law enforcement officer.

A native of Old Forge, Lackawanna County, Preate graduated from the Wharton School of Finance with a degree in economics and earned his law degree at the University of Pennsylvania in 1965.

Following law school, Preate volunteered for combat duty with the U.S. Marines. He served as a Marine infantry officer in Vietnam in 1967 and 1968. In over three years of service, he rose to the rank of Captain and was awarded five medals for his combat service.

Upon returning home, he was an assistant district attorney for eight years, specializing in drug prosecutions, and won 20 consecutive trials against drug pushers. Elected Lackawanna County District Attorney in 1977, he became one of the state's foremost homicide prosecutors, winning all 19 murder cases that went to jury verdict. As a district attorney, he won every case he brought to court.

Following three consecutive elections as district attorney, Preate took office as attorney general of Pennsylvania in January 1989. His top priority is, in his words, "to make Pennsylvania the toughest state in the nation against drug pushers." His leadership in the drug fight has attracted White House attention – he has met on several occasions with President Bush, and the President's newest drug strategy book singles out Pennsylvania as one of just four states who are leaders in the war on drugs.

Because of Preate's success as a career prosecutor, the U.S. Justice Department chose him to serve on its Executive Working Group, a small, special committee of U.S. attorneys, state attorneys general and big-city district attorneys who focus on major law enforcement policy issues. His colleagues in the National Association of Attorneys General have elected him chairman of the Association's Eastern Region, co-chair of the Criminal Law Committee, and as the Association's delegate to the American Bar Association.

Nationally known as a death penalty expert, he is a frequent lecturer on the subject and has appeared on national television programs, including ABC's *Nightline*. He has also written a book on the subject.

Preate wrote the first major reform of Pennsylvania's drug laws in more than a decade – 19 bills in all. Many have already been passed. He is also leading the legal charge against consumer ripoffs, phony charity scams, corrupt officials, organized crime bosses, toxic waste dumpers and child pornographers.

The administration and staff of Edinboro University of Pennsylvania would like to take this opportunity to recognize those faculty members who are retiring during the 1990-91 academic year.

William Benoit
Career Counseling and Placement
24 years

William Benoit, director of the Career Counseling and Placement Center, retires after 24 years of service to the University. He graduated from Edinboro with a degree in art education in 1958. Following teaching assignments in Pittsburgh and Union City, he returned to Edinboro in 1965 to earn a master's degree in guidance and counseling. After working as a guidance counselor in Cambridge Springs, he joined the University staff in 1967 as associate dean of admissions. He took on his current position in 1981.

W. Micque Brown
Physics and Technology
28 years

W. Micque Brown, assistant professor of physics and technology, joined the Edinboro staff in 1963. Previously, he taught in the Millcreek School District, served as product engineer for American Sterilizer, lab technician and apprentice for General Electric Co., and lineman for General Telephone.

Brown earned a bachelor's degree in science education from Edinboro in 1961 and a second degree in computer math from Case Western Reserve in 1962. He received master's degrees from Syracuse University, the University of Missouri, the University of Buffalo, the University of Illinois, and Atlanta University.

The co-author of *Laboratory Studies in Physical Sciences*, Brown is a member of the National Science Teachers Association, secretary and program chairman for the Biomedical Equipment Technology Association of Northwestern Pennsylvania, and advisor to the Hospital Equipment Technology Club.

Dr. Scott Dye
Speech and Communication Studies
20 years

Dr. Scott Dye, professor in the department of speech and communication studies, retires after 20 years of service to Edinboro University. He received his bachelor's degree in government and master's in speech from University of Redlands and earned a doctorate in rhetorical theory and public address at Western Reserve University in 1971.

Prior to joining the Edinboro staff, Dye served as assistant professor at the University of Connecticut, and instructor at Purdue University and Western Reserve University.

A certified member of the American Institute of Parliamentarians, Dye has served on the organization's board of directors, national committee on education, by-laws and rules committee, and publications committee. A former member of the University Senate, Dye continues to assist senators and other Edinboro University employees on procedural matters.

Dr. Martin Farabaugh
24 years

Dr. Martin P. Farabaugh received his bachelor's degree in mathematics and industrial arts from California State College in 1949, and a master's degree in secondary education and vocational guidance and counseling from the University of Pittsburgh in 1954. He served in the U.S. Army during the Korean conflict before obtaining his doctorate degree from Catholic University in 1966.

He began his career at Edinboro as scheduling officer in 1967. He then became assistant dean of teacher education in 1972, associate dean in 1973, and dean in 1977. Farabaugh was appointed associate to the dean of professional studies in 1983 and became the unofficial dean of teacher education in 1987. From 1988 until his retirement, he was coordinator of academic administration.

Henry Katzwinkel
Art
32 years

Henry Katzwinkel has been a member of the Edinboro art department since 1959. In 1953 he earned an advertising art certificate from Atlanta Art Institute and received a B.S. in art education from Edinboro State Teachers College in 1956. For three years he served as an art instructor at Oil City Senior High School, before

continuing his education at Penn State where he earned a master's degree in art education in 1961. He completed additional graduate work at SUNY - Buffalo and the Cleveland Institute of Art.

A renowned artist, Katzwinkel is a member of the Art Center of Erie, the Cleveland Museum of Art, the American Crafts Council, the Pennsylvania Art Education Association, the National Art Education Association, the Pennsylvania State Education Association, and the Northwestern Pennsylvania Artists Association. His jewelry has been exhibited at the Erie Art Museum, St. Francis College Mall, Bruce Gallery, Butler Institute of American Art, the Meadville Art Market, and the Northwestern Pennsylvania Artists Association, as well as in private collections in Germany and throughout the United States.

Katzwinkel is the recipient of numerous honors and awards. He was the designer/craftsman for the Edinboro University ceremonial mace and presidential medallion used each year during commencement ceremonies. In 1982 he received the Distinguished Service Award for Faculty from the Edinboro Alumni Association.

A man who loves to travel, Katzwinkel has visited 49 states and 7 Canadian provinces, as well as 18 European countries, 3 Orient countries, and 4 South Pacific countries.

Dr. Paul Thomas Biology and Health Services 22 years

Dr. Paul M. Thomas has been a biology professor at Edinboro University since 1968. He received a bachelor of science degree from Allegheny College in 1958. His education continued at the University of Michigan where he earned a master of arts (1959), master of science (1962), and doctorate (1964). In addition, he completed post-doctoral work at Cornell University and the California Institute of Technology.

During his career, Thomas conducted research and participated in technical exchange with the Pa. Fish Commission, the University of Pittsburgh, Australia and the Great Barrier Reef, Ecuador and the Galapagos Islands. He currently serves as associate pastor for First United Methodist Church in Titusville, Pa.

Vincent Trotta 25 years

Vincent P. Trotta began his career at Edinboro in 1965 as associate professor of education. In 1966 he became director of financial aid and was later named associate vice president for administration and student personnel services, and from 1983 to 1984, he served as acting vice president. In 1984 he was named associate vice president for finance and human resources management, and his last two years at Edinboro were spent as associate vice president for student affairs.

Trotta currently serves as vice president for administrative affairs at Metropolitan State University, a member of the Minnesota State System.

The recipient of a bachelor of arts in science from Penn State, Trotta earned a master of science in physics and chemistry education and a National Science Foundation fellowship from the University of Pennsylvania, and completed coursework on a doctorate in educational administration at Penn State.

Martha Zebrowski Library 24 years

Martha Zebrowski, an acquisitions librarian at Baron-Forness Library, is retiring after 24 years of service to Edinboro. She attended Mercer University in Macon, Georgia; Adrian College in Michigan; Sienna Heights College in Adrian, Michigan; and the University of Michigan.

During World War II she worked for the Social Security Administration and later for the U.S. War Department. As a librarian, she was employed in Ypsilanti, Michigan, and Adrian, Michigan, before coming to Edinboro in 1966.

Also Retiring . . .

Dr. Gordon Hensley, Foreign Languages, 22 years

Guy Conti, Health and Physical Education, 19 years

Daryl Lake, Associate Vice President for Faculty Relations, 8 years

Rebecca Manship, Residence Life, 26 years

Dr. L. Patrick McLane, Health and Physical Education, 20 years

Master of Arts Art

- * Annette Marie Bradshaw, B.S., Edinboro University of Pennsylvania, 1979
- Barbara Craig Colwell, B.S., Edinboro University of Pennsylvania, 1971
- Barbara J. Myles, B.A., Kent State University, 1984
- Paul Anthony O'Hara III, B.A., California University of Pennsylvania, 1987
- Joanne Priester Oviatt, B.S., Edinboro University of Pennsylvania, 1961

Master of Arts Clinical Psychology

- * Sherry Lynn Addicott, B.A., Youngstown State University, 1989
- Susan Christine Angelotti, B.S.N., Villa Maria College, 1981
- * Karen Sue Horstman, B.A., Edinboro University of Pennsylvania, 1988
- * Dave T. Martinez, B.A., Edinboro University of Pennsylvania, 1987
- * Cynthia Louise Wright Miller, B.A., Edinboro University of Pennsylvania, 1988
- * Paula Marie Richter, B.A., Mercyhurst College, 1988; M.Ed., Edinboro University of Pennsylvania, 1990
- * Harold T. Slaughter, B.A., Penn State-Behrend, 1988
- Patricia Bresky Steinbrink, B.A., Beloit College, 1973
- * Patricia Ann Strickenberger, B.A., Mercyhurst College, 1987
- * David Robert Tamilin, B.S., Gannon University, 1987
- Julie Lynne Uhlman, B.A., Edinboro University of Pennsylvania, 1986
- * Dennis Bryan Vaughn, B.S., Juniata College, 1989

Master of Arts Communication Studies

- Becky Johnson Carey, B.S. in Ed., Slippery Rock University of Pennsylvania, 1979
- * Lori Monique Eason, B.A., Edinboro University of Pennsylvania, 1980
- Dorothy Nonyelum Edoga, B.S., Edinboro University of Pennsylvania, 1989
- Renée Stephanie Glass, B.A., Gannon University, 1989
- * Emily F. Green, B.A., Edinboro University of Pennsylvania, 1988
- Eric Allen Levis, B.A., Edinboro University of Pennsylvania, 1988
- Maura Ann McLaughlin, B.A., Georgetown University, 1985
- Erik David Nelson, B.A., Edinboro University of Pennsylvania, 1988
- Mary Ann Olsavsky, B.S., Edinboro University of Pennsylvania, 1987
- Tricia Lee Pascoe, B.F.A., Edinboro University of Pennsylvania, 1988
- Cathy L. Stutzman-Harms, B.A., Goshen College, 1988
- * Kenneth Allan White, B.A., Edinboro University of Pennsylvania, 1983

Master of Arts Counseling

- Pleshette Nicole Butler, B.F.A., Edinboro University of Pennsylvania, 1988
- * Alice Virginia Carnes, B.S. in Ed., Edinboro University of Pennsylvania, 1972
- Linda Diane Casamento, B.S. in Ed., SUNY-Geneseo, 1972
- Line Ursule Garant, B.A., Edinboro University of Pennsylvania, 1988
- Edith Suzanne Joseph, B.A., Slippery Rock University of Pennsylvania, 1981
- Mark Douglas MacDonald, B.S. in Ed., Clarion University of Pennsylvania, 1977
- * Kathy Ann McCoy, B.S. in Ed., Edinboro University of Pennsylvania, 1976
- Nancy Jean Moss, B.S. in Ed., Kent State University, 1965
- Lisa G. Nathanson, B.S., SUNY-Buffalo, 1983
- * Richard Raymond Plucknett, B.S., Houghton College, 1983
- * Robert James Reitz, B.A., University of Pittsburgh, 1972
- * Joan Eleanor Williams Robinson, B.S., Howard University, 1964
- Judy Ann Schreiber, B.S., Edinboro University of Pennsylvania, 1974
- Robert Edward Swain, B.A., Edinboro University of Pennsylvania, 1989
- Andrea Jean Zirkle, B.A., Findlay College, 1988

Master of Arts History

- * Thomas David Stubrich, B.A., Baptist Bible College, 1977

**Master of Arts
Rehabilitation-Counseling**

- * Anne Elizabeth Westfall, B.F.A., Edinboro University of Pennsylvania, 1979

**Master of Arts
Social Sciences**

- * Fredrick Eugene Gustafson, B.A., Allegheny College, 1979
- * William Fredric Gustafson, B.A., Penn State University, 1973

**Master of Arts
Speech and Language
Pathology**

- Kelly Dawn Binaut, B.A., Edinboro University of Pennsylvania, 1989
- Angela Dianne Burke, B.A., Edinboro University of Pennsylvania, 1989
- * Karen Elaine Dietrick, B.A., Edinboro University of Pennsylvania, 1989
- Christopher A. Findlay, B.A., Edinboro University of Pennsylvania, 1987
- * Susan Mary Fitzgerald, B.S. in Ed., Edinboro University of Pennsylvania, 1989
- * Alan Russell Hawthorne, B.A., Edinboro University of Pennsylvania, 1989
- * Lisa Marie Judge, B.S., Marywood College, 1989
- Jennifer A. Kusse, B.A., Alma College, 1972
- Kathy Marshall Lee, B.S. in Ed., Edinboro University of Pennsylvania, 1976
- Susan Snyder Leopold, B.S. in Ed., Edinboro University of Pennsylvania, 1982
- * Rhonda Kay/Leonard Marcinko, B.S. in Ed., Edinboro University of Pennsylvania, 1984
- * Karen Sue Meszaros, B.A., Edinboro University of Pennsylvania, 1988
- Lisa Marie Tirsch, B.A., Edinboro University of Pennsylvania, 1988
- * Karen Marie Vinskofski, B.S., Marywood College, 1989

**Master of Education
Educational Psychology**

- Brenda Arndt Bailey, B.S., Edinboro University of Pennsylvania, 1984
- * Carol Elizabeth Buckleitner, B.A., Albion College, 1989
- * Lei Chen, B.A., Beijing Foreign Language University, 1983
- * Rebecca O'Leary Devine, B.S., Gannon University, 1977
- Valerie Anne Flickinger, B.A., Indiana University of Pennsylvania, 1989
- Andrew James Gillie, B.A., Edinboro University of Pennsylvania, 1988
- James Edward Harmon, B.A., Houghton College, 1989
- Pamela Rahn Lewis, B.S., Indiana University of Pennsylvania, 1973
- * Debra Heyz Myers, B.S., Edinboro University of Pennsylvania, 1986
- Kathleen Jane Nicholson, B.A., Mercyhurst College, 1989
- Alene Rososky Norris, B.A., Juniata College, 1975
- Erich Edward Reidell, B.S. in Ed., SUNY-Buffalo, 1989
- * Katherine L. Wardi-Zonna, B.A., Mercyhurst College, 1986
- Greg Woz, B.S., Niagara University, 1973

**Master of Education
Elementary Education**

- Lisa Pfister Brightman, B.A., Mercyhurst College, 1984
- Elaine Duink Caflisch, B.A., SUNY-Fredonia, 1982
- * Carol Love Cartney, B.S. in Ed., Edinboro University of Pennsylvania, 1978
- Patricia Elizabeth Diebold, B.S. in Ed., Edinboro University of Pennsylvania, 1982
- * Lois Ann Eichenlaub, B.S., Penn State University, 1982
- * Lisa Lynette Spellman Ferrick, B.S. in Ed., Edinboro University of Pennsylvania, 1985
- * Joyce Elizabeth Hoellein, B.A., West Virginia Wesleyan College, 1970
- Jacquelyn Gail Holmberg, B.S. in Ed., Edinboro University of Pennsylvania, 1983
- * Mary Jo Zaleski Melvin, B.S. in Ed., Edinboro University of Pennsylvania, 1975

**Master of Education
Elementary School
Administration**

- * Patricia Jean Chechak, B.S. in Ed., Slippery Rock University of Pennsylvania, 1977
- * Susan J. Curtin, B.S. in Ed., Indiana University of Pennsylvania, 1983
- * Helen K. Howell, B.S. in Ed., University of Kansas, 1973
- Laura Ann Kuch, B.S. in Ed., Edinboro University of Pennsylvania, 1989
- * Mary Lee Lynch, B.A., Mercyhurst College, 1970
- * Philip William Mifsud, B.S. in Ed., Edinboro University of Pennsylvania, 1979
- * Diane Kimberly Olszewski, B.S., Edinboro University of Pennsylvania, 1976

**Master of Education
Mathematics**

- * ValJean Marie Peckich, B.S., Penn State University, 1984
- Janet Maureen Quinn, B.S. in Ed., West Virginia University, 1986
- Susan Jo Wilson, B.S. in Ed., Edinboro University of Pennsylvania, 1976

Pamela Ruth Lasher, B.S. in Ed., Edinboro University of Pennsylvania, 1974

**Master of Education
Reading**

- Mary Kathleen Allison, B.S. in Ed., Indiana University of Pennsylvania, 1976
- * Janet Graves Blaha, B.A., Westminster College, 1977
- Dean M. Feighner, B.S. in Ed., Edinboro University of Pennsylvania, 1972
- * Stephanie A. Herdzik, B.S. in Ed., Mercyhurst College, 1987
- * Karen Kmiecik Hoover, B.S., Penn State University, 1978
- Michelle Jeanne Johnson, B.S. in Ed., Slippery Rock University of Pennsylvania, 1986
- * Mary Elizabeth Leib, B.S. in Ed., Edinboro University of Pennsylvania, 1989
- Elizabeth Ann McChesney, B.S., Edinboro University of Pennsylvania, 1982
- * Carolyn Connor Monday, B.A., Marshall University, 1974
- Tammy Lynne Montgomery, B.A., Mercyhurst College, 1988
- * Encie Mossford Moroski, B.A., Kent State University, 1971
- * Gayle Sandra Overholt, B.S. in Ed., Edinboro University of Pennsylvania, 1983
- Beverly Lynn Scott, B.S. in Ed., Edinboro University of Pennsylvania, 1985
- * LuAnn Siwula, B.S. in Ed., Edinboro University of Pennsylvania, 1988
- * Diane Marie Toboz, B.S. in Ed., Edinboro University of Pennsylvania, 1989
- * Alisa Ann/Warner Willey, B.S. in Ed., Edinboro University of Pennsylvania, 1988
- * Dianne Lyn Young, B.A., Wittenburg University, 1969

**Master of Education
Secondary School
Administration**

- * Dennis Roy Dorman, B.A., Edinboro University of Pennsylvania, 1985
- John Robert Karns, B.S. in Ed., Edinboro University of Pennsylvania, 1977
- * Joan Leslie Mellon, B.S. in Ed., Shippensburg University of Pennsylvania, 1983
- James Alan Miller, B.S. in Ed., Edinboro University of Pennsylvania, 1978
- * John Thayer Moyer, B.S., Edinboro University of Pennsylvania, 1977
- * Sing-yu Sun, B.D., Shandong University China, 1989

**Master of Education
Special Education**

- * Roseanna Lee Bongiorno, B.S., Edinboro University of Pennsylvania, 1986
- * Katherine Leah/Durbino Boron, B.S. in Ed., Slippery Rock University of Pennsylvania, 1970
- * Steven Alexander Chizewick, B.S., Gannon University, 1985
- James Patrick Connell, B.S. in Ed., Edinboro University of Pennsylvania, 1975
- * Lisa Lea Diefenderfer, B.S., University of Pittsburgh, 1987
- * David Joseph Emley, B.S., SUNY-Cortland, 1982
- * Jan Moore Feleppa, B.S., Indiana University of Pennsylvania, 1973
- * Gail Anne Fought, B.S. in Ed., Clarion University of Pennsylvania, 1984
- Ann Marie Francis, B.S. in Ed., SUNY-Fredonia, 1978
- * Patricia J. Hautzinger, B.A., Mercyhurst College, 1986
- Marlene Beth Heibel, B.S. in Ed., Indiana University of Pennsylvania, 1980
- * Janet Margaret Jenkins, B.A., Mercyhurst College, 1983
- * Cheryl A. Johnson-Menezes, B.A., Hillsdale College, 1972
- Kimberly Ann Kickel, B.S., Gannon University, 1984
- * Betsy Range Korb, B.S. in Ed., Slippery Rock University of Pennsylvania, 1980
- Polly A. Lindberg, B.S. in Ed., Edinboro University of Pennsylvania, 1986
- Tracey Lee Lloyd, B.S. in Ed., Edinboro University of Pennsylvania, 1985
- * Janet Christine Pomorski, B.S. in Ed., Edinboro University of Pennsylvania, 1972
- * Mary Patricia Shattuck, B.S. in Ed., Clarion University of Pennsylvania, 1985
- Brian Charles Sheldon, B.S. in Ed., Edinboro University of Pennsylvania, 1987
- * Bernadette DiBartolomeo Verno, B.S. in Ed., Clarion University of Pennsylvania, 1983
- * V. Beverly Vierkorn, B.S. in Ed., SUNY-Buffalo, 1966
- * Rebecca Susan Weaver, B.A., Westminster College, 1972
- * Judy Anne Yost, B.S. in Ed., SUNY-Geneseo, 1986

Master of Fine Arts

- Mohammad Ali Bhatti, B.F.A., University of Sind, 1974
* Frank Donald DiPlacido, B.A., Mercyhurst College, 1984
Robert M. Paul, B.F.A., Edinboro University of Pennsylvania, 1989
* Debra J. Shingledecker, B.A., Westminster College, 1986
* Timothy Joel Sutch, B.A., University Without Walls, 1976

Master of Science Biology

- Timothy Edward Cooney, B.A., Mercyhurst College, 1979
* Wendy Lynn Marshall, B.S., Penn State University, 1985

Master of Science in Nursing

- Carolynn Blaze Zupcic Barton, B.S.N., Carlow College, 1981
Grace Charity Brown, B.S.N., Walla Walla College, 1984
Douglas J. Davis, B.S.N., Roberts Wesleyan College, 1985
Julia F. Donovan, B.S.N., University of Pittsburgh, 1981
John Frederick Mueller II, B.S.N., California State University, 1980
Lisa Bideaux Rohde, B.S., Edinboro University of Pennsylvania, 1986
Kelly Anne Sanfrotello, B.S.N., Penn State University, 1986
* Barbara Valentine Tofani, B.S.N., Edinboro University of Pennsylvania, 1979
Anita Suzanne/Meyers Tyler, B.S.N., Villa Maria College, 1977
Patricia Irene Wahrenberger, B.S.N., Penn State University, 1977

* Students who completed degree requirements during Summer or December, 1990

Honors

The following degree candidates have earned at least sixty-four credits as undergraduate students of Edinboro University and have attained the following cumulative averages: Summa Cum Laude, 3.80 to 4.00; Magna Cum Laude, 3.60 to 3.79; and Cum Laude, 3.40 to 3.59.

Summa Cum Laude

Dolores Arcenas
Jeffrey L. Braun
Richard Anthony Bucco
Colleen Marie Clayman
Carol Birch Collier
Brian P. Corey
William Timothy Dorsch
Lia Anne Felix
Bonney Sue Finnegan
Cheryl Marie Freitag
Randy Warren Helsel
John Michael Hinman
Kara Marie Hopkins
Colette Lea Hughes
Tina Stamatis Johnston
Teresa Angela Kozik
Kimberly Susan Kraebel
Gay Koehler Lipchik

Jeffery S. McClay
Sandra Jane Metzler
Debbie Moore Nicols
Sherri Ann Pierce
Christine Rainbow
Jonathan Lawrence Reynolds
Tracy E. Rogers
Kimberly Jane Sandacz
Colleen Lagan Sheffer
Darlene R. Spaid
Amy R. Thompson
Joanne M. Valone
Robert Lee Wagener, Jr.
Frieda Louise Wagner
John Donald Wheeler
Lynne Louise Williams
Valerie Sue Yeagle
Melinda Jean Zacherl

Magna Cum Laude

Maher M. Atwah
Joseph Victor Barickman
Susan Kay Bell
William John Berger
Mark Patrick Bernardo
Cheryl A. Bitting
Ellen Louise Bly
Sherry Lynn Brown
Peter Salvatore Calogero
Melanie Kay Claypoole
Mark Brian Cole
Dona R. Curry
Josette Nichelle De Paul
Daniel James DeRoss
Karen Seth Dishinger
Patrick Wm Durkin
Tracy Lynn Flesik
Roberta Swanson Forsman
Ellen Teresa Frontz
Judy Ann Gabel-Turchetta
Alisa Dawn Glass
Amy Jeanette Greene
Scott Allen Hauser
Jill Marie Hrinda-Patten
Amy Elizabeth Hull
Michael A. Israel

Joan Bossard Latta
Kelly Ann McCormick
CarylAnn Minor
Geoffrey Douglas Munro
Donna Marie Muroski
Donna Jean Parker
William Daniel Perrine
Julie Ann Peterson
Lisa Ann Petras
Pamela Ann Runser
Ida Jane Schaffner
Cathy Jane Shawver
Mark Anthony Shioleno
Rachel Renée Stewart
Siew Lian Tan
Malcolm Edward Julius Tobias
Laurie Swanson Triola
Carrie Rena Triponey
Charles Everett Tunstall
Lori Ann Twardowski
Donna Marie Ulan
Mark Edward Wallace
Darla Jean Wise
Kazuko Yano
Scott E. Zacherl

Wendy Ann Allen
 Mark M. Allwes
 Dawn Marie Balazy
 Paul Douglas Baltzer
 Valleri Mae Beers
 Kimberly Ann Blimmel
 Tammy Lee Brodowski
 Allison Marie Campbell
 Kellie Lynn Chuba
 Janice Marie Clark
 Ronald David Collett
 John Matthew Conaway
 Christine Lee Corbeil
 Sara Eileen Debski
 Bernadette Marie DeVore
 Kimberly Ann Dougherty
 Kendra Sue Durfee
 Lisa Marie Eimers
 John S. Ericksen
 Tracy Lynn Erlwein
 Laura Marie Everhart
 Julaine Ellen Field
 William Henry Fryling II
 Kristin Marie Henke
 Kimberly Lynn Hopkins
 Darrell Evan Jolley
 Crystal Lynn Kelly
 Mary G. Kennedy
 Michelle Dawn Kephart
 Eileen Paula Knox
 Peter Mark Kraus

Robert J. Lang
 Deborah Jeanne/Arkwright Lindvay
 Robert Cameron Logan
 Kimberly Sue Lorinc
 John E. Lowther, Jr.
 Angela D. Lucarelli
 Christine Elizabeth Lutkus
 Dorothy A. Mahoney
 Kris Elaine McQueeney
 Shelly Ann Messenger
 Terry Brent Morgan
 Vipul Munjal
 Adam Charles Myers
 Cynthia Jean Norman
 Kirk David Patten
 Mary Beth Reidy
 Jill Lynnelle Sernik
 Kylene Ann Shesman
 Denise Lenora Stiffler
 Michelle Renee Suhy
 Robert G. Swasta
 Dawn Marie Sylvester
 Denise Christine Tisch
 Katherine A. Tracy
 Angela Marie Turek
 Kristin Beverly Vierkorn
 Amy Jo Volkman
 Mark Edward Vrabel
 William Marion Williams
 Jeffrey Lynn Wuenstel
 Donna Marie Zeher

University Honors Program

Maher M. Atwah
 Jeffrey L. Braun
 Peter Salvatore Calogero
 Cheryl Marie Freitag
 Teresa Angela Kozik
 Kimberly Susan Kraebel
 Gay Koehler Lipchik
 Christine Elizabeth Lutkus
 CarylAnn Minor
 Vipul Munjal

Tracy E. Rogers
 Kimberly Jane Sandacz
 Jill Lynnelle Sernik
 Siew Lian Tan
 Amy R. Thompson
 Malcolm Edward Julius Tobias
 Donna Marie Ulan
 Lynne Louise Williams
 Melinda Jean Zacherl

School of Liberal Arts

Bachelor of Arts
 Anthropology

Melissa Ann Guy
 Kristin Evans Leonard

Bachelor of Arts
 Art History

Lisa Marie Balogh
 * Allison Marie Campbell - Cum
 * Carol Birch Collier - Summa
 Lia Anne Felix - Summa
 * Patricia Diane O'Neill
 Tracy E. Rogers - Magna

Bachelor of Arts
 Criminal Justice

* Donald Louis Adamsky
 Pamela Jeanne Amross
 * Robert James Beaumont
 Timothy Craig Berg
 * David Michael Bova
 Sharmaine D. Brann
 Jeffrey Alan Calabrese
 * Thomas Gerard Cessar
 Glenn Michael Conrad
 * Ronald Gregory Crawford
 Shawn Patrick Crosby
 * Bernadette Marie DeVore - Cum
 * Jacqueline Michelle Dixon
 Robert James Donaldson
 * Scott Alan Eckert
 * Haywood Johnson El
 David Cyril Emerson
 * Kristine Marquerette Fledderman
 Tracy Lynn Flesik - Magna
 William Henry Fryling II - Cum
 * Dale Edward Gillette
 * David Daniel Hawkins
 Brian Christopher Henesey
 Arthur Joseph Hilinski, Jr.
 Bryan Scott Hogan
 William Gerald Howard
 * Scott Allen Irwin

Jimmy Lee Johnson
 Darcy Lynn Kirkwood
 ** Robert S. Klinger
 David Wayne Koget
 Lora Ann Lally
 Deborah Carroll Lesik
 * Stephen Richard Libicer
 ** James R. Lowman
 John Thomas Luhr
 Timothy John Malinowski
 * Steven Bryan Mistrik
 Douglas Glenn Moorhead
 * Marianne Moser
 Shawn Patrick Ogg
 Donald William Overmoyer
 * Anthony Paris
 * Michael Scott Pierce
 Matthew William Psillas
 * Lisa Marie Reimer
 John Andrew Ropchock
 Michael David Rothermund
 Anne Marie Seippel
 * Christopher Mark Stahl
 Kimberly Laine Thompson
 James Anthony Troha
 * Eric William Trosch
 Thomas Michael Truchanowicz
 Charles Everett Tunstall - Magna
 * Edward John Walker
 Jonathan Michael Weaver
 * Kenneth Lynn Webb
 David Carl Wright
 * Shelley Ann Wykoff
 James Louis Yankel

Bachelor of Arts
 Drama

Lorra Lee Cleary
 * David C. Engstrom
 Jonie Sue Wiegel

Bachelor of Arts
 English/Literature

Brenda Ann Balter
 * Deborra Kay Bergmark

Christine Elizabeth Lutkus - Cum
 * Miriam Paulette Meislik
 David James Ursenbach

Bachelor of Arts
 English/Writing

Charlene Marie Beach
 * Wayne Michael Conway
 Michael Scott Copper
 James D. Kifer
 Sheila Diane Lackey
 * Robert J. Lang - Cum
 * Linda Renee McHenry
 CarylAnn Minor - Magna
 * Pamela Ann Runser - Magna

Bachelor of Arts
 History

Jamie Lynne Ayres
 Brenda Ann Balter
 * Heather Speer Edwards
 * Eric Scott J. Frauenfeld
 * Wynn K. Han
 John Patrick Harker
 Michael A. Israel - Magna
 David Brian Kordel
 * Scott Russell Shelton
 Donald Loren Smith

Bachelor of Arts
 Humanities/Arts and
 Humanities

* Nancy Lee Lewis
 Julie Ann Peterson - Magna

Bachelor of Arts
 Humanities/Language

Rhonda Sue Orr

Bachelor of Arts Music

- ** Timothy B. Bodamer
- * Richard Allen Croyle
- * Mary Louise Herendeen
- * Heidi L. Kindle
- * Charles Lynn McCracken
Victoria Ann Szymkiewicz
Carrie Rena Triponey - Magna
Theresa Marie Walko
John Donald Wheeler

Bachelor of Arts Philosophy

David Lynn Johnson

Bachelor of Arts Political Science

- Jeffrey L. Braun - Summa
Darren Scott Hood
Mark A. Jozefov
- * John Paul Junker
Scott Andrew Knapp
Christine Elizabeth Lutkus - Cum
Sean James O'Brien
Tracy E. Rogers - Magna
- * Shenann Marie Rupp
- * Judy Marie Suh
- * Robert Varsek
Brandie Michelle Weaver
- * John Walter Wilczynski
Jeffrey Andrew Williamson

Bachelor of Arts Psychology

- * Gary William Ailes
Jane Ellen Barnes
James J. Beaulieu
Valleri Mae Beers
- * Melissa Michelle Benke
William Brian Bichsel
- * Amy Marie Brocius
- * Serena Elaine Christos
- * Kellie Lynn Chuba - Cum

- * Ronald David Collett - Cum
- * Carolyn A. Crehan
Candice Marie Crim
- * Rebecca Ann Culan
- * Shawn Eric Dundon
Patrick Wm Durkin - Magna
- * Kevin James Finley
Barbara Marie Gies
- * Diane Marie Giorgianni
Suzanne Glick
Susan Marie Gombos
Kimberly Ann Good
- * George Jeffrey Gray
- ** Katherine E. Hall
- * Colette Michele Hanes
Vicki L. Haspel
Steven Richard Heath
Diane Marie Hoban
- * Douglas Robert Hodapp
- * Joseph Lawrence Hokaj
Jill Marie Hrinda-Patten - Magna
Amy Elizabeth Hull - Magna
Joseph John Jozefczyk
Traci Lee Kaufman
Kimberly Susan Kraebel - Summa
Daniel Michael Kuligowski
Gay Koehler Lipchik - Summa
Angela D. Lucarelli - Cum
Allen W. R. Maxson
Jeffery S. McClay - Summa
- * Edward Charles Mehalko
- * Lynne Mary Meinert
- ** Carol J. Mickens
- ** Teri S. Miller
Terry Brent Morgan - Cum
- * Geoffrey Douglas Munro - Magna
- * William Joseph Myers
Audra Rita Naujokas
Janet Lisa O'Brien
- ** Lori L. Perkins
Robert Thomas Pierce
Kelly J. Rebich
- ** Paula A. Rendulic
Kelly June Rice
John Upton Rizzo
- * Joseph Thomas Roman
- * Catherine Ann Schermer
Patricia Eileen Schreck
- * Joseph Scot Schroeder
- * Cathy Jane Shawver - Magna
Colleen Lagan Sheffer - Summa
- * Pamela Andrews Sherwin
- * Kimberly Ann Shick
Heather L. Simpson
- * Michelle Leigh Smith
- * James Ronald Soder
- * Brenda Sue Staph
Diana Christine Stitt
Susan Lee Stonesifer
Geri Landwehr Szalai
Joanne M. Valone - Summa
Frieda Louise Wagner - Summa
Mark Edward Wallace - Magna
- * Diane F. Wheeler

- * Bonnie Young
- * Paul Ziatyk
- * Cindy Ann Zilen
- ** Heidi L. Zimmerman

Bachelor of Arts Social Science

- Michael Anthony Little
- * Mark Howard Raabe
- * Mark Edward Vrabel - Cum

Bachelor of Arts Social Science/ Pre-Law Studies

- * Alexander George Humanick

Bachelor of Arts Sociology

- * Kimberly Jean Hamme
Gregory C. Kuhn
Geri Landwehr Szalai

Bachelor of Arts Spanish

- * Dolores Arcenas - Summa

Bachelor of Arts Speech and Hearing Disorders

- Alison Tracy Brown
- ** Jenise A. Cauffman
Barbara Joan DeVries
- * Tracy Lee Drabeck
Kendra Sue Durfee - Cum
Julaine Ellen Field - Cum
Carole Anne Garfield
Amy Lynn Grubb

- Julia Lynne Hockenberry
- * Rebecca Lynn Hull
- Eileen Paula Knox - Cum
Rachelle Christine Laubach
Gerald Lewis Liebel
- * Kelly Anne Miller
- * Leiloni G. Miller
Gretchen Sue Moenich
Kimberly Ann Mullin
- * Michelle Arlene O'Donnell
Lisa Ann Petras - Magna
Amy Elizabeth Rynd
Jo-Ette L. Schau
Vanessa Lynn Schepis
Mishele Leigh Skoloda
- * Marci Le Snyder
- * Jennifer Anne Stomieroski
Julie Ann Webber
Christine Gail Woomer

Bachelor of Arts Speech Communications

- Kevin Scott Achtzehn
James Roland Bailey, Jr.
- * Pamela Dallas Bardy
Marlia Elizabeth Buell
- * Thomas Robert Carroll
- * Robert Leslie Chase II
- * Janice Marie Clark - Cum
Karla Diane College
Deborah Ann Cordera
Lorie Ann Cubetus
Dorinda Jean Fails
Darren Robert Farver
- ** Kimberly M. Gallagher
Nolan Brent Gardner
- * Oluf Magnus Geheb
- * Christina Lea Ghery
- * Wayne Michael Gizzi
- * Lori Ann Green
Lisa Marie Gregor
Karen Lynn Groom
- * Jeffrey George Hanson
- * Tina M. Harmon
Jennifer Ann Heller
- * Charles Herring, Jr.
- * Shoko Higa
Halli Lynn Hult
- * Elaine Michelle James
- * Laura Elizabeth Jones
- * James Robert Kopec
Teresa Angela Kozik - Summa
Lisa Marie Kuzupas
- * Timothy M. McCaffrey
- * Kelly Lyn McCrea
- * Heather Susanne McFeeley
- * Michele M. McGuire
- * Floyd Randall McIlwain

- * Nancy Lynn McNamara
Daniel David Miaczynski
Kimberly Ann Moore
- * Laura S. Nee
Katrina Stockman Oldakowski
Lisa Michelle Opoka
- * James John Pancoast
- ** Melissa A. Perkins
Tina Marie Piano
James Patrick Pietrzyk
René F. Prendergast
- * Arlene Joy Vento Pushinsky
Roy J. Rectenwald
- * Dwayne Bruce Rollin
- * James Patrick Ross
Joseph Craig Salvadori
Mihoko Sano
- * MaryAnn Scarpaci
- * Gary Raymond Schickel
Dale G. Smith
- * Jolene Gay Smith
Michael James Snizik
- * Chiaki Sone
Rosemarie Eileen Surovick
- * Michael G. Swanz
- * Karen Elizabeth Trapp
John Patrick Troncane
Mark James Waugaman
Lindsey L. Wisniewski
Kimberly Ann Woodle
- * Charles Russell Yaeger
- * Christopher Charles Yuhasz
Donna Marie Zeher - Cum

Bachelor of Fine Arts

- Karen Lyn Adams
Wendy Ann Allen - Cum
- * Sanya Mari Bebell
William John Berger - Magna
Mark Patrick Bernardo - Magna
Darlene Beyer
- * Cheryl A. Bitting - Magna
- * Kimberly Dawn Black
- * Matthew George Borczon
Debra Lynn Branem
- * Robert Matthew Brocius
Steven Michael Carver
Thomas Joseph Castanzo, Jr.
Daniel Ray Conley
Thomas Clifford Cooper
Barry Tyler DeQuenne
Daniel Patrick Downie
Carl William Ellis
- * Tracy Lynn Erlwein - Cum
Bonney Sue Finnegan - Summa
- * Dean Patrick Gallagher
Lawrence T. Gawel
- * April Lynn Grinolds

- James Edward Gruver, Jr.
Christine Ann Hayes
Dion Lee Holmes
Douglas Albin Howell
Daniel David Hurley
- * Audrey Rachele Kelly
Kristi Ann Kotlinski
Todd William Kuzdzal
- * George E. Lehman
Nadeana Lee Lesnett
Robert Cameron Logan - Cum
- * Christopher E. Martin
- * James Joseph McNamara III
- * Shelly Ann Messenger - Cum
- * Mark Steven Miller
- * Adam Charles Myers - Cum
Todd Martin Napier
- ** Colleen R. Newcombe
Craig Richard Osbin
Monica Mary Palkovic
Gretchen Elaine Pallack
- * Bernadine Marie Parrish
- * Christopher Baker Powell
Michael Lewis Rader
Carla Marie Ramage
Judith A. Brookman Reeping
- * Patrick Charles Rigney
- * Lisa Marie Russo
Ann Moriah Rutkowski
- * Joseph W. Schmitzer
- * Daniel Raymond Schmock
- * Susan Marie Senko
Margaret Slepowronska
- * Kevin Edward Spall
- * Jennifer Lynn Stypinski
- * Lori Ann Twardowski - Magna
Karen D. Wedekind
Paul David Wegweiser
John Phillips Wiegand
Jerry James Zorek
Laura L. Zurku

Bachelor of Science Industrial and Trade Leadership

- Samuel P. Genovesi
- * Dennis Joseph Lukaszewski
- * David Charles VanOrd

Bachelor of Science Social Work

- Dawn Marie Balazy - Cum
- * Dorothy Brigham Burfield
- * Michelle Lea Burnett

Dabney Krystina Conwell
 * Sheila Lynn Doubet
 Lorie Ann Dowling
 * Jill Elaine Fleming
 Alisa Dawn Glass - Magna
 Scott Allen Hauser - Magna
 James Ray Heckman
 * Jennifer Lynn Heimer
 * Bernadett Ann Hewitt
 * Jennifer Ann Jacquillard
 Melissa Ann Kennedy
 Christine Maciak
 Laura Lynn Maxwell
 Karen Lynn Morton
 * Valerie Anne Motter
 * Amy R. Nath
 * Carol Allen Parsons
 * Laura Reneé Patalas
 * Julia Marie Rader
 Sarah Elizabeth Spooner
 * Rae Lynn Stanfield
 Terri Lynn Steigner
 Shannon Renee Sumoske

Teresa Michelle Tallant
 Janette Marie Tidball
 Angela Marie Turek - Cum
 * Kramer L. Turner
 Valerie May Winnick
 Renee Linnette Wisor
 Mary Kathryn Yadeski Yurkovic
 Cindy Marie Zembroski

**Associate of Arts
 Criminal Justice**

Joe Daniel Ayers
 * Liana Ruth Baumgarten
 Michael J. Kehoe
 * Donald Charles Oakes
 Delores N. Pichler
 Colleen Ann Shine

**Associate of Arts
 Human Services**

Tracy Lyn Walczak Auell
 Sharon Denese Gerome
 * Evelyn Keibler Grossett

**Associate of Arts
 Liberal Studies**

* Miwako Aoyama
 Kathleen Elizabeth Blakely
 Mary Kaye Callahan
 * William David Jackson
 Noriko Carrie Omura
 Michael John Styborski
 * Ayako Terada
 * Ward Bruce Waldo

* Students who completed degree requirements during Summer or December, 1990
 ** Students who will complete degree requirements during Summer, 1991

School of Science, Management and Technologies

**Bachelor of Arts
 Biology**

Michelle Jane Kerber
 Michael A. Kozalla
 Joseph Michael Sherrick

* Donald B. Kibbe
 * Lenee Mari Longo
 * William Anthony Schubert III

Timothy Robert Overmoyer
 * John Robert Suminski
 * Robert G. Swasta - Cum
 * Ward Stuart Troetschel
 Charles William Tupitza
 ** Jeffrey A. Vayda
 * William Marion Williams - Cum

**Bachelor of Arts
 Earth/Space Science**

* Steven Edward Brown
 * James Harrison Foskey
 Stephen Christopher Hughes
 * Beth Ann McMillen

**Bachelor of Arts
 Natural Science and
 Mathematics/
 Cooperative Engineering**

* Michael James Boehm
 Michael Joe Kelley
 * George Bernard Schmitt

**Bachelor of Science
 Anesthesia**

* James Edward Perry
 * Charles Kent Persinger
 * Celina Susan Sinanyan

**Bachelor of Arts
 Economics/Business**

* Kenneth E. French

**Bachelor of Arts
 Physics**

* Keith Andrew Dobson
 Kirk David Patten - Cum
 Milton Curtis Robinson
 Deanna Rae Volk

**Bachelor of Science
 Biology**

* Cheryl Marie Freitag - Summa
 * Anthony Frank Friendly
 Lisa Ann Kornaga
 Stephanie Lynn Phillips
 Randall Martin Reyer
 * Gabrielle E. Sakolsky
 Kimberly Jane Sandacz - Summa
 * Pamela Ann Starkey
 Steven Patrick Tammariello
 Thomas Edward Traynor, Jr.
 Donna Marie Ulan - Magna
 Rachel Ann Weigert

**Bachelor of Arts
 Environmental Studies/
 Geography**

* Cynthia Jean Norman - Cum

**Bachelor of Arts
 Physics/Cooperative
 Engineering**

Eric Jon Boyles

**Bachelor of Arts
 Geography**

Robert John Holman
 Scott Micheal Kreuzer
 * Brenda Marie Lucia
 * Dennis E. Weimer

**Bachelor of Arts
 Specialized Studies**

* Michael Gregory Best
 * William Thomas Bioni
 Cynthia L. Casale
 Mark Brian Cole - Magna
 * Glenn Clark Gross, Jr.
 David Jeffrey Innocent
 David Arthur Karn
 * Lawrence Joseph Lance
 Christopher Robert Lewis
 Steven Ronald Maenpaa
 Peter Damiano Marsico, Jr.

**Bachelor of Science
 Biology/Pre-Medical**

* Melissa Martha Balter
 * Richard Anthony Bucco - Summa
 * Damian Mark Fronzaglia
 Neil Leonard Murphy, Jr.
 Donna Jean Parker - Magna
 David Lee Pinkerton

**Bachelor of Arts
 Mathematics**

* Edward Robert Abplanalp
 * Ray Alan Bloom

Bachelor of Science Business Administration/ Accounting

- * Thomas C. Aaron
- * Ammar Abdulmunim Al-Aker
- * Lori Christine Brickner
- * John Robert Dougherty
- * John S. Ericksen - Cum
Beth Ann Frank
- * Gary Lee Glunt
- * Todd Alan Goodhart
- * Leah Rae Hann
- Kathleen Marie Held
- Crystal Lynn Kelly - Cum
- * Gerald J. Kimmel
- Dawn Marie Krince
- * Rick Allen Lewandowski
- * Timothy Alan Long
- Harry William Lubbert
- * Dorothy A. Mahoney - Cum
- ** Melissa McLaughlin
- Kris Elaine McQueeney - Cum
- Kathleen Ann Milosh
- * Scott Earl Morgan
- Vipul Munjal - Cum
- * Marie Frances Niebauer
- Teresa Elaine Nunamaker
- Daniel Jay Prihoda
- * Eric John Riddle
- Cheryl Ann Robinson
- Jon Eric Stuck
- Allen Paul Timko, Jr.
- * Katherine A. Tracy - Cum
- * Larry Neil Usher
- Todd Michael Vecellio
- * Patricia G. White
- * Sally H. White
- Scott E. Zacherl - Magna

Bachelor of Science Chemistry

- Dailene Marie Dubuque
- * Mark Anthony Shiolen - Magna
- Shawn Michael Swavey
- * Frederick Francis Tady, Jr.

Bachelor of Science Chemistry/Industrial Bio-Chemistry

- Gina Rugala Shiolen

Bachelor of Science Comprehensive Business Administration

- * Hengameh Akbarzadeh
- Matthew Shawn Alt
- Mohammad Tariq Bandukda
- * Anthony Joseph Barbarino, Jr.
Beth Ann Bell
- * Chris Ann Bischoff
- * Julie Marie Bishop
- * Frederick Charles Brockman
- Sheila Rosenbaum Brooker
- * Thomas D. Brucker
- Joseph Patrick Bullister
- * Jennifer Helane Bunsey
- Brian William Byrd
- * Robin Ann Calla
- * Peter Salvatore Calogero - Magna
- David Thomas Cammarata
- Lisa Marie Caratozzolo
- * Michael Louis Churn
- * William Michael Clark
- Susan Lynn Coyne
- Dona R. Curry - Magna
- * Brian Scott Czuchra
- * Luke Davidoff
- * Joseph Charles DiBattisto
- * Dominick David DiNofrio
- * William John Dove
- Gregory Richard Durban
- Lisa Marie Eimers - Cum
- * Nancy Ann Fletcher
- Peter Nicholas Futia
- David Gall
- * Dennis James Gawronski, Jr.
- * John Alan Gennuso
- Barbara Ann Gordon
- * Renee Lynn Grabowski
- * Brian Michael Granata
- * Mary Plosila Griswold
- David Allen Growley
- Kristen Kay Hanny
- * Sheila Marie Hoesch
- * Lois Jean Hoover
- * Penny Suzanne Hopwood
- Robert Alan Huber
- * Colette Lea Hughes - Summa
- * Janet A. Hunter
- Patrick Michael Huntley
- Gregory Scott Johnson
- * Mitchell James Kallay
- * Brad Michael Kelly
- Kemp William Konick II
- * Mary Kaye Kornbau
- Dann Vaughan Kruse
- Matthew L. Lamoreaux
- * Mary Elizabeth Lenze
- ** Mark R. Licnerski
- John E. Lowther, Jr. - Cum
- Kimberly Dianne Lynn
- * Lisa Marie Maracci
- Christina M. Mason

- Keith Leland McCreary
- Craig David McCullough
- * Floyd McElwain, Jr.
- * Mark Paul Milby
- * Gary Michael Miller
- Gregory Ronald Moeller
- * Michelle Elizabeth Moraski
- Robin Denise Murray
- * Glen Darwin Neel
- Rajive Jacob Ninan
- David Wayne Nowakowski
- * John D. Nuccetelli
- * Christopher Alan Pagano
- * Gary M. Parkin
- Michael Joseph Pero
- Christopher Scott Pope
- * Angela Rae Pratt
- Kurt Price
- * Michael Edward Puskar
- * Brian Matthew Quirk
- * Bradley Michael Ramage
- Jonathan Lawrence Reynolds - Summa
- William Jeffery Rodland
- Timothy Gaul Rose
- * John Lawrence Santarelli
- * Ida Jane Schaffner - Magna
- * Kevin Steven Schram
- Mark C. Sciorilli
- Ronald Scott
- * Robert Eric Seaberg
- Charles Allen Severo
- Kimberly Beth Shephard
- ** Asif A. Siddiqi
- * Damien J. Siggia
- Sohini Sinha
- Donna Leilani Snyder
- Emery Walter Strohm III
- Michelle Renee Suhy - Cum
- Siew Lian Tan - Magna
- * Raymond Haviland Tennent IV
- * Rena May Ulaky
- * Gloria A. Vignolo L.
- Robert Lee Wagener, Jr. - Summa
- * Brian Frank Wagner
- Marsha Church Walker
- Timothy Fred Weatherby
- Karen Joyce Wertz
- David Edwin Williams
- David James Williams
- Robert Glenn Wilson
- Millicent Natalie Wise
- Keith Allen Wolber
- ** Kazuko Yano - Magna
- Amy Beth Young
- * Mary Beth Zaleski
- Kelly Anne Zurat

Bachelor of Science Computer Science

- * Carl Henry Amstone IV
- Maher M. Atwah - Magna
- * William Charles Baker
- John Gerard Boraten
- Heidi Marie Boyd
- * Susan R. Brumbaugh
- Leon Richard Bucheit, Jr.
- John Matthew Conaway - Cum
- Brian P. Corey
- Daniel James DeRoss - Magna
- * Brian Martin Drumm
- ** Nabil M. El-Houayek
- David Evan Farver
- David Lee Gee, Jr.
- Timothy A. Hricko
- Sandra A. Kay
- Donald H. Kirschman
- * Mark David LeSuer
- * Garret Matthew Maracci
- * James Vincent Masone
- Imran Ali Khan Soomro
- * Darlene R. Spaid - Summa
- Kevin Eric Stutzman
- Amy R. Thompson - Summa
- * Tammy Lynn Turner
- * Dienna Marie Wolfe

Bachelor of Science Economics

- Darrell Evan Jolley - Cum
- Sohini Sinha

Bachelor of Science Environmental Science/ Biology

- David James Broggi

Bachelor of Science Geology

- * Jeffrey E. Bahling
- William Timothy Dorsch - Summa
- * George Michael Lukert
- Steven Thomas McNeal

Bachelor of Science Medical Technology

- ** Shannon C. Ehlers
- * Clare M. Kerr
- ** Teresa M. Koger
- * Debra R. Mathews
- * Stephen Joseph Pikna III
- * Suzanne Marie Vélez

Bachelor of Science Nuclear Medicine Technology

- ** Leah C. Brock
- ** Ann M. Crissman
- ** Beth A. DeAngelis
- * Ellen Teresa Frontz - Magna
- * Kristin Marie Leonard
- * Jack Alan Peterson
- * James Alan Ruszkiewicz

Bachelor of Science Nursing

- Claudia Jean Baloga
- * Josephine Fontanez Bucco
- Julie Carl-Samulewski
- Sherril Lyn Craze
- * Gina Marie DeAngelis
- Karen Seth Dishinger - Magna
- Laura Marie Everhart - Cum
- * Sandra Pauline Hanstine
- * Sandra Lee Hart
- Michele Marie Huff
- Scott A. Johnson
- Kimberlie Anne Kawinski
- Lisa R. Leon
- Eileen Marie Christann Lorei
- * Tracy Lynne Majerik
- Rebecca Ann Maley
- * Wilson Albert Matthews III
- Heidi Sue McDonough
- Vicki Lynn McGinty
- Margaret Ann McGraw
- Mary J. Moran
- Janice Carothers Moryc
- Phyllis Tatar Ostrzeniec
- * Denise Marie Parrish
- Carla Ann Petrucci
- Melissa Ann Petulla
- Linda Koontz Rutkowski
- Gloria Jean Sayers Shover
- Michele Lea Steinbring
- Susan Marie Stief
- Lisa Marie Szymanski

- Eileen Suzanne Tighe
- * Julia Anne Werling
- * Kathleen Weber White
- Tammy Lee Young

Bachelor of Science Nutrition

- Ellen Louise Bly - Magna
- Janice Lynne Bush
- Deborah Lynn Camp
- Kathleen Marie Clark
- Jennifer Story Edell
- Christine Mary Sergent

Bachelor of Science Physics

- Steven Leslie Berryman
- Peter Mark Kraus - Cum
- John Frederick Snodgrass
- Malcolm Edward Julius Tobias - Magna

Associate of Applied Science Dental Technology

- * Mary Kate Brunick
- * Edith Marie Ciongoli
- * Sherry Lynn Dingfelder
- * Melissa Ann Foulk
- * Barbara Lynn Cordes Hossain
- * Brenda Lee Mook

Associate of Engineering Technology Digital Engineering

- Brian James DiCarlo

Associate of Engineering Technology Manufacturing Engineering

- * Robert D. Enterline
- * Allen Scott Garver

Brian David Heistermann
* Richard Michael Kimmeth
Trent Carl Kosterman
Merlin David Rockwood

Associate of Science Computer/Information Processing Technology

* Valerie J. Gorniak
* Larry L. Longberry
Eric John Miazga
Amy Louise Niebauer
Robert Michael Revelt
* Kathleen Marie Spenik
* Cheryl Lynn Storm
* Cynthia Ann Unger
* James Ralph Watson
Robert Glenn Wilson
* Karen Anne Wohlfarth
Duane Allen Wood

Associate of Science General Business Administration

Hasan Ali
* Margaret Ann Dunbar
* Marilyn Christine Duran
Terry Lynne Everett
* Peter Scott Ferguson
Patrick Thomas Glass
Jennifer Lynn Harrington
Tomoko Hashida
William Lewis Hilliard
Marnie Lynn Hindle
* Kevin Andrew Lobins
Monica Marie McCrory
* Jacqueline Marie McFadden
Michael Vincent McWilliams
* Dianna Lynne Montgomery
* Tricia Ann Nudd
* Rocky Joseph Pignotti
Kathleen Ann Pulling
* Hiroyuki Tanaka
Harriet Jones Thompson
* Sherri Lee Volgstadt
Jennifer J. Wetsell
Betty Ann Wist

Associate of Science Hospital Equipment Technology

* Mark Damian Bajadek
* Denise Marie Faivre

Associate of Science Medical Laboratory Technician

* Roger Eugene Roush
* Carol Koehler Smith
* David Allen Zacherl

Associate of Science Secretarial Science

Deborah Jean (Strawoet) Kirk
* Sherrie Jones Shumate

Bachelor of Science in Art Education

Lisa Marie Balogh
Lorraine Gail Cochran
* Michelle Lynn Conkle
* Marc William Conrad
* Lurae A. Crawford
Dawn Robin Crosby
Mary Kuhaneck Dzeskewicz
* Holly Ann Fassinger
Dana Lyn Hopkins
* Deborah Jeanne/Arkwright Lindvay -
Cum
* Cheryl Lynn Marzock
Rebecca Ann Pascarella
Jill Lynnelle Sernik - Cum
* Rachel Renée Stewart - Magna
* Lisa Marie Teubert
Angela Jean Young

Bachelor of Science in Education Elementary Education

Andrea Marie Abate
Laurie Susan Adams
Paulette Berrish Aliota
* Kelli Jean Allen
Doreen Marie Anderson
Kelly Suzanne Babay
* Susan Margaret Babcock-Rosendahl
* Dennis Martin Bailey
* Karen Marie Beer
Lori Ann Bender
Nicole Renae Bennett
* Sherilyn Ruth Bentz
* Cynthia Jean Black
Sharon Louise Black
* Michelle Ann Bracken
* Sherry Lynn Brown - Magna
Trudi Annmarie Busha
* Rachelle Kathleen Butch
Julie Marie Callan
Michele Barbara Carier
* Melanie Kay Claypoole - Magna
* Shannon Lynn Cole
Gina Constantine
Heather Marie Covert
Sandra Lynn Crandall
Kira M. Cummings
* Amanda Montague Daggett
Monica Suzette Dean
* Bryan Richard Denman
* Deborah Anne Devine
Mary Elizabeth DiBello

School of Education

Lisa Marie Durand
Lori Ann Durand
Tiffany Lynne Erdos
* Leslie Ann Everly
* Ann Marie Fosco
* Richard Lee Fraker
* Wendy Ann Francese
Amy Fry
Sandra Elaine Gadke
Elizabeth Ann Garloch
* Karolyn L. Gieschen
* Amy J. Graswick
Amy Jeanette Greene - Magna
Richard L. Heasley II
* Howard Lee Hegner
Lisa Marie Hertzog
Valerie Yvonne Hoover
Kara Marie Hopkins - Summa
Kimberly Lynn Hopkins - Cum
* Karen Lynn Huskonen
Julianne Johnson
* Janice Lynn Jones
Mary G. Kennedy - Cum
Jamie Ann Kilroy
* Julia Kay Knapp
* Bruce Albert Kolosvary
* Sharon Lynn Kovski
* Robin Marie Krouse
Kristine Marie Kuhl
* Kathleen Patricia Latkovic
Melissa Ann Lazzaro
* Carrie Ann Lebzelter
* Julia Anne Lichtinger
Kimberly Kay Lloyd
* Michael Orlando Lombardo
Kimberly Sue Lorinc - Cum
Susan Paulette Malesky
* Julia Rae Marshall
* Jean Marie Matuza
* Kimberly Ann McCrea
Susan Kelly McDowell
* Sarah Jane Merenick
* Kimberly Ann Mihaly
Karen Elizabeth Miller
* Heather Lin Morrison
Teresa Marie Murawski
Senta Anne Murray
Vonalee E. Murray
Kathleen Marie Parkinson
Edna Jean Pender
* William Daniel Perrine - Magna
** Tanya R. Peterman
Nancy Marie Poulson
Susan Eileen Pyle
* Christine Rainbow - Summa
Shelley Kaye Redmond
* Dawn Renee Roach
Lisa Drury Roberts
Colleen Marie Romano
Amy Michele Ryding
Cynthia R. Saccamozzone

* Amy Louise Scherfel
Sherri Lynn Searight
Carol Jeanne Shaw
Patricia Ann Shenkel
Laura Ann Sheptock
Rosanne Marie Siggia
Julie Louise Silver
* Michelle Lynn Siwiecki
* Cressa Jane Smith
Kevin Michael Smouse
Janice Marie Snidemiller
Susan Lynn Snyder
Laura Louise Steadman
Julie Marie Stefurak
Diana Lynn Suhy
* James Giel Sullivan, Jr.
Barbara Lee Supinsky
Amy Jo Volkman - Cum
* Christine Joan Wagner
Kathleen Ann Wells
Elizabeth Anne Williams
Renee Annette Yates
Valerie Sue Yeagle - Summa

Bachelor of Science in Education Elementary Education/Early Childhood Education

Vinia L. Boylan-Smith
Tammy Lee Brodowski - Cum
Carrie Ann Burbee
* Catherine A. Santoro Constantinovich
Josette Nichelle De Paul - Magna
* Anne Marie Divelbiss
* Ann Louise Eichenlaub
* Kristen Dawn English
Kandy Ellen Foote
Melinda Sue Heider
Kristin Marie Henke - Cum
Lisa Lyn Henning
Kristin Anne Houston
* Gretchen Krouse Johnston
Tina Stamatis Johnston - Summa
* Joyce Marie Lomax
Carol Ann McAtee
* Donna Marie Muroski - Magna
* Mary Beth Reidy - Cum
* Jennifer Louise Roberts
* Katherine Joan Robertson
* Colleen Marie Rushnock
* Pamela Suzette Schwartz
Patricia P. Sestak
Mary Ann Smith
Erin Diann Theis
Laurie Swanson Triola - Magna
Lynne Louise Williams - Summa

* Students who completed degree requirements during Summer or December, 1990
** Students who will complete degree requirements during Summer, 1991

**Bachelor of Science in Education
Elementary Education/
Mentally-Physically Handicapped**

- Dawna Rae Barnett
Theresa Marie Bartley
Susan Kay Bell - Magna
* Michele Rose Bross
Linda L. Cappabianca
Sara Eileen Debski - Cum
* Roberta Swanson Forsman - Magna
* Jayla Marie Fucci
* Judy Ann Gabel-Turchetta - Magna
Jacalyn Currie Hultman
Barbara Jean Kaufman
* Julie Ann Kitchen
Shellie Ann Minor
Sherri Ann Pierce - Summa
* Geraldine Mary Sawtelle
* Melissa Marie Siggins
Lynda Diane Stacy
Sheri Ann Summerhill
Denise Christine Tisch - Cum
* Darla Jean Wise - Magna

**Bachelor of Science in Education
Health and Physical Education**

- James Cauley Barnes
Shawn Regan Bates
* Sarah Miller Bishop
* Timothy Scott Blystone
John Paul Britt
* Paul G. Chimenti
* Scott Alan Craig
* Kathleen Louise Falkinburg
* David T. Grimaldi
Randy Warren Helsel - Summa
Judith Ann Ingram
* Mark Steven Julius
Charles Kennedy
Michelle Dawn Kephart - Cum
* Danita Kay Kulok
* Donald William Lutz
* Regis William Lux
* John Edward McFarland
* William Joseph McNally, Jr.
Jesse Laurence Meckler
Matthew David Miller
* Bonnie Sue Roney
Regina Marie Sape
Lynn Luray Sellers

- Andrew Pasquale Spacht
Craig Irving Swanson
* Dawn Marie Sylvester - Cum

**Bachelor of Science in Education
Mentally and Physically Handicapped**

- * Tanya Desiree Andrews
* Melissa S. Bisceglia
* Kimberly Ann Blimmel - Cum
David Paul Henderson
* William Louis Hertel
* Gerald Scott Hites
* Jane Almarie Lewis
* Mary Catherine Lukach
Kelly Ann McCormick - Magna
Amy Michelle Miller
Laurie Ann Miller
* Paul Jude Tomassoni
* Thomas Burdick Torok

**Bachelor of Science in Education
Mentally-Physically Handicapped/Elementary Education**

- * Walter Edward Barczyk
Wendy Kim Carlson
Susan L. Kast
* Jacquelyne Ann Lipchik
* Debbie Moore Nicols - Summa
Pamela Mae Rehrig
Lucinda Louise Schnarr
Christine Renee Shaffer
Kristin Beverly Vierkorn - Cum

**Bachelor of Science in Education
School Dental Hygienist**

- Frances Legters Fair
* Jeannie Marie Gregorek
Tina Marie Keffer
Beth Ann Neal
Roxanne Louise Preston
Jennifer Lynn Thompson
Bobbie Marie Tomb

**Bachelor of Science in Education
Secondary Education/Biology**

- Judy Marie Ladaika
Elizabeth Tucker Trafford

**Bachelor of Science in Education
Secondary Education/
Communications**

- * Carolyn Merritt Veale

**Bachelor of Science in Education
Secondary Education/
Comprehensive English**

- James F. Angelo
Bridget Behan
** Tina D. Claxton
Christine Lee Corbeil - Cum
* Douglas John Forcucci
* John Michael Hinman - Summa
** Susan A. Jones
* Don Edward Lilley
** John G. LoPresto
Bridgid Anne McGrath
Sandra Jane Metzler - Summa
Alice Mary Nichols
Kristine Ann Sherman

**Bachelor of Science in Education
Secondary Education/
Earth-Space Science**

- * Tricia Lynn Benson
* Kylene Ann Shesman - Cum

**Bachelor of Science in Education
Secondary Education/French**

- * Gary Alan Graham

**Bachelor of Science in Education
Secondary Education/
General Science**

- Michael James Flynn
* Lisa Lyman Konya

**Bachelor of Science in Education
Secondary Education/German**

- Kimberly Ann Dougherty - Cum

**Bachelor of Science in Education
Secondary Education/
Mathematics**

- Mark M. Allwes - Cum
* Richard Paul Asmondy
* Joseph Victor Barickman - Magna
Lynn Marie Barrett
* Jennifer J. Bergmark
Colleen Marie Clayman - Summa
Michael Andrew Drzewiecki
Beverly R. Goss
Michael James Graziano
* Jennifer Lynn Kliber
Rose Marie Kraus
* Joan Bossard Latta - Magna
Scott David Rager
* Denise Lenora Stiffler - Cum
* Jeffrey Lynn Wuenstel - Cum
Melinda Jean Zacherl - Summa

- * Students who completed degree requirements during Summer or December, 1990
** Students who will complete degree requirements during Summer, 1991

The University does not claim the list of degree candidates is absolutely accurate. Students are granted degrees only if they meet all academic and financial requirements.

**Bachelor of Science in Education
Secondary Education/Physics**

- * Paul Douglas Baltzer
James Owen Rucks, Jr.

**Bachelor of Science in Education
Secondary Education/
Social Studies**

- Brenda Marie Orner Biedrzycki
Joseph D. Calafato
Heather Lynn Cochran
Daniel E. Confer
Francis Ronald Conti
* Jeffrey A. Davis
Marc Aaron Goldberg
* Crist Wylam King
Larry Alan Laird
* Gregory John Lehman
Darwin R. Manges, Jr.
Donald Frank Matthews
Pamela Lynn Morton
Thomas Vincent Petti
Christopher P. Rokosky
* Daniel F. Stevens
* Laura Lynne Vegso

**Bachelor of Science in Education
Secondary Education/Spanish**

- Janyce Lee Brawn
Daniel Arthur Tyger

**Associate of Science
Pre-School Education**

- * Christie Michele Duska
* Holly Heather Feronti
* Constance Marie Gates
Carina Lynne Kategianes
* Christina Maria Knoer
* Dana Nicolle Kuhn
Amie Lynn Lister
* Wendy Susan McCarthy
* Tina Marie Price
Wendy Ann Squires
Kathleen Marie Woomer

Chancellor, State System of Higher Education

Dr. James H. McCormick

Board of Governors, State System of Higher Education

Mr. F. Eugene Dixon, Jr., *Chairperson*

Ms. Julia B. Ansill
Dr. Muriel Berman
The Honorable Donald Carroll, Jr.
The Honorable Jeffrey W. Coy
Mr. G. Edward DeSeve
Ms. Rebecca F. Gross
Mr. James A. Hughes
Dr. James L. Larson
The Honorable F. Joseph Loeper

Mr. Floyd M. Mains
Mr. Joseph M. Nespoli
Mr. Philip D. Rowe, Jr.
The Honorable Jere W. Schuler
The Honorable Patrick J. Stapleton
Mr. Julius Uehlein
Ms. Jennifer L. Crissman, *Student Representative*
Ms. Mary Napoli, *Student Representative*
Mr. Darren Parr, *Student Representative*

Council of Trustees

Mr. C. Richard Johnston, *Chairperson*

Edith Benson, Esq.
Mr. Edwin D. Dombrowski
Mrs. Susan Hagen
Mrs. Patricia Heasley
Dr. Lawrence Krespan

The Honorable Robert J. Kusse
Dr. Harold Sargent
Harry Thomas, Esq.
Mr. R. Benjamin Wiley
Ms. Kimberly Lynn, *Student Representative*

Commencement Committee

John F. Fleischauer Provost and Vice President for Academic Affairs, *Chairman*
William Coleman Director, Physical Plant
Sherri Galvin..... Assistant to the President
Gary Jamison..... Director, Student Services
Patti S. Loomis..... Director, Public Relations and Publications
Paul Martin..... Chairman, Department of Music
Dolores Mortimer..... Coordinator, Auxiliary Services
Denise Ohler..... Interim Director, Career Counseling and Placement
Alice Parker Registrar's Office
M. Roy Strausbaugh..... Dean, Academic Administration
Bob Wallace..... Director, Instructional Technology

ALMA MATER

*Hail to thee, our Alma Mater glorious;
Fresh wreaths we bring to bind thy brow.
Trials have passed and thou has stood victorious;
Never fairer, never statelier than now.
O Edinboro, Edinboro,
Ever praising thee in song;
While class speeds class as swift years pass,
To thee our hearts belong.*

Commencement



Edinboro University of Pennsylvania

December 15, 1991

2:00 p.m.

McComb Fieldhouse

Commencement Ceremony

Convocation John F. Fleischauer, Ph.D.
Provost and Vice President for Academic Affairs
Edinboro University of Pennsylvania

Prelude Symphonic Band

Pomp and Circumstance ACADEMIC PROCESSIONAL Symphonic Band
Edward Elgar

Star-Spangled Banner University Chorale
Francis Scott Key
Symphonic Band
Tim Cordell, *Conductor*

Invocation Rabbi Leonard H. Lifshen
Brith Sholom Congregation
Erie, Pennsylvania

President's Welcome President Foster F. Diebold
Edinboro University of Pennsylvania

America the Beautiful University Chorale
Samuel Ward
Peter van den Honert, *Conductor*

Awarding of Honorary Doctorate President Foster F. Diebold
Chuck Jones
Academy Award-Winning Animator

Presentation of Candidates John F. Fleischauer

Conferring of Degrees President Foster F. Diebold

Alma Mater David Herendeen, Soloist
University Chorale

Benediction Rabbi Leonard H. Lifshen

Crown Imperial..... RECESSIONAL Symphonic Band
William Walton

The audience is asked to stand during the Processional and Recessional and to join in the singing of the National Anthem and the Alma Mater.

The Commencement Procession

The University Marshal
The University President
The Trustees of the University
The Platform Party
The University Faculty

Colors Distinctive of the Disciplines and Professions

Apricot	Nursing
Dark Blue	Philosophy
Light Blue	Education
Peacock Blue.....	Public Administration
Brown	Fine Arts
Citron	Social Work
Copper	Economics
Crimson	Journalism
Drab	Business
Gray	Veterinary Science
Silver Gray.....	Oratory
Green	Medicine
Olive Green	Pharmacy
Sage Green.....	Physical Education
Lemon	Library Science
Lilac	Dentistry
Maize	Agriculture
Orange.....	Engineering
Pink.....	Music
Salmon Pink	Public Health
Purple.....	Law
Russet.....	Forestry
Scarlet.....	Theology
White	Arts, Letters and Humanities
Golden Yellow.....	Science

Honors Award Designations

Gold Stoles	Summa Cum Laude
White Stoles	Magna Cum Laude
Red Stoles	Cum Laude
Gold Cords	University Honors Program Graduate
Red Cords	Departmental Honor Graduate

The Ceremonial Mace

The ceremonial mace, a symbol of presidential authority, is carried at the head of the academic procession by the University Marshal. A gift of the Alumni Association, the mace was designed and executed by Henry Katzwinkel and Dr. Seymour Blinderman, former chairman of the Art Department. It was first used at the inauguration of Edinboro State College President Chester T. McNerney, in 1967.

The mace, twenty-seven inches in length, is topped by a sterling silver sphere studded with circular cabachon rubies, secured by bezels. The collar of the mace is inlaid with ebony, alternated with silver relief fleur-de-lis design elements. The cultured pearls mounted in cups encircle the bottom of the collar symbolizing the thirteen state colleges of Pennsylvania. The shaft of the mace is composed of Brazilian rosewood sections, separated by sterling silver rings. The mace is terminated by a cast sterling silver finial; the five cultured pearls represent the existing curricula. The rib-like cone form is terminated by a small silver sphere symbolizing the world.

The metal working processes incorporated in the ceremonial mace include turning, forging, inlaying, stone setting, and lost wax centrifugal casting.

The Presidential Medallion

A symbol of presidential authority, the first presidential medallion was presented to Foster F. Diebold during the May, 1981 commencement ceremonies. It is permanently housed in the president's office and will be presented to successive presidents. Designed and executed by Mr. Henry Katzwinkel, professor of art, the sterling silver medallion consists of a three and one-half inch pectoral pendant featuring on its face the sunken crest of the Commonwealth of Pennsylvania. On the reverse side is the figure of a Gordon Highlander with pipes. To the right of the piper is the Cross of St. Andrew. To the left is the Cross of England. Flanking the figure is the date 1857, the opening year of the University, and garland thistles. In the background are the hills of Scotland, and beneath the piper is an open book, symbol of knowledge.

The pendant descends from a shield containing a triple-towered castle, the symbol of defense, protection, and strength. The collar of the medallion is comprised of a series of two-inch shields, alternately bearing three different designs: the meigle, an interlacing knotwork peculiar to the Pictish school of Celtic art; the Tudor rose design; and "ESC" in interlocking letters on a background of tabby weaving. Connecting each of the collar shields is a Cross of St. George, representing the union of Scotland and England. The entire medallion was fabricated and cast in the *cire perdue* (lost wax) process.

Academic Vestments

The gown, the cap, and the hood, representing the major components of the academic dress, are a ceremonial inheritance from the medieval universities of the eleventh and twelfth centuries, where dress was the outward sign of privilege and responsibility. The academic dress worn by those participating in today's academic processional symbolizes the level of their academic attainment and the institution they attended.

Gown

Although the gown is more frequently black, certain universities have authorized the use of colored gowns. The bachelor and master gowns are fashioned from black serge. The yoke for the bachelor gown is designed to be worn closed and features long, flowing and pointed sleeves. The master gown is designed to be worn open or closed. Its sleeves are very long with square ends, and the front part has an arc cut away. The arms protrude through a slit at the elbow. The gown for the doctor degree is made of wool, serge, or silk with an open front faced with wide velvet panels. The sleeves are loose and bell-shaped with three bars of velvet in black or the color of the discipline in which the doctorate was obtained.

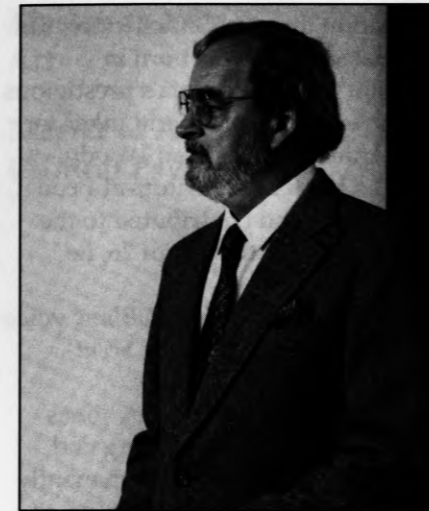
Hood

The most outstanding feature of the academic dress is the hood. It is usually worn only for the master's and the doctor's degrees. The doctor's hood is longer than the master's hood and has distinguished panels. The college or the university granting the degree is indicated by the color of the hood lining. The velvet trim of the hood indicates the field in which the degree was granted.

Cap

The standard cap is the mortarboard, usually the color of the gown. The tassel is black for the baccalaureate and master degree and is worn over the left front quarter of the cap. The tassel for the doctor's mortarboard is of gold thread. Undergraduates wear the tassel on the right side of the cap until the moment the degree is conferred by the president.

President Foster F. Diebold



Foster F. Diebold

Now in his twelfth year as president of Edinboro University of Pennsylvania, Foster F. Diebold is the fourteenth chief executive officer of the institution of higher learning that has come to acclaim in the last decade as one of Pennsylvania's and the nation's finest. He has brought a vigorous educational and moral leadership, a strengthening of the spirit of community, a clear sense of direction and purpose, and a dimension of multicultural pluralism and diversity.

Much has been accomplished during President Diebold's tenure. The University has returned to financial health. Significant facilities and grounds improvements have been achieved, with several of the historic structures on campus restored to their original splendor. Academic programs have been emphasized and improved, with more than 100 degree offerings now available. Enrollment gains have been unprecedented in both numbers and academic quality. International linkages have been established with institutions in several other countries, and Edinboro University's disabled student services program continues to garner acclaim as one of the finest among all colleges and universities in the United States. Widely recognized as a leader in education both here and abroad, President Diebold has positioned Edinboro University to meet the challenges of the 1990s, as well as those that will face public higher education in the 21st century.

The Orange, New Jersey, native is a graduate of Monmouth College and also holds a master of arts in educational administration from Seton Hall University. He has met coursework requirements for a doctorate in education at Rutgers University and is currently completing the dissertation requirement for the Ph.D. program in higher education at the University of Pittsburgh.

Prior to his presidency of Edinboro University, President Diebold was president of the University of Alaska from 1977 to 1979. Before that, he was executive secretary to the Board of Regents and special assistant to the president of the University of Alaska Statewide System. From 1969 to 1976, he was director of Development and Planning at Kean College in New Jersey; and from 1965 to 1969, he was assistant superintendent of the Neptune Township (New Jersey) Public Schools.

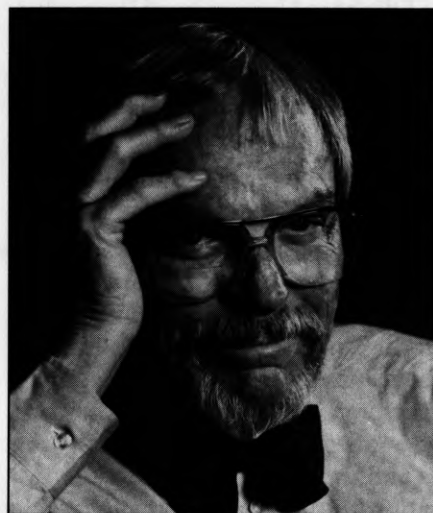
Recognized for his extensive experience in the field of education management, President Diebold's scholarly achievements in the discipline of applied ethics in higher education deserve special mention. The model statement he authored for the American Association of State Colleges and Universities, "Ethical Practices for College Presidents," was unanimously adopted by that professional organization and published as policy for the chief executives of its nearly 400 member institutions nationwide. It is the first formally adopted ethical practices and policy statement for higher education presidents.

For his leadership on an international scale and for his many contributions to the advancement of higher education and enrichment of an emerging culture in Pakistan, President Diebold was decorated with prestigious gold medals from three Pakistani universities. The awards for educational eminence were presented during visits to the Edinboro campus by official Pakistani delegations.

Most recently, President Diebold was honored by the Government of Pakistan with the presentation of the degree of Doctor of Laws (*honoris causa*) presented at the Government House in the City of Karachi. The ceremony was attended by the presidents of the various universities holding linkage agreements together with Edinboro University and many high-ranking officials of the Government of Pakistan.

A staunch advocate of a statewide system of public universities in Pennsylvania, President Diebold supported the enabling legislation for the State System of Higher Education (Act 188 of 1982) and saw the State System come to existence in 1983 as a member of the transition team. He currently serves on the System's Executive Council of Presidents and on the boards of the Pennsylvania Academy for the Profession of Teaching, the Pennsylvania State Athletic Conference, and the University Center at Harrisburg.

Active in community affairs, he serves on the Board of Directors of the Erie Conference on Community Development, and the United Way of Erie County, the Board of Corporators of both St. Vincent Health Center and Hamot Medical Center, and on the Executive Committee of the French Creek Council, Boy Scouts of America. He is also a member of the Marine Bank Advisory Board, the Advisory Board of the McMannis Educational Trust Fund, and the Pittsburgh Plate Glass Corporation Scholarship Review Committee.



Chuck Jones

Three-time Academy Award-winning animation director Chuck Jones, considered by many to be the Charlie Chaplin of animated films, was born in Spokane, Washington, in 1912. Following graduation from California's prestigious Chouinard Art Institute, he began working as a cel washer, painter and inker for the Ub Iwerks studio and later worked for Walter Lantz, who created Woody Woodpecker, and Charles Mintz. In 1933 he joined a team of animators at Leon Schlesinger's studio (later to be sold to Warner Brothers) and contributed to the development of Porky Pig, Bugs Bunny, and Daffy Duck. At the age of 26, he began directing for the studio.

In 1947 Jones created Pepe le Pew, a skunk character with a Mel Blanc voice imitation of Charles Boyer. Two years later, the character starred in *For Scentimental Reasons* which won Jones the first of his three Academy Awards.

The aesthetics of the Hollywood cartoon were greatly enriched by Jones' contributions. While his cartoons are noted for their speed, precise timing and dynamic verve, the characters never bleed, never die, and are never permanently injured; they are resilient. They move according to the rules of anatomy but behave beyond the boundaries of psychology. Jones has lampooned everything from mystery and western movies to grand opera. His films have influenced some

of the most important recent directors including Steven Spielberg, George Lucas, and Joe Dante.

During his years at Warner Brothers, Jones created Inki and the Mynah Bird, Sniffles the mouse, Hubie and Bertie, Sam Sheepdog, Ralph Wolf, Marvin Martian, Henery Hawk, Crawford, Hugo the Abdominal Snowman, Gosamer, Marc Antony Kitty, Junyer Bear, Pepe le Pew, the Roadrunner, and Wile E. Coyote. Each of his characters possesses an element of Jones' own personality. The Coyote represents his inability to deal with certain things in the physical world, particularly tools; Pepe le Pew is his dream vision of himself; Bugs is the inoffensive guy who, when roused, is as unbeatable as Groucho Marx; and Daffy is the complete survivalist.

"The Roadrunner" series began in 1949 as a satire on chase films and featured Wile E. Coyote, the luckless predator who courts failure whether he is raising an umbrella for protection from an incoming boulder or falling victim to a myriad of Acme products. Cinematic in scope, the Roadrunner series is also renowned for its brilliant timing and comic gags.

With the exception of four months with the Walt Disney Studio in the mid-fifties, Jones remained at Warner Brothers until the cartoon studio shut down in the early 1960s. He joined MGM to work on Tom and Jerry and won an Academy Award for a short called *The Dot and the Line*.

He later set up Chuck Jones Enterprises to produce television specials including *A Cricket in Times Square*, *A Very Merry Cricket*, and *Yankee Doodle Cricket*. He wrote and directed the feature film *The Phantom Tollbooth*, and in the mid-seventies produced three films based on the work of Rudyard Kipling - *Rikki-Tikki-Tavi*, *The White Seal*, and *Mowgli's Brothers*. He also worked as producer and director with his close friend Theodore Geisel, otherwise known as Dr. Seuss, on the TV versions of *Horton Hears a Who* and *How the Grinch Stole Christmas*.

In 1979 he directed *The Bugs Bunny/Roadrunner Movie*, a feature-length retrospective based on a screenplay he wrote with Mike Maltese. Under his new production company, Chuck Jones Productions, he is currently creating and executing the animation sequence for the new Peter Hyams/Morgan Creek feature-length film, *Stay Tuned*.

In addition to his films, Jones has authored six children's books including *William, the Backwards Skunk*. His recent autobiography, *Chuck Amuck*, is an extravagantly illustrated memoir of his life and work. He is currently working on *How to Draw from the Fun Side of Your Brain*, a textbook on animation technique and a sequel to *Chuck Amuck*.

Among the many honors bestowed upon Chuck Jones during his career are lifetime achievement awards from the Zagreb International Film Festival (1988), the Houston International Film Festival (1991) and the Chicago Film Festival (1987); five-time selection by the National Society of Cartoonists as recipient of the Best Animation Award; the Golden Plate Award from the American Academy of Achievement; and the Career Achievement Award from the L.A. Critics.

For his incomparable contribution to the art of character animation; his deep understanding of literature, music, the visual arts, and other areas of human behavior; his genius in creating characters rich in originality, energy, and recognizable in their reflection of the human condition; his pioneer efforts in shaping a visual art unique to America; his enduring commitment to those who would follow; and his love of humanity that shows in his determination to make people laugh, Chuck Jones will be awarded the honorary degree, Doctor of Letters, *honoris causa*, at today's commencement ceremony.

Photo: © Yousuf Karsh

Master of Arts Art

* L. R. James, B.S., Edinboro University of Pennsylvania, 1969

Master of Arts Clinical Psychology

* Cindy A. Chernicky Balsiger, B.A., Edinboro University of Pennsylvania, 1988
Sandra Boyer Barnes, B.A., Allegheny College, 1972
Peggy A. Dinger, B.A., Edinboro University of Pennsylvania, 1990
Scott Robert Gessner, B.A., Edinboro University of Pennsylvania, 1990
Jeanne L. Graham, B.A., Indiana University of Pennsylvania, 1975
Shari Lynn Gross, B.A., Edinboro University of Pennsylvania, 1984
Colette Michele Hanes, B.A., Edinboro University of Pennsylvania, 1990
Jon Ross Kerschner, B.A., Edinboro University of Pennsylvania, 1987
Elizabeth Ann Knapp, B.S., Penn State University, 1989
James Michael Kuterbach, B.S., Penn State University, 1990
* Galen L. MacDonald, B.A., Gordon College, 1966
* Maureen Benz Myers, B.A., Gannon University, 1988
Roselie Cirino Nelson, B.S., Gannon University, 1974
Barbara Ann Pendleton, B.A., Allegheny College, 1990
Renée A. Phelps, B.A., Point Park College, 1989
Debra L. Reno, B.A., Edinboro University of Pennsylvania, 1989
Barbara Brinkley Vamosi, B.A., Edinboro University of Pennsylvania, 1975
William J. Vorsheck III, B.A., Indiana University of Pennsylvania, 1985
Mark Donley White, B.A., Allegheny College, 1990
* Barbara E. Zerebecki, B.S., Edinboro University of Pennsylvania, 1989

Master of Arts Communication Studies

Frederick R. Anzivino, B.A., University of Toledo, 1970
Becky Johnson Carey, B.S. in Ed., Slippery Rock University of Pennsylvania, 1979
Joseph Michael DeSantis, B.A., Edinboro University of Pennsylvania, 1984
Peijun Jia, B.D., Shanghai Institute of Foreign Language, 1983
* Mary Ann Olsavsky, B.S., Edinboro University of Pennsylvania, 1987
Tricia Lee Pascoe, B.F.A., Edinboro University of Pennsylvania, 1988
Henry Francis Wernicki, B.A., Alliance College, 1973
Michael Troy Willis, B.S., Edinboro University of Pennsylvania, 1989

Master of Arts Counseling

Michele Bigham, B.S., Bowling Green State University, 1986
Cynthia Jean Bitting, B.S. in Ed., Edinboro University of Pennsylvania, 1987
* James J. Carideo, B.S., Penn State University, 1987
Sharon Louise Eckert, B.A., Ashland College, 1989
William Burke Hancock, B.A., Union College/New York, 1981
Jean L. Harris, B.A., Edinboro University of Pennsylvania, 1988
Billie Karen Lyle, B.S. in Ed., Edinboro University of Pennsylvania, 1974
Joan M. McLaughlin, B.A., Seton Hill College, 1964
Anna Jane Mercatoris, B.A., Gettysburg College, 1990
Josephine Marie Parente, B.A., Olivet College, 1990
Pamela K. Roche, B.A., Grove City College, 1978
Richard A. Schlesinger, B.A., University of Pittsburgh, 1989
Mary Elizabeth Watson, B.A., Grove City College, 1987

James Joseph Beaulieu, B.A., Alliance College, 1987

Master of Arts Social Sciences

Master of Arts Speech and Language Pathology

Kris Ann Bancroft, B.A., Edinboro University of Pennsylvania, 1989
* Kelly Dawn Binaut, B.A., Edinboro University of Pennsylvania, 1989
John Charles Clouser, B.S., Gannon University, 1980
* Terri Elizabeth Corr, B.A., Edinboro University of Pennsylvania, 1990
* Trayce Lynne Deeter, B.A., Edinboro University of Pennsylvania, 1990
* Cynthia Marie Hapeman Dillen, B.A., Edinboro University of Pennsylvania, 1987
* Tammy Diane Ferry, B.A., Edinboro University of Pennsylvania, 1990

- * Marjorie Ann Herritage, B.F.A., University of Georgia, 1959
- * Brenda S. Lindsey, B.A., Edinboro University of Pennsylvania, 1990
- Terri Lynn Lyons, B.A., Edinboro University of Pennsylvania, 1987
- * Lori Ann McPhaden-Rolph, B.A., Edinboro University of Pennsylvania, 1987
- * Kathie Mae Moyer, B.A., Edinboro University of Pennsylvania, 1990
- * Vanessa Rhea Sheriff, B.A., Edinboro University of Pennsylvania, 1990
- * Renee Messmer Woods, B.A., Edinboro University of Pennsylvania, 1989

Master of Education Educational Psychology

- Nancy Punkar Baker, B.S., Ohio State University, 1977
- Rose Anne Bogolin, B.F.A., Edinboro University of Pennsylvania, 1989
- * Patrick Bahan Carney, B.A., Gannon University, 1989
- * Kathleen Bridget Fling, B.S. in Ed., Clarion University of Pennsylvania, 1977
- * Laura Louise Gualtieri, B.S. in Ed., Edinboro University of Pennsylvania, 1987
- Michael Alan Haslett, B.A., Edinboro University of Pennsylvania, 1988
- * John F. Knouse Jr., B.A., Gannon University, 1985
- * Amy S. Lees, B.S., Utica College of Syracuse University, 1989
- * Jamie Ann Pascarella, B.S., University of Pittsburgh-Bradford, 1990
- Katrina Prather, B.A., Edinboro University of Pennsylvania, 1988
- Michelle René Ratti, B.S., Geneva College, 1990
- Patricia B. Stickner, B.A., Mercyhurst College, 1975
- Nancy Ann Stroud, B.A., St. Bonaventure University, 1990
- * Daniel P. Stroup, B.S. in Ed., Edinboro University of Pennsylvania, 1980

Master of Education Elementary Education

- Gina Ann Angelo, B.S. in Ed., Edinboro University of Pennsylvania, 1987
- Kazi Imran Hossain, B.S., University Dhaka-Bangladesh, 1984
- Dean C. Maynard, B.S. in Ed., Edinboro University of Pennsylvania, 1984

Master of Education Elementary School Administration

- * Judy L. Decker, B.A., Thiel College, 1966
- * James David Eubank, B.S. in Ed., Slippery Rock University of Pennsylvania, 1985
- * Sylvia Mary Gaukel, B.S. in Ed., Bowling Green State University, 1973
- * Christopher Barrett Smith, B.S. in Ed., Edinboro University of Pennsylvania, 1976

Master of Education Reading

- * Dennis Martin Bailey, B.S. in Ed., Edinboro University of Pennsylvania, 1990
- Dianne Susan Connors, B.S. in Ed., Villa Maria College, 1971
- * Bonnie S. Coxon, B.S. in Ed., Edinboro University of Pennsylvania, 1987
- Linda Doutt Culbertson, B.A., Grove City College, 1984
- * Michelle Susan Fitzsimmons, B.S. in Ed., SUNY-Geneseo, 1977
- * Vanessa Lee Hodgins, B.S. in Ed., Edinboro University of Pennsylvania, 1990
- * Cheryl Witt Kather, B.A., Villa Maria College, 1982
- * Cynthia Barnett Kline, B.S. in Ed., Edinboro University of Pennsylvania, 1990
- * Kathleen Marie Medved, B.S. in Ed., Edinboro University of Pennsylvania, 1977
- * Elizabeth Sopp Meeder, B.S. in Ed., Edinboro University of Pennsylvania, 1989
- Jacquelyn March Roden, B.S. in Ed., Clarion University of Pennsylvania, 1976
- J. Mark Vendel, B.S. in Ed., Edinboro University of Pennsylvania, 1973

Master of Education Secondary School Administration

- * Carol E. Bohman, B.A., Edinboro University of Pennsylvania, 1985
- * Patrick Joseph Dean, B.S. in Ed., Edinboro University of Pennsylvania, 1974
- * Neil Joseph Donovan, B.S. in Ed., Penn State University, 1981
- * Timothy Michael McQueeney, B.S. in Ed., Penn State University, 1984
- * Timothy J. Rankin, B.S., Edinboro University of Pennsylvania, 1978
- * Anthony Dewey Sheppard, B.S. in Ed., Edinboro University of Pennsylvania, 1981
- * George R. Sucha, B.S. in Ed., Slippery Rock University of Pennsylvania, 1969
- * Edward John Zenewicz, B.A., Waynesburg College, 1971

Master of Education Special Education

- * Kathryn J. Bartlett, B.S. in Ed., Edinboro University of Pennsylvania, 1986
- Anna Louise Lope Caro, B.S. in Ed., Edinboro University of Pennsylvania, 1988
- * Mark Ellis Eastlick, B.S. in Ed., Edinboro University of Pennsylvania, 1976
- * Kimberly Rose Gies, B.A., Mercyhurst College, 1987
- * Ophelia Marie Harper, B.A., Penn State University, 1985
- Deborah Labart Hotchkiss, B.S., Houghton College, 1975

Master of Fine Arts

- * Patricia Karen Hovis, B.S. in Ed., Cabrini College, 1985
- * Kenneth LeRoy Lundmark, B.S., Malone College, 1977
- * Susan P. Ottaway, B.S. in Ed., Edinboro University of Pennsylvania, 1982
- * Michele Petrishen, B.S. in Ed., Edinboro University of Pennsylvania, 1988
- Patricia Louise Reffner, B.A., Mercyhurst College, 1984
- Colleen Mary Scrivo, B.A., Villa Maria College, 1976
- * Regina Suzanne Smith, B.A., Vassar College, 1986
- * Amy Susan Wickerham, B.A., Thiel College, 1983

- Karen Savakis Bournias, B.F.A., Bowling Green State University, 1975
- * Paul K. Hill, B.A., SUNY-Binghamton, 1985
- * Donald Louis Robson, B.F.A., Indiana University of Pennsylvania, 1986
- * Pamela June Roys, B.S. in Ed., Youngstown State University, 1989
- Rebecca Lynne Stowell, B.F.A., Southwestern Texas State University, 1987

Master of Science Biology

- Gregory J. Czarnecki, B.S., Gannon University, 1989
- * Marilee Gittere, B.S., Daemen College, 1964

Master of Science in Nursing

- Grace C. Brown, B.S.N., Walla Walla College, 1984
- Krista Lynn Burkett, B.S.N., Roberts Wesleyan College, 1987
- Melissa Kay Homan, B.S.N., Slippery Rock University of Pennsylvania, 1985
- Michelle Suzanne Kotcella, B.S., Edinboro University of Pennsylvania, 1983
- Kelly Anne Sanfrotello, B.S.N., Penn State University, 1986
- Anita Meyers Tyler, B.S.N., Villa Maria College, 1977
- * Patricia Irene Wahrenberger, B.S.N., Penn State University, 1977

* Students who completed degree requirements during Summer 1991

Honors

The following degree candidates have earned at least sixty-four credits as undergraduate students of Edinboro University and have attained the following cumulative averages: Summa Cum Laude, 3.80 to 4.00; Magna Cum Laude, 3.60 to 3.79; and Cum Laude, 3.40 to 3.59.

Summa Cum Laude

Bruce Robert Bednarski
David Arthur Chart
Gladys E. Chart
Betty L. Conover
Thomas E. Greggs
Kerry Ennis Lyons
Elizabeth Ann McCarthy
Stacey Jeanne Miller

Judy Robertson Proper
Carol Jean Irene Pyle
Tina Marie Rhodes
Kimberly Ann Shick
Allison Jeanne Swingenstein
Phillip Andrew Tims
Patricia Bean Valencic
Rosalie Anne Watt

Magna Cum Laude

Susan D. Blount
Barbara A. Denardi
Edna R. Felmlee
Matthew Garret Haight
Lisa Kristine Hogue
Kathy T. Iorio
Stacey Marie Karotka
Leigh L. Meier
David Christopher Mitchell

Cheryl A. Moore
Jane Lee Morris
Susan Murawski
Richard Douglas Osborn
Julie Ann Quinn
Gabriella Lenore Savelli
Joseph Eugene Shrader
James Joseph Urban Jr.
Kazuko Yano

Cum Laude

Niraj Kumar Balasaria
Linda Anne Bennett
John David Bowen
Leah Catherine Brock
Kelly Kathleen Brown
John Ross Dickman
Virginia Marie-Sivak DiRaimo
Christine Marie Eisbrenner
Anna Marie Elliott
James Joseph Fetzner
Karen Annette Gongaware
Elizabeth Jean Grebinoski
Marcella Anne Hamilton
Katrina Marie Johnston
Joseph Linebach

Susan McKinney Lloyd
Harold A. Longmore
Barbara Ann Majewski
Anthony John Matelock
Valerie Kay Osborne
Anthony E. Patterson
Tanya Rose Peterman
Jeffrey Everett Price
Matthew Wade Rogers
Shahla Shah
Kimberly Sue Thompson
Jody Lynn Troyer
Linda Ann Wilson
Patricia Ann Young

University Honors Program

David Arthur Chart
Betty L. Conover

Tina Marie Rhodes
Joseph Eugene Shrader

Baccalaureate and Associate Degrees

School of Liberal Arts

Bachelor of Arts Art History

Michelle Ann Ferneti

Bachelor of Arts Criminal Justice

Francesco Joseph Ardino Jr.
* Brian Edward Barnhart
* Michael David Bichsel
Andrea Jean Marie Blaszak
* Michael Andrew Boehm
* Lance Joseph Brusco
* Jeffrey D. Button
Matthew James Clydesdale
Daniel Anthony Cuiffi
John Joseph D'Amico III
Maurita Mary Deptula
* Kraig Daymond Dilley
* Harold Allan Donahue
* Joan Louise Dorman
Paul Arthur Ennis
Michelle Eileen Gundrum
* Matthew Garret Haight - Magna
* John Bryce Holmes Jr.
* Janell Marie Homer
Reta Darlene Hull
Brenda Dee Jones
Kenneth Mark Kindervater
* Robert Stephen Klinger
Julianne Marie Kuntz
* Pierre Allen Lent
* James Robert Lowman
Sherri Gay Meeder
Bruce Michael Mihalak
Michael Paul Miles
Derek David Miller
Ronald Charles Morgan
* Anthony E. Patterson - Cum
Geno Anthony Pisciotano
Bradley Scott Powell
Tina Marie Rhodes - Summa
Michael Anthony Robson
* Stephen Joseph Sable
* Gordon Edward Smith
Onalee Marie Smith
* Shawn Edward Smith
Thomas J. Steineck
* Mark Douglas Thompson
* Thomas Michael Truchanowicz
Linda Ann Wilson - Cum

* Dale Lee Wimer
* Michael Edward Wurst

Bachelor of Arts Drama

David Vincent Bortle

Bachelor of Arts English

Joanne Irene Anderson
Linda Anne Bennett
* Melissa Elayne Borgia
* Melanie Mary Garbin
Anka Palic
Penelope Helen Saines
Danielle Slongo
Kimberly Michele Treadwell

Bachelor of Arts French

Christine Noelle Freemal

Bachelor of Arts History

* Mark Henry Giza
Jeffrey Keith Jones
David Joseph Kwiatkowski
John George Popely

Bachelor of Arts Humanities

Dean Edward Fox
Gregory Michael Knepp

Bachelor of Arts Music

* Timothy Baun Bodamer
* Roberta Lynn Maroney
James Kinsley Neiner

Bachelor of Arts Political Science

Dina Marie Blake
* Eric Francis Deutschbauer
William Peter Jeanguenat
* Melissa Ann Kilhenny
Patrick Lothair Rhoades

Bachelor of Arts Psychology

* James Martin Basile
James Joseph Beaulieu
* Bruce Robert Bednarski - Summa
Alicia Brown
Tina Marie Byers
Stephen Scott Campbell
Daryl James Collura
Betty L. Conover - Summa
Brian Richard Daniels
* Dawn Renee Fischer
Karen Annette Gongaware - Cum
* Katherine Elizabeth Hall
Matthew E. Helsel
* Kathy T. Iorio - Magna
Stephanie Anne Jordan
Stacey Marie Karotka - Magna
Beverly L. Kerr
Nicole Lynn LeCause
Sheila Lynn Ley
Terri L. Lindenberger
Betty Jane Lytle
Colleen Manion
* Douglas Andrew McGarvey
Audra Marie Merryman
* Teri Sue Miller
Cheryl L. Patterson
Nina Maddalon Perino
* Lori Lynn Perkins
LeeAnn Pinchalk
* Carol Jean Irene Pyle - Summa
Anthony Michael Ramsey
Daniel Jon Richardson
Joy Marie Ruhl
Diana Christine Stitt
Michael John Styborski
Patricia Bean Valencic - Summa
* Patricia Ann Young - Cum
Jeffrey Thomas Zajac
* Heidi Louise Zimmerman

Bachelor of Arts Russian

Paul Martin Semrau Jr.

Bachelor of Arts Social Science

James Joseph Beaulieu

Bachelor of Arts Sociology

* Teresa M. Batrla
Christina R. Meeder
Timothy Edward Zack

Bachelor of Arts Speech and Hearing Disorders

* Jenise Anne Cauffman
Carolyn Anne Fox
* Veronica Marie Gambill
Tonimarie A. Gionti
Tammy Lynn Glenn
Colleen A. Lonergan
Kelley Jane Petrucelli
Samantha Sue Saloum
April Mae Stahlman
Gregory Walter Staub
Natalie Ann Wiesen

Bachelor of Arts Speech Communications

* Lee David Alverson
James Roland Bailey Jr.
Christina Marie Bair
Paul Joseph Biondo
* James Chadwick Brown
Shawn Michael Bryan
Kimberly Anne Caro
Linda Ann Claus
Lara Lee Eskievich
Jill Suzanne Evans
Shawn Scott Fallon
Jacqueline Lee Fite
* Kimberly Marie Gallagher
Edith Alice Grant
* Sandra Danielle Groves
* Marcella Anne Hamilton - Cum
Laura Katherine Hartley

Michael Patrick Held
* Timothy Earl Jay
* Kimberly Anne Koenemund
Maribeth Mahoney
* Robert Sprowls Morrow
* Melissa Ann Perkins
Christopher John Popa
* Richard S. Proctor
Gabriella Lenore Savelli - Magna
David John Sawicki
James Edward Sawyer
Christine Susan Shilkunas
Todd David Sturga
Robert Alan Swanson
Stephen Patrick-Anthony Thompson
* David Eugene Turzak
* Marc Thomas Wallace
Kurt John York
Jessica Christie Yost
W. Brien Zahorchak
Charlene Ann Zarzeczny
* Joseph F. Zdarko III

Bachelor of Fine Arts

Cheryl Yvonne Anderson
Brenda Ann Barretta
Christopher Robert Battaglia
Sheldon Thomas Borden
* Lisa June Campbell
* Thomas Patrick Churney
* James David Cowie Jr.
* Gregg Alan Daubenspeck
* Barry Tyler DeQuenne
Christopher Michael Elardo
Angeliki Costas Georgiou
Kenneth Wayne Gibson
Katie Annette Griswold
Lorie Ann Klie
Eugene Louis Kurtic
Kerry Ennis Lyons - Summa
Kevin Richard Manco
Tina Marie Montagna
Richard Miles Moyer
Richard Douglas Osborn - Magna
* Iris Dawn Parker
* Matthew John Pekarcik
Mark David Polaski
Denise Beth Redman
Scot David Rumsey
David James Seybold
Lynn A. Skarada
David D. Tennent III
Cynthia Antoinette Ujhazy
* Matthew David Walker

Bachelor of Science Industrial and Trade Leadership

David F. Gorny
Matthew John Rovnak

Bachelor of Science Social Work

Susan D. Blount - Magna
Dennis Michael Daugherty
Amy Elizabeth Hoffman
Juliann Mizikowski
Beatrice Ann Munson
Katherine C. Shewan
Melanie Beth Travis

Associate of Arts Criminal Justice

Brian Joseph Gabutti

Associate of Arts Human Services

* Kenneth William Sutter

Associate of Arts Liberal Studies

* Mary Kay Callahan
* Lloyd Kenneth Sutley
Naoko Tsutsumi
Yuko Yagisawa

* Students who completed degree requirements during Summer 1991

School of Science, Management and Technologies

Bachelor of Arts Biology

Vincent Paul Cummings
Kimberly Joyce Hall
* Joseph Michael Sherrick

Bachelor of Arts Earth/Space Science

Paul Frederick Dawson
Joseph Eugene Shrader - Magna

Bachelor of Arts Environmental Studies/ Geography

Jeffrey Paul Gombita

Bachelor of Arts Geography

* Lisa Renee Parmenter
William F. Reese Jr.
Michael Wayne

Bachelor of Arts Mathematics

Elizabeth Jean Grebinoski - Cum
Matthew Wade Rogers - Cum
* Daron Jay Royal
Donald J. Vitron

Bachelor of Arts Natural Science and Mathematics

Robert John Szemanski
James Joseph Urban Jr. - Magna

Bachelor of Arts Specialized Studies

* Gregory Paul Bruce
Jonathan Peter Dickinson
Michael Anthony Pisano

Shona Charlene Rasel
Scott C. Roides
* Norman Randolph Shor
Derek Damon Stewart
* Jeffrey Alan Vayda

Bachelor of Science Biology

David Brian Rea
David Clarke Thrasher

Bachelor of Science Business Administration

James Anthony Alcorn
Leann Marie Anthony
Mark Edward Becker
Donald Stephen Bierhals
Jeffrey Michael Bone
Howard Dennis Bradley
Gladys E. Chart - Summa
* Michelle Renee Coffman
* Jeffrey D. Crossman
Eric Carl Danielson
Douglas Alan Danko
Firat Sozen Demiral
Kathleen Ann Denman
Christine Marie Eisbrenner - Cum
James Joseph Fetzner - Cum
* Daniel Glenn Foy
James Guy Fried
John C. George Jr.
Andrew Joseph Griffin Jr.
* Kristen Kay Hanny
Scott Allen Highlands
Matthew Scott Hilton
Yan Jiao
Carla R. Johnson
* Robert William Johnson
Glenn Raymond Kauffman
* Carolyn Marie Koscelnik
* Dean Allen Kysor
* Mark Richard Licnerski
* Joseph Linebach - Cum
Diana Colette LoBasso
* Harold A. Longmore - Cum
* Gregory Edward Marburger
* Chandra Ann Margetta
Daniel Michael McCurdy
* Sheila Evelyn McIntosh
* Douglas Alan McIntyre
* Melissa McLaughlin
Wendy Ruth Metcalf
Stacey Jeanne Miller - Summa
Jun Mita
* John David Mohre

Cheryl A. Moore - Magna
Kimberly Anne Nichols
Michael Lee Oncea
Jeffrey Everett Price - Cum
* Christopher Charles Rauber
Jennifer Nina Renn
Vickie Lynn Rossey
* Jeffrey Carl Santos
* Shahla Shah - Cum
* Asim Shaikh
* Niaz Ahmed Shaikh
* John Patrick Shaw
* Asif Akhtar Siddiqi
Benjamin Joseph Stoffer
Robyn Jordan Sye
Robert John Thiele
* Kimberly Sue Thompson - Cum
Michael William Thuransky
* Phillip Andrew Tims - Summa
* Gary Wade Tozzo
David Strang Treloar Jr.
Ronald A. Verno
Brian Michael Walker
Lance Michael Walrath
Keith G. White
Rodney Calvin Whitfield
Earl Lee Woodard Jr.
Steven Alan Wright
* Kazuko Yano - Magna
Rosanne Yanosich

Bachelor of Science Chemistry

Christopher William Gausman

Bachelor of Science Computer Science

Cassandra Marie Baker
* Niraj Kumar Balasaria - Cum
* Imari Lenell Bremer
* Christine Campa Capozzoli
Teresa Anne Dodge
* Arlene Margaret Ellis
* Bahman Golshan
* Nabil M. Hoyek
Lance Stephen Jablonski
* Fadel Abdul Rahman Machaal
Edward Michael Majchrzak
James W. McCall
* Raymond Edward Neubert
Christopher Gregory Proctor
Allison Jeanne Swingenstein - Summa

Bachelor of Science Economics

Tsung-Ming Frank Chen
Michael C. Noonan
Michelle Ann Outten

Bachelor of Science Environmental Science

Jeffrey Edward Cook
Anthony John Matelock - Cum

Bachelor of Science Geology

Andrea L. Smelko

Bachelor of Science Medical Technology

* Kelly Anne Cook
* Shannon Chelsey Ehlers
* Teresa M. Koger

Bachelor of Science Nuclear Medicine Technology

* Leah Catherine Brock - Cum
* Ann Marie Crissman
* Beth Ann DeAngelis
* David Paul Sheriff

Bachelor of Science Nursing

Lisa A. Bellotti
Robert Dwight McGaughey
Tracy Peace

Bachelor of Science Physics

David Arthur Chart - Summa
David Christopher Mitchell - Magna

Bachelor of Science in Nursing

* Joanne Jarmolowicz Dudenhoeffer
* Karen E. Kauffeld
* Barbara Ann Majewski - Cum
* Susana Murawski - Magna
* Susan Renee Paris
* Deborah Quinn Radomile
* Renée Ruth Rockwood
* Kimberly Ann Shick - Summa
* Bonnie Lou Staudt
* Timothy Edward Winschel

Associate of Applied Science Dental Technology

* Bradley Ray Hanks
* Misty Michelle Sheppard
* Teresa Jean Wagner

Associate of Engineering Technology Biomedical Engineering Technology

* Brian D. Whitney

Associate of Engineering Technology Manufacturing Engineering Technology

William C. Adams Jr.
David James Hogue
Leonard R. Kriegisch Jr.
Mark Valent Mancos
William G. Mulley Jr.
Todd Robert Wahlers

Associate of Science Computer/Information Processing Technology

Pamela Sue Battko
Valerie A. Jordan
* April E. Welch-McNeal

Associate of Science General Business Administration

Kathy Ellen Blue
* Terry Edward Chiaramonte
Nicholas Anthony Giacone
Yayoi Hasebe
Joanna Lynn Jones
Elizabeth Coverdale Keim
Delana Marie Kuhn
Gloria Jean Seeley
Michelle Marie Tarantello
Rebecca Ann Wilson
Masashi Yamazaki

Associate of Science Hospital Equipment Technology

* Roy Bruce Wolfe

* Students who completed degree requirements during Summer 1991

School of Education

Bachelor of Science in Art Education

* Kristen Marie Bills
* Kelly Kathleen Brown - Cum
Rebecca Eileen Jones
Melissa Angela Klomp
Rebecca Sue Lowrey
Elizabeth Ann McCarthy - Summa
Brenda Marie Thompson
* David Earl Wanker
David William Wray Jr.

Bachelor of Science in Education Elementary Education

Martha Jean Agostino
Mary Jo Aiello
Sheri Kay Amberson
Susan Marie Andruschat
* Rick Alan Askey
Dena Leigh Berger
Joyce Ann Berkebile
Lorin William Brooks
Jennifer Beth Butts
Mary Jo Baltes Carideo
Deborah Amendola Cook
Amy Elizabeth Delaney
Lynda Diane Dennison
Virginia Marie-Sivak DiRaimo - Cum
Jill C. Donati
Karri Lyn Dowden
Charlotte Chase Drayer
Michelle Lynn Edwards
* Kenneth Wayne Eimiller
* Ann Marie Terry Feigh
Edna R. Felmler - Magna
Holly Heather Feronti
Susan Marie Gibas
Lizabeth Gail Glaser
Jeannine Lynn Gould
Sharon Johnson Gross
Paul E. Hansen
Lisa Kristine Hogue - Magna
* Annette Kaye Hotchkiss
Kimberly Ann Humes
Christopher Brian Hutter
Lisa Ann Iacano
* Jay Francis Keenan
* Tina Marie Kimple
Kelly Diane King
Bernice Angela Kirby
Carrie Lynn Kizak
* Trudy Ann Laskey
* Susan McKinney Lloyd - Cum
Sandra Dale Logan
Beth Louise Martin

Debora Alison Maryott
Cindy Sue McClimans
Lori Ann McCowin
Russell Lawrence McIntire
* Jennifer Marie Meconi
Leigh L. Meier - Magna
Stacey Marie Meyner
Nancie Lucille Miller
Jane Lee Morris - Magna
Denise Inez Nelson
Kelley Frances Neuburger
Janine Marie Newhouse
Holly Alisa Noble
Tracey Michelle Noé
Valerie Kay Osborne - Cum
* Tanya Rose Peterman - Cum
Sandra Lynn Petsch
Carolyn Jean Phillips
Kerry Elizabeth Phillips
Judy Robertson Proper - Summa
Denise Lynn Rice
Melissa Ann Rice
Susan Ellen Scherfel
Laurie Lynn Schott
Shelly Elizabeth Seneta
Karen Rosalie Sharer
Corissa Lee Smith
Dianne Marie Sparks
Brenda Sue Staaf
Janet Frances Svenson
Elizabeth Ann Sykes
* Stephanie Bain Thomas
Jody Lynn Troyer - Cum
Gerald Lewis VanZandt
Elizabeth Anne Williams
Mark Lawrence Williams
Krista Louise Woods

Bachelor of Science in Education Elementary Education- Mentally and Physically Handicapped

Dianne Claire Bufalini
Barbara A. Denardi - Magna
Anna Marie Elliott - Cum
Cheryl Ann Garland
Grace Ann Gillette
Melissa Lorie Gillette
Kathleen R. Glover
Gretchen Diane Kline
Julie Anne Lovell
Amy Lynn Norris
Lori Ann Portka
Cynthia Lee Sklar
Christine Barbara Vespoli
Peggy Lynn Walters

Rosalie Anne Watt - Summa
Elizabeth Catherine Whitmire
Karen Marie Zalewski

Bachelor of Science in Education Health and Physical Education

Jeanne Marie Barnett
Richard W. DerVanik Jr.
John Ross Dickman - Cum
William George Hair Jr.
Pamela Marie Hering
Stacy Lee MacMillan
Robert Jude Nitowski
Donna Marie Thibert

Bachelor of Science in Education Mentally and Physically Handicapped

Erika Lyn Bingman
Dalhart Thomas Dobbs Jr.
Tracy Lynn Policastro
Tracy Lorraine Sipe
Richard Thomas Slebonick
Christine Marie Tishko

Bachelor of Science in Education Secondary Education/ Chemistry

Katrina Marie Johnston - Cum

Bachelor of Science in Education Secondary Education/ Comprehensive English

Jennifer Lynn Adair
* Tina Dorine Claxton
Aimee Lynn Croushore
Dorene P. Detwiler
* Susan Ann Jones
* John Gerard LoPresto
Deborah Ann Malanowski
Lisa Marie Nachman

Julie Ann Quinn - Magna
Aleta Marie Rupert

**Bachelor of Science in
Education
Secondary Education/
General Science**

* William A. Rothstein

**Bachelor of Science in
Education
Secondary Education/
Mathematics**

* John David Bowen - Cum
* Thomas E. Greggs - Summa

**Bachelor of Science in
Education
Secondary Education/
Mathematics - Physics**

* Bradford John Kallay

**Bachelor of Science in
Education
Secondary Education/
Social Studies**

Linda Anne Bennett - Cum
Marcella Reneé Brant
John Paul Cleary Jr.
* Francis Ronald Conti
Kathleen Marie Damico
Jamie Daniel Intihar
Thomas Mark Izydorczak
* Gene Martin Minetti
Carol Lee Musiek
* Katherine Louise Oplinger

**Bachelor of Science in
Education
Secondary Education/
Spanish**

Nina Anise Joslin
Darcie Lynn Sanford

**Associate of Science
Pre-School Education**

Carol Lee Brocklehurst
Kristin Lee Hughes
Beth Ann Popely
* Amy Lynn Solida

Chancellor, State System of Higher Education

Dr. James H. McCormick

Board of Governors, State System of Higher Education

Mr. F. Eugene Dixon, Jr., *Chairperson*

Ms. Julia B. Ansill
Dr. Muriel Berman
The Honorable Donald Carroll Jr.
The Honorable Jeffrey W. Coy
Mr. G. Edward DeSeve
Ms. Rebecca F. Gross
Mr. James A. Hughes
Dr. James L. Larson
The Honorable F. Joseph Loeper
Mr. Floyd M. Mains

Mr. Joseph M. Nespoli
Dr. Robert J. O'Hara Jr.
Mr. Philip D. Rowe Jr.
The Honorable Jere W. Schuler
The Honorable Patrick J. Stapleton
Mr. Julius Uehlein
Ms. Kimberly M. Allen, *Student Representative*
Ms. Monica A. Douglas, *Student Representative*
Mr. Patrick J. Geho, *Student Representative*

Council of Trustees

Mr. C. Richard Johnston, *Chairperson*

Edith Benson, Esq.
Mr. Edwin D. Dombrowski
Mrs. Susan Hagen
Mrs. Patricia Heasley
Dr. Lawrence Krespan

The Honorable Robert J. Kusse
Dr. Harold Sargent
Harry Thomas, Esq.
Mr. R. Benjamin Wiley

Commencement Committee

John F. Fleischauer Provost and Vice President for Academic Affairs, *Chairman*
William Coleman Director, Physical Plant
Sherrie Shumate Assistant to the President
Gary Jamison Director, Student Services
Gerald Kiel Associate Dean, Records and Registration
Patti S. Loomis Director, Public Relations and Publications
Paul Martin Chairman, Department of Music
Denise Ohler Director, Advising and Career Services
Alice Parker Office of Records and Registration
M. Roy Strausbaugh Dean, Academic Administration
Bob Wallace Director, Instructional Technology

* Students who completed degree requirements during Summer 1991

The University does not claim the list of degree candidates is absolutely accurate. Students are granted degrees only if they meet all academic and financial requirements.

ALMA MATER

*Hail to thee, our Alma Mater glorious;
Fresh wreaths we bring to bind thy brow.
Trials have passed and thou has stood victorious;
Never fairer, never statelier than now.
O Edinboro, Edinboro,
Ever praising thee in song;
While class speeds class as swift years pass,
To thee our hearts belong.*