

EDINBORO UNIVERSITY OF PENNSYLVANIA

COMMENCEMENT

May 11, 1986

2:00 p.m.

McComb Fieldhouse



THE COMMENCEMENT CONVOCATION

Burton O. Witthuhn *Provost and Vice President for Academic Affairs
Edinboro University*

Prelude *Symphony Band
Tim Cordell, Conductor*

Academic Processional **POMP AND CIRCUMSTANCE** *Symphony Band
Edgar Elgar*

THE NATIONAL ANTHEM **STAR SPANGLED BANNER** *Robert Waterstripe
Francis Scott Key
Professor of Voice
University Singers
Gordon Flood, Conductor*

Invocation *The Rev. Leon Muroski
Our Lady of the Lake
Edinboro, Pa.*

Presidential Welcome *Foster F. Diebold
President, Edinboro University*

University Singers **THE BATTLE HYMN OF THE REPUBLIC** *arr. by Wilhowsky*

Commencement Address *Mary Emily Hannah
Vice Chancellor for Academic Policy and Planning
State System of Higher Education*

Presentation of Candidates *Burton O. Witthuhn*

Conferring of Degrees *President Diebold*

ALMA MATER *Robert Waterstripe
University Singers*

Benediction *The Rev. Leon Muroski*

Recessional **Grand March from AIDA** *Symphony Band
Guiseppe Verdi*

The audience is asked to stand during the Processional and Recessional and to join in the singing of the Alma Mater.

A photography company has been engaged to take pictures of each of the graduates. Out of courtesy for the graduates, their families and friends, the University respectfully asks you to refrain from taking pictures inside the gymnasium area. Photographs may be taken in the lobby or outdoors. Thank you for your cooperation.

THE COMMENCEMENT PROCESSION

The University Marshal
The University President
The Trustees of the University
The Platform Guests
The University Faculty

COLORS DISTINCTIVE OF THE DISCIPLINES AND PROFESSIONS

<i>Apricot</i>	<i>Nursing</i>
<i>Dark Blue</i>	<i>Philosophy</i>
<i>Light Blue</i>	<i>Education</i>
<i>Peacock Blue</i>	<i>Public Administration</i>
<i>Brown</i>	<i>Fine Arts</i>
<i>Citron</i>	<i>Social Work</i>
<i>Copper</i>	<i>Economics</i>
<i>Crimson</i>	<i>Journalism</i>
<i>Drab</i>	<i>Business</i>
<i>Gray</i>	<i>Veterinary Science</i>
<i>Silver Gray</i>	<i>Oratory</i>
<i>Green</i>	<i>Medicine</i>
<i>Olive Green</i>	<i>Pharmacy</i>
<i>Sage Green</i>	<i>Physical Education</i>
<i>Lemon</i>	<i>Library Science</i>
<i>Lilac</i>	<i>Dentistry</i>
<i>Maize</i>	<i>Agriculture</i>
<i>Orange</i>	<i>Engineering</i>
<i>Pink</i>	<i>Music</i>
<i>Salmon Pink</i>	<i>Public Health</i>
<i>Purple</i>	<i>Law</i>
<i>Russet</i>	<i>Forestry</i>
<i>Scarlet</i>	<i>Theology</i>
<i>White</i>	<i>Arts, Letters and Humanities</i>
<i>Golden Yellow</i>	<i>Science</i>

HONORS MEDALLIONS

<i>Silver Ribbons</i>	<i>Departmental Special Recognition</i>
<i>French Bronze Ribbons</i>	<i>Magna Cum Laude</i>
<i>Gold Ribbons</i>	<i>Summa Cum Laude</i>
<i>Bronze Ribbons</i>	<i>Cum Laude</i>
<i>Gold/Gold Ribbons</i>	<i>Honor Program Graduates</i>

THE CEREMONIAL MACE

The Ceremonial Mace, a symbol of presidential authority, is carried at the head of the academic procession by the University Marshal, Mr. Alton Huntley. A gift of the Alumni Association, the Mace was designed and executed by Henry Katzwinkel and Dr. Seymour Blinderman, former chairman of the Art Department. It was first used at the Inauguration of Edinboro State College President, Chester T. McNerney, in 1967.

The Mace, twenty-seven inches in length, is topped by a sterling silver sphere studded with circular cabachon rubies, secured by bezels. The collar of the Mace is inlaid with ebony, alternated with silver relief fleur-de-lis design elements. The cultured pearls mounted in cups encircle the bottom of the collar symbolizing the thirteen state colleges of Pennsylvania. The shaft of the Mace is composed of Brazilian Rosewood sections, separated by sterling silver rings. The Mace is terminated by a cast sterling silver finial; the five cultured pearls represent the existing curriculums. The rib-like cone form is terminated by a small silver sphere symbolizing the world.

The metal working processes incorporated in the Cermonial Mace include: turning, forging, inlaying, stone setting, and lost wax centrifugal casting.

THE PRESIDENTIAL MEDALLION

A symbol of presidential authority, the first Presidential Medallion was presented to Foster F. Diebold during the May 1981 Commencement ceremonies. It is permanently housed in the President's Office and will be presented to successive presidents. Designed and executed by Mr. Henry Katzwinkel, assistant professor of art, the sterling silver Medallion consists of a three and one-half inch pectoral pendant featuring on its face the sunken crest of the Commonwealth of Pennsylvania. On the reverse side is the figure of a Gordon Highlander with pipes. To the right of the piper is the Cross of St. Andrew. To the left is the Cross of England. Flanking the figure is the date 1857, the opening year of the University, and garland thistles. In the background are the hills of Scotland, and beneath the piper is an open book, an image of knowledge.

The pendant descends from a shield containing a triple-towered castle, the symbol of defense, protection, and strength. The collar of the medallion is comprised of a series of two-inch shields, alternately bearing three different designs: the meigle, an interlacing knotwork peculiar to the Pictish school of Celtic art; the Tудо rose design; and "ESC" in interlocking letters on a background of tabby weaving. Connecting each of the collar shields is a Cross of St. George, representing the union of Scotland and England. The entire medallion was fabricated and cast in the *cire perdue* (lost wax) process.

ACADEMIC VESTMENTS

The gown, the cap and the hood, representing the major components of the academic dress, are a ceremonial inheritance from the medieval universities of the eleventh and twelfth centuries, where dress was the outward sign of privilege and responsibility. The academic dress worn by those participating in today's academic processional symbolizes the level of their academic attainment and the institution they attended.

Gown

Although the gown is more frequently black, certain universities have authorized the use of colored gowns. The bachelor and master gowns are fashioned from black serge. The yoke for the bachelor gown is designed to be worn closed and features long, flowing and pointed sleeves. The master gown is designed to be worn open or closed. Its sleeves are very long with square ends, and the front part has an arc cut away. The arms protrude through a slit at the elbow. The gown for the doctor degree is made of wool, serge, or silk with an open front faced with wide velvet panels. The sleeves are loose and bell-shaped with three bars of velvet in black or the color of the discipline in which the doctorate was obtained.

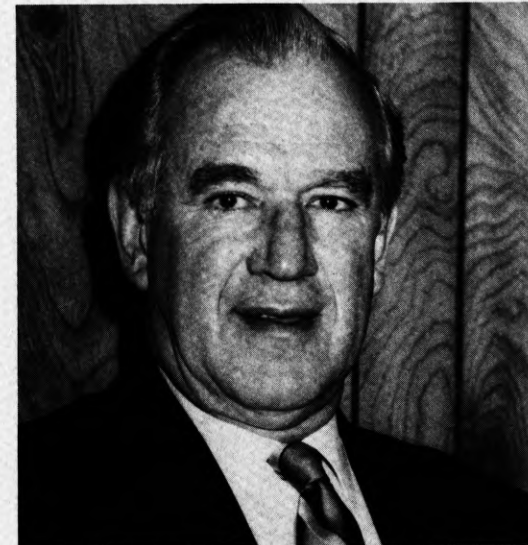
Hood

The most outstanding feature of the academic dress is the hood. It is usually worn only for the master's and the doctor's degrees. The doctor's hood is longer than the master's hood and has distinguished panels. The college or the university granting the degree is indicated by the color or coloring of the hood lining. The velvet trim of the hood indicates the field in which the degree was granted.

Cap

The standard cap is the mortarboard, usually the color of the gown. The tassel is black for the baccalaureate and master degree and is worn over the left front quarter of the cap. The tassel for the doctor's mortarboard is of gold thread. Undergraduates wear the tassel on the right side of the cap until the moment the degree is conferred by the president.

THE UNIVERSITY MARSHAL - ALTON A. HUNTLEY



Carrying the Ceremonial Mace and leading the academic procession as University Marshal is Alton A. Huntley, associate professor in the School of Education. Mr. Huntley has completed 25 years of service to Edinboro University and will be retiring in May 1986.

Al Huntley graduated from Wattsburg High School. He earned a Bachelor of Science degree in Education from Edinboro State College, and a Master of Education degree from the University of Pittsburgh. In addition, he has completed graduate work at SUNY-Buffalo, Penn State (Behrend), and Temple University.

A veteran of World War II and the Korean War, Huntley began his teaching career at Greensburg High School in Greensburg, Pa., as an instructor of social studies, geography, and driver education. He later taught geography and served as guidance counselor at Memorial Junior High School in Erie, Pa.

Huntley joined the Edinboro staff in 1961 as a supervisor of student teachers. In addition to that position, he has served as area curriculum coordinator for Erie, Warren, and Crawford counties and as a counselor in the University's Career Counseling and Placement Office.

Among his many professional memberships are the National Education Association, the Pa. Association for Higher Education, the Pennsylvania State Education Association, the Middle Atlantic School/College/University Staffing Association, and Phi Delta Kappa honorary fraternity. A member of the Edinboro community, Huntley has been active in the Borough Council, Chamber of Commerce Board of Directors, Church Council, and the Edinboro Foundation Board of Directors. In addition, he was a delegate to the Republican National Convention in 1976 and served as Mayor of Edinboro from 1974-77.

An avid traveler, Mr. Huntley has visited 16 foreign countries and most of the United States. He and his wife, Jean, have lived in Edinboro for the past 25 years.

EDINBORO UNIVERSITY PRESIDENT - FOSTER F. DIEBOLD



Since his appointment as president of Edinboro University of Pennsylvania on August 1, 1979, Foster F. Diebold has initiated a wide variety of policies and programs designed to complement his desire for an increased level of excellence and quality in higher education.

Noted for his extensive experience in the field of education management, President Diebold previously served as president of the University of Alaska Statewide System. His principal fields of professional interest include higher education management, governance and planning, budget development and fiscal control, legislative liaison, and personnel management/collective bargaining.

A native of Orange, New Jersey, President Diebold served as president of the University of Alaska from 1977-1979. Prior to that, he was executive secretary to the Board of Regents and special assistant to the president of the University of Alaska's Statewide System. From 1969 to 1976, he was director of the Division of College Development and Planning at Kean College in New Jersey (formerly Newark State College); and from 1965 to 1969, he was assistant superintendent of Neptune Township Public Schools in New Jersey.

A graduate of Monmouth College, Diebold holds a Bachelor of Science in Education and a Master of Arts in Educational Administration from Seton Hall University. He has met course requirements for his doctorate in education at Rutgers University and is currently completing coursework for his Ph.D. in Higher Education Administration at the University of Pittsburgh.

President Diebold presently serves on the Capital Facilities and Appropriations Subcommittee of the Chancellor's Executive Council and on the Commission for the Universities Ad Hoc Committee on Public Higher Education in Pennsylvania. President Diebold also serves on the Committee of Governance of the American Association of State Colleges and Universities (AASCU).

Active in the community, President Diebold serves on the Board of Corporators for Hamot Medical Center, the St. Vincent Foundation for Health and Human Services, and the Board of Directors, United Way of Erie County. He is a member of the Marine Bank Advisory Board, the Pittsburgh Plate Glass Corporation Scholarship Review Committee, and serves as a guest speaker for civic and educational organizations throughout the year.

President Diebold resides in Edinboro with his wife, Patricia, daughters, Jessica and Stacey, and son, Wesley.

COMMENCEMENT SPEAKER - MARY EMILY HANNAH



Dr. Mary Emily Hannah, vice chancellor for academic policy and planning for the State System of Higher Education, will serve as guest speaker for today's commencement ceremony.

Dr. Hannah joined the Pennsylvania State System of Higher Education following ten years of executive administrative service in both the Wisconsin and Minnesota state university systems. In Wisconsin, Dr. Hannah served as the chief executive officer (chancellor) of the University of Wisconsin - Eau Claire from 1980 to 1984. From 1975 to 1980, she held the position of vice chancellor at the State University System of Minnesota, and prior to that, she was assistant vice president and acting president of Metropolitan State University in St. Paul.

The vice chancellor began her teaching career in Denver, Colorado, where she spent three years teaching English, speech, history, and journalism. She served as assistant professor at California State University-Sacramento for one year before joining the faculty at St. Cloud State University of Minnesota.

A graduate of the Denver Public Schools, Dr. Hannah received a Bachelor of Arts and an Honorary Doctor of Law from Grinnell College in Iowa. She earned a Master of Arts from the University of Iowa and a Ph.D. from the University of Illinois. In addition, Dr. Hannah has completed post-doctoral studies at the University of Colorado, University of Florida, and Harvard University.

As Vice Chancellor for Academic Policy and Planning, Dr. Hannah is the chief academic officer for the State System of Higher Education. She is responsible for developing academic approval, review, and evaluation procedures; articulating training and retraining needs of industry; developing partnerships with basic education; and directing the development of institutional and System plans, including enrollment.

Among Dr. Hannah's many interests are the first amendment, the role of advocacy and debate in British and American history, American political humor, and the participation of women in public policy-making.

DISTINGUISHED ALUMNUS AWARD - CLIFFORD V. JONES



Originally from the Union City, Pa., area, Dr. Clifford V. Jones graduated from Edinboro State Teachers College in 1936. The recipient of a Bachelor of Science in Mathematics and Science, he was active in the YMCA, Drama Club, and various sports programs. He was also the first president of the Student-Faculty Cooperative Council established in 1934.

After five years as a teaching principal at the high school level and two and a half years as assistant chief metallurgist in a steel company, he spent three years as a commissioned officer in the United States Navy during World War II.

Dr. Jones received a Master's Degree in Educational Administration from the University of Pittsburgh in 1951 and a doctorate in educational administration from Columbia University in 1953. During his studies at Columbia, he served as assistant superintendent of schools in suburban New York City. For the next eleven years, he was superintendent of schools at Port Allegany, Shamokin, and Charleroi in Pennsylvania, and Passaic in New Jersey. In 1963, he became a full professor and chairman of programs and doctoral studies in educational administration at the University of Massachusetts.

During the next three years, he founded, directed, and developed the Cooperative School Service Center which included over 80 New England school systems and conducted many off-campus programs, institutes, and in-service activities throughout the northeastern United States. In the summer of 1966, he founded Associated Educational Consultants, a national education consulting and management firm in Pittsburgh. Jones became executive director and general manager and has directed and participated in approximately 2,000 consulting projects for school systems, colleges, universities, and municipal governments in over half of the fifty states.

The author of numerous publications on school building reorganization, facility planning, and staffing areas, Dr. Jones' articles have appeared in the *American School Board Journal*, *Pennsylvania Education Bulletin*, *Massachusetts School Board Journal*, *Trend*, and a number of textbooks.

DISTINGUISHED ALUMNUS AWARD - DAVID W. STEADMAN



The subject of a recent PBS broadcast of "Smithsonian World," Dr. David William Steadman is a research associate of the Smithsonian Institution and a curator at the New York State Museum in Albany. The one-hour program followed Steadman from the Galapagos Islands off the coast of Ecuador, to the Cook Islands in the South Pacific, to England to show how the young scientist is building on the work of Charles Darwin to shed new light on the mysteries of evolution.

Steadman received a Bachelor of Science in Biology from Edinboro University in 1973, a Master of Science Degree in Zoology from the University of Florida, and a Ph.D. in Geosciences from the University of Arizona. During his educational career, he taught a number of courses in zoology, ecology, ornithology, cellular physiology, and introductory biology.

The recipient of numerous grants and fellowships, Steadman has been awarded nearly \$100,000 during the past ten years. Among the organizations which have helped to fund the various research projects are the American Museum of Natural History, the University of Arizona, Smithsonian Institution, and the National Geographic Society.

In support of Darwin's theory of evolution, Steadman has conducted research throughout the world. His field work has included collecting and surveying vertebrates in New York State; collecting living and fossil vertebrates in the Cook Islands and Jamaica; observing wildlife and teaching in Fiji, Samoa, the Cook Islands, French Polynesia, and the Hawaiian Islands; and film-making in England, the Galapagos Islands, and the Cook Islands.

The 34-year-old scientist has presented papers and lectured throughout the United States, Canada, and England. He has organized several scientific meetings, appeared on radio and television talk shows, and published extensively since 1976.

MASTER'S DEGREES

MASTER OF ARTS - CLINICAL PSYCHOLOGY

- *Elizabeth Wallach Ackerman, B.S., Penn State University, 1984
- *Bobbi Dawley-Kuftic, B.S. in Ed., Edinboro University, 1980
- *Linda Rose Dickson, B.A., Edinboro University, 1984
- *Glenn Michael Felton, B.A., Keene State College, 1978
- *Bruce Daniel Kobal, B.A., Mercyhurst College, 1982
- Maryann Boylan Lugenbeal, B.A., California State University, 1982
- *Marie Louise Martone, B.A., Mercyhurst College, 1973
- James Kernan Matta, B.A., Edinboro University, 1984
- *Regina Ann Pingitore, B.S., Ashland College, 1979
- Kris Hallenburg Poasa, B.A., Albion College, 1972
- Jini Schneck Rachiele, B.A., Duquesne University, 1974
- *Rita Sherman Ross, B.A., Slippery Rock University, 1974; M.A., Edinboro University, 1982
- *Timothy Raymond Smith, B.A., Edinboro University, 1980
- *RaeAnn Marie Taylor, B.A., Edinboro University, 1983
- *Jerome Leo Troncone, B.A., Penn State University, 1981
- *Dawn Aline Wiley, B.A., Edinboro University, 1984

MASTER OF ARTS - GERONTOLOGY

- Rod J. Maras, B.S., Gannon University, 1971; M.Ed., Edinboro University, 1976
- Jerold B. McIntyre, B.A., Edinboro University, 1973

MASTER OF ARTS - HISTORY

- *John Richard Kane, B.A., Mercyhurst College, 1978
- *John S. Kocik, B.S., Edinboro University, 1977
- *Caroline Anne Rhodes, B.A., Syracuse University, 1960

MASTER OF ARTS - POLITICAL SCIENCE

- Richard Paul Gigliotti, B.A., Edinboro University, 1978
- Carol Jean Powell, B.A., Penn State University, 1971

MASTER OF ARTS - REHABILITATION COUNSELING

- Tammy Teresa Jenkins Aylesworth, B.S., Eastern Kentucky University, 1984
- William David Book, B.A., Edinboro University, 1983
- Camille Marie Carideo, B.A., Villa Maria College, 1973
- Susan Gail Glenn, B.A., Edinboro University, 1983
- Verna Elizabeth Jackson, B.A., Edinboro University, 1984
- Gwendolyn Kaltoft, B.S., University of Nebraska, 1975
- Deborah Lynne Kirkland, B.A., Edinboro University, 1984
- Karen R. Petroski, B.A., Edinboro University, 1980
- Michele Nadean Thornton, B.S., Edinboro University, 1979

MASTER OF ARTS - SOCIAL SCIENCES

- *Michael Chinedum Durueke, B.A., Edinboro University, 1983
- **Chinyere Geraldine Edoga, B.A., Edinboro University, 1985

- *Theophilus Timothy Chukwuemeka Egwim, B.A., Edinboro University, 1984
- *Cordelia Ekerekeme Niekietien, B.A., Edinboro University, 1984
- Richard Charles Stafford, B.A., Edinboro University, 1979
- J. Mark Vendel, B.S. in Ed., Edinboro University, 1973

MASTER OF ARTS - SPEECH/LANGUAGE PATHOLOGY

- *Marcia Marie Carll, B.S., California University, 1984
- *Elizabeth Ann Castelli, B.S. in Ed., Edinboro University, 1984
- **Dianne M. DeLullo, B.S. in Ed., Edinboro University, 1985
- *Diane Lynn Dillon, B.S. in Ed., Edinboro University, 1984
- Janice Marie DiLuzio, B.S., Boston University, 1975
- *Linda Kay Findlay, B.S. in Ed., Edinboro University, 1984
- *Diana Tresa Dyky Hanhold, B.A., Allegheny College, 1983
- *Debra Sue Harayda, B.A., Edinboro University, 1983
- Jacqueline Danel Kranking, B.S. in Ed., California State University, 1977
- Maureen Elizabeth McQuown, B.A., Edinboro University, 1984
- Frank J. Weber III, B.A., Allegheny College, 1984
- Amy Rawlings Williams, B.A., Thiel College, 1984

MASTER OF ARTS - STUDENT PERSONNEL SERVICES IN HIGHER EDUCATION

- Gary Lee Astorino, B.S. in Ed., Edinboro University, 1980
- Marjorie Jean Bensink, B.S., Clarion University, 1975
- Vincent DiMichele, B.A., Lock Haven University, 1984
- Anne Monahan Ford, B.A., Edinboro University, 1983
- Lynne Elizabeth Morgan, B.A., Allegheny College, 1984
- *Christine Ann Offutt, B.A., Edinboro University, 1984
- *Joyce Margaret Pawlak-Gromen, B.A., Edinboro University, 1983

MASTER OF EDUCATION - ART

- Dixie Rose Kleinfeld, B.S. in Ed., Edinboro University, 1971

MASTER OF EDUCATION - EDUCATIONAL PSYCHOLOGY

- *Thomas Jeffrey Bond, B.A., Geneva College, 1975
- *Arthur Bouwers, B.A., Calvin College, 1968
- *Mary Jane Brown, B.S., Geneva College, 1976
- *Victor Louis Colonna, Jr., B.A., Penn State University, 1975
- *Edward Joseph Currie, B.S. in Ed., Edinboro University, 1981
- *Margo Hreso Currie, B.S., Edinboro University, 1970
- *Margaret Hess Gotschall, B.S., Kent State University, 1972
- *Raymond Henry Gutowski, B.S., Geneva College, 1972
- Susan Lane Hurtt, B.S., Iowa State University, 1956
- *Paula Robinson Kanapesky, B.S. in Ed., Indiana University, 1968
- *Dennis Raymond Kretzler, B.S., California University, 1978
- *Nils S. Liebendorfer, B.S., Washington and Jefferson, 1953
- *Linda Elizabeth McCrillis-Chovan, B.S., Penn State University, 1977
- *William Bruce McLachlan, B.A., Indiana University, 1974
- Andrea Christine Notturmo, B.A., Xavier University, 1984

- Stephen Joseph Orlando, B.S., James Madison University, 1975
 *Kathy Wessel Pavlinich, B.S. in Ed., Edinboro University, 1975
 *Mark Jude Pilarski, B.S., Edinboro University, 1979
 *Yvonne Heath Roe, B.A., Muskingum College, 1956
 *Russell C. Taylor, B.S. in Ed., Edinboro University, 1978
 *Jana Marie Thomas, B.S., University of Pittsburgh, 1983
 *Charles Walker Townsend III, B.A., Geneva College, 1966
 *Lori Lynn Wines Trombetta, B.A., Ohio State University, 1980
 *Donna Dean Wines, B.S. in Ed., Kent State University, 1971
 Cynthia L. Wood, B.A., Edinboro University, 1982
 *Wen Fan Yan, B.A., Shanghai Teachers College, 1982

MASTER OF EDUCATION - ELEMENTARY EDUCATION

- *Annette Louise Guillaume, B.S. in Ed., Edinboro University, 1984
 Mary Anne Zeigler Hannibal, B.A., Mercyhurst College, 1968
 Merita Ann Hatch, B.S. in Ed., Edinboro University, 1981
 *Ruth Kirk Hollabaugh, B.S. in Ed., Edinboro University, 1974
 **Marilyn D. Lent, B.S. in Ed., Edinboro University, 1985
 *Amy Ann Marasco, B.S. in Ed., Edinboro University, 1984
 Shawn K. McBride, B.S. in Ed., Edinboro University, 1981
 *Linda Holmen Onderko, B.S., Thiel College, 1981
 *Mary Jo Schirra Radock, B.S. in Ed., Edinboro University, 1974
 John D. Rhoads IV, B.S. in Ed., Lock Haven University, 1985
 *Annette Meko Rilling, B.A., Mercyhurst College, 1973
 James Edward Sekerak, B.S. in Ed., Edinboro University, 1979
 *Wen Ju Shen, Bachelor's Degree, Shanghai Institute of Foreign Languages,
 1966
 Rita Alexander Sink, B.S. in Ed., Appalachian State University, 1965
 William Hugh Sullivan, Jr., B.S., Penn State University, 1976
 *Marla Smith Veshecco, B.A., Mercyhurst College, 1979
 Kevin Richard Ziroli, B.A., Mercyhurst College, 1983

MASTER OF EDUCATION - ELEMENTARY SCHOOL ADMINISTRATION

- **Elaine Kirsch Mozdy, B.A., Marygrove College, 1956
 Marilyn Whalen Smith, B.S. in Ed., Edinboro University, 1969
 Eileen M. Stuttler, B.A., Milligan College, 1966

MASTER OF EDUCATION - ELEMENTARY SCHOOL GUIDANCE AND COUNSELING

- Diane Marie Krzywicki, B.A., Mercyhurst College, 1970

MASTER OF EDUCATION - INSTRUCTIONAL MEDIA

- M. Susie Mihoci, B.S., Edinboro University, 1981

MASTER OF EDUCATION - READING

- Constance Roberts Altadonna, B.A., Mercyhurst College, 1972
 Linda Marie/Sproveri Best, B.S., Edinboro University, 1974

- *Nina Marie Cipriani Burkhardt, B.S. in Ed., Indiana University, 1976
 *Roxana Simmons Christopher, B.A., Heidelberg College, 1969
 *Lynnette Joy Conti, B.S. in Ed., Edinboro University, 1981
 Ardis Lynn Gotsch, B.S. in Ed., Edinboro University, 1975
 *Jeanne Marie Kraus, B.S. in Ed., Slippery Rock University, 1981
 *James Forrest Logan, B.S. in Ed., Edinboro University, 1978
 Andrea M. DeJohn Manuel, B.S. in Ed., Edinboro University, 1969
 *Kathleen Jean Morfenski, B.A., Penn State University, 1976
 *Mary Jeanne Neville, B.S. in Ed., Duquesne University, 1981

MASTER OF EDUCATION - SECONDARY ENGLISH

- *Gary Lee Dow, B.A., Edinboro University, 1979

MASTER OF EDUCATION - SECONDARY MATHEMATICS

- *Marilyn A. Huya, B.S. in Ed., Edinboro University, 1977

MASTER OF EDUCATION - SECONDARY SCHOOL ADMINISTRATION

- Lorie L. Bearfield, B.A., Edinboro University, 1985
 Kathleen Ann Charlton, B.S. in Ed., Duquesne University, 1973
 *Robert K. Hackett, B.S. in Ed., Edinboro University, 1972

MASTER OF EDUCATION - SECONDARY SCHOOL GUIDANCE AND COUNSELING

- Larry Joe Baughman, B.S. in Ed., Clarion University, 1975
 *Judith L. Cherek, B.S. in Ed., Edinboro University, 1979
 *Mary Jane Long Kemp, B.S., Indiana University, 1952
 Russell H. McCracken, B.S. in Ed., Clarion University, 1974
 *Thomas Michael Ritari, B.S. in Ed., Edinboro University, 1968
 *Eugene Edward Walczak, B.S., Penn State University, 1977

MASTER OF EDUCATION - SPECIAL EDUCATION

- *Kathleen Cusimano Carlson, B.S. in Ed., Edinboro University, 1982
 *Joan Azalos Dengel, B.S. in Ed., Edinboro University, 1965
 *Rebecca Diane Eidens, B.S. in Ed., Kent State University, 1977
 *Susanne Bowen Harrington, B.S., Slippery Rock University, 1980
 *Humiko Haruta, B.A., Teikyo University, Japan, 1982
 Leslie Ann Huckno, B.S. in Ed., Edinboro University, 1985
 *Stacy Chase Jacobs, B.S. in Ed., Clarion University, 1980
 *Joan Fisher Lasher, B.S., Penn State University, 1979
 Marcia Peterson Lauffenburger, B.S. in Ed., Edinboro University, 1984
 Susan Opferman, B.S. in Ed., Edinboro University, 1984
 *Kayann L. Prochko, B.S. in Ed., Edinboro University, 1974
 *Sandra Lee Sudano, B.S. in Ed., Edinboro University, 1980
 *Ellen McGinnis Vendel, B.S., Edinboro University, 1977
 *Angela Marie Vickey, B.A., Mercyhurst College, 1979

MASTER OF FINE ARTS - ART

- *Judith Ann Briggs, B.A., American University, 1977
- *Joseph David Cunliffe, B.F.A., Edinboro University, 1975
- Steven M. Johnson, B.F.A., Emporia State University, 1977
- *Matthew Jon Metz, B.F.A., Ball State University, 1983
- *Frank Marino Russo, B.S., SUNY at New Paltz, 1982
- *Timothy Gerard Zacchetti, B.F.A., Edinboro University, 1982

MASTER OF SCIENCE - BIOLOGY

- Joan S. Howlett, B.S., University of Michigan, 1961
- Ling Huang, Bachelor's Degree, Guangzhou Institute, 1982
- *Richard F. Kaintz, B.A., Edinboro University, 1973
- Kimberly A. Kent-Haloul, B.S., Gannon University, 1983

MASTER OF SCIENCE IN NURSING

- Elizabeth Farmer Beidler, B.S.N., University of Pittsburgh, 1948
- Robin Hunter Burt, B.S.N., University of Pittsburgh, 1981
- Brenda Jean Carrier, B.S., Edinboro University, 1975
- *Mary Kathryn Colvin, B.S.N., Georgetown University, 1978
- Frances Anne Freitas, B.S.N., SUNY at Buffalo, 1978
- Kathleen Anne Hale, B.S.N., Alderson-Broaddus College, 1964
- Ann Barkam Karsch, B.S.N., Villa Maria College, 1979
- Dawn Duerr Rutkowski, B.S., Penn State University, 1972
- Stephanie Joan Woods, B.S., Edinboro University, 1979

*Students who completed degree requirements during Summer or December, 1985

**Students who will complete degree requirements during Summer, 1986

HONORS GROUP

This group includes those degree candidates who have earned at least sixty-four credits as undergraduate students of Edinboro University and who have attained the following cumulative averages: Summa Cum Laude, 3.80 to 4.00; Magna Cum Laude, 3.60 to 3.79; and Cum Laude, 3.40 to 3.59.

SUMMA CUM LAUDE

Sandra Marie Chapman
Ann Katherine Ellison
Karen Sue Enos
Monica Marie Ference
Lori Denise Fertig
Marcie Diane Gall
Michael J. Harman
Dorothy Rose Hayes
Peter Alan Hitchcock
Robert Basil Kocur
Keith A. Koehler
Paul Alan Kohut
Thomas Read Merry
Raymond Patrick Miller

Debra Rose Millstein
Tracey Lee Mullen
Lisa Kay Parker
Susan J. Randazzo
Michael Francis Reilly
Barry Paul Smith
VickyAnn Jean Sosnowski
Charles Clayton Stephenson
Michelle Ann Thomas
David John Urban
Michele Renee Varrato
Tammy Gayle Walters
Tracy Marie Watson
Michelle Ann Wilkins

MAGNA CUM LAUDE

Philip Chukwuma Aka
Brenda Bishop
Todd Emerson Brinkley
Laura Jean Camp
LeeAnn Carley
Teresa Lynn Drzewiecki
Kelly Diann Dyer
Jane Lynn Easterling
Elizabeth Ann Eckert
Mary E. Grolemond
Jean Lynn Kennedy
Michael Gordon Klasen
Marcia Rae Linhart
David Arthur Mansfield
Holly Sue McCann
Valerie Lynn McCauley (Klinginsmith)

Kristin Marie McCormish
Mark R. Minichelli
James Paul Nelson
Stacie Marie Owens
Susan Anne Peffer
Ronald E. Pollard
Shelley Sue Powell
Pamela Beth Rabinovitz
Rhonda S. Rebold
Steven Edward Ringer
Frances E. Rosenberg-Klimek
John Robert Sidman
Terry Stelman
Hope Dawn Tomajko
Mark Allen Wege
Anne Marie Zaphiris

CUM LAUDE

Pamela Marie Anderson
John Paul Bensinger
Shirley Jean Beuchat
Margaret Jean Budny
Curtis Craig Corba
Matthew Ferguson
Ray David Gentzyl
Linda A. Grundza
Lisa Mae Hancock
Kathy Jo Hixenbaugh
Holly Ann Hollenbaugh
David Allan Huff
Dale Joseph Ianni
Susan E. Kelvington
Elisabeth Anne Klee
Carrie L. Krantz
Wendy S. Krentz
Deena Maree Lynn
Kathryn Lynne Mazur
James Daniel Miller, Jr.
Mary Rita Morris
Gayle Anne Neely
Michele Renee Paris
William Joseph Purtell

Thomas Anthony Pushchak
F. Michael Rake
Elizabeth K. Reinhold
Timothy Donald Rolph
William Murray Rose
Renee Lynne Rosgony
Sandra G. Rupczyk
Douglas Clarke Scherrer
Richard Sorek
Patti Jean Strait
Mary Beth Svetkovich
Frank J. Tascone, Jr.
Janice Ann Teprovič
Cindy Lou Thompson
Brian Lee Thummler
John Edward Tomajko
Leonard P. Turton
Paul R. Vamos
Sherma Van Riper
Kirk Emerson Waterstripe
Tamaylan Marie Webb
Susan Wilson-Zacchetti
Renee Jo Winkelman

UNIVERSITY HONORS PROGRAM

Peter Alan Hitchcock
Thomas Read Merry
Raymond Patrick Miller
Virginia Sue Pollard
Thomas Anthony Pushchak
F. Michael Rake
VickyAnn Jean Sosnowski
Charles Clayton Stephenson

BACCALAUREATE DEGREES

FACULTY OF ARTS AND SCIENCES

BACHELOR OF ARTS - ANTHROPOLOGY

Charles Clayton Stephenson - Summa Cum Laude

BACHELOR OF ARTS - ART HISTORY

Lori Beth Morgan

BACHELOR OF ARTS - ARTS AND SCIENCES: HUMANITIES

*Donna Masters Clinard
Carol Lynne Forrest
Mary Dailey Holmes
Gayle Anne Neely - Cum Laude
Cathy Ann Osborne

BACHELOR OF ARTS - ARTS AND SCIENCES: HUMANITIES/ENGLISH

*Susan Lorraine Peters
Gwen Denise Vredevoogd

BACHELOR OF ARTS - ARTS AND SCIENCES: HUMANITIES/LANGUAGES

*Katrina Charlaïne Carlson

BACHELOR OF ARTS - ARTS AND SCIENCES: NATURAL SCIENCES/MATH

Mark Anthony Ruby

BACHELOR OF ARTS - ARTS AND SCIENCES: NATURAL SCIENCES/MATH/COOPERATIVE ENGINEERING

Jack S. Dillen
Lawrence Martin Hapeman
Michael Gordon Klasen - Magna Cum Laude
John Scott Schening
Christopher K. Tan

BACHELOR OF ARTS - ARTS AND SCIENCES: NATURAL SCIENCES/MATH/WILDLIFE

Thomas Michael Burkhart

BACHELOR OF ARTS - ARTS AND SCIENCES: SOCIAL SCIENCES

*Donald Curtis Jones

BACHELOR OF ARTS - BIOLOGY

*Kevin Ray Gillespie
Stanley Albert Klees
*George Christopher Querns

BACHELOR OF ARTS - DRAMA

James Francis Hennessy

BACHELOR OF ARTS - EARTH SCIENCES

*Emery Vogan George
*Jane C. Stanford

Jeffrey John Young

BACHELOR OF ARTS - ENGLISH

Anthony Gerard Bruno
**Dana DiPerna
**Stacey Nogy

*Lana Sue Lytle
Caasi Redding

BACHELOR OF ARTS - ENVIRONMENTAL SCIENCES/GEOGRAPHY

Robert P. Brunner
Braden L. Guilinger

*Pamela Marie Klingensmith
Aimee L. Milford

BACHELOR OF ARTS - GEOGRAPHY

James Sherman Cardman II

*Leslie Paul Eger

BACHELOR OF ARTS - GERMAN

Paula Eugenia Green

BACHELOR OF ARTS - HISTORY

Tommy Ankenbauer
David Allan Huff - Cum Laude
*Joseph Thomas Luke Jennings

Mary Jo Kirchner
Suzanne Annette Mair
Mildred Mae Mitchell

BACHELOR OF ARTS - MATHEMATICS

Shahryar Alimahmoodi
*Lori Denise Fertig - Summa Cum Laude
Gregory Stuart Huck
Stacy Ann Strait

Cindy Lou Thompson - Cum Laude
Tracy Marie Watson - Summa Cum Laude
Charlene Sue Wilcox

BACHELOR OF ARTS - MUSIC

Marian Ruth Eberle

BACHELOR OF ARTS - PHILOSOPHY

*Laura Ann Kamienski

BACHELOR OF ARTS - PHYSICS

Joseph William Kvederis
Richard Mark Somplatsky

*David John Urban - Summa Cum Laude

BACHELOR OF ARTS - POLITICAL SCIENCE

*Philip Chukwuma Aka - Magna Cum Laude
*Maria Hloeann Valiant Al-Haddad
*Francis Obiahu Alu
James Felix Geronimo

Mark Allen Kiddo
**Claudia Lukert
**Mark David Mateja
Thomas Read Merry - Summa Cum Laude

Maurice Shederick Jacques Moragne
Joseph James Nania

Denise Marie Riley
Rebecca Ann Weigert

BACHELOR OF ARTS - PSYCHOLOGY

Rachel Naomi Austin
*Cynthia J. Bell
Susan Beth Bennett
John Paul Bensinger - Cum Laude
*Sharon Ann Borkowski
Todd Emerson Brinkley - Magna Cum Laude
Tracy Joann Brown
*Patricia K. Burchard
*Jason Evan Cook
*Curtis Craig Corba - Cum Laude
Aimee Curran
*Adam Howard Deming
Kellie Lynn Doyle
*Jane Lynn Easterling - Magna Cum Laude
*Lisa Marie Fedore
Willa F. Hals
**Lori Jean Hopkins
**Susan Christine Hott
Dee L. Huegel
Jennyfir Roslyn Hunter
Donna L. Johnson
*Russell David Karl
*Deborah Jean Kehoe
*Crystal Dawn Kepler

*Dale Elaine Kernahan
*Robert Basil Kocur - Summa Cum Laude
Kriste Anne Kozak
Thomas Matthew Lang
Stacy Ann Leretsis
Mischelle Mae Lohr
**Linda C. Martin
Kristin Marie McCormish - Magna Cum Laude
*Mark A. Nevill
*William Joseph Nicholas, Jr.
*Mark Damian Noce
Debra Peyronel
Deborah Kay Raymond
*Mary Ann Rogers
Sharon Lynn Seebacher
*John Robert Sidman - Magna Cum Laude
*Jean Louise Standish
Dana Sue Steck
**William Clement Tarpenning III
*Frank J. Tascone, Jr. - Cum Laude
Brian Lee Thummler - Cum Laude
Julie Lynne Uhlman
*Carla Ann Vassallo
*Sandra Ann Verlich

BACHELOR OF ARTS - RUSSIAN

*Michael R. Davis
Paul J. Brian Heckathorn
*Margaret Kolodziej

F. Michael Rake - Cum Laude
*William Richard Vitanyi, Jr.

BACHELOR OF ARTS - SOCIOLOGY

Lisa Mae Hancock - Cum Laude
Brian David Martin

*JoAnn Peterman
Vincent Anthony Sorace

BACHELOR OF ARTS - SPANISH

*Jane Caroline Shunk

BACHELOR OF ARTS - SPECIALIZED STUDIES

Sharon Ann Bingham
John Glenn Brenneman
*Dennis Roy Dorman
Carol Anne Goldsmith
*Patricia A. Hainer

*Kathleen A. Lander
Randall B. Schlosser
*Charles Patrick Sheldon
*Kathy Ann Shockloss
May C. Lum Tsui

BACHELOR OF ARTS - SPEECH COMMUNICATIONS

- **Diana I. Abraham
- **Michelle Louise Bailey
- *Shirley S.A. Baker
- *Marie-Luise Brenner
- Cecilia Marie Burgio
- Christopher James Butcher
- *Molly Ann Cassidy
- *Gwendolyn A. Cates
- *Mary Elizabeth Cherok
- Christina Lynn Christiansen
- *Daniel G. Conwell
- Rande Charles Dasher
- Debra Jean Debone
- *Gerard J. Delaney
- Donna Alice Diebold
- **Andrew Dubeansky
- *William Alan Edmonds
- Don L. Espy
- Nancy A. Fedeanis
- Cheryl Lynn Fisher
- Brian Kevin Frasier
- Stephen Patrick Garofalo
- Jackson W. Gray, Jr.
- Andrew James Hallman
- Susan Elizabeth Hanna
- JoAnn Marie Hedstrom
- *Sean M. Henderson
- *Anna M. Hohwald
- *John F. Horan
- Amy Jeannette
- **Maria Jeannette
- **Alvis Jenkins
- *Denise R. Kelley
- *Jean Lynn Kennedy - Magna Cum Laude
- *Robert James Klenk, Jr.
- Mary Delcine Krug
- *Teresa Jean Lang
- *Karin June Lauria
- Raymond Patrick Miller - Summa Cum Laude
- Mark Bradley Morrow
- *Meghan Marie O'Hara
- **Becki Lynn Owens
- Natalie Ann Pace
- *Kelly Jo Peterson
- *Gregg P. Pietrocarlo
- Drew Allen Podnar
- *Shelley Sue Powell - Magna Cum Laude
- **Larry Price
- Raymond Anthony Rhodes
- *Keith Allen Rose
- **Edward Rusnak
- *Matthew Joseph Schaaf
- *Laurie Jo Smith
- *Kevin Louis Stiles
- Patti Jean Strait - Cum Laude
- *Patrick A. Taylor
- *David L. Teel
- Trudy Diane Terravecchia
- *Michele Tierney
- *Richard A. Tkac
- *Christopher Jon Walker
- Mark Vincent Wallace
- Erik Seth Wegweiser
- *Elizabeth Ann Weir
- Laurie Suzanne Willow
- John E. Wood
- Anne Marie Zaphiris - Magna Cum Laude

BACHELOR OF ARTS - SPEECH AND HEARING DISORDERS

- **Mary M. Wellington

BACHELOR OF FINE ARTS - ART

- Gene Michael Astorino
- *Nicolette M. Azicri
- *Craig Robert Bachman
- Kimberly Jean Baum
- *Jennifer Lee Bidwell
- *Jeffrey Alan Brinkley
- *David Millard Brown
- Margaret Jean Budny - Cum Laude
- Gregory Sebastian Cunningham
- *Linda Jane Durborow
- Kelly Diann Dyer - Magna Cum Laude
- *Elizabeth Ann Eckert - Magna Cum Laude
- *Todd Alan Emerick
- Gina M. Fedore
- *Monica Marie Ference - Summa Cum Laude
- Matthew Ferguson - Cum Laude

- *Karen Susan Flynn
- William Paul Getzey, Jr.
- *Alisa Marie Green
- Margaret Mary Greer
- *Michael Kevin Hulme
- *Brian Jahn
- Philip Anthony Kram
- Thomas E. Laslavic
- Marcia Rae Linhart - Magna Cum Laude
- Karen Jeanne Lloyd
- *Kimberly Anne Lobins
- Emil Andrew Lukas
- James Walter Mattern
- *Carol L. Maxin
- *Debra Rose Millstein - Summa Cum Laude
- Ginelle Ilene Neely
- *Jaye Frances Parrocchini
- Drew T. Patrick
- *Elizabeth K. Reinhold - Cum Laude

- *Steven Michael Repko
- Andrew F. Rock
- Cynthia Lynn Rodella
- **Bruce R. Roland
- *Marianne Rowe
- *Shari Lynn Sherwood
- *Mark Philip Sidelinger
- *Christina L. Snyder
- David Joseph Stellitano
- Jessica Lynne Strasburg
- Carol Diane Swift
- *Christine K. Thomas
- Mary Chamberlain Thomas
- Randolph Keith van der Kleut
- Sherma Van Riper - Cum Laude
- Eric Alan Warner
- Alan Sandford Weeks
- Eric Francis Yeager

BACHELOR OF SCIENCE - BIOLOGY

- Matthew Tibby Carrick
- *Michael J. Harman - Summa Cum Laude
- *Mark Andrew Kalmeyer
- Michele Renee Paris - Cum Laude
- Steven Edward Ringer - Magna Cum Laude
- *Allan Duane Schempp
- Kirk Emerson Waterstripe - Cum Laude
- Ellen M. Yearick

BACHELOR OF SCIENCE - BIOLOGY: PRE-DENTAL

- Paul Thomas Foulk
- Mark R. Minichelli - Magna Cum Laude

BACHELOR OF SCIENCE - BIOLOGY: PRE-MEDICAL

- Paul Alan Kohut - Summa Cum Laude
- Michael Francis Reilly - Summa Cum Laude

BACHELOR OF SCIENCE - BIOLOGY: PRE-PHARMACY

- *Innocent Ahamefula Ogu

BACHELOR OF SCIENCE - CHEMISTRY

- Jack S. Amburgey, Jr.
- *Dorian H. Courter
- David Neal Lineman
- *William Kenneth Swanson III

BACHELOR OF SCIENCE - ECONOMICS

- Patrick James Boyle
- *John Michael Middleton
- *Peter Terence Skywark

BACHELOR OF SCIENCE - GEOLOGY

- *Scott Michael Anderson
- *Robert Henry Andolsek
- *Glenn Allen Boser
- David Karl Bridger
- *Edward Martin Davis
- *Michael Anthony Drda

*Daniel David Edwards
*James Steven Fontaine, Jr.
*Todd Grady France
*John Thomas Garvey
*Rodney Allen Gilson
*Ralph Francis Mongillo, Jr.
Patrick Thomas Peterson

*Gregory Gerard Shuler
*Ricky S. Soepyan
*Terry Stellman - Magna Cum Laude
*Keith Edward Tate
*David Eugene Uvodich
**Peter J. Welch
*Calvin Vernon Westcott

BACHELOR OF SCIENCE - MATHEMATICS

**Melissa L. Caro
Peter Alan Hitchcock - Summa Cum Laude
Susan J. Randazzo - Summa Cum Laude

BACHELOR OF SCIENCE - PHYSICS

John William Bradley

BACHELOR OF SCIENCE - INDUSTRIAL/TRADES LEADERSHIP

Robert William Hitchcock
David Charles VanOrd

FACULTY OF PROFESSIONAL STUDIES

BACHELOR OF ARTS - CRIMINAL JUSTICE

*Michael Scott Barrett
William Victor Barton, Jr.
*Gregg Andrew Boser
Daniel Robert Brawn
*Rueben Zachary Butler, Jr.
William Keith Cimino
*Kevin Michael Conlan
*William James Dapper
*Laura Ann Fox
*Wayne R. Gardner
Ronald John Golembeski, Jr.
Edward S. Gronlund
Barbara L. Harrington
Michael Richard Hawley
Lori L. Henry
*Lisa Ann Hoyt
**Ingrid Valentina Jacobs
John Charles Kadlup

Jean M. Kamandulis
Kathryn Ksenich
Theodore James Kukich
*Mark J. Lane
Ronald Michael Larson
*Tracy Lynn McCutcheon
Tammy Louise McNamara
Priscilla Jan Millspaw-Yanc
*Edward J. Orr
*Michael Joseph Repp, Jr.
Dennis L. Rhoades
James Brian Robb
Barbara Lee Santus
*Craig Andrew Schilpp
*Albert Boyd Simmons
Timothy Joseph Wentzel
Jann M. Zimmerman

BACHELOR OF ARTS - ECONOMICS/ACCOUNTING

Roy Edmund Arrowsmith
Leonard Steven Carovac
*Laurie Lynn Crance
Tracy Ann Davies
*Shawn Anthony Garrison
*Karen Maria Green

Kathryn Marie Leventry
*Lauren Anne Long
*Robert Francis O'Rorke
Walter Dean Rounds
*James Robert Shepley

BACHELOR OF ARTS - ECONOMICS/BUSINESS

*John Cronin Astori
*Rebecca Lee Auer
David Gilbert Ball
*Shirley Jean Beuchat - Cum Laude
*Jeffrey Camillus Bogdan
Bryan Scott Browder
David Alan Chrzanowski
Daniel K. Claxton
Tina L. Collins
*Timothy Brian DeMarco
Diane Marie Derbis
John Edward Ewonce
*Scott Arthur Frankowski
*David Y. Gresens
*George Michael Hardisky
Dean Robert Hardt
*William Barton Hill III
Michael Steven Hoover

Pamela Ruth McClernan
Abdullah Hussein Megherhi
*Heather Rose Miller
*Annette Marie Monkowski
*Gregory B. Morgan
*Kimio L. Nelson
*Dominic Joseph Orfitelli
*Donna B. Park
*Robert Alan Schon
Richard B. Schoppmann
Robert William Shipman
*James Robert Smith
*Jesse Alan Smyers
Mark William Suich
*Jeffrey Scott Sumrall
Randall Keith Wolfe
*John P. Zaepfel
Richard M. Welsh+

BACHELOR OF SCIENCE - ANESTHESIA

*Cornelia Gallagher Dusckas
 *Danelle Joan Gradler
 Michael Ray Herron
 *Keith Michael Kallenbach
 *Eileen Kuny
 Lizabeth Ann Lysowski

*Cheryl Lynn Pfau
 Kristin Alice Rossi
 *George F. Saleh
 *Laurie J. Steffan
 *Maribeth Thomas
 *Wayne Edward Vinton

BACHELOR OF SCIENCE - BUSINESS ADMINISTRATION/ACCOUNTING

Patricia A. Armstrong
 Thomas Allen Bennett
 Richard L. Buck
 *Michael E. Conklin
 *Martha Ann Donahue
 *Michael Timothy Dunlap
 Thomas T. Fucci
 John Eric Fuller
 Dean E. Gossman
 *Dorothy Rose Hayes - Summa Cum Laude
 *Deborah Ann Hoffman
 Nasim A. Junejo
 Eric Lamonte Keiser

Elisabeth Anne Klee - Cum Laude
 Cynthia M. Laird
 *Kathi Annette Lange
 Debra Marie Ledrick
 Kelly Sue Leofsky
 Kim Andrea Lowery
 Holly Sue McCann - Magna Cum Laude
 *Alfonso Penedo
 Anna F. Robey
 Burtner Lee Seibert, Jr.
 Todd Cyril Skiff
 James Vernon Uncapher
 Michelle Ann Wilkins - Summa Cum Laude

BACHELOR OF SCIENCE - BUSINESS ADMINISTRATION/COMPREHENSIVE BUSINESS

*Dana A. Allison
 *Larry E. Archinal
 *Timothy J. Bell
 Catherine A. Bonaminio
 **Derick Burton
 *Roy A. Campbell
 Sandra Marie Chapman - Summa Cum Laude
 *William Paul Corry
 John M. Deighton
 Susan Ellen Dorwin
 *Joseph Drozynski
 Jacquelyn Kay DuShaw
 Kimberly Hope Dzara
 Joseph John Evanchick
 David H. Fisher
 Karen Ann Green
 *Marci Lynn Grice
 *Raymond C. Harrington III
 **Barbara J. Harrison
 *Dennis Robert Helterbran
 David Lee Hott
 **Susan Christine Hott
 Kevin Jay Huser
 William Richard Kirdahy
 **Kathryn Leitholf

*Barry Michael Majeske
 David Arthur Mansfield - Magna Cum Laude
 *Colleen Teresa Meaney
 Sharon Kay Messmer
 William R. Miller, Jr.
 **Michael Muoio
 *Akobuchi Chibuzo Stevena Nwadike
 *Stacie Marie Owens - Magna Cum Laude
 Mary Margaret Pilewskie
 *Lorri Jean Rasey
 Renee A. Romah
 Renee Lynne Rosgony - Cum Laude
 Nicholas Michael Roturnno
 Douglas Clarke Scherrer - Cum Laude
 *Lisa Anita Schneider
 *James Jeffrey Shogan
 *Kurt Owen Smith
 *John David Swift
 **George R. Traut, Jr.
 *Kristopher G. Wagner
 Tammy Gayle Walters - Summa Cum Laude
 *Ronald Scott Werner
 *John Charles Yezzi
 *Randolph William Yost

BACHELOR OF SCIENCE - COMPUTER SCIENCE

*Mark Alan Adams
 Mary Carol Allen
 *John C. Altman
 Ronald Michael Anchak
 Kathleen Marie Andrews
 *Dorothy Ashe
 Deborah Anne Baer
 Stephen C. Balkovic
 *Jacqueline Marie Barco
 Darlene J. Bennett
 John Anthony Bistransky
 Kris Joseph Blumish
 *James W. Bolton
 Michael A. Brandenburg
 *Jeffrey Lawrence Braun
 *Karen Lee Braymaker
 William Dale Brown
 *Jon Samuel Bryan
 *Christopher Nelson Campbell
 Craig Owen Carlson
 Jane Margaret Charles
 *William Patrick Chiles
 Christine Elizabeth Cosper
 *Kevin John Danch
 Carolyn Ann DeRubeis
 *Kelli Lynn Dickey
 David William Dillinger
 *Jeffrey Thomas Edmiston
 *Terrence A. Ferrante
 *Cathi Mae Fink
 *Marilyn Joan Fuhrman
 Ray David Gentyel - Cum Laude
 Elizabeth Diana George
 *Gordon Alan Gibbens
 Eric T. Glod
 Jerry Marshall Goodenough
 Victor Gerald Graham
 Judith D. Gramley
 *James Michael Griffin
 Linda A. Grundza - Cum Laude
 *Paul W.A. Grygo
 *Lynda Diane Hazen
 Dale Joseph Ianni - Cum Laude
 Natasha Marie Johnson
 **Jeff Kebort

Karen Jean Kennedy
 *Hatem Mahmood Khalil
 **David P. Koteles
 *Chung-Chao Lin
 Timothy S. Lydick
 Michael Kenton Mahler
 William Roland Maloney
 *Jesus Enrique Malpica
 Linda Kay Marks
 Lisa Marie Matha
 Christine L. Miller
 James Daniel Miller, Jr. - Cum Laude
 Michael Stanley Mstowski
 *Margaret Ann Mullins
 James Paul Nelson - Magna Cum Laude
 Deanna Marie Oliver
 Lisa Kay Parker - Summa Cum Laude
 *Randall A. Peterson
 *Katherine Rose Pifer
 Ronald E. Pollard - Magna Cum Laude
 Virginia Sue Pollard
 Thomas Xavier Purcell
 Thomas Anthony Pushchak - Cum Laude
 *Janet R. Rutan
 Francis T. Ryan III
 Kanwarjeet Singh Sabherwal
 Gerard Edward Shickler
 Maria Zofia Siwek
 Timothy James Slater
 *Gary S. Smith
 Ross Paul Sorce
 *Richard Sorek - Cum Laude
 *Mark Wesley Staszak
 Orest Roman Swystun
 *Henry Montgomery Terwilliger, Jr.
 Leonard P. Turton - Cum Laude
 Anthony Joseph Wagner
 Michael Scott Walker
 *Clinton B. Warner
 *Tamaylan Marie Webb - Cum Laude
 Mark Allen Wege - Magna Cum Laude
 *Randy Edward Wiles
 Linda Sue Williams
 *David Jude Willow
 *Jeffrey Glenn Zahn

BACHELOR OF SCIENCE - MEDICAL TECHNOLOGY

**Susan Diane Blystone
 *Jennifer Anne Clark
 *Debra Marie Kirsch

*Karen Sue Knight
 *Beverly Ann Mercer
 **Grace Pagano

*Scott K. Palmer
 *Lorraine Rose Pinyot
 *Debra Suzann Pittenger
 *Lisa Linn Rhoads

**Birtie M. Schupay
 **Leroy H. Stecker III
 *Kimberly Ann Stromple

BACHELOR OF SCIENCE - NUCLEAR TECHNOLOGY

Zuhair M. Al-Atwi

*Cynthia A. Couche

BACHELOR OF SCIENCE - NURSING

Beth Marie Barnes
 Monica Ann Benedek
 Nancy Lynn Bengel
 Carla Lynn Berndt
 Lea Ann Bodak
 Lisa Marie Bodamer
 Brenda Lane Bond
 Karen M. Bondi
 Frances Ann Cammarata
 Laura Jean Camp - Magna Cum Laude
 Connie Lee Chesley
 Robin Lee Copley
 Lisa Ann Cratty
 Suzanne Csop
 Melissa Kay Davison
 Paula Jo Dixson
 Deborah Jane Dziekciasz
 Jennifer A. Grosko
 Kathleen Edna Guzik
 Kathleen A. Hatfield
 Edwina M. Hetrick
 Christine Margaret Hey
 Mary Elyn Hilbert
 Holly Ann Hollenbaugh - Cum Laude
 Ruth Ann Jezak
 Karen Yvonne Kaiser

Brenda Lee Kuhn
 Mary Catharine Luke
 Susan Marie Mezger
 Donna Lynn Mickey
 *Susan Marie Molnar
 Elaine Ruth Nemec
 Andrea Marie Nieratko
 Susan Marie Olson
 Antonina F. Palmieri
 Jennifer B. Reel
 Donna Lynn Rodgers
 Lisa B. Rohde
 Anita Michele Sabo
 Cindy Lynn Schaub
 Ellen Lorraine Sharp
 Jody Lynn Slater
 Coleen Marie Snyder
 Robin Suzanne Sprague
 Rosalind A. Staskiewicz
 Lisa Noël Stickle
 Dawn Marie VanDamia
 Stacey Jean Vincent
 Christine Marie Vinoski
 Debra Sue Weidle
 Truth Ann Young
 Janice Marie Zelen

BACHELOR OF SCIENCE - NUTRITION

Valarie Jean Bierre
 Mary E. Grolemond - Magna Cum Laude

Pamela Jean Kibbey
 VickyAnn Jean Sosnowski - Summa Cum Laude

BACHELOR OF SCIENCE - SOCIAL WORK

**Lloyd E. Akins, Jr.
 Darlene Marie Baliga
 Cynthia L. Blasco
 Dawn Sue Duran
 *Patricia Ann Goss
 Shelley Lynn Harrah
 **Barbara J. Hill
 Heidi Marie Hysong
 Cheryl Lynn Janacek
 Anne Elizabeth Konieczko

Kathleen Ann Larkin
 Adriane Marie Mucheck
 Cathleen Siöbhan O'Donoghue
 Julia Elizabeth Penny
 *Sharon Elizabeth Quinn
 Lisa Marie Raspanti
 *Mary Ann Reasinger
 Laurel Marie Waytenick
 Mary Ellen Wenom
 *Marcia Lynne Windisch

BACHELOR OF SCIENCE IN ART EDUCATION

*Rebecca Ann Ackley
 *Regina Maria Baker
 Grover A. Bell
 Roseanna L. Bongiorno
 Bonnie H. Burns
 *David LaVerne Durfee, Sr.
 Ann Katherine Ellison - Summa Cum Laude
 Karen Sue Enos - Summa Cum Laude
 Marci Diane Gall - Summa Cum Laude
 Allan Irvin Johnson

Michael John Jones
 Carolyn Ann Marks
 *Todd William McCloud
 *Charles Morgan Noyes
 Christine Marie Pingatore
 Cheryl Ann Ross
 Becky Lynn Snow
 Mark Edward VanVoorhis
 *Susan Wilson-Zacchetti - Cum Laude

BACHELOR OF SCIENCE IN EDUCATION - COMMUNICATION/SENSORY DISORDERS

*Indrè Anelè Ardys
 **Victoria L. Bliss
 *Kimberly Diane Bort
 Leslie Michelle Brown
 Cindy Lee Demetter
 Mary Kay Hoffman
 Susan Marie Malinowski
 Valerie Lynn McCauley (Klinginsmith) - Magna
 Nancy Ann Moretti
 Pamela Rae Ratica

Catherine Renée Reinsel
 Marybeth Rieger
 *Frances E. Rosenberg-Klimek - Magna Cum Laude
 Sandra G. Rupczyk - Cum Laude
 *Lynda Schauble
 Dorene Marie Soroka
 Michelle Ann Thomas - Summa Cum Laude
 **David W. Thompson
 *Linda L. Weichler

BACHELOR OF SCIENCE IN EDUCATION - ELEMENTARY EDUCATION

Pamela Marie Anderson - Cum Laude
 *Cheryl Lynn Balisky
 Sally Ida Barron
 Brenda Bishop - Magna Cum Laude
 *Debra Lynn Boylan
 *Danielle Tove Brandt
 Lydia Ellen Bright
 Brian S. Bronson
 *Daniel Thomas Callahan
 LeeAnn Carley - Magna Cum Laude
 Terry Lynn Carlson
 Renée J. Carothers
 Gwen Marie Conrad
 Diane Louise Cotterman
 *Daniel Robert Ferretti
 *Robin Kimberly Fox
 Jodi Lyn Gilligan
 Marcie Ann Glenn
 *Leslie Marie Hazlewood
 Nancy JoAnn Helzel
 Kathy Jo Hixenbaugh - Cum Laude
 *Holly Ann Howrilla
 *Jeffrey F. Kaye
 *Susan E. Kelvington - Cum Laude
 *Philip L. Kler

*Keith A. Koehler - Summa Cum Laude
 *Wendy S. Krentz - Cum Laude
 *Suzanne Marie LaRock
 *Carol Osborne Lilly
 Michelle Lee Long
 Cynthia Ann Mahr
 Helen Claire Martin
 **Shelly Lynn McChesney
 *Dianne Frances Messmer
 Marie Louise Mong
 Susan Ruth Noll
 *William Joseph Purtell - Cum Laude
 *Tracy Louise Putnam
 Rhonda S. Rebold - Magna Cum Laude
 *Ellen Mary Resko
 Diane M. Richard
 William P. Rocco
 Cynthia Marie Rupp
 Laura Suzanne Sansone
 **David James Shadish
 Sandra Ann Smith
 Cynthia T. Strucker
 Mary Beth Svetkovich
 Tammy Lynn Symons
 Janice Ann Teprovich - Cum Laude

*Hope Dawn Tomajko - Magna Cum Laude
*Terri Jean Valentz
Michele Renee Varrato - Summa Cum Laude
*Lisa LaVerne Wagner

*James Albert Weyrick
*Renee Jo Winkelman - Cum Laude
Robert C. Ziegler
Joanie Louise Zuccaro

BACHELOR OF SCIENCE IN EDUCATION - ELEMENTARY/MENTALLY AND PHYSICALLY HANDICAPPED

Jodie Michele Brandt
*Susan G. Lander

*Regina Ann Pude

BACHELOR OF SCIENCE IN EDUCATION - HEALTH AND PHYSICAL EDUCATION

*Kevin John Boxer
Robin Lynn Boyd
Harold E. Craine
James Patrick Durkin
*Paul Estes
Tammy Lynn Hulings
*Thomas David Hyland

Kathryn Lynne Mazur - Cum Laude
Ellen Louise Mulligan
Michael Anthony Robel
*Michelle Ann Ross
*Robert J. Santos
*Edward H. Sterner

BACHELOR OF SCIENCE IN EDUCATION - LIBRARY SCIENCE

Gail Jean McCreary

BACHELOR OF SCIENCE IN EDUCATION - MENTALLY AND PHYSICALLY HANDICAPPED

Theresa Lynn Blakeslee
*Maxine Dawn Hedman
**Linda Lee
Lisa Marie LoBasso
Joan Elizabeth Martin
*Donna Jean McGahan

Karen Louise Miller
*Phillip A. Moore
Christine O'Neill
Heidi Jane Stemmerich
*Kim Lee Thomas
*Sandra Elizabeth Traphagen

**BACHELOR OF SCIENCE IN EDUCATION -
MENTALLY AND PHYSICALLY HANDICAPPED/ELEMENTARY EDUCATION**

Cathleen Ann Bollam
*Cynthia Ann Lamb
Polly A. Lindberg
*Tracey Lee Mullen - Summa Cum Laude

**Lynda J. Pryor
Tina Elizabeth Ptasick
Marcy Jean Rathke
*Kimberly Sue Rouse

BACHELOR OF SCIENCE IN EDUCATION - MUSIC

*Lynda Ruth Gobel
*Anthony Michael Martone, Jr.

*Richard Paul Peak
**Bruce Lee Yates

BACHELOR OF SCIENCE IN EDUCATION - SECONDARY BIOLOGY

*John W. Hardy

*Guy Lewis Trezona

BACHELOR OF SCIENCE IN EDUCATION - SECONDARY EARTH/SPACE SCIENCE

Elizabeth Ruth Rentschler

BACHELOR OF SCIENCE IN EDUCATION - SECONDARY ENGLISH

**Anita F. Crowe
*Teresa Lynn Drzewiecki - Magna Cum laude

*Candice Muller Gross
Carrie L. Krantz - Cum Laude

Tracy Lynn McCalla
Matilda Louise Noviello
Pamela Beth Rabinovitz - Magna Cum Laude
William Murray Rose - Cum Laude

Marcy Louise Thompson
*Paul R. Vamos - Cum Laude
*Ann Marie Zanotti

BACHELOR OF SCIENCE IN EDUCATION - SECONDARY FRENCH

Susan Anne Pepper - Magna Cum Laude

BACHELOR OF SCIENCE IN EDUCATION - GENERAL SCIENCE

Linda Marie Arnett

BACHELOR OF SCIENCE IN EDUCATION - SECONDARY MATHEMATICS

Rhoda M. Adams
Fred Edward Bardo
Danielle Suzanne Baum
Benjamin A. Calderone
*Tracy Ellen Condie
*J. Patrick Lenox

Raymond Alan Lentz
Deena Maree Lynn - Cum Laude
*Mary Rita Morris - Cum Laude
Douglas Clayton Railsback
*John Edward Tomajko - Cum Laude

BACHELOR OF SCIENCE IN EDUCATION - SECONDARY MATHEMATICS/PHYSICS

William Charles Clark
*John R. Morris

Theresa Maria Washburn

BACHELOR OF SCIENCE IN EDUCATION - SECONDARY SOCIAL STUDIES

**Rita F. Bishop
Thomas J. Cardy
*John Gordon Knapp
**Timothy Patsko

Timothy Donald Rolph - Cum Laude
Barry Paul Smith - Summa Cum Laude
Tammy Lucille Strubel

ASSOCIATE DEGREES

ASSOCIATE OF ARTS - CRIMINAL JUSTICE

Scott Louis Cleaver
*Timothy John Hriso
Edward Alan Kestel

Suzanne L. McBride
*Alexander Curtis Pierce

ASSOCIATE OF ARTS - HUMAN SERVICES

Jane Ellen Burlingame
Regina Marie Buzzard

Patricia L. Fox

ASSOCIATE OF ARTS - LIBERAL STUDIES

Todd Douglas Fries
Cathleen Jo Miller

Amy Lynn Nawrocki

ASSOCIATE OF SCIENCE - BUSINESS ADMINISTRATION

*Gina M. Abbondanza
*Patrick Joseph Babay
*William Ackerman Berney
Curtis C. Corba
Kristine Ann Davies
Paul Edward Gall
*Barbara Lee Haaz
*Jane E. Hasenflu
*Diane Louise Kraus

*Mark Edward Medrick
*Gary M. Parkin
Mary J. Ploszkiewicz
David Charles Roby
*Percy Lee Schlimm
Michele Joyce Spirito
Brian Vaughn Swisher
*Chun Cheong Tsui
*Gerald Charles Zorn, Jr.

ASSOCIATE OF SCIENCE - COMPUTER INFORMATION PROCESSING

*Eugene K. Bahling
Carol Goldinger Baker
*Leo Kenneth Blum, Jr.
*Keith Douglas Brown
*F. John Carrick
*Mary Jane Nosko Clark
*Louise Mae Daubenspeck
*Neil F. Dewey
William L. Doyle
*Tony P. Ferrara
Scott Benjamin Fields
*Edward Carl Fudale
*Mercedes Gumber
*Steven Hajdu
John Aglio Herbstritt
*Kathleen Susan Kaliszewski
*Mark Alan Knepper
Timothy Earl LaFlamme
Allan Luther Martin

Joseph Michael Miller
*Darcy Lynne Mischenko
*Sandra Louise Oster
Lawrence Armand Pardini
*Kevin P. Patten
Renee Lynn Peters
Lisa Renee Peterson
*Madhavikutty D. Pillai
Harry Edward Richards III
Cherie Rimdzius
*Randy Mark Severo
*Ronny Michael Severo
*Douglas Craig Shriver
*Patrick Kevin Spear
*Mary L. Stone
*Stacy Ann Strait
Jeannette Thompson
*Robert Frank Wells
Michele Ann Wollerton

ASSOCIATE OF SCIENCE - HOSPITAL EQUIPMENT TECHNOLOGY

Paul Douglas Balter
*Mark Russell Bean
*Edward J. Burkiewicz
Robert James Campbell
*Eric John Carlson
Troy A. Gillette
*Dennis Richard Jackson
*David Otto LaVan
*Russell H. McCracken
*Brian John Meeker

*David George Miller
Donald Keith Miller II
Thomas M. Miller
Mark Anthony Nolan
*James A. Pavlicek
*Harold John Popp
*Charles David Rogers, Jr.
*Jerry Alan Skalko
John Albert Strobel
*Ralph Thomas Zinz

ASSOCIATE OF SCIENCE - PRE-SCHOOL EDUCATION

*Sarah Leota Baumgardner
Kelly Rae Bills
*Kathleen Marie Chason
Naomi Green
*Eileen Marie Hadgkiss
*Loretta Belle Hogans
Catherine Julia Juskewycz
*Caroll Ann Latimer

Cynthia Joan Marsh
*Margaret Mingione
*Twila J. Palmer
*Margie Elizabeth Simpson
*Gillian Rapp Stanton
*Joanne Marie Wallis
Theresa Olivia Harrison Whitehead

ASSOCIATE OF SCIENCE - SECRETARIAL SCIENCE

*Fusako Yoshida

*Students who completed degree requirements during Summer or December, 1985

**Students who will complete degree requirements during Summer, 1986

+Special certification awarded in lieu of bachelor's degree.

The University does not claim the list of degree candidates is absolutely accurate. Students are granted degrees only if they meet all academic and financial requirements.

COUNCIL OF TRUSTEES

Mr. Paul J. Caron, *Chairperson, Erie*
Ms. Edith Benson, *Erie*
Dr. Jan K. Brydon, *Erie*
Mr. C. Richard Johnston, *Meadville*
Dr. Lawrence W. Krespan, *Warren*
Mr. Maurice Moragne, *Clairton*

Mrs. Eve Y. Murphy, *Edinboro*
Dr. Harold Sargent, *Sharon*
Mr. William Schulz, *Edinboro*
Mr. Harry Thomas, *Erie*
Mr. Ben Wiley, *Erie*

PRESIDENT'S CABINET

Foster F. Diebold President
Burton O. Witthuhn Provost and Vice President for Academic Affairs
Donald Panhorst Associate Vice President for Academic Affairs
Ronald Swift Assistant to the Provost and Vice President for Academic Affairs
Richard J. Gromen Dean, Faculty of Arts and Sciences
R. Harriet Phillips Dean, Faculty of Professional Studies
Roy Strausbaugh Dean, Continuing Education
Robert M. Beagle Vice President for Development and Planning
Clifford Cox Associate Vice President for Development and Planning
David O'Dessa Associate Vice President for University Facilities
and Development
Terrence Carlin Director, Admissions Office
Philip Kerstetter Director, Institutional Research and Planning
Richard Morley Vice President for Finance and Administration
Vincent Trotta Associate Vice President for Finance and Administration
Daryl Lake Associate Vice President for Human Resources
and Employee Relations
Glenda Lawhorn Vice President for Student Affairs
Gary Jamison Director, Student Services
James Foulk Director, Disabled Student Services

COMMENCEMENT COMMITTEE

Mr. Robert Ruffin Assistant to the President
Mrs. Patricia Graham Office of the Vice President for Student Affairs
Ms. Sherri Gehrlein President's Office
Mr. Gary Jamison Director, Student Services
Miss Patti S. Loomis Public Relations Officer
Ms. Dolores Mortimer Custodial Services Manager
Mr. David O'Dessa Associate Vice President for University Facilities
and Development
Dr. Bob Wallace Director of Instructional Technology
Mr. Ronald Watkins Registrar

A Special Thank You To: Mrs. Marjorie Koon and Dr. Jack Williams

EDINBORO UNIVERSITY OF PENNSYLVANIA

ALMA MATER

*Hail to thee, our Alma Mater glorious;
Fresh wreaths we bring to bind thy brow.
Trials have passed and thou has stood victorious;
Never fairer, never statelier than now.
O Edinboro, Edinboro,
Ever praising thee in song;
While class speeds class as swift years pass,
To thee our hearts belong.*