

EDINBORO UNIVERSITY OF PENNSYLVANIA

# Commencement

May 19, 1985

2:00 p.m.

McComb Fieldhouse



# THE COMMENCEMENT CONVOCATION

---

Burton O. Witthuhn *Provost and Vice President for Academic Affairs  
Edinboro University*

Prelude *Symphony Band  
Tim Cordell, Conductor*

Academic Processional **POMP AND CIRCUMSTANCE** *Symphony Band  
Tim Cordell, Conductor*  
*Edgar Elgar*

THE NATIONAL ANTHEM **STAR SPANGLED BANNER** *University Singers  
Gordon Flood, Director*  
*Francis Scott Key*

Invocation *The Rev. Theofanis Nacapoulos  
Assumption Greek Orthodox Church  
Erie, Pa.*

Presidential Welcome *Foster F. Diebold  
President, Edinboro University*

Awarding of Honorary Doctorate *Milton S. Eisenhower  
President Emeritus, John Hopkins University*

University Singers **THE BATTLE HYMN OF THE REPUBLIC** *arr. by Wilhowsky*

Commencement Address *Peter J. Liacouras  
President, Temple University*

Presentation of Candidates *Burton O. Witthuhn*

Conferring of Degrees *President Diebold*

ALMA MATER *University Singers  
Gordon Flood, Director*

Benediction *The Rev. Theofanis Nacapoulos*

Recessional **Grand March from AIDA** *Symphony Band  
Tim Cordell, Conductor*  
*Giuseppe Verdi*

The audience is asked to stand during the Processional and Recessional and to join in the singing of the Alma Mater.

A photography company has been engaged to take pictures of each of the graduates receiving their degree. Out of courtesy for the graduates, their families and friends, the University respectfully asks you to refrain from taking pictures inside the gymnasium area. Photographs may be taken in the lobby or outside. Thank you for your cooperation.

## THE COMMENCEMENT PROCESSION

*The University Marshal*  
*The University President*  
*The Trustees of the University*  
*The Platform Guests*  
*The University Faculty*

## COLORS DISTINCTIVE OF THE DISCIPLINES AND PROFESSIONS

<i>Apricot</i>	<i>Nursing</i>
<i>Dark Blue</i>	<i>Philosophy</i>
<i>Light Blue</i>	<i>Education</i>
<i>Peacock Blue</i>	<i>Public Administration</i>
<i>Brown</i>	<i>Fine Arts</i>
<i>Citron</i>	<i>Social Work</i>
<i>Copper</i>	<i>Economics</i>
<i>Crimson</i>	<i>Journalism</i>
<i>Drab</i>	<i>Business</i>
<i>Gray</i>	<i>Veterinary Science</i>
<i>Silver Gray</i>	<i>Oratory</i>
<i>Green</i>	<i>Medicine</i>
<i>Olive Green</i>	<i>Pharmacy</i>
<i>Sage Green</i>	<i>Physical Education</i>
<i>Lemon</i>	<i>Library Science</i>
<i>Lilac</i>	<i>Dentistry</i>
<i>Maize</i>	<i>Agriculture</i>
<i>Orange</i>	<i>Engineering</i>
<i>Pink</i>	<i>Music</i>
<i>Salmon Pink</i>	<i>Public Health</i>
<i>Purple</i>	<i>Law</i>
<i>Russet</i>	<i>Forestry</i>
<i>Scarlet</i>	<i>Theology</i>
<i>White</i>	<i>Arts, Letters and Humanities</i>
<i>Golden Yellow</i>	<i>Science</i>

## HONORS MEDALLIONS

<i>Silver Ribbons</i>	<i>Departmental Special Recognition</i>
<i>French Bronze Ribbons</i>	<i>Magna Cum Laude</i>
<i>Gold Ribbons</i>	<i>Summa Cum Laude</i>
<i>Bronze Ribbons</i>	<i>Cum Laude</i>
<i>Gold/Gold Ribbons</i>	<i>Honor Program Graduates</i>

## THE CEREMONIAL MACE

The Ceremonial Mace, a symbol of presidential authority, is carried at the head of the academic procession by the University Marshal, Dr. Jack Williams. A gift of the Alumni Association, the Mace was designed and executed by Dr. Seymour Blinderman, formerly of the art faculty, and Mr. Henry Katzwinkel. It was first used at the inauguration of Edinboro State College President, Chester T. McNerney, in 1966.

The Mace, twenty-seven inches high, is topped by a sterling silver sphere studded by cone-shaped rubies. The neck of the Mace is inlaid with rosewood, alternated with silver fleur-de-lis. Cultured pearls mounted on cups encircle the top of the shaft. Discs of silver interspersed with rosewood compose the shaft which ends with tip-casted silver. Sunken cultured pearls encircle a rounded cone with textured silver to end in a small globe.

## THE PRESIDENTIAL MEDALLION

A symbol of presidential authority, the first Presidential Medallion was presented to Foster F. Diebold during the May 1981 Commencement ceremonies. It is permanently housed in the President's Office and will be presented to successive presidents. Designed and executed by Mr. Henry Katzwinkel, assistant professor of art, the sterling silver Medallion consists of a three and one-half inch pectoral pendant featuring on its face the sunken crest of the Commonwealth of Pennsylvania. On the reverse side is the figure of a Gordon Highlander with pipes. To the right of the piper is the Cross of St. Andrew. To the left is the Cross of England. Flanking the figure is the date 1857, the opening year of the University, and garland thistles. In the background are the hills of Scotland, and beneath the piper is an open book, an image of knowledge.

The pendant descends from a shield containing a triple-towered castle, the symbol of defense, protection, and strength. The collar of the medallion is comprised of a series of two-inch shields, alternately bearing three different designs: the meigle, an interlacing knotwork peculiar to the Pictish school of Celtic art; the Tudor rose design; and "ESC" in interlocking letters on a background of tabby weaving. Connecting each of the collar shields is a Cross of St. George, representing the union of Scotland and England. The entire medallion was fabricated and cast in the *cire perdue* (lost wax) process.

## ACADEMIC VESTMENTS

The gown, the cap and the hood, representing the major components of the academic dress, are a ceremonial inheritance from the medieval universities of the eleventh and twelfth centuries, where dress was the outward sign of privilege and responsibility. The academic dress worn by those participating in today's academic processional symbolizes the level of their academic attainment and the institution they attended.

### Gown

Although the gown is more frequently black, certain universities have authorized the use of colored gowns. The bachelor and master gowns are fashioned from black serge. The yoke for the bachelor gown is designed to be worn closed and features long, flowing and pointed sleeves. The master gown is designed to be worn open or closed. Its sleeves are very long with square ends, and the front part has an arc cut away. The arms protrude through a slit at the elbow. The gown for the doctor degree is made of wool, serge, or silk with an open front faced with wide velvet panels. The sleeves are loose and bell-shaped with three bars of velvet in black or the color of the discipline in which the doctorate was obtained.

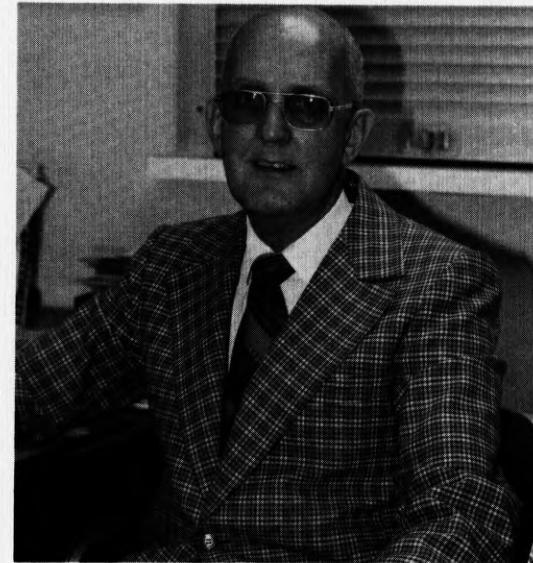
### Hood

The most outstanding feature of the academic dress is the hood. It is usually worn only for the master's and the doctor's degrees. The doctor's hood is longer than the master's hood and has distinguished panels. The college or the university granting the degree is indicated by the color or coloring of the hood lining. The velvet trim of the hood indicates the field in which the degree was granted.

### Cap

The standard cap is the mortarboard, usually the color of the gown. The tassel is black for the baccalaureate and master degree and is worn over the left front quarter of the cap. The tassel for the doctor's mortarboard is of gold thread. Undergraduates wear the tassel on the right side of the cap until the moment the degree is conferred by the president.

## THE UNIVERSITY MARSHAL - JACK E. WILLIAMS



Carrying the Ceremonial Mace and leading the academic procession as University Marshal is Dr. Jack E. Williams. Dean of Graduate Studies and Academic Administration, Dr. Williams has completed 24 years of service to Edinboro University and will be retiring in February 1986.

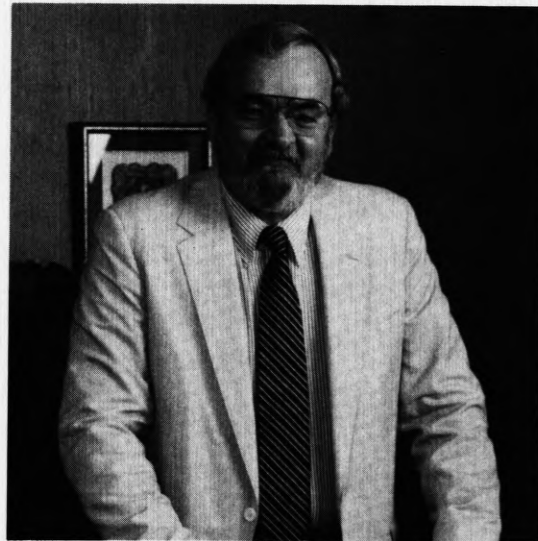
Jack Williams graduated from Milton (Pa.) High School in 1947. He earned a bachelor of science in history and math from Bloomsburg State Teachers College in 1951, completed a master of science degree in educational administration at Bucknell University in 1955, and received a D.Ed. in educational administration from Pennsylvania State University in 1961.

Prior to joining the Edinboro staff as a supervisor of student teachers, Dr. Williams was employed as a teacher of junior high social studies and math in Milton, Pa. He also taught in the Mount Union and Huntingdon school districts.

In his current position as Dean, Dr. Williams coordinates the program of graduate studies at Edinboro University and is responsible for the activities of the Registrar's Office which include scheduling, registration, veterans affairs, and change of curriculum. He is an active member of a number of University committees including the University Senate, Curriculum Committee, the Senate Scholarship and Financial Aid Committee, Dean's Council, Registration Committee, and the Commencement Committee.

Dr. Williams and his wife, Emma, have lived in Edinboro for the past 24 years. A former employee in the Normal and Hamilton libraries, Mrs. Williams serves as advisor of Delta Zeta Sorority.

## EDINBORO UNIVERSITY PRESIDENT - FOSTER F. DIEBOLD



Since his appointment as president of Edinboro University on August 1, 1979, Foster F. Diebold has initiated a wide variety of policies/procedures and programs on the Edinboro University campus which have been designed to complement his desire for an increased level of excellence and quality in higher education.

Noted for his extensive experience in the field of education management, President Diebold previously served as president of the University of Alaska Statewide System. His principal fields of professional interest include higher education management, governance and planning, budget development and fiscal control, legislative liaison, and personnel management/collective bargaining.

President Diebold strives for perfection and innovation in higher education. In so doing, and under his direction, this University can pride itself on outstanding programming, such as the Disabled Students Program which is one of the largest in the eastern part of the United States. The newest effort in educational innovation brought about by the President is a concept known as "Partnerships in Education and Industry." This activity emphasizes an increased level of awareness of the needs and desires of the educational and industrial communities.

A native of Orange, New Jersey, President Diebold served as president of the University of Alaska from 1977-1979. Prior to that, he was executive secretary to the board of regents and special assistant to the president of the University of Alaska's Statewide System. From 1969 to 1976, he was director of the Division of College Development and Planning at Kean College in New Jersey (formerly Newark State College); and from 1965 to 1969, he was assistant superintendent of Neptune Township Public Schools in New Jersey.

Edinboro University's president holds a bachelor of science in education from Monmouth College, a master of arts in educational administration from Seton Hall University; and he has met course requirements for his doctorate in education at Rutgers University.

President Diebold currently serves as chairman of the Pennsylvania State Athletic Conference Board of Directors and is a member of the American Association of State Colleges and Universities Committee on State Relations and Committee on Governance; the State System of Higher Education (SSHE) Commission of University Presidents' Business and Finance Committee, Human Resource Management Committee, and Educational Policy Committee; and the Board of Governors Long-Range Planning Committee. He is also a charter member of the World Future Society and a member of the SSHE search committee for a vice chancellor for finance and administration.

Active in the community, President Diebold serves on the Board of Corporators for Hamot Medical Center and the St. Vincent Foundation for Health and Human Services. He is a member of the Marine Bank Advisory Board, the Pittsburgh Plate Glass Corporation Scholarship Review Committee, and serves as guest speaker at numerous civic and educational organizations throughout the year.

The President and his wife, Patricia, have two daughters—ten-year-old Jessica and four-year-old Stacey.

## COMMENCEMENT SPEAKER - PETER J. LIACOURAS



Peter J. Liacouras, president of Temple University, will serve as guest speaker for today's commencement ceremony.

Since becoming Temple's seventh president on July 1, 1982, Peter Liacouras has taken bold steps to bring the Commonwealth research university into greater national and international prominence. He has uncompromisingly insisted on excellence as the standard in all university activity, while strengthening Temple's historic role as a university for people from all walks of life.

During Liacouras' two and one-half year tenure, a five-year enrollment decline has been reversed, a \$4 million deficit has been converted into an \$8 million surplus, and, perhaps most important of all, a new "spirit" has emerged at Temple as evidenced by

colorful banners and t-shirts and a resurgence of pride among the 147,000 alumni.

Liacouras is at the helm of a University with approximately 30,000 students, 9,000 faculty and staff, a hospital that is one of only 14 in the nation performing heart transplants, and an annual operating budget of \$400 million. The University has 14 schools and colleges and five campuses in metropolitan Philadelphia. Temple also conducts programs at 50 off-campus sites in the region and on three continents.

After graduating from Yeadon (Pa.) High School and Drexel University, he earned his law degree at the University of Pennsylvania Law School. Focusing on international law, he earned master's degrees at Harvard Law School and the Fletcher School of Law and Diplomacy. He was a research associate at the World Rule of Law Center, Duke University, and Sterling Fellow at Yale Law School.

Before being elected president of Temple University, Liacouras established an impressive record as dean of the Law School for ten years and as a faculty member there since 1963. Under his direction, Temple Law School was transformed into a law center of national and international reputation.

A legal scholar, educator, and human rights activist, President Liacouras is the author of a two-volume critical analysis of the voting patterns of judges of the International Court of Justice.

Frequently called to public service, Liacouras led investigations of the Philadelphia Traffic Court and consumer fraud as a special assistant district attorney. For the Governor's Justice Commission, he directed a four-year study of the use and abuse of computers in the criminal justice systems. The "Liacouras Committee" critique of Pennsylvania bar admission procedures led to dramatic changes in the state's bar examination process in the 1970's.

President Liacouras is married to Philadelphia lawyer Ann Locke Myers, a former Woodrow Wilson Fellow, Fulbright Scholar, and instructor at Bryn Mawr College. They have four children ranging in age from 19 to 25.

## HONORARY DOCTORATE - MILTON S. EISENHOWER

Milton Stover Eisenhower has been selected to receive an honorary doctorate, the *Doctor of Public Service*, during today's ceremony. An example of the close relationship between higher education and public service, Dr. Eisenhower is only the third person in Edinboro's 128-year history to receive such an honor.

Born in 1899, Dr. Eisenhower served as the president of Kansas State University, Penn State University, and on two separate occasions as president of John Hopkins University in Baltimore, Maryland.

During the U.S. presidency of his brother, Dwight D. Eisenhower, Dr. Eisenhower was a close and trusted advisor on both domestic and foreign matters. During his lifetime, this distinguished educator performed special and personal services for seven other American presidents. His last book, *The President is Calling*, was an assessment of the eight presidents he came to know intimately and an evaluation of the Constitution, laws, and traditions affecting the presidency.

At the time of publication of this program, arrangements were being made through Milton Eisenhower, Jr., to select a surrogate to receive this honor on behalf of Dr. Eisenhower.

## DISTINGUISHED ALUMNUS AWARD - KEITH D. SKELTON



Born and raised on a farm in western Pennsylvania, Keith Skelton is a descendant of Samuel Skelton, the first pastor of the Massachusetts Bay Colony. Educated in the public schools of Pennsylvania, Skelton graduated from Edinboro State College in 1939 with a bachelor of science in education and attended graduate school at the University of Pittsburgh and the University of Michigan. He completed law school at Syracuse University and the University of Washington in Seattle and holds the degree, Juris Doctor in Law.

Following graduation, Dr. Skelton was involved in combat service during World War II as a pilot of B-24 bombers and as an intelligence officer.

His career began in 1949 when he was admitted to the Washington State Bar Association. Ten years later he joined the Oregon State Bar Association. He was admitted to practice before the U.S. Court of Military Appeals, the highest military court, and practiced before the United States Supreme Court and the federal courts in the District of Oregon.

Skelton was first elected to the Oregon House of Representatives in 1957 and served seven two-year terms before retiring from the legislature in 1975. The practicing attorney currently serves as executive director of the Oregon Institute on Workers' Compensation Research and director of the Association of Workers' Compensation Defense Attorneys in Oregon.

An active politician, Skelton serves on the Education, Judiciary, Health and Welfare, and Financial Affairs committees, to name a few, and chairs such groups as Ways and Means, Interim Committee on Governmental Reorganization, Fiscal Highways Study, the Special Committee on Constitutional Revision, and the Governor's Task Force on Transportation.

Dr. Skelton is married to the former Betty Roberts, an associate justice with the Oregon Supreme Court.

## MASTER'S DEGREES

### MASTER OF ARTS - CLINICAL PSYCHOLOGY

- \*Jeannie Saupe' Benson, B.A., Edinboro University, 1983
- \*Mary Mueller Boenke, B.A., Wellesley College, 1951
- \*Yvonne Katheryn Caputo, B.S. in Ed., Edinboro University 1969; M.Ed., Edinboro University, 1974
- \*Kimberly A. Cicero, B.A., Daemen College, 1979
- \*Jonathan David Evans, B.A., Edinboro University, 1974
- \*Patricia Ann Hardner, B.S., Villa Maria College, 1964
- \*Carolyn S. Martorana Light, B.A., Edinboro University, 1983
- \*Jayne Tyler Logan, B.A., Edinboro University, 1983
- \*Arthur Andrew Marsh, B.A., Edinboro University, 1982
- \*Debra Susan McIntire, B.S., Gannon University, 1983
- \*Susan M. Meara, B.S. in Ed., Edinboro University, 1976
- \*Lewis Meckley, B.A., Millersville University, 1976
- \*Norma J. Nighman, B.A., Behrend College, 1983
- \*Anthony Michael Pedone, B.A., Youngstown State University, 1968
- \*Doreen Radich, B.A., Edinboro University, 1983
- \*Celeste Marie Seibold, B.S., Villa Maria College, 1983
- \*Richard A. Sekula, B.S., Pennsylvania State University, 1978
- \*Winifred Winter Waechter, B.A., Gannon University, 1975
- \*Fawn Wright-McLaughlin, B.A., Edinboro University, 1982

### MASTER OF ARTS - GERONTOLOGY

- \*Barbara Eves Gainey, B.S., Allegheny College, 1975
- \*Dr. Nancy S. Rung, B.A., Edinboro University, 1970; D.P.M., Ohio College of Podiatric Medicine, 1977

### MASTER OF ARTS - HISTORY

- Lauri Lee Haas Greenawalt, B.A., Alliance College, 1983
- Elizabeth Ann Walsh, B.A., Grove City College, 1962

### MASTER OF ARTS - POLITICAL SCIENCE

- \*\*Chidi Uchenna Madujibeya, B.S., Edinboro University, 1983
- \*Richard Paul Walker, B.A., Edinboro University, 1977
- \*Wayne William West, B.A., Edinboro University, 1973

### MASTER OF ARTS - REHABILITATION COUNSELING

- Georgine Baran-Rusnak, B.A., Pennsylvania State University, 1982
- Randy L. Gorske, B.S., Edinboro University, 1980
- Edward Paul Leonard Kechisen, B.A., Alliance College, 1983
- Mary E. Kwiatkowski, B.A., Edinboro University, 1975
- Judith Ann Stewart, B.S., Clarion University, 1978

### MASTER OF ARTS - SOCIAL SCIENCES

- Virginia Lee Breighner, B.A., Edinboro University, 1983
- \*\*Michael Chinedum Durueke, B.A., Edinboro University, 1983

- \*\*Theophilus C. Egwim, B.A., Edinboro University, 1984
- \*\*Cordelia Ekerekeme Niekietien, B.A., Edinboro University, 1984
- Boniface Esonwune Ugorji, B.S., University of Guyana, 1980

#### MASTER OF ARTS - SPEECH/LANGUAGE PATHOLOGY

- \*Janice Helen Baxter, B.S., University of New York at Fredonia, 1983
- \*Michelle Lynn Benoit, B.S., Pennsylvania State University, 1983
- \*\*Beth A. Castelli, B.S. in Ed., Edinboro University, 1984
- \*\*Diane Lynn Dillon, B.S. in Ed., Edinboro University, 1984
- \*\*Linda Kay Findlay, B.S. in Ed., Edinboro University, 1984
- \*\*Debra Sue Harayda, B.A., Edinboro University, 1983
- \*Patricia Marie LeRoy, B.S., Daemen College, 1977
- \*Kimberly Jo Lukacs, B.A., Edinboro University, 1983
- \*Tracy Lynn Natcher, B.S., Edinboro University, 1983
- \*Donna Lee Schaefer, B.S. in Ed., Edinboro University, 1982
- \*Karen Sheppard-Nene, B.S. in Ed., Edinboro University, 1980
- \*Michael Charles Soupart, B.S. in Ed., Edinboro University, 1979
- \*Cynthia Louise Morrow Swanson, B.S. in Ed., Edinboro University, 1983
- \*Carol A. Zadach, B.S. in Ed., Indiana University, 1981
- \*Paula Marie Zanker, B.S., Edinboro University, 1983

#### MASTER OF ARTS - STUDENT PERSONNEL SERVICES IN HIGHER EDUCATION

- Andrew Jay Bayus, B.S., Edinboro University, 1983
- Cynthia Ellen Bullis, B.S., Niagara University, 1982
- \*Bret G. Fels, B.S. in Ed., Edinboro University, 1984
- \*Charlotte H. Headley, B.S. in Ed., Edinboro University, 1976
- \*Bernice Ann Leonard, B.A., Edinboro University, 1980
- \*David L. Lyon, B.S., Ashland College, 1972
- Robert Martin, B.A., Clarion University, 1970
- \*Linda Allison Palmiero, B.A., Allegheny College, 1966
- \*Marilyn Martin Rositer, B.S., Edinboro University, 1962
- \*Mary Elizabeth Strawbridge, B.A., Case Western Reserve University, 1971
- Delia A. Weaver, B.A., Edinboro University, 1982

#### MASTER OF EDUCATION - ART

- \*Clair Victor Curll, B.S., Edinboro University, 1979
- \*John Stewart Keddy, B.A., Elmira College, 1980
- \*Kurt Frederick Reichert, B.S. in Ed., Bowling Green State University, 1974
- Karen Kelly Schmitt, B.S., Mercyhurst College, 1979
- \*Harold David Zabady, B.S. in Ed., Mansfield University, 1972

#### MASTER OF EDUCATION - EDUCATIONAL PSYCHOLOGY

- Elaine C. Benson, B.S. in Ed., Edinboro University, 1977
- \*Mei-Yu Chang, B.A., Fu Jen Catholic University, 1974
- \*James C. Chapman, B.A., SUNY at Fredonia, 1977
- \*Melanie Jean Kuebel, B.A., Pennsylvania State University, 1982
- Janet L. Norquist, B.A., Westminster College, 1984
- Sheldon John Peterson, B.S. in Ed., Edinboro University, 1978
- Sarah Warthman, B.S., Eastern Kentucky University, 1976

#### MASTER OF EDUCATION - ELEMENTARY EDUCATION

- \*Frances June Adams, B.S. in Ed., Youngstown University, 1970
- Kathleen Sue Chappel, B.S. in Ed., SUNY at Fredonia, 1975
- Rose Marie Clark, B.A., Mercyhurst College, 1968
- Marianne Eileen Cremi, B.S. in Ed., Edinboro University, 1979
- \*Robert Allan Ferrara, B.S., Edinboro University, 1975
- \*Mary Kathleen Ferraro, B.S., Mercyhurst College, 1980
- \*Kay L. Griffey, B.S. in Ed., Slippery Rock University, 1978
- \*Linda Diane Hackett, B.S. in Ed., Edinboro University, 1971
- \*David LaRue Hamilton, B.A., University of Pittsburgh, 1968
- \*Roberta Jane Hines, B.S. in Ed., Edinboro University, 1978
- \*Brent Katich, B.S. in Ed., Edinboro University, 1976
- \*Nancy Kocur, B.S. in Ed., Villa Maria College, 1977
- Catherine Mary Malik, B.S. in Ed., St. Bonaventure University, 1980
- \*Sister Catherine Anne Mesanko, B.A., Mercyhurst College, 1965
- \*LouAnn Mishic, B.S. in Ed., Cleveland State University, 1974
- \*Nancy June Patterson, B.S. in Ed., Edinboro University, 1979
- \*Kathleen Marie Reardon, B.S. in Ed., Edinboro University, 1983
- \*Mary Anne Rocca, B.S. in Ed., Edinboro University, 1983
- \*Lucinda MacTaggart Rodgers, B.S. in Ed., Edinboro University, 1973
- \*Rebecca Ann Rugh, B.S. in Ed., West Virginia University, 1978
- \*Ann N. Sabol, B.S., Edinboro University, 1978
- \*Susan L. Stillwagon, B.S. in Ed., Edinboro University, 1980
- \*Julia Adelaide Strong, B.S., Florida State University, 1963
- \*Robin Elaine Waslick, B.S. in Ed., Edinboro University, 1977
- \*Linda L. Wires, B.S. in Ed., Edinboro University, 1970
- \*Shirley McConnell Yoak, B.S., Kent State University, 1977
- \*Mary Donnelly Zappitelli, B.S., Villa Maria College, 1980

#### MASTER OF EDUCATION - ELEMENTARY SCHOOL ADMINISTRATION

- Jeffrey Allen Clark, B.S. in Ed., Clarion University, 1979
- \*David Lee Murphy, B.S., Pennsylvania State University, 1974
- \*Sandra Citro O'Brien, B.A., Bowling Green State University, 1973
- \*David Earl Rhodes, B.S. in Ed., Edinboro University, 1972; M.Ed., Edinboro University, 1978
- Irene Elizabeth Spacht, B.A., Mercyhurst College, 1970

#### MASTER OF EDUCATION - INSTRUCTIONAL MEDIA

- Louis Michael Benko, B.A., Thiel College, 1971
- Michael Edward Kozuchowsky, B.S. in Ed., California University, 1980
- Janice J. Tower, B.S. in Ed., State University of South Dakota, 1960

#### MASTER OF EDUCATION - MUSIC

- \*Michael J. Malthaner, B.S.M., Clarion University, 1979

#### MASTER OF EDUCATION - READING

- \*Craig Eugene Ausel, B.S. in Ed., Edinboro University, 1982
- \*Mary McCaughtry Axtell, B.S. in Ed., Edinboro University, 1969
- \*Victoria Louise Branton, B.S., University of Pittsburgh, 1982

- \*Jennifer Ilse Franz, B.S. in Ed., Edinboro University, 1980
- Cathy Ann Glatz, B.S. in Ed., Edinboro University, 1983
- \*Kathleen L. Kennedy, B.S. in Ed., Edinboro University, 1979
- \*Tracy Marie Manna, B.S. in Ed., Edinboro University, 1983
- \*\*Amy Ann Marasco, B.S. in Ed., Edinboro University, 1984
- \*Timothy P. Mulholland, B.S. in Ed., Edinboro University, 1980
- Carole White Smith, B.A., University of Missouri, 1966
- \*Karen Lynn Williams, B.S., Edinboro University, 1983

**MASTER OF EDUCATION - SECONDARY ENGLISH**

- \*Anthony Joseph Verga, B.S. in Ed., Edinboro University, 1976
- \*Kathryn Ann Thomas, B.A., Mercyhurst College, 1979

**MASTER OF EDUCATION - SECONDARY MATHEMATICS**

- Ann Marie Joint, S.S.J., B.S. in Ed., Villa Maria College, 1969

**MASTER OF EDUCATION - SECONDARY SCHOOL ADMINISTRATION**

- \*David DeOto, B.S., Edinboro University, 1975; M.Ed., Edinboro University, 1981
- Patricia Rudolph Johnson, B.S., Villa Maria College, 1960
- \*Thomas Charles Kelley, B.A., St. Bonaventure, 1964
- \*Robert Joseph Sauers, B.S., Lock Haven University, 1983
- Richard Scaletta, B.S. in Ed., Edinboro University, 1980

**MASTER OF EDUCATION - SECONDARY SCHOOL GUIDANCE AND COUNSELING**

- Marsha Elaine Black, B.S. in Ed., Clarion University, 1969
- James William Hamilton, Jr., B.S., West Chester University, 1971

**MASTER OF EDUCATION - SPECIAL EDUCATION**

- \*Kathleen Speice Bastow, B.S. in Ed., Clarion University, 1977
- Susan Carlene Boam-Wood, B.S. in Ed., Edinboro University, 1972
- \*Yun-Ying Chen, B.A., National Cheng Chi University, 1975
- \*Nancy Knipp Downey, B.A., Pennsylvania State University, 1973
- Rosemarie Kuttruff Green, B.S. in Ed., Edinboro University, 1972
- \*Sonja Watkins Meehan, B.S. in Ed., Slippery Rock University, 1978
- \*Laurence David Shrefler, B.S. in Ed., Edinboro University, 1975
- \*Cynthia Ann Steidle Snyder, B.S. in Ed., Edinboro University, 1975
- \*Barbara Walter Swackhammer, B.S. in Ed., Edinboro University, 1979
- \*Martha Jean Waite, B.S. in Ed., Edinboro University, 1980
- Sherry Lee Wascak, B.S. in Ed., Edinboro University, 1977
- \*Kathleen Jo Werner, B.S. in Ed., Clarion University, 1979
- \*Cynthia Marie Yachetta, B.A., Edinboro University, 1982

**MASTER OF FINE ARTS - ART**

- Shelle Lichtenwalter Barron, B.F.A., Mercyhurst College, 1974
- \*Jack M. Coville, B.F.A., Wayne State University, 1973
- Kent Richard Dahlquist, B.F.A., Edinboro University, 1982
- Robert James Hogleund, B.F.A., Edinboro University, 1982
- Renata L. Kagle, B.S., Edinboro University, 1973
- \*\*Frank M. Russo, B.S., SUNY at New Paltz, 1982

- \*Nancy Chalker Tennant, B.A., Albion College, 1958
- \*Heidi Prescott Williamson, B.F.A., Edinboro University, 1981

**MASTER OF SCIENCE - BIOLOGY**

- Debra Lynn Brissey, B.S., Edinboro University, 1983
- \*Emi Itoi, B.S., Toho University (Japan), 1982
- \*Norma Lynn Kline, B.A., Thiel College, 1974
- \*Akram R. Molaka, B.S., University of Baghdad, 1975
- \*Karim Dad Pitafi, B.S., University of Sind, 1972
- \*Dennis Michael Shade, B.S., Gannon University, 1975

**MASTER OF SCIENCE IN NURSING**

- Linda L. Benson, B.S. in Nursing, Slippery Rock University, 1979
- Mary Kathryn Colvin, B.S. in Nursing, Georgetown University, 1978
- \*Sharon Spangler Faulkner, B.S. in Nursing, Villa Maria College, 1980
- Janice M. Giltinan, B.S. in Nursing, Case Western Reserve, 1967
- Katherine A. Gustafson, B.S. in Nursing, Villa Maria College, 1980
- \*Karlita Kay/Neal Konnerth, B.S. in Nursing, Case Western Reserve, 1975
- Mary Ann Mihalcin Lubiejewski, B.S., Edinboro University, 1976
- Carol Ann Vogt, B.S., Edinboro University, 1977
- Patricia Simms Wagner, B.S. in Nursing, Villa Maria College, 1966
- \*Sheila Mae Warner, B.S. in Nursing, Slippery Rock University, 1978

- \*Students who completed degree requirements during Summer or December, 1984
- \*\*Students who will complete degree requirements during Summer, 1985



## HONORS GROUP

This group includes those degree candidates who have earned at least sixty-four credits as undergraduate students of Edinboro University and who have attained the following cumulative averages: Summa Cum Laude, 3.80 to 4.00; Magna Cum Laude, 3.60 to 3.79; and Cum Laude, 3.40 to 3.59.

### SUMMA CUM LAUDE

Sharon M. Brawley  
Joyce A. Goedeker  
Wayne T. Jones  
Ann Katherine Lillie  
Scott Ronald Lowden  
Kimberly Elaine McGowan  
Linda M. Meadowcroft  
Susan M. Moore  
Gerald Lee Morford  
Vale Christopher Pelletier

Doris J. Renfro  
Maureen Ritari  
Beverly Lynn Scott  
Valerie Lynn Sisson  
Karl S. Siwiecki  
Christopher Glenn Vaidean  
Thomas M. Weprich  
Barbara Ann Young  
Michael John Zinnikas

### MAGNA CUM LAUDE

David S. Adams  
Terri Lynne Andrews  
Cherie N. Austin  
Kevin F. Burkhardt  
Laura Susan Cox  
Dianne Marie DeLullo  
Teresa Marie DeLullo  
Dennis James Dudenhoefer  
Lisa Lynn Eury  
Mary Margaret Golden  
Cheryl L. Heard  
Karen Elaine Hespelien  
Michael Joseph Hippchen  
Shu-Ling Hsu  
Lisa Jane Hunter  
Duane L. Karns  
Toni Elizabeth Kebort  
Tina Louise Learn  
Marilyn D. Lent

Desiree Lynn Lydick  
Edward Donald Lydick, II  
Alexandra June  
Dennis Michael Morell  
Constance Lynn Moser  
Deborah Lynne Parker  
Frank Robasky  
Lori Ann Sexton  
Penny M. Shreve  
Lisa L. Spellman  
Jody A. Stivison  
Marijana Stovic  
Beatrice Ethel Stuchell  
Monica Ann Valley  
Dorothy Jean Grezeszak Wheeler  
M. Beth Williams  
Donna Judkins Workman  
Eve Marie Zubrycki

## CUM LAUDE

David Andrew Arch  
Michele L. Armour  
Michael William Brown  
Maureen Cherok  
Sherry Steinhauer Crosby  
Lawrence J. Danielka  
Robert Eugene Daugherty  
Stephanie Deligiannis  
Susan Marie Douthit  
Vincent Frederick Dunsworth  
Charles Howard Durmis  
John Frederick Erikson  
Susan Marie Flood  
Ruth Ann Foreman  
Timothy D. George  
Sylvia Adele Glans  
Mary A. Hendershot  
Mark Denis Johnson  
Vivian Leigh Karuba  
Patricia Jane Kennedy  
Darla Renee Kline  
Jill Marie Larson  
David A. Lecorchick

Barbara McCandless  
Alison Debra McGrath  
John Charles McGrath  
Dianne Malley  
Monica Mitchell  
Patricia M. Nemeth  
Ronda Marie Nickerson  
Kathleen Anne O'Neill  
Paige Alyssa Pulice  
Yvonne Rabbit  
Brian Scott Radaker  
Judy Ann Rawa  
Jennifer Lynn Reed  
Joanne Rheinlander  
Debra L. Sanderbeck  
Dorothy Alice Sherwood  
Alexander Sleptzoff, Jr.  
Brenda Marie Smith  
Janice Stanley  
LuAnn M. Strobel  
Jeff C. Swartzbeck  
Michelle Marie Taylor  
Dawn Louise Wolcott

### UNIVERSITY HONORS PROGRAM

Kevin F. Burkhardt  
Laura Susan Cox  
Joyce A. Goedeker  
Gerald Lee Morford  
Dorothy Jean Grezeszak Wheeler  
Eve Marie Zubrycki

## BACCALAUREATE DEGREES

### FACULTY OF ARTS AND SCIENCES

#### BACHELOR OF ARTS - ANTHROPOLOGY

Laura Susan Cox - Magna Cum Laude      Michael Strutt  
Eric E. Marshall

#### BACHELOR OF ARTS - ART HISTORY

Monica Ann Valley - Magna Cum Laude      Thomas M. Weprich - Summa Cum Laude

#### BACHELOR OF ARTS - ARTS AND SCIENCES: HUMANITIES

\*Virginia A. Bell      Kenneth Scott Dawe

#### BACHELOR OF ARTS - ARTS AND SCIENCES: HUMANITIES/ENGLISH

\*David Alan Hrinda

#### BACHELOR OF ARTS - ARTS AND SCIENCES: NATURAL SCIENCES

Kathleen D. Dugan      \*Charles David McQuaid  
Cheryl L. Heard - Magna Cum Laude      Lynn A. Noon  
\*Kelly J. Jerome      Deborah Louise Plohr  
\*Lori Kay Macom      David F. Russell

#### BACHELOR OF ARTS - ARTS AND SCIENCES: NATURAL SCIENCES/COOPERATIVE ENGINEERING

William A. Groves      John Mark Luther, Jr.

#### BACHELOR OF ARTS - ARTS AND SCIENCES: NATURAL SCIENCES/PRE-PHARMACY

\*\*Innocent Ahamefula Ogu

#### BACHELOR OF ARTS - ARTS AND SCIENCES: SOCIAL SCIENCES

John Alan Syphrit

#### BACHELOR OF ARTS - BIOLOGY

Mazyar Alimahmoodi      Brian Scott Radaker - Cum Laude  
\*Jeffrey S. Bell      \*Amie Pilar Scott  
\*Bruce A. Petroy      Keith Allan Trostle  
John J. Piazza

#### BACHELOR OF ARTS - CHEMISTRY

Ruth Ann Foreman - Cum Laude      Jeffrey John Schryver

#### BACHELOR OF ARTS - DRAMA

James Francis Hennessy      \*William Thomas Roiz  
\*Michael David Nelson

#### BACHELOR OF ARTS - ENGLISH

Kimberly Ann Brooks      Jane Lynne Hosey  
Cassandra Lee Fucci      Mark David O'Donnell  
Joyce A. Goedeker - Summa Cum Laude

#### BACHELOR OF ARTS - EARTH SCIENCES

\*Christopher Scott Baughman      \*Carol M. Shaw  
\*Gary Carl Hartman

#### BACHELOR OF ARTS - ENVIRONMENTAL SCIENCES/GEOGRAPHY

Braden Guilinger      \*John Walter McCanna  
\*Mary Ellen Held

#### BACHELOR OF ARTS - FRENCH

Dorothy Jean Grezeszak Wheeler - Magna Cum      Helen Luann Williams

#### BACHELOR OF ARTS - GEOGRAPHY

Jerome Rex Baker      \*Emil M. Mrazovich  
Dennis James Dudenhoefer - Magna Cum Laude

#### BACHELOR OF ARTS - HISTORY

David Andrew Arch - Cum Laude      \*Willie Lee Dives Lee  
\*Carol Ann Baldwin      Gregory Paul Martin  
Lori Lou Bearfield      Carl John Marzolf  
\*Donald James Harr, III      \*Theodore Allen Patrick  
\*\*Laura J. Lascek      Thomas Raymond Reinhardt

#### BACHELOR OF ARTS - MATHEMATICS

Carolyn Elias      Kimberly Elaine McGowan - Summa Cum Laude  
\*Willis Kaye Kirkpatrick      Denise L. Powers  
Carl Robert Leichtenberger, Jr.

#### BACHELOR OF ARTS - MUSIC

Pamela L. Barrett      \*Timothy David Havrilla

#### BACHELOR OF ARTS - PHILOSOPHY

Sharon Lynn Brown      \*Stephen Drew Zielinski

#### BACHELOR OF ARTS - PHYSICS

\*Dean Alexander Cuda      William Maul, III  
\*Vincent Frederick Dunsworth - Cum Laude      Gerald Lee Morford - Summa Cum Laude  
Charles Allen Durlin      \*Edward Anthony Pasewicz  
Philip N. Green      Michael Scott Thiem  
\*William Neal Klingensmith      \*Michael John Zinnikas - Summa Cum Laude

#### BACHELOR OF ARTS - POLITICAL SCIENCE

Carol Elizabeth Buck      Michael Joseph Hippchen - Magna Cum Laude  
Marcia Lynn Ekas      Daniel John O'Connor  
\*Timothy P. Galluzzi      Lawrence Allan Peters

Elizabeth Regina Ripton  
Christopher Martin Rodgers  
\*Joseph Sicker

Tammy Renee Smith  
\*Peter Andrew Yaksick

#### BACHELOR OF ARTS - PSYCHOLOGY

\*James Andrew Adams  
\*Joel Wesley Adams  
Mary Ann Anzur  
\*Keith D. Badorrek  
\*Ruth M. Barber  
\*Susan Diane Bjornberg  
Janet Linda Brite  
\*James Paul Caron  
David A. Clough  
Kenneth L. Copeland, Jr.  
Jeffrey DePaul  
MarLea Carol Gayles  
Sherry Ann Gilbert  
\*Rick L. Gray  
\*Sid Harth  
\*Lisa A. Jansen  
Mary Beth Johnson  
Stephanie Lynn Lane  
David A. Lecorchick - Cum Laude  
\*Janet Michelle Leonard  
\*Palma Giulia Leone  
\*Linda Irene Litwiler  
Alan L. Locke  
\*Traci Lee Mann

\*Marie Therese Marino  
Heather Ellen Marshall  
\*James Kernan Matta  
\*Diana Lynn McCollam  
Ruby Mitchell  
\*Sharon Kay Moran  
Jeffry A. Phelps  
Ann Marie Pisano  
\*Yvonne Rabbit - Cum Laude  
\*Kathleen Ann Reay  
\*Joan Marie Russo  
\*Jeffrey Edward Schauer  
Lori Anne Sciulli  
\*Jennifer Shuster  
\*Laverne Bonness Smith  
Marijana Stovic - Magna Cum Laude  
Susan Elena Tesore  
Jody Lynne Valley  
\*Gina Marie Venditti  
Colleen Higley Volpone  
Timothy M. Whitford  
\*Dawn Aline Wiley  
\*Donna Judkins Workman - Magna Cum Laude  
Eve Marie Zubrycki - Magna Cum Laude

#### BACHELOR OF ARTS - SOCIOLOGY

David A. Lecorchick - Cum Laude  
Debra L. Sanderbeck - Cum Laude

#### BACHELOR OF ARTS - SPANISH

Elizabeth Gaye Keppel

#### BACHELOR OF ARTS - SPECIALIZED STUDIES

\*Anna Elizabeth Abdala  
\*Sandra Jean Bearfield  
Jacquelyn Davis  
Kenneth E. Poland  
\*James Anthony Saloum  
\*Justus Obidinma Uzoma  
\*Charles Alan Wagner

#### BACHELOR OF ARTS - SPEECH COMMUNICATIONS

\*Karin May Abramo  
Sally Ann Arnold  
Matthew Allen Baum  
\*Lisa Anne Bricker  
\*Donald Mark Buckalew  
\*Victoria Vicki Budzko  
\*\*Molly A. Cassidy  
Mark Anthony Chrzanowski  
Joni Beth Clawson  
Sarah Jean Danforth  
\*Kathleen Ann Darbous  
\*Jeffrey Bond Dawson

\*Joseph Michael DeSantis  
Jacqueline Lee Ewart  
\*\*James Robert Falbo, II  
Michael F. Gallagher  
Christopher J. Graham  
\*Lamar Hamilton  
\*James Brion Harer  
\*Diane Marie Heubel  
\*Laura Jean Heubel  
Carla L. Hill  
\*Jennie Robinson Hitchcock  
\*Lorraine Marie Hone  
Alan Bruce Joyce  
\*James Richard Kahler  
\*Kristen Lee Keegan  
Patricia Jane Kennedy - Cum Laude  
\*\*Robert J. Klenk  
\*David Michael Kopko  
\*Lori A. Kostiuk  
Debra Sue Lusk  
John Charles McGrath - Cum Laude  
Stacy McNeal

Constance Lynn Moser - Magna Cum Laude  
\*Mark Anthony Mulig  
\*Michael Francis Murphy  
\*John Francis Nolte  
Beth Ann Pandrock  
Charles Richard Parish  
\*Paula Kay Pastore  
\*Diane Perry  
\*Kelly Ann Powers  
Gregory J. Pyle  
Thomas Saccamozzowe  
\*Gregory Joseph Sewell  
\*Daniel L. Shuffstall  
Robin Elaine Snowden  
Benjamin B. Spitzer  
\*Silko Renaldo Thomas  
James L. Thompson  
Joy Anne Verner  
\*Linda Jean Wagner  
\*Kathleen Elizabeth Wappler  
John Carl Yarosz, II

#### BACHELOR OF FINE ARTS - ART

\*Theresa Rae Armswood  
William Russell Baker  
Susan Lynn Barnes  
Frank X. Bauer  
Eric Decatur Baum  
Betty Jean Bodnar  
\*Thomas Borawski  
\*Cheryl Brumfield-Knox  
Scott Richard Campbell  
\*Thomas Michael Catalde  
\*Claire Denise Clapper  
\*Deborah Sue Cole  
\*Edward Daniel Corrigan  
Traci Ann Data  
Stephanie Deligiannis - Cum Laude  
John T. DeMichael  
Albert Scott Easton  
Lisa Ann Evans  
\*\*Monica M. Ference  
\*\*Karen S. Flynn  
Robert T. Glover, Jr.  
Peter Paul Gool  
Sally Bea Hawkins  
Barbara D. Hepp  
Jonathan David Herbruck  
\*Karen Elaine Hespelin - Magna Cum Laude  
Jeanne Ann Hranica  
\*Carl L. Jacobitz  
Gary Michael Kenigsberg  
Elizabeth Ann Kinard  
Robert Gene King  
Steven Kyrn Kohler  
Pete D. Kraus  
Jeffrey Blake Little  
Dianne Malley - Cum Laude  
\*Kimberli Ann Malone  
Lisa Ann McCall  
\*Walter Charles McGervey  
Janet E. McVicar  
Timothy Mark Moldovan  
Dennis Michael Morell - Magna Cum Laude  
\*Andrea L. Moxie  
Joseph Francis Musser  
\*Jay Dean Nodianos  
\*Christine Marie Novad  
Christian Gene Paulson  
Roberta Jo Pingor  
\*J. Mark Reed  
Jennifer Lynn Reed - Cum Laude  
Beverly Crick Sadler  
\*Terry L. Sadler  
\*Edward Demetri Saloum

Patrick Saunders  
\*Allison William Seymour  
Brenda Marie Smith - Cum Laude  
\*Shelley Lynne Smith  
Andrew Jay Sorensen  
William Edward Stright, Jr.  
Christopher Stys

Leslie Shaun Swainson  
Janice Ann Terhorst  
Valerie Anne Valone  
Thomas James Vredevoogd  
Ronald F. Waldinger  
M. Beth Williams - Magna Cum Laude  
Scott Edward Williams

#### BACHELOR OF SCIENCE - BIOLOGY

Kevin F. Burkhardt - Magna Cum Laude  
Joseph Didomenico  
Shahin Hassanzadeh  
Eric T. Schall

#### BACHELOR OF SCIENCE - BIOLOGY: PRE-DENTAL

Michael William Brown - Cum Laude

#### BACHELOR OF SCIENCE - BIOLOGY: PRE-MEDICAL

Charles Howard Durmis - Cum Laude  
\*Wayne T. Jones - Summa Cum Laude

#### BACHELOR OF SCIENCE - BIOLOGY: PRE-VETERINARY

Scott Charles Gigliotti

#### BACHELOR OF SCIENCE - CHEMISTRY

Martin McLoughlin

#### BACHELOR OF SCIENCE - ECONOMICS

Ignatius Chukwudi Chikezie

#### BACHELOR OF SCIENCE - ENVIRONMENTAL SCIENCE/BIOLOGY

Lisa Marie Echard  
\*Alison J. Keeler  
Mark Alan Spencer

#### BACHELOR OF SCIENCE - ENVIRONMENTAL SCIENCE/EARTH-SPACE SCIENCE

\*Edward Neil Durborow

#### BACHELOR OF SCIENCE - GEOLOGY

\*\*Robert H. Andolsek  
\*Thomas Edward Artman  
Douglas Carl Baum  
\*Jeffrey Paul Brandebura  
\*\*Edward M. Davis  
\*David Alan Fuller  
\*David Jessloski  
Steven David Kopanski  
\*Jill Marie Larson - Cum Laude  
\*Wayne Michael Lindgren  
\*Christopher Maier  
\*Gary E. McChesney  
\*Kevin John McIntyre  
\*Eric James Nystrom  
\*Samuel Richard Reese  
Janet Lynn Santini  
\*Timothy John Skiles  
\*\*Jennifer J. Stadterman  
\*Rebecca Claire Stevens  
John Matthew Stump  
\*Paula Jean Tanner  
David Eugene Uvodich  
\*\*Calvin V. Westcott

#### BACHELOR OF SCIENCE - PHYSICS

Mark Denis Johnson - Cum Laude  
Edward Donald Lydick, II - Magna Cum Laude

## FACULTY OF PROFESSIONAL STUDIES

### BACHELOR OF ARTS - CRIMINAL JUSTICE

\*Bryan Anthony Barbour  
Scott R. Bly  
Brian Keith Boyd  
Debra Marie Britton  
G. Michael Carpenter  
Willie Joe Chealey, Jr.  
Robert Eugene Daugherty - Cum Laude  
Frank J. Doleno  
John S. Ghering  
Philip Gregory Giavasis  
Raymond Charles Hipwell, Jr.  
\*Joseph John Hornyak  
Michele Denise Howard  
\*Ralph C. Howard, Jr.  
\*\*Lisa Ann Hoyt  
\*Mark Howard Humes  
\*R. Scott Hunter  
Michael L. Jack  
\*Richard Scott Jordan  
Mary Joline Kumpf  
Scott Ronald Lowden - Summa Cum Laude  
Marcia Kay McBride  
Michael Scott Mershimer  
Donald Vincent Natale, Jr.  
\*Patricia M. Nemeth - Cum Laude  
\*Linda M. Rush  
David Seretti  
Thomas Scott Shawley  
\*Toni Lynn Shay  
Jody A. Stivison - Magna Cum Laude  
\*Larry Lee Wilson  
Ronald Arthur Winschel

### BACHELOR OF ARTS - ECONOMICS/ACCOUNTING

\*J. Michael Albert  
Kathleen Ann Byrnes  
\*\*Laurie Lynn Crance  
Scott Alan Crossman  
Alan Epstein  
\*\*John Eric Fuller  
Sylvia Adele Glans - Cum Laude  
Diane M. Kaleida  
Tina Louise Learn - Magna Cum Laude  
Nadine Helen Lett  
\*Daniel Metro  
James D. Miller  
\*Mary Theresa Legler Mills  
\*Deborah Lynne Parker - Magna Cum Laude  
\*Vale Christopher Pelletier - Summa Cum Laude  
\*Jeffrey P. Teasdale  
Mary Beth Wengert

### BACHELOR OF ARTS - ECONOMICS/BUSINESS

Daniel Paul Barclay  
\*Todd Albert Bemiller  
Virginia Elizabeth Bryan  
Leon Richard Bucheit, Jr.  
\*Karen Sue Buker  
Cory Alan Bulger  
Richard William Chernicky  
Stephen Bradley Cohen  
\*Guy David Costa, Jr.  
\*John Kenneth Cox  
\*Joseph William DiMatteo  
\*Amy Lynn Feiling  
\*Richard Kevin Frazier  
Arthur Albert Freitas  
\*Diane Lynn Govier  
\*Wayne Alan Graham  
\*Scott R. Heatherington  
Carolyn Hodnik  
Cathleen Ann Jankowski  
Ronald J. Kims, Jr.  
Vicki L. Kirmeyer  
Paul Walter Kraus  
\*Randy Kujan  
John M. Kwiatkoski  
Jennifer Lego  
\*John Barry Lerda  
\*Laura V. Logan  
\*Martin Mago  
Barry Delano Marshall  
\*Thomas Leon Marther, III

\*Harry William Mascaró, Jr.  
 \*Anthony Curtis Maynard  
 \*William B. McCutcheon  
 \*Doreen Rose Measel  
 \*Michael Kevin Miller  
 Michael Monday  
 David Edward Nowicki  
 Innocent N. Obasi  
 \*Nelson Ezemonye Onyeji  
 John Coleman Ororke  
 \*\*Donna B. Park  
 \*Daniel R. Patterson  
 \*William John Patterson, Jr.  
 \*Cynthia C. Petak  
 Pamela Pollard  
 \*James C. Poremba  
 Mark Daniel Riddle  
 \*James M. Ritt

\*Thomas Edward Ryan  
 Rita Eileen Schlosser  
 \*\*Richard Schoppmann  
 \*Robert C. Schumm  
 \*Lawrence Hall Schwertz  
 \*Lauri Sue Scott  
 \*Alfred Richard Snyder  
 \*Norbert James Steimer  
 \*Sandra Marie Suminski  
 \*Mark Charles Swift  
 \*Steven Anthony Timpona  
 \*Rita Maria Valentine  
 Kathryn Lee Vanderwende  
 \*Denise Lynn Warren  
 Nancy Laurent Woll  
 \*Thomas Clark Wood  
 Michael T. Woods

**BACHELOR OF SCIENCE - ANESTHESIA**

\*Peter Anthony Arcadi  
 \*Vicki Deane Beyer  
 \*Larry D. Brown  
 \*Ruth Ann Schmalzried Crannell  
 Sherry Steinhauser Crosby - Cum Laude

\*Judy Ann Goddard  
 \*Roberta Jane Jones  
 \*Mark Kossick  
 \*Philip Mark Latona  
 \*James P. Laughner

**BACHELOR OF SCIENCE - BUSINESS ADMINISTRATION/ACCOUNTING**

Terri Lynne Andrews - Magna Cum Laude  
 \*\*Michael E. Conklin  
 Michael Phil Gish

Margaret Beth Grieshofer  
 \*\*Kathi A. Lange  
 Jeff C. Swartzbeck - Cum Laude

**BACHELOR OF SCIENCE - BUSINESS ADMINISTRATION/COMPREHENSIVE BUSINESS**

Sharon M. Brawley - Summa Cum Laude  
 Brian David Buehler  
 John Charles Carroll  
 Lori Vargo DeGeorge  
 Richard A. Fickes  
 Marci Lynn Grice  
 Bryan Keith Hayes  
 Robert Brian Hayes  
 Joseph John Herdzyk, Jr.  
 \*Neil Robert Hoffman  
 Shu-Ling Hsu - Magna Cum Laude  
 Vincent Michael Johns  
 Marlan Alton Jones, III  
 Alexandra June - Magna Cum Laude

Kenneth Lew Kalac  
 \*Toni Lynn Kruithoff  
 Scott Lamperski  
 \*Ronald Alexander Lawson, Jr.  
 Bruce Warren Marlatt  
 \*Tanne Marie McKnight  
 Linda M. Meadowcroft - Summa Cum Laude  
 \*Robert Paul Nungesser, Jr.  
 \*Tammy Ellen Pilarcik  
 Susan Carol Schlenker  
 \*\*Lisa A. Schneider  
 Lori Lynn Strutz  
 Denise Marie Svitek  
 Mary Kathryn Walkiewicz

**BACHELOR OF SCIENCE - COMPUTER SCIENCE**

David S. Adams  
 Michele L. Armour - Cum Laude

\*David Lee Baer  
 \*\*Darlene J. Bennett

John E. Bigley  
 Stephen George Brozinick  
 \*Daniel Ray Burrows  
 Lawrence J. Danielka - Cum Laude  
 \*Douglas James Delaney  
 David Alan Dempsey  
 \*\*Kelli Lynn Dickey  
 \*Earl Arthur Englert, Jr.  
 John Frederick Erikson  
 Timothy D. George - Cum Laude  
 Carla Ann Grabowski  
 Darla Faye Graff  
 \*Edward E. Hackworth  
 Sandra Lynn Hampel  
 \*\*Julius Holman  
 Daniel L. Horn  
 \*Sue J. Hsich  
 \*Dale E. Hunker  
 Aydin M. Hussein  
 \*\*Dale J. Ianni  
 Kevin E. Joseph  
 Jacqueline Mary Jurewicz  
 Duane L. Karns - Magna Cum Laude  
 Mohammad Tariq Khan  
 Ann Wendy Lewis  
 Ching-Cheng Lin  
 Timothy Larry Mazyck

Gary Norman McChesney  
 Namon McWilliams, III  
 Lisa Ann Medrick  
 \*Gregory E. Megahan  
 Susan M. Moore - Summa Cum Laude  
 \*Barry Kent Nuhfer  
 \*Jeffrey David Olen  
 \*David D. Parker  
 Victor Cyr Pelletier, Jr.  
 \*Tammy Rae Phillips  
 Mary Kay Porter  
 Joseph Henry Ransdorf  
 Judy Ann Rawa - Cum Laude  
 \*Joanne Rheinlander - Cum Laude  
 \*Richard Wayne Rote  
 Beth Ann Ryden  
 Brian John Seese  
 \*Donna Marie Shaheen  
 Valerie Lynn Sisson - Summa Cum Laude  
 Alexander Sleptzoff, Jr. - Cum Laude  
 Deborah Ann Snyder  
 James Robert Stevens  
 Christopher Evans Swoger  
 \*Christopher Glenn Vaidean - Summa Cum Laude  
 Grant Richard Watkins  
 \*Philip Hugh Weldon  
 \*Karen Sheila Yeager

**BACHELOR OF SCIENCE - LIFE MANAGEMENT SERVICES**

\*Diane Mary Crerand

**BACHELOR OF SCIENCE - MEDICAL TECHNOLOGY**

\*Brooke Elaine Carrell  
 \*\*Jennifer Clark  
 \*Denise L. Hecker  
 \*Mary Lou Ellen Hefferman  
 \*\*Karen S. Knight

\*Janet Iris Mikula  
 Lorraine Rose Pinyot  
 \*\*Debra Pittinger  
 \*\*Lisa Linn Rhoads  
 \*Lori Alayne Schneider

**BACHELOR OF SCIENCE - NURSING**

Lynn Marie Anderson  
 Donna Rae Barber  
 Gretchen A. Bayer  
 Mary J. Beardsley  
 Catherine Ellen Blausler  
 Kathleen Ann Buckley  
 Linda L. Campbell  
 Holly Lynn Cardy  
 Jacqueline Cunningham  
 Teresa Marie DeLullo - Magna Cum Laude  
 Sheri Lynn DiMartino

Lisa Lynn Eury - Magna Cum Laude  
 Cheryl Lynn Evans  
 Nathan Edgar Everhart  
 Ann Marie Foote  
 Bonnie-Lynne Hackett  
 April Renee Hall  
 Deanna Lynne Hallstrom  
 Kim Renee Headlee  
 Mary A. Hendershot - Cum Laude  
 Carolyn Margaret Hennigan  
 Wendy Lea Herron

Sherry Lynn Hibar  
 Mary Catherine Hohman  
 Sue Ellen Hollerich  
 Theresa Frances Keaty  
 Lorraine Aurelia Kelley  
 Rose Marie Kennerknecht  
 Jean Ann King  
 Kathleen Ann Knipp  
 Sharon Lynn Lambert  
 William Stephen Lamont  
 Angeline J. Lewkowicz  
 Linda Maria Maimone  
 Marie Elizabeth Masotti  
 Barbara McCandless - Cum Laude  
 Lou Ann McFadden  
 Debbie Ann Migrock  
 Jean Marie Mihalov  
 Dianne Marie Mikeska  
 Nancy Lynn Miller  
 Susan Marie Molnar

Dolores Ann Nadzam  
 Payge Ann Orchard  
 Ann Renée Pflug  
 Joan Piernik  
 Nichola Anne Previni  
 Kathleen Marie Rocca  
 Jayne L. Rose  
 Michael Eugene Schleifer  
 Rebecca Elaine Servidio  
 Deborah Lee Smetana  
 Stephanie Anne Spampani  
 Renae Lynn Steinhoff  
 Sandra Ann Stephens  
 Richard Earl Stewart  
 Maureen M. Sweeny  
 Michelle Helene Theofiledes  
 Nancy Arlene Thomas  
 Marianne Urbaniak  
 Kristyn Joy Westbrook  
 Kandy Lee Yarris

**BACHELOR OF SCIENCE - NUTRITION**

\*Laura Marie Long

**BACHELOR OF SCIENCE - SOCIAL WORK**

\*Linda L. Battin  
 \*Dennis William Bergmann  
 Dawn Marie Birtcil  
 Rebecca Ann Boboige  
 \*Peter Colin Chapman  
 Chinyere Geraldine Edoga  
 Teresa Marie Eyer  
 Janet L. Gerhardt  
 \*Julie Gruber  
 Carla R. Ihli  
 \*Kathleen L. Mattock

Ronda Marie Nickerson - Cum Laude  
 Kathleen Ann Philips  
 \*Debra J. Pratz  
 \*Barbara Gertrude Scullen  
 Brad Eugene Skelding  
 \*Carolyn C. Stapinsky  
 \*Cynthia Rose Steves  
 \*Beatrice Ethel Stuchell - Magna Cum Laude  
 Maryann Sutton  
 \*Linda Ann Varner  
 Patricia Marie Wozniak

**BACHELOR OF SCIENCE IN ART EDUCATION**

Rebecca Ackley  
 George Michael Andrews  
 Karen Elaine Bogue  
 Cheryl T. Bosch  
 Gayle Elaine Bromer  
 Loren Marie Day

Karen Annette Giagnacova  
 Bernadette Parma  
 Tina Marie Rader  
 \*Bonnie Mae Sherman  
 Janice Stanley - Cum Laude  
 \*Cheryl Elizabeth Vincent

**BACHELOR OF SCIENCE IN EDUCATION - COMMUNICATION/SENSORY DISORDERS**

Erin Marie Bryan  
 Maureen Cherok - Cum Laude  
 Deborah Lynn Chevete

Antonia M. Climo  
 Tracy Lynn Cotter  
 \*Amy Lynn DeGrange

Dianne Marie DeLullo - Magna Cum Laude  
 \*Sandra Christine Dilettuso  
 Mark Louis DiVincenzo  
 Amy M. Fritz  
 Susan E. Hand  
 Susan M. Hartman  
 Lynnette Marie Henry  
 \*Natalie Anne Huegel  
 \*Mary Kathleen Lehman  
 \*Rhonda Kay Leonard

Lynn Ann Mangola  
 Elaine McGeady  
 \*Maureen Elizabeth McQuown  
 Brenda Glavis Michalczik  
 \*Jennifer Louise Ohle  
 Debra Lynn Randinelli  
 Stephanie Ann Reardon  
 \*Lori Ann Sexton - Magna Cum Laude  
 Yvonne Kay Wiley

**BACHELOR OF SCIENCE IN EDUCATION - ELEMENTARY EDUCATION**

Tami Sue Abrams  
 \*Cherie N. Austin - Magna Cum Laude  
 James Edward Becker, III  
 Laura Lee Boyce  
 Cynthia Lea Boyd  
 Trisha Diane Boylan  
 Elizabeth Anne Brown  
 Clifford A. Collins  
 \*Janice Marie Conley  
 \*Beth Ann Conrad  
 Mireille Catherine Couturier  
 \*George Leroy Custard  
 \*Grace Ann Danylo  
 Nancy L. Daugherty  
 Susan Marie Douthit - Cum Laude  
 Dottie Jo Doyle  
 Carol Beth Dzimian  
 \*Kathy A. Fiesler  
 \*Mary Margaret Golden - Magna Cum Laude  
 Michele Helen Golder  
 \*Donita Louise Gruver  
 Kathy Irene Hoenes  
 \*Vivian Leigh Karuba - Cum Laude  
 \*Toni Elizabeth Kebort - Magna Cum Laude  
 \*\*Philip L. Kler  
 \*Kimberly Sue Knapp  
 \*Kim Ann Kolesar  
 Deborah Ann Kraus  
 Joyce Frances Krzeminski  
 Valerie Anne Kuhn

Noreen Leininger  
 Marilyn D. Lent - Magna Cum Laude  
 \*\*Carol Osborne Lilly  
 Jody Elizabeth Lyle  
 \*Michelle Marie Madden  
 Susan Lucille McCurdy  
 Paula Jean McGinnis  
 Alison Debra McGrath - Cum Laude  
 Kathy Ann McLaughlin  
 \*Diana R. Mitchell  
 \*Linda Christine Petros  
 Joanne Leslie Phelps  
 \*Anne H. Powell  
 Paige Alyssa Pulice - Cum Laude  
 \*Jill Ann Randolph  
 Patchetta T. Robinson  
 Sydney Woods Satterfield  
 Laurie A. Schultz  
 Beverly Lynn Scott - Summa Cum Laude  
 \*Stuart George Shoskin  
 \*Penny M. Shreve - Magna Cum Laude  
 Janice Marie Sims  
 Lisa L. Spellman - Magna Cum Laude  
 Linda L. Tubbs  
 Lisa LaVerne Wagner  
 Barbara Jean Weindorf  
 Kimberly Sue Woodard  
 Lisa Kaye Yepsen (SanZotta)  
 Barbara Ann Young - Summa Cum Laude

**BACHELOR OF SCIENCE IN EDUCATION - HEALTH AND PHYSICAL EDUCATION**

\*Jack E. Byers  
 Vincent William Camuto  
 Mary Ann Chilcott  
 Gregg William Eck  
 \*Michael Thomas Emge  
 Marcia Lynne Etheridge

Noel Fisher  
 Lynda Gallagher  
 \*Karyn Dee Gutekunst  
 \*Juliann Hoebee  
 Keith C. LaVine  
 Laurie Anne Leone

Michael Shaughn McDonald  
Lisa Marie Oliver  
\*Nelmarl Orr  
Paul Alan Przepierski  
Jodi Marie Raschiatore  
Maureen Ritari - Summa Cum Laude

\*Bridget Marie Rounds  
Joseph William Schmalzried  
Paul J. Spinden, III  
Barbara Jo Thurbon  
\*Kevin Robert Vacirca  
\*William Scott Zadernak

#### BACHELOR OF SCIENCE IN EDUCATION - LIBRARY SCIENCE

Marjorie H. Gigliotti  
\*Darla Renee Kline - Cum Laude  
Doris J. Renfro - Summa Cum Laude  
\*Tracey Farkas Schlosser

#### BACHELOR OF SCIENCE IN EDUCATION - MENTALLY/PHYSICALLY HANDICAPPED

Lisa Acquaviva  
\*Rhonda Leigh Baran  
Stephanie Romelle Carothers  
Bonnie J. Corbin  
Sandra J. Edwards  
Leslie Ann Huckno  
Lisa Jane Hunter - Magna Cum Laude  
\*Christine L. Hutchison  
\*Colleen T. Jones  
Laura Ann Kawecki  
Louise Linn Keeler  
\*Colleen Frances Kennedy  
\*Terri Jean Lentz  
\*Linda Lowry  
\*Anne Elizabeth Mahoney  
Laura L. Canales McIntire  
\*\*Phillip Moore  
\*Carol Ann Morse  
Kathleen S. Mulhern  
Kathleen Anne O'Neill - Cum Laude  
Kelly Ann Quinn  
\*\*Kimberly Sue Rouse  
Sara Jane Schauer  
Lisa Jean Simonetti  
Janet Lynn Singleton  
Kim Lee Thomas  
\*Megan Thompson  
Melissa Lee Winterhalter

#### BACHELOR OF SCIENCE IN EDUCATION - MUSIC

\*Pamela Brown  
\*Susan Marie Flood - Cum Laude  
Tammy E. Harman  
Ann Katherine Lillie - Summa Cum Laude  
Sandra Lynn Martonik  
David Lloyd Perenyi  
\*Dale Arlen Rice  
Michelle Marie Taylor - Cum Laude  
Thomas Edward Whalen  
\*Sherry Sinkler Wright

#### BACHELOR OF SCIENCE IN EDUCATION - SCHOOL DENTAL HYGIENIST

Stephanie B. Marcinko

#### BACHELOR OF SCIENCE IN EDUCATION - SECONDARY BIOLOGY

Karen Louise Grasso  
Desiree Lynn Lydick - Magna Cum Laude  
Linda Lee Stevenson  
Carlo B. Vitale

#### BACHELOR OF SCIENCE IN EDUCATION - SECONDARY ENGLISH

\*\*Candice M. Gross  
Patricia Gaherty Hughes  
Monica Mitchell - Cum Laude  
\*John A. O'Shea, Jr.  
LuAnn M. Strobel - Cum Laude  
\*Laurie Ann Ugino  
\*Laura Ann Whitbeck  
\*\*Ann Marie Zanotti

#### BACHELOR OF SCIENCE IN EDUCATION - SECONDARY FRENCH

\*Danis Daniel Frombach

#### BACHELOR OF SCIENCE IN EDUCATION - SECONDARY GENERAL SCIENCE

\*Charles Edward Lytle  
\*Anita Rose Kennedy Parker

#### BACHELOR OF SCIENCE IN EDUCATION - SECONDARY MATHEMATICS

Gary Douglas King  
\*Charles William Lipchik, III  
Nancy C. Musser  
Michael Walter Schrecengost  
\*Nancy Toth Shea  
\*Dorothy Alice Sherwood - Cum Laude  
\*Patricia Melinda Welser

#### BACHELOR OF SCIENCE IN EDUCATION - MATHEMATICS/PHYSICS

Frank Robasky - Magna Cum Laude  
Karl S. Siwiecki - Summa Cum Laude  
\*James Daniel Stepp

#### BACHELOR OF SCIENCE IN EDUCATION - SECONDARY SOCIAL STUDIES

James Robert Aiello  
\*Kirk Manfred Fernitz  
Kristin Ann Frederickson  
\*Jason Lee Govern  
\*Dino Haidaris  
George David Hammill, Jr.  
Jan Marie Lee  
\*Ronald E. Rankin, Jr.  
\*William J. Smith  
Dawn Louise Wolcott - Cum Laude

**UNDERGRADUATE AND GRADUATE AWARDS**

Alumni Association Scholarship .....	Sherry Beauvais
Alumni Association Scholarship .....	Lisa Eury
Alumni Association Scholarship .....	James Gall
Alumni Association Scholarship .....	Mary Jankowski
Alumni Association Scholarship .....	Robert Starr
Alumni Association Scholarship .....	Philip Ventrello
Behavioral Science — Dr. Ralph Ackerman .....	Patricia Schwartz
Behavioral Science — Communications and Sensory Disorders .....	Patricia Allen
Behavioral Science — Mary Rose Ditz .....	Tracey Mullen
Behavioral Science — Dr. Francis Johnson .....	Michelle Thomas
Behavioral Science — Dr. Julia Marshall .....	David Lecorchick
Behavioral Science — Mentally/Physically Handicapped .....	Amy Pettit
Behavioral Science — Dr. John Schell .....	Robert Kocur
Justina Baron Alumni Scholarship .....	Thomas Merry
Beverly Enterprises Nursing Scholarship .....	Theresa DeLullo
Beverly Enterprises Nursing Scholarship .....	Lisa Eury
Beverly Enterprises Nursing Scholarship .....	Mary Hendershot
Beverly Enterprises Nursing Scholarship .....	Barbara McCandless
Wilbur and Mabel Cassidy Billings Mathematics Scholarship .....	Daniel Helmbrecht
Business and Accounting Club Scholarship .....	Lisa Ann Herman
Business and Accounting Club Scholarship .....	Cindy Laird
Grace A. Crowe Athletic Scholarship .....	Robert Iddings
Grace A. Crowe Athletic Scholarship .....	Leigh Kolback
Grace A. Crowe Athletic Scholarship .....	Robert Sirca
Grace A. Crowe Honors Scholarship .....	Celia Chamberlain
Grace A. Crowe Honors Scholarship .....	Robert J. Hickey
Grace A. Crowe Honors Scholarship .....	Curtis Kremer
Grace A. Crowe Honors Scholarship .....	Thomas Merry
Grace A. Crowe Honors Scholarship .....	Gerald Morford
Grace A. Crowe Honors Scholarship .....	Vicky Ann Sosnowski
Grace A. Crowe Honors Scholarship .....	Margo Jane Wilson
Grace A. Crowe Honors Scholarship .....	Eve Marie Zubrycki
Dollars for Honors Scholarship .....	Sherry Beauvais
Dollars for Honors Scholarship .....	David Matthews
Dollars for Honors Scholarship .....	Brian Montgomery
Dollars for Honors Scholarship .....	Marie Sheftic
Dollars for Honors Scholarship .....	Jeffrey Wuenstel
Dollars for Honors Scholarship .....	Jane Marie Young
Erie Advertising Club Scholarship .....	Pete Kraus
Erie Engineering Societies Council Scholarship .....	Edward Lydick
The Esther Alice Estock Memorial Music Scholarship .....	Michele Taylor
Jack Finegan Award .....	David Hrinda
Mildred Forness Library Science Scholarship .....	Doris Renfro
General Telephone Company of Pennsylvania Honors Scholarship .....	Dennis Smithers
Giltinan-Overheim Scholarship .....	Nancy Moran
Anna Kelso Gray Memorial Scholarship .....	Brian Montgomery
Curly Halmi Memorial Athletic Scholarship .....	Brian Duffy

Curly Halmi Memorial Athletic Scholarship .....	Marie Gilliland
Curly Halmi Memorial Athletic Scholarship .....	Carl Smith
Sox Harrison Scholarship .....	Kevin Parrish
Frank Hawthorne Scholarship .....	Kimberly McGowan
Frank Hawthorne Scholarship .....	Meleny Stover
Frank Hawthorne Scholarship .....	Tracy Watson
Health and Physical Education Scholarship .....	Jane Crooks
Luther V. Hendricks Memorial Scholarship .....	Barry Smith
Marine Bank Honors .....	William R. Watson
John "Butch" McBride Memorial Scholarship .....	Mark Minichelli
James McKinley Men's Tennis Scholarship .....	Mark Minichelli
Music Department Scholarship .....	Nicholas Filia
Music Department Scholarship .....	Michael Holl
Music Department Scholarship .....	Chris Richards
Music Department Scholarship .....	Sally West
Newcombe Foundation Grants .....	Donnie Aber
Newcombe Foundation Grants .....	Carol Bigelow
Newcombe Foundation Grants .....	Theotis Braddy
Newcombe Foundation Grants .....	Joseph Cesnick
Newcombe Foundation Grants .....	Mary Elizabeth Cherok
Newcombe Foundation Grants .....	Laurie Chipley
Newcombe Foundation Grants .....	Dixie Davis
Newcombe Foundation Grants .....	Adam Deming
Newcombe Foundation Grants .....	Brenda Eshbach
Newcombe Foundation Grants .....	Anthony Fiorani
Newcombe Foundation Grants .....	John Horan
Newcombe Foundation Grants .....	Robert Kocur
Newcombe Foundation Grants .....	Paul Kohut
Newcombe Foundation Grants .....	Mary Krug
Newcombe Foundation Grants .....	Ronald Manning
Newcombe Foundation Grants .....	Linda Meadowcroft
Newcombe Foundation Grants .....	Ruth Obrzut
Newcombe Foundation Grants .....	Mary Ann Parznik
Newcombe Foundation Grants .....	JoAnn Shoup
Newcombe Foundation Grants .....	Dan Shuffstall
Newcombe Foundation Grants .....	James Skidmore
Newcombe Foundation Grants .....	Susan Utiss
Newcombe Foundation Grants .....	Paul Vamos
Newcombe Foundation Grants .....	John Yaroz
Newcombe Foundation Grants .....	John Yorgan
Michael McAtee Ramsay Memorial Fund Scholarship .....	Jill Larson
Helen Sabin Reed Memorial Scholarship — Elementary Education .....	Diane Cotterman
Helen Sabin Reed Memorial Scholarship — Elementary Education .....	Marilyn Lent
Helen Sabin Reed Memorial Scholarship — Political Science .....	Lynn Hooks
Georg Friedrich Sauer Prize .....	Grace Pagano
Harold R. Sauer Adult Scholarship .....	Ernest L. Petrich
Phyllis Disek Sturm Memorial Scholarship .....	Matthew Meisenhelter
University Services Inc., Scholarships — Athletics .....	Scott Dodds
University Services Inc., Scholarships — Athletics .....	Dominic Grande
University Services Inc., Scholarships — Athletics .....	Daniel Hastings



#### **PRESIDENTIAL HONORS SCHOLARSHIPS**

Annual awards of \$1000 are made available to incoming freshmen who have combined SAT scores of 1200 or greater. In addition, eligible applicants must be unconditionally accepted to the University Honors Program and must present evidence of outstanding academic achievement and involvement while in high school. Financial need is not a factor. Funds for the Presidential Honors Scholarships are made available by the Dollars for Honors Fund.

#### **SENIOR HONORS ACHIEVEMENT AWARD**

Occasional awards are given to outstanding honors graduates in recognition of their efforts. The value of these awards varies. Monies for the Senior Honors Achievement Award are made available by the Dollars for Honors Fund.

#### **UNIVERSITY SERVICES, INC. HONORS SCHOLARSHIPS**

University Services, Inc. offers annual scholarships ranging in value from \$500 to \$1000 to freshmen and upperclassmen who are participating in the University Honors Program. Financial need is not a factor.

### **SCHOLARSHIP AWARDS**

---

#### **ALUMNI ASSOCIATION SCHOLARSHIPS**

The Alumni Association of Edinboro University has made available seven \$700 annual scholarships. These are available to outstanding high school seniors who will be enrolled in one of six schools of study at Edinboro University. Selection criteria include academic major, high school records, and involvement in school activities. These scholarships are renewable for four consecutive years providing the recipients maintain a 3.00 QPA. Financial need may be a factor.

#### **AN-SIK MIN ECONOMICS SCHOLARSHIP**

One \$300 annual award is given to a bachelor of science economics major who has at least 15 credit hours completed in economics. The student must also have a 3.00 or greater quality point average. The award is made available by Dr. An-Sik Min, an economics professor at Edinboro University of Pennsylvania. Financial need may be a factor.

#### **ATHLETIC GRANTS**

Athletic grants are given to students participating in the following areas: football, men's basketball, women's basketball, men's cross country, women's cross country, women's volleyball, and wrestling. These awards are based upon the athletic prowess of the recipient as ascertained by the coaching staff in the individual sports area.

#### **JUSTINA BARON ALUMNI SCHOLARSHIP**

The Justina Baron Alumni Scholarship is awarded annually to the son, daughter, niece, or nephew of an Edinboro graduate. The recipient must have completed a minimum of 32 credit hours and have a B+ or greater academic average. Financial need is not a limiting factor in selection. This award is currently valued at \$600 annually and is named in honor of Ms. Justina Baron who served Edinboro University as a librarian from 1925 until her retirement in 1965. In addition, Ms. Baron served as alumni secretary from 1937 through 1962. Funds for this scholarship have been made available through contributions from Ms. Baron and alumni.

#### **BEHAVIORAL SCIENCES FUND SCHOLARSHIPS**

The Behavioral Sciences Fund, established by Dr. and Mrs. Ralph Ackerman and maintained by the Behavioral Science faculty, provides seven annual scholarships which range from \$50 to \$400 in value. These scholarships are available to freshmen and upperclassmen majoring in communications and sensory disorders, psychology, or special education. Selection criteria include academic achievement and participation in extra-curricular activities. Financial need is not a factor.

#### **BEVERLY ENTERPRISES NURSING SCHOLARSHIP**

The Beverly Enterprises Nursing Scholarship is valued at \$250 and is made available to a senior nursing major who has exhibited outstanding academic and clinical performance. This scholarship is funded by Beverly Enterprises, a national firm that operates over 400 nursing home facilities, including the Western Reserve Convalescent Home in Erie. Beverly Enterprises funded four \$250 scholarships for the 1984-85 academic year.

#### **WILBUR AND MABEL CASSIDY BILLINGS MATHEMATICS EDUCATION SCHOLARSHIP**

The C. Wilbur and Mabel Cassidy Billings Mathematics Education Scholarship provides an award of \$300 to an incoming freshman who has shown outstanding high school academic achievement and who has been accepted for enrollment in the mathematics education program. This scholarship is in honor of C. Wilbur and Mabel Cassidy Billings. Financial need may be a factor.

#### **BUSINESS AND ACCOUNTING CLUB SERVICE AWARD**

The Business and Accounting Club has established a \$50 per semester award which is given to a club member who has made a significant contribution to the organization. Financial need is not a factor.

#### **GRACE A. CROWE ATHLETIC SCHOLARSHIPS**

Grace A. Crowe Scholarships for Athletes are given to three incoming freshmen participating in one of the following athletic programs: men's swimming, women's swimming, baseball, soccer, men's tennis, women's tennis, men's track, women's track, men's volleyball, and softball. Additional selection criteria include minimum SAT scores of 900 and placement in the upper 2/5 of high school graduating class. These awards are made available through an endowment to Edinboro University from the estate of Grace A. Crowe. Financial need is not a factor.

#### **DEBORAH S. DAY MEMORIAL MUSIC SCHOLARSHIP**

The family and friends of Deborah S. Day have established a scholarship fund in her memory. A \$100 award is made yearly to a freshman music major. The student will receive the award based on outstanding performance in voice or instrumental music at a competitive audition. Financial need is not a factor.

#### **AIME H. DOUCETTE MEMORIAL SCHOLARSHIP**

Aime H. Doucette Memorial Scholarship is awarded annually in the amount of \$100 to a third year student at Edinboro University who has demonstrated exceptional performance in the fields of art education, communications, graphics or jewelry. The scholarship is sponsored by family and friends of Aime H. Doucette, a long-time member of the Art Department at Edinboro University. Financial need is not a factor.

#### **ERIE ADVERTISING CLUB SCHOLARSHIP**

The Erie Advertising Club Scholarship is presented annually to a junior or senior majoring in business administration/marketing, graphic arts or communication with an advertising or public relations focus. The student must also have obtained scholastic achievement and demonstrate leadership potential. This scholarship is sponsored by the Erie Advertising Club. The amount of the award varies. Financial need is not a factor.

#### **ERIE BOTTLING CORPORATION SCHOLARSHIP**

The Erie Bottling Corporation has established a \$1000 scholarship to be given to a student from Erie or Crawford County. The awardee must be a marketing major of high academic ability. Financial need is not a factor.

#### **ERIE ENGINEERING SOCIETIES COUNCIL SCHOLARSHIP**

The Erie Engineering Societies Council provides one annual scholarship to an undergraduate who has an outstanding high school academic record and has enrolled in the engineering or science program at Edinboro University. Financial need may be a factor in selection.

#### **THE ESTHER ALICE ESTOCK MEMORIAL MUSIC SCHOLARSHIP**

The Esther Alice Estock Memorial Music Scholarship is given to a sophomore music major who demonstrates outstanding music aptitudes and who possesses the potential for superior performance in the classical music field. Once offered, it may be continued into the awardee's junior and senior years if the student's QPA and performance standards are judged superior to those of other candidates. This scholarship is funded by interest drawn from a gift made in memory of Esther A. Estock, class of 1943, by her sister, Anne Elaine Estock, also an alumna. Financial need is a factor.

#### **JACK FINEGAN AWARD**

The Jack Finegan Award in the amount of \$50 is granted to a senior who shows talent in writing poetry or prose intended to make us aware of the needs of our fellow humans and which advance our efforts to make the world a better place. This award is funded by the parents of Jack Finegan. Financial need is not a factor.

#### **MILDRED FORNESS LIBRARY SCIENCE SCHOLARSHIP**

The Mildred Forness Library Science Scholarship provides a \$200 award to a currently enrolled library science major. The scholarship is in honor of Mildred Forness who from 1922 to 1969 was a librarian at Edinboro University. The University library is named in her honor. Financial need is a factor in selection.

#### **GILTINAN-OVERHEIM SCHOLARSHIP**

The Giltinan-Overheim Scholarship provides \$750 to an incoming freshman athlete. In addition to athletic prowess other selection criteria include SAT scores of 1000 or greater, placement in the upper 2/5 of high school graduating class, and acceptance to Edinboro University as a physics or cooperative engineering major. Financial need is not a factor.

#### **ANNA KELSO GRAY MEMORIAL SCHOLARSHIP**

The Anna Kelso Gray Memorial Scholarship provides \$300 to an incoming freshman at Edinboro University who has demonstrated outstanding high school academic achievement. Funds for this scholarship are from the estate of Marion D. Isaacs in memory of Anna Kelso Gray. Financial need is a consideration in selection.

#### **CURLY HALMI MEMORIAL ATHLETIC SCHOLARSHIP**

The Curly Halmi Memorial Athletic Scholarship is offered annually to a freshman athlete who plans to participate in either football, men's basketball or women's basketball and who exhibited academic achievement while in high school. This scholarship has a current value of up to \$1000 annually. This scholarship is named in honor of the late Curly Halmi, a prominent Edinboro businessman who was a staunch supporter of the various athletic programs at Edinboro. Funds for this award have been made available through donations from the family and friends of Curly Halmi.

#### **SOX HARRISON SCHOLARSHIP**

The Sox Harrison Scholarship is offered annually to an incoming freshman athlete and is currently valued at up to \$1000. This scholarship is named in honor of the late Sox Harrison who served Edinboro University for 35 years as coach and athletic director from 1928 until his retirement in 1952 and who is remembered as "The Founding Father of Edinboro University's athletic program." Funds for this scholarship have been made available through contributions from the family and friends of Sox Harrison.

#### **FRANK HAWTHORNE SCHOLARSHIP**

The Frank Hawthorne Scholarship Fund provides three annual awards of \$700 each to students majoring in mathematics who have a minimum earned QPA of 3.40. The fund has been established by Frank Hawthorne, class of 1936. Financial need is not a factor.

#### **HEALTH AND PHYSICAL EDUCATION SCHOLARSHIP**

The Health and Physical Education scholarship provides \$100 to a health and physical education major who has been in the program for at least one semester and who demonstrates above average academic qualification. This award is funded by contributions from the Health and Physical Education Department faculty, boosters, Student Fair receipts and other sources. Financial need is not a factor.

#### **JOHN "BUTCH" McBRIDE MEMORIAL SCHOLARSHIP**

The McBride Memorial Scholarship presents an annual award of \$300 to an Edinboro University student athlete who has exhibited outstanding achievement in a varsity sport, as well as high academic performance. Financial need is also a factor. The scholarship was established by John B. McBride, Sr., Barbara McBride, and Richard McBride in memory of their son and brother, John "Butch" McBride.

#### **JAMES MCKINLEY MEN'S TENNIS SCHOLARSHIP**

The James McKinley Men's Tennis Scholarship is awarded annually to the freshman, sophomore or junior member of the men's varsity tennis team who has the highest cumulative QPA. The McKinley Tennis scholarship is valued at \$75 and is available every spring. This award is named in honor of Dr. James McKinley who served Edinboro University in the capacities of both dean of academic affairs, and provost and vice-president for academic affairs from 1967 until his retirement in 1983. Funds for this scholarship have been made available through contributions made by colleagues of Dr. McKinley.

#### **CHESTER T. McNERNEY SCHOLARSHIP**

The Chester T. McNerney Scholarship will be awarded for the first time in the 1985-86 academic year. Valued at \$200 annually, this award will be made to a member of the Student Government Association who has made a significant contribution to Edinboro University and who has exhibited academic excellence. Financial need is also a factor. This scholarship is named in honor of the late Chester T. McNerney who served as president of Edinboro University from 1966 until his retirement in 1979. Funds for this award have been made available through contributions from the family and friends of Dr. McNerney.

#### **MORRISON MEMORIAL FUND**

The Morrison Memorial Fund provides an annual scholarship to graduate students who have shown outstanding undergraduate academic achievement. Financial need is also considered in the selection of the scholarship recipients. The Bruce Manville Morrison Estate of Erie, Pa., was the donor of this fund which is evenly divided for the purchase of rare books for the library and assistance to graduate students.

#### **MUSIC DEPARTMENT SCHOLARSHIP**

The Music Department has made available a group of scholarships valued from \$200 to \$500 to incoming freshmen who show superior musical talent. Funds are provided by music faculty, students and alumni. Financial need is not a factor.

#### **NEWCOMBE FOUNDATION GRANTS**

The Newcombe Foundation provides awards to academically capable undergraduate and graduate students who are physically disabled. The grant awards are to help students satisfy the special expenses related to their handicap that are not met by other agencies. Awards range from \$300 to \$750 per year for students enrolled at least half-time in a degree or certification program at Edinboro University. Students must have at least one semester of coursework completed and be making progress toward their academic goal. This fund is supported by the Charlotte W. Newcombe Foundation. Financial need is a factor.

#### **LOIS CALDWELL NORTH MEMORIAL SCHOLARSHIP**

The Lois Caldwell North Memorial Scholarship presents one annual award of \$100 to a student who plans to enter the ministry upon completion of his/her education at Edinboro University. Lois Caldwell North was a member of the class of 1886 at Northwestern State Normal School. This scholarship was endowed by Mrs. North's daughter, Eleanor North of State College, Pennsylvania. Awards are based upon class rank and financial need.

#### **PRE-LAW SCHOLARSHIP**

An annual award of varying value is presented to a senior Edinboro University student who has been accepted to law school. Additional criteria include an earned QPA of 3.00 or greater and completion of or current enrollment in PO550, PO563 and/or PO565. Money for this award is provided by donations from the late Mr. David Gifford, an attorney in Erie, Pa.

#### **MICHAEL McATEE RAMSAY MEMORIAL FUND SCHOLARSHIP**

The Ramsay Memorial Fund provides one \$200 annual award to a senior earth science major who has exhibited high academic achievement to help defray the cost of summer field camp. Financial need may be a factor. This fund was established in memory of Michael McAtee Ramsay, who attended Edinboro University in 1978, by his family and students in the Edinboro University Earth Science Department.

#### **HELEN SABIN REED MEMORIAL SCHOLARSHIP/ELEMENTARY EDUCATION**

The Helen Sabin Reed Memorial Scholarship provides one annual award of \$600 to a student who has demonstrated outstanding academic achievement in the field of elementary education with a concentration in reading. Helen Sabin Reed received both her undergraduate and graduate degrees from Edinboro University. This scholarship was established in her honor by Mrs. Theo S. Meyer, Erie, Pennsylvania. Financial need may be a factor.

#### **HELEN SABIN REED MEMORIAL SCHOLARSHIP/POLITICAL SCIENCE**

One annual award of \$600 is available to an incoming freshman political science major who has demonstrated outstanding academic achievement. Financial need may also be a factor. This scholarship is named for Helen Sabin Reed who received both her graduate and undergraduate degrees from Edinboro University. It was established in her memory by Mrs. Theo S. Meyer of Erie, Pa.

#### **GEORG FRIEDRICH SAUER PRIZE**

This prize in the amount of \$100 per year is presented during the Honors Convocation each year to a student who has the highest academic year scores in beginning German without having any high school background in German. Financial need is not a factor. This prize is given by Dr. Harold Sauer in memory of his father, Georg Friedrich Sauer.

#### **HAROLD SAUER ADULT SCHOLARSHIP**

The Harold Sauer Adult Scholarship is valued at \$250 and is presented annually at the Honors Convocation to the adult student who is at least 35 years of age, has completed at least 32 credit hours of study, is enrolled in a baccalaureate program and whose earned QPA is 3.20 or greater.

#### **HAROLD R. SAUER PRIZE IN MEDIEVAL MUSIC**

The Harold R. Sauer Prize in Medieval Music is valued at \$250 and is presented annually at the Honors Convocation to a member of the Madrigal Singers who has demonstrated scholarship in the area of Medieval Music.

#### **PHYLLIS DISEK STURM MEMORIAL SCHOLARSHIP**

The Phyllis Disek Sturm Memorial Scholarship provides an annual award of \$300 to an incoming freshman English major who has shown outstanding high school academic achievement. The Edinboro University English Department and the friends and associates of Dr. Ralph Sturm have established this scholarship in memory of Phyllis Disek Sturm. Financial need may be a factor.

#### **UNIVERSITY SERVICES, INC. SCHOLARSHIPS**

The Board of University Services, Inc. of Edinboro University has established philanthropic grants/scholarships in the following areas: athletics, honors, leadership, and general scholarship. Awards range in value up to \$1000 annually.

#### **LELAND W. VanLANINGHAM EDUCATION SCHOLARSHIP**

The Leland W. VanLaningham Education Scholarship is presented to an incoming freshman education major who has shown outstanding high school academic achievement. This \$250 award will be paid each year for four years provided the recipient maintains a 3.00 QPA. This scholarship is in honor of Professor L. W. VanLaningham who served Edinboro University from 1949 until 1967. Financial need is a factor.

#### **VLAHAKIS CHEMISTRY SCHOLARSHIP**

The Vlahakis Chemistry Scholarship is a \$300 award which is presented annually to a student majoring or planning to major in chemistry at Edinboro University. The award was established by Mrs. Thekla Staab Vlahakis in memory of her late husband, George K. Vlahakis and her two sons, Walter and William. While financial need may be considered, academic achievement is the critical factor in choosing the recipient.

#### **THEKLA STAAB VLAHAKIS MEMORIAL SCHOLARSHIP**

The Thekla Staab Vlahakis Memorial Scholarship provides an annual award of \$400 to an incoming freshman from North Allegheny High School who has exhibited high academic achievement. Financial need may be a factor. This scholarship is provided by Mrs. Carolyn Wissinger and Mrs. Georgia Holm in memory of their mother, Thekla Staab Vlahakis.

#### **DEAN RICHARD I. WELLER AWARD**

The Dean Richard I. Weller Award provides a \$50 award to an outstanding health science student at Edinboro University. This award was established by the Lake Erie Health Education Center; Northwestern Pennsylvania Lung Association; Richard I. Weller, former dean of science and mathematics from 1970 to 1980; and faculty and staff of Edinboro University. Awards are based upon academic achievement.

#### **RUSSELL M. WOOD ACCOUNTING SCHOLARSHIP**

The Russell M. Wood Accounting Scholarship provides an annual award of \$250 to an incoming freshman accounting major who has exhibited high academic achievement. In addition, the award, once given will be continued for a four-year period if the recipient maintains a minimum QPA of 3.00. This scholarship is in honor of Russell M. Wood. Financial need is a factor.

## COUNCIL OF TRUSTEES

---

Dr. Herald D. Green, *Chairperson, Erie*  
Ms. Edith Benson, *Erie*  
Mr. Paul J. Caron, *Erie*  
Mr. C. Richard Johnston, *Meadville*  
Dr. Lawrence W. Krespan, *Warren*  
Mr. Maurice Moragne, *Clairton*

Mr. Peter Mortensen, *Hermitage*  
Mrs. Eve Y. Murphy, *Edinboro*  
Mr. William Schulz, *Edinboro*  
Mr. Harry Thomas, *Erie*  
Mr. Ben Wiley, *Erie*

## PRESIDENT'S CABINET

---

Foster F. Diebold ..... President  
Burton O. Witthuhn ..... Provost and Vice President for Academic Affairs  
Donald Panhorst ..... Associate Vice President for Academic Affairs  
Joseph Stewart ..... Assistant to the Provost for Community Affairs  
Ronald Swift ..... Assistant to the Provost and Vice President for Academic Affairs  
Richard J. Gromen ..... Dean, Faculty of Arts and Sciences  
R. Harriet Phillips ..... Dean, Faculty of Professional Studies  
Jack Williams ..... Dean, Graduate Studies/Academic Administration  
Roy Strausbaugh ..... Dean, Continuing Education  
Robert M. Beagle ..... Vice President for Development and Planning  
Clifford Cox ..... Associate Vice President for Development and Planning  
David O'Dessa ..... Associate Vice President for University Facilities  
and Development  
Terrence Carlin ..... Director, Admissions Office  
Philip Kerstetter ..... Director, Institutional Research and Planning  
Richard Morley ..... Vice President for Finance and Administration  
Vincent Trotta ..... Associate Vice President for Finance and Administration  
Daryl Lake ..... Associate Vice President for Human Resources  
and Employee Relations  
Glenda Lawhorn ..... Vice President for Student Affairs  
Gary Jamison ..... Director, Student Services

## COMMENCEMENT COMMITTEE

---

Mr. Robert Ruffin ..... Assistant to the President  
Mrs. Patricia Graham ..... Office of the Vice President for Student Affairs  
Mrs. Marjorie Koon ..... President's Office  
Miss Patti S. Loomis ..... Public Relations Officer  
Ms. Dolores Mortimer ..... Custodial Services Manager  
Mr. David O'Dessa ..... Associate Vice President for University Facilities  
and Development  
Ms. Marrlee Robbins ..... Admissions Counselor  
Dr. Bob Wallace ..... Director of Instructional Technology  
Dr. Jack Williams ..... Dean, Graduate Studies/Academic Administration

# EDINBORO UNIVERSITY OF PENNSYLVANIA

## ALMA MATER

*Hail to thee, our Alma Mater glorious,  
Fresh wreaths we bring to bind thy brow  
Trials have past and thou has stood victorious  
Never fairer never statelier than now,  
O Edinboro, Edinboro  
Ever praising thee in song  
While class speeds class as swift years pass  
To thee our hearts belong.*