



# COMMENCEMENT

*May 11, 2002*

**EDINBORO UNIVERSITY  
OF PENNSYLVANIA**

---

---

# COMMENCEMENT CEREMONY

---

**Convocation**

**Robert C. Weber, Ph.D.**

*Provost and Vice President for Academic Affairs*

**Prelude**

**Symphonic Wind Ensemble**

Gary S. Grant, Ph.D., *Conductor*

**Pomp and Circumstance**

*Edward Elgar*

**ACADEMIC PROCESSIONAL**

Symphonic Wind Ensemble

**Star-Spangled Banner**

*Francis Scott Key*

**Robert Roxby**

Symphonic Wind Ensemble

**Invocation**

**Reverend Ronald Whited**

*Faith Assembly of God*

*Edinboro, Pennsylvania*

**Message from the President**

**Frank G. Pogue, Ph.D.**

*President*

**How Can I Keep From Singing**

*Elizabeth Beckham*

**University Singers**

Peter van den Honert, D.M.A., *Conductor*

**Introduction of  
Honorary Doctorate Recipients**

**Robert C. Weber**

**Awarding of Honorary Doctorates**

*Donald M. Alstadt*

*K. Leroy Irviss*

**Frank G. Pogue**

**Hooding of Honorary Doctorates**

**Harry K. Thomas**

*Chair, Edinboro University Council of Trustees*

**Student Address**

**Jane E. Gibson**  
*Bachelor of Science in Nursing*

**Alumni Greetings**

**Daniel Higham**  
*President, Alumni Association*

**Presentation of Candidates**

**Robert C. Weber**  
Mary M. Bevevino, Ph.D., *Dean of Graduate Studies*  
Terry L. Smith, Ph.D., *Dean of Liberal Arts*  
Eric A. Randall, Ph.D., *Dean of Science, Management and Technology*  
R. Scott Baldwin, Ph.D., *Dean of Education*  
Richard E. Arnold, Ph.D., *Associate to the President for Equity and Special Programs*

**Conferring of Degrees**

**Frank G. Pogue**

**Alma Mater**

**Robert Roxby**  
Symphonic Wind Ensemble

**Benediction**

**Reverend Annissa Schoolfield**  
*St. James African Methodist Episcopal Church*  
*Erie, Pennsylvania*

**Fanfare and Recessional**

*Edward Elgar*

**RECESSIONAL**  
Symphonic Wind Ensemble

The audience is asked to stand during the Processional and Recessional and to join in the singing of the National Anthem and the Alma Mater.

**COLORS DISTINCTIVE OF THE DISCIPLINES AND PROFESSIONS**

- Apricot ..... Nursing
- Dark Blue ..... Philosophy
- Light Blue ..... Education
- Peacock Blue ..... Public Administration
- Brown ..... Fine Arts
- Citron ..... Social Work
- Copper ..... Economics
- Crimson ..... Journalism
- Drab ..... Business
- Gray ..... Veterinary Science
- Silver Gray ..... Oratory
- Green ..... Medicine
- Olive Green ..... Pharmacy
- Sage Green ..... Physical Education
- Lemon ..... Library Science
- Lilac ..... Dentistry
- Maize ..... Agriculture
- Orange ..... Engineering
- Pink ..... Music
- Salmon Pink ..... Public Health
- Purple ..... Law
- Russet ..... Forestry
- Scarlet ..... Theology
- White ..... Arts, Letters and Humanities
- Golden Yellow ..... Science

**HONORS DESIGNATIONS**

- Gold Stoles ..... Summa Cum Laude
- White Stoles ..... Magna Cum Laude
- Red Stoles ..... Cum Laude
- Gold Cords ..... University Honors Program Graduate
- Red Cords ..... Departmental Honor Graduate

**THE CEREMONIAL MACE**

The ceremonial mace, a symbol of presidential authority, is carried at the head of the academic procession by the Grand Marshal, Dr. Max Azicri. A gift of the Alumni Association, the mace was designed and executed by Professor Henry Katzwinkel and Dr. Seymour Blinderman, former chairman of the Art Department. It was first used at the inauguration of Edinboro State College President Chester T. McNerney, in 1967.

The mace, twenty-seven inches in length, is topped by a sterling silver sphere studded with circular cabochon rubies, secured by bezels. The collar of the mace is inlaid with ebony, alternated with silver relief fleur-de-lis design elements. The cultured pearls mounted in cups encircle the bottom of the collar symbolizing the thirteen state colleges of Pennsylvania. The shaft of the mace is composed of Brazilian rosewood sections, separated by sterling silver rings. The mace is terminated by a cast sterling silver finial; the five cultured pearls represent the existing curricula. The rib-like cone form is terminated by a small silver sphere symbolizing the world.

The metal working processes incorporated in the ceremonial mace include turning, forging, inlaying, stone setting, and lost wax centrifugal casting.

## THE PRESIDENTIAL MEDALLION

The first presidential medallion was presented to former President Foster F. Diebold during the May, 1981 commencement ceremonies. Designed and executed by Professor Henry Katzwinkel, the sterling silver medallion consists of a three and one-half inch pectoral pendant featuring on its face the figure of a Gordon Highlander with pipes. To the right of the piper is the Cross of St. Andrew. To the left is the Cross of England. Flanking the figure is the date 1857, the opening year of the University, and garland thistles. In the background are the hills of Scotland, and beneath the piper is an open book, a symbol of knowledge. On the reverse side is the sunken crest of the Commonwealth of Pennsylvania.

The pendant descends from a shield containing a triple-towered castle. The collar of the medallion is comprised of a series of two-inch shields,

alternately bearing three different designs: the meigle, an interlacing knotwork peculiar to the Pictish school of Celtic art; the Tudor rose design; and "ESC" in interlocking letters on a background of tabby weaving. Connecting each of the collar shields is a Cross of St. George, representing the union of Scotland and England. The entire medallion was fabricated and cast in the *cire perdue* (lost wax) process.

Surrounding the silver medallion is a gold crafted circle which reads "Edinboro University of Pennsylvania." Professor Katzwinkel, now retired, added this piece to the medallion especially for the Inauguration of President Frank G. Pogue in 1997, and it is now a permanent fixture to the medallion representing the school's current status as a University.

## ACADEMIC VESTMENTS

The gown, the cap, and the hood, representing the major components of the academic dress, are a ceremonial inheritance from the medieval universities of the eleventh and twelfth centuries, where dress was the outward sign of privilege and responsibility. The academic dress worn by those participating in today's academic processional symbolizes the level of their academic attainment and the institution they attended.

### GOWN

Although the gown is more frequently black, certain universities have authorized the use of colored gowns. The bachelor's and master's gowns are fashioned from black serge. The yoke for the bachelor's gown is designed to be worn closed and features long, flowing and pointed sleeves. The master's gown is designed to be worn open or closed. Its sleeves are very long with square ends, and the front part has an arc cut away. The arms protrude through a slit at the elbow. The gown for the doctor's degree is made of wool, serge, or silk with an open front faced with wide velvet panels. The sleeves are loose and bell-shaped with three

bars of velvet in black or the color of the discipline in which the doctorate was obtained.

### HOOD

The most outstanding feature of the academic dress is the hood. It is usually worn only for the master's and the doctor's degrees. The doctor's hood is longer than the master's hood and has distinguished panels. The college or the university granting the degree is indicated by the color of the hood lining. The velvet trim of the hood indicates the field in which the degree was granted.

### CAP

The standard cap is the mortarboard, usually the color of the gown. The tassel is black for the baccalaureate and master's degree and is worn over the left front quarter of the cap. The tassel for the doctor's mortarboard is of gold thread. Undergraduates wear the tassel on the right side of the cap until the moment the degree is conferred by the president.

## PRESIDENT FRANK G. POGUE

Frank G. Pogue was appointed the 15th president of Edinboro University of Pennsylvania on July 1, 1996.

A sociologist, Dr. Pogue holds a bachelor's degree from Alabama State University, a master's degree from Atlanta University, and a Ph.D. from the University of Pittsburgh.

Prior to his presidency at Edinboro University, Dr. Pogue was the vice chancellor for student affairs and special programs at the State University of New York (SUNY) Central Administration in Albany, serving in that position for 10 years. While vice chancellor, he also served for one year as interim president at the SUNY College at Cobleskill. Prior to his assignment in the SUNY Central Administration, President Pogue was vice president for student affairs, associate vice president for research and educational development, dean of undergraduate studies, and a department chairperson, all at SUNY Albany.

Dr. Pogue participates in national, regional and statewide leadership groups. He serves as a member of the American Council on Education Commission on Government and Public Affairs which advises the Division of Governmental Relations on the broad range of issues in which congressional and executive branch actions affect colleges and universities. He is a member of the American Association of State Colleges and Universities (AASCU) Task Force on Teacher Education and serves as co-chair of the AASCU Forum on Rural Services. Since 1984, Dr. Pogue has served on the Commission on Higher Education Middle States Association of Colleges and Schools and is a former vice chair and member of the Commission's Executive Committee. He currently serves as President for the Middle States Association Board of Trustees and is a member of its Executive Committee. He was appointed chairperson of the Middle States Advisory Committee on Institutional Financial Resources, which advised the Commission on the relationship of financial resources to institutional accreditation. Dr. Pogue also serves on the Board of Trustees of the BACCHUS & GAMMA Peer Education Network. Dr. Pogue is chairperson of the State System of Higher Education (SSHE) Commission for the Universities and Commission of Presidents Executive Committee and is a member of the Chancellor's Advisory Council of the State System of Higher Education. He is a member of the Executive Board of a Community of Agile Partners in Education (CAPE). In October 1996, Dr. Pogue was appointed by former Pennsylvania Governor

Tom Ridge to the Governor's Commission on Academic Standards.

Locally, Dr. Pogue serves on the boards of directors for the Erie Conference on Community Development, the United Way of Erie County, the Presque Isle Partnership (chairperson of the Leadership Gifts Division of the 1998-1999 Endowment Campaign), and the Greater Erie County Chapter of the American Red Cross, for which he served as their 1997 capital campaign chairman. In addition, he serves as an Honorary Member of the Erie Wolves Club. He also serves as a member of the Martin Luther King Center Scholarship Committee and the Board of Corporators for both the Hamot Health Foundation and the St. Vincent Health Center. Dr. Pogue was chairperson of the Commission for the Erie County Millennium initiative, "Together 2000."

Recently, Dr. Pogue was honored with the Louis J. Tullio Community Service Award which is administered by the Erie Area Chamber of Commerce. The Greater Erie Community Action Committee (GECAC) honored him with the Paul P. Martin Community Service Award in the year 2000, and in 1999, the Distinguished Service Award for Leadership and Vision was presented to him by the SUNY at Albany Council of Trustees.

Dr. Pogue has shared his experiences and expertise in the Edinboro University classroom setting via guest lecturer presentations. He has also taught the course titled *Special Topics in Sociology* for the Department of Sociology and Anthropology. He continues to enjoy working in the classroom environment.

Since becoming president, Dr. Pogue has created the concept and philosophy of the Edinboro Family, a learner-centered environment where students come first and are an integral part of a caring and supportive campus community.



## GRAND MARSHAL

Leading the Academic Procession and carrying the ceremonial mace today is political science professor Dr. Max Azicri. A native of Cuba, Azicri has been a member of the Edinboro faculty since 1969. He is considered one of America's leading authorities on Cuba, having written two books and dozens of articles on the subject.

Azicri earned a B.A. degree from Havana Institute in 1952 and an M.A. degree from the Havana School of Journalism in 1956. He received a law degree from Havana University School of Law in 1959. After immigrating to the United States, he continued his education at the University of Southern California, earning an M.A. degree in political science in 1966, and a Ph.D. in the subject in 1975.

He began his career in 1955 in Havana, first as a newspaper reporter for the *Diario Nacional*, then the *Excelsior* from 1956 to 1957, and the *Diario Libre* from 1959 to 1960. After moving to Florida, Azicri worked for *Avance*, a weekly newspaper in Miami as its South American Correspondent from 1960 to 1962. He also was a member of the Cuban Revolutionary Council in Miami in the early 1960s, serving as its delegation chairman to Uruguay and Chile.

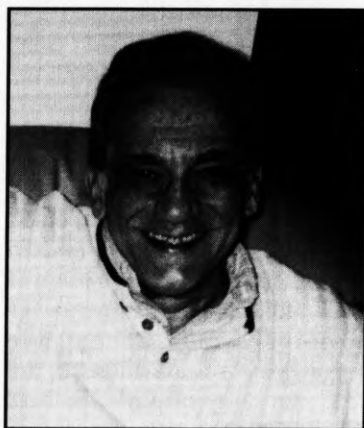
Azicri was a member of the U.S. Army's Cuban Units in 1963, before enrolling at the University of Southern California where he worked in the school's Research Institute on Communist Strategy and Propaganda. He began his teaching career in 1965 as a teacher at Temple City High School and Culver City High School before coming to Edinboro University in 1969.

Azicri's career has been dedicated to studying and writing about Cuba, particularly during the past 50 years. His two books: "Cuba Today and Tomorrow: Reinventing Socialism," and "Cuba - Politics, Economics and Society," are considered among the most authoritative written about the nation. He is currently editing and writing for an upcoming book: "Cuban Socialism in a New Century: Adversity, Survival and Renewal."

As both an American scholar and a native Cuban who witnessed the Cuban revolution of the late 1950's, Azicri has had unique access to the people and records of that time. His perspective and insights on the events of the last half of the 20th Century have been experienced by only a handful of others. One of the highlights of his career came just one year ago when he was invited to attend a conference in Cuba marking the 40th anniversary of the Bay of Pigs invasion in 1962. Edinboro University was one of only seven American institutions invited to the event. Hosted by Cuban President Fidel Castro, the American and Cuban guests were a virtual Who's Who of key participants in the ill-fated invasion. As a result of participating in the Conference, Edinboro University was presented with sets of declassified documents from the invasion and a complete set of videos from the two-day conference.

In addition to his many visits to Cuba, Azicri has received government grants to study in Germany, Israel, Egypt and Yugoslavia.

Among the honors he has received are Honored Nominee for the Council for Advancement and Support of Education's Professor of the Year program in 1989, Commonwealth of Pennsylvania Department of Education Distinguished Faculty Award for Academic Service in 1983, and Edinboro University Distinguished Faculty Award for Academic Service in 1980-81.



## HONORARY DOCTORATE

Donald M. Alstadt, chairman emeritus of the Lord Corporation, has been selected to receive the degree Doctor of Public Service (*Doctor Beneficiorum Publicorum, Honoris Causa*) at today's Commencement ceremony.

He is a 1947 graduate of the University of Pittsburgh.

Alstadt began his professional career as a consultant with the Carborundum Co. in 1946. He began his long association with Lord Corporation in 1947 as an executive development engineer. In 1947 he became head of research and was named manager of central research in 1956. Two years later he was appointed General Manager of the Hughson Chemical Co. until 1966. He returned to the Lord Corporation that year as executive vice president and became president in 1968. He continued his rise through the company ranks, becoming vice chairman in 1975 and chairman and chief executive officer in 1982. He was named chairman of the board of the Jura Corporation in 1991, and chairman emeritus for Jura in 2000.

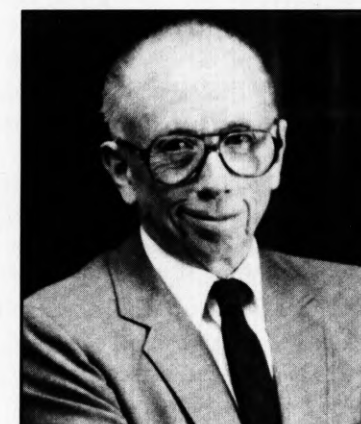
Mr. Alstadt's areas of expertise include research in rubber to metal adhesion, physics and chemistry of surfaces, dielectrics and rheology of materials, bioengineering, chemistry and physics of the solid state, and mechanical dynamics.

Alstadt has had affiliations with many colleges and universities during his career. He served on the board of visitors and dean's council, and as an adjunct professor and ambassador at large at Duke University's school of engineering. He was a member of the President's Circle at the California Institute of Technology, the Board of Advisors of Case Institute of Technology, and the Advisory Board of the Mellon Research Institute of Carnegie Mellon University. The Massachusetts Institute of Technology appointed Alstadt to the Visiting Committee for its Department of Material Science; the Board of Advisors for its Center for Advanced Engineering, and its advisory committee for the laser biomedical research center in the Department of Physics. Other institutions he has served include California Institute of Technology, Franklin Pierce Law Center, University of Pittsburgh, Thiel College, University of Southern California, University of North Carolina, Tulane University, the College of William and Mary and the University of Denver.

Alstadt's community memberships include the Cleveland Clinic Foundation's national research advisory board; the Erie Conference on Community Development's board of directors; the Kloff Foundation's advisory council; and many committees, boards and commissions for the Commonwealth of Pennsylvania. He is also a charter member of the Urban Coalition.

Alstadt has received many awards and honors during his career. He has been named to *Who's Who in America*, *Who's Who in Industry and Finance*, and *Leaders in American Science*. In 1969 President Nixon appointed him as Metropolitan Chairman of the National Alliance of Businessmen. In 1983 he was named the Francis Wright Davis Distinguished Lecturer for the Applied Academy of Sciences. In 1985 he received the Duke University Distinguished Service Award from its School of Engineering. That year he also won a Distinguished Service Award from the Adhesives and Sealants Council. In 2000 he was named to the National Air and Space Museum's Wall of Honor. That same year the Wisdom Society for the Advancement of Knowledge, Learning and Research in Education presented him with the Wisdom Award of Honor and named him an Eminent Wisdom Fellow of the Wisdom Hall of Fame.

Alstadt's interests are in the dynamics of the management of change in business and social institutions and the technical innovation process in industry. He is a lecturer and author of publications dealing with management, technology and innovation, and has made films in conjunction with National Educational Television on "Human Attitudes and Managing Change."



## HONORARY DOCTORATE

K. Leroy Irvis, former Speaker of the House of Representatives of the Commonwealth of Pennsylvania, has been selected to receive the degree Doctor of Public Service (*Doctor Beneficiorum Publicorum, Honoris Causa*) at today's Commencement ceremony.

A native of Saugerties, New York, Mr. Irvis graduated summa cum laude with degrees in history and English from the State University of New York at Albany, where he also received a Master's degree in English literature and an honorary doctorate in public affairs. He was honored by his alma mater in 1969 with a Distinguished Alumnus Award for his work as a political leader.

Mr. Irvis began his political career in 1958 when he was elected to the House of Representatives from Pittsburgh's Hill District. He served in the House for 30 years – 26 years in leadership positions – including seven as Majority Leader and four as Minority Leader, the longest such tenure in House history. Mr. Irvis was unanimously elected the 130th Speaker of the House in 1977, and was the first speaker of African-American heritage in the nation. The only other unanimous election of a Speaker was that of Benjamin Franklin. His service as House Speaker from 1977 to 1978 and again from 1983 to 1988 was the longest tenure as Speaker since 1774 when Pennsylvania was a colony.

Acknowledging his election as House Speaker on May 23, 1977, Mr. Irvis said: "You have elected not a black man to be Speaker of the House of Representatives, but, more importantly, you have elected a man who happens to be black, and that is the direction that this country must continue to go."

When first selected as Majority Leader in 1969, Mr. Irvis' colleagues in the House had no idea that their choice was the first riveter, steel chipper, woodcarver and poet in the nation to be elected to such high office. His qualities, however, came from his life experience as a wage earner, high school teacher, World War II civilian attache, Urban League secretary, assistant district attorney, family man, and public citizen.

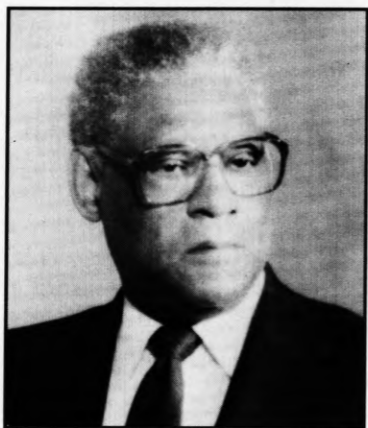
During his three decades of public service, he sponsored more than 1,600 pieces of legislation addressing his concerns for education, civil rights, health, human services, mental illness, government

administration, prison reform, justice, and housing. His most noted achievements included the sponsorship and passage of legislation creating the Pennsylvania Human Relations Commission, the Pennsylvania Higher Education Assistance Agency, the Pennsylvania Higher Education Equal Opportunity Program, and the Minority Business Development Authority. He introduced on the floor of the House the idea of a Community College system in Pennsylvania, and also sponsored the 1966 legislation that created Pennsylvania's state-related system of universities.

Before he retired as Speaker, Temple University published 58 of his poems in a volume titled "This Land of Fire." In 1995, more than 200,000 of his personal papers were donated to the University of Pittsburgh Library System. The collection includes letters and other correspondence, speeches, bills, resolutions, photos and other official papers and memorabilia. The Irvis papers became the centerpiece of Pitt's African American Collection and related materials.

In 1998, Governor Tom Ridge and First Lady Michele Ridge selected Mr. Irvis to be the first recipient of the Pennsylvania Historical and Museum Commission's "Pennsylvania Founder's Award" for his lifelong public service with distinction in education, oration, the arts, social philosophy, advocacy for civil rights education, and the preservation and promotion of individual rights.

In 1999, a bill was introduced in the House to name the East Wing of the State Capitol Building after Mr. Irvis. The building, built in the 1980s during Mr. Irvis' tenure, is now known as the K. Leroy Irvis Legislative Office Building.



## EDUCATOR, ADVISOR AND STAFF MEMBER OF THE YEAR AWARDS

Edinboro University of Pennsylvania President Frank G. Pogue presented the Educator of the Year, Advisor of the Year, and Staff Member of the Year Awards to three Edinboro employees at the Spring 2002 Convocation held on Friday, April 5. The annual event is the University-wide employee recognition program.



**Dr. Patricia Flach**, Elementary Education Department, is the recipient of the 2002 Educator of the Year Award. Since joining the Edinboro Family in 1995 as a Miller School Master Teacher and faculty member in the department of elementary education, she has been actively engaged in teaching full-day kindergarten at the Miller School, and teaching math, science and foundations of character education for the department of elementary education. Dr. Flach is also the program director for the Character Education Graduate Certificate Program. She is described by one of her students as an individual who motivates her students to meet high expectations and is always willing to help and share in the students' excitement and success. She holds a D.Ed. in Education/Curriculum and Instruction from Indiana University of Pennsylvania, serves on the Board of Directors of The Heartwood Institute in Pittsburgh, and was the conference chair for the 2000 Pennsylvania Association for Multicultural Education Conference. Dr. Flach is a member of numerous national and international organizations, including Phi Delta Kappa, the Association for Supervision and Curriculum Development, and the National Association for the Education of the Young Child.



**Dr. Kenneth Milles**, Psychology Department, is the 2002 Advisor of the Year. "Through working with Dr. Milles, I have achieved more at Edinboro University than I ever thought imaginable. His attitude, encouragement, wisdom and friendship have greatly fostered my interest in the field of Psychology and inspired me to reach for the stars. He brings out the very finest qualities in every student's life that he touches, and he is one of the university's great assets," wrote his student nominator. Dr. Milles earned his Ph.D. in Psychology from Kent State University. He has published more than 30 articles and papers and has presented at numerous conferences and workshops. Dr. Milles is a member of the Western Pennsylvania Psychological Association and the steering committee of the Western Pennsylvania Undergraduate Psychology Conference. His community service efforts include serving as a consultant for the Hospice of Metropolitan Erie Family Bereavement Program and the sexual offenders treatment program at the State Correctional Institution at Cambridge Springs.



**Kerri Watson**, Assistant to the Dean of Science, Management and Technology, is the 2002 Staff Member of the Year. An individual who has made a positive impact on the University-wide priorities, goals and objectives through her positive attitude, innovative ideas, leadership and commitment to students, Ms. Watson was nominated separately by nearly every department chairperson in the school. One of her nominators describes her as someone who approaches every situation with an enormous amount of understanding and compassion while at the same time upholding academic standards. She earned a Bachelor's degree in Business from Lake Erie College in Ohio and started at Edinboro University in 1984 as an Admissions Recruiter. She was promoted to Assistant Director of Admissions in 1990 and seven years later moved to her current position. Ms. Watson is responsible for coordinating retention activities such as those related to the Science, Management and Technology living-learning floors in the residence halls. She also coordinates the development of articulation agreements with high schools and colleges.

## UNIVERSITY FACULTY MARSHALS

<i>Eugene Antley</i> , Sociology and Anthropology Department	<i>Sally Lanz</i> , Biology and Health Services Department
<i>Max Azicri</i> , Political Science and Criminal Justice Department	<i>James LoPresto</i> , Physics and Technology Department
<i>Elaine Bercik</i> , Baron-Forness Library	<i>Charles Marr</i> , English and Theatre Arts Department
<i>Robert Cogan</i> , Philosophy Department	<i>Robert Matthews</i> , Music Department
<i>James Comella</i> , Mathematics and Computer Science Department	<i>Nazir Mughal</i> , History Department
<i>Salene Cowher</i> , Counseling and Human Development Department	<i>Karl Nordberg</i> , Educational Services Department
<i>Diane Crandall</i> , Art Department	<i>Patricia Nosel</i> , Nursing Department
<i>James Dunn</i> , Business Administration and Economics Department	<i>Ronald Reinig</i> , Social Work Department
<i>Charles Edwards</i> , Psychology Department	<i>Alfred Riccomini</i> , Special Education and School Psychology Department
<i>Edward Erdos</i> , Health and Physical Education Department	<i>Janet Rogers</i> , Chemistry Department
<i>David Hurd</i> , Geosciences Department	<i>Roy Shinn</i> , Speech and Communication Studies Department
<i>Margot Koczan</i> , Foreign Languages Department	<i>Rosemary Treloar</i> , Elementary Education Department

## RETIREES

The administration and staff of Edinboro University of Pennsylvania would like to take this opportunity to recognize those faculty and staff who have or are retiring.

*Eugene Antley*, Sociology and Anthropology  
*Marsha Arendash*, Office of the Associate to the President for Equity and Special Programs  
*Donald Beckman*, Educational Services  
*Edward Bercik*, Baron-Forness Library  
*Elaine Bercik*, Baron-Forness Library  
*Roy Brant*, Political Science and Criminal Justice  
*Dana Bushnell*, Philosophy  
*Janet Cummings*, Housekeeping  
*Sandra Ferri*, Maintenance  
*Linda Fetterolf*, Educational Services  
*John Fleming*, Baron-Forness Library  
*Gloria Furcron*, Academic Support Services  
*John Furcron*, Health and Physical Education  
*Monir Girgis*, Geosciences  
*Francis Gosciewski*, Psychology  
*Myra Granat*, Housekeeping  
*Virginia Hajewski*, Foreign Languages  
*Rita Hayes*, Ghering Health and Wellness Center  
*Richard Heasley*, Sociology and Anthropology  
*Sally Hites*, Enrollment Management and Retention  
*Donald Hoffman*, History  
*Frank Hudak*, Educational Services  
*David Karrfalt*, English and Theatre Arts  
*Gerald Kiel*, Enrollment Management and Retention  
*John Markun*, Facilities  
*W. James McHenry*, Counseling and Human Development  
*James Palmer*, Sociology and Anthropology  
*William A. Reed, Jr.*, Development and Marketing  
*Robert Rhodes*, Political Science and Criminal Justice  
*John Radovich*, Athletics  
*Judith Schilling*, Nursing  
*Karen Schleich*, Miller Research Learning Center  
*Michael Schneider*, Geosciences  
*William Schopf*, English and Theatre Arts  
*George Shimpeno*, Health and Physical Education  
*Charles Sink*, Chemistry  
*Eugene Stoddard*, English and Theatre Arts  
*Patricia Villella*, Nursing  
*David Wagner*, Physics and Technology  
*Arnold White*, Health and Physical Education  
*Ronald Woodland*, English and Theatre Arts  
*John Wooliscroft*, English and Theatre Arts

## HONORARY DOCTORATE RECIPIENTS

- Charles R. Webber*, May 1981  
*Louis J. Tullio*, May 1983  
*Milton Eisenhower*, May 1985  
*Dr. Gertrude Barber*, May 1988  
*Mary Porreco*, May 1988  
*Sr. M. Lawreace Antoun, SSJ*, May 1989  
*Joseph DiMaggio Jr*, May 1989  
*G. Andrew Fleming*, May 1990  
*Walter Hendl*, May 1990  
*I. King Jordan*, May 1991  
*Chuck Jones*, December 1991  
*Raymond Shafer*, May 1992  
*Charles Kennedy*, May 1992  
*Mary Beth Kennedy*, May 1992  
*Richard Nygaard*, May 1993  
*Na'im Akbar*, December 1993  
*Mahmoud Haroon*, December 1994  
*Eiji Oue*, May 1995  
*Louis Porreco*, December 1995  
*Thomas Hagen*, May 1996  
*Paul O'Neill*, December 1997  
*Michael Zahorchak*, December 1997  
*Fred Rogers*, May 1998  
*Donald DiPlacido*, December 1998  
*Dr. Yvonne Thornton*, May 1999  
*Dr. James E. Barker*, December 1999  
*Sir George A.O. Alleyne, M.D.*, December 2000  
*Dr. John Hope Franklin*, December 2000  
*The Honorable Joyce A. Savocchio*, December 2001

## MASTER'S DEGREES

### GRADUATE STUDIES

Mary M. Bevevino, Ph.D., Dean

### MASTER OF ARTS

#### Clinical Psychology

- Jamie Rita Brzuz, B.A., Gannon University, 2000  
Diane Louise Fortuna, B.A., Mercyhurst College, 2000  
Christine Ann Kalie, B.A., Mercyhurst College, 1985  
Stella Irene Kyriakakis, B.A., Allegheny College, 1977  
Julie Ann Magee, B.A., Lock Haven University of Pennsylvania, 2000  
Dawn Marie Romagnola, B.A., Niagara University, 2000

#### Communication Studies

- Jack Lewis Bunja, B.A., Edinboro University of Pennsylvania, 2000  
Paul Michael Marini, B.A., Penn State University, 1997  
Kira Lynn Miskimmin, B.A., Gannon University, 1998  
Anshé Jamiela Sledge, B.A., Edinboro University of Pennsylvania, 1999  
Jacquelyn Suzanne Spiegel, B.A., Edinboro University of Pennsylvania, 1999  
Adam Daniel Vellone, B.A., Edinboro University of Pennsylvania, 1996  
Peter Saxe Willis, B.A., Denison University, 1994  
Qi Zhang, B.A., Beijing University - Chinese Medicine, 1997

#### Counseling

- Eltoné Ray Abdelaziz, B.A., Edinboro University of Pennsylvania, 1997  
Jennifer Berit Benacci, B.A., Northern Arizona University, 1995  
William David Burkett, B.A., Huntington College, 1995  
Billie Jo Coleman, B.A., Edinboro University of Pennsylvania, 1999  
Betsy S. Cummings, B.A., Roberts Wesleyan College, 1999  
Shelley Marie Johnson, B.A., Mercyhurst College, 1996; M.A., Edinboro University of Pennsylvania, 1999  
Angela Rose Karg, B.A., Clarion University of Pennsylvania, 1999  
Deborah M. Morris, B.A., Edinboro University of Pennsylvania, 1998  
Michael M. Oelke, B.A., Edinboro University of Pennsylvania, 1999  
Jennifer Lenore Rhodes, B.A., Pennsylvania State University, 1997  
Tracy R. Ryback, B.A., Alfred University, 1989  
Karen Sue Sewell, B.S.N., Ursuline College, 1995  
Benjamin M. Stuller, B.S., Edinboro University of Pennsylvania, 1999



**Speech Language  
Pathology**

- Candace Rose Sussman, B.A., Ithaca College, 1996  
Kristina Marie VanNorman, B.A., Edinboro University of Pennsylvania, 1999
- Emily Tinley Allen, B.A., Edinboro University of Pennsylvania, 1999  
Michelle Elizabeth Almon, B.A., Edinboro University of Pennsylvania, 2000  
Sheila Balasa, B.A., Carleton College, 1999  
Tina Marie Berish, B.A., Edinboro University of Pennsylvania, 1999  
Erin J. Burke, B.A., Edinboro University of Pennsylvania, 2000  
Danielle Nicole Chiodo, B.A., University of Pittsburgh, 2000  
Richelle Celeste Fernacz, B.A., Edinboro University of Pennsylvania, 2000  
Rebecca Lynn Holko, B.A., Edinboro University of Pennsylvania, 2000  
Heather Ann Hurey, B.A., Edinboro University of Pennsylvania, 1999  
Ian H. Jones, B.A., Edinboro University of Pennsylvania, 2000  
\* Kristy E. McKenzie, B.A., Bloomsburg University of Pennsylvania, 2000  
\* Ruth F. Nicholson, B.A., College of Wooster, 1999  
Margaret Rose Porter, B.A., Edinboro University of Pennsylvania, 1999  
Nicole Marie Raco, B.A., Edinboro University of Pennsylvania, 2000  
Pushpa Parvathy Ramachandran, B.S., Ali Yavar Jung National Institute, 1999  
Mary C. Szpara, B.A., Edinboro University of Pennsylvania, 2000  
\* Sheila K. Taylor, B.S., Pennsylvania State University, 2000  
Jill Anne Zamierowski, B.S., Edinboro University of Pennsylvania, 1997

**MASTER OF EDUCATION**

**Educational Psychology**

- Shaunna Marie Adley, B.A., Cleveland State University, 2000  
Amy Lyn Hardesty, B.A., Pennsylvania State University, 2000  
Julie Marie McKeta, B.A., Gannon University, 1995  
Lisa Maria Savelli, B.A., Edinboro University of Pennsylvania, 1994  
Julie Lynn Tullio, B.A., Pennsylvania State University, 1995

**Elementary Education**

- Allison Eilen Alberico, B.S., Edinboro University of Pennsylvania, 1994  
Traci Yvonne Alexander, B.S., Clarion University of Pennsylvania, 1983; M.A., Indiana University of Pennsylvania, 1990

- Ronald P. Biebel, B.A., Edinboro University of Pennsylvania, 1993  
Marjorie Kathleen Calkins Cook, B.A., Roberts Wesleyan College, 1977  
Kara Elizabeth Easley, B.A., Indiana University of Pennsylvania, 1994  
Heather Ann Hakel, B.A., University of Alaska, 1988  
Julie Anne Hoefler, B.S., Allegheny College, 2000  
Todd Anthony Jennings, B.A., Virginia Tech, 1999  
Rachel Marie King, B.F.A., Edinboro University of Pennsylvania, 1999  
Kenneth Michael Maracci, B.A., Edinboro University of Pennsylvania, 1987  
Rebecca Lynne McCormick, B.S., Edinboro University of Pennsylvania, 1997  
Marla Ann Turley, B.S.Ed., Edinboro University of Pennsylvania, 1986  
Carolyn Louise Weichler, B.S.Ed., Edinboro University of Pennsylvania, 1983

**Middle/Secondary  
Instruction**

- Stacie Lynn Bortz, B.S., Mercyhurst College, 1998  
Lisa M. Heidt, B.S., Edinboro University of Pennsylvania, 1995  
Peter Joseph Natalie, B.S.Ed., Edinboro University of Pennsylvania, 1971  
Rebecca Miller Wise, B.S., Allegheny College, 1991  
Lucas D. Wooster, B.S., George Washington University, 1999

**Reading**

- Molly H. Anderson, B.S., Edinboro University of Pennsylvania, 1994  
Jodi Lynn Gee, B.S., Edinboro University of Pennsylvania, 2000  
Julie Ann Graziano, B.S., Gannon University, 1991  
Kelli Lynn Scott-Ball, B.S., Liberty University, 2000  
Michele Lee Shannon, B.S., Evangel College, 1992  
Stephanie Lynn Sherwood, B.A., California State University, 1987  
Sarah S. Thompson, B.A., Duke University, 1979

**School Administration**

- Timothy Mark Burkett, B.S., Edinboro University of Pennsylvania, 1995  
Mathew Steven Caro, B.S., University of Maryland, 1992  
Stephen Kelly Cragg, B.S., Slippery Rock University of Pennsylvania, 1988  
Carla Michelle Johnson, B.S., Edinboro University of Pennsylvania, 1996  
Michelle Helen Roberts, B.S., Edinboro University of Pennsylvania, 1995  
Sarah Melissa Roseto, B.A., Edinboro University of Pennsylvania, 2000

James Owen Rucks Jr., B.S., Edinboro University of Pennsylvania, 1991  
Donald Lyle Stark, B.A., Lycoming College, 1992  
Adelbert Lee Sturdevant II, B.S., California State University, 1994  
James P. Walter II, B.A., Alma College, 1995

### Special Education

Susan Elaine Dailey, B.S., Clarion University of Pennsylvania, 1973  
Kimberly Lynn Hefner, B.S., University of South Florida, 1996  
Cathy A. Hutchison, B.F.A., Edinboro University of Pennsylvania, 1976  
Diana L. Joint, B.S., Edinboro University of Pennsylvania, 1991  
Elizabeth Marie Makarowski, B.A., John Carroll University, 1997

### MASTER OF FINE ARTS

---

#### Fine Arts

Danielle M. Bartone, B.F.A., Edinboro University of Pennsylvania, 1999  
Summer Allison Bruch, B.F.A., Central Missouri State University, 1999  
Stephen Edgar Heywood, B.A., Southern Utah University, 2000  
Brian Lee Jensen, B.S., Southern Utah University, 1996

### MASTER OF SCIENCE

---

#### Biology

Joanne Marie Anderson, B.S., Edinboro University of Pennsylvania, 1998

### MASTER OF SCIENCE IN NURSING

---

Brenda M. Long, B.S.N., University of Pittsburgh, 1998  
Sharon H. Palotas, B.S.N., Edinboro University of Pennsylvania, 1994  
Joseph W. Phillips Jr., B.S.N., Thiel College, 1993  
Debra Rice Shreve, B.S., Edinboro University of Pennsylvania, 1999  
Sally Joanne Sidelinger, B.S.N., Pennsylvania State University, 1999  
Erma Lou Watt, B.S.N., Carlow College, 1991

### MASTER OF SOCIAL WORK

---

Kelly Brown, B.A., Mercyhurst College, 1998  
Kelly Anne Cook, B.S., Edinboro University of Pennsylvania, 1991  
Mark Alan Davis, B.A., Edinboro University of Pennsylvania, 1992  
Claire Ann Donch, B.A., Edinboro University of Pennsylvania, 1975  
Mandy Ann Fauble, B.A., Thomas Aquinas College, 1998  
Sandra K. Green, B.S., Edinboro University of Pennsylvania, 1992  
S. Christine Laythe, B.A., Carroll College, 1989  
Jodi E. Manning, B.A., Clarion University of Pennsylvania, 2000  
Ellen Marie Miller, B.S., Geneva College, 1995  
Pamela Lynn Morgan, B.A., Edinboro University of Pennsylvania, 1999  
Shannon Leigh Ritzert, B.A., Indiana University of Pennsylvania, 1998  
Amy Suzanne Wiczorek, B.A., Mercyhurst College, 2000  
Shannon Danae Zuck, B.S., Edinboro University of Pennsylvania, 1997

\* Students who will complete degree requirements during Summer 2002.

The University does not claim the list of degree candidates or honors designations is absolutely accurate. Students are granted degrees only if they meet all academic and financial requirements.

## HONORS

The following degree candidates have earned at least 64 credits as undergraduate students of Edinboro University and have attained the following cumulative averages: *Summa Cum Laude*, 3.80 to 4.00; *Magna Cum Laude*, 3.60 to 3.79; and *Cum Laude*, 3.40 to 3.59.

### SUMMA CUM LAUDE

Kristy Lynn Adams  
Derek Armstrong  
William Lloyd Bartlett  
Carrie Christina Ben-Ezra  
Robin Sue Berlin  
Richard Aaron Bradshaw  
Steven Chadd Breyak  
Joseph Francis Capezzuto  
Cheryl Ann Farkas  
Bethany Joy Fenton  
Jane Ellen Gibson  
Sharon Anne Gregg  
Heidi Lynn Hawthorne  
Pamela Sue Hayden  
Jennifer E. Huck  
Jessica Joyce Interval  
Deanna Lin Keppel  
Erika G. Marazas  
Michelle Katherine Maze  
Christian William McKinney

Randolph Scott Mellow  
Juan Carlos Navarro Carrion  
Kimberly Richelle Paar  
Vikki L. Palmer  
Eric Michael Pinto  
Greg A. Robertson  
Lauri Beth Saylor  
Kathryn Rebecca Shumway  
Stephanie Anne Skolnik  
Fred Brenton Steiger  
Kristy Loren Stephens  
Miwa Taira  
Michelle Lee Tomnay  
Julie Elaine Turner  
Rebakah Michele Visznecki  
Mark Steven Weathers  
Daniel Patrick Webster  
Megan Marie Williams  
Amanda M. Ziegenfus  
Aaron David Zwald

### MAGNA CUM LAUDE

Abdellatif Abouhria  
Kristy Lee Albert  
Megan Elizabeth Black  
Mark Allen Borland  
Aileen Jean Brady  
April Joy Brenner  
Tara Opal Breon  
Stacie Nicole Bruce  
Mary Catherine Causgrove  
Heather Tracy Consla  
Aubrey Lynn Cook  
Lisa Sue Crumb  
Stephanie Ann Cutrona  
Kristy Lynn Fausnaught  
Billie-Jo Fladry  
Beth Anne Graham  
Nanette Therese Grygier  
Melanie Carlson Heim  
Jason Theodore Hilton  
Kelly Beth Hood  
Bridget Kathleen Jenney  
Brandon Thomas Ketchum

Debra A. Kosteniuk  
Sandra Joyce Kozloff  
Matthew John Laser  
Brooke Elizabeth Manz  
Ellen Patricia McCarthy  
Lynn A. Mihoci  
Christina Marie Miller  
Christa Dawn Mott  
Lisa Joy Mroz  
Rebecca Ann Munnell  
Danielle L. Nelson  
Daniel Joseph Nowosielski  
Joie Brooks Puskarich  
Michelle Ruth Rhodes  
Robert Eric Straw  
Lucinda F. Swearingen  
Stephanie Ann Taylor  
Daniel Aaron Warner  
Suzanne Marie White  
Laura Eileen Whitford  
Breanna Lynn Zorich

## CUM LAUDE

Allyson Marie Abercrombie  
Eric Lawson Baker  
Jennifer Lee Baker  
Kristin Emily Bartholomew  
James Chad Bednez  
Heather Marie Brandon  
Bruce Anthony Brinker  
Kris Ann Bryant  
Arron Jacob Cambridge  
Allison M. Church  
Kristina Lynne Cook  
Robert David Cox  
Diane Elaine Daeschner  
Randall S. DeVallance  
Mathew Eliot Elwell  
Susan Lynn Emmert  
Michael L. Evans  
Jennifer Renee Fehir  
Elizabeth Ceballos Fisher  
Glenn Louis Franceschina  
Barbara Lee Franz  
Christina Faye Freitas  
Corrie Marie Gaydos  
Sandi L. George  
Jennifer Lynn Harke  
Marie L. Hawkins  
Brandy J. Henderson  
Brian Joseph Hnatkovich  
Sarah B. Hovland  
Jessica Ann Jones  
Kaitlin Elizabeth Kennedy  
Branaii Betty Kennell  
Kelly Christine Kirdahy  
Robin Ann Kline  
Derek Leonard Knizner

Rebecca Eileen Lamb  
Tammey L. LaPlaca  
Christy L. Leonard  
Amber Marie Libbon  
Ryan Paul Linderson  
Rebecca Ann Lloyd  
Jacob Charles Malec  
Daniel E. Massing  
Melissa Jean Means  
Tim Walter Meyers  
Ryan Scott Muller  
Sharon Catherine Murphy  
Dane Thomas O'Brien  
Emelia Anne Omniewski  
Sally A. Owen  
Darla Marie Pattison  
Shannon Marie Plyler  
Doris Avati Puja  
Cynthia Anne Raab  
Darla Ann Ricker  
Amy Elizabeth Riggle  
Laurie Anne Ropelewski  
Uriah John Sampson  
Melanie R. Shroyer  
Christine Marie Sitek  
Margaret Helen Smith  
Matthew James Spade  
Charles Allen Stapleton III  
Kristin Ann Stempfer  
Amanda Noelle Stimpson  
Gail Patrice Waldinger  
Amanda Ann Wiggers  
Wendy Jean Wiggins  
Brian Raymond Williams  
Adriana A. Zieja

### UNIVERSITY HONORS PROGRAM

**Honors Diploma Award**  
William Lloyd Bartlett  
Mark Allen Borland  
Cheryl Ann Farkas  
Jane Ellen Gibson  
Brandon Thomas Ketchum  
Christian William McKinney  
Rebecca Ann Munnell  
Joie Brooks Puskarich  
Stephanie Anne Skolnik  
Julie Elaine Turner  
Rebekah Michele Visznecki

**General Education Honors  
Award**  
Joseph Francis Capezzuto  
Sandra Joyce Kozloff  
Danielle L. Nelson  
Emelia Anne Omniewski  
Laura Eileen Whitford  
Amanda M. Ziegenfus

# BACCALAUREATE AND ASSOCIATE DEGREES

## SCHOOL OF LIBERAL ARTS

Terry L. Smith, Ph.D., Dean

### BACHELOR OF ARTS

#### Anthropology

Lisa E. Hogan  
David Geoffrey Mason  
Lynn A. Mihoci – *Magna Cum Laude*  
Mary Elizabeth Pickard

#### Art History

Glenn Louis Franceschina – *Cum Laude*  
James Brandon Redden  
Matthew George Shimek

#### Criminal Justice

Jason D. Brown  
Kris Ann Bryant – *Cum Laude*  
William John Buchleitner  
Michael John Camino  
Ryan Eugene Cappelletty  
Aubrey Lynn Cook – *Magna Cum Laude*  
Darlene Rochelle Davis  
Dean A. Dickson  
Gregg Joseph Earley  
Jamie Marie Fails  
Eric Michael Fries  
Johnathan Erik Frisk  
Lisa A. Hamilton  
Breanne Renee Hillen  
Matthew W. Hudak  
\* David P. Hunt  
Brandon Thomas Ketchum – *Magna Cum Laude*  
Christy L. Leonard – *Cum Laude*  
Lynann R. Lorenz  
Kimberly S. Magee  
Scott Robert McGarvie  
Kelly M. Montiel  
Sharon Catherine Murphy – *Cum Laude*

\* Tricia Noel Murphy  
Jason Matthew Noblick  
William Morgan Parris  
Leigh I. Rainey Jr.  
Bobbie Ray  
Joseph Eugene Rea  
\* Robert W. Schwartz  
Jeffrey P. Seigworth  
Jancy Lynn Seus  
\* James T. Shaw  
Matthew Robert Spitznogle  
Timothy Joseph Tellers  
Kelly R. Turner  
Patrick Joseph Turpack  
Angela Louise Urey  
Anthony Paul Williams  
Brian Raymond Williams – *Cum Laude*  
Clevon Louis Wofford

#### Drama

Reneé Elizabeth Campbell  
Robert M. Connick  
Maribeth McCarthy

#### English

Steven Chadd Breyak – *Summa Cum Laude*  
Lisa A. Brown  
Lee William Cherry  
Norana P. Cummins  
Mindy Lynn Delavern  
Dayna D. Hair  
Justin Robert Holt  
Stephanie A. Hubbell  
Michelle Katherine Maze – *Summa Cum Laude*  
Ellen Patricia McCarthy – *Magna Cum Laude*  
Christian William McKinney – *Summa Cum Laude*  
Judy E. Schrader

Julie Lynne Sheldon  
Charles Allen Stapleton III – *Cum Laude*  
Julie Elaine Turner – *Summa Cum Laude*  
Daniel Aaron Warner – *Magna Cum Laude*  
Amanda M. Ziegenfus – *Summa Cum Laude*

#### History

Nathan Dalton Albert  
Gary Leroy Collins  
Nanette Therese Grygier – *Magna Cum Laude*  
Jennifer E. Huck – *Summa Cum Laude*  
Craig J. Huya  
Robin Ann Kline – *Cum Laude*  
Breanna Lynn Lloyd  
Steven Paul Martin  
Robert James Wertz Jr.

#### Humanities

Thomas Matthew Kennedy  
Heather Tracy Consla – *Magna Cum Laude*

#### Music

Jacob Charles Malec – *Cum Laude*  
Amanda Margaret Sargent  
Milan George Tepshich

#### Philosophy

William Lloyd Bartlett – *Summa Cum Laude*

#### Political Science

Stacie Nicole Bruce – *Magna Cum Laude*  
Kimberly Ann Haines  
Nicolas A. Pishnery  
Diane Rane Schoonover  
Jeremy Jet Ward

#### Psychology

Sarah Elizabeth Abraham  
Brooke H. Barthen  
Robin Sue Berlin – *Summa Cum Laude*

Mark Allen Borland – *Magna Cum Laude*  
Casey Dale Branstrom  
Heather Francine Breit  
Julie M. Clark  
Kimberly Robin Elizabeth Dent  
Nicole DiMichele  
Susan Patricia Esper  
Tanya Rose Gomola  
Beth Anne Graham – *Magna Cum Laude*  
Amy Elizabeth Grainger  
Melanie Carlson Heim – *Magna Cum Laude*  
\* Sarah L. Juracko  
Jennifer Marie Klingman  
Sandra Joyce Kozloff – *Magna Cum Laude*  
Deanna K. Laser  
Rebecca Ann Lloyd – *Cum Laude*  
Kelley Marie Majczyk  
\* Tara J. McCloskey  
Andrea Suzanne Mihelic  
Darci S. Mongera  
Rebecca Ann Munnell – *Magna Cum Laude*  
Kimberly Richelle Paar – *Summa Cum Laude*  
Shannon Marie Plyler – *Cum Laude*  
Linda Ann Schreib  
Melissa Lynn Stone  
John V. Teti  
Natalie Serena Walker  
Sarah Ann Wijkowski

#### Social Science

Jerrad Edward Rimel  
James Edward Rupp Jr.  
Stephanie M. Schneider

#### Sociology

Amy Farkas Hickey  
Sally A. Owen – *Cum Laude*  
Cheryl Anne Savill  
Kathleen Mary Williams

#### Spanish

Stacie Nicole Bruce – *Magna Cum Laude*  
Nicolas A. Pishnery

## Speech Communications

Luke L. Armour  
Dennis M. Burke  
\* Jason C. Cooper  
Megan Jane Crowther  
Erica Dawn Denning  
Corrie Marie Gaydos – *Cum Laude*  
Brian James Haller  
Maria Rose Hills  
Matthew David Jakovac  
\* Amy L. Lander  
\* Ryan R. Lapinsky  
Daniel E. Massing – *Cum Laude*  
Rebecca Suzanne Melani  
Renee Christine Mennini  
Jennie Marlene Monza  
John Timothy O'Malley  
Juliet Amanda Owens  
Laura Christine Paxton  
William Frederick Phillips III  
Douglas Vincent Pletz  
Daniel Robert Popa  
Jared Premick  
Christopher Joseph Rebar  
Shaun Adam Salchli  
Christina Renee Stearns  
Fred Brenton Steiger – *Summa Cum Laude*  
Kristy Loren Stephens – *Summa Cum Laude*  
Carla Nicole Strawoet  
Julie Megan Trohoske  
Lois Ann Trudeau  
Michelle Leah Truswell  
Vanessa Lynn Vanzin  
\* Maurissa M. Vergari  
Adrienne Marie Vesely  
Tara Ann Viola  
Robert James Wertz Jr.  
Ernest P. Wolfram  
Amanda M. Ziegenfus – *Summa Cum Laude*

## Speech Language Hearing Disorders

Marlana Lynn Adams  
Nicole Lynn Beck  
Alyssa Nicole Best  
Monique Yvonne Bivins  
Billie-Jo Fladry – *Magna Cum Laude*

Sarah B. Hovland – *Cum Laude*  
Melissa Jean Means – *Cum Laude*  
Christina Marie Miller – *Magna Cum Laude*  
Sara Jean Punsky  
Lauri Beth Saylor – *Summa Cum Laude*  
Gail Patrice Waldinger – *Cum Laude*  
Daniel Patrick Webster – *Summa Cum Laude*

## BACHELOR OF FINE ARTS

### Fine Arts-Applied Media Arts

Stephanie Nicole Adams  
Bridget Elizabeth Allen  
Erica Marie Antic  
Greg P. Barnes  
Matthew Francis Beightol  
Brad A. Bender  
Megan Elizabeth Black – *Magna Cum Laude*  
Hillary Louise Bogdan  
Dennis M. Burke  
Arron Jacob Cambridge – *Cum Laude*  
Joseph Francis Capezzuto – *Summa Cum Laude*  
Sharon Caruso  
David Eugene Cassatt  
Jerod R. Chirico  
\* Allison M. Church – *Cum Laude*  
Ronald A. Churley  
Christopher R. DeLucia  
Joslyn Alaire Elliott  
Michael L. Evans – *Cum Laude*  
R. Brian Fleetman  
Marc Andrew Hale  
Tina Marie Harvey  
Anne Luke Jones  
Kaitlin Elizabeth Kennedy – *Cum Laude*  
Robert R. Kneuer  
Vorathit Kruavanichkit  
Aaron Allen Lenk  
Bradley Morris Marks  
Johnitta Monet Mitchell  
Ryan Scott Muller – *Cum Laude*  
Juan Carlos Navarro Carrión – *Summa Cum Laude*  
Kian Chai Ng

\* Andrea Joy Parrish  
Tara Lynn Petrucci  
\* Andrea L. Porreca  
Joshua Kawah Price  
Michelle Ruth Rhodes – *Magna Cum Laude*  
Jolene Rae Richards  
Uriah John Sampson – *Cum Laude*  
Joshua David Seybert  
Katie Marie Sisco  
Michael J. Smith  
Jill Elizabeth Spencer  
Kristin Ann Stempfer – *Cum Laude*  
Robert Eric Straw – *Magna Cum Laude*  
Adam Bradley Sullivan  
Chad Christopher Watkins  
Amanda Marie West  
Melissa Windsor  
Stephen Mac Lean Wittmaak  
\* Albert G. Wood  
\* Ah-Young Yoon

### Fine Arts-Crafts

Rachel Marie Bleil  
Bruce Anthony Brinker – *Cum Laude*  
Debby Lee Carpenter  
\* Christopher A. Clawson  
Scott D. Cornish  
Kristy Ann Dubinsky  
Kelly Beth Hood – *Magna Cum Laude*  
Jennifer M. Kitchen  
Derek Leonard Knizner – *Cum Laude*  
Ryan Paul Linderson – *Cum Laude*  
Brooke Elizabeth Manz – *Magna Cum Laude*  
Eric Michael Pinto – *Summa Cum Laude*  
Joie Brooks Puskarich – *Magna Cum Laude*  
Gretchen Ann Rothenbach  
Matthew George Shimek  
\* Melanie R. Shroyer – *Cum Laude*  
Suzanne Marie White – *Magna Cum Laude*

## BACHELOR OF SCIENCE

### Social Work

Marisa Jean Adiutori  
Dorothy Elaine Baker  
Deanna Cosby  
Karrah Jean Hopkins  
Ronallynn Knight  
Teresa Ann Myers  
Sheryl Diane Orr  
Jason Lee Reagle  
Laurie Anne Ropelewski – *Cum Laude*  
Michele Marie Semovoski  
Gloria Jean Seifreit  
\* Matthew Joseph Stewart  
Lucinda F. Swearingen – *Magna Cum Laude*  
Stephanie Ann Taylor – *Magna Cum Laude*  
Leah Michelle Turner  
\* Amy J. Unger  
Rebekah Michele Viszneki – *Summa Cum Laude*  
Darlene L. Weislogel  
Lisa Ann Wolyniec

## ASSOCIATE OF ARTS

### Criminal Justice

Derrick Montrel Davis  
Thaddeus John Mickel

### Human Services/Social Services

Melanie Charlene Stewart

### Liberal Studies

Nicholas James DeRenzis  
Bonny K. Gentle  
Carla Lee Gutting  
Peter Kees  
Michele Lee Moncilovich

# SCHOOL OF SCIENCE, MANAGEMENT AND TECHNOLOGY

Eric A. Randall, Ph.D., Dean

## BACHELOR OF ARTS

---

### Biology

Elizabeth M. Pominville

### Earth Science

Heidi Lynn Hawthorne – *Summa Cum Laude*

### Environmental Studies/Geography

Lowell Alexander Abbadini

Loren Paul Chase

Ryan Steven Cook

Melissa Renee Cylenica

Randall S. DeVallance – *Cum Laude*

Aaron Charles Feerst

Gerald Patrick Leonard

\* Kevin C. McCaslin

\* Angela C. McWilliams

John I. Newton

Eric J. Rekitt

### Geography

Bethany Joy Fenton – *Summa Cum Laude*

### Mathematics

Kristy Lee Albert – *Magna Cum Laude*

William Lloyd Bartlett – *Summa Cum Laude*

Heidi Gene Henning

Heather Dawn Iddings

Joseph Jacob Kodnovich

### Natural Science and Mathematics/Wildlife Technology

Carrie Ann Duafala

Karen Elizabeth Revesz

### Physics

Eric Lawson Baker – *Cum Laude*

## BACHELOR OF SCIENCE

---

### Biology

Eulala Alta Marie Abbey

Kristin Emily Bartholomew – *Cum Laude*

Heather Marie Brandon – *Cum Laude*

Kathy Veronica Breisch

Catherine Elizabeth Havrilla

Emelia Anne Omniewski – *Cum Laude*

Lisa Marie Petsche

Doris Avati Puja – *Cum Laude*

Fernando Tejada

Leeanne Faith Young

### Business Administration

Abdellatif Abouhri – *Magna Cum Laude*

Carrie Christina Ben-Ezra – *Summa Cum Laude*

Nancy Lee Boland

Brett Bowness

Chad A. Caros

Katrina A. Copeland

Meisha Claire Englert

Vanessa Renée Fremer

Renda Leigh Greer

Angie Dee Gregory

David Patrick Gregory

Stacie Louise Hall

Wendy Kay Hallman

Brandy J. Henderson – *Cum Laude*

Kristen Rene Insana

Harry Lamar Jones

Hunsam Kim

Raymond J. King

Ronald J. Kleppick Jr.

Debra A. Kosteniuk – *Magna Cum Laude*

Jason S. Kovach

Adam Kenneth Kunkel

Amber Marie Libbon – *Cum Laude*

Amy Elizabeth Lindsey

Jaime E. Luna

Theresa Elizabeth Marino

Kevin M. Moser

Andrew Michael Nagg

Douglas B. Nagle IV

Steven Jeffrey Parkin

Shawn Nicholas Petrisko

Steve Paul Rathmann

Melissa S. Right

Christy Nichole Risner

Bert Thomas Smith

Carlos Ramon Soto

Miwa Taira – *Summa Cum Laude*

Brandie Jean Ward

David Paul Ziner

Joshua J. Zinz

### Chemistry

Brian Joseph Hnatkovich – *Cum Laude*

### Computer Science

Kimberly S. Alexander

David M. Bedo

Richard Aaron Bradshaw – *Summa Cum Laude*

Scott Robert Fenn

Christopher James Hill

Joshua P. Jones

John Paul Krotulski

Randolph Scott Mellow – *Summa Cum Laude*

Paresh Nareshbhai Patel

Daniel Thomas Tobin

### Economics

Shawn Christian Carr

### Environmental Science/Biology

Derek Armstrong – *Summa Cum Laude*

Jeffrey Thomas Kohut

Erika G. Marazas – *Summa Cum Laude*

Patricia Leigh Meshanko

Amber Dee Oyler

Gina Catherine Pistoia

Samantha Lynn Wilfong

### Environmental Science/Geology

William Jack Boyles Jr.

Andrew R. Janik

Thomas Allen Mando Jr.

Yong-hwa Shin

Matthew James Spade – *Cum Laude*

### Geology

Mathew Eliot Elwell – *Cum Laude*

### Nursing

April Joy Brenner – *Magna Cum Laude*

Kristina Lynne Cook – *Cum Laude*

Lisa René Daddario

Susan Lynn Emmert – *Cum Laude*

Christina Faye Freitas – *Cum Laude*

Richard Allen Galbraith

Jane Ellen Gibson – *Summa Cum Laude*

Kerri Lynn Greer

Donna Jean Haugh

LaToya Jarman

Casey V. Kirberger

Kelly Christine Kirdahy – *Cum Laude*

Tammey L. LaPlaca – *Cum Laude*

Sarah Leah Mattocks

Tim Walter Meyers – *Cum Laude*

Daniel Joseph Nowosielski – *Magna Cum Laude*

Ifeanyi Temple Onyenweaku

Darla Marie Pattison

Lisa Marie Pope

Margaret Helen Smith – *Cum Laude*

Stacia Keyvnia Tate

Tiffany Noelle Thomas

Jessica Lee Thompson  
Deborah S. Warner  
Erin Marie Whaling  
Adriana A. Zieja – *Cum Laude*

## ASSOCIATE OF SCIENCE

---

### Business Administration

Chih Chang  
Bruce Carl Coffin  
Catherine Rebecca Johns  
Robert D. Migliaccio II  
Brian John Richardson  
Desiree Marie Schmader  
Sherry L. Szoszorek  
Elizabeth Ann Wilson

### Nutrition

Kristin L. Ballard  
Jennifer Lynn Everall  
Erica L. Richerson

## ASSOCIATE OF ENGINEERING TECHNOLOGY

---

### Biomedical Equipment Technology

John Miczikus

### Manufacturing Engineering Technology

Cleveland Tyus Clinton  
Daniel James Dell  
Jason S. Kovach  
Robin E. Maloney  
Robert Arthur Range  
Brian Scott Sypin

## SCHOOL OF EDUCATION

R. Scott Baldwin, Ph.D., Dean

### BACHELOR OF SCIENCE IN ART EDUCATION

---

Angela Lynn Bowersox  
Stephanie Ann Cutrona – *Magna Cum Laude*  
Yvonne C. Eaton  
Elizabeth Ann Horner  
Scott L. Mealy  
Vikki L. Palmer – *Summa Cum Laude*  
Kathryn Rebecca Shumway – *Summa Cum Laude*  
Sia Kristen Walker

Dane Thomas O'Brien – *Cum Laude*  
Erin Renee Rogacki  
Robert Paul Schodt Jr.  
Lauren Ann Snell  
Stacey A. Starcheski  
Amanda Noelle Stimpson – *Cum Laude*  
Brenda Kaye Swavey  
Michelle Lee Tomnay – *Summa Cum Laude*  
Amy Renee VanScoter  
Mark Steven Weathers – *Summa Cum Laude*  
Jennifer L. Woods

### BACHELOR OF SCIENCE IN EDUCATION

---

#### Elementary Education

Kristy Lynn Adams – *Summa Cum Laude*  
Melinda A. Beers  
Gregory James Clapper  
Jeremy Jason Collins  
Robert David Cox – *Cum Laude*  
Lisa Sue Crumb – *Cum Laude*  
Lauren Elizabeth Davis  
\* Martin P. Denslow  
Sandi L. George – *Cum Laude*  
Jill Marie Giovanelli  
Sharon Anne Gregg – *Summa Cum Laude*  
\* Stacey L. Haas  
Angela Marie Haefner  
Andrew M. Heimes  
Philip Evan Heubach  
Marianne Irene Hinton  
Jennifer E. Huck – *Summa Cum Laude*  
Jessica Joyce Interval – *Summa Cum Laude*  
\* Adam Tucker Kaufman  
Branaii Betty Kennell – *Cum Laude*  
Tara E. King  
Lannea B. Leehan

#### Elementary Education/Early Childhood

Milena Rae Bish  
Jessica Lee Call  
Catherine Mary Cleveland  
Elizabeth Ceballos Fisher – *Cum Laude*  
Jennifer Lynn Harke – *Cum Laude*  
Bridget Kathleen Jenney – *Magna Cum Laude*  
Deanna Lin Keppel – *Summa Cum Laude*  
Kristen Ann Klodowski  
Nicole Lynn Mealy  
Christa Dawn Mott – *Magna Cum Laude*  
Anna M. Proya  
Cynthia Anne Raab – *Cum Laude*  
Darla Ann Ricker – *Cum Laude*  
Beverly Christine Wanner

#### Elementary Education/Mentally and Physically Handicapped

Allyson Marie Abercrombie – *Cum Laude*  
Aileen Jean Brady – *Magna Cum Laude*  
Mary Catherine Causgrove – *Magna Cum Laude*  
Cheryl Ann Farkas – *Summa Cum Laude*  
Kristy Lynn Fausnaught – *Magna Cum Laude*  
Jennifer Renee Fehir – *Cum Laude*  
Jessica Lynne Gaab  
Susen M. Hice  
Bradley Dale Johnston  
Jessica Ann Jones – *Cum Laude*

Rebecca Eileen Lamb – *Cum Laude*  
Nicole Lynn Larimer  
Marci Lou Musgrove  
Amy Elizabeth Riggle – *Cum Laude*  
Wendy Marie Rzodkiewicz  
Stephanie Anne Skolnik – *Summa Cum Laude*  
Laura Eileen Whitford – *Magna Cum Laude*  
Amanda Ann Wiggers – *Cum Laude*  
Megan Marie Williams – *Summa Cum Laude*

#### **Health and Physical Education**

James Chad Bednez – *Cum Laude*  
Edward J. Czarnecki  
Diane Elaine Daeschner – *Cum Laude*  
Regina Rosemary Davis  
Katie Madeleine Fry  
Joshua Thomas Geis  
Susan Marie Howard  
Craig Thomas Kaufman  
Bradley James Kocher  
Karen Elizabeth Kroto  
Kenneth Alan Musil  
Greg A. Robertson – *Summa Cum Laude*  
Christine Marie Sitek – *Cum Laude*  
Kristen Lynn Stafford  
Nafis Mahdi Taalib-Din  
Aaron David Zwald – *Summa Cum Laude*

#### **Mentally/Physically Handicapped**

\* Colleen M. Hoffman

#### **Secondary Education – Biology**

Gregg James Simonsen  
Kimberly M. Wright

#### **Secondary Education – Comprehensive English**

Jennifer Lee Baker – *Cum Laude*  
Natalie Lynn Juliussen  
Danielle L. Nelson – *Magna Cum Laude*  
Wendy Jean Wiggins – *Cum Laude*  
Sarah Jane Zelina

#### **Secondary Education – Earth/Space Science**

Mathew Eliot Elwell – *Cum Laude*  
Marie L. Hawkins – *Cum Laude*  
Lisa Joy Mroz – *Magna Cum Laude*

#### **Secondary Education – German**

Erin Lee Bott

#### **Secondary Education – Mathematics**

Tara Opal Breon – *Magna Cum Laude*  
Shannon Michele Reese

#### **Secondary Education – Social Studies**

Gary Leroy Collins  
Angela Marie Erickson  
Darren Andrew Gerlach  
Jason Theodore Hilton – *Magna Cum Laude*  
Craig J. Huya  
Matthew John Laser – *Magna Cum Laude*  
Mark L. Lewis  
Stephen Austin Scheloske  
Jeffrey F. Wolford  
Breanna Lynn Zorich – *Magna Cum Laude*

### **ASSOCIATE OF ARTS**

#### **Human Services/Developmental Disabilities**

Jessica A. Smith

### **ASSOCIATE OF SCIENCE**

#### **Pre-School Education**

Tara Michele Christensen  
Sarah Ruth Vavala  
Heather Rae Yoest

### **BACHELOR OF ARTS IN SPECIALIZED STUDIES**

Richard E. Arnold, Ph.D., Associate to the President for Equity and Special Programs

Keith L. Allen  
Kimberly Ann Baker  
Amanda Jane Balcer  
Ya-Wen Chang  
Makenzie Kathleen Ehrin  
Barbara Lee Franz – *Cum Laude*  
Christopher E. Gable  
Karla Nadia Gray  
Pamela Sue Hayden – *Summa Cum Laude*  
Jennifer M. Katchmar  
Michael Douglas King  
Michael K. Kuzmish  
Jeremy Scott Lombardo  
Eric William Marendt

\* Tiffany R. Miller  
Jessica Marie Millimaci  
Jillian Elizabeth Moore  
Nicolae Joseph Muntean III  
Catherine Jones Peyton  
Kourtney A. Post  
Patrick Andrew Rae  
Jennifer L. Richardson  
Scott William Schlutz  
Robin Denise Shanor  
Megan D. Snyder  
Leah Wrenshall Spiegel  
Richard A. Wehner  
George V. Woods

\* Students who will complete degree requirements during Summer 2002.

The University does not claim the list of degree candidates or honors designations is absolutely accurate. Students are granted degrees only if they meet all academic and financial requirements.



# Alma Mater

Edinboro University of Pennsylvania

Hail to Thee our Alma Mater glo-ri-ous; fresh  
wreaths we bring to bind thy brow. Trials have  
passed, and Thou hast stood vic-tor-i-ous, ne-ver fair-er, nev-er state-li-  
er than now; O Ed-in-bo-ro, Ed-in-bo-ro, ev-er prais-ing  
Thee in song. While class speeds class, as swift years pass, to Thee our hearts be-long.

## State System of Higher Education

### Board of Governors State System of Higher Education

Judy G. Hample, *Chancellor*

Charles A. Gomulka, *Chair*  
Kim E. Lyttle, *Vice Chair*  
R. Benjamin Wiley, *Vice Chair*  
Syed R. Ali-Zaidi  
Angela M. Ambrose  
The Honorable Jeffrey W. Coy  
Daniel P. Elby  
David P. Holveck  
The Honorable Vincent J. Hughes  
Patricia K. Poprik  
The Honorable James J. Rhoades  
David M. Sanko  
B. Michael Schaul  
The Honorable Jere W. Schuler  
The Honorable Mark S. Schweiker  
John K. Thornburgh  
Christine J. Toretta  
Amy M. Yozviak  
The Honorable Charles B. Zogby  
*There is currently one vacancy*

### Council of Trustees

Harry K. Thomas, *Chair*  
Benedict J. Miceli, *Vice Chair*  
Harold C. Shields, *Secretary*  
Clifford E. Allen  
Jacqueline N. Gichinga  
Patricia B. Heasley  
John E. Horan  
C. Richard Johnston  
Virginia L. McGarvey  
Catherine M. Manning, *SSJ*  
R. Benjamin Wiley  
Judy G. Hample (*ex officio*)

### Commencement Committee

Robert C. Weber, *Provost and Vice President for Academic Affairs, Chair*  
Carol Bolla, *Coordinator of Special Events and Programs*  
Janet Bowker, *Director, Alumni Affairs*  
Julia Fedders, *Assistant Director of Student Activities*  
Judy Kubeja, *Senior Executive Associate to the Provost*  
Randall McCaslin, *Manager, Distance Education and Multi-Media Services*  
Alice Parker, *Coordinator for Degree Audit Systems, Office of Records and Registration*  
Timothy W. Pilewski, *Coordinator of Records and Registration*  
Brian Pitzer, *Director of Marketing*  
Lorraine Revak, *Facilities Office and General Services Manager*  
Brenton Steiger, *Student Representative*  
Kristy Stephens, *Student Representative*  
Peter van den Honert, *Chair, Department of Music*

*One of the 14 universities in Pennsylvania's State System of Higher Education, Edinboro University is committed to affirmative action for all persons in its educational programs, activities, and employment practices.*



# COMMENCEMENT

*December 14, 2002*

**EDINBORO UNIVERSITY  
OF PENNSYLVANIA**

---

---

# COMMENCEMENT CEREMONY

---

**Convocation**

**Robert C. Weber, Ph.D.**

*Provost and Vice President for Academic Affairs*

**Prelude**

**Symphonic Wind Ensemble**

*Gary S. Grant, Ph.D., Conductor*

**Pomp and Circumstance**

*Edward Elgar*

**ACADEMIC PROCESSIONAL**

Symphonic Wind Ensemble

**Star-Spangled Banner**

*Francis Scott Key*

**Jennifer Wilkinson**

Symphonic Wind Ensemble

**Invocation**

**Reverend Nathan Detering**

*Unitarian Universalist Congregation of Erie*

*Erie, Pennsylvania*

**Message from the President**

**Frank G. Pogue, Ph.D.**

*President*

**For All We Know**

*Brent Pierce*

**University Chorale**

*Peter van den Honert, D.M.A., Conductor*

**Introduction of  
Honorary Doctorate Recipient**

**Robert C. Weber**

**Awarding of Honorary Doctorate**

*Mike S. Zafirovski*

**Frank G. Pogue**

**Hooding of Honorary Doctorate**

**Harry K. Thomas**

*Chair, Edinboro University Council of Trustees*

<b>Student Address</b>	<b>Nikki L. Shearer</b> <i>Bachelor of Science in Education, Elementary Education/ Early Childhood</i>
<b>Alumni Greetings</b>	<b>Daniel Higham</b> <i>President, Alumni Association</i>
<b>Presentation of Candidates</b>	<b>Robert C. Weber</b> Mary M. Bevevino, Ph.D., <i>Dean of Graduate Studies and Research</i> Terry L. Smith, Ph.D., <i>Dean of Liberal Arts</i> Eric A. Randall, Ph.D., <i>Dean of Science, Management and Technology</i> R. Scott Baldwin, Ph.D., <i>Dean of Education</i> Richard E. Arnold, Ph.D., <i>Associate to the President for Equity and Special Programs</i>
<b>Conferring of Degrees</b>	<b>Frank G. Pogue</b>
<b>Alma Mater</b>	<b>Jennifer Wilkinson</b> Symphonic Wind Ensemble
<b>Benediction</b>	<b>Reverend Clifton McNair III</b> <i>Word of Life Christian Center Erie, Pennsylvania</i>
<b>Fanfare and Recessional</b> <i>Edward Elgar</i>	<b>RECESSIONAL</b> Symphonic Wind Ensemble

The audience is asked to stand during the Processional and Recessional and to join in the singing of the National Anthem and the Alma Mater.

## COLORS DISTINCTIVE OF THE DISCIPLINES AND PROFESSIONS

Apricot .....	Nursing
Dark Blue .....	Philosophy
Light Blue .....	Education
Peacock Blue .....	Public Administration
Brown .....	Fine Arts
Citron .....	Social Work
Copper .....	Economics
Crimson .....	Journalism
Drab .....	Business
Gray .....	Veterinary Science
Silver Gray .....	Oratory
Green .....	Medicine
Olive Green .....	Pharmacy
Sage Green .....	Physical Education
Lemon .....	Library Science
Lilac .....	Dentistry
Maize .....	Agriculture
Orange .....	Engineering
Pink .....	Music
Salmon Pink .....	Public Health
Purple .....	Law
Russet .....	Forestry
Scarlet .....	Theology
White .....	Arts, Letters and Humanities
Golden Yellow .....	Science

## HONORS DESIGNATIONS

Gold Stoles .....	Summa Cum Laude
White Stoles .....	Magna Cum Laude
Red Stoles .....	Cum Laude
Gold Cords .....	University Honors Program Graduate
Red Cords .....	Departmental Honor Graduate

## THE CEREMONIAL MACE

The ceremonial mace, a symbol of presidential authority, is carried at the head of the academic procession by the Grand Marshal, Dr. Jeanne C. Faieta. A gift of the Alumni Association, the mace was designed and executed by Professor Henry Katzwinkel and Dr. Seymour Blinderman, former chairman of the Art Department. It was first used at the inauguration of Edinboro State College President Chester T. McNerney, in 1967.

The mace, twenty-seven inches in length, is topped by a sterling silver sphere studded with circular cabochon rubies, secured by bezels. The collar of the mace is inlaid with ebony, alternated with silver relief fleur-de-lis design elements. The cultured pearls mounted in cups encircle the bottom of the collar symbolizing the thirteen state colleges of Pennsylvania. The shaft of the mace is composed of Brazilian rosewood sections, separated by sterling silver rings. The mace is terminated by a cast sterling silver finial; the five cultured pearls represent the existing curricula. The rib-like cone form is terminated by a small silver sphere symbolizing the world.

The metal working processes incorporated in the ceremonial mace include turning, forging, inlaying, stone setting, and lost wax centrifugal casting.

## THE PRESIDENTIAL MEDALLION

The first presidential medallion was presented to former President Foster F. Diebold during the May, 1981 commencement ceremonies. Designed and executed by Professor Henry Katzwinkel, the sterling silver medallion consists of a three and one-half inch pectoral pendant featuring on its face the figure of a Gordon Highlander with pipes. To the right of the piper is the Cross of St. Andrew. To the left is the Cross of England. Flanking the figure is the date 1857, the opening year of the University, and garland thistles. In the background are the hills of Scotland, and beneath the piper is an open book, a symbol of knowledge. On the reverse side is the sunken crest of the Commonwealth of Pennsylvania.

The pendant descends from a shield containing a triple-towered castle. The collar of the medallion is comprised of a series of two-inch

shields, alternately bearing three different designs: the meigle, an interlacing knotwork peculiar to the Pictish school of Celtic art; the Tudor rose design; and "ESC" in interlocking letters on a background of tabby weaving. Connecting each of the collar shields is a Cross of St. George, representing the union of Scotland and England. The entire medallion was fabricated and cast in the *cire perdue* (lost wax) process.

Surrounding the silver medallion is a gold crafted circle which reads "Edinboro University of Pennsylvania." Professor Katzwinkel, now retired, added this piece to the medallion especially for the Inauguration of President Frank G. Pogue in 1997, and it is now a permanent fixture to the medallion representing the school's current status as a University.

## ACADEMIC VESTMENTS

The gown, the cap, and the hood, representing the major components of the academic dress, are a ceremonial inheritance from the medieval universities of the eleventh and twelfth centuries, where dress was the outward sign of privilege and responsibility. The academic dress worn by those participating in today's academic procession symbolizes the level of their academic attainment and the institution they attended.

### GOWN

Although the gown is more frequently black, certain universities have authorized the use of colored gowns. The bachelor's and master's gowns are fashioned from black serge. The yoke for the bachelor's gown is designed to be worn closed and features long, flowing and pointed sleeves. The master's gown is designed to be worn open or closed. Its sleeves are very long with square ends, and the front part has an arc cut away. The arms protrude through a slit at the elbow. The gown for the doctor's degree is made of wool, serge, or silk with an open front faced with wide velvet panels. The sleeves are loose and bell-shaped with three

bars of velvet in black or the color of the discipline in which the doctorate was obtained.

### HOOD

The most outstanding feature of the academic dress is the hood. It is usually worn only for the master's and the doctor's degrees. The doctor's hood is longer than the master's hood and has distinguished panels. The college or the university granting the degree is indicated by the color of the hood lining. The velvet trim of the hood indicates the field in which the degree was granted.

### CAP

The standard cap is the mortarboard, usually the color of the gown. The tassel is black for the baccalaureate and master's degree and is worn over the left front quarter of the cap. The tassel for the doctor's mortarboard is of gold thread. Undergraduates wear the tassel on the right side of the cap until the moment the degree is conferred by the president.

## PRESIDENT FRANK G. POGUE

Frank G. Pogue was appointed the 15th president of Edinboro University of Pennsylvania on July 1, 1996.

A sociologist, Dr. Pogue holds a bachelor's degree from Alabama State University, a master's degree from Atlanta University, and a Ph.D. from the University of Pittsburgh.

Prior to his presidency at Edinboro University, Dr. Pogue was the vice chancellor for student affairs and special programs at the State University of New York (SUNY) Central Administration in Albany, serving in that position for 10 years. While vice chancellor, he also served for one year as interim president at the SUNY College at Cobleskill. Prior to his assignment in the SUNY Central Administration, President Pogue was vice president for student affairs, associate vice president for research and educational development, dean of undergraduate studies, and a department chairperson, all at SUNY at Albany.

Dr. Pogue participates in national, regional and statewide leadership groups. He serves as a member of the American Council on Education Commission on Government and Public Affairs which advises the Division of Governmental Relations on the broad range of issues in which congressional and executive branch actions affect colleges and universities. He is a member of the American Association of State Colleges and Universities (AASCU) Task Force on Teacher Education and serves as co-chair of the AASCU Forum on Rural Services. Since 1984, Dr. Pogue has served on the Commission on Higher Education Middle States Association (MSA) of Colleges and Schools and is a former vice chair and member of the Commission's Executive Committee. He currently serves as President for the MSA Board of Trustees and is a member of its Executive Committee. He was appointed chairperson of the MSA Advisory Committee on Institutional Financial Resources, which advised the Commission on the relationship of financial resources to institutional accreditation. Dr. Pogue also serves on the Board of Trustees of The BACCHUS & GAMMA Peer Education Network. He is chairperson of the Pennsylvania State System of Higher Education (SSHE) Commission for the Universities and Commission of Presidents Executive Committee, and he is a member of the Chancellor's Advisory Council. He is a member of the Executive Board of A Community of Agile Partners in Education (CAPE). In October 1996, Dr. Pogue was appointed by Pennsylvania Governor Tom Ridge to the Governor's Commission on Academic Standards.

Locally, Dr. Pogue serves on the boards of directors for the Erie Conference on Community

Development, the United Way of Erie County, the Meadville Area Industrial Commission, and the Greater Erie County Chapter of the American Red Cross, for which he served as the 1997 capital campaign chairman. In addition, he serves as an Honorary Member of the Erie Wolves Club. He also serves as a member of the Civic Coordinating Committee of Erie County and the Board of Corporators for the Hamot Health Foundation, St. Vincent Health System, and the Meadville Medical Center Health Systems, Inc. Dr. Pogue was chairperson of the Commission for the Erie County Millennium initiative, "Together 2000." He served as the local chairperson of the State Employees Combined Appeal (SECA) campaign in 2001 and 2002, on the Erie Mayor's Task Force on Public Safety, and as the honorary chairman of the Erie Day School's Adopt-A-Scholar scholarship program (2001-02 and 2002-03).

Dr. Pogue was honored with the Louis J. Tullio Community Service Award which is administered by the Erie Area Chamber of Commerce. The Greater Erie Community Action Committee (GECAC) honored him with the Paul P. Martin Community Service Award in the year 2000, and in 1999, the Distinguished Service Award for Leadership and Vision was presented to him by the SUNY at Albany Council of Trustees.

Dr. Pogue has shared his experiences and expertise in the Edinboro University classroom setting via guest lecturer presentations. He has also taught the course titled *Special Topics in Sociology* for the Department of Sociology. He continues to enjoy working in the classroom environment.

Since becoming president, Dr. Pogue has created the concept and philosophy of the Edinboro Family, a learner-centered environment where students come first and are an integral part of a caring and supportive campus community.



## GRAND MARSHAL

Leading the academic procession and carrying the ceremonial mace at today's Commencement ceremony is Dr. Jeanne C. Faieta, chairperson of Edinboro University's special education and school psychology department.

Faieta earned a B.S. degree from California University of Pennsylvania in 1977 and an M.Ed. degree from that school in 1978. She received a supervisory certificate in special education from West Virginia University in 1987, and an Ed.D. degree in 1989. The focus of her doctorate is in learning disabilities/educational administration.

She began her teaching career as an early childhood language therapist for the Intermediate Unit #7 in Greensburg, Pa., in 1977. She then served as a learning disabilities teacher for Intermediate Unit #1 in California, Pa., from 1978 to 1986. At West Virginia University she was a clinical instructor in the special education graduate program for a year before joining Davis & Elkins College as an adjunct research instructor in its academic resource and writing center. She returned to West Virginia University in January of 1987 to serve as practicum coordinator of special education. In the fall of 1989 she joined the faculty of Edinboro University as a professor of special education and school psychology, and served as department chairperson from 1993-1996 and 1997 to the present.

Faieta has served on numerous committees and organizations during her career. These include: Literacy Institute of the Center for Excellence in Teaching, Faculty Advisory Group, Pennsylvania Federation of the Council for Exceptional Children, president of the

teacher education division of the Pennsylvania Federation for the Council of Exceptional Children, advisory board member of the Gertrude A. Barber Center and the Erie County chapter of Americans with Disabilities. She has also served as a member of the Pennsylvania Association for Gifted Education, Association for Children with Learning Disabilities, and the American Educational Research Association.

She has participated in many international professional conferences as a presenter including Georgia's Statewide Conference of the Council for Exceptional Children, Toronto's Council for Exceptional Children, the American Educational Research Association in San Francisco, and the National Conference of the Teacher Education Division of the Council for Exceptional Children in Salt Lake City.

Among her publications are "A Comparison of Traditional Whole Language and Direct Instructional Approaches in Teaching Reading to Students with Learning Problems," "Pragmatic Disorders and Behavior Disorders: Do They Overlap?" and "Training Teachers to Supervise Their Peers."



## HONORARY DOCTORATE

Mike S. Zafirovski, president and chief operating officer of Motorola, Inc., has been selected to receive the degree Doctor of Public Service (*Doctor Beneficiorum Publicorum, Honoris Causa*) at today's Commencement ceremony.

He is a 1975 graduate of Edinboro University where he captained both the swim team and the men's soccer team, lettering a total of seven times.

Prior to joining Motorola, Zafirovski spent 24 years at General Electric Company beginning in 1975. After a series of rotational assignments that included coursework within GE and MBA classes at night, he was promoted in 1978 to the GE corporate audit staff, a key training assignment for managerial talent within the company. For the next three and one-half years, he conducted financial and operation reviews at nine of the company businesses in the Americas, Europe and Asia. From 1982 to 1996, he held a series of increasingly more senior positions with GE, including eight years as president and CEO of four businesses. In 1996, Zafirovski was promoted to president of GE Lighting for Europe, Middle East and Africa. After three years, he was promoted to president of GE Lighting, one of GE's 10 businesses. He reported to Jack Welch, GE's then-chairman and CEO.

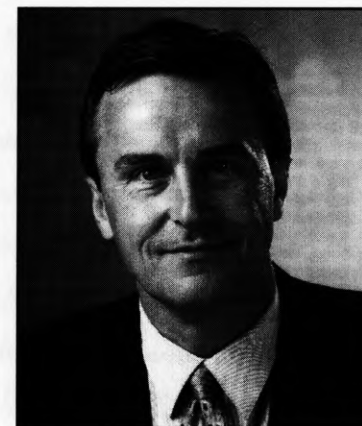
Zafirovski joined Motorola in June 2002 to oversee the company's wireless handset businesses, including cellular phones, related software and consumer two-way radios. With 2001 sales over \$10 billion and 18,000 employees, PCS (Personal Communications Sector) is Motorola's largest single business segment. Under his leadership, Motorola's

handset business gained market share, returned to profitability and introduced new products as well as a new marketing campaign.

Zafirovski was promoted to Motorola president and chief operating officer on July 25, 2002.

Zafirovski holds a bachelor of science degree in mathematics from Edinboro. His sister, Blaga, graduated from Edinboro in 1982 with a degree in social work. Edinboro University honored Zafirovski at the 2000 Frank G. Pogue Honors Scholarship Luncheon for his help in obtaining GE's support of the University's Latino Leadership program. He was presented with the University's first Alumni Award of Excellence.

A native of Macedonia, he lives in Lake Forest, Illinois, with his wife Robin and three sons, Matt, Kirk and Todd. He serves on the board of directors of Motorola, United Way of Lake County, and Children's Memorial Hospital in Chicago.



## UNIVERSITY FACULTY MARSHALS

*Max Azicri*, Political Science and Criminal Justice Department  
*Robert Cogan*, Philosophy Department  
*James Comella*, Mathematics and Computer Science Department  
*Salene Cowher*, Professional Studies Department  
*Diane Crandall*, Art Department  
*Raymond Dengel*, Baron-Forness Library  
*James Dunn*, Business Administration and Economics Department  
*Charles Edwards*, Psychology Department  
*Edward Erdos*, Health and Physical Education Department  
*Jeanne Faieta*, Special Education and School Psychology  
*Margot Koczan*, Foreign Languages Department  
*Sally Lanz*, Biology and Health Services Department  
*Charles Marr*, English and Theatre Arts Department  
*Peter Mathews*, Physics and Technology Department  
*Rhonda Matthews*, Sociology Department  
*Robert Matthews*, Music Department  
*J. Brian McKay*, Chemistry Department  
*Nazir Mughal*, History and Anthropology Department  
*Karl Nordberg*, Secondary Education Department  
*Patricia Nosel*, Nursing Department  
*Ronald Reinig*, Social Work Department  
*Roy Shinn*, Speech and Communication Studies Department  
*Rosemary Treloar*, Elementary Education Department  
*Brian Zimmerman*, Geosciences Department

## HONORARY DOCTORATE RECIPIENTS

*Charles R. Webber*, May 1981  
*Louis J. Tullio*, May 1983  
*Milton Eisenhower*, May 1985  
*Dr. Gertrude Barber*, May 1988  
*Mary Porreco*, May 1988  
*Sr. M. Lawrence Antoun, SSJ*, May 1989  
*Joseph DiMaggio Jr*, May 1989  
*G. Andrew Fleming*, May 1990  
*Walter Hendl*, May 1990  
*I. King Jordan*, May 1991  
*Chuck Jones*, December 1991  
*Raymond Shafer*, May 1992  
*Charles Kennedy*, May 1992  
*Mary Beth Kennedy*, May 1992  
*Richard Nygaard*, May 1993  
*Na'im Akbar*, December 1993  
*Mahmoud Haroon*, December 1994  
*Eiji Oue*, May 1995  
*Louis Porreco*, December 1995  
*Thomas Hagen*, May 1996  
*Paul O'Neill*, December 1997  
*Michael Zahorchak*, December 1997  
*Fred Rogers*, May 1998  
*Donald DiPlacido*, December 1998  
*Dr. Yvonne Thornton*, May 1999  
*Dr. James E. Barker*, December 1999  
*Sir George A.O. Alleyne, M.D.*, December 2000  
*Dr. John Hope Franklin*, December 2000  
*The Honorable Joyce A. Savocchio*, December 2001  
*Donald M. Alstadt*, May 2002  
*K. Leroy Irvis*, May 2002



## MASTER'S DEGREES

### GRADUATE STUDIES

Mary M. Bevevino, Ph.D., Dean

### MASTER OF ARTS

- Art** \* Michael A. Prather, B.A., Edinboro University of Pennsylvania, 1993
- Communication Studies** Karrie Ann Bowen, B.A., Edinboro University of Pennsylvania, 1997  
\* Jennifer R. Stoddard, B.A., Edinboro University of Pennsylvania, 1995  
Joseph John Varkette, B.A., Ohio University, 1989  
\* Peter Saxe Willis, B.A., Denison University, 1994
- Counseling** Kristen H. Bazylak, B.A., Allegheny College, 1998  
Kimberly Marie Beachly, B.S., Grove City College, 1999  
Michelle L. Borsos, B.A., Mercyhurst College, 1999  
\* Zamara Richelle Bryant-Sheehan, B.F.A., University of Oklahoma, 1999  
Kimberly A. Cron, B.S., Edinboro University of Pennsylvania, 2000  
\* Christopher Dean Fox, B.A., Edinboro University of Pennsylvania, 1998  
\* Jonathan J. Gaddis, B.A., Edinboro University of Pennsylvania, 1999  
\* Jason Geary Gruber, B.A., Point Park College, 1999  
Beth Marie Kopycinski, B.A., Edinboro University of Pennsylvania, 1999  
Mark Leon Lindberg, B.S., Pennsylvania State University, 1989  
\* Anthony Lee Masone, B.A., Mount Vernon Nazarene College, 1998  
Audra M. Merryman, B.S., Edinboro University of Pennsylvania, 1992  
Melissa Ann Norton, B.S., Edinboro University of Pennsylvania, 2000  
Joseph La'Mar Page, B.A., Edinboro University of Pennsylvania, 1995  
\* Jaime Lynn Rogowski, B.A., Edinboro University of Pennsylvania, 2000  
Anthony Wayne Ross, B.A., Edinboro University of Pennsylvania, 1992  
Tad Pierre Santos, B.A., Gannon University, 1999  
\* Virginia L. Schwartz, B.A., Pennsylvania State University, 1997  
Shawn Thomas Sledzianowski, B.A., SUNY College at Geneseo, 2000  
Amanda Susan Verleni, B.A., Edinboro University of Pennsylvania, 2000

### Social Sciences

\* Rita Ann Orinko, B.S., Gannon University, 1976

### Speech Language Pathology

\* Kristy E. McKenzie, B.A., Bloomsburg University of Pennsylvania, 2000  
\* Ruth Florence Nicholson, B.A., College of Wooster, 1999  
\* Sheila K. Taylor, B.S., Pennsylvania State University, 2000

### MASTER OF EDUCATION

#### Educational Psychology

Kathleen Elizabeth Blake, B.A., SUNY College at Fredonia, 2001  
Shaunna Marie Chiacchiero, B.A., Cleveland State University, 2000  
Carrie M. Devine, B.A., Gannon University, 2000  
John Paul DiSanza, B.A., Gannon University, 2001  
\* April Christine Feorene, B.S., Mount Union College, 2000  
Marie Comtesse Grande, B.A., Pennsylvania State University, 2001  
\* Luann Michelle Jones, B.A., University of South Carolina, 1998  
Jeffrey Thomas Long, B.A., Edinboro University of Pennsylvania, 1998  
Jill Marie Long, B.S., Ferrum College, 1999  
\* Kathleen A. Mattera, B.S., Edinboro University of Pennsylvania, 1998  
Theresa Marie McDonald, B.S., Coastal Carolina University, 2001  
\* Rebecca Lane Pears, B.A., Edinboro University of Pennsylvania, 1999  
Mark Thomas Rockwell, B.S., East Stroudsburg University of Pennsylvania, 2001  
Cynthia R. Sharrer, B.A., Mercyhurst College, 2001  
LuAnn Marie Short, B.A., Mercyhurst College, 2000  
Guang Yu Tan, B.A., Sichuan University, 1998  
Anthony Joseph Tedesco, B.A., Edinboro University of Pennsylvania, 2000  
Brent Lea Wolfe, B.A., Indiana University of Pennsylvania, 1985  
\* Jessie Merrit Zablony, B.S., Slippery Rock University of Pennsylvania, 1997

#### Elementary Education

Dana Charles Gilmore, B.A., Otterbein College, 1997  
\* Darleen L. Hovis, B.A., Central Bible College, 1970  
Lauren Elizabeth Hughes, B.S., Edinboro University of Pennsylvania, 1997  
Jennifer Lynn Kaczmarek, B.S., California University of Pennsylvania, 1998  
Tanya L. Keyser, B.S., California University of Pennsylvania, 1998  
\* Lesley Ann King, B.A., McMaster University, 1995  
Donna M. Miller, B.S., Edinboro University of Pennsylvania, 1999  
Mary C. Piper, B.A., Edinboro University of Pennsylvania, 1996

Kathryn Tipton Silvis, B.A., Westminster College, 1995  
Kristie E. Stephan, B.A., Pennsylvania State University, 2000  
Christine Felton Stovall, B.S., Saint Bonaventure University, 1995  
Kathleen S. Wiest, B.S., Gannon University, 1988

### **Middle/Secondary Instruction**

Matthew Richard Fox, B.A., Allegheny College, 1999  
\* Terry L. Gray, B.S., Temple University, 1993  
\* Peter Joseph Natalie, B.S.Ed., Edinboro University of Pennsylvania,  
1971

### **Reading**

\* Cara Ann Adiutori, B.S., Edinboro University of Pennsylvania, 1997  
\* Donna Jean Lee Banks, B.S., Edinboro University of Pennsylvania,  
1999  
Amy C. Bayhorst, B.A., Mercyhurst College, 1992  
Julie Pavluk Campitelli, B.A., John Carroll University, 1999  
\* Bethany Marie Devine, B.S., Clarion University of Pennsylvania, 1997  
Nicole Ann Fornelli, B.S., John Carroll University, 1996  
\* Melissa Ann Foulk, B.S., Edinboro University of Pennsylvania, 1987  
\* Rachelle Lynn Francis, B.S., Edinboro University of Pennsylvania,  
2001  
Alanna Lee Gardner, B.S., Pennsylvania State University, 1988  
Diana Ruth Hudgson, B.S., Edinboro University of Pennsylvania,  
1994  
Laurie A. Kantz, B.S., Edinboro University of Pennsylvania, 1995  
\* Jennifer L. Kerr, B.S., Indiana University of Pennsylvania, 1995  
Daphne A. Kretz, B.S.Ed., Edinboro University of Pennsylvania, 1992  
Deana Lyn Krowicki, B.S., Edinboro University of Pennsylvania, 1994  
Stephanie A. Landon, B.S., Edinboro University of Pennsylvania,  
2001  
Deborah Ann Parulo, B.S.Ed., Slippery Rock University of  
Pennsylvania, 1991  
\* Rebecca Lynn Rossman, B.A., University of Pittsburgh, 1999  
\* Lori Dell Sheridan, B.A., Mercyhurst College, 1992  
\* Diane Marie Szczesny, B.S., Edinboro University of Pennsylvania,  
1982  
Joanne L. Waller, B.S., University of Maryland, 1993  
\* Jennifer Barbara Wiczorek, B.S., Edinboro University of  
Pennsylvania, 1993  
\* Andrea Lynn Wisor, B.S., Edinboro University of Pennsylvania, 2000  
Julie Ann Yount, B.S., Edinboro University of Pennsylvania, 1998  
Carol S. Zamperini, B.S., Indiana University of Pennsylvania, 1972

### **School Administration**

Cliff Eric Beck, B.S., Mercyhurst College, 1992  
\* Joshua Eric Bischof, B.A., Allegheny College, 1998  
\* Kristen Therese Boyd, B.A., Mercyhurst College, 1998

\* Jason Andrew Burgert, B.S., Edinboro University of Pennsylvania,  
1996  
\* Mark D. Dippold, B.S.Ed., Slippery Rock University of Pennsylvania,  
1988  
\* David John Koma, B.S.Ed., Slippery Rock University of  
Pennsylvania, 1995  
Melissa Dawn Morrison, B.A., Mercyhurst College, 1999  
Christopher John Popa, B.A., Edinboro University of Pennsylvania,  
1991  
James Joseph Smith, B.S., Edinboro University of Pennsylvania, 1995  
\* Jarrin B. Sperry, B.S., Edinboro University of Pennsylvania, 1994  
\* Joseph A. Tarasovitch, B.A., Mercyhurst College, 1985

### **Special Education**

Margaret L. Corsale, B.A., Edinboro University of Pennsylvania, 1976  
\* Anna Marie Elliott, B.S., Edinboro University of Pennsylvania, 1991  
\* Dawn Marie Flister, B.S., Edinboro University of Pennsylvania, 2001  
Jerry L. Gill, B.S., Pennsylvania State University, 1991  
Cathy A. Hutchison, B.F.A., Edinboro University of Pennsylvania,  
1976  
\* Amy Lyn Kandel, B.S., Clarion University of Pennsylvania, 1997  
\* Laurie Ann Pastorius, B.S., Edinboro University of Pennsylvania,  
2000  
\* Michelle Louise Ricker, B.A., SUNY College at Fredonia, 1988  
Kristen Elaine Rutkowski, B.S., Edinboro University of Pennsylvania,  
1998

## **MASTER OF FINE ARTS**

### **Fine Arts**

\* Kristi Ann Blank, B.A., University of Delaware, 1990  
Andrew Perry Davis, B.F.A., Winthrop University, 1998

## **MASTER OF SCIENCE**

### **Biology**

John Michael Brumfield, B.S., University of Pittsburgh, 1997; B.S.,  
Edinboro University of Pennsylvania, 2001

\* Students who completed degree requirements during Summer 2002.

The University does not claim the list of degree candidates or honors designations is absolutely accurate. Students are granted degrees only if they meet all academic and financial requirements.

## HONORS

The following degree candidates have earned at least 64 credits as undergraduate students of Edinboro University and have attained the following cumulative averages: *Summa Cum Laude*, 3.80 to 4.00; *Magna Cum Laude*, 3.60 to 3.79; and *Cum Laude*, 3.40 to 3.59.

### SUMMA CUM LAUDE

Judith S. Albaugh	Gregory Elliot Lindquist
Dean Antic	David Dwayne Merritt
Allison Michelle Langett	Caroline M. Murira
Baughman	Carrie A. Owen
Erin Michelle Bourquin	Steven Wayne Panicucci
Alyson Rosamae Coulter	Michelle Marie Panutsos
Eden Sandak Ertle	Teresa Lynne Perry
Abigail Ann Gaines	Carmen E. Quatman
Lori Lee Geelen	Catherine Celeste Quatman
Elaine Carol Petri Gibson	Robin L. Roberts
Jaime Lynn Gould	Patricia Meeker Sachse
Paula V. Griffo	Nikki Lynn Shearer
Lorin Roselle Hosmer	Sarah Evelyn Showalter
Lesley Ann King	Craig M. Smith
Megan M. Korey	Rebecca W. Stansfield
Marissa Lyn Krzeminski	Jessica Lynn Szewczyk
Susan L. Leach	Carolyn Marie Viglione
Liisa Danielle Lepisto	Gretchen Louise Vought
Michelle Marie Lewis	

### MAGNA CUM LAUDE

Kimberly Sue Andry	Sarah Ann Jones
Melissa Blair Applebee	Cheryl Kay Krachkowski
Ewelina Biszczak	Carrie Anne Leonard
Rana Marie Shallenberger	Maia Autumn Longenecker
Boardley	Gregory James Marcello
Alda Jane Brown	Suzanne Margaret Matej
Jane Ellen Burlingame	Colleen Patrice Miller
Brent Asher Catherman	Megan Elizabeth Moon
Amanda Lee Clayboss	Timothy M. Moran
Soya Djigue	Michael R. Nimelli
Kelly Ann Dows	Anna Jean Peterson
Jennifer L. Erskine	Karen Lee Rizzo
Jennifer Lea Franz	Kristy A. Rutter
Elizabeth Mary Fye	Megan Elizabeth Schell
Kristina Lee Gray	Victoria Evelyn Smith
Hattie Lyn Grubke	Jonathan M. Trueblood
Cheryl Elizabeth Hampton	Cheryl Reneé Walker
Mercedes Henning	Rachel Faye Weaver
Lisa Loraine Hurta	Crystal L. Welker
Amy Lynn Hvozdk	Nathanael Grimm Wibberley

## CUM LAUDE

Eric Wayne Armstrong	Kara Marie Keener
JoAnne Baker	Melissa Ryan Kikola
Christopher Anthony	Adam Matthew Kisiel
Bershefsky	Maryann Milne Kunath
Jennifer Lynn Borden	Rikki Le Ann Lee
Drew James Carlin	Pamela A. Manross
Jamie Jo Chapman	Sara Rene Metelsky
Allison Marie Church	Emily Renee Natalie
Jeremy D. Criswell	Gina Lynn Nordside
Tamara Mae Eade	Kurt Robert Nuber
Jason Mark Eberl	Sarah Rose Press
Eric John Eller	Sandra Lee Raffensberger
Stephen Joseph Fairman	Tammy-Jo Rodgers
Jessica Ann Fender	Stacy L. Rosencrans
Katherine A. Flach	Pamela Marie Rush
Jennifer Lynn Garrett	Jeremy Paul Scheffner
Sandi L. George	Peter James Schmitt
Jennifer Brandy Gilligan	Melanie Raye Shroyer
John Gary Hagstrom	Beth Ann Thompkins
Michael W. Harmon	Amy Jo Unger
Cathy Ann Hensler	Sarah Joy VanBoxel
Amy Elizabeth Holder	Melissa Lee Worrell
Karen Louise Huber	Jessica Sue Zeiber
Octavia Bernadine Ice	Andrea Marie Zihar
Sheree Lynn Johnson	

### UNIVERSITY HONORS PROGRAM

**Honors Diploma Award**  
Rana Marie Shallenberger  
Boardley  
Jaime Lynn Gould  
Megan Elizabeth Moon  
Carmen E. Quatman  
Catherine Celeste Quatman  
Jessica Lynn Szewczyk

**General Education Honors  
Award**  
Kristina Lee Gray  
Rachel Faye Weaver

# BACCALAUREATE AND ASSOCIATE DEGREES

## SCHOOL OF LIBERAL ARTS

Terry L. Smith, Ph.D., Dean

### BACHELOR OF ARTS

#### Art History

Sara Elizabeth Deegan  
Sarah Anne Hetzler  
Jennifer Renee McGarvie  
Thomas John Olszewski  
Becky Ann Snook

#### Broadcast Journalism: Radio/TV News

Terrence L. Hicks  
Melinda Susan Poole

#### Criminal Justice

Shawn Mark Bauer  
\* Jesse David Bayle  
Nicholas Roger Blair  
\* Matthew B. Bly  
\* Christopher Robert Buehner  
\* Michael John Camino  
Melissa Marie Cortes  
Neil H. Cridge  
Melanie Ann Czarnecki  
Marco Francis DeChicchis  
Robin Lyn Deeter  
\* Chad V. Findlay  
Johnathan Erik Frisk  
Abigail Ann Gaines – *Summa Cum Laude*  
John F. Gemler  
Edward M. Glance  
David Joseph Greggs  
Cheryl Elizabeth Hampton – *Magna Cum Laude*  
Patrick Leland Howard  
Ka Leung Thomas Hui  
Christopher Ryan Kane  
Edward Alan Kestel  
Brian David King

Selena Therese Lane  
Jenea S. Lindahl  
\* Heather Kristine Lohr  
\* Scott Andrew Luginski  
\* Christopher D. Michael  
Stacy Ann Mikolajczyk  
\* Michael Patrick Miller  
\* Tricia Noel Murphy  
Charisse LaShawn Newton  
\* Kevin D. O'Meara  
\* Mark F. Orlandi  
\* Andrew Leonard Pinsky III  
Christopher Robert Platko  
\* Lisa Marie Presogna  
\* Shannon Jean Rodgers  
Valarie Ann Rumberger  
\* William Lee Saunders  
\* Robert William Schwartz  
\* James Thomas Shaw Jr.  
\* Andrew James Taylor  
\* Ericka Danielle Tillery  
Brian Edward Turpin  
Andrew James Van Volkenburg  
Matthew William VanEmon  
\* Mickey Mantle West Jr.  
\* Mark Bradley Wilcox  
\* Clevon L. Wofford

#### Drama

Jessica Ann Fisher  
Stephen S. Gray  
Heather Ann McFadden  
Colleen Patrice Miller – *Magna Cum Laude*

#### English

\* Michelle M. Bartosek  
\* Damien C. Blakeslee  
Shannon Christine Bray

\* Lisa A. Brown  
\* Joshua Lee Campbell  
Katie Rose Hauptman  
Jeffrey Robert Komara  
Gregory Elliot Lindquist – *Summa Cum Laude*  
Lauren Faith Mailliard  
\* Sara Rene Metelsky – *Cum Laude*  
\* Marc Joseph Phelps  
Lucille Jane Redcay  
Rachel Faye Weaver – *Magna Cum Laude*

#### History

\* Nicole E. Allison  
\* Eric Hugh Bonner  
Jennifer Robin Brandt  
Brent Asher Catherman – *Magna Cum Laude*  
Jamie Jo Chapman – *Cum Laude*  
Michael W. Harmon – *Cum Laude*  
Octavia Bernadine Ice – *Cum Laude*  
\* Jeremy Curtis Ickes  
\* Jason Alan Knight  
Nicole Marian McMahon  
Christopher James Reardon

#### Music

Eric J. Contrael  
Diana Marie Hagan

#### Political Science

Jason Douglas Brinker

#### Print Journalism: News/Editorial

Jennifer Lea Franz – *Magna Cum Laude*

#### Psychology

\* Jeromi Alan Birtikidis  
Steven A. Brugger  
Jane Ellen Burlingame – *Magna Cum Laude*  
\* Abigayle Mint Busse  
Jennifer L. Erskine – *Magna Cum Laude*  
Melissa Kaye Gintert

Jennifer Lynn Gustafson  
Amy Elizabeth Holder – *Cum Laude*  
\* Mark D. Hrivnak  
Lisa Loraine Hurta – *Magna Cum Laude*  
\* Sarah Lynn Juracko  
Kara Marie Keener – *Cum Laude*  
Maryann Milne Kunath – *Cum Laude*  
\* Susan L. Leach – *Summa Cum Laude*  
Michelle Marie Lewis – *Summa Cum Laude*  
Michele Ann Marian  
\* Tara Jo McCloskey  
Elizabeth Amber Miller  
Michelle Marie Panutsos – *Summa Cum Laude*  
Janeen Marie Potoski  
\* Amanda J. Snyder  
Jessica Lynn Szewczyk – *Summa Cum Laude*  
\* Katherine Lynn Thomas  
\* Amanda F. Turk  
\* Kara Lynn Tuznik  
Shelly Reneé Uhlman  
\* Shaun M. Witherow  
\* Jennifer Lynn Wolfe  
Kimberly Anne Wolfe

#### Social Science

\* David James Buona  
Joseph Peter Irons

#### Sociology

Samuel Matthew Claster  
Molly Elizabeth Passinger  
Robin Georgiana Prothro  
\* Frank Boyd Stern

#### Spanish

Megan Elizabeth Moon – *Magna Cum Laude*

#### Speech Communications

\* Angela M. Ambrose  
Devin Terrill Austin  
Benn David Barber  
\* Michelle Curtisse Berasi

- John V. Cardone  
 \* Kristen Lynn Carr  
 Brent Asher Catherman – *Magna Cum Laude*  
 Daniel Lawrence Conahan  
 Jennifer Monsour Constantine  
 \* Jason Clive Cooper  
 Micheal Lamont Dean  
 Tamara Mae Eade – *Cum Laude*  
 \* Leslie Ann Fernichio  
 Elaine Carol Petri Gibson – *Summa Cum Laude*  
 Joshua Francis Gleason  
 Hattie Lyn Grubke — *Magna Cum Laude*  
 Charles Juron Hammond  
 \* Adam Matthew Kisiel – *Cum Laude*  
 \* Amy Lynn Lander  
 \* Ryan Robert Lapinsky  
 \* Robert Thomas Launer  
 Michael Lawrence Leonard  
 Toby Alan Martin  
 Lawrence Mazzerle  
 \* Jill Renee McFadden  
 \* Jessalyn Marie McKeown  
 Carleen Ishma McTavous  
 David Dwayne Merritt – *Summa Cum Laude*  
 Michael D. Miller  
 Timothy M. Moran – *Magna Cum Laude*  
 Steven Wayne Panicucci – *Summa Cum Laude*  
 \* Laura Christine Paxton  
 Dupree Matthew Quearles  
 Sandra Lee Raffensberger – *Cum Laude*  
 \* Douglas Allen Robinson  
 Kristy A. Rutter – *Magna Cum Laude*  
 \* Emily Nicole Shultz  
 Stephenie Diane Stevens  
 Stephanie Rae Tate  
 Maurissa Maeanne Vergari  
 \* Adrienne Marie Vesely  
 Sandra Jeannette Wheeler  
 Jason William Whelpley

### Speech Language Hearing Disorders

- JoAnne Baker – *Cum Laude*  
 \* Kevin Joseph Maier  
 \* Laura M. Toevs

## BACHELOR OF FINE ARTS

### Fine Arts-Applied Media Arts

- Ahmad Nabeel Abul-Ela  
 Braden Algeo  
 Kimberly Sue Andry – *Magna Cum Laude*  
 John Joseph Barilla  
 \* Thomas Joseph Begandy  
 \* Allison Marie Church – *Cum Laude*  
 Jessica Ann Coll  
 John C. Collopy  
 William Jason Coniglio  
 Matthew Thomas Cousineau  
 Kristina D. DiPlacido  
 Kelly Ann Dows – *Magna Cum Laude*  
 \* Jason Mark Eberl – *Cum Laude*  
 Jessica Ann Fender – *Cum Laude*  
 Andrew Michael Fisher  
 Holly M. Fleger  
 Jennifer Lynn Garrett – *Cum Laude*  
 Jennifer Brandy Gilligan – *Cum Laude*  
 Shawn Alan Glitsch  
 Jaime Lynn Gould – *Summa Cum Laude*  
 Marta L. Heberle  
 Sheryl Esther Kingsley  
 Brandon M. Koay  
 Carrie Anne Leonard – *Magna Cum Laude*  
 Nicholas Edward Lewis  
 Thomas Mathew Lott  
 Suzanne Margaret Matej – *Magna Cum Laude*  
 Matthew Randall Merry  
 Christopher M. Metzger  
 David J. Morrison  
 Kian Chai Ng  
 Jeffrey Eric Paris  
 \* Andrea Lynn Porreca  
 James Powell IV  
 \* Joshua K. Price  
 Seth Uriah Rich  
 Peter James Schmitt – *Cum Laude*  
 Amy Laura Smith  
 Josh Allen Solt  
 Megan Marie Thayer  
 Jonathan M. Trueblood – *Magna Cum Laude*  
 Richard John Ulanowicz  
 \* Karen Lynn White

- Nathanael Grimm Wibberley – *Magna Cum Laude*  
 Daniel P. Wolbert  
 Farman Wolper  
 \* Albert G. Wood  
 \* Ah-Young Yoon  
 Andrea Marie Zihar – *Cum Laude*

### Fine Arts-Crafts

- Judith S. Albaugh – *Summa Cum Laude*  
 \* Sarah May Barvenik  
 Meagan E. Brown  
 \* Christopher A. Clawson  
 Amanda Lee Clayboss – *Magna Cum Laude*  
 \* Dustin James Demaske  
 \* Kristy A. Dubinsky  
 Angela Marie Gagnon  
 Thomas Ray Hall  
 Laura Kiersten Hetz  
 Maia Autumn Longenecker – *Magna Cum Laude*  
 Jennifer Lynn Parks  
 \* Gretchen Ann Rothenbach  
 \* Melanie Raye Shroyer – *Cum Laude*  
 \* Randy S. Tumsis  
 Melissa Lee Worrell – *Cum Laude*

## BACHELOR OF SCIENCE

### Industrial/Trades Leadership

- Steven Andrew McLaughlin

### Social Work

- Lasetta Joi Benning  
 Kellie Marie Brown  
 Jon Michael Burdick  
 Tracy Lynn Cafrelli  
 Brian Vincent Chrzanowski  
 Norma L. Jafko  
 Cherie L. Kinem  
 Carrie A. Owen – *Summa Cum Laude*  
 Gregory John Phillips  
 Lauren M. Reese

- Natalie K. Reeves  
 Tammy-Jo Rodgers – *Cum Laude*  
 Devyn LeeAnn Snell  
 \* Matthew J. Stewart  
 \* Amy Jo Unger – *Cum Laude*  
 Lisa A. Vogt

## ASSOCIATE OF ARTS

### Criminal Justice

- William Lidano Adiutori  
 Renee Lynn Brechtel  
 Joshua David Dudas

### Human Services/Social Work

- Erin Elizabeth Pillar  
 Pamela Anne Pinney

### Liberal Studies

- Jennifer Susan Anderson  
 Patricia Bieber  
 Stephanie Danielle Galeno  
 \* Royce E. Godfrey  
 Patrick John Leguard

# SCHOOL OF SCIENCE, MANAGEMENT AND TECHNOLOGY

Eric A. Randall, Ph.D., Dean

## BACHELOR OF ARTS

---

### Biology

Kelly Lynne Lucore  
Marra Maureen McCurdy  
Montanya Tuarone Thomas  
\* Shane Edward Yoest

### Environmental Studies/Geography

Charles Frederick Buhl Jr.  
Lucas Michael Fenlock  
Julie Marie Harasti  
Seth Michael Hinton  
\* Kevin C. McCaslin  
\* Angela M. McWilliams  
Shana Lyn Mullen  
Dallas Duwayne Runser  
Joshua David Skopow

### Geography

George A. Moles III

### Mathematics

\* Karen Louise Huber – *Cum Laude*  
\* Joseph Jacob Kodnovich  
Beth Ann Thompkins – *Cum Laude*  
Carolyn Marie Viglione – *Summa Cum Laude*

### Physics

Caroline M. Murira – *Summa Cum Laude*

## BACHELOR OF SCIENCE

---

### Biology

Drew James Carlin – *Cum Laude*  
Sherri K. Foltz  
Gregory James Marcello – *Magna Cum Laude*  
Carmen E. Quatman – *Summa Cum Laude*

### Business Administration

\* Gregory Eric Anderson  
Dean Antic – *Summa Cum Laude*  
Brian William Barthelmes  
\* Darren Robert Beck  
Gretchen Marie Beers  
Ewelina Biszczak – *Magna Cum Laude*  
Cara Christine Cherrison  
Martin William Covert  
Timothy T. Cron  
Kimberly S. Daniels  
James S. Dickerson  
Amy Leah Douglass  
Eric John Eller – *Cum Laude*  
Matthew Vernon Feleppa  
\* Gary Craig Fulton Jr.  
Elizabeth A. Glecos  
Paula V. Griffo – *Summa Cum Laude*  
Vicki J. Hawthorne  
Mohamed A. Hussein  
Amy Lynn Lesovich  
\* Julie Ann Leuschel  
Pamela A. Manross – *Cum Laude*  
Michele Lee McCoy  
Stephen Andrew Neidich  
Elise Joy Nichols  
\* Marc J. Piccirillo  
Sarah Rose Press – *Cum Laude*  
\* Carole Lynn Price  
Kazi Ishtiaque Rashid  
\* Claudia A. Rech  
Steven Michael Rinn

Robin L. Roberts – *Summa Cum Laude*

\* Toyoko Shinoda  
\* J. Michael Sloan  
Melissa Robyn Sloan  
Victoria Evelyn Smith – *Magna Cum Laude*  
Gregory David Tarbell  
Steven Mark Tryon  
Aaron J. Tucker III  
Julie Lynn Whitco  
\* Tiffany M. Williams  
\* David Paul Ziner

### Chemistry

Mandy Lynn Large

### Computer Science

Saiful Ahsan  
Brandon John Artines  
Christopher Anthony Bershefsky – *Cum Laude*  
\* Casey Edward Christie  
Omer Ege  
Lindsay Theres Eves  
\* Scott Robert Fenn  
\* Karen Louise Huber – *Cum Laude*  
Jason A. Johnson  
\* Craig M. Smith – *Summa Cum Laude*  
\* Rebecca W. Stansfield – *Summa Cum Laude*  
Christopher L. Trowbridge  
\* Jessica Sue Zeiber – *Cum Laude*

### Economics

Soya Djigüe – *Magna Cum Laude*  
\* Raihan Jamil  
\* Malgorzata Magdalena Rzepecka  
Brady A. Sheik

### Environmental Science/Biology

Jennifer Marie Beers  
\* Patrick Michael Kramer  
Gregory James Marcello – *Magna Cum Laude*  
Fatema Nahid

### Environmental Science/Geology

\* Andrew R. Janik

### Geology

\* Leigh Ann Butler  
\* Jeremy Paul Scheffner – *Cum Laude*

### Medical Technology

\* Christopher James Boeh

### Nursing

\* Sarah E. Brady  
Loan K. Duong  
\* Elizabeth Mary Fye – *Magna Cum Laude*  
Lisa Marie Trimble

## BACHELOR OF SCIENCE IN NURSING

---

Jennifer Lynn Borden – *Cum Laude*  
Meredythe M. Burrows  
Tina M. Cole  
Christine H. DeCrease  
Sondra L. Forringer  
Kirstin Cady Gleason  
Jill Marie Hedlund  
Susan Louetta Hoffman  
Kimberly Ann Le  
Gina Lynn Nordside – *Cum Laude*  
Bethany Ann Patterson  
Erica Lynn Pedersen  
Lori Elizabeth Prenatt  
Camille Enrica Radomile  
Joan Elizabeth Stacy  
Ted A. Thompson

**ASSOCIATE OF ENGINEERING  
TECHNOLOGY**

---

**Manufacturing Engineering Technology**

Jonathan Michael Baumgardner  
Joseph M. Bogda III  
Troy Edward Plavsity

**ASSOCIATE OF SCIENCE**

---

**Business Administration**

Carrie Ann Albers  
Tara Ann Briningner  
Julie M. Dell  
Nicole Renee Petruso

**Computer Science**

\* Kenneth Brian Knapp  
\* Frank Alan Mascitti Jr.

**SCHOOL OF EDUCATION**

R. Scott Baldwin, Ph.D., Dean

**BACHELOR OF SCIENCE IN  
ART EDUCATION**

---

Season Marie Allegro  
Tricia Nicole Caskey  
Karen Kristine Eliason  
Eden Sandak Ertle – *Summa Cum Laude*  
Nicole Kathleen Evanick  
Sarah Ann Jones – *Magna Cum Laude*  
Marissa Lyn Krzeminski – *Summa Cum Laude*  
Michelle Marie Panutsos – *Summa Cum Laude*  
Leanna Lynn Pearcy  
Sarah Evelyn Showalter – *Summa Cum Laude*  
Jessica Marie Striker  
Marisa Faith Yeslow

**BACHELOR OF SCIENCE  
IN EDUCATION**

---

**Elementary Education**

Serena Sue Anderson  
Erin Michelle Bourquin – *Summa Cum Laude*  
Kathryn Theresa Braceland  
Lisa Kaye Briggs  
Alda Jane Brown – *Magna Cum Laude*  
Jessica Christine Calvelage  
Carrie Ann Camino  
Alyson Rosamae Coulter – *Summa Cum Laude*  
Jeremy D. Criswell – *Cum Laude*  
Danelle Marie Darcangelo  
\* Martin P. Denslow  
Justin R. Fluegel  
Amanda Jean Gaines  
\* Sandi L. George – *Cum Laude*  
Jessica Leigh Gibbs  
Jennifer Marin Gordon  
Robert John Grygier III  
\* Stacey Lynn Haas  
Mary Cathryn Hannah  
Kiev Michele Hargest

Nicholas H. Hess  
Kelli Kathleen Higgins  
Lorin Roselle Hosmer – *Summa Cum Laude*  
Amy Lynn Hvozdkik – *Magna Cum Laude*  
Brooke Rae Johnson  
Sheree Lynn Johnson – *Cum Laude*  
\* Adam Tucker Kaufman  
Megan M. Korey – *Summa Cum Laude*  
\* Cheryl Kay Krachkowski – *Magna Cum Laude*  
Vera M. Lobdell  
Andrea Michelle Menard  
Megan Elizabeth Moon – *Magna Cum Laude*  
Glamarie L. Myers  
Emily Renee Natalie – *Cum Laude*  
Joseph T. Nolan  
Kurt Robert Nuber – *Cum Laude*  
Erin Lee Owens  
Teresa Lynne Perry – *Summa Cum Laude*  
Rick A. Slade  
Steven Patrick Smith  
John Robert Tice Jr.  
Chad Wayne Wagner  
Crystal L. Welker – *Magna Cum Laude*

**Elementary Education/Early Childhood**

Kelly Lee Barnes  
Beth Marie Cirillo  
Dona Rae Cranden  
Joanne Margaret Curtis  
Maureen Anne Czerwinski  
Robyn Ann Delp  
Crystal Lee Eddy  
Katherine A. Flach – *Cum Laude*  
Leslie S. Gardner  
Katie Laurel George  
Elizabeth Ann Gustavson  
Melissa Ryan Kikola – *Cum Laude*  
Lesley Ann King – *Summa Cum Laude*  
Liisa Danielle Lepisto – *Summa Cum Laude*  
Trisha Marie Liebau  
Kristen Nicole Nehnevajsa

Michael R. Nimelli – *Magna Cum Laude*  
Stacie Marie Pfeiffer  
Megan Elizabeth Schell – *Magna Cum Laude*  
Nikki Lynn Shearer – *Summa Cum Laude*  
Amy Marie VanDamia  
Kristin Therese Youngs

### Elementary Education/Mentally and Physically Handicapped

Shalan Christine Ann Anderson  
Belinda Ann Lewis Beaman  
\* Rana Marie Shallenberger Boardley – *Magna Cum Laude*  
Andrea Lynn Bracey  
Claudia Ann Bunce  
Theresa Ann Conkey  
Michael John DiGangi  
Jessica Marie Friday  
Lori Lee Geelen – *Summa Cum Laude*  
Linda Elizabeth Giuliano  
Kristina Lee Gray – *Magna Cum Laude*  
Jaclyn Marie Homme  
\* Chantell Lynne Little  
Stephanie Ann More  
Malinda Frances Paris  
Anna Jean Peterson – *Magna Cum Laude*  
Erin Lynn Proud  
Karen Lee Rizzo – *Magna Cum Laude*  
Stacy L. Rosencrans – *Cum Laude*  
Laura Ann Ruprecht  
Pamela Marie Rush – *Cum Laude*  
Vicki S. Saska – *Summa Cum Laude*  
Sharon Marie Seman  
Lisa Ann Suroviec  
Melissa Marie Wells

### Health and Physical Education

Julie Marie Long  
Patrick M. McCallion  
Joshua D. Pearce  
Bradley Thomas Wolak

### Mentally/Physically Handicapped

\* Colleen Marie Hoffman  
David Vaughn Holton  
Jeffrey T. Miller  
Jessica Lynn Mineo  
Gretchen Louise Vought – *Summa Cum Laude*

### Secondary Education – Comprehensive English

Mercedes Henning – *Cum Laude*  
Cathy Ann Hensler – *Cum Laude*  
Shannon Renee Kuzio  
Rikki Le Ann Lee – *Cum Laude*  
Kevin Casey O'Connor

### Secondary Education – Earth/Space Science

Eric Wayne Armstrong – *Cum Laude*

### Secondary Education – Mathematics

Melissa Blair Applebee – *Magna Cum Laude*  
John Gary Hagstrom – *Cum Laude*

### Secondary Education – Physics

Stephen Joseph Fairman – *Cum Laude*

### Secondary Education – Social Studies

Daniel Aaron Andrzejczak  
Allison Michelle Langett Baughman – *Summa Cum Laude*  
Richard James Beach  
Jon Carl Beckman  
Justin Michael Bienkowski  
Philip James Bonus  
\* Jeremy Robert Cunningham  
Devin Michael Demaske  
Matthew L. Groves  
Abby Elizabeth Harris  
Michael Allan Stimmell  
Louis A. Strelecki

### BACHELOR OF SCIENCE IN HEALTH AND PHYSICAL EDUCATION

Catherine Celeste Quatman – *Summa Cum Laude*

### ASSOCIATE OF ARTS

#### Human Services/Developmental Disabilities

Michele M. Burke  
Diane Marie Catalfu

### ASSOCIATE OF SCIENCE

#### Pre-School Education

Michele L. Baker  
\* Rebecca Sue Casbohm  
\* Jonelle Melanie Kirberger  
Jolene K. Munson  
Heidi Joy Myer  
\* Brenda L. Simitoski

### BACHELOR OF ARTS IN SPECIALIZED STUDIES

Richard E. Arnold, Ph.D., Associate to the President for Equity and Special Programs

Edie A. Archer  
Sarah Renee Calalesina  
Rhonda R. Champion  
\* Mary Elizabeth Denial  
Heidi Carleen Ecklund  
Anita Faith Joslyn  
Diana Michelle Koether  
\* Linda Jo Lewis  
\* William Robert Ludwig  
Bryan Allen McConnell  
\* Tiffany Rae Miller  
\* Jessica Marie Millimaci  
April E. More  
\* Anthony Michael Raco

Keysha Reese  
Patricia Meeker Sachse  
Brooke Elaine Shaffer  
Ryan John Shapert  
\* Jonna Dawn Sigall  
Meri Joanna Surdoval  
\* Bruce T. Theuret  
Scott Michael Thomson  
Sarah Joy VanBoxel – *Cum Laude*  
Nicole Lee Vlahovic  
Cheryl Reneé Walker  
Carissa Dawn Weibley  
\* Karen Marie Widdowson  
Yimin Wu

\* Students who completed degree requirements during Summer 2002.

The University does not claim the list of degree candidates or honors designations is absolutely accurate. Students are granted degrees only if they meet all academic and financial requirements.



# Alma Mater

Edinboro University of Pennsylvania

Hail to Thee our Alma Mater glo-ri-ous; fresh

wreaths we bring to bind thy brow. Trials have

passed, and Thou hast stood vic-tor-i-ous, ne-ver fair-er, nev-er state-li-

er than now, O Ed-in-bo-ro, Ed-in-bo-ro, ev-er prais-ing

Thee in song. While class speeds class, as swift years pass, to Thee our hearts be-long.

## State System of Higher Education

### Board of Governors State System of Higher Education

Judy G. Hample, *Chancellor*

Charles A. Gomulka, *Chair*  
 Kim E. Lyttle, *Vice Chair*  
 R. Benjamin Wiley, *Vice Chair*  
 Syed R. Ali-Zaidi  
 The Honorable Jeffrey W. Coy  
 Brandon W. Danz  
 Daniel P. Elby  
 David P. Holveck  
 The Honorable Vincent J. Hughes  
 Patricia K. Poprik  
 The Honorable James J. Rhoades  
 David M. Sanko  
 B. Michael Schaul  
 The Honorable Jere W. Schuler  
 The Honorable Mark S. Schweiker  
 John K. Thornburgh  
 Christine J. Toretta  
 Kara L. Wealand  
 The Honorable Charles B. Zogby  
*There is currently one vacancy*

### Council of Trustees

Harry K. Thomas, *Chair*  
 Benedict J. Miceli, *Vice Chair*  
 Harold C. Shields, *Secretary*  
 Clifford E. Allen  
 John R. Evans  
 Jacqueline N. Gichinga  
 John E. Horan  
 C. Richard Johnston  
 Catherine M. Manning, *SSJ*  
 Virginia L. McGarvey  
 R. Benjamin Wiley  
 Judy G. Hample (*ex officio*)

### Commencement Committee

Robert C. Weber, *Provost and Vice President for Academic Affairs, Chair*  
 Janet Bowker, *Director, Alumni Affairs*  
 Gary Grant, *Chair, Department of Music*  
 Judy Kubeja, *Senior Executive Associate to the Provost*  
 Randall McCaslin, *Manager, Distance Education and Learning Technology Academy*  
 Alice Parker, *Coordinator for Degree Audit Systems, Office of Records and Registration*  
 Timothy W. Pilewski, *Coordinator of Records and Registration*  
 Brian Pitzer, *Director of Public Relations*  
 Lorraine Revak, *Facilities Office and General Services Manager*  
 Stefanie C. Russell, *Coordinator of Special Events and Programs*  
 Craig Tiede, *Assistant Director for Resident Programs and Leadership*

*One of the 14 universities in Pennsylvania's State System of Higher Education,  
Edinboro University is committed to affirmative action for all persons in its  
educational programs, activities, and employment practices.*