



COMMENCEMENT

May 6, 2000

**EDINBORO UNIVERSITY
OF PENNSYLVANIA**

COMMENCEMENT CEREMONY

Convocation

Robert C. Weber, Ph.D.

Provost and Vice President for Academic Affairs

Prelude

Symphonic Wind Ensemble

Gary S. Grant, Ph.D., Conductor

Pomp and Circumstance

Edward Elgar

ACADEMIC PROCESSIONAL

Symphonic Wind Ensemble

Star-Spangled Banner

Francis Scott Key

Jane West

Symphonic Wind Ensemble

Invocation

Reverend Dr. John Dietz

First United Presbyterian Church

Edinboro, Pennsylvania

Message from the President

Frank G. Pogue, Ph.D.

President

All That Hath Life and Breath

Rene Clausen

University Singers

Rebecca D'Amico, Soprano

Peter van den Honert, D.M.A., Conductor

Commencement Address

James F. Drane, Ph.D.

Emeritus Professor of Philosophy and Russell B. Roth

Professor of Bioethics

Student Address

Jody R. Himrod

Bachelor of Science in Art Education

Alumni Greetings

Daniel Higham
President, Alumni Association

Presentation of Candidates

Robert C. Weber
Terry L. Smith, Ph.D., *Acting Dean of Graduate Studies and Dean of Liberal Arts*
Eric A. Randall, Ph.D., *Dean of Science, Management and Technologies*
John R. Criswell, Ed.D., *Acting Dean of Education*
Richard E. Arnold, Ph.D., *Dean of Academic Services*

Conferring of Degrees

Frank G. Pogue

Alma Mater

Jane West
Symphonic Wind Ensemble

Benediction

Reverend John Scott
*Grace United Methodist Church
Meadville, Pennsylvania*

Fanfare and Recessional
Edward Elgar

RECESSIONAL
Symphonic Wind Ensemble

The audience is asked to stand during the Processional and Recessional and to join in the singing of the National Anthem and the Alma Mater.

COLORS DISTINCTIVE OF THE DISCIPLINES AND PROFESSIONS

- Apricot Nursing
- Dark Blue Philosophy
- Light Blue Education
- Peacock Blue Public Administration
- Brown Fine Arts
- Citron Social Work
- Copper Economics
- Crimson Journalism
- Drab Business
- Gray Veterinary Science
- Silver Gray Oratory
- Green Medicine
- Olive Green Pharmacy
- Sage Green Physical Education
- Lemon Library Science
- Lilac Dentistry
- Maize Agriculture
- Orange Engineering
- Pink Music
- Salmon Pink Public Health
- Purple Law
- Russet Forestry
- Scarlet Theology
- White Arts, Letters and Humanities
- Golden Yellow Science

HONORS DESIGNATIONS

- Gold Stoles Summa Cum Laude
- White Stoles Magna Cum Laude
- Red Stoles Cum Laude
- Gold Cords University Honors Program Graduate
- Red Cords Departmental Honor Graduate

THE CEREMONIAL MACE

The ceremonial mace, a symbol of presidential authority, is carried at the head of the academic procession by the Grand Marshal, Thomas Stanko. A gift of the Alumni Association, the mace was designed and executed by Professor Henry Katzwinkel and Dr. Seymour Blinderman, former chairman of the Art Department. It was first used at the inauguration of Edinboro State College President Chester T. McNerney, in 1967.

The mace, twenty-seven inches in length, is topped by a sterling silver sphere studded with circular cabochon rubies, secured by bezels. The collar of the mace is inlaid with ebony, alternated with silver relief fleur-de-lis design elements. The cultured pearls mounted in cups encircle the bottom of the collar symbolizing the thirteen state colleges of Pennsylvania. The shaft of the mace is composed of Brazilian rosewood sections, separated by sterling silver rings. The mace is terminated by a cast sterling silver finial; the five cultured pearls represent the existing curricula. The rib-like cone form is terminated by a small silver sphere symbolizing the world.

The metal working processes incorporated in the ceremonial mace include turning, forging, inlaying, stone setting, and lost wax centrifugal casting.

THE PRESIDENTIAL MEDALLION

The first presidential medallion was presented to former President Foster F. Diebold during the May, 1981 commencement ceremonies. Designed and executed by Professor Henry Katzwinkel, the sterling silver medallion consists of a three and one-half inch pectoral pendant featuring on its face the figure of a Gordon Highlander with pipes. To the right of the piper is the Cross of St. Andrew. To the left is the Cross of England. Flanking the figure is the date 1857, the opening year of the University, and garland thistles. In the background are the hills of Scotland, and beneath the piper is an open book, a symbol of knowledge. On the reverse side is the sunken crest of the Commonwealth of Pennsylvania.

The pendant descends from a shield containing a triple-towered castle. The collar of the medallion is comprised of a series of two-inch shields,

alternately bearing three different designs: the meigle, an interlacing knotwork peculiar to the Pictish school of Celtic art; the Tudor rose design; and "ESC" in interlocking letters on a background of tabby weaving. Connecting each of the collar shields is a Cross of St. George, representing the union of Scotland and England. The entire medallion was fabricated and cast in the *cire perdue* (lost wax) process.

Surrounding the silver medallion is a gold crafted circle which reads "Edinboro University of Pennsylvania." Professor Katzwinkel, now retired, added this piece to the medallion especially for the Inauguration of President Frank G. Pogue in 1997, and it is now a permanent fixture to the medallion representing the school's current status as a University.

ACADEMIC VESTMENTS

The gown, the cap, and the hood, representing the major components of the academic dress, are a ceremonial inheritance from the medieval universities of the eleventh and twelfth centuries, where dress was the outward sign of privilege and responsibility. The academic dress worn by those participating in today's academic processional symbolizes the level of their academic attainment and the institution they attended.

GOWN

Although the gown is more frequently black, certain universities have authorized the use of colored gowns. The bachelor's and master's gowns are fashioned from black serge. The yoke for the bachelor's gown is designed to be worn closed and features long, flowing and pointed sleeves. The master's gown is designed to be worn open or closed. Its sleeves are very long with square ends, and the front part has an arc cut away. The arms protrude through a slit at the elbow. The gown for the doctor's degree is made of wool, serge, or silk with an open front faced with wide velvet panels. The sleeves are loose and bell-shaped with three

bars of velvet in black or the color of the discipline in which the doctorate was obtained.

HOOD

The most outstanding feature of the academic dress is the hood. It is usually worn only for the master's and the doctor's degrees. The doctor's hood is longer than the master's hood and has distinguished panels. The college or the university granting the degree is indicated by the color of the hood lining. The velvet trim of the hood indicates the field in which the degree was granted.

CAP

The standard cap is the mortarboard, usually the color of the gown. The tassel is black for the baccalaureate and master's degree and is worn over the left front quarter of the cap. The tassel for the doctor's mortarboard is of gold thread. Undergraduates wear the tassel on the right side of the cap until the moment the degree is conferred by the president.

PRESIDENT FRANK G. POGUE

Frank G. Pogue was appointed the 15th president of Edinboro University of Pennsylvania on July 1, 1996.

A sociologist, Dr. Pogue holds a bachelor's degree from Alabama State University, a master's degree from Atlanta University, and a Ph.D. from the University of Pittsburgh.

Prior to his presidency at Edinboro University, Dr. Pogue was the vice chancellor for student affairs and special programs at the State University of New York (SUNY) Central Administration in Albany, serving in that position for 10 years. While vice chancellor, he also served for one year as interim president at the SUNY College at Cobleskill. Prior to his assignment in the SUNY Central Administration, President Pogue was vice president for student affairs, associate vice president for research and educational development, dean of undergraduate studies, and a department chairperson, all at SUNY Albany.

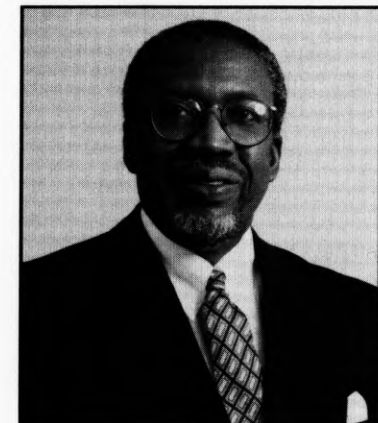
Dr. Pogue participates in national, regional and statewide leadership groups. Since 1984, he has served on the Commission on Higher Education of the Middle States Association of Colleges and Schools, is a former vice chair and member of its Executive Committee, and currently serves as association second vice president for its Board of Trustees and chairs the MSA Task Force on Equity and Diversity. He was appointed chairperson of the Middle States Advisory Committee on Institutional Financial Resources, which advised the Commission on the relationship of financial resources to institutional accreditation. In addition, Dr. Pogue serves as a member of the American Council on Education Commission on Government and Public Affairs which advises the Division of Governmental Relations on the broad range of issues in which congressional and executive branch actions affect colleges and universities. Dr. Pogue serves as a member of the American Association of State Colleges and Universities (AASCU) Task Force on Teacher Education, as vice chair of the AASCU Executive Committee for the Commission on the Rural Agenda, and as a member of the Pennsylvania Association of Colleges and Universities (PACU) Board of Directors.

Locally, Dr. Pogue serves on the boards of directors for the Erie Conference on Community

Development, the United Way of Erie County, the French Creek Council Boy Scouts of America, the Presque Isle Partnership (chairperson of the Leadership Gifts Division of the 1998-1999 Endowment Campaign), and the Greater Erie County Chapter of the American Red Cross, for which he served as their 1997 capital campaign chairman. He also serves as a member of Congressman Phil English's High-Tech Advisory Task Force, the Erie County Fiscal Management Task Force, the City of Erie Y2K Task Force, and the Martin Luther King Center Scholarship Committee. In October 1996, President Pogue was appointed by Pennsylvania Governor Tom Ridge to the Governor's Commission on Academic Standards. He has also been appointed to the Board of Corporators for both the Hamot Health Foundation and the St. Vincent Health Center. Dr. Pogue serves as chairperson of the Commission for the Erie County Millennium initiative, "Together 2000." He was also recently honored with the Distinguished Service Award for Leadership and Vision by the State University of New York at Albany.

Dr. Pogue has shared his experiences and expertise in the Edinboro University classroom setting via guest lecturer presentations. He has also taught the course titled *Special Topics in Sociology* for the Department of Sociology, Anthropology and Social Work. He continues to enjoy working in the classroom environment.

Since becoming president, Dr. Pogue has created the concept and philosophy of the Edinboro Family, a learner-centered environment where students come first and are an integral part of a caring and supportive campus community.



GRAND MARSHAL

Carrying the Ceremonial Mace and leading the academic procession at today's Commencement ceremony is Thomas Stanko, a professor in the English and Theatre Arts Department.

Mr. Stanko joined the Edinboro University faculty (then Edinboro State College) in 1966, following 11 years as a teacher and basketball coach at Cecil and Canon-McMillan high schools in Washington County, Pa.

Mr. Stanko graduated from Clarion State Teachers' College in 1953 with a degree in English and history. Following graduation he served two years with the U. S. military in Korea. He earned a master's degree from the University of Pittsburgh in 1960, and pursued doctoral studies there. As a Frick Scholar, Mr. Stanko became a diplomate of the University of Birmingham, England, for his work in Shakespeare studies. He also completed post-graduate work at the University of Chicago, Gannon University, the Walloon Writing Institute, Bard College, and Columbia University.

At Edinboro, Mr. Stanko was one of the first members of the graduate faculty in English, teaching at both the graduate and undergraduate levels. With several colleagues, he played a key role in developing the department's current writing program and was among the first to incorporate non-traditional and in-service perspectives into department offerings. Mr. Stanko developed the "On Broadway" course, providing students the opportunity to study in New York City. He also developed courses on adolescent literature and the teaching of English and writing, as well as a series of writing and newspaper workshops.

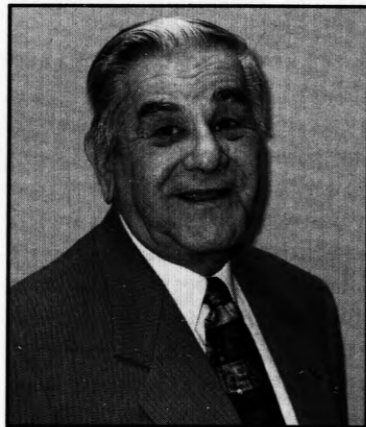
Beyond the classroom, Mr. Stanko served as department chair from 1979-1990. He also served as a member of the University Senate, a director of the Northwest Pennsylvania Council of Teachers of English, and a curriculum evaluator for the National Council of Teachers of English. Mr. Stanko was the faculty advisor to the

Edinboro University student newspaper, *The Spectator*, from 1983-1995. Many Edinboro students who worked with him on the newspaper have gone on to work as professional journalists and writers in a variety of settings.

Mr. Stanko has been the public address announcer for the Fighting Scots basketball teams every season since 1978. His interests have also led to his appointment as Edinboro University's faculty representative to both the National Collegiate Athletic Association and the Pennsylvania State Athletic Conference, roles he has filled since 1988.

Mr. Stanko furthered his interest in education by funding a trio of endowed scholarships. Two of the scholarships reward academically deserving student athletes, specifically a male and a female basketball player. The *On Special Assignment* scholarship, an award granted to an incoming student newspaper editor, began in 1988, with matching funds committed by the University president.

When Mr. Stanko is not at the University he can be found at his residence in Canonsburg, Pa. with his wife, Rena, and his son, Thomas Kevin, a 1987 graduate of Edinboro University with a degree in criminal justice. Stanko's daughter, Rebecca Lynn Mastrangelo, also a 1987 graduate of Edinboro University, practices law in Las Vegas.



COMMENCEMENT ADDRESS

Delivering the address at today's ceremony is James F. Drane, Ph.D., emeritus professor of philosophy and Russell B. Roth Professor of Bioethics at Edinboro University of Pennsylvania.

One of America's foremost experts on medical ethics, Dr. Drane received an A.B. in philosophy from Little Rock College, a B.D. in theology from Gregorian University, a master's degree in romance languages from Middlebury College, and a doctorate in philosophy and ethics from the University of Madrid.

A former priest, he completed post-doctoral studies at Georgetown University and its Medical School, Union Theological Seminary, Yale University, and the Menninger School of Psychiatry where he studied under Karl Menninger.

Dr. Drane has been a visiting scholar at the Kennedy Institute for Bioethics at Georgetown University, the University of Tennessee Medical School, the University of Madrid Research Center, and the University of Pittsburgh Center for Medical Ethics.

He was a member of the teaching faculty at Edinboro University from 1969 until his retirement in 1991, developing 15 new courses in philosophy, ethics and religion, and balancing his classroom teaching with extensive research, writing and speaking on the then-emerging field of bioethics. He was named the University's outstanding faculty member in 1973, and was awarded faculty emeritus status in 1992.

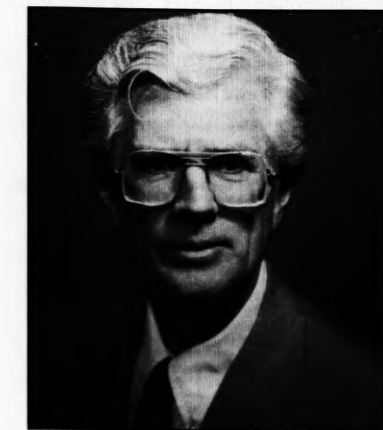
In 1987, Dr. Drane was named the Russell B. Roth Professor of Bioethics at Edinboro University, the institution's first endowed professorship, named after its benefactor, the late Russell B. Roth, M.D., noted Erie urologist and past president of the American Medical Association. The professorship has enhanced bioethics education by combining Dr. Drane's numerous scholarly pursuits with extensive travel throughout the world to provide bioethics education and clinical consultation in developing medical ethics programs. Dr. Drane's continuing research focuses on contemporary issues in biomedical ethics raised by advances in medical technologies, as well as on topical medical issues

such as AIDS, cloning, termination of life-supporting treatment, and medically-assisted suicide.

A prolific writer, Dr. Drane has authored nine books and contributed to ten others. He has presented more than 200 papers to national and international professional groups and published more than 250 articles in newspapers, journals and magazines. His 1989 book, *Becoming a Good Doctor: The Place of Virtue and Character in Medical Ethics*, continues to receive critical, academic and professional acclaim.

Internationally, Dr. Drane has worked with the World Health Organization and the Pan American Health Organization. He spoke and presented papers at the 1989 Nobel Conference on Medical Ethics in Stockholm; the 1990 Regional Consultation on AIDS, Human Rights, Ethics and Law in Santiago, Chile; the Ford Foundation Symposium on the Beginning of Human Life; the International Conference on Medical Ethics in Jerusalem; and, in 1991, the III Pan American Health Organization Teleconference on AIDS, where his lecture was transmitted by satellite from Caracas, Venezuela, to an estimated 400,000 viewers throughout the hemisphere.

Noted worldwide for his research, writing and teaching in the field of bioethics, Dr. Drane continues to bring distinction to Edinboro University through his tireless scholarly and humanitarian efforts.

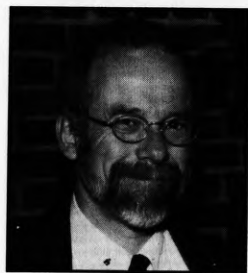


EDUCATOR, ADVISOR AND STAFF MEMBER AWARDS

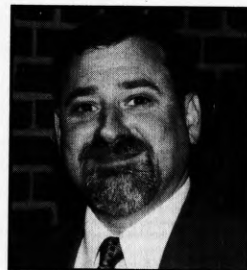
Professor Sherry Reynolds, business administration and economics, is a co-recipient of the 2000 Educator of the Year Award. Since joining the Edinboro Family in 1991, she has taken a special interest in her students, bringing enthusiasm and excitement to her classes. A member of her department's Curriculum Committee and advisor to the National Business Honor Society, she has developed six new courses leading to new concentrations in the business administration major, as well as to its first graduate program. She is regarded by her students as an engaging and challenging professor who has their interests at heart.



Dr. Robert McConnell, director of the office for students with disabilities (OSD), is a co-recipient of the 2000 Educator of the Year Award. A member of the Edinboro Family since 1986, first as assistant OSD director, and since 1993 as director of the nationally-recognized program, his concern for the well-being of students with disabilities transcends his office duties. He often assists them in the classroom, after normal working hours, and during weekends and holidays. Edinboro University, our local and regional communities, and the State System of Higher Education have benefitted from Dr. McConnell's many presentations and consultations on the Americans with Disabilities Act and its requirements.



Mr. Bruce Skolnick, academic support services, is the 2000 Advisor of the Year. Since joining the Edinboro Family in 1990, he has been widely regarded as a knowledgeable, accessible and caring member of the faculty with whom students interact easily and effectively. One student wrote: "You can talk to him as a friend, not just as an advisor or professor." Providing advice to students through his regular "Dear Advisor" column in *The Spectator*, the student newspaper, his dedication has contributed significantly to the University's "Priority #1" efforts to increase student retention.



Ms. Sharon Miller, coordinator of scheduling, is the 2000 Staff Member of the Year. An Edinboro employee since 1973, she has been primarily responsible for the successful implementation over the past year of the student component of the Banner integrated software system. She has worked tirelessly to develop a user-friendly system of registration and scheduling that permits students and faculty maximum use of the system's capabilities. As a result, students now have access to a convenient and dependable on line scheduling service. She is widely regarded as a kind and caring member of the Edinboro Family who is always committed to quality.



UNIVERSITY FACULTY MARSHALS

Ruthanne Atkinson, Elementary Education

Ronald Baker, Mathematics and Computer Science

Elaine Bercik, Library

Robert Cogan, Philosophy

James Dunn, Business Administration and Economics

Richard Forcucci, Speech and Communication Studies

David Giltinan, Physics and Technology

Richard Heasley, Sociology, Anthropology and Social Work

Sally Lanz, Biology and Health Services

Robert Matthews, Music

W. James McHenry, Counseling and Human Development

Homer Mershon, Foreign Languages

Gregory Morrow, Psychology

Nazir Mughal, History

Karl Nordberg, Educational Services

Patricia Nosel, Nursing

Robert Rhodes, Political Science and Criminal Justice

Alfred Riccomini, Special Education and School Psychology

Janet Rogers, Chemistry

Thomas Stanko, English and Theatre Arts

George Vierkorn, Health and Physical Education

Suzanne Winterberger, Art

Brian Zimmerman, Geosciences

RETIREES

The administration and staff of Edinboro University of Pennsylvania would like to take this opportunity to recognize those faculty and staff who are retiring.

Ronald Baker
Mathematics and Computer Science

H. James Caldwell
Police

Mark Carter
Marketing and Development

Shirley J. Cooling
Custodial Supervisor

Richard Freitag
Mathematics and Computer Science

Thomas Hajewski
Foreign Languages

Edward D. Hoganson
Chemistry

Jane Hutchison
Campus Day Care Center

Homer Mershon
Foreign Languages

Jo Anne Michael
Office of the Bursar

Evelyn Radziszewski
Nursing

Richard Reese
Mathematics and Computer Science

Barbara Stolar
Residence Life and Housing

John Urban
Mathematics and Computer Science

George Vierkorn
Health and Physical Education

James D. Watson
Mathematics and Computer Science

HONORARY DOCTORATE RECIPIENTS

Charles R. Webber, May 1981

Louis J. Tullio, May 1983

Milton Eisenhower, May 1985

Gertrude Barber, May 1988

Mary Porreco, May 1988

Sr. M. Lawrence Antoun, SSJ, May 1989

Joseph DiMaggio Jr., May 1989

G. Andrew Fleming, May 1990

Walter Hendl, May 1990

I. King Jordan, May 1991

Chuck Jones, December 1991

Raymond Shafer, May 1992

Charles Kennedy, May 1992

Mary Beth Kennedy, May 1992

Richard Nygaard, May 1993

Na'im Akbar, December 1993

Mahmoud Haroon, December 1994

Eiji Oue, May 1995

Louis Porreco, December 1995

Thomas Hagen, May 1996

Paul O'Neill, December 1997

Michael Zahorchak, December 1997

Fred Rogers, May 1998

Donald DiPlacido, December 1998

Dr. Yvonne Thornton, May 1999

James E. Barker, December 1999

MASTER'S DEGREES

GRADUATE STUDIES

Terry L. Smith, Ph.D., Acting Dean

MASTER OF ARTS

Art

Liza L. Dexter, B.S., Clarion University of Pennsylvania, 1998

Clinical Psychology

Sara J. Crawford, B.A., Ashland University, 1997

Chad Curtis Cummings, B.A., Lock Haven University of Pennsylvania, 1998

John Andrew Etling, B.A., Edinboro University of Pennsylvania, 1993

Lisa Marie Fritz, B.A., University of Dayton, 1998

Heidi A. Gecek, B.A., West Virginia University, 1997

Kiyomi Hashimoto, B.A., Arizona State University, 1997

Patricia Ann Lynch, B.A., Niagara University, 1998

Candice Marie McCartan, B.A., Edinboro University of Pennsylvania, 1997

David Michael Myers, B.S., Penn State University, 1997

Timothy Michael Ostrich, B.A., Lebanon Valley College, 1997

Benjamin L. Riley, B.A., Edinboro University of Pennsylvania, 1998

Tracey Lee Sampson, B.S., Allegheny College, 1996

Stephania Stavridou, B.S., Indiana State University, 1998

Christine Ann Towns, B.A., Edinboro University of Pennsylvania, 1993

Shauna Maurie Trimble, B.A., Indiana University of Pennsylvania, 1997

Communication Studies

Michelle Marie Chrzanowski, B.A., Edinboro University of Pennsylvania, 1998

Laurie Jo Peyronel, B.S.N., Slippery Rock University of Pennsylvania, 1992

Herbert F. Sommers Jr., B.A., University of Toledo, 1987

David August Waples, B.A., Utica College of Syracuse University, 1980

Counseling

Tammy F. Barlow, B.A., Edinboro University of Pennsylvania, 1995

Vicki Lyn Brown, B.A., Clarion University of Pennsylvania, 1996

Lauri P. Enterline, B.A., Edinboro University of Pennsylvania, 1994

Kimberly Ann Garnon, B.A., Indiana University of Pennsylvania, 1990

* Elena C. Hansen, B.A., Nazareth College, 1997

Lisa Ann Jocz, B.S., University of Pittsburgh, 1997
 Danny Jones, B.S., University of Pittsburgh, 1998
 Heidi Marie Otto, B.S., Indiana University of Pennsylvania, 1996
 Timothy G. Sneeringer, B.S., Slippery Rock University of Pennsylvania, 1977
 John G. Still, B.A., Edinboro University of Pennsylvania, 1998
 James H. Traczenski, B.A., Edinboro University of Pennsylvania, 1996

Social Sciences

Walter D. Patterson, B.S., Slippery Rock University of Pennsylvania, 1991

Speech/Language Pathology

Kristine Marguerite Goldynia, B.S., Wayne State University, 1998
 Amy Marie Hock, B.S., Bloomsburg University of Pennsylvania, 1998
 * Carolyn D. Hutzell, B.A., University of Pittsburgh, 1997
 Barbara M. Kaminski, B.A., Pittsburg State University, 1997
 Pamela Anne Klingman, B.A., Edinboro University of Pennsylvania, 1998
 Matthew Stephen Kustera, B.S., Penn State University, 1992
 * Maria G. Licatatiso, B.A., Baldwin-Wallace College, 1998
 * Brad L. Lindner, B.A., Edinboro University of Pennsylvania, 1998
 * Tami A. Lombardi, B.A., University of Dayton, 1997
 Darcy Renee Meehan, B.A., Edinboro University of Pennsylvania, 1995
 * Amy E. O'Donnell, B.A., University of Maryland, 1998
 * Gina Lynn Parola, B.S., SUNY College at Plattsburgh, 1997
 Daria Marie Piper, B.A., Edinboro University of Pennsylvania, 1998
 Janel L. Rice, B.A., Edinboro University of Pennsylvania, 1997
 Dana Marie Rugg, B.A., Edinboro University of Pennsylvania, 1997
 Mary Josephine Skelly, B.A., Edinboro University of Pennsylvania, 1996

MASTER OF EDUCATION

Educational Psychology

David C. Brumbaugh, B.S., Edinboro University of Pennsylvania, 1982
 Gregory Charles DiStefano, B.A., Edinboro University of Pennsylvania, 1998
 Danielle Jeanine Dotson, B.A., SUNY at Buffalo, 1998
 Amy Beth Gustafson, B.A., SUNY College at Geneseo, 1995
 Heather L. Kosziel, B.S., Edinboro University of Pennsylvania, 1993
 Holly Renee Peterson, B.A., Penn State University, 1999
 Amy Ann Pillitteri, B.A., California University of Pennsylvania, 1996

Elementary Education

Julie Michelle Abele, B.S., Gannon University, 1990
 Sally Boone Castleman, B.A., University of Maryland, 1973
 Noelle Fitzpatrick Colpoys, B.A., Siena College, 1986
 Kathleen S. DeWeese, B.S., Westminster College, 1988
 Tera M. Fenix, B.A., Edinboro University of Pennsylvania, 1987
 Andrea Frances Nucerino, B.A., Edinboro University of Pennsylvania, 1996
 Amy L. Place, B.A., Mercyhurst College, 1991

Elementary School Administration

Patrick J. DiPaolo, B.A., Thiel College, 1992
 Michelle Ruth Sceiford, B.S., Penn State University, 1995

Reading

Carol Goldinger Baker, B.S., Edinboro University of Pennsylvania, 1995
 Janet Lynn Laboda, B.S.Ed., Clarion University of Pennsylvania, 1980
 Qing Liang, B.A., Liaoning Teachers College, PRC, 1982
 Denise Inez Nelson, B.S., Edinboro University of Pennsylvania, 1991
 Debora Alison Ploss, B.S.Ed., Edinboro University of Pennsylvania, 1991
 Yvonne Rivera, B.S., Edinboro University of Pennsylvania, 1998

Secondary School Administration

Kenneth A. Berlin, B.A., Edinboro University of Pennsylvania, 1993
 Steven A. Ferringer, B.S., Clarion University of Pennsylvania, 1987
 Martin A. Rimpa, B.S., Edinboro University of Pennsylvania, 1995
 Daniel Arthur Shreve, B.A., Gannon University, 1983

Special Education

* Traci Michelle Bowman, B.A., Edinboro University of Pennsylvania, 1995
 * Joseph A. Dlugos, B.A., Bucknell University, 1998
 * Lisa A. Giannamore, B.S., Slippery Rock University of Pennsylvania, 1997
 Jon Andrew Glass, B.S., University of Pittsburgh
 Michelle Marie Gromacki, B.A., Edinboro University of Pennsylvania, 1997
 Rachel Lynn Jeglinski, B.A., Edinboro University of Pennsylvania, 1997
 Tammie Renee Jones, B.S.Ed., Edinboro University of Pennsylvania, 1997
 Kendra Joan Krumpe, B.F.A., Edinboro University of Pennsylvania, 1996
 Joan Marie Latta, B.S., Edinboro University of Pennsylvania, 1990
 * David E. Mansfield, B.S., Grove City College, 1996

Julie Ann Waha, B.S., Edinboro University of Pennsylvania, 1994
 * Jennifer R. Wiesner, B.S., Kent State University, 1994
 Shelly L. Wilmoth, B.A., Mercyhurst College, 1985

MASTER OF SCIENCE

Biology

Angela Kukol Hebel, B.S., Edinboro University of Pennsylvania, 1995
 Patrick Robert Pontzer, B.S., University of Massachusetts, 1985
 Lisa Marie Reese, B.S., Notre Dame College, 1999
 Ryan G. Rhodes, B.S., Ursinus College, 1997
 Gary William Sackett, B.S., Grove City College, 1997

MASTER OF SCIENCE IN NURSING

Carol Christine Flanders, B.S.N., St. Joseph's College, 1995
 Charlotte Hasbrouck Foresther, B.S.N., Edinboro University of
 Pennsylvania, 1992
 Kristine Ann Komosa, B.S.N., Gannon University, 1993

* Students who will complete degree requirements during Summer 2000.

The University does not claim the list of degree candidates or honors designations is absolutely accurate. Students are granted degrees only if they meet all academic and financial requirements.

HONORS

The following degree candidates have earned at least sixty-four credits as undergraduate students of Edinboro University and have attained the following cumulative averages: Summa Cum Laude, 3.80 to 4.00; Magna Cum Laude, 3.60 to 3.79; and Cum Laude, 3.40 to 3.59.

SUMMA CUM LAUDE

Emily Marie Adams	David A. Mailliard
Joshua Alan Balik	Lori Jane Mason
Traci Lyn Betlan	Padraic David McGrath
John Louis Boetger	Mervi Sinikka Pakaste
Shelley Larayne Caravella	Karen A. Pekelnicky
Melanie M. Christopher	Christine Reneé Peterson
Kathleen A. Copeland	Alton Hickerson Post
Jackie V. Egli	Sonja Sansone
Emily Jill Elliott	Kelly Rachelle Schreckengost
Blake Leonard Ferchalk	Nancy Jean Shorts
David E. Ferster	Dan L. Shumate
Jessica Ann Gardner	Jared M. Skemp
Jaime Lynn Gomolka	Ashley D. Smith
Helene Comtesse Stent Grande	David Oyler Snyder
Thomas Michael Hallberg	Michael Edward Spec
Justyn Renée Headley	Mary C. Szpara
Jason L. Hrabak	Jennifer L. Toner
Deanna Lynn Jodon	Susan Lynne Turk
Jeanna Lynn Johns	Cynthia Ann Valimont
Jason Lawrence Kisielewski	Amanda Gretchen Vargo
Ardis M. Kliber	Karen M. Weiland
Kristy Jo Kreider	Gary L. Williamson
Carrie Joy Lowers	

MAGNA CUM LAUDE

Steven Paul Adams	Jeffrey Vincent Lonnett
William F. Bacu	Shana Krishel Marcus
April Dawn Barrett	Michelle C. Martin
Melissa A. Bensink	Todd Charles McAlpine
Tina R. Bowser	April Jeannine McIntyre
Angela Magdalene Bubash	Kandice Lynn Niemann
Erin Jean Burke	Dennis Mark O'Laughlin
Nicole E. Ceacer	Jaime Lynn Palombo
Tracy Lynn Chrzanowski	Andrew Robert Passinger
Melissa Mae Costantino	Carrie Renee Perry
Joel Francis Dinger	Timothy Robert Raubenstrauch
Brigitte R. Dubots	Tara Kay Retterer
William Joseph Figurski	Rebecca Dawn Rolinson
Jacquelyn Marie Geer	Brittany A. Rowe
William Joseph Gehrlein	Erika R. Rutkowski
Gina M Giordano	Jennifer E. Santell
Sarah J. Glessner	Jeremy Robert Snyder
Stacey Lynn Hallock	Christina Marie Spelic
Lourdes Damasco Harkness	Sarah Louann Stauffer
Jody Rebecca Himrod	Debra J. Stevens
Stacy Ann Knouse	Diane Marie Trickey
Meghan Dawn Kutz	Adam Thomas Watt
Allison C. Lacher	Kathryn M. Westhoff

CUM LAUDE

Michelle Elizabeth Almon
Nathan Scott Aulenbacher
Robert J. Bearfield
Jennifer Eileen Bebko
Jill Elaine Beers
Connie Marie Bello
Deborah L. Bernoski
Aaron David Bienkowski
Kelly Lynn Boosel
Elizabeth LeAnn Butler
Matthew James Causey
Amber Ann Cornelius
Lisa Ann Davis
Shane J. Dewalt
Jessica Hope Diebold
Joel J. Durick
Amanda K. Eimers
Shelly Marie Engel
Richelle Celeste Fernacz
Stefanie Suzan Flack
Ian Shawn Framer
Ryan H. Fye
Kelly Lynn Gartley
Linda S. Gilligan
Rebecca Lea Grygier
Neil Edward Gush
Jeffrey Alan Halliday
Alison L. Haner
Rebekah Suzanna Henn
Michael John Hertzler
Gabriela Hnilková
Rebecca Lynn Holko
Kellie Jo Kasbee
Alla P. Kasparoff

Brenda Lynn Kinder
Renee E. King
Cindy Lynn Krieg
Staci Ann Laskowski
David W. McDonald
Stephen James Moore
Manda Lee Moyer
Patrick Joseph Mulholland Jr.
Colleen P. Murray-Donaldson
Cynthia A. Nowacki
Tressa Ann Oddi
Lynne Marie Ostrowski
Nicholas A. Oto
Jennie Ruth Peters
Natalie Jo Pramble
Wesley V. Price
Melody Lynn Protasio
Nicole Marie Raco
Debra Ann Rice
Stacy Lynn Roman
Thomas Charles Ross
Michael Alan Sawin
Darcie Marie Scott
Andrea C. Sertz
Jessica M. Sestak
Michael Steven Slencak
Jennifer Ann Stewart
Angela F. VanCise
Luke Thomas Walker
Aaron David Ward
Shelly Rynn Webb
Jeff Wade Whitman
Michael F. Woods

Mervi Sinikka Pakaste
Alton Hickerson Post
Sonja Sansone
David Oyler Snyder
Michael Edward Spec
Jennifer L. Toner

Joshua Alan Balik
Melanie M. Christopher
Melissa Mae Costantino
Shelly Marie Engel
Blake Leonard Ferchalk
Lori Jane Mason
Tressa Ann Oddi

UNIVERSITY HONORS PROGRAM

BACCALAUREATE AND ASSOCIATE DEGREES

SCHOOL OF LIBERAL ARTS

Terry L. Smith, Ph.D., Dean

BACHELOR OF ARTS

Anthropology

Teri L. Berlin
Lester J. Breakstone
Joni Ann Peters

Criminal Justice

Jason A. Balsomico
Aaron David Bienkowski — Cum
Ryan Alexander Bogle
Jolene Marie Brassart
Ben W. Carbaugh
Ryan Scott Chapman
Dean Andrew Dickson
Jennifer Marie Ford
Scott William Fosnot
Cassandra Lee Geiling
Keiva Lynnette Gray
Michelle Nicole Guie
Susan Jean Herald
* Nathan A. Hill
Andrew R. Johnson
* Carrie C. Johnson
Stephen M. Joseph
Kellie Jo Kasbee — Cum
Jason Wesley Law
Ahmal J. Martin
Jessica Lyn Martin
Lori Jane Mason — Summa
Robert Merriman
Sarah Marie Northrop
William Morgan Parris
Justin John Porter
Hallie Lynn Potter
Jonathan P. Preteroti
Eric Ramone Quinn
Chad Michael Schmeltz
Richard James Sikora
Stefanie Marie Smith

Christopher John Sterling
* Duane E. Tabak
Diane Marie Trickey — Magna
David A. Weis
Todd Michael Weschler
Steven Eric Wright
Michael David Wroblewski
Robert Edward Zoba

Drama

Jennifeer Irene Anderson
* Kyle Arden Romm

English

Steven Paul Adams — Magna
Jill Elaine Beers — Cum
Lisa Ann Davis — Cum
* Jessica Hope Diebold — Cum
Deborah L. Dumm
Erika Leigh Enigk
Blake Leonard Ferchalk — Summa
Helene Comtesse Stent Grande — Summa
* Stacey Lynn Hallock — Magna
Michael Leonard Hetzler
* Michele M. King
Jason Lawrence Kisielewski — Summa
* Karen Susan Maddix
Sarah Elizabeth Moore
Lynne Marie Ostrowski — Cum
Melody Lynn Protasio — Cum
Rebecca Dawn Rolinson — Magna
Kelly Kristine Speer
Michelle Layden Stoner
Eric D. Strasser
Andra Kay Urchuck
Adam Thomas Watt — Magna

German

Alton Hickerson Post — Summa

History

- * Gregory A. Anysz
Nathan Scott Aulenbacher — Cum
Eric B. Brinn
Kelly Lynn Gartley — Cum
Lance C. Haldeman
Susan Eileen Lewandowski
- * Ashley D. Smith — Summa
Kathleen A. Smith
Tammy L. Williamson

Music

Joelle Ann Davern
Thomas Michael Hallberg — Summa
Albert B. Lerini
Aaron Marshall Miller
Jennie Ruth Peters — Cum

Philosophy

Daniel Glenn Shallenberger
Jeremy Robert Snyder — Magna

Political Science

Ben W. Carbaugh
Kelly Lynn Gartley — Cum
Keiva Lynnette Gray
Craig Arthur Howe
Duane R. Malott
Scott B. Nielsen
Christine Lynn Williams
Tammy L. Williamson

Psychology

Emily Marie Adams — Summa
Robert O. Barney
Robert J. Bearfield — Cum
Mary E. Bemis
Jason E. Durbin
Kirstie Noel Hammer

Lourdes Damasco Harkness — Magna
Justin T. Jeffrey
Jeanna Lynn Johns — Summa

- * Cosina D. Johnson
Michelle Denise Kent
Stephanie Marie Lazarcik
Janet R. Lewis
Heather D. Martin
Shannon Elaine McKenzie
Patrick Joseph Mulholland Jr. — Cum
Sharon Victoria Nace
Jennifer Rebecca Nordin
Kristie Lynn Prentice
Jaime Lynn Rogowski
Alicia Beth Romano
- * Erica L. Shaffer
Jennifer Claudine Shaffer
Angela Anne Shash
Jared M. Skemp — Summa
Jeremy Robert Snyder — Magna
Melissa Lee Taylor
Kelli Lynn Torboli
- * Marcy L. Turbish
Kristin Ann Zeiser

Social Science

Matthew E. Shamer
Mathew Ronald Wise

Sociology

- * Bettijo Chapman
Zackery Melvin Lees
Tammy S. McPherson
Frank Boyd Stern

Spanish

Maricely Reyes-Cruz

Speech Communications

Toby L. Bednez
Traci Lyn Betlan — Summa
Craig R. Biondi
Sara Elaine Bosnjak
Eric Michael Brink

Jack Lewis Bunja
Brian James Collopy
Jennifer R. Cordes
Gregory Augustus Day
Nicholas Alexander Del Greco
Sarah Christine Dixon
Christina Marie Dunmyer
Jackie V. Egli — Summa
Stacey Marie Felix
Jeffrey Alan Halliday — Cum
Nicole A. Heidemann
Rebekah Suzanna Henn — Cum
Michael John Hertzler — Cum
Marin Nicole Hightower

- * Andrea Denise James
Laurie Jean Kurutz
- * David C. Lavery
Rachel Erin Leed
- * Candace L. McKinney
Megan Jo Mitchell
Stephen James Moore — Cum
Manda Lee Moyer — Cum
Bruce L. Mulley Jr.
Carrie Shannon O'Connell
Theresa Rinebold
Brittany A. Rowe — Magna
Traci Noelle Turner
Beth Ann Vargo
Erica Anne Weinzen
Rebecca L. Wilkins
Ethan A. Zaharia

Speech Language Hearing Disorders

Michelle Elizabeth Almon — Cum
Erin Jean Burke — Magna
Richelle Celeste Fernacz — Cum
Sarah J. Glessner — Magna
Nicole Antoinette Harris
Rebecca Lynn Holko — Cum
Ian H. Jones
Shana Krishel Marcus — Magna
Nicole Marie Raco — Cum
Kelly Rachelle Schreckengost — Summa
Sarah Louann Stauffer — Magna
Kristina Lynn Suchevid
Mary C. Szpara — Summa
Kelley A. Vasilko

BACHELOR OF FINE ARTS

Applied Media Arts

- Jason Mark Antolik
Brooke Ann Beacom
- * Devon M. Bender
Carey Rae Black
Michael Patrick Budai
Matthew James Causey — Cum
Charissa Dawn Cobble
Shane J. Dewalt — Cum
Joel J. Durick — Cum
Courtney Ann Duzyk
William Joseph Figurski — Magna
Jason Robert Furda
Lisa Lynn Genco
Jamie Lyn Giambrone
Joseph G. Gorski
Steven K. Gramley
Susan Lynn Grieco
Daniel L. Hopkins
 - * Jenna M. Kohlmeyer
Jaimee Suzanne Lindvay
Christopher Francis Marrero
Kristen Marie Neill
Mervi Sinikka Pakaste — Summa
Angela Kay Peters
 - * Matthew J. Piccarreto
Benjamin Lee Porter
Jennifer M. Price
Lynn Ann Ratkovich
Thomas Charles Ross — Cum
Wendy Jean Schell
 - * Andrea C. Sertz — Cum
Jessica M. Sestak — Cum
John Wilson Simons
Michael Edward Spec — Summa
 - * Emily C. Stone
Matthew Ryan Stroup
Melissa Ann Timko
Luke Thomas Walker — Cum
Danielle Marie Weber
Karen M. Weiland — Summa
Nathan J. Wrhen

Fine Arts-Crafts

Joshua Alan Balik — Summa
Jacob Lawrence Graham
Alison L. Haner — Cum
Jennifer L. Huff
Justin T. Jeffrey
Renee E. King — Cum
Ardis M. Kliber — Summa
Allison C. Lacher — Magna
Darcy E. Merante
Benjamin James Miller
Colleen P. Murray-Donaldson — Cum
Laura Lynn Plunkett
Marcia Ann Shehan
Matthew Arden Stahlman
Jason A. Vicker

BACHELOR OF SCIENCE

Social Work

Kelly Ann Fisher
April Jeannine McIntyre — Magna
Melissa Sue Minehart
Christopher M. Mullen
Kerrie Eileen Reynolds
Cynthia Ann Valimont — Summa
Amanda Gretchen Vargo — Summa
Christy D. Yeiser

ASSOCIATE OF ARTS

Criminal Justice

Gregory J. Phillips

Human Services — Social Work

Sally Ann Childs
Karleigh Dawn Hanisek
Robin A. Kline

Liberal Studies

Adam N. Bixler
Sean Christopher Johnson
Carol A. Liebau
Lori A. Watt
Casey A. Wiedmaier
Nyla Guay Wolfgang

SCHOOL OF SCIENCE, MANAGEMENT AND TECHNOLOGIES

Eric A. Randall, Ph.D., Dean

BACHELOR OF ARTS

Biology

Mashonda Kirtreese Harris
Melissa Jean Roberts

Earth/Space Science

Jason Matthew Bumbara
Steven P. Dodds

Environmental Studies/Geography

Carrie Rose Antel
Steven David Bonislawsky
George Myron Heintz
Tressa Ann Oddi — Cum
Lisa Carol Susann
Jeff Wade Whitman — Cum

Mathematics

Tracy Eileen Mazur

Natural Science and Mathematics

James F. Hahn
Scott Clifford Kelly
Joshua Lee Reinsburrow

Physics

Kimberly Anne Armitage
Shane Allen Fox
Jason L. Hrabak — Summa

BACHELOR OF SCIENCE

Biology

Julia M. Hajewski
Claudia A. Koay
William John Ringler Jr.
Amy Beth Stockner
Aaron David Ward — Cum
Philip R. Wisniewski

Business Administration

William F. Bacu — Magna
April Dawn Barrett — Magna
Deborah L. Bernoski — Cum
Joseph F. Bonetto III
Joel S. Carlson
Alyson Elizabeth Carr
Paul A. Chadman
Kathleen A. Copeland — Summa
Amber Ann Cornelius — Cum
Diana Marie Dobo
Shelly Marie Engel — Cum
Ian Shawn Fremer — Cum
Richard Ronald Gadomski
Edward F. Gerg
Linda S. Gilligan — Cum
Bonnie Marie Godish
James C. Headley
Allen Peter Holcomb
William Thomas Irons
Matthew Paul Jarusinski
David A. Mailliard — Summa
Brian J. Malone
Christine Yvonne Malone
Hind Marcil
Padraic David McGrath — Summa
Melissa Lynn Musico
Robert P. Neely
Kristi Ann Nieminen
Jun Kyu Park
Charles Lynn Ramsey
Anthony Rinella
Ronald Edward Rusnak

Shawn R. Schrag
Jennifer Alicia Shamp
Kyra Leigh Sherba
Matthew Alan Shipe
Dan L. Shumate — Summa
Mary Beth Smith
Amanda M. Sprong
Abid H. Syed
Kathy S. Wakefield
Shawn Andre Walsh
Jennifer A. Weir
Jeffrey Allee Wolfe

Chemistry

William Forest McCalmont
Ian Wood Straffin
Daniel Joseph Volna

Computer Science

Kenneth C. Crabb
David M. Moore
Steven J. Pfister
Daniel V. Rapp
Guy Martin Raught
Charles Jay Richardson

Economics

Jennifer Eileen Bebko — Cum
Mathew Peter Dirlam
Samuel Mark Leone

Environmental Science

Todd E. Fetzer
Rachelle Ann Hayden
Ryan Christopher Leiberher
Shannon Renee Lenker

Geology

* Sabrina Bess Eakin
* Brian A. Meley
Kathryn M. Westhoff — Magna

Medical Technology

* Melissa A. Kidd
* Colleen T. Laxdal

Nursing

Philip Andrew Becker
Connie Marie Bello — Cum
Shannon Dawn Bly
Tina R. Bowser — Magna
Caryn Elizabeth Chiota
Virginia Ellen Trappler Hannah
Jay B. Huff
Alla P. Kasparoff — Cum
Brian Patrick Kissinger
Tracy J. Knox
Carol Ann Kuklinski
Kiersten Marie Kulich
Christina Renee Lauderman
Nicole Marie Malec
Nicole Marie Meredith
Heather Renee Mozdy
Kelly Anne Nicklas
Michelle Kimberley Petruso
Michelle Marie Phillips
Michael Alan Sawin — Cum
Rachel Michelle Scanlon
Karen Lee Sitek
Nicole Leslie Snelbaker
Holly Leigh Stanfield
Debra J. Stevens — Magna
Shelly Rynn Webb — Cum
Katie Marie Williams

Nutrition

Meridith May Michaels
Laura Anne Mihalovic

Physics

Todd Charles McAlpine — Magna

ASSOCIATE OF ENGINEERING TECHNOLOGY

Biomedical Equipment Technology

Ryan Scott Cypher
Bruce Wayne Jones
Daniel E. Watkins

Manufacturing Engineering Technology

Eric Joseph Barton
Nicolas P. Chylinski
Keith D. Dey
Michael David Gaerttner
Michael G. Kosteniuk
Andrew Clem Steinmetz

ASSOCIATE OF SCIENCE

Business Administration

Michelle Ann Felix
Michelle Lee Shaffer
Koji Terasaki

Computer Science

Lawrence C. Fisher

SCHOOL OF EDUCATION

John R. Criswell, Ed.D., Acting Dean

BACHELOR OF SCIENCE IN ART EDUCATION

Aaron L. Brown
Elizabeth LeAnn Butler — Cum
Suzanne Marie Cebula
Carrie Lee Ferguson
Gregory Thomas Frommeyer
Candice Helen Goodisky
Roddy Edward Hartle
Jody Rebecca Himrod — Magna
Joan Antionette Kleiner
Marlene Jennifer Kramer
Jeffrey Vincent Lonnett — Magna
Dennis Mark O'Laughlin — Magna
Tabitha C. Price
Randy Joseph Reed
Angela F. VanCise — Cum

BACHELOR OF SCIENCE IN EDUCATION

Elementary Education

Melissa A. Bensink — Magna
Amy Lynn Burich
Nicole E. Ceacer — Magna
Tracy Lynn Chrzanowski — Magna
Nicole Renee Clark
Corey Lee Craig
* Brigitte R. Dubots — Magna
Cathlene M. Duguay
* Amanda K. Eimers — Cum
Jennifer Lynn Elmer
Amy Joan Fontanella
Tiffany Alane Frey
Ryan H. Fye — Cum
Jessica Ann Gardner — Summa
Jacquelyn Marie Geer — Magna
William Joseph Gehrlein — Magna
* Gina M Giordano — Magna
Jaime Lynn Gomolka — Summa
Martin Roy Greishaw III

Rebecca Lea Grygier — Cum
Neil Edward Gush — Cum
Elizabeth A. Haines
Corey Joseph Haugh
Jessica Marie Hooley
Deanna Lynn Jodon — Summa
Karen A. Johnson
Rebecca Lynn Jones
Brenda Lynn Kinder — Cum
Kristy Jo Kreider — Summa
Melody Christina Leeper
Elizabeth J. Lehmann
Micky Lee Lilley
Raymond Vincent Lonnett
Heather Nicole Mahan
Michelle C. Martin — Magna
David W. McDonald — Cum
Erin Elizabeth McGowan
Christopher Marc McHale
Lori Elizabeth Mellors
Michelle Sue Mihalak
* Dana M. Montini
Kandice Lynn Niemann — Magna
Mark Bradley Ostheimer
Molly Cole Palmatier
* Crystal A. Peck
Karen A. Pikelnicky — Summa
Carrie Renee Perry — Magna
Natalie Jo Prample — Cum
Timothy Robert Raubenstrauch — Magna
Debra Ann Rice — Cum
Chris J. Roehn
Joshua Mark Rohaly
Stacy Lynn Roman — Cum
Genna Pauline Rossi
Erika R. Rutkowski — Magna
Jennifer E. Santell — Magna
Christen Lee Servey
Jennifer Jean Shellhammer
Nancy Jean Shorts — Summa
Vickie Lynn Sickles
Debora Lynn Smith
Megan D. Spiegel
Jennifer Ann Stewart — Cum
Amy J. Thomas

Susan Lynne Turk — Summa
Elizabeth Marie Vale
Rowena V. Wagner
Kristy A. Walker
Joan Denise Waterman
David A. Werling
Robert F. Young

Elementary Education/Mentally Physically Handicapped

Heather Lynn Boehke
Allison Anne Boocock
Kelly Lynn Boosel — Cum
Rebecca E. Byers
Catherine Louise Campbell
Shelley Larayne Caravella — Summa
Heather Ann Cowling
Raina R. Cullinan
Danielle DiMichele
Jaime Diana DePietro
Joel Francis Dinger — Magna
David E. Ferster — Summa
Stefanie Suzan Flack — Cum
Justyn Renée Headley — Summa
Jacqueline A. Holko
Mary Elizabeth Jones
Kellie Marie Kersnick
Stacy Ann Knouse — Magna
Cindy Lynn Krieg — Cum
Carrie Joy Lowers — Summa
Brian James Mahoney
Colleen Maire McCurdy
Stacey Lee McGaughey
Francesca Anne Norgren
Tara Lynn O'Neill
Donald Clark Orlando
Jaime Lynn Palombo — Magna
Wesley V. Price — Cum
Tara Kay Retterer — Magna
Natalie Elizabeth Roeback
Elizabeth A. Ross
Darcie Marie Scott — Cum
Michael Steven Slencak — Cum
Christina Marie Spelic — Magna
Donald Lewis Stitt
* Brittany N. Tague
Gretchen Lynn Temple

Jennifer L. Toner — Summa
Amy Erin VanDeCar

Health and Physical Education

Neil Richard Balint
John Louis Boetger — Summa
* Gabriela Hnilková — Cum
Wayne Edward Lloyd
Nicholas A. Oto — Cum
Todd M. Piazza
Richard L. Simmen
Michael John Vidnansky
Misty Marie Walter
Melissa Ann Young

Mentally/Physically Handicapped

Jaclyn Rae McCready
Curt Michael Springer

Secondary Education — Biology

Meghan Dawn Kutz — Magna

Secondary Education — Comprehensive English

Nicole Marie Bilecky
Melanie M. Christopher — Summa
Kathryn Elizabeth Crowe
Emily Jill Elliott — Summa
Casey J. Gembicki
Donette Joy Hodge
Daniel J. Kliber Jr.
Andrew Robert Passinger — Magna
Christine Renee Peterson — Summa

Secondary Education — German

Sonja Sansone — Summa

Secondary Education — Mathematics

Melissa Mae Costantino — Magna
Beth Ann Schwabenbauer
Robert Joseph Svitilla

Secondary Education – Physics

Jeffrey D. Ketcham
Robert Joseph Svitilla

Secondary Education – Social Studies

* Gregory A. Anysz
Elizabeth Anne Evans
Shawn Patrick Green
Staci Ann Laskowski – Cum
Amy Elizabeth Rae
Kimberly Joy Schmidt
Cheri Lee Snyder
David Oyler Snyder – Summa
Gary L. Williamson – Summa
Michael F. Woods – Cum

Secondary Education – Spanish

Michael Brett Ditzenberger
Eva Elizabeth Jerome

BACHELOR OF ARTS IN SPECIALIZED STUDIES

Richard E. Arnold, Ph.D., Dean

Shannon Lea Alexander
Eric William Barczynski
Erin Lee Bartus
* Kelly J. Bodnar
Reneé Marie Bull
Laura Cathryn Coburn
Denise Rayane Collins-Pauley
Erin M. DiGiacomo
Michael John Douglass
Shawn Trevor Eback
Lisa Ann Fiedler
Craig S. Gustafson

Margaret B. LeSuer
David L. Martin
Mark D. Miller
Jennifer Sarah Noves
* Cynthia A. Nowacki – Cum
Kimberly Lyn Port
Sharri Lynn Rickel
David T. Salser
* Jamaal R. Stewart
James V. Stewart
Tiffany Lynne Vogt
Alyssa Dartley Young

* Students who will complete degree requirements during Summer 2000.

The University does not claim the list of degree candidates or honors designations is absolutely accurate. Students are granted degrees only if they meet all academic and financial requirements.

ASSOCIATE OF ARTS

Human Services – Developmental Disabilities

Kate E. Zeller

ASSOCIATE OF SCIENCE

Pre-School Education

Carrie Lynn Nalesnick
Angela Anne Windows

Alma Mater

Edinboro University of Pennsylvania

Hail to Thee our Alma Mater glo - ri - ous; fresh

wreaths we bring to bind thy brow. Trials have

passed, and Thou hast stood vic - to - ri - ous, ne - ver fair - er, nev - er state - li -

er than now, O Ed - in - bo - ro, Ed - in - bo - ro, ev - er prais - ing

Thee in song, While class speeds class, as swift years pass, to Thee our hearts be - long

State System of Higher Education

**Board of Governors
State System of Higher Education**

James H. McCormick, *Chancellor*

F. Eugene Dixon, Jr., *Chair*
Kim E. Lyttle, *Vice Chair*
R. Benjamin Wiley, *Vice Chair*
Syed R. Ali-Zaidi
Muriel Berman
Zachary I. Cattell, *Student Representative*
Jeffrey W. Coy
Daniel P. Elby
Charles A. Gomulka
Eugene W. Hickok, Jr.
Joy C. Leonard, *Student Representative*
Shelby A. Linton, *Student Representative*
F. Joseph Loeper
Thomas J. Ridge
David M. Sanko
B. Michael Schaul
Jere W. Schuler
Patrick J. Stapleton, Jr.
John K. Thornburgh
Christine J. Toretti

Council of Trustees

Harry K. Thomas, *Chair*
Benedict J. Miceli, *Vice Chair*
Harold C. Shields, *Secretary*
Clifford E. Allen
William F. Bacu, *Student Representative*
Patricia Heasley
Frank J. Jakovac
C. Richard Johnston
Catherine Manning, *SSJ*
R. Benjamin Wiley
James H. McCormick, *Chancellor (ex officio)*

Commencement Committee

Robert C. Weber, *Provost and Vice President for Academic Affairs, Chair*
Carol Bolla, *Coordinator of Special Events and Programs*
Janet Bowker, *Director, Alumni Affairs*
Julia Fedders, *Coordinator of University Center*
Judy Kubeja, *Senior Executive Associate to the Provost*
Patti S. Loomis, *Director of Public Relations and Publications*
Randall McCaslin, *Manager, Distance Education and Multi-Media Services*
Alice Parker, *Administrative Assistant, Office of Records and Registration*
Timothy W. Pilewski, *Coordinator of Records and Registration*
Lorraine Revak, *Facilities Office and General Services Manager*
Peter van den Honert, *Chair, Department of Music*

*A member of the State System of Higher Education,
Edinboro University of Pennsylvania is committed to affirmative action
and equal opportunity for all persons in its educational programs,
activities, and employment practices.*



COMMENCEMENT

December 16, 2000

**EDINBORO UNIVERSITY
OF PENNSYLVANIA**

COMMENCEMENT CEREMONY

Convocation

Robert C. Weber, Ph.D.

Provost and Vice President for Academic Affairs

Prelude

Symphonic Wind Ensemble

Gary S. Grant, Ph.D., *Conductor*

Pomp and Circumstance

Edward Elgar

ACADEMIC PROCESSIONAL

Symphonic Wind Ensemble

Star-Spangled Banner

Francis Scott Key

Scott Zurcher

Symphonic Wind Ensemble

Invocation

Monsignor Henry Schauerman

St. Agatha Roman Catholic Church

Meadville, Pennsylvania

Message from the President

Frank G. Pogue, Ph.D.

President

Hark, I Hear the Harps Eternal

Alice Parker

University Chorale

Peter van den Honert, D.M.A., *Conductor*

**Introduction of
Honorary Doctorate Recipients**

Robert C. Weber

Awarding of Honorary Doctorate

Sir George A.O. Alleyne

Dr. John Hope Franklin

Frank G. Pogue

Student Address

Junia E. Isiminger
Bachelor of Science, Business Administration

Alumni Greetings

Daniel Higham
President, Alumni Association

Presentation of Candidates

Robert C. Weber
Terry L. Smith, Ph.D., *Dean of Liberal Arts and Graduate Studies*
Eric A. Randall, Ph.D., *Dean of Science, Management and Technologies*
R. Scott Baldwin, Ph.D., *Dean of Education*
Richard E. Arnold, Ph.D., *Associate to the President for Equity and Special Programs*

Conferring of Degrees

Frank G. Pogue

Alma Mater

Scott Zurcher
Symphonic Wind Ensemble

Benediction

Reverend Herlies Murphy
*Community Missionary Baptist Church
Erie, Pennsylvania*

Fanfare and Recessional
Edward Elgar

RECESSIONAL
Symphonic Wind Ensemble

The audience is asked to stand during the Processional and Recessional and to join in the singing of the National Anthem and the Alma Mater.

COLORS DISTINCTIVE OF THE DISCIPLINES AND PROFESSIONS

- Apricot Nursing
- Dark Blue Philosophy
- Light Blue Education
- Peacock Blue Public Administration
- Brown Fine Arts
- Citron Social Work
- Copper Economics
- Crimson Journalism
- Drab Business
- Gray Veterinary Science
- Silver Gray Oratory
- Green Medicine
- Olive Green Pharmacy
- Sage Green Physical Education
- Lemon Library Science
- Lilac Dentistry
- Maize Agriculture
- Orange Engineering
- Pink Music
- Salmon Pink Public Health
- Purple Law
- Russet Forestry
- Scarlet Theology
- White Arts, Letters and Humanities
- Golden Yellow Science

HONORS DESIGNATIONS

- Gold Stoles Summa Cum Laude
- White Stoles Magna Cum Laude
- Red Stoles Cum Laude
- Gold Cords University Honors Program Graduate
- Red Cords Departmental Honor Graduate

THE CEREMONIAL MACE

The ceremonial mace, a symbol of presidential authority, is carried at the head of the academic procession by the Grand Marshal, Karl Nordberg. A gift of the Alumni Association, the mace was designed and executed by Professor Henry Katzwinkel and Dr. Seymour Blinderman, former chairman of the Art Department. It was first used at the inauguration of Edinboro State College President Chester T. McNerney, in 1967.

The mace, twenty-seven inches in length, is topped by a sterling silver sphere studded with circular cabochon rubies, secured by bezels. The collar of the mace is inlaid with ebony, alternated with silver relief fleur-de-lis design elements. The cultured pearls mounted in cups encircle the bottom of the collar symbolizing the thirteen state colleges of Pennsylvania. The shaft of the mace is composed of Brazilian rosewood sections, separated by sterling silver rings. The mace is terminated by a cast sterling silver finial; the five cultured pearls represent the existing curricula. The rib-like cone form is terminated by a small silver sphere symbolizing the world.

The metal working processes incorporated in the ceremonial mace include turning, forging, inlaying, stone setting, and lost wax centrifugal casting.

THE PRESIDENTIAL MEDALLION

The first presidential medallion was presented to former President Foster F. Diebold during the May, 1981 commencement ceremonies. Designed and executed by Professor Henry Katzwinkel, the sterling silver medallion consists of a three and one-half inch pectoral pendant featuring on its face the figure of a Gordon Highlander with pipes. To the right of the piper is the Cross of St. Andrew. To the left is the Cross of England. Flanking the figure is the date 1857, the opening year of the University, and garland thistles. In the background are the hills of Scotland, and beneath the piper is an open book, a symbol of knowledge. On the reverse side is the sunken crest of the Commonwealth of Pennsylvania.

The pendant descends from a shield containing a triple-towered castle. The collar of the medallion is comprised of a series of two-inch shields,

alternately bearing three different designs: the meigle, an interlacing knotwork peculiar to the Pictish school of Celtic art; the Tudor rose design; and "ESC" in interlocking letters on a background of tabby weaving. Connecting each of the collar shields is a Cross of St. George, representing the union of Scotland and England. The entire medallion was fabricated and cast in the *cire perdue* (lost wax) process.

Surrounding the silver medallion is a gold crafted circle which reads "Edinboro University of Pennsylvania." Professor Katzwinkel, now retired, added this piece to the medallion especially for the Inauguration of President Frank G. Pogue in 1997, and it is now a permanent fixture to the medallion representing the school's current status as a University.

ACADEMIC VESTMENTS

The gown, the cap, and the hood, representing the major components of the academic dress, are a ceremonial inheritance from the medieval universities of the eleventh and twelfth centuries, where dress was the outward sign of privilege and responsibility. The academic dress worn by those participating in today's academic processional symbolizes the level of their academic attainment and the institution they attended.

GOWN

Although the gown is more frequently black, certain universities have authorized the use of colored gowns. The bachelor's and master's gowns are fashioned from black serge. The yoke for the bachelor's gown is designed to be worn closed and features long, flowing and pointed sleeves. The master's gown is designed to be worn open or closed. Its sleeves are very long with square ends, and the front part has an arc cut away. The arms protrude through a slit at the elbow. The gown for the doctor's degree is made of wool, serge, or silk with an open front faced with wide velvet panels. The sleeves are loose and bell-shaped with three

bars of velvet in black or the color of the discipline in which the doctorate was obtained.

HOOD

The most outstanding feature of the academic dress is the hood. It is usually worn only for the master's and the doctor's degrees. The doctor's hood is longer than the master's hood and has distinguished panels. The college or the university granting the degree is indicated by the color of the hood lining. The velvet trim of the hood indicates the field in which the degree was granted.

CAP

The standard cap is the mortarboard, usually the color of the gown. The tassel is black for the baccalaureate and master's degree and is worn over the left front quarter of the cap. The tassel for the doctor's mortarboard is of gold thread. Undergraduates wear the tassel on the right side of the cap until the moment the degree is conferred by the president.

PRESIDENT FRANK G. POGUE

Frank G. Pogue was appointed the 15th president of Edinboro University of Pennsylvania on July 1, 1996.

A sociologist, Dr. Pogue holds a bachelor's degree from Alabama State University, a master's degree from Atlanta University, and a Ph.D. from the University of Pittsburgh.

Prior to his presidency at Edinboro University, Dr. Pogue was the vice chancellor for student affairs and special programs at the State University of New York (SUNY) Central Administration in Albany, serving in that position for 10 years. While vice chancellor, he also served for one year as interim president at the SUNY College at Cobleskill. Prior to his assignment in the SUNY Central Administration, President Pogue was vice president for student affairs, associate vice president for research and educational development, dean of undergraduate studies, and a department chairperson, all at SUNY Albany.

Dr. Pogue participates in national, regional and statewide leadership groups. He serves as a member of the American Council on Education Commission on Government and Public Affairs which advises the Division of Governmental Relations on the broad range of issues in which congressional and executive branch actions affect colleges and universities. He is a member of the American Association of State Colleges and Universities (AASCU) Task Force on Teacher Education and serves as chair of the AASCU Executive Committee for the Commission on the Rural/Regional Agenda. Since 1984, Dr. Pogue has served on the Commission on Higher Education Middle States Association of Colleges and Schools and is a former vice chair and member of the Commission's Executive Committee. He currently serves as Association Second Vice President for the Middle States Association Board of Trustees and is a member of its Executive Committee. He was appointed chairperson of the Middle States Advisory Committee on Institutional Financial Resources, which advised the Commission on the relationship of financial resources to institutional accreditation. Dr. Pogue is the vice chairperson of the State System of Higher Education (SSHE) Commission for the Universities and Commission of Presidents Executive Committee and is a member of the Executive Board of A Community of Agile Partners in Education (CAPE). In October

1996, Dr. Pogue was appointed by Pennsylvania Governor Tom Ridge to the Governor's Commission on Academic Standards.

Locally, Dr. Pogue serves on the boards of directors for the Erie Conference on Community Development, the United Way of Erie County, the Presque Isle Partnership (chairperson of the Leadership Gifts Division of the 1998-1999 Endowment Campaign), and the Greater Erie County Chapter of the American Red Cross, for which he served as their 1997 capital campaign chairman. He also serves as a member of the Martin Luther King Center Scholarship Committee and the Board of Corporators for both the Hamot Health Foundation and the St. Vincent Health Center. Dr. Pogue is the chairperson of the Commission for the Erie County Millennium initiative, "Together 2000."

Recently, Dr. Pogue was honored with the Paul P. Martin Community Service Award by the Greater Erie Community Action Committee (GECAC). In 1999, the Distinguished Service Award for Leadership and Vision was presented to him by the SUNY at Albany Council of Trustees.

Dr. Pogue has shared his experiences and expertise in the Edinboro University classroom setting via guest lecturer presentations. He has also taught the course titled *Special Topics in Sociology* for the Department of Sociology, Anthropology and Social Work. He continues to enjoy working in the classroom environment.

Since becoming president, Dr. Pogue has created the concept and philosophy of the Edinboro Family, a learner-centered environment where students come first and are an integral part of a caring and supportive campus community.



GRAND MARSHAL

Carrying the Ceremonial Mace and leading the academic procession at today's Commencement ceremony is Karl E. Nordberg, professor in the Department of Educational Services.

Mr. Nordberg joined the Edinboro faculty in 1966, and was appointed full professor in 1998. Prior to coming to Edinboro, he was a secondary English teacher at Titusville High School for two years.

Mr. Nordberg earned a bachelor's degree from Edinboro in secondary English in 1964, and a master's degree in guidance and counseling in 1967. He has completed coursework in instructional media and curriculum at the State University of New York at Buffalo.

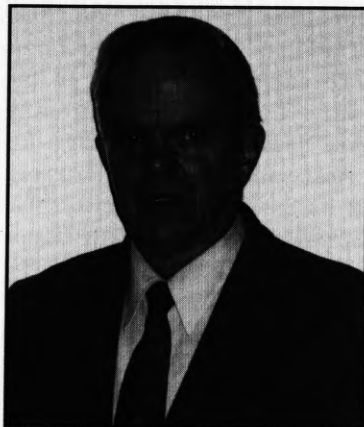
Mr. Nordberg is best known for his contributions to two seminal publications depicting the early history of the Borough of Edinboro. *Edinboro: A Dirt Street Town*, a 160-page narrated pictorial history of Edinboro, was co-published with Dr. John L. Marsh in 1978. A second pictorial narrative, *Edinboro: The Journey's End*, also co-published with Dr. Marsh, appeared in 1990. In the foreword to the second volume, Mr. Nordberg and Dr. Marsh wrote that they believed they had captured in both books the very personification of a late-Victorian agricultural community where the farmer was the premier citizen. Their concern, they wrote, was with describing in words and pictures the life and times of a community that embodied what were once among the most cherished American virtues and values. Both volumes drew heavily on the photographs of Edinboro's legendary photographer, the late Lawrence V. Kupper.

Other publications and presentations on which Mr. Nordberg and Dr. Marsh have collaborated include *Closing the Gap: The Story of a Country Church*, a narrated pictorial history of the Edinboro Presbyterian Church; *The Presbyteria of Lake Erie: A Panorama*, a photographic essay of the churches of the Lake Erie region; and *The Rural Experience in Northwestern Pennsylvania*, a narrated video and slide program funded by the Public Committee for Humanities in Pennsylvania.

Other photographic displays and presentations produced by Mr. Nordberg include "Literacy: New Materials for an Old Battle," a multi-media presentation funded by a grant from Phi Delta Kappa; "Northwestern Pennsylvania Railway", a pictorial series printed from the Kupper Collection of photographic glass plates of the Edinboro-Cambridge Springs trolley; a photographic historical display of General Windsor (circa 1890) of Warren, Pennsylvania, funded by the Pennsylvania Historical and Museum Commission and housed in the Warren County Historical Museum; and a display of historical Edinboro area photographs, also funded by the Pennsylvania Historical and Museum Commission, now on display in the Alumni House.

His professional and academic associations include membership in Phi Delta Kappa as past president and secretary, the Pennsylvania Association of Colleges and Teacher Educators, the Association for Supervision and Curriculum Development, and the Association of Pennsylvania State College and University Faculty.

Mr. Nordberg and his wife, the former Barbara Johnston, who also holds bachelor's and master's degrees from Edinboro, have two sons who are also Edinboro alumni, Kevin, a 1994 graduate, and Keith, a 1996 graduate.



HONORARY DOCTORATE

Sir George A.O. Alleyne, M.D., director of the Pan American Sanitary Bureau, Pan American Health Organization, Regional Office of the World Health Organization, has been selected to receive the degree Doctor of Public Service (*Doctor Beneficiorum Publicorum, Honoris Causa*) at today's Commencement ceremony.

A native of Barbados, Dr. Alleyne is a graduate of the University of the West Indies in Jamaica. He holds the degrees bachelor of medicine and surgery and doctor of medicine from the University of London. He is a Fellow of both the Royal College of Physicians, London, and the American College of Physicians.

Dr. Alleyne became a member of the World Health Organization Nutrition Advisory Panel in 1970, and, two years later, was appointed a Pan American Health Organization consultant on Postgraduate Fellowship Training in South America. In 1974 he became an adviser to the Latin American Centre for the Biological Sciences and chairman of the Pan American Health Organization's Advisory Committee on Medical Research.

Dr. Alleyne served as senior registrar in medicine at the University College Hospital of the West Indies in 1962 and 1963. He was a member of the scientific staff at the Tropical Metabolism Research Unit of the British Medical Research Council from 1963 to 1970, and honorary senior research fellow at the University of the West Indies from 1965 to 1970. In 1970-71 he served as senior lecturer at the University of the West Indies, and was reader in medicine of the University in 1971-72. Dr. Alleyne was then appointed professor of medicine and four years later became chairman of the University's Department of Medicine. In 1977 he was appointed to the prestigious Sir Arthur Sims Commonwealth Travelling Professorship of the Royal College of Surgeons and Physicians of London.

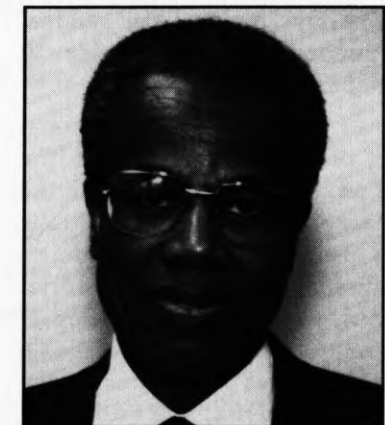
In 1981 Dr. Alleyne was appointed chief of the Unit of Research Promotion and Coordination in the Division of Human Resources and Research at the Pan American Health Organization, with responsibility for the development, implementation and coordination of research policies and activities. In 1983 he was appointed director of the Organization's Area of

Health Programs, where he supervised many of its technical programs.

In 1990 Dr. Alleyne was appointed assistant director of the Pan American Health Organization, with primary responsibility for supervising its 28 field offices and for its technical cooperation with member states. He also supervised the Emergency Preparedness and Disaster Relief Program and the Program on Women, Health and Development.

Dr. Alleyne is the recipient of numerous awards, including the Pelican Prize of the League of Graduates of the University of the West Indies, the Centenary Medal of Jamaica, the Award of Excellence of the Jamaican Scientific Association, the Jamaica Medical Association Prize, the Special Prize of the University of the West Indies for Medical Alumni, and the Pelican Prize of the Washington Chapter of the University of the West Indies Alumni. In 1989 the University of the West Indies conferred upon Dr. Alleyne an honorary Doctor of Science degree, and in 1990 he was made Knight Bachelor by Her Majesty Queen Elizabeth II for his services to medicine.

The Pan American Health Organization is an international agency composed of the states and territories of the Americas. Its secretariat, the Pan American Sanitary Bureau, is also the Regional Office of the World Health Organization for the Americas. In addition to its headquarters in Washington, D.C., PAHO has offices in almost every country in the Americas, as well as several scientific institutions known as Pan American centers.



HONORARY DOCTORATE

Dr. John Hope Franklin, the James B. Duke Professor of History Emeritus at Duke University, has been selected to receive the degree Doctor of Public Service (*Doctor Beneficiorum Publicorum, Honoris Causa*) at today's Commencement ceremony.

Called the 20th century's preeminent black scholar by the *New York Times Magazine*, Dr. Franklin was awarded the Presidential Medal of Freedom in 1995 by President Clinton for an illustrious career as an academician and his unrelenting challenges to racism.

An Oklahoma native, Dr. Franklin is a graduate of Fisk University and earned a master's degree and a doctorate in history from Harvard University. He has taught at a number of institutions, including Fisk University, St. Augustine's College, North Carolina Central University, and Howard University. From 1956 to 1964 he served as chairman of the Department of History at Brooklyn College. In 1964 Dr. Franklin joined the faculty of the University of Chicago, serving as chairman of the Department of History from 1967 to 1970 and John Matthews Manley Distinguished Service Professor from 1969 to 1982, when he became professor emeritus. He has been the recipient of more than 125 honorary degrees.

Dr. Franklin has devoted his entire life to chronicling the history of Americans and, in particular, African Americans and Southerners. The author of more than 12 books on African Americans, the Civil War, Reconstruction and race relations, his text, *From Slavery to Freedom: A History of African Americans*, now in its eighth printing, is widely considered to be the definitive work on the subject and remains the seminal book on African American history more than 50 years after it was published.

Dr. Franklin has served on many national commissions and delegations, including the National Council on the Humanities and the Presidential Advisory Commission on Public Diplomacy. He has also served on the President's Advisory Commission on Ambassadorial Appointments and was a United States delegate to the 21st General Conference of UNESCO. Currently, Dr. Franklin serves as chairman of the advisory board for One America: The President's Initiative on Race and Reconciliation.

Dr. Franklin has been the recipient of many honors. In 1978 *Who's Who in America* selected Dr. Franklin as one of eight Americans who have made significant contributions to society. He also received the Jefferson Medal awarded by the Council for the Advancement and Support of Education and was the first recipient of the Cleanth Brooks Medal of the Fellowship of Southern Writers. In 1990 he received the Encyclopedia Britannica Gold Medal for the Dissemination of Knowledge, and in 1993 he received the Charles Frankel Prize for contributions to the humanities. He also received the first W.E.B. DuBois Award from the Fisk University Alumni Association, the Organization of American Historians' Award for Outstanding Achievement, the Alpha Phi Alpha Award of Merit, and the NAACP's Spingarn Medal.

In addition to serving as historical consultant on Steven Spielberg's Oscar-nominated film, *Amistad*, Dr. Franklin was featured in 1997 in *First Person Singular: John Hope Franklin*, a PBS televised work which chronicles his life experiences. In 1998 he and Archbishop Desmond Tutu were featured in *Race and Reconciliation: A Journey Towards Peace*, a documentary for PBS filmed on the island of Goree in West Africa.

In February of 2001, Duke University will celebrate the opening of the John Hope Franklin Center for Interdisciplinary and International Studies. A newly renovated facility located in Durham, the Center will seek to promote "innovative approaches to research and teaching on race, equality, and other fundamental issues of social life and human understanding."



THE BIBLIOGRAPHIES

Sir George A.O. Alleyne, M.D., selected writings and presentations:

- Protein Energy Malnutrition*, with Hay, Picou, Stanfield & Whitehead (1976) Edward Arnold, London.
- Whither Caribbean Health*, with K.A. Sealy (1992), Publication of the West Indies Commission.
- "Protein malnutrition in children: Advances in the last ten years," with J.C. Waterlow (1971).
- "A history of the Commonwealth Caribbean Medical Research Council, 1956-1976," (1976).
- "The importance of health in development: A Caribbean perspective," *Caribbean Affairs* (1989).
- "Health and tourism in the Caribbean," *PAHO Bulletin* (1990).
- Public Health for All," Sixth International Congress of the World Federation of Public Health Associations, Atlanta, Georgia (1991).
- "The Public Health and Development," Johns Hopkins University School of Hygiene and Public Health (1992).
- "Health in Our Time," Pan American Sanitary Bureau, World Health Organization, Washington, D.C. (1995).
- "The Primacy of Life Beyond All Human Conditions Everywhere on Earth: From Hippocrates to the Good Samaritan," Rome, Italy (1995).
- "Beyond Medical Care: Policies for Health in the Next Century," 9th Congress of the International Association of Health Policy, Montreal, Canada (1996).

Dr. Alleyne has contributed more than 145 articles and abstracts to scholarly medical publications and proceedings, and presented more than 75 lectures and papers to conferences, convocations and conventions in the Caribbean, Latin America, Europe, Canada and the United States.

John Hope Franklin, Ph.D., his writings:

- The Free Negro in North Carolina, 1790-1860* (University of North Carolina Press, 1943, Russell & Russell, 1969).
- From Slavery to Freedom: A History of African Americans* (Alfred A. Knopf, 1947; revised and enlarged, 1957, 1967, 1974, 1980, 1987, and 1994; Vintage paperback edition, Random House, 1969).
- The Militant South, 1800-1860* (Belknap Press of Harvard University Press, 1956; paperback edition, Beacon Press, 1964).
- Reconstruction After the Civil War* (University of Chicago Press, 1961; paperback edition, 1963).
- The Emancipation Proclamation* (Doubleday & Company, 1963; Edinburgh University Press, 1963; Anchor paperback, 1965).
- Land of the Free*, with John W. Caughey and Ernest R. May (Franklin Publications; Benziger Bros., 1965; revised edition, 1970).
- Illustrated History of Black Americans*, with the editors of *Time-Life Books*, Time-Life Inc., 1970 and 1973).
- A Southern Odyssey: Travelers in the Ante-bellum North* (Louisiana State University Press, 1976).
- Racial Equality in America* (University of Chicago Press, 1976).
- George Washington Williams: A Biography* (University of Chicago Press, 1985).
- Race and History: Selected Essays 1938-1988* (Louisiana State University Press, 1990).
- The Color Line: Legacy for the Twenty-First Century* (University of Missouri Press, 1993).

In addition to his books, Dr. Franklin has edited more than a dozen other books, and contributed more than 115 articles to journals, digests, periodicals and other scholarly publications.

UNIVERSITY FACULTY MARSHALS

<i>Ruthanne Atkinson</i> , Elementary Education	<i>Robert Matthews</i> , Music
<i>Max Azicri</i> , Political Science and Criminal Justice	<i>W. James McHenry</i> , Counseling and Human Development
<i>Elaine Bercik</i> , Library	<i>Gregory Morrow</i> , Psychology
<i>Robert Cogan</i> , Philosophy	<i>Karl Nordberg</i> , Educational Services
<i>James Dunn</i> , Business Administration and Economics	<i>Patricia Nosel</i> , Nursing
<i>David Giltinan</i> , Physics and Technology	<i>Alfred Riccomini</i> , Special Education and School Psychology
<i>Richard Heasley</i> , Sociology, Anthropology and Social Work	<i>Janet Rogers</i> , Chemistry
<i>Anne Jedlicka</i> , Mathematics and Computer Science	<i>George Shimpeno</i> , Health and Physical Education
<i>Margot Koczan</i> , Foreign Languages	<i>Roy Shinn</i> , Speech and Communication Studies
<i>Sally Lanz</i> , Biology and Health Services	<i>Suzanne Winterberger</i> , Art
<i>Charles Marr</i> , English and Theatre Arts	<i>Brian Zimmerman</i> , Geosciences

HONORARY DOCTORATE RECIPIENTS

<i>Charles R. Webber</i> , May 1981	<i>Mary Beth Kennedy</i> , May 1992
<i>Louis J. Tullio</i> , May 1983	<i>Richard Nygaard</i> , May 1993
<i>Milton Eisenhower</i> , May 1985	<i>Na'im Akbar</i> , December 1993
<i>Gertrude Barber</i> , May 1988	<i>Mahmoud Haroon</i> , December 1994
<i>Mary Porreco</i> , May 1988	<i>Eiji Oue</i> , May 1995
<i>Sr. M. Lawrence Antoun, SSJ</i> , May 1989	<i>Louis Porreco</i> , December 1995
<i>Joseph DiMaggio Jr</i> , May 1989	<i>Thomas Hagen</i> , May 1996
<i>G. Andrew Fleming</i> , May 1990	<i>Paul O'Neill</i> , December 1997
<i>Walter Hendl</i> , May 1990	<i>Michael Zahorchak</i> , December 1997
<i>I. King Jordan</i> , May 1991	<i>Fred Rogers</i> , May 1998
<i>Chuck Jones</i> , December 1991	<i>Donald DiPlacido</i> , December 1998
<i>Raymond Shafer</i> , May 1992	<i>Dr. Yvonne Thornton</i> , May 1999
<i>Charles Kennedy</i> , May 1992	<i>James E. Barker</i> , December 1999

MASTER'S DEGREES

GRADUATE STUDIES

Terry L. Smith, Ph.D., Dean

MASTER OF ARTS

Communication Studies

- * Michelle Marie Chrzanowski, B.A., Edinboro University of Pennsylvania, 1998
- Anne M. O'Neill-Klemensic, B.A., Mercyhurst College, 1981
- Laurie Jo Peyronel, B.S.N., Slippery Rock University of Pennsylvania, 1992

Counseling

- * Clares Basile, B.S., East Stroudsburg University of Pennsylvania, 1997
- * Stephanie Michelle Beauchat, B.S., Pennsylvania State University, 1996
- Marcia E. Berarducci, B.A., Mercyhurst College, 1995
- Larry J. Bolger, B.S., Penn State, 1996
- Kara Louise Cook, B.A., Edinboro University of Pennsylvania, 1998
- Eliza J. Griffin, B.A., Allegheny College, 1995
- * Elena C. Hansen, B.A., Nazareth College of Rochester, 1997
- Danny Jerome Jones, B.S., University of Pittsburgh, 1978
- Kara Lynn Lowenberg, B.S., Western Illinois University, 1998
- Jennifer E. Malone, B.F.A., Edinboro University of Pennsylvania, 1998
- Jane Y. Mathewson Everett, B.A., Edinboro University of Pennsylvania, 1981
- Claudia Theresa Mokwa, B.S., Gannon University, 1996
- Darrell James Shields, B.S.Ed., Edinboro University of Pennsylvania, 1995
- * Timothy G. Sneeringer, B.S., Slippery Rock University of Pennsylvania, 1977
- * Kathleen May Springirth, B.A., West Chester University of Pennsylvania, 1998
- Karen Margaret Steffen, B.A., Westminster College, 1996
- * Roblyn Marie Stotsky, B.A., Edinboro University of Pennsylvania, 1998

Speech/Language Pathology

- * Carolyn Dianne Hutzell, B.A., University of Pittsburgh, 1977
- * Maria Gabriella Licatatiso, B.A., Baldwin-Wallace College, 1998
- * Tami Ann Lombardi, B.A., University of Dayton, 1997
- * Amy Elizabeth O'Donnell, B.A., University of Maryland-System, 1998

- * Gina Lynn Parola, B.S., SUNY College at Plattsburgh, 1997
- * Janel L. Rice, B.A., Edinboro University of Pennsylvania, 1997
- * Julie K. Swartfager, B.A., Edinboro University of Pennsylvania, 1997
- * Leslie Suzanne Ursu, B.S., Pennsylvania State University, 1998

MASTER OF EDUCATION

Educational Psychology

- Paul Michael Blancino, B.A., Edinboro University of Pennsylvania, 1998
- Fawn Marie Fisher, B.A., Edinboro University of Pennsylvania, 1997
- * Barbara Marie Gies, B.A., Edinboro University of Pennsylvania, 1991
- * Megan Marie Hensler, B.A., Gannon University, 1999
- * Terry Luca Hokaj, B.A., Edinboro University of Pennsylvania, 1996
- Sandra A. Knittel, B.A., Edinboro University of Pennsylvania, 1998
- * Michelle Kristin Radecki, B.A., Allegheny College, 1995
- * Amanda Michelle Shannon, B.A., Allegheny College, 1999
- Thomas Michael Ward, B.S., Clarion University of Pennsylvania, 1999
- Melinda J. Wilson, B.S., Edinboro University of Pennsylvania, 1993
- Priscilla Suzanne Young, B.A., Clarion University of Pennsylvania, 1999

Elementary Education

- Rae L. Abele, B.S., Pennsylvania State University, 1995
- * Sally B. Castleman, B.A., University of Maryland College, 1973
- Stephanie R. Cox, B.A., Slippery Rock University of Pennsylvania, 1996
- * Karin Elizabeth Dragon, B.S., SUNY College at Fredonia, 1993
- Karen Kay Langford, B.S., Edinboro University of Pennsylvania, 1992
- Heather L. Machacek, B.A., Edinboro University of Pennsylvania, 1996
- * Michael James Moore, B.A., Thiel College, 1997
- James Michael Rasavage II, B.S., Edinboro University of Pennsylvania, 1996
- Kelly Julia Rigoni, B.A., Duquesne University, 1998
- David B. Rolph, B.S., Edinboro University of Pennsylvania, 1998
- Erin Perowicz Sabol, B.A., Pennsylvania State University, 1991
- Joanne L. Waller, B.S., University of Maryland College, 1993

Middle/Secondary School Instruction

- Richard K. Harvey, B.S., Grove City College, 1995
- Stacy Ann LeCorchick, B.A., Pennsylvania State University, 1995
- * Leslie Ann Palmer, B.S., Edinboro University of Pennsylvania, 1995

Reading

- * Ann Cleary Bortnick, B.S., Edinboro University of Pennsylvania, 1992
- * Robin Marie Clement, B.A., Pennsylvania State University, 1998
- Renee Coates-Smith, B.A., Niagara University, 1991
- Elise K. Graham, B.S.Ed., Edinboro University of Pennsylvania, 1989
- Jennifer Elaine Kemp, B.S., Edinboro University of Pennsylvania, 1998
- * Virginia Kathleen McAuliffe, B.A., Boston College, 1991
- * Lisa Hope Popovich-Corsale, B.A., Thiel College, 1991
- * Yvonne Rivera, B.S., Edinboro University of Pennsylvania, 1998
- * Jenny Lynn Singer, B.S., Edinboro University of Pennsylvania, 1997

School Administration

- * Barbara Ann Ackerman, B.S., Houghton College, 1989
- * Ernest E. Axton, B.S., Robert Morris College, 1993
- * Jay D. Badams, B.A., Allegheny College, 1990
- * J. Matthew Bendig, B.S., Edinboro University of Pennsylvania, 1995
- Matthew William Bennett, B.S.Ed., Edinboro University of Pennsylvania, 1997
- Lorri Renee Bland, B.S., Mercyhurst College, 1996
- * Teresa Szumigala Callaghan, B.A., Mercyhurst College, 1995
- * Terrence P. Costello, B.A., Gannon University, 1991
- * Meighan Leigh Gast, B.A., Edinboro University of Pennsylvania, 1999
- * Scott Charles Hironimus, B.S., Edinboro University of Pennsylvania, 1994
- * Catherine Jennet Kinderman, B.S., Edinboro University of Pennsylvania, 1999
- * Craig Lussier, B.S.Ed., Edinboro University of Pennsylvania, 1993
- * Joseph John Orlando III, B.S., Gannon University, 1994
- * Marcie Jo Presta, B.A., Mercyhurst College, 1996
- Timothy Charles Sabol, B.A., Mercyhurst College, 1992
- Pamela Jane Tonty, B.S., University of Dayton, 1991
- * Carol Hattie Troop, B.S., Villa Maria College, 1989

Special Education

- Kevin Mitchell Abbott, B.A., SUNY College at Fredonia, 1987
- * Edward Lee Beck, B.S., Mansfield University of Pennsylvania, 1976
- Jill Ninette Burkhart, B.S., Slippery Rock University of Pennsylvania, 1993
- Marissa Lynn Colletti, B.S., SUNY College at Fredonia, 1999
- * Joseph Allen Dlugos, B.A., Bucknell University, 1998
- * Nicole C. Fisher, B.A., Edinboro University of Pennsylvania, 1998
- * Jennifer Marie Fuchs, B.S., Edinboro University of Pennsylvania, 1996
- * Lisa Ann Giannamore, B.S., Slippery Rock University of Pennsylvania, 1997
- * Jon Andrew Glass, B.S., University of Pittsburgh, 1994

- * Lisa Ann Ketterer, B.A., Edinboro University of Pennsylvania, 1995
- * David Edson Mansfield, B.S., Grove City College, 1996
- * Nicole M. Marino, B.S., Slippery Rock University of Pennsylvania, 1994
- Susan R. Mook, B.S., Wright State University, 1992
- Heather Joleen Peterson, B.A., Edinboro University of Pennsylvania, 1996
- * Jennifer Rebecca Wiesner, B.S.Ed., Kent State University, 1994
- * Gina Marie Zanghi, B.S., Edinboro University of Pennsylvania, 1998

MASTER OF FINE ARTS

Fine Arts

- Margaret Mary Murrell Brace, B.A., Mercyhurst College, 1971
- Robert Andrew Jones, B.F.A., Winthrop University, 1996
- * Y. Kanazawa, B.F.A., Kutztown University of Pennsylvania, 1998
- * Richard James Nickel, B.S., SUNY College at Buffalo, 1996

MASTER OF SCIENCE

Biology

- Marc Sashenka Kirchner, B.S., West Virginia University, 1994
- Thomas John Lawrie, B.A., Gannon University, 1972
- Gregory A. Lehman, B.S., Pennsylvania State University, 1980
- * Lisa Ann Mangel, B.S., Pittsburg State University, 1992
- Gary William Sackett, B.S., Grove City College, 1997
- * Jayme R. Taylor, B.S., Gannon University, 1993

MASTER OF SCIENCE IN NURSING

- Dan Edward Briggs, B.S.N., Edinboro University of Pennsylvania, 1993
- Amy E. Pagano, B.S.N., Kent State University, 1982
- Judith Ann Urey, B.S.N., Edinboro University of Pennsylvania, 1993
- Barbara Lynn Waples, B.S.N., Gannon University, 1991

* Students who completed degree requirements during Summer 2000.

The University does not claim the list of degree candidates or honors designations is absolutely accurate. Students are granted degrees only if they meet all academic and financial requirements.

HONORS

The following degree candidates have earned at least sixty-four credits as undergraduate students of Edinboro University and have attained the following cumulative averages: Summa Cum Laude, 3.80 to 4.00; Magna Cum Laude, 3.60 to 3.79; and Cum Laude, 3.40 to 3.59.

SUMMA CUM LAUDE

- | | |
|--------------------------|--------------------------|
| Tanya Ursula Bertig | Kathleen Anne Rees |
| Karen Marie Borland | Kerrie Jean Rynd |
| Jeanne Patricia Campbell | Zachary James Schierberl |
| Jill C. DeRosa | Lee Lucian Shadeck |
| Jodi Lynn Gee | Ashley Daye Smith |
| Gina Marie Giordano | Matthew Richard Stevens |
| Amy Melissa Glass | Christina Lynn Turske |
| Rhys Lloyd Holland | Laura Beth Wade |
| Robert C. Mawhinney II | Amy Melissa Wiltsie |
| Deborah J. Miller | Lori Ann Wozniak |
| Michelle Lynn Polochak | Nichole Rae Zeigler |
| Jennifer Lee Quadri | |

MAGNA CUM LAUDE

- | | |
|---------------------------|-------------------------|
| Elizabeth Jean Book | Erika Lynn Johnson |
| Kristy Lynn Boyle | Melissa R. Johnson |
| Curtis James Bradshaw | John A. Kiser |
| Tony Francis Burfield | Blair Stephen Lawrence |
| Stephanie Elaine Clapp | James Neil Mack |
| Michelle Rose Costantino | Tammy Lee Mao |
| Dana Marie Danzuso | Stephen Joseph Marietti |
| Elaine Dombrowski | Amy J. Morganti |
| Gretchen Dale Dorman | Jennifer Suzanne Olson |
| Marc T. Fox | Holly Ann Piazza |
| Ronald John Freebourn | Dana Colette Polakowski |
| Patricia J. Gallagher | Erika Rose Rutkowski |
| Adrienne Margaret Grafton | Ericjon Thomas |
| Stacey Lynn Hallock | Michelle Lynn Tota |
| Gemma Rose Harrison | Lori M. Turano |
| Elizabeth A. Hunt | Heather Marie Waite |
| Junia Elizabeth Isiminger | Tiffany Joy Young |

CUM LAUDE

Lance Alan Baker
Rachel Ann Baker
Elizabeth M. Ball
Erin Nicole Beardsley
Shannon Marie Bedits
Angela Broskey
Amber Arlien Clever
Robert Calvin Crawford
Justin M. Crousey
Dawn Marie Dougherty
Wendy L. Eckert
Amanda Kay Eimers
Michael Vincent Feleppa
Martha Elizabeth Fetzner
Daniel T. Hanstine
Kristen Marie Hartzell
Jennifer A. Heatley
Kristin Anne Higgins
Gabriela Hnilková
Blake A. Hoppe
Julie Alice Karus
Christine R. Kemp
Anjanette Elizabeth Kent
Amanda Grace King
Michael G. Kosteniuk
William Matthew Kuhar

Susan Marie Lee
Wesley James Levers
Jessica Lynn Lias
John L. Marion
John S. Mazurek Jr.
Kelly Lynn McPherson
Melissa Margaret Mercurio
Beth Ann Morris
Timothy E. Myers
Melissa Ann Norton
Dana Kay O'Neill
Carrie Suzanne Palmer
Aaron Raymond Peck
Pamela Rose Potter
Nicholas E. Reckhart
Brendan Allan Schulte
Andrea Catherine Sertz
Christopher Paul Stanzone
Heather Nicole Starkey
Amy R. Szalewicz
Zachary Adam Tenney
Ericka Carol Waters
Laura Rose Wisniewski
Marianne M. Wood
Kelly Suzanne Worner

Kristy Lee Ganoë
Amy Melissa Glass

John A. Kiser
Kerrie Jean Rynd

UNIVERSITY HONORS PROGRAM

BACCALAUREATE AND ASSOCIATE DEGREES

SCHOOL OF LIBERAL ARTS

Terry L. Smith, Ph.D., Dean

BACHELOR OF ARTS

Anthropology

* Joni Ann Peters

Art History

Dianne Adele Collins
Jenna Leigh DelTondo

Criminal Justice

* Ryan Charles Anderson
Jeremy Jacob Atkin
* Benjamin Lawrence Boozer
Michael Scot Bowser
* Jeremy R. Brain
* Nicole Marie Carlson
Jason John Cerqua
Jason J. Chamberlin
Charles Anthony Diulus Jr.
Matthew Howard Doyle
Holly Marie Eckert
Laura Lynn Fetzner
Martha Elizabeth Fetzner – Cum
Daniel William Foltz
Terah Lynn Gissendanner
* Jason R. Hensel
* Nathan Allan Hill
Jason Byron Hoffman
Jason A. Hrelec
Alex M. Hromyak
* Carrie C. Johnson
* Daniel Sheridan Jones
Matthew Christopher Jones
Kristine Lynn Kirkpatrick
Elizabeth Anne Kroll
Terrell LaCole Lewis

* Matthew J. Libell
Kevin Richard Luffy
Kenneth L. Lunger Jr.
* Roni Elizabeth Martucci
* Timothy David Melford
Stephanie Lenore Napier
Dawn Michelle Palmer
William M. Parris
* Joy Renée Pfaff
Cheryl Alicia Porter
* Jeffrey Robert Rush
Jeffrey Scott Samlock
* Jonathan G. Schopf
Catherine E. Smith
* Duane E. Tabak
* Zachary Adam Tenney – Cum
* Rachel Suzanne Waksmunski
Amanda Catherine Weaver
Christopher Aaron Weston
Wade Owen Williams
Marie Elizabeth Wolf
Ryan Michael Woyicki
* Jason John Zietz

Drama

* Kyle Arden Romm
Apryl Lynne Sparbanie

English

* Tony Francis Burfield – Magna
Sarah Anne Daddario
* Jessica Hope Diebold
Adele Renée Formaini
Kristy Lee Ganoë
* Stacey Lynn Hallock – Magna
Shawn Robert Harris
* Michele Marie King

Arlene Elizabeth Morris
Joshua Douglas Short

History

* Gregory Allan Anysz
Marc T. Fox – Magna
Ronald John Freebourn – Magna
Michael P. Ganley
Dawn Price
Aaron Brent Rolph
* Ashley Daye Smith – Summa
Edward Thornton II
James M. Wright
Matthew William Yount

Music

Mandy Lynn Atallah
Dee Anna Lee Hedges

Philosophy

Ericjon Thomas – Magna

Political Science

Jeffrey D. Barker
Joseph R. Bernot
* Tiffany Faye Couch
Shannon Mae Ishler
* Lori Ann Johnson
John A. Kiser – Magna
Bryan Thomas Lenzo
Rachel Lynn Mitchell
Matthew Amos Muddiman

Psychology

Erin Nicole Beardsley – Cum
Kirsten Marie Beck
Curtis James Bradshaw – Magna
Cindy Ann Brock
Fawn T. Carpenter
Justin M. Crousey – Cum
Wendy L. Eckert – Cum

* Wendolyn Fox
Frederick William Gardner
Jennifer A. Heatley – Cum
Monica Kathleen King
Syreeta Tisha McTavous
Lisa Michelle Peace
Jessica Erin Piper
Todd V. Radaci
Kathleen Anne Rees – Summa
* Zachary James Schierberl – Summa
* Erica Lee Shaffer
Kosuke Takahashi
Anthony Joseph Tedesco
Erika Marie Thoms
Tracy Ann Titko
* Kelli L. Torboli
Michelle Lynn Tota – Magna
Jason Stewart Trubic
* Marcy L. Turbish
* Amanda Susan Wilkinson
Randy P. Woyicki

Sociology

* Bettijo Chapman
Kimberly S. Headland
Aiko Onishi

Speech Communications

Maureen Monzá Alexander
James A. Barefoot
Andrea Lynn Blose
Maurice Lamont Cissell
Amber Arlien Clever – Cum
Michelle Rose Costantino – Magna
Matthew Michael Cummings
Matthew Alan Ferringier
Mark Christopher Flemm
Joseph M. Garvin
* Gemma Rose Harrison – Magna
Marie Diane Hayes
Timothy Alan Hollabaugh
Rhys Lloyd Holland – Summa
* Andrea Denise James
* Shawn R. Kinkead

Jennifer Lynn Krol
* David Christopher Lavery
Robert James Link
Andrew Marc Longenberger
* Aaron James Maier
* Chad Eric Martin
Kelly Ann McCauliff-Hess
* Candace Lynn McKinney
Ebony C. McQueen
Carissa Ann Mieszkowski
Byron Devon Morant Jr.
* Benjamin T. Morgan
Anna Nicole Mrak
* Bruce Lynn Mulley Jr.
Kirk Edward Pershing
* Ross Michael Petrini
* Christina Lee Pollock
* Kimberly Sue Radford
* Nicholas E. Reckhart – Cum
David Matthew Robinson
Sarah Melissa Roseto
David M. Rothhaar
Heather Irene Smith
Suzanne Gayle Sturging
Nadeemuddin Syed
* Annie Elizabeth Thompson
Jeffrey Lámar Tyree
Daniel R. Watson
Dana Jean Willey
* Terrell A. Woodard

Speech Language Hearing Disorders

* Jennifer Ann Ameno
Michele Catherine Gardner
Lindsey Joy Hirsch
Erika Lynn Johnson – Magna
Susan Marie Lee – Cum
Erin Nicole Weightman
Melissa Ann Winschel

BACHELOR OF FINE ARTS

Applied Media Arts

Diana J. Adameck
Lance Alan Baker – Cum
Elizabeth M. Ball – Cum
* Devon Marie Bender
Thomas Justin Calabrese
Laura Ann Czano
Jocelyne S. Demaske
* Rhaina Taylor Douthett
Nathan J. Fronko
Jason Michael Gaghan
Colleen Erin Garris
Tracy Ann Graziano
Kyoko Hiraike
Jason Thomas Hook
Elizabeth A. Hunt – Magna
Sumiko Kobori
Ian Joseph Kocan
Kenneth Krapfl
Brian Mitchell Macauley
* Kristen Elizabeth Mancuso
Amy Rose Matvey
Carla Anne Nemenz
* Christina Marie Patterson
Kelly Ann Rubinosky
Chenoa C. Seay
* Andrea Catherine Sertz – Cum
Darrel John Shiring
* Danielle C. Shive
* Emily Claire Stone
Holly Ann Tarquinio
Tammy S. Tillotson
* Kelly Ann Tyzinski
Stacey Michele Weaver
Marianne M. Wood – Cum

Fine Arts-Crafts

Robert Calvin Crawford – Cum
Robert Wesley Dingman
* Michael T. Egan
Julie Ann Fleckenstein
Adrienne Margaret Grafton – Magna

Brandon Jerome Jenkins Greene

- * Sarah Alexis Hallam
- * Craig Aaron Hickle
- Gregg D. Imling
- Matthew W. Lamb
- Sean C. MacMillan
- Michael Kevin Moorhouse
- Sean P. Murphy
- * Jason Alexander Oros
- Aaron Raymond Peck – Cum

BACHELOR OF SCIENCE

Social Work

- Tracy L. Angelotti
- Larena D. Birkmire
- Renée M. Buck
- Stacy Lynn Fabian
- Gregory Richard Gnacinski
- * Rebecca S. Humphreys
- Dian L. Kwiatkowski
- Jessica Lynn Lias – Cum
- Brooke Allison Lockner
- Deanna Marie Murray
- Christie Ann Nath
- Melissa Ann Norton – Cum
- Brooke Kelly Peebles
- Liana Marie Scalise
- Richard A. Shaw
- Dean M. Taylor
- Matthew Jon Tecza
- Traci Ann Waite

ASSOCIATE OF ARTS

Criminal Justice

- Katie Lee Avenali
- James Patrick McCloskey
- * Michael Reid Wetmore

Human Services

- Kelly L. Kennedy
- Sally A. Owen
- Stephanie Ann Taylor
- * Taralee Marie Wilcox

Liberal Studies

- * Cindy L. Ridgeway
- * Takayuki Tokuhashi

SCHOOL OF SCIENCE, MANAGEMENT AND TECHNOLOGIES

Eric A. Randall, Ph.D., Dean

BACHELOR OF ARTS

Biology

- * Shawn J. Johnson

Earth Science

- * Brett Nathan Kosowski

Environmental Studies/Geography

- Stephen Neil Button
- * Sarah P. Crawford
- Stephen Joseph Marietti – Magna
- Robert J. Santell
- Robert William Shaffer
- * Mary Kathleen Smith

Geography

- Michael B. Thomas

Mathematics

- Matthew J. Conologue
- Kerrie Jean Rynd – Summa

Natural Science and Mathematics

- Rasheedah Ameerah McFadden
- Rahmin Jeffrey Norwood

BACHELOR OF SCIENCE

Biology

- Liam J. Arkwright
- Stephanie Elaine Clapp – Magna
- Richard Alan Dopico Jr.
- * Aaron Paul Edwards
- * Brian Edward Esper
- Blake A. Hoppe – Cum
- Lyndsey Irene Noble
- Amanda Jane Sinkovec

Business Administration

- Arif B. Akkas
- Tanya Ursula Bertig – Summa
- Michael Ryan Bickar
- * Gretchen Kristine Cameron
- * Stephen Mark Carter
- Paul Michael DeCenso
- Brian Delmar Fischer
- * Dawn Noel Foltz
- Brian L. Fulkerson
- Carrie Lynn Gerle
- Steven James Grygier
- * James P. Hill
- * William James Hughley Jr.
- Junia Elizabeth Isiminger – Magna
- * Bridget Michelle Karns
- Sadat K. Khan
- Momin Khattak
- Frank J. Koch
- Sandrilee Taylor Kozlowski
- Drew A. Kramer
- Amy Beth Ling
- * Brenda Ann Loughlin
- Julie Marie Mace
- James Neil Mack – Magna
- John L. Marion – Cum
- * Allyson Michelle Mikita
- * Patrick Michael Mulvihill

Richard C. Patterson
Dana Colette Polakowski – Magna
Melissa Ann Renfro
Julie Marie Riccomini
* Anthony Rinella IV
Sandro Rotella
Frederick David Sherman
* Mark W. Strauss
Michael Sean Sullivan
Edward John Thomas
Melanie A. Tozzi
Christina Lynn Turske – Summa
* Quentin Ware-Bey
Kelly Suzanne Worner – Cum
Suzanne L. Zurawski

Chemistry

Bradley Alan Lambie

Computer Science

* David Brian Beveridge
Kirk Robert Daniels
Daniel T. Hanstine – Cum
Mark Stephen Jeffers
Christopher Jared Kohler
Lauren Leigh Lattner
Duane E. Leamer
John C. Lyons
* Christopher John More
Elanangai Venugopal
Edwin James Weixel

Environmental Science

Sheila Louise Beers
* Todd E. Fetzer
Tracy Ann Graziano
Melissa R. Johnson – Magna
Jeffrey M. Matts
Karann Marie Nagare

Geology

* Sabrina Bess Eakin
* Brian Aubrey Meley
Richard Allen Moore
* Tricia Elaine Moore
* Lori Ann Wozniak – Summa

Medical Technology

* Melissa Ann Kidd
* Colleen Theresa Laxdal
* Amy J. Morganti – Magna

Nuclear Medicine Technology

* Wesley James Levers – Cum

Nursing

Margaret McCooey Camino
* Scott Andrew Carr
Mary Elizabeth Heath
Susan Marie Lee – Cum
* Melissa Jo Martin
Deborah J. Miller – Summa
Timothy E. Myers – Cum
Jaclyn Ashley Reis
Michelle Kristy Silka

Nutrition

Kelly Ann Martray

BACHELOR OF SCIENCE IN NURSING

* Jennifer Nicole Bailey
* Susan Marie Bengar
* Maureen E. Cullen
* Elaine Dombrowski – Magna
* William Richard Dross Jr.
* Senecca Bremm Elliott
* Jeanette Lisette Fedasz

* Laurie Anne Fife
* Tiffany Marie Foust
* Anjanette Elizabeth Kent – Cum
* Laura Jean Klancer
* Linda Irene Litwiler
* Sara Lynn Newman
* Christine Lynn Sarchet
* Jennifer Susanne Snyder
* Kathryn S. Walsh

ASSOCIATE OF ENGINEERING TECHNOLOGY

Biomedical Equipment Technology

Jason P. Gilliland
* Craig Allen Zazado

Manufacturing Engineering Technology

Bleu Harrison
David Preston Hart

ASSOCIATE OF SCIENCE

Business Administration

* Nancy Lee Boland
Corrina D. Griffith
Tara M. Scutella
Suzanne Elizabeth Wynes

SCHOOL OF EDUCATION

R. Scott Baldwin, Ph.D., Dean

BACHELOR OF SCIENCE IN ART EDUCATION

Rachel Ann Baker – Cum
Mark J. Champlain
Jill C. DeRosa – Summa
Kristen Marie Hartzell – Cum
John Jason Hoyman
Christine Marie Jeska
Andrea Marie Mager
Christina Marie Mazzone
Jeremy Ryan Morey
Jessica L. Morningstar
Jessalynn Kathleen Rodgers
Christopher Paul Stanzione – Cum
Tara F. Williams
Tiffany Joy Young – Magna

BACHELOR OF SCIENCE IN EDUCATION

Elementary Education

Robert F. Altadonna
Christina Ann Arthurs
Corey Matthew Barbato
Shannon Marie Bedits – Cum
Kelly Elizabeth Bowers
Kristy Lynn Boyle – Magna
Jessica Ann Burrows
Christia Marie Castelluccio
Sabrina Ann Cendrowski
Ann Margaret Chimenti
* Nicole Renee Clark
Michelle Lee Denk
Gretchen Dale Dorman – Magna
Dawn Marie Dougherty – Cum
* Amanda Kay Eimers – Cum
Melissa Georgina Farinacci
Rachel Diane Freund
Kristina Ann George

* Gina Marie Giordano – Summa
Michael Joseph Green
* Christine M. Hallisey
Alexander Herring
Ashley Ann Housholder
* Andrew C. Kirschner
* Blair Stephen Lawrence – Magna
Shelly Marie Lichius
Alexis Anne Lisowski
Danielle Lynn Loos
Lisa Ann Lutterbaugh
John S. Mazurek Jr. – Cum
Melissa Margaret Mercurio – Cum
Lindsay Craig Mitchell
* Dana Marie Montini
Beth Ann Morris – Cum
Elaine Michele Nottingham
Dana Kay O'Neill – Cum
Nicole Marie Ott
Twila J. Palmer
* Crystal Ann Peck
Holly Ann Piazza – Magna
Pamela Rose Potter – Cum
* Erika Rose Rutkowski – Magna
Brendan Allan Schulte – Cum
Ann Ruschelle Simon
Susan Lynne Slaymaker
Eileen Siobhan Smock
Christopher Allan Stadtfeld
Matthew Richard Stevens – Summa
* Gregory J. Suhayda
Kelli Marie Suppa
* Amy R. Szalewicz – Cum
Megan Faith Thomas
* Laura Beth Wade – Summa
Clifford James Warden
Marybeth Williams
Laura Rose Wisniewski – Cum

Elementary Education/Mentally Physically Handicapped

Jessica Lyn Antol
Mindy Ann Arnold
Elizabeth Jean Book – Magna
Angela Broskey – Cum
Casey James Copeman
Dana Marie Danzuso – Magna
Megan Lynne Emmons
Jodi Lynn Gee – Summa
Heather Marie Geer
Amy Melissa Glass – Summa
Jill Emily Henderson
Craig M. Jeffers
Julie Alice Karus – Cum
Lisa Marie Marino
Carly Jean Martin
Kari Lynn McCollough
Travis Connor McCoy
Natalie Ann Myers
Jennifer Suzanne Olson – Magna
Amanda Marie Osborn
Laurie A. Pastorius
April Lynn Picozzi
Michelle Lynn Polochak – Summa
Jennifer Frieda Russo
Robin Tracy Sakala
Jenny Ann Seth
Anesha Eileen Smith
Heather Nicole Starkey – Cum
* Brittany Nicole Tague
Nicole Marie Usko
* Elizabeth Marie Vale
Heather Marie Waite – Magna
Randy Eric Weibl
Amy Melissa Wiltsie – Summa
Andrea Lynn Wisor
Nichole Rae Zeigler – Summa

Health and Physical Education

William Paul Besser
Lisa Renee Blackhurst
Bethany Lynn Boyd
Kimberly Anne Cron
Michael Vincent Feleppa – Cum

Patricia J. Gallagher – Magna
Melinda A. Helman
Kristin Anne Higgins – Cum
* Gabriela Hnilková – Cum
Kelly Lynn McPherson – Cum
Megan Elise Stockner
Timothy John Wellington
Bruce Allen Witt

Mentally/Physically Handicapped

Sara Beth Allbee
Patrick O. Baughman
John Michael Budai
Lorrie Marie Csordas
* Lee Lucian Shadeck – Summa
Deborah Lynn Zirkle

Secondary Education – Biology

Andrew Richard Schneider
Jennifer M. Thomas

Secondary Education – Comprehensive English

Nikolas Shane Bajorek
Kimberly Dawn Barron
Jeanne Patricia Campbell – Summa
Rachelle Lynn Francis
Christine R. Kemp – Cum
Amanda Grace King – Cum
Anthony Joseph Miller
Jennifer Lee Quadri – Summa
Lori Ann Senkewitz

Secondary Education – Earth/Space Science

Jessica Jennie Monteleone

Secondary Education – Mathematics

Kelly Lynn Carlisle
Robert C. Mawhinney II – Summa

Secondary Education – Social Studies

John Joseph Angerer IV
* Gregory Allan Anysz
Donald Lloyd Braden III
William Matthew Kuhar – Cum
Tammy Lee Mao – Magna
Carrie Suzanne Palmer – Cum

Secondary Education – Spanish

Ericka Carol Waters – Cum

ASSOCIATE OF SCIENCE

Pre-School Education

Tanaya Ann Burrows
Melissa Lynn Dickerson
Bridget Marie Dorr
Alison Marie Froess
Glamarie L. Myers
* Valerie Linnra VanNette

BACHELOR OF ARTS IN SPECIALIZED STUDIES

Richard E. Arnold, Ph.D., Associate to the President for Equity and Special Programs

Daniel P. Abraham
Brian C. Albertson
* Kelly J. Bodnar
Karen Marie Borland – Summa
Sarah Marie Bull
Laura Cathryn Coburn
Toland Lee Cordell
William C. Cummings
Melissa Ann Eastman
Ellen M. Eshelman
Melissa Beth Feldman
Erin Elizabeth Grover
Matthew Raymond Gutowski
Andrew W. Jones
* Raymond Joseph Knapp Jr.

* Michael G. Kosteniuk – Cum
* Michelle Lyn Mosberger
* Cynthia Ann Nowacki
* Jennifer L. Quinn
Jamaal R. Stewart
* Jason Philip Swartzbaugh
Lori M. Turano – Magna
Patrina Lee Vogt
* David C. Wasco
Kellie Marie Weaver
* Robert W. Wright
Adam L. Wygant
Chad Richard Young
Christopher James Zilla

* Students who completed degree requirements during Summer 2000.

The University does not claim the list of degree candidates or honors designations is absolutely accurate. Students are granted degrees only if they meet all academic and financial requirements.

Alma Mater

Edinboro University of Pennsylvania

Hail to Thee our Alma Mater glo-ri-ous; fresh
wreaths we bring to bind thy brow. Trials have
passed, and Thou hast stood vic-tor-i-ous, ne-ver fair-er, nev-er state-li-
er than now, O Ed-in-bo-ro, Ed-in-bo-ro, ev-er prais-ing
Thee in song, While class speeds class, as swift years pass, to Thee our hearts be-long.

State System of Higher Education

James H. McCormick, *Chancellor*

**Board of Governors
State System of Higher Education**

Charles A. Gomulka, *Chair*
Kim E. Lyttle, *Vice Chair*
R. Benjamin Wiley, *Vice Chair*
Syed R. Ali-Zaidi
Angela M. Ambrose, *Student Representative*
Jeffrey W. Coy
Daniel P. Elby
Eugene W. Hickok, Jr.
David P. Holveck
F. Joseph Loeper
James V. Manser IV, *Student Representative*
Thomas J. Ridge
David M. Sanko
B. Michael Schaul
Jere W. Schuler
Patrick J. Stapleton, Jr.
John K. Thornburgh
Christine J. Toretti
Amy M. Yozviak, *Student Representative*

Council of Trustees

Harry K. Thomas, *Chair*
Benedict J. Miceli, *Vice Chair*
Harold C. Shields, *Secretary*
Clifford E. Allen
Patricia Heasley
John E. Horan
Frank J. Jakovac
C. Richard Johnston
Catherine Manning, *SSJ*
Portia L. McClellan, *Student Trustee*
R. Benjamin Wiley
James H. McCormick (*ex officio*)

Commencement Committee

Robert C. Weber, *Provost and Vice President for Academic Affairs, Chair*
Carol Bolla, *Coordinator of Special Events and Programs*
Janet Bowker, *Director, Alumni Affairs*
Julia Fedders, *Coordinator of University Center*
Judy Kubeja, *Senior Executive Associate to the Provost*
Patti S. Loomis, *Director of Publications*
Randall McCaslin, *Manager, Distance Education and Multi-Media Services*
Alice Parker, *Administrative Assistant, Office of Records and Registration*
Timothy W. Pilewski, *Coordinator of Records and Registration*
Lorraine Revak, *Facilities Office and General Services Manager*
Peter van den Honert, *Chair, Department of Music*

*One of the 14 universities in Pennsylvania's State System of Higher Education,
Edinboro University is committed to affirmative action for all persons in its
educational programs, activities, and employment practices.*