

Commencement

Edinboro University of Pennsylvania

May 11, 1997



Commencement Ceremony

Convocation	Robert C. Weber, Ph.D. <i>Provost and Vice President for Academic Affairs</i>	
Prelude	Symphonic Wind Ensemble Gary S. Grant, Ph.D., <i>Conductor</i>	
Pomp and Circumstance	ACADEMIC PROCESSIONAL	Symphonic Wind Ensemble <i>Edward Elgar</i>
Star-Spangled Banner	David Herendeen, D.M.A. Symphonic Wind Ensemble <i>Francis Scott Key</i>	
Invocation	The Reverend Monsignor Robert J. Smith <i>St. Mark's Center Erie, Pennsylvania</i>	
Welcome	Frank G. Pogue, Ph.D. <i>President</i>	
Greetings	R. Benjamin Wiley <i>Vice Chair, Board of Governors, State System of Higher Education Chair, Council of Trustees</i> Edward P. Kelley Jr. <i>Vice Chancellor for Employee and Labor Relations State System of Higher Education</i>	
America the Beautiful	University Chorale Peter van den Honert, D.M.A., <i>Conductor</i> <i>Samuel Ward</i>	
Commencement Address	Michele M. Ridge <i>First Lady, Commonwealth of Pennsylvania</i>	
Alumni Address	David Irlbacher '73 <i>Alumni Association President</i>	
Student Address	Cynthia J. Hope <i>Bachelor of Arts, Speech and Hearing Disorders</i>	
Presentation of Candidates	Robert C. Weber Philip P. Kerstetter, Ph.D., <i>Dean of Education and Graduate Studies</i> Donald H. Dilmore, Ph.D., <i>Acting Dean of Liberal Arts</i> Richard E. Arnold, Ph.D., <i>Acting Associate Dean of Science, Management and Technologies</i>	
Conferring of Degrees	President Frank G. Pogue	
Alma Mater	David Herendeen Symphonic Wind Ensemble	
Benediction	Bishop Duane Brock <i>Victory Christian Center Erie, Pennsylvania</i>	
Fanfare and Recessional	RECESSIONAL	Symphonic Wind Ensemble <i>Edward Elgar</i>

The audience is asked to stand during the Processional and Recessional and to join in the singing of the National Anthem and the Alma Mater.

The Commencement Procession

ROTC Color Guard
The Grand Marshal
The University President
The Trustees of the University
The Platform Party
The Faculty Marshals
The University Faculty

Colors Distinctive of the Disciplines and Professions

Apricot.....	Nursing
Dark Blue	Philosophy
Light Blue.....	Education
Peacock Blue.....	Public Administration
Brown	Fine Arts
Citron.....	Social Work
Copper.....	Economics
Crimson.....	Journalism
Drab	Business
Gray	Veterinary Science
Silver Gray.....	Oratory
Green.....	Medicine
Olive Green.....	Pharmacy
Sage Green.....	Physical Education
Lemon.....	Library Science
Lilac.....	Dentistry
Maize	Agriculture
Orange.....	Engineering
Pink.....	Music
Salmon Pink.....	Public Health
Purple	Law
Russet.....	Forestry
Scarlet	Theology
White.....	Arts, Letters and Humanities
Golden Yellow.....	Science

Honors Award Designations

Gold Stoles	Summa Cum Laude
White Stoles	Magna Cum Laude
Red Stoles	Cum Laude
Gold Cords	University Honors Program Graduate
Red Cords	Departmental Honor Graduate

The Ceremonial Mace

The ceremonial mace, a symbol of presidential authority, is carried at the head of the academic procession by the Grand Marshal, Eugene Stoddard. A gift of the Alumni Association, the mace was designed and executed by Professor Henry Katzwinkel and Dr. Seymour Blinderman, former chairman of the Art Department. It was first used at the inauguration of Edinboro State College President Chester T. McNerney, in 1967.

The mace, twenty-seven inches in length, is topped by a sterling silver sphere studded with circular cabochon rubies, secured by bezels. The collar of the mace is inlaid with ebony, alternated with silver relief fleur-de-lis design elements. The cultured pearls mounted in cups encircle the bottom of the collar symbolizing the thirteen state colleges of Pennsylvania. The shaft of the mace is composed of Brazilian rosewood sections, separated by sterling silver rings. The mace is terminated by a cast sterling silver finial; the five cultured pearls represent the existing curricula. The rib-like cone form is terminated by a small silver sphere symbolizing the world.

The metal working processes incorporated in the ceremonial mace include turning, forging, inlaying, stone setting, and lost wax centrifugal casting.

The Presidential Medallion

A symbol of presidential authority, the first presidential medallion was presented to former President Foster F. Diebold during the May, 1981 commencement ceremonies. It is permanently housed in the president's office and will be presented to successive presidents. Designed and executed by Mr. Henry Katzwinkel, professor of art, the sterling silver medallion consists of a three and one-half inch pectoral pendant featuring on its face the sunken crest of the Commonwealth of Pennsylvania. On the reverse side is the figure of a Gordon Highlander with pipes. To the right of the piper is the Cross of St. Andrew. To the left is the Cross of England. Flanking the figure is the date 1857, the opening year of the University, and garland thistles. In the background are the hills of Scotland, and beneath the piper is an open book, symbol of knowledge.

The pendant descends from a shield containing a triple-towered castle, the symbol of defense, protection, and strength. The collar of the medallion is comprised of a series of two-inch shields, alternately bearing three different designs: the meigle, an interlacing knotwork peculiar to the Pictish school of Celtic art; the Tudor rose design; and "ESC" in interlocking letters on a background of tabby weaving. Connecting each of the collar shields is a Cross of St. George, representing the union of Scotland and England. The entire medallion was fabricated and cast in the cire perdue (lost wax) process.

The gown, the cap, and the hood, representing the major components of the academic dress, are a ceremonial inheritance from the medieval universities of the eleventh and twelfth centuries, where dress was the outward sign of privilege and responsibility. The academic dress worn by those participating in today's academic processional symbolizes the level of their academic attainment and the institution they attended.

Gown

Although the gown is more frequently black, certain universities have authorized the use of colored gowns. The bachelor's and master's gowns are fashioned from black serge. The yoke for the bachelor's gown is designed to be worn closed and features long, flowing and pointed sleeves. The master's gown is designed to be worn open or closed. Its sleeves are very long with square ends, and the front part has an arc cut away. The arms protrude through a slit at the elbow. The gown for the doctor's degree is made of wool, serge, or silk with an open front faced with wide velvet panels. The sleeves are loose and bell-shaped with three bars of velvet in black or the color of the discipline in which the doctorate was obtained.

Hood

The most outstanding feature of the academic dress is the hood. It is usually worn only for the master's and the doctor's degrees. The doctor's hood is longer than the master's hood and has distinguished panels. The college or the university granting the degree is indicated by the color of the hood lining. The velvet trim of the hood indicates the field in which the degree was granted.

Cap

The standard cap is the mortarboard, usually the color of the gown. The tassel is black for the baccalaureate and master's degree and is worn over the left front quarter of the cap. The tassel for the doctor's mortarboard is of gold thread. Undergraduates wear the tassel on the right side of the cap until the moment the degree is conferred by the president.

Grand Marshal



Eugene M. Stoddard

Carrying the ceremonial mace and leading the academic procession at today's Commencement ceremony is Eugene M. Stoddard, associate professor and chairperson of the Department of English and Theatre Arts.

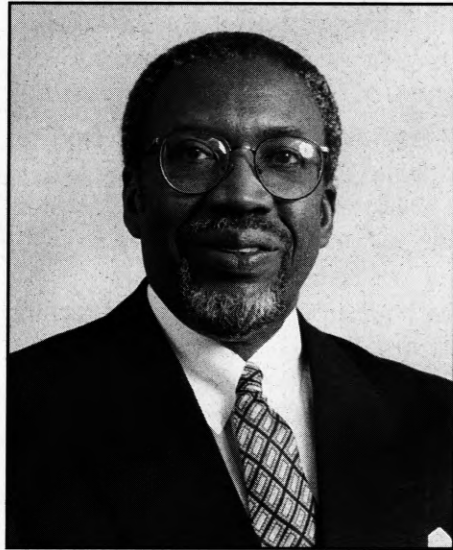
Mr. Stoddard earned an A.B. degree in English and German from Michigan's Hope College in 1955. From 1955 to 1959 he served in the U.S. Navy as an aviator and legal officer, and was stationed in Iwakuni, Japan. His first teaching assignment came in 1959 at Corry High School as an English teacher for grades 7-9. He worked as a technical writer and production manager at Talon, Inc., in Meadville from 1960-61, while earning an M.Ed. in secondary English from Edinboro. In the summer of 1960 he attended Syracuse University as a *Wall Street Journal* Fellow. The following summer he attended Columbia University as an Old Dominion Scholar in psycholinguistics and sociolinguistics. From 1961 to 1965 he taught at Brocton, New York, Central High School, serving as chairperson of the English Department. During that time he earned an M.A. degree in journalism studies from Syracuse University. In the summer of 1963 he was an NEH Fellow in cross-cultural studies at Michigan State University. From 1965 to 1966 he spent a year at SUNY Fredonia where he was the James B. Conant Clinical Professor in English and English education. In 1966 he joined the faculty of Edinboro University.

During his career at Edinboro, Mr. Stoddard has served the University in many capacities. Within the English and Theatre Arts Department he has been a member of the graduate faculty, and the Scholarship and Planning Committees, as well as numerous search committees. His University service has included membership in the APSCUF Legislative Assembly, Distance Education Committee, International Academic Festival Steering Committee, Academic Concerns Committee, Task Force on Freshman Orientation, University Promotions Committee, Teacher Education Committee, and the Liberal Arts Chairs group. He has chaired the University Promotions Committee, the Promotions Review Committee, and the Freshman Year Subcommittee for Middle States Accreditation. He is currently co-chair of the University's 21st Century Planning Group.

Mr. Stoddard holds membership in many professional organizations including the National Council Teachers of English, Pennsylvania Council Teachers of English, Modern Language Association, National Education Association, and the Association Department of English.

His community service record includes membership on the Board of Education of Brocton, New York; the Corry School District Strategic Planning Group; the Socio-Psychological Research Team of Fredonia, New York; and ad hoc study committees of area school boards. He is a consultant in curriculum to the Millcreek School District, and is past president of Brocton-Portland Industrial Development Corporation. He is director of the Union City Men's Bowling Association and past president of the Thursday Nite Men's Bowling Association.

President Frank G. Pogue



Dr. Frank G. Pogue

Dr. Frank G. Pogue, the 15th president of Edinboro University of Pennsylvania, began the first year of his presidency on July 1, 1996.

A sociologist, President Pogue holds a bachelor's degree from Alabama State University, a master's degree from Atlanta University, and a Ph.D. from the University of Pittsburgh.

Prior to his presidency at Edinboro University, President Pogue was the vice chancellor for student affairs and special programs at the State University of New York (SUNY) System Central Administration in Albany, serving in that position for 10 years. There he was responsible for, among many programs, system-wide student educational services and programming, access and financial aid services, school and college relations, the New York City Office for Student Recruitment, undergraduate scholarship programs, the Graduate Fellowship Program for Underrepresented Students, diversity and affirmative action initiatives, university public safety, the Office for the Disadvantaged, the Office of Hispanic Affairs, the New York African American Research Foundation, the university-wide Native American Program, and educational opportunity programs and centers for the disadvantaged. While vice chancellor, Dr. Pogue served for one year as interim president at the SUNY College at Cobleskill.

During his many years with SUNY, Dr. Pogue impacted many lives and events. In 1973, as chair of the Department of African and Afro-American Studies (now the Department of Africana Studies) at the State University of New York at Albany, he developed a master's degree program which included African Studies, Afro-American Studies or a combination of African/Afro-American Studies – the only such MA degree program in SUNY. He also was instrumental in establishing World Week on the campus, where all students celebrate diversity.

Prior to his assignment in the SUNY System Central Administration, President Pogue served as vice president for student affairs, associate vice president for research and educational development, dean of undergraduate studies, and a department chairman, all at SUNY Albany.

In October of this year, Dr. Pogue was appointed by Pennsylvania Governor Tom Ridge to a statewide panel on academic standards. The bipartisan commission is made up of legislators, business leaders and educators. Pogue represents higher education on the commission and is the only member from northwestern Pennsylvania. The commission has been given the task of developing a new set of standards for Pennsylvania schools in math, science, reading and writing.

Pogue is no stranger to academic standards. Since 1984, he has served on the Commission on Higher Education of the Middle States Association of Colleges and Schools and is currently a member of its executive board. He was a consultant to the commission which reviewed education standards in the state of New York several years ago. His experience in higher education spans three decades.

President Pogue's administration has brought to Edinboro University a renewed sense and spirit of community, a reaffirmation of institutional purpose, and a commitment to protect the accessibility which Edinboro University and the State System of Higher Education offer to affordable, exceptional, high quality education.

Michele M. Ridge



Michele M. Ridge

Delivering the Commencement address at today's ceremony is Michele M. Ridge, wife of Pennsylvania Governor Tom Ridge. Born in Erie, Pennsylvania, in 1947, Michele M. Ridge is the oldest child of Margaret Nagle and the late Army Major Howard Moore. On January 17, 1995, she became the 41st First Lady of the Commonwealth when her husband, Tom Ridge, was sworn in as the 43rd Governor of Pennsylvania. The Governor and Mrs. Ridge have two children, Lesley, age 10, and Tommy, age 9.

Due to her father's military career, Mrs. Ridge and her family moved repeatedly from the time she was a small child through her teenage years, including a six-year residency in Europe. Returning to Erie, near the end of her junior year of high school, Mrs. Ridge attended Strong Vincent High School where she graduated with distinction in 1965. She then attended Seton Hill College in Greensburg, where she was a leader of the student body and went on to graduate in 1969 with a bachelor's degree in European history. Furthering her academic studies, she earned her master's degree in library science from the University of Pittsburgh's Graduate School in 1971. In recognition of her lifelong achievements, Mrs. Ridge was presented with an Honorary Doctorate of Humane Letters from Pittsburgh's Point Park College and Seton Hill College.

Well respected in the field of library science and literacy, Mrs. Ridge secured a position as director of the Erie County Library System in 1979, where she supervised approximately 100 employees and managed a \$3.8 million budget with a system of seven libraries, including a book mobile which contained approximately 425,000 volumes of books, audiovisual materials and periodicals. In order to devote more time to her family and the responsibilities as First Lady, she resigned from her post in February 1995. In the past, Mrs. Ridge was also the executive producer of "Library Medley," a monthly PBS radio program which broadcasts in Pennsylvania, Ohio, New York and Canada. Her support of education earned her the 1995 Gannon University Friends of Education Award and the 1987 Erie Reading Council Literacy Award. The Council is a division of the International Reading Association.

As an active member of her community, Mrs. Ridge was one of the original incorporators of Erie's highly acclaimed cultural arts center known as "Discovery Square." The educational center consists of an art museum, a children's museum and historical society headquarters. She is a sustaining member of the Junior League of Erie and the Rotary Club of Erie and is a former president of the Erie County Historical Society. Recently, Mrs. Ridge completed a nine-year term as a member of the Second Harvest Food Bank of Northwestern Pennsylvania during which she saw first-hand the need for communities and their families to get involved in helping those less fortunate.

Committed to helping educate women about breast cancer and the importance of early detection, Mrs. Ridge has become the honorary chair of the Pennsylvania Breast Cancer Coalition.

Prevention of violence by and against youth is a top priority of both the Governor and First Lady. The Governor appointed Mrs. Ridge to chair The Governor's Community Partnership for Safe Children, a community-based initiative that seeks to curb youth violence. Mrs. Ridge also serves as honorary chair of the Pennsylvania Chapter of Stop Americas Violence Everywhere (SAVE) and the Pennsylvania Safe Kids Coalition.

University Faculty Marshals

<i>Ruthanne Atkinson</i> , Elementary Education	<i>Barbara Grippe</i> , Library	<i>Karl Nordberg</i> , Educational Services
<i>Ronald Baker</i> , Mathematics and Computer Science	<i>Richard Heasley</i> , Sociology / Anthropology / Social Work	<i>Patricia Nosel</i> , Nursing
<i>Joyce Berry</i> , Physics and Technology	<i>Mary Kristina Hogan</i> , Music	<i>Alfred Riccomini</i> , Special Education and School Psychology
<i>Roy Brant</i> , Political Science and Criminal Justice	<i>Cynthia Legin-Bucell</i> , Psychology	<i>Janet Rogers</i> , Chemistry
<i>Fred Caro</i> , Health and Physical Education	<i>James Meehan</i> , Business Administration and Economics	<i>Eugene Stoddard</i> , English and Theatre Arts
<i>Robert Cogan</i> , Philosophy	<i>Homer Mershon</i> , Foreign Languages	<i>Robert Tammariello</i> , Biology and Health Services
<i>Richard Forcucci</i> , Speech and Communication Studies	<i>Richard Gromen</i> , History	<i>Chuen Chow</i> , Geosciences
	<i>W. James McHenry</i> , Counseling and Human Development	<i>Suzanne Winterberger</i> , Art

Retirees

The administration and staff of Edinboro University of Pennsylvania would like to take this opportunity to recognize those faculty and staff who are retiring.

<i>Harriet A. Alger</i> , Elementary Education, 2 years	<i>Mary Kristina Hogan</i> , Music 29 years	<i>Emil Magdik</i> , Conference and Convention, 30 years
<i>Benjamin R. Bullock</i> , Geosciences 27 years	<i>Gary C. Jamison</i> , Student Affairs 28 years	<i>Garry G. Messmer</i> , Chemistry 28 years
<i>Barbara A. Bunting</i> , Duplicating 30 years	<i>Kristine Karmazon</i> , Accounting 10 years	<i>Bert A. Miller</i> , Speech and Communication Studies, 27 years
<i>Deborah D. Coad</i> , Accounting 5 years	<i>Judy Kellogg</i> , Facilities 8 years	<i>Edward J. Owens</i> , Ghering Health Center, 8 years
<i>James R. Flynn</i> , Educational Services 29 years	<i>Paul D. Knuth</i> , Geosciences 30 years	<i>Joan M. Sexsmith</i> , Nursing, 6 years
<i>Janet L. Hayes</i> , Accounting 30 years	<i>Cyrus Lee</i> , Psychology 28 years	<i>Donald Alsop Wheeler</i> , Biology and Health Services, 32 years
	<i>Gregory D. Lessig</i> , Political Science 31 years	

Master's Degrees

Graduate Studies

Philip P. Kerstetter, Ph.D., Dean

Master of Arts

Art

Ashley Suzanne Beech, B.S., Edinboro University of Pennsylvania, 1993
 Tammy L. Hawkins, B.F.A., Edinboro University of Pennsylvania, 1992
 Hui-wen Lee, B.A., National Pingtung Inst., 1993
 Kiyoo Matsumoto, B.A., Aoyama Gakuin University, 1991
 Karen M. Socha, B.A., Edinboro University of Pennsylvania, 1988

Communication Studies

Anastasia Andreou, B.A., Edinboro University of Pennsylvania, 1995
 Stephanie Lynn Cable, B.A., Clarion University of Pennsylvania, 1995
 James Adam Flickinger, B.A., Edinboro University of Pennsylvania, 1993
 Christopher Claude McGonnell, B.A., Edinboro University of Pennsylvania, 1995
 Thomas William McLaren, B.S., Eastern Michigan University, 1982
 Jennifer Nancy Packard, B.A., Edinboro University of Pennsylvania, 1993
 Mallar Sinha, B.A., Edinboro University of Pennsylvania, 1994
 Bethany Anne Spicer, B.S., Edinboro University of Pennsylvania, 1994
 Wei Sun, B.A., Qufu Normal University PRC, 1985
 Mary Louise Timashenko, B.F.A., Edinboro University of Pennsylvania, 1981
 Ryan L. Van Dusen, B.A., Edinboro University of Pennsylvania, 1995

Counseling

Michael C. Adamus, B.A., Edinboro University of Pennsylvania, 1989
 Rabeena Alli, B.A., Edinboro University of Pennsylvania, 1995
 Pamela Jo Allshouse, B.S., Penn State University / Behrend, 1993
 Allison Leigh Barkley, B.S.Ed., University of Georgia, 1994
 Kathleen Elizabeth Blakely, B.F.A., Edinboro University of Pennsylvania, 1993
 Christine Michele Bridgman, B.A., University of Maryland, 1995
 Andrew Thomas Corbett, B.A., Edinboro University of Pennsylvania, 1995
 Francis J. Cwiklinski, B.S., Edinboro University of Pennsylvania, 1994
 Michelle Jennifer Didion-Myers, B.S., Gannon University, 1992
 Gregory L. Houck, B.A., Thiel College, 1989
 Linda Terese Kilanski, B.A., Edinboro University of Pennsylvania, 1994
 Susan Duelfer Lazzaro, B.A., University of Pittsburgh, 1988
 Donelle Davey Mando, B.A., Mercyhurst College, 1976
 Lori Ann McManus, B.A., Edinboro University of Pennsylvania, 1995
 Nthabiseng E. Mohanoe, B.A., University of the North, 1990
 Jennifer Kathleen Monroe, B.A., Edinboro University of Pennsylvania, 1994
 Mel Perry, B.S., Edinboro University of Pennsylvania, 1995
 Melissa Marie Persing, B.A., St. Vincent College, 1993
 Brenda Jane Raymond, B.A., Grove City College, 1995
 Jennifer Ann Simonsen, B.S., Clarion University of Pennsylvania, 1995
 Dana Marie Tacca, B.A., Edinboro University of Pennsylvania, 1995

Heather Michelle Warmus, B.A., Edinboro University of Pennsylvania, 1995
Angela Dee Wells, B.A., Edinboro University of Pennsylvania, 1995
Kimberly Kae Young, B.S., Lock Haven University of Pennsylvania, 1987
Melinda Beth Zampogna, B.A., Penn State University, 1992

Social Sciences

Shabnam Bashir, B.A., University of Baluchistan, 1994
Edward William Carter Jr., B.A., Edinboro University of Pennsylvania, 1993
Kimberly A. Lata, B.A., Edinboro University of Pennsylvania, 1992
Richard Sabol Jr., B.A., University of Pittsburgh, 1988

Speech and Language Pathology

Raymond William Andrews III, B.A., Elizabethtown College, 1991
Michelle R. Benedict, B.A., Edinboro University of Pennsylvania, 1995
Catherine Elaine Covert, B.S., University of Illinois, 1995
James Douglas DeSantis, B.S., Slippery Rock University of Pennsylvania, 1990
Jodi Kay McFadyen, B.A., Western Michigan University, 1995
Ann Marie Murphy, B.A., Catholic University of America, 1994
Donna Mary Murphy, B.A., SUNY-Binghamton, 1994
Tanya Lee Stachel, B.S., Bloomsburg University of Pennsylvania, 1995
Lisa Hall Stuart, B.A., Winthrop College, 1989
Diane Marie Tripp, B.S., Marywood College, 1995
Janel Lyn Whitmer, B.A., SUNY-Buffalo, 1995

Master of Education

Educational Psychology

Kimberly Renee Barry, B.S., Edinboro University of Pennsylvania, 1993
Cynthia Lee Sklar, B.A., Edinboro University of Pennsylvania, 1991

Elementary Education

Judith H. Barrett, B.A., Austin College, 1985
Karen M. Briggs, B.S.Ed., Indiana University of Pennsylvania, 1981
Ahmad J.S.H. Mohammad, B.A., Kuwait University, 1994
Gina Marie Rullo, B.A., Indiana University of Pennsylvania, 1992
Marc Alan Van Doren, B.S., Edinboro University of Pennsylvania, 1993

Elementary School Administration

Deborah Ann Amatangelo, B.S.Ed., Edinboro University of Pennsylvania, 1973
Dana Marie DeMartino, B.S., Edinboro University of Pennsylvania, 1992
Rebecca Ann Dugan, B.S., Gannon University, 1991

Reading

Michele Anne Condello, B.A., Grove City College, 1992
Sharon Marie Ferringer, B.S., Edinboro University of Pennsylvania, 1992
Cinda L. Findlan, B.S., Clarion University of Pennsylvania, 1975
Lisa Lyn Herman, B.S.Ed., Edinboro University of Pennsylvania, 1991
Judith R. Riddle, B.S., Kent State University, 1967

Secondary School Administration

Karen Marie Miller, B.S.Ed., Edinboro University of Pennsylvania, 1989

Special Education

Natalie Lynn Crosby, B.A., Edinboro University of Pennsylvania, 1993
Martha Ann Dyke, B.A., Indiana University, 1978
Emily Catherine MacDuffie, B.A., Allegheny College, 1994
Kristine Folkes Merrill, B.S.Ed., SUNY College-Fredonia, 1988
Jacquelyn Michelle Peterson, B.S.Ed., Indiana University of Pennsylvania, 1989
Laurie Beth Riccomini, B.S.Ed., Edinboro University of Pennsylvania, 1993
Kristine Renee Stoehr, B.A., Edinboro University of Pennsylvania, 1994

Master of Fine Arts

Maryan Carol Benkowski, B.F.A., Ohio State University, 1993
Renee M. Zettle-Sterling, B.F.A., Indiana University, 1993

Master of Science

Biology

Jennifer Lynn Hill, B.A., Penn State University, 1995
Amy Swanson Strayer, B.S., Villa Maria College, 1979

Master of Science in Nursing

Deborah L. Bialas, B.S.N., University of Pittsburgh, 1976
Wendy Lynn-Mangini Carlson, B.S.N., Clarion University of Pennsylvania-Venango, 1988
Cynthia Sue Coogan, B.S.N., Clarion University of Pennsylvania, 1995
Paul J. Dill, B.S., Villa Maria College, 1989
Deborah L. Gosnell, B.S., Penn State University/Shenango, 1989
Tina R. Hawley, B.S.N., Villa Maria College, 1985
Paul Eric Thompson, B.S.N., Kent State University, 1989
Deborah Ann Lyda Wasson, B.S.N., Edinboro University of Pennsylvania, 1995

The University does not claim the list of degree candidates or honors designations is absolutely accurate. Students are granted degrees only if they meet all academic and financial requirements.

Honors

The following degree candidates have earned at least sixty-four credits as undergraduate students of Edinboro University and have attained the following cumulative averages: Summa Cum Laude, 3.80 to 4.00; Magna Cum Laude, 3.60 to 3.79; and Cum Laude, 3.40 to 3.59.

Summa Cum Laude

Donald L. Adams
Michele Lee Basile
Jeanette Anne Bellon
Richard Charles Cornwell II
Rose R. Deka
Janine L. Fenell
Heather Hakos-Hruby
Lauri Ann Heckler
Cynthia Jean Hope
Christine R. Jordan
Elizabeth W. Kidd
Todd Allen Kosterman
Matthew Allen Lyngarkos
John Kelly Mathews
Candice A. Mathewson
Lee Aaron McCracken
Melissa Sue Mills
Windle Rose Oberrath
Kathleen Marie Oliver
Alison Maureen Pency

Deborah Carol Picardo
Barbara A. Polakowski
Janet L. Preston
Susan Lynn Serbic
Daniele Lynn Severance
Renee Ann Sherrell
Sherrie Jones Shumate
Christopher Michael Smith
Gregory J. Spitzer
Judith Ann Stainbrook
Catherine A. Steele
Emily Elaine Stevens
Andrew Kent Stover
Yumi Suzuki
Melissa Renae Thomas
Steven Michael Tubbs
John Donald Wheeler
Amanda J. White
Andrew Konrad Wodzianski
Jennifer Ann Zimm

Magna Cum Laude

Kelly Elizabeth Barrese
Christopher Michael Bellas
Matthew William Bennett
Michael James Bocianowski II
Karrie Ann Bowen
Nicole Helene Bulette
Stacey Lynn Burge
David Paul Campbell
Tami Sue Caruso
Tricia Margaret Chapman
Jan M. Cleaver
Jennifer Lynn Daum
Wendy Lou DiGregorio
Patrick Joseph Donahue
Tracy Ellen Ebaugh
Meg Elizabeth Eisenhower
Michael Robert Elgard
Beth A. Gates
Jill M. Gillette
Tara Lynn Gorczyca
Cass Heilig
Kristie Lynn Jackson
Deborah Ann Matlak
Rebecca Lynne McCormick
Elizabeth Seath McGonigal
Nicole Renee Melchek

Valerie Ann Miles
Melissa Ann Miller
Brian Lee Myers
Holly M. Nix
Erica M. Opegard
Ingrid M. Psuty
Richelle Leigh Roden
Natalie Ann Rusnak
Jennifer Anne Sabom
Bernice Louise (Carey) Schetter
Julie Ann Schneider
Kimberly J. Scott
Christa Michele Sherred
Michael Alan Skelly
Derek N. Smith
Kimberly Ann Smith
Lori Kay Stafford
Norma V. Stanford
Melissa S. Starenchak
Jeffrey E. Steiger
Stacey Lynn Stromdahl
William C. Thurston
Heather Marie Trojan
Millicent Ann Underwood
Martha Seifert Zaksheske

Cum Laude

Harumi Akiba
Michael Dave Bartosek
Damian John Bebell
Nicole Anne Boback
Melanie Marie Bonson
Pamela Marie Brusoski
Christine Louise Buto
Erin Michelle Davis
John Andrew Eldridge III
Sean William Fellows
Brian James Forst
Michelle Dawn Fortin
Debra Lynn Fuller
Michael Kerry Fuller
Barbara Jean Gamble
Heather Leah Gardner
Kimberly Marie Gibb
Donald L. Grace
Monika Andrea Grof
Lisa Jeanne Grygier
Adam L. Hatton
Karen E. Hayes
Kara Leslie Horn
Alexandra Helene Johnson
Angela S. Kildoo
Russell F. King
Rita R. Kiter
Mara Elizabeth Klein

Gordon S. Krahe
Ronald H. Lovett II
Jason Allan Lydic
Stacey Lynn McClain
Heath Louis McCormick
John Patterson McCready
Karie Elizabeth McGranor
Andrew Gregory McKay
Kelly Lynn McKinney
Alisha Michele Melesky
Louise E. Murkens
Brian F. Nath
Yingtong Niu
Tischann M. Nye
Erin Leigh Omniewski
Maria D. Picciotti
Christopher Michael Roman
Lisa A. Saleh
Lori Ann Schafer
Patrick H. Schwindt Jr.
Joseph Lloyd Sensor
David Eric Sitler
Malinda Elise Viera
Karianne Lynn Waleski
Nanet Arlene Wendereusz
Eric M. Wiser
Kurt Joseph Wolfe

University Honors Program

Stacey Lynn Burge
Patrick Joseph Donahue
Erica M. Opegard
Alison Maureen Pency
Natalie Ann Rusnak

Kimberly Ann Smith
Judith Ann Stainbrook
Eric M. Wiser
Andrew Konrad Wodzianski

Baccalaureate and Associate Degrees

School of Liberal Arts Donald H. Dilmore, Ph.D., Acting Dean

Bachelor of Arts

Anthropology

Maritt M. Davis
Patrick H. Schwindt Jr. – Cum

Art History

Michele Lee Basile – Summa
David James Hughes
Shawn Christopher Martin
Ernest R. Oakes II
Natalie Ann Rusnak – Magna

Criminal Justice

David John Altvater
Tony Darnel Brinson
Eric F. Brodbeck
Christopher James Buzard
Heather Lynn Calgaro
Deborah Lyn Callan
Jennifer J. DePlatchett
Donald Jay Dowling
Stacey Lynn Dyrwal
Matthew V. Fender
Matthew Edward Gentile
Jenna Lynn Green
Michael J. Gustafson
Geraldine Hathaway
Maria Lynn Haverstick
Jason L. Iams
Roger T. Krawchuk
Scott William Marree
Scott A. Maurer
Daniel M. Meyer
Amy D. Milliren
Scott Vincent Mohnkern
Daniel Robert Nelson

Marcella Lynn Otteni
* Christopher D. Pappalardo
Jeremy L. Peifer
Kenneth R. Petersen
Michael Anthony Prilla
Marianne Riggle
Anthony Robert Robie
Eric E. Saleh
Scott Carl Schwedler
Kevin Lane Seelbaugh
Neal Christian Sibley
Kayleen Nicole Smith
Jennifer Ann Ulianelli
Paul Daniel Williams
Tiffany Lynn Williams

Drama

Pamela Marie Brusoski – Cum
Stacey Lynn McClain – Cum
David Eric Sitler – Cum

English

Nicole Anne Boback – Cum
Patrick Joseph Donahue – Magna
Michael Robert Elgard – Magna
Brad Christopher Ellsworth
Eric John Held
Molly Marie Lubiejewski
Michelle Marie Munson
* Erica M. Oppeward – Magna
Alison Maureen Pency – Summa
Lisa Marie Pokalsky
Christopher Michael Roman – Cum
Natalie Ann Rusnak – Magna
Sherrie Jones Shumate – Summa
Judith Ann Stainbrook – Summa

French

Scott Alan Mervis

History

Laurie K. Auld
Aaron Michael Bowes
Jan M. Cleaver – Magna
Rose R. Deka – Summa
Dana Marie Horvath
Thomas F. Lang
Gerald P. Novak
Emily Karen Painter
Michael Anthony Prilla
* Thomas Larry Stubna Jr.
Jarrod Michael Vallecorsa
Jennifer L. Woolstrum

Music

Edward Clinton Best
Julie Marie Ciarfella
Edmund L. Elko
Andrew Gregory McKay – Cum
Joseph Lloyd Sensor – Cum
Christopher Michael Smith – Summa
Matthew Edward Stresing
Eve Crognale Thrasher
Tracy Lyn Wolstoncroft
Michelle Carolyn Word

Philosophy

Lee Aaron McCracken – Summa

Political Science

Christopher Michael Bellas – Magna
Donald L. Grace – Cum
David Alan Hider

Psychology

Christine Marie Arigoni
Christopher Shea Ballard
Damian John Bebell – Cum
Melissa Jennifer Connolly
David Charles Cook
Alexis Erena Coutris
Wendy Lou DiGregorio – Magna
Cindy L. Earhart
Jennifer Jane Esper
Heather Lea Ferguson
Donna Marie Flite
Salena Michelle Gavin
Tara Lynn Gorczyca – Magna
Garo V. Gordon
Jennifer Renee Gray
Samantha S. Hank
Jeanette Lee Hendricks
Leonard John Jurkowski Jr.
Vincent Lee Kemp
Michael A. Kiel
Christina Diane Koontz
Tracy Lynn Luben
Matthew Allen Lyngarkos – Summa
Michelle Lee Magness
Terri Beth Mando
Elizabeth Seath McGonigal – Magna
Karie Elizabeth McGranor – Cum
Nicole Renee Melchek – Magna
Alisha Michele Melesky – Cum
* Katina Neshawna Morgan
Christina Marie Petrosky
Lisa A. Saleh – Cum
Kimberly Michelle Schrader
Jennifer Lynn Settles
Tim O. Shorts
Michael Alan Skelly – Magna
* Valerie Ann Smith
Stephanie Ann Truby
Fawn Marie Elizabeth VanGuilder
* James Edward Wagner
Melissa Ann Ward
Adam T. Woody

Sociology

Patrick J. Elder
Vicki Lenore Eller
Heather Dawn Hay
Candice A. Mathewson – Summa
John Patterson McCready – Cum
Ruby Josephine McFerren
Brad Alan Mickey

Spanish

Jesus Trevino

Speech and Hearing Disorders

Donald L. Adams – Summa
Kristin Michele Arata
Kelly Elizabeth Barrese – Magna
Brenda Leigh Bindeman
Karen Patricia Clark
Erin Michelle Davis – Cum
Barbara Joyce Elek
Anne Chadwick Endean
Michelle Marie Gromacki
Cynthia Jean Hope – Summa
Rachel Lynn Jeglinski
Tammie Renee Jones
Molly Ann Keenan
Julie A. Kula
Tabitha Lynn Lightner
April Kaye Lipchik
Kelly Lynn McKinney – Cum
Colleen S. Paytas
Claire M. Pearson
Jennifer M. Pontius
Janel Lea Rice
Maria J. Schall
Julie Ann Schneider – Magna
Kimberly J. Scott – Magna
Karla Anne Steighner
Jennifer Ann Zimm – Summa

Speech Communications

Andrew Paul Baer
Karrie Ann Bowen – Magna
Tamara J. Brown
Michael G. Crans
Cecilie Nicole Davis
Janine L. Fenell – Summa
Erika Joyce Gabler
William G. Hepp IV
Kara Leslie Horn – Cum
Angela Kay Kuepker
Thomas Michael Leonard
Jennifer Kuehne Loughman
Brian Edward Marton
Molly Palmer McGrane
Bill A. Negron
Jade J. Oakes
Diana C. Polen
Ronald Allen Postreich Jr.
Adam Christopher Reese
T. Matthew Robb
Myles Patrick Rooney
Norma V. Stanford – Magna
Eric Richard Steele
Andrew Kent Stover – Summa
Celeste L. T. Suber
Theresa Sue Vickery
Atsushi Wada
Kevin Michael Ward
Paul Jason Webb
Douglas Edward Wheeler
Jason Daniel Wolgemuth

Bachelor of Fine Arts

Applied Media Arts

Christian Stephen Allen
Jeanette Anne Bellon – Summa
Pamela Renee Bielman
Michael James Bocianowski II – Magna
Kenneth Ray Hale Jr.
Cass Heilig – Magna
David M. Kanon
Lisa Marie Kirsch
Anthony Joseph Klimko

Giovanni Maria Maltese
Kelly Christine Murphy
Michael Broderick Perrotti
Sharon A. Robaskiewicz
Mitchell P. Ruzak

Geology

Michael Dave Bartosek – Cum
Adam L. Hatton – Cum
Matthew Curtis Irvine
Jonathan William Frank Remo

Medical Technology

* James H. Harper
* Catherine A. Steele – Summa

Nuclear Medicine Technology

Carrie Jo Fisher
* Helen Michelle McGill
Douglas L. Rice
* Joseph A. Zeek

Nursing

Stephanie Lynn Baker
Colleen Renee Bessetti
Tami Sue Caruso – Magna
Beth Alayne Cassidy
Laura Rebekah Clever
Christopher E. Conn
Jayme Marie Crabb
Kelly Anne Dodson
Sarah Elizabeth Dolecki
Tammy Ann Dowling
Leslie Ann Engro
Kelly A. Farley
Michael Kerry Fuller – Cum
Barbara Jean Gamble – Cum
Heather Leah Gardner – Cum

Tracy Nicole Gebhardt
Heidi Lynne Gernert
Kimberly Marie Gibb – Cum
Larry Dean Goodlin
Jennifer Christine Hubbell
Kristie Lynn Jackson – Magna
Angela S. Kildoo – Cum
Kevin John Kolarosky
Kimberly A. Laboski
Julie M. Last
Andrew G. Lattanzio
Jennifer J. Long
Deborah Ann Matlak – Magna
Ralph H. McClay II
Renee Dawn McMullen
Valerie Ann Miles – Magna
Heather Nicole Minich
Maria Therese O'Donnell
Tammy Marie Pietras
Shawna Jeanne Reilly
Sandra Kay Rizzo
Donald William Seib
Derek N. Smith – Magna
Emily Elaine Stevens – Summa
Jane M. Tagliaferi
Kimberly A. Weaver
Amanda J. White – Summa
Melissa Kay Wonderling

Nutrition

Christine D. Mashuda
Mariann Noreen Murphey

Associate of Engineering Technology

Biomedical Equipment Technology

Dennis Joseph Sarbak
Steve J. Spaulding
Mark Alan Spiegel

Manufacturing Engineering Technology

Matthew Shawn Barker
Stephen J. Barnes
Ernest Reginald Johnson
Joel Curtis Thayer
Terrance D. Zinz

Associate of Science

Computer-Information Processing Technology

Andrew Brandt Eddy

General Business Administration

Lori A. Albert
Greg James Angiolelli
Kelly Renee Barnes
Linda L. Godfrey
Wayne Millard Hoffman
Marie F. Lander
Sherry Lynn Lindsey
Pamela Anne Manross
Patricia Marie Tauber
Mark J. Tenney
Uriah J. Weber

Medical Laboratory Technology

Linda S. Lococo

Bachelor of Science in Art Education

Barbara Jo Dennis
Heather Hakos-Hruby – Summa
Jason Stephen Korpa
Tischann M. Nye – Cum
Mary Kathryn Podroskey
William Otto Wetzel
Andrew Konrad Wodzianski – Summa

Bachelor of Science in Education

Elementary Education

Rebecca Ann Arth
Amy Michelle Aufman
Maria Elizabeth Bajus
Melissa Ann Beck
Katherine Elizabeth Becker
Peter Douglas Boyd
Marie Louise Brockway
Kelly Ann Brooks
Christine Louise Buto – Cum
Tricia Margaret Chapman – Magna
Alicia Lynn Coletta
Richard Charles Cornwell II – Summa
Christina M. Daye
Tammy Lynn Duszynski
Tracy Ellen Ebaugh – Magna
John William Flanagan
Tammy Marie Friedhaber
Jodi L. Gibson
Jill M. Gillette – Magna
Amy J. Gilmore
Monika Andrea Grof – Cum
Samantha Brooke Isaac
Kanako Iwakura
Jennifer Lynn Johnson
Jennifer Leigh Kronenwetter

School of Education Philip P. Kerstetter, Ph.D., Dean

Cari Anne LaFuria
Colleen M. Leftheris
* Adrienne Lee Lipiec
Rebecca Lynne McCormick – Magna
Melissa Ann Miller – Magna
Brian F. Nath – Cum
Jacqueline Marie Nestor
Holly M. Nix – Magna
Brenda Elfreda Pennella
Jeni Lynn Peters
Deborah Carol Picardo – Summa
Lee Marie Piccioni
Janet L. Preston – Summa
Tawnya Dawn Reed
Tammy R. Rettman
Stephanie Lynn Rinella
Stacey Gene Schultz
Jill Marie Sherman
Julie Rae Sickafuse
Malina Renee Sims
Heather Anne Spolarich
Melissa S. Starenchak – Magna
Nicolle Jane Stockton
Sean Douglas Tanner
Melissa Renae Thomas – Summa
Sharon Noelle Thomas
Dana Marie Tomechko
Edith Espinoza Trevino
* Steven Michael Tubbs – Summa
Shelly Kathleen Turi
Malinda Elise Viera – Cum
R. Sean Voorhees
Meranda Joy Wall
Staci Renee Webb
Rusty Allen Weingard
Rosalie Marie Weisenseel
Nanet Arlene Wendereusz – Cum
Rebecca Ann Williams
Dana Marie Wykoff
Kimberley Anne Ziner

Elementary Education/ Mentally-Physically Handicapped

Melissa K. Abel
Matthew William Bennett – Magna
Melanie Marie Bonson – Cum
Nicole Helene Bulette – Magna
Stacey Lynn Burge – Magna
Paula Louise Christ
Lisa Merenda Cremonese
Jennifer Rebecca Darr
Jennifer Lynn Daum – Magna
John Andrew Eldridge III – Cum
Michelle Dawn Fortin – Cum
Beth A. Gates – Magna
Marcie Lee Heasley
Lauri Ann Heckler – Summa
Stephen Vincent Kraft
Kelly Ann Lavadie
Meribeth Miller
Anne Marie Newton
Kathleen Marie Oliver – Summa
Jenny Lynn Parmarter
Jacquelin Lee Reagle
Jennifer Elizabeth Riestler
Amy Lynn Robinson
Timothy Andrew Sable
Christa Michele Sherred – Magna
Jenny Rebecca Smith-Lourens
Kerri J. Stitt
Heather Marie Trojan – Magna
Millicent Ann Underwood – Magna
Karianne Lynn Waleski – Cum
Martha Seifert Zaksheske – Magna
Gina Marie Zanghi

Health and Physical Education

Daniel Bryan Calhoun
Sean William Fellows – Cum
Sarah A. Lyons
Joy Mellisa McMann
Jeremy Christopher O'Day
Martyn J. Stoddard

Bradley Clinton Stone
 Jeffrey Steven Thimons
 Andrew T. Winegarden
 Kurt Joseph Wolfe – Cum

**Secondary Education –
 Earth/Space Science**

Mark D. Chludzinski

Associate of Science

Pre-School Education

Rhonda Lee Chapman
 Patricia Ann Clawson
 Heather S. Crabtree
 Threasa Marie Griffin
 Karen Marie Johnson
 Kerri Leigh McCullough
 Debora Lynn Smith
 Michelle Lynn VanBergen

**Mentally and Physically
 Handicapped**

Curtis Andrew Ace
 Todd A. Geer
 Jane Marie Mallin
 Angela May Mihoci
 Lori Ann Schafer – Cum
 Diane Kristen Schall

**Secondary Education –
 Mathematics**

Christine R. Jordan – Summa
 Tami L. Kent
 Timothy John Moore
 James Scott Waychoff

**Secondary Education –
 Social Science**

Fred Eugene Garvey Jr.
 Gordon S. Krahe – Cum
 William Jay Lawrence
 Gregory J. Spitzer – Summa
 Robert Jon Thompson
 Sandra Lynn Wojnar

Bachelor of Arts

Specialized Studies

Richard Paul Dettling
 Kimberly Ann Hlavtur
 Sara Ann Johnson
 Wendy Michelle McMahon
 Felicia Antionette Pope
 James V. Santo
 Patrick D. Schuster
 Ryan Clint Shaffer
 Aimee Lee Shontz
 Kathryn Virginia White

**Secondary Education –
 Biology**

Richelle Leigh Roden – Magna
 Susan Lynn Serbic – Summa

**Secondary Education –
 Chemistry**

Refaat Khalid Abu-Saleh
 Lynn Ann Gilliland
 Scott R. Griffis

**Secondary Education –
 Spanish**

Windle Rose Oberrath – Summa

**Secondary Education –
 Comprehensive English**

Sharon S. Clabby
 Jonathan Michael Edmiston
 Keri Anne Spielvogle
 Lori Kay Stafford – Magna
 Stacey Lynn Stromdahl – Magna
 Gary Eugene Wisor Jr.

* Students who will complete degree requirements during Summer 1997.

The University does not claim the list of degree candidates or honors designations is absolutely accurate. Students are granted degrees only if they meet all academic and financial requirements.

Edinboro University of Pennsylvania is committed to affirmative action and equal opportunity for all persons in its educational programs, activities, and employment practices.

Alma Mater
 Edinboro University of Pennsylvania

Hail to Thee our Al - ma Ma - ter glo - ri - ous; fresh

wreaths we bring to bind thy brow. Trials have

passed, and Thou hast stood vic - to - ri - ous, ne - ver fair - er, nev - er state - li -

er than now, O Ed - in - bo - ro, Ed - in - bo - ro, ev - er prais - ing

Thee in song, While class speeds class, as swift years pass, to Thee our hearts be - long.

**Chancellor, State System of
Higher Education**

James H. McCormick

**Board of Governors, State
System of Higher Education**

F. Eugene Dixon Jr. – *Chair*
Julia B. Ansill – *Vice Chair*
R. Benjamin Wiley – *Vice Chair*
Syed R. Ali-Zaidi
Muriel Berman
Christopher J. Cerski – *Student Representative*
Jeffrey W. Coy
Daniel P. Elby
Richard A. Fino – *Student Representative*
Glenn Y. Forney
Eugene W. Hickok Jr.
F. Joseph Loeper
Kim E. Lyttle
Joseph M. Nespoli
Rocco A. Ortenzio
Thomas J. Ridge
Jere W. Schuler
Andrew H. Shoffner – *Student Representative*
Patrick J. Stapleton
Christine J. Toretta

Council of Trustees

R. Benjamin Wiley – *Chair*
Clifford "Kip" Allen
Edwin D. Dombrowski
Susan H. Hagen
Patricia Heasley
Frank J. Jakovac
C. Richard Johnston
Benedict J. Miceli
Ellen Sass – *Student Representative*
William C. Schulz
Harry K. Thomas
James H. McCormick – *Chancellor (ex officio)*

Commencement Committee

Robert C. Weber – *Provost and Vice President for Academic Affairs – Chair*
Carol Bolla – *Coordinator of Special Events and Programs*
Janet Bowker – *Director, Alumni Affairs*
William Coleman – *Assistant Vice President for Facilities*
Jerry Kiel – *Associate Vice President for Enrollment Management and Retention*
Judy Kubeja – *Senior Executive Associate to the Provost*
Patti S. Loomis – *Director of Public Relations and Publications*
Edward Nixon – *Assistant Vice President for Student Development*
Alice Parker – *Administrative Assistant, Office of Records and Registration*
Lorraine Revak – *Facilities Office and General Services Manager*
Karen Smith – *Student Representative*
Peter van den Honert – *Chair, Department of Music*
Bob Wallace – *Director, TV and Media Services*

Commencement

Edinboro University of Pennsylvania

December 14, 1997



Commencement Ceremony

Convocation Robert C. Weber, Ph.D.
Provost and Vice President for Academic Affairs

Prelude Symphonic Wind Ensemble
Gary S. Grant, Ph.D., *Conductor*

Pomp and Circumstance ACADEMIC PROCESSIONAL Symphonic Wind Ensemble
Edward Elgar

Star-Spangled Banner Katrina Van Dreele, Ph.D.
Francis Scott Key Symphonic Wind Ensemble

Invocation The Reverend Terry Kime
Unitarian Universalist Congregation of Erie
Erie, Pennsylvania

Welcome Frank G. Pogue, Ph.D.
President

Greetings R. Benjamin Wiley
Vice Chair, Board of Governors, State System of Higher Education
Chair, Council of Trustees

America the Beautiful University Singers
Samuel Ward Peter van den Honert, D.M.A., *Conductor*

Awarding of Honorary Doctorates Frank G. Pogue
Paul H. O'Neill
Michael M. Zahorchak

Student Address Patrick J. Reider
Bachelor of Fine Arts, Fine Arts/Crafts

Alumni Address Daniel Higham
Alumni Association Vice President

Presentation of Candidates Robert C. Weber
 Philip P. Kerstetter, Ph.D., *Dean of Education and Graduate Studies*
 Terry L. Smith, Ph.D., *Dean of Liberal Arts*
 Eric A. Randall, Ph.D., *Dean of Science, Management and Technologies*
 Richard E. Arnold, Ph.D., *Dean of Academic Services*

Message from the President and Conferring of Degrees Frank G. Pogue

Alma Mater Katrina Van Dreel
 Symphonic Wind Ensemble

Benediction The Reverend Dr. John Dietz
First United Presbyterian Church
Edinboro, Pennsylvania

Fanfare and Recessional RECESSIONAL Symphonic Wind Ensemble
Edward Elgar

The audience is asked to stand during the Processional and Recessional and to join in the singing of the National Anthem and the Alma Mater.

University Faculty Marshals

<i>Ruthanne Atkinson</i> Elementary Education	<i>Barbara Grippe</i> Library	<i>Patricia Nosel</i> Nursing
<i>Ronald Baker</i> Mathematics and Computer Science	<i>Richard Gromen</i> History	<i>Alfred Riccomini</i> Special Education and School Psychology
<i>Joyce Berry</i> Physics and Technology	<i>Richard Heasley</i> Sociology/Anthropology/Social Work	<i>Janet Rogers</i> Chemistry
<i>Roy Brant</i> Political Science and Criminal Justice	<i>Cynthia Legin-Bucell</i> Psychology	<i>Rimvydas Sliazas</i> Business Administration and Economics
<i>Fred Caro</i> Health and Physical Education	<i>Robert Matthews</i> Music	<i>Eugene Stoddard</i> English and Theatre Arts
<i>Chuen Chow</i> Geosciences	<i>W. James McHenry</i> Counseling and Human Development	<i>Robert Tammariello</i> Biology and Health Services
<i>Robert Cogan</i> Philosophy	<i>Homer Mershon</i> Foreign Languages	<i>Suzanne Winterberger</i> Art
<i>Richard Forcucci</i> Speech and Communication Studies	<i>Karl Nordberg</i> Educational Services	

The Commencement Procession

ROTC Color Guard
 The Grand Marshal
 The University President
 The Trustees of the University
 The Platform Party
 The Faculty Marshals
 The University Faculty

Colors Distinctive of the Disciplines and Professions

Apricot.....	Nursing
Dark Blue	Philosophy
Light Blue.....	Education
Peacock Blue.....	Public Administration
Brown	Fine Arts
Citron.....	Social Work
Copper.....	Economics
Crimson.....	Journalism
Drab	Business
Gray	Veterinary Science
Silver Gray.....	Oratory
Green.....	Medicine
Olive Green.....	Pharmacy
Sage Green.....	Physical Education
Lemon.....	Library Science
Lilac.....	Dentistry
Maize	Agriculture
Orange.....	Engineering
Pink.....	Music
Salmon Pink.....	Public Health
Purple.....	Law
Russet.....	Forestry
Scarlet.....	Theology
White.....	Arts, Letters and Humanities
Golden Yellow.....	Science

Honors Award Designations

Gold Stoles	Summa Cum Laude
White Stoles	Magna Cum Laude
Red Stoles	Cum Laude
Gold Cords	University Honors Program Graduate
Red Cords	Departmental Honor Graduate

The Ceremonial Mace

The ceremonial mace, a symbol of presidential authority, is carried at the head of the academic procession by the Grand Marshal, Richard Gromen. A gift of the Alumni Association, the mace was designed and executed by Professor Henry Katzwinkel and Dr. Seymour Blinderman, former chairman of the Art Department. It was first used at the inauguration of Edinboro State College President Chester T. McNerney, in 1967.

The mace, twenty-seven inches in length, is topped by a sterling silver sphere studded with circular cabochon rubies, secured by bezels. The collar of the mace is inlaid with ebony, alternated with silver relief fleur-de-lis design elements. The cultured pearls mounted in cups encircle the bottom of the collar symbolizing the thirteen state colleges of Pennsylvania. The shaft of the mace is composed of Brazilian rosewood sections, separated by sterling silver rings. The mace is terminated by a cast sterling silver finial; the five cultured pearls represent the existing curricula. The rib-like cone form is terminated by a small silver sphere symbolizing the world.

The metal working processes incorporated in the ceremonial mace include turning, forging, inlaying, stone setting, and lost wax centrifugal casting.

The Presidential Medallion

The first presidential medallion was presented to former President Foster F. Diebold during the May, 1981 commencement ceremonies. Designed and executed by Professor Henry Katzwinkel, the sterling silver medallion consists of a three and one-half inch pectoral pendant featuring on its face the figure of a Gordon Highlander with pipes. To the right of the piper is the Cross of St. Andrew. To the left is the Cross of England. Flanking the figure is the date 1857, the opening year of the University, and garland thistles. In the background are the hills of Scotland, and beneath the piper is an open book, a symbol of knowledge. On the reverse side is the sunken crest of the Commonwealth of Pennsylvania.

The pendant descends from a shield containing a triple-towered castle. The collar of the medallion is comprised of a series of two-inch shields, alternately bearing three different designs: the meigle, an interlacing knotwork peculiar to the Pictish school of Celtic art; the Tudor rose design; and "ESC" in interlocking letters on a background of tabby weaving. Connecting each of the collar shields is a Cross of St. George, representing the union of Scotland and England. The entire medallion was fabricated and cast in the cire perdue (lost wax) process.

Surrounding the silver medallion is a gold crafted circle which reads "Edinboro University of Pennsylvania." Professor Katzwinkel, now retired, added this piece to the medallion especially for the Inauguration of President Frank G. Pogue, and it is now a permanent fixture to the medallion representing the school's current status as a University.

Academic Vestments

The gown, the cap, and the hood, representing the major components of the academic dress, are a ceremonial inheritance from the medieval universities of the eleventh and twelfth centuries, where dress was the outward sign of privilege and responsibility. The academic dress worn by those participating in today's academic processional symbolizes the level of their academic attainment and the institution they attended.

Gown

Although the gown is more frequently black, certain universities have authorized the use of colored gowns. The bachelor's and master's gowns are fashioned from black serge. The yoke for the bachelor's gown is designed to be worn closed and features long, flowing and pointed sleeves. The master's gown is designed to be worn open or closed. Its sleeves are very long with square ends, and the front part has an arc cut away. The arms protrude through a slit at the elbow. The gown for the doctor's degree is made of wool, serge, or silk with an open front faced with wide velvet panels. The sleeves are loose and bell-shaped with three bars of velvet in black or the color of the discipline in which the doctorate was obtained.

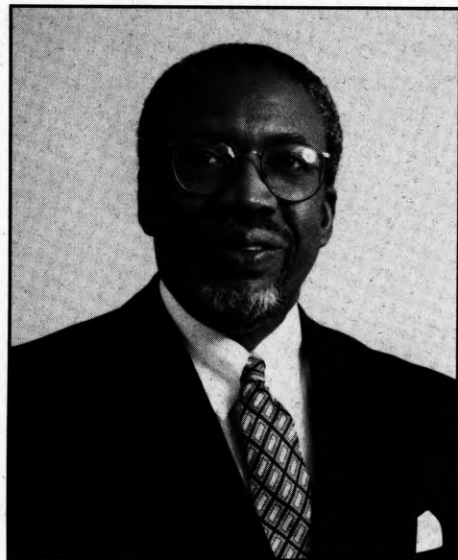
Hood

The most outstanding feature of the academic dress is the hood. It is usually worn only for the master's and the doctor's degrees. The doctor's hood is longer than the master's hood and has distinguished panels. The college or the university granting the degree is indicated by the color of the hood lining. The velvet trim of the hood indicates the field in which the degree was granted.

Cap

The standard cap is the mortarboard, usually the color of the gown. The tassel is black for the baccalaureate and master's degree and is worn over the left front quarter of the cap. The tassel for the doctor's mortarboard is of gold thread. Undergraduates wear the tassel on the right side of the cap until the moment the degree is conferred by the president.

President Frank G. Pogue



Dr. Frank G. Pogue

Dr. Frank G. Pogue was appointed the 15th president of Edinboro University of Pennsylvania on July 1, 1996.

A sociologist, President Pogue holds a bachelor's degree from Alabama State University, a master's degree from Atlanta University, and a Ph.D. from the University of Pittsburgh.

Prior to his presidency at Edinboro University, Dr. Pogue was the vice chancellor for student affairs and special programs at the State University of New York (SUNY) Central Administration in Albany, serving in that position for 10 years. While vice chancellor, he also served for one year as interim president at the SUNY College at Cobleskill. Prior to his assignment in the SUNY Central Administration, President Pogue was vice president for student affairs, associate vice president for research and educational development, dean of undergraduate studies, and a department chairperson, all at SUNY Albany.

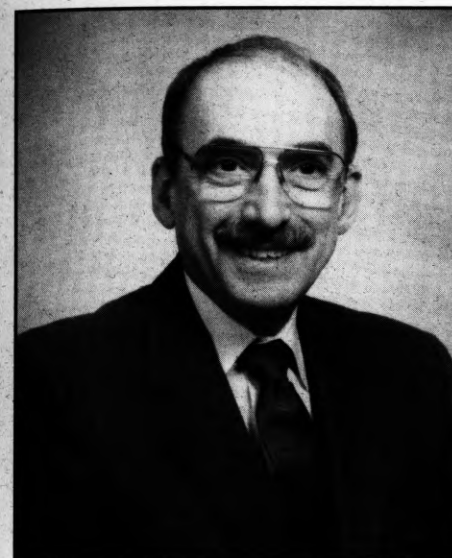
Dr. Pogue participates in national, regional and statewide leadership groups. Since 1984, he has served on the Commission on Higher Education of the Middle States Association of Colleges and Schools and is currently vice chair and member of its Executive Committee and chair of its Task Force on Equity and Diversity. He was also recently appointed chairperson of their Advisory Committee on Institutional Financial Resources, which will advise the Commission on the relationship of financial resources to institutional accreditation. Last year, he was also appointed to the Executive Committee of the Commission on the Rural Agenda of the American Association of State Colleges and Universities.

In October 1996, President Pogue was appointed by Pennsylvania Governor Tom Ridge to the Governor's Commission on Academic Standards. This bipartisan panel of legislators, business and corporate leaders and educators was given the task of gathering from citizens across the Commonwealth – particularly parents and community and business leaders – ideas and proposals for new academic standards and then recommending them to the Governor for approval. These standards, which Governor Ridge wanted to be rigorous, measurable, applicable to the world in which we live, and clearly written, are now being discussed and debated in public hearings being held across the state prior to adoption by the Board of Education.

Locally, Dr. Pogue serves on the boards of directors for the Erie Conference on Community Development, the United Way of Erie County, the Erie County Fiscal Management Task Force, the French Creek Council of the Boy Scouts of America, the Martin Luther King Center Scholarship Committee, and the Greater Erie County Chapter of the American Red Cross, for which he served as their 1997 capital campaign chairman. He has also been appointed to the boards of corporators for both the Hamot Health Foundation and the St. Vincent Health Center.

Since becoming president, Dr. Pogue has created the concept and philosophy of the Edinboro Family, a learner-centered environment where students come first and are an integral part of a caring and supportive campus community.

Grand Marshal



Dr. Richard J. Gromen

Carrying the ceremonial mace and leading the academic procession at today's Commencement ceremony is Dr. Richard J. Gromen, professor of history.

Dr. Gromen earned a bachelor's degree in history in 1953, a master's degree in history in 1961, and a Ph.D. in history in 1969, all from Western Reserve University. His teaching career began at Brunswick School where he taught history and mathematics from 1960 to 1964. He joined the Edinboro staff in 1964 as an assistant professor in social sciences and, in 1967, was named associate professor. A year later, he was promoted to full professor and was named chairperson of the history department. From 1969 to 1972 Dr. Gromen served as chairperson of the division of social sciences before serving as dean of the school of behavioral and social sciences from 1972 to 1981 and dean of the faculty of arts and sciences/graduate dean from 1981 to 1987. The following year, he served as interim dean of liberal arts before returning to the classroom in 1987.

During his career at Edinboro, Dr. Gromen assisted in the development of numerous programs, including counseling, history, psychology, social science, and speech pathology and audiology at the master's level; and the baccalaureate programs in criminal justice, economics/business, history, social work, and industrial and trade leadership. His University service has included membership on the University Senate Committee on Committees, Dean's Council, Pre-Healing Arts Committee, Department Evaluation Committee, Faculty Research Council, President's Cabinet, and the Middle States Evaluation Commission and Goals Statement Task Force.

Dr. Gromen currently serves as Edinboro's representative to the Americans for Competitive Enterprise Systems and was judge/advocate for the University's History Day. He has been a member of the University Senate since its inception in 1969, coordinator and spokesperson for the School of Arts and Sciences at the annual Honors Convocation, and state chairperson for Deans of Arts and Sciences of Pennsylvania State Colleges and Universities.

Dr. Gromen holds membership in many professional organizations including the American Association of University Professors, American Historical Association, Flagship Niagara League, National Education Association, North American Conference on British Studies, and Phi Alpha Theta.

His community service record includes the positions of board member, vice president, president, and past president of the Northwestern Pennsylvania Americans for the Competitive Enterprise System; coordinator for District I Pennsylvania Little League; and judge for the Pennsylvania Junior Academy of Science. He has also been a presenter at the Erie County Kiwanis Clubs Community Leaders Workshop, secretary and president of Triboro Little League, vice president of the Edinboro Kiwanis Club and a member of the Edinboro Foundation Board.

Dr. Gromen's many honors include listing in Who's Who in America (five editions), Dictionary of International Biography, Outstanding Professionals in Human Service, and Who's Who in the East.

Honorary Doctorate



Paul H. O'Neill

Paul H. O'Neill, chairman of the board and chief executive officer of Aluminum Company of America (Alcoa), has been selected to receive the degree Doctor of Public Service (*doctor beneficiorum publicorum, honoris causa*) at today's Commencement ceremony.

A world class business leader, Mr. O'Neill was elected chairman and chief executive officer of Alcoa on April 20, 1987. Prior to that he served as an Alcoa director.

Born in St. Louis, Missouri, Mr. O'Neill received a bachelor of arts degree in economics from Fresno State College and a master's degree in public administration from Indiana University. Additionally, he participated in graduate study programs in economics at Claremont Graduate School and George Washington University.

Prior to joining Alcoa, Mr. O'Neill was president of International Paper Company. He joined IP in 1977 as vice president for planning. Four years later, he was named senior vice president for planning and finance, and in 1983 was appointed senior vice president of the company's paper-board and packaging segment. He was named president in 1985.

Mr. O'Neill began his career as an engineer for Morrison-Knudsen, Inc., in Anchorage, Alaska. He worked as a computer systems analyst with the U.S. Veterans Administration from 1961 to 1966 and served on the staff of the U.S. Office of Management and Budget from 1967 to 1977. He was deputy director of the OMB from 1974 to 1977.

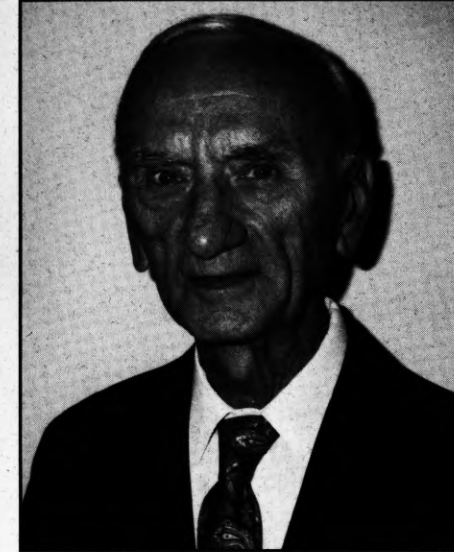
Mr. O'Neill is chairman of the board of trustees of The RAND Corporation; a director of the Institute for International Economics, the International Primary Aluminum Institute, Lucent Technologies, and Manpower Demonstration Research Corporation; a trustee of the American Enterprise Institute; a member of the board of governors of the National Association of Securities Dealers, Inc.; and a senior member of The Conference Board.

He is a founding member of the National Academy of Social Insurance; a council member of the Miller Center at the University of Virginia; a trustee for the H. John Heinz III Center for Science, Economics and the Environment; vice chairman of the Allegheny Policy Council; and a director of the Council for Excellence and the Gerald R. Ford Foundation.

During the past year, Mr. O'Neill served as chairman of the Governor's Commission on Academic Standards. His vision led the group to the successful completion of its charge – to develop academic standards for the Commonwealth of Pennsylvania.

The doctoral citation presented to Paul H. O'Neill reads as follows: *In recognition of your leadership in the cause of civic and social responsibility, which has had positive and profound effects on the lives of individuals and institutions; for your commitment to the economic development and stability of America as we approach the Millennium; for your emphasis on excellence and education as engines for individual and societal achievement; and for your willingness to undertake the role of public servant and statesman in the broader context of the Commonwealth of Pennsylvania, for the benefit of its citizenry.*

Honorary Doctorate



Michael M. Zahorchak

Michael M. Zahorchak, a 1937 Edinboro graduate, has been selected to receive the degree Doctor of Public Service (*doctor beneficiorum publicorum, honoris causa*) at today's Commencement ceremony.

A native of Aliquippa, Pa., Mr. Zahorchak attended Aliquippa High School and earned a bachelor of science in secondary education (science and social studies) from Edinboro State Teachers College in 1937. He received a master's degree in secondary education and educational administration from the University of Pittsburgh in 1942. He earned additional credits in the field of personnel psychology, administration and supervision leading to certification as a secondary school principal in 1955 and supervising principal in 1958.

Mr. Zahorchak's teaching career began as a sixth grade instructor in the Aliquippa Public Schools in 1938. From 1939 to 1942, he was ninth grade social studies and science instructor at Aliquippa Junior High School. He taught at Aliquippa Junior-Senior High School from 1946 to 1957, serving as science department chair for the last two years and assistant principal from 1957 to 1960. Mr. Zahorchak's next position was assistant principal at Aliquippa Senior High School from 1960 to 1967 before he was appointed principal, a position he held for two years.

He joined the Edinboro staff as associate professor of education and supervisor of student teaching in 1969 and served the University until his retirement in 1978.

Mr. Zahorchak has been a member of the Edinboro University Alumni Association's Board of Directors since 1955 and has served that board as both its president and vice president. In 1979 he was selected by the Association as a distinguished alumnus and subsequently was accorded honorary lifetime membership as a director emeritus. He is one of only two people ever to be recognized with life membership. An added honor was Mr. Zahorchak's induction into the Edinboro University Athletic Hall of Fame in 1982.

Mr. Zahorchak has represented Edinboro University with the Pennsylvania Council of Alumni Associations in the capacity of secretary, vice president and president. Typical of his love for Edinboro and his unending philanthropic support was his endowment of a scholarship fund for student-athletes in honor of the Zahorchak family name and in memory of his late wife, Ruth.

He is the father of two sons, both Edinboro graduates: Michael is an art instructor at Baden Economy Junior High School, and Thomas is an art instructor at Quaker Valley Junior High School.

The doctoral citation presented to Michael M. Zahorchak reads as follows: *In recognition of your leadership in education, which has had positive and profound effects upon the lives of both individuals and institutions; for your commitment to the achievement of all who would try to reach the fulfillment of their potential; for your lifelong focus on human learning in its multiple forms and myriad stages; for the devotion you have shown your alma mater and the Pennsylvania State System of Higher Education; and for your tireless service on behalf of your community and its citizens.*

Master's Degrees

Graduate Studies

Philip P. Kerstetter, Ph.D., Dean

Master of Arts

Art

- * Eileen Marie Gill, B.A., Mercyhurst College, 1994
- Geraldine Ruth Zojonc, B.F.A., Edinboro University of Pennsylvania, 1979

Clinical Psychology

- Thom Allen Brunner, B.A., Edinboro University of Pennsylvania, 1994
- Theresa A. Burke, B.A., Niagara University, 1995
- Brian Christopher Herman, B.A., Edinboro University of Pennsylvania, 1992
- Wendy S. Lindsey, B.A., Edinboro University of Pennsylvania, 1995
- Jeffrey Allen Ludovici, B.S., Slippery Rock University of Pennsylvania, 1995
- Pamela Munson Luper, B.A., Edinboro University of Pennsylvania, 1995
- Kathy Shaffer Mahood, B.A., Clarion University of Pennsylvania, 1973
- Michaela Metz, B.A., Baden-Wurttemberg, 1990
- Cheryl Clark Purser, B.A., Edinboro University of Pennsylvania, 1995
- Eric J. Valko, B.A., Edinboro University of Pennsylvania, 1995
- Joseph M. Yeager, B.A., Edinboro University of Pennsylvania, 1995

Communication Studies

- * William H. Adair, B.A., Edinboro University of Pennsylvania, 1993
- * Aamir Anwar, B.A., University of Punjab, 1987
- Stephanie Anne Bertoni, B.A., Edinboro University of Pennsylvania, 1993
- Lori Anna Dyer, B.A., Penn State University/Behrend, 1995
- Maya Siham Kriem, B.S., Edinboro University of Pennsylvania, 1996
- Erinn Dyan Lake, B.S., Edinboro University of Pennsylvania, 1992
- * Thomas William McLaren, B.S., Eastern Michigan University, 1982
- * Jennifer Nancy Packard, B.A., Edinboro University of Pennsylvania, 1993
- Mallar Sinha, B.A., Edinboro University of Pennsylvania, 1994
- Jamal Din Slimani, B.A., University Sidi Mohamed Ben ABD, 1986
- Reneva Ann Sweet, B.S., Edinboro University of Pennsylvania, 1989
- Mikal Suzanne White, B.A., Penn State University, 1995

Counseling

- * Hedy Margarete Archer, B.S., Edinboro University of Pennsylvania, 1993
- * Deirdre Ann Baljo, B.A., Concordia College/Oregon, 1991
- Kevin Keith Sutton Cook, B.A., Edinboro University of Pennsylvania, 1994
- * Heidi C. Decker, B.A., Edinboro University of Pennsylvania, 1989
- * Barbara Ann Denardi, B.S., Edinboro University of Pennsylvania, 1991
- * Susannah S. Freed-Callihan, B.A., Penn State University/Behrend, 1992
- Pamela Joy Gaston, B.S., Lancaster Bible College, 1981
- Arlene G. Goldberg, B.S., Edinboro University of Pennsylvania, 1995
- * John David Habada, B.S., Edinboro University of Pennsylvania, 1982
- Mary Margaret Hartnett, B.S., Montclair State College, 1983
- * Joanne Elizabeth Hornstrom, B.A., Edinboro University of Pennsylvania, 1995
- * Lisa Ann Kaylor, B.S., Clarion University of Pennsylvania, 1995
- * Diana M. Klein, B.S.N., Ottawa University, 1969

Social Sciences

- Bonita L. Klinginsmith, B.A., Edinboro University of Pennsylvania, 1995
- * Lori Ann Linden, B.A., Edinboro University of Pennsylvania, 1995
- Deborah Lynn Loney, B.A., West Virginia University, 1993
- Shelly Ann McManigle, B.S., Edinboro University of Pennsylvania, 1994
- Melissa Ann Oswald, B.A., Edinboro University of Pennsylvania, 1994
- Matthew John Williams, B.A., Geneva College, 1990
- * Susan Marie Wisniewski, B.A., Indiana University of Pennsylvania, 1993
- Kerry Lynne Wolfrom, B.S.N., Gannon University, 1990
- Stacy Rae Wright, B.A., Slippery Rock University of Pennsylvania, 1992
- * Melinda B. Zampogna, B.A., Penn State University, 1992

Speech and Language Pathology

- * Saif Ullah Abbasi, B.A., University of Sind, 1967
- Tresha Kay (Carmo) Bresslin, B.A., Edinboro University of Pennsylvania, 1992
- Matthew P. Bruno, B.A., Gannon University, 1995
- * Melinda C. Austin, B.A., Edinboro University of Pennsylvania, 1994
- * Sheri L. Hoehn, B.A., Edinboro University of Pennsylvania, 1995
- * Jennifer Lynn Krieger, B.A., Edinboro University of Pennsylvania, 1995

Master of Education

Educational Psychology

- * Lisa Marie Bokenko, B.A., Edinboro University of Pennsylvania, 1995
- * Melinda L. Byham, B.A., Edinboro University of Pennsylvania, 1996
- * Kevin Keith Sutton Cook, B.A., Edinboro University of Pennsylvania, 1994
- Michelle Marie DuShole, B.S., Edinboro University of Pennsylvania, 1996
- Robin Denise Ethridge, B.A., Edinboro University of Pennsylvania, 1995
- Kristen L. Ferro, B.A., SUNY College-Fredonia, 1988
- * Christine Anne Gatto-Shea, B.A., SUNY College-Fredonia, 1988
- Stacey Ann Goldstein, B.A., Mercyhurst College, 1994
- Joanne Ellen Keys, B.S., John Carroll University, 1996
- * MerriBeth Kujkowski, B.S.Ed., Edinboro University of Pennsylvania, 1991
- Molly Kate McDivitt, B.A., SUNY-Buffalo, 1996
- Susan Lynn Mead, B.A., SUNY College-Fredonia, 1991
- Nancy L. Rankin, B.A., Gannon University, 1981
- Sally L. Rider, B.A., Edinboro University of Pennsylvania, 1994
- Jennifer Ellen Shaffer, B.A., Hiram College, 1993
- Sherri L. Stoffer, B.S., Edinboro University of Pennsylvania, 1993

Elementary Education

- * June Marie Arnink, B.S., Toccoa Falls College, 1992
- * Amy Lynn Badeau, B.S.Ed., Clarion University of Pennsylvania, 1988
- * Debra L. Bullington, B.S.Ed., Edinboro University of Pennsylvania, 1973
- Melissa Grace Engel, B.S., Edinboro University of Pennsylvania, 1995
- Diana Lyn Ferris, B.S.Ed., Edinboro University of Pennsylvania, 1988
- Caroline Ann Goniea, B.A., Rutgers State University/New Brunswick, 1995
- Sandra L. Schellang, B.S., Edinboro University of Pennsylvania, 1988
- Leslie Burgard Van Tassel, B.A., Mercyhurst College, 1981
- Debra Ann Westcott, B.S., Penn State University, 1990

Elementary School Administration

- * Linda Louise Cappabianca, B.S.Ed., Edinboro University of Pennsylvania, 1991
- Sherry Renae Giardina, B.A., Thiel College, 1994
- Tracy Lynn Reiser, B.A., Edinboro University of Pennsylvania, 1993
- * Steven R. Schultz, B.S., Edinboro University of Pennsylvania, 1992
- * LaDonna Olivia Gilley Shanahan, B.S., Bowling Green State University, 1964

Reading

- Patricia Anne Cervone, B.S.Ed., Edinboro University of Pennsylvania, 1992
- Marcia J. Del Porto, B.S., Penn State University, 1973
- * Dawn Michelle Nowakowski, B.S.Ed., Slippery Rock University of Pennsylvania, 1990
- * Patricia Del Porto Vonah, B.A., Penn State University, 1968

Secondary School Administration

- * Jennifer Adair Brown, B.S.Ed., Edinboro University of Pennsylvania, 1991
- * Thomas Anthony DelFratte, B.A., Allegheny College, 1977
- * Sharon M. Gdaniec, B.S.Ed., Slippery Rock University of Pennsylvania, 1992

Special Education

- * Angela Victoria Abate, B.S., West Virginia University, 1995
- * Sophie Chimonidou, B.S., Edinboro University of Pennsylvania, 1995
- Bridgid McGrath Cooper, B.S.Ed., Edinboro University of Pennsylvania, 1991
- Lori Ann Crowley, B.S., Penn State University, 1991
- * Beverly Ann Hogan, B.A., Edinboro University of Pennsylvania, 1995
- Lisa M. Oesterling, B.S.Ed., Indiana University of Pennsylvania, 1986
- * Kimberly Lynn Rettger, B.S., Penn State University, 1993
- Kathryn M. Schultz, B.S.Ed., Edinboro University of Pennsylvania, 1993
- Julie Dugan Verdonik, B.A., John Carroll University, 1991

Master of Fine Arts

- Paul Arthur Frazer, B.S., SUNY-Buffalo, 1994
- * Richard Mark Sayer, B.F.A., Edinboro University of Pennsylvania, 1995
- * Julie K. Thurn, B.F.A., Indiana University of Pennsylvania, 1984
- Carole Amanda Werder, B.F.A., Edinboro University of Pennsylvania, 1974

Master of Science in Nursing

- Janice Therese Brabender, B.S.N., Edinboro University of Pennsylvania, 1992
- * Deborah Lin Thompson, B.S.N., Cedarville College, 1989

* Students who completed degree requirements during Summer 1997.

The University does not claim the list of degree candidates or honors designations is absolutely accurate. Students are granted degrees only if they meet all academic and financial requirements.

Honors

The following degree candidates have earned at least sixty-four credits as undergraduate students of Edinboro University and have attained the following cumulative averages: Summa Cum Laude, 3.80 to 4.00; Magna Cum Laude, 3.60 to 3.79; and Cum Laude, 3.40 to 3.59.

Summa Cum Laude

Loirie Ann Baney
Jan M. Cleaver
Leann Lynn Coon
Celeste S. Currie
Kristen Marie Emswiler
Amy Renee Godfrey
Elizabeth Ann Greenwood
Brenda Lee Harper
Stephanie Jo Kasper
Victoria J. Leopold
Teresa Antonia Mahon
Catherine Alice Mathewson-Steele

Sharon M. McCracken
Dawn Marie Meiers-Dembinski
Colleen R. Miller
Arthur A. Nichols
Patrick James Reider
Anna Christina Soennecken
Tessa Bree Stahlsmith
Sarah Elizabeth Strong
Yumi Suzuki
Julie K. Swartfager
Jonathan Stuart Tenney
Steven M. Tubbs

Magna Cum Laude

Jean M. Anderson
Kimberly Ann Bergman
Sean Edward Brown
Michael Anthony D'Addesi Jr.
Greta L. Rodgers English
Jeffrey Allen Fiedler
James L. Flaherty II
Deborah Jean Fuller
Eric Michael Grignol
Jocelyn Gail Hovey
Syed Ehteshamul Islam
William Patrick Kaminski
Michael R. Mancuso
Michael Garrett Marino
Michelle D. McBeth

Connie Lee Moyer
Joseph M. Neuch
Erica Michelle Oppegard
Kathleen McAtee Patterson
Jill Elizabeth Rozycki
Karen Ann Rugare
Jennifer Rebecca Sherman
Maureen Lynn Toy
Lydia D. Treter
Dana Maurice Washington
Kathleen Anne Weislogel
Charlyn J. Wilson
Heather A. Young
Scott Edward Zorn

Cum Laude

Stephanie G. Bailey
Jennifer Ann Boice
Janet Ann Brand
Michael S. Burns
Brenda Diane Buzard
Debbie Jo Catalfu
Derek Roy Clark
Mary Louise Dorfner
Lois Carol Garbarino
Lori Ann Genovesi
Megan Eileen Herman
Scott Paul Knoebel
Darren Patrick Kugal
Amy Sarah Kuhn
Amy Jo Lamm
Michael Robert Long
Carmen R. Machacek
Yoshie Matsuura

Sallie Lou McAdoo
Candice Marie McCartan
Amy F. Mona
Stefanie A. Morosky
Melinda L. Murphy
Susanne Marie Niebauer
Jason Lee Popielarczyk
Catherine M. Sauro
Christopher David Scoville
Erika Lyn Stein
Patricia Ann Territo
Rebecca A. Tessmer
Jeanine Ruth Van Damia
Kimberly L. Webber
Annette Frances Wheeler
Jina Marie White
Sara Beth Winkelbauer
Heather Leigh Young

University Honors Program

Syed Ehteshamul Islam
Dawn Marie Meiers-Dembinski

Erica Michelle Oppegard
Patrick James Reider

Baccalaureate and Associate Degrees

School of Liberal Arts Terry L. Smith, Ph.D., Dean

Bachelor of Arts

Anthropology

Stephanie Jo Kasper – Summa
Jonathan Stuart Tenney – Summa

Art History

Jason M. Chrissis
Renee Susan Gates
* Matthew Douglas Hileman
Amber Lynn Koehler
Heather Anne Strelecki
* Pamela Jane Stuchell

Criminal Justice

Eltone Ray Abdelaziz
* Mark Andrew Adamchik
Shawn Wesley Arford
* Joseph Jeffrey Baiera
* Brian M. Bartley
Gregory Matthew Bartosek
Jeffrey Michael Benson
Melissa Rae Brooks
Joel P. Cafini
* William H. Culp
Keith Aaron Cushenberry
* Terry A. Danko
Katie W. Degenhart
John Thomas Eagley
* Ronald Wayne Fagley
Jeffrey Allen Fiedler – Magna
Richard Dale Forney
Deborah Jean Fuller – Magna
* Rhonda Lynn Galosky
Jennifer Lynne Gasior
* Todd J. Giliberto
Shawn Christopher Gonsar

* Ebony Salese Gunby
Megan Eileen Herman – Cum
James Ross Hopkins

* Drusilla Ingram
Craig E. Jackson
David Samuel Johnson
Michelle Lynn Johnston

Scott Andrew Koch
Robin Marie Kornetz
Jennifer Ann Lecker

* Daniel P. Long
Gary D. Mack
Marc Patrick Martucci
Victor Masone III

Scott A. Mauer
Shawn Patrick McClintock
Mario T. Mezzacapo
Craig R. Murray

* Christopher David Pappalardo
Danyal Edana Patterson
Rebecca Jo Peterson

* Todd Matthew Price

* Tashina Kai Reeder
Anthony R. Robie
Jeffrey Andrew Scelp

Christopher Michael Schultheis
Christopher David Scoville – Cum
Heather Danielle Shafer

Jason Eugene Shrader

* Brian Arthur Sittig
Matthew Jacob Smith

* Alexander Wesley Tell
Emily Anne Watson
Daniel N. Weber

* Jesse Jay Wendl
Jason E. Whitman
Eric Christian Wytiaz
Lisa Ann Zemba
Amy Teresa Zimmerman

Drama

* Mayumi Okumura

English

Edwin R. Hahn
Laura M. Hebel
Victoria J. Leopold – Summa

* Erica Michelle Oppgard – Magna
Steve Owens
Robert Scott Prather
Sheldon S. Rodgers
Dena Michelle Steif
Chamberlain Patrick Sturging
Kimberly L. Webber – Cum

History

Ryan P. Breckenridge
Jan M. Cleaver – Summa
Brian James Decker
Thomas Frank Demharter
David Michael Demsey
Quaintance Terrell Hannon

* Dana Marie Horvath
John A. Luchin Jr.

* Scott E. Russell

* Thomas L. Stubna Jr.
Jonathan Stuart Tenney – Summa

Humanities

* Marios Charalambou Akritas

Music

Jennifer Marie Bischak
James Adam Diller
* Lauren Elizabeth Hughes
Gina Rashay Pritchett

Philosophy

Sarah Briggs Stoughton

Political Science

Andrea Lee DaCosta
Rena Lynn Galford
Misty Lynn Nickel
Jennifer Elizabeth Nientimp
Cheryl Alicia Porter
Dale Andrew Robinson

Psychology

Jean M. Anderson – Magna
Heather Faith Blazetic
Jennifer Ann Boice – Cum
Jermon E. Caldwell
Frederick Allen Cleland Jr.
Michael Anthony D'Addesi Jr. –
Magna

Brittney M. Dezwick
Allison K. Ewig

* Amanda Elizabeth Ferster
Melissa Joy Fies
Lois Carol Garbarino – Cum

Esther M. Giannamore
Amy Renee Godfrey – Summa

Gregory Todd Goehring
* Shontae Sherrod Graham
Kimberly Ann Holden

* Kimberly Ann Huyck
Anjanette Elizabeth Kent
Ericca Lyn Kersnick

Kye-Hwan Dennis Kim
Brian Thomas Knizner

Darren Patrick Kugal – Cum
Daniel Michael Kuligowski

Candice Marie McCartan – Cum
Sharon M. McCracken – Summa

* Eric Scott McDowell

* Dawn Marie Meiers-Dembinski –
Summa

* Danyelle Lee Miller

* Jody Helen Miller

* Arthur A. Nichols – Summa
Jason Lee Popielarczyk – Cum
Katerina Roussos

Amy Lynne Semanek

* Valerie Ann Smith
Heather Marie Steudler

* Michael A. Tomczak

* Alisha Lane Turner

* James Edward Wagner

Jennifer Ann Witt

* Heather Leigh Young – Cum

Social Science

Gregg Alan Martin

Sociology

Amy Lynn Cape

* Pasquale Edwardo Casane III

Spanish

Yoshie Matsuura – Cum

Speech and Hearing Disorders

Jill Christine Beighley

* Celeste S. Currie – Summa

* Anna Marie Garbaloff

Amy Sue Hetrick

Lisa Anne Johnston

Timothy Andrew Knight

* Jennifer Anne Leopold

Graceann Leupp

* Carmen R. Machacek – Cum

* Becky Lynne Neghiu

Jennifer Rebecca Norelli

* Melanie Lyn Richardson

Dana M. Rugg

Anna Christina Soennecken – Summa

* Julie K. Swartfager – Summa

Jill Dana Tehle

Dawn Renee Weaver

David A. Whipkey

* Jill Anne Zamierowski

Speech Communications

Jennifer Lynn Beighley

Chad J. Bernotas

Sean Edward Brown – Magna

Elaine K. Bush

* JoAnn Elaine Cheney

* Matthew J. Ciavarelli

Julia Katherine Cioccio

* Kathryn Elizabeth Czuwara

Jill Marie Daly

Pamela Dawn Fetterolf

James L. Flaherty II – Magna

Megan Foley

Gregory Todd Goehring

Denise Mikaela Habib

Richard Hall Knight

Jennifer Anne Lattimore

Michael R. Mancuso – Magna

Dana Marie Molinaro

Mary Brennan O'Malley

Tammie Carol Pace

Matthew James Peters

Scott Edward Piker

Benjamin Ian Riddle

* Jennifer Robin Schwantner

* Alicia Dawn Sienerth

Paul F. Skrok

Ryan Todd Slepian

* Joseph Anthony Soltis

Kim Marie Stavisky

Amber Hope Tipton

* Karen L. Wright

Bachelor of Fine Arts

Applied Media Arts

Kimberly Marie Adams

Melissa Renee Allen

Carrie Christine Biagio

John Edmund Bieranoski Jr.

* Max A. Blobner

Lisa Jean Cairns

Scott Andrew Dopierala

* Amy Lynn Fazzolari

Joseph Vincent Ferralli

Eric Michael Grignol – Magna

Kimberly Lee Gunn
Audra M. Halleck
Kirk H. Hazen

* Stephen Carter Heidelberg
David Andrew Holland
Kristy A. Holnaider
Jason Earl Hoover
Richard E. Ingelido
Katherine L. Johnson
Joseph Wiliam Kalinowski
William Charles Krowinski
Bryan Daniel Matulay
* Emily J. Miller
* Aubrey Anne Minnis
Ian James Murphy
Cynthia Marie Peterson
Shane Christian Pullar
Lisa Ann Schulz
Kevin M. Simones
Melanie M. Smith
Yumi Suzuki – Summa
Justin Todd Vavrick
Colleen Ann Whitney
Gregory Thomas Wieder

Fine Arts/Crafts

Melissa Reneé Charlson
Mary Louise Dorfner – Cum
Christopher Todd Ellis
Antonio Vincent Ferneti
* Robin Ann Hughston
Dennis Paul Klinefelter
Michael Robert Long – Cum
Michael W. McGreal III
Damon A. Navari
Patrick James Reider – Summa

Bachelor of Science

Social Work

April Marie Arrigo
Jennifer L. Bernath
Tinamarie Fiore Butterfield
Lynn Michele Clark
Darel R. Cooper
* Noelle Suzanne Dancy
Amy Lynn Fisher
* Jeffrey Lee Hayden
Paula L. Kuszajewski
Steven Joseph Leonard
David Charles McClelland
Carrie Jean Musselman
Holly Renee Pasikoski
James D. Potter
Nicole Marie Pro
Michele E. Schetter
Angela Rose Sweeney
Kimberly Ann Turner
* Jeanine Ruth Van Damia – Cum
Kathleen Anne Weislogel – Magna
Jessica A. Wesolek
* Heather A. Young – Magna

Associate of Arts

Criminal Justice

* Randall Glenn Carlson
* Amy Lynn Krenz
Kenneth Alan Zdunski

Human Services

Jennifer Nicole Barker-Elhasani
Rebecca Susann Humphreys
Deborah L. Marx
Tammy Helene Mikolajczyk
Amy Lynn Reinsfelder
Christine Lynn Skelly

Liberal Studies

Denise Renée Allen
James P. Brosnan
Jessica Dawn Ford

School of Science, Management and Technologies

Eric A. Randall, Ph.D., Dean

Bachelor of Arts

Biology

Donald Martin Chiodo
* Sallie Lou McAdoo – Cum
* William Douglas Shoulders

Earth/Space Science

James Vern Stewart

Environmental Studies/ Geography

Paul Joseph Bauer
Kenneth Brett Berger
* Derik M. Fales
Kathy Flannagan
Anthony Andrew Gigliotti
Thomas M. Homolek Jr.
S. Greg Honkus
Jason Richard Kelley
* Melinda L. Murphy – Cum
Bret Robert Rehwaldt
Shane E. Wareham

Geography

Amy Lynn Lovelady
Edward F. McClory
Yasuhiro Takashima

Mathematics

Max William Blair Jr.
David William Erich
Steven D. Satterlee
Junichi Shishido

Natural Science and Mathematics

* Vinola Saint Auguste
* Michael Stephen Waleski

Bachelor of Science

Biology

Benjamin K. Baker
* Vincent L. Bayer
Charles Derek Cole
* Amy Jo Killeen
Stefanie A. Morosky – Cum
Tiffany Joy Sexauer
Brent Stephen Sperry

Business Administration

Robert Joseph Arrigo
Nathaniel Robert Bahurinsky
Stephanie G. Bailey – Cum
Lorrie Ann Baney – Summa
* Hanane Benyoussef
Jason Edward Bosco
* Joshua Mills Brashers
* John Edward Buckham II
Nicole Marie Bucko
* Jennifer Marie Cherry
Victoria Anne Dugan
Jeannine Lynn Flick
Mary Sue Gorman
* Julie-Anne Gorzka
Maureen Ann Gwin
Jesse David Hannan
Christopher Allen Hart
Matthew Daniel Higham
* Travis Richard Hunt
* Brian Keith Hurley
Danelle Marie Hutchison
Syed Ehteshamul Islam – Magna
Christopher J. Kahat

Asif Khan Khattak
Todd Ronald Mancuso
Jeffrey Brian Manners
Stephanie Jo Meako
Michael Lee Melquist
Michael Patrick Mihlfried
Mark Thomas Moran
Robert W. Myers
Joshua C. Paris
Jerome E. Patalas Jr.
Heather Lynn Pavkov

* Ryan Charles Post
Gail Lynn Rasavage
Michael John Reade
Lawrence Edward Rice
Troy Hill Sarria
* Steven Michael Sarrick
Chad Joseph Seideneck
Herman Supangat
* Kristin Marie Tamelcoff
Katrina L. Tate
Frank M. Urbanick
Angela Jennifer Valaitis
Dana Maurice Washington – Magna
Charlyn J. Wilson – Magna
Jason Joseph Yuhasz

Computer Science

Gordon S. Bauer
Shawn Eric Chapman
* Jeffrey W. Jordan
Mark David Pruyn
Scott Allen Shifko

Environmental Science

Kimberly Ann Bowers
Jason C. Caravella
Jon Chadwick Edel Jr.
Michael Todd Kinnear
Angela Nicole Kreiser
Douglas A. Lobingier
Matthew David Scott
Scott Edward Zorn – Magna

Geology

* Jill Elizabeth Rozycki – Magna

Medical Technology

* Stacy Michelle Hannah
* James H. Harper
* Catherine Alice Mathewson-Steele –
Summa
Tracy M. Turner

Nuclear Medicine Technology

Carissa Jean Shuck
* Joseph Anthony Zeek

Nursing

Brenda Diane Buzard – Cum
Leann Lynn Coon – Summa
Brooke Lindsay Dennis
* Bonnie Jean Desko
* Sarah Elizabeth Dolecki
Michelle D. McBeth – Magna
Patricia E. Waisley

Bachelor of Science in Nursing

* Victoria L. Angelotti
* Christine Elizabeth Antonelli
* Michelle Marie Bieliski
* Barbara A. Bird
* Robert Eric DiGello
* Jessica Anne Doolan
* Tony Duane Hirsch
* Steven Eric Johnston
* Judith Katherine King
* Denise L. Knoll
* Corry Jean Kozalla
* Melissa Myrtle McCartney
* Shannon Lynn McGaughey
* Connie Lee Moyer – Magna
* Audrey Joyce Perry
* Jennifer D. Simmons
* Holly Ann Thompson
* Karen Margaret Wolfe
* Mary J. Wylie

Associate of Engineering Technology

Biomedical Equipment Technology

* Eric Roger Brown

Manufacturing Engineering Technology

James P. Grygier
* David J. Lasher
Paul C. Pisarchick

Associate of Science

Computer Science

Kristen Noelle Briggs
Mark E. Thornton

General Business Administration

Kimberly S. Alexander
Christina Starr Alfieri

Medical Laboratory Technology

* Theresa Ann Wykoff

Bachelor of Science in Art Education

Lauren Elise Ayala
Sarah Marie Campbell
Renee Downey
Christine A. Kotarsky
Kathleen Ann Kroll
Lori Marie Langdon
Susan Elizabeth Martin
Erika Lyn Stein – Cum
Stanley T. Zimmerman Jr.

Bachelor of Science in Education

Elementary Education

Melissa N. Anderson
Christine Michele Antolik
Todd Allen Baker
* Kimberly Ann Bergman – Magna
Kathleen Margaret Biby
Stephanie Jane Buchheit
Michael S. Burns – Cum
Ryan Patrick Casciotti
Debbie Jo Catalfu – Cum
Alissa Marie Clugh
Lori Alison Cordell
Danielle Marie D'Amico
Chad Edward Danka
Kristin Elizabeth Dowd
Edward J. Emmett
Kristen Marie Emswiller – Summa
Kristine Nichole Forkus
Mindy Rose Forte
Amber Corinne Gannon
Tonya Lynn Gilkinson
Michelle Elizabeth Graham
Elizabeth Ann Greenwood – Summa
* Marcie Ann Hamilton
Shawna Ann Hamilton
Pachis Lin Hartwick
Jamielyn E. Hazen
Kimberly Kay Horner
Alisa Jo Kardos

School of Education Philip P. Kerstetter, Ph.D., Dean

Toni Michele King
Scott Paul Knoebel – Cum
Margaret Bernadette Kowalski
Denise Danielle Kuffer-Gustafson
Amy Sarah Kuhn – Cum
Amy Jo Lamm – Cum
* Adrienne Lee Lipiec
* Amy Susan Martin
Desiree Danielle McMichael
Denise Marie Mitchell
Steven Michael Mizikowski
Kristen Ann Nelson
* Amy Sandra Newell
Susan Nicole Nichols
Tonya Michelle Nichols
Susanne Marie Niebauer – Cum
Jennifer Ann O'Brien
Kimberly Ann Palmer
Kathleen McAtee Patterson – Magna
Stacy Lynn Peterson
Elizabeth Ann Pope
* Kristina L. Retzlaff
Erin Kathleen Seeley
Chad Allan Shelatz
Jennifer Rebecca Sherman – Magna
Kathleen Ann Shreve-Harris
Angela Jeanne Skakalski
Bethany Jane Slagle
Tessa Bree Stahlsmith – Summa
Sarah Elizabeth Strong – Summa
Michelle Marie Tackett
Patricia Ann Territo – Cum
Maureen Lynn Toy – Magna
* Steven M. Tubbs – Summa
Julie Ann Sullivan Tullio
Marlaina Elizabeth Underwood
Lianna Fay West
Sarah Beth Winkelbauer – Cum
Kimberly Anne Ziner

Elementary Education/ Mentally-Physically Handicapped

Cara Ann Adiutori
Gloria Dawn Barrett
Jeffrey James Bonniger
* Rachel Elizabeth Calabrese
Greta L. Rodgers English – Magna

Christine Lynn Evans
Danielle Renee Heath
Lisa Marie Heaverly
Elizabeth A. Horning
Amy Lyn Ingold
Amy Kristin Kibbee
Theresa S. Koech
Lisa M. Lucas
Teresa Antonia Mahon – Summa
Sharon Rae Mahoney
Colleen R. Miller – Summa
Amy F. Mona – Cum
Amy Colleen Moore
* Michael William O'Connor
* Justin Mark Raymond
Nancy Jean Rubin
David R. Swanson
Alison Marie Tarbell
Rebecca A. Tessmer – Cum
Renel Lynne Tully
Lori A. Uber
Tonya Sheree Wasser
Jennifer Ann Wert
Annette Frances Wheeler – Cum
Jina Marie White – Cum

Health and Physical Education

Ryan John Abbott
James Howard Campbell
Derek Roy Clark – Cum
Colleen Patricia Colvin
Travis W. Kuhl
Roger Philip Lyon
Jason Alan Machajewski
* Brian J. Manning
Brian John McCall
Christina Marie Petrisko
John Sabo
Matthew Mark Schultz
* John P. Stahon
Michelle Lynn Weber
Chad Eric Wensel

Mentally and Physically Handicapped

Brenda L. Carpenter
Brenda Lee Harper – Summa
Jennifer Anne Way

Secondary Education – Biology

Bradley D. Huck
Christen Patricia Johnson
* Tammy Sue Pavlik

Secondary Education – Comprehensive English

Chlvie Jean Carlstrom
Lori Ann Genovesi – Cum
Keith Alan Miller

Secondary Education – Earth/Space Science

Janet Ann Brand – Cum
LaRina M. Clark

Secondary Education – Mathematics

* Michelle Rene Abu-Saleh
Dominic Joseph DiBucci
Joshua Michael Lape
Thomas Robert Rasbach
Catherine M. Sauro – Cum
Lydia D. Treter – Magna

Secondary Education – Physics

Jason Paul Marin

Secondary Education – Social Science

Sean Edward Brown – Magna
William Patrick Kaminski – Magna
Kara L. Laycock
Brian William Luthringer
Joseph M. Neuch – Magna
Richard George Rutkowski
Brian S. Stadler

Associate of Science

Pre-School Education

* Rebecca Lane Byham
Katherine Elizabeth Collins
* Catherine Ann Fitzgerald
* Trudy Lynn Fockler
Barbara Ann Gainer
* Rebecca Susan Guianen
* Barbara Jo-Ann Hooks
Shelley G. Johnston
Sharon R. Neuman
Mikaela E. Thomas
Tracy Lynn Zuschlag

Bachelor of Arts in Specialized Studies

Richard E. Arnold, Ph.D., Dean

Angela L. Frank
Alyssa Kathleen George
* Johanna Elizabeth Gross
Jocelyn Gail Hovey – Magna
Timothy R. Huhta
* Ethan David Karpowich

Halim Kim
Michael Garrett Marino – Magna
Thomas A. McCrea
Shawn Patrick Migliaccio
* Jennifer Leigh Mitchell

Karen Ann Rugare – Magna
James Albert Smock
Troy P. Spencer
Andrea Carlson Stevens
* Scott Alan Winsor

* Students who completed degree requirements during Summer 1997.

The University does not claim the list of degree candidates or honors designations is absolutely accurate. Students are granted degrees only if they meet all academic and financial requirements.

A member of the State System of Higher Education, Edinboro University of Pennsylvania is committed to affirmative action and equal opportunity for all persons in its educational programs, activities, and employment practices.

Alma Mater
Edinboro University of Pennsylvania

Hail to Thee our Alma Mater glo - ri - ous; fresh
wreaths we bring to bind thy brow. Trials have
passed, and Thou hast stood vic - to - ri - ous, ne - ver fair - er, nev - er state - li -
er than now, O Ed - in - bo - ro, Ed - in - bo - ro, ev - er prais - ing
Thee in song, While class speaks class, as swift years pass, to Thee our hearts be - long.

**Chancellor, State System of
Higher Education**

James H. McCormick

**Board of Governors, State
System of Higher Education**

F. Eugene Dixon Jr. – *Chair*
Kim E. Lyttle – *Vice Chair*
R. Benjamin Wiley – *Vice Chair*
Syed R. Ali-Zaidi
Muriel Berman
Christopher J. Cerski – *Student Representative*
Jeffrey W. Coy
Daniel P. Elby
Richard A. Fino – *Student Representative*
Glenn Y. Forney
Charles A. Gomulka
Eugene W. Hickok Jr.
F. Joseph Loeper
Rocco A. Ortenzio
Thomas J. Ridge
Jere W. Schuler
Andrew H. Shoffner – *Student Representative*
Patrick J. Stapleton
John K. Thornburgh
Christine J. Toretti

Council of Trustees

R. Benjamin Wiley – *Chair*
Clifford "Kip" Allen
Susan H. Hagen
Patricia Heasley
Frank J. Jakovac
C. Richard Johnston
Benedict J. Miceli
Ellen C. Sass – *Student Representative*
William C. Schulz
Harold C. Shields
Harry K. Thomas
James H. McCormick – *Chancellor (ex officio)*

Commencement Committee

Robert C. Weber – Provost and Vice President for Academic Affairs –
Chair
Carol Bolla – Coordinator of Special Events and Programs
Janet Bowker – Director, Alumni Affairs
D.J. Bradley – Director, Desktop Systems and Learning Technology
William Coleman – Assistant Vice President for Facilities
Jerry Kiel – Associate Vice President for Enrollment Management and
Retention
Judy Kubeja – Senior Executive Associate to the Provost
Patti S. Loomis – Director of Public Relations and Publications
Edward Nixon – Assistant Vice President for Student Development
Alice Parker – Administrative Assistant, Office of Records and
Registration
Lorraine Revak – Facilities Office and General Services Manager
Karen Smith – Student Representative
Peter van den Honert – Chair, Department of Music