

# *Commencement*

**Edinboro University  
of Pennsylvania**

**May 12, 1996**



# Commencement Ceremony

---

Convocation .....	Robert C. Weber, Ph.D. <i>Interim Provost and Vice President for Academic Affairs Edinboro University of Pennsylvania</i>	
Prelude .....	Symphonic Wind Ensemble Gary S. Grant, Ph.D., <i>Conductor</i>	
Pomp and Circumstance .....	ACADEMIC PROCESSIONAL .....	Symphonic Wind Ensemble
<i>Edward Elgar</i>		
Star-Spangled Banner .....	David Herendeen, D.M.A. Symphonic Wind Ensemble	
<i>Francis Scott Key</i>		
Invocation.....	The Rev. John Jacquel <i>Our Lady of the Lake Catholic Church Edinboro, Pennsylvania</i>	
Chancellor's Greeting .....	Charles R. Agnew <i>Associate Vice Chancellor for Development State System of Higher Education</i>	
President's Welcome .....	President Foster F. Diebold <i>Edinboro University of Pennsylvania</i>	
America the Beautiful .....	University Singers Peter van den Honert, D.M.A., <i>Conductor</i>	
<i>Samuel Ward</i>		
Awarding of Honorary Doctorate .....	President Foster F. Diebold	
<i>Thomas B. Hagen</i>		
Presentation of Candidates .....	Robert C. Weber	
<i>Charles Frederick Abel, J.D., Ph.D., Dean of Graduate Studies Philip P. Kerstetter, Ph.D., Dean of Education and Acting Dean of Liberal Arts Michael A. Mogavero, Ph.D., Dean of Science, Management and Technologies</i>		
Conferring of Degrees .....	President Foster F. Diebold	
Alma Mater.....	David Herendeen Symphonic Wind Ensemble	
Benediction.....	The Rev. John Jacquel	
Fanfare and Recessional .....	RECESSIONAL .....	Symphonic Wind Ensemble
<i>Edward Elgar</i>		

The audience is asked to stand during the Processional and Recessional and to join in the singing of the National Anthem and the Alma Mater.

**The Commencement Procession**

---

ROTC Color Guard  
The University Marshal  
The University President  
The Trustees of the University  
The Platform Party  
The University Faculty

**Colors Distinctive of the Disciplines and Professions**

---

Apricot.....	Nursing
Dark Blue .....	Philosophy
Light Blue.....	Education
Peacock Blue.....	Public Administration
Brown .....	Fine Arts
Citron.....	Social Work
Copper.....	Economics
Crimson.....	Journalism
Drab .....	Business
Gray .....	Veterinary Science
Silver Gray .....	Oratory
Green.....	Medicine
Olive Green.....	Pharmacy
Sage Green .....	Physical Education
Lemon.....	Library Science
Lilac.....	Dentistry
Maize .....	Agriculture
Orange .....	Engineering
Pink .....	Music
Salmon Pink.....	Public Health
Purple .....	Law
Russet.....	Forestry
Scarlet .....	Theology
White.....	Arts, Letters and Humanities
Golden Yellow .....	Science

**Honors Award Designations**

---

Gold Stoles .....	Summa Cum Laude
White Stoles .....	Magna Cum Laude
Red Stoles .....	Cum Laude
Gold Cords .....	University Honors Program Graduate
Red Cords .....	Departmental Honor Graduate

**The Ceremonial Mace**

---

The ceremonial mace, a symbol of presidential authority, is carried at the head of the academic procession by the University Marshal, Dr. Louella "Bunny" Bucho. A gift of the Alumni Association, the mace was designed and executed by Professor Henry Katzwinkel and Dr. Seymour Blinderman, former chairman of the Art Department. It was first used at the inauguration of Edinboro State College President Chester T. McNerney, in 1967.

The mace, twenty-seven inches in length, is topped by a sterling silver sphere studded with circular cabochon rubies, secured by bezels. The collar of the mace is inlaid with ebony, alternated with silver relief fleur-de-lis design elements. The cultured pearls mounted in cups encircle the bottom of the collar symbolizing the thirteen state colleges of Pennsylvania. The shaft of the mace is composed of Brazilian rosewood sections, separated by sterling silver rings. The mace is terminated by a cast sterling silver finial; the five cultured pearls represent the existing curricula. The rib-like cone form is terminated by a small silver sphere symbolizing the world.

The metal working processes incorporated in the ceremonial mace include turning, forging, inlaying, stone setting, and lost wax centrifugal casting.

**The Presidential Medallion**

---

A symbol of presidential authority, the first presidential medallion was presented to Foster F. Diebold during the May, 1981 commencement ceremonies. It is permanently housed in the president's office and will be presented to successive presidents. Designed and executed by Mr. Henry Katzwinkel, professor of art, the sterling silver medallion consists of a three and one-half inch pectoral pendant featuring on its face the sunken crest of the Commonwealth of Pennsylvania. On the reverse side is the figure of a Gordon Highlander with pipes. To the right of the piper is the Cross of St. Andrew. To the left is the Cross of England. Flanking the figure is the date 1857, the opening year of the University, and garland thistles. In the background are the hills of Scotland, and beneath the piper is an open book, symbol of knowledge.

The pendant descends from a shield containing a triple-towered castle, the symbol of defense, protection, and strength. The collar of the medallion is comprised of a series of two-inch shields, alternately bearing three different designs: the meigle, an interlacing knotwork peculiar to the Pictish school of Celtic art; the Tudor rose design; and "ESC" in interlocking letters on a background of tabby weaving. Connecting each of the collar shields is a Cross of St. George, representing the union of Scotland and England. The entire medallion was fabricated and cast in the cire perdue (lost wax) process.

## Academic Vestments

The gown, the cap, and the hood, representing the major components of the academic dress, are a ceremonial inheritance from the medieval universities of the eleventh and twelfth centuries, where dress was the outward sign of privilege and responsibility. The academic dress worn by those participating in today's academic processional symbolizes the level of their academic attainment and the institution they attended.

### Gown

Although the gown is more frequently black, certain universities have authorized the use of colored gowns. The bachelor's and master's gowns are fashioned from black serge. The yoke for the bachelor's gown is designed to be worn closed and features long, flowing and pointed sleeves. The master's gown is designed to be worn open or closed. Its sleeves are very long with square ends, and the front part has an arc cut away. The arms protrude through a slit at the elbow. The gown for the doctor's degree is made of wool, serge, or silk with an open front faced with wide velvet panels. The sleeves are loose and bell-shaped with three bars of velvet in black or the color of the discipline in which the doctorate was obtained.

### Hood

The most outstanding feature of the academic dress is the hood. It is usually worn only for the master's and the doctor's degrees. The doctor's hood is longer than the master's hood and has distinguished panels. The college or the university granting the degree is indicated by the color of the hood lining. The velvet trim of the hood indicates the field in which the degree was granted.

### Cap

The standard cap is the mortarboard, usually the color of the gown. The tassel is black for the baccalaureate and master's degree and is worn over the left front quarter of the cap. The tassel for the doctor's mortarboard is of gold thread. Undergraduates wear the tassel on the right side of the cap until the moment the degree is conferred by the president.

## University Marshal



Dr. Louella M. "Bunny" Bucho

Carrying the ceremonial mace and leading the academic procession at today's Commencement ceremony is Dr. Louella M. "Bunny" Bucho, professor in the department of English and theatre arts.

Dr. Bucho holds a bachelor of science degree in English and social sciences from Edinboro University, a master's degree in English from Gannon University, and a doctorate in English from Indiana University of Pennsylvania. She has taught literature, literary critical theory, and research writing since joining the Edinboro faculty in 1966.

Throughout her career at Edinboro, Dr. Bucho has served on a variety of committees, including the University Senate, the Senate Academic Concerns Committee, the University Academic Advisement Committee, and the Act 101 Board of Directors. Since 1985 she has served as chair of the President's Faculty Advisory Committee, and for the past six years she has coordinated the University's annual Academic Festival.

She is a member of the University's Alumni Association Board of Directors and co-chairs the President's Commission on the Status of Women.

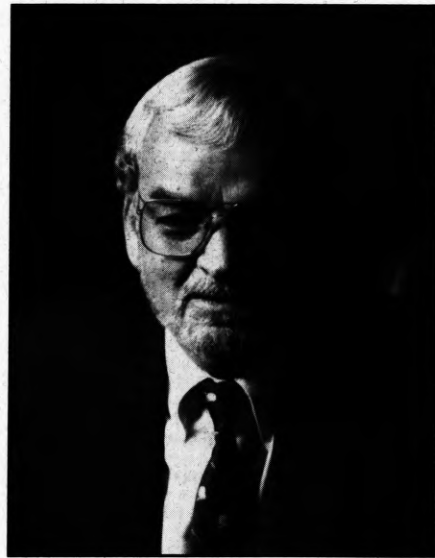
In 1979 and 1980, Dr. Bucho co-chaired two statewide professional conferences which led to the formation of the English Association of Pennsylvania State Universities, the current statewide professional organization of English professors. She was selected in 1994 to participate in the American Association of Higher Education National Colloquium on Faculty Citizenship.

Dr. Bucho has chaired a number of Washington Township citizens' action committees. She recently served on the Washington Township Comprehensive Plan Steering Committee and is currently an auditor for the Township. In 1994 she was one of five finalists for the Erie Women's Roundtable "Woman of the Year."

An active member of the International Wolf Center and Defenders of Wildlife, Dr. Bucho is devoted to the protection and preservation of the wolf and is well-known for her study of this endangered species and her advocacy on its behalf. During the past ten years, she has attended international scientific conferences on the wolf, and she regularly presents educational programming to area schools, conservation groups, and service organizations.

Dr. Bucho is married to Daniel Bucho, chief of police in Girard, Pa., and a well-known wildlife artist. Their daughter, Jody Beth Bucho Gallagher, serves as assistant to the dean of education at Edinboro University.

## President Foster F. Diebold



Foster F. Diebold

Now in his 17th and final year as president of Edinboro University of Pennsylvania, Foster F. Diebold is the fourteenth chief executive officer of the institution of higher learning that has come to acclaim as one of Pennsylvania's and the nation's finest. He has brought a vigorous educational and moral leadership, a strengthening of the spirit of community, a clear sense of direction and purpose, and a dimension of multicultural pluralism and diversity.

His term of office is the longest presidency at Edinboro University in the 20th century and the second longest in the school's 139-year history. Under his leadership, significant advances have been made in governance, enrollment, academic programming, fiscal management, strategic planning, teacher education, community service, facilities renovation and revitalization, and fund raising. International education linkages have been established with 13 institutions in four countries, and his leadership in developing specialized support and service programs for students with disabilities has brought acclaim to the University from across the nation. His lifelong commitment to the study and practice of ethics in higher education has brought added professional recognition to both Edinboro University and the State System of Higher Education, which was established in 1983 and which brought university status to what was then Edinboro State

College. His staunch advocacy of the statewide system of 14 public universities in Pennsylvania multiplied the success of the System statewide and its reputation as being one of the finest in the nation. Widely recognized as a leader in education both here and abroad, President Diebold has positioned Edinboro University to meet the challenges of the 1990s, as well as those that will face public higher education in the 21st century.

The Orange, New Jersey, native is a graduate of Monmouth College and also holds a master of arts in educational administration from Seton Hall University. He has met coursework requirements for a doctorate in education at Rutgers University and is currently completing the dissertation requirement for the Ph.D. program in higher education at the University of Pittsburgh.

Prior to his presidency of Edinboro University, President Diebold was president of the University of Alaska from 1977 to 1979. Before that, he was executive secretary to the Board of Regents and special assistant to the president of the University of Alaska Statewide System. From 1969 to 1976, he was director of Development and Planning at Kean College in New Jersey and a member of the graduate faculty at that institution; and from 1965 to 1969, he was assistant superintendent of the Neptune Township (New Jersey) Public Schools.

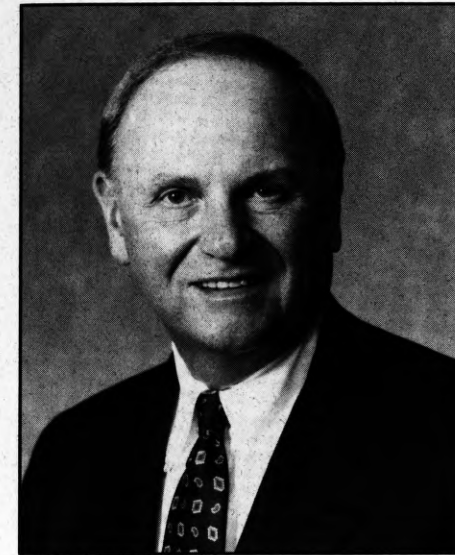
Recognized for his extensive experience in the field of education management, President Diebold's scholarly achievements in the discipline of applied ethics in higher education deserve special mention. The model statement he authored for the American Association of State Colleges and Universities, "Ethical Practices for College Presidents," was unanimously adopted by that professional organization and published as policy for the chief executives of its nearly 400 member institutions nationwide. It is the first formally adopted ethical practices and policy statement for higher education presidents.

For his leadership on an international scale and for his many contributions to the advancement of higher education and enrichment of an emerging culture in Pakistan, President Diebold was decorated with prestigious gold medals from three of the eight Pakistani universities with which Edinboro University maintains formal academic linkages. President Diebold was also honored by the Government of Pakistan with the awarding of the degree of Doctor of Laws (*honoris causa*), presented at the Government House in the City of Karachi. Edinboro also has linkage agreements with institutions in the Peoples' Republic of China, Cuba and in the Kingdom of Morocco.

President Diebold's stature in American higher education was recognized by numerous high-level appointments. He was named to the National Committee on U.S.-China Relations, the leading national organization devoted to building constructive relationships between the two countries. He was also appointed to the Leadership Council of the Northeast-Midwest Institute, a regional component of the Center for Regional Policy, and to the Pennsylvania Humanities Council, the private, non-profit group promoting statewide public understanding of the humanities.

President Diebold will retire from office on June 30, 1996. He will be succeeded by Dr. Frank G. Pogue, Jr., who comes to Edinboro University of Pennsylvania from the State University of New York (SUNY) System Central Administration in Albany, where he has served since 1986 as the vice chancellor for student affairs and special programs.

## Honorary Doctorate



Thomas B. Hagen

Thomas B. Hagen, Secretary of Commerce of the Commonwealth of Pennsylvania, has been selected to receive the degree Doctor of Public Service (*doctor beneficiorum publicorum, honoris causa*) at today's Commencement ceremony.

A distinguished businessman and civic leader, Secretary Hagen served Erie Insurance Group for forty years, ultimately as chairman and CEO. In 1993, he established a management consulting business in downtown Erie, but remained on the board of directors of Erie Insurance and served as a consultant to the company.

Born in Buffalo, New York, Mr. Hagen grew up in Erie, where he attended Penn State-Erie, The Behrend College. In 1957 he earned a bachelor's degree in commerce with a concentration in insurance from The Ohio State University, where he was a Griffith Scholar, president of the Insurance Society, and a member of Phi Kappa Psi fraternity. He is a 1981 recipient of The Ohio State University's "Alumni Citizenship Award," the highest recognition bestowed on alumni, and was designated an "Alumni Fellow" of Penn State-Erie, The Behrend College, in 1988.

A retired Captain in the Naval Reserve, Mr. Hagen served on active duty as supply officer of the Atlantic Fleet destroyer, USS Harwood. He is a past president of the Erie Council of the Navy League, a former member of the National Advisory Board of the Naval Reserve Association, and a Companion of the Naval Order of the U.S.

Long identified with community revitalization and economic development, Mr. Hagen is a charter member of the Board of the Pennsylvania Economic Development Partnership to which he was appointed by the Governor of Pennsylvania in 1987. He is a founder of the Bayfront East Side Taskforce, and founder and past president of the former Erie Tomorrow Corporation.

Secretary Hagen's interest and involvement in historic restoration, including the first certified historic restoration of National Register-listed property in Erie, earned him the "Preservationist of the Year" award in 1987 from the Pennsylvania Historical and Museum Commission, and Preservation Pennsylvania, Inc. He is a founder of the Steamship Niagara Museum in Erie and was appointed to the Governor's Committee for the U.S. Brig Niagara Maritime Center in 1990. He received the 1990 Erie County Historical Society "Local History Award" and the Pennsylvania Society of Architects "Honor Award" for contributions to the profession by a non-architect in 1993.

The doctoral citation presented to Thomas B. Hagen reads as follows: *In recognition of your leadership in the cause of civic and social responsibility, which has had positive and profound effects on the lives of individuals and institutions; for your long-standing commitment to the growth and development of the Erie community and northwestern Pennsylvania; for your willingness to undertake the role of public servant and statesman in the broader context of the Commonwealth of Pennsylvania, for the benefit of its citizenry; and for your many contributions to civic and community life.*

## Retirees

The administration and staff of Edinboro University of Pennsylvania would like to take this opportunity to recognize those faculty members and senior administrators who are retiring.

J. C. Armstrong Counseling and Human Development Department 26 1/2 years	Estella M. Hyde Nursing Department 13 years	Thelma M. Pascaran Library 27 1/2 years
Ralph A. Carls Biology and Health Services Department 26 years	Wallace Jewell Mathematics and Computer Science Department 28 years	George E. Pitluga Art Department 28 years
Robert E. Connors Elementary Education Department 37 years	Jerome Kindred English and Theatre Arts Department 22 years	Thomas R. Price English and Theatre Arts Department 26 1/2 years
William M. Cox Art Department 25 years	James Klausman Music Department 27 years	Curtis Robinson Biology and Health Services Department 23 years
Jerry J. Dantry Educational Services Department 31 years	Richard Douglas Knox Art Department 28 years	Ian C. Short Art Department 21 years
Foster F. Diebold President 17 years	Glenda M. Lawhorn Dean of Students 11 3/4 years	Donald B. Snyder Biology and Health Services Department 26 1/2 years
Janet Patterson Fleischauer Elementary Education Department 7 1/2 years	Thomas N. Legge Biology and Health Services Department 29 years	Dean L. Stoffer Special Education and School Psychology Department 28 years
Carl M. Frank History Department 30 years	Paul A. Martin Music Department 28 years	Roy P. Stonesifer, Jr. History Department 34 years
Nola M. Garrett English and Theatre Arts Department 30 1/2 years	Charles W. McCleary Art Department 26 years	Leroy S. Williams Music Department 28 years
Charles H. Glendinning English and Theatre Arts Department 37 years	Donna L. Nicholas Art Department 27 years	
Harold D. Gramley English and Theatre Arts Department 26 years	Robert Nolan Mathematics and Computer Science Department 27 1/2 years	

## Master's Degrees

### Graduate Studies Charles Frederick Abel, J.D., Ph.D., Dean

#### Master of Arts

##### Art

Judith Kay Copeland, B.F.A., Ohio University, 1970  
Trevor John Herceg, B.S., Mansfield University of Pennsylvania, 1993  
Marianna Holiday Nowak, B.F.A., Edinboro University of Pennsylvania, 1979

##### Communication Studies

Vincent D. Brocki, B.A., Colgate University, 1975  
Paul Matthew Colino, B.A., Edinboro University of Pennsylvania, 1994  
Mary Ellen Dahlkemper, B.A., Mercyhurst College, 1973  
Tracy Joann Gorrell, B.S., Edinboro University of Pennsylvania, 1994  
Barbara Jean Hauck, B.S., Skidmore College, 1983  
Mona Chabra Memon, B.A., Edinboro University of Pennsylvania, 1993  
Karen Marie Reagan, B.S., Ohio University, 1985  
Joel Stanley Schwartz, B.A., Thiel College, 1990  
Reneva Ann Sweet, B.S., Edinboro University of Pennsylvania, 1989  
Yvonne Tate, B.A., Cheyney University of Pennsylvania, 1990  
Matthew Robert Walker, B.A., Grove City College, 1994  
Abdellatif Zaimi, B.A., University Mohammed V, 1985

##### Counseling

Theresa Ann Belesky, B.A., Glassboro State College, 1994  
Suzanne DeVore Bennett, B.A., Drew University, 1972  
Deborah Ann Burger, B.A., Edinboro University of Pennsylvania, 1993  
Kimberly Leigh Byrnes, B.A., Edinboro University of Pennsylvania, 1994  
Amerigo Caporusio III, B.A., Edinboro University of Pennsylvania, 1992  
Kristin Ann Chandler, B.A., Edinboro University of Pennsylvania, 1994  
Brandyn Shane Paul Charlton, B.S., Ohio University, 1992  
Rae Jolene Engman, B.A., Edinboro University of Pennsylvania, 1994  
John S. Ferry, B.A., Edinboro University of Pennsylvania, 1994  
Shelly Rae Foster, B.A., Edinboro University of Pennsylvania, 1994  
Todd Matthew Herrick, B.A., Edinboro University of Pennsylvania, 1992  
Gregory L. Houck, B.A., Thiel College, 1989  
Karen M. Frantz Huels, B.A., Edinboro University of Pennsylvania, 1994  
Daniel W. Kestner III, B.S., Geneva College, 1994  
Magdalena Lee, B.D., Fu Jen Catholic University, 1978  
Robert P. Marriott, B.S., Indiana University of Pennsylvania, 1991  
Tammy Jo Meyer, B.A., Penn State University, 1994  
Paula Maria Neff, B.S., Edinboro University of Pennsylvania, 1992  
Beth Ann Neppach, B.A., Thiel College, 1991  
Nicole L. Parisi, B.S., Geneva College, 1994  
Daryl Brian Parker, B.A., Edinboro University of Pennsylvania, 1994

Paula Wing Patalon, B.A., Edinboro University of Pennsylvania, 1989  
Sally Ann Quiñones, B.S., SUNY College-Fredonia, 1987  
Mary Katherine Sanko, B.A., Gannon University, 1981  
Robert John Slencak II, B.A., Edinboro University of Pennsylvania, 1993

## Social Sciences

Waseem A. Bhatti, B.A., University of Karachi, 1977  
Aïcha César, B.A., College of William and Mary, 1985  
Deborah Hunt Wagner, B.A., Edinboro University of Pennsylvania, 1992

## Speech and Language Pathology

Amy A. Dunbar, B.A., Edinboro University of Pennsylvania, 1993  
Kris Lynn Foley, B.A., Edinboro University of Pennsylvania, 1993  
Tricia Lynette Maryott, B.S., Penn State University, 1993  
Kathleen Therese Muroski, B.A., Edinboro University of Pennsylvania, 1993  
Jennifer Elizabeth O'Malley, B.A., Edinboro University of Pennsylvania, 1994  
Amy R. Langus Rubin, B.S., Ohio University, 1994

## Master of Education

---

### Educational Psychology

Shehla Abbasi, B.A., University of Sind, 1977  
Mousa M.I. Alrajab, B.A., Kuwait University, 1987  
Christine Marie Copeland, B.A., Grove City College, 1994  
Georgia Kazakos Hudy, B.S., Edinboro University of Pennsylvania, 1994  
Lauren Michelle Jagiello, B.A., Niagara University, 1994  
Kenneth William Sutter, B.A., Edinboro University of Pennsylvania, 1994

### Elementary Education

Amy Lynn Cooke, B.S., Edinboro University of Pennsylvania, 1994  
Deborah Jean Kreider, B.A., Edinboro University of Pennsylvania, 1986  
Christine Marie Porter, B.S., Edinboro University of Pennsylvania, 1993  
Katie Ann Potter, B.S., Edinboro University of Pennsylvania, 1994  
Michael Bruce Trombley, B.A., Allegheny College, 1973

### Elementary School Administration

Scott T. Alter, B.S., Edinboro University of Pennsylvania, 1994  
Peggy Jean Snyder, B.S., Edinboro University of Pennsylvania, 1968

### Reading

Mary Frances Pascarella, B.S.Ed., Slippery Rock University of Pennsylvania, 1989  
Robin Lynne Quick, B.S., Edinboro University of Pennsylvania, 1992  
Mary Ellen Stickle, B.S.Ed., Edinboro University of Pennsylvania, 1978

### Secondary School Administration

Diana L. Lillard, B.S.Ed., Edinboro University of Pennsylvania, 1973  
Chun-Yong Liu, B.S., Zibo Teacher's College, 1982

### Special Education

Mary Lou Bean, B.S.Ed., Edinboro University of Pennsylvania, 1979  
Jodi Lyn Bramucci, B.S., Edinboro University of Pennsylvania, 1994  
John Michael Hinman, B.S.Ed., Edinboro University of Pennsylvania, 1990  
Stacey Marie Murphy, B.S.Ed., Edinboro University of Pennsylvania, 1991

Beth Ellen Overberg, B.S.Ed., Edinboro University of Pennsylvania, 1993  
Christine A. Payne, B.S.Ed., Edinboro University of Pennsylvania, 1982  
Paul Jay Riccomini, B.A., Edinboro University of Pennsylvania, 1993

## Master of Fine Arts

---

Edith Bernadette Murphy, B.A., University of Wisconsin, 1994  
Elizabeth Anne Spurlock, B.A., Eastern Kentucky University, 1991

## Master of Science

---

### Biology

John M. Antonelli, B.S., Edinboro University of Pennsylvania, 1992  
Jason Christopher Ball, B.S., Grove City College, 1993  
Brian Kirk Zeppenfeld, B.S., Penn State University/Behrend, 1982

## Master of Science in Nursing

---

Grace Charity Brown, B.S.N., Walla Walla College, 1984  
Ann Arlene Stanonis, B.S.N., Clarion University of Pennsylvania, 1987

The University does not claim the list of degree candidates or honors designations is absolutely accurate. Students are granted degrees only if they meet all academic and financial requirements.

## Honors

---

The following degree candidates have earned at least sixty-four credits as undergraduate students of Edinboro University and have attained the following cumulative averages: Summa Cum Laude, 3.80 to 4.00; Magna Cum Laude, 3.60 to 3.79; and Cum Laude, 3.40 to 3.59.

### Summa Cum Laude

---

Karen Laura Amrhein  
Deborah Linse Artello  
Charles David Babish  
Beth Ann Barbara  
Stephanie Ann Bard  
Robin Elizabeth Bell  
Thomasina Marie Berdine  
Matthew Anthony Brown  
Helen S. Caccavo  
Kari A. Copper  
Frances T. Donatelli  
Marie Bess Forst  
Brenda Lee Gastecki  
Mary B. Hauser  
Robin Lee Hecker  
Todd William Henne  
Linda Shilling Hornstein

Darnell Reneé Kasemer  
Michelle L. Klark  
Carley Michelle Koscinski  
Sherrie L. McIntosh  
Cindy Lee Mitchell  
Tanya Marie Moraco  
Cindy Lee Murdock  
Alissa Marie Ogurchak  
Heather Marie Papinchak  
Jill Elizabeth Rozycki  
Steven Joseph Schelinski  
Lesley L. Spute  
Sheri Marie Sterrett  
Yumi Suzuki  
Dorothy Jean Grezeszak Wheeler  
Jennifer Lynn Young

### Magna Cum Laude

---

Jennifer Lynne Allen  
Gretchen Ann Brown  
Wendy A. Burgwald  
Jennifer Lee Cady  
Charles I. Cochran  
Janine Marie DeFranco  
Lisa Mary DeRooy  
David Scott Duda  
Sara Jane Elliott  
Bruce M. Erikson  
David C. Filoni  
David M. Frenia  
Karen S. Freytag  
David A. Gallus  
Bruce Edward Hetrick  
Leslie Ann Hobbs  
Bonnie Jean Kraus  
Lynn M. Krofek  
Johanna Beth Ledger  
Patrick M. MacLaughlin  
Anna Laurie McDonald  
Lloyd Leslie McGowan  
Alicia Montedoro  
Yang Nie

Lisa E. Nudelman  
Marla Jean Palmiter  
Carrie Lee Podroskey  
Jason Alan Reinhart  
Monica Stellina Rigamonti  
Angela M. Sabol  
Tammy Louise Schell  
MaryAnne Seybert Shay  
Lisa Rae Shearer  
Jason R. Sheneman  
Amy L. Simcheck  
John Patrick Smagner  
Eric J. Smith  
Kristi Lynn Smith  
Ann M. Stepchuck  
Daniel Vincent Stephens  
Jennifer Carey Stull  
Daniel Tarkowski  
Tyler Faith Troutman  
Richard Alexander Walker, Jr.  
Stacie Renée Webb  
Robert D. Wisnom, Jr.  
Leanne D. Wukich  
Czarina Yee

## Cum Laude

---

Donna J. Appel  
Ronda S. Baker  
Patricia J. Banta  
Michael John Barbara  
Cosmo A. Barbaro  
Joshua Eric Beatty  
Craig M. Bennetti  
Kimberly M. Boylan  
Amy Sue Brendlinger  
Stacy Lynne Briggs  
Rhonda Ann Brown  
Judith Burke  
Melinda L. Byham  
Jeremy Dylan Chaffee  
Shannon Alaine Chapman  
Pollyanna S. Cole  
Tammi Marie Copp  
Stephanie Lynne DeSimone  
Jennifer L. Dunham  
Paula Jean Elias  
Joseph David Etling  
Catherine Ann Ferrari  
Ashley D. Foringer  
Joseph C. Frombach  
Barbara Jean Fuller  
Kara Lind Gago  
Julie Suzanne Gamble  
Kirsten Lynn Gatesman  
Kristan Suzan Gibson  
Carol Darlene Gillette  
Michelle Lyn Graham  
Christine H. Hagan  
Jennifer Marie Hammers  
Kazuya Handa  
Michele Marie Headley

Cecilia Ann Huntley  
Rana Odanah Lamees Hutchison  
Mindy Regina Keenan  
Joanne Elissa Kerstetter  
Heather Kirch  
Christopher Thomas Knight  
Asli Kotak  
Heather V. Kreiter  
Michael A. Labbiento  
James W. Lanegan  
Valerie Rae Macedo  
Dana M. McLellan  
Shannon Marie McMillen  
Wendy Lynia Merritt  
Justine Diane Miller  
Milovan Milovanovic  
Julie Belinda Nelson  
Thomas Edward Obenrader, Jr.  
Jennifer Rebecca Puzausky  
Timothy R. Rasbach  
Chad Douglas Richards  
Carlos Menzel Rocha  
Erin Lea Sanders  
Jennifer Ann Shaffer  
Patricia Amber Shoulders  
Dawn Renee Smith  
Terri Lynn Sopher  
Peggy A. Stroupe  
Ho-Yin Anthony Tse  
Renee Louise Twombly  
Marcia Kathleen Wamboldt  
Keith John Webb  
Jennifer Lynne Wiley  
Jennifer Lynne Wittmaak

### University Honors Program

---

Thomasina Marie Berdine  
Matthew Anthony Brown  
Pollyanna S. Cole  
Bruce M. Erikson

Marie Bess Forst  
Cindy Lee Murdock  
Alissa Marie Ogurchak



# Baccalaureate and Associate Degrees

## School of Liberal Arts Philip P. Kerstetter, Ph.D., Acting Dean

### Bachelor of Arts

#### Anthropology

Daniel R. Evanoff  
Heather Joleen Holloway  
Amy Kathleen Spicuzza

#### Art History

Tania J. Cochran  
Holly Marie Crew  
Matthew Douglas Hileman  
Anna Laurie McDonald – Magna  
Cindy Lee Murdock – Summa  
Linda S. Shellito

#### Criminal Justice

Todd J. Aiello  
Craig M. Bennetti – Cum  
Wendy A. Burgwald – Magna  
David Martin Campbell  
Shannon Alaine Chapman – Cum  
Charles I. Cochran – Magna  
Erin Lynne Conley  
Tammi Marie Copp – Cum  
Charles Brian Counts  
David Scott Duda – Magna  
Anthony W. Eppolito  
Jo Anne Fatchet  
Marc Anthony Grassley  
La' Kieva I. Heard  
Jason Patrick Hollihan  
Daniel Walter Jones  
Matthew David Loring  
Julie Markham  
Daniel A. McElhinny  
Phillip Clifford Melton  
Anna Maria Moks  
Steven Robert Munshaw

Sandra Lynn McKellop Novakowski  
Thomas Edward Obenrader, Jr. – Cum  
Vincent J. Pinchotti  
Timothy Theron Rill, Jr.  
Daniel Carl Riska  
Carlos Menzel Rocha – Cum  
Mark Justin Russo  
Lisa Rae Shearer – Magna  
Bridget Irene Sheats  
Chara Lynne Sheppard  
Joseph E. Spence  
Tameki Lashonda Tarver  
Jon-Paul Taylor  
Pamela J. Tillman  
Cynthia Ann Walentosky  
Robert D. Wisnom, Jr. – Magna

#### Drama

Alissa Marie Ogurchak – Summa  
Carrie Lee Podroskey – Magna

#### English

Amy Rebecca Black  
Tricia Anne Deckert  
Leslie Ann Hobbs – Magna  
Jayme Ellen Liparula  
Lonée Lona

#### German

Jill N. Raver

#### History

Amy Elicia Francisco  
David A. Gallus – Magna  
Joseph Thomas McCarthy  
Tanya Marie Moraco – Summa

Anthony Joseph Pirrello  
Kyle Edward Semmel  
Daniel Vincent Stephens – Magna  
Kelly Lynn Thakur  
Adam Daniel Vellone

#### Humanities

Mark Edward Black  
Kara Lind Gago – Cum  
Connie Sue Shetler

#### Music

Kim Thomas Hartman  
Amie Colleen Hennessy  
Michael A. Otto  
Christopher P. Snyder

#### Philosophy

Daniel R. Evanoff

#### Political Science

Christopher David Adams  
Gretchen Ann Brown – Magna  
Michael Jerome Brown  
Tricia Marie DeSanti  
Thomas Frank Demharter  
John William Ewart  
Julian James Hoffman

#### Psychology

Eric D. Anglikowski  
Donna J. Appel – Cum  
Sherrie Denise Black  
James L. Bocci

Kathryn J. Bradley  
Melinda L. Byham – Cum  
Stephanie Erin Campbell  
Margaret Bonanti Champagne  
Stephen James Corrigan  
Brian Charles Crissman  
Shari Sue DeFabio

Kristen Lynn Donahue  
Frances T. Donatelli – Summa  
Catherine Ann Ferrari – Cum  
Joseph C. Frombach – Cum  
Brenda L. Hall  
Brad Alan Henry  
Jason David Keller  
Heather Kirch – Cum  
Michelle L. Klark – Summa  
Lynn M. Krofek – Magna  
James W. Lanegan – Cum  
Tammie M. Lucas  
Heather Lynn May  
Shannon Lynn McGaughey  
Rebekah Lynn Moss  
Stacie Lynn Mukina  
Julie Belinda Nelson – Cum  
Shannon Lee Pastrick  
Jennifer Colleen Payer  
Laurel D. Pugliese  
Kristin Michelle Reischer  
Jennifer Renee Robison  
Amy A. Wagner  
Shirley Denise Watson  
Lisa Marie Weishner  
Dorothy Jean Grezeszak Wheeler – Summa  
Meghan Lynn Wingerson

#### Social Science

Lorri Marie Blystone  
Rana Odanah Lamees Hutchison – Cum  
Richard B. Morrison

#### Sociology

Karen S. Freytag – Magna  
Leslie Ann Hobbs – Magna  
Heather Elyn Quigg  
Martin L. Williams

#### Spanish

Theresa Lynn Boals  
Jeremy Dylan Chaffee – Cum  
Sherrie L. McIntosh – Summa

#### Speech and Hearing Disorders

Jeanette M. Anglikowski  
Ronda S. Baker – Cum  
Adam L. Brooks  
Kari A. Copper – Summa  
Michael Trevor Farrand  
Joseph M. Farrow  
Ashley D. Foringer – Cum  
Julie Suzanne Gamble – Cum  
Brenda Lee Gastecki – Summa  
Mary B. Hauser – Summa  
Melissa M. Kaufman  
Tracy Lynn Knoll  
Johanna Beth Ledger – Magna  
Carolyn Ann Long  
Dawn R. Maier  
Linda R. McAndrew  
Danielle Laraine McFarland  
Alicia Montedoro – Magna  
Andrea Frances Nucicino  
Robert William Petruso  
Danielle Marie Rife  
Mary Josephine Skelly  
Rebekah Lynn Smith  
Lesley L. Spute – Summa  
James H. Traczenski  
Tyler Faith Troutman – Magna  
Marcia Kathleen Wamboldt – Cum  
Jennifer Lynne Wittmaak – Cum

#### Speech Communications

Jason Paul Anderson  
Brad Christian Brewer  
Michael M. Byers  
Jeffrey Lawrence Ciotti  
Connie Lynn Clement  
Matthew Ian Cohen  
Christopher Sean Doyle  
Todd William Henne – Summa

Bruce Edward Hetrick – Magna  
Dana Marie Hilinski  
Gretchen Louise Holtzapple  
Brandy Marie Jericho  
Jacquelyn Marie Kaputa  
Bradley Lee Kean  
Joanne Elissa Kerstetter – Cum  
Carley Michelle Koscinski – Summa  
Jennifer Lee Markey  
Lisa E. Nudelman – Magna  
Sean Steven Peebles  
Ena Renee Pistella  
M. Renée Renshaw  
Kelly Lynn Roberts  
Steven Joseph Schelinski – Summa  
Tammy Louise Schell – Magna  
Jennifer Ann Shaffer – Cum  
\* Henriett Toth  
Richard Alexander Walker, Jr. – Magna  
Rebecca Jean Wissner  
Jeffrey Paul Zimmer

### Bachelor of Fine Arts

#### Applied Media Arts

Eric Robert Anderson  
Charles David Babish – Summa  
Christopher Joseph Baughman  
Sharon Lee Belling  
Lidia Delfina Cornelio  
Sara Jane Elliott – Magna  
Stacia Ann Epler  
David C. Filoni – Magna  
Melissa A. Garcia  
Melissa Ann Guy  
Kazuya Handa – Cum  
Jason Jeffrey Jackman  
Andrew David Keener  
Kimberly Ann Krebbeks  
Valerie Rae Macedo – Cum  
Vincent R. Maffessanti  
Charles William Moore  
Michelle Elizabeth Russell  
Matt Ray Scott  
Yumi Suzuki – Summa

Stacie Renée Webb – Magna  
Christopher Scott West  
David John Paul Wheaton  
Amy J. Woodside

## Bachelor of Science

---

### Industrial and Trade Leadership

Lloyd Leslie McGowan – Magna  
Thomas A. Piecknick  
James S. Preston  
Daniel Tarkowski – Magna

### Social Work

Suzanne Marie Brown  
Brad-Leigh Tasha Gaines  
Carrie Ann Long  
Amy Lu Mikulich  
Randy L. Newport  
Janis Lynn O'Connell  
Donovan Allen Rounds  
Erin Lea Sanders – Cum

## University College

Andrew C. Lawlor, Ph.D., Dean

## Bachelor of Arts

---

### Specialized Studies

Jennifer Lynn Alexander  
Karen Lee Atchley  
Howard Melbern Darr III

Damon R. Delp  
Lisa Jo Gregg  
William David Jackson  
David R. Keech  
Mark David Kline

John Patrick Smagner – Magna  
Lisa A. Uhrin  
Jennifer Lynn VanVerth  
Josette Jaye Von Birgelen

## Associate of Arts

---

### Criminal Justice

Theresa Marie Chimiak  
Paul K. Smeal

### Liberal Studies

Marc T. Fox  
Denise Mikaela Habib  
Harold Edward Holmstrom  
Thad Allen Shaffer

Robert Eric Lee  
Tyrone Keith Mason  
Kristin Lynn Neuburger  
James S. Preston

## School of Science, Management and Technologies

Michael A. Mogavero, Ph.D., Dean

## Bachelor of Arts

---

### Biology

Christa Lorraine George  
John Michael Shippling

### Environmental Studies/ Geography

Bernard Chad Baylis  
Joseph James Gray  
Lance C. Harry  
Marla Jean Palmiter – Magna  
Jill Elizabeth Rozycki – Summa

### Geography

Erin Beth Wiley

### Natural Science and Mathematics

Andres Alvira  
Philip Carleton Dodge  
Mari Kimura  
Cristi Sue Manross  
Gregg Douglas Sarbak  
Raji D. Spencer

### Physics

Jayson Paul Bauer  
Robb Hunter Hansen  
Franklin Richard King  
Christopher Thomas Knight – Cum

## Bachelor of Science

---

### Biology

Donna M. Bauhof  
Stacy Lynne Briggs – Cum  
Julie Kathleen Conrad  
Kurt Michael Schmitt  
Jennifer Carey Stull – Magna

### Business Administration

Patricia J. Banta – Cum  
Martha J. Bartosek  
Asif Masood Bhally  
Jennifer L. Booth  
Stacy Ann Bray  
Matthew Anthony Brown – Summa  
Jennifer Lee Cady – Magna  
Tia Sue Coatoam  
Melissa Marie Cockburn  
Joseph David Etling – Cum  
Amy K. Favero  
Sheila M. Freeman  
David M. Frenia – Magna  
Carrie Elaine Heffernan  
Jeffrey Phillip Heleniak  
Todd Aaron Henry  
John C. Hillard  
Daniel Glenn Hopkins  
Mario Allen Houston  
Todd Alan Kaday  
Kazunari Kajimura  
Bradley John Kegerreis  
Matthew J. Kenworthy  
Bonnie Jean Kraus – Magna  
Maya Siham Kriem  
Stephen Matthew Liebenauer  
Kevin Andrews Lobins  
Stacey Lynn Loje  
Gavin Craig Maus  
Melissa Ann McCall  
Monica Marie McCrory  
Amy Marie Nielsen

Renee Ann Parks  
Robert William Petruso II  
Pamela Ann Roberts  
Becky Rae Scouten  
Jason L. Shallenberger  
Patricia Amber Shoulders – Cum  
Tina L. Shreve  
Eric J. Smith – Magna  
Julie Ann Smith  
Julie Kirsten Steff  
Marlene L. Sullivan  
Nicholas Earl Svidunovich  
Czarina Yee – Magna

### Chemistry

Michael Robert Buehner  
Thomas William Lavis  
Jeremy Todd Nicholson  
Yang Nie – Magna

### Computer Science

Asli Kotak – Cum  
Thomas Jason Kramer  
Jeffery Douglas Luce  
Farhan Nawaz-Ali Memon  
Milovan Milovanovic – Cum  
Jason Alan Reinhart – Magna  
Christine Renee Scott  
Jason R. Sheneman – Magna  
Ho-Yin Anthony Tse – Cum

### Environmental Science

Michelle G. Allen  
Karen Laura Amrhein – Summa  
Christopher Bryan Barney  
Heather M. Brown  
Scott A. Melego  
John Paul Moroney  
James Michael Rasavage  
Jeffrey Brian Scouten

Daniel A. Sowry  
Paul William Totleben  
Renee Louise Twombly – Cum

## Geology

James Ronald Johnston  
Christopher C. Rauber

## Medical Technology

\* Christopher Duane Johns

## Nuclear Medicine Technology

Dianne Evelyn Heindl  
\* Amanda L. Motter

## Nursing

Melissa Edith Baldwin  
Joshua Eric Beatty – Cum  
Valerie Lynn Bond  
Stacy Michele Bookman  
Kimberly M. Boylan – Cum  
Karri Lynn Capone  
Kimberly L. Carlisle  
Pollyanna S. Cole – Cum  
Nicole Marie Daly  
Yvette Mia Daniels  
Anita Monique DeBoe  
Diane Marie Derkowski  
Rosanne Dzeskewicz  
Diann Cathleen Fay  
Debra K. Felster  
Kelly Ann Finck  
Nicole Margaret Frauenfeld

Heather Lee Galbraith  
Nadene G. Garrity  
Carol Darlene Gillette – Cum  
Thomas Anthony Graham  
Gerald E. Hain, Jr.  
Brian Thomas Hasselman  
Rebecca L. Himes  
Tracy Ann Krauza  
Donald E. Larmon  
Sonya Janale Lee  
Kristin Marie Luba  
Tammie M. Lucas  
Maryann Lukowich  
Susan Rae Mattern  
Angel Lynn McCauley  
Brad W. Metznerbacher  
Kimberly Ann Mitchell  
Patricia Marie Nothum  
Carrie Ann Oblack  
Karen M. Orr  
Lee Ann Passerotti  
Deborah J. Price  
Jennifer Rebecca Puzausky – Cum  
Kim Marie Reese  
John A. Rupp  
Kristie Lynn Sages  
Lori Ann Shellgren  
Jill Marie Spinnenweber  
Susan Marie Stanko  
Ann M. Stepchuck – Magna  
Doreen Ellen Truchanowicz  
Cheryl Melissa Vitale  
Keith John Webb – Cum

## Nutrition

Ann Donovan Jensen  
Lynette Marie Myers  
Theresa M. Sajdak  
Monique Elizabeth Seman

## Associate of Engineering Technology

### Biomedical Equipment Technology

Robert Scott Boyle  
Joel Alan Keith  
Dana J. McGowan

### Manufacturing Engineering Technology

Matthew Aaron Held  
Shane Edward Hull  
Anissa Marie Leonard  
Donald Joseph Mosko, Jr.  
Ryan Clint Shaffer  
Henry A. Snow

## Associate of Science

### General Business Administration

Melody Anne Beres  
Theresa Lynn Boals  
Kathleen Frances Brady  
Mary Teresa Delaney  
Pamala C. Dreischal  
Julie Lorraine Harmon  
Shane Edward Hull  
Heather Anne Kellogg  
Alan G. Peters  
Matthew Mark Schultz  
Deborah Lou Spencer  
Delight D. Stevens  
Cheri L. Urda  
Brian Douglas Wyant

## School of Education Philip P. Kerstetter, Ph.D., Dean

### Bachelor of Science in Art Education

Allen Douglas Bayuk  
Jennifer Kathleen Dionne  
Brian Arthur Garza  
Mary C. Geiger  
Michael A. Labbiento – Cum  
Heather Marie Papinchak – Summa  
Jane Elizabeth Schilling  
Candace Shellenbarger  
Jason Edward Strickland

### Bachelor of Science in Education

#### Elementary Education

Jennifer Lynne Allen – Magna  
Carrie Marie Amitrone  
Deborah Linse Artello – Summa  
Elizabeth Ann Babcock  
Dana Marie Ballina  
Beth Ann Barbara – Summa  
Michael John Barbara – Cum  
Dori Kristine Blint  
Helen S. Caccavo – Summa  
Patricia M. Choffo  
Christopher Charles Coxon  
Ann Catherine Culbertson  
Lisa Mary DeRooy – Magna  
Joseph Leo Dembinski  
Heather A. Dorans  
Michelle Marie DuShole  
Jennifer L. Dunham – Cum  
Robin L. Dyer  
Paula Jean Elias – Cum  
Dawn Marie Folliard  
Marie Bess Forst – Summa  
Andrea Patricia Foss  
Karen Ann Fraser  
Jennifer Ann Goellner  
Julie Graczyk

Christine H. Hagan – Cum  
Michele Marie Headley – Cum  
Wendy L. Higley  
Linda Shilling Hornstein – Summa  
Lori A. Howard  
Heidi L. Hughes  
Jenna Amy Jauch  
Tiffany Maxine Kimbrough  
Jana Marie Kubaney  
Lori J. Leith  
Denise Louise Lester  
Robert Louis Madura  
Daryle Robert Maher  
Sherri Lee Mannarino  
Keith Alan McCrory  
Michael Robert McLaughlin  
Shannon Marie McMillen – Cum  
Justine Diane Miller – Cum  
Cindy Lee Mitchell – Summa  
Tara Sue Morton  
Nicole Marie Murphy  
Joanne Marie Orosz  
Scott P. Palmer  
Elizabeth Anne Peacock  
Susan Ann Peterson  
Patricia Kathleen Puline  
Monica Stellina Rigamonti – Magna  
Christine Lynnette Roden  
Sheryl Lee Schrag  
Elaine Denise Shebatka  
Stacie Jo Sikora  
Amy L. Simcheck – Magna  
Kristen Marie Sisti  
Dawn Marie Slaby  
Dawn Renee Smith – Cum  
Kristi Lynn Smith – Magna  
Terri Lynn Sopher – Cum  
Sheri Marie Sterrett – Summa  
Christina Marie Stoops  
Peggy A. Stroupe – Cum  
Danielle Marie Suppa  
Michelle Lee Thomas  
Brook Tiffany Valentine  
Daniel O. Varndell  
Alyssa Lynn Victorski  
Megan Michelle Waschak  
Michelle Renee Weyman

Jennifer Lynne Wiley – Cum  
Tammy Ann Williams  
Jill Diane Wilson  
Leanne D. Wukich – Magna  
Karen Ann Yankel  
Kevin Michael Znosko

### Elementary Education/ Mentally-Physically Handicapped

Sean Joseph Alex  
Stephanie Ann Bard – Summa  
Robin Elizabeth Bell – Summa  
Kathryn Knapp Bradford  
Katie C. Brady  
Rhonda Ann Brown – Cum  
Judith Burke – Cum  
Erin Jean Carney  
\* Megan Marie Crossey  
Janine Marie DeFranco – Magna  
Stephanie Lynne DeSimone – Cum  
Ryan Hanley Duffy  
Jane Ann Esposito  
Barbara Jean Fuller – Cum  
Kristan Suzan Gibson – Cum  
Jennifer Marie Hammers – Cum  
Dale Arthur Herman, Jr.  
Brenda K. Hoffman  
Cecilia Ann Huntley – Cum  
Darnell Renee Kasemer – Summa  
Mindy Regina Keenan – Cum  
William R. King, Jr.  
Gregory Shane Long  
Yvonne Kay McCray  
Dana M. McLellan – Cum  
Celina Mickle  
Holly Lynn Mitchell  
Karen Sue Overdorff  
MaryAnne Seybert Shay – Magna  
Heather Anne Smith  
Jeffrey Edward Theiss  
Marcia Ann Tome  
Brenda Sue Whitford  
Jennifer Lynn Young – Summa

### Health and Physical Education

\* Benedetto Al Betti  
Gerald Lewis Eisner III  
Robert Morrow Goodwin  
Fabian Alberto Uquillas Granados  
Eric J. Gross  
Kevin Daniel Heid  
Shawn E. Humes  
Matthew P. Jurgs  
Carl Stephen Leonard  
John A. Reynolds  
Christian Anderson Tuttle  
Amy Sue Woods

### Mentally and Physically Handicapped

Georgia Ruth Bowser  
Jennifer Ann Colucci  
Kirsten Lynn Gatesman – Cum  
Mary C. Geiger  
Lisa Eileen Kerr  
Carolann Locke  
Cynthia L. Peck  
Chad Douglas Richards – Cum

### Secondary Education – Biology

Dave Jerome Kosiorek  
Erin Lynn Lucas

### Secondary Education – Chemistry

Jennifer Lynn Prinkey

### Secondary Education – Comprehensive English

Suzette Marie DeMichele  
Kristen Faith Detwiler  
Robin Lee Hecker – Summa  
Robert Paul Karney  
Shauna Lyn Miller  
Julie A. Nelson  
Carrie Lee Podroskey – Magna  
Angela M. Sabol – Magna

### Secondary Education – Earth/Space Science

Jennifer Lee Straub

### Secondary Education – French

Heather Marie Recker

### Secondary Education – General Science

Thomas Stephen Crawford

### Secondary Education – Mathematics

F. Michael Bodak II  
Stacie Elizabeth Krepps  
Wendy Lynia Merritt – Cum

### Secondary Education – Social Science

Kenneth Stec Bauer  
Todd M. Bloomer  
Aran Terrill Burnett  
Michelle Lyn Graham – Cum  
Keith D. Hanisek  
Thomas Bernard Kostolansky, Jr.  
Patrick M. MacLaughlin – Magna  
Chad T. McConville

### Secondary Education – Spanish

Amy Sue Brendlinger – Cum  
Andrea Jean Proper

### Associate of Science

---

#### Pre-School Education

Wendy R. L. Janoski  
Hope Renee Rhodes  
Janice Marie Seelinger  
Heather Renee Zuback

### Chancellor, State System of Higher Education

---

James H. McCormick

### Board of Governors, State System of Higher Education

---

F. Eugene Dixon Jr. – *Chair*  
Julia B. Ansill – *Vice Chair*  
Muriel Berman  
Jeffrey W. Coy  
Glenn Y. Forney  
Eugene W. Hickok Jr.  
James A. Hughes  
F. Joseph Loeper  
Kim E. Lyttle  
Christopher M. Makos  
Amy L. Martin – *Student Representative*  
Joseph M. Nespoli  
Rocco A. Ortenzio  
Thomas J. Ridge  
Philip D. Rowe Jr.  
Elizabeth L. Schmid – *Student Representative*  
Jere W. Schuler  
Patrick J. Stapleton  
Christine J. Toretta  
R. Benjamin Wiley

### Council of Trustees

---

R. Benjamin Wiley – *Chair*  
John D. Catone  
Edwin D. Dombrowski  
Susan B. Hagen  
Patricia Heasley  
Frank J. Jakovac  
C. Richard Johnston  
Sonya Lee – *Student Representative*  
Benedict J. Miceli  
William C. Schulz  
Harry K. Thomas  
James H. McCormick – *Chancellor (ex officio)*

### Commencement Committee

---

Robert C. Weber – Interim Provost and Vice President for Academic Affairs – *Chair*  
Carol Bolla – Staff Assistant to the President  
William Coleman – Assistant Vice President for Facilities  
Sherri Galvin – Assistant to the President  
Gary Jamison – Interim Vice President for Student Affairs  
Gerald Kiel – Assistant Vice President for Academic Administration  
James Klausman – Chairman, Department of Music  
Judy Kubeja – Senior Executive Associate to the Provost  
Patti S. Loomis – Director of Publications  
Alice Parker – Administrative Assistant, Office of Records and Registration  
Lorraine Revak – Facilities Office and General Services Manager  
Bob Wallace – Director, TV and Media Services

\* Students who will complete degree requirements during Summer 1996.

The University does not claim the list of degree candidates or honors designations is absolutely accurate. Students are granted degrees only if they meet all academic and financial requirements.



## ALMA MATER

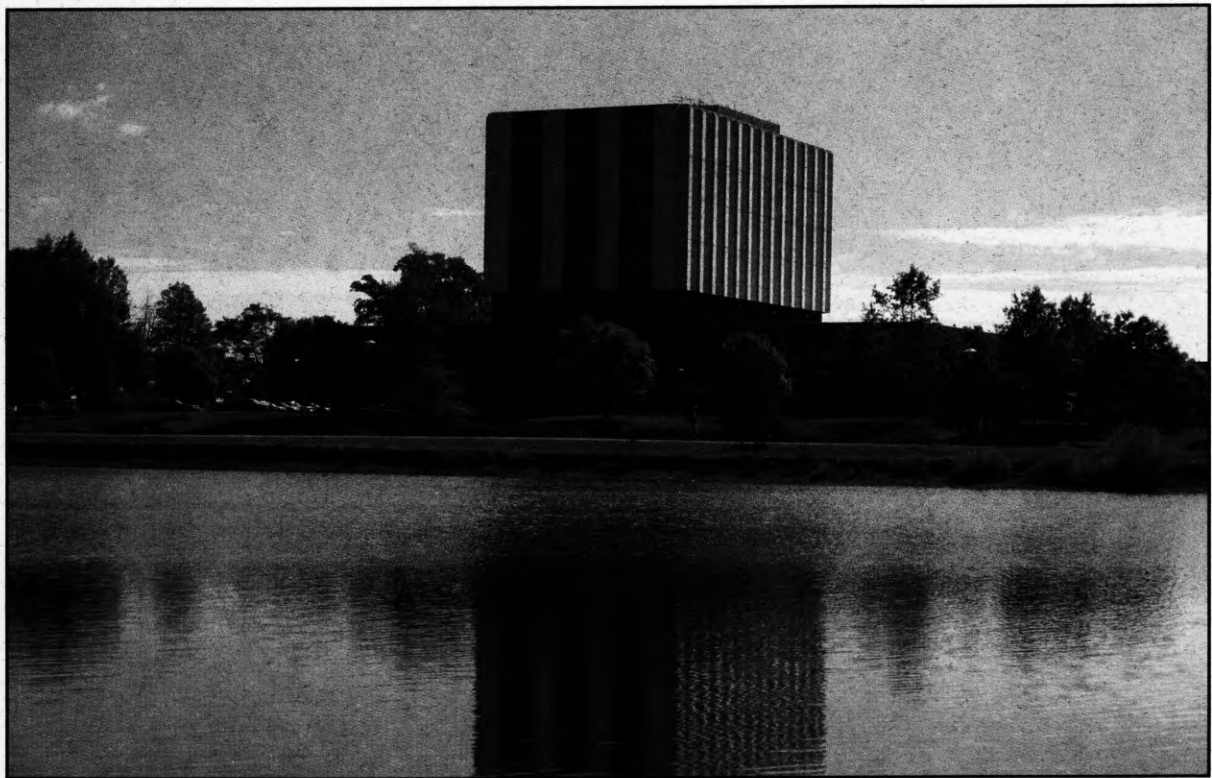
*Hail to thee, our Alma Mater glorious;  
Fresh wreaths we bring to bind thy brow.  
Trials have passed and thou has stood victorious;  
Never fairer, never statelier than now.  
O Edinboro, Edinboro,  
Ever praising thee in song;  
While class speeds class as swift years pass,  
To thee our hearts belong.*

# *Commencement*

## **Edinboro University of Pennsylvania**

December 8, 1996

*The Value of Community*



# Commencement Ceremony

---

Convocation .....	Robert C. Weber, Ph.D. <i>Interim Provost and Vice President for Academic Affairs Edinboro University of Pennsylvania</i>
Prelude .....	Symphonic Wind Ensemble Gary S. Grant, Ph.D., <i>Conductor</i>
Pomp and Circumstance ..... <i>Edward Elgar</i>	ACADEMIC PROCESSIONAL ..... Symphonic Wind Ensemble
Star-Spangled Banner ..... <i>Francis Scott Key</i>	David Herendeen, D.M.A. Symphonic Wind Ensemble
Invocation.....	Rabbi Michael L. Feshbach <i>Temple Anshe Hessed Erie, Pennsylvania</i>
President's Welcome ..... <i>"The Value of Community"</i>	Frank G. Pogue, Ph.D. <i>Edinboro University of Pennsylvania</i>
America the Beautiful ..... <i>Samuel Ward</i>	University Chorale Peter van den Honert, D.M.A., <i>Conductor</i>
Commencement Address .....	Mary Beth Kennedy <i>Executive Director, Community Country Day School and Director, Community of Caring</i>
Presentation of Candidates ..... Donald H. Dilmore, Ph.D., <i>Acting Dean of Liberal Arts</i> Philip P. Kerstetter, Ph.D., <i>Dean of Graduate Studies and Dean of Education</i> Michael A. Mogavero, Ph.D., <i>Dean of Science, Management and Technologies</i>	Robert C. Weber
Conferring of Degrees .....	President Frank G. Pogue
Alma Mater.....	David Herendeen Symphonic Wind Ensemble
Benediction .....	Rabbi Michael L. Feshbach
Fanfare and Recessional ..... <i>Edward Elgar</i>	RECESSIONAL ..... Symphonic Wind Ensemble

The audience is asked to stand during the Processional and Recessional and to join in the singing of the National Anthem and the Alma Mater.

## The Commencement Procession

ROTC Color Guard  
The University Marshal  
The University President  
The Trustees of the University  
The Platform Party  
The University Faculty

## Colors Distinctive of the Disciplines and Professions

Apricot.....	Nursing
Dark Blue .....	Philosophy
Light Blue.....	Education
Peacock Blue.....	Public Administration
Brown .....	Fine Arts
Citron.....	Social Work
Copper.....	Economics
Crimson.....	Journalism
Drab .....	Business
Gray .....	Veterinary Science
Silver Gray .....	Oratory
Green.....	Medicine
Olive Green.....	Pharmacy
Sage Green .....	Physical Education
Lemon.....	Library Science
Lilac.....	Dentistry
Maize .....	Agriculture
Orange.....	Engineering
Pink.....	Music
Salmon Pink.....	Public Health
Purple .....	Law
Russet.....	Forestry
Scarlet .....	Theology
White.....	Arts, Letters and Humanities
Golden Yellow .....	Science

## Honors Award Designations

Gold Stoles .....	Summa Cum Laude
White Stoles .....	Magna Cum Laude
Red Stoles .....	Cum Laude
Gold Cords .....	University Honors Program Graduate
Red Cords .....	Departmental Honor Graduate

## The Ceremonial Mace

The ceremonial mace, a symbol of presidential authority, is carried at the head of the academic procession by the University Marshal, Dr. Donald A. Wheeler. A gift of the Alumni Association, the mace was designed and executed by Professor Henry Katzwinkel and Dr. Seymour Blinderman, former chairman of the Art Department. It was first used at the inauguration of Edinboro State College President Chester T. McNerney, in 1967.

The mace, twenty-seven inches in length, is topped by a sterling silver sphere studded with circular cabochon rubies, secured by bezels. The collar of the mace is inlaid with ebony, alternated with silver relief fleur-de-lis design elements. The cultured pearls mounted in cups encircle the bottom of the collar symbolizing the thirteen state colleges of Pennsylvania. The shaft of the mace is composed of Brazilian rosewood sections, separated by sterling silver rings. The mace is terminated by a cast sterling silver finial; the five cultured pearls represent the existing curricula. The rib-like cone form is terminated by a small silver sphere symbolizing the world.

The metal working processes incorporated in the ceremonial mace include turning, forging, inlaying, stone setting, and lost wax centrifugal casting.

## The Presidential Medallion

A symbol of presidential authority, the first presidential medallion was presented to Foster F. Diebold during the May, 1981 commencement ceremonies. It is permanently housed in the president's office and will be presented to successive presidents. Designed and executed by Mr. Henry Katzwinkel, professor of art, the sterling silver medallion consists of a three and one-half inch pectoral pendant featuring on its face the sunken crest of the Commonwealth of Pennsylvania. On the reverse side is the figure of a Gordon Highlander with pipes. To the right of the piper is the Cross of St. Andrew. To the left is the Cross of England. Flanking the figure is the date 1857, the opening year of the University, and garland thistles. In the background are the hills of Scotland, and beneath the piper is an open book, symbol of knowledge.

The pendant descends from a shield containing a triple-towered castle, the symbol of defense, protection, and strength. The collar of the medallion is comprised of a series of two-inch shields, alternately bearing three different designs: the meigle, an interlacing knotwork peculiar to the Pictish school of Celtic art; the Tudor rose design; and "ESC" in interlocking letters on a background of tabby weaving. Connecting each of the collar shields is a Cross of St. George, representing the union of Scotland and England. The entire medallion was fabricated and cast in the cire perdue (lost wax) process.



## Academic Vestments

The gown, the cap, and the hood, representing the major components of the academic dress, are a ceremonial inheritance from the medieval universities of the eleventh and twelfth centuries, where dress was the outward sign of privilege and responsibility. The academic dress worn by those participating in today's academic processional symbolizes the level of their academic attainment and the institution they attended.

### Gown

Although the gown is more frequently black, certain universities have authorized the use of colored gowns. The bachelor's and master's gowns are fashioned from black serge. The yoke for the bachelor's gown is designed to be worn closed and features long, flowing and pointed sleeves. The master's gown is designed to be worn open or closed. Its sleeves are very long with square ends, and the front part has an arc cut away. The arms protrude through a slit at the elbow. The gown for the doctor's degree is made of wool, serge, or silk with an open front faced with wide velvet panels. The sleeves are loose and bell-shaped with three bars of velvet in black or the color of the discipline in which the doctorate was obtained.

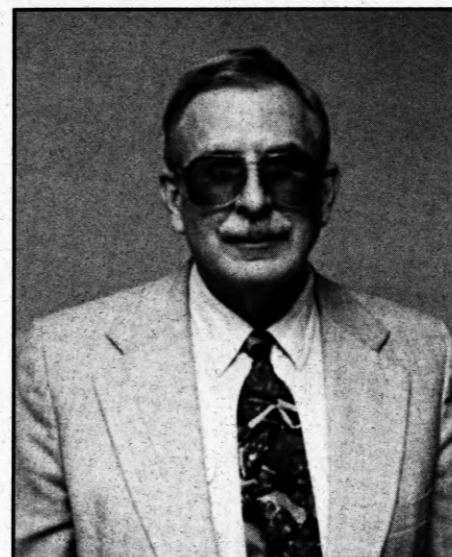
### Hood

The most outstanding feature of the academic dress is the hood. It is usually worn only for the master's and the doctor's degrees. The doctor's hood is longer than the master's hood and has distinguished panels. The college or the university granting the degree is indicated by the color of the hood lining. The velvet trim of the hood indicates the field in which the degree was granted.

### Cap

The standard cap is the mortarboard, usually the color of the gown. The tassel is black for the baccalaureate and master's degree and is worn over the left front quarter of the cap. The tassel for the doctor's mortarboard is of gold thread. Undergraduates wear the tassel on the right side of the cap until the moment the degree is conferred by the president.

## University Marshal



Dr. Donald Alsop Wheeler

Carrying the ceremonial mace and leading the academic procession at today's Commencement ceremony is Dr. Donald Alsop Wheeler, professor in the biology and health services department.

A native of Philadelphia, Dr. Wheeler grew up in Ridley Park, Pennsylvania, and graduated from the former Ridley Park High School. In his senior year he placed 13th in the state cross country meet and graduated as "most all-around" student. During the summers while in high school and college he worked at his grandparents' dairy and grape farm near Hammondsport, New York. He received a bachelor's degree from Michigan State University in 1953 with a major in farm crops and earned a master's degree there in 1956 with a major in plant breeding and a minor in botany and plant pathology. In 1961 he earned a Ph.D. from Cornell University with a major in plant breeding and genetics and minors in agronomy and plant pathology. His thesis and assistantship work focused on corn breeding and in field trials of corn varieties for the state of New York.

From 1961 to 1965 Dr. Wheeler served on the original faculty of Delta College in Michigan, teaching general biology and botany. He served as chair of the biology department from 1963 to 1965 and as adjunct professor for Saginaw Valley College.

He came to Edinboro in 1965 as a member of the science department and served as assistant chairperson of the biology department from 1970 to 1973. He participated in a National Science Foundation summer course on teaching general biology at Williams College in 1965, and completed an NSF short course on human genetics at the University of Maryland in 1974. During a sabbatical in 1976, Dr. Wheeler was a post-doctoral fellow in human genetics at the Johns Hopkins Medical School. He participated in an Environmental Protection Agency-sponsored symposium on aneuploidy-type mutations in Washington, D.C., in 1985. During a second sabbatical in 1992 he was a visiting fellow in the biology department of the California Institute of Technology and at the City of Hope National Medical Center studying genetics, cell biology, and evolutionary aspects of climatic change.

He is a life member of the national scientific honorary society Sigma Xi, the American Association for the Advancement of Science, and the Pennsylvania State Education Association. Other professional affiliations include the Johns Hopkins Medical and Surgical Association, and the Association of Pennsylvania State College and University Faculty.

Dr. Wheeler and the former Dorothy Grezeszak were married on their graduation day from Michigan State. Their four children have all been Edinboro students. Jean Christiansen is an elementary teacher in Orem, Utah. David is on the faculty of the psychology department at Robert Morris College in Pittsburgh. Michael is a research technician in entomology at Cornell University, and John is studying for his fourth degree from Edinboro.

## President Frank G. Pogue



Dr. Frank G. Pogue

Dr. Frank G. Pogue, the 15th president of Edinboro University of Pennsylvania, began the first year of his presidency on July 1, 1996.

A sociologist, President Pogue holds a bachelor's degree from Alabama State University, a master's degree from Atlanta University, and a Ph.D. from the University of Pittsburgh.

Prior to his presidency at Edinboro University, President Pogue was the vice chancellor for student affairs and special programs at the State University of New York (SUNY) System Central Administration in Albany, serving in that position for 10 years. There he was responsible for, among many programs, system-wide student educational services and programming, access and financial aid services, school and college relations, the New York City Office for Student Recruitment, undergraduate scholarship programs, the Graduate Fellowship Program for Underrepresented Students, diversity and affirmative action initiatives, university public safety, the Office for the Disadvantaged, the Office of Hispanic Affairs, the New York African American Research Foundation, the university-wide Native American Program, and educational opportunity programs and centers for the disadvantaged. While vice chancellor, Dr. Pogue served for one year as interim president at the SUNY College at Cobleskill.

During his many years with SUNY, Dr. Pogue impacted many lives and events. In 1973, as chair of the Department of African and Afro-American Studies (now the Department of Africana Studies) at the State University of New York at Albany, he developed a master's degree program which included African Studies, Afro-American Studies or a combination of African/Afro-American Studies – the only such MA degree program in SUNY. He also was instrumental in establishing World Week on the campus, where all students celebrate diversity.

Prior to his assignment in the SUNY System Central Administration, President Pogue served as vice president for student affairs, associate vice president for research and educational development, dean of undergraduate studies, and a department chairman, all at SUNY Albany.

In October of this year, Dr. Pogue was appointed by Pennsylvania Governor Tom Ridge to a statewide panel on academic standards. The bipartisan commission is made up of legislators, business leaders and educators. Pogue represents higher education on the commission and is the only member from northwestern Pennsylvania. The commission has been given the task of developing a new set of standards for Pennsylvania schools in math, science, reading and writing.

Pogue is no stranger to academic standards. Since 1984, he has served on the Commission on Higher Education of the Middle States Association of Colleges and Schools and is currently a member of its executive board. He was a consultant to the commission which reviewed education standards in the state of New York several years ago. His experience in higher education spans three decades.

President Pogue's administration has brought to Edinboro University a renewed sense and spirit of community, a reaffirmation of institutional purpose, and a commitment to protect the accessibility which Edinboro University and the State System of Higher Education offer to affordable, exceptional, high quality education.

## Mary Beth Kennedy



Mary Beth Kennedy

Delivering the Commencement address at today's ceremony is Mary Beth ("Betty") Kennedy, a missionary sister of the Church of God in Christ, an associate member of the Order of St. Benedict, and co-founder of the Community Drop-In Center and the Community Country Day School.

Mary Beth was raised in Erie, Pennsylvania. Her mother was a pillar in Holy Trinity, Church of God in Christ and an important influence on many of the outstanding members of the community. An outstanding student, Mary Beth was selected valedictorian at Strong Vincent High School. She was president of the local youth chapter of the NAACP, but her deepest love and commitment was to church activities locally and statewide.

Awarded a full scholarship from Temple University, Mary Beth earned a bachelor of arts degree in 1948. She received a professional teaching certificate in mentally/physically handicapped from Edinboro in 1983 and earned a master's degree in Bible theology from International Bible Institute and Seminary in 1981.

At an American Friends Service Committee gathering in 1946 Mary Beth met her husband, Charles C. Kennedy. They worked together at the Rockland, New York, State Hospital – she as a psychiatric aide, he as an attendant.

They were married very quietly in June of 1949 in a Quaker chapel in New York City. For the next five years they lived in Puerto Rico where for the first year she taught elementary school and he worked in a government hospital. They then moved to another village where they became involved in missionary and social work.

In 1955 the Kennedys came to Erie for a year of training to be missionaries in Africa, and in January of 1956 they left for Liberia. They established and operated a mission school in the villages of Tugbakeh and Wissikeh, and they made Liberia their home for the next eight years.

Together, they founded the House of Prayer, a mission of the Church of God in Christ; the Community Country Day School for socially maladjusted and emotionally disturbed children; and the Community Drop-In Center, an emergency counseling facility and shelter for runaways, addicts, alcoholics, and people with suicidal tendencies.

A few years later, they founded the Community of Caring, a social service agency that concentrates on helping the "newly poor" and chronically unemployed by providing the basic necessities of life, including food, shelter and counseling. Not long after that, the Kennedys developed Community of Caring, International which is active in Cuba, Haiti, Tanzania, and Liberia.

The couple has four children – Charles, Jr., Mary Ann, Elizabeth Rose and Grace Lorraine – and three grandchildren.

# Master's Degrees

## Graduate Studies

Philip P. Kerstetter, Ph.D., Dean

### Master of Arts

#### Clinical Psychology

Dianna J. Borstad, B.A., University of Minnesota/Duluth, 1993  
Denise F. Bunner, B.A., Edinboro University of Pennsylvania, 1994  
Wendy Nicole Cavuoto, B.A., SUNY-Buffalo, 1995  
Carol Chaffin-Page, B.A., Edinboro University of Pennsylvania, 1994  
Kelly Darlene Frontz, B.S., Clarion University of Pennsylvania, 1995  
Susan Rose Galle, B.A., Penn State University, 1993  
Anthony Michael Goff, B.S., John Carroll University, 1994  
Warren McClure Hartzell, B.A., Edinboro University of Pennsylvania, 1977  
Christine A. Kalie, B.A., Mercyhurst College, 1985  
Merritt Lynn Kleiner, B.A., Penn State University/Behrend, 1994  
Tracie Rae Krause, B.A., Edinboro University of Pennsylvania, 1994  
Carrie J. Kuchcinski, B.S., Penn State University/Behrend, 1995  
John Stephen Petkac, B.S., Penn State University, 1982  
Kristjana K. Rahn, B.A., Mount Mary College, 1993  
Lisa June Schening, B.S., Penn State University, 1987

#### Communication Studies

\* Michele Marie Agostini, B.A., Penn State University, 1992  
Michele Ann Bauman, B.A., Edinboro University of Pennsylvania, 1990  
\* Barbara Jean Hauck, B.S., Skidmore College, 1983  
John Kirk Leo, B.A., Edinboro University of Pennsylvania, 1993  
\* Joyce Krahe McDonnell, B.A., Edinboro University of Pennsylvania, 1993  
Joel S. Schwartz, B.A., Thiel College, 1990  
Elizabeth Ann Stuyvesant, B.A., Susquehanna University, 1993  
Reneva Ann Sweet, B.S., Edinboro University of Pennsylvania, 1989  
Yvonne Tate, B.A., Cheyney University of Pennsylvania, 1990

#### Counseling

Joel Edward Brecht, B.S., University of Pittsburgh, 1993  
Ann Marie Burbules, B.A., Mercyhurst College, 1983  
\* Amerigo Caporusio III, B.A., Edinboro University of Pennsylvania, 1992  
Theresa Sharlene Carey, B.A., Edinboro University of Pennsylvania, 1995  
Mindy Nicole Chanoff, B.A., Hofstra University, 1994  
Pamela Clark, B.A., Gannon University, 1995  
Paula R. Crissman, B.A., Edinboro University of Pennsylvania, 1993  
Jennifer Lynne Cwiklinski, B.S., Edinboro University of Pennsylvania, 1994  
Jennifer Frances Drahuschak, B.S., Slippery Rock University of Pennsylvania, 1991  
\* Deborah M. Figaski, B.S., University of New Hampshire, 1975  
Kerry Lynn Fleischauer, B.A., Edinboro University of Pennsylvania, 1994  
Shari Lynne Gould, B.A., Edinboro University of Pennsylvania, 1981  
Tracey Michelle Harakal, B.S., Edinboro University of Pennsylvania, 1995  
Christina L. Horning, B.S. Mansfield University of Pennsylvania, 1993

\* Paul Anthony Imig, B.S., Indiana University of Pennsylvania, 1987  
Kimberly Anne Jensen, B.S., Penn State University, 1992  
\* Sandra Kioumourtzis, B.S., Clarion University of Pennsylvania, 1992  
Danielle Marie Morton, B.S., Edinboro University of Pennsylvania, 1993  
Michelle A. Nelson, B.A., Edinboro University of Pennsylvania, 1996  
Brian D. Novogradac, B.A., Edinboro University of Pennsylvania, 1993  
William Edward Probert, Jr., B.A., Lock Haven University of Pennsylvania, 1994  
Rebecca Ann Pulling, B.A., Allegheny College, 1986  
Teri L. Rexford, B.S., Edinboro University of Pennsylvania, 1993  
Shon Delone Smith, B.A., Edinboro University of Pennsylvania, 1994  
Connie Faye Walker, B.S., Edinboro University of Pennsylvania, 1994  
Caren S. Webb, B.A., Allegheny College, 1993  
Desiree Michelle Weppner, B.S., Gannon University, 1993  
\* Ronald Henry Wilga, B.A., Alliance College, 1970

#### Social Sciences

Saifullah Abbasi, B.A., University of Sind, 1967  
Robert James Magill, B.A., Edinboro University of Pennsylvania, 1994  
\* Robert Michael Popella, Jr., B.S., Clarion University of Pennsylvania, 1993  
\* Jolie Kathleen Said, B.A., Edinboro University of Pennsylvania, 1992  
John Patrick Werkmeister, B.A., University of Pittsburgh, 1985

#### Speech and Language Pathology

Susan L. Harmon, B.A., Edinboro University of Pennsylvania, 1994  
Jill Allison Monico, B.A., Edinboro University of Pennsylvania, 1994  
\* Jeffrey Ewell Scott, B.A., Edinboro University of Pennsylvania, 1994  
\* John Michael Tumminello, B.A., St. Joseph College, 1990

### Master of Education

#### Educational Psychology

Shehla Abbasi, B.A., University of Sind, 1977  
Kimberly Renee Barry, B.S.W., Edinboro University of Pennsylvania, 1993  
Kevin Keith Sutton Cook, B.A., Edinboro University of Pennsylvania, 1994  
Linda Crestina Darrow, B.A., SUNY-Binghamton, 1990  
Laura Lynn Endean, B.S., Northern Arizona University, 1992  
Cassie Lee Gadsby, B.A., Penn State University, 1995  
Mary Ann Krueger, B.S., Gannon University, 1985  
Jefferson David Long, B.A., SUNY College-Fredonia, 1995  
Rebecca Lynn Malyszka, B.A., Grove City College, 1995  
Michael T. McGaughey, Sr., B.S., Clarion University of Pennsylvania, 1990  
Edward Dalton Ryan, B.A., University of Iowa, 1994  
Jennifer M. Stains, B.A., Indiana University of Pennsylvania, 1994  
Yuehua Tong, B.A., Qufu Normal University PRC, 1989

#### Elementary Education

\* Yvette Renee Bryant, B.S.Ed., Penn State University, 1991  
\* Daniel Thomas Burbage-Macaluso, B.S.Ed., Slippery Rock University of Pennsylvania, 1988  
Sheila Mollie Conway, B.S., Edinboro University of Pennsylvania, 1995  
Virginia Marie DiRaimo, B.S.Ed., Edinboro University of Pennsylvania, 1991

Marilyn M. Glotzbecker, B.S.Ed., Slippery Rock University of Pennsylvania, 1975  
 Shelley Elaine Morgenstern, B.S.Ed., Slippery Rock University of Pennsylvania, 1981  
 Christine Marie Pearson, B.A., Indiana University of Pennsylvania, 1992  
 Donna Jean Phelps, B.S.Ed., Edinboro University of Pennsylvania, 1990  
 Norma Jean Robarts, B.S.Ed., Edinboro University of Pennsylvania, 1993  
 \* Dana Suzanne Sedersten, B.A., University of Northern Colorado, 1986  
 \* Brenda J. Stearns, B.S.Ed., Edinboro University of Pennsylvania, 1980  
 \* Laurie Sue Triola, B.S.Ed., Edinboro University of Pennsylvania, 1991

### Elementary School Administration

\* Joyce Edna Bowser-Lansberry, B.S.Ed., Edinboro University of Pennsylvania, 1973  
 \* Claudia Thompson Conway, B.S., Miami University/Oxford Campus, 1975  
 Kelly S. Hess, B.S.Ed., Edinboro University of Pennsylvania, 1991  
 Mary M. Hoffman, B.S., Edinboro University of Pennsylvania, 1993  
 \* Nicole R. Kolakowski, B.S.Ed., Edinboro University of Pennsylvania, 1992  
 \* Barbara J. Piszker, B.A., Mercyhurst College, 1970  
 LaDonna Olivia Gilley Shanahan, B.S., Bowling Green State University, 1964  
 \* Mary Donnelly Zappitelli, B.S., Villa Maria College, 1980

### Reading

\* Carol J. Bartlett, B.S.Ed., Edinboro University of Pennsylvania, 1989  
 \* Casey A. Cass, B.S., Edinboro University of Pennsylvania, 1995  
 \* Sherry Lynn Eastman, B.S.Ed., Edinboro University of Pennsylvania, 1990  
 \* Gwyn Louise Horner, B.S.Ed., Edinboro University of Pennsylvania, 1992  
 Lisa Michele Woughter, B.S.Ed., Edinboro University of Pennsylvania, 1988

### Secondary School Administration

\* Abdul Rahman Abdullah .S Al-Khodhairy, B.S., Islamic University, 1983  
 Abdullah Abdullmohsen Alroudhan, B.A., Kuwait University, 1985  
 \* John Martin Brown, B.S., Slippery Rock University of Pennsylvania, 1976  
 Nicholas H. Cronk, B.A., Wabash College, 1992  
 \* Thomas Patrick Hargest, B.S., Edinboro University of Pennsylvania, 1970  
 Patrick Robert Holland, B.S.Ed., Slippery Rock University of Pennsylvania, 1984  
 \* Andrew Pushchak, B.S., Edinboro University of Pennsylvania, 1993  
 \* David Paul Stoczynski, B.S., Gannon University, 1974  
 Xiaolei Xing, B.A., Shandong Teacher's University, 1989

### Special Education

\* Karyn Suzanne Brown, B.S., Edinboro University of Pennsylvania, 1990  
 \* Diane M. Cochran, B.S.Ed., SUNY College-Fredonia, 1983  
 Elizabeth A. Davison, B.S.Ed., SUNY College-Fredonia, 1988  
 Peter William Heh, B.A., Washington/Jefferson College, 1994  
 Debra Ann Kerestman, B.A., Edinboro University of Pennsylvania, 1989  
 \* Shannon R. Klinder, B.S., Rutgers State University, 1992  
 \* Stacey Marie Murphy, B.S.Ed., Edinboro University of Pennsylvania, 1991  
 Reneé Joann Nicolazzo, B.S.Ed., Edinboro University of Pennsylvania, 1987  
 \* Jeffrey Francis Orlando, B.S.Ed., Edinboro University of Pennsylvania, 1992  
 \* Kristen M. Schnaekel, B.S., Edinboro University of Pennsylvania, 1992  
 \* Rosanne Marie Siggia, B.S.Ed., Edinboro University of Pennsylvania, 1991  
 \* Mary Katharine Swanson, B.S.Ed., SUNY College-Fredonia, 1986

### Master of Fine Arts

John Samuel Alexander III, B.F.A., Edinboro University of Pennsylvania, 1994  
 Michael Neil Anderson, B.S., University of Oregon, 1982  
 Scott Allen Dow, B.F.A., Edinboro University of Pennsylvania, 1994  
 James L. Walters, B.F.A., Carnegie-Mellon University, 1987

### Master of Science

#### Biology

John Michael Antonelli, B.S., Edinboro University of Pennsylvania, 1992

\* Students who completed degree requirements during Summer 1996.

The University does not claim the list of degree candidates or honors designations is absolutely accurate. Students are granted degrees only if they meet all academic and financial requirements.

## Honors

---

The following degree candidates have earned at least sixty-four credits as undergraduate students of Edinboro University and have attained the following cumulative averages: Summa Cum Laude, 3.80 to 4.00; Magna Cum Laude, 3.60 to 3.79; and Cum Laude, 3.40 to 3.59.

### Summa Cum Laude

Tami J. Bloss	Trica Luanne Peterson
Cheryl A. Dougherty	Sharon Leigh Pratt
Todd J. Drozeski	Mary K. Runser
Laura Elizabeth Fordyce	Cheryl Ann Steele
James Matthew Hoffman	Jolene K. Thompson
Joyce Marie Klasen	Angela Lynn Traggiai
Charles Joseph LaBonté	Carol J. Vavrek
Nicole Renee McCullough	Cynthia Anne Walk
Mark Andrew Paskowski	Carla Jean Womer

### Magna Cum Laude

Jamie D. Billings	Kerryn Lynn Maas
Stacey Lynn Burge	Kelly L. McCaffrey
Jason Andrew Burgert	Michael J. McCracken
Sara Kathryn Creager	Emmet Harold McGuire III
Rebecca Ann DeGeorge	Bryan Michael McMullen
Chanda Kay Doutt	Ann Marie Pesta
Susan L. Fields	Johanna Carol Sanfilippo
Kelly Marie Finney	Traci Lynn Shade
Cynthia W. Gilbert	Rebecca Lynn Shafer
Eileen Kristen Hughes	John Michael Sivak
Sarah Louise Hunt	Rebecca Ann Solarczyk
Jennifer Lynn Kent	Therese M. Taylor
Serena Michelle Kerr	Margaret A. Tetuan
Corey Allan Kline	Pami J. Waite
Regina Lynne Loucks	

## Cum Laude

Melanie Lynn Baiera	James Joseph Madasz, Jr.
Amanda Elizabeth Crisp Barko	Charlotte M. Mainon
Robert S. Blount	Kelli Ann Malcolm
Cassandra Lyn Burkhardt	Amanda Lynne Motter
Kristie Marie Camasi	Sandra I. Nelson
Amy Maureen Champion	Lois Ann Pearo
Maureen Elizabeth Cook	Debbie Lynn Piper
Jennifer Lynn Datre	Robin Lynn Pusateri
Ralph DeTullio, Jr.	Patricia Ras
Christina Sue Dolan	William A. Richter
Shane Paul Donaldson	Russell James Scheller
Paul Owen Engleman III	Stephanie Dawn Schultz
Jacqueline Marie Firster	Alexia Carmen Sovchen
Andryanto Handayani	Janet Renee Steuart
Sandra Ann Harman	Nicole Leanne Strazzer
Tiffany Elizabeth Hays	Steven Dale Styer
Dwight Gary Heminger	Cheryl Rae Timco
Gerald Eric Hemmis	Mande Jo Wessell
Linda L. Hobson	Dawn Marie Wienclaw
Christopher Duane Johns	Darlene E. Wilson
James M. Klinder	Michelle Lee Witsch
Dennis A. L'Huillier	Cassandra Jane Yeast
Kimberly Christine Lefebre	Eric Karl Zechman
George E. Lehman	Julia Michele Zulovich
Michael J. Liebel	

### University Honors Program

Eileen Kristen Hughes	Trica Luanne Peterson
Nicole Renee McCullough	Rebecca Ann Solarczyk

# Baccalaureate and Associate Degrees

## School of Liberal Arts Donald H. Dilmore, Ph.D., Acting Dean

### Bachelor of Arts

#### Anthropology

Shane Paul Donaldson – Cum  
Scott M. Graves  
Ann Marie Pesta – Magna  
James Christopher Renn

#### Art History

Eileen Kristen Hughes – Magna  
Kelly J. Schruers  
\* Aki Unno

#### Criminal Justice

James F. Armagost  
\* Steven Joseph Bayer  
Lynne Rae Borman  
James H. Brose  
\* F. André Chivalette  
Leslie D. Ciarelli  
\* Erik D. Cox  
Robert Edwin Craft, Jr.  
Andy J. Dalton  
Ralph DeTullio, Jr. – Cum  
\* Christopher Lee Distler  
\* Donald D. Doult  
Dino Anthony Fratangeli  
Christopher L. Frazier  
Gregory Patrick Gilson  
Michael R. Gould  
\* Renee Kristine Greaves  
Comocrea Shawtrell Hathaway  
\* Daniel T. Hoetzlein  
Terry Luca Hokaj  
Mark William Irwin  
Jeffrey David Jones  
Joseph David Karg

Mariam Khokhar  
Adam James Lee  
Daniel R. Lee, Jr.  
Brian Lilly  
Raymond Joseph Linn  
D. Shane McCoy  
Nicole Renee McCullough – Summa  
Steven C. Miller  
\* Melissa Lynne Mowry  
Anthony Lamont Oaks  
Justine Petnuch  
Dan L. Prichard  
Michael Anthony Prilla  
Brian Keith Reeher  
Jerry Roberts  
Terry Roberts  
Stacey R. Rodemoyer  
Scott Carl Schwedler  
\* Tony S. Setlock  
John Brian Shetler  
Lori Lynn Simon  
\* Shawn A. Stelitano  
\* Jayson Wesley Walter  
Rodney Lee Warren  
\* Jeffrey James Whitt  
Benjamin James Winkle  
Michelle Lee Witsch – Cum  
Brian R. Wolcott  
\* Troy Aaron Wood  
Jason James Young  
Stephen Thomas Zewatsky

#### English

\* Douglas G. Callen  
Thomas John Ferguson  
Sedessa Ann Grushecky  
James Matthew Hoffman – Summa  
Frank David Johnston  
Michael J. McCracken – Magna  
Robert Wells McIntosh  
Melissa Dawn McWilliams  
Teonnie Sheree Mitchell

Michelle Lynn Mullen  
Stephanie Jill Sunshine

#### German

Helen Danielle Daugherty

#### History

Susan Marian Benedict  
Daniel L. Bernice  
\* Jaison Harbart Fisher  
Ethan T. Holmes  
Joyce Marie Kebert  
Matthew A. Kuebler  
\* Jennifer Lyn Lannon  
\* Stacey Marie Lasher  
Jeremy David Reichart  
Andrew James Vincierra

#### Humanities

Jason Carl Baron  
\* Meagan Leigh Kennedy  
Scott Alexander Malec

#### Music

Shawn A. Mitchell  
Alison Beth Reichenfeld  
\* Jason Howard Steele  
Andrew W. Tepe

#### Philosophy

Kerryn Lynn Maas – Magna

#### Political Science

Matthew D. Barrett  
Christian D. Constantine  
James Drew Curran  
Christina Sue Dolan – Cum  
Cole A. Dunchuck  
Richard E. Jones

#### Psychology

Darlene F. Arndt  
Diana Darlene Beck  
Jeanette Bermudez  
\* Jamie D. Billings – Magna  
\* Jacek Ciesluk  
Alexis Erena Coutris  
\* Jennifer Lynn Datres – Cum  
Tamela Ann Davis  
Michele Lee Diaz  
Patrick Joseph Donoghue  
Tricia Ann Dybzinski  
\* Paul Owen Engleman III – Cum  
Amanda E. Ferster  
Jodi Elaine Fletcher  
Lisa Sharon Gilligan  
Jacqueline Leign Hansen  
Kimberly Joy Haskitt  
\* Laura Anne Hook  
Kristen Marie Huber  
Christy L. Jamison  
Jill Ann Joslyn  
Serena Michelle Kerr – Magna  
Lauren Renee Kuhn  
Paula Kathleen LeSuer  
Bonnie L. Libell  
Heather Lee Machacek  
Eric Alan Manendo  
Tracy Marie Martin  
Jeffrey Scott McClellan  
Brian K. McGuire  
\* Heather Lynne McWilliams  
\* Phyllis Elaine Merritt  
\* Sherri L. Naylor  
\* Michelle A. Nelson  
Trica Luanne Peterson – Summa  
Shelby Annette Plavsity  
\* Angela Eliese Roberson  
Jennifer Michelle Schuster

Rebecca Lynn Shafer – Magna  
\* Deborah D. Shelley  
\* Janet Renee Steuart – Cum  
\* Julie J. Williams  
Kara Susanne Willow  
Denise Louise Wolfe  
Casandra Jane Yeast – Cum

#### Social Science

Sharon Leigh Pratt – Summa

#### Sociology

\* Vidal DeSean Farr  
\* Ayrn Lisa Herron  
\* Geoffrey Scott Joslin  
\* Suzanne Denise Ludwig  
Ruby Jo McFerren  
Chad Steven VanDivner

#### Speech and Hearing Disorders

\* Joelle Lyn Barris  
\* Bridgette Marie Bruno  
Nicole M. D'Antonio  
\* Lori Ann Ditrich  
\* Michelle Louise Geitner  
Wendy Michelle McMahon  
Wendi Jeanne Schelhorn  
\* Melanie Ann Shannon  
\* Laurell L. Sixsmith  
\* Cheryl Ann Steele – Summa

#### Speech Communications

Travis Nathan Avery  
\* Alexander Bass  
Donald M. Boyle  
Sherry Louise Bradley  
Jacob Michael Brazil  
\* Jennifer Ann Campanella  
Michael James Culver  
\* Ryan Edward Doak  
\* Dusty L. Dollar

Darin Thomas Foltz  
William Joseph Grzelak  
Tiffany Elizabeth Hays – Cum  
Susan Louetta Hoffman  
\* Jessica Ann Ling  
Merle Pastrick Linn  
Meaghan Kara McDonald  
Denice Lynne Munshower  
\* Arlene Ann Neely  
Vera L. Newell  
Lois Ann Pearo – Cum  
Shakira M. Ray  
M. Renee Renshaw  
Myles P. Rooney  
Margaret A. Tetuan – Magna  
\* Henriett Toth  
Sarah Lynn VanDreason  
Michael Andrew Votovich  
Amber Charlotte Woodson

### Bachelor of Fine Arts

#### Applied Media Arts

Laurie A. Barrey  
\* Patricia Allison Bentley  
\* Dana Michele Catoline  
\* Michelle D. Clark  
Sara Kathryn Creager – Magna  
\* Jason Jon Dancisin  
Melissa Rachel Marguerite Elliot  
Bradley M. Ford  
Benjamin J. Frazier  
Stephen Michael Gosser  
David Andrew Himlin  
\* Kyle Matthew Keagy  
Adam Peter Klein II  
Kimberly Ann Krebbeks  
Jennifer Sue Lindow  
Regina Lynne Loucks – Magna  
Vincent A. Marangoni  
Aubrey Anne Minnis  
Nichole R. Munnell  
\* Tara Lynn Murphy  
Jason Edward Mursch  
\* Michelle E. Russell  
Amanda Ray Smith

Rebecca Ann Solarczyk – Magna  
Mande Jo Wessell – Cum  
\* Jennifer Gwen Zampogna  
Norman Charles Zoumas, Jr.

### Fine Arts – Crafts

\* Mary Ann Gold  
\* Mark L. Minnick  
Samantha J. Schwoeble

## Bachelor of Science

---

### Social Work

Tamika A. Bailor  
Tami J. Bloss – Summa  
\* Diana M. Carlson  
Christina Marie Cessna  
Catherine Mae Chesmar-Sheldon  
Amy Lynn Chittister  
Marie Aline Curtis  
Cynthia Grace Dingfelder  
Barbara Angeline Doan  
Melanie Lynn Dobbs  
Cheryll Pamela Eicher  
Robert S. Ewing  
Diana Kay Flanders  
Trina Marie Friendly  
Michelle Marie George  
Stacie Marie Guild  
Melissa T. Hutton  
Leighan Klaips  
Heather Lynn Kline  
Kimberly Christine Lefebre – Cum  
Kelly L. McCaffrey – Magna  
Valerie Marie Morgan  
Sandra I. Nelson – Cum

Julie A. Prough  
Todd B. Ray  
Johanna Carol Sanfilippo – Magna  
Michael J. Sims  
Jessica Lark Sturtevant  
Melinda J. Thompson  
\* Pam Margaruite Turner  
Kicole Suzanna Watson  
Andrea Marie Wrona

## Associate of Arts

---

### Criminal Justice

Patricia Ann Coleman  
Timothy W. Dilijonas  
Michael Joseph Fickenworth  
Marc Patrick Martucci  
Kristen Lynn Raun  
Jamie Russell Rockwell  
Kenneth Grant Shaffer, Jr.  
Russell William Bryan Shaffer

### Human Services

Kimberly Ruth Dinger  
Vanessa Marie Moorehead  
Terry Lee Tate

### Liberal Studies

\* Thomas John Buckel  
Thomas Matthew Kennedy  
Robert Charles Rohrbach  
\* James Edward Rupp, Jr.  
Alison Marie Vraninin  
Judy Anne Williams

## Bachelor of Arts

---

### Specialized Studies

Stella Lucille Bowers-Walton  
Steven H. Cheney  
Tara M. Hamler  
\* Catherine J. Hanhauser  
\* Alison N. Hayes  
Gale Yvette Jordan  
Ethan David Karpowich  
Betty Lou Koerbel  
\* Joseph Alan Lada  
\* John Luchansky IV  
Karen Louise Mance  
\* Keith Allen Martin  
Meghan Ellen Patterson  
Jeffrey Stephen Rzepecki  
Julia Michele Zulovich – Cum

## School of Science, Management and Technologies

Michael A. Mogavero, Ph.D., Dean

## Bachelor of Arts

---

### Biology

Jeremy John Gatesman  
Carl Eric Haemer  
\* Jamie Dawn Merritt

### Environmental Studies/ Geography

Theresa Marie Alling  
Melissa Ann Beatty  
\* Julie Elaine Blume  
Brandon L. DiSabato  
Charles Michael Fedell, Jr.  
Jonathon Philip Grafious  
Michael Robert Gray  
Geoffery Gordon Hirz  
April Arlene Horner  
\* James M. Klinder – Cum  
Blaine Darrin Kuhn  
Mary Catherine Piper  
Christine Roppolo  
Beth Ann Rossi  
Nicole Reneé Storey  
Shelly M. Swanson  
Justin John Szmodis  
Eric Jon Wittmer  
\* Brad Alain Wroblewski

### Geography

Janet Lynn McCann

### Mathematics

Cara Jay Fabian  
Kevin L. Manross

### Natural Science and Mathematics

Ralph Charles Baumgart, Jr.

### Physics

Timothy P. Dudley  
Charles James Eccles  
Richard J. Zarger

## Bachelor of Science

---

### Biology

\* Chad Wayne Swartz

### Business Administration

Adeyoola Yejide Adeyemo  
Brian T. Andrzejewski  
Darcy Lee Anthony  
Hanane Benyoussef  
Keith M. Blair  
Ryan M. Costello  
John B. Dohanic  
Travis Levell Duck  
Sean Douglas Ferguson  
Susan L. Fields – Magna  
Steven D. Frisina  
Jo Anna Fuhs  
Danielle L. Gilbert  
Mary A. Grill  
Andryanto Handayani – Cum  
\* Gerald Eric Hemmis – Cum  
Linda L. Hobson – Cum  
Diana Michelle Holder  
Michael A. Jacobs  
Vanessa Jean Junker  
Stephen A. Kast  
Elizabeth Coverdale Keim  
\* Lori A. Klein

\* Amy Lea Knezovich  
George E. Lehman – Cum  
Kyle Allen Longstreet  
Geoffrey A. Lyons  
Daniel David McQuiston  
Randal James Mills  
Keith A. Nordberg  
Mark John Orlop  
Mark Andrew Paskowski – Summa  
\* James Russell Petruso  
Gregory Alan Rex  
\* Gregory J. Santora  
Cary Edward Senge  
Kenneth H. Somerville  
Dean W. Swaney  
Cheng-Guan Tan  
Colleen J. Vaughan-Hancock  
Carol J. Vavrek – Summa  
Lisa A. Vecellio  
Kathleen R. Williams  
Stephen Alan Winsor  
\* Jamie Patrick Workman

### Chemistry

Matthew B. Berlin  
Tonja Jane Guianen  
Louise E. Murkens  
William Patrick Pavlek

### Computer Science

Robert S. Blount – Cum  
Joseph Warren Dally III  
John David Garies  
\* Jason Wayne Modlin  
William A. Richter – Cum  
Steven Dale Styer – Cum

### Economics

\* Charles Joseph LaBonté – Summa

## Environmental Science

Dawn R. Bozarth  
Kevin Charles DeMaison  
Jennifer Anne Dieter  
Geanine Marie Florian  
Eric Earl Hannes  
\* Daniel Scott Jump  
Kristopher Kyle Keller  
\* Brian Joseph Koch  
\* Bethany A. VanZandt

## Geology

Dale C. Andrews  
Kristie Marie Camasi – Cum  
Stephen Edward Deeter  
Tracey L. Eastridge  
\* Emmet Harold McGuire III – Magna  
Wayne Edward Randolph, Jr.  
\* Chris C. Rauber

## Medical Technology

Thomas Allen Dobson  
\* Christopher Duane Johns – Cum  
\* Jennifer Lynn Kent – Magna  
\* Jennifer Lynne Novalk  
Hemarani Aline Sivarajan  
\* Bethann Wagner

## Nuclear Medicine Technology

\* Mark Howard Brigham  
\* Eric A. Calabrese  
\* David Harrison Hathaway  
\* Jennifer Lee Lisovich  
\* James Joseph Madasz, Jr. – Cum  
\* Amanda Lynne Motter – Cum  
\* Julianne Murray  
\* Nathaniel Drake Pauley  
\* Steven Lance Presto  
\* Russell James Scheller – Cum  
\* Richard Blaine States

## Nursing

Rosalyn Marie Belak  
Alyssa Elaine DeRose  
Debra Anne Flite  
Julie R. Fratarcangeli  
John Michael Garry III  
Sandra Ann Harman – Cum  
Cheryl D. Hermann  
Rachel Dawn McCready  
Edna B. Pett  
Derek Andrew Reckard  
Heather Rae Rossi  
Mary K. Runser – Summa  
Traci Lynn Shade – Magna  
John Michael Sivak – Magna  
Elizabeth E. Terella  
Beth Anne Vamos  
\* Darlene E. Wilson – Cum

## Bachelor of Science in Nursing

\* Kristin Hoffman Afrasiabi  
\* Jeffery D. Alexander  
\* Megan Ann Bergeson  
\* David G. Comerzan  
\* Melanie E. Dobay  
\* Paul F. Estes  
\* Debra Tan Fleming  
\* Marjorie A. Hall  
\* Marjorie Jean Heltke  
\* Kimberly Sinclair Jackson  
\* Marci A. Kelly  
\* Gary David Kinlaw  
\* Ann Margaret Nies  
\* Nicole S. Reyda  
\* Julie Renee Ritterpusch  
\* Kelly Louise Schreck  
\* Shirley J. Schuit  
\* Edna Jean Stickell  
\* Therese M. Taylor – Magna  
\* Rebecca C. Tingley  
\* Jacqueline A. Tylman  
\* Cindy Lou Walters  
\* Deena M. Westphal  
\* Rester Wovenu  
\* Mary Elizabeth Zivkovich

## Associate of Engineering Technology

### Biomedical Equipment Technology

\* Charles Joseph LaBonté  
Randy Thomas Lowers

### Manufacturing Engineering Technology

Richard D. Bittner, Jr.  
Michael A. Hamilton  
Donald Joseph Mosko, Jr.

## Associate of Science

### Computer Science

Brenda Lois Calhoun  
\* Mark David Pruyne

### General Business Administration

Jeffrey David Burton  
Barbara Ann Feltenberger  
Gary F. Fritz  
\* Amber Corinne Gannon  
Bobbi Jo Graham  
Shirley Ruth Moore  
Tracy Rae Stewart

### Medical Laboratory Technology

Laurie Lynn Rossi

## School of Education Philip P. Kerstetter, Ph.D., Dean

### Bachelor of Science in Art Education

Debra Jean Dowling  
Amy Lynn Phillipelli  
Paula Joy Holsopple  
Stephen Peter Loya  
Lora Anne Mazer  
Melissa Lynn Pepper  
Beth Ann Rossi  
Alexia Carmen Sovchen – Cum  
Jason C. Woolslare

### Bachelor of Science in Education

#### Elementary Education

\* Jennifer Renee Abbott  
Stacey Evonne Alexander  
Howard Frank Anderson  
Melanie Lynn Baiera – Cum  
Brenda Rochelle Beal  
Amy J. Beare  
Ralph A. Benedict  
Rebecca Lynn Bland  
Michelle Lyn Bobich  
Stacie Anne Boca  
Keri Anne Brooks  
Jason Andrew Burgert – Magna  
Casandra Lyn Burkhart – Cum  
Jeffrey John Calvin  
\* Kellie Marie Camasi  
Jennifer Lynn Connors  
Heather L. Deringer  
Debra Jane Dietz  
Jennifer Lee Donatelli  
Shannon Donovan  
Cheryl A. Dougherty – Summa  
Todd J. Drozski – Summa  
Tammy Lynn Duszynski  
\* Karen M. Fadool

Christine Faulhaber  
Emily Jane Fritz  
Cynthia W. Gilbert – Magna  
Nicole Arlene Goetz  
Mary Lorraine Gracey  
Dwight Gary Heminger – Cum  
Lori W. Homa  
Michael Jerome Hudak  
Dena Marie Irwin  
Kelly René Johnson  
Joyce Marie Klasen – Summa  
Corey Allan Kline – Magna  
Jennifer Dawn Kotula  
Jennifer L. Lemmo

\* Michael J. Liebel – Cum  
Heidi Margaret Loomis  
Christine Elaine Lovett  
Kelli Ann Malcolm – Cum  
Arianne Michele Marsh  
Christy Lynn Masilunas  
Renee McCabe  
Shelby Elaine McCartney  
Jodie Renae McClintock  
\* Kimberly Jayne McLaughlin  
Michael Robert McLaughlin  
Christine Louise Meley  
Stacy Lynn Muenz  
Emily Irene O'Brien  
Lynette Michele Pascuzzi  
Debbie Lynn Piper – Cum  
Nicole A. Powell  
Patricia Ras – Cum  
Marion Lynn Richmond  
Stephanie Dawn Schultz – Cum  
Lori Lynn Schwanbeck  
\* Michelle Renee Scurry  
Wendy Ann Sharp  
Amy N. Smith  
Jacqueline M. Smith  
Mrryce Javon Smith  
Tray L. Smith  
Gina Marie Stumpo  
Heather Lynn Taggart  
Sean Douglas Tanner  
Holly Leslie Toohey  
Elaine Vaccarello  
Craig Everett Villa

Pami J. Waite – Magna  
Cynthia Anne Walk – Summa  
\* Kristy Marie Weinheimer  
Christine Lynnette Whiteman  
Karen Margaret Williams  
Mark Joseph Williams  
Carla Jean Womer – Summa  
Kevin Micheal Znosko

### Elementary Education/ Mentally-Physically Handicapped

Amanda Elizabeth Crisp Barko – Cum  
Leslie Grant Beatty  
Corissa Leann Boarts  
Lauren Elizabeth Bond  
Stacey Lynn Burge – Magna  
Alexandra Carter  
Amy Maureen Champion – Cum  
Holly Marie Chrzanowski  
Kimberly Dawn Clark  
Maureen Elizabeth Cook – Cum  
Rebecca Ann DeGeorge – Magna  
Kelly Marie Finney – Magna  
\* Jacqueline Marie Firster – Cum  
Laura Elizabeth Fordyce – Summa  
Kimberly Marie Gable  
Jennifer Danielle Gerred  
Jennifer Louise Lisowski  
Charlotte M. Mainon – Cum  
Bryan Michael McMullen – Magna  
Stephanie Renee Moyer  
Tracy A. Musgrave  
Phyllis Jean Pope  
Tiffani Ann Reaves  
\* Marc A. Riccomini  
Sherri Anne Shaner  
Brad Paul Simala  
Nicole Leanne Strazzer – Cum  
Angela Lynn Traggiai – Summa  
Dawn Marie Wienclaw – Cum  
Jessica Louise Wood



**Health and Physical Education**

Kristopher J. Black  
 Celeste A. Cecchini  
 Danielle Demore  
 Chanda Kay Doult – Magna  
 Clarence Robert Holmes, Jr.  
 Sarah Louise Hunt – Magna  
 Robin Lynn Pusateri – Cum  
 Brett R. Ramming  
 Dana Jeannene Tharp  
 Stephanie Lynn Yeager  
 Louis Vincent Zadecky

**Mentally and Physically Handicapped**

Terri J. Dixon  
 Donette Angela Hamm  
 Sandra Diane Hodgson  
 \* Carl M. Johnson  
 Jane Marie Mallin  
 Sarah Louise Matt  
 Chad Douglas Richards  
 Jolene K. Thompson – Summa  
 Cheryl Rae Timco – Cum

**Secondary Education – Chemistry**

Paul Edward Claypool, Jr.

**Secondary Education – Comprehensive English**

Vera Helen Jocz  
 \* Michael Douglas Levin  
 \* Timothy Adam Ranck  
 Carla Michelle Worthen

**Secondary Education – Earth/Space Science**

Mark Douglas Chludzinski  
 \* Daniel M. Freeman

**Secondary Education – French**

Jennifer A. Hendrick

**Secondary Education – General Science**

John David Driscoll  
 Karen M. Sabol

**Secondary Education – Mathematics**

\* Dennis A. L'Huillier – Cum  
 Eric Karl Zechman – Cum

**Secondary Education – Physics**

Gary A. Gerber II

**Secondary Education – Social Science**

James Edward Booker  
 Daniel Jonathon Clemens  
 John Joseph Geisinger III  
 \* John P. Starasinich  
 Donna L. Williams  
 \* Richard John Yeager

**Associate of Science**

**Pre-School Education**

Tabatha Ann Battaglia  
 James William Etling  
 Kimberly Ann Lobdell  
 Janet Ruth Politis  
 Jennifer Sue Price

\* Students who completed degree requirements during Summer 1996.

The University does not claim the list of degree candidates or honors designations is absolutely accurate. Students are granted degrees only if they meet all academic and financial requirements.

*Alma Mater*

Edinboro University of Pennsylvania

Hail to Thee our Alma Mater glo - ri - ous; fresh

wreaths we bring to bind thy brow. Trials have

passed, and Thou hast stood vic - to - ri - ous, ne - ver fair - er, nev - er state - li -

er than now; O Ed - in - bo - ro, Ed - in - bo - ro, ev - er prais - ing

Thee in song, While class speeds class, as swift years pass, to Thee our hearts be - long.

**Chancellor, State System of  
Higher Education**

---

James H. McCormick

**Board of Governors, State  
System of Higher Education**

---

F. Eugene Dixon, Jr. – *Chair*  
Julia B. Ansill – *Vice Chair*  
R. Benjamin Wiley – *Vice Chair*  
Muriel Berman  
Christopher J. Cerski – *Student Representative*  
Jeffrey W. Coy  
Daniel P. Elby  
Richard A. Fino – *Student Representative*  
Glenn Y. Forney  
Eugene W. Hickok, Jr.  
F. Joseph Loeper  
Kim E. Lyttle  
Joseph M. Nespoli  
Rocco A. Ortenzio  
Thomas J. Ridge  
Philip D. Rowe, Jr.  
Jere W. Schuler  
Andrew W. Shoffner – *Student Representative*  
Patrick J. Stapleton  
Christine J. Toretta

**Council of Trustees**

---

R. Benjamin Wiley – *Chair*  
Edwin D. Dombrowski  
Susan B. Hagen  
Patricia Heasley  
Frank J. Jakovac  
C. Richard Johnston  
Benedict J. Miceli  
William C. Schulz  
Harry K. Thomas  
James H. McCormick – *Chancellor (ex officio)*

**Commencement Committee**

---

Robert C. Weber – Interim Provost and Vice President for Academic  
Affairs – *Chair*  
Janet Bowker – Director, Alumni Affairs  
William Coleman – Assistant Vice President for Facilities  
Sherri Galvin – Assistant to the President  
Jerry Kiel – Associate Vice President for Enrollment Management and  
Retention  
Judy Kubeja – Senior Executive Associate to the Provost  
Patti S. Loomis – Director of Publications  
Edward Nixon – Assistant Vice President for Student Development  
Alice Parker – Administrative Assistant, Office of Records and  
Registration  
Lorraine Revak – Facilities Office and General Services Manager  
Karen Smith – Student Representative  
Peter van den Honert – Chairman, Department of Music  
Bob Wallace – Director, TV and Media Services