



EDINBORO UNIVERSITY
OF PENNSYLVANIA
IN ERIE
THE PORRECO CENTER



Associate of Arts in Criminal Justice
Associate of Arts in Human Services
Associate of Science in Business Administration
Associate of Arts in Liberal Studies

Dr. Frank G. Pogue, President

One of the 14 universities in Pennsylvania's State System of Higher Education

"BUILDING A PROSPEROUS FUTURE THROUGH ACADEMIC EXCELLENCE AND CIVILITY"

Edinboro University of Pennsylvania recently introduced a new theme – one that will lead us to the 2006-07 academic year when we will celebrate the University's 150th anniversary or Sesquicentennial. This theme, "Building a prosperous future through academic excellence and civility," builds upon our commitment to academic excellence and civility while introducing the ideal of prosperity. We believe that excellence in academics and civility will lead to prosperity, not only for members of the Edinboro Family, but also for the region, state, nation and the world we serve.

I am pleased to present this brochure to you and to share information about the degree programs we are offering at Edinboro University in Erie – The Porreco Center. By offering classes at our historic and beautiful facility in Erie, we are reaching out to those of you who live in Erie and prefer to stay at home while taking classes . . . those of you who realize that an Edinboro degree can open the doors to a prosperous and productive future, at a fraction of the cost of many other colleges and universities . . . those of you who, unfortunately, find yourselves unemployed and looking for a new career direction . . . and even those of you who are returning from military service.



As you'll see on the following pages, a degree from Edinboro University can take you almost anywhere you want to go. It can, indeed, lead to a "prosperous future through academic excellence and civility."

Frank G. Pogue
Dr. Frank G. Pogue, President
Edinboro University of Pennsylvania

EDINBORO UNIVERSITY IN ERIE

THE PORRECO CENTER

YOU CAN EARN A DEGREE . . .

- ❖ **Associate of Arts in Criminal Justice** -- will prepare you for a variety of employment opportunities with the police, the courts, and correctional programs.
- ❖ **Associate of Arts in Human Services** -- will prepare you for employment in a wide range of mental health and/or human services fields.
- ❖ **Associate of Science in Business Administration** -- will prepare you for an entry-level position in business, accounting, finance or marketing.
- ❖ **Associate of Arts in Liberal Studies** -- will enhance your basic skills while giving you the foundation you need for a four-year degree.

IN ERIE . . .

Beginning in fall 2004, all classes for these four programs will be offered at Edinboro University in Erie – The Porreco Center, 2951 West 38th Street (just minutes from the Millcreek Mall).

AT CONVENIENT TIMES . . .

Classes are scheduled during late afternoons, evenings and weekends.

Monday-Thursday

2:30 to 3:45 p.m.*

4:00 to 5:15 p.m.*

4:00 to 6:30 p.m.

5:30 to 6:45 p.m.*

7:00 to 8:15 p.m.*

7:00 to 9:30 p.m.

Friday

5:30 to 8:00 p.m.

Saturday

9:00 to 11:30 a.m.

Sunday

4:00 to 6:30 p.m.

AT AN AFFORDABLE COST . . .

Edinboro University continues to offer the lowest tuition rates in the area.

*Classes meet twice a week. All others meet once a week.

ASSOCIATE OF ARTS DEGREE

CRIMINAL JUSTICE

OVERVIEW

The field of criminal justice encompasses all matters relating to crime. It is concerned with law, criminology, police, courts, corrections, crime control policy and planning. Moreover, it is a rapidly changing field. Modern criminal behavior such as computer theft and embezzlement, terrorism, racketeering and sophisticated political corruption require new technologies and skills for crime control. There is a need for broadly educated personnel with a deep understanding of the criminal justice system and its political, social and economic environments. There is equally a need for modern police skills, from accounting to computer skills and counseling.

A sound degree program in criminal justice must be flexible to prepare undergraduates for a rapidly changing — and exciting — set of occupations. To meet this need, Edinboro University offers a comprehensive program which provides an overview of the criminal justice system and development of essential skills: the Associate of Arts in Criminal Justice.

CAREER OPPORTUNITIES

The two-year associate degree program is designed primarily to provide persons currently employed in criminal justice agencies an opportunity to enrich their backgrounds in criminal justice studies and at the same time earn a college degree in the field.

Edinboro's criminal justice program seeks to provide students with a broad understanding of the entire criminal justice system and human behavior rather than a narrow specialization. A wide range of employment opportunities exist with the police, the courts, and correctional programs. The background provided by this degree program may also be valuable for those who decide to seek a four-year bachelor's degree in criminal justice, social work, sociology or political science.

PROGRAM OF STUDY

I. GENERAL EDUCATION REQUIREMENTS	30 sem. hrs.
College Writing Skills (3)	
One approved course from each Core category (21)	
One approved course from two different Distribution categories (6)	
II. CRIMINAL JUSTICE REQUIREMENTS	30 sem. hrs.
A. THE CRIMINAL JUSTICE SYSTEM	18 sem. hrs.
American Government (3)	
Principles of Sociology (3)	
Introduction to Criminal Justice (3)	
Introduction to Policing (3)	
Introduction to Corrections (3)	
Prosecution and the Courts (3)	
To be selected from at least two categories below	12 sem. hrs.
B. LEGAL ASPECTS OF CRIME	
Pennsylvania Criminal Code (3)	
Criminal Procedure and Evidence (3)	
C. SOCIETAL INFLUENCES ON CRIME AND DELINQUENCY	
American State and Local Government (3)	
Drugs and Human Behavior (3)	
Organized Crime and Corruption (3)	
Juvenile Delinquency (3)	
American Urban Development (3)	
U.S. Police History (3)	
D. TECHNIQUES OF DEALING WITH CRIME	
Criminal Investigation (3)	
Public Administration (3)	
Criminalistics (3)	
Probation, Parole and Community Corrections (3)	
E. ELECTIVES	
Juvenile Justice (3)	
F. FIELD EXPERIENCE	
Internship in Criminal Justice (3)	
III. ELECTIVES (Open)	6 sem. hrs.
TOTAL	66 sem. hrs.

FOR MORE INFORMATION, CONTACT:
Department of Political Science & Criminal Justice
Edinboro University of Pennsylvania
Edinboro, PA 16444
Phone: 814-732-2409
<http://webs.edinboro.edu/dept/polscience.html>

ASSOCIATE OF ARTS DEGREE

HUMAN SERVICES

OVERVIEW

The basic premise of this program is that there is a common core of attitudes, skills and knowledge that apply to a variety of settings in the human services. Individuals equipped with these competencies can make effective contributions to agencies involved in mental health, education, welfare, retardation, corrections and other areas.

CAREER OPPORTUNITIES

Many health and human services agencies are seeking individuals who have less than a baccalaureate degree, but are sophisticated enough to be effective workers.

This program is concerned with the preparation of individuals as mental health workers, psychiatric aides, social service workers, workers for developmentally disabled, and workers with the elderly. The availability of trained paraprofessionals in these areas could make such services available to the public more efficiently and effectively.

The goal of the program is to educate, in two years, a generalist worker who could move into a wide range of mental health and/or human services fields.

Human services paraprofessionals held several thousand government jobs during the 1990s. Government agencies employ a significant portion of the paraprofessionals to deal with such issues as poverty, crime, public assistance, population policy, social rehabilitation, community development, mental health, racial and ethnic studies, and environmental impact studies.

PROGRAM OF STUDY

I. GENERAL EDUCATION REQUIREMENTS	30 sem. hrs.
College Writing Skills (3)	
One approved course from each Core category (21)	
One approved course from two different Distribution categories (6)	
II. HUMAN SERVICE AREA REQUIREMENTS	24 sem. hrs.
A. NATURE AND NEED OF SERVICE	9 sem. hrs.
Social Services (3)	
Principles of Sociology (3)	
Contemporary Social Problems (3)	
B. BEHAVIORS, TREATMENTS AND STRATEGIES	9 sem. hrs.
Human Diversity (3)	
Introduction to Social Welfare Policy (3)	
Society and the Individual (3)	
C. ELECTIVES IN FIELD	6 sem. hrs.
To be selected from the following:	
Medical Social Work (3)	
Child Welfare (3)	
Aging and Human Services (3)	
Juvenile Delinquency (3)	
Soc. of Marriage and Family (3)	
Race and Ethnic Relations (3)	
Sociology of the Life Cycle (3)	
III. FREE ELECTIVES	12 sem. hrs.
TOTAL	66 sem. hrs.

FOR MORE INFORMATION, CONTACT:

**Department of Sociology
Edinboro University of Pennsylvania**

Edinboro, PA 16444

Phone: 814-732-1593

Fax: 814-732-1632

<http://webs.edinboro.edu/dept/sociology.html>

ASSOCIATE OF SCIENCE DEGREE

BUSINESS ADMINISTRATION

OVERVIEW

The Associate of Science degree in Business Administration prepares students for a variety of professional careers. This degree program is especially designed to provide students with a business degree for entry-level positions in business, for job promotion, or as a bridge toward completion of a bachelor's degree in business administration. Students complete a foundation of business courses that provide thorough exposure to each of the business functions, to economics, to business law, and to the technology used in business.

Students are also required to complete an elective course in business that provides additional expertise in a selected business area. This elective is chosen from courses in advertising and promotion, cost accounting, human resource management, and money and banking.

All of the courses required in the associate degree program also apply to the bachelor's degree in business administration.

CAREER OPPORTUNITIES

The Associate of Science in Business Administration program prepares the student to find employment in various positions in domestic or international businesses including accounting, advertising, finance, financial services, logistics, management, marketing and production.

Business positions are available for graduates in commercial firms, not-for-profit organizations, government agencies and international businesses. Graduates can also choose to be self-employed and are prepared for further study in business administration, accounting, finance, financial services, economics or marketing.

PROGRAM OF STUDY

I. GENERAL EDUCATION REQUIREMENTS	24 sem. hrs.
II. BUSINESS FOUNDATION REQUIREMENTS	27 sem. hrs.
Principles of Accounting I (3)	
Principles of Accounting II (3)	
Information Resources Management* (3)	
Legal and Regulatory Environment of Business (3)	
Principles of Economics: Macro (3)	
Principles of Economics: Micro (3)	
Business Finance I (3)	
Principles of Management (3)	
Principles of Marketing (3)	
*Students who cannot demonstrate competence in word processing and spreadsheet software must take Essentials of Computing I as a General Education Core 7 course or as an elective.	
III. BUSINESS ELECTIVE	3 sem. hrs.
One of the following courses:	
Cost Accounting	
Money and Banking	
Human Resource Management	
Advertising and Promotion	
IV. ELECTIVES	6 sem. hrs.
College Algebra must be taken as an elective	
TOTAL	60 sem. hrs.

FOR MORE INFORMATION, CONTACT:
Department of Business Administration and Economics
Edinboro University of Pennsylvania
Edinboro, PA 16444
Phone: 814-732-2407
Fax: 814-732-1610
<http://webs.edinboro.edu/dept/business.html>

ASSOCIATE OF ARTS DEGREE

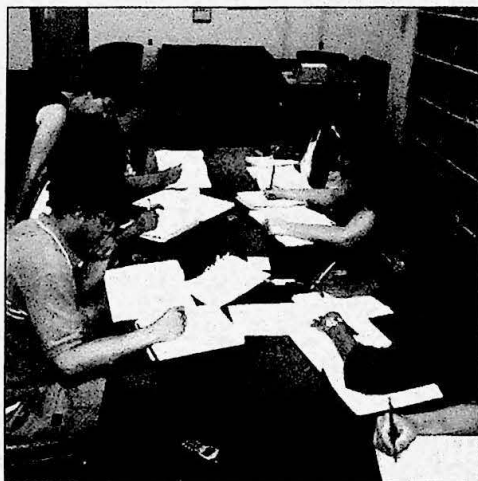
LIBERAL STUDIES

OVERVIEW

The Associate of Arts in Liberal Studies is a flexible two-year degree program designed to meet the needs of a variety of students:

- ❖ students desiring a two-year degree that will enable them to transfer to a four-year institution;
- ❖ unemployed workers wanting to develop marketable job skills;
or
- ❖ employed persons seeking retraining or upgrading of knowledge.

Up to 15 hours of credit may be awarded for previously completed courses at vocational or technical institutes, and students may be eligible to have their tuition covered by the national vocational training act.



liberal studies

PROGRAM OF STUDY

I. GENERAL EDUCATION REQUIREMENTS **30 sem. hrs.**

College Writing Skills (3)

One approved course from each Core category (21)

One approved course from two different Distribution categories (6)

II. HUMANITIES TRACK **15-24 sem. hrs.**

At least one advanced course from four of seven advanced humanities disciplines: Art, English and Theatre Arts, Foreign Languages, History, Music, Philosophy, or Speech Communications

III. ELECTIVES **6-15 sem. hrs.**

To be chosen in close consultation with the program advisor.

TOTAL **60 sem. hrs.**



FOR MORE INFORMATION, CONTACT:

Department of Philosophy

Edinboro University of Pennsylvania

Edinboro, PA 16444

Phone: 814-732-2490

Fax: 814-732-2865

<http://webs.edinboro.edu/dept/philosophy.html>

FALL 2004

PORRECO CLASS SCHEDULE

ACCT210	Principles of Accounting I	Mon./Wed., 5:30-6:45 p.m.
BIOL100	Intro. to Biology	Thurs., 4:00-6:30 p.m.
CRIM200	Intro. to Criminal Justice	Wed., 4:00-6:30 p.m.
CSCI104	Essentials of Computing	Mon./Wed., 2:30-3:45 p.m.
ECON220	Principles of Economics - Micro . .	Mon./Wed., 7:00-8:15 p.m.
ENGL101	College Writing Skills	Thurs., 7:00-9:30 p.m.
ENGL102	Spec. Writing/Research	Fri., 5:30-8:00 p.m.
ENGL116	American Prose Classics	Sun., 4:00-6:30 p.m.
GEOG101	World Geography	Tues., 7:00-9:30 p.m.
HIST262	History of U.S. 2	Wed., 4:00-6:30 p.m.
HIST271	African American History I	Tues., 4:00-6:30 p.m.
HIST335	History of Sports	Thurs., 4:00-6:30 p.m.
HPE113	Wellness/Walking	Thurs., 7:00-9:30 p.m.
MATH104	Finite Math	Wed., 7:00-9:30 p.m.
MATH105	College Algebra	Mon., 7:00-9:30 p.m.
MUSC103	Intro. to Music	Mon., 4:00-6:30 p.m.
PHIL200	Intro. to Philosophy	Mon., 7:00-9:30 p.m.
PHIL251	World Religions	Wed., 7:00-9:30 p.m.
POLI240	Intro. to Comparative Government	Tues., 7:00-9:30 p.m.
PSYC101	General Psychology	Wed., 7:00-9:30 p.m.
PSYC319	Psych. of Adulthood & Aging	Thurs., 4:00-6:30 p.m.
SOC100	Principles of Sociology	Tues./Thurs., 5:30-6:45 p.m.
SOC207	Contemporary Social Problems . .	Tues./Thurs., 4:00-5:15 p.m.
THEA218	Intro. to Theater	Sat., 9:00-11:30 a.m.

FALL 2004

RECOMMENDED FULL-TIME SCHEDULES

Each of the four associate degree programs described in this brochure can be completed at Edinboro University's Porreco Center in Erie in two years. Listed below are the recommended full-time class schedules for each program for the fall 2004 semester.

A.A. – CRIMINAL JUSTICE

Intro. to Criminal Justice
College Writing Skills
General Psychology
Principles of Sociology
Choice of Core 1, 2, 3, 6 or 7

A.A. – HUMAN SERVICES

Choice of Core 1, 2, 3, 5, 6 or 7
College Writing Skills
General Psychology
Principles of Sociology
Contemporary Social Problems

A.A. – LIBERAL STUDIES

Intro. to Biology
College Writing Skills
World Geography
World Religions
Choice of:
Intro. to Theatre or
American Prose Classics

3. – BUSINESS ADMIN.

Principles of Accounting I
Essentials of Computing
College Writing Skills
College Algebra
Choice of Core 1, 2, 3, 4, 5, 6 or 7

CORE CLASS CHOICES

CORE 1

Intro. to Music
Intro. to Theatre

CORE 2

World Geography
Intro. to Comparative Gov't.

CORE 3

History of U.S. 2
American Prose Classics

CORE 4

General Psychology

CORE 5

African American History 1
Principles of Sociology

CORE 6

Introduction to Philosophy

CORE 7

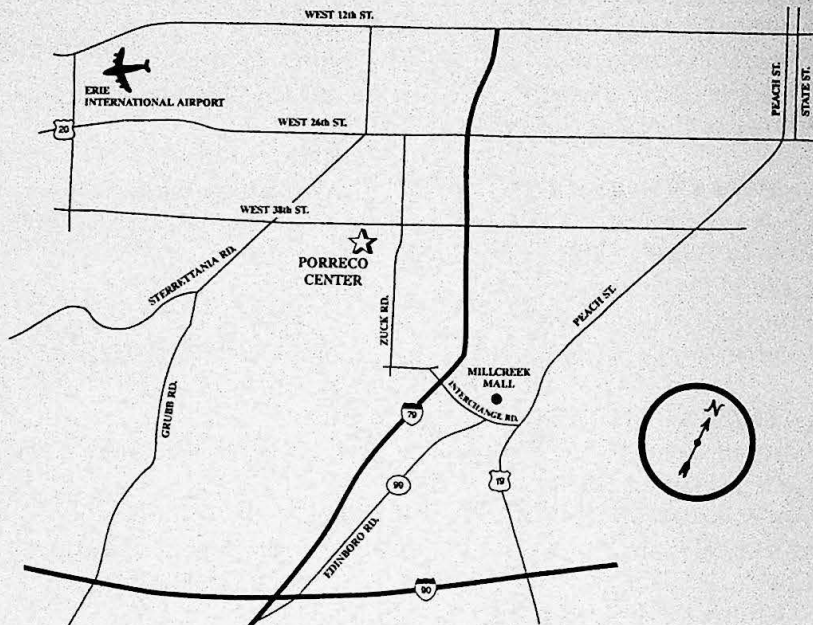
Intro. to Biology

These programs may also be pursued on a part-time basis, but program completion time will be longer than two years.

EDINBORO UNIVERSITY IN ERIE

THE PORRECO CENTER

2951 West 38th Street
Erie, PA 16506
Phone: (814) 836-1955
Fax: (814) 833-2085



The rich history of the Porreco estate dates back to the mid-nineteenth century when a German immigrant purchased the original 400 acres. Much of the estate was divided into smaller holdings and sold privately in 1976. The core of the property, however, was retained and put on public auction.

In 1978, Erie businessman Louis J. Porreco purchased it, and, in 1986, he donated the estate to Edinboro University in an effort to enhance the quality and convenience of educational offerings in the Erie area.

Today, the renovated estate is used by the University to provide both credit and non-credit educational opportunities for traditional and non-traditional students, and for holding special events.



EDINBORO UNIVERSITY

OF PENNSYLVANIA

ADMISSIONS OFFICE

Biggers House

Edinboro University of Pennsylvania

Edinboro, PA 16444

Phone: 1-888-8GO-BORO (888-846-2676)

or 814-732-2761

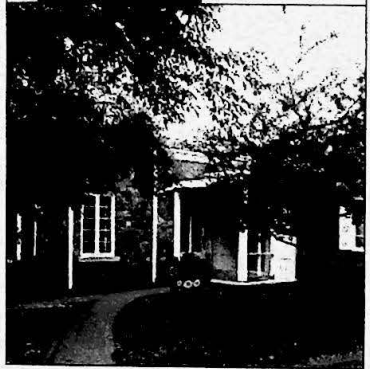
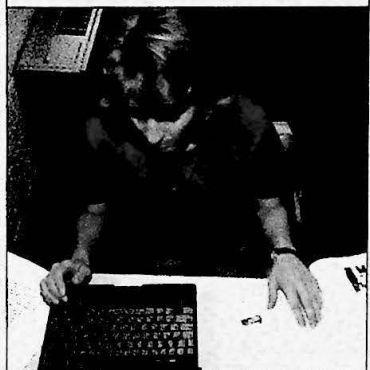
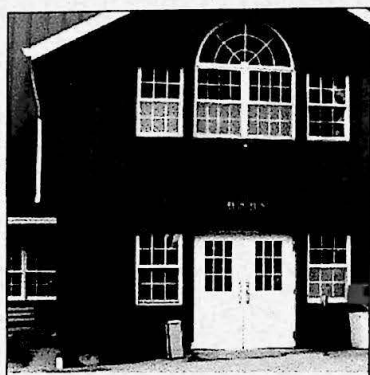
Fax: 814-732-2420

E-mail: eup_admissions@edinboro.edu

Web: www.edinboro.edu

One of the 14 universities in Pennsylvania's State System of Higher Education, Edinboro University is committed to affirmative action for all persons in its educational programs, activities, and employment practices.

EDINBORO UNIVERSITY OF PENNSYLVANIA



- ❖ Edinboro University in Erie – The Porreco Center is conveniently located on West 38th Street, just minutes from the Millcreek Mall.
- ❖ One of the largest standing barns in Erie County has been renovated to include classrooms and a seminar area. The barn also houses a fully-equipped computer lab with 24 computers with Internet capabilities.
- ❖ To learn more about Edinboro University in Erie and the programs offered, you are welcome to attend any of our open houses at the Porreco Center:
 - Saturday, May 22 (1:00 to 3:00 p.m.)
 - Sunday, June 13 (1:00 to 3:00 p.m.)
 - Wednesday, July 14 (6:00 to 8:00 p.m.)
 - Saturday, Aug. 14 (1:00 to 3:00 p.m.)
 - Monday, Aug. 16 (6:00 to 8:00 p.m.)
- ❖ For additional information, call the Edinboro University Undergraduate Admissions Office at 814-732-2761 or 888-8GO-BORO (toll free).
- ❖ Apply online at www.edinboro.edu.

Edinboro University of Pennsylvania provides a quality education at an affordable cost in an environment that is caring, attractive, safe and secure.