

FIGHTING SCOTS

WINTER SPORTS BROCHURE 1981 - 1982

BASKETBALL

WRESTLING

SWIMMING

GYMNASTICS

VOLLEYBALL

NCAA

AIAW

ECAC

PA. CONF.

EDINBORO STATE COLLEGE



ATHLETIC STAFF DIRECTORY

Position - Name	Office Address	Telephone
Athletic Director - Jim McDonald	113 McComb	732-2778/2776
Associate - Dr. Kathleen Lipkovich	114 McComb	732-2472/2776
Athletic Secretary - Peggy Tau	114 McComb	732-2776/2778
Athletic Trainer - Bob Klingler	Training Room	732-2473
Assistant - Fran Adams	104 Crawford	732-2502
Baseball - Ron Bunofsky	110 McComb	732-2471
Basketball (Men), Head Coach - Guy Conti	108 McComb	732-2248
Assistant - John Furcron	108 McComb	732-2248
Basketball (Women), Head Coach - Dr. K. Lipkovich	114 McComb	732-2472
Assistant - Dr. Jim Kennedy	107 Compton	732-2773
Cross Country (Men) - Doug Watts	112 McComb	732-2584
Cross Country (Women) - Bill McDonald	Earlley Hall	732-2903
Football, Head Coach - Denny Creehan	Sox Harrison Stad.	732-2749/2568
Assistant Head Coach - Tom Herman	Stadium	732-2749/2568
Assistant - Dave Lyon	Stadium	732-2749/2568
Assistant - Rich Formosa	Stadium	732-2749/2568
Assistant - Regis O'Neill	Stadium	732-2749/2568
Assistant - Mike Burke	Stadium	732-2749/2568
Assistant - Pete DeStefano	Stadium	732-2749/2568
Assistant - Malen Luke	Stadium	732-2749/2568
Assistant - Mike Michaels	Stadium	732-2749/2568
Gymnastics - Carol Caler	107 McComb	732-2584
Soccer - George Shimpeno	112 McComb	732-2584
Softball - Monica Pellman	114 McComb	732-2778
Sports Information - Paul Newman	Ross Hall	732-2745/2929
Swimming - Ed Erdos	111 McComb	732-2471/2208
Tennis (Men) - Dr. Jim Flynn	116 Miller	732-2806
Tennis (Women) - George Vierkorn	110 McComb	732-2471
Track (Men) - Doug Watts	112 McComb	732-2584
Track (Women) - Bill McDonald	Earlley Hall	732-2903
Volleyball (Men) - Dennis Patton	103 Crawford	732-2520
Volleyball (Women) - Dr. Pat McLane	103 Crawford	732-2520
Assistant to the Coach - Dr. Al Stone	112 Academy	732-2504
Wrestling - Fred Caro	111 McComb	732-2471



McComb Fieldhouse - The Home of Winter Sports for the "Fighting Scots"

WELCOME TO FIGHTING SCOT COUNTRY

MEMO TO THE MEDIA

Edinboro State's 1981-82 guide has been designed to assist members of the press in the coverage of Fighting Scot athletic events. Press releases, photographs and statistics of all winter sports will be made available for your use throughout the season. Pre-game basketball material (rosters, starters, statistics and records) are available at the press table. A play-by-play, halftime and final statistics will be provided for each home game. If additional information is desired, please contact the Sports Information Office, Paul Newman, Director, Edinboro State College, Edinboro, Pa. 16444. Office Phone: (814) 732-2745; Home Phone: (814) 732-3735.

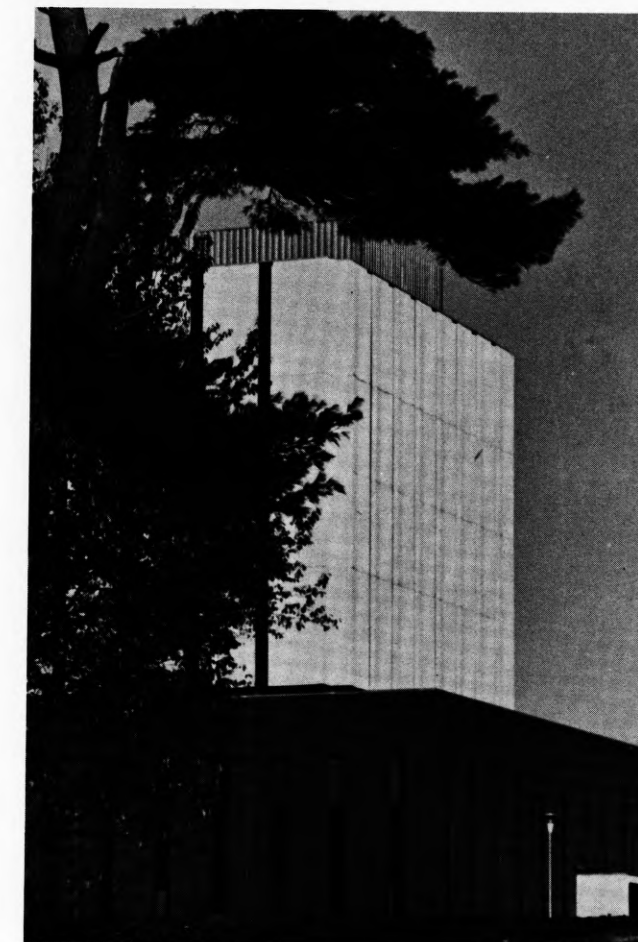
HAVE A GREAT YEAR! - THE SCOTS

Guide Editor: Paul Newman
Associate Editor: Pat Gillespie
Photo Credits: Rich Byington,
 Jay Nodianos, Laura Stumpff
Staff Credits: Cheryl Harney, Pat Byrnes,
 Pete Katsafanas, Rick Bengel, John Perkoski

Edinboro State College is committed to affirmative action for all persons in its educational programs, activities and employment practices. Please direct equal opportunity inquiries to the Affirmative Action Officer, Edinboro State College.

FIND IT FAST. . .

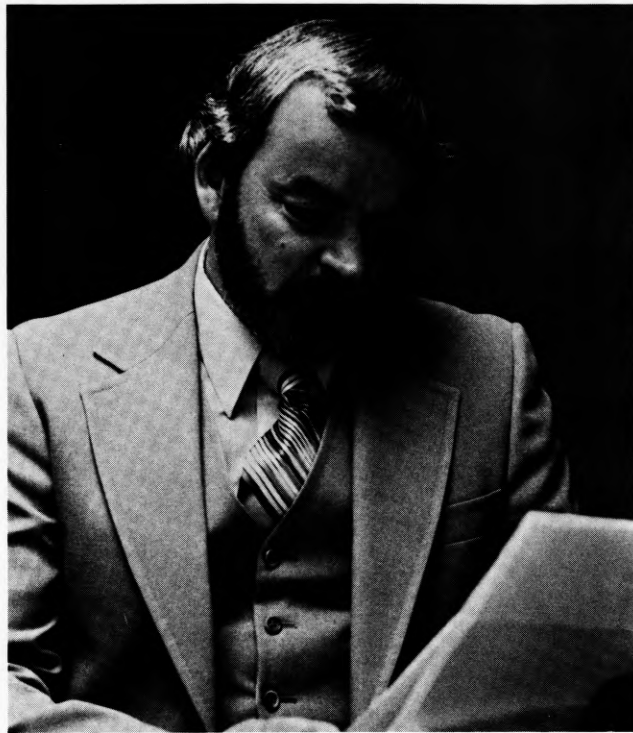
Athletic Director - Jim McDonald	4
College History	3
Ass't. BB Coach - John Furcron	16
Men's Basketball Coach - Guy Conti	6
Men's Basketball Opponents	12-16
Men's Basketball Outlook	6-7
Men's Basketball Players	8-10
Men's Basketball Records	19-20
Men's Basketball Results	23-27
Men's Basketball Roster	9
Men's Basketball Statistics	11
Men's Volleyball	28
President - Foster F. Diebold	2
Swimming Coach - Ed Erdos	46
Swimming Outlook and Roster	46-47
Team Trainer - Bob Klingler	16
Women's BB Coach - Dr. Lipkovich	30
Women's Basketball Opponents	35-38
Women's Basketball Outlook	30-31
Women's Basketball Players	32-34
Women's Basketball Records	40-41
Women's Basketball Results	39-40
Women's Basketball Roster	33
Gymnastics Coach - Carol Caler	42
Women's Gymnastics	42-43
Wrestling Coach - Fred Caro	44
Wrestling Outlook and Roster	44-45



EDINBORO STATE COLLEGE

1981-82 WINTER SPORTS
BASKETBALL
WRESTLING
SWIMMING
VOLLEYBALL
GYMNASTICS

NEW LEADERSHIP FOR THE 1980's



ESC President — Foster F. Diebold

Foster F. Diebold was named Edinboro State College's 14th President on August 1, 1979. Since that time, he has brought a consistently determined vision to his guidance of the College's many-faceted services to northwestern Pennsylvania.

Noted for his extensive experience in the field of education management, President Diebold had previously served as President of the University of Alaska statewide system.

His innovative efforts at Edinboro have taken many shapes. Most recently, he initiated a total reorganization of the College's various academic schools and administrative offices with a watchful eye upon fiscal responsibility and increased institutional responsiveness. In keeping with his policy of making maximum use of existing campus resources in higher education, he has imaginatively met the ever-changing needs brought about by new and emerging student interests and societal expectations.

Unique cooperative programs with area business and industry are also the result of President Diebold's revitalization of Edinboro State College. Among his favorite projects is the All-College Honors Program, which draws upon the contributions of College staff for its scholarship funds, and which recognizes the academic distinction of excellent students by offering specialized interdisciplinary course work and advanced research work.

President Diebold's principal fields of professional interest include higher education management, governance, and planning; budget development and fiscal control; legislative liaison; and personnel management/collective bargaining.

A native of Orange, New Jersey, he served as President of the University of Alaska from 1977-1979. Prior to that, he was executive secretary to the Board of Regents and Special Assistant to the President of the University of Alaska's statewide system. From 1969 to 1976, he was director of the Division of College Development of Kean College, New Jersey (formerly Newark State College), and from 1965 to 1969, he was Assistant Superintendent of Neptune Township Public Schools in New Jersey.

President Diebold was formerly a member of the graduate school of education at Kean College from 1969 to 1976; a teacher of English and Psychology in the Neptune Township Public Schools from 1959 to 1965; and in 1957 and 1958, he was a supervisor at the Arthur Brisbane Child Treatment Center for the Emotionally Disturbed in Farmingdale, New Jersey.

Edinboro's President holds an associate degree in psychology from Monmouth Community College, West Long Branch, New Jersey; a bachelor of science degree in education from Monmouth College, a master of arts in educational administration from Seton Hall University; and he has met course requirements for his doctorate in education at Rutgers University. While at Rutgers University in 1963, he received a Wall Street Journal fellowship.

President Diebold currently serves as Chairman of the Committee on Administration and Finance in the State College and University System of Pennsylvania and in July will begin a term as a member of the Commission of Presidents Executive Committee. He holds membership on the American Association of State Colleges and Universities Committee on State Relations, and on the Government Relations Committee of the Pennsylvania Association of Colleges and Universities.

President Diebold's community service includes membership on the Board of Corporators, Hamot Medical Center in Erie, and on Marine Bank's Local Advisory Board. Recently he was a panel participant at the First Global Conference on the Future in Toronto, Canada.

The President and his wife, Patricia, have two daughters, six-year-old Jessica and recent arrival, three-month-old Stacey.

EDINBORO STATE...MEETING NEW CHALLENGES



Founded as a private academy in 1857, Edinboro State College has continued its surge to the forefront as one of the leading educational institutions in western Pennsylvania. Situated on a sprawling 585-acre campus in the scenic resort community of Edinboro, the College is within 100 miles of the educational and cultural centers of Buffalo, Cleveland, and Pittsburgh. It is just 15 miles south of Erie, the third largest city in Pennsylvania, and easily accessible from all directions by interstates 79, 80 and 90.

Having provided 125 years of service, Edinboro has the distinction of being the second normal school established in Pennsylvania and the 12th in the United States. It has grown to more than forty buildings including the 350,000-volume Baron-Forness Library, a modern seven-story structure which serves as a focal point for the spacious campus. More than 5,500 students representing almost every county in the Commonwealth, as well as numerous states and foreign countries attend Edinboro. Its tradition of educational service and research is matched by a distinguished 350-member faculty, more than half of whom have earned doctoral degrees.

The College now offers more than 100 undergraduate, graduate, and associate degree programs, a diversity unmatched by any other college or university in northwestern Pennsylvania. While seeking to meet the educational needs of its region from both a professional and

cultural standpoint, Edinboro now makes contributions in the fields of education, government, environmental improvement, urban and rural problems, crime prevention, and service to business and industry. Recent program developments include those in the high-demand areas of allied health, business administration, communications, computer technology, nursing, and various pre-professional offerings such as law, dentistry, medicine, pharmacy and veterinary science. Numerous student internships provide additional examples of the College's efforts to create a close working relationship with the people it serves while, at the same time, offering students intellectual and career opportunities.

Edinboro has initiated an All-College Honors Program to provide challenging and enriched learning experiences for academically gifted students. Undergraduate students are encouraged to strive for academic excellence both in their major fields and in other disciplines. Honor students pursue studies that are greater in depth and scope than those required of other undergraduates.

Although the costs for attending ESC rank among the lowest in the Commonwealth, over \$6,000,000 in financial aid is available annually to eligible students.

Students are admitted to the College in September, January, or at the beginning of each summer session and are considered for admission on the basis of their general scholarship, nature of secondary program, and SAT or ACT scores.

ESC ATHLETIC PROGRAM GETS NEW LEADER



Athletic Director — Jim McDonald

Jim McDonald, an associate professor in Edinboro's Department of Health and Physical Education, was appointed the College's new athletic director on June 1st of this past summer. Edinboro President Foster Diebold named McDonald on the basis of his aggressive leadership capabilities and his anticipated role to increase fund raising activities for the Scots' athletic program.

The newly appointed athletic director made immediate changes in the Scots' athletic program by adding women's cross country and men's volleyball to increase Edinboro's offerings to 17 men and women's intercollegiate sports. To make the Scots competitive at the NCAA Division II level, he also kicked off the College's first major fund raising campaign for student athletic scholarships. He emphasized the fact that scholarship support was the athletic program's major challenge and set a \$100,000 goal that the staff would work toward by September of 1982.

McDonald has been at Edinboro State since 1962 and for 12 years served as the Fighting Scot basketball coach (1962-1975) and never experienced a losing season while his teams compiled an impressive 181 wins against only 89 losses. During that

span, his cagers won four Western Division Pennsylvania Conference crowns, the PC state championship and two District 18 titles that netted trips to the NAIA National Tournament. His teams set 27 ESC records and made 19 post-season appearances while four of his players were named All-Americans.

Prior to accepting his position at Edinboro, McDonald served as assistant basketball coach in Erie, Pa. He is a 1965 graduate of Bridgeport High School in his home town of Bridgeport, West Virginia.

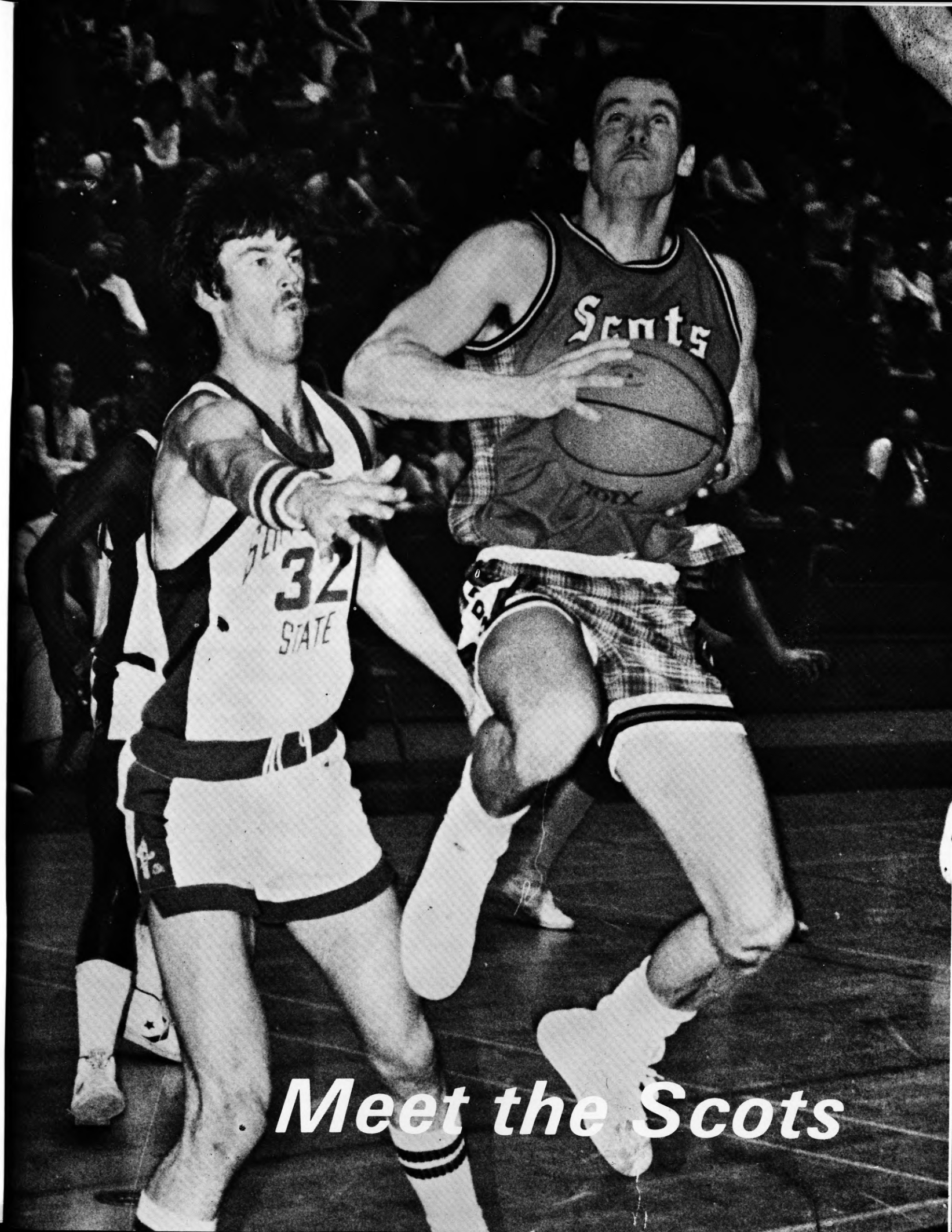
In 1960 he received a degree in chemistry and physical education from West Virginia Wesleyan College and he also holds a master's degree in health from the University of Buffalo. He has done doctoral work in sports science at West Virginia University.

As an undergraduate, he set nine school records at Wesleyan and was twice voted both AP and UPI basketball All-American. In 1960, he was the second leading scorer in the United States, averaging slightly over 33 points a game, and led his team to the national basketball tournament in Kansas City, Missouri. He was named to the NAIA's All-Tournament Team in 1959 and 1960.

In 1966, McDonald was selected Area Eight Coach of the Year by the eastern seaboard coaches and that same year was honored as one of the top ten finalists in the Coach of the Year national poll. McDonald's honors also include selection to the West Virginia All-Time College Basketball Team and membership in the West Virginia Sports Hall of Fame. He served four years on the NAIA's All-American selection committee, and was chosen by the NAIA to coach an All-American team of NBA-bound cagers who won the Gold Medal in Israel's Hapoel Games. His all-star coaching assignment brought additional recognition to Edinboro as the College was named as the team's official training site.

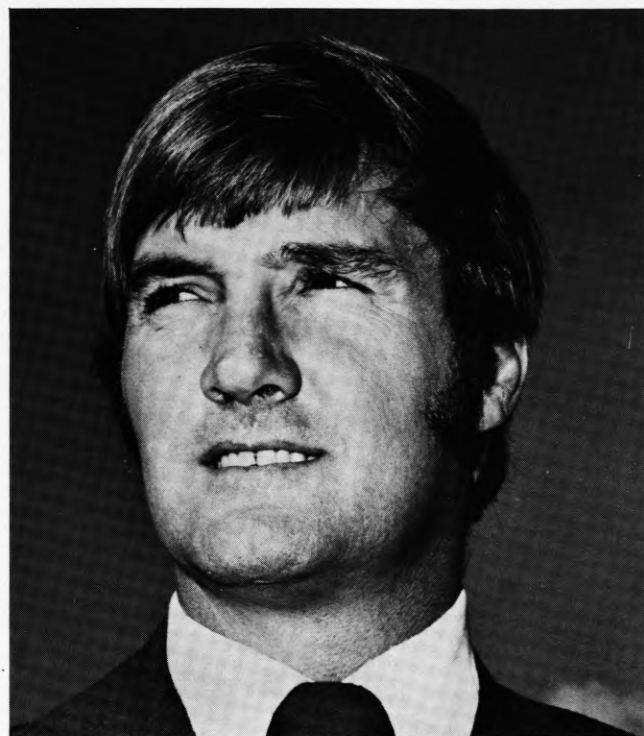
In addition to his classroom and basketball coaching duties, McDonald was Edinboro State's golf coach for 17 years during which his teams won over 40 tournaments and finished as high as 3rd place at the NCAA Division II National Tournament. He was twice selected District Coach of the Year in golf.

As a resident of Edinboro, McDonald has a record of extensive community involvement. He was Little League Baseball Director for four years and for the past two years, has been a member of the General McLane School Board. He and his wife, Mary Lou, have three sons - Mark, Mike, and Matthew.



Meet the Scots

CONTI EYES 100th WIN AT ESC



Coach - Guy Conti

When Guy Conti stepped into the cage coaching ranks seven years ago, his efforts in basketball followed the same pattern as his past endeavors -- successful. The Freeport, Pa., native directed the

Fighting Scots to their best season in history with a 24-5 record while grabbing the PC's Western crown, the district championship, three tourney titles and a trip to the NAIA National Tournament in Kansas City. His team also cracked the record for consecutive victories with 13 straight successes.

During his six years at the Fighting Scot helm, Conti's teams have compiled an 83-69 overall record, while making two trips to the NAIA District 18 championships. His best season after his career opener was 1979-80's impressive 21-6 ledger which ranks as the eighth best in Edinboro's 47-year basketball history.

Prior to his basketball tutorship, Conti was the Scots' head baseball coach before serving as assistant football coach for four seasons. In his two years as the Scots' diamond mentor, Conti assembled a talent-laden team that recorded school's baseball history. He quickly climbed the ladder in ESC's football program moving from freshman coach, then to tutor the Scots' receivers and finally to direct the ESC backfield as offensive coordinator in his last two campaigns. During his two years of grooming the offense, Edinboro finished with a very respectable 9-6-3 slate.

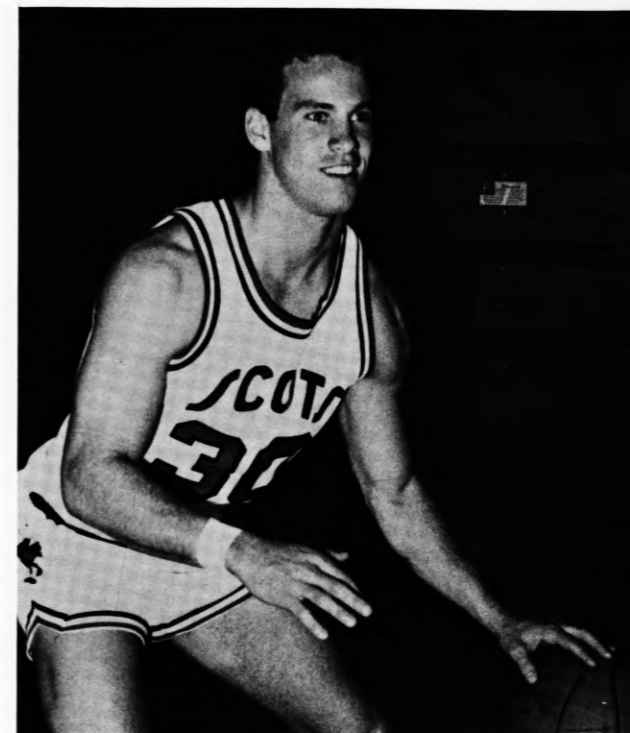
Conti and his wife, Jan, have four children - Kim, a junior at Robert Morris College; Kurt, a freshman at Gannon University; along with Craig and Kelly who attend McDowell High School in Erie.

SCOUTING THE 1981-82 SCOTS

LOCATION: Edinboro, Pa., 16444
 PRESIDENT: Foster F. Diebold
 NICKNAME: Fighting Scots
 COLORS: Red and White
 FIELDHOUSE: McComb (3,400)
 ENROLLMENT: 5,800
 HEAD COACH: Guy Conti (Clarion '65)
 COACHES RECORD: Six years, 83-69
 1980-81 RECORD: 7-17
 1980-81 HOME RECORD: 4-8
 1980-81 ROAD RECORD: 3-9
 1980-81 CONFERENCE FINISH: 4th Place, 4-6
 LETTERMEN LOST/RETURNING: 1/7
 ATHLETIC AFFILIATIONS: NCAA, AIAW, ECAC, Pa. Conference
 ATHLETIC DIRECTOR: Jim McDonald

SPORTS INFO. DIRECTOR: Paul Newman
 Office Phone: 814-732-2745,
 Home Phone: 814-732-3735
 ASSISTANT COACH:
 John Furcron (Bowling Green '59)
 BASKETBALL OFFICE: McComb Fieldhouse
 Basketball phone: 814-732-2248
 RETURNING STARTERS: 4
 TEAM STRENGTHS: Shooting, quickness
 TEAM WEAKNESS: Dominant big man
 1981-82 CAPTAINS: Land Battle, Steve Senko
 TEAM TRAINER: "Doc" Klinger
 MOST WINS: 24-5 (1975-76) - Conti
 TOURNAMENT CHAMPIONSHIPS: Allegheny
 Tournament (1976), West Va. Wesleyan
 Tournament (1976) - Conti
 DISTRICT CHAMPIONSHIPS: NAIA District 18
 (1976) - Conti

SCOT CAGERS "REBUILT"



Steve Senko - G, 5-10, Jr., Philadelphia, Pa.

Edinboro State coach Guy Conti can hardly wait until his 1981-82 basketball squad, consisting of four returning starters and seven lettermen, hits the hardwoods to see if his Fighting Scots can continue the impressive pace set late last season. "We were forced to rebuild last year," reflected Conti, "but we rebuilt in a hurry."

Conti, who is in his sixth season with the Scots and owns an 83-69 overall mark at ESC, watched his young cagers struggle in 1980-81 until the second semester. At that point, he mixed a pair of transfers, 6-5 center Land Battle and 6-5 forward Marcus Thompson, with playmaking junior sensation 5-10 Steve Senko and quick-maturing soph guard 6-1 Edwin Wright to form the nucleus of a regenerated band of Fighting Scots. A late season surge on the strength of the talented and exciting new combination saw Edinboro rally to win a berth in the Pennsylvania Conference's Western Division playoffs.

"We may still be a young team (no seniors)," claims Conti, "but we will be experienced. I think our biggest asset will be the all-around scoring ability we possess. You can't really point to shut down one person because everyone's a bonafide threat," the Boro mentor continued.

A quick glance at the scoring stats bear out Conti's assessment of his squad. All four returning starters dented the double-digit column. Thompson's 15 ppg led the way, followed by Senko's 12.6, Battle's 12.5, and Wright's 12.3.

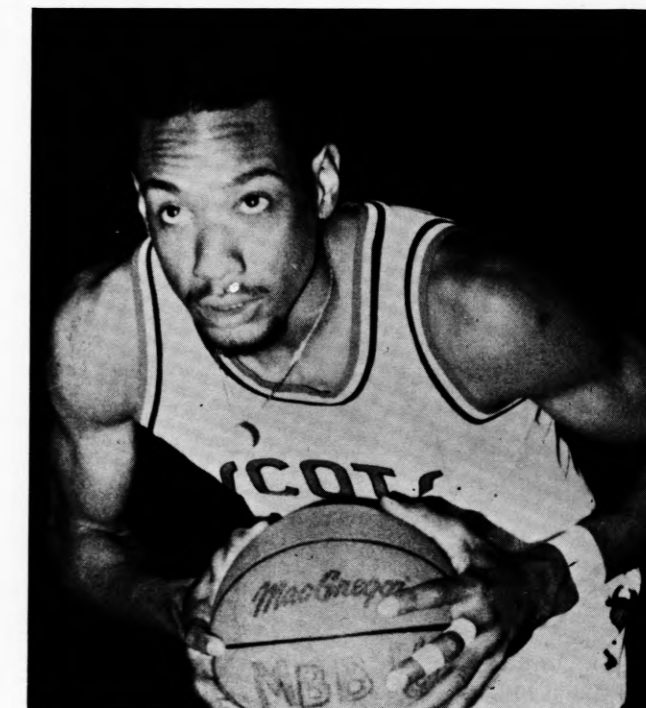
"Although this could be the best jumping team I've ever had, we're still in need of a dominating center," projected Conti. "If Mike Albert (6-9, So.) matures underneath, we will have a very strong all-around team. Of course, we still have Land (Battle) who can play center for us and he was second team All-Conference last year. It would just really help us to have Mike ready and move Land to forward,"

The high-leaping Battle set a torrid rebounding pace with his 11.0 grabs per game average and registered the second-best shot blocking season in Scot history by rejecting 61 attempts.

Should Battle remain in the pivot, look for 6-4 sophomore Barry Marshall to man the other forward spot, along with Thompson. Marshall looked impressive in his brief stint on the court last year and showcased exceptional quickness under the hoop. Still on tap is 6-6 junior John Luca, who has logged plenty of varsity playing time and needs only consistency to win the nod. Luca tossed in 118 markers and pulled away 96 missed shots.

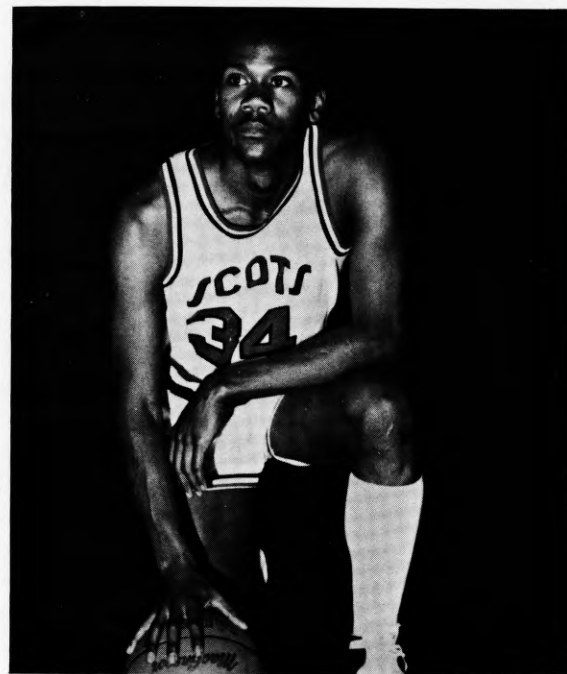
Edinboro is deep in talent at the point guard behind Senko, where a trio of experienced players are available for duty. On hand are long-range shooting Willie Lee (5-6, So.), and Steubenville transfer Brian Sharick (5-11, So.).

At the other guard position, Marshall will back up Edwin Wright along with 6-1 sophomore Julius Holman. Opponents could be surprised to see a pair of new faces dent the starting five early in the likes of steady-playing transfer Brian Simmons and talented freshmen 6-7 Clyde Brabson.

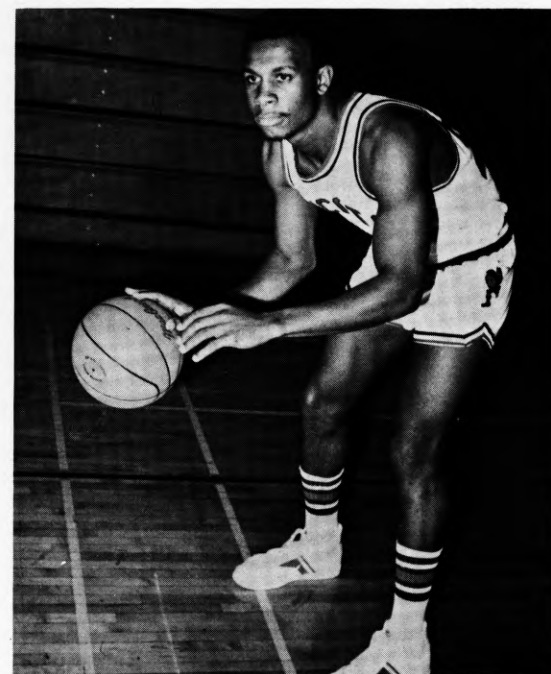


Land Battle - C-F, 6-5, Jr., Toledo, Ohio

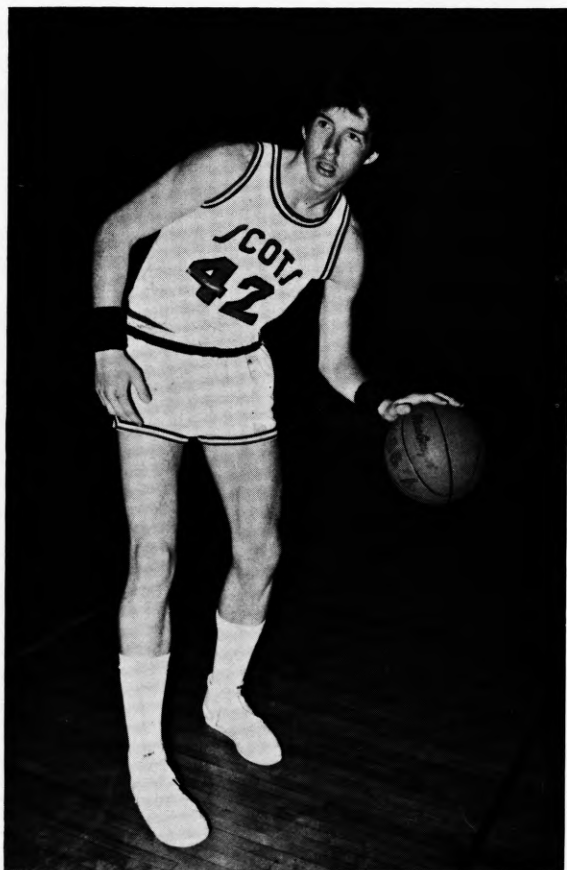
COGS IN THE REBUILDING PROCESS



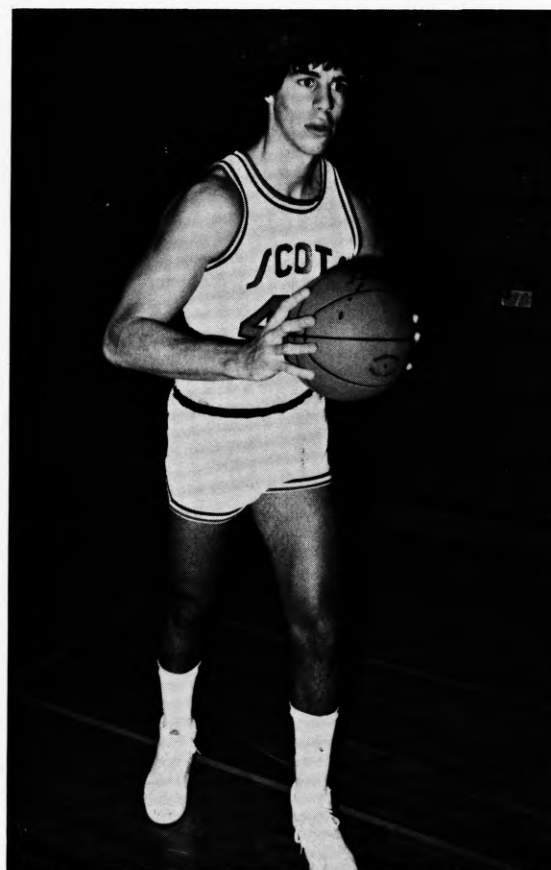
Brian Simmons - F-G, 6-3, Jr., Ft. Wayne, Ind.



Edwin Wright - G, 6-1, So., Clewiston, Fla.
 G FG PCT FT PCT REB AVG TP AVG
 1980-81 24 120 .385 54 .730 113 4.7 294 12.3

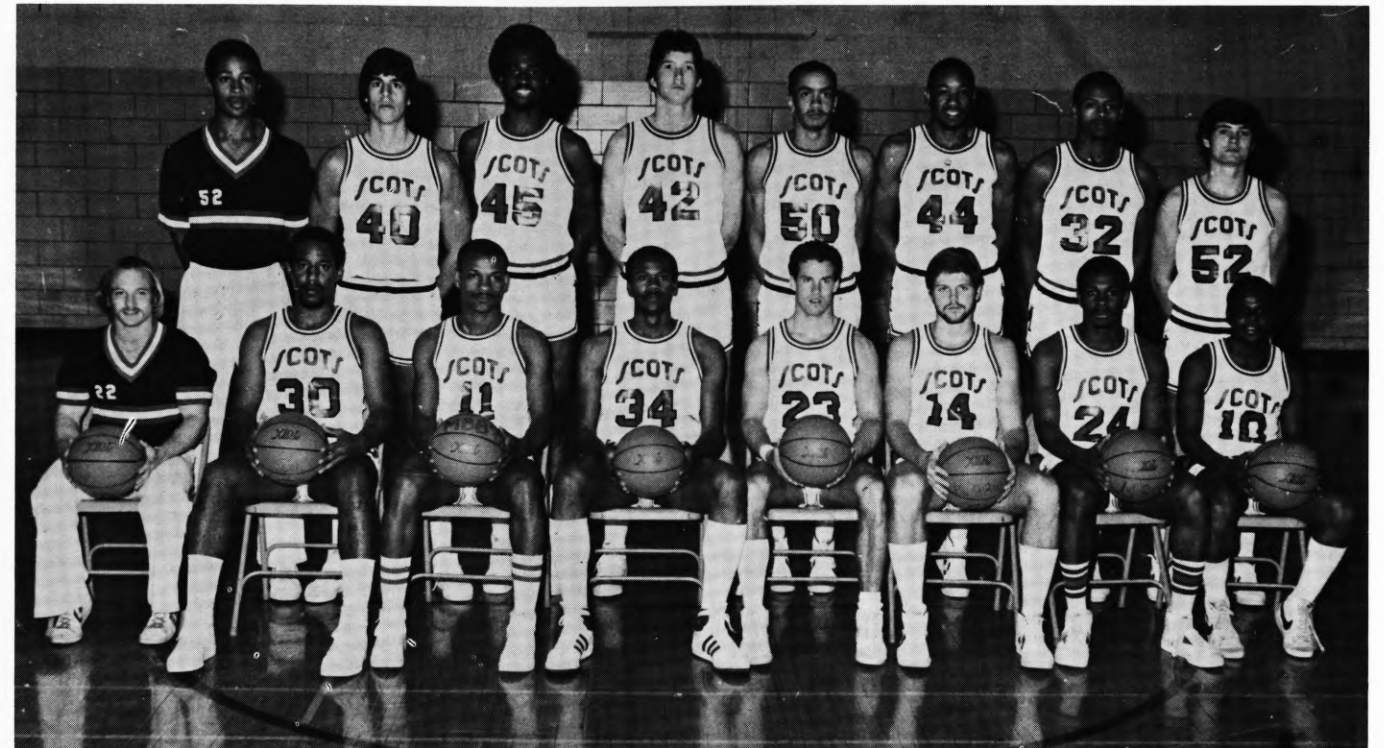


Mike Albert - C, 6-9, So., District Heights, Md.
 G FG PCT FT PCT REB AVG TP AVG
 1980-81 22 18 .400 7 .467 55 2.5 43 2.0



John Luca - F, 6-6, Jr., Mayfield Hts., Ohio
 G FG PCT FT PCT REB AVG TP AVG
 1979-80 18 8 .308 2 .286 16 .9 18 1.0
 1980-81 23 47 .338 24 .545 96 4.2 118 5.1

***** THE FIGHTING SCOTS *****



EDINBORO STATE'S 1981 FIGHTING SCOTS: Seated (L-R) Mike Calahan, Keith Woods, Julius Holman, Brian Simmons, Steve Senko, Brian Sharrick, Edwin Wright and Willie Lee. Standing (L-R) Derrick Burton,

John Luca, Clyde Brabson, Mike Albert, Marcus Thompson, Land Battle, Barry Marshall, and Noel Fisher.

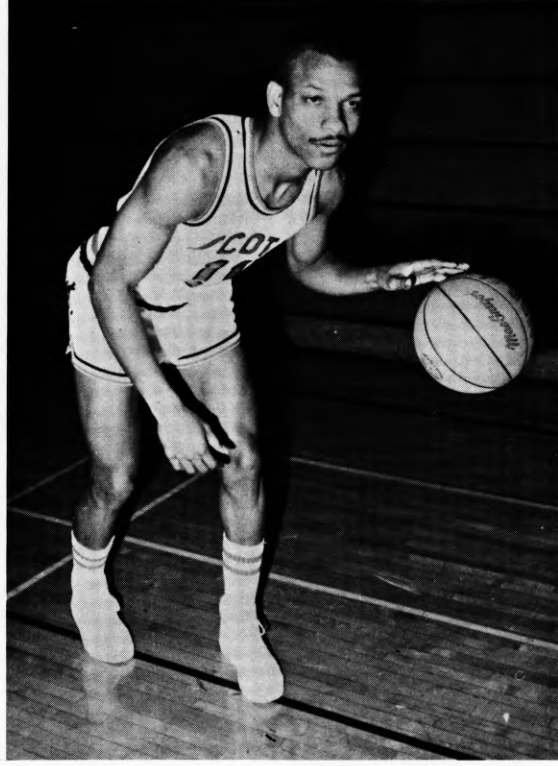
EDINBORO STATE COLLEGE 1981-82 ALPHABETICAL BASKETBALL ROSTER

NAME	POS.	HT.	WT.	CLASS	HOMETOWN/HIGH SCHOOL
* Albert, Mike	C	6-9	200	So.	District Hts., Md./McDonough
* Battle, Land	C-F	6-5	180	Jr.	Toledo, Ohio/Toledo
Boetger, John	G	6-2	165	Fr.	Erie, PA/Mercyhurst Prep
Brabson, Clyde	C-F	6-7	185	Fr.	Ft. Wayne, Ind./Wayne
Downs, Donnie	F	6-4	180	Fr.	Upper Marlboro, Md./McDonough
Fisher, Noel	F	6-3	180	So.	Coraopolis, PA/Moon
Holman, Julius	G	6-1	175	So.	Washington, D.C./Cardozo
* Lee, Willie	G	5-6	150	So.	Clewiston, Fla./Clewiston
** Luca, John	F	6-6	200	Jr.	Mayfield Hts., Ohio/Mayfield
Marshall, Barry	F-G	6-4	190	So.	Pomfret, Md./McDonough
** Senko, Steve	G	5-10	160	Jr.	Philadelphia, PA/Arch. Ryan
Sharick, Brian	G	5-11	172	So.	Burrell, PA/Lower Burrell
Shoskin, Stu	F	6-3	175	Fr.	Erie, PA/McDowell
Simmons, Brian	G	6-3	180	Jr.	Ft. Wayne, Ind./Wayne
Woods, Keith	F	6-3	180	Fr.	Sharon/Sharon
* Wright, Edwin	G	6-1	190	So.	Clewiston, Fla./Clewiston

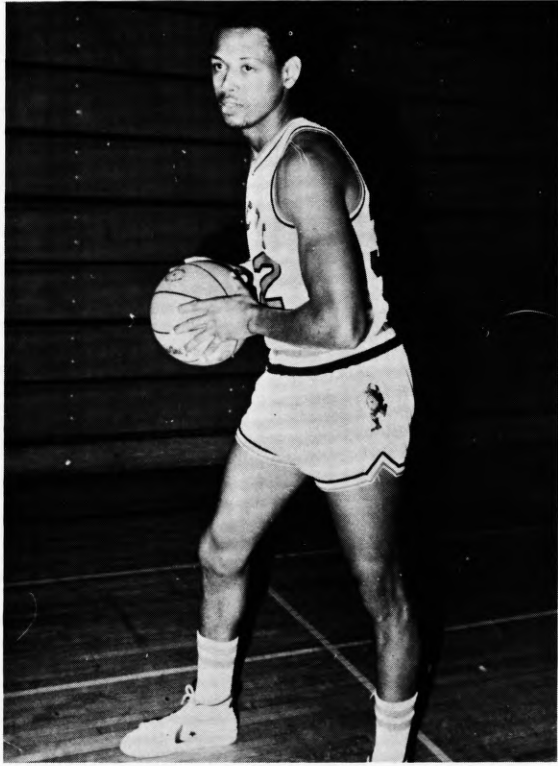
* Varsity Letters

Varsity Players in Bold

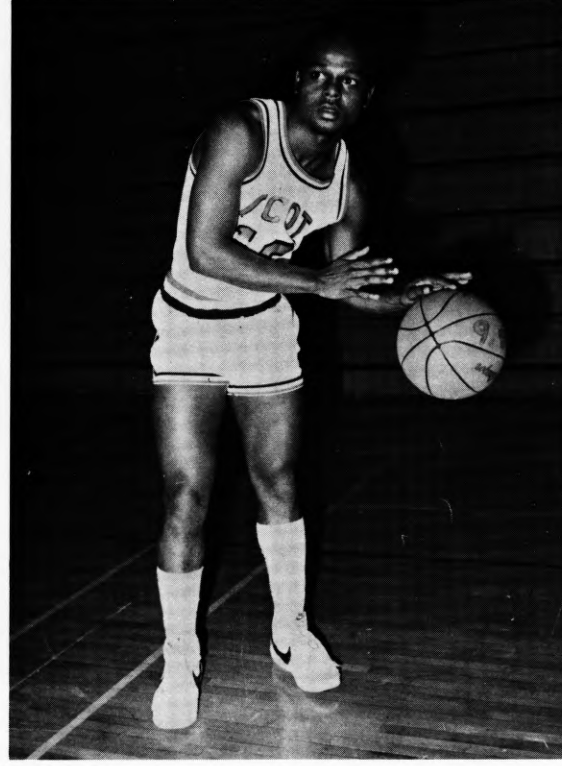
DESTINED FOR VARSITY ACTION ...



Julius Holman - G, 6-1, So., Washington, D.C.
 G FG PCT FT PCT REB AVG TP AVG
 1980-81 3 0 .000 0 .000 2 .7 0 0.0



Barry Marshall - F-G, 6-4, So., Pomfret, Md.
 G FG PCT FT PCT REB AVG TP AVG
 1980-81 5 12 .462 2 .400 19 3.8 26 5.2



Willie Lee - G, 5-6, So., Clewiston, Fla.
 G FG PCT FT PCT REB AVG TP AVG
 1980-81 24 49 .441 9 .692 24 1.0 107 4.6



Clyde Brabson - C-F, 6-7, Fr., Ft. Wayne, Ind.

1980-81 EDINBORO STATE VARSITY BASKETBALL STATISTICS - 24 GAMES (7-17)

NAME	G	FG-FGA	PCT	FT-FTA	PCT	REB	AVG	BLKS	F-DIS	ASTS	STL	TO	TP	AVG
Steve Senko (G, 5-10, So.)	24	109-253	.431	84-110	.764	82	3.4	--	55-3	121	58	73	302	12.6
Edwin Wright (G, 6-1, Fr.)	24	120-312	.385	54-74	.730	113	4.7	4	61-4	34	20	50	294	12.3
Marcus Thompson (F, 6-5, So.)	17	117-261	.448	22-34	.647	104	6.1	14	68-6	20	37	45	256	15.1
Land Battle (F, 6-5, So.)	17	93-172	.541	26-44	.591	187	11.0	61	61-4	24	14	32	212	12.5
Joe Kurung (G, 6-0, Sr.)	22	46-125	.368	47-58	.810	64	2.9	--	47-0	46	18	36	139	6.3
John Luca (F, 6-6, So.)	23	47-139	.338	24-44	.545	96	4.2	2	61-2	4	14	26	118	5.1
Willie Lee (G, 5-6, Fr.)	24	49-111	.441	9-13	.692	24	1.0	--	13-0	10	9	19	107	4.6
Cliff Collins (F, 6-2, So.)	24	24-53	.453	6-15	.400	47	2.0	4	24-0	9	6	22	54	2.3
Mike Albert (C, 6-9, Fr.)	22	18-45	.400	7-15	.467	55	2.5	4	27-0	2	2	14	43	2.0
Jim Abraham (G, 5-11, Fr.)	22	12-35	.343	18-25	.720	20	.9	1	25-0	18	12	11	42	1.9
Noel Fisher (F, 6-2, Fr.)	22	6-19	.316	2-4	.250	7	.3	1	16-1	6	1	6	14	.6
Steve Parker (G, 6-1, Fr.)	2	1-1	1.000	---	---	---	---	---	1-0	---	---	1	2	1.0
Earl Toole (G, 6-0, So.)	4	0-2	---	---	---	---	---	---	2-0	---	---	3	---	---
Others	5	35-87	.402	8-11	.727	83	16.6	15	26-2	1	7	20	78	15.6
Team						99								
ESC TOTALS	24	677-1615	.419	307-447	.687	981	40.9	106	487-22	295	198	358	1661	69.2
OPPONENT TOTALS	24	706-1511	.467	367-533	.689	1068	44.5	55	486-11	337	179	428	1779	74.1

HOME RECORD: 4-8	W-L	H-A	ESC	OPP	REBOUNDING MARGIN	NEUTRAL COURT: 1-1	PC WEST: 4-6
	L	H	64	78	-3.6		
	L	H	59	62			
	L	A	43	61			
	L	H	63	77			
	L	H	54	55			
	L	A	66	88			
	W	A	88	78			
	L	A	68	73			
	L	A	85	86			
	L	A	92	97			
	L	A	69	75			
	L	H	60	62			
	L	A	72	96			
	W	H	75	72			
	L	A	61	77			
	W	H	83	74			
	L	H	82	86			
	W	H	58	57			
	W	H	87	66			
	W	A	67	57			
	L	H	55	62			
	L	H	57	70			
	W	A	84	74			
	L	A	69	96			

WINNING MARGIN -4.9
 REBOUNDING MARGIN -3.6
 ROAD RECORD: 2-8
 LEADING SCORERS: Senko-14, Wilson-13, Senko-11, Kurung-10, Wright-16, Wilson-15, Senio-18, Wright-16, Wright-16, Lee-13, Wright-31, Senko-28, Thompson-18, Battle, Senko-14, Senko-18, Wright-17, Battle-14, Thompson-27, Wright-17, Senko-14, Wright-18, Luca-13, Battle, Senko-14, Thompson-13, Senko-14, Wright-14, Thompson-13, Thompson-21, Wright-13, Luca-12, Battle-20, Luca, Thompson-10, Senko-22, Thompson-17, Wright-13, Thompson-29, Senko-19, Battle-13, Wright-19, Thompson-12, Thompson-24, Lee-16, Battle-15, Wright-18, Senko-17, Thompson, Kurung-12, Kurung, Battle, Thompson-12, Lee-15, Wright-11, Battle-10, Battle-21, Thompson, Kurung-18, Battle-18, Abraham-10

LEADING REBOUNDERS: Wilson-9, Wright-7, Wilson-23, Wilson-7, Senko-6, Wilson-14, Wright-10, Wilson-9, Wright-10, Wright-9, Battle-10, Albert-8, Battle-14, Thompson-11, Thompson-13, Battle-12, Luca-9, Battle-13, Battle-13, Battle-11, Battle-14, Battle-15, Battle-8, Battle-8, Battle-16, Battle-16, Battle-13, Thompson-7, Thompson-5, Battle-10, Battle-9, Battle-13, Thompson-7, Battle-10



*Allegheny Tournament; **Pa. Conference Playoffs

FAIRMONT STATE

November 27-28 at Fairmont Tournament

Location: *Fairmont, West Virginia*
Enrollment: *5,500*
Colors: *Maroon and White*
Nickname: *Falcons*
Home Court: *Feaster Center*
Capacity: *4,000*
Head Coach: *Joe Retton*
Sports Info. Director: *Joe Lambiotte*
Athletic Director: *Colin T. Cameron*
Conference: *W. Va. Intercollegiate Athletic Conf.*
1980-81 Record: *26-5*
Last Game: *1978-79, Fairmont 107-82*
Lettermen Lost: *4*
Lettermen Returning: *4*
Team Strength: *Point guard*
Team Weakness: *Loss of big man*
Captain: *TBA*
Top Veterans: *Kevin Beaford (G, 5-11, Jr. 19.7)*
Top Newcomers: *Tim Murphy (F, 6-5, Fr.)*
Joe Garrett (C, 6-8, Sr.)

SHIPPENSBURG STATE

November 27-28 at Fairmont Tournament

Location: *Shippensburg, Pa.*
Enrollment: *6,000*
Colors: *Red and Blue*
Nickname: *Red Raiders*
Home Court: *Heighes Fieldhouse*
Capacity: *4,000*
Head Coach: *Rodger Goodling*
Sports Info. Director: *John Aloisi*
Athletic Director: *William Corman*
Conference: *Pennsylvania - East*
1980-81 Record: *14-11*
Last Game: *First Meeting*
Lettermen Lost: *4*
Lettermen Returning: *7*
Team Strength: *Shooting, pressure defense*
Team Weakness: *Height*
Captain: *TBA*
Top Veterans: *Brian Cozzens (F, 6-6, Sr., 17.1)*
Ed Henninger (G, 6-2, Sr., 11.0)
Top Newcomers: *Lee Holms (F, 6-6, Fr.)*
Parrish Petry (G, 6-0, Fr.)

WEST LIBERTY STATE

November 27-28 at Fairmont Tournament

Location: *West Liberty, West Virginia*
Enrollment: *2,600*
Colors: *Gold and Black*
Nickname: *Hilltoppers*
Home Court: *Bartell Fieldhouse*
Capacity: *2,500*
Head Coach: *Paul Holzshu*

Sports Info. Director: *Chris Beall*
Athletic Director: *Harold Martin*
Conference: *W. Va. Intercollegiate Athletic Conf.*
1980-81 Record: *15-11*
Last Game: *First Meeting*
Lettermen Lost: *6*
Lettermen Returning: *6*
Team Strength: *Depth*
Team Weakness: *Height*
Captain: *TBA*
Top Veterans: *S. Johnson (C-F, 6-5, So., 15.0)*
Randy Smith (G, 6-0, Sr., 14.0)
Top Newcomers: *Anthony Williams (C-F, 6-5, Jr.)*
Bryon Williams (G, 6-1, So.)

UNIV. OF PITT-BRADFORD

December 2 at Pitt-Bradford

Location: *Bradford, Pa.*
Enrollment: *900*
Colors: *Blue and Gold*
Nickname: *Panthers*
Home Court: *T. L. McDowell Sports Center*
Capacity: *1,800*
Head Coach: *Dick Danielson*
Sports Info. Director: *None*
Athletic Director: *Dick Danielson*
Conference: *Independent*
1980-81 Record: *16-11*
Last Game: *1980-81, Pitt-Bradford 77-63*
Lettermen Lost: *1*
Lettermen Returning: *9*
Team Strength: *Experience, quickness*
Team Weakness: *Size*
Captain: *Bob Hannon*
Top Veterans: *Bob Hannon (G, 6-2, Sr., 14.7)*
Kenny Barber (F, 6-4, Jr., 15.0)
Top Newcomers: *Randy Wade (G, 5-11, Jr.)*
Urban McGill (C, 6-7, Jr.)

GANNON UNIVERSITY

December 5 at Edinboro, February 15 at Gannon

Location: *Erie, Pa.*
Enrollment: *4,200*
Colors: *Maroon and Old Gold*
Nickname: *Golden Knights*
Home Court: *Ganon Auditorium*
Capacity: *3,000*
Head Coach: *Dick Fox*
Sports Info. Director: *Steve Huefner*
Athletic Director: *Howard Elwell*
Conference: *Independent*
1980-81 Record: *17-10*
Last Game: *Gannon 61-43, 70-57*
Lettermen Lost: *1*
Lettermen Returning: *10*
Team Strength: *Experience*
Team Weakness: *Inside Game*
Captains: *Dan Sculley, Roger Moore*

BEHREND COLLEGE

December 10 at Gannon

Location: *Erie, Pa.*
Enrollment: *1,800*
Colors: *Blue, White and Red*
Nickname: *Cubs*
Home Court: *Erie Hall*
Capacity: *700*
Head Coach: *Jim Sims*
Sports Info. Director: *Dave Bohun*
Athletic Director: *Herb Lauffer*
Conference: *Independent*
1980-81 Record: *18-10*
Last Game: *1980-81, Behrend 55-54*
Lettermen Lost: *4*
Lettermen Returning: *5*
Team Strength: *Rebounding, Defense*
Team Weakness: *Inexperience*
Captains: *Tom Blythe, Dan Vaughn*
Top Veterans: *Dan Vaughn (C, 6-6, Sr., 12.0)*
Tom Blythe (F, 6-5, Jr., 5.0)
Top Newcomers: *Rick Sims (G, 6-1, Fr.)*
Steve Aden (F, 6-6, Fr.)

ALLIANCE COLLEGE

December 11 at Edinboro

Location: *Cambridge Springs, Pa.*
Enrollment: *300*
Colors: *Red and White*
Nickname: *Eagles*
Home Court: *Cambridge Springs High School Gym*
Capacity: *1,800*
Head Coach: *Ted Haluch*
Sports Info. Director: *Albert Modrejewski*
Athletic Director: *Ted Haluch*
Conference: *Independent*
1980-81 Record: *2-12*
Last Game: *1980-81, Edinboro 87-66*
Lettermen Lost: *2*
Lettermen Returning: *5*
Team Strength: *Height, Experience*
Team Weakness: *Lack of Depth*
Captain: *TBA*
Top Veterans: *Harold Mong (C, 6-8, Jr., 17.8)*
Steve Crane (G, 6-2, Sr., 6.5)
Top Newcomers: *Chris Berdis (F, 6-3, So.)*
John Swoyer (G, 6-2, Fr.)

ROBERT MORRIS COLLEGE

December 12 at Robert Morris

Location: *Pittsburgh, Pa.*
Enrollment: *4,800*
Colors: *Blue and White*
Nickname: *Colonials*
Home Court: *John Jay Center*
Capacity: *1,700*
Head Coach: *Matt Furganic, Jr.*

Sports Info. Director: *Randy Cosgrove*
Athletic Director: *TBA*
Conference: *ECAC-Metro*
1980-81 Record: *9-17*
Last Game: *First Meeting*
Lettermen Lost: *4*
Lettermen Returning: *6*
Team Strength: *Guards*
Team Weakness: *Big Man*
Captain: *TBA*
Top Veterans: *Chip Harris (G, 6-1, So., 11.8)*
Forest Grant (G, 6-2, So., 10.5)
Top Newcomers: *Phil Coles (F, 6-5, Fr.)*
Mark Dobbs (G, 6-4, Fr.)

MERCYHURST

December 14 at Edinboro,
February 8 at Mercyhurst

Location: *Erie, Pa.*
Enrollment: *1,300*
Colors: *Blue and Green*
Nickname: *Lakers*
Home Court: *Campus Center*
Capacity: *1,700*
Head Coach: *Bill Kalbaugh*
Sports Info. Director: *Howard C. Twiggs*
Athletic Director: *Dr. Michael Cusack*
Conference: *Independent*
1980-81 Record: *10-16*
Last Game: *1980-81, Mercyhurst 73-68, Edinboro 83-74*
Lettermen Lost: *1*
Lettermen Returning: *5*
Team Strength: *Guards*
Team Weakness: *Inside Game*
Captains: *Bob Blackwell, Greg Becker*
Top Veterans: *Greg Becker (F, 6-5, Sr., 10.9)*
Bob Blackwell (G, 6-1, Sr., 11.4)
Top Newcomers: *John Berkley (F, 6-6, Fr.)*
John Green (G, 6-0, Fr.)

ALLEGHENY COLLEGE

January 8-9 at Allegheny Tournament

Location: *Meadville, Pa.*
Enrollment: *1,900*
Colors: *Blue and Gold*
Nickname: *Gators*
Home Court: *David Mead Fieldhouse*
Capacity: *2,400*
Head Coach: *John Reynders*
Sports Info. Director: *Beth Hough*
Athletic Director: *Norman Sundstrom*
Conference: *President's Athletic*
1980-81 Record: *16-8*
Last Game: *1975-76, Edinboro 95-84*
Lettermen Lost: *4*
Lettermen Returning: *7*
Team Strength: *Experience*

ALLEGHENY (CONT'D)

Team Weakness: *Inexperienced big man*
Captains: *Phil Murphy, Darryl Dawson*
Top Veterans: *Phil Murphy (F, 6-4, Sr., 20.5)*
Bruce Nesdore (G, 6-2, So., 12.7)
Top Newcomers: *Mike Pawelec (C, 6-7, Fr.)*
Mike Miller (C, 6-5, Fr.)

GENESEO STATE

January 8-9 at Allegheny Tournament

Location: *Geneseo, NY*
Enrollment: *5,100*
Colors: *Blue and White*
Nickname: *Blue Knights*
Home Court: *Kuhl Gym*
Capacity: *2,500*
Head Coach: *Tom Pope*
Sports Info. Director: *Dan Hurley*
Athletic Director: *Robert Riedel*
Conference: *SUNYAC-West*
1980-81 Record: *9-14*
Last Game: *First Meeting*
Lettermen Lost: *7*
Lettermen Returning: *2*
Team Strength: *Height, quickness*
Team Weakness: *Shooting*
Captains: *Dave Zielinski, Alonzo Burgin*
Top Veterans: *Dave Zielinski (C, 6-7, Jr., 3.4)*
Top Newcomers: *Alonzo Burgin (G, 6-2, Jr.)*

SWARTHMORE

January 8-9 at Allegheny Tournament

Location: *Swarthmore, Pa.*
Enrollment: *1,300*
Colors: *Garnet*
Nickname: *Little Quakers*
Home Court: *Lamb-Miller Fieldhouse*
Capacity: *1,200*
Head Coach: *John DeGregorio*
Sports Info. Director: *Hugh Meehan*
Athletic Director: *David Moyer*
Conference: *MASCAC*
1980-81 Record: *7-17*
Last Game: *First Meeting*
Lettermen Lost: *5*
Lettermen Returning: *7*
Team Strength: *Defense*
Team Weakness: *Lack of Height*
Captain: *TBA*
Top Veterans: *G. Dougherty (C, 6-4, Sr., 16.8)*
Ron Bradley (F, 6-2, Jr., 14.2)
Top Newcomers: *Andrew Hargadon (F, 6-5, Fr.)*
Tole Hart (F, 6-3, Fr.)

SLIPPERY ROCK STATE

January 13 at Edinboro,
February 3 at Slippery Rock

Location: *Slippery Rock, Pa.*
Enrollment: *6,000*
Colors: *Green and White*
Nickname: *Rockets, The Rock*
Home Court: *Morrow Fieldhouse*
Capacity: *3,000*
Head Coach: *Dave Rooney*
Sports Info. Director: *John Carpenter*
Athletic Director: *Dr. Robert Oliver*
Conference: *Pennsylvania-West*
1980-81 Record: *6-19*
Last Game: *1980-81, Edinboro 88-78, 75-71,*
84-74
Lettermen Lost: *6*
Lettermen Returning: *7*
Team Strength: *Defense, shooting*
Team Weakness: *Experience, height*
Captains: *Dave Boetger, Troy Mild*
Top Veterans: *Bill Rausch (G, 6-2, Jr., 15.7)*
Troy Mild (F, 6-3, So., 13.1)
Top Newcomer: *Mike McConnell (G, 5-10, Fr.)*

CALIFORNIA STATE

January 16 at Edinboro, February 6 at California

Location: *California, Pa.*
Enrollment: *4,500*
Colors: *Red and Black*
Nickname: *Vulcans*
Home Court: *Hamer Hall*
Capacity: *4,000*
Head Coach: *Tim Loomis*
Sports Info. Director: *Bob Wood*
Athletic Director: *Jeff Petrucci (interim director)*
Conference: *Pennsylvania-West*
1980-81 Record: *7-18*
Last Game: *1980-81, California 62-60*
Edinboro 67-57
Lettermen Lost: *1*
Lettermen Returning: *10*
Team Strength: *Overall size, defense*
Team Weakness: *Shooting*
Captain: *TBA*
Top Veterans: *Bruce Gwin (C-F, 6-5, Sr., 11.3)*
Maxie Wiley (G, 6-5, So., 11.9)
Top Newcomers: *John Acors (C, 6-10, Fr.)*
Mark Lewis (F, 6-6, Fr.)

UNIV. OF PITT-JOHNSTOWN

January 18 at Pitt-Johnstown

Location: *Johnstown, Pa.*
Enrollment: *2,500*

PITT-JOHNSTOWN (CONT'D)

Colors: *Light Blue and Gold*
Nickname: *Mountain Cats*
Home Court: *UPJ-Sports Center*
Capacity: *2,300*
Head Coach: *Jim Basista*
Sports Info. Director: *Tom Bowers*
Athletic Director: *C. Edward Sherlock*
Conference: *Independent*
1980-81 Record: *9-17*
Last Game: *1979-80, Edinboro 103-78, 62-60*
Lettermen Lost: *1*
Lettermen Returning: *5*
Team Strength: *Back court*
Team Weakness: *Inside depth*
Captains: *Bruce Gunter, John Pion, Chuck Glasser*
Top Veterans: *Bruce Gunter (F, 6-5, Sr., 10.8)*
Chuck Glasser (F, 6-5, Sr., 13.4)
Top Newcomers: *Tim Eberly (C, 6-8, Fr.)*
Dave Higinbotham (F, 6-4, Fr.)

LOCK HAVEN STATE

January 20 at Lock Haven,
February 10 at Edinboro

Location: *Lock Haven, Pa.*
Enrollment: *2,550*
Colors: *Red and White*
Nickname: *Bald Eagles*
Home Court: *Thomas Fieldhouse*
Capacity: *2,000*
Head Coach: *Dr. Brad Black*
Sports Info. Director: *Buck O'Reilly*
Athletic Director: *Dr. Charles Eberle*
Conference: *Pennsylvania-West*
1980-81 Record: *14-12*
Last Game: *1980-81, Lock Haven 97-92 (OT)*
Edinboro 58-57
Lettermen Lost: *2*
Lettermen Returning: *6*
Team Strength: *Experienced starters*
Team Weakness: *Lack of depth*
Captain: *TBA*
Top Veterans: *Doug LeGette (F, 6-5, Sr., 18.3)*
Terry Gilman (G, 5-11, Sr., 11.7)
Top Newcomers: *Mike Greene (G, 6-5, Fr.)*
Scott Dobak (C, 6-6, Fr.)

CLARION STATE

January 23 at Edinboro, February 13 at Clarion

Location: *Clarion, Pa.*
Enrollment: *4,700*
Colors: *Blue and Gold*
Nickname: *Golden Eagles*
Home Court: *Tippin Gymnasium*
Capacity: *5,000*

Head Coach: *Joe DeGregorio*
Sports Info. Director: *Richard P. Herman*
Athletic Director: *Frank Lignelli*
Conference: *Pennsylvania-West*
1980-81 Record: *23-6*
Last Game: *1980-81, Clarion 86-85, 86-82*
Lettermen Lost: *1*
Lettermen Returning: *7*
Team Strength: *Forwards*
Team Weakness: *Guards*
Captains: *Joe Malis, Chris Roosevelt*
Top Veterans: *Joe Malis (G-F, 6-6, Sr., 18.1)*
Chris Roosevelt (F, 6-4, Jr., 14.3)
Top Newcomers: *Darryl Whiten (G, 5-9, Fr.)*
Dan Kozel (C, 6-8, Fr.)

DAEMEN

January 25 at Edinboro

Location: *Amherst, NY*
Enrollment: *1,100*
Colors: *Blue and Gold*
Nickname: *Golden Warriors*
Home Court: *Bell Arena*
Capacity: *1,800*
Head Coach: *Ken Murray*
Sports Info. Director: *TBA*
Athletic Director: *Ken Murray*
Conference: *Independent*
1980-81 Record: *7-17*
Last Game: *1979-80, Edinboro 102-77*
Lettermen Lost: *7*
Lettermen Returning: *4*
Team Strength: *Quickness*
Team Weakness: *Size*
Captains: *Tom Williams, Rhett Beverly*
Top Veterans: *Tom Williams (F, 6-4, Sr., 20.1)*
Rhett Beverly (G, 6-3, Sr., 16.4)
Top Newcomers: *Arthur Mack (C, 6-7, Jr.)*
Ricky Long (C, 6-6, Fr.)

INDIANA UNIV. OF PA

January 27 at Indiana, February 17 at Edinboro

Location: *Indiana, Pa.*
Enrollment: *12,400*
Colors: *Maroon and Slate*
Nickname: *Big Indians*
Home Court: *Memorial Fieldhouse*
Capacity: *2,500*
Head Coach: *Carl Davis*
Sports Info. Director: *Larry Judge*
Athletic Director: *Herm Sledzik*
Conference: *Pennsylvania-West*
1980-81 Record: *17-11*
Last Game: *1980-81, Indiana 96-72, 62-55 (OT)*
96-69
Lettermen Lost: *4*
Lettermen Returning: *8*

INDIANA (CONT'D)

Team Strength: *Experience*
 Team Weakness: *Overall size*
 Captain: *Sam Scott*
 Top Veterans: *Sam Scott (F, 6-3, Sr., 16.0)*
 Jeff Brown (G, 6-1, Sr., 16.5)
 Top Newcomers: *Dan Betts (F, 6-5, Jr.)*
 Dave Beck (F, 6-5, So.)

GROVE CITY

January 30 at Edinboro

Location: *Grove City, Pa.*
 Enrollment: *2,200*
 Colors: *Crimson and White*
 Nickname: *Wolverines*
 Home Court: *Arena*
 Capacity: *1,800*
 Head Coach: *John Barr*
 Sports Info. Director: *Bob Smith*
 Athletic Director: *R. Jack Behringer*
 Conference: *Independent*
 1980-81 Record: *13-10*
 Last Game: *1972-73, Edinboro 72-62*
 Lettermen Lost: *2*
 Lettermen Returning: *6*
 Team Strength: *Leadership, scoring*
 Team Weakness: *Rebounding*
 Captains: *Dan Tilton, Tom Spelman*
 Top Veterans: *Dan Tilton (G, 5-9, Sr., 8.8)*
 Bob Crow (F, 6-3, Jr., 16.2)
 Top Newcomers: *Mark Zimmerman (C, 6-7, So.)*
 Curt Siverling (C, 6-8, Fr.)

LAROCHE

February 1 at LaRoche

Location: *Pittsburgh, Pa.*
 Enrollment: *1,500*
 Colors: *Red and White*
 Nickname: *Red Devils*
 Home Court: *Carson Middle School*
 Capacity: *800*
 Head Coach: *John Pasquinelli*
 Sports Info. Director: *Carmen Diestler*
 Athletic Director: *Ed Skacan*
 Conference: *Independent*
 1980-81 Record: *15-8*
 Last Game: *1980-81, LaRoche 62-59*
 Lettermen Lost: *4*
 Lettermen Returning: *7*
 Team Strength: *Quickness*
 Team Weakness: *Size*
 Captains: *Eric Urbanowicz, Jeff Haus*
 Top Veterans: *Eric Urbanowicz (F, 6-2, Sr., 10.6)*
 Jeff Haus (G, 6-0, Sr., 7.9)
 Top Newcomers: *Bob Klocek (F, 6-5, Sr.)*



ASSISTANT COACH - JOHN FURCRON

John Furcron begins his seventh year in ESC basketball. A Wilmington, Ohio product, Furcron owns a B.S. degree from Bowling Green, along with a master's and doctorate from West Virginia University. He came to Edinboro after teaching nine years in the Elyria, Ohio, school system and stepped in to guide ESC's soccer team to their first NAIA district title. He and his wife, Gloria, and their children, Angela and John, reside in Edinboro.

TEAM TRAINER - BOB KLINGLER

Bob Klingler begins his 15th year of giving Fighting Scot athletes the tops in professional medical care. The 1952 Lock Haven grad ventured to Hermann School of Physical Therapy in Houston, Texas and became a registered physical therapist in 1954. He later received his M.S. from Bucknell. Prior to accepting his ESC post, Klingler taught at Milton Hershey, a private boys' school in Hershey, Pa., where he served as the Spartans' head football mentor, head track coach and assistant basketball coach. Bob and his daughter, Julie, make their home in nearby Washington Township.

SCOTS AGAINST THEIR OPPONENTS

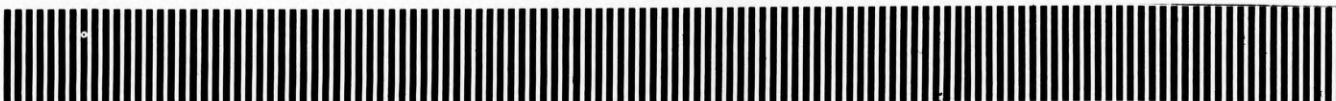
TEAM	WON	LOST	LATEST GAME	TEAM	WON	LOST	LATEST GAME
Alcorn	0	1	1974-75	LaRoche	0	2	1980-81
Alderson Broaddus	1	0	1975-76	Lawrence Tech	2	2	1942-43
Allegheny	7	12	1975-76	Lock Haven	32	13	1980-81
Alliance	46	24	1980-81	Long Beach State	0	1	1968-69
Alma	1	0	1971-72	Los Angeles State	1	0	1968-69
Ashland	1	1	1973-74	Mansfield	5	7	1974-75
Atlantic Christ.	1	0	1977-78	Marietta	1	0	1971-72
Baldwin-Wallace	3	1	1975-76	Mars Hill	1	0	1970-71
Behrend	8	2	1980-81	Mercyhurst	8	8	1980-81
Bloomsburg	1	3	1973-74	Mich. Lutheran	1	0	1965-66
Bluffton	1	0	1962-63	Morgan State	0	1	1977-78
Buffalo	1	3	1951-52	Mount Union	1	2	1972-73
Buffalo State	0	1	1946-47	Muskingum	0	2	1973-74
Buffalo St. Tchrs.	1	1	1929-30	Northern Michigan	1	1	1970-71
California	47	46	1980-81	Oberlin	1	1	1978-79
Cal State-Fullerton	1	0	1968-69	Ohio Chiropody	7	0	1940-41
Canisius	0	3	1941-42	Ohio Wesleyan	2	0	1972-73
Capital	1	1	1976-77	Oneonta State	1	1	1971-72
Carnegie Mellon	1	0	1979-80	Palm Beach Atlantic	1	0	1974-75
Carnegie Tech	0	2	1962-63	Pitt-Bradford	0	1	1980-81
Central Michigan	0	1	1965-66	Pitt-Johnstown	5	3	1979-80
Cheyney	1	3	1975-76	Point Park	6	7	1980-81
Clarion	53	44	1980-81	Roberts Wesleyan	6	0	1969-70
Cleveland State	2	1	1967-68	St. Lawrence	0	1	1979-80
Concord	1	0	1977-78	Saint Mary's	1	0	1939-40
Daemen	2	0	1979-80	St. Vincent	6	3	1980-81
DeSalles	1	0	1940-41	Salem	1	1	1971-72
Erie Branch	2	0	1930-31	Shepherd	0	1	1976-77
Fairmont	0	1	1978-79	Slippery Rock	49	47	1980-81
Fenn	6	4	1964-65	Thiel	24	9	1964-65
Findley	0	1	1933-34	Walsh	2	0	1966-67
Fredonia	49	6	1969-70	Washington & Lee	0	1	1978-79
Frostburg	7	0	1976-77	Waynesburg	4	0	1966-67
Gannon	9	30	1980-81	West Chester	1	1	1929-30
Geneva	6	6	1978-79	West Georgia	1	0	1975-76
Georgia State	1	0	1977-78	West Virginia State	1	0	1973-74
Grove City	11	16	1972-73	West Va. Wesleyan	3	2	1978-79
Gustavus-Adolphus	1	0	1975-76	Western Ontario	2	0	1973-74
Hiram	1	0	1970-71	Westminster	1	5	1980-81
Indiana (Pa.)	38	53	1980-81	Westmont	0	1	1971-72
Kanty	1	0	1928-29	Wheeling	0	1	1976-77
Kent	0	1	1937-38	Wilmington (Del.)	0	1	1972-73
Kenyon	2	1	1971-72	Wisc.-Milwaukee	0	1	1969-70
Kutztown	2	0	1973-74	Wittenberg	0	1	1971-72
Lake Superior State	0	1	1975-76	Youngstown YMCA	1	1	1928-29

OPPONENTS CENTURY CLUB

OPP	ESC	YEAR	OPP	ESC	YEAR		
131	Indiana	72	1955-56	107	Fairmont	82	1978-79
112	Clarion	104	1958-59	106	Mansfield	65	1967-68
111	Mount Union	94	1971-72	106	Slippery Rock	94	1958-59
110	California	73	1956-57	104	U. of Wisconsin	85	1969-70
110	Clarion	92	1957-58	103	Alliance	102	1957-58
109	Allegheny	106	1958-59	103	Indiana	85	1959-60
109	Indiana	67	1953-54	103	Mercyhurst	73	1977-78
108	California	95	1964-65	102	California	78	1965-66
107	Geneva	98	1966-67	101	Clarion	88	1958-59

SEASONS RANKED BY PERCENTAGES

YEAR	W-L	PCT	YEAR	W-L	PCT
1. 1931-32	12-1	.923	25. 1936-37	7-6	.538
2. 1928-29	12-2	.857	26. 1966-67	10-10	.500
3. 1975-76	24-5	.827	26. 1950-51	9-9	.500
4. 1974-75	22-5	.815	26. 1935-36	5-5	.500
5. 1938-39	8-2	.800	26. 1942-43	1-1	.500
6. 1967-68	19-5	.792	30. 1976-77	11-12	.478
7. 1965-66	18-5	.782	31. 1946-47	7-8	.466
8. 1979-80	21-6	.778	32. 1957-58	10-11	.452
8. 1939-40	14-4	.778	33. 1978-79	11-14	.440
10. 1973-74	18-6	.750	34. 1948-49	7-9	.437
11. 1940-41	11-4	.733	35. 1937-38	6-8	.428
12. 1963-64	16-6	.727	36. 1954-55	8-12	.400
13. 1961-62	17-7	.708	36. 1958-59	8-12	.400
14. 1949-50	12-5	.705	38. 1952-53	8-13	.381
15. 1970-71	16-8	.667	39. 1977-78	9-15	.375
15. 1930-31	10-5	.667	40. 1953-54	6-12	.333
17. 1971-72	17-9	.654	40. 1951-52	6-12	.333
18. 1968-69	14-8	.636	42. 1941-42	4-9	.307
19. 1933-34	8-5	.615	43. 1980-81	7-17	.292
20. 1969-70	13-9	.591	44. 1960-61	6-15	.281
20. 1972-73	13-9	.591	44. 1947-48	4-11	.281
22. 1929-30	8-6	.571	46. 1956-57	5-14	.266
23. 1964-65	10-8	.555	47. 1955-56	4-16	.200
24. 1962-63	11-9	.550	48. 1945-46	0-5	.000



EDINBORO CENTURY CLUB

ESC	OPP	YEAR	ESC	OPP	YEAR		
133	Lock Haven	90	1967-68	107	Clarion	88	1956-57
126	Roberts Wesleyan	96	1973-74	107	Daemen	85	1978-79
123	Waynesburg	97	1966-67	106	Fredonia	81	1963-64
123	Alliance	86	1973-74	105	Salem	91	1971-72
122	Alliance	72	1973-74	104	Walsh	72	1964-65
119	Alliance	108	1954-55	104	Waynesburg	88	1965-66
116	N. Michigan	98	1970-71	104	Allegheny	85	1972-73
116	Western Ontario	62	1970-71	103	Lock Haven	101	1961-62
115	Lock Haven	79	1970-71	103	Clarion	92	1967-68
115	Pitt-Johnstown	55	1969-70	103	Lock Haven	67	1968-69
114	Alliance	104	1958-59	103	Pitt-Johnstown	78	1979-80
112	Clarion	78	1968-69	102	California	93	1958-59
110	Slippery Rock	73	1967-68	102	Allegheny	80	1961-62
110	Fredonia	64	1966-67	102	Daemen	77	1979-80
110	Clarion	84	1967-68	101	Slippery Rock	92	1958-59
110	Kenyon	99	1968-69	101	Behrend	64	1973-74
109	W. Va. Wesleyan	78	1967-68	101	Slippery Rock	95	1973-74
109	Waynesburg	84	1967-68	100	Fredonia	66	1956-57
109	Lock Haven	79	1964-65	100	Alliance	88	1956-57
108	Cleveland State	60	1967-68	100	Indiana	87	1964-65
108	Western Ontario	61	1973-74	100	Slippery Rock	77	1974-75

TEAM RECORDS AND CHAMPIONSHIPS

TEAM RECORDS - SEASON

Most Wins	24-5	Guy Conti	1975-76
	21-3	(regular season play)	1975-76
Best Season	12-1	Sox Harrison	1931-32
Scoring Average	89.4		1967-68
Shooting Percentage	51.7		1966-67
Free Throw Percentage	72.5		1973-74
Rebounding Average	55.7		1965-66
Rebounding Percentage	62.5		1966-67
Field Goals	966	(29 games)	1975-76
Consecutive Victories	13		1975-76
Consecutive Victories, One season	13		1975-76
Consecutive Conference Wins	17		1967-69

TEAM RECORDS - GAME

Points	133	Lock Haven	1967-68
Points, Half	74	Point Park	1973-74
Field Goals	54	Lock Haven	1967-68
	54	Alliance	1973-74
Free Throws	33-40	Slippery Rock	1973-74
Free Throw Percentage	93.6	Point Park	1973-74
	(26-27)		
Rebounds	93	Clarion (PC record)	1968-69
Points, Two Teams	227	ESC 119, Alliance 108	1954-55
Longest Games	3 OT	Lock Haven	1961-62

CHAMPIONSHIPS

*NAIA District 18 (4): 1965-66 (McDonald), 1971-72 Regular Season Tournaments: Ashland Holiday (Rooney), 1974-75 (McDonald), 1975-76 (Conti) Tournament, 1973-74 (McDonald), Marietta Pennsylvania Conference (1): 1967-68 (McDonald) Tournament, 1971-72 (Rooney), Erie Classic, PC Western Division (7): 1961-62 (Park), 1963-64 1975-76 (Conti), Allegheny Tournament, 1975-76 (McDonald), 1965-66 (McDonald), 1967-68 (Conti), West Virginia Wesleyan Tournament, (McDonald), 1968-69 (McDonald), 1974-75 1975-76 (Conti)

*Won the right to play in NAIA Tournament in Kansas City, Mo.

INDIVIDUAL RECORDS - SEASON

MOST POINTS

Tim Smiley	508 (29 games)	1975-76
Walt Askins	496 (19 games)	1956-57
Don Lovett	494 (25 games)	1978-79
Fred Riley	492 (26 games)	1971-72
Fred Riley	485 (24 games)	1970-71
Don Lovett	468 (27 games)	1979-80
Frank Smith	466 (22 games)	1964-65
Dan Petchel	460 (18 games)	1964-65
Melvin Hooker	460 (26 games)	1979-80
Frank Smith	447 (24 games)	1967-68

HIGHEST SCORING AVERAGES

Walt Askins	26.1 (19 games)	1956-57
Dan Petchel	25.6 (18 games)	1964-65
Frank Smith	30.1 (9 games)	1966-67

BEST SHOOTING PERCENTAGES

Jerome Thomas	58.9 (23 games)	1977-78
Lynn Nelson	58.3 (16 games)	1966-67
Dan Petchel	55.8 (18 games)	1964-65
Frank Smith	59.4 (9 games)	1966-67

INDIVIDUAL RECORDS - GAME

BEST FOUL SHOOTING PERCENTAGES

Roy Stauffer	88.2 (90-102)	1972-73
Ken Gerber	85.1 (63-74)	1961-62
Fred Riley	84.7 (100-118)	1971-72

MOST REBOUNDS

Darryl Meachem	393	1965-66
----------------	-----	---------

BEST REBOUNDING AVERAGES

Darryl Meachem	18.5 (10 games)	1966-67
	17.1 (23 games)	1965-66

MOST POINTS

Frank Smith	54	Fredonia	1966-67
Frank Smith	52	Kenyon	1968-69

MOST FIELD GOALS

Frank Smith	21	Waynesburg	1966-67
Frank Smith	21	Kenyon	1968-69

MOST REBOUNDS

Don Dougan	39	Indiana State (Pa. Conf. Record)	1964-65
------------	----	-------------------------------------	---------

MOST FOUL SHOTS MADE

Ken Gerber	14-14	Gannon	1961-62
Roy Stauffer	14-17	Salem	1971-72
Don Dougan	13-16	Baldwin-Wallace	1964-65

MOST ASSISTS

Larry Betar	20	California	1973-74
Dave Knowlton	19	Grove City	1969-70

MOST BLOCKED SHOTS

Melvin Hooker	11	Slippery Rock	1979-80
---------------	----	---------------	---------

MOST CONSECUTIVE FOUL SHOTS

Ken Gerber	38 (Pa. Conf. Record)	1961-62
------------	-----------------------	---------

MOST ASSISTS

Dave Knowlton	194 (24 games)	1970-71
---------------	----------------	---------

MOST BLOCKED SHOTS

Melvin Hooker	129 (26 games)	1979-80
---------------	----------------	---------

MOST STEALS

Nick Brascetta	73 (27 games)	1979-80
----------------	---------------	---------

TOP CAREER SCORERS

1. Walt Askins	1,739	1956-60
2. Tim Smiley	1,574	1973-77
3. Don Lovett	1,513	1976-80
4. Dan Petchel	1,344	1962-65
5. Fred Riley	1,279	1969-72
6. Frank Smith	1,225	1966-69
7. Jim Prokell	1,196	1969-72
8. Gary Stanton	1,177	1974-78
9. Roy Stauffer	1,153	1971-74
10. Don Dougan	1,095	1964-68
11. Melvin Hooker	917	1977-80
12. Darryl Meachem	881	1963-67
13. Rod Vashaw	879	1956-60
14. Bob McVeigh	840	1949-51
15. Wendell Rojik	812	1960-64

TOP CAREER REBOUNDERS

1. Don Dougan	992	1964-68
2. Darryl Meachem	897	1963-67
3. Gary Stanton	841	1974-78
4. Dan Petchel	744	1962-65
5. Melvin Hooker	708	1977-80
6. Ken Barker	689	1960-65
7. Don Lovett	660	1976-80
8. Frank Smith	637	1966-69
9. Wendell Rojik	622	1960-64
10. Jim Prokell	593	1969-72
11. Dennis Hampton	547	1973-76
12. Rick Sulka	507	1970-73
13. Don Gerdich	498	1971-74
14. Ron Beckett	459	1972-77
15. Art Dickinson	442	1968-71

SPECIAL RECOGNITION - "SCOTS OF THE PAST"

NAIA 2nd TEAM ALL-AMERICAN

1964-65 Dan Petchel

NAIA 3rd TEAM, ALL-AMERICAN

1971-72 Fred Riley
 1968-69 Frank Smith
 1967-68 Frank Smith
 1965-66 Darryl Meachem

NAIA ALL-AMERICAN HONORABLE MENTION

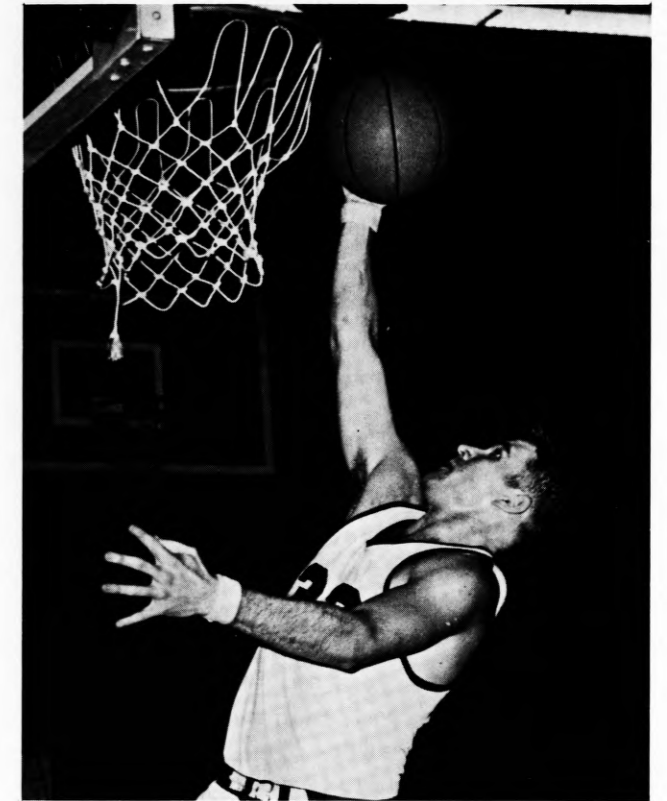
1975-76 Tim Smiley
 1974-75 Tim Smiley
 1973-74 Roy Stauffer, Dennis Hampton
 1972-73 Roy Stauffer
 1970-71 Fred Riley

NAIA DISTRICT 18 1st TEAM

1979-80 Melvin Hooker, Don Lovett
 1977-78 Gary Stanton
 1975-76 Tim Smiley, Dennis Hampton
 1974-75 Tim Smiley
 1973-74 Dennis Hampton
 1972-73 Roy Stauffer
 1971-72 Fred Riley
 1970-71 Fred Riley
 1968-69 Frank Smith
 1967-68 Frank Smith
 1965-66 Darryl Meachem

NAIA DISTRICT 30 1st TEAM

1964-65 Dan Petchel



Frank Smith

NAIA DISTRICT 18 2nd TEAM

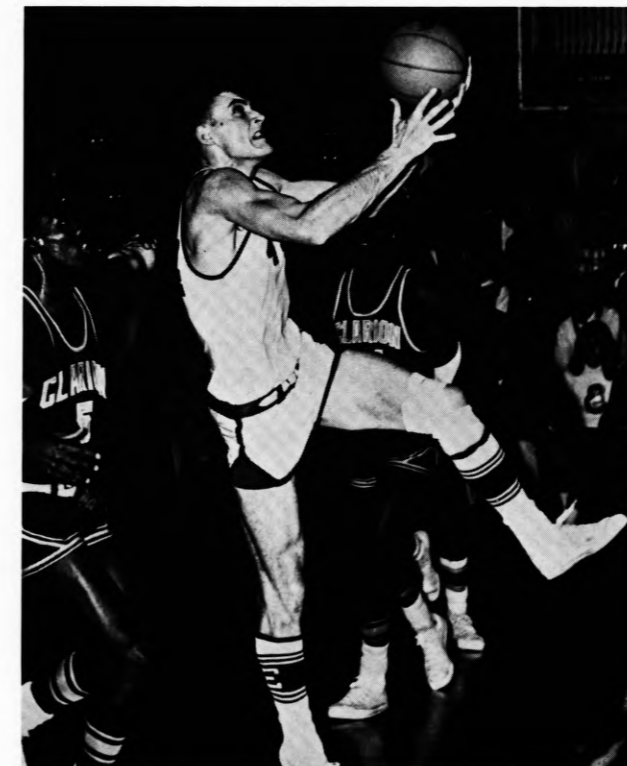
1976-77 Tim Smiley, Gary Stanton
 1973-74 Roy Stauffer
 1971-72 Jim Prokell
 1970-71 Jim Prokell
 1969-70 Art Dickinson, Jim Prokell
 1967-68 Don Dougan, Mick Unick

NAIA DISTRICT 18 HONORABLE MENTION

1979-80 Tyrone Tillman
 1978-79 Melvin Hooker, Don Lovett
 1977-78 Don Lovett
 1974-75 Charlie Hickox
 1971-72 Roy Stauffer
 1969-70 Fred Riley

PA. CONFERENCE 1st TEAM

1979-80 Melvin Hooker, Don Lovett
 1978-79 Don Lovett
 1977-78 Gary Stanton
 1976-77 Gary Stanton
 1975-76 Tim Smiley, Dennis Hampton
 1974-75 Tim Smiley
 1973-74 Roy Stauffer
 1972-73 Roy Stauffer
 1971-72 Fred Riley, Jim Prokell
 1970-71 Fred Riley, Jim Prokell
 1969-70 Art Dickinson, Jim Prokell
 Dave Knowlton



Dan Petchel

- 1968-69 Frank Smith
- 1967-68 Don Dougan, Frank Smith
- 1966-67 Lynn Nelson
- 1965-66 Darryl Meachem
- 1964-65 Dan Petchel
- 1963-64 Dan Petchel
- 1962-63 Dan Petchel

PA. CONFERENCE 2nd TEAM

- 1980-81 Land Battle, Steve Senko
- 1978-79 Melvin Hooker, Tyrone Tillman
- 1977-78 Rick Federici, Don Lovett
- 1976-77 Tim Smiley
- 1974-75 Charlie Hickox, Larry Betar, Don Childs
- 1973-74 Dennis Hampton, James Boyd, Charlie Hickox
- 1972-73 Larry Betar
- 1971-72 Jim Romaniszyn
- 1970-71 Dave Knowlton
- 1968-69 Rod Herron, Harry Jenkins
- 1967-68 Harry Jenkins, Jim Robinson, Mick Unick
- 1965-66 Dave Shenefelt, Don Dougan

PA. CONFERENCE HONORABLE MENTION

- 1979-80 Tyrone Tillman
- 1976-77 Don Lovett
- 1974-75 Don Gerdich, Gary Stanton
- 1971-72 Roy Stauffer
- 1968-69 Tim Ziner, Mick Unick, Jim Robinson
- 1966-67 Butch Hurley, Harry Jenkins, Tim Maloney, Darryl Meachem, Frank Smith
- 1964-65 Dave Shenelt
- 1962-63 Ken Barker
- 1961-62 Ken Barker, Jim Sims, Wendell Rojik

PITTSBURGH PRESS ALL-DISTRICT

First Team

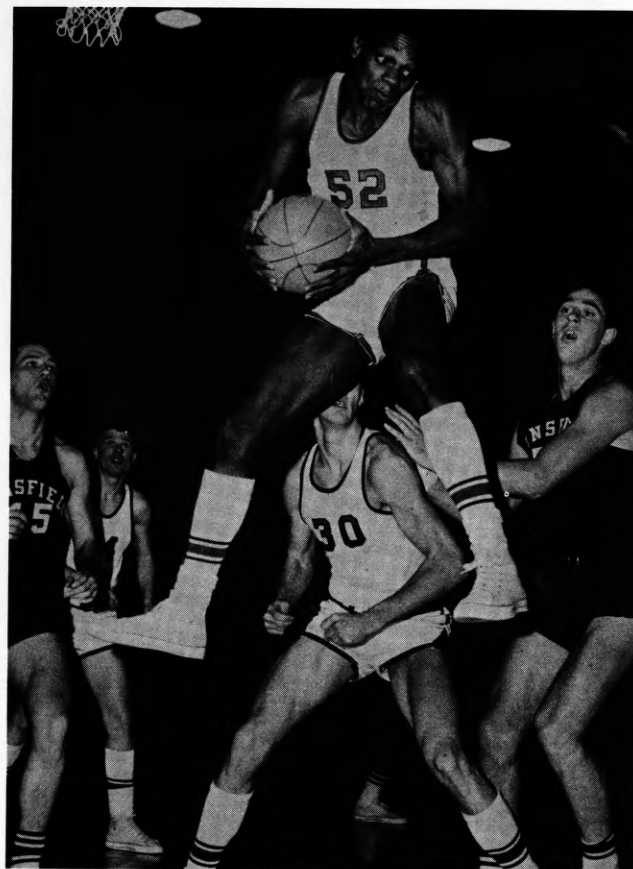
- 1979-80 Melvin Hooker
- 1975-76 Tim Smiley
- 1974-75 Tim Smiley
- 1973-74 Dennis Hampton
- 1971-72 Fred Riley, Jim Prokell
- 1968-69 Frank Smith

Second Team

- 1979-80 Don Lovett
- 1973-74 Roy Stauffer
- 1972-73 Roy Stauffer
- 1970-71 Fred Riley
- 1969-70 Art Dickinson

Third Team

- 1974-75 Charlie Hickox
- 1970-71 Jim Prokell
- 1969-70 Jim Prokell



Darryl Meachem

ERIE MORNING NEWS "BIG FIVE" TEAM

First Team

- 1980-81 Steve Senko
- 1979-80 Melvin Hooker, Don Lovett
- 1978-79 Don Lovett
- 1975-76 Tim Smiley
- 1974-75 Tim Smiley
- 1972-73 Roy Stauffer

Second Team

- 1980-81 Land Battle, Marcus Thompson
- 1979-80 Tyrone Tillman
- 1978-79 Melvin Hooker
- 1974-75 Charlie Hickox
- 1973-74 James Boyd, Dennis Hampton, Charlie Hickox, Roy Stauffer

Melvin Hooker - MVP Erie Morning News "Big Five", Selected by Dean Smith for Olympic Trials, Los Angeles Lakers in 8th round (183rd pick).

Fred Riley - UPI Small All-America 1971-72, Basketball News 2nd Team, All-America 1971-72, PCPA Honorable Mention 1970-71, SOS Classic 1971-72.

Darryl Meachem - SOS Classic Outstanding Athlete, Penn-Ohio All-Section Team 1965-66.

Dave Shenefelt - Penn-Ohio Honorable Mention 1965-66

ALL-TIME SCORES

1928-29 (12-2)
Coach: Sox Harrison

ESC	Opp.
58 Clarion	27
58 Fredonia	26
58 Youngstown YMCA	38
87 Kanty College	21
20 Clarion	14
36 California	25
46 Slippery Rock	32
24 Slippery Rock	36
49 Fredonia	29
50 Indiana	18
40 California	19
42 Youngstown YMCA	44
38 Indiana	22
34 Slippery Rock	30
640	381

1932-33
Coach: Sox Harrison
Being Researched

ESC	Opp.
27 Findley	28
50 Fredonia	22
33 Clarion	20
31 Westminster	41
35 California	32
32 Slippery Rock	37
50 Indiana	34
54 Fredonia	29
59 California	25
30 Westminster	45
46 Slippery Rock	34
36 Indiana	38
36 Clarion	34
519	419

1929-30 (8-6)
Coach: Sox Harrison

ESC	Opp.
29 Ashland	41
25 Slippery Rock	24
18 Buffalo St. Tchr.	20
20 Canisius	38
36 West Chester	37
31 Waynesburg	25
25 Slippery Rock	22
40 California	38
32 Clarion	22
45 Indiana	25
41 Buffalo St. Tchr.	22
39 California	52
32 Clarion	19
23 Indiana	24
436	409

1934-35
Coach: Sox Harrison
Being Researched

ESC	Opp.
24 Thiel	42
32 Thiel	40
54 Clarion	35
33 Clarion (OT)	30
30 Slippery Rock	41
40 Slippery Rock	37
44 Indiana	32
32 Indiana	38
50 California	32
27 California	33
366	360

1930-31 (11-4)
Coach: Sox Harrison

ESC	Opp.
55 Alliance	15
42 Alliance	20
43 Erie Branch	22
24 West Chester	20
43 Kutztown	32
34 Slippery Rock	33
21 Clarion	14
29 Indiana	23
44 Erie Branch	24
28 Slippery Rock	29
38 California	39
34 California	38
59 Clarion	41
47 Indiana	30
21 Allegheny	29
562	409

1936-37 (7-6)
Coach: Sox Harrison

ESC	Opp.
49 Ohio Chiropody	18
33 California	43
36 Indiana	39
41 Clarion	46
31 California	37
30 Thiel	35
47 Fredonia	35
45 Thiel	32
37 Ohio Chiropody	30
43 Slippery Rock	49
53 Clarion	30
43 Indiana	30
41 Slippery Rock	37
529	461

1931-32 (12-1)
Coach: Sox Harrison

ESC	Opp.
60 Fredonia	26
37 Indiana	31
46 Alliance	23
42 Kutztown	31
22 California	23
31 Slippery Rock	22
34 California	17
44 Slippery Rock	35
46 Alliance	31
655	577

1937-38 (6-8)
Coach: Sox Harrison

ESC	Opp.
36 Kent	37
44 Fredonia	45
33 Clarion	28
655	577

47 Clarion	16
32 Indiana	15
32 Clarion	22
60 Fredonia	22
538	314

1933-34 (8-5)
Coach: Sox Harrison

ESC	Opp.
27 Findley	28
50 Fredonia	22
33 Clarion	20
31 Westminster	41
35 California	32
32 Slippery Rock	37
50 Indiana	34
54 Fredonia	29
59 California	25
30 Westminster	45
46 Slippery Rock	34
36 Indiana	38
36 Clarion	34
519	419

1934-35
Coach: Sox Harrison
Being Researched

ESC	Opp.
24 Thiel	42
32 Thiel	40
54 Clarion	35
33 Clarion (OT)	30
30 Slippery Rock	41
40 Slippery Rock	37
44 Indiana	32
32 Indiana	38
50 California	32
27 California	33
366	360

1935-36 (5-5)
Coach: Sox Harrison

ESC	Opp.
49 St. Marys	38
45 Fredonia	37
51 Ohio Chiropody	27
54 Clarion	33
43 Canisius	52
32 Fredonia	28
44 Alliance	40
37 Indiana	29
32 Clarion	30
52 Slippery Rock	44
54 California	44
39 Lawrence Tech.	45
50 California	51
36 Slippery Rock	67
40 Indiana	35
39 Alliance	18
47 Ohio Chiropody	37
744	655

1939-40 (13-4)
Coach: Sox Harrison

ESC	Opp.
49 St. Marys	38
45 Fredonia	37
51 Ohio Chiropody	27
54 Clarion	33
43 Canisius	52
32 Fredonia	28
44 Alliance	40
37 Indiana	29
32 Clarion	30
52 Slippery Rock	44
54 California	44
39 Lawrence Tech.	45
50 California	51
36 Slippery Rock	67
40 Indiana	35
39 Alliance	18
47 Ohio Chiropody	37
744	655

1940-41 (11-4)
Coach: Sox Harrison

ESC	Opp.
45 DeSalles	44
54 Ohio Chiropody	33
46 Lawrence Tech.	44
29 Fredonia	28
53 Thiel	42
49 Thiel	50
36 Slippery Rock	26
34 California	36
50 Fredonia	37
43 Clarion	33
38 California	49
42 Indiana	32
35 Indiana	34
51 Clarion	36
50 Slippery Rock	53
655	577

1941-42 (3-7)
Coach: Sox Harrison

ESC	Opp.
57 Fredonia	29
44 Alliance	33
36 Fredonia	38
27 Indiana	44
35 Slippery Rock	51
36 California (OT)	40
28 Clarion	41
39 California	49
37 Lawrence Tech.	34
33 Canisius	66
372	425

1942-43 (1-1)
Coach: Sox Harrison

ESC	Opp.
34 Lawrence Tech	50
--- Alliance	---
Season Halted - WW II	---
1943-44 (War)	
1944-45 (War)	
1945-46 (0-5)	
Coach: Sox Harrison	
ESC	Opp.
32 Clarion	53
38 Slippery Rock	74
33 Alliance	42
33 Alliance	52
39 Alliance (OT)	45
175	266

1946-47 (7-8)
Coach: Sox Harrison

ESC	Opp.
39 Buffalo State	51
54 Fredonia	44
44 Alliance	53
44 Indiana	45
34 Fenn	33
46 Slippery Rock	51
63 California	45
45 Clarion	46
62 Alliance	55
48 Indiana	57
42 California	45
43 Clarion	41
40 Fenn	37
54 Fredonia	25
44 Slippery Rock	52
702	680

1947-48 (4-11)
Coach: Sox Harrison

ESC	Opp.
62 Fredonia	37
51 Fenn	46
43 Alliance	54
51 Salem	57
55 California	63
53 California	71
56 Clarion	60
36 Alliance	37
51 Fredonia	49

ALL-TIME SCORES (CONT'D)

69 Thiel	38
48 Clarion	51
55 Indiana	62
60 Slippy Rock	73
49 Indiana	71
45 Slippy Rock	77
<hr/>	
784	846
<hr/>	
1948-49 (7-9)	
Coach: Sox Harrison	
ESC	Opp.
48 Fredonia	21
55 Alliance	56
44 Slippy Rock	57
57 Gannon	48
65 Indiana	75
50 Slippy Rock	67
50 Clarion	48
45 Buffalo	57
48 Fredonia	43
55 Alliance	44
57 California	59
46 Clarion	60
51 Gannon	52
50 Thiel	76
81 California	69
56 Indiana	45
<hr/>	
858	877

1949-50 (12-5)	
Coach: Sox Harrison	
ESC	Opp.
72 Fredonia	44
59 Alliance	40
55 Grove City	54
62 Gannon	57
66 California	50
54 Indiana	70
52 Slippy Rock	58
52 Gannon	68
45 Slippy Rock	42
49 California	64
60 Clarion	50
35 Buffalo	47
60 Indiana	56
58 Clarion	50
73 Alliance	57
61 Fredonia	52
65 Thiel	51
<hr/>	
978	910

1950-51 (9-9)	
Coach: Sox Harrison	
ESC	Opp.
64 Allegheny	52
55 Fredonia	46
61 Slippy Rock	60
82 Fredonia	72
79 Alliance	61
65 Gannon	73
53 Indiana	54
82 Clarion	84
65 Slippy Rock	90
55 Buffalo	62
66 Gannon	43
62 California	77
82 Clarion	91
63 Alliance	55
52 Fenn	75
77 Thiel	70

80 California	63
84 Grove City	99
<hr/>	
1227	1227
<hr/>	
1951-52 (6-12)	
Coach: Sox Harrison	
ESC	Opp.
46 Fredonia	42
58 Allegheny	79
63 California	55
46 Gannon	48
57 Slippy Rock	61
66 Fredonia	68
60 Buffalo	55
67 Gannon	85
77 Alliance	58
71 Indiana	74
49 Slippy Rock	91
68 Clarion	82
79 Grove City	83
61 California	92
74 Clarion	106
67 Alliance	57
56 Thiel	55
63 Geneva	85
<hr/>	
1128	1276

1952-53 (8-13)	
Coach: Sox Harrison	
ESC	Opp.
57 Fredonia	56
68 Allegheny	78
67 Grove City	77
51 Alliance	57
75 Indiana	87
67 Slippy Rock	92
67 Gannon	71
72 Alliance	61
68 Gannon	81
68 Indiana	64
77 Thiel	59
75 Allegheny	93
85 Fredonia	68
53 California	73
76 Clarion	82
90 Grove City	57
86 California	81
77 Thiel	66
32 Clarion	76
63 Geneva	92
67 Slippy Rock	72
<hr/>	
1441	1543

1953-54 (6-12)	
Coach: Art McComb	
ESC	Opp.
61 Fredonia	49
56 Allegheny	52
68 Indiana	76
56 Grove City	61
61 Fredonia	64
49 Thiel	42
47 Gannon	61
73 Allegheny	89
49 Alliance	80
57 California	82
72 Alliance	70
64 Thiel	67
66 Clarion	65
64 Grove City	58

70 Gannon	71
58 California	89
65 Clarion	88
67 Indiana	109
<hr/>	
1103	1273
<hr/>	
1954-55 (8-12)	
Coach: Art McComb	
ESC	Opp.
62 Gannon	77
59 Allegheny	80
59 Indiana	98
80 Grove City	77
65 Fredonia	62
61 Allegheny	79
70 Thiel	63
119 Alliance	108
77 Slippy Rock	78
66 California	81
61 Indiana	69
72 Slippy Rock	67
59 Gannon	70
70 California	85
66 Clarion	72
70 Fredonia	51
67 Alliance	62
63 Grove City	71
61 Clarion	66
68 Thiel	62
<hr/>	
1496	1478

1955-56 (3-17)	
Coach: Art McComb	
ESC	Opp.
62 Allegheny	95
53 Alliance	69
76 Indiana	91
52 Grove City	61
56 Fredonia	54
74 Allegheny	84
63 Thiel	75
54 Slippy Rock	77
62 Gannon	85
65 Slippy Rock	80
77 Thiel	70
57 Clarion	68
61 California	65
67 Fredonia	82
72 Indiana	131
82 Alliance	76
64 California	86
64 Clarion	91
74 Grove City	76
55 Gannon	71
<hr/>	
1290	1587

1956-57 (5-14)	
Coach: Robert Thurbon	
ESC	Opp.
81 Grove City	104
63 Allegheny	74
66 Thiel	90
73 California	110
68 Slippy Rock	78
68 Grove City	105
66 Gannon	80
71 Clarion	72
84 Fredonia	77
61 Thiel	64
67 California	74

73 Allegheny	60
100 Fredonia	66
100 Alliance	88
68 Fenn	81
78 Slippy Rock	97
107 Clarion	88
94 Alliance	96
89 Gannon	90
<hr/>	
1477	1594

1957-58 (10-11)	
Coach: Robert Thurbon	
ESC	Opp.
64 Grove City	72
84 Slippy Rock	79
102 Alliance	103
90 Fredonia	76
64 Thiel	61
65 California	60
63 Indiana	96
52 Gannon	60
92 Clarion	110
76 Lock Haven (OT)	74
83 Fredonia	69
75 Thiel	67
77 California	88
94 Slippy Rock	97
54 Grove City	71
76 Allegheny	67
74 Fenn	61
75 Alliance	70
65 Indiana	97
84 Clarion	99
65 Gannon (OT)	75
<hr/>	
1574	1652

1958-59 (8-12)	
Coach: Robert Thurbon	
ESC	Opp.
75 Alliance	80
101 Slippy Rock	92
61 Grove City	56
79 Thiel	72
62 Gannon	86
88 Clarion	101
91 California	99
94 Slippy Rock	106
80 Thiel	78
83 Fredonia	74
61 Lock Haven	74
56 Mansfield	99
66 Grove City	75
69 Mansfield	98
114 Alliance	104
102 California	93
104 Clarion	112
99 Fredonia	72
77 Gannon	79
106 Allegheny	109
<hr/>	
1668	1759

1959-60 (6-13)	
Coach: Jim Smart	
ESC	Opp.
66 Fenn	68
72 Lock Haven	49
75 Indiana	66
77 Fredonia	66
67 Alliance	84
73 California	83
61 Clarion	58
68 Indiana	75
<hr/>	
1960-61 (6-15)	
Coach: Loyal Park	
ESC	Opp.
68 Lock Haven	87
45 Alliance	61
43 Indiana	73

61 Clarion	71
77 Grove City	95
54 Mt. Union	90
56 California	58
79 Indiana	89
57 Gannon	62
73 Slippy Rock	85
33 Alliance	58
85 Fredonia	51
88 Thiel	66
86 California	68
64 Slippy Rock	73
70 Clarion	67
62 Gannon	83
55 Grove City	73
87 Allegheny (OT)	93
93 Fredonia	78
67 Lock Haven	65
<hr/>	
1403	1546

1961-62 (17-7)	
Coach: Loyal Park	
ESC	Opp.
60 Fredonia	58
60 Clarion	65
48 Grove City	71
81 Slippy Rock	61
63 Carnegie Tech	76
73 Rbts. Wesleyan	64
81 California	51
81 Indiana	67
56 Gannon (OT)	58
83 Fenn	52
103 L. Haven (3 OT)	101
63 Alliance	52
87 Fredonia	80
71 Thiel	63
82 California	64
67 Clarion	62
56 Alliance	69
74 Indiana	82
69 Thiel	60
72 Lock Haven	60
76 Slippy Rock	71
102 Allegheny	80
Pa. Conference Western Division Championship:	
86 Slippy Rock	68
Pa. Conf. Championship:	
54 Mansfield	58
<hr/>	
1748	1593

1962-63 (11-9)	
Coach: Jim McDonald	
ESC	Opp.
66 Bluffton	46
82 Alliance	86
91 Clarion	83
70 Slippy Rock	64
60 Carnegie Tech	63
87 California	56
52 Gannon	60
74 Thiel	64
66 Fenn	68
72 Lock Haven	49
75 Indiana	66
77 Fredonia	66
67 Alliance	84
73 California	83
61 Clarion	58
68 Indiana	75

ALL-TIME SCORES (CONT'D)

97 Fredonia	71
83 Lock Haven	52
64 Slippy Rock	70
Pa. Conference Western Division Championship:	
69 Slippy Rock	83
<hr/>	
1454	1347

1963-64 (16-6)	
Coach: Jim McDonald	
ESC	Opp.
75 Alliance	59
63 Slippy Rock	67
73 Thiel	45
92 Baldwin-Wallace	90
72 Bloomsburg	71
84 Clarion	66
106 Fredonia	81
94 Fenn	82
71 Bloomsburg	74
85 Indiana	99
80 Lock Haven	48
88 Rbts. Wesleyan	73
83 Lock Haven	61
81 Alliance	91
85 California	80
86 Slippy Rock	79
99 Indiana	88
95 Clarion	90
67 California	55
72 Gannon (OT)	71
Pa. Conf. Championship:	
90 Mansfield	98
NAIA District 30 Champ.:	
67 Westminster	81
<hr/>	
1808	1649

1964-65 (10-8)	
Coach: Jim McDonald	
ESC	Opp.
99 Grove City	89
68 Alliance	80
76 Slippy Rock	80
92 Thiel	61
109 Lock Haven	79
104 Walsh	72
90 Clarion	69
100 Indiana	87
70 California	82
89 Lock Haven	53
84 Alliance	89
86 Geneva	85
86 Slippy Rock	63
91 Indiana	82
69 Fenn	77
95 California	108
50 Gannon	58
77 Clarion	79
<hr/>	
1535	1393

1965-66 (18-5)	
Coach: Jim McDonald	
ESC	Opp.
84 Mansfield	83
70 Alliance	68
67 Slippy Rock	56
95 Lock Haven	55
80 Clarion	71
104 Waynesburg	88
68 Indiana	71

83 Fredonia	62
78 California	102
89 Lock Haven	72
86 Mansfield	82
90 Alliance	83
99 Mich. Lutheran	58
79 Slippy Rock	72
95 Indiana	85
70 Geneva	71
93 Cleveland State	72
83 Clarion	79
71 California	58
Pa. Conf. Championship:	
76 Cheyney	96
NAIA District 18 Champ.:	
76 Geneva	60
79 California	62
Nat'l NAIA Tournament:	
53 Central Michigan	67
<hr/>	
1868	1673

1966-67 (11-11)	
Coach: Jim McDonald	
ESC	Opp.
88 Mansfield	73
90 Alliance	93
99 Slippy Rock	94
90 Lock Haven	77
73 Clarion	71
87 California	92
110 Fredonia	64
123 Waynesburg	97
94 Indiana	95
83 W.V. Wes. (OT)	85
90 Lock Haven	64

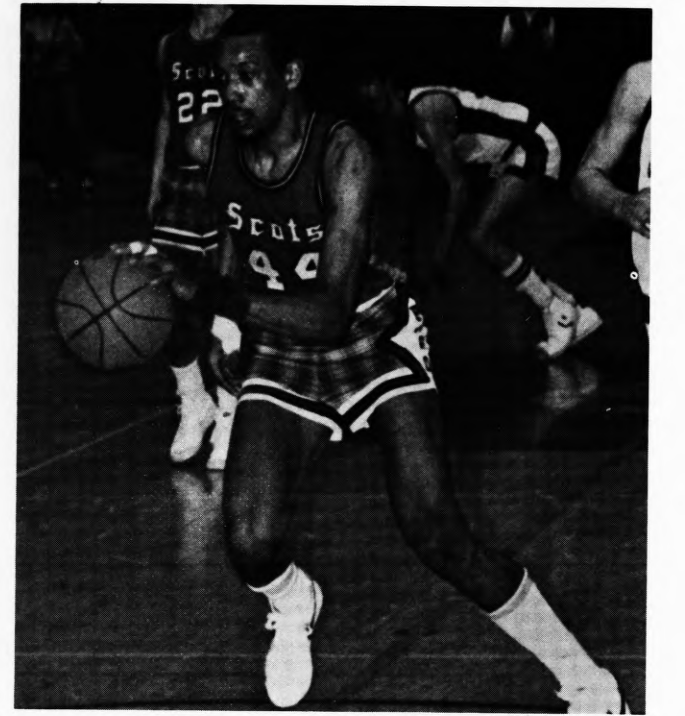
ALL-TIME SCORES (CONT'D)

115 Lock Haven 79	65 Grove City 58	NAIA District 18 Playoffs:	1977-78 (9-15)
88 Slippery Rock 76	66 Bloomsburg 75	83 Slippery Rock 79	Coach: Guy Conti
116 W. Ontario 62	85 Mount Union 68	70 Indiana 59	ESC Opp.
60 Clarion 66	68 Indiana 60	Nat'l NAIA Tournament:	
81 Ohio Wesleyan 67	78 Lock Haven 68	94 Palm Beach Atl. ... 86	
87 Hiram 50	93 Behrend 60	79 Alcorn State 85	
116 N. Michigan 98	64 California (OT) ... 59	2188	1934
96 Kenyon 98	67 Clarion 66		
75 California 66	86 Alliance 69	1975-76 (24-5)	
91 Mars Hill 68	57 Indiana 63	Coach: Guy Conti	
96 Geneva 75	86 Slippery Rock 76	ESC Opp.	
73 Slippery Rock 77	62 Lock Haven 61	73 Mercyhurst 72	
64 Indiana 84	1558	84 West Georgia 78	
82 Lock Haven 92	1503	84 Bald.-Wallace 72	
91 Oneonta State 64		78 Frostburg 71	
93 California 83	1973-74 (18-6)	95 Allegheny 84	
85 Clarion (OT) 87	Coach: Jim McDonald	68 Clarion 65	
89 Alliance 83	ESC Opp.	88 Lock Haven 56	
88 W. Va. Wesleyan ... 78	101 Behrend 64	88 St. Vincent 69	
61 Indiana 68	108 Western Ontario ... 61	91 Behrend 66	
NAIA District 18 Playoffs:	95 Clarion 80	70 Aids-Broad (OT) ... 69	
81 Clarion 70	122 Alliance 72	73 W. Va. Wesleyan ... 68	
60 Indiana 67	76 California 50	81 Frostburg 71	
2065	82 Slippery Rock 81	80 Lock Haven 62	
	90 W. Va. State 68	67 Slippery Rock 68	
1971-72 (17-9)	75 Ashland 74	72 California 61	
Coach: Dave Rooney	87 Frostburg 59	64 Point Park 69	
ESC Opp.	57 Lock Haven 63	61 Indiana 59	
91 Kenyon 84	81 Bloomsburg 90	89 Alliance 78	
85 Lock Haven (OT) ... 82	126 Point Park 95	72 Mercyhurst 73	
73 Point Park 71	71 Frostburg 65	92 Clarion (OT) 91	
82 Geneva 74	55 Muskingum 62	80 California 66	
70 Clarion (OT) 71	76 Indiana 86	67 Indiana 64	
85 Alma (OT) 80	62 Mercyhurst 59	78 Slippery Rock 71	
65 Capital 78	81 California 51	83 St. Vincent 81	
105 Salem 91	95 Clarion 86	Pa. Conf. Championship:	
94 Marietta 87	95 Lock Haven 58	77 Cheyney State ... 78	
82 California 76	67 Indiana 69	NAIA District 18 Playoffs:	
67 Alliance 83	101 Slippery Rock 95	93 Clarion (OT) 90	
77 Slippery Rock 83	123 Alliance 86	67 Indiana 66	
94 Mount Union 111	NAIA District 18 Playoffs:	Nat'l NAIA Tournament:	
70 Alliance 69	84 Point Park 80	88 Gustavus Adolp. ... 73	
90 Slippery Rock 87	65 Indiana 78	73 Lake Superior St. ... 76	
74 Indiana 70	2075	2276	2067
71 Wittenberg 81	1732		
74 Lock Haven 66		1976-77 (11-12)	
87 California 74	1974-75 (22-5)	Coach: Guy Conti	
72 Clarion 75	Coach: Jim McDonald	ESC Opp.	
62 Oneonta 87	95 Bald.-Wallace 72	91 Capital Univ. (OT) .. 84	
76 Indiana (OT) 74	60 Clarion 58	86 Clarion 87	
72 Grove City 62	76 Mansfield 60	99 Alliance 85	
NAIA District 18 Playoffs:	80 California 62	70 Mercyhurst (OT) ... 69	
85 Slippery Rock 75	94 Slippery Rock 71	63 Lock Haven 58	
81 Clarion 78	82 Behrend 68	89 Behrend 87	
Nat'l NAIA Tournament:	85 Mercyhurst 80	70 Wheeling 76	
72 Westmont, Cal. ... 91	88 Point Park 78	79 Shepherd 84	
2056	78 St. Vincent 70	85 St. Vincent 80	
	67 Lock Haven 61	95 Point Park 104	
1972-73 (13-9)	93 Frostburg 75	55 Lock Haven 56	
Coach: Jim McDonald	80 St. Vincent 85	93 California 78	
ESC Opp.	84 Point Park 85	71 Mercyhurst 67	
64 Mercyhurst 71	80 Indiana 70	58 Pitt-Johnstown ... 68	
74 Ohio Wesleyan ... 66	75 Mercyhurst 66	90 Clarion (OT) 89	
104 Allegheny 85	87 California 73	71 Slippery Rock 74	
59 Clarion 76	82 Clarion 69	90 Frostburg (OT) ... 87	
67 Wilmington (Del.) .. 69	87 Lock Haven 58	82 California 106	
61 California 67	46 Indiana 51	88 Indiana 94	
70 Alliance 64	100 Slippery Rock 77	77 Indiana 88	
74 Slippery Rock 94	80 Alliance 66	57 Slippery Rock 76	
48 Muskingum 59	93 Frostburg (2 OT) ... 91	95 Pitt-Johnstown ... 90	
60 Point Park 79	Pa. Conf. Championship:	73 Gannon 75	
	70 Mansfield 79	1827	1862

1979-80 (Cont'd)	1979-80 (21-6)
ESC Opp.	Coach: Guy Conti
59 Indiana 64	ESC Opp.
62 Pitt-Johnstown ... 60	80 Carn-Mellon (OT) ... 74
90 California 73	62 Westminster 42
69 Lock Haven 80	70 Gannon 68
50 Slippery Rock 48	84 Mercyhurst 86
52 Clarion (2 OT) ... 50	103 Pitt-Johnstown ... 78
80 Mercyhurst 74	64 Behrend 59
75 St. Vincent 52	82 St. Lawrence 86
65 Indiana 63	75 Lock Haven 74
67 Point Park 66	102 Daemen 77
68 California 66	
85 Lock Haven 79	
84 Alliance 71	
81 Slippery Rock 74	
71 Clarion 84	
83 Gannon 78	
NAIA District 18 Playoffs:	
62 Behrend 55	
72 Clarion 80	
1351	1130
1980-81 (7-17)	
Coach: Guy Conti	
ESC Opp.	
64 Westminster 78	
59 LaRoche 62	
43 Gannon 61	
63 Pitt-Bradford 77	
54 Behrend 55	
66 LaRoche 88	

ALL-TIME SCORES (CONT'D)

88 Slippery Rock 78	68 Mercyhurst 73
85 Clarion 86	92 L. Haven (2 OT) ... 97
69 Point Park 75	60 California 62
72 Indiana 96	75 Slippery Rock 72
61 St. Vincent 77	83 Mercyhurst 74
82 Clarion 86	58 Lock Haven 57
87 Alliance 66	67 California 57
55 Indiana (OT) 62	57 Gannon 70
84 Slippery Rock 74	84 Slippery Rock 74
Pa. Conference Playoffs:	
69 Indiana 96	
1661	1779



Battle begins his drive

RESULTS BY SEASONS

YEAR	G	W	L	POINTS		YEAR	G	W	L	POINTS	
				FOR	AGST					FOR	AGST
1928-29	14	12	2	640	381	1955-56	20	3	17	1290	1587
1929-30	14	8	6	436	409	1956-57	19	5	14	1477	1594
1930-31	15	11	4	562	409	1957-58	21	10	11	1574	1652
1931-30	13	12	1	538	314	1958-59	20	8	12	1668	1759
1932-33		Being Researched				1959-60	Being Researched				
1933-34	13	8	5	519	419	1960-61	21	6	15	1403	1546
1934-35		Being Researched				1961-62	24	17	7	1748	1593
1935-36	10	5	5	366	360	1962-63	20	11	9	1454	1347
1936-37	13	7	6	529	461	1963-64	22	16	6	1808	1649
1937-38	14	6	8	582	576	1964-65	18	10	8	1535	1393
1938-39	10	8	2	492	374	1965-66	23	18	5	1868	1673
1939-40	17	13	4	744	655	1966-67	22	11	11	1843	1744
1940-41	15	11	4	655	577	1967-68	24	19	5	2148	1834
1941-42	10	3	7	372	425	1968-69	22	14	8	1845	1670
1942-43	2	1	1	34	50	1969-70	22	13	9	1664	1539
1943-44		War				1970-71	24	16	8	2065	1811
1944-45		War				1971-72	26	17	9	2056	2060
1945-46	5	0	5	175	266	1972-73	22	13	9	1558	1503
1946-47	15	7	8	702	680	1973-74	24	18	6	2075	1732
1947-48	15	4	11	784	846	1974-75	27	22	5	2188	1924
1948-49	16	7	9	858	877	1975-76	29	24	5	2281	2067
1949-50	17	12	5	978	910	1976-77	23	11	12	1827	1862
1950-51	18	9	9	1227	1227	1977-78	24	9	15	1760	1826
1951-52	18	6	12	1128	1276	1978-79	25	11	14	1875	1924
1952-53	21	8	13	1441	1543	1979-80	27	21	6	1997	1859
1953-54	18	6	12	1103	1273	1980-81	24	7	17	1661	1779
1954-55	20	8	12	1496	1478	TOTALS	896	502	394	61,029	58,713

SPIKERS AWAIT VARSITY TESTS



The Edinboro State men's volleyball team stepped into collegiate competition this past year when the sport was elevated from club status to become the College's 17th intercollegiate sport. Under Coach Dennis Patton's talented tutelage, the Scot spikers have already established themselves as varsity competitors at the collegiate level and are now ready to battle for ESC victories on the net circuit.

Patton was a major cog in directing the Lady Scot volleyballers to a sparkling 37-9 record and a trip to

the AIAW Division II National Tournament in California. The Fighting Scot mentor has been a player/coach for the "AA" USVBA Meadville Volleyball Team for the past 25 years. Patton coached Maplewood High School's boys' team for 12 seasons where his teams won nine straight district championships and finished second in the state on three different occasions. He has also directed interest in men's volleyball at Edinboro State over the past six years.

1981-82 MEN'S VOLLEYBALL ROSTER

NAME	POSITION	CLASS	HOMETOWN/HIGH SCHOOL
Brown, William	Outside Spiker	Fr.	Polaski, Pa./Wilmington
Carter, Troy	Middle Blocker	Jr.	Falconer, N.Y./Falconer
Catrana, James	Outside Spiker	Sr.	Farrell, Pa./Farrell
Chase, Richard	Outside Spiker	Jr.	Corry, Pa./Corry
Ekl, Joseph	Setter	So.	North Huntingdon, Pa./Norwin
Fulmer, Kurt	Setter/Spiker	Fr.	Pittsburgh, Pa./North Allegheny
Hsu, Ning	Setter	So.	Erie, Pa.
Jones, Michael	Outside Spiker	Fr.	Tidioute, Pa./Tidioute
Lawrence, David	Middle Blocker	So.	Waterford, Pa./Fort Leboeuf
Mackey, Michael	Outside Spiker	Fr.	Pittsburgh, Pa./Keystone Oaks
McDonald, Mike	Outside Spiker	So.	Pittsburgh, Pa./Montour
Mowry, David	Outside Spiker	So.	Pittsburgh, Pa./North Allegheny
Steiger, Kenneth	Middle Blocker	So.	Cochranon, Pa./Cochranon
Head Coach: Denny Patton			

Meet the Lady Scots...



DIRECTING THE LADY SCOTS ...



Coach - Kathleen Lipkovich

Dr. Kathleen Lipkovich begins her second year leading the Edinboro State Lady Scots basketball program in addition to serving as the College's associate athletic director. Dr. Lipkovich, who was named to her new post at the outset of the 1981 year, is only the second head coach in women's basketball history at Edinboro.

Originally from Youngstown, Ohio, Dr. Lipkovich has had collegiate level teaching and coaching experience at West Virginia University, Central Connecticut State College and Trinity College in Hartford, Connecticut. While working as a doctoral graduate assistant at West Virginia University, the newly appointed mentor was assistant varsity coach for the women's basketball team that won the 1977 state championship and finished with a 19-6 overall record.

From 1977 through 1978, she was head coach for Central Connecticut's women's basketball and volleyball teams. Her Blue Devil cagers, who posted a 12-5 season slate, competed in the EAIWA regional tournament. A year later, Dr. Lipkovich accepted a position at Trinity College in physical education where she served as the women's basketball, soccer and softball coach. In her one year at the Trinity helm, her lady cagers went 10-5 on the campaign.

The Ohio native, who graduated from Chaney High School, began her teaching and coaching career in 1972 as a physical education instructor and track and field coach in the Howland Local School District at Howland, Ohio, and then held a similar position from 1972 through 1975 at McDonald High School in McDonald, Ohio.

Dr. Lipkovich, who recently completed a post-doctoral fellowship at Harvard University in higher educational administration, started her collegiate work at Youngstown State University where she received a B.S. degree in health and physical education in 1972. At Youngstown State, she competed in the women's varsity sports of volleyball, basketball, and softball.

The Youngstown graduate then continued her academic career by receiving an M.S. degree in 1975 from West Virginia University. She then served as a doctoral graduate assistant there until receiving her doctorate in 1977 after majoring in educational administration and physical education.

Her administrative experience encompasses an internship in West Virginia University's department of athletics where she was involved in recruitment, scheduling, budgeting, athletic policies, and eligibility. Her doctoral internship at West Virginia extended her administrative experiences in such areas as curriculum design, selection and retention, and departmental policies. Dr. Lipkovich's post-doctoral fellowship at Harvard University in educational administration involved preparation for individuals to assume administrative positions.

SCOUTING THE 1981-82 LADY SCOTS

HEAD COACH: Dr. Kathleen Lipkovich
(Youngstown '72)

COACHES RECORD: One year, 11-16

1980-81 RECORD: 11-16

1980-81 HOME RECORD: 8-5

1980-81 ROAD RECORD: 3-11

COLORS: Red and White

LETTERMEN LOST/RETURNING: 6/5

ATHLETIC AFFILIATIONS: NCAA, AIAW, ECAC

ATHLETIC DIRECTOR: Jim McDonald
Office Phone: 814-732-2776

SPORTS INFO. DIRECTOR: Paul Newman
Office Phone: 814-732-2745,
Home Phone: 814-732-3735

ASSISTANT COACH:
Jim Kennedy (California, Pa. '53)

RETURNING STARTERS: 2

TEAM STRENGTHS: Quickness

TEAM WEAKNESS: Experience

1981-82 CAPTAINS: TBA

LADY SCOTS IN YOUTH MOVEMENT

Edinboro State's Lady Scot cagers under second year coach Kathleen Lipkovich will be battling both a lack of experience and a challenging 20-game schedule that finds the ESC women playing 13 road contests. Compounding the problem is the loss of last year's top three scorers who were also the Scots leading rebounders on a squad that went 11-16 against primarily Division I teams.

The tough schedule should have provided a springboard, however, for this year's crop of young Lady Scots who return five letter winners on a roster of twelve. Only one senior and two juniors are listed along with five sophomores and four freshmen.

Leading the backcourt attack is the team's lone senior, Wanda Hartzell. The 5-6 guard, who could see some alternate action at forward, tossed in 112 markers last year to average 4.7 points per game from the outside. The Keystone High grad led the Lady Scots in assists with 64 passes that resulted in scores.

Expected to pace the team in the shooting department is 5-11 sophomore Ellen Mulligan. Working her way into a starting assignment at a forward slot, Mulligan hit the hoop at a 7.8 clip while clearing away 114 rebounds. Her 210 markers were fourth best in the scoring column and she finished second best in accuracy from the free throw line by connecting on 62.9 percent of her tries.

Speedy Nellie Orr is scheduled for point guard duties where she will direct the Edinboro State offense. The 5-2 sophomore saw spot action as a frosh but still found enough playing time to drop in 50 points and also claim the number one honors at the charity stripe where she netted 64.3 percent of her attempts.

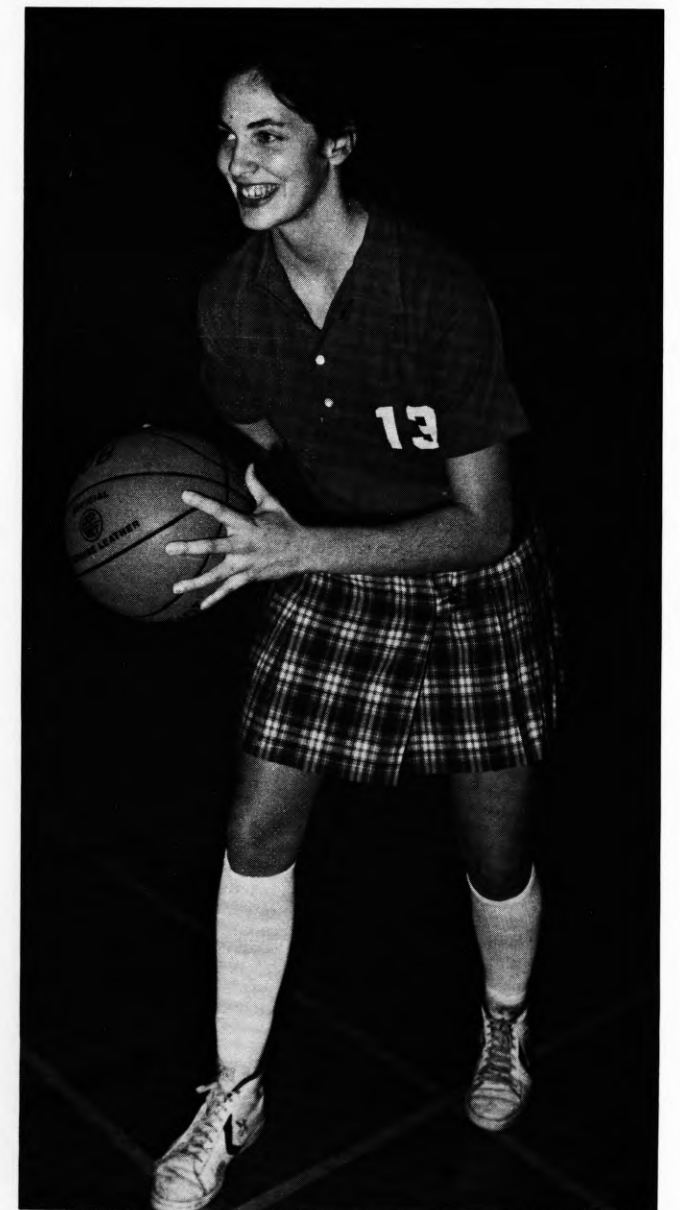
Help underneath the basket is expected from 5-11 junior Mary Lou Malarkey and 5-9 sophomore Audrey Carter. Malarkey, a double letter winner, served primarily in a relief role last year but should get a starting nod during the 1981-82 campaign. Carter finished strong to close out her frosh debut by grabbing 62 missed shots and potting 59 points. She should dominate the boards during the 1981-82 hardwood campaign.

Newcomers looking to break into lineup at guard slots include freshman duo of 5-5 Mary Beth Heise and 5-5 Nancy Beach. Heise, captain of Villa Maria Academy's 13-1 team, was the most point-prolific among the rookies with a 12.0 scoring average during her senior year.

Mary Ann Chilcott a 5-8 sophomore and 5-8 Melanie Green will challenge the veterans for court time at the forward spots. Chilcott, who bypassed her frosh season, was an Iroquois High standout where she registered an 850-point career with the Braves and cleared the glass at a 12.0 rate.

"Our schedule is a little bit more balanced with Division I and Division II teams," claimed Lipkovich who faces an early opener on November 20-21 with ESC's annual hosting of the DGWS Tournament that includes St. Bonaventure, Duquesne and Slippery Rock. "Although we don't have a lot of experience, we'll depend on our quickness to keep us competitive," she concluded.

Lipkovich admits one of her team's primary goals is to be successful against Pennsylvania Conference foes. Should Edinboro post winning ways in PC play, ESC could capture a repeat appearance in the conference championships hosted by Edinboro State near the end of February.

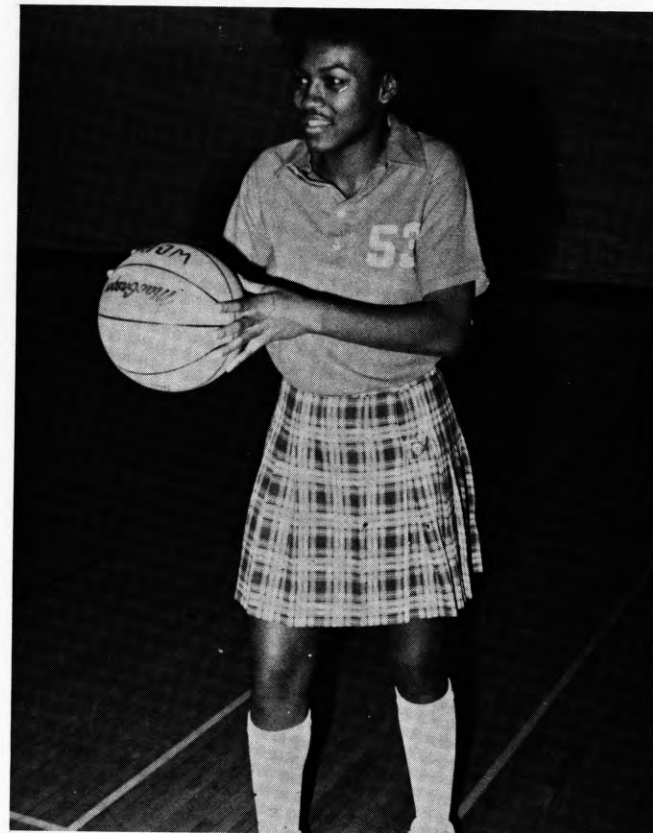


Ellen Mulligan - F, 5-11, So., Montrose, Pa.

BUILDING FOR THE FUTURE...



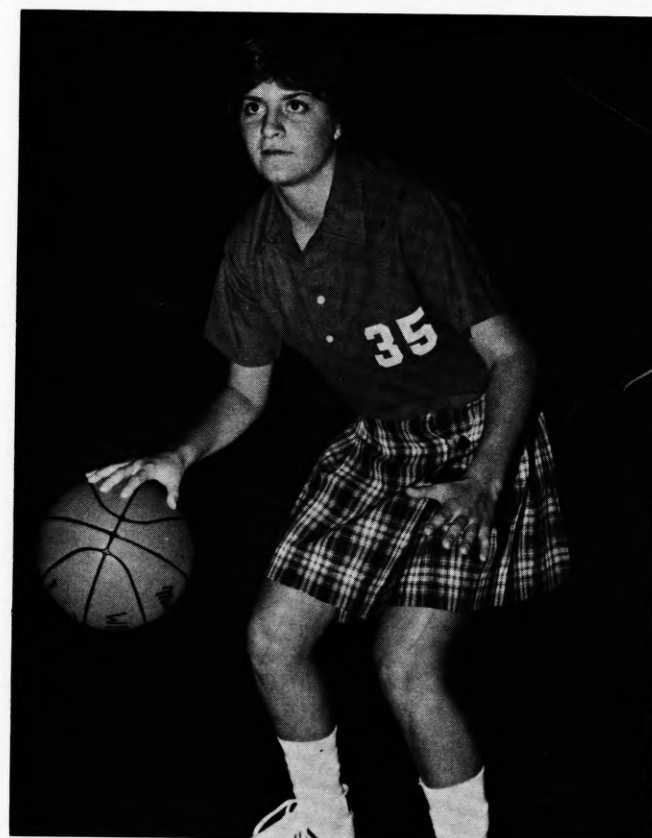
Mary Ann Chilcott - G, 5-8, So., Erie, Pa.



Audrey Carter - F-C, 5-9, So., Erie, Pa.



Mary Lou Malarkey - F-C, 5-11, Jr., Pittsburgh, Pa.



Mary Beth Heise - G, 5-5, Fr., Erie, Pa.

THE 1981-82 LADY SCOTS



EDINBORO STATE'S 1981 LADY SCOTS: (Seated L-R) Jackie Barney, Mary Beth Heise, Nancy Beach, Nellie Orr, Wanda Hartzell and Molly Seidel. (Standing L-R) Head Coach Dr. Kathleen Lipkovich, Chris

O'Donnel-Mgr., Audrey Carter, Mary Lou Malarkey, Ellen Mulligan, Mary Ann Chilcott, Melanie Green, Assistant Coach Monica Pellman.

EDINBORO STATE COLLEGE 1981-82 WOMEN'S NUMERICAL BASKETBALL ROSTER

Head Coach: Dr. Kathleen Lipkovich

W	R	NAME	POS.	HT.	CLASS	HOMETOWN/HIGH SCHOOL
12	13	* Mulligan, Ellen	F	5-11	So.	Montrose/Montrose Area
14	15	* Orr, Nellie	G	5-3	So.	Erie/Fairview
20	21	** Hartzell, Wanda	G-F	5-6	Sr.	Knox/Keystone
22	23	Chilcott, Mary Ann	F	5-8	So.	Erie/Iroquois
24	25	Beach, Nancy	G	5-5	Fr.	Arnold/Arnold Area
30	31	Green, Melanie	F	5-8	Fr.	Atlantic/Conneaut Lake
32	33	** Malarkey, Mary Lou	F-C	5-11	Jr.	Pittsburgh/Chartiers Valley
34	35	Heise, Mary Beth	G	5-5	Fr.	Erie/Villa Maria
52	53	* Carter, Audrey	F	5-9	So.	Erie/Academy

W - Home

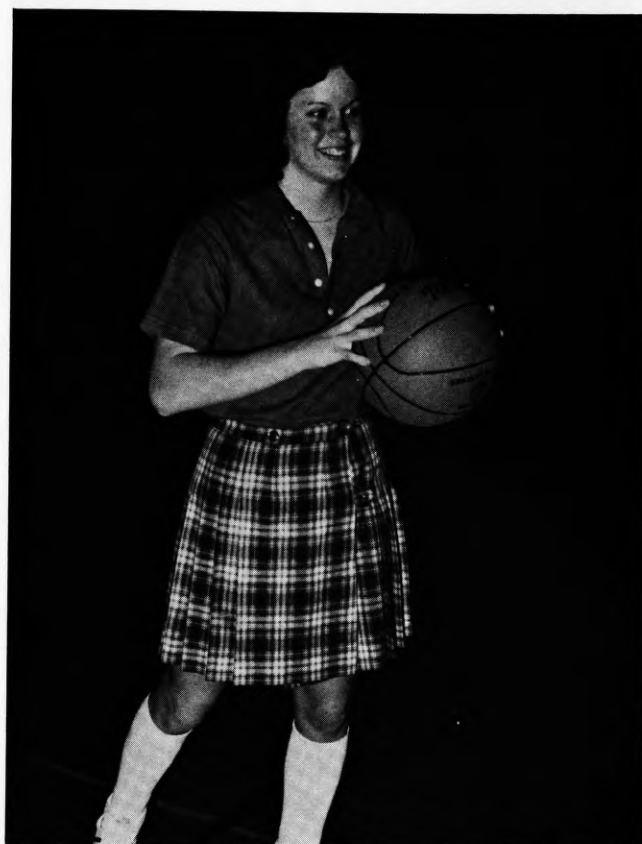
R - Away

*Varsity Letters

Assistant Coach: Jim Kennedy

Assistant to the Coach: Monica Pellman

INEXPERIENCED BUT TALENTED...



Melanie Green - F, 5-8, Fr., Atlantic, Pa.



Wanda Hartzell - G, 5-6, Sr., Knox, Pa.



Nancy Beach - G, 5-5, Fr., Arnold, Pa.



Nellie Orr - G, 5-3, So., Erie, Pa.

DUQUESNE

November 20-21 at Edinboro DGWS Tournament
February 16 at Edinboro

Location: *Pittsburgh, Pa.*
Enrollment: 7,500
Colors: *Red and Blue*
Nickname: *Duchesses*
Home Court: *Civic Arena*
Capacity: 16,000
Head Coach: *Tom Welch*
Sports Info. Director: *Nellie King*
Athletic Director: *John Manning*
Conference: *Pennwood-West*
1980-81 Record: 10-9
Last Game: 1980-81, *Edinboro 71-60*
Lettermen Lost: 1
Lettermen Returning: 5
Team Strengths: *Depth*
Team Weaknesses: *Experience, size*
Captains: *Kathy Folk, Leah Kennedy*
Top Veterans: *C. Stough (G-F, 5-10, So., 13.0)*
M. Cessar (G-F, 5-9, So., 12.7)
Top Newcomers: *Sue Cox (C, 6-0, Fr.)*
Carol Burchlaw (G-F, 5-8, Fr.)

ST. BONAVENTURE

November 20-21 at Edinboro DGWS Tournament

Location: *St. Bonaventure, New York*
Enrollment: 2,500
Colors: *Brown and White*
Nickname: *Lady Bonnies*
Home Court: *Reilly Center*
Capacity: 6,000
Head Coach: *Tony Iacovino*
Sports Info. Director: *Jim Englehardt*
Athletic Director: *Larry Weise*
Conference: *Independent*
1980-81 Record: 12-10
Last Game: 1980-81, *Edinboro 103-54*
Lettermen Lost: 8
Lettermen Returning: 4
Team Strengths: *Front court*
Team Weaknesses: *Lack of Experience*
Captain: *TBA*
Top Veterans: *Donna Ditota (C, 6-1, Jr., 7.1)*
Margaret Feeney (G, 5-6, So., 4.5)
Top Newcomers: *Kathy Diskin (G, 5-8, Fr.)*
Marlene Trietly (F, 5-9, Fr.)

SLIPPERY ROCK

November 20-21 at Edinboro DGWS Tournament
December 7 at Edinboro,
February 3 at Slippery Rock

SLIPPERY ROCK (CONT'D)

Location: *Slippery Rock, Pa.*
Enrollment: 5,600
Colors: *Green and White*
Nickname: *Rockets, The Rock*
Home Court: *Morrow Fieldhouse*
Capacity: 3,000
Head Coach: *Judy Battles*
Sports Info. Director: *John Carpenter*
Athletic Director: *Dr. Robert Oliver*
Conference: *Pennsylvania-West*
1980-81 Record: 14-12
Last Game: 1980-81, *Edinboro 66-65,*
Slippery Rock 78-64
Lettermen Lost: 4
Lettermen Returning: 8
Team Strengths: *Experience*
Team Weaknesses: *Scoring ability*
Captains: *Kathy Lisman, Jodi Kest*
Top Veterans: *Jackie Collins (C, 6-0, Jr., 10.3)*
Kathy Lisman (G, 5-6, Sr., 7.7)
Top Newcomers: *Mary Anne Grubic (F, 5-9, Fr.)*
Kim Williams (G, 5-6, Fr.)

WEST VIRGINIA

November 30 at West Virginia

Location: *Morgantown, West Virginia*
Enrollment: 22,000
Colors: *Old Gold and Blue*
Nickname: *Mountaineers*
Home Court: *WVU Coliseum*
Capacity: 14,000
Head Coach: *Kittie Blakemore*
Sports Info. Director: *Mike Parsons*
Athletic Director: *Fred Schaus*
Conference: *Independent*
1980-81 Record: 15-18
Last Game: 1980-81, *West Virginia 101-91,*
Edinboro 81-74
Lettermen Lost: 5
Lettermen Returning: 8
Team Strengths: *Outside shooting, speed*
Team Weaknesses: *Rebounding, experience*
Captains: *Laurie Evans, Kathy Ball, Christy Webb*
Top Veterans: *Cathy Parson (G, 5-7, Jr., 20.7)*
Laurie Evans (F, 5-8, Sr., 5.8)
Top Newcomers: *Olivia Bradley (C, 6-2, Fr.)*
Lauren Cooley (G, 5-9, Fr.)

CANISIUS

December 2 at Canisius

Location: *Buffalo, New York*
Enrollment: 4,000
Colors: *Old Gold and Navy Blue*
Nickname: *Lady Griffs*

CANISIUS (CONT'D)

Home Court: *Koessler Athletic Center*
Capacity: 2,400
Head Coach: *Sister Maria Pares*
Sports Info. Director: *John Maddock*
Athletic Director: *Reverend Paul Dugan*
Conference: *Independent*
1980-81 Record: 13-11
Last Game: 1980-81, Edinboro 74-50
Lettermen Lost: 6
Lettermen Returning: 8
Team Strengths: *Height, speed*
Team Weaknesses: *Inexperience*
Captains: *Diane Cahill, Joanne Robb*
Top Veterans: *Kara Haun (F, 5-10, So., 12.9)*
Diane Cahill (F, 5-7, Sr., 11.7)
Top Newcomers: *Marlane McLean (C, 5-11, Fr.)*
Molly Quattrone (G, 5-4, Fr.)

NIAGARA

December 10 at Niagara

Location: *Niagara University, New York*
Enrollment: 2,950
Colors: *Purple, White and Gold*
Nickname: *Lady Eagles*
Home Court: *NU Student Center*
Capacity: 3,300
Head Coach: *Nancy Riccio*
Sports Info. Director: *Marty Gleason*
Athletic Director: *Nancy Riccio*
Conference: *Independent*
1980-81 Record: 18-9
Last Game: 1980-81, Niagara 68-57
Lettermen Lost: 6
Lettermen Returning: 6
Team Strengths: *Guards, bench*
Team Weaknesses: *Center*
Captains: *Beth Duffy, Linda LeMura*
Top Veterans: *Beth Duffy (G, 5-5, Sr., 8.3)*
Linda LeMura (G, 5-5, Sr., 5.7)
Top Newcomers: *Sue Bott (C, 6-0, Jr.)*
Pamela Lee (F-G, 5-8, Jr.)

LOCK HAVEN STATE

January 14 at Edinboro

Location: *Lock Haven, Pa.*
Enrollment: 2,550
Colors: *Red and White*
Nickname: *Lady Eagles*
Home Court: *Thomas Fieldhouse*
Capacity: 2,000
Head Coach: *Fred Riley*
Sports Info. Director: *Buck O'Reilly*
Athletic Director: *Dr. Charles Eberle*

LOCK HAVEN (CONT'D)

Conference: *Pennsylvania-West*
1980-81 Record: 6-13
Last Game: 1980-81, Edinboro 69-59
Lettermen Lost: 3
Lettermen Returning: 6
Team Strengths: *Good attitude*
Team Weaknesses: *Inexperience*
Captain: *None*
Top Veterans: *Teresa Derksen (C, 6-0, Jr., 12.9)*
Top Newcomers: *Helen Wolfman (C, 6-1, Fr.)*
Sue Kuhn (G, 5-5, Fr.)

CLEVELAND STATE

January 20 at Cleveland State

Location: *Cleveland, Ohio*
Enrollment: 19,500
Colors: *Forest Green and White*
Nickname: *Vikings*
Home Court: *Homer E. Woodling Gymnasium*
Capacity: 2,800
Head Coach: *Alice Khol*
Sports Info. Director: *Merle Levin*
Athletic Director: *Robert F. Busbey*
Conference: *Independent*
1980-81 Record: 16-8
Last Game: 1980-81, Edinboro 57-47
Lettermen Lost: 2
Lettermen Returning: 6
Team Strengths: *Outside shooting*
Team Weaknesses: *Lack of height*
Captains: *Laura Englehart, Wendy Hotz,*
Robin Sobolewski
Top Veterans: *Karen Chaney (G, 5-8, So., 13.7)*
Laura Englehart (G-F, 5-8, Sr., 12.1)
Top Newcomers: *Carlotta Davis (G, 5-7, Fr.)*
Tracey Evans (F, 5-11, Jr.)

CLARION STATE

January 23 at Clarion

Location: *Clarion, Pa.*
Enrollment: 4,700
Colors: *Blue and Gold*
Nickname: *Golden Eagles*
Home Court: *W.S. Tippin Gymnasium*
Capacity: 5,000
Head Coach: *Kathy McGirr*
Sports Info. Director: *Rich Herman*
Athletic Director: *Frank Lignelli*
Conference: *Pennsylvania-West*
1980-81 Record: 7-17
Last Game: 1980-81, Edinboro, 96-59
Lettermen Lost: 3
Lettermen Returning: 4

CLARION (CONT'D)

Team Strengths: *Guards*
Team Weaknesses: *Forwards*
Captain: *Pam Lewis*
Top Veterans: *Pam Lewis (G, 5-6, Jr., 10.3)*
Darby Tatsak (G-F, 5-8, So., 6.8)

GANNON

January 26 at Gannon

Location: *Erie, Pa.*
Enrollment: 4,000
Colors: *Old Gold and Maroon*
Nickname: *Lady Knights*
Home Court: *Gannon Auditorium*
Capacity: 3,000
Head Coach: *Lea Austin*
Sports Info. Director: *Steve Huefner*
Athletic Director: *Howard Elwell*
Conference: *Independent*
1980-81 Record: 15-10
Last Game: 1980-81, Edinboro 73-68
Lettermen Lost: 6
Lettermen Returning: 5
Team Strengths: *Overall individual ability*
Team Weaknesses: *Leadership*
Captains: *Del Braithwaite, Linda Hunley,*
Ellen Matschner
Top Veterans: *Linda Hunley (F, 5-10, Jr., 12.0)*
Del Braithwaite (F-C, 5-11, Sr., 7.7)
Top Newcomers: *Kelly Reedy (G, 5-8, Fr.)*
Lynn Begalla (G, 5-6, Fr.)

CALIFORNIA STATE

January 29 at Edinboro

Location: *California, Pa.*
Enrollment: 4,000
Colors: *Red and Black*
Nickname: *Lady Vulcans*
Home Court: *Hamer Hall*
Capacity: 3,500
Head Coach: *Betsy Mosher*
Sports Info. Director: *Bob Wood*
Athletic Director: *Jeff Petrucci*
Conference: *Pennwood-West*
1980-81 Record: 10-14
Last Game: 1972-73, Edinboro 66-15
Lettermen Lost: 1
Lettermen Returning: 7
Team Strengths: *Shooting, rebounding*
Team Weaknesses: *Defense*
Captain: *TBA*
Top Veterans: *Lisa Scott (G-F, 5-10, Jr., 15.7)*
Lisa Zitalone (F, 5-11, Sr., 14.5)
Top Newcomers: *Lisa Phenizee (C, 6-0, Fr.)*
Jenise Lockhart (G, 5-5, Fr.)

ROBERT MORRIS

January 30 at Edinboro

Location: *Pittsburgh, Pa.*
Enrollment: 4,800
Colors: *Royal Blue*
Nickname: *Lady Colonials*
Home Court: *John Jay Center*
Capacity: 700
Head Coach: *Dan Swalga*
Sports Info. Director: *Randy Cosgrove*
Athletic Director: *TBA*
Conference: *Pennwood-West*
1980-81 Record: 14-11
Last Game: *First Meeting*
Lettermen Lost: 4
Lettermen Returning: 10
Team Strengths: *Guards, forwards*
Team Weaknesses: *No experience in middle*
Captain: *TBA*
Top Veterans: *Kim Basick (G, 5-8, Jr., 12.3)*
Donna Tustin (F, 5-10, Sr., 8.8)
Top Newcomers: *Missy Walls (F, 5-11, Fr.)*
Diane Solomon (G, 5-5, Fr.)
Kim Mong (C, 6-0, Fr.)

INDIANA UNIV. OF PA.

February 5 at Indiana

Location: *Indiana, Pa.*
Enrollment: 12,250
Colors: *Maroon and Slate*
Nickname: *Lady Braves*
Home Court: *Zink Hall*
Capacity: 1,500
Head Coach: *Carolyn Thompson*
Sports Info. Director: *Larry Judge*
Athletic Director: *Herm Sledzik*
Conference: *Pennsylvania-West*
1980-81 Record: 13-10
Last Game: 1980-81, Edinboro 71-70
Lettermen Lost: 3
Lettermen Returning: 5
Team Strengths: *Aggressiveness*
Team Weaknesses: *Size*
Captains: *Carol Hoover, Julie Kibler*
Top Veterans: *Julie Kibler (F-C, 5-10, Jr., 15.3)*
Debbie Gibbons (F, 5-9, So., 7.5)
Top Newcomers: *Adriene Douglas (F-C, 5-10, Fr.)*
Michelle Guin (F-C, 5-10, Fr.)

UNIVERSITY OF AKRON

February 9 at Akron

Location: *Akron, Ohio*
Enrollment: 24,500
Colors: *Blue and Gold*
Nickname: *Lady Zips*
Home Court: *Memorial Hall*

AKRON (CONT'D)

Capacity: 3,200
 Head Coach: *Darlene Young*
 Sports Info. Director: *Rob Fournier*
 Athletic Director: *Gordon Larson*
 Conference: *Independent*
 1980-81 Record: *17-14*
 Last Game: *1978-79, Edinboro 78-53*
 Lettermen Lost: 3
 Lettermen Returning: 11
 Team Strengths: *Depth*
 Team Weaknesses: *Rebounding*
 Captains: *Susan Deckard, Casey O'Connor*
 Top Veterans: *Kathie Sullivan (C, 6-2, Jr., 11.1)*
Casey O'Connor (F, 5-11, Jr., 14.0)
 Top Newcomers: *Ruth Whatmough (F, 5-9, Fr.)*
K.K. Turner (G, 5-5, Fr.)

FAIRMONT STATE

February 12 at Edinboro

Location: *Fairmont, West Virginia*
 Enrollment: *5,500*
 Colors: *Maroon and White*
 Nickname: *Falcons*
 Home Court: *Feaster Center*
 Capacity: *4,000*
 Head Coach: *Joe Lambiotte*
 Sports Info. Director: *Joe Lambiotte*
 Athletic Director: *Colin T. Cameron*
 Conference: *W. Va. Intercollegiate Athletic Conf.*
 1980-81 Record: *9-12*
 Last Game: *First Meeting*
 Lettermen Lost: *None*
 Lettermen Returning: 7
 Team Strengths: *Experience*
 Team Weaknesses: *Speed*
 Captain: *Ann Marie Santo*
 Top Veterans: *Vicki Huffman (C, 5-10, So., 18.2)*
Donna Hopkins (F, 5-8, Jr., 11.4)
 Top Newcomers: *Vickie Bostic (G, 5-5, Fr.)*

SALEM

February 13 at Salem

Location: *Salem, West Virginia*
 Enrollment: *900*
 Colors: *Green and White*
 Nickname: *Lady Tigers*
 Home Court: *T. Ed Davis Building*
 Capacity: *4,000*
 Head Coach: *Laurel Smith*
 Sports Info. Director: *Ed Armstrong*
 Athletic Director: *Bill Dellastatious*
 Conference: *W. Va. Intercollegiate Athletic Conf.*
 1980-81 Record: *6-14*

SALEM (CONT'D)

Last Game: *First Meeting*
 Lettermen Lost: 6
 Lettermen Returning: 6
 Team Strengths: *Outside shooting*
 Team Weaknesses: *Lack of height*
 Captains: *Cathy Zandarski, Shelley Klinek,*
Colleen Wiwczar
 Top Veterans: *Shelley Klinek (G, 5-6, So., 15.0)*
Cathy Zandarski (G, 5-7, Jr., injured)
 Top Newcomers: *Cathy Wolfe (C, 5-11, Fr.)*
Ann Sprague (F, 5-9, Fr.)

CHEYNEY STATE

February 19 at Cheyney

Location: *Cheyney, Pa.*
 Enrollment: *1,900*
 Colors: *Royal Blue and White*
 Nickname: *Lady Wolves*
 Home Court: *Cope Hall Gymnasium*
 Capacity: *2,800*
 Head Coach: *C. Vivian Stringer*
 Sports Info. Director: *Bill Morton*
 Athletic Director: *Ed Lawrence*
 Conferred: *Pennsylvania-East*
 1980-81 Record: *25-3*
 Last Game: *1980-81, Cheyney 88-52, 83-40*
 Lettermen Lost: 5
 Lettermen Returning: 7
 Team Strengths: *Experienced starters*
 Team Weaknesses: *Passing*
 Captains: *Faith Wild, Valerie Walker*
 Top Veterans: *Valerie Walker (F, 6-1, Sr., 19.9)*
Yolanda Laney (F, 5-10, So., 16.6)
 Top Newcomers: *Rosetta Guilford (F, 5-9, So.)*
Paulette Bigelow (G, 5-7, Fr.)

EAST STROUDSBRUG STATE

February 20 at East Stroudsburg

Location: *East Stroudsburg, Pa.*
 Enrollment: *3,500*
 Colors: *Red and Black*
 Nickname: *Warriors*
 Home Court: *Koehler Fieldhouse*
 Capacity: *2,800*
 Head Coach: *Dr. Donna Deutsch*
 Sports Info. Director: *Pete Nevins*
 Athletic Director: *Clyde Witman*
 Conference: *Pennsylvania-East*
 1980-81 Record: *16-7*
 Last Game: *1980-81, East Stroudsburg 61-60*
 Lettermen Lost: 5
 Lettermen Returning: 3
 Team Strengths: *Rebounding*
 Team Weaknesses: *Inexperience*
 Captains: *None*

LADY SCOTS' ALL-TIME SCORES

1966-67 (5-0) Coach: Judy Saurer	51 Indiana 58 50 Villa Maria 32 51 Villa Maria 33 69 California 33 55 U. of Pittsburgh 59 70 Ohio Wesleyan 46	129 Gannon 31 89 Villa Maria 20 50 Cheyney 72 48 Penn State 34 64 Lock Haven 59 44 Slippery Rock 58 63 Tennessee Tech 84 70 Univ. of Tennessee 68 78 Univ. of Kentucky 72 92 Behrend 25 69 Capital 34 66 Slippery Rock 60 101 Mercyhurst 24 64 U. of Pittsburgh 56 60 St. Joseph's 70 78 Ursinus (OT) 86 66 Cheyney (OT) 62 71 Clarion 40 76 Indiana 56 72 Penn State 65 62 Slippery Rock 55 64 Temple 45 70 Lock Haven 60 Eastern Regionals 65 West Chester 64 59 St. Joseph's 66	65 Cheyney 84 82 Slippery Rock 65 84 Indiana 60 103 Akron 62 84 Lock Haven 66 91 St. Joseph's (OT) 98 78 Penn State 90 68 U. of Maryland 93 95 Clarion 77 64 U. of Pittsburgh 80 75 Slippery rock 78 EAIW Regionals 85 Penn State 81 63 Immaculata 75
1967-68 (6-2) Coach: Judy Saurer	51 Villa Maria 32 45 Thiel 27 40 Allegheny 25 61 Grove City 43 38 Westminster 43 40 Allegheny 36 34 Thiel 25 29 Slippery Rock 53	1972-73 (10-0) Coach: Judy Saurer	1913 1657
1968-69 (7-1) Coach: Judy Saurer	42 Thiel 34 62 Villa Maria 27 58 Villa Maria 32 66 Allegheny 25 26 Slippery Rock 65 39 Allegheny 31 42 Thiel 16 42 Westminster 31	1973-74 (7-4) Coach: Judy Saurer	1978-79 (18-9) Coach: Judy Saurer
1969-70 (8-2) Coach: Judy Saurer	41 Villa Maria 40 39 Youngstown 12 55 Villa Maria 23 33 U. of Pittsburgh 43 29 Gannon 26 26 Slippery Rock 52 65 Thiel 24 52 Clarion 25 56 Chatham 38 68 Thiel 26	1974-75 (17-6) Coach: Judy Saurer	ESC Opp. 81 Cleveland State 64 92 Gannon 60 58 Purdue 57 77 Penn State 82 67 U. of Pittsburgh 48 68 Cortland 58 68 Niagara 61 79 LaSalle 62 67 U. of Maryland 85 67 Old Dominion 93 68 Virginia Common 47 70 Villanova 49 65 St. Joseph's 76 71 Michigan State 50 89 Pitt-Johnstown 58 60 Slippery Rock 61 69 U. of Pittsburgh 54 91 Indiana 60 71 Kent State 66 76 Lock Haven 60 50 Penn State 60 62 West Virginia 51 50 Cheyney 64 71 Clarion 62 78 Akron 53 49 Slippery Rock 51 56 Rutgers 95
1970-71 (5-4) Coach: Judy Saurer	51 Youngstown 44 70 Mercyhurst 25 58 Gannon 35 48 Indiana 62 52 California 35 64 Mercyhurst 57 37 U. of Pittsburgh 40 54 Villa Maria 62 26 Slippery Rock 61	1974-75 (17-6) Coach: Judy Saurer	1866 1406
1971-72 (5-3) Coach: Judy Saurer	64 Mercyhurst 40 50 Mercyhurst 58	1975-76 (20-6) Coach: Judy Saurer	1976-77 (17-7) Coach: Judy Saurer
ESC Opp. 64 Mercyhurst 40 50 Mercyhurst 58	ESC Opp. 50 Allegheny 33 68 Mercyhurst 29 74 Youngstown 42 56 Villa Maria 28 67 Allegheny 15 51 U. of Pittsburgh 39 66 Mercyhurst 44 63 Villa Maria 31 66 California 15 37 Indiana 35	ESC Opp. 48 Lock Haven 49 47 Mercyhurst 38 58 Youngstown 31 56 Clarion 40 62 Niagara 29 35 Slippery Rock 75 57 Behrend 42 43 Ohio State 70 50 U. of Pittsburgh 54 64 Villa Maria 46 36 Indiana 34	ESC Opp. 100 Jamestown C.C. 42 95 West Virginia 48 75 Penn State 78 92 Slippery Rock 75 103 Buffalo State 27 120 Gannon 22 81 Jamestown C.C. 47 85 LaSalle 65 76 Queens College 66 88 William Patterson 56 72 Montclair 83 74 U. of Md. (OT) 75 71 Frostburg 66 71 U. of Pittsburgh 66 81 Slippery Rock 77 80 Clarion 67 72 Lock Haven 82 56 St. Joseph's 68 77 Temple 57 90 Penn State 77 60 Cheyney 65 83 Slippery Rock 76 84 U. of Pittsburgh 87 118 Indiana 86
ESC Opp. 64 Mercyhurst 40 50 Mercyhurst 58	ESC Opp. 51 Indiana 58 50 Villa Maria 32 51 Villa Maria 33 69 California 33 55 U. of Pittsburgh 59 70 Ohio Wesleyan 46	ESC Opp. 104 Fredonia 25 70 Frostburg 45 50 Slippery Rock 78 65 Penn State 55 58 Frostburg 54 58 Slippery Rock 73 109 Gannon 42 84 Miami-Dade 46 81 Capital 50 45 Slippery Rock 62 74 U. of Pittsburgh 52 71 Penn State 67 49 Lock Haven 61 98 Mercyhurst 27 69 Cheyney (OT) 67 49 Ursinus 52 85 Clarion 46 81 Behrend 36 69 Indiana 54 44 Slippery Rock 53 80 Indiana 46 84 Bloomsburg 52 68 St. Joseph's 60	1977-78 (13-12) Coach: Judy Saurer
ESC Opp. 64 Mercyhurst 40 50 Mercyhurst 58	ESC Opp. 51 Indiana 58 50 Villa Maria 32 51 Villa Maria 33 69 California 33 55 U. of Pittsburgh 59 70 Ohio Wesleyan 46	ESC Opp. 104 Fredonia 25 70 Frostburg 45 50 Slippery Rock 78 65 Penn State 55 58 Frostburg 54 58 Slippery Rock 73 109 Gannon 42 84 Miami-Dade 46 81 Capital 50 45 Slippery Rock 62 74 U. of Pittsburgh 52 71 Penn State 67 49 Lock Haven 61 98 Mercyhurst 27 69 Cheyney (OT) 67 49 Ursinus 52 85 Clarion 46 81 Behrend 36 69 Indiana 54 44 Slippery Rock 53 80 Indiana 46 84 Bloomsburg 52 68 St. Joseph's 60	ESC Opp. 56 Australian Nat't 59 65 West Virginia 56 36 Penn State 73 72 U. of Cincinnati 39 74 U. of Pittsburgh 77 105 Gannon 69 116 Jamestown C.C. 23 2 Wilm. Patterson (F) 0 115 Jamestown C.C. 28 90 West Virginia 65 76 Immaculata 86 71 LaSalle 73

TOP CAREER SCORERS AND REBOUNDEES

1979-80 (Cont'd)	58 Villanova 90
ESC	66 Slippery Rock 65
Opp.	40 Penn State 100
90 Indiana 68	50 U. of Pittsburgh 58
77 W. Virginia (OT) 73	71 Indiana 70
56 Kent State 48	96 Clarion 59
87 Lock Haven 53	81 West Virginia 74
87 Duquesne 64	40 Cheyney 83
79 Villanova (OT) 75	69 Lock Haven 59
104 Clarion 62	57 Niagara 68
70 Gannon 61	73 Gannon 68
62 Univ. of Michigan 54	71 Duquesne 60
64 Michigan State 74	64 Slippery Rock 78
57 Univ. of Detroit 74	60 East Stroudsburg 61
87 Slippery Rock 57	48 Kent State 59
2483	2232

1980-81 (11-16)	1759	1905
Coach: Kathleen Lipkovich		
ESC	Opp.	
103 St. Bonaventure 54		
57 Cleveland State 47		
60 Syracuse 63		
52 Cheyney 88		
62 Fair. Dickinson 86		
90 West Virginia 101		
74 Canisius 50		
79 Cortland 58		
50 George Wash. 53		
61 N. Kentucky 92		
59 Indiana State 83		
68 LaSalle 78		



TOP CAREER SCORERS

1. Tina Skidmore	1337	1977-81
2. Audrey Scott	1191	1976-80
3. Lori Dolby	1167	1977-80
4. Sheilah Collins	1001	1974-77
5. Kate Kosewicz	822	1974-77
6. Barb Moran	750	1975-78
7. Erika Sauer	700	1974-77
8. Linda Shorter	561	1979-81
9. Karen Petroski	469	1976-80
10. Kathy Nelson	445	1975-78

TOP CAREER REBOUNDEES

1. Tina Skidmore	809	1977-81
2. Audrey Scott	654	1976-80
3. Linda Shorter	564	1979-81
4. Kate Kosewicz	530	1974-77
5. Mag McCarthy	490	1971-75
6. Karen Petroski	423	1976-80
7. Erika Sauer	343	1974-77
8. Mary Ann Bralich	276	1975-79
9. Carol Fletcher	273	1972-76
10. Donnene Disco	238	1977-79

EDINBORO CENTURY CLUB

ESC	OPP	YEAR	ESC	OPP	YEAR
129	Gannon	31 1975-76	104	Fredonia	25 1974-75
120	Gannon	22 1976-77	104	Clarion	62 1979-80
118	Indiana	86 1976-77	103	Buffalo State	27 1976-77
116	Jamestown C.C.	23 1977-78	103	St. Bonaventure	54 1980-81
115	Jamestown C.C.	23 1977-78	103	Akron	62 1977-78
109	Gannon	42 1974-75	101	Mercyhurst	24 1975-76
105	Gannon	69 1977-78	100	Jamestown C.C.	42 1976-77

TEAM RECORDS - SEASON

Most Wins	22-12	Judy Saurer	1979-80
Best Season	10-0	Judy Saurer	1972-73
Scoring Average	83.1		1976-77
Shooting Percentage	44.1		1976-77
Free Throw Percentage	68.2		1976-77
Rebounding Average	53.8		1980-81
Rebounding Percentage	53.6		1976-77
Field Goals	1073	(34 games)	1979-80
Consecutive Victories	10		1972-73

TEAM RECORDS - GAME

Points	129	Gannon	1975-76
Points, Half	69	Indiana	1976-77
Field Goals	60	Gannon	1975-76
Free Throws	34-45	Indiana	1976-77
	26-39	Temple	1976-77
Free Throw Pct.	94.7 (18-19)	Pitt	1976-77
Points, Two Teams	204	ESC 118, Indiana 86	1976-77

INDIVIDUAL RECORDS - SEASON

MOST POINTS

Lori Dolby	552 (30 games)	1979-80
Audrey Scott	511 (34 games)	1979-80
Tina Skidmore	434 (32 games)	1979-80
Lori Dolby	419 (27 games)	1978-79

HIGHEST SCORING AVERAGES

Lori Dolby	18.4 (30 games)	1979-80
Sheilah Collins	16.1 (22 games)	1974-75
Lori Dolby	15.5 (27 games)	1978-79
Audrey Scott	15.0 (34 games)	1979-80

BEST SHOOTING PERCENTAGES

Sheilah Collins	51.9 (24 games)	1975-76
Tina Skidmore	51.7 (32 games)	1979-80

BEST FOUL SHOOTING PERCENTAGES (50 attempts)

Barb Moran	77.6 (66-85)	1976-77
Audrey Scott	74.6 (47-68)	1979-80
Lori Dolby	74.2 (46-62)	1979-80

MOST REBOUNDS

Linda Shorter	322	1979-80
---------------	-----	---------

BEST REBOUNDING AVERAGE

Mag McCarthy	11.6 (10 games)	1972-73
Mag McCarthy	10.4 (26 games)	1973-74
Mag McCarthy	10.1 (23 games)	1974-75

MOST ASSISTS

Sheilah Collins	132 (24 games)	1975-76
-----------------	----------------	---------

MOST BLOCKED SHOTS

Linda Shorter	68 (25 games)	1980-81
Kate Kosewicz	60 (23 games)	1974-75

MOST STEALS

Audrey Scott	92 (34 games)	1979-80
--------------	---------------	---------

INDIVIDUAL RECORDS - GAME

MOST POINTS

Tina Skidmore	41	Clarion	1980-81
Kate Kosewicz	36	Gannon	1974-75
Lori Dolby	34	Pitt	1978-79

MOST FIELD GOALS

Tina Skidmore	18	Clarion	1980-81
Lori Dolby	16	Pitt	1978-79
Lori Dolby	16	Pitt-Johnstown	1978-79

MOST FOUL SHOTS MADE

Karen Petroski	12-13	Lock Haven	1977-78
Kathy Nelson	12-13	Penn State	1977-78
Sheilah Collins	11-12	Cheyney	1974-75

GYMNASTS EYE IMPROVEMENT

To the casual observer, Edinboro State gymnastics coach Carol Caler is in a frustrating position. Now in her tenth year at the Edinboro helm, Caler directs a Fighting Scot gymnastics program which has never produced a winning record. Yet the personable Fighting Scot mentor is enthusiastic about this season's prospects. "A winning season is just a matter of time," observes Caler. "There is a feeling of pride on this year's team. They are capable of producing our highest team score ever."

The source of the pride felt by this year's squad is undoubtedly the consistent improvement that the program has shown over the years. The Lady Scots are one of the few teams that can boast an average team score improvement of ten points in each of the past years. "This improvement was important to us as a team," commented Caler. "We set that as a goal for ourselves and have a feeling of accomplishment for having achieved it."

The immediate goal for this year's Lady Scots is to increase their team and individual levels of difficulty. Toward that end, the schedule is weighted with five AIAW Division II foes, while next year's schedule is expanded to ten Division II dual meets. "We are sufficiently experienced in intermediate competition," Caler analyzes, "but we are virtual newcomers to high caliber gymnastics. That's where we've set our sights."

Leading this year's squad, which lost only one senior from last year's team, are sophomore Tammy Grieser (all-around) and freshman Lori Mikula (all-around). This talented pair is backed by seniors Brenda Carpenter (bars) and Wendy Smith (all-around) who Caler says have improved year by year and are now at a difficulty level which will add depth to the team. Individual performers include junior returnees Denise Wells (bars) and Laurie Mariotti (floor), along with freshmen newcomers Dorette Kearney (floor, beam, vault) Marcy Ethenridge (floor, vault), Dottie Doyle (floor, vault), Linda Durborow (beam), Lisa Margaria (floor, beam), and Cathleen O'Donoghue (floor).



SENIORS - (L-R): Wendy Smith, Brenda Carpenter and Laurie Mariotti.



Coach Carol Caler

The 1981-82 gymnastics season at Edinboro State College marks the tenth anniversary of head coach Carol Caler's arrival at ESC, and, not coincidentally; it also marks the tenth anniversary of gymnastics competition here at the Boro.

A 1967 graduate of Slippery Rock State College, where she captained the 1966-67 Rocket gymnastics squad, Caler became the first female gymnast from the Rock to ever qualify for the national championships. Following her graduation from Slippery Rock, the Shamokin, Pa. native piloted three consecutive (1968-1972) Rochester (Pa.) High School gymnastic squads to district crowns. Subsequently, while completing the requirements for her M.S. degree at West Virginia University, Caler initiated the formation of that school's intercollegiate gymnastics program, as she did at Edinboro upon her arrival in 1972. Two years later, Caler's Lady Scot gymnasts placed second at the Pennsylvania Conference State gymnastics meet.

The Lady Scot coach, who is an instructor in the health and physical education department at Edinboro, lives in Cambridge Springs with her husband, Gerard.



EDINBORO STATE COLLEGE 1981-82 WOMEN'S GYMNASTICS TEAM - Front Row (L-R): Dottie Doyle, Lori Mikula, Coach Caler, Tammy Greiser and Denise

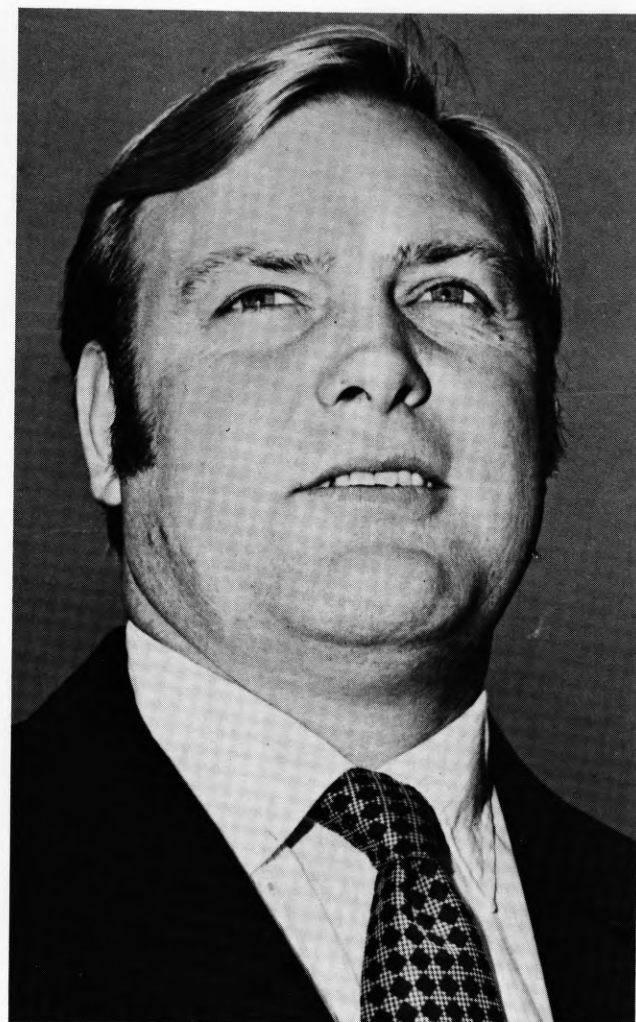
Wells. Back Row (L-R): Cathy O'Donoghue, Marcy Etheridge, Brenda Carpenter, Wendy Smith, Laurie Mariotti, Mitz Kearney and Linda Durborow.

EDINBORO STATE COLLEGE 1981-82 WOMEN'S GYMNASTICS ROSTER

NAME	EVENT	CLASS	HOMETOWN/HIGH SCHOOL
** Carpenter, Brenda	Bars	Sr.	Lafayette, N.J./High Point Regional
Doyle, Dottie	Floor, Vault	Fr.	Stoneboro, Pa./Lakeview
Durborow, Linda	Beam	Fr.	Harrisburg, Pa./Central Dauphin
Etheridge, Marcy	Floor, Vault	Fr.	Meadville, Pa./Meadville High
* Greiser, Tammy	AA	So.	Perkasie, Pa./Pennridge High
Kearney, Dorette	Floor, Beam, Vault	Fr.	Stoneboro, Pa./Lakeview
Margaria, Lisa	Floor, Beam	Fr.	Evans City, Pa./Seneca Valley
** Mariotti, Laurie	Floor	Jr.	Edinboro, Pa./General McLane
Mikula, Lori	AA	Fr.	Aliquippa, Pa./Hopewell
O'Donoghue, Cathleen	Floor	Fr.	Angola, N.Y./Lake Shore
*** Smith, Wendy	AA	Sr.	Erie, Pa./McDowell
** Wells, Denise	Bars	Jr.	Waterford, Pa./Seneca

*Varsity Letters

CARO LOOKS TO CONTINUE WINNING WAYS



Coach Fred Caro

Fred Caro is commencing his 19th year as head wrestling coach at Edinboro State College, where he has guided the Fighting Scots to winning ways in one of the best small college wrestling conferences in the nation. The Springdale, Pa. native has directed the ESC grapplers to an impressive 132-84-3 mark during his reign, including a 10-3-1 mark in 1976-77, an 11-1 record in 1977-78, and an 8-3 slate in 1978-79 when the Scots captured 11th, 12th and 11th places, respectively, at the NAIA national tournaments.

Caro has the distinction of being honored locally, nationally and internationally. He served as president of the NAIA National Wrestling Coaches Association and was selected to lead the USA-NAIA Free Style Wrestling Team tour of Japan and Korea during the summer of 1977. In addition, he is a former chairman of the Health and Physical Education Department at the College.

The veteran ESC mentor received his B.S. degree in Physical Education from Lock Haven State College in 1958, before moving on to receive both his M.S. in 1963 and Certificate of Advanced Study in 1971 from Springfield College, Springfield, Mass.

He began his coaching career at Tyrone Area High School in Tyrone, Pa., where he served for three years as assistant coach of the football, wrestling, and track teams. In addition, Caro was an assistant wrestling coach at Springfield College while completing the academic requirements for his M.S. degree. His coaching and teaching experience also includes tenure at Derry Area High School, Derry, Pa.

He and his wife, Ann, reside in Edinboro with their six children.

GRAPPLERS IN YOUTH MOVEMENT

Under the direction of Edinboro State mentor Fred Caro, who has registered an 18 year 132-83-3 record, a young but talented crop of Fighting Scot grapplers will strive to improve upon their 4-4 mark of a year ago. Caro suffered the loss of his two top wrestlers from last year's squad in Greg Astorino (25-9) and Gary Astorino (18-5-1).

"We'll have a young team again this year," commented Caro. "We're armed with a crop of freshmen who need experience and will form the nucleus of this year's team," continued the Edinboro mentor.

Leading the way for the Scots will be last year's most valuable wrestler, senior Greg Sirb. The 118-pound Sharon native ended the 1981 season with an 18-10-1 record. He placed sixth in the Wright State tournament, Pennsylvania Conference, and NAIA National Tourney. Sirb earned a championship berth at the Midwest Classic Tourney and a third in the Edinboro Invitational. He was a representative of the USA-NAIA free-style wrestling team which toured Japan in 1980.

Following Sirb in the 126-pound weight class will be sophomore letter winner Bret Campbell. The Edinboro native ended his first season with a 5-12 record. He placed third in the Edinboro Invitational and sixth in the Pennsylvania Conference. A strong contender at 126 along with Campbell will be freshman Mike Conklin from Pittsburgh.

Competing for a second season at 134 will be sophomore Dallas Bryan of Delmar, Delaware. Bryan grappled his way to a 7-11 record which was highlighted by a third place finish in the Edinboro Invitational last year. He also posted the quickest fall of only 18 seconds. Bryan will be backed-up at 134 by Pittsburgh freshman Dominic Orfitelli.

Dropping one weight class from last year will be 142-pound Ron Hamrick from Union City. Hamrick concluded the 1981 campaign with a 7-9 mark.

Making first appearances in the 150-pound weight class will be sophomore Jim Saloum of Corry and Saegertown freshman Bryan Browder.

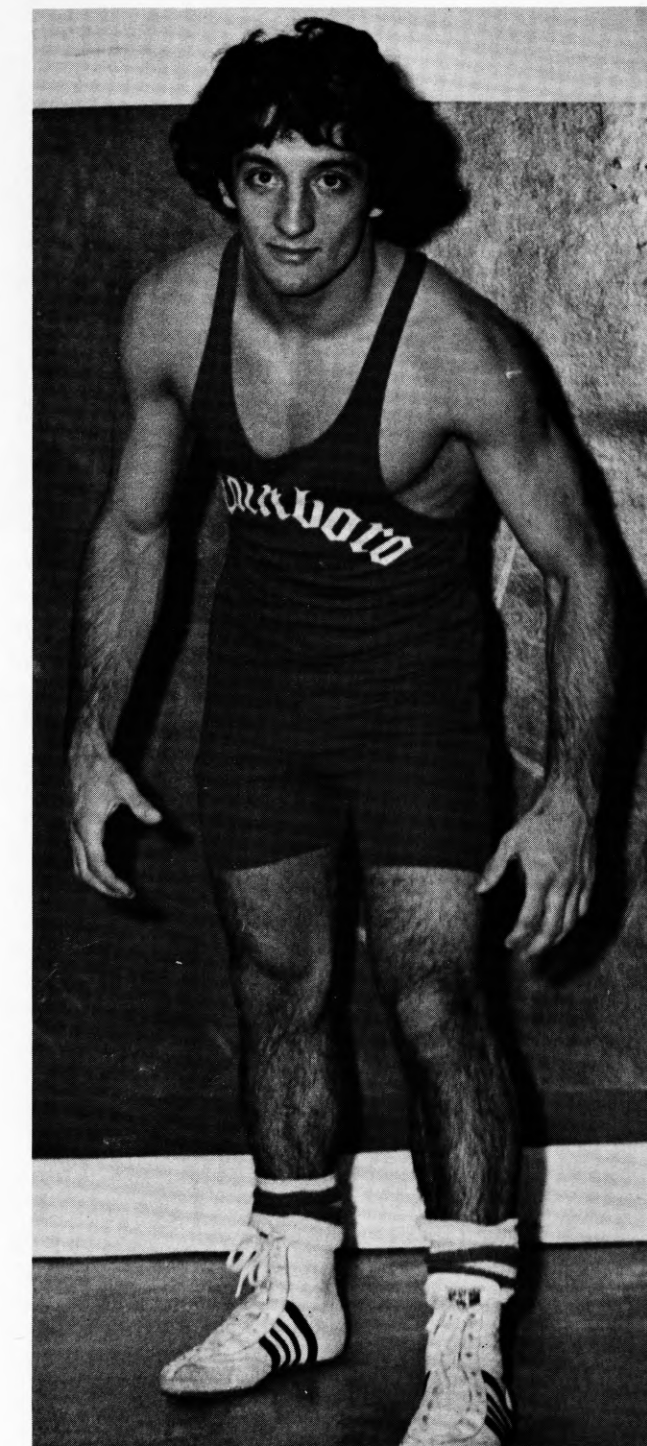
Competing at the 158-pound weight class will be freshman Joe Dzubara from Akron, Ohio.

Senior Ed Wisniewski will handle the 167-pound chores. The Chagrin Falls, Ohio stalwart posted a 3-9 record and a second place finish at the Edinboro Invitational last year.

Corry's Joe Amoroso will represent the Fighting Scots at the 170-pound weight class. The 5-8 freshman was also a member of the Edinboro State football team this past fall.

Titusville freshman Don O'Neill is another promising newcomer who will grapple on the mats at the 190-pound category.

Leading the way in the unlimited division will be sophomore Fred Caro of Edinboro. Caro concluded his freshman campaign with a 7-14 record and a fourth place finish in the Pennsylvania Conference. Caro shares the weight class with junior Kirk Hagerich of Elyria, Ohio.



Greg Sirb

1981-82 WRESTLING ROSTER

NAME	HT.	WT.	CLASS	HOMETOWN/HIGH SCHOOL
Amoroso, Joe	5-8	177	Fr.	Corry, Pa./Corry
Browder, Bryan	5-9	142	Fr.	Saegertown, Pa./Cambridge
* Bryan, Dallas	5-7	134	So.	Delmar, Del./Delmar
* Campbell, Bret	5-6	126	So.	Edinboro, Pa./General McLane
* Caro, Fred	6-3	UNL	So.	Edinboro, Pa./General McLane
Conklin, Mike	5-6	118	Fr.	Pittsburgh, Pa./Plum
Dzubara, Joseph	5-10	167	Fr.	Akron, Ohio/Akron Hoban
Hagerich, Kirk	5-10	UNL	Jr.	Elyria, Ohio/Brookside
** Hamrick, Ron	5-7	150	Jr.	Union City, Pa./Union City
Holman, Ron	5-7	126	Fr.	Erie, Pa./Academy
Lynde, Mark	5-11	134	Sr.	Erie, Pa./Iroquois
O'Neill, Don	6-0	190	Fr.	Titusville, Pa./Titusville
Orfitelli, Dominic	5-8	134	Fr.	Pittsburgh, Pa./Swissvale
Ryan, Russell	5-8	118	Jr.	Hanover, Pa./Hanover
Saloum, James	5-4	142	So.	Corry, Pa./Corry
*** Sirb, Greg	5-4	118	Sr.	Sharon, Pa./Sharon
** Wisniewski, Ed	5-10	167	Sr.	Chagrin Falls, Ohio/Kenston

*Varsity Letters

SWIMMERS POINT TO NATIONALS



Head Coach: Ed Erdos

Since the appointment of Ed Erdos as Edinboro State's swimming coach in 1971 the fortunes of the Fighting Scot tankers have improved dramatically. In Erdos' ten years at the Edinboro helm, the Scots have compiled a 56-34-1 overall record, including a perfect 10-0 slate in 1974-75 when ESC captured one of its three (1974-75, 1975-76, 1977-78) 11th-place NCAA Division II finishes. Additionally, Scot swimmers have splashed to runnerup positions in the Pennsylvania Conference five times during Erdos' rein and over the last five years 16 Edinboro swimmers have captured 72 All-American titles.

A Bulter, Pa. native and 1965 graduate of Slippery Rock, Erdos is a former NAIA All-American in the 100 and 200-yard backstroke. He not only splashed to Rocket records in those events, but also won titles at the Pennsylvania and Penn-Ohio Conference championships in both his junior and senior years.

After graduation from Slippery Rock with a health education degree in 1965, Erdos tutored a Cleveland area AAU team for a year before being named head coach at Berea, Ohio's Midpark High School. From 1967 until his departure in 1970, his teams compiled an outstanding 60-28 scholastic record, including a seventh-place state ranking in 1968 and a ninth-place finish in 1970.

The Edinboro State coach and his wife, Patricia, who reside in Edinboro, have a daughter, Tiffany (12) and son, Ted, (10).

Although All-American co-captains Mike Pyle and Bob Wright were lost through graduation Coach Ed Erdos feels his Fighting Scot swimmers could be stronger than last year's 6-3-1 edition. Erdos saw his tankers splash to a fifteenth place finish at the NCAA Division II national championships last season and he believes this squad has more overall depth than last year's team.

"We're shooting for a spot in the top ten at nationals this year," projected Erdos who have compiled a sparkling 63-30-1 slate during his past ten years at the Edinboro helm. During that span his swimmers and divers have earned a total of seventy All-American awards.

Pacing the swimming Scots will be junior All-American Robin Doyle who garnered a twelfth place finish in the 200-yard backstroke with a 1:58.0 clocking. Doyle, who captains his Scot squad, was also the 100-yard backstroke conference champ last year and will lead Edinboro State's 400-yard freestyle relay team that is pointing for a top finish in both the conference and the national championships. Joining Doyle will be freshman Ed Williams, sophomore Dave Bond, and sophomore Mike Carney.

Returning letter winners include Bill Markiewicz (freestyle), Kirby Burkholder (backstroke), Kevin McIntyre (diver), Rick Hamilton (freestyle), Greg Pyle (butterfly), Tim Sheehan (breaststroke), Tom Transue (freestyle), Gene Jaskiewicz (freestyle), and Gary Darr (freestyle).



All-American Robin Doyle



Edinboro State's 1981-82 Swim Team: (First row L-R) Lolli Lucas, Chris Kunath, Shari Rock, Gary Darr, Bill Emeason, Matt Thayer, Mark Carney, Gene Jaskiewicz, Rick Hamilton, Robin Doyle, Mike Geisecke.

Second Row (L-R) Scott Williams, Kevin Wells, Ben Hartzberg, Kevin McIntyre, Tim Sheehan, Greg Pyle, Tom Transue, Dave Bond, Todd Franklin. (Top row) Kirby Burkholder.

EDINBORO STATE COLLEGE 1981-82 SWIMMING ROSTER

NAME	EVENT	CLASS	HOMETOWN/HIGH SCHOOL
Bond, Dave	Freestyle	So.	Carlisle, Pa./Carlisle
** Burkholder, Kirby	Backstroke	Jr.	Harrisburg, Pa./Carlisle
* Carney, Mike	Freestyle	So.	Euclid, Ohio/Euclid
* Darr, Gary	Freestyle	So.	Erie, Pa./East
** Doyle, Robin	Backstroke/Free	Jr.	Harrisburg, Pa./Central Dauphin
Emeason, Bill	Freestyle	Fr.	Franklin, Pa./Franklin
Franklin, Todd	Diver	Fr.	Youngsville, Pa./Youngsville
Geisecke, Mike	Freestyle	Fr.	Erie, Pa./East
** Hamilton, Rick	Freestyle	Jr.	Lockport, N.Y./Lockport
** Jaskiewicz, Eugene	Freestyle	Jr.	Euclid, Ohio/Euclid
Kunath, Chris	Breaststroke	Jr.	Erie, Pa./Upper St. Clair
** Markiewicz, Bill	Freestyle	Jr.	Erie, Pa./Strong Vincent
* McIntyre, Kevin	Diver	So.	Pittsburgh, Pa./Greater Latrobe
* Pyle, Greg	Butterfly	So.	Euclid, Ohio/Euclid
Raible, James	Butterfly	Fr.	Allison Park, Pa./Shaler
** Sheehan, Tim	Breaststroke	Jr.	Pittsburgh, Pa./Greensburg
Thayer, Matthew	Butterfly/Free	Fr.	Zelienople, Pa./Seneca Valley
** Transue, Tom	Freestyle	Jr.	Easton, Pa./Easton
Wells, Kevin	Freestyle	Fr.	Indiana, Pa./Indiana
Williams, Edward	Freestyle	Fr.	Waterford, Pa./Fort LeBoeuf

*Varsity Letters

LADY SCOTS' AGAINST THEIR OPPONENTS

TEAM	WON	LOST	LATEST GAME	TEAM	WON	LOST	LATEST GAME
Akron	2	0	1978-79	Maryland	0	4	1979-80
Alabama	1	0	1979-80	Mercyhurst	8	1	1975-76
Allegheny	7	0	1972-73	Miami-Dade	1	0	1974-75
Alliance	1	0	1966-67	Miami (Fla.)	1	0	1979-80
Australian National	0	1	1977-78	Michigan	1	0	1979-80
Behrend	3	0	1975-76	Michigan State	1	1	1979-80
Bloomsburg	1	0	1974-75	Montclair	0	1	1976-77
Buffalo	1	0	1975-76	Niagara	3	1	1980-81
Buffalo State	1	0	1976-77	Northern Kentucky	0	2	1980-81
California	3	0	1972-73	Ohio State	0	1	1973-74
Canisius	1	0	1980-81	Ohio Wesleyan	1	0	1971-72
Capital	2	0	1975-76	Old Dominion	0	1	1978-79
Chatham	1	0	1969-70	Penn State	6	7	1980-81
Cheyney	2	7	1980-81	Pittsburgh	6	9	1980-81
Cincinnati	1	0	1977-78	Pitt-Johnstown	1	1	1979-80
Clarion	9	0	1980-81	Purdue	1	0	1978-79
Cleveland State	3	0	1980-81	Queens	1	0	1976-77
Cortland	3	0	1980-81	Rutgers	0	1	1978-79
Dayton	1	0	1979-80	St. Bonaventure	2	0	1980-81
Detroit	0	1	1979-80	St. Joseph's	1	6	1979-80
Duquesne	2	0	1980-81	Slippery Rock	9	14	1980-81
East Stroudsburg	0	1	1980-81	Syracuse	0	1	1980-81
Fairleigh Dickinson	0	1	1980-81	Temple	2	0	1976-77
Fredonia	1	0	1974-75	Tennessee	1	0	1975-76
Frostburg	3	0	1976-77	Tennessee Tech	0	1	1975-76
Gannon	10	0	1980-81	Thiel	8	0	1969-70
George Washington	0	1	1980-81	Upper Iowa	1	0	1979-80
Grove City	1	0	1967-68	Ursinus	0	2	1975-76
Immaculata	0	2	1977-78	Villa Maria	11	1	1975-76
Indiana (Pa.)	10	2	1980-81	Villanova	2	1	1980-81
Indiana State	1	1	1980-81	Virginia Commonwealth	1	0	1978-79
Jamestown C.C.	4	0	1977-78	West Chester	1	0	1975-76
Kent State	2	1	1980-81	West Point	1	0	1979-80
Kentucky	1	0	1975-76	West Virginia	6	1	1980-81
Lamar	0	1	1979-80	Westminster	2	1	1968-69
LaSalle	2	3	1980-81	William Patterson	2	0	1977-78
Lock Haven	6	3	1980-81	Youngstown	4	0	1973-74

LADY SCOTS' RESULTS BY SEASONS

YEAR	G			POINTS		YEAR	G			POINTS	
	G	W	L	FOR	AGST		G	W	L	FOR	AGST
1966-67	5	5	0	159	121	1974-75	23	17	6	1645	1203
1967-68	8	6	2	338	284	1975-76	26	20	6	1866	1406
1968-69	8	7	1	377	261	1976-77	24	17	7	1994	1558
1969-70	10	8	2	464	309	1977-78	25	13	12	1913	1657
1970-71	9	5	4	460	421	1978-79	27	18	9	1859	1687
1971-72	8	5	3	460	359	1979-80	34	22	12	2483	2232
1972-73	10	10	0	598	311	1980-81	27	11	16	1759	1905
1973-74	11	7	4	556	508	TOTALS	255	171	84	16,931	14,222

FOLLOW THE FIGHTING SCOTS



EDINBORO STATE WINTER SPORTS 1981-82

MEN'S BASKETBALL
COACH: GUY CONTI

Nov. 27-28		at Fairmont Tournament (7:00-9:00)
Dec. 2	WED	at Univ. of Pitt-Bradford
Dec. 5	SAT	GANNON UNIVERSITY
Dec. 10	THU	at Behrend College
Dec. 11	FRI	ALLIANCE
Dec. 12	SAT	at Robert Morris College
Dec. 14	MON	MERCYHURST COLLEGE
Jan. 8-9		at Allegheny Tournament (7:00, 9:00)
Jan. 13	WED	*SLIPPERY ROCK STATE
Jan. 16	SAT	*CALIFORNIA STATE
Jan. 18	MON	at Univ. of Pitt-Johnstown
Jan. 20	WED	*at Lock Haven State
Jan. 23	SAT	*CLARION STATE
Jan. 25	MON	DAEMEN COLLEGE
Jan. 27	WED	*at Indiana Univ. of Pa.
Jan. 30	SAT	GROVE CITY COLLEGE
Feb. 1	MON	at LaRoche College
Feb. 3	WED	*at Slippery Rock State
Feb. 6	SAT	*at California State
Feb. 8	MON	at Mercyhurst College
Feb. 10	WED	*LOCK HAVEN STATE
Feb. 13	SAT	*at Clarion State
Feb. 15	MON	at Gannon Univ.
Feb. 17	WED	*INDIANA UNIV. OF PA
Feb. 23	TUE	Pa. Conf. Championship

*Pennsylvania Conference Games
All games are played at 8:00 p.m., unless otherwise noted.

WOMEN'S BASKETBALL
COACH: DR. KATHLEEN LIPKOVICH

Nov. 20-21		DGWS Tournament
Nov. 30	MON	at W. Virginia Univ. (7:00)
Dec. 2	WED	at Canisius (6:00)
Dec. 7	MON	SLIPPERY ROCK (7:00)
Dec. 10	THU	at Niagara Univ. (5:45)
Jan. 14	THU	LOCK HAVEN STATE (7:30)
Jan. 20	WED	at Cleveland State U. (6:00)
Jan. 23	SAT	at Clarion State (6:00)
Jan. 26	TUE	at Gannon Univ. (7:00)
Jan. 29	FRI	CALIFORNIA STATE (6:30)
Jan. 30	SAT	ROBERT MORRIS (6:00)
Feb. 3	WED	at Slippery Rock (6:00)
Feb. 5	FRI	at Indiana U. of Pa. (5:00)
Feb. 9	TUE	at Akron University (6:00)
Feb. 12	FRI	at Fairmont State (7:00)
Feb. 13	SAT	at Salem State (1:00)
Feb. 16	TUE	DUQUESNE UNIV. (6:00)
Feb. 19	FRI	at Cheyney State (6:00)
Feb. 20	SAT	at East Stroudsburg (12:00)
Feb. 26-27		PA CONF. AT EDINBORO

WOMEN'S GYMNASTICS
COACH: CAROL CALER

Jan. 16	SAT	Clarion and E. Stroudsburg at Clarion (1:00)
Jan. 26	TUE	at Youngstown (1:00)
Jan. 29	FRI	at Pitt-Johnstown (5:00)
Feb. 5	FRI	at Indiana of Pa. (5:00)
Feb. 13	SAT	at Brockport (2:00)
Feb. 23	TUE	LOCK HAVEN (4:00)
Feb. 26-27		Pa. Conf. at E. Stroudsburg

EDINBORO STATE COLLEGE College Calendar 1981-82

FIRST SEMESTER:
Registration Tue., Sept. 1
Classes Begin Wed., Sept. 2
Homecoming Sat., Oct. 10
Mid-Term Sat., Oct. 17
Thanksgiving Recess
Begins Tue., Nov. 24
Thanksgiving Recess
Ends Mon., Nov. 30
Last Day of Classes Thurs., Dec. 17
Final Exams Begin Fri., Dec. 8
Semester Ends Tue., Dec. 22

SECOND SEMESTER:
Registration Tue., Jan. 12
Classes Begin Wed., Jan. 13
Mid-Term Sat., March 6
Spring Recess Begins Wed., March 10
Spring Recess Ends Mon., March 21
Easter Recess Begins Thurs., Apr. 8
Easter Recess Ends Tue., Apr. 13
Last Day of Classes Mon., May 10
Final Exams Begin Tue., May 11
Final Exams End Fri., May 14
Commencement Sun., May 16 (2:00 p.m.)

MEN'S VOLLEYBALL
COACH: DENNIS PATTON

Jan. 23-24		Penn State Tourn. (9:00)
Feb. 6	SAT	League Tournament at Indiana (9:00)
Feb. 12-13		Pitt Tournament (4:00)
Feb. 16	TUE	at Behrend (9:00)
Feb. 18	THU	ALLEGHENY (7:00)
Feb. 25	THU	GROVE CITY (7:00)
Mar. 2	MON	at Slippery Rock (7:00)
Mar. 4	THU	CLARION (7:00)
Mar. 8	MON	at Allegheny (7:00)
Mar. 25	THU	SLIPPERY ROCK (7:00)
Mar. 28	SAT	U.S.V.B.A. TOURN. (9:00)
Mar. 30	TUE	at Grove City (7:00)
Apr. 5	MON	BEHREND (7:00)
Apr. 5	TUE	at Clarion
Apr. 14	WED	League Playoffs

WRESTLING
COACH: FRED CARO

Nov. 20-21		Ohio Open at Wright State
Dec. 8	TUE	at California, Capital (5:00)
Jan. 15-16		Midwest Clas. at Anderson
Jan. 19	TUE	at Indiana U. of Pa. (7:30)
Jan. 23	SAT	EDINBORO INVITATIONAL TOURN. (10:00)
Jan. 26	TUE	at Clarion State (7:30)
Feb. 2	TUE	at Slippery Rock (7:30)
Feb. 4	THU	ALLEGHENY/YOUNGSTOWN (6:00)
Feb. 12-13		Pa. Conf. at E. Stroudsburg
Feb. 19-20		NCAA Regionals
Feb. 26-27		NCAA Nationals

SCOUTING THE SCOTS

EDINBORO STATE COLLEGE
Location Edinboro, Pa.
Enrollment 5,800
Nickname Fighting Scots
Conference Pa. West
President Foster Diebold
AD Jim McDonald
SID Paul Newman
Phone 814-732-2745

SWIMMING
COACH: ED ERDOS

Nov. 7	SAT	ALFRED TECH (1:00)
Dec. 12	SAT	CARNEGIE-MELN. (1:00)
Jan. 20	WED	SLIPPERY ROCK (7:00)
Jan. 23	SAT	at Case Western (1:00)
Jan. 27	WED	at Allegheny (7:00)
Feb. 4	THU	YOUNGSTOWN (6:00)
Feb. 6	SAT	at Indiana (2:00)
Feb. 20	SAT	FREDONIA (2:00)
Feb. 23	TUE	at Clarion (7:00)
Mar. 4-5-6		Pa. Conf. at Ind. U. of Pa.
Mar. 18-19-20		NCAA Nationals at Clarion

All Edinboro State College varsity sports are funded in part by the Student Government Association, the Commonwealth of Pennsylvania and Student Services, Inc.

