

EDINBORO STATE



NAIA

NCAA

ECAC

PC

1976-77
FIGHTING
SCOTS

FIGHTING SCOTS'

1976-77 SCHEDULE

Nov. 27	CAPITAL UNIVERSITY
Dec. 4	*at Clarion
Dec. 6	ALLIANCE
Dec. 10	at Mercyhurst
Dec. 14	*LOCK HAVEN
Dec. 16	BEHREND
Jan. 5-6	at Shepherd Tournament
Jan. 10	at Pitt-Johnstown
Jan. 12	at St. Vincent
Jan. 16	at Point Park (1:00, Civic Arena)
Jan. 19	*at Lock Haven
Jan. 22	*CALIFORNIA
Jan. 27	GANNON
Jan. 29	*at Indiana
Feb. 2	MERCYHURST
Feb. 5	FROSTBURG
Feb. 7	*CLARION
Feb. 10	*SLIPPERY ROCK
Feb. 12	*at California
Feb. 15	*INDIANA
Feb. 19	*at Slippery Rock
Feb. 21	PITT-JOHNSTOWN
Feb. 25	Pa. Conf. Playoffs — East
Feb. 28-	
Mar. 1	NAIA District 18 Playoffs

*Pennsylvania Conference Games

GAME TIMES

6:00 p.m., JV — 8:00 p.m., Varsity

WELCOME TO BORO COUNTRY

Edinboro State's 1976-77 guide has been designed to assist members of the press in the coverage of Fighting Scot basketball. Press releases, photographs and statistics will be made available for your use throughout the season. A play-by-play, halftime and final statistics will be provided for each home game. If press space or additional information is desired, please contact Paul Newman, Public Relations Director, Edinboro State College, Edinboro, Pa. 16444; Office: (814) 732-2745; Home (814) 734-3735.

FOLLOW THE FIGHTING SCOTS AT HOME AND AWAY ON WQLN-FM RADIO, 91.3, WITH GARY CHRISTIANSEN AND PAUL NEWMAN.

"WHERE IT'S AT" . . .

ATHLETIC STAFF

Athletic Director — Al Hall17
Coaches	
Conti, Guy — Head Coach 2
Furcron, John — Asst. Coach 2
Seneta, Larry — Asst. Coach 2
Siegel, Paul — Asst. Coach 2
Sports Information — Paul Newman	..17
Team Trainer — Bob Klingler17

COLLEGE, THE

Campus Pictures 33-36
Location and History 34-36
McComb Fieldhouse.. Inside Back Cover	
President — Dr. McNerney34

OPPONENTS

Information on Each 1976-77	
Opponent in Scheduled Order	.. 12-16

A GLANCE AT THE PAST

1975-76 Varsity Results27
1975-76 Varsity Statistics27
1975-76 Pa. Conference Results29
All-Americans20
All-Time Scores 22-27
Century Club, Edinboro29
Century Club, Opponent29
Championships30
Records, Individual Game31
Records, Individual Season31
Records, Team30
Seasons by Percentages28
Season Results, 1928-197628
Special Recognition32

SCANNING THE SCOTS

Outlook 3
Players	
Guards 4-6
Forwards 6-9
Centers10
Roster, Varsity and JV19
ScheduleBack Cover
Scouting Report3

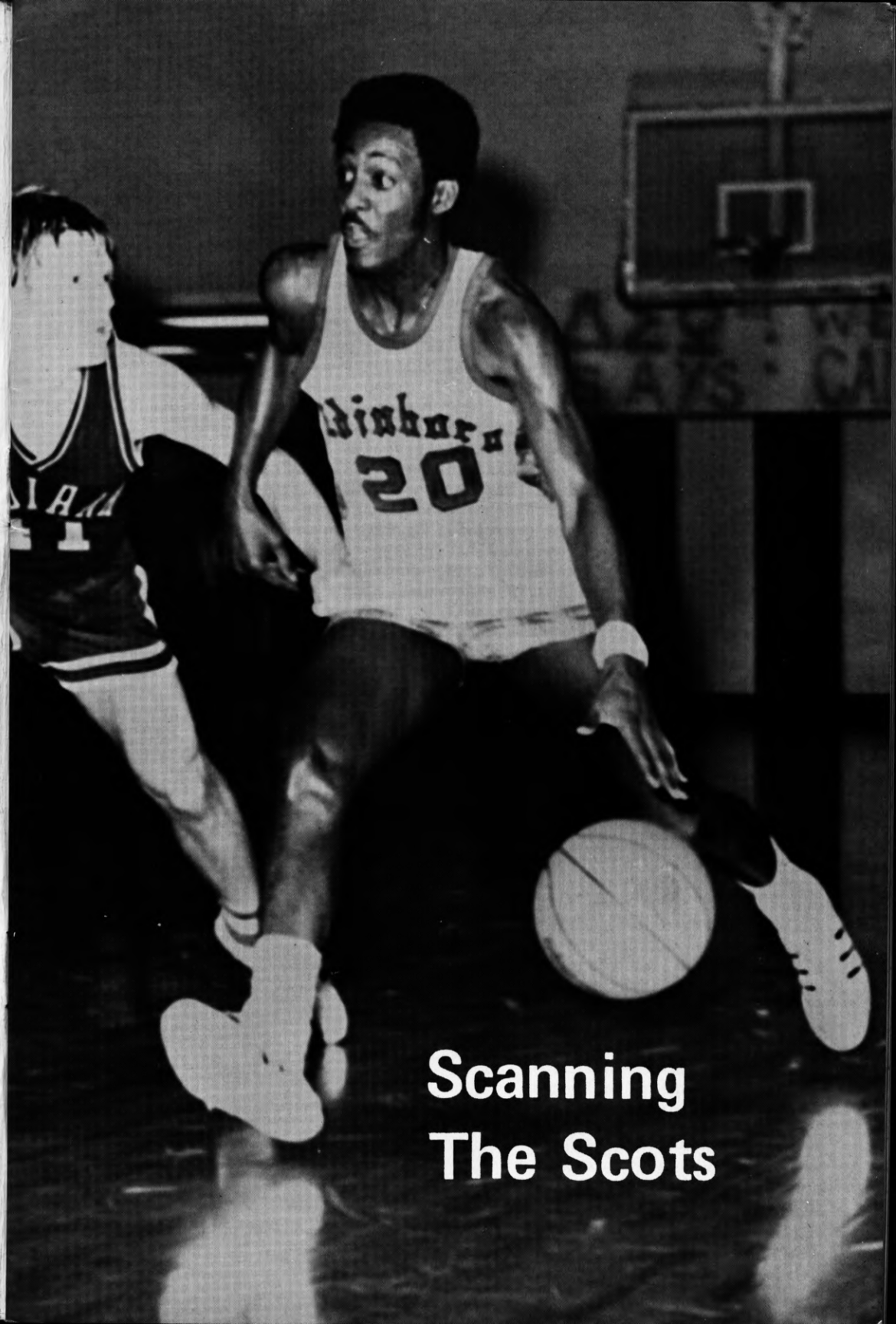


GUIDE EDITOR: Paul Newman

COPY: Cliff Dickinson, Elaine Dzurko,
Patti Loomis

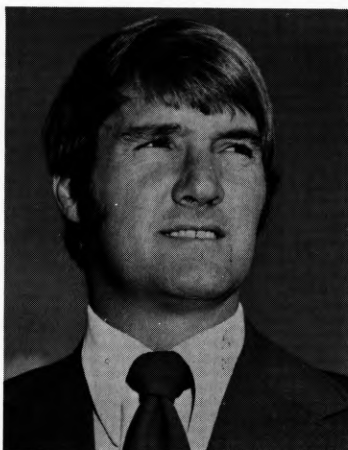
PHOTOGRAPHY: Tom Blevins, Paul Lane,
Buck Snodgrass

STATISTICIANS: Ed Burak, Jim Pierami,
Beth White



Scanning The Scots

CONTI CONTINUES WINNING TRADITION



Head Coach Guy Conti

Guy Conti stepped into the cage-coaching ranks a year ago and his efforts in basketball followed the same pattern of his past endeavors — successful. The Freeport, Pa., native directed the Fighting Scots to their best season in history with a 24–5 record while grabbing the PC's Western crown, the district championship, three tourney titles and a trip to the NAIA National Tournament in Kansas City. His team also cracked the record for consecutive victories with 13 straight successes.

Prior to his basketball tutorship, Conti was the Scots' head baseball coach before serving as assistant football coach for four seasons. In his two years as the Scots' diamond mentor, Conti assembled a talent-laden team that recorded consecutive record-breaking seasons, giving Edinboro its best finishes in the school's baseball history. He quickly climbed the ladder in ESC's football program moving from freshman coach, then to tutor the Scots' receivers and finally to direct the ESC backfield as offensive coordinator in his last two campaigns. During his two years of grooming the offense, Edinboro finished with a very respectable 9–6–3 slate.

A graduate of Clarion, Conti has had outstanding careers both as a player and a coach in several different sports. The versatile athlete spent a professional baseball stint with the Houston Astros organization as a catcher and was an outstanding football player at Freeport High and Clarion State where he played quarterback.

Conti, his wife, Janet, and children, Kim, Curt, Craig and Kelly, reside in Edinboro.

ASSISTANT COACHES

Both John Furcron and Paul Siegel begin their second year in ESC basketball and are joined by newcomer Larry Seneta. A Wilmington, Ohio, product, Furcron owns a B.S. degree from Bowling Green, along with a master's and doctorate from West Virginia University. He came to Edinboro after teaching 9 years in the Elyria, Ohio, school system and stepped in to guide ESC's soccer team to their first NAIA district title. He and his wife, Gloria, and their children, Angela and John, reside in Edinboro.

Paul Siegel, a Clarion graduate, had an outstanding scholastic coaching record (111–67) and came to the Scots from Erie's McDowell High after the team won the school's only section and district togas. Siegel, his wife, Judy, along with their three children, Paul, Pam and Julie, live in Fairview.

Larry Seneta joins the Scot ranks after a most successful coaching post at Girard High for 9 years. He had a superb baseball career at Youngstown State which resulted in pro contracts with the Detroit Tigers and Texas Rangers. Seneta lives in Girard with his wife, Floris, and children, Shelly, Lori, Larry, and Stacie.



Assistants: Paul Siegel, John Furcron and Larry Seneta.

SCOUTING THE SCOTS . . .

Location: Edinboro, Pa. 16444

Nickname: Fighting Scots

Colors: Red and White

Fieldhouse: McComb (4,200)

Enrollment: 6,700

Athletic Affiliations: NAIA, NCAA,

ECAC, Pa. Conference

Head Coach: Guy Conti (Clarion, '65)

Coach's Record: 1 year, 24–5

Asst. Coaches: John Furcron (Bowling

Green, '59), Paul Siegel (Clarion, '64),

Larry Seneta (Youngstown, '66)

Athletic Director: Al Hall, 814-732-2776

1975–76 Record: 24–5

1975–76 Home Record: 10–3

1975–76 Road Record: 14–2

Conference Finish: First

Lettermen Lost: 3

Starters Returning: 3

Team Strengths: Quickness, Experienced starters

Team Weakness: Experienced depth

Basic Offense: 1–4

Basic Defense: Multiple

Sports Info. Director: Paul Newman 814-732-2745,

Home 734-3735

Captains: Ron Beckett, Alonzo Craig, Tim Smiley

"CARDIAC KIDS" — THEY CAN MAKE IT HAPPEN

When Edinboro State coach Guy Conti reflects on his first year as a college mentor, he finds his debut a tough act to follow. As a matter of fact, the toughest thing facing ESC's 1976–77 cage edition is repeating the winning ways of the past pair of seasons.

The Fighting Scots have piled up an outstanding 46–9 record over the past two seasons, along with back-to-back trips to the NAIA national finals in Kansas City, Mo.

In his first year at the helm, Conti saw his men post a record-breaking 24–5 ledger, claim the Pennsylvania Conference Western Division title and the NAIA District 18 championship before bowing out in the second round of the NAIA national playoffs.

Appropriately nicknamed the "Cardiac Kids" because of their numerous close victories last season, the Scots will be battling to post impressive margins of difference this campaign. Helping that cause are five of last year's top seven players to counter the challenges of a tough, 23-game schedule.

Edinboro will once again be able to rely on the quickness and outside shooting of All-America Honorable Mention guard Tim Smiley who led the Scots' scoring attack with a 17.5 average. The 6–1 Indiana product tossed in a record-shattering 508 points last year and currently ranks seventh on the all-time scoring list with 1,148 markers.

Complementing him is Bob Dillard who has been moved to the shooting guard spot, while Smiley brings the ball down the court as the playmaker. He is undoubtedly one of the club's top defensive players among the guard ranks which are backed up by the freshman duo of Mike Franklin and Jeff Patton. Both have had brilliant scholastic careers and could get plenty of varsity experience in their frosh debuts.

Still on tap is sparkplug Alonzo Craig who hit the hoop at an 11.0 clip last season and has the ability to break any tight ball game wide open. A "sixth starter," he could provide the leadership to give a third straight trip to the national tourney.

The men in plaid have undoubtedly one of the District's finest big men in 6-7 Gary Stanton who is both strong off the boards and accurate around the basket. Stanton pulled away 217 rebounds in his sophomore stint, while canning 10.6 points per game to round out a quintet of ESC double digit scorers.

Destined for another starting role is 6-7 Ron Beckett who turned around from a seldom-used, reserve role to a starting post late in the year. His last second heroics were instrumental in key season-ending victories.

Talent continues to abound underneath the boards with 6-8 backup center Tom Craig, 6-4 Jerome Thomas, 6-4 Randy White and 6-6½ transfer Jesse Harris waiting in the wings. Any one of the foursome could challenge for a starting berth. Rounding out the roster as replacements are 6-4 Rick Bell, 6-5 Don Lovett, 6-4 Jim Wimply and 6-4 Algernon White.

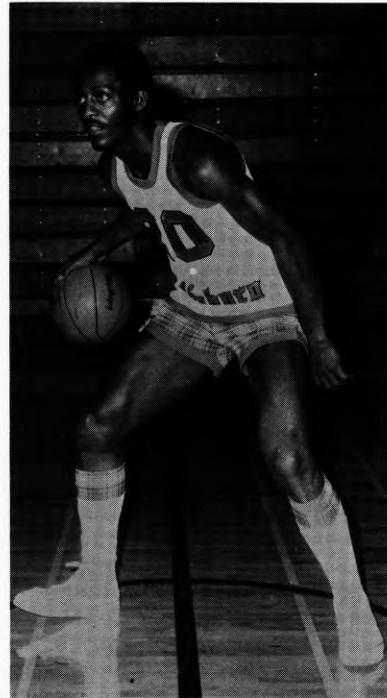
Ron Beckett, Alonzo Craig and Tim Smiley have been tagged tri-captains to lead the Scots back down the hectic cage campaign trail.

GUARDS

20-21 TIM SMILEY***
G, 6-1, 175, Sr., Ft. Wayne, Ind.

Has an outside chance of becoming the number one scorer in ESC's cage history ... Should finish as the best Scot point-getting guard ever ... Tossed in a record-shattering 508 points a year ago and currently ranks seventh on the all-time scoring list with 1,148 markers ... Definite All-American contender ... Twice named NAIA All-America Honorable Mention ... Led the team in assists with 133 passes that led to scores ... Has a unique high-arching shot that is deadly from 20-25 feet ... Always a potential game breaker with his court quickness and ability to run away from his competitors ... Dumped in a career high 30 points while leading Edinboro to the Allegheny Tournament title ... Most dramatic shot was a 25-footer at the buzzer to edge St. Vincent.

Year	G	FG	PCT	FT	PCT	REB	PTS	AVG
1973-74	23	96	.447	36	.692	51	228	9.9
1974-75	27	176	.436	60	.674	94	412	15.3
1975-76	29	222	.449	64	.771	109	508	17.5
TOTALS	79	494	.444	160	.714	254	1148	14.5



10-11 BOB DILLARD*
G, 6-2, 180, Sr., North Braddock, Pa.

Undoubtedly was the major key in Edinboro's offense last year with his playmaking deftness ... Will team with Smiley to form ESC's veteran backcourt duo ... Makes things happen in a ball game ... Is deceptively quick which makes him extremely effective defensively ... Totaled only 42 points but could surprise this year's opposition with an offensive explosion ... "The steady influence on our ball club," - Conti ... Allowed the Scots to make their first big step to the national finals in Kansas City when he drilled a 20-footer in the final second against Clarion in the district semi-final game to push the clash into overtime ... Can also get off the floor and is strong enough to be rebounding addition to the squad ... A transfer from Crowder Junior College in Missouri where he posted respective 16.5 and 17.3 point averages ... Named first-team all-section at Swissvale High.

Year	G	FG	PCT	FT	PCT	REB	PTS	AVG
1975-76	19	21	.488	2	.500	15	44	2.3

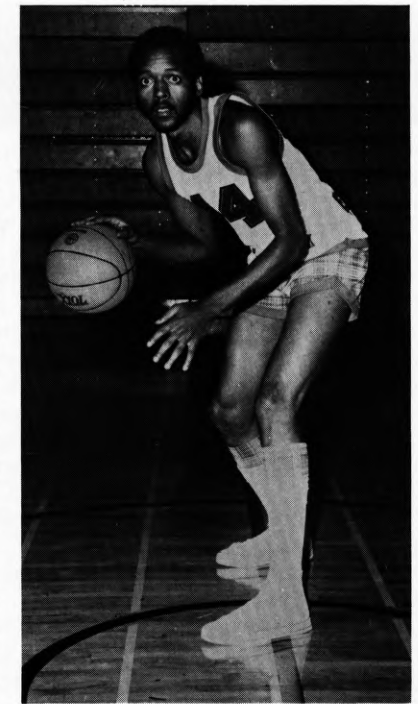


GUARDS

14-15 ALONZO CRAIG***
G-F, 6-3, 175, Sr., Ft. Wayne, Ind.

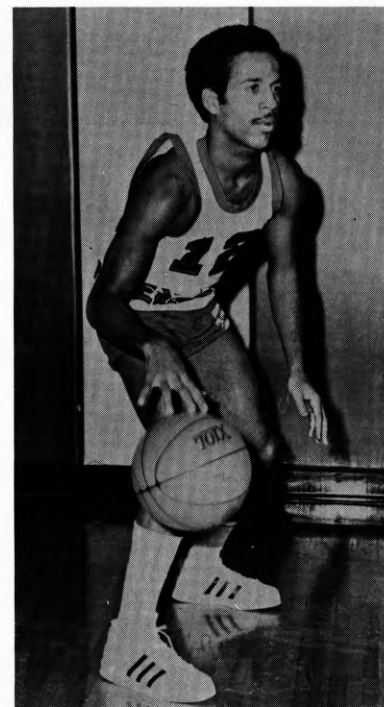
Slowed by a pre-season injury but should be ready for action right after the 1st of the year ... "The John Havlichek of our club," - Conti ... Should technically be tagged a "sixth starter" ... Made a smashing debut in Kansas City when he dumped in a game leading 25 points to lead Edinboro to a first-round win in the national tournament ... Played in all 29 games and canned 319 markers to rank fourth on the scoring charts with a 11.0 average ... Look for him to see more duty at forward this year where his shooting and rebounding ability can be utilized ... Can hit the bomb from outside or penetrate quickly to be double dangerous near the hoop ... Has pumped in 605 points during his 74 appearances on the hardwoods.

Year	G	FG	PCT	FT	PCT	REB	PTS	AVG
1973-74	23	65	.439	30	.652	36	160	7.0
1974-75	22	47	.362	32	.711	35	126	5.7
1975-76	29	144	.431	31	.574	57	319	11.0
TOTALS	74	256	.418	93	.641	128	605	8.2



12-13 MIKE FRANKLIN
G, 5-11, 163, Fr., Cleveland, O.

Probably one of the most talented scholastic point guards in the state of Ohio during his senior year ... Both a UPI and AP All-State selection in addition to being named all-scholastic by the Cleveland Press and Cleveland Plain Dealer ... Possesses exceptional quickness which makes him a standout on offense and defense ... "Very, very exciting, young freshman," - Conti ... Hit the hoop at a 17.0 clip and registered 111 assists at Cleveland Heights High ... Paced Heights to a 19-2 season record and as a junior played in a Heights team that had the distinction of being runners-up for the Ohio High School state basketball crown ... His club also captured the Lake Erie League title during his senior campaign with a 15-1 ledger ... Comes from an impressive basketball family and has two brothers currently playing collegiate ball, one of whom is an All-American ... Is talented enough to see a good deal of relief action throughout his frosh campaign.



GUARDS – FORWARDS

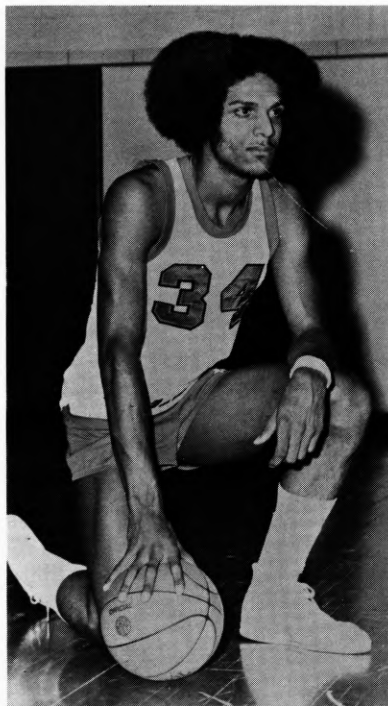
44-45 JEFF PATTON
G, 6-1, 170, Fr., Pittsburgh, Pa.

A surprise arrival on the ESC team who could prove to be the best shooting newcomer in the Scot camp ... A Boyle High School product from Pittsburgh's highly touted WPIAL AA league ... Directed the Lancers to the Section XIII championship with a 13-1 slate while finishing 19-3 overall ... Blistered the cords with a 24 points-per-game average and notched 6 assists per contest ... Finished his brilliant scholastic career by being selected First Team All-WPIAL and All-Section ... A Dapper Dan Roundball Classic performer in addition to being a Quigley, Colt, Akron and Sharon Classic participant ... Also quarterbacked Boyle High's grid team where he earned three varsity letters to duplicate his award winning ways in basketball ... Should see spotty action throughout the Scots' 23-game schedule at the shooting guard slot ... Likewise, a proven winner in the classroom as he registered honor roll scrolls with 3.2 and 3.4 semester during his senior year ... Already tagged for Coach Guy Conti's 1976-77 varsity edition.



34-35 JIM WIMBLY
F, 6-4, 190, So., Ft. Wayne, Ind.

Another promising Scot hopeful who is being groomed for the future ... Performed steadily on Edinboro's junior varsity team last year and will occasionally see that same kind of competition to gain playing experience during his sophomore season ... Both a speedster and a leaper in addition to having an excellent shot ... Nicknamed "Wimp" ... Is expected to give added help underneath the basket ... Was captain of Ft. Wayne, Indiana's Northrup High School that blazed its way to a 28-1 record and the coveted state championship ... Hammered the cords at a 13.4 points-per-game clip while pulling down missed shots at the rate of 7.5 rebounds per outing ... An all-around athlete who was named to the Ft. Wayne All-City cage team and voted the squads' MVP honor ... Awarded a pair of varsity letters for the Northrup Bruins in basketball, track and football.

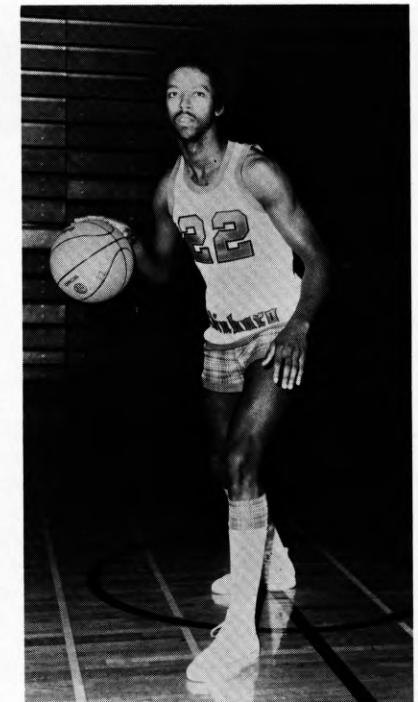


FORWARDS

22-23 RON BECKETT***
F, 6-7, 185, Sr., Elyria, O.

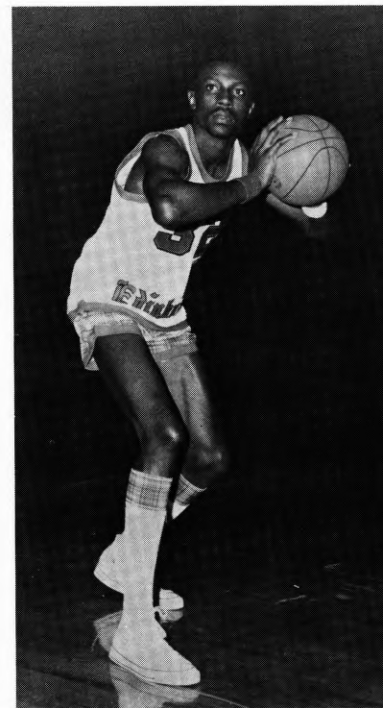
Battled his way into a starting role last year and responded in spectacular fashion ... Should have a superb senior year as both a scorer and rebounder ... "Outstanding ability," - Conti ... Is noted primarily for his close jumpers but has excellent shooting range for a big man ... His extraordinary leaping ability makes him a constant threat around the rim ... Finished the year with a very respectable 46% shooting mark from the floor while dropping in 198 points and snaring 140 rebounds ... Netted one of the heroic highlights of last season when he posted a three-point play in the final seconds that stopped powerful Indiana ... Had another sterling performance in an OT win over Clarion with 20 points and 14 rebounds.

Year	G	FG	PCT	FT	PCT	REB	PTS	AVG
1972-73	10	41	.342	19	.655	75	101	10.1
1973-74	18	16	.390	5	.500	45	37	2.1
1975-76	28	90	.462	18	.667	140	198	7.1
TOTALS	56	147	.413	42	.636	260	336	6.0



32-33 JESSE HARRIS
F, 6-6½, So., Youngstown, O.

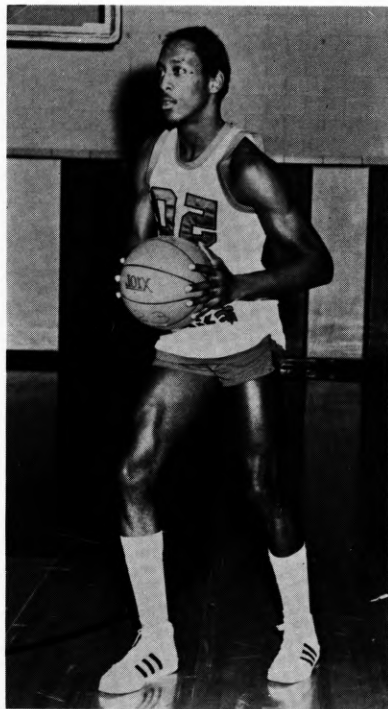
A welcomed addition who could eventually prove to be one of the most vital cogs in this year's campaign ... Recovering from minor knee surgery which was required because of his high leaping ability ... Undoubtedly the teams' best jumper ... A transfer from Allen County Junior College in Kansas where he ripped the net at a 15.0 rate and cleared away missed shots at a 10.2 pace ... Named All-Conference for his game-leading performances at Allen County ... Twice All-City and All-Northeastern Ohio while competing on Youngstown Rayen High School's hardwoods ... Was Rayen's leading scorer by averaging 18 points-per-game and added 16 rebounds per clash ... Not only has demonstrated that he can get off the floor, but is also deadly at the 15-foot range ... "If he heals up, it will be just like adding a veteran player to our roster as we come down the stretch," - Conti.



FORWARDS

42-43 RANDY WHITE
F, 6-4, 195, So., Cleveland, Ohio

Comes to the Scots from Allen County Community Junior College in Kansas ... Worked at the forward post for Allen County where he connected on 16 points per game and ripped away 10 rebounds per outing ... "Has extraordinary moves on the baseline" - Conti ... A physical ball player who likes to go inside both offensively and defensively ... Can also shoot from the outside ... Apparently has won a starting position and should log plenty of playing time in his first year of wearing the plaid ... Played his high school ball at Cleveland's John Adams on a team that was sectional and district champions ... Named All-City, All-Scholastic and Cleveland Press All-Star in addition to being selected East Senate All-Star ... Pumped in 16 points per game gathering in 10 caroms per contest while performing for the Rebels ... Enjoys music and was president of John Adams' marching band for three years.



50-51 JEROME THOMAS*
F, 6-4, 180, Jr., Farrell, Pa.

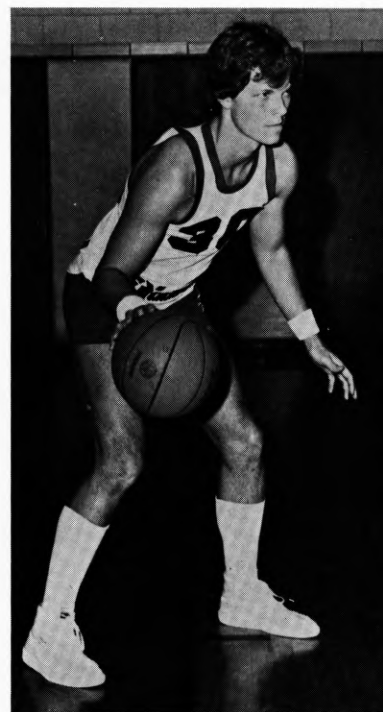
Another budding cager who's in the thick of the battle for a starting spot where he now has the experience to be a top contender ... Has continually proved his shooting to the point that opponents cannot disregard him as an offensive threat ... Noted as one of the Scots' most aggressive and physical ball players ... Ranks right with Beckett and Harris in the leaping department ... Don't be surprised if he plays as much time as anyone of the starting forwards right from the Scots' first opener ... His sturdiness and quickness make him a tenacious defensive player ... "Most physical we have," - Conti ... Learned his basketball fundamentals under the tutelage of Ed MacCluskie ... Played on scholastic teams that won two WPIAL, two sectional and one state championship ... Dropped in 15 points per outing and twelve rebounds per clash during his senior year at Farrell.

Year	G	FG	PCT	FT	PCT	REB	PTS	AVG
1975-76	19	8	.533	11	.611	26	27	1.4

FORWARDS

24-25 DON LOVETT
F, 6-5, 168, Fr., St. Petersburg, Fla.

A newcomer who has been extremely impressive in early drills ... Only thing holding him back from starting at one of the forward slots is experience ... "A sound, fundamental basketball player" - Conti ... Like Franklin, he has a great basketball playing future at Edinboro State ... One of a quartet of players who traveled north from St. Petersburg to perform on the ESC hardwoods ... Tagged All-City, All-Conference and All-Regional at Northeast High ... Paced the Vikings to the Bayfront Championship with a 23-4 conference slate, while also annexing the Tampa Catholic Tournament title ... Selected to play in the Florida All-State Star game ... Fired points through the rim at an 18.3 average while pulling down 12.5 errant shots per contest ... Has demonstrated excellent accuracy and his shooting prowess, along with his high-leaping antics could result in plenty of frosh playing time.



30-31 RICK BELL
F, 6-3, 200, So., Jamestown, N.Y.

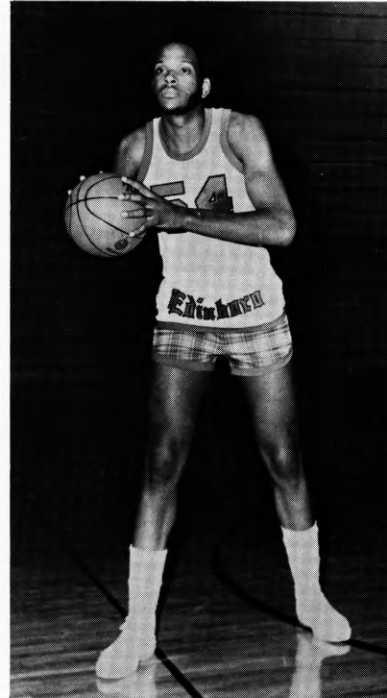
Saw starting action throughout his freshman year as a junior varsity cager where he excelled at forward ... His ability to play defense and his strength off the boards could thrust him into a surprising starting role ... Possesses a fine jump shot in close to the hoop ... A very physical basketball player ... Played his scholastic ball at Southwestern Central in Jamestown, N.Y., where he helped the Trojans to a 7-1 conference record and the league and section championships ... Earned two varsity letters at Southwestern Central where he finished with a career average of 15.8 points per game and 12 rebounds per outing ... Was third team All-New York State in the small school division and in his junior year was the leading scorer in the CCIAC ... Originally recruited for his outstanding golfing talents ... Was the 1976 New York State high school golf champion ... Garnered four varsity letters for the Trojans on the links ... A social science major.

CENTERS

54-55 GARY STANTON**
C, 6-7, 225, Jr., Cleveland, O.

Rapidly developing into one of the finest big men in Edinboro State's history ... Cleared away 217 rebounds last year while averaging 7.8 per game and dented the double digit column with a 10.6 points per game output ... Named MVP in last year's Erie Classic and Allegheny Tournament ... "Best center in the district and a great shooter" - Conti ... Connected on 47% of his attempts from the floor to attest to his deft accuracy ... Uncanny ability to use the glass from the side ... Should have a superb season ... Registered a team-leading 38 blocked shots and is now averaging 34 blocked shots per year in his career ... Is deceptively quick and complements it with strength inside ... Has had outstanding performances in his two trips to the NAIA national finals in Kansas City, Missouri

Year	G	FG	PCT	FT	PCT	REB	PTS	AVG
1974-75	27	77	.531	19	.543	148	173	6.4
1975-76	28	131	.473	35	.648	217	297	10.6
TOTALS	55	208	.493	54	.607	365	470	8.5



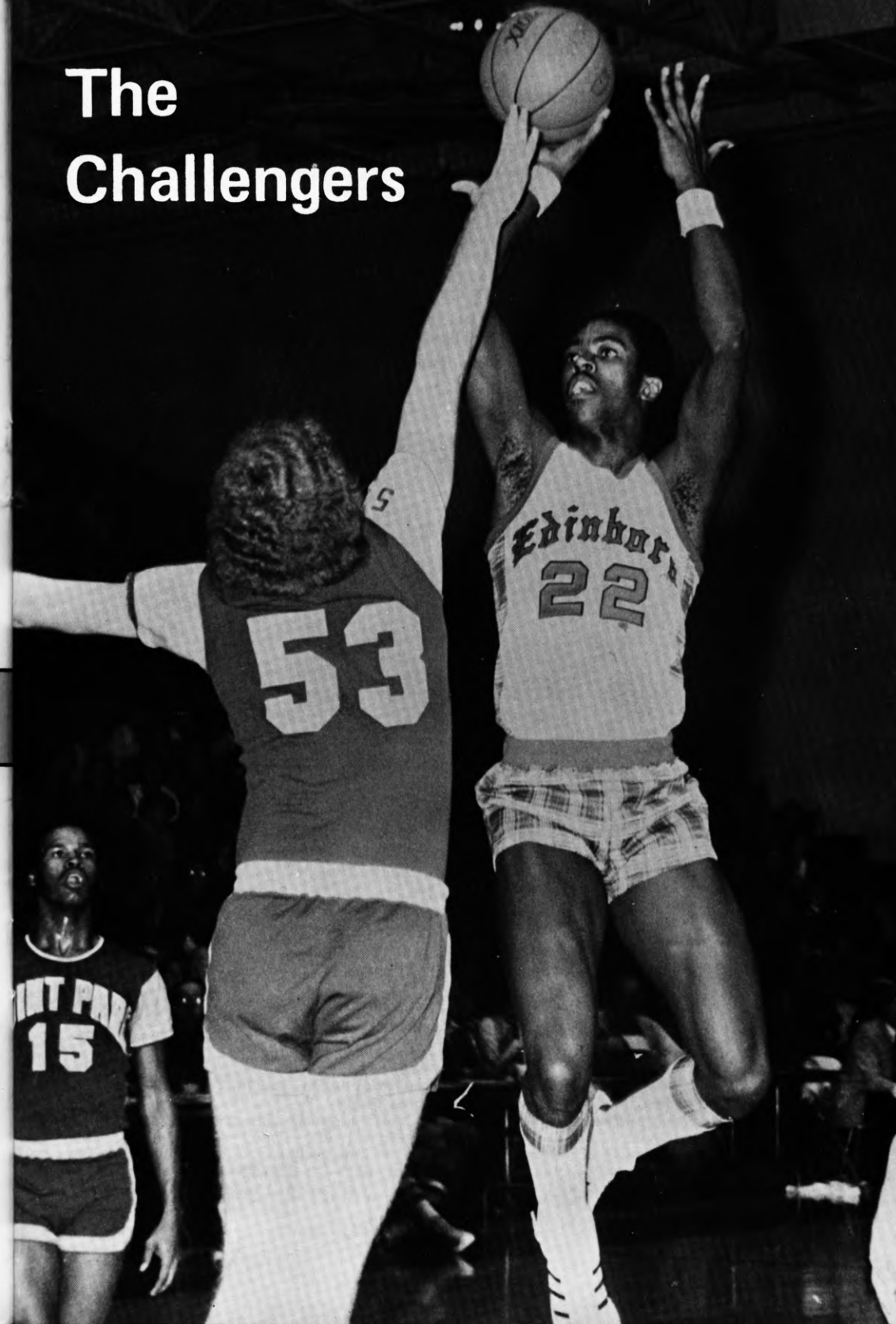
40-41 TOM CRAIG*
C, 6-8½, 210, Sr., Philadelphia, Pa.

Is Edinboro State's backup center but could very well be an outstanding starter for any other district team ... Don't be too surprised if Coach Conti eventually ends up with both Craig and Stanton in the lineup at the same time ... "Must play for us to be a district contender," - Conti ... Extremely improved over last season ... Has worked hard to develop himself over the past two summers and always gives 100% ... Canned 53 points and grabbed 39 rebounds while seeing spotty action last year ... First team All Conference selection at Philadelphia Community College where he was leading scorer and rebounder ... Also averaged 15 points per game and 10 rebounds per outing during a year's stint on Widener College's junior varsity team ... A double letter winner at Philadelphia's Arch Bishop Ryan High.

Year	G	FG	PCT	FT	PCT	REB	PTS	AVG
1975-76	18	22	.478	9	.734	39	53	2.9



The Challengers



CAPITAL UNIVERSITY

November 27 — at Edinboro

Head Coach: Vince Chickerella, 148-51, 8 seasons

Sports Information Director: George Heddleston, Area Code 614, 236-6196

1975-76 Record: 16-12

Lettermen Lost: 2

Lettermen Returning: 5

Team Strength(s): Speed, Quickness

Team Weakness(es): Pivots

Captain(s): TBA

Athletic Director: Vince Chickerella

Location: Columbus, Ohio

Enrollment: 2,615

Colors: Purple and White

Nickname: Crusaders

Home Court: Alumni Gymnasium

Gym Capacity: 2,400

Conference: Ohio Athletic

Last Game: 1971-72, Capital 78-65

Top Veterans: Pat Moeller (P, 6-7, Sr., 7.3), Ricky Lee (W, 6-4, So., 13.0), Napoleon Allen (P, 6-5, So., 8.8), Dave Cecutti (W, 6-0, Sr., 1.0), Scott Ballinger (G, 6-1, Jr., 2.7)

Top Newcomers: Mark Waters (P, 6-7, Fr.), Mike Rogers (W, 6-0, Fr.), Todd Zwick (G, 6-0, Fr.), Mike Hausfeld (W, 6-4, So.)

MERCYHURST COLLEGE

December 10 — at Mercyhurst, February 2 — at Edinboro

Head Coach: Dick Fox, 59-31, 4 seasons

Sports Information Director: Bill Shelley, Area Code 814, 456-2508

1975-76 Record: 13-8

Lettermen Lost: 4

Lettermen Returning: 5

Team Strength(s): Guard play

Team Weakness(es): Experienced board strength

Captain(s): Jeff Davern

Athletic Director: Bill Shelley

Location: Erie, Pa.

Enrollment: 1,500

Colors: Green and Blue

Nickname: Lakers

Home Court: Erie County Fieldhouse

Gym Capacity: 4,000

Conference: Independent

Last Game: 1975-76, ESC 73-72, MC 73-72

Top Veterans: Paul Young (F, 6-3, 12.4), Kevin Bradley (G, 6-0, 8.1), Jeff Davern (G, 5-10, 7.6), John Burrow (F, 6-4, 4.6)

Top Newcomers: Manzie Williams (C, 6-6, Fr.), Ed Jones (G, 6-1, Jr.), Joe Ford (C, 6-9, Jr.), Don Jackson (F, 6-3, Jr.)

CLARION STATE COLLEGE

December 4 — at Clarion, February 7 — at Edinboro

Head Coach: Joe DeGregorio, 30-21, 2 seasons

Sports Information Director: Bill Proudfit, Area Code 814, 782-3342

1975-76 Record: 18-9

Lettermen Lost: 3

Lettermen Returning: 6

Team Strength(s): Roseto and Grinage

Team Weakness(es): Pressure defense

Captain(s): TBA

Athletic Director: Frank Lignelli

Location: Clarion, Pa.

Enrollment: 5,000

Colors: Blue and Gold

Nickname: Golden Eagles

Home Court: Tippin Gymnasium

Gym Capacity: 4,000

Conference: Pennsylvania

Last Game: 1975-76, ESC 68-65, 92-91 OT, 93-90 OT

Top Veterans: Terry Roseto (C, 6-7, Sr., 16.4), Carl Grinage (G, 5-9, Sr., 14.2), Mike Sisinni (G, 6-2, So., 8.1), Reggie Wells (F, 6-4, So., 11.7), Jay Abrahamovich (F, 6-3, Sr., 3.6), Mark Lockridge (F, 6-4, So., 3.7)

Top Newcomers: Jim Mattingly (G, 6-2, So.), Bill Armstrong (F, 6-6, Jr.), Dan Chojnacki (C, 6-8, Fr.)

LOCK HAVEN STATE COLLEGE

December 14 — at Edinboro, January 19 — at Lock Haven

Head Coach: Dick Taylor, 31-58, 4 seasons

Sports Information Director: Ross Nevel, Area Code 717, 748-5351

1975-76 Record: 11-12

Lettermen Lost: 3

Lettermen Returning: 9

Team Strength(s): Defense

Team Weakness(es): Height

Captain(s): Al Ridge, Bill Vassallo

Athletic Director: Charles Eberle

Location: Lock Haven, Pa.

Enrollment: 2,400

Colors: Crimson and White

Nickname: Bald Eagles

Home Court: Thomas Fieldhouse

Gym Capacity: 2,000

Conference: Pennsylvania

Last Game: 1975-76, ESC 80-62, 88-56

Top Veterans: Dave Hendershot (F, 6-4, Jr., 13.1), Al Ridge (C, 6-5, Sr., 10.5), Bill Vassallo (G, 6-0, Sr., 9.0), Mike Fitzgerald (F, 6-3, Sr., 8.8)

Top Newcomers: Brian Anderson (G, 6-0, Jr.), Dave Bosnik (G, 5-10, Fr.)

ALLIANCE COLLEGE

December 8 — at Edinboro

Head Coach: Ted Haluch, 183-269, 22 seasons

Sports Information Director: David Matejczyk, Area Code 814, 398-4375

1975-76 Record: 1-21

Lettermen Lost: 4

Lettermen Returning: 3

Team Strength(s): Handling, Shooting

Team Weakness(es): Height, Rebounding

Captain(s): Terry Karsonovich

Athletic Director: Ted Haluch

Location: Cambridge Springs, Pa.

Enrollment: 225

Colors: Red and White

Nickname: Eagles

Home Court: Cambridge Springs High School

Gym Capacity: 1,800

Conference: Independent

Last Game: 1975-76, ESC 89-78

Top Veterans: Terry Karsonovich (F, 6-3, Sr., 13.3), Jeff Presnar (C, 6-5, Sr., 12.0)

Top Newcomers: John Young (G, 5-11, Fr.), Pat Hagen (G, 5-10, Fr.)

BEHREND COLLEGE

December 16 — at Edinboro

Head Coach: Leon E. Wright, 1st season

Sports Information Director: Roger L. Sweeting, Area Code 814, 898-1511, Ext. 235

1975-76 Record: 7-16

Lettermen Lost: 6

Lettermen Returning: 2

Team Strength(s): Potential

Team Weakness(es): Experience

Captain(s): Vince Unice

Athletic Director: Roger L. Sweeting

Location: Erie, Pa.

Enrollment: 1,600

Colors: Blue-White-Red

Nickname: Cubs

Home Court: Erie Hall

Gym Capacity: 700

Conference: Independent

Last Game: 1975-76, ESC 91-66

Top Newcomers: Kirk Farbacher (C, 6-7, Fr.), James Carr (G, 5-11, Fr.), Bernard Orr (G, 5-10, Fr.)

SHEPHERD INVITATIONAL TOURNAMENT

January 5—6 at Martinsburg, W. Va.

The Fighting Scots will bounce the basketball over the semester break at the Shepherd Invitational Tournament which features Monmouth College from New Jersey, Wheeling College of West Virginia and the host school, Shepherd. The Scots tip off the tourney in a 9:00 p.m. encounter against Wheeling.

The pre-tourney favorite is Shepherd, a club that went 33—3, two of those losses going to nationally ranked Fairmont State, the West Virginia Conference champions. The Rams were lodged in the runner-up spot of the WVIAC and return five lettermen for the 1976—77 campaign. Most prolific is returning guard Rodney Sewell, a 6-1 senior who blistered the nets at a 25.0 pace last year.

Monmouth also brings an impressive set of credentials with a 22—5 log and a berth in the NCAA playoffs a year ago. The Pioneers depend on the inside game of 6-7 Bob Wymbbs who netted 16 points per game and 9.4 rebounds last season and the outside fire power of 6-2 guard Bill Terry, a 16.2 points per game scorer.

Edinboro's opponent, Wheeling College, also had impressive stats with a 24—11 overall card and a third place finish in the West Virginia Conference behind Shepherd and Fairmont last year. The high-flying Cardinals have 6-7 Leroy Wilson underneath the hoop and 6-1 senior Rod Gaddy, the team's leading scorer, back to haunt opposing cagers.

POINT PARK COLLEGE

January 16 — at Pittsburgh Civic Arena

Head Coach: Jerry Conboy, 99—78, 7 seasons

Sports Information Director: Joe Camizzi, Area Code 412, 391-4100, Ext. 279

1975—76 Record: 16—10

Lettermen Lost: 4

Lettermen Returning: 5

Team Strength(s): Speed

Team Weakness(es): Height

Captain(s): Bobby Franklin

Athletic Director: Jerry Conboy

Location: Pittsburgh, Pa.

Enrollment: 1,100

Colors: Green and Gold

Nickname: Pioneers

Home Court: CCAC Fieldhouse

Gym Capacity: 3,500

Conference: Independent

Last Game: 1975—76, PP 69—64

Top Veterans: Bobby Franklin (G, 5-11, Sr., 24.4), Dale Smith (F, 6-5 So., 11.1)

Top Newcomers: Greg Wilson (G-F, 6-3, Jr., 20.0), Linfoster Lindsey (F-C, 6-6, Sr., 13.0), Lance Cash (F, 6-3, Jr., 25.6), Eric Nunley (G, 6-2, Fr., 19.0), Melvin Paul (F, 6-6, Fr., 17.0)

PITT-JOHNSTOWN

January 10 — at Johnstown, February 21 — at Edinboro

Head Coach: Jim Basista, 10—13, 1st season

Sports Information Director: John James, Area Code 814, 266-9661, Ext. 276

1975—76 Record: 10—13

Lettermen Lost: 2

Lettermen Returning: 8

Team Strength(s): Depth

Team Weakness(es): Experience

Captain(s): TBA

Athletic Director: Ed Sherlock

Location: Johnstown, Pa.

Enrollment: 2,312

Colors: Blue and Gold

Nickname: Mountain Cats

Home Court: UPJ Gym

Gym Capacity: 600

Conference: Independent

Last Game: 1969—70, ESC 115—55

Top Veterans: Rich Ragan (F, 6-4, Jr., 16.7), Don Elzer (C, 6-7, Sr., 14.1), Chuck Brizill (C, 6-7, Jr., 13.9), Tom Mitchell (G, 6-1, Sr., 8.2), Mike Black (G, 5-11, Jr., 7.6)

Top Newcomers: Chuck Bradford (F, 6-6, Fr.), Bill Starn (F, 6-5, Fr.), Glenn Fisher (F, 6-6, Fr.)

CALIFORNIA STATE COLLEGE

January 22 — at Edinboro, February 12 — at California

Head Coach: Myles Witchey, 165—138, 14 seasons

Sports Information Director: Eric Bugaile, Area Code 412, 938-4419

1975—76 Record: 10—12

Lettermen Lost: 1

Lettermen Returning: 8

Team Strength(s): Experience

Team Weakness(es): Size, depth

Captain(s): TBA

Athletic Director: Roy Terry

Location: California, Pa.

Enrollment: 5,219

Colors: Red and Black

Nickname: Vulcans

Home Court: Hamer Hall

Gym Capacity: 3,600

Conference: Pennsylvania

Last Game: 1975—76, ESC 80—66, 72—61

Top Veterans: Delmer Beshore (G, 5-10, Jr.), Scott Mountz (F-C, 6-4, Jr.), Rich Hartung (F, 6-3, Jr.), Clarence Covington (G, 5-9, Sr.)

Top Newcomers: Dave Turner (F, 6-2, Jr.), Mike Aikens (G-F, 6-2, So.), Mike Moyer (G-F, 6-0, Fr.)

ST. VINCENT COLLEGE

January 12 — at St. Vincent

Head Coach: Bernie Matthews, 62—76, 6 seasons

Sports Information Director: Steven J. Kittey, Area Code 412, 539-9761, Ext. 246

1975—76 Record: 5—18

Lettermen Lost: 4

Lettermen Returning: 5

Team Strength(s): Experienced starters

Team Weakness(es): Overall depth

Captain(s): Tim Menzies, Al Mallah

Athletic Director: Oland "Dodo" Canterna

Location: Latrobe, Pa.

Enrollment: 958

Colors: Green and Gold

Nickname: Bearcats

Home Court: Kennedy Hall

Gym Capacity: 2,200

Conference: Independent

Last Game: 1975—76, ESC 83—81, 88—69

Top Veterans: Jack Linsenbigler (G, 5-10, Sr., 4.9), Tim Menzies (F, 6-4, Sr., 9.3), Rocky Wells (G, 6-1, Jr., 15.7), Ron Spinosi (C, 6-6, So., 10.1)

Top Newcomers: Mike Andrews (F, 6-5, Jr.), Al Mallah (F, 6-4, Jr.), Dan Lhota (F, 6-5, Fr.), Vince Nesser (G, 5-11, Fr.), Wayne Paul (F, 6-7, Fr.)

GANNON COLLEGE

January 27 — at Edinboro

Head Coach: Ed Sparling, 41—15, 2 seasons

Sports Information Director: Bud Elwell, Area Code 814-456-7523

1975—76 Record: 16—11

Lettermen Lost: 4

Lettermen Returning: 8

Team Strength(s): Rebounding, Outside Shooting

Team Weakness(es): Overall height

Captain(s): Fate Harris, Neal Stoczynski

Athletic Director: Bud Elwell

Location: Erie, Pa.

Enrollment: 2,600

Colors: Maroon and Gold

Nickname: Golden Knights

Home Court: Gannon Auditorium

Gym Capacity: 3,100

Conference: Independent

Last Game: 1968—69, GC 69—57

Top Veterans: Stan Sligh (C, 6-7, Sr., 17.1), Fate Harris (C, 6-5, Sr., 10.5), Neal Stoczynski (G, 6-3, Sr., 9.5), Joe Blanks (G, 6-1, Jr., 8.7)

Top Newcomers: Bill Butler (F, 6-6, Fr.), Jim Hobbie (G, 6-3, So.), Frank Miller (G, 6-0, Jr.)

INDIANA UNIVERSITY OF PENNSYLVANIA

January 29 — at Indiana, February 15 — at Edinboro

Head Coach: Carl Davis, 110-42, 6 seasons

Sports Information Director: Randy L. Jesick, Area Code 412, 357-2233

1975-76 Record: 20-5

Lettermen Lost: 4

Lettermen Returning: 7

Team Strength(s): Rebounding, outside shooting

Team Weakness(es): Quickness, bench

Captain(s): Gary Kotsch, Elio Filippi

Athletic Director: Herm Sledzik

Location: Indiana, Pa.

Enrollment: 11,000

Colors: Maroon and Slate

Nickname: Indians

Home Court: Memorial Fieldhouse

Gym Capacity: 2,500

Conference: Pennsylvania

Last Game: 1975-76, ESC 67-64, 61-59

Top Veterans: Gary Kotsch (G, 6-2, Sr., 14.2), Rich Lynch (C, 6-5, Sr., 8.4), Bill Cashaw (F, 6-3, So., 7.2), Elio Filippi (F, 6-5, Sr., 5.2), Gerry Recktenwald (G, 6-0, Jr., 8.4)

Top Newcomers: Ken McCrea (F, 6-4, Fr.), Gerald Bailey (F, 6-4, Fr.)

FROSTBURG STATE COLLEGE

February 5 — at Edinboro

Head Coach: Kurt Wolfe, 89-59, 6 seasons

Sports Information Director: Ralph M. Perrey, Area Code 301, 689-4371

1975-76 Record: 12-15

Lettermen Lost: 3

Lettermen Returning: 9

Team Strength(s): Guards

Team Weakness(es): Lack of a big man

Captain(s): Ray Nelson

Athletic Director: Harold Cordts

Location: Frostburg, Md.

Enrollment: 3,200

Colors: Black and Gold

Nickname: Bobcats

Home Court: Physical Education Arena

Gym Capacity: 3,400

Conference: Independent

Last Game: 1975-76, ESC 81-71, 78-71

Top Veterans: Frazer Nelson (F-C, 6-5, Jr., 3.9), Raymond Nelson (F, 6-3, Sr., 13.8), Leroy Scott (G, 6-1, So., 14.5), Greg Wright (F, 6-4, So., 2.7)

Top Newcomers: Gary Hauger (G-F, 6-1, Jr.), Kevin Liller (G-F, 6-2, Fr.), Louis Thomas (F, 6-2, Fr.)

SLIPPERY ROCK STATE COLLEGE

February 10 — at Edinboro, February 19 — at Slippery Rock

Head Coach: Doug Zimmerman, 7-17, 1st season

Sports Information Director: John Carpenter, Area Code 412, 794-7216

1975-76 Record: 7-17

Lettermen Lost: 6

Lettermen Returning: 5

Team Strength(s): Experienced boardmen

Team Weakness(es): Inexperienced backcourt

Captain(s): Bill McNees, Ron Hatzen, Chuck Link

Athletic Director: Robert E. Raymond

Location: Slippery Rock, Pa.

Enrollment: 6,250

Colors: Green and White

Nickname: Rockets

Home Court: Morrow Fieldhouse

Gym Capacity: 3,000

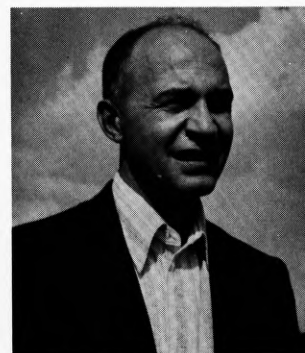
Conference: Pennsylvania

Last Game: 1975-76, ESC 78-71, SRSC 68-67

Top Veterans: Tim Austin (F, 6-8, Jr.), Ron Hatzen (F, 6-4, Jr.), Chuck Link (C, 6-8, Jr.), Bill McNees (G, 5-9, Jr.)

Top Newcomers: Mike Hardy (F, 6-4, So.), Dan Rupert (G, 6-0, So.)

THE TEAM BEHIND THE TEAM . . .



Bob Klingler



Paul Newman



Al Hall

AL HALL — ATHLETIC DIRECTOR

Since Al Hall's appointment as Athletic Director in 1968, Edinboro State has enjoyed one of the most successful collegiate athletic programs in the East. Through his efforts, ESC has become a focal point for athletics in Northwestern Pennsylvania and has hosted numerous championship events. Typical of this was the designation of Edinboro as the site for the 1972 National YMCA Diving and Swimming Championships, the largest swimming meet in the world. Under his leadership, ESC's sports program has vastly expanded and attained new memberships in the ECAC and NCAA while building a coaching staff that has compiled the College's best record in history. Al's selection to numerous sport committees in the Erie area along with posts in both the ECAC and Pennsylvania Conference bear out his dedication to the world of athletics. A graduate of Baldwin-Wallace College, he served as Assistant Director of Athletics at Akron University for two years and piloted Akron's cross country teams to championship finishes for 12 seasons. Al, his wife, Pam, daughter, Beth, and their son, Dale, reside in Edinboro.

PAUL NEWMAN — SPORTS INFORMATION DIRECTOR

Paul Newman began his duties nine years ago as ESC's first Sports Information Director and now also serves as Assistant to the President for External Affairs. Paul is a 1964 graduate of Edinboro where he earned both his B.S. degree and M.Ed. while majoring in English. Prior to joining the Scots, he held a teaching position in Ashtabula, Ohio, for three years. In connection with his duties, he is also the District 18 Publicity Chairman for the National Association of Intercollegiate Athletics and recently completed a two-year term as President of the NAIA's Sports Information Directors' Association. Paul, his wife, Connie, and their children, Paul Jr., Michele and Scott, make their home in Edinboro.

BOB KLINGLER — TEAM TRAINER

Giving Fighting Scot athletes the tops in professional medical care and producing top-notch staffs of student trainers has been the trademark of trainer Bob Klingler who begins his tenth season at Edinboro State. The 1952 Lock Haven grad ventured to Hermann School of Physical Therapy in Houston, Texas and became a registered physical therapist in 1954. He later received his M.S. from Bucknell. Prior to accepting his ESC post, Klingler taught at Milton Hershey, a private boys' school in Hershey, Pa., where he served as the Spartans' head football mentor, head track coach and assistant basketball coach. Both his cinder and cage teams never experienced a losing season, while his grid teams continually posted successful campaigns in the powerful Capitol Area Conference. Bob, his wife, Jill, and daughter, July, make their home in Washington Township.



EDINBORO STATE'S 1976-77 BASKETBALL TEAM

Seated (L-R): Randy White, Don Lovett, Jeff Patton, Tim Smiley, Alonzo Craig, Bob Dillard, Moses Jones, Mike Franklin and George Crunkleton. Standing: Greg Donor (Manager), John Furcron (Assistant Coach), Ed Ransom (Manager), Jerome Thomas, Gary Stanton, Ron Beckett, Tom Craig, Jesse Harris, Larry Seneta (Assistant Coach), Paul Siegel (Assistant Coach) and Head Coach Guy Conti.

1976-77 BASKETBALL ROSTER

NO.		NAME	POS.	HT.	WT.	CLASS	HOMETOWN/HIGH SCHOOL	HIGH SCHOOL COACH
WHITE	RED							
10	11	*Bob Dillard	G	6-2	180	Sr.	N. Braddock, Pa./Swissvale	James Bonacci
12	13	Mike Franklin	G	5-10	165	Fr.	Cleveland Hts., O./Cleveland Hts.	Jim Cappaletti
14	15	***Alonzo Craig (Capt.)	G-F	6-3	175	Sr.	Ft. Wayne, Ind./R. Nelson Snider	Roy Kline
20	21	***Tim Smiley (Capt.)	G	6-1	175	Sr.	Ft. Wayne, Ind./Wayne	Will Doehman
22	23	***Ron Beckett (Capt.)	F	6-7	185	Sr.	Elyria, O./Elyria	Mike Riley
24	25	Donald Lovett	F	6-5	170	Fr.	St. Petersburg, Fla./North East	Ed Evans
30	31	Rick Bell	F	6-5	200	So.	Jamestown, N.Y./Southwestern	Richard Brown
32	33	Jesse Harris	F	6-6½	180	So.	Youngstown, O./Youngstown Rayen	John Georges
34	35	Jim Wimbyly	F	6-4	190	So.	Ft. Wayne, Ind./Northrop	Robert Dillie
40	41	*Tom Craig	C	6-8½	210	Sr.	Philadelphia, Pa./Archbishop Ryan	George Paull
42	43	Randy White	F	6-4	195	So.	Cleveland, O./John Adams	Terry Lloyd
44	45	Jeff Patton	G	6-1	170	Fr.	Pittsburgh, Pa./Boyle	Francis Mannion
50	51	*Jerome Thomas	F	6-4	180	Jr.	Farrell, Pa./Farrell	Ed McCluskey
52	53	Algernon White	F	6-4	170	Fr.	St. Petersburg, Fla./Northeast	Ed Evans
54	55	**Gary Stanton	C	6-7	225	Jr.	Cleveland, O./John Adams	Terry Lloyd

*Varsity Letters

Captains: Ron Beckett, Alonzo Craig, Tim Smiley

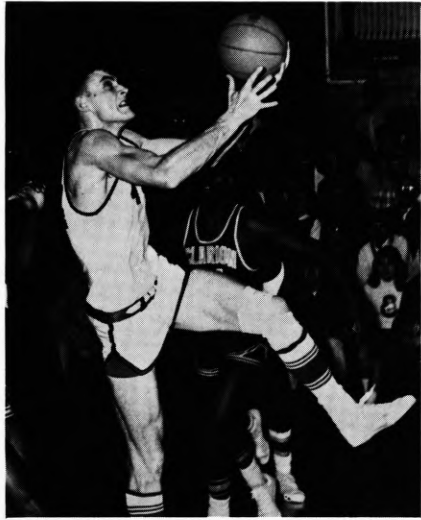
Managers: Ed Ransom, Greg Donor

JUNIOR VARSITY ROSTER

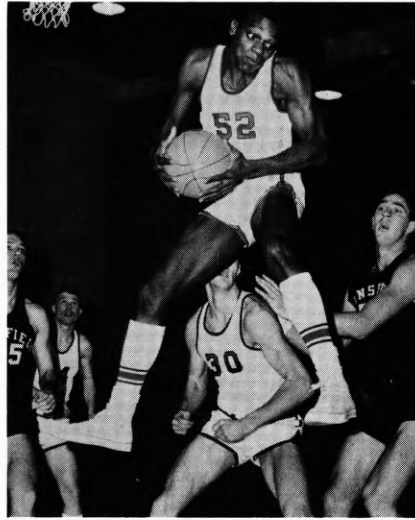
NO.		NAME	POS.	HT.	WT.	CLASS	HOMETOWN/HIGH SCHOOL	HIGH SCHOOL COACH
WHITE	RED							
10	11	Odell Miller	F	6-3	170	Fr.	Pittsburgh/Penn Hills	None
12	13	Tim Lawrence	G	5-11	155	Fr.	Erie/McDowell	Dick Fuller
14	15	George Coles	G	6-0	170	Jr.	Pittsburgh/Penn Hills	None
20	21	Bernie Miloser	F	6-2	180	So.	Ford City/Ford Cliff	Mark Freuhan
22	23	Bruce Talley	G	5-11	150	Fr.	Ft. Wayne, Ind./New Haven	Jerry Mitchell
24	25	Geary Conley	F	6-2	185	Fr.	Pittsburgh/Cent. Catholic	Larry Mikelonglo
30	31	Rich Pretnik	F	6-2½	205	Fr.	Pittsburgh/Freedom	Jim Irons
32	33	Rick Andzel	G	5-7	155	Fr.	Jamestown, N.Y./Jamestown	Fletcher Arritt
34	35	Joe Kelihar	C	6-4	200	Fr.	Cambridge Springs/C. Springs	P. J. Campbell
40	45	Paul Zyglowicz	G	6-0	160	Fr.	Pittsburgh/Lawrenceville Cath.	John Cope
42	43	Doug Santini	G	6-0	165	Fr.	Charleroi/Charleroi	Henry Pennline
50	51	Walt Bacik	C	6-3½	185	So.	West Mifflin/West Mifflin North	Miles Zelesnik

Head Coach: Guy Conti Assistants: John Furcron, Paul Siegel, Larry Seneta Equipment Mgrs: Pete Katsafanas, Denny Harkness

EDINBORO STATE ALL-AMERICANS



Dan Petchel (F) 1964-65



Darryl Meachem (F) 1965-66



Frank Smith (F) 1967-68, 1968-69



Fred Riley (G) 1971-72

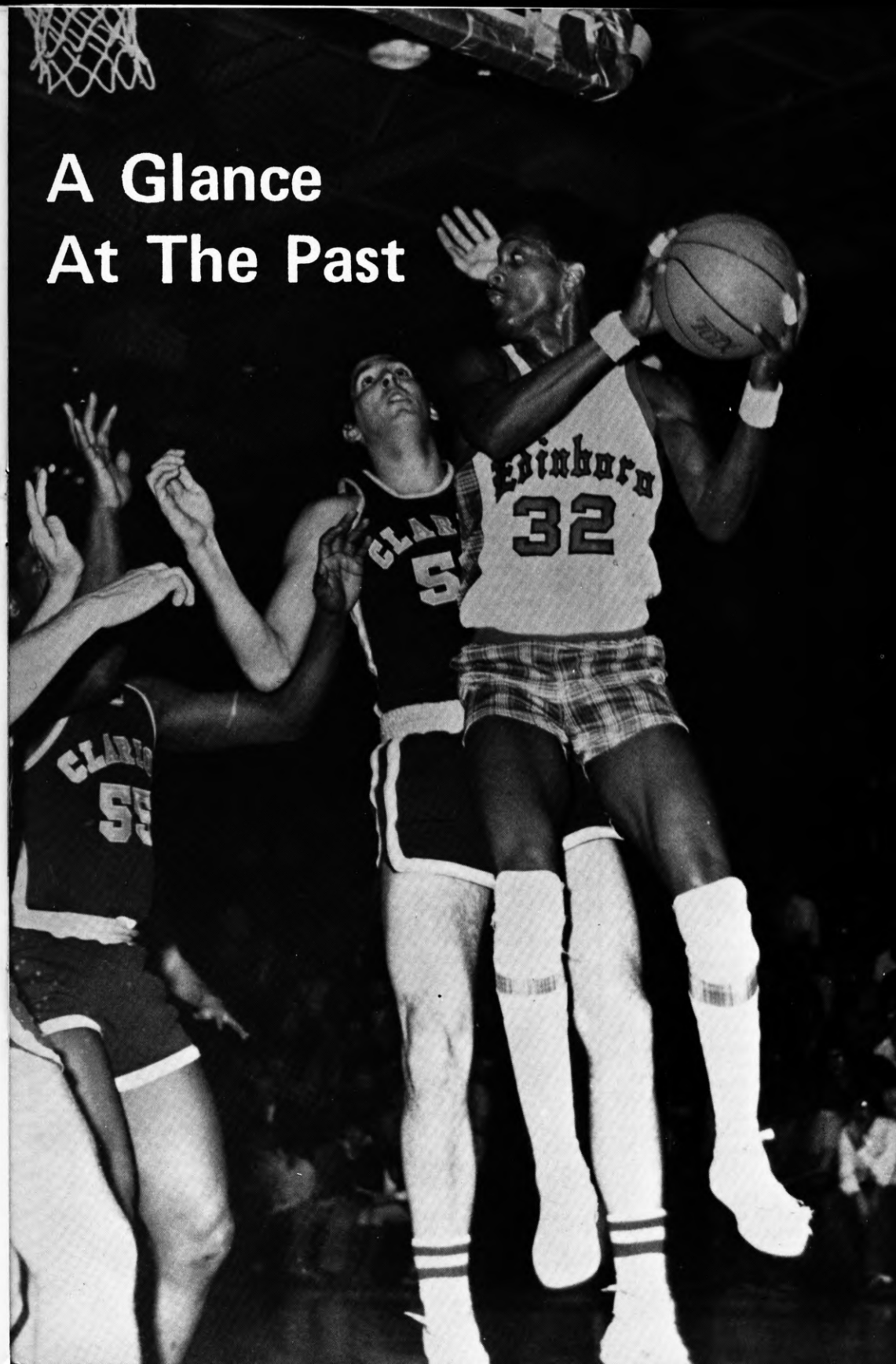
Edinboro State's four All-American winners have been traditionally prolific scorers for the Fighting Scots. Three forwards and a guard comprise the quartet which was groomed by Jim McDonald for their national honors on the Edinboro hardwoods.

Dan Petchel ranks as the second all-time scorer in ESC's cage history with his 1,344 career points while Fred Riley and Frank Smith hold down the number three and four spots on the scoring list with their respective 1,279 and 1,225-point outputs. Darryl Meachem ranks seventh among the all-time top scorers with his 881 tallies.

In the rebounding department, Meachem and Petchel are two of the college's top three career rebounders with 897 and 744, respectively. Meachem pulled down 393 rebounds for a school record established during the 1965-66 season.

Smith owns two individual scoring records. His 54-point output against Fredonia in the 1966-67 season earned him the most points scored in a single game record. The 6-1 forward compiled the most field goals scored in a single game record with 21 two-point markers against Waynesburg in the same season and 21 against Kenyon in 1969.

A Glance At The Past



ALL-TIME SCORES — 1928-1976

1928-29	
<i>Coach: Sox Harrison</i>	
Won 12 — Lost 2	
ESC	Opp.
58	Clarion..... 27
58	Fredonia..... 26
58	Youngstown
	YMCA..... 38
87	Kanty College... 21
20	Clarion..... 14
36	California..... 25
46	Slippery Rock... 32
24	Slippery Rock... 36
49	Fredonia..... 29
50	Indiana..... 18
40	California..... 19
42	Youngstown
	YMCA..... 44
38	Indiana..... 22
34	Slippery Rock... 30
640381
1929-30	
<i>Coach: Sox Harrison</i>	
Won 8 — Lost 6	
ESC	Opp.
29	Ashland..... 41
25	Slippery Rock... 24
18	Buffalo St.Tchrs.. 20
20	Canisius..... 38
36	West Chester... 37
31	Waynesburg... 25
25	Slippery Rock... 22
40	California..... 38
32	Clarion..... 22
45	Indiana..... 25
41	Buffalo St.Tchrs.. 22
39	California..... 52
32	Clarion..... 19
23	Indiana..... 24
436409
1930-31	
<i>Coach: Sox Harrison</i>	
Won 11 — Lost 4	
ESC	Opp.
55	Alliance..... 15
42	Alliance..... 20
43	Erie Branch..... 22
24	West Chester... 20
43	Kutztown..... 32
34	Slippery Rock... 33
21	Clarion..... 14
29	Indiana..... 23
44	Erie Branch..... 24
28	Slippery Rock... 29
38	California..... 39
34	California..... 38
59	Clarion..... 41
47	Indiana..... 30
21	Allegheny..... 29
562409
1931-32	
<i>Coach: Sox Harrison</i>	
Won 12 — Lost 1	
ESC	Opp.
60	Fredonia..... 26

37	Indiana..... 31
46	Alliance..... 23
42	Kutztown..... 31
22	California..... 23
31	Slippery Rock... 22
34	California..... 17
44	Slippery Rock... 35
46	Alliance..... 31
47	Clarion..... 16
37	Indiana..... 15
32	Clarion..... 22
60	Fredonia..... 22
538314
1932-33	
<i>Coach: Sox Harrison</i>	
<i>(Being Researched)</i>	
1933-34	
<i>Coach: Sox Harrison</i>	
Won 8 — Lost 5	
ESC	Opp.
27	Findley..... 28
50	Fredonia..... 22
33	Clarion..... 20
31	Westminster... 41
35	California..... 32
32	Slippery Rock... 37
50	Indiana..... 34
54	Fredonia..... 29
59	California..... 25
30	Westminster... 45
46	Slippery Rock... 34
36	Indiana..... 38
36	Clarion..... 34
519419
1934-35	
<i>Coach: Sox Harrison</i>	
<i>(Being Researched)</i>	
1935-36	
<i>Coach: Sox Harrison</i>	
Won 5 — Lost 5	
ESC	Opp.
24	Thiel..... 42
32	Thiel..... 40
54	Clarion..... 35
33	Clarion (OT)... 30
30	Slippery Rock... 41
40	Slippery Rock... 37
44	Indiana..... 32
32	Indiana..... 38
50	California..... 32
27	California..... 33
366360
1936-37	
<i>Coach: Sox Harrison</i>	
Won 7 — Lost 6	
ESC	Opp.
49	Ohio Chirobody.. 18
33	California..... 43
36	Indiana..... 39
41	Clarion..... 46
31	California..... 37
30	Thiel..... 35
47	Fredonia..... 35

45	Thiel..... 32
37	Ohio Chirobody.. 30
43	Slippery Rock... 49
53	Clarion..... 30
43	Indiana..... 30
41	Slippery Rock... 37
529461
1937-38	
<i>Coach: Sox Harrison</i>	
Won 6 — Lost 8	
ESC	Opp.
36	Kent..... 37
44	Fredonia..... 45
33	Clarion..... 28
54	Fredonia..... 41
48	California..... 44
37	Indiana..... 55
39	Thiel..... 34
37	Ohio Chirobody.. 23
32	California..... 49
56	Slippery Rock... 57
41	Slippery Rock... 42
41	Indiana..... 43
35	Clarion..... 41
49	Ohio Chirobody.. 37
582576
1938-39	
<i>Coach: Sox Harrison</i>	
Won 8 — Lost 2	
ESC	Opp.
43	Fredonia..... 37
53	Clarion..... 35
64	California..... 42
46	Fredonia..... 22
54	Indiana..... 36
50	Clarion..... 51
51	Slippery Rock... 34
45	California..... 32
39	Slippery Rock... 43
47	Indiana..... 42
492374
1939-40	
<i>Coach: Sox Harrison</i>	
Won 13 — Lost 4	
ESC	Opp.
49	St. Marys..... 38
45	Fredonia..... 37
51	Ohio Chirobody.. 27
54	Clarion..... 33
43	Canisius..... 52
32	Fredonia..... 28
44	Alliance..... 40
37	Indiana..... 29
32	Clarion..... 30
52	Slippery Rock... 44
54	California..... 44
39	Lawrence Tech.. 45
50	California..... 51
36	Slippery Rock... 67
40	Indiana..... 35
39	Alliance..... 18
47	Ohio Chirobody.. 37
744655

1940-41	
<i>Coach: Sox Harrison</i>	
Won 11 — Lost 4	
ESC	Opp.
45	DeSalles..... 44
54	Ohio Chirobody.. 33
46	Lawrence Tech.. 44
29	Fredonia..... 28
53	Thiel..... 42
49	Thiel..... 50
36	Slippery Rock... 26
34	California..... 36
50	Fredonia..... 37
43	Clarion..... 33
38	California..... 49
42	Indiana..... 32
35	Indiana..... 34
51	Clarion..... 36
50	Slippery Rock... 53
655577
1941-42	
<i>Coach: Sox Harrison</i>	
Won 3 — Lost 7	
ESC	Opp.
57	Fredonia..... 29
44	Alliance..... 33
36	Fredonia..... 38
27	Indiana..... 44
35	Slippery Rock... 51
36	California (OT)... 40
28	Clarion..... 41
39	California..... 49
37	Lawrence Tech.. 34
33	Canisius..... 66
372425
1942-43	
<i>Coach: Sox Harrison</i>	
Won 1 — Lost 1	
ESC	Opp.
34	Lawrence Tech.. 50
—	Alliance..... —
<i>(Season Halted—W.W.II)</i>	
1943-44 (War)	
1944-45 (War)	
1945-46	
<i>Coach: Sox Harrison</i>	
Won 0 — Lost 5	
ESC	Opp.
32	Clarion..... 53
38	Slippery Rock... 74
33	Clarion..... 42
33	Alliance..... 52
39	Alliance..... (OT) 45
175266
1946-47	
<i>Coach: Sox Harrison</i>	
Won 7 — Lost 8	
ESC	Opp.
39	Buffalo State... 51
54	Fredonia..... 44
44	Alliance..... 53
44	Indiana..... 45
34	Fenn..... 33
46	Slippery Rock... 51

ALL-TIME SCORES

63	California..... 45
45	Clarion..... 46
62	Alliance..... 55
48	Indiana..... 57
42	California..... 45
43	Clarion..... 41
40	Fenn..... 37
54	Fredonia..... 25
44	Slippery Rock... 52
702680
1947-48	
<i>Coach: Sox Harrison</i>	
Won 4 — Lost 11	
ESC	Opp.
62	Fredonia..... 37
51	Fenn..... 46
43	Alliance..... 54
51	Salem..... 57
55	California..... 63
53	California..... 71
56	Clarion..... 60
36	Alliance..... 37
51	Fredonia..... 49
69	Thiel..... 38
48	Clarion..... 51
55	Indiana..... 62
60	Slippery Rock... 73
49	Indiana..... 71
45	Slippery Rock... 77
784846
1948-49	
<i>Coach: Sox Harrison</i>	
Won 7 — Lost 9	
ESC	Opp.
48	Fredonia..... 21
55	Alliance..... 56
44	Slippery Rock... 57
57	Gannon..... 48
65	Indiana..... 75
50	Slippery Rock... 67
50	Clarion..... 48
45	Buffalo..... 57
48	Fredonia..... 43
55	Alliance..... 44
57	California..... 59
46	Clarion..... 60
51	Gannon..... 52
50	Thiel..... 76
81	California..... 69
56	Indiana..... 45
858877
1949-50	
<i>Coach: Sox Harrison</i>	
Won 12 — Lost 5	
ESC	Opp.
72	Fredonia..... 44
59	Alliance..... 40
55	Grove City..... 54
62	Gannon..... 57
66	California..... 50
54	Indiana..... 70
52	Slippery Rock... 58
52	Gannon..... 68
45	Slippery Rock... 42
49	California..... 64
60	Clarion..... 50
35	Buffalo..... 47

60	Indiana..... 56
58	Clarion..... 50
73	Alliance..... 57
61	Fredonia..... 52
65	Thiel..... 51
978910
1950-51	
<i>Coach: Sox Harrison</i>	
Won 9 — Lost 9	
ESC	Opp.
64	Allegheny..... 52
55	Fredonia..... 46
61	Slippery Rock... 60
82	Fredonia..... 72
79	Alliance..... 61
65	Gannon..... 73
53	Indiana..... 54
82	Clarion..... 84
65	Slippery Rock... 90
55	Buffalo..... 62
66	Gannon..... 43
62	California..... 77
82	Clarion..... 91
63	Alliance..... 55
52	Fenn..... 75
77	Thiel..... 70
80	California..... 63
84	Grove City..... 99
1,2271,227
1951-52	
<i>Coach: Sox Harrison</i>	
Won 6 — Lost 12	
ESC	Opp.
46	Fredonia..... 42
58	Allegheny..... 79
63	California..... 55
46	Gannon..... 48
57	Slippery Rock... 61
66	Fredonia..... 68
60	Buffalo..... 55
67	Gannon..... 85
77	Alliance..... 58
71	Indiana..... 74
49	Slippery Rock... 91
68	Clarion..... 82
79	Grove City..... 83
61	California..... 92
74	Clarion..... 106
67	Alliance..... 57
56	Thiel..... 55
63	Geneva..... 85
1,1281,276
1952-53	
<i>Coach: Sox Harrison</i>	
<i>(Being Researched)</i>	
ESC	Opp.
57	Fredonia..... 56
68	Allegheny..... 78
67	Grove City..... 77
51	Alliance..... 57
75	Indiana..... 87
67	Slippery Rock... 92
67	Gannon..... 71
72	Alliance..... 61
68	Gannon..... 81
68	Indiana..... 64

ALL-TIME SCORES

77	Thiel.....	59
75	Allegheny.....	93
85	Fredonia.....	68
53	California.....	73
76	Clarion.....	82
90	Grove City.....	57
86	California.....	81
77	Thiel.....	66
32	Clarion.....	76
63	Geneva.....	92
—	Slippery Rock... —	—

1953-54

Coach: Art McComb
Won 6 — Lost 12

ESC	Opp.	
61	Fredonia.....	49
56	Allegheny.....	52
68	Indiana.....	76
56	Grove City.....	61
61	Fredonia.....	64
49	Thiel.....	42
47	Gannon.....	61
73	Allegheny.....	89
49	Alliance.....	80
57	California.....	82
72	Alliance.....	70
64	Thiel.....	67
66	Clarion.....	65
64	Grove City.....	58
70	Gannon.....	71
58	California.....	89
65	Clarion.....	88
67	Indiana.....	109

1,103 1,273

1954-55

Coach: Art McComb
Won 8 — Lost 12

ESC	Opp.	
62	Gannon.....	77
59	Allegheny.....	80
59	Indiana.....	98
80	Grove City.....	77
65	Fredonia.....	62
61	Allegheny.....	79
70	Thiel.....	63
119	Alliance.....	108
77	Slippery Rock... —	78
66	California.....	81
61	Indiana.....	69
72	Slippery Rock... —	67
59	Gannon.....	70
70	California.....	85
66	Clarion.....	72
70	Fredonia.....	51
67	Alliance.....	62
63	Grove City.....	71
61	Clarion.....	66
68	Thiel.....	62

1,496 1,478

1955-56

Coach: Art McComb
Won 3 — Lost 17

ESC	Opp.	
62	Allegheny.....	95
53	Alliance.....	69
76	Indiana.....	91

52	Grove City.....	61
56	Fredonia.....	54
74	Allegheny.....	84
63	Thiel.....	75
54	Slippery Rock... —	77
62	Gannon.....	85
65	Slippery Rock... —	80
77	Thiel.....	70
57	Clarion.....	68
61	California.....	65
67	Fredonia.....	82
72	Indiana.....	131
82	Alliance.....	76
64	California.....	86
64	Clarion.....	91
74	Grove City.....	76
55	Gannon.....	71
1,290	1,587

1956-57

Coach: Robert Thurbon
Won 5 — Lost 14

ESC	Opp.	
81	Grove City.....	104
63	Allegheny.....	74
66	Thiel.....	90
73	California.....	110
68	Slippery Rock... —	78
68	Grove City.....	105
66	Gannon.....	80
71	Clarion.....	72
84	Fredonia.....	77
61	Thiel.....	64
67	California.....	74
73	Allegheny.....	60
100	Fredonia.....	66
100	Alliance.....	88
68	Fenn.....	81
78	Slippery Rock... —	97
107	Clarion.....	88
94	Alliance.....	96
89	Gannon.....	90
1,477	1,594

1957-58

Coach: Robert Thurbon
Won 10 — Lost 11

ESC	Opp.	
64	Grove City.....	72
84	Slippery Rock... —	79
102	Alliance.....	103
90	Fredonia.....	76
64	Thiel.....	61
65	California.....	60
63	Indiana.....	96
52	Gannon.....	60
92	Clarion.....	110
76	Lock Haven. (OT)	74
83	Fredonia.....	69
75	Thiel.....	67
77	California.....	88
94	Slippery Rock... —	97
54	Grove City.....	71
76	Allegheny.....	67
74	Fenn.....	61
75	Alliance.....	70
65	Indiana.....	97
84	Clarion.....	99
65	Gannon..... (OT)	75
1,574	1,652

1958-59

Coach: Robert Thurbon
Won 8 — Lost 12

ESC	Opp.	
75	Alliance.....	80
101	Slippery Rock... —	92
61	Grove City.....	56
79	Thiel.....	72
62	Gannon.....	86
88	Clarion.....	101
91	California.....	99
94	Slippery Rock... —	106
80	Thiel.....	78
83	Fredonia.....	74
61	Lock Haven.....	74
56	Mansfield.....	99
66	Grove City.....	75
69	Mansfield.....	98
114	Alliance.....	104
102	California.....	93
104	Clarion.....	112
99	Fredonia.....	72
77	Gannon.....	79
106	Allegheny.....	109
1,668	1,759

1959-60

Coach: Jim Smart
Won 6 — Lost 13
(Scores not available)

1960-61

Coach: Loyal Park
Won 6 — Lost 15

ESC	Opp.	
68	Lock Haven.....	87
45	Alliance.....	61
43	Indiana.....	73
61	Clarion.....	71
77	Grove City.....	95
54	Mt. Union.....	90
56	California.....	58
79	Indiana.....	89
57	Gannon.....	62
73	Slippery Rock... —	85
33	Alliance.....	58
85	Fredonia.....	51
88	Thiel.....	66
86	California.....	68
64	Slippery Rock... —	73
70	Clarion.....	67
62	Gannon.....	83
55	Grove City.....	73
87	Allegheny... (OT)	93
93	Fredonia.....	78
67	Lock Haven.....	65
1,403	1,546

1961-62

Coach: Loyal Park
Won 17 — Lost 7

ESC	Opp.	
60	Fredonia.....	58
60	Clarion.....	65
48	Grove City.....	71
81	Slippery Rock... —	61
63	Carnegie Tech... —	76
73	Roberts Wesleyan	64
81	California.....	51
81	Indiana.....	67

ALL-TIME SCORES

56	Gannon.... (OT)	58
83	Fenn.....	52
103	Lock Haven.....	101
	(3 OT)	101
63	Alliance.....	52
87	Fredonia.....	80
71	Thiel.....	63
82	California.....	64
67	Clarion.....	62
56	Alliance.....	69
74	Indiana.....	82
69	Thiel.....	60
72	Lock Haven.....	60
76	Slippery Rock... —	71
102	Allegheny.....	80

Western Division

Championship—PSCAC	
86 Slippery Rock... —	68
State Championship—PSCAC	
54 Mansfield.....	58
1,748 1,593

1962-63

Coach: Jim McDonald
Won 11 — Lost 9

ESC	Opp.	
66	Bluffton.....	46
82	Alliance.....	86
91	Clarion.....	83
70	Slippery Rock... —	64
60	Carnegie Tech... —	63
87	California.....	56
52	Gannon.....	60
74	Thiel.....	64
66	Fenn.....	68
72	Lock Haven.....	49
75	Indiana.....	66
77	Fredonia.....	66
67	Alliance.....	84
73	California.....	83
61	Clarion.....	58
68	Indiana.....	75
97	Fredonia.....	71
83	Lock Haven.....	52
64	Slippery Rock... —	70

Western Division

Championship—PSCAC	
69 Slippery Rock... —	83
1,454 1,347

1963-64

Coach: Jim McDonald
Won 16 — Lost 6

ESC	Opp.	
75	Alliance.....	59
63	Slippery Rock... —	67
73	Thiel.....	45
92	Baldwin-Wallace... —	90
72	Bloomsburg.....	71
84	Clarion.....	66
106	Fredonia.....	81
94	Fenn.....	82
71	Bloomsburg.....	74
85	Indiana.....	99
80	Lock Haven.....	48

88	Roberts Wesleyan	73
83	Lock Haven.....	61
81	Alliance.....	91
85	California.....	80
86	Slippery Rock... —	79
99	Indiana.....	88
95	Clarion.....	90
67	California.....	55
72	Gannon.... (OT)	71

State Championship—PSCAC

90	Mansfield.....	98
NAIA District 30 Championship		
67 Westminster.....	81	
1,808 1,649	

1964-65

Coach: Jim McDonald
Won 10 — Lost 8

ESC	Opp.	
99	Grove City.....	89
68	Alliance.....	80
76	Slippery Rock... —	80
92	Thiel.....	61
109	Lock Haven.....	79
104	Walsh.....	72
90	Clarion.....	69
100	Indiana.....	87
70	California.....	82
89	Lock Haven.....	53
84	Alliance.....	89
86	Geneva.....	85
86	Slippery Rock... —	63
91	Indiana.....	82
69	Fenn.....	77
95	California.....	108
50	Gannon.....	58
77	Clarion.....	79
1,535 1,393	

1965-66

Coach: Jim McDonald
Won 18 — Lost 5

ESC	Opp.	
84	Mansfield.....	83
70	Alliance.....	68
67	Slippery Rock... —	56
95	Lock Haven.....	55
80	Clarion.....	71
104	Waynesburg... —	88
68	Indiana.....	71
83	Fredonia.....	62
78	California.....	102
89	Lock Haven.....	72
86	Mansfield.....	82
90	Alliance.....	83
99	Michigan Luth... —	58
79	Slippery Rock... —	72
95	Indiana.....	85
70	Geneva.....	71
93	Cleveland State... —	72
83	Clarion.....	79
71	California.....	58

State Championship—PSCAC

76	Cheyney.....	96
----	--------------	----

NAIA District 18 Championship

76	Geneva.....	60
79	California.....	62

National NAIA Tournament, K. C., Mo.

53	Central Michigan... —	67
1,868	1,673

1966-67

Coach: Jim McDonald
Won 11 — Lost 11

ESC	Opp.	
88	Mansfield.....	73
90	Alliance.....	93
99	Slippery Rock... —	94
90	Lock Haven.....	77
73	Clarion.....	71
87	California.....	92
110	Fredonia.....	64
123	Waynesburg... —	97
94	Indiana.....	95
83	W. Va. Wesleyan... —	85
	(OT)	85
90	Lock Haven.....	64
71	Mansfield.....	77
67	Alliance.....	66
71	Cleveland State... —	75
89	Roberts Wesleyan	78
75	Slippery Rock... —	77
	(OT)	77
77	Indiana.....	85
98	Geneva.....	107
26	California.....	31
85	Clarion.....	75
70	Baldwin Wallace... —	102
87	Walsh.....	66
1,843	1,744

1967-68

Coach: Jim McDonald
Won 19 — Lost 5

ESC	Opp.	
109	Waynesburg... —	84
84	Slippery Rock... —	56
133	Lock Haven.....	90
103	Clarion.....	92
98	California.....	91
93	Fredonia.....	84
87	Indiana U. of Pa... —	85
99	Mansfield.....	81
90	Alliance.....	72
109	W. Va. Wesleyan... —	78
65	Mansfield.....	106
83	Lock Haven.....	66
90	Alliance(OT).... —	88
108	Cleveland State... —	60
110	Slippery Rock... —	73
67	Indiana U. of Pa... —	69
80	Roberts Wesleyan	87
78	Geneva.....	87
97	California.....	75
110	Clarion.....	84
86	Grove City.....	65

State Championship—PSCAC

73	Cheyney State... —	61
----	--------------------	----

NAIA District 18—
Championship
55 Gannon..... 52
41 Westminster..... 48
2,148 1,834

1968-69
Coach: Jim McDonald
Won 14 — Lost 8

ESC	Opp.
78 Geneva.....	81
103 Lock Haven.....	67
99 Slippery Rock.....	73
71 Clarion State.....	69
126 Roberts Wesleyan.....	66
85 Cal. S. Fullerton.....	63
58 Long Beach State.....	84
78 Los Angeles State.....	73
110 Kenyon.....	99
74 Alliance.....	86
93 California State.....	80
93 Lock Haven.....	64
87 Alliance.....	73
72 Fredonia State.....	62
95 Slippery Rock.....	78
67 Indiana U. of Pa.....	89
57 California State.....	54
112 Clarion State.....	78
86 Grove City.....	98
75 Indiana U. of Pa.....	81
PC State Championship	
69 Cheyney State.....	83

NAIA District 18
Playoffs

57 Gannon.....	69
1,845	1,670

1969-70
Coach: Jim McDonald
Won 13 — Lost 9

ESC	Opp.
88 Grove City.....	82
115 Pitt-Johnstown.....	55
70 Lock Haven.....	67
75 Slippery Rock.....	69
72 Clarion State.....	75
57 Fredonia State.....	60
85 North. Michigan.....	92
85 U. Wisconsin.....	104
88 Alliance.....	75
77 Lock Haven.....	60
64 Alliance.....	77
80 Slippery Rock.....	57
72 Indiana U. of Pa.....	75
70 Roberts Wesleyan.....	58
68 California State.....	77
71 Point Park.....	54
72 Clarion State.....	52
77 Geneva.....	74
73 Indiana U. of Pa.....	60
66 California State.....	77

NAIA District 18
Playoffs

68 Indiana U. of Pa.....	(OT) 67
71 California State.....	72
1,664	1,539

ALL-TIME SCORES

1970-71
Coach: Jim McDonald
Won 16 — Lost 8

ESC	Opp.
96 Grove City.....	84
81 Alliance.....	69
115 Lock Haven.....	79
88 Slippery Rock.....	76
116 W. Ontario.....	62
60 Clarion.....	66
81 Ohio Wesleyan.....	67
87 Hiram.....	50
116 North. Michigan.....	98
96 Kenyon.....	98
75 California.....	66
91 Mars Hill.....	68
96 Geneva.....	75
73 Slippery Rock.....	77
64 Indiana U. of Pa.....	84
82 Lock Haven.....	92
91 Oneonta State.....	64
93 California.....	83
85 Clarion(OT).....	87
89 Alliance.....	83
88 W. Va. Wesleyan.....	78
61 Indiana U. of Pa.....	68
NAIA District 18	
Playoffs	
81 Clarion.....	70
60 Indiana U. of Pa.....	67
2,065	1,811

1971-72
Coach: Dave Rooney
Won 17 — Lost 9

ESC	Opp.
91 Kenyon.....	84
85 Lock Haven (OT).....	82
73 Point Park.....	71
82 Geneva.....	74
70 Clarion (OT).....	71
85 Alma (OT).....	80
65 Capital.....	78
105 Salem.....	91
94 Marietta.....	87
82 California.....	76
67 Alliance.....	83
77 Slippery Rock.....	83
94 Mount Union.....	111
70 Alliance.....	69
90 Slippery Rock.....	87
74 Indiana.....	70
71 Wittenberg.....	81
74 Lock Haven.....	66
87 California.....	74
72 Clarion.....	75
62 Oneonta.....	87
76 Indiana (OT).....	74
72 Grove City.....	62
NAIA District 18	
Playoffs	
85 Slippery Rock.....	75
81 Clarion.....	78
National NAIA	
Tournament	
Kansas City, Mo.	
72 Westmont, Cal.....	91
2,056	2,060

1972-73
Coach: Jim McDonald
Won 13 — Lost 9

ESC	Opp.
64 Mercyhurst.....	71
74 Ohio Wesleyan.....	66
104 Allegheny.....	85
59 Clarion.....	76
67 Wilmington (Del.).....	69
61 California.....	67
70 Alliance.....	64
74 Slippery Rock.....	94
48 Muskingum.....	59
60 Point Park.....	79
65 Grove City.....	58
66 Bloomsburg.....	75
85 Mount Union.....	68
8 Indiana U. of Pa.....	60
78 Lock Haven.....	68
93 Behrend.....	60
64 California (OT).....	59
67 Clarion.....	66
86 Alliance.....	69
57 Indiana U. of Pa.....	63
86 Slippery Rock.....	76
62 Lock Haven.....	61

1,558 1,503

1973-74
Coach: Jim McDonald
Won 18 — Lost 6

ESC	OPP
101 Behrend.....	64
108 West. Ontario.....	61
95 Clarion.....	80
122 Alliance.....	72
76 California.....	50
82 Slippery Rock.....	81
90 W. Va. State.....	68
75 Ashland.....	74
87 Frostburg.....	59
57 Lock Haven.....	63
81 Bloomsburg.....	90
126 Point Park.....	95
71 Frostburg.....	65
55 Muskingum.....	62
76 Indiana (Pa.).....	86
62 Mercyhurst.....	59
81 California.....	51
95 Clarion.....	86
95 Lock Haven.....	58
67 Indiana (Pa.).....	69
101 Slippery Rock.....	95
123 Alliance.....	86

NAIA District 18
Playoffs

84 Point Park.....	80
65 Indiana (Pa.).....	78

2,075 1,732

Continued on next page

ALL-TIME SCORES

1974-75
Coach: Jim McDonald
Won 22 — Lost 5

ESC	Opp.
95 Baldwin-Wallace.....	72
60 Clarion.....	58
76 Mansfield.....	60
80 California.....	62
94 Slippery Rock.....	71
82 Behrend.....	68
85 Mercyhurst.....	80
88 Point Park.....	78
78 St. Vincent.....	70
67 Lock Haven.....	61
93 Frostburg.....	75
80 St. Vincent.....	85
84 Point Park.....	85
80 Indiana.....	70
75 Mercyhurst.....	66
87 California.....	73
82 Clarion.....	69
87 Lock Haven.....	58
46 Indiana.....	51
100 Slippery Rock.....	77
80 Alliance.....	66
93 Frostburg (2 OT).....	91
PC State Championship	
70 Mansfield.....	79
NAIA District 18 Playoffs	
83 Slippery Rock.....	79
70 Indiana.....	59
National NAIA Tournament	
Kansas City, Mo.	
94 Palm Beach Atlantic.....	86
79 Alcorn State.....	85

1975-76
Coach: Guy Conti
Won 24 — Lost 5

ESC	Opp.	LEADING SCORERS
73 Mercyhurst.....	72	Stanton.....18
84 West Georgia.....	78	Smiley.....20
84 Baldwin-Wallace.....	72	Stanton.....24
78 Frostburg.....	71	Smiley.....28
95 Allegheny.....	84	Smiley.....30
68 Clarion.....	65	Hampton.....17
88 Lock Haven.....	56	Smiley.....15
88 St. Vincent.....	69	Smiley.....22
91 Behrend.....	66	Smiley, Childs.....16
70 Alderson-Broaddus (OT).....	69	Smiley.....23
73 W. Va. Wesleyan.....	68	Stanton.....18
81 Frostburg.....	71	Shared by four.....17
80 Lock Haven.....	62	Craig.....23
67 Slippery Rock.....	68	Craig.....20
72 California.....	61	Smiley.....18
64 Point Park.....	69	Smiley.....22
61 Indiana.....	59	Smiley.....22
89 Alliance.....	78	Smiley.....19
72 Mercyhurst.....	73	Smiley.....19
92 Clarion (OT).....	91	Smiley.....24
80 California.....	66	Craig.....16
67 Indiana.....	64	Smiley, Hampton.....19
78 Slippery Rock.....	71	Craig.....16
83 St. Vincent.....	81	Smiley.....19
PC State Championship		
77 Cheyney.....	78	Childs.....20
NAIA District 18 Playoffs		
93 Clarion (OT).....	90	Smiley.....22
67 Indiana.....	66	Hampton.....16
National NAIA Tournament		
Kansas City, Mo.		
88 Gustavus Adolphus.....	73	Craig.....25
73 L. Superior State.....	76	Stanton.....22

1975-76 VARSITY STATISTICS

NAME	G	FGM	FGA	PCT	FTM	FTA	PCT	REB	AVG	TP	AVG
Smiley, T.	29	222	494	.449	64	83	.771	109	3.8	508	17.5
Childs, D.	29	137	286	.479	57	73	.781	165	5.7	331	11.4
Hampton, D.	28	130	301	.432	63	85	.741	299	10.7	323	11.5
Craig, A.	29	144	334	.431	31	54	.574	57	2.0	319	11.0
Stanton, G.	28	131	277	.473	35	54	.648	217	7.8	297	10.6
Beckett, R.	28	90	195	.462	18	27	.667	140	5.0	198	7.1
Lentz, B.	27	25	64	.391	21	32	.656	70	2.6	71	2.6
Craig, T.	18	22	46	.478	9	19	.734	39	2.2	53	2.9
Dillard, B.	19	21	43	.488	2	4	.500	15	.8	44	2.3
Ley, H.	15	12	36	.333	16	19	.842	12	.8	40	2.7
Lett, G.	16	10	35	.286	15	21	.714	17	1.1	35	2.2
Thomas, J.	19	8	15	.533	11	18	.611	26	1.4	27	1.4
Trivelli, S.	5	5	17	.294	3	6	.500	2	.4	13	2.6
Simmons, F.	10	4	13	.308	4	4	1.000	3	.3	12	1.2
Draper, B.	11	5	13	.385	0	5	.000	19	1.7	10	.9
								195	6.7		
ESC TOTALS	29	966	2169	.445	349	504	.692	1385	47.8	2281	78.7
	29	847	1972	.429	373	528	.706	1253	43.2	2067	71.3

SEASONS RANKED BY PERCENTAGES

YEAR	W-L	PCT	YEAR	W-L	PCT
1. 1931-32	12-1	.923	22. 1964-65	10-8	.555
2. 1928-29	12-2	.857	23. 1962-73	11-9	.550
3. 1975-76	24-5	.827	24. 1936-37	7-6	.538
4. 1974-75	22-5	.815	25. 1966-67	10-10	.500
5. 1938-39	8-2	.800	26. 1950-51	9-9	.500
6. 1967-68	19-5	.792	27. 1942-43	1-1	.500
7. 1965-66	18-5	.782	28. 1935-36	5-5	.500
8. 1939-40	14-4	.778	29. 1946-47	7-8	.466
9. 1973-74	18-6	.750	30. 1957-58	10-11	.452
10. 1940-41	11-4	.733	31. 1948-49	7-9	.437
11. 1963-64	16-6	.727	32. 1937-38	6-8	.428
12. 1961-62	17-7	.708	33. 1954-55	8-12	.400
13. 1949-50	12-5	.705	34. 1958-59	8-12	.400
14. 1970-71	16-8	.667	35. 1953-54	6-12	.333
15. 1930-31	10-5	.667	36. 1951-52	6-12	.333
16. 1971-72	17-9	.654	37. 1941-42	4-9	.307
17. 1968-69	14-8	.636	38. 1960-61	6-15	.281
18. 1933-34	8-5	.615	39. 1947-48	4-11	.281
19. 1969-70	13-9	.591	40. 1956-57	5-14	.266
20. 1972-73	13-9	.591	41. 1955-56	4-16	.200
21. 1929-30	8-6	.571	42. 1945-46	0-5	.000

RESULTS BY SEASONS

Year	G	W	L	Points		Year	G	W	L	Points	
				For	Agst.					For	Agst.
1928-29	14	12	2	640	381	1953-54	18	6	12	1,103	1,273
1929-30	14	8	6	436	409	1954-55	20	8	12	1,496	1,478
1930-31	15	11	4	562	409	1955-56	20	3	17	1,290	1,587
1931-30	13	12	1	538	314	1956-57	19	5	14	1,477	1,594
1932-33		(Being Researched)				1957-58	21	10	11	1,574	1,652
1933-34	13	8	5	519	419	1958-59	20	8	12	1,668	1,759
1934-35		(Being Researched)				1959-60		(Being Researched)			
1935-36	10	5	5	366	360	1960-61	21	6	15	1,403	1,546
1936-37	13	7	6	529	461	1961-62	24	17	7	1,748	1,593
1937-38	14	6	8	582	576	1962-63	20	11	9	1,454	1,347
1938-39	10	8	2	492	374	1963-64	22	16	6	1,808	1,649
1939-40	17	13	4	744	655	1964-65	18	10	8	1,535	1,393
1940-41	15	11	4	655	577	1965-66	23	18	5	1,868	1,673
1941-42	10	3	7	372	425	1966-67	22	11	11	1,843	1,744
1942-43	2	1	1	34	50	1967-68	24	19	5	2,148	1,834
1943-44	War					1968-69	22	14	8	1,845	1,670
1944-45	War					1969-70	22	13	9	1,664	1,539
1945-46	5	0	5	175	266	1970-71	24	16	8	2,065	1,811
1946-47	15	7	8	702	680	1971-72	26	17	9	2,056	2,060
1947-48	15	4	11	784	846	1972-73	22	13	9	1,558	1,503
1948-49	16	7	9	858	877	1973-74	24	18	6	2,075	1,732
1949-50	17	12	5	978	910	1974-75	27	22	5	2,188	1,924
1950-51	18	9	9	1,227	1,227	1975-76	29	24	5	2,281	2,067
1951-52	18	6	12	1,128	1,276						
1952-53		(Being Researched)				TOTALS	752	435	317	50,468	47,920

EDINBORO CENTURY CLUB

ESC	OPP	YEAR	ESC	OPP	YEAR		
133	Lock Haven	90	1967-68	108	Cleveland St.	60	1967-68
126	Roberts Wesleyan	66	1968-69	108	Western Ontario	61	1973-74
126	Point Park	96	1973-74	107	Clarion	88	1956-57
123	Waynesburg	97	1966-67	106	Fredonia	81	1963-64
123	Alliance	86	1973-74	105	Salem	91	1971-72
122	Alliance	72	1973-74	104	Walsh	72	1964-65
119	Alliance	108	1954-55	104	Waynesburg	88	1965-66
116	N. Michigan	98	1970-71	104	Allegheny	85	1972-73
116	Western Ontario	62	1970-71	103	Lock Haven	101	1961-62
115	Lock Haven	79	1970-71	103	Clarion	92	1967-68
115	Pitt-Johnstown	55	1969-70	103	Lock Haven	67	1968-69
114	Alliance	104	1958-59	102	California	93	1958-59
112	Clarion	78	1968-69	102	Allegheny	80	1961-62
110	Slippery Rock	73	1967-68	101	Slippery Rock	92	1958-59
110	Fredonia	64	1966-67	101	Behrend	64	1973-74
110	Clarion	84	1967-68	101	Slippery Rock	95	1973-74
110	Kenyon	99	1968-69	100	Fredonia	66	1956-57
109	W. Va. Wesleyan	78	1967-68	100	Alliance	88	1956-57
109	Waynesburg	84	1967-68	100	Indiana	87	1964-65
109	Lock Haven	79	1964-65	100	Slippery Rock	77	1974-75

OPPONENTS CENTURY CLUB

OPP	ESC	YEAR	OPP	ESC	YEAR		
131	Indiana	72	1955-56	107	Geneva	98	1966-67
112	Clarion	104	1958-59	106	Mansfield	65	1967-68
111	Mount Union	94	1971-72	106	Slippery Rock	94	1958-59
110	California	73	1956-57	104	U. of Wisc., Mil.	85	1969-70
110	Clarion	92	1957-58	103	Alliance	102	1957-58
109	Allegheny	106	1958-59	103	Indiana	85	1959-60
109	Indiana	67	1953-54	102	California	78	1965-66
108	California	95	1964-65	101	Clarion	88	1958-59

1975-76 PENNSYLVANIA CONFERENCE RESULTS

Eastern Div.	Conference	Overall	Western Div.	Conference	Overall				
*Cheyney	11	1 .961	24	5 .828	Edinboro	9	1 .900	24	5 .828
Mansfield	8	4 .667	17	7 .708	Indiana	7	3 .700	20	5 .800
Shippensburg	7	5 .583	15	11 .577	Clarion	7	3 .700	18	9 .666
Bloomsburg	6	6 .500	13	10 .524	Slippery Rock	3	7 .300	6	18 .250
Kutztown	5	7 .416	13	10 .525	Lock Haven	2	8 .200	11	12 .478
E. Stroudsburg	3	9 .250	12	13 .480	California	2	8 .200	10	12 .454
Millersville	2	10 .167	9	15 .375					

Once again, Cheyney State with virtually its entire squad from last year is favored to repeat not only as kings of the East, but as Pennsylvania Conference champions, too.

Kutztown and Bloomsburg have the veteran squads and experience to be contenders, while Millersville should not be far behind. There is little difference in the rest of the pack with Mansfield, Shippensburg and East Stroudsburg flooring young clubs in the throes of rebuilding programs.

Edinboro State, defending PC Western Division champion, is expected to get a stern challenge from Clarion, along with rugged tests on home courts from the remaining conference foes as the Scots bid for their third straight loop crown.

Both Clarion and Edinboro have veteran squads back on the floor to be the class of the West. Lurking in the wings are a veteran-laden Indiana five, a surprising Slippery Rock quintet, a superbly coached Lock Haven squad and an always dangerous California roundball edition.

TEAM RECORDS AND CHAMPIONSHIPS

TEAM RECORD – SEASON

Most Wins	24–5	Guy Conti	1975–76
	21–3	(regular season play)	1975–76
Best Season	12–1	Sox Harrison	1931–32
Scoring Average	89.4		1967–68
Shooting Percentage	51.7		1966–67
Free Throw Percentage	72.5		1973–74
Rebounding Average	55.7		1965–66
Rebounding Percentage	62.5		1966–67
Field Goals	966	(29 games)	1975–76
Consecutive Victories	13		1975–76
Consecutive Victories, One Season	13		1975–76
Consecutive Conference Wins	17		1967–69

TEAM RECORDS – GAME

Points	133	Lock Haven	1967–68
Points, Half	74	Point Park	1973–74
Field Goals	54	Lock Haven	1967–68
	54	Alliance	1973–74
Free Throws	33–40	Slippery Rock	1973–74
Free Throw Pct.	(26–27) 93.6	Point Park	1973–74
Rebounds	93	Clarion (PC Record)	1968–69
Points, Two Teams	227	(ESC 119, Alliance 108)	1954–55
Longest Game	3 O.T.	Lock Haven	1961–62

CHAMPIONSHIPS

*NAIA District 18 (4): 1965–66 (McDonald), 1971–72 (Rooney), 1974–75 (McDonald), 1975–76 (Conti)

Pennsylvania Conference (1): 1967–68 (McDonald)

PC Western Division (7): 1961–62 (Park), 1963–64 (McDonald), 1965–66 (McDonald), 1967–68 (McDonald), 1968–69 (McDonald), 1974–75 (McDonald), 1975–76 (Conti)

Regular Season Tournaments: Ashland Holiday Tournament, 1973–74 (McDonald), Marietta Tournament, 1971–72 (Rooney), Erie Classic, 1975–76 (Conti), Allegheny Tournament, 1975–76 (Conti), W. Virginia Wesleyan Tournament, 1975–76 (Conti)

*Won the right to play in NAIA Tournament in Kansas City, Mo.

TOP CAREER SCORERS

1. Walt Askins 1,739	7. Tim Smiley 1,148	13. Dave Shenefeld 797
2. Dan Petchel 1,344	8. Don Dougan 1,095	14. Larry Betar 755
3. Fred Riley 1,279	9. Darryl Meachem 881	15. Jim Sims 730
4. Frank Smith 1,225	10. Rod Vashaw 879	16. Harry Jenkins 728
5. Jim Prokell 1,196	11. Bob McVeigh 840	17. Ken Barker 708
6. Roy Stauffer 1,153	12. Wendell Rojik 812	

TOP CAREER REBOUNDERS

1. Don Dougan992	5. Frank Smith637	9. Rich Sulka507
2. Darryl Meachem897	6. Wendell Rojik622	10. Don Gerdich498
3. Dan Petchel744	7. Jim Prokell593	11. Art Dickinson442
4. Ken Barker689	8. Dennis Hampton .547	12. Charlie Hickox . . .423

INDIVIDUAL RECORDS – SEASON

Most Points

Tim Smiley	508	(29 games)	1975-1976
Walt Askins	496	(19 games)	1956-1957
Fred Riley	492	(26 games)	1971-1972
Fred Riley	485	(24 games)	1970-1971
Frank Smith	466	(22 games)	1968-1969
Dan Petchel	460	(18 games)	1964-1965
Frank Smith	447	(24 games)	1967-1968

Highest Scoring Averages

Walt Askins	26.1	(19 games)	1956-1957
Dan Petchel	25.6	(18 games)	1964-1965
Frank Smith	30.1	(9 games)	1966-1967

Best Shooting Percentages

Lynn Nelson	58.3	(16 games)	1966-1967
Dan Petchel	55.8	(18 games)	1964-1965
Frank Smith	59.4	(9 games)	1966-1967

Best Foul Shooting Percentages

Roy Stauffer	88.2	(90-102)	1972-1973
Ken Gerber	85.1	(63-74)	1961-1962
Fred Riley	84.7	(100-118)	1971-1972

Most Rebounds

Darryl Meachem	393		1965-1966
----------------	-----	--	-----------

Best Rebounding Averages

Darryl Meachem	18.5	(10 games)	1966-1967
	17.05	(23 games)	1965-1966

Most Consecutive Foul Shots

Ken Gerber	38	(PSCAC Record)	1961-1962
------------	----	----------------	-----------

Most Assists

Dave Knowlton	194	(24 games)	1970-1971
---------------	-----	------------	-----------

INDIVIDUAL RECORDS – GAME

Most Points

Frank Smith	54	Fredonia	1966-1967
Frank Smith	52	Kenyon	1968-1969

Most Field Goals

Frank Smith	21	Waynesburg	1966-1967
Frank Smith	21	Kenyon	1968-1969

Most Rebounds

Don Dougan	38	Indiana State (PC Record)	1964-1965
------------	----	------------------------------	-----------

Most Foul Shots Made

Ken Gerber	14-14	Gannon	1961-1962
Roy Stauffer	14-17	Salem	1971-1972
Don Dougan	13-16	Baldwin-Wallace	1964-1965

Most Assists

Larry Betar	20	California	1973-1974
Dave Knowlton	19	Grove City	1969-1970

SPECIAL RECOGNITION — "SCOTS OF THE PAST"

NAIA 2nd TEAM, ALL-AMERICAN
1964-1965: Dan Petchel

NAIA 3rd TEAM, ALL-AMERICAN
1971-1972: Fred Riley
1968-1969: Frank Smith
1967-1968: Frank Smith
1965-1966: Darryl Meachem

NAIA ALL-AMERICAN HONORABLE MENTION
1975-1976: Tim Smiley
1974-1975: Tim Smiley
1973-1974: Roy Stauffer, Dennis Hampton
1972-1973: Roy Stauffer
1970-1971: Fred Riley

NAIA DISTRICT 18 1st TEAM
1975-1976: Tim Smiley, Dennis Hampton
1974-1975: Tim Smiley
1973-1974: Dennis Hampton
1972-1973: Roy Stauffer
1971-1972: Fred Riley
1970-1971: Fred Riley
1968-1969: Frank Smith
1967-1968: Frank Smith
1965-1966: Darryl Meachem

NAIA DISTRICT 30 1st TEAM
1964-1965: Dan Petchel

NAIA DISTRICT 18 2nd TEAM
1973-1974: Roy Stauffer
1971-1972: Jim Prokell
1970-1971: Jim Prokell
1969-1970: Art Dickinson, Jim Prokell
1967-1968: Don Dougan, Mick Unick

NAIA DISTRICT 18 HONORABLE MENTION
1974-1975: Charlie Hickox
1971-1972: Roy Stauffer
1969-1970: Fred Riley

PITTSBURGH PRESS ALL-DISTRICT

First Team:
1975-1976: Tim Smiley
1974-1975: Tim Smiley
1973-1974: Dennis Hampton
1971-1972: Fred Riley, Jim Prokell
1968-1969: Frank Smith

Second Team:
1973-1974: Roy Stauffer
1972-1973: Roy Stauffer
1970-1971: Fred Riley
1969-1970: Art Dickinson

Third Team:
1974-1975: Charlie Hickox
1970-1971: Jim Prokell
1969-1970: Jim Prokell

ERIE MORNING NEWS BIG FIVE TEAM

First Team:
1975-1976: Tim Smiley
1974-1975: Tim Smiley
1972-1973: Roy Stauffer

Second Team:
1974-1975: Charlie Hickox
1973-1974: James Boyd, Dennis Hampton, Charlie Hickox, Roy Stauffer

ASSOCIATED PRESS HONORS

Third Team, All Pennsylvania:
1967-1968: Frank Smith

Honorable Mention, All Pennsylvania:

1974-1975: Tim Smiley
1973-1974: Roy Stauffer
1972-1973: Roy Stauffer, Larry Betar
1971-1972: Fred Riley
1969-1970: Fred Riley
1968-1969: Frank Smith

PC 1st TEAM (WEST)

1975-1976: Tim Smiley, Dennis Hampton
1974-1975: Tim Smiley
1973-1974: Roy Stauffer
1972-1973: Roy Stauffer
1971-1972: Fred Riley, Jim Prokell
1970-1971: Fred Riley, Jim Prokell
1969-1970: Art Dickinson, Jim Prokell, Dave Knowlton
1968-1969: Frank Smith
1967-1968: Don Dougan, Frank Smith
1966-1967: Lynn Nelson
1965-1966: Darryl Meachem
1964-1965: Dan Petchel
1963-1964: Dan Petchel
1962-1963: Dan Petchel

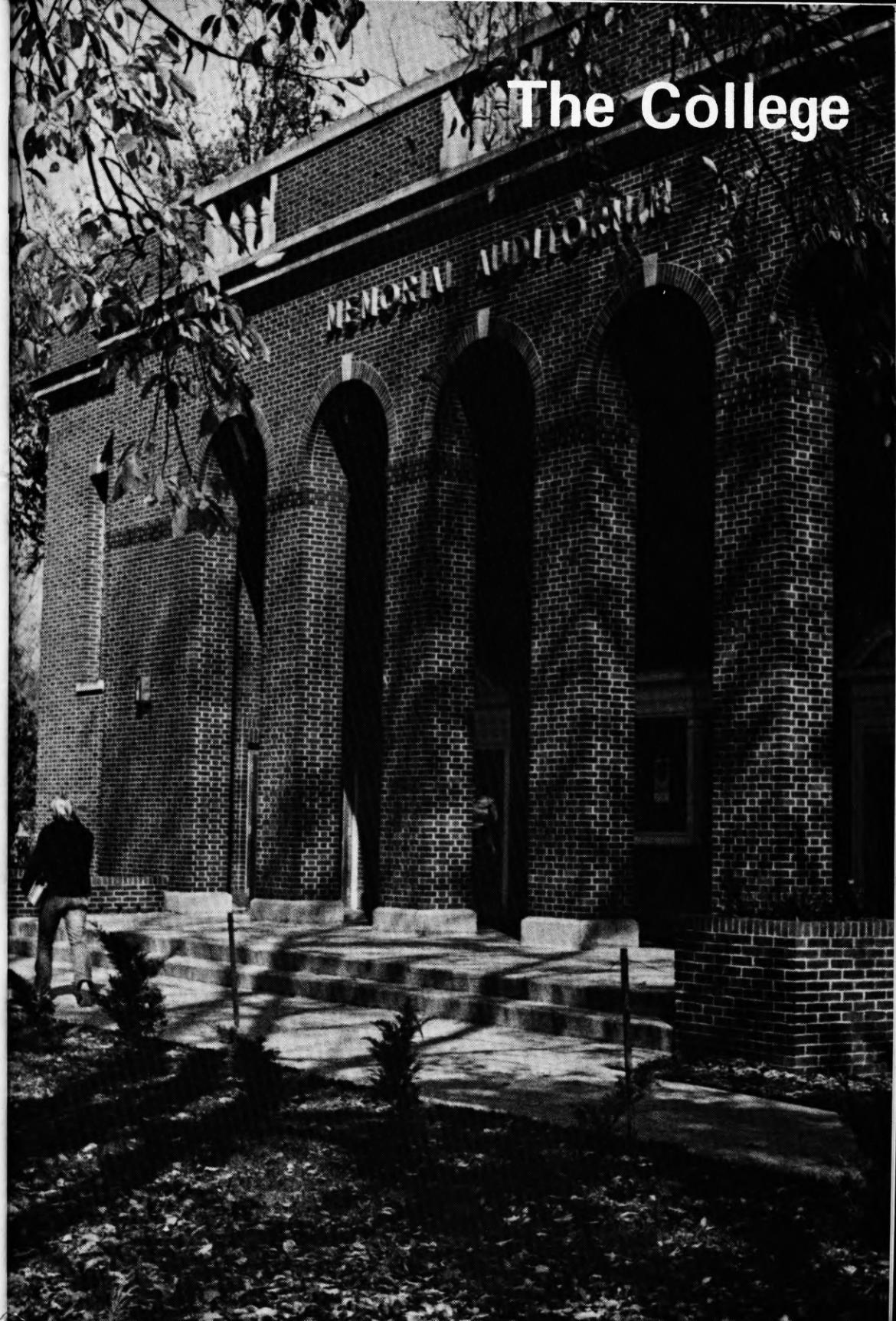
PC 2nd TEAM

1974-1975: Charlie Hickox, Larry Betar, Don Childs
1973-1974: Dennis Hampton, James Boyd, Charlie Hickox
1972-1973: Larry Betar
1971-1972: Jim Romaniszyn
1970-1971: Dave Knowlton
1968-1969: Rod Herron, Harry Jenkins
1967-1968: Harry Jenkins, Jim Robinson, Mick Unick
1965-1966: Dave Shenefelt, Don Dougan

PC HONORABLE MENTION

1974-1975: Don Gerdich, Gary Stanton
1971-1972: Roy Stauffer
1968-1969: Tim Ziner, Mick Unick, Jim Robinson
1966-1967: Butch Hurley, Harry Jenkins, Tim Maloney, Darryl Meachem, Frank Smith
1964-1965: Dave Shenefelt
1962-1963: Ken Barker
1961-1962: Ken Barker, Jim Sims, Wendell Rojik

Fred Riley — UPI Small All-America 1971-72; Basketball News 2nd Team; All-America 1971-72; PCPA Honorable Mention 1970-71; SOS Classic 1971-72.
Darryl Meachem — SOS Classic; SOS Outstanding Athlete; Penn-Ohio All-Section Team 1965-66.
Dave Shenefelt — Penn-Ohio Honorable Mention 1965-66.



EDINBORO STATE COLLEGE . . .



Edinboro President — Dr. Chester T. McNerney

From its beginning as a private academy in 1856, Edinboro State College has surged to the forefront as one of the leading educational institutions in Western Pennsylvania. Located just 15 miles south of Erie, Pa., the College's setting offers a contrast of seasons. Enhanced by the beauty of Edinboro Lake, the community serves as a resort center during the summer while numerous nearby ski slopes offer a variety of recreation in the picturesque winter months. The College's location enables it to readily serve the tri-state area with its proximity to Pittsburgh, Pa. (125 miles), Cleveland, Ohio (100 miles) and Buffalo, New York (120 miles). Moreover, it is easily accessible from the north and south by Interstate 79 and east and west by Interstate 90.

Until recently the chief objective of the College was the education and preparation of classroom teachers for the schools of the Common-

. . . PREPARING FOR TOMORROW

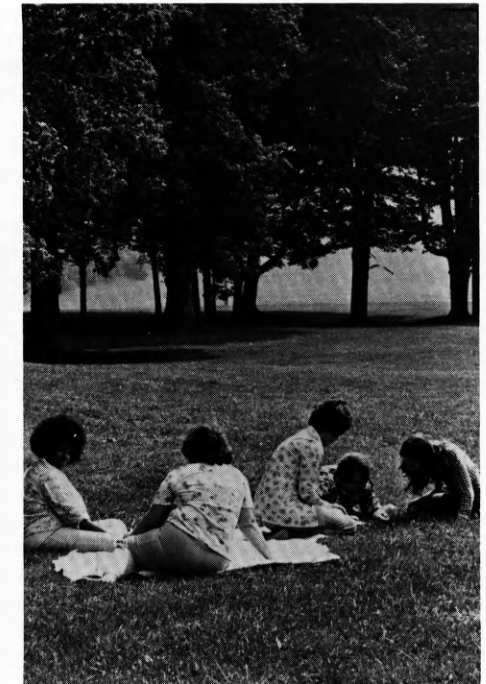


wealth. With the implementation of programs in arts, sciences and humanities, Edinboro has now become a multi-purpose institution of higher learning serving the educational needs of a tri-state area.

The College has experienced a rapid growth rate in students, faculty and physical plant. Forty buildings cover the 585-acre campus which now services more than 7,000 students.

In its university oriented role, the College makes contributions in the fields of education, government, conservation, environmental improvement, urban and rural problems, crime prevention, and service to business and industry. Edinboro seeks to offer educational programs which will afford maximum opportunities to its potential students and to meet the educational needs of its region from a professional and a cultural standpoint.

With the addition of the liberal





arts degree program in 1962, the College's curriculum has expanded to include numerous course selections. Curricula range from elementary and secondary education, special fields in art, library science, music and special education to medical technology.

Student activities are designed to develop the personality, poise, self-confidence and professional awareness that will fit graduates for significant participation in American society.

The College stresses friendly relations among students and faculty, as well as active student participation in decisions affecting them. Quality education has been an Edinboro tradition for more than a century as graduates have distinguished themselves in the professions, business and industry.

With the appointment of Dr. Chester T. McNerney as Edinboro State's President in 1966, the College has undergone innovations and reorganization that have enabled the College to keep in step with the times and maintain its academic excellence.

Edinboro State College is at the brink of a new era and has taken the initiative for a new direction among the state colleges of Pennsylvania. The College plans to offer programs in such diverse fields as international education, business administration and engineering to meet its leadership responsibilities in the years ahead.

Keeping pace with the College's academic progress has been a building program which has dramatically changed the physical appearance of the campus over the past decade. Included among the additions are a nine-acre lake, an athletic complex, dormitory quadrant and new student services facilities such as a student union, dining hall and health center. Scheduled for completion in the near future are a new library and administration building.

HOME OF THE FIGHTING SCOTS



Arthur L. McComb Fieldhouse

SPECIAL FEATURES

NBA PRO SCOREBOARD

*AAU-SIZED POOL WITH
DIVING TANK*

*UNDERWATER SOUND AND
LIGHTING SYSTEM*

THREE BASKETBALL COURTS

HANDBALL COURTS

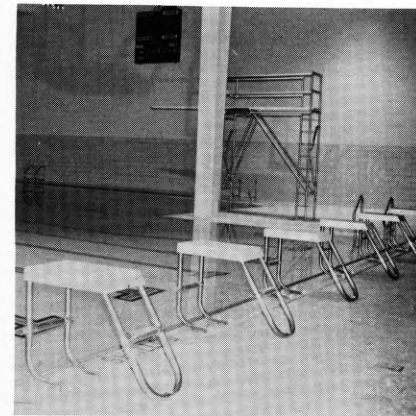
WRESTLING ROOM

MEDICAL SUITE

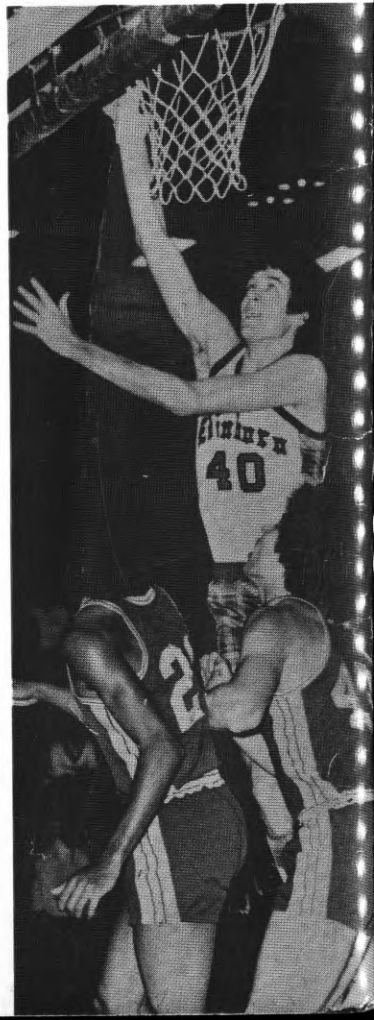
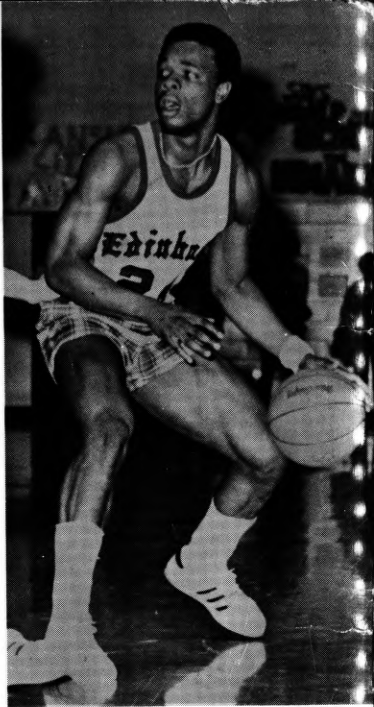
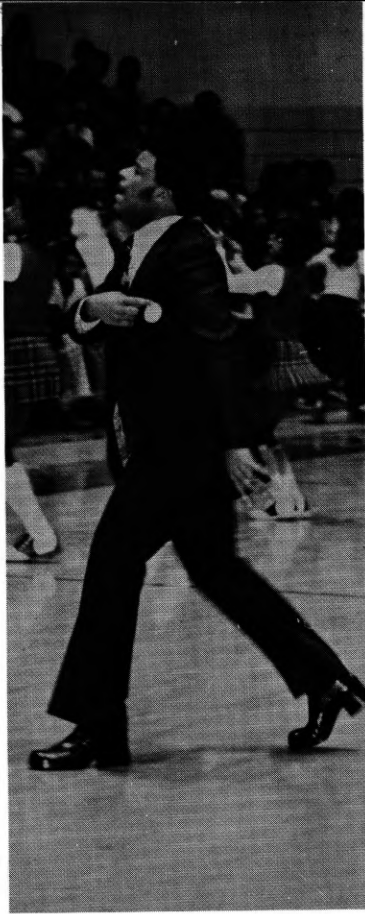
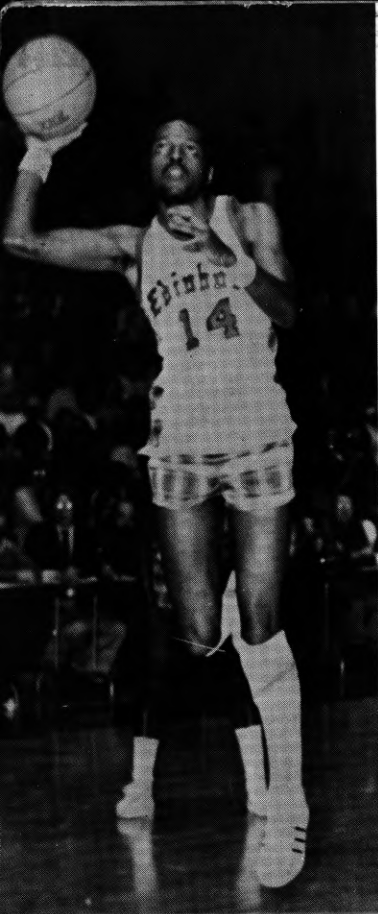
RIFLE RANGE

STEAM ROOMS

One of the finest athletic facilities in northwestern Pennsylvania services the Fighting Scots' basketball, wrestling and swimming teams. The new structure has a seating capacity in the gymnasium area for 4200 fans while the natatorium seats 500 spectators. Underwater sound and lighting systems are featured in the pool area as well as four underwater viewing ports. Adjacent to the swimming area is a separate diving tank with one and three meter diving boards. The electrically operated bleachers can be rolled back in a matter of minutes to expand the available floor space into three basketball courts for intramural usage. The athletic complex has already become a favorable site for both high school basketball and wrestling championships. A 680-car parking lot is conveniently located next to the fieldhouse to accommodate team followers. Additional attractions include office facilities for members of the Health and Physical Education Department, locker room space for 1,000 students, an equipment room and two classrooms.



South End of Pool



THE
FIGHTING
SCOTS
IN ACTION

