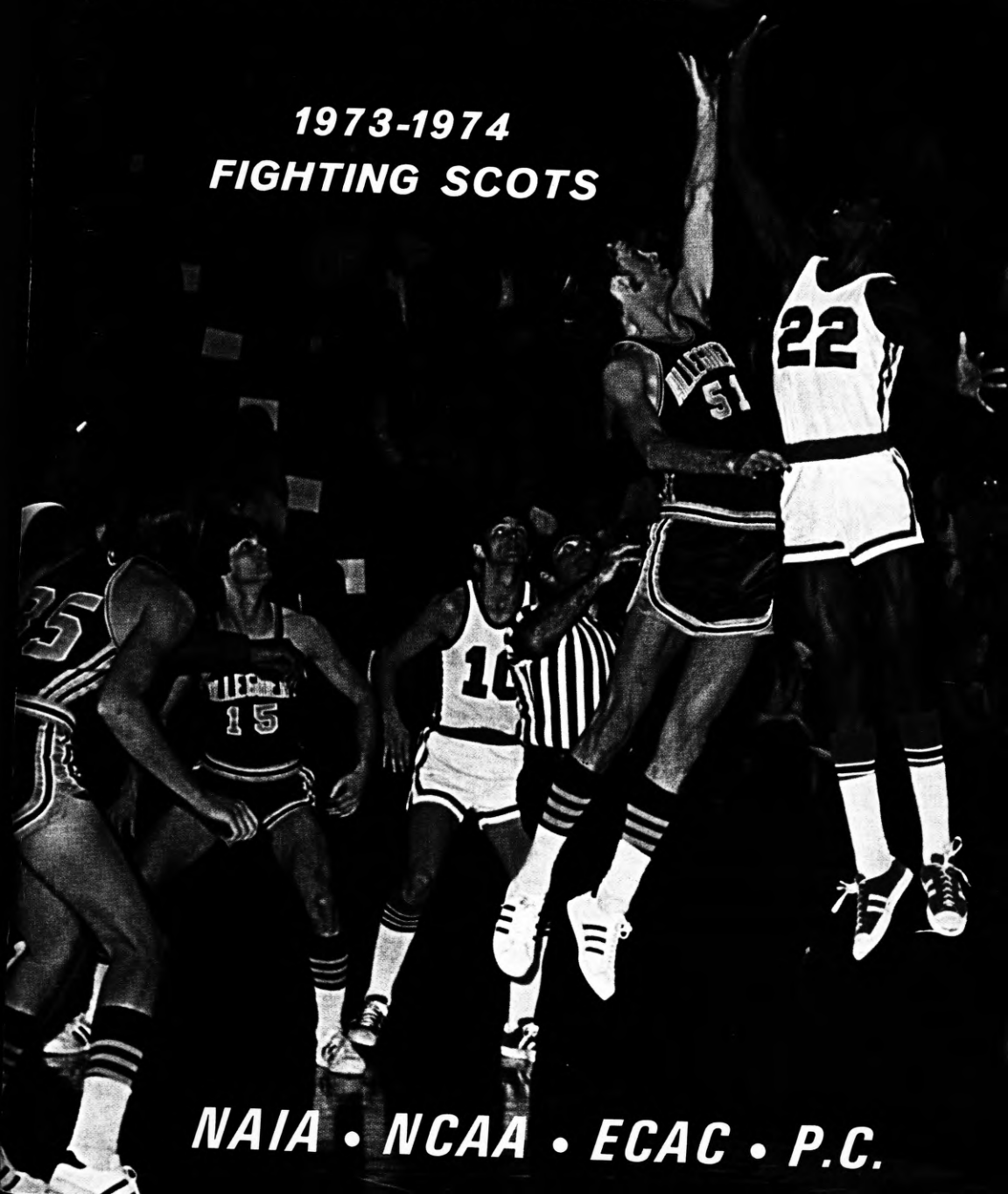


# EDINBORO STATE BASKETBALL

1973-1974  
FIGHTING SCOTS



*NAIA • NCAA • ECAC • P.C.*



MISS MAURA JOBES

### “Welcome to Boro Country”

Introducing this year's Fighting Scot basketball guide is attractive Miss Maura Jobes, Edinboro State's 1973 Homecoming Queen. A graduate of Tech Memorial High School in Erie, Pa., Maura is a junior majoring in art education. She is a member of Delta Zeta social sorority, the art league and was a finalist for "Glamour" magazine as well as a candidate for "Roto" magazine.

# Fighting Scots' 1973-74 Schedule

**Head Coach - Jim McDonald**  
**Assistant Coach - Tony Laterza**

- Dec. 1 BEHREND
- Dec. 6 WESTERN ONTARIO
- Dec. 8 \*CLARION
- Dec. 10 ALLIANCE
- Dec. 12 \*at California
- Dec. 15 \*at Slippery Rock
- Dec. 27 ASHLAND
- Dec. 28 TOURNAMENT
- Jan. 11 at Frostburg
- Jan. 17 \*at Lock Haven
- Jan. 18 at Bloomsburg
- Jan. 23 POINT PARK
- Jan. 25 FROSTBURG
- Jan. 28 at Muskingum
- Feb. 2 \*at Indiana (Pa.)
- Feb. 7 MERCYHURST
- Feb. 9 \*CALIFORNIA
- Feb. 13 \*at Clarion
- Feb. 16 \*LOCK HAVEN
- Feb. 19 \*INDIANA (Pa.)
- Feb. 23 \*SLIPPERY ROCK
- Feb. 25 at Alliance
- Mar. 2 PC Playoff-West
- Mar. 4-6 NAIA Dist. Playoffs

*\*Pennsylvania Conference Games*

### GAME TIMES

6:00 p.m., JV — 8:00 p.m., Varsity



FRONT COVER: The Fighting Scots await the outcome of a jump ball situation in ESC's home contest against Allegheny.

## FIND IT FAST

### ATHLETIC STAFF

Athletic Director—Al Hall .....	22
Cheerleaders .....	19
Coaches	
Laterza, Tony—Assistant Coach .....	5
McDonald, Jim—Head Coach .....	4
Sports Information—Paul Newman .....	22
Sports Staff .....	5
Team Manager .....	5
Team Trainer—Bob Klingler .....	22

### COLLEGE, THE

Athletic Affiliations .....	19
Athletic Program Sets Torrid Pace .....	40
Campus Pictures .....	36, 37, 38, 39
Location and History .....	36, 37
McComb Fieldhouse . . . Inside Back Cover	
President—Dr. McNerney .....	38

### OPONENTS

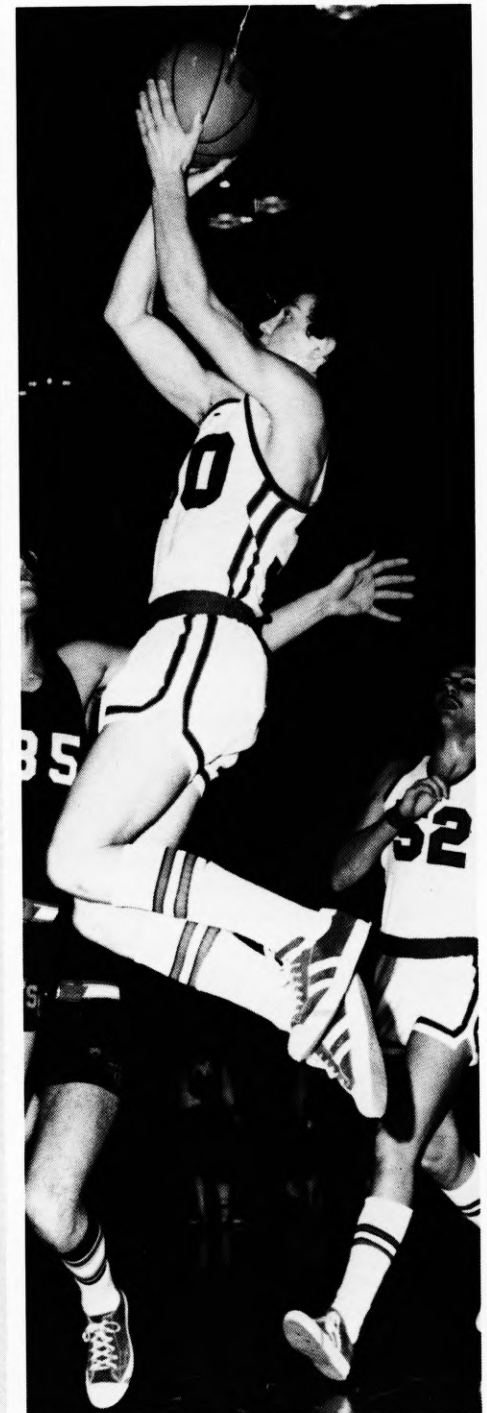
Information on Each 1973-74	
Opponent In Scheduled Order .....	14-18

### A GLANCE INTO THE PAST

1972-73 Varsity Results .....	24
1972-73 Varsity Statistics .....	24
1972-73 Pa. Conference Results .....	35
All-Americans .....	28
All-Time Scores .....	29-33
Century Club, Edinboro .....	35
Century Club, Opponents .....	35
Championships .....	26
Records, Individual Game .....	27
Records, Individual Season .....	27
Records, Team .....	26
Seasons By Percentages .....	34
Season Results, 1928-1973 .....	34
Special Recognition .....	25

### SCANNING THE SCOTS

Outlook .....	2
Players	
Guards .....	6, 7, 8
Forwards .....	9, 10
Centers .....	11
Junior Varsity .....	12
Pronunciation Guide .....	12
Roster, Varsity and JV .....	21
Schedule .....	Inside Front Cover
Scouting Report .....	2



## SCOT SCOUTING REPORT

*Location:* Edinboro, Pa. 16412

*Nickname:* Fighting Scots

*Colors:* Red and White

*Fieldhouse:* McComb (4,200)

*Enrollment:* 7,025

*Athletic Affiliations:* NAIA, NCAA,  
ECAC, Pa. Conference

*Head Coach:* Jim McDonald  
(West Virginia Wesleyan, '60)

*Coach's Record:* 141-76, 11 years

*Assistant Coach:* Tony Laterza  
(Akron, '52)

*Athletic Director:* Al Hall, 814-732-2776

*1972-73 Record:* 13-9

*Conference Finish:* Second Place Tie,  
6-4

*Lettermen Lost:* 4

*Lettermen Returning:* 8

*Starters Returning:* 4

*Team Strengths:* Depth, Veteran Guards

*Team Weaknesses:* Speed, Agressiveness

*Basic Offense:* Pattern

*Basic Defense:* Multiple

*Captain:* Roy Stauffer

*Sports Info. Director:* Paul Newman  
814-732-2745, Home 814-734-3735

### SCOTS LOOK TO CONTINUE HOT PACE

Edinboro State's Fighting Scot cagers turned around one of their worse starts ever last year when they streaked to ten wins in their last 12 games to complete the season with a 13-9 record. ESC Coach Jim McDonald will be hoping for a continuation of that hot pace with the return of four regulars for the 1973-74 hardcourt campaign.

On hand to pace the Scots offensive attack once again is 5-10 sharp shooter Roy Stauffer who hit the hoop at a 19.5 clip and found time to pile up 96 assists. The honorable mention All-American (NAIA) winner erased his own ESC free throw shooting standard when he tossed in 88.2 per cent of his tries from the charity stripe. The mark was good enough to rank second place nationally in the NCAA's College Division statistics.

Up front the Scots can count on returnees 6-6 Don Gerdich and 6-8 Sam Vickers to hammer the boards along with 6-7 Ron Beckett.

Newcomer Charlie Hickox, a transfer from West Virginia University, is expected to nail down one of the starting roles under the hoop, while junior college products 6-4 James Boyd and 6-5 Dennis Hampton are also held in high consideration for regular spots. Both averaged over 20 points and 15 rebounds per game in the juco ranks.

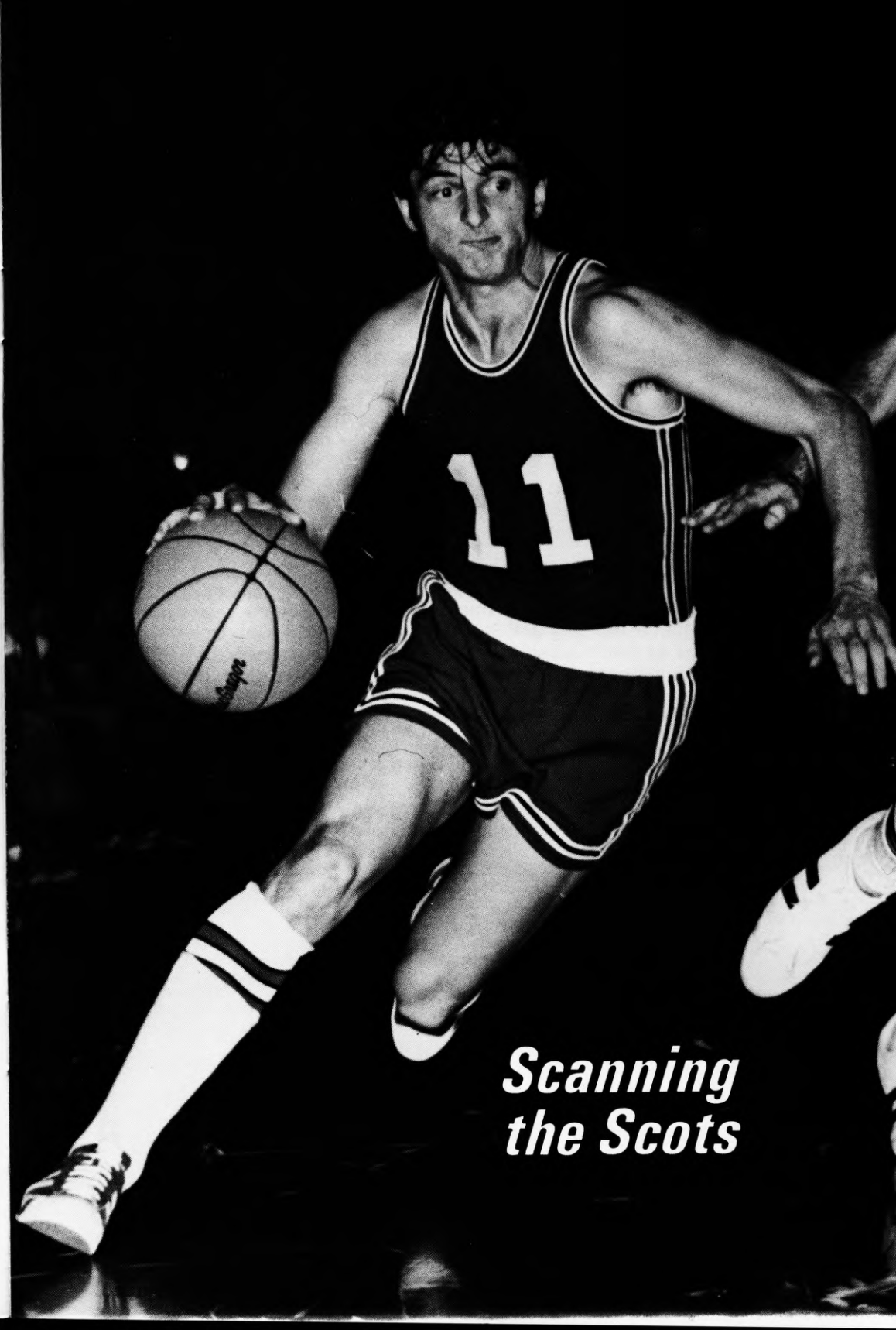
McDonald has strength off the boards with Gerdich who pulled down 143 missed shots last year. The powerful junior grabbed rebounding honors in five of the Scots last six games to clear the glass at a 6.8 rate in 21 appearances.

Quarterbacking the club will be 6-2 Larry Betar, who steadily improved through the 1972-73 season. Betar broke into the starting five midway through the schedule to guide the team to seven straight wins. The Scot sophomore led the team in assists with 100, claimed the best shooting percentage on the squad with a 49.4 mark and finished with an 11.9 points per game average.

Bolstering the guard ranks are 6-1 senior Paul Stiles, 6-1 junior Bill Henk and sophomore 6-1 Bill Lentz.

A pair of freshman recruits in 6-0 Tim Smiley and 6-3 Alonzo Craig will also be taking shots at starting assignments in the back court.

Under McDonald's tutorage for the past ten years, Edinboro State has never had a losing season and also holds the distinction of never finishing lower than second place in league play. The Scots winning ways on the hardwoods should continue in 1973.



*Scanning  
the Scots*



## WINNING -- A McDONALD TRADITION



Head Coach - Jim McDonald

Winning ways have become a tradition with Jim McDonald-coached teams at Edinboro State. In eleven seasons at the helm, his Fighting Scot cagers have never experienced a losing season while registering a remarkable 141 wins against only 76 losses.

Since taking the reigns at Edinboro State in 1962, McDonald has led the Scots to four Western Division Pennsylvania Conference crowns, the PC State Championship and six appearances in the NAIA district playoffs. His teams have played in sixteen post season contests during a ten-year span. The 1965-66 club captured the District 18 toga and earned a trip to the NAIA national tournament in Kansas City, Missouri.

McDonald was selected by the coaches of the eastern seaboard states to be the Area Eight Coach

of the Year in 1966 and was honored as one of the top ten finalists in the NAIA's Coach of the Year poll.

A wave of ESC basketball records have fallen by the wayside under McDonald's management. Some 17 team marks and 10 individual standards have been revised under his tutelage. Along with the 27 new records, four Edinboro State cagers have been named All-Americans since 1965.

He posted his best mark as a coach five years ago as his cagers rang up a regular season record of 17-4 and finished with a 19-5 overall ledger.

His 1967-68 team cracked 10 existing Edinboro State College basketball records and captured the PSCAC State Championship by defeating annual powerhouse Cheyney State. The 1967-68 squad ranked as high as eleventh among the nation's small colleges and finished fifth nationally in rebounding.

Prior to accepting his current position at Edinboro in 1961, McDonald served as assistant basketball coach at Harborcreek High School in Erie, Pa. He is a 1955 graduate of Bridgeport High School, Bridgeport, West Virginia.

As a player, McDonald attended West Virginia Wesleyan College, where he participated as a varsity "Bobcat" for four seasons.

During his collegiate basketball career McDonald was selected as an All-American two years by the UPI and the NAIA for his outstanding performances on the hardwoods. He reached the climax of his athletic career with the Bobcats in his senior year, 1960, when he ranked as the second leading scorer in the nation with an average of slightly over 33-points-a-game in regular season competition. In that same year, he was chosen to try out for the United States Olympic Basketball Team at Denver, Colorado. In addition, McDonald's performance in the National NAIA Post-Season Basketball Tournament, held annually in Kansas City, Mo., earned him the distinction of being named to the NAIA's All-Tournament Team in 1959 and 1960.

McDonald, his wife, Mary Lou, and their three sons, Mark (13), Mike (11) and Matthew (1), reside in Edinboro.

## ASSISTANT BASKETBALL COACH

Tony Laterza, who guided the University of Akron to national basketball prominence, enters his third year in the Fighting Scot ranks as assistant cage coach.

One of Ohio's most highly respected coaches, Laterza compiled a nine year record of 178 wins and only 59 losses. His teams averaged nearly 20 wins a season during his ten year stay at the Buckeye School.

Highlighting his hardcourt accomplishments were four trips to the NCAA Mideast Regionals where the Zips captured three tournament titles. They finished as the NCAA College Division runner-up in 1963-64 and managed a third place finish to close out the 1965-66 campaign. He also guided Akron to three straight Ohio Conference titles while finishing with second place honors four other times.

Laterza's coaching know how is also reflected on the links where his golf teams totaled outstanding 101-38-5 mark. In his second season at the helm, the Zips won their first Ohio Conference crown in golf, shared the title the following year and then repeated as sole champs in 1961.

Laterza is a graduate of Akron University where he starred in both basketball and football. He earned a B.S. in education from Akron in 1952 and received his Masters degree from Kent State in 1963.



Assistant Coach - Tony Laterza

## TEAM MANAGER



Manager  
Jim Kleszc

## SPORTS STAFF



Statmen (front) John Catone and Lance Dickinson;  
(back) Photographer Gene Yee and SID Paul Newman.



## GUARDS

### 10-11 Roy Stauffer G, 5-10, 170, Sr., Emmaus, Pa.

Undoubtedly one of the best shooting guards in the Pennsylvania Conference . . . Won the Western Division scoring title last year with a 19.6 average . . . The nation's (NCAA-CD) top returning free throw shooter . . . Toppled ESC's free throw record for the second straight year last season when he hit 90 of 102 tries for a .882 percentage mark . . . Has totalled 787 points and has moved into 12th place on Edinboro's all-time scoring list . . . Owns a highly impressive 50 per cent shooting average from the floor in 48 games . . . Was second on the club in assists with 96 . . . Garnered All-America Honorable Mention (NAIA), Pa. Conference First Team and District 18 First Team honors last year . . . Accorded press All-Star Team awards by the Erie Morning News and Pittsburgh Press . . . Also an outstanding golfer and baseball player.

Year	G	FGM	Pct.	FTM	Pct.	Reb.	Pts.	Avg.
1971-72	26	138	.517	81	.871	84	357	13.7
1972-73	22	170	.489	90	.882	70	430	19.5
Var. Tot.	48	308	.503	171	.876	154	787	16.4

CAPTAIN



### 30-31 Larry Betar G, 6-2, 170, Jr., Altoona, Pa.

Broke into the starting five midway through the season to guide ESC to seven straight wins . . . Seems to improve everytime he steps onto the court . . . Not only an accurate shooter but also an exciting passer . . . Will most likely quarterback the club . . . Claimed the best shooting percentage on last year's team with a 49.4 mark and finished with a 11.9 points per game average . . . Is becoming a respected defensive ball player . . . Finished fifth in the conference scoring race . . . Won the assists honors with 100 passes that led to scores . . . Shot 49.4 per cent from the floor to give the Scots a pair of guards who hit on one of every two tries . . . Continues the tradition of John Swogger-coached playmakers who have led Edinboro State teams to success . . . Guided Swogger's Altoona High team to a 23-2 record.

Year	G	FGM	Pct.	FTM	Pct.	Reb.	Pts.	Avg.
Frosh	19	91	.416	53	.679	101	235	12.4
1971-72	1	0	.000	0	.000	0	0	0.0
1972-73	22	114	.494	34	.708	70	262	11.9
Var. Tot.	23	114	.491	34	.708	70	262	11.4



## GUARDS

### 42-43 Bill Lentz G, 6-2, 185, So., Allentown, Pa.

Came on strong at the end of the season to help the Scots win some crucial ball games . . . Helped ESC's offensive attack by contributing 68 points while hitting on 48 per cent of his shots . . . Will undoubtedly be one of the backup guards for the starting unit . . . Fine outside shooter who goes to the hoop with determination . . . Can come off the bench and be a sparkplug . . . Paced Allentown's Salisbury High School to a 23-3 mark and the District 11 championship . . . Tagged All-State and All-League after averaging 23 points per game for the Falcons . . . Continued his hardcourt career at Fork Union Military Academy in Virginia where he earned First Team honors in the Virginia Military School League . . . A lefthander . . . Also a top notch baseball pitcher . . . Majors in medical technology.

Year	G	FGM	Pct.	FTM	Pct.	Reb.	Pts.	Avg.
1972-73	14	19	.475	30	.857	39	68	4.8



### 44-45 Paul Stiles G, 6-1, 185, Sr., Bradford, Pa.

Returns after a second knee operation which has plagued his basketball career at Edinboro . . . Working hard to get back into the form he showed during his freshman year when he tossed in 435 points and grabbed 183 rebounds . . . Can hit the bomb from the outside . . . Was true on 48 per cent of his tries from the floor when he helped lead the 1970-71 frosh team to an 18-4 finish . . . Could play a major role should he be able to respond physically . . . Determined and loves to play the game . . . Led Bradford High School to the District Nine championship while averaging 17 markers a game . . . Was unanimously chosen to the District's First Team, selected to the Coaches Independent All-Star Team and All-State Honorable Mention.

Year	G	FGM	Pct.	FTM	Pct.	Reb.	Pts.	Avg.
Frosh	22	180	.484	75	.676	183	435	19.3
1971-72	2	1	.167	1	.500	2	3	1.5
1972-73	5	12	.387	1	.500	13	25	5.0
Var. Tot.	7	13	.351	2	.500	15	28	4.0



## GUARDS

### 14-15 Alonzo Craig G, 6-3, 175, Fr., Ft. Wayne, Ind.

The top freshman guard recruited at ESC this year . . . Possesses all the tools to be a top notch performer and will only be held back by his lack of experience . . . An exceptionally good ball handler . . . Accurate middle distance shooter . . . Aggressive defensive player . . . Moves to the hoop quickly and is a fine jumper . . . His quick reactions make him a threat both offensively and defensively . . . Offers flexibility because he also is comfortable at a forward spot . . . First Team All-City for two years at Fort Wayne and a Second Team All-State selectee . . . Zipped the net at a 22.5 points per game clip and averaged 9.2 rebounds per outing . . . Helped guide Fort Wayne's Panthers to the City's Holiday Tournament title.



### 20-21 Tim Smiley G, 6-0, 175, Fr., Ft. Wayne, Ind.

Will play a vital role after he becomes more acquainted with the system . . . His ability is attested to by his selection to the varsity squad in just his freshman year . . . An adept outside shooter . . . Still refining his basketball playing techniques . . . A very capable ball handler who exhibits exceptional quickness on the court . . . A hustler . . . Netted 18.4 points per game in helping Wayne High School to a 13-9 season finish and a 5-4 slate in the Fort Wayne City League . . . Earned two varsity letters in basketball, one in cross country and one in track for the Generals . . . A Ft. Wayne All-City winner . . . Ripped the cords for more than 20 points in eleven games during his final year.

## FORWARDS-CENTERS

### 24-25 Don Gerdich F-C, 6-6, 208, Jr., McKeesport, Pa.

Fought his way to a starting spot at center last year where he became a demon on the boards . . . One of the most physical rebounders in the Western Division of the Pennsylvania Conference . . . Extremely quick for his size . . . Gets position underneath and enjoys contact in getting the ball . . . Hauled down 143 missed shots last year as the Scots leading rebounder . . . Cleaned the glass 99 times in a varsity role as a freshman to bring his two-year career to an average of almost six rebounds per game . . . Earned sixth place honors in the PC's Western Division rebounding race with an average of 8.2 caroms per contest . . . One of the main cogs in McKeesport's Tiger team that finished the year with a 17-5 card.

Year	G	FGM	Pct	FTM	Pct	Reb	Pts	Avg
1971-72	12	36	.387	17	.607	99	89	4.2
1972-73	21	38	.367	19	.576	143	95	4.5
Var. Tot.	42	74	.372	36	.576	184	184	4.4



### 34-35 James Boyd F, 6-4, 170, Jr., Benton Harbor, Mich.

A newcomer from the Juco ranks who will most likely be one of the starting forwards . . . A superb shooter who also jumps well . . . Possesses fine quickness . . . A team player . . . Led Benton Harbor High School to a 17-5, 18-4 and 16-6 seasons . . . Averaged 21 points and 15 rebounds per game last year at Lake Michigan Junior College . . . Paced his junior college team to three different Christmas tournament titles . . . Named to the Junior College All-State First Team in Michigan . . . Was an All-Conference choice while starring for Benton Harbor High School were he hit the double figure mark in both scoring and rebounding . . . Fine attitude towards the game . . . Helps the Scots cause as both an offensive and defensive ball player . . . Has the potential to become one of the finest forwards in the PC's Western Division.



## FORWARDS

### 32-33 Dennis Hampton F, 6-5, 190, Jr., Chicago, Ill.

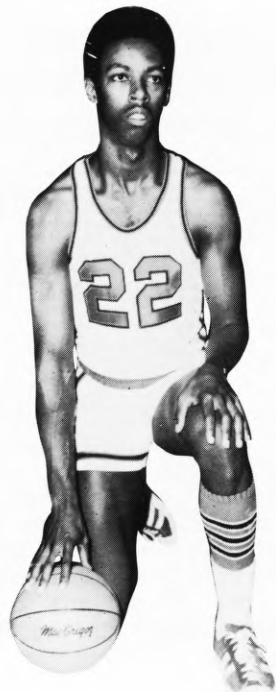
An outstanding college prospect . . . Might prove to be the best forward on the Scots 1973-74 club . . . Very strong inside both offensively and defensively . . . Will start and has needed experience with his junior college background . . . Plays around the top of the rim . . . Also top among his assets is his attitude towards the game . . . Will be one of the key men in the rebounding department . . . All-State honorable mention on a Harlan High team that finished 22-4 . . . Paced the Harlan Falcons to back-to-back city and conference championships in Chicago . . . All-State at Lake Michigan Junior College where he averaged 20 points and 18 rebounds per game . . . MVP in two Michigan Junior College tournaments . . . Is exceptionally quick and strong . . . Has been a starter ever since his junior year in high school.



### 22-23 Ron Beckett F, 6-7, 180, So., Elyria, O.

Was one of the Scots top scorers and rebounders until he injured his back after ten games as a freshman starter . . . Averaged 10.1 points per game and 7.5 rebounds . . . Has the potential to be one of the best players in the conference . . . Shoots well from almost any place on the floor . . . Surprisingly quick with the ball and can jump with the best of them . . . Is listed as a forward this year but played guard as a freshman . . . Has to battle experienced talent to gain any kind of playing time and therefore will most likely provide needed depth to the Scots cage ranks this year . . . Matched his scoring average of 10 points per game with his rebounding stats as a regular on Elyria High Pioneers . . . Earned a varsity letter on ESC's track team as a frosh while garnering points in the high jump.

Year	G	FGM	Pct	FTM	Pct	Reb	Pts	Avg
1972-73	10	41	.342	19	.655	75	101	10.1



## CENTERS

### 40-41 Charlie Hickox C, 6-6, 190, Jr., Parkersburg, W. Va.

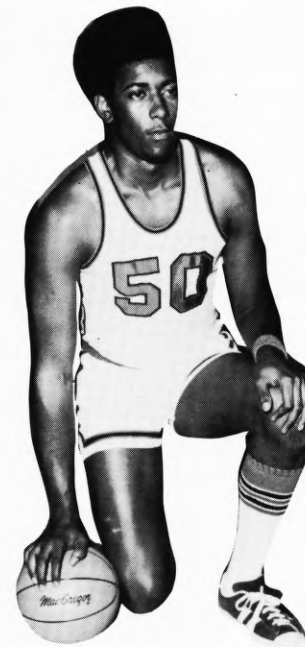
Will be the starting center . . . A transfer from West Virginia University . . . Might prove to be the best center to ever play at ESC . . . A real fighter under the boards . . . A great jumper who has a knack for tipping the ball through the hoop . . . Extremely effective in close . . . Probably the best defensive player among the big men on the team . . . Always knows where the basket is . . . In 1970 was voted the most outstanding high school basketball player in West Virginia . . . Poured 18.8 points through the hoop and grabbed 19.0 rebounds to lead Parkersburg High to the state championship via 26-1 season record . . . AAA First Team All-State for the Big Reds . . . Set West Virginia University's high jump record in 1971 . . . An outstanding student who majors in biology.



### 50-51 Sam Vickers C, 6-8, 220, So., Elyria, O.

Saw much playing time as a freshman and has the attributes to become a top notch center . . . Is maturing quickly underneath the hoop and is determined to do the job . . . Has good range as a shooter . . . Had his best effort against Lock Haven when he grabbed 14 missed shots . . . Cleared the backboard 91 times and dropped in 135 points to rank 4th on the ESC scoring chart last season . . . Is starting to move much better to get position under the boards . . . His playing time will increase with his improvement on defense . . . Destined to become one of the outstanding centers in the conference if he continues his present progress . . . Shared leading scorer honors of 13 points in the first varsity game he played at college . . . Was the leading field goal percentage shooter on a Elyria Pioneer team that finished with a .500 season record . . . An elementary education major.

Year	G	FGM	Pct	FTM	Pct.	Reb.	Pts.	Avg.
1972-73	18	54	.446	27	.692	91	135	7.5







1973-74 FIGHTING SCOT'S JV's (L-R): Tom Podbielski, Ron Hakala, William Brown, Bob Nanovsky, John Brenner, Mike Drozin, Rob Lowther, Mike Pancerev, Ernie Pasqualone and Gary Stokan.

### SCOUTING THE SCOTS JUNIOR VARSITY

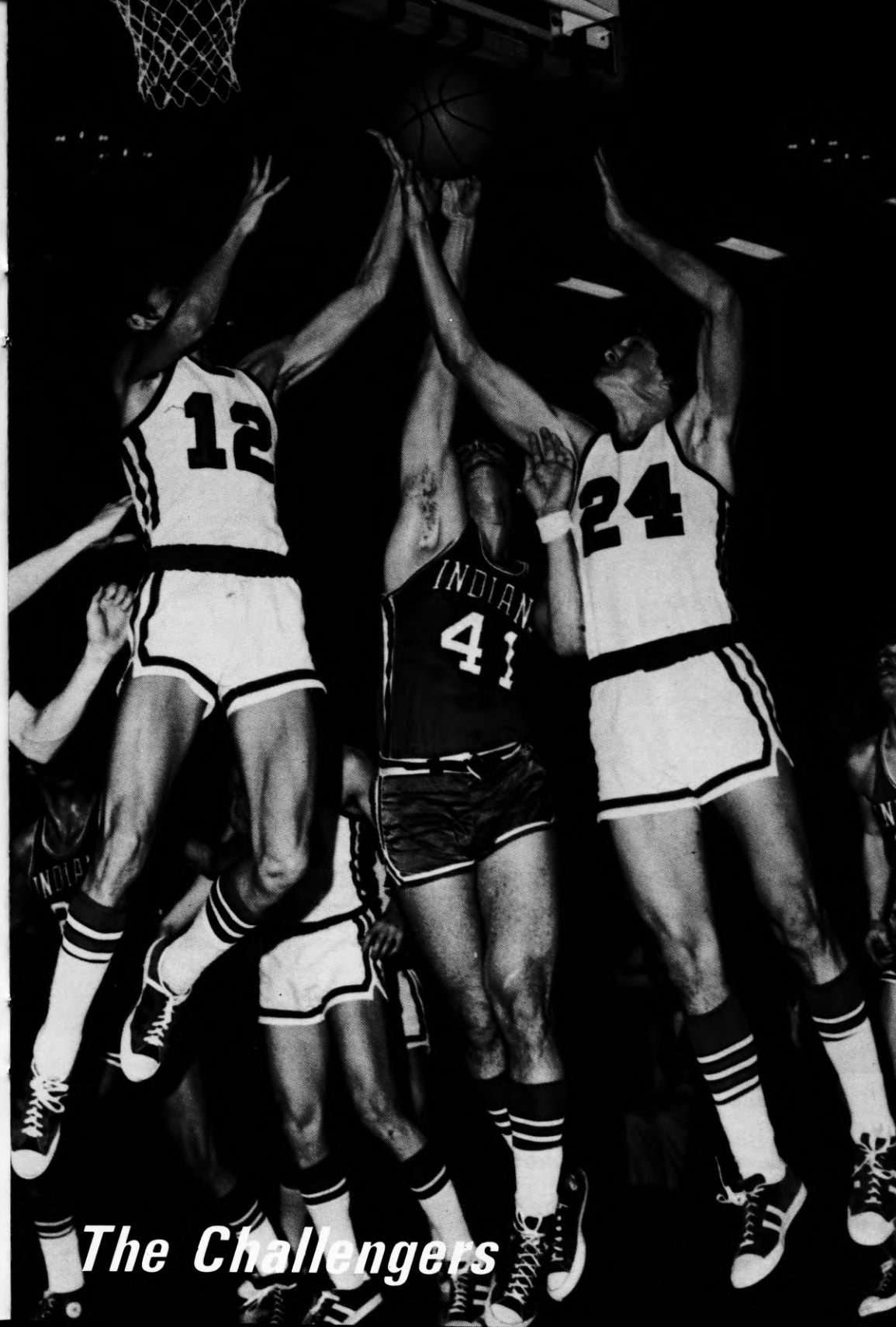
**GUARDS:** GARY STOKAN, 6-0, Fr.—Quarterbacked Pittsburgh's South Hills Catholic High to the 1972 State Catholic championship . . . Tossed in 15.5 points per game and averaged 8.7 assists per contest . . . All-Catholic First Team. ERNIE PASQUALONE, 5-11, Fr. — An All-State Honorable Mention winner from Geneva, Ohio . . . Blistered the nets at a 22.3 clip while leading the Eagles to a 12-8 record . . . Was First Team All-Conference and All-County. TOM PODBIELSKI, 6-1, Fr. — A First Team All-Section Three winner from Beaver Falls High School . . . Main cog on a Tiger team that went 17-5 for the year . . . Chipped in 12.5 points per game while averaging five rebounds and five assists per outing.

**FORWARDS:** MIKE DROZIN, 6-3, So.—Probably the best leaper on the team . . . Didn't play high school ball but earned some varsity playing time last year due to his determination . . . Set ESC's high jump record as a freshman last year with a 6'9" leap. MIKE PANCEREV, 6-1, Fr. — Starred at nearby Ft. LeBoeuf High School where he led the Bisons in scoring with a 17 points per game showing . . . Voted best defensive player on LeBoeuf's 13-9 cage team . . . All-Erie County. ROB LOWTHER, 6-2, Fr. — Starred for Mars High School and was the second leading field goal percentage shooter on a squad that went 17-8 . . . Coached by former Edinboro State grid standout Ed Stotsky. RON HAKALA, 6-1, So. — Should provide needed depth at the forward slot . . . An outstanding tennis player.

**CENTERS:** DALE GRIFFIN, 6-7, So.—Should lead the team underneath the hoop in both scoring and rebounding . . . Saw action in 11 varsity games last year where he hauled down 30 rebounds . . . Led the Elyria Pioneers in scoring with a 13.6 points-per-game average and rebounding with 13 grabs per contest. JOHN BRENNER, 6-6, Fr. — Hauled down 350 rebounds (14.5 pg) and hit on 54 per cent of his tries from the floor while starring at New York's Chenango Valley High . . . Averaged 12 points per game as he sparked the Warriors to a 18-5 season record. BOB NANOVSKY, 6-6, Fr. — All-Conference center in both his junior and senior years at Clarion Area High . . . Burned the cords for a 21 point per game scoring mark and cleaned the boards at a 24.0 rate.

### PRONUNCIATION GUIDE

Betar . . . . . BEE-tar	Lowther . . . . . LOW-thur	Pasqualone . . . . . PASS-qua-lone
Gerdich . . . . . GUR-ditch	Nanovsky . . . . . Na-NOV-skee	Podbielski . . . . . Pod-BILL-skee
Laterza . . . . . la-TUR-za	Pancerev . . . . . PAN-sir-ev	Stauffer . . . . . STAW-fer



*The Challengers*

## BEHREND COLLEGE

December 1 — at Edinboro

*Head Coach:* Roger Sweeting, 96-72, 9 Seasons

*Sports Information Director:* Roger Sweeting, Area Code 814, 899-3101

*1972-73 Record:* 5-15

*Lettermen Lost:* 5

*Lettermen Returning:* 6

*Team Strength:* Returnees

*Team Weakness:* Lack of Size

*Captains:* G. McKinney and J. Olszewski

*Athletic Director:* Roger Sweeting

*Location:* Erie, Pa.

*Enrollment:* 1,500

*Colors:* Red, White and Blue

*Nickname:* Cubs

*Home Court:* Erie Hall

*Gym Capacity:* 700

*Conference:* None

*Last Game:* 1972-73, ESC 93-60

*Top Veterans:* Glenn McKinney (G, 6-1, Sr., 17.5), Joe Olszewski (F, 6-3, So.), Larry Szoszorek (F, 6-4, So., 10.4), Jeff Gillette (F, 6-4, So., 1.5), Paul Ruland (F, 6-3, So., 3.4), Frank Moorhead (G, 6-3, So., 4.0)

*Top Newcomers:* Jim Davis (C, 6-3, Fr.), Larry McAleer (G, 5-10, Fr.), Larry Yalich (G, 5-10, Fr.), Jack Nill (G, 5-11, Fr.), Fred Bartnicki (F, 6-4, Fr.), Mike Verschneider (C, 6-5, Fr.), Kevin Cambell (F, 6-3, Fr.)

## UNIVERSITY OF WESTERN ONTARIO

December 6 — at Edinboro

*Head Coach:* Jerry Gonser, 54-39, 10 Seasons

*Sports Information Director:* Marvin Decker, Area Code 519, 679-2425

*1972-73 Record:* 7-12

*Lettermen Lost:* 5

*Lettermen Returning:* 5

*Team Strength:* Youth and Enthusiasm

*Team Weakness:* Young Team

*Captain:* To Be Named

*Athletic Director:* Dr. Robert Barney

*Location:* London, Ontario, Canada

*Enrollment:* 15,898

*Colors:* Purple and White

*Nickname:* Mustangs

*Home Court:* Alumni Hall

*Gym Capacity:* 2,800

*Conference:* OUAA

*Last Game:* 1970-71, ESC 116-62

*Top Veterans:* Wally Kurnew (G, 5-11, So.)

*Top Newcomers:* Joe Martino (G, 5-10, Sr.)

## CLARION STATE COLLEGE

December 8 — at Edinboro, February 13 — at Clarion

*Head Coach:* Ron Galbreath, 57-38, 4 Seasons

*Sports Information Director:* William Proudfit, Area Code 814, 226-6000, Ext. 492

*1972-73 Record:* 19-6

*Lettermen Lost:* 4

*Lettermen Returning:* 6

*Team Strength:* Defense

*Team Weakness:* Experience, Quickness

*Captains:* D. Ankeney, L. Myers

*Athletic Director:* Frank Lignelli

*Location:* Clarion, Pa.

*Enrollment:* 4,600

*Colors:* Blue and Gold

*Nickname:* Golden Eagles

*Home Court:* Tippin Gymnasium

*Gym Capacity:* 4,000

*Conference:* Pennsylvania

*Last Game:* 1972-73, CSC 76-59  
ESC 67-66

*Top Veterans:* Dave Ankeney (G, 6-1, Sr., 10.7), Lou Myers (C, 6-4, Sr., 10.1), Gary Walters (F, 6-4, Sr., 4.8)

*Top Newcomers:* Mike Smith (G, 5-9, So.), Pete Belcher (F, 6-5, So.), Terry Roseto (C, 6-8, Fr.), Carl Grinage (G, 5-10, Fr.), Jim Hoskinson (C, 6-7, Fr.), Bob Carll (G, 5-10, Fr.)

## ALLIANCE COLLEGE

December 10 — at Edinboro, February 25 — at Alliance

*Head Coach:* Ted Haluch, 170-210, 19 Seasons

*Sports Information Director:* Leo Rudzki, Area Code 814, 398-4611, Ext. 365

*1972-73 Record:* 3-20

*Lettermen Lost:* 7

*Lettermen Returning:* 2

*Team Strength:* Quickness, Shooting

*Team Weakness:* Experience

*Captains:* Chuck Axe, George Forester

*Athletic Director:* Ted Haluch

*Location:* Cambridge Springs, Pa.

*Enrollment:* 450

*Colors:* Red and White

*Nickname:* Eagles

*Home Court:* Cambridge Springs H. S.

*Gym Capacity:* 1,200

*Conference:* Independent

*Last Game:* 1972-73, ESC 70-64, 86-69

*Top Veterans:* Chuck Axe (C, 6-5, Jr., 10.4), George Forester (F, 6-2, Jr., 5.8)

*Top Newcomers:* Len Thompson (C, 6-7, Fr.), Ken Ritts (C, 6-5, Fr.), Terry Karsonovich (F, 6-3, Fr.)

## CALIFORNIA STATE COLLEGE

December 12 — at California, February 9 — at Edinboro

*Head Coach:* Myles Witchey, 136-109, 11 Seasons

*Sports Information Director:* Tom Galvin, Area Code 412, 938-2281, Ext. 407

*1972-73 Record:* 11-11

*Lettermen Lost:* 9

*Lettermen Returning:* 2

*Team Strength:* Guards

*Team Weakness:* Inexperience, Lack of Height

*Captain:* To Be Named

*Athletic Director:* Paul Ross

*Location:* California, Pa.

*Enrollment:* 5,750

*Colors:* Red and Black

*Nickname:* Vulcans

*Home Court:* Hamer Hall

*Gym Capacity:* 4,000

*Conference:* Pennsylvania

*Last Game:* 1972-73, CSC 67-61

ESC 64-59 (OT)

*Top Veterans:* Augie DiPasquale (G, 6-1, Sr., 14.9), Bill Hughes (G, 6-0, Sr., 2.1)

*Top Newcomers:* Mike Buckley (F, 6-4, So.), John Chuhran (C, 6-3, Jr.), Lynn Schwendeman (G, 6-0, So.), Joe Henry (G-F, 6-4, Jr.)

## SLIPPERY ROCK STATE COLLEGE

December 15 — at Slippery Rock, February 23 — at Edinboro

*Head Coach:* Cliff Wettig, First Season

*Sports Information Director:* John Carpenter, Area Code 412, 794-7216

*1972-73 Record:* 23-7

*Lettermen Lost:* 5

*Lettermen Returning:* 6

*Team Strength:* Speed, Shooting

*Team Weakness:* Height, Depth

*Captains:* Denny Kopka, Peyton Tomblin

*Athletic Director:* Dr. Robert Raymond

*Location:* Slippery Rock, Pa.

*Enrollment:* 6,000

*Colors:* Green and White

*Nickname:* Rock

*Home Court:* Morrow Field House

*Gym Capacity:* 2,200

*Conference:* Pennsylvania

*Last Game:* 1972-73, SR 94-74

ESC 86-76

*Top Veterans:* Denny Kopka (F, 6-5, Sr., 12.0), Peyton Tomblin (G-F, 6-2, Sr., 12.2), Owen Long (G, 5-11, Jr., 11.2), Terry Acker (G, 5-11, Jr., 5.0), Greg Munson (G, 6-3, So., 3.8)

*Top Newcomers:* Bob Gallagher (G, 6-2, Jr.), Bill Odem (F, 6-5, Jr.), John Thiebaud (G, 6-2, So.), Bob O'Connor (F, 6-6, So.)



## ASHLAND HOLIDAY TOURNAMENT

December 27, 28 — at Ashland, Ohio

*December 27th — Edinboro vs West Va. State, Ashland vs Kutztown*

Edinboro State will tip off the action at Ashlands' Holiday Tournament when the Scots get a December 27th, 7:00 Yule Tide greeting from WEST VIRGINIA STATE'S Yellow Jackets. Host Ashland College will follow later the same night when the Purple Eagles clash with one of ESC's Pennsylvania Conference mates, Kutztown State College. West Virginia raced to a 21-11 record a year ago and has six returning lettermen on hand for the 1973-74 campaign. Most impressive was the Jackets 16-5 slate that was good enough to place third in the tough West Virginia Intercollegiate Athletic Conference. The Jackets are strong at the guard spots with returnees Alfred Lance (6-0, So., 14.3 pga) and Ron Calloway (6-3, So., 10 pga) but will look to newcomers Art Collins (6-7, Fr.), Paul Michaux (6-6, Fr.) and Dan Lewis (6-9, So.) to do the work under the boards. Second year coach Curtis Price will be looking forward to another strong showing in the Jackets' ambitious 26-game schedule. Host ASHLAND seems to have all the ingredients to produce a cage powerhouse with talented prospects from the juco ranks and 8 returning lettermen which include All-American guard Bill "The Thrill" Higgins who scored 26.1 points per game last year. Transfers Mariel Rogers (6-6, Jr.) and John Mills (6-7, Jr.) provide the scoring and rebounding punch needed under the hoop with backups John Mongerson (6-7, Fr.) and Rich Steinman (6-7, Fr.) also on hand. Veteran guards Rich Mosier and Kirk Minter return as well. Mosier rewrote the Ashland record in assists last year. Battling for one of the forward spots is letter winner Roger Remenaric (6-5, Jr.) along with Randy Emmons (6-4, So.). Emmons is the top returning rebounder with 112 grabs last year while Remenaric followed closely with 109 swipes. KUTZTOWN coach Ken Meyer, entering his third year, looks for the Golden Bears to move up in the Eastern Division of the Pennsylvania Conference and have a shot at their first winning season in five years. The Bears attack will revolve around a trio of lettermen in Al Rossignoli (6-2, Jr., F), Frank Yusella (5-10, Jr., G) and Jim Buss (6-5, Jr., F). Rossignoli hit the net at an 11.8 clip last year and pulled down 131 rebounds. The big help for the Bears will be the addition of board men Howard Krouse (6-8, So.) and Jim Johnson (6-6, Fr.)

## FROSTBURG STATE COLLEGE

January 11 — at Frostburg, January 25 — at Edinboro

*Head Coach: Kurt Wolfe, 61-22, 3 Seasons*

*Sports Information Director: None*

*1972-73 Record: 14-10*

*Lettermen Lost: 4*

*Lettermen Returning: 4*

*Team Strength: Speed*

*Team Weakness: Height, Experience*

*Captain: To Be Named*

*Athletic Director: Dr. Harold Cordts*

*Location: Frostburg, Maryland*

*Enrollment: 2,500*

*Colors: Black and Gold*

*Nickname: Bobcats*

*Home Court: Compton Gym*

*Gym Capacity: 800*

*Conference: Independent*

*Last Game: No Previous Meeting*

*Top Veterans: Gordon Seeley (F, 6-3, Sr., 11.0), Dana Cunningham (G, 5-10, Sr., 6.0), Jim Riggelman (G, 5-10, Sr., 6.0)*

*Top Newcomers: Mitch Stoller (G, 5-8, Jr.), Wayne Simonsen (F, 6-4, Fr.), Jeff Mauzy (C, 6-5, Fr.), David Swick (F, 6-4, Fr.)*

## LOCK HAVEN STATE COLLEGE

January 17 — at Lock Haven, February 16 — at Edinboro

*Head Coach: Dick Taylor, 7-14, 1 Season*

*Sports Information Director: Ross Nevel, Area Code 717, 748-5351, Ext. 464*

*1972-73 Record: 7-14*

*Lettermen Lost: 3*

*Lettermen Returning: 5*

*Team Strength: Defense*

*Team Weakness: Experience*

*Captain: Warren Goodling*

*Athletic Director: Stan Daley*

*Location: Lock Haven, Pa.*

*Enrollment: 2,500*

*Colors: Red and White*

*Nickname: Bald Eagles*

*Home Court: Thomas Field House*

*Gym Capacity: 1,500*

*Conference: Pennsylvania*

*Last Game: 1972-73, ESC 78-68, 62-61*

*Top Veterans: Warren Goodling (G, 5-9, Sr., 14.1), John Miller (G, 5-11, Sr., 6.2), John Salley, (C, 6-8, Jr., 2.0), Gary Knepp (F, 6-2, Sr., 7.1), Rick Miller (G, 5-11, Jr., 6.0)*

*Top Newcomers: Mike Bergeron (C, 6-4, So.), Joe Sain (F, 6-3, Fr.), Frank Norris (F, 6-4, Fr.), Mike Chancey (G, 6-1, Jr.), George Forde (G, 5-11, Fr.), Mike Fitzgerald (F, 6-3, Fr.)*

## BLOOMSBURG STATE COLLEGE

January 18 — at Bloomsburg

*Head Coach: Charles Chronister, 38-12, 2 Seasons*

*Sports Information Director: Nick Dietterick, Area Code 717, 389-3411*

*1972-73 Record: 20-5*

*Lettermen Lost: 1*

*Lettermen Returning: 6*

*Team Strength: Quickness, Shooting, Depth*

*Team Weakness: Back-up Center*

*Captain: John Willis*

*Athletic Director: Dr. Conrad Bautz*

*Location: Bloomsburg, Pa.*

*Enrollment: 4,600*

*Colors: Maroon and Gold*

*Nickname: Huskies*

*Home Court: E. H. Nelson Fieldhouse*

*Gym Capacity: 3,700*

*Conference: Pennsylvania*

*Last Game: 1972-73, BSC 75-66*

*Top Veterans: John Willis (C, 6-8, Sr., 21.4), Joe Kempinski (G, 6-2, Sr., 12.5), Tony DaRe (G, 5-10, Sr., 12.5), Gary Choyka (G, 6-0, Sr., 9.9), Gary Tyler (F, 6-5, Jr., 6.5)*

*Top Newcomers: Jerry Radocha (F, 6-5, Fr.), Rick Evans (F, 6-3, Fr.), Bob Parambo (F, 6-3, So.)*

## POINT PARK COLLEGE

January 23 — at Edinboro

*Head Coach: Jerry Conboy, 46-52, 5 Seasons*

*Sports Information Director: Malette Poole, Area Code 412, 391-4100, Ext. 8241*

*1972-73 Record: 15-9*

*Lettermen Lost: 6*

*Lettermen Returning: 3*

*Team Strength: Height*

*Team Weakness: Inexperience*

*Captain: Bob Rager*

*Athletic Director: Jerry Conboy*

*Location: Pittsburgh, Pa.*

*Enrollment: 1,250*

*Colors: Green and Gold*

*Nickname: Pioneers*

*Home Court: Allegheny Com. College*

*Gym Capacity: 3,500*

*Conference: Independent*

*Last Game: 1972-73, PPC, 79-60*

*Top Veterans: Bob Rager (G, 6-3, Sr., 14.0), Jim Ney (F, 6-4, Jr., 12.6), Ali Morris (C, 6-8, Sr., 1.9)*

*Top Newcomers: Dan Kelly (C-F, 6-10, Jr.), Jim McKinnon (F, 6-3, So.), Bob Ager (G, 6-0, Jr.), Bob Franklin (G, 5-11, Fr.)*



## MUSKINGUM COLLEGE

January 28 — at Muskingum

*Head Coach:* Jim Burson, 66-65, 6 Seasons

*Sports Information Director:* Mike Morrison, Area Code 614, 826-8134

*1972-73 Record:* 19-4

*Lettermen Lost:* 4

*Lettermen Returning:* 7

*Team Strength:* Defense

*Team Weakness:* Lack of Big Men

*Captains:* To Be Named

*Athletic Director:* Edgar Sherman

*Location:* New Concord, Ohio

*Enrollment:* 1,100

*Colors:* Black and Magenta

*Nickname:* Fighting Muskies

*Home Court:* John Glenn Gymnasium

*Gym Capacity:* 2,000

*Conference:* Ohio Athletic Conference

*Last Game:* 1972-73, MC 59-48

*Top Veterans:* Gene Ford (G, 5-8, Sr., 19.3), Gary Ferber (F, 6-5, Sr., 12.7), Mark Warner (F, 6-4, Jr., 8.9)

*Top Newcomers:*

## INDIANA UNIVERSITY, Pennsylvania

February 2 — at Indiana, February 19 — at Edinboro

*Head Coach:* Carl Davis, 52-23, 4 Seasons

*Sports Information Director:* Randy Jesick, Area Code 412, 357-2233

*1972-73 Record:* 13-10

*Lettermen Lost:* 1

*Lettermen Returning:* 6

*Team Strength:* Experience

*Team Weakness:* Lack of Height

*Captains:* Randy Allen, Gene Gaige

*Athletic Director:* Herm Sledzik

*Location:* Indiana, Pa.

*Enrollment:* 8,900

*Colors:* Maroon and Slate

*Nickname:* Indians

*Home Court:* Memorial Field House

*Gym Capacity:* 2,500

*Conference:* Pennsylvania

*Last Game:* 1972-73, ESC 68-60  
IUP 63-57

*Top Veterans:* Randy Allen (G, 6-1, Sr., 17.1), Jeff Lawrence (F, 6-3, Jr., 11.8), John Guyton (F, 6-5, So., 7.7), Gene Gaige (C, 6-5, Sr., 6.7), Mark Bianchi (F, 6-2, Sr., 5.2), Marty Mattocks (G, 6-0, Jr., 4.0)

*Top Newcomers:* Mike Christensen (C, 6-8, Fr.), Mike Reidmiller (C, 6-7, Fr.), Dick Lynch (F, 6-5, Fr.), Elio Filippi (F, 6-4, Fr.)

## MERCYHURST COLLEGE

February 7 — at Edinboro

*Head Coach:* Dick Fox, 35-16, 2 Seasons

*Sports Information Director:* Joe Mattis, Area Code 814, 864-0681

*1972-73 Record:* 19-7

*Lettermen Lost:* 2

*Lettermen Returning:* 12

*Team Strength:* Depth, Height

*Team Weakness:* Ball Handling

*Captain:* Jeff McConnell

*Athletic Director:* Dick Fox

*Location:* Erie, Pa.

*Enrollment:* 1,469

*Colors:* Green and Blue

*Nickname:* Lakers

*Home Court:* Erie County Fieldhouse

*Gym Capacity:* 4,000

*Conference:* Independent

*Last Game:* 1972-73, MC 71-64

*Top Veterans:* Steve Albert (F, 6-6, Jr., 16.7), Jesse Campbell (C, 6-9, So., 13.0), Carl Jones (G, 5-10, Jr., 11.9), Mike Emick (F, 6-5, Jr., 5.5), Jeff McConnell (C, 6-7, Sr., 4.2), Dan Bukowski (F, 6-2, Jr., 5.5)

*Top Newcomers:* Jeff Davern (G, 5-10, Fr.), Jim Oshlick (G, 6-1, Fr.), John Burrow (F, 6-4, Fr.), Willis Cardot (G, 5-10, Jr.), Curtis Hixon (F, 6-4, Jr.)



FIGHTING SCOT 1973-74 CHEERLEADERS (L-R): Karen Lineman, Mary Pavkov, Marianne Langiotti, Jody Freed, Kathy Brown, Karen McEntire, Debbie Vrbancic, Barb Gates, Linda Byrtus.

## ESC ATHLETIC AFFILIATIONS



NAIA

NAIA — Edinboro State has national affiliation with the National Association of Intercollegiate Athletics. The NAIA was organized in 1940 for the purpose of promoting interest in athletics among colleges of moderate enrollment. The NAIA encourages a broad program of athletic pursuits in its member schools and maintains that athletics must be an integral part of the overall educational process. A total of 17 national championships are sponsored by the NAIA.



NCAA

NCAA — The National Collegiate Athletic Association is a voluntary organization of more than 700 institutions and conferences devoted to the sound administration of intercollegiate athletics in all of its phases. The NCAA has responded to small colleges expanding needs and desires with a College Division classification. There are about 400 College Division members in the NCAA. CD Championships are conducted in nine sports which include regional tournaments in basketball and football.



ECAC

ECAC — The Eastern College Athletic Conference embraces 12 New England and Middle Atlantic states Maryland, Virginia and the District of Columbia. The member institutions are separated into three different divisions. The ECAC differs from the majority of the other major college conferences throughout the country because it is not a playing conference in which every team within the group meets all or most of the others in the various sports. With 211 active members, it is the largest athletic conference in the nation.

# 1973-74 FIGHTING SCOTS



## EDINBORO STATE'S 1973-74 VARSITY CAGERS

*Front Row (L-R):* Alonzo Craig, Bill Lentz, Bill Henk, Roy Stauffer, Paul Stiles, Larry Betar and Tim Smiley. *Back Row (L-R):* Assistant Coach Tony Laterza, James Boyd, Don Gerdich, Charlie Hickox, Sam Vickers, Ron Beckett, Dennis Hampton, Manager Jim Kleszcz and Head Coach Jim McDonald.

## 1973-74 NUMERICAL BASKETBALL ROSTER

White	Red	Name	Pos.	Ht.	Wt.	Class	Hometown/High School	High School Coach
10	11	*Roy Stauffer	G	5-10	170	Sr.	Emmaus/Emmaus	Mr. Richard Shaak
12	13	*Bill Henk	G	6-1	165	Jr.	Pittsburgh/Keystone Oaks	Mr. James Sims
14	15	Alonzo Craig	G	6-3	175	Fr.	Ft. Wayne, Ind./R. Nelson Snider	Mr. Roy Kline
20	21	Tim Smiley	G	6-0	175	Fr.	Ft. Wayne, Ind./Wayne	Mr. Will Doehrmann
22	23	*Ron Beckett	F	6-7	180	So.	Elyria, O./Elyria	Mr. Mike Riley
24	25	*Don Gerdich	F-C	6-6	208	Jr.	McKeesport/McKeesport Area	Mr. Edmund Kittik
30	31	*Larry Betar	G	6-2	170	Jr.	Altoona/Altoona Area	Mr. John Swogger
32	33	Dennis Hampton	F	6-5	190	Jr.	Chicago, Ill./Harlan	Mr. Lee Umbles
34	35	James Boyd	F	6-4	170	Jr.	Benton Harbor, Mich./Benton Harbor	Mr. Ace Elsner
40	41	Charlie Hickox	C	6-6	190	Jr.	Parkersburg, W. Va./Parkersburg	Mr. Sam Manditch
42	43	*Bill Lentz	G	6-2	185	So.	Allentown/Salisbury	Mr. William Paulik
44	45	Paul Stiles	G	6-1	185	Sr.	Bradford/Bradford	Mr. Hal Hansen
50	51	*Sam Vickers	C	6-8	220	So.	Elyria, O./Elyria	Mr. Mike Riley

\*Varsity Letters

Captain: Roy Stauffer

Manager: Jim Kleszcz

## JUNIOR VARSITY ROSTER

White	Red	Name	Pos.	Ht.	Wt.	Class	Hometown/High School	High School Coach
10	11	Ernie Pasqualone	G	5-11	140	Fr.	Geneva, O./Geneva	Mr. William Koval
12	13	Gary Stokan	G-F	6-0	165	Fr.	Pittsburgh/South Hills Catholic	Mr. Robert Keebler
22	23	Tom Podbielski	G-F	6-1	175	Fr.	Beaver Falls/Beaver Falls	Mr. Frank Chan
24	25	Mike Pancerev	F	6-1	185	Fr.	Waterford/Fort LeBoeuf	Mr. Wayne Augustine
30	31	Ron Hakala	F	6-1	170	So.	Ashtabula, O./Ashtabula	Mr. Robert Walters
34	35	Mike Drozin	F	6-3	170	So.	Euclid, O./St. Joseph	None
40	41	John Brenner	C	6-6	172	Fr.	Binghamton, N.Y./Chenango Valley	Mr. Bob McDaniels
42	43	Bob Nanovsky	C	6-6	205	Fr.	Shipperville/Clarion Area	Mr. Bob Murphy
44	45	Rob Lowther	F	6-2	175	Fr.	Valencia/Mars	Mr. Edward Stotsky
54	55	*Dale Griffin	C	6-7	225	So.	Elyria, O./Elyria	Mr. Mike Riley

Head Coach: Jim McDonald

Assistant Coach: Tony Laterza

JV Manager: Glenn Lett



## KEEPING THE SCOTS ON THE MOVE . . .



Al Hall

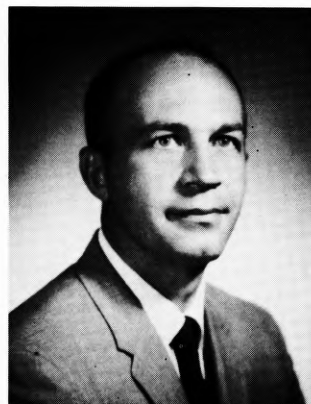
**ATHLETIC DIRECTOR:** Since Al Hall's appointment as Athletic Director in 1968, Edinboro State has enjoyed one of the most respected and most successful collegiate athletic programs in the East. Through his efforts ESC has expanded to twelve varsity sports and attained new memberships in the ECAC and NCAA while building a coaching staff that has compiled the College's best record in history. Al's selection to numerous sports committees in the Erie area along with posts in both the ECAC and Pennsylvania Conference bear out his dedication to the world of athletics. A graduate of Baldwin Wallace College, he served as Assistant Director of Ath-

letics at Akron University for two years and piloted Akron's cross country teams to championship finishes for 12 seasons. Al's wife, Pam, daughter, Beth, and their son, Dale, reside in Edinboro.

**SPORTS INFORMATION DIRECTOR:** Paul Newman began his duties six years ago as ESC's first Sports Information Director and now also serves as Assistant to the President. Paul is a 1964 graduate of Edinboro where he earned both his B.S. degree and M.Ed. while majoring in English. Prior to joining the Scots, he held a teaching position in Ashtabula, Ohio, for three years. In connection with his duties, he is also the District 18 Publicity Chairman for the National Association of Intercollegiate Athletics and recently completed a two-year term as President of the NAIA's Sports Information Director's Association. Paul, his wife, Connie, and their children, Paul Jr., Michele, and Scott make their home in Edinboro.

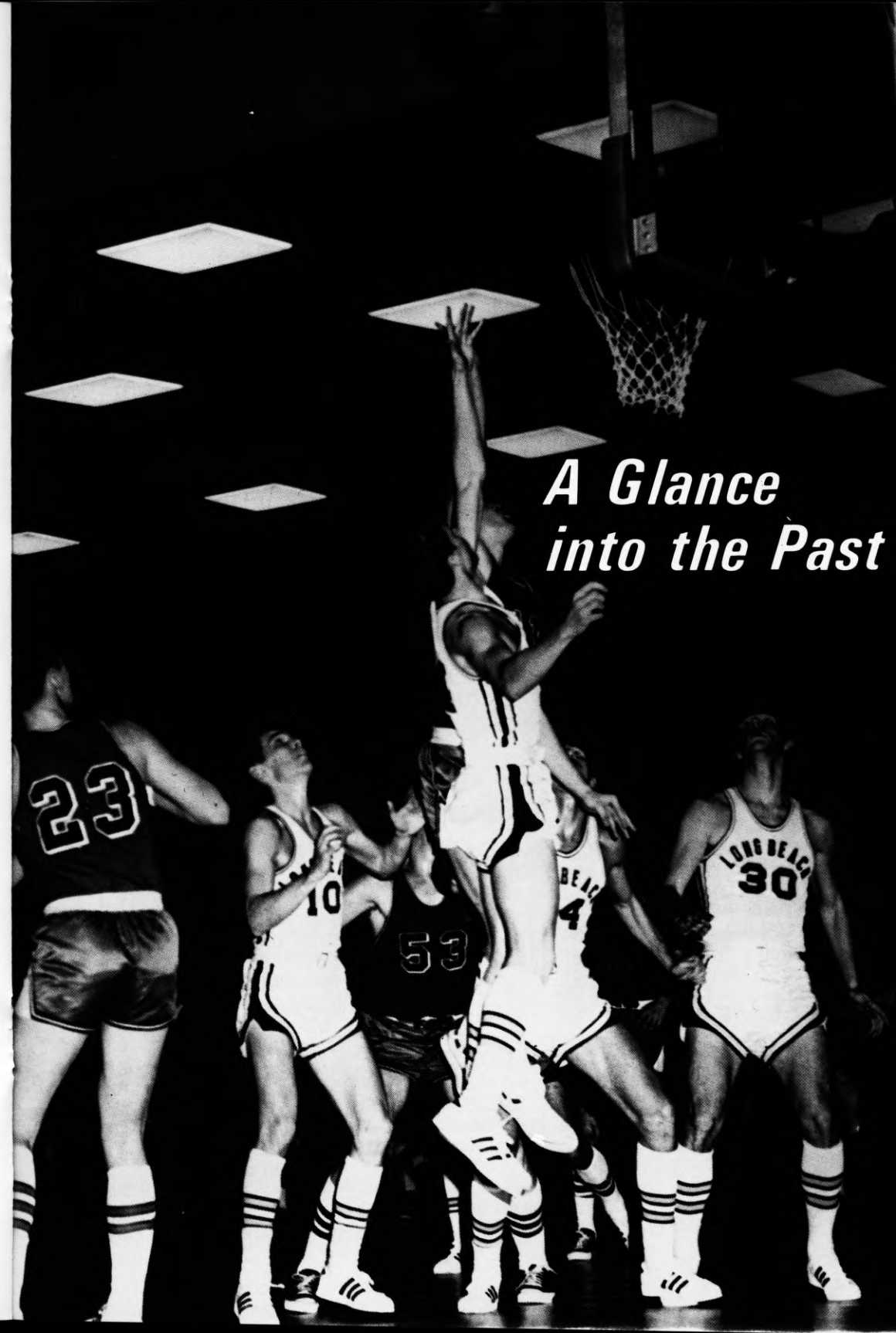


Paul Newman



Bob Klingler

**TEAM TRAINER:** Bob Klingler begins his seventh year of giving Fighting Scot athletes the tops in professional medical care. The 1952 Lock Haven grad ventured to Hermann School of Physical Therapy in Houston, Texas and became a registered physical therapist in 1954. He later received his M.S. from Bucknell. Prior to accepting his ESC post, Klingler taught at Milton Hershey, a private boys' school in Hershey, Pa., where he served as the Spartans' head football mentor, head track coach and assistant basketball coach. Both his cinder and cage teams never experienced a losing season, while his grid teams continually posted successful campaigns in the powerful Capitol Area Conference. Bob, his wife, Jill, and daughter, Julie, make their home in Edinboro



*A Glance  
into the Past*



## 1972-73 VARSITY RESULTS

Overall Record: 13-9

ESC	Opp.	Leading Scorer	Leading Rebounder
64	Mercyhurst . . . . . 71-L	Stauffer, Vickers. 13	R. Sulka . . . . . 13
74	Ohio Wesleyan . . . . 66-W	R. Stauffer . . . . 26	R. Beckett . . . . 9
104	Allegheny . . . . . 85-W	R. Stauffer . . . . 30	R. Sulka . . . . 17
59	*Clarion . . . . . 76-L	R. Beckett . . . . 18	Beckett, Birner . . 6
67	Wilmington (Del.) . . 69-L	R. Stauffer . . . . 15	R. Sulka . . . . 13
61	*California (Pa.) . . . 67-L	R. Stauffer . . . . 16	R. Beckett . . . . 6
70	Alliance . . . . . 64-W	D. Miller . . . . 25	Gerdich, Beckett. 8
74	*Slippery Rock . . . . 94-L	R. Stauffer . . . . 20	D. Miller . . . . 8
48	Muskingum . . . . . 59-L	L. Betar . . . . 12	D. Gerdich . . . . 7
60	Point Park . . . . . 79-L	R. Beckett . . . . 15	R. Beckett . . . . 15
65	Grove City . . . . . 58-W	R. Stauffer . . . . 24	D. Miller . . . . 7
66	Bloomsburg . . . . . 75-L	R. Stauffer . . . . 20	B. Henk . . . . 14
85	Mount Union . . . . 68-W	R. Stauffer . . . . 35	D. Gerdich . . . . 10
68	*Indiana (Pa.) . . . . 60-W	Betar, Vickers. . . 18	R. Sulka . . . . 7
78	*Lock Haven . . . . . 68-W	R. Stauffer . . . . 22	S. Vickers . . . . 14
93	Behrend . . . . . 60-W	L. Betar . . . . 15	R. Sulka . . . . 12
64	*California (Pa.) (OT) 59-W	R. Stauffer . . . . 26	D. Gerdich . . . . 15
67	*Clarion . . . . . 66-W	R. Stauffer . . . . 20	D. Gerdich . . . . 11
86	Alliance . . . . . 69-W	R. Stauffer . . . . 22	D. Gerdich . . . . 13
57	*Indiana (Pa.) . . . . 73-L	L. Betar . . . . 21	R. Sulka . . . . 12
86	*Slippery Rock . . . . 76-W	R. Stauffer . . . . 27	Gerdich, Lentz. . 8
62	*Lock Haven . . . . . 61-W	L. Betar . . . . 27	D. Gerdich . . . . 13

\*Conference Games

CONFERENCE RECORD 6-4 (Tie for Second)

HOME RECORD 8-5

AWAY RECORD 5-4

## 1972-73 VARSITY STATISTICS

Name	G	FGM	FGA	Pct.	FTM	FTA	Pct.	REB.	Avg.	TP	Avg.
Stauffer, R. . . . .	22	170	348	.489	90	102	.882	70	3.2	430	19.5
Betar, L. . . . .	22	114	231	.494	34	48	.708	70	3.2	262	11.9
Henk, B. . . . .	21	58	149	.400	24	37	.649	100	4.8	140	6.7
Vickers, S. . . . .	18	54	124	.446	27	39	.692	91	5.0	135	7.5
Sulka, R. . . . .	19	61	135	.452	9	24	.375	127	6.7	131	6.8
Beckett, R. . . . .	10	41	120	.342	19	29	.655	75	7.5	101	10.1
Gerdich, D. . . . .	21	38	106	.367	19	33	.576	143	6.8	95	4.5
Miller, D. . . . .	14	33	77	.429	18	24	.750	58	4.1	84	6.0
Lentz, B. . . . .	14	19	40	.475	30	35	.857	39	2.9	68	4.8
Griffin, D. . . . .	11	18	41	.424	3	8	.375	30	2.7	39	3.5
Birner, B. . . . .	9	15	42	.357	4	7	.571	25	2.8	34	3.8
Rozanski, B. . . . .	9	5	21	.238	2	3	.667	3	.3	12	1.3
Drozin, M. . . . .	1	1	2	.500	0	1	.000	2	1.0	2	2.0
Others . . . . .	6	12	33	.364	1	2	.500	13	2.1	25	4.1
Team . . . . .								138	6.3		
ESC TOTALS . . . . .	22	639	1469	.435	280	392	.714	984	44.7	1558	70.8
OPPONENTS . . . . .	22	625	1451	.431	253	370	.684	880	40.0	1503	68.3

## SPECIAL RECOGNITION -- "SCOTS OF THE PAST"

NAIA 2nd TEAM, ALL-AMERICAN	ASSOCIATED PRESS HONORS
1964-1965: Dan Petchel	Honorable Mention-All Pennsylvania
NAIA 3rd TEAM, ALL-AMERICAN	1972-1973: Roy Stauffer
1971-1972: Fred Riley	Larry Betar
1968-1969: Frank Smith	1971-1972: Fred Riley
1967-1968: Frank Smith	1969-1970: Fred Riley
1965-1966: Darryl Meachem	1968-1969: Frank Smith
NAIA ALL-AMERICA HONORABLE MENTION	PC 1st TEAM (WEST)
1972-1973: Roy Stauffer	1972-1973: Roy Stauffer
1970-1971: Fred Riley	1971-1972: Fred Riley, Jim Prokell
NAIA DISTRICT 18 1st TEAM	1970-1971: Fred Riley, Jim Prokell
1972-1973: Roy Stauffer	1969-1970: Art Dickinson
1970-1971: Fred Riley	Jim Prokell
1968-1969: Frank Smith	Dave Knowlton
1967-1968: Frank Smith	1968-1969: Frank Smith
1965-1966: Darryl Meachem	1967-1968: Don Dougan
NAIA DISTRICT 30 1st TEAM	Frank Smith
1964-1965: Dan Petchel	1966-1967: Lynn Nelson
NAIA DISTRICT 18 2nd TEAM	1965-1966: Darryl Meachem
1971-1972: Jim Prokell	1964-1965: Dan Petchel
1970-1971: Jim Prokell	1963-1964: Dan Petchel
1969-1970: Art Dickinson	1962-1963: Dan Petchel
Jim Prokell	PC 2nd TEAM
1967-1968: Don Dougan	1972-1973: Larry Betar
Mick Unick	1971-1972: Jim Romaniszyn
NAIA DISTRICT 18 HON. MENTION	1970-1971: Dave Knowlton
1971-1972: Roy Stauffer	1968-1969: Rod Herron
1969-1970: Fred Riley	Harry Jenkins
PITTSBURGH PRESS ALL-DISTRICT	1967-1968: Harry Jenkins
1965-1966: Dave Shenefelt	Jim Robinson
Don Dougan	Mick Unick
First Team:	PC HONORABLE MENTION
1971-1972: Fred Riley, Jim Prokell	1971-1972: Roy Stauffer
1968-1969: Frank Smith	1968-1969: Tim Ziner, Mick Unick
Second Team:	Jim Robinson
1972-1973: Roy Stauffer	1966-1967: Butch Hurley
1970-1971: Fred Riley	Harry Jenkins
1969-1970: Art Dickinson	Tim Maloney
Third Team:	Darryl Meachem
1970-1971: Jim Prokell	Frank Smith
1969-1970: Jim Prokell	1964-1965: Dave Shenefelt
ASSOCIATED PRESS HONORS	1962-1963: Ken Barker
Third Team, All Pennsylvania:	1961-1962: Ken Barker, Jim Sims
1967-1968: Frank Smith	Wendell Rojik
<b>OTHERS</b>	
Fred Riley . . . . .	UPI Small All-America 1971-72; Basketball News 2nd Team All-America 1971-72; PCPA Honorable Mention 1970-71; SOS Classic 1971-72.
Darryl Meachem . . . . .	SOS Classic; SOS Outstanding Athlete; Penn-Ohio All-Section Team 1965-66.
Dave Shenefelt . . . . .	Penn-Ohio Honorable Mention 1965-66.
Roy Stauffer . . . . .	1972-73 Erie Morning News Big "5" 1st Team
Larry Betar . . . . .	1972-73 Erie Morning News Big "5" 2nd Team

## TEAM RECORDS AND CHAMPIONSHIPS

### TEAM RECORD—SEASON

Most Wins	19-5	James McDonald	1967-1968
	17-4	(regular season play)	
Best Season Record	12-1	Sox Harrison	1931-1932
Highest Scoring Average	89.4		1967-1968
Best Shooting Percentage	51.7		1966-1967
Best Free Throw Percentage	71.4		1972-1973
Best Rebounding Average	55.7		1965-1966
Best Rebounding Percentage	62.5		1966-1967
Most Field Goals	868	(24 games)	1967-1968
Most Consecutive Victories	11	1966-1967—	1967-1968
Most Consecutive Victories	10	(one season)	1967-1968
Most Consecutive Conference Wins	17		1967-1969

### TEAM RECORDS—GAME

Most Points	133	Lock Haven	1967-1968
Most Field Goals	54	Lock Haven	1967-1968
Most Free Throws	31-49	California	1965-1966
	31-51	Lock Haven	1961-1962
Most Rebounds	93	Clarion (PC Record)	1968-1969
Most Points (two teams)	227	(ESC 119, Alliance 108)	1954-1955
Longest Game	3 O. T.	Lock Haven	1961-1962

### CHAMPIONSHIPS

Western Division PSCAC	(Loyal Park)	1961-1962
Western Division PSCAC	(Jim McDonald)	1963-1964
Western Division PSCAC	(Jim McDonald)	1965-1966
*NAIA District 18 Championship	(Jim McDonald)	1965-1966
Western Division PSCAC	(Jim McDonald)	1967-1968
PSCAC State Championship	(Jim McDonald)	1967-1968
Western Division PC	(Jim McDonald)	1968-1969
Marietta Tournament Champions	(Dave Rooney)	1971-1972
*NAIA District 18 Championship	(Dave Rooney)	1971-1972

\*Won the right to play in NAIA Tournament in Kansas City, Mo.

### TOP CAREER SCORERS

1. Walt Askins.....	1,739	8. Rod Vashaw.....	879
2. Dan Petchel.....	1,344	9. Bob McVeigh.....	840
3. Fred Riley.....	1,279	10. Wendell Rojik.....	812
4. Frank Smith.....	1,225	11. Dave Shenefelt.....	797
5. Jim Prokell.....	1,196	12. Roy Stauffer.....	787
6. Don Dougan.....	1,095	13. Jim Sims.....	730
7. Darryl Meachem.....	881	14. Harry Jenkins.....	728
		15. Ken Barker.....	708

### TOP CAREER REBOUNDERS

1. Don Dougan.....	992	5. Frank Smith.....	637
2. Darryl Meachem.....	897	6. Wendell Rojik.....	622
3. Dan Petchel.....	744	7. Jim Prokell.....	593
4. Ken Barker.....	689	8. Rich Sulka.....	507
		9. Art Dickinson.....	442

## INDIVIDUAL RECORDS -- SEASON

### Most Points

Walt Askins	496	(19 games)	1956-1957
Fred Riley	492	(26 games)	1971-1972
Fred Riley	485	(24 games)	1970-1971
Frank Smith	466	(22 games)	1968-1969
Dan Petchel	460	(18 games)	1964-1965
Frank Smith	447	(24 games)	1967-1968

### Highest Scoring Averages

Walt Askins	26.1	(19 games)	1956-1957
Dan Petchel	25.6	(18 games)	1964-1965
Frank Smith	30.1	(9 games)	1966-1967

### Best Shooting Percentages

Lynn Nelson	58.3	(16 games)	1966-1967
Dan Petchel	55.8	(18 games)	1964-1965
Frank Smith	59.4	(9 games)	1966-1967

### Best Foul Shooting Percentages

Roy Stauffer	88.2	(90-102)	1972-1973
Ken Gerber	85.1	(63-74)	1961-1962
Fred Riley	84.7	(100-118)	1971-1972

### Most Rebounds

Darryl Meachem	393		1965-1966
----------------	-----	--	-----------

### Best Rebounding Averages

Darryl Meachem	18.5	(10 games)	1966-1967
	17.05	(23 games)	1965-1966

### Most Consecutive Foul Shots

Ken Gerber	38	(PSCAC Record)	1961-1962
------------	----	----------------	-----------

### Most Assists

Dave Knowlton	194	(24 games)	1970-1971
---------------	-----	------------	-----------

## INDIVIDUAL RECORDS -- GAME

### Most Points

Frank Smith	54	Fredonia	1966-1967
Frank Smith	52	Kenyon	1968-1969

### Most Field Goals

Frank Smith	21	Waynesburg	1966-1967
Frank Smith	21	Kenyon	1968-1969

### Most Rebounds

Don Dougan	38	Indiana State	1964-1965
		(PC Record)	

### Most Foul Shots Made

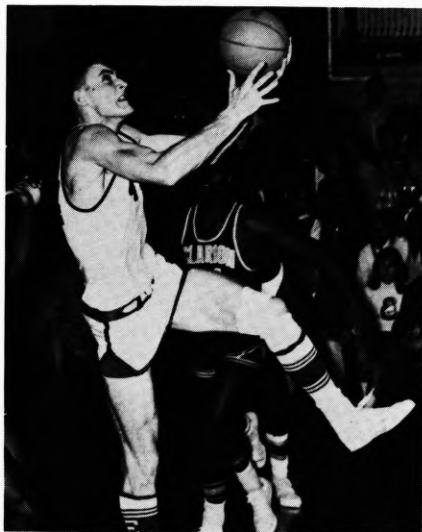
Ken Gerber	14-14	Gannon	1961-1962
Roy Stauffer	14-17	Salem	1971-1972
Don Dougan	13-16	Baldwin-Wallace	1964-1965

### Most Assists

Dave Knowlton	19	Grove City	1969-1970
---------------	----	------------	-----------



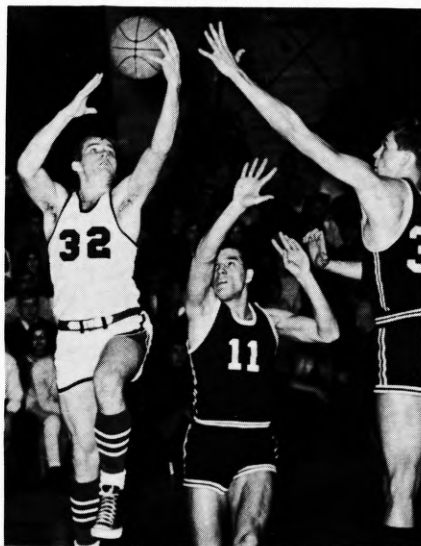
## EDINBORO STATE ALL-AMERICANS



Dan Petchel (F) 1964-65



Darryl Meachem (F) 1965-66



Frank Smith (F) 1967-68, 1968-69



Fred Riley (G) 1971-72

Edinboro State's four All-American winners have been traditionally prolific scorers for the Fighting Scots. Three forwards and a guard comprise the quartet which was groomed by Jim McDonald for their national honors on the Edinboro hardwoods.

Dan Petchel ranks as the second all-time scorer in ESC's cage history with his 1,344 career points while Fred Riley and Frank Smith hold down the number three and four spots on the scoring list with their respective 1,279 and 1,225-point outputs. Darryl Meachem ranks seventh among the all-time top scorers with his 881 tallies.

In the rebounding department, Meachem and Petchel are two of the college's top three career rebounders with 897 and 744, respectively. Meachem pulled down 393 rebounds for a school record established during the 1965-66 season.

Smith owns two individual scoring records. His 54-point output against Fredonia in the 1966-67 season earned him the most points scored in a single game record. The 6-1 forward compiled the most field goals scored in a single game record with 21 two-point markers against Waynesburg in the same season and 21 against Kenyon in 1969.

## ALL-TIME SCORES -- 1928-1973

1928-29	
Coach: Sox Harrison	
Won 12 — Lost 2	
ESC	Opp.
58	Clarion..... 27
58	Fredonia..... 26
58	Youngstown
	YMCA..... 38
87	Kanty College... 21
20	Clarion..... 14
36	California..... 25
46	Slippery Rock... 32
24	Slippery Rock... 36
49	Fredonia..... 29
50	Indiana..... 18
40	California..... 19
42	Youngstown
	YMCA..... 44
38	Indiana..... 22
34	Slippery Rock... 30
640	.....381

1929-30	
Coach: Sox Harrison	
Won 8 — Lost 6	
ESC	Opp.
29	Ashland..... 41
25	Slippery Rock... 24
18	Buffalo St.Tchrs.. 20
20	Canisius..... 38
36	West Chester... 37
31	Waynesburg... 25
25	Slippery Rock... 22
40	California..... 38
32	Clarion..... 22
45	Indiana..... 25
41	Buffalo St.Tchrs.. 22
39	California..... 52
32	Clarion..... 19
23	Indiana..... 24
436	.....409

1930-31	
Coach: Sox Harrison	
Won 11 — Lost 4	
ESC	Opp.
55	Alliance..... 15
42	Alliance..... 20
43	Erie Branch..... 22
24	West Chester... 20
43	Kutztown..... 32
34	Slippery Rock... 33
21	Clarion..... 14
29	Indiana..... 23
44	Erie Branch..... 24
28	Slippery Rock... 29
38	California..... 39
34	California..... 38
59	Clarion..... 41
47	Indiana..... 30
21	Allegheny..... 29
562	.....409

1931-32	
Coach: Sox Harrison	
Won 12 — Lost 1	
ESC	Opp.
60	Fredonia..... 26

37	Indiana..... 31
46	Alliance..... 23
42	Kutztown..... 31
22	California..... 23
31	Slippery Rock... 22
34	California..... 17
44	Slippery Rock... 35
46	Alliance..... 31
47	Clarion..... 16
37	Indiana..... 15
32	Clarion..... 22
60	Fredonia..... 22
538	.....314

1932-33	
Coach: Sox Harrison	
(Being Researched)	
1933-34	
Coach: Sox Harrison	
Won 8 — Lost 5	
ESC	Opp.

27	Findley..... 28
50	Fredonia..... 22
33	Clarion..... 20
31	Westminster... 41
35	California..... 32
32	Slippery Rock... 37
50	Indiana..... 34
54	Fredonia..... 29
59	California..... 25
30	Westminster... 45
46	Slippery Rock... 34
36	Indiana..... 38
36	Clarion..... 34
519	.....419

1934-35	
Coach: Sox Harrison	
(Being Researched)	
1935-36	
Coach: Sox Harrison	
Won 5 — Lost 5	
ESC	Opp.

24	Thiel..... 42
32	Thiel..... 40
54	Clarion..... 35
33	Clarion (OT)... 30
30	Slippery Rock... 41
40	Slippery Rock... 37
44	Indiana..... 32
32	Indiana..... 38
50	California..... 32
27	California..... 33
366	.....360

1936-37	
Coach: Sox Harrison	
Won 7 — Lost 6	
ESC	Opp.

49	Ohio Chiropody.. 18
33	California..... 43
36	Indiana..... 39
41	Clarion..... 46
31	California..... 37
30	Thiel..... 35
47	Fredonia..... 35

45	Thiel..... 32
37	Ohio Chiropody.. 30
43	Slippery Rock... 49
53	Clarion..... 30
43	Indiana..... 30
41	Slippery Rock... 37
529	.....461

1937-38	
Coach: Sox Harrison	
Won 6 — Lost 8	
ESC	Opp.

36	Kent..... 37
44	Fredonia..... 45
33	Clarion..... 28
54	Fredonia..... 41
48	California..... 44
37	Indiana..... 55
39	Thiel..... 34
37	Ohio Chiropody.. 23
32	California..... 49
56	Slippery Rock... 57
41	Slippery Rock... 42
41	Indiana..... 43
35	Clarion..... 41
49	Ohio Chiropody.. 37
582	.....576

1938-39	
Coach: Sox Harrison	
Won 8 — Lost 2	
ESC	Opp.

43	Fredonia..... 37
53	Clarion..... 35
64	California..... 42
46	Fredonia..... 22
54	Indiana..... 36
50	Clarion..... 51
51	Slippery Rock... 34
45	California..... 32
39	Slippery Rock... 43
47	Indiana..... 42
492	.....374

1939-40	
Coach: Sox Harrison	
Won 13 — Lost 4	
ESC	Opp.

49	St. Marys..... 38
45	Fredonia..... 37
51	Ohio Chiropody.. 27
54	Clarion..... 33
43	Canisius..... 52
32	Fredonia..... 28
44	Alliance..... 40
37	Indiana..... 29
32	Clarion..... 30
52	Slippery Rock... 44
54	California..... 44
39	Lawrence Tech.. 45
50	California..... 51
36	Slippery Rock... 67
40	Indiana..... 35
39	Alliance..... 18
47	Ohio Chiropody.. 37
744	.....655



1940-41	
Coach: Sox Harrison	
Won 11 — Lost 4	
ESC	Opp.
45	DeSalles..... 44
54	Ohio Chiropody.. 33
46	Lawrence Tech.. 44
29	Fredonia..... 28
53	Thiel..... 42
49	Thiel..... 50
36	Slippery Rock... 26
34	California..... 36
50	Fredonia..... 37
43	Clarion..... 33
38	California..... 49
42	Indiana..... 32
35	Indiana..... 34
51	Clarion..... 36
50	Slippery Rock... 53
655	.....577
1941-42	
Coach: Sox Harrison	
Won 3 — Lost 7	
ESC	Opp.
57	Fredonia..... 29
44	Alliance..... 33
36	Fredonia..... 38
27	Indiana..... 44
35	Slippery Rock... 51
36	California (OT)... 40
28	Clarion..... 41
39	California..... 49
37	Lawrence Tech.. 34
33	Canisius..... 66
372	.....425
1942-43	
Coach: Sox Harrison	
Won 1 — Lost 1	
ESC	Opp.
34	Lawrence Tech.. 50
—	Alliance.....
(Season Halted—W.W.II)	
1943-44 (War)	
1944-45 (War)	
1945-46	
Coach: Sox Harrison	
Won 0 — Lost 5	
ESC	Opp.
32	Clarion..... 53
38	Slippery Rock... 74
33	Clarion..... 42
33	Alliance..... 52
39	Alliance....(OT) 45
175	.....266
1946-47	
Coach: Sox Harrison	
Won 7 — Lost 8	
ESC	Opp.
39	Buffalo State... 51
54	Fredonia..... 44
44	Alliance..... 53
44	Indiana..... 45
34	Fenn..... 33
46	Slippery Rock... 51

63	California..... 45
45	Clarion..... 46
62	Alliance..... 55
48	Indiana..... 57
42	California..... 45
43	Clarion..... 41
40	Fenn..... 37
54	Fredonia..... 25
44	Slippery Rock... 52
702	.....680
1947-48	
Coach: Sox Harrison	
Won 4 — Lost 11	
ESC	Opp.
62	Fredonia..... 37
51	Fenn..... 46
43	Alliance..... 54
51	Salem..... 57
55	California..... 63
53	California..... 71
56	Clarion..... 60
36	Alliance..... 37
51	Fredonia..... 49
69	Thiel..... 38
48	Clarion..... 51
55	Indiana..... 62
60	Slippery Rock... 73
49	Indiana..... 71
45	Slippery Rock... 77
784	.....846
1948-49	
Coach: Sox Harrison	
Won 7 — Lost 9	
ESC	Opp.
48	Fredonia..... 21
55	Alliance..... 56
44	Slippery Rock... 57
57	Gannon..... 48
65	Indiana..... 75
50	Slippery Rock... 67
50	Clarion..... 48
45	Buffalo..... 57
48	Fredonia..... 43
55	Alliance..... 44
57	California..... 59
46	Clarion..... 60
51	Gannon..... 52
50	Thiel..... 76
81	California..... 69
56	Indiana..... 45
858	.....877
1949-50	
Coach: Sox Harrison	
Won 12 — Lost 5	
ESC	Opp.
72	Fredonia..... 44
59	Alliance..... 40
55	Grove City..... 54
62	Gannon..... 57
66	California..... 50
54	Indiana..... 70
52	Slippery Rock... 58
52	Gannon..... 68
45	Slippery Rock... 42
49	California..... 64
60	Clarion..... 50
35	Buffalo..... 47

60	Indiana..... 56
58	Clarion..... 50
73	Alliance..... 57
61	Fredonia..... 52
65	Thiel..... 51
978	.....910
1950-51	
Coach: Sox Harrison	
Won 9 — Lost 9	
ESC	Opp.
64	Allegheny..... 52
55	Fredonia..... 46
61	Slippery Rock... 60
82	Fredonia..... 72
79	Alliance..... 61
65	Gannon..... 73
53	Indiana..... 54
82	Clarion..... 84
65	Slippery Rock... 90
55	Buffalo..... 62
66	Gannon..... 43
62	California..... 77
82	Clarion..... 91
63	Alliance..... 55
52	Fenn..... 75
77	Thiel..... 70
80	California..... 63
84	Grove City..... 99
1,227	.....1,227
1951-52	
Coach: Sox Harrison	
Won 6 — Lost 12	
ESC	Opp.
46	Fredonia..... 42
58	Allegheny..... 79
63	California..... 55
46	Gannon..... 48
57	Slippery Rock... 61
66	Fredonia..... 68
60	Buffalo..... 55
67	Gannon..... 85
77	Alliance..... 58
71	Indiana..... 74
49	Slippery Rock... 91
68	Clarion..... 82
79	Grove City..... 83
61	California..... 92
74	Clarion.....106
67	Alliance..... 57
56	Thiel..... 55
63	Geneva..... 85
1,128	.....1,276
1952-53	
Coach: Sox Harrison	
(Being Researched)	
ESC	Opp.
57	Fredonia..... 56
68	Allegheny..... 78
67	Grove City..... 77
51	Alliance..... 57
75	Indiana..... 87
67	Slippery Rock... 92
67	Gannon..... 71
72	Alliance..... 61
68	Gannon..... 81
68	Indiana..... 64

77	Thiel..... 59
75	Allegheny..... 93
85	Fredonia..... 68
53	California..... 73
76	Clarion..... 82
80	Grove City..... 57
86	California..... 81
77	Thiel..... 66
32	Clarion..... 76
63	Geneva..... 92
—	Slippery Rock... —
1953-54	
Coach: Art McComb	
Won 6 — Lost 12	
ESC	Opp.
61	Fredonia..... 49
56	Allegheny..... 52
68	Indiana..... 76
56	Grove City..... 61
61	Fredonia..... 64
49	Thiel..... 42
47	Gannon..... 61
73	Allegheny..... 89
49	Alliance..... 80
57	California..... 82
72	Alliance..... 70
64	Thiel..... 67
66	Clarion..... 65
64	Grove City..... 58
70	Gannon..... 71
58	California..... 89
65	Clarion..... 88
67	Indiana.....109
1,103	.....1,273
1954-55	
Coach: Art McComb	
Won 8 — Lost 12	
ESC	Opp.
62	Gannon..... 77
59	Allegheny..... 80
59	Indiana..... 98
80	Grove City..... 77
65	Fredonia..... 62
61	Allegheny..... 79
70	Thiel..... 63
119	Alliance.....108
77	Slippery Rock... 78
66	California..... 81
61	Indiana..... 69
72	Slippery Rock... 67
59	Gannon..... 70
70	California..... 85
66	Clarion..... 72
70	Fredonia..... 51
67	Alliance..... 62
63	Grove City..... 71
61	Clarion..... 66
68	Thiel..... 62
1,496	.....1,478
1955-56	
Coach: Art McComb	
Won 3 — Lost 17	
ESC	Opp.
62	Allegheny..... 95
53	Alliance..... 69
76	Indiana..... 91

52	Grove City..... 61
56	Fredonia..... 54
74	Allegheny..... 84
63	Thiel..... 75
54	Slippery Rock... 77
62	Gannon..... 85
65	Slippery Rock... 80
77	Thiel..... 70
57	Clarion..... 68
61	California..... 65
67	Fredonia..... 82
72	Indiana.....131
82	Alliance..... 76
64	California..... 86
64	Clarion..... 91
74	Grove City..... 76
55	Gannon..... 71
1,290	.....1,587
1956-57	
Coach: Robert Thurbon	
Won 5 — Lost 14	
ESC	Opp.
81	Grove City.....104
63	Allegheny..... 74
66	Thiel..... 90
73	California.....110
68	Slippery Rock... 78
68	Grove City.....105
66	Gannon..... 80
71	Clarion..... 72
84	Fredonia..... 77
61	Thiel..... 64
67	California..... 74
73	Allegheny..... 60
100	Fredonia..... 66
100	Alliance..... 88
68	Fenn..... 81
78	Slippery Rock... 97
107	Clarion..... 88
94	Alliance..... 96
89	Gannon..... 90
1,477	.....1,594
1957-58	
Coach: Robert Thurbon	
Won 10 — Lost 11	
ESC	Opp.
64	Grove City..... 72
84	Slippery Rock... 79
102	Alliance.....103
90	Fredonia..... 76
64	Thiel..... 61
65	California..... 60
63	Indiana..... 96
52	Gannon..... 60
92	Clarion.....110
76	Lock Haven. (OT) 74
83	Fredonia..... 69
75	Thiel..... 67
77	California..... 88
94	Slippery Rock... 97
54	Grove City..... 71
76	Allegheny..... 67
74	Fenn..... 61
75	Alliance..... 70
65	Indiana..... 97
84	Clarion..... 99
65	Gannon....(OT) 75
1,574	.....1,652

1958-59	
Coach: Robert Thurbon	
Won 8 — Lost 12	
ESC	Opp.
75	Alliance..... 80
101	Slippery Rock... 92
61	Grove City..... 56
79	Thiel..... 72
62	Gannon..... 86
88	Clarion.....101
91	California..... 99
94	Slippery Rock...106
80	Thiel..... 78
83	Fredonia..... 74
61	Lock Haven..... 74
56	Mansfield..... 99
66	Grove City..... 75
69	Mansfield..... 98
114	Alliance.....104
102	California..... 93
104	Clarion.....112
99	Fredonia..... 72
77	Gannon..... 79
106	Allegheny.....109
1,668	.....1,759
1959-60	
Coach: Jim Smart	
Won 6 — Lost 13	
(Scores not available)	
1960-61	
Coach: Loyal Park	
Won 6 — Lost 15	
ESC	Opp.
68	Lock Haven..... 87
45	Alliance..... 61
43	Indiana..... 73
61	Clarion..... 71
77	Grove City..... 95
54	Mt. Union..... 90
56	California..... 58
79	Indiana..... 89
57	Gannon..... 62
73	Slippery Rock... 85
33	Alliance..... 58
85	Fredonia..... 51
88	Thiel..... 66
86	California..... 68
64	Slippery Rock... 73
70	Clarion..... 67
62	Gannon..... 83
55	Grove City..... 73
87	Allegheny....(OT) 93
93	Fredonia..... 78
67	Lock Haven..... 65
1,403	.....1,546
1961-62	
Coach: Loyal Park	
Won 17 — Lost 7	
ESC	Opp.
60	Fredonia..... 58
60	Clarion..... 65
48	Grove City..... 71
81	Slippery Rock... 61
63	Carnegie Tech... 76
73	Roberts Wesleyan 64
81	California..... 51
81	Indiana..... 67

56	Gannon.... (OT)	58
83	Fenn.....	52
103	Lock Haven.....	
	(3 OT)	101
63	Alliance.....	52
87	Fredonia.....	80
71	Thiel.....	63
82	California.....	64
67	Clarion.....	62
56	Alliance.....	69
74	Indiana.....	82
69	Thiel.....	60
72	Lock Haven.....	60
76	Slippery Rock... 71	
102	Allegheny.....	80
1,608		1,467
Western Division		
Championship—PSCAC		
86	Slippery Rock... 68	
State Championship—		
PSCAC		
54	Mansfield.....	58
1,748		1,593
1962-63		
Coach: Jim McDonald		
Won 11 — Lost 9		
ESC	Opp.	
66	Bluffton.....	46
82	Alliance.....	86
91	Clarion.....	83
70	Slippery Rock... 64	
60	Carnegie Tech... 63	
87	California.....	56
52	Gannon.....	60
74	Thiel.....	64
66	Fenn.....	68
72	Lock Haven.....	49
75	Indiana.....	66
77	Fredonia.....	66
67	Alliance.....	84
73	California.....	83
61	Clarion.....	58
68	Indiana.....	75
97	Fredonia.....	71
83	Lock Haven.....	52
64	Slippery Rock... 70	
1,385		1,264
Western Division		
Championship—PSCAC		
69	Slippery Rock... 83	
1,454		1,347
1963-64		
Coach: Jim McDonald		
Won 16 — Lost 6		
ESC	Opp.	
75	Alliance.....	59
63	Slippery Rock... 67	
73	Thiel.....	45
92	Baldwin-Wallace. 90	
72	Bloomsburg.....	71
84	Clarion.....	66
106	Fredonia.....	81
94	Fenn.....	82
71	Bloomsburg.....	74
85	Indiana.....	99
80	Lock Haven.....	48

88	Roberts Wesleyan 73	
83	Lock Haven..... 61	
81	Alliance..... 91	
85	California..... 80	
86	Slippery Rock... 79	
99	Indiana..... 88	
95	Clarion..... 90	
67	California..... 55	
72	Gannon.... (OT) 71	
1,651		1,470
State Championship—		
PSCAC		
90	Mansfield..... 98	
NAIA District 30		
Championship		
67	Westminster..... 81	
1,808		1,649
1964-65		
Coach: Jim McDonald		
Won 10 — Lost 8		
ESC	Opp.	
99	Grove City..... 89	
68	Alliance..... 80	
76	Slippery Rock... 80	
92	Thiel..... 61	
109	Lock Haven..... 79	
104	Walsh..... 72	
90	Clarion..... 69	
100	Indiana..... 87	
70	California..... 82	
89	Lock Haven..... 53	
84	Alliance..... 89	
86	Geneva..... 85	
86	Slippery Rock... 63	
91	Indiana..... 82	
69	Fenn..... 77	
95	California..... 108	
50	Gannon..... 58	
77	Clarion..... 79	
1,535		1,393
1965-66		
Coach: Jim McDonald		
Won 18 — Lost 5		
ESC	Opp.	
84	Mansfield..... 83	
70	Alliance..... 68	
67	Slippery Rock... 56	
95	Lock Haven..... 55	
80	Clarion..... 71	
104	Waynesburg... 88	
68	Indiana..... 71	
83	Fredonia..... 62	
78	California..... 102	
89	Lock Haven..... 72	
86	Mansfield..... 82	
90	Alliance..... 83	
99	Michigan Luth... 58	
79	Slippery Rock... 72	
95	Indiana..... 85	
70	Geneva..... 71	
93	Cleveland State.. 72	
83	Clarion..... 79	
71	California..... 58	
1,584		1,388
State Championship—		
PSCAC		
76	Cheyney..... 96	

NAIA District 18		
Championship		
76	Geneva..... 60	
79	California..... 62	
National NAIA		
Tournament, K. C., Mo.		
53	Central Michigan. 67	
1,868		1,673
1966-67		
Coach: Jim McDonald		
Won 11 — Lost 11		
ESC	Opp.	
88	Mansfield..... 73	
90	Alliance..... 93	
99	Slippery Rock... 94	
90	Lock Haven..... 77	
73	Clarion..... 71	
87	California..... 92	
110	Fredonia..... 64	
123	Waynesburg... 97	
94	Indiana..... 95	
83	W. Va. Wesleyan (OT) 85	
90	Lock Haven..... 64	
71	Mansfield..... 77	
67	Alliance..... 66	
71	Cleveland State.. 75	
89	Roberts Wesleyan 78	
75	Slippery Rock... (OT) 77	
77	Indiana..... 85	
98	Geneva..... 107	
26	California..... 31	
85	Clarion..... 75	
70	Baldwin Wallace. 102	
87	Walsh..... 66	
1,843		1,744
1967-68		
Coach: Jim McDonald		
Won 19 — Lost 5		
ESC	Opp.	
109	Waynesburg... 84	
84	Slippery Rock... 56	
133	Lock Haven..... 90	
103	Clarion..... 92	
98	California..... 91	
93	Fredonia..... 84	
87	Indiana U. of Pa.. 85	
99	Mansfield..... 81	
90	Alliance..... 72	
109	W. Va. Wesleyan. 78	
65	Mansfield..... 106	
83	Lock Haven..... 66	
90	Alliance(OT)... 88	
108	Cleveland State.. 60	
110	Slippery Rock... 73	
67	Indiana U. of Pa.. 69	
80	Roberts Wesleyan 87	
78	Geneva..... 87	
97	California..... 75	
110	Clarion..... 84	
86	Grove City..... 65	
State Championship—		
PSCAC		
73	Cheyney State... 61	

NAIA District 18—		
Championship		
55	Gannon..... 52	
41	Westminster..... 48	
2,148		1,834
1968-69		
Coach: Jim McDonald		
Won 14 — Lost 8		
ESC	Opp.	
78	Geneva..... 81	
103	Lock Haven..... 67	
99	Slippery Rock... 73	
71	Clarion State... 69	
126	Roberts Wesleyan 66	
85	Cal. S. Fullerton. 63	
58	Long Beach State 84	
78	Los Angeles State 73	
110	Kenyon..... 99	
74	Alliance..... 86	
93	California State.. 80	
93	Lock Haven..... 64	
87	Alliance..... 73	
72	Fredonia State.. 62	
95	Slippery Rock... 78	
67	Indiana U. of Pa.. 89	
57	California State.. 54	
112	Clarion State... 78	
86	Grove City..... 98	
75	Indiana U. of Pa.. 81	
PC State Championship		
69	Cheyney State... 83	
NAIA District 18		
Playoffs		
57	Gannon..... 69	
1,845		1,670
1969-70		
Coach: Jim McDonald		
Won 13 — Lost 9		
ESC	Opp.	
88	Grove City..... 82	
115	Pitt-Johnstown.. 55	
70	Lock Haven..... 67	
75	Slippery Rock... 69	
72	Clarion State... 75	
57	Fredonia State... 60	
85	North. Michigan. 92	
85	U. Wisconsin... 104	
88	Alliance..... 75	
77	Lock Haven..... 60	
64	Alliance..... 77	
80	Slippery Rock... 57	
72	Indiana U. of Pa.. 75	
70	Roberts Wesleyan 58	
68	California State.. 77	
71	Point Park... 54	
72	Clarion State... 52	
77	Geneva..... 74	
73	Indiana U. of Pa.. 60	
66	California State.. 77	
NAIA District 18		
Playoffs		
68	Indiana U. of Pa.. (OT) 67	
71	California State.. 72	
1,664		1,539

1970-71		
Coach: Jim McDonald		
Won 16 — Lost 8		
ESC	Opp.	
96	Grove City..... 84	
81	Alliance..... 69	
115	Lock Haven..... 79	
88	Slippery Rock... 76	
116	W. Ontario..... 62	
60	Clarion..... 66	
81	Ohio Wesleyan... 67	
87	Hiram..... 50	
116	North. Michigan.. 98	
96	Kenyon..... 98	
75	California..... 66	
91	Mars Hill..... 68	
96	Geneva..... 75	
73	Slippery Rock... 77	
64	Indiana U. of Pa.. 84	
82	Lock Haven..... 92	
91	Oneonta State... 64	
93	California..... 83	
85	Clarion(OT)... 87	
89	Alliance..... 83	
88	W. Va. Wesleyan.. 78	
61	Indiana U. of Pa.. 68	
NAIA District 18		
Playoffs		
81	Clarion..... 70	
60	Indiana U. of Pa.. 67	
2,065		1,811
1971-72		
Coach: Dave Rooney		
Won 17 — Lost 9		
ESC	Opp.	
91	Kenyon..... 84	
85	Lock Haven (OT) 82	
73	Point Park..... 71	
82	Geneva..... 74	
70	Clarion (OT)... 71	
85	Alma (OT)..... 80	
65	Capital..... 78	
105	Salem..... 91	
94	Marietta..... 87	
82	California..... 76	
67	Alliance..... 83	
77	Slippery Rock... 83	
94	Mount Union... 111	
70	Alliance..... 69	
90	Slippery Rock... 87	
74	Indiana..... 70	
71	Wittenberg..... 81	
74	Lock Haven..... 66	
87	California..... 74	
72	Clarion..... 75	
62	Oneonta..... 87	
76	Indiana (OT)... 74	
72	Grove City..... 62	
NAIA District 18		
Playoffs		
85	Slippery Rock... 75	
81	Clarion..... 78	
National NAIA		
Tournament		
72	Westmont, Cal... 91	
2,056		2,060

1972-73		
Coach: Jim McDonald		
Won 13 — Lost 9		
ESC	Opp.	
64	Mercyhurst..... 71	
74	Ohio Wesleyan.. 66	
104	Allegheny..... 85	
59	Clarion..... 76	
67	Wilmington (Del.) 69	
61	California..... 67	
70	Alliance..... 64	
74	Slippery Rock... 94	
48	Muskingum..... 59	
60	Point Park..... 79	
65	Grove City..... 58	
66	Bloomsburg..... 75	
85	Mount Union... 68	
68	Indiana U. of Pa.. 60	
78	Lock Haven..... 68	
93	Behrend..... 60	
64	California (OT).. 59	
67	Clarion..... 66	
86	Alliance..... 69	
57	Indiana U. of Pa.. 63	
86	Slippery Rock... 76	
62	Lock Haven..... 61	
1,558		1,503





## SEASONS RANKED BY PERCENTAGES

YEAR	W-L	Pct.	YEAR	W-L	Pct.
1. 1931-32	12-1	.923	21. 1936-37	7-6	.538
2. 1928-29	12-2	.857	22. 1966-67	10-10	.500
3. 1938-39	8-2	.800	23. 1950-51	9-9	.500
4. 1967-68	19-5	.792	24. 1942-43	1-1	.500
5. 1965-66	18-5	.782	25. 1935-36	5-5	.500
6. 1939-40	14-4	.778	26. 1946-47	7-8	.466
7. 1940-41	11-4	.733	27. 1957-58	10-11	.452
8. 1963-64	16-6	.727	28. 1948-49	7-9	.437
9. 1961-62	17-7	.708	29. 1937-38	6-8	.428
10. 1949-50	12-5	.705	30. 1954-55	8-12	.400
11. 1970-71	16-8	.667	31. 1958-59	8-12	.400
12. 1930-31	10-5	.667	32. 1953-54	6-12	.333
13. 1971-72	17-9	.654	33. 1951-52	6-12	.333
14. 1968-69	14-8	.636	34. 1941-42	4-9	.307
15. 1933-34	8-5	.615	35. 1960-61	6-15	.281
16. 1969-70	13-9	.591	36. 1947-48	4-11	.266
17. 1972-73	13-9	.591	37. 1956-57	5-14	.263
18. 1962-63	12-9	.571	38. 1955-56	4-16	.200
19. 1929-30	8-6	.571	39. 1945-46	0-5	.000
20. 1964-65	10-8	.555			

## RESULTS BY SEASONS

Year	Points					Year	Points				
	G	W	L	For	Agst.		G	W	L	For	Agst.
1928-29	14	12	2	640	381	1951-52	18	6	12	1,128	1,276
1929-30	14	8	6	436	409	1952-53	(Being Researched)				
1930-31	15	11	4	562	409	1953-54	18	6	12	1,103	1,273
1931-32	13	12	1	538	314	1954-55	20	8	12	1,496	1,478
1932-33	(Being Researched)					1955-56	20	3	17	1,290	1,587
1933-34	13	8	5	519	419	1956-57	19	5	14	1,477	1,594
1934-35	(Being Researched)					1957-58	21	10	11	1,574	1,652
1935-36	10	5	5	366	360	1958-59	20	8	12	1,668	1,759
1936-37	13	7	6	529	461	1959-60	(Being Researched)				
1937-38	14	6	8	582	576	1960-61	21	6	15	1,403	1,546
1938-39	10	8	2	492	374	1961-62	24	17	7	1,748	1,593
1939-40	17	13	4	744	655	1962-63	20	11	9	1,454	1,347
1940-41	15	11	4	655	577	1963-64	22	16	6	1,808	1,649
1941-42	10	3	7	372	425	1964-65	18	10	8	1,535	1,393
1942-43	2	1	1	34	50	1965-66	23	18	5	1,868	1,673
1943-44	War					1966-67	22	11	11	1,843	1,744
1944-45	War					1967-68	24	19	5	2,148	1,834
1945-46	5	0	5	175	266	1968-69	22	14	8	1,845	1,670
1946-47	15	7	8	702	680	1969-70	22	13	9	1,664	1,539
1947-48	15	4	11	784	846	1970-71	24	16	8	2,065	1,811
1948-49	16	7	9	858	877	1971-72	26	17	9	2,056	2,060
1949-50	17	12	5	978	910	1972-73	22	13	9	1,558	1,503
1950-51	18	9	9	1,227	1,227	Totals	672	371	301	43,924	42,197

## EDINBORO CENTURY CLUB

ESC	Opp.	Year	ESC	Opp.	Year
133 Lock Haven	90	1967-68	108 Cleveland St.	60	1967-68
126 Roberts Weslyn.	66	1968-69	107 Clarion	88	1956-57
123 Waynesburg	97	1966-67	106 Fredonia	81	1963-64
119 Alliance	108	1954-55	105 Salem	91	1971-72
116 N. Michigan	98	1970-71	104 Walsh	72	1964-65
116 Western Ontario	62	1970-71	104 Waynesburg	88	1965-66
115 Lock Haven	79	1970-71	104 Allegheny	85	1972-73
115 Pitt-Johnstown	55	1969-70	103 Lock Haven	101	1961-62
114 Alliance	104	1958-59	103 Clarion	92	1967-68
112 Clarion	78	1968-69	103 Lock Haven	67	1968-69
110 Slippery Rock	73	1967-68	102 California	93	1958-59
110 Fredonia	64	1966-67	102 Allegheny	80	1961-62
110 Clarion	84	1967-68	101 Slippery Rock	92	1958-59
110 Kenyon	99	1968-69	100 Fredonia	66	1956-57
109 W. Va. Weslyn.	78	1967-68	100 Alliance	88	1956-57
109 Waynesburg	84	1967-68	100 Indiana	87	1964-65
109 Lock Haven	79	1964-65			

## OPPONENTS CENTURY CLUB

Opp.	ESC	Year	Opp.	ESC	Year
131 Indiana	72	1955-56	107 Geneva	98	1966-67
112 Clarion	104	1958-59	106 Mansfield	65	1967-68
111 Mount Union	94	1971-72	106 Slippery Rock	94	1958-59
110 California	73	1956-57	104 U. of Wisc., Mil.	85	1969-70
110 Clarion	92	1957-58	103 Alliance	102	1957-58
109 Allegheny	106	1958-59	103 Indiana	85	1959-60
109 Indiana	67	1953-54	102 California	78	1965-66
108 California	95	1964-65	101 Clarion	88	1958-59

## 1972-73 PENNSYLVANIA CONFERENCE RESULTS

WESTERN DIVISION							EASTERN DIVISION								
Conference				Full Season			Conference				Full Season				
W	L	Pct	W	L	OA	DA	W	L	Pct.	W	L	OA	DA		
Clarion	8	2	.800	19	6	70.1	60.2	*Cheyney	12	2	.857	23	5	72.9	63.1
Slippery Rock	6	4	.600	23	7	83.3	71.4	E. Stroudsburg	10	4	.714	23	4	74.7	67.1
Edinboro	6	4	.600	13	9	70.8	68.3	Bloomsburg	10	4	.714	20	5	78.0	63.5
California	5	5	.500	11	11	65.4	66.5	Millersville	8	6	.571	15	9	80.0	72.8
Indiana	3	7	.300	13	10	65.5	60.6	Mansfield	7	7	.500	12	11	67.4	66.5
Lock Haven	2	8	.200	7	14	61.2	64.8	West Chester	4	10	.286	5	21	60.8	75.7
*Won Championship (Cheyney 76, Clarion 62)							Kutztown	3	11	.214	8	17	61.5	68.4	
							Shippensburg	2	12	.143	6	17	64.7	76.9	

Defending champion Cheyney should win the Eastern Division title, but the Wolves may have a tough battle in the PC title game.

Cheyney returns three starters headed by 6-9 forward Vince Ellison, East Stroudsburg and Bloomsburg, led by 6-8 center John Willis, should give the Wolves their toughest competition. Millersville may move up.

In the West, Slippery Rock and Edinboro could overtake last season's champion Clarion, which suffered heavy graduation losses.

Edinboro has a stellar guard in Roy Stauffer and a highly-touted transfer in 6-7 Charlie Hickox. Slippery Rock returns three starters from the league's top scoring team. Indiana and Lock Haven should be improved. California may not be as strong despite the return of guard Augie DiPasquale.



## HOME OF THE FIGHTING SCOTS

### EDINBORO STATE COLLEGE

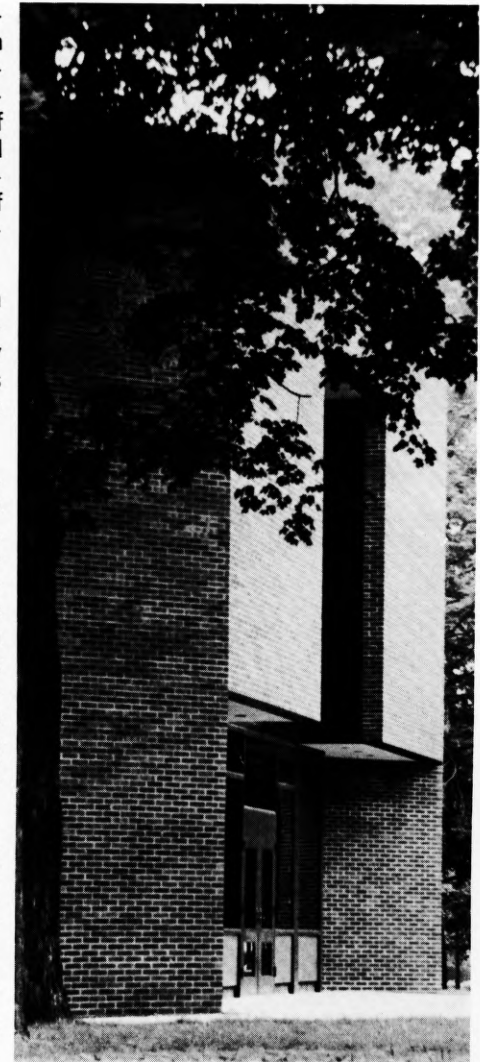
From its beginnings as a private academy in 1856, Edinboro State College has surged to the forefront as one of the leading educational institutions in western Pennsylvania. Located just 15 miles south of Erie, Pa., the college's setting offers a contrast of seasons. Enhanced by the beauty of Edinboro Lake, the community serves as a resort center during the summer while numerous nearby ski slopes offer a variety of recreation in the picturesque winter months. The college's location enables it to readily serve the tri-state area with its proximity to Pittsburgh, Pa. (125 miles), Cleveland, Ohio (100 miles) and Buffalo, New York (120 miles). Moreover, it is easily accessible from the north and south by Interstate 79 and east and west by Interstate 90.

Until recently the chief objective of the college was the education and preparation of classroom teachers for the schools of the Commonwealth. With the implementation of programs in arts, sciences and humanities, Edinboro has now become a multi-purpose institution of higher learning serving the educational needs of a tri-state area.

The College has experienced a rapid growth rate in students, faculty and physical plant. Forty buildings cover the 585-acre campus which now services more than 7,000 students.

In its university oriented role, the College makes contributions in the fields of education, government, conservation, environmental improvement, urban and rural problems, crime prevention and service to business and industry. Edinboro seeks to offer educational programs which will afford maximum opportunities to its potential students and to meet the educational needs of its region from a professional and a cultural stand-point.

With the addition of the liberal arts degree program in 1962, the College's curriculum has expanded to include numerous course selections. Curricula range from elementary and secondary education, special fields in art, library science, music and special education to medical technology.



President — Dr. Chester T. McNerney





Van Houten Dining Hall

Student activities are designed to develop the personality, poise, self-confidence and professional awareness that will fit graduates for significant participation in American society.

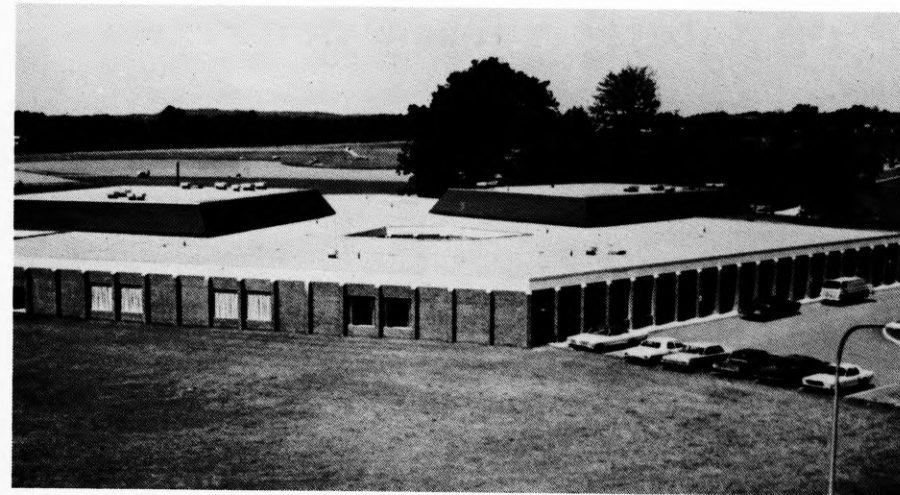
The College stresses friendly relations among students and faculty, as well as active student participation in decisions affecting them. Quality education has been an Edinboro tradition for more than a century as graduates have distinguished themselves in the professions, business and industry.

With the appointment of Dr. Chester T. McNerney as Edinboro State's President in 1966, the College witnessed the addition of a prominent leader who is dedicated to the academic life, a tireless advocate of personal involvement in the religious and civic affairs of one's community, and an educator who visibly believes in and practices total individual professional commitment.

Under Dr. McNerney's leadership Edinboro State has undergone innovations and reorganization that has enabled the College to keep in step with the times and maintain its academic excellence.

Edinboro State College is at the brink of a new era and has taken the initiative for a new direction among the state colleges of Pennsylvania. The College plans to offer programs in such diverse fields as international education, business administration and engineering to meet its leadership responsibilities in the years ahead.

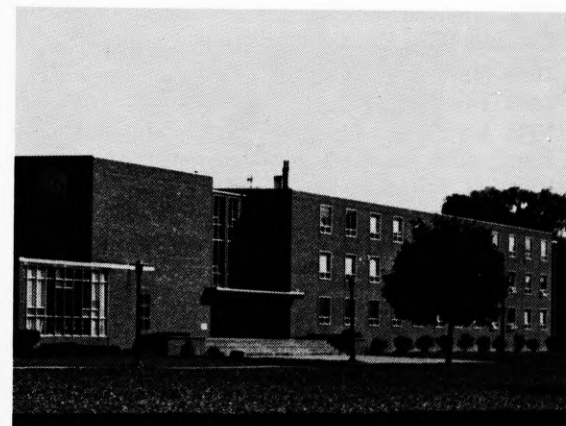
Keeping pace with the College's academic progress has been a building program which has dramatically changed the physical appearance of the campus over the past decade. Included among the additions are a nine-acre lake, an athletic complex, dormitory quadrant and new student services facilities such as a student union, dining hall and health center. Scheduled for completion in the near future are an eight-story twin dormitories and a new library.



Miller Research Learning Center



Hamilton Library



Centennial Hall



## 1972-73 SCOTS SET TORRID VICTORY PACE



Edinboro State's 1972-73 sports season proved to be the most successful campaign in Fighting Scot athletic history as ESC athletes in 12 varsity sports shattered the school's winning percentage mark for the fourth straight year. The Scots produced a final slate of 92 wins, 42 losses and 4 ties to claim an all-time high .687 percentage.

Six of Edinboro State's 12 varsity sports finished among the top 25 schools in the nation while three First Team All-America awards were claimed by Scots. In addition to the national rankings were NAIA district championships in tennis, track and golf while the Scot cindermen also registered their first ever Pa. Conference crown.

Highlighting the individual awards were Dave Antognoli's First Team All-America plaques in both

track and cross country along with grappler Tom Herr's NAIA national title in wrestling. Antognoli, who shared the Scot Senior Athlete of the Year honors with grinder Jim Romaniszyn, completed his athletic career at ESC with an unprecedented six First Team All-America citations and an unblemished 52-0 career record in cross country.

### EDINBORO STATE 1972-73 SPORTS REVIEW

Sport	W-L-T	Pct.	Team Honors
Tennis	10-0-0	1.000	18th Nationally-NAIA (5 Pts.), NAIA Dist. Champs (26 Pts.), 2nd-Pa. Conf. (23 Pts.)
Swimming	11-1-0	.917	22nd Nationally-NAIA (7 Pts.), 2nd-Pa. Conf. (311 Pts.), 3rd-Penn-Ohio Meet (294 Pts.)
Track	6-1-0	.857	14th Nationally-NAIA (12 Pts.), Pa. Conf. Champs (124 Pts.), NAIA Dist. 18 Champs, Buffalo State Relay Champs (99 Pts.)
Golf	10-3-0	.769	12th Nationally (933 Pts.)-NAIA, Dist. 18 Champs (628 Pts.), 2nd-Pa. Conf. (765 Pts.)
Wrestling	11-4-0	.733	20th Nationally-NAIA (19 1/2 Pts.), 8th-Pa. Conf. (37 Pts.), 4th-Ashland Invit. (46 1/2 Pts.)
Cross Country	5-2-0	.714	17th Nationally-NAIA (474 Pts.), 2nd-Pa. Conf. (68 Pts.), 3rd-Malone Invit., 5th-Canisus Invit., 22nd-Notre Dame Invit.
Baseball	11-7-0	.611	5th-Pa. Conference
Basketball	13-9-0	.591	2nd-Pa. Conference, Western Division
Soccer	4-3-3	.571	6th-West. Pa. Intercol. Soccer Assoc., ECAC Southern Regional Selectee
Bowling	8-7-0	.533	2nd-NAIA Dist. 18, 5th-ACUI, 9th-West. Pa. Collegiate Bowling Conf., 1st-ESC Invit.
Football	3-5-1	.375	3rd-Pa. Conference, Western Division
Judo	0-0-0	.000	7th-Eastern Regional Collegiate Tournament
	92-42-4	.687	

## HOME OF THE FIGHTING SCOTS



Arthur L. McComb Fieldhouse

### SPECIAL FEATURES

NBA PRO SCOREBOARD

AAU-SIZED POOL WITH DIVING TANK

UNDERWATER SOUND AND LIGHTING SYSTEM

THREE BASKETBALL COURTS

HANDBALL COURTS

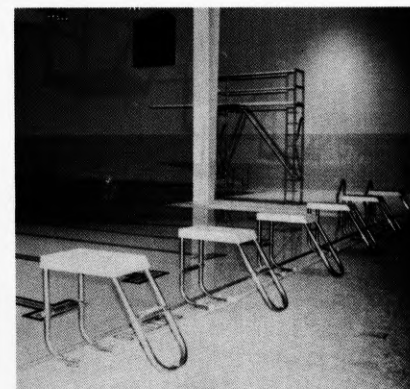
WRESTLING ROOM

MEDICAL SUITE

RIFLE RANGE

STEAM ROOMS

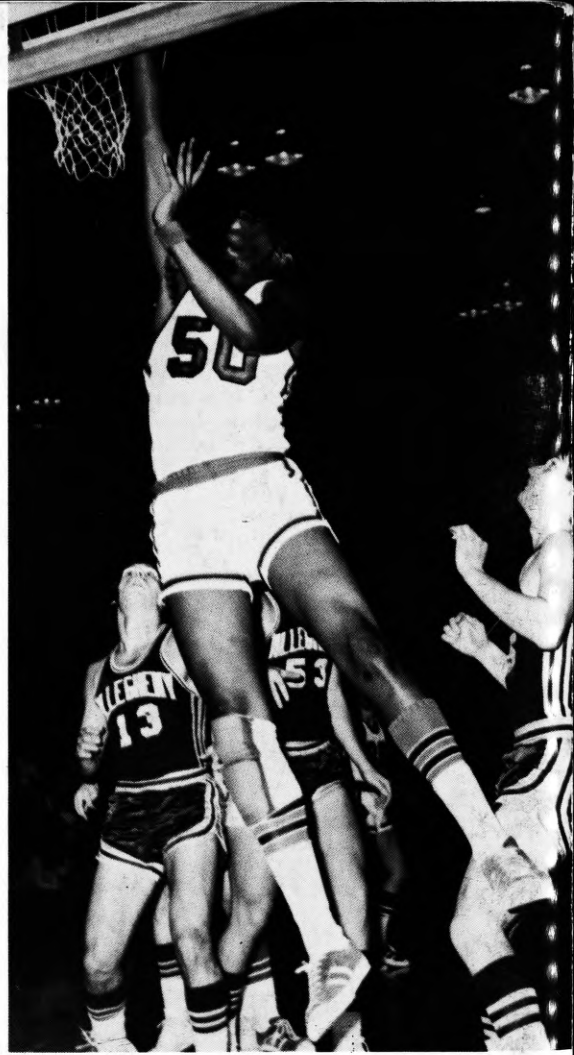
One of the finest athletic facilities in northwestern Pennsylvania services the Fighting Scots' basketball, wrestling and swimming teams. The new structure has a seating capacity in the gymnasium area for 4200 fans while the natatorium seats 500 spectators. Underwater sound and lighting systems are featured in the pool area as well as four underwater viewing ports. Adjacent to the swimming area is a separate diving tank with one and three meter diving boards. The electrically operated bleachers can be rolled back in a matter of minutes to expand the available floor space into three basketball courts for intramural usage. The athletic complex has already become a favorable site for both high school basketball and wrestling championships. A 680-car parking lot is conveniently located next to the fieldhouse to accommodate team followers. Additional attractions include office facilities for members of the Health and Physical Education Department, locker room space for 1,000 students, an equipment room and two classrooms.



South End of Pool

EDITOR: Paul Newman; ADDITIONAL STAFF CREDITS: Rita Naculich, Laraine Johnson, Sandy Aurin, Lance Dickinson and John Catone, copy; PHOTOGRAPHY: Gene Yee and Chris Wunder; STATISTICIANS: Mike Bacon and Pete Katsafanas.





**FIGHTING SCOTS  
IN ACTION**

