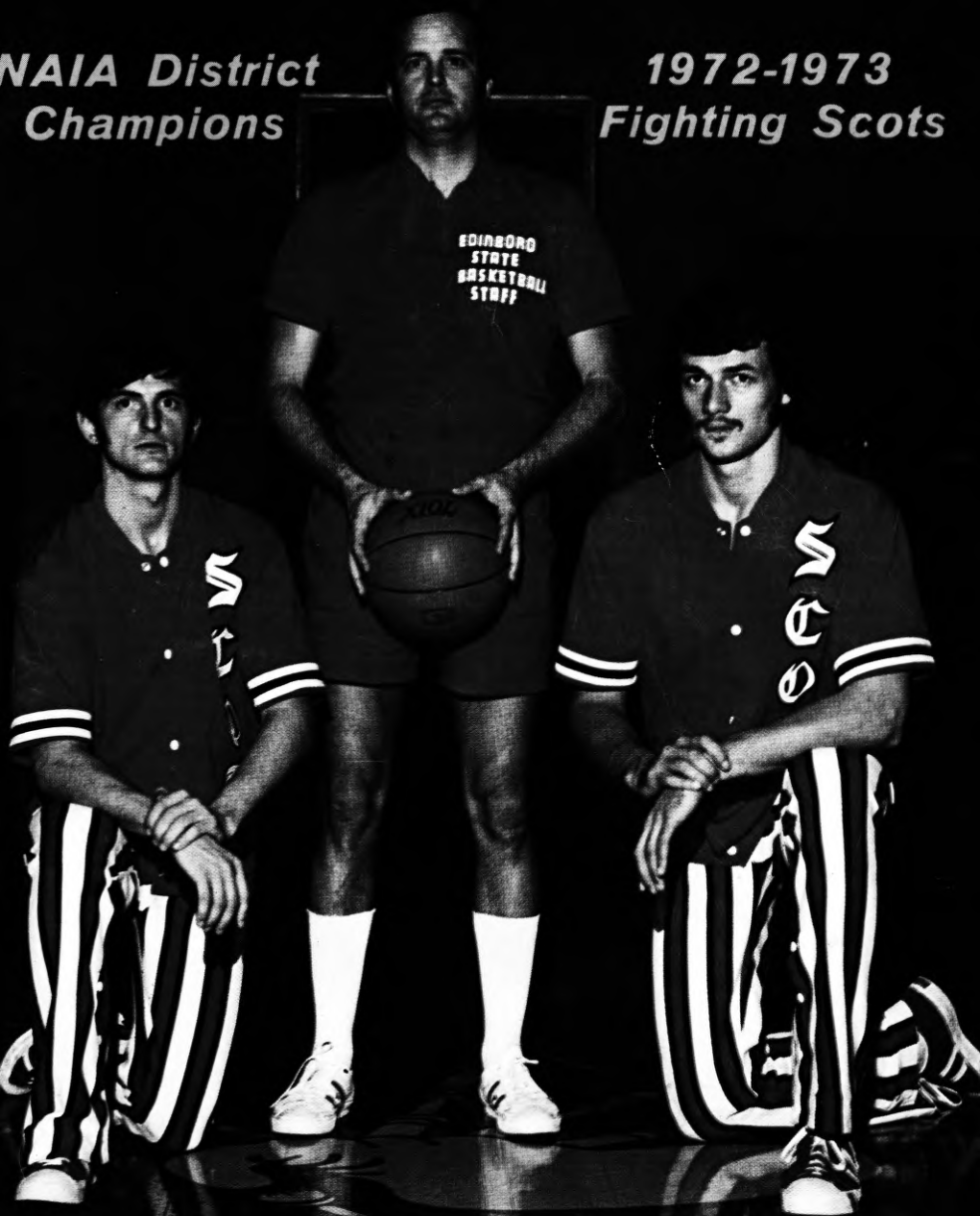


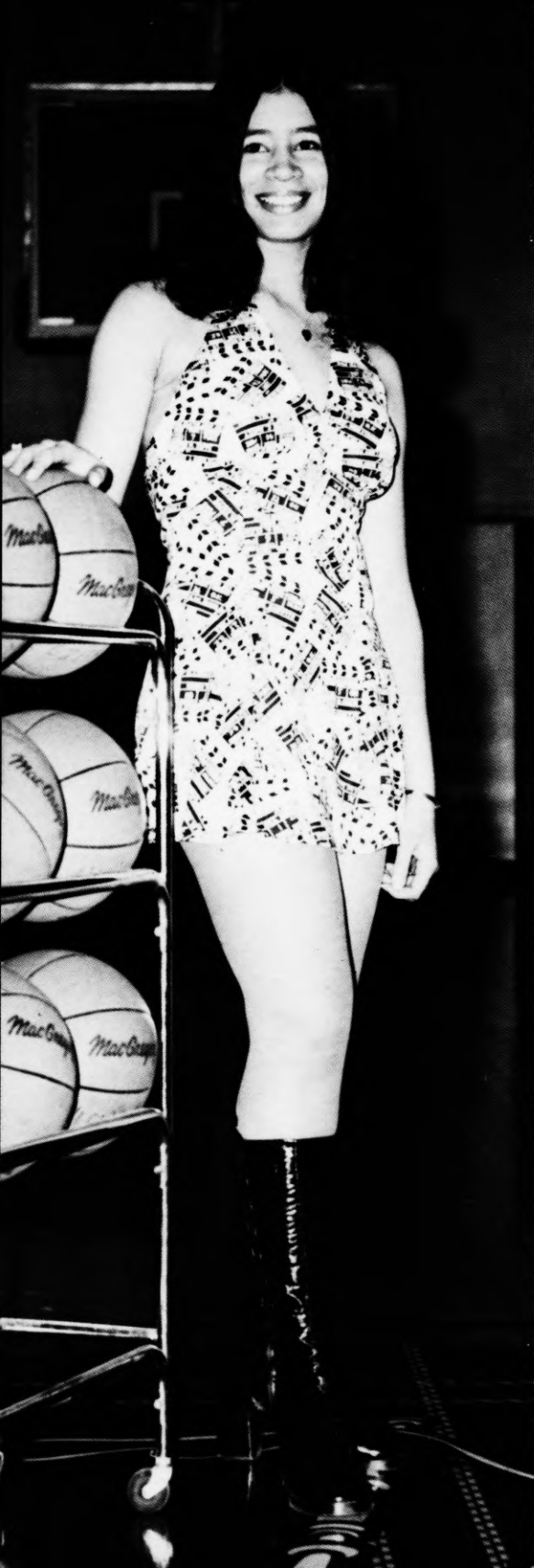
EDINBORO STATE BASKETBALL

*NAIA District
Champions*

*1972-1973
Fighting Scots*



NCAA • NAIA • ECAC • PA. CONF.



Fighting Scots' 1972-73 Schedule

Head Coach - Jim McDonald
Assistant Coach - Tony Laterza

Nov. 28	MERCYHURST
Dec. 5	at Ohio Wesleyan
Dec. 7	ALLEGHENY
Dec. 9	*at Clarion
Dec. 12	WILMINGTON (Del.)
Dec. 16	*CALIFORNIA
Jan. 10	at Alliance
Jan. 13	*at Slippery Rock
Jan. 20	MUSKINGUM
Jan. 25	at Point Park
Jan. 27	at Grove City
Jan. 30	BLOOMSBURG
Jan. 31	MOUNT UNION
Feb. 3	*INDIANA
Feb. 5	*at Lock Haven
Feb. 8	BEHREND
Feb. 10	*at California
Feb. 14	*CLARION
Feb. 17	ALLIANCE
Feb. 20	*at Indiana
Feb. 24	*SLIPPERY ROCK
Feb. 27	*LOCK HAVEN
Mar. 3	PC Playoff-East
Mar. 5-7	NAIA District 18 Playoffs

**Pennsylvania Conference Games*

Game Times

6:00 p.m., JV — 8:00 p.m., Varsity



FRONT COVER: 1972-73 Fighting Scot Co-Captains Roy Stauffer and Rich Sulka (kneeling) with Head Coach Jim McDonald.

FIND IT FAST

ATHLETIC STAFF

Athletic Director—Al Hall	22
Coaches	
Laterza, Tony—Assistant Coach	5
McDonald, Jim—Head Coach	4
Riley, Fred—Student Coach	5
Stubbe, Roger—Student Coach	5
Sports Information—Paul Newman	22
Team Trainer—Bob Klingler	22

COLLEGE, THE

Athletic Affiliations	19
Athletic Program	40
Campus Pictures	36, 37, 39
Location and History	36, 37
McComb Fieldhouse	Inside Back Cover
President—Dr. McNerney	38

OPPONENTS

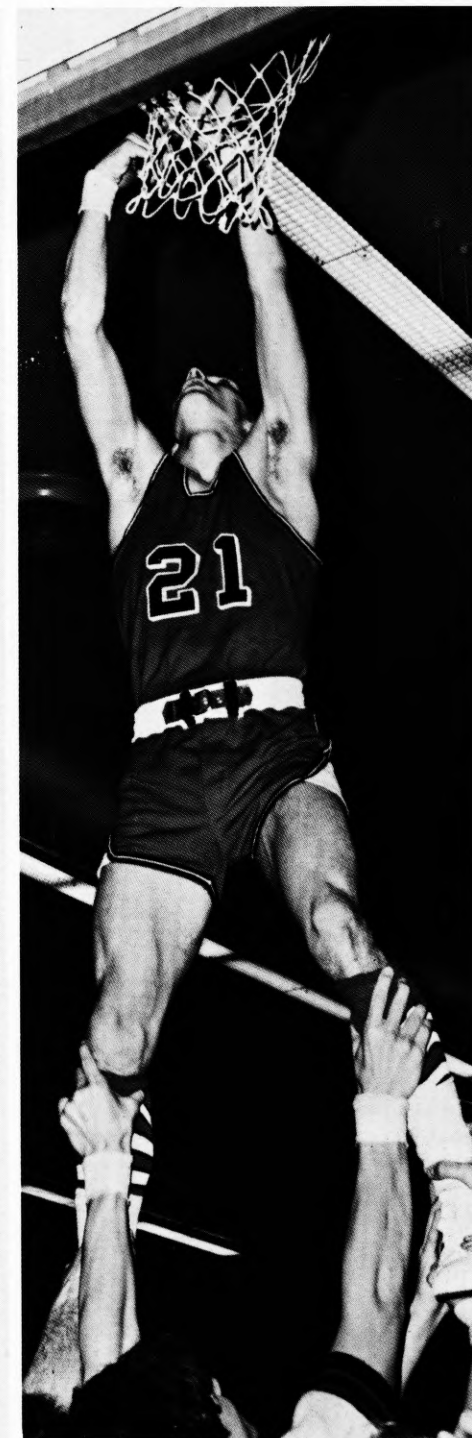
Information on Each 1972-73	
Opponent In Scheduled Order	14-19

A GLANCE INTO THE PAST

1971-72 Varsity Results	24
1971-72 Varsity Statistics	24
1971-72 Pa. Conference Results	35
All-Americans	28
All-Time Scores	29-33
Century Club, Edinboro	35
Century Club, Opponents	35
Championships	26
Records, Individual Game	27
Records, Individual Season	27
Records, Team	26
Seasons By Percentages	34
Season Results, 1928-72	34
Special Recognition	25

SCANNING THE SCOTS

Outlook	2
Players	
Guards	6, 7, 8
Guard-Forwards	9
Forwards	10
Forward-Centers	11
Centers	12
Pronunciation Guide	21
Roster, Varsity and JV	21
Schedule	Inside Front Cover
Scouting Report	2



SCOT SCOUTING REPORT

Location: Edinboro, Pa. 16412

Nickname: Fighting Scots

Colors: Red and White

Fieldhouse: McComb (4,600)

Enrollment: 7,400

Athletic Affiliations: NAIA, NCAA,
ECAC, Pa. Conference

Head Coach: Jim McDonald (West
Virginia Wesleyan, '60)

Coach's Record: 128-67, 10 Years

Assistant Coach: Tony Laterza
(Akron, '52)

Student Coaches: Fred Riley,
Roger Stubbe

1971-72 Honors: NAIA District 18
Champions, Marietta Tourney
Champs, Capital City Classic
Runners-up

1971-72 Record: 17-9

Conference Finish: Second, 5-3

Lettermen Lost: 3

Lettermen Returning: 5

Starters Returning: 2

Team Strengths: Shooting, Overall
Height

Team Weaknesses: Experience, Speed

Co-Captains: Rich Sulka,
Roy Stauffer

SCOTS TALENTED BUT INEXPERIENCED

Veteran coach Jim McDonald returns from a year's sabbatical leave to greet the youngest team in his past 10 years at Edinboro State.

Although McDonald's youth movement might be a full season or two away from becoming another Kansas City contender, the Scot cagers are not short on talent for the 1972-73 schedule.

The Scots should be the strongest under the boards where they have both experienced veterans and talented newcomers fighting for positions. Rich Sulka (6-6, Sr.) has the experience edge over all challengers with Don Gerdich (6-6, So.) and Don Miller (6-5, So.) also on hand after clocking varsity playing time as freshmen.

Sulka hauled down 165 stray shots last year while averaging 5.6 points per game and finished as the fifth leading rebounder in the conference.

A quartet of freshmen standouts are also in the battle for starting berths under the basket. Leading the assault is 6-8 Sam Vickers and 6-7 Ron Beckett while 6-5 Bob Birner and 6-7 Dale Griffin are also waiting to make their marks. Vickers' rapid improvement since the beginning of practice in the fall could win him the starting center spot with Sulka moving to a forward post.

Both Gerdich and Miller are destined to log plenty of playing time throughout the season after their strategic roles last year.

Most unsettled of all positions is the Scots' starting guard assignments.

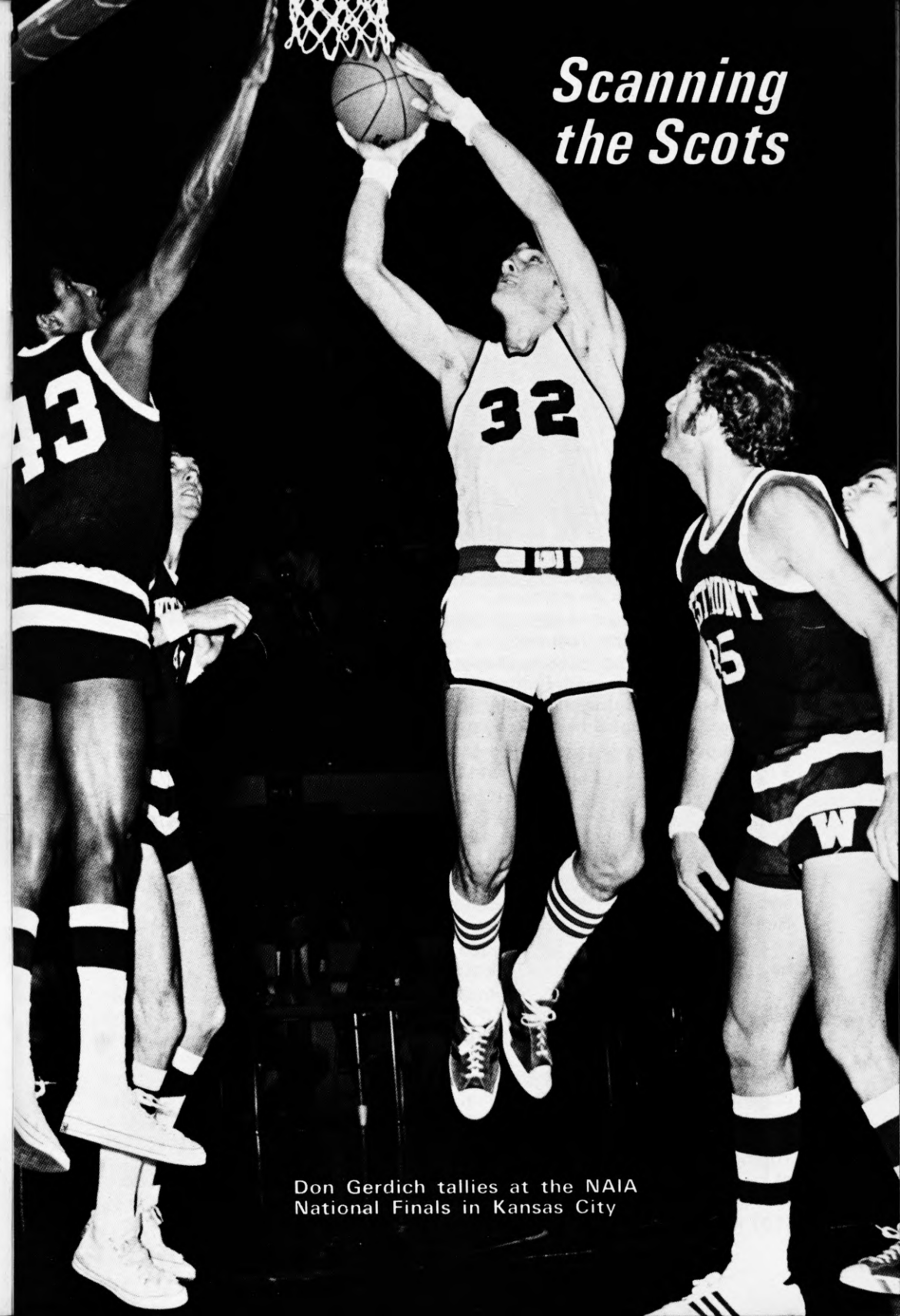
A shoo-in for one of the two positions is Roy Stauffer. The 5-10 junior set a new Edinboro foul shooting record by hitting on 87.1 % of his attempts last year along with being the team's number three scorer with a 13.7 points-per-game output. The Emmaus, Pa., ace also led the club in assists with 92.

Altoona's Bernie Jubeck (6-1, Sr.) is the only other letterman at guard along with Stauffer.

Three familiar faces also in the guard battle include Altoona's Larry Betar (6-1, So.), Pittsburgh's Bill Henk (6-1, So.) and Bradford's Paul Stiles (6-2, Jr.). Henk and Stiles started with the Scots two years ago but have been sidelined for a season due to injuries.

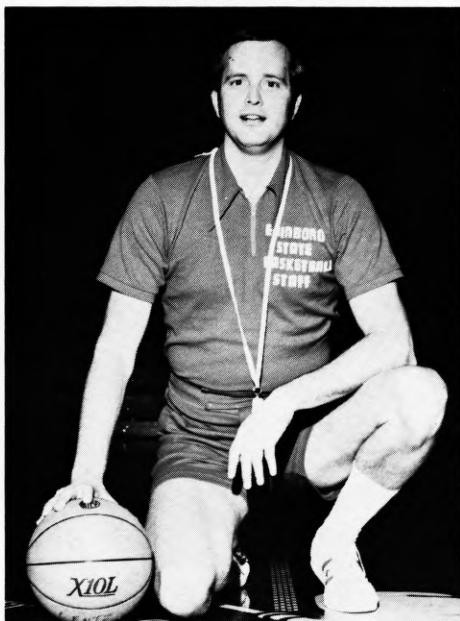
Betar starred for the ESC frosh last year and has made a quick adjustment to the varsity ranks. He tossed in 235 points for a 12.4 average and still found time to grab 101 rebounds in his freshman debut.

Scanning the Scots



Don Gerdich tallies at the NAIA National Finals in Kansas City

WINNING -- A McDONALD TRADITION



Head Coach - Jim McDonald

of the Year in 1966 and was honored as one of the top ten finalists in the NAIA's Coach of the Year poll.

A wave of ESC basketball records have fallen by the wayside under McDonald's management. Some 17 team marks and 10 individual standards have been revised under his tutelage. Along with the 27 new records, four Edinboro State cagers have been named All-Americans since 1965.

He posted his best mark as a coach five years ago as his cagers rang up a regular season record of 17-4 and finished with a 19-5 overall ledger.

His 1967-68 team cracked 10 existing Edinboro State College basketball records and captured the PSCAC State Championship by defeating annual powerhouse Cheyney State. The 1967-68 squad ranked as high as eleventh among the nation's small colleges and finished fifth nationally in rebounding.

Prior to accepting his current position at Edinboro in 1961, McDonald served as assistant basketball coach at Harborcreek High School in Erie, Pa. He is a 1965 graduate of Bridgeport High School, Bridgeport, West Virginia.

As a player, McDonald attended West Virginia Wesleyan College, where he participated as a varsity "Bobcat" for four seasons.

During his collegiate basketball career McDonald was selected as an All-American two years by the UPI and the NAIA for his outstanding performances on the hardwoods. He reached the climax of his athletic career with the Bobcats in his senior year, 1960, when he ranked as the second leading scorer in the nation with an average of slightly over 33-points-a-game in regular season competition. In that same year, he was chosen to try out for the United States Olympic Basketball Team at Denver, Colorado. In addition, McDonald's performance in the National NAIA Post-Season Basketball Tournament, held annually in Kansas City, Mo., earned him the distinction of being named to the NAIA's All-Tournament Team in 1959 and 1960.

McDonald, his wife, Mary Lou, and their two sons, Mark (12) and Mike (10) reside in Edinboro.

Winning ways have become a tradition with Jim McDonald-coached teams at Edinboro State. In ten seasons at the helm, his Fighting Scot cagers have never experienced a losing season while registering a remarkable 128 wins against only 59 losses.

Since taking the reigns at Edinboro State in 1962, McDonald has led the Scots to four Western Division Pennsylvania Conference crowns, the PC State Championship and six appearances in the NAIA district playoffs. His teams have played in sixteen post season contests during a ten-year span. The 1965-66 club captured the District 18 toga and earned a trip to the NAIA national tournament in Kansas City, Missouri.

McDonald was selected by the coaches of the eastern seaboard states to be the Area Eight Coach

ASSISTANT BASKETBALL COACH

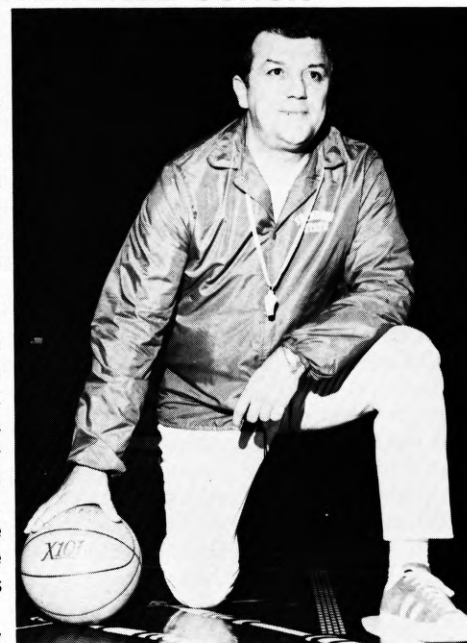
Tony Laterza, who guided the University of Akron to national basketball prominence, enters his second year in the Fighting Scot ranks as assistant cage coach.

One of Ohio's most highly respected coaches, Laterza compiled a nine year record of 178 wins and only 59 losses. His teams averaged nearly 20 wins a season during his ten year stay at the Buckeye School.

Highlighting his hardcourt accomplishments were four trips to the NCAA, Midwest Regionals where the Zips captured three tournament titles. They finished as the NCAA College Division, runner-up in 1963-64 and managed a third place finish to close out the 1965-66 campaign. He also guided Akron to three straight Ohio Conference titles while finishing with second place honors four other times.

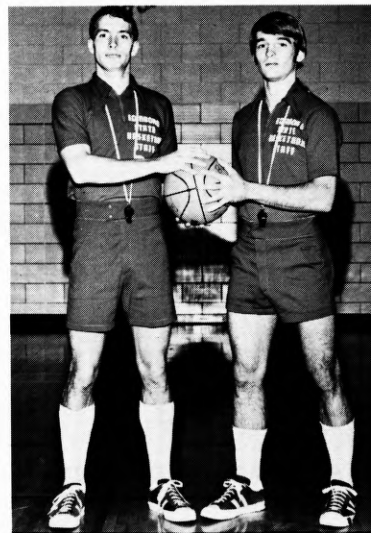
Laterza's coaching know how is also reflected on the links where his golf teams totaled outstanding 101-38-5 mark. In his second season at the helm, the Zips won their first Ohio Conference crown in golf, shared the title the following year and then repeated as sole champs in 1961.

Laterza is a graduate of Akron University where he starred in both basketball and football. He earned a B.S. in education from Akron in 1952 and received his Masters degree from Kent State in 1963.



Assistant Coach - Tony Laterza

STUDENT COACHES, TEAM MANAGER



Student Coaches
Fred Riley and Roger Stubbe



Manager
Jim Kleszc

GUARDS

10-11 Roy Stauffer

G, 5-10, 170, Jr., Emmaus, Pa.

Nailed down a varsity starting assignment as a sophomore last year and responded with outstanding performances . . . Shot a torrid 52 per cent from the floor while averaging 13.7 points per game as the team's third leading scorer . . . A team leader who is a fiery competitor . . . Set an ESC foul shooting record by hitting on 87.1 per cent of his attempts . . . Has totaled 866 points in two seasons at Edinboro with his 509-point output on the frosh squad and 357 in his varsity debut . . . Also led the club in assists with 92 . . . One of the team's top offensive players who possesses a fine jump shot . . . Selected co-captain . . . Averaged 30 points per game at Emmaus High where he earned All-State, All-District and All-League honors . . . Continued his hot pace with a 24 pga at Augusta (Va.) Military Academy . . . Excels at golf and baseball . . . Nicknamed "Stauff."

Year	G	FGM	PCT.	FTM	PCT.	REB.	PTS.	AVG.
1971-72	26	138	.517	81	.871	84	357	13.7

CO-CAPTAIN



GUARDS

30-31 Larry Betar

G, 6-1, 170, So., Altoona, Pa.

Tagged by the coaches as the most improved player on the squad . . . Very coachable prospect . . . Has overcome inexperience to become a top contender for a starting guard berth where he could end up as the team's playmaker . . . Can thread the needle with his sharp passing . . . Shows poise under pressure . . . Finished as the second leading scorer on the JV team last year by popping in 235 markers to average 12.4 points per game . . . Also claimed a surprising 101 rebounds as a frosh . . . Relies on an accurate short jump shot offensively . . . Should emerge as one of the Scots top young cagers if he continues at his current pace . . . Guided Coach John Swogger's Altoona High team to a sparkling 23-2 record . . . Averaged an incredible 14 assists per game for Altoona's Mountain Lions . . . Nicknamed "Moose" . . . A social studies major.

Year	G	FGM	PCT.	FTM	PCT.	REB.	PTS.	AVG.
Frosh	19	91	.416	53	.679	101	235	12.4
1971-72	1	0	.000	0	.000	0	0	0.0



14-15 Bernie Jubeck

G, 6-1, 170, Sr., Altoona, Pa.

A veteran guard who gives the Scots a tested playmaker to run ESC's offensive attack . . . A deceptive left hander . . . Most effective as a passer but can also hit consistently from the outside . . . Saw limited action throughout both his sophomore and junior campaigns . . . Paved the way to an 11-6 season slate for the 1969-70 freshmen team while registering 63 assists . . . Executes the fast break very effectively with his experienced quickness . . . Most likely will be used in a relief role at one of the guard slots where he has recorded playing time in sixteen varsity contests . . . A heady ball player who enjoys the game . . . Spent his high school hard court time performing for Bishop Guilfoyle in Altoona . . . A secondary social studies major . . . Relaxes by playing golf.

Year	G	FGM	PCT.	FTM	PCT.	REB.	PTS.	AVG.
1970-71	9	9	.391	6	1.000	11	24	2.7
1971-72	7	2	.250	0	.000	2	4	.6
Var. Tot.	16	11	.355	6	1.000	13	28	1.8



12-13 Bill Henk

G, 6-1, 165, So., Pittsburgh, Pa.

Probably the best all-around guard on the Scots' roster . . . Knows all phases of the game well and will continually push the starters . . . Possesses real good fundamentals that put him a step ahead of most of the newcomers . . . Deceptive leaper who "stuffs" with ease and can help out under the boards occasionally . . . A sound defensive player on a Scot squad that is seeking defensive standouts . . . Started with the Scot freshmen two years ago but was forced into the bleachers with injuries last season . . . Playmaker on the 1970-71 frosh squad that rolled up an 18-4 mark . . . Tossed in 215 tallies in 22 games to score at a 9.8 clip while showcasing a 48 per cent accuracy mark . . . Starred at Keystone Oaks High School under Coach Jim Sims who made his mark as an Edinboro State cager from 1960-1964.

Year	G	FGM	PCT.	FTM	PCT.	REB.	PTS.	AVG.
Frosh	22	87	.478	41	.804	74	215	9.8



GUARDS

32-33 Bob Rozanski

G, 6-0, 170, So., Glassport, Pa.

Rounds out a corp of backup guards who should start logging varsity playing time . . . Greatest strong point is his excellent outside shooting ability . . . A lefthander . . . His competitive attitude makes him a contender for a playing role . . . Exhibits very good defensive fundamentals . . . Was the third highest scorer on last year's JV team with 164 markers to average 9.1 points per game . . . Played in 18 of 19 JV contests and twice was the leading scorer with 21-point performances . . . Was All-District during both his junior and senior years at Serra Catholic where he hit the hoop at a 20.8 rate . . . Earned a spot in the Dapper Dan Roundball Classic held annually in Pittsburgh . . . Likes to fish . . . Nicknamed "Rosy."

Year	G	FGM	PCT.	FTM	PCT.	REB.	PTS.	AVG.
Frosh	18	55	.437	54	.794	42	164	9.1



20-21 Bill Lentz

G, 6-2, 185, Fr., Allentown, Pa.

A newcomer who has already demonstrated his wares as a tough one on one player . . . A deceptive driver who is quick with the ball . . . A lefthander . . . Possesses a fine 15 foot jumper . . . Physically a strong guard who will help out offensively . . . Will undoubtedly be groomed throughout the season on the JV squad and make occasional varsity appearances . . . Starred at Salisbury High School near Allentown where he led the Falcons to a 23-3 season record and the District 11 championship . . . Earned Second Team All-State honors and All-League awards for his hardcourt efforts at Salisbury . . . Carried on his offensive barrage at Fork Union Military Academy in Virginia and won a First Team berth in the Virginia Military School League . . . Also starred in baseball where he earned four varsity high school letters . . . A medical technology major.

GUARDS-FORWARDS

44-45 Paul Stiles

G-F, 6-2, 185, Jr., Bradford, Pa.

Missed last year because of a knee operation but is back at almost full strength . . . With a healthy knee can do it all . . . Has the longest shooting range on the team . . . Compliments his offensive play with tough defense . . . Extremely quick hands . . . Should continually increase his varsity playing time as the season progresses . . . A determined performer who could break into the starting five almost any time . . . Helped lead the 1970-71 frosh to an 18-4 finish by scoring at a 19.3 rate . . . Hit on 48 per cent of his tries from the floor for a 435-point total and grabbed 183 rebounds . . . Led Bradford High to the District Nine championship while averaging 17 markers a game . . . Was unanimously chosen to the District's First Team, selected to the Coaches Independent All-Star Team and All-State Honorable Mention . . . Nicknamed "Stys."

Year	G	FGM	PCT.	FTM	PCT.	REB.	PTS.	AVG.
Frosh	22	180	.484	75	.676	183	435	19.3



22-23 Ron Beckett

F-G, 6-7, 180, Fr., Elyria, O.

Adjusted quickly to the intercollegiate ranks and appears to have earned a starting position . . . Most likely will work at a forward post while being groomed to become a guard . . . Has all the physical tools to become a great offensive player . . . Can hit from almost anyplace on the court . . . Fastest man on the team and also the best jumper on the squad . . . Still hampered by inexperience but learns quickly . . . Could become the Scots tallest guard ever . . . Adds to the lineup with his rebounding ability . . . Averaged 10 points per game for Elyria High's Pioneers and equalled his efforts underneath the hoop with 10 rebound per contest to his credit . . . Will also aid the Edinboro track program as a high jumper . . . Nicknamed "Beck" . . . An elementary education major.

FORWARDS

34-35 Don Miller

F, 6-5, 197, So., Pittsburgh, Pa.

One of the Clan's smoothest offensive players . . . Played 12 varsity games as a freshman last year and was highly instrumental in some early season wins . . . Tossed in only 40 points, but added 46 rebounds in his 12 appearances . . . Relies on a soft 15-foot jumper from the side . . . Much stronger now than in his freshman debut which should help him considerably underneath . . . A very intelligent basketball player . . . Averaged 14.5 points-per-game at Pittsburgh's St. Basil's and paced the Sabers' to the Catholic Western Pennsylvania Championship . . . Led St. Basil's to a 10-0 slate in conference action and an overall season record of 23-2 . . . Selected to the Section All-Star Team for his outstanding performances with the Sabers . . . Enjoys listening to rock music and playing golf . . . Nicknamed "Mills" . . . A math major.

Year	G	FGM	PCT.	FTM	PCT.	REB.	PTS.	AVG.
1971-72	12	15	.349	10	.625	46	40	3.3



40-41 Bob Birner

F, 6-5, 195, Fr., Monaca, Pa.

One of the Scots top recruits who has a very promising future on the Edinboro State hardwoods . . . Has all the equipment to become an all-around performer underneath the basket . . . A First Team All-State cager who hit on 50 per cent of his tries from the floor . . . Clipped the nets for 18 points-per-game and cleared the glass at the rate of 16 rebounds per contest . . . Helped lead Coach Otto Pritchard's Monaca Indians to the Section 18-B title, the WPIAL Championship and a 25-5 season record . . . A main cog in Monaca's quest for the Western Regional title and the coveted trip to Harrisburg for the state finals . . . Named to several All-Tourney teams and garnered Section 18's MVP award . . . All-State First Team by the UPI, All-State honorable mention by the AP . . . Appropriately nicknamed "Bunsen" . . . An economics major.



FORWARDS-CENTERS

54-55 Dale Griffin

F-C, 6-7, 225, Fr., Elyria, O.

Another top freshman prospect who could become a great one at ESC . . . Could see varsity action very soon, only being held back by inexperience . . . An exceptionally good outside shooter for a big man . . . Physically very powerful which enables him to maintain good position under the boards . . . A strong rebounder . . . Led the Elyria Pioneers in scoring with a 13.6 points-per-game average and rebounding with 13 grabs-per-contest to his credit . . . Earned triple letters in both football and basketball at Elyria . . . Helped Elyria to an unbeaten grid season from his tight end slot and a second place ranking in Ohio's High School football poll . . . Was a standout punter . . . First Team All-Conference in football and the Second Team choice in basketball . . . Member of the Cleveland Plain Dealer Dream Team and a National Honor Society selectee . . . Nicknamed "Tiny" . . . Loves to fish.



24-25 Don Gerdich

F-C, 6-6, 208, So., McKeesport, Pa.

Started as a freshman last year and will fit into the Scot lineup throughout the season . . . The team's most aggressive rebounder . . . A high-spirited competitor . . . Vastly improved shooter . . . Extremely agile for his size . . . Loves contact underneath . . . Was impressive at the NAIA national playoffs in Kansas City . . . Totaled 99 rebounds and 89 points in 21 varsity appearances last season . . . A graduate of McKeesport Area High School where he helped pave the way to a 17-5 ledger for the Tigers . . . Tossed in 16.7 points-a-game in his senior year along with 16 rebounds per clash to receive All-Section honors . . . Should have a fine career at ESC . . . Nicknamed "The Hawk" . . . A social studies major.

Year	G	FGM	PCT.	FTM	PCT.	REB.	PTS.	AVG.
1971-72	21	36	.387	17	.607	99	89	4.2



CENTERS

52-53 Rich Sulka

C-F, 6-6, 225, Sr., Pittsburgh, Pa.

Will undoubtedly start at either center or forward for the Scots . . . The only double varsity letter winner on the team . . . Continually had late-game heroics throughout the 1970-71 schedule with key rebounds . . . One of the two team leaders . . . Physically equipped to do it all underneath the boards . . . Another of the Scots big men who has vastly improved in shooting . . . Finished as the fifth leading rebounder in the Western Division with his 165 grabs . . . Rammed in 141 points last year and cleared the glass at a 6.6 clip . . . Has a career total of 380 rebounds and could move into the top ten with a fine showing in his final year . . . Averaged 25 points a game and 17 rebounds during his senior year to highlight a great career at Central Catholic in Pittsburgh . . . Played in the famed Dapper Dan Roundball Classic . . . An art major.

Year	G	FGM	PCT.	FTM	PCT.	REB.	PTS.	AVG.
1970-71	23	66	.434	23	.523	215	155	6.7
1971-72	25	53	.393	35	.538	165	141	5.6
Var. Tot.	48	119	.415	58	.532	380	296	6.2

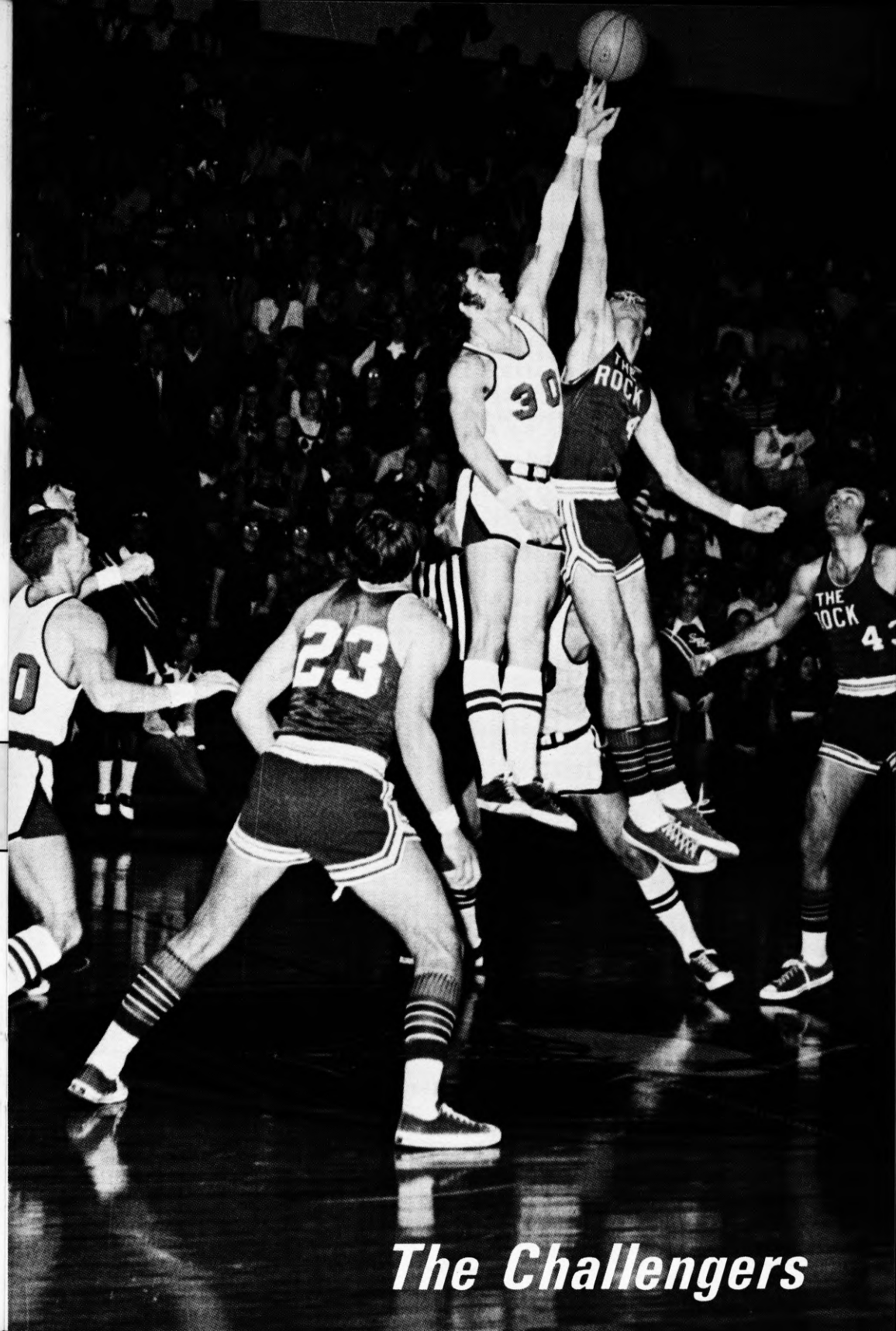
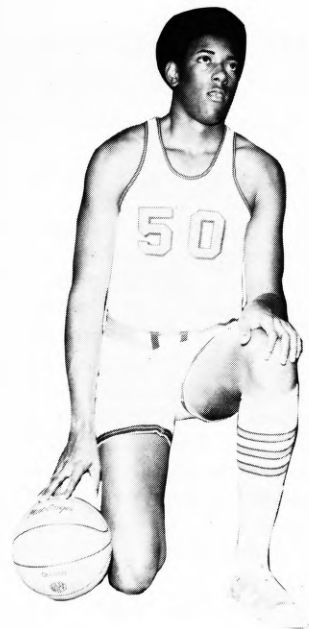


CO-CAPTAIN

50-51 Sam Vickers

C, 6-8, 220, Fr., Elyria, O.

One of five freshmen who are gunning for varsity starting berths . . . Tallest man on the ESC roster . . . Rates as one of the most improved freshman since the beginning of practice in October . . . His development at the center post could very likely spell the difference in the Scots 1972-73 cage campaign . . . Has good range as a shooter and a soft touch . . . Strong at boxing out underneath the hoop and could be a rebounding leader . . . Like many other of the Scots outstanding freshmen, he should only be hampered by inexperience . . . Was the leading field goal percentage shooter on a Elyria Pioneer team that finished with a .500 season record . . . Is really just starting to mature on the court and could become a fine collegiate center . . . Enjoys listening to soul music . . . Nicknamed "Vic" . . . An elementary education major.



The Challengers

MERCYHURST COLLEGE

November 28 — at Edinboro

Head Coach: Dick Fox, 9-16, 1 Season

Sports Information Director: Joe Mattis, Area Code 814, 864-0681

1971-72 Record: 16-9

Lettermen Lost: 1

Lettermen Returning: 7

Team Strength: Depth, Offense

Team Weakness: Defense

Captain: J. C. Carter

Athletic Director: Dick Fox

Location: Erie, Pa.

Enrollment: 900

Colors: Blue, Green and White

Nickname: Lakers

Home Court: Technical Memorial H.S.

Gym Capacity: 1,500

Conference: Independent

Last Game: No Previous Game

Top Veterans: J. C. Carter (F, 6-3, Sr., 20.6), Steve Albert (F, 6-6, So., 16.2), Mike Emick (F, 6-5, So., 11.3), Dan Bukowski (G, 6-2, So., 7.5), Jeff McConnell (C, 6-7, Jr., 6.5), Carl Jones (G, 5-10, So., 12.2), Dave Wieczorek (G, 5-9, Jr., 2.3)

Top Newcomers: Jesse Campbell (C, 6-9, Fr.), Jeff Davern (G, 5-10, Fr.), Bob Repko (F, 6-5, Fr.), Bryant Jacobs (F, 6-5, Fr.), John Chojnacki (F, 6-5, Fr.), Curtis Hixson (F, 6-3, Jr.)

OHIO WESLEYAN COLLEGE

December 5 — at Ohio Wesleyan

Head Coach: Frank Shannon, 163-148, 13 Seasons

Sports Information Director: Steve Wilson, Area Code 614, 369-4431

1971-72 Record: 11-11

Lettermen Lost: 3

Lettermen Returning: 8

Team Strength: Defense, Rebounding

Team Weakness: Shooting

Captains: To be named

Athletic Director: Dr. Robert M. Strimer

Location: Delaware, Ohio

Enrollment: 2,500

Colors: Red and Black

Nickname: Battling Bishops

Home Court: Edwards Field House

Gym Capacity: 1,100

Conference: Ohio Athletic Conference

Last Game: 1970-71, ESC 81-67

Top Veterans: Jay Baksa (F, 6-4, Sr.), Dennis Ball (6-3½, F, Jr.), Chris Hardman (6-0, G, Sr.), Eric Morris (6-6, C, Sr.)

Top Newcomers: Bob Foster (6-0, G, So.), Mike Rieker (6-5, F, Sr.), Warren Hollis (6-4, F-C, So.)

ALLEGHENY COLLEGE

December 7 — at Edinboro

Head Coach: Norm Sundstrom, 23-17, 2 Seasons

Sports Information Director: John Ganley, Area Code 814, 337-3251

1971-72 Record: 12-8

Lettermen Lost: 2

Lettermen Returning: 7

Team Strength: Rebounding, Speed

Team Weakness: Shooting

Captain: To be named

Athletic Director: Harold McElhaney

Location: Meadville, Pa.

Enrollment: 1,700

Colors: Blue and Gold

Nickname: Gators

Home Court: David Mead Field House

Gym Capacity: 2,000

Conference: Presidents Ath. (PAC)

Last Game: 1961-62, ESC 102-80

Top Veterans: Larry Turnbaugh (C, 6-7, So., 14.7), Jim Hein (G, 6-3, So., 7.7), Mike Malone (G, 6-3, So., 12.4), Gerry Stupiansky (G, 6-1, Sr., 3.0), Joe Knap (C, 6-7, Sr., 8.9), John Reynders (F, 6-2, So., 8.2), Jim Henyey (F, 6-4, Sr., 6.0)

Top Newcomers: Jesse Johnson (C, 6-5, Fr.), Roy Wilson (G, 6-1, Fr.), Bob Del Greco (G, 5-11, Fr.)

CLARION STATE COLLEGE

December 9 — at Clarion, February 14 — at Edinboro

Head Coach: Ron Galbreath, 128-67, 11 Seasons

Sports Information Director: William A. Proudfit, Area Code 814, 226-6000

1971-72 Record: 18-7

Lettermen Lost: 3

Lettermen Returning: 7

Team Strength: Defense, Depth, Desire

Team Weakness: Size, Quickness

Captains: J. Sebestyen, E. Kreiling, D. Wilson

Athletic Director: Frank Lignelli

Location: Clarion, Pa.

Enrollment: 4,600

Colors: Blue and Gold

Nickname: Golden Eagles

Home Court: Tippin Gymnasium

Gym Capacity: 4,000

Conference: Pennsylvania

Last Game: 1971-72, CSC 71-70, 75-72

NAIA Dist. 18 Finals

ESC 81-78

Top Veterans: Elmer Kreiling (G, 6-2, Sr.), Joe Sebestyen (F, 6-2, Sr.), Sonny Cicero (G, 5-8, Sr.), Don Wilson (G, 6-3, Sr.), Dave Ankeney (G, 6-1, Jr.), Lou Myers (F, 6-4, Jr.), Gary Walters (F, 6-4, Jr.)

Top Newcomers: Pete Belcher (F, 6-5, Fr.), Dave Nicholl (C, 6-8, Fr.), John Kelly (C, 6-7, Fr.)

WILMINGTON COLLEGE (Del.)

December 12 — at Edinboro

Head Coach: Jim Huggard, First Season

Sports Information Director: Joseph Farnan, Area Code 302, 328-9401

1971-72 Record: 12-8

Lettermen Lost: 3

Lettermen Returning: 4

Team Strength: Offense

Team Weakness: Defense

Captain: Dan Branch

Athletic Director: Jim Huggard

Location: New Castle, Delaware

Enrollment: 525

Colors: Green and White

Nickname: Wildcats

Home Court: De La Warr High School

Gym Capacity: 900

Conference: Independent

Last Game: None

Top Veterans: Dan Branch (C, 6-7, Sr., 22.2), Jake Harrison (F, 6-2, Jr., 11.9), Elmer Lucas (F, 6-5, So., 9.3), James Britt (G, 6-1, So., 13.1)

Top Newcomers: Floyd Shelton (G, 6-3, Fr.), Paul McDade (F, 6-5, Fr.), Steve Blong (G, 6-3, Fr.), Larry Blong (F, 6-4, Fr.), Julio Perez (C, 6-5, Fr.)

CALIFORNIA STATE COLLEGE

December 16 — at Edinboro, February 10 — at California

Head Coach: Myles B. Witchey, 125-98, 10 Seasons

Sports Information Director: Tom Galvin, Area Code 412, 938-2281, Ext. 407

1971-72 Record: 13-9

Lettermen Lost: 1

Lettermen Returning: 7

Team Strength: Experience

Team Weakness: Lack of height, Depth on bench

Captain: Named every game

Athletic Director: Paul Ross

Location: California, Pa.

Enrollment: 6,800

Colors: Red and Black

Nickname: Vulcans

Home Court: Hamer Hall

Gym Capacity: 4,000

Conference: Pennsylvania

Last Game: 1971-72, ESC 82-76, 87-74

Top Veterans: Joe Mancinelli (F, 6-4, Sr., 9.4), Augie DiPasquale (G, 6-1, Jr., 11.3), Dan Ross (G, 6-0, Sr., 5.3), Cleve Steward (C, 6-5, Sr., 14.5), Mark Matty (G, 6-2, Sr., 12.1), Ralph Losey (F, 6-3, Sr., 7.6), Gary Skinner (G, 6-2, Sr., 5.3)

Top Newcomers: Bill Hughes (G, 5-11, Jr.), Mike Mihalov (G, 6-1, Jr.), Joe Henry (F, 6-5, So.)

ALLIANCE COLLEGE

January 10 — at Alliance, February 17 — at Edinboro

Head Coach: Ted Haluch, 167-190, 18 Seasons

Sports Information Director: Leo Rudzki, Area Code 814, 398-4611, Ext. 365

1971-72 Record: 4-18

Lettermen Lost: 2

Lettermen Returning: 7

Team Strength: Depth, Experience

Team Weakness: Speed

Captain: Jack Siverling

Athletic Director: Ted Haluch

Location: Cambridge Springs, Pa.

Enrollment: 550

Colors: Red and White

Nickname: Eagles

Home Court: Cambridge Springs H.S.

Gym Capacity: 1,200

Conference: Independent

Last Game: 1971-72, ESC 67-83, 70-69

Top Veterans: Jack Siverling (G, 5-10, Sr., 16.1), John Marucci (F, 6-4, Jr., 14.6), Jim Phillips (G, 6-2, Jr., 5.2), Terry Miller (F, 6-2, Sr., 6.0), Jim Brickell (F, 6-3, Jr., 2.3), Mike Feightner (C, 6-8, Jr., 2.3), Mark Walter (G, 6-1, Jr., 1.6)

Top Newcomers: Barry Forster (F, 6-2, So.), John Marron (F, 6-2, So.), Dennis Mazur (F, 6-3, Jr.), Mike Mazurek (G, 6-2, Jr.)

SLIPPERY ROCK STATE COLLEGE

January 13 — at Slippery Rock, February 24 — at Edinboro

Head Coach: Mel Hankinson, 27-21, 2 Seasons

Sports Information Director: John Carpenter, Area Code 412, 794-4040

1971-72 Record: 17-6

Lettermen Lost: 2

Lettermen Returning: 7

Team Strength: Defense, Backcourt

Team Weakness: Corners, Rebounding

Captain: Doug Hudson

Athletic Director: Dr. Robert Raymond

Location: Slippery Rock, Pa.

Enrollment: 5,500

Colors: Green and White

Nickname: Rock

Home Court: Morrow Field House

Gym Capacity: 2,100

Conference: Pennsylvania

Last Game: 1971-72, SRSC 83-77
87-90, NAIA Dist.
18 Playoff, ESC
85-75

Top Veterans: Mark Balbach (G, 6-3, Sr., 15.8), Doug Hudson (G, 5-7, Sr., 6.1), Peyton Tomblin (F, 6-2, So., 7.2), Ken Barlett (G, 6-0, Sr., 5.6), Steve Viviano (F, 6-3, Sr., 3.8), Dennis Kopka (F, 6-5, Jr., 11.8), Dennis Rockwell (F, 6-4, Sr., 10.7)

Top Newcomers: Owen Long (G, 5-11, So.), Terry Acker (G, 5-11, So.), Rick Dunsmore (F, 6-3, So.)

MUSKINGUM COLLEGE

January 20 — at Edinboro

Head Coach: Jim Burson, 47-61, 5 Seasons

Sports Information Director: Ross Feltz, Area Code 614, 826-8134

1971-72 Record: 11-12

Lettermen Lost: 1

Lettermen Returning: 8

Team Strength: Height and Shooting

Team Weakness: Inexperience

Captains: Todd Brown and Jim Vejsicky

Athletic Director: Edgar Sherman

Location: New Concord, Ohio

Enrollment: 1,200

Colors: Black and Magenta

Nickname: Fighting Muskies

Home Court: John Glenn Gymnasium

Gym Capacity: 2,000

Conference: Ohio Athletic Conference

Last Game: None

Top Veterans: Gene Ford (G, 5-8, Jr., 19.5), Todd Brown (F, 6-5, Sr., 15.4), Jim Vejsicky (G, 5-11, Sr., 13.8), Gary Ferber (F, 6-5, Jr., 10.5)

Top Newcomers: No frosh expected to make varsity.

POINT PARK COLLEGE

January 25 — at Point Park

Head Coach: Jerry Conboy, 31-43, 3 Seasons

Sports Information Director: Dan McGibbeny, Area Code 412, 391-4100, Ext. 8262

1971-72 Record: 13-12

Lettermen Lost: 1

Lettermen Returning: 7

Team Strength: Depth, Speed, Defense

Team Weakness: Board Strength

Captains: Bob Rager and Joe Spellman

Athletic Director: Barry Hanburger

Location: Pittsburgh, Pa.

Enrollment: 2,000

Colors: Green and Gold

Nickname: Pioneers

Home Court: U. of Pitt. Field House

Gym Capacity: 5,500

Conference: Independent

Last Game: 1971-72, PPC 71-73

Top Veterans: Bob Rager (G, 6-2, Jr., 10.6), Larry Anderson (G, 6-2, Sr., 8.6), Al Harris (F, 6-2, Jr., 10.4), Joe Spellman (F, 6-3, Sr., 8.2), Don Jones (F, 6-5, So., 14.0), Ali Morris (C, 6-7, Jr., 7.0)

Top Newcomers: Joe Schipani (C, 6-8, Fr.), Ron Screbinski (C, 6-6, Fr.), Sam Jacobs (G, 6-3, Fr.), Jim McKinnon (G, 6-3, Fr.)

GROVE CITY COLLEGE

January 27 — at Grove City

Head Coach: John Barr, First Season

Sports Information Director: Bob Smith, Area Code 412, 458-6600 Ext. 245

1971-72 Record: 12-12

Lettermen Lost: 3

Lettermen Returning: 6

Team Strength: Height, Experience

Team Weakness: Shooting

Captains: Dave King and Rick Rottman

Athletic Director: Jack Behringer

Location: Grove City, Pa.

Enrollment: 2,100

Colors: Crimson and White

Nickname: Wolverines

Home Court: College Arena

Gym Capacity: 1,800

Conference: Independent

Last Game: 1970-71, ESC 72-62

Top Veterans: Fred Schwab (F, 6-5, Jr., 13.6), Ernie Nagy (C, 6-6, Sr., 7.3), Rick Rottman (F, 6-2, Sr., 10.2), Jim Milligan (F, 6-5, Jr., 4.6), Geoff McKinley (G, 5-11, Sr., 1.8) Dave King (G, 5-8, Sr., 8.0)

Top Newcomers: Bob Gustine (G, 5-10, Jr.), Steve Demme (F, 6-5, So.), Steve Hope (F, 6-4, Sr.), Jim Perruquet (G, 6-2, So.), Jeff Rose (C, 6-6, So.)

BLOOMSBURG STATE COLLEGE

January 30 — at Edinboro

Head Coach: Charles Chronister, 18-7, 1 Season

Sports Information Director: Bruce C. (Nick) Dietterick, Area Code 717, 389-3411

1971-72 Record: 18-7

Lettermen Lost: 3

Lettermen Returning: 5

Team Strength: Shooting, Rebounding, Defense

Team Weakness: Depth at center

Captain: Art Luptowski

Athletic Director: Dr. Conrad Bautz

Location: Bloomsburg, Pa.

Enrollment: 4,250

Colors: Maroon and Gold

Nickname: Huskies

Home Court: BSC Fieldhouse

Gym Capacity: 4,500

Conference: Pennsylvania

Last Game: 1963-64, ESC 72-71

Top Veterans: Art Luptowski (G, 5-10, Sr., 11.0), John Willis (C, 6-8, Jr., 14.5), Gary Choyka (C, 6-0, Jr., 8.7)

Top Newcomers: Gary Tyler (F, 6-4, So.), Dick Grace (F, 6-4, So.), Joe Kempski (F, 6-3, So.)

MOUNT UNION COLLEGE

January 31 — at Edinboro

Head Coach: Gary Fisher, 27-20, 2 Seasons

Sports Information Director: George Heddleston, Jr., Area Code 216, 821-5320

1971-72 Record: 13-11

Lettermen Lost: 4

Lettermen Returning: 5

Team Strength: Size, Confidence

Team Weakness: Speed

Captain: Unnamed

Athletic Director: Jackson Rafeld

Location: Alliance, Ohio

Enrollment: 1,300

Colors: Purple and White

Nickname: Purple Raiders

Home Court: Timken Bldg. Gym.

Gym Capacity: 3,000

Conference: Ohio Athletic Conf.

Last Game: 1971-72, ESC 94-111

Top Veterans: Barry Ring (F, 6-6, Jr., 13.5), Ed Lawrence (C, 6-8, Jr., 13.9) Jim Courtney (F, 6-3, Jr., 7.4), Tom Weisenstein (G, 6-2, Sr., 4.1), Mike Gerber (G, 5-5, Sr., 8.4)

Top Newcomers: Bill Boyer (F, 6-5, So.), John Lewis (F, 6-4, So.), Greg Patton (F, 6-3, Fr.)

INDIANA UNIVERSITY, Pennsylvania

February 3 — at Edinboro, February 20 — at Indiana

Head Coach: Carl Davis, 39-13, 2 Seasons

Sports Information Director: Randy L. Jesick, Area Code 412, 357-2233

1971-72 Record: 15-9

Lettermen Lost: 1

Lettermen Returning: 6

Team Strength: Guards

Team Weakness: Experience

Captain: John Carom

Athletic Director: Herm Sledzik

Location: Indiana, Pa.

Enrollment: 8,500

Colors: Maroon and Slate

Nickname: Big Indians

Home Court: Memorial Field House

Gym Capacity: 2,500

Conference: Pennsylvania

Last Game: 1971-72, Esc 74-70
76-74

Top Veterans: John Carom (C, 6-5, Sr., 18.9), Randy Allen (G, 6-1, Jr., 13.8), Mark Bianchi (F, 6-2, Jr., 6.4), Bob Isenberg (G, 5-10, Sr., 8.3), Jeff Lawrence (F, 6-3, So., 6.1)

Top Newcomers: Joe Novack (F, 6-4, So.), Lance Stephens (F, 6-3, So.), Ed Kowalski (C, 6-5, So.), Marty Mattocks (G, 6-0, So.), Dick Mogle (G, 5-10, So.)

LOCK HAVEN STATE COLLEGE

February 5 — at Lock Haven, February 27 — at Edinboro

Head Coach: Dick Taylor, First Season

Sports Information Director: Ross Nevel, Area Code 717, 748-5351, Ext. 378

1971-72 Record: 8-14

Lettermen Lost: 2

Lettermen Returning: 8

Team Strength: Rebounding

Team Weakness: Outside Shooting

Captain: John Marzlak

Athletic Director: Stan Daley

Location: Lock Haven, Pa.

Enrollment: 2,400

Colors: Crimson and White

Nickname: Bald Eagles

Home Court: Thomas Field House

Gym Capacity: 1,800

Conference: Pennsylvania
Last Game: 1971-72, ESC 85-82
74-66

Top Veterans: John Marzlak (G, 5-10, Sr., 10.3), Russ Paulin (F, 6-7, Jr., 15.5), Ziggy Tauginas (G, 6-6, Sr., 4.6)

Top Newcomers: Reggie Flowers (G, 5-9, Jr.), Tony Modrovsky (F, 6-1, Sr.), John Salley (C, 6-8, So.)

PENN STATE -- BEHREND

February 8 — at Edinboro

Head Coach: Roger Sweeting, 91-57, 7 Seasons

Sports Information Director: Roger Sweeting, Area Code 814, 899-3101

1971-72 Record: 13-7

Lettermen Lost: 4

Lettermen Returning: 7

Team Strength: Depth

Team Weakness: Height

Captain: Unnamed

Athletic Director: Roger Sweeting

Location: Erie, Pa.

Enrollment: 1,500

Colors: Red, White and Blue

Nickname: Cubs

Home Court: Erie Hall

Gym Capacity: 700

Conference: None

Last Game: None

Top Veterans: Ike Burnett (G, 6-1, Jr., 15.0), Dennis Deiner (C, 6-2, Jr., 13.5), Steve Johnson (G, 6-4, So., 7.0), Glenn McKinney (G, 6-0, Jr., 27.5), Chris Gross (F, 6-2, So., 7.0)

Top Newcomers: Frank Moorhead (F, 6-3, Fr.), Mark Borowy (G, 6-3, Fr.), Larry Szoszorek (F, 6-3, Fr.), Mike Hook (F, 6-2, Sr.), Tom Taylor (C, 6-2, Jr.)

ESC ATHLETIC AFFILIATIONS



NAIA — Edinboro State has national affiliation with the National Association of Intercollegiate Athletics. The NAIA was organized in 1940 for the purpose of promoting interest in athletics among colleges of moderate enrollment. The NAIA encourages a broad program of athletic pursuits in its member schools and maintains that athletics must be an integral part of the overall educational process. A total of 17 national championships are sponsored by the NAIA.



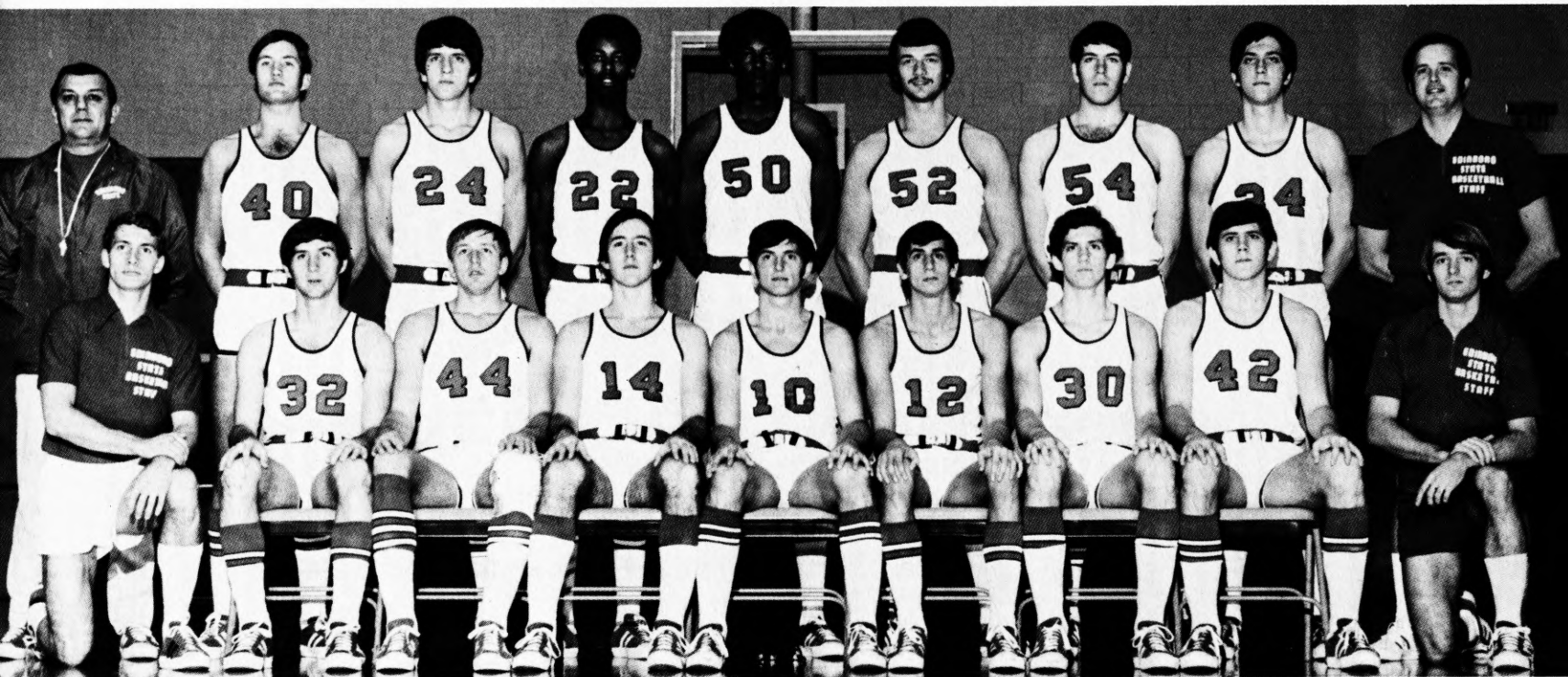
NCAA — The National Collegiate Athletic Association is a voluntary organization of more than 700 institutions and conferences devoted to the sound administration of intercollegiate athletics in all of its phases. The NCAA has responded to small colleges expanding needs and desires with a College Division classification. There are about 400 College Division members in the NCAA. CD Championships are conducted in nine sports which include regional tourneys in basketball and football.



ECAC — The Eastern College Athletic Conference embraces 12 New England and Middle Atlantic states Maryland, Virginia and the District of Columbia. The member institutions are separated into three different divisions. The ECAC differs from the majority of the other major college conferences throughout the country because it is not a playing conference in which every team within the group meets all or most of the others in the various sports. With 211 active members, it is the largest athletic conference in the nation.

Pennsylvania Conference — The Pennsylvania Conference, organized in 1951, has a membership of 14 collegiate institutions. The conference, which is divided into Western and Eastern Divisions, consists of Bloomsburg, California, Cheyney, Clarion, East Stroudsburg, Edinboro, Indiana, Kutztown, Lock Haven, Mansfield, Millersville, Shippensburg, Slippery Rock and West Chester.

1972-73 FIGHTING SCOTS



1972-73 FIGHTING SCOT CAGERS AND COACHES

Front Row (L-R): Student Coach Fred Riley, Bob Rozanski, Paul Stiles, Bernie Jubeck, Roy Stauffer, Bill Henk, Larry Betar, Bill Lentz and Student Coach Roger Stubbe. *Back Row (L-R):* Assistant Coach Tony Laterza, Bob Birner, Don Gerdich, Ron Beckett, Sam Vickers, Rich Sulka, Dale Griffin, Don Miller and Head Coach Jim McDonald.

VARSITY ROSTER

White	Red	Name	Pos.	Ht.	Wt.	Class	Hometown (High School)	High School Coach
10	11	*Roy Stauffer	G	5-10	170	Jr.	Emmaus (Emmaus)	Mr. Richard Shaak
12	13	Bill Henk	G	6-1	165	So.	Pittsburgh (Keystone Oaks)	Mr. James Sims
14	15	*Bernie Jubeck	G	6-1	170	Sr.	Altoona (Bishop Guilfoyle)	Mr. Tom Lane
20	21	Bill Lentz	G	6-2	185	Fr.	Allentown (Salisbury)	Mr. William Paulik
22	23	Ron Beckett	F-G	6-7	180	Fr.	Elyria, O. (Elyria)	Mr. Mike Riley
24	25	*Don Gerdich	F-C	6-6	208	So.	McKeesport (McKeesport Area)	Mr. Edmund Kittiko
30	31	Larry Betar	G	6-1	170	So.	Altoona (Altoona Area)	Mr. John Swogger
32	33	Bob Rozanski	G	6-0	170	So.	Glassport (Serra Catholic)	Mr. Ken Denne
34	35	*Don Miller	F	6-5	197	So.	Pittsburgh (St. Basil)	Mr. Red Ryan
40	41	Bob Birner	F	6-5	195	Fr.	Monaca (Monaca)	Mr. Otto Pritchard
44	45	Paul Stiles	G-F	6-2	185	Jr.	Bradford (Bradford)	Mr. Hal Hansen
50	51	Sam Vickers	C	6-8	220	Fr.	Elyria, O. (Elyria)	Mr. Mike Riley
52	53	*Rich Sulka	C-F	6-6	225	Sr.	Pittsburgh (Central Catholic)	Mr. John Killian
54	55	Dale Griffin	F-C	6-7	225	Fr.	Elyria, O. (Elyria)	Mr. Mike Riley

Co-Captains: Rich Sulka and Roy Stauffer

* Varsity Letters

Manager: Jim Kleescz

JUNIOR VARSITY ROSTER

Name	Pos.	Ht.	Wt.	Class	Hometown (High School)	High School Coach
Mike Drozin	F	6-3	170	Fr.	Euclid, O. (St. Joseph)	None
Charles Maurer	F	6-6	240	Fr.	Cleveland, O. (Fairview)	Mr. Neil Sames
John Skutski	G	6-3	185	Fr.	Turtle Creek (Turtle Creek)	Mr. Don Goltz
Jim VanOrden	C	6-7	218	Fr.	Butler, N. J. (Butler)	Mr. Art Pasquale

Head Coach: Jim McDonald
Assistant Coach: Tony Laterza

Student Coaches: Fred Riley
Roger Stubbe

PRONUNCIATION GUIDE

Stauffer . . . STAW-fer
JubeckJU-bek

GerdichGUR-ditch
BetarBEE-tar

DrozinDRO-zen
SkutskiSCUT-skee

Coaches: StubbeSTEW-bee
Laterzala-TUR-za

BEHIND THE SCENES . . .



Al Hall

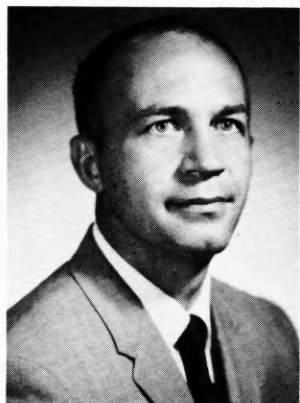
ATHLETIC DIRECTOR: Since Al Hall's appointment as Athletic Director in 1968, Edinboro State has enjoyed one of the most respected and most successful collegiate athletic programs in the East. Through his efforts ESC has expanded to twelve varsity sports and attained new memberships in the ECAC and NCAA while building a coaching staff that has compiled the College's best record in history. Al's selection to numerous sports committees in the Erie area along with posts in both the ECAC and Pennsylvania Conference bear out his dedication to the world of athletics. A graduate of Baldwin Wallace College, he served as Assistant Director of Ath-

letics at Akron University for two years and piloted Akron's cross country teams to championship finishes for 12 seasons. Al's wife, Pam, daughter, Beth, and their son, Dale, reside in Edinboro.

SPORTS INFORMATION DIRECTOR: Paul Newman began his duties five years ago as ESC's first Sports Information Director and now also serves as Assistant to the President. Paul is a 1964 graduate of Edinboro where he earned both his B.S. degree and M.Ed. while majoring in English. Prior to joining the Scots, he held a teaching position in Ashtabula, Ohio, for three years. In connection with his duties, he is also the District 18 Publicity Chairman for the National Association of Intercollegiate Athletics and recently completed a two-year term as President of the NAIA's Sports Information Director's Association. Paul, his wife, Connie, and their children, Paul, Jr. and Michele, make their home in Edinboro.



Paul Newman



Bob Klingler

TEAM TRAINER: Bob Klingler begins his sixth year of giving Fighting Scot athletes the tops in professional medical care. The 1952 Lock Haven grad ventured to Hermann School of Physical Therapy in Houston, Texas and became a registered physical therapist in 1954. He later received his M.S. from Bucknell. Prior to accepting his ESC post, Klingler taught at Milton Hershey, a private boys' school in Hershey, Pa., where he served as the Spartans' head football mentor, head track coach and assistant basketball coach. Both his cinder and cage teams never experienced a losing season, while his grid teams continually posted successful campaigns in the powerful Capitol Area Conference. Bob, his wife, Jill, and daughter, Julie, make their home in Edinboro.

A Glance into the Past



1971-72 VARSITY RESULTS

Overall Record: 17-9

ESC	Opp.	Leading Scorer	Leading Rebounder
91 Kenyon.....	84-W	F. Riley 27	R. Sulka 8
85 Lock Haven (OT)	82-W	J. Prokell 22	J. Prokell 8
73 Point Park	71-W	Riley, Foster .17	R. Sulka 15
82 Geneva	74-W	J. Prokell 20	C. Foster 12
70 Clarion (OT)	71-L	F. Riley 33	Prokell, Sulka. 9
85 Alma (OT)	80-W	F. Riley 23	C. Foster 11
65 Capital	78-L	J. Prokell 18	Prokell, Sulka. 8
105 Salem	91-W	F. Riley 29	D. Gerdich . . . 11
94 Marietta	87-W	J. Prokell 25	Prkll, Grdch. . 7
82 California	76-W	Prokell, Riley .22	R. Sulka 11
67 Alliance	83-L	Prokell, Riley .15	R. Sulka 14
77 Slippery Rock	83-L	F. Riley 21	J. Prokell 8
94 Mount Union	111-L	J. Prokell 26	J. Prokell 12
70 Alliance	69-W	J. Rom'n 21	D. Miller 11
90 Slippery Rock	87-W	Rom'n., Riley .21	J. Prokell 13
74 Indiana	70-W	R. Stauffer . . . 22	J. Prokell 11
71 Wittenberg	81-L	J. Prokell 19	Sulka, Rom'n. 6
74 Lock Haven	66-W	F. Riley 25	J. Rom'n 15
87 California	74-W	J. Prokell 24	J. Prokell 6
72 Clarion	75-L	R. Stauffer . . . 23	J. Prokell 10
62 Oneonta	87-L	J. Rom'n 22	J. Rom'n 9
76 Indiana (OT)	74-W	F. Riley 22	R. Sulka 10
72 Grove City	62-W	J. Prokell 25	J. Prokell 12
85 Slippery Rock*	75-W	J. Rom'n 27	J. Prokell 14
81 Clarion*	78-W	F. Riley 24	J. Prokell 10
72 Westmont, Cal. **	91-L	J. Prokell 19	J. Prokell 9

*NAIA District 18 Championship.

**National NAIA Tournament, Kansas City, Mo.

1971-72 VARSITY STATISTICS

Name	G	FGA	FGM	Pct.	FTA	FTM	Pct.	REB.	Avg.	TP	Avg.
Riley, F.	26	394	196	.497	118	100	.847	96	3.7	492	18.9
Prokell, J.	26	315	153	.486	192	127	.661	208	8.0	433	16.6
Stauffer, R.	26	267	138	.517	93	81	.871	84	3.2	357	13.7
Romaniszyn, J.	24	270	127	.470	112	79	.705	141	5.9	333	13.9
Sulka, R.	25	135	53	.393	65	35	.538	165	6.6	141	5.6
Gerdich, D.	21	93	36	.387	28	17	.607	99	4.7	89	4.2
Miller, D.	12	43	15	.349	16	10	.625	46	3.8	40	3.3
Kowit, J.	12	11	4	.364	15	6	.400	10	.8	14	1.2
Sample, P.	11	9	4	.444	4	2	.500	5	.4	10	.9
Jubeck, B.	7	8	2	.250	0	0	.000	2	.3	4	.6
Maiden, J.	1	1	0	.000	4	1	.250	1	1.0	1	1.0
Roche, M.	1	1	0	.000	0	0	.000	0	0.0	0	0.0
Betar, L.	1	1	0	.000	0	0	.000	0	0.0	0	0.0
Others	11	114	57	.500	46	28	.609	82	7.9	142	12.9
Team								85	3.3		
ESC Totals	26	1662	785	.472	693	486	.701	1024	39.4	2056	79.1
Opponents	26	1805	816	.452	653	428	.655	1116	42.9	2060	79.2

1971-72 JUNIOR VARSITY RECORD: 8-11

SPECIAL RECOGNITION -- "SCOTS OF THE PAST"

NAIA 2nd TEAM, ALL-AMERICAN 1964-1965: Dan Petchel	ASSOCIATED PRESS HONORS <i>Honorable Mention-All Pennsylvania</i> 1971-1972: Fred Riley 1969-1970: Fred Riley 1968-1969: Frank Smith
NAIA 3rd TEAM, ALL-AMERICAN 1971-1972: Fred Riley 1968-1969: Frank Smith 1967-1968: Frank Smith 1965-1966: Darryl Meachem	PC 1st TEAM (WEST) 1971-1972: Fred Riley 1970-1971: Fred Riley 1969-1970: Art Dickinson 1968-1969: Frank Smith 1967-1968: Don Dougan 1966-1967: Lynn Nelson 1965-1966: Darryl Meachem 1964-1965: Dan Petchel 1963-1964: Dan Petchel 1962-1963: Dan Petchel
NAIA ALL-AMERICA HONORABLE MENTION 1970-1971: Fred Riley	PC 2nd TEAM 1971-1972: Jim Romaniszyn 1970-1971: Dave Knowlton 1968-1969: Rod Herron 1967-1968: Harry Jenkins 1966-1967: Harry Jenkins 1965-1966: Dave Shenefelt 1964-1965: Dave Shenefelt 1962-1963: Ken Barker 1961-1962: Ken Barker
NAIA DISTRICT 18 1st TEAM 1970-1971: Fred Riley 1968-1969: Frank Smith 1967-1968: Frank Smith 1965-1966: Darryl Meachem	PC HONORABLE MENTION 1971-1972: Roy Stauffer 1968-1969: Tim Ziner 1966-1967: Butch Hurley 1964-1965: Dave Shenefelt 1962-1963: Ken Barker 1961-1962: Wendell Rojik
NAIA DISTRICT 30 1st TEAM 1964-1965: Dan Petchel	Jim Prokell Jim Prokell Jim Prokell Jim Prokell Jim Prokell Jim Prokell Mick Unick
NAIA DISTRICT 18 2nd TEAM 1971-1972: Jim Prokell 1970-1971: Jim Prokell 1969-1970: Art Dickinson 1967-1968: Don Dougan Mick Unick	Don Dougan Don Dougan Don Dougan Don Dougan Don Dougan
NAIA DISTRICT 18 HON. MENTION 1971-1972: Roy Stauffer 1969-1970: Fred Riley	Don Dougan
PITTSBURGH PRESS ALL-DISTRICT <i>First Team:</i> 1971-1972: Fred Riley 1971-1972: Jim Prokell 1968-1969: Frank Smith <i>Second Team:</i> 1970-1971: Fred Riley 1969-1970: Art Dickinson <i>Third Team:</i> 1970-1971: Jim Prokell 1969-1970: Jim Prokell	Wendell Rojik Jim Sims
ASSOCIATED PRESS HONORS <i>Third Team, All Pennsylvania:</i> 1967-1968: Frank Smith	

OTHERS

Fred Riley	UPI Small All-America 1971-72; Basketball News 2nd Team All-America 1971-72; PCPA Honorable Mention 1970-71; SOS Classic 1971-72.
Darryl Meachem	SOS Classic; SOS Outstanding Athlete; Penn-Ohio All-Section Team 1965-66.
Dave Shenefelt	Penn-Ohio Honorable Mention 1965-66.

TEAM RECORDS AND CHAMPIONSHIPS

TEAM RECORD—SEASON

Most Wins	19-5	James McDonald	1967-1968
	17-4	(regular season play)	
Best Season Record	12-1	Sox Harrison	1931-1932
Highest Scoring Average	89.4		1967-1968
Best Shooting Percentage	51.7		1966-1967
Best Free Throw Percentage	70.6		1967-1968
Best Rebounding Average	55.7		1965-1966
Best Rebounding Percentage	62.5		1966-1967
Most Field Goals	868	(24 games)	1967-1968
Most Consecutive Victories	11	1966-1967—	1967-1968
Most Consecutive Victories	10	(one season)	1967-1968
Most Consecutive Conference Wins	17		1967-1969

TEAM RECORDS—GAME

Most Points	133	Lock Haven	1967-1968
Most Field Goals	54	Lock Haven	1967-1968
Most Free Throws	31-49	California	1965-1966
	31-51	Lock Haven	1961-1962
Most Rebounds	93	Clarion (PC Record)	1968-1969
Most Points (two teams)	227	(ESC 119, Alliance 108)	1954-1955
Longest Game	3 O. T.	Lock Haven	1961-1962

CHAMPIONSHIPS

Western Division PSCAC	(Loyal Park)	1961-1962
Western Division PSCAC	(Jim McDonald)	1963-1964
Western Division PSCAC	(Jim McDonald)	1965-1966
*NAIA District 18 Championship	(Jim McDonald)	1965-1966
Western Division PSCAC	(Jim McDonald)	1967-1968
PSCAC State Championship	(Jim McDonald)	1967-1968
Western Division PC	(Jim McDonald)	1968-1969
*NAIA District 18 Championship	(Dave Rooney)	1971-1972

*Won the right to play in NAIA Tournament in Kansas City, Mo.

TOP CAREER SCORERS

1. Walt Askins.....	1,739	8. Rod Vashaw.....	879
2. Dan Petchel.....	1,344	9. Bob McVeigh.....	840
3. Fred Riley.....	1,279	10. Wendell Rojik.....	812
4. Frank Smith.....	1,225	11. Dave Shenefeld.....	797
5. Jim Prokell.....	1,196	12. Jim Sims.....	730
6. Don Dougan.....	1,095	13. Harry Jenkins.....	728
7. Darryl Meachem.....	881	14. Ken Barker.....	708

TOP CAREER REBOUNDERS

1. Don Dougan.....	992	5. Frank Smith.....	637
2. Darryl Meachem.....	897	6. Wendell Rojik.....	622
3. Dan Petchel.....	744	7. Jim Prokell.....	593
4. Ken Barker.....	689	8. Art Dickinson.....	442

INDIVIDUAL RECORDS -- SEASON

Most Points

Walt Askins	496	(19 games)	1956-1957
Fred Riley	492	(26 games)	1971-1972
Fred Riley	485	(24 games)	1970-1971
Frank Smith	466	(22 games)	1968-1969
Dan Petchel	460	(18 games)	1964-1965
Frank Smith	447	(24 games)	1967-1968

Highest Scoring Averages

Walt Askins	26.1	(19 games)	1956-1957
Dan Petchel	25.6	(18 games)	1964-1965
Frank Smith	30.1	(9 games)	1966-1967

Best Shooting Percentages

Lynn Nelson	58.3	(16 games)	1966-1967
Dan Petchel	55.8	(18 games)	1964-1965
Frank Smith	59.4	(9 games)	1966-1967

Best Foul Shooting Percentages

Roy Stauffer	87.1	(81-93)	1971-1972
Ken Gerber	85.1	(63-74)	1961-1962
Fred Riley	84.7	(100-118)	1971-1972

Most Rebounds

Darryl Meachem	393		1965-1966
----------------	-----	--	-----------

Best Rebounding Averages

Darryl Meachem	18.5	(10 games)	1966-1967
	17.05	(23 games)	1965-1966

Most Consecutive Foul Shots

Ken Gerber	38	(PSCAC Record)	1961-1962
------------	----	----------------	-----------

Most Assists

Dave Knowlton	194	(24 games)	1970-1971
---------------	-----	------------	-----------

INDIVIDUAL RECORDS -- GAME

Most Points

Frank Smith	54	Fredonia	1966-1967
Frank Smith	52	Kenyon	1968-1969

Most Field-Goals

Frank Smith	21	Waynesburg	1966-1967
Frank Smith	21	Kenyon	1968-1969

Most Rebounds

Don Dougan	38	Indiana State (PC Record)	1964-1965
------------	----	------------------------------	-----------

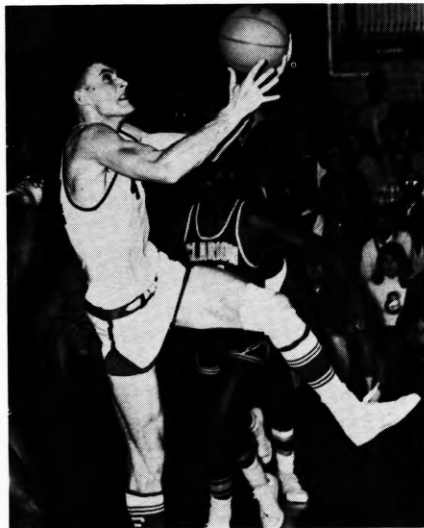
Most Foul Shots Made

Ken Gerber	14-14	Gannon	1961-1962
Roy Stauffer	14-17	Salem	1971-1972
Don Dougan	13-16	Baldwin-Wallace	1964-1965

Most Assists

Dave Knowlton	19	Grove City	1969-1970
---------------	----	------------	-----------

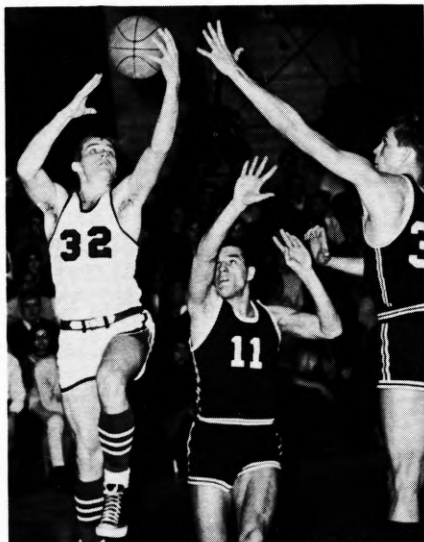
EDINBORO STATE ALL-AMERICANS



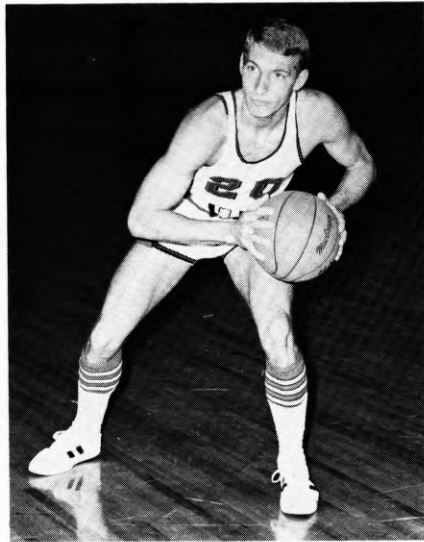
Dan Petchel (F) 1964-65



Darryl Meachem (F) 1965-66



Frank Smith (F) 1967-68, 1968-69



Fred Riley (G) 1971-72

Edinboro State's four All-American winners have been traditionally prolific scorers for the Fighting Scots. Three forwards and a guard comprise the quartet which was groomed by Jim McDonald for their national honors on the Edinboro hardwoods.

Dan Petchel ranks as the second all-time scorer in ESC's cage history with his 1,344 career points while Fred Riley and Frank Smith hold down the number three and four spots on the scoring list with their respective 1,279 and 1,225-point outputs. Darryl Meachem ranks seventh among the all-time top scorers with his 881 tallies.

In the rebounding department, Meachem and Petchel are two of the college's top three career rebounders with 897 and 744, respectively. Meachem pulled down 393 rebounds for a school record established during the 1965-66 season.

Smith owns two individual scoring records. His 54-point output against Fredonia in the 1966-67 season earned him the most points scored in a single game record. The 6-1, forward compiled the most field goals scored in a single game record with 21 two-point markers against Waynesburg in the same season and 21 against Kenyon in 1969.

ALL-TIME SCORES -- 1929-1972

1928-29	
Coach: Sox Harrison	
Won 12 — Lost 2	
ESC	Opp.
58 Clarion.....	27
58 Fredonia.....	26
58 Youngstown	
YMCA.....	38
87 Kanty College...	21
20 Clarion.....	14
36 California.....	25
46 Slippery Rock...	32
24 Slippery Rock...	36
49 Fredonia.....	29
50 Indiana.....	18
40 California.....	19
42 Youngstown	
YMCA.....	44
38 Indiana.....	22
34 Slippery Rock...	30
<u>640</u>	<u>381</u>

1929-30	
Coach: Sox Harrison	
Won 8 — Lost 6	
ESC	Opp.
29 Ashland.....	41
25 Slippery Rock...	24
18 Buffalo St.Tchrs..	20
20 Canisius.....	38
36 West Chester....	37
31 Waynesburg....	25
25 Slippery Rock...	22
40 California.....	38
32 Clarion.....	22
45 Indiana.....	25
41 Buffalo St.Tchrs..	22
39 California.....	52
32 Clarion.....	19
23 Indiana.....	24
<u>436</u>	<u>409</u>

1930-31	
Coach: Sox Harrison	
Won 10 — Lost 5	
ESC	Opp.
55 P.N.A.C.....	15
42 P.N.A.C.....	20
43 Erie Branch....	22
24 West Chester....	20
43 Kutztown.....	32
34 Slippery Rock...	33
21 Clarion.....	14
29 Indiana.....	23
44 Erie Branch....	24
28 Slippery Rock...	29
38 California.....	38
34 California.....	38
59 Clarion.....	41
47 Indiana.....	30
21 Allegheny.....	29
<u>562</u>	<u>409</u>

1931-32	
Coach: Sox Harrison	
Won 12 — Lost 1	
ESC	Opp.
60 Fredonia.....	26

37 Indiana.....	31
46 Alliance.....	23
42 Kutztown.....	31
22 California.....	23
31 Slippery Rock...	22
34 California.....	17
44 Slippery Rock...	35
46 Alliance.....	31
47 Clarion.....	16
37 Indiana.....	15
32 Clarion.....	22
60 Fredonia.....	22
<u>604</u>	<u>363</u>

1932-33	
Coach: Sox Harrison	
(Being Researched)	

1933-34	
Coach: Sox Harrison	
Won 8 — Lost 5	
ESC	Opp.
27 Findley.....	28
50 Fredonia.....	22
33 Clarion.....	20
31 Westminster....	41
35 California.....	32
32 Slippery Rock...	37
50 Indiana.....	34
54 Fredonia.....	29
59 California.....	25
30 Westminster....	45
46 Slippery Rock...	34
36 Indiana.....	38
36 Clarion.....	34
<u>519</u>	<u>419</u>

1934-35	
Coach: Sox Harrison	
(Being Researched)	
1935-36	
Coach: Sox Harrison	
Won 5 — Lost 5	
ESC	Opp.
24 Thiel.....	42
32 Thiel.....	40
54 Clarion.....	35
33 Clarion.....	35
30 Slippery Rock...	37
40 Slippery Rock...	37
44 Indiana.....	38
32 Indiana.....	38
50 California.....	32
27 California.....	33
<u>366</u>	<u>360</u>

1936-37	
Coach: Sox Harrison	
Won 7 — Lost 6	
ESC	Opp.
49 Ohio Chiropody..	18
33 California.....	43
36 Indiana.....	39
41 Clarion.....	46
31 California.....	37
30 Thiel.....	35
47 Fredonia.....	35

1937-38	
Coach: Sox Harrison	
Won 6 — Lost 8	
ESC	Opp.
36 Kent.....	37
44 Fredonia.....	45
33 Clarion.....	28
54 Fredonia.....	41
48 California.....	44
37 Indiana.....	55
39 Thiel.....	34
37 Ohio Chiropody..	23
32 California.....	49
56 Slippery Rock...	57
41 Slippery Rock...	42
41 Indiana.....	43
35 Clarion.....	41
49 Ohio Chiropody..	37
<u>582</u>	<u>576</u>

1938-39	
Coach: Sox Harrison	
Won 8 — Lost 2	
ESC	Opp.
43 Fredonia.....	37
53 Clarion.....	35
64 California.....	42
46 Fredonia.....	22
54 Indiana.....	36
50 Clarion.....	51
51 Slippery Rock...	34
45 California.....	32
39 Slippery Rock...	43
47 Indiana.....	42
<u>492</u>	<u>374</u>

1939-40	
Coach: Sox Harrison	
Won 14 — Lost 4	
ESC	Opp.
49 St. Marys.....	38
45 Fredonia.....	37
51 Ohio Chiropody..	27
54 Clarion.....	33
43 Canisius.....	52
32 Fredonia.....	28
44 Alliance.....	40
37 Indiana.....	29
32 Clarion.....	30
52 Slippery Rock...	44
54 California.....	44
39 Lawrence Tech..	45
50 California.....	51
36 Slippery Rock...	67
40 Indiana.....	35
39 Alliance.....	18
47 Ohio Chiropody..	37
<u>744</u>	<u>655</u>

1940-41
Coach: Sox Harrison
Won 11 — Lost 4

ESC	Opp.
45	DeSalles..... 44
54	Ohio Chiropody... 33
46	Lawrence Tech... 44
29	Fredonia..... 28
53	Thiel..... 42
49	Thiel..... 50
36	Slippery Rock... 26
34	California..... 36
50	Fredonia..... 37
43	Clarion..... 33
38	California..... 49
42	Indiana..... 32
35	Indiana..... 34
51	Clarion..... 36
50	Slippery Rock... 53
655577

1941-42
Coach: Sox Harrison
Won 4 — Lost 9

ESC	Opp.
57	Fredonia..... 29
44	Alliance..... 33
36	Fredonia..... 38
27	Indiana..... 44
35	Slippery Rock... 51
36	California..... 40
28	Clarion..... 41
—	California..... —
37	Lawrence Tech... 34
33	Canisius..... 66
333376

1942-43
Coach: Sox Harrison
Won 1 — Lost 1

ESC	Opp.
34	Lawrence Tech... 50
—	Alliance..... —
(Season Halted—W.W.II)	

1943-44 (War)

1944-45 (War)

1945-46
Coach: Sox Harrison
Won 0 — Lost 5

ESC	Opp.
32	Clarion..... 53
38	Slippery Rock... 74
33	Clarion..... 42
33	Alliance..... 52
39	Alliance.....(OT) 45
175266

1946-47
Coach: Sox Harrison
Won 7 — Lost 8

ESC	Opp.
39	Buffalo State... 51
54	Fredonia..... 44
44	Alliance..... 53
44	Indiana..... 45
34	Fenn..... 33
46	Slippery Rock... 51

63	California..... 45
45	Clarion..... 46
62	Alliance..... 55
48	Indiana..... 57
42	California..... 45
43	Clarion..... 41
40	Fenn..... 37
54	Fredonia..... 25
44	Slippery Rock... 52
702680

1947-48
Coach: Sox Harrison
Won 4 — Lost 11

ESC	Opp.
62	Fredonia..... 37
51	Fenn..... 46
43	Alliance..... 54
51	Salem..... 57
55	California..... 63
53	California..... 71
56	Clarion..... 60
36	Alliance..... 37
51	Fredonia..... 49
69	Thiel..... 38
48	Clarion..... 51
55	Indiana..... 62
60	Slippery Rock... 73
49	Indiana..... 71
45	Slippery Rock... 77
784846

1948-49
Coach: Sox Harrison
Won 7 — Lost 9

ESC	Opp.
48	Fredonia..... 21
55	Alliance..... 56
44	Slippery Rock... 57
57	Gannon..... 48
65	Indiana..... 75
50	Slippery Rock... 67
50	Clarion..... 48
45	Buffalo..... 57
48	Fredonia..... 43
55	Alliance..... 44
57	California..... 54
46	Clarion..... 60
51	Gannon..... 52
50	Thiel..... 76
81	California..... 69
56	Indiana..... 45
858872

1949-50
Coach: Sox Harrison
Won 12 — Lost 5

ESC	Opp.
72	Fredonia..... 44
59	Alliance..... 40
55	Grove City..... 54
62	Gannon..... 57
66	California..... 50
54	Indiana..... 70
52	Slippery Rock... 58
52	Gannon..... 68
45	Slippery Rock... 42
49	California..... 64
60	Clarion..... 50
35	Buffalo..... 47

60	Indiana..... 56
58	Clarion..... 50
73	Alliance..... 57
61	Fredonia..... 52
65	Thiel..... 51
978910

1950-51
Coach: Sox Harrison
Won 9 — Lost 9

ESC	Opp.
64	Allegheny..... 52
55	Fredonia..... 46
61	Slippery Rock... 60
82	Fredonia..... 72
79	Alliance..... 61
65	Gannon..... 73
53	Indiana..... 54
82	Clarion..... 84
65	Slippery Rock... 90
55	Buffalo..... 62
66	Gannon..... 43
62	California..... 77
82	Clarion..... 91
63	Alliance..... 55
52	Fenn..... 75
77	Thiel..... 70
80	California..... 63
84	Grove City..... 99
1,2271,227

1951-52
Coach: Sox Harrison
Won 6 — Lost 12

ESC	Opp.
46	Fredonia..... 42
58	Allegheny..... 79
63	California..... 55
46	Gannon..... 48
57	Slippery Rock... 61
66	Fredonia..... 68
60	Buffalo..... 55
67	Gannon..... 85
77	Alliance..... 58
71	Indiana..... 74
49	Slippery Rock... 91
68	Clarion..... 82
79	Grove City..... 83
61	California..... 92
74	Clarion..... 106
67	Alliance..... 57
56	Thiel..... 55
63	Geneva..... 85
1,1281,276

1952-53
Coach: Sox Harrison
(Being Researched)

ESC	Opp.
57	Fredonia..... 56
68	Allegheny..... 78
67	Grove City..... 77
51	Alliance..... 57
75	Indiana..... 87
67	Slippery Rock... 92
67	Gannon..... 71
—	Alliance..... —
68	Gannon..... 81
68	Indiana..... 64

77	Thiel..... 59
75	Allegheny..... 93
85	Fredonia..... 68
86	California..... 81
76	Clarion..... 82
—	Grove City..... —
—	California..... —
77	Thiel..... 66
—	Clarion..... —
—	Geneva..... —
—	Slippery Rock... —

1953-54
Coach: Art McComb
(Being Researched)

1954-55
Coach: Art McComb
Won 8 — Lost 12
(Being Researched)

ESC	Opp.
62	Gannon..... 77
58	Indiana..... 97
—	Grove City..... —
—	Fredonia..... —
59	Allegheny..... 80
—	Thiel..... —
119	Alliance..... 108
72	Slippery Rock... 67
—	California..... —
61	Indiana..... 69
—	Slippery Rock... —
54	Gannon..... 70
—	California..... —
—	Clarion..... —
65	Fredonia..... 62
80	Grove City..... 77
—	Clarion..... —
—	Thiel..... —
61	Allegheny..... 79

1955-56
Coach: Art McComb
Won 4 — Lost 16

ESC	Opp.
62	Allegheny..... 95
53	Alliance..... 69
76	Indiana..... 91
52	Grove City..... 61
56	Fredonia..... 54
74	Allegheny..... 84
63	Thiel..... 75
54	Slippery Rock... 77
62	Gannon..... 85
65	Slippery Rock... 80
77	Thiel..... 70
57	Clarion..... 68
61	California..... 65
67	Fredonia..... 82
72	Indiana..... 131
82	Alliance..... 76
64	California..... 86
64	Clarion..... 91
74	Grove City..... 76
55	Gannon..... 71
1,2901,587

1956-57
Coach: Robert Thurbon
Won 5 — Lost 14

ESC	Opp.
81	Grove City..... 104
63	Allegheny..... 74
66	Thiel..... 90
73	California..... 110
68	Slippery Rock... 78
68	Grove City..... 105
66	Gannon..... 80
71	Clarion..... 72
84	Fredonia..... 77
61	Thiel..... 64
67	California..... 74
73	Allegheny..... 60
100	Fredonia..... 66
100	Alliance..... 88
68	Fenn..... 81
78	Slippery Rock... 97
107	Clarion..... 88
94	Alliance..... 96
89	Gannon..... 90
1,4771,594

1957-58
Coach: Robert Thurbon
Won 10 — Lost 11

ESC	Opp.
64	Grove City..... 72
84	Slippery Rock... 79
102	Alliance..... 103
90	Fredonia..... 76
64	Thiel..... 61
65	California..... 60
63	Indiana..... 96
52	Gannon..... 60
92	Clarion..... 110
76	Lock Haven (OT) 74
83	Fredonia..... 69
75	Thiel..... 67
77	California..... 88
94	Slippery Rock... 97
54	Grove City..... 71
76	Allegheny..... 67
74	Fenn..... 61
75	Alliance..... 70
65	Indiana..... 97
84	Clarion..... 99
65	Gannon..... (OT) 75
1,5741,652

1958-59
Coach: Robert Thurbon
Won 8 — Lost 12

ESC	Opp.
75	Alliance..... 80
101	Slippery Rock... 92
61	Grove City..... 56
79	Thiel..... 72
62	Gannon..... 86
88	Clarion..... 101
91	California..... 99
94	Slippery Rock... 106
80	Thiel..... 78
83	Fredonia..... 74
61	Lock Haven..... 74
56	Mansfield..... 99
66	Grove City..... 75
69	Mansfield..... 98

114	Alliance..... 104
102	California..... 93
104	Clarion..... 112
99	Fredonia..... 72
77	Gannon..... 79
106	Allegheny..... 109
1,6681,761

1959-60
Coach: Jim Smart
Won 6 — Lost 13
(Scores not available)

1960-61
Coach: Loyal Park
Won 6 — Lost 15

ESC	Opp.
68	Lock Haven..... 87
45	Alliance..... 61
43	Indiana..... 73
61	Clarion..... 71
77	Grove City..... 95
54	Mt. Union..... 90
56	California..... 58
79	Indiana..... 89
57	Gannon..... 62
73	Slippery Rock... 85
33	Alliance..... 58
85	Fredonia..... 51
88	Thiel..... 66
86	California..... 68
64	Slippery Rock... 73
70	Clarion..... 67
62	Gannon..... 83
55	Grove City..... 73
87	Allegheny... (OT) 93
93	Fredonia..... 78
67	Lock Haven..... 65
1,4031,546

1961-62
Coach: Loyal Park
Won 17 — Lost 7

ESC	Opp.
60	Fredonia..... 58
60	Clarion..... 65
48	Grove City..... 71
81	Slippery Rock... 61
63	Carnegie Tech... 76
73	Roberts Wesleyan 64
81	California..... 51
81	Indiana..... 67
56	Gannon..... (OT) 58
83	Fenn..... 52
103	Lock Haven.....
(3 OT) 101	
63	Alliance..... 52
87	Fredonia..... 80
71	Thiel..... 63
82	California..... 64
67	Clarion..... 62
56	Alliance..... 69
74	Indiana..... 82
69	Thiel..... 60
72	Lock Haven..... 60
76	Slippery Rock... 71
102	Allegheny..... 80
1,6081,467

Western Division
Championship—PSCAC
86 Slippery Rock... 68
State Championship—
PSCAC
54 Mansfield..... 58
1,7481,593

1962-63
Coach: Jim McDonald
Won 12 — Lost 9
ESC Opp.
66 Bluffton..... 46
82 Alliance..... 86
91 Clarion..... 83
70 Slippery Rock... 64
60 Carnegie Tech... 63
87 California..... 56
52 Gannon..... 60
74 Thiel..... 64
66 Fenn..... 68
72 Lock Haven..... 49
72 Thiel..... 64
75 Indiana..... 66
77 Fredonia..... 66
67 Alliance..... 84
73 California..... 83
61 Clarion..... 58
68 Indiana..... 75
97 Fredonia..... 71
83 Lock Haven..... 52
64 Slippery Rock... 70
1,3851,264

Western Division
Championship—PSCAC
69 Slippery Rock... 83
1,5261,396
1963-64
Coach: Jim McDonald
Won 16 — Lost 6
ESC Opp.
75 Alliance..... 59
63 Slippery Rock... 67
73 Thiel..... 45
92 Baldwin-Wallace. 90
72 Bloomsburg..... 71
84 Clarion..... 66
106 Fredonia..... 81
94 Fenn..... 82
71 Bloomsburg..... 74
85 Indiana..... 99
80 Lock Haven..... 48
88 Roberts Wesleyan 73
83 Lock Haven..... 61
81 Alliance..... 91
85 California..... 80
86 Slippery Rock... 79
99 Indiana..... 88
95 Clarion..... 90
67 California..... 55
72 Gannon..... (OT) 71
1,6511,470

State Championship—
PSCAC
90 Mansfield..... 98
NAIA District 30
Championship
67 Westminster..... 81
1,8081,649

1964-65
Coach: Jim McDonald
Won 10 — Lost 8
ESC Opp.
99 Grove City..... 89
68 Alliance..... 80
76 Slippery Rock... 80
92 Thiel..... 61
109 Lock Haven..... 79
104 Walsh..... 72
90 Clarion..... 69
100 Indiana..... 87
70 California..... 82
89 Lock Haven..... 53
84 Alliance..... 89
86 Geneva..... 85
86 Slippery Rock... 63
91 Indiana..... 82
69 Fenn..... 77
95 California.....108
50 Gannon..... 58
77 Clarion..... 79
1,5351,393

1965-66
Coach: Jim McDonald
Won 18 — Lost 5
ESC Opp.
84 Mansfield..... 83
70 Alliance..... 68
67 Slippery Rock... 56
95 Lock Haven..... 55
80 Clarion..... 71
104 Waynesburg... 88
68 Indiana..... 71
83 Fredonia..... 62
78 California.....102
89 Lock Haven..... 72
86 Mansfield..... 82
90 Alliance..... 83
99 Michigan Luth... 58
79 Slippery Rock... 72
95 Indiana..... 85
70 Geneva..... 71
93 Cleveland State.. 72
83 Clarion..... 79
71 California..... 58
1,5841,388

State Championship—
PSCAC
76 Cheyney..... 96
NAIA District 18
Championship
76 Geneva..... 60
79 California..... 62
National NAIA
Tournament, K. C., Mo.
53 Central Michigan. 67
1,8681,673

1966-67
Coach: Jim McDonald
Won 11 — Lost 11
ESC Opp.
88 Mansfield..... 73
90 Alliance..... 93
99 Slippery Rock... 94
90 Lock Haven..... 77
73 Clarion..... 71
87 California..... 92
110 Fredonia..... 64
123 Waynesburg... 97
94 Indiana..... 95
83 W. Va. Wesleyan. (OT) 85
90 Lock Haven..... 64
71 Mansfield..... 77
67 Alliance..... 66
71 Cleveland State.. 75
89 Roberts Wesleyan 78
75 Slippery Rock... (OT) 77
77 Indiana..... 85
98 Geneva.....107
26 California..... 31
85 Clarion..... 75
70 Baldwin Wallace.102
87 Walsh..... 66
1,8431,744

1967-68
Coach: Jim McDonald
Won 19 — Lost 5
ESC Opp.
109 Waynesburg... 84
84 Slippery Rock... 56
133 Lock Haven..... 90
103 Clarion..... 92
98 California..... 91
93 Fredonia..... 84
87 Indiana U. of Pa.. 85
99 Mansfield..... 81
90 Alliance..... 72
109 W. Va. Wesleyan. 78
65 Mansfield.....106
83 Lock Haven..... 66
90 Alliance(OT)... 88
108 Cleveland State.. 60
110 Slippery Rock... 73
67 Indiana U. of Pa.. 69
80 Roberts Wesleyan 87
78 Geneva..... 87
97 California..... 75
110 Clarion..... 84
86 Grove City..... 65

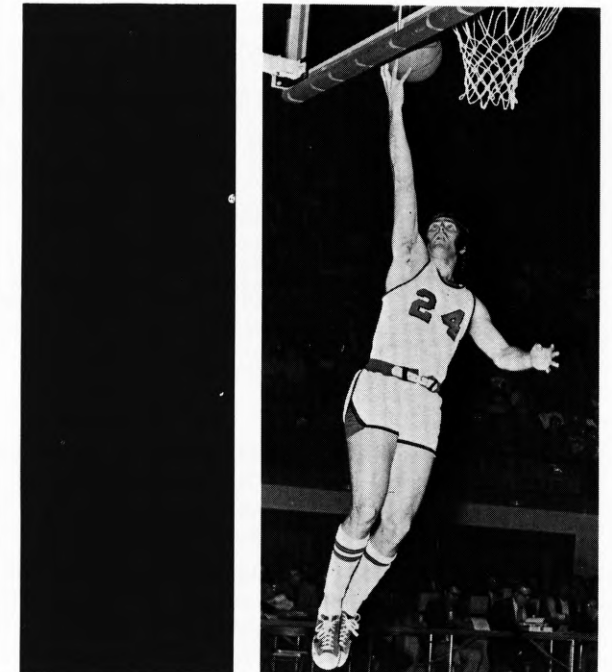
State Championship—
PSCAC
73 Cheyney State... 61
NAIA District 18—
Championship
55 Gannon..... 52
41 Westminster..... 48
2,1481,834

1968-69
Coach: Jim McDonald
Won 14 — Lost 8
ESC Opp.
78 Geneva..... 81
103 Lock Haven..... 67
99 Slippery Rock... 73
71 Clarion State... 69
126 Roberts Wesleyan 66
85 Cal. S. Fullerton. 63
58 Long Beach State 84
78 Los Angeles State 73
110 Kenyon..... 99
74 Alliance..... 86
93 California State.. 80
93 Lock Haven..... 64
87 Alliance..... 73
72 Fredonia State... 62
95 Slippery Rock... 78
67 Indiana U. of Pa.. 89
57 California State.. 54
112 Clarion State... 78
86 Grove City..... 98
75 Indiana U. of Pa.. 81
PC State Championship
69 Cheyney State... 83
NAIA District 18
Playoffs
57 Gannon..... 69
1,8451,670

1969-70
Coach: Jim McDonald
Won 13 — Lost 9
ESC Opp.
88 Grove City..... 82
115 Pitt-Johnstown.. 55
70 Lock Haven..... 67
75 Slippery Rock... 69
72 Clarion State... 75
57 Fredonia State... 60
85 North Michigan.. 92
85 U. Wisconsin....104
88 Alliance..... 75
77 Lock Haven..... 60
64 Alliance..... 77
80 Slippery Rock... 57
72 Indiana U. of Pa.. 75
70 Roberts Wesleyan 58
68 California State.. 77
71 Point Park... 54
72 Clarion State... 52
77 Geneva..... 74
73 Indiana U. of Pa.. 60
66 California State.. 77
NAIA District 18
Playoffs
68 Indiana U. of Pa.. (OT) 67
71 California State.. 72
1,6641,539

1970-71
Coach: Jim McDonald
Won 16 — Lost 8
ESC Opp.
96 Grove City..... 84
81 Alliance..... 69
115 Lock Haven.....79
88 Slippery Rock... 76
116 W. Ontario..... 62
60 Clarion..... 66
81 Ohio Wesleyan... 67
87 Hiram..... 50
116 North Michigan.. 98
96 Kenyon..... 98
75 California..... 66
91 Mars Hill..... 68
96 Geneva..... 75
73 Slippery Rock... 77
64 Indiana U. of Pa.. 84
82 Lock Haven..... 92
91 Oneonta State... 64
93 California..... 83
85 Clarion(OT)... 87
89 Alliance..... 83
88 W. Va. Wesleyan.. 78
61 Indiana U. of Pa.. 68
NAIA District 18
Playoffs
81 Clarion..... 70
60 Indiana U. of Pa.. 67
2,0651,811

1971-72
Coach: Dave Rooney
Won 17 — Lost 9
ESC Opp.
91 Kenyon..... 84
85 Lock Haven (OT) 82
73 Point Park..... 71
82 Geneva..... 74
70 Clarion (OT)... 71
85 Alma (OT)..... 80
65 Capital..... 78
105 Salem..... 91
94 Marietta..... 87
82 California..... 76
67 Alliance..... 83
77 Slippery Rock... 83
94 Mount Union... 111
70 Alliance..... 69
90 Slippery Rock... 87
74 Indiana..... 70
71 Wittenberg..... 81
74 Lock Haven..... 66
87 California..... 74
72 Clarion..... 75
62 Oneonta..... 87
76 Indiana (OT)... 74
72 Grove City..... 62
NAIA District 18
Playoffs
85 Slippery Rock... 75
81 Clarion..... 78
National NAIA
Tournament
Kansas City, Mo.
72 Westmont, Cal... 91
2,0562,060



Kowitz Gets Two At K. C.

SEASONS RANKED BY PERCENTAGES

YEAR	W-L	Pct.	YEAR	W-L	Pct.
1. 1931-32	12-1	.923	19. 1964-65	10-8	.555
2. 1928-29	12-2	.857	20. 1936-37	7-6	.538
3. 1938-39	8-2	.800	21. 1966-67	10-10	.500
4. 1967-68	19-5	.792	22. 1950-51	9-9	.500
5. 1965-66	18-5	.782	23. 1942-43	1-1	.500
6. 1939-40	14-4	.778	24. 1935-36	5-5	.500
7. 1940-41	11-4	.733	25. 1946-47	7-8	.466
8. 1963-64	16-6	.727	26. 1957-58	10-11	.452
9. 1961-62	17-7	.708	27. 1948-49	7-9	.437
10. 1949-50	12-5	.705	28. 1937-38	6-8	.428
11. 1970-71	16-8	.667	29. 1958-59	8-12	.400
12. 1930-31	10-5	.667	30. 1951-52	6-12	.333
13. 1971-72	17-9	.654	31. 1941-42	4-9	.307
14. 1968-69	14-8	.636	32. 1960-61	6-15	.281
15. 1933-34	8-5	.615	33. 1947-48	4-11	.266
16. 1969-70	13-9	.591	34. 1956-57	5-14	.263
17. 1962-63	12-9	.571	35. 1955-56	4-16	.200
18. 1929-30	8-6	.571	36. 1945-46	0-5	.000

RESULTS BY SEASONS

Year	G	W	L	Points		Year	G	W	L	Points	
				For	Agst.					For	Agst.
1928-29	14	12	2	640	381	1950-51	18	9	9	1,227	1,227
1929-30	14	8	6	436	409	1951-52	18	6	12	1,128	1,276
1930-31	15	10	5	562	409	1952-53	(Being Researched)				
1931-32	13	12	1	604	363	1953-54	(Being Researched)				
1932-33	(Being Researched)					1954-55	(Being Researched)				
1933-34	13	8	5	519	419	1955-56	20	4	16	1,290	1,587
1934-35	(Being Researched)					1956-57	19	5	14	1,477	1,594
1935-36	10	5	5	366	360	1957-58	21	10	11	1,574	1,652
1936-37	13	7	6	529	469	1958-59	20	8	12	1,668	1,761
1937-38	14	6	8	582	576	1959-60	(Being Researched)				
1938-39	10	8	2	492	374	1960-61	21	6	15	1,403	1,546
1939-40	18	14	4	744	655	1961-62	24	17	7	1,748	1,593
1940-41	15	11	4	655	577	1962-63	21	12	9	1,526	1,396
1941-42	13	4	9	333	376	1963-64	22	16	6	1,808	1,649
1942-43	2	1	1	34	50	1964-65	18	10	8	1,535	1,393
1943-44	War					1965-66	23	18	5	1,868	1,673
1944-45	War					1966-67	22	11	11	1,843	1,744
1945-46	5	0	5	175	266	1967-68	24	19	5	2,148	1,834
1946-47	15	7	8	702	680	1968-69	22	14	8	1,845	1,670
1947-48	15	4	11	784	846	1969-70	22	13	9	1,664	1,539
1948-49	16	7	9	858	872	1970-71	24	16	8	2,065	1,811
1949-50	17	12	5	978	910	1971-72	26	17	9	2,056	2,060
Totals						617 347 270 39,866 37,997					

EDINBORO CENTURY CLUB

ESC	Opp.	Year	ESC	Opp.	Year		
133	Lock Haven	90	1967-68	109	Lock Haven	79	1964-65
126	Roberts Weslyn.	66	1968-69	108	Cleveland St.	60	1967-68
123	Waynesburg	97	1966-67	107	Clarion	88	1956-57
119	Alliance	108	1954-55	106	Fredonia	81	1963-64
116	N. Michigan	98	1970-71	105	Salem	91	1971-72
116	Western Ontario	62	1970-71	104	Walsh	72	1964-65
115	Lock Haven	79	1970-71	104	Waynesburg	88	1965-66
115	Pitt-Johnstown	55	1969-70	103	Lock Haven	101	1961-62
114	Alliance	104	1958-59	103	Clarion	92	1967-68
112	Clarion	78	1968-69	103	Lock Haven	67	1968-69
110	Slippery Rock	73	1967-68	102	California	93	1958-59
110	Fredonia	64	1966-67	102	Allegheny	80	1961-62
110	Clarion	84	1967-68	101	Slippery Rock	92	1958-59
110	Kenyon	99	1968-69	100	Fredonia	66	1956-57
109	W. Va. Weslyn.	78	1967-68	100	Alliance	88	1956-57
109	Waynesburg	84	1967-68	100	Indiana	87	1964-65

OPPONENTS CENTURY CLUB

Opp.	ESC	Year	Opp.	ESC	Year		
131	Indiana	72	1955-56	107	Geneva	98	1966-67
112	Clarion	104	1958-59	106	Mansfield	65	1967-68
111	Mount Union	94	1971-72	106	Slippery Rock	94	1958-59
110	California	73	1956-57	104	U. of Wisc., Mil.	85	1969-70
110	Clarion	92	1957-58	103	Alliance	102	1957-58
109	Allegheny	106	1958-59	102	California	78	1965-66
108	California	95	1964-65	101	Clarion	88	1958-59

1971-72 PENNSYLVANIA CONFERENCE RESULTS

WESTERN DIVISION						EASTERN DIVISION							
Conference			Full Season			Conference			Full Season				
W	L	Pct.	W	L	OA DA	W	L	Pct.	W	L	OA DA		
Slippery Rock	6	2	.750	17	7	88.0 76.7	*Cheyney	12	2	.857	22	6	90.4 75.1
Clarion	6	2	.750	18	7	73.9 65.9	E. Stroudsburg	11	3	.786	20	4	78.3 65.1
Edinboro	5	3	.625	17	9	79.1 79.2	Bloomsburg	11	3	.786	18	7	79.7 69.2
California	2	6	.250	13	9	75.4 73.3	Mansfield	8	5	.615	13	8	82.9 74.1
Lock Haven	1	7	.125	8	14	77.9 79.0	West Chester	6	8	.429	8	16	71.0 75.4
**Indiana	—	—	—	15	9	74.5 70.3	Shippensburg	3	10	.231	9	15	72.6 82.4
*Won championship playoff.						Millersville	3	11	.214	10	16	74.1 79.3	
**Ineligible for title.						Kutztown	1	13	.071	1	21	64.1 88.0	

A wide-open race is forecast in the Western Division with Clarion and Indiana both capable of dethroning champion Slippery Rock. Edinboro will have to operate without two all-conference players, but still should be strong. California rates as a darkhorse with Lock Haven challenging the leaders.

Defending conference champion Cheyney State may be seriously challenged in the Eastern Division of the PC by Bloomsburg and Mansfield. Bloomsburg has 6-8 center Jim Willis on hand, while Mansfield returns four starters. East Stroudsburg, a contender for the last two years, could drop a notch, while West Chester moves up in the Eastern Division.



A WINNER FROM ATHLETICS

From its beginnings as a private academy in 1856, Edinboro State College has surged to the forefront as one of the leading educational institutions in western Pennsylvania. Located just 15 miles south of Erie, Pa., the college's setting offers a contrast of seasons. Enhanced by the beauty of Edinboro Lake, the community serves as a resort center during the summer while numerous nearby ski slopes offer a variety of recreation in the picturesque winter months. The college's location enables it to readily serve the tri-state area with its proximity to Pittsburgh, Pa. (125 miles), Cleveland, Ohio (100 miles) and Buffalo, New York (120 miles). Moreover, it is easily accessible from the north and south by Interstate 79 and east and west by Interstate 90.

TO CLASSROOM ESC

Until recently the chief objective of the college was the education and preparation of classroom teachers for the schools of the Commonwealth. With the implementation of programs in arts, sciences and humanities, Edinboro has now become a multi-purpose institution of higher learning serving the educational needs of a tri-state area.

The College has experienced a rapid growth rate in students faculty and physical plant. Forty buildings cover the 585-acre campus which now services more than 7,000 students.

QUALITY LEADERSHIP KEEPS ESC ON THE MOVE



Edinboro President – Dr. Chester T. McNerney

In its university oriented role, the College makes contributions in the fields of education, government, conservation, environmental improvement, urban and rural problems, crime prevention, and service to business and industry. Edinboro seeks to offer educational programs which will afford maximum opportunities to its potential students and to meet the educational needs of its region from a professional and a cultural standpoint.

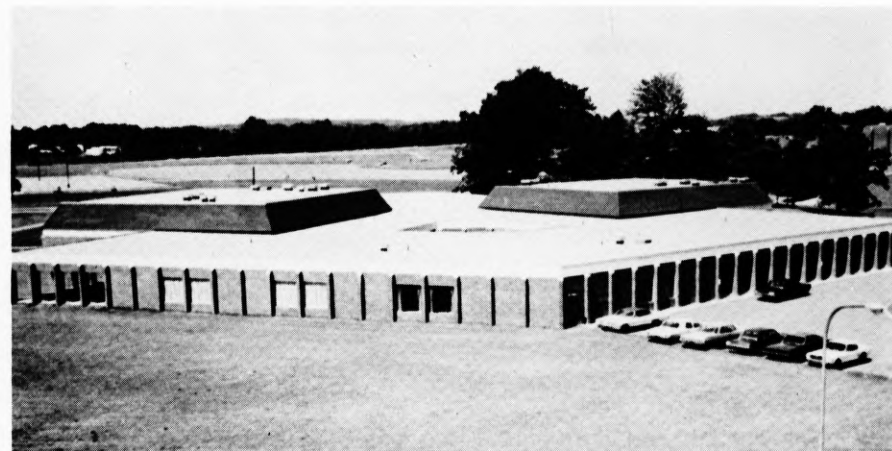
With the addition of the liberal arts degree program in 1962, the College's curriculum has expanded to include numerous course selections. Curricula range from elementary and secondary education, special fields in art, library science, music, speech and special education to medical technology.

Student activities are designed to develop the personality, poise, self-confidence and professional awareness that will fit graduates for significant participation in American society.

The College stresses friendly relations among students and faculty, as well as active student participation in decisions affecting them. Quality education has been an Edinboro tradition for more than a century as graduates have distinguished themselves in the professions, business and industry.

With the appointment of Dr. Chester T. McNerney as Edinboro State's President in 1966, the College witnessed the addition of a prominent leader who is dedicated to the academic life, a tireless advocate of personal involvement in the religious and civic affairs of one's community, and an educator who visibly believes in and practices total individual professional commitment.

Under Dr. McNerney's leadership Edinboro State has undergone innovations and reorganization that has enabled the College to keep in step with the times and maintain its academic excellence.



Miller Research Learning Center



Education Classroom Building



New Student Union

ATHLETIC PROGRAM SETS TORRID PACE

While Edinboro State has been flourishing as an educational institution, the College's athletic program has kept stride with a torrid pace of its own. The Scots' athletic program has grown to include 12 varsity sports, having added five new sports within the last four years. Officially listed on the Fighting Scot register are baseball, basketball, bowling, cross country, football, golf, judo, soccer, swimming, tennis, track and wrestling.

Scot teams have been busy adding victories to the list of varsity sports as the Clansmen won 7 out of every 10 contests during last year's athletic schedule.

Intercollegiate athletics play an important role in the total educational program of Edinboro State College. The program is so conducted as to assure wholesome use of leisure time, a healthy focal point for the experience and the expression of group spirit, and a laboratory experience for prospective coaches.

Sox Harrison Stadium, one of two major facilities located in the sports complex, has a seating capacity for 5,000 spectators and provides competition areas for both the football and track teams. A baseball diamond of major league specifications is also located just to the west of the stadium.

The McComb Fieldhouse contains three basketball courts, an AAU-sized swimming pool, a diving tank with one and three meter boards, underwater sound systems, lighting systems and viewing ports, wrestling room, two handball courts, a corrective gym, medical suite, a rifle range, two steam rooms, locker room space for 1,000 students and many additional features to meet the needs of the Health and Physical Education Department. Seating capacity of the gym is approximately 4,600 while the natatorium seats 500 spectators.

Four different sets of tennis courts are situated throughout the campus while 8 bowling lanes are provided in the new student union for intercollegiate competition. The nearby Culbertson Hills Country Club is the home of the Scots' golf and cross country teams.



MEMO TO THE PRESS

Press releases, photographs and statistics will be made available for your use throughout the season. If you desire press box space, please apply in advance to Sports Information Office. Paul Newman, Sports Information Director; Edinboro State College, Edinboro, Pa. 16412. Office Phone: 814, 734-1671, Ext. 245, Home Phone: 814, 734-3735; Press Box Ext. 249.

HOME OF THE FIGHTING SCOTS



Arthur L. McComb Fieldhouse

SPECIAL FEATURES

NBA PRO SCOREBOARD

*AAU-SIZED POOL WITH
DIVING TANK*

*UNDERWATER SOUND AND
LIGHTING SYSTEM*

THREE BASKETBALL COURTS

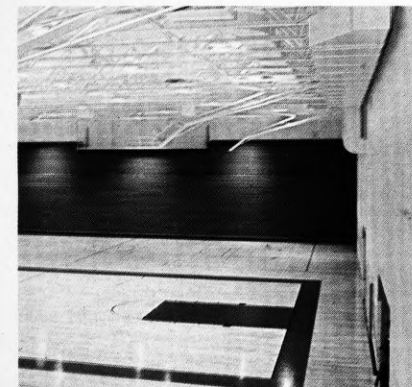
HANDBALL COURTS

WRESTLING ROOM

MEDICAL SUITE

RIFLE RANGE

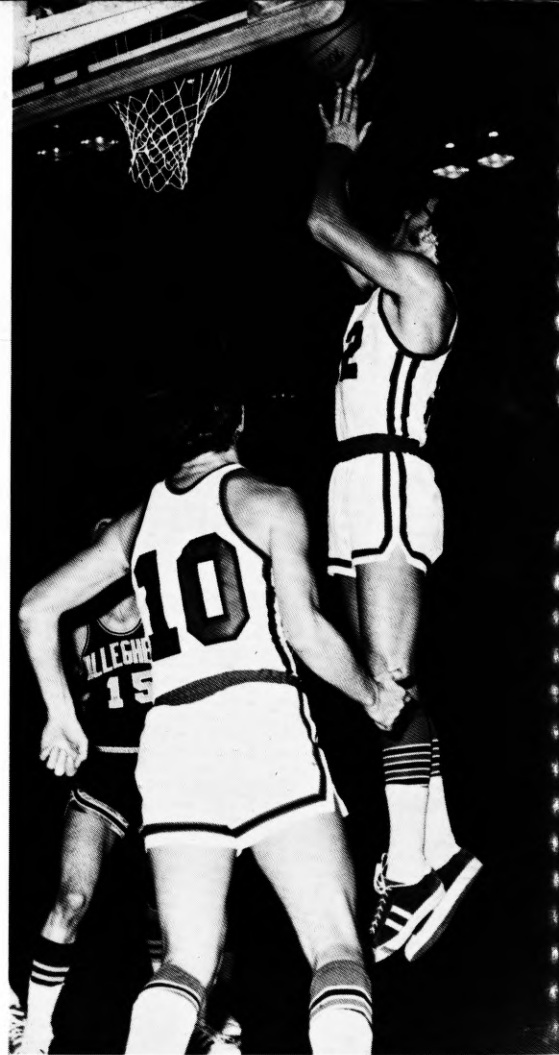
STEAM ROOMS



Main Playing Arena

One of the finest athletic facilities in northwestern Pennsylvania services the Fighting Scots' basketball, wrestling and swimming teams. The new structure has a seating capacity in the gymnasium area for 4600 fans while the natatorium seats 500 spectators. Underwater sound and lighting systems are featured in the pool area as well as four underwater viewing ports. Adjacent to the swimming area is a separate diving tank with one and three meter diving boards. The electrically operated bleachers can be rolled back in a matter of minutes to expand the available floor space into three basketball courts for intramural usage. The athletic complex has already become a favorable site for both high school basketball and wrestling championships. A 680-car parking lot is conveniently located next to the fieldhouse to accommodate team followers. Additional attractions include office facilities for members of the Health and Physical Education Department, locker room space for 1,000 students, an equipment room and two classrooms.

EDITOR: Paul Newman; ADDITIONAL STAFF CREDITS: Rita Naculich, Kathy Delehunt, Phyllis Kirsch, Laraine Johnson, Lance Dickinson, John Catone and John Garbark, copy; PHOTOGRAPHY: Gene Yee, Charleen Hinkler and Chris Wunder.



**1972-73 SCOTS
IN ACTION**

