

*FOLLOW THE
"FIGHTING SCOTS"*

1971-72

**EDINBORO STATE
BASKETBALL**



Fighting Scot Usherettes — Greeting Fighting Scot fans as they enter McComb Fieldhouse are usherettes (L-R): Lark Anglio, Debbie Holker, Linda Hight, Connie Williams, Cindy Styborski, Joyce Popney, Linda Buzga and Sue Stehle.

1971-72 FIGHTING SCOTS' SCHEDULE

VARSITY COACH — DAVE ROONEY

JUNIOR VARSITY COACH — TONY LATERZA

December 2	Kenyon (JV vs. Shenango).....	Home
December 4	Lock Haven State.....	Away*
December 7	Point Park.....	Home†
December 9	Geneva.....	Away†
December 11	Clarion State.....	Home*†
December 21, 22	Capital City Classic.....	Columbus, Ohio
January 4, 5	Marietta Tournament.....	Marietta, Ohio
January 8	California State.....	Away*†
January 11	Duquesne University (JV).....	Away
January 12	Alliance.....	Away†
January 15	Slippery Rock State.....	Away*†
January 26	Mount Union.....	Away†
January 29	Alliance.....	Home†
February 3	Slippery Rock State.....	Home*†
February 5	Indiana University of Pa.....	Away†
February 9	Wittenberg University (JV vs. Niagara).....	Home
February 10	Lock Haven State (JV vs. Gannon).....	Home*
February 12	California State.....	Home*†
February 16	Clarion State.....	Away*†
February 19	Oneonta State.....	Away
February 22	Indiana University of Pa.....	Home†
February 24	Grove City.....	Home†
February 26	Gannon College (JV).....	Away

March 1 Conference Playoff — West

March 6-8 NAIA District 18 Playoffs

*Conference Game †Includes Junior Varsity Contest

Game Time: 6 p.m.; JV — 8 p.m.; Varsity

Follow the "FIGHTING SCOTS"

HOME OF THE FIGHTING SCOTS



Arthur L. McComb Fieldhouse

SPECIAL FEATURES

NBA PRO SCOREBOARD

AAU-SIZED POOL WITH
DIVING TANK

UNDERWATER SOUND AND
LIGHTING SYSTEM

THREE BASKETBALL COURTS

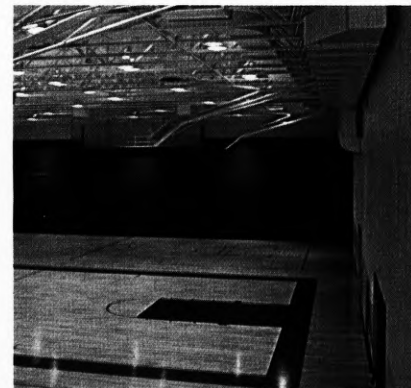
HANDBALL COURTS

WRESTLING ROOM

MEDICAL SUITE

RIFLE RANGE

STEAM ROOMS



Main Playing Arena

One of the finest athletic facilities in northwestern Pennsylvania services the Fighting Scots' basketball, wrestling and swimming teams. The new structure has a seating capacity in the gymnasium area for 4600 fans while the natatorium seats 500 spectators. Underwater sound and lighting systems are featured in the pool area as well as four underwater viewing ports. Adjacent to the swimming area is a separate diving tank with one and three meter diving boards. The electrically operated bleachers can be rolled back in a matter of minutes to expand the available floor space into three basketball courts for intramural usage. The athletic complex has already become a favorable site for both high school basketball and wrestling championships. A 680-car parking lot is conveniently located next to the fieldhouse to accommodate team followers. Additional attractions include office facilities for members of the Health and Physical Education Department, locker room space for 1,000 students, an equipment room and two classrooms.

WHERE TO FIND IT FAST

ATHLETIC STAFF

Athletic Director, Al Hall	12
Directory of Staff	2
Laterza, Tony—Assistant Coach	11
Rooney, Dave—Head Coach	11
Sports Information—Paul Newman	12
Team Trainer—Bob Klingler	12

COLLEGE, THE

Athletic Program	40
Campus, Aerial View	37
Campus, Color Pictures	39
General Information	38
History	38
President, Dr. McNerney	40

OPPONENTS

Alliance College	16
California State	16
Capital City Classic	15
Clarion State	15
Geneva College	15
Grove City College	18
Indiana Univ. of Pa.	17
Kenyon College	14
Lock Haven State	14
Marietta Tournament	16
Mount Union College	17
Oneonta College	18
Point Park College	14
Slippery Rock State	17

IF YOU CALL US . . .

ADMINISTRATION

Dronsfield, James (Development)	232
Gates, Robert (V.P. Admin. Services)	347
Herbel, Vaughn (Business Office)	241
McKinley, James (V.P. Acad. Affairs)	222
McNerney, Chester T. (President)	220
Umbarger, Harold (Admissions)	228
Yon, John (V.P. Student Personnel)	223

MEN'S ATHLETIC DEPARTMENT

Blaney, Chuck (football)	207
*Caro, Fred (wrestling)	478
Conti, Guy (football)	207
Daugherty, George (equipment)	207
*Erdos, Ed (swimming)	271
Hall, Al (athletic director)	476
Harkness, Denny (equipment)	207
Herbel, Vaughn (golf)	241
Hyland, Jack (football)	207
Klingler, Bob (trainer)	278, 276
Laterza, Tony (basketball)	300

*Head Coach

College Number — Area Code—814, 734-1671—Press Box Ext. 249
 The College Switchboard is open 7:00 a.m.—12:00 p.m., Monday-Friday
 Saturday, 8:00 a.m.—12:00 noon
 Mailing Address: Edinboro State College, Edinboro, Pa. 16412

MEMO TO THE PRESS:

Press releases, photographs and statistics will be made available for your use throughout the season. If you desire press box space, please apply in advance to Sports Information Office.

Paul Newman, *Sports Information Director*
 Edinboro State College, Edinboro, Pa. 16412
 Office Phone: 814, 734-1671, Ext. 245, Home Phone: 814, 734-3735

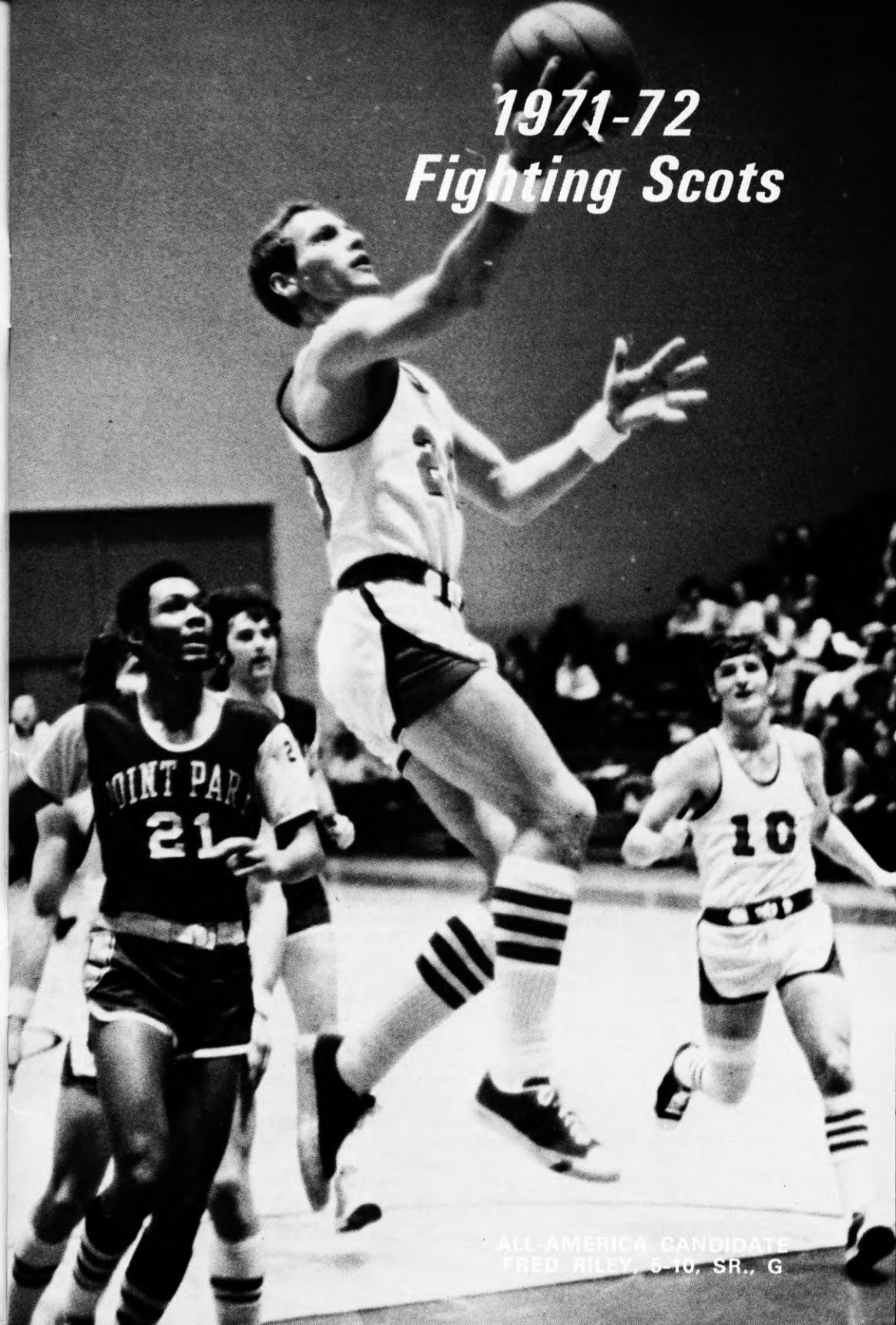
Wittenberg University	18
Conference	Inside Back Cover
PAST, THE	
1970-71 Conference Results	28
1970-71 Frosh Results-Stats	27
1970-71 In Review	22
1970-71 Varsity Results-Stats	26
All-Americans	25
All-Time Scores	30-34
Century Clubs	36
Championships	28
Individual Honors	24
Records-Individual	29
Records-Team	28
Results By Seasons	35
Seasons By Percentages	35
Top Rebounders, Career	36
Top Scorers, Career	36
Top Scorers, 1960-1970	36
TEAM, THE 1971-72	
Captains	4
Centers	9
Forwards	7-8
Guards	4-7
Junior Varsity	19
Outlook	10
Returning Lettermen	20
Rosters	21
Schedule	Inside Front Cover
Usherettes	Inside Front Cover

*Mariotti, Hank. (tennis)	276
*McDonald Bill (football)	249
*McDonald, James (basketball, golf)	478
*Miller, Gus (judo)	201
Florek, Florian (physician)	344
Newman, Paul (publicity)	245
*Rooney, Dave (basketball)	300
Shesman, Joe (football)	207
*Shimpeno, George (soccer)	489
Straub, Bill (football)	207
Vogel, Vern (bowling)	433
Vierkorn, George (intramurals)	271
*Watts, Doug (track, cross country)	366
Zvonar, Tony (football)	207

WOMEN'S ATHLETIC DEPARTMENT

Acker, Nancy (volleyball)	202
Gustaveson, Ada (tennis)	282
Peterson, Cynthia (intramurals)	282
Saurer, Judith (basketball)	202
Truax, Dana (cheerleaders)	357
Zvonar, Anne (gymnastics)	366

1971-72 Fighting Scots



ALL-AMERICA CANDIDATE
 FRED RILEY, 5-10, SR., G

SCOT CO-CAPTAINS

20-21 Fred Riley

G, 5-10, 150, Sr., Clearfield, Pa.

Should lead the Scots scoring attack from the outside where he is a deadly shooter . . . Undoubtedly the best offensive guard in Edinboro's history . . . Ranks number ten on the all-time scoring list and could finish as high as number three . . . Earned NAIA All-America Honorable Mention honors last year after averaging 20.2 points per game . . . Possesses excellent speed . . . Fell just eleven points short of an all-time season record with his 485 markers during the 1970-71 campaign . . . A First Team All-District and All-Conference winner . . . Averaged 25.8 points a game at Clearfield High School and was selected Outstanding Player in District 9, unanimously named to the Coaches and Sportswriters District 9 All-Star Team, named Fourth Team All-State by UPI and made the AP's Honorable Mention All-State list.

Year	G	FGM	PCT.	FTM	PCT.	REB.	PTS.	AVG.
1969-70	22	130	.436	42	.566	51	302	13.7
1970-71	24	210	.494	65	.722	72	485	20.2
Career	46	340	.470	107	.652	123	787	17.1



30-31 Jim Prokell

F, 6-0, 185, Sr., Pittsburgh, Pa.

One of the most deceptive six-footers in the business . . . Has the uncanny ability to quickly slip underneath the hoop to work both offensively and defensively . . . Finished as the team's second leading scorer last year with 431 markers and a 17.9 points-a-game average . . . Also ranked second in the rebounding department where he grabbed 167 stray shots . . . Has connected on 266 of 513 shots during his first two seasons to register an impressive 51.9 shooting percentage . . . Was accorded First Team All-Conference honors during both his sophomore and junior years . . . Currently ranks 12th on the all-time scoring list and could very easily move into sixth place with a successful season . . . Selected as one of the Scots co-captains for the 1971-72 campaign . . . A graduate of Pittsburgh's Canevin High School.

Year	G	FGM	PCT.	FTM	PCT.	REB.	PTS.	AVG.
1969-70	22	108	.551	116	.707	218	332	15.1
1970-71	24	158	.498	115	.752	167	431	17.9
Career	26	266	.519	231	.729	385	763	16.6



GUARDS

10-11 Roy Stauffer

G, 5-11, 168, So., Emmaus, Pa.

Should nail down one of the two starting guard slots to give the Scots added scoring punch . . . Proved to be one of the top point getters in the history of Edinboro frosh teams when he tossed in 509 points . . . Blistered the nets for 23.1 points a game in 22 freshman appearances . . . A quick guard who possesses a fine outside shot . . . Has demonstrated outstanding accuracy from the free throw line . . . Could be one of four Scots who will finish in double figures for the season . . . Was an All-State, All-District and All-League selection while performing for Emmaus High . . . Averaged 30 points a game during his scholastic stint . . . Continued his offensive barrage at Augusta Military Academy in Virginia where he hit the hoops for 24 points per contest . . . Should have a great future on the Edinboro hardwoods.

Year	G	FGM	PCT.	FTM	PCT.	REB.	PTS.	AVG.
Frosh	22	200	.480	109	.721	125	509	23.1

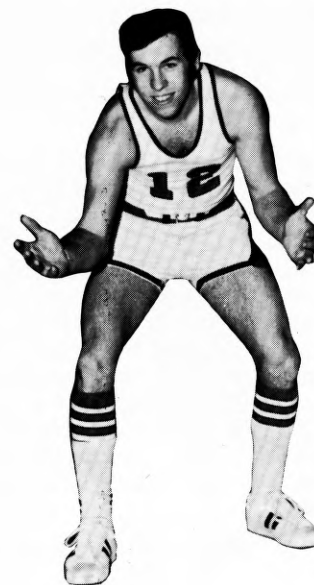


12-13 Paul Sample

G, 5-7, 147, So., Pittsburgh, Pa.

Smallest but one of the quickest men on the Fighting Scots roster . . . Ranked third in assists on the frosh team with 64 to his credit . . . Has an accurate jump shot from the outside . . . Always hustling . . . Is a good dribbler and likes to lead the fast break . . . Not a big scoring threat but seems to perk up the offense when inserted in the lineup . . . Had 69 steals during his freshman campaign . . . Could prove to be an effective cog in the Scots' hardcourt strategy this year which will demand much physically . . . Honorable Mention All-Section winner from Brentwood High School in Pittsburgh . . . Captain of his high school basketball team.

Year	G	FGM	PCT.	FTM	PCT.	REB.	PTS.	AVG.
Frosh	21	44	.500	30	.789	51	118	5.5



GUARDS

44-45 Paul Stiles

G, 6-1, 185, So., Bradford, Pa.

Gives the Clan a reliable playmaker who can be called on to run the Edinboro offense . . . Saw limited action as a sophomore last year but demonstrated that he could direct the varsity attack . . . Had his best showing on the ESC hardwoods when he registered 63 assists while leading the frosh to an 11-6 season slate . . . Can shoot well from the outside and possesses fine quickness . . . Might prove to be more valuable to the Scots this year in a backup role rather than as a starter . . . Particularly effective in running the fast break . . . A graduate of Bishop Guilfoyle High School in Altoona.

Year	G	FGM	PCT.	FTM	PCT.	REB.	PTS.	AVG.
1970-71	9	9	.391	6	1.000	11	24	2.7



14-15 Bernie Jubeck

G, 6-0, 165, Jr., Altoona, Pa.

Another offensive stalwart up from the frosh ranks who could also work his way into a starting role . . . Has been hampered somewhat by a knee injury which could temporarily hold him back this season . . . One of the main cogs in the freshman's 18-4 season while averaging 19.3 points a game . . . Hit on 48 percent of his attempts from the floor to total 435 tallies . . . Also grabbed 183 rebounds to finish third in that department . . . Led Bradford High to the District Nine championship while averaging 17 markers a game . . . Was unanimously chosen to the District's First Team, selected to the Coaches Independent All-Star Team and All-State Honorable Mention.

Year	G	FGM	PCT.	FTM	PCT.	REB.	PTS.	AVG.
Frosh	22	180	.484	75	.676	183	435	19.3



GUARDS-FORWARDS

40-41 Jim Romaniszyn

G, 6-2, 190, Jr., Titusville, Pa.

Undoubtedly one of the best athletes in Edinboro's sports history . . . A proven performer . . . Was slowed in his sophomore debut with a broken hand but managed to see action in 16 games and averaged 9.2 per contest . . . A combination of aggressiveness, agility, speed and quickness . . . Had his greatest day in an Edinboro uniform when he scored 46 points in one game during his freshman year . . . Could get another late start this year due to a back injury . . . Another player who traditionally plays a "spark plug" role . . . A strong defensive performer and, in spite of his height, does well underneath the boards . . . Was an All-State Honorable Mention winner after averaging 19 points a game and leading the Titusville Rockets to a 19-3 mark.

Year	G	FGM	PCT.	FTM	PCT.	REB.	PTS.	AVG.
1970-71	16	57	.409	33	.660	72	147	9.2



42-43 Charlie Foster

F, 6-1, 185, So., Springfield, N. J.

A vastly improved soph who will start . . . Best leaper on the team and also an adept shooter . . . Small in comparison to college forwards but has a quick move to the inside which he combines with his jumping ability . . . Possesses good overall speed which should help him come up with numerous steals on the Scots' full court press . . . Played in only 12 freshman games yet managed to average 15.9 points a game and snare 9.3 rebounds per contest . . . Inexperience will be his biggest enemy . . . Seldom takes a bad shot and has caught on to the Clan's offensive patterns quite rapidly . . . Captained the Dayton Regional High School Bulldogs who posted a 23-1 season slate and captured the conference crown with an unblemished 14-0 mark.

Year	G	FGM	PCT.	FTM	PCT.	REB.	PTS.	AVG.
Frosh	12	66	.418	59	.747	111	191	15.9



FORWARDS

24-25 Joel Kowitz

F, 6-2, 170, Sr., Lakewood, N.J.

A utility ball player who can play at either a forward or guard slot . . . Scored 67 points in his first year at the "Boro" during the 1970-71 season . . . A transfer from Ocean City Junior College where he averaged 17 points a contest and hauled down 11 rebounds per game . . . Likes to pick his way through the middle offensively and jumps well . . . Prefers to play defense . . . Can hit from the outside when called on . . . A Garden State Athletic Conference All-Star Team member while playing for Ocean City Junior College . . . A graduate of Lakewood High in New Jersey where he led the Piners to a sparkling 20-4 overall record during his senior year . . . A social studies major in secondary education.

Year	G	FGM	PCT.	FTM	PCT.	REB.	PTS.	AVG.
1970-71	19	25	.357	17	.586	38	67	3.5



22-23 Mark Roche

F, 6-3, 160, So., Cochranon, Pa.

Probably one of the hardest working players on the floor . . . Saw action as a freshman last year where he was a surprise inside . . . Will most likely see plenty of action in his junior varsity program this year to gain experience . . . Earned varsity letters at Cochranon High School while operating from both the forward and center post spots . . . Pulled down 70 rebounds and scored 91 points while making appearances in 20 games for last year's 18-4 frosh squad . . . An Art Education major.

Year	G	FGM	PCT.	FTM	PCT.	REB.	PTS.	AVG.
Frosh	20	36	.424	19	.559	70	91	4.7



CENTERS

32-33 Don Gerdich

C, 6-5, 208, Fr., McKeesport, Pa.

Impressed the coaches enough to earn a spot on the varsity roster as a freshman . . . Came to Edinboro from McKeesport Area High School where he helped pave the way to a 17-5 ledger for the Tigers . . . Tossed in 16.7 points per game in his senior year along with 16 rebounds per contest to receive All-Section honors . . . Aggressive underneath where he is destined to become a fine rebounder . . . Has good quickness and possesses a sure set of hands . . . Will most likely be the backup center but could be pressed into action at one of the forward slots due to the Clan's lack of height this year . . . Is physically strong and can jump well . . . Lacks only experience on the collegiate hardwoods where he should eventually become a capable contender.

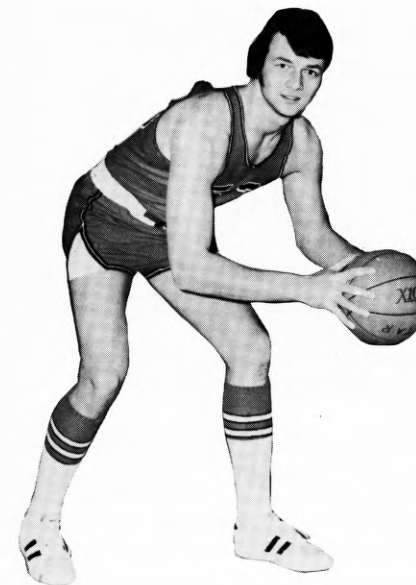


52-53 Rich Sulka

C, 6-6, 220, Jr., Pittsburgh, Pa.

Will be counted on heavily to get the ball off the boards for the Scots . . . The Clan's biggest man whose performance could decide the outcome of Edinboro's 1971-72 cage campaign . . . A rugged rebounder who could also become a threat offensively . . . Hauled down 215 stray shots as a soph starter to nail down top honors in the rebounding department . . . Added 155 markers to the Scots' total point output along with his 8.9 rebounds per game . . . Tough to contend with after he gets position underneath where he asserts his strength . . . Still developing as a college ball player . . . Had a great freshman year at Edinboro when he cleared the glass at the rate of 14.8 rebounds per contest . . . Averaged 25 points a game and 17 rebounds during his senior year to highlight a great career at Central Catholic High in Pittsburgh . . . Played in the famed Dapper Dan Roundball Classic.

Year	G	FGM	PCT.	FTM	PCT.	REB.	PTS.	AVG.
1970-71	23	66	.434	23	.523	215	155	6.7



ROONEY RELIES ON NEW STRATEGY

Dave Rooney, who has made winning a habit with Edinboro State's freshman teams, faces a king-sized job this year as he steps into the varsity coaching ranks for the first time. The Scots winning ways on the basketball court over the past ten years receive a serious threat as the Clansmen are confronted with a rigorous 23-game schedule without their traditional height advantage.

"We have the quickness to make us a fine defensive team," summarized Rooney, who led last year's frosh to an 18-4 ledger. "Almost everyone we face will have a size advantage so we'll have to depend on speed and shooting to keep us in the ball game. If we can stay even with our opponents throughout the game, I think we have the kind of shooting and hustle on defense needed to pull us through."

Rooney will turn to the outside scoring talents of guard, Fred Riley, who ripped the nets for 485 points last year to average 20.2 per game. The 5-10 senior stalwart earned all-conference, all-district and NAIA All-American honors after falling just eleven points short of an all-time season record. In just two years of varsity action, the Clearfield product has moved into tenth place on the all-time scoring list with his 787 points.

Completing the Scots' veteran 1-2 punch is senior forward Jim Prokell, the Clan's second leading scorer for the 1970-71 campaign with a 17.9 points-a-game average. His two-year output has also pushed him high on the Edinboro scoring list where he now ranks 11th with 763 points. Although only six feet, the Pittsburgh ace demonstrated his jumping ability by finishing with 167 stray shots to rank second in the rebounding department.

Riley and Prokell have both been tabbed to lead the 1971-72 squad as co-captains.

Completing the quartet of returning starters are Jim Romaniszyn (Titusville) and 6-6 Rich Sulka (Pittsburgh).

"You can always count on Romaniszyn to eventually win a spot someplace in the lineup," added Rooney. After getting a slow start last year due to a broken hand, the 6-2 guard clipped the hoop for 147 markers which netted him a 9.2 points-a-game average in 16 appearances.

Sulka showed signs of promise with his board work and led the team in rebounding by sweeping the glass clean 215 times. The key to the Scots' chances for success will bank heavily on just how well the pivot ace can lead the Edinboro attack underneath the boards.

Freshman Don Gerdich (McKeesport), at 6-5, and sophomore Charlie Foster (Springfield, N.J.), at 6-1, will be vying for starting roles below the nets along with Bob Koger (Pittsburgh), a 6-5 senior letter winner.

"Foster has really improved," claims Rooney, "and could be a big surprise for us underneath the boards"

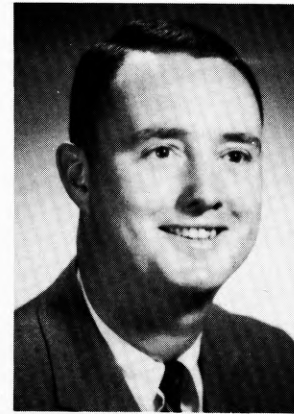
Battling for one of the starting guard assignments will be Bernie Jubeck, a 6-0 junior from Altoona, along with promising sophomores Roy Stauffer (Emmaus) and Paul Stiles (Bradford).

Stauffer, a 5-11 guard, poured in a record 509 points to register an output of 23.1 points per game while Stiles tossed 435 markers for a 19.3 average. Both hit on 48 per cent of their shots from the floor.

Senior lettermen Joel Kowit (Lakewood, N.J.) completes the Clan's nucleus of seven returning letter winners.

Newcomers Mark Rocine (Cochranon), a 6-3 forward, and speedy Paul Sample (Pittsburgh), a 5-7 guard, who played on the Scots' point-potent frosh team, round out the Clan's varsity roster.

HEAD BASKETBALL COACH



Dave Rooney

Dave Rooney will be making his debut as a varsity coach this year as he takes command of Edinboro State's basketball fortunes for the 1971-72 cage season. Coming off an 18-4 finish with the Scot frosh, the Allentown, Pa., native has already proven his knowledge of the game by successfully piloting the Clan's freshman program for the past two years.

The Scots' new mentor is a 1959 graduate of William Allen High School in Allentown, Pa. and also holds both B.S. and M.S. degrees from West Chester State College where he majored in health and physical education.

Rooney was a standout basketball player throughout both his high school and collegiate campaigns.

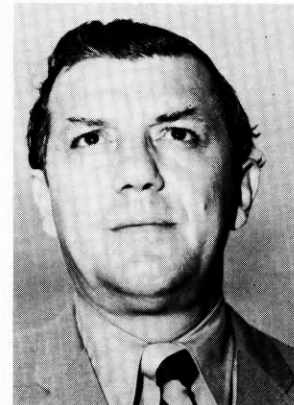
He led the 1958-59 William Allen team to the East Penn League championship and earned an all-state honorable mention berth for his performances on the hardwoods. In his freshman year at West Chester, Rooney piloted the frosh to an undefeated season with a sterling 17-0 record.

After two years of varsity competition his cage career was interrupted by service in the Armed Forces. He later returned to West Chester State to serve in a coaching capacity while he completed his B.S. requirements and then pursued his M.S. degree.

Before joining the Edinboro coaching staff, Rooney served as head basketball coach for one year at Spring Ford High School in Royersford, Pa.

He and his wife, Sue, now reside in Edinboro.

ASSISTANT BASKETBALL COACH



Tony Laterza

Tony Laterza, who guided the University of Akron to national basketball prominence, has joined the Fighting Scot cage ranks to pilot Edinboro's junior varsity program.

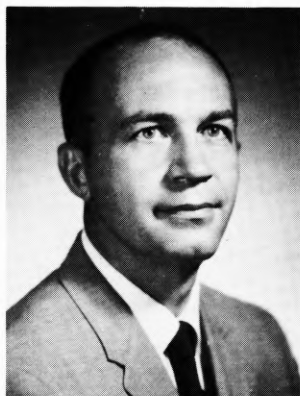
One of Ohio's most highly respected coaches, Laterza compiled a nine year record of 178 wins and only 59 losses. His teams averaged nearly 20 wins a season during his ten year stay at the Buckeye School.

Highlighting his hardcourt accomplishments were four trips to the NCAA, Mideast Regionals where the Zips captured three tournament titles. They finished as the NCAA College Division, runner-up in 1963-64 and managed a third place finish to close out the 1965-66 campaign. He also guided Akron to three straight Ohio Conference titles while finishing with second place honors four other times.

Laterza's coaching know how is also reflected on the links where his golf teams totaled outstanding 101-38-5 mark. In his second season at the helm, the Zips won their first ever Ohio Conference crown in golf, shared the title the following year and then repeated as sole champs in 1961.

Laterza is a graduate of Akron University where he starred in both basketball and football. He earned a B. S. in education from Akron in 1952 and received his Masters degree from Kent State in 1963.

TEAM TRAINER



Bob Klingler

Bob Klingler is commencing his fifth year on the Scots' staff as team trainer. The 1952 Lock Haven grad ventured to Hermann School of Physical Therapy in Houston, Texas, where he became a registered physical therapist in 1954, and later received his M.S. from Bucknell. Klingler taught at Milton Hershey, a private boys' school in Hershey, Pa., prior to accepting his ESC post. While at Milton Hershey, he served as the Spartans' head football mentor, head track coach and assistant basketball coach. Both his cinder and cage teams never experienced a losing season, while his grid teams continually posted successful campaigns in the powerful Capitol Area Conference. Bob, his wife, Jill, and daughter, Julie, make their home in Edinboro.

ATHLETIC DIRECTOR

Mr. Allan W. Hall was appointed Edinboro's first full-time Director of Athletics three years ago. Hall, a graduate of Baldwin-Wallace College, served as Assistant Director of Athletics at Akron University for two years prior to coming to Edinboro. While at Akron, Hall was quite active in the University's athletic program. He piloted Akron's cross country teams for 12 years and guided his harriers to three Ohio Conference and three All-Ohio championships. His 1963 team held the distinction of being national runner-up. Hall's keen interest in all phases of sports is reflected by his past accomplishments in the field of athletics. In 1962 he was selected Meet Director of the AAU Swimming Championships. He was highly instrumental in making Akron University the site of the Mideast Regional NCAA Basketball Tournaments in 1964, 1965 and 1966. Al, his wife Pam, daughter Beth and son Richard reside in Edinboro.




Al Hall

SPORTS INFORMATION DIRECTOR



Paul Newman

Paul Newman began his duties four years ago as Edinboro's first Sports Information Director and now also serves as Assistant to the President. Mr. Newman is a 1964 graduate of Edinboro where he earned both his B.S. degree and M.Ed. while majoring in English. Prior to his appointment at the College, he held a teaching position with the Buckeye Local Schools in Ashtabula, Ohio, for three years. In connection with his duties, he is also the District 18 Publicity Chairman for the National Association of Intercollegiate Athletics and is currently in his second year as President of the NAIA's Sports Information Directors' Association. Paul, his wife, Connie, and their children, Paul, Jr. and Michele, reside in Edinboro.



*A New Face . . .
A New Challenge*

KENYON COLLEGE

December 2 — at Edinboro

Head Coach: Jim Zak, 9-14, 1 Season

Sports Information Director: Robert Zuer, Area Code 614, 427-2244

1970-71 Record: 9-14

Lettermen Lost: 0

Lettermen Returning: 6

Team Strength: Outside Shooting, Defense

Team Weakness: Rebounding

Captains: Marty Hunt, Jim Smith

Athletic Director: Philip Morse

Location: Gambier, Ohio

Enrollment: 1,300

Colors: Purple and White

Nickname: Lords

Home Court: Wertheimer Field House

Gym Capacity: 1,500

Conference: Ohio Athletic

Last Game: 1970-71, Kenyon 98-96

Top Veterans: Marty Hunt (G, 6-3, Sr.), Mike White (6-2, F, So.), Ed Moran (6-0, G, Jr.), Jim Smith (6-4, F, Sr.), Tim Delaney (6-4, F, Jr.), Pete Schneeberger (6-6, C, Jr.)

Top Newcomers: Dave Myer (6-4, C, Fr.), Jim Wilhelm (6-9, C, So.)

LOCK HAVEN STATE COLLEGE

December 4 — at Lock Haven, February 10 — at Edinboro

Head Coach: James Christopher, 15-22, 2 Seasons

Sports Information Director: Ross Nevel, Area Code 717, 748-5351

1970-71 Record: 8-12

Lettermen Lost: 2

Lettermen Returning: 7

Team Strength: Overall Height

Team Weakness: Outside Shooting

Captains: Bud Brennen, Cliff Billet

Athletic Director: Steve Jacobs

Location: Lock Haven, Pa.

Enrollment: 2,400

Colors: Crimson and White

Nickname: Bald Eagles

Home Court: Thomas Fieldhouse

Gym Capacity: 1,100

Conference: Pennsylvania

Last Game: 1970-71, ESC 115-79
LH 82-92

Top Veterans: Bud Brennen (C, 6-4, Sr.), Tom Gahr (G, 5-10, Jr.), Ziggy Tauginas (F, 6-6, Jr.), Cliff Billet (F, 6-5, Sr.), John Marzлак (G, 5-10, Jr.), John Miller (G, 5-11, So.), Harold McKenzie (C, 6-4, Jr.)

Top Newcomers: Warren Goodling (G, 5-9, So.), Russ Paulin (F, 6-7, Jr.), Clyde Soule (F, 6-9, Fr.)

POINT PARK COLLEGE

December 7 — at Edinboro

Head Coach: Jerry Conboy, 18-31, 2 Seasons

Sports Information Director: Ken Fisher, Area Code 412, 391-4100

1970-71 Record: 7-17

Lettermen Lost: 2

Lettermen Returning: 6

Team Strength: Depth

Team Weakness: Inexperience

Captains: Bob Rager, Joe Spellman

Athletic Director: Barry Hanburger

Location: Pittsburgh, Pa.

Enrollment: 2,100

Colors: Green, White and Gold

Nickname: Pioneers

Home Court: Fitzgerald Field House

Gym Capacity: 5,200

Conference: Independent

Last Game: 1969-70, ESC 71-54

Top Veterans: Larry Anderson (G, 6-2, Jr.), Gary Flakes (F, 6-3, So.), Calvin Gaines (F, 6-0, Sr.), Al Harris (G, 6-2, So.), Ali Morris (F, 6-7, So.)

Top Newcomers: Keith Leos (G, 5-8, Jr.), Joe Spellman (F, 6-3, Jr.), Jerry Valasek (G, 6-3, Jr.)

GENEVA COLLEGE

December 9 — at Geneva

Head Coach: Max Holm, First Season

Sports Information Director: W. Lee Troup, Area Code 412, 846-5100

1970-71 Record: 7-16

Lettermen Lost: 5

Lettermen Returning: 5

Team Strength: Shooting

Team Weakness: Inexperience

Captain: Mike Tinstman

Athletic Director: Cliff Aultman

Location: Beaver Falls, Pa.

Enrollment: 1,312

Colors: Old Gold and White

Nickname: Golden Tornadoes

Home Court: Metheny Fieldhouse

Gym Capacity: 3,900

Conference: Independent

Last Game: 1970-71, ESC 96-75

Top Veterans: Dale Zeh (G, 5-9, So.), Mike Tinstman (F, 6-3, Sr.), Ken Creasman (F, 6-5, Jr.)

Top Newcomers: Jim Washington (F, 6-4, Fr.), Stan Lego (G, 6-0, So.), John Crawford (G, 5-10, So.)

CLARION STATE COLLEGE

December 11 — at Edinboro, February 16 — at Clarion

Head Coach: Ron Galbreath, 20-23, 2 Seasons

Sports Information Director: William Proudfit, Area Code 814, 226-6000

1970-71 Record: 16-7

Lettermen Lost: 0

Lettermen Returning: 6

Team Strength: Intact squad, defense

Team Weakness: Lack of big men, quickness

Captain: Carl Jefferis

Athletic Director: Frank Lignelli

Location: Clarion, Pa.

Enrollment: 4,300

Colors: Blue and Gold

Nickname: Golden Eagles

Home Court: Tippin Gymnasium

Gym Capacity: 4,000

Conference: Pennsylvania

Last Game: 1970-71, Clarion 60-66,
85-87; (NAIA Dist. 18
Playoff, ESC 81-70)

Top Veterans: Carl Jefferis (G, 6-0, Sr.), Elmer Kreiling (G, 6-2, Jr.), Bill Mitchell (C, 6-4, Sr.), Ron Peden (F, 6-3, Sr.), Joe Sebestyen (F, 6-2, Jr.), Don Wilson (G, 6-3, Jr.), Sonny Cicero (G, 5-8, Jr.)

Top Newcomers: Dave Ankeney (G, 6-1, So.), Dick Fenstermaker (F, 6-2, So.), John Griffin (G, 6-0, So.), Lou Myers (F, 6-4, So.), Gary Walters (C, 6-4, So.)

CAPITAL CITY CLASSIC

December 21, 22 — at Columbus, Ohio

Edinboro State will join three other perennial small college basketball powers as Capital University, Alma College of Michigan and Berea, Kentucky, round out the four-team holiday tourney. The Scots have been tagged to meet Alma at 7 p.m. on the 21st while powerful Capital (21-4) will tangle with Berea in the nightcap. The two losers will battle each other the second evening for consolation honors as the two winners clash for the tournament crown. Following the championship game an All-Classic team will be selected. Alma's seven returning lettermen and two junior college transfers pits Edinboro against a talented club that should improve on last year's 13-9 mark. Leading the list of returnees is three-year letterman Ike Neitering, a 6-6 center who averaged 16 points per game during the '70-'71 campaign. Capital's Mike Stumpf, a 6-8 Little All-America candidate, is one of four talented veterans who will carry the Crusaders hopes this season.

MARIETTA INVITATIONAL TOURNAMENT

January 4, 5 — at Marietta, Ohio

Edinboro will ring in the "New Year" against Salem College of West Virginia as the Scots return to the Buckeye State for a second holiday season tournament. Marietta will hit the hardwoods against John Carroll University of Cleveland to open the two-day tourney and Edinboro follows against Salem in a 9 p.m. fray. The losers and winners will pair off the next night for consolation and championship honors. Although tourney host Marietta is in a "rebuilding year," Coach Phil Roach has four lettermen returning with 6-7 senior center Tom Barnes leading the Pioneers underneath. Marietta finished 13-10 last year and Roach says the Pioneers will continue to run and emphasize a fast-pace offense. The tournament, which will be played at Ban Johnson Fieldhouse, is co-sponsored by the Marietta Shrine Club in behalf of the Aladdin Temple Crippled Children's Fund.

CALIFORNIA STATE COLLEGE

January 8 — at California, February 12 — at Edinboro

Head Coach: Myles Witchey, 112-89, 9 Seasons

Sports Information Director: Bob Wood, Area Code 412, 938-2281

1970-71 Record: 13-9

Lettermen Lost: 5

Lettermen Returning: 8

Team Strength: Depth

Team Weakness: Inexperience

Captain: Named Every Game

Athletic Director: Paul Ross

Location: California, Pa.

Enrollment: 5,600

Colors: Red and Black

Nickname: Vulcans

Home Court: Hamer Hall

Gym Capacity: 4,000

Conference: Pennsylvania

Last Game: 1970-71, ESC 75-66, 93-83

Top Veterans: Ralph Losey (F, 6-3, Jr.), Tom Katruska (F, 6-5, Sr.), Gary Skinner (G, 6-2, Jr.), Cleve Steward (F, 6-5, Jr.), Mark Matty (G, 6-1, Jr.)

Top Newcomers: Augie Dipasquale (G, 6-1, So.), Ken Meadows (F, 6-4, So.), Jerry Slampak (C, 6-6, Jr.)

ALLIANCE COLLEGE

January 12 — at Alliance, January 29 — at Edinboro

Head Coach: Thaddeus Haluch, 163-172, 18 Seasons

Sports Information Director: Leo Rudzki, Area Code 814, 398-4611

1970-71 Record: 6-16

Lettermen Lost: 7

Lettermen Returning: 3

Team Strength: More inside talent

Team Weakness: Inexperience

Captains: P. J. Campbell, Jack Siverling

Athletic Director: Thaddeus Haluch

Location: Cambridge Springs, Pa.

Enrollment: 570

Colors: Red and White

Nickname: Eagles

Home Court: Cambridge Springs H.S.

Gym Capacity: 1,800

Conference: Independent

Last Game: 1970-71, ESC 81-69, 89-83

Top Veterans: P. J. Campbell (C, 6-4, Sr.), Jack Siverling (G, 5-10, Sr.), Bob Aleski (F, 6-3, Sr.)

Top Newcomers: John Marucci (F, 6-4, So.), Jim Phillips (G, 6-2, So.), Jim Brickell (F, 6-2, So.), Terry Miller (F, 6-2, Jr.)

MOUNT UNION COLLEGE

January 26 — at Mount Union

Head Coach: Gary Fisher, 14-9, 1 Season

Sports Information Director: Doug Smith, Area Code 216, 821-5320

1970-71 Record: 14-9

Lettermen Lost: 1

Lettermen Returning: 9

Team Strength: Guards

Team Weakness: Forwards

Captains: Doug Mason, Jim Howell

Athletic Director: Jack Rafeld

Location: Alliance, Ohio

Enrollment: 1,300

Colors: Purple and White

Nickname: Purple Raiders

Home Court: Timken Phys. Ed. Building

Gym Capacity: 3,000

Conference: Ohio

Last Game: No Previous Game

Top Veterans: Jim Howell (F, 6-3, Sr.), Clyde Lepley (G, 6-0, Sr.), Doug Mason (C, 6-6, Sr.), Tom Robinson (G, 6-0, Sr.), Mike Gerber (G, 5-5, Jr.), Robin Risser (G, 5-10, Jr.), Jim Courtney (F-G, 6-4, So.), Scott Humphrey (F, 6-4, So.), Barry Ring (F-C, 6-6, So.)

Top Newcomer: Tom Weisenstine (G, 6-2, Jr.)

SLIPPERY ROCK STATE COLLEGE

January 15 — at Slippery Rock, February 3 — at Edinboro

Head Coach: Mel Hankinson, 10-15, 1 Season

Sports Information Director: John Carpenter, Area Code 412, 794-7216

1970-71 Record: 10-15

Lettermen Lost: 7

Lettermen Returning: 5

Team Strength: Shooting, solid guards

Team Weakness: Big men, height

Captain: Doug Zimmerman

Athletic Director: Dr. Robert E. Raymond

Location: Slippery Rock, Pa.

Enrollment: 5,500

Colors: Green and White

Nickname: Rockets

Home Court: Morrow Field House

Gym Capacity: 2,200

Conference: Pennsylvania

Last Game: 1970-71, ESC 88-76
SR 73-77

Top Veterans: Ken Barlett (G, 6-0, Jr.), Bob Bly (F, 6-3, Jr.), Doug Hudson (G, 5-7, Jr.), Larry Thompson (G, 6-0, Sr.), Doug Zimmerman (G, 6-1, Sr.)

Top Newcomers: Mark Balbach (G, 6-3, Jr.), Denny Rockwell (F, 6-4, Jr.), Denny Kopka (F, 6-5, So.), Steve Viviano (F, 6-3, Jr.), Peyton Tomblin (G, 6-2, So.)

INDIANA UNIVERSITY OF PENNSYLVANIA

February 5 — at Indiana, Pa., February 22 — at Edinboro

Head Coach: Carl Davis, 24-4, 1 Season

Sports Information Director: Randy Jesick, Area Code 412, 357-2233

1970-71 Record: 24-4

Lettermen Lost: 4

Lettermen Returning: 5

Team Strength: Depth, Scoring Potential

Team Weakness: Rebounding, Lack of Size

Captains: Tom Kerstetter, Bob Isenberg

Athletic Director: Herm Sledzik

Location: Indiana, Pa.

Enrollment: 10,000

Colors: Maroon and Slate

Nickname: Indians

Home Court: Memorial Field House

Gym Capacity: 2,500

Conference: Pennsylvania

Last Game: 1970-71, IUP 64-84, 61-68,
IUP 60-67 (NAIA)

Top Veterans: Tom Kerstetter (F, 6-4, Sr.), John Carom (C, 6-5, Jr.), Bob Isenberg (G, 5-10, Sr.), Sherm Brizzi (G, 5-9, Jr.), Tom Sgriccia (F, 6-2, Jr.)

Top Newcomers: Dave Moscovic (G, 6-2, Jr.), Randy Allen (G, 6-1, So.), Mark Bianchi (F, 6-2, So.), Tony Frank (F, 6-3, Jr.), Gene Gaige (C, 6-5, So.)

WITTENBERG UNIVERSITY

February 9 — at Edinboro

Head Coach: Bob Hamilton, 17-7, 1 Season

Sports Information Director: Don Perkins, Area Code 513, 327-6115

1970-71 Record: 17-7

Lettermen Lost: 2

Lettermen Returning: 5

Team Strength: Defense

Team Weakness: Scoring Punch

Captains: Joe Hamilton, Bill Johnson

Athletic Director: Bill Edwards

Location: Springfield, Ohio

Enrollment: 2,624

Colors: Red and White

Nickname: Tigers

Home Court: Wittenberg Field House

Gym Capacity: 2,000

Conference: Ohio

Last Game: No Previous Games

Top Veterans: Joe Hamilton (G, 5-10, Sr.), Bill Johnson (F, 6-3, Sr.), Pat Beasley (F, 6-5, Jr.), Jim Rose (F, 6-4, Sr.), Hal McLean (F, 6-6, Jr.)

Top Newcomer: Loren Olson (C, 6-10, So.)

ONEONTA STATE

February 19 — at Oneonta

Head Coach: Don Flewelling, First Season

Sports Information Director: Al Pastore, Area Code 516, 431-3595

1970-71 Record: 12-11

Lettermen Lost: 2

Lettermen Returning: 8

Team Strength: Quickness, Speed

Team Weakness: Overall Size

Captains: Harry Styles, Don McLeod

Athletic Director: Ed Kassler

Location: Oneonta, New York

Enrollment: 5,000

Colors: Red and White

Nickname: Red Dragons

Home Court: Red Dragon Gymnasium

Gym Capacity: 2,200

Conference: SUNY Athletic Conference

Last Game: 1970-71, ESC 91-64

Top Veterans: Harry Styles (F, 6-3, Jr.), Don McLeod (C-F, 6-6, Jr.), Larry Nowlin (F-G, 6-2, Jr.), Mark Regan (G, 5-10, Jr.), Phil Meagly (G, 5-10, Sr.), Monroe Hale (G, 5-11, Jr.), Larry Brenner (C, 6-8, Jr.), Don Williams (F, 6-0, Sr.)

Top Newcomers: Jerry Hinton (F, 6-1, So.), Elliot Knight (G, 6-0, So.), Steve Blackmon (G, 6-0, Fr.), Carlos Curz (G, 5-10, So.)

GROVE CITY COLLEGE

February 24 — at Edinboro

Head Coach: Russ Trimmer, First Season

Sports Information Director: Bob Smith, Area Code 412, 458-6603

1970-71 Record: 12-12

Lettermen Lost: 5

Lettermen Returning: 4

Team Strength: Defense

Team Weakness: Tall Center, Big Scorer

Captains: Ed Berti, Ron Ward

Athletic Director: Jack Behringer

Location: Grove City, Pa.

Enrollment: 2,100

Colors: Crimson and White

Nickname: Wolverines

Home Court: College Arena

Gym Capacity: 1,700

Conference: Independent

Last Game: 1970-71, ESC 96-84

Top Veterans: Ed Berti (G, 5-10, Sr.), Ernie Nagy (C, 6-6, Jr.), Fred Schwab (F, 6-5, So.), Ron Ward (F, 6-2, Sr.)

Top Newcomers: Joe Ionta (G, 6-0, Fr.), Randy Nikoloff (F, 6-4, Fr.), Jeff Rose (C, 6-5, Fr.)



1971-72 Fighting Scot JV's L-R: Rick Merritt, Larry Betar, Dean Hartzell, Bob Rozanski, Russ Hajnik and Mark Radakovich. Second Row: Pete Katsafanas-mgr., Ed Mailliard-mgr., Joe Duich, Don Miller, Mark Roche, George Pistner, Dave Kufen and Coach Tony Laterza.

MEET THE SCOT JUNIOR VARSITY CAGERS

Edinboro's Fighting Scot junior varsity cagers are almost a carbon copy of their varsity counterparts. They lack height and will have to rely on the same kind of tactics to register wins during the 1971-72 campaign.

The tallest man listed on the roster is 6-4 forward Don Miller from St. Basil's in Pittsburgh. While averaging 14.5 points per game Miller paved the Sabers' way to the Catholic Western Pennsylvania championship. St. Basil's raced through conference action with a 10-0 slate and finished the year with a 23-2 slate overall.

Backing up Miller is 6-3 Joe Maiden from Roosevelt High in Washington, D.C. A three-year letter winner at Roosevelt, Maiden tossed in 15 points per contest while hauling down 17 rebounds a game.

A trio of promising guards in 6-2 Dave Kufen, 6-0 Larry Betar and 5-10 Bob Rozanski should keep the young Scots on the move offensively.

Kufen was a standout on the hardwoods at West Mifflin South where he was named to the All-Section and All-District teams. While hitting on 50 per cent of his shots from the floor for the Spartans, he ripped the nets at the rate of 17 points per game.

Assists became the name of the game for Larry Betar who handled the playmaking chores for Altoona's successful season in cage action. Betar guided the Mountain Lions to a 23-2 record while recording an incredible 14 assists per game mark.

Rozanski demonstrated his accuracy at Serra Catholic where he was All-District during both his junior and senior years. His 20.8 points per game along with his all-around floor play earned him a spot in the Dapper Dan Roundball Classic held annually in Pittsburgh.

Expected to play key roles throughout the season at either guard or forward posts are 6-1 Dean Hartzell from Bridgeport, West Virginia; 6-0 Rick Merritt from Lockport, New York; Girard's 6-1 Russ Hajnik and 6-2 George Pistner from Elk County Christian in St. Mary's.

Along with the traditional conference rivals the junior varsity's 19-game slate will feature contests with Duquesne, Niagara and Gannon.



Scots' returning lettermen (L-R): Rich Sulka, Bob Koger, Jim Romaniszyn, Joel Kowitz, Jim Prokell, Bernie Jubeck and Fred Riley

1971-72 EDINBORO STATE COLLEGE BASKETBALL TEAM

VARSITY ROSTER

White	Red	Name	Pos.	Ht.	Wt.	Class	Hometown (High School)	High School Coach
10	11	Roy Stauffer	G	5'11"	168	So.	Emmaus (Emmaus)	Mr. Richard Shaak
12	13	Paul Sample	G	5'7"	147	So.	Pittsburgh (Brentwood)	Mr. William Douglass
14	15	*Bernie Jubeck	G	6'0"	165	Jr.	Altoona (Bishop Guilfoyle)	Mr. Tom Lane
20	21	**Fred Riley	G	5'10"	150	Sr.	Clearfield (Clearfield Area)	Mr. William Thorn
22	23	Mark Roche	F	6'3"	160	So.	Cochranton (Cochranton)	Mr. Wilbert Barnhardt
24	25	*Joel Kowitz	F	6'2"	170	Sr.	Lakewood, N.J. (Lakewood)	Mr. Bob Nastaes
30	31	*Jim Prokell	F	6'0"	185	Sr.	Pittsburgh (Canevin)	Mr. William Chontas
32	33	Don Gerdich	F-C	6'5"	208	Fr.	McKeesport (McKeesport Area)	Mr. Edmund Kittiko
40	41	*Jim Romaniszyn	G	6'2"	190	Jr.	Titusville (Titusville)	Mr. James Kockler
42	43	Charlie Foster	F	6'1"	185	So.	Springfield, N.J. (Dayton)	Mr. Ray Yanchus
44	45	Paul Stiles	F-G	6'1"	185	So.	Bradford (Bradford)	Mr. Hal Hansen
52	53	*Rich Sulka	C	6'6"	220	Jr.	Pittsburgh (Central Catholic)	Mr. John Killian

Co-Captains — Fred Riley and Jim Prokell

*Varsity Letters

JUNIOR VARSITY ROSTER

White	Red	Name	Pos.	Ht.	Wt.	Class	Hometown (High School)	High School Coach
10	11	Mark Roche	F	6'3"	160	So.	Cochranton (Cochranton)	Mr. Wilbert Barnhardt
12	13	Dave Kufen	F-G	6'2"	150	Fr.	West Mifflin (W. Mifflin So.)	Mr. Nick DeRosa
14	15	Joe Maiden	F-G	6'3"	175	Fr.	Washington, D.C. (Roosevelt)	Mr. Richard Wells
20	21	George Pistner	F	6'2"	165	Fr.	St. Mary's (Elk Co. Christian)	Mr. Jim Pfingstler
24	25	Larry Betar	G	6'0"	160	Fr.	Altoona (Altoona Area)	Mr. John Swogger
30	31	Rick Merritt	G	6'0"	160	Fr.	Lockport, N.Y. (Lockport)	Mr. Richard Crosset
32	33	Don Miller	F-G	6'4"	195	Fr.	Pittsburgh (St. Basil)	Mr. Red Ryan
40	41	Russ Hajnik	F	6'1"	170	Fr.	Girard (Rice Avenue)	Mr. Gay Stoner
42	43	Bob Rozanski	G	5'11"	165	Fr.	Glassport (Serra Catholic)	Mr. Ken Denne
44	45	Dean Hartzell	F-G	6'1"	180	Fr.	Bridgeport, W. Va. (Bridgeport)	Mr. Tom Brown
54	55	George Middleton	F	6-2	180	So.	Lakewood, O. (Lakewood)	Mr. Harry Groman

Managers — Pete Katsafanas, Jim Kleszcz and Ed Mailliard.

1970-71 SCOTS MAINTAIN WINNING WAYS

Edinboro State's success in the cage was continued last year when the Scots raced through a 24-game schedule with a 16-8 record. The Clansmen's impressive slate marked the tenth straight year that the Scots have finished without a losing campaign.

In his ninth year at the Edinboro helm, Jim McDonald raised his collegiate coaching mark to a new reading of 128 wins and 67 losses while his team also received its sixth district playoff bid since first being invited 8 seasons ago in 1963. McDonald will not return to the coaching ranks this year as he has been granted a sabbatical leave for academic advancement.

Hot shooting Fred Riley, a 5-10 junior from Clearfield, fell just eleven points short of an all-time season scoring record with 485 points to his credit while leading the offensive attack. The flashy guard averaged 20.2 points a game while hitting on a highly respectable 49.4 per cent of his shots from the floor. The junior ace finished as the Clan's leading scorer in 15 of their 24 games. In his two years as a varsity regular the young Scot has moved into tenth spot on the all-time scoring list with 787 points. His outstanding hard court performances already have earned him first team berths on the NAIA District 18 and the Pennsylvania Conference squads.

Closing out a brilliant career at Edinboro was senior guard Dave Knowlton (Mercer) who has guided the Edinboro offense for the past three years. His 194 assists during the past campaign shattered his old record of 174 which he established a year ago. The speed playmaker also holds the Edinboro record for assists in one game with 19 passes that led to Fighting Scot scores. He proved to be the Clan's most steady foul shooter throughout the 1970-71 schedule with 63 successful tries in 77 attempts for an 81.8 percentage mark.

Jim Prokell, a junior forward from Pittsburgh, followed Riley in the scoring parade with 431 tallies and 17.9 points a game average. His two year output has also pushed him high on the Edinboro scoring list where he now ranks 11th with 763 points. "Pro," although only six feet, demonstrated his jumping ability by grabbing 167 stray shots to finish number two in the rebounding department. For the second straight year his accuracy from the floor ranked him number one on the squad as he hit on 158 of 377 attempts to post a 49.8 shooting percentage.

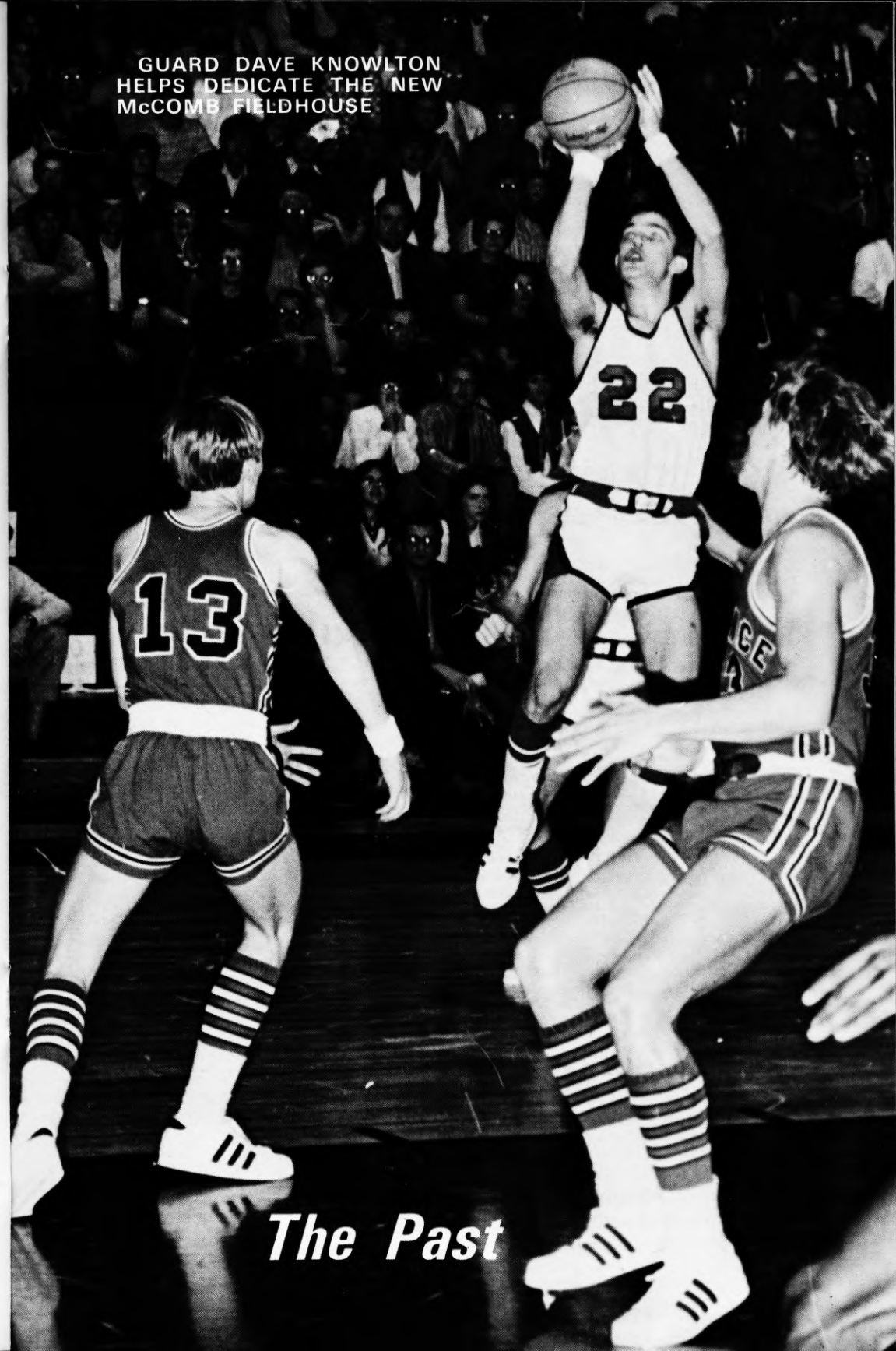
Sophomore stalwart Rich Sulka (Pittsburgh), a 6-6 center, showed signs of promise for the future with his rebounding tactics under the boards. The first year pivot ace led the team in rebounding by sweeping the glass clean 215 times. His 155 points for the campaign garnered him a fourth place spot on the team's scoring list.

After getting off to a slow start because of a broken hand, sophomore Jim Romaniszyn (Titusville) clipped the nets for 147 markers which netted him a 9.2 points-a-game average in just 16 appearances. He proved to be quite effective underneath the hoop where he chipped in 72 rebounds and connected on 41 per cent of his tries from the field.

The Clansmen received a mid-season setback with the loss of 6-10 center Art Dickinson (Crystal Lake, Ill.) who rounded out a trio of high scoring Scots with a 19.1 points-a-game average and a team leading mark of 11.8 rebounds per contest. The big pivot man left the Clan's ranks after pacing the Men of McDonald to an 11-2 record in their first 13 games.

With the loss of senior Dave Knowlton and Ray Overholt, the Scots will be returning four of their five starters for the 1971-72 campaign. The experienced band of young Fighting Scots should prove to be another strong contingent of Edinboro cagers.

GUARD DAVE KNOWLTON
HELPS DEDICATE THE NEW
McCOMB FIELDHOUSE



The Past

SPECIAL RECOGNITION — "SCOTS OF THE PAST"

NAIA 2nd TEAM, ALL-AMERICAN

1964-1965: Dan Petchel

NAIA 3rd TEAM, ALL-AMERICAN

1968-1969: Frank Smith

1967-1968: Frank Smith

1965-1966: Darryl Meachem

NAIA ALL-AMERICA HONORABLE MENTION

1970-1971: Fred Riley

PC 1st TEAM (WEST)

1970-1971: Fred Riley
Jim Prokell

1969-1970: (West)
Art Dickinson
Jim Prokell
Dave Knowlton

1968-1969: Frank Smith

1967-1968: Don Dougan
Frank Smith

1966-1967: Lynn Nelson

1965-1966: Darryl Meachem

1964-1965: Dan Petchel

1963-1964: Dan Petchel

1962-1963: Dan Petchel

PC 2nd TEAM

1970-1971: Dave Knowlton

1968-1969: Rod Herron
Harry Jenkins

1967-1968: Harry Jenkins
Jim Robinson
Mick Unick

1965-1966: Dave Shenefelt
Don Dougan

PC HONORABLE MENTION

1968-1969: Tim Ziner
Jim Robinson
Mick Unick

1966-1967: Butch Hurley
Harry Jenkins
Tim Maloney
Darryl Meachem
Frank Smith

1964-1965: Dave Shenefelt

1962-1963: Ken Barker

1961-1962: Ken Barker
Wendell Rojik
Jim Sims

NAIA DISTRICT 18 1st TEAM

1970-1971: Fred Riley

1968-1969: Frank Smith

1967-1968: Frank Smith

1965-1966: Darryl Meachem

NAIA DISTRICT 30 1st TEAM

1964-1965: Dan Petchel

NAIA DISTRICT 18 2nd TEAM

1970-1971: Jim Prokell

1969-1970: Art Dickinson
Jim Prokell

1967-1968: Don Dougan
Mick Unick

NAIA DISTRICT 18 HON. MENTION

1969-1970: Fred Riley

OTHERS

Penna. Collegiate Press Ass'n. Hon. Mention 1970-1971 Fred Riley
Pittsburgh Press All-District Second Team 1970-1971 Fred Riley
Pittsburgh Press All-District Third Team 1969-1970, 1970-1971. Jim Prokell
Pittsburgh Press All-District Second Team 1969-1970 Art Dickinson
Honorable Mention All-Pennsylvania by A. P. 1969-1970 Fred Riley
Pittsburgh Press All-District First Team 1968-1969 Frank Smith
Third Team All-Pennsylvania by A. P. 1967-1968 Frank Smith
Honorable Mention All-Pennsylvania by A. P. 1968-1969 Frank Smith
SOS Outstanding Athlete (Erie, Pa.) 1965-1966 Darryl Meachem
Sox Harrison Award 1967-1968 Jim Robinson
Penn-Ohio All-Section Team 1965-1966 Darryl Meachem
Penn-Ohio Honorable Mention 1965-1966 Dave Shenefelt

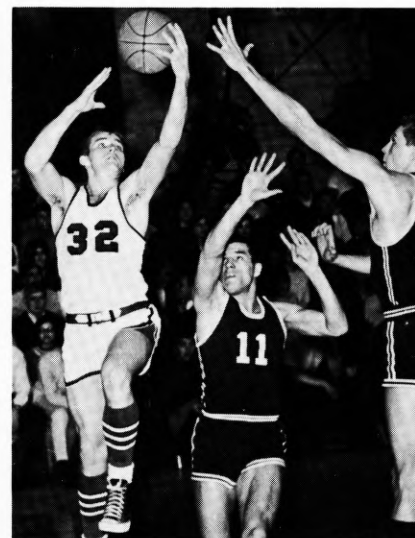
EDINBORO STATE COLLEGE'S ALL-AMERICANS



Dan Petchel
1964-1965



Darryl Meachem
1965-1966



Frank Smith
1967-1968; 1968-1969

Three Edinboro State basketball products have been named NAIA All-Americans for their outstanding roundball abilities.

Sheffield's Dan Petchel (1964-65 All-American selectee) ranks as Edinboro State's second all-time high scorer with 1,344 points. Bentleyville's Frank Smith (1967-68 and 1968-69 All-American) holds down the third place spot with 1,225 markers while Aliquippa's Darryl Meachem (1965-66 All-American) ranks fifth with 881 tallies.

In the rebounding department, Meachem and Petchel are two of the college's top three career rebounders with 897 and 744, respectively. Meachem pulled down 393 rebounds for a school record established during the 1965-66 season.

Smith owns two individual scoring records. His 54-point output against Fredonia in the 1966-67 season earned him the most points scored in a single game record. The 6-1, 198-lb. forward compiled the most field goals scored in a single game record with 21 two-point markers against Waynesburg in the same season and 21 against Kenyon in 1969.

1970-71 VARSITY RESULTS

Regular Season Record 15-7

Overall Record 16-8

ESC	Opp.	Leading Scorer	Leading Rebounder
96	Grove City.....84	Fred Riley.....24	Rich Sulka.....9
81	Alliance.....69	Jim Prokell.....21	Rich Sulka.....11
115	Lock Haven State...79	Fred Riley.....25	Rich Sulka.....13
88	Slippery Rock State...76	Fred Riley.....21	Rich Sulka.....15
116	W. Ontario.....62	Art Dickinson...27	Art Dickinson...18
60	Clarion State.....66	Art Dickinson...21	Art Dickinson...13
81	Ohio Wesleyan.....67	Fred Riley.....21	Rich Sulka.....11
87	Hiram.....50	Fred Riley.....19	Rich Sulka.....11
116	Northern Michigan U..98	Jim Prokell.....31	Art Dickinson...24
96	Kenyon.....98	Fred Riley.....25	Art Dickinson...18
75	California State.....66	Jim Prokell.....24	Rich Sulka.....12
91	Mars Hill.....68	Art Dickinson...26	Rich Sulka.....13
96	Geneva.....75	Art Dickinson...27	Art Dickinson...9
			Rich Sulka.....9
73	Slippery Rock State...77	Fred Riley.....22	Rich Sulka.....8
64	Indiana U. of Pa.....84	Fred Riley.....21	Mike Brzozowski. 8
82	Lock Haven State...92	Fred Riley.....24	Jim Prokell.....9
91	Oneonta State.....64	Fred Riley.....26	Jim Prokell.....11
93	California State.....83	Fred Riley.....20	Bob Koger.....15
		Jim Prokell.....20	
85	Clarion State(OT)...87	Fred Riley.....35	Bob Koger.....9
			Fred Riley.....9
89	Alliance.....83	Fred Riley.....32	Rich Sulka.....12
88	W. Va. Wesleyan.....78	Fred Riley.....32	Jim Prokell.....10
			Jim Romaniszyn. 10
61	Indiana U. of Pa.....68	Jim Prokell.....21	Jim Prokell.....7
81	Clarion State.....70	Fred Riley.....23	Jim Prokell.....10
			Jim Romaniszyn. 10
60	Indiana U. of Pa.....67	Jim Prokell.....11	Jim Prokell.....12
		Jim Romaniszyn. 11	

1970-71 VARSITY STATISTICS

Name	G	FGA	FG	FG%	FTA	FT	FT%	REB.	AVG.	TP	AVG.
F. Riley, g	24	425	210	.494	90	65	.722	72	3.0	485	20.2
J. Prokell, f	24	317	158	.498	153	115	.752	167	6.9	431	17.9
D. Knowlton, g	24	156	72	.462	77	63	.818	82	3.4	207	8.6
R. Sulka, c	23	152	66	.434	44	23	.523	215	8.9	155	6.7
Romaniszyn, g-f	16	137	57	.409	50	33	.660	72	4.5	147	9.2
J. Kowit, g	19	70	25	.357	29	17	.586	38	2.0	67	3.5
M. Brzozowski, f	18	78	31	.396	10	4	.400	62	3.6	66	3.6
R. Overholt, g	20	52	23	.442	18	15	.833	22	1.1	61	3.0
B. Koger, f	14	74	19	.257	11	6	.545	75	5.3	44	3.4
T. Albright, g	14	37	12	.324	6	3	.500	14	1.0	27	1.9
B. Jubeck, g	9	23	9	.391	6	6	1.000	11	1.2	24	2.7
A. Dickinson, f*	13	192	89	.458	85	71	.835	154	11.8	249	19.1
Others	10	79	38	.481	35	26	.743	70	7.0	102	10.2
Team	24							84	3.5		
ESC Totals	24	1792	809	.444	614	447	.727	1138	47.4	2065	86.0
Opponents	24	1647	676	.411	635	459	.724	937	39.0	1811	75.1

*Competed only one-half of season.

1970-71 FRESHMAN RESULTS

Season Record 18-4

ESC	Opp.	Leading Scorer	Leading Rebounder
74	Grove City.....65	Roy Stauffer....24	Charles Foster...12
82	Alliance.....69	Roy Stauffer....24	Charles Foster...16
106	Penn State-Dubois...42	Roy Stauffer....16	Bob Ungarean...11
106	Slippery Rock State...87	Roy Stauffer....28	Charles Foster...12
104	Vic Kress.....78	Charles Foster...28	G. Middleton...12
95	Clarion State.....86	Paul Stiles.....30	Roy Stauffer....8
96	Boyce Community...82	Roy Stauffer....25	Paul Stiles.....13
96	Buhl Memorial.....74	Paul Stiles.....38	G. Middleton...19
84	Gannon.....62	Roy Stauffer....22	G. Middleton...11
95	Erie All Stars.....79	Roy Stauffer....24	G. Middleton...16
86	Gannon.....74	Paul Stiles.....26	G. Middleton...14
62	California State.....76	Roy Stauffer....22	Roy Stauffer....11
100	Home Care Products..48	Roy Stauffer....18	Paul Stiles.....14
84	Geneva.....60	Charles Foster...18	G. Middleton...15
81	Slippery Rock State...85	Paul Stiles.....33	G. Middleton...8
92	Vic Kress.....83	Roy Stauffer....26	G. Middleton...11
104	Cuyahoga Community.72	Roy Stauffer....34	Roy Stauffer....9
92	California State.....61	Paul Stiles.....28	G. Middleton...15
			Paul Stiles.....15
72	Clarion State.....70	Paul Stiles.....20	Paul Stiles.....9
94	Gannon.....95	Roy Stauffer....29	G. Middleton...14
117	Behrend Campus PSU.99	Roy Stauffer....38	G. Middleton...14
			Paul Stiles.....14
89	Lakeland Community.97	Roy Stauffer....32	Mark Roche.....8

1970-71 FRESHMAN STATISTICS

Name	G	FGA	FG	FG%	FTA	FT	FT%	REB.	AVG.	TP	AVG.
R. Stauffer, g	22	416	200	.480	140	109	.721	125	5.6	509	23.1
P. Stiles, g-f	22	372	180	.484	111	75	.676	183	8.3	435	19.3
B. Henk, g	22	182	87	.478	51	41	.804	74	3.4	215	9.8
G. Middleton, c	22	224	87	.388	43	17	.395	220	10.0	191	8.7
B. Ungarean, g	19	105	59	.562	36	25	.694	64	3.4	143	7.5
P. Sample, g	21	88	44	.500	38	30	.789	51	2.4	118	5.5
M. Roche, f	20	85	36	.424	34	19	.559	70	3.5	91	4.7
R. Stubbe, g	11	34	9	.265	26	16	.615	14	1.2	34	3.0
K. Anthony, g	12	29	11	.380	11	6	.545	8	1.7	28	2.3
R. Grynuck, f	7	12	6	.500	2	1	.500	4	.5	13	1.8
Others	12	209	79	.330	108	76	.704	143	11.9	234	19.5
Team	22							73	3.3		
ESC Totals	22	1756	798	.456	600	415	.692	1029	46.5	2011	91.4
Opponents	22	1514	607	.409	690	430	.623	957	43.5	1644	74.7

EDINBORO CAGE RECORDS

TEAM RECORD—SEASON

Most Wins	19-5	James McDonald	1967-1968
	17-4	(regular season play)	
Best Season Record	12-1	Sox Harrison	1931-1932
Highest Scoring Average	89.4		1967-1968
Best Shooting Percentage	51.7		1966-1967
Best Free Throw Percentage	70.6		1967-1968
Best Rebounding Average	55.7		1965-1966
Best Rebounding Percentage	62.5		1966-1967
Most Field Goals	868	(24 games)	1967-1968
Most Consecutive Victories	11	1966-1967—	1967-1968
Most Consecutive Victories	10	(one season)	1967-1968
Most Consecutive Conference Wins	17		1967-1969

TEAM RECORDS—GAME

Most Points	133	Lock Haven	1967-1968
Most Field Goals	54	Lock Haven	1967-1968
Most Free Throws	31-49	California	1965-1966
	31-51	Lock Haven	1961-1962
Most Rebounds	93	Clarion (PC Record)	1968-1969
Most Points (two teams)	223	(ESC 133, Lock Haven 90)	1967-1968
Longest Game	3 O. T.	Lock Haven	1961-1962

CHAMPIONSHIPS

Western Division PSCAC	(Park)	1961-1962
Western Division PSCAC	(McDonald)	1963-1964
Western Division PSCAC	(McDonald)	1965-1966
*NAIA District 18 Championship	(McDonald)	1965-1966
Western Division PSCAC	(McDonald)	1967-1968
PSCAC State Championship	(McDonald)	1967-1968
Western Division PC	(McDonald)	1968-1969

*Won the right to play in NAIA Tournament in Kansas City, Mo.

1970-71 PENNSYLVANIA CONFERENCE RESULTS

	Conference			Full Season			
	W	L	Pct.	W	L	Pts.	Opp.
EASTERN DIVISION							
*Cheyney.....	13	1	.929	23	6	94.5	82.6
E. Stroudsburg.....	11	3	.786	20	4	82.4	69.7
Mansfield.....	9	5	.643	18	8	83.1	76.1
Millersville.....	7	7	.500	14	9	86.2	78.3
Shippensburg.....	6	8	.429	11	12	80.7	87.6
Bloomsburg.....	5	9	.357	11	9	83.3	81.9
West Chester.....	4	10	.286	7	18	78.1	85.4
Kutztown.....	1	13	.071	3	15	74.9	87.6
WESTERN DIVISION							
Clarion.....	7	1	.875	16	9	73.0	69.0
Edinboro.....	4	4	.500	16	8	86.5	75.5
California.....	4	4	.500	11	9	76.1	72.5
Lock Haven.....	3	5	.375	8	12	78.0	86.4
Slippery Rock.....	2	6	.250	10	15	84.5	84.6

*Won championship playoff.

INDIVIDUAL RECORDS — SEASON

Most Total Points (4 yrs.)

Walt Askins	1739	1956-1960
Dan Petchel	1344	1961-1965

Most Points

Walt Askins	496	1956-1957
Frank Smith	466	1968-1969
Dan Petchel	460	1964-1965

Highest Scoring Averages

Walt Askins	26.1	(19 games)	1956-1957
Dan Petchel	25.6	(18 games)	1964-1965
Frank Smith	30.1	(9 games)	1966-1967

Best Shooting Percentages

Lynn Nelson	58.3	(16 games)	1966-1967
Dan Petchel	55.8	(18 games)	1964-1965
Frank Smith	59.4	(9 games)	1966-1967

Best Foul Shooting Percentages

Ken Gerber	85.1	(63-74)	1961-1962
Don Dougan	77.9	(81-104)	1967-1968

Most Career Rebounds (4 yrs.)

Don Dougan	992		1963-1968
------------	-----	--	-----------

Most Rebounds

Darryl Meachem	393		1965-1966
----------------	-----	--	-----------

Best Rebounding Averages

Darryl Meachem	18.5	(10 games)	1966-1967
	17.05	(23 games)	1965-1966

Most Consecutive Foul Shots

Ken Gerber	38	(PSCAC Record)	1961-1962
------------	----	----------------	-----------

Most Assists

Dave Knowlton	194	(24 games)	1970-1971
---------------	-----	------------	-----------

INDIVIDUAL RECORDS — GAME

Most Points

Frank Smith	54	Fredonia	1966-1967
Frank Smith	52	Kenyon	1968-1969
Dan Petchel	40	Alliance	1963-1964

Most Field-Goals

Frank Smith	21	Waynesburg	1966-1967
Frank Smith	21	Kenyon	1968-1969

Most Rebounds

Don Dougan	38	Indiana State	1964-1965
		(PC Record)	

Most Foul Shots Made

Ken Gerber	14-14	Gannon	1961-1962
Don Dougan	13-16	Baldwin-Wallace	1964-1965

Most Assists

Dave Knowlton	19	Grove City	1969-1970
---------------	----	------------	-----------

ALL-TIME SCORES — 1929-1971

1928-29	
<i>Coach: Sox Harrison</i>	
Won 12 — Lost 2	
ESC	Opp.
58 Clarion.....	27
58 Fredonia.....	26
58 Youngstown	
YMCA.....	38
87 Kanty College...	21
20 Clarion.....	14
36 California.....	25
46 Slippery Rock... 32	
24 Slippery Rock... 36	
49 Fredonia.....	29
50 Indiana.....	18
40 California.....	19
42 Youngstown	
YMCA.....	44
38 Indiana.....	22
34 Slippery Rock... 30	
640	381
1929-30	
<i>Coach: Sox Harrison</i>	
Won 8 — Lost 6	
ESC	Opp.
29 Ashland.....	41
25 Slippery Rock... 24	
18 Buffalo St. Tchrs. 20	
20 Canisius.....	38
36 West Chester... 37	
31 Waynesburg... 25	
25 Slippery Rock... 22	
40 California.....	38
32 Clarion.....	22
45 Indiana.....	25
41 Buffalo St. Tchrs. 22	
39 California.....	52
32 Clarion.....	19
23 Indiana.....	24
436	409
1930-31	
<i>Coach: Sox Harrison</i>	
Won 10 — Lost 5	
ESC	Opp.
55 P.N.A.C.....	15
42 P.N.A.C.....	20
43 Erie Branch.....	22
24 West Chester... 20	
43 Kutztown.....	32
34 Slippery Rock... 33	
21 Clarion.....	14
29 Indiana.....	23
44 Erie Branch.....	24
28 Slippery Rock... 29	
38 California.....	38
34 California.....	38
59 Clarion.....	41
47 Indiana.....	30
21 Allegheny.....	29
562	409
1931-32	
<i>Coach: Sox Harrison</i>	
Won 12 — Lost 1	
ESC	Opp.
60 Fredonia.....	26

37 Indiana.....	31
46 Alliance.....	23
42 Kutztown.....	31
22 California.....	23
31 Slippery Rock... 22	
34 California.....	17
44 Slippery Rock... 35	
46 Alliance.....	31
47 Clarion.....	16
37 Indiana.....	15
32 Clarion.....	22
60 Fredonia.....	22
604	363
1932-33	
<i>Coach: Sox Harrison</i>	
<i>(Being Researched)</i>	
1933-34	
<i>Coach: Sox Harrison</i>	
Won 8 — Lost 5	
ESC	Opp.
27 Findley.....	28
50 Fredonia.....	22
33 Clarion.....	20
31 Westminster... 41	
35 California.....	32
32 Slippery Rock... 37	
50 Indiana.....	34
54 Fredonia.....	29
59 California.....	25
30 Westminster... 45	
46 Slippery Rock... 34	
36 Indiana.....	38
36 Clarion.....	34
519	419
1934-35	
<i>Coach: Sox Harrison</i>	
<i>(Being Researched)</i>	
1935-36	
<i>Coach: Sox Harrison</i>	
Won 5 — Lost 5	
ESC	Opp.
24 Thiel.....	42
32 Thiel.....	40
54 Clarion.....	35
33 Clarion.....	35
30 Slippery Rock... 37	
40 Slippery Rock... 37	
44 Indiana.....	38
32 Indiana.....	38
50 California.....	32
27 California.....	33
366	360
1936-37	
<i>Coach: Sox Harrison</i>	
Won 7 — Lost 6	
ESC	Opp.
49 Ohio Chiropody.. 18	
33 California.....	43
36 Indiana.....	39
41 Clarion.....	46
31 California.....	37
30 Thiel.....	35
47 Fredonia.....	35

45 Thiel.....	32
37 Ohio Chiropody.. 30	
43 Slippery Rock... 49	
53 Clarion.....	30
43 Indiana.....	30
41 Slippery Rock... 37	
529	469
1937-38	
<i>Coach: Sox Harrison</i>	
Won 6 — Lost 8	
ESC	Opp.
36 Kent.....	37
44 Fredonia.....	45
33 Clarion.....	28
54 Fredonia.....	41
48 California.....	44
37 Indiana.....	55
39 Thiel.....	34
37 Ohio Chiropody.. 23	
32 California.....	49
56 Slippery Rock... 57	
41 Slippery Rock... 42	
41 Indiana.....	43
35 Clarion.....	41
49 Ohio Chiropody.. 37	
582	576
1938-39	
<i>Coach: Sox Harrison</i>	
Won 8 — Lost 2	
ESC	Opp.
43 Fredonia.....	37
53 Clarion.....	35
64 California.....	42
46 Fredonia.....	22
54 Indiana.....	36
50 Clarion.....	51
51 Slippery Rock... 34	
45 California.....	32
39 Slippery Rock... 43	
47 Indiana.....	42
492	374
1939-40	
<i>Coach: Sox Harrison</i>	
Won 14 — Lost 4	
ESC	Opp.
49 St. Marys.....	38
45 Fredonia.....	37
51 Ohio Chiropody.. 27	
54 Clarion.....	33
43 Canisius.....	52
32 Fredonia.....	28
44 Alliance.....	40
37 Indiana.....	29
32 Clarion.....	30
52 Slippery Rock... 44	
54 California.....	44
39 Lawrence Tech... 45	
50 California.....	51
36 Slippery Rock... 67	
40 Indiana.....	35
39 Alliance.....	18
47 Ohio Chiropody.. 37	
744	655

1940-41	
<i>Coach: Sox Harrison</i>	
Won 11 — Lost 4	
ESC	Opp.
45 DeSalles.....	44
54 Ohio Chiropody.. 33	
46 Lawrence Tech... 44	
29 Fredonia.....	28
53 Thiel.....	42
49 Thiel.....	50
36 Slippery Rock... 26	
34 California.....	36
50 Fredonia.....	37
43 Clarion.....	33
38 California.....	49
42 Indiana.....	32
35 Indiana.....	34
51 Clarion.....	36
50 Slippery Rock... 53	
655	577
1941-42	
<i>Coach: Sox Harrison</i>	
Won 4 — Lost 9	
ESC	Opp.
57 Fredonia.....	29
44 Alliance.....	33
36 Fredonia.....	38
27 Indiana.....	44
35 Slippery Rock... 51	
36 California.....	40
28 Clarion.....	41
— California.....	—
37 Lawrence Tech... 34	
33 Canisius.....	66
333	376
1942-43	
<i>Coach: Sox Harrison</i>	
Won 1 — Lost 1	
ESC	Opp.
34 Lawrence Tech... 50	
— Alliance.....	—
<i>(Season Halted—W.W.II)</i>	
1943-44 (War)	
1944-45 (War)	
1945-46	
<i>Coach: Sox Harrison</i>	
Won 0 — Lost 5	
ESC	Opp.
32 Clarion.....	53
38 Slippery Rock... 74	
33 Clarion.....	42
33 Alliance.....	52
39 Alliance....(OT) 45	
175	266
1946-47	
<i>Coach: Sox Harrison</i>	
Won 7 — Lost 8	
ESC	Opp.
39 Buffalo State... 51	
54 Fredonia.....	44
44 Alliance.....	53
44 Indiana.....	45
34 Fenn.....	33
46 Slippery Rock... 51	

63 California.....	45
45 Clarion.....	46
62 Alliance.....	55
48 Indiana.....	57
42 California.....	45
43 Clarion.....	41
40 Fenn.....	37
54 Fredonia.....	25
44 Slippery Rock... 52	
702	680
1947-48	
<i>Coach: Sox Harrison</i>	
Won 4 — Lost 11	
ESC	Opp.
62 Fredonia.....	37
51 Fenn.....	46
43 Alliance.....	54
51 Salem.....	57
55 California.....	63
53 California.....	71
56 Clarion.....	60
36 Alliance.....	37
51 Fredonia.....	49
69 Thiel.....	38
48 Clarion.....	51
55 Indiana.....	62
60 Slippery Rock... 73	
49 Indiana.....	71
45 Slippery Rock... 77	
784	846
1948-49	
<i>Coach: Sox Harrison</i>	
Won 7 — Lost 9	
ESC	Opp.
48 Fredonia.....	21
58 Alliance.....	56
44 Slippery Rock... 57	
57 Gannon.....	48
65 Indiana.....	75
50 Slippery Rock... 67	
50 Clarion.....	48
45 Buffalo.....	57
48 Fredonia.....	43
55 Alliance.....	44
57 California.....	54
46 Clarion.....	60
51 Gannon.....	52
50 Thiel.....	76
81 California.....	69
56 Indiana.....	45
858	872
1949-50	
<i>Coach: Sox Harrison</i>	
Won 12 — Lost 5	
ESC	Opp.
72 Fredonia.....	44
59 Alliance.....	40
55 Grove City.....	54
62 Gannon.....	57
66 California.....	50
54 Indiana.....	70
52 Slippery Rock... 58	
52 Gannon.....	68
45 Slippery Rock... 42	
49 California.....	64
60 Clarion.....	50
35 Buffalo.....	47

60 Indiana.....	56
58 Clarion.....	50
73 Alliance.....	57
61 Fredonia.....	52
65 Thiel.....	51
978	910
1950-51	
<i>Coach: Sox Harrison</i>	
Won 9 — Lost 9	
ESC	Opp.
64 Allegheny.....	52
55 Fredonia.....	46
61 Slippery Rock... 60	
82 Fredonia.....	72
79 Alliance.....	61
65 Gannon.....	73
53 Indiana.....	54
82 Clarion.....	84
65 Slippery Rock... 90	
55 Buffalo.....	62
66 Gannon.....	43
62 California.....	77
82 Clarion.....	91
63 Alliance.....	55
52 Fenn.....	75
77 Thiel.....	70
80 California.....	63
84 Grove City.....	99
1,227	1,227
1951-52	
<i>Coach: Sox Harrison</i>	
Won 6 — Lost 12	
ESC	Opp.
46 Fredonia.....	42
58 Allegheny.....	79
63 California.....	55
46 Gannon.....	48
57 Slippery Rock... 61	
66 Fredonia.....	68
60 Buffalo.....	55
67 Gannon.....	85
77 Alliance.....	58
71 Indiana.....	74
49 Slippery Rock... 91	
68 Clarion.....	82
79 Grove City.....	83
61 California.....	92
74 Clarion.....	106
67 Alliance.....	57
56 Thiel.....	55
63 Geneva.....	85
1,128	1,276
1952-53	
<i>Coach: Sox Harrison</i>	
<i>(Being Researched)</i>	
ESC	Opp.
57 Fredonia.....	56
68 Allegheny.....	78
67 Grove City.....	77
51 Alliance.....	57
75 Indiana.....	87
67 Slippery Rock... 92	
67 Gannon.....	71
— Alliance.....	—
68 Gannon.....	81
68 Indiana.....	64

77 Thiel.....	59
75 Allegheny.....	93
85 Fredonia.....	68
86 California.....	81
76 Clarion.....	82
— Grove City.....	—
— California.....	—
77 Thiel.....	66
— Clarion.....	—
— Geneva.....	—
— Slippery Rock...	—

1953-54

Coach: Art McComb
(Being Researched)

1954-55

Coach: Art McComb
Won 8 — Lost 12
(Being Researched)

ESC	Opp.
62 Gannon.....	77
58 Indiana.....	97
— Grove City.....	—
— Fredonia.....	—
59 Allegheny.....	80
— Thiel.....	—
119 Alliance.....	108
72 Slippery Rock...	67
— California.....	—
61 Indiana.....	69
— Slippery Rock...	—
54 Gannon.....	70
— California.....	—
— Clarion.....	—
65 Fredonia.....	62
— Alliance.....	—
80 Grove City.....	77
— Clarion.....	—
— Thiel.....	—
61 Allegheny.....	79

1955-56

Coach: Art McComb
Won 4 — Lost 16

ESC	Opp.
62 Allegheny.....	95
53 Alliance.....	69
76 Indiana.....	91
52 Grove City.....	61
56 Fredonia.....	54
74 Allegheny.....	84
63 Thiel.....	75
54 Slippery Rock...	77
62 Gannon.....	85
65 Slippery Rock...	80
77 Thiel.....	70
57 Clarion.....	68
61 California.....	65
67 Fredonia.....	82
72 Indiana.....	131
82 Alliance.....	76
64 California.....	86
64 Clarion.....	91
74 Grove City.....	76
55 Gannon.....	71
1,290	1,587

1956-57

Coach: Robert Thurbon
Won 5 — Lost 14

ESC	Opp.
81 Grove City.....	104
63 Allegheny.....	74
66 Thiel.....	90
73 California.....	110
68 Slippery Rock...	78
68 Grove City.....	105
66 Gannon.....	80
71 Clarion.....	72
84 Fredonia.....	77
61 Thiel.....	64
67 California.....	74
73 Allegheny.....	60
100 Fredonia.....	66
100 Alliance.....	88
68 Fenn.....	81
78 Slippery Rock...	97
107 Clarion.....	88
94 Alliance.....	96
89 Gannon.....	90
1,477	1,594

1957-58

Coach: Robert Thurbon
Won 10 — Lost 11

ESC	Opp.
64 Grove City.....	72
84 Slippery Rock...	79
102 Alliance.....	103
90 Fredonia.....	76
64 Thiel.....	61
65 California.....	60
63 Indiana.....	96
52 Gannon.....	60
92 Clarion.....	110
76 Lock Haven (OT) 74	
83 Fredonia.....	69
75 Thiel.....	67
77 California.....	88
94 Slippery Rock...	97
54 Grove City.....	71
76 Allegheny.....	67
74 Fenn.....	61
75 Alliance.....	70
65 Indiana.....	97
84 Clarion.....	99
65 Gannon..... (OT) 75	
1,574	1,652

1958-59

Coach: Robert Thurbon
Won 8 — Lost 12

ESC	Opp.
75 Alliance.....	80
101 Slippery Rock...	92
61 Grove City.....	56
79 Thiel.....	72
62 Gannon.....	86
88 Clarion.....	101
91 California.....	99
94 Slippery Rock...	106
80 Thiel.....	78
83 Fredonia.....	74
61 Lock Haven.....	74
56 Mansfield.....	99
66 Grove City.....	75
69 Mansfield.....	98

114 Alliance.....	104
102 California.....	93
104 Clarion.....	112
99 Fredonia.....	72
77 Gannon.....	79
106 Allegheny.....	109
1,668	1,761

1959-60

Coach: Jim Smart
Won 6 — Lost 13
(Scores not available)

1960-61

Coach: Loyal Park
Won 6 — Lost 15

ESC	Opp.
68 Lock Haven.....	87
45 Alliance.....	61
43 Indiana.....	73
61 Clarion.....	71
77 Grove City.....	95
54 Mt. Union.....	90
56 California.....	58
79 Indiana.....	89
57 Gannon.....	62
73 Slippery Rock...	85
33 Alliance.....	58
85 Fredonia.....	51
88 Thiel.....	66
86 California.....	68
64 Slippery Rock...	73
70 Clarion.....	67
62 Gannon.....	83
55 Grove City.....	73
87 Allegheny... (OT) 93	
93 Fredonia.....	78
67 Lock Haven.....	65
1,403	1,546

1961-62

Coach: Loyal Park
Won 17 — Lost 7

ESC	Opp.
60 Fredonia.....	58
60 Clarion.....	65
48 Grove City.....	71
81 Slippery Rock...	61
63 Carnegie Tech...	76
73 Roberts Wesleyan	64
81 California.....	51
81 Indiana.....	67
56 Gannon..... (OT) 58	
83 Fenn.....	52
103 Lock Haven.....	
(3 OT) 101	
63 Alliance.....	52
87 Fredonia.....	80
71 Thiel.....	63
82 California.....	64
67 Clarion.....	62
56 Alliance.....	69
74 Indiana.....	82
69 Thiel.....	60
72 Lock Haven.....	60
76 Slippery Rock...	71
102 Allegheny.....	80
1,608	1,467

Western Division
Championship—PSCAC

86 Slippery Rock...	68
State Championship—	
PSCAC	
54 Mansfield.....	58
1,748	1,593

1962-63

Coach: Jim McDonald
Won 12 — Lost 9

ESC	Opp.
66 Bluffton.....	46
82 Alliance.....	86
91 Clarion.....	83
70 Slippery Rock...	64
60 Carnegie Tech...	63
87 California.....	56
52 Gannon.....	60
74 Thiel.....	64
66 Fenn.....	68
72 Lock Haven.....	49
72 Thiel.....	64
75 Indiana.....	66
77 Fredonia.....	66
67 Alliance.....	84
73 California.....	83
61 Clarion.....	58
68 Indiana.....	75
97 Fredonia.....	71
83 Lock Haven.....	52
64 Slippery Rock...	70
1,385	1,264

Western Division
Championship—PSCAC

69 Slippery Rock...	83
1,526	1,396

1963-64

Coach: Jim McDonald
Won 16 — Lost 6

ESC	Opp.
75 Alliance.....	59
63 Slippery Rock...	67
73 Thiel.....	45
92 Baldwin-Wallace.	90
72 Bloomsburg.....	71
84 Clarion.....	66
106 Fredonia.....	81
94 Fenn.....	82
71 Bloomsburg.....	74
85 Indiana.....	99
80 Lock Haven.....	48
88 Roberts Wesleyan	73
83 Lock Haven.....	61
81 Alliance.....	91
85 California.....	80
86 Slippery Rock...	79
99 Indiana.....	88
95 Clarion.....	90
67 California.....	55
72 Gannon... (OT) 71	
1,651	1,470

State Championship—PSCAC

90 Mansfield.....	98
NAIA District 30	
Championship	
67 Westminster.....	81
1,808	1,649

1964-65

Coach: Jim McDonald
Won 10 — Lost 8

ESC	Opp.
99 Grove City.....	89
68 Alliance.....	80
76 Slippery Rock...	80
92 Thiel.....	61
109 Lock Haven.....	79
104 Walsh.....	72
90 Clarion.....	69
100 Indiana.....	87
70 California.....	82
89 Lock Haven.....	53
84 Alliance.....	89
86 Geneva.....	85
86 Slippery Rock...	63
91 Indiana.....	82
69 Fenn.....	77
95 California.....	108
50 Gannon.....	58
77 Clarion.....	79
1,535	1,393

1965-66

Coach: Jim McDonald
Won 18 — Lost 5

ESC	Opp.
84 Mansfield.....	83
70 Alliance.....	68
67 Slippery Rock...	56
95 Lock Haven.....	55
80 Clarion.....	71
104 Waynesburg...	88
68 Indiana.....	71
83 Fredonia.....	62
78 California.....	102
89 Lock Haven.....	72
86 Mansfield.....	82
90 Alliance.....	83
99 Michigan Luth...	58
79 Slippery Rock...	72
95 Indiana.....	85
70 Geneva.....	71
93 Cleveland State..	72
83 Clarion.....	79
71 California.....	58
1,584	1,388

State Championship—PSCAC

76 Cheyney.....	96
NAIA District 18	
Championship	
76 Geneva.....	60
79 California.....	62
National NAIA	
Tournament, K. C., Mo.	
53 Central Michigan.	67
1,868	1,673

1966-67

Coach: Jim McDonald
Won 11 — Lost 11

ESC	Opp.
88 Mansfield.....	73
90 Alliance.....	93
99 Slippery Rock...	94
90 Lock Haven.....	77
73 Clarion.....	71
87 California.....	92
110 Fredonia.....	64
123 Waynesburg...	97
94 Indiana.....	95
83 W. Va. Wesleyan.	
(OT) 85	
90 Lock Haven.....	64
71 Mansfield.....	77
67 Alliance.....	66
71 Cleveland State..	75
89 Roberts Wesleyan	78
75 Slippery Rock...	
(OT) 77	
77 Indiana.....	85
98 Geneva.....	107
26 California.....	31
85 Clarion.....	75
70 Baldwin Wallace.	102
87 Walsh.....	66
1,843	1,744

1967-68

Coach: Jim McDonald
Won 19 — Lost 5

ESC	Opp.
109 Waynesburg...	84
84 Slippery Rock...	56
133 Lock Haven.....	90
103 Clarion.....	92
98 California.....	91
93 Fredonia.....	84
87 Indiana U. of Pa..	85
99 Mansfield.....	81
90 Alliance.....	72
109 W. Va. Wesleyan.	78
65 Mansfield.....	106
83 Lock Haven.....	66
90 Alliance (OT)...	88
108 Cleveland State..	60
110 Slippery Rock...	73
67 Indiana U. of Pa..	69
80 Roberts Wesleyan	87
78 Geneva.....	87
97 California.....	75
110 Clarion.....	84
86 Grove City.....	65

State Championship—PSCAC

73 Cheyney State...	61
NAIA District 18—	
Championship	
55 Gannon.....	52
41 Westminster.....	48
2,148	1,834

1968-69
Coach: Jim McDonald
Won 14 — Lost 8

ESC	Opp.
78	Geneva..... 81
103	Lock Haven..... 67
99	Slippery Rock... 73
71	Clarion State... 69
126	Roberts Wesleyan 66
85	Cal. S. Fullerton.. 63
58	Long Beach State 84
78	Los Angeles State 73
110	Kenyon..... 99
74	Alliance..... 86
93	California State.. 80
93	Lock Haven..... 64
87	Alliance..... 73
72	Fredonia State... 62
95	Slippery Rock... 78
67	Indiana U. of Pa.. 89
57	California State.. 54
112	Clarion State... 78
86	Grove City..... 98
75	Indiana U. of Pa.. 81
PC State Championship	
69	Cheyney State... 83
NAIA District 18 Playoffs	
57	Gannon..... 69
1,8451,670

1969-70
Coach: Jim McDonald
Won 13 — Lost 9

ESC	Opp.
88	Grove City..... 82
115	Pitt-Johnstown.. 55
70	Lock Haven... 67
75	Slippery Rock... 69
72	Clarion State... 75
57	Fredonia State... 60
85	North. Michigan. 92
85	U. Wisconsin... 104
88	Alliance..... 75
77	Lock Haven..... 60
64	Alliance..... 77
80	Slippery Rock... 57
72	Indiana U. of Pa.. 75
70	Roberts Wesleyan 58
68	California State. 77
71	Point Park. 54
72	Clarion State... 52
77	Geneva..... 74
73	Indiana U. of Pa.. 60
66	California State.. 77
NAIA District 18 Playoffs	
68	Indiana U. of Pa. (OT) 67
71	California State.. 72
1,6641,539

1970-71
Coach: Jim McDonald
Won 16 — Lost 8

ESC	Opp.
96	Grove City..... 84
81	Alliance..... 69
115	Lock Haven..... 79
88	Slippery Rock... 76
116	W. Ontario..... 62
60	Clarion..... 66
81	Ohio Wesleyan... 67
87	Hiram..... 50
116	North. Michigan.. 98
96	Kenyon..... 98
75	California..... 66
91	Mars Hill..... 68
96	Geneva..... 75
73	Slippery Rock... 77
64	Indiana U. of Pa.. 84
82	Lock Haven..... 92
91	Oneonta State... 64
93	California..... 83
85	Clarion(OT)..... 87
89	Alliance..... 83
88	W. Va. Wesleyan.. 78
61	Indiana U. of Pa.. 68
NAIA District 18 Playoffs	
81	Clarion..... 70
60	Indiana U. of Pa.. 67
2,0651,811

SEASONS RANKED BY PERCENTAGES

YEAR	W-L	Pct.	YEAR	W-L	Pct.
1. 1931-32	12-1	.923	19. 1936-37	7-6	.538
2. 1928-29	12-2	.857	20. 1966-67	10-10	.500
3. 1938-39	8-2	.800	21. 1950-51	9-9	.500
4. 1967-68	19-5	.792	22. 1942-43	1-1	.500
5. 1965-66	18-5	.782	23. 1935-36	5-5	.500
6. 1939-40	14-4	.778	24. 1946-47	7-8	.466
7. 1940-41	11-4	.733	25. 1957-58	10-11	.452
8. 1963-64	16-6	.727	26. 1948-49	7-9	.437
9. 1961-62	17-7	.708	27. 1937-38	6-8	.428
10. 1949-50	12-5	.705	28. 1958-59	8-12	.400
11. 1970-71	16-8	.667	29. 1951-52	6-12	.333
12. 1930-31	10-5	.667	30. 1941-42	4-9	.307
13. 1968-69	14-8	.636	31. 1960-61	6-15	.281
14. 1933-34	8-5	.615	32. 1947-48	4-11	.266
15. 1969-70	13-9	.591	33. 1956-57	5-14	.263
16. 1962-63	12-9	.571	34. 1955-56	4-16	.200
17. 1929-30	8-6	.571	35. 1945-46	0-5	.000
18. 1964-65	10-8	.555			



A record crowd of 4600 greets the Scots

RESULTS BY SEASONS

Year	G	W	L	Points		Year	G	W	L	Points		
				For	Agst.					For	Agst.	
1928-29	14	12	2	640	381	1950-51	18	9	9	1,227	1,227	
1929-30	14	8	6	436	409	1951-52	18	6	12	1,128	1,276	
1930-31	15	10	5	562	409	1952-53	(Being Researched)					
1931-32	13	12	1	604	363	1953-54	(Being Researched)					
1932-33	(Being Researched)						1954-55	(Being Researched)				
1933-34	13	8	5	519	419	1955-56	20	4	16	1,290	1,587	
1934-35	(Being Researched)						1956-57	19	5	14	1,477	1,594
1935-36	10	5	5	366	360	1957-58	21	10	11	1,574	1,652	
1936-37	13	7	6	529	469	1958-59	20	8	12	1,668	1,761	
1937-38	14	6	8	582	576	1959-60	(Being Researched)					
1938-39	10	8	2	492	374	1960-61	21	6	15	1,403	1,546	
1939-40	18	14	4	744	655	1961-62	24	17	7	1,748	1,593	
1940-41	15	11	4	655	577	1962-63	21	12	9	1,526	1,396	
1941-42	13	4	9	333	376	1963-64	22	16	6	1,808	1,649	
1942-43	2	1	1	34	50	1964-65	18	10	8	1,535	1,393	
1943-44	War						1965-66	23	18	5	1,868	1,673
1944-45	War						1966-67	22	11	11	1,843	1,744
1945-46	5	0	5	175	266	1967-68	24	19	5	2,148	1,834	
1946-47	15	7	8	702	680	1968-69	22	14	8	1,845	1,670	
1947-48	15	4	11	784	846	1969-70	22	13	9	1,664	1,539	
1948-49	16	7	9	858	872	1970-71	24	16	8	2,065	1,811	
1949-50	17	12	5	978	910	Totals	591	330	261	37,810	35,937	

EDINBORO CENTURY CLUB

ESC	OPP.	YEAR	ESC	OPP.	YEAR		
119	Alliance	108	1954-55	109	Waynesburg	84	1967-68
100	Fredonia	66	1956-57	133	Lock Haven	90	1967-68
100	Alliance	88	1956-57	103	Clarion	92	1967-68
107	Clarion	88	1956-57	109	W. Va. Wesleyan	78	1967-68
101	Slippery Rock	92	1958-59	108	Cleveland State	60	1967-68
114	Alliance	104	1958-59	110	Slippery Rock	73	1967-68
102	California	93	1958-59	110	Clarion	84	1967-68
103	Lock Haven	101	1061-62	103	Lock Haven	67	1968-69
102	Allegheny	80	1961-62	126	Roberts Wesleyan	66	1968-69
106	Fredonia	81	1963-64	110	Kenyon	99	1968-69
109	Lock Haven	79	1964-65	112	Clarion	78	1968-69
104	Walsh	72	1964-65	115	Pitt-Johnstown	55	1969-70
100	Indiana	87	1964-65	115	Lock Haven	79	1970-71
104	Waynesburg	88	1965-66	116	Western Ontario	62	1970-71
110	Fredonia	64	1966-67	116	Northern Michigan	98	1970-71
123	Waynesburg	97	1966-67				

OPPONENTS' CENTURY CLUB

ESC	OPP.	YEAR	ESC	OPP.	YEAR		
72	Indiana	131	1955-56	106	Allegheny	109	1958-59
73	California	110	1956-57	95	California	108	1964-65
102	Alliance	103	1957-58	78	California	102	1965-66
92	Clarion	110	1957-58	98	Geneva	107	1966-67
88	Clarion	101	1958-59	65	Mansfield	106	1967-68
94	Slippery Rock	106	1958-59	85	U. of Wisc., Milw.	104	1969-70
104	Clarion	112	1958-59				

TOP CAREER SCORERS

1. Walt Askins.....	1,739	8. Wendell Rojik.....	812
2. Dan Petchel.....	1,344	9. Dave Shenefeld.....	797
3. Frank Smith.....	1,225	10. Fred Riley.....	787
4. Don Dougan.....	1,095	11. Jim Prokell.....	763
5. Darryl Meachem.....	881	12. Jim Simms.....	730
6. Rod Vashaw.....	879	13. Harry Jenkins.....	728
7. Bill McVeigh.....	840	14. Ken Barker.....	708

TOP CAREER REBOUNDERS

1. Don Dougan.....	992	4. Ken Barker.....	689
2. Darryl Meachem.....	897	5. Frank Smith.....	637
3. Dan Petchel.....	744	6. Wendell Rojik.....	622

TOP SCORERS 1960 - 1970

Years	Player	G	FG	Pct.	Ft.	Pct.	Reb.	Ave.	Pts.	Ave.
1960-1961	Sims, Jim	21	111	45%	35	78%	125	5.9	257	12.2
1961-1962	Petchel, Dan	20	111	50%	63	64%	157	7.8	285	14.3
1963-1964	Petchel, Dan	22	147	49%	115	74%	222	10.0	409	18.5
1964-1965	Petchel, Dan	18	167	56%	126	74%	236	13.1	460	25.6
1965-1966	Meachem, Darryl	23	158	54%	97	58%	393	17.1	413	18.0
1966-1967	Smith, Frank	9	102	59%	67	63%	125	13.9	271	30.1
1967-1968	Smith, Frank	24	177	48.1%	93	76.2%	247	10.3	447	18.6
1968-1969	Smith, Frank	22	189	48.7%	88	61.5%	250	11.4	466	21.2
1969-1970	Prokell, Jim	22	108	55.1%	116	70.7%	218	9.9	332	15.1
1970-1971	Riley, Fred	24	210	49.4%	65	72.2%	72	3.0	485	20.2

Edinboro State...



WESTERN PENNSYLVANIA'S FASTEST
GROWING COLLEGIATE INSTITUTION

THE COLLEGE'S HISTORY

The beginnings of the college were laid in 1857, over one hundred years ago, when a band of Scotch-Irish farmers grouped together and founded a private normal school at Edinboro by popular subscription to train teachers. In 1861 it was chartered by the Commonwealth as Pennsylvania's second Normal School and developed and grew through service to the Commonwealth.

A great forward stride was taken in 1914, when the Commonwealth purchased Edinboro Normal School. In 1926, alerted to the need for better educated teachers for its schools, Pennsylvania made Edinboro a Teachers College offering a four-year curriculum leading to degrees of Bachelor of Science in Secondary, Elementary, and Art Education, and Library Science.

In 1960 the name of the college was changed to Edinboro State College.

Beginning in September of 1957, the college was empowered to grant degrees of Master of Education in Elementary Education. In September 1961, graduate study in secondary education was added to the graduate program.

In 1962 the liberal arts degree program was begun. Students may prepare for various vocations as an arts and science major in Humanities, Social Sciences or Natural Sciences and may receive a Bachelor of Arts degree.

The control of the College is vested in the Board of Trustees, composed of nine members appointed by the Governor of Pennsylvania. The Board of Trustees in turn elects the President of the College who is responsible for its administration. The State Superintendent of Public Instruction is an ex-officio member of the Board of Trustees.

The College is accredited by the National Council for Accreditation of Teacher Education, the Middle States Association of Colleges and Secondary Schools, and the American Medical Association. In addition, its curriculums are registered by the New York State Department of Education.

Graduates of Edinboro have distinguished themselves in all professional fields: education, law, medicine, and religion as well as business and politics.

The College stresses friendly relations among students and faculty and informal student counseling and guidance. The faculty is keenly aware of professional interests and self growth. High qualitative and quantitative standards distinguish the graduates of this college. The preparation of better educated citizens has been an Edinboro tradition for over a century.

GENERAL INFORMATION

<i>Location</i>	Edinboro, Pa.
<i>President</i>	Dr. Chester T. McNerney
<i>Enrollment</i>	6,850
<i>Colors</i>	Red and White
<i>Nickname</i>	Fighting Scots
<i>Gymnasium</i>	Arthur L. McComb Fieldhouse
<i>Conferences</i>	Pennsylvania, NAIA, ECAC
<i>Athletic Director</i>	Al Hall
<i>Head Basketball Coach</i>	Dave Rooney
<i>Assistant Basketball Coach</i>	Tony Laterza
<i>Sports Information Director</i>	Paul Newman
<i>Team Trainer</i>	Bob Klingler
<i>Equipment Managers</i>	George Dougherty, Denny Harkness



Home of the Fighting Scots

QUALITY LEADERSHIP . . .



Dr. Chester T. McNerney
President

Dr. Chester T. McNerney became president of Edinboro State College in September, 1966. His formal inauguration, honoring him as Edinboro's thirteenth president, followed on April 22, 1967.

Dr. McNerney came to Edinboro from the University of Akron, where he was the Dean of the College of Education and was highly instrumental in the development of numerous educational innovations. He was cited as the motivating force behind the University of Akron Classrooms Around the World, and recognized for his scholarly studies of comparative education abroad.

Dr. McNerney's primary areas of interest deal with the improvement of the curriculum, the program for educational supervision and administration, and the improvement of inter-personal relationships among the various members of working groups. His concern in this area has led to his writing of several books, lecturing and conducting various workshops.

Under Dr. McNerney's guidance, the College has witnessed the growth of administrative operations, broader forms of student government, and the development of the future growth of Edinboro State College.

He is a man dedicated to the academic life, a tireless advocate of personal involvement in the religious and civic affairs of one's community, and an educator who visibly believes in and practices total individual professional commitment.

SPORTS PROGRAM GROWS TO ELEVEN

Intercollegiate athletics play an important role in the total educational program of Edinboro State College. The program is so conducted as to assure wholesome use of leisure time, a healthy focal point for the experience and the expression of group spirit, and a laboratory experience for prospective coaches.

Edinboro's athletic program has grown in recent years to total 11 varsity sports. Included are baseball, basketball, bowling, cross country, football, golf, soccer, swimming, tennis, track and wrestling. Four varsity sports have been added in just the past three years.

Sox Harrison Stadium, one of two major facilities located in the sports complex, has a seating capacity for 5,000 spectators and provides competition areas for both the football and track teams. A baseball diamond of major league specifications is also located just to the west of the stadium.

The McComb Fieldhouse contains three basketball courts, an AAU-sized swimming pool, a diving tank with one and three meter boards, underwater sound systems, lighting systems and viewing ports, wrestling room, two handball courts, a corrective gym, medical suite, a rifle range, two steam rooms, locker room space for 1,000 students and many additional features to meet the needs of the Health and Physical Education Department. Seating capacity of the gym is approximately 4,600 while the natatorium seats 500 spectators.

Four different sets of tennis courts are situated throughout the campus while 8 bowling lanes are provided in the new student union for intercollegiate competition. The nearby Culbertson Hills Country Club is the home of the Scots' golf and cross country teams.

Pennsylvania Conference

The Pennsylvania Conference, organized in 1951, reverts to its original membership of 14 this year with Indiana's return after a six-year absence. The conference, which is divided into Western and Eastern Divisions, consists of Bloomsburg, California, Cheyney, Clarion, East Stroudsburg, Edinboro, Indiana, Kutztown, Lock Haven, Mansfield, Millersville, Shippensburg, Slippery Rock and West Chester. In football and basketball the division winners play each other to determine the conference champion. All 14 conference schools belong to the E.C.A.C. while many are also NCAA and NAIA members. Since Indiana does not meet all the Western Division Colleges due to scheduling problems, the Indians will not be eligible for the conference championship this year.

1971-72 SCOT CO-CAPTAINS



SENIOR CO-CAPTAINS: Jim Prokell and Fred Riley have been chosen to serve as co-captains for the Scots this year. Riley, who is an All-American candidate, finished as the team's leading scorer last year while Prokell followed in the runner-up spot. Both were first team all-conference picks.

MEMO TO THE PRESS

We at Edinboro State College invite you to join us for the 1971-72 Fighting Scots' cage season. We sincerely appreciate your publicity of Edinboro's athletics in the past and have compiled this brochure to assist you in your coverage of the Scots' basketball season.

Press releases, photographs, and statistics will be made available for your use throughout the season. For additional information please contact:

Paul Newman, *Sports Information Director*
Edinboro State College
Edinboro, Pennsylvania 16412
Office Telephone: Area Code 814, 734-1671
Ext. 245

EDITOR: Paul Newman. ADDITIONAL CREDITS: Rita Kimmy, *copy*; John Swaiko, *photography*; Glenn Koppel, *photography*; and Chris Wunder, *photography*.

The 1971-72 Fighting Scots: (Kneeling) Co-Captains Fred Riley and Jim Prokell. FIRST ROW (L-R) Roy Stauffer, Paul Stiles, Bernie Jubeck, Joel Kowit, Jim Romaniszyn, Paul Sample. SECOND ROW (L-R) Pete Katsafanas-Manager, Ed Mailliard-Manager, Charlie Foster, George Middleton, Bob Kroger, Rich Sulka, Don Gerdich, Jim Kleszcz-Manager, Tony Laterza-Assistant Coach, Dave Rooney-Head Coach.

KING



1971-72 Fighting Scots