

Dennis P. Leeper

Edinboro

State College

COLLEGE ARCHIVES



Follow the
"Fighting Scots"
1970-1971





EDINBORO STATE'S McCOMB FIELDHOUSE

1970-71 FIGHTING SCOTS' SCHEDULE

VARSITY COACH — JAMES McDONALD

FRESHMEN COACH — DAVE ROONEY

December 1	Grove City.....	Away†
December 3	Alliance.....	Home†
December 5	Lock Haven.....	Home*
December 8	Slippery Rock.....	Home*†
December 10	Western Ontario.....	Home
December 12	Clarion.....	Away*†
December 15	Ohio Wesleyan.....	Home
December 18	Hiram.....	Home
January 6	Northern Michigan.....	Home
January 8	Kenyon.....	Home
January 11	California.....	Away*†
January 13	Mars Hills.....	Home
January 30	Geneva.....	Home†
February 4	Slippery Rock.....	Away*†
February 6	Indiana.....	Home
February 9	Lock Haven.....	Away*
February 12	Oneonta State.....	Home
February 13	California State (1:00-3:00).....	Home*†
February 16	Clarion.....	Home*†
February 18	Alliance.....	Away†
February 19	Gannon (Freshman only).....	Away
February 20	West Virginia Wesleyan.....	Home
February 23	Indiana.....	Away

February 27 Conference Playoff — East

March 1-3 NAIA District 18 Playoffs

March 6-10 NAIA Playoff — Kansas City, Mo.

*Conference Game.

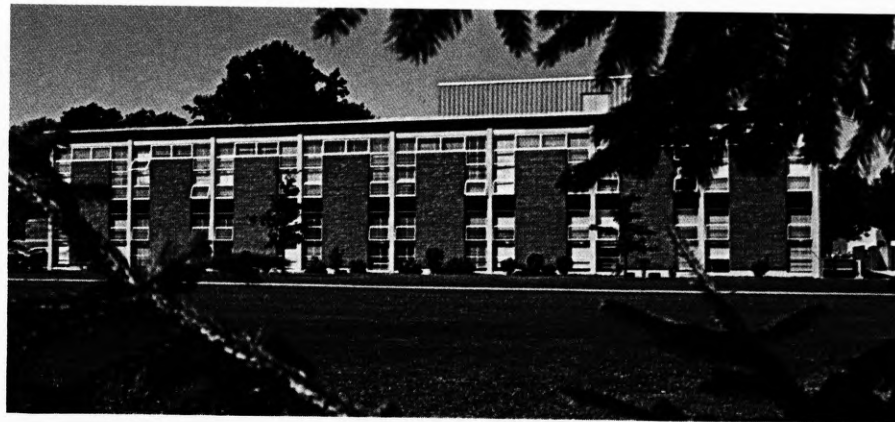
†Includes Freshman Contest.

Starting Times: Freshman—6:00 p.m., Varsity—8:00 p.m.

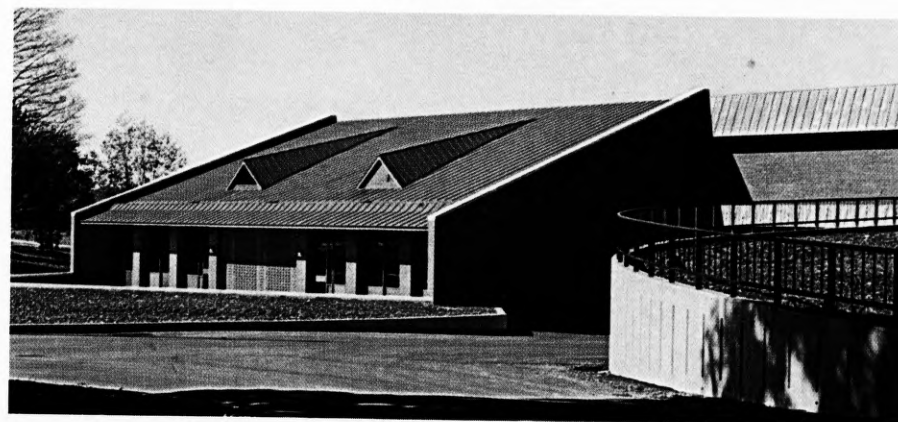
Follow the "Fighting Scots"

EDINBORO STATE

. . . . A UNIVERSITY IN THE MAKING



HAMILTON LIBRARY



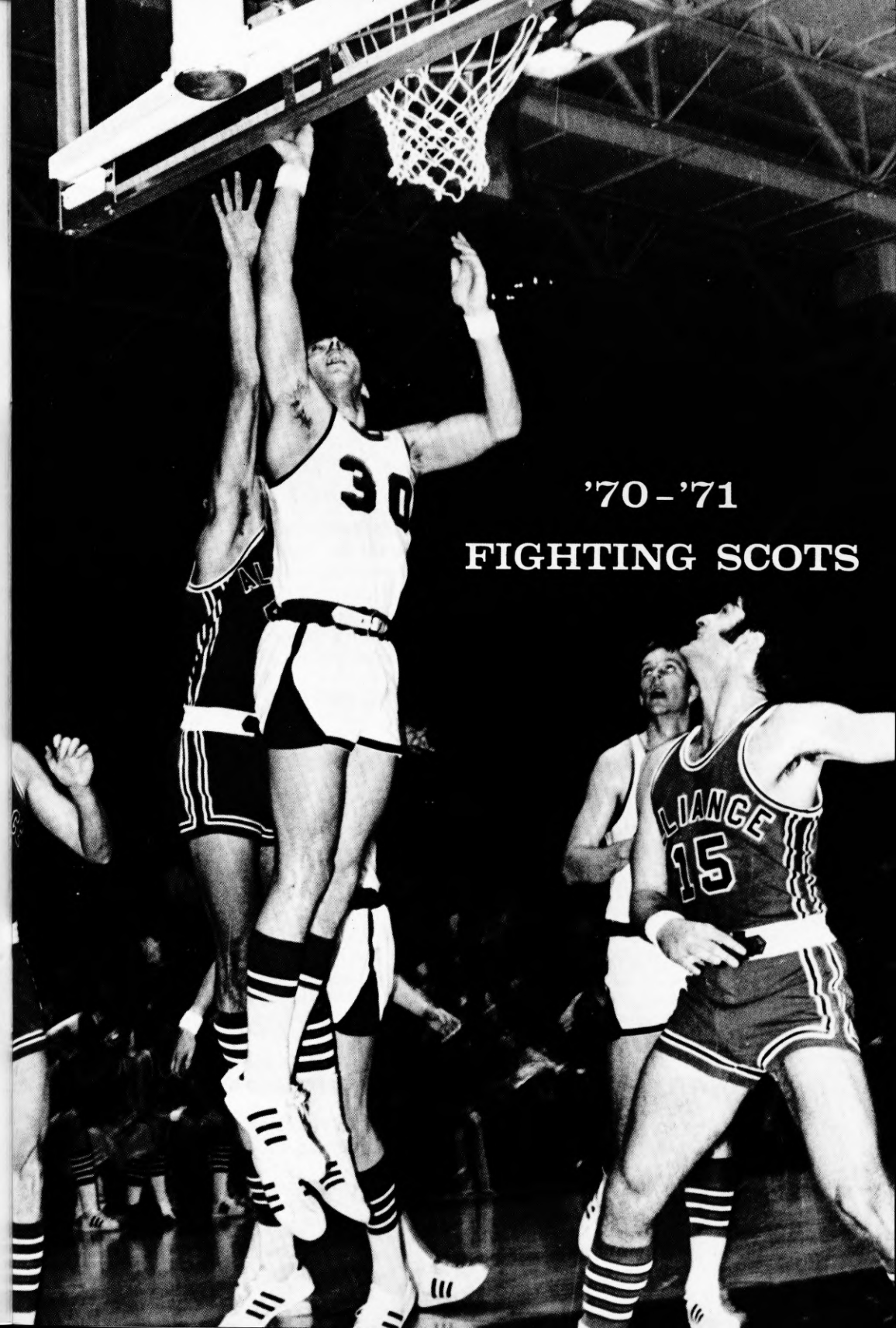
VAN HOUTEN DINING HALL



EDINBORO LAKE

BROCHURE GUIDE

Edinboro State, A University in the Making	1
Brochure Guide	2
Scots' 1970-71 Outlook	4
Scot Sketches	5-7
Scot Freshmen, Small But Fast	8
If You Call Us	9
Head Basketball Coach	10
Assistant Basketball Coach	11
Athletic Director	11
Team Trainer	12
Sports Information Director	12
Challenging the Scots	13-19
Varsity — Freshman Rosters	21
1969-70 In Review	22
Special Recognition — "Scots of the Past"	24
Edinboro State College's All-Americans	25
1969-1970 Varsity Results	26
1969-1970 Varsity Statistics	26
1969-1970 Freshman Results	27
1969-1970 Freshman Statistics	27
1969-1970 PC Standings	27
Edinboro Cage Records	28
Pennsylvania Conference	28
Individual Records — Season and Game	29
All-Time Scores — 1928-1970	30-34
Seasons Ranked by Percentages	35
Results by Seasons	35
Edinboro Century Club	36
Opponents' Century Club	36
Top Scorers and Rebounders	36
Top Scorers of the 60's	36
The College's History	38
General Information	38
President	39
Edinboro State College's Athletic Program	39
McComb Gymnasium — New Home for the Scots'	40



'70-'71

FIGHTING SCOTS

SCOTS' 1970-71 OUTLOOK

For seven consecutive seasons Edinboro basketball coach Jim McDonald has reeled off pessimistic outlooks for his cage prospects and then has proceeded to burn up the hardwoods with his quintets. In a year when the Scots will be sporting a new look from their gymnasium right down to their uniforms, McDonald continues to be pessimistic.

"Our lack of speed and aggressiveness will hurt us," moaned the Scots' mentor. "It especially shows up on defense which was our weakest point last year. We can't attempt to have a successful season unless we improve in both of those areas."

Yet the doubting mentor has a nucleus of six returning lettermen to lead him through a 22-game schedule that features 15 home contests.

The Edinboro mentor has made his mark on the collegiate scene with an eight-year win-loss record of 112-59. Last year's squad just missed a return trip to the national finals after they were nipped by a California State buzzer shot, 72-71, in the district finals.

The Clan showcases a pair of big men up front with 6-10 senior forward Art Dickinson and 6-6 sophomore center Rich Sulka.

Dickinson finished strong during the 1969-70 campaign to lead the Clan into the NAIA playoffs. Taking second place honors in the scoring race with 325 points and a 14.8 points a game average, the vet displayed his worth underneath the bucket by hauling down 201 rebounds.

Untested Rich Sulka should also shore up the Scots' board work. The 6-6 sophomore center led the frosh team in rebounds with 252 grabs while averaging 12.2 points a contest.

Last year's leading scorer, 6-0 junior Jim Prokell, will return at a forward slot where he banged in 332 points. While hitting the scoreboard at a 15.1 clip the cage ace found enough time to clear the glass 218 times to finish as the squad's second leading rebounder.

Adding depth to the forward wall are 6-2 Sid Booker, 6-1 Jim Romaniszyn and 6-7 sophomore Mike Brzozowski.

The Scots have plenty of experience returning at the guard slots where the trio of 6-0 senior Dave Knowlton, 5-10 junior Fred Riley, and 5-11 senior Ray Overholt will guide the Edinboro attack.

Knowlton shattered all assist records during the 69-70 schedule while totaling 174 for the season as the Clan's playmaker. He had a record high of 19 in one game to smash the existing mark of 12 which the speedy guard established during his sophomore debut. While directing the Clan's offense, Knowlton managed to hit the double-figure column in scoring with a 10.4 points-a-game average.

Supplying outside scoring punch is junior guard Fred Riley who made an outstanding first-year varsity appearance on the hardwoods last season. As a soph starter, he tallied 302 points to rank third in the scoring statistics with a 13.7 average. Riley should once again loosen up the middle with his shooting ability from the outer edge. Together, Riley and Knowlton give the Clan a highly respected fast break.

Veteran guard Ray Overholt played the role of "super-sub" last year. Also a strong outside point-getter, Overholt is called on when the Scots offense bogs down.

Striving for chances to break into an already veteran set of guards are 6-2 junior Joel Kowit, along with the sophomore duo of 6-3 Tom Albright and 6-0 Bernie Jubeck.

Ray Overholt, Art Dickinson and Dave Knowlton have been selected to lead the 1970-71 team as tri-captains.

SCOT SKETCHES



Tom Albright

Sid Booker

Mike Brzozowski

Art Dickinson

TOM ALBRIGHT (32-33) G, 6-3, 175, SO., RICHMOND, VA.

An exceptionally good outside shooter who adds depth to the Clan's experienced corps of veteran guards . . . Averaged 12.6 points a game last year while seeing only limited frosh action . . . Starred on the hardwoods at Richmond's George Wythe High School where he hit the nets at a 19.5 clip and averaged 12.3 rebounds a contest . . . Selected to the High School All-American squad in 1969 to climax his scholastic career.

SID BOOKER (14-15) F, 6-2, 165, JR., ERIE, PA.

Dumped 111 points through the hoop as a soph reliever last year and hauled down 57 rebounds . . . Can help the Scots' cause by filling in at either a forward or a guard slot . . . The 6-2 leaper led Erie's East High Warriors to the District 10 championship in 1968 . . . Booker was second in the state in both the high jump and high hurdles for East . . . Won the Pennsylvania Conference championship and set a new ESC high jump record with a 6-7 leap this past spring.

MIKE BRZOWSKI (44-45) F, 6-7, 200, SO., CLEVELAND, O.

Although he is untested in a varsity role, Mike has been improving steadily in the McDonald camp . . . Could eventually become a strong board man for the Clan . . . Grabbed 89 rebounds and scored 74 points on the ESC freshman team two years ago . . . Played at Lourdes Central Catholic in Cleveland where he averaged 23.3 points a game in league action and 17.0 overall.

ART DICKINSON (54-55) F, 6-10, 225, SR., CRYSTAL LAKE, ILL.

Has developed into one of the Scots' leading rebounders and scorers . . . A two-year letterman who will start at forward . . . Turned into one of the Scots top performers last season, finishing only seven points from the scoring lead with 325 markers . . . In the playoffs, Art's 30 points and last second foul shooting lifted Edinboro over Indiana, taking the Scots into the district finals . . . Along with his 14.8 point average, he was third among Clan rebounders with a 9.1 showing . . . Averaged 19 points a contest for his Crystal Lake, Ill., high school as a pivot man.

SCOT SKETCHES



Jim Prokell

Fred Riley

Jim Romaniszyn

Rich Sulka

JIM PROKELL (30-31) F, 6-0, 185, JR., PITTSBURGH, PA.

The workhorse of the Scots' offense underneath the boards . . . Named to numerous all star teams last year after finishing as the Clans' leading scorer with a 15.1 points a game average . . . An aggressive ball player . . . Finished second in rebounding with 218 grabs . . . Proved to have the best "shooting eye" with a torrid 55.1 percentage from the floor . . . His leaping ability gives him an edge inside where he is a proficient scorer . . . Will be a regular starter.

FRED RILEY (20-21) G, 5-10, 150, JR., CLEARFIELD, PA.

Probably the best outside shooting guard in Edinboro's basketball history . . . Won a starting berth as a sophomore and finished third in the scoring parade with his 13.7 average . . . Blistered the nets for 329 points to average 20.5 points a contest in his freshman year . . . Averaged 25.8 points a game at Clearfield and was selected Outstanding Player in District 9, unanimously named to the Coaches and Sports-writers District 9 All-Star Team, named Fourth Team All-State by UPI and made the AP's Honorable Mention All-State list.

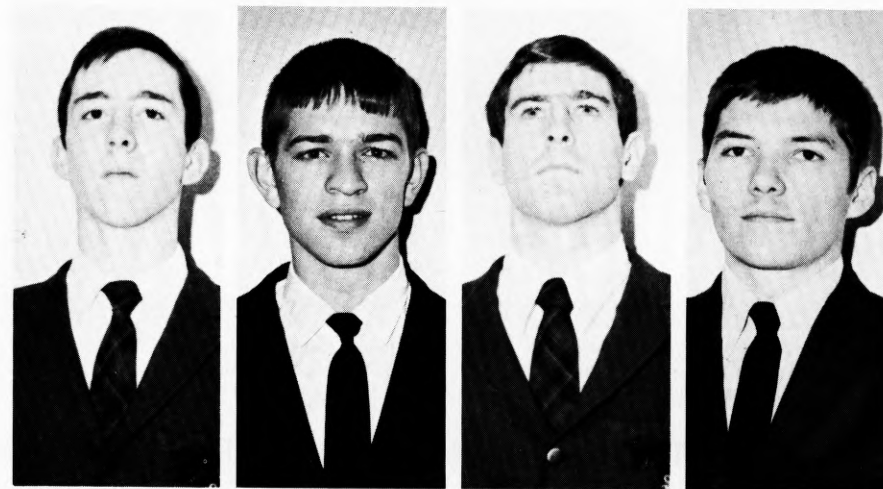
JIM ROMANISZYN (40-41) G-F, 6-1, 195, SO., TITUSVILLE, PA.

Any time Jim is on the court you can expect to see 110% effort . . . Muscled his way into the top spot in the frosh scoring figures last year with 388 points and a 22.8 scoring average . . . Scored a season high of 46 points in one game . . . Will be late getting started because of a broken hand . . . Starred as a sophomore starter on the Scots' football team . . . Was an All-State Honorable Mention winner after averaging 19 points a game and leading the Titusville Rockets to a 19-3 mark.

RICH SULKA (52-53) C, 6-6, 210, SO., PITTSBURGH, PA.

Could easily win a regular assignment as a sophomore . . . Noted for his strength underneath where he can rebound with anyone on the club . . . Cleared the glass 252 times in a freshman starting role to lead the squad with a 14.8 average while dumping through 207 points . . . Was the top rebounder in 10 of 17 frosh contests . . . Averaged 25 points a game and 17 rebounds a game at Central Catholic and played in the Dapper Dan Roundball Classic.

SCOT SKETCHES



Bernie Jubeck

Dave Knowlton

Joel Kowitz

Ray Overholt

BERNIE JUBECK (10-11) G, 6-0, 160, SO., ALTOONA, PA.

Came on strong at the end of his freshman year to become the team's number one playmaker . . . Has quickness and has demonstrated his playmaking ability with sharp passing . . . Possesses a fine outside shot . . . Finished his frosh campaign with 62 assists after working his way into the starting five midway through the season . . . Should see limited action in his varsity debut.

DAVE KNOWLTON (22-23) G, 6-0, 158, SR., MERCER, PA.

Has earned varsity letters for the past two seasons while directing the Scots' offense . . . Smashed all the ESC assists records with 174 scoring passes last year to up his career to 307 in a playmaker's role . . . Set an individual game high with 19 assists against Grove City . . . Averaged 17.5 points a game . . . Led the Mercer Mustangs to two straight Class B Pennsylvania State Championships . . . Honorable Mention All-State in high school and was a "Dapper Dan Roundball Classic" performer.

JOEL KOWIT (24-25) G, 6-2, 170, JR., LAKEWOOD, N.J.

A transfer from Ocean City Junior College where he averaged 17 points a contest and hauled down 11 rebounds every game . . . A strong defensive performer who should make numerous appearances in the Scot uniform . . . A Garden State Athletic Conference All-Star Team member . . . Helped guide the Lakewood High Piners to a 20-4 record in his senior year.

RAY OVERHOLT (12-13) G, 5-11, 165, SR., BROOKFIELD, ILL.

Rounds out a trio of experienced guards who led the Clan last year . . . Has had two very fine seasons as a varsity cager for the Scots . . . Can score well from the outside and knows how to move the fast break . . . Had a great freshman year when he meshed 212 points . . . Also a standout baseball player at ESC . . . Named All-State Honorable Mention and All-Suburban Conference at Riverside Brookfield High.



1970-71 Fighting Scot Freshmen L-R: Head Coach Dave Rooney, Curtis Hill, Craig Burns, Kurt Anthony, Charlie Foster, Mark Roche, Ed McAtee, Ben Perrin, Paul Stiles, Bob Ungarean, Bill Henk, Bob Goman, Roy Stauffer, Paul Sample and manager, Ed Mailliard.

SCOT FRESHMEN SMALL BUT FAST

Edinboro State has traditionally come up with towering freshmen cage teams. This year's squad has a different kind of slant as quickness commands the frosh attack rather than size.

Heading the list of speedsters and prolific scorers are guards Roy Stauffer, Bill Henk, and Bob Ungarean along with forwards Paul Stiles, Charlie Foster, and George Middleton.

Stauffer, a 5-11 sharp shooter from Emmaus, Pa., was an All-State, All-District and All-League selection for the Hornets as he hit the nets at a 30 points-a-game clip. He continued his court prowess at Augusta Military Academy in Virginia where he averaged 24 points an outing.

Coming to the Clan with a long list of impressive credentials is Paul Stiles, a 6-1 stalwart from Bradford, Pa., where he led the Owls to the District Nine cage championship. While averaging 17 points a game, Paul was unanimously chosen to the District's First Team by the sports' writers, selected to the coaches' Independent All-Star Team and named Honorable Mention All-State for the second straight year.

Keystone Oaks' Bill Henk, a 5-11 backcourt ace, gives the first year Scots some extra scoring punch. While at the Pittsburgh school, Henk was named All-Section WPIAL and shot for the highest percentage mark in the school's history (57%) while averaging over 17 points a game.

Giving support underneath will be the duo of 6-1 Charlie Foster and 6-2 George Middleton. Foster who came to the Clan from Springfield, New Jersey, will have the job of clearing the boards and slamming in points underneath. Lakewood, Ohio's George Middleton will be confronted with a similar role while striving to get the ball for the Scots.

Utility man Bob Ungarean, a six-footer from Monaca, rounds out a contingent of guards which includes Paul Sample, a 5-7 honorable mention All-Selection winner from Pittsburgh Brentwood; 5-11 Bob Goman from Verona, New Jersey; Warren's 5-11 Craig Burns; 6-1 Kurt Anthony from last year's Western Regional finalists, Union City and Cochranon's 5-11 Curtis Hill.

Adding depth under the basket are 6-3 Mark Roche, another Cochranon High cager; 6-2 Ray Grynuck, who played at Butler High School and Edinboro's Ed McAtee, a General McLane High product.

IF YOU CALL US . . .

ADMINISTRATION	Position	College Extension
Dr. Chester T. McNerney	President	220
Dr. James E. McKinley	Vice President of Academic Affairs	222
Dr. John F. Yon	Vice President of Student Personnel Services	223
James B. Dronsfield	Director of Development	232
Vaughn E. Herbel	Business Manager	241
Dr. Robert Gates	Director of Administrative Services	347
Harold O. Umbarger	Director of Admissions	228
ATHLETIC DEPARTMENT		
Charles Blaney	Freshman Football Coach, Assistant Wrestling Coach	207
Fred Caro	Director of Health and Physical Education, Wrestling Coach	478
Al Hall	Athletic Director	476
Jack Hyland	Assistant Football Coach	207
Robert Klingler	Trainer	276
Hank Mariotti	Tennis Coach	282
Bill McDonald	Head Football Coach	249
James McDonald	Head Basketball Coach	478
Dr. Gus Miller	Judo Coach	201
Dr. Florian Florek	Team Physician	344
Paul Newman	Sports Information Director	245
Dave Rooney	Assistant Basketball Coach	276
Joe Shesman	Assistant Football Coach	207
George Shimpeno	Soccer Coach	282
Bill Straub	Assistant Football Coach	207
Mickey Watson	Assistant Football Coach	207
George Vierkorn	Intramurals Director	271
Doug Watts	Track Coach, Cross Country Coach	276
Tony Zvonar	Assistant Football Coach	207
Miss Nancy Acker	Women's Volleyball Coach, Co-ordinator of Women's Physical Education	202
Mrs. Pat Carmo	Dance Club	282
Miss Ada Gustaveson	Women's Tennis Coach, Synchronized Swimming Club	282
Miss Anne Nielson	Gymnastics Club, Women's Intramural Director	282
Miss Judith Saurer	Women's Basketball Coach	202
Mrs. Dana Truax	Cheerleaders' Adviser	357

College Number—Area Code—814—734-1671
 The College switchboard is open 7:00 a.m.—12:00 p.m., Monday-Friday
 Saturday, 8:00 a.m.—12:00 noon.

HEAD BASKETBALL COACH



Jim McDonald

The 1969-70 season marked a milestone in coach Jim McDonald's career as he garnered his 100th win at the helm of the Fighting Scots by winning his opening game of the season.

Since his appointment as head coach in 1962, Jim McDonald has guided Edinboro State College to 4 Western Division PC Basketball Championship titles, the PC State Championship, and the NAIA District 18 Championship which earned Edinboro a trip to the NAIA Championship Playoffs in Kansas City, Missouri. In 1966 Mr. McDonald was selected by the coaches of the Eastern Seaboard States to be the Area 8 Basketball Coach of the Year and was honored as one of the top ten finalists in the NAIA's Coach of the Year poll for his outstanding accomplishments.

This season marks his ninth year as the Clan's head coach.

Prior to accepting his current position at Edinboro in 1961, McDonald served as assistant basketball coach at Harborcreek High School in Erie, Pa. He is a 1956 graduate of Bridgeport High School, Bridgeport, West Virginia.

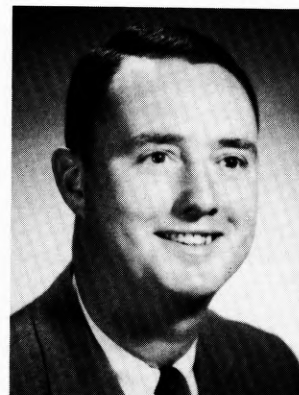
As a player, McDonald attended West Virginia Wesleyan College, where he participated as a varsity "Bobcat" for four seasons. During his collegiate basketball career McDonald was selected as an All-American two years by the UPI and the NAIA as a result of his outstanding abilities on the hardwoods. McDonald reached the climax of his athletic career with the Bobcats in his senior year, 1960, when he ranked as the second leading scorer in the nation with his average slightly over 33 points a game in regular season competition. In that same year, he was chosen to try out for the United States Olympic Basketball Team at Denver, Colorado. In addition, McDonald's performance in the National NAIA Post-Season Basketball Tournament, held annually in Kansas City, Mo., earned him the honor of being named to the NAIA's All-Tournament Team for two consecutive years, 1959 and 1960.

Under McDonald's tutorship, the Scots have won 106 of 157 regular season encounters or more than 67% of their games. He posted his best mark as a coach two years ago as his cagers rang up a regular season record of 17-4 and finished with a 19-5 ledger after tournament play. In all games the *Men of McDonald* have posted 112 wins and only 59 losses.

His '67-'68 team cracked 10 existing Edinboro State College basketball records and captured the PSCAC State Championship by defeating annual powerhouse Cheyney State. The 1967-68 squad ranked as high as eleventh among the nation's small colleges and finished fifth in the nation in the team rebounding department. The Scots won their first 10 games while averaging 100 points a contest during the '67-'68 campaign.

Under McDonald's tutelage Edinboro State College is rapidly earning respect in the small college circuits of the East. The Scots have never experienced a losing season under his guidance. In addition, three Edinboro cagers have garnered All-American honors since 1965. Winning has become a tradition in the McDonald camp.

ASSISTANT BASKETBALL COACH



Dave Rooney

Allentown, Pa. native Dave Rooney begins his second year as head freshman basketball coach and assistant to the varsity squad. Along with his coaching duties, the second-year mentor assists in activity instruction in the physical education department of the college.

Rooney is a 1959 graduate of William Allen High School in Allentown, Pa. and also holds both B.S. and M.S. degrees from West Chester State College where he majored in health and physical education.

The Scots' new coach was a standout basketball player throughout both his high school and collegiate campaigns.

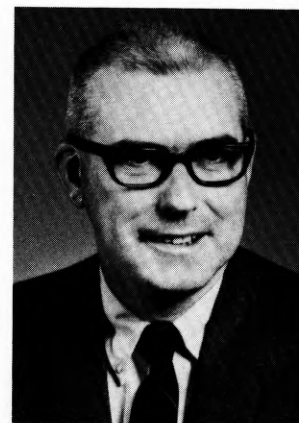
He led the 1958-59 William Allen team to the East Penn League championship and earned an all-state honorable mention berth for his performances on the hardwoods. In his freshman year at West Chester, Rooney piloted the frosh to an undefeated season with a sterling 17-0 record.

After two years of varsity competition his cage career was interrupted by service in the Armed Forces and he later returned to West Chester State to serve in a coaching capacity while he completed his B.S. requirements and pursued his M.S. degree.

Before joining the Edinboro coaching staff, Rooney served as head basketball coach for one year at Spring Ford High School in Royersford, Pa.

He and his wife, Sue, now reside in Edinboro.

ATHLETIC DIRECTOR



Al Hall

Mr. Allan W. Hall was appointed in 1967 as Edinboro's first full-time Director of Athletics. Hall's extensive background in the area of sports has aided him in serving his new position.

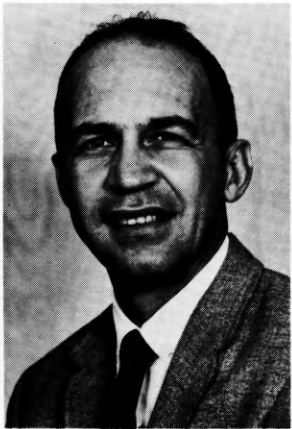
A graduate of Baldwin-Wallace College, he served as Assistant Director of Athletics at Akron University for two years prior to coming to Edinboro.

While at Akron, Hall was quite active in the University's athletic program. He piloted Akron's cross country teams for 12 years and guided his harriers to three Ohio Conferences and three All-Ohio championships. His 1963 squad held the distinction of being runnerup to national champion Emporia State in the NCAA meet. Along with his cross country duties he also served as assistant track coach at A. U. for 12 years.

Hall's keen interest in all phases of sports is reflected by his past accomplishments in the field of athletics. In 1962 he was selected Meet Director of the National AAU Swimming Championships. He was highly instrumental in making Akron University the site of the Midwest Regional NCAA Basketball Tournaments in 1964, 1965, and 1966. Hall is also credited with the inception of the Junior Olympics program in the City of Akron. He served as the University's Sports Information Director during 1958 and 1959.

He, his wife Pam, and their baby daughter, Mary Beth, reside in Edinboro.

TEAM TRAINER



Bob Klingler

Klingler served as the Spartans' head football mentor, head track coach, and assistant basketball coach. Both his cinder and cage teams never experienced a losing season under his leadership, while his grid teams posted continuous successful campaigns in the powerful Capitol Area Conference.

During the off season the Scots' medical man has been enrolled in graduate work at Springfield College in Massachusetts and serves as a physical therapist at St. Vincent Hospital in Erie where he administers treatment to rehabilitation patients.

Mr. Klingler, his wife, Jill, and daughter, Julie, make their home in Edinboro.

Bob Klingler is commencing his fourth year on the Scots' staff as team trainer. His valuable background of medical knowledge is also utilized in the instruction of anatomy, physiology and kinesiology at the College.

Klingler graduated from Lock Haven State College in 1952 with a B.S. degree and then ventured to Hermann School of Physical Therapy in Houston, Texas, where he became a registered physical therapist in 1954.

He received his M.S. from Bucknell University in Lewisburg, Pa., where he also acted as the Bisons' assistant athletic trainer.

He taught at Milton Hershey, a private boys' school in Hershey, Pa., prior to accepting his post at Edinboro. While at Milton Hershey School,

SPORTS INFORMATION DIRECTOR

Paul Newman began his duties three years ago as Edinboro's first Sports Information Director and now also serves as Assistant to the President.

Mr. Newman is a 1964 graduate of Edinboro where he earned both his B.S. degree and M.Ed. while majoring in English.

Prior to his appointment at the College, he held a teaching position with the Buckeye Local Schools in Ashtabula, Ohio for three years. He served as a cross country coach and assistant track coach at Edgewood Senior High School in Ashtabula, Ohio.

In connection with his duties, he is also the District 18 Publicity Chairman for the National Association of Intercollegiate Athletics and is currently President of the NAIA's Sports Information Directors Association.

He serves as the adviser for the *Tartan*, Edinboro's college yearbook.

Mr. Newman, his wife, Connie, and their children, Paul, Jr. and Michele, make their home in Edinboro.



Paul Newman

CHALLENGING THE SCOTS . . .



GROVE CITY COLLEGE

December 1 — at Grove City

Head Coach: Cliff Wettig, 100-74, 8 Seasons
Sports Information Director: Bob Smith, Area Code 412, 458-6600
1969-1970 Record: 11-11
Lettermen Lost: 2
Lettermen Returning: 7
Starters Returning: 7
Team Strength: Outstanding Guards
Team Weakness: Tall Forwards
Captains: Dave Roberts & Tom Montgomery
Athletic Director: R. Jack Behringer
Top Veterans: 6-0 Tom Carr (G, Sr.), 5-10 Dave Roberts (G, Sr.), 6-7 Doug Rohrer (C, Sr.)
Top Newcomers: 6-3 Ron Ward (F, Jr.), 6-3 Bob Eskesen (F, So.), 6-2 Rick Rottman (F, So.)
This year's score: Edinboro 96 — Grove City 84

ALLIANCE COLLEGE

December 3 — at Edinboro, February 18 — at Alliance

Head Coach: Thaddeus Haluch, 167-167, 17 Seasons
Sports Information Director: Z. Wesolowski, Area Code 814, 398-4611
1969-70 Record: 10-11
Lettermen Lost: 1
Lettermen Returning: 7
Starters Returning: 5
Team Strength: Speedy Guards
Team Weakness: Height
Captain: Tom Accamando
Athletic Director: Thaddeus Haluch
Top Veterans: 5-11 Tom Accamando (G, Sr.), 6-0 Mike Barkasy (G, Fr.), 6-2 Mark Krumenacker (F, Sr.), 6-2 Bernie Novotny (C, Sr.), 6-4 Tom White (F, Sr.), 6-0 Tom Roslonski (G, Sr.), 6-3 Ken Rector (F, Sr.)
Top Newcomers: 6-3 P. J. Campbell (C, Jr.), 5-9 Jack Silverling (G, So.)
This year's score: Edinboro 81 — Alliance 69 — First Game

LOCK HAVEN STATE COLLEGE

December 5 — at Edinboro, February 9 — at Lock Haven

Head Coach: Jim Christopher, 7-10, 1 Season
Sports Information Director: E. Ross Nevel, Jr., Area Code 717, 748-5351
1969-70 Record: 7-10
Lettermen Lost: 0
Lettermen Returning: 9
Starters Returning: 5
Team Strength: Experience, returning lettermen
Team Weakness: Fundamentals
Captain: Bruce Parkhill
Athletic Director: Steve Jacobs
Top Veterans: 6-3 Bruce Parkhill (F, Sr.), 6-4 Bud Brennen (G, Sr.), 6-5 Cliff Billet (F, Jr.), 6-6 Ziggy Tauginos (C, So.), 5-10 John Marzlak (G, So.)
Top Newcomers: 6-3 Mike Jones (F, Fr.), 6-2 Ken Stallings (G, Fr.), 6-2 John Miller (G, Fr.)
This year's score: Edinboro 115 — Lock Haven 79 — First Game

SLIPPERY ROCK STATE COLLEGE

December 8 — at Edinboro, February 4 — at Slippery Rock

Head Coach: Mel Hankinson, First Season
Sports Information Director: John Carpenter, Area Code 412, 794-7216
1969-70 Record: 10-15
Lettermen Lost: 3
Lettermen Returning: 5
Starters Returning: 5
Team Strength: Aggressive Defense
Team Weakness: Experience
Captains: Larry Deemer and John Wiegand
Athletic Director: Dr. Bradley F. Keith
Top Veterans: 6-1 Larry Deemer (G, Sr.), 6-8 Bob Wiegand (C, Sr.), 5-11 Hank Hudson (G, Jr.)
Top Newcomers: 6-3 Bob Bly (F, So.), 5-8 Doug Hudson (G, So.), 6-6 Walt Luba (C, Jr.), 6-3 Les Petty (F, Jr.), 5-10 Doug Zimmerman (F, Jr.)
This year's score: Edinboro 88 — Slippery Rock 76 — First Game

UNIVERSITY OF WESTERN ONTARIO

December 10 — at Edinboro

Head Coach: Jerry Gonser, 53-73, 6 Seasons
Sports Information Director: Dutch Decker, Area Code 519, 679-2425
1969-70 Record: 13-9
Lettermen Lost: 6
Lettermen Returning: 6
Starters Returning: 7
Team Strength: Stronger Tall Men
Team Weakness: Depth
Captain: Bruce Dempster
Athletic Director: Mr. John Metras
Top Veterans: 6-2 Bruce Dempster (G, So.), 6-4 Marnix Hiersink (F, So.), 6-7 Al Brown (C, So.), 6-4 Wayne Weaver (F, Sr.)
Top Newcomers: 6-5 Roaul Kreek (G, Jr.), 6-5 Stan Freeman (F, Sr.), 6-1 George Anagnost (F, Sr.)
This year's score: Edinboro 116 — Western Ontario 62

CLARION STATE COLLEGE

December 12 — at Clarion, February 16 — at Edinboro

Head Coach: Ronald Galbreath, 4-16, First Season
Sports Information Director: William Proudfit, Area Code 814, 226-6000
1969-70 Record: 4-16
Lettermen Lost: 4
Lettermen Returning: 5
Starters Returning: 3
Team Strength: Good Overall Shooters
Team Weakness: Experience
Captain: Carl Jefferis
Athletic Director: Frank Lignelli
Top Veterans: 6-0 Carl Jefferis (G, So.), 6-4 Bill Mitchell (C, Jr.), 6-3 Tom Murtaugh (F, Jr.)
Top Newcomers: 6-3 Don Wilson (G, So.), 6-2 Elmer Kreiling (G, So.), 6-2 Joe Sebestyen (F-C, So.), 6-0 Mike McIntyre (G, So.)
This year's score: Clarion 66 — Edinboro 60 — First Game

OHIO WESLEYAN UNIVERSITY

December 15 — at Edinboro

Head Coach: Frank Shannon, 143-123, 12 Seasons

Sports Information Director: Roy R. Bumsted, III, Area Code 614, 363-1261

1969-70 Record: 5-12

Lettermen Lost: 2

Lettermen Returning: 9

Starters Returning: 5

Team Strength: Good Depth, Height

Team Weakness: Extremely Young

Captains: Chosen Each Game

Athletic Director: Dr. Robert Strimer

Location: Delaware, Ohio

Enrollment: 2,500

Colors: Red and Black

Nickname: Battling Bishops

Home Court: Edwards Gymnasium

Gym Capacity: 1,500

Conference: Ohio Athletic

Last Game: No Previous Games

Top Veterans: 6-5 Ken Redick (F, Jr.), 6-5 Ray Schmitt (F, Jr.), 5-9 Mike Mickler (G, Sr.), 6-2 Jackie Brown (G, Jr.), 5-11 Harry Radcliffe (G, Jr.), 6-4 Tim Smith (F, Jr.)

Top Newcomers: 6-6 Eric Morris (C, So.), 6-5 Gary Brown (C, So.), 6-3 Dan Penrod (F, So.), 6-4 Jay Baska (F, So.)

This year's score: Edinboro 81 — Ohio Wesleyan 67

HIRAM COLLEGE

December 18 — at Edinboro

Head Coach: Bill Hollinger, 143-279, 13 Seasons

Sports Information Director: Lance Karkraff, Area Code 216, 569-3211

1969-70 Record: 5-17

Lettermen Lost: 0

Lettermen Returning: 7

Starters Returning: 6

Team Strength: Height and Speed

Team Weakness: Seasoned Ballplayers

Captain: Mark Farrell

Athletic Director: Bill Hollinger

Location: Hiram, Ohio

Enrollment: 1,200

Colors: Red and Columbia Blue

Nickname: Terriers

Home Court: Price Gymnasium

Gym Capacity: 1,500

Conference: Ohio Athletic

Last Game: No Previous Games

Top Veterans: 5-10 Mark Farrell, (G, Sr.), 6-3 Larry McCall (F, So.), 6-6 Tom Lubert (C, So.)

Top Newcomers: 6-5 Don Aitken (C, Fr.), 6-5 Kevin Derrick (F, Fr.), 5-11 Maniverst Hopkins (G, Fr.), 6-4 Doug Rush (F, Fr.), 6-4 Mark Thorpe (F, Fr.), 6-1 Dan Thomas (G, Fr.)

This year's score: Edinboro 87 — Hiram 50

NORTHERN MICHIGAN UNIVERSITY

January 6 — at Edinboro

Head Coach: Glenn Brown, 26-24, 2 Seasons

Sports Information Director: Gil Heard, Area Code 906, 227-2720

1969-70 Record: 13-13

Lettermen Lost: 2

Lettermen Returning: 10

Starters Returning: 4

Team Strength: Depth in Big Men

Team Weakness: Speed

Captains: Al Inkala and Hugh Friday

Athletic Director: Rollie Dotsch

Location: Marquette, Michigan 49855

Enrollment: 7,800

Colors: Old Gold and Olive Green

Nickname: Wildcats

Home Court: Hedgcock Fieldhouse

Gym Capacity: 5,000

Conference: Independent

Last Game: 1969-70, NMU 92-85

Top Veterans: 6-2 George Barber (G, Sr.), 6-2 Hugh Friday (G, Sr.), 6-4 Brian Ouimette (F, Jr.), 6-6 Al Inkala (C, Sr.)

Top Newcomers: 6-5 Lee Palmer (F, Jr.), 6-3 Marty Griffin (F, So.), 6-0 John Conklin (G, Jr.), 6-1 Ed Higham (G, Jr.), 6-4 Steve Veneklasen (G-F, Sr.), 6-6 Mike Duehning (C, Jr.), 6-5 Larry Ruffato (F, Jr.)

KENYON COLLEGE

January 8 — at Edinboro

Head Coach: Jim Zak, First Season

Sports Information Director: Dennis Pollock, Area Code 614, 427-2244

1969-70 Record: 12-11

Lettermen Lost: 5

Lettermen Returning: 5

Starters Returning: 5

Team Strength: Outside Shooting

Team Weakness: Hustling Defense

Captains: Not Chosen

Athletic Director: Phillip Morse

Location: Gambier, Ohio

Enrollment: 1,155

Colors: Purple and White

Nickname: Lords

Home Court: Wertheimer Field House

Gym Capacity: 1,500

Conference: Ohio Athletic

Last Game: 1968-69, ESC 110-99

Top Veterans: 6-3 Marty Hunt (G, Jr.), 6-0 Ed Moran (G, So.), 6-6 Dave DePuy (C, So.), 6-4 Tim Delaney (F, So.)

Top Newcomers: 5-11 Charlie Masters (G, Fr.), 5-7 Dave Wible (G, Fr.)

CALIFORNIA STATE COLLEGE

January 11 — at California, February 13 — at Edinboro

Head Coach: Myles Witchey, 99-80, 8 Seasons

Sports Information Director: Bob Woods, Area Code 412, 938-2281

1969-70 Record: 20-5

Lettermen Lost: 3

Lettermen Returning: 5

Starters Returning: 5

Team Strength: Experience and Quickness

Team Weakness: A Big Board Man

Captains: R. Greene, N. Milligan, J. Taylor

Athletic Director: Paul Ross

Location: California, Pa.

Enrollment: 5,200

Colors: Red and Black

Nickname: Vulcans

Home Court: Hamer Hall

Gym Capacity: 4,000

Conference: Pennsylvania

Last Game: 1969-70, Calif. 76-68, 77-66 (NAIA Dist. 18 Playoff, Calif. 72-71)

Top Veterans: 6-3 Ray Greene (G, Sr.), 5-10 Nate Milligan (G, Jr.), 6-5 Jack Taylor (C, Sr.), 6-5 Tom Katruska (F, Jr.), 6-1 Stan Williams (G, Jr.)

Top Newcomers: 6-4 Cleveland Steward (F, So.), 5-11 Gary Skinner (G, So.), 6-3 Jack Howard (F, So.)

MARS HILL COLLEGE

January 13 — at Edinboro

Head Coach: Jack Lytton, First Season

Sports Information Director: Bill Deans, Area Code 704, 689-1219

1969-70 Record: 11-19

Lettermen Lost: 4

Lettermen Returning: 4

Starters Returning: 6

Team Strength: Attitude

Team Weakness: Height and Experience

Captains: Ed Miller and Rod Johnson

Athletic Director: Don Henderson

Location: Mars Hill, N. Carolina

Enrollment: 1,480

Colors: Blue and Gold

Nickname: Lions

Home Court: Chambers

Gym Capacity: 3,600

Conference: NAIA, Independent

Last Game: No Previous Games

Top Veterans: 5-8 Eddie Miller (G, Sr.), 5-11 Roger McGowan (G, Jr.), 6-6 Mike Smith (C, Jr.), 6-5 Mike Miller (F, Jr.)

Top Newcomers: 5-9 Jeffrey Lytton (G, Jr.), 6-3 John Adeimy (G, So.), 6-4 Jerry Hayes (F, Fr.)

GENEVA COLLEGE
January 30 — at Edinboro

Head Coach: Clifford J. Aultman, 285-240, 21 Seasons
Sports Information Director: W. Lee Troup, Area Code 412, 846-5100
1969-70 Record: 5-19
Lettermen Lost: 1
Lettermen Returning: 7
Starters Returning: 7
Team Strength: Plenty of Depth
Team Weakness: Experienced Big Men
Captains: Designated Each Game
Athletic Director: Clifford J. Aultman
Top Veterans: 6-7 Bill Allen (C, Sr.), 6-4 Dwight DeCarlo (F, Sr.), 5-11 Randy Hubbard (G, Jr.), 6-1 John Aultman (G, Sr.), 5-11 Loni Sheffield (G, Sr.), 6-6 Ken Creasman (F-C, So.)
Top Newcomers: 6-3 Brad Frey (F, So.), 5-9 Dale Zeh (G, Fr.)

Location: Beaver Falls, Pa.
Enrollment: 1,325
Colors: Old Gold and White
Nickname: Golden Tornados
Home Court: Metheny Fieldhouse
Gym Capacity: 3,900
Conference: Independent
Last Game: 1969-70, ESC 77-74

INDIANA UNIVERSITY OF PENNSYLVANIA
February 6 — at Edinboro, February 23 — at Indiana, Pa.

Head Coach: Carl Davis, First Season
Sports Information Director: Randy Jesick, Area Code 412, 357-2233
1969-70 Record: 21-4
Lettermen Lost: 3
Lettermen Returning: 5
Starters Returning: 5
Team Strength: Experienced Starters, Defense
Team Weakness: Depth in Big Men
Captains: Lee McCullough and Dave Erney
Athletic Director: Herm Sledzik
Top Veterans: 6-6 Lee McCullough (C, Sr.), 6-4 Tom Kerstetter (F, Jr.), 6-2 Dave Erney (F, Sr.), 5-10 Gary Gruseck (G, Sr.), 5-10 Tom Rusnica (G, Sr.)
Top NewComers: 6-5 John Carom (C, So.), 6-0 Bob Isenberg (G, Jr.)

Location: Indiana, Pa.
Enrollment: 8,500
Colors: Maroon and Slate
Nickname: Big Indians
Home Court: Memorial Fieldhouse
Gym Capacity: 3,000
Conference: Independent
Last Game: 1969-70, IUP 75-72, ESC 73-60, ESC 68-67 OT (NAIA)

ONEONTA STATE
February 12 — at Edinboro

Head Coach: Ed Kassler
Sports Information Director: Al Pastore, Area Code 607, 431-3698
1969-70 Record: 9-10
Lettermen Lost: 8
Lettermen Returning: 3
Starters Returning: 3
Team Strength: Overall Height
Team Weakness: Experience
Captains: Joe Roberts and Bob Evans
Athletic Director: Dr. Hal Chase
Top Veterans: 6-2 Bob Evans (F, Sr.), 6-0 Joe Roberts (G, Jr.), 6-0 Don Williams (G, Jr.)
Top Newcomers: 6-6 Jon Buchwald (C, So.), 6-7 Larry Brenner (C, So.), 6-6 Don McLeod (G-F, So.)

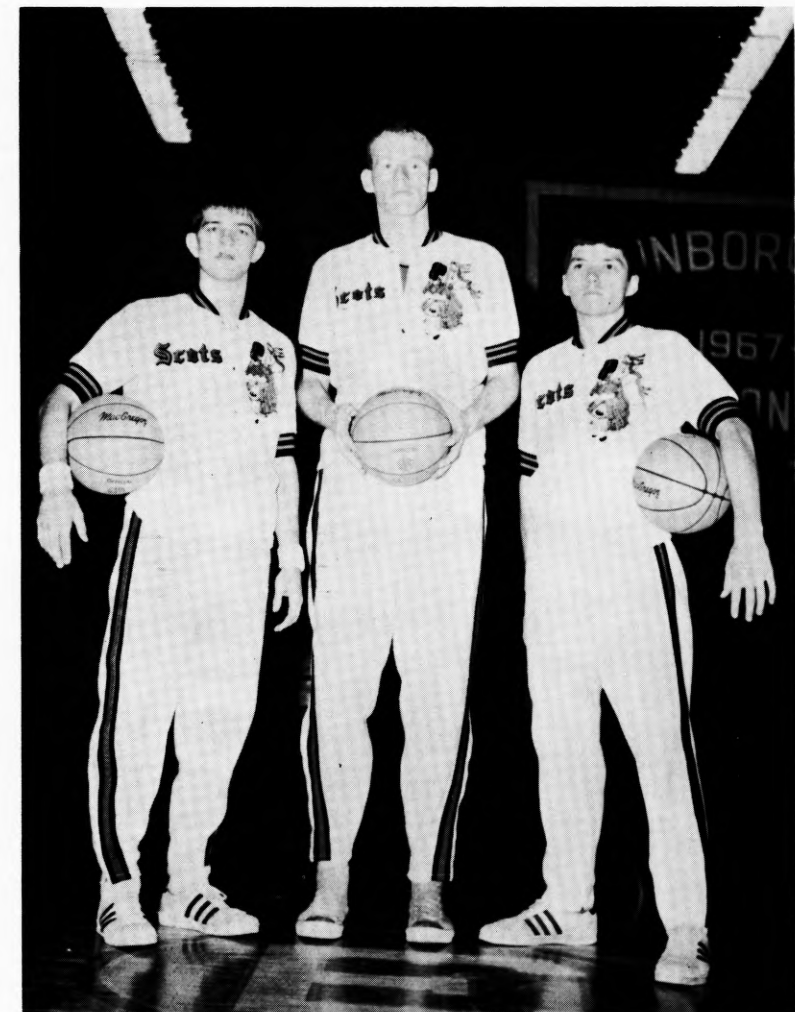
Location: Oneonta, New York
Enrollment: 4,800
Colors: Red and White
Nickname: Red Dragons
Home Court: Red Dragon Gymnasium
Gym Capacity: 2,500
Conference: SUNY Athletic Conference
Last Game: No Previous Game

WEST VIRGINIA WESLEYAN

February 20 — at Edinboro

Head Coach: Franklin (Hank) Ellis, 297-243, 20 Seasons
Sports Information Director: Creal Cornwell, Area Code 304, 473-7011
1969-70 Record: 12-14
Lettermen Lost: 2
Lettermen Returning: 7
Starters Returning: 4
Team Strength: Overall Height
Team Weakness: Speed
Captian: Mark Mendelson
Athletic Director: David Reemsnyder
Top Veterans: 6-5 Mark Mendelson (F, Sr.), 6-2 Dave Cores (F, So.), 6-0 Stan Bolankship (G, Jr.), 6-5 Ken Baylor (C, Jr.), 5-11 Joe Lafferty (G, Jr.)
Top Newcomers: 6-6 Richard Sturn (C, Fr.), 6-4 Randy Carlson (F, Fr.), 6-2 Stephen Cores (G, Fr.)

Location: Buckhannon, W. Va.
Enrollment: 1,750
Colors: Orange and Black
Nickname: Bobcats
Home Court: Buckhannon Upshur Gym
Gym Capacity: 1,500
Conference: WVIAC
Last Game: 1967-68, ESC 109-78



1970-71 Tri Captains: Dave Knowlton, Art Dickinson, Ray Overholt



1970-71 Fighting Scot Varsity L-R: Fred Riley, Bernie Jubeck, Joel Kowitz, Jim Prokell, Sid Booker, Mike Brzozowski, Art Dickinson, Rich Sulka, Bob Koger, Tom Albright, Jim Romaniszyn, Dave Knowlton, and Ray Overholt.

1970-71 EDINBORO STATE COLLEGE BASKETBALL TEAM

VARSITY ROSTER

White	Red	Name	Pos.	Ht.	Wt.	Class	Hometown (High School)	High School Coach
10	11	Bernie Jubeck	G	6'0"	160	So.	Altoona (Bishop Guilfoyle)	Mr. Tom Lane
12	13	*Ray Overholt	G	5'11"	165	Sr.	Brookfield, Ill. (Riverside-Brookfield)	Mr. Ron Nikcevic
14	15	*Sid Booker	F	6'2"	165	Jr.	Erie (East)	Mr. Clarence Metzgar
20	21	*Fred Riley	G	5'10"	150	Jr.	Clearfield (Clearfield Area)	Mr. William Thorn
22	23	*Dave Knowlton	G	6'0"	158	Sr.	Mercer (Mercer)	Mr. John Swogger
24	25	Joel Kowitz	G	6'2"	170	Jr.	Lakewood, N. J. (Lakewood)	Mr. Bob Nastaes
30	31	*Jim Prokell	F	6'0"	185	Jr.	Pittsburgh (Canevin)	Mr. William Chontas
32	33	Tom Albright	G	6'3"	175	So.	Richmond, Va. (George Wythe)	Mr. Walter Malinski
40	41	Jim Romaniszyn	G-F	6'1"	195	So.	Titusville (Titusville)	Mr. Rhea Saltz
44	45	Mike Brzozowski	F	6'7"	200	So.	Cleveland, O. (Lourdes Central Catholic)	Mr. James Kockler
52	53	Rich Sulka	C	6'6"	210	So.	Pittsburgh (Central District)	Mr. Dale Masino
54	55	*Art Dickinson	F	6'10"	225	Sr.	Crystal Lake, Ill. (Crystal Lake)	Mr. John Killian
								Mr. John Swanson

Manager—Steve Baker; Tri-Captains—Art Dickinson, Dave Knowlton, Ray Overholt.

*Varsity Letters.

FRESHMEN ROSTER

White	Red	Name	Pos.	Ht.	Wt.	Class	Hometown (High School)	High School Coach
4	5	Paul Sample	G	5'7"	147	Fr.	Pittsburgh (Brentwood)	Mr. William Douglass
10	11	Roy Stauffer	G	5'11"	168	Fr.	Emmaus (Emmaus)	Mr. Richard Shaak
12	13	William Henk	G	5'11"	143	Fr.	Pittsburgh (Keystone Oaks)	Mr. James Sims
14	15	Robert Ungarean	G	6'0"	185	Fr.	Monaca (Monaca)	Mr. Otto Prichard
22	23	Kurt Anthony	G	6'1"	165	Fr.	Union City (Union City)	Mr. Ken Orris
24	25	Edward McAtee	F	6'2"	170	Fr.	Edinboro (General McLane)	Mr. James Smart
30	31	Craig Burns	G	5'11"	160	Fr.	Edinboro (Warren)	Mr. Joseph Shantz
34	35	Robert Goman	G	5'11"	160	Fr.	Verona, N. J. (Verona)	Mr. Doug Gaffney
40	41	Charles Foster	F	6'1"	185	Fr.	Springfield, N. J. (Dayton Regional)	Mr. Ray Yanchus
42	43	Ray Grynuck	F	6'2"	205	Fr.	Lyndora (Butler)	Mr. James Riley
44	45	Paul Stiles	G-F	6'1"	185	Fr.	Bradford (Bradford)	Mr. Hal Hansen
50	51	Mark Roche	F	6'3"	160	Fr.	Cochranton (Cochranton)	Mr. Wilbert Barnhardt
54	55	George Middleton	F	6'2"	180	Fr.	Lakewood, O. (Lakewood)	Mr. Harry Groman

Manager:—Ed Mailliard.

1969-70 IN REVIEW

Edinboro State's 1969-70 cagers raced away from a mediocre 4-4 early season start, registered nine wins in their next 14 outings and came within seconds of that coveted dream trip to the national playoffs in Kansas City. The Scots continued their winning ways under the McDonald management by finishing with a 13-9 season slate.

With the loss of seven lettermen and All-American Frank Smith, pre-season forecasts saw the Clan in a rebuilding year with a squad that lacked depth and experience. Yet the sophomore-juniored studded squad came up with their own billboard of cage stars in maintaining Edinboro's tradition on the hardwoods.

A junior cast of 6-1 guard Dave Knowlton, 6-10 center Art Dickinson and 5-11 guard Ray Overholt provided outstanding game performances in the Clan's quest of their 20th winning season.

Making strong debuts in sophomore starting roles were 5-10 guard Fred Riley, 6-0 forward Jim Prokell and 6-9 forward Bob Burlingame.

Knowlton, who has proved a playmaker deluxe for the Scots, smashed two assist records which he established as a sophomore starter and also had one of the best showings at the foul line where he clicked on 74 % of his tries. The flashy quarterback finished with 174 assists to top his old mark of 133 while his 19 passes to scores against Grove City in the season opener eclipsed his old standard of 12.

Jim Prokell, a 6-0 jumping jack from Canevin High in Pittsburgh, paved the way offensively for the Fighting Scots. The inside ace led the team in scoring with 332 markers to average 15.1 points a game. His accuracy from the floor ranked number one on the squad as the soph stalwart hit on 108 of 196 attempts to post a blistering 55.1 %, only three percentage points off the Edinboro record. In the meantime the high leaping forward hauled down 218 rebounds to grab second place honors in that department and connected on 116 foul shots which also was a team high.

Art Dickinson, the Scots' 6-10 pivot man, sparked a second half surge that landed Edinboro a berth in the NAIA playoffs. The towering junior had his finest game in the first tourney contest when he dumped in 30 points to lead his teammates to an overtime win against Indiana University. Dickinson climbed to the second place slot in scoring with 325 tallies for a 14.8 average. He grabbed 201 stray shots to nail down the number three position in rebounding with 9.1 caroms a contest.

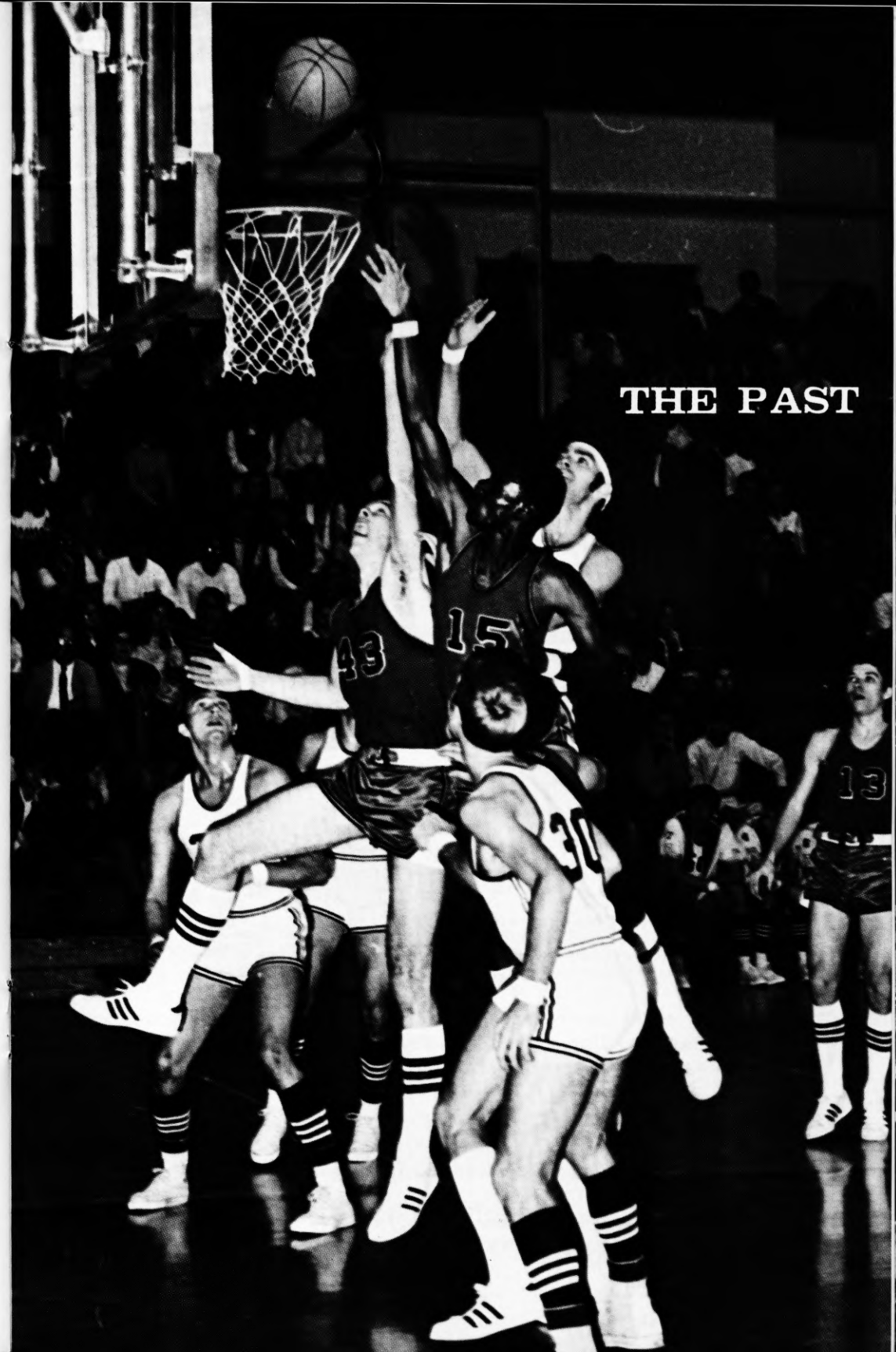
Guard Fred Riley displayed some classy outside shooting to lead in field goals with 130. His 302 total points placed him third on the scoring list as he finished in double figures with a 13.7 scoring average for the campaign.

Another big up-front performer, 6-9 Bob Burlingame, was the man of the hour underneath. The sophomore strong man cleared the glass of 250 missed shots to take command of the rebounding with an 11.4 average. His 228 points rounded out the top four in scoring with a 10.4 points a game showing.

The 1969-70 cage captain, Ray Overholt, tuned up his arm by making appearances in all 22 games. The 5-11 junior guard was always on hand when any of the starting five faltered and chipped in 133 points for the season.

Forward Sid Booker and guard Jim Stranko tossed in 111 and 59 points respectively in supporting roles.

Coach Jim McDonald notched his 100th victory to highlight the season's opening. Since his appointment as head mentor in 1962, the Scots have never experienced a losing season.



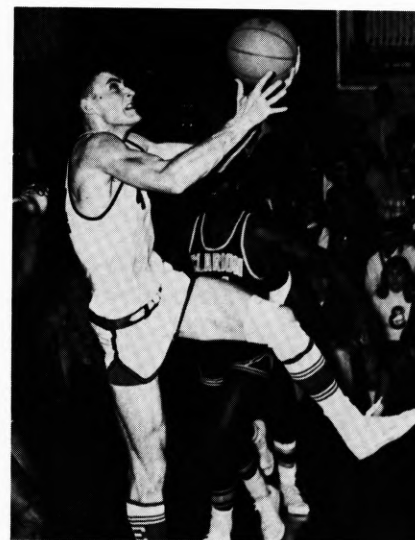
SPECIAL RECOGNITION — "SCOTS OF THE PAST"

NAIA 2nd TEAM, ALL-AMERICAN	PC HONORABLE MENTION
1964-1965: Dan Petchel	1968-1969: Tim Ziner
NAIA 3rd TEAM, ALL-AMERICAN	Jim Robinson
1968-1969: Frank Smith	Mick Unick
1967-1968: Frank Smith	1966-1967: Butch Hurley
1965-1966: Darryl Meachem	Harry Jenkins
PC 1st TEAM	Tim Maloney
1969-1970: (West)	Darryl Meachem
Art Dickinson	Frank Smith
Jim Prokell	1964-1965: Dave Shenefelt
Dave Knowlton	1962-1963: Ken Barker
1968-1969: Frank Smith	1961-1962: Ken Barker
1967-1968: Don Dougan	Wendell Rojik
Frank Smith	Jim Sims
1966-1967: Lynn Nelson	NAIA DISTRICT 18 1st TEAM
1965-1966: Darryl Meachem	1968-1969: Frank Smith
1964-1965: Dan Petchel	1967-1968: Frank Smith
1963-1964: Dan Petchel	1965-1966: Darryl Meachem
1962-1963: Dan Petchel	NAIA DISTRICT 30 1st TEAM
PC 2nd TEAM	1964-1965: Dan Petchel
1968-1969: Rod Herron	NAIA DISTRICT 18 2nd TEAM
Harry Jenkins	1969-1970: Art Dickinson
1967-1968: Harry Jenkins	Jim Prokell
Jim Robinson	1967-1968: Don Dougan
Mick Unick	Mick Unick
1965-1966: Dave Shenefelt	NAIA DISTRICT 18 HON. MENTION
Don Dougan	1969-1970: Fred Riley

OTHERS

Pittsburgh Press All-District Second Team 1969-1970 Art Dickinson
 Pittsburgh Press All-District Third Team 1969-1970 Jim Prokell
 Honorable Mention All-Pennsylvania by A. P. 1969-1970 Fred Riley
 Pittsburgh Press All-District First Team 1968-1969 Frank Smith
 Third Team All-Pennsylvania by A. P. 1967-1968 Frank Smith
 Honorable Mention All-Pennsylvania by A. P. 1968-1969 Frank Smith
 SOS Outstanding Athletic (Erie, Pa.) 1965-1966 Darryl Meachem
 Sox Harrison Award 1967-1968 Jim Robinson
 Penn-Ohio All-Section Team 1965-1966 Darryl Meachem
 Penn-Ohio Honorable Mention 1965-1966 Dave Shenefelt

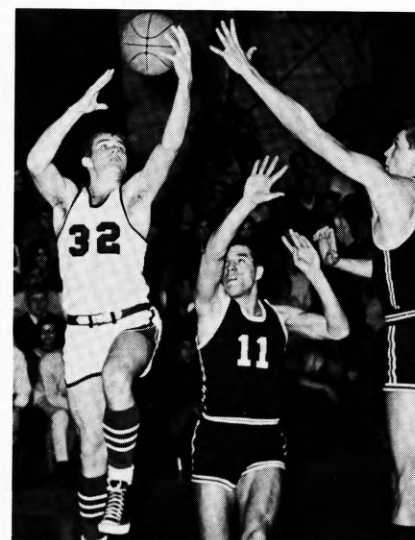
EDINBORO STATE COLLEGE'S ALL-AMERICANS



Dan Petchel
1964-1965



Darryl Meachem
1965-1966



Frank Smith
1967-1968; 1968-1969

MEN OF McDONALD GAIN HONORS

Three of Coach Jim McDonald's basketball products have been named NAIA All-Americans for their outstanding roundball abilities.

Sheffield's Dan Petchel (1964-65 All-American selectee) ranks as Edinboro State's second all-time high scorer with 1,344 points. Bentleyville's Frank Smith (1967-68 and 1968-69 All-American) holds down the third place slot with 1,225 markers while Aliquippa's Darryl Meachem (1965-66 All-America) ranks fifth with 881 tallies.

In the rebounding department, Meachem and Petchel are two of the college's top three career rebounders with 897 and 744, respectively. Meachem pulled down 393 rebounds for a school record established during the 1965-66 season.

Smith owns two individual scoring records. His 54-point output against Fredonia in the 1966-67 season earned him the most points scored in a single game record. The 6-1, 198-lb. forward compiled the most field goals scored in a single game record with 21 two-point markers against Waynesburg in the same season and 21 against Kenyon in 1969.

1969-70 VARSITY RESULTS

Regular Season Record 12-8			Overall Record 13-9		
ESC	Opp.	Leading Scorer	Leading Rebounder		
88	Grove City.....	82 Bob Burlingame.	24	Bob Burlingame.	17
115	Pitt-Johnstown.....	55 Fred Riley.....	23	Bob Burlingame, Sid Booker, Jim Prokell.....	11
70	Lock Haven State...	67 Fred Riley.....	20	Jim Prokell.....	20
75	Slippery Rock State.	69 Jim Prokell.....	32	Bob Burlingame.	16
72	Clarion State.....	75 Fred Riley.....	21	Jim Prokell.....	9
57	Fredonia State U....	60 Bob Burlingame, Ray Overholt, Art Dickinson.....	11	Jim Prokell.....	11
85	North. Michigan U..	92 Fred Riley.....	23	Jim Prokell.....	19
85	U. Wis. at Milw....	104 Art Dickinson...	21	Art Dickinson...	15
88	Alliance.....	75 Art Dickinson...	22	Art Dickinson...	9
77	Lock Haven State...	60 Jim Prokell.....	22	Art Dickinson...	15
64	Alliance.....	77 Jim Prokell.....	16	Bob Burlingame.	14
80	Slippery Rock State.	57 Art Dickinson...	16	Jim Prokell.....	18
72	Indiana U. of Pa....	75 Jim Prokell.....	22	Bob Burlingame.	11
70	Roberts Wesleyan...	58 Fred Riley.....	18	Bob Burlingame.	16
68	California State....	77 Art Dickinson...	25	Art Dickinson, Jim Prokell.....	10
71	Point Park.....	54 Jim Prokell.....	18	Art Dickinson...	18
72	Clarion State.....	52 Art Dickinson...	25	Art Dickinson...	21
77	Geneva.....	74 Art Dickinson...	26	Art Dickinson...	14
73	Indiana U. of Pa....	60 Fred Riley.....	22	Bob Burlingame.	19
66	California State....	77 Jim Prokell.....	19	Jim Prokell.....	15
68	Indiana U. of Pa.(OT)	67 Art Dickinson...	30	Art Dickinson...	13
71	California State....	72 Dave Knowlton...	19	Bob Burlingame.	13

1969-70 VARSITY STATISTICS

Name	G	FGA	FG	FG%	FTA	FT	FT%	REB.	AVG.	TP	AVG.
J. Prokell, f	22	196	108	.551	164	116	.707	218	9.9	332	15.1
A. Dickinson, c	22	263	123	.468	120	79	.658	201	9.1	325	14.8
F. Riley, g	22	298	130	.436	74	42	.566	51	2.3	302	13.7
B. Burlingame, f	22	189	89	.471	83	50	.602	250	11.4	228	10.4
D. Knowlton, g	22	120	50	.417	87	64	.736	81	3.7	164	7.5
R. Overholt, g	22	110	41	.373	74	51	.689	50	2.3	133	6.0
S. Booker, f	17	105	50	.476	13	11	.846	57	3.4	111	6.5
J. Stranko, g	18	66	26	.394	9	7	.778	23	1.3	59	3.3
T. Carr, g	11	12	4	.333	0	0	—	5	.5	8	.7
J. Kodba, g	4	0	0	—	1	0	—	1	.2	0	—
Other	1	3	1	.333	1	0	—	4	4.0	2	2.0
Team	22	—	—	—	—	—	—	85	3.9	—	—
ESC Totals	22	1362	622	.457	626	420	.671	1026	46.6	1664	75.7
Opponents	22	1508	611	.407	487	317	.650	906	41.2	1539	70.0

1969-70 FRESHMAN RESULTS

Season Record 11-6			
ESC	Opp.	Leading Scorer	Leading Rebounder
95	Grove City.....	84 Jim Booros.....	31 Rich Sulka.....
87	Pitt-Johnstown.....	69 Jim Booros.....	22 Rich Sulka.....
91	Slippery Rock State.	96 Gary Rausch....	24 Rich Sulka.....
79	Clarion State.....	86 Jim Booros.....	21 Gary Rausch....
95	Fredonia State U....	34 Doug Craig.....	19 Doug Craig.....
86	Alliance.....	78 Jim Booros.....	19 Jim Romaniszyn.
95	Meadville Jaycees...	80 Tom Albright...	26 Jim Romaniszyn.
59	Gannon.....	60 Jim Romaniszyn.	20 Rich Sulka.....
91	Alliance.....	78 Jim Romaniszyn.	28 Gary Rausch....
89	Slippery Rock State.	74 Gary Rausch....	30 Rich Sulka.....
120	Roberts Wesleyan...	80 Jim Romaniszyn.	46 Gary Rausch....
56	California State....	68 Jim Romaniszyn.	20 Rich Sulka.....
66	Meadville Jaycees...	70 Jim Romaniszyn.	25 Rich Sulka.....
70	Clarion State.....	76 Jim Romaniszyn.	26 Rich Sulka.....
95	Geneva.....	89 Jim Romaniszyn.	35 Barry Gordon...
93	CCYC (Erie).....	74 Jim Romaniszyn.	34 Rich Sulka.....
59	California State....	54 Jim Romaniszyn.	18 Rich Sulka.....

1969-70 FRESHMAN STATISTICS

Name	G	FGA	FG	FG%	FTA	FT	FT%	REB.	AVG.	TP	AVG.
J. Romaniszyn, f	17	347	141	.406	139	106	.763	121	7.1	388	22.8
G. Rausch, f	17	233	118	.507	89	59	.663	213	12.5	295	17.4
R. Sulka, c	17	175	84	.480	67	39	.582	252	14.8	207	12.2
B. Jubeck, g	17	101	31	.307	36	23	.639	39	2.3	85	5.0
R. Branowitz, f	11	59	28	.475	17	10	.588	73	6.6	66	6.0
B. Gordon, g	9	50	16	.320	12	8	.750	58	6.4	40	4.4
C. Braden, g	11	37	11	.297	17	11	.647	10	9.1	33	3.0
G. Overholt, g	8	11	4	.364	3	2	.667	5	.7	10	1.2
F. Berzansky, g	4	1	0	—	2	2	1.000	1	.2	2	.5
Others	7	282	118	.418	96	63	.656	134	19.1	299	42.7
Team	—	—	—	—	—	—	—	39	2.3	—	—
ESC Totals	17	1296	551	.425	478	323	.667	945	55.6	1425	84.8
Opp. Totals	17	1199	486	.405	444	278	.626	688	40.5	1250	73.5

1969-70 PC BASKETBALL RESULTS

WESTERN DIVISION	Conference			Full Season			
	W	L	Pct.	W	L	Pts.	Opp.
*California.....	7	1	.875	20	5	2156	1914
Edinboro.....	5	3	.625	13	9	1664	1539
Slippery Rock.....	4	4	.500	10	15	1769	1930
Lock Haven.....	2	6	.250	7	10	1322	1423
Clarion.....	2	6	.250	4	16	1437	1629
EASTERN DIVISION							
Cheyney.....	13	1	.929	25	3	2652	2273
Bloomsburg.....	9	5	.643	15	8	1928	1788
Mansfield.....	8	6	.571	17	8	2165	2018
Kutztown.....	8	6	.571	11	8	1580	1636
West Chester.....	8	6	.571	11	15	2047	2002
East Stroudsburg.....	5	9	.357	9	15	1696	1805
Millersville.....	4	10	.286	12	12	2155	2089
Shippensburg.....	1	13	.071	2	20	1735	2100

*Conference Championship: California 110, Cheyney 91.

EDINBORO CAGE RECORDS

TEAM RECORD—SEASON

Most Wins	19-5	James McDonald	1967-1968
	17-4	(regular season play)	
Best Season Record	12-1	Sox Harrison	1931-1932
Highest Scoring Average	89.4		1967-1968
Best Shooting Percentage	51.7		1966-1967
Best Free Throw Percentage	70.6		1967-1968
Best Rebounding Average	55.7		1965-1966
Best Rebounding Percentage	62.5		1966-1967
Most Field Goals	868	(24 games)	1967-1968
Most Consecutive Victories	11	1966-1967	1967-1968
Most Consecutive Victories	10	(one season)	1967-1968
Most Consecutive Conference Wins	17		1967-1969

TEAM RECORDS—GAME

Most Points	133	Lock Haven	1967-1968
Most Field Goals	54	Lock Haven	1967-1968
Most Free Throws	31-49	California	1965-1966
	31-51	Lock Haven	1961-1962
Most Rebounds	93	Clarion (PC Record)	1968-1969
Most Points (two teams)	223	(ESC 133, Lock Haven 90)	1967-1968
Longest Game	3 O. T.	Lock Haven	1961-1962

CHAMPIONSHIPS

Western Division PSCAC	(Park)	1961-1962
Western Division PSCAC	(McDonald)	1963-1964
Western Division PSCAC	(McDonald)	1965-1966
*NAIA District 18 Championship	(McDonald)	1965-1966
Western Division PSCAC	(McDonald)	1967-1968
PSCAC State Championship	(McDonald)	1967-1968
Western Division PC	(McDonald)	1968-1969

*Won the right to play in NAIA Tournament in Kansas City, Mo.

PENNSYLVANIA CONFERENCE

The Pennsylvania State Colleges Athletic Conference, organized in 1951, last year changed its name to the Pennsylvania Conference.

Its membership originally consisted of the 14 state colleges; Bloomsburg, California, Cheyney, Clarion, East Stroudsburg, Edinboro, Indiana, Kutztown, Lock Haven, Mansfield, Millersville, Shippensburg, Slippery Rock, and West Chester. In 1966 Indiana no longer was eligible for conference laurels as it acquired university status.

The conference is divided into a Western Division and an Eastern Division. Members of the Eastern Division include Bloomsburg, Cheyney, East Stroudsburg, Mansfield, Kutztown, Millersville, Shippensburg, and West Chester, while Edinboro, California, Clarion, Lock Haven, and Slippery Rock comprise the Western Division. In basketball, the conference champions of both leagues face each other at the end of the season to determine the PC championship.

INDIVIDUAL RECORDS — SEASON

Most Total Points (4 yrs.)

Walt Askins	1739	1956-1960
Dan Petchel	1344	1961-1965

Most Points

Walt Askins	496	1956-1957
Frank Smith	466	1968-1969
Dan Petchel	460	1964-1965

Highest Scoring Averages

Walt Askins	26.1	(19 games)	1956-1957
Dan Petchel	25.6	(18 games)	1964-1965
Frank Smith	30.1	(9 games)	1966-1967

Best Shooting Percentages

Lynn Nelson	58.3	(16 games)	1966-1967
Dan Petchel	55.8	(18 games)	1964-1965
Frank Smith	59.4	(9 games)	1966-1967

Best Foul Shooting Percentages

Ken Gerber	85.1	(63-74)	1961-1962
Don Dougan	77.9	(81-104)	1967-1968

Most Career Rebounds (4 yrs.)

Don Dougan	992	1963-1968
------------	-----	-----------

Most Rebounds

Darryl Meachem	393	1965-1966
----------------	-----	-----------

Best Rebounding Averages

Darryl Meachem	18.5	(10 games)	1966-1967
	17.05	(23 games)	1965-1966

Most Consecutive Foul Shots

Ken Gerber	38	(PSCAC Record)	1961-1962
------------	----	----------------	-----------

Most Assists

Dave Knowlton	174	(21 games)	1969-1970
---------------	-----	------------	-----------

INDIVIDUAL RECORDS — GAME

Most Points

Frank Smith	54	Fredonia	1966-1967
Frank Smith	52	Kenyon	1968-1969
Dan Petchel	40	Alliance	1963-1964

Most Field-Goals

Frank Smith	21	Waynesburg	1966-1967
Frank Smith	21	Kenyon	1968-1969

Most Rebounds

Don Dougan	38	Indiana State (PC Record)	1964-1965
------------	----	------------------------------	-----------

Most Foul Shots Made

Ken Gerber	14-14	Gannon	1961-1962
Don Dougan	13-16	Baldwin-Wallace	1964-1965

Most Assists

Dave Knowlton	19	Grove City	1969-1970
---------------	----	------------	-----------

ALL-TIME SCORES — 1929-1970

1928-29 Coach: Sox Harrison Won 12 — Lost 2		37 Indiana..... 31	45 Thiel..... 32
ESC	Opp.	46 Alliance..... 23	37 Ohio Chiropody.. 30
58	Clarion..... 27	42 Kutztown..... 31	43 Slippery Rock... 49
58	Fredonia..... 26	22 California..... 23	53 Clarion..... 30
58	Youngstown	31 Slippery Rock... 22	43 Indiana..... 30
	YMCA..... 38	34 California..... 17	41 Slippery Rock... 37
87	Kanty College... 21	44 Slippery Rock... 35	529
20	Clarion..... 14	46 Alliance..... 31	469
36	California..... 25	47 Clarion..... 16	
46	Slippery Rock... 32	37 Indiana..... 15	
24	Slippery Rock... 36	32 Clarion..... 22	
49	Fredonia..... 29	60 Fredonia..... 22	
50	Indiana..... 18	604	363
40	California..... 19	1932-33	
42	Youngstown	Coach: Sox Harrison	
	YMCA..... 44	(Being Researched)	
38	Indiana..... 22	1933-34	
34	Slippery Rock... 30	Coach: Sox Harrison	
640	381	Won 8 — Lost 5	
1929-30		ESC	Opp.
Coach: Sox Harrison		27 Findley..... 28	36 Kent..... 37
Won 8 — Lost 6		50 Fredonia..... 22	44 Fredonia..... 45
ESC	Opp.	33 Clarion..... 20	33 Clarion..... 28
29	Ashland..... 41	31 Westminster... 41	54 Fredonia..... 41
25	Slippery Rock... 24	35 California..... 32	48 California..... 44
18	Buffalo St.Tchrs.. 20	32 Slippery Rock... 37	37 Indiana..... 55
20	Canisius..... 38	50 Indiana..... 34	39 Thiel..... 34
36	West Chester... 37	54 Fredonia..... 29	37 Ohio Chiropody.. 23
31	Waynesburg... 25	59 California..... 25	32 California..... 49
25	Slippery Rock... 22	30 Westminster... 45	56 Slippery Rock... 57
40	California..... 38	46 Slippery Rock... 34	41 Slippery Rock... 42
32	Clarion..... 22	36 Indiana..... 38	41 Indiana..... 43
45	Indiana..... 25	36 Clarion..... 34	35 Clarion..... 41
41	Buffalo St. Tchrs.. 22	36 Clarion..... 34	49 Ohio Chiropody.. 37
39	California..... 52	519	582
32	Clarion..... 19	419	576
23	Indiana..... 24	1938-39	
436	409	Coach: Sox Harrison	
1930-31		Won 8 — Lost 2	
Coach: Sox Harrison		ESC	Opp.
Won 10 — Lost 5		43 Fredonia..... 37	53 Clarion..... 35
ESC	Opp.	53 Clarion..... 35	64 California..... 42
55	P.N.A.C..... 15	64 California..... 42	46 Fredonia..... 22
42	P.N.A.C..... 20	46 Fredonia..... 22	54 Indiana..... 36
43	Erie Branch..... 22	54 Indiana..... 36	50 Clarion..... 51
24	West Chester... 20	50 Clarion..... 51	51 Slippery Rock... 34
43	Kutztown..... 32	45 California..... 32	45 California..... 32
34	Slippery Rock... 33	39 Slippery Rock... 43	39 Slippery Rock... 43
21	Clarion..... 14	47 Indiana..... 42	47 Indiana..... 42
29	Indiana..... 23	492	374
44	Erie Branch..... 24	1939-40	
28	Slippery Rock... 29	Coach: Sox Harrison	
38	California..... 38	Won 14 — Lost 4	
34	California..... 38	ESC	Opp.
59	Clarion..... 41	49 St. Marys..... 38	49 St. Marys..... 38
47	Indiana..... 30	45 Fredonia..... 37	45 Fredonia..... 37
21	Allegheny..... 29	51 Ohio Chiropody.. 27	51 Ohio Chiropody.. 27
562	409	54 Clarion..... 33	54 Clarion..... 33
1931-32		43 Canisius..... 52	43 Canisius..... 52
Coach: Sox Harrison		32 Fredonia..... 28	32 Fredonia..... 28
Won 12 — Lost 1		44 Alliance..... 40	44 Alliance..... 40
ESC	Opp.	37 Indiana..... 29	37 Indiana..... 29
60	Fredonia..... 26	32 Clarion..... 30	32 Clarion..... 30
		52 Slippery Rock... 44	52 Slippery Rock... 44
		54 California..... 44	54 California..... 44
		39 Lawrence Tech... 45	39 Lawrence Tech... 45
		50 California..... 51	50 California..... 51
		36 Slippery Rock... 67	36 Slippery Rock... 67
		40 Indiana..... 35	40 Indiana..... 35
		39 Alliance..... 18	39 Alliance..... 18
		47 Ohio Chiropody.. 37	47 Ohio Chiropody.. 37
		744	655

1940-41		63 California..... 45	60 Indiana..... 56
Coach: Sox Harrison		45 Clarion..... 46	58 Clarion..... 50
Won 11 — Lost 4		62 Alliance..... 55	73 Alliance..... 57
ESC	Opp.	48 Indiana..... 57	61 Fredonia..... 52
45	DeSalles..... 44	42 California..... 45	65 Thiel..... 51
54	Ohio Chiropody.. 33	40 Fenn..... 37	978
46	Lawrence Tech... 44	54 Fredonia..... 25	910
29	Fredonia..... 28	44 Slippery Rock... 52	
53	Thiel..... 42	702	680
49	Thiel..... 50	1950-51	
36	Slippery Rock... 26	Coach: Sox Harrison	
34	California..... 36	Won 9 — Lost 9	
50	Fredonia..... 37	ESC	Opp.
43	Clarion..... 33	64 Allegheny..... 52	55 Fredonia..... 46
38	California..... 49	61 Slippery Rock... 60	55 Fredonia..... 46
42	Indiana..... 32	82 Fredonia..... 72	79 Alliance..... 61
35	Indiana..... 34	65 Gannon..... 73	53 Indiana..... 54
51	Clarion..... 36	82 Clarion..... 84	65 Slippery Rock... 90
50	Slippery Rock... 53	55 Buffalo..... 62	66 Gannon..... 43
655	577	62 California..... 77	82 Clarion..... 91
1941-42		63 Alliance..... 55	52 Fenn..... 75
Coach: Sox Harrison		52 Fenn..... 75	77 Thiel..... 70
Won 4 — Lost 9		80 California..... 63	84 Grove City..... 99
ESC	Opp.	1,227	1,227
57	Fredonia..... 29	1951-52	
44	Alliance..... 33	Coach: Sox Harrison	
36	Fredonia..... 38	Won 6 — Lost 12	
27	Indiana..... 44	ESC	Opp.
35	Slippery Rock... 51	46 Fredonia..... 42	58 Allegheny..... 79
36	California..... 40	63 California..... 55	46 Gannon..... 48
28	Clarion..... 41	57 Slippery Rock... 61	66 Fredonia..... 68
37	Lawrence Tech... 34	60 Buffalo..... 55	67 Gannon..... 85
33	Canisius..... 66	77 Alliance..... 58	71 Indiana..... 74
333	376	49 Slippery Rock... 91	68 Clarion..... 82
1942-43		79 Grove City..... 83	61 California..... 92
Coach: Sox Harrison		74 Clarion..... 106	67 Alliance..... 57
Won 1 — Lost 1		56 Thiel..... 55	63 Geneva..... 85
ESC	Opp.	1,128	1,276
34	Lawrence Tech... 50	1952-53	
—	Alliance..... —	Coach: Sox Harrison	
—	(Season Halted—W.W.II)	(Being Researched)	
1943-44 (War)		ESC	Opp.
1944-45 (War)		72 Fredonia..... 44	59 Alliance..... 40
1945-46		55 Grove City..... 54	62 Gannon..... 57
Coach: Sox Harrison		66 California..... 50	66 California..... 50
Won 0 — Lost 5		54 Indiana..... 70	51 Alliance..... 57
ESC	Opp.	52 Slippery Rock... 58	75 Indiana..... 87
32	Clarion..... 53	52 Gannon..... 68	67 Slippery Rock... 92
38	Slippery Rock... 74	45 Slippery Rock... 42	67 Gannon..... 71
33	Clarion..... 42	49 California..... 64	— Alliance..... —
33	Alliance..... 52	60 Clarion..... 50	68 Gannon..... 81
39	Alliance..... (OT) 45	35 Buffalo..... 47	68 Indiana..... 64
175	266		
1946-47			
Coach: Sox Harrison			
Won 7 — Lost 8			
ESC	Opp.		
39	Buffalo State... 51		
54	Fredonia..... 44		
44	Alliance..... 53		
44	Indiana..... 45		
34	Fenn..... 33		
46	Slippery Rock... 51		

77	Thiel	59
75	Allegheny	93
85	Fredonia	68
86	California	81
76	Clarion	82
—	Grove City	—
—	California	—
77	Thiel	66
—	Clarion	—
—	Geneva	—
—	Slippery Rock	—

1953-54

Coach: Art McComb
(Being Researched)

1954-55

Coach: Art McComb
Won 8 — Lost 12
(Being Researched)

ESC	Opp.	
62	Gannon	77
58	Indiana	97
—	Grove City	—
—	Fredonia	—
59	Allegheny	80
—	Thiel	—
119	Alliance	108
72	Slippery Rock	67
—	California	—
61	Indiana	69
—	Slippery Rock	—
54	Gannon	70
—	California	—
—	Clarion	—
65	Fredonia	62
—	Alliance	—
80	Grove City	77
—	Clarion	—
—	Thiel	—
61	Allegheny	79

1955-56

Coach: Art McComb
Won 4 — Lost 16

ESC	Opp.	
62	Allegheny	95
53	Alliance	69
76	Indiana	91
52	Grove City	61
56	Fredonia	54
74	Allegheny	84
63	Thiel	75
54	Slippery Rock	77
62	Gannon	85
65	Slippery Rock	80
77	Thiel	70
57	Clarion	68
61	California	65
67	Fredonia	82
72	Indiana	131
82	Alliance	76
64	California	86
64	Clarion	91
74	Grove City	76
55	Gannon	71
1,290		1,587

1956-57
Coach: Robert Thurbon
Won 5 — Lost 14

ESC	Opp.	
81	Grove City	104
63	Allegheny	74
66	Thiel	90
73	California	110
68	Slippery Rock	78
68	Grove City	105
66	Gannon	80
71	Clarion	72
84	Fredonia	77
61	Thiel	64
67	California	74
73	Allegheny	60
100	Fredonia	66
100	Alliance	88
68	Fenn	81
78	Slippery Rock	97
107	Clarion	88
94	Alliance	96
89	Gannon	90
1,477		1,594

1957-58
Coach: Robert Thurbon
Won 10 — Lost 11

ESC	Opp.	
64	Grove City	72
84	Slippery Rock	79
102	Alliance	103
90	Fredonia	76
64	Thiel	61
65	California	60
63	Indiana	96
52	Gannon	60
92	Clarion	110
76	Lock Haven	(OT) 74
83	Fredonia	69
75	Thiel	67
77	California	88
94	Slippery Rock	97
54	Grove City	71
76	Allegheny	67
74	Fenn	61
75	Alliance	70
65	Indiana	97
84	Clarion	99
65	Gannon	(OT) 75
1,574		1,652

1958-59
Coach: Robert Thurbon
Won 8 — Lost 12

ESC	Opp.	
75	Alliance	80
101	Slippery Rock	92
61	Grove City	56
79	Thiel	72
62	Gannon	86
88	Clarion	101
91	California	99
94	Slippery Rock	106
80	Thiel	78
83	Fredonia	74
61	Lock Haven	74
56	Mansfield	99
66	Grove City	75
69	Mansfield	98

114	Alliance	104
102	California	93
104	Clarion	112
99	Fredonia	72
77	Gannon	79
106	Allegheny	109
1,668		1,761

1959-60
Coach: Jim Smart
Won 6 — Lost 13
(Scores not available)

1960-61
Coach: Loyal Park
Won 6 — Lost 15

ESC	Opp.	
68	Lock Haven	87
45	Alliance	61
43	Indiana	73
61	Clarion	71
77	Grove City	95
54	Mt. Union	90
56	California	58
79	Indiana	89
57	Gannon	62
73	Slippery Rock	85
33	Alliance	58
85	Fredonia	51
88	Thiel	66
86	California	68
64	Slippery Rock	73
70	Clarion	67
62	Gannon	83
55	Grove City	73
87	Allegheny	(OT) 93
93	Fredonia	78
67	Lock Haven	65
1,403		1,546

1961-62
Coach: Loyal Park
Won 17 — Lost 7

ESC	Opp.	
60	Fredonia	58
60	Clarion	65
48	Grove City	71
81	Slippery Rock	61
63	Carnegie Tech	76
73	Roberts Wesleyan	64
81	California	51
81	Indiana	67
56	Gannon	(OT) 58
83	Fenn	52
103	Lock Haven	101
	(3 OT)	
63	Alliance	52
87	Fredonia	80
71	Thiel	63
82	California	64
67	Clarion	62
56	Alliance	69
74	Indiana	82
69	Thiel	60
72	Lock Haven	60
76	Slippery Rock	71
102	Allegheny	80
1,608		1,467

Western Division		
Championship—PSCAC		
86	Slippery Rock	68
State Championship—PSCAC		
54	Mansfield	58
1,748		1,593

1962-63
Coach: Jim McDonald
Won 12 — Lost 9

ESC	Opp.	
66	Bluffton	46
82	Alliance	86
91	Clarion	83
70	Slippery Rock	64
60	Carnegie Tech	63
87	California	56
52	Gannon	60
74	Thiel	64
66	Fenn	68
72	Lock Haven	49
72	Thiel	64
75	Indiana	66
77	Fredonia	66
67	Alliance	84
73	California	83
61	Clarion	58
68	Indiana	75
97	Fredonia	71
83	Lock Haven	52
64	Slippery Rock	70
1,385		1,264

Western Division
Championship—PSCAC
69 Slippery Rock... 83
1,526 1,396

1963-64
Coach: Jim McDonald
Won 16 — Lost 6

ESC	Opp.	
75	Alliance	59
63	Slippery Rock	67
73	Thiel	45
92	Baldwin-Wallace	90
72	Bloomsburg	71
84	Clarion	66
106	Fredonia	81
94	Fenn	82
71	Bloomsburg	74
85	Indiana	99
80	Lock Haven	48
88	Roberts Wesleyan	73
83	Lock Haven	61
81	Alliance	91
85	California	80
86	Slippery Rock	79
99	Indiana	88
95	Clarion	90
67	California	55
72	Gannon	(OT) 71
1,651		1,470

State Championship—PSCAC		
90	Mansfield	98
NAIA District 30 Championship		
67	Westminster	81
1,808		1,649

1964-65
Coach: Jim McDonald
Won 10 — Lost 8

ESC	Opp.	
99	Grove City	89
68	Alliance	80
76	Slippery Rock	80
92	Thiel	61
109	Lock Haven	79
104	Walsh	72
90	Clarion	69
100	Indiana	87
70	California	82
89	Lock Haven	53
84	Alliance	89
86	Geneva	85
86	Slippery Rock	63
91	Indiana	82
69	Fenn	77
95	California	108
50	Gannon	58
77	Clarion	79
1,535		1,393

1965-66
Coach: Jim McDonald
Won 18 — Lost 5

ESC	Opp.	
84	Mansfield	83
70	Alliance	68
67	Slippery Rock	56
95	Lock Haven	55
80	Clarion	71
104	Waynesburg	88
68	Indiana	71
83	Fredonia	62
78	California	102
89	Lock Haven	72
86	Mansfield	82
90	Alliance	83
99	Michigan Luth.	58
79	Slippery Rock	72
95	Indiana	85
70	Geneva	71
93	Cleveland State	72
83	Clarion	79
71	California	58
1,584		1,388

State Championship—PSCAC
76 Cheyney..... 96
NAIA District 18 Championship
76 Geneva..... 60
79 California..... 62

National NAIA Tournament, K. C., Mo.
53 Central Michigan. 67
1,868 1,673

1966-67
Coach: Jim McDonald
Won 11 — Lost 11

ESC	Opp.	
88	Mansfield	73
90	Alliance	93
99	Slippery Rock	94
90	Lock Haven	77
73	Clarion	71
87	California	92
110	Fredonia	64
123	Waynesburg	97
94	Indiana	95
83	W. Va. Wesleyan	(OT) 85
90	Lock Haven	64
71	Mansfield	77
67	Alliance	66
71	Cleveland State	75
89	Roberts Wesleyan	78
75	Slippery Rock	(OT) 77
77	Indiana	85
98	Geneva	107
26	California	31
85	Clarion	75
70	Baldwin Wallace	102
87	Walsh	66
1,843		1,744

1967-68
Coach: Jim McDonald
Won 19 — Lost 5

ESC	Opp.	
109	Waynesburg	84
84	Slippery Rock	56
133	Lock Haven	90
103	Clarion	92
98	California	91
93	Fredonia	84
87	Indiana U. of Pa.	85
99	Mansfield	81
90	Alliance	72
109	W. Va. Wesleyan	78
65	Mansfield	106
83	Lock Haven	66
90	Alliance	88
108	Cleveland State	60
110	Slippery Rock	73
67	Indiana U. of Pa.	69
80	Roberts Wesleyan	87
78	Geneva	87
97	California	75
110	Clarion	84
86	Grove City	65

State Championship—PSCAC
73 Cheyney State... 61

NAIA District 18—Championship
55 Gannon..... 52
41 Westminster..... 48
2,148 1,834

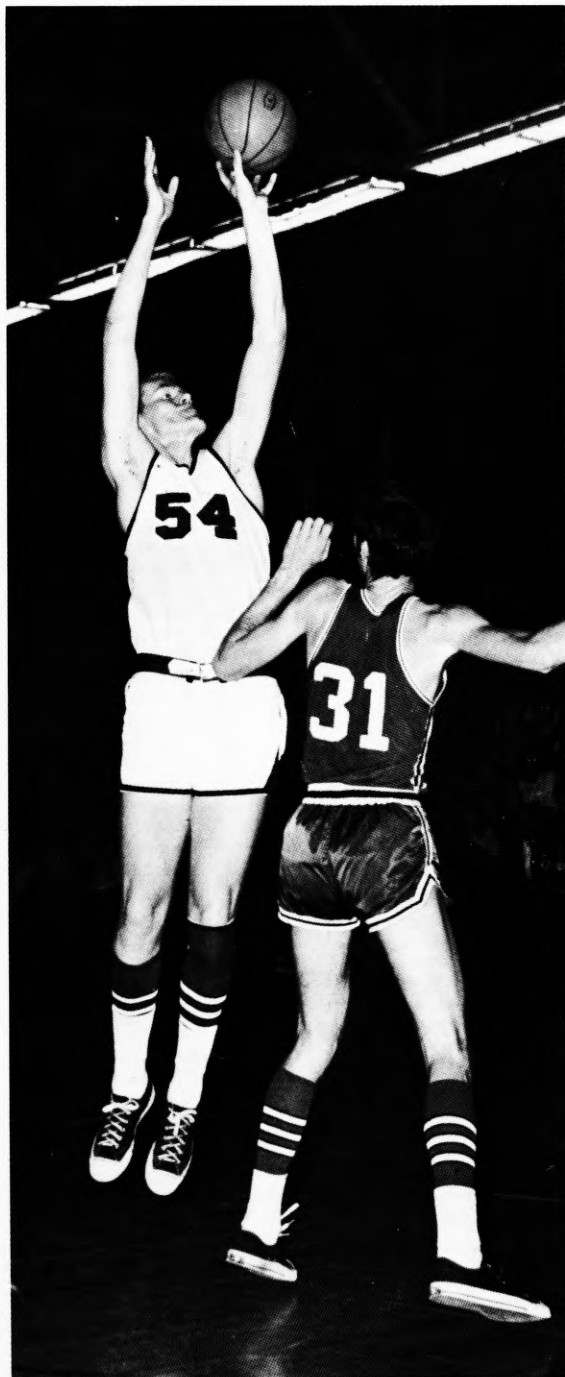
ALL-TIME SCORES — 1929-1970

1968-69
Coach: Jim McDonald
Won 14 — Lost 8

ESC	Opp.
78	Geneva 81
103	Lock Haven 67
99	Slippery Rock . . . 73
71	Clarion State . . . 69
126	Roberts Wesleyan 66
85	Cal. S. Fullerton.. 63
58	Long Beach State 84
78	Los Angeles State 73
110	Kenyon 99
74	Alliance 86
93	California State.. 80
93	Lock Haven 64
87	Alliance 73
72	Fredonia State... 62
95	Slippery Rock . . . 78
67	Indiana U. of Pa.. 89
57	California State... 54
112	Clarion State . . . 78
86	Grove City 98
75	Indiana U. of Pa.. 81
PC State Championship	
69	Cheyney State... 83
NAIA District 18	
Playoffs	
57	Gannon 69
1,8451,670

1969-70
Coach: Jim McDonald
Won 12 — Lost 10

ESC	Opp.
88	Grove City 82
115	Pitt-Johnstown.. 55
70	Lock Haven 67
75	Slippery Rock . . . 69
72	Clarion State . . . 75
57	Fredonia State... 60
85	North. Michigan. 92
85	U. Wisconsin... 104
88	Alliance 75
77	Lock Haven 60
64	Alliance 77
80	Slippery Rock . . . 57
72	Indiana U. of Pa.. 75
70	Roberts Wesleyan 58
68	California State.. 77
71	Point Park 54
72	Clarion State . . . 52
77	Geneva 74
73	Indiana U. of Pa.. 60
66	California State.. 77
NAIA District 18	
Playoffs	
68	Indiana U. of Pa. .
	(OT) 67
71	California State.. 72
1,6641,539



SEASONS RANKED BY PERCENTAGES

	YEAR	W-L	Pct.		YEAR	W-L	Pct.
1.	1931-32	12-1	.923	18.	1936-37	7-6	.538
2.	1928-29	12-2	.857	19.	1935-36	5-5	.500
3.	1938-39	8-2	.800	20.	1942-43	1-1	.500
4.	1967-68	19-5	.792	21.	1950-51	9-9	.500
5.	1965-66	18-5	.782	22.	1966-67	10-10	.500
6.	1939-40	14-4	.778	23.	1946-47	7-8	.466
7.	1940-41	11-4	.733	24.	1957-58	10-11	.452
8.	1963-64	16-6	.727	25.	1948-49	7-9	.437
9.	1961-62	17-7	.708	26.	1937-38	6-8	.428
10.	1949-50	12-5	.705	27.	1958-59	8-12	.400
11.	1930-31	10-5	.667	28.	1951-52	6-12	.333
12.	1968-69	14-8	.636	29.	1941-42	4-9	.307
13.	1933-34	8-5	.615	30.	1960-61	6-15	.281
14.	1969-70	13-9	.591	31.	1947-48	4-11	.266
15.	1929-30	8-6	.571	32.	1956-57	5-14	.263
16.	1962-63	12-9	.571	33.	1955-56	4-16	.200
17.	1964-65	10-8	.555	34.	1945-46	0-5	.000

RESULTS BY SEASONS

Year	G	W	L	Points		Year	G	W	L	Points	
				For	Agst.					For	Agst.
1928-29	14	12	2	640	381	1949-50	17	12	5	978	910
1929-30	14	8	6	436	409	1950-51	18	9	9	1,227	1,227
1930-31	15	10	5	562	409	1951-52	18	6	12	1,128	1,276
1931-32	13	12	1	604	363	1952-53	(Being Researched)				
1932-33	(Being Researched)					1953-54	(Being Researched)				
1933-34	13	8	5	519	419	1954-55	(Being Researched)				
1934-35	(Being Researched)					1955-56	20	4	16	1,290	1,587
1935-36	10	5	5	366	360	1956-57	19	5	14	1,477	1,594
1936-37	13	7	6	529	469	1957-58	21	10	11	1,574	1,652
1937-38	14	6	8	582	576	1958-59	20	8	12	1,668	1,761
1938-39	10	8	2	492	374	1959-60	(Being Researched)				
1939-40	18	14	4	744	655	1960-61	21	6	15	1,403	1,546
1940-41	15	11	4	655	577	1961-62	24	17	7	1,748	1,593
1941-42	13	4	9	333	376	1962-63	21	12	9	1,526	1,396
1942-43	2	1	1	34	50	1963-64	22	16	6	1,808	1,649
1943-44	War					1964-65	18	10	8	1,535	1,393
1944-45	War					1965-66	23	18	5	1,868	1,673
1945-46	5	0	5	175	266	1966-67	22	11	11	1,843	1,744
1946-47	15	7	8	702	680	1967-68	24	19	5	2,148	1,834
1947-48	15	4	11	784	846	1968-69	22	14	8	1,845	1,670
1948-49	16	7	9	858	872	1969-70	22	13	9	1,664	1,539
						Totals	567	314	253	35,745	34,126

EDINBORO CENTURY CLUB

ESC	OPP.	YEAR	ESC	OPP.	YEAR		
119	Alliance	108	1954-55	110	Fredonia	64	1966-67
100	Fredonia	66	1956-57	123	Waynesburg	97	1966-67
100	Alliance	88	1956-57	109	Waynesburg	84	1967-68
107	Clarion	88	1956-57	133	Lock Haven	90	1967-68
101	Slippery Rock	92	1958-59	103	Clarion	92	1967-68
114	Alliance	104	1958-59	109	W. Va. Wesleyan	78	1967-68
102	California	93	1958-59	108	Cleveland State	60	1967-68
103	Lock Haven	101	1961-62	110	Slippery Rock	73	1967-68
102	Allegheny	80	1961-62	110	Clarion	84	1967-68
106	Fredonia	81	1963-64	103	Lock Haven	67	1968-69
109	Lock Haven	79	1964-65	126	Roberts Wesleyan	66	1968-69
104	Walsh	72	1964-65	110	Kenyon	99	1968-69
100	Indiana	87	1964-65	112	Clarion	78	1968-69
104	Waynesburg	88	1965-66	115	Pitt-Johnstown	55	1969-70

OPPONENTS' CENTURY CLUB

ESC	OPP.	YEAR	ESC	OPP.	YEAR	
72	Indiana	131	1955-56	109	Allegheny	1958-59
73	California	110	1956-57	95	California	1964-65
102	Alliance	103	1957-58	78	California	1965-66
92	Clarion	110	1957-58	98	Geneva	1966-67
88	Clarion	101	1958-59	65	Mansfield	1967-68
94	Slippery Rock	106	1958-59	85	U. of Wisc., Milw.	1969-70
104	Clarion	112	1958-59			

TOP TEN CAREER SCORERS

1. Walt Askins..... 1,739
2. Dan Petchel..... 1,344
3. Frank Smith..... 1,225
4. Don Dougan..... 1,095
5. Darryl Meachem..... 881
6. Rod Vashaw..... 879
7. Bill McVeigh..... 840*
8. Wendell Rojik..... 812
9. Dave Shenefeld..... 797
10. Jim Sims..... 730

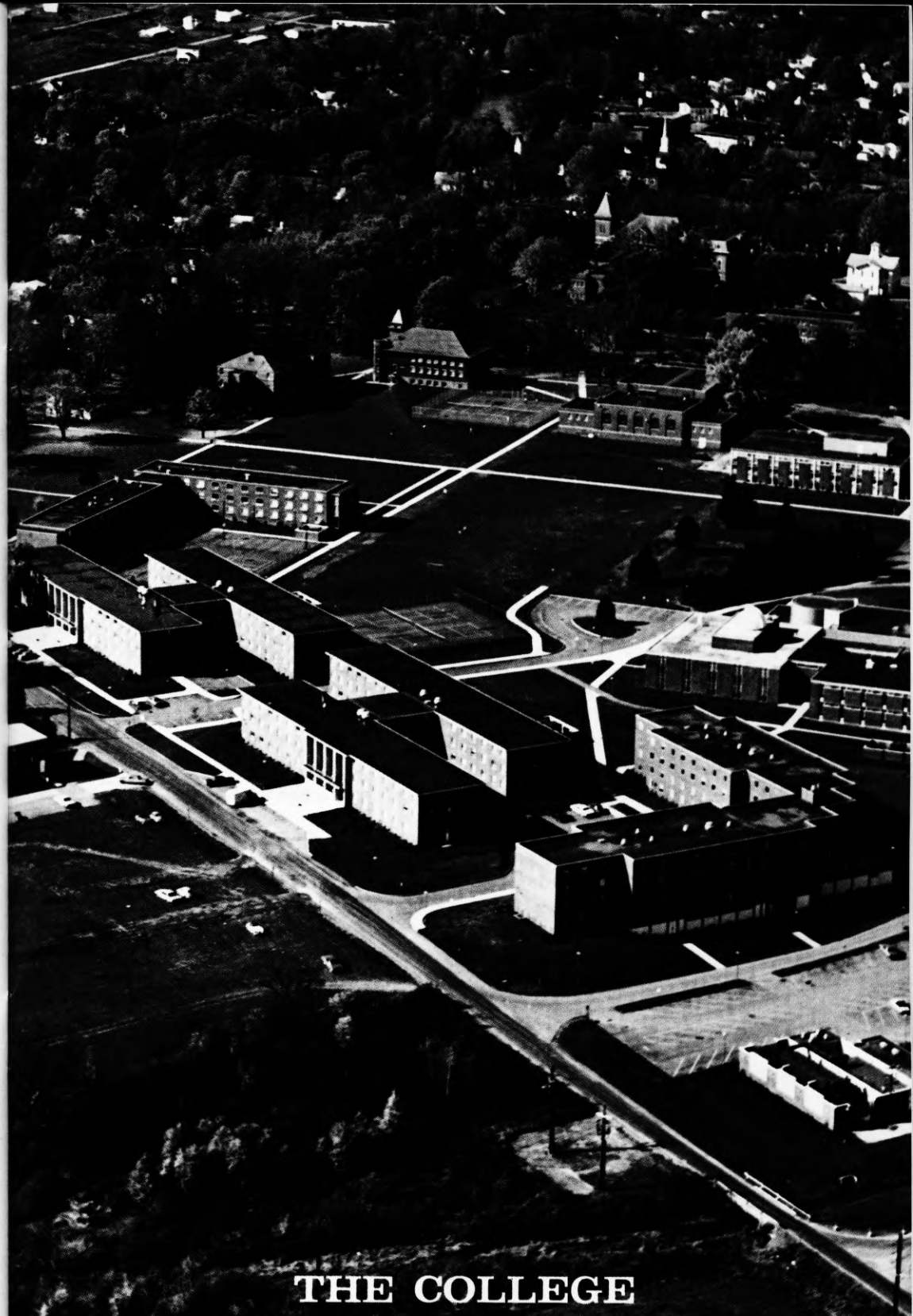
*Three years of competition.

TOP CAREER REBOUNDERS

1. Don Dougan..... 992
2. Darryl Meachem..... 897
3. Dan Petchel..... 744
4. Ken Barker..... 689
5. Frank Smith..... 637
6. Wendell Rojik..... 622

TOP SCORERS OF THE 60's

Years	Player	G	FG	Pct.	Ft.	Pct.	Reb.	Ave.	Pts.	Ave.
1960-1961	Sims, Jim	21	111	45%	35	78%	125	5.9	257	12.2
1961-1962	Petchel, Dan	20	111	50%	63	64%	157	7.8	285	14.3
1963-1964	Petchel, Dan	22	147	49%	115	74%	222	10.0	409	18.5
1964-1965	Petchel, Dan	18	167	56%	126	74%	236	13.1	460	25.6
1965-1966	Meachem, Darryl	23	158	54%	97	58%	393	17.1	413	18.0
1966-1967	Smith, Frank	9	102	59%	67	63%	125	13.9	271	30.1
1967-1968	Smith, Frank	24	177	48.1%	93	76.2%	247	10.3	447	18.6
1968-1969	Smith, Frank	22	189	48.7%	88	61.5%	250	11.4	466	21.2
1969-1970	Prokell, Jim	22	108	55.1%	116	70.7%	218	9.9	332	15.1





Arthur L. McComb Fieldhouse

FIGHTING SCOTS' NEW HOME

McComb Fieldhouse is both a welcomed and most attractive addition to Edinboro State's athletic complex. The recently completed facility will service the Scots' current intercollegiate sports of basketball and wrestling while both swimming and rifle are anticipated additions in the near future. The structure includes two regulation-size basketball courts along with a slightly smaller third court for intramural competition, an AAU-sized swimming pool, wrestling room, two handball courts, a corrective gym, medical suite, rifle range and two steam rooms. Underwater sound and lighting systems are featured in the pool area as well as four underwater viewing ports. Adjacent to the swimming area is a separate diving tank with one and three meter diving boards. Seating capacity of the gymnasium is approximately 4600 while the natatorium seats 500 spectators. Additional attractions include office facilities for members of the health and physical education department, locker room space for 1,000 students, an equipment room, locker rooms for officials, faculty, coaches, opposing teams and women students, a laundry room, a four-sided clock and scoreboard in the main sports arena, storage areas, and two classrooms.



Main Playing Arena



AAU-Sized Pool

HONORING ARTHUR L. McCOMB



Arthur L. McComb

Arthur L. McComb came to Edinboro State College in 1946 after becoming a renowned teacher and coach at Pittsburgh's Aspinwall High School for twenty years.

A native of Plain Grove Township in Lawrence County, McComb returned to Brent School near his home to begin his profession in education after graduating from Slippery Rock in 1920. He later earned two degrees from the University of Pittsburgh and has attended Geneva College, Harvard and Penn State Universities.

Mr. McComb began his 40-year coaching career at New Castle's Ben Franklin Junior High School in 1922. Under his direction the school's football team lost only one game during his four years at the helm.

The Edinboro-bound mentor enjoyed his greatest success as a gridiron coach at Aspinwall High School. His 1943 team accomplished a task that no other WPIAL football title winner has ever duplicated when they became the only unbeaten, untied, and *unscored* upon champs in WPIAL history. McComb's 1944 team also captured the WPIAL championship after finishing with an 8-1 season record. During his twenty years as head football coach at Aspinwall he lost only 20 games. While teaching physical education, history, geography, and mathematics, he carried over his coaching talents to basketball where his quintets won two WPIAL sectional titles.

From 1946 until his retirement in 1962, McComb became one of Edinboro State's most versatile athletic leaders while coaching football, swimming, golf, track, tennis, basketball and wrestling. Highlighting his tutorship in sports at Edinboro were his 1959, '60 and '61 tennis teams, tagged the "courtless wonders" because they had no home courts to play on, that went undefeated and sent the Scots' first representatives to the national finals.

Still an active competitor at 73 years of age, McComb enjoys golf, fishing, hunting and bowling. He and his wife, Wilda, reside in Edinboro.

MEMO TO THE PRESS

We at Edinboro State College invite you to join us for the 1970-71 Fighting Scots' cage season. We sincerely appreciate your publicity of Edinboro's athletics in the past and have compiled this brochure to assist you in your coverage of the Scots' basketball season.

Press releases, photographs, and statistics will be made available for your use throughout the season. For additional information please contact:

Paul Newman, *Sports Information Director*
Edinboro State College
Edinboro, Pennsylvania 16412
Office Telephone: Area Code 814, 734-1671
Ext. 245

