

AIM at the sun, and you may not reach it; but your arrow will fly higher than if aimed at an object on the same level with yourself.—J. Hawes.

TABLE OF CONTENTS

Foreword and Greetings	7
College and Town	17
General Information	23
Scholarship Standards	40
Student Government and Organizations	47
Regulations	62
Scheduled Events	83
Constitution of Student Council ..	94
Index	103

FOREWORD

In offering to you Edinboro College, we feel we give you countless opportunities in the field of education, friendship, and activities. We sincerely hope you will share this feeling with us. Your years will be happy here and filled to the brim with the best of that into which you will enter.

This handbook is published by the Student-Faculty Co-Operative Council, that it may serve as a guide for you and that you may know something of the new life opening before you. It is the Council's sincere wish that you may have happy and helpful years at Edinboro.

Committee:

Emily Carpenter, '40
Editor

Helen Turner, '41
Loren Whitney, '41
Louise Smith, '42
Stuart Akelson, '42

GREETINGS

From the President

One of the pleasant duties of my office is to welcome students to our campus and to extend them greetings and best wishes for a successful and profitable year. This duty, however, is more than a routine one, even though after five years of service as President, it may be difficult to express my feelings in words that are different.

As we enter upon the 79th year of service by this old, but young-in-spirit, College, we could easily take an account of stock, and point with pride and hope to the future. To the students who are returning from vacation, this may be an old story, but to our newcomers, a short stay will be necessary to learn and to get into the Edinboro spirit. If our new friends look about them and take advantage of the opportunities and facilities around them, their adventure on our Campus will be a happy one.

There are important changes in faculty personnel. Mr. Wheatley, who rendered many years of valuable service, has retired. His duties as Dean of Instruction will be taken over, for a while, by Mr. Offner. In order that assistance may be given to

Mr. Offner as Director of Teacher Education, Miss Strohecker will assume the position of a supervisor of Student Teaching. Miss Evelyn Bergstrom, an alumna of Edinboro, and holder of an A. M. degree from Syracuse University, will serve as Dean of Women. Mr. Orville Bailey, a graduate of the University of Oregon and Columbia University, takes on the duties of Dean of Men and will work with Mr. Harrison in the field of Health Education. He will coach football, while Mr. Harrison will take charge of basketball.

In welcoming you—old and new—to Edinboro, I bespeak for your hearty cooperation with these new servants of the College and with all others who work with you and in your behalf.

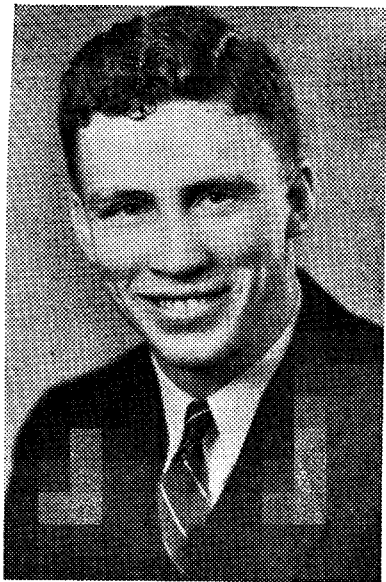
CARMON ROSS,
President.

From the Dean of Instruction

In my greetings to students, old and new, all I ask is co-operation in order that I may the better serve you in the dual position of Acting Dean of Instruction and Director of Teacher Education. Since I have met all our new Freshmen, I feel certain they will make a contribution in loyalty to our College and be a credit to themselves.

Welcome all to Edinboro!

H. L. OFFNER,
Acting Dean of Instruction



Mr. Orville Bailey, B. S., A. M.
Dean of Men, Instructor in Physical
Education and Coach

From the Dean of Men

As a new-comer to Edinboro State Teachers College I, like you, am anxious to become better acquainted with the fine traditions and lofty ideals of this institution. The standards of this college, with nearly eighty years of existence, are such that we should ever strive to uphold the old and to set new and still higher ones.

College is a place for personal growth, not only mentally and physically, but socially. Here we should learn "the give and take" of life, whether it be on the athletic field, on the campus, or in the classroom.

Life here will be far more worthwhile if we are happy. However, those who seek happiness may never find it, while those who live each minute, each hour, each day, each month, and each year to the fullest extent will always be happy.

"To live most and to serve best" should be our motto. May I wish you health, happiness, and opportunity during your stay at Edinboro.

ORVILLE BAILEY,
Dean of Men



Miss Evelyn Bergstrom, B. S., A. M.
New Dean of Women

From the Dean of Women

It is with a great deal of anticipation that I am entering my Alma Mater as its Dean of Women. Years of association with Edinboro as a student made me deeply appreciative of the spirit of intimacy and friendliness for which it is known; as a member of the faculty I shall endeavor to carry on this tradition.

My work involves assisting you in your individual problems, helping you to derive maximum benefits from your college experience, and furthering the interests of group living. It is, indeed, a task of sympathetic understanding and mutual confidence.

In the final analysis, the services I can render to you as students are determined by you. As you avail yourselves of the opportunities of this personnel service and cooperate in its functioning, so will you and Edinboro grow.

EVELYN BERGSTROM,
Dean of Women

From the Dept. of Physical Education

At Edinboro we invite you to join a well-rounded program of athletics for your recreation. We hope to carry on competitive sports, which will include touch football, soccer, tennis, volley ball, mush ball, and, with our new gymnasium, swimming. This should offer every man in college an opportunity to participate in some form of enjoyable physical recreation.

Edinboro realizes the importance of inter-collegiate athletics, but it also knows the excellent value and vital need of properly supervised physical education for everyone.

I would urge each one of you to join intramural athletics with spirit and enthusiasm.

B. REGIS HARRISON.

From the Women's Athletic Director

The Women's Athletic Association is an educational force in the college life. Its character depends upon the student's interpretation of the use and meaning of sports, games and recreation. Its influence depends largely upon the character and ideals of the student leaders.

The object of the association is to present a recreational program for all students with the main objective—the attainment of Health and Health Habits.

The numerous teas given throughout the year tend to develop the purely social side of the organization. They furnish outlets for talent and ability which are not necessarily athletic.

The emphasis of Play at Edinboro is "To Play with us not against us". This association welcomes you and invites you to come out every Tuesday, Wednesday and Thursday afternoons. You may choose your own sport or learn a new one: Field Hockey, Horseback Riding, Volleyball, Newcomb, Bicycling, Hiking, Basketball, Shuffleboard, Deck Tennis, Paddle Tennis, Badminton, Ping Pong, Swimming, Skiing, Skating, Mushball, Tennis, Golf, Field and Track Events and Archery.

The following poem was written by our President, Alice Kruszka, for our banquet this year. We are looking forward to greeting you at our 1940 W. A. A. party

NETTIE MAI RUTTLE

"Phi Delta Lambda, what a worthy name we bear,
Health, sports, and happiness in all we've come to share
Phi or Delt, it matters not, the game is all the goal;
Freshmen, Sophs, whatever class, the spirit makes the whole.
Our Alpha and Omega is the growth of every girl.
To high ideals we give our strength and honor's flag unfurl."

EDINBORO TOWN

Edinboro lies four miles south of the crest of the water shed dividing the waters flowing north into Lake Erie from the waters flowing south into the Gulf of Mexico. The first settlement was made in this vicinity in 1796 by William Culbertson, who built a big house on what is now Plum Street, Edinboro. A few miles south you find the fertile valley so important because of the French occupation in early history. During the time of the Civil War one of the direct routes to Canada by the underground railroad went through the town.

EDINBORO COLLEGE

Edinboro was founded as a private academy by popular subscription in 1857.

It was chartered as a State Normal School January 23, 1861.

It was one of the first Normal Schools purchased from private ownership by the State in 1914.

It was organized as a Teachers College with full four-year course leading to the degree of Bachelor of Science in Education in 1926. In April, 1936, the College observed its 75th anniversary when a group of

prominent educators and the Governor of the State were present.

Edinboro is a member of the American Association of Teachers Colleges.

Edinboro has a plant of twelve buildings on a thirty-eight acre plot which represents an investment of \$1,500,000 of public money. Its maintenance is furnished by the State of Pennsylvania. During the past few years many improvements have been made.

Edinboro has been designated specifically to serve the five counties of Erie, Crawford, Mercer, Venango and Warren in Western Pennsylvania, but students have from time to time come from every section of the State and from other states.

CAMPUS BUILDINGS

Academy Hall

This is the original school building of the campus group, having been built in 1857. It has been known by various names. For years it housed the Commercial Department, and because today it is given over to the Music Department, it is generally known as Music Hall to the present student generation. It merits preservation as a historic landmark. Its site is held sacred in the building program which has been laid out by the Commonwealth since its purchase in 1914. In 1934-35 many improvements were made to modernize it.

Normal Hall

Normal Hall was built in 1875. In 1891 it was greatly enlarged. It contains the auditorium, the library, the administrative offices and the demonstration school, used as a Campus Practice School for first six grades.

Recitation

It was built during Mr. Cooper's regime and embodies a number of his original ideas in school construction. One of these was a floor plan that did not allow students to pass from one room to another without going out of doors. It has been kept in excellent repair and has served

many generations of Edinboro students. Numerous improvements were made in 1935.

Haven Hall

Principal John F. Bigler built Haven Hall in 1903. It served as a women's dormitory. Principal Frank E. Baker added to it a dining room which is rated as one of the most attractive school refectories of the state. This handsome room is the center of the school's social activities.

The Gymnasiums

The old gymnasium was built in 1906. In its day it represented the standard set for housing the athletic interests of the college. The new gymnasium, which is now built, faces the center courtyard in front of Loveland Hall and contains a modern swimming pool. It is a building greatly needed for the carrying on of Edinboro's interesting program of physical activities.

Reeder Hall

Erected in 1907, Reeder Hall is used as a men's dormitory. It was named in honor of one of the early donors of the school. In the winter of 1936 part of the vast basement was converted into a beautiful "Y" hut, where the boys have a recreational center.

Loveland Hall

Loveland Hall bears the name of Mr. Frank Loveland of Corry, who for many years prior to his death in January, 1939, was a trustee of the college and for long interested and active in public education in the State. It was built in 1930 to house the Art and Science Departments.

The Campus School

The new campus school fronts on Normal Street. This is the largest of the new buildings and is an entire school complete in itself, and modern to the last word.

The Auditorium

Not the one in Normal Hall, but a new auditorium. It is located on the east side of the front walk between Normal and Haven Halls. It is a very beautiful and spacious auditorium adequate to care for the cultural activities of the college.

PROGRAM FOR FRESHMAN WEEK—1939-1940

To Members of the Freshman Class:

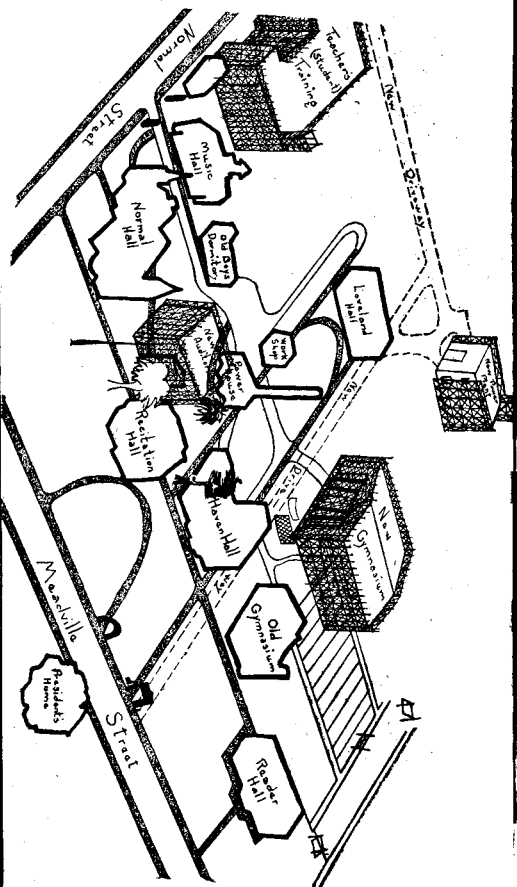
Please study the following schedule carefully. You will find it planned to make your beginning college life as pleasant and free from difficulties as possible. However, it will be necessary for you to cooperate by punctually meeting all obligations. All Freshmen are expected to be present at each session.

Tuesday, September 12, 1939

- 8:30- 9:00 All Freshmen assemble in auditorium—Dr. Van Houten
- 9:00-12:00 Normal Hall, interviews; Haven Hall, physical examination
- 1:00- 4:00 Auditorium, Normal Hall, placement examinations for all Freshmen
- 8:00 Haven Hall Social program directed by the College Social Committee

Wednesday, September 13, 1939

- 9:00-12:00 Interviews, Normal Hall; Medical examination, Haven Hall. Registration in Normal



Hall for those who have completed interviews and physical examination.

- 1:15- 4:00 Registration, Normal Hall
- 8:00 Haven Hall Progressive Party directed by College Social Committee

Thursday, September 14, 1939

- 9:00 College Auditorium, Normal Hall
Songs led by Miss Wilson
Address of Welcome by Dr. Ross, President
Edinboro, Center of Art Education, by Mr. Bates
Student Health, Miss Ober, College Nurse
Personal Relationships, Dean of Women
The College Library, Miss Forness, Librarian
- 1:15 College Auditorium, Student Activities at Edinboro presented by students under the direction of Miss Hudson
- 4:00 Haven Hall, Faculty Reception to Freshmen
- 8:00 Haven Hall, Fall Welcome Party, directed by College Social Committee

Dormitory students must call at the office of the Dean of Women in Haven Hall for room assignments. Personal room keys cannot be secured until registration is completed and fees are paid. The dormitory rooms may be used Monday night, September 11. Meals will not be served in the College Dining Room until Tuesday noon, September 12.

FRESHMAN REGULATIONS

Freshman customs will begin at 8:00 a. m., Monday, September 18, and will continue until the latter part of October when a party or some celebration will climax the probationary period. These regulations apply to all freshmen—commuting, campus and off-campus students.

1. Men shall wear dinks every day except Sunday. Women shall wear visorless dinks.

2. From Thursday, September 14, until Thursday, September 28, each Freshman shall wear a 6x6-inch pedigree card bearing name, hometown, and hobby of the wearer in letters not less than 1 inch high.

3. Freshmen shall extend a greeting to all upper classmen and step aside while doing so.

4. All Freshmen must attend class meetings and athletic events.

5. Dates only on Saturday nights for the first three weeks.

6. Each Freshman not participating in football is requested to boost the Saturday athletic events by wearing a white cardboard sign 9 inches by 12 inches, from 8:00 a. m. Friday until 4:00 p. m. Saturday.

7. Freshmen shall not wear school awards other than those award-

ed by Edinboro S. T. C.

8. Know the college songs by end of the first week.

9. Carry a copy of the handbook at all times.

10. Remember that one of your opportunities at college is social contacts. Use good manners at all times—in the dining hall, on the campus, off-campus, and in the dormitories.

11. The Freshmen shall wait until the upperclassmen have entered the dining room at meal times and then enter—Freshmen women follow the upperclassmen and then freshman men may enter.

12. A Freshman standing next to an upperclassman must draw up that particular superiors chair in the dining room.

You may purchase your "dinks" from the "E" club on registration day and also the next day. Freshman regulations will be enforced by the Student Council, student body through the Customs Court whose members are: Robert Olson, chairman; John Wolfe, Helen Sylvander, Leah Crawford, William Bohn, and Betsy Vincent.

SUGGESTIONS

Learn the names of as many students as possible.

Speak to everybody.

Remember that a low, modulated voice never displeases.

Remember the home and the family you represent.

Make a regular schedule for your study periods.

Do all your work on week days; you need one day of rest in every seven.

Avoid unnecessarily late hours.

Stay on the campus most of the week-ends.

Attend an Edinboro church.

Engage in athletics of some sort.

Engage in some "Y" work.

Read the bulletin boards each day.

THE LIBRARY

The Library of Edinboro State Teachers College is located on the second floor of the administration building in Normal Hall. It has approximately nineteen thousand volumes exclusive of bound periodicals and government documents. We are now subscribing to one hundred and fifty-two periodicals which represent the best of the general and professional magazines.

The Library observes the following hours:

8:00 a. m. to 5:00 p. m., Monday to Friday, inclusive

7:30 p. m. to 9:00 p. m., Monday to Friday, inclusive

8:00 a. m. to 1:00 p. m. Saturday
1:00 p. m. to 4:00 p. m. Saturday

Our library is one of the few in the state which employs open shelves for all books and thus allows students easy access to all the material. This privilege carries with it the responsibility of using the library for the good of the greatest number. Toward this end we have a small number of regulations which we enforce:

1. Students will register on entering the library and again on leaving, at which time they will show books charged for use outside the li-

brary.

2. All books which have been definitely assigned to classes are placed on shelves directly behind the desk or in a section in the library office, and this is known as the Reserve Collection. These books may be withdrawn at 5 P. M. and returned at 7:30 P. M. or taken at 9 P. M. and returned the following day. Failure to observe these regulations will result in a fine of ten cents per day.

3. All books except those on reserve may be withdrawn for two weeks. A fine of two cents a day is charged for books kept overtime.

4. Magazines may be withdrawn from the library subject to the same rules as reserve books.

5. No student will be issued grades or credits until all obligations in the library have been settled.

6. No books are to be removed from the library except by proper charging at the desk by the librarian in charge. Anyone found to have taken books from the library improperly or to have improperly charged books in his or her possession will be subject to a fine of \$5.00 per book and suspension from all college activities until such fine is paid. Clipping from any book is always prohibited. Clipping from pamphlets,

magazines or newspapers without permission by the librarian will be subject to a similar fine.

We welcome you to the library and urge that you use it not only as a place in which to prepare assignments, but also as an opportunity to meet and enjoy the companionship of the world's greatest minds as they are revealed through their writings. You may never again have the time and privilege which is yours at Edinboro.

CHURCH SERVICES

Advent Christian Church—Sunday School at 10:00 A. M. Sermon at 11:00 A. M.

Baptist Church—Bible School at 10:00 A. M. Divine Worship at 11:00 A. M.

Catholic Services—Mass is held in the Loveland Hall Auditorium every Sunday at 9:00 A. M. Other services will be published and announced.

Methodist Church—Church School at 11:15 A. M. Morning Worship at 10:00 A. M.

Presbyterian Church—Morning worship at 10:00 A. M. Church School at 11:15 A. M.

Vesper Service—the first Sunday of

every month is reserved for a Vesper Service at 4:00 P. M. On this afternoon a distinguished pastor from a neighboring community is invited to lead the service.

TELEPHONE SERVICE

Edinboro has a modern system of telephone service. Telephones are located in various places on the campus.

A few simple directions are all that are necessary.

If you are on campus and wish to call another station on the campus, simply dial the number of that station.

If you are on campus and wish to call a number off campus, dial 70 or 78 and give the operator the number you want.

Long distance calls by students may be made over the pay 'phones found in each dormitory.

If you are off campus and wish to call the college, dial 301 for any college station.

MOVIES

Every Friday night at seven thirty o'clock during the college year motion pictures are exhibited in the auditorium. The program consists of popular current releases and short subjects. The selection of feature

pictures available is considered unusually good in spite of the fact that selections are somewhat limited, due to the comparatively small number of pictures used during the year. The movies are operated on a self-supporting basis. A nominal admission fee of fifteen cents is charged each student. This pays for film rental and transportation, student help, and for maintenance of the projection and sound equipment.

BUS SCHEDULE

The bus service through Edinboro is direct from Erie to Pittsburgh. The bus station is on the public square at Buchanan's United Station. Buses can be hailed from the college. The buses follow the route of Erie, Edinboro, Cambridge Springs, Meadville, Greenville, Farrell, New Castle, Ellwood City, Zelenople, Pittsburgh.

The time schedule from Edinboro is as follows:

South-bound: 8:05; 11:15; 1:15; 3:15; 5:45 and 8:12 (replaced on Sundays and holidays by 9:12).

North-bound: 8:30; 12:05; 1:52; 4:15; 6:20 and 10:15.

POSTAL SERVICE

Edinboro's mail is transported on a truck which makes three trips daily from Erie to Cambridge Springs. The mail is transported from the Post Office to the college for people living in the dormitories. Those living off-campus can either get the mail in the same box of the family with whom they live or can hire a box. A box costs forty-five cents per quarter.

Dormitory mail will be delivered to the people to whom it is addressed. To mail a letter either give it to someone going to the Post Office or place it in the box in the vestibule of the Dean's office.

The truck follows this schedule:

South (to Erie Railroad station)
7:20 A. M., 12:50 P. M. and 5:40 P. M.

North (to Erie City) 9:00 A. M. and 6:20 P. M. There is little use of making trips to and from the Post Office if there is no truck which will bring your mail.

Express packages and freight will, as a rule, be sent to Cambridge Springs.

BELL SCHEDULE

There are two types of bells heard on the Edinboro campus. We shall call the first which announces regular class schedules the class bell. The other type which announces meal time, we shall call the kitchen bell.

6:30..Kitchen Bell..Warning Bell
7:00..Kitchen Bell..Breakfast
7:50..Class Bell..Warning, first per.
8:00..Class Bell..First period
8:50..Class Bell..First period ends
9:00..Class Bell..Second period
9:50..Class Bell..Second period ends
10:00..Class Bell..Third Period
10:50..Class Bell..Third period ends
11:00..Class Bell..Fourth period
11:50..Class Bell..Fourth period ends
12:00..Town Fire Siren
12:00..Kitchen Bell..Warning Bell
12:15..Kitchen Bell..Lunch
1:05..Class Bell..Warning. fifth per.
1:15..Class Bell..Beginning fifth per.
2:05..Class Bell..End of fifth period
2:15..Class Bell..Sixth period
3:05..Class Bell..End of sixth period
3:15..Class Bell..Seventh period
4:05..Class Bell..End of classes for the day
5:45..Kitchen Bell..Warning Bell
6:00..Kitchen Bell..Dinner
7:30..Class Bell..Begins quiet hour
10:00..Class Bell..Girls residences locked.(11 p. m. Saturday night).

As soon as the new electric clock system is complete, the old bell on Recitation Hall will be displaced by a system of chimes being erected in the tower of Normal Hall.

BULLETIN BOARD

There is one and only one way to keep one's self informed as to the life of the college. That is to watch the bulletin board. Do not watch it only for your own name, but for the names of your friends, for the organization meetings, and for the social schedule. We feel that there is no way to keep up with the college activities except by watching the official bulletin. Every student should examine the bulletin in front of the President's office in Normal Hall at least once a day. In Loveland Hall, art students should read the bulletin just inside the second set of double doors in the main entrance. A bulletin board is found in each dormitory.

COLLEGE PHYSICIAN

Doctor Ghering's office on campus is on the third floor of Haven Hall. Freshmen should learn the location of the infirmary. Doctor Ghering is there daily between 11:00 A. M. and 12:00 M. Miss Ober, the school nurse, lives in the dormitory and can be found there at practically any time. **IN CASE OF EMERGENCY DIAL "2182"**. This is the clinic and Doctor Ghering can be found there.

OFFICIAL FIRE REGULATIONS

The loss of life and property by fire and accident is appalling in spite of all the organized efforts of Nation, State, Insurance Companies, Automobile Associations, and the schools. Upon the schools, however, and especially upon the TEACHERS, must fall a grave duty and responsibility to so instruct children in "Safety First" habits that the loss of life and property by FIRE and CARELESSNESS may be reduced accordingly. The attention of students is called in this pamphlet to the following regulations concerning

FIRE DRILLS

DRILLS are required by the laws of Pennsylvania.

FIRE ALARM in Haven, Loveland and Normal Halls is given on a regular fire alarm system; in Reeder by means of an electric gong; in Recitation and Music Halls an electric bell system will be used.

General First Essentials:

1. Children first.
2. First floors and basements first.
3. Students first, followed by faculty.
4. Avoid running and rushing; keep to the right.

5. Always keep smoke-break doors closed when not in use.

6. When alarm is given, close all windows to prevent draft.

RESPONSIBILITY for the observance of fire drills and their regulations fall to all persons—students, faculty, all employees.

GOOD CITIZENS WILL COOPERATE.

SIGNAL FOR FIRE DRILLS will not be announced and will be given by one person, only, delegated for this duty.

The first fire alarm is a call and notice to ALL PERSONS to participate.

Specific rules and directions are posted on each floor of each building.

SCHOLARSHIP STANDARDS

At the end of each quarter a preliminary grade report is prepared for each student showing his standing in each course pursued. The quarter reports are given directly to students, but at the request of students or of parents, copies of the quarterly reports will be sent home. However, when a student's report at the end of a quarter is unsatisfactory, the report will be sent to the parents. At the end of each semester the final report is mailed to the parents.

Standings are indicated by letters which represent different qualities of work done by students:

An "A" grade is given to students whose quality of work is clearly of an exceptional nature.

A "B" grade is given to students who do distinctly superior work.

A "C" grade represents the type of work done by the average student. This grade represents work of good quality in daily recitations, assignments, and examinations.

A "D" grade indicates work below average.

An "F" grade indicates failure. Any course in which an "F" grade has been earned must be repeated.

"X" is not a grade, but indicates that the student, because of illness or some other justifiable cause, has not been able to complete the required work within the time limit. The condition must be removed during the first semester that the student is in residence after he received the condition.

In general, a standing indicated by the letters "A", "B", or "C", means satisfactory work, while others denote unsatisfactory work. After a grade has been earned and recorded, it cannot be changed or raised except by repeating the course. This does not apply to an "X".

The grades above indicate one thing only, i. e., ACCOMPLISHMENT OR ACHIEVEMENT in scholarship.

Graduation is based not only on the completion of a certain quantity of work, but also on the maintenance of a certain quality of scholarship in the courses pursued. To accomplish this, beginning with September, 1937, a quality point system will be used according to which quality points are assigned to grades as follows: An "A" grade shall be given 3 quality points for each semester hour of credit so marked; a "B" grade, 2 quality points; a "C" grade,

1 quality point; a "D" grade, no quality points, or zero; an "F" grade, -1 quality point.

Example: A student receiving for this first semester's work the following grades would have to his credit 19 quality points.

	Sem. Hrs.	Grade	Quality Points
1st Subject3	D	3x0—0
2nd Subject3	A	3x3—9
3rd Subject2	C	2x1—2
4th Subject3	C	3x1—3
5th Subject3	D	3x0—0
6th Subject2	B	2x2—4
7th Subject1	C	1x1—1
	17		19

To be graduated, a student must have a number of quality points equal to the number of semester hours of credit required in the curriculum being pursued.

A total of quality points equal to the semester hours in the curriculum up to the semester in which student teaching is scheduled must be earned before students are permitted to do student teaching. A grade of "C" or better must be earned in student teaching.

If a student's average is below 1 for the year, that is, if he does work below "C" average, he will be re-

quired to raise his average to 1 or "C" in the subjects already taken before he may proceed further with his work. This may be done by attending summer session or by repeating courses in which the grades are low.

Students who fail in subjects in one semester are not permitted to take extra semester hours the following semester, i. e., more than the regular load.

Only students who have an average of "B" or 2 are permitted to take more than the normal load, and then only after permission has been given.

Students who do not maintain the standard grade of work with a regular semester load will have their schedule reduced, thus lengthening their period of residence. Students who do not do a standard grade of work with a reduced schedule will be asked to withdraw from the college.

Students who show low achievement scores in the freshman tests in English fundamentals, spelling, arithmetic, reading, or writing, may be required to take "make-up" or remedial courses in these subjects, without credit, and with a corresponding reduction in the regular

schedule. A definite standard set up at Edinboro is that of English fitness as fundamental.

Class attendance and attendance at student assemblies is required. Students are excused from class meetings and assemblies **only for illness or other justifiable cause**: Excessive absence may result in loss of credit or lowered grade.

Where unusual conditions seem to warrant a deviation from the foregoing standards, such cases are handled by the President or persons appointed by him.

Class Attendance

The authorities at Edinboro are strongly of the opinion that those who go to College, in many cases under financial difficulties, should have a serious purpose, and that they ought to get all they can out of college, not only the social life, but the classroom as well. The College thinks that students should still attend classes and that such habits of regularity ought to be developed which all teachers will need when they actually assume positions. For this reason class attendance and attendance at the weekly College Assembly are required. No formal system of the so-called permitted absences or "cuts" is in effect. Absences may

be necessary under certain conditions of emergencies. These will be handled as individual cases by the instructors and the Dean of Instruction and Deans of Men and Women. The College believes that the really serious and conscientious student can ask and solve the question of absences from class and worthwhile activities by asking himself the all important question, "Why am I here?" No elaborate system of bookkeeping on "cuts" and permitted absences can answer this question.

Day Students' Facilities

The day students may use the Library for study purposes. A room in the basement of Normal Hall is reserved for the use of the commuting boys. A room on the first floor of Haven Hall is reserved for the use of the girls who commute. Chairs and tables are provided for study and rest.

FEES

The quarterly fees to be paid to the college are as follows:

Contingent Fee	\$18.00
Activity Fee	5.00
Room, Board and Laundry.....	63.00
Special Fee for Art Students..	9.00
Late Registration Fee—	\$1.00 a day, not exceeding \$5.00.

The dates of payment of these fees as follows:

September 13-14, payment for first half of first semester.

November 13-14, payment for second half of first semester.

January 24-25, payment for first half of second semester.

March 25-26, payment for second half of second semester.

These fees are paid at the Bursar's Office on the above dates. More about fees and paying them will be found in the 1939-40 issue of the Edinboro Record, the College catalogue.

GOVERNMENT AND STUDENT ORGANIZATIONS

Student-Faculty Cooperative Government

The purpose of this plan of government organized in Edinboro in 1935 is to take over increasingly responsibility for organizing and directing purely student affairs, to cooperate with the proper college authorities in the matter of student welfare, and to seek constantly to make the college a better agency for developing effective citizens and teachers.

The legislative function of the new system is vested in a council consisting of eight students and three faculty members. Each class sends two representatives, one boy and one girl, each serving for a year. The girls being elected in the fall and the boys in the spring. Two members are elected by the faculty members from their group, and one is appointed by the College President to represent him.

The representatives as elected last year are as follows:

Seniors—Angelo Casella, Louise Carlburg

Juniors—Lee Jeffords, Emily Carpenter

Sophomores—Robert Olson, Elaine Ghering
Freshmen—Raymond Mitcham, Jean Carlson

The girl representatives will be renewed in October, and the boys in the second semester. The Freshmen elect both of their representatives in October.

The Senior Class—'40

Its membership includes all students who lack but one year of graduation with a degree.

The Junior Class—'41

Its members are all students who have two years of credit toward graduation.

The Sophomore Class—'42

Students have one year of credit. Second year students who are candidates for State Limited Certificates belong to this class.

The Freshman Class—'43

Entering students and others who have less than one year of credit beyond high school, belong to this class.

EXTRA-CURRICULAR PROGRAM

Beginning with the second semester, 1936-37, a revised program of extra-curricular activities went into effect. This program was developed by the committee on student activities as a result of much thought and consideration. Students should study carefully the description of the plan before they make their choices of club membership and activities. Students must remember that attendance in the organizations joined will be as much a requirement as class attendance, and a similar record will be kept by the officers.

Groups of activities—non-athletic
Group A: Includes a group of activities from which every student is required to select ONE, but may select an additional one if his program and character of work done warrants an extra activity in this group. These organizations are:

Comstock Club, Press Club, Horace Mann Club, ScaRab Club, Debating Club, Rural Problems Club, Photo Club.

Group B: Students may join one of this group in addition to the one in group A, but not all. Students who are elected to membership of two group B organizations need not select any in group A. These or-

ganizations are:

Edinboro Players, A Capella Choir, Orchestra, Band.

Group C: Membership is voluntary and is in addition to the membership provided under groups A and B. These organizations are:

Y. M. C. A., Y. W. C. A., Newman Club.

Group D: Major offices such as President (exclusive of any group organization), Secretary-Treasurer, Editor of the Spectator, Editor of the Yearbook, Appointed Manager of a major sport, and of others approved by the student council and college president. Major officers may be exempted from membership and participation in a group A organization during their terms of office.

Exclusion: Students may be refused membership in any organization if regular work is unsatisfactory. This refusal, however, does not exempt the student from the requirement for membership and participation in some organization for six semesters.

Schedule of Activities (Subject to change)

Monday, Group A Clubs, 7:30-9:00
1st and 3rd Mondays: Comstock

50

Club, Press Club, ScaRab Club, Delta Phi Delta (not a group A Club, but scheduled for convenience)

2nd and 4th Mondays: H o r a c e

Mann Club, Debating Club, Rural Problems Club

9:00-10:30—Fraternities

Tuesday evening: Dramatic Club

Wednesday evening: 1st and 3rd

Wednesdays: Y. M. C. A.

2nd and 4th Wednesdays: Newman Club

Thursday evenings: 1st and 3rd

Thursdays: Y. W. C. A.

Friday morning: 2nd and 4th Fridays: student forum

Friday evening: 3:15 choir (also same hour Mondays)

4:00 orchestra

Evening: games, movies, etc.

PHYSICAL EDUCATION ACTIVITIES

Beginning with September, 1937, all students are required to take part, without credit, in at least one physical education activity each semester in which no physical education courses or student teaching are required. (This is a state-wide requirement.)

51

THE ORGANIZATIONS

The Comstock Club

The Comstock Club is a nature club with fascinating field and indoor work. It is expected to appeal to those students who are particularly interested in biological science. It is not restricted to secondary students majoring in biology, however, but is designed for any students whose interest lies in that field.

Debating Club

The Debating Club is designed to encourage the practise of debating and discussion of such social and political questions as are commonly considered in a debate. The organization is expected to flourish this year under a new and vitalized membership.

Horace Mann Club

This club was formerly known as the Professional club. It is designed for consideration of a wide variety of professional problems. It is of great interest and value to the student.

Press Club

This club is designed to furnish an agency for bringing the college into contact with the public through home papers of students. It also serves

the interest of those students who are concerned with practical journalism. It is hoped that the club will develop into an active press bureau as well as medium for discussing problems of journalism and other forms of writing.

Rural Problems Club

This club was organized to meet the needs of those students who expect to teach in rural areas or in small village school systems, as do the majority of Edinboro graduates during their first years in the profession. It is an eminently practical organization which should be of interest particularly to those enrolled in the elementary curriculum.

The ScARAb Club

The ScARAb Club is made up of the entire art school personnel. It was organized for the purpose of conducting the business of this student-faculty group whenever the need arises. The club has developed its own traditions and ideals and is of primary interest to the life of the art department. Being an art organization, it plays an important role in the college activity program.

The Photography Club

Open to all students who are interested either in the scientific or the

artistic side of photography. The club is divided into small groups, giving each member an opportunity to do actual work in the darkroom.

Edinboro Players

The dramatic club is an organization familiar not only to the college students but also to townspeople and residents of nearby cities. It is an outlet for those who wish to express their dramatic talent. The club presents a great variety of productions throughout the year ranging from farcical one-act comedies to elaborate productions of the works of famous playwrights. The Players always welcome new talent which will aid them in strengthening and expanding their organization.

A Capella Choir

This is an organization composed of men and women who are interested in music of the higher type. It gives each year a great number of performances. Among them are a Christmas concert, at least one chapel program each semester, and an operetta. It also takes part in programs of interest to the entire school such as commencement and baccalaureate services and the monthly vespers.

The Orchestra

The orchestra is open to all students who are interested in instrumental ensemble programs.

Rehearsals include such numbers as "Hungarian Dance No. 6", by Brahms, "Country Garden", by Granger, "Peer Gynt Suite", by Greig, and other orchestral favorites.

The Band

The band is open to all students who are interested in instrumental group playing. Its purpose is to serve the school at various college and civic functions, as well as for its members to enjoy band playing.

Y. M. C. A.

This is an organization to which all men students are eligible to membership. Its purpose is the building of moral and spiritual nature and at the same time providing interesting social activities.

Besides sending delegates to many interesting conferences held in this section of the state, the "Y" plays an active part in the school's intramural sports program.

Y. W. C. A.

The Y. W. C. A. is a woman's organization "united in the desire to realize full and creative life through the growing knowledge of God". The meetings are interesting, varying,

and satisfying to all types of individuals. Outstanding meetings and services are held throughout the year. Joint services with the Y. M. C. A. are often held. The social aim is expressed by teas, parties and outings. The club is made up of a large and enthusiastic membership.

Newman Club

The Newman Club is a religious organization administering to the interests of the Catholic students in the college. The club, which was organized two years ago, already has a large, active membership. It meets the second and fourth Wednesdays of each month.

HONORARY FRATERNITIES

Alpha Psi Omega

The Alpha Psi Omega is a branch of the National Honorary Dramatics Fraternity. It is open to all students who maintain a high standard of work in dramatics. Its purpose is to provide a wider fellowship with others interested in the College Theatre.

Delta Phi Delta

Delta Phi Delta, National Professional Honor Art Fraternity, was instituted at Edinboro in 1927. Membership is open to Junior and Senior students who have maintained an average of "Superior" in art subjects and "Good" or better in their academic subjects. The purpose of this fraternity is "to promote Art in America, to recognize scholarship, to foster true friendship".

Mu Kappa Gamma

This is an honorary elective organization composed of students who have contributed in an outstanding way to the musical life of the campus. Membership is based on the following points: leadership, scholarship, musical ability, outstanding contribution, cooperation, length of service, and participation in more than one musical organization.

SOCIAL FRATERNITIES

Chi Delta Sigma and Kappa Delta Phi Fraternities

New members in each of these fraternities are limited to boys selected by current membership. The purpose of these fraternities is to promote among their members brotherhood, scholarship, courtesy, refinement, and perseverance, and to advance our college through further development and leadership of their members.

Alpha Delta Sorority

New members in this sorority are limited to girls selected by the current membership. The purpose of this sorority is to secure the same results for its members as those set up by the fraternities for the members and the college.

PHYSICAL EDUCATION ORGANIZATIONS

W. A. A.

The Women's Athletic Association is one of the most active organizations on the campus. Every girl in the college is a member. For competition in sports, such as hockey, basketball, volley ball, speed ball, tennis, archery, field, track, golf, and various other activities, the organi-

zation is divided into two societies, the Phis and the Deltas. Not only do we feel that the W. A. A. plays a very important part in our lives physically, but also mentally and socially.

The "E" Club

The "E" Club is an organization composed of lettermen of varsity intercollegiate competition. It functions through its recognition and awarding of varsity certificates and letters. The primary purpose is to maintain the standards of athletic ability in the college athletic program. The promotion of genuine sportsmanship and the participation of its members in student organizations on the campus are its underlying responsibilities.

STUDENT PUBLICATIONS

There are a number of publications on the campus for which students are entirely responsible. The publications are financed from the Student Activity Fund and advertising. One free copy of each publication is presented to every student in the college. Anyone interested in journalism can, if he proves to have sufficient talent, find positions on one or more of these publication staffs.

The Spectator

The Spectator is the college paper. Twelve copies a year are issued to the students and sent to the high schools of Northwestern Pennsylvania. All college activities are reported to the students through this publication. It has been the policy of the Council to appoint the editor and business manager and to allow them to choose their own staff. All persons interested in this work should get in touch with the editor.

The Conneautteean

The Conneautteean is Edinboro's yearbook, published for the benefit of the school and its patrons. The editor and business manager are elected by the members of the Junior Class. The staff, with a few exceptions, is composed of Juniors. Real experience is necessary to gain a position on the staff, but don't let yourself be accused of not trying.

Student's Handbook

This source of information is produced by the Council. Its purpose is to give all necessary information to the incoming Freshmen, to make them as comfortable as possible in Edinboro school and community. In the spring the Council chooses one of its members to assemble the ma-

terial for this directory. This member is allowed to choose any staff he may need.

Other Publications

There are three other publications other than the three mentioned, which are very important to the college. One of these is the College Record. This handbook is really a condensed form of the Record which eliminates much unnecessary material. For any information not in this book, see the Record. There is a Record for the Summer Session and a special art pamphlet published each year. These can be obtained free by each student.

DORMITORY AND RESIDENCE REGULATIONS

In Order to permit Maximum Freedom to All Students and to Protect the Rights of Individuals, Certain Standards of Action Have Been Adopted by the Student-Faculty Committee.

FOREWORD

The following suggestive rules and regulations are a slight modification and revision of the basic report presented by the Student-Faculty Committee in 1934 and subsequent additions and revisions. These supersede all previous rules and regulations and suggestions previously issued.

A careful reading of these few and brief regulations show that the College Dormitories are a **convenience** and not a **playhouse**. The hope is that the student life—professional, moral, cultural—will be built up by means of the proper use of the dormitories, and the organization of activities in them. The initiative of students and the cooperative efforts of the faculty will be relied upon for this purpose.

These regulations are YOUR regu-

lations. I hope they will be observed in the proper spirit. Students can be depended upon to be **fair** and **reasonable**. Thus, alone can the dormitories serve their rightful purpose.

These regulations are approved and will continue in force until such time as the Student Cooperative Council may suggest changes that meet with the approval of the College.

The following suggestions for the proper government of Haven and Reeder Halls are offered to the students, not as "rules", but as suggestions. I am convinced that college students, and especially young men and women who are entering upon the preparation for a most honorable and important profession like teaching, can be appealed to without too many "do's" and don't's". The administration has tried to impress upon students that this should be an institution of few "rules", but that those we do have should be followed. Therefore, without laying down the following as "rules" and "regulations", I am suggesting a line of behavior which I am sure is fair, reasonable, and proper. Compared with other residence colleges, especi-

ally the State Teachers Colleges, these regulations are very lenient and liberal.

CARMON ROSS
President of the College

Principles Underlying All Regulations

- I Respect the rights of others. This should be the golden rule of democracy.
- II Property, whether your own or that of the State, should be protected and cared for. The law provides for the payment of damages on the part of those committing the damages.
- III Be at all times **ladies and gentlemen**. Edinboro has no place for boors and those who cannot be decent whether in the dormitory, the campus, the playing field, the classroom, or the town.
- IV Habits which will make for success or for failure will be formed in college. Each student is writing for himself or for herself an indelible record. This record will speak for you later. The College is frequently asked to recommend students. What kind of a record are you making for yourself? You, alone, **can and should** answer this.

What are your behavior patterns?

V Students are in the college primarily for purposes of learning to work and think. A certain amount of time is necessary to study in the evening. Because of the very nature of a co-educational institution, definite understandings are necessary for the conduct of young men and young women living on the same campus.

VI The best possible manners should be shown at all times in the dining room. This concerns the manner of dressing, habits of eating, and boisterous behavior. Try to appear in the dining hall properly dressed. The boys will make a finer impression if they wear coats and neckties. Boys wearing sweat shirts will be refused admission to the dining room **at any time**. The evening meal and special occasions require proper attire, i. e., coat and tie.

A. Hours

- I **Quiet Hours Are Kept** (Boisterous and unnecessary noises, rough house, are at all times undesirable.)

- a. Before 7 a. m. daily except Sunday at 8 a. m.
- b. During class hours:
8:00 a. m. to 11:50 a. m. daily except Sunday
1:15 p. m. to 4:15 a. m., daily except Saturday and Sunday
- c. From 8:00 p. m. to 10:30 p. m., daily except Saturday and Sunday
- d. After 11:00 p. m. daily—washrooms are not used after 11:00 p. m. except in case of emergency
- e. Radios

Probably nothing is more annoying than the abuse of the radio. The abuse of the radio becomes a serious distraction to correct study habits. The radio in the lobby of Haven Hall should not be operated after 8 p. m., and during class hours, except in case of really important broadcasting when the Dean of Women may give permission for its use outside of these hours. On Sunday radios may not be operated before 9:00 a. m. Room radios are

not forbidden, but they may not operate between 8 p. m. and 10 p. m. Between 10 p. m. and 11 p. m. the radios may be operated at a subdued tone. After 11 p. m. radios may not be operated at all. Radios used after this hour may be removed from the rooms at the order of the Deans. The radio in Haven Hall will be controlled by a key switch and cannot be operated during the hours indicated.

II Lights Are Out

In residences for boys and girls not later than 11:15 p. m. daily.

III Houses Are Locked (From Outside)

- a. In residences for boys at 11 p. m.
- b. In residences for girls at 10 p. m., daily, except Saturday when they are locked at 11 p. m.

IV Registration

- a. From November 1 to March 1 girls may not leave the dormitory without permission after 7:30

- p. m. At other periods the hour is 8:00 p. m.
- b. On Lecture-Entertainment nights girls of the Junior and Senior classes of the four-year curricula may return to the dormitory 30 minutes later than the closing hour of ten o'clock. This also applies to the regular productions of the Edinboro Players.
- c. Whenever intercollegiate basketball games are played on nights other than Saturday, girls of the Junior and Senior classes of the four-year curricula and Seniors of the three-year curricula may return to the dormitory 30 minutes later than the hour of ten o'clock.
- d. When leaving for a club or other meeting girls will "sign up" in the House Registration book, indicating without fail the destination or meeting. Girls will be in the dormitory or places of residence on Saturday and Sunday nights not later than 10 p. m.

V Motion Pictures

There will be one motion picture performance—Friday evening at 7:30 p. m. This hour fits in with the hours for closing Haven and Reeder Halls.

VI Haven Hall Visiting Hours for Campus Students

Since the College Dining Hall is located in Haven Hall, Reeder Hall boys may come to Haven Hall not earlier than 15 minutes before meals and leave immediately after breakfast, not later than 1:00 p. m. daily, except Sunday at 2 p. m., and 7:00 p. m., daily.

VII Haven Hall Visiting Hours for Off-Campus Students

- a. Girls off campus may visit the residents of Haven Hall between 7 p. m. and 9 p. m., but will register upon coming and leaving.
- b. Boys, campus and off-campus, may visit Saturday and Sunday nights as follows:
Saturday nights—8 p. m. to 10:30 p. m.
Sunday nights—8 p. m. to 10:00 p. m. Saturday and Sunday, open between 2:00 p. m. and

6:00 p. m., unless other permission has been given by the Dean of Women.

VIII Reeder Hall Visiting Hours

Off-campus boys may visit the residents of Reeder Hall between 7 p. m. and 9 p. m., but will register on coming and leaving. The dormitories are intended for those who live there. Off-campus students are requested not to make a habit of loafing in students' rooms during class hours.

B. Plant

- I Students living in dormitory are asked to cooperate with the maids and housekeepers in keeping the rooms neat and tidy.
- II Fire regulations prohibit the attachment of extra wires or light cords from the electric light sockets; also the use of electric equipment of any type in the bed rooms. Haven Hall has special receptacles for the attachment of electric equipment in the bath rooms.
- III The driving of nails and the use of pasters for the hanging of pictures, or pennants, and the like, damage the walls and paint. The college has re-

cently completed the renovating of the paint in nearly all the rooms. Help the college maintain these rooms in their present condition.

- IV The bathing facilities provided in the dormitories are the best found in any institution. Use these, but please do not abuse them. Report promptly all leaks and other defective plumbing.
- V Students' rooms may not be used for fraternity purposes, nor for initiating students into fraternities. The dormitories are meant for all students and are not to be used for the advantage of any particular group.
- VI The fire escapes are intended for use in case of fire, **only**. Students are requested to use the proper entrances and stairways in entering and leaving dormitories.
- VII Lights—Students and faculty members and college employees are asked to cooperate in cutting down the cost of operating the electric lights, which show an increased cost of 50 per cent the past year. Please turn out lights in rooms and

bathrooms when not being used. All hall lights will be turned out at 11 p. m. Exit lights will always be turned on at night.

VIII Students are liable to damages for breakages, defacements, and wilful destruction of property.

IX The rooms on the first floor, Reeder, occupied by members of the faculty and personnel are strictly private. Boys are requested to regard them as such and refrain from intrusion. Loafing in these rooms is absolutely prohibited at all times. Visiting by boys on this floor will be carried on in the social rooms, only.

C. Miscellaneous

I It is needless to say that the College **cannot** and **will not** tolerate drinking on or off-campus. The President of the College will dismiss without any reservations whatever, students who are guilty of drinking, **on** or **off-campus**. Such dismissal will mean that no other State Teachers College, probably no other college in the State, would admit such

a student.

Anyone who brings bottles of beer or intoxicating beverages into the dormitory will likewise be dismissed.

II Checking and Signing Up

There will be a student monitor on the first floor of the dormitories to register all guests and visitors (not dormitory residents) who come to the dormitories between the hours of 6 and 9 p. m. Off-campus students are welcome, but they will **leave by 9 p. m.**, except on Saturday nights when they may remain until 11 p. m. Between 9 p. m. and 11 p. m. there will be a student on the first floor to register all dormitory residents in Reeder Hall as they leave or return. Students who have good reasons for leaving between these hours should not object to "signing up". Doors will be locked at 10 p. m. in Haven Hall and 11 p. m. in Reeder Hall. Men students who expect to be out later than 11 p. m., will notify Dean of Men in advance. **Fire escapes are not to be used for entering nor for leaving.** These student

monitors have authority to report all violations of this regulation. The night watchman may also check students after 11 p. m.

III **Guests**

Students may have over-night guests in the dormitory provided they pay at the rate of 50c per guest per night. This is a state regulation. Students who have over-night guests in Haven Hall will first secure a "guest permit" card from the Dean of Women. If guest is to be in Reeder Hall, this permit card will be secured from Mrs. Forness, House Matron, who will assign the room or place. Off-campus students may not be over-night guests nor use the dormitory over night without first securing this permit. Dormitory students are requested to cooperate with the college authorities in carrying out this regulation. Please report all over-night guests in the dormitory to Dean of Women in Haven Hall or to Mrs. Forness in Reeder Hall as soon as you know your guest is coming. The rates as fixed by the State for transients shall

be: 50c per night per person for room; breakfast, 40c; lunch, 40c; dinner, 50c. These rates apply to regular meals only. Students are not permitted to house anyone in their rooms over night without permission.

On special occasions like Parents' Day and High School Guest Day, the College will give dormitory students permission to house guests gratis, provided request for this permission is secured from the Dean of Women or Mrs. Forness in advance.

IV **Laundry for Dormitory Students**

Free use of tubs, ironing boards, electric irons, etc., in Haven Hall basement, south end. Laundry reserved for use of boys on Thursdays. Personal laundry of dormitory students is done free of charge. All laundry, not including colored clothes, must be packed in bags especially made for steam laundry, and which may be purchased at Klingensmith's Book Shop for a small sum. All bags must be marked clearly with the name of the owner.

V Fire Drills

Specific rules are posted in each room of each building.

VI Registering

For boys and girls should be done in all residences on standard registration forms before leaving town.

VII Use of Lake

Students register in their respective residences before going on Lake. Students leave the lake by 8:30 p. m. Students should be able to swim before going on lake in any boat.

VIII PERMISSION FOR GIRLS

- a. Permission to leave town at any time is given at the office of the Dean of Women or by the House President.
- b. Permission from parents or guardians should be filed in the office of the Dean of Women for
 1. Use of Lake for boating or swimming.
 2. Autoing—the family must assume responsibility in case of accident.
 3. Visiting away from home over night.

- c. The College does not favor granting permission to students to leave town or the dormitories after the formal social dances which close at midnight. Unless in cases of real emergencies or need upon written request from parents, permission to leave town or dormitories after dances will not be granted.

IX The Night Policeman

The night watchman is a regular State employee, sworn in as a police officer with campus duties similar to such an officer's. He is not only a custodian of state and college property, but an officer of the law to preserve reasonable order in the dormitories at night, to protect students from such disturbances and nuisances which interfere with their general welfare, to see to it that all buildings are locked at regular hours, and to assist students in case of an emergency or other needs in which he may be able to assist. The night watchman is the student's friend.

X Loudness

Undue familiarity by language and by action between the sexes on the campus is cheap and gives to the passerby a harmful impression of the college. Decency is always more profitable than cheap display of vulgarity. Girls are asked to be properly robed at all times including going to and from the gymnasium.

- XI The college has no desire to prohibit smoking. Young men and young women are asked to take into account their own individual interests in the matter of smoking in college. Nevertheless, the fire regulations and protection of life and property require that students may not smoke in their rooms and in the college buildings except where permitted. Smoking will be permitted in the boys' lobby in the basement of Reeder Hall. Smoking anywhere in Haven Hall, on its porches, and on its approaches cannot be permitted. There is no prohibition against smoking on the campus, but the throwing of cigarette stumps, burnt matches, etc.,

around the entrance to our buildings is a very unsightly thing and gives the visitor a poor impression of the College. Please try to minimize this practice. Help advertise the college in the proper way. The students are the best advertisement the College has.

- XII Congregating by students in public places during class hours makes for a waste of good time and creates a poor impression.
- XIII Permission to hold important college functions off campus or out of town may be granted by the President of the College, only. Such requests must be made in writing and in ample time.
- XIV Please assist in making it possible for each student to do his or her best work.

Management of the Dormitories

Beginning with September 1, 1939, the management of the dormitories will be as follows:

Haven Hall—The Dean of Women, assisted by the College Nurse.

Reeder Hall—The Dean of Men assisted by the House Matron.

Assignment of Rooms—During the

sessions of the College when the Dean of Women is on Campus, all room assignments in both dormitories will be made by the Dean of Women; when the Dean of Women is on vacation, all room assignments may be made by the Secretary to the President or by the Business Office.

Payment for Rooms and Meals for Guests—Guests in Haven Hall will pay the Dean of Women; guests in Reeder Hall will pay the House Matron. All meals are to be paid to the dietitian.

College Linen—All College Linen is under the direct control of the College Nurse. The Maid in Haven Hall, the House Matron in Reeder Hall, and the Dietitian will clear all linen through the College Nurse, who, in turn will have supervision of the operation of the Laundry. social rooms, distribution of linen, and devising ways and means to make the residents comfortable and happy.

The Dean of Men—Has general duty of guiding and counselling all men students and particularly the men in residence. The Dean is entrusted with the important task of advising in problems of

relationship among the male residents in Reeder Hall, in the formation of social programs, and in directing, as adviser, the student house governing board. The men are urged to consult the Dean of Men in personal problems as they affect their college experience and progress, and their relationship with instructors. The Dean of Men, in cooperation with the Dean of Women, may re-assign rooms.

House Matron in Reeder Hall—The general supervision of the physical plant, cleanliness of the entire building, orderly arrangement of furniture in lobbies, social rooms, distribution of linen, control and inspection of the rooms as to general up-keep, and direction of the work of janitors and cleaners. She will cooperate with the Dean of Men in devising ways and means to make the residents comfortable and happy. The House Matron admits students to rooms only after the room has been assigned by the Dean of Women. All changes for rooms are made either by the Dean of Women or the Dean of Men.

Offices—Haven Hall, Dean's office, first floor, right. Reeder Hall, Room No. 9 first floor will be used by the House Matron and the Dean of Men. Men residents are requested to use the office on any business pertaining to their residence. Faculty rooms are on the first floor and are private. Students will respect this privacy.

SCHEDULED EVENTS—1939-40

Lecture-Entertainment Course

The College announces another unusual series of lectures and musical numbers for the ten-series course offered annually to the students and the general public. The series, with dates, follows:

- October 6—Concert by Lazzari and Trevisan of the Metropolitan Opera Company
- November 8—Gutzon Borglum—American Sculptor—"The Future of the Fine Arts"
- November 16—H. R. Knickerbocker, International Correspondent, "At the Ringside of History"
- December 13—Concert — Cambrian Male Chorus (40 Welsh Singers)
- January 9—Grant Wood, American Artist, "Regional Art"
- February 7—Catherine Van Buren, Colored Soprano
- February 14—Lecture—Louis Adamic, "A New American Looks at His Adopted Country"
- March 1—Westminster Chorus
- April 4—Lecture and Readings by Robert Frost
- April 15—Concert—Little Symphony Orchestra of Chicago

FOOTBALL SCHEDULE 1939

September 30—California—Home
October 7—Mansfield—Home
October 14—Indiana—Away
October 21—Clarion—Away
October 28—Alliance—Home
November 4—Westminster—Away
November 11—Slippery Rock—Away



BASKETBALL SCHEDULE

December 16—St. Marys College—
Home
January 6—Fredonia Normal School
—Home
January 12—Ohio College of Chiro-
pody—Home
January 13—Clarion State Teachers
College—Home
January 20—Fredonia Normal
School—Away
January 24—Alliance College—
Away
January 26—Indiana State Teachers
College—Away
January 27—Clarion State Teachers
College—Away
February 2—Slippery Rock State
Teachers College—Home
February 7—California State Teach-
ers College—Home
February 9—Lawrence Tech—Home
February 16—California State
Teachers College—Away
February 23—Indiana State Teach-
ers College—Home
March 1—Alumni—Home
March 6—Alliance College—Home
March 8—Ohio College of Chiropody
—Away

SPECIAL ASSEMBLY NUMBERS

11:00 A. M.

Wed., Oct. 11—Harry C. White,
"Electricity"

Thurs., Oct. 14—The John C. Frye
Co., Magicians

Wed., Jan. 17—Walter van Haitma
—"Aviation"

Wed., Mar. 13—Robert C. Bowman,
Impersonator

OTHER EVENTS

October 7—Parents' Day

October 28—Homecoming Day

April 6—Rural School Conference

April 13—Rural School Music Festi-
val

May 11—High School Guest Day

May 25—Alumni Day

May 28—Commencement Day

SCHOOL SONGS

Dear Home of College Days
(Old Refrain)

Dear home of college days, so great
and free,

Thy sons and daughters will be true
to thee.

Thy love we'll cherish and thy fame
declare,

Loyal to thee, and to thy name so
fair.

Chorus

So raise your voices all, and honor
give,

Her fame and glory may they ever
live.

Through joy and sorrow as the years
go by,

And with a constancy that cannot
die.

Alma Mater
(Aloha)

Hail to thee, our Alma Mater glori-
ous,

Fresh wreaths we bring to bind thy
brow;

Trials past thou hast withstood vic-
torious,

Never fairer, never statlier than now.
O Edinboro, Edinboro,

We revere thee, love thee, serve thee
ever.

While class speeds class

As swift years pass,
To thee our hearts are true.

Winds That Sweep the Campus

Winds that sweep the campus,
Winds that stir the trees,
Sweep around her towers.
Standing calm and still
Through the winter's darkness,
Through the summer shine,
Bear her our blessings
Through glad good will.

Pep Song

Ed'nboro College, we will sing to you
We'll defend your standards
In whate'er we do.
"Hail, hail, the gang's all here."
Round thy colors bright,
We'll stick together for the
Crimson and white.

Hand Me Down My Bonnet

Hand me down my bonnet,
Hand me down my shawl,
Hand me down my calico dress,
I'm going to a Calico Ball.
First she gave me honey,
And then she gave me cake,
And then she gave me ginger bread
For kissing her at the gate.
O—as we go marching,
And the band begins to p-l-a-y
You can hear the people shouting
"Edinboro College wins today."

FIRST SEMESTER

1939-1940

Final Date for Entrance Examination	Tuesday, September 12
Registration and Classification of Freshmen	Wednesday, September 13
Registration and Classification of Upper-Classmen	Thursday, September 14
Classes Begin	8:00 A. M.	Friday, September 15
Thanksgiving Recess Begins	12:00 M.	Wednesday, November 22
Thanksgiving Recess Ends	12:00 M.	Monday, November 27
Christmas Recess Begins	12:00 M.	Thursday, December 21
Christmas Recess Ends	12:00 M.	Tuesday, January 2
First Semester Ends—After Last Class	Saturday, January 20

SECOND SEMESTER

Second Semester Begins	12:00 A. M.	Wednesday, January 24
Easter Recess Begins—After Last Class	Thursday, March 31
Easter Recess Ends	12:00 M.	Tuesday, March 28
Class Work Ends—After Last Class	Wednesday, May 22
Preparation for Commencement, Senior Events, etc.	May 23 24
Alumni Day	Saturday, May 25
Baccalaureate Sermon	Sunday, May 26
Senior Day or Class Night	Monday, May 27
Commencement	10:00 A. M.	Tuesday, May 28

**Student's Typical Schedule
FIRST SEMESTER**

Period	Mon.	Tues.	Wed.	Thurs.	Fri.	Sat.	Sun.
8:00- 8:50							
9:00- 9:50							
10:00-10:50							
11:00-11:50	Consultations with Faculty		Assembly		1. Class Meet 2. Forum 3. Dean's Con 4. Forum		
1:15- 2:05							
2:15- 3:05							
3:15- 4:05						No classes Scheduled	
4:05- 5:30							Vespers once mo.
7:30- 8:45	Clubs						
				Recreational Activities			
				Religious Organizations			

All blank spaces designate classes, study, library, or leisure.
Clubs and religious organizations meet every other week

**Student's Typical Schedule
SECOND SEMESTER**

Period	Mon.	Tues.	Wed.	Thurs.	Fri.	Sat.	Sun.
8:00- 8:50							
9:00- 9:50							
10:00-10:50							
11:00-11:50	Consultations with Faculty		Assembly		1. Class Meet 2. Forum 3. Dean's Con 4. Forum		
1:15- 2:05							
2:15- 3:05							
3:15- 4:05						No classes Scheduled	
4:05- 5:30							Vespers once mo.
7:30- 8:45	Clubs						
				Recreational Activities			
				Religious Organizations			

All blank spaces designate classes, study, library, or leisure.
Clubs and religious organizations meet every other week

CONSTITUTION

THE STUDENT-FACULTY
CO-OPERATIVE GOVERNMENT

Adopted February 4, 1935

State Teachers College
Edinboro, Pennsylvania

CONSTITUTION

ARTICLE I

Name

The name of this organization shall be the Student-Faculty Co-operative Government of the Edinboro State Teachers College.

ARTICLE II

Purpose

While appreciating deeply the province and functions of the Trustees, College President, Dean of Instruction, the Dean of Women, Bursar, and other officials and faculty committees and members organized chiefly for administering the business and instruction of the college, we, the students, the faculty, and the President of the College, feel that there still remains unoccupied a large, promising field for co-operative service. Accordingly, we do hereby declare that the purpose of this Co-operative Government is to take over increasingly the responsibility for organizing and directing purely student affairs, to co-operate with the proper college authorities in matters of student welfare, and to seek constantly to make the college a better agency for developing effective citizens and teachers.

ARTICLE III

Membership

The membership of this Co-operative Government shall consist of all students, all the faculty and the President of the College.

ARTICLE IV

General Organization

Section 1. The functions of this Co-operative Government shall be distributed as follows: (a) legislative functions in relation to all student and student-faculty agencies, now existing and to be organized, are vested in a Council, and; (b) executive functions, including the veto of any measure passed by the Council, are vested in the President of the College.

Section 2. The existing student-faculty agencies and student organizations with faculty sponsors are to continue in their present form and to function as at present until such time as they may be modified either by vote of the Council and approved by the College President, or by direction of the College President.

ARTICLE V

Membership, Election, Officers of the Council

Section 1. The Student-Faculty Council shall be composed of eleven

members, eight of whom—four men and four women—shall be students elected by the several classes; two members of the faculty—a man and a woman—elected by the faculty; and one member of the faculty appointed by the President of the College.

Section 2. Two students, one man and one woman, shall be elected by each class in February, 1935, the woman to serve for one semester and the man for two semesters. Thereafter each class will elect annually a woman in October, and a man in February, the men and women each to serve two semesters. In October the Freshman Class will also elect annually a man to represent them for one semester. In February 1935 there shall be chosen the two faculty representatives and the faculty member appointed by the President. Thereafter the faculty members to the council will be selected each October.

To be eligible for election to the Council, students should be outstanding in character and ability and have a college record of better than a G average. The President of each class shall appoint a nominating committee of three which shall submit at least two nominations for each membership on the Council. From this

group of nominations, with or without additional nominations that may be made from the floor, the class shall elect by ballot its two representatives to the Council. After its organization, the Council, with the approval of the student body, may adopt any other feasible method of selecting the student representatives to the Council.

Section 3. Any student vacancy on the Council shall be filled for the balance of the term at a special election conducted in the same manner as herein prescribed for the regular election. Any faculty vacancy shall be filled in the same manner as prescribed for the regular election or appointment. Nothing in this Constitution shall prevent the election of any student doing practice teaching in Erie or shall prevent any student from succeeding himself or herself.

Section 4. The officers of the Council shall be a chairman, a vice-chairman, and a secretary, to be chosen annually by the Council from its student members immediately after the new members have been elected. The Chairman shall be chosen from the Council members of the Senior class and the Vice-Chairman from the Council members of the Junior Class.

ARTICLE VI

Duties of the Council

Section 1. To initiate, organize, and direct in co-operation with the faculty a social program for the entire student body.

Section 2. To integrate, improve, and supervise the organization and activities of all student and student-faculty agencies.

Section 3. To act upon submitted requests for the organization of any new student or student-faculty agency.

Section 4. To provide, as needed, co-operative standing committees such as the following: House Committee, Publicity Committee, Athletic Committee, etc. These committees may co-operate with purely faculty committees for the same purpose. These standing committees should have at least five members (student and faculty) and should be appointed by the Chairman of the Council from the student and faculty bodies with the approval of the Council.

Section 5. To co-operate with the College President, the Trustees, or some properly delegated authority in the assessment, collection, and control of any Student Activity Fee or other fee or dues that the students upon the recommendation of the

Council may agree by majority vote to assess or pay to provide for activities, agencies, and welfare not adequately supported by the State; provided that the said fees or dues are approved by the President of the College and the Board of Trustees, or other controlling agency.

Section 6. To hold regular meetings once each month, in addition to special meetings as needed, when constructive suggestions or criticisms from students or faculty members shall be investigated and acted upon.

Section 7. To recommend to the faculty or the President of the College penalties for specific disciplinary cases which are not sufficiently serious to warrant possible expulsion or other severe punishment.

Section 8. To provide for at least one general student assembly every month for the purpose of interpreting the work of the Council and for transacting any business of general interest to the Student Body brought before it by the Council, the College President, or a representative of the students or the faculty. At such assembly meetings the chairman, or, in his absence, the vice-chairman, of the Council shall preside; the Secretary of the Council shall record the minutes.

ARTICLE VII

Powers of the President of the College

Because of the nature of the office of President of the College and his responsibilities to the Board of Trustees; the State Superintendent of Public Instruction, the State Council of Education, and the Governor, the President is an ex-officio member of all committees and to him is reserved the duty and right of final approval of all acts, rules and regulations that may be devised or offered.

ARTICLE VIII

Finances

Section 1. In order to co-ordinate and control the funds of the several student-faculty activities and organizations, either now existing or that may be created, all funds belonging to, or collected by the several organizations, shall, when requested by the Council, be deposited in and disbursed through a General Control Fund of which the President of the College and the Bursar or other faculty member or members may be custodians.

Section 2. The Bursar or any delegated member of the faculty of the College may, upon request of

the Council, subject to the approval of the President of the College, keep individual and separate accounts of the several funds and credits of each organization included within the General Control Fund as provided for in Article VIII, Section 1. Disbursements shall be made upon duly authorized requisitions of each organization.

Section 3. There shall be an annual audit of the General Control Fund made by an auditing committee of three, one representing the student body, one the faculty, and one the President of the College. This audit shall be published or posted at the beginning of each college year.

ARTICLE IX

Ratification and Amendments

Section 1. This Constitution shall go into effect as soon as ratified by the approval of the President of the College and by a two-thirds vote of the faculty and student body present when such vote is taken.

Section 2. This Constitution may be amended or revised by a majority vote of the entire student body and the faculty, provided that said amendment or revision first be submitted in writing to the Council and the Presi-

dent of the College approved by them, and then posted for two weeks.

COMMITTEE—

Representing Student Body:

Viola Good
Reid Hastie

Representing Faculty and President:

Nelle G. Hudson
Royce R. Mallory
W. A. Wheatley

Approved by the President of the College, Carmon Ross,
February 4, 1935.

Ratified by the Student Body,
February 4, 1935.

INDEX

Basketball Schedule	85
Bell Schedule	35
Bulletin Board	37
Bus Schedule	33
Campus Buildings	19-21
Campus View	22
Church Services	31
Class Attendance	44
Class Organizations	48
College Calendar	89
College Physician	37
Day Students	45
Edinboro College and Town	17-18
Extracurricular Program	49
Fees	45-46
Fire Rules and Regulations	38
Football Schedule	84
Freshman Regulations	26-27
Greetings:	
The President	7
The Dean of Instruction	9
The Dean of Men	11
The Dean of Women	13
Department of Physical Education	14
The Women's Athletic Director	15-16
Honorary Fraternities	57
Lecture and Entertainment Course	83
Library	29-30
Movies	32
Organizations	52

Physical Education Organizations	51
Postal Service	34
Publications	59
Resident Regulations:	
General	62
Quiet Hours	65
Visiting Hours	69
Registration	67
Guests	74
Laundry	75
Management of Dormitories..	79
Scholastic Requirements	40-45
School Songs	87
Social Fraternities	58
Student Government	47
Student Government-Council ..	94
Student Schedule	90-91
Telephone Service	32