

november 4, 1983

the VOICE of bloomsburg university

This issue has been compiled by Dr. Fuller's one o'clock journalism students.

Family Planning Funded

RENE FITE
Staff Writer

The Student Senate voted to allocate \$1600 to the Family Planning Center at their meeting Monday night. The allocation was approved with the stipulation that a student ID must be shown so that CGA will have verification on the

The allocation was approved with the stipulation that a student ID must be shown so that CGA will have a verification...

number of students actually utilizing the facilities during the year.

Students make up forty-two percent of Family Planning's case load. The cost for a student to receive a complete gynecological examination from the center is \$20, as opposed to \$50-75 from a doctor in Bloomsburg.

The Senate also voted to allocate \$354 to the Student Speech-Language and Hearing Association to pay one-third of the cost to send 15 students to a National Convention in Cincinnati Nov. 18-20. The money will be used for lodging, transportation, and membership and registration fees.

Phi Beta Lambda received an allocation of \$178 to pay one-third of the cost of a trip to New York City

The senate approved the allocation of an estimated \$100 to the International Relations Club.

on Nov. 4. Forty-seven members will be going, and they will tour the United Nations, the Commodities Exchange, the New York Stock Exchange, and the Federal Reserve Building.

The Senate approved the allocation of an estimated \$100 to the International Relations Club with the stipulation that they bring back all receipts from food

preparation for International Day, Nov. 11. They will set up 15 tables in the Union and offer samples of food from different countries.

The allocation of \$85 to the Data Processing Management Association was approved by the Senate. The money will be distributed in three areas: \$45 for a subscription to "Computer World," \$30 for supplies, and \$10 for correspondence with the sponsoring chapter, located at Susquehanna University.

Ramp Question Answered

KERRY SCOTT BOLL
Staff Writer

The big question of that curious ramp leading to steps is finally answered.

A new residence life office is being built. The old lounge area located in the basement of Luzerne Hall is being turned into a large conference room with a divider, a computer room, a storage room, and two offices.

Dr. Jerrold Griffis, vice president for student life, says that

it is all part of a project designed to reorganize the student life offices. He plans to tie residence hall life, academic advisement, and career development together.

As of November 1, Jenny Carpenter, director of residence halls, and Richard Haupt, director of housing, will be combining resident life operations and food operation together.

Luzerne Hall was chosen after a study was made. This study showed that only a handful of students previously used the basement lounge area.

Funding for the offices is generated from student room fees which is an auxiliary student life fund. It is not taken out of state funding.

This new office will also be centrally located among the six other dormitories.

These offices will provide a meeting place and mailboxes for the resident deans. Access to these offices will be from the hallway inside of Luzerne or the outside ramp. Handicapped students will have access by using the dorm elevator.

The resident life office will handle on and off campus students, housing, and the food service.

A proposal is being made for establishing an academic advisement office in the old housing office after they leave. Included, academic development may move to Weller and the career development office will expend into that room.

DA Race a Toss Up

The Committee for Action in Politics (CAP) of APSCUF recently interviewed the two candidates for Columbia County District Attorney. The result was a stalemate.

CAP found that both candidates are well qualified for the office. Both have had significant experience as assistant district attorney. The Republican is William Kreisher and the Democrat is Elwood Harding.

Besides style, the candidates differ most significantly in terms of their priorities, according to CAP. Both agree on a number of important issues, however.

They believe that driving under the influence is an extremely serious crime that should be diligently enforced; Accelerated Rehabilitation Disposition (ARD) status should only be granted to qualified people.

Both candidates consider spouse abuse to be so serious a crime that the marital relationship should not isolate a person from being prosecuted; rape laws should be changed to permit a spouse to be prosecuted.

Criminal justice education is an important priority and they would be willing to place criminal justice intern students in the prosecutor's office, as well as other criminal justice agencies.

They believe that a closer relationship should be developed with the security force at Bloomsburg. When rape occurs on campus, both think it serious and believe the location should not insulate suspects from prosecution.

SUMMARY OF DISTRICT ATTORNEY CANDIDATES' SPECIFIC COMMENTS

Kreisher's priority issue is making the office more efficient, in terms of record keeping and information retrieval. He wants to computerize records. According to Kreisher, this "streamlining" is especially important in light of the 180-day rule for the prosecution of criminal cases. According to Kreisher, basic office organization hasn't changed since the 1930's; hence it is going to be very difficult to meet the requirements of the 180-day rule.

He also claims that the taxpayers of Columbia County could save approximately \$15,000 a year by eliminating one of the two assistant district attorney positions. According to Kreisher, with only four or five criminal sessions a year and only one judge, two assistants are not needed.

Harding's priority issue, on the other hand, is to establish close contact with all police departments in Columbia County including BU's campus police. This goal would be attained through holding educational seminars

(Continued on Page 4)

CORRECTION

All December '83, May '84 and August '84 grads who will not be in Bloomsburg next semester, sign up for your senior portrait-yearbook photograph now. Sign-up sheets are located on the bulletin board outside the OBITER office, top floor KUB. Photographs will be taken the week of November 7.

Editorial

The James M. McCormick Center for Human Services has taken away a lot of the space that was once used for parking.

So far, the new parking situation has been bearable at BU. Except for a few minor complaints at the beginning of the semester, students and faculty seem to have adjusted to the situation.

The Safety and Law Enforcement officials have designed a workable system for parking. They have also established rules that help the system run more smoothly. So why aren't these rules being followed?

Many students complain about lack of funds at school. Whether it's on-campus or off-campus complainers, the argument is always the same; I wish I had more money.

One way to save money is to follow the parking rules designed by the Safety and Law Enforcement officials, which will save you \$5.00 (the cost of a parking ticket on campus).

Yesterday I followed a small silver car into the lower level of the tri-level parking garage and proceeded to park my car after the silver one pulled into a space. After realizing the other car was parked the wrong way (the sticker wasn't visible), I told the driver that he would be fined \$5.00 for parking that way. He said, "Hey thanks", reparked his car, and we walked out of the tri-level and to class.

The point of my argument is simple.

Rules are made for a reason, and if you break parking rules, you pay through your wallet.

Everyone who registered a car at the beginning of the semester was given a leaflet with parking regulations and rules, a color-coded map, and fines. Yet people continue to park the wrong way.

The silver car wasn't the only car in the tri-level that was parked the wrong way. There were others. And I'm sure the owners found \$5.00 tickets waiting for them at the end of the day.

A quick review of parking rules can save students money. After a full day of classes, who wants to be greeted by a parking ticket?

-JANE WOYTOWICH

Revising Advising

Dear Editor,

Once again scheduling is upon us and once again we must face ignorant advisors. They complain about unprepared students; try asking your advisor about a course. Anybody can read the course description paragraph, but how many times have you found yourself in a course which has a dynamic course description only to discover it to be another boring course?

Have you ever had an advisor tell you that he will refuse to sign your course selection form unless you have Comp II, even after you told him you're going to take it in the

summer? Has one ever told you that the advice of other advisors is "baloney?" One constantly hears of students being short on credits-where is advisement when you need it?

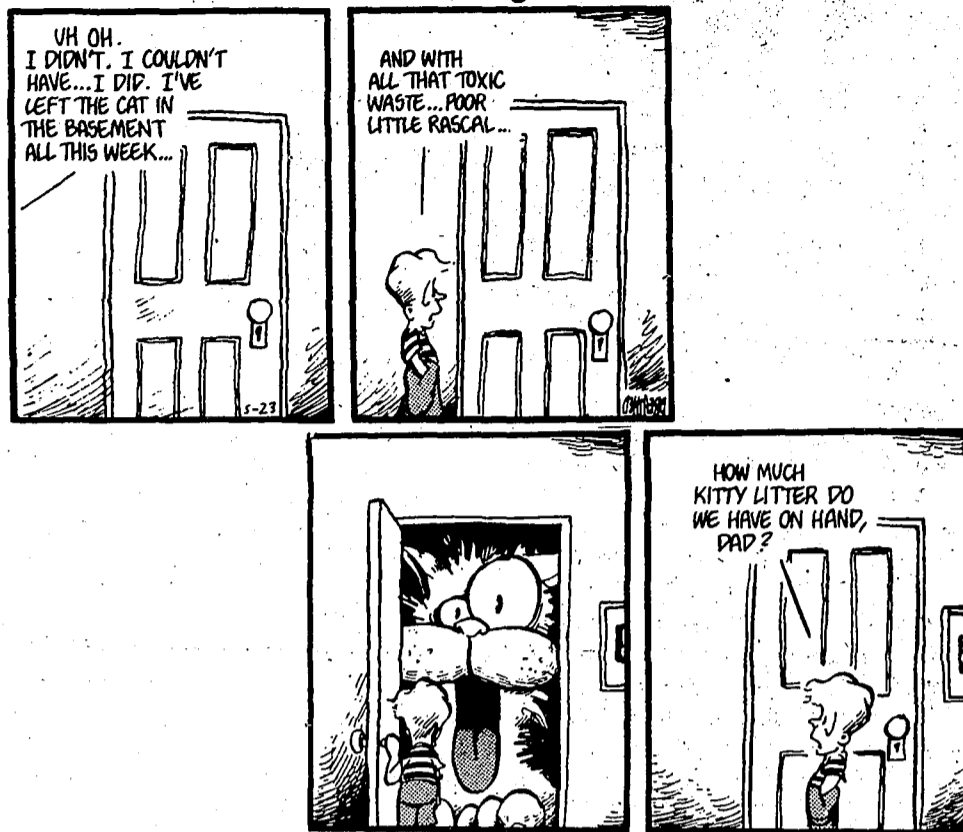
An alternative to the current advisement system would be to give that job to interested profs and upperclassman. This would enable fellow students who really want to help to pass on their first hand experience on courses and professors to people who need it. It would also release the responsibility from disinterested profs!

Junior or what?

The Voice Staff

Executive Editor Jane Woytowich
 News Editor Lori Leonard
 Feature Editor Betsy Charlton
 Sports Editor Sarah Hackforth
 Copy Editors Kevin Delsite, Gail Kaucher
 Photo Department Kent Hagedorn
 Reporters: Renee Fite, Julie Pyle, Joan Bradley, Kerry Boll, Christine VonFunk, Tina Dailey, Dan Clemens, Peter Sanchez, Walt Roberts, Bob Tier, Phil Husick, Beth Ault, Hillary Phelps, Karin Suttman, Joanne Hodge, Grace Coleman.

BLOOM COUNTY by Berke Breathed



Transfer Students Have Problem

Dear Editor,

I would like to bring to the attention of everyone at Bloomsburg University the treatment that transfer students receive. After speaking to a group of my friends who are also transfer students, I found that my situation was not unique.

On October 27th Thursday, I spent almost four hours trying to schedule my classes for next semester, and the whole morning was a waste of time. Not only did I end up missing class, but I left the Kehr Union Building wondering how can we call ourselves a university when the scheduling process isn't even up to grade school standards. I waited in line in the union for approximately 25 minutes to schedule at which time I was informed that they had no records of me being a transfer student and did not have any copy of my transcripts. I was told to report to the registrar's office which I did, and they knew nothing of the situation either. I then headed across campus to my advisor's office where I was told that they had not received my transcripts and I would have to go back to the registrar's office.

When I finally returned to the registrar's office, I was told I was getting upset over nothing and that I should just calm down a little. I was then instructed to go to admissions. The admission's office told me that they had sent my records down to the registrar's office weeks ago and that they should of already been received by my advisor.

Again for a second time I proceeded back to my advisor's of-

fice where I found that my transcripts had been sitting in my file the whole time and that no one had even bothered to look. I needed two signatures and got one right away. I was told that the other signature would have to be obtained from the Dean of my department at Waller Administration Building. I walked up there to find that I would end up waiting another 30 minutes before I stormed into his office, interrupting his meeting just to get a signature so that I could continue my so called "NEW EFFICIENT SCHEDULING PROCESS." Finally I returned back to the registrar's office and had the final paper work taken care of. But of course when I went to register my classes, two of them had already been closed.

This whole process took me almost 4 hours to accomplish. I am now being penalized for Bloomsburg's mistakes. I had to rearrange my schedule which would have been filled at 10:00 a.m. that morning, but because of all the running around it wasn't.

I would like to say that Bloomsburg University should get organized and show some intelligence and maturity when trying to schedule transfer students, just as they would when scheduling returning sophomores, juniors, and seniors.

Come on Bloomsburg! How can you expect us as students to grow up and take responsibility when you as administrators don't even have your act together!

An Aggravated Transfer Student

Presentations Planned

KEVIN DELSITE
Staff Writer

The Bloomsburg University Interservice Christian Fellowship plans to sponsor short multimedia shows beginning in the third week of November, according to campus fellowship president Tom Becker. The presentations are about 10 to 12 minutes in length, and consist of two slide projectors linked together with a soundtrack.

The fellowship plans on working with the RA's in each of the dormitories in scheduling the programs. According to Becker, the shows will begin at 7:00 pm in the downstairs lobby of the dorm scheduled for the program that evening.

"Our purpose in sponsoring these presentations is to provoke discussion and get the viewers to think about their relationship to God," says Julie Kautz, fellowship evangelism coordinator. "We don't intend to preach, only to make people think."

According to Becker, there are two possible programs that may be shown. One is entitled "If God Were A Circle" and the other is called "Waste Bin." Both are high-quality shows produced by 2100 Productions.

The presentations are to be very informal and will probably have little publicity. Becker said, "We plan on having some of the fellowship members go to all the rooms in the dorm in which the presentation will be held and make personal contact with the residents. They'll simply explain what's going on and invite them down."

As with all fellowship activities, the shows are open to anyone wishing to attend.

McCormick Center Ahead of Schedule

JULIE PYLE
Staff Writer

Dr. Raymond Babineau, Director of Institutional Planning, says that the construction of the James H. McCormick Center for Human Services is ahead of schedule. "Forty-six percent of the work is elapsed," he said. The three story building is 130' x 240' wide with an area of 81,000 square feet. After its completion in June of 1984 the Center will feature many expanded instructional services.

One, a new and expanded radio and television studios for the campus. The facility will include a main studio, two substudios for television, a master control room plus control rooms for each studio and television and motion picture editing rooms. These new facilities will serve the entire campus, including such instructional programs as mass communication and educational media. The radio set up will include two studios with control rooms, a recording library and teletype area.

Another element of the new building will be a specialized laboratory for computer instruction with an adjacent auto-tutorial laboratory equipped with microcomputers. Babineau said, "With the ever expanding use of microcomputers, not only in computer science and business programs, but in such fields as education, mathematics, the hard sciences, the social sciences and the arts, this will be an extremely important facility to the in-

structional program of the University."

Another facility that will feature microcomputers will be the new and much enlarged Curriculum Materials Center. Here microcomputers will be utilized to catalog and access materials, to review educational courseware and to develop new educational software. The Center will become a focal point for all education programs on campus and a magnet for inservice teachers seeking information on up-to-date curriculum materials.

The Learning Resources Center (LRC) will be moving over from the Andruss Library to provide expanded services to the campus. In addition to the usual media services, the LRC will feature a new media production lab. The lab will combine previous LRC facilities with the Educational Media Lab to provide both faculty and students with media production capability. Also, a new darkroom facility for photographic work will be in this area.

The new Center will also feature several all-purpose classrooms designed to facilitate multimedia presentations to groups of varying sizes. One of these rooms will also allow for theatre-in-the-round presentations and will be equipped with a theatrical lighting system and carpeted floor coverings. Specialized laboratories and classrooms for elementary education, mass communication, nursing, psychology, secondary

(Continued on Page 4)

Recycled heat Saves

GAIL KAUCHER
Staff Reporter

A new heat recovery system will be installed in the Scranton Commons saving Bloomsburg University thousands of dollars. According to Donald McCulloch, Director of the Physical Plant, a yearly savings of over \$13,000 could be realized by recycling the heat from the kitchen exhaust system.

The recovery system will involve placing coils in the exhaust air systems. With the aid of pumps, the heat will be transferred into coils on the air handler. Through this system, the intake air can be pre-heated and easily circulated throughout the building, McCulloch explained.

He also stated that the system could only be utilized while the Commons' exhaust system was in operation. According to sources in the Servomation office, their exhaust system operates a majority of the day; from approximately 6 a.m. until after the dinner dishes are completed.

The new system is expected to be installed during the summer of 1984. McCulloch said the construction will not interfere with the normal operating procedures in the

Commons.

Funding for this project has been made available to Bloomsburg University through a grant from the Department of Energy through the Governor's Council on Energy.

The approximate cost of the project is \$43,200; 50 percent is paid by the grant and 50 percent by the University.

McCulloch said the bids for construction will be opened after he receives the "specs and designs" from the engineers.

Answers to
Wednesday's
Crossword Puzzle

G	A	M	E	C	L	I	C	H	E		
H	E	L	I	X	R	A	D	I	A	N	T
O	N	T	A	P	A	T	L	A	R	G	E
P	I	E	L	I	T	H	E	P	U	N	
S	E	R	V	I	C	E	S	B	O	L	D
A	C	E	S	G	O	O	F	S			
R	A	P	I	D	L	A	W	N	S		
R	E	M	I	T	C	O	N	E			
A	C	I	D	F	L	A	G	R	A	N	T
I	R	A	P	E	O	N	S	T	I	E	
N	U	B	B	I	N	S	T	O	T	E	S
S	I	L	E	N	C	E	E	V	I	C	T
T	E	E	T	E	R	R	A	C	E		

AARON AND JOEL MARCUS



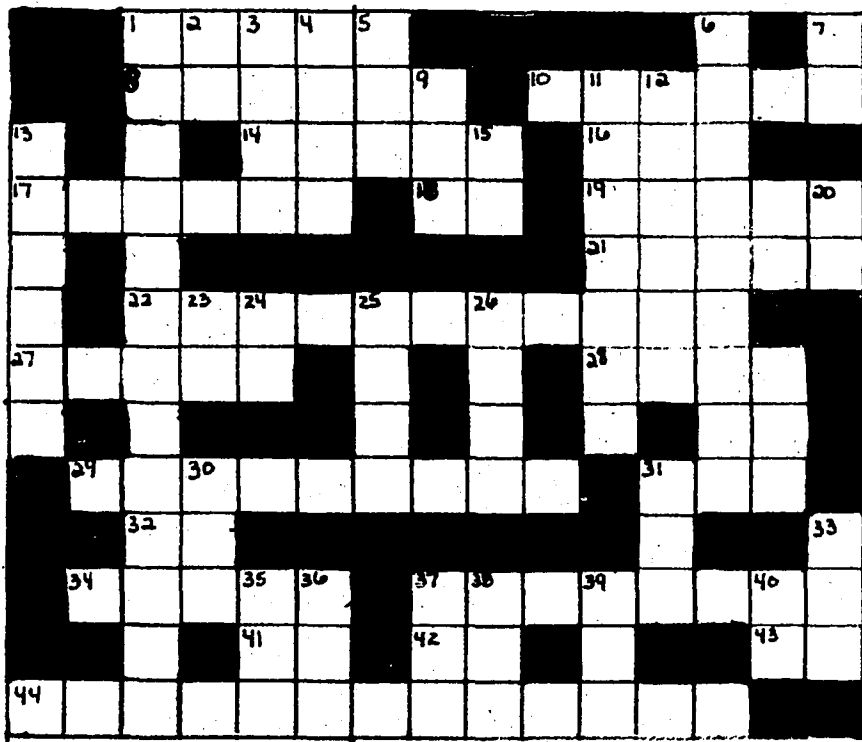
Musicians
Singers
Songwriters
and
Brothers



8 p.m. November 6
President's Lounge

Free Refreshments

CROSSWORD PUZZLE



Across

1. BU student handbook
8. BU computer system
10. largest dorm on campus
14. what pros do
16. air, combining form
17. title of BU yearbook
18. Quincy's title, abbrev.
19. quibble
21. Indians of Oklahoma
22. acting president of BU
27. rating
28. rainbow
29. baseball field by Nelson
31. precious stone
32. mother, slang
34. computer language
37. BU is located in this country
41. symbol for beryllium
42. upon
43. electrical current
44. original name of Carver Hall

3. lo-cal beer
4. above
5. telephone automatic answering, abbrev.
6. diffused; spread throughout
7. article, Spanish
9. religious org. at BU
11. using few words
12. asthmatic breather
13. intramural athletic team
15. pronoun
20. article, French
23. commercial
24. musical syllable
25. famous bear
26. a horse
30. a diet cola
31. Centennial is one
33. college students' best friend
35. Japanese sash
36. allow
37. Army bed
38. single
39. nation, abbrev.
40. a part of psyche

Down

1. timid; cowardly
2. contained

Campus Shorts

Coffeehouse

Come listen to the smooth and easy music of Aaron and Joel Marcus in the Presidents' Lounge on Sunday, November 6 at 8 p.m. Admission is free. Sponsored by KUB Program Board.

The Hunt is On

WALTER ROBERTS
Staff Writer

The Kehr Union Program Board will be sponsoring a scavenger hunt tentatively for November 28th thru December 9th.

The scavenger hunt will include all types of games and riddles that will make participants use their heads.

The hunt will include a multitude

of subjects and places. The even itself will prove to be fun, enjoyable and promotes learning.

So, if you find yourself having the pre-finals blues, plan on attending the program board's scavenger hunt.

Further details on the hunt will be released in the near future.

Cancer a Killer

Lung cancer is the number one cause of cancer death among men. In the last thirty years, there has been a 400 percent increase in women's lung cancer deaths. By the late 1980's, lung cancer is expected to surpass breast cancer as the number one cancer killer among women.

McCormick Center

(Continued from Page 3)

education, and sociology will be in the building.

"The Center is the kind of facility that will provide expanded opportunities for all instructional programs," said Babineau. "The building will enhance the University's ability to continue its tradition of excellence in delivering educational programs to its clients."

Departments and Offices planned for location in the Center for Human Services are: Communication Studies, Curriculum and Foundations, Mathematics and Computer Science, Nursing, Psychology, Sociology, Curriculum Materials Center, Campus Health Center, Instructional Services,

Learning Resources Center, School of Education, and College of Professional Studies.

The new building will cost less than was anticipated. In September, 1982, the Burcavage Evans Architects estimated the total cost of approximately \$5.9 million. The Governor's Budget Office allocated \$5.3 million to the University which finally came up with a bid cost of \$4.7 million.

"We are presently seeking an equipment allocation, requesting \$1.391 million," said Babineau. These monies could be used for equipment such as security for learning resource material, cabinetry, a central vacuum system and a FM radio transmitter.

DA Race

(Continued from Page 1)

once a month for the police. Harding believes that these educational seminars could be used to focus on key areas in law enforcement such as driving under the influence offenses, child abuse reporting, drugs, etc.

Harding wants to eliminate any possible conflict of interest through disassociating his relationship with any defendants in a criminal case. He also thinks that the district attorney's office needs more complete record keeping. He would accomplish this goal by improving the filing system.

He favors prosecuting domestic violence cases, emphasizing that the abused spouse must testify in order to have a case. Prosecutions could be improved by stressing to police that his office will support domestic violence charges and through educational seminars which teach evidence gathering in such cases.

Unlike Kreisher, Harding believes that the second assistant district attorney is a valuable asset. He thinks that a potential situation could and in fact has come up in which the second assistant district attorney was absolutely necessary. Accordingly, the savings to the county would be minimal, i.e., less than \$10,000 a year. The district attorney's office has a total budget of only \$54,000 a year.

Because both candidates were judged to be equally well qualified, CAP decided not to endorse either Kreisher or Harding.

**PUT A PROF
BACK**

**Re-Elect
STEPHEN D. BECK**
Bloomsburg Town Council

He wants to keep on representing
YOU

*******Shape Up on Shopping*******

BETSY CHARLTON
Feature Editor

All of you off-campus students who are rejoicing because you don't have to buy a meal ticket might find yourself asking this question: Where are the cheapest places to buy food?

Knowing where to get your best buys will save you not only money but time. We all know how valuable our time is as college students!

Three different food markets, Weis Markets, Giant and I.G.A., were compared on the basic food items that students most frequently buy.

Included in these categories were bread, dairy products, canned goods, meats, frozen foods and produce.

According to the chart, Giant brand bread is cheaper than the house brands at other two. Generally this pattern held in other areas.

As far as produce went, I.G.A. offers the most economical buy.

Off-campus students asked where they usually shop and why, said they shopped at Giant because prices there are the cheapest.

Students with limited transportation and time were found to shop at Weis.

Each store has its advantages depending on your needs, with the information provided in the chart,

you can decide which store is best for you.

CATEGORIES	STORE		
	WEISS (brand)	GIANT (brand)	I.G.A. (brand)
** BREADS			
loaves	59¢ 1 lb. 2oz.	54¢ 1lb. 4oz.	46¢ 1 lb. 4oz.
hotdog rolls	12 - 69¢	12 - 73¢	8 - 50¢
ham rolls	8 - 63¢	8 - 59¢	8 - 50¢
Milk	\$2.04 gal.	\$1.88 gal.	\$2.04 gal.
Large eggs	97¢ doz.	96¢ doz.	95¢ doz.
MEATS			
ground beef	\$1.49 pd.	\$1.11 pd.	\$1.49 pd.
chicken legs	\$1.09 pd.	\$.71 pd.	\$.79 pd.
chicken breast	\$1.79 pd.	\$1.69 pd.	\$1.69 pd.
ham	\$1.69 pd.	\$1.35 pd.	\$1.39 pd.
FROZEN FOODS			
pizza	\$2.39 /9slices	\$1.49 /9slices	\$1.89 /9slices
cut beans	\$1.05 / 24 oz.	\$.65 / 16 oz.	\$1.19 / 20 oz.
corn	\$ 1.27 / 24 oz.	\$1.76 / 32 oz.	\$1.19 / 20 oz.
CANNED GOODS			
beans	\$.41 / 15½ oz.	\$.37 / 15½ oz.	\$.37 / 16 oz.
peas	\$.50 / 16 oz.	\$.43 / 16 oz.	\$.51 / 16 oz.
PRODUCE			
iceberg lettuce	87¢ /head	79¢ / head	69¢ / head
celery	89¢	77¢	89¢
cucumbers	3 for \$1.00	4 for \$1.00	5 for \$1.00

**Data collected on Nov. 1, 1983



OPEN SKATING
 WED., FRI., SAT., SUN. 7 p.m.
 LATE SKATE, EVERY SAT. 10 p.m.
 MATINEE, SAT. AND SUN. 1:30 p.m.
 MORNING SKATE, WED. 10 a.m.
 ADULT SKATE, THURS. 7 p.m.

BLOOM/DANVILLE HWY.
 For Private Party Reservations
CALL 275-1473


**PREGNANT?
NEED HELP?**

Pregnancy Testing
 Confidential Counseling
 Abortion
 Birth Control
 Gynecological Services


Allentown Women's Center
215-264-5657

The Bloomsburg Players Present
Student Productions

including:



Dutchman
Dir. Gary Miller



Coal Diamond
Dir. Lori Hower

My Days as a Youngling
Dir. Marci Woodruff

Nov. 3-5 **Carver Aud.** **8:00 p.m.**
 Student FREE with I.D. - eye -

“WBSC

Changed My Life !!

640 AM




University Pizza
 (FORMERLY TWO BOYS FROM ITALY)
 211 West Main Street

FREE DELIVERY
 within a half hour

FRI.	Large Pizza for price of small.....	\$3.95
SAT.	Large Stromboli	\$5.00
	16 Cut Sicilian.....	\$5.00

784-1680 **“YOUR RING, WE BRING”**

CAPITOL TWIN THEATRE
Special!
MIDNIGHT SHOW
 Friday & Saturday

“Tara”
 Starring: Seka

Main Street
 Bloomsburg, Pa.



Searching For A Landlord



Don't get caught in this situation. Look for off-campus housing early.

The Voice OFFICE HOURS

Monday-Wednesday-Friday	1 - 5:30 p.m.
Tuesday - Thursday	1 - 10:00 p.m.
Sunday	5:00 - 10:00 p.m.

10th ANNIVERSARY

SALE

NOV. 7-12, 1983

All Fiction/Non-Fiction
books in stock (non-text)

10%

All imprinted clothing

All emblematic gifts

All stationery

Bargain Tables

Campus Beautification Book Sale

in Lobby

REGISTER FOR PRIZES - Drawing
Friday, Nov. 11 at 4:00 p.m.

— THE UNIVERSITY STORE —

HILARY PHELPS
Staff Writer

This is the time of year when many students are considering their housing for next fall. Either students are ready to move out of the dorms, or they have earned their 64 credits and have no other alternatives than to move off-campus.

To most students, this is the first time in their lives they ever had to "look" for a place to live and they don't know where to begin. No one

"Chances are that moving off-campus will cost more than living on."

wants to get stuck with the leftovers, so keep these things in mind while you and your friends are looking.

Begin by obtaining a list of available landlords who rent to students. This list can be acquired in the Residence Life Office of Ben Franklin, room 16.

According to Richard Haupt,

Students should consider the basic fee...as well as hidden costs...electric bills, garbage removal fees, telephone bills and installment fees, water and sewage fees, and food costs...

Associate Director of Resident Life, "We don't approve off-campus housing, we refer you to its being there, and it is the Bloomsburg Code Enforcement Inspector who is responsible for inspecting the property of the various landlords on the list."

It is also important to decide on how much you can afford to spend. Haupt says, "Chances are that moving off-campus will cost more than living on."

Students should consider the basic fee of rent per semester as well as hidden costs. These hidden costs may include electric bills, garbage removal fees, telephone bills and telephone installment fees, water and sewage fees as well as the cost of food.

In addition to these fees, Haupt noted that most landlords also ask for a security deposit of approximately \$100 paid in advance to secure any damages that might arise. Also note if the places you look at are furnished or not. Furnishing an apartment can be an added expense to worry about.

Next consider the kind of living

situation you'd prefer. Would you rather be within walking distance of campus or do you have access to a car so that it doesn't really matter how far away you live. This might not seem important to you now, but when it comes to carrying your laundry up to campus or walking to and from classes in the snow and rain, this is a necessary factor to consider.

Also have a realistic number of how many people you'd like to live with. Most of the available housing only accommodate up to six people. Therefore, says's Haupt, "It is important to realize that groups consisting of more than six people may have a more difficult time finding housing."

It is very important to get on a waiting list if you and your friends are interested in a particular place.

Be cautious of a "verbal agreement" with a landlord. When it comes to finalizing the deal, get a written lease, READ it and sign it only when you have agreed to everything on the lease. If you are unsure of the lease, bring it to a campus lawyer and make sure you understand it thoroughly. Finally, keep a copy of the lease with your landlord's signature on it for your records.

All off-campus students should be aware of the Community Assistance Program which acts as a referral committee for students with housing problems.

According to Haupt, "The Community Assistance Program is there for the student's benefit." They recommend students to other people and help them find solutions to their off-campus housing problems. The program which consists of Rose Mary Boyd, Rick Hutchison, Helenann Kuzmack and Meg Walker, makes contacts with

"The Community Assistance Program is there for the students' benefit."

students, identifies where they are living and discusses any problems off-campus students may be having.

The Community Assistance Program will be moving to a new location behind Luzerne Hall within the next three to four weeks. Haupt says, "It is a referral process we're working with and hopefully we'll be more accessible to the students now."

Start looking for off-campus housing now and hopefully you will end up with a wider selection of available housing as well as increase your chances of avoiding off-campus housing problems.

Record Review**The Jury Is Out**

BOB TIER
Staff Writer

Is Billy Joel an innocent man? He thinks so, or at least his new album implies he feels that he is. Then again, what could one of the biggest pop artists of the 80's be guilty of? How about forgery, or lack of originality, or maybe, just being a man without a style?

The new Joel album, entitled "Innocent Man," has released two singles since August eighth. The style of the new album is not so new. It's taken directly from the 1950's.

The first release, "Tell Her About It," sounds like an old Elton John tune. Although Elton John isn't a 50's performer, his music also expressed that same rock-and-roll flare.

It's more the vocals that sound like Elton John, than the instrumentation. The music has an up-beat tempo and his combination of piano and other instruments provides a smooth texture. However, the music isn't a distinct '50's sound.

"Uptown Girl," the second single, is another up-tempo song. With the

Every album Joel produced seems to have a varying style present in them.

background vocals, and the musical style the song definitely has a '50's flavor.

All the other songs on the album, with the exception of "Easy Money," the song Joel wrote for the Rodney Dangerfield movie, have the sound of the Be-Bop decade.

Every album Joel produced seems to have a varying style present in them. Although his first few sound more alike, his later albums range in a variety of sounds.

"Innocent Man" is a '50's be-bop rock and roll. "Nylon Curtain," released in September, 1982, sounded like a Beatles revival and came from the 60's. In 1980 he released a new wave album, "Glass Houses," when new wave was big.

When disco hit the charts, Joel tried his hand at it with "52nd Street." The song "Big Shot" was probably the harshest disco tune ever released.

Before that was "The Stranger" album, which had the mixed mellow mood of the seventies.

This selection certainly shows versatility on the part of the performer, but it doesn't give the listener something to hold on to. Some opponents of Billy Joel say he just rides the trend to cash in on the popularity.

The other side of the coin is that each new album is fresh. Also, it is nice to hear what the performer can do with a particular style. Either way, it's a listener's choice, but regardless of the genre of the new album, it is a strong album.

Joel was, and still is, a strong lyricist. No matter how he presents the music, the lyrics are always his highlight. The weakest songs lyrically are "Uptown Girl" and "Easy Money."

Another up-beat song on the album not yet mentioned is a tune called "Christie Lee." Talk about PUN-ishment, this song has it. Of course, Joel is no stranger to using words with a double meaning. This humorous tune is filled with sex and violins.

"Leave a Tender Moment Alone" and the title cut are the Billy Joel ballads so familiar to fans.

Joel also slows down the pace with other cuts on the album. "This Night" whose musical chorus was written by Beethoven has the '50's moonlight dances mocked perfectly.

"Careless Talk" and "The Longest Time" are filled with the bass background vocals prominent in the '50's.

Another impressive feature is Joel's own vocals. Each song has a different quality and tonality. At points, it's hard to tell you are listening to the same man singing.

If there is still a question of doubt of why Joel went back to the roots of rock and roll, he explains it in his last song on the second side. The song is called "Keeping the Faith," which he does do in his new album.

Joel is an innocent man. He's just telling people that today's music is a result of the '50's, not that the past should get in the way, but that the past shouldn't be forgotten; it should be drawn upon to bring back memories.

Of course, this isn't the first time Joel justified his musical style. In

From Discs to Dollars

JOANNE HODGE
Staff Writer

Mark Brichta, a marketing major at BU, took up the hobby of disc jockeying last semester and now makes a profit from his business.

Brichta's interest in music began when he was a high school senior. "I used to go to clubs towards the end of my senior year and talk to the disc jockeys. They were really interesting," he said.

The senior from Allentown is a member of Zeta Psi fraternity at B.U. Brichta, along with Scott Ridge, provides music for date parties, picnics, and various other functions. "After date parties in October, we usually have 1 or 2 gigs a week," Brichta said.

Brichta said the pair play a lot of funk and top 40 music. Sometimes, if their clients have requests, Brichta will ask them to list the names of the songs on a sheet of paper so that he can make arrangements to get these records.

After giving his first solo performance last spring, Brichta

began to get a really good feeling about his work, although he was just beginning to get his system together.

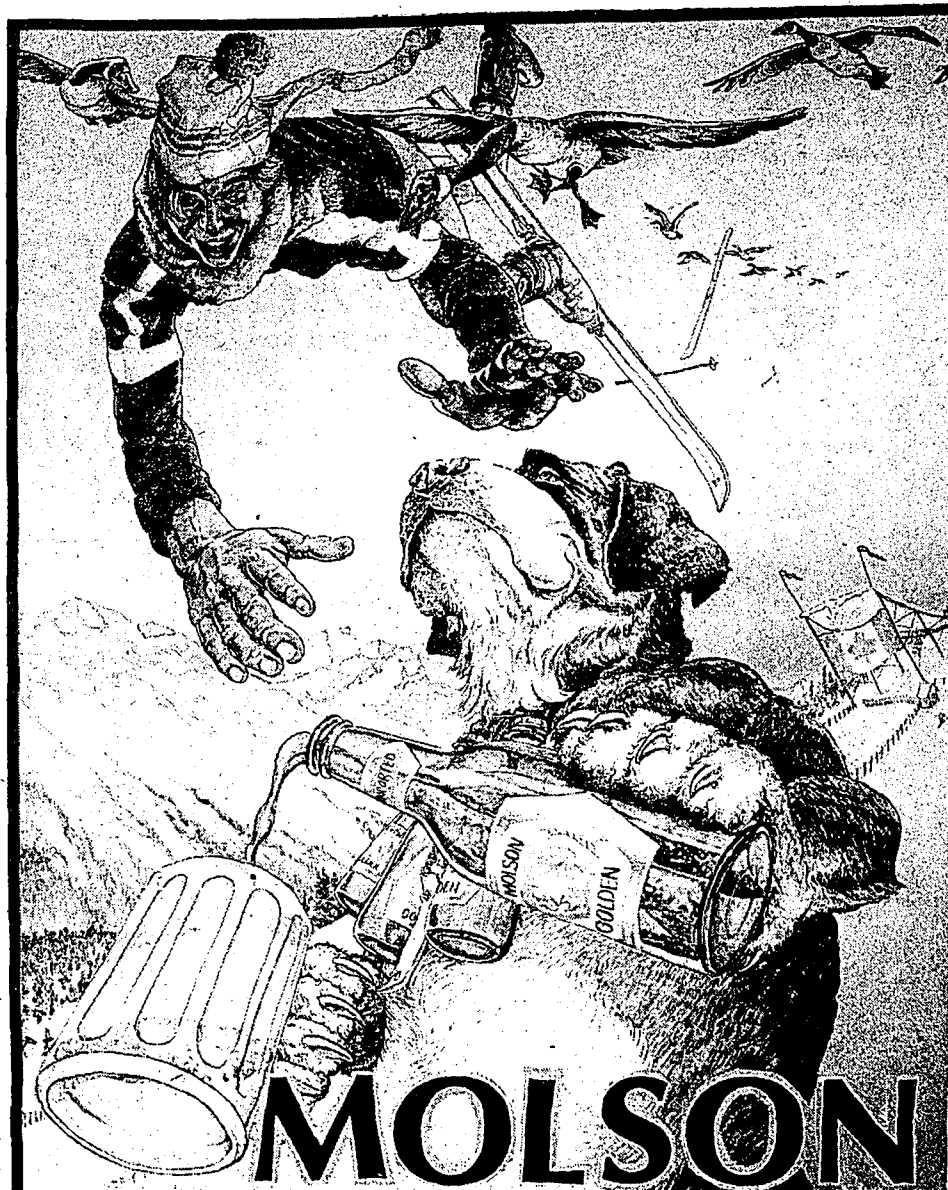
"Being giving a deejay at Bloomsburg takes away a lot of social time, but it's a good time. Sometimes you can just get tired of parties," said Brichta.

Later last spring, he also deejayed for Sigma Sigma Sigma's picnic, his won fraternity's date party, and Delta Epsilon Beta's spring banquet. Recently he volunteered to perform in the Junior Class Air Band contest.

Brichta began to get involved with deejaying at Bloomsburg when a friend of his decided to transfer. This friend asked Brichta if he was interested in buying his sound system. He was.

He started purchasing and collecting albums and 45's to help add flavor to his performance.

"I feel that as a deejay, Brichta commented, "I have some of the best music, do the best job I can, and put on a good show that people will enjoy."



AVAILABLE AT YOUR TAVERN OR DISTRIBUTOR
Master Distributor - Sacco Beer Dist. Inc., Berwick, Pa.

Where Have All The Concerts Gone?

ROBERT SULLIVAN
Staff Writer

The members of the Bloomsburg Student Concert Committee haven't forgotten the musical interest of the students. As a matter of fact The Hooters are being lined up for a show in late November. That is if there are no more problems.

There are many obstacles which can get in the way of setting up a show, the biggest being money. With a budget of only \$12,500 from C.G.A. this year, getting a good band that everybody knows is a dream. There are a couple of reasons why this is so. One is that the cost of a big band is usually around \$20,000.

Then there are the costs of getting tickets and posters printed. There are a small expense compared to something like sound and light crews, which can run another couple thousand dollars, and a

stage if the concert is in Nelson Field House. The use of a middle agent is a cost the committee would like to do without but lose a little credibility when doing so.

The next event which holds up shows is a performance site. There is Nelson Field House where the bigger of the concerts are held, and there is Haas Auditorium. At Nelson there are sports teams to get around and at Haas there are plays, choir and bands to contend with.

Finally there is the choosing of the right band. The committee gets a list of available groups, which recently hasn't been to long, and has to decide which would be the best for you. This isn't an easy job because they don't know what you want. Do you want hard rock or pop? Old groups or new? It's a decision which either makes or breaks their reputation.

The Jury is out

(Continued from Page 7)

"Glass Houses" he did it with "It's Still Rock and Roll to Me."

The new album is worthy of praise. If you are a '50's fan, or like good lyrics, the album is for you. If you liked some of Joel's past works, but are still hesitant, don't be.

Remember one thing, "Hot funk, cool punk, even if it's old junk, next phase, new wave, dance craze, anyways, It's still Billy Joel to me."

A Hunting We Will Go

PHILIP HUSICK
Staff Writer

The hunters in Columbia County are not having as good a year with small game as they have in previous years.

S.A. Smithonic, South Columbia County's Game Protector, said, "This years kill has been down 10-20 percent from normal."

Smithonic said, "One reason is because of the windy day we had last Saturday, and also because the corn fields have not been harvested yet."

"Most hunters won't go into an unharvested corn field, and the birds were lying low in the fields because of the wind," Smithonic remarked, "but the fields will be harvested soon and the hunters will do better."

Hunters have a limit to how many small game animals they may kill. Their limit varies according to species from one per season for turkeys, to six daily for squirrels and foxes.

Smithonic said, "The fine for killing more than your limit depends on the type of species. Rabbits and squirrels are \$10, birds \$25, turkeys \$50, and deer are \$200 for every one over the limit. The hunters will probably also lose their license."

Smithonic remarked, "The fines for shooting an animal out of season are the same as over the limit, but that doesn't happen often."

Hunters that kill an animal by mistake and reports it to a Game Protector will receive a reduced penalty and they will not lose their hunting license privileges.

Legal hunting hours for small and big game are from one-half hour before sunrise until sunset.

Waterfowl, raccoon, dove, spring gobbler and woodchuck hunting all have specific times of the day they can be hunted.

Smithonic said, "The fine for hunting before or after hours is \$15. It is mainly a safety precaution, because it is hard to identify your target before and after these hours."

All small game is open now until Nov. 26, except raccoon, turkey, spring gobbler, woodchuck, fox, skunk, opossum, weasel, and coyotes.

Raccoon season is open for Pennsylvania residents Nov. 7-Jan. 31, and for nonresidents Dec. 7-Jan. 31.

Turkey season is open in Columbia County until Nov. 12.

Crow season is open in Columbia County until Nov. 20 and then it opens again Dec. 30.

Deer archery season, is Dec. 14-17. This season is for antlered or antlerless deer as long as hunters use a bow.

Antlered season is Nov. 28-Dec. 10. This season is for deer with two or more points to an antler or a spike three or more inches long.

Antlerless deer are open for two days, Dec. 12-13. This is for any deer without antlers, or both antlers being less than three inches in length.

Bear season is Nov. 21-22 and there is an individual limit of one, or a party limit of three for hunting parties of three or more.

During bear, deer, late archery and muzzle loader seasons it is unlawful to hunt any other wildlife, except migratory game birds.

Hunting licenses are available from county treasurers local issuing agents (sporting good stores), and local Game Commission Division Offices.

Licenses cost \$5.50 for resident hunters 12-16 years old and for senior citizens. Resident hunters ages 17-64 pay \$8.50, and nonresident hunters pay \$60.50. To buy a specific animal license or fire arm license, hunters pay individual fees.

Smithonic said, "For hunting without a license residents of Pennsylvania are fined \$25, and nonresidents are fined \$100."

**POINT
DRIVE-IN
FRI.-SAT.-SUN.**

Tiffany Lust
XXX
and
That's Porn
XXX



WEEKEND SPECIALS

From

DOMINO'S PIZZA



\$2 off any 3-item 16-inch Pizza

one coupon per pizza exp. 11/6/83

limited delivery area
drivers carry less than \$10

599
OLD BERWICK RD.
784-6211



4 FREE COKES

With any 16-inch Pizza

one coupon per pizza exp. 11/6/83

limited delivery area
drivers carry less than \$10

599
OLD BERWICK RD.
784-6211



2 FREE COKES

With Any Pizza

one coupon per Pizza exp. 11/6/83

limited delivery area
drivers carry less than \$10

599
OLD BERWICK RD.
784-6211

Playoff Berth at Stake

Huskies Set for Showdown

JODY CASILLI
Staff Writer

The Pennsylvania Conference Championship is on the line this Saturday, November 5th, as defending champs East Stroudsburg visit Bloomsburg at Redman Stadium for a 1:00 p.m. showdown.

The Huskies are in contention for the state game to be held in Her-

shey Stadium on November 19th. The winners of Saturday's game will face the Western Division titlist Clarion State, who has already clinched a playoff spot.

East Stroudsburg enters into the game with an overall record of 6-2 and is 4-1 in the P.C. East while Bloomsburg is 4-4 overall. Bloomsburg is also 4-1 in division play. Both teams lost this past Saturday as the Huskies dropped a 14-7 decision at Kutztown and West Chester kicked a field goal with nine seconds left to defeat the Warriors.

The loss to Kutztown was Bloomsburg's first division setback. It snapped a four game winning streak with victories over Mansfield (10-6), West Chester (25-24), Millersville (22-14), and Cheyney (17-13).

The Warriors are averaging 30.0 points per game while allowing just 12. They have outscored their opponents 240-97.

Bloomsburg will have their hands full with a talented pair of quarterbacks — junior Andy Baranek who has connected on 59 for 124 passes for 925 yards and seven

(Continued on Page 10)



Kent Hagedorn

The Huskies hope to celebrate a few scores in this weekend's showdown against East Stroudsburg.

Men's Intramurals

Playoffs Begin with Upset

TINA DAILY
Staff Writer

The Men's Intramural Program is well under way, with a surprising upset occurring in the first round of the softball playoffs.

The top seeded Kamikaze Kids were outscored by Bodaga Lodge after an 11 inning battle which ended with Bodaga Lodge on top, 14-10.

The Kids were losing until the bottom of the seventh inning, when they scored seven runs and forced the game into extra innings.

However, Bodaga Lodge pitcher Jack Steele held the Kids scoreless over the final four innings where the score remained 10-10. In the top of the eleventh, the Lodge scored four runs and wrapped the game up.

In other softball action, POD beat SIO Red, 3-0. Dave Torrisi pitched the shutout for POD.

The defending champion Misfits beat Delta Pi, 14-4, and therefore kept their undefeated streak alive. The Fits didn't allow any runs after the first inning and took advantage of the walks given up by the Delta

Pi pitching.

The game between Fellowship of Christian Athletes and Dirty Dozen was delayed on account of darkness.

In other rounds of Intramural action, the champions of the Horseshoe competition was determined, with FCA beating Delta Pi for the title. Third place was a tie between POD and Lambda Chi.

In the third and final meet of cross-country, the Fleetfoots took first. TKE ended up placing second, and FCA ran third.

The Tennis competition is now in semi-final action, with the final four teams being Lambda Chi, Gooneybirds, Losing Streak, and TKE.

Coming up will be some heavy competition in racquetball and volleyball. The Misfits are the ones to beat in volleyball. They are the two-time defending champions, however, no team has ever won it three times in a row.

The next few weeks in the Men's Intramurals should be proven exciting and very competitive.

VOTE WITH ϵ^s

ϵ EDUCATED

•1968 Honors graduate - Bloomsburg State College

ϵ EXPERIENCED

•1970 - Masters degree - Temple University

ϵ EFFECTIVE

•1974 Honors graduate - Villanova Law School

ϵ SELECT

•Columbia County Assistant District Attorney since January, 1977

•Private law practice in Bloomsburg since 1975

•A proven jury trial record as prosecutor

ϵ ELWOOD HARDING

your **NEW**

DISTRICT ATTORNEY



Paid for by the Committee to Elect ELWOOD HARDING DISTRICT ATTORNEY, FREDERICK J. "TED" PETERSON CHAIRMAN

Football

(Continued from Page 9)

touchdowns. He has been intercepted by opponents 11 times. Junior Charlie Diskin will also give the Huskies a run for their money. He is 65 for 122 for 979 yards and eight touchdowns. Diskin has thrown six interceptions.

Their favorite receiver is wide out Scott Benoit who has 51 receptions for 615 yards and five touchdowns.

Senior tailback Dell Walker is Stroudsburg's leading rusher with 117 carries for 521 yards and eight touchdowns. The senior had 154 yards and two touchdowns last Saturday against West Chester.

A linebacker leads East Stroudsburg's defensive team. Senior Mike Reichenbach is averaging about 13 tackles per game and is getting a lot of help from Bill Camp, a junior who leads the team in quarterback sacks.

RESEARCH PAPERS

14,789 to choose from — all subjects!
Rush \$2 for the current, 306-page catalog. Custom research & thesis assistance also available.
Research, 11322 Idaho Ave., #206WA,
Los Angeles, CA 90025 (213) 477-8226.

Men's Cross Country

The men's cross country team captured 23rd place out of 32 teams in the NCAA Regionals held last Saturday at Holy Cross University.

The University of Lowell won the event with 61 points, closely followed by PSAC Champions Indiana University of PA with 62. Other PSAC schools competing were Millersville, 4th place; Slippery Rock, 6th; Mansfield, 9th; West Chester, 10th; Shippensburg, 15th; East Stroudsburg, 17th; Kutztown, 18th; and Lock Haven, 26th. California and Clarion ran with incomplete teams.

Slippery Rock's Robert Petrini won the event in a time of 31:44 and got some revenge by edging out Brian Ferrari of California, who defeated him in the PSAC's held two weeks ago.

Dean Feinhauer captured 62nd place for the Huskies in a time of 33:50. Senior John Homan placed 101st in 34:43. Brett Sarge (142nd, 35:36), Darryl Atherholt (163rd, 36:04), and Mike Greene (201st, 37:21) were the only other BU runners to compete.

Women's Basketball Youth Will be the Key to Success

SARAH HACKFORTH
Sports Editor

With the end of the fall sports lurking around the corner comes the emergence of the winter sports. Not only has wrestling and swimming been practicing, but also women's basketball.

The team has a number of new faces and a very competitive schedule ahead.

Losing three of last seasons five

losing three of last seasons five starters has necessitated coach Susan Hibbs to look to her younger players.

starters has necessitated coach Susan Hibbs to look to her younger players and freshmen for the offensive and defensive strengths that will be needed to successfully overcome a difficult schedule.

Seven new faces are on this years roster, they include: guards Pam Bressi, and Tina Honis; guards-forwards - Ellen Fawley and Linda King; forwards - Patti Del Grosso and Sue Kocker. Lisa Essig another forward is a transfer and may be able to play in the spring.

Six returning players, including the only returning senior Sue Knapp, will be looked to for their leadership. Jean Millen and Kris

Zimmerman are the only two starters returning from last year. They will be the nucleus around which the team will be built. Jeanne Radcliffe, last year's co-captain, is injured at the moment, but hopes to be able to contribute. Rounding out the returning players are junior Sarah Hackforth and Sabrina McChesney.

The team also has a new coaching look. Two assistant coaches have been added this year. Jon Bardsley, for BU All-American guard, is assisting coach Hibbs. He is in the Sports Masters Program and is enrolled at Temple. Dave Piperato is a Business Education Major from Easton, Pa. He is assisting the forwards and centers.

The team looks quick and more together according to coach Hibbs. "They have a good co-operative spirit which is a pre-requisite for a good or outstanding team," said Hibbs. Hibbs' strategy is working on the basics and fundamentals.

"They have a good co-operative spirit which is a prerequisite for a good or outstanding team," said Hibbs.

She is looking at aggressive defense and shooting as the strong points. Hibbs stressed the togetherness of the team and is looking at that to be her greatest asset. She has initiated a new type of captaincy this year by having revolving captains. New captains will be chosen for every game. "This way the team will not be split or divided," said Hibbs.

The Lady Huskies face a very tough schedule this year with many of their games prior to the men's. All conference games will be played Wednesdays and Saturdays with non-conference being played in between. They will play teams in the eastern part of the conference both home and away and a couple of teams in the west only once. Millersville, Shippensburg and East Stroudsburg look to be the toughest in the conference this year. This conference as with the men's is probably one of the strongest in the nation.

The team starts their season off November 19th with their annual alumni scrimmage. Their first game is November 28th against Bucknell. November 30th is their first conference game. They play East Stroudsburg away.



Patrick J. Murphy

Kris Zimmerman will be looking to lead the Huskies from a back court position.

The Bucknell Concert Committee
Presents

the
B-52's
& Special Guest

FRIDAY, NOV. 4th

8:00 p.m.

at

Davis Gym - Bucknell University

Tickets are \$7 with Bucknell U. I.D.

\$9 General Admission

Ticket Outlets

Bucknell University Center
Bloomsburg University KUB
Susquehanna University

Lycoming College
Penn State HUB
M&M Stereo
Rt. 15, Lewisburg

Rochester Making Great Strides On the Road to Recovery

DAN CLEMENS
Staff Writer

Vernon Rochester, the sophomore running back for the Huskies who was injured earlier this season, is making great strides on the road to recovery.

Rochester, of Lawnside, N.J., suffered nerve damage in his neck in a game against Mansfield University. The injury resulted when he was hit by a defender on his initial carry in the game.

The accident restricted the use of his arms and legs. For a few weeks it was questionable whether or not he would ever walk again. However, a recent phone conversation with the person who is commonly referred to as "Ra-cha" quickly cleared up any doubt.

According to Rochester, he has gained the use of his hands and arms, which he uses daily to lift weights. He can curl 40 pounds with his right arm and 25 pounds with his left arm. He also has sen-

He has gained the use of his hands and arms through weight lifting and has experienced feelings of sensation in his legs.

sation in his legs and toes.

"The doctors have me working my upper body for strength and they also have me on mats to gain coordination," said Rochester.

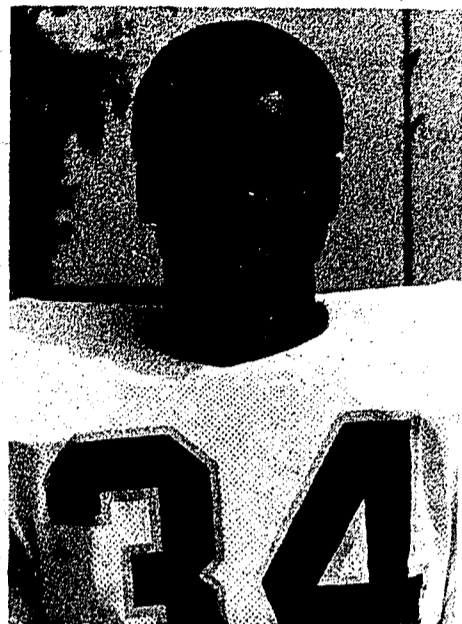
His tone of voice is that of a Super Bowl champ and not that of a frustrated athlete. Darryl Richards, who plays linebacker for the Huskies and was also Rochester's roommate before the injury, added some insight about his friend's frame of mind. "Vernon is a very confident, strong minded person. Even though this is a serious time in his life, he will recover. He will

"Vernon is a very confident, strong minded person. Even though this is a serious time in his life, he will recover. He will not be defeated by this," said room mate Daryl Richards.

not be defeated by this," said Richards.

Richards compared his outlook to that of his ex-roommate. "I was in a low state of mind when it first happened. We had good times together," he said. "I miss having him around," Richards added.

Apparently the Rochester family is experiencing the same feelings



VERNON ROCHESTER

as Richards. According to Rochester, "They are very supportive but I have to keep them in good faith." He added, "Because I am fine, they are fine."

There was some speculation among Bloomsburg football fans that the hit Rochester received was a malicious attempt to injure the runner who was such a vital cog in the Huskies' offense. However, after speaking to several team members, it appears that it was simply a result of the emotion involved in football.

Richards reflected some of these same sentiments. "It was a questionable hit because he was on his way down. But it was early in the game and this is when everyone is pumped up," said Richards.

It is easy for a team to have an emotional letdown after the loss of such a prominent player. However, the Huskies under coach Landis went on a four-game winning streak which was a pleasant surprise to all of the loyal fans who had grown accustomed to losing.

"After the injury the team realized a total commitment to winning," said Richards. "We went after it furiously and we have been ever since." He added, "There was no "ra-ra" speeches. It was internal. We knew what we had to do. There was little to be said after that," he stated.

Rochester had been following the Huskies' quest for the title faithfully. Frequent phone conversations with Richards keep him posted on the events of the season.

"I know they can win without me," Rochester said, "if they play up to their capabilities. I wish them luck."

Like the Huskies, Rochester is fighting a battle. "God is going to get me back on my feet," he stated.

Classified Ads

FOR SALE

FOR SALE: Dorm sized fridge. Call 784-3956.

PERSONALS

HWV's --OOFF! Fourth of Juuuly!!! Love, Web.

PIZZA MAN - Good luck this hellious weekend! Your Sal's Friend

WHERE WILL YOU spend eternity?

BIX, the rabbit is still kicking, T.B.

AVA, You're the greatest!

LAMBDA CHI ALPHA associates - WHEW BABE!

"LITTLE" miss napoli (Anita), Happy Birthday, guess who.

ALL AL'S, High Four at the Nook.

LAMBDA CHI - Great time at the float! Thanx - Get set to party! Pixies

TO MY BERRIGAN'S Buddy - Halloween was a real treat! Thanks Frank!

Love, Jude

MUSIC for the non-intelligensia. Fri. night 242 Iron.

HEY Papa Keith - Congrats! Where are our cigars? M&T??

HAPPY B-Day Frankie. Have a good one! F.B.

KATHLEEN Thanks, Your Irish friend.

JADE: Congatulations! Next time 1st...Your partner.

ICE MAIDEN: don't spit ice, or the Debate team won't want you!

Love ya!...C.A.G.

OOPIE: Here's look at you kid.

JIM REX - your name's in the paper now! - the reporter

BK - someone loves you if you don't know who, you're in trouble!

MOVING? Wirt St. needs 5 girls - call 784-8050

APT. 9 on the hill you're great.

ROOMIES AT 22! you're the best!

DEAREST Pebbles - Yum! Yum! 406.

SUE - PFFFFT!

SNAKE take the abuse you only live once. B.S.

WAFFLES loves Judy Garland!

HAPPY ANNIVERSARY to the 16th of Pixies. Love Joanne.

DANNY: I Love You - Bush

LISA M. - Loved that Cool Whip? Palace.

HAPPY BIRTHDAY Jim! H.P.

LET'S START the countdown - Phi Sig Pi humble pledges reign!

THANKS Ruby for last Monday night - Love, KSB.

HEY Dave How's the COWS!!

TTHANKS for the support music lovers! KES.

AL AND ROGER the Pie Eyed Pub need more free drinks PPH.

MARCI - BOLONEY!, lov-your cast!

LACKDOG - Happy B-day the crew at 10th st.

FREDS Burger Barn invites you - to attempt-"The Cube".

HAPPY ANNIVERSARY to the 28th Pledge Class of Chi Sig. Love Betsy.

ARFIN: Meet at 3 on Third.

GOOD LUCK Huskies - Beat E.S. Montour Hall Staff.

DARRIN - Happy Grappling - the Nagger.

VOICE CLASSIFIEDS

I wish to place a classified ad under the heading:

Announcements

Lost and Found

For Sale

Personals

Services

Wanted

Other

I enclose \$ _____ for _____ WORDS

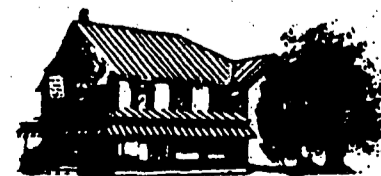
10¢ A WORD

Send to: Box 97 KUB or drop in the Voice mail slot, Union before 5 p.m. on Sunday or before 5 p.m. on Tuesday.

All classified must be pre-paid.

Lightstreet
hotel
SINCE 1856

*For A Delightful
Dining Experience*



for reservations:
784-1070

VOICE SPORTS ...

INSIDE:

For Vernon Rochester progress continues in his battle to defeat the odds.

Husky Booters Finish Season With Losses to ESU, Susquehanna

ART CARUCCI
Staff Reporter

The Bloomsburg University soccer team concluded its season with a 4-11-1 record after losses against Susquehanna University and East Stroudsburg University during the period from Oct. 29-31.

Susquehanna relied on a first half goal by Tim Kinfella to secure a 1-0 victory over the Huskies Saturday.

Saturday's game marked the seventh time the Huskies have been held scoreless this season.

BU outshot Susquehanna 8-5, but Crusader goalkeeper Greg Cordasco was forced to make only two saves.

Saturday's game marked the seventh time the Huskies have been held scoreless this season. Of those seven shutouts, the Huskies have lost three by a score of 1-0.

Monday afternoon, BU travelled to East Stroudsburg for its season finale and was defeated 6-1.

Jeff Kenyon paced the Warriors' attack with three goals and an assist, while Neal Clipper contributed a goal and two assists.

Richardo Lopes scored BU's goal with an assist from Jim Byrne.

With the loss against East Stroudsburg, the Huskies finished with an 0-6 mark against eastern division teams in the Pennsylvania Conference.

When examining the goals for and goals against ratio, it is not difficult to understand why the Huskies had their problems this season. The opposition outscored BU 42-17.

During certain points of the season, the Huskies appeared to be making major strides toward improvement, particularly University Maryland-Baltimore County. But each performance was usually followed by a bad one.

Poor outings against schools

The Huskies appeared to be improving with victories over good soccer schools, such as Lehigh and University Maryland-Baltimore County.

such as Shippensburg and Kutztown neutralized whatever momentum the Huskies may have had from previous victories. Throughout the season inconsistency proved to be the team's major stumbling block.



Kent Hagedorn

Hutchinson gives last minute instructions on how the Huskies will reach the National Championships for the second straight year.

Field Hockey

Hopes to Return to Title Game

By MARY HASSENPLUG
Sports Editor

While most students at Bloomsburg University are spending another typical weekend on campus, the Pennsylvania conference champion field hockey team will be in Massachusetts fighting for one of two positions in the national finals.

The NCAA, Division II National Tournament gets underway this

To spread out the tournament geographically, the top-seeded Huskies will travel to Bentley (MA) College.

weekend at two different sites on the East coast. The number one seed, Lock Haven, hosts C.W. Post and Kutztown in first round action. Bloomsburg, the number two seed, travels to Massachusetts and the home field of Bentley College. They are joined by Keene (NH) College, with their impressive 18-1 record. Normally the top two teams earn the home field advantage, due to the close proximity of Lock Haven and BU, a new site was chosen to spread out the tournament geographically. The site of the national finals will go to the highest seeded team to reach the finals.

Bloomsburg earned a bye in the opening round after they earned the number two seed following their impressive victory over former number two marked Kutztown in the PSAC championships. Bentley (10-5-2) and Keene, the New Hampshire state champs, will face off

on Friday afternoon giving the Huskies an opportunity to observe the various styles of play that they will meet on Saturday. BU will test the winner of Friday's contest to determine who will advance to the national finals.

At Lock Haven, the Golden Bears of Kutztown (11-2) take on C.W. Post with the winner meeting the Bald Eagles. The winners of the semifinal matches will meet at the home of the higher seeded team on Saturday, Nov. 12.

Coach Jan Hutchinson's squad is eager to return to the finals and prove their talents. "I'm really excited. I think we can play with any of these teams. (I'm very optimistic about reaching the finals. I think everybody would love to meet Lock Haven in the finals, and avenge last season's loss.) It would

"I'm very optimistic about reaching the finals. I think everybody would love to meet Lock Haven in the finals, and avenge last season's loss," said Hutchinson.

be really exciting to face them again and this time come away with national crown."

The Huskies (14-2-1) plan to extend their nine game winning streak all the way to the national finals, and with their determination and talent they just may do it.



A head shot attempted by the Huskies is deflected away. BU dropped their final two games to end their season with a 4-11-1 record.