

# The Teachers College Herald

Volume 42

APRIL, 1938

Number 1

CATALOGUE NUMBER

1938-1939



THIS COLLEGE IS A MEMBER OF  
THE AMERICAN ASSOCIATION OF  
TEACHERS COLLEGES — CLASS A

The Teachers College Herald is published quarterly.  
Entered as second class mail matter at the Post Office at Shippensburg,  
Pennsylvania, under Act of August 24, 1912.

---

The State Teachers College  
SHIPPENSBURG, PENNSYLVANIA

# College Calendar

1938 - 1939

## SUMMER SESSION—1938

Registration Day .....	Monday, June 20
Classes Begin .....	Tuesday, June 21
Entrance Examinations .....	Friday, July 15
Session Ends .....	Saturday, July 30

## POST SESSION—1938

Session Begins .....	Monday, August 1
Session Ends .....	Saturday, August 20

## FIRST SEMESTER—1938-1939

Final Date for Entrance Examinations .....	Tuesday, September 13
Registration and Classification of all Freshmen.....	Wednesday, Sept. 14
Registration and Classification of all Other Classes....	Thursday, Sept. 15
Classes Begin .....	Friday, September 16
Thanksgiving Recess Begins .....	12 M. Wednesday, November 23
Thanksgiving Recess Ends .....	12 M. Monday, November 28
Christmas Recess Begins .....	12 M. Friday, December 23
Christmas Recess Ends .....	12 M. Tuesday, January 3
First Semester Ends .....	After Last Class, Saturday, January 21

## SECOND SEMESTER—1938-1939

Second Semester Begins .....	12 M. Wednesday, January 25
Easter Recess Begins .....	12 M. Thursday, April 6
Easter Recess Ends .....	12 M. Tuesday, April 11
Class Work Ends .....	12 M. Tuesday, May 23

## COMMENCEMENT 1939

Senior Day .....	Friday, May 26
Alumni Day .....	Saturday, May 27
Baccalaureate Sermon .....	Sunday, May 28
Commencement .....	Monday, May 29

## Board of Trustees

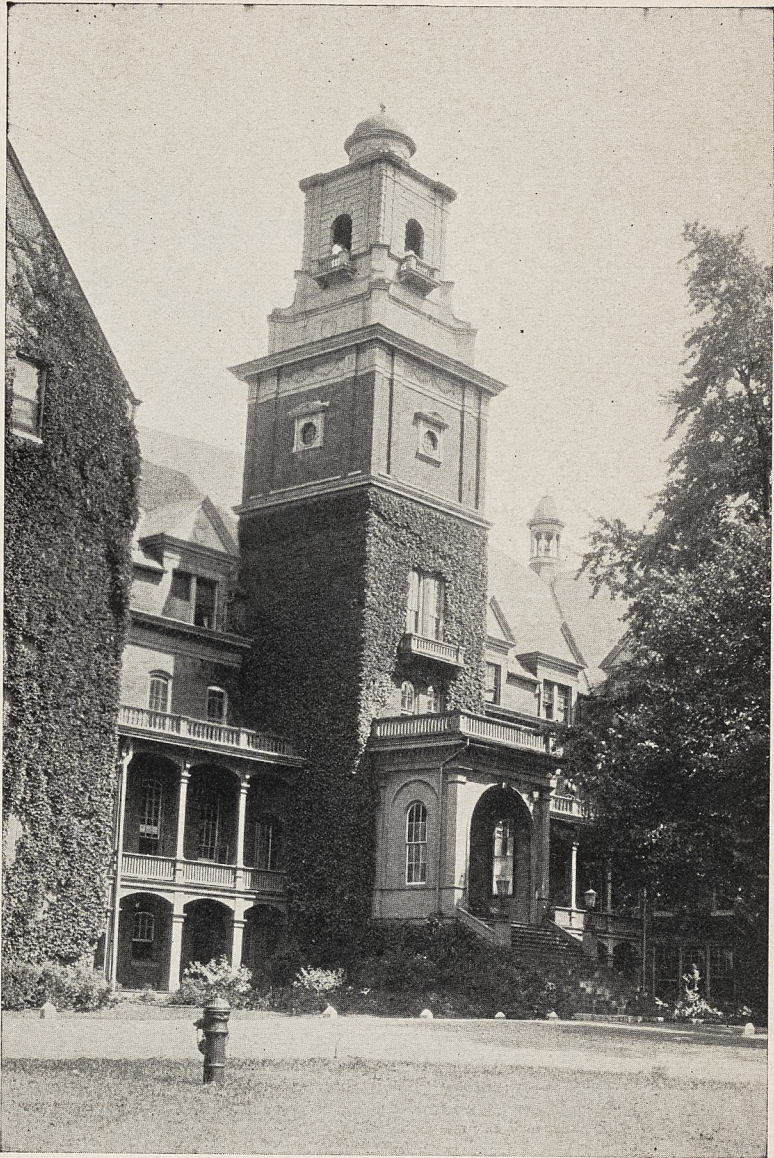
LESTER K. ADE, A.M., Ph.D., LL.D..... Superintendent of  
 EX-OFFICIO Public Instruction

---

EDWARD S. BERRY, M.D. .... Shippensburg, Pennsylvania  
 CALEB S. BRINTON ..... Carlisle, Pennsylvania  
 J. L. FINAFROCK ..... Mercersburg, Pennsylvania  
 HARVEY A. GROSS ..... York, Pennsylvania  
 H. B. HEGE ..... Mercersburg, Pennsylvania  
 RALPH JACOBY ..... Carlisle, Pennsylvania  
 ETHEL SMILEY OGLE (Mrs. Charles C.)..... Chambersburg, Pennsylvania  
 JEREMIAH S. OMWAKE ..... Shippensburg, Pennsylvania  
 EARLE H. SCHAEFFER ..... Harrisburg, Pennsylvania

### OFFICERS OF THE BOARD OF TRUSTEES

EARLE H. SCHAEFFER ..... President  
 J. L. FINAFROCK ..... Vice President  
 JEREMIAH S. OMWAKE ..... Secretary



THE TOWER

# The Faculty

1938-1939

- ALBERT LINDSAY ROWLAND ..... *President of the College*  
A.B., Temple University; A.M., Ph.D., University of Pennsylvania
- FLORENCE MAY KUNKEL ..... *Dean of Women*  
A.B., A.M., Wellesley College
- EARL W. WRIGHT ..... *Dean of Men*  
B.S., M.S., Gettysburg College; Ed.D., George Washington University
- KEITH B. ALLAN ..... *Geography and Geology; Chairman, Geography*  
B.Ed., Illinois State Normal University; *Department*  
A.M., Colorado Teachers College
- JANE BEARDWOOD ..... *English, French*  
A.B., Bryn Mawr College; Ph.D., University of Pennsylvania
- MARION H. BLOOD ..... *English; Chairman, English Department*  
B.S., A.M., University of Pennsylvania
- CLARA W. BRAGG ..... *Librarian*  
Pratt Institute
- RAYMOND S. BRUNNER ..... *Director and Chairman, Adult Education Department*  
B.S., Franklin & Marshall College; M.S., Pennsylvania State College
- H. L. BURKHOLDER ..... *Education*  
Ph.B., Dickinson College; A.M., New York University
- RALPH D. CLEMENT ..... *Art*  
A.B., A.M., Ph.D., University of Pittsburgh
- RUTH A. CUNNINGHAM ..... *Director, Intermediate Group*  
B.S., Juniata College; *Director, Cooperative Education*  
A.M., Teachers College, Columbia University
- N. B. CURTIS ..... *Director and Chairman, Business Education Department*  
B.A., Iowa State Teachers College; M.Ed., University of Pittsburgh.
- J. LINWOOD EISENBERG ..... *Psychology; Chairman, Education Department*  
A.B., A.M., Ursinus College; Ph.D., University of Pennsylvania  
LL.D., Grove City College
- J. SETH GROVE ..... *Mathematics; Chairman, Mathematics Department*  
A.B., Ursinus College; A.M., Teachers College, Columbia University
- EDWARD GULIAN ..... *Health Education for Men*  
B.S., Gettysburg College; A.M., Columbia University

- W. P. HARLEY ..... *Director, Training Schools*  
A.B., Juniata College; A.M., Teachers College, Columbia University
- LAURA ESTELLA HIGH.....*English; Training Teacher, Junior High School*  
A.B., Dickinson College; A.M., University of Pennsylvania
- S. ALICE HUBER ..... *Director, Secondary Group*  
Ph.B., University of Chicago; A.M., Teachers College,  
Columbia University
- GERTRUDE E. KAUFFMAN ..... *Art, Campus School*  
B.S., Edinboro State Teachers College; A.M., George Peabody College
- NORA A. KIEFFER ..... *Education and Mathematics*  
B.S., A.M., Teachers College, Columbia University
- LESLIE C. KREBS.....*Nature Study, Visual Education and Geography*  
B.S., Pennsylvania State College; *Director, The Museum*  
Ed.M., Temple University
- EMERSON H. LOUCKS ..... *Social Studies*  
A.B., Findlay College; A.M., Ph.D., Columbia University
- GEORGE E. MARK ..... *English*  
Ph.B., A.M., Dickinson College; A.M., University of Pittsburgh
- SALLY H. NORRIS ..... *Music, Campus School*  
B.S., Fredericksburg State Teachers College; A.M., Columbia University
- FRANCES W. OYER...*Primary Education; Training Teacher, Campus School*  
B.S., A.M., Columbia University
- VINTON H. RAMBO.....*Health Education, Physics, Educational Biology*  
B.S., Iowa Wesleyan College; A.M., Columbia University
- CLAUDIA C. ROBB.....*Health Education for Women; Chairman,*  
B.S., Kellogg School of Physical Education; *Health Department*  
A.M., Columbia University
- ERMA K. ROLAR.....*Social Studies; Principal, Campus School*  
A.B., Pennsylvania State College;  
A.M., Teachers College, Columbia University
- PAUL W. SEATON ..... *Business Education*  
B.S., Indiana State Teachers College
- S. S. SHEARER.....*Biological Sciences; Chairman, Science Department*  
A.B., Ursinus College; M.S., University of Chicago
- THELMA E. SMALL ..... *Acting Director, Rural Group*  
B.S., Shippensburg State Teachers College;  
A.M., Teachers College, Columbia University

- HARLING E. SPONSELLER.....*Social Studies; Principal, Junior High School*  
 B.S., Shippensburg State Teachers College;  
 A.M., Teachers College, Columbia University
- JOHN K. STEWART.....*English, Latin; Chairman, Foreign Language*  
 A.B., A.M., Lafayette College; *Department*  
 A.M., Pennsylvania State College
- ELVIN L. VALENTINE.....*Social Studies; Chairman, Social Studies*  
 A.B., Depauw University; *Department*  
 A.M., Ph.D., University of Wisconsin
- JAMES C. WEAVER.....*Public School Music; Chairman, Arts Department*  
 B.S., Temple University; A.M., New York University
- HARPER J. WENTZ.....*General Science and Mathematics; Training*  
 B.S., Franklin and Marshall College; *Teacher, Junior High School*  
 A.M., Columbia University
- HARRIET WILLOUGHBY.....*Director, Kindergarten-Primary Group*  
 B.Pd., Central Teachers College;  
 B.S., A.M., Teachers College, Columbia University
- ALMA MAE WINTON ..... *Assistant Librarian*  
 A.B., Allegheny College;  
 B.S., in Library Science, Columbia University
- MARY E. YORK ..... *English*  
 B.S., A.M., Ohio State University

### LABORATORY SCHOOL FACULTY

- W. P. HARLEY, A.M. .... *Director*

### CAMPUS SCHOOL

- ERMA K. ROLAR, A.M. .... *Principal, Geography and History*
- RUTH A. CUNNINGHAM, A.M. .... *Director, Intermediate Group*  
*Director, Cooperative Education*
- EDWARD GULIAN, A.M. .... *Health, Physical Education*
- GERTRUDE E. KAUFFMAN, A.M. .... *Art and Handwriting*
- NORA A. KIEFFER, A.M. .... *Arithmetic*
- LESLIE C. KREBS, Ed.M. .... *Science and Geography*
- SALLY H. NORRIS, A.M. .... *Music*
- FRANCES W. OYER, A.M. .... *Kindergarten-Primary*
- CLAUDIA C. ROBB, A.M. .... *Health, Physical Education*
- HARRIET WILLOUGHBY, A.M. .... *Director, Kindergarten-Primary Group*
- MARY E. YORK, A.M. .... *Reading*

## PLEASANT HILL RURAL SCHOOL

THELMA E. SMALL, A.M. .... *Acting Director, Rural Group*  
 S. ALICE HUBER, A.M. .... *Director, Secondary Group*

## # SENIOR HIGH SCHOOL

\*CHARLES B. DERICK, A.M., M.S. .... *Principal, Latin*  
 \*WILLIAM J. ANGLE, B.S. .... *Mathematics*  
 \*VELVA W. DIVEN, A.B. .... *English*  
 \*C. R. EURICH, A.M. .... *Social Studies*  
 \*ROY V. MOUER, A.M. .... *Science*  
 \*HELEN I. WILSON, A.B. .... *Foreign Language, Social Studies*

## # JUNIOR HIGH SCHOOL

H. E. SPONSELLER, A.M. .... *Principal, Social Studies*  
 \*FRANK L. BLACK, B.S. .... *Social Studies*  
 \*S. L. DAIHL, A.B. .... *Mathematics*  
 \*MYRA ESH, B.S. .... *Social Studies, Mathematics*  
 LAURA E. HIGH, A.M. .... *English*  
 \*RUSSELL A. LEREW, M.S. .... *Social Studies, Industrial Arts*  
 HARPER J. WENTZ, A.M. .... *Science, Mathematics*

## # ELEMENTARY SCHOOLS

\*MABEL V. BARNER .... *Second Grade*  
 \*MARTHA J. BROWN, B.S. .... *First Grade*  
 \*MAUDE CLEVER .... *Sixth Grade*  
 \*RUTH HALE .... *Fifth Grade*  
 \*JULIA V. HARGLEROAD .... *Fourth Grade*  
 \*MABEL KLINE, B.S. .... *First Grade*  
 \*CARRIE KITZMILLER .... *Fifth Grade*  
 \*EDITH MORRISON .... *Third and Fourth Grades*  
 \*MABEL STOCK .... *First and Second Grades*  
 \*HAZEL WALTERS .... *Third Grade*  
 \*HELEN S. YOTTER .... *Sixth Grade*

\*Co-operative Teachers

# Shippensburg Borough Schools



## NON-INSTRUCTIONAL STAFF

ALBERT LINDSAY ROWLAND, A.M., Ph.D. . . . . *President of the College*  
 CLARE R. LIGGETT, A.B., Dickinson College. . . . . *Secretary to the President*  
 S. ALICE HUBER, A.M. . . . . *Director of Placement*  
 ELIZABETH T. NOFTSKER, B.S. in Ed., Shippensburg . . . . . *Registrar*  
 FLORENCE M. KUNKEL, A.M. . . . . *Dean of Women*  
 EARL W. WRIGHT, M.S., Ed.D. . . . . *Dean of Men*  
 W. P. HARLEY, A.M. . . . . *Director of Training Schools*  
 VIRGINIA G. GOODHART . . . . . *Secretary to Director of Training Schools*

---

HARRY B. ETTER, M.D., New York University . . . . . *Physician*  
 GRACE KYLE, R.N., Hospital of the University of Pennsylvania. . . . . *Nurse*

---

FLORENCE M. KUNKEL, A.M. . . . . *Dietitian*  
 HARRIET NOVINGER . . . . . *Superintendent of Kitchen*  
*Dining Room and Kitchen Staff*—Hazel Brannan, Florence Cramer,  
 Mary Detwiler, John Jones, Amanda Kitzmiller, B. M. Lindsey,  
 Hattie Long, Annie Price, Mae Rebeck, Bessie Rice, Olive Stake,  
 Linnie Stevens and Cora Warren.

---

JOHN W. LACKHOVE . . . . . *Business Manager*  
 BEULAH A. BOWEN . . . . . *Bookkeeper*  
 ALICE M. NOLL . . . . . *Clerk to Business Manager*  
 MARIE YOCUM . . . . . *Clerk to Business Manager*  
 ANNA M. CLIPPINGER . . . . . *Clerk in Retail Store*  
 R. B. CLIPPINGER . . . . . *Receiving Clerk*  
 HARRY M. ESHELMAN . . . . . *Superintendent of Grounds and Buildings*  
*Grounds and Buildings Staff*—Clyde C. Barner, Alex Coleman,  
 William Crusey, Graydon C. Fisher, John Fitzgerald, Hiram D.  
 Highlands, Charles Hill, Clifford Hoover, Raymond Hutchison,  
 Joseph Rideout, Mervin D. Schlessman and Jerry Thomas  
 WILLIAM S. WEIBLEY . . . . . *Deputy Sheriff and Watchman*  
 IRENE GILBERT . . . . . *Matron of "Old Main"*  
 FLORENCE REISINGER . . . . . *Matron of Men's Dormitory*  
 CARRIE SNOKE . . . . . *Matron of Women's Dormitory*  
*Assistants to Matrons*—Dorothy Plasterer and Sara McCulloch  
 NELL JONES . . . . . *Superintendent of Laundry*  
*Assistants*—Cora Clough, Lena Clough, Janet Hoover and Mabel Killian

## SUMMER SESSIONS

June 20, 1938 – August 20, 1938

A six weeks' summer session followed by a post session of three weeks will open Monday, June 20. There will be no Saturday classes.

The summer sessions will give opportunity to teachers in service to prepare for higher certification. Regular college courses will be offered toward the completion of the requirements for the baccalaureate degree.

Advanced courses in English, Social Studies, Mathematics, Science, Psychology, and Education will be offered to the holders of Normal and Standard Certificates. Courses in the special fields of Adult Education and Business Education will also be available.

A selected number of courses will be offered in the post session of three weeks from August 1 to August 20.

A bulletin is available giving a detailed description of the summer sessions of 1938.

## The College

SHIPPENSBURG is a town of approximately five thousand people, located in the center of the beautiful Cumberland Valley, thirty-nine miles southwest of Harrisburg by United States-Pennsylvania highway No. 11, and forty-one miles from Harrisburg by the Pennsylvania Railroad. Carlisle, the county seat of Cumberland County, lies twenty-one miles from Shippensburg toward Harrisburg, and Chambersburg, the county seat of Franklin County, ten miles in the opposite direction. Gettysburg, the county seat of Adams County, with its famous battlefield now a national shrine, is but thirty-five miles distant. Rich farm lands, broad meadows, and delightful woodlands bounded by mountains to the north and south, characterize this valley which is one of the richest agricultural sections of the country.

Originally known as the Cumberland Valley State Normal School, this institution first opened its doors to students on April 15, 1873. The first class was graduated in 1874. For more than fifty years it continued to serve as a State Normal School, graduating students prepared and legally qualified to teach in the public schools of the Commonwealth. In 1922 high school graduation was required for admission to the institution. In 1926 the State Council of Education authorized four-year courses based upon high school graduation. In August, 1927, by authority of the General Assembly, this institution became a college with the right to grant degrees and its name was changed to the State Teachers College at Shippensburg.

The site consists of approximately sixty-four acres with two fully equipped athletic fields, Eckels Field and Heiges Field, eighteen tennis courts, a quarter mile track with a two-twenty straightaway and an archery range. The buildings on the campus are arranged in a curving line on the crest of a hill, sloping gently to the southeast. The plant consists of a general utility building known as "Old Main," containing the administrative offices, the dining room and kitchen, many of the recitation rooms, the auditorium and the dormitories for men; a Women's Building housing the women students and containing the chemical, biological and psychological laboratories, and the music rooms; the Ezra Lehman Memorial Library; the Gymnasium; the Campus Laboratory School; the President's Residence; the Infirmary; utility buildings and garages; a sewage disposal plant; and a power plant.

There is now in process of construction under grants from the General State Authority a new gymnasium, a new utility building, a new Science Hall, and a new campus laboratory school, including a nursery school, representing a total capital investment in additional buildings of approximately \$675,000. This construction is under contract to be completed in September, 1938.

The library is housed in an independent, modern building designed exclusively for this purpose. Its reading rooms and stacks are available from 8 A. M. until 5:30 P. M. and from 7 until 10 P. M. The collection of 20,000 books and 150 magazines is carefully selected and constantly available. Indexes to periodicals supply convenient reference to back numbers, both bound and unbound, and there are many encyclopedias, both general and special, for research. A collection of over 5000 pictures, a clipping file, a large pamphlet collection, and an interesting group of textbooks and courses of study serve to meet the needs of the students of the college. The student will also find recreational reading in the fields of biography, drama, fiction and current events. Trained librarians are on duty at all times to assist students in finding material.

Adequate student teaching laboratories are provided.

Attached to the training schools is a Federal Emergency Nursery School unit available for observation and participation by students pursuing the elementary curricula. This school has a capacity of twenty pupils and the age range is from eight months to four years.

A kindergarten and the first six grades are maintained in the Campus Laboratory School which also houses the Nursery School. This building is equipped with offices, library, combination gymnasium and auditorium, service rooms and class rooms. There is a playground equipped with playground apparatus and a separate playground for the Nursery School. Pupils also have the opportunity of using the college gymnasium and a portion of Heiges Field.

A typical one-teacher rural school is maintained by the college and a two-teacher school is also available as student teaching laboratories for students pursuing the rural curriculum.

The schools of the Borough of Shippensburg are available as student teaching laboratories. These schools include the grades from the first to the sixth, a junior high school housed in a separate building with a distinct organization, and a senior high school, also housed distinctly and having a distinct organization. These schools have recently been brought together by the building of a new unit of construction housing a gymnasium, an auditorium, a library, offices, service rooms and class rooms, giving the Shippensburg Borough Schools one of the most modern and attractive school plants in the State.

The offices of Supervising Principal of the Borough Schools, of Principal of the Township Schools, and of Director of the College Training Schools are held by the same person who is an employe of all three organizations and who integrates the work of the college and of the adjacent school districts to the mutual advantage of these units.

The dormitory facilities are entirely modern, the lavatories being equipped with shower baths, tubs and modern plumbing throughout. Stairways of fireproof construction are provided for all dormitories. The auditorium is equipped with a stage with modern lighting devices.

Shippensburg is a co-educational college, 46 per cent of the student body being men and 54 being women. This relative equality between the number of men and the number of women is regarded as a highly desirable situation. Professional, social and religious activities of many kinds are carried on throughout the year—debating, dramatics, athletics, religious meetings, field days, intra-mural contests of various kinds, dances, lectures and entertainments. Conferences and trips to places of historic, scientific and educational interest occur frequently under proper supervision.

The college feels that a standard of conduct becoming a prospective teacher is so high as to preclude membership in the college enrollment of all persons whose habits and conduct are not worthy of the imitation of children who may be placed under their instruction. As it has been necessary to dismiss from the college persons who cannot attain this high standard of conduct, it is suggested that those who are not so qualified do not apply for admission. As teachers must first be able to discipline themselves, it is the aim of the college consistently to cultivate right habits of self-discipline on the part of the students. Opportunities are provided for the development of these habits and advice is constantly given. Teachers must be persons of intelligence and a high standard of scholarship is required for all who would earn the coveted baccalaureate degree. Teach-

ers must be persons of character and every opportunity is provided for the development of a high standard of character on the part of each student. Those who do not achieve this standard are invited to leave.

This college is a professional school for the preparation of teachers and all of its courses lead to certificates to teach in the public schools of Pennsylvania. The college believes, however, that such professional preparation is the best preparation for general citizenship and for parenthood that has yet been provided in any institution of higher learning.

The college further believes that the teaching profession provides the most significant social service that it is possible for anyone to render, as upon the efficiency of the public schools and the character, intelligence and devotion of the teachers therein depends in large measure the national destiny.

## FEES, DEPOSITS, REPAYMENTS

### A. FEES

#### I. ACTIVITY FEE:

- First Semester—\$10.00  
 Second Semester—\$12.00  
 (Each payable in two equal parts)  
 Summer Session—\$2.00 in full

These fees, determined by vote of the student body, are administered through a cooperative organization under regulations approved by the Board of Trustees. These fees will cover the cost of student activities in athletics, lectures, entertainments, student publications, etc.

#### II. CONTINGENT FEE:

	Per Half Semester
Regular Term—Elementary Curriculum . . . . .	\$18.00
Secondary Curriculum . . . . .	\$18.00
Business Education Curriculum . . . . .	\$21.00
Adult Education Curriculum—to be determined	
Summer Session—\$5.00 per semester hour—Minimum fee, \$15.00	

(A special charge is made Cooperative Education students to defray the expense of trips taken during the junior and senior years to visit progressive schools.)

#### III. HOUSING FEE:

1. The housing rate for students shall be \$63.00 per one-half semester and \$42.00 for the summer session. This includes room, meals and limited laundry.
  - (a) No reduction in the rate is to be made for laundry done at home or for students who go home for a few days at a time.
  - (b) A student may, at the discretion of the President of the College, occupy a double room alone by paying an additional \$36.00 or \$12.00 for the summer session.
2. Housing rate for employes other than those included in the State Classification schedule (faculty, clerks, etc.) shall be \$9.00 per week.

## 3. The rates for transients shall be:

Room, \$.50 per night; Breakfast, \$.40; Lunch, \$.40; Dinner, \$.50.

The charge for room and board includes furniture, bedding, light and heat. Each room accommodates two students. All rooms are provided with single beds for each student.

## IV. DAMAGE FEES:

Students shall be responsible for damages or breakage or loss, or delayed return of college property.

## V. INFIRMARY FEES:

After three days in the college infirmary, the college shall charge an additional \$1.00 for each day.

Day students who may be admitted to the infirmary shall pay board at the rate of \$2.00 a day. This charge includes the regular nurse and regular medical service, but does not include special nurse or special medical service.

## VI. TUITION FEE:

Students whose residence is out of the State shall be charged a fee of \$105.00 per semester; \$35.00 per summer session. (It is understood that this fee has been operative since June 1, 1929, for entering students only.)

Out-of-state students shall pay the contingent fee in addition to the tuition fee.

## VII. DEGREE FEE:

A fee of \$5.00 shall be paid by each candidate for a degree to cover the cost of degree diploma.

## VIII. RECORD TRANSCRIPT FEE:

One dollar (\$1.00) shall be charged for the second and each subsequent transcript of records.

## IX. DELINQUENT ACCOUNTS:

No student shall be enrolled, graduated, or receive a transcript of his record until all previous charges have been paid.

## B. DEPOSITS

## I. ADVANCED REGISTRATION DEPOSITS:

A deposit of \$10.00 shall be made by all students when they request registration. This is a guarantee of the intention of the student to enter college for the term or semester designated. It is deposited with the State Revenue Department to the credit of the student's contingent fee. If, however, the student notifies the college at least three weeks before the opening of college that he is unable to enter, or if the student is rejected by the college, repayment of his deposit will be made through the Revenue Department on application from the student through the College authorities.

Check or money order for this amount must be drawn to the Commonwealth of Pennsylvania.

## C. NO OTHER FEES OR DEPOSITS PERMITTED

No fees or deposits, other than as specified above, may be charged by a State Teachers College.

## D. REPAYMENTS

## REPAYMENT WILL NOT BE MADE:

1. To students who are temporarily suspended, indefinitely suspended, dismissed, or who voluntarily withdraw from college.
  2. For any part of the advance registration deposit for any cause whatsoever, except where students give notice of intention to withdraw at least three weeks before the college opens, or when the student is rejected by the college.
- II. A repayment will be made for personal illness, the same being certified to by an attending physician, or for such other reasons as may be approved by the Board of Trustees for the amount of the housing and contingent fees paid by the student for the part of the semester which the student does not spend in college.
- III. The advance registration deposit will be returned to students provided they notify the college not less than three weeks before the opening of the semester or term of their intention not to attend, or provided the student is rejected by the college.

## ANNUAL COST

For boarding students living on the campus the cost of a year at Shippensburg (exclusive of the summer session) is as follows:

*\*Contingent Fee*

\$18.00 per half semester .....	\$ 72.00
<i>Activity Fee</i>	
\$5.00 per half semester, first semester.....	10.00
\$6.00 per half semester, second semester...	12.00
<i>Board, Room and Laundry</i>	
\$7.00 per week—36 weeks .....	<u>252.00</u>

Total..... \$346.00

\*Adult and Business Education students will add \$12.00 per year to the contingent fee in calculating this cost.

In addition to this sum the average student will require for books, gymnasium costume, student organization dues, etc., not less than \$50 a year.

Day students—those living at home—do not pay the Housing Fee and the annual cost for such students is \$94.00. No student will be allowed to register as a day student who does not live at home.

## TIME OF PAYMENT

- June 20, payment in full of all summer session fees.  
 September 13, payment for first half of first semester.  
 November 14, payment for second half of first semester.  
 January 25, payment for first half of second semester.  
 March 27, payment for second half of second semester.

## REQUIREMENTS FOR ADMISSION

Admission to a State Teachers College will be made on the basis of the following controlling principles:

1. General scholarship
2. Character and personality
3. Health and physical vigor
4. A personal interview

Candidates for admission must satisfy these four general requirements in detail as outlined below:

1. General scholarship as evidenced by graduation from an approved four-year high school or institution of equivalent grade or equivalent preparation as determined by the Pre-Professional Credentials Division of the Department of Public Instruction and ranking in the upper half of the class at graduation. Candidates for admission who lack this rank at graduation will be required to present further evidence of fitness.

- a. Applicants ranking in the upper half of their graduating class in high school will be admitted on certificate without further evidence of general scholarship.
- b. Applicants who do not rank in the upper half of the graduating class may be admitted on probation, provided:
  1. They are recommended by their high school principal as being able to do creditable work and
  2. Appraisal of the detailed high school record indicates to admission authorities of the college that the candidate can do satisfactory college work, and
  3. A rating satisfactory to the institution is made on a scholastic aptitude test administered at the college.

Applicants satisfactorily meeting requirements 1, 2, and 3 above will be admitted for one semester on probation. At the end of the probationary period such students will be required to withdraw from the college unless they meet the required standard of scholarship in at least nine (9) semester hours of work.

2. Integrity and appropriate personality as shown by an estimate by secondary school officials of the candidate's trustworthiness, initiative, industry, social adaptability, personal appearance and sympathy.

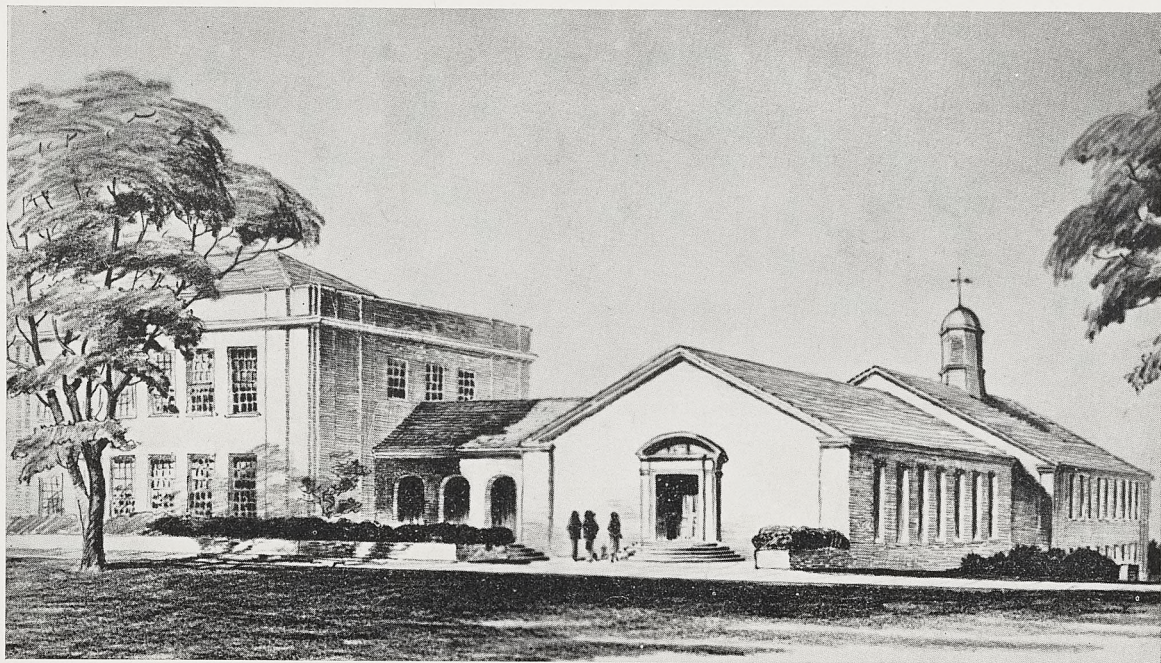
3. Health, physical vigor, emotional stability, absence of physical defects that would interfere with the successful performance of the duties of a teacher and absence of predisposition toward ill health as determined by a medical examination at the college.

- a. All applicants for admission shall present a certificate of examination signed by a physician legally qualified to practice medicine in the Commonwealth of Pennsylvania. Forms for this examination will be furnished by the college. This medical examination will be checked by the examining physician at the college and students may be required to undergo a complete re-examination.
- b. Applicants may be rejected for the following reasons:
  1. Incurable defects or diseases as of the heart, lungs, kidneys, digestive system, nervous system including hysteria, epilepsy, nervous instability, skin, organs of the special senses, thyroid.
  2. Defective vision of marked degree.
  3. Permanently impaired hearing.
  4. Marked speech defects.
  5. Unsightly deformities.
  6. Marked obesity.

Students with remedial defects will be accepted on condition that immediate treatment be undertaken for the removal of these defects.

4. A personal interview with particular attention to personality, speech habits, social presence, expressed interests of the applicant and promise of professional development.





SCIENCE HALL AND LABORATORY SCHOOL

- a. The personal interview is to serve two purposes:
  1. It is to give the examining committee of the college an opportunity to select from the applicants for admission those persons who give promise of becoming desirable teachers.
  2. It is to take an inventory of the personal characteristics of the applicants who are admitted, making this inventory available to instructors and officers concerned with personnel work in the college.
- b. The interview will be conducted at the college or at other places and at times designated by the President of the College.

All applications should be made to the President, State Teachers College, Shippensburg, Pennsylvania.

#### ADVANCED STANDING

1. Advanced credit will be given for equivalent courses completed in approved institutions of collegiate grade, but no student may obtain a certificate or degree without a minimum residence of one year in this college. A student transferring from another college will be required to present a statement of honorable dismissal from that college and to meet the same entrance requirements as any other applicant.

2. No candidate for a college certificate shall receive more than thirty-two semester hours credit toward graduation for work done in extension classes.

No credit will be given for correspondence work or extension work taken after September 1, 1927, for a normal school certificate.

3. Persons who have completed the work of the two-year Kindergarten-Primary, Intermediate, or Rural curricula are admitted to Junior standing for a degree, provided they are graduates of an approved four-year high school. The exact number of hours credit granted will depend upon the curriculum which the student has completed and the one in which he wishes to secure his degree. Those who become candidates for the degree in the elementary field will secure two full years credit, but those who transfer to the secondary field will lose some credit, usually from ten to twelve hours.

4. Graduates of State Normal Schools prior to September, 1920, who have had a four-year high school preparation, can be awarded not more than sixty-four semester hours of credit toward the baccalaureate degree.

5. Graduates of State Normal Schools who lack four years of high school preparation may apply to the Pre-Professional Credentials Division, Department of Public Instruction, Harrisburg, Pennsylvania, for a high school equivalent certificate, which, when issued by this Division, will be accepted by the State Teachers Colleges as equivalent to graduation from a four year high school.

6. No credit for public or private teaching experience, previously credited as high school equivalent or as equivalent professional credit toward graduation, shall be granted or counted toward meeting the requirements for entrance to or graduation from the four-year curricula.

#### SCHOLASTIC REQUIREMENTS

1. For the purpose of reporting the progress of and giving assistance to each student, each semester is divided into four periods; the first of six weeks and three other periods of four weeks each. At the end of the

first six weeks of each semester, each teacher hands to the administration office a record of the students who are not doing satisfactory work. A report is made to each student and, when deemed necessary, to the parent. At the end of the two succeeding four week periods similar reports are made. At the end of the semester a permanent grade is recorded for each student and a copy is sent to the parents.

2. A Quality Point System is in operation and demands that a student, before he can be graduated, must have a number of quality points equal to the number of semester hours required in the curriculum. That is, a student in the four year curriculum must have 128 semester hours of credit to be graduated and under the Quality Point System he must also have 128 quality points.

3. Quality point requirement before a student may be admitted to student teaching:

- a. A student shall not be permitted to enter student teaching unless his quality points shall equal the number of semester hours required by the curriculum.
- b. A student in the secondary curriculum shall be permitted to enter student teaching if he shall have achieved an average of C or better in each subject field to be taught in the training school.

The Quality Point schedule is as follows:

An "A" grade shall give 3 quality points for each semester hour of credit so marked; a "B" grade, 2 quality points; a "C" grade, 1 quality point; a "D" grade, no quality points; an "F" grade, a minus quality point, for each semester hour of credit so marked.

Example: A student receiving for his first semester's work the following grades would have to his credit 22 quality points.

	Semester Hours	Grade	
1st subject	3	C	$3 \times 1 = 3$
2nd subject	3	A	$3 \times 3 = 9$
3rd subject	2	B	$2 \times 2 = 4$
4th subject	3	C	$3 \times 1 = 3$
5th subject	3	D	$3 \times 0 = 0$
6th subject	2	B	$2 \times 2 = 4$
7th subject	1	F	$1 \times -1 = -1$
	—		—
	17		22

Students in the Cooperative curriculum receive grades of only "passing" or "failing."

#### REQUIREMENTS FOR GRADUATION AND CERTIFICATION

1. Every student in the State Teachers College, Shippensburg, Pennsylvania, selects during the first two years, one of the seven degree curricula offered. All curricula are definitely four years in length and require the satisfactory completion of one hundred and twenty-eight semester hours for the degree of Bachelor of Science in Education. Every graduate is entitled to the Provisional College Certificate in the appropriate curriculum which, after three years of successful teaching and the earning of six additional semester hours of prescribed credit, becomes a Permanent College Certificate.

2. A State Standard Limited Certificate valid for three years and renewable upon evidence of twelve semester hours of further approved preparation may be secured after the completion of the first three years (ninety-six semester hours) of the elementary curriculum where certain substitutions have been made in the second year and in the third year to meet the educational requirement. However, after February 1, 1939, all persons beginning a preparation for teaching in the elementary field must have completed an approved four year teacher education curriculum in this field to receive certification.

3. The Normal School Certificate is no longer issued except to those who have already begun preparation for this form of certificate.

4. All students are required to take part, without credit, in one physical education activity each semester in which no physical education courses or student teaching are required; and one other extra-curricular activity one semester each year.

### PRIZES

**S**CHOLARSHIP PRIZE. The class of 1908 offers a yearly prize of ten dollars to the four year student having the highest average at graduation. This prize was awarded on Commencement day, 1937, to Helen V. Spangler, East Berlin.

**DISTINGUISHED SERVICE MEDAL.** A gold medal presented by Mrs. Eleanor Kyner Boots, class of '89, suitably inscribed, will be awarded the student who, in the judgment of the student body and the faculty, has done most for the college during the year. Character, scholarship, initiative, community service, skill in athletics, debating and other school activities will be given due consideration. This prize was awarded on Commencement day, 1937, to Hugh E. Spittal, McKeesport.

**PRIZE FOR EXCELLENCE IN STUDENT TEACHING.** Mrs. Mary Long Fairley, class of '89, offers an annual prize of ten dollars to the student in the graduating class who makes the highest record in student teaching. This prize last year was awarded to S. Kathryn Eichelberger, Dillsburg, with Honorable Mention to Maree R. Riley, Waynesboro, and Mary Jane Zeiters, Hummelstown.

**PUBLIC SPEAKING PRIZE.** The Class of 1916 offers a yearly prize of five dollars for excellence in public speaking. The prize for 1937 was awarded to E. Carol Bird, Class of 1939, Wellsville.

### THE ALUMNI LOAN FUND

Boarding students who need financial aid during their senior year may borrow a sum not exceeding \$100 from the Alumni Loan Fund for one year from the time of their graduation without interest. Students in need of such assistance must file their request for aid with the president not later than August 15 of the year preceding their graduation.

The following Alumni Loan Scholarships have been established:

PROF. JOHN F. MCCREARY—Gift of Metropolitan Alumni Association.

DR. GEORGE M. D. ECKELS—Gift of the Metropolitan Alumni Association.

PROF. J. W. HUGHES—Gift of the Class of 1893.

DR. JOSEPH F. BARTON—Gift of L. M. Shepp, 1896, Millersburg, Pa.

DR. JAMES ELDON—Gift of the Class of 1921.

PROF. AND MRS. C. I. PENNY—Gift of the Class of 1886.  
 SCHOLARSHIP, CLASS OF 1907—Gift of the Class of 1907.  
 DR. G. M. D. ECKELS—Gift of the Class of 1898.  
 DR. JAMES ELDON—Two Scholarships, Gift of the Class of 1924.  
 ADAMS COUNTY—Gift of the Alumni of Adams County.  
 H. MILTON ROTH—Gift of the Class of 1899.  
 DR. JOSEPH F. BARTON—Gift of the General Alumni Association.  
 CLASS OF 1890—Gift of John M. Fogelsanger, 1890, and H. K. Strickler,  
 1890.  
 Y. W. C. A.—Scholarships.  
 COUNTRY LIFE CLUB—Scholarships.  
 THE ADA V. HORTON SCHOLARSHIP FUND—Class of 1911.  
 CLASS OF 1922 FUND.  
 CLASS OF 1901 FUND.  
 CLASS OF 1896 FUND.  
 THE ADA V. HORTON SCHOLARSHIP FUND—Gift of the Alumni of York  
 County.  
 SCHOLARSHIP—Franklin County Chapter of the Daughters of the American  
 Revolution.  
 THE HANNAH A. KIEFFER RURAL SCHOLARSHIP LOAN.  
 EZRA LEHMAN SCHOLARSHIP FUND—Class of 1896.  
 WOMEN'S ATHLETIC ASSOCIATION LOAN FUND.

These loans are made annually to seniors who need assistance and whose records are meritorious.

#### GENERAL REGULATIONS

1. All clothing is required to be marked with woven numbers which are purchased by each student upon entering college.
2. (a) A uniform one-piece washable costume for Physical Education is prescribed for all women students.  
 (b) A uniform costume for Physical Education is prescribed for all men students.  
 These costumes should be obtained after enrollment at the college.  
 Both men and women must wear the regular gymnasium shoes for gymnasium exercises.
3. Students should bring the following articles with them or purchase them on arrival at the college: a pair of blankets or heavy quilt, wash-stand cover and bureau cover, pair of window curtains, towels, table napkins and toilet articles. Rooms are supplied with bed, bedding, bureau, study tables, chairs and light fixtures.
4. No change or alterations may be made in the permanent parts or fixtures of the rooms, nor nails driven into the walls.
5. Damage done to furniture and other school property is charged against the student responsible for it.
6. In all proper ways religious influences are thrown around the student. The Campus Christian Association, which is undenominational in character, assumes the development of religious activity in the college and has a large membership among the student body. This Association provides a religious service every Sunday evening at six o'clock which closes in time for students to attend evening church worship and all students are urged to affiliate themselves with the church of their choice and attend its services on Sunday.

### COLLEGE PUBLICATIONS

*The Teachers College Herald* is the official college publication.

*The Campus Reflector* is the weekly publication issued by a student staff with a faculty adviser.

*The Cumberland* is the annual year book edited and published by the senior class.

### ATHLETICS

Ample provision is made for participation on the part of every student, men and women, in one or more forms of athletic exercise and such participation is required of each student each semester.

In addition to out-of-door exercises and the regular training in the gymnasium, the college encourages the following athletic sports:

#### WOMEN'S ATHLETICS

ARCHERY—Outdoor butts are provided and instruction is given.

HIKING—Open to women students all year.

HOCKEY—Class teams are organized early in the fall and a series of inter-class games is played.

SOCCER—Played during the fall season.

HANDBALL—Courts are provided in the gymnasium.

BASKETBALL—Class teams are organized and a series of inter-class games is played.

VOLLEY BALL—Played in the spring.

BASEBALL—In the spring and summer terms this game occupies the place held by hockey in the fall term.

TRACK AND FIELD SPORTS.

TENNIS—Eighteen courts available.

#### MEN'S ATHLETICS

Intercollegiate competition is provided in Football, Basketball, Baseball, Track and Tennis.

Intra-mural athletic activities are scheduled in the following sports:

Basketball	Horse Shoes
Bowling	Shuffleboard
Dart Ball	Soft Ball
Football Passing	Swimming
Foul Shooting	Table Tennis
Handball	Tennis

The archery butts are also available to men by special arrangements.

## The Curricula

The curricula offered at this college include education for teaching in kindergarten and in primary grades; education for teaching in the intermediate grades; education for teaching in the one-teacher rural schools; education for teaching the various academic subjects of the junior and senior high school curricula; education for teaching in the field of business education; education for teaching in the field of adult education; and a curriculum known as Cooperative Education providing instruction in the progressive techniques requisite for teaching in progressive schools. All curricula are four years in length and lead to the degree of Bachelor of Science in Education and to a College Provisional Certificate to teach in the public schools of the Commonwealth.

Since the national survey of teacher education, undertaken by the Office of Education at Washington, revealing through its published reports the wisdom of distributing the material in schools and colleges of education to provide a liberal, cultural basis in the first two years and place the professional emphasis in the last two years, the curricula for the State Teachers Colleges of Pennsylvania have been revised to conform to these findings and the recommendations of this survey.

### BASIC TWO YEARS OF THE CURRICULA\* of the State Teachers Colleges of Pennsylvania

(Sequence of courses subject to change for administrative reasons. Present students ranking as juniors and seniors will complete the curricula in force prior to September 1, 1937.)

	Cl. Sem.			Cl. Sem.	
	Hr.	Hr.		Hr.	Hr.
<b>First Semester</b>			History of Civilization .....	4—	4
English, including Library			Appreciation of Art .....	3—	2
Science .....	4—	3			
Speech .....	3—	3			
Biological Science .....	4—	3			
Health Education, including			<b>Third Semester</b>		
Physical Education and Personal Hygiene .....	4—	2	Literature I .....	3—	3
Place and Purpose of Education in the Social Order, including School Visitation...	3—	2	Economic Geography .....	3—	3
Appreciation of Music .....	3—	2	General Psychology .....	3—	3
			Physical Science .....	4—	3
			Elective .....	4—	4
	21—	15		17—	16
			<b>Fourth Semester</b>		
<b>Second Semester</b>			Literature II .....	3—	3
English .....	3—	3	Principles of Sociology .....	2—	2
Principles of Geography .....	3—	3	or Principles of Economics..	(2)—	(2)
Biological Science .....	4—	3	Educational Psychology .....	3—	3
Health Education, including			Physical Science .....	4—	3
Physical Education and Personal Hygiene .....	4—	2	Elective .....	5—	5
				17—	16

Notes: (1) The electives in the first two years shall consist of such approved courses as will meet the needs of the students' future program of studies.

(2) The electives in the last two years shall be selected with reference to the field of service for which the prospective teacher is preparing.

\*Students electing the curriculum in Adult Education will pursue the first two years as indicated above and will for the remaining two years follow the differentiated curriculum indicated on pages 26 and 27.

\*Students electing the curriculum in Business Education will follow the sequence of courses found on page 28.

\*Students electing the curriculum in Cooperative Education will pursue the first two years as indicated above and will for the remaining two years follow the differentiated curriculum indicated on page 29.

**LAST TWO YEARS OF THE ELEMENTARY CURRICULUM**  
of the State Teachers Colleges of Pennsylvania

	Cl. Hr.	Sem. Hr.		Cl. Hr.	Sem. Hr.
<b>Fifth Semester</b>			<b>Seventh Semester</b>		
American Government—			Educational Measurements . . . .	2—	2
Federal, State, and Local . . . .	3—	3	Curriculum in Elementary		
Teaching of Reading . . . . .	3—	3	Science . . . . .	4—	3
Music I . . . . .	4—	2	Visual Education . . . . .	2—	1
Art I . . . . .	4—	2	Children's Literature and Story		
Curriculum in Arithmetic . . . .	3—	2	Telling . . . . .	3—	3
School Law . . . . .	1—	1	Evolution of the American Pub-		
Elective . . . . .	3—	3	lic School . . . . .	2—	2
	21—	16	Philosophy of Education . . . .	2—	2
			Elective . . . . .	3—	3
				18—	16
<b>Sixth Semester</b>			<b>Eighth Semester</b>		
Child Psychology . . . . .	3—	3	Student Teaching and Confer-		
Teaching of English, including			ences . . . . .	15—	12
Handwriting . . . . .	4—	3	Curriculum Materials, Selec-		
Music II . . . . .	3—	1½	tion and Adaptation . . . . .	4—	3
Art II . . . . .	3—	1½		19—	15
Teaching of Health . . . . .	3—	2			
U. S. History to 1865 . . . . .	3—	3			
Elective . . . . .	3—	3			
	22—	17			

Notes: (See note 1 Page 22).

- (1) The requirements for the State Standard Limited Certificate prescribe as electives in the second year:

Teaching of English  
Teaching of Reading  
Curriculum in Arithmetic

and as electives in the third year:

Student Teaching 6 semester hours  
Curriculum Materials  
Children's Literature and Story Telling  
Curriculum in Elementary Science

**LAST TWO YEARS OF THE SECONDARY CURRICULUM**  
of the State Teachers Colleges of Pennsylvania

	Cl. Hr.	Sem. Hr.		Cl. Hr.	Sem. Hr.
<b>Fifth Semester</b>			<b>Seventh Semester</b>		
American Government—			Evolution of the American Pub-		
Federal, State and Local . . . .	3—	3	lic School . . . . .	2—	2
School Law . . . . .	1—	1	Visual Education . . . . .	2—	1
Educational Measurements . . . .	2—	2	Guidance . . . . .	2—	2
Electives . . . . .	10—	10	Philosophy of Education . . . .	2—	2
	16—	16	Electives . . . . .	9—	9
				17—	16
<b>Sixth Semester</b>			<b>Eighth Semester</b>		
Problems of Junior-Senior High			Student Teaching and Confer-		
School . . . . .	2—	2	ences . . . . .	15—	12
Adolescent Psychology . . . . .	2—	2	Curriculum Materials, Selec-		
Electives . . . . .	12—	12	tion and Adaptation . . . . .	4—	3
	16—	16		19—	15



## ELECTIVES FOR ELEMENTARY CURRICULUM

ELECTIVES FOR KINDERGARTEN,  
GRADES 1, 2, 3 (GROUP I)

Pre-School Child .....	2	2
Kindergarten-Primary Theory ...	2	2
U. S. History since 1865 .....	3	3
Special Education .....	3	3
Child Adjustment .....	3	3
Diagnostic and Remedial Instruction in Reading .....	3	3
Parent Education .....	3	3
Handicrafts .....	4	2
Descriptive Astronomy .....	2	1
Courses in Speech or other approved courses from subject fields		

Geog. of Eastern Hemisphere ...	3	3
Descriptive Astronomy .....	2	1
Courses in Speech or other approved courses from subject fields		

ELECTIVES FOR TEACHERS OF  
ONE-ROOM RURAL SCHOOLS  
(GROUP III)ELECTIVES FOR GRADES 4, 5, 6  
(GROUP II)

Teaching of Arithmetic .....	3	3
Civic Education .....	3	3
U. S. History since 1865 .....	3	3
Industrial Arts .....	4	2
Geog. of Western Hemisphere ..	3	3

Rural Education .....	3	3
Rural Sociology .....	3	3
Rural School Problems .....	2	2
Agriculture and Nature .....	3	2
Descriptive Astronomy .....	2	1
Any other electives approved for Kindergarten or Grades 1, 2, 3, 4, 5, and 6		

SUBJECT FIELD REQUIREMENTS FOR SECONDARY  
CURRICULUM

ENGLISH		Electives			
Required Courses					
English I .....	3	3	Shakespeare .....	3	3
English II .....	3	3	Short Story .....	3	3
Literature I .....	3	3	Modern Novel .....	3	3
Literature II .....	3	3	World Literature .....	3	3
English Philology .....	3	3	Contemporary Poetry .....	2	2
Advanced Composition .....	3	3	Victorian Prose & Poetry .....	3	3
			Journalism .....	2	2
			Pre-Shakespearean Lit. ....	2	2
			Romantic Period .....	3	3
			Essay .....	3	3
			Modern Drama .....	2	2
			19th Century Novel .....	3	3

## REQUIREMENTS FOR FIELDS OF CONCENTRATION IN SCIENCE

## A. Science

## Required

Biological Science .....	8	6
Physical Science .....	8	6
Electives in Biological Science .....		6
Electives in Physical Science .....		6

## Electives

See courses listed under electives in Biological Science and under Physical Science

A minimum of twenty-four semester hours must be presented to meet the requirements for the field of concentration.

## B. Biological Science

## Required

Botany .....	8	6
Zoology .....	8	6

## Electives

Ecology .....	4	3
Advanced Biology .....	4	3
Advanced Zoology .....	4	3
Physiology .....	4	3
Bacteriology .....	4	3
Parasitology .....	4	3
Comparative Anatomy .....	4	3
Histology .....	4	3
Genetics .....	3	3
Embryology .....	4	3
Entomology .....	4	3
Advanced Nature Study .....	4	3



SOUTH CAMPUS

At least twelve semester hours must be selected from the foregoing list to fulfill the requirements for this field of concentration in biological science.

## C. Physical Science

## Required

General Inorganic Chemistry .....	12	8
General College Physics .....	12	8

## Electives

Qualitative Analysis .....	4	3
Quantitative Analysis .....	4	3
Organic Chemistry .....	4	3
Physical Chemistry .....	4	3
Industrial Chemistry .....	4	3
Physiological Chemistry .....	4	3
Food Chemistry .....	4	3
Colloidal Chemistry .....	4	3
Descriptive Astronomy .....	2	1
Physiography .....	3	3
Geology .....	4	3
Mechanics .....	4	3
Heat .....	4	3
Magnetism and Electricity .....	4	3
Hydrostatics .....	4	3
Optics .....	4	3
Modern Physics .....	4	3
Sound .....	4	3
Physics Laboratory .....	4	3

A minimum of eight semester hours must be presented from the list of electives in order to fulfill the requirements for a field of concentration in Physical Science.

## GEOGRAPHY

## Required Courses

Principles of Geography .....	3	3
Economic Geography .....	3	3
Geog. of U. S. and Canada .....	3	3
Geog. of Latin America .....	3	3
Geog. of Europe .....	3	3
Geog. of the Pacific Realm .....	3	3

## Electives

Climatology & Meteorology ....	3	3
Physiography .....	3	3
Conservation of Natural Resources .....	3	3
Field Courses (to be approved) ..	3	3
Commercial & Industrial Geog. ...	3	3
Trade and Transportation .....	3	3

## FRENCH

## Required Courses

Elementary French .....	6	6
19th Century and Contemporary French Prose and Poetry .....	6	6
Outline Course in French Lit. ....	3	3
17th Century French History & Literature—Composition .....	3	3

## Electives

Romantic and Realistic Movement in French Lit. ....	6	6
The French Novel .....	3	3
French Drama .....	3	3

## LATIN

Adv. Latin I Ovid and Virgil .....	3	3
Adv. Latin II Livy .....	3	3
Adv. Latin III Cicero and Tacitus .....	3	3
De Senectute and De Amicitia Adv. Latin IV Horace .....	3	3
Adv. Latin V Plautus and Terence .....	3	3
Adv. Latin VI Roman Civilization .....	3	3

## SOCIAL STUDIES

## Required Courses

History of Civilization .....	4	4
Sociology or Economics .....	2	2
American Government .....	3	3
U. S. History before 1865 .....	3	3
Social and Industrial Hist. of U. S. ....	3	3
Modern European History .....	3	3

## Electives

Early European History .....	3	3
Principles of Economics .....	2	2
Principles of Sociology .....	2	2
Latin American History .....	3	3
Comparative Government .....	3	3
European History since World War .....	3	3
Origin of Social Institutions .....	3	3
History of England .....	3	3
U. S. History since 1865 .....	3	3
History of Far East .....	3	3
History of Pennsylvania .....	3	3
History of Ethics .....	3	3
Renaissance and Reformation ..	3	3
Industrial Relations .....	3	3

## MATHEMATICS

## Required Courses

College Algebra .....	3	3
College Trigonometry .....	3	3
Analytic Geometry .....	3	3
Calculus I .....	3	3
Calculus II .....	3	3
Statistics .....	3	3

## Electives

College Algebra II .....	3	3
Synthetic Geometry .....	3	3
Hist. of Mathematics .....	3	3
Applied Mathematics .....	3	3

### ADULT EDUCATION CURRICULUM

In the broadest sense adult education is concerned with all media of adult learning. Today in Pennsylvania thousands of adults are enrolled in classes to seek help in solving felt needs involving almost every interest of life. There are those who wish to secure credit toward high school or college graduation; others need help in solving problems of family relationship; some, in understanding the economic situation; some, in interpreting social conditions; others, in learning the responsibilities and duties of citizenship; still others, in adjusting personality to new conditions; etc.

The demand for teachers to help groups meet these vital needs is strongly felt at the present time. The State has recognized its obligation for adult education by providing funds for school districts which employ teachers for adults. This college believes that it can serve the citizens of Pennsylvania by educating teachers for this adult field.

A special four year curriculum, authorized by the State Council of Education and available at this college only, is designed to familiarize students with the theory and practice of adult education. Graduates from this curriculum will be prepared to serve in school districts that will wish to meet their obligations to the adults of the community. In addition, by judicious selection of electives these graduates will be prepared to teach in the public schools of the Commonwealth.

#### I. Cultural Basis

64 semester hours of basic cultural education duplicating the prescribed curricula of the first two years in the State Teachers Colleges.  
(Persons offering approved credit in all or any of this requirement to be admitted to advanced standing in accordance with such credit)

#### II. Professional Basis (Suggested)

General professional education in courses as follows:

- Evolution of American Public Schools
- Philosophy of Education
- Adolescent Psychology
- Psychology for Adult Education
- Mental Hygiene
- Personality Adjustment
- Individualized Techniques
- Adjustment Counselling
- Group Work Techniques

#### III. Specific Preparation (Suggested)

Concentration in the special field of Adult Education selected from the following groups and courses:

##### Group I—Personal Finance

- Budgeting
- Personal Accounts
- Buying
- Banking and Investment
- Insurance
- Business Law
- Advertising
- Marketing
- Retail Selling
- Typewriting
- Stenography
- Accounting

##### Group II—Vocational Adjustment

- Trade Education
- Adjustment Counselling
- Personality
- Vocational Guidance
- Mental Hygiene
- Budgeting
- Applied Economics
- Applied Sociology
- Labor Problems
- Aptitude Testing

##### Group III—Rural Life

- Soil Conservation
- Farm Mechanics
- Farm Accounting
- Crop Rotation
- Reforestation
- Cultural Appreciations in
  - Music
  - Art
  - Literature
- Radio Appreciation
- Dramatics
- Population Trends and Movements

##### Group IV—Home Making

- The Family
- Child Care
- Behavior Problems
- Nursery School
- Adolescence
- Children's Literature
- Good Manners
- Home Furnishing & Decoration
- Home Budgeting
- Family Purchasing
- Guidance
- Gardening as a Hobby

**Group V—Health and Safety**

Exercise and Rest  
 Play  
 Contemporary Emergency Facilities  
 Disease and its Prevention  
 Neurosis  
 First Aid  
 Diet  
 Pure Food  
 Sanitation  
 Operating an Automobile  
 Traffic  
 Camps (The Camper & Director)

**Group VI—Citizenship**

Literacy  
 Citizenship  
 English for Foreigners  
 American History  
 American Government  
 American Political & Social Phil.  
 Origin of Crime and Poverty  
 Social Agencies

**Group VII—Leisure Time Activities**

Cultural Reading  
 Radio Appreciation  
 Motion Picture Appreciation  
 Dramatic Appreciation  
 Cultural Appreciation in  
 Music  
 Art  
 Literature  
 Foreign Language Study

French  
 German  
 Spanish

Play  
 Sports  
 Dramatics  
 Choral Speaking

**Group VIII—Parental Education**

Courtship and Marriage  
 The Family  
 Child Care  
 Nursery School  
 Behavior Problems  
 The School Child  
 Adolescence  
 Guidance

**Group IX—Workers Education**

Parliamentary Law  
 Creative English  
 Public Speaking  
 English Composition  
 Work Shop  
 Labor History  
 Social & Labor Legislation  
 Trade Education  
 Trade Re-training

**IV. Practicum**

Student Teaching & Leadership with  
 Conferences  
 Curriculum Materials, Selection and  
 Adaptation

Courses will be offered only as demand arises. Additional courses may be offered to meet specific demands.

Courses may be taken without matriculation for the degree with the approval of the college authorities.

Advanced standing will be granted students or graduates of approved collegiate institutions.

Satisfactory equivalents will be accepted in lieu of specific courses.

Specific courses in the field of Adult Education may be offered in partial satisfaction of the subject matter requirement in related standard fields of secondary certification in lieu of specific courses of equivalent credit hourage therein.

Students pursuing other curricula may elect, with the advice and approval of the Dean of Instruction, such courses in Adult Education as may lead to certification in this field.

## BUSINESS EDUCATION CURRICULUM

(Sequence of courses subject to change for administrative reasons)

		Cl.	Sem.			Cl.	Sem.
		Hr.	Hr.			Hr.	Hr.
<b>First Semester</b>				<b>Fifth Semester</b>			
Place and Purpose of Edu. in the Social Order inc. Sch. Visitation .....	3	2		General Psychology .....	3	3	
Health Edu. (1) inc. Phys. Ed. & Pers. Hyg. ....	4	2		School Law and Administration .....	2	2	
Speech .....	3	3		Business Law (2) .....	3	3	
English (1) inc. Library Sc. ....	4	3		R Salesmanship & Retail Selling (1) .....	3	3	
Business Mathematics (1) .....	3	3		B*Bookkeeping & Accounting (4) .....	3	3	
Business Writing .....	3	1		S*Stenographic Office Practice..	5	3	
Typewriting (1) .....	3	1					
<b>Second Semester</b>				<b>Sixth Semester</b>			
English (2) .....	3	3		Psychology of Method in Bus. Courses .....	3	3	
Health Ed. (2) inc. Phys. Ed. & Pers. Hyg. ....	4	2		Tests & Meas. in Business Courses .....	3	3	
Economic Geography (1) .....	3	3		Sec. Sch. Bus. Educ. Org. & Content .....	2	2	
Business Mathematics (2) .....	3	3		Economics (1) .....	3	3	
Bookkeeping and Accounting (1) .....	5	3		Visual Education .....	2	1	
S Typewriting (2) .....	3	1		Clerical Practice and Machines .....	5	3	
S*Shorthand (1) .....	5	3		R*Retail Selling (2) .....	3	3	
<b>Third Semester</b>				<b>Seventh Semester</b>			
Literature (1) .....	3	3		Philosophy of Education .....	2	2	
Economic Geography (2) .....	3	3		American Government .....	3	3	
Business Organization & Finance .....	3	3		Economics (2) .....	3	3	
B*Bookkeeping and Accounting (2) .....	5	3		R*Retail Selling (3) .....	12	6	
S*Shorthand (2) .....	5	3		*Bus. Math. (3) with Statistics .....	2	2	
S*Typewriting (3) .....	5	2		History of Civilization .....	4	4	
				*Accounting and Auditing .....	3	3	
<b>Fourth Semester</b>				<b>Eighth Semester</b>			
Biological Science .....	4	3		Student Teaching Obs. & Conference .....	15	12	
Business Correspondence .....	3	3		Curriculum Materials Selection and Adaptation ..	4	3	
Business Law (1) .....	3	3					
B*Bookkeeping and Accounting (3) .....	3	3					
S*Shorthand Applications .....	5	3					
S*Typewriting Applications .....	5	2					

Students may become majors in either the Bookkeeping (B), the Stenographic (S), or the Retail Selling (R) field. All three of these fields may be elected, or a combination of any two fields is possible.

These fields are indicated by the appropriate letters B, S and R on the outline of the curriculum.

Those who omit one or more of these fields may elect courses in the fields of English, Social Studies, Mathematics, Science, Art, Music, Geography, Education, or any other department of the College.

A total of 128 semester hours will be required for graduation and the degree.

A semester program of sixteen (16) semester hours is considered standard. "A" and high "B" students may carry a heavier program, not to exceed the college maximum.

Courses in the last two semesters of this curriculum will not be offered until the year 1939-40, except as requested during the summer sessions of 1938 and 1939.

\* Elective courses.

## COOPERATIVE EDUCATION CURRICULUM

A special four year curriculum in elementary education authorized by the Board of Teachers College Presidents and available at this college only, is designed to familiarize students with the theory and practice of progressive education. Graduates from this curriculum are prepared to assume positions in schools already employing or desiring to employ progressive techniques, and are also certified to teach in any elementary school of the Commonwealth. The first two years of this curriculum conform to the basic two years set forth on page 22.

	Cl.	Sem.		Cl.	Sem.
	Hr.	Hr.		Hr.	Hr.
Fifth Semester			Seventh Semester		
American History and Gov't...	3—	3	Measures and Self Testing Ma-	2—	2
Reading Activities .....	3—	3	terials .....	4—	3
Music I .....	4—	2	Environmental Appreciations ..	2—	1
Art I .....	4—	2	Visual Education .....	3—	3
Number Projects .....	3—	2	Children's Literature and Story	2—	2
School Law .....	1—	1	Telling .....	3—	3
Elective .....	3—	3	Parent Education .....	2—	2
	<hr/>		Philosophy of Education in-	2—	2
	21— 16		cluding the Development of	3—	3
			Progressive Education .....	3—	3
			Elective .....	<hr/>	
				18— 16	
Sixth Semester			Eighth Semester		
Child Psychology and Guidance	3—	3	Student Teaching and Confer-	15—	12
Creative English .....	3—	3	ences .....	4—	3
Manuscript Writing .....	2—	1	Curriculum Materials, Selection	<hr/>	
Creative Music .....	3—	1½	and Adaptation .....	19— 15	
Creative Art .....	3—	1½		<hr/>	
Int. Rhythm including Teach-	3—	2	Total.....	157—129	
ing of Health .....	3—	3		<hr/>	
Social Activities .....	2—	2			
Literary Appreciation .....	2—	2			
	<hr/>				
	22— 17				

## ELECTIVES

Advanced Creative English .....	3	3
Advanced Creative Art .....	4	2
Mental Hygiene .....	3	3
Modern Drama .....	3	3
Dramatic Technique .....	4	2

Courses in Speech or other approved courses from subject fields

Any electives provided for the elementary curriculum

Field trips to progressive schools will be taken during the junior and senior years and are an integral part of this curriculum.

## COURSES OF INSTRUCTION

*Courses are designated according to the following scheme: Initial letters show subject field; numbers show curricula—1-9, all curricula; 11-19, elementary; 21-29, secondary; 31-39, cooperative; 41-59, elective; 61-89, business education (61-80, required; 81-89, elective); 90 and above, adult education.*

### THE ARTS

#### ART

A-11—ART I—ELEMENTARY INDUSTRIAL ART—Develops an appreciation of art in everyday life. Gives experience in various craft media such as clay, reed, metal, wood, linoleum blocks, soap and beads. 2 semester hours.  
DR. CLEMENT

A-12—ART II—ELEMENTARY DRAWING, DESIGN AND COLOR—Gives experience and develops skill in the various media used in public schools. Includes simplified graphic vocabulary (animal and figure), color theory and harmonies, elements of design, and perspective. 1½ semester hours.  
DR. CLEMENT

A-14—ART IV—HISTORY AND APPRECIATION OF ART—This course is designed to develop sensitiveness to works of art by analyzing them for art principles and significant qualities. Chief periods in the history and evolution of art are studied and traced by showing outstanding works of painting, sculpture and architecture of the past and present. 2 semester hours.  
DR. CLEMENT

A-32—CREATIVE ART — This course is designed to give the student a thorough understanding of art as creative expression and how it functions throughout the modern curriculum. A background of philosophical, factual, and technical material necessary for stimulating children to self-expression is acquired through planning and participating in integrated units of activity, in which special attention is given to an analysis of the uses of the various elements of art. Teaching procedures are studied through observation and participation in actual classroom situations. (Cooperative Education) 2 semester hours.  
MISS KAUFFMAN

#### WRITING

A-33—MANUSCRIPT WRITING—To develop the technique of manuscript writing at desk and blackboard; to acquaint the student with methods of teaching manuscript and cursive writing by theory, observation and practice; comparative study of various systems of cursive writing; appreciation of historical background and present practices gained through assigned readings. (Cooperative Education) 1 semester hour. MISS KAUFFMAN

#### Music

A-15—MUSIC I—Acquaints the prospective teacher with the materials and techniques necessary for the teaching of music in grades one, two, and three. This is accomplished through the study of elementary theory; sight-singing with syllables; study of rote songs; dictation; writing music; study of rhythm bands; and finally the teaching of music from the creative basis. 2 semester hours.  
MR. WEAVER

A-16—MUSIC II—PRE-REQUISITE A-15. Prepares the student for the teaching of music in grades four, five, and six, and the one and two room rural school. This is accomplished through the continuation of many of



the ideas started in the previous course, plus the study of conducting groups of singers; study of teaching music from an appreciative basis; singing in two and three parts; and the ability to create music using a rhythmic pattern, and a melodic pattern. 1½ semester hours. MR. WEAVER

A-2—MUSIC III—This course is a study of the history and appreciation of music. This is accomplished by studying all the forms of music and many of the better known composers, starting with Johann S. Bach up to the present time. The media used for this study are the victrola, the radio, and the piano. The course stresses the possibilities of music as a means to a fuller appreciation of life, and a better use of leisure time. 2 semester hours. MR. WEAVER

A-31—INTERPRETATIVE RHYTHM—This course aims to give the students opportunity to express ideas, moods and emotions by means of body movement and facial changes. Each individual will develop his own personal interests and also participate in group activity. Different musical forms will be used for accompaniment and intimate studies will be made of a variety of these forms. The course will also be professionalized so that students may become familiar with methods and procedures used in presenting such a course to boys and girls. (Cooperative Education) 1 semester hour. MISS ROBB AND MISS NORRIS

A-34—CREATIVE MUSIC—Prepares the student for the teaching of music from the creative point of view. This is accomplished through the study of harmony; proper chord progressions; proper melodic progressions; and correct rhythms; also, the ability to express one's emotions through the medium of music. The creative side stresses the ability to compose, using proper melodic and rhythmic patterns to suggest ideas in music. (Cooperative Education) 2 semester hours. MR. WEAVER

### BUSINESS EDUCATION

B-61—BUSINESS WRITING—Practice at the desk and blackboard with methods of instruction for penmanship in the business education of secondary schools. Qualifies for certification in Business Writing. One semester hour.

B-62—BUSINESS CORRESPONDENCE—Practice in the special application of business writing in correspondence situations, including review of needed essentials in grammar, spelling, syllabication, and vocabulary study. Completes certification requirements in Business English (with previous twelve hours in English). Three semester hours.

B-73—BUSINESS ORGANIZATION AND FINANCE—Fundamental information and study of the organization and management of typical businesses. Three semester hours.

B-74—CLERICAL PRACTICE AND MACHINES—Actual office practice of clerical skills in filing and business papers, the development of skills on the adding and calculating machine, the bookkeeping machine, duplicating machines including: mimeograph, multigraph, multilith, and rotary hectograph-type duplicators. Three semester hours.

B-65—PSYCHOLOGY OF METHODS IN BUSINESS ED. — Offering a choice of three courses in the methods of teaching business education subjects in the secondary schools, grouped according to the sequence field selected: Secretarial, Bookkeeping and Accounting, or the Retail Selling sequence. Three semester hours.

B-66—TESTS AND MEASUREMENTS IN BUSINESS ED. — Study of tests and methods of measurement in Business Education instruction in the secondary schools. Three semester hours.

B-67—SECONDARY SCHOOL BUSINESS EDUCATION ORGANIZATION AND CONTENT—Study of various curricula plans with methods of determining community needs and of administering secondary school business education curricula. Two semester hours.

B-68—STUDENT TEACHING, OBSERVATION, AND CONFERENCE—Actual teaching situation under supervision in a secondary school business education department, including participation in the teaching life of the school community. Twelve semester hours.

B-69—CURRICULUM MATERIALS, SELECTION, AND ADAPTATION—Organization of materials and lesson planning in the special subjects involved in the student teaching situation, correlated with the student teaching semester. Three semester hours.

B-71—TYPEWRITING I—Initial learning of touch operation of standard typewriters. One semester hour.

B-72—TYPEWRITING II—Initial application of typewriting skills. One semester hour.

B-S-83—TYPEWRITING III—Specialized applications of typewriting and advanced skill development, with introduction of transcription from shorthand; correlated with Shorthand II. Two semester hours.

B-S-84—TYPEWRITING APPLICATIONS—Advanced application of transcription and the development of transcribing skill; correlated with Shorthand Applications. Completes certification requirement for typewriting. Two semester hours.

B-S-81—SHORTHAND I—Initial learning of Gregg Shorthand with introduction of dictation. Three semester hours.

B-S-82—SHORTHAND II—Specialized practice of shorthand skill with introduction of transcription; correlated with Typewriting III. Three semester hours.

B-S-85—SHORTHAND APPLICATIONS—Advanced application of shorthand skill; correlated with Typewriting Applications. Completes certification requirements in Shorthand. Three semester hours.

B-S-86—STENOGRAPHIC OFFICE PRACTICE—Actual office practice of stenographic skill, transcribing from dictating machine recordings, filing systems, office procedure and business papers. Qualifies for certification in Office Practice. Three semester hours.

B-63—BUSINESS MATHEMATICS I—Review and development of arithmetical skills with business applications. Gives certification for Business Mathematics. Three semester hours.

B-64—BUSINESS MATHEMATICS II—Continued development of business mathematics skills correlated with Business Information. Certifies in Junior Business Training. Three semester hours.

B-70—BOOKKEEPING AND ACCOUNTING I—Principles of accounting. Single proprietorship. Three semester hours.

B-B-82—ACCOUNTING II—Principles of accounting continued, partnerships. Three semester hours.



OLD MAIN

B-B-83—ACCOUNTING III—Principles of corporate organization and accounting. Three semester hours.

B-B-84—ACCOUNTING IV—Principles of accounting for manufacturing concerns and departmental accounting. Completes certification requirements in Bookkeeping and Accounting. Three semester hours.

B-75—BUSINESS LAW I—Introduction to the study of fundamental business law. Three semester hours.

B-76—BUSINESS LAW II—Advanced specialized study of business law with special Pennsylvania supplementary analysis. Completes certification requirements for Business Law. Three semester hours.

B-77—SALESMANSHIP AND RETAIL SELLING I—Introduction and general study of principles of salesmanship with introduction of application to retail selling. Certifies in Salesmanship. Three semester hours.

B-R-82—RETAIL SELLING II—Special application of salesmanship principles in advertising and retail selling. Three semester hours.

B-R-83—RETAIL SELLING III—Actual store practice in retail selling situations. Completes certification in Retail Selling. Six semester hours.

## EDUCATION

Ed-1—PLACE AND PURPOSE OF EDUCATION IN THE SOCIAL ORDER—This course is intended to acquaint the student with the major functions of education in contemporary society. It is not essentially a professional course. It includes a survey of the organization, underlying purposes, and the content of American education with some reference to education in non-democratic society. 2 semester hours. MR. BURKHOLDER

Ed-2—PSYCHOLOGY I—A basic course in general psychology designed to give the student an understanding of the terms, aims, and methods of psychology with special reference to children at the various age levels. Experiments, introspection and observation of individuals will be required of all students. 3 semester hours. DR. EISENBERG, DR. WRIGHT

Ed-3—PSYCHOLOGY II—This course is for students who have completed Psychology I. The general topics of educational psychology are treated with special reference to methods and techniques of applying the principles of psychology to educational situations. Laboratory experiments and observation in the training school are required. 3 semester hours. DR. EISENBERG

Ed-4—VISUAL EDUCATION—The background for and the use of Visual-Sensory aids in the school room. These aids include the school journey, objects-specimens-models, pictorial materials, projection machinery of still and motion type, blackboard and bulletin boards, and radio. 1 semester hour. MR. KREBS

Ed-5—EDUCATIONAL TESTS AND MEASUREMENTS—This course presents the elements of the statistical process, acquaints the pupils with the most generally accepted tests of the several kinds, together with a study of the simpler techniques for preparing, interpreting and applying the results of tests. A well balanced testing program in the field in which the student expects to teach is considered. 2 semester hours. DR. WRIGHT

Ed-6—HISTORY AND PHILOSOPHY OF EDUCATION—The historical development of our generally accepted educational concepts and practices is traced, with the major emphasis upon the more recent movements. Assigned reading, class discussions, and special reports are intended to help the student integrate his different training experiences, and to form his own philosophy of education. 4 semester hours. MR. BURKHOLDER

Ed-7—STUDENT TEACHING—This activity is required during the last year of training. It includes observation, participation and teaching, and is offered according to the specialization of the student in Kindergarten-Primary, Intermediate, Rural, Cooperative and Secondary Groups. The Campus Training School affords training in the kindergarten and grades one to six. Training in the Rural Group is obtained in a one-room ungraded school in Shippensburg Township, and in a two-room school in Shippensburg Borough. The Shippensburg Schools also provide for training in the Junior and Senior High Schools and in grades one to six. 14 semester hours. MR. HARLEY AND STAFF

A special opportunity for student teaching is given during the third year for students who wish to apply for teaching on a State Standard Limited Certificate. 6 semester hours. MR. HARLEY AND STAFF

Ed-9—TECHNIQUE OF TEACHING—This course accompanies student teaching and must reinforce it at every point. It includes lesson planning; types of teaching with their respective techniques; the trend toward individual instruction; socialized school activities; collection, evaluation, and organization of materials of instruction; marking systems, records and reports. 2 semester hours.

MISS CUNNINGHAM, MISS HUBER, MISS SMALL, MISS WILLOUGHBY

Ed-12—PRE-SCHOOL CHILD—This course aims to acquaint students with all phases of human development from birth to kindergarten age; to become familiar in theory and in practice with the principles underlying proper guidance of pre-school behavior. The Nursery School is available for observation and participation. 2 semester hours. MISS OYER

Ed-13—KINDERGARTEN-PRIMARY THEORY—The fundamental purpose of this course is to increase the understanding of child development during the pre-school age through directed observation of kindergarten age children. Special attention is given to the educational principles and aims of the earlier kindergarten educators in comparison with the present day theories and practices. Observation and participation in the kindergarten is required. 2 semester hours. MISS OYER

Ed-22—PROBLEMS OF JUNIOR AND SENIOR HIGH SCHOOL—A study of the aims, purposes and development of secondary education; the program of studies and the methods best suited to the needs of these pupils; the qualification of teachers; the high school buildings; and the cost of maintaining secondary schools. 3 semester hours. MISS HUBER

Ed-24—GUIDANCE—The place of guidance in education; the field of personal analysis; cooperation with other educational agencies; type studies in vocational guidance; the responsibility of the individual teacher and school administrators for educational and curriculum guidance; and guidance through instruction. 2 semester hours. MISS HUBER

Ed-33—MEASURES AND SELF TESTING MATERIALS—This course develops the knowledge, attitudes, habits and skills necessary in a well balanced testing program. Self-testing materials are presented. Participation in a testing program is required. Tests and self-testing materials are presented in relation to progressive education. (Cooperative Education) 2 semester hours. DR. WRIGHT

Ed-36—CHILD PSYCHOLOGY AND GUIDANCE—Guidance is treated in this course as an inextricable element of the whole educative process. The necessary informational background at the physical, mental and spiritual levels will be studied to give the teacher a basis for intelligent and sympathetic child guidance. Christian ethics as a basis for conduct will be considered. The principle that every teacher is a guidance counselor and every child a problem will control the course. The interpretation of personal and social attitudes and behaviors will be learned from actual case studies. Opportunity will be given for contact with the children in the Training School. (Cooperative Education) 3 semester hours.

DR. ROWLAND

Ed-38—PARENT EDUCATION—The significance of parent education in any general scheme of education; the family as a social unit; family relationships; social hygiene; sanitation and health; the family budget; the place of the child in the home; the parents' responsibility for the child; the child's responsibility to the family; the relationship of the home to the school, economic society, the state, and the church will be considered in this course. The purpose will be to make the prospective teacher in a progressive school familiar with the aims and procedures of parent education, to insure a sympathy for the parent point of view, to provide the materials and techniques for actual participation in parent education. (Cooperative Education) 2 semester hours.

DR. ROWLAND

### ENGLISH

E-1—ENGLISH I—A course in English fundamentals emphasizing the structure and use of correct English. The work is based upon the needs of the students as discovered in their written composition and in their speech. 3 semester hours.

DR. BEARDWOOD, MISS BLOOD, MR. MARK, MR. STEWART

E-2—ENGLISH II—A composition course designed to further the student's knowledge of English fundamentals and to improve his written and spoken English. Pre-requisite, English I. 3 semester hours.

DR. BEARDWOOD, MISS BLOOD, MR. MARK, MR. STEWART

E-3—SPEECH—The purpose of this course is (1) to acquaint students with intelligent and efficient methods of using library tools; (2) to develop pleasing, well-modulated voices and the ability to meet adequately the usual demands for informal speaking; (3) to develop skill in parliamentary practice; (4) to acquaint students with good plays for children and methods of producing them that will be both simple and practicable. 3 semester hours.

MISS YORK

E-4—LITERATURE I—A study of the major types of English prose and poetry by means of discussion, reports, and analysis. 3 semester hours.

MR. MARK, MR. STEWART

E-5—LITERATURE II—A study of types of American literature from Colonial times to the present by means of discussion, reports, and analysis. 3 semester hours.

MISS BLOOD, MR. MARK, MR. STEWART

E-12—THE TEACHING OF READING—Covers the aims, principles, materials and methods of teaching reading throughout the first eight grades. Emphasis is placed on beginning reading. 3 semester hours.

MISS YORK

E-13—CHILDREN'S LITERATURE—A study of children's interests, literary materials and methods of presenting literature in the elementary grades. Opportunity for story telling and dramatization is given. 3 semester hours.

MISS YORK

E-14—**SPEECH PROBLEMS**—Designed to equip prospective teachers with the knowledge and technique necessary to recognize and correct speech defects. 2 semester hours. MISS YORK

E-21—**ENGLISH PHILOLOGY**—An outline of the history and development of the English language with a brief survey of historical grammar and review of the principles and methods involved in the study of grammar. 3 semester hours. DR. BEARDWOOD

E-31—**READING ACTIVITIES**—As a basis for the work in Reading Activities, a study will first be made of the reading process, aims, and materials in the light of recent scientific investigation.

Then detailed consideration will be given to such activities as projects, activity-units, reading clubs and other devices in which children in co-operation with the teacher and each other, use reading in life situations to attain their own goals, and incidentally develop desirable skills and attitudes, and will be carried on in connection with story telling and the teaching of appreciation in various types of literary material for children. (Cooperative Education) 3 semester hours. MISS CUNNINGHAM, MISS YORK

E-32—**CREATIVE ENGLISH**—Students in this course will be encouraged to write and speak freely in order that they may understand more fully the joys of self-expression. The reading of various types of literature will furnish background and stimulus for original production. (Cooperative Education) 3 semester hours. MISS BLOOD

E-34—**LITERARY APPRECIATION**—This course aims to present a proper appreciation of literature from the Classic Era to the present. From the ancient literature of Greece and Rome, from French, German, English and American literature, the leading poems, prose works, and dramas are read and critically studied. Stress is always placed on the literary greatness of the works and the students are guided to a real, enthusiastic appreciation of the great masterpieces of poetry and prose. (Cooperative Education) 3 semester hours. MR. STEWART

E-41—**SHAKESPEARE**—Plays typical of the author's various dramatic periods are studied. There is a core of intensive reading in class, with extensive reading for report. Initial consideration is given to the social and dramatic background of the author. Information derived from the course is related to the consideration of high school Shakespearean plays. 3 semester hours. MR. MARK

E-42—**SHORT STORY**—This course is designed to give the student a knowledge of the history and technique of the short story. American, English, and European writers will be considered and stories will be written by students interested in this phase of the work. 3 semester hours. MISS BLOOD

E-43—**MODERN NOVEL**—A study of the modern novel in England. This course begins with the work of Meredith and Hardy, and includes the writing of the younger novelists of the present time. 3 semester hours. MISS BLOOD

E-45—**CONTEMPORARY POETRY**—A study of British and American poetry of the Twentieth Century. The course acquaints the student with modern trends in poetry, works for the appreciation of verse forms, and suggests contemporary poetry suitable for intermediate and high school classes. 3 semester hours. MISS BLOOD

E-46—VICTORIAN PROSE AND POETRY — Deals with the writings of the greater Victorian poets and essayists; stresses the trends of Victorian thought as found in the literature of the age. 3 semester hours.

MISS BLOOD

E-49—ROMANTIC PERIOD—Designed to acquaint students with the English Romantic Movement of the late eighteenth and early nineteenth centuries. Stress will be placed upon poetry and upon literary criticism of and by the poets of this time. 3 semester hours.

MISS BLOOD

E-50—DRAMATIC ENGLISH—Designed to give the student a background upon which to base his judgment of dramatic literature and dramatic production. The course offers practical experience in the production of plays, and aids the student in acquiring familiarity with dramatic material suitable for school use. 3 semester hours.

MISS BLOOD

### FOREIGN LANGUAGES

#### FRENCH

F-21 and 22—ELEMENTARY FRENCH—A thorough review of the fundamentals of French grammar and pronunciation. Reading material is chosen from the late nineteenth century and contemporary literature. 6 semester hours.

DR. BEARDWOOD

F-23 and 24—19TH CENTURY AND CONTEMPORARY FRENCH PROSE AND POETRY—A study of French Romanticism and Realism, and of the prose and poetry of the present day. 6 semester hours.

DR. BEARDWOOD

F-25—17TH CENTURY FRENCH LITERATURE — A study of the Classical period of French Literature. 3 semester hours.

DR. BEARDWOOD

F-26—OUTLINE COURSE IN FRENCH LITERATURE—A rapid survey of the origin and development of French Language and Literature. 3 semester hours.

DR. BEARDWOOD

(All courses include practice in speaking and writing French. Methods and problems involved in the teaching of French are progressively introduced. The literature is presented with its historical and cultural background.)

#### LATIN

L-41—OVID AND VIRGIL—Reading of selections from the *Metamorphoses* of Ovid and the *Aeneid* of Virgil. 3 semester hours.

MR. STEWART

L-42—LIVY—This course embraces selections from Books I, XXI and XXII. 3 semester hours.

MR. STEWART

L-43—CICERO AND TACITUS—A literary study of the essay as a type of Latin literature. This course also includes further work in Latin prose composition and informal discussions and reports on methods of teaching Latin in high schools. 3 semester hours.

MR. STEWART

L-44—HORACE—The Odes of Horace are read and studied together with metrical readings of the same by English and American poets. Special attention is given to the Horatian metres. 3 semester hours.

MR. STEWART

L-45—TEACHING OF LATIN—This course embraces a thorough study of the methods employed in the teaching of Latin and an examination of the devices used to popularize and vivify the subject. Actual classroom teaching is practiced and reports are given on important phases of Latin teaching. 3 semester hours.

MR. STEWART



L-46—ROMAN COMEDY—This course embraces the reading and interpretation of selected plays of Plautus and Terence. 3 semester hours.

MR. STEWART

### GEOGRAPHY

G-1—PRINCIPLES OF GEOGRAPHY—Emphasis is laid on the inter-relations between the physical and cultural landscapes. The important geographic factors such as climate, soil, minerals, water bodies, topography, natural vegetation and mathematical relations are discussed with this relationship in mind and their effects upon economic value of a region. This course is basic for all geography which follows. 3 semester hours.

MR. ALLAN, MR. KREBS

G-2—ECONOMIC GEOGRAPHY—This course deals with economic and commercial activities of man from the geographic viewpoint. It includes a systematic study of the agricultural, industrial and commercial relations of the world with special stress upon the economic development of the United States. The course is developed to follow Principles of Geography to produce a harmonious unit in Geography. 3 semester hours.

MR. ALLAN

G-11—GEOGRAPHY OF THE WESTERN HEMISPHERE—A study of relationships between life activities and factors of the natural environment in the major regions of North and South America. Special attention is given to the organization of geographic units and methods of presenting geographic information in the grades. 3 semester hours.

MR. KREBS

G-12—GEOGRAPHY OF THE EASTERN HEMISPHERE—An analysis and interpretation is evolved of the regions, natural, economic and political, of the eastern hemisphere in terms of the outstanding relationships between the cultural and natural items of these regions. 3 semester hours.

MR. KREBS

G-21—GEOGRAPHY OF UNITED STATES AND CANADA—A regional treatment of the continent of North America based on the natural geographic regions with a study of man's varied adjustments to the conditions in each region. Emphasis is also placed on the problem of conservation of our natural resources. 3 semester hours.

MR. KREBS

G-22—GEOGRAPHY OF LATIN AMERICA—A regional study stressing the inter-relationship between the physical and cultural landscapes. Each geographic region is studied to complete the understanding of the economic relations between the countries of North and South America. 3 semester hours.

MR. ALLAN

G-23—GEOGRAPHY OF EUROPE—A general picture showing the inter-relationship between the physical and cultural backgrounds is stressed in the first part of the course on Europe. The second part deals with the economic and political environments of each country in the light of their geographic environment. 3 semester hours.

MR. ALLAN

G-24—GEOGRAPHY OF THE PACIFIC REALM—Deals with the geography of the countries of the Pacific Basin. Special emphasis is laid on Australia, the Islands of the Pacific, and the countries of Asia bordering the Pacific. The economic and political relations of the Orient and Occident are stressed. 3 semester hours.

MR. ALLAN

G-31—ENVIRONMENTAL APPRECIATIONS—The purpose of this course is to show how the elements and factors of the environment influence life, and how man in turn has made effective use of the natural resources, forces of nature, scientific controls, and social organizations in furthering his needs,

growth, and cultural development. Field trips to recognize, interpret, and evaluate types of study and to apply basic principles will be made. (Co-operative Education) 3 semester hours. MISS WILLOUGHBY

G-41—CLIMATOLOGY—Divided into Elementary Meteorology and Climatology. The important classifications of climate are studied with their bases for classification. Plant and animal responses are studied in the light of their climatic environment. 3 semester hours. MR. ALLAN

G-42—PHYSIOGRAPHY—This course is designed to give the student an appreciation of the earth's modifying agents. The major topics discussed are as follows: weathering, wind ground, water, running water, ice, vulcanism, diastrophism, wave action, and ocean currents. 3 semester hours. MR. ALLAN

G-47—GEOGRAPHIC INFLUENCES IN AMERICAN HISTORY—A geographic interpretation of the economic, social and political development of the United States is emphasized. 3 semester hours. MR. ALLAN

### HEALTH EDUCATION

H.Ed.-1—HEALTH EDUCATION I—This course provides for three hours of activity and one hour of class room procedure throughout the freshman year. In the activity course the student will become familiar with modern conceptions of physical education and develop skills in team and individual sports with special emphasis upon carryover values. Hockey, soccer, archery, basketball, hand ball and tennis will be included in the first semester, also a program of folk and national dances. In the classroom the student will become familiar with the fundamental health habits, attitudes and knowledge supporting his daily living. 2 semester hours. MISS ROBB, MR. GULIAN

H.Ed.-2—HEALTH EDUCATION II—This course is a continuation of Health Education I with the same division of time. In the activity course volley ball, deck tennis, ping pong, shuffle board, baseball, tennis and archery will be included in the second semester, also a program of social and modern dancing. In the classroom the student will be free to study specific health problems which are of personal interest to him. 2 semester hours. MISS ROBB, MR. GULIAN

H.Ed.-16—SCHOOL AND COMMUNITY HYGIENE—The modern conception of public health as applied to the school and community; various agencies assisting in maintaining high standards of health living. 3 semester hours. MISS ROBB

### MATHEMATICS

M-11—CURRICULUM IN ARITHMETIC—The major objectives of this course are (1) to give the student an overview of the curriculum in Arithmetic for the elementary grades, (2) to study present trends in teaching the basic phases of the work in grades one to three from the standpoint of significance and meanings, (3) to acquaint the student with textbooks, materials and tests available for the primary grades. 2 semester hours. MISS KIEFFER, MR. GROVE

M-21—MATHEMATICS I. 3 semester hours. MR. GROVE

M-22—MATHEMATICS II. 3 semester hours. MR. GROVE

M-23—MATHEMATICS III. 3 semester hours. MR. GROVE

These three courses will cover the materials usually taught in the courses of College Algebra, Trigonometry and Analytic Geometry. The following topics are among those that will be included: Graphical representation of algebraic and trigonometric functions and their applications; solutions of right and oblique triangles; identities; straight line, circle, and conic sections, including translation and rotation of axes, etc.

M-24—MATHEMATICS IV—CALCULUS—Differentiation and integration of algebraic functions; study of the variations of the functions using derivatives; implicit differentiation of functions; use of differentials, maxima and minima; applications in velocity and acceleration, areas, pressure, work, volumes, etc. 3 semester hours. MR. GROVE

M-25—MATHEMATICS V—Continuation of Mathematics IV, extending the use of derivatives and integrals to trigonometric, logarithmic and exponential functions. 3 semester hours. MR. GROVE

M-31—NUMBER PROJECTS—The objectives of this course are centered largely in the techniques involved in organizing, presenting and developing units of work which may be used as vitalizing factors in mastering the fundamental phases of arithmetic for the elementary grades. A special study is made of units which may serve as a basis for experience in understanding and using the knowledge, concepts, and principles concerning the quantitative side of the child's life and life in general. The development of attitudes and appreciations is emphasized in all the work. (Cooperative Education) 3 semester hours. MISS KIEFFER

## SCIENCE

### BIOLOGICAL SCIENCES

BS-1 and 2—BIOLOGICAL SCIENCE I and II—This course involves the study of the general principles of animal and plant biology together with the concomitant results that spring from the efforts in gaining them. It is given as a basis for further study as well as to acquaint the student specifically with the biology underlying human behavior.

Specifically, the course involves a study of protoplasm, cell structure with the series of their combinations, the function of the several organs of plant and animal life, embryology, micro-organisms and disease together with a few types of both plants and animals.

Some of the theories of biology as development, adjustment and heredity are made a careful study. A brief history of the science is offered. 6 semester hours. MR. SHEARER, MR. RAMBO

S-12—NATURE STUDY—A study is made of the common trees, flowers, insects, birds, and animals. The course aims to give not only subject matter but appreciations, habits of observation, and an understanding of how the work may be presented to children. 3 semester hours. MR. KREBS

BS-41—BOTANY I—THE FLOWERING PLANT—Mainly emphasizes the structure and physiology of angiosperms. The economic value of plants, weeds, and certain aspects of forestry, taxonomy and local ecology are briefly considered. 3 semester hours. MR. SHEARER

BS-42—BOTANY II — THALLOPHYTES, BRYOPHYTES, PTERIDOPHYTES AND SPERMATOPHYTES—Presents a survey of the plant kingdom by studying typical representatives of all the subdivisions of all groups of plants. The course stresses largely the development and reproduction of plants. 3 semester hours. MR. SHEARER

BS-43—ZOOLOGY I—GENERAL ZOOLOGY—Typical representatives of the various phyla are studied. A number of the invertebrate forms are considered and work is terminated by making a comprehensive study of the frog. The anatomical and physiological sides are emphasized. 3 semester hours.

MR. SHEARER

BS-44—ZOOLOGY II—VERTEBRATE ZOOLOGY—The invertebrate phyla omitted in the first course are considered and emphasis is especially placed upon the Arthropods. Considerable import is given to the insect group of this phylum. Anatomy, physiology and ecology are taken into the plan of the work. 3 semester hours.

MR. SHEARER

#### PHYSICAL SCIENCES

PS-1 and 2—PHYSICAL SCIENCE I and II—This course is intended to have students become more familiar and more interested in their physical world. The parts of astronomy, geology, physics and chemistry that are needed to grasp a better understanding and a better appreciation of the principles and relationships of the most common phenomena of the physical sciences are considered bases of procedure.

Opportunity is offered to develop a scientific attitude and method which, in turn, leads to a critical and cultural attitude of mind. A brief history of physical science is made an integral part of the work. 6 semester hours.

MR. SHEARER, MR. RAMBO

PS-21 and 22—GENERAL INORGANIC CHEMISTRY—A systematic study of the history, occurrence, preparation, properties, metallurgy and application to daily life of the important non-metallic and metallic elements and their compounds. Emphasis will be placed upon the fundamental principles, laws, and theories of chemical action. The laboratory work during part of the second semester will include an introduction to Qualitative Analysis. 6 semester hours.

DR. WRIGHT

PS-41—QUALITATIVE ANALYSIS—Designed to acquaint the student with the theory and practice by which the important metals and acids are separated and identified in complex mixtures, alloys, ores, and minerals. A study will be made of ionization, mass action and other fundamental theories. 3 semester hours.

DR. WRIGHT

PS-49—PHYSICS I—Detailed study of the subject matter taught in high school Physics including mechanics, heat and sound. Demonstration, discussions and laboratory experiments. 3 semester hours.

MR. RAMBO

PS 50—PHYSICS II—Electricity, magnetism, light and modern Physics. Recent developments in the field of Physics. 3 semester hours.

MR. RAMBO

#### SOCIAL STUDIES

##### HISTORY

SS-I—HISTORY OF CIVILIZATION—An orientation course surveying the major movements in western culture. The course attempts to give the student an understanding of present-day civilization and his relation to it through a study of its origins and developments. 4 semester hours.

DR. LOUCKS, DR. VALENTINE

SS-II—UNITED STATES HISTORY I (Elementary Curriculum)—A survey course in American History to 1865 designed for elementary teachers. Social, cultural and biographical materials will receive special emphasis. 3 semester hours.

DR. LOUCKS

SS-12—UNITED STATES HISTORY II—A continuation of U. S. History I covering the period from 1865 to the present. The work will be professionalized with special reference to the needs of elementary teachers. 3 semester hours. DR. LOUCKS

SS-21—UNITED STATES HISTORY BEFORE 1865 (Secondary Curriculum)—After a brief introduction to the Colonial Period treated as a phase of European History, the course will stress the important economic, social and political movements from 1763 to 1865. 3 semester hours. DR. LOUCKS

SS-22—SOCIAL AND INDUSTRIAL HISTORY OF THE U. S.—After a brief review of the Agricultural Era, the emphasis of this course will be upon the industrialization of American life after the Civil War to the present, and its effects upon our cultural and political life and upon our relations with foreign powers. An advanced course for junior and senior high school teachers. 3 semester hours. DR. LOUCKS

SS-23—MODERN EUROPEAN HISTORY—Beginning with the expansion of Europe and the rise of modern capitalism this course will survey the interplay of economic, political and cultural factors which have been most influential in creating the contemporary scene in Europe. 3 semester hours. DR. LOUCKS

SS-43—HISTORY OF LATIN AMERICA—A survey of the development of Latin America, tracing its political, economic and cultural relations with the United States and Europe and indicating its place in world affairs. Emphasis is put on its place in the diplomatic history of the United States. Prerequisite—U. S. History. 3 semester hours. DR. VALENTINE

SS-47—HISTORY OF ENGLAND—A survey of English history stressing the political, economic and cultural developments which enter most largely into the American heritage and which tend to bind the two nations together today. 3 semester hours. DR. VALENTINE

SS-49—HISTORY OF THE FAR EAST—The important cultural achievements through many centuries of nearly half of the human race, living in the Orient, will be surveyed to provide an understanding of the recent events there. The modern relations of eastern Asia with Europe and America will be traced, with emphasis on recent developments which vitally involve American interests. 3 semester hours. DR. VALENTINE

#### SOCIAL SCIENCE

SS-2—PRINCIPLES OF SOCIOLOGY—An introductory course which will introduce students to fundamental sociological concepts and apply these in a study of some of our most important social institutions. 2 semester hours. DR. LOUCKS

SS-3—AMERICAN GOVERNMENT—A brief study of the general concepts and principles of government is followed by a detailed study of the structure, powers and activity of the national and state governments. Emphasis is placed on the actual functioning of the present-day government organism and its attack upon such problems as agriculture, industry and labor. 3 semester hours. DR. VALENTINE

SS-4—EDUCATIONAL SOCIOLOGY — An introductory course in Sociology stressing the principles of Sociology and their applications in the classroom, school system and community. 3 semester hours. DR. LOUCKS

SS-13—CIVIC EDUCATION (Elementary Curriculum)—In this course students will discover through reading and observation in the laboratory school, character building activities which contribute to the child's civic

education. A study and evaluation will be made of pertinent community agencies and their relationship to the teacher and the school. 3 semester hours. MISS ROLAR

SS-24—ECONOMICS—Designed to give the Social Science teacher some understanding of the economic problems facing America today and of the principles involved in their solution. The course will center around the problem of economic security and the economic phases of its possible solutions. 3 semester hours. DR. VALENTINE

SS-25—PROBLEMS OF POLITICAL SCIENCE—The principles of modern government in America and abroad are studied as a basis for understanding political problems. The government's problem of providing security and liberty to all will be emphasized. Other problems with proposed solutions will be studied, such as efficiency in government, legislative and judicial reform, public finance and the regulation of business. Fascism and communism will be compared with democracy. The course is planned to supplement the course in Economics, which it should follow. Prerequisite—American Government. 3 semester hours. DR. VALENTINE

SS-31—AMERICAN HISTORY AND GOVERNMENT—Political principles and problems in the United States will be studied, with such historical background as is necessary to an understanding of these. Recent developments in the nature and extent of government activities will be studied in relation to their economic background and constitutional status. Such vital problems as democracy and efficiency in government, social insurance and government regulation of economic life will be considered. (Cooperative Education) 3 semester hours. DR. VALENTINE

SS-32—SOCIAL ACTIVITIES—Based upon Civics and U. S. History, this course will stress the development of a series of activities which will serve to direct the social learning of pupils in elementary grades. Through discussion and reading it will provide the necessary historical, sociological and economic backgrounds for adequate understanding of present-day social problems related both to the experience of the college student and of pupils in the elementary grades. Opportunity will be provided for planning actual units and for observing pupil activities in the campus laboratory school. (Cooperative Education) 3 semester hours. MISS ROLAR

## Student Organizations

### GOVERNING ORGANIZATIONS

**T**HE Student Cooperative Association determines the amount of the Activity Fee and through its constitution delegates to the President's Council the determination of the activities budget and its administration. The cafeteria is managed by the students under the sponsorship of the dietitian. This Association, under the sponsorship of the business manager, controls and operates the retail store, including the purchase of all textbooks.

**THE PRESIDENT'S COUNCIL.** This body controls and directs the student activities of the college under the authority of the Student Cooperative Association. It is composed of eighteen student members and four advisory faculty members, all of whom hold membership in the council ex-officio, by reason of their leadership of specific activities of the college. The president of the college is the president of the council. It administers the activities fund through a budget system by which each of the activities of the college is allocated its share of the money available for this purpose. The council elects a student treasurer and checks against the activities fund must be signed by the president and the treasurer of the council.

**STUDENT GOVERNMENT ORGANIZATIONS.** Four student government organizations exist at this college, one for day student women, one for boarding student women, one for day student men and one for boarding student men. Each organization has its officers and is responsible to the dean of men and women respectively and to the President's Council for the social life of the college, including such behavior problems as arise from time to time.

### MUSICAL ORGANIZATIONS

**WOMEN'S CHORAL CLUB.** The Women's Choral Club is an organization of women selected by examination. Any student is eligible if she meets the requirements, but the total number must not exceed fifty members. This club appears in concert during the year and aids in other musical performances of the school.

**MEN'S GLEE CLUB.** Admission to this club is by an examination in the ability to sight-sing and to read music written in four parts. The total number of men in this organization is determined by the director, proper balance of the different parts being the deciding factor. The club gives a concert each year, and then a tour is arranged. It is necessary for all the members of this organization to enroll for at least two semesters.

**COLLEGE ORCHESTRA.** This club is open to all students who play an instrument. Admission is by examination in the proper techniques of the instrument, and the ability to read music reasonably well. The group plays for all Chapel exercises, many college functions, and usually gives one complete concert. Students are urged to bring their instruments and apply to the director of music for admission to this group. Certain orchestral instruments are owned by the college and are loaned to students on request.

**CHAPEL CHOIR.** The Choir sings at the regular Chapel meetings, singing the Doxology and certain responses to the prayers. The group is a mixed group, being composed of twelve men and twelve women. The Choir gives a program for the college and throughout the service area.

**COLLEGE BAND.** This is a uniformed group which plays for all the at home football games, and at least two of the away games. The Band also drills, forming letters of all the visiting colleges. During the first semester this group is primarily a marching band, but during the second semester it is a concert band, giving at least one concert at the college. The Band also plays for numerous occasions during the college year. During the football season the Band is open only to men; during the second semester it is open to men and women. Admission is by examination in the techniques of the instrument, and the ability to read music reasonably well. Bring your instrument to college and apply for admission if interested. The college owns several instruments which may be loaned to deserving students.

There are other small groups of instrumental and vocal students, including the string quartette; the male quartette; the women's trio; the brass quartette; and the string quintette. Other groups may be arranged for as required.

### ATHLETIC ORGANIZATIONS

**WOMEN'S ATHLETIC ASSOCIATION.** Membership in this organization is earned by a point system in major sports, the purpose being to encourage participation, cooperation and sportsmanship among women. Each year the W. A. A. sponsors Play Day to which high school girls from the entire service area are invited. The May Day program is also in charge of the W. A. A.

**MEN'S ATHLETIC ASSOCIATION.** All men students interested in athletics are members of this Association. The Association approves proposed inter-collegiate agreements, contracts and schedules, determines the awarding of insignia, advises as to the athletic budget, determines the eligibility of students for athletic competitions, administers the program of intra-mural sport, promotes interest in and attendance at athletic contests by students and the community, and exercises such other powers and duties as may be delegated by the Athletic Council.

**THE ATHLETIC COUNCIL.** The Athletic Council consists of the officers of the Women's Athletic Association and the Men's Athletic Association and the faculty sponsors of athletics. The president of the college is the chairman of the Council. The Council regulates and determines the athletic policy of the college and directs the budgeting of finances for the support of athletics.

### DRAMATIC ORGANIZATION

**THE MASQUERS** is the organization designed to provide for students interested in dramatics. Members are given opportunity not only to take acting parts, but also to direct plays and to experiment with lighting, make-up, and staging. In 1937-38 the Masquers presented three major productions as well as one-act plays at the regular weekly meetings of the organization. Membership is limited and determined by competitive try-outs.

### RELIGIOUS ORGANIZATIONS

**CAMPUS CHRISTIAN ORGANIZATION.** This is a new organization formed by the merging of the former Young Women's and Young Men's Christian Associations. Membership is voluntary. While the social aspect of the work of the organization manifests itself at all times and everywhere, it is especially concerned with the religious aspect of the college. The activi-



ties sponsored by the organization give opportunity for the practice of the principles for which the organization stands. Regular meetings are held every Sunday evening at 6 o'clock.

**BIBLE TRAINING CLASS.** The purpose of this group is to arrive, by Bible study and group discussion, at an intellectually adequate and emotionally satisfying religion which will find expression in Christian living. Weekly meetings are held on Tuesdays from 4:15 until 5:15.

### STUDENT PUBLICATIONS

**CAMPUS REFLECTOR.** The college news publication appears weekly during the college year and reports the doings of the student body and faculty. Its purpose is multifold; it aims to keep the college before the public and to provide activity for students whose interest lies in the direction of amateur journalism; it also serves as a forum where controversial subjects may be discussed. It stimulates and maintains student morale. It is especially interested in all activities of creative quality. For the past four years the Reflector has won a high rating in the Columbia Scholastic Press Association contest and the Pennsylvania School Press Association Contest.

**THE CUMBERLAND** is the annual yearbook edited and published by the senior class and paid for by the Student Cooperative Association. Every registered full time student receives a copy of this yearbook which represents in word and picture the spirit of the college. Its form varies from year to year.

### CLUBS

**ART ASSOCIATION.** As an extra curricular organization of the college, this club is maintained for the benefit of those students who are interested in some phase of art activity. It has for its objectives the growth of art appreciation, the development of talent beyond that which the classroom offers, and participation in many college-sponsored activities, such as: decorating for college dances and entertainments, painting stage scenery for dramatic productions, designing posters, presenting art fairs and exhibits, and visiting New York and other art centers to view important art collections.

The club meets weekly on Tuesday afternoons to discuss the work of the various committees which function within the Association. New projects and activities are considered at each meeting, and past work is criticized and judged. The faculty sponsor endeavors to maintain a spirit of cooperation among the various groups within the organization in order to bring the full aid of the club to any current project or activity for the benefit of the club itself or any other department of the school.

**CHESS CLUB.** Students interested in chess and with an elementary knowledge of the game are invited to join the Chess Club which meets weekly and plays both intra-mural and intercollegiate matches. Chess experts are invited from time to time to speak to the Club.

**THE COLLEGE CHAMBER OF COMMERCE.** The business education curriculum students are associate members of the College Chamber of Commerce and take part in all of their activities. Active membership qualifies as an extra curricular activity and permits office holding and serving on committees. Regular programs are sponsored that are of interest both to the business education students and to the entire student body, with special speakers and demonstrations from the actual business world.

Special divisions of the Chamber are conducted to offer opportunity for the further development of interests along the lines of the various sequences, including special recognition for merit in shorthand, typing, transcription, accounting and general business machines operation. Special functions in the social life of the college are sponsored by the Chamber during the year for the members and their friends.

**COOPERATIVE CLUB.** A voluntary organization of Cooperative students, this Club has weekly meetings, discusses current problems in the field of progressive education.

**COUNTRY LIFE CLUB.** All students majoring in rural education through this club find an opportunity to study rural life problems; to assist with community programs; to meet and hear rural leaders from the field.

**ENGLISH CLUB.** This is an organization formed in the fall of 1932. Its membership which is limited to twenty persons is made up of upper classmen, interested in the field of English, who show high scholarship in this field. Last year the group attended theatrical performances of note and opportunities are offered for personal contact with literary personages.

**EUCLIDIAN CLUB.** This organization, named after the early Greek mathematician, Euclid, is an extra-curricular activity for students who are preparing to teach mathematics.

**GAMMA DELTA GAMMA,** the debating club, is organized by students interested in debating, all students so interested being eligible. During the first semester one hour each Thursday afternoon is devoted to the study of the strategy of debating and its application in actual debates. In the second semester inter-collegiate debates are held with other colleges. The college maintains five debating teams and competed in fifty-four inter-collegiate debates in 1937.

**GAMMA THETA UPSILON.** This fraternity is of National character devoted to developing interest in the field and furthering the study of geography. It is symbolic of the challenges which geography offers "of the earth", "from the sky", and "under the sky."

**GEOGRAPHY CLUB.** This is an organization open to all students who are interested in the field of geography. The work of the club includes illustrated travel talks, helpful geographical contests, and slides of various places of the world. The main object of the club is to probe more deeply into the subject of geography than can be done in the ordinary class.

**INTERNATIONAL RELATIONS CLUB.** A group of students organized under the auspices of the Carnegie Endowment for International Peace for the study and discussion of International Relations. Club members make addresses and conduct forums on world affairs in neighboring high schools. Delegates are sent to the Eastern States Regional Conference. Regular weekly meetings, Monday, 4:15 to 5:15.

**MATHEMATICS CLUB.** The Mathematics Club, organized in 1925, aims to promote a greater interest in mathematics among its members and in the college. The work of the club includes a study of important phases of the history of mathematics, the social significance of the subject, mathematical recreations and other activities of a mathematical nature. The club is open to all students interested in mathematics.

**NATURE CAMERA CLUB.** This club is open to all students of the college. Its purpose is to arouse an interest in nature study by use of the camera. Practice in handling the camera, developing and printing of the pictures taken are a part of the work of the club. The planning, taking and editing of motion pictures is work carried out during the second semester.

**NEWMAN CLUB.** The Newman Club was organized in 1932 at the request of a number of women interested in dancing to develop more fully those persons who are talented in this direction. The club offers its contribution to the college by appearing as a special attraction in dramatic and musical programs and by participating directly in the May Day festivities. This club has not functioned during the past year.

**PHILOSOPHY CLUB.** The membership of this club is composed mainly of upper classmen. The activities consist of discussions, book reviews by members, and several guest speakers each semester. General discussion follows individual presentations. The topics considered are chosen by the club, and include those of social, historical, and philosophical aspects of contemporary life. The meetings are informal, weekly, and one hour in length.

**PHI SIGMA PI.** This is a national honor fraternity which was installed at Shippensburg in 1931. Membership may be gained by students who have been in residence a year or more and who are able to meet the scholastic, social and citizenship requirements.

**ROUND TABLE.** The Round Table is a club consisting of students who have worked or are working in either the College or Training School libraries. Meetings are held weekly, Wednesday evenings. Literary works are discussed and news of other libraries is brought before the club. A member in good standing may wear the Round Table Emblem when he has completed his second semester's work.



HORTON HALL

## General Alumni Association

President .....	J. FLOYD SLAYBAUGH, '16, Gettysburg, Pa.
Immediate Past President .....	RAYMOND G. MOWREY, '06, Quincy, Pa.
First Vice President .....	MYRTLE M. STOUGH, '07, Carlisle, Pa.
Second Vice President .....	LEVI GILBERT, '17, Altoona, Pa.
Secretary-Treasurer .....	S. ALICE HUBER, '96, Shippensburg, Pa.

### EXECUTIVE COMMITTEE

#### THE OFFICERS AND

H. H. BAISH, '95 .....	Harrisburg, Pa.
CARRIE V. BROWN, '94 .....	Wormleysburg, Pa.
W. N. DECKER, '95 .....	Altoona, Pa.
JESSE S. HEIGES, '91 .....	Collegetown, Pa.
BERTHA H. HENRY, '91 .....	Everett, Pa.
PAUL S. LEHMAN, '21 .....	Lewistown, Pa.
W. A. NICKLES, '76 .....	Shippensburg, Pa.
B. N. PALMER, '96 .....	Portage, Pa.
RALPH C. SWAN, '31 .....	New Bloomfield, Pa.

### ALUMNI COUNCIL

Appointed by the Executive Committee of the  
General Alumni Association

<i>High School</i>	<i>County</i>	<i>Alumnus</i>
Altoona .....	Blair .....	Levi Gilbert
Ambler .....	Montgomery .....	Earl Baker
Arendtsville .....	Adams .....	Vacancy
Bedford Borough .....	Bedford .....	Lester E. Croft
Bellwood Borough .....	Blair .....	Helen Bland
Berrysburg, Lykens Valley .....	Dauphin .....	Oscar M. Kimmel
Biglerville .....	Adams .....	L. V. Stock
Blain .....	Perry .....	Dean Lyons
Boiling Springs .....	Cumberland .....	W. G. Rice
Burnham Borough .....	Mifflin .....	Ruth A. Kinsloe
Cambria County, Upper End .....	Cambria .....	Frank Thornton
Camp Hill .....	Cumberland .....	Frank Hare
Carlisle .....	Cumberland .....	Maynard Gillough
Chambersburg .....	Franklin .....	Frank Faust
Cheltenham Township .....	Montgomery .....	John Harris
Codorus Township .....	York .....	Glenn L. Bushey
Darby .....	Delaware .....	John Neely
Defiance, Broad Top Township .....	Bedford .....	Ross K. Snyder
Dillsburg .....	York .....	Harold Starry
Dover .....	York .....	J. E. Myers
Doylestown .....	Bucks .....	Margaret K. Lehman
Dry Run, Fannett Township .....	Franklin .....	Kathleen Campbell
Duncannon .....	Perry .....	Roxanna Shearer

East Berlin	Adams	Elmer M. Gruver
East St. Clair Twp.	Bedford	W. Edgar Berkheimer
Elizabethville	Dauphin	Vacancy
Enola, East Pennsboro Township	Cumberland	Russell Roddy
Everett Borough	Bedford	Catherine P. Henry
Fairfield	Adams	Ralph B. Hoover
Falsington	Bucks	H. C. Neagle
Fannettsburg, Metal Township	Franklin	Vacancy
Gettysburg	Adams	G. W. Lefever
Glen Nor Jt.	Delaware	Gail A. Gorsuch
Granville	Mifflin	J. Lindsay Snider
Greencastle	Franklin	William Conrad
Halifax	Dauphin	F. M. Barrick
Hanover	York	Clark W. Schue
Harrisburg		
William Penn	Dauphin	Harold Gottshall
John Harris	Dauphin	Paul Faust
Harrisonville, Licking Creek Township	Fulton	Claude Mellott
Hershey, Derry Township	Dauphin	Roy Hovis
Highspire	Dauphin	Tyrell Robinson
Hollidaysburg	Blair	Griff Jones, Jr.
Hopewell, Township and Borough	Bedford	W. F. Benner
Hummelstown	Dauphin	Sara Jane Busler
Huntingdon	Huntingdon	Mrs. Frank M. Magill
Hustontown, Taylor Township	Fulton	Inez Brown
Hyndman	Bedford	Everett McVicker
Ickesburg	Perry	Vacancy
Johnstown	Cambria	Carl E. Sherbine
Landisburg	Perry	Wallace Steese
Langhorne	Bucks	Mary E. Lewis
Lansdale	Montgomery	Paul Brandt
Lansdowne	Delaware	Roy Kraber
Lemaster, Peters Township	Franklin	L. Margaret Hoffeditz
Lemoine	Cumberland	Catherine Powell
Lewistown	Mifflin	Paul Shull
Littlestown	Adams	Charles Fitz
Liverpool	Perry	Mary Shuler
Lower Merion	Montgomery	Harold Kline
Lower Paxton Township, Colonial Park	Dauphin	Vada Hoch
Loysville, Tressler Orphans Home	Perry	M. Eleanor Culbertson
Lykens	Dauphin	C. R. Coyle
McAlevy's Fort, Jackson Township	Huntingdon	Henry Stoudt
McAlisterville	Juniata	Mary Rempfer
McClure	Snyder	Michael W. Weader
McConnellsburg	Fulton	Harold Welsh
McVeytown	Mifflin	Mrs. Henry C. Swigart
Manchester	York	Grace I. Ensminger
Mann's Choice	Bedford	Alfred Benna
Martinsburg Borough	Blair	Maurice Arnold
Martinsburg, Morrison Cove Vocational	Blair	Helen L. Lehman
Marysville	Perry	Gordon Davis
Mechanicsburg	Cumberland	Maclay Kelly
Media	Delaware	Ross Neagle
Mercersburg	Franklin	Herman Hege
Middletown	Dauphin	S. A. Johnston
Mifflintown	Juniata	Mildred J. Bashore
Millersburg	Dauphin	Mrs. Joseph Seal
Millerstown	Perry	Robert McPherson
Milroy, Armagh Township	Mifflin	Norman Calhoun
Morrisville	Bucks	Raymond Schwinger
Mount Union	Huntingdon	Mrs. I. N. Taylor, Jr.
New Bloomfield	Perry	Ralph Swan
New Cumberland	Cumberland	Maurice Hoff
New Enterprise	Bedford	Lena H. Imler
New Oxford	Adams	Sara Auker
Newport	Perry	Walter Cressler
Newtown	Bucks	William Barbour
Newville	Cumberland	C. E. Hassler
Norristown	Montgomery	John R. Moore

Orbisonia .....	Huntingdon .....	John Miller
Penbrook .....	Dauphin .....	Adam Hoover
Perkasie .....	Bucks .....	Theodore Mellott
Petersburg .....	Huntingdon .....	Pauline E. Hoffman
Pleasantville, West St. Clair Jt. ....	Bedford .....	Frank A. Arnold
Port Royal .....	Juniata .....	Mrs. E. L. Beaver
Quakertown .....	Bucks .....	Rev. H. W. Fitting
Quincy Township .....	Franklin .....	Vacancy
Radnor .....	Delaware .....	Robert B. Nixon
Red Lion .....	York .....	J. Harvey Becker
Reedsville, Brown Township .....	Mifflin .....	Joyce Bomgardner
Roaring Spring .....	Blair .....	Mildred G. Beegle
Robertsdale .....	Huntingdon .....	Dorothy Gephart
Saltillo .....	Huntingdon .....	Mrs. Louisa Cornelius
Saxton-Liberty .....	Bedford .....	Rose McCahan
Sharon Hill .....	Delaware .....	Helen M. Hefner
Shippensburg .....	Cumberland .....	Russell Eurich
Spring Grove .....	York .....	Luther Yohe
Steelton .....	Dauphin .....	Mark Sleichter
St. Thomas .....	Franklin .....	Ora Christman
Susquehanna Township, Harrisburg ..	Dauphin .....	Augustus De Walt
Swatara Township, Oberlin .....	Dauphin .....	John Coover
Thompsontown .....	Juniata .....	Max I. Bookwalter
Tyrone .....	Blair .....	F. Clark Skelly
Warfordsburg, Bethel Township .....	Fulton .....	J. C. Schriver
Washington Township, Waynesboro ..	Franklin .....	Howard Etter
Waynesboro .....	Franklin .....	Glenn Lehman
Wellsville .....	York .....	Mrs. H. B. Hetrick
Wiconisco .....	Dauphin .....	Anna Orndorff
Williamstown .....	Dauphin .....	Muriel Davis
Yardley .....	Bucks .....	Dorothy Barnett
Yeagerstown, Derry Township .....	Mifflin .....	James Gibboney
York .....	York .....	Helen Miller
York Springs .....	Adams .....	Roy Starry

### ALUMNI ASSOCIATIONS

The former plan of County Alumni Organizations has been largely replaced by the Alumni Council functioning on a high school area basis. There are, however, some counties that continue their organizations and the college has been notified of the following elections of County Association officers for 1937-38:

#### ALUMNI ASSOCIATION OF FRANKLIN COUNTY

President ..... VIRGIL LONG, '37, Shippensburg, Pa.  
 Vice President ..... JOHN S. YOHE, '30, Fayetteville, Pa.  
 Secretary-Treasurer ..... BERTHA RAHAUSER, '16, Greencastle, Pa.

#### ALUMNI ASSOCIATION OF YORK COUNTY

President ..... HOWARD F. SLAGLE, '96, Hanover, Pa.  
 Vice President ..... MRS. ROBERT L. GRAYBILL, '26, York, Pa.  
 Secretary ..... CATHERINE M. MILLER, '36, Hanover, Pa.  
 Treasurer ..... HELEN R. SPANGLER, '25, Dover, Pa.

#### METROPOLITAN ALUMNI ASSOCIATION

President ..... JOHN R. MOORE, '22, Norristown, Pa.  
 1st Vice-President ..... EARL T. BAKER, '30, Ambler, Pa.  
 2nd Vice-President ..... RUTH K. DUKE, '10, Ardmore, Pa.  
 Secretary ..... CARRIE GIBBS BARBOUR, '26, Newton, Pa.  
 Treasurer ..... S. MILTON ZIMMERMAN, Ardmore, Pa.

### ROSTER OF STUDENTS 1937-38

#### GRADUATE STUDENTS

<i>Name</i>	<i>Post Office</i>	<i>County and State</i>
Burtner, Raymond H. B.S., '37 Shippensburg S. T. C.	Aspers	Adams, Pa.
Daub, Dorothy J. A.B., '36 Wilson College	Linden Ave., Mercersburg	Franklin, Pa.
Dittmann, J. Walter B.S. '37 Shippensburg S. T. C.	213 S. Main St., Chambersburg	Franklin, Pa.
Eichelberger, S. Kathryn B.S. '37 Shippensburg S. T. C.	Dillsburg	York, Pa.
Enck, Pauline N. B.S. '37 Shippensburg S. T. C.	23 E. Coover St., Mechanicsburg	Cumberland, Pa.
Hartz, Anna V. A.B. '37 Howard University	174 Ridge St., Steelton	Dauphin, Pa.
Kendall, Gladys M. B.A. '35 University of Hawaii	Carlisle Barracks, Carlisle	Cumberland, Pa.
Messersmith, Herbert B.S. '34 Shippensburg S. T. C.	109 E. Keller St., Mechanicsburg	Cumberland, Pa.
Pentz, Mildred V. A.B. '37 Wilson College	1217 Wilson Ave., Chambersburg	Franklin, Pa.



Russell, R. Allen	B.S. '37 Shippensburg S. T. C. .... 21 N. Washington St., Shippensburg.	Cumberland, Pa.
Snoke, Hubert F.	B.S. '37 Shippensburg S. T. C. .... 215 S. Queen St., Shippensburg.	Cumberland, Pa.
Spangler, Helen V.	B.S. '37 Shippensburg S. T. C. .... East Berlin, R. D. 2	York, Pa.
Stabley, Frederick W.	A.B. '37 Pennsylvania State College. 42 E. Main St., Dallastown.	York, Pa.

## CLASS OF 1938

<i>Name</i>	<i>Post Office</i>	<i>County and State</i>
Barton, Homer M.	Crystal Springs	Fulton, Pa.
Beard, Robert J.	Blue Ridge Summit	Franklin, Pa.
Bellows, Charles F.	E. King St., Shippensburg	Cumberland, Pa.
Berger, Mary M.	26 N. Federal St., Chambersburg	Franklin, Pa.
Black, Lona M.	N. Prince St., Shippensburg	Cumberland, Pa.
Bollinger, Benjamin A.	Chambersburg, R. D. 2	Franklin, Pa.
Bow, George L.	126 E. Lancaster Ave., Wayne	Delaware, Pa.
Brandt, Glen C.	Chambersburg R. D. 1	Franklin, Pa.
Campbell, George A.	1818 Grant St., Aliquippa	Beaver, Pa.
Cashman, Frank R.	Longfellow Apts., Rosemont	Montgomery, Pa.
Clifford, Paul I.	614 Boas St., Harrisburg	Dauphin, Pa.
Cochlin, Mary Ida	Shippensburg R. D. 3	Franklin, Pa.
Coffey, Frank L.	202 W. King St., Shippensburg	Cumberland, Pa.
Cover, Marjorie E.	1 S. Fourth St., Steelton	Dauphin, Pa.
Crone, Mildred E.	3213 N. 6th St., Harrisburg	Dauphin, Pa.
Diehl, Marion E.	101 N. 6th St., Chambersburg	Franklin, Pa.
Dyer, Evangeline Z.	Hancock, Md., R. D.	Fulton, Pa.
Earley, Betty E.	110 E. Orange St., Shippensburg	Cumberland, Pa.
Ellis, M. Elizabeth	44 S. Earl St., Shippensburg	Cumberland, Pa.
Evans, Marlin V.	Valley View	Schuylkill, Pa.
Flook, Rebecca S.	38 W. King St., Chambersburg	Franklin, Pa.
Frehn, John A.	Walnut Bottom	Cumberland, Pa.
Gillan, Julia G.	St. Thomas	Franklin, Pa.
Gingrich, Velma S.	36 College Ave., Annville	Lebanon, Pa.
Gipe, Thelma B.	Fayette St., Mercersburg	Franklin, Pa.
Haas, Mary A.	Duncannon R. D. 1	Perry, Pa.
Haller, Robert F.	815 Union St., Hollidaysburg	Blair, Pa.
Harrison, Mary K.	1939 Logan St., Harrisburg	Dauphin, Pa.
Hatter, Jessie E.	1102 Cameron St., Harrisburg	Dauphin, Pa.
Heiges, Mary McC.	246 E. Philadelphia St., York	York, Pa.
Hodge, Sarah V.	520 Fairground Ave., Carlisle	Cumberland, Pa.
Kadel, Maybelle	415 W. Middle St. Gettysburg	Adams, Pa.
Kavanagh, William T.	1112 County Line Rd., Bryn Mawr	Delaware, Pa.
Kirssin, Duane F.	32 E. King St., Shippensburg	Cumberland, Pa.
Kitzmiller, Richard L.	312 Walnut St., Shippensburg	Cumberland, Pa.
Laird, Charles W.	465 Lincoln Way East, Chambersburg	Franklin, Pa.
Leamer, Martha R.	931-58th St., Altoona	Blair, Pa.
Lingenfelter, John R.	408 E. Grant St., Altoona	Blair, Pa.
Lyster, Helen J.	1929 N. Fifth St., Harrisburg	Dauphin, Pa.
Manning, Esther A.	121 E. King St., Shippensburg	Cumberland, Pa.
Mastrocola, Frank L.	2001-8th Ave., Altoona	Blair, Pa.
Myers, K. Elizabeth	Waynesboro R. D. 3	Franklin, Pa.
Oyer, Pauline E.	418 S. Main St., Chambersburg	Franklin, Pa.
Rambo, Blanche A.	211 S. Washington St., Shippensburg	Cumberland, Pa.
Reeder, Marion G.	213 S. Penn St., Shippensburg	Cumberland, Pa.
Reese, Robert C.	226 Ramsey Ave., Chambersburg	Franklin, Pa.
Rotz, J. Stanley	Fort Loudon	Franklin, Pa.
Ruhl, John A.	411 W. North St., Carlisle	Cumberland, Pa.
Ryan, Michael A.	Media R. D. 2	Delaware, Pa.

Saxe, LeRoy H. ....	26 N. Earl St., Shippensburg	Cumberland, Pa.
Schlegel, Miriam A. ....	543 Wert St., Millersburg	Dauphin, Pa.
Seavers, Gilmore B. ....	Newville R. D. 1	Cumberland, Pa.
Seibert, Franklin S. ....	101 N. Penn St., Shippensburg	Cumberland, Pa.
Sheesley, Mary E. ....	905 S. 9th St., Harrisburg	Dauphin, Pa.
Shively, S. Jane ....	Chambersburg R. D. 1	Franklin, Pa.
Sorge, Robert E. ....	212 Basin St., Harrisburg	Dauphin, Pa.
Sweeney, John J. ....	239 Rowe St., Tamaqua	Schuylkill, Pa.
Treher, Charles W. ....	Fayetteville R. D. 1	Franklin, Pa.
Waddle, M. Elizabeth ....	Fairfield	Adams, Pa.
Walck, Robert M. ....	114 W. Second St., Waynesboro	Franklin, Pa.
Warfel, Wilbur W. ....	326 East Ave., Millersburg	Dauphin, Pa.
Wilson, Charles R. ....	Three Springs	Huntingdon, Pa.
Young, Elizabeth J. ....	402 N. West St., Carlisle	Cumberland, Pa.
Zimmerman, Garnet L. ....	Mercersburg R. D. 1	Franklin, Pa.

## CLASS OF 1939

<i>Name</i>	<i>Post Office</i>	<i>County and State</i>
Ackerson, Thelma B. ....	212 N. 6th St., Chambersburg	Franklin, Pa.
Anderson, William F. ....	1807 Jackson St., Aliquippa	Beaver, Pa.
Batchelor, William G. ....	1608 Jackson St., Aliquippa	Beaver, Pa.
Bay, John W. ....	119 N. Earl St., Shippensburg	Cumberland, Pa.
Bentz, R. Dorothy ....	2306 Jefferson St., Harrisburg	Dauphin, Pa.
Bentz, Richard R. ....	1219 Derry St., Harrisburg	Dauphin, Pa.
Berry, H. Roth ....	E. Orange St., Shippensburg	Cumberland, Pa.
Biggs, Jean E. ....	Ortanna	Adams, Pa.
Bonner, Harold W. ....	Waynesboro R. R. 1	Franklin, Pa.
Byers, Elizabeth H. ....	Lampeter	Lancaster, Pa.
Clark, Virginia G. ....	118 N. Prince St., Shippensburg	Cumberland, Pa.
Clippinger, Dallas E. ....	329 E. Orange St., Shippensburg	Cumberland, Pa.
Colyer, Marlin H. ....	Third Ave., Burnham	Mifflin, Pa.
Conti, Thomas O. ....	Gettysburg R. D. 4	Adams, Pa.
Coover, Alice L. ....	119 E. Burd St., Shippensburg	Cumberland, Pa.
Coover, William D. ....	119 E. Burd St., Shippensburg	Cumberland, Pa.
Davis, Walter H. ....	559 Vickroy Ave., Johnstown	Cambria, Pa.
Dennis, Milton K. ....	101 N. Penn St., Shippensburg	Cumberland, Pa.
Eyster, C. William ....	Hanover R. D. 4	Adams, Pa.
Ellis, Evelyn R. ....	44 S. Earl St., Shippensburg	Cumberland, Pa.
Fohl, Jean M. ....	S. Main St., Biglerville	Adams, Pa.
Folkenroth, Richard A. ....	Gettysburg R. D. 2	Adams, Pa.
Foreman, Charles A. ....	234 E. Orange St., Shippensburg	Cumberland, Pa.
Funk, Erma L. ....	Guernsey	Adams, Pa.
Galantucci, Louis G. ....	133½ 7th Ave., Altoona	Blair, Pa.
Garrett, Darwin ....	178 Pennebaker Ave., Lewistown	Mifflin, Pa.
Gensler, R. Elwood ....	47 Cumberland Ave., Shippensburg	Franklin, Pa.
Gephart, Ruth H. ....	Shippensburg R. D. 1	Cumberland, Pa.
Gerhart, H. Brinton ....	Mercersburg	Franklin, Pa.
Greenawalt, Emma Jane ....	117 S. Earl St., Shippensburg	Cumberland, Pa.
Hoover, Lee B. ....	235 E. King St., Chambersburg	Franklin, Pa.
Jackson, Lillian E. ....	103 S. Fayette St., Shippensburg	Cumberland, Pa.
Jenkins, Donald E. ....	Six Mile Run	Bedford, Pa.
Joseph, Velma E. ....	Dover R. D. 2	York, Pa.
Kann, Arthur L. ....	Shippensburg R. D. 6	Cumberland, Pa.
Kerr, Willard E. ....	2452 Elm St., Penbrook	Dauphin, Pa.
Killian, Fay E. ....	321 E. Orange St., Shippensburg	Cumberland, Pa.
Krone, Hazel M. ....	Mechanicsburg R. D. 3	Cumberland, Pa.
Landis, Ruth M. ....	Fairfield	Adams, Pa.
Lauver, Paul H. ....	Butler St., Penbrook	Dauphin, Pa.
Lenherr, Marie M. ....	Mercersburg R. D. 1	Franklin, Pa.
Link, Ruth A. ....	325 Herman Ave., Lemoyne	Cumberland, Pa.

McCormick, Francis E. ....	415 Adams St., Pottsville .....	Schuylkill, Pa.
McGuire, John J. ....	303—4th Ave., Altoona .....	Blair, Pa.
McTigue, Tim G. ....	Nanty Glo .....	Cambria, Pa.
McVitty, Kathleen S. ....	Spring Run .....	Franklin, Pa.
Madden, Kenneth C. ....	Orbisonia .....	Huntingdon, Pa.
March, Harold V. ....	Dillsburg .....	York, Pa.
Marquart, Dorothy C. ....	Fairfield St., Newville .....	Cumberland, Pa.
Mathews, Dorothy V. ....	255 Adams St., Steelton .....	Dauphin, Pa.
Miller, George M. ....	Manor Ave., South Enola .....	Cumberland, Pa.
Minnich, Beulah P. ....	127 N. College St., Carlisle .....	Cumberland, Pa.
Moul, H. Edgar .....	Abbottstown .....	Adams, Pa.
Oliver, Elizabeth H. ....	20 W. Tioga St., Tunkhannock .....	Wyoming, Pa.
O'Loughlin, Charles J. ....	1218 Wade St., Aliquippa .....	Beaver, Pa.
Pike, J. Pershing .....	Mason and Dixon .....	Franklin, Pa.
Pittman, Roy E. ....	Warfordsburg .....	Fulton, Pa.
Plough, Harriet M. ....	532 Philadelphia Ave., Chambersburg .....	Franklin, Pa.
Remaly, Dale E. ....	25 E. North St., Carlisle .....	Cumberland, Pa.
Rhodes, Donald S. ....	339 E. Orange St., Shippensburg .....	Cumberland, Pa.
Rupp, H. Lloyd .....	216 Muench St., Harrisburg .....	Dauphin, Pa.
Schule, Stewart V. ....	Florin .....	Lancaster, Pa.
Scott, Raymond E. ....	Waynesboro R. D. 2 .....	Franklin, Pa.
Settle, Stanley C. ....	Biglerville R. D. 1 .....	Adams, Pa.
Shetron, Robert L. ....	Chambersburg R. D. 4 .....	Franklin, Pa.
Shields, Roy C. ....	3 W. Burd St., Shippensburg .....	Cumberland, Pa.
Shockey, Riemen H. ....	Walker Apts., Lincoln Way West, Cham'b'g .....	Franklin, Pa.
Simons, Eloise Z. ....	46 W. South St., Carlisle .....	Cumberland, Pa.
Simons, Louiszita .....	2608 Lexington St., Harrisburg .....	Dauphin, Pa.
Simpson, John W. ....	3141 N. Fifth St., Harrisburg .....	Dauphin, Pa.
Slick, Walter R. ....	Roaring Spring R. D. 1 .....	Blair, Pa.
Smeltz, John R. ....	2235 Jefferson St., Harrisburg .....	Dauphin, Pa.
Spangler, Harry L. ....	239 W. Broad St., Tamaqua .....	Schuylkill, Pa.
Spangler, Pauline T. ....	Gettysburg R. D. 4 .....	Adams, Pa.
Stinefelt, Blanche G. ....	Beale Ave., Enola .....	Cumberland, Pa.
Stokes, Jack J. ....	304 W. Main St., Girardville .....	Schuylkill, Pa.
Taylor, Mabel A. ....	McConnellsburg .....	Fulton, Pa.
VanLeer, S. Mildred .....	3435 Plumstead Ave., Drexel Hill .....	Montgomery, Pa.
Vaughan, A. Blair .....	Perulack .....	Juniata, Pa.
Walborn, Harriett M. ....	624 Church St., Millersburg .....	Dauphin, Pa.
Weibley, Herbert W. ....	201 N. Penn St., Shippensburg .....	Cumberland, Pa.
Wentz, Mary E. ....	734 Pennsylvania Ave., York .....	York, Pa.
Wise, Raymond T. ....	Orrstown .....	Franklin, Pa.
Zalonka, Adam F. ....	170 E. Bacon St., Pottsville .....	Schuylkill, Pa.

## CLASS OF 1940

<i>Name</i>	<i>Post Office</i>	<i>County and State</i>
Angle, Fred G. ....	Greencastle R. D. 4 .....	Franklin, Pa.
Anthony, Lester W. ....	Dillsburg R. D. 2 .....	York, Pa.
Arbeggast, John H. ....	Newville R. D. 3 .....	Cumberland, Pa.
Armstrong, John F. ....	2112½ 13th Ave., Altoona .....	Blair, Pa.
Baer, Harry E. ....	626 Maclay St., Harrisburg .....	Dauphin, Pa.
Baker, Grace E. ....	Thomasville R. D. 1 .....	York, Pa.
Barnett, N. Edith .....	Chambersburg R. D. 7 .....	Franklin, Pa.
Bartlebaugh, Florence E. ....	Waterstreet .....	Huntingdon, Pa.
Bashoar, Sara E. ....	Littlestown .....	Adams, Pa.
Bashore, Doris J. ....	Port Royal .....	Juniata, Pa.
Bender, Romaine C. ....	719 W. Princess St., York .....	York, Pa.
Bennethum, Harvey L. ....	203 Walnut St., Ashland .....	Schuylkill, Pa.
Berke, Charles F. ....	25 W. Fourth St., Waynesboro .....	Franklin, Pa.
Bishop, V. June .....	602 E. Washington St., Chambersburg .....	Franklin, Pa.
Black, Valesta M. ....	Broad Top .....	Huntingdon, Pa.
Bolton, Rose A. ....	218 N. Prince St., Shippensburg .....	Cumberland, Pa.
Bond, George W. ....	217 East St., Williamstown .....	Dauphin, Pa.
Bortner, Ross L. ....	Hanover R. D. 2 .....	York, Pa.
Bowers, Joseph S. ....	303 E. McKinley St., Chambersburg .....	Franklin, Pa.
Bowersox, Daniel W. ....	501 S. Hanover St., Carlisle .....	Cumberland, Pa.

Boynton, Dorothy M.	224 Electric Ave., Lewistown	Mifflin, Pa.
Briner, Sara G.	Ellittsburg	Perry, Pa.
Brinton, Gerald S.	315 W. 11th St., New Cumberland	Cumberland, Pa.
Brooks, Helen V.	336 Lincoln St., Steelton	Dauphin, Pa.
Bryner, D. Vivian	Port Royal	Juniata, Pa.
Bucher, Ethel M.	17 E. Burd St., Shippensburg	Cumberland, Pa.
Burkholder, Ruth E.	Orrstown	Franklin, Pa.
Callahan, Elizabeth J.	Middleburg	Snyder, Pa.
Clapper, Fred L.	Railroad Ave., Saxton	Bedford, Pa.
Clegg, Ruth V.	Water St., Everett	Bedford, Pa.
Coffey, A. Louise	202 W. King St., Shippensburg	Cumberland, Pa.
Cook, Thelma J.	422 E. King St., Shippensburg	Cumberland, Pa.
Coulson, M. Francis	York Springs	Adams, Pa.
Cuzzolina, Virginia M.	212 E. Grant Ave., Altoona	Blair, Pa.
Daniele, Michael A.	712-14th Ave., Altoona	Blair, Pa.
Davis, Agnes M.	Robertsdale	Huntingdon, Pa.
Davis, Jean M.	502 Ryers Ave., Cheltenham	Montgomery, Pa.
Davis, R. Edmo	244 E. Garfield St., Shippensburg	Cumberland, Pa.
Davis, Sarah	Blue Ridge Summit	Franklin, Pa.
Dearmy, Naomi H.	Shippensburg R. D. 3	Franklin, Pa.
Deck, Robert L.	197 Lancaster Ave., Wayne	Delaware, Pa.
Derick, Jane A.	217 E. King St., Shippensburg	Cumberland, Pa.
Ditmer, Zug H.	413 N. College St., Carlisle	Cumberland, Pa.
Donaldson, Clay E.	Coalmont	Huntingdon, Pa.
Douglas, John M.	307-17th St., Altoona	Blair, Pa.
Dunlap, Mildred I.	Biglerville R. D. 1	Adams, Pa.
Easterbrook, Eva V.	30 Richard Ave., Shippensburg	Cumberland, Pa.
Eckenrode, Ralph L.	66 W. Queen St., Chambersburg	Franklin, Pa.
Eichelberger, Helen A.	426 Pine Ave., Altoona	Blair, Pa.
Ellwein, S. Lois	W. King St., Shippensburg	Franklin, Pa.
Essick, Martha J.	29 N. Earl St., Shippensburg	Cumberland, Pa.
Ferguson, Nancy G.	1226-6th Ave., Altoona	Blair, Pa.
Fickes, Evelyn F.	Carlisle R. D. 4	Cumberland, Pa.
Fidler, Alfred J.	Aspers	Adams, Pa.
Fleming, M. Ruth	410 W. King St., Shippensburg	Franklin, Pa.
Fortna, Wayne B.	Orrstown R. D. 1	Franklin, Pa.
Freet, Lorraine A.	488 E. Washington St., Chambersburg	Franklin, Pa.
Friedman, Harold	1404-18th St., Altoona	Blair, Pa.
Fry, Evelyn L.	Mifflintown	Juniata, Pa.
Funk, S. Josephine	Mercersburg	Franklin, Pa.
Gabert, Martena B.	Three Springs	Huntingdon, Pa.
Gallager, Edith	170 Lismore Ave., Glenside	Montgomery, Pa.
Garling, Hazel L.	185 Cleveland Ave., Waynesboro	Franklin, Pa.
Gates, Willard F.	Woodbury	Bedford, Pa.
Gearhart, Elsie H.	Blue Ridge Summit	Franklin, Pa.
Gebhard, James B.	101 Walnut St., Carlisle	Cumberland, Pa.
Gendel, Sophie	1809-14th Ave., Altoona	Blair, Pa.
Gerlock, Donald E.	1122-16th Ave., Altoona	Blair, Pa.
Getty, Kenneth W.	King of Prussia	Montgomery, Pa.
Gibson, Lena A.	Landsburg	Perry, Pa.
Gilbert, Liberty L.	240 W. King St., Shippensburg	Cumberland, Pa.
Gillan, Mable L.	St. Thomas	Franklin, Pa.
Glenn, Edgar M.	Fairfield R. D. 1	Adams, Pa.
Goyt, Abbie Ann	46 W. King St., Shippensburg	Cumberland, Pa.
Graham, Camilla R.	Carlisle R. D. 3	Cumberland, Pa.
Griest, Walter B.	York Springs	Adams, Pa.
Griffiths, Sarah	34 W. Main St., Girardville	Schuylkill, Pa.
Grissinger, Louise G.	Broad Top	Huntingdon, Pa.
Grove, Isabelle G.	525 E. Catherine St., Chambersburg	Franklin, Pa.
Heisey, Dorothy A.	Mechanicsburg R. D. 2	Cumberland, Pa.
Hertzler, Mildred M.	Carlisle R. D. 1	Cumberland, Pa.
Hoch, C. Elizabeth	Fayetteville	Franklin, Pa.
Hofman, Ernest W.	East Berlin R. D. 1	York, Pa.
Hoke, Julius U.	101 N. Earl St., Shippensburg	Cumberland, Pa.
Hollar, Janet E.	213 S. Water St., Chambersburg	Franklin, Pa.
Howland, Amos G.	301 N. Prince St., Shippensburg	Cumberland, Pa.
Iloff, Louie B.	Walnut St., Burnham	Mifflin, Pa.
Kauffman, Bernard H.	Spring Run	Franklin, Pa.
Kaufman, Laura A.	Pleasant Hall	Franklin, Pa.
Kendall, Donald M.	127 W. Burd St., Shippensburg	Cumberland, Pa.
Kirk, Lem E.	Warfordsburg	Fulton, Pa.
Krug, Helen C.	237 York St., Hanover	York, Pa.

Lehman, Josephine F. ....	102 N. Earl St., Shippensburg	Cumberland, Pa.
Leppert, Forrest J. ....	Alum Bank	Bedford, Pa.
LeRoy, Willette J. ....	2153 Logan St., Harrisburg	Dauphin, Pa.
Lewis, J. Robert	130 E. Second Ave., Altoona	Blair, Pa.
Long, Roland E. ....	Millerstown	Juniata, Pa.
Lynch, Donald F. ....	McConnellsburg	Fulton, Pa.
Lyons, Howard W. ....	117 W. King St., Shippensburg	Cumberland, Pa.
McCartney, Margaret F. ....	220 Beech Ave., Altoona	Blair, Pa.
McKay, William J. ....	2740 N. Fifth St., Harrisburg	Dauphin, Pa.
McVey, Lucy L. ....	106 S. Division St., Mount Union	Huntingdon, Pa.
Martin, Olan E. ....	Orrstown	Franklin, Pa.
Meckley, A. Pauline	Halifax R. D. 1	Dauphin, Pa.
Meckley, Sara E. ....	Halifax R. D. 1	Dauphin, Pa.
Miller, George J. ....	Lancaster Ave., West Enola	Cumberland, Pa.
Miller, Mary Ellen	Orbisonia	Huntingdon, Pa.
Morgan, Mary C. ....	521 Seneca St., Harrisburg	Dauphin, Pa.
Morrison, Amy L. ....	Loysville	Perry, Pa.
Mowry, Clarence L. ....	Buffalo Mills	Bedford, Pa.
Myers, Erva Mae	Dillsburg	York, Pa.
Myers, Janet R. ....	Dover R. D. 2	York, Pa.
Myers, Jay W. ....	Newville R. D. 3	Cumberland, Pa.
Neidig, Eleanor L. ....	Carlisle R. D. 4	Cumberland, Pa.
Nell, Richard T. ....	516 N. Bedford St., Carlisle	Cumberland, Pa.
Nickey, William B. ....	538 W. Louthier St., Carlisle	Cumberland, Pa.
Noftsker, Carolyn B. ....	321 E. King St., Shippensburg	Cumberland, Pa.
Noonan, Betty	1522 20th Ave., Altoona	Blair, Pa.
Oliver, Irene V. ....	Greencastle R. D. 2	Franklin, Pa.
Oliver, Robert K. ....	128 Glen St., Chambersburg	Franklin, Pa.
Orner, Kathryn M. ....	26 Fourth St., Gettysburg	Adams, Pa.
Owen, Robert C. ....	Landsburg	Perry, Pa.
Parkin, William R. ....	Ebensburg	Cambria, Pa.
Patterson, Russell K. ....	600 Woodbine St., Harrisburg	Dauphin, Pa.
Peffer, Elizabeth H. ....	Newville R. D. 1	Cumberland, Pa.
Powell, Annabel R. ....	Buffalo Mills	Bedford, Pa.
Price, Thomas J. ....	2120 Centre St., Ashland	Schuylkill, Pa.
Reb, Edna E. ....	324 E. Main St., Girardville	Schuylkill, Pa.
Rebok, John A. ....	24 N. Queen St., Shippensburg	Cumberland, Pa.
Richards, Mary Louise	338 S. 17th St., Harrisburg	Dauphin, Pa.
Ridenour, Lillian G. ....	220 Philadelphia Ave., Waynesboro	Franklin, Pa.
Rife, Richard D. ....	Chambersburg R. D. 2	Franklin, Pa.
Ritts, Lois R. ....	1405 North Ave., Wilkingsburg	Allegheny, Pa.
Rockwell, Robert W. ....	28 W. King St., Shippensburg	Cumberland, Pa.
Sheaffer, Anna Mae	309 E. King St., Shippensburg	Cumberland, Pa.
Sheaffer, Mildred G. ....	Huntsdale	Cumberland, Pa.
Shoap, Betty Jane	267 E. Main St., Hummelstown	Dauphin, Pa.
Shope, Oscar M. ....	Main St., Saltillo	Huntingdon, Pa.
Shugars, Mary Jean	115 S. Washington St., Shippensburg	Cumberland, Pa.
Shull, Marjorie W. ....	320 22nd Ave., Altoona	Blair, Pa.
Sites, Lorraine E. ....	Fairfield	Adams, Pa.
Slabaugh, Vivian L. ....	827 Maryland Ave., York	York, Pa.
Snyder, Denis E. ....	513 W. 16th St., Tyrone	Blair, Pa.
Sponseller, Edwin H. ....	21 Richard Ave., Shippensburg	Cumberland, Pa.
Stitt, J. Howard	Mount Union R. D. 1	Huntingdon, Pa.
Timothy, George L. ....	2250 N. Fourth St., Harrisburg	Dauphin, Pa.
Trostle, Crawford W. ....	209 N. Washington St., Gettysburg	Adams, Pa.
Waddle, Florence E. ....	Fairfield	Adams, Pa.
Warf, Roberta M. ....	214 Vine St., Williamstown	Dauphin, Pa.
Watson, Mary E. ....	Shippensburg R. D. 1	Franklin, Pa.
Whited, Ethel E. ....	Six Mile Run	Bedford, Pa.
Wineman, Henry G. ....	Newburg	Cumberland, Pa.
Wingert, M. Betty	110 Lincoln Way West, Chambersburg	Franklin, Pa.
Witter, Dorris E. ....	Waterfall	Fulton, Pa.
Wolfe, Janet L. ....	1725 Market St., Harrisburg	Dauphin, Pa.
Woomer, Kinard K. ....	S. Main St., Yeagertown	Mifflin, Pa.
Yokum, Nellie M. ....	Chaneysville	Bedford, Pa.
Zeigler, J. Lloyd	161 E. High St., Carlisle	Cumberland, Pa.
Zepp, Miriam A. ....	New Oxford R. D. 2	Adams, Pa.
Zimmerman, Alyce R. ....	Greencastle R. D. 4	Franklin, Pa.
Zinkand, Elizabeth G. ....	35 Philips Ave., Waynesboro	Franklin, Pa.
Zullinger, Robert L. ....	228 E. Garfield St., Shippensburg	Cumberland, Pa.

## CLASS OF 1941

<i>Name</i>	<i>Post Office</i>	<i>County and State</i>
Adams, Fred W.	Willow Hill	Franklin, Pa.
Allison, Reed D.	Glen Rock	York, Pa.
Anderson, Scott H.	39 Richard Ave., Shippensburg	Cumberland, Pa.
Andrew, Marie L.	Orrtanna	Adams, Pa.
Aushman, Margaret H.	Fayetteville	Franklin, Pa.
Baer, Henry E.	Greencastle R. D. 2	Franklin, Pa.
Baker, Robert J.	603 Franklin Ave., Aliquippa	Beaver, Pa.
Barkman, Hope B.	Clearville	Bedford, Pa.
Bartholomew, Eloise	2652 N. 6th St., Harrisburg	Dauphin, Pa.
Beason, William T.	325 Fourth Ave., Altoona	Blair, Pa.
Beitzel, Mary S.	409 S. High St., Mechanicsburg	Cumberland, Pa.
Bergstresser, Dean E.	Port Royal	Juniata, Pa.
Bitner, Harold M.	Williamson	Franklin, Pa.
Blakey, Constance A.	1716 Walnut St., Harrisburg	Dauphin, Pa.
Booth, Lorelei I.	Hancock, Md. R. D. 1	Fulton, Pa.
Booz, Earl D.	123 E. Burd St., Shippensburg	Cumberland, Pa.
Burns, Harry H.	224 S. Fayette St., Shippensburg	Cumberland, Pa.
Christopher, Dora F.	Hopewell	Bedford, Pa.
Clifford, Clayton	23 Terrace Blvd., Lewistown	Mifflin, Pa.
Cochlin, Margaret F.	Shippensburg R. D. 3	Franklin, Pa.
Conti, Evelyn M.	Gettysburg R. D. 4	Adams, Pa.
Cox, Anna Jane	1407 Logan Ave., Tyrone	Blair, Pa.
Cunningham, Helen S.	1056 Bald Eagle Ave., Tyrone	Blair, Pa.
Cuzzolina, Edna Margaret	212 E. Grant Ave., Altoona	Blair, Pa.
Davidson, Quentin	333 Emerald St., Harrisburg	Dauphin, Pa.
Delbridge, H. Ruth	361 W. Main St., Girardville	Schuylkill, Pa.
DeMuth, Q. Donald	524 E. Logan Ave., Altoona	Blair, Pa.
Dennis, Fannie L.	1517 Derry St., Harrisburg	Dauphin, Pa.
Duppstadt, Homer	Buffalo Mills	Bedford, Pa.
Eaton, Charles D.	Landisburg	Perry, Pa.
Foreman, Victor G.	131 Park Ave., Chambersburg	Franklin, Pa.
Funk, Emory C.	Scotland	Franklin, Pa.
Gabler, Isabel E.	922 Scotland Ave., Chambersburg	Franklin, Pa.
Gephart, Verneida E.	Shippensburg R. D. 1	Cumberland, Pa.
Gossert, Janet L.	128 E. King St., Shippensburg	Cumberland, Pa.
Green, Jean M.	1210 Boulevard, Juniata, Altoona	Blair, Pa.
Grim, Adam E.	Orrstown	Franklin, Pa.
Grossinger, Edna R.	46 W. High St., Carlisle	Cumberland, Pa.
Grove, J. Robert	2417 N. Fifth St., Harrisburg	Dauphin, Pa.
Guresh, Stephen	332 W. Ridge St., Lansford	Carbon, Pa.
Gutshall, Mildred E.	Carlisle Springs	Cumberland, Pa.
Guyer, Mary E.	Martinsburg	Bedford, Pa.
Hall, Dorothy E.	1324 N. Front St., Sunbury	Northumberland, Pa.
Harris, Albert H.	Millerstown	Perry, Pa.
Hege, Ruth Edna	Greencastle R. D. 1	Franklin, Pa.
Howland, Erwin W.	301 N. Prince St., Shippensburg	Cumberland, Pa.
Ickes, Samuel J.	136 E. King St., Shippensburg	Cumberland, Pa.
Isenberger, Elmer M.	708 Lincoln Way East, Chambersburg	Franklin, Pa.
Jones, Helen L.	2427 Maple Ave., Altoona	Blair, Pa.
Keller, Jessie B.	122 W. Catherine St., Chambersburg	Franklin, Pa.
Kinzer, Bivon C. W.	Reeds Gap	Juniata, Pa.
Kitzmiller, Dorothy C.	312 Walnut St., Shippensburg	Cumberland, Pa.
Krebs, Jean E.	331 Fort St., Shippensburg	Cumberland, Pa.
Lackhove, Zola V.	Shippensburg	Cumberland, Pa.
Leary, Joseph J.	11 Central Ave., Rockledge	Montgomery, Pa.
Lehman, Adah J.	Lewisberry	York, Pa.
Leonard, Fred D.	15 Halley St., Mount Union	Huntingdon, Pa.
Lindsay, Anna J.	Shippensburg R. D. 3	Franklin, Pa.
Linsinger, Paul W.	244 S. 6th St., Chambersburg	Franklin, Pa.
Locke, Elma B.	401 Division St., Mount Union	Huntingdon, Pa.
Lowry, William C.	High St., Everett	Bedford, Pa.

MacDannald, Dorothy J. ....	68 Cumberland Road, Lemoyne .....	Cumberland, Pa.
McCulloh, Elise .....	Sylvan .....	Franklin, Pa.
McElwain, Dorothy M. ....	36 Standing Stone Ave., Huntingdon .....	Huntingdon, Pa.
McGehee, Miriam G. ....	1111 Scotland Ave., Chambersburg .....	Franklin, Pa.
McIntyre, Dolly M. ....	East Berlin .....	Adams, Pa.
Markey, Wilma L. ....	321 S. 6th St., Chambersburg .....	Franklin, Pa.
Mellott, Dorothy J. ....	McConnellsburg .....	Fulton, Pa.
Mellott, Helen R. ....	Mercersburg R. D. 2 .....	Franklin, Pa.
Merris, Viola R. ....	Mechanicsburg .....	Cumberland, Pa.
Meyers, Wilma E. ....	Rockwood .....	Somerset, Pa.
Miller, Elizabeth B. ....	126 E. King St., Shippensburg .....	Cumberland, Pa.
Mitchell, Paul S. ....	117 S. Prince St., Shippensburg .....	Cumberland, Pa.
Morris, John A. ....	State Street, Newtown .....	Bucks, Pa.
Morrow, I. Jean .....	Roxbury .....	Franklin, Pa.
Mummert, J. Arletta .....	Lewisberry .....	York, Pa.
Nute, Janet L. ....	543 E. King St., Chambersburg .....	Franklin, Pa.
Ott, Richard B. ....	113 S. Queen St., Shippensburg .....	Cumberland, Pa.
Otto, Ruth H. ....	Dillsburg .....	York, Pa.
Overcash, Jeryl E. ....	575 S. Second St., Chambersburg .....	Franklin, Pa.
Patton, Mary L. ....	Thompsontown .....	Juniata, Pa.
Peck, Omar C. ....	318 E. North St., Carlisle .....	Cumberland, Pa.
Ransom, Charlotte E. ....	38 W. South St., Chambersburg .....	Franklin, Pa.
Reed, Galen B. ....	210 Ridge Ave., Shippensburg .....	Cumberland, Pa.
Rhinehart, Esther M. ....	217 Harding Court, York .....	York, Pa.
Rice, Harold G. ....	Landsburg .....	Perry, Pa.
Rook, Joseph S. ....	Newville R. D. 1 .....	Cumberland, Pa.
Ruess, Edward .....	Morrisville .....	Bucks, Pa.
Russell, Hadessa R. ....	423 W. King St., Shippensburg .....	Franklin, Pa.
Ryder, Devona G. ....	Scotland .....	Franklin, Pa.
Schwartz, Doris E. ....	1113-A W. Poplar St., York .....	York, Pa.
Shank, Geraldine C. ....	44 Haven St., Schuylkill Haven .....	Schuylkill, Pa.
Shertz, E. Virginia .....	420 E. Catherine St., Chambersburg .....	Franklin, Pa.
Sheibley, Romaine I. ....	New Bloomfield .....	Perry, Pa.
Shoop, Janet L. ....	Shippensburg R. D. 3 .....	Franklin, Pa.
Smith, Le F. ....	Dickinson .....	Cumberland, Pa.
Sponseller, Elizabeth E. ....	35 W. King St., Chambersburg .....	Franklin, Pa.
Sproh, Thelma M. ....	111 N. Hanover St., Carlisle .....	Cumberland, Pa.
Staver, Kenneth W. ....	27 N. Penn St., Shippensburg .....	Cumberland, Pa.
Steffen, Margy A. ....	15 S. Market St., Selingsgrove .....	Snyder, Pa.
Stinner, John R. ....	122 East St., Williamstown .....	Dauphin, Pa.
Stouffer, Nelson W. ....	610 Philadelphia Ave., Chambersburg .....	Franklin, Pa.
Suereth, Dorothy M. ....	408 N. Belvedere Ave., York .....	York, Pa.
Swartz, I. Paul .....	Port Royal .....	Juniata, Pa.
Sweger, Lewis E. ....	Loysville .....	Perry, Pa.
Tyner, M. Kathryn .....	116 Cumberland Ave., Shippensburg .....	Franklin, Pa.
Ventresca, Harry G. ....	3825 6th Ave., Altoona .....	Blair, Pa.
Wagner, Esther L. ....	62 E. Chocolate Ave., Hershey .....	Dauphin, Pa.
Wallace, Arlene A. ....	Blain .....	Perry, Pa.
Walter, Clarence G. ....	1405 Scotland Ave., Chambersburg .....	Franklin, Pa.
Walter, Geraldine M. ....	Locust St., Burnham .....	Mifflin, Pa.
Waring, Rachel T. ....	315 Calder St., Harrisburg .....	Dauphin, Pa.
Waugh, Athalie W. ....	120 W. King St., Shippensburg .....	Cumberland, Pa.
Weirick, Paul E. ....	Market St., Mount Union .....	Huntingdon, Pa.
Wert, Margaret C. ....	1317 Turner St., Allentown .....	Lehigh, Pa.
Wiest, Eleanor L. ....	624 Main St., Lykens .....	Dauphin, Pa.
Wirt, Virginia D. ....	1935 N. Fourth St., Harrisburg .....	Dauphin, Pa.
Witman, A. Geraldine .....	33 Water St., Hummelstown .....	Dauphin, Pa.
Zeiters, Margaret W. ....	Hanover St., Hummelstown .....	Dauphin, Pa.

## CLASS OF 1942

<i>Name</i>	<i>Post Office</i>	<i>County and State</i>
Bartschat, Elizabeth A. ....	Newton Hamilton .....	Mifflin, Pa.
Bolan, Geraldine G. ....	303 Walnut St., Shippensburg .....	Cumberland, Pa.
Bringman, John W. ....	Biglerville .....	Adams, Pa.
Castle, R. Gladding .....	Mechanicsburg R. D. ....	Cumberland, Pa.

D'Aguanno, Mikeal J. ....	523 7th Ave., Altoona .....	Blair, Pa.
Gillan, William J. ....	St. Thomas .....	Franklin, Pa.
Haller, William M. ....	815 Union St., Hollidaysburg .....	Blair, Pa.
Immel, Roger A. ....	Chambersburg R. D. 2 .....	Franklin, Pa.
Rhodes, Rosalie V. ....	339 E. Orange St., Shippensburg .....	Cumberland, Pa.
Robinson, Jane B. ....	Shade Gap .....	Huntingdon, Pa.
Shoemaker, Maxine L. ....	9 S. Earl St., Shippensburg .....	Cumberland, Pa.
Sommerville, Nellie A. ....	Shippensburg R. D. 1 .....	Cumberland, Pa.
Wright, Margaret E. ....	111 S. Prince St., Shippensburg .....	Cumberland, Pa.

## PART-TIME CAMPUS STUDENTS

<i>Name</i>	<i>Post Office</i>	<i>County and State</i>
Alexander, Carrie B. ....	1616 Walnut St., Harrisburg .....	Dauphin, Pa.
Armstead, N. Louise .....	16 S. 16th St., Harrisburg .....	Dauphin, Pa.
Barton, Velda L. ....	Crystal Springs .....	Fulton, Pa.
Baughman, Velma R. ....	559 N. Bedford St., Carlisle .....	Cumberland, Pa.
Berkheimer, W. Edgar .....	Johnstown R. D. 3 .....	Cambria, Pa.
Bitner, Ruth E. ....	Dillsburg .....	York, Pa.
Black, C. Drexel .....	Six Mile Run .....	Bedford, Pa.
Blaine, Leona T. ....	Markelsville .....	Perry, Pa.
Boden, Fay E. ....	59 W. Main St., Mechanicsburg .....	Cumberland, Pa.
Bohn, Caro Jane .....	McConnellsburg .....	Fulton, Pa.
Boyer, Jean M. ....	825 Hummel Ave., Lemoyne .....	Cumberland, Pa.
Brandt, Glen C. ....	Chambersburg R. D. 1 .....	Franklin, Pa.
Breneman, Lynn G. ....	Mount Holly Springs .....	Cumberland, Pa.
Brubaker, Charles A. ....	Cumberland St., Enola .....	Cumberland, Pa.
Brunner, Grace C. ....	New Bloomfield .....	Perry, Pa.
Brunner, R. Marjorie .....	Landisburg .....	Perry, Pa.
Carroll, Winifred E. ....	31 S. West St., Carlisle .....	Cumberland, Pa.
Conrad, Nan .....	Greencastle .....	Franklin, Pa.
Crouse, Harold U. ....	Amberson .....	Franklin, Pa.
Deitch, Jacob A. S. ....	Mechanicsburg R. D. 1 .....	Cumberland, Pa.
Dorman, Alice B. ....	Orange St., Shippensburg .....	Cumberland, Pa.
Dougherty, Mary Elizabeth .....	51 York St., Gettysburg .....	Adams, Pa.
Edgar, Ross L. ....	Dover R. D. 1 .....	York, Pa.
Elliot, Wayne W. ....	Chambersburg .....	Franklin, Pa.
Fleisher, Eva P. ....	Newport .....	Perry, Pa.
Fogelsanger, Helen K. ....	E. King St., Shippensburg .....	Cumberland, Pa.
Fox, Olen A. ....	Carlisle St., Greencastle .....	Franklin, Pa.
Frehn, John A. ....	Walnut Bottom .....	Cumberland, Pa.
Fry, Margaret E. ....	24 E. Main St., Newville .....	Cumberland, Pa.
Gentzler, L. Charles .....	East Berlin .....	Adams, Pa.
Harris, Howard D. ....	Shippensburg R. D. ....	Cumberland, Pa.
Hartman, Lloyd R. ....	Liberty St., Gettysburg .....	Adams, Pa.
Hege, Mary L. ....	Greencastle R. R. 1 .....	Franklin, Pa.
Heiges, Mary McC. ....	246 E. Philadelphia St., York .....	York, Pa.
Hempt, Dorothy E. ....	Camp Hill R. D. 1 .....	Cumberland, Pa.
Hereter, MaBelle .....	133 Chambersburg St., Gettysburg .....	Adams, Pa.
Hissong, Ruth E. ....	Chambersburg R. R. 1 .....	Franklin, Pa.
Hodge, Sarah V. ....	520 Fairground Ave., Carlisle .....	Cumberland, Pa.
Hornberger, William K. ....	Shermansdale .....	Perry, Pa.
Hunsberger, Clarence W. ....	Mercersburg .....	Franklin, Pa.
Hurley, Paul F. ....	Main St., Newville .....	Cumberland, Pa.
Inskip, George B. ....	York Springs .....	Adams, Pa.
Jacoby, Catharine H. ....	E. Main St., Mechanicsburg .....	Cumberland, Pa.
Kauffman, Edna E. ....	2433 Canby St., Penbrook .....	Dauphin, Pa.
Kelso, Ray L. ....	McConnellsburg R. D. 1 .....	Fulton, Pa.
Kendig, Mildred L. ....	Shippensburg R. R. 3 .....	Cumberland, Pa.
Kennedy, Charles A. ....	New Oxford R. D. 3 .....	Adams, Pa.
Kessler, Merrill M. ....	2 Charles St., Hanover .....	York, Pa.



Lear, Pearl A. ....	Carlisle R. D. 6 .....	Cumberland, Pa.
McAllicher, Catherine .....	Elliottsburg .....	Perry, Pa.
McDannell, James M. ....	New Oxford R. D. 3 .....	Adams, Pa.
McFarland, Effie W. ....	363 Locust Ave., Steelton .....	Dauphin, Pa.
McKillip, Dorothy B. ....	519 N. West St., Carlisle .....	Cumberland, Pa.
Mason, Jesse S. ....	E. Market St., Williamstown .....	Dauphin, Pa.
Mellott, Claude L. ....	Harrisonville .....	Fulton, Pa.
Metz, Ruth E. ....	Chambersburg R. D. 5 .....	Fulton, Pa.
Miller, Herbert W. ....	Biglerville .....	Adams, Pa.
Morrison, Glenn D. ....	Landisburg .....	Perry, Pa.
Morrison, Kenneth E. ....	Landisburg .....	Perry, Pa.
Myers, Frances R. ....	265 W. Cottage Place, York .....	York, Pa.
Myers, Glenn S. ....	Dillsburg .....	York, Pa.
Ocker, Rachel D. ....	Newville .....	Cumberland, Pa.
Orndorff, Gerald L. ....	New Oxford .....	Adams, Pa.
Partner, Virginia M. ....	Biglerville .....	Adams, Pa.
Pike, Alma G. ....	Mason and Dixon .....	Franklin, Pa.
Pike, Esther M. ....	Mason and Dixon .....	Franklin, Pa.
Plough, Mary M. ....	Newville R. D. ....	Cumberland, Pa.
Polk, James E. ....	N. Earl St., Shippensburg .....	Cumberland, Pa.
Preston, W. Willard .....	Carlisle R. D. 2 .....	Cumberland, Pa.
Reisinger, George W. ....	Ickesburg .....	Perry, Pa.
Reisinger, M. Isabel .....	Loysville .....	Perry, Pa.
Runk, Isabelle A. ....	520 Seneca St., Harrisburg .....	Dauphin, Pa.
Sanders, Wilbur N. ....	Quincy .....	Franklin, Pa.
Schwinger, Ruth E. ....	Shiremanstown .....	Cumberland, Pa.
Shaffer, Helen A. ....	Newville R. D. 1 .....	Cumberland, Pa.
Sheaffer, Lester E. ....	Loysville .....	Perry, Pa.
Sipe, Clara M. ....	Shiremanstown .....	Cumberland, Pa.
Skinner, Mary P. ....	Dry Run .....	Franklin, Pa.
Squires, Rhea H. ....	10 S. Penn St., Shippensburg .....	Cumberland, Pa.
Stains, Althea G. ....	Three Springs .....	Huntingdon, Pa.
Stains, Harold S. ....	Three Springs .....	Huntingdon, Pa.
Statler, Maynard W. ....	Greencastle R. D. 1 .....	Franklin, Pa.
Stone, Paul L. ....	Carlisle R. D. 1 .....	Cumberland, Pa.
Stouffer, Charlotte R. ....	39 N. 18th St., Harrisburg .....	Dauphin, Pa.
Strohm, Margaret R. ....	221 E. King St., Shippensburg .....	Cumberland, Pa.
Stuart, Mary A. ....	410 S. Fifth St., Carlisle .....	Cumberland, Pa.
Wierman, Joseph E. ....	Fulton St., Hanover .....	York, Pa.
Wilson, Hazel L. ....	Newville R. D. 1 .....	Cumberland, Pa.
Wingert, H. Eugene .....	Summerdale .....	Cumberland, Pa.
Yeager, Mary C. ....	145 E. Pomfret St., Carlisle .....	Cumberland, Pa.

## EXTENSION STUDENTS

<i>Name</i>	<i>Post Office</i>	<i>County and State</i>
Armstead, N. Louise .....	16 S. 16th St., Harrisburg .....	Dauphin, Pa.
Barton, Velda L. ....	Crystal Springs .....	Fulton, Pa.
Blaine, Leona T. ....	Markelsville .....	Perry, Pa.
Breneman, Anne .....	Robertsdale .....	Huntingdon, Pa.
Brickley, Helen P. ....	1403½ Third St., Altoona .....	Blair, Pa.
Bruner, Grace C. ....	New Bloomfield .....	Perry, Pa.
Coover, John L. ....	Oberlin .....	Dauphin, Pa.
Cornelius, Louisa C. ....	Saltito .....	Huntingdon, Pa.
Dorman, Alice B. ....	E. Orange St., Shippensburg .....	Cumberland, Pa.
Fenical, Catherine R. ....	1339 Vernon St., Harrisburg .....	Dauphin, Pa.
Fleisher, Eva P. ....	Newport .....	Perry, Pa.
Gensler, Harriet .....	5 S. Front St., Harrisburg .....	Dauphin, Pa.
Geutzler, L. Charles .....	East Berlin .....	Adams, Pa.
Gephart, Dorothy M. ....	Robertsdale .....	Huntingdon, Pa.
Graham, Martha M. ....	Burnham .....	Mifflin, Pa.
Hoke, J. Kenneth .....	West Fairview .....	Cumberland, Pa.
Hurley, Paul F. ....	Main St., Newville .....	Cumberland, Pa.

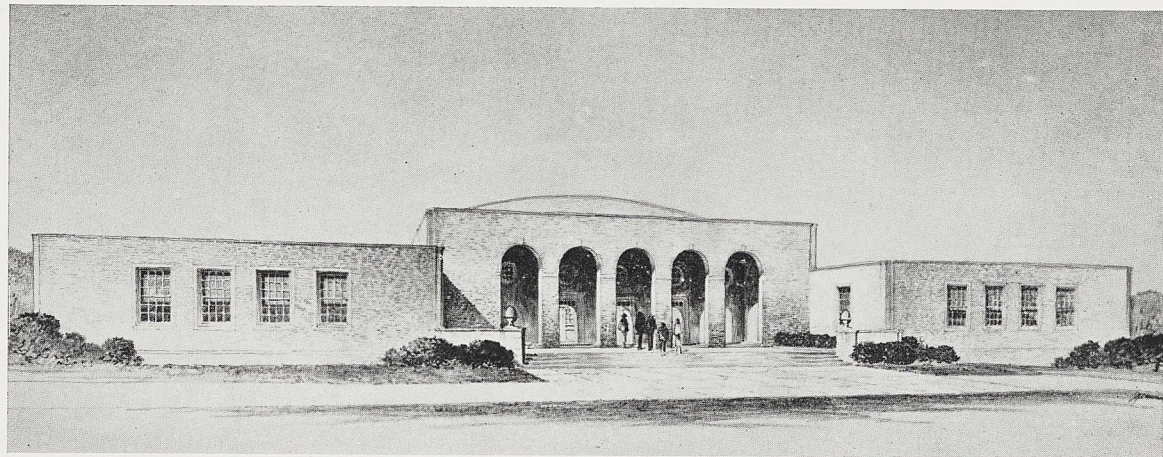
Kinsloe, Ruth A. ....	Burnham .....	Mifflin, Pa.
Lear, Pearl A. ....	Carlisle R. D. 6 .....	Cumberland, Pa.
Lowder, Eleanor M. ....	1615 Berryhill St., Harrisburg .....	Dauphin, Pa.
McMillen, Ernestine C. ....	Loysville .....	Perry, Pa.
Metz, Ruth E. ....	Chambersburg R. D. 5 .....	Franklin, Pa.
Mills, E. Ferne .....	Clearville .....	Bedford, Pa.
Mowry, Lillian Y. ....	491 E. King St., Chambersburg .....	Franklin, Pa.
Onkst, Avis K. ....	421 Bedford St., Hollidaysburg .....	Blair, Pa.
Rahauer, Esther .....	930 Lincoln Way East, Chambersburg .....	Franklin, Pa.
Reisinger, M. Isabel .....	Loysville .....	Perry, Pa.
Ryder, Olive M. ....	St. Thomas R. D. 1 .....	Franklin, Pa.
Schulz, Julia R. ....	2701 18th St., Altoona .....	Blair, Pa.
Shoop, Isabelle A. ....	225 Yale St., Harrisburg .....	Dauphin, Pa.
Sipe, Mildred L. ....	Burnham .....	Mifflin, Pa.
Stalley, Martha M. ....	Breezewood .....	Bedford, Pa.
Wentz, Beulah .....	East Berlin .....	Adams, Pa.
Wentz, Margaret E. ....	McKnightstown .....	Adams, Pa.

## SUMMER SESSION, 1937

<i>Name</i>	<i>Post Office</i>	<i>County and State</i>
Alexander, Carrie B. ....	1616 Walnut St., Harrisburg .....	Dauphin, Pa.
Allen, Mary G. ....	Orrtanna .....	Adams, Pa.
Antrobus, Mary B. ....	121 W. Wayne Ave., Wayne .....	Delaware, Pa.
Armstead, N. Louise .....	16 S. 16th St., Harrisburg .....	Dauphin, Pa.
Arnold, Alice M. ....	534 Hickory St., Hollidaysburg .....	Blair, Pa.
Arnold, Robert B. ....	Chambersburg R. D. 6 .....	Franklin, Pa.
Baer, Hazel E. ....	5 Derrick St., Uniontown .....	Fayette, Pa.
Baillets, Walter S. ....	New Cumberland .....	Cumberland, Pa.
Baker, Dorothy A. ....	Spring Run .....	Franklin, Pa.
Baker, Grace E. ....	Thomasville .....	York, Pa.
Baker, Herbert W. ....	Spring Run .....	Franklin, Pa.
Barncord, Walter E. ....	Hyndman .....	Bedford, Pa.
Barr, Helen F. ....	1314 Logan Ave., Tyrone .....	Blair, Pa.
Barton, Homer M. ....	Crystals Springs .....	Fulton, Pa.
Barton, Velda L. ....	Crystals Springs .....	Fulton, Pa.
Basehoar, Frank E. ....	Littlestown .....	Adams, Pa.
Bedford, M. Ruth .....	W. King St., Shippensburg .....	Cumberland, Pa.
Beitzel, Kathryn H. ....	409 S. High St., Mechanicsburg .....	Cumberland, Pa.
Bellows, Charles F. ....	E. King St., Shippensburg .....	Cumberland, Pa.
Benner, Margaret S. ....	Gettysburg R. D. 1 .....	Adams, Pa.
Bentz, Laurence L. ....	Wellsville .....	York, Pa.
Berger, Mary M. ....	26 N. Federal St., Chambersburg .....	Franklin, Pa.
Bickett, Carl W. ....	McAlevy's Fort .....	Huntingdon, Pa.
Bird, E. Carol .....	Wellsville .....	York, Pa.
Black, C. Drexel .....	Six Mile Run .....	Bedford, Pa.
Blaine, Leona T. ....	Markelsville .....	Perry, Pa.
Blowers, Mildred A. ....	1823 11th Ave., Altoona .....	Blair, Pa.
Bollinger, Benjamin A. ....	Chambersburg R. D. 2 .....	Franklin, Pa.
Brandt, Glen C. ....	Chambersburg R. D. 1 .....	Franklin, Pa.
Bream, Grace A. ....	536 Nelson St., Chambersburg .....	Franklin, Pa.
Bream, Ronald J. ....	Gardners .....	Adams, Pa.
Brickley, Helen P. ....	1403½ 3rd St., Altoona .....	Blair, Pa.
Brown, Martha G. ....	110 Ridge Ave., Steelton .....	Dauphin, Pa.
Brown, Mary C. ....	W. King St., Shippensburg .....	Cumberland, Pa.
Brubaker, Charles A. ....	Cumberland Ave., Enola .....	Cumberland, Pa.
Brubaker, Wilma N. ....	Mercersburg .....	Franklin, Pa.
Brunner, R. Marjorie .....	Landisburg .....	Perry, Pa.
Bullock, Mary Louise .....	Highspire .....	Dauphin, Pa.
Burkholder, Harold J. ....	N. High St., Newville .....	Cumberland, Pa.
Burkholder, Lawrence .....	N. High St., Newville .....	Cumberland, Pa.
Burtner, Raymond H. ....	Aspers .....	Adams, Pa.
Burnett, Nellie A. ....	Sidman .....	Cambria, Pa.
Butt, Helen M. ....	213 Steinwehr St., Gettysburg .....	Adams, Pa.
Butt, Kathleen G. ....	213 Steinwehr St., Gettysburg .....	Adams, Pa.

Carter, Anna L. ....	217 N. Front St., Steelton .....	Dauphin, Pa.
Chamberlain, Catherine .....	Box 87 Gettysburg .....	Adams, Pa.
Christine, Ethel I. ....	17 E. King St., York .....	York, Pa.
Chuchek, Olive P. ....	442 Ohio St., Johnstown .....	Cambria, Pa.
Claycomb, Cleo M. ....	New Paris .....	Bedford, Pa.
Clifford, Paul I. ....	13 E. Simpson St., Mechanicsburg .....	Cumberland, Pa.
Clugston, Florence O. ....	417 Second St., Highspire .....	Dauphin, Pa.
Coble, Minnie K. ....	St. Thomas .....	Franklin, Pa.
Comerer, Paul A. ....	Burnt Cabins .....	Fulton, Pa.
Conrad, Nan .....	Greencastle .....	Franklin, Pa.
Cooper, Elizabeth A. ....	1839 Boas St., Harrisburg .....	Dauphin, Pa.
Cornelius, Louisa C. ....	Saltillo .....	Huntingdon, Pa.
Cressman, Claire M. ....	Shiremanstown .....	Cumberland, Pa.
Crone, Mildred E. ....	3213 N. 6th St., Harrisburg .....	Dauphin, Pa.
Crouse, Harold U. ....	Amberson .....	Franklin, Pa.
Crouse, Wendell W. ....	Spring Run .....	Franklin, Pa.
Cruise, Thelma G. ....	Walnut Bottom .....	Cumberland, Pa.
Dentler, Gladys I. ....	Biglerville .....	Adams, Pa.
Depuy, Wilma V. ....	530 E. Liberty St., Chambersburg .....	Franklin, Pa.
Dittmann, J. Walter .....	211 S. Main St., Chambersburg .....	Franklin, Pa.
Dorman, Alice B. ....	E. Orange St., Shippensburg .....	Cumberland, Pa.
Downin, Kathryn .....	Mercersburg .....	Franklin, Pa.
Dum, Martha J. ....	Landsburg .....	Perry, Pa.
Dyer, Evangeline Z. ....	Hancock, Md. R. D. ....	Fulton, Pa.
Eckert, Mary C. ....	620 N. Hanover St., Carlisle .....	Cumberland, Pa.
Eichman, P. Elizabeth .....	Middleburg .....	Snyder, Pa.
Ellis, Evelyn R. ....	44 S. Earl St., Shippensburg .....	Cumberland, Pa.
Ellis, M. Elizabeth .....	44 S. Earl St., Shippensburg .....	Cumberland, Pa.
Ernst, Donald R. ....	York Springs .....	Adams, Pa.
Evans, Marlin V. ....	Valley View .....	Schuylkill, Pa.
Fairchilds, Martha E. ....	Market St., Millersburg .....	Dauphin, Pa.
Farber, R. A. ....	Bedford .....	Bedford, Pa.
Felton, Dorothy G. ....	Breezewood .....	Bedford, Pa.
Fenical, Catherine E. ....	1839 Vernon St., Harrisburg .....	Dauphin, Pa.
Fetterolf, Edna M. ....	Lewistown .....	Mifflin, Pa.
Figard, Helene E. ....	Six Mile Run .....	Bedford, Pa.
Fleisher, Eva P. ....	Newport .....	Perry, Pa.
Flook, Rebecca S. ....	38 W. King St., Chambersburg .....	Franklin, Pa.
Fogelsanger, Arthur B. ....	E. King St., Shippensburg .....	Cumberland, Pa.
Fogelsanger, Helen K. ....	E. King St., Shippensburg .....	Cumberland, Pa.
Fogelsanger, Louella G. ....	212 E. Orange St., Shippensburg .....	Cumberland, Pa.
Fogelsanger, M. Bernice .....	Scotland .....	Franklin, Pa.
Fox, Margaret V. ....	235 Walnut St., Steelton .....	Dauphin, Pa.
Fohl, Jean M. ....	Main St., Biglerville .....	Adams, Pa.
Fox, Olen A. ....	Greencastle .....	Franklin, Pa.
Frehn, John A. ....	Walnut Bottom .....	Cumberland, Pa.
Gabert, Martena B. ....	Three Springs .....	Huntingdon, Pa.
Gardner, Hilda W. ....	Shirleysburg .....	Huntingdon, Pa.
Garretson, Marian W. ....	Flora Dale .....	Adams, Pa.
Gensler, Harriet H. ....	5 S. Front St., Harrisburg .....	Dauphin, Pa.
Gephart, Dorothy M. ....	Shippensburg R. D. ....	Cumberland, Pa.
Gilbert, Frances M. ....	Gettysburg R. D. 1 .....	Adams, Pa.
Gingrich, Velma S. ....	36 College Ave., Annville .....	Lebanon, Pa.
Ginter, Agnes M. ....	Beaverdale .....	Cambria, Pa.
Gipe, Louise C. ....	927 Wilson Ave., Chambersburg .....	Franklin, Pa.
Gipe, Thelma B. ....	Mercersburg .....	Franklin, Pa.
Graham, Frances M. ....	Newville .....	Cumberland, Pa.
Graham, Martha M. ....	Burnham .....	Mifflin, Pa.
Greathead, E. Jeanne .....	McConnellsburg .....	Fulton, Pa.
Greenawalt, Emma Jane .....	117 S. Earl St., Shippensburg .....	Cumberland, Pa.
Griffiths, Sarah L. ....	34 W. Main St., Girardville .....	Schuylkill, Pa.
Gusmerotti, Tullio .....	Brookville R. D. 3 .....	Jefferson, Pa.
Gussman, Pauline E. ....	20 Conway St., Carlisle .....	Cumberland, Pa.
Gutshall, Evelyn R. ....	New Kingstown .....	Cumberland, Pa.
Gutshall, Margaret E. ....	Blain .....	Perry, Pa.
Guyer, Evelyn M. ....	Martinsburg .....	Blair, Pa.
Haas, Mary A. ....	Duncannon R. D. 1 .....	Perry, Pa.
Haldeman, Anna M. ....	Mifflin .....	Juniata, Pa.
Haller, Ada M. ....	Lewistown R. D. 3 .....	Mifflin, Pa.
Hartman, Lloyd .....	5 Liberty St., Gettysburg .....	Adams, Pa.
Hartzell, Geraldine A. ....	166 York St., Gettysburg .....	Adams, Pa.
Hauger, Claude R. ....	Rockwood .....	Somerset, Pa.

Hay, William K. ....	Rockwood .....	Somerset, Pa.
Hefner, Helen A. ....	Bonsall Ave., Sharon Hill .....	Delaware, Pa.
Hege, Mary L. ....	Greencastle R. D. 1 .....	Franklin, Pa.
Heiges, Mary McC. ....	246 E. Philadelphia St., York .....	York, Pa.
Hempt, Dorothy E. ....	Camp Hill R. D. 1 .....	Cumberland, Pa.
Henry, Ada L. ....	123 Cumberland Rd., Bedford .....	Bedford, Pa.
Hereter, MaBelle .....	133 Chambersburg St., Gettysburg .....	Adams, Pa.
Hershberger, Florence M. ....	Wolfsburg .....	Bedford, Pa.
Hetrick, J. Murray .....	Mexico .....	Juniata, Pa.
Highlands, Lois E. ....	508 Michigan St., Jeannette .....	Westmoreland, Pa.
Hine, Elouise M. ....	Scotland Ave., Chambersburg .....	Franklin, Pa.
Hodge, Sarah V. ....	520 Fairground Ave., Carlisle .....	Cumberland, Pa.
Hofeditz, L. Margaret .....	Mercersburg R. D. ....	Franklin, Pa.
Hoke, J. Kenneth .....	West Fairview .....	Cumberland, Pa.
Hoover, Allen G. ....	Hesston .....	Huntingdon, Pa.
Hoover, Elmer B. ....	Duncansville .....	Blair, Pa.
Hopple, Mable R. ....	Millerstown .....	Perry, Pa.
Hovetter, Mary E. ....	Walnut Bottom .....	Cumberland, Pa.
Hunberger, Mildred M. ....	New Berlin .....	Union, Pa.
Huntsberger, Grace A. ....	627 Emerald St., Harrisburg .....	Dauphin, Pa.
Hurley, Paul F. ....	Newville .....	Cumberland, Pa.
Hutton, Florence A. ....	39 N. 6th St., Chambersburg .....	Franklin, Pa.
Joseph, Velma E. ....	Dover R. D. 2 .....	York, Pa.
Jumper, Florence F. ....	S. Pitt St., Carlisle .....	Cumberland, Pa.
Kauffman, Edna E. ....	2433 Canby St., Penbrook .....	Dauphin, Pa.
Kauffhold, Kathryn M. ....	1536 N. Fifth St., Harrisburg .....	Dauphin, Pa.
Kerlin, Dorothy J. ....	326 6th St., New Cumberland .....	Cumberland, Pa.
Kessler, Merrill M. ....	2 Charles St., Hanover .....	York, Pa.
Kimmel, John I. ....	West Fairview .....	Cumberland, Pa.
King, Margaret A. ....	Laidig .....	Fulton, Pa.
Kinports, Anna E. ....	Mount Wolf .....	York, Pa.
Kinsloe, Ruth A. ....	Fourth Ave., Burnham .....	Mifflin, Pa.
Kirby, Jeanne H. ....	Chambersburg .....	Franklin, Pa.
Kline, Ruth E. ....	Spruce Hill .....	Juniata, Pa.
Klink, Pearl E. ....	S. West St., Carlisle .....	Cumberland, Pa.
Kraber, Ruth V. ....	111 Columbia Road, Enola .....	Cumberland, Pa.
Kremer, Julia K. ....	Chambersburg .....	Franklin, Pa.
Krone, Hazel M. ....	Mechanicsburg R. D. 3 .....	Cumberland, Pa.
Krug, Mary H. ....	627 W. Market St., York .....	York, Pa.
Leamer, Martha R. ....	58th St., Altoona .....	Blair, Pa.
Lehner, Isabel S. ....	Newville R. R. 2 .....	Cumberland, Pa.
Leinbaugh, R. Erna .....	Lashley .....	Fulton, Pa.
Leppert, Forrest J. ....	Alum Bank .....	Bedford, Pa.
Line, Martha M. ....	1002 17th Ave., Altoona .....	Blair, Pa.
Lowe, Louise M. ....	133 E. Cottage Place, York .....	York, Pa.
MacDonnell, Loretta E. ....	Fairfield .....	Adams, Pa.
McAlicher, Catherine E. ....	Elliottsburg .....	Perry, Pa.
McCleary, James F. ....	554 S. Second St., Chambersburg .....	Franklin, Pa.
McCullough, Mary B. ....	Newville R. D. 1 .....	Cumberland, Pa.
McCurdy, Isabel W. ....	Shippensburg R. D. ....	Franklin, Pa.
McFarland, Effie W. ....	363 Locust St., Steelton .....	Dauphin, Pa.
McFerren, Mary E. ....	431 E. Queen St., Chambersburg .....	Franklin, Pa.
McGowan, H. Vera .....	Burnt Cabins .....	Fulton, Pa.
McGuire, John H. ....	303 Fourth Ave., Altoona .....	Blair, Pa.
McMillen, Ernestine C. ....	Loysville .....	Perry, Pa.
McNaul, Ella H. ....	38 Enola Drive, Enola .....	Cumberland, Pa.
McVey, Lucy L. ....	106 S. Division St., Mount Union .....	Huntingdon, Pa.
McVitty, Kathleen S. ....	Spring Run .....	Franklin, Pa.
Markle, Emory H. ....	1800 Monroe St., York .....	York, Pa.
Marquardt, Gretchen I. ....	343 Hamilton Ave., State College .....	Centre, Pa.
Martin, Frances M. ....	E. Orange St., Shippensburg .....	Cumberland, Pa.
Martin, Helen E. S. ....	49 Clayton Ave., Waynesboro .....	Franklin, Pa.
Meals, Catherine S. ....	479 Lincoln Way East, Chambersburg .....	Franklin, Pa.
Melhorn, Anna Mary .....	309 W. Hartley St., York .....	York, Pa.
Mellinger, Gail M. ....	Shippensburg R. D. ....	Cumberland, Pa.
Metz, Ruth E. ....	Chambersburg R. D. 5 .....	Franklin, Pa.
Meyers, Dorothy W. ....	Rockwood .....	Somerset, Pa.
Miller, Cecelia R. ....	Chambersburg R. R. 5 .....	Franklin, Pa.
Miller, Dwight E. ....	Schellsburg .....	Bedford, Pa.
Miller, Gertrude .....	515 E. Catherine St., Chambersburg .....	Franklin, Pa.
Miller, Herbert W. ....	Biglerville .....	Adams, Pa.
Miller, Mary S. ....	Schellsburg .....	Bedford, Pa.
Mills, E. Ferne .....	Clearville .....	Bedford, Pa.



GYMNASIUM

Mohler, W. Lester	..... Newburg R. D. 1	.....	Cumberland, Pa.
Moore, Charlotte E.	..... Riddlesburg	.....	Bedford, Pa.
Morrison, Glenn D.	..... Landisburg	.....	Perry, Pa.
Morrison, Kenneth E.	..... Landisburg	.....	Perry, Pa.
Mowry, Lillian Y.	..... 539 Lincoln Way East, Chambersburg	.....	Franklin, Pa.
Muto, Clement T.	..... 1321 Swatara St., Harrisburg	.....	Dauphin, Pa.
Myers, Erva Mae	..... Dillsburg	.....	York, Pa.
Myers, Glenn S.	..... Dillsburg	.....	York, Pa.
Nankivell, Lillian D.	..... Millerstown	.....	Perry, Pa.
Norris, William R.	..... Mapleton Depot	.....	Huntingdon, Pa.
O'Brien, Martha E.	..... 533 Garber St., Hollidaysburg	.....	Blair, Pa.
Onkst, Avis K.	..... 421 Bedford St., Hollidaysburg	.....	Blair, Pa.
Palmer, E. Rebecca	..... 916 N. Third St., Harrisburg	.....	Dauphin, Pa.
Partner, Virginia M.	..... Biglerville	.....	Adams, Pa.
Payne, Naomi V.	..... 113 N. Summit St., Harrisburg	.....	Dauphin, Pa.
Peters, Margaret H.	..... 270 Baltimore St., Gettysburg	.....	Adams, Pa.
Phenicie, Ruth	..... Mercersburg	.....	Franklin, Pa.
Pike, Alma G.	..... Mason and Dixon	.....	Franklin, Pa.
Pike, Esther M.	..... Mason and Dixon	.....	Franklin, Pa.
Plank, Elizabeth	..... Louthier St., Carlisle	.....	Cumberland, Pa.
Plasterer, Floyd F.	..... Dry Run	.....	Franklin, Pa.
Plough, Mary M.	..... Newville	.....	Cumberland, Pa.
Porter, Mary K.	..... 131 N. Grant St., Waynesboro	.....	Franklin, Pa.
Prescott, Eva M.	..... Tower City	.....	Schuylkill, Pa.
Preston, Willard W.	..... Carlisle R. D. 2	.....	Cumberland, Pa.
Raffensberger, Harold E.	..... New Oxford	.....	Adams, Pa.
Reb, Edna E.	..... 324 E. Main St., Girardville	.....	Schuylkill, Pa.
Reisinger, George W.	..... Ickesburg	.....	Perry, Pa.
Reisinger, M. Isabel	..... Loysville	.....	Perry, Pa.
Rice, Florence I.	..... Landisburg	.....	Perry, Pa.
Rightnour, Rose E.	..... Gettysburg	.....	Adams, Pa.
Robinson, Clara M.	..... 134 Balm St., Harrisburg	.....	Dauphin, Pa.
Rothrock, William	..... 615 Fifth Ave., Juniata, Altoona	.....	Blair, Pa.
Rowland, George A.	..... Shippensburg	.....	Cumberland, Pa.
Ruch, Mary A. R.	..... Tower City R. D. 1	.....	Schuylkill, Pa.
Ryder, Eleanor	..... S. Prince St., Shippensburg	.....	Cumberland, Pa.
Ryder, Olive M.	..... St. Thomas	.....	Franklin, Pa.
Saxe, LeRoy H.	..... N. Earl St., Shippensburg	.....	Cumberland, Pa.
Schnebel, Clinton M.	..... Greencastle	.....	Franklin, Pa.
Scholl, Florence F.	..... Millerstown	.....	Perry, Pa.
Schulz, Julia R.	..... 2701 18th St., Altoona	.....	Blair, Pa.
Schwinger, Ruth E.	..... Shiremanstown	.....	Cumberland, Pa.
Selser, L. Natalie	..... Mercersburg	.....	Franklin, Pa.
Shaffer, Helen I.	..... Newville R. D. 1	.....	Cumberland, Pa.
Shamp, Dorothy R.	..... 1945 N. Fourth St., Harrisburg	.....	Dauphin, Pa.
Shoop, Isabelle A.	..... 225 Yale St., Harrisburg	.....	Dauphin, Pa.
Shoemaker, LaRue F.	..... 1925 Whitehall St., Harrisburg	.....	Dauphin, Pa.
Shuler, Gertrude C.	..... Liverpool	.....	Perry, Pa.
Shuler, Mary E.	..... Liverpool	.....	Perry, Pa.
Shull, Marjorie W.	..... 320 22nd Ave., Altoona	.....	Blair, Pa.
Simons, Eloise Z.	..... W. South St., Carlisle	.....	Cumberland, Pa.
Sipe, Clara M.	..... Shiremanstown	.....	Cumberland, Pa.
Sipe, Mildred L.	..... Burnham	.....	Mifflin, Pa.
Skinner, Mary P.	..... Dry Run	.....	Franklin, Pa.
Slick, Eleanor R.	..... Roaring Spring	.....	Blair, Pa.
Slick, Rosalind A.	..... Roaring Spring	.....	Blair, Pa.
Smith, Alcesta L.	..... Mount Union	.....	Huntingdon, Pa.
Smith, Marion E.	..... New Freedom	.....	York, Pa.
Smith, Marion W.	..... McAlevy's Fort	.....	Huntingdon, Pa.
Snider, Dorothy R.	..... Milroy	.....	Mifflin, Pa.
Snider, J. Lindsay	..... Milroy	.....	Mifflin, Pa.
Snively, Donald L.	..... N. Wayne Ave., Wayne	.....	Chester, Pa.
Snyder, Gertrude E.	..... Newport	.....	Perry, Pa.
Sollenberger, Helen L.	..... Waynesboro	.....	Franklin, Pa.
Sowers, Norman B.	..... 23 Richard Ave., Waynesboro	.....	Cumberland, Pa.
Spahr, William T.	..... Dillsburg R. D. 1	.....	York, Pa.
Spangler, Grace E.	..... York Springs	.....	Adams, Pa.
Spar, Ada May	..... Blairs Mills	.....	Huntingdon, Pa.
Sponseller, Edwin H.	..... 21 Richard Ave., Shippensburg	.....	Cumberland, Pa.
Squires, Rhea H.	..... 10 S. Penn St., Shippensburg	.....	Cumberland, Pa.
Staley, Martha N.	..... Breezewood	.....	Bedford, Pa.
Stake, Lillian P.	..... Saltillo	.....	Huntingdon, Pa.
Stambaugh, A. Alice	..... Green Park	.....	Perry, Pa.

Steuer, Thelma E. ....	Saxton .....	Bedford, Pa.
Stock, Edith M. ....	158 N. College St., Carlisle .....	Cumberland, Pa.
Stone, Paul L. ....	Carlisle R. D. 1 .....	Cumberland, Pa.
Stouffer, Charlotte R. ....	1823 Briggs St., Harrisburg .....	Dauphin, Pa.
Strickler, Helen L. ....	E. King St., Chambersburg .....	Franklin, Pa.
Strohm, Margaret R. ....	E. King St., Shippensburg .....	Cumberland, Pa.
Stuart, Mary A. ....	410 S. Pitt St., Carlisle .....	Cumberland, Pa.
Sturgen, William M. ....	Etters .....	York, Pa.
Sweigert, Franklin P. ....	Lyons Apt., Chambersburg .....	Franklin, Pa.
Tate, Vivian B. ....	Landisburg .....	Perry, Pa.
Temple, Ralph O. ....	Halifax R. D. 1 .....	Dauphin, Pa.
Throckmorton, Edith M. ....	Chambersburg R. D. 2 .....	Franklin, Pa.
Tree, Anthony N. ....	Tyrone R. D. 4 .....	Blair, Pa.
Tree, Hulda M. ....	Tyrone R. D. 4 .....	Blair, Pa.
Tschopp, Rose S. ....	259 High St., Chambersburg .....	Franklin, Pa.
Vogelsong, Charles A. ....	Mechanicsburg R. D. 1 .....	Cumberland, Pa.
Vogelsong, Guy L. ....	Mechanicsburg .....	Cumberland, Pa.
Walker, Margaret H. ....	Garber St., Chambersburg .....	Franklin, Pa.
Walter, Mabel G. ....	Gettysburg R. D. 4 .....	Adams, Pa.
Ward, Kathryn B. ....	Carlisle R. D. 1 .....	Cumberland, Pa.
Weidner, Verna A. ....	Gardners .....	Cumberland, Pa.
Wentz, Beulah E. ....	East Berlin .....	Adams, Pa.
Wentz, Margaret E. ....	McKnightstown .....	Adams, Pa.
West, Alice I. ....	39 Lincoln Way West, Chambersburg .....	Franklin, Pa.
Wible, Finlay J. ....	McConnellsburg .....	Fulton, Pa.
Wikberg, Hellin .....	E. Burd St., Shippensburg .....	Cumberland, Pa.
Wilds, Edith M. ....	Fort Littleton .....	Fulton, Pa.
Wilson, Hazel L. ....	Newville R. D. 1 .....	Cumberland, Pa.
Wingert, H. Eugene .....	Summerdale .....	Cumberland, Pa.
Wingert, Mary Jane .....	373 E. Catherine St., Chambersburg .....	Franklin, Pa.
Witmer, Arlene M. ....	Millersburg .....	Dauphin, Pa.
Woodside, Margaret .....	Mifflin .....	Juniata, Pa.
Yeager, Mary C. ....	145 E. Pomfret St., Carlisle .....	Cumberland, Pa.
Yeingst, Irva M. ....	722 N. Pitt St., Carlisle .....	Cumberland, Pa.
Yoder, Evelyn G. ....	Spruce Hill .....	Juniata, Pa.
Zeigler, Evelyn M. ....	161 E. High St., Carlisle .....	Cumberland, Pa.

## ENROLLMENT

### COLLEGE

Graduate Students .....	13
Class of 1938 .....	64
Class of 1939 .....	84
Class of 1940 .....	162
Class of 1941 .....	119
Class of 1942 .....	13
Part-Time Campus Students .....	90
Extension Students .....	34
Summer Session Students, 1937 .....	298
<b>Total</b> .....	<b>877</b>
Duplications .....	130
<b>Final Total College Students</b> .....	<b>747</b>

**LABORATORY SCHOOLS****CAMPUS SCHOOLS**

Nursery School .....	21
Kindergarten .....	17
Grade I .....	22
Grade II .....	18
Grade III .....	19
Grade IV .....	20
Grade V .....	11
Grade VI .....	22
Total.....	150

**PLEASANT SCHOOL**

Grades I-VII .....	29
--------------------	----

**SHIPPENSBURG PUBLIC SCHOOLS****Grade Schools**

Grade I .....	58
Grade II .....	55
Grade III .....	57
Grade IV .....	70
Grade V .....	88
Grade VI .....	92
Total.....	420

**West End**

Grade I .....	18
Grade II .....	20
Grade III .....	18
Grade IV .....	17
Total.....	73

**Junior High School**

Grade VII .....	102
Grade VIII .....	80
Grade IX .....	150
Total.....	332

**Senior High School**

Grade X .....	133
Grade XI .....	105
Grade XII .....	89
Total.....	327
Grand Total, Training Schools.....	1331



## INDEX

	Page
Admission, Requirements for .....	15
Advanced Standing .....	17
Alumni Associations .....	52
Alumni Council .....	49
Alumni Loan Fund .....	19
Annual Cost .....	15
Athletics .....	21
Calendar 1938-39 .....	3
Certification, Requirements for .....	18
Clubs .....	46
Courses of Instruction .....	30
Curricula	
Adult Education .....	26
Business Education .....	28
Cooperative Education .....	29
Secondary Education .....	23
Elective Fields .....	24
Enrollment .....	66
Executive Committee .....	49
Faculty for 1938-39 .....	5
Fees, Deposits, Repayments .....	13
General Information .....	11
Graduation, Requirements for .....	18
Laboratory School Faculty .....	7
Library .....	11
Non-instructional Staff .....	9
Payments, Time of .....	15
Prizes .....	19
Publications .....	21
Regulations .....	20
Roster of Students .....	52
Scholastic Requirements .....	17
Student Organizations .....	44
Student Teaching Laboratories .....	12
Summer Sessions 1938 .....	10
Trustees, Board of .....	4