

THE TEACHERS COLLEGE HERALD

*A catalogue of the State
Teachers College for the
fifty-seventh school year*



SHIPPENSBURG, PENNSYLVANIA

1928 · · 1929

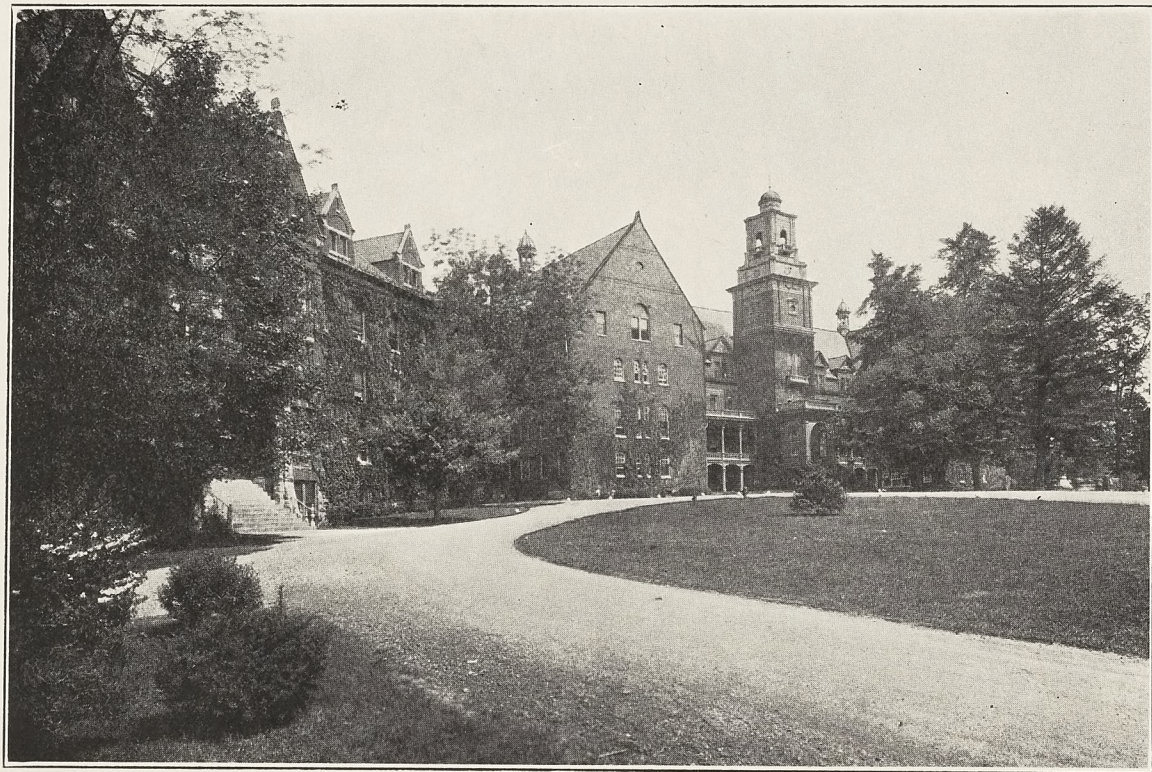
And Prospectus for 1929 and 1930

VOLUME 43

NUMBER 1

TABLE OF CONTENTS

	<i>Page</i>
Admission, Requirements for	24
Advanced Two-Year Curriculum Leading to B.S. Degree	31
Articles Students Should Bring With Them	49
Alumni Fund	42
Athletics: Men's and Women's	46
Board of Trustees	4
Calendar 1929-1930	3
Building and Room Regulations	44
Certificates for Teachers in Service	26
Class Regulations	44
College, The	20
College Publications	49
Curricula of the Pennsylvania State Normal Schools and Teachers Colleges	28
Day Students, Expenses of	22
Elective Fields	36
Elective Fields, Prerequisites for	37
Expenses	21
Faculty for 1928-1929	5
Fees	22
Four-Year Curriculum in Elementary Education (B.S. Degree) ..	33
Four-Year Curriculum for Junior and Senior High School Teachers (B. S. Degree)	35
General Regulations	49
Government and Discipline	43
Graduation, Requirements for	29
Health Regulations	46
Instrumental Music Department	38
Lectures, Concerts, Moving Picture Entertainments	47
Library	48
Literary Societies	48
Officers, Alumni Associations	79
Payments, Time of	22
Prizes	41
Reading Room	48
Registration Blank	83
Religious Work	47
Requirements for Admission	24
Requirements Relating to Students in all Curricula	28
Sabbath Regulations	48
Social Regulations	44
Student Enrollment	53
Student Government	24
Student Organizations	50
Summer Session, 1929	38
Summer Session, Payments for	23
Text-books Used	39
Time Regulations	43
Two-Year Curricula for Elementary Teaching	28



APPROACH TO WOMEN'S DORMITORY AND ADMINISTRATIVE BUILDING

CALENDAR 1929 - 30

SUMMER SESSION, 1929

Registration DayMonday, June 24
Classes BeginTuesday, June 25
Summer Session EndsSaturday, August 3

FIRST SEMESTER, 1929

Registration DayTuesday, September 10
Organization of ClassesWednesday, September 11
Thanksgiving Recess BeginsSaturday, 12 M.—November 23
College ReopensMonday, 12 M.—December 2
Christmas Vacation BeginsSaturday 12 M.—December 21
College ReopensMonday, 12 M.—January 6, 1930
First Semester ClosesSaturday, 12 M.—January 25

SECOND SEMESTER, 1930

Second Semester BeginsMonday, 8 A. M.—January 27
Anniversary Normal Literary SocietyFriday, March 14
Easter Vacation BeginsThursday, 12 M.—April 17
College ReopensWednesday, 12 M.—April 23
Reunion Philo Literary SocietyFriday, May 2
Training School CommencementThursday, May 22
Alumni DaySaturday, 1 P. M.—May 24
Baccalaureate SermonSunday, 8 P. M.—May 25
Class DayMonday, May 26
Commencement DayTuesday, 9:30—May 27

BOARD OF TRUSTEES

Geo. H. Stewart	President
George W. Himes	Vice-President
Geo. S. McLean	Secretary
J. W. Lackhove	Business Manager
John G. Benedict, Waynesboro, Commission expires .. 1929	
Geo. S. McLean, Shippensburg " " .. 1929	
Quinn T. Mickey, Shippensburg " " .. 1929	
John E. Boher, Shippensburg " " .. 1930	
C. Arthur Griest, Guernsey " " .. 1930	
George W. Himes, Shippensburg " " .. 1930	
Mrs. Walter K. Sharpe, Chambersburg " " .. 1931	
Mrs. Gilbert E. Swope, Newville " " .. 1931	
Geo. H. Stewart, Shippensburg " " .. 1931	

STANDING COMMITTEE

COMMITTEE ON DISCIPLINE AND INSTRUCTION

Geo. H. Stewart	Geo. S. McLean	John E. Boher
	Mrs. Walter K. Sharpe	

COMMITTEE ON HOUSE AND GROUNDS

Geo. W. Himes	Quinn T. Mickey	John G. Benedict
	Mrs. Gilbert E. Swope	

COMMITTEE ON FINANCE

C. Arthur Griest	Geo. H. Stewart
J. W. Lackhove	Business Manager

FACULTY FOR 1928-29

EZRA LEHMAN, Ph.D., LL.D.Principal

Education: Graduate Shippensburg S. N. S., 1889, Elementary Course; 1892 Scientific Course; Ph.B., Bucknell University, 1899; Ph.D., University of Pennsylvania, 1903; LL.D., Bucknell University, 1925; Special Student Teachers' College, Columbia University, three summer sessions.

Experience: Teacher one room rural school, Franklin County, 1889-90; Principal Huntingdon, Pennsylvania, High School, 1892-1896; Teacher of English, Shippensburg S. N. S., 1896-1898, 1899-1900; Associate Editor Lippincott Dictionary, 1903-1906; Head Department of English, Newtown High School, New York City, 1906-1913; Principal S. T. C., Shippensburg, 1913—

Harrison Fellow in English, University of Pennsylvania, 1901-1903; President Pennsylvania State Education Association, 1924.



J. S. HEIGES, A. M., Pd. D.Education; Dean

Education: Graduate Shippensburg S. N. S., 1891; A. B. Ursinus College, 1898; Summer Session Teachers' College, Columbia, 1911; A.M., Ursinus College, 1912; Pd.D., Ursinus College, 1923; A.M., New York University, 1928.

Experience: Teacher Rural School, York County, 1891-1892; Teacher Grammar Grades, fifth, sixth, seventh, eighth, York Springs, 1892-1894; Principal Summer Normal, 1892-1894; Grammar School, eighth grade, New Cumberland, 1898-1899; Supervisory Principal, Derrick City, 1899-1900; Supervisory Principal, Dillsburg, 1900-1901; Ward Principal, Harrisburg, 1901-1902; Teacher Mathematics, Shippensburg S. N. S., 1902-1908; Teacher History of Education and Dean, S. T. C., Shippensburg, 1908—



EDNA ARNOLD, A. B.Dean of Women

Education: A.B., West Virginia University, 1922; Summer Session University of Wisconsin, 1928.

Experience: Teacher of English Junior High School, Weston, West Virginia, 1907-1909; Head of English Department, High School, Weston, West Virginia, 1909-1913; Principal, Weston High School, 1913-1922; Acting Dean of Women, West Virginia University summer quarters, 1912-1915; Dean of Women, S. T. C., Shippensburg, 1922—

Member National Association Deans of Women, Pennsylvania Association Deans of Women.

EARL WRIGHT, M. S. . . Chemistry and Dean of Men

Education: B.S., Gettysburg College, 1923; M.S., Gettysburg College, 1928. Graduate School University of Pittsburgh, 1923-24 and Summer of 1928.

Experience: High School, New Kensington, Pa., 1923-24; High School, Blairsville, Pa., 1924-27; Senior High School, Reading, Pa., 1927-28; S. T. C., Shippensburg, Pa., 1928—

**JOHN K. STEWART, A. M. Latin**

Education: Graduate Susquehanna Collegiate Institute, 1894; A.B., Lafayette College, 1898; A.M., Lafayette College, 1908; Summer Sessions, State College, 1927 and 1928.

Experience: Teacher of Latin and Greek, Susquehanna Collegiate Institute, Towanda, Pennsylvania, 1898-1901; Teacher of Latin, Greek and Literature, Towanda High School, 1901-1906; Teacher of Latin, S. T. C., Shippensburg, 1906—

**S. ALICE HUBER, Ph.B., Director Junior High School group**

Education: Graduate Shippensburg S. N. S., 1896; Temple University, special courses, 1900-1902; University of Pennsylvania, extension courses, 1906-1908; Columbia University, Summer, 1913; Ph.B. in Education, University of Chicago, 1925; Columbia University, Summer, 1927.

Experience: Teacher Elementary Schools, Jarrettown, Pennsylvania, 1899-1905; Teacher, German, Mathematics, High School, Bristol, Pa., 1905-1908, Principal, 1907-1908; S. T. C., Shippensburg, 1909—

**H. WYLIE STEWART, A. B. Social Sciences**

Education: Graduate Shippensburg S. N. S., 1893; A. B. Wilson College, 1899; Summer Session Mt. Gretna, 1910; European Study and Travel, 1913; Summer Sessions Columbia University, 1921, 1922; Summer Sessions, State College, 1927 and 1928.

Experience: One room rural schools, Pennsylvania, 1893-1895; High School, 1900-1901; Principal of Walnut School, Marshall, North Carolina, 1901-1902; Public Schools, Pennsylvania, 1902-1904; S. T. C., Shippensburg, 1904—

Author: History of the Cumberland Valley.

M. IRENE HUBERArt

Education: Shippensburg S. N. S., 1896; Diploma, School of Applied Art, Philadelphia, 1903; Certificate, Prang School of Art Methods, 1910; Primary Art, University of Chicago, 1919; Summer Session, University of New York, 1922; Graduate, School of Applied Art, Philadelphia, 1927.

Experience: Teacher Rural Schools, Schuylkill County, 1890-1892; Grades, Suedburg, Pennsylvania, 1892-1895; Grades, Pine Grove, Pennsylvania, 1896-1900; Art, Froebel Kindergarten Training School, Harrisburg, Pennsylvania, 1903-1904; Art, S. T. C., Shippensburg, 1904—

Member Eastern Arts Association; The American Federation of Arts.

**S. S. SHEARER, M. S.**Biological Sciences

Education: Graduate Shippensburg S. N. S., 1907; A.B. Ursinus College, 1916; M.S. University of Chicago, 1922; Ogden Graduate School of Science, University of Chicago, 1921-23; graduate work, Summer Quarters, University of Chicago, 1926, 1927, 1928.

Experience: Ungraded Schools, 1903-05; Seventh and Eighth Grades, Middletown, Pennsylvania, 1907-09; Principal Yardley Borough Schools, 1909-14; Dean of Men, Shippensburg S. N. S., 1918-22; S. T. C., Shippensburg, 1917—

Member Sigma Xi; Pennsylvania Academy of Science; Botanical Society of America; The American Forestry Association.

**H. L. BURKHOLDER, A. M.** ..Assistant in Education

Education: Graduate Shippensburg S. N. S., 1901; Ph.B., Dickinson College, 1923; Student Teachers' College, Columbia University, Summer, 1919; Summer Session, Susquehanna University, 1906; Extension course, State College, 1925; A. M. University of New York.

Experience: Teacher Rural Schools, Lancaster County, 1901-1904; Principal Frankford Township High School, 1908-1916; Teacher Education and Writing S. T. C., Shippensburg, 1918—

**LESLIE C. KREBS, B. S.**, Geography and Agriculture

Education: B. S., Agriculture, Pennsylvania State College, 1913; Special Student, Pennsylvania State College, Summer, 1918; University of Chicago, School of Geography, Summer, 1921, Graduate Student, Clark University, School of Geography, 1924-25.

Experience: Teacher of Geography and Agriculture, S. T. C., Shippensburg, 1918—

Member Pennsylvania Academy of Science, Graduate Scholarship in Clark School of Geography, 1924-25.



FRIEDA B. BAUSCH, A. B. French

Education: A. B., Gettysburg College, 1917; Summer Session, University of Wisconsin, 1919; Graduate Scholarship, Bryn Mawr College, 1922-23; Summer Session, University of Chicago, 1923; University of Grenoble and Paris, Summer, 1924.

Experience: Student assistant in German, Gettysburg College, 1916-1917; Teacher French, German and Latin, East Bank, West Virginia, High School, 1917-1918; French, Spanish, and Latin, Narberth, Pennsylvania, High School, 1918-1919; Instructor French, S. T. C., Shippensburg, 1919—

Member Modern Language Association of America; Social and Scientific Society of America.



J. SETH GROVE, A. M. Mathematics

Education: Graduate Shippensburg S. N. S., 1910; A. B., Ursinus College, 1917; A.M., Teachers College, Columbia and Teachers College Diploma in Mathematics, 1924; Second Lieutenant, Field Artillery, U. S. Army, 1918.

Experience: Teacher seventh and eighth grades, Clay Hill, Pennsylvania, 1910-11; Teacher Mathematics and Science, Liberty Central High School, Saxton, Pa., 1911-13, Principal, 1912-13; Instructor English and Science, Clarion S. N. S., 1917-20; Instructor Mathematics and Physics, S. T. C., Shippensburg, 1920—

Member Pennsylvania Academy of Science and American Mathematical Society.



HANNAH A. KIEFFER, A. M., Director of Rural Education

Education: Graduate Millersville S. N. S., 1908; B.S. Teachers College, Columbia University, diploma in Elementary Supervision, 1915; A.M., Teachers College, Columbia University, diploma in Rural Supervision, 1916.

Experience: Teacher of one room rural schools, Dauphin County, 1903-1906; Assistant Principal New Holland Borough Schools, Lancaster County, 1908-1910; Supervising Principal of Drumore Township High School and one-room schools, 1910-1913;

County Supervisor of one teacher and elementary graded schools, Queen Anne's County, Maryland, 1916-1920; Instructor, Maryland State Summer School, Ocean City, 1918 and 1919; Director of Rural Education and instructor Geography, S. T. C., Shippensburg, 1920—

Member: American Country Life Association; Tenure Committee and Research Committees P. S. E. A.; Pennsylvania Academy Science.

Prizes and Scholarships: 1913, Helen Hartley Jenkins Scholarship Student, Teachers College, Columbia University, 1914; Scholarship Student Teachers College, Columbia University.



ELIZABETH McWILLIAMS, B. S., Dietitian and Nutrition Instructor

Education: Graduate Lock Haven S. N. S., 1906; B. S., Pennsylvania State College, 1920.

Experience: Teacher Rural Schools, 1903-1905; Grades and High School, Elysburg, Pennsylvania, 1906-1909; Seventh and eighth grades, Wiconisco, Pennsylvania, 1909-1911; Domestic Science, History, etc. Wiconisco High School, 1911-1918; Nutrition, Domestic Science, S. T. C., Shippensburg, 1920—

Member Pennsylvania Academy of Science; American Child Health Association.



CLAUDIA C. ROBB, B. S., Director of Health Education

Education: Temple University, 1912, 1913, 1914; Summer Session, Temple University, 1919; B.S., Kellogg School of Physical Education, Battle Creek College, 1926.

Experience: Physical Director, Y. W. C. A., Philadelphia, Pa., 1915, 1916; Physical Director, Y. W. C. A., Reading, Pa., 1917, 1918, 1919; Physical Director, Haddon Heights, New Jersey, 1920; Playground Director, Wilmington, Delaware, 1914; Recreation Committee, Silver Bay, New York, 1916; Recreation Leader, Camp Nepahwin, Pa., 1917, 1918; Swimming Director, Public Baths, Philadelphia, Pa., 1919, 1920; Director of Health Education, S. T. C., Shippensburg, January, 1921—

Member of Pennsylvania Physical Education Association; National Physical Education Association; Phi Gamma Mu, National Social Science Honor Society.

NORA A. KIEFFER, A. M. Mathematics

Education: Graduate Millersville S. N. S., 1909; B.S. Degree and Diploma in Teaching of Mathematics, Teachers College, Columbia University, 1916; A.M. Degree and Diploma in Supervising the Teaching of Mathematics, Teachers College, Columbia University, 1917.

Experience: Teacher of Rural Schools, Dauphin County, 1904-1907; Teacher Mathematics, High School, Huntingdon, 1909-1912; Teacher Mathematics, Preparatory School for Boys, Mt. Hermon, Massachusetts, 1913-1915; Teacher Mathematics, High School, Camden, New Jersey, 1917-1919; Assistant in Mathematics Department, Horace Mann High School, Columbia University, 1916-1917; Assistant Financial Secretary, National Lutheran Council, New York City, 1919-1920; Instructor Teaching of Arithmetic and Assistant in Psychology, S. T. C., Shippensburg, 1923—

Member Mathematical Association of America, National Council of Teachers of Mathematics, Pennsylvania Academy of Science.

Prize in Scholarship, Millersville S. N. S., 1908; Scholarship, Millersville S. N. S., 1909; Teaching prize in the Training School, Millersville S. N. S., 1909; Scholarship in Mathematics, Teachers College, Columbia University, 1917.

**W. P. HARLEY, A. M. . . . Director of Training School**

Education: A. B., Juniata College, 1911; A. M., Teachers College, Columbia University, 1915; Special Student, Teachers College, Summer, 1916.

Experience: Teacher Rural Training School, New Enterprise, Pennsylvania, Summer, 1911; Supervising Principal, Williamsburg, Pennsylvania, 1911-1913; Director Rural Training Schools, Williamsburg, Pennsylvania, Summers 1912 and 1913; Supervising Principal, Mount Union, Pennsylvania, 1913-1921; Teacher Education, State Normal School, Frostburg, Maryland, Summer, 1921; Director of Training School, S. T. C., Shippensburg, 1921—

***JESSIE A. LANE, A. M. Psychology**

Education: Ph.B., School of Education, University of Chicago, 1919; A.M., Teachers College, Columbia University, 1923.

Experience: Director of Training and Instructor in Psychology, Normal School, Fort Wayne, Indiana, 1919-1921; Director of Training and Instructor in Psychology, Teachers College, Detroit, Michigan, 1921-1922; Psychology, Shippensburg S. T. C., 1924—

*Resigned Jan. 1, 1929.

MARION H. BLOOD, M. A.English

Education: B. S. Graduate School of Education, University of Pennsylvania, 1920; M.A. English and Psychology, Graduate School, University of Pennsylvania, 1922.

Experience: Teacher eighth grade, Brookville, 1914-1917; Teacher English, Washington Seminary, Washington, 1920-1921; Substitute English teacher, William Penn High School for Girls, Philadelphia, 1921-1922; Teacher English, Temple University, Philadelphia, 1922-1923; Assistant Dean of Women, University of Michigan, Ann Arbor, Michigan, 1923-1924, Teacher English, S. T. C., Shippensburg, 1924—

**ELEANOR MARSTON, B. S.Art**

Education: B.S., University of Montana, 1923; Boothbay Studios, Boothbay, Maine; Berkshire School of Art, Summer, 1927; Woodbury School of Observation, Summer, 1928.

Experience: Teacher Art and Music, Junior High School, Bozeman, Montana, 1923; Teacher Industrial Art, special, Riverside, New Jersey, 1924; Art, S. T. C., Shippensburg, 1924—

Member Eastern Arts Association.

**HARRY NEWSHAM BENTZ, A. M., Physical Education and Coach Men's Athletics**

Education: B.A., Pennsylvania State College, 1923; A.M., Pennsylvania State College, 1927.

Experience: Director of Athletics, Mansfield S. N. S., 1923-1924; Physical Education, S. T. C., Shippensburg, 1924—

**EDGAR C. BYE, A. M.Social Studies**

Education: A.B., Haverford College, 1915; M.A., University of Pennsylvania, 1922; Graduate work in Political Science and Education, University of Pennsylvania, 1922-26.

Experience: High School, Downingtown, Pa., 1911-12; West Chester S. N. S., 1915-16; Supervising Principal, Packerton, 1916-18; Boys' Latin School, Baltimore, Md., 1918-19; Head of Department of Social Studies, Coatesville, Pa., 1919-26; Clark University, Summer Sessions, 1927-28; S. T. C., Shippensburg, 1926—

Member American Academy of Political and Social Science; Association of History Teachers of the Middle States and Maryland; National Council for the Social Studies; Contributor to the Historical Outlook, Opportunity, The Sierra Educational News, N. E. A. Proceedings, etc.

ALBERT BENJAMIN CUNNINGHAM, Ph.D., English

Education: A.B., Muskingum College, 1913; B.D., Drew Theological Seminary, 1915; A.M., New York University, 1916; Ph.D., New York University, 1926.

Experience: Dean College of Liberal Arts and Professor of English, Lebanon University, 1916-17; Dean and Professor of Languages, The College of Puget Sound, 1919-22; Professor of English, The State College of Washington, 1922-25; S. T. C., Shippensburg, 1926—

Member of American Association for the Advancement of Science; The National Research Council.

Author: The Manse at Barren Rocks, 1918; Singing Mountains, 1919; The Chronicle of an Old Town, 1919; Old Black Bass, 1922; Animal Tales of the Rockies, 1925; Aims and Methods in Oral English, 1927.

**CLARISSA A. RANDALL, A. M., Public School Music**

Education: Sc.B., New York University, 1926; A. M., New York University, 1928.

Experience: Teacher of Music, Private School in Macon, Ga., 1919-20; Teacher of Music in High School, Huntington, West Virginia, 1920-22; Supervisor of Music, McKeesport, Pa., 1922-25; Teacher of Ear Training and Sight Singing, New York University, Summer, 1926; Director of Music Department, S. T. C., Shippensburg, 1926—

**ESTHER HENDERSON, B. S., Health Education Coach
Women's Athletics**

Education: B.S., Miami University, 1918; Graduate Student, Columbia University, Summer Sessions, 1921, 1922, 1923.

Experience: Physical Director for Girls, Piqua Junior and Senior High School, Piqua, Ohio, 1918-21; Supervisor of Physical Education in Public Schools, Williamson, West Virginia, 1921-23; Health Education, S. T. C., Shippensburg, 1926—

Member State Physical Education Association.

**MARY E. YORK, A. M., Reading and Children's Literature**

Education: Ohio Wesleyan University, 1917-19; B.S., Ohio State University, 1921; M.A., Ohio State University, 1925; Graduate Student, Columbia University, Summer Session, 1923.

Experience: Teacher, Elementary Department, Rickoff School, Cleveland, Ohio, 1921-22, Teacher, High School, Gettysburg, Ohio, 1922-25; Critic Teacher, Eastern Illinois State Teachers College, Charleston, Illinois, 1925-26; S. T. C., Shippensburg, 1926—



ROY A. DIBERT, A.M., Physics, Educational Biology

Education: Shippensburg State Normal School, 1922; Summer Session, State College, 1923; Summer Session, Susquehanna University, 1924-1925; B.S., Franklin and Marshall College, 1926; A.M., Teachers College Columbia, 1928; Diploma, Teacher of Science.

Experience: Rural School Bedford County, 1916-19; Principal of Liberty Central High School, Saxton, Pa., 1922-24; Training Teacher, Science and Algebra, State Teachers College, Shippensburg, Pa., 1926-1928; Instructor in Physics and Educational Biology, State Teachers College, Shippensburg, Pa., 1928—



ALICE T. LEUTSKER, A.M. Psychology

Education: State Normal School, Oshkosh, Wisconsin; A.B. Lawrence College, Appleton, Wisconsin, 1910; A.M. Columbia University, 1926; University of Chicago, Fall Semester, 1928.

Experience: Rural School and High Schools in Wisconsin, 1906-1907, 1908-09, 1910-1913; Training Department, Green Bay High School 1913-1916; Assistant Principal and Principal Door-Kewaukee County Training School, 1916-1920; San Francisco State Teachers College, 1920-1925; Chadron State Normal College, 1926-1927; S. T. C., Shippensburg, 1927-28, 1929—



**HARRIET WILLOUGHBY, A.M., Director Primary
Kindergarten Group**

Education: B.Pd., Central Teacher's College, Warrensburg, Mo., 1908; Diploma in Supervision, Teachers College, Columbia University, 1911; B.S., Teachers College, Columbia University, 1919; M.A., Teachers College, Columbia University, 1920; Special Work, Summer Session, Greeley, Col., 1925; Graduate work, Summer Session, University of Chicago, 1926.

Experience: First Grade Teacher, Houston, Mo., 1901-1907; First Grade Teacher, Fredericktown, Mo., 1908-1910; Director of Primary Grades, Northern Normal and Industrial School, Aberdeen, S. Dak., 1911-1914; Director of Third and Fourth Grades, State Normal School, Bellingham, Wash., 1914-1918; Assisting Teacher

in Primary Grades, Lincoln School, Teachers College, New York City, 1918-1920; Principal of Primary Grades, Teachers College, Mankato, Minn., 1926-1927; Training Teacher, S. T. C., Shippensburg, 1927—



RUTH A. CUNNINGHAM, A.M., Director of Intermediate Group.

Education: Special Student, Pennsylvania State College, Summer Sessions, 1916, 1917, 1919; Graduate Shippensburg S. N. S., 1925; B.S., Juniata College, 1927; A.M., Teachers College, Columbia University, 1928.

Experience: Teacher Rural School, Wells Tannery, Pa., 1912; Primary Grades, Robertsdale, Pa., 1913-1915; Social Studies and Art, Intermediate and Junior High School Grades, Mount Union, Pa., 1915-1921; Principal Elementary School, Mount Union, Pa., 1921-1923; Training Teacher, English and Art, Shippensburg S. N. S., 1923-1925; Dean of Women and Teacher of English, Juniata College Summer Sessions, 1927, 1928; Director of Intermediate Group, Shippensburg S. T. C., 1928—



EARL HARLAN, A.M.,English

Education: B.A., Drake University, 1922; M.A., University of Pennsylvania, 1928; Graduate Work, Drake University, Summer of 1924.

Experience: Teacher of subfreshman English, Drake University, 1921-1922; English teacher, Grand Junction High School, Iowa, 1922-1923; Head of English Department, Granite County High School, Philipsburg, Montana, 1923-1925; English teacher, Boise High School, Idaho, 1925-1927; Head of English Department, Catasauqua High School, 1927-1928; S. T. C., Shippensburg, Pa., 1928—



WARD AVERY, B.S., Assistant, Public School Music

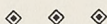
Education: B.S., Indiana State Normal School, Terre Haute, Ind., 1926; Student Lake Forset, Ill., Summer, 1919.

Experience: Teacher of Music, Noble Co., Indiana, 1923-1924; Assistant Music Department, Indiana State Normal School, 1924-1926; Teacher of Music and grade supervisor West Terre Haute, Indiana, 1924-1926; Teacher of Music, Central Junior High School, Saginaw, Michigan, 1926-1928; State Teachers College, Shippensburg, Pa., 1928—

LENA E. LIPSCOMB, M. A.English

Education: B.S., Peabody College, Nashville, Tenn., 1925; M.A., English, Teachers College Columbia, 1928; Diploma, Supervisor of English, Teachers College Columbia, 1928.

Experience: Teacher, primary and elementary grades, Birmingham, Ala., 1909-1913; Teacher, Latin, English, Assistant Principal High School, Flora, Miss., 1920-1921; Teacher, Latin, English, Junior High School, Nashville, Tenn., 1921-1925; Teacher, Sixth grade, 1925-1928, Bronxville, N. Y.; Teacher, English, State Teachers College, Shippensburg, Pa., 1928—

**IONA DEVERS, B.S.**Training Teacher, Music

Education: Miami University, B.S., 1928; New York University, 1925.

Experience: Rural Supervision, 1917, 1918; Rural Teacher, 1919, 1920; City Supervisor, Music, Fostoria, Ohio, 1922-1927; Training School, Shippensburg State Teachers College, 1928—

**MARY L. SNIVELY, B. S.,** Training Teacher, Third Grade

Education: Graduate Shippensburg S. N. S., 1909; Teachers College, Columbia, 1915-1916; Summer Sessions, Teachers College, Columbia, 1921, 1924; B.S. Teachers College, Columbia, 1926.

Experience: Teacher Rural School, Franklin County, Pa., 1909-1911; Teacher Intermediate Grades, Shady Grove, Franklin County, 1911-1913; Intermediate Grades, Greencastle, Pa., 1913-1915. Training School, S. T. C., Shippensburg, Pennsylvania, 1916—

**FRANCES W. OYER B.S.,** Training Teacher, First Grade

Education: Graduate Shippensburg S. N. S., 1919; B.S., Columbia University, 1925.

Experience: Enhaut, grade one, 1919-1921; Special grade teacher, Steelton, 1921-1923; Training Teacher, First Grade, S. T. C., Shippensburg, 1924—

Special recognition of Kindergarten teaching at Horace Mann, Teachers College, Summer, 1925. Member of International Kindergarten Union.

Member Pennsylvania State Normal Training Department.

ERMA K. ROLAR, A.B., Training Teacher, History,
Geography, Composition, Spelling.

Education: Graduate Shippensburg S. N. S., 1918; B.A., State College, 1925; Summer sessions, Teachers College, Columbia University, 1922, 1923, 1924.

Experience: Teacher Rural School, Cumberland County, 1918; Greencastle Public Schools, 1919; Hagerstown Public Schools, 1920-1921; Steelton Public Schools, 1921-1924; Training Teacher, History, Geography, S. T. C., Shippensburg, 1925—



MARTHA E. SHAMBAUGH, A. B., Training Teacher,
Art, Writing, Health Education.

Education: Graduate Shippensburg S. N. S., 1919; A.B., Albright College, 1924; Special Student at Dickinson College, 1924-1925.

Experience: Third grade teacher, Carlisle, Pa., 1919-1920; fourth grade, Carlisle, Pa., 1920-1921; Spanish and English, High School, Carlisle, Pa., 1924-1925; Training Teacher, Art, Writing, Health Education, S. T. C., Shippensburg, 1925—

Captain Training School Girl Scout Troop, 1925—



HARPER J. WENTZ, B.S., Training Teacher, Arithmetic, Health, Geography.

Education: Graduate Shippensburg S. N. S., 1918; B.S., Franklin and Marshall, 1923; Summer Sessions, Columbia University, 1927 and 1928.

Experience: Teacher Rural School, Adams County, 1914-1916; Principal of Schools, East Berlin, 1919-1920; Principal of Schools, New Oxford, 1920-1921; Supervising Principal, Expedit, 1923-1925; Training Teacher, Arithmetic, Health, Geography, S. T. C., Shippensburg, 1925—



EDNA STAMY FOX, B.S., Assistant to Rural Director
and Training Teacher, Rural School

Education: Graduate S. N. S., 1921; B.S., Pennsylvania State College, 1926.

Experience: Teacher in Rural Training School, Cumberland County, 1921-22; Grade Teacher, Mercersburg, Pa., 1922-23; Teacher of Geography, Elizabethtown College, Summer Session, 1923; Assistant to Rural Director, S. T. C., Shippensburg, 1923-24; Teacher of Geography, S. T. C., Shippensburg, Summer Session, 1924; Assistant to Rural Director, S. T. C., Shippensburg, 1926—

Prepared slides for scientific lectures and micrological publications presented at International Botanical Congress, Cornell University, Summer of 1926.



HARLING E. SPONSELLER, B.S., Principal and
Training Teacher, Social Studies, Junior High
School

Education: Lebanon Valley College; Graduate Shippensburg S. N. S., 1926; Summer Session George Washington University, 1926; B. S., Shippensburg S. T. C., 1928; First Lieutenant U. S. Army Air Service, 1917-1919.

Experience: U. S. Army, American Expeditionary Force, 1917-1919; Principal Junior High School, Frederick County, Md., 1920-1922; Shippensburg Junior H. S., 1926-1928; Training Teacher Social Studies, S. T. C., Shippensburg, 1928—

Member: Pennsylvania Academy of Science, Maryland Chapter Sons of the American Revolution, American Legion, Veterans Foreign Wars.



HENRY L. SELLERS, B.S., Training Teacher, Science,
Algebra and Health. Junior High School.

Education: B.S., Grove City College, 1923; Summer session, California, S. N. S., 1924; Grove City College, 1925; Graduate Work University of Pittsburgh, 1928.

Experience: U. S. Army, 1917-1919; Teacher Science & Mathematics, Coach Somerset High School, 1923-1926; Training Teacher, S. T. C., Shippensburg, February, 1928—

Member: American Legion, Veterans Foreign Wars.



MARIE ANNETTE WEBB, B.S.E., Training Teacher,
English, Junior High School

Education: Graduate Mansfield State Normal School, 1922; University of Pennsylvania Extension Courses, 1923-1927; Special Courses Pennsylvania State College, 1925-1926; B.S.E., Bucknell University, 1927; Advanced work, University of Pennsylvania, 1928, Summer.

Experience: Teacher Junior High School, Wyoming, Pa., 1922-1924; Teacher, English, High School, Wyoming, Pa., 1924-1926; Special Training Teacher Bucknell Model School, Summer, 1926; Training School, S. T. C., Shippensburg, Pa., 1928—

JOHN W. LACKHOVEBusiness Manager

Education: Graduate Mercersburg Academy, 1908; Eastman Gaines Commercial School, 1912.

Experience: Business Office, Mercersburg Academy, 1912-1916; Santa Fe R. R. Passenger Department, 1916-1917; U. S. Army, 1917-1919; Western Maryland R. R. President's Office, 1919-1920; Hotel Management 1920-1921; Business Manager, S. T. C., Shippensburg, 1921—

†**ADA V. HORTON, M.E.**Registrar

Education: Graduate Shippensburg S. N. S., 1888; Master Diploma, 1891.

Experience: Teacher Primary School, Camp Hill, 1887; Earisman's School, Lancaster County, 1889; Primary School Rohrerstown, 1890; Intermediate School, New Cumberland, 1890-1894; Teacher Physiology and Geography, Shippensburg S. N. S., 1895-1906; Preceptress, Shippensburg S. N. S., 1906-1916; Secretary to Principal, Shippensburg S. N. S., 1895-1920; Registrar, S. T. C., Shippensburg, 1920—

**CLARA W. BRAGG**Librarian

Education: Cazenovia Seminary, Graduate and Post-Graduate; Cornell University; Pratt Institute Graduate in Library Science, 1904.

Experience: Cataloguer Wyoming Historical Society, Wilkes-Barre, 1904-1906; Head Cataloguer Worcester Public Library, 1906-1909; Reference Librarian, Columbia University, 1909-1912; Librarian, Bath, New York, 1912-1915; Alexandria Bay, New York, 1920-1921; Rome, New York, 1921-1923; S. T. C., Shippensburg, 1923; Instructor, N. J. Summer School for Librarians, 1928.

Member American Library Association; Pennsylvania State Library Association; Contributor to various professional periodicals.

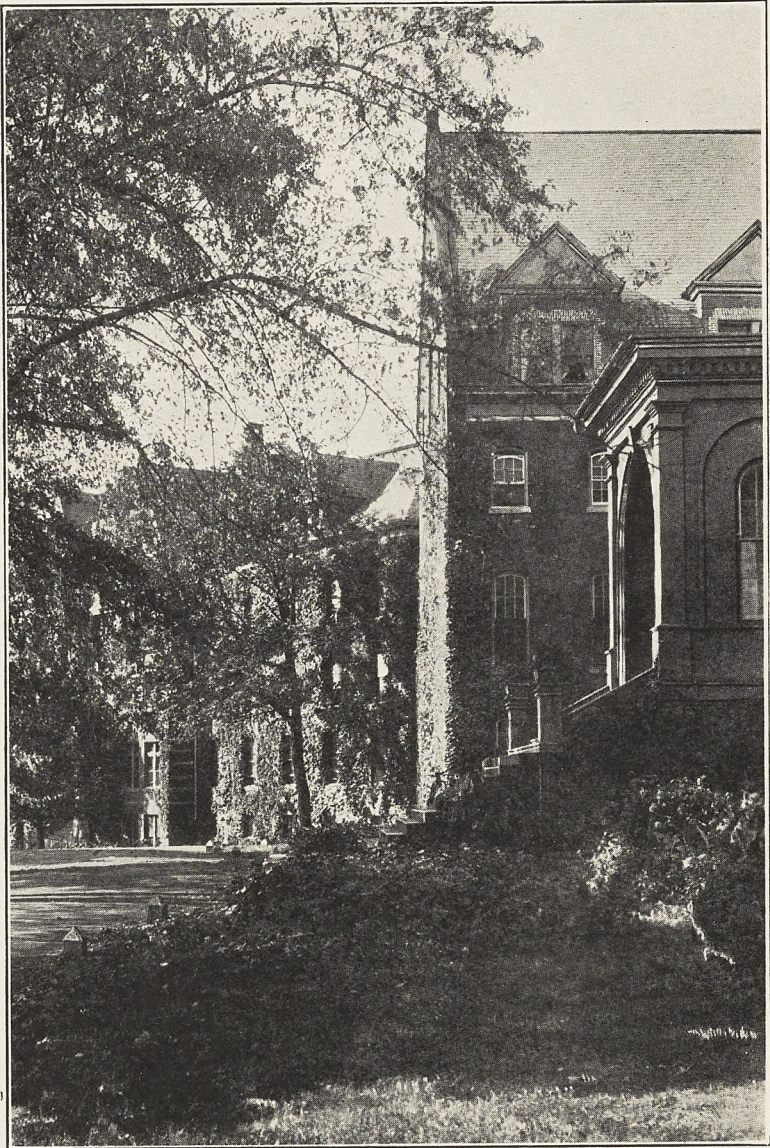
**FRANCES G. HEPINSTALL, B.S.**, Assistant Librarian

Education: B.S., Library Science, Syracuse University, 1924.

Experience: Order assistant, 1924-25; reference assistant in charge of periodical and bindery department, 1925-28, Syracuse University Library; Assistant librarian, S. S. T. C., 1928—

Member of American library Association, Member of Phi Kappa Phi.

†Resigned, February 1, 1928.



IN THE SHADOWS OF "OLD MAIN"

GRACE KYLE, R. N.School Nurse

Education: College of Notre Dame, Baltimore, Maryland, 1896; Graduate Training School for Nurses, Hospital of University of Pennsylvania, Philadelphia, 1906.

Experience: Private Nursing, Philadelphia, 1906-1910; Public Health Nursing, Newville, 1910-1914; Ambridge, 1914-1915; York, 1915-1916; Private Nursing and Directress of Nurses, West Philadelphia Hospital for Women, 1916-1917; Organized Public Health Nursing, Shippensburg, 1917-1921; School Nurse, S. T. C., Shippensburg, 1921—

Member Graduate Nurses' Association of Pennsylvania; National Organization for Public Health Nursing.



GLADYS L. KIRMANSecretary to Principal

GLADYS MORRIS WYNKOOPSecretary to Dean

BEULAH V. ANKERBRAND, Assistant to Business Manager

ALICE M. NOLLClerk to Business Manager

EDNA CLIPPINGER, Secretary to Director of Training School

HARRY B. ETTER, M. D.School Physician

ANNA M. CLIPPINGERClerk in Supply Room

***ELLEN SHATZER** ...Matron of Women's Dormitory

ETHEL LENHER, Matron of Administration Building

FLORENCE REISINGER, Matron of Boys' Dormitory

CARRIE SNOKE ...Matron of Women's Dormitory

SAMUEL HOOVER, Supt. of Grounds and Buildings

R. B. CLIPPINGERReceiving Clerk



Additional Members of Faculty During Summer Session, 1927.

KATHERINE BENTZ, A.B.Juvenile Literature

HERBERT A. BARR, B.S.Music

RUTH IMMELL, A.M., English and Dean of Women

ARTHUR McINTOSH, A.M.Science

WILLIAM MUTHARD, A.M.Social Studies

MORRIS WOLF, A.M., Ph. D.Social Studies

*Died, September 14, 1928.

STATE TEACHERS COLLEGE SHIPPENSBURG, PA.

Shippensburg is a town of five thousand population, 41 miles south of Harrisburg, on the Cumberland Valley Railroad, a branch of the Pennsylvania line. The Reading and The Western Maryland Railroads also run into the town.

It is in the center of the beautiful Cumberland Valley, a region famed in the history of the nation. Gettysburg with its famous battlefield, is only 35 miles distant; Chambersburg, rich in historic interest, is 11 miles distant; while Carlisle is only twice as far away.

The Cumberland Valley is famous not only for its beauty and its historic associations, but it is one of the richest agricultural communities in the nation.

Shippensburg is a splendid school town. Its people are progressive and intelligent. The moral tone of the town is indicated by the fact that for more than thirty years there has not been a licensed saloon in the town or within six miles of it. There are, however, twelve churches within the borough limits.

THE COLLEGE

The Cumberland Valley State Normal School opened its doors to the public April 15, 1873. The first class was graduated in 1874. For more than fifty years it continued its work as a State Normal School, graduating students in both the two and three year courses. In 1926 it was authorized by the State Council of Education to offer four year courses in preparation for teaching in Junior High School and for supervisory positions in addition to the regular two year courses fitting for teaching in the elementary grades. In August, 1927 the official name of the institution was changed to State Teachers College.

The plant consists of the Administration Building, the Women's Dormitory, the Gymnasium, the Training School, the Power Plant, the Principal's House, the Infirmary, the Laundry, Carpenter Shop and the newly erected Disposal Plant.

The Administration Building recently renovated and remodeled, contains the Principal's, Business Manager's, Dean's, and Registrar's Offices, Chapel, Recitation Rooms, Biological Laboratory and the Dining Room. The second and third floors are used as Dormitories.

The Women's Dormitory is a beautiful homelike building equipped with all modern conveniences. Its open court is the assembly and lounging place for the boarding women students. The Basement con-

tains the newly built Chemical and Biological Laboratories and a large Music Room. An addition now in process of erection will provide more rooms, modern lavatories, rest rooms, fire towers, etc. The Men's Dormitory has been thoroughly renovated and is modern in its equipment. A new and thoroughly modern system of heating has been introduced. The Lavatories, newly equipped with shower baths, are provided with everything needed for the comfort and convenience of the students. The Main Building has been renovated and modernized so as to make it thoroughly up-to-date in every respect.

All other buildings are modern and admirably suited to the purpose for which they are intended.

EXPENSES

The expenses at the State Teachers College are very reasonable. They are kept as low as it is possible to keep them without crippling the work of the school.

Free Tuition.—The State of Pennsylvania furnishes free tuition (a scholarship) to all students who sign an agreement binding themselves to teach in the public schools of the state for at least two years.

The charge to boarding students is \$144.00 for a semester of eighteen weeks (\$8.00 a week). This covers board, furnished room, heat, light and laundry. This amount payable at the beginning of each semester as indicated below.

The other expenses are the registration term fee of \$12.50, payable when a room is assigned or (in the case of day students) at the time of registration. This fee (\$15.00 for day students including \$2.50 service charge) covers the following items: Free admission to all games and entertainments, including those listed in the college entertainment course, the Thanksgiving Play, the Philo Reunion, the Normal Society Anniversary, the Dramatic Society entertainment, concerts by the Choral Society; subscription to the Campus Reflector; use of Infirmary and services of nurse in case of illness. It also covers medicine and services of physician in cases of illness not exceeding three days duration.

Since the number of boarding students desiring rooms is in advance of the number of rooms available, we are forced every year to find rooms outside our dormitories for students, or to refuse to enroll those who apply. Because of this condition, boarding students will be held responsible for the rental of the rooms assigned them for the full semester of eighteen weeks. Withdrawal from college leaves the institution with a vacant room upon its hands. Where the withdrawal of the student is due to personal illness properly certified by a physician, the student will be held responsible for only one-half

the rental of the room. Boarding will be charged only for the time the student is in actual attendance. But no deduction will be made for absence during the first two or last two weeks of a semester.

In case of necessary absence from college of more than two weeks, students will be credited with the cost of board.

The charge for board and room includes furniture, bedding, light and heat. Each room accommodates two students. All rooms are provided with single beds for each student. When the dormitories are not crowded students may room alone by paying an extra charge of one dollar a week. (During the past four or five years it has not been possible to grant this privilege. There are a few single rooms available at regular rates.)

"Students will not be allowed to board outside the building except with parents or near relatives." By "near relatives" is meant brother or sister, uncle or aunt, or grandparents.

TIME OF PAYMENTS

As previously indicated, registration term fee, \$12.50, is payable by boarding students each semester when a room is engaged. Day students will pay \$15.00 at the time of registration.

If the student is unable to enter the college the registration fee will be returned, if notice of inability to come is given at least two weeks before the opening of the semester or term for which the student has registered. No registration fees are returned after the date indicated.

September 10, payment for first semester (if fee of \$12.50 has previously been paid	\$144.00
January 27, payment of second semester (if fee of \$12.50 has previously been paid)	\$144.00

Books can be purchased at the book room of the college.

EXPENSES FOR DAY STUDENTS

September 10, registration term fee	\$15.00
January 27, registration term fee	15.00

The attention of students is called to the time at which payments are due. The college authorities are required to meet bills as they come due and they must therefore insist upon prompt payment. Unless special arrangement is made in advance, no student will be admitted to class until payments are made.

FEEES

No special fees are charged in any subject but students in laboratory or hand work courses will be charged for materials used or destroyed.

An extra enrollment fee of \$1.00 is charged students who register after the first two days of a semester or term.

PAYMENTS FOR SPECIAL SUMMER TERM SESSION (1929)

Registration fee, payable when room is assigned.....	\$10.00
June 24, payments in full for six weeks	48.00

Total expense for summer term exclusive of books, etc. . .	\$58.00
Day students will pay only registration and term fee including service charge for the summer term	12.50

No deductions will be made on account of absence during the last two weeks of a term or during the first two weeks. An additional fee of \$1.00 is charged students who enter later than June 25.

SPECIFIC AIMS OF THE COLLEGE

All Teachers Colleges and State Normal Schools aim to prepare young men and women for the work of teaching. The Shippensburg State Teachers College emphasizes the features common to all teachers college, but it claims the following distinctive characteristics:

1. Home Life—The authorities believe that the College should reproduce the social life of the home as far as possible. College life should, therefore, be a preparation for living. Young men and women should be taught self-control, for without this ability any scheme of education will be a failure. The great majority of our pupils come to us with a very definite purpose in view and wish to make the best possible use of their opportunities, hence the tone of the college is remarkably earnest.

It is a further aim and object of the college to prepare our pupils for social efficiency. We realize that young men and women must be able to take an active part in the affairs of the various communities into which they are expected to go after leaving the institution; hence the college does not neglect the social side of the student's life, and opportunities for social intercourse under proper direction are afforded the students from time to time. The student who goes forth from a college lacking the ability to associate with cultured men and women is bound to be more or less of a failure in life. Our pupils are therefore trained in the conventions expected of them by society so that they may take their place in the affairs of their respective communities. The ideal of any school should be to reproduce as nearly as possible the family life. As young men and women associate in the family, so should they associate in a properly regulated school.

In carrying out this policy this Teachers College allows the greatest possible freedom to the young men and women compatible with good taste and sound morality. In short, everything is done by the faculty to co-operate with the students in maintaining a bright and refined home life and to help them to the cultivation of that grace and dignity that marks the real lady or gentleman.

2. Number of Students.—The principal and faculty believe that a college should be small enough to make it possible for the faculty to know the students personally and for the students to know one another intimately. A college ranging from six to seven hundred in number is large enough to combine the best features to be found in a student body but is not so large as to destroy the individuality of the students.

3. Small Classes.—We believe in small classes, not exceeding thirty-five or forty students. When the classes are larger than this it is impossible for the teacher to come into that close personal contact with the students so necessary to their progress. Very often the lecture method with its glaring faults is used by teachers in large classes. Experience shows that really good work is impossible in classes numbering more than thirty-five or forty students.

STUDENT GOVERNMENT

The authorities of the college believe that no one can be successful in governing others who has not first learned to govern himself. Accordingly the students are given the opportunity to practice self-government. The boarding women are organized into a Student League, which elects a president, vice-president, and secretary. These officers with representatives elected from the four classes and three members of the faculty appointed by the principal, constitute the Student Council, which has charge of the discipline of the boarding girls. The work of this organization has been most satisfactory.

The boarding men of the college are organized into a men's Association. The Association elects a president, treasurer, and secretary. There are five vice-presidents, elected by the members of the five corridors. The above officers with representatives elected from the four classes, together with the Dean, constitute the Representative Board. The new plan is meeting the approval of everyone. Any young man who is reasonable in his actions will find our dormitory life a real home.

REQUIREMENTS FOR ADMISSION

ADOPTED BY BOARD OF NORMAL SCHOOL AND TEACHERS COLLEGE PRINCIPALS, MARCH 1926.

Admission to a State Teachers College and Normal School shall be on a basis of graduation from an approved four-year high-school, or equivalent training in an approved private secondary school.

Graduates of senior high schools in a school district maintaining an approved junior high school organization will be admitted on evidence of twelve units of preparation earned in grades 10, 11 and 12.

A unit represents not less than 120 sixty-minute periods of prepared work, or the equivalent.

Graduates of approved two-year high schools are entitled to not more than eight units of credit and graduates of approved three-year high schools to not more than twelve units of credit toward the standard admission requirement; provided, however, that such students, or other students having irregular entrance qualifications, may take examinations in additional subjects taken in course in county superintendents' offices in all counties having such students at the close of the school year. These examinations will be given under the direction of the Credentials Bureau of the Department of Public Instruction, under a cooperative plan adopted by the Board of Normal School Principals, January 15, 1926. In case of failure in a subject, or subjects, the student, after additional study during the summer, may take a second examination in August at one of the normal schools or teachers colleges, or at any one of the centers where State examinations are regularly conducted, namely, Philadelphia, Harrisburg, and Scranton.

Under this arrangement students who complete the work of a four-year high school with a three-year rating may take examinations in fourth-year subjects and thereby receive credit equivalent to that of a four-year high school; graduates of three-year high schools with a two-year rating may take examinations in third-year subjects for credit in three years of approved high school work. All inquiries should be addressed to the Credentials Bureau, Department of Public Instruction, Harrisburg, Pa.

Credentials of all students entering the State Teachers Colleges and Normal Schools on the basis of an approved four-year preparation shall be received and evaluated by the college or normal school; students not having an approved four-year preparation or students whose preparation is irregular, shall have their credentials evaluated by the Credentials Bureau of the Department of Public Instruction.

Graduates of approved four-year high schools or of equivalent private secondary schools who desire admission to a State Teachers College or Normal School without examination must present a detailed statement of all studies pursued, including the time devoted to such studies, and the grades received. Blanks for such purposes may be secured from the principal of the State Teachers College or Normal School. These blanks should be filled out by the principal of the school which the student attended, or where this is impossible, by the local superintendent of schools.

Advanced credit will be given for equivalent courses in approved institutions of collegiate grade, but no student may obtain a teacher college or normal school certificate without a minimum residence of one year. (Teachers who have been granted credit for experience may finish a two year curriculum with a minimum residence of one-half year.) (See below.)

The usual health certificate required by law for the certification of teachers shall be presented by all applicants for admission. Applicants disqualified, by reason of physical defects, from the successful performance of the duties of a teacher will not be admitted.

All applicants for admission shall present evidence of good moral character and ideals characteristic of the teaching service.

No candidate for a teachers college or normal school certificate shall receive more than twenty semester hours of credit toward graduation for work done in extension classes or by correspondence. No credit will be given for correspondence work taken after September 1, 1927.

TEACHERS COLLEGE AND NORMAL SCHOOL CERTIFICATES FOR TEACHERS IN SERVICE

The following conditions apply only to those persons who have taught in Pennsylvania public schools prior to July 1, 1922. (No Credit will be given toward the completion of the entrance requirements or of the regular normal school course for teaching done after July 1, 1922.)

The fifteen units of high school work required for entrance to the State Teacher Colleges and Normal Schools may be earned in approved high schools, summer schools, extension classes, correspondence study in institutions approved by the Department of Public Instruction, and by tutoring under approved conditions.

Credit for entrance may also be secured by teaching experience in Pennsylvania public schools at the rate of three standard high school units for each year of successful teaching experience.

Whenever a teacher has earned the credits necessary for entrance to a State Teachers College or a Normal School in any of the above ways or by any combination of them, four semester hours of credit on a regular State Teachers College or Normal School curriculum may be granted for each year of teaching experience in Pennsylvania with a rating of "middle or better" subsequent to meeting the entrance conditions up to a maximum of thirty-two semester hours, provided, however, that all credits thus given shall be conditional until the teacher shall have proved his ability to do the work of the State Teachers College or Normal School curriculum in a creditable manner.

In all cases in which Normal School or College credit is given for teaching experience, the work remaining to be done shall be selected by the authorities of the Normal School or College to secure the best development of the student in teaching power.

A minimum of one-half year of resident study shall be required of all candidates for graduation who are credited for teaching experience as outlined above.

Entrance and normal school credits based on teaching experience as outlined above will not be granted after September 1, 1927.

Credit for student teaching other than that done under the direction of the normal school or college shall not be approved.

Credit toward entrance or toward graduation with a degree will not be allowed for experience in teaching.

Credit for correspondence courses will be given in the two year courses provided such courses were completed prior to September 1, 1927.

A maximum of twenty semester hours credit for extension and correspondence courses completed prior to September 1, 1927 may be allowed in the two year courses.

Not more than eighteen semester hours of extension work will be credited toward the requirements of the third and fourth years in a degree curriculum. Such credits will be given in the following courses only:

American Literature	2	semester	hours
History of Education	3	"	"
American Government	3	"	"
Teaching and Supervision of Arithmetic in Elementary Schools	3	"	"
Civic Education in Elementary Schools	3	"	"
History and Organization of Education in Pennsylvania	2	"	"
Educational Psychology	3	"	"
Supervision and Administration of Elementary Schools	3	"	"

Extension courses given in the above or equivalent subjects in other institutions will be accepted when the courses have been given by full time members of the faculty of such institutions.

**CURRICULA OF THE PENNSYLVANIA STATE
NORMAL SCHOOLS AND TEACHERS COLLEGES**
**STUDENTS PREPARING FOR ELEMENTARY TEACHING MUST
SELECT ONE OF THREE CURRICULA**

The three curricula have been organized upon the principle that teaching in the elementary schools can be classified into sufficiently definite types to require specialization. Each curriculum prepares for a specific type of teaching position.

The work of the first semester is the same for all students in the two year courses. A large purpose of the work of the first semester is to acquaint students with the requirements for successful teaching in the different grades so that they may be able to decide intelligently in what grade or grades they prefer to teach. The course entitled "Introduction to Teaching" which includes observation and participation in the training school is especially designed to aid students in a wise selection of a curriculum.

At the end of the first semester students who expect to remain only two years in the Normal School or Teachers College are asked to select one of the first three curricula for the purpose of specializing in a specific field of teaching. The work of each curriculum must be completed in its entirety. Students may be granted the privilege of changing from one curriculum to another only on condition that the prescribed courses of any curriculum so selected must be completed before a certificate of graduation is granted.

**THE THREE TWO YEAR CURRICULA FOR ELEMENTARY
TEACHING**

Group I. Kindergarten-Primary—for teachers of Kindergarten and grades 1, 2 and 3. (Two year course.)

Group II. Intermediate grades—for teachers of grades 4, 5 and 6. (Two year course.)

Group III. Rural—for teachers of rural schools. (Two year course.)

REQUIREMENTS RELATING TO STUDENTS IN ALL CURRICULA

1. All entering students are required to take, without credit, ten lessons on "Using the Library."
2. All students are required to take part, without credit, in one extra-curricula activity one semester each year.
3. All students, before receiving a final grade in the subject, must equal eighth grade standards of achievement in English (including spelling) and arithmetic.

Note: The preceding are supplementary to the entrance requirement of graduation from a four-year high school with at least fifteen Carnegie units of work.

PROGRAM OF STUDIES

New Course adopted by the Board of Teachers College and Normal School Principals March 18, 1926

REQUIREMENT FOR GRADUATION FROM TWO-YEAR CURRICULA AND CREDENTIAL

The completion of the 68 required semester hours in a two-year curriculum entitles the students who meets all other legal requirements to the Normal School or Teachers College certificate which is a valid state license to teach in the elementary school for two years. On the completion of two years of successful teaching, the Normal School or Teachers College Certificate is made into the Normal School or Teachers College Diploma which is a valid life license to teach in the elementary schools of Pennsylvania.

TWO-YEAR CURRICULUM FOR GROUP 1 KINDERGARTEN AND PRIMARY GRADES, 1, 2, 3.

Note: The first figure following a subject indicates the number of 50 minute class periods per week. The second figure indicates the number of semester hours of credit allowed for the successful completion of the course. Figures in parentheses indicate sequential courses in a given subject.

FIRST SEMESTER

Educational Biology	3	3
Introduction to Teaching	3	3
English (1)	3	3
Music (1)	4	2
Art (1)	4	2
Oral Expression	2	2
Handwriting	2	1
Physical Education (1)	3	1

24 17

SECOND SEMESTER

Psychology and Child Study	3	3
English (2)	3	3
Music (2)	3	1½
Art (2)	3	1½
Nature Study	2	2
Teaching Primary Reading	3	3
Teaching of Number	2	2
Physical Education (2)	3	1

22 17

THIRD SEMESTER

Educational Sociology	3	3
Children's Literature and Story Telling	3	3
Kindergarten-Primary Theory	2	2
Educational Measurements	2	2
Health and Hygiene in Primary Grades	3	3
Elective	3	3
Physical Education (3)	3	1

19 17

FOURTH SEMESTER

Student Teaching and Conferences	18	10
Teaching of Primary Subjects	4	4
Geography	1	1
Social Studies	1	1
Spelling and Language	2	2
Technique of Teaching	2	2
Physical Education (4)	3	1
	<u>22</u>	<u>17</u>

TWO-YEAR CURRICULUM FOR GROUP II
INTERMEDIATE GRADES—4, 5, 6.

FIRST SEMESTER

Educational Biology	3	3
Introduction to Teaching	3	3
English (1)	3	3
Music (1)	4	2
Art (1)	4	2
Oral Expression	2	2
Handwriting	2	1
Physical Education (1)	3	1
	<u>24</u>	<u>17</u>

SECOND SEMESTER

Psychology and Child Study	3	3
English (2)	3	3
Nature Study	2	2
Teaching of Arithmetic	3	3
Teaching of Geography	3	3
Music (2)	3	1½
Art (2)	3	1½
Physical Education (2)	3	1
	<u>23</u>	<u>18</u>

THIRD SEMESTER

Educational Sociology	3	3
Teaching of Social Studies	3	3
Juvenile Literature and Silent Reading	2	2
Educational Measurements	2	2
Health and Hygiene in Intermediate Grades	3	3
Elective	3	3
Physical Education (3)	3	1
	<u>19</u>	<u>17</u>

FOURTH SEMESTER

Student Teaching and Conferences	18	10
Technique of Teaching	2	2
Teaching of English	3	3
Physical Education (4)	3	1
	<u>21</u>	<u>16</u>

TWO-YEAR CURRICULUM FOR GROUP III (RURAL)

FIRST SEMESTER

Educational Biology	3	3
Introduction to Teaching	3	3
English (1)	3	3
Music (1)	4	2
Art (1)	4	2
Oral Expression	2	2
Handwriting	2	1
Physical Education (1)	3	1
	<u>24</u>	<u>17</u>

SECOND SEMESTER

Psychology and Child Study	3	3
English (2)	3	3
Nature Study and Agriculture	2	2
Teaching of Arithmetic	3	3
Teaching of Geography	3	3
Music (2)	3	1½
Art (2)	3	1½
Physical Education (2)	3	1
	<hr/>	
	23	18

THIRD SEMESTER

Rural Sociology	3	3
Teaching of Social Studies	3	3
Juvenile Literature and Silent Reading	2	2
Educational Measurements	2	2
Health and Hygiene in Rural Schools	3	3
Primary Methods for Rural Schools	3	3
Physical Education (3)	3	1
	<hr/>	
	19	17

FOURTH SEMESTER

Student Teaching and Conferences	13	10
Technique of Teaching	2	2
Teaching of Reading	3	3
Physical Education (4)	3	1
	<hr/>	
	21	16

ADVANCED TWO-YEAR CURRICULUM LEADING TO B. S. IN EDUCATION

(Open only to Those who have Completed the Work of Groups I, II, or III, [rural])

Conditions of Entrance to the Third Year of the Four-Year Curriculum in Elementary Education

1. All persons who have completed the work of Groups I, II, or III (rural, formerly Group IV) are admitted to third year standing provided they have previously completed the work of a four-year high school, and all such persons must complete 68 hours of work beyond graduation from Groups I, II, or III (rural, formerly Group IV) as these were, prior to September 1, 1926, organized and administered.

2. All credits for work less than that required at a State Teachers College or Normal School for graduation between September, 1920 and September, 1926 shall be evaluated by multiplying the number of semester hours already earned by .85.

The following table applies this ratio to enough typical cases to illustrate the principle:

Former Semester Hours		New Semester Hours
6	x .85=	5.0
11	x .85=	9.0
22	x .85=	19.0
36	x .85=	21.0
60	x .85=	51.0

Rule: If the decimal is less than .5, disregard it; if it is .5 or more, count it as a unit.

3. Persons who graduated from a State Normal School prior to September, 1920, and who have had a four-year high school preparation, cannot be awarded more than 68 semester hours of credit for their normal school work.

4. Graduates of the State Normal Schools who have not had four years of high school preparation may apply to the Credentials Bureau, Harrisburg, Pennsylvania, for a high school equivalent certificate, which, when issued by the Credentials Bureau, will be accepted by the State Teachers Colleges and Normal Schools as equivalent to graduation from a four-year high school and all credits earned at a State Normal School prior to September, 1926 will be evaluated as indicated above.

5. No credit for public or private school teaching experience, previously credited as high school equivalent or as equivalent professional credit toward graduation, shall be granted or counted toward meeting the requirements for entrance to or graduation from the advanced two-year curriculum.

FIFTH SEMESTER

Opportunity is provided so that a student may complete in this semester the work of the first two years in the curricula which he did not pursue, as follows:

FIFTH SEMESTER

1. Graduates of Group I will take:

Teaching of Arithmetic	3	3
Teaching of Geography	3	3
Teaching of English	3	3
Teaching of Social Studies	3	3
	12	12

2. Graduates of Group II will take:

Teaching of Primary Reading	3	3
Teaching of Number	2	2
Teaching of Primary Subjects	4	4
Kindergarten-Primary Theory	2	2
	11	11

3. Graduates of Group III will take:

Teaching of English	3	3
Teaching of Number	2	2
Kindergarten-Primary Theory	2	2
Teaching Primary Subjects	4	4
	11	11

Total taken by a Student as above	11	11 or	12	12
Educational Psychology	3	3	3	3
Economic Biology	4	3	4	3
	18	17 or	19	18
	18	17 or	19	18

SIXTH SEMESTER

History of Education	3	3
English Literature	2	2
Descriptive Astronomy	3	3
Economics	3	3
Physiography	4	3
Teaching and Supervision of Arithmetic in Elementary School	3	3
	18	17

SEVENTH SEMESTER

Principles of Education	3	3
American Literature	2	2
American Government	3	3
Principles of Human Geography	3	3
Nutrition	4	3
Civic Education in the Elementary School	3	3
	18	17

EIGHTH SEMESTER

Advanced Composition	3	3
History and Appreciation of Art	4	2
History and Appreciation of Music	4	2
History and Organization of Edn. in Pa.	2	2
Practical School Contacts	5	5
Supervision and Administration of Elementary School	3	3
	21	17

FOUR-YEAR CURRICULUM IN ELEMENTARY EDUCATION FOR CLASS ROOM
TEACHERS (B. S. IN EDUCATION)

FIRST SEMESTER

Educational Biology	3	3
Introduction to Teaching	3	3
English (1)	3	3
Oral Expression	2	2
Art (1)	4	2
Music (1)	4	2
Handwriting	2	1
Physical Education (1)	3	1
	24	17

SECOND SEMESTER

Psychology and Child Study	3	3
English (2)	3	3
Art (2)	3	1½
Music (2)	3	1½
Nature Study	2	2
Teaching of Primary Reading	3	3
Teaching of Number	2	2
Physical Education (2)	3	1
	22	17

THIRD SEMESTER

Educational Psychology	3	3
Teaching of Arithmetic	3	3
Teaching of Geography	3	3
Economic Biology	4	3
American Literature	2	2
Nutrition	4	3
Physical Education (3)	3	1
	<hr/>	
	22	18

FOURTH SEMESTER

Teaching of English	3	3
Descriptive Astronomy	3	3
Educational Measurements	3	3
Economics	3	3
Teaching of Primary Subjects	4	4
Geography	1	1
Social Studies	1	1
Spelling and Language	2	2
Physical Education (4)	3	1
	<hr/>	
	19	17

FIFTH SEMESTER

Educational Sociology	3	3
Children's Literature and Story Telling	3	3
Health and Hygiene in the Elementary School	3	3
Teaching of Social Studies	3	3
American Government	3	3
Elective	2	2
	<hr/>	
	17	17

SIXTH SEMESTER

History of Education	3	3
Physiography	3	3
Teaching and Supervision of Arithmetic in Elementary Schools	3	3
Advanced Composition	3	3
English Literature	2	2
Civic Education in Elementary School	3	3
	<hr/>	
	17	17

SEVENTH SEMESTER

Student Teaching and Conferences	13	10
Technique of Teaching	2	2
Principles of Human Geography	3	3
Kindergarten-Primary Theory	2	2
	<hr/>	
	20	17

EIGHTH SEMESTER

History and Appreciation of Art	4	2
History and Appreciation of Music	4	2
History and Organization of Education in Penna.	2	2
Practical School Contacts	4	4
Supervision and Administration of Elementary School	3	3
Principles of Education	3	3
	20	16

The completion of the foregoing curriculum of 136 semester hours entitles a person to the degree of B. S. in Education which after two years of successful teaching experience becomes a life license to teach, supervise or serve as principal in the elementary field.

FOUR-YEAR CURRICULUM FOR THE PREPARATION OF JUNIOR AND SENIOR
HIGH SCHOOL TEACHERS (B. S. IN EDUCATION)

FIRST SEMESTER

Educational Biology	3	3
English (1)	3	3
Oral Expression	2	2
Social and Industrial U. S. History	3	3
Human Geography	3	3
Appreciation and Application of Art	4	2
Physical Education (1)	3	1
	21	17

SECOND SEMESTER

Introduction to Teaching	3	3
English (2)	3	3
Everyday Science	3	3
Economics	3	3
Handwriting	2	1
World Problems in Geography	3	3
Physical Education (2)	3	1
	20	17

THIRD SEMESTER

Psychology and Adolescence	3	3
English Literature	2	2
First Elective Field	3	3
Second Elective Field	3	3
American Government	3	3
Physical Education (3)	3	1
Free Elective	2	2
	19	17

FOURTH SEMESTER

Educational Psychology	3	3
American Literature	2	2
First Elective Field	3	3
Second Elective Field	3	3
Educational Sociology	3	3
Physical Education (4)	3	1
History and Appreciation of Music	4	2
	21	17

FIFTH SEMESTER

Purpose, Organization and Development of Junior High School	3	3
Advanced Composition	3	3
Guidance	3	3
First Elective Field	3	3
Second Elective Field	3	3
Free Elective	2	2
	17	17

SIXTH SEMESTER

History of Education	3	3
Educational Measurements	3	3
First Elective Field	3	3
Second Elective Field	3	3
Dramatic English	3	3
History and Organization of Education in Penna.	2	2
	17	17

SEVENTH SEMESTER

Student Teaching, Conferences, and School Contacts	18	14
Technique of Teaching	2	2
	20	16

EIGHTH SEMESTER

Principles of Education	3	3
Health and Hygiene in Junior High School	3	3
First Elective Field	6	6
Second Elective Field	6	6
	18	18

REQUIREMENT FOR GRADUATION AND CREDENTIAL

Upon the completion of the 136 semester hours of the foregoing curriculum the degree of B. S. in Education is awarded. This entitles the holder to teach in any public school any subject in which he has earned 18 or more semester hours of credit. After two years of successful teaching, a life license in the foregoing field is awarded.

ELECTIVE FIELDS FOR PROSPECTIVE JUNIOR AND SENIOR HIGH SCHOOL TEACHERS

The person who is to teach successfully in the junior high school must have, in addition to what has been prescribed, a special preparation in at least two fields. A third field, in which less preparation is possible, is also desirable. There are electives in six fields.

ELECTIVE ARRANGEMENT OF FOUR YEAR HIGH SCHOOL FIELDS

(Six Semester Hours in Each of Two Fields for Three Years)

<p style="text-align: center;">ELECTIVES IN ENGLISH</p> <p>3— 3 Teaching of English in Junior High School</p> <p>3— 3 Philology and Grammar</p> <p>3— 3 Contemporary Poetry</p> <p>3— 3 Short Story</p> <p>3— 3 Modern Novel</p> <p>3— 3 Elizabethan Drama</p> <hr style="width: 20%; margin-left: 0;"/> <p>18 + 18 Required = 36</p> <p style="text-align: center;">ELECTIVES IN GEOGRAPHY</p> <p>3— 3 Economic Geography</p> <p>3— 3 Physiography</p> <p>3— 3 Geography of European Countries</p> <p>3— 3 Geographic Influences in American History</p> <p>3— 3 Geography of North America</p> <p>3— 3 Geography of Latin America</p> <hr style="width: 20%; margin-left: 0;"/> <p>18 + 6 Required = 24</p> <p style="text-align: center;">ELECTIVES IN SOCIAL STUDIES</p> <p>3— 3 Teaching of Social Studies</p> <p>3— 3 Early European History</p> <p>3— 3 Modern European History</p> <p>3— 3 American History to 1865</p> <p>3— 3 American History since 1865</p> <p>3— 3 Political Science</p> <hr style="width: 20%; margin-left: 0;"/> <p>18 + 15 Required = 33</p>	<p style="text-align: center;">ELECTIVES IN SCIENCE</p> <p>6— 6 Chemistry</p> <p>6— 6 Physics</p> <p>3— 3 Economic Biology</p> <p>4— 3 Advanced Biology</p> <p>3— 3 Descriptive Astronomy</p> <p>3— 3 Teaching of Science in Junior High School</p> <p>3— 3 Physiography</p> <hr style="width: 20%; margin-left: 0;"/> <p>27 + 6 Required = 33</p> <p style="text-align: center;">ELECTIVES IN MATHEMATICS</p> <p>12—12 Mathematical Analysis (A practical two-year course in Algebra, Trigonometry, Analytical Geometry, the Differential, and Integral Calculus)</p> <p>3— 3 Teaching of Junior High School Mathematics</p> <p>3— 3 Teaching of Algebra and Plane Geometry</p> <hr style="width: 20%; margin-left: 0;"/> <p>18—18, and none required, = 18</p> <p style="text-align: center;">FOREIGN LANGUAGES</p> <p>15—15 in French or Latin After two years High School French or three years High School Latin.</p> <p>3— 3 Teaching of Languages</p> <hr style="width: 20%; margin-left: 0;"/> <p>18—18, and none required, = 18</p>
--	--

Electives, however, are particularly liable to misuse unless carefully safeguarded. The selection of electives is deferred until the end of the first year and is subject to the following:

PREREQUISITES FOR THE ELECTION OF FIELDS IN THE JUNIOR HIGH SCHOOL CURRICULUM

1. To elect Science, a student must present a unit in Chemistry and a unit in Physics.
2. To elect Social Studies, a student must present two high school units in social studies.
3. To elect Mathematics, a student must present one high school unit in Algebra and one high school unit in Plane Geometry, or two units in Composite Mathematics, one of which at least must have been taken in the Senior High School.

4. To elect French, a student must present two high school units in French.

5. To elect Latin, a student must present three high school units in Latin.

When a student has chosen his elective fields, his curriculum becomes a closed series of courses not subject to change without loss of credit.

A graduate in this course will be entitled to teach in any high school any subject in which he has 18 or more semester hours credit.

INSTRUMENTAL MUSIC DEPARTMENT

The music department of the State Teachers College offers special instruction in voice, piano and violin. Teachers of proved ability are in charge of each branch of this work. The individual needs of each student will be carefully considered and attention given. All work is carefully graded and opportunities provided for individual development. Student recitals, school assemblies, society and class functions offer an ideal atmosphere for ambitious students to make public appearance. Special orchestral groups furnish an opportunity for ensemble study. The College Orchestra and Concert Band with their complete equipment offer an experience second to none for training in instrumental music for use in either public schools or for individual accomplishment. Class instruction in orchestral and band work as part of regular course. No charge for class instruction.

Students will register in these subjects as in other branches. The charge for this, including the use of piano for practice is \$25.00 per semester.

SUMMER SESSION

June 24, 1929 to August 3, 1929

A six weeks Summer term will open June 24. This session will give opportunity to teachers in service to prepare for the State Standard Certificate. The courses offered will be those approved by the Department of Public Instruction for the renewal of the Partial or for the Standard Certificate. Course will be offered also in the advanced two year curriculum and the four year courses.

Advanced courses in English, Social Studies, Mathematics, Science, Foreign Languages, School Measurements and School Administration will be offered to Graduates of the two and the three year courses and the holders of Standard or State Permanent Certificates.

The Summer session of 1930 will open June 23.

TEXT BOOKS USED

These texts are subject to change.

Art—

- Art I. Applied Drawing—Brown.
 Art II. Practical Drawing (Art Education Ed.)—Tarnum,
 Kirby, Dutch and Hare.
 Art Appreciation, Art in Everyday Life—Goldstein.
 Art History and Appreciation—Gardner.

Education—

- An Introduction to Education—Frazier and Armentrout.
 An Introduction to Teaching—Bagley and Keith.
 The Beginning Teacher—Almack and Lang.
 Teaching in the Intermediate Grades—Freeland, Adams and
 Hall.
 Principles of Education—Chapman and Counts.

English— Composition, A Handbook of Writing—Wood.

- Composition, Writing for Print—Harrington.
 English, The Teaching of—Klapper.
 Literature, American—Pattee.
 Literature, Childrens—Curry and Clippinger.
 Literature, Types of English—McClelland and Baugh.
 Novel, A Study of Prose Fiction—Perry.
 Poetry, New Voices—Wilkinson.
 Poetry, Modern American—Untermeyer.
 Poetry, Modern British—Untermeyer.
 Reading, Silent and Oral—(Rev. Ed.) Stone.
 Reading, Manual for First Grade—Hardy.
 Reading, How to Teach—Pennel and Cusack.
 Philology and Grammar, Fundamentals in English—Cross.

French—

- French Grammar (Complete course)—Fraser and Squair.
 French Composition for Colleges—Shanks and Meras.
 Histoyre de France—Melet.
 Illustrations of Early French Literature—Anderson.
 French Prose of the XVII Century—Warren.
 The Oxford Book of French Verse.
 (Suitable French Classics are read as part of the courses
 given.)

Geography—

- Teaching of Geography—Branom.
 College Geography—Peattie.
 World Problems in Geography, The New World—Bowman.

Hygiene and Physical Education—

- Hygiene, Educational Hygiene—Averill.
 American Red Cross First Aid—Lynch.
 Physical Education, Physical Training for Elementary Schools
 —Clark.

The New Physical Education—Wood and Cassidy.
 Handbook of Stunts—Rodgers.
 Elementary Games, Plays and Dances—Clark.

Latin—

Virgil's Aeneid—Books VI-XII—Kittredge and Greenough.
 Horace, Odes, Epodes, Satires and Epistles—Chase.
 Livy, Books I—XXI, XXII—Chase.
 Cicero, De Senectute and De Amicitia—Crowell.
 Teaching of Latin—Game.

Mathematics—

Teaching of Arithmetic in the Primary Grades—Morton.
 Teaching of Arithmetic in the Intermediate Grades—Morton.
 Teaching of Jr. High School Mathematics—Smith and Reeve.
 Freshman Mathematics—Mullins and Smith.
 Elementary Calculus—Woods and Bailey.

Music—

Manual for Teachers—Dann.
 Second, Third and Fourth Year Music—Dann.
 Outlines of Music History—Hamilton.

Psychology—

Introduction to Child Psychology—Waddle.
 The Psychology of Youth—Swift.
 Psychology for Students of Education—Gates.
 Educational Measurements and the Classroom Teacher—
 Gilliland and Jordan.
 Educational Tests and Measurements—Monroe, De Voss and
 Kelley.
 Introduction to the Use of Standardized Tests—Pressey and
 Pressey.
 Diagnostic Testing and Remedial Teaching—Paulu.
 Tests and Measurements in High School Instruction—Ruch
 and Stoddard.

Science—

Educational Biology

General Biology—Holmes.
 Educational Biology—Atwood and Heiss.

Economic Biology

Biology of the Frog—Holmes.
 General and Professional Biology—Menge.
 General Botany—Densmore.
 Manual for Elementary Zoology—Hyman.

Advanced Biology

General Zoology—Hegner.
 General Botany—Densmore.
 Textbook of General Botany—Holman and Robbins.
 Manual for Elementary Zoology—Hyman.

Chemistry

A Course in General Chemistry—McPherson and Henderson.

Laboratory Manual—McPherson and Henderson.

Physics

College Physics—Stewart.

College Physics—Caswell.

Manual Physics for the Laboratory—Taylor, Watson and Howe.

Nature Study

Our Living World—Downing.

Social Studies—

Teaching of History—Klapper.

Teaching of History—Tryon.

Early European History, History of Civilization—Thorndike.

Modern European History, Modern and Contemporaneous History—Shapiro.

American History 1865, Traditions of American Nationality—Greene.

American History since 1865, Development of American Nationality—Fish.

Social and Industrial History of the United States, American Economic History—Foulkner.

Economics: Principles and Problems—Edie.

Political Science, Principles and Problems of Government—Haines and Haines.

American Government, Introduction to American Government—Ogg and Ray.

Educational Sociology, and Education—Good.

Educational Sociology, Principles of Educational Sociology (New Ed.)—Smith.

Rural Sociology—Gillette.

Educational and Vocational Guidance—Proctor.

PRIZES**SCHOLARSHIP PRIZES**

The class of 1908 offers a yearly prize of five dollars in gold to the four year student having highest average at graduation. This prize was awarded in June, 1928 to Mary Heilman, Shippensburg, Pa.

PUBLIC SPEAKING PRIZE

The class of 1916 offers a yearly prize of five dollars in gold for excellence in Public Speaking. The prize for 1928 was awarded to Helen McKelvey, Waynesboro, Pa., with Honorable Mention of Aljane Stante, Marysville, Pa. and Bruce Stouffer, Newville, Pa.

PRIZES IN DEBATING

Mrs. Louise L. Lehman offers two yearly prizes in books to the students winning first and second places in the inter-society debate. The first prize for 1928 debate was won by Roger Mowrey, Quincy, Pa., and the second prize by Evelyn Stein, York, Pa.

DISTINGUISHED SERVICE PRIZE

A gold medal presented by Mrs. Eleanor Kyner Boots, class of '89, suitably inscribed will be awarded the student who in the judgment of the student body and the faculty has done most for the school during the year. Character, scholarship, initiative, community service, skill in athletics, debating and other school activities will be given due consideration. This prize was awarded on Commencement Day, 1928 to Monroe S. E. Gobrecht, Hanover, Pa.

SHORT STORY PRIZE

The Myrtle Mayberry prizes of books ranging in value from ten to fifteen dollars will be awarded annually on Commencement Day to the students who submit the best short stories written in competition for this prize. Established by Mrs Mulford Stough. '07. Awarded June, 1928. First prize to Helen Penrod, Windber, Pa., and second prize to David Brandt, Shippensburg, Pa., with Honorable Mention of Ruth Brightbill, Harrisburg, Pa. and Louis Knohr, Gratz, Pa.

PRIZE FOR EXCELLENCE IN STUDENT TEACHING

Mrs. Mary V. Fairley, class of '89, offers an annual prize of ten dollars in gold to the student in the graduating class who makes the highest record in student teaching. This prize was divided between Zora Murray, Goodyear, Pa. and William R. Stover, Waynesboro, Pa.

THE ALUMNI FUND

Boarding students who need financial aid during their senior year may borrow a sum not exceeding \$100 from the Alumni Fund for one year from the time of their graduation without interest. Students in need of such assistance must file their request for aid with the principal not later than August 15 of the year preceding their graduation.

The following Alumni Loan Scholarships have been established:
Prof. John F. McCreary—Gift of the Metropolitan Alumni Assoc.
Dr. George M. D. Eckels—Gift of the Metropolitan Alumni Assoc.
Dr. Joseph F. Barton—Gift of L. M. Shepp, '96, Millersburg, Pa.
Prof. J. W. Hughes—Gift of Class of '93.

Dr. James Eldon—Gift of Class of '21.

Prof. C. L. Penny—Gift of Class of '86.

Scholarship, Class of 1907—Gift of Class of '07.

These are awarded annually to students who need financial assistance and whose records are meritorious.

GOVERNMENT AND DISCIPLINE

All school government should have for its end the development of character in the individual student. Any method of government which does not secure this important end is wrong in principle.

In a Teachers College where the student is being trained to govern other students, there can be no excuse for loose government. No person is qualified to teach in the public schools until he has attained a complete mastery over himself. The individual who has been trained in schools to habits of self-control and a wise self-direction has received the best training which any school can give him.

We rely greatly upon the honor and self-respect of our students in our efforts to control. Students who enter this school are supposed to come for the purpose of preparing themselves for their life work, and to be capable of self-control. The disciplinary regulations are, therefore, few and simple. Students who cannot abide by these regulations will be required to leave the institution.

When students are not making satisfactory progress in their studies, their parents are notified and if this course does not remedy the matter, the parents will be asked to withdraw them from the college. Students who are not making good use of their opportunities to receive an education will not be retained.

Obedience on the part of the students to the following rules and regulations is necessary to the successful management and control of a Teachers College, and is for the best interests of the students themselves. No regulations are made which we do not regard as important.

TIME REGULATIONS

1. Recitation hours from 8:15 to 12:15 a. m. and from 1:15 to 4:15 p. m.
2. Breakfast at 7:15 a. m. Lunch at 12:30 p. m. and Dinner at 6:00 p. m.
3. Chapel service at 11:15 a. m.
4. Prayer meeting on Wednesday, 7:00 p. m. Attendance voluntary.
5. "Normal" and "Philomathean" Literary Societies meet on Friday evenings at 7:00 o'clock.

6. Y. W. C. A. and Y. M. C. A. meetings on Sunday at 6:00 p. m., Sunday School at 8:45 a. m.
7. Study hour from 7:00 to 10:00 p. m.

CLASS REGULATIONS

1. No student will be allowed to take more studies than he can pursue profitably nor fewer than necessary to keep him sufficiently employed.
2. Students must attend classes up to the time of their leaving college.
3. All students must be present at the chapel exercises, unless excused.
4. A costume suitable for use in gymnasium must be worn in the physical training classes. The regulation uniform, bloomers, skirt, stockings and shoes should be purchased at the college. Do not purchase any part of the uniform before entering.
5. All articles of clothing sent to the laundry must be distinctly marked with the student's full name.
6. Both men and women must wear the regular gymnasium shoes for gymnasium exercises. Women should purchase shoes at college.

BUILDING AND ROOM REGULATIONS

1. Each student will be held responsible for the condition of his room and its furniture, and he will be charged with any loss or unnecessary damage.
2. No change or alterations must be made in the permanent parts or fixtures of the rooms, nor nails driven into the walls without the permission of the preceptress or matron.
3. Students are required to provide themselves with soft-soled slippers for the building.
4. All articles of clothing sent to the laundry must be distinctly marked with the student's full name.
5. Students may be required to change their rooms or to board out of the building if deemed best by the Principal.

SOCIAL REGULATIONS

1. Day students will not call at the rooms of boarders, nor stay in their rooms over night, unless by permission of the Dean of Women. Boarding students will be held responsible to the Dean of Women for the observance of this rule.

2. Boarding students will not be permitted to visit in town on Sundays, nor remain in town over night, excepting with relatives.

3. Visitors to the building will be regarded as under the same regulations as the students.

4. Visiting the buildings and grounds on Sundays is not approved of except in the case of parents, and they are asked to keep in mind our regulation for quiet on the Sabbath. Students will not be allowed to make or receive calls during school or study hours.

5. Students will receive calls from relatives or friends in the reception room only. No one except parents will be permitted to visit the students' rooms.

6. Students are under the regulations of the college going to and coming from their homes.

7. Students wishing to visit their homes or other places during the term must present written permits from parents to the Dean of Women or Dean of Men. Parents are urged not to ask their children to be absent from the school except between the hours of 4 p. m. Friday and 8 a. m. Monday. No student will be allowed to go home oftener than once every three weeks. The students cannot make up the work missed through absence from class. Absence from the college is a positive loss to students. Students return to school after being absent over week-ends with work unprepared. The best work is done by students who are absent from college only in case of absolute necessity. The faculty will not hold themselves responsible for the progress of students who visit their homes or other places frequently during the term. No student who is failing in his work will be allowed to be away from school for the week-end.

9. The authorities of the college will not, except in case of absolute necessity, call a student to the telephone during school hours or study hours. Such calls should be made before 8:15 a. m., between 12:15 noon and 1:15 o'clock p. m., and 4:15 and 7:00 p. m.

10. Students will be permitted to be five day students only in such instances as the Principal deems wise for the reasons presented to him in writing by the parents. Any student registered as a five-day student will be expected to go home each week-end. As very few five-day students do good class work since they have no opportunity to take part in special activities, parents are urged to allow their children to be five-day students only in cases of absolute necessity.

11. Parents sometimes complain that the expenses incurred by students are considerably in excess of those listed in the catalogue. There is no reason for such complaint, as every legitimate expense is plainly listed in the catalogue. Students, however, frequently persuade their parents to supply them with more money than should

be given them. Bills for books, fees, and other legitimate expenses will always be furnished by the college when requested by parents.

HEALTH REGULATIONS

1. Students upon entering the college must present physician's certificate showing that they have been successfully vaccinated.
2. Students during vacation, or at any time when they are absent from college must avoid exposure to contagious or infectious diseases.
3. Students will be expected to observe proper hygienic rules during the time they are enrolled as members of the college.
4. The college kitchen is in charge of the head of the Department of Cookery, who is a skilled dietitian. A carefully balanced menu will be arranged. Food especially adapted to the needs of the student is provided and parents are requested not to send boxes of cooked eatables to students. Many cases of ill health are directly traceable to over-indulgence in food sent from home.

ATHLETICS

It is the duty of the college to see to the physical well-being of every young man and woman in attendance. The day is gone by when the pale, delicate, bookish student is regarded as the ideal to be sought. Young men and women must be just as strong and robust as possible. For this reason we encourage all our students to take part in some type of athletics.

In addition to out-of-door exercises and the regular training in the gymnasium, the school encourages the following athletic sports:

Hiking.—Open to women students all year.

Girls' Hockey.—Class teams are organized early in the fall and a series of inter-class games is played.

Girls' Soccer.—Played during the fall season.

Girls' Basketball.—Not only are class games played but group teams are organized, and a regular schedule of games arranged. Nearly all the boarding women take part in these games.

Girls' Volley Ball.—Played in the Spring.

Girls' Baseball.—In the Spring and Summer terms this game occupies the place held by the hockey in the Fall term.

Deck Tennis.—Played during early Spring.

Tennis is open to both men and women and is under the control of the Students' Tennis Association.

Men's Athletics

Football is open to all the men: A series of inter-school games will be played. Class teams will also be organized.

Basketball.—The same method is followed as in football. Nearly all the men take part in this game.

Baseball.—Teams are organized from each class. From these organizations the school team is organized.

Track and Field Sports.—A meet will be held each spring, at which the class championship will be decided.

ENTERTAINMENTS

Moving Pictures.—The college owns a Powers 6-B Moving Picture Machine, and once every month a moving picture entertainment is given for the entire evening. Plays of Shakespeare, and productions from modern dramatists are presented, and films dealing with the work of various important industries, life in foreign countries, interesting experiments in chemistry and physics, etc., are shown.

Lectures, Concerts, etc.—During the past year a remarkably strong series of concerts and entertainments were presented. These included the following: Boston Women's Symphony Orchestra, Sue Hastings' Marionettes, Col. Philip Moore, V. L. Granville, Paula Hemminghaus, "Lightnin"—by Sprague Co., Zimmer Harp Trio; Comedy-Drama, "The Mollusc." An equally strong course will be provided for 1929-1930. All entertainments in this course are free to students.

Vesper Services.—During the summer session vesper services are held out of doors every Sunday evening. Well known ministers and other speakers are procured to address these meetings.

RELIGIOUS WORK

Our students are furnished excellent opportunities for spiritual growth and development. We have a prayer and lecture service every Wednesday evening, conducted by a member of the faculty, or minister, to which all the students are invited. The service is attended by a large number of students and is full of interest and profit.

We have a Sabbath School organized among the students. This service is held every Sabbath morning. The school is divided into classes, each class being taught by a member of the faculty. The International Lesson is used.

Students, unless excused by the Principal, are expected to attend the church service of their choice every Sabbath morning. The

church attendance in connection with the religious services at the school offers them all the spiritual advantages that they would receive at their own homes. In all proper ways religious influences are thrown around the pupil, making his school life to conform as nearly as possible to home life.

A Young Men's Christian Association and a Young Women's Christian Association have been formed among the students. These societies have been doing a great work for the growth of religious sentiment in the college. These associations are non-denominational in character.

SABBATH REGULATIONS

3:00 to 5:00 p. m. will be observed as a quiet period. During this time no singing, loud talking, or other unnecessary noise will be allowed in the building.

LITERARY SOCIETIES

Among the most valuable auxiliaries to a Normal School or College are its literary societies. The Normal and the Philomathean societies are strong, vigorous associations, and in their growth are keeping equal pace with the growth of the college. They meet in separate halls every Friday evening for the rendering of carefully prepared programs. These programs are highly entertaining and instructive, and those taking part in rendering them bestow ample labor and care in their preparation.

LIBRARY AND READING ROOM

The Library and Reading Room of the Teachers College is one of its most important features. All the leading magazines, periodicals and many newspapers, daily and weekly, are found upon its shelves and on the files of the handsome room fitted up for the purpose.

Books on professional subjects, selected by experts, are constantly added to the shelves, and at present a collection of 10,000 volumes is at the service of the student body during the entire school day and evening. Encyclopedias, dictionaries, and handbooks of all sorts may be found in abundance, and the library is in charge of two trained librarians whose business it is to cooperate with all departments of the school in research work. More than 1200 new volumes were added last year.

A course of 10 hours in Library Methods is also taught, and students are given opportunity for practice work under expert guidance, in the libraries of both the College and the Training School. This work is now listed as an extra curricular activity.

The students are encouraged to make good use of the privileges of the reading room and the results are most gratifying. A librarian is always in charge of the room when it is open, in order that students may get the largest profit possible from their hours spent in the reading room. The student who has been graduated from a College without having acquired a taste for good literature, and a knowledge of how to read with the greatest possible profit, is but poorly equipped for the work of teaching.

ARTICLES THAT STUDENTS SHOULD BRING WITH THEM TO COLLEGE

Students should bring the following articles with them or purchase them on arrival at the college:

A pair of blankets or heavy quilt, washstand cover and bureau cover, pair window curtains, towels, table napkins and toilet articles. They should also bring a knife, fork, spoon and glass tumbler for use in their rooms, as these articles may not be taken from the dining-room.

Rooms are supplied with bed, bedding, bureau, study table, chairs, washstand with bowl and pitcher and light fixtures.

GENERAL REGULATIONS

Damage done to furniture and other school property is charged against the students responsible for it. A deposit is required for all keys furnished students. This will be retained by the College until the keys are returned.

It must not be understood that the foregoing regulations embrace all the duties and obligations devolving upon the individual student. No list of rules can be made which would cover every duty of the student under all the possible contingencies of Teachers College Life. And on the other hand, there are many habits and forms of conduct so obviously out of harmony with obligations of the person who is preparing to teach that it is not deemed necessary to prohibit them by formal rule.

Our standard of conduct for those who are preparing to teach under the tuition of the College is so high that it would preclude anyone from looking to the profession of teaching for a life calling whose habits and conduct are not worthy the imitation of the children who may be placed under his instruction.

COLLEGE PUBLICATIONS

"The Teachers College Herald" is the official college publication. It is furnished free to students while they are in attendance at the school. The price to others is 25 cents a year. Alumni and former students are earnestly urged to subscribe and keep themselves in touch with the affairs at the college.

"The Campus Reflector" is the weekly students publication. It contains all the news of the college including athletics, literary society notes, class room activities, and data concerning the work of the music department. The editorials are usually of a constructive nature and deal largely with problems of the school. The paper also contains an extensive alumni column.

The paper is furnished free to students and the price to others is one dollar and seventy-five cents for the college year.

STUDENT ORGANIZATIONS

Glee Clubs. Each literary society maintains a glee club under students' direction but supervised by the director of music. Opportunity is given to those of marked ability to join one of these glee clubs. Application must be made to the director of music.

Girls' Choral Society. The girls' choral society meets once a week to study standard choral selections which they give at the various school entertainments throughout the college year. Those desiring to become members will make application to the director of music.

Men's Glee Club. The men's glee club gives the young men opportunity for the development of their musical ability under skilled direction.

Orchestra. The college orchestra meets twice a week for rehearsal. It plays for the daily chapel exercises and also at the various college programs throughout the year. Students who play any orchestral instruments are urged to bring their instruments to college and apply to the director of music for admission to the orchestra.

College Concert Band. The recently organized college band numbers about fifty members. This organization is conducted by Mr. Avery. Students who wish to learn to play on a band instrument will be given free instruction.

Press Club. The members of this organization act as correspondents of various newspapers throughout the state. Items of interest are thus given to the public. The club meets monthly. Professor Stewart is the director of this organization.

Arts and Crafts Club. The Arts and Crafts Club is an organization which has for its object the growth of Art appreciation and the development of talent beyond that which the class room offers. It also gives the members an opportunity to develop talent and technique along such lines of Art as are not included in the regular courses of study as well as craft work not possible otherwise. The work of the club is under the direction of the Art Department.

Young Men's Christian Association. Membership in this organization is entirely voluntary, but a large majority of the men of the faculty and student body are connected with the organization. It holds weekly meetings.

Young Women's Christian Association. A large majority of the young women of the college are associated with this organization and are much interested in its work. Its weekly meetings are well attended.

The Varsity Club. The Varsity Club is an organization of students that have earned their Varsity letter in some one of the major sports of the college which consists of football, baseball, basketball and track. The purpose of the organization is to encourage sportsmanlike conduct, not only among themselves but in the student body. They also encourage organized cheering in athletic contests and help entertain visiting teams.

The organization strives to make life as pleasant as possible for the new students as well as help to guide each new student into some college activity.

Women's Athletic Association. Membership in this organization is earned by point system in major sports. Over half of the girls in school belong to this organization, the purpose being to encourage cooperation and sportsmanship among ourselves.

Debating. Gamma Delta Gamma, the debating club, meets once every two weeks for practice in debating. The Club usually has a membership of about thirty, all students being eligible. The work is so arranged as to give as many as possible an opportunity to debate with teams from other colleges. The schedule for 1928-29 includes Millersville, West Chester, East Stroudsburg, Slippery Rock and Juniata.

Readers' Club. This organization came into being in 1924. Membership is voluntary and has steadily increased every year. It is designed to furnish recreational reading to those who desire it, the books being purchased from the small yearly fee paid by each member. Popular fiction and non-fiction are both included in the collection, which at present numbers over 150 volumes. The club is sponsored by the library department, the librarian acting as faculty adviser.

Mathematics Club. The Mathematics Club aims to create and promote a greater interest in mathematics among its members and in the college. The work of the club includes special studies of practical and historical topics, dramatization of mathematical subjects, mathematical recreations, and other activities of a mathematical nature.

Country Life Club. All students majoring in rural education through this club find an opportunity to study rural life problems; to conduct surveys; to assist with community programs; to meet and hear rural leaders from the field.

The Geography Club is an organization open to all students who are interested in the field of geography. It is made up of an active and an associate membership. The work of the club includes illustrated travel talk, helpful geographical contests, and slides of various places of the world. The main object of the club is to probe deeper into the subject of geography than can be done in the ordinary class.

CATALOGUE OF STUDENTS

1928-1929

STATE TEACHERS COLLEGE

SUMMARY

Class of 1929 B. S. Four Year Course	25
Class of 1929 Two Year Course	188
Class of 1930 B. S. Four Year Course	50
Class of 1930 Two Year Course	246
Class of 1931 B. S. Four Year Course	69
Class of 1932 B. S. Four Year Course	93
Post Graduates Summer 1928	85
Summer School Students	417
Names of Students appearing twice	38
Total Enrollment in College Department	1051
Total Enrollment of Men in College Department	323
Total Enrollment of Women in College Department	728
Enrollment in Training Schools	887
Total Enrollment	1938

CLASS OF 1929 B. S. FOUR YEAR COURSE

WOMEN

<i>Name</i>	<i>Address</i>	<i>County</i>	<i>State</i>
Foltz, Helen F.,	320 E. Queen St.,	Chambersburg,	Franklin,
Johnson, Grace E.,	1427 Berryhill St.,	Harrisburg,	Dauphin,
Snively, Mary R.,	E. Baltimore St.,	Greencastle,	Franklin,

MEN

Bailets, Earl B.,	Halifax,	Dauphin,	Pa.
Benner, George W.,	Six Mile Run,	Bedford,	Pa.
Brandt, David D.,	120 S. Prince St.,	Shippensburg,	Cumberland, ...
Ehlman, Luther F.,	Ickesburg,	Perry,	Pa.
Fenstermacher, Varnum H.,	2502 N. 6th St.,	Harrisburg,	Dauphin, Pa.
Fleisher, J. William,	22 Locust St.,	Lewistown,	Mifflin,
Funk, George E.,	Bowmansdale,	Cumberland,	Pa.
Gutknecht, Henry S.,	Fayetteville,	Franklin,	Pa.
Heberlig, Albert F.,	Richard Ave.,	Shippensburg,	Cumberland, Pa.
Hess, Kenneth W.,	Boiling Springs,	Cumberland,	Pa.
Kelley, J. Maclay,	Newville,	Cumberland,	Pa.
Lehman, D. Webster,	Newville,	Cumberland,	Pa.
Leshner, Robert F.,	Atco Apts.,	Greencastle,	Franklin,
Light, George M.,	256 Center St.,	Millersburg,	Dauphin,
Longanecker, Edwin S.,	508 W. Main St.,	Mechanicsburg,	Cumberland Pa.

<i>Group Name</i>	<i>Post Office</i>	<i>County and State</i>
Neagley, Ross L.,	Fallsington,	Bucks,
Rettinger, Marlin E.,	Halifax,	Dauphin,
Smith, Paul M., 112 S. Prince St.,	Shippensburg,	Cumberland, ... Pa.
Watson, Lester W.,	Shippensburg,	Franklin,
White, R. Ernest, 2235 Jefferson St.,	Harrisburg,	Dauphin,
Wilson, Gerald F., 1st Ave. Ext.,	Red Lion, ...	York,
Yundt, John H.,	Chambersburg R. 2,	Franklin,

CLASS OF 1929 TWO YEAR COURSE

WOMEN

<i>Group Name</i>	<i>Post Office</i>	<i>County and State</i>
II. Adams, B. Margaret, ...	Marysville,	Perry, Pa.
I. Allen, Mary E.,	St. Thomas,	Franklin, Pa.
I. Arnold, M. Felma,	1016 N. George St.,	York,
III. Baker, Elizabeth M., ..	Dover, R. 3.	York, Pa.
II. Baker, S. Dora,	Windsor,	York, Pa.
I. Barnett, Dorothy H., ...	Afton Ave., Yardley, Bucks, Pa.
III. Basehore, Freda F., ...	Seven Stars,	Adams, Pa.
II. Beamer, H. Martha, ...	110 Southey Ave.,	Altoona, ... Blair, Pa.
III. Beamer, Mae I.,	New Oxford, R. 2,	Adams, Pa.
I. Beckley, Alice V.,	St. Clairsville,	Bedford, Pa.
III. Bennett, Stella I.,	Flintstone, R. 1.	Washington, Md.
II. Berkheimer, Dorothy M.,	5 S. Belvidere Ave.,	York,
II. Bingman, Amelia E., ...	Beavertown,	Snyder, Pa.
I. Binkley, Mary,	State Line,	Franklin, Pa.
II. Bittinger, Ethel,	Chambersburg, R. 2,	Franklin, Pa.
II. Blair, Lucy,	Orrstown,	Franklin, Pa.
I. Bolger, Grace,	S. Market St.,	Martinsburg, ... Blair, Pa.
II. Boone, Mary E.,	Nook,	Juniata, Pa.
I. Botterbusch, Dorothy E.,	1132 N. George St.,	York,
I. Braddock, Jean S.,	531 Trenton Ave.,	Wilkesburg, Alle-
	gheny, Pa.
II. Brechbill, Helen R., ...	Chambersburg, R. 2,	Franklin, Pa.
I. Breinich, Marie,	541 S. Front St.,	Steelton, Dauphin, .. Pa.
I. Brightbill, Ruth I., ...	2512 Woodlawn St.,	Harrisburg, Dau-
	phin, Pa.
I. Britton, Janet M.,	Upper Strasburg,	Franklin, Pa.
I. Brown, M. Lois,	118 N. 2nd St.,	Chambersburg, Frank-
	lin, Pa.
II. Brunner, L. Bernice, ...	Bressler,	Dauphin, Pa.
II. Bufflap, Wilhelmina, ...	1360 W. Market St.,	York,
II. Campbell, A. Marion, ..	Elysburg,	Northumberland, Pa.
I. Carter, M. Dorothy,	120 Freys Ave.,	York,
I. Cashman, Kathryn G., ...	New Oxford,	Adams, Pa.
II. Clugston, Thelma I., ...	S. Broad St.,	Lansdale, .. Montgomery, Pa.
II. Coleman, H. Pauline, ..	Mowersville,	Franklin, Pa.

<i>Group Name</i>	<i>Post Office</i>	<i>County and State</i>
I. Colston, Naomi E.,576 S. Main St., Chambersburg,	Franklin, Pa.
I. Confer, Grace M.,101 Willow Ave., Altoona,Blair, Pa.
II. Cooper, Martha R.,Main St., Enhaut,Dauphin, Pa.
I. Craig, Elizabeth B.,S. Church St., Waynesboro,	Franklin, Pa.
III. Crider, Grace M.,Newville,Cumberland, Pa.
II. Crouse, Gail E.,535 Center St., Chambersburg,	Franklin, Pa.
I. Culler, Mildred W.,Mechanicsburg,Cumberland, Pa.
II. Deardorff, Burnelle L.,Gettysburg, R. 5,Adams, Pa.
II. Deardorff, L. Blanche,Biglerville,Adams, Pa.
II. DeGroft, Edith V.,Mont Alto,Franklin, Pa.
II. Dershen, Mabel J.,Elysburg,Northumberland, Pa.
I. Eckard, S. Geraldine,	620 N. Hanover St., Carlisle,	Cumberland, Pa.
II. Eichelberger, Greta L.,Bowmansdale,Cumberland, Pa.
II. Ellinger, Esther C.,81 Chestnut St., Lewistown,Mifflin, Pa.
III. Elliott, Marian J.,Newville,Cumberland, Pa.
III. Ensminger, Grace I.,Manchester, R. 1,York, Pa.
I. Esh, Mrs. Reba Seldon,	33 W. 3rd St., Lewistown,Mifflin, Pa.
I. Fickinger, Dorothy R.,Vine St., Williamstown,Dauphin, Pa.
II. Filson, Anna M.,Church St., Reedsville,Mifflin, Pa.
II. Fleck, N. Ruth,204 First Ave., Altoona,Blair, Pa.
II. Gates, Elda P.,Petersburg,Huntingdon, Pa.
II. Goodling, Elizabeth S.,	2806 E. Curtin St., Harrisburg,	Dauphin, Pa.
II. Grass, Gertrude I.,Dover, R. 2,York, Pa.
II. Hafer, Kathryn V.,Greencastle,Franklin, Pa.
II. Hainley, P. Dorothea,136 Broad St., Hollidaysburg,	Blair, Pa.
I. Hall, Ethel M.,107 N. Hanover St., Carlisle,	Cumberland, Pa.
I. Hamer, Helen E.,Hooversville,Somerset, Pa.
II. Hanshaw, Helen I.,Oberlin,Dauphin, Pa.
I. Hartzok, Hazel I.,Fayetteville,Franklin, Pa.
I. Havice, Marjorie,20 E. King St., Shippensburg,	Cumberland, Pa.
II. Hawn, Esther M.,Petersburg,Huntingdon, Pa.
II. Hayes, Eleanor D.,Shippensburg, R. 2,Cumberland, Pa.
III. Heckman, Martha R.,Chambersburg, R. 10,Franklin, Pa.
II. Hench, Carrie B.,Loysville,Perry, Pa.
II. Henry, Elizabeth R.,Hanover,York, Pa.
I. Hershman, Doris E.,Mechanicsburg, Box 124,	Cumberland, Pa.
I. Hertzler, Jane B.,Carlisle, R. 6,Cumberland, Pa.
II. Hess, Evelyn N.,Cor. Park & Madison Ave.,	Waynesboro, Franklin, Pa.

<i>Name</i>	<i>Post Office</i>	<i>County</i>	<i>State</i>
II. Hilner, Ruth E.,	1013 S. Melrose St., Harrisburg,	Dauphin,	Pa.
III. Hockenberry, Goldie E.,	Newville, R. 4,	Cumberland,	Pa.
I. Horner, Alice B.,	473 E. Liberty St., Chambersburg,	Franklin,	Pa.
II. Houck, Reba A.,	Enhaut,	Dauphin,	Pa.
I. Hubler, Erma M.,	2030 N. 5th St., Harrisburg,	Dauphin,	Pa.
I. Hurley, Mary H.,	Bernharts,	Berks,	Pa.
III. Hykes, Ruth E.,	Aspers,	Adams,	Pa.
II. Ibberson, Ruth M.,	West St., Lykens,	Dauphin,	Pa.
I. Jacoby, Helen M.,	306 E. Main St., Mechanicsburg,	Cumberland,	Pa.
I. Jemison, L. Ruby,	1100 Cowden St., Harrisburg,	Dauphin,	Pa.
II. Jones, Lewese,	Richmond Furnace,	Franklin,	Pa.
II. Jones, Mrs. Ruth P.,	Windber, R. 1,	Somerset,	Pa.
II. Kass, Edith L.,	Marysville,	Perry,	Pa.
II. Keck, G. Zula,	Orrstown,	Franklin,	Pa.
III. Keckler, R. Rachel,	Waynesboro,	Franklin,	Pa.
III. Keckler, Ruth E.,	Zullinger,	Franklin,	Pa.
I. Killian, Mary A.,	115 N. Law St., Allentown,	Lehigh,	Pa.
II. Kirkpatrick, Madolin,	Scotland,	Franklin,	Pa.
II. Kline, Edna M.,	Biglerville, R. 1,	Adams,	Pa.
II. Kline, Helen E.,	3824 W. Chestnut Ave., Altoona,	Blair,	Pa.
I. Klingler, Iva M.,	McClure,	Snyder,	Pa.
I. Klingman, Pauline B.,	Market St., Mifflinburg,	Union,	Pa.
III. Krone, Mildred A.,	Lewisberry,	York,	Pa.
I. LaMaster, Evelyn G.,	Lemaster,	Franklin,	Pa.
I. Landis, Erma I.,	Oberlin,	Dauphin,	Pa.
III. Lawson, Florence M.,	Honey Grove,	Juniata,	Pa.
II. Lewis, Ruth V.,	E. High St., Duncannon,	Perry,	Pa.
I. Locke, Madaline G.,	Milford St., Mt. Union,	Huntingdon,	Pa.
I. Lower, Helen I.,	Table Rock,	Adams,	Pa.
II. Ludwig, Louise,	1454 W. King St., York,	York,	Pa.
III. McCulloh, Ellen E.,	Chambersburg, R. 8,	Franklin,	Pa.
I. McDannell, Ruth D.,	Shippensburg,	Cumberland,	Pa.
III. McDonald, Myrtle V.,	Newville,	Cumberland,	Pa.
II. McDowell, Miriam E.,	New Cumberland, R. 1,	Cumberland,	Pa.
I. McKelvey, Helen,	37 E. Main St., Waynesboro,	Franklin,	Pa.
III. McVitty, Anna M.,	Spring Run,	Franklin,	Pa.
III. McVitty, J. Velma,	Spring Run,	Franklin,	Pa.
II. Manges, Neva,	330 W. Church St., Somerset,	Somerset,	Pa.
II. Markley, Dorothy,	N. 3rd St., Bellwood,	Blair,	Pa.
II. Maurath, Charlotte R.,	7½ N. Earl St., Shippensburg,	Cumberland,	Pa.

<i>Name</i>	<i>Post Office</i>	<i>County</i>	<i>State</i>
I. Mentzer, Ida M.,Newville,Cumberland,	Pa.
I. Metz, Florence M. E.,	..Fayetteville,Franklin,	Pa.
I. Miller, Edith M.,32 W. Pomfret St.,	Carlisle, Cumber-	land,
III. Minter, Marian M.,New Oxford, R. 2,Adams,	Pa.
II. Moyer, Mildred L.,502 S. Main St.,	Chambersburg, Frank-	lin,
II. Nelson, Helen E.,Petersburg,Huntingdon,	Pa.
II. Noble, Dorothea I.,662 W. Market St.,	York,	York, Pa.
III. Ocker, Mary M.,Newville, R. 5,Cumberland,	Pa.
I. Palmer, R. Ethel,Smithburg,Frederick,	Md.
III. Penrod, Helen E.,Windber,Somerset,	Pa.
I. Peters, Blanche M.,	...Fayetteville, R. 1,Franklin,	Pa.
II. Peters, Irene E.,448 Atlantic Ave.,	York,	York, Pa.
II. Polk, Mary E.,Shippensburg,Cumberland,	Pa.
I. Porter, Irene C.,112 Ridge St.,	Steelton, ...	Dauphin, Pa.
II. Ports, Naomi R.,McAllister St.,	Hanover,	York, Pa.
I. Prigg, Anna I.,16th St.,	Harrisburg,	Dauphin, Pa.
I. Rebert, L. Josephine,	..Cashtown,Adams,	Pa.
II. Reider, E. Frances,	...Middletown, R. 2,Dauphin,	Pa.
II. Rice, Mary R.,Landisburg,Perry,	Pa.
II. Richardson, Sara E.,	..Oakville,Cumberland,	Pa.
I. Riggeal, Mildred,Orrtanna,Adams,	Pa.
I. Rinehart, C. Margaret,	..Park Ave.,	Mercersburg, ...	Franklin, Pa.
I. Robinson, Bess H.,1328 William St.,	Harrisburg, Dauphin,	Pa.
I. Ross, Margaret Edda,	..Masonic Home,	Elizabethtown, Lancas-	ter,
II. Ross, Margaret Elizabeth,	304 E. Walton Ave.,	Altoona, ..	Blair, Pa.
I. Rotz, Gladys V.,Ft. Loudon,Franklin,	Pa.
III. Sanders, Bernice A.,	..Fairfield,Adams,	Pa.
I. Schaffstall, I. Edna,	...300 W. Main St.,	Lykens, ..	Dauphin, Pa.
I. Scott, Hazel M.,2415 Derry St.,	Harrisburg, Dauphin,	Pa.
II. Seacrist, Flora C.,230 S. Duke St.,	York,	York, Pa.
I. Sehner, Dorothy E.,	...Cottage Ave.,	Glenn Rock,	York, Pa.
III. Shaffer, Helen I.,Newville,Cumberland,	Pa.
I. Sharp, Edna M.,739 N. George St.,	York,	York, Pa.
III. Shatzer, Lois V.,St. Thomas,Franklin,	Pa.
III. Shettel, Salome,Lewisberry,York,	Pa.
II. Shoemaker, Margretta M.,	1216 Wilson Ave.,	Chambersburg, Frank-	lin,
II. Shoemaker, Mildred I.,	1216 Wilson Ave.,	Chambersburg, Frank-	lin,
II. Shope, M. Dorothy,	...Oberlin,Dauphin,	Pa.
II. Shue, Mary E.,Mount Union,Huntingdon,	Pa.
II. Snyder, Helen G.,Union St.,	Millersburg, ...	Dauphin, Pa.
I. Snyder, Kathryn A.,	...Landisburg,Perry,	Pa.

<i>Group Name</i>	<i>Post Office</i>	<i>County and State</i>
II. Spealman, Laura K., ...	Dillsburg,	York, Pa.
III. Speer, Mary L.,	Blairs Mills,	Huntingdon, Pa.
II. Stante, Aljane J.,	S. Main St., Marysville,	Perry, Pa.
II. Stein, Evelyn G.,	40 E. Princess St., York,	York, Pa.
I. Sterrett, Margaret G., ..	Forbes Road,	Westmoreland, Pa.
II. Stewart, E. Thelma, ...	Roaring Springs,	Blair, Pa.
I. Stewart, Lucy,	1021 S. 9th St., Harrisburg, Dauphin, Pa.	
I. Stoneback, Hazel L., ...	943 Monocacy St., Bethlehem, North-	
	ampton,	Pa.
I. Stouffer, M. Margaret, ..	Waynesboro,	Franklin, Pa.
I. Stover, Marie E.,	625 Lincoln St., Carlisle, Cumberland,	
	Pa.
III. Straley, Florence M., ...	Lewisberry,	York, Pa.
II. Straley, Katharine E., ..	206 S. 15th St., Camp Hill, Cumber-	
	land,	Pa.
I. Sultzbaugh, Estella M., .	Camp Hill, R. 1,	Cumberland, Pa.
II. Sweitzer, K. Isabella, ..	Highspire,	Dauphin, Pa.
I. Swindell, Emily C.,	508 South Ave., Wilkesburg, Alle-	
	gheny,	Pa.
II. Taylor, A. Lois,	Biglerville,	Adams, Pa.
II. Tussey, Sara E.,	Altoona, R. 2,	Blair, Pa.
II. Vanderau, E. Helen, ...	Mercersburg,	Franklin, Pa.
I. Wahrman, Carrie E. S., .	730 St. John St., Allentown, ..	Lehigh, Pa.
III. Wallace, Georgia K., ...	2303 N. 6th St., Harrisburg, Dauphin, Pa.	
II. Walls, R. Hazel,	Orbisonia,	Huntingdon, Pa.
II. Weikert, Madeline L., ..	Gettysburg,	Adams, Pa.
I. Weller, Florence M., ...	Mercersburg,	Franklin, Pa.
II. Wenk, Mildred D.,	Aspers,	Adams, Pa.
II. White, Margaret H., ...	Shippensburg,	Cumberland, Pa.
II. Williams, Iola,	King St., Chambersburg, ..	Franklin, Pa.
II. Wilson, Alda M.,	1519 Fulton St., Harrisburg, Dauphin, Pa.	
I. Young, Ruby L.,	Lemoyne,	Cumberland, Pa.

MEN

III. Berkheimer, Edgar W., .	Fishertown,	Bedford, Pa.
III. Doll, Richard N.,	York, R. 10,	York, Pa.
III. Grass, Ivan E.,	Dover, R. 2,	York, Pa.
III. Heckman, Price H., ...	Chambersburg, R. 4,	Franklin, Pa.
III. Kinard, A. Thomas, ...	New Cumberland,	Cumberland, Pa.
III. Myers, Glen G.,	Fayetteville,	Franklin, Pa.
III. Raffensperger, Ivan, ...	Biglerville,	Adams, Pa.
III. Stamy, A. Reese,	Chambersburg, R. 10,	Franklin, Pa.
III. Stum, Paul E.,	Landisburg,	Perry, Pa.
III. Wilt, Roy B.,	Blain,	Perry, Pa.

CLASS OF 1930 B. S. FOUR YEAR COURSE

WOMEN

<i>Name</i>	<i>Post Office</i>	<i>County</i>	<i>State</i>
Barbour, D. Gail, 125 N. 6th St.,	Chambersburg,	Franklin,	Pa.
Bolinger, Mary E.,	Three Springs,	Huntingdon,	Pa.
Brown, E. Helen, 18 W. Queen St.,	Chambersburg,	Franklin,	Pa.
Campbell, Martha E., 1505 Scotland Ave.,	Chambersburg,	Franklin,	Pa.
Craig, M. Elizabeth,	Shippensburg, R. 2.,	Cumberland,	Pa.
Daniels, Gladys S., S. Market St.,	Mechanicsburg,	Cumberland,	Pa.
Etter, Edna J.,	Chambersburg, R. 8.,	Franklin,	Pa.
Garrett, Mrs. Bessie B., 12 S. 16th St.,	Harrisburg,	Dauphin,	Pa.
Heberlig, Norma B., 165 S. Summit St.,	Harrisburg,	Dauphin,	Pa.
Hege, Margaret G.,	Mercersburg,	Franklin,	Pa.
Hertzler, Ruth M., 100 23rd St.,	Camp Hill,	Cumberland,	Pa.
Hoover, Vitalis M., 210 Washington St.,	Shippensburg,	Cumberland,	Pa.
Johnescu, Anna M., 524 Jeannette St.,	Wilkinsburg,	Allegheny,	Pa.
Kines, Ethel H.,	New Buffalo,	Perry,	Pa.
Klugh, Thelma K., Hummel Ave.,	Lemoyne,	Cumberland,	Pa.
Lembert, Frances E., 1116 Larchmont Ave.,	Penfield,	Delaware,	Pa.
Lentz, Alice A., 209 Enola Road,	Enola,	Cumberland,	Pa.
Poorbaugh, Marion P.,	York, R. 3,	York,	Pa.
Shallenberger, Anna O.,	McAlisterville,	Juniata,	Pa.
Small, Thelma E.,	Marion,	Franklin,	Pa.
Stewart, L. Louise,	Dry Run,	Franklin,	Pa.
Zarger, Janet L., 812 Lincoln Way East,	Chambersburg,	Franklin,	Pa.

MEN

Barbour, Robert R., E. King St.,	Shippensburg,	Cumberland,	Pa.
Brindle, George R.,	Chambersburg, R. 1,	Franklin,	Pa.
Byers, Erney C.,	Lewisberry,	York,	Pa.
Cable, Raymond W., 378 Center St.,	Millersburg,	Dauphin,	Pa.
DeWalt, Augustus, Harrisburg, R. 2,		Dauphin,	Pa.
Dubbs, William B., 17 N. Earl St.,	Shippensburg,	Cumberland,	Pa.
Ehlman, Samuel A.,	Ickesburg,	Perry,	Pa.
Eichelberger, Alfred L.,	Bowmansdale,	York,	Pa.
Fitzgerald, John, 322 S. West St.,	Carlisle,	Cumberland,	Pa.
Forney, S. George, 464 Race St.,	Millersburg,	Dauphin,	Pa.
Goodhart, Mark M.,	Dickinson,	Cumberland,	Pa.
Gotwalt, Samuel A., 334 E. King St.,	York,	York,	Pa.
Harbison, Dale H.,	Bakerstown,	Allegheny,	Pa.
Henry, Mervin L., 338 E. Burd St.,	Shippensburg,	Cumberland,	Pa.
Kreps, Melvin H., 2228 N. 6th St.,	Harrisburg,	Dauphin,	Pa.
Larimer, Claude F.,	Ebensburg,	Cambria,	Pa.
McGaughey, J. Wilbur,	Lemaster,	Franklin,	Pa.
Maxell, Edward N., 742 Madison Ave.,	York,	York,	Pa.

<i>Name</i>	<i>Post Office</i>	<i>County</i>	<i>State</i>
Mentzer, W. Richard,	Martinsburg,	Blair,	Pa.
Miller, J. Elwood,	Schellburg,	Bedford,	Pa.
Morris, Walter S.,	Marysville,	Perry,	Pa.
Reed, Harold C., 44 S. Earl St.,	Shippensburg, ...	Cumberland, ...	Pa.
Schwinger, E. Raymond, 318 Mulberry St.,	Hagerstown, Washington, Md.		
Shuler, Philip K., 316 Reno St.,	New Cumberland, .	Cumberland, ...	Pa.
Taylor, Noel A.,	Arendtsville,	Adams,	Pa.
Weirick, Park C., Progress, Box 317,		Dauphin,	Pa.
Wetzel, J. Wilbur, Linden Ave.,	Waynesboro, ...	Franklin,	Pa.
Yohe, John S.,	Fayetteville,	Franklin,	Pa.

CLASS OF 1930 TWO YEAR COURSE

WOMEN

<i>Name</i>	<i>Post Office</i>	<i>County</i>	<i>State</i>
Alleman, Edna, Shippensburg, R. 4,		Franklin,	Pa.
Allen, Ethel C., 2444 Reel St.,	Harrisburg,	Dauphin,	Pa.
Andrews, Hazel, 129 Harrison Ave.,	Chambersburg, Franklin, ...		Pa.
Angle, E. Pearl, 37 Spring Grove Ave.,	Greencastle, Franklin, ...		Pa.
Auker, Katharine M.,	Mifflintown,	Juniata,	Pa.
Baird, Meta B., 176 Hamilton Ave.,	Waynesboro, Franklin,		Pa.
Barnett, Marguerite M.,	Hopewell,	Bedford,	Pa.
Bates, Blanche D., 1903 N. 3rd St.,	Harrisburg, ..	Dauphin,	Pa.
Benchoff, I. Stanton, 168 L. Way West,	Chambersburg, Franklin, .		Pa.
Berger, Mary M., 26 N. Federal St.,	Chambersburg, Franklin,		Pa.
Bernhardt, Harriet M., 1205 Derry St.,	Harrisburg, Dauphin,		Pa.
Betts, Lou Dennis, 431 N. Main St.,	Waynesboro, ..	Franklin,	Pa.
Bingaman, Mary A.,	Middleburg,	Snyder,	Pa.
Bingman, Beulah B.,	New Kingston,	Cumberland, ...	Pa.
Bittinger, Kathleen W., 218 Miller St.,	Chambersburg, Franklin, ...		Pa.
Boone, Harriet A.,	Nook,	Juniata,	Pa.
Bossert, Christine K.,	Mifflintown, R. 3, ..	Juniata,	Pa.
Bowen, Sara E., 201 Bridge St.,	New Cumberland, Cumberland, ...		Pa.
Boyer, Mabel S., 24 Shaw Ave.,	Lewistown,	Mifflin,	Pa.
Bradenbaugh, Ethel E., 277 Union St.,	Millersburg, Dauphin,		Pa.
Bradford, Fay,	Center Hall,	Centre,	Pa.
Brady, A. Eleanor, Main St.,	Marysville,	Perry,	Pa.
Brandt, Vesta R., 120 S. Prince St.,	Shippensburg, Cumberland, ...		Pa.
Brindle, Isabelle A.,	Ft. Loudon,	Franklin,	Pa.
Brinker, Eleanor,	Chalfont,	Bucks,	Pa.
Brode, Florence E.,	Central City,	Somerset,	Pa.
Brown, A. Lorena,	Franklinville,	Huntingdon, ...	Pa.
Brown, Beatrice E.,	Spring Mills,	Centre,	Pa.
Brown, Edna M., 18 W. Queen St.,	Chambersburg, Franklin,		Pa.
Brumgard, Vivian,	Littlestown,	Adams,	Pa.
Brymesser, Mabel M.,	Plainfield,	Cumberland, ...	Pa.
Buck, Ruthanna C., 147 Enola Drive,	Enola,	Cumberland, ...	Pa.

<i>Name</i>	<i>Post Office</i>	<i>County</i>	<i>State</i>
Burley, Virginia M., 910 S. 17th St., Harrisburg, ..		Dauphin, ..	Pa.
Burket, Dorothy R.,	Martinsburg,	Blair,	Pa.
Calloway, Geneva A.,	Mt. Holly Springs, ..	Cumberland, ..	Pa.
Claycomb, Cleo M.,	Cessna, R. 1,	Bedford,	Pa.
Cless, Ruth M., 1925 N. 6th St., Harrisburg,		Dauphin,	Pa.
Cohill, Helen M.,	Mt. Holly Springs, ..	Cumberland, ..	Pa.
Collier, Beatrice, 208 Valley St., Lewistown,		Mifflin,	Pa.
Collins, Oneda M.,	Gettysburg, R. 1, ..	Adams,	Pa.
Conover, G. Kathryn,	Littlestown,	Adams,	Pa.
Corley, Ona M.,	Buffalo Mills,	Bedford,	Pa.
Cornelius, Mrs. Louisa C., ..	Saltillo,	Huntingdon, ..	Pa.
Crist, Ivalilian, 30 Eureka St., Windber,		Somerset,	Pa.
Critchley, Martha L., 102 E. Keller St., Mechanicsburg, ..		Cumberland, ..	Pa.
Crouse, H. Dorothy,	Dry Run,	Franklin,	Pa.
Crum, Leila N., 124 S. Church St., Waynesboro, ..		Franklin,	Pa.
Curfman, Anna B.,	Zullinger,	Franklin,	Pa.
Daniels, Grace,	Everett, R. 1,	Bedford,	Pa.
Davis, A. Matilda, 511 Derry St., Harrisburg,		Dauphin,	Pa.
DeWalt, Helen, 237 N. 6th St., Chambersburg, ..		Franklin,	Pa.
Dietz, Romaine E.,	Wellsville,	York,	Pa.
Dorner, Kathleen C., 238 Pomfret St., Carlisle, ..		Cumberland, ..	Pa.
Duck, Ada W.,	Middleburg,	Snyder,	Pa.
DuVall, Velda L.,	Akersville,	Fulton,	Pa.
Elliott, Ruby, 51 E. Franklin St., Greencastle, ..		Franklin,	Pa.
Embick, E. Sara, 207 Reno St., New Cumberland, ..		Cumberland, ..	Pa.
Emery, M. Algie,	Centre Hall,	Centre,	Pa.
Etter, Eleanora E.,	Fayetteville,	Franklin,	Pa.
Eyster, Ruth A.,	Hanover, R. 5,	York,	Pa.
Fagley, Nellie, 1111 Logan Ave., Tyrone,		Blair,	Pa.
Fenical, Catherine R., 1339 Vernon St., Harrisburg, ..		Dauphin,	Pa.
Figard, Leah H.,	Six Mile Run,	Bedford,	Pa.
Flickinger, Martha E., 110 6th Ave., Altoona,		Blair,	Pa.
Fretz, Isabella A., 310 E. Queen St., Chambersburg, ..		Franklin,	Pa.
Frey, Helen M.,	Carlisle, R. 2,	Cumberland, ..	Pa.
Frey, Margaret E.,	Newville,	Cumberland, ..	Pa.
Frey, Myrtle F., 815 E. Philadelphia St., York, ..		York,	Pa.
Funk, Ruth M.,	Manchester, R. 1, ..	York,	Pa.
Gabler, Katharine E., 922 Scotland Ave., Chambersburg, ..		Franklin, ..	Pa.
Gaines, Lovenia M., 1528 3rd St., Altoona,		Blair,	Pa.
Garman, Marjorie A., 1304 Lincoln Ave., Tyrone, ..		Blair,	Pa.
Garrettson, Mary L., 315 S. Market St., Mechanicsburg, ..		Cumberland, ..	Pa.
Gemmill, Dorothy E., 1287 W. Poplar St., York, ..		York,	Pa.
Gibbons, Geraldine A., Crawford Ave., Altoona, ..		Blair,	Pa.
Gindlesperger, June P.,	Biglerville,	Adams,	Pa.
Gorley, Anne, 122 Clayton Ave., Waynesboro,		Franklin,	Pa.
Grattan, Mary E., 625 Prospect St., Portage,		Cambria,	Pa.

<i>Name</i>	<i>Post Office</i>	<i>County</i>	<i>State</i>
Greiman, Grace E.,	Red Lion,	York,	Pa.
Gross, Esther E.,	York, R. 10,	York,	Pa.
Gumby, Sara E., 158 N. West St.,	Carlisle,	Cumberland,	Pa.
Hale, Dorothy E., 309 W. 10th St.,	New Cumberland,	Cumberland,	Pa.
Hamme, A. Geraldine, 106 Westminster Ave.,	Hanover,	York,	Pa.
Hamme, Mahala C., 106 Westminster Ave.,	Hanover,	York,	Pa.
Harshaw, Estella C., 411 S. 3rd St.,	Colwyn,	Delaware,	Pa.
Heberlig, Hazel M., Shippensburg, R. 2,		Cumberland,	Pa.
Heberlig, Helen M.,	Carlisle, R. 6,	Cumberland,	Pa.
Heffelfinger, K. Kathryn, W. Main St.,	Newville,	Cumberland,	Pa.
Hefner, Helen M., 35 Bonsall Ave.,	Philadelphia,	Philadelphia,	Pa.
Hench, June L.,	Loysville,	Perry,	Pa.
Hildt, M. Gladys,	Stewartstown,	York,	Pa.
Hill, Mary L.,	Cove Gap,	Somerset,	Pa.
Hoffman, Loreda G., Paint St.,	Scalp Level,	Somerset,	Pa.
Howard, Elcora L., 211 N. 2nd St.,	Steeltown,	Dauphin,	Pa.
Ihrig, Catherine L., 57 E. Cottage Place,	York,	York,	Pa.
Irwin, Laura A., 412 Maple Ave.,	Bellwood,	Blair,	Pa.
Jacoby, Marian E., 306 E. Main St.,	Mechanicsburg,	Cumberland,	Pa.
Kane, Grace E.,	Orrtanna, R. 2,	Adams,	Pa.
Karns, Maxine,	Dillsburg,	York,	Pa.
Kauffman, Florence, 522 W. 4th St.,	Lewistown,	Mifflin,	Pa.
Kerr, Helen I., 404 N. Bedford St.,	Carlisle,	Cumberland,	Pa.
Kinney, Mary C.,	Expedit,	Cambria,	Pa.
Klink, Pearl E., Mechanicsburg, R. 1,		Cumberland,	Pa.
Knippel, Mildred E., York St.,	Hanover,	York,	Pa.
Kocher, Anne L.,	Petersburg,	Huntingdon,	Pa.
Kolb, Inez E., Oak Lane,	New Cumberland,	Cumberland,	Pa.
Kolb, Mary E., 128 S. 2nd St.,	Chambersburg,	Franklin,	Pa.
Koontz, Edna M.,	Lutzville,	Bedford,	Pa.
Kough, V. Irene,	Robertsdale,	Huntingdon,	Pa.
Kramer, Mary E.,	Carlisle, R. 9,	Cumberland,	Pa.
Krug, Mary H., 627 W. Market St.,	York,	York,	Pa.
Kuhn, Grace D.,	Cashtown,	Adams,	Pa.
Landis, Nelda, 120 N. Diamond St.,	York,	York,	Pa.
Lehman, Evelyn B., 652 E. Union St.,	Millersburg,	Dauphin,	Pa.
Leigh, Beulah M.,	Newville,	Cumberland,	Pa.
Leigh, Virginia B.,	Newville,	Cumberland,	Pa.
Leshner, Barbara E.,	Carlisle, R. 1,	Cumberland,	Pa.
Lewis, Mary E., East High St.,	Duncannon,	Perry,	Pa.
Lloyd, Marion, 5443 Walnut St.,	Philadelphia,	Philadelphia,	Pa.
Lochbaum, Frances E., Mt. Vernon Apts.,	Hagerstown,	Washington,	Md.
Long, Edith M.,	Main St.,	Mifflin,	Pa.
Long, Alma K.,	Funkstown,	Washington,	Md.
Long, Ruth I.,	Wellsville,	York,	Pa.
Love, R. Dorothy,	Oakville,	Cumberland,	Pa.

<i>Name</i>	<i>Post Office</i>	<i>County</i>	<i>State</i>
Lowe, Elnora A., 3211 N. 3rd St., Harrisburg, ...		Dauphin,	Pa.
Lowe, Louise M., 133 E. Cottage Place, York,		York,	Pa.
Luse, Gladys L.,	West Fairview,	Cumberland,	Pa.
McCleary, Florine C., 174 S. Main St., Chambersburg, Franklin,		Pa.	
McCreary, M. Verna,	Schellburg,	Bedford,	Pa.
McDonald, M. Armilda,	Belleville,	Mifflin,	Pa.
McLaughlin, Rose C., 750 W. Princess St., York, ..		York,	Pa.
McManus, Mary M.,	Plainfield,	Cumberland,	Pa.
McMeen, Ruth L., 140 W. 5th St., Lewistown, ..		Mifflin,	Pa.
Mackey, Marian S., Chambersburg, R. 5,		Franklin,	Pa.
Matthias, E. Beatrice,	Burnt Cabins,	Huntingdon,	Pa.
Messner, Anna R.,	Wiconisco,	Dauphin,	Pa.
Metcalfe, Helen M., 228 S. Church St., Waynesboro, Franklin,		Pa.	
Metz, Ruth E.,	Chambersburg,	Franklin,	Pa.
Metzger, Kathryn C.,	New Enterprise, ...	Bedford,	Pa.
Miller, Almira L.,	Dillsburg, R. 2, ...	York,	Pa.
Miller, Dorothy E., 341 E. Garfield St., Shippensburg, Cumberland, ..		Pa.	
Miller, Hazel A., 1636 Catherine St., Harrisburg, ..		Dauphin,	Pa.
Miller, Helen E.,	Marion,	Franklin,	Pa.
Miller, Marie M., 668 Mohr St., Enhaut,		Dauphin,	Pa.
Miller, Nellie E.,	Clearville,	Bedford,	Pa.
Miller, Velva K., 82 N. 3rd St., Chambersburg, ..		Franklin,	Pa.
Millhouse, Mildred,	Shippensburg,	Franklin,	Pa.
Mingle, Phyllis, 728 Church St., Roaring Springs, ..		Blair,	Pa.
Minter, Martha O.,	New Oxford,	Adams,	Pa.
Moist, Catharine J.,	Lewistown, R. 2, ...	Mifflin,	Pa.
Motter, H. Theda,	Littlestown, R. 2, ...	Adams,	Pa.
Moyer, Thelma N.,	Carlisle, R. 6,	Cumberland,	Pa.
Myers, R. Frances, Baltimore St., Dillsburg,		York,	Pa.
Noaker, L. Pearl,	Shippensburg, R. 1, ..	Cumberland,	Pa.
O'Brien, Virginia M.,	Bellwood,	Blair,	Pa.
Oiler, Nellie E.,	Newville, R. 4, ...	Cumberland,	Pa.
Ott, Margaret,	Orbisonia,	Huntingdon,	Pa.
Oyer, Sarah C., 244 E. Garfield St., Shippensburg, Cumberland,		Pa.	
Packer, Catherine C., 1851 Spencer St., Harrisburg, Dauphin,		Pa.	
Patterson, Olevia C.,	Gettysburg, R. 1, ..	Adams,	Pa.
Pecht, Bertha M.,	Milroy,	Mifflin,	Pa.
Pecht, E. Grace,	Milroy,	Mifflin,	Pa.
Pecht, Eunice M.,	Milroy,	Mifflin,	Pa.
Peffer, Mabel M.,	Newville,	Cumberland,	Pa.
Pines, M. Elmyra,	Millerstown,	Perry,	Pa.
Powell, Evelyn,	Hooversville,	Somerset,	Pa.
Quickel, Marguerite J., 3110 Derry St., Harrisburg, Dauphin,		Pa.	
Rebuck, M. Fanny, 26 Montgomery Ave., Shippensburg, Franklin, ..		Pa.	
Reed, Miriam C.,	Milroy,	Mifflin,	Pa.
Reever, Helen B., 121 E. South St., York,		York,	Pa.

<i>Name</i>	<i>Post Office</i>	<i>County</i>	<i>State</i>
Reigart, Isabel G., 424 S. Duke St., York,	York,	York,	Pa.
Rexroth, Marie E., Biglerville, R. 2,	Adams,	Adams,	Pa.
Rinard, R. Lela,	Breezewood,	Bedford,	Pa.
Rinehart, G. Anna,	Brodbecks,	York,	Pa.
Robinson, Harriett E., 115 E. North St., Waynesboro, Franklin,	Franklin,	Franklin,	Pa.
Ross, B. Edna,	Saxton,	Bedford,	Pa.
Scellatto, Alime J., 350 W. North St., Carlisle, ..	Cumberland,	Cumberland,	Pa.
Scott, June,	Carlisle, R. 8,	Cumberland,	Pa.
Seltzer, S. Jeannette, 424 Cumberland St., Lebanon, Lebanon,	Lebanon,	Lebanon,	Pa.
Senft, Eva, 832 W. Poplar St., York,	York,	York,	Pa.
Shelly, Ruth R.,	Dillsburg,	York,	Pa.
Shoap, Isabelle A., 225 Yale St., Harrisburg,	Dauphin,	Dauphin,	Pa.
Shope, A. Nellie,	Orbisonia,	Huntingdon,	Pa.
Shuler, Mary E.,	Liverpool,	Perry,	Pa.
Sipe, M. Clara,	Carlisle, R. 9,	Cumberland,	Pa.
Sleichter, Margaret C.,	Scotland,	Franklin,	Pa.
Smith, Junia S., 53 S. Main St., Chambersburg, ..	Franklin,	Franklin,	Pa.
Snyder, Anna M.,	Lewistown, R. 1, ..	Mifflin,	Pa.
Snyder, Mary,	York New Salem, ..	York,	Pa.
Sprow, E. Kathryn,	Fayetteville,	Franklin,	Pa.
Steever, Isabel A., Market St., Lykens,	Dauphin,	Dauphin,	Pa.
Sternner, Mary L., 655 W. Philadelphia St., York, ..	York,	York,	Pa.
Stetler, Lorena F.,	Middleburg,	Snyder,	Pa.
Stine, Greta M., 28 High St., Gettysburg,	Adams,	Adams,	Pa.
Stitt, Ruth J.,	Gettysburg, R. 10, ..	Adams,	Pa.
Strayer, Bernadette E.,	Dillsburg,	York,	Pa.
Strickler, Martha M.,	Boiling Springs, ..	Cumberland,	Pa.
Swab, Helen I., Broad St., Elizabethville,	Dauphin,	Dauphin,	Pa.
Swisher, Nellie E.,	Waynesboro,	Franklin,	Pa.
Tarman, Marguerite V., 137 Columbia Road, Enola, Cumberland, ..	Pa.	Cumberland, ..	Pa.
Tasker, D. Frances,	Blackgap,	Franklin,	Pa.
Thumma, Erma R., 706 High St., Enhaut,	Dauphin,	Dauphin,	Pa.
Timmons, Mabel K.,	Orrstown,	Franklin,	Pa.
Tussey, Isabell A.,	Spruce Creek,	Huntingdon,	Pa.
Wagner, Ada M.,	Mifflintown,	Juniata,	Pa.
Wagner, M. Mildred,	Milroy,	Mifflin,	Pa.
Wentz, Margaret E., McKnightstown, R. 1,	Adams,	Adams,	Pa.
Whorley, Jean M., 242 Maclay St., Harrisburg, ..	Dauphin,	Dauphin,	Pa.
Whorley, Lillian R., 128 N. Earl St., Shippensburg, Cumberland,	Pa.	Cumberland,	Pa.
Wiest, Loy E., 342 Church St., Millersburg,	Dauphin,	Dauphin,	Pa.
Williams, Katharyn E., 11 W Coover St., Mechanicsburg, Cumberland, Pa.	Pa.	Cumberland, Pa.	Pa.
Wilson, Jessie,	Stewartstown,	York,	Pa.
Winn, Helen M., W. 15th St., New Cumberland, ..	Cumberland,	Cumberland,	Pa.
Wilt, Miriam E., 127 E. Cottage Place, York,	York,	York,	Pa.
Witmer, Adda M.,	Liverpool,	Perry,	Pa.

<i>Name</i>	<i>Post Office</i>	<i>County</i>	<i>State</i>
Woods, Ariel D., 207 E. Garfield St.,	Shippensburg,	Cumberland,Pa.
Yeager, Ruth, S. 2nd St.,	Chambersburg,	Franklin,Pa.
Yoder, Evelyn G.,	Spruce Hill,	Juniata,Pa.

MEN

Burkhart, William H.,	Shippensburg, R. 1,	Cumberland,Pa.
Casey, James P.,	Falls Creek,	Jefferson,Pa.
Crum, Eugene W.,	R. 1, South Fork,	Cambria,Pa.
Fox, Olen A.,	Greencastle, R. 2,	Franklin,Pa.
Gearhart, Lowell,	Shady Grove,	Franklin,Pa.
Hench, Donald W.,	Andersonburg, R. 1,	Perry,Pa.
Kelly, Floyd W.,	Three Springs,	Huntingdon,Pa.
Kemper, C. Glenn,	Heidlersburg,	Adams,Pa.
Kennedy, Charles A.,	New Oxford,	Adams,Pa.
Knepper, Paul A.,	Chambersburg, R. 11,	Franklin,Pa.
McCord, Franklin M.,	Wiconisco,	Dauphin,Pa.
McDannell, James M.,	309 E. King St.,	Shippensburg, Cumberland,	Pa.
McLaughlin, Bill T.,	E. Baltimore St.,	Greencastle, Franklin,Pa.
Mohler, George A.,	Elliottsburg,	Perry,Pa.
Mooney, Harold T.,	Shippensburg,	Cumberland,Pa.
Robinson, Carl A.,	East Waterford,	Juniata,Pa.
Roddy, S. Russell,	West Fairview,	Cumberland,Pa.
Rotz, George R.,	Chambersburg, R. 9,	Franklin,Pa.
Shaffer, William B.,	Pavia,	Bedford,Pa.
Sherbine, Carl E.,	Wilmore,	Cambria,Pa.
Sleichter, Craig G.,	Mowersville,	Franklin,Pa.
Smith, Parker T.,	Glen Rock,	York,Pa.
Snyder, Chester L.,	Hanover, R. 4,	York,Pa.
Sweigert, Franklin P.,	384 W. Queen St.,	Chambersburg, Franklin,	Pa.
Tanger, Rene A.,	York Springs,	Adams,Pa.
Thornton, Frederick,	Boiling Springs,	Cumberland,Pa.
Thornton, Lester R.,	Boiling Springs,	Cumberland,Pa.
Wood, Wayne F.,	Newville,	Cumberland,Pa.

CLASS OF 1931 FOUR YEAR COURSE**WOMEN**

<i>Name</i>	<i>Post Office</i>	<i>County</i>	<i>State</i>
Baum, Josephine K.,	Shippensburg, R. 5,	Cumberland,Pa.
Champlain, Elizabeth V.,	511 S. 15th St.,	Harrisburg, Dauphin,Pa.
Emig, Evelyn,	Spring Grove,	York,Pa.
Etka, Anna J.,	16 Cross St.,	Mifflintown,Pa.
Fogelsanger, Grace E.,	104 N. Earl St.,	Shippensburg, Cumberland,	..Pa.
Freedman, Blanche,	232 S. Pershing Ave.,	York,	..York, ..Pa.
Green, Relda J.,	Marysville,	Perry,Pa.

<i>Name</i>	<i>Post Office</i>	<i>County</i>	<i>State</i>
Gross, Estella R.,	Dover, R. 2,	York,	Pa.
Hoffeditz, Elizabeth C.,	Mercersburg,	Franklin,	Pa.
Hoffman, Mary E.,	Carlisle,	Cumberland,	Pa.
Jackson, Marguerite M.,	415 N. West St.,	Carlisle, Cumberland,	Pa.
McCormick, Carolyn E.,	664 N. Hanover St.,	Carlisle, Cumberland,	Pa.
Myers, G. Marie,	Newport,	Perry,	Pa.
Peffer, Georgia H.,	Newville,	Cumberland,	Pa.
Rawhouser, Dorothy,	652 Madison Ave.,	York,	Pa.
Sowers, Mary F.,	Fairfield,	Adams,	Pa.
Stephens, Helen M.,	Millerstown,	Perry,	Pa.
Sterner, Pearl E.,	Hanover, R. 2,	York,	Pa.
Vance, Emma M.,	Ft. Loudon,	Franklin,	Pa.
Walters, H. Lucile,	W. King St.,	Shippensburg, Cumberland,	Pa.
Withers, Rachael A.,	2305 Market St.,	Camp Hill, Cumberland,	Pa.

MEN

Allison, H. Wilbur,	Shippensburg,	Cumberland,	Pa.
Arnold, W. Maurice,	New Cumberland,	Cumberland,	Pa.
Barkley, Donald,	106 E. Orange St.,	Shippensburg, Cumberland,	Pa.
Brandt, Martin G.,	Shippensburg,	Cumberland,	Pa.
Bushey, Norman F.,	Biglerville,	Adams,	Pa.
Calhoun, Norman R.,	Milroy,	Mifflin,	Pa.
Clark, William B.,	118 N. Prince St.,	Shippensburg, Cumberland,	Pa.
Cox, Benjamin J.,	Williamstown,	Dauphin,	Pa.
Danner, Earl F.,	West Fairview,	Cumberland,	Pa.
Davis, Don,	Walnut St.,	Williamstown, Dauphin,	Pa.
Davis, Gordon R.,	Marysville,	Perry,	Pa.
Day, David W.,	Union St.,	Millersburg, Dauphin,	Pa.
Deardorff, Myles R.,	Gettysburg,	Adams,	Pa.
Deiss, T. Henry,	Milroy,	Mifflin,	Pa.
Dissinger, Earl,	Duncannon,	Perry,	Pa.
Eberle, Elmer V.,	2404 N. 6th St.,	Harrisburg, Dauphin,	Pa.
Ebner, Charles H.,	2244 Jefferson St.,	Harrisburg, Dauphin,	Pa.
Edwards, Richard,	Bressler,	Dauphin,	Pa.
Frank, Norman W.,	Chambersburg,	Franklin,	Pa.
Fuller, Donald M.,	111 Orange St.,	Shippensburg, Cumberland,	Pa.
Gulden, Donald L.,	Biglerville,	Adams,	Pa.
Hamman, Odes M.,	Three Springs,	Huntingdon,	Pa.
Hazlett, William C.,	Dry Run,	Franklin,	Pa.
Joseph, Maron J.,	337 Oak Lane,	Glenolden, Delaware,	Pa.
Knorr, D. Louis,	Gratz,	Dauphin,	Pa.
Leberknight, James D.,	Orrstown,	Franklin,	Pa.
Mitchell, Edgar W.,	1237 Chestnut St.,	Harrisburg, Dauphin,	Pa.
Monn, John J.,	Scotland,	Franklin,	Pa.
Mort, Donald W.,	111 W. King St.,	Waynesboro, Franklin,	Pa.
Myers, Ernest R.,	324 High St.,	Highspire, Dauphin,	Pa.

<i>Name</i>	<i>Post Office</i>	<i>County</i>	<i>State</i>
Oyer, Cyrus, 25 W. 4th St., Waynesboro,	Franklin,	Franklin,	Pa.
Peters, H. Bowers,	Aspers,	Adams,	Pa.
Rife, Jean M., 141 W. King St., Chambersburg, ..	Franklin,	Franklin,	Pa.
Schlichter, Lowell W., Chambersburg, R. 3,	Franklin,	Franklin,	Pa.
Shaffer, Donald W.,	Mercersburg,	Franklin,	Pa.
Sheeler, J. Howard, 304 Long Ave., Shippensburg, ..	Cumberland,	Cumberland,	Pa.
Slaybaugh, Arthur L.,	Arendtsville,	Adams,	Pa.
Snoke, James S.,	Mowersville,	Franklin,	Pa.
Somer, Donald C., 110 E. King St., Shippensburg, ..	Cumberland,	Cumberland,	Pa.
Stees, Wallace L.,	Marysville,	Perry,	Pa.
Tiley, Chas C.,	Shippensburg,	Cumberland,	Pa.
Vogel, R. Clayton,	Williamstown,	Dauphin,	Pa.
Walters, Charles, 337 E. King St., Shippensburg, ..	Cumberland,	Cumberland,	Pa.
Washington, LeRoy, 137 Lincoln St., Carlisle, ...	Cumberland,	Cumberland,	Pa.
Weader, Michael W.,	McClure,	Snyder,	Pa.
Weaver, J. Dale,	Gettysburg, R. 7, ..	Adams,	Pa.
Weigle, John R.,	Lewisberry,	York,	Pa.
Wolfe, Milton D., 113 S. Arch St., Mechanicsburg, ..	Cumberland,	Cumberland,	Pa.

CLASS OF 1932 FOUR YEAR COURSE

WOMEN

<i>Name</i>	<i>Post Office</i>	<i>County</i>	<i>State</i>
Black, Minerva S.,	Altoona, R. 2,	Blair,	Pa.
Brown, Agnes, Glen St., Chambersburg,	Franklin,	Franklin,	Pa.
Brown, Catherine L., Glen St., Chambersburg, ...	Franklin,	Franklin,	Pa.
Burk, Dorothy F., 613 Hummel Ave., Lemoyne, ..	Cumberland,	Cumberland,	Pa.
Campbell, Janet E., 134 W. Milford St., Mt. Union, ..	Huntingdon,	Huntingdon,	Pa.
Clark, M. Gladys, 118 N. Prince St., Shippensburg, ..	Cumberland,	Cumberland,	Pa.
Danfelt, F. Helen, 5 Pen Mar St., Waynesboro, ..	Franklin,	Franklin,	Pa.
Feldman, Elizabeth A., 605 L. Way East, Chambersburg, ..	Franklin,	Franklin,	Pa.
Fortna, Bertha M., 28 Montgomery Ave., Shippensburg, ..	Franklin,	Franklin,	Pa.
Geib, Gwendolyn, 216 Front St., Marysville,	Perry,	Perry,	Pa.
Gelnet, Irene E., 305 N. Main St., Hummelstown, ..	Dauphin,	Dauphin,	Pa.
Heefner, Dorothy G.,	Waynesboro, R. 4, ..	Franklin,	Pa.
Herre, Mary K., 3004 N. 3rd St., Harrisburg, ...	Dauphin,	Dauphin,	Pa.
Keasey, Martha, 308 Brookline Blvd., Brookline, ..	Delaware,	Delaware,	Pa.
Kitzmiller, Gladys, 120 3rd St., Waynesboro,	Franklin,	Franklin,	Pa.
Longbrake, Jennie A.,	Marysville,	Union,	Ohio
Lytle, Mildred E., Shippensburg, R. 4,	Cumberland,	Cumberland,	Pa.
Myers, Beatrice C., 611 W. Market St., York, ...	York,	York,	Pa.
Newman, Marcelle E., 111 8th St., Tyrone,	Blair,	Blair,	Pa.
O'Dell, Irene, 219 Valley St., Lewistown,	Mifflin,	Mifflin,	Pa.
Ruff, Florence E., 30 W Main St., Hummelstown, ..	Dauphin,	Dauphin,	Pa.
Stock, Edith M., 158 N. College St., Carlisle,	Cumberland,	Cumberland,	Pa.
Taylor, Harriet C., 312 E. Maple St., Wildwood, ..	Cape May,	Cape May,	N. J.

<i>Name</i>	<i>Post Office</i>	<i>County</i>	<i>State</i>
Tritt, Margaret E.,	Newville,	Cumberland,	Pa.
Witter, Marion E.,	331 E. King St., Chambersburg,	Franklin,	Pa.

MEN

Baker, F. Ben,	Everett, R. 1,	Bedford,	Pa.
Baker, Vernon F.,	Shippensburg, R. 4,	Franklin,	Pa.
Bauer, Walter J.,	Slatington, R. 2,	Lehigh,	Pa.
Berkheimer, Earl M.,	119 S. Market St., Mechanicsburg,	Cumberland,	Pa.
Bikle, Charles L.,	206 W. 2nd St., Waynesboro,	Franklin,	Pa.
Black, John W.,	Gettysburg, R. 7,	Adams,	Pa.
Blowers, John R.,	Neff's Mills,	Huntingdon,	Pa.
Blynn, Harry,	S. Penn St., Shippensburg,	Cumberland,	Pa.
Bradley, Albert G.,	Dudley,	Huntingdon,	Pa.
Campbell, Cloyd C.,	Dry Run,	Franklin,	Pa.
Conrad, William P.,	39 W. Baltimore St., Greencastle,	Franklin,	Pa.
Davidson, D. Earl,	Milroy,	Mifflin,	Pa.
Davison, Joseph F.,	Chambersburg, R. 9,	Franklin,	Pa.
Dayton, Clark H.,	Newville,	Cumberland,	Pa.
Deihl, Lee H.,	109 King St., Shippensburg,	Cumberland,	Pa.
Dick, Dwight M.,	558 Vickroy St., Johnstown,	Cambria,	Pa.
Dile, Kenneth,	Fayetteville,	Franklin,	Pa.
Donaldson, John K.,	150 Grove St., Morrisville,	Bucks,	Pa.
Dutton, Edward Z.,	Marysville,	Perry,	Pa.
Faust, R. Paul,	Zeiglersville,	Montgomery,	Pa.
Fegan, Charles S.,	Fayetteville,	Franklin,	Pa.
Foreman, Joseph M.,	234 E. Orange St., Shippensburg,	Cumberland,	Pa.
Fortney, Boyd M.,	Bowmansdale,	Cumberland,	Pa.
Franklin, John A.,	22 Montgomery Ave., Shippensburg,	Franklin,	Pa.
Fulton, Glenn E.,	427 E. King St., Shippensburg,	Cumberland,	Pa.
Funk, Paul L.,	20 W. Factory St., Mechanicsburg,	Franklin,	Pa.
Gabler, S. Raymond,	Lurgan,	Franklin,	Pa.
Geyer, Blaine,	53 W. 7th St., Chambersburg,	Franklin,	Pa.
Gleim, Millard L.,	Gardners,	Adams,	Pa.
Gracey, Eugene,	337 S. Main St., Lewistown,	Mifflin,	Pa.
Green, B. Jack,	Carrolltown,	Cambria,	Pa.
Greenawalt, Norman,	S. Earl St., Shippensburg,	Cumberland,	Pa.
Heckman, Paul S.,	Chambersburg, R. 7,	Franklin,	Pa.
Henneberger, Russell B.,	338 Catherine St., Chambersburg,	Franklin,	Pa.
Hilbush, E. William,	Newville,	Cumberland,	Pa.
Hipple, Ralph W.,	Marysville,	Perry,	Pa.
Hockersmith, Fred B.,	14 W. King St., Shippensburg,	Cumberland,	Pa.
Hoover, Ralph B.,	235 E. King St., Chambersburg,	Franklin,	Pa.
Huber, A. Carl,	Enola,	Cumberland,	Pa.
Kee, George W.,	327 Pitt St., Carlisle,	Cumberland,	Pa.
Kling, Fred P.,	Dry Run,	Franklin,	Pa.
Kochenderfer, Paul,	Ickesburg,	Perry,	Pa.

<i>Name</i>	<i>Post Office</i>	<i>County</i>	<i>State</i>
Kuhn, Myron I.,	Greencastle, R. 4,	Franklin,	Pa.
McClain, Charles W.,	205 S. 2nd St.,	Chambersburg,	Franklin, Pa.
McFerren, Frank E.,	431 E. Queen St.,	Chambersburg,	Franklin, Pa.
Maxheimer, Paul I.,	St. Thomas,	Franklin,	Pa.
Miller, F. Park,	324 Main St.,	Lykens,	Dauphin, Pa.
Mohler, W. Lester,	Newburg, R. 1,	Cumberland,	Pa.
Mower, William D.,	222 E. Garfield St.,	Shippensburg,	Cumberland, Pa.
Moyer, Ivan B.,	Marysville,	Perry,	Pa.
Musser, L. Victor,	Six Mile Run,	Bedford,	Pa.
Myers, Harold W.,	Chambersburg, R. 2,	Franklin,	Pa.
Owens, Myoli,	154 W. North St.,	Carlisle,	Cumberland, Pa.
Piper, Harold W.,	Lilly,	Cambria,	Pa.
Rabena, P. Tony,	427 Bridge St.,	New Cumberland,	Cumberland, Pa.
Robinson, O. Tyrrell,	212 Penn St.,	Highspire,	Dauphin, Pa.
Sinclair, James H.,	Falls Creek,	Jefferson,	Pa.
Sleichter, W. Joseph,	W. King St.,	Shippensburg,	Franklin, Pa.
Smith, H. Glenn,	Shippensburg, R. 2,	Cumberland,	Pa.
Snively, I. Newton,	322 Bryn Mawr Ave.,	Cynwyd,	Montgomery, Pa.
Sutton, Roy G.,	River St.,	New Cumberland,	Cumberland, Pa.
Taylor, Richard G.,	206 N. Prince St.,	Shippensburg,	Cumberland, Pa.
Throckmorton, Hugh A.,	Chambersburg, R. 2,	Franklin,	Pa.
Valentine, Irvin,	362 E. Catherine St.,	Chambersburg,	Franklin, Pa.
Webber, Pheanias C.,	Fallsington,	Bucks,	Pa.
Wolf, Richard H.,	Oregon St.,	Mercersburg,	Franklin, Pa.
Yohe, H. Luther,	Spring Grove,	York,	Pa.
Zepp, Hebert E.,	Gettysburg, R. 10,	Adams,	Pa.

SUMMER SESSION 1928 POST GRADUATES

WOMEN

<i>Name</i>	<i>Post Office</i>	<i>County</i>	<i>State</i>
Bedford, M. Ruth,	'23, Shippensburg,	Cumberland,	Pa.
Bohn, Myra A.,	'27, 548 S. Church St.,	Waynesboro,	Franklin, Pa.
Burkholder, Mildred R.,	'27, Newville,	Cumberland,	Pa.
Burnshire, Wilma H.,	'27, 313 E. Logan Ave.,	Altoona,	Blair, Pa.
Clever, Ethel L.,	'07, 313 E. King St.,	Shippensburg,	Cumberland, Pa.
Clever, Maude,	'00, 313 E. King St.,	Shippensburg,	Cumberland, Pa.
Cox, Carolyn V.,	'23, 507 7th Ave.,	Juniata,	Blair, Pa.
Craig, M. Elizabeth,	'21, Shippensburg,	Cumberland,	Pa.
Crozier, Helen F.,	'24, 1523 Swatara St.,	Harrisburg,	Dauphin, Pa.
Crusey, Thelma G.,	'27, Lees Cross Roads,	Cumberland,	Pa.
Dorsett, M. Eleanor,	'27, Y. W. C. A.,	18th & Arch Sts.,	Phila., Phila., Pa.
Drawbaugh, Nannie Z.,	'01, Newville,	Cumberland,	Pa.
Eisenhart, Ruth R.,	'27, 613 W. Mason St.,	York,	York, Pa.
Essick, Elizabeth R.,	'27, 15 E. King St.,	Shippensburg,	Cumberland, Pa.
Etter, Edna J.,	'21, Chambersburg, R. 8,	Franklin,	Pa.

<i>Name</i>	<i>Post Office</i>	<i>County</i>	<i>State</i>
Funk, Kathryn E., '26,	33 E. King St., Shippensburg,	Cumberland,	Pa.
Graham, Frances M., '06,	...Newville,	Cumberland,	Pa.
Green, Pearl B., '12,	232 E. Orange St., Shippensburg,	Cumberland,	Pa.
Harry, Kathryn A., '27,	1802 7th Ave., Juniata,	Blair,	Pa.
Hays, Mary A., '27,	430 Wolf Ave., Chambersburg,	Franklin,	Pa.
Johnson, Grace E., '27,	1427 Berryhill St., Harrisburg,	Dauphin,	Pa.
Lehman, C. Alice, '94,Shippensburg,	Cumberland,	Pa.
Loy, Mrs. Sara M., '26,Newville,	Cumberland,	Pa.
Lukens, M. Katharine, '27,	213 1st Ave., Altoona,	Blair,	Pa.
McCurdy, K. Eva, '24,	Shippensburg,	R. 5, Cumberland,	Pa.
McLaughlin, Gail C., '16,	...Fort Loudon,	Franklin,	Pa.
Markle, Effie A., '22,Hanover,	York,	Pa.
Markle, Sylvia V., '22,Hanover,	York,	Pa.
Miller, Ellen, '10,Elizabethville,	Dauphin,	Pa.
Morrison, Edith R., '04,Shippensburg,	Cumberland,	Pa.
Needy, Mabel, '04,	24 W. Main St., Waynesboro,	Franklin,	Pa.
Nelson, Elsie E., '27,	248 Myers St., Steelton,	Dauphin,	Pa.
Nye, Mary C., '27,	25 Richard Ave., Shippensburg,	Cumberland,	Pa.
Pecht, Katharine S., '27,	...Milroy,	Mifflin,	Pa.
Perlette, Mary E., '87,	232 E. King St., Shippensburg,	Cumberland,	Pa.
Plough, Mary M., '13,Newville,	Cumberland,	Pa.
Rice, Lenore G., '25,	228 Peffer St., Harrisburg,	Dauphin,	Pa.
Rodgers, Myra P., '27,Mifflin,	Juniata,	Pa.
Rolar, Margaret B., '22,	204 E. Garfield St., Shippensburg,	Cumbrld,	Pa.
Russ, Edna C., '27,	48 W. Orange St., Shippensburg,	Cumberland,	Pa.
Rutledge, Mrs. Isabel, '18,	410 Wolf Ave., Chambersburg,	Franklin,	Pa.
Ryder, Helen L., '25,Greencastle,	Franklin,	Pa.
Ryder, Olive M., '25,Williamson,	Franklin,	Pa.
Shambaugh, Margaret E., '27,	345 E. King St., Shippensburg,	Cumb.,	Pa.
Shearer, Eva M., '23,Dry Run,	Franklin,	Pa.
Shires, H. Bess, '25,Bedford,	Bedford,	Pa.
Simms, Helen M., '27,	309 Jones St., Hollidaysburg,	Blair,	Pa.
Smith, O. Gladys, '27,Lemasters,	Franklin,	Pa.
Snowden, Viola, '26,Ellerslie,	Washington,	Pa.
Snyder, Miriam I., '24,Millersburg,	Dauphin,	Pa.
Tschop, Pauline A., '13,	2757 4th Ave., Huntington,	Cabell,	W. Va.
Walters, Hazel F., '23,	31 N. Earl St., Shippensburg,	Cumberland,	Pa.
Weidenhammer, Hattie F., '26,	Highspire,	Dauphin,	Pa.
Winter, Mrs. Gordon, '27,	...Warfordsburg,	Fulton,	Pa.
Wiseman, Nellie L., '27,	Richard Ave., Shippensburg,	Cumberland,	Pa.
Wolfe, Ethel B., '12,Newville,	R. 3, Cumberland,	Pa.

MEN

Baker, Earl T., '26,East Berlin,	Adams,	Pa.
Barbour, J. William, '26,	...Shippensburg,	Cumberland,	Pa.
Bernecker, Clarence E., '24,	. St. Thomas,	Franklin,	Pa.

<i>Name</i>	<i>Post Office</i>	<i>County</i>	<i>State</i>
Blynn, Oscar M., '26,	35 S. Penn St.,	Shippensburg,	Cumberland,Pa.
Dahl, S. Lester, '23,Mowersville,Franklin,Pa.
Eisenhower, Frank L., '26,	..Shippensburg,	R. 6,	Cumberland,Pa.
Etter, Howard M., '27,	328 E. 3rd St.,	Shippensburg,	Cumberland, ..Pa.
Gentzler, Charles L., '24,East Berlin,Adams,Pa.
Gingrich, Robert, '26,Greencastle,Franklin,Pa.
Hassler, C. Ebbert, '20,Newville,Cumberland,Pa.
Hoover, Harvey E., '26,Newville,Cumberland,Pa.
Johnston, Samuel A., '15,	...Highspire,Dauphin,Pa.
Kelley, J. Maclay, '21,Newville,Cumberland,Pa.
Luse, Robert L., '25,West Fairview,Cumberland,Pa.
Maclay, Robert D., '19,Scotland,Franklin,Pa.
Miller, John W., '25,Millersburg,	R. 1,	Dauphin,Pa.
Ocker, William B., '19,Shippensburg,Cumberland,Pa.
Sheaffer, Joseph M., '23,Shippensburg,Cumberland,Pa.
Shearer, William W., '27,	...Spring Run,Franklin,Pa.
Sheetz, Herbert S., '25,Halifax,Dauphin,Pa.
Slothower, Harry G., '24,Wellsville,York,Pa.
Sponseller, Harling E., '26,	..Shippensburg,Cumberland,Pa.
Stover, E. Cecil, '97,Arendtsville,Adams,Pa.
Throne, Anson G., '27,	327 E. King St.,	Shippensburg,	Cumberland, Pa.
Thrush, G. Herman, '20,	215 E. King St.,	Shippensburg,	Cumberland, Pa.
Walters, Boyd C., '27,Akersville,Fulton,Pa.
Weast, Harry P., '27,Shippensburg,Cumberland,Pa.
Wolf, Harry S., '25,Linglestown,Dauphin,Pa.
Yohe, Waldo E., '27,New Oxford,Adams,Pa.

SUMMER 1928

WOMEN

<i>Name</i>	<i>Post Office</i>	<i>County</i>	<i>State</i>
Acker, Nettie G.,Schellburg,Bedford,Pa.
Albright, Anna V.,Brodbecks,York,Pa.
Althouse, Dorothy E.,Newville,Cumberland,Pa.
Andrews, Vera A.,Everett,Bedford,Pa.
Bagshaw, Esther M.,Alexandria,Huntingdon,Pa.
Bagshaw, Lena V.,Alexandria,Huntingdon,Pa.
Baker, Eva M.,Carlisle, R. 4,Cumberland,Pa.
Baker, Margaret A.,Dillsburg,York,Pa.
Barkdoll, Alice M.,Waynesboro, R. 4,	..Franklin,Pa.
Barner, Mary E.,Newport, R. 2,Perry,Pa.
Barnes, Mrs. Anna L.,	Fayetteville, R. 2,Franklin,Pa.
Barnhart, Charlotte E.,Mason & Dixon,	..Franklin,Pa.
Barr, Eleanor M.,McAlevy's Fort,Huntingdon,Pa.
Barry, Sadie I.,	120 West St.,	Williamstown,Dauphin,Pa.

<i>Name</i>	<i>Post Office</i>	<i>County</i>	<i>State</i>
Bashore, Mildred J.,	Mifflintown,	Juniata,	Pa.
Beam, Beulah B.,	Goodyear,	Cumberland,	Pa.
Beck, Dorothy M.,	Expedit,	Cambria,	Pa.
Beckley, Edith C.,	St. Clairsville,	Bedford,	Pa.
Beegle, Dorothy L.,	Lutzville,	Bedford,	Pa.
Bemiller, Ethel, 102 Broadway,	Hanover,	York,	Pa.
Bender, S. Kathryn, King St.,	Shippensburg,	Cumberland,	Pa.
Bennett, Stella I.,	Flintstone,	Washington,	Md.
Bingman, Amelia E.,	Beavertown,	Snyder,	Pa.
Blauser, Vesta W.,	Spring Mills,	Centre,	Pa.
Boden, Viola,	Ickesburg,	Perry,	Pa.
Bowers, Anna I., 625 Chestnut St.,	York,	York,	Pa.
Brechbill, Helen R., Chambersburg, R. 2,		Franklin,	Pa.
Brown, Blanche,	Hustontown,	Fulton,	Pa.
Brown, Hazel M.,	Hustontown,	Fulton,	Pa.
Bubb, Frances I.,	Paintersville,	Mifflin,	Pa.
Burger, Mrs. C. W., 50 Irvin Ave.,	Hagerstown,	Washington,	Md.
Burkholder, P. Ethel,	Chambersburg,	Franklin,	Pa.
Carper, Elsie G.,	Roaring Springs,	Blair,	Pa.
Chestnut, Maryellen,	Hancock,	Fulton,	Md.
Clary, Estella R.,	Greencastle,	Franklin,	Pa.
Coller, Sara,	New Bloomfield,	Perry,	Pa.
Confer, Grace M., 101 Willow Ave.,	Altoona,	Blair,	Pa.
Cook, Anna G.,	Mt. Alto, R. 1,	Franklin,	Pa.
Davis, Mrs. B. Lenna Marie,	New Milport,	Clearfield,	Pa.
Davis, Virginia B., 324 Emerald St.,	Harrisburg,	Dauphin,	Pa.
Davison, Jaffe W., 1208 Edgar Ave.,	Chambersburg,	Franklin,	Pa.
Deardorff, Annabelle,	Biglerville,	Adams,	Pa.
Deardorff, C. Emma,	Orrtanna,	Adams,	Pa.
Deardorff, Dessa,	Biglerville,	Adams,	Pa.
Deatrick, Ruth A.,	East Berlin,	Adams,	Pa.
DeHart, Martha, 521 Emerald St.,	Harrisburg,	Dauphin,	Pa.
Detwiler, Janet M., 1054 N. George St.,	York,	York,	Pa.
Detwiler, M. Esther, 206 Park St.,	Waynesboro,	Franklin,	Pa.
Dice, L. Kathryn, 509 S. Market St.,	Mechanicsburg,	Cumberland,	Pa.
Ditzler, Roma,	Lickdale,	Lebanon,	Pa.
Diven, W. Velva, 9 S. Queen St.,	Shippensburg,	Cumberland,	Pa.
Dovey, Isabella,	Geistown,	Cambria,	Pa.
Dugan, Bessie M.,	Etters,	York,	Pa.
Eavey, Esther, 721 Virginia Ave.,	Hagerstown,	Washington,	Md.
Eichelberger, Greta L.,	Bowmansdale,	Cumberland,	Pa.
Eichenser, Grace,	Dunlo,	Cambria,	Pa.
Eisenhauer, E. Agnes,	Rexmont,	Lebanon,	Pa.
Elden, Mrs. Guy E., Edgar Ave.,	Chambersburg,	Franklin,	Pa.
Ensminger, Mary E., 403 Garlinger Ave.,	Hagerstown,	Washington,	Md.
Esh, Mrs. Reba Seldon, 33 W. 3rd St.,	Lewistown,	Mifflin,	Pa.

<i>Name</i>	<i>Post Office</i>	<i>County</i>	<i>State</i>
Fenical, Catharine, 1625 Wallace St., Harrisburg,	Dauphin,	Pa.
Figard, Edythe,	Wood,	Huntingdon, Pa.
Firth, Jean,	Yeagertown,	Mifflin,	Pa.
Fitz, E. Clara,	Shady Grove,	Franklin,	Pa.
Fry, Emma S., 33 S. West St., Carlisle,	Cumberland, Pa.	
Fulton, Frances S.,	Mechanicsburg,	Cumberland, Pa.
Garber, Emma Lou, 513 W. Phila. St., York,	York, Pa.	
Garrett, Mrs. Bessie B., 12 S. 16th St., Harrisburg,	Dauphin, Pa.	
Gaster, Orval A.,	Three Springs,	Huntingdon, Pa.
Geesey, Thelma E.,	York, R. 5,	York, Pa.
Gilpin, Mildred, 1660 11th Ave., Huntington,	Cabell,	W. Va.	
Gipe, A. Mae,	Willow Hill,	Franklin,	Pa.
Glenn, Elizabeth A.,	McConnellsburg,	Fulton,	Pa.
Glenn, Ethel M.,	McConnellsburg,	Fulton,	Pa.
Glessner, Mary E.,	West Fairview,	Cumberland, Pa.
Golden, Edith L.,	Warfordsburg,	Fulton,	Pa.
Green, Bertha I.,	Johnstown, R. 2,	Cambria,	Pa.
Green, Elizabeth S.,	Johnstown, R. 2,	Cambria,	Pa.
Grissinger, Hazel A.,	Broad Top,	Huntingdon, Pa.
Hagans, P. Bessie,	McAlevy's Fort,	Huntingdon, Pa.
Hahn, Betty Mae, 2623 Lexington St., Harrisburg,	Dauphin, Pa.	
Hamer, Helen E.,	Hooversville,	Somerset, Pa.
Handlin, Thelma S., 1137 20th St., Huntington,	Cabell,	W. Va.	
Harman, Janet E.,	Mt. Holly Springs,	Cumberland, Pa.
Havice, Marjorie, 20 E. King St., Shippensburg, ..	Cumberland, Pa.	
Hartman, Cordelia A.,	Gettysburg,	Adams,	Pa.
Hawbaker, Amy S.,	Waynesboro, R. 4,	Franklin,	Pa.
Hawn, Byrde L.,	Petersburg,	Huntingdon, Pa.
Heefner, M. Margaret,	Quincy,	Franklin,	Pa.
Heffelfinger, K. Kathryn, W. Main St., Newville, ..	Cumberland, Pa.	
Heilman, Mary F., 212 W. King St., Shippensburg,	Cumberland, Pa.	
Helsel, Sara E.,	Houtzdale,	Clearfield, Pa.
Higgs, Clara V., 411 Mitchell Ave., Hagerstown, ..	Washington, Pa.	
Hoar, Ada M.,	Milroy,	Mifflin,	Pa.
Hoar, Sylvia S.,	Milroy,	Mifflin,	Pa.
Hoffman, A. Verna,	Mechanicsburg, R. 3,	Cumberland, Pa.
Hoffman, Mrs. Leah Mc, 30 Walnut St., Steelton, ..	Dauphin, Pa.	
Hogue, Mrs. May C.,	Breezewood,	Bedford,	Pa.
Hollar, Daisy M.,	Chambersburg,	Franklin,	Pa.
Hoverter, Mrs. Julia P., 55 S. 2nd St., Newport, ..	Perry, Pa.	
Hunter, Kathryn,	Berwindsdale,	Clearfield, Pa.
Hyde, V. Bertha,	Manns Choice,	Bedford,	Pa.
Hykes, Ruth E.,	Aspers,	Adams,	Pa.
James, Helen M., 514 W Market St., Williamstown,	Dauphin, Pa.	
Johnescu, Anna M., 524 Jeannette St., Wilkinsburg,	Allegheny, Pa.	

<i>Name</i>	<i>Post Office</i>	<i>County</i>	<i>State</i>
Johnson, Laura M.,	Blain,	Perry,	Pa.
Jones, Lewese,	Richmond Furnace,	Franklin,	Pa.
Jones, Mrs. Ruth P.,	Windber, R. 1.,	Somerset,	Pa.
Joseph, Blanche,	East Berlin,	Adams,	Pa.
Judy, Ona H.,	Bedford, R. 5,	Bedford,	Pa.
Kane, Lillian F., 331 Long Av.,	Shippensburg,	Cumberland,	Pa.
Karns, Maxine,	Dillsburg,	York,	Pa.
Kauffman, Gertrude E.,	Mifflintown,	Juniata,	Pa.
Keefer, Helen M.,	Millersburg, R. 2,	Dauphin,	Pa.
Keller, Lanah M., S. Fayette St.,	Mercersburg,	Franklin,	Pa.
Kent, Carrie,	Fannettsburg,	Franklin,	Pa.
Kershner, Susan G.,	Williamsport,	Washington,	Md.
Kerstetter, Margaret S.,	Main St., Lykens,	Dauphin,	Pa.
Krewson, Alice R., 40 S. Clinton St.,	Doylestown,	Bucks,	Pa.
Kriner, Mary K.,	Greencastle,	Franklin,	Pa.
Krout, Alverta M.,	Seven Valleys,	York,	Pa.
Lear, Pearl A.,	Boiling Springs,	Cumberland,	Pa.
Lehman, Margaret B.,	Amaranth,	Fulton,	Pa.
Lentz, Theda,	Seven Valleys, R. 2,	York,	Pa.
Lindsay, Gladys N.,	Greencastle,	Franklin,	Pa.
Lininger, Martha,	Fort Loudon,	Franklin,	Pa.
Lochbaum, Frances E., Mt. Vernon Apts.,	Hagerstown,	Washington,	Md.
Locher, Jean A.,	Holidaysburg, R. 2,	Blair,	Pa.
Long, Dorothy,	New Paris,	Bedford,	Pa.
Losch, Beatrice M.,	Richfield,	Juniata,	Pa.
Lowe, Amy,	Wiconisco,	Dauphin,	Pa.
McCall, Magdalen,	Summerhill,	Cambria,	Pa.
McCleaf, Florence E., Seminary Ave.,	Gettysburg,	Adams,	Pa.
McCleary, Vada M., Chambersburg, R. 7,		Franklin,	Pa.
McCrea, Katherine J., High St.,	Newville,	Cumberland,	Pa.
McDannell, Ruth D.,	Shippensburg,	Cumberland,	Pa.
McDowell, Miriam E., New Cumberland, R. 1,		Cumberland,	Pa.
McGonigal, Catherine, 413 Arch St.,	Carlisle,	Cumberland,	Pa.
McGowan, Martha,	Burnt Cabins,	Fulton,	Pa.
McKown, Alice C., Clayton Ave.,	Waynesboro,	Franklin,	Pa.
McVitty, Anna M.,	Spring Run,	Franklin,	Pa.
Mackey, Alice M., Chambersburg, R. 5,		Franklin,	Pa.
Manges, Neva, 330 W. Church St.,	Somerset,	Somerset,	Pa.
Markley, Dorothy, N. 3rd St.,	Bellwood,	Blair,	Pa.
Mason, Philomene M.,	Ellerslie, R. 1,	Washington,	Md.
Mayhugh, Helen I., 119 Harrison Ave.,	Waynesboro,	Franklin,	Pa.
Mears, Martha E.,	Dudley,	Huntingdon,	Pa.
Messner, Irene E.,	Wiconisco,	Dauphin,	Pa.
Mickey, Helen C., 38 E. 3rd St.,	Waynesboro,	Franklin,	Pa.
Mickle, G. Edna,	Alum Bank,	Bedford,	Pa.

<i>Name</i>	<i>Post Office</i>	<i>County</i>	<i>State</i>
Mickle, Olive L.,	Alum Bank,	Bedford,	Pa.
Middlekauff, Lena L.,	62 E. Baltimore St.,	Hagerstown,	Washington, Md.
Miller, Almira L.,	Dillsburg, R. 2,	York,	Pa.
Miller, Mary S.,	Schellburg,	Bedford,	Pa.
Minich, Marguerite,	Loysville,	Perry,	Pa.
Minter, Marian M.,	New Oxford, R. 2,	Adams,	Pa.
Mixell, J. Marie,	Chambersburg, R. 1,	Franklin,	Pa.
Morningstar, S. Ella,	Saxton,	Bedford,	Pa.
Morrow, Dorothy M.,	1004 Lincoln Ave.,	Tyrone,	Blair,
Mower, Maude V.,	Mowersville,	Franklin,	Pa.
Mowry, Mildred A.,	Schellburg,	Bedford,	Pa.
Murray, Zora I.,	Goodyear,	Cumberland,	Pa.
Myers, Carolyn E.,	East Berlin,	Adams,	Pa.
Myers, R. Frances,	Baltimore St.,	Dillsburg,	York,
Nesbit, Olive C.,	Andersonburg,	Perry,	Pa.
Niswander, Bertha I.,	Greencastle, R. 4,	Franklin,	Pa.
Orris, Mrs. Elizabeth S.,	W. Main St.,	Mechanicsburg,	Cumberland, Pa.
Osborne, Margaret,	New Oxford, R. 2,	Adams,	Pa.
Palmer, R. Ethel,	Smithburg,	Frederick,	Md.
Pecht, Bertha M.,	Milroy,	Mifflin,	Pa.
Pennington, Fanny D.,	634 Potomac Ave.,	Hagerstown,	Washington, Md.
Phenicie, Ruth,	Mercersburg,	Franklin,	Pa.
Pike, Mary A.,	E. Baltimore St.,	Greencastle,	Franklin,
Poorbaugh, Mary A.,	Wellersburg,	Somerset,	Pa.
Porter, M. Alverna,	Ellerslie,	Bedford,	Md.
Prigg, Anna I.,	16th St.,	Harrisburg,	Dauphin,
Reber, Stella M.,	26 E. Locust St.,	Mechanicsburg,	Cumberland,
Rebert, Bernice,	Hanover, R. 5,	York,	Pa.
Rebert, Dorothy,	Codorus,	York,	Pa.
Rebert, Mary E.,	Carlisle,	Cumberland,	Pa.
Reider, E. Frances,	Middletown, R. 2,	Dauphin,	Pa.
Rice, Margaret P.,	Carlisle, R. 1,	Cumberland,	Pa.
Richardson, Sara E.,	Oakville,	Cumberland,	Pa.
Riggeal, Mildred,	Orrtanna,	Adams,	Pa.
Rinehart, Minerva C.,	Newport,	Perry,	Pa.
Robinson, E. Helen,	Neelyton,	Huntingdon,	Pa.
Rotz, Gladys V.,	Ft. Loudon,	Franklin,	Pa.
Schooley, Mildred A.,	406 W. Main St.,	Everett,	Bedford,
Scott, Hazel M.,	2415 Derry St.,	Harrisburg,	Dauphin,
Seip, Marjorie,	Wiconisco,	Dauphin,	Pa.
Shaffer, Helen I.,	Newville,	Cumberland,	Pa.
Sherlock, Elizabeth G.,	Walnut,	Juniata,	Pa.
Schetrompf, Myda B.,	Lashley,	Fulton,	Pa.
Schetrompf, R. Erna,	Lashley,	Fulton,	Pa.
Shoemaker, Margaret A.,	New Bethlehem,	Clarion,	Pa.

<i>Name</i>	<i>Post Office</i>	<i>County</i>	<i>State</i>
Shy, Pearl, 1137 20th St.,	Huntington,	Cabell,	W. Va.
Sierer, Edna F., 616 State St.,	Lemoyne,	Cumberland,	Pa.
Sixeas, Mrs. K. V.,	Oakville,	Cumberland,	Pa.
Sleeth, Helen A.,	Laughlintown,	Westmoreland,	Pa.
Smith, Elizabeth,	Williamsburg,	Blair,	Pa.
Smith, Ellen M.,	Dunlo,	Cambria,	Pa.
Smith, Mrs. Mary O., 1217 Virginia Ave.,	Hagerstown,	Washington,	Md.
Snively, Mary R.,	Greencastle,	Franklin,	Pa.
Snyder, Leone M.,	Mercersburg,	Franklin,	Pa.
Sollenberger, Mary E., 102 S. Potomac Ave.,	Waynesboro,	Franklin,	Pa.
Souders, S. Hazel,	McConnellsburg,	Fulton,	Pa.
Sparr, Ada M.,	Blairs Mills,	Huntingdon,	Pa.
Spealman, Laura K.,	Dillsburg,	York,	Pa.
Stambach, Mrs. Arietta G., 919 S. Queen St.,	York,	York,	Pa.
Stepler, Helen M., 63 L. W. West,	Chambersburg,	Franklin,	Pa.
Stitt, Margaret E.,	McCoysville,	Juniata,	Pa.
Storey, Anna M., 1015 Oak Hill Ave.,	Hagerstown,	Washington,	Md.
Strickler, E. Martha,	Penns Grove,	Salem,	N. J.
Strine, E. W. Kathryne,	Scotland,	Franklin,	Pa.
Suter, Alice M.,	New Paris,	Bedford,	Pa.
Swartz, Martha E., 36 S. Queen St.,	Shippensburg,	Cumberland,	Pa.
Topper, Martine R.,	Hyndman,	Bedford,	Pa.
Travitz, Dorothy,	Halifax,	Dauphin,	Pa.
Treese, Ethel M.,	Williamsburg,	Blair,	Pa.
Tressler, Violet W.,	Newport,	Perry,	Pa.
Webner, Martha E., Harrisburg, R. 1,		Dauphin,	Pa.
Wentworth, M. Elizabeth, 5805 5th Ave.,	Pittsburgh,	Allegheny,	Pa.
West, Alice I., 36 W. Washington St.,	Chambersburg,	Franklin,	Pa.
Wheatley, Louise E., 513 S. George St.,	York,	York,	Pa.
Wilcher, M. Louella, 424 4th St.,	Braddock,	Allegheny,	Pa.
Wilson, Marie V., 610 4th Ave.,	Altoona,	Blair,	Pa.
Winand, E. Hilda,	Hampton,	Adams,	Pa.
Wineland, Marian E.,	Martinsburg,	Blair,	Pa.
Wolfe, E. Margaret,	New Oxford,	Adams,	Pa.
Wolff, Eleanor M., Clayton Ave.,	Waynesboro,	Franklin,	Pa.
Zeger, Louise A.,	Mercersburg,	Franklin,	Pa.
Zeigler, Mildred E.,	Millerstown,	Perry,	Pa.
Zimmerman, C. Romaine,	Hopewell,	Bedford,	Pa.
Zimmerman, Mary R.,	Mifflin,	Juniata,	Pa.

MEN

Allison, Robert, 20 S. Prince St.,	Shippensburg,	Cumberland,	Pa.
Baldwin, Jere J.,	Burnt Cabins,	Fulton,	Pa.
Barkley, Donald, 106 E. Orange St.,	Shippensburg,	Cumberland,	Pa.
Barton, David O.,	Academia,	Juniata,	Pa.

<i>Name</i>	<i>Post Office</i>	<i>County</i>	<i>State</i>
Bashore, Paul M.,	Bethel,	Berks,	Pa.
Biery, Otto A.,	Alderson,	Luzerne,	Pa.
Black, Frank,	Shippensburg,	Cumberland,	Pa.
Bonbrake, J. Mahon, 27 E. Main St.,	Waynesboro,	Franklin,	Pa.
Bosserman, Lewis M.,	Arendtsville,	Adams,	Pa.
Bradley, Albert G.,	Dudley,	Huntingdon,	Pa.
Brenize, Robert J.,	Shippensburg, R. 5,	Cumberland,	Pa.
Brown, Hilbert,	Stewartstown,	York,	Pa.
Cable, Percy,	Hooversville,	Somerset,	Pa.
Cable, Raymond W., 378 Center St.,	Millersburg,	Dauphin,	Pa.
Carroll, H. Eugene,	Shippensburg,	Cumberland,	Pa.
Caufman, Paul F.,	Newport,	Perry,	Pa.
Ciarracco, Angelo,	Dudley,	Huntingdon,	Pa.
Comerer, Paul A.,	Burnt Cabins,	Fulton,	Pa.
Coons, G. Edgar, 140 E. 2nd St.,	Waynesboro,	Franklin,	Pa.
Dillon, Edgar J.,	Orrtanna, R. 2,	Adams,	Pa.
Edwards, Dallas H.,	Waterfall,	Fulton,	Pa.
Eichelberger, Alfred L.,	Bowmansdale,	Cumberland,	Pa.
Fitzgerald, John, 322 S. West St.,	Carlisle,	Cumberland,	Pa.
Fry, Frank L.,	New Bloomfield,	Perry,	Pa.
Funk, Miles,	Chambersburg,	Franklin,	Pa.
Gill, James E.,	Neelyton,	Huntingdon,	Pa.
Goodhart, Mark M.,	Dickinson,	Cumberland,	Pa.
Guttshall, D. Ralph,	Three Springs,	Huntingdon,	Pa.
Hamman, Odes M.,	Three Springs,	Huntingdon,	Pa.
Hartle, Robert L.,	Hagerstown, R. 5,	Washington,	Md.
Hartman, Paul R.,	Aspers,	Adams,	Pa.
Hazlett, William C.,	Dry Run,	Franklin,	Pa.
Heberlig, Albert F., Richard Ave.,	Shippensburg,	Cumberland,	Pa.
Hendrix, Donald K., 27 N. Earl St.,	Shippensburg,	Cumberland,	Pa.
Hensel, J. Frank,	Mowersville,	Franklin,	Pa.
Hepner, Russell A.,	Elizabethville, R. D.,	Dauphin,	Pa.
Hockenberry, Dorman R.,	New Germantown,	Perry,	Pa.
Hoffman, Clarence J.,	Halifax, R. 4,	Dauphin,	Pa.
Hoverter, Lawrence, 55 S. 2nd St.,	Newport,	Perry,	Pa.
Hull, Roy E.,	McKnightstown,	Adams,	Pa.
Keller, Lloyd N.,	Marysville,	Perry,	Pa.
Kirk, Donald W.,	Warfordsburg,	Fulton,	Pa.
Kistler, B. Frank,	Elliottsburg,	Perry,	Pa.
Koontz, Kenneth,	Hollsopple,	Somerset,	Pa.
Light, George M., 256 Center St.,	Millersburg,	Dauphin,	Pa.
Long, Charles V.,	East Waterford,	Juniata,	Pa.
Long, Virgil,	Shippensburg,	Cumberland,	Pa.
Loy, William S.,	Newville,	Cumberland,	Pa.
McAlicher, David E.,	Elliottsburg,	Perry,	Pa.
McCrea, William H.,	Newville,	Cumberland,	Pa.

<i>Name</i>	<i>Post Office</i>	<i>County</i>	<i>State</i>
McElfish, C. Harold,	Flintstone,	Bedford,	Pa.
McNees, Wayne A.,	Mt. Alto,	Franklin,	Pa.
Martin, Lloyd A.,	Newville,	Cumberland,	Pa.
Mateer, Kenneth H., 114 Walnut St.,	Coatesville, .	Chester,	Pa.
Mellott, Claude L.,	Amaranth,	Fulton,	Pa.
Michael, Lester P., 31 S. Fayette St.,	Shippensburg,	Cumberland,	Pa.
Miller, Gwynne E.,	Schellburg,	Bedford,	Pa.
Miller, J. Elwood,	Schellburg,	Bedford,	Pa.
Mincemoyer, Floyd A.,	Mechanicsburg,	Cumberland,	Pa.
Metzler, Henry,	Burnt Cabins,	Fulton,	Pa.
Mock, Water W.,	Alum Bank,	Bedford,	Pa.
Morrison, J. Warren,	Landisburg,	Perry,	Pa.
Mort, Norman A.,	Fannettsburg,	Franklin,	Pa.
Myers, Jesse W.,	Mechanicsburg, R. 6,	Cumberland,	Pa.
Neagley, Ross L.,	Fallsington,	Bucks,	Pa.
Orner, James P.,	Cashtown,	Adams,	Pa.
Perrin, R. Robert,	Artemas,	Bedford,	Pa.
Raffensperger, Edgar W., ..	Elliottsburg,	Perry,	Pa.
Reed, Harold C., 44 S. Earl St.,	Shippensburg, ..	Cumberland,	Pa.
Reynolds, Raymond E., Glasgow,	Cambria,	Pa.
Rudy, Harry W., New Cumberland, R. 1,	Cumberland,	Pa.
Schwinger, E. Raymond, 318 Mulberry St.,	Hagerstown,	Washington, Md.	
Serff, John J., East Berlin,	Adams,	Pa.
Shatzer, Linn H., St. Thomas,	Franklin,	Pa.
Shearer, Ira S., Dillsburg, R. 2,	York,	Pa.
Snively, I. Newton, 322 Bryn Mawr Ave.,	Cynwyd,	Montgomery,	Pa.
Snoke, James S., Mowersville,	Franklin,	Pa.
Snyder, V. S. Robert, Wood,	Huntingdon,	Pa.
Stains, Russell G., Burnham,	Mifflin,	Pa.
Stamy, A. Reese, Chambersburg, R. 10,	Franklin,	Pa.
Stetler, Russell G., 315 E. Main St.,	Mechanicsburg,	Cumberland,	Pa.
Stewart, D. Frank, Amberson,	Franklin,	Pa.
Stine, Calvin B., 234 Boyer St.,	Johnstown,	Cambria,	Pa.
Stine, Clyde E., 158 Horner St.,	Johnstown,	Cambria,	Pa.
Stine, Paul J., Shippensburg, R. 6,	Cumberland,	Pa.
Stouffer, Bruce O., Newville, R. 1,	Cumberland,	Pa.
Troutman, Clyde M., Millerstown,	Perry,	Pa.
White, R. Ernest, 2235 Jefferson St.,	Harrisburg, ..	Dauphin,	Pa.
White, Robert S., 42 Montgomery Ave.,	Shippensburg,	Cumberland, Pa.	
Wilson, Gerald F., Red Lion,	York,	Pa.
Wilt, Roy B., Blain,	Perry,	Pa.
Winter, W. Gordon, Warfordsburg,	Fulton,	Pa.
Wisler, Charles F., Ellerslie	Bedford,	Md.
Yeager, Paul E., Williamson,	Franklin,	Pa.
Yeingst, Frank, Gardners, R. 2,	Cumberland,	Pa.
Yohe, T. Vernon, New Oxford,	Adams,	Pa.

GENERAL ALUMNI ASSOCIATION

PresidentDr. L. A. Carl, '99, Newport, Pa.
 Vice-President.....Ralph Jacoby, '09, Mechanicsburg, Pa.
 Secretary, Myrtle Mayberry (Stough), '07, 210 S. West St., Carlisle, Pa.

Alumni will confer a favor by informing the Registrar
 of any changes that should be made.

ALUMNI ASSOCIATION OF DAUPHIN COUNTY

President..Raymond G. Bressler, '04, 2041 N 2nd St., Harrisburg, Pa.
 Vice-President..P. L. Hocker, '02, 2522 Lexington St., Harrisburg, Pa.
 Secretary.....Jessie Wright, '04, 362 Locust St., Steelton, Pa.

ALUMNI ASSOCIATION OF FRANKLIN COUNTY

President.....Charles Gentzler, '24, Fayetteville, Pa.
 Vice-President.....Jacob L. Brake, '21, St. Thomas, Pa.
 Secretary.....Gail Walker, '24, Fannettsburg, Pa.

ALUMNI ASSOCIATION OF ADAMS COUNTY

President.....J. F. Slaybaugh, '16, Gettysburg, Pa.
 Vice-President.....Leslie Stock, '21, Biglerville, Pa.
 Secretary.....Helen Drais (Taylor), '21, Arendtsville, Pa.

ALUMNI ASSOCIATION OF YORK COUNTY

President.....Portis A. Smith, '07, Wellsville, Pa.
 Vice-President.....A. C. Rawhouser, '86, York, Pa.
 Secretary.....Mary Heiges, '28, York, Pa.

ALUMNI ASSOCIATION OF HUNTINGDON COUNTY

President.....H. H. Kell, '97, Petersburg, Pa.
 Vice-President.....E. Oliver Winters, '21, Three Springs, Pa.
 Secretary.....Zada Workman, '28, Orbisonia, Pa.

ALUMNI ASSOCIATION OF CUMBERLAND COUNTY

President.....W. M. Rife, '91, Carlisle, Pa.
 Secretary.....Mary Yeager, '16, Carlisle, Pa.

ALUMNI ASSOCIATION OF CAMBRIA COUNTY

President.....John E. Neely, '22, Portage, Pa.
 Vice-President.....Ralph R. Beard, '10, Portage, Pa.
 Secretary-Treasurer....Alda Swatsworth, '23, Ferndale, Johnstown, Pa.

ALUMNI ASSOCIATION OF MIFFLIN COUNTY

President.....Paul S. Lehman, '21, S. Main St., Lewistown, Pa.
 Secretary.....Thelma McBride (Hess), '23, Yeagertown, Pa.
 Treasurer.....Cecelia Gottschalk, '26, Yeagertown, Pa.

ALUMNI ASSOCIATION OF PERRY COUNTY

President.....G. Robert Coyle, '16, Marysville, Pa.
 Vice-President.....Ralph Swan, '25, Landisburg, Pa.
 Secretary.....Irene Ritter, '26, Loysville, Pa.

METROPOLITAN ALUMNI ASSOCIATION

President.....C. J. Walter, '87, 1122 S. Peach St., Philadelphia, Pa.
 Vice-President..Wallis McKendree, '25, 1486 B. Kaign Ave., Camden,
 N. J.
 Secretary.....Blanche M. Stoops, '21, Lincoln Apts., Ardmore, Pa.

ALUMNI ASSOCIATION OF PITTSBURGH

President..Roy Mathias, '15, 701 Brownsville Rd., Mt. Oliver Station,
 Pittsburgh, Pa.
 Secretary..Romaine Nell, '18, 1132 Fayette St., N. S. Pittsburgh, Pa.

Meetings of county associations are held when possible during the week of institute.

TRAINING SCHOOLS

W. P. HARLEY, A. M.,
 Director

EDNA V. CLIPPINGER
 Secretary

**SHIPPENSBURG TRAINING TEACHERS
 CAMPUS SCHOOL**

HARPER J. WENTZ, B. S.
 Principal

HARRIET WILLOUGHBY, A. M.,
 Director of Kindergarten and Primary Group

FRANCES W. OYER, B. S.,
 Kindergarten-Primary

MARY L. SNIVELY
 Third Grade

RUTH CUNNINGHAM, A. M.,
 Director of Intermediate Group
 English

ERMA K. ROLAR, A. B.,
 Geography and History

MARTHA E. SHAMBAUGH, A. B.,
Writing, Art and Health

HARPER J. WENTZ, B. S.
Mathematics and Health

PLEASANT HILL SCHOOL

HANNAH A. KIEFFER, A. M.,
Director of Rural Group

EDNA STAMY FOX, B. S.,
Training Teacher

SPECIAL TEACHERS

IONA DEVERS, B. S.,
Music

CLARA BRAGG
Librarian

ELIZABETH McWILLIAMS, B. S.,
School Luncheon

Health, GRACE KYLE, R. N.,
School Nurse

SHIPPENSBURG PUBLIC SCHOOLS

JUNIOR HIGH SCHOOL

HARLING SPONSELLER, B. S., Principal
Social Science

HENRY SELLERS, B. S.,
Science and Health

MARIE WEBB, B. S. E.,
English

MARY E. PERLETTE
Mathematics

MARY S. MOWERY, A. B.,
Social Science

ELEMENTARY SCHOOL

NANCY GRAYSON

First Grade

KATHRYN F. MINEHART

First Grade

MABEL BARNER

Second Grade

ALICE LEHMAN

Second and Third Grades

HAZEL WALTERS

Third Grade

HELEN YOTTER

Fourth Grade

ELLA MARTIN

Fourth and Fifth Grades

CARRIE KITZMILLER

Fifth Grade

MAUDE CLEVER

Fifth and Sixth Grades

ELLA NOFTSKER

Sixth Grade

ENROLLMENT OF TRAINING SCHOOLS

1928-1929

CAMPUS SCHOOL		SHIPPENSBURG PUBLIC SCHOOLS	
Grade I	28	Grade I	73
Grade II	32	Grade II	63
Grade III	26	Grade III	60
Grade IV	23	Grade IV	65
Grade V	20	Grade V	82
Grade VI	24	Grade VI	71
Grade VII	10	JUNIOR HIGH SCHOOL	
Grade VIII	16	Grade VII	73
PLEASANT HILL SCHOOL		Grade VIII	72
Grades I-VIII	32	Grade IX	117