

THE NORMAL SCHOOL HERALD

CATALOGUE

FIFTY-FIFTH SCHOOL YEAR

OF THE

CUMBERLAND VALLEY
STATE NORMAL
SCHOOL

SHIPPENSBURG, PENNSYLVANIA

1926 - 1927

AND PROSPECTUS FOR 1927 AND 1928

TABLE OF CONTENTS

	<i>Page</i>
Advanced Two-Year Curriculum Leading to B.S. Degree	39
Articles Students Should Bring With Them	59
Alumni Fund	51
Athletics: Men's and Women's	55
Board of Trustees	4
Building and Room Regulations	53
Calendar 1927-1928	3
Class Regulations	52
Curricula of the Pennsylvania State Normal Schools	33
Day Students, Expenses of	26
Description and Aims of Cumberland Valley State Normal	24
Elective Fields	44
Elective Fields, Prerequisites for	45
Expenses	25
Faculty for 1926-1927	5
Fees	26
Four-Year Curriculum in Elementary Education (B.S. Degree)	41
Four-Year Curriculum for Junior High School Teachers (B.S. Degree)	43
General Regulations	60
Government and Discipline	51
Graduation, Requirements for	44
Health Regulations	54
Instrumental Music Department	46
Lectures, Concerts, Moving Picture Entertainments	55
Library	59
Literary Societies	56
Normal School Certificate for Teachers in Service	32
Officers, Alumni Associations	98
Payments, Time of	26
Prizes	50
Reading Room	59
Registration Blank	103
Religious Work	56
Requirements for Admission	30
Requirements Relating to Students in all Curricula	34
Sabbath Regulations	56
School Publications	60
Social Regulations	53
Student Enrollment	62
Student Government	30
Student Organizations	60
Summer Session, 1927	46
Summer Session, Payments for	29
Text-books Used	46
Time Regulations	52
Two-Year Curricula for Elementary Teaching	33

CALENDAR 1927 - 1928

FIRST SEMESTER, 1927

Registration Day	Monday, September 12
Organization of Classes	Tuesday, September 13
Training School Opens	Wednesday, September 14
Thanksgiving Vacation	Saturday, November 19
School Reopens	Monday, 8:15 A. M.—November 28
Christmas Vacation Begins	Wednesday, December 21
School Reopens	Tuesday, January 3, 1928
First Semester Closes	Friday, January 27

SECOND SEMESTER, 1928

Second Semester Begins	Monday, January 30
Anniversary Normal Literary Society	Friday, March 23
Easter Vacation Begins	Friday, March 30
School Reopens	Tuesday, April 10
Reunion Philo Literary Society	Friday, May 11
Training School Commencement	Thursday, May 31
Class Day	Saturday, June 2
Alumni Meeting	Saturday, June 2
Baccalaureate Sermon	Sunday, June 3
Commencement Day	Monday, June 4
Summer Session of Nine Weeks Begins	Monday, June 11
Summer Session Ends	Saturday, August 11

BOARD OF TRUSTEES

Geo. H. Stewart	President
George W. Himes	Vice-President
Geo. S. McLean	Secretary
J. W. Lackhove	Bursar
John E. Boher, Shippensburg, Commission expires	
C. Arthur Griest, Guernsey " "	1927
George W. Himes, Shippensburg " "	1927
Mrs. Walter K. Sharpe, Chambersburg " "	1928
Mrs. Gilbert E. Swope, Newville " "	1928
Geo. H. Stewart, Shippensburg " "	1928
John G. Benedict, Waynesboro " "	1929
Geo. S. McLean, Shippensburg " "	1929
Quinn T. Mickey, Shippensburg " "	1929

STANDING COMMITTEE

COMMITTEE ON DISCIPLINE AND INSTRUCTION

Geo. H. Stewart	Geo. S. McLean	John E. Boher
	Mrs. Walter K. Sharpe	

COMMITTEE ON HOUSE AND GROUNDS

Geo. W. Himes	Quinn T. Mickey	John G. Benedict
	Mrs. Gilbert E. Swope	

COMMITTEE ON FINANCE

C. Arthur Griest	Geo. H. Stewart
J. W. Lackhove	Bursar

FACULTY FOR 1926-27

EZRA LEHMAN, Ph.D., LL.D.Principal

Education: Graduate Shippensburg S. N. S., 1889, Elementary Course; 1892 Scientific Course; Ph.B., Bucknell University, 1899; Ph.D., University of Pennsylvania, 1903; LL.D., Bucknell University, 1925; Special Student Teachers' College, Columbia University, three summer sessions.

Experience: Teacher one room rural school, Franklin County, 1889-90; Principal Huntingdon, Pennsylvania, High School, 1892-1896; Teacher of English, Shippensburg S. N. S., 1896-1898, 1899-1900; Associate Editor Lippincott Dictionary, 1903-1906; Head Department of English, Newtown High School, New York City, 1906-1913; Principal Shippensburg S. N. S., 1913—

Harrison Fellow in English, University of Pennsylvania, 1901-1903; President Pennsylvania State Education Association, 1924.

***J. S. HEIGES, A.M., Pd.D.**Education; Dean

Education: Graduate Shippensburg S. N. S., 1891; A. B. Ursinus College, 1898; Summer Session Teachers' College, Columbia, 1911; A.M., Ursinus College, 1912; Pd.D. Ursinus College, 1923.

Experience: Teacher Rural School, York County, 1891-1892; Teacher Grammar Grades, fifth, sixth, seventh, eighth, York Springs, 1892-1894; Principal Summer Normal, 1892-1894; Grammar School, eighth grade, New Cumberland, 1898-1899; Supervisory Principal, Derrick City, 1899-1900; Supervisory Principal, Dillsburg, 1900-1901; Ward Principal, Harrisburg, 1901-1902; Teacher Mathematics, Shippensburg S. N. S., 1902-1908; Teacher History of Education and Dean, Shippensburg S. N. S., 1908—

**EDNA ARNOLD, A. B.**Dean of Women

Education: A. B., West Virginia University, 1922.

Experience: Teacher of English Junior High School, Weston, West Virginia, 1907-1909; Head of English Department, High School, Weston, West Virginia, 1909-1913; Principal, Weston High School, 1913-1922; Acting Dean of Women, West Virginia University summer quarters, 1912-1915; Dean of Women, Shippensburg S. N. S., 1922—

Member National Association Deans of Women, Pennsylvania Association Deans of Women.

*Leave of absence February 1—June 1, 1927.

†LEVI F. GILBERT, B.S. . . Science, and Dean of Men

Education: Graduate Shippensburg S. N. S., 1917; B. S., Franklin and Marshal College, 1922.

Experience: Teacher Rural Schools of Fayette County, 1910-1913; Principal Grade Building, Fayette County, 1913-1915; English and Mathematics, Biglerville High School, 1917; History and Athletics, Mount Union High School, 1919-1920; Assistant Science and Dean of Men, Shippensburg S. N. S., 1922—



G. F. BECKMYER, M.S. . . . Science and Dean of Men

Education: Graduate West York High School, 1910; Millersville S. N. S., 1913; B. S., Gettysburg College, 1920; M. S., Gettysburg College, 1925; Graduate School, University of Pennsylvania, 1922-1925.

Experience: Fourth grade, 1913-1914, West York, Pa., Assistant Principal, Glenville H. S., 1914-1915, Glenville, Pa.; Principal, East Berlin H. S., 1915-1916, East Berlin, Pa.; Instructor of Science, Radnor High School, 1920-1927, Wayne, Pa.; Bacteriologist, Medical Corps, U. S. Army, 1918-1919; Assistant in Science and Dean of Men, Shippensburg, S. N. S., 1927—



JOHN K. STEWART, A. M. Latin

Education: Graduate Susquehanna Collegiate Institute, 1894; A.B., Susquehanna Collegiate Institute, 1898; A.M., Lafayette College, 1908.

Experience: Teacher of Latin and Greek, Susquehanna Collegiate Institute, Towanda, Pennsylvania, 1898-1901; Teacher of Latin, Greek and Literature, Towanda High School, 1901-1906; Teacher of Latin, Shippensburg S. N. S., 1906—



S. ALICE HUBER, Ph.B., Director Junior High School group

Education: Graduate Shippensburg S. N. S., 1896; Temple University, special courses, 1900-1902; University of Pennsylvania, extension courses, 1906-1908; Columbia University, Summer, 1913; Ph.B. in Education, University of Chicago, 1925.

Experience: Teacher Elementary Schools, Jarretstown, Pennsylvania, 1899-1905; Teacher, German, Mathematics, High School, Bristol, Pa., 1905-1908, Principal, 1907- 1908; Shippensburg S. N. S., 1909—

†Resigned, February 1, 1927.

H. WYLIE STEWART, A. B. Social Sciences

Education: Graduate Shippensburg S. N. S., 1893; A. B. Wilson College, 1899; Summer Session Mt. Gretna, 1910; European Study and Travel, 1913; Summer Sessions Columbia University, 1921, 1922.

Experience: One room rural schools, Pennsylvania, 1893-1895; High School, 1900-1901; Principal of Walnut School, Marshall, North Carolina, 1901-1902; Public Schools, Pennsylvania, 1902-1904; Shippensburg S. N. S., 1904—

Author: History of the Cumberland Valley.



MARY RACHEL HARRIS, M. Pd., Director Kindergarten-Primary Group, Training School

Education: Graduate Bloomsburg S. N. S., 1896; Graduate Student Bloomsburg S. N. S., 1901; B.Pd., Bloomsburg S. N. S., 1905; M.Pd., Bloomsburg S. N. S., 1906; Student Bucknell University, 1897-1898; Student Clark University Summer School, 1901; Student Columbia University Summer School, 1908, 1924.

Experience: Grade teacher elementary schools, Mauch Chunk, 1883-1884; Grade teacher, Milton, 1896-1898; Grade teacher, Allentown, 1898-1900; Head of Model School, Bloomsburg S. N. S., 1900-1908; Principal of Training School, Shippensburg S. N. S., and Teacher in Education, 1908-1921; Teacher in Education, Summer School, Frederick, Maryland, 1913; Director of Kindergarten-Primary Group and Teacher of Education, Shippensburg S. N. S., 1921; Institute and Platform work, 1908—



***M. IRENE HUBER** Art



S. S. SHEARER, M.S. Biological Sciences and
Chairman of the Department of Science

Education: Graduate Shippensburg S. N. S., 1907; A.B., Ursinus College, 1916; M.S., University of Chicago, 1922; Ogden Graduate School of Science, University of Chicago, 1921-23; 1926.

Experience: Ungraded Schools, 1903-05; Seventh and Eighth Grades, Middletown, Pennsylvania, 1907-09; Principal Yardley Borough Schools, 1909-14; Dean of Men, Shippensburg S. N. S., 1918-22; Shippensburg S. N. S., 1917—

Member Sigma Xi; Pennsylvania Academy of Science, Botanical Society of America; The American Forestry Association.



***H. L. BURKHOLDER** Assistant in Education

* Leave of absence, 1926-1927.

LESLIE C. KREBS, B. S., Geography and Agriculture

Education: B. S., Agriculture, Pennsylvania State College, 1913; Special Student, Pennsylvania State College, Summer, 1918; University of Chicago, School of Geography, Summer, 1921, Graduate Student, Clark University, School of Geography, 1924-25.

Experience: Shippensburg State Normal School, Geography and Agriculture, 1918—

Member Pennsylvania Academy of Science, Graduate Scholarship in Clark School of Geography, 1924-25.

**FRIEDA B. BAUSCH, A. B.**French

Education: A. B., Gettysburg College, 1917; Summer Session, University of Wisconsin, 1919; Graduate Scholarship, Bryn Mawr College, 1922-23; Summer Session, University of Chicago, 1923; University of Grenoble and Paris, Summer, 1924.

Experience: Student assistant in German, Gettysburg College, 1916-1917; Teacher French, German and Latin, East Bank, West Virginia, High School, 1917-1918; French, Spanish, and Latin, Narberth, Pennsylvania, High School, 1918-1919; Instructor French, Shippensburg S. N. S., 1919—

Member Modern Language Association of America; Social and Scientific Society of America.

**J. SETH GROVE, A. M.**Mathematics

Education: Graduate Shippensburg S. N. S., 1910; A. B., Ursinus College, 1917; A.M., Teachers College, Columbia and Teachers College Diploma in Mathematics, 1924; Second Lieutenant, Field Artillery, U. S. Army, 1918.

Experience: Teacher seventh and eighth grades, Clay Hill, Pennsylvania, 1910-11; Teacher Mathematics and Science, Liberty Central High School, Saxton, Pa., 1911-13, Principal, 1912-13; Instructor English and Science, Clarion S. N. S., 1917-20; Instructor Mathematics and Physics, Shippensburg, S. N. S., 1920—

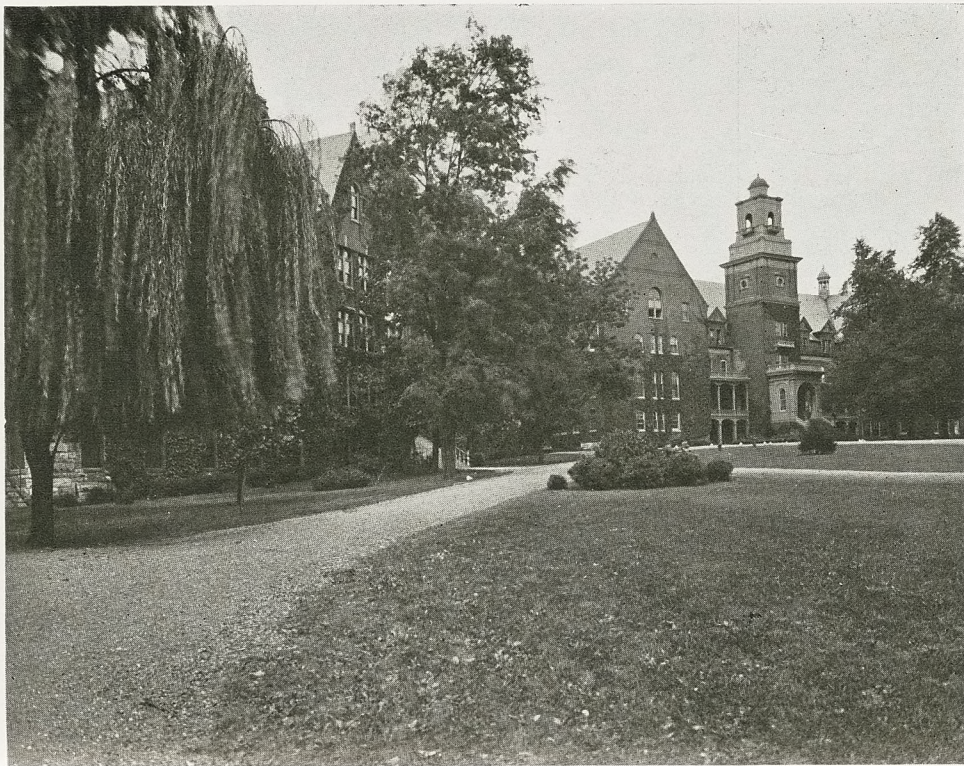
Member Pennsylvania Academy of Science and American Mathematical Society.

**HANNAH A. KIEFFER, A.M.,** Director of Rural Education

Education: Graduate Millersville S. N. S., 1908; B.S. Teachers College, Columbia University, diploma in Elementary Supervision, 1915; A.M., Teachers College, Columbia University, diploma in Rural Supervision, 1916.



ENTRANCE TO "OLD MAIN"



GIRLS' DORMITORY AND ADMINISTRATION BUILDING

Experience: Teacher of one room rural schools, Dauphin County, 1903-1906; Assistant Principal New Holland Borough Schools, Lancaster County, 1908-1910; Supervising Principal of Drumore Township High School and one-room schools, 1910-1913; Dean of Women, McAllister Hall, State College, Pennsylvania, summer session, 1912; County Supervisor of one teacher and elementary graded schools, Queen Anne's County, Maryland, 1916-1920; Instructor, Maryland State Summer School, Ocean City, 1918 and 1919; Director of Rural Education and instructor Geography, Shippensburg S. N. S., 1920—

Member: American Country Life Association; Secretary Rural Department, P. S. E. A.; Tenure Committee, P. S. E. A.; Research Committee, P. S. E. A.; Pennsylvania Academy Science, National Travel Club; Cumberland County Chapter, D. A. R.; Carlisle American Association, University Women.

Prizes and Scholarships: Prize in Teaching, Millersville S. N. S., 1908; 1913, Helen Hartley Jenkins Scholarship Student, Teachers College, Columbia University, 1914; Scholarship Student Teachers College, Columbia University.

Publications: Rural Education numbers of Shippensburg Normal School Herald, April, 1921, October, 1922, 1923, 1924, 1925 and January, 1927.



ELIZABETH McWILLIAMS, B. S., Dietitian and Nutrition Instructor

Education: Graduate Lock Haven S. N. S., 1906; B. S., Pennsylvania State College, 1920.

Experience: Teacher Rural Schools, 1903-1905; Grades and High School, Elysburg, Pennsylvania, 1906-1909; Seventh and eighth grades, Wiconisco, Pennsylvania, 1909-1911; Domestic Science, History, etc. Wiconisco High School, 1911-1918; Nutrition, Domestic Science, Shippensburg S. N. S., 1920—

Member Pennsylvania Academy of Science; American Child Health Association.



CLAUDIA C. ROBB, B.S., Director of Health Education

Education: Temple University, 1912, 1913, 1914; Summer Session, Temple University, 1919; B.S., Kellogg School of Physical Education, Battle Creek College, 1926.

Experience: Physical Director, Y. W. C. A., Philadelphia, Pa., 1915, 1916; Physical Director, Y. W. C. A., Reading, Pa., 1917, 1918, 1919; Physical Director, Haddon Heights, New Jersey, 1920; Playground Director, Wilmington, Delaware, 1914; Recreation Committee, Silver Bay, New York, 1916; Recreation Leader, Camp

Nepahwin, Pa., 1917, 1918; Swimming Director, Public Baths, Philadelphia, Pa., 1919, 1920; Director of Health Education, Shippensburg S. N. S., January, 1921—

Member of Pennsylvania Physical Education Association; National Physical Education Association; Phi Gamma Mu, National Social Science Honor Society.



NORA A. KIEFFER, B. S., A. M. Mathematics

Education: Graduate Millersville S. N. S., 1909; B.S. Degree and Diploma in Teaching of Mathematics, Teachers College, Columbia University, 1916; A.M. Degree and Diploma in Supervising the Teaching of Mathematics, Teachers College, Columbia University, 1917.

Experience: Teacher of Rural Schools, Dauphin County, 1904-1907; Teacher Mathematics, High School, Huntingdon, 1909-1912; Teacher Mathematics, Preparatory School for Boys, Mt. Hermon, Massachusetts, 1913-1915; Teacher Mathematics, High School, Camden, New Jersey, 1917-1919; Assistant in Mathematics Department, Horace Mann High School, Columbia University, 1916-1917; Assistant Financial Secretary, National Lutheran Council, New York City, 1919-1920; Instructor Teaching of Arithmetic and Assistant in Psychology, Shippensburg S. N. S., 1923—

Member Mathematical Association of America, National Council of Teachers of Mathematics, Pennsylvania Academy of Science, Cumberland County Chapter D. A. R.

Prize in Scholarship, Millersville S. N. S., 1908; Scholarship, Millersville S. N. S., 1909; Teaching prize in the Training School, Millersville S. N. S., 1909; Scholarship in Mathematics, Teachers College, Columbia University, 1917.



W. P. HARLEY, A. M. . . . Director of Training School

Education: A. B., Juniata College, 1911; A. M., Teachers College, Columbia University, 1915; Special Student, Teachers College, Summer, 1916.

Experience: Teacher Rural Training School, New Enterprise, Pennsylvania, Summer, 1911; Supervising Principal, Williamsburg, Pennsylvania, 1911-1913; Director Rural Training Schools, Williamsburg, Pennsylvania, Summers 1912 and 1913; Supervising Principal, Mount Union, Pennsylvania, 1913-1921; Teacher Education, State Normal School, Frostburg, Maryland, Summer, 1921; Director of Training School, Shippensburg S. N. S., 1921—



JESSIE A. LANE, A. M. Psychology

Education: Ph. B. School of Education, University of Chicago, 1919; A. M. Teachers College, Columbia University, 1923.

Experience: Director of Training and Instructor in Psychology, Normal School, Fort Wayne, Indiana, 1919-1921; Director of Training and Instructor in Psychology, Teachers College, Detroit, Michigan, 1921-1922; Psychology, Shippensburg S. N. S., 1924—



MARION H. BLOOD, B. S., M. A.English

Education: B. S. Graduate School of Education, University of Pennsylvania, 1920; M.A. English and Psychology, Graduate School, University of Pennsylvania, 1922.

Experience: Teacher eighth grade, Brookville, 1914-1917; Teacher English, Washington Seminary, Washington, 1920-1921; Substitute English teacher, William Penn High School for Girls, Philadelphia, 1921-1922; Teacher English, Temple University, Philadelphia, 1922-1923; Assistant Dean of Women, University of Michigan, Ann Arbor, Michigan, 1923-1924; Teacher English, Shippensburg S. N. S., 1924—



ELEANOR MARSTON, B. S.Art

Education: B.S., University of Montana, 1923; Boothbay Studios, Boothbay, Maine.

Experience: Teacher Art and Music, Junior High School, Bozeman, Montana, 1923; Teacher Industrial Art, special, Riverside, New Jersey, 1924; Art, Shippensburg S. N. S., 1924—

Member Eastern Arts Association.



***KATHARINE ZERFOSS BENTZ**, Reading Supervisor,
Training School Juvenile Literature and Story
Telling



***HARRY NEWSHAM BENTZ, B.A.**, Physical Educa-
tion and Coach Men's Athletics



ALICE E. HARTZLER, A.B., A.M.,English

Education: Graduate West Chester S. N. S.; A.B., College of Literature, Science, and the Arts, University of Michigan, 1918; Special Student Summer Sessions: Harvard, 1919; Columbia University, 1923; A.M., English, Graduate School, University of Michigan, 1925.

Experience: Vice-Principal and Teacher of English, High School, Morrisville, Pa., 1915-1917; Teacher of English, High School, West Chester, Pa., 1918-1920; Teacher of English, High School, Elkins Park, Pa., 1920-1924; Teacher of English, Shippensburg S. N. S., 1925—

* Leave of absence 1926-1927.

HARRIET A. TOOKE, MUS.B., Music

Education: Mus.B., Syracuse University, 1918; Graduate Supervisor's Course, Cornell University, 1920; Summer session, Columbia University, 1923.

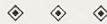
Experience: Supervisor of Music, East Syracuse, N. Y., 1918-20; Supervisor of Music, Scotia, N. Y., 1920-23; Music Instructor, Shippensburg S. N. S., 1925—

**EDGAR C. BYE, M.A.** Social Studies

Education: A.B., Haverford College, 1915; M.A., University of Pennsylvania, 1922; Graduate work in Political Science and Education, University of Pennsylvania, 1922-26.

Experience: High School, Downingtown, Pa., 1911-12; West Chester S. N. S., 1915-16; Supervising Principal, Packerton, 1916-18; Boys' Latin School, Baltimore, Md., 1918-19; Head of Department of Social Studies, Coatesville, Pa., 1919-26; Shippensburg S. N. S., 1926—

Member American Academy of Political and Social Science; Association of History Teachers of the Middle States and Maryland; National Council for the Social Studies; President of Pennsylvania Council for the Social Studies, 1926; Contributor to the Historical Outlook, Opportunity, The Sierra Educational News, N. E. A. Proceedings, 1926.

**ALBERT BENJAMIN CUNNINGHAM, Ph.D.,** English

Education: A.B., Muskingum College, 1913; B.D., Drew Theological Seminary, 1915; A.M., New York University, 1916; Ph.D., New York University, 1926.

Experience: Dean College of Liberal Arts and Professor of English, Lebanon University, 1916-17; Dean and Professor of Languages, The College of Puget Sound, 1919-22; Professor of English, The State College of Washington, 1922-25; Shippensburg, S. N. S., 1926—

Member of American Association for the Advancement of Science; The National Research Council.

Author: The Manse at Barren Rocks, 1918; Singing Mountains, 1919; The Chronicle of an Old Town, 1919; Old Black Bass, 1922; Animal Tales of the Rockies, 1925; Aims and Methods in Oral English, 1927.

**CLARISSA A. RANDALL, Sc.B.** . . Public School Music

Education: Sc.B., New York University, 1926.

Experience: Teacher of Music, Private School in Macon, Ga., 1919-20; Teacher of Music in High School, Huntington, West Virginia, 1920-22; Supervisor of Music, McKeesport, Pa., 1922-25;

Teacher of Ear Training and Sight Singing, New York University, Summer, 1926; Director of Music Department, Shippensburg, S. N. S., 1926—



ESTHER HENDERSON, B.S., Health Education Coach
Women's Athletics

Education: B.S., Miami University, 1918; Graduate Student, Columbia University, Summer Sessions, 1921, 1922, 1923.

Experience: Physical Director for Girls, Piqua Junior and Senior High School, Piqua, Ohio, 1918-21; Supervisor of Physical Education in Public Schools, Williamson, West Virginia, 1921-23; Health Education, Shippensburg S. N. S., 1926—

Member State Physical Education Association.



BLANCHE BASCOM ROBINSON, A.B. Art

Education: A.B., Allegheny College, 1897; Graduate, Pratt Institute, 1905; Member Commonwealth Art Colony, 1908; Chicago Art Institute, Summer Session, 1925.

Experience: Supervisor of Art, Somerville, New Jersey, 1905-12; Director of Art in Otterbein University, 1912-16; Instructor in Arts and Crafts, Pocono Pines Assembly, Summer of 1909; Supervisor of Art, Elm Grove, West Virginia, 1925-26; Art Teacher, State Normal School, West Liberty, West Virginia, Summer of 1926; Shippensburg S. N. S., 1926—

Member of the American Federation of Arts.



A. W. WASSELL, A.B., Assistant, Public School Music

Education: A.B., Colby College, 1926; Lehigh University, 1924; New York University, Summer Sessions, 1921, 1922, 1923, 1926.

Experience: Orchestral Assistant, Worcester Classical High School, Worcester, Mass., 1922; Director, Colby College Band, 1925-26; Director, Colby College Orchestra, 1924-26; Private instructor for four years; Shippensburg S. N. S., 1926—



B. F. POTRATZ, B.S., Physical Education and Coach
of Men's Athletics

Education: B.S., Middleburg College, 1922.

Experience: Springfield High School, 1923-24; Middleburg College, 1924-25; Stratford High School, 1925-26; Shippensburg S. N. S., 1926—

MARY E. YORK, A.M., Reading and
 ature

Education: Ohio Wesleyan University, B.S., Ohio State University, 1921; M.A., Ohio State University, 1925; Graduate Student, Columbia University, Summer Session, 1923.

Experience: Teacher, Elementary Department, Rickoff School, Cleveland, Ohio, 1921-22, Teacher, High School, Gettysburg, Ohio, 1922-25; Critic Teacher, Eastern Illinois State Teachers College, Charleston, Illinois, 1925-26; Shippensburg S. N. S., 1926—



IDA T. BRENNAN Handwriting

Education: Graduate, Cedar Valley Junior College, 1920; Iowa State Teachers College, 1922; Palmer School of Business Writing, 1924.

Experience: Penmanship supervisor, Spirit Lake, Iowa, 1922-24; Bloomington, Illinois, 1924-26; Grand Forks, North Dakota, 1926; Instructor Writing, Shippensburg S. N. S., February 1927—



GRACE M. CLARK, M.A., Director of Intermediate
 Group, Training School.

Education: Graduate Fremont Normal School, 1904; A.B., Nebraska State University, 1907; M.A., Teachers College, Columbia University, 1926.

Experience: First and second grades, Pierce, Nebraska, 1900-1904; Public Schools, Lincoln, Nebraska, Elementary grades, 1907-1916, 1922-1926; Open Air Room, 1916-1918; Hygiene, grades 6, 7, 8 and Testing of pupils, grades 1 to 8, 1918-1922; Instruction in Primary Methods, Nebraska Wesleyan University, 4 Summer Sessions; Shippensburg S. N. S., 1926—

Member: Supervisors of Student Teaching.



FRANCES W. OYER B.S., Training Teacher, First
 Grade

Education: Graduate Shippensburg S. N. S., 1919; B.S., Columbia University, 1925.

Experience: Enhaut, grade one, 1919-1921; Special grade teacher, Steelton, 1921-1923; Training Teacher, First Grade, Shippensburg S. N. S., 1924—

Special recognition of Kindergarten teaching at Horace Mann, Teachers College, Summer, 1925. Member of International Kindergarten Union.

Member Pennsylvania State Normal Training Department.

MARY E. YORK, A.M., Reading Children's Literature
ERMA K. Geography

Education: Ohio Wesleyan University, 17-19; B.S., Ohio State University, 1921; M.A., Ohio State University, 1925; Graduate Student, Columbia University, Summer Session, 1923.

Experience: Teacher, Elementary Department, Rickoff School, Cleveland, Ohio, 1921-22, Teacher, High School, Gettysburg, Ohio, 1922-25; Critic Teacher, Eastern Illinois State Teachers College, Charleston, Illinois, 1925-26; Shippensburg S. N. S., 1926—



IDA T. BRENNAN Handwriting

Education: Graduate, Cedar Valley Junior College, 1920; Iowa State Teachers College, 1922; Palmer School of Business Writing, 1924.

Experience: Penmanship supervisor, Spirit Lake, Iowa, 1922-24; Bloomington, Illinois, 1924-26; Grand Forks, North Dakota, 1926; Instructor Writing, Shippensburg S. N. S., February 1927—



GRACE M. CLARK, M.A., Director of Intermediate Group, Training School.

Education: Graduate Fremont Normal School, 1904; A.B., Nebraska State University, 1907; M.A., Teachers College, Columbia University, 1926.

Experience: First and second grades, Pierce, Nebraska, 1900-1904; Public Schools, Lincoln, Nebraska, Elementary grades, 1907-1916, 1922-1926; Open Air Room, 1916-1918; Hygiene, grades 6, 7, 8 and Testing of pupils, grades 1 to 8, 1918-1922; Instruction in Primary Methods, Nebraska Wesleyan University, 4 Summer Sessions; Shippensburg S. N. S., 1926—

Member: Supervisors of Student Teaching.



FRANCES W. OYER B.S., Training Teacher, First Grade

Education: Graduate Shippensburg S. N. S., 1919; B.S., Columbia University, 1925.

Experience: Enhaut, grade one, 1919-1921; Special grade teacher, Steelton, 1921-1923; Training Teacher, First Grade, Shippensburg S. N. S., 1924—

Special recognition of Kindergarten teaching at Horace Mann, Teachers College, Summer, 1925. Member of International Kindergarten Union.

Member Pennsylvania State Normal Training Department.

J. R., B.A., Training Teacher, History,
Composition, Spelling.

Education: Graduate Shippensburg S. N. S., 1918; B.A., State College, 1925; Summer sessions, Teachers College, Columbia University, 1922, 1923, 1924.

Experience: Teacher Rural School, Cumberland County, 1918; Greencastle Public Schools, 1919; Hagerstown Public Schools, 1920-1921; Steelton Public Schools, 1921-1924; Training Teacher, History, Geography, Shippensburg S. N. S., 1925—



MARTHA E. SHAMBAUGH, A. B., Training Teacher,
Art, Writing, Health Education.

Education: Graduate Shippensburg S. N. S., 1919; A.B., Albright College, 1924; Special Student at Dickinson College, 1924-1925.

Experience: Third grade teacher, Carlisle, Pa., 1919-1920; fourth grade, Carlisle, Pa., 1920-1921; Spanish and English, High School, Carlisle, Pa., 1924-1925; Training Teacher, Art, Writing, Health Education, Shippensburg S. N. S., 1925—

Captain Training School Girl Scout Troop, 1925—



HARPER J. WENTZ, B.S., Training Teacher, Arith-
metic, Health, Geography.

Education: Graduate Shippensburg S. N. S., 1918; B.S., Franklin and Marshall, 1923.

Experience: Teacher Rural School, Adams County, 1914-1916; Principal of Schools, East Berlin, 1919-1920; Principal of Schools, New Oxford, 1920-1921; Supervising Principal, Expedit, 1923-1925; Training Teacher, Arithmetic, Health, Geography, Shippensburg S. N. S., 1925—



EDNA STAMY FOX, B.S., Assistant to Rural Director
and Training Teacher, Rural School

Education: Graduate S. N. S., 1921; B.S., Pennsylvania State College, 1926.

Experience: Teacher in Rural Training School, Cumberland County, 1921-22; Grade Teacher, Mercersburg, Pa., 1922-23; Teacher of Geography, Elizabethtown College, Summer Session, 1923; Assistant to Rural Director, Shippensburg S. N. S., 1923-24; Teacher

of Geography, Shippensburg S. N. S., Summer Session, 1924; Assistant to Rural Director, Shippensburg S. N. S., 1926—

Prepared slides for scientific lectures and micrological publications presented at International Botanical Congress, Cornell University, Summer of 1926.



BLANCHE L. SECOR, B.S., Training Teacher, Second Grade

Education: B.S., University of Illinois, 1924; Graduate Study, University of Chicago, Summer Session, 1924.

Experience: Public Schools, Niantic, Illinois, 1917-19; Campaign, Illinois, 1920-22; Training Teacher, Northern State Normal College, Marquette, Michigan, 1924-26; Training Teacher, Shippensburg S. N. S., 1926—



ALBERT P. BUSCH, A.B., Training Teacher, Industrial Arts and Boys' Activities, Junior High School

Education: Blackburn College, Carlinville, Illinois, 1915, 1916; Illinois Southern Normal University, Summer Sessions, 1920, 1921; Colorado State University, Boulder, Colorado, Special work in psychology and education, Summer Session, 1921; A.B., Bradley Polytechnic Institute, Peoria, Illinois, 1924.

Experience: Principal of Junior High School, Pinckneyville, Illinois, 1920; Principal of Junior High School, West Liberty, Iowa, 1921; Supt. of Graded School, Fairview, Illinois, 1922; Principal of Junior High School, Rock Springs, Wyoming, 1924-1925; Training Teacher, Industrial Arts and Boys' Activities, Shippensburg S. N. S., 1926—

Practical experience in machine woodwork, carpentering and painting; Director of Playgrounds, East St. Louis, Illinois, Summer of 1917; United States Navy, 1918, 1919; Scout Master, Rock Springs, Wyoming, 1924-1925.



ROY M. DIBERT, B.S., Training Teacher, Science, Algebra, Junior High School.

Education: Summer Session, State College, 1923; Summer Sessions, Susquehanna University, 1924, 1925; B.S., Franklin and Marshall College, 1916.

Experience: Rural School, Bedford County, 1916-19; Principal of Liberty Central High School, Saxton, Pa., 1922-24; Training Teacher, Science, Algebra, Shippensburg S. N. S., 1926—



DO MEN ATTEND THE SHIPPENSBURG NORMAL? THIS ANSWERS THE QUESTION



FOOT BALL SQUAD, 1926-1927

M. CATHERINE WALKER, B.S., Training Teacher,
Geography and Health, Junior High School

Education: B.S., Hood College, 1924; Graduate Student, Pennsylvania State College, Summer Session, 1926.

Experience: Teacher of Home Economics, High School, Sharpsville, Pa., 1924-25; Teacher of Home Economics, High School, Shippensburg, Pa., 1925-26; Training Teacher, Geography and Health, Shippensburg S. N. S., 1926—



STANLEY V. BRUNNERViolin

Education: Private instruction under Sara Lemer and J. C. Van Hulsteyn, 1909-1924; Peabody Conservatory of Music, Baltimore, Maryland, 1921-1922.

Experience: Member of Haydn Symphony and also Hadyn Quartette, Baltimore, Maryland, 1921-1922; Private Instruction, Harrisburg, 1917-1921, 1922-1923; Violin, Shippensburg, S. N. S., 1923—



GRACE I. SCHLEIFVoice and Piano

Education: Graduate of New England Conservatory, Teachers Diploma, 1923; Soloists Diploma, 1924; P.G., 1925, voice under Mr. Charles White and Mr. Wm. L. Whitney, piano under Mrs. Alfred DeVoto.

Experience: Teacher voice, piano, chorus, Kents Hill Seminary Kents Hill, Maine, 1925-26; Voice and Piano, Shippensburg S. N. S., 1926-27.



JOHN W. LACKHOVEBursar

Education: Graduate Mercersburg Academy, 1908; Eastman Gaines Commercial School, 1912.

Experience: Business Office, Mercersburg Academy, 1912-1916; Santa Fe R. R. Passenger Department, 1916-1917; U. S. Army, 1917-1919; Western Maryland R. R. President's Office, 1919-1920; Hotel Management 1920-1921; Bursar, Shippensburg S. N. S., 1921—



ADA V. HORTON, M. E.Registrar

Education: Graduate Shippensburg S. N. S., 1888; Master Diploma, 1891.

Experience: Teacher Primary School, Camp Hill, 1887; Earisman's School, Lancaster County, 1889; Primary School Rohrsertown, 1890; Intermediate School, New Cumberland, 1890-1894;

Teacher Physiology and Geography, Shippensburg S. N. S., 1895-1906; Preceptress, Shippensburg S. N. S., 1906-1916; Secretary to Principal, Shippensburg S. N. S., 1895-1920; Registrar, Shippensburg, S. N. S., 1920—



CLARA W. BRAGG Librarian

Education: Cazenovia Seminary, Graduate and Post-Graduate; Cornell University; Pratt Institute Graduate in Library Science, 1904.

Experience: Cataloguer Wyoming Historical Society, Wilkes-Barre, 1904-1906; Head Cataloguer Worcester Public Library, 1906-1909; Reference Librarian, Columbia University, 1909-1912; Librarian, Bath, New York, 1912-1915; Alexandria Bay, New York, 1920-1921; Rome, New York, 1921-1923; Shippensburg S. N. S., 1923—

Member American Library Association; Pennsylvania State Library Association; Contributor to various professional periodicals.



DORIS H. MOORE, B.S. Assistant Librarian

Education: B.S. in Library Science, Syracuse University, 1926.

Experience: Loan desk assistant Teachers College, Columbia, Summer Session, 1925; Loan desk assistant, Syracuse University Library, 1925-26; Assistant Librarian, Shippensburg S. N. S., 1926—

Member American Library Association.



GRACE KYLE, R. N. School Nurse

Education: College of Notre Dame, Baltimore, Maryland, 1896; Graduate Training School for Nurses, Hospital of University of Pennsylvania, Philadelphia, 1906.

Experience: Private Nursing, Philadelphia, 1906-1910; Public Health Nursing, Newville, 1910-1914; Ambridge, 1914-1915; York, 1915-1916; Private Nursing and Directress of Nurses, West Philadelphia Hospital for Women, 1916-1917; Organized Public Health Nursing, Shippensburg, 1917-1921; School Nurse, Shippensburg, S. N. S., 1921—

Member Graduate Nurses' Association of Pennsylvania; National Organization for Public Health Nursing.



GLADYS L. KIRMAN Secretary to Principal

BEULAH V. ANKERBRAND Assistant to Bursar
ALICE M. McKEE Clerk to Bursar
EDNA CLIPPINGER, Secretary to Director of Training School
HARRY B. ETTER, M. D. School Physician
ANNA M. CLIPPINGER Clerk in Supply Room
ELLEN SHATZER Matron of Girls' Dormitory
ETHEL LENHER, Matron of Administration Building
FLORENCE REISINGER, Matron of Boys' Dormitory
SAMUEL HOOVER, Supt. of Grounds and Buildings



Additional Members of Faculty During Summer Session, 1926.

ELIZABETH CLEVER, A.M. English
JOHN H. FOX, A.M. Nature Study
RUTH IMMELL, A.M. . . . Education and Psychology
HANNA RAPPUHN, B.S. Primary Education
VINCENT A. ROY, A.B. Art
MORRIS WOLF, A.M., Ph.D. Social Studies

THE CUMBERLAND VALLEY STATE NORMAL SCHOOL

SHIPPENSBURG, PA.

Shippensburg is a town of five thousand population, 41 miles south of Harrisburg, on the Cumberland Valley Railroad, a branch of the Pennsylvania line. The Reading and The Western Maryland Railroads also run into the town.

Shippensburg is in the center of the beautiful Cumberland Valley, a region famed in the history of the nation. Gettysburg, with its famous battlefield, is only 35 miles distant; Chambersburg, rich in historic interest, is 11 miles distant; while Carlisle is only twice as far away.

The Cumberland Valley is famous not only for its beauty and its historic associations, but it is one of the richest agricultural communities in the nation.

Shippensburg is a splendid school town. Its people are progressive and intelligent. The moral tone of the town is indicated by the fact that for more than thirty years there has not been a licensed saloon in the town or within six miles of it. There are, however, twelve churches within the borough limits.

THE SCHOOL

The school buildings are beautifully situated just outside the borough limits in the midst of a campus of twenty-five acres. The plant consists of the Administration building, the Girls' Dormitory, the Gymnasium, the Training School, the Power Plant, the Principal's House, the Infirmary, the Laundry, Carpenter Shop and the newly erected Disposal Plant.

The Administration Building recently renovated and remodeled, contains the Principal's, Bursar's, Dean's, and Registrar's Offices, Chapel, Recitation Rooms, Biological Laboratory and the Dining Room. The second and third floors are used as Dormitories.

The Women's Dormitory is a beautiful homelike building equipped with all modern conveniences. Its open court is the assembly and lounging place for the boarding women students. The Basement contains the newly built Chemical and Biological Laboratories and a large Music Room. The Men's Dormitory is thoroughly modern in its equipment. A new and thoroughly modern system of heating has been introduced. The Lavatories, newly equipped with shower

baths, are provided with everything needed for the comfort and convenience of the students. The Main Building is being renovated and modernized so as to make it thoroughly up-to-date in every respect.

All other buildings are modern and admirably suited to the purpose for which they are intended.

EXPENSES

The expenses at the Cumberland Valley State Normal School are very reasonable. They are kept as low as it is possible to keep them without crippling the work of the school.

Free Tuition.—The State of Pennsylvania furnishes free tuition (a scholarship) to all students who have fifteen or more high school credits and who sign an agreement binding them to teach in the public schools of the state for at least two years.

Boarding students who remain at the school for at least eighteen weeks (one semester) pay \$8.00 a week for board, furnished room, heat, light, and laundry,—\$288.00 for the school year. This is payable in four installments as indicated below.

The other expenses are the registration fee of \$5.00, payable when a room is assigned or (in the case of day students) at the time of registration. All students will pay a semester fee of \$10.00. This fee covers the following items: Free admission to all games and entertainments, including those listed in the school entertainment course, the Thanksgiving Play, the Philo Reunion, the Normal Society Anniversary the Dramatic Society entertainment, concerts by the Choral Society; subscription to the Campus Reflector; use of Infirmary and services of nurse in case of illness. It also covers medicine and services of physician in cases of illness not exceeding one week's duration.

Since the number of boarding students desiring rooms is in advance of the number of rooms available, we are forced every year to find rooms outside our dormitories for students, or to refuse to enroll those who apply. Because of this condition, boarding students will be held responsible for the rental of the rooms assigned them for the full semester of eighteen weeks. Withdrawal from school leaves the school with a vacant room upon its hands. Where the withdrawal of the student is due to personal illness properly certified by a physician, the student will be held responsible for only one-half the rental of the room. Boarding will be charged only for the time the student is in actual attendance. But no deduction will be made for absence during the first two or last two weeks of a semester.

In case of necessary absence from school of more than two weeks, students will be credited with the cost of board.

The charge for board and room includes furniture, bedding, light and heat. Each room accommodates two students. All eight

dollar rooms are provided with single beds for each student. When the dormitories are not crowded students may room alone by paying an extra charge of one dollar a week. (During the past four or five years it has not been possible to grant this privilege. There are a few single rooms available at regular rates).

"Students will not be allowed to board outside the building except with parents or near relatives." By "near relatives" is meant brother or sister, uncle or aunt, or grandparents.

TIME OF PAYMENTS

As previously indicated, registration fee, \$5.00, is payable by boarding students when a room is engaged and by day students at the time of registration. The term fee is made a part of the first payment of each semester

If the student is unable to enter the school the registration fee will be returned, if notice of inability to come is given at least two weeks before the opening of the semester or term for which the student has registered. No registration fees are returned after the date indicated.

September 12, first payment, including semester fee	\$82.00
November 14, remainder of payment for semester,	72.00
January 30, first payment, second semester, including semester fee	82.00
April 2, remainder of payment for second semester,	72.00

Books can be purchased at the book room of the school.

EXPENSES FOR DAY STUDENTS

Registration fee payable on entering school	\$5.00
September 12, semester fee	12.50
January 30, semester fee, second semester	12.50

The attention of students is called to the time at which payments are due. The school authorities are required to meet bills as they come due and they must therefore insist upon prompt payment. Unless special arrangement is made in advance, no student will be admitted to class until payments are made.

FEEES

No special fees are charged in any subject but students in laboratory or hand work courses will be charged for materials used or destroyed.

An extra enrollment fee of \$1.00 is charged students who register after the first two days of a semester or term.



CAMPUS WALK



COURT OF GIRLS' DORMITORY

PAYMENTS FOR SPECIAL SUMMER TERM SESSION (1927)

Registration fee, payable when room is assigned	\$12.00
June 14, payments in full for nine weeks	72.00

Total expense for summer term exclusive of books, etc.	\$82.00
Day students will pay only registration and term fees for the summer term	10.00

No deductions will be made on account of absence during the last two weeks of a term or during the first two weeks.

SPECIFIC AIMS OF THE SCHOOL

All State Normal Schools aim to prepare young men and women for the work of teaching. The Cumberland Valley State Normal School emphasizes the features common to all normal schools, but it claims the following distinctive characteristics:

1. Home Life—The authorities believe that the school should reproduce the social life of the home as far as possible. School life should, therefore, be a preparation for living. Young men and women should be taught self-control, for without this ability any scheme of education will be a failure. The great majority of our pupils come to us with a very definite purpose in view and wish to make the best possible use of their opportunities, hence the tone of the school is remarkably earnest.

It is a further aim and object of the school to prepare our pupils for social efficiency. We realize that young men and women must be able to take an active part in the affairs of the various communities into which they are expected to go after leaving the school; hence the school does not neglect the social side of the student's life, and opportunities for social intercourse under proper direction are afforded the students from time to time. The student who goes forth from a school lacking the ability to associate with cultured men and women is bound to be more or less of a failure in life. Our pupils are therefore trained in the conventions expected of them by society so that they may take their place in the affairs of their respective communities. The ideal of any school should be to reproduce as nearly as possible the family life. As young men and women associate in the family, so should they associate in a properly regulated school.

In carrying out this policy this Normal School allows the greatest possible freedom to the young men and women compatible with good taste and sound morality. In short, everything is done by the faculty to co-operate with the students in maintaining a bright and refined home life and to help them to the cultivation of that grace and dignity that marks the real lady or gentleman.

2. Size of the School.—The principal and faculty of the school believe that a school should not number more than six hundred pupils. Schools exceeding this number are apt to be unwieldy; it is not possible for the faculty to know the students personally in larger schools, nor for the students to know one another intimately. As a result, many of the conditions that should prevail in a large home school are absent in such schools. A school ranging from five to six hundred in number is large enough to combine the best features to be found in a student body but is not so large as to destroy the individuality of the students. It is our purpose to limit our attendance to 600 during the coming year if possible.

3. Small Classes.—We believe in small classes, not exceeding thirty-five or forty students. When the classes are larger than this it is impossible for the teacher to come into that close personal contact with the students so necessary to their progress. Very often the lecture method with its glaring faults is used by teachers in large classes. Experience shows that really good work is impossible in classes numbering more than thirty-five or forty students.

STUDENT GOVERNMENT

The authorities of the school believe that no one can be successful in governing others who has not first learned to govern himself. Accordingly the students are given the opportunity to practice self-government. The boarding women are organized into a Student League, which elects a president, vice-president, and secretary. These officers with representatives elected from the four classes and three members of the faculty appointed by the principal, constitute the Student Council, which has charge of the discipline of the boarding girls. The work of this organization has been most satisfactory.

The boarding men of the school are organized into a men's Association. The Association elects a president, treasurer, and secretary. There are five vice-presidents, elected by the members of the five corridors. The above officers with representatives elected from the four classes, together with the Dean, constitute the Representative Board. The new plan is meeting the approval of everyone. Any young man who is reasonable in his actions will find our dormitory life a real home.

REQUIREMENTS FOR ADMISSION

ADOPTED BY BOARD OF NORMAL SCHOOL PRINCIPALS,
MARCH, 1926.

Admission to a State Normal School shall be on a basis of graduation from an approved four-year high school, or equivalent training in an approved private secondary school.

Graduates of senior high schools in a school district maintaining an approved junior high school organization will be admitted

on evidence of twelve units of preparation earned in grades 10, 11 and 12.

A unit represents not less than 120 sixty-minute periods of prepared work, or the equivalent.

Until September 1, 1927, high school work completed prior to July 1, 1924, will be accepted on the basis of 96 clock hours of work requiring preparation.

Graduates of approved two-year high schools are entitled to not more than eight units of credit and graduates of approved three-year high schools to not more than twelve units of credit toward the standard admission requirement; provided, however, that such students, or other students having irregular entrance qualifications, may take examinations in additional subjects taken in course in county superintendents' offices in all counties having such students at the close of the school year. These examinations will be given under the direction of the Credentials Bureau of the Department of Public Instruction, under a cooperative plan adopted by the Board of Normal School Principals, January 15, 1926. In case of failure in a subject, or subjects, the student, after additional study during the summer, may take a second examination in August at one of the normal schools, or at any one of the centers where State examinations are regularly conducted, namely, Philadelphia, Harrisburg, and Scranton.

Under this arrangement students who complete the work of a four-year high school with a three-year rating may take examinations in fourth-year subjects and thereby receive credit equivalent to that of a four-year high school; graduates of three-year high schools with a two-year rating may take examinations in third-year subjects for credit in three years of approved high school work. All inquiries should be addressed to the Credentials Bureau, Department of Public Instruction, Harrisburg, Pa.

Credentials of all students entering the State Normal Schools on the basis of an approved four-year preparation shall be received and evaluated by the normal school; students not having an approved four-year preparation or students whose preparation is irregular, shall have their credentials evaluated by the Credentials Bureau of the Department of Public Instruction.

Graduates of approved four-year high schools or of equivalent private secondary schools who desire admission to a State Normal School without examination must present a detailed statement of all studies pursued, including the time devoted to such studies, and the grades received. Blanks for such purposes may be secured from the principal of the State Normal School. These blanks should be filled out by the principal of the school which the student attended, or where this is impossible, by the local superintendent of schools.

Until September 1, 1927, the holders of permanent and professional certificates will be given one credit toward admission as regular students in the normal schools for each subject of high school grade written on the certificate.

Advanced credit will be given for equivalent courses in approved institutions of collegiate grade, but no students may obtain a normal school certificate without a minimum residence of one year. (Teachers who have been granted credit for experience may finish a two year curriculum with a minimum residence of one-half year.) (See below.)

The usual health certificate required by law for the certification of teachers shall be presented by all applicants for admission. Applicants disqualified, by reason of physical defects, from the successful performance of the duties of a teacher will not be admitted.

All applicants for admission shall present evidence of good moral character and ideals characteristic of the teaching service.

No candidate for a normal school certificate shall receive more than twenty semester hours of credit toward graduation for work done in extension classes or by correspondence. No credit will be given for correspondence work taken after September 1, 1927.

NORMAL SCHOOL CERTIFICATES FOR TEACHERS IN SERVICE

The following conditions apply only to those persons who have taught in Pennsylvania public schools prior to July 1, 1922. (No Credit will be given toward the completion of the entrance requirements or of the regular normal school course for teaching done after July 1, 1922.)

The fifteen units of high school work required for entrance to the State Normal Schools may be earned in approved high schools, summer schools, extension classes, correspondence study in institutions approved by the Department of Public Instruction, and by tutoring under approved conditions.

Credit for entrance may also be secured by teaching experience in Pennsylvania public schools at the rate of three standard high school units for each year of successful teaching experience.

Whenever a teacher has earned the credits necessary for entrance to a State Normal School in any of the above ways or by any combination of them, four semester hours of credit on a regular State Normal School curriculum may be granted for each year of teaching experience in Pennsylvania with a rating of "middle or better" subsequent to meeting the entrance conditions up to a maximum of thirty-two semester hours, provided, however, that all credits thus given shall be conditional until the teacher shall have proved his ability to do the work of the State Normal School curriculum in a creditable manner.

In all cases in which Normal School credit is given for teaching experience, the work remaining to be done shall be selected by the authorities of the Normal School to secure the best development of the student in teaching power.

A minimum of one-half year of resident study shall be required of all candidates for graduation who are credited for teaching experience as outlined above.

Entrance and normal school credits based on teaching experience as outlined above will not be granted after September 1, 1927.

Credit for student teaching other than that done under the direction of the normal school shall not be approved.

Credit toward entrance or toward graduation with a degree will not be allowed for experience in teaching.

CURRICULA OF THE PENNSYLVANIA STATE NORMAL SCHOOLS

STUDENTS PREPARING FOR ELEMENTARY TEACHING MUST SELECT ONE OF THREE CURRICULA

The three curricula have been organized upon the principle that teaching in the elementary schools can be classified into sufficiently definite types to require specialization. Each curriculum prepares for a specific type of teaching position.

The work of the first semester is the same for all students in the two year courses. A large purpose of the work of the first semester is to acquaint students with the requirements for successful teaching in the different grades so that they may be able to decide intelligently in what grade or grades they prefer to teach. The course entitled "Introduction to Teaching" which includes observation and participation in the training school is especially designed to aid students in a wise selection of a curriculum.

At the end of the first semester students who expect to remain only two years in the Normal School are asked to select one of the first three curricula for the purpose of specializing in a specific field of teaching. The work of each curriculum must be completed in its entirety. Students may be granted the privilege of changing from one curriculum to another only on condition that the prescribed courses of any curriculum so selected must be completed before a certificate of graduation is granted.

THE THREE TWO YEAR CURRICULA FOR ELEMENTARY TEACHING

Group I. Kindergarten-Primary—for teachers of Kindergarten and grades 1, 2 and 3. (Two year course.)

Group II. Intermediate grades—for teachers of grades 4, 5 and 6. (Two year course.)

Group III. Rural—for teachers of rural schools. (Two year course.)

REQUIREMENTS RELATING TO STUDENTS IN ALL CURRICULA

1. All entering students are required to take, without credit, ten lessons on "Using the Library."
2. All students are required to take part, without credit, in one extra-curricula activity one semester each year.
3. All students, before receiving a final grade in the subject, must equal eighth grade standards of achievement in English (including spelling) and arithmetic.

Note: The preceding are supplementary to the entrance requirement of graduation from a four-year high school with at least fifteen Carnegie units of work.

PROGRAM OF STUDIES

New Course adopted by the Board of Normal School Principals

March 18, 1926

REQUIREMENT FOR GRADUATION FROM TWO-YEAR CURRICULA AND CREDENTIAL

The completion of the 68 required semester hours in a two-year curriculum entitles the students who meets all other legal requirements to the Normal School certificate which is a valid state license to teach in the elementary school for two years. On the completion of two years of successful teaching, the Normal School Certificate is made into the Normal School Diploma which a valid life license to teach in the elementary schools of Pennsylvania.

TWO-YEAR CURRICULUM FOR GROUP 1 KINDERGARTEN AND PRIMARY GRADES, 1, 2, 3.

Note: The first figure following a subject indicates the number of 50 minute class periods per week. The second figure indicates the number of semester hours of credit allowed for the successful completion of the course. Figures in parentheses indicate sequential courses in a given subject.

FIRST SEMESTER

Educational Biology	3	3
Introduction to Teaching	3	3
English (1)	3	3
Music (1)	4	2
Art (1)	4	2
Oral Expression	2	2
Handwriting	2	1
Physical Education (1)	3	1

24 17

SECOND SEMESTER

Psychology and Child Study	3	3
English (2)	3	3
Music (2)	3	1½
Art (2)	3	1½
Nature Study	2	2
Teaching Primary Reading	3	3
Teaching of Number	2	2
Physical Education (2)	3	1
	22	17

THIRD SEMESTER

Educational Sociology	3	3
Children's Literature and Story Telling	3	3
Kindergarten-Primary Theory	2	2
Educational Measurements	2	2
Health and Hygiene in Primary Grades	3	3
Elective	3	3
Physical Education (3)	3	1
	19	17

FOURTH SEMESTER

Student Teaching and Conferences	13	10
Teaching of Primary Subjects	4	4
Geography	1	1
Social Studies	1	1
Spelling and Language	2	2
Technique of Teaching	2	2
Physical Education (4)	3	1
	22	17

TWO-YEAR CURRICULUM FOR GROUP II
INTERMEDIATE GRADES—4, 5, 6.

FIRST SEMESTER

Educational Biology	3	3
Introduction to Teaching	3	3
English (1)	3	3
Music (1)	4	2
Art (1)	4	2
Oral Expression	2	2
Handwriting	2	1
Physical Education (1)	3	1
	24	17

SECOND SEMESTER

Psychology and Child Study	3	3
English (2)	3	3
Nature Study	2	2
Teaching of Arithmetic	3	3
Teaching of Geography	3	3
Music (2)	3	1½
Art (2)	3	1½
Physical Education (2)	3	1
	23	18

THIRD SEMESTER

Educational Sociology	3	3
Teaching of Social Studies	3	3
Juvenile Literature and Silent Reading	2	2
Educational Measurements	2	2
Health and Hygiene in Intermediate Grades	3	3
Elective	3	3
Physical Education (3)	3	1
	19	17

FOURTH SEMESTER

Student Teaching and Conferences	13	10
Technique of Teaching	2	2
Teaching of English	3	3
Physical Education (4)	3	1
	21	16

TWO-YEAR CURRICULUM FOR GROUP III (RURAL)

FIRST SEMESTER

Educational Biology	3	3
Introduction to Teaching	3	3
English (1)	3	3
Music (1)	4	2
Art (1)	4	2
Oral Expression	2	2
Handwriting	2	1
Physical Education (1)	3	1
	24	17

SECOND SEMESTER

Psychology and Child Study	3	3
English (2)	3	3
Nature Study and Agriculture	2	2
Teaching of Arithmetic	3	3
Teaching of Geography	3	3
Music (2)	3	1 ½
Art (2)	3	1 ½
Physical Education (2)	3	1
	23	18

THIRD SEMESTER

Rural Sociology	3	3
Teaching of Social Studies	3	3
Juvenile Literature and Silent Reading	2	2
Educational Measurements	2	2
Health and Hygiene in Rural Schools	3	3
Primary Methods for Rural Schools	3	3
Physical Education (3)	3	1
	19	17



DEBATING CLUB, 1926-1927



SCHOOL ORCHESTRA, 1926-1927

FOURTH SEMESTER

Student Teaching and Conferences	13	10
Technique of Teaching	2	2
Teaching of Reading	3	3
Physical Education (4)	3	1
	21	16

ADVANCED TWO-YEAR CURRICULUM LEADING TO B. S. IN EDUCATION

(Open only to Those who have Completed the Work of Groups I, II, or III, [rural])

Conditions of Entrance to the Third Year of the Four-Year Curriculum in Elementary Education

1. All persons who have completed the work of Groups I, II, or III (rural, formerly IV) are admitted to third year standing provided they have previously completed the work of a four-year high school, and all such persons must complete 68 hours of work beyond graduation from Groups I, II, or III (rural, formerly IV) as these were, prior to September 1, 1926, organized and administered.

2. All credits for work less than that required at a State Normal School for graduation between September, 1920 and September, 1926 shall be evaluated by multiplying the number of semester hours already earned by .85.

The following table applies this ratio to enough typical cases to illustrate the principle:

Former Semester Hours		New Semester Hours
6	x .85=	5.0
11	x .85=	9.0
22	x .85=	19.0
36	x .85=	21.0
60	x .85=	51.0

Rule: If the decimal is less than .5, disregard it; if it is .5 or more, count it as a unit.

3. All persons who graduated from a State Normal School prior to September, 1920, and who have had a four-year high school preparation, cannot be awarded more than 68 semester hours of credit for their normal school work.

4. Graduates of the State Normal Schools who have not had four years of high school preparation may apply to the Credentials Bureau, Harrisburg, Pennsylvania, for a high school equivalent certificate, which, when issued by the Credentials Bureau, will be accepted by the State Normal Schools as equivalent to graduation

from a four-year high school and all credits earned at a State Normal School prior to September, 1926 will be evaluated as indicated above.

5. No credit for public or private school teaching experience, previously credited as high school equivalent or as equivalent professional credit toward graduation, shall be granted or counted toward meeting the requirements for entrance to or graduation from the advanced two-year curriculum.

FIFTH SEMESTER

Opportunity is provided so that a student may complete in this semester the work of the first two years in the curricula which he did not pursue, as follows:

FIFTH SEMESTER

1. Graduates of Group I will take:

Teaching of Arithmetic	3	3
Teaching of Geography	3	3
Teaching of English	3	3
Teaching of Social Studies	3	3
	12	12

2. Graduates of Group II will take:

Teaching of Primary Reading	3	3
Teaching of Number	2	2
Teaching of Primary Subjects	4	4
Kindergarten-Primary Theory	2	2
	11	11

3. Graduates of Group III will take:

Teaching of English	3	3
Teaching of Number	2	2
Kindergarten-Primary Theory	2	2
Teaching Primary Subjects	4	4
	11	11

Total taken by a Student as above	11	11 or	12	12
Educational Psychology	3	3	3	3
Economic Biology	4	3	4	3
	18	17 or	19	18
	18	17 or	19	18

SIXTH SEMESTER

History of Education	3	3
English Literature	2	2
Descriptive Astronomy	3	3
Economics	3	3
Physiography	4	3
Teaching and Supervision of Arithmetic in Elementary School	3	3
	18	17

SEVENTH SEMESTER

Principles of Education	3	3
American Literature	2	2
American Government	3	3
Principles of Human Geography	3	3
Nutrition	4	3
Civic Education in the Elementary School	3	3
	18	17

EIGHTH SEMESTER

Advanced Composition	3	3
History and Appreciation of Art	4	2
History and Appreciation of Music	4	2
History and Organization of Edn. in Pa.	2	2
Practical School Contacts	5	5
Supervision and Administration of Elementary School	3	3
	21	17

FOUR-YEAR CURRICULUM IN ELEMENTARY EDUCATION FOR CLASS ROOM
TEACHERS (B. S. IN EDUCATION)

FIRST SEMESTER

Educational Biology	3	3
Introduction to Teaching	3	3
English (1)	3	3
Oral Expression	2	2
Art (1)	4	2
Music (1)	4	2
Handwriting	2	1
Physical Education (1)	3	1
	24	17

SECOND SEMESTER

Psychology and Child Study	3	3
English (2)	3	3
Art (2)	3	1½
Music (2)	3	1½
Nature Study	2	2
Teaching of Primary Reading	3	3
Teaching of Number	2	2
Physical Education (2)	3	1
	22	17

THIRD SEMESTER

Educational Psychology	3	3
Teaching of Arithmetic	3	3
Teaching of Geography	3	3
Economic Biology	4	3
American Literature	2	2
Nutrition	4	3
Physical Education (3)	3	1
	22	18

FOURTH SEMESTER

Teaching of English	3	3
Descriptive Astronomy	3	3
Educational Measurements	3	3
Economics	3	3
Teaching of Primary Subjects	4	4
Geography	1	1
Social Studies	1	1
Spelling and Language	2	2
Physical Education (4)	3	1
	19	17

FIFTH SEMESTER

Educational Sociology	3	3
Children's Literature and Story Telling	3	3
Health and Hygiene in the Elementary School	3	3
Teaching of Social Studies	3	3
American Government	3	3
Elective	2	2
	17	17

SIXTH SEMESTER

History of Education	3	3
Physiography	3	3
Teaching and Supervision of Arithmetic in Elementary Schools	3	3
Advanced Composition	3	3
English Literature	2	2
Civic Education in Elementary School	3	3
	17	17

SEVENTH SEMESTER

Student Teaching and Conferences	13	10
Technique of Teaching	2	2
Principles of Human Geography	3	3
Kindergarten-Primary Theory	2	2
	20	17

EIGHTH SEMESTER

History and Appreciation of Art	4	2
History and Appreciation of Music	4	2
History and Organization of Education in Penna.	2	2
Practical School Contacts	4	4
Supervision and Administration of Elementary School	3	3
Principles of Education	3	3
	20	16

The completion of the foregoing curriculum of 136 semester hours entitles a person to the degree of B. S. in Education which after two years of successful teaching experience becomes a life license to teach, supervise or serve as principal in the elementary field.

 FOUR-YEAR CURRICULUM FOR THE PREPARATION OF JUNIOR HIGH SCHOOL
 TEACHERS (B. S. IN EDUCATION)

FIRST SEMESTER

Educational Biology	3	3
English (1)	3	3
Oral Expression	2	2
Social and Industrial U. S. History	3	3
Human Geography	3	3
Appreciation and Application of Art	4	2
Physical Education (1)	3	1
	<hr/>	
	21	17

SECOND SEMESTER

Introduction to Teaching	3	3
English (2)	3	3
Everyday Science	3	3
Economics	3	3
Handwriting	2	1
World Problems in Geography	3	3
Physical Education (2)	3	1
	<hr/>	
	20	17

THIRD SEMESTER

Psychology and Adolescence	3	3
English Literature	2	2
First Elective Field	3	3
Second Elective Field	3	3
American Government	3	3
Physical Education (3)	3	1
Free Elective	2	2
	<hr/>	
	19	17

FOURTH SEMESTER

Educational Psychology	3	3
American Literature	2	2
First Elective Field	3	3
Second Elective Field	3	3
Educational Sociology	3	3
Physical Education (4)	3	1
History and Appreciation of Music	4	2
	<hr/>	
	21	17

FIFTH SEMESTER

Purpose, Organization and Development of Junior High School	3	3
Advanced Composition	3	3
Guidance	3	3
First Elective Field	3	3
Second Elective Field	3	3
Free Elective	2	2
	<hr/>	
	17	17

SIXTH SEMESTER

History of Education	3	3
Educational Measurements	3	3
First Elective Field	3	3
Second Elective Field	3	3
Dramatic English	3	3
History and Organization of Education in Penna.	2	2
	17	17

SEVENTH SEMESTER

Student Teaching, Conferences, and School Contacts	18	14
Technique of Teaching	2	2
	20	16

EIGHTH SEMESTER

Principles of Education	3	3
Health and Hygiene in Junior High School	3	3
First Elective Field	6	6
Second Elective Field	6	6
	18	18

REQUIREMENT FOR GRADUATION AND CREDENTIAL

Upon the completion of the 136 semester hours of the foregoing curriculum the degree of B. S. in Education is awarded. This entitles the holder to teach in any public school any subject in which he has earned 18 or more semester hours of credit. After two years of successful teaching, a life license in the foregoing field is awarded.

ELECTIVE FIELDS FOR PROSPECTIVE JUNIOR HIGH SCHOOL TEACHERS

The person who is to teach successfully in the junior high school must have, in addition to what has been prescribed, a special preparation in at least two fields. A third field, in which less preparation is possible, is also desirable. There are electives in six fields.

ELECTIVE ARRANGEMENT OF FOUR YEAR HIGH SCHOOL FIELDS

(Six Semester Hours in Each of Two Fields for Three Years)

ELECTIVES IN ENGLISH		ELECTIVES IN SCIENCE	
3— 3	Teaching of English in Junior High School	6— 6	Chemistry
3— 3	Philology and Grammar	6— 6	Physics
3— 3	Contemporary Poetry	3— 3	Economic Biology
3— 3	Short Story	4— 3	Advanced Biology
3— 3	Modern Novel	3— 3	Descriptive Astronomy
3— 3	Elizabethan Drama	3— 3	Teaching of Science in Junior High School
		3— 3	Physiography
18 +18	Required=36	27 + 6	Required=33

ELECTIVES IN GEOGRAPHY

3—3	Economic Geography
3—3	Physiography
3—3	Geography of European Countries
3—3	Geographic Influences in American History
3—3	Geography of North America
3—3	Geography of Latin America

18 + 6 Required=24

ELECTIVES IN SOCIAL STUDIES

3—3	Teaching of Social Studies
3—3	Early European History
3—3	Modern European History
3—3	American History to 1865
3—3	American History since 1865
3—3	Political Science

18 + 15 Required=33

ELECTIVES IN MATHEMATICS

12—12	Mathematical Analysis (A practical two-year course in Algebra, Trigonometry, Analytical Geometry, the Differential, and Integral Calculus)
3—3	Teaching of Junior High School Mathematics
3—3	Teaching of Algebra and Plane Geometry

18—18, and none required,=18

FOREIGN LANGUAGES

15—15	in French or Latin After two years High School French or three years High School Latin.
3—3	Teaching of Languages

18—18, and none required,=18

Electives, however, are particularly liable to misuse unless carefully safeguarded. The selection of electives is deferred until the end of the first year and is subject to the following:

PREREQUISITES FOR THE ELECTION OF FIELDS IN THE JUNIOR HIGH SCHOOL CURRICULUM

1. To elect Science, a student must present a unit in Chemistry and a unit in Physics.
2. To elect Social Studies, a student must present two high school units in social studies.
3. To elect Mathematics, a student must present one high school unit in Algebra and one high school unit in Plane Geometry, or two units in Composite Mathematics, one of which at least must have been taken in the Senior High School.
4. To elect French, a student must present two high school units in French.
5. To elect Latin, a student must present three high school units in Latin.

When a student has chosen his elective fields, his curriculum becomes a closed series of courses not subject to change without loss of credit.

Note: The same regulations apply regarding admission and advanced credit for work already given, etc., as are applicable to the Advanced Two-Year Elementary Curriculum.

INSTRUMENTAL MUSIC DEPARTMENT

The music department of Cumberland Valley State Normal School offers special instruction in voice, piano and violin. Teachers of proved ability are in charge of each branch of this work. The individual needs of each student will be carefully considered and attention given. All work is carefully graded and opportunities provided for individual development. Student recitals, school assemblies, society and class functions offer an ideal atmosphere for ambitious students to make public appearance. Special orchestral groups furnish an opportunity for ensemble study. The Cumberland Valley State Normal School Philharmonic Orchestra and Concert Band with their complete equipment offer an experience second to none for training in instrumental music for use in either public schools or for individual accomplishment. Class instruction in orchestral and band work as part of regular course. No charge for class instruction.

Students will register in these subjects as in other branches. The charge for this, including the use of piano for practice is \$25.00 per semester.

SUMMER SESSION

June 13, 1927 to August 12, 1927

A nine weeks Summer term will open June 13th. This session will give opportunity to teachers in service to prepare for the State Standard Certificate. The courses offered will be those approved by the Department of Public Instruction for the Partial or the Standard Certificate. Course will be offered also in the advanced two year curriculum and the four year courses.

Advanced courses in English, Social Studies, Mathematics, Science, Foreign Languages, School Measurements and School Administration will be offered for Normal School Graduates and the holders of Standard or State Permanent Certificates.

The Summer session of 1928 will open June 11, and close August 10.

TEXT BOOKS USED

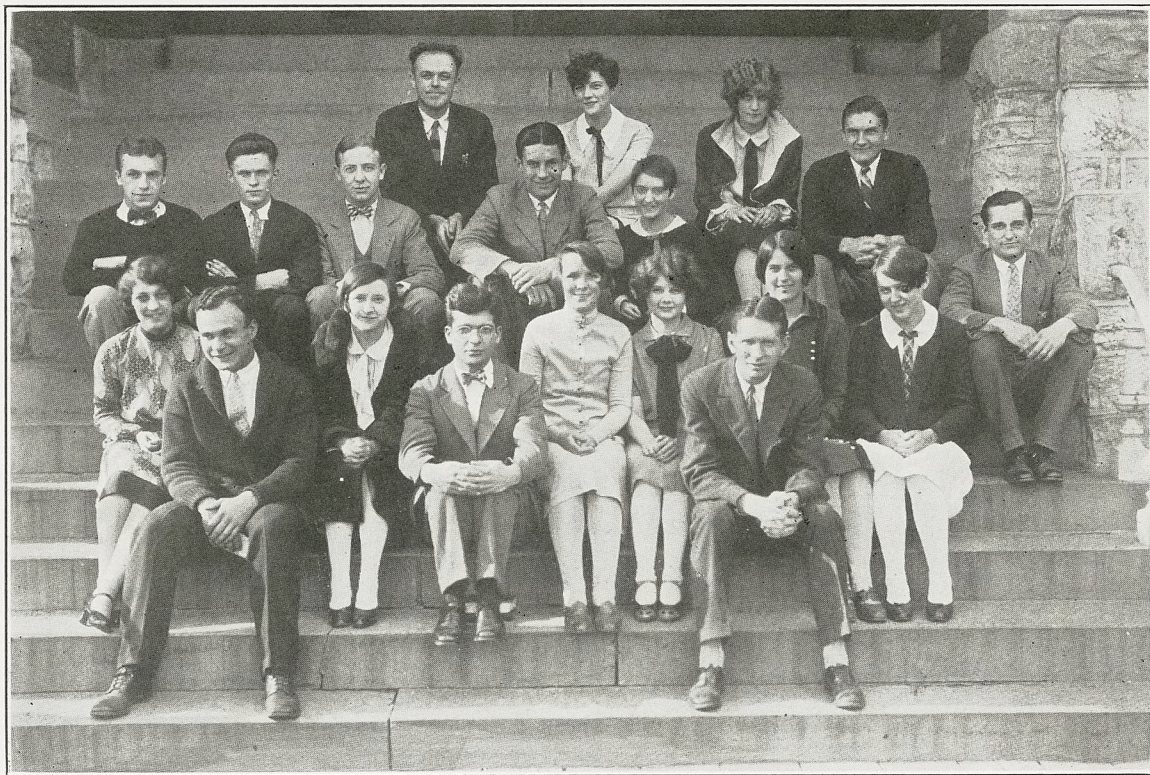
(This list embraces the texts that will be used in the regular normal department, and special teacher training course as far as they have been adopted.)

Algebra, College—Hart.

Arithmetic, Teaching of—Newcomb.



SCHOOL BAND, 1926-1927



DRAMATIC CLUB, 1926-1927

- Arithmetic, New Method—Thorndike.
Botany, College—Bergen & Davis; Coulter; Transeau; Gavong.
Chemistry—Morganie.
Composition, Writing of English—Manley and Rickert.
Drawing—Brown; Whitney.
Education, Introduction to—Frasier and Armentrout.
Educational Practice, Principles of—Klapper.
Educational Tests and Measurements—Monroe, DeVoss & Kelley.
Century Book Selections—Greever and Bachelor.
Century Hand Book—Greever and Jones.
Economic Life—Tugwell, Murro and Stryker.
English Literature, Types of—McClelland and Baugh.
American Literature—Pattee.
English in High School, Teaching of—Stratton.
French, Grammar—Frazer & Squair, (Revised.)
French, First Year, Petits Conte de France—Meras & Roth.
French, Second Year, Ca et La en France—Cramer; Neuf Contes
Choisis, Daudet, Columba Merimee.
French, Third Year—Pecheur, D'Islande, Avare, Voltaire, Le Cid,
Corneille, etc.
Geography, Teaching of—Branom; Clark.
Geography, Economic—Whitback and Finch.
Geology—Chamberlin and Salisbury.
Geometry, Solid—Smith.
Guidance, Educational and Vocational—Proctor.
History, Development of Am. Nationality—Fish.
History, Ancient, (Rev. ed.)—Webster.
History, Mediaeval and Modern, (Rev. ed.)—Webster.
History of England—(Revised) Cheyney.
History, Industrial of American People—Moore.
History, Since Civil War—Lingley.
History of Education—Graves.
Horace Odes—Moore.
Hygiene, (Jr.) Laws of Health—Winslow and Williamson.
Literature, Children's—Curry and Cleppinger.
Literature in Elementary Schools—McClintock.
Livy—Selections.
Mathematical Analysis, Introduction to—Griffin.
Mathematics, Junior High School—Clark.
Nature Study—Downing.
Physics, A Textbook for Colleges—Stewart.
Psychology, B—Swift.
Psychology of Childhood—Norsworthy and Whitely.
Reading, Silent and Oral—Stone.
Sociology, Rural—
Sociology, Educational—Doro.
Story Telling—Cather.

Trigonometry—(Revised) Wentworth and Smith.

Virgil—Greenough & Kittridge.

Public School Music—Dann.

Zoology, Advanced—Hegner; Holmes; Menge.

PRIZES

SCHOLARSHIP PRIZES

The class of 1908 offers a yearly prize of five dollars in gold to the four year student having highest average at graduation. This prize was awarded in June, 1926 to Margaret K. Lehman, Shippensburg, Pa.

PUBLIC SPEAKING PRIZE

The class of 1916 offers a yearly prize of five dollars in gold for excellence in Public Speaking. The prize for 1926 was awarded to Helen W. Keggereis, Shippensburg, Pa., with Honorable Mention of James S. Snoke, Mowersville, Pa., and Dorothea Kirk, Harrisburg, Pa.

PRIZES IN DEBATING

Mrs. Louise L. Lehman offers two yearly prizes in books to the students winning first and second places in the inter-society debate. The first prize for 1926 debate was won by Mazie K. Hamil, McConnellsburg, Pa., and the second prize by Margaret K. Lehman, Shippensburg, Pa.

DISTINGUISHED SERVICE PRIZE

A gold medal presented by Mrs. Eleanor Kyner Boots, class of '89, suitably inscribed will be awarded the student who in the judgment of the student body and the faculty has done most for the school during the year. Character, scholarship, initiative, community service, skill in athletics, debating and other school activities will be given due consideration. This prize was awarded on Commencement Day, 1926 to Margaret K. Lehman, Shippensburg, Pa.

SHORT STORY PRIZE

The Myrtle Mayberry prize of books ranging in value from ten to fifteen dollars will be awarded annually on Commencement Day to the student who submits the best short story written in competition for this prize. Established by Mrs. Mulford Stough, '07. Awarded June, 1926 to Henry S. Gutknecht, Fayetteville, Pa., with Honorable Mention of Frances E. Tay, Carlisle, Pa.

PRIZE FOR EXCELLENCE IN STUDENT TEACHING

Mrs. Mary V. Fairley, class of '89, offers an annual prize of ten dollars in gold to the student in the graduating class who makes the highest record in student teaching. This prize was divided in June, 1926, between Maude Eppley, Eppers, Pa., and Myra C. Esh, Milroy, Pa.

The Gold Medal offered by the Girls' Athletic Association to the student who wins the highest number of athletic points while maintaining satisfactory class standing was won in June, 1926 by Dorothy L. Leese, York, Pa.

THE ALUMNI FUND

Boarding students who need financial aid during their senior year may borrow a sum not exceeding \$100 from the Alumni Fund for one year from the time of their graduation without interest. Students in need of such assistance must file their request for aid with the principal not later than August 15 of the year preceding their graduation.

The following Alumni Loan Scholarships have been established:
Prof. John F. McCreary—Gift of the Metropolitan Alumni Assoc.
Dr. George M. D. Eckels—Gift of the Metropolitan Alumni Assoc.
Dr. Joseph F. Barton—Gift of L. M. Shepp, '96, Millersburg, Pa.
Prof. J. W. Hughes—Gift of Class of '93.
Dr. James Eldon—Gift of Class of '21.

These are awarded annually to students who need financial assistance and whose records are meritorious.

GOVERNMENT AND DISCIPLINE

All school government should have for its end the development of character in the individual student. Any method of government which does not secure this important end is wrong in principle.

In a Normal School where the student is being trained to govern other students, there can be no excuse for loose government. No person is qualified to teach in the public schools until he has attained a complete mastery over himself. The individual who has been trained in schools to habits of self-control and a wise self-direction has received the best training which any school can give him.

We rely greatly upon the honor and self-respect of our students in our efforts to control. A Normal School is not a reformatory. Students who enter this school are supposed to come for the purpose of preparing themselves for their life work, and to be capable

of self-control. The disciplinary regulations are, therefore, few and simple. Students who cannot abide by these regulations will be required to leave the institution.

When students are not making satisfactory progress in their studies, their parents are notified and if this course does not remedy the matter, the parents will be asked to withdraw them from the school. Students who are not making good use of their opportunities to receive an education will not be retained in school.

Obedience on the part of the students to the following rules and regulations is necessary to the successful management and control of a Normal School, and is for the best interests of the students themselves. No regulations are made which we do not regard as important.

TIME REGULATIONS

1. Recitation hours from 8:15 to 12:15 a. m. and from 1:15 to 4:15 p. m.
2. Breakfast at 7:15 a. m. Lunch at 12:30 p. m. and Dinner at 5:30 p. m.
3. Chapel service at 11:15 a. m.
4. Prayer meeting on Wednesday, 7:00 p. m. Attendance voluntary.
5. "Normal" and "Philomathean" Literary Societies meet on Friday evenings at 7:00 o'clock.
6. Y. W. C. A. and Y. M. C. A. meetings on Sunday at 6:00 p. m., Sunday school at 8:45 a. m.
7. Study hour from 7:00 to 10:00 p. m. 8:00 to 10:30 Saturday forenoon.

CLASS REGULATIONS

1. No student will be allowed to take more studies than he can pursue profitably nor fewer than necessary to keep him sufficiently employed.
2. Students must attend classes up to the time of their leaving school.
3. All students must be present at the chapel exercises, unless excused.
4. A costume suitable for use in gymnasium must be worn in the physical training classes. It is suggested that the gymnasium costume be secured after students have entered the school and have ascertained just what is needed.

5. All articles of clothing sent to the laundry must be distinctly marked with the student's full name.

6. Both men and women must wear the regular gymnasium shoes for gymnasium exercises.

BUILDING AND ROOM REGULATIONS

1. Each student will be held responsible for the condition of his room and its furniture, and he will be charged with any loss or unnecessary damage.

2. No change or alterations must be made in the permanent parts or fixtures of the rooms, nor nails driven into the walls without the permission of the preceptress or matron.

3. Students are required to provide themselves with soft-soled slippers for the building.

4. All articles of clothing sent to the laundry must be distinctly marked with the student's full name.

5. Students may be required to change their rooms or to board out of the building if deemed best by the Principal of the school.

SOCIAL REGULATIONS

1. Day students will not call at the rooms of boarders, nor stay in their rooms over night, unless by permission of the Dean of Women. Boarding students will be held responsible to the Dean of Women for the observance of this rule.

2. Boarding students will not be permitted to visit in town on Sundays, nor remain in town over night, excepting with relatives.

3. Visitors to the building will be regarded as under the same regulations as the students.

4. Visiting the buildings and grounds on Sundays is not approved of except in the case of parents, and they are asked to keep in mind our regulation for quiet on the Sabbath. Students will not be allowed to make or receive calls during school or study hours.

5. Students will receive calls from relatives or friends in the reception room only. No one except parents will be permitted to visit the student's rooms.

6. Students are under the regulations of the school going to and coming from their homes.

7. Students wishing to visit their homes or other places during the term must present written permits from parents to the Dean of Women or Dean of Men. Parents are urged not to ask their children to be absent from the school except between the hours

of 4 p. m. Friday and 8 a. m. Monday. No student will be allowed to go home **oftener** than once every three weeks. The students cannot make up the work missed through absence from class. Absence from the school is a positive loss to students. Students return to school after being absent over week-ends with work unprepared. The best work is done by students who are absent from school only in case of absolute necessity. The faculty will not hold themselves responsible for the progress of students who visit their homes or other places frequently during the term. No student who is failing in his work will be allowed to be away from school for the week end.

9. The authorities of the school will not, except in case of absolute necessity, call a student to the telephone during school hours or study hours. Such calls should be made before 8:15 a. m., between 12:15 noon and 1:15 o'clock p. m., and 4:15 and 7:00 p. m.

10. Students will be permitted to be five day students only in such instances as the Principal deems wise for the reasons presented to him in writing by the parents. Any student registered as a five-day student will be expected to go home **each** week-end. As very few five-day students do good class work since they have no opportunity to take part in special activities, parents are urged to allow their children to be five-day students only in cases of absolute necessity.

11. Parents sometimes complain that the expenses incurred by students are considerably in excess of those listed in the catalogue. There is no reason for such complaint, as every legitimate expense is plainly listed in the catalogue. Students, however, frequently persuade their parents to supply them with more money than should be given them. Bills for books, fees, and other legitimate expenses will always be furnished by the school when requested by parents.

HEALTH REGULATIONS

1. Students upon entering the school must present physician's certificate showing that they have been successfully vaccinated.

2. Students during vacation, or at any time when they are absent from school, must avoid exposure to contagious or infectious diseases.

3. Students will be expected to observe proper hygienic rules during the time they are enrolled as members of the school.

4. The school kitchen is in charge of the head of the Department of Cookery, who is a skilled dietitian. A carefully balanced menu will be arranged. Food especially adapted to the needs of the student is provided and parents are requested not to send boxes of cooked eatables to students. Many cases of ill health are directly traceable to over-indulgence in food sent from home.

ATHLETICS

It is the duty of the school to see to the physical well-being of every young man and woman in attendance. The day is gone by when the pale, delicate, bookish student is regarded as the ideal to be sought. Young men and women must be just as strong and robust as possible. For this reason we encourage all our students to take part in some type of athletics.

In addition to out-of-door exercises and the regular training in the gymnasium, the school encourages the following athletic sports:

Girl's Hockey.—Class teams are organized early in the fall and a series of inter-class games is played.

Girl's Basketball.—Not only are class games played but group teams are organized, and a regular schedule of games arranged. Nearly all the boarding women take part in these games.

Girl's Baseball.—In the Spring and Summer terms this game occupies the place held by the hockey in the Fall term.

Tennis is open to both men and women and is under the control of the Students' Tennis Association.

Men's Athletics

Football is open to all the men: A series of inter-school games will be played. Class teams will also be organized.

Basketball.—The same method is followed as in football. Nearly all the men take part in this game.

Baseball.—Teams are organized from each class. From these organizations the school team is organized.

Track and Field Sports.—A meet will be held each spring, at which the class championship will be decided.

ENTERTAINMENTS

Moving Pictures.—The school owns a Powers 6-B Moving Picture Machine, and once every month a moving picture entertainment is given for the entire evening. Plays of Shakespeare, and productions from modern dramatists are presented, and films dealing with the work of various important industries, life in foreign countries, interesting experiments in chemistry and physics, etc., are shown.

Lectures, Concerts, etc.—During the past year a remarkably strong series of concerts and entertainments were presented. These included the following: Devereaux Players, Lorado Taft, Jesse

Pugh, Dr. Carl Wallace Pelly, Schubert Quartette. An equally strong course of lectures and concerts will be provided for the school year 1927-1928.

Vesper Services.—During the summer session vesper services are held out of doors every Sunday evening. Well known ministers and other speakers are procured to address these meetings.

All entertainments, concerts, moving picture entertainments are free to the students.

RELIGIOUS WORK

Our students are furnished excellent opportunities for spiritual growth and development. We have a prayer and lecture service every Wednesday evening, conducted by a member of the faculty, or minister, to which all the students are invited. The service is attended by a large number of students and is full of interest and profit.

We have a Sabbath School organized among the students. This service is held every Sabbath morning, and the exercises are highly appreciated and greatly enjoyed by the school. The school is divided into classes, each class being taught by a member of the faculty. The International Lesson is used.

Students, unless excused by the Principal, are required to attend the church service of their choice every Sabbath morning. The church attendance in connection with the religious services at the school offers them all the spiritual advantages that they would receive at their own homes. In all proper ways religious influences are thrown around the pupil, making his school life to conform as nearly as possible to the home life in a Christian family.

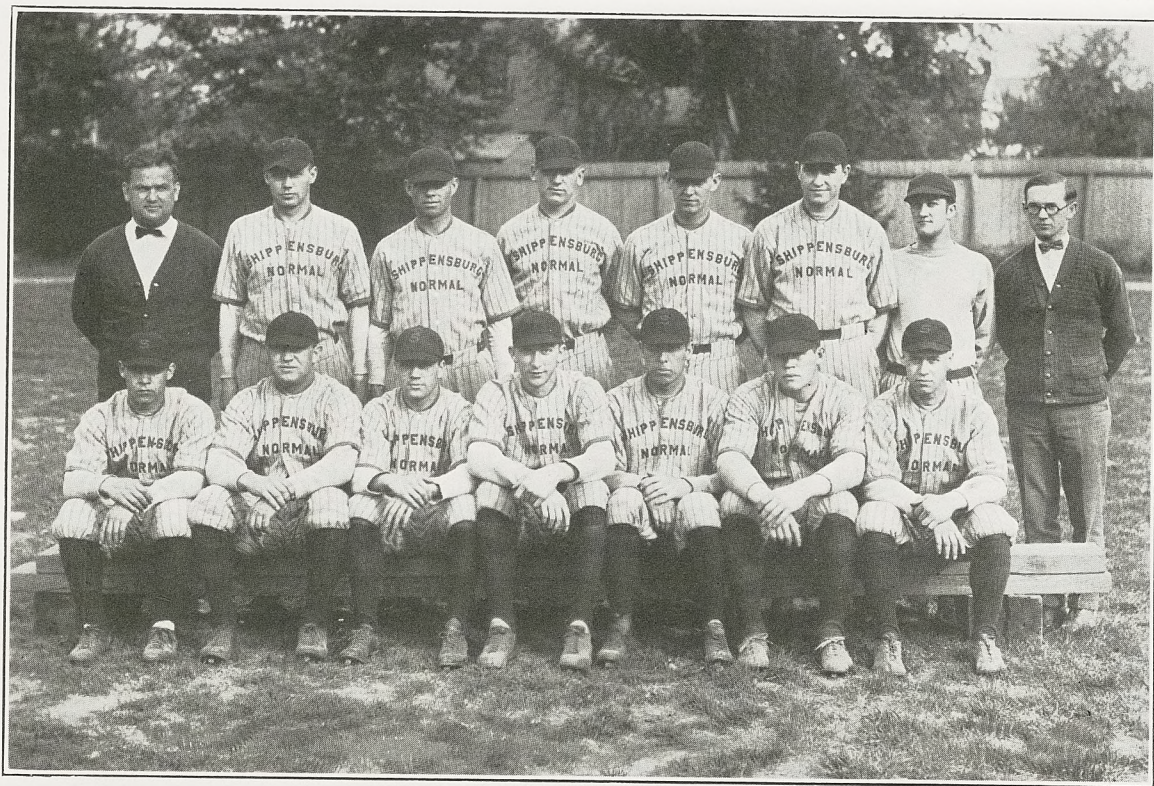
A Young Men's Christian Association and a Young Women's Christian Association have been formed among the students. These societies have been doing a great work for the growth of religious sentiment in the school. These associations are non-denominational in character.

SABBATH REGULATIONS

3:00 to 5:00 p. m. will be observed as a quiet period. During this time no singing, loud talking, or other unnecessary noise will be allowed in the building.

LITERARY SOCIETIES

Among the most valuable auxiliaries to a Normal School or College are its literary societies. The Normal and the Philomathean societies are strong, vigorous associations, and in their growth are



BASE BALL TEAM, 1926



CHORAL CLUB, 1926-1927

keeping equal pace with the growth of the school. They meet in separate halls every Friday evening for the rendering of carefully prepared programs. These programs are highly entertaining and instructive, and those taking part in rendering them bestow ample labor and care in their preparation.

LIBRARY AND READING ROOM

The Library and Reading Room of the Cumberland Valley State Normal School is one of its most important features. All the leading magazines, periodicals and many newspapers, daily and weekly, are found upon its shelves and on the files of the handsome room fitted up for the purpose.

Books on professional subjects, selected by experts, are constantly added to the shelves, and at present a collection of 7000 volumes is at the service of the student body during the entire school day and evening. Encyclopedias, dictionaries, and handbooks of all sorts may be found in abundance, and the library is in charge of two trained librarians whose business it is to cooperate with all departments of the school in research work. More than 1200 new volumes were added last year.

A course of 18 hours in Library Methods is also taught, and students are given opportunity for practice work under expert guidance, in the libraries of both the Normal School and the Training School.

The students are encouraged to make good use of the privileges of the reading room and the results are most gratifying. A librarian is always in charge of the room when it is open, in order that students may get the largest profit possible from their hours spent in the reading room. The student who has been graduated from a Normal School without having acquired a taste for good literature, and a knowledge of how to read with the greatest possible profit, is but poorly equipped for the work of teaching.

ARTICLES THAT STUDENTS SHOULD BRING WITH THEM TO SCHOOL

Students should bring the following articles with them or purchase them on arrival at the school:

A pair of blankets or heavy quilt, washstand cover and bureau cover, pair window curtains, towels, table napkins and toilet articles. They should also bring a knife, fork, spoon and glass tumbler for use in their rooms, as these articles may not be taken from the dining room.

Rooms are supplied with bed, bedding, bureau, study table, chairs, washstand with bowl and pitcher and light fixtures.

GENERAL REGULATIONS

Damage done to furniture and other school property is charged against the students responsible for it. A deposit is required for all keys furnished students. This will be retained by the school until the keys are returned.

It must not be understood that the foregoing regulations embrace all the duties and obligations devolving upon the individual student. No list of rules can be made which would cover every duty of the student under all the possible contingencies of Normal School Life. And on the other hand, there are many habits and forms of conduct so obviously out of harmony with obligations of the person who is preparing to teach that it is not deemed necessary to prohibit them by formal rule.

Our standard of conduct for those who are preparing to teach under the tuition of the Cumberland Valley State Normal School is so high that it would preclude anyone from looking to the profession of teaching for a life calling whose habits and conduct are not worthy the imitation of the children who may be placed under his instruction.

SCHOOL PUBLICATIONS

"The Normal School Herald" is the official school publication. It is furnished free to students while they are in attendance at the school. The price to others is 25 cents a year. Alumni and former students are earnestly urged to subscribe and keep themselves in touch with the affairs at the school.

"The Campus Reflector" is the weekly students publication. It contains all the news of the school including athletics, literary society notes, class room activities, and data concerning the work of the music department. The editorials are usually of a constructive nature and deal largely with problems of the school. The paper also contains an extensive alumni column.

The paper will be furnished free to students and the price to others is one dollar and seventy-five cents for the school year.

STUDENT ORGANIZATIONS

Glee Clubs. Each literary society maintains a glee club under students' direction but supervised by the director of music. Opportunity is given to those of marked ability to join one of these glee clubs. Application must be made to the director of music.

Girls' Choral Society. The girls' choral society meets once a week to study standard choral selections which they give at the various school entertainments throughout the school year. Those

desiring to become members will make application to the director of music.

Men's Glee Club. The men's glee club gives the young men opportunity for the development of their musical ability under skilled direction.

Orchestra. The school orchestra meets twice a week for rehearsal. It plays for the daily chapel exercises and also at the various school programs throughout the year. Students who play any orchestral instruments are urged to bring their instruments to school and apply to the director of music for admission to the orchestra.

School Concert Band. The recently organized school band numbers about fifty members. This organization is conducted by Professor Wassel. Students who wish to learn to play on a band instrument will be given free instruction.

Press Club. The members of this organization act as correspondents of various newspapers throughout the state. Items of interest are thus given to the public. The club meets monthly. Professor Stewart is the director of this organization.

Arts and Crafts Club. The Arts and Crafts Club is an organization which has for its object the growth of Art appreciation and the development of talent beyond that which the class room offers. It also gives the members an opportunity to develop talent and technique along such lines of Art as are not included in the regular courses of study as well as craft work not possible otherwise. The work of the club is under the direction of the Art Department.

Young Men's Christian Association. Membership in this organization is entirely voluntary, but a large majority of the men of the faculty and student body are connected with the organization. It holds weekly meetings.

Young Women's Christian Association. A large majority of the young women of the school are attached to this organization and are much interested in its work. Its weekly meetings are well attended.

The Varsity Club. The Varsity Club is an organization of students that have earned their Varsity letter in some one of the major sports of the school which consists of football, baseball, basketball and track. The purpose of the organization is to encourage sportsmanlike conduct, not only among themselves but in the student body. They also encourage organized cheering in athletic contests and help entertain visiting teams.

The organization strives to make life as pleasant as possible for the new students as well as help to guide each new student into some school activity.

CATALOGUE OF STUDENTS

1926-1927

NORMAL SCHOOL

SUMMARY

Class of 1927 B. S. Four Year Course	5
Class of 1927 Three Year Course Group IV	35
Class of 1927 Two Year Course	218
Class of 1928 B. S. Four Year Course	11
Class of 1928 Three Year Course Group IV	49
Class of 1928 Two Year Course	174
Class of 1929 B. S. Four Year Course	4
Class of 1930 B. S. Four Year Course	65
Special Students	5
Post Graduates Summer School 1926	30
Summer School Students 1926	504
Names of Students Appearing Twice	91
Total Enrollment in Normal Department	1009
Total Enrollment of Men in Normal Department	291
Total Enrollment of Women in Normal Department	718
Enrollment in Training Schools	793
Total Enrollment March 1, 1927	1802

Class of 1927, B. S., Four Year Course

WOMEN

<i>Name</i>	<i>Post Office</i>	<i>County</i>	<i>State</i>
Strike, Mildred G., 200 N. Penn St.,	Shippens-		
	burg,	Cumberland,	Pa.

MEN

Basehore, Kenneth R.,	Newburg,	Cumberland,	Pa.
Blanch, Karl H., 492 Elizabeth St.,	Highspire, .	Dauphin,	Pa.
Kline, Harold I., S. Earl St.,	Shippensburg,	Cumberland,	Pa.
Reber, Harold Z., 318 E. King St.,	Shippens-		
	burg,	Cumberland,	Pa.

Class of 1927, Three Year Course, Group IV

WOMEN

<i>Name</i>	<i>Post Office</i>	<i>County</i>	<i>State</i>
Bucher, Helen M., 368 W. Louther St., Carlisle,	Cumberland,	Pa.	
Dorsett, M. Eleanor, 738 Foss Ave., Drexel Hill,	Delaware,	Pa.	
Dorsett, Sara E., 2nd Ave., Burnham,	Mifflin,	Pa.	
Eisenhower, M. Elizabeth, Ridge Ave., Shippens- burg,	Cumberland,	Pa.	
Fodder, Helen S.,	Bedford, R. 3,	Pa.	
Gardner, Pearl O.,	York Springs,	Pa.	
Hays, Mary A., 430 Wolf Ave., Chambersburg,	Franklin,	Pa.	
Lukens, M. Katharine, 213 First Ave., Altoona,	Blair,	Pa.	
Morrow, Helen F., 1004 Lincoln Ave., Tyrone,	Blair,	Pa.	
Raffensperger, S. Loretta, Biglerville,	Adams,	Pa.	
Rempfer, Mary M.,	Bunkertown,	Pa.	
Rodgers, Myra P., Licking St., Mifflin,	Juniata,	Pa.	
Shambaugh, Margaret E., 345 E. King St., Ship- pensburg,	Cumberland,	Pa.	
Slothour, A. Pauline,	East Berlin,	Pa.	
Smith, Evelyn M., 31 Evergreen St., Harris- burg,	Dauphin,	Pa.	
Smith, O. Gladys,	Lemaster,	Pa.	

MEN

Bixler, John H.,	Millerstown,	Pa.	
Brougher, George B., 18 E. Keller St., Mechan- icsburg,	Cumberland,	Pa.	
Bushey, Glenn L.,	York Springs,	Pa.	
Diehl, Lee A., 423 E. King St., Shippensburg,	Cumberland,	Pa.	
Edwards, Dallas H.,	Waterfall,	Pa.	
Etter, Howard M., 328 E. Burd St., Shippens- burg,	Cumberland,	Pa.	
Etter, John E.,	St. Thomas,	Pa.	
Fisher, Ray M.,	Clearville,	Pa.	
Gottshall, G. Harold, 12 Grace St., Harrisburg,	Dauphin,	Pa.	
Hamil, Harvey N.,	Ft. Loudon,	Pa.	
Heston, Herman H.,	New Bloomfield,	Pa.	
Hovis, Ralph M., Cedar St., Chambersburg,	Franklin,	Pa.	
Raffensperger, Edgar W.,	Elliottsburg,	Pa.	
Ruhl, Ray L., Baltimore St., Dillsburg,	York,	Pa.	
Snively, Donald L.,	Waynesboro, R. 4,	Pa.	
Truscott, Frederick W.,	Shippensburg,	Pa.	
Walters, Boyd C.,	Akersville,	Pa.	
Watson, J. Ernest,	Shippensburg,	Pa.	
Yohe, Waldo E.,	New Oxford,	Pa.	

Class of 1927, Two Year Course

WOMEN

<i>Group Name</i>	<i>Post Office</i>	<i>County and State</i>
II. Allen, Anna V.,	Shippensburg,	Cumberland, Pa.
III. Angle, Evelyn M.,	Mason & Dixon,	Franklin, Pa.
II. Ankeny, Kathryn M.,	Stoyestown,	Somerset, Pa.
II. Arnold, Florence C.,	Allen,	Cumberland, Pa.
II. Arnold, Margaret C.,	Mexico,	Juniata, Pa.
II. Baker, Gladys N.,	Cleveland Ave., Waynesboro, Frank- lin,	Pa.
II. Barbour, Helen A.,	125 N. 6th St., Chambersburg, Franklin,	Pa.
I. Barnes, Lyllian E.,	273 Muench St., Harrisburg, Dau- phin,	Pa.
I. Barrow, E. Gertrude,	38 Enola Drive, Enola, Cumber- land,	Pa.
I. Barton, Hannah M.,	Delta,	York, Pa.
I. Beasley, Mary A.,	249 W. 3rd St., Lewistown, Mifflin, Pa.	
II. Beattie, Catherine M.,	435 4th Ave., Altoona,	Blair, Pa.
I. Bigelow, Charlotte L.,	McAlevy's Fort,	Huntingdon, Pa.
I. Bingman, Ruth E.,	New Kingstown,	Cumberland, Pa.
I. Blackburn, Phyllis A.,	Poplar Ave., Hummelstown, Dau- phin,	Pa.
I. Blain, Ethel M.,	Millerstown,	Perry, Pa.
I. Bland, Helen S.,	402 Maple Ave., Bellwood,	Blair, Pa.
I. Blasser, Martha P.,	229 Walnut St., Millersburg, Dau- phin,	Pa.
I. Bohn, Myra A.,	S. Church St., Waynesboro, Frank- lin,	Pa.
II. Boltz, Caroline A.,	206 Willow Ave., Altoona,	Blair, Pa.
II. Bordner, Juanita M.,	1624 North St., Harrisburg, Dau- phin,	Pa.
II. Botterbusch, E. Mar- garet,	1132 N. George St., York,	York, Pa.
I. Brechbiel, Jeanetta S.,	Shippensburg,	Franklin, Pa.
II. Briner, Helen G.,	Green Park,	Perry, Pa.
II. Buck, Evelyn R.,	Tyrone, R. 5,	Huntingdon, Pa.
I. Burkhardt, Corinne E.,	458 E. Washington St., Chambers- burg,	Franklin, Pa.
II. Burkhardt, L. Miriam,	Shippensburg, R. 1,	Cumberland, Pa.
II. Burkholder, Mildred R.,	N. High St., Newville, Cumberland, Pa.	
II. Burnshire, Wilma H.,	313 E. Logan Ave., Altoona, Blair, Pa.	
II. Bushey, Mildred C.,	Biglerville,	Adams, Pa.
II. Byers, Mary E.,	S. Locust St., Hagerstown, Washing- ton,	Md.

<i>Group Name</i>	<i>Post Office</i>	<i>County and State</i>
I. Clopper, Edith M.,	179 Cleveland Ave., Waynesboro, Franklin,	Pa.
II. Clymans, E. Ruth,	Willow Hill,	Franklin, Pa.
II. Conley, Naomi M.,	608 Market St., New Cumberland, Cumberland,	Pa.
I. Cooper, Thelma R.,	746 S. 21st St., Harrisburg, Dau- phin,	Pa.
II. Coover, Margaret K.,	Chambersburg, R. 10,	Franklin, Pa.
I. Cox, E. May,	Williamstown,	Dauphin, Pa.
II. Croft, M. Lau Verne,	1516 4th Ave., Altoona,	Blair, Pa.
I. Crouse, Helen E.,	Black Gap,	Franklin, Pa.
II. Crouse, Gail E.,	535 Center St., Chambersburg, Frank- lin,	Pa.
I. Crouse, Mildred E.,	3315 Jonestown Road, Harrisburg, Dauphin,	Pa.
II. Crum, Hazel P.,	Aitch,	Huntingdon, Pa.
II. Crusey, Thelma G.,	Walnut Bottom,	Cumberland, Pa.
I. Deardorff, Dorothy M.,	Biglerville,	Adams, Pa.
I. Deininger, Louise P.,	37 E. Locust St., Lebanon, Lebanon,	Pa.
I. Dice, Martha A.,	Marysville,	Perry, Pa.
I. Diehl, Fay A.,	Lutzville,	Bedford, Pa.
I. Diehl, Rintha M.,	Amaranth,	Fulton, Pa.
I. Dively, Evelyn V.,	Bedford,	Bedford, Pa.
II. Doll, Charlotte M.,	1 Mifflin St., Lebanon,	Lebanon, Pa.
II. Durboraw, A. Mildred,	590 E. King St., Chambersburg, Franklin,	Pa.
I. Ebersole, Ruth R.,	W. High St., Hummelstown, Dau- phin,	Pa.
I. Eisenhart, Ruth R.,	613 W. Mason Ave., York,	York, Pa.
I. Elwell, L. Virginia,	627 Lafayette St., Cape May, Cape May,	N. J.
II. Ely, Rose B.,	37 N. 6th St., Chambersburg, Frank- lin,	Pa.
II. Essick, Elizabeth R.,	15 E. King St., Shippensburg, Cum- berland,	Pa.
II. Everhart, Miriam A.,	1138 N. George St., York,	York, Pa.
I. Faust, Evelyn R.,	Market St., Mechanicsburg, Cumber- land,	Pa.
II. Fetterolf, Edna M.,	126 W. Charles St., Lewistown, Mifflin,	Pa.
II. Filler, Nell,	Bedford,	Bedford, Pa.
I. Fitzgerald, Eva,	580 W. Louthier St., Carlisle, Cum- berland,	Pa.
I. Foltz, Helen F.,	320 E. Queen St., Chambersburg, Franklin,	Pa.

<i>Group Name</i>	<i>Post Office</i>	<i>County and State</i>
II. Foreman, Helen C., . . .	Lees X Roads,	Cumberland, Pa.
I. Fortney, Mary L., . . .	811 Penna. Ave., York,	York, Pa.
II. Franklin, Helen M., . . .	22 Montgomery Ave., Shippensburg, Franklin,	Pa.
II. Freeman, Violet K., . . .	1044 Union St., Reading, . . .	Berks, Pa.
II. Fromme, Hazel L., . . .	702 E. Elizabeth St., Williamstown, Dauphin,	Pa.
I. Garner, Ruth S.,	James Creek,	Huntingdon, Pa.
III. Gelsing, Dorothy M., . .	Fayetteville, R. 1,	Franklin, Pa.
II. Gentzel, Caroline M., . .	515 Muench St., Harrisburg, Dau- phin,	Pa.
I. Gibbs, D. Naomi,	278 W. Jackson St., York, . . .	York, Pa.
II. Goodhart, Helen M., . .	Lees X Roads,	Cumberland, Pa.
II. Grissinger, Helen G., . .	Broad Top,	Huntingdon, Pa.
I. Hainley, Ethel M.,	136 Board St., Hollidaysburg, Blair, Pa.	
II. Hale, Ruth E.,	20 S. Washington St., Shippens- burg,	Cumberland, Pa.
II. Hall, Alice E.,	616 7th St., Huntingdon, Hunting- don,	Pa.
II. Harlacher, Anne M., . .	Main St., Progress,	Dauphin, Pa.
II. Harmony, Ruth L., . . .	W. King St., Chambersburg, Frank- lin,	Pa.
II. Harry, Kathryn A., . . .	1802 7th Ave., Juniata,	Blair, Pa.
II. Heberly, Mary Jane, . .	303 N. Newberry St., York, . .	York, Pa.
II. Helfrich, Catherine L., .	229 E. Orange St., Shippensburg, Cumberland,	Pa.
II. Helman, Kathleen F., .	Chambersburg, R. 10, . . .	Franklin, Pa.
II. Hepler, Mae P.,	2207 Berryhill St., Harrisburg, Dau- phin,	Pa.
II. Hershey, Katherine E., .	437 E. Orange St., Lancaster, Lan- caster,	Pa.
II. Hill, Josephine P., . . .	216 Howard Ave., Altoona, . .	Blair, Pa.
I. Hissong, Margaret R., .	Cessna,	Bedford, Pa.
II. Hoch, Vada B.,	Newburg,	Cumberland, Pa.
II. Hoffman, E. Grace, . . .	306 E. Market St., Williamstown, Dauphin,	Pa.
II. Horner, Anna M.,	473 E. Liberty St., Chambersburg, Franklin,	Pa.
III. Horton, Florence V., . .	Wells Tannery,	Fulton, Pa.
II. Hubley, Margaret M., . .	334 E. Burd St., Shippensburg, Cum- berland,	Pa.
I. Johnson, Grace E.,	1427 Berryhill St., Harrisburg, Dau- phin,	Pa.
II. Johnston, Florence L., .	632 Briggs St., Harrisburg, Dauphin, Pa.	



GIRLS' HOCKEY CLUB, 1926-1927



VARSITY BASKET BALL TEAM, 1926-1927

<i>Group Name</i>	<i>Post Office</i>	<i>County and State</i>
I. Jones, Helen M.,	351 S. Church St., Waynesboro, Franklin,	Pa.
I. Kass, Katherine M.,	Verbeck St., Marysville,	Perry, Pa.
I. Katzman, Sara E.,	417 W. Pine St., Clearfield, Clear- field,	Pa.
II. Kauffman, A. Herthal,	Chambersburg, R. 1,	Franklin, Pa.
II. Kegerreis, Helen W.,	Shippensburg, R. 2,	Cumberland, Pa.
I. Kelly, Helen M.,	46 Parker St., Carlisle, Cumber- land,	Pa.
II. Kerstetter, Grace W.,	Williamstown,	Dauphin, Pa.
III. Kimmel, Mary K.,	Boiling Springs,	Cumberland, Pa.
II. Kinsloe, Ruth A.,	4th Ave., Burnham,	Mifflin, Pa.
I. Kirk, Dorothea G.,	625 Oxford St., Harrisburg, Dau- phin,	Pa.
II. Kirkpatrick, Goldie A.,	Scotland,	Franklin, Pa.
II. Kline, Grace M.,	936 Perry St., Reading,	Berks, Pa.
I. Kump, Pauline W.,	28 Commerce St., Chambersburg, Franklin,	Pa.
III. Lay, Catherine D.,	Delta,	York, Pa.
I. Lehman, Mrs. Margaret K.,	Newville,	Cumberland, Pa.
II. Lehman, Mary E.,	Newville,	Cumberland, Pa.
II. Lindsey, Mary M.,	137 W. King St., Shippensburg, Cum- berland,	Pa.
II. McAlicher, Catherine E.,	Elliottsburg,	Perry, Pa.
I. McCall, Ruth E.,	E. Rosana St., Hummelstown, Dau- phin,	Pa.
II. McCloskey, Martha C.,	521 10th Ave., Juniata,	Blair, Pa.
II. McCune, Helen M.,	310 W. King St., Shippensburg, Cum- berland,	Pa.
I. McNellis, Rose R.,	249 E. Patterson St., Lansford, Car- bon,	Pa.
II. Mackey, Helen E.,	Chambersburg, R. 5,	Franklin, Pa.
II. Maisel, Sara L.,	41 N. Hancock St., Wilkes-Barre, Luzerne,	Pa.
I. Martin, Alice B.,	Rouzerville,	Franklin, Pa.
I. Meglathery, Anna C.,	351 Broadway, Bethlehem, North- ampton,	Pa.
II. Mellott, Mary L.,	McConnellsburg,	Fulton, Pa.
II. Miller, Alma M.,	Hampton,	Adams, Pa.
I. Miller, Gladys, L.,	St. Thomas,	Franklin, Pa.
II. Monihan, Mary V.,	Port Royal,	Juniata, Pa.
II. Moore, Edith L.,	Bridgeton, R. 5,	Cumberland, N. J.
I. Mort, M. Venus,	Fannettsburg,	Franklin, Pa.

<i>Group Name</i>	<i>Post Office</i>	<i>County and State</i>
I. Mowrey, E. Louise,	132 N. 6th St., Chambersburg, Frank- lin,	Pa.
I. Mowrey, Lillian Y.,	229 S. 6th St., Chambersburg, Frank- lin,	Pa.
I. Myers, E. Elizabeth,	538 N. Pitt St., Carlisle, Cumber- land,	Pa.
I. Myers, Olive L.,	Dickinson,	Cumberland, Pa.
II. Nefh, Mrs. Sara G.,	Shippensburg, R. 6,	Cumberland, Pa.
II. Neill, Mary E.,	420 Electric Ave., Lewistown, Mif- flin,	Pa.
I. Nelson, Adelle R.,	232 Conway St., Carlisle, Cumber- land,	Pa.
II. Nelson, Elsie E.,	248 Myers St., Steelton,	Dauphin, Pa.
II. Nye, Mary C.,	25 Richard Ave., Shippensburg, Cum- berland,	Pa.
II. Orr, J. Louise,	Shell St., Progress,	Dauphin, Pa.
II. Parks, Alma E.,	Saxton,	Bedford, Pa.
I. Patterson, Margaret,	Dover,	York, Pa.
II. Pecht, Katharine S.,	Milroy,	Mifflin, Pa.
II. Peters, M. Olive,	Flora Dale,	Adams, Pa.
II. Piper, Miriam B.,	Quentin,	Lebanon, Pa.
I. Pogue, Margaret E.,	529 2nd St., Pitcairn,	Allegheny, Pa.
I. Reed, Mary C.,	Milroy,	Mifflin, Pa.
I. Reifsteck, Wilhelmina, Newberry St., Hollidaysburg, Blair, Pa.		
I. Rex, Evelyn S.,	Morgan St., Slatedale,	Lehigh, Pa.
I. Roth, Mildred E.,	4th St., Biglerville,	Adams, Pa.
II. Russ, Edna C.,	48 W. Orange St., Shippensburg, Cumberland,	Pa.
II. Savage, Sadie R.,	39 N. Hancock St., Wilkes-Barre, Luzerne,	Pa.
I. Schlessman, Lavina A., 212 Garfield St., Shippensburg, Cum- berland,		Pa.
I. Scott, Mary Louise,	Gettysburg, R. 4,	Adams, Pa.
I. Sheaffer, Gladys G.,	208 32nd St., Harrisburg, Dauphin, Pa.	
II. Sheaffer, M. Katherine, 111 W. Louthier St., Carlisle, Cum- berland,		Pa.
III. Shearer, Grace E.,	Dry Run,	Franklin, Pa.
II. Shenk, Anna M.,	Huntsdale,	Cumberland, Pa.
II. Sherlock, Mary A.,	Duncansville,	Blair, Pa.
II. Shively, Catherine M., 43 S. 3rd St., Steelton,		Dauphin, Pa.
I. Shue, Margaret A.,	2609 Reel St., Harrisburg, Dauphin, Pa.	
I. Shue, Mildred G.,	2609 Reel St., Harrisburg, Dauphin, Pa.	
I. Simms, Helen M.,	309 Jones St., Hollidaysburg, Blair, Pa.	
II. Skinner, Mary P.,	Dry Run,	Franklin, Pa.

<i>Group Name</i>	<i>Post Office</i>	<i>County and State</i>
I. Small, M. Esther,	977 Bedford St., Johnstown, Cam- bria,	Pa.
II. Snider, Louise,	Chambersburg, R. 10, . . .	Franklin, Pa.
II. Snyder, Louise N.,	Gardners,	Adams, Pa.
II. Souder, Grace A.,	Mechanicsburg, R. 2, . . .	Cumberland, Pa.
II. Spear, Helen R.,	438 Broad St., Chambersburg, Frank- lin,	Pa.
II. Speicher, Esther E.,	426 N. 7th St., Lebanon, . . .	Lebanon, Pa.
I. Spidel, Martha G.,	Franklintown,	York, Pa.
II. Springer, Sara E.,	148 E. Water St., Middletown, Dau- phin,	Pa.
II. Stanek, Mary G.,	1428 Ridge Ave., North Braddock, Allegheny,	Pa.
I. Stever, Ethel P.,	Mt. Vernon Ave., Huntingdon, Hunt- ingdon,	Pa.
II. Stewart, M. Louise,	Burnham,	Mifflin, Pa.
II. Stiver, Elizabeth E.,	Tyrone, R. 5,	Blair, Pa.
II. Sundry, M. Henrietta,	Iekesburg,	Perry, Pa.
I. Sutton, Anna V.,	Lewisberry,	York, Pa.
II. Tate, Alice L.,	Landisburg,	Perry, Pa.
I. Tate, Frances I.,	208 S. Market St., Mechanicsburg, Cumberland,	Pa.
I. Tay, Frances E.,	W. South St., Carlisle, Cumberland, Pa.	
I. Temple, Harriet D.,	Petersburg,	Huntingdon, Pa.
I. Watson, Marjorie B.,	Franklin St., Waynesboro, Frank- lin,	Pa.
II. Waughtel, Mary M.,	S. Main St., Red Lion,	York, Pa.
II. Weakley, Jean M.,	342 W. North St., Carlisle, Cumber- land,	Pa.
I. Weaner, Nita M.,	Bendersville,	Adams, Pa.
I. Wertz, Dorothy S.,	19 Latimer St., York,	York, Pa.
II. Whorley, Margaret E.,	128 N. Earl St., Shippensburg, Cum- berland,	Pa.
II. Whorley, Miriam E.	Clearfield,	Clearfield, Pa.
	(Crawford, Wm.),	
III. Wilson, Florence B.,	Market St., Camp Hill, Cumberland, Pa.	
I. Winter, Mrs. Margaret	7 E. Orange St., Shippensburg, Cum- berland,	Pa.
II. Wonders, Gertrude E.,	Dillsburg,	York, Pa.
II. Woomer, A. Madge,	19 Depot St., Lewistown, . . .	Mifflin, Pa.
I. Wyant, Mary G.,	49 Commerce St., Chambersburg, Franklin,	Pa.
I. Young, Nell M.,	Robertsdale,	Huntingdon, Pa.
III. Zepp, Esther S.,	Gettysburg,	Adams, Pa.

<i>Group Name</i>	<i>Post Office</i>	<i>County and State</i>
II. Zuse, Adelaide M.,	Locust St., Wormleysburg, Cum-	berland, Pa.

MEN

III. Booz, Ray H.,	Shippensburg, R. 1, . .	Cumberland, Pa.
II. Bothwell, Kenneth H., .2nd St.,	Highspire,	Dauphin, Pa.
II. Bradley, Erwin S.,	Broad Top,	Huntingdon, Pa.
III. Burkhart, Jesse W.,	Shippensburg, R. 1, . .	Cumberland, Pa.
III. Cook, Charles F.,	Shippensburg, R. 4, . .	Cumberland, Pa.
III. Cool, Joseph A.,	Fairfield,	Adams, Pa.
III. Coover, John L.,	Shippensburg, R. 1, . .	Cumberland, Pa.
III. Crouse, Warren M.,	Dry Run,	Franklin, Pa.
III. Frehn, John A.,	Shippensburg,	Cumberland, Pa.
II. Glessner, Clarence F.,	West Fairview,	Cumberland, Pa.
III. Greist, Chester J.,	Wellsville,	York, Pa.
II. Hayes, Edwin S.,	316 E. King St., Shippensburg, Cum-	berland, Pa.
III. Henninger, Marlin G.,	Elizabethville,	Dauphin, Pa.
II. Hoffman, Ralph R.,	318 N. Union St., Middletown, Dau-	phin, Pa.
III. Keister, Frank O.,	New Cumberland,	Cumberland, Pa.
III. Miller, Elott F.,	324 W. Main St., Lykens, Dauphin, Pa.	
II. Musselman, Leonard W., 143 E. Water St.,	Gettysburg, Adams,	Pa.
III. Plasterer, Trafford B.,	Shippensburg, R. 6, . .	Cumberland, Pa.
III. Plessinger, Eugene H.,	Amaranth,	Fulton, Pa.
III. Shank, Earl R.,	Greencastle, R. 3,	Franklin, Pa.
III. Shearer, William W.,	Spring Run,	Franklin, Pa.
II. Sollenberger, John M.,	28th St., Penbrook,	Dauphin, Pa.
II. Stine, Paul J.,	Shippensburg, R. 6, . .	Cumberland, Pa.
II. Throne, Anson G.,	327 E. King St., Shippensburg, Cum-	berland, Pa.
III. Weast, Harry P.,	Shippensburg, R. 1, . .	Cumberland, Pa.
II. Winter, W. Gordon,	7 E. Orange St., Shippensburg, Cum-	berland, Pa.

Class of 1928, B. S., Four Year Course**WOMEN**

<i>Name</i>	<i>Post Office</i>	<i>County</i>	<i>State</i>
Beattie, Mary Mc.,	Shippensburg, R. 2, Cumberland, . .		Pa.
Burkins, Anna M.,	Milroy,	Mifflin,	Pa.
Carvell, Maude E., Beecher & Grive Sts.,	Chel-		
	tanham,	Montgomery,	Pa.
Heilman, Mary F., 106 E. Orange St.,	Shippens-		
	burg,	Cumberland,	Pa.

<i>Name</i>	<i>Post Office</i>	<i>County</i>	<i>State</i>
Miller, Mary Anne, 126 E. King St., Shippens- burg,		Cumberland, . . .	Pa.
Slaybaugh, Blanche E.,	Biglerville,	Adams,	Pa.
Strike, Margaret E. (Newman), Wells Tannery,		Fulton,	Pa.
Wiseman, Nellie L., 20 Richard Ave., Shippens- burg,		Cumberland, . . .	Pa.

MEN

Diller, H. Hurn, 227 S. Pitt St., Carlisle,		Cumberland, . . .	Pa.
Gobrecht, Monroe S. E.,	Hanover,	York,	Pa.
Hintze, Royal H.,	Wrightsville,	York,	Pa.

Class of 1928, Three Year Course, Group IV**WOMEN**

<i>Name</i>	<i>Post Office</i>	<i>County</i>	<i>State</i>
Campbell, Kathleen V.,	Doylesburg,	Franklin,	Pa.
Davis, Virginia B., 324 Emerald St., Harrisburg,		Dauphin,	Pa.
Duvall, Freeda A.,	McConnellsburg,	Fulton,	Pa.
Lewellen, Dorothy O., 2516 N. 5th St., Harris- burg,		Dauphin,	Pa.
Miller, Maude T., 1636 Catherine St., Harris- burg,		Dauphin,	Pa.
Miller, Sylvia L., S. Park St., Mercersburg,		Franklin,	Pa.
Pohl, Clara Mae, 821 Franklin Ave., Woodlawn,		Beaver,	Pa.
Snively, Mary R., E. Baltimore St., Greencastle,		Franklin,	Pa.
Trexler, Marguerite C.,	Mertztown,	Berks,	Pa.
Workman, Pauline D.,	Saxton,	Bedford,	Pa.
Workman, Zada L.,	Rockhill Furnace,	Huntingdon, . . .	Pa.

MEN

Bailets, Earl B.,	Halifax,	Dauphin,	Pa.
Berkstresser, Robert R.,	Maddensville,	Huntingdon, . . .	Pa.
Brandt, David D., 130 S. Prince St., Shippens- burg,		Cumberland, . . .	Pa.
Ehlman, Luther F.,	Ickesburg,	Perry,	Pa.
Eisenberg, William J., 614 Woodbine St., Harris- burg,		Dauphin,	Pa.
Fenstermacher, Varnum H., 2502 N. 6th St., Harrisburg,		Dauphin,	Pa.
Fisher, Graydon C., 301 N. Prince St., Shippens- burg,		Cumberland, . . .	Pa.
Fleisher, J. William, 22 Locust St., Lewistown, . .		Mifflin,	Pa.
Funk, George E.,	Bowmansdale,	Cumberland, . . .	Pa.

<i>Name</i>	<i>Post Office</i>	<i>County</i>	<i>State</i>
Gibbs, P. Stanley, 601 Electric Ave.,	Lewistown,	Mifflin,	Pa.
Goodhart, Mark M.,	Dickinson,	Cumberland,	Pa.
Gotwalt, Milton H., 334 E. King St.,	York,	York,	Pa.
Gutknecht, Henry S.,	Fayetteville,	Franklin,	Pa.
Hartman, Paul R.,	Aspers,	Adams,	Pa.
Heberlig, Albert F., Richard Ave.,	Shippensburg,	Cumberland,	Pa.
Hensel, J. Frank,	Mowersville,	Franklin,	Pa.
Horton, Edward S., 2230 Penn St.,	Harrisburg,	Dauphin,	Pa.
Hovis, Roy E., 221 Cleveland Ave.,	Waynesboro,	Franklin,	Pa.
Kistler, B. Frank,	Elliottsburg,	Perry,	Pa.
Leshner, Robert F., Atco Apts.,	Greencastle,	Franklin,	Pa.
Light, George M., 256 Center St.,	Millersburg,	Dauphin,	Pa.
Long, Virgil,	Shippensburg,	R. 5, Cumberland,	Pa.
Longanecker, Edwin S., 508 W. Main St.,	Me-		
	chanicsburg,	Cumberland,	Pa.
McElfish, C. Harold,	Flintstone,	Allegheny,	Md.
Mateer, Kenneth H., 114 Walnut St.,	Coates-		
	ville,	Chester,	Pa.
Mentzer, W. Richard,	Martinsburg,	Blair,	Pa.
Michael, Lester P., 31 S. Fayette St.,	Shippens-		
	burg,	Cumberland,	Pa.
Mowrey, Roger C.,	Quincy,	Franklin,	Pa.
Reary, Arthur R.,	Biglerville,	Adams,	Pa.
Rettinger, Marlin E.,	Halifax,	Dauphin,	Pa.
Serff, John J.,	East Berlin,	Adams,	Pa.
Shatzer, Linn H.,	St. Thomas,	Franklin,	Pa.
Stover, William R., 205 Park St.,	Waynesboro,	Franklin,	Pa.
Watson, Lester W.,	Shippensburg,	Cumberland,	Pa.
White, R. Ernest, 2235 Jefferson St.,	Harris-		
	burg,	Dauphin,	Pa.
White, Robert S., 42 Montgomery Ave.,	Ship-		
	pensburg,	Franklin,	Pa.
Wilson, Gerald F., 1st Ave. Ext.,	Red Lion,	York,	Pa.
Yundt, John H.,	Chambersburg,	R. 2, Franklin,	Pa.

Class of 1928, Two Year Course

WOMEN

<i>Group Name</i>	<i>Post Office</i>	<i>County and State</i>
II. Abbott, E. Venetta, . . .	Saxton,	Bedford, Pa.
I. Addlesberger, Nellie C.,	S. Potomac St.,	Waynesboro, Frank-
	lin,	Pa.
III. Albright, Anna V., . . .	Brodbecks,	York, Pa.
I. Aufer, Jane C.,	406 Orange St.,	Mifflintown, Juniata, Pa.
III. Bair, Ruthanna,	Camp Hill, R. 1,	Cumberland, Pa.

<i>Group Name</i>	<i>Post Office</i>	<i>County and State</i>
II. Baker, Estella M.,	McClure,	Snyder, Pa.
II. Barnes, Margaret K.,	Shermans Dale,	Perry, Pa.
II. Barr, Helen F.,	1314 Logan Ave., Tyrone,	Blair, Pa.
III. Bashore, Mildred J.,	Mifflintown,	Juniata, Pa.
I. Basehoar, Ruth E.,	Littlestown,	Adams, Pa.
I. Bay, Evelyn E.,	4th Ave., Burnham,	Mifflin, Pa.
II. Beale, Ruth O.,	Mifflin,	Juniata, Pa.
I. Beale, W. Gretchen,	Duncannon,	Perry, Pa.
II. Beam, J. Mary,	Mowersville,	Franklin, Pa.
II. Beaver, Le Nora,	Millerstown,	Perry, Pa.
II. Benn, E. Mary,	410 Bell Ave., Altoona,	Blair, Pa.
II. Bergner, Gertrude I.,	355 Fall St., Lebanon,	Lebanon, Pa.
II. Bilott, Grace A.,	15 Derry St., Hershey,	Dauphin, Pa.
II. Blain, Nellie F.,	Millerstown,	Perry, Pa.
I. Boehne, E. Marguerite,	2615 0 1/2 St., Galveston, Galves-	ton, Texas
II. Bolan, Evelyn B.,	343 1/2 E. King St., Shippensburg,	Cumberland, Pa.
II. Boone, Mary E.,	Nook,	Juniata, Pa.
I. Boudier, Elizabeth M.,	Cleveland Ave., Waynesboro, Frank-	lin, Pa.
II. Bowers, Anna I.,	625 Chestnut St., York,	York, Pa.
II. Boyer, Gladys M.,	2003 Church St., Lebanon, Lebanon, Pa.	
I. Brandt, Della F.,	Jonestown,	Lebanon, Pa.
I. Bretz, Thelma G.,	209 Enola Road, Enola, Cumber-	land, Pa.
II. Brown, F. Evelyn,	209 1st Ave., Altoona,	Blair, Pa.
II. Brubaker, Wilma N.,	S. Main St., Mercersburg, Franklin, Pa.	
II. Bubb, Frances I.,	Paintersville,	Mifflin, Pa.
II. Bush, Margaret A.,	673 E. Philadelphia St., York, York, Pa.	
I. Crone Martha M.,	3000 N. 3rd St., Harrisburg, Dau-	phin, Pa.
II. Crum, Jennie Z.,	135 Hanover St., Hummelstown, Dau-	phin, Pa.
II. Deckman, Ruth E.,	317 Smyser St., York,	York, Pa.
I. DeHart, Martha L.,	521 Emerald St., Harrisburg, Dau-	phin, Pa.
II. Dershen, Mabel J.,	New Park,	York, Pa.
I. Detwiler, Emma J.,	1054 N. George St., York,	York, Pa.
II. DeVincens, Lillian,	506 1/2 8th Ave., Altoona,	Blair, Pa.
II. Ditzler, Esther M.,	Lickdale,	Lebanon, Pa.
II. Ditzler, Roma,	Lickdale,	Lebanon, Pa.
II. Drake, Sara E.,	623 N. 18th St., Harrisburg, Dau-	phin, Pa.

<i>Group Name</i>	<i>Post Office</i>	<i>County and State</i>
I. Drayer, Wilma I.,	12th & Bridge Sts., New Cumberland,	Cumberland, Pa.
I. Duffey, Frances W.,	Cove Gap,	Franklin, Pa.
II. Eberly, Ruth E.,	Mechanicsburg, R. 2,	Cumberland, Pa.
II. Fagan, Marian R.,	242 S. West St., Carlisle,	Cumberland, Pa.
II. Faust, Isabelle E.,	2612 Lexington St., Harrisburg,	Dauphin, Pa.
I. Fishel, Marie L.,	2111 W. Market St., York,	York, Pa.
II. Fleisher, Eva P.,	Newport,	Perry, Pa.
II. Flinchbaugh, Elva M.,	S. Main St., Red Lion,	York, Pa.
II. Foreman, Myrtle M.,	234 E. Orange St., Shippensburg,	Cumberland, Pa.
I. Forshey, Mary C.,	511 5th Ave., Altoona,	Blair, Pa.
II. Forsythe, Virginia M.,	Middletown, R. D.,	Dauphin, Pa.
II. Fox, Floranna B.,	Gettysburg,	Adams, Pa.
II. Fry, Emma S.,	33 S. West St., Carlisle,	Cumberland, Pa.
II. Garver, Alice L.,	115 Brown St., Middletown,	Dauphin, Pa.
III. Gipe, Anna M.,	Willow Hill,	Franklin, Pa.
II. Glunt, Ada E.,	320 Harrison Ave., Altoona,	Blair, Pa.
I. Gordon, Thelma G.,	Zullinger,	Franklin, Pa.
II. Graham, Martha M.,	Burnham,	Mifflin, Pa.
II. Grove, Jessie I.,	26 S. 28th St., Penbrook,	Dauphin, Pa.
II. Grove, Anna M.,	Fayette St., Shippensburg,	Cumberland, Pa.
I. Grove, Ruth E.,	Dillsburg,	York, Pa.
II. Guss, Mildred M.,	Mifflin,	Juniata, Pa.
II. Hahn, Betty Mae,	2623 Lexington St., Harrisburg,	Dauphin, Pa.
II. Hall, Margaret E.,	Blain,	Perry, Pa.
I. Hall, Miriam E.,	2512 N. 5th St., Harrisburg,	Dauphin, Pa.
II. Heiges, Mary Mc.,	246 E. Philadelphia St., York,	York, Pa.
II. Hemphill, Helen M.,	Shippensburg, R. 2,	Cumberland, Pa.
I. Henderson, M. Rebecca,	Chambersburg,	Franklin, Pa.
I. Hillegass, Myrtle H.,	Buffalo Mills,	Bedford, Pa.
III. Hoffeditz, C. Ethel,	Mercersburg, R. 4,	Franklin, Pa.
I. Hogue, Mrs. Mary C.,	Breezewood,	Bedford, Pa.
I. Holsinger, Freda M.,	Martinsburg,	Blair, Pa.
I. Hull, Bernice L.,	401 Parker St., Shamokin,	North-Cumberland, Pa.
II. Hummer, Marie A.,	Hershey,	Dauphin, Pa.
I. Hunberger, Mildred M.,	New Berlin,	Union, Pa.



GIRLS' VARSITY BASKET BALL SQUAD, 1927



GYMNASIUM

<i>Group Name</i>	<i>Post Office</i>	<i>County and State</i>
II. Jones, Genivieve H.,	Neelyton,	Huntingdon, Pa.
II. Kane, Lillian F.,	331 Long Ave., Shippensburg,	Cumberland, Pa.
II. Kauffman, Gertrude E.,	Mifflintown,	Juniata, Pa.
I. Ketterman, Urgie C.,	1420 W. Market St., York,	York, Pa.
I. Knupp, Dorothy J.,	502 S. Potomac St., Waynesboro,	Franklin, Pa.
I. Kocher, Elura,	Broad St., Elizabethville, Dauphin,	Pa.
I. LaRue, Alice W.,	Forest Grove,	Bucks, Pa.
II. Leib, Pauline G.,	19 N. Seward St., York,	York, Pa.
I. Leonard, Evelyn G.,	Oakland Mills,	Juniata, Pa.
II. Lewis, Janet E.,	Chestnut St. & 4th Ave., Coatesville,	Chester, Pa.
III. Lininger, Martha,	Ft. Loudon,	Franklin, Pa.
I. Locher, Jean A.,	Hollidaysburg, R. 2,	Blair, Pa.
I. Losch, Beatrice M.,	Richfield,	Juniata, Pa.
II. Lower, B. Kathleen,	531 53rd St., Altoona,	Blair, Pa.
I. McCleaf, E. Mary,	Fairfield,	Adams, Pa.
II. McCleary, Evelyn R.,	174 S. Main St., Chambersburg,	Franklin, Pa.
II. McCoy, Elizabeth G.,	Carlisle, R. 5,	Cumberland, Pa.
II. McCoy, Ruth D.,	Elliottsburg,	Perry, Pa.
II. McCurdy, Elizabeth M.,	Shippensburg,	Cumberland, Pa.
III. McLaughlin, Gladys M.,	Ft. Loudon,	Franklin, Pa.
II. Madden, Miriam G.,	Three Springs,	Huntingdon, Pa.
I. Manning, Rachel E.,	Shell St., Progress,	Dauphin, Pa.
II. Mease, Dorothy M.,	424 N. 23rd St., Lebanon,	Lebanon, Pa.
II. Mercer, Florence R.,	709 58th St., Eldorado,	Blair, Pa.
III. Merz, Mrs. Beulah M.,	1423 Vernon St., Harrisburg,	Dauphin, Pa.
I. Mickey, Helen C.,	38 E. 3rd St., Waynesboro,	Franklin, Pa.
II. Miller, Elda M.,	Hampton,	Adams, Pa.
I. Miller, Pauline,	1409 Marion St., Harrisburg,	Dauphin, Pa.
II. Miller, Ruth R.,	4th St., Lewistown,	Mifflin, Pa.
I. Moore, Miriam L.,	Center Hall,	Centre, Pa.
I. Morrow, Dorothy M.,	1004 Lincoln Ave., Tyrone,	Blair, Pa.
II. Mower, Maude,	Mowersville,	Franklin, Pa.
I. Mummert, Mary E.,	Williamsburg,	Blair, Pa.
II. Mumper, Josephine,	312 W. Main St., Mechanicsburg,	Cumberland, Pa.
II. Myers, Dorothy E.,	Dickinson,	Cumberland, Pa.
I. Myers, E. Vesta,	1922 Mulberry St., Harrisburg,	Dauphin, Pa.

<i>Group Name</i>	<i>Post Office</i>	<i>County and State</i>
II. Neumyer, Ruth K.,	45 Chestnut St., Penbrook,	Dauphin, Pa.
II. Newcomer, Alice E.,	29 N. Penn St., Shippensburg,	Cumberland, Pa.
I. Orner, Evelyn M.,	Gettysburg St., Arendtsville,	Adams, Pa.
II. Patterson, Mary C.,	Carlisle, R. 9,	Cumberland, Pa.
II. Pines, Marian L.,	Millerstown,	Perry, Pa.
II. Qigley, Loretta C.,	N. Main St., Red Lion,	York, Pa.
II. Rebert, Bernice,	Hanover, R. 5,	York, Pa.
II. Richardson, Charlotte E.,	Shippensburg, R. 2,	Cumberland, Pa.
I. Rider, Isabelle M.,	226 W. North St., Waynesboro,	Franklin, Pa.
I. Schue, Margaret H.,	131 Centennial Ave., Hanover,	York, Pa.
I. Seabrook, Margaret A.,	Fairfield,	Adams, Pa.
II. Seavers, C. Miriam,	18 N. Washington St., Shippensburg,	Cumberland, Pa.
III. Shaffer, I. Helen,	Newville,	Cumberland, Pa.
II. Sheaffer, Fae J.,	Marysville,	Perry, Pa.
I. Shenk, Mildred E.,	Millerstown,	Perry, Pa.
II. Shetrom, Minnie,	1314 Mifflin St., Huntingdon,	Huntingdon, Pa.
I. Shoemaker, Margaret A.,	New Bethlehem,	Clarion, Pa.
II. Shultz, Evelyn R.,	Main St., Bressler,	Dauphin, Pa.
I. Sierer, Edna F.,	616 State St., Lemoyne,	Cumberland, Pa.
I. Sipe, Mildred L.,	Burnham,	Mifflin, Pa.
I. Slick, Frieda A.,	Roaring Spring,	Blair, Pa.
II. Smallwood, Rachel G.,	427 N. West St., Carlisle,	Cumberland, Pa.
I. Smith, Eleanor V.,	128 A. West 3rd St., Frederick,	Frederick, Md.
II. Smith, Violet M.,	New Cumberland,	Cumberland, Pa.
II. Snyder, E. Ferne,	Carlisle, R. 9,	Cumberland, Pa.
II. Snyder, Geraldine,	King & Washington Sts., Shippensburg,	Cumberland, Pa.
II. Snyder, Martha E.,	Camp Hill, R. 1,	Cumberland, Pa.
II. Spease, Mary C.,	Duncannon,	Perry, Pa.
II. Sprute, Hedwig M.,	1303 Grandview St., North Brad-dock,	Allegheny, Pa.
III. Stamy, A. Maude,	Chambersburg, R. 10,	Franklin, Pa.
I. Stoner, G. Naomi,	201 Water St., Highspire,	Dauphin, Pa.
I. Strickler, E. Martha,	Penns Grove,	N. J.
II. Stuart, Mary A.,	410 S. Pitt St., Carlisle,	Cumberland, Pa.

<i>Group Name</i>	<i>Post Office</i>	<i>County and State</i>
II. Tarman, Dorothy M.,	. . . 137 Columbia Road Enola, Cum-	berland, Pa.
I. Tree, Hilda M., Tyrone, R. 4,	Huntingdon, Pa.
II. Ulsh, Dorothy A., 321 S. Main St., Lewistown, Mifflin, Pa.	
I. Vale, Sara E., 170 W. Louther St., Carlisle, Cum-	berland, Pa.
II. Waltman, D. Marguerite,	Meade St., Hanover,	York, Pa.
I. Waughtel, Ada V., S. Main St., Red Lion,	York, Pa.
II. Webner, Martha A., Harrisburg, R. 1,	Dauphin, Pa.
II. Weikert, Eleanor E., 2436 Broad St., Penbrook, Dauphin, Pa.	
I. Wert, S. Alma, S. High St., Arendtsville, . .	Adams, Pa.
II. Wert, Viola M., 1317 Turner St., Allentown, Lehigh, Pa.	
II. White, Urva C., 208 E. Bell Ave., Altoona, . .	Blair, Pa.
II. Wink, L. Ethel, Hustontown,	Fulton, Pa.
II. Woodburn, Elizabeth		
E., Broad St., Newville, . .	Cumberland, Pa.
II. Woomer, Myrtle L., 40 S. Main St., Yeagertown, Mifflin, Pa.	
I. Worthington, Iva L., 31 Hillside Ave., Doylestown, Bucks, Pa.	
II. Zeiders, Marie E., 256 Altoona Ave., Enola, Cum-	berland, Pa.
II. Zeigler, A. Elizabeth, 211 N. College St., Carlisle, Cum-	berland, Pa.

MEN

II. Allison, Robert, 20 S. Prince St., Shippensburg, Cum-	berland, Pa.
II. Barbour, Robert E., E. King St., Shippensburg, Cum-	berland, Pa.
II. Coble, Frank E., Shady Grove,	Franklin, Pa.
II. Eichelberger, Alfred L.,	Bowmansdale,	York, Pa.
II. Fitz, Charles H., 315 Fairview Ave., Waynesboro,	Franklin, Pa.
II. Hockersmith, R. Lee, 14 W. King St., Shippensburg, Cum-	berland, Pa.
II. McCarthy, J. Edward, 1669 S. 9th St., Harrisburg, Dau-	phin, Pa.
III. McKee, James K., Amaranth,	Fulton, Pa.
III. McKeehan, F. Robert, Newville,	Cumberland, Pa.
III. Millar, John Z., New Oxford, R. D.,	Adams, Pa.
III. Sleichter, Craig G., Mowersville,	Cumberland, Pa.
II. Stouffer, Bruce O., Newville, R. 1,	Cumberland, Pa.

Class of 1929, B. S. Four Year Course

WOMEN

<i>Name</i>	<i>Post Office</i>	<i>County</i>	<i>State</i>
Walker, Margaret H.,	Garber St., Chambers-		
	burg,	Franklin,	Pa.
Warfield, Mary E.,	313 S. 14th St.,	Harrisburg, .	Dauphin,
			Pa.

MEN

Dodd, Joseph H.,	Center St.,	Wiconisco,	Dauphin,
			Pa.
Larimer, Claude F.,	Patton,	Cambria,
			Pa.

Class of 1930 B. S. Four Years Course

WOMEN

<i>Name</i>	<i>Post Office</i>	<i>County</i>	<i>State</i>
Barbour, D. Gail,	125 N. 6th St.,	Chambersburg,	Franklin,
			Pa.
Bolinger, Mary E.,	Three Springs,	Huntingdon,
			Pa.
Brown, E. Helen,	18 W. Queen-		
	burg,	Franklin,	Pa.
Campbell, Martha E.,	1505 Scotland Ave.,		
	Chambersburg, .	Franklin,	Pa.
Champlain, Elizabeth V.,	511 S. 15th St.,	Harris-	
	burg,	Dauphin,	Pa.
Daniels, Gladys S.,	S. Market St.,	Mechanics-	
	burg,	Cumberland, . .	Pa.
Garrett, Bessie B.,	12 S. 16th St.,	Harrisburg, .	Dauphin,
			Pa.
Heberlig, Norma B.,	165 S. Summit St.,	Harris-	
	burg,	Dauphin,	Pa.
Hege, Margaret J.,	Mercersburg,	Franklin,
			Pa.
Hertzler, Ruth M.,	100 23rd St.,	Camp Hill, . . .	Cumberland, . .
			Pa.
Hoover, Vitalis M.,	210 Washington St.,	Ship-	
	pensburg,	Cumberland, . .	Pa.
Johnescu, Anna M.,	524 Jeannette St.,	Wilkins-	
	burg,	Allegheny,	Pa.
Johnston, Frances F.,	Mercersburg,	Franklin,
			Pa.
Kann, M. Kathryn,	66 N. 14th St.,	Harrisburg, .	Dauphin,
			Pa.
Kines, Ethel H.,	New Buffalo,	Perry,
			Pa.
Klugh, Thelma K.,	Hummel Ave.,	Lemoyne, . . .	Cumberland, . .
			Pa.
Lembert, Frances E.,	1116 Larchmont Ave.,		
	Penfield,	Delaware,	Pa.
Lentz, Alice A.,	209 Enola Road,	Enola,	Cumberland, . .
			Pa.
Ocker, Mary O.,	Newville, R. 5, . . .	Cumberland, . .
			Pa.
Poorbaugh, Marian P.,	York, R. 3,	York,
			Pa.

<i>Name</i>	<i>Post Office</i>	<i>County</i>	<i>State</i>
Rawhouser, Dorothy, 625 Madison Ave., York, .	York,	York,	Pa.
Ruhl, Jessie K., 618 W. Louther St., Carlisle, .	Cumberland,	Cumberland,	Pa.
Zarker, Janet L., 812 L. W. East, Chambers-	burg,	Franklin,	Pa.

MEN

Arnold, John P., 1019 Ralston St., Harrisburg, .	Dauphin,	Dauphin,	Pa.
Bikle, Charles A., Chambersburg, R. 11,	Franklin,	Franklin,	Pa.
Bikle, Henry C., Chambersburg, R. 11,	Franklin,	Franklin,	Pa.
Brindle, George R., Chambersburg, R. 1,	Dauphin,	Dauphin,	Pa.
Byers, Erney C.,	Lewisberry,	York,	Pa.
Cable, Raymond W., Center St., Millersburg, .	Dauphin,	Dauphin,	Pa.
Carter, E. William, 219 Penn St., Shippensburg,	Cumberland,	Cumberland,	Pa.
Dewalt, Augustus,	Harrisburg, R. 2,	Dauphin,	Pa.
Dubbs, William B., 17 N. Earl St., Shippens-	burg,	Cumberland,	Pa.
Eberle, Elmer V., 2404 N. 6th St., Harrisburg, .	Dauphin,	Dauphin,	Pa.
Ehlman, Samuel A.,	Ickesburg,	Perry,	Pa.
Fleming, Frank B., 9 W. King St., Shippens-	burg,	Cumberland,	Pa.
Forney, S. George, 464 Race St., Millersburg, .	Dauphin,	Dauphin,	Pa.
Gotwalt, Samuel A., 334 E. King St., York, . .	York,	York,	Pa.
Gray, Martin R., 910 Bridge St., New Cumber-	land,	Cumberland,	Pa.
Harbison, Dale H.,	Bakerstown,	Allegheny,	Pa.
Henry, Mervin L., 338 E. Burd St., Shippens-	burg,	Cumberland,	Pa.
Johnston, Archie W., 223 Norland Ave., Cham-	bersburg,	Franklin,	Pa.
King, John J.,	Munhall,	Allegheny,	Pa.
Kreiger, Richard D., 219 Geary St., New Cum-	berland,	Cumberland,	Pa.
Kreps, Melvin H., 2228 N. 6th St., Harrisburg, .	Dauphin,	Dauphin,	Pa.
McGaughey, J. Wilbur,	Lemaster,	Franklin,	Pa.
Martin, J. Fred,	Martinsburg,	Blair,	Pa.
Maxell, Edward M., 742 Madison Ave., York, .	York,	York,	Pa.
Miller, J. Elwood,	Schellburg,	Bedford,	Pa.
Morrell, Edward E., 1159 Derry St., Harris-	burg,	Dauphin,	Pa.
Morris, Walter S., Myrtle Ave., Marysville, . .	Dauphin,	Dauphin,	Pa.
Neagley, Ross L.,	Fallsington,	Bucks,	Pa.
Rebok, C. Herman, 49 N. 17th St., Chambers-	burg,	Franklin,	Pa.
Reed, Harold C., N. Main St., Mercersburg, . .	Franklin,	Franklin,	Pa.

<i>Name</i>	<i>Post Office</i>	<i>County</i>	<i>State</i>
Schwinger, E. Raymond, 318 Mulberry St., Hagerstown,		Washington,	Md.
Shuler, Philip K., Reno St., New Cumberland,		Cumberland,	Pa.
Smith, Howard M.,	Greencastle,	Franklin,	Pa.
Snyder, Earl R.,	Cape Vincent,	Jefferson,	N. Y.
Swartz, J. Herbert,	Marion,	Franklin,	Pa.
Taylor, Noel A.,	Arendtsville,	Adams,	Pa.
Walters, F. Sheldon, 142 Burd St., Shippens- burg,		Cumberland,	Pa.
Walters, G. Frank, 31 N. Earl St., Shippens- burg,		Cumberland,	Pa.
Weirick, Park C., Box 317, Progress,		Dauphin,	Pa.
Wetzel, J. Wilbur, Linden Ave., Waynesboro,		Franklin,	Pa.
Wineland, Joe J.,	Martinsburg,	Blair,	Pa.
Yohe, John S.,	Fayetteville,	Franklin,	Pa.

Special Students, 1926-27

<i>Name</i>	<i>Post Office</i>	<i>County</i>	<i>State</i>
Blair, E. Helen,	Blair's Mills,	Huntingdon,	Pa.
Brownagle, Chester J., 603 Showers St., Harris- burg,		Dauphin,	Pa.
Hammond, Wayne,	Spring Run,	Franklin,	Pa.
Hosfeld, H. Richard, N. Prince St., Shippens- burg,		Cumberland,	Pa.
Miller, Clyde L., 341 Garfield St., Shippens- burg,		Cumberland,	Pa.

Summer, 1926, Post Graduates

WOMEN

<i>Name</i>	<i>Post Office</i>	<i>County</i>	<i>State</i>
Blose, Ruth E., '24,	Altoona, R. 1,	Blair,	Pa.
Blowers, Mildred A., '25,	Juniata,	Blair,	Pa.
Bower, V. Fay, '24,	Wormleysburg,	Cumberland,	Pa.
Burkins, Anna M., '25,	Milroy,	Mifflin,	Pa.
Etter, Edna J., '21,	Chambersburg, R. 8,	Franklin,	Pa.
Fulton, Laura B., '02, 351 Graham St., Carlisle,		Cumberland,	Pa.
Hoffman, Alma L., '14,	Carlisle,	Cumberland,	Pa.
Hoke, Anna M., '20,	Shippensburg,	Cumberland,	Pa.
McCullough, S. Isabel, '24,	Newville, R. 2,	Cumberland,	Pa.
McFerren, Mary E., '25, 431 E. Queen St., Chambersburg,		Franklin,	Pa.
Miller, Mary Anne, '24,	Shippensburg,	Cumberland,	Pa.

<i>Name</i>	<i>Post Office</i>	<i>County</i>	<i>State</i>
Mower, Martha J., '24,	Shippensburg,	Cumberland,	Pa.
Oyler, Lu Ella M., '12,	Fayetteville,	Franklin,	Pa.
Parsons, Maude L., '23, 127 S. 4th St.,	Lebanon, Lebanon,	Pa.
Rolar, Erma K., '18,	Shippensburg,	Cumberland,	Pa.
Shaw, Mary C., '24, 417 Spruce Ave.,	Altoona,	Blair,	Pa.
Shearer, Eva M., '23,	Dry Run,	Franklin,	Pa.
Small, Thelma E., '24,	Marion,	Franklin,	Pa.
Snow, Margaretta B., '24,	Shippensburg,	Cumberland,	Pa.
Strike, Margaret E. (Newman), '25, Wells Tan-	nery,	Fulton,	Pa.
White, Florence K., '24, 218 E. Bell Ave.,	Altoona,	Blair,	Pa.

MEN

Dodd, Wilson K., '24,	Wiconisco,	Dauphin,	Pa.
Funk, Amos M., '21,	Lemaster,	Franklin,	Pa.
Johnston, Samuel A., '15,	Highspire,	Dauphin,	Pa.
Kauffman, George F., '25, 317 N. Newberry St.,	York,	York,	Pa.
Kelley, J. Maclay, '21,	Newville,	Cumberland,	Pa.
Luse, Robert L., '25,	West Fairview,	Cumberland,	Pa.
Means, Robert M., '22,	Shippensburg,	Cumberland,	Pa.
Mower, Charles E., '21,	Shippensburg,	Cumberland,	Pa.

Summer, 1926

WOMEN

<i>Name</i>	<i>Post Office</i>	<i>County</i>	<i>State</i>
Acker, Mary L.,	Wolfsburg,	Bedford,	Pa.
Albright, Anna B.,	Brodbecks,	York,	Pa.
Althouse, Dorothy E.,	Newville,	Cumberland,	Pa.
Ambrose, Margie E., 142 N. Potomac Ave.,	Waynesboro,	Franklin,	Pa.
Angle, M. Evelyn,	Mason & Dixon,	Franklin,	Pa.
Arnold, Florence C.,	Allen,	Cumberland,	Pa.
Arnold, Pearl E.,	Dillsburg,	York,	Pa.
Ash, Dorothy G.,	Flintstone,	Allegheny,	Md.
Baker, Margaret A.,	Dillsburg,	York,	Pa.
Baker, Mary E.,	Barnitz,	Cumberland,	Pa.
Barbour, Rachel H.,	Shippensburg,	Cumberland,	Pa.
Barkdoll, Alice M.,	Waynesboro, R. 4,	Franklin,	Pa.
Barklie, Lucy M., 90 Ashley St.,	Ashley,	Luzerne,	Pa.
Barnes, E. Lyllian, 273 Muench St.,	Harrisburg, Dauphin,	Pa.
Barr, Eleanor M.,	McAlevy's Fort,	Huntingdon,	Pa.

<i>Name</i>	<i>Post Office</i>	<i>County</i>	<i>State</i>
Barnhart, Clarlotte E.,	Mason & Dixon, . . .	Franklin,	Pa.
Barnhart, Margaret C.,	Warfordsburg,	Fulton,	Pa.
Barry, Sadie I.,	Williamstown,	Dauphin,	Pa.
Basehoar, C. Esther,	Littlestown,	Adams,	Pa.
Basehoar, Ruth E.,	Littlestown,	Adams,	Pa.
Basehore, Freda F.,	Seven Stars,	Adams,	Pa.
Beam, Beulah B.,	Gardners,	Adams,	Pa.
Beam, Louetta C.,	Mowersville,	Franklin,	Pa.
Beattie, Mary Mc.,	Shippensburg, R. 2, . . .	Cumberland, . . .	Pa.
Beaver, Doretta P.,	Nescopeck,	Luzerne,	Pa.
Bell, Mrs. Edna,	Hagerstown,	Washington, . . .	Md.
Bender, S. Kathryn,	Ickesburg,	Perry,	Pa.
Benedict, Constance M.,	Lemaster,	Franklin,	Pa.
Bennett, Helen M., 243 N. Newberry St.,	York,	York,	Pa.
Bennett, I. Grace,	Artemas,	Bedford,	Pa.
Bennett, Stella I.,	Flintstone,	Allegheny,	Md.
Bernhardt, Nell F.,	Mt. Union,	Huntingdon, . . .	Pa.
Bingaman, Pauline A., 2003 Kensington St.,	Harrisburg,	Dauphin,	Pa.
Bingman, Amelia E.,	Beavertown,	Snyder,	Pa.
Bingman, Mary A.,	New Kingstown,	Cumberland, . . .	Pa.
Bishop, Laura M.,	Carlisle,	Cumberland, . . .	Pa.
Bixler, Reba A., 54 W. Ridge St.,	Carlisle,	Cumberland, . . .	Pa.
Blackburn, Helen D.,	Cessna,	Bedford,	Pa.
Blauser, Vesta W.,	Spring Mills,	Centre,	Pa.
Blowers, Hazel C.,	Juniata,	Blair,	Pa.
Botdorf, Anna E.,	Milroy,	Mifflin,	Pa.
Boeckler, Amy R., 649 Main St.,	Lykens,	Dauphin,	Pa.
Bolan, Ellen J.,	Oberlin,	Dauphin,	Pa.
Book, Dorothy J.,	Mexico,	Juniata,	Pa.
Boone, Mary E.,	Nook,	Juniata,	Pa.
Brechbiel, Jeannetta S.,	Shippensburg,	Franklin,	Pa.
Briner, Myrhl V.,	Green Park,	Perry,	Pa.
Britton, Mrs. Margaret K.,	Chambersburg,	Franklin,	Pa.
Brown, J. Blanche,	Hustontown,	Fulton,	Pa.
Brown, Hazel M.,	Hustontown,	Fulton,	Pa.
Brown, Virgil L., 14 S. Mulberry St.,	Hagers-		
	town,	Washington, . . .	Md.
Brubaker, Emma H.,	Mechanicsburg,	Cumberland, . . .	Pa.
Burd, Nettie M.,	New Bloomfield,	Perry,	Pa.
Burkholder, Mildred R., N. High St.,	Newville,	Cumberland, . . .	Pa.
Campbell, Cora M.,	New Bloomfield,	Perry,	Pa.
Campbell, Verna M.,	Perulack,	Juniata,	Pa.
Carbaugh, M. Ruth,	Upper Strasburg,	Franklin,	Pa.
Cashman, Miriam V.,	East Berlin,	Adams,	Pa.

<i>Name</i>	<i>Post Office</i>	<i>County</i>	<i>State</i>
Charles, Della A.,	Everett,	Bedford,	Pa.
Charles, Helen G.,	Duncannon,	Perry,	Pa.
Chubb, Florence P.,	Halifax,	Dauphin,	Pa.
Clark, Annie K.,	New Bloomfield,	Perry,	Pa.
Clary, Estella R.,	Greencastle,	Franklin,	Pa.
Clevenger, Mary E.,	Breezewood,	Bedford,	Pa.
Clouser, Erma H.,	New Bloomfield,	Perry,	Pa.
Conrad, Mary E.,	New Florence,	Westmoreland,	Pa.
Cook, Anna G.,	Altenwald,	Franklin,	Pa.
Cooper, Geraldine N.,	1839 Boas St., Harris-		
	burg,	Dauphin,	Pa.
Cooper, Thelma R.,	746 S. 21st St., Harrisburg,	Dauphin,	Pa.
Creighton, Anna A.,	1509 7th Ave., Juniata,	Blair,	Pa.
Creighton, Julia P.,	1509 7th Ave., Juniata,	Blair,	Pa.
Crouse, Gail E.,	535 Center St., Chambersburg,	Franklin,	Pa.
Crouse, E. Helen,	Black Gap,	Franklin,	Pa.
Crouse, Mildred E.,	3315 Jonestown Road,		
	Harrisburg,	Dauphin,	Pa.
Crum, M. Roberta,	Cassville,	Huntingdon,	Pa.
Crusey, Thelma G.,	Walnut Bottom,	Cumberland,	Pa.
Daubert, Mary E.,	Lebanon, R. 8,	Lebanon,	Pa.
Davidson, Iva M.,	Newville,	Cumberland,	Pa.
Davis, Ada M.,	McAllisterville,	Juniata,	Pa.
Detwiler, Janet M.,	1054 N. George St., York,	York,	Pa.
Dikon, Mary E.,	Williamstown,	Dauphin,	Pa.
Divel, Martha E.,	Amaranth,	Fulton,	Pa.
Eckenrode, Hazel K.,	Chambersburg, R. 6,	Franklin,	Pa.
Eckley, N. Emma,	McAlevy's Fort,	Huntingdon,	Pa.
Eichelberger, Greta L.,	Bowmansdale,	Cumberland,	Pa.
Eisenhower, M. Elizabeth,	Ridge Ave., Shippens-		
	burg,	Cumberland,	Pa.
Elwell, L. Virginia,	627 Lafayette St., Cape		
	May,	Cape May,	N. J.
Everhart, Miriam A.,	1133 N. George St., York,	York,	Pa.
Ewing, Elsie M.,	Neff's Mills,	Huntingdon,	Pa.
Feather, E. Lucille,	Alum Bank,	Bedford,	Pa.
Felty, Erma K.,	Harrisburg, R. 3,	Dauphin,	Pa.
Fitz, Clara E.,	Shady Grove,	Franklin,	Pa.
Fitzgerald, Eva,	580 W. Louthier St., Carlisle,	Cumberland,	Pa.
Ford, Helen M.,	Penbrook,	Dauphin,	Pa.
Foreman, Helen C.,	Lees X Roads,	Cumberland,	Pa.
Fortney, Mary L.,	811 Penna Ave., York,	York,	Pa.
Foster, Ada G.,	Piney Grove,	Fulton,	Md.
Foster, Vera A.,	Piney Grove,	Fulton,	Md.
Fox, Floranna B.,	Gettysburg,	Adams,	Pa.

<i>Name</i>	<i>Post Office</i>	<i>County</i>	<i>State</i>
Fox, Margaret V., 1605 S. Front St., Steelton,	Dauphin,	Dauphin,	Pa.
Fox, Margie P.,	Greencastle,	Franklin,	Pa.
Frank, Mabel F.,	West Fairview,	Cumberland,	Pa.
Garber, Charlotte L.,	New Kingstown,	Cumberland,	Pa.
Gardner, Pauline M.,	Gardners,	Cumberland,	Pa.
Garvin, Mary V., Chambersburg, R. 10,	Franklin,	Franklin,	Pa.
Gaster, Orval A.,	Three Springs,	Huntingdon,	Pa.
Gaumer, Sara M.,	New Cumberland,	Cumberland,	Pa.
Gelsing, Dorothy M.,	Fayetteville, R. 1,	Franklin,	Pa.
Geist, Mrs. Alice M.,	Hamburg,	Berks,	Pa.
Gerhard, Margaret A.,	Halifax, R. 1,	Dauphin,	Pa.
Gibbs, D. Naomi, 276 W. Jackson St., York,	York,	York,	Pa.
Gift, Kathleen R.,	Lemaster,	Franklin,	Pa.
Gillaugh, Mary A.,	Carlisle,	Cumberland,	Pa.
Ginter, A. May,	Lloydell,	Cambria,	Pa.
Ginter, Lucy,	Lloydell,	Cambria,	Pa.
Gipe, A. Mae,	Willow Hill,	Franklin,	Pa.
Gish, Isabel M.,	Ft. Loudon,	Franklin,	Pa.
Glenn, Ethel M.,	McConnellsburg,	Fulton,	Pa.
Glessner, Mary E.,	West Fairview,	Cumberland,	Pa.
Gluck, Allegra W.,	Chambersburg,	Franklin,	Pa.
Gorsuch, Gail A.,	Cove Gap,	Franklin,	Pa.
Gorsuch, Jeannette E.,	Cove Gap,	Franklin,	Pa.
Griffith, A. Myrl,	Duncannon,	Perry,	Pa.
Grissinger, Hazel A.,	Broad Top,	Huntingdon,	Pa.
Grissinger, Helen G.,	Broad Top,	Huntingdon,	Pa.
Grove, Ruth E.,	Dillsburg,	York,	Pa.
Guyer, A. Elizabeth,	Chambersburg,	Franklin,	Pa.
Hagans, Bessie P.,	McAlevy's Fort,	Huntingdon,	Pa.
Hale, Ruth E., 20 S. Washington St., Shippens-	burg,	Cumberland,	Pa.
Hammer, Ruie,	Bedford,	Bedford,	Pa.
Hammond, Elsie M.,	Bolivar,	Westmoreland,	Pa.
Harmony, Ruth L., W. King St., Chambersburg,	Franklin,	Franklin,	Pa.
Harper, Helen V.,	Shade Gap,	Huntingdon,	Pa.
Harris, Helen V.,	Mt. Union,	Huntingdon,	Pa.
Hart, Irene B.,	Penbrook,	Dauphin,	Pa.
Hart, Ruth A.,	Mifflintown, R. 2,	Juniata,	Pa.
Hawbecker, Amy S.,	Midvale,	Franklin,	Pa.
Heberly, Mary Jane, 303 N. Newberry St., York,	York,	York,	Pa.
Heefner, Margaret M.,	Quincy,	Franklin,	Pa.
Heiges, A. Katharine, 246 E. Phila. St., York,	York,	York,	Pa.
Helman, Kathleen F., Chambersburg, R. 10,	Franklin,	Franklin,	Pa.
Henry, Frances W.,	Franklinville,	Huntingdon,	Pa.
Henry, Mary A.,	McConnellsburg,	Fulton,	Pa.

<i>Name</i>	<i>Post Office</i>	<i>County</i>	<i>State</i>
Hershey, Katherine E., 437 E. Orange St., Lan-	caster,	Lancaster, Pa.
Hess, Loye R.,	Philipsburg, R. D., Centre,	Pa.
Hilbert, Mabel M., 721 W. Main St., Waynes-	boro,	Franklin, Pa.
Hoar, Sylvia S.,	Milroy,	Mifflin, Pa.
Holderbaum, Mabel E.,	New Paris,	Bedford, Pa.
Hollinger, Mrs. Alma D., Box 50, Hagerstown,	Washington, Md.
Holmes, Sara C., 226 Adams St., Steelton,	Dauphin,	Pa.
Hoop, Sallie F.,	Knobsville,	Fulton, Pa.
Hoover, Mary A.,	Halifax, R. 2,	Dauphin, Pa.
Hower, Mrs. Violet M.,	Perulack,	Juniata, Pa.
Hull, Anna K.,	East Berlin,	Adams, Pa.
Huntzberger, Grace A., 1502 Thompson St.,	Harrisburg,	Dauphin, Pa.
Hykes, Esther M.,	Aspers,	Adams, Pa.
Jeffries, Vessie T., 427 A. St., Carlisle,	Cumberland,	Pa.
Johnson, Ivie G.,	Grassflat,	Clearfield, Pa.
Johnson, Laura M.,	Blain,	Perry, Pa.
Johnson, Mildred K.,	Huntingdon,	Huntingdon, Pa.
Johnston, Florence L., 632 Briggs St., Harris-	burg,	Dauphin, Pa.
Jones, Lewese,	Richmond Furnace, Franklin,	Pa.
Joseph, Blanche M.,	East Berlin,	Adams, Pa.
Judy, Ona H.,	Everett,	Bedford, Pa.
Kane, Stella M.,	Chambersburg, R. 6, Franklin,	Pa.
Karns, Arbelia P.,	Bedford,	Bedford, Pa.
Kauffman, A. Charlotte,	Mifflintown,	Juniata, Pa.
Kauffman, A. Herthal,	Chambersburg R. 1, Franklin,	Pa.
Kauffman, Daisy E.,	Boswell,	Somerset, Pa.
Kaufman, Louise E.,	Upper Strasburg,	Franklin, Pa.
Keefer, Jennie S.,	Gettysburg, R. 5,	Adams, Pa.
Keiser, Ethel D.,	Lykens,	Dauphin, Pa.
Kendig, Gail A.,	Newburg,	Cumberland, Pa.
Kent, Carrie L.,	Fannettsburg,	Franklin, Pa.
Kerstetter, Margaret S.,	Lykens,	Dauphin, Pa.
Keyser, Anna M.,	Schellburg,	Bedford, Pa.
Kiracofe, Mary C., 606 W. Church St., Hagers-	town,	Washington, Md.
Kirkpatrick, Goldie A.,	Scotland,	Franklin, Pa.
Knisely, Ruth E.,	Alum Bank,	Bedford, Pa.
Kosanovich, Anna G., Box 1374, Woodlawn,	Beaver,	Pa.
Kough, Lolita B.,	Carlisle, R. 7,	Cumberland, Pa.
Kriner, Mary K.,	Greencastle, R. 4,	Franklin, Pa.
Krone, Ida R.,	Lewisberry,	York, Pa.

<i>Name</i>	<i>Post Office</i>	<i>County</i>	<i>State</i>
Lady, Eunice R.,	Abilene,	Dickinson,	Kansas
Lau, Bertha E.,	East Berlin,	Adams,	Pa.
Leberknight, M. Kathleen,	Orrstown,	Franklin,	Pa.
Lehman, B. Margaret,	Amaranth,	Fulton,	Pa.
Lentz, Thelma A., 315 2nd St.,	Slatington,	Lehigh,	Pa.
Lindemuth, Susan M., 258 E. Phila. St.,	York,	York,	Pa.
Lightner, Mildred W.,	Landisburg,	Perry,	Pa.
Lightner, Mrs. Vena H.,	Shirleysburg,	Huntingdon,	Pa.
Lightner, Vera M.,	Landisburg,	Perry,	Pa.
Lindsay, Gladys N.,	Greencastle, R. 4,	Franklin,	Pa.
Lowe, Amy C.,	Wiconisco,	Dauphin,	Pa.
Loy, Mrs. Sara M.,	Newville,	Cumberland,	Pa.
Lupold, Ada C.,	Elizabethville,	Dauphin,	Pa.
Lutz, Blanche H., 803 S. 27th St.,	Harrisburg,	Dauphin,	Pa.
Lutz, M. Esther,	Palmyra, R. 1,	Lebanon,	Pa.
Lynch, Ruth R.,	Crystal Springs,	Fulton,	Pa.
McAlicher, Catherine E.,	Elliottsburg,	Perry,	Pa.
McCadden, Alice F.,	Gettysburg,	Adams,	Pa.
McCarter, Marian S.,	Carlisle,	Cumberland,	Pa.
McCauslin, Mrs. Gladys M.,	Bendersville,	Adams,	Pa.
McCleaf, Florence E.,	Gettysburg,	Adams,	Pa.
McCleary, Vada N.,	Chambersburg, R. 7,	Franklin,	Pa.
McCoy, Ruth D.,	Elliottsburg,	Perry,	Pa.
McDannell, Ruth D.,	Gettysburg, R. 7,	Adams,	Pa.
McElheny, Leah A., 401 S. Front St.,	Steelton,	Dauphin,	Pa.
McGonigal, Catherine E.,	Carlisle,	Cumberland,	Pa.
McQuade, Mrs. Mabel O.,	Knobsville,	Fulton,	Pa.
McVitty, Alice C.,	Spring Run,	Franklin,	Pa.
Mackey, Alice M.,	Chambersburg, R. 5,	Franklin,	Pa.
Mackey, Helen E.,	Chambersburg, R. 5,	Franklin,	Pa.
Martin, Alice B.,	Rouzerville,	Franklin,	Pa.
Martin, Helen M.,	Newville, R. 5,	Cumberland,	Pa.
Martin, Mary L.,	Hagerstown, R. 7,	Washington,	Md.
Matthews, Mrs. Emma L., 631 Boyd St.,	Harrisburg,	Dauphin,	Pa.
May, Elsie G.,	Everett,	Bedford,	Pa.
May, Thelma B.,	Everett,	Bedford,	Pa.
Meals, Catherine S.,	Chambersburg,	Franklin,	Pa.
Mellott, H. Josephine,	McConnellsburg,	Fulton,	Pa.
Messner, Irene E.,	Wiconisco,	Dauphin,	Pa.
Middlekauff, Mrs. Lena L.,	Hagerstown,	Washington,	Md.
Miller, Blanche B.,	Elizabethville,	Dauphin,	Pa.
Miller, Mrs. Cottie B., 133 E. Lee St.,	Hagerstown,	Washington,	Md.
Miller, Mary Ellen,	Belleville,	Mifflin,	Pa.

<i>Name</i>	<i>Post Office</i>	<i>County</i>	<i>State</i>
Miller, Sara S.,	Shirleysburg,	Huntingdon,	Pa.
Milligan, A. Myrtle,	Loysville,	Perry,	Pa.
Minich, Marguerite E.,	Loysville,	Perry,	Pa.
Minter, Marian M.,	New Oxford, R. 2,	Adams,	Pa.
Mitchell, Josephine H.,	McAlevy's Fort,	Huntingdon,	Pa.
Mixel, J. Marie,	Chambersburg, R. 5,	Franklin,	Pa.
Moore, Edith L.,	Bridgeton, R. 5,	Cumberland,	N. J.
Mosescu, Mrs. Hope B.,	Carlisle,	Cumberland,	Pa.
Mosebrook, Bertha N.,	Glenville,	York,	Pa.
Maurer, Mae H.,	Mercersburg,	Franklin,	Pa.
Mower, Maude V.,	Mowersville,	Franklin,	Pa.
Murray, Zora L.,	Goodyear,	Cumberland,	Pa.
Murtorff, M. Beatrice,	Gardners,	Adams,	Pa.
Myers, E. Elizabeth, 538 N. Pitt St.,	Carlisle,	Cumberland,	Pa.
Neff, Catherine E., 302 S. Market St.,	Mechanicsburg,	Cumberland,	Pa.
Neff, Lillian M.,	Warrior's Mark,	Huntingdon,	Pa.
Nesbit, Olive C.,	Andersonburg,	Perry,	Pa.
Niswander, Bertha,	Greencastle, R. 4,	Franklin,	Pa.
Nevis, Frances,	Elliottsburg,	Perry,	Pa.
Nonnemaker, Rhine R.,	Alum Bank,	Bedford,	Pa.
Orr, Agnes I.,	Progress,	Dauphin,	Pa.
Orris, Ruth E.,	Carlisle,	Cumberland,	Pa.
Osborne, Margaret E.,	New Oxford,	Adams,	Pa.
Oswald, Irene G.,	Hagerstown,	Washington,	Md.
Oyer, Annie I.,	Chambersburg, R. 3,	Franklin,	Pa.
Parks, Alma E.,	Saxton,	Bedford,	Pa.
Pecht, Katharine S.,	Milroy,	Mifflin,	Pa.
Peters, Martha J.,	Fayetteville,	Franklin,	Pa.
Phenicie, Ruth,	Mercersburg,	Franklin,	Pa.
Philips, M. Ivadene,	Bedford,	Bedford,	Pa.
Phillipy, Mary E.,	Chambersburg,	Franklin,	Pa.
Pike, Mary A.,	Mason & Dixon,	Franklin,	Pa.
Pogue, Margaret E.,	Pitcairn,	Allegheny,	Pa.
Porter, M. Alverna,	Ellerslie,	Washington,	Md.
Preston, Mary J. L.,	Carlisle, R. 1,	Cumberland,	Pa.
Raffensperger, S. Loretta,	Biglerville,	Adams,	Pa.
Rebert, Mary E.,	Carlisle, R. 1,	Cumberland,	Pa.
Rebert, Josephine L.,	Cashtown,	Adams,	Pa.
Reed, Mary C.,	Milroy,	Mifflin,	Pa.
Reider, Frances E.,	Middletown,	Dauphin,	Pa.
Reynolds, Elva L.,	Parkesburg, R. 1,	Chester,	Pa.
Rhodcap, Effie I.,	Waynesboro, R. 1,	Franklin,	Pa.
Rhoades, Mary A.,	Stoyestown,	Somerset,	Pa.
Rice, Lenore G., 228 Peffer St.,	Harrisburg,	Dauphin,	Pa.

<i>Name</i>	<i>Post Office</i>	<i>County</i>	<i>State</i>
Riggeal, Mildred J.,	Orrtanna, R. 1, . . .	Adams,	Pa.
Ritz, Nellie P.,	Warfordsburg, . . .	Fulton,	Pa.
Rockey, Ivy P.,	Gardners,	Adams,	Pa.
Roland, Mabel E.,	New Oxford,	Adams,	Pa.
Rosenberry, Helen M., 247 High St., Chambers- burg,		Franklin,	Pa.
Rosenberry, Marjorie M., . . .	Upper Strasburg, . .	Franklin,	Pa.
Roth, B. Elizabeth, 538 Spruce St., Steelton, . .		Dauphin,	Pa.
Russ, Edna C., 48 W. Orange St., Shippens- burg,		Cumberland, . . .	Pa.
Saum, Mary F., 28 N. 2nd St., Hagerstown, . . .		Washington, . . .	Md.
Schenck, Lena E.,	Enid,	Fulton,	Pa.
Schetrompf, Erna L.,	Lashley,	Fulton,	Pa.
Schetrompf, Myda B.,	Lashley,	Fulton,	Pa.
Schooley, Mildred A.,	Everett,	Bedford,	Pa.
Schultz, Cora A.,	Warfordsburg, . . .	Fulton,	Pa.
Seip, Marjorie,	Wisconisco,	Dauphin,	Pa.
Shaffer, Erma E.,	Newville,	Cumberland, . . .	Pa.
Shaffer, L. May, 215 State St., Everett,		Bedford,	Pa.
Shatzer, Amy G.,	Chambersburg, R. 6,	Franklin,	Pa.
Sheaffer, Gladys G., 38 N. 20th St., Harrisburg,		Dauphin,	Pa.
Shehan, Mary M.,	Joller,	Huntingdon, . . .	Pa.
Shenck, Anna M.,	Huntsdale,	Cumberland, . . .	Pa.
Sherlock, Elizabeth G.,	Walnut,	Juniata,	Pa.
Slothour, A. Pauline,	East Berlin,	Adams,	Pa.
Snider, Louise, Chambersburg, R. 10,		Franklin,	Pa.
Snyder, Bertha P.,	Ickesburg,	Perry,	Pa.
Snyder, Leone M.,	Mercersburg, R. 2, .	Franklin,	Pa.
Squires, Mrs. Helen G.,	Shippensburg, . . .	Cumberland, . . .	Pa.
Stitt, Margaret E.,	McCoysville,	Juniata,	Pa.
Stouffer, Edna C.,	Newville, R. 1, . . .	Cumberland, . . .	Pa.
Strickler, M. Ethel,	Aliquippa,	Beaver,	Pa.
Strine, Margaret Z.,	Emigsville,	York,	Pa.
Stymiest, Delma G.,	Mt. Alto,	Franklin,	Pa.
Suter, Alice M.,	New Paris,	Bedford,	Pa.
Sutton, Anna V.,	Lewisberry,	York,	Pa.
Swisher, Nellie E.,	Waynesboro,	Franklin,	Pa.
Tate, Mary E.,	Mechanicsburg, . . .	Cumberland, . . .	Pa.
Tennis, Helen M.,	Oberlin,	Dauphin,	Pa.
Thompson, Helen M., 844 S. Cameron St., Harrisburg,		Dauphin,	Pa.
Tressler, Blanche E.,	New Bloomfield, . .	Perry,	Pa.
Walker, Beulah E.,	Lewisberry,	York,	Pa.
Warren, Nellie M.,	Shippensburg, . . .	Cumberland, . . .	Pa.
Way, Hannah E.,	Duncannon,	Perry,	Pa.

<i>Name</i>	<i>Post Office</i>	<i>County</i>	<i>State</i>
Weakley, Jean M., 342 W. North St.,	Carlisle,	Cumberland,	Pa.
Weaver, Elva E.,	Elizabethville,	Dauphin,	Pa.
Weidenhammer, Hattie M.,	Highspire,	Dauphin,	Pa.
Weikert, Madeline L.,	Gettysburg,	Adams,	Pa.
Weller, Edna M., 21 E. Main St.,	Somerset,	Somerset,	Pa.
Wenk, Myrtle D.,	Aspers,	Adams,	Pa.
Wert, Hazel E.,	Franklinville,	Huntingdon,	Pa.
Whorley, Miriam E.,	Shippensburg,	Cumberland,	Pa.
Wingert, Alma M.,	Scotland,	Franklin,	Pa.
Winger, Grace K.,	Mason & Dixon,	Franklin,	Pa.
Wink, M. Estalene,	Hancock,	Fulton,	Md.
Winters, Mrs. Leona B.,	Maugansville,	Washington,	Md.
Wise, Margaret C.,	Elizabethville,	Dauphin,	Pa.
Witmer, Grace E.,	Carlisle, R. 1,	Cumberland,	Pa.
Wonders, Gertrude E.,	Dillsburg,	York,	Pa.
Woodal, Myrtle L.,	McConnellsburg,	Fulton,	Pa.
Workman, Pauline,	Saxton,	Bedford,	Pa.
Workman, Zada L.,	Rockhill Furnace,	Huntingdon,	Pa.
Wrye, Edith M.,	Warrior's Mark,	Huntingdon,	Pa.
Yeingst, Gwendolyn E.,	Mifflin,	Juniata,	Pa.
Young, Nell M.,	Robertsdale,	Huntingdon,	Pa.
Young, Ruby,	Robertsdale,	Huntingdon,	Pa.
Zeger, A. Louise,	Mercersburg, R. 3,	Franklin,	Pa.
Zeigler, Clementine G.,	Dry Run,	Franklin,	Pa.
Zeigler, Pauline B., 64 E. Washington St.,			
	Hagerstown,	Washington,	Md.
Zepp, Esther S.,	Gettysburg,	Adams,	Pa.
Zercher, Beulah M.,	Mt. Joy,	Lancaster,	Pa.
Zug, Anna L.,	Shippensburg,	Cumberland,	Pa.

MEN

Bair, George C.,	Spring Run,	Franklin,	Pa.
Baker, Earl T.,	East Berlin,	Adams,	Pa.
Baldwin, J. Jere,	Burnt Cabins,	Fulton,	Pa.
Barnhart, Ralph W., 22 Fairview Ave.,	Waynes-		
	boro,	Franklin,	Pa.
Bert, Paul C.,	Orrstown,	Franklin,	Pa.
Black, Charles A.,	Shermans Dale,	Perry,	Pa.
Black, Maxwell A., 39 S. Potomac St.,	Waynes-		
	boro,	Franklin,	Pa.
Blynn, Oscar M.,	Shippensburg,	Cumberland,	Pa.
Bonbrake, J. Mahon,	Waynesboro, R. 2,	Franklin,	Pa.
Booz, Ray H.,	Shippensburg,	Cumberland,	Pa.
Bothwell, Kenneth H., 2nd St.,	Highspire,	Dauphin,	Pa.
Bradley, Albert G.,	Dudley,	Huntingdon,	Pa.

<i>Name</i>	<i>Post Office</i>	<i>County</i>	<i>State</i>
Bradley, Erwin S.,	Broad Top,	Huntingdon,	Pa.
Brenize, Robert J.,	Mowersville,	Franklin,	Pa.
Burgard, Clair B.,	Dillsburg,	York,	Pa.
Bushey, Glenn L.,	York Springs,	Adams,	Pa.
Campbell, Samuel A.,	Dry Run,	Franklin,	Pa.
Ciarrocca, Angelo L.,	Dudley,	Huntingdon,	Pa.
Claar, Wilmer,	Queen,	Bedford,	Pa.
Clouser, George C.,	Webster Mills,	Fulton,	Pa.
Clugston, Thomas A.,	Chambersburg, R. 10,	Franklin,	Pa.
Cook, Charles F.,	Shippensburg, R. 4,	Cumberland,	Pa.
Cook, O. Wayne,	Dillsburg,	York,	Pa.
Cool, Joseph A.,	Fairfield,	Adams,	Pa.
Coons, G. Edgar,	Waynesboro,	Franklin,	Pa.
Crabb, Russ A.,	Berrysburg,	Dauphin,	Pa.
Crum, John B.,	Shermans Dale,	Perry,	Pa.
Deardorff, Kermitt O.,	Biglerville,	Adams,	Pa.
Deardorff, Myles R.,	Gettysburg, R. 5,	Adams,	Pa.
Deiss, Henry,	Milroy,	Mifflin,	Pa.
Deshong, Albert D.,	Harrisonville,	Fulton,	Pa.
DeVenney, Ray W.,	Carlisle, R. 7,	Cumberland,	Pa.
Dillon, Edgar J.,	Orrtanna, R. 2,	Adams,	Pa.
Dissinger, Earl,	Duncannon, R. 2,	Perry,	Pa.
Eisenhower, Frank L.,	Shippensburg,	Cumberland,	Pa.
Ehlman, Samuel A.,	Ickesburg,	Perry,	Pa.
Eppley, William S.,	Etters,	York,	Pa.
Erford, Harold E.,	West Fairview,	Cumberland,	Pa.
Etter, Howard M.,	328 E. Burd St., Shippens- burg,	Cumberland,	Pa.
Etter, John E.,	St. Thomas,	Franklin,	Pa.
Fisher, Graydon C.,	301 N. Prince St., Shippens- burg,	Cumberland,	Pa.
Fisher, Ray M.,	Clearville,	Bedford,	Pa.
Frehn, John A.,	Shippensburg,	Cumberland,	Pa.
Fry, Frank L.,	New Bloemfield,	Perry,	Pa.
Funt, Harry M.,	Arendtsville,	Adams,	Pa.
Gill, James E.,	Shade Gap,	Huntingdon,	Pa.
Gleim, Millard L.,	Mt. Holly Springs,	Cumberland,	Pa.
Glessner, Clarence F.,	West Fairview,	Cumberland,	Pa.
Goodhart, Mark M.,	Dickinson,	Cumberland,	Pa.
Griffith, Edgar H.,	Wolfsburg,	Bedford,	Pa.
Greist, Chester J.,	Wellsville,	York,	Pa.
Hartzell, Ernest M.,	Summerdale,	Cumberland,	Pa.
Harvey, Paul E.,	Newville, R. 2,	Cumberland,	Pa.
Heberlig, Alnert F.,	Richard Ave., Shippensburg,	Cumberland,	Pa.
Hemphill, Craig M.,	Shippensburg,	Cumberland,	Pa.

<i>Name</i>	<i>Post Office</i>	<i>County</i>	<i>State</i>
Hench, Maynard H.,	Andersonburg,	Perry,	Pa.
Henninger, Marlin G.,	Elizabethville,	Dauphin,	Pa.
Henry, Wilson, Jr.,	Franklinville,	Huntingdon,	Pa.
Hepner, Russell A.,	Elizabethville, R. 1,	Dauphin,	Pa.
Heston, Herman H.,	New Bloomfield,	Perry,	Pa.
Hill, Walter J.,	Needmore,	Fulton,	Pa.
Hockenberry, Dorman R.,	New Germantown,	Perry,	Pa.
Hornberger, William K.,	Marysville,	Perry,	Pa.
Hostetler, Waldo H.,	Johnstown, R. 3,	Cambria,	Pa.
Hykes, Maurice W.,	Aspers, R. 1,	Adams,	Pa.
Jones, Warren,	Neelyton,	Huntingdon,	Pa.
Keller, Lloyd N.,	Marysville,	Perry,	Pa.
Keller, J. Roy,	Mercersburg,	Franklin,	Pa.
Kerr, Frank V.,	Hyndman,	Bedford,	Pa.
Kinsloe, Arthur W.,	Burnham,	Mifflin,	Pa.
Knisely, Joseph H.,	Alum Bank,	Bedford,	Pa.
Krouse, Jerome F.,	Dudley,	Huntingdon,	Pa.
Lashley, Leander V.,	Artemas,	Bedford,	Pa.
Lebo, Ray R.,	Halifax,	Dauphin,	Pa.
Lesh, Daniel A.,	Millerstown,	Perry,	Pa.
Line, Robert R.,	Carlisle, R. 6,	Cumberland,	Pa.
Lohman, Harry A.,	26 Tritle Ave.,	Waynesboro, Franklin,	Pa.
Loy, William S.,	Newville,	Cumberland,	Pa.
Long, Charles V.,	East Waterford,	Juniata,	Pa.
McAlicher, David E.,	Elliottsburg,	Perry,	Pa.
McCauslin, Dewey E.,	Bendersville,	Adams,	Pa.
McClain, Ernest R.,	Colfax,	Huntingdon,	Pa.
McNees, Wayne A.,	Mt. Alto,	Franklin,	Pa.
McNitt, James A.,	Lewistown, R. 4,	Mifflin,	Pa.
Martin, Lloyd A.,	Newville, R. 5,	Cumberland,	Pa.
May, H. W.,	Crystal Springs,	Fulton,	Pa.
Mentzer, Harvey K.,	Waynesboro, R. 1,	Franklin,	Pa.
Metzler, H. Oliver,	Decorum,	Bedford,	Pa.
Mickle, T. Ross,	New Paris,	Bedford,	Pa.
Michael, Lester P.,	31 S. Fayette St.,	Shippens-	
	burg,	Cumberland,	Pa.
Miller, Elott F.,	324 W. Main St.,	Lykens,	Dauphin,
			Pa.
Miller, Harper M.,	Quincy,	Franklin,	Pa.
Mock, Walter H.,	Alum Bank, R. 1,	Bedford,	Pa.
Myers, Jesse W.,	Mechanicsburg, R. 6,	Cumberland,	Pa.
Myers, John W.,	Dover, R. 1,	York,	Pa.
Myers, H. Nelson,	Mercersburg,	Franklin,	Pa.
Neagley, Ross L.,	Fallsington,	Bucks,	Pa.
Nesbit, Vernon B.,	Dillsburg,	York,	Pa.
Nixon, Robert B.,	4814 A. St.,	Philadelphia,	Pa.

<i>Name</i>	<i>Post Office</i>	<i>County</i>	<i>State</i>
Noll, Robert C.,	Chambersburg, R. 9,	Franklin,	Pa.
Ocker, George E.,	Shippensburg,	Cumberland,	Pa.
Orner, James P.,	Cashtown,	Adams,	Pa.
Paul, Rufus D.,	Halifax, R. 2,	Dauphin,	Pa.
Plessinger, Eugene H.,	Amaranth,	Fulton,	Pa.
Preston, W. Willard,	Carlisle, R. 1,	Cumberland,	Pa.
Prosser, Elmer C.,	Six Mile Run,	Bedford,	Pa.
Raffensperger, Edgar W.,	Elliottsburg,	Perry,	Pa.
Reynolds, Clyde M.,	Johnstown, R. 2,	Cambria,	Pa.
Rhine, Maurice C.,	Perulack,	Juniata,	Pa.
Riley, Horace W.,	Quincy,	Franklin,	Pa.
Ritter, Donald L.,	Shippensburg,	Cumberland,	Pa.
Rohm, Donald A.,	Breezewood,	Bedford,	Pa.
Romig, Russell A. M.,	Milroy,	Mifflin,	Pa.
Roudabush, John A.,	Claysburg,	Bedford,	Pa.
Rudy, Harry W.,	New Cumberland, R. 1,	Cumberland,	Pa.
Ruhl, Ray L.,	Baltimore St., Dillsburg,	York,	Pa.
Ryan, Earl H.,	15 E. Coover St., Mechanicsburg,	Cumberland,	Pa.
Sanderson, John M.,	New Bloomfield,	Perry,	Pa.
Seylar, Merle L.,	Mercersburg,	Franklin,	Pa.
Shank, Earl R.,	Greencastle, R. 3,	Franklin,	Pa.
Sheaffer, Walter O.,	Dillsburg, R. 2,	York,	Pa.
Shelley, Lawrence E.,	Etters,	York,	Pa.
Shoenfelt, Carlyle W.,	325 Main St., Roaring Springs,	Blair,	Pa.
Shumaker, Milton R.,	Blain,	Perry,	Pa.
Singley, Ray C.,	Mt. Carmel,	Northumberland,	
Skladzein, Joseph S.,	Glen Lyon,	Luzerne,	Pa.
Slaybaugh, Arthur L.,	Arendtsville,	Adams,	Pa.
Smith, Harry D.,	Coopers Plains,	N. Y.	
Smith, James P.,	Woodlawn,	Beaver,	Pa.
Smith, Paul M.,	112 S. Prince St., Shippens- burg,	Cumberland,	Pa.
Smith, Ralph,	Inglesmith,	Dauphin,	Pa.
Sollenberger, John M.,	28th St., Penbrook,	Dauphin,	Pa.
Sponseller, A. Nevin,	Mainville,	Columbia,	Pa.
Spotts, Roy M.,	New Bloomfield,	Perry,	Pa.
Stains, Russell G.,	Burnham,	Mifflin,	Pa.
Steigelman, Jay M.,	Barnitz,	Cumberland,	Pa.
Stewart, D. Frank,	Amberson,	Franklin,	Pa.
Stine, Clyde E.,	1305 4th Ave., Juniata,	Blair,	Pa.
Stoke, Harry D.,	Blain,	Perry,	Pa.
Stouffer, Paul H.,	Newville,	Cumberland,	Pa.
Stover, William R.,	205 Park St., Waynesboro,	Franklin,	Pa.
Strohm, William H.,	Carlisle,	Cumberland,	Pa.

<i>Name</i>	<i>Post Office</i>	<i>County</i>	<i>State</i>
Stuck, Howard J.,	Lewisberry,	York,	Pa.
Suter, Harry A.,	New Paris,	Bedford,	Pa.
Throne, Anson G.,	327 King St.,	Shippensburg,	Cumberland, Pa.
Vaughan, A. B.,	Perulack,	Juniata,	Pa.
Wagaman, Robert N.,	Waynesboro, R. 1,	Franklin,	Pa.
Walters, Boyd C.,	Akersville,	Fulton,	Pa.
Wasson, Robert L.,	Box 86, Altoona, R. 1,	Blair,	Pa.
Weaver, Joseph J.,	Windber,	Somerset,	Pa.
Weigle, Ralph A.,	Wellsville,	York,	Pa.
Wertz, Paul L.,	Landisburg,	Perry,	Pa.
White, Robert J.,	42 Montgomery Ave.,	Shippensburg,	Cumberland, Pa.
Wible, Paul W.,	McConnellsburg,	Fulton,	Pa.
Wilt, Roy B.,	Blain,	Perry,	Pa.
Winfield, Harry D.,	605 Boas St.,	Harrisburg,	Dauphin, Pa.
Wise, Charles H.,	Lykens,	Dauphin,	Pa.
Yeager, Paul E.,	Williamson, R. 1,	Franklin,	Pa.
Yeingst, Frank,	Gardners,	Cumberland,	Pa.
Yohe, Waldo E.,	New Oxford,	Adams,	Pa.
Zimmerman, Ralph E.,	Halifax,	Dauphin,	Pa.

GENERAL ALUMNI ASSOCIATION**Officers**

President.....W. W. Eisenhart, '97, Tyrone, Pa.
 Vice-President.....Hon. J. L. Young, '87, Mechanicsburg, Pa.
 Secretary.....Myrtle Mayberry (Stough), '07, Carlisle, Pa.
 Alumni will confer a favor by informing the Registrar
 Ada V. Horton, of any changes that should be made.

ALUMNI ASSOCIATION OF DAUPHIN COUNTY**Officers**

President...M. H. Thomas, '90, 2214 Chestnut St., Harrisburg, Pa.
 Vice-President..Dr. H. H. Baish, '95, 711 N. 2nd St., Harrisburg, Pa.
 Secretary.....Jessie Wright, '04, 362 Locust St., Steelton, Pa.

ALUMNI ASSOCIATION OF FRANKLIN COUNTY**Officers**

President.....J. Maclay Kelley, '21, Waynesboro, Pa.
 Vice-President.....Jacob L. Brake, '21, St. Thomas, Pa.
 Secretary (Recording)...Esther Rahauser, '21, Chambersburg, Pa.

ALUMNI ASSOCIATION OF ADAMS COUNTY**Officers**

President.....C. I. Raffensperger, '21, Biglerville, Pa.
 Vice-President.....J. F. Slaybaugh, '16, Gettysburg, Pa.
 Secretary.....Mrs. Cleo Connor Neely, '22, Gettysburg, Pa.

ALUMNI ASSOCIATION OF YORK COUNTY**Officers**

President.....W. G. Fishel, '02, 2114 W. Market St., York, Pa.
 Vice-President.....S. M. Stouffer, '12, Hanover, Pa.
 Secretary.....Belle I. Anthony, '13, Wellsville, Pa.

METROPOLITAN ASSOCIATION**Officers**

President.....J. M. Fogelsanger, '90, Ellena St., Phila., Pa.
 Vice-President
 Mrs. Florence Fogelsanger Murphy, '03, 2260 N. Park Ave.,
 Phila., Pa.
 Secretary ..Blanche M. Stoops, '21, 11 Lincoln Apts., Ardmore, Pa.

ALUMNI ASSOCIATION OF HUNTINGDON COUNTY**Officers**

President.....E. Oliver Winters, '21, McAlevy's Fort, Pa.
 Vice-President.....Mabel A. Cornelius, '24, Saltillo, Pa.
 Secretary..Mary M. Hade, '13, (Mrs. Frank Magill), Huntingdon, Pa.

ALUMNI ASSOCIATION OF CUMBERLAND COUNTY**Officers**

President.....W. M. Rife, '91, Carlisle, Pa.
 Secretary.....Mary Yeager, '16, Carlisle, Pa.

ALUMNI ASSOCIATION OF PITTSBURGH**Officers**

President.....H. Frank Hare, '17, Springdale, Pa.
 Secretary

Mrs. Mary Oellig Titus, '17, 140 S. Shaw Ave., Turtle Creek, Pa.

ALUMNI ASSOCIATION OF BLAIR COUNTY**Officers**

President.....H. H. Beacham, '02, 317 3rd Ave., Altoona, Pa.
 Secretary

Mrs. Vida Wolcott (Decker), '96, 202 1st Ave., Altoona, Pa.

Alumni Meetings are held when possible during the week of County Institute.

TRAINING SCHOOLS

W. P. HARLEY, A. M.,
 Director

EDNA V. CLIPPINGER
 Secretary

SHIPPENSBURG TOWNSHIP TRAINING TEACHERS

MARY R. HARRIS, M. Pd., Assistant Director
 Director of Kindergarten and Primary Group

FRANCES W. OYER, B. S.,
 Kindergarten-Primary

BLANCHE I. SECOR, B.S.,
 Second Grade

GRACE M. CLARK, A.M.,
 Director of Intermediate Group English

ERMA K. ROLAR, A. B.,
 Geography and History

MARTHA E. SHAMBAUGH, A. B.,

Writing, Art and Health

HARPER J. HENTZ, B.S.,

Mathematics and Health

PLEASANT HILL SCHOOL

HANNAH A. KIEFFER, A. M.,

Director of Rural Group

EDNA STAMY FOX, B.S.,

Training Teacher

HARRIET A. TOOKE, Mus. B.,

Music

CLARA BRAGG

Librarian

ELIZABETH McWILLIAMS, B. S.,

School Luncheon

Health, GRACE KYLE, R.N.,

School Nurse

SHIPPENSBURG PUBLIC SCHOOLS

A. LEE SHULENBERGER, A. M.,

Supervising Principal

JUNIOR HIGH SCHOOL

HARLING SPONSELLOR, Principal,

Social Science

ALBERT BUSCH, A.B.,

Health, Industrial Arts

*EMILY CLEVER

English

KATHERINE SPESSARD

English

MARY E. PERLETTE

Mathematics

CATHERINE WALKER, B.S.,

Health, Industrial Arts

ROY DIBERT, B.S.,

Science, Mathematics

*Deceased.

ELEMENTARY SCHOOL

- MANNY GRAYSON
First Grade
- MABEL BARNER
Second Grade
- ALICE LEHMAN
Second Grade
- HAZEL WALTERS
Third Grade
- MARY WOODROW
Third and Fourth Grades
- ELLA MARTIN
Fourth Grade
- CARRIE KITZMILLER
Fourth and Fifth Grades
- MAUD CLEVER
Fifth and Sixth Grades

**SHIPPENSBURG TOWNSHIP TRAINING SCHOOLS
ENROLLMENT**

1926-1927

CAMPUS SCHOOL		SHIPPENSBURG PUBLIC SCHOOLS	
Grade I	20	Grade I	73
Grade II	32	Grade II	60
Grade III	22	Grade III	62
Grade IV	28	Grade IV	69
Grade V	21	Grade V	63
Grade VI	28	Grade VI	20
Grade VII	22		
Grade VIII	15	JUNIOR HIGH SCHOOL	
		Grade VII	51
		Grade VIII	74
		Grade IX	96
PLEASANT HILL SCHOOL			
Grades I-VIII	37		