

SECOND ANNUAL CATALOGUE

PENNSYLVANIA

State Normal School

FOURTH DISTRICT,

East Stroudsburg, = Penn'a.

1895.

no porch



STATE NORMAL SCHOOL, EAST STROUDSBURG, PA.

SECOND ANNUAL CATALOGUE

PENNSYLVANIA

STATE NORMAL SCHOOL,

FOURTH NORMAL DISTRICT,

EAST STROUDSBURG, PA.

1894-1895.

CALENDAR FOR 1895-1896.

STROUDSBURG, PA.:
MONROE DEMOCRAT PRINT.
1895.

OFFICERS OF THE BOARD.
1895--1896.

President,
HON. J. B. STORM.

Vice President,
THEO. Y. HOFFMAN.

Secretary,
I. A. GARDNER.

Treasurer,
H. M. MUTCHLER.

BOARD OF TRUSTEES.

Representing the Stockholders.

HON. J. B. STORM, <i>Stroudsburg, Pa.</i>	} Term of Three Years. 1893-1896.
T. Y. HOFFMAN, <i>East Stroudsburg, Pa.</i>	
J. K. FENNER, <i>East Stroudsburg, Pa.</i>	
J. I. MILLER, <i>Portland, Pa.</i>	
MILTON YETTER, <i>East Stroudsburg, Pa.</i>	} Term of Three Years. 1894-1897.
I. A. GARDNER, <i>East Stroudsburg, Pa.</i>	
F. J. KISTLER, <i>East Stroudsburg, Pa.</i>	
F. W. EILENBERGER, <i>East Stroudsburg, Pa.</i>	
B F. MOREY, <i>Stroudsburg, Pa.</i>	} Term of Three Years. 1895-1898.
PHILIP RUSTER, <i>East Stroudsburg, Pa.</i>	
F. H. SMITH, <i>East Stroudsburg, Pa.</i>	
R. W. REYNOLDS, <i>East Stroudsburg, Pa.</i>	

Representing the State.

DR. W. G. WEAVER, <i>Wilkes-Barre, Pa.</i>	}	Term of Three Years. 1893-1896.
A. C. LABARRE, ESQ., <i>Easton, Pa.</i>		
ALEX. W. DICKSON, <i>Scranton, Pa.</i>	}	Term of Three Years. 1894-1897.
H. S. RINKER, <i>Mauch Chunk, Pa.</i>		
WM. B. HOLMES, <i>Honesdale, Pa.</i>	}	Term of Three Years. 1895-1898.
JOHN J. MCGEEHIN, <i>Hazleton, Pa.</i>		

STANDING COMMITTEES.

FINANCE.

F. H. SMITH, A. C. LABARRE, W. G. WEAVER,
M. YETTER, I. A. GARDNER.

INSTRUCTION AND DISCIPLINE.

B. F. MOREY, A. C. LABARRE, A. W. DICKSON,
JOHN I. MILLER, R. W. REYNOLDS.

BUILDING.

JNO. J. MCGEEHIN, J. K. FENNER, W. B. HOLMES,
MILTON YETTER, T. Y. HOFFMAN.

SUPPLIES

W. B. HOLMES, T. Y. HOFFMAN, H. S. RINKER,
J. K. FENNER, F. H. SMITH.

GROUNDS.

F. W. EILENBERGER, W. G. WEAVER, PHILIP RUSTER,
JNO. J. MCGEEHIN, MILTON YETTER.

LECTURES.

F. W. EILENBERGER, F. J. KISTLER,
H. S. RINKER, A. W. DICKSON, B. F. MOREY.

FACULTY.

MISS MARIE BRADLEY,
Vocal and Instrumental Music.

R. L. PARK, A. M.,
Penmanship, Book-Keeping, Drawing, Manual Training.

MISS GERTRUDE EDMUND, Ph. D.,
Rhetoric, Pedagogics, School Management.

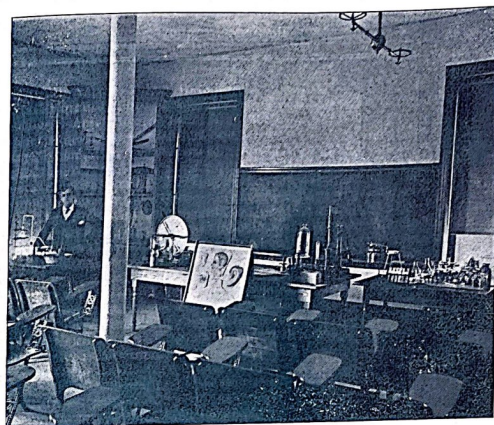
CHAS. H. TEETER,
Arithmetic and Algebra.

MISS LOUISE HOCHLEITNER,
German, French, Sewing, Dressmaking.

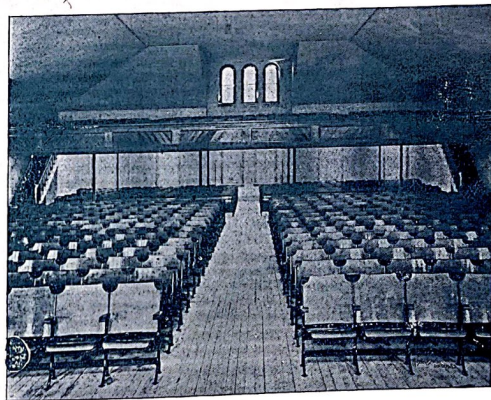
MORRIS EVANS,
Type Writing, Charge Book Room.

MRS. E. T. GRAY,
Matron.

PHILIP RUSTER,
Steward.



NATURAL SCIENCE ROOM.



INTERIOR VIEW OF CHAPEL.

CATALOGUE of STUDENTS.

SENIOR CLASS of '95.

LADIES.

NAME.	POST OFFICE.	COUNTY.	STATE.
Brands, Mary J.	Portland,	Northampton,	Pa.
Brown, Elsie	Angels,	Wayne,	"
Barbeau, Agnes	Del. Water Gap,	Monroe,	"
Bush, Edith	Marshall's Creek,	Monroe,	"
Carney, Anna	Wilkes-Barre,	Luzerne,	"
Canam, Grace	Bethlehem,	Northampton,	"
Cool, Evelyn M.	Columbia,	Warren,	N. J.
Curran, Nellie	Scranton,	Lackawanna,	Pa.
Dodson, Kate	Plymouth,	Luzerne,	"
Davies, Mary	Scranton,	Lackawanna,	"
Edinger, Florence	Stroudsburg,	Monroe,	"
Evans, Laura B.	Stroudsburg,	Monroe,	"
Evans, Susie E.	Vaughnsville,	Putnam,	O.
Edwards, Annie M.	Kingston,	Luzerne,	Pa.
Flynn, Emily	Dunmore,	Lackawanna,	"
Fenstermacher, Mary	Lehigh,	Carbon,	"
Gray, Edith	East Stroudsburg,	Monroe,	"
Heller, Ruth	Stroudsburg,	Monroe,	"
Hicks, Katherine	Scranton,	Lackawanna,	"
Holsman, Katherine	Bethlehem,	Northampton,	"
Johnson, Emma	Reading,	Berks,	"
Jones, Mattie	Scranton,	Lackawanna,	"
Jones, Sarah J.	Parsons,	Luzerne,	"
Kurtz, Mabel	East Stroudsburg,	Monroe,	"
Krauter, Mame	Scranton,	Monroe,	"
Mack, Annie	Wilkes-Barre,	Luzerne,	"
Miller, Susie	Portland,	Northampton,	"
Metzgar, Lizzie	White Haven,	Luzerne,	"
McCadden, Annie	Wilkes-Barre,	Luzerne,	"
McCaughey, Josephine	Pittston,	Luzerne,	"
Mollahan, Kate	Wilkes-Barre,	Luzerne,	"
Newhart, Carrie	Slatington,	Lehigh,	"
Osman, Isabel	Asbury,	Warren,	N. J.
Rinehart, Minnie G.	Mountain Home,	Monroe,	Pa.

STATE NORMAL SCHOOL

13

NAME.	POST OFFICE.	COUNTY.	STATE.
Reap, Mame	Scranton,	Lackawanna,	Pa.
Ruddy, Mary	Scranton,	Lackawanna,	"
Shafer, Margaret	Mountain Home,	Monroe,	"
Schoonover, Elsie	West Bethlehem,	Lehigh,	"
Timony, Kathryn	Freeland,	Luzerne,	"
Williams, Mary	Plymouth,	Luzerne,	"
Walsh, M. Alice	Peckville,	Lackawanna,	"

GENTLEMEN.

NAME.	POST OFFICE.	COUNTY.	STATE.
Appenzeller, C. D.	Stroudsburg,	Monroe,	Pa.
Bush, Ralph D.	Stroudsburg,	Monroe,	"
Brewster, William P.	Brooklyn,	Susquehanna,	"
Bursh, E. F.	Belfast,	Northampton,	"
Bachman, C. C.	Northampton,	Northampton,	"
Batt, O. E.	Edelmans,	Northampton,	"
Coolbaugh, H. F.	Stroudsburg,	Monroe,	"
Detrick, W. J.	Portland,	Northampton,	"
Ellenberger, R. J.	Shawnee,	Monroe,	"
Fawkes, Edward	Lansford,	Carbon,	"
Gilpin, George	Sterling,	Wayne,	"
Graul, F. M.	Green Lane,	Montgomery,	"
Houck, Chas. S.	McMichaels,	Monroe,	"
Jayne, Wilson T.	Rosengrant,	Wyoming,	"
Kinney, Ira L.	E. Stroudsburg,	Monroe,	"
Keiser, Norman G.	Bossardsville,	Monroe,	"
Mulligan, John R.	Nesquehoning,	Carbon,	"
Miller, Charlton D.	Stroudsburg,	Monroe,	"
McGuigan, Frank	Scranton,	Lackawanna,	"
Rhodes, Norman E.	Stroudsburg,	Monroe,	"
Reimer, Eli	Johnsonville,	Northampton,	"
Smith, H. E.	Belvidere,	Warren,	N. J.
Smith, Hez.	Nesquehoning,	Carbon,	Pa.

COMPLETE LIST OF STUDENTS.

LADIES.

NAME.	POST OFFICE.	COUNTY.	STATE.
Appenzeller, Elsie M.	Stroudsburg,	Monroe,	Pa.
Arnold, Stella M.	Peckville,	Lackawanna,	"
Brown, Elsie	Angels,	Wayne,	"
Barbeau, Agnes	Del. Water Gap,	Monroe,	"
Brands, Mary J.	Portland,	Northampton,	"
Bush, Edith	Marshall's Creek,	Monroe,	"
Brodhead, May	Old Forge,	Lackawanna,	"
Boye, Alice	Lansford,	Carbon,	"
Bush, Mattie L.	Marshall's Creek,	Monroe,	"
Burtell, Louise	East Stroudsburg,	Monroe,	"
Bowman, Agnes	Mt. Pocono,	Monroe,	"

STATE NORMAL SCHOOL,

Burke, Mary C.	Wilkes-Barre,	Luzerne,	"
Barnes, Emma L.	Peckville,	Lackawanna,	"
Boucher, Jennie D.	Bushkill,	Pike,	"
Bonner, Grace V.	Rosengrant,	Wyoming,	"
Bennett, Clara R.	Shawnee,	Monroe,	"
Boyle, Ellen M.	Lanford,	Carbon,	"
Bluett, Eliza	Pleasant Mt.	Wayne,	"
Boorem, May	Paradise Valley,	Monroe,	"
Bush, Maggie C.	Marshall's Creek,	Monroe,	"
Cure, Anna S.	Thompkinsville,	Lackawanna,	"
Curran, Nellie	Scranton,	Lackawanna,	"
Canam, Grace R.	Bethlehem,	Northampton,	"
Cool, Evelyn	Columbia,	Warren,	N. J.
Casey, Marie	Carbondale,	Lackawanna,	Pa.
Carney, Annie	Wilkes-Barre,	Luzerne,	"
Campbell, Laura	Scranton,	Lackawanna,	"
Carman, Nettie	East Stroudsburg	Monroe,	"
Collins, Margaret	Nesquehoning,	Carbon,	"
Coons, Millie	Scranton,	Lackawanna,	"
Crooks, Annie	Gouldsboro,	Wayne,	"
Cooper, Della	Luzerne,	Luzerne,	"
Carney, Mary	Wilkes-Barre,	Luzerne,	"
Cyphers, Miriam E.	Shawnee,	Monroe,	"
Cooke, Lucy	Scranton,	Lackawanna,	"
Carpenter, Hattie N.	Factoryville,	Wyoming,	"
Carpenter, Lillie M.	Factoryville,	Wyoming,	"
Davis, Mary A.	Scranton,	Lackawanna,	"
Dodson, Katie	Plymouth,	Luzerne,	"
Dick, Jeanie H.	Moosic,	Lackawanna,	"
Dougherty, Mary	Freeland,	Luzerne,	"
Evans, Susie E.	Vaughnsville,	Putnam,	O.
Evans, Laura E.	Stroudsburg,	Monroe,	Pa.
Edwards, Annie M.	Kingson,	Luzerne,	"
Edinger, Florence	Stroudsburg,	Monroe,	"
Edwards, Olwen M.	Kingson,	Luzerne,	"
Engler, Blanche	Stroudsburg,	Monroe,	"
Flynn, Emily	Dunmore,	Lackawanna,	"
Fenstermacher, Mary	Lehighon,	Carbon,	"
Farrow, Carrie	Martin's Creek,	Northampton,	"
Fanning, Nellie R.	Plymouth,	Luzerne,	"
Follweiller, Clara L.	Lynport,	Lehigh,	"
Frey, Ethel	Freytown,	Lackawanna,	"
Gilpin, Laura R.	Sterling,	Wayne,	"
Gilpin, Libbie	Laanna,	Pike,	"
Gray, Edith	East Stroudsburg,	Monroe,	"
Gray, Esther	East Stroudsburg,	Monroe,	"
Gallagher, Maggie	Wilkes-Barre,	Luzerne,	"
Gray, Virginia	Phillipsburg,	Center,	"
Grant, Angie R.	Newfoundland,	Wayne,	"
Heller, Ruth	Stroudsburg,	Monroe,	"
Hill, Belle	East Stroudsburg,	Monroe,	"
Holzeman, Katherine	Bethlehem,	Northampton,	"

EAST STROUDSBURG, PA.

Hicks, Katherine	Scranton,	Lackawanna,	Pa.
Henry, Jeanette M	Blairstown,	Warren,	"
Huston, Merlan	Portland,	Northampton,	"
Hunt, Rena	Fleetville,	Lackawanna,	"
Hobbs, Bertha	Marshbrook,	Lackawanna,	"
Hoffman, Lou. M.	East Stroudsburg,	Monroe,	"
Hines, Mary	Wilkes-Barre,	Luzerne,	"
Howe, Blanche	East Stroudsburg,	Monroe,	"
Hoag, Mary T.	Wyalusing,	Bradford,	"
Hopps, Ruth E.	Greentown,	Pike,	"
Howell, Eva M.	Pleasant Mount,	Wayne,	"
Hayes, Margaret	Scranton,	Lackawanna,	"
Jones, Anna	Wilkes-Barre,	Luzerne,	"
Johnson, M. Emma	Reading,	Berks,	"
Jayne, Nanna	Eatonville,	Wyoming,	"
Jones, Elizabeth	Plymouth,	Luzerne,	"
Jones, Mattie	Scranton,	Lackawanna,	"
Jones, Sarah J.	Parsons,	Luzerne,	"
Joyce, Sarah	Carbondale,	Lackawanna,	"
Jones, Laura M.	Plymouth,	Luzerne,	"
Jenkins, Eva L.	Philadelphia,	Philadelphia,	"
Kurtz, Mabel	East Stroudsburg,	Monroe,	"
Kilne, A. Violet	Wilkes-Barre,	Luzerne,	"
Kurtz, Elizabeth	Columbiaville,	Lapeer,	Mich.
Kurtz, Ella May	Columbiaville,	Lapeer,	"
Kearney, Ella	Peckville,	Lackawanna,	"
Kemp, Gertrude	East Stroudsburg,	Monroe,	"
Krauter, Mayme	Tobyhanna,	Monroe,	"
Klaer, Anna	Stroudsburg,	Monroe,	"
Kellow, Jessie	Scranton,	Lackawanna,	"
Kober, Lizzie	Shawnee,	Monroe,	"
Krickbaum, Edna R.	Wilkes-Barre,	Luzerne,	"
Kistler, Ida A.	Stony Run,	Berks,	"
Killhullen, Julia A.	Carbondale,	Lackawanna,	"
Lesoine, Lizzie	East Stroudsburg,	Monroe,	"
Loughney, Lizzie A.	Pittston,	Luzerne,	"
Livingston, Ella J.	Saulsbery,	Hunterdon,	"
Mount, Lizzie	East Stroudsburg,	Monroe,	"
Mack, Annie	Wilkes-Barre,	Luzerne,	"
Miller, Susie B.	Portland,	Northampton,	"
Mollehan, Kate	Wilkes-Barre,	Luzerne,	"
McLane, Anna	Dunmore,	Lackawanna,	"
McCauley, Josephine	Pittston,	Luzerne,	"
McDonald, Regina	Warrior Run,	Luzerne,	"
McCadden, Annie A.	Wilkes-Barre,	Luzerne,	"
Metzger, Lizzie	White Haven,	Luzerne,	"
Morris, Carrie	Pt. Pleasant,	Bucks,	"
Moll, Elizabeth	South Bethlehem,	Northampton,	"
Mutchler, Ella M.	Monroe,	Monroe,	"
Michaels, Emma E.	East Stroudsburg,	Monroe,	"
Morey, Bertha	Stroudsburg,	Monroe,	"
Mack, Mary	Richmond,	Northampton,	"

Masters, Edith	Wimmers,	Lackawanna,	Pa.
Marsch, Lizzie R.	Greentown,	Pike,	"
Nicholas, Lillie M.	Cherryville,	Northampton,	"
Noys, Hannah V.	Westport,	Clinton,	"
Newhart, Carrie	Slatington,	Lehigh,	"
Newhart, Hattie	Allentown,	Lehigh,	"
Newlin, Emma W.	Port Carbon,	Schuylkill,	"
Osman, Isabella	Asbury,	Warren,	"
O'Hara, Kate	Dunmore,	Lackawanna,	"
Pearson, Lizzie A.	Stone Church,	Northampton,	"
Pierce, Hannah	Minsi,	Monroe,	"
Priest, Zola B.	Canadensis,	Monroe,	"
Pearl, Olive	Moosic,	Lackawanna,	"
Powers, Maud	Scranton,	Lackawanna,	"
Purcell, Mary	Scranton,	Lackawanna,	"
Priest, Olive A.	Mountain Home,	Monroe,	"
Pursell, Fannie E.	White Haven,	Luzerne,	"
Plummer, Alice A.	Marsh Brook,	Lackawanna,	"
Peters, Lizzie	Mauch Chunk,	Carbon,	"
Rowan, Mary	Miner's Mills,	Luzerne,	"
Reilly, Lizzie	Mill Creek,	Huntingdon,	"
Rinehart, Minnie	Mountain Home,	Monroe,	"
Ruddy, Mary	Scranton,	Lackawanna,	"
Rasner, Anna	Roxbury,	Lackawanna,	"
Rafter, Isabella	Scranton,	Lackawanna,	"
Roberts, Mame	Scranton,	Lackawanna,	"
Roberts, Hallie	Del. Water Gap,	Monroe,	"
Ruster, Susie	East Stroudsburg,	Monroe,	"
Ruehrig, Mary	Bethlehem,	Northampton,	"
Rosenberry, Belle	Middaugh's,	Northampton,	"
Reese, Angie	Scranton,	Lackawanna,	"
Reilly, Della	Nesquehoning,	Carbon,	"
Reinhart, Lizzie	Taylor,	Lackawanna,	"
Ruddy, Kate	Scranton,	Lackawanna,	"
Rosenkrans, Edna	East Stroudsburg,	Monroe,	"
Reilly, Nellie	Mill Creek,	Huntingdon,	"
Rufe, Sallie	Revere,	Bucks,	"
Schoonover, Elsie	W. Bethlehem,	Lehigh,	"
Shafer, Margaret	Mountain Home,	Monroe,	"
Shaw, Eva L.	Del. Water Gap,	Monroe,	"
Swartzwelder, Fannie E.	Stroudsburg,	Monroe,	"
Smith, Olive K.	Vail,	Warren,	N. J.
Smith, Mary	Nesquehoning,	Carbon,	Pa.
Smith, Maggie M.	Marshall's Creek,	Monroe,	"
Sutliff, Iva	Gallie,	Wayne,	"
Smith, Cora	Wallsville,	Lackawanna,	"
Siler, Anna M.	Bangor,	Northampton,	"
Silver, Mary C.	Silver Brook,	Schuylkill,	"
Shields, Mary E.	Jermyn,	Lackawanna,	"
Spencer, Lottie A.	Pleasant Mount,	Wayne,	"
Spiegel, Laura A.	Thornhurst,	Lackawanna,	"
Svepenizer, Nellie M.	Milford,	Pike,	"
Smith, Esther M.	Bald Mount,	Lackawanna,	"

Selple, Bertha	Bangor,	Northampton,	Pa.
Turn, Philura F.	Coolbaugh,	Monroe,	"
Timony, Catherine.	Freeland,	Luzerne,	"
Timony, Bridget F.	Freeland,	Luzerne,	"
Trimmer, Francis B.	White Haven,	Luzerne,	"
Talley, Annie	Bethlehem,	Northampton,	"
Timbrell, Lena	Columbia,	Warren,	N. J.
Turn, Fannie M.	Bushkill,	Pike,	Pa.
Turn, Helen E.	Coolbaugh,	Monroe,	"
Walsh, Mary A.	Peckville,	Lackawanna,	"
Williamson, Kate	Wilkes-Barre,	Luzerne,	"
Williams, Mary	Flymouth,	Luzerne,	"
Werner, Berths F.	Pen Argyl,	Northampton,	"
Webber, Marie	Dunmore,	Lackawanna,	"
Waderman, Emma	Clifford,	Susquehanna,	"
Watson, Emma	Hamilton,	Wayne,	"
Wright, Effie	Peetona,	Wayne,	"
Waters, Anna W.	Stroudsburg,	Monroe,	"
Wyckoff, Janie F.	Marshall's Creek,	Monroe,	"
Wood, Blanch A.	Milford,	Pike,	"
Yetter, Myrtle	East Stroudsburg,	Monroe,	"
Yost, Estella M.	Scranton,	Lackawanna,	"
Zeigler, Rosa A.	North Penn,	Schuylkill,	"
Zeiss, Mary C.	Milwaukee,	Lackawanna,	"

GENTLEMEN.

Ackerman, Harley	Tatamy,	Northampton,	Pa.
Appenzeller, Chas. D.	Stroudsburg,	Monroe,	"
Achenbach, Solomon T.	Belfast,	Northampton,	"
Ace, Claud B.	Swittwater,	Monroe,	"
Allegor, J. L.	Shawnee,	Monroe,	"
Ackerman, Oscar W.	Ackermanville,	Northampton,	"
Ackerman, Albert E.	Ackermanville,	Northampton,	"
Brewster, W. F.	Brooklyn,	Susquehanna,	"
Bursh, E. F.	Belfast,	Northampton,	"
Bush, Ralph D.	Stroudsburg,	Monroe,	"
Brod, H. O.	Flicksville,	Northampton,	"
Batt, O. E.	Edelman's,	Northampton,	"
Beck, Frank B.	Stone Church,	Monroe,	"
Brown, Robert C.	Stroudsburg,	Northampton,	"
Bachman, Chas. C.	Northampton,	Schuylkill,	"
Bickley, Geo. F.	Orwigsburg,	Carbon,	"
Boyle, Bernard S.	Lansford,	Monroe,	"
Brundage, Phillip E.	Stroudsburg,	Lehigh,	"
Benner, Joseph	Fullerton,	Lehigh,	"
Becker, William A.	Nazareth,	Northampton,	"
Birmingham, William	Gardville,	Schuylkill,	"
Boyle, Frank P.	Hazleton,	Susquehanna,	"
Bender, B. F.	East Stroudsburg,	Monroe,	Mont.
Bonner, Chas.	Granite,	Granite,	"

STATE NORMAL SCHOOL,

Butler, James S.	Sterling,	Wayne,	Pa.
Butler, William J.	Wilkes-Barre.	Susquehanna,	"
Bender, Stanley W.	East Bangor,	Northampton,	"
Brown, William E.	Stroudsburg,	Monroe,	"
Boyle, D. S.	Hazleton,	Luzerne,	"
Coolbaugh, Herbert F.	Stroudsburg,	Monroe,	"
Compton, Fred	Drinker,	Lackawanna,	"
Curran, Howard T.	Cross Roads,	York	"
Coyle, Moses	Mauch Chunk,	Carbon,	"
Corsellus, H. S.	Milwaukee,	Lackawanna,	"
Cyphers, R. M.	Shawnee.	Monroe,	"
Cannon, F. J.	Hazleton.	Luzerne,	"
Dunn, George W.	East Stroudsburg,	Monroe,	"
Detrick, Walton J.	Portland,	Northampton,	"
Dillard, Herbert	East Bangor,	Northampton,	"
Drum, Herbert R.	Thornhurst,	Lackawanna,	"
Detrick, Frank A.	Marshall's Creek,	Monroe,	"
Delong, C. R.	Stroudsburg.	Monroe,	"
Eckert, Frank	East Stroudsburg.	Monroe.	"
Ellenberger, R. J.	Shawnee,	Center,	"
Erhard, Wilbur	Fleming,	Monroe,	"
Ellenberger, Clinton	Shawnee,	Schuylkill,	"
Fegley, Theodore	Orwiesburg,	Carbon,	"
Fawkes, Edward	Lansford,	Lehigh,	"
Fenner, Frank D.	Ferndale,	Lehigh,	"
Follweiller, R. E.	Lynnport,	Lackawanna.	"
Fuller, Eugene O.	Bald Mount,	Northampton,	"
Fr-y, Amzie A.	Middaugh's,	Northampton,	"
Frace, James M.	Sandts Eddy,	Northampton,	"
Gilpin, George	Sterling,	Wayne,	"
Gardner, Fred C.	East Stroudsburg,	Monroe.	"
Grant, P. M.	Green Lane,	Montgomery,	"
Gile, Norman C.	Lamb's Creek,	Tioga,	"
Gross, Thomas D.	Harrisburg.	Dauphin,	"
Hom, Garrett	Lehighton,	Carbon,	"
Houston, John B.	Freeland,	Luzerne,	"
Houck, C. S.	McMichaels,	Monroe,	"
Heller, Robert	Shawnee,	Monroe,	"
Henan, J. J.	Lattimer,	Luzerne,	"
Hallet, Miles E.	East Stroudsburg,	Monroe,	"
Heberling, Elmer C	Klecknersville,	Northampton,	"
Hess, John T	Mt. Bethel,	Northampton,	"
Hobbs, G. L.	Fleetville,	Lackawanna,	"
Henson, Alonzo	Philadelphia,	Philadelphia,	"
Henn, Gustave	Mauch Chunk,	Carbon,	"
Hollinshead, Frank	Stroudsburg,	Monroe,	"
Hoffman, J.	Marshall's Creek,	Monroe,	"
Hoffman, Harvey	East Stroudsburg,	Monroe,	"
Hill, George P.	Lansford,	Carbon,	"
Huffman, Norman	Marshall's Creek,	Monroe,	"
Hester, Henry	Richmond,	Northampton,	"
Harper, Henry W.	Harpers,	Northampton,	"
Imbt, C. H.	Analomink,	Monroe,	"

EAST STROUDSBURG, PA.

Iiterly, James	Belfast,	Northampton,	Pa.
Jayne, Wilson T.	Rosengrant,	Wyoming,	"
Jayne Wade H.	Lucasville,	Wyoming,	"
Joyce, William J.	Pittston,	Luzerne,	"
Jamison, Wm. E.	Seranton,	Lackawanna,	"
Keiser, Norman G.	Bossardsville,	Monroe,	"
Keller, Gaylon, L.	Peckville,	Lackawanna,	"
Kinney, Ira L.	East Stroudsburg.	Monroe,	"
Kistler, Milton S.	Fast Stroudsburg,	Monroe,	"
Kresge, Thomas	Falls,	Wayne,	"
Koehler, J. J.	Moorestown,	Northampton,	"
Koehler, Geo. W.	Moorestown,	Northampton,	"
Kunkle, Geo. F.	Moorestown,	Northampton,	"
Keefe, Eddie	Seranton,	Lackawanna,	"
Kintz, John	Stroudsburg.	Monroe,	"
Karos, W. E.	Loysburg,	Bedford,	"
Looghran, Peter J.	Hazleton,	Luzerne,	"
Mulligan, J. R.	Nesquehoning,	Carbon,	"
Mervin, George	Stroudsburg.	Monroe,	"
Madden, John	Hazleton,	Luzerne,	"
McGuigan, Frank	Seranton,	Lackawanna,	"
McMillen, Edward	Culp,	Platr,	"
McDonald, James	Freeland.	Luzerne,	"
McGeehan, Cornelius	Freeland,	Luzerne,	"
McCreary, James W.	Luzerne.	Luzerne,	"
McDonald, Patrick	Seranton,	Lackawanna,	"
Male, Nicholas M.	Pen Argyl,	Northampton,	"
Murray, Michael J.	Dunmore,	Lackawanna,	"
Murray, Peter J	Dunmore,	Lackawanna,	"
Miller, Geo. W.	Richmond,	Northampton,	"
Miller, Charlton D.	Stroudsburg,	Monroe,	"
Murray, Martin	Wilkes-Barre,	Luzerne,	"
Mack, J. J.	Katelen,	Northampton,	"
Miller, A. F.	Wind Gap,	Northampton,	"
Mansfield, Chas. T.	Stroudsburg,	Monroe,	"
Meyers, C. O.	Flicksville,	Northampton,	"
Morgan, Alfred S.	Shattington,	Lehigh,	"
Nye, Fred C.	Rosengrant,	Wyoming,	"
Oyer, Joseph	Stone Church,	Northampton,	"
Ott, Jacob R.	Stone Church,	Northampton,	"
O'Donnell, John D.	Summit Hill,	Carbon,	"
Powell, James	Lackawanna,	Lackawanna,	"
Palmer, John	Minooka,	Monroe,	"
Price, Clarence	Stroudsburg.	Monroe,	"
Price, Myron A.	Canendensis,	Monroe,	"
Pipher, Isalah B.	Canendensis,	Monroe,	"
Pomp, Wm. H.	Minsi,	Monroe,	"
Reimer, Eli	Pen Argyl,	Northampton,	"
Rhodes, Norman E.	Johnsonville,	Northampton,	"
Reichard, John	Stroudsburg,	Monroe,	"
Rufe, John J.	East Bangor,	Northampton,	"
Remaly, George C.	Revere,	Bucks,	"
Rasner, John	Luzerne,	Luzerne,	"
	Roxburg,	Warren,	N. J.

STATE NORMAL SCHOOL,

Rochrig, Chas. A.	Lehighton,	Carbon,	Pa.
Rogers, Edward B.	Hartford,	Susquehanna,	"
Reimer, Enoch	Johansonville,	Northampton,	"
Royer, E. J.	Cherryville,	Northampton,	"
Saricks, Joseph G.	Sandy Run,	Luzerne,	"
Stone, Clarence	Marshall's Creek,	Monroe,	"
Smith, Harvey E.	Belvidere,	Warren,	N. J.
Smith, Hezekiah	Nesquehoning,	Carbon,	Pa.
Strunk, Walter M.	Parkland,	Northampton,	"
Shotwell, J. Roe	East Stroudsburg,	Monroe,	"
Shotwell, Ford S.	East Stroudsburg,	Monroe,	"
Silver, Michael	Silver Brook,	Schuylkill,	"
Shafer, Daniel H.	Stroudsburg,	Monroe,	"
Stevens, C. C.	Hollisterville,	Wayne,	"
Smith, Arthur L.	Gouldsboro,	Wayne,	"
Sullivan, E. J.	Wilkes-Barre,	Luzerne,	"
Shannon, J. P.	Nazareth,	Luzerne,	"
Stockler, H. E.	Edelman's,	Northampton,	"
Sandt, John H.	Petersville,	Northampton,	"
Schall, Ulysses A.	North Bangor,	Northampton,	"
Super, Jacob J.	Flicksville,	Northampton,	"
Shuman, Floyd	Flicksville,	Northampton,	"
Shuman, Melvin	Coffetown,	Northampton,	"
Sassaman, T. J.	Hellerstown,	Monroe,	"
Shiffer, E. E.	Shawnee,	Lackawanna,	"
Triebler, Harry	Minooka,	Luzerne,	"
Toole, William	Freeland,	Lackawanna,	"
Timony, Jas. J.	Mayfield,	Wayne,	"
Walsh, Michael J.	South Sterling,	Monroe,	"
Whittaker, Joseph R.	East Stroudsburg,	Monroe,	"
Walsh, William	East Stroudsburg,	Monroe,	"
Werkheiser, Harry	East Stroudsburg,	Monroe,	"
Ward, T. H.	Duryea,	Luzerne,	"
Walter, Moses	Shawnee,	Monroe,	"
Welty, Geo. H.	Moorstown,	Northampton,	"
Young, Layton	Laytons,	Sussex,	N. J.

NAMES OF PUPILS IN MODEL SCHOOL.

Albert, Annie	Gearhart, Helen	Osborne, Eddie
Ace, Charles	Gearhart, Greenwald	Paul, Olive
Albert, Harry	Hyslop, Marguerite	Paul, Elva
Ables, Archie	Hausser, George	Peck, Jesse
Bosler, Etta	Howe, Howard	Price, Earl
Barteau, Ethel	Hardinstine, Chester	Paul, Harvey
Brodhead, Arthur	Hoffman, Ellen	Price, Milla
Brodhead, Livingston	Hanna, Mella	Peters, Bessie
Dush, Lemos	Hardenstine, May	Price, Nellie
Bird, Earl	Hoffman, Norma	Pipher, Lewis
Bittenbender, Frank	Houck, Laura	Puterbaugh, Edna
Butz, Lillie	Heinbach, Pearl	Rosenkrans, Edna
Barteau, Mildred	Hanna, Samuel	Ruster, Letna
Bunnell, James	Hill, Grace	Rinehart, Ada
Bible, Helen	Hill, Mamie	Regous, John
Brownell, Genivieve	Hoffman, Mary	Regous, Joseph
Brownell, Clarence	Hollinshead, George	Rinker, Merton
Burratt, Ned	Hill, Frank	Rosenkrans, Carl
Burnett, Emery	Hollinshead, Eddie	Reed, George
Burnett, Charlton	Hohensheld, Helen	Reynolds, Verna
Coffman, Blanche	Ike, Willie	Reed, Abbie
Cyphers, Raymond	Ike, Samuel	Rinehart, Raymond
Crossdale, Laurence	Ike, Herbert	Shafter, Myrtle
Campbell, Lillie	Kidnea, Mamie	Shuster, Harry
Campbell, Edith	Kelly, Bert	Shay, Henry
Cortright, Clymine	Kresge, Lizzie	Shaw, Mary
Caul, Jay	Krauter, Stewart	Singer, Carrie
Campbell, Charles	Kennedy, Harry	Sciple, Beulah
Childs, Lena	Kistler, Mary	Shaw, Ernest
Coffman, Claud	Kresge, Spering	Shay, Emma
Cyphers, Leonard	Kautz, Layton	Stemple, Una
Carlton, Etta	Kresge, Milo	Shoemaker, Walter
Carlton, Cora	Kennedy, Ethel	Shay, Hilda
Dickinson, Frank	Kane, Lillian	Slater, Carl
Depue, Fred	Kane, Grace	Smith, Russell
Daubert, Harry	Keefe, Genivieve	Spragle, Olive
Decker, Newton	LaBar, Alma	Shafer, Jacob
Drake, Mabel	LaBar, John	Thompson, Annie
Detrick, Jeanette	LaBar, Frank	Tucker, Leila

STATE NORMAL SCHOOL

Daubert, Calvin
 Dreher, Mary
 Decker, Edith
 Decker, Leon
 Decker, Rosana
 Dunn, Thomas
 Dunn, Josie
 Drake, Millard
 Demong, Charles
 Edinger, Harry
 Edinger, Walter
 Eyre, John
 Eyre, Martin
 Ederling, Grace
 Emery, Eddie
 Edinger, Laura
 Edinger, Hilda
 Freeland, Harry
 Freeland, Morton
 Fisher, John
 Gill, John

LaBar, Harry
 LaBar, Bert
 LaBar, Nellie
 LaBar, Laura
 McNeal, Carrie
 McNeal, Mamie
 Mervin, Robert
 Morgan, Lizzie
 McNeal, Roy
 Mann, Willie
 Meredith, Roy
 Morgan, James
 Messinger, George
 Messinger, Lizzie
 Nye, Mattie
 Newhart, Clarence
 Nevil, Earl
 O'Brien, Edith
 O'Brien, Nellie
 Overfield, Ruth
 Osborne, Lizzie

Transeau, Alma
 Tillotson, Jean
 Tucker, Garrett
 Teeter, Martha
 Transeau, Lydia
 Turpening, Lowell
 Teal, Mabel
 VanO'Linda, Judson
 VanWye, Harvey
 Velle, Charles
 VanKirk, Clarence
 Wyckoff, John
 Wyckoff, Harold
 Watson, Mamie
 Young, John
 Young, Avada
 Yeisley, George
 Zimmerman, Charles
 Zacharias, Hallie
 Zacharias, Glenna

MUSIC PUPILS.

LADIES.

Gertrude Kemp,
 Lou Hoffman,
 Ruth Hopps,
 Mattie Nye,
 Mrs. R. L. Park,
 Fannie Turn,
 Mary Rowan,
 Lemos Bush,

Blanche Wood,
 Edna Rosenkrans,
 Edith Decker,
 Myrtle Yetter,
 Hallie Roberts,
 Alice Plummer,
 Laura B. Evans,
 Myrtle Shaffer,

Fannie Swartsfelder,
 Bessie Peters,
 Anna Waters,
 Belle Hill,
 Myrta Smith,
 Stella M. Arnold.

GENTLEMEN.

William Becker,
 George Merwin,
 W. J. Butler,

Lee Kistler,
 John Retchard,
 Theodore Pegley.

Garret F. Hom,
 Herbert Dillard,

FIRST YEAR--1894.

SUMMARY.

NUMBER DURING FALL TERM,	- - - - -	320
" " WINTER "	- - - - -	360
" " SPRING "	- - - - -	485
TOTAL IN ALL DEPARTMENTS,	- - - - -	1165

NUMBER OF DIFFERENT STUDENTS DURING YEAR,	-	530
LADIES,	-	296
GENTLEMEN,	-	234

IN MODEL.

FALL TERM,	- - - - -	78
WINTER "	- - - - -	89
SPRING "	- - - - -	132
TOTAL,	- - - - -	299

COUNTIES REPRESENTED.

Adams	Clearfield	Monroe	Wayne
Allegheny	Clinton	Montgomery	Sussex, N. J.
Blair	Carbon	Northampton	Schuylkill
Bradford	Elk	Pike	New York City
Bedford	Huntingdon	Sullivan	Philadelphia
Berks	Lackawanna	Sullivan, N. Y.	York
Bucks	Luzerne	Warren	
Centre	Lehigh	Warren, N. J.	TOTAL, 30

STATE NORMAL SCHOOL,

SECOND YEAR--1895.

NUMBER DURING FALL TERM,	- - - - -	380
" " WINTER "	- - - - -	414
" " SPRING "	- - - - -	477
TOTAL IN ALL DEPARTMENTS,		1271

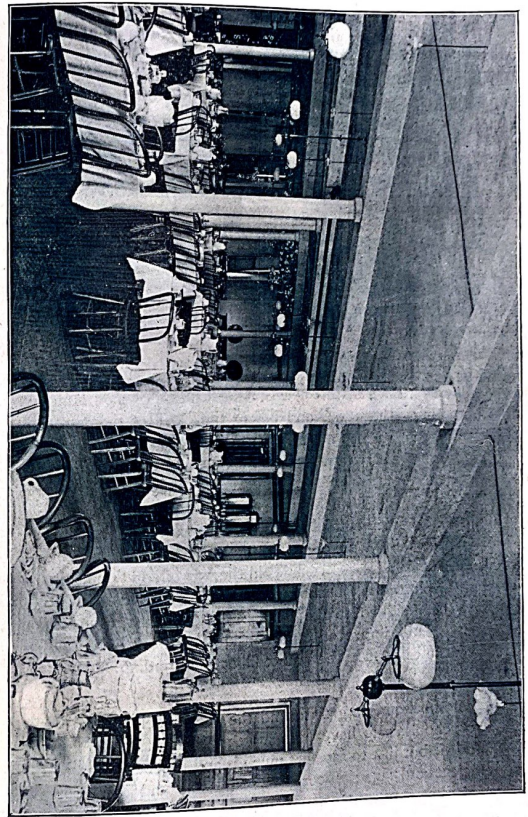
NUMBER OF DIFFERENT STUDENTS DURING YEAR,	-	507
LADIES,	-	276
GENTLEMEN,	-	231

MODEL PUPILS.

FALL TERM,	- - - - -	145
WINTER "	- - - - -	150
SPRING "	- - - - -	148
TOTAL,	- - - - -	443

COUNTIES REPRESENTED.

Adams	Clinton	Montgomery	Susquehanna
Allegheny	Carbon	Northampton	Tioga
Blair	Dauphin	Pike	Wyoming
Bradford	Huntingdon	Putnam, Ohio	Warren
Bedford	Lackawanna	Philadelphia	Warren, N. J.
Berks	Luzerne	Sullivan	Wayne
Bucks	Lehigh	Sullivan, N. Y.	
Centre	Lapeer, Mich	Sussex, N. J.	
Clearfield	Monroe	Schuylkill	TOTAL, 33



VIEW OF DINING ROOM.

EAST STROUDSBURG STATE NORMAL SCHOOL.

HISTORY.

The first term of this new State institution opened Monday, September 4th, 1893, and before the close of the term 320 pupils were enrolled. The attendance steadily increased to 375 in the Winter term, and to 485 in the Spring term. The attendance for the past year has reached a total for the three terms of 1271. With this increase in the number of pupils, have followed the necessary additions to the Faculty, so that now we have a teaching force of fifteen regular instructors and several assistants. Increased facilities in the way of additional apparatus, Cyclopædias, Dictionaries, and other reference books, have been added to the School. The athletic grounds have been greatly improved, and considerable work is being done upon the campus in the way of filling and grading.

The phenomenal growth and the results achieved the past two school years have been most gratifying to all concerned, and it is but just to say that much is and has been due to the efficient and superior corps of instructors and liberal support of the board of trustees.

OUR LOCATION.

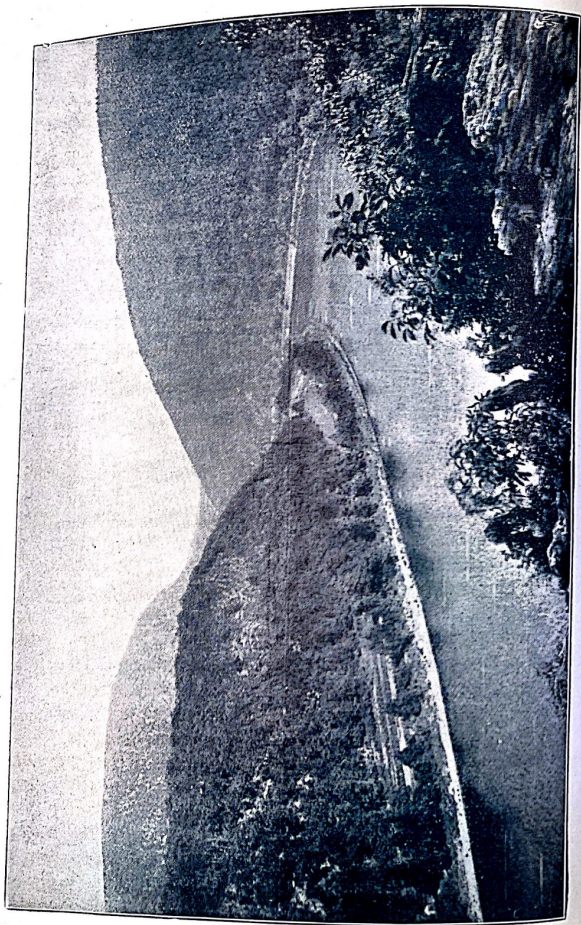
Probably no school in the State has a more desirable location—a place more highly favored by nature than the present site of the East Stroudsburg State Normal.

The school is located in the thriving and populous borough of East Stroudsburg, Monroe County, Pa., and within a mile of the center of the borough of Stroudsburg, the county seat. The two boroughs, while separated by Brodhead's Creek, are, nevertheless, most conveniently connected by a well-equipped street railway. The population of the two places differs but little, the combined being about five thousand inhabitants.

We are in the midst of the most picturesque and famous Summer Resort region in the State. This statement is fully born out by the Geographical location, for we are within three miles of the far-famed Delaware Water Gap, justly celebrated for the beauty, grandeur and sublimity of its scenery, and visited annually by thousands of tourists from all parts of the world.

Within a short distance of East Stroudsburg and Delaware Water Gap are Caldeno, Buttermilk, and Marshall Falls, Echo, Poponoming and Mountain Lakes, Council Rock, Winona Cliff, and many other beautiful and interesting places.

The surrounding country, and, indeed, the immediate vicinity of the school, affords unexcelled opportunities for the profitable study of the Natural Sciences, particularly Botany. The Delaware Water Gap is the most imposing natural break in the Blue Ridge Mountains, where may be traced the effects of the Glacial Period, and the different rock formations.



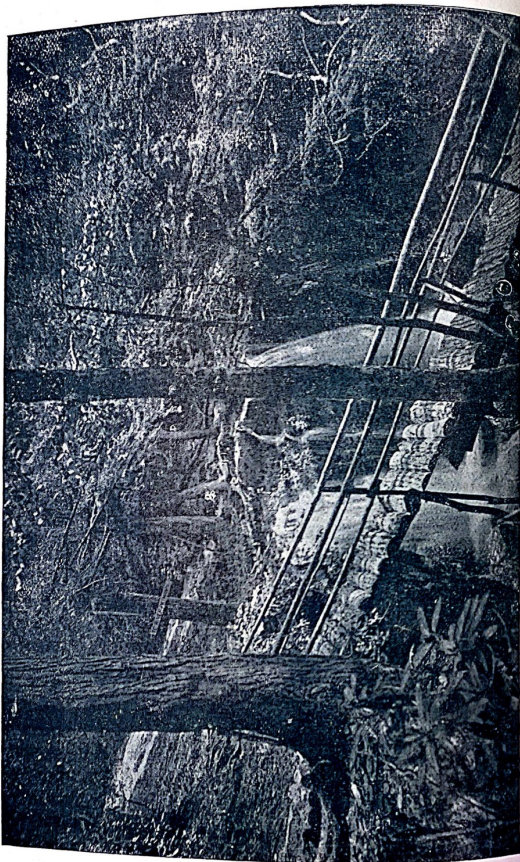
DELAWARE WATER GAP.

East Stroudsburg is one thousand five hundred feet above tide water. In both towns are many fine hotels and private summer boarding cottages.

The towns are lighted with arc and incandescent electric lights and gas, and have telephone and telegraph communication, banks, good stores, and all other modern conveniences usually found in progressive towns. There are churches of almost all denominations—the following being represented in East Stroudsburg, viz: The Presbyterian, Methodist, Baptist and Catholic. The same denominations are in Stroudsburg with the following additional: Lutheran, German Reformed and Friends.

BUILDINGS

It is the aim of the Trustees of this institution to provide everything that will add to the convenience and homelike comforts of its pupils. To this end they have thoroughly equipped one of the newest and neatest Normal School buildings in the State. They have endeavored to get the best features from all other buildings of a similar character, and have in this way avoided many of the mistakes and blunders in design and construction. The buildings, three stories above the basement, are of stone and brick, and embrace all the latest designs and modern improvements in architectural skill. A new kitchen has been erected, and other buildings will follow as rapidly as needed. A large two story porch has been erected in front of the main building. Fire escapes of the latest and best designs have been placed on all the buildings, and liberal provisions have been made in the way of safety hose throughout all the halls of the buildings. The buildings are lighted throughout with gas, and are heated with the best system of steam heating, known as the Direct-Indirect.



VIEW OF FALLS NEAR SCHOOL.

ROOMS.

The students' rooms are unusually large, well ventilated, carpeted and furnished with good and substantial hard wood furniture, including bedsteads, bureaus, wash-stands, tables and wardrobes. The recitation rooms are all large and furnished with good black-boards and comfortable chairs with arm rest for writing purposes. The trustees have provided elegantly furnished parlors, reception rooms, library and reading rooms.

COURSES OF INSTRUCTION

AS REVISED DEC. 11, 1894.

Four Courses of Instruction are provided for, as follows: Elementary Course, Regular Normal Course, Scientific Course, Advanced Normal Course.

ELEMENTARY COURSE.

PREPARATORY STUDIES.

LANGUAGE.—Orthography, Reading.

NATURAL SCIENCE.—Physiology and Hygiene.

HISTORICAL SCIENCE.—Geography, Political and Physical; History of the United States.

THE ARTS.—Penmanship, sufficient to be able to explain some approved system; writing to be submitted to the Board of Examiners.

Other studies, as Arithmetic, English Grammar, Algebra, etc., shall be added to the Preparatory year, said studies to be selected by each Normal School, but the "final" examination in these added branches shall be deferred till the end of the Junior year.

JUNIOR YEAR.

PEDAGOGICS.—School Management; Methods of Teaching the Common Branches.

LANGUAGE.—English Grammar; Latin, sufficient for the introduction of Cæsar.

MATHEMATICS.—Arithmetic; Elementary Algebra.

NATURAL SCIENCE.—Botany.

HISTORICAL SCIENCE.—Civil Government.

THE ARTS.—Drawing, a daily exercise for at least twenty-four weeks, work to be submitted to the Board of Examiners; Book-keeping, single entry, including a knowledge of common business papers, and a daily exercise for at least seven weeks; Vocal Music, elementary principles, and attendance upon daily exercises for at least twelve weeks.

PHYSICAL CULTURE.

SENIOR YEAR.

PEDAGOGICS.—Physiology; Methods of Teaching the Common Branches; History of Education; Model School Work, at least twenty weeks of actual teaching daily during one period of not less than forty-five minutes; a Thesis on a professional subject.

LANGUAGE.—Rhetoric and Composition; English Literature, at least twelve weeks' work, including the thorough study of four English classics; Latin, Cæsar, through the Helvetian War.

MATHEMATICS.—Plane Geometry.

NATURAL SCIENCE.—Elementary Natural Philosophy.

HISTORICAL SCIENCE.—General History.

THE ARTS.—Elocutionary exercises in connection with the study of English Literature; Manual Training.

PHYSICAL CULTURE.

REGULAR NORMAL COURSE.

(THREE YEARS.)

This Course includes the studies of the Elementary Course, and the following branches: A full equivalent will be accepted for any of the text-books named in this Course.

PEDAGOGICS.—Advanced Psychology; Moral Science; Philosophy of Education; Methods of Teaching; Practice of Teaching; Pedagogical Works; Fröbel, Education of Man, Quick, Educational Reformers, Fitch, Lectures on Teaching; School Supervision, School Apparatus; Discussion of Manual Training, Physical Culture, etc.

MATHEMATICS.—Solid Geometry; Plane and Analytical Trigonometry; Surveying.

LANGUAGE.—Latin: Cæsar, 3 books; Virgil's *Æneid*, 3 books; Cicero, 3 orations.

NATURAL SCIENCE.—Chemistry, including Chemistry of Soils; Zoology, including Entomology; and Geology.

LITERATURE.—Higher Literature, English and American, including a study of at least four classics.

SCIENTIFIC COURSE.

(FOUR YEARS.)

This Course includes the studies of the Regular Normal Course and the following branches:

PEDAGOGICS.—Logic; Course of Professional Reading selected from Regular or Advanced Normal Course; a Thesis on a professional subject.

LANGUAGE.—Latin: 3 books of Virgil's *Aeneid*, 3 orations of Cicero, or a full equivalent; (an equivalent of Greek, German or French will be accepted for any of the following studies: Virgil, Cicero, Higher Algebra, Spherical Trigonometry, Surveying, Analytical Geometry, Calculus, Mathematical Natural Philosophy and Mathematical Astronomy, and an equivalent in Latin and advanced work in Natural Science for any of the foregoing mathematical studies.)

MATHEMATICS.—Higher Algebra; Spherical Trigonometry and Surveying, with use of instruments; Analytical Geometry; Differential and Integral Calculus.

NATURAL SCIENCE.—Higher Natural Philosophy; Astronomy; Descriptive and Mathematical.

HISTORICAL SCIENCE.—English History; Grecian History; Roman History.

ADVANCED NORMAL COURSE.

(FIVE YEARS.)

This course includes the studies of the Scientific Course, and one year's additional work in Pedagogics, as follows: A full equivalent will be accepted for any of the text-books in the Course.

PSYCHOLOGY.—James, Advanced Course.

Laurie's Institutes of Education; Rein's Outline of Pedagogy; Herbart's Science of Education; Spencer's Education; Rosmini's Method in Education; Davidson's Education of the Greek People.

Discussion of Methods and Objects of Leading Educators: Fröbel, Pestalozzi, Dr. Arnold, Horace Mann and others.

Discussion of Educational Theories.

Education in the United States; Education in Pennsylvania (Wickersham); General Survey of History of Public Education in Germany, France and England.

Advanced work in Language, Mathematics, Natural Science, etc., may be taken at the option of the student.

COURSE OF ELOCUTION.

In addition to the regular work done in the Junior and Senior years of the Elementary Course, special opportunity will be given for more extended work in this most important branch of culture together with a careful and critical study of Higher English Classics—Shakespeare and other masters. The Principal will have personal supervision of some of the higher work in elocution.

COLLEGE PREPARATORY.

The Course for young ladies and gentlemen preparing for college is shaped with due regard to the college, class, etc., the pupil may desire to enter.

Rules for Final Examinations

AND ADMISSION TO THE JUNIOR AND SENIOR CLASSES
IN THE ELEMENTARY COURSE.

I. Admission to the Senior and Junior classes shall be determined by the State Board of Examiners at the annual examination by the Board.

2. In order to be admitted to the Junior class at any State Normal School, persons must be examined in the six preparatory branches named and no others; and the examination in these branches shall be final. Those who for any reason were unable to complete the preparatory examination, may be admitted to both the preparatory and the Junior examinations at the end of the Junior year. But they must be classed as preparatory students till the final examination in the preparatory branches has been completed. No substitutions or conditions shall be allowed for any of the studies required for admission to the Junior class.

3. In order to be admitted to the Senior class, persons must be examined in all the Junior studies, except Methods and Latin, and the examination in these branches shall be final. No substitutions or conditions shall be allowed for any of the studies required for admission to the Senior class.

4. If the faculty of any State Normal School, or the State Board of Examiners, decide that a person is not prepared to pass an examination by the State Board, he shall not be admitted to the same examination at any other State Normal School during the same school year.

5. If a person who has completed the Preparatory or the Junior studies at any State Normal School, desires to enter another State Normal School, the Principal of the School at which the examination was held shall send the proper certificate to the Principal of the School which the person desires to attend. Except for the reason here stated, no certificate setting forth the fact of the passing of the Preparatory or the Junior studies shall be issued.

6. Candidates for graduation shall be examined in all the branches of the Senior year. They shall have the opportunity of being examined in any of the higher branches, including

vocal and instrumental music and double entry book-keeping; and all studies completed by them shall be named in their certificate.

7. Persons who have been graduated in any Course may be examined at any State examination in any branches of a higher course, and the Secretary of the Board of Examiners shall certify, on the back of their diplomas, to the passing of the branches completed at said examination.

8. A certificate setting forth the proficiency of all the applicants in all the studies in which they desire to be examined by the State Board of Examiners shall be prepared and signed by the faculty and presented to the Board.

Rules Relating to Certificates and Degrees.

1. Students who have completed any one of the foregoing Courses shall receive a certificate or diploma authorizing them to teach in the public schools of the State two years without examination.

2. Persons who have completed any one of the foregoing Courses and have taught two full annual school terms since graduation, shall receive a certificate or diploma, authorizing them to teach in the public schools of Pennsylvania without further examination, provided that they present to the faculty and Board of Examiners a certificate of good moral character and skill in the Art of Teaching from the Board, or Boards of Directors by whom they were employed, countersigned by the proper Superintendent.

3. Degrees shall be conferred as follows:
To graduates in the Regular Normal Course, the degree of

Bachelor of Elementary Pedagogics (B. E. P.); after two years' successful teaching, the degree of Master of Elementary Pedagogics (M. E. P.)

To graduates in the Scientific Course, the degree of Bachelor of Science (B. S.); after two years' successful teaching, the degree of Master of Elementary Pedagogics (M. E. P.) Graduates of the Scientific Course who have engaged in scientific, literary or professional pursuits at least three years after graduation may receive the degree of Master of Science (M.S.)

To graduates in the Advanced Normal Course, the degree of Bachelor of Pedagogics (B. P.); after two years' successful teaching after completing this Course or the Scientific Course, the degree of Master of Pedagogics (M. P.)

ADMISSION.

Those who are fairly well advanced in the English branches, by entering the beginning of the Fall term can complete the work of the Junior year in three terms. Time and money are saved by knowing just when to enter, and it is therefore advisable to come at the opening of the term. Students may enter, however, at any time and find profitable work in all classes. On entering, the applicant is placed in such class or classes as his attainment and ability warrant.

BOOKS.

While students will be able to procure all needed text-books, stationery, etc., at the Normal Book Room at a few cents rental, or may purchase them at the regular price, it is advisable for all to bring such books as they may have, as they will be found valuable for reference.

TEXT BOOKS.

The Text Books used are the following, and may be purchased at Normal Book Room, or rented for a few cents per copy:

Algebra, - - - Wentworth.	Natural Philosophy, - - - Avery.
Geometry, - - - "	Psychology, - - - Baker.
Arithmetic, - - - Milne & Brooks.	Latin, Cæsar, - - - Harkness, Harper.
Geography, - - - Barnes.	Beginner's Latin, Collar & Daniels.
History, - - - "	Drawing, - - - Prang.
Civil Government, - - - Young.	Penmanship, - - - Spencerian.
General History, - - - Myers.	School Management,
Grammar, - - - Maxwell.	White & Raub.
Composition, - - - Lockwood.	Methods, - - - Brooks.
Rhetoric, - - - Hills.	History of Education, - - - Painter.
Elocution, - - - Shoemaker.	Readers, - - - Monroe.
Spelling, - - - Monroe.	German, - - - Whitney.
Hyde's Lessons in English.	Otis, - - - Grimm's Maerchen.
Physiology, - - - Walker, Blaisdell.	Greek, - - - White's First Lessons.
Botany, - - - Gray's.	Goodwin's Grammar.

EXPENSES.

Tuition, boarding, washing, furnished rooms, heat (steam), light (gas), \$4.50 per week, full term.

Fall Term, 16 weeks, \$4.50 per week,	\$72 00
Winter " 12 " " " "	54 00
Spring " 14 " " " "	63 00

Those who avail themselves of the State aid by complying with the requirements given under "State Appropriations," reduce their expense fifty cents per week from the above amounts.

DAY PUPILS.

Tuition in Normal,	\$1.50 per week.
Deducting State Aid,	1.00 " "

RATES FOR MUSIC.

Two lessons per week with daily practice periods :

Fall term, - - - - -	\$16 00
Winter term, - - - - -	12 00
Spring " - - - - -	14 00
One lesson per week, - - - - -	60
Boarding during vacation, per week - - - - -	3 00
Transient boarding, - - - - -	3 00
" " per day, - - - - -	75

DEDUCTIONS.

No deductions are made for absence the first two or last two weeks of the term, except by previous arrangement with the Principal.

For absence two or more consecutive weeks on account of personal sickness, one-half of the usual charge for board and tuition is allowed.

Teachers, whose schools do not close until after the beginning of the Spring term, are charged by the week at term rates, provided they remain until the close of the term.

There are no extra charges except for private lessons in Music, Painting, Greek and Typewriting.

All bills are payable *one-half* at the opening and the remainder at the *middle* of the terms. The Principal acts as agent for the trustees in receipting all bills.

STATE APPROPRIATIONS TO STUDENTS.

In accordance with the Act of the Legislature, the following appropriations have been made to Normal students and Normal graduates :

1. Each student over SEVENTEEN years of age, who shall sign a paper declaring his intention to teach in the common schools of the State, shall receive the sum of FIFTY CENTS per week, or such part thereof as shall actually be paid by the State as aid to undergraduates.

2. Each student over SEVENTEEN years of age, who was disabled in the military or naval service of the United States, or of Pennsylvania, or whose father lost his life in said service, and who shall sign a paper declaring his intention to teach, shall receive the sum of ONE DOLLAR per week.

3. Each student who, upon graduating, shall sign an agreement to teach in the common schools of the State two full school years, shall receive the sum of FIFTY DOLLARS.

4. Any student to secure the benefit of the appropriations must attend at least twelve consecutive weeks, and receive instructions in the Theory and Practice of Teaching.

MEANS OF ACCESS.

East Stroudsburg is reached over the main line of the Delaware, Lackawanna & Western R. R. from Scranton and the northwest, and by the same route from New York City and New Jersey. There are eight trains daily to New York and Philadelphia, and the same number north to Scranton. The Wilkes-Barre and Eastern, a new railroad completed to Wilkes-Barre, makes a short and direct route to that city. A new road from the south is finished and in operation to within a few miles of the town.

Pupils coming from the south will take the Belvidere division of the Pennsylvania at Easton and Phillipsburg to Manunka Chunk, thence via Delaware, Lackawanna & Western. The railroad facilities are good, and the accommodations and train service of the D., L. & W. most excellent, it being in all prob-

ability the best equipped road in the country. On almost all trains vestibule and parlor cars are run. Spark arrestors and extension fronts on all engines, while for cleanliness, beauty and comfort the D., L. & W. is unsurpassed by any road in the State.

LIBRARY AND READING ROOM.

The Library and Reading Room contain reference books, International and Standard dictionaries, cyclopedias, daily papers, magazines, leading periodicals and educational journals. During the present year liberal additions have been made in the way of new books on Travel, History and Pedagogy. A valuable collection of birds, the property of Prof. Kemp, has been loaned to the school.

LITERARY SOCIETIES.

Two Literary societies—*The Minisink* and *Shakespearean*—were organized at the opening of the School and are now in a very flourishing condition. A gentlemen's debating club, known as the "Delawares," holds regular weekly meetings.

Y. M. C. A. and the Y. W. C. A.

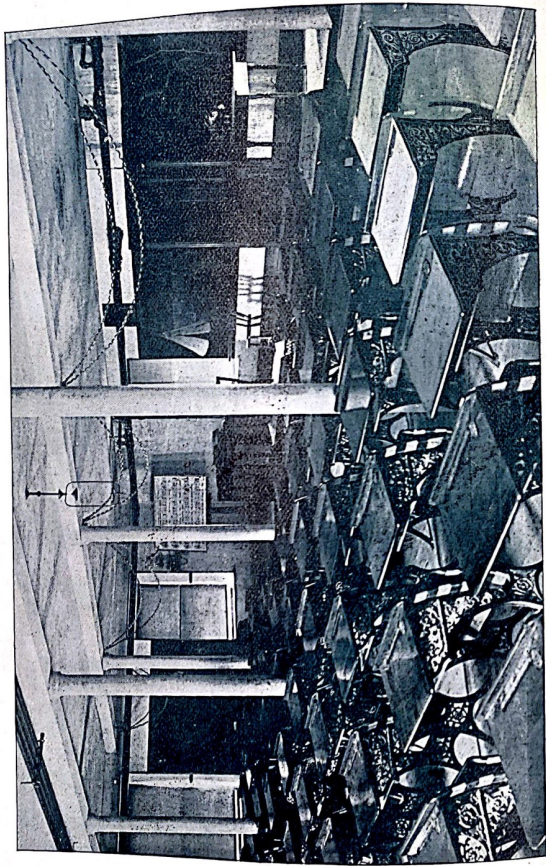
A Young Men's Christian Association was organized early in the fall of 1893, and at present numbers 50 members. The Y. W. C. A. was organized the fall of 1894, and already numbers 55 members. The work and growth in both have been most encouraging. Most interesting and profitable meetings are held every week. In addition, a Normal Christian Society has been formed, and the religious young men and women take charge and conduct the evening prayer meetings, thus encouraging Christian work in the school and developing leaders in moral and religious lines.

ATHLETICS.

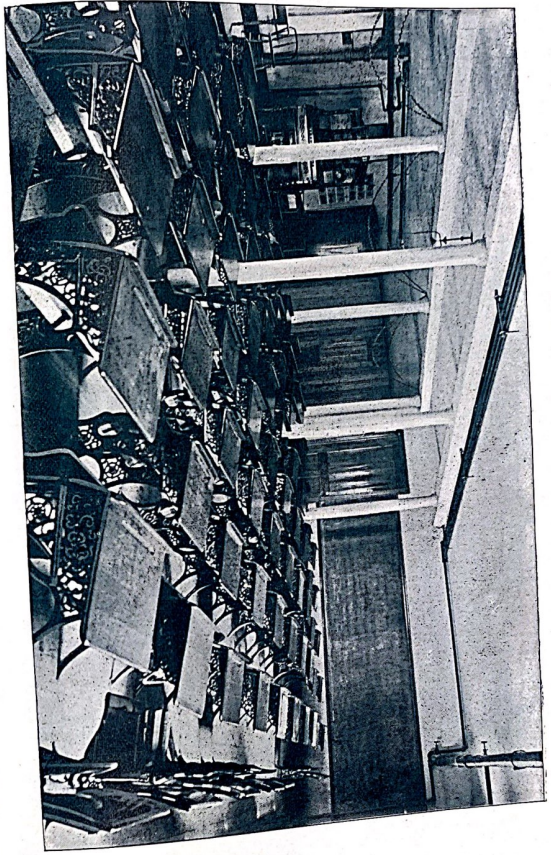
Foot ball, tennis, croquet, base ball and other athletic sports receive considerable attention. Both the foot ball team and base ball club have done excellent playing with some of the strongest teams of this part of the State and New Jersey. They have made a very commendable record.

LECTURES AND ENTERTAINMENTS.

In addition to the open meetings and other entertainments given by the societies, we have had lectures and entertainments from the following, viz: Dr. E. E. White, Columbus, Ohio; Dr. Geo. E. Reed, Pres. Dickinson College; Dr. Jno. Harris, Pres. Bucknell University; Hon. Henry Houck, Dep. State Supt.; The Thalia Concert Co.; two concerts by the music department under the direction and supervision of Miss Bradley, and two Operettas by the pupils of the Model School, under the direction of Mrs. Lamb.



(a) MODEL SCHOOL CHAPEL.



(b) MODEL SCHOOL CHAPEL.

MODEL SCHOOL.

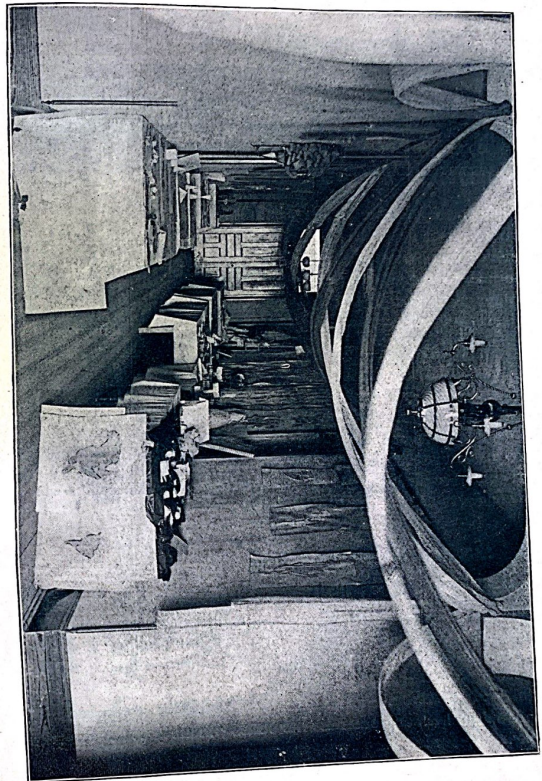
Kindergarten Department--Regular
Kindergarten Course.

FIRST GRADE.

1. *Language.*—Conversational lessons on different objects—flowers, animals, &c.
2. *Reading.*—Sentences from board and from readers. Work varied. Sounds of letters given.
3. *Number.*—Combinations to 10.
4. *Drawing.*—The work with solids, cube, cylinder, hemisphere, square prism and triangular prism.
5. *Color.*—Spectrum scale, primary colors.
6. *Busy Work.*—Clay modeling, paper cutting, designing and sewing.
7. *Writing.*

SECOND GRADE.

1. *Language.*—Object lessons given and compositions required from children. Study of birds and plants.
2. *Reading.*—Work in sounds continued. Supplementary work given. Stories read to children. Easy sentences read and written.



MODEL SCHOOL EXHIBIT.

3. *Number*.—Combinations to 30. Simple work in fractions.
4. *Drawing*.—Second year solids, as given in the Prang System of Drawing.
5. *Geography*.—Place lessons, talks on plants, animals; observation of natural features of land; draw maps of school room and town, &c.
6. *Writing*.
7. *Spelling*.—Spelling, both oral and written.

THIRD GRADE.

1. *Language*.—Work continued.
2. *Reading*.—Third reader; supplementary work.
3. *Number*.—Children taught to read and write any number. Work with U. S. Money; work with inch, foot, &c., and pints, quarts, &c.
4. *Drawing*.—Third year work.
5. *Geography*.—Observation of soils, rocks, &c.; continue study of distance, direction and points of the compass; study world as a whole; different races of men; read stories to children.
6. *Writing*.
7. *Spelling*.

FOURTH GRADE.

1. *Language*.—Much composition work required, stories read, poetry read to children and reproduced in the child language.
2. *Reading*.—Third and Fourth Readers; stories brought by children, and other articles bearing on the lesson or brought up by the lesson.
3. *Number*.—Work of third year continued; fractions, decimals.

4. *Drawing*.—Fourth year work.
5. *Geography*.—Forms of land and water; study of North America.
6. *Writing*.
7. *Spelling*.
8. *Physiology*.—Read simple books on subject.

FIFTH GRADE.

1. *Language*.—Hyde's Language Lessons; composition work continued.
2. *Reading*.—Fourth Reader and supplementary work.
3. *Number*.—Fourth year work continued; factoring, least common multiple.
4. *Drawing*.—Fifth year work.
5. *Geography*.—United States and South America.
6. *Writing*.
7. *Spelling*.
8. *Physiology*.—Read books on the subject and talk of what is read.

SIXTH GRADE.

1. *Language*.—Hyde's Language Lessons.
2. *Reading*.—Fifth Reader. As much outside reading as can be done.
3. *Number*.—Least common multiple; work in fractions, mensuration.
4. *Drawing*.—Sixth year work.
5. *Geography*.—Study South America, Asia and Africa.
6. *Writing*.
7. *Spelling*.

8. *History*.—Discovery of America, to settlement of North and South Carolina.
9. *Physiology*.—Blaisdell's revised edition, "How to Keep Well."

SEVENTH GRADE.

1. *Language*.—Hyde's Language Lessons.
 2. *Reading*.—Much miscellaneous work done.
 3. *Number*.—Finish preceding work; percentage.
 4. *Drawing*.—Seventh year work.
 5. *Geography*.—Finish sixth year work and review North America and the United States.
 6. *Writing*.
 7. *Spelling*.
 8. *History*.
 9. *Physiology*.—Review sixth year work, and read as much as possible on the subject.
- Music and calisthenics in all grades.

GOVERNMENT AND REGULATIONS.

The highest form of government is self-government, with due regard to the just and equal rights of others. He who is unable to govern himself can not hope to be able to govern others. It is presumed that all who enter the school are ladies and gentlemen of good character, and as such they will be treated, until they have proven themselves untrustworthy, when they will be dismissed from the school.

The following are the regulations deemed necessary for the best interests of the school :

1. Loud talking, whistling, scuffling or any other rude or boisterous behavior is strictly prohibited in the building.
2. The use of tobacco in any of its forms in or about the building, and the use of intoxicating drinks or profane language are strictly prohibited.
3. No water, dirt, or other material shall be thrown from the windows.
4. Students shall not visit one another's rooms during the regular hours of study except by special permission of the teacher in charge.
5. No student shall withdraw from the school during the session without permission from the principal.
6. All students are expected to be regular and prompt upon attendance at class, chapel and meals.
7. Ladies and gentlemen are not allowed to associate together, excepting at such times and occasions as may be designated by the Principal. Standing in groups in the main corridors, or prolonged conversations are not allowed.
8. Each occupant will be held responsible for the condition of his room and any damage done to furniture.
9. All students having friends visiting, should notify the Principal of their presence.
10. No students shall withdraw from the classes to which they have been assigned without special permission from the Principal.
11. Gentlemen not connected with the school will not be permitted to call upon students without permission.

12. It is to be understood by the students that it is enjoined upon the members of the faculty to see to it that the requirements of the school are complied with, and that they have full authority to correct any improper acts that may come to their notice.

SUGGESTIONS TO PUPILS.

All rooms are carpeted and furnished with all necessary furniture, consisting of table, bureau, chairs, wardrobe, bed, mattress and springs, and all bedding. We suggest, however, that students bring with them the following articles, viz: An extra quilt, a knife and fork, and a spoon, a cup or tumbler, towels, napkins, a laundry bag, and any little articles with which to ornament their rooms.

Twelve pieces are allowed each student in laundry, per week. All articles must be stamped with the full name of the owner, otherwise we will not be responsible for loss of clothing.

FACULTY.

The makeshift policy of employing young and inexperienced teachers for the Normal Schools, has not been countenanced by the authorities of this school. Our faculty is composed of some of the best known educators in the country.

We have endeavored, from the opening of the new institution, to employ, as far as possible, none but the very best teachers.

Thus far, we have been fortunate in securing for the heads of the different departments, teachers of recognized ability, who have had special training for their respective lines of work.

DEPARTMENTS.

PROFESSIONAL DEPARTMENT.

This Normal School aims to take rank as a professional school. A school where intending teachers already graduated from high schools may receive training in the theory and art of teaching; where students may acquire a growing ideal of the art of teaching; where they may form permanent habits of preparation for work, of self criticism, of persistent study for the sake and for the love of the knowledge acquired. The capstone of the school is the professional department. The work required includes the legitimate studies of a Normal School.

PSYCHOLOGY.

1. Study of the laws of human thought.
2. History of mental growth of child.
3. Principles of education drawn from these two heads so as to form an acceptable body of educational doctrine.

Mental facts are treated, as far as possible, from an experimental and analytic point of view.

HISTORY OF EDUCATION.

1. Tracing the development of modern educational thought.
2. Such knowledge of educational systems as will lead teachers to avoid errors of the past and adopt the tried and true.

SCHOOL MANAGEMENT.

1. Development of course of study for elementary schools. Subjects of instruction, their order, value, correlation.
2. Application of principles of education to classification, organization, school discipline.
3. Observation and study of typical school conditions, appliances, construction, sanitation.
4. Professional Improvement—teachers' meetings, agencies, educational journals, text books, studies on children in kindergarten, statistical studies on data concerning the development of the senses, emotions, etc.

METHODS.

1. The general principles of method.
2. Methods of teaching the subjects of the elementary school.

EDUCATIONAL LITERATURE

1. Study of Plato, Republic; Pestalozzi, Leonard and Gertrude; Rousseau, Emile, Parker, Talks on Teaching; Locke, Education; Habit in Education, Radestock; Spencer, Education. Study of contemporary discussions upon education.

MODEL SCHOOL.

Each student in the Senior Year is required to teach twenty-one weeks in the Model School. All the work of the professional department centers in the work of the Practice School. Without practice work, no one is a trained teacher; with it, no one can be called inexperienced.

ENGLISH DEPARTMENT.

GRAMMAR and COMPOSITION.

Three full terms are given to the study of grammar and composition.

The work in grammar aims to train the student in the use of correct language. Sentences are studied, not so much for the parsing as for their true structure and the nice expression of the thought. The rules of syntax are taught, not by having pupils study incorrect expressions, but by a series of skillful development lessons.

C Grade.—Parts of speech, words, phrases, clauses, kinds of sentences, construction of sentences, punctuation, capitalization, brief compositions, simple parsing and analyzing, etc.

B Grade.—Modification of the parts of speech; infinitives, participles; clauses; construction of sentences, analysis, diagramming; principles of expression; the more common figures of speech; original compositions; paraphrasing and the use of synonyms; abstracts; amplifications, etc.

A Grade.—A thorough review and discussion of the principles of grammar, with supplementary work from other reference books, composition, discussion of title, subject and theme of a composition, constitute much of the work in this grade.

RHETORIC.

Special stress is placed upon a thorough and practical study of this important branch. Throughout the course in English, in both the Junior and the Senior years, the teachers insist upon purity and elegance of style, and a careful study and analysis of the style, figures, etc., of the selections of some of the best English writers.

MATHEMATICS.

ARITHMETIC.

The work in arithmetic is divided into three grades, with as many classes in each grade, as the demands of the school necessitate.

C Grade.—The writing of numbers, G. C. D., L. C. M., factoring, common and decimal fractions, measurements, percentage, simple interest and discount.

B Grade.—Begins with fractions, reviews the subject and takes up square and cube root and their practical application.

A Grade.—The work begins with percentage and reviews the entire subject, and takes up the philosophy of arithmetic, test and practical problems as supplementary work.

ALGEBRA and GEOMETRY.

These branches are begun in the Fall Term and carried through the year. An attempt is made to make the work in algebra and geometry inductive.

Special attention is given in both departments to the solution of original problems.

DEPARTMENT of HISTORY, Geography, and Civil Government.

A thorough course is given in United States history, with opportunity to pursue a more comprehensive historical study.

While narrative history is made important, the deeper philosophy of history is also sought.

An effort is made to make historical study a thought exercise.

Civil government and history are supplementary.

Civil government is pursued in the natural way, proceeding from the concrete local government to the more abstract national government. Special importance is attached to civil government in respect to origins.

Independent work along particular lines is encouraged. A short course is also given in practical politics.

Inquiry is made into causes and consequences of certain present day questions.

GEOGRAPHY.

This one of the most important branches in the school curriculum, receives its full share of attention. While the text-book

is used as a guide the pupils are encouraged to freely peruse other books of reference upon the subject. The object is not to spend valuable time upon a multiplicity of details, but to give clear ideas of man's relation to the earth, her forces, surface, climate, commerce, her people, their customs, education and progress.

The subject is studied in connection with history of the United States, with as much general history as time will permit.

DEPARTMENT OF PHYSICAL SCIENCE.

In the Department of Physical Science, it is the aim to develop scientific habits of thought by the true scientific method. As the knowledge gained by one's own experience has a clearness, definiteness and certainty not predicable of that gained through others, students are encouraged to observe, experiment and record for themselves.

As far as practicable, nature is the text book used, and the student is directed to decipher and interpret its pages by his own investigation.

The instructor's aim is to put the student face to face with nature, that he may teach himself, by the exercise of his own mind, gain knowledge from objects themselves, and observe them with his own eyes, perform experiments with his own hands.

PHYSICS.

In the study of this branch of science, experiment precedes the statement of the law involved. Principles and laws are

illustrated by the facts of the pupil's own experience, and in the case of classes of phenomena, with which he is unfamiliar, the student, under the careful direction of the instructor, gets experience through the agency of a well-arranged series of experiments. A well-selected supply of physical apparatus is already in use, and additions are liberally made from time to time, according to the demands of the department.

BOTANY.

In the study of botany the student must handle the plants and dissect the flowers for himself. He is required to analyze and describe them and to prepare a herbarium of at least fifty plants.

He is taught to see clearly, and that, too, with the aid of a simple and compound microscope, to record accurately, to cultivate self-reliance—in a word—to learn the method and catch the spirit of the great workers in science. This district is delightful for the student of botany, the flora being exceptionally varied and easily accessible.

PHYSIOLOGY.

It is the aim in this branch of study, to give to the students correct ideas of the structure, activity and care of the human body, and at the same time make the subject a valuable means of mental development. As the importance of observation and experiment in this branch also is recognized, facilities are offered for the objective methods of study.

The student is encouraged to confirm the knowledge he gets from the text-book, by the actual observation of the objects

themselves. The use of the microscope is encouraged, and lectures and illustrations accompany the recitation.

CHEMISTRY, GEOLOGY, ZOOLOGY, ASTRONOMY.

The sciences of chemistry, geology, zoology and astronomy are taught according to the most approved methods.

LATIN and GREEK.

In the Junior, two terms are required in Collar and Daniell's "Beginner's Latin Book." The object being to ground the pupils thoroughly in the fundamental principles of paradigms and construction. In the Senior Year, the class is required to read at least the first twenty-nine chapters of Cæsar.

Students preparing for college, and those taking Post Graduate Courses, pursue the studies of Latin and Greek as per courses.

DRAWING AND MANUAL TRAINING.

The educational value of drawing is rapidly being recognized and it is being placed in the list of common branches. But the aim of drawing in public schools should be educational and

not specialistic. Neither is it the province of the public schools to teach it as an accomplishment. Yet the teacher who hopes for anything like good results should be able to do something in the artistic line, and certainly should have done more than he is required to teach.

In view of this fact provision is made for those who have completed the twenty-eight weeks' work in the Prang System, to take advanced work in the more artistic lines of light and shade and color, both from model and ornament.

In the Manual Training Department, the work embraces Clay Modeling and Plaster Paris Casting, Mechanical Drawing, Shading and Artistic Drawing.

COMMERCIAL DEPARTMENT.

The course embraces both single and double entry book-keeping, penmanship, spelling, composition, arithmetic, commercial law, actual business and type-writing.

DEPARTMENT OF MUSIC.

The department has been more than self supporting from the opening of the school. An average of thirty pupils per term has more than filled the regular time of the teacher in this department. Miss Bradley, the teacher, in addition to the regular instruction of all the Juniors for more than two terms, has had a volunteer *Chorus Class* of forty voices during the year. They have been most thoroughly drilled in some of the highest grade choruses, and Opera.

THE NORMAL SCHOOL ORCHESTRA, under the direction of Prof. H. A. Hibshman, has grown in popularity and efficiency, and is now an organization of which the school may justly be proud.

SEWING and DRESSMAKING.

Another line is Plain and Fancy Sewing, Cutting and Fitting, Dressmaking, Embroidering and all kinds of Artistic Needle Work. This part of the work is in charge of a lady of culture and experience, Miss Hochleitner, who was educated in the leading Universities in Germany and Paris.

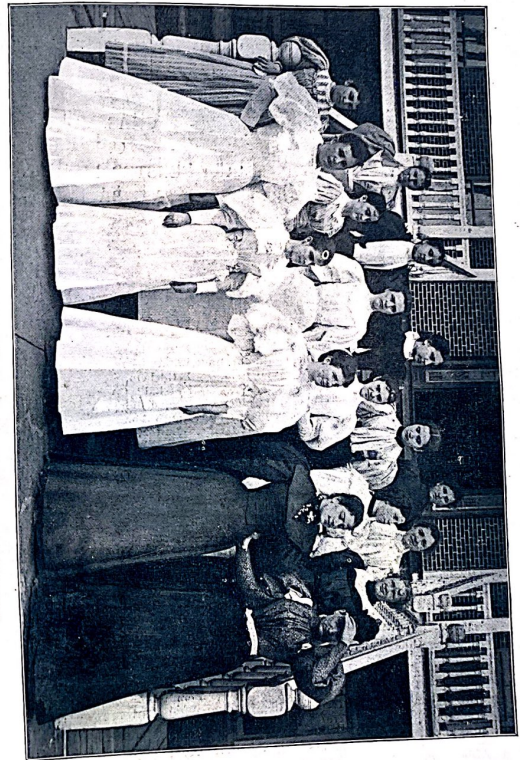
PARENTS AND PUPILS.

You will be interested to know that while in the pursuance of the regular course of two years, without additional cost, students have acquired a knowledge and a practice in an Art which can never degenerate into commonplace, but which must continue to improve and grow in importance with the development and progress of the age.

How helpless is the young lady, and more particularly the married woman, who is unable to do, or to understand the rudiments of *plain sewing*.

WE ARE THE FIRST NORMAL SCHOOL IN THE STATE TO INTRODUCE THIS LINE OF MANUAL TRAINING. Our pupils are very enthusiastic over the work. It is most gratifying to see the interest manifested in this department.

Many of our young ladies, besides having done work in all lines of Art Needle Work, as Haniton lace and handkerchief work, free hand drawing of patterns, have made their own dresses. The cut on page 63 shows one of the classes photographed in the garments they have made.



GROUP OF LADIES WEARING THE DRESSES THEY HAVE MADE.

ALUMNI OFFICERS.
1895-96.

PRESIDENT, - - - - - CHAS. HOUCK.
VICE PRESIDENT, - - - - - O. E. BATT.
SECRETARY, - - - - - MARY FENSTERMACHER.
TREASURER, - - - - - C. C. BACHMAN.

ALUMNI.

LADIES.

	OCCUPATION.	ADDRESS.	Pa.
Bettle, Helen	Teacher,	Nazareth,	"
Brady, Anna	Teacher Grammar Grade,	Wilkes-Barre,	"
Brodhead, Mary	Att. Moravian Sem.	Bethlehem,	"
Bush, Anna	Teacher,	Marshall's Creek,	"
Corby, Hattie M.	Teacher Int. Grade,	Nesquehoning,	"
Connell, Bessie	Teacher Primary Grade,	Nanticoke,	"
Corbett, Anna L.	Teacher Primary Grade,	Scranton,	"
Cope, Lottie	Teacher,	Nazareth,	"
Coollan, Tillie	Teacher Primary Grade,	Pittston,	"
Cyphers, Lizzie	Teacher Primary Grade,	East Stroudsburg,	"
Cunningham, Kate	Teacher Primary Grade,	Pittston,	"
Cox, Kate	Business College,	Scranton,	"
Fisher, Alice	Teacher,	Lansford,	"
Gilligan, Mary	Teacher Primary Grade,	Dunmore,	"
Gilmartin, Lydia	Teacher Gram. Grade,	Carbondale,	"
Gordon, Susie	Teacher Primary Grade,	Pittston,	"
Griffith, Laura	Teacher Primary Grade,	Lansford,	"
Ganghan, Annie	Att. Teachers' School,	Scranton,	"
Gillsple, Nellie	Teacher Primary School,	Freeland,	"
Hess, Lizzie	Teacher Primary Grade,	West Bethlehem,	"
Henrick, Emma	Teacher,	Bethlehem,	"
Hancock, Ethel J.	Teacher,	Nesquehoning,	"
Hancock, Anna	Teacher,	Bethlehem,	"
Heberli, Ella	Teacher,	Bethlehem,	"
Heath, Elizabeth	Teacher Primary Grade,	Wilkes-Barre,	"
Hicks, Grace	Teacher,	Scranton,	"
Johnson, Mame	Teacher Primary Grade,	Wilkes-Barre,	"
Kelley, Mame G.	Training School,	Scranton,	"
Kelly, Anna	Music,	Mauch Chunk,	"
Kenny, Mae G.	Teacher Primary Grade,	Wilkes-Barre,	"
Kline, Jennie	Teacher,	Summit Hill,	"

Kervin, Maggie	Teacher Primary Grade,	Lansford,	Pa.
LaBarre, Daisy	Teacher Int. Grade,	East Mauch Chunk,	"
McCauley, Theresa	Teacher Primary Grade,	Pittston,	"
McHale, Mame	Sub teacher,	White Haven,	"
McCarthy, Lizzie	Teacher,	East Mauch Chunk,	"
Moses, Esther		Scranton,	"
Miller, Laura		Mummasburg,	"
Murphy, Olive	Teacher,	Scranton,	"
Morrow, Grace	Teacher Primary Grade,	Pittston,	"
Morrow, Mary	Teacher,	Mauch Chunk,	"
Mahon, Mary	Teacher Gram. Grade,	Scranton,	"
Newmiller, Louise	Teacher, Kindergarden,	Lansford,	"
O'Dea, Marie		Wilkes-Barre,	"
Orr, Katie	Teacher,	Scranton,	"
O'Neil, Alberta	Sub teacher,	Wilkes-Barre	"
Richards, Nellie	Att. Training School,	Scranton,	"
Regan, Lizzie	Teacher Prim. Grade,	Wilkes-Barre,	"
Scanlon, Winfred	Teacher,	Tobyhanns,	"
Stuckley, Emily	Teacher,	Mauch Chunk,	"
Snyder, Gertrude	Teacher Prim. Grade,	South Bethlehem,	"
Snyder, Carrie		Rendova,	"
Shields, Katie	Sub Teacher,	Lansford,	"
Shields, Mamie		Mauch Chunk,	"
Sorenson, Margaret	Teacher Prim. Grade,	Nanticoke,	"
Tennant, Kate	Teacher,	Forty Fort,	"
Turner, Nellie	Teacher Intern. Grade,	Tidoute,	"
Van Etten, Bessie	Teacher Second. Grade,	Stroudsburg,	"
Van Etten, Lila		Milford,	"
Vail, Nettie		Moscow,	"
White, Lottie	Teacher Primary Grade,	Weatherly,	"
Williams, Maud	Teacher,	Scranton,	"
Weaver, Sarah	Teacher Gram. Grade,	Pittsburg,	"

GENTLEMEN.

Costenbader, Thomas	Att. Muhlenberg College,	Mauch Chunk,	"
Culbertson, John	Teacher,	Snydersville,	"
Collins, Frank	Conductor,	Carbondale,	"
Golden, Edward	Teacher,	Parsons,	"
Hoover, G. S.	Teacher,	Upper Lehigh,	"
Jackson, H. A.	Teacher Gram. Grade,	White Haven,	"
Kunkle, H. A.	Teacher,	Brodheadsville,	"
Lord, J. P.	Principal,	Pittston,	"
McGill, J. J.	Teacher,	Freeland,	"
McCarthy, Francis	Vice Principal,	Mayfield,	"
McMonegal, Michael		Hazleton,	"
Rinker, Richard A.	Teacher Inter. Grade,	East Mauch Chunk,	"

CALENDAR.
1895-96.

FALL TERM.

FALL TERM OF SIXTEEN WEEKS,
BEGINS MONDAY, SEPTEMBER 2, 1895.
ANNIVERSARY OF MINISINK SOCIETY,
FRIDAY EVENING, OCT. 25 1895.

FALL TERM CLOSES,
FRIDAY, DECEMBER 20, 1895.

WINTER TERM.

WINTER TERM OF TWELVE WEEKS,
BEGINS MONDAY, DECEMBER 30, 1895.

JUNIOR EXHIBITION,
FRIDAY EVENING, FEBRUARY 21, 1896.

WINTER TERM CLOSES,
THURSDAY, MARCH 20, 1896.

SPRING TERM.

SPRING TERM OF FOURTEEN WEEKS,
BEGINS TUESDAY, MARCH 25, 1896.

ANNIVERSARY OF SHAKESPEAREAN SOCIETY,
FRIDAY EVENING, APRIL 25, 1896.

COMMENCEMENT WEEK.

BACCALAUREATE SERMON, SUNDAY, JUNE 22, 1896.

CLASS DAY EXERCISES, WEDNESDAY, JUNE 25, 1896.

COMMENCEMENT CONCERT, WEDNESDAY EVENING, JUNE 25.

COMMENCEMENT, THURSDAY, JUNE 26, 1896.

ALUMNI DINNER, THURSDAY, JUNE 26, 1896.

BUSINESS MEETING, ALUMNI, 2 P. M., THURSDAY, JUNE 26.