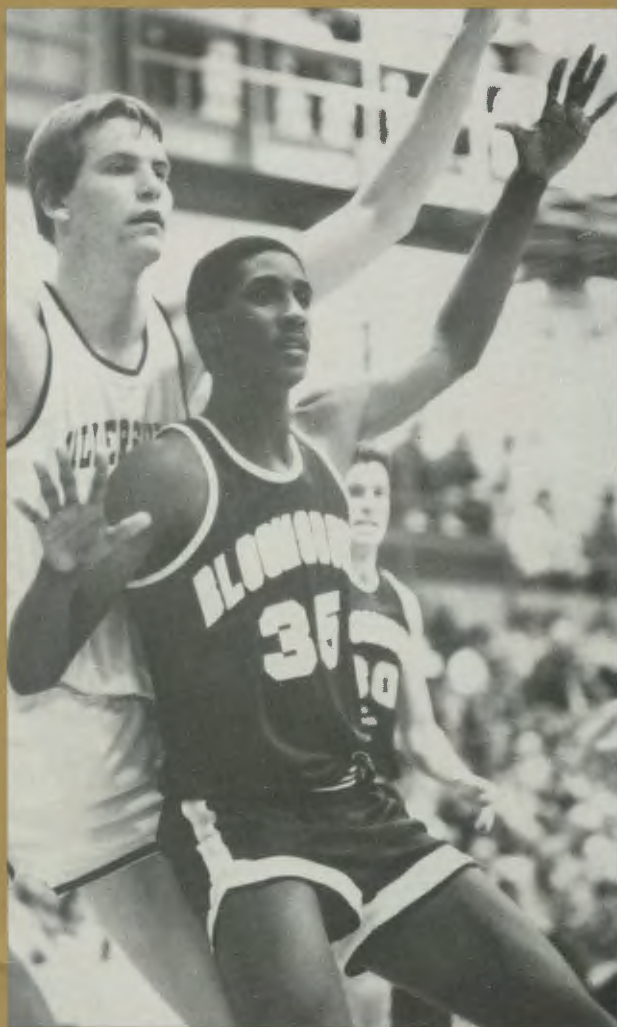


Bloomsburg University Basketball



"A Winning Tradition"

1986-87

— BLOOMSBURG UNIVERSITY —

"A Commitment to Excellence"

Bloomsburg University is a multi-purpose institution of higher education serving the citizens of Pennsylvania as one of the 14 Commonwealth-owned Universities. With a commitment to provide a quality, affordable education for all qualified students, Bloomsburg combines the tradition of an institution founded in 1839 with modern learning, living and recreational programs and facilities. Commonwealth funding provides 55 percent of Bloomsburg's annual operating budget.

Undergraduate students may enroll in degree programs in 64 areas of study in the arts and sciences, business, teacher education, nursing and health sciences. A program in engineering is offered in conjunction with the Pennsylvania State University, and preparation for post-baccalaureate study at professional schools is offered. Unique educational opportunities are available through advanced placement, study abroad, professional practicum, internships, independent study and the Center for Academic Development programs.

At the graduate level, the master's degree is offered in 25 areas of study and there are ten supervisory certification programs in the field of teacher education.

Extended program offerings provide continuing, life-long learning opportunities for people of all ages and educational interest through non-degree courses, non-credit mini-courses offered at off-campus locations and by public service television, and credit for work experience.

Enrollment for the Fall semester, 1985, totalled 6,439 students. There were 5,133 full-time and 769 part-time undergraduates, 108 full-time and 429 part-time graduate students. Instruction is provided by a 367-member faculty.

The University's 173-acre campus overlooks the Town of Bloomsburg and the scenic Susquehanna Valley. Carver Hall, built in 1867, provides a contrast with the modern facilities that include seven residence halls, a library, a 2,000-seat auditorium, student union, dining hall, gymnasium, administration building, five classroom buildings, athletic fields and recreational areas on the lower campus.

An athletic complex and recreational area occupy the school's 100-acre upper campus. In addition, the James H. McCormick Center for Human Services is the newest building on the lower campus and was used for the first time last fall.

Located less than two miles from an Interstate 80 interchange and 22 miles from Interstate 81, Bloomsburg is within one hour's driving time from Wilkes-Barre/Scranton, Hazleton and Williamsport, 1½ hours from Harrisburg, 2½ hours from Philadelphia, and three hours from New York City. The community is 45 miles from the Avoca International Airport and is serviced by major bus lines.

Bloomsburg has an enviable placement record. Of the 1,104 who graduated in the 1984-85 academic year, 81.4% had meaningful employment or were in graduate school one year later.

Active files of over 25,000 living alumni are kept by the University. Graduates of BU have distinguished themselves in areas including law, medicine (one is a Nobel Laureate), science, architecture, education, industry and research.

The Bloomsburg University is fully accredited by the Middle States Association of Colleges and Schools, the National Council for the Accreditation of Teacher Education, and the Pennsylvania State Board of Education.

Table of Contents

Bloomsburg University	Inside Front Cover
<i>"A Commitment to Excellence"</i>	
To the Media, Quick Facts and Contacts	1
President Harry Ausprich	2
Athletic Director Roger Sanders	1
Head Coach Charles Chronister	3
Assistant Coaches Profiles	4
The Season Ahead	5-6
1986-87 Husky Varsity	7
Records Against 1986-87 Opponents	7
Player Profiles	8-10
Quick Facts on 1986-87 Opponents	11-14
1985-86 Results	15
1985-86 Stats	16
Special Honors	17
Bloomsburg's Top Twenty	17
Basketball's Birth at BU	18
Bloomsburg Basketball <i>"A Winning Tradition"</i>	19
Coaches' Records	20
Bloomsburg Basketball <i>"Over the Years"</i>	20-21
All-Time Bloomsburg Records	22-23
Nelson Fieldhouse, <i>"Home of the Huskies"</i>	24
BU Area media Outlets	Inside Back Cover
1986-87 Schedule	Back Cover

To The Media

For further information concerning Bloomsburg University basketball, contact Sports Information Director Jim Hollister, Waller Administration Building, Bloomsburg University, Bloomsburg, PA 17815. (Phone 717-389-4413, office; 717-784-7756, home)

Quick Facts and Contacts at BU

Location: Bloomsburg, PA 17815

Enrollment: 6,300

General Information: 717-389-4000

President: Dr. Harry Ausprich

Athletic Director: Roger Sanders

Athletic Department: 717-389-4354

Colors: Maroon and Gold

Nickname: Huskies

Home Court: Nelson Fieldhouse (3000)

Pressbox: 717-389-4262

Trainer: Art Hopkins (phone: 717-389-4401)

Equipment Manager: Ron Morgan (phone: 717-389-4374)

Conference: Pennsylvania (Eastern Division)

1985-86 Overall Record: 15-11

1985-86 Division Record: 7-7

Harry Ausprich

- President -

Dr. Harry Ausprich began his tenure July 15, 1985 as the Sixteenth President of Bloomsburg University. His permanent appointment follows that of former President James H. McCormick, who is currently serving as the Chancellor for the State System of Higher Education, and Dr. Larry W. Jones, who served as President two years on an acting and interim basis.



Prior to coming to Bloomsburg, Ausprich served Kent State University as Dean of the College of Fine and Professional Arts from 1978 to 1985. While there he was instrumental in implementing a program in fashion design and merchandising which has gained a national reputation. In addition, he served as Dean of the Blossom Festival School Program in cooperation with the Cleveland Orchestra. In previous years he served as Dean of the Faculty of Arts and later as Dean of the Faculty of Arts and Humanities, both at SUNY Buffalo. While at Buffalo he developed a proposal for a program in dance and for a series of interdisciplinary seminars in the arts. In the early 1970's he worked at the University of Northern Iowa as Dean of the College of Humanities and Fine Arts. Classroom teaching experiences and departmental chairperson responsibilities comprised his major assignments at Indiana State University and Memphis State University.

Roger Sanders

- Athletic Director -



Roger Sanders assumed his duties as Bloomsburg's Director of Athletics in June of 1982. In addition, Sanders has served as head coach of the Huskies' highly successful Division I wrestling program for the past thirteen years compiling an enviable 151-60-3 record. During his tenure, BU has captured five Pennsylvania Conference Championships and an

Eastern Wrestling league title. He has coached 36 PC champions and numerous All-Americans including five national championships.

Under his direction, many new projects have developed in the Athletic Department including: the construction of nine new athletic practice fields, an addition to the Redman Stadium pressbox, obtaining automobiles from local dealers for use by athletic department personnel in recruiting and scouting trips, an "ox roast" prior to the Homecoming contest, a facelift or redecoration for the Nelson Fieldhouse main arena floor, among others. He has also spent numerous working on a program to build the general athletic scholarship fund through the Husky Club-Alumni Association to aid Bloomsburg in its efforts to maintain a highly competitive program in the Pennsylvania Conference and NCAA Divisions I and II.

Charles Chronister

- Head Coach -



Bloomsburg University Head Coach Charles Chronister has certainly upheld the slogan "Bloomsburg Basketball; A Winning Tradition" during his 15 year tenure as the Huskies' head coach. Chronister has never had a losing season, amassing a career record of 265-138 for a .658 winning percentage, making him the winningest coach in BU history.

The Huskies have recorded 20 consecutive winning seasons, including five 20-win seasons and four NCAA Division II National Tournament appearances. Last year, the Huskies finished with a 15-11 mark.

The Huskies' most recent National Tournament appearance was following the 1982-83 season when BU fell to eventual champion Wright State in the quarter-finals. The two seasons prior to that, Bloomsburg made postseason appearances in the tournament but were dealt regional losses. In 1980-81, Cal-Poly San Luis Obispo knocked off the Huskies and the following season, Pennsylvania Conference rival Cheyney defeated Chronister's squad. In Bloomsburg's first NCAA Tournament in 1974, the Huskies were beaten in the quarterfinals by eventual champ Morgan State.

Chronister coached Bloomsburg to its first ever Pennsylvania Conference Championship in the 1980-81 season. The Huskies have also won three PC Eastern Division crowns during his reign. The school posted its first 20-win season in 1972-73, going 20-5. During Bloomsburg's three straight NCAA postseason appearances between 1980-81 and 1982-83, the Huskies recorded a 70-24 log, including a school record 24 wins in 1981-82.

Last season, BU could put together no more than two straight victories in the PC East, finishing at 7-7 for the second straight season. The Huskies put together their longest winning streak of the season, three games, early in the season, downing Juniata, Susquehanna and Shippensburg.

During his 15 seasons, Chronister has coached three All-Americans; John Willis (1971-74), Jerry Radocha (1973-77) and Jon Bardsley (1978-82), all playing within a ten-year period. Radocha is Bloomsburg's all-time leading scorer, Willis is fourth and Bardsley eighth. Chronister has also coached the top five scorers in the school's history as well as nine of the top eleven.

Chronister, a graduate of East Stroudsburg University with a bachelor's and master's degree in health and physical education, was an assistant coach at Gettysburg College for four years under Bob Hulton. Prior to that, he coached at Hanover (PA) High School, where his teams compiled a 59-8 record while winning numerous county championships and participating in the PIAA District III playoffs.



Assistant Coaches

Burt Reese

Burt Reese enters his nineteenth season as an assistant coach for the Huskies. For seven of those years, Reese coached the freshman basketball teams, compiling an 83-87 mark. For the past ten seasons, he has worked directly with the varsity program. His most important duty with the Huskies for the past several years has been coordinating the staff's recruiting efforts. In addition, Reese serves as the head coach of Bloomsburg's nationally ranked men's tennis teams. He received his bachelor's and master's degrees from East Stroudsburg University.

Dr. Michael Herbert

"Doc" Herbert enters his twenty-second season with Bloomsburg's basketball program. He has served in numerous capacities over the past 21 years, including a three-year stint in charge of the freshman team. He also serves as coach of the BU women's tennis squad and led his team to the Pennsylvania Conference championship last season. His Huskies set a new team record for points in a PC championship tournament with 27 points in 1985. Herbert received his bachelor's degree at the University of Maryland and his master's and doctorate degrees from Lehigh University.

Ray Ricketts

Ray Ricketts begins his second season as an assistant coach at Bloomsburg. Ricketts came to BU from a highly successful program at Springfield College where he was an assistant for five seasons. Prior to that he was an assistant at the University of Massachusetts for four years. Ricketts is a 1974 graduate of Albright College where he still ranks as the school's seventh all-time leading scorer with 1558 career points. Ricketts was a four-year starter and served as captain for two seasons. He also earned his master's degree at Springfield.

Tony DaRe

Tony DaRe, a former Bloomsburg player (1970-74), begins his third year of collegiate coaching as an assistant for Chronister. DaRe was a member of the 1973-74 BU team that advanced to the quarter-finals of the NCAA tournament and also ranks among the all-time leaders in single-season free throw percentage at Bloomsburg. Before coming to BU, DaRe was an assistant coach for nine years at Central Columbia High School where the team won the PIAA Class AA state championship in 1981.



LEFT TO RIGHT: Tony DaRe, Ray Ricketts, Charlie Chronister (head coach), Mike Herbert, Burt Reese

The Season Ahead

Dangerous could be the best word to describe the Bloomsburg University Huskies for the upcoming 1986-87 men's basketball season. The departure of five seniors, all of whom started at some time last season, would make most coaches shudder. However, veteran coach Charlie Chronister feels Bloomsburg had one of its finest recruiting efforts ever. That's saying a lot considering the program has not experienced a losing season in 20 years!

"It appears that we will have more good athletes than in recent years," stated Chronister. "The individual talent exists, but how quickly we get that talent going in one direction will determine our success."

A year ago the Huskies posted a 15-11 mark and were 7-7 in the Pennsylvania Conference's Eastern Division, just missing the post-season playoffs for the second straight season. The biggest loss from that squad was Glenn Noack, the school's second all-time leading scorer.

Noack, a two-time PC East and ECAC All-Star, totalled 1504 points in four seasons. He made 573 of 1193 field goal attempts (47.8 percent) and 358 of 423 free throws (84.6 percent). His point total ranks second to Jerry Radocha (1973-77, 1778 points), while his career free throw percentage is a BU record. He also holds the team record for consecutive free throws made (33) during the 1983-84 campaign.

Also gone from last season's unit are Shane Planutis, who finished 16th on the all-time scoring chart with 930 points, as well as forward Dean Colone, center/forward Pat Flanagan and guard Les Alston.

"Our obvious area of concern is leadership," Chronister commented. "We lost five seniors who played a lot at Bloomsburg. Finding on-court leadership is important to any team. It may take more time for those people to emerge."

Junior Greg Thomas is the team's most experienced performer in terms of playing time as he saw extensive action during the last two seasons. He averaged 6.6 ppg and 2.8 rebounds as a freshman and a year ago, 4.2 ppg and 1.7 rebounds. Thomas will serve as one of the Huskies' co-captains. "He's really a two guard but playing more point guard last season has helped him," said Chronister. "We plan on doing more of that type of thing this season. Getting away from designating specific positions to people and starting to put our best athletes and combinations on the floor."

Sophomore Bill Connelly and Alex Nelcha saw considerable action last year and will be expected to pick up some of the offensive punch lost to graduation. Connelly averaged 9.2 ppg and 2.9 rebounds while playing in all 26 games. "He looks like a leading candidate for the small forward position," Chronister commented. "Billy is an explosive offensive player who could pick up some of the lost point production. He may be stepping into Noack's role to put points on the board."

Nelcha took over the center position midway through the season, averaging 7.4 ppg and 5.1 rebounds. "Alex came here from Venezuela as a very young, inexperienced basketball player. But he made tremendous strides both on the court and in the weight room," Chronister said. "I think he will be in the top echelon of big men in this league for the next few years."

The Huskies' other co-captain, junior Steve Ross along with sophomore Steve Melchior provide Bloomsburg with experienced depth on the front line.

"The people with junior college experience should bring some more maturity to this team," Chronister commented. "The new people will give us a number of ways to go with our lineup. We have size up front and if we want to we can put some pretty big guards in the game at the same time."

A trio of junior college products will hopefully provide that experience Chronister expects. Big Matt Wilson will be the Huskies'

tallest player and could take a place in the middle, moving Nelcha to a forward spot. "Matt has demonstrated a lot of intangibles that we're going to need with this young club. He'll make us stronger inside immediately."

In addition, Joe Stepanski and Jim Lavelle will battle for starting roles at the guard positions.

Another threesome in their first year with the team could see action early in the campaign. Freshmen Dave Carpenter, John Williams, and Dallas Wilson, bring the club something it has lacked over the past few seasons, speed and more rebounding ability. "Those players will have an immediate impact on our program," Chronister stated.

Carpenter should give Bloomsburg the ability to rebound the basketball better than in recent years. "He's an aggressive rebounder who has improved his medium range jump shot," Chronister said.

Williams and Wilson provide more height and quickness in the backcourt and help the team possess good overall team speed.

"We intend to play more of an up tempo game both offensively and defensively," said Chronister. "We've been conservative out of our defense because of personnel the last few years. Hopefully a more aggressive defensive style will allow us to score more out of the defense. Where our points will come from remains to be seen."

Chronister and his team won't have too long to become acquainted as five of the first seven contests are against PC Eastern Division opponents.



Bill Connelly drives to the bucket

1986-87 Husky Varsity

Name	Cl.	Pos.	Ht.	Wt.	Hometown (High School)
Dave Carpenter	Fr.	F	6-5½	214	Oreland (Upper Dublin)
Bill Connelly	So.	F	6-4½	182	Absecon, NJ (Holy Spirit)
Jim Lavelle	So.	G	5-7	134	Syracuse, NY (Bishop Grimes)
Steve Melchior	So.	F	6-5½	189	Lansdale (North Penn)
Kyle Miller	Fr.	F	6-6	215	Sparta, NJ (Sparta)
Alex Nelcha	So.	C	6-6	200	Caracus, Venezuela (Lileo Luis Ezpelosin)
Steve Ross	Jr.	C	6-5	240	Souderton (Souderton)
Mike Simpkins	So.	G	6-0	178	Norristown (Norristown)
Joe Stepanski	Jr.	G	6-0	156	Shickshinny (Northwest)
Greg Thomas	Jr.	G	6-2½	181	Carlisle (Carlisle)
John Williams	Fr.	G	6-1	167	Detroit, MI (Detroit Northern)
Dallas Wilson	Fr.	F	6-3	183	Wyandanch, NY (Wyandanch)
Matt Wilson	Jr.	C	6-10	224	Setauket, NY (Ward Melville)

Records Against 1986-87 Opponents

Binghamton		first meeting	
Bloomfield		first meeting	
Cabrini		first meeting	
California (PA)	2-0		1.000
Cheyney	34-39		.466
C.W. Post	0-2		.000
East Stroudsburg	57-44		.564
King's (PA)	19-14		.576
Kutztown	73-25		.745
Lock Haven	73-25		.745
Longwood		first meeting	
Mansfield	68-46		.607
Millersville	51-58		.468
Newport News		first meeting	
New York Tech	0-1		.000
Philadelphia Textile	4-13		.235
Queen's (NY)	2-0		1.000
Scranton	6-8		.429
Shippensburg	79-47		.627
West Chester	41-26		.612
York (PA)	12-0		1.000

Player Profiles

DAVE CARPENTER

6' 5½" 214 lbs. Freshman
Oreland, PA Upper Dublin H.S.

Was the outstanding player in Montgomery County last season. A very physical player who takes the ball hard to the basket. Will see a lot of playing and could become one of the club's leading rebounders. Is working hard to improve his medium-range jump shot.



BILL CONNELLY

6' 4½" 182 lbs. Sophomore
Absecon, NJ Holy Spirit H.S.

An explosive offensive player who should provide a lot of the team's scoring punch. Has the potential to be a scorer in the category of former players Glenn Noack and Barry Francisco. Needs to work on his defense and better shot selection.

JIM LAVELLE

5' 7" 134 lbs. Sophomore
Syracuse, NY Bishop Grimes H.S.

Smallest player ever to play for a Chronister-coached team at BU. Good leadership skills and is a "make it happen" type of player. Defensively he causes problems for big people and will take the charge. Needs to improve his scoring capabilities.



STEVE MELCHIOR

6' 5½" 189 lbs. Sophomore
Lansdale North Penn H.S.

A hard worker who will provide experienced depth in the low post area. Perhaps one of the better jump shooters among the big men. With more experience, should see valuable playing time.

KYLE MILLER

6' 6" 215 lbs. Freshman
Sparta, NJ Sparta H.S.

A surprising walk-on who made the team because of his tough, aggressive play in the basket area. Adds depth in the low post areas. His playing time will increase as his physical strength and shooting skills improve.





ALEX NELCHA
6' 6" 200 lbs. Sophomore
Caracas, Venezuela
Lileo Luis Ezpelosin H.S.

Has shown tremendous improvement since joining the team in the second semester of last season. Probably the most consistent inside defender and rebounder. A definite shot-blocking threat who needs only to improve his scoring ability in the basket area.

STEVE ROSS
6' 5" 240 lbs. Junior
Souderton, PA Souderton H.S.

One of the hardest working, enthusiastic players ever at Bloomsburg. A strong, mature performer who is expected to see more playing. Will serve as one of the squad's co-captains. Should be a big help to the coaching staff with the young team.



MIKE SIMPKINS
6' 0" 178 lbs. Sophomore
Norristown, PA Norristown H.S.

A second-year guard with a good ability to put points on the board. He can take opposing guards to the low post and score. Still making the transition from being a high school forward. As his defense and ball handling improve, his playing time will probably increase.

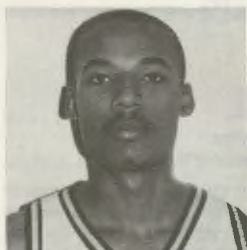
JOE STEPANSKI
6' 0" 156 lbs. Junior
Shickshinny, PA Northwest H.S.

A transfer who appears to have excellent court awareness. He will compete for playing time at a guard slot. His physically tough style should help generate some points through his defense as well as offensively.



GREG THOMAS
6' 2½" 181 lbs. Junior
Carlisle, PA Carlisle H.S.

Most experienced guard on the team and will be the other co-captain. Will be called on to play both the point and wing once again this year. Should supply some of the on-court leadership this team will need. Looking to regain his form of two seasons ago.



JOHN WILLIAMS
6' 1" 167 lbs. Freshman
Detroit, MI Detroit Northern H.S.

A talented athlete who will compete for a starting wing position. Runs the floor exceptionally well and can go to the boards from the guard spot. His quickness will help defensively. Needs to improve consistency on medium-range jump shot and defense.

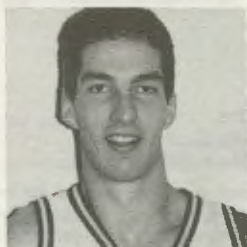
DALLAS WILSON
6' 3" 183 lbs. Freshman
Wyandanch, NY Wyandanch H.S.

One of the real pleasant surprises of this year's recruiting class who can play both running and half-court games. Extremely hard worker on defense who will get much time on the floor this season. Has the potential to be the most versatile player ever at BU.



MATT WILSON
6' 10" 224 lbs. Junior
Setauket, NY Ward Melville H.S.

The biggest player at BU in recent history. His junior college experience gives him maturity and an outstanding knowledge of the game. Excellent passer who has a good jump shot. Should provide solid inside scoring punch and defensive help.



Quick Facts on 1986-87 Opponents

SUNY-Binghamton
Binghamton, NY 13901

"Colonials"

Scranton Tournament; Dec. 19-20

Head Coach: David Archer (4th)	Conference: SUNYAC
Office Phone: (607) 777-2133	SID: N/A
Home Phone: (607) 785-7032	Office Phone: (607) 777-4255
1985-86 Overall Record: 14-14	Home Phone: N/A
1985-86 Conference Record: 6-6	A.D.: Dr. Nell Jackson

Bloomfield College
Bloomfield, NJ 07003

"Deacons"

Husky Invitational; Jan. 9-10

Head Coach: Mark Corino (5th)	Conference: CACC
Office Phone: (201) 748-9000 (363)	SID: Gordon Hervster
Home Phone: (201) 759-3394	Office Phone: (201) 748-9000 (362)
1985-86 Overall Record: 17-8	Home Phone: N/A
1985-86 Conference Record: 5-3	A.D.: Al Restaino

Cabrini College
Radnor, PA 19087

"Cavaliers"

Scranton Tournament; Dec. 19-20

Head Coach: John Dzik (6th)	Conference: PAC
Office Phone: (215) 687-2100 (386)	Athletic Department: (215) 687-2100 (386)
Home Phone: (215) 586-1038	A.D.: John Dzik
1985-86 Overall Record: 24-6	
1985-86 Conference Record: 8-0	

California University
California, PA 15419

"Vulcans"

Husky Invitational; Jan. 9-10

Head Coach: Jim Boone (1st)	Conference: PC (West)
Office Phone: (412) 938-4360	SID: Bruce Wald
Home Phone: (412) 938-9038	Office Phone: (412) 938-4552
1985-86 Overall Record: 7-19	Home Phone: (412) 939-7239
1985-86 West Record: 5-5	A.D.: Jan McConnell

Cheyney University
Cheyney, PA 19319

"Wolves"

Jan. 24, Home; Feb. 21, Away

Head Coach: Charlie Songster (5th)	Conference: PC East
Office Phone: (215) 399-2267	SID: George Heaslip
Home Phone: (215) 593-7073	Office Phone: (215) 399-2025
1985-86 Overall Record: 29-5	Home Phone: (215) 593-6764
1985-86 PC East Record: 13-1	A.D.: Andy Hinson

EU-C.W. Post Campus
Greenvale, NY 11548

"Pioneers"

Jan. 19, Home

Head Coach: Tom Galeazzi (6th)
Office Phone: (516) 299-2289
Home Phone: (516) 421-1891
1985-86 Overall Record: 24-3
1985-86 Conference Record: 12-0

Conference: Big Apple
SID: Bill Huffman
Office Phone: (516) 299-2333
Home Phone: (516) 629-1093
A.D.: Vin Salamone

East Stroudsburg University
East Stroudsburg, PA 18301

"Warriors"

Dec. 13, Home; Feb. 14, Away

Head Coach: Kyle DeGregorio (2nd)
Office Phone: (717) 424-3317
Home Phone: N/A
1985-86 Overall Record: 2-25
1985-86 PC East Record: 0-14

Conference: PC East
SID: Pete Nevins
Office Phone: (717) 424-3312
Home Phone: (717) 421-4146
A.D.: Dr. Louis M. Marciani

King's College
Wilkes-Barre, PA 18701

"Monarchs"

Jan. 7, Away

Head Coach: Ken Atkins (4th)
Office Phone: (717) 825-5900
Home Phone: (717) 829-0598
1985-86 Overall Record: 18-8
1985-86 Conference Record: 12-4

Conference: Mid Atlantic
SID: John Engel
Office Phone: (717) 826-5900
Home Phone: (717) 822-3564
A.D.: John Dorish

Kutztown University
Kutztown, PA 19530

"Golden Bears"

Dec. 3, Home; Feb. 4, Away

Head Coach: Rick Binder (3rd)
Office Phone: (215) 683-4064
Home Phone: (215) 373-7037
1985-86 Overall Record: 14-12
1985-86 PC East Record: 6-8

Conference: PC East
SID: Pete Katsafanas
Office Phone: (215) 683-4113
Home Phone: (215) 683-3846
A.D.: Irv Hess

Lock Haven University
Lock Haven, PA 17745

"Bald Eagles"

Jan. 14, Home

Head Coach: Kurt Kanaskie (2nd)
Office Phone: (717) 893-2097
Home Phone: (717) 748-6473
1985-86 Overall Record: 15-12
1985-86 PC West Record: 7-7

Conference: PC West
SID: Buck O'Reilly
Office Phone: (717) 893-2350
Home Phone: (717) 748-2676
A.D.: Dr. Charles A. "Tod" Eberle

Longwood College
Farmville, PA 23901

"Lancers"

Longwood Tournament, Nov. 21-22

Head Coach: Cal Luther (5th)
Office Phone: (804) 392-9243
Home Phone: (804) 392-5679
1985-86 Overall Record: 14-13
1985-86 Conference Record: 7-3

Conference: Mason-Dixon
SID: Hoke Currie
Office Phone: (804) 392-9391
Home Phone: (804) 392-8005
A.D.: Dr. Carolyn Hodges

Mansfield University
Mansfield, PA 16933

"Mounties"

Dec. 10, Home; Feb. 11, Away

Head Coach: Ed Wilson (19th)
Office Phone: (717) 662-4115
Home Phone: (717) 662-3869
1985-86 Overall Record: 13-15
1985-86 PC East Record: 7-7

Conference: PC East
SID: Sally Walrath
Office Phone: (717) 662-4301
Home Phone: (717) 724-7454
A.D.: Roger Maisner

Millersville University
Millersville, PA 17551

"Marauders"

Dec. 6, Away; Feb. 7 Home

Head Coach: John Kochan (4th)
Office Phone: (717) 872-3509
Home Phone: (717) 872-7191
1985-86 Overall Record: 24-6
1985-86 PC East Record: 13-1

Conference: PC East
SID: Greg Wright
Office Phone: (717) 872-3100
Home Phone: (717) 872-1081
A.D.: Dr. Gene A. Carpenter

Newport News
Newport News, VA 23607

"Bilgers"

Longwood Tournament, Nov. 21-22

Head Coach: Horace Underwood (7th)
Office Phone: (804) 380-2613
Home Phone: (804) 380-2724
1985-86 Overall Record: 10-18

Conference: Independent
Athletics: (804) 380-2613
Gym: (804) 380-2724
A.D.: Horace Underwood

New York Tech
Union, NY 13502

"Bears"

Jan. 12, Away

Head Coach: Bob DeBonis (3rd)
Office Phone: (516) 686-7626
Home Phone: N/A
1985-86 Overall Record: 9-19

Conference: Big Apple
Athletics: (516) 686-7626
A.D.: William T. "Buck" Lai
1985-86 Conference Record: 4-6

Philadelphia Textile
Philadelphia, PA 19144

"Rams"

Feb. 2, Home

Head Coach: Herb McGee (20th)
Office Phone: (215) 951-2724
Home Phone: (215) 265-2829
1985-86 Overall Record: 16-14
1985-86 Conference Record: 6-4

Conference: Mideast
SID: TBA
Office Phone:
Home Phone:
A.D.: Harry Pure

Queen's College
Flushing, NY 11367

"Knights"

Longwood Tournament, Nov. 21-22; Jan. 17, Away

Head Coach: Don Lizak (4th)
Office Phone: (718) 520-7775
Home Phone: N/A
1985-86 Overall Record: 14-12
1985-86 Conference Record: 6-4

Conference: Big Apple
SID: Al Goldis
Office Phone: (718) 520-7215
Home Phone: N/A
A.D.: Dr. Richard Wettan

University of Scranton
Scranton, PA 18501

"Royals"

Scranton Tournament, Dec. 19-20

Head Coach: Robert Bessoir (15th)
Office Phone: (717) 961-7478
Home Phone: N/A
1985-86 Overall Record: 20-9
1985-86 MAC North Record: 13-3

Conference: MAC North
SID: Ken Buntz
Office Phone: (717) 961-7571
Home Phone: (717) 342-1021
A.D.: Gary Wodder

Shippensburg University
Shippensburg, PA 17257

"Red Raiders"

Dec. 1, Away; Jan. 31, Home

Head Coach: Roger Goodling (10th)
Office Phone: (717) 532-1449
Home Phone: (717) 243-1542
1985-86 Overall Record: 13-13
1985-86 PC East Record: 5-9

Conference: PC East
SID: John Alosi
Office Phone: (717) 532-1201
Home Phone: (717) 532-4435
A.D.: Dr. James Pribula

West Chester University
West Chester, PA 19383

"Wolves"

Jan. 21, Away; Feb. 18, Home

Head Coach: Earl Voss (14th)
Office Phone: (215) 436-2136
Home Phone: (215) 692-9286
1985-86 Overall Record: 13-13
1985-86 PC East Record: 5-9

Conference: PC East
SID: Nevin Morris
Office Phone: (215) 436-3316
Home Phone: (215) 873-7731
A.D.: Richard B. Yoder

York College
York, PA 17405

"Spartans"

Husky Invitational, Jan. 9-10; Jan. 26, Away

Head Coach: Jeff Gamber (10th)
Office Phone: (717) 846-7788
Home Phone: (717) 244-9620
1985-86 Overall Record: 10-15

Conference: Independent
SID: Contact Gamber
A.D.: Jeff Gamber



The 1986-87 Huskies

1985-86 Results

Opponents	BU	Opp.	Site	High Scorer	High Rebounder
* Mt. St. Mary's	62	75	A	Noack - 22	Planutis - 7
* Juniata	59	46	A	Noack - 20	Planutis - 7
Susquehanna	93	65	H	Simpkins - 20	Flanagan - 7
Shippensburg	73	69	H	Noack - 20	Planutis - 10
Kutztown	63	66	A	Noack - 14	Noack - 8
Mansfield	81	67	A	Noack - 23	Noack - 6 Planutis - 6
+ Muhlenberg	76	87	A	Noack - 16 Alston - 16	Planutis - 6
+ Kean	74	66	A	Connelly - 20	Flanagan - 6 Planutis - 6
Maryland/Balt. Co.	90	73	A	Noack - 21	Planutis - 7
Lock Haven	74	75	A	Noack - 20	Planutis - 7
Millersville	63	67	H	Alston - 19	Colone - 6 Flanagan - 6
Cheyney	65	72	A	Noack - 26	Colone - 13
Queen's	73	67	H	Alston - 16 Planutis - 16	Noack - 8
C. W. Post	64	83	A	Planutis - 18	Planutis - 10
East Stroudsburg	59	46	A	Noack - 16	Planutis - 9
West Chester	71	59	H	Alston - 15	Planutis - 7 Colone - 7 Nelcha - 7
Cheyney	60	76	H	Noack - 14	Simpkins - 7
Phila. Textile	66	65	A	Alston - 16	Noack - 8
Shippensburg	76	60	A	Noack - 18	Simpkins - 7
Kutztown	63	55	H	Noack - 20	Noack - 8
York	81	54	H	Simpkins - 15	Noack - 8
Millersville	61	88	A	Connelly - 20	Nelcha - 10
Mansfield	65	71	H	Alston - 18	Connelly - 9
King's	78	60	H	Alston - 14 Nelcha - 14 Noack - 14	Noack - 11
East Stroudsburg	83	67	H	Colone - 15 Thomas - 15	Melchior - 6
West Chester	75	73	A	Noack - 21	Noack - 5

* - Gettysburg Tournament

+ - Scranton Tournament

1985-86 Statistics

Name	G	FGA	FG	PCT.	FTA	FT	PCT.	REB	AVG	Fouls/ Disq.	PTS	AVG	ASST
Les Alston	26	208	112	53.8	69	56	81.2	50	1.9	69/1	280	10.8	96
Jerome Brisbon	2	7	1	14.3	2	1	50.0	3	1.5	3	3	1.5	2
Dean Colone	26	167	81	48.5	39	27	69.2	86	3.3	39	189	7.3	36
Bill Connelly	26	192	88	45.8	87	62	71.3	76	2.9	44	238	9.2	20
Pat Flanagan	24	80	32	40.0	32	10	31.3	80	3.3	56/4	74	3.1	19
Dave Koslosky	5	2	1	50.0	0	0	0.0	1	0.2	4	2	0.4	0
Steve Melchior	23	71	30	42.3	14	9	64.3	42	1.8	25	69	3.0	6
Alex Nelcha	17	103	54	52.4	37	18	48.6	86	5.1	31	126	7.4	4
Glenn Noack	26	339	152	44.8	122	104	85.2	133	5.1	60/1	408	15.7	60
Shane Planutis	26	197	86	43.7	27	22	81.5	127	4.9	66/2	194	7.5	23
Steve Ross	18	13	6	46.2	9	4	44.4	14	0.8	13	16	0.9	1
Mike Simpkins	22	111	52	46.8	49	34	69.4	55	2.5	42	138	6.3	16
Greg Thomas	26	90	41	45.6	35	27	77.1	45	1.7	38/1	109	4.2	44
Team Totals	26	1580	736	46.6	522	374	71.6	798	30.7	490/9	1846	71.0	327
Opponent Totals	26	1503	685	45.6	573	384	67.0	871	33.5	489/12	1754	67.5	320

Special Honors From 1985-86

Team

Gettysburg Tournament - Third Place
Scranton Tournament - Third Place
20th Consecutive Winning Season

Glenn Noack - Captain

All Tournament Team - Gettysburg & Scranton
First Team - PSAC East
NABC East Region
ECAC South Region

Player of the Year - Bloomsburg University
Bloomsburg University Career Foul Shooting Percentage - 84.6
Bloomsburg University Second Career Scorer - 1504 Points

Shane Planutis

Bloomsburg University #16 Career Scorer - 930 Points

Bloomsburg's Top Twenty

1. Jerry Radocha	1778*	1973-77
2. Glenn Noack	1504*	1982-86
3. Barry Francisco	1479*	1980-84
4. John Willis	1467	1971-74
5. Mike Wenrich	1397	1979-82
6. Robert Herzig	1362*	1961-65
7. Richard Lloyd	1339*	1958-62
8. Jon Bardsley	1252*	1978-82
9. Al Williams	1173*	1975-78
10. Terry Conrad	1081*	1979-83
11. Steve Bright	1026*	1975-78
12. William Swisher	1014*	1955-59
13. James Gustave	955*	1954-58
14. Howard Johnson	946	1969-72
15. Shane Planutis	930	1982-86
16. Len Kozick	926*	1953-57
17. James Platukis	878	1968-71
18. Robert Snyder	859	1967-70
19. Paul Kuhn	851	1969-72
20. Bill Tillman	789*	1977-81

*Indicates Four-Year Total

Basketball's Birth at Bloomsburg

The game of basketball was invented by James Naismith in December of 1891 in Springfield, Massachusetts. Just over two years later, the game of basketball was played for the first time at Bloomsburg in what was then the "new" gymnasium. This gymnasium was located directly behind Carver Hall, near the site of the present-day Kehr Union Building. The excerpt that follows was taken out of *The Columbian*, a Bloomsburg newspaper, from Friday March 2, 1894. It describes, to the best of the University's knowledge, the first organized basketball game ever played on the campus:

"The new gymnasium at the Normal School was opened with appropriate ceremonies last week Thursday. After the close of the exercises incident to the presentation of the large flag by the P.O.S. of A., the audience went from the auditorium to the gymnasium, and filled every available space. The running track was crowded, and the sides of the first floor was thickly lined with spectators . . . The most exciting part of the program was the game of basketball between members of the Philogian and Calliepan Societies. A bushel basket was hung at either end of the hall about ten feet from the floor. Every time that either side gets the ball in the basket at the opposite end of the hall it counts three. The game is nearly as exciting as football, though not quite as rough and dangerous. The Philos were the first to land the ball in the Callies' basket and a great shout went up from the spectators. But the Callies put the ball in the Philo basket twice, and this with fouls made the score 9 to 5 at the end of the third inning, in favor of the former and then the Callies and their friends went wild and everybody shouted."

This exhibition was just the beginning of a tradition of success in the sport of basketball at Bloomsburg which has lasted right from the first game ever played on campus to the present-day Huskies of 1986-87.

The picture below shows the 1894-95 Bloomsburg Normal School basketball team. This was the school's first varsity basketball team.



Bloomsburg Basketball

"A Winning Tradition"

Since the inception of competitive basketball at Bloomsburg near the turn of the century, the men's basketball team has been a dominant force compiling a record of 865-541 for a winning percentage of .615. From the very first coach, A.K. Aldinger, to the present coach, Charles Chronister, Bloomsburg basketball teams have performed at a level of excellence which is reflective of champions.

Competitive basketball at Bloomsburg began in the late 1890's under the direction of coach Aldinger. However, because a fire destroyed all records of the games played in those initial years, the first year for which records are available is 1901, when Bloomsburg was 4-3 under Aldinger. Since that time Aldinger and 17 other coaches have helped build the "winning tradition" in basketball at Bloomsburg.

From 1901 to 1932, ten different men took their turn at the helm of the Huskies with five of those men coaching for only one year. During the 1919-20 and 1920-21 seasons, T.W. Pownall (13-6, .684) and R.H. Diedrich (12-2, .857) turned in the best single-season marks. However, in terms of those coaches who coached for longer than one year, George M. Mead from 1921-25 (42-17, .712) and Thornley W. Booth from 1926-32 (59-25, .702) were the most successful coaches in the early years of Bloomsburg basketball.

Following Booth's first year in 1926-27, the school changed its name from the Bloomsburg Normal School to the Bloomsburg State Teacher's College. It would be known by this name until 1960 when the school became Bloomsburg State College.

In 1932, upon the departure of Booth, George Buckheit took over the reigns of the Huskies and guided them to a 95-71 mark (.572) over 12 years. He coached from 1932-43, before taking a year off in 1943-44 during which Jack Llewellyn guided the Huskies to an 11-4 mark. Buckheit then returned to coach Bloomsburg during the period of 1944-46. Pete Wisher took over for Buckheit in 1946, and during his three-year stint at Bloomsburg, he guided the Huskies to a 25-27 record (.480).

The year of 1949 marked the first year Bloomsburg competed in the Pennsylvania Conference and also marked the arrival of new head coach Harold Shelly who coached from 1949-60. Shelly guided Bloomsburg to an 11-year mark of 112-74 and a PC record of 81-54 including a conference championship in 1952-53. Bill Foster then led the Huskies to three consecutive second place conference finishes from 1960-63, and a 45-11 overall mark. Foster's .807 winning percentage leads all Bloomsburg coaches who have coached for more than one year. Foster is currently the head coach at the University of South Carolina.

From 1966-71 Earl Voss guided the Huskies to a 63-42 record (.600), before handing the reigns over to present-day coach Charles Chronister. Chronister, who has coached for the past 15 seasons at BU, has accumulated an overall record of 265-138 (.658) and is the most accomplished coach in Bloomsburg's long basketball history. He has guided the Huskies to four NCAA Division II tournament appearances, won 20 or more games five times, and has coached the top four scorers in Bloomsburg history. In addition, he has coached three All-Americans at BU—John Willis (1972-74), Jerry Radocha (1973-77), and most recently, Jon Bardsley (1978-82).

Coaches' Records at Bloomsburg

(1901-1986)

Years	Coach	Wins	Losses	Pct.
1901-05 (4)	Aldinger, A.K.	17	12	.613
1905-06 (1)	Westphal, Alfred	2	3	.400
1906-10 (4)	Bryant, B.F.	21	27	.438
1910-11 (1)	Barrier, Prof.	6	7	.461
1911-19 (8)	Weimer, John W.	40	39	.506
1919-20 (1)	Pownall, T.W.	13	6	.684
1920-21 (1)	Diedrich, R.H.	12	2	.857
1921-25 (4)	Mead, George M.	42	17	.712
1925-26 (1)	Jackson, A.K.	7	6	.538
1926-32 (6)	Booth, Thornley W.	59	25	.702
1932-42 & 1944-46 (12)	Buckheit, George	95	71	.572
1943-44 (1)	Llwellyn, Jack	11	4	.733
1946-49 (3)	Wisher, Pete	25	27	.480
1949-60 (11)	Shelly, Harold	112	74	.602
1960-63 (3)	Foster, William	45	11	.807
1966-71 (5)	Voss, Earl	63	42	.600
1971-85 (15)	Chronister, Charles	265	138	.658

Bloomsburg Basketball

"Over the Years"

Year	Coach	Wins	Losses	Pct.
*1901-02	A. K. Aldinger	4	3	.571
1902-03	Aldinger	6	4	.600
*1903-04	Aldinger	6	1	.857
*1904-05	Aldinger	3	4	.429
*1905-06	Alfred F. Westphal	2	3	.400
1906-07	B. F. Bryant	6	8	.429
1907-08	Bryant	2	9	.182
1908-09	Bryant	6	5	.545
1909-10	Bryant	7	5	.583
1910-11	Bryant	6	7	.462
1911-12	John Weimer	<i>No records available</i>		
1912-13	Weimer	<i>No records available</i>		
1913-14	Weimer	6	10	.375
1914-15	Weimer	9	3	.750
1915-16	Weimer	8	8	.500
1916-17	Weimer	5	11	.313
1917-18	Weimer	8	4	.667
1918-19	Weimer	4	3	.571
1919-20	T. W. Downall	13	6	.684
1920-21	R. H. Diedrich	12	2	.857
1921-22	George M. Mead	5	6	.455
1922-23	Mead	8	5	.615
1923-24	Mead	18	1	.947
1924-25	Mead	11	5	.688
1925-26	A. K. Jackson	7	6	.538
1926-27	T. W. Booth	6	6	.500
1927-28	T. W. Booth	13	6	.684
1928-29	T. W. Booth	11	2	.846
1929-30	T. W. Booth	9	4	.692

1930-31	T. W. Booth	17	1	.944	
1931-32	T. W. Booth	3	6	.333	
1932-33	Buckheit, George C.	6	8	.428	
1933-34	Buckheit	8	4	.666	
1934-35	Buckheit	6	9	.400	
1935-36	Buckheit	9	5	.642	
1936-37	Buckheit	9	7	.562	
1937-38	Buckheit	6	9	.400	
1938-39	Buckheit	8	3	.727	
1939-40	Buckheit	10	4	.714	
1940-41	Buckheit	10	4	.714	
1941-42	Buckheit	8	4	.666	
1942-43	<i>No Sports Scheduled During This Year</i>				
1943-44	Llwellyn, Jack	11	3	.785	
1944-45	Buckheit, George C.	10	3	.761	
1945-46	Buckheit	4	9	.307	
1946-47	Wisher, Pete	7	10	.411	
1947-48	Wisher	10	9	.526	Conference
1948-49	Wisher	8	8	.500	Record
1949-50	Shelly, Harold S.	12	7	.630	7-4
1950-51	Shelly	9	7	.562	6-7
1951-52	Shelly	12	4	.750	8-4
1952-53	Shelly	11	6	.647	10-2
1953-54	Shelly	9	7	.562	7-4
1954-55	Shelly	13	4	.764	8-3
1955-56	Shelly	11	6	.647	8-3
1956-57	Shelly	9	8	.529	7-6
1957-58	Shelly	10	7	.588	8-5
1958-59	Shelly	9	8	.529	6-7
1959-60	Shelly	7	10	.411	6-9
1960-61	Foster, William	12	4	.750	9-3
1961-62	Foster	16	3	.842	12-2
1962-63	Foster	17	4	.809	11-3
1963-64	Norton, Robert	13	6	.684	9-5
1964-65	Norton	7	13	.350	4-10
1965-66	Norton	8	11	.421	6-8
1966-67	Voss, Earl	12	8	.600	9-5
1967-68	Voss	13	7	.650	8-6
1968-69	Voss	13	9	.590	7-7
1969-70	Voss	15	9	.625	9-5
1970-71	Voss	11	9	.550	5-9
1971-72	Chronister, Charles	18	7	.720	11-3
1972-73	Chronister	20	5	.800	10-4
1973-74	Chronister	22	6	.786	11-3
1974-75	Chronister	15	10	.600	8-6
1975-76	Chronister	13	10	.565	6-6
1976-77	Chronister	17	7	.708	8-4
1977-78	Chronister	14	10	.583	6-6
1978-79	Chronister	13	12	.520	6-6
1979-80	Chronister	14	13	.519	7-5
1980-81	Chronister	23	7	.766	9-3
1981-82	Chronister	24	7	.774	10-2
1982-83	Chronister	23	10	.697	11-3
1983-84	Chronister	19	11	.633	11-3
1984-85	Chronister	15	12	.555	7-7
1985-86	Chronister	15	11	.577	7-7

*Incomplete Records / No Records

Individual and Team Records

Team Records

Points	1 Game	144 - vs. Shippensburg State 2/6/57 (Centennial Gym Record)
Points	1 Year	2307 - 1982-83 69.9 per game
Rebounds	1 Game	76 - vs. Rochester I. T., 11/30/62
Rebounds	1 Year	1253 - 1973-74 (44.8 per game)
Field Goal Attempts	1 Year	1853 - 1982-83
Field Goals	1 Year	902 - 1982-83
Field Goals	1 Game	56 - vs. Baptist Bible, 2/9/73
Field Goal Percentage	1 Year	49.8% - 1971-72
Field Goal Percentage	1 Game	70% - vs. Cheyney (21-30) 12/10/66
Least Field Goals by Opponent	1 Game	14 - vs. Lock Haven, 1/23/74
Free Throws Accepted	1 Year	715 - 1982-83
Free Throws	1 Year	503 - 1982-83
Free Throws	1 Game	44 - vs. Quinnipiac, 12/29/75
Free Throw Percentage	1 Year	77% - 1984-85
Free Throw Percentage	1 Game	100% - vs. West Chester, 2/4/67 vs. Cheyney, 2/1/84 (18/18) vs. Shippensburg, 1/31/85
Least Free Throws by Opponent	1 Game	2 - vs. Denison, 12/29/73
Assists	1 Game	35 - vs. York, 2/26/74
Assists	1 Year	595 - 1973-74
Conference Points	1 Year	1240 - 1961-62 (77.5 per game)
Average Winning Margin	1 Year	15.5 - pts. per game, 1961-62
Consecutive Victories	1972-73	14 - Coach Charles Chronister
Victories in One Season	1981-82	24 - Coach Charles Chronister
Conference Champions	1980-81	Coach Charles Chronister
Conference Eastern	1973-74	Coach Charles Chronister (11-3)
Divisional Champions	1980-81	Coach Charles Chronister (9-3)
	1983-84	Coach Charles Chronister (11-3)
N.C.A.A. Mid-East Regional	1973-74	Coach Charles Chronister
N.C.A.A. East Regional Champions	1982-83	Coach Charles Chronister
Best Conference Record	1961-62	Coach William Foster (12-2)
Best Overall Record	1961-62	Coach William Foster (16-3, .842)

NCAA Action!

Individual Records

Single Game Records

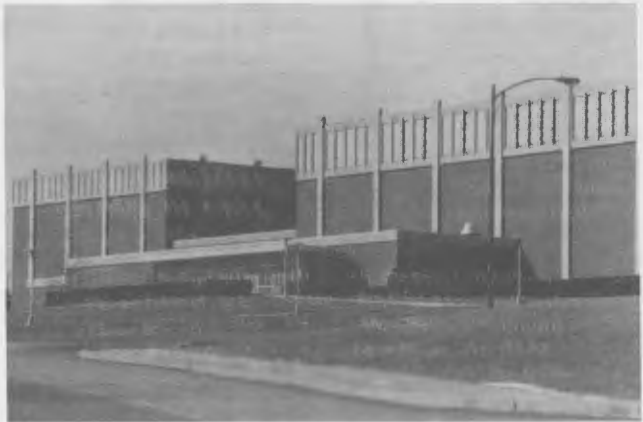
Points	48	John Willis, 2/26/74
Field Goals	20	Jerry Radocha, 1/7/77
Field Goals Attempted	39	Jerry Radocha, 1/7/77
Free Throws Attempted	21	Rick Fertig, 2/17/68
Free Throws Made	18	Rick Fertig, 2/17/68
Free Throw Percentage	14-14	Jeff Slocum, 2/25/78
Rebounds	33	Mike Morrow, 1966-67
Assists	18	Art Luptowski, 2/12/72

Season Records

Points	598	Jerry Radocha, 1976-77
Per Game Average	24.9%	Jerry Radocha, 1976-77
Field Goals Attempted	456	Jerry Radocha, 1976-77
Field Goals	233	Jerry Radocha, 1976-77
Field Goal Percentage	56.7%	Bob Herzig, 1961-62
Free Throws Attempted	167	Jerry Radocha, 1976-77
Free Throws Made	132	Jerry Radocha, 1976-77
Consecutive Free Throws Made	33	Glenn Noack, 1983-84
Consecutive Games Started	121*	Barry Francisco, 1980-84
Games Played	124*	Barry Francisco, 1980-84
Assists	589*	Jon Bardsley, 1978-82
Free Throw Percentage (25 or more attempts)	89.0 88.3 88.1 87.7 86.7 86.2 85.4 85.2	Greg Thomas (49-55), 1984-85 Glenn Noack (98-111), 1984-85 Rick Fertig (59-67), 1966-67 George Foering (29-33), 1966-67 Al Williams (39-45), 1974-75 Jeff Slocum (56-65), 1977-78 Dave Ogden (70-82), 1979-80 Glenn Noack (104-122), 1985-86
Rebounds	389	John Willis, 1973-74
Rebound Average	18.4	Bob Herzig, 1963-64
Assists	180	Jon Bardsley, 1980-81
Conference Average	25.3	Richard Lloyd, 1961-62
Conference Points	404	Richard Lloyd, 1961-62
Points by Freshman	443	Mike Wenrich, 1979-80
Career Records		
Points Scored	1178*	Jerry Radocha, 1976-77
Average Points Per Game	19.4	Richard Lloyd, 1958-59
Conference Career Points	1144*	Richard Lloyd, 1958-62
Conference Average	19.4*	Richard Lloyd, 1958-62
Field Goals Attempted	1408*	Jerry Radocha, 1973-77
Field Goals Scored	692*	Jerry Radocha, 1973-77
Field Goal Percentage	54.4	John Willis, 1971-74
Free Throws Attempted	497*	Jerry Radocha, 1973-77
Free Throws Made	384*	Jerry Radocha, 1973-77
Free Throw Percentage	84.6	Glenn Noack, 1982-86
Rebounds	1041*	Robert Herzig, 1961-65
Average Rebounds Per Game	14.5* (66)	Norm Shutovich, 1957-61

Nelson Fieldhouse

"Home Of The Huskies"



The Nelson Fieldhouse, located on Bloomsburg University's upper campus, serves as home for most of BU's athletic events. The facility has all the necessary ingredients as it holds a 3000 seat arena for all home wrestling and basketball games, an indoor track, two tennis courts, an olympic size swimming pool, and two handball/racquetball courts. The building has classroom and office space for use by the health/physical education and athletic staffs. Nelson also houses the wrestling practice room, which is a fully padded area located on the second floor. A totally equipped Nautilus weight room adds to the strength and conditioning areas of the program, and Nelson also offers a training room staffed by a full-time physical therapist and no less than six student assistants. Also an equipment manager handles the needs of most of Bloomsburg's 18 varsity athletic teams.

Head Trainer

Art Hopkins

Art is in his fourth year as the Head Trainer at Bloomsburg. He is a licensed Physical Therapist (LPT) and received his certificate from Hahneman Hospital in Philadelphia and his undergraduate degree at East Stroudsburg.



Equipment Manager

Ron Morgan

Mr. Ron Morgan has served as Bloomsburg's equipment manager for the past thirteen years. Ron is located in the Nelson Fieldhouse and handles most of the equipment needs of BU's 18 varsity programs.



BU AREA MEDIA OUTLETS

The purpose of this guide is to provide members of the media with necessary information concerning Bloomsburg basketball. Members of the media are always welcome on the Bloomsburg University campus. It would be appreciated if those who plan to cover any of the Huskies' home or away contests would contact the sports information office so that we can make every effort to accommodate your needs and requests.

Newspapers

Press-Enterprise
3185 Lackawanna Avenue
Bloomsburg, PA 17815

Danville News
14 East Mahoning Street
Danville, PA 17821

Daily Item
200 South Market Street
Sunbury, PA 17801

Milton Standard
19 Arch Street
Milton, PA 17847

News-Item
701 North Rock Street
Shamokin, PA 17872

Sun Gazette
252 West Fourth Street
Williamsport, PA 17701

The Grit
208 West Third Street
Williamsport, PA 17701

Patriot-News
P.O. Box 2265
Harrisburg, PA 17015

Standard Speaker
21 North Wyoming Street
Hazleton, PA 18201

Radio and Television

WHLM Radio
107 West Main Street
Bloomsburg, PA 17815

WCNR Radio
125 West Main Street
Bloomsburg, PA 17815

WPGM Radio
Eight East Market Street
Danville, PA 17821

WILQ Radio
P.O. Box 1176
Williamsport, PA 17701

WWPA Radio
P.O. Box 2168
Williamsport, PA 17701

WNEP - TV
Wilkes-Barre Scranton Int. Airport
Avoca, PA 18641

WBRE - TV
62 South Franklin Street
Wilkes-Barre, PA 18703

WYOU - TV
415 Lackawanna Avenue
Scranton, PA 18503

WGAL - TV
P.O. Box 7127
Lancaster, PA 17604

WHTM - TV
P.O. Box 2775
Harrisburg, PA 17105

WHP - TV
P.O. Box 1507
Harrisburg, PA 17105

Wire Services

Associated Press
Suite 250
One Franklin Plaza
Philadelphia, PA 19102

United Press International
1819 JFK Boulevard
Philadelphia, PA 19103



Jim Doyle, Sports Director
WHLM RADIO
"Voice of the Huskies"



John Michaels
Sports Editor
Press-Enterprise

FOLLOW THE HUSKIES ON WHLM-AM 55.0

1986-87 Schedule

November 21-22	at Longwood Tournament (Longwood, Newport News, Queen's)	Farmville, Va.
December	1 at Shippensburg	7:30 p.m.
	3 KUTZTOWN	8:00 p.m.
	6 at Millersville	8:00 p.m.
	10 MANSFIELD	8:00 p.m.
	13 EAST STROUDSBURG	8:00 p.m.
	19-20 at Scranton Tournament (Scranton, Cabrini, Binghamton)	Scranton, Pa.
January	7 at King's (Pa.)	7:30 p.m.
	9-10 HUSKY INVITATIONAL (California, Pa.; Bloomfield; York, Pa.)	
	12 at New York Tech	7:30 p.m.
	14 LOCK HAVEN	7:30 p.m.
	17 at Queen's	7:30 p.m.
	19 C.W. POST	7:30 p.m.
	21 at West Chester	8:00 p.m.
	24 CHEYNEY	8:00 p.m.
	26 at York (Pa.)	7:30 p.m.
	31 SHIPPENSBURG	8:00 p.m.
February	2 PHILADELPHIA TEXTILE	7:30 p.m.
	4 at Kutztown	8:00 p.m.
	7 MILLERSVILLE	8:00 p.m.
	11 at Mansfield	8:00 p.m.
	14 at East Stroudsburg	8:00 p.m.
	18 WEST CHESTER	8:00 p.m.
	21 at Cheyney	7:30 p.m.