

THE CAMPUS VOICE

Bloomsburg State College

November 15, 1982

In This Issue:
Wrestling Preview
on Pages 6-8

Funds Allocated

By MEG RONEY

The economics club, under the direction of Dr. Peter Bohling, returned last Thursday to Finance Committee's meeting in order to petition for funds necessary to send 26 of its members to the World Bank and International Monetary Fund in Washington, D.C.

Submitting a revised estimate, the club requested \$383.84 from the CGA reserve, in order to cover one-third of the total cost of lodging, transportation, and food for the trip.

The Committee, deciding not to include money for food in its allocation to the group, motioned to fund a total of \$210.50. However, after a motion was made to reconsider this amount and further discussion on the matter took place, the motion to grant the club \$210.50 was defeated.

Still declining to give funds for meals, the Committee did decide that more traveling money would be needed. Finally, it was motioned to allocate a total of \$260.50 to the economics club, and this was

clearly passed.

The United Way, the second group appearing at Thursday's meeting, was not as successful as the economics club. Seeking \$1,000 from Finance, the United Way was awarded nothing, after the motion to allocate this amount was defeated.

Concluding that not enough of the group's services were used by students, the Committee felt that the funds it allocates to some of United Way's branches, such as Family Planning, are sufficient support.

Organizations are reminded that fifteen copies of their requisitions are to be presented to Sally Marrazzo, treasurer of CGA, or to the CGA office no later than the Monday before the Finance Committee meets, which is every Thursday at 3:30 p.m.

In addition, organizations should be aware that for requests over \$300, three separate bids must be acquired for such purchases. Copies of these three bids must be submitted along with the organization's requisitions.

Forensics Place First

By ROBERT LIGHTCAP

The BSC forensic team captured the 1st place sweepstakes trophy at the Collegiate Forensic Association (CFA) Fall Tournament held at Lehman College, Bronx, New York, the weekend of October 29th and 30th.

Helping the team to the 135 point sweepstakes victory was Karen Halderman, who placed 2nd in pentathlon, earning 34 points. David Gass also placed in pentathlon, taking 6th place with 20 points.

Halderman also placed 2nd in the humorous oral reading. Also competing in this event were Lynne Miller, Brenda Beverly, and David Gass.

In informative speaking, BSC saw both participants winning. They were John Chapin, who placed 2nd, and Gass, taking 4th.

Oral interpretation also had two winners from BSC. They were Barb Wiest, taking 1st, and Bob Lightcap, taking 4th. Also competing in this event were Miller and Chapin.

Gass placed 5th in extemporaneous speaking, with teammates Halderman, April Edwards, and Chuck Gilmore also giving a fine showing.

Impromptu speaking handed Halderman another 2nd place win. Also in this event were

Chapin, Gass and Gilmore.

Cathy Kempfle took 2nd in persuasive speaking, with Miller and Linda Whipple also competing.

The team of Halderman - Gilmore took 2nd place in Dual Dramatics. Also in this category were teams of Miller - Chapin, Edwards - Carpitella and Pucillo - Gilmore.

Improvisational pairs featured the team of Gilmore - Jones, who took 2nd. Other teams were Gass - Lightcap, Chapin - Edwards, and Beverly - Halderman.

Not only did the Forensic team do well in individual speaking, but debate saw winners as well.

In novice debate, Bloomsburg took both first and second place. The teams were Cathy Kempfle - Sharon Carpitella, and Iris Hall - Hall consecutively.

Competing in Lincoln - Douglas debate were Bob Jones, Johnna Diehl, Angela Ditommaso and Mike Pucillo.

Travelling with the team, as judges, were graduate assistants Fred Deets and Marian Wilson, as well as Harry Strine, director of forensics.

New Student Rep. Named to Board

Aaron Porter, a Bloomsburg State College junior from Philadelphia, has been named student representative to the college's Board of Trustees. He replaces Thomas Gordon who graduated in May, 1982. College officials received notification on Wednesday that Porter's appointment by Governor Thornburgh had been approved by the Senate on Tuesday.

Porter, who attended Central High School in Philadelphia, has a double major at BSC in

English - journalism and economics and a minor in history.

He is a member in Sigma Tau Delta, National Honor Society in English; the Human Relations Planning Committee; Community Government Association; Commonwealth Association of Students; College Arts Council; and the College Judicial Board. He is a program assistant in the Center for Academic Development and is a

(Continued on Page 3)

Recruits come to campus

Peace Corps Comes to BSC

Traditionally, 21 years has been considered the age of maturity, the point at which adulthood is reached. In March of 1982, the Peace Corps reached that plateau.

Peace Corps recruiters will be at Bloomsburg State College on November 29 and 30, and also on December 1. They will hold a general information meeting on November 29 at 7 p.m. in Kehr Union's multipurpose room A. Senior-grad interviews will be conducted on November 30 and December 1, and those who are interested should contact the Career Development and Placement Office for an application and appointment. An information booth will be set up in Kehr Union on November 29.

Interested persons are encouraged to apply early, as only about 3,000 volunteer positions are filled each year.

The recruiters will be looking for degrees, background or experience in biology, chemistry, physics, math, agriculture, forestry, education, business, health and liberal arts, especially with language skills.

Joseph LaGue, area recruitment manager for the Peace Corps' Philadelphia office, says the Corps is different now than it was in its early days.

"We're a smaller, more efficient organization that is more focused on meeting basic human needs in host countries," LaGue explains.

"Today's volunteers," he says, "bring to the developing world skills that are needed to improve the quality of life, from agriculture to health to education. They teach survival and development skills that aren't available in the 60 countries hosting volunteers. Eventually, they eliminate the need for their own services in a

Peace Corps Volunteers Find Rewards in What They Do.

particular region."

LaGue points out that the Peace Corps is not functioning to bring "the American way" to host countries, but rather to provide needed skills to them and to give Americans and the people of the developing world a close-up look at each other.

"Because of the Peace Corps," he states, "there are almost 90,000 former volunteers

who've had a chance to meet, live with and share the lives of people in different cultures, different societies. They've brought home their perceptions of what it's really like in other parts of the world and have given their hosts a chance to see that Americans aren't all private detectives, cowboys or bumbling parents, our TV and film image, but are people who can and do care about the rest of the world."

Peace Corps volunteers, LaGue says, have to find their rewards in what they do and how well they do it, as benefits are limited to transportation,

Monetary Rewards Don't Bring People to the Peace Corps.

cross-cultural and language training, living expenses, medical coverage and a small savings of \$175 per month for their two years of service.

"No one will ever get rich as a Peace Corp volunteer, so the monetary rewards aren't what bring people (more than 16,000 applications in 1981) to us," exclaims LaGue. "Some want the real working experience so valued by today's employers, some want the responsibility they'll find as volunteers, some want the travel and the adventure, some want nothing more than the opportunity to contribute, in a positive and effective way, to a better world. Whatever their reasons, they're getting what we call 'the toughest job you'll ever love.'"

"Volunteers live at the social and economic level of those they serve," says LaGue, "and that

(Continued on Page 6)



Cynthia Dandrade

STUDENTS DONATE BLOOD last Wednesday and Thursday when the Bloodmobile came to BSC.

Finals Again

Stress at the Semester's End Can Be Handled

Campus Digest News Service
Being a responsible student is stressful enough, but with the approach of final exams, there tends to be an accompanying increase in stress anxiety. Uncontrolled stress can easily cause one to blow his-or-her cool during a test and can even lead to complications which could

It is normal to have the hesitation and anxiety that accompanies high stress situations.

threaten the whole college career.

Now is the time when an increase of "if only" thoughts are likely to occur. Everyone is

familiar with "if only" thoughts: ones like, "If only I had decided to become a race car driver;" "If only my allowance didn't depend upon on my attending classes;" and "If only I had studied harder early in the semester."

Fortunately, it is quite normal to have such thoughts, to have the hesitation and anxiety that accompany high-stress situations. And, unpleasant as they may be at the time, stress and anxiety can be productive states if used to the proper advantage.

The key to managing stress and anxiety is recognition that it exists. Excess stress can rob students of their cognitive and creative thought processes when they are most in need of

them. To do anything about it, however, one must first become

The key to managing stress and anxiety is recognition that it exists.

aware of the stress. Stress can manifest itself in many forms: mental, physical and emotional. Here's what to look for:

MENTAL: Forgetfulness, loss of concentration, poor judgement, disorganization, lack of interest-motivation, living in the past or future, obsessions and compulsiveness.

Warning: Caffeine and sugar are known to affect concentration and recall of information. Now is the time to take up jogging for that needed

pick-me up.

EMOTIONAL: Irritability, nervousness, moodiness, emotional outbursts, over-demands of self and others, depression, hostility. In other words, an excessive emotional display of any sort.

PHYSICAL: Muscular tension, high blood pressure, cold extremities, headaches, digestive problems, constipation, insomnia.

You may be a chronic stress carrier and therefore not familiar with a more relaxed state. A series of isometric exercises will help you locate areas of muscle tension.

Now that you know what to look for, here's what you can do to lessen stress in the testing situation.

In general, take care of yourself. There are many forms

of test to expect. Reduce the element of surprise within the bounds of ethics.

Plan for intermittent periods of relaxation-reward and study. A guide to go by is:

Remind yourself that you are being rewarded for good work when you take a break.

-Two hours of study for one hour of television.

-Read three chapters for a 10-minute walk

-Go over class notes then call a friend to discuss them.

Remind yourself that you are being rewarded for good work when you take your break.

Set reasonable goals. If you tell yourself the only way you will be successful on this exam is to face it, and you have missed a week of notes and have 15 chapters to read, you aren't exactly being realistic. Don't give up, but don't lie to yourself, either. Do the best you can within the time allowed, and remember the test when it comes time for finals.

If the situation feels unmanageable, don't struggle through it alone. Seek out the comfort of friends; talk to your advisor; enlist the aid of a caring counselor. It makes good sense to help yourself out with the most appropriate and efficient tools available.



CORRECTION

In last Wednesday's issue of the *Campus Voice* (Nov. 10), it was incorrectly stated in a copy box in Nurse Susan Kroll-Smith's column, "Here's to Your Health", that "mono is not contagious". The disease is contagious. The error was a staff error and has no reflection on Nurse Kroll-Smith.

Campus Voice Staff

Vol. LXI No. 27

Bloomsburg State College, PA 17815 Box 97 KUB 309-3101

- Executive Editor.....Debbie Berkley
- Managing Editor.....Angel Grasso
- News Editors.....Patty Hagmann, Patrick Murphy
- News Asst.....Betsy Wollam
- Feature Editors.....Mike Yamrus, Mike Dillon
- Feature Assts.....Charles Pennypacker, Stephanie Richardson
- Sports Editors.....Dan Campbell, Dan Loughlin, Wade Douglas
- Photo Editor.....Kent Hagedorn
- Ad Manager.....Nancy Barg
- Ad Asst.....Tony Crouthamel
- Copy Editors.....Meg Roney, Fran Heckel, Lori Ziegenfus
- Copy Assts.....Joanne Wizna, Patti Marcavage, Cindi MacHatton
- Circulation Manager.....Merrill Troxell
- Business Manager.....Neil Renaldi
- Advisor.....Mr. Richard Savage

The Voice is governed by the Editorial Board with the final responsibility for all material resting with the executive editor as stated in the Joint Statement of Freedom, Rights and Responsibilities of students at BSC.

The Voice reserves the right to edit all letters and copy submitted. A maximum of 450 words will be placed on all letters to the editor with an allowance for exceptions. All letters must be signed and have an address and phone number for verification. Names will be withheld upon request.

The opinions voiced in the columns, articles and notices are not necessarily honored by the entire staff. An unsigned staff editorial denotes a major editorial opinion.

All copy must be submitted by 5 p.m. on Sundays, Tuesdays or Thursdays. A two day notice must be given for late or postponed articles.

Public Relations to be discussed

Jeanne Sacco, PR and special events director, Boscov's Department Store, will discuss "PR, Jobs, and the Writer" 9:30 a.m., tomorrow, Nov. 16, in Bakeless Hall 105. The

discussion, sponsored by the Department of English, is open to the public.

Ms. Sacco received a bachelor's degree in theatre, speech, and dance from Penn-

sylvania State University, and was a professional actress and dancer for several years. In addition to working in New York City, and touring in

(Continued on Page 6)



Student Receives Scholarship

Freshman Karen Klocek is the recipient of this year's \$1,000 JELD-WEN, WENCO Foundation Scholarship. For a number of years, BSC has been the school appointed to make this award to a new student each year through its financial aid office.

Klocek is a graduate of Shenandoah Valley High School and is enrolled in the School of Professional Studies with a concentration on early childhood education. She is the daughter of Mr. and Mrs. Leonard Klocek of Shenandoah.

The Foundation Scholarship was increased from \$750 to \$1,000 two years ago. The recipient must be an incoming freshman from the Ringtown-Shenandoah area from which the WENCO plant draws its employees.

Voice Recital Rescheduled

The voice recital by Stephen Kanouse and George Jacobs scheduled for November 7, has been changed to Saturday, December 4, at 8:15 p.m. in Carver Hall Auditorium.

The Villanova Women's Glee Club, directed by Barry Prager, will present an informal concert with the BSC Husky Singers, directed by William Decker, Friday, November 12, at 8:30 p.m. in the Multi-Purpose Room of Kehr Union.

Black Christian Conference Held

By YINDRA STANLEY

Behold, how good and how pleasant it is for brethren to dwell together in unity. This was the theme for the 2nd Annual Black Christian Conference held in Milroy, Pa., a campsite where 150 college students, administrators and faculty gathered recently.

Colleges that attended were Penn State, Shippensburg, West Chester, Temple University, Lincoln University, and Ohio State.

Activities at the Conference included workshops on "How To Be A Leader, The Fundamentals of Building a Campus, Biblical Models, and How To Survive in a White Institution. These workshops helped students in dealing with various situations on campus. Following the workshops was a situational learning lab where students applied the information from the workshops to real life situations.

Next, came time for "Strutting your God Given Stuff," a talent show where students had a chance to sing and cite daily devotion with prayer.

Sophomore, Donetta Green,

Danville Speaker Visits BSC

Gary Ellis, superintendent of the Danville State Hospital, visited the Bloomsburg State College campus last Monday and spoke to the medical sociology class of Professor Chang Shub Roh on "Stigma Related to Mental Health."

Ellis, one of the original authors of the Pennsylvania Mental Health Act of 1966, presented historical perspectives of the treatment of mental patients in Pennsylvania and the United States, including different attitudes attached to each developmental stage.

The local administrator stated that there were a total of over 560,000 patients in state hospitals during the mid-1950's. He said the number, however, gradually started to decrease due largely to the development of new treatment and drugs, including tranquilizers. Accordingly, the attitudes also changed from the rigid control of the patient's behavior to more human understanding and treatment based on individual needs.

"Such a development," he commented, "is credited to the federal government which encouraged each state to develop a comprehensive mental health act in the 1960's. This laid the basic foundation of the current status of mental health acts in each state of the nation."

Olympian Seeks Help

Now is your chance to show everyone just how talented you really are! The campus literary magazine, The Olympian, wants to see what you can do. This year could be the best publication ever if you just send in your work. The staff will accept any poetry, essays, articles, short stories (about 1000 words), or pen and ink artwork for consideration.

Everybody loves to see his name in print, so send your typewritten (preferably) manuscripts to Kathy Thomas, Box 66, KUB. And if you don't want to be known, go anonymous!

The last day to submit your work is December 6, 1982. So get to work over Thanksgiving, and be creative.

Solar Project Presented

By BRIAN LUCAS

Since the energy crisis, there has been a keen interest in solar energy as a viable energy source. In an effort to determine its feasibility, the Federal Government and various industries have funded solar data collecting projects.

One of these projects, funded by Pennsylvania Power and Light Company and directed by Dr. David Superdock of the BSC Physics department, has been collecting solar radiation and wind data on the roof of the Hartline Science building for over a year.

The Society of Physics Students, as part of its Fall '82 Seminar Series, will sponsor a 30 minute slide presentation by Dr. Superdock on Thursday, November 18th, at 4 p.m. in Hartline room 83. In his presentation, Dr. Superdock will give an overview of his solar project. Students and faculty are cordially invited.

Leadership Workshop To Be Held

Dr. Janice McElroy, executive director of Resource Development Services, Allwintown, will conduct a workshop on leadership styles and their relationship to the workplace on Saturday, November 20, from 9 a.m. to 1 p.m. in Rm. 106, Bakeless Center for the Humanities, Bloomsburg State College.

Sponsored by the Columbia and Montour Counties Women's Conference '83 as one of the "midterm events," the workshop is open to all area women. Registration is limited, however, with the deadline November 12. Those wishing to attend should contact Florence Thompson; 784-6631, by that date. There is a registration fee of \$15 which covers the cost of all materials.

Dr. McElroy, who has been trained and certified by Performax Systems International, Inc. to present this workshop, is executive director of her own management training and consulting firm. In a telephone interview, Dr. McElroy described the November 20th session in this way:

"This workshop will help define leadership, and help provide insight into the personal and environmental factors that

make up the quality of leadership.

"A well-researched, self-assessment instrument will be used to help individuals identify their own dominant leadership style in an objective, non-threatening way. Valuable insight will be gained about one's personal strengths and weaknesses in interpersonal relationships. Participants will learn how to structure a working environment that best complements their styles for maximum group effectiveness."

Dr. McElroy has presented this workshop in many areas and will be conducting it this weekend in Lancaster.

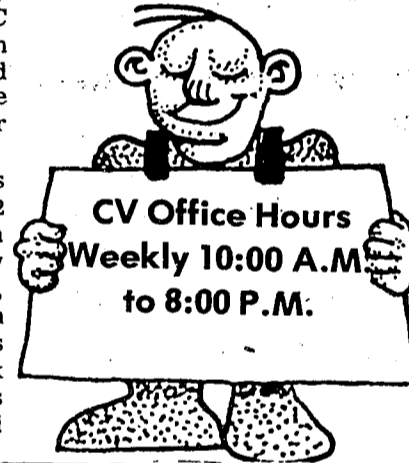
Student Named to Board

(Continued from Page 1)

former member of the Husky varsity football team.

Porter has attended the Black Conference on higher education held in Harrisburg and a conference on violence and extremism held at the University of Maryland.

He is the son of Mr. and Mrs. Amos Porter of Philadelphia and has two brothers and two sisters.



Say **HAPPY BIRTHDAY** With **Raf's Flowers**

Corner of East and Third Sts. 784-4406

World Wide Delivery

KUB
Clipboard of Events

KEHR UNION PROGRAM BOARD

MOVIE TUES. NOV. 16
"Lawrence of Arabia"
2:00 Commuter's Movie, KUB
7:00 Students/Public, KUB

BINGO!
Thursday, Nov. 18
9:00 p.m. KUB

Bloomsburg Players Production Presents
"Comedy Show"
Fri. Nov. 19
KUB

"Snap out of it on Nov. 18th!"

"Nov. 18th is the day we're asking every smoker to quit for 24 hours. And we'll help. Just ask your American Cancer Society for a 'Larry Hagman Special Stop Smokin' Wrist Snappin' Red Rubber Band. Not smoking just might be habit-forming."

The Great American Smokeout
American Cancer Society



Kent Hagedorn

THE COLLEGE games room, located on the ground floor of the Union, offers a release for students between classes. Above, Jody Jackson challenges the game Defender.

Crossword Puzzle

ACROSS

- 1 Movie mogul Marcus
- 5 Heroic tale
- 9 Song syllable-
- 12 The state of being undamaged
- 15 Pal
- 16 Its capital is Dacca
- 17 Nobel chemist
- 18 The art of putting on plays
- 19 Pearson and Maddox
- 21 — Vegas
- 22 Drink to excess
- 23 — Hiss
- 26 Italian painter
- 27 Screenwriter Anita
- 28 Devilishly sly
- 31 Decline
- 32 Devices for refining flour
- 33 Teachers organization
- 34 Shore protectors (2 wds.)
- 36 Machine part
- 37 Type of music
- 38 Doesn't eat
- 39 The Sunflower State
- 40 Part of APB, to police
- 41 All-too common excuse (2 wds.)
- 43 Short opera solo
- 47 Grotto
- 48 Part of the hand
- 50 Made do
- 51 Prevents
- 52 — Alte
- 53 U.S. caricaturist
- 54 Farm storage place

DOWN

- 1 Conservatives' foes, for short
- 2 Go — length (ramble)
- 3 Famous volcano
- 4 Moves jerkily
- 5 Hollywood populace
- 6 Sheriff Taylor
- 7 "Golly"
- 8 — as an eel
- 9 Size of some want-ads (2 wds.)
- 10 Regretful one
- 11 Vanderbilt and — Lowell
- 13 Acquit
- 14 "The Lord is My —"
- 15 Veal —
- 20 Extends across
- 22 Turkic tribesmen
- 23 Mr. Guinness
- 24 Spanish for wolf
- 25 Retrace (3 wds.)
- 26 Disproof
- 28 Ends, as a broadcast (2 wds.)
- 29 Like Felix Unger
- 30 Head inventory
- 32 Hurt or cheated
- 35 Glided
- 36 Lead minerals
- 38 Coquette
- 40 Take — (pause)
- 41 Finished a cake
- 42 Football trick
- 43 "Rock of —"
- 44 Anklebones
- 45 Work with soil
- 46 Too
- 49 New Deal organization

College Bookstores Changing

Campus Digest News Service
College bookstores just aren't what they used to be.

They're better.

Once thought to be just a place to buy books, paper and pencils at the start of each semester, college stores today are expanding their inventory

College stores want to become more to students.

in an effort to make students regular customers. Many of the major college stores across the country now carry anything from sporting goods to calculators, makeup and personal items to record albums, candy to clothing. That's in addition to all the things you would expect to be able to buy there as well—books, calendars, school supplies, art and engineering supplies.

Part of the reason for the change in inventories is that college stores want to become more important to students. Students often have a large amount of disposable income.

The managers of college stores are competing for the student's business with all kinds of specialty and department stores. The more variety of items the college stores can offer when a student comes in to buy his books, the more money they will make. But more important is the likelihood that the student will return for more purchases throughout the semester.

Most college stores are right on or near campus, so they have an advantage in location over their town counterparts. Students travel past their store sometimes many times a day going to and from classes. So the more merchandise the store can use to entice the students to stop by between

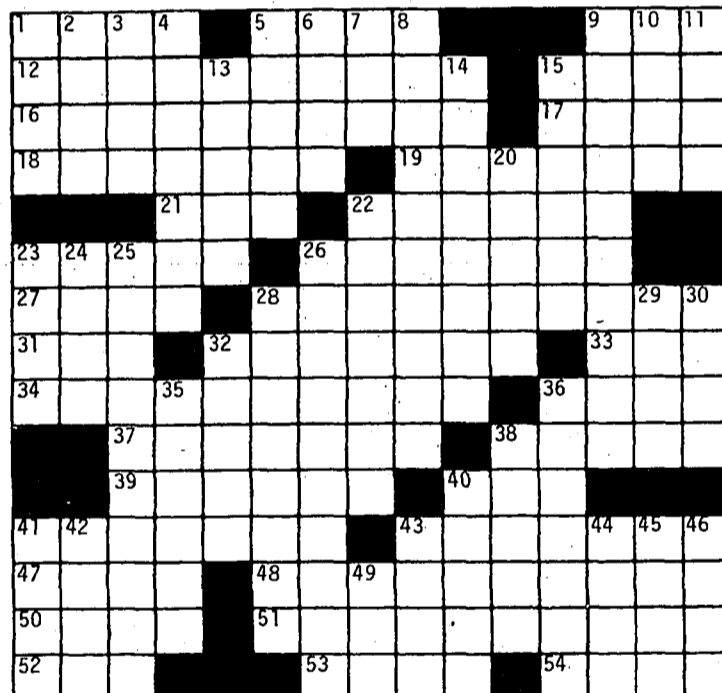
classes, the better.

Students appreciate the services offered by most larger college bookstores, also. Being able to cash a check, mail letters, buy school supplies, check out current reading material, as well as buy magazines, newspapers, albums, snacks, health and beauty aids, sporting goods, gifts, and much more all in one place is extremely convenient.

The National Association of College Stores, which most college bookstores are a

Students appreciate the convenience of most larger college book stores.

member of, is helping managers of the college bookstores become one-stop shops. Emphasis is placed on a larger variety of goods accessible to students, with a wider range of services offered at the bookstores.



© Edward Julius

Collegiate CW77-2

Answers on Page 6

ALBUM SPECIALS THIS WEEK

- Dan Fogelburg "Greatest Hits" \$5.49
- Phil Collins "Hello, I Must Be Going" \$5.49
- George Harrison "Gone" \$5.49
- Al DiMeola "Tour de Force" \$5.49
- Billy Squire "Emotions In Motion" \$5.49

Sale Ends Saturday, Nov. 20th
Wrangler Flannel Shirts - ONLY \$8.99

RECORD & JEANSWEAR
Main St., Bloomsburg

KEHR UNION SNACK BAR

Whole Pizza Pies:

- 9" - \$1.70
- 12" - \$2.70
- 16" - \$4.85
- Sicilian 16" pie: \$4.85

50¢ extra for each topping -
pepperoni, onions, peppers,
mushrooms, extra cheese

COMING SOON ...
Onion rings & breaded zucchini sticks

BSC Community Orchestra

Features Soloist

The Bloomsburg State College Community Orchestra, under the direction of John Master, will present its initial concert of the 1982-83 season in Haas Auditorium, Sunday afternoon, November 14, at 2:30.

Robert Swan, violinist with the famed Chicago Symphony Orchestra, will be soloist. The Concert Choir, directed by William Decker, will perform with the orchestra in rendering the celebrated "Gloria" by Vivaldi, with Mary Decker, Wendy Miller, and Lucille Rosholt, soloists.

The program includes Gluck's "Overture to Iphigenia In Aulis", Prokofeff's "Lieutenant Kije Suite", Hoffmeister's Concerto in D major with soloist Robert Swan, and following intermission, "Gloria".

The concert is being sponsored by the Department of Music, the Community Government Association, and the Arts Council of BSC. Admission is \$2.00 and tickets are available at Kehr Union Information Desk, telephone 389-4202, or at the door. The concert is free with Community Activities card or Patron card.

Sex In Class On The Rise

Campus Digest News Service

Colleges across the country are providing students with a little extra along with their education—sex.

Although sex was never intended to be a part of the college learning experience, that's what a growing percentage of men and women are getting after class or in the instructor's office.

As society relaxes its moral standards about sex, and as the number of women and older students returning to college has increased, sexual relationships between the student body and the faculty have become more and more common.

Some estimates show 10 to 20 percent of faculty members of various colleges date or have dated their students. One poll of students revealed 25 percent of female students who graduated after 1971 had had sex with their professors.

A survey at some Colorado colleges of 111 men and women who had student-faculty affairs in 1980 indicated that most (84 percent) were between male professors and female students.

The average number of affairs for male professors was three compared to one for female professors.

The average grade point of

Colleges Increase Enrollment

Campus Digest News Service

Community college enrollment should increase by at least 5.5 percent this fall over last year, says a study by the American Association of Community and Junior Colleges.

The study of community college agencies in 33 states showed that 25 of the agencies expected and increase in enrollment, 2 expected a decrease and 6 could not project enrollments.

more than 50 students who had been involved with an instructor was an A minus.

This increased sexual activity on campus is giving rise to concern, to put it mildly. Student-teacher relationships have always been considered taboo and often promote suspicion and disapproval from both colleagues and students.

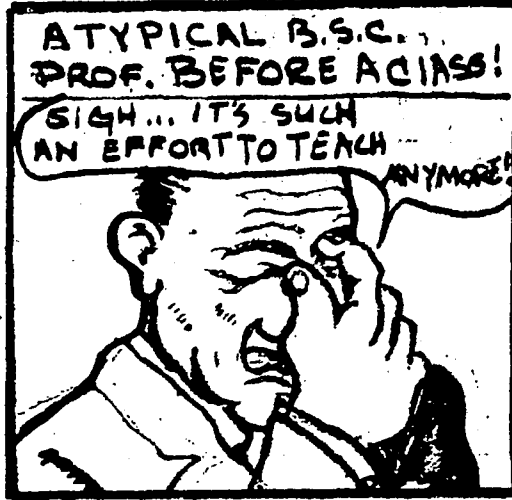
Because the student-teacher relationship is comparable to that of a client-professional, some speak out against these sexual relations as a breakdown in professional standards. According to many critics, a certain amount of distance must be maintained to allow the educational process to succeed.

A professor sexually involved with a student can sometimes find more on his hands than raised eyebrows. Frequently, instructors report that bedroom play is used as blackmail for better grades.

The tables can be turned around, too. Students often suffer sexual harassment from professors. However, a college or university can usually help out in situations like that. Many institutions have established investigative procedures to handle sexual harassment complaints.

College officials may be able to stop unwilling affairs, but they have little power to put an end to relationships between two consenting adults, especially if the two are capable of handling the accompanying difficulties caused by the liaison.

PROFESSOR T. B. A. BY JH/KJ.



Players to Present Bewildering Drama

One of the most puzzling and most discussed plays of recent times, Samuel Beckett's tragic-comedy, "Waiting For Godot," is the presentation in Carver Hall Thursday, Friday, and Saturday, November 18, 19, and 20, at 8:15 p.m., by the Bloomsburg State College Players.

Allen Murphy and Bob Sweeney will be seen as two tramps who, throughout the play, are waiting patiently on an open plain, near a small tree, for the appearance of a certain Godot.

Who this Godot is, however, is never explained and is one of the reasons for the vociferous controversies that have stormed over this play. Some have contended that Godot is God. To still others, Godot means Beauty, Death, or Mercy. In any case, Godot never arrives.

The play is unconventional in structure and a London critic wrote that "it has no plot, no climax, no beginning, no middle, and no end," but that he loved it.

For those with a taste for the unusual and challenging in modern drama, "Godot" is

their cup of tea. As director, Michael McHale says, "We won't be upset if the average theatre goer leaves in a puzzlement or a bit bewildered, but we will care if they are indifferent."

In addition to Murphy and Sweeney as the chief protagonists, the cast will include Tom Bowers as Pozzo, James Dotzler as Lucky, and Eric Strauss as Boy. Dena Harvey stage manages.

"Waiting For Godot" is open to the public with special rates for Senior Citizens. Reservations can be made by calling 389-4291, Monday through Friday, between the hours of 11 a.m. and 4 p.m.; no Saturday or Sunday hours. Tickets will also be sold at the door.

The Campus Voice Needs Writers STOP IN!

Tomorrow's Movie:
 "Lawrence of Arabia"
 2:00 Commuters
 7:00 Students/Public
KUB

Get Results, Use the CV Classifieds!

If you have an announcement to make, need something, have something to sell, lost or found something, can provide a service, or just have a message for someone, submit your classified ad today.

OFFICIAL Ω AGENCY
OMEGA
 AUTHORIZED SALES & SERVICE

EXPERT

WATCH AND JEWELRY REPAIRING

WALKER'S
 Jewelers
 Berwick & Bloomsburg

- GUARANTEED WORKMANSHIP
- QUICK SERVICE
- REASONABLE PRICES
- GENUINE FACTORY PARTS USED

DIAMOND RESTYLING AND REMOUNTING A SPECIALTY

BSC's 1st Wrestling Tourney Hosts Eight Teams

Editor's Note: The following story and standings appeared in the December 2, 1977 issue of the CV, Al Schock, Sport's Editor.

By MIKE DENNEN

The first annual Bloomsburg Invitational Wrestling Tournament will be held December 3 in Nelson Fieldhouse on the BSC campus.

Teams participating in the tournament along with the Huskies are:

Bucknell University; Lycoming University of Tennessee (Chattanooga); Morgan State; University of Virginia; Kutztown State; Duke University.

The Husky squad, coming off of a strong second place finish in the ESSC Open Wrestling Tournament, has been ranked 17th among NCAA Division I schools in the Amateur Wrestling News pre-season listings. This list includes all the major colleges across the nation.

"It's great to be listed in the company of the traditionally top wrestling teams of the nation and have the state of Penn-

sylvania represented with the three teams of Penn State, Bloomsburg, and Clarion," commented Coach Roger Sanders upon notification of this honor.

Tournaments awards will be given to the first and second place winners in each of the ten

weight classes as well as an outstanding wrestler award.

The preliminary bouts will begin at 10 am with the consolation finals and finals beginning at 6:30 p.m.

Tickets can be purchased for \$2.00 per session, \$1.00 with student I.D.

AMATEUR WRESTLING NEWS NCAA DIVISION I TOP 20	
1. Iowa State	10. Michigan
2. Oklahoma State	11. Syracuse
3. Iowa	12. Cal Poly
4. Oregon State	13. Brigham Young
5. Wisconsin	14. Penn State
6. Kentucky	15. Indiana
7. Oklahoma	16. Portland State
8. Lehigh	17. BLOOMSBURG STATE
9. Arizona State	18. Michigan State
	19. Mississippi
	20. Clarion State

Seminar Series Continues

"Developing an Asexual Value System" will be the topic of the third presentation in the Women Student's Seminar Series. Dr. William R. Stayton, Assistant Professor of Psychiatry and Human Behavior at The Thomas Jefferson University Medical College in Philadelphia will lead

this discussion today Nov. 15. Dr. Stayton believes that making sexual decisions is a critical issue for college students. His presentation, therefore, will focus on the types of sexual value systems found in a college campus and relevant for each student. In

(Continued on Page 7)

PR

(Continued from Page 2)

Summer stock, she taught creative drama, and was affiliated with Actor's Theatre, Louisville.

She was a radio station account executive, a teacher at the Chataqua Institute, and a program director for the YMCA. She has been with Boscov's two years.

**Answers
to cross-
word puzzle
from
page 4**

L	O	E	W	S	A	G	A	T	R	A			
I	N	T	A	C	T	N	E	S	S	C	H	U	M
B	A	N	G	L	A	D	E	S	H	U	R	E	Y
S	T	A	G	E	R	L	E	S	T	E	R	S	
		L	A	S	T	I	P	P	L	E			
A	L	G	E	R	R	A	P	H	A	E	L		
L	O	O	S	S	E	R	P	E	N	T	I	N	E
E	B	B	S	I	F	T	E	R	S	N	E	A	
C	O	A	S	T	G	U	A	R	D	G	E	A	R
		C	O	U	N	T	R	Y	F	A	S	T	S
		K	A	N	S	A	S	A	L	L			
I	F	O	R	G	O	T	A	R	I	E	T	T	A
C	A	V	E	F	I	N	G	E	R	N	A	I	L
E	K	E	D	F	O	R	E	S	T	A	L	L	S
D	E	R		N	A	S	T	S	I	L	O		

Peace Corps

(Continued from Page 1)

can be much different than they're used to here. It's just not an easy thing to do.

"Most people who leave the Peace Corps do so in the first six months, the most difficult time of adjustment. Of those who serve the full two years, though, and many extend beyond that, most feel that the experience was very worthwhile and that they got more out of it in terms of personal growth and satisfaction than they put in in long, often frustrating, hours of developmental assistance."

If you're a senior-grad, and a U.S. citizen, interested in

becoming a volunteer, contact the Career Development and Placement Office, Ben Franklin Hall, now for an application and interview appointment. Others should attend the general information meeting on November 29 in Kehr Union's multipurpose room A or come to the information booth in Kehr Union on November 29. A former volunteer will conduct the meeting, open to all, and will take questions about Peace Corps service. A 30-minute color film highlighting three volunteers' lives will be shown. Admission is free.

Poff

(Continued from Page 7)

find that it has grown into quite a large group. I'd like to see more athletes on the varsity level involved, because it is important to be an example in both words and actions on campus."

Coach Sanders has been familiar with Poff for quite

some time - Carl's father was Sander's high school wrestling coach.

Sanders commented: "Carl Poff projects the image of BSC that I'd like to see projected."

With only two seniors and one junior on the squad of 35 wrestlers, Poff's teaching influence is ready for the test.

1982 BSC

Wrestling Schedule

If you want a chance to see the BSC wrestling team this year, you had better plan ahead.

This is because the Huskies' first dual meet of the season at home won't be until West Chester comes to Nelson Fieldhouse on January 18. The other reason you may want to plan ahead is that Huskies will have only four home dual matches, all in the spring semester.

The other home event will take place this weekend at Nelson - Nov. 19-20, Friday and Saturday, when the Huskies host the BSC Invitational. This is the only home wrestling event of the fall semester.

This year the Huskies will remain in the friendly confines of Pennsylvania for the majority of the schedule.

"We try to schedule a major trip every two years," explained assistant coach Carl Poff. Last year the Huskies travelled through the midwest, where they encountered such wrestling powers as Iowa State.

"But we feel very fortunate," Poff continued, "that we can remain in the state and still wrestle top 20 teams - some of the best teams in the country."

The Huskies will indeed meet some of the top teams in the country. The Lehigh tourney usually attracts the top ten teams, while the Lock Haven and Wilkes tournaments offer the best in the east. EWL powers Cleveland St., Clarion St., Lock Haven and Millersville are all on the schedule, as are the defending EWL champions, Penn State.

The Nittany Lions invade Nelson Fieldhouse on February 17.

1982-83 Wrestling Schedule	
NOV. 19-20	BSC INVITATIONAL (Southern Connecticut, Franklin & Marshall, Clarion St., Penn St., Virginia, Duke, Bucknell Bloomsburg St.)
Dec. 3-4	At Lehigh Tournament
Dec. 10 - 11	At Lock Haven Tournament
Dec. 29 - 30	At Wilkes Tournament
Jan. 8	At West Chester Tournament
Jan. 11	At Shippensburg State with Kutztown State
Jan. 14	At Indiana (PA) 7:30 p.m.
Jan. 15	At Slippery Rock State 1:30 p.m.
JAN. 18	WEST CHESTER STATE 7:30 p.m.
Jan. 21	At Clarion State 7:30 p.m.
JAN. 25	LOCK HAVEN STATE 7:30 p.m.
JAN. 29	CLEVELAND STATE 2:00 p.m.
Feb. 1	At Millersville State 7:30 p.m.
Feb. 4	At West Virginia 8:00 p.m.
Feb. 5	At Pittsburgh with Navy
Feb. 11 - 12	PSAC Tournament (At Edinboro)
FEB. 17	PENN STATE 7:30 p.m.
Feb. 25 - 26	EWL Tournament (At Clarion)

COME SEE

"JEKYLL & HYDE"

...TOGETHER AGAIN®

A comedy that examines modern living through chemistry

ONLY \$2



"They told Dr. Jekyll to take his experiment and shove it up his nose..."

...so he did."

CAPITOL THEATRE
MON. & TUES. NITES,
NOV. 15 & 16
SHOWTIME: 7 & 9:15 P.M.

*Contact any SIO brother for tickets OR call 784-5962



THE VOICE

SPORTS

Carl Poff Joins Husky Coaching Staff

By DAN CAMPBELL
Sports Editor
Carl Poff may be a new name to most students on the BSC campus, but BSC isn't new to Carl Poff.

Poff was an intrical part of the BSC wrestling teams from 1974 - 1979. He placed third in the Eastern Wrestling League tournament three times. The EWL tourney is the NCAA

qualifier.
"Carl Poff is one of the best teaching coaches we have ever put out," stated BSC athletic director and head coach Roger Sanders. "He has endless

energy and will be a beneficial addition to our team."

"I feel real fortunate and lucky to get this position," Poff stated. "Roger Sanders was a great coach and it will be a real pleasure, to be honest, working for him."

Last year, Poff was an assistant on the University of North Carolina Tar Heels team, which finished fifth in the season-ending NCAA tournament, behind the "Big Four" of Iowa-Iowa St. and Oklahoma-Oklahoma St.

"I learned a lot at NC," Poff said. "The coach and situation down there are different. Coach Sanders and the BSC program run in just the opposite manner - it is neat to have worked on both ends of the stick."

In fact, it was in last year's NCAA Championship tourney when Poff was put into a unique situation.

"In the 134 pound finals," Poff explained, "I was coaching a guy from NC by the name of CD Mock - we were teammates in high school. On the other side of the mat was Roger Sanders coaching Don Reese. Not only was I coaching against my old coach, I was coaching against an old college teammate, who was wrestling an old high school teammate."

Mock beat Reese for the 134 pound national title. This year Poff is in the Bloomsburg corner.

"I wasn't real sure," Poff continued, "about the talent up here. But I've been real impressed with just how good these kids are and surprised to see how hard they are working this early in the year."

When Poff was an undergraduate at BSC, he was an officer of a christian group known as the Fellowship of Christian Athletes.

"At the time there were hardly more people than the officers involved," Poff said. "But I've been real pleased to

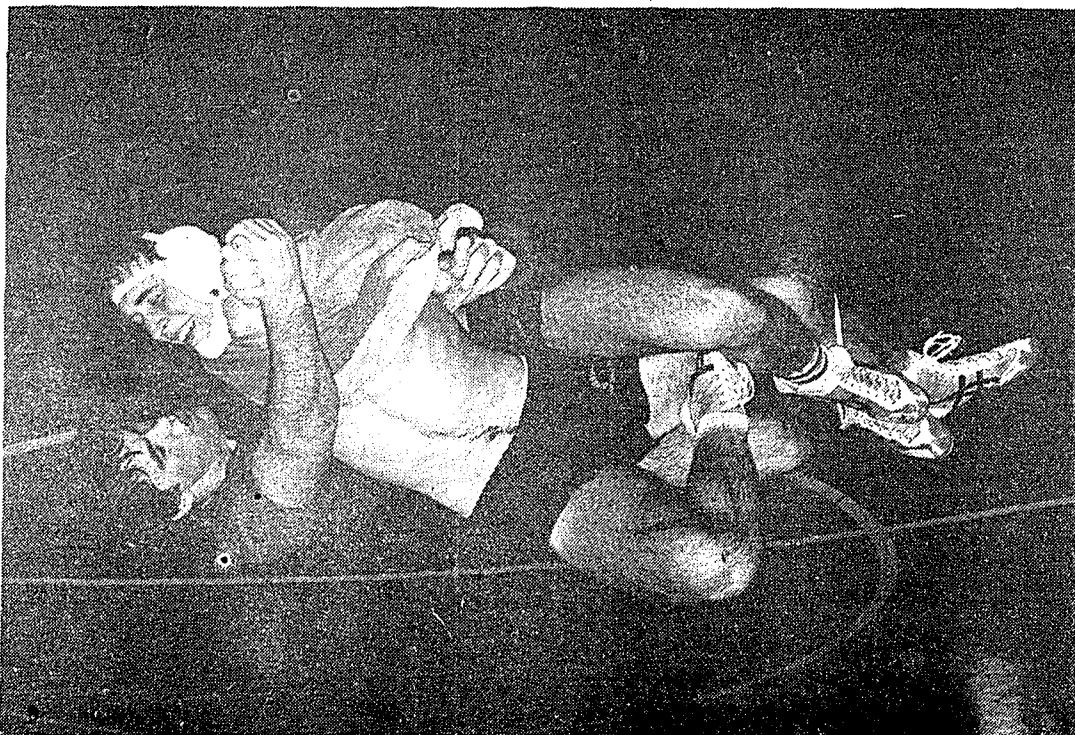
(Continued on Page 6)



Kent Hagedorn

CARL POFF. The new assistant Husky Wrestling coach instructs a team member on escapes from the bottom position.

BSC Invitational Starts Friday at Noon Saturday Action Starts 10 a.m. Finals Saturday Night 7 p.m.



Kent Hagedorn

JOHN McFADDEN works on his pinning combination at a recent Husky practice.

Seminar

(Continued from Page 6)

addition, he will offer criteria for making sexual decisions. Other important sexual issues faced by college students will also be discussed.

The seminar will be held at 7:30 in the Kehr Union Building, Multipurpose Room A. All interested members of the BSC community are invited and encouraged to attend.

CV Classifieds

Announcements

PART-TIME EMPLOYMENT - Marketing and Sales Position, 15 hours per week. Car needed. - \$300 per month - Interviews, Nov. 15, Room 15 Ben Franklin Bldg. 11 a.m. to 2 p.m. - Sign up sheet in Career Dev. Center.

HELP WANTED -- EARN FREE TRAVEL AND EXTRA MONEY as Campus Representative for Student Travel. Call Jim at 617-383-9560 daily or 617-545-6604 after 6 p.m.

FOR SALE: SKI BOOTS -- New Condition, Caber Bio 8 1/2 -- Garmont Gara 8 \$75 pair -- Call 784-9072

Personals

PEPE, TURN ON your heart light. -- E.T.

CAN YOU IMAGINE...LEO C. BALD?

TOM DIEHL, Hoped you'd respond by now. Did you like the balloons? -- RSVP

FOR SALE: -- Glenn -- cheap. Write P.O. Box 1802

Classified

I wish to place a classified ad under the heading:

Announcements

Lost and Found

For Sale

Personals

Services

Wanted

Other

I enclose \$ _____ for _____ words. (at 10¢ a word.)

Send to: Box 97 KUB or drop in the Campus Voice mail slot, 3rd floor Union before 5 p.m. on Sunday or before 5 p.m. on Tuesday.
All classified must be pre-paid.

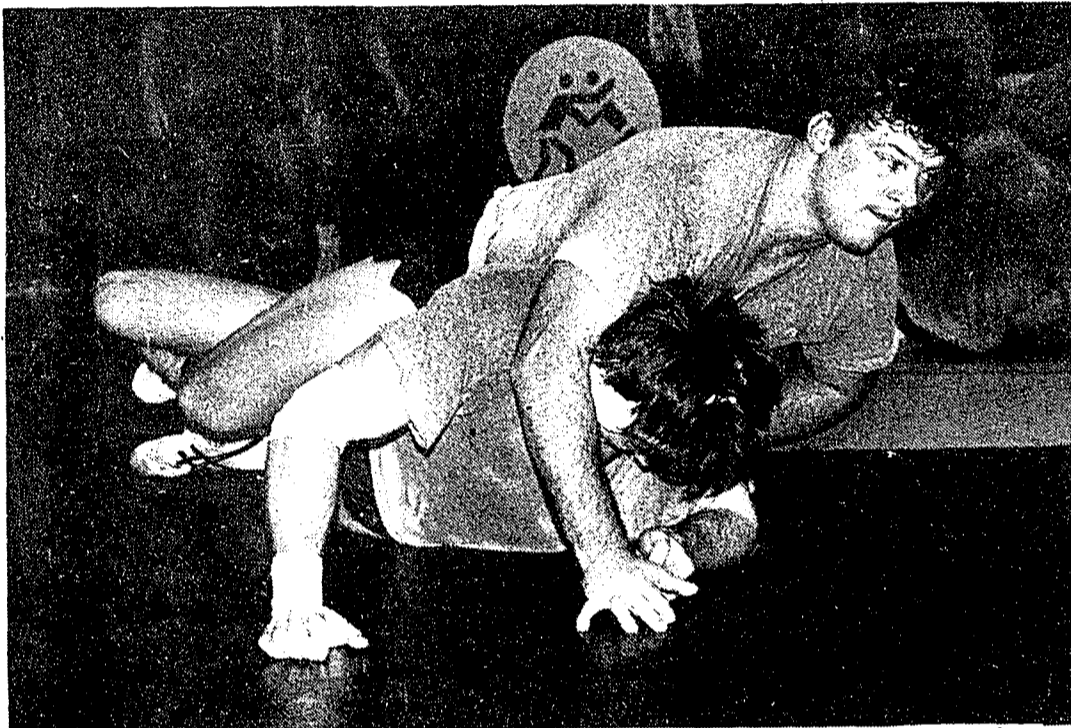
THE VOICE

SPORTS

'82-83 Wrestling Preview

Todd Cummings Named Captain

Huskies are a Mixture of Young and Old



Kent Hagedorn

SOPHOMORE TOM GIBBLE moves up a weight this year to 177. As a freshman, Gibble won a PSAC title and qualified for the national tournament.

BSC Invitational Scheduled for Weekend

By DAN CAMPBELL
Sports Editor

The 1982-83 BSC wrestling season will formally get under way this Friday and Saturday - November 19-20 - when the Huskies host the fifth annual BSC Invitational. It will be the only home event for the grapplers in fall semester.

Participating in this year's meet will be Bucknell, Clarion, Duke, Franklin and Marshall, Penn State, Southern Connecticut and the University of Virginia.

"The tournament is usually dominated by BSC, Clarion and Penn State," said assistant coach Carl Poff. Last year the tournament was won by the host team in an exciting final round. The Huskies went into the finals trailing Clarion, and the Golden Eagles had more wrestlers in the finals. But a large crowd was treated to some exciting wrestling as the Huskies managed to squeak out the win.

"Because the tournament is the season opener for most of the teams," said head coach Roger Sanders, "we set up the format a little differently. Each team is allowed two participants

at each weight class - this allows each coach to get a look at more people in a match situation."

The Huskies use the tournament to help establish a starting lineup for the year, Sanders indicated.

Each wrestler is also given a three pound weight allowance.

The first round starts on Friday at noon and the tournament will wrap up with the finals on Saturday evening at 7:00 p.m.

Students will be admitted free of charge throughout the tournament until the finals, when they will be charged \$1.00. The schedule for the weekend is as follows:

Round 1 - Friday, Nov. 19 - noon
Quarter finals - Friday - 6 p.m.

First Round Consolations
Immediately following the quarter finals
Consolations Saturday - Nov. 20 - 10 a.m.
Semi-finals - Saturday - noon
Finals - Saturday - 7 p.m.
3-4-5-6 places will be wrestled
for Saturday afternoon.

The Lineup

By DAN CAMPBELL
Sports Editor
The Lineup

Young but experienced. That seems to be the best way to describe the 1982-83 BSC wrestling team.

"We have two seniors returning," indicated Carl Poff, the Huskies new assistant coach. "Woody Fry is our only junior with experience and the rest are sophomores and freshmen."

Todd Cummings and Joe Wade are the returning seniors Poff indicated. Cummings will

"We have two seniors (Cummings and Wade) returning...Fry is our only junior with experience and the rest are sophomores and freshmen."

product. He wasn't a top prospect out of high school, but he had the basic tools and refined them on our mats."

Dagle will move up to the 134 pound spot vacated by Don Reese. Reese finished second in the national tournament last year, and will be a tough act to follow.

Bui Dagle was a freshman All-American last year - placing himself among the top six in the nation's freshman at 134, where he saw limited action.

Battling Fry at 126 will be Phil Conner, while Ty Smith and John Eck will be trying to crack the lineup at 134.

At 142, one of this year's top recruits, Keith Youtz, should see a lot of action. Youtz finished second in last year's PIAA Tournament. Sophomore Nelson Fritz will be Youtz's competition for the weight. Fritz will also be in the running at 134.

At 150, sophomores Mike Hamer and Ed Tonnesen have been working real hard according to Sanders, and will be looking for the starting berth, while Greg Sullivan and Rich Rosati will be looking at the 158 and 167 pound weight classes.

At 177, Tom Gibble returns after a season in which the freshman won a PSAC title and qualified for nationals. As a sophomore, Gibble will be competing 10 pounds heavier for the first part of the season.

John McFadden treads weight classes with Wade this season. As a freshman, John placed fourth in the EWL tournament, missing the third place slot by a criteria decision that reverted back to the first take-down of the match.

"We are young and experienced at some weights," head Coach Sanders said. "But we are unproven at other weights and still need some experience. Our best lineup is Sullivan, Rosati, Gibble, Michaels, McFadden and Wade (150-HWT) but it will take time for them to get to those weights. We are going to be better in February than we are now, no doubt about it. We are definitely in a rebuilding year, but we are going to be competitive. This is one of the hardest working teams I've ever had."

be assuming the captain's role.

Last season, Wade won Pennsylvania Conference and Eastern Wrestling League championships at 190 pounds. The EWL title qualified him for nationals, where he went into the Division I event seeded 12th in the country.

Cummings just missed a shot at the national tourney with a third place finish in the EWL tourney. The year before, Todd made the trip to nationals. He also finished third in the PSAC tourney.

Wade's record last year was 20-8-1, while Cummings finished 25-12. This season Wade will move up to heavyweight and Cummings will stay at 118.

Freshman Joe Cusson will probably see some action at 118 also.

At 126, junior Woody Fry will try and pick up where he left off last year. After battling freshman Troy Dagle for much of the season for the 126 pound slot, Fry came on to place third in both the PSAC and EWL meets.

"Woody is good for BSC wrestling," indicated head coach Roger Sanders. "Woody is a typical Bloomsburg

More Wrestling Inside

National Field Hockey
Results in Wednesday's Voice