

The MAROON AND GOLD News

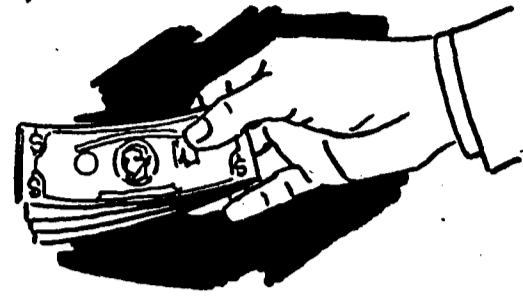
Vol. LIII No. 2

Student Publication
BLOOMSBURG STATE COLLEGE

September 16, 1974

BLOOMSBURG STATE COLLEGE
Bloomsburg Pennsylvania

COMMUNITY ACTIVITIES BUDGET 1974-75



EXPENSES

I. ATHLETICS

Athletic Awards Dinner
Athletic Fund
Athletic Insurance
Athletic Office
Baseball
Basketball
Basketball
Cross Country
Field Hockey
Football
Golf
Swimming
Swimming
Tennis
Tennis
Track
Wrestling
Soccer

TOTAL ATHLETICS

II. RECREATION

Intercollegiate
Intercollegiate
Physical Education
Recreation
Student Activities

TOTAL RECREATION

III. ARTIST AND LECTURE SERIES

Arts Council
Civic Music Association

TOTAL ARTIST AND LECTURE SERIES

III. COLLEGE AND COMMUNITY SERVICE

Alumni, High School, College and Community Service
Commencement
The Pilot
Ali College Calendar
Homecoming
Freshman Orientation
Parent's Weekend
Maroon and Gold Newspaper
Obituary
Olympian
Football Programs
Community Activities Bus
Station Wagon and Club Wagon
Annual Education Conference
Big Name Entertainment
Bloomsburg Ambulance Assoc.
CGA Scholarship Fund
Social Security Taxes
Secretarial & Bookkeeping Services
Awards Day Convocation

TOTAL COLLEGE AND COMMUNITY SERVICE

IV. MUSIC APPROVED BUDGET

Band
Concert Choir
Men's Glee Club
Studio Band
Women's Glee Club

Section A (cont'd)

Medical Supplies
Basketball (Women)
Field Hockey (Women)
Recreation
Tennis (Women)
Water Ballet
New:
Athletic Office
Swimming

Total Section A

Section B

Physical Therapy
Men's Intramural
Women's Intramural

Section B
\$ 77,000

II. ARTIST AND LECTURE SERIES

Arts Council
Civic Music Association

TOTAL ARTIST AND LECTURE SERIES

III. COLLEGE AND COMMUNITY SERVICE

Alumni, High School, College and Community Service
Commencement
The Pilot
Ali College Calendar
Homecoming
Freshman Orientation
Parent's Weekend
Maroon and Gold Newspaper
Obituary
Olympian
Football Programs
Community Activities Bus
Station Wagon and Club Wagon
Annual Education Conference
Big Name Entertainment
Bloomsburg Ambulance Assoc.
CGA Scholarship Fund
Social Security Taxes
Secretarial & Bookkeeping Services
Awards Day Convocation

TOTAL COLLEGE AND COMMUNITY SERVICE

The Budget: BSC Budget Request Community Activities Budget

Budget
1972-73
\$ 4,850
4,150

Expenses to
6/30/73
\$ 4,850

Expenses
6/30/73
445.80
445.59

Budget
73-74
4,078
2,600

absorbed elsewhere

Budget
1973-74
\$ 6,850
3,850
600
600
850
500
1,000

4,250

4,029
\$ 89,755

1,000
975
2,100

4,075

5,000
3,220
1,000

\$ 9,220
\$ 98,995

1,050
1,500
1,400

1,030

650

947

800

77

\$ 14,250
2,000
\$ 16,250

6,000

1,825
2,600
1,750
2,800

1,400
9,100

13,445
600

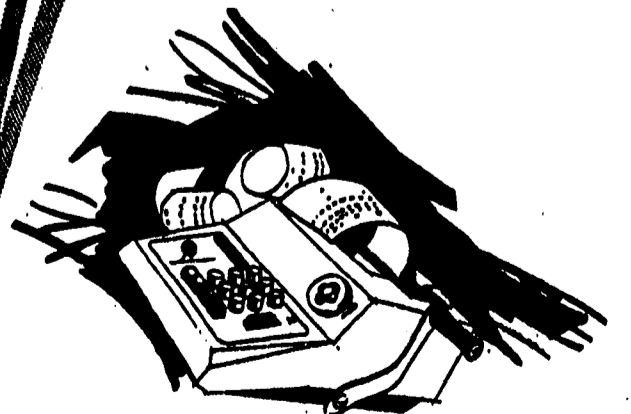
1,000
2,000

20,000
420

400
1,250

17,300

789.50



See Related Story Pages 6 and 7)



The Board of Trustees held their first meeting of the '74-'75 school year last week. (Photo by D. Maresh.)

Trustees Discuss Budget and APSCUF Settlement

By Barb Wanchisen

"Under no circumstances do we think tripling is a good situation..... This new residence hall will definitely be the answer to the problem," said President McCormick at the Board of Trustees meeting last Wednesday night at 7:30 p.m. in Carver Hall.

The new dormitory the President was speaking about is the one to be constructed in place of Waller, across the street from Elwell Hall.

Waller To Be Torn Down

Mr. Buckingham, Vice President for Administration, informed those present that the plans for the new dormitory have been completed and that by

Dec. 1, Waller should be in the process of demolition. G.S.A. has approved the necessary additional funds to begin tearing Waller down.

Haas To Stop Leaking

Haas Auditorium has been another source of concern in the last few months. The roof has been leaking and during heavy rains there has been a great deal of water entering into the building. Organizations such as the Concert Choir and Band have been forced to seek other places to practice.

However, Mr. Buckingham said that by Oct. 2 bids will be open to contractors and that by

the middle of November Haas will get that new roof.

Mr. Buckingham also stated that Carver Hall will have the necessary rewiring plans for the upper floor in the near future.

Robert Redman Stadium To Open

After 12 years of waiting, the new stadium behind Nelson Field House will open. The first home football game will be on Saturday Sept. 21 at 1:30 p.m. Preceding the game, an official dedication will take place that should last about 20 minutes.

The Budget

"There have been some very unusual inflationary cost since last spring," noted President McCormick.

When the budget for this year was still in process last spring, an inflationary percentage was taken into consideration. A request for supplemental monies will be drawn up and President McCormick can see no problems in attaining it.

Commonwealth-APSCUF Settlement?

A new settlement was proposed a few weeks ago by negotiators for both the Commonwealth and A.P.S.C.U.F. It has only to face ratification by the APSCUF members on the state college and university campuses. Basically the four provisions are (1) this agreement will be binding for at least a 3 year period. (cont. on pg. 11)

Volunteers are needed to work with children in Bloomsburg, acting as big brothers and big sisters, helping out with homework and providing recreation and friendship. A few hours of your time each week will make some child very happy. If interested give your name, address and phone number to: Diane Leply, Box 3872, Kehr Union.

(cont. on pg. 3)

C.A.S. To Provide Student Aide

The Commonwealth Association of Students, the only educational "consumer advocate" group for all the students in Pennsylvania's fourteen state colleges, has reopened its office at 229 State Street, Harrisburg, Pa. 17101. C.A.S. staff members can be contacted at (717) 233-7618 during office hours, 9 a.m. to 5 p.m. C.A.S. evolved from the individual student governments and P.S.A.S.G. (Pennsylvania State Association of Student Governments) to represent the individual students collectively, link the students and the Department of Education, the State Legislature and the governor. The decline in appropriations for higher education compelled the formation of C.A.S. to act as their voice in the capital.

With a contingency that includes 80,000 state college students, C.A.S. has the potential to influence legislation for the students.

Expectations for the coming year include:

A more substantial student

representation on the Board of Regents for the proposed Commonwealth University Act, and a clearer definition of a student association to represent the student's voice in Harrisburg.

A voter registration campaign throughout the commonwealth to involve more students the selection of their representatives, giving the students and C.A.S. greater influence in student related legislation.

An investigation into the regulation and control of student activity fees in the state colleges. The main question under scrutiny by C.A.S. and the Justice Department is: "Are the monies collected by the student governments or by the Commonwealth?"

In addition, C.A.S. will attempt to provide services to its individual members: discounts in travel expenses, insurance, accommodations, tires, etc., may be contracted. Development of a student legal aid fund is forthcoming.

Schnuer and Flynn Fill Prominent Posts

Nancy L. Schnuer has been appointed Assistant Attorney General, Department of Justice, to serve as Regional Counsel to the State College Presidents in the Northeast Region of Pennsylvania which includes Bloomsburg, Mansfield, Lock Haven, and East Stroudsburg. Attorney Schnuer began her new assignment on August 21, 1974 and has her regional office on the Bloomsburg State College campus in Carver Hall.

Mrs. Schnuer's Bachelor of Science degree in Political Science and Economics was received from The American University, Washington, D.C. in 1971, and this year was awarded her Doctor of Jurisprudence degree from Dickinson School of Law.

She has served as a legal assistant in the Department of Education of Pennsylvania, working on the Public School Code Project, and was also associated for a period of two years with Legal Services, Inc., Carlisle, Pa. She holds membership in the Law Student Division, American Bar Association, American Civil Liberties Union; and League of Women Voters.

Dr. Gertrude Flynn, a prominent personality in psychiatric nursing, has been appointed to the new position of Director of the Nursing Program at Bloomsburg State College, according to Dr. C. Stuart Edwards, Dean, School

of Professional Studies.

The Bachelor of Science Degree in nursing at BSC has been initiated to act as the main support program for other educational endeavors in health care. It is being made possible through the inclusion of new faculty with specialists in health care fields, through the establishment of new courses, through the relationships developed with health agencies, and with the eventual goal of the development of a graduate program in nursing. It is felt that in the physical health care section, nursing has received the greatest attention and has been identified as the training program most needed in the region served by BSC. Extremely beneficial is the close proximity to and the already-established working relationship with the Geisinger Medical Center, which affords excellent opportunity for the development and services of a nursing program. Dr. Flynn's first year will be utilized for planning with the initial

(cont. on pg. 4)

Play Orchestra

A farce with music, set in an Eastern spa, and a curtain-raiser set in Hell make up the City Center Acting Company's unusual double bill, "Play-Orchestra," which will be presented on Monday September 16, 1974, 8:15 at the Haas Auditorium, sponsored by Arts Council. The plays depict the "romantic triangle" from two distinctly 20th century perspectives.

"Play," the curtain-raiser by Samuel Beckett, is a private vision of Hell in which a menage a trois played by Mary-Joan Negro, Gisela Caldwell and Sam Tsoutsouvas is immobilized in funeral urns, "Orchestra," by Jean Anouilh, is a sardonic farce about one night in the life of an all-girl orchestra. The orchestra, performing salon music of the 1920's, has a male pianist, played by Jared Sakren, who is fought over by Mary Lou Rosato and Nita Angelletti. Each of the plays, by a European author, is receiving a rare American performance at the Acting Company's hands.

The Company, under the artistic direction of John Houseman, is now in its third successful season of touring classic and modern plays in repertory coast to coast. Jack O'Brien directs the double bill for the Company, and has made a special adaptation of "Orchestra" from the French.

Musical arrangements are by Fritz Rikko. Douglas W. Schmidt designed the "Play-Orchestra" settings. Costumes are by Nancy Potts and lighting by David F. Segal. Admission for "Play-Orchestra" by Student ID Card-Faculty Communities Community Activities of \$3.00 for adults and \$1.50 for students. Tickets are available in advance in Room 114 of Haas Auditorium.

ETS Sponsors Examinations

College seniors preparing to teach school may take the National Teacher Examinations sponsored by the Educational Testing Service (ETS) on November 9, 1974, January 25, April 5, and July 19, 1975.

ETS is a nonprofit, educational organization which prepares and administers this testing program...

When hiring new teachers, many school districts look to the results of this test for further information on candidates. Several states also use the results of the tests for certification and licensing of teachers.

On each full day of testing, prospective teachers may take the Common Examinations which measure their professional and general educational background. An area examination may also be taken which measures their mastery of the subject they expect to teach.

Prospective teachers should contact the school systems where they seek employment, or here at school, for specific advice on which examinations and on what date they should be taken.

The "Bulletin of Information for Candidates" contains a list of test centers, and as well as registration forms. Copies may be obtained at the placement office or by writing to the National Teacher Examinations, Box 911, Educational Testing Service, Princeton, New Jersey

Reserved Army Training Corps Offers Leadership Labs

"Good afternoon, cadets." Is this any way for an instructor to greet a classroom of BSC students? It is if the instructor is a lieutenant colonel of the United States Army, and if the class is a basic course of the Reserved Army Training Corps program, Bloomsburg Company.

Responding "good afternoon, sir," approximately 30 students met Tuesday in a Centennial gym classroom for the first of their weekly Leadership Laboratories, on "Common Hours." This basic course, which has interested an equal number of women and men of the freshman and sophomore

classes, involves no commitment to the US government or the Army. After completion of this basic term, the advanced program encompasses a legally binding contract and obligation to the United States Army for enlistment.

In addition to the freshmen and sophomore trainees, five upper classmen will be involved with non-commissioned posts in the Bloomsburg Company. Captain Cadet Richard Christian, a senior at BSC, will act as company coordinator, with enlisted-juniors Dent Canouse, Kirby Rothrock, Robert Rosics and

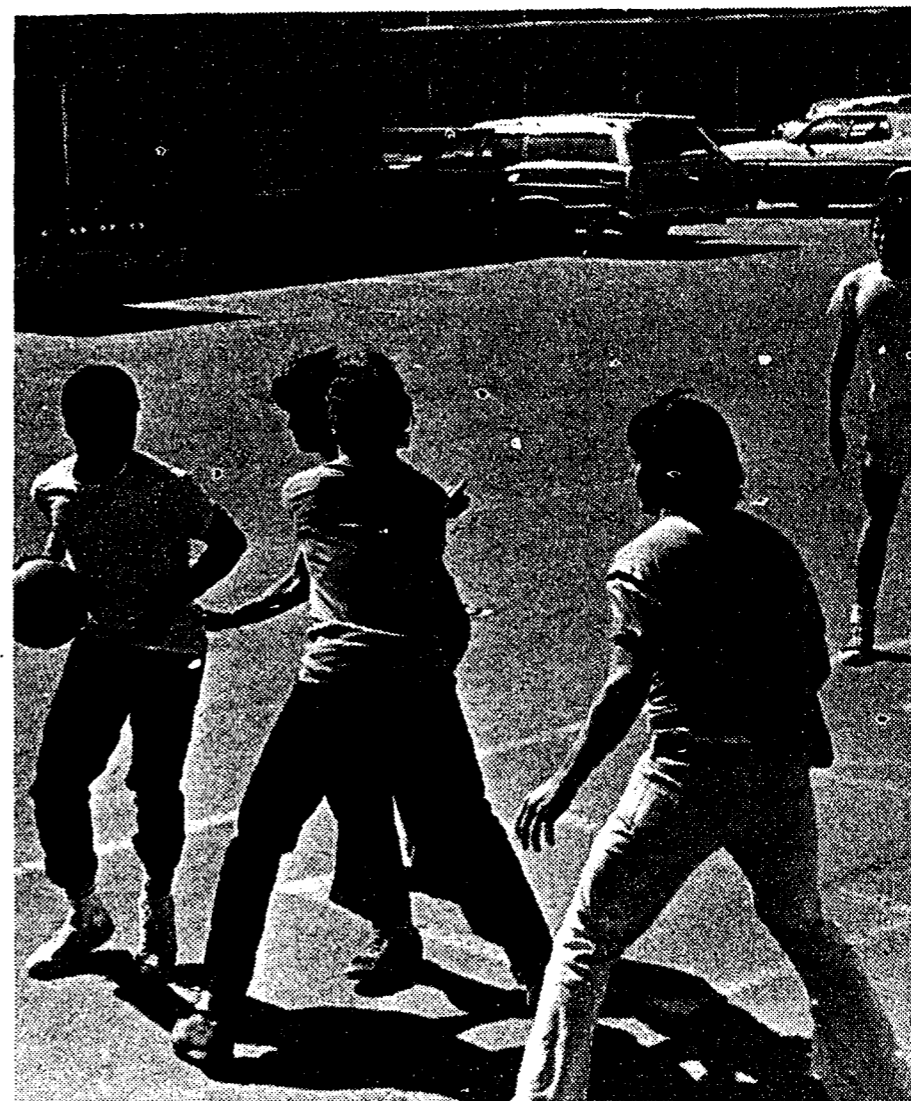
David Orgler under him.

The junior class cadets have all completed their basic course or have earned constructive credit through active service, and were enlisted in brief ceremonies held during the class hours on Tuesday.

The Bloomsburg Company will be under the jurisdiction of the Lieutenant Commander, Cadet Colonel Paul Bush of Bucknell. Bucknell is the "father" company of the new Bloomsburg, Lycoming and Susquehanna branches. The ROTC program this year, according to Cadet Colonel Buch, will feature "increased realism," utilizing the same training as in the Army; practical training in military matters, communications, drill work, small unit tactics, individual tactical training and map and compass training.

For the Bloomsburg cadets, the course holds in store an introduction to administration and uniforms, orientation to military equipment and the wearing of uniforms and basic

(cont. on pg. 11)



Students take a break from their new schedules with a quick basketball game behind Luzern. (Photo by S. White.)

For Your Information

Student Jobs in Psych Department

The Psychology Department is recruiting students to serve as aides in their introductory courses. The aides will work with Mr. Bashore in running discussion groups, tutoring, monitoring study skills and individual progress in the course.

The aides will work up to ten hours per week and receive two dollars per hour for their effort.

This student aide program is funded by the Educational Opportunity Program under the direction of Jesse Bryant. This is a trial semester and if preliminary data show enhancement of student performance, the EOP office and the Psychology Department plan to submit a Special Services Grant application to continue the program.

Interested students must have completed General Psychology satisfactorily. Contact Mrs. Long, Department Secretary, Ext. 3916.

Elementary Ed. Majors

Applications for student teaching will be taken for both the fall and spring semesters for 1975-76.

Elementary Education majors will meet Tuesday, September 17, at 3:30 p.m. in Kuster Auditorium. Those unable to attend this meeting are to schedule an appointment with the Elementary Education Office, Room 13, Waller Administration Building, Phone 389-3708.

Secondary Education majors will meet Thursday, September 19, at 3:30 p.m. in Kuster Auditorium, Hartline Science Center. Contact the Secondary Education Office, Room 14, Waller Administration Building, Phone 389-2712.

All students are requested to delay pre-scheduling with their advisors until they have been assigned their student teaching semester. This may change their course selection for the spring.

Dr. Wolfe, Dean of Extended Programs

Dr. Richard O. Wolfe has been named Dean of Extended Programs at Bloomsburg State College, according to Dr. McCormick.

The new position includes leadership for the programs of Continuing Education, Summer Sessions, International Studies and Cooperative Education. The office will be the initial contact point for all persons and organization in the region that are interested in the development of lifelong education.

The new dean brings a wealth of experience to the position. He has been a member of the BSC faculty since 1967. Dr. Wolfe joined the faculty as an associate professor of education and as a faculty member, being promoted to the rank of full professor in 1972.

BNai Zion Services

The B'Nai Zion Congregation, 213 E. Front St., Danville, invites BSC students to High Holy Day Services.

Yom Kippur services will be held September 25 at 8 p.m. and the following morning at 10 a.m.

Rosh Hashanah services will be held today, September 16, at 8 p.m. and the following morning service will be at 10 a.m.

Greek News

The ISC rush period starts Thursday, September 19. All upperclassmen with an overall cumulative average of a 2.0 or better are invited to register in the Inter-Sorority Council room in Kehr Union between the hours of 9:00 and 3:00. Registration fee is \$1.00.

Appalachian Summer

An article entitled, "An Appalachian Summer" by David E. Washburn of the Department of Educational Studies and Services at BSC is to be published in the September issue of Pennsylvania Education. This journal, a publication of the Pennsylvania Department of Education, will be available on September 9. In the article, Dr. Washburn describes a unique educational experience he and his students had as he led them through the southern highlands of Kentucky in an investigation of Appalachian culture and education.

(cont. on pg. 10)

Business Dept Divides

BSC's School of Business now consists of two separate departments. They are the Department of Business Education and the Department of Business Administration.

This action is a result of the changing needs of the educational community, and an attempt to improve the offerings and opportunities of the School of Business.

Professor Willard A. Christian was unanimously recommended for appointment as Chairman of the Business Education Department, as was Professor Robert P. Yori for Chairman of the Business Administration Department on May 10, 1974. They are responsible for supervising and administering their respective departments. Each is responsible and reports directly to the Dean of the School of Business, Dr. Emory W. Rarig.

The School of Business' rapid growth made the two new departments necessary. More than 1,000 full-time students and 25 full-time faculty members make up the School. Seven areas of specialization (Accounting, Secretarial, Business Information Processing and General, in Business Education, and Management, Accounting, and Economics in Business Administration) are available. The School is also involved in evaluating various facilities and needs as the initial steps in beginning a Master of Business Administration program.

(cont. on pg. 10)

NSL Seeks Low-Cost Student Air Fares

The National Student Lobby (NSL) will fight for adoption by Congressional legislation of a policy involving special low-cost student air travel rates.

Arthur Rodbell, Executive Director of the National Student Lobby, announced that NSL's lobbying strategy will center around the passage of two Congressional Bills, S. 1739 and S. 2651.

Bill S. 2651 is due to appear shortly before the House Subcommittee on Transportation and Aeronautics. It would reinstate discount fares on a standby basis for youth under 22, senior citizens over 65, and handicapped persons.

The second bill, S. 1739, would liberalize the conditions under which U.S. airlines may offer inclusive tour charters

(ITCs) to the public.

"Students stand to gain in different ways from each of these bills," Rodbell said. "When travel costs suddenly increase, an extreme burden is imposed upon the student, and in some cases the student cannot complete his or her education because of the financial hardship."

S. 2651, which would allow the student with a flexible time schedule to travel stand by at a reduced price, could save the students as a whole an amount approaching 100 million dollars annually. Passage of S. 1739 would provide the student a greatly expanded opportunity to travel by group charter and save more than half of what would be their current costs of their travel in many cases.

Letters are needed from students who care about the prohibitive cost of air travel. Write your representative (c/o House of Representatives, Washington, D.C. 20515) expressing your support for the passage of S.2651, and to your two Senators (c/o U.S. Senate, Washington, 20510) stating complete support for S. 1739.

C.A.S.

(from pg. 2)

Douglas Dows, a recent college graduate, has assumed the position of executive secretary of the Commonwealth Association of Students. His staff will include two student interns receiving academic credit in their own fields. They are Maureen McGovern (Clarion State College), a political science major, who will act as research assistant to investigate legislative bills and their effects on students and the state colleges, and David Watts (Bloomsburg State College), an English major acting as media assistant.

Campus Insurance

Students have expressed concern regarding insurance coverage for property damage and theft of personal belongings at their college residence, both on-campus and off-campus. After a survey by the Office of Campus Services, it was found that this type insurance is available but quite expensive on an individual basis. A number of variables regulate the cost; such as type structure of residence, number of occupants, location, etc.

In the event a student encounters damage or loss of personal possessions, the parent or family insurance carrier should be contacted. The majority of parents carry a home-owner's policy or the equivalent which offers ample coverage.

The Office of Campus Services, extension 3701 or 3919, can recommend insurance companies which will offer coverage to students. Students are under no obligation to contact these companies.

Editorial

This is the year for action. The Two-Year Action Plan completed last year by the Planning Commission will be implemented. The initial use of the new pre-scheduling and registration system for the Spring semester is only a week away. And Progress is being made on the new proposed radio station for BSC.

The progress on the radio station is eight years in the making. A number of reasons for this delay can be delineated, but a major problem has been lack of support.

Not support by the Administration, or by CGA, but rather student support. The kind that is needed to operate a station worthy of being called a college radio station. Needed to have an effective and efficient operation are disc jockeys, managers writers, business personnel, technicians and many others. Some of these people have already come forward; however, vacancies do exist and must be filled prior to the first broadcast.

Now is the time to see an eight year dream become a reality. Next semester is too late, for by then more excuses will be added to those already given.

Time cannot be a factor, either. The CGA Radio Committee is comprised of members from the entire college community. They have taken the time when time was in short supply. Their efforts cannot, and should not, be for naught.

The cultural and educational aspects should also be considered. Even though I would not want to see the day when the Maroon and Gold News is faced with a competitor, I would gladly work for another form of mass communications at BSC. (As a matter of fact, I am currently a member of the Radio Station Committee.) The experiences derived would be a broadening of one's education but also a sharing of one's life. Included in this sharing would also be the "give and take" of working together and enjoying what You are accomplishing.

Therefore, if you have a desire to see a radio station at BSC instead of just hearing talk of one, get involved. Here's a list of people currently working for a WBS: Dan Spadoni, Pat Farnack, Bill Acierno, Jim Campbell, Charlie Bender, Ted Piotrowski. Any one of the above mentioned people can help to get you involved, too.

Frank Lorah

Magic Circle Program Not Just A Game

A visit to the Union during the hot days of mid-June revealed a large group of people, chuckling loudly in either the Formal Lounge or the Commuter Lounge. Unfamiliar as they were to the new student building, they still seemed to be enjoying themselves while participating in a special summer workshop, the Human Development Program.

Dr. Carl Pepperman, from the Central Susquehanna Intermediate Unit, headed up the five day series of lectures, which began June 9. Approximately 40 elementary and secondary teachers from 13 surrounding area schools, came daily, earning credit towards their teacher's certification.

IN-SERVICE TRAINING

The Graduate Council-approved course was one in a series of Summer 1974 in-service credit courses offered at BSC. This mini-course program is available to persons holding a Bachelor's degree in Education and who wish to

obtain permanent teacher's certification.

According to Dr. Ray Rost, chairman of the Department of Educational Studies and Services, BSC sponsors these in-service workshops to "oversee largely unsupervised courses."

"We cannot grant more than one graduate credit for one full week's work," he stated. Therefore the department chairman will consider granting one or two college credits above the assigned credit value of the course if the student fulfills his contract of extra course work, above and beyond the requirements of the course. Thus a student must do some independent study on his own.

"The inservice program was approved by the Graduate Council for the summer of 1974," Rost commented. "We began last summer by coordinating a few independent study type courses on China, India and Project 18, a Social Studies Workshop."

THE HUMAN DEVELOPMENT PROGRAM

The purpose of Dr. Pepperman's HDP mini-course was to present a workable approach toward preventive mental health. "HDP is a curricular program," stated Pepperman, meaning that the approach follows a basic lesson guide developed by two West Coast elementary school counselors, Dr. Harold Bessell and Uvaldo Palomares.

MAGIC CIRCLE DISCUSSION

A crucial part of the relatively new HDP curriculum is the Magic Circle program, a type of group discussion

method, involving children in expressing themselves. According to the course outline distributed to the BSC participants, the Magic Circle "utilizes daily experiences in a small, semi-structured group to facilitate social and emotional growth in children."

Small groups of eight to twelve students sit in the Magic Circle. A leader, or coordinator, is chosen to keep the rules of the session, which include sitting quietly, talking only after receiving permission from the leader, and listening while someone else is talking.

Topics of discussion center around three themes - the development of awareness, of mastery and of social interaction. An aware child listens well, shares his own experiences with others and thus learns to be an "effective communicator." Mastery encompasses the development of a positive self-concept. Social interaction heightens a child's awareness and mastery as he sensitively relates to others' feelings, with a goal of personal effectiveness. The end result of the Magic Circle provides participants with an idea of "what works and what doesn't work" with people.

TEACHER PARTICIPATION CRITICAL

Because a teacher has such a vast influence on his students through his interactions with the class, Dr. Pepperman believes that it is "very critical for teachers to experience the Magic Circle program" and for them to adopt it into their basic curriculum.

The teachers involved in the BSC in-service training program were encouraged "to be facilitators and listeners, not probers or analyzers during the Magic Circle. The whole atmosphere of HDP is one of acceptance, of 'I'm OK, you're OK,'" commented Pepperman.

Other courses sponsored this past summer by the Department of Educational Studies and Services included 'Teacher Effectiveness', 'Law Related Education' and 'Vocational Counseling.' This effort to provide valuable continuing educational experiences to college graduates of the community is being well received by all student and faculty participants. It is their hope that similar workshops will continue to be offered in the future.

Posts

(from pg. 2)

students for the program to be admitted in the 19975-76 college year.

A native of Massachusetts, Dr. Flynn received her Registered Nurse degree from Carney Hospital School of Nursing, Boston, Mass., and her Bachelor of Science degree in psychiatric nursing from the University of Rochester. Her Master of Science degree in Nursing was earned at the University of Buffalo, and her Doctor of Nursing Science Degree from Boston University.

Comparative Study of Grades

How about a game of ten-questions? Here goes! Who, as a group, received higher overall median grades at BSC last year--male or female students? Do upper or lower classmen receive higher grades at BSC? What academic department at BSC awarded the highest grades, and what department the lowest grades? During which semester last year did students receive the highest grades?

Well, there aren't ten questions above, but those asked are important enough by themselves. Where does one find answers to the above questions? In a research bulletin entitled, "A comparative Study of Undergraduate and Graduate Grades Given by Departments and by Instructors of Bloomsburg State College (June 1973-74.)"

This bulletin was prepared in the Office of Institutional Research under the supervision of Dr. Merritt Sanders. As it is of a sensitive nature, it is only available to those who wish to peruse it via permission from Dr. Dayton Pickett, Vice President of Academic Affairs.

Now for those answers. Females received higher median grades during both semesters and the summer sessions. In fact, their grades were a quarter grade higher than males, medially 2.97, whereas males had a median of 2.66.

Upperclassmen earn higher grades than lowerclassmen. Here again, the difference was a full quarter of a grade point. The medial grades for upperclassmen were 3.06 and for lowerclassmen, 2.70. The report does not attempt to provide answers to why this is so. However, conjectures may include a new environment for

lowerclassmen or perhaps those students not capable of college-level work drop out and thus higher grades are reported for upperclassmen.

And what department has awarded the highest grades--Secondary Education with a medial grade of 3.46. The Chemistry Department awarded the lowest grades with a medial grade of 2.20. No explanation will be offered as to why except to point out that the

(cont. on p. 10)

Maroon and Gold News

Editor-in-Chief	Frank Lorah
Business Manager	Dave Coffman
News Editor	Barb Wanchisen
Assistant News Editor	Peggy Moran
Feature Editor	Valery O'Connell
Sports Editor	Bill Sipler
Photo Editor	Dan Maresh
Copy Editor	Kathy Joseph
Staff:	Mark Mullen, Kim McNally, Ron Troy, Tom Young

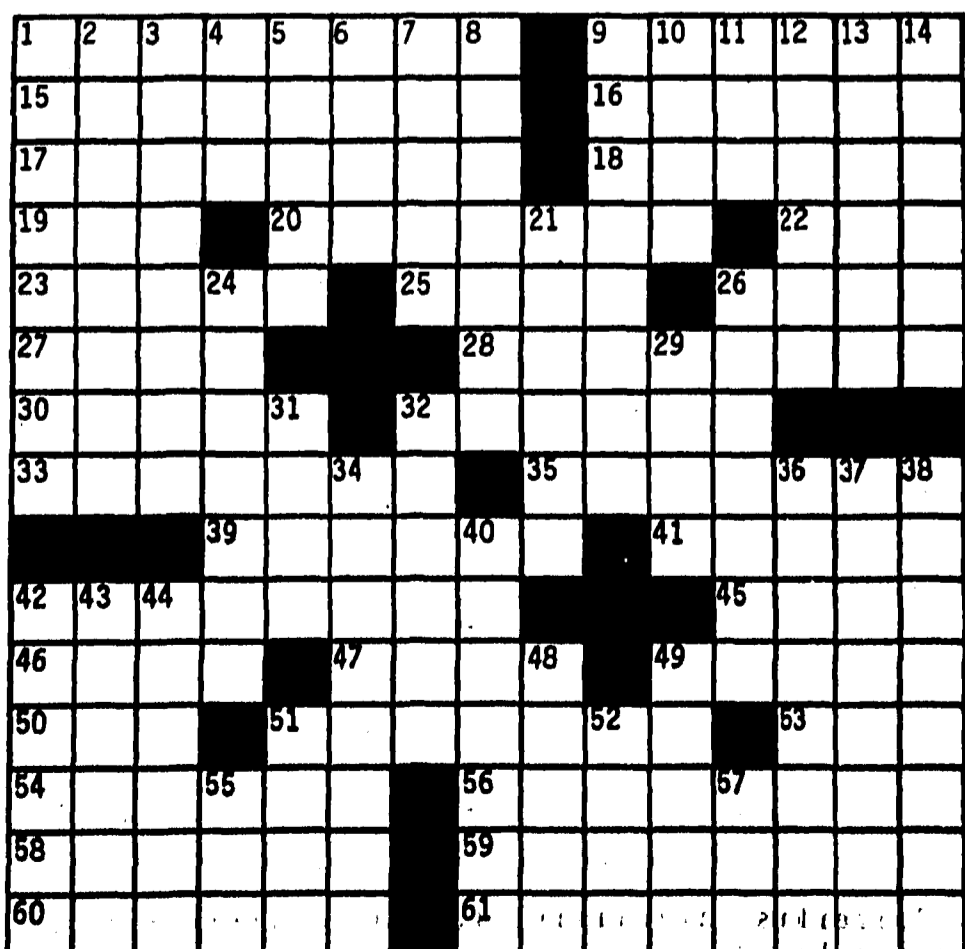
ACROSS

- 1 Cattle-breeding Nation
- 9 Snare
- 15 South American boa
- 16 Catholic nine days' devotion
- 17 Type of rifle
- 18 Commercial
- 19 Here: Fr.
- 20 Deliberates over
- 22 Eastern daylight time (abbr.)
- 23 Wally Cleaver's best friend
- 25 Rescue
- 26 Scoff at
- 27 Pigeon
- 28 Card game
- 30 On an ocean voyage
- 32 Fights with an epee
- 33 Beatles song
- 35 Article of personal property
- 39 Scatter (old shortened form)
- 41 Mr. Greene
- 42 "___ your money, invest it"
- 45 Hindu spirit
- 46 Turkish river

- 47 Debauchee
- 49 ___ year itch
- 50 Pen point
- 51 Type of vegetable
- 53 Tavern
- 54 Wildmark movie or insect trap
- 56 "Moonlight ___"
- 58 A crystalline alcohol
- 59 Comes forth
- 60 Redecorated
- 61 Accumulations near the shore

DOWN

- 1 Of the visitation rules in a dorm
- 2 Short, amusing tale
- 3 Most speedy
- 4 High card
- 5 Act crazy
- 6 Archaic preposition
- 7 Arabian seaport and adjoining gulf
- 8 Distance
- 9 Position oneself defensively
- 10 Words to accompany neithers
- 11 Tennessee power complex
- 12 Free from sin
- 13 Wreath for the head
- 14 Contemptibly small or worthless
- 21 Show plainly
- 24 Epistemological visionaries
- 26 "Bet you can't eat ___"
- 29 Non-imaginary number
- 31 Adenosine triphosphates (abbr.)
- 32 Great warmth of emotion
- 34 That can be endured
- 36 La ___ (opera)
- 37 Bring into being
- 38 Meat quality
- 40 "The Cat in the Hat" and "The Grinch Who Stole Christmas"
- 42 Famous reindeer
- 43 Brooks Robinson, e.g.
- 44 Arrested
- 48 A purgative
- 49 Pay out money
- 51 Mexican slave
- 52 Country south of the Caspian
- 55 Wartime Medical Officer (abbr.)
- 57 Catch



Campus Cultural Events

- Past, Present and Future



The Arts Council presents the Center City Acting Company this evening at 8:15 p.m. "Play-Orchestra" asks unusual things of the actors, and they respond in unusual ways.

Summer Playhouse

Featured Dracula

"I am often told that I have a light footstep." Those words, spoken in icy tones, aptly explained the sudden appearance of the Count at center stage.

Those same light and mysterious footsteps, along with their master's wry humor, held the audience on the edge of their seats as the 1974 Bloomsburg State College Summer Theatre presented "Dracula" from June 27 through 29 in Haas Center for the arts. Starring David Hurst, professional actor (on and off Broadway) and television, the Summer Theatre gave one of their best performances to date. Featured as Count Dracula was the extremely tall Alan Rosenbloom, familiar to the role due to his experience on other stages.

Large audiences, mostly drawn from the surrounding community, attended each performance. The children, always ready for a good scare, had the most fun. Everyone was aware of their excitement before the show, their attempts to imitate Dracula's diction and character during the intermissions and their pretended fright at the finale. Even their parents had no trouble relating to the actor's sly wit which made the whole show flow smoothly.

Director William Acierno staged a comeback performance by commandeering an excellent show. His former plays left much to be desired. One wonders if the professionalism or the smallness of the cast contributed the most to this production's success?

The stage settings and lighting did wonders in presenting an aura of misty, mysterious England during the turn of the century. The costuming was effective and makeup, especially Lucy's paleness and the Count's true-to-death appearance, was excellent.

The story revolves around the sudden illness of Lucy Seward (played by Kathy Walsh daughter of a London doctor (Allen Murphy) who runs a sanatorium on his estate. Dr. Seward seeks advice from his colleague, Dr. Van Helsing (David Hurst), a specialist in obscure diseases. Van Helsing suspects foul play immediately when he hears of Lucy's symptoms. His suspicions are proven true when the neighboring Count Dracula appears on stage.

After days of searching for Dracula's hiding place, the casket is discovered in an underground passage way. Van Helsing destroys the demon with the typical stake through the heart.

The small cast of "Dracula" worked well together excellently. Most of the amateurs blended in well with the professionals; only an experienced theatre critic could have noticed the differences in style.

With precise diction and an intensity that carried easily to the far corners of the auditorium, David Hurst portrayed a convincing Van Helsing. His few flubs were quickly and expertly covered up.

(cont. on pg. 10)

Acting Company Presents

Something Different

Learn to play the violin in four weeks. Kneel inside an urn and speak for half an hour. Wear a facial makeup that contains oatmeal.

There is only one profession that makes such demands: the theatre.

When the City Center Acting Company presents Samuel Beckett's and Jean Anouilh's "Play-Orchestra" at Haas Auditorium tonight at 8:15 under the auspices of the Arts Council, the performers will have to come to grips with violins, urns, oatmeal and more. "Play-Orchestra" is an evening with two contemporary playwrights who see comedy and life very differently from the average man and who ask unusual things of their actors.

In "Play" for instance, the theatrical staple, the romantic triangle is presented as never before: a husband, his wife and his mistress are trapped inside funeral urns and seemingly are in Hell. Nothing is visible but their faces, which are painted to look like the urns. The author, Samuel Beckett, won a Nobel Prize for challenging most of the tenets on which the theatre was founded. His portraits of creatures who utter fragmentary thoughts in a void they can neither change nor comprehend, have been called the "theatrical embodiment of much 20th century philosophy."

Beckett defies explanation, but Jack O'Brien, director for the Acting Company, says, "The play is probably Beckett's version of 'No Exit'. If this isn't Hell, I don't know what is." Both his "Play" and "Anouilh's 'Orchestra'" are plays in which things aren't exactly what they seem to be.

In "Play" the actors are deprived of their customary 'tools'. They cannot move; their voices, although using normal inflections at first, climax with a rapid, toneless gunfire of words. Their identities and expressions are lost beneath a greasepaint that is smeared with oatmeal. They do not talk to each other, but to a Light which flashes on and off their faces, blinding them, seeming to grant permission to speak.

All three of the actors -- who perform on their knees, wearing kneepads and clutching grip-handles inside their urns -- agree that "Play" is the hardest things they have yet to do. "The great challenge," says Sam Tsoutsouvas, who plays the husband, "is to suggest, without any external or emotional or facial expression or vocal extravagance or coloration, the anguish in the minds of these people." "It gives us a chance," says Mary-Joan Negro, who plays the mistress, to really see how strong our concentration is. The slightest fazing out by any of us could destroy the play."

Technical challenges are nothing new to the City Center Acting Company. Most of the actors had a rigorous classical training at the Drama Division of the Juilliard School in New York, where their studies included dance, movement and fencing. But they were not taught how to play musical instruments -- which a number of them have to do in "Orchestra," the second half of the Company's double bill.

"Orchestra," by Jean Anouilh, depicts one night in the life of an all-girl orchestra -- which has a male piano player. Director O'Brien has made a (cont. on p. 10)

Couch Recital

Like Lightning Striking

by Valery O'Connell

Whoever would think that a musician could make such an impact on the gods that lightning would strike so close to the building in which he was performing? And no one would expect that musician to keep right on playing as if nothing had happened at all.

Despite the brilliant flash of light and loud crackle from the speakers, John Couch, resident pianist and member of the Music Department at BSC, remained cool, calm and collected on Thursday evening, Sept. 12, in Carver Hall Auditorium. The audience quickly forgot the flash and crash, as they absorbed themselves in the brilliance of Mr. Couch's music. It was like lightning striking again and again and again.....

The nearly full auditorium was treated to another lecture recital which Couch made popular at BSC last year. Departing from the traditional white tie recital, Couch related to the audience with his accounts of the lives of the three composers he chose for the evening. Works from Bach, Schumann and Beethoven made up the program.

Bach's "Chromatic Fantasia and Fugue" was explained by Couch as a piece of contrasting structure; the free form of

fantasia and the structured intertwining of melody in fugue combined in this one piece. Couch remarked on the an-

tithesis of piety and passion in the man Bach, which could explain the composer's desire

(cont. on pg. 10)



Tremendous concentration and love of his instrument are qualities that mix well in John Couch, resident pianist.

The Budget: Putting It All Together

By Frank Lorah

Budget! Budget Hearings! Proposed Budget! Fiscal Budget! Approved Budget! Budget Crunch! Budget Money! Budget Time! Budget Deficit! Budget Surplus! Budget! Budget! Budget!

The word 'budget' is heard in many conversations and used in a variety of contexts. But what is a budget? According to Webster's Seventh New Collegiate Dictionary, a budget is: "a statement of the financial position of a sovereign body for a definite period of time based on estimates of expenditures during the period and proposals for financing them; a plan for the coordination of resources and expenditures; or the amount of money that is available for, required for, or assigned to a particular purpose."

Everyone connected with, assigned responsibility for, or holding title to money and other resources utilizes a budget to some extent, even if it is only a mental picture. Perhaps it would be wise to call a budget a planning tool.

Now the question may be raised, "Why the lecture on budgets?" Answer: "Because there are two general budgets prepared at BSC each year which affects every member of the college community, including you."

The two budgets referred to are the Budget Request for Bloomsburg State College and the Community Activities Budget. In turn, each of these budgets will be presented and explained in part to show where your tuition, community activities fee and other fees are being expended.

Budget Request For BSC

Sources of funds are of two major types: Local (received from students' tuition), and State (appropriated by the Pennsylvania legislature). Looking at the chart labeled "Sources of Funds", it can be seen that the bulk of the increase from 1973-74 to 1974-75 was in state appropriations. The funds available through local sources is of a relatively fixed nature, increasing only by increasing tuition fees or increased enrollment.

This year's increase in state appropriations has caused much speculation. Wasn't it less than one year ago that we heard talk of budget crunches and retrenchments? The 1973 Student Rally in Harrisburg had a marked effect on bringing the monetary needs of state colleges to the consciousness of legislators and the Department of Education. And many feel that the plain talk and straightforwardness of the College's Planning Document made it known to the Commonwealth that BSC means business.

Uses of funds are broken down into three major categories: Salaries and Benefits, Operational Expenses, and Equipment and Construction Contracts.

Operational Expenses include such items as data processing services, legal fees, medical clinic services, printing, advertising, telephone, utilities and fuel, office supplies, library materials and supplies, and a host of others. Operational Expenses are also shown as pie charts due to the multiplicity of items included.

As can be seen, the Salaries and Benefits are requiring a smaller percentage of available funds. However, it was recently announced that increased faculty salaries will require further appropriations from the state. It should also be noted that the 1975-76 budget has not as of yet been approved.

Community Activities Budget

For the most part, the Sources and Uses of Funds indicated in the Community Activities Budget are self-explanatory. However, where necessary, notes are provided for clarity.

(cont. on pg. 7)

BSC Budget Request

BLOOMSBURG STATE COLLEGE
Three-Year Budget Comparison
(Uses of Funds)

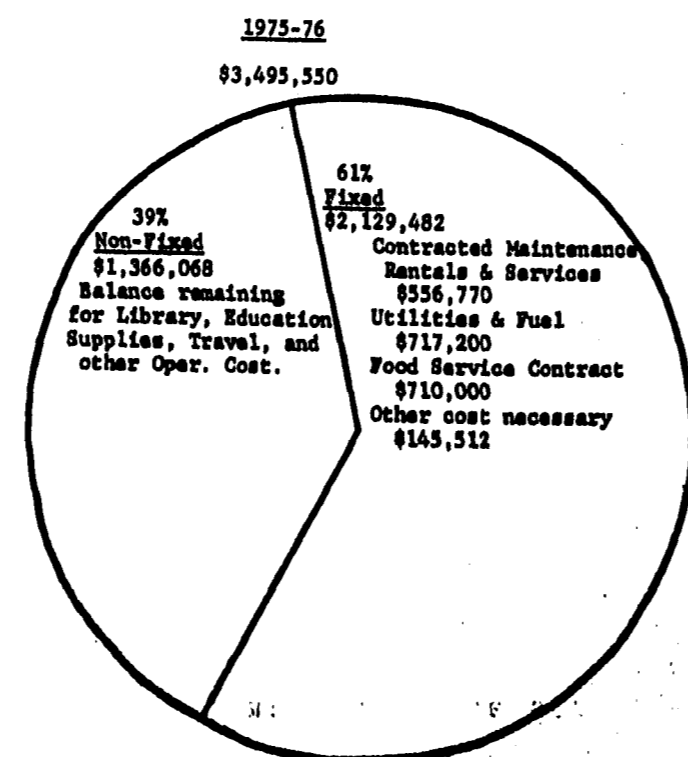
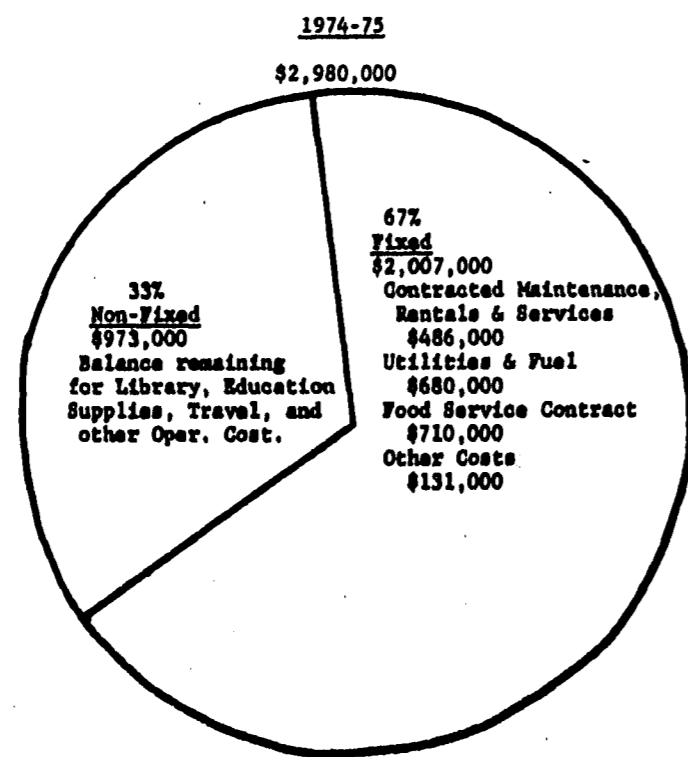
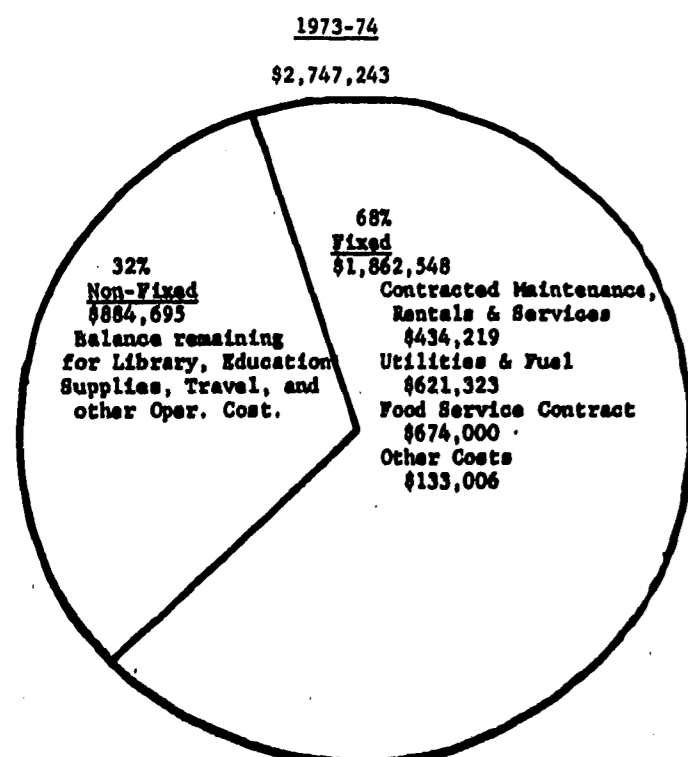
1974-75	
Total	\$14,974,188
Equipment and Construction Contracts	\$420,000 or 2.9%
Operational Expenses	\$2,980,000 or 19.9%
Salaries and Benefits	\$11,574,188 or 77.2%
(Sources of Funds)	
Local	\$6,230,188 or 41.3%
State	\$8,744,000 or 58.7%

(All percentages are approximations.)

1973-74	
Total	\$13,796,757
Equipment and Construction Contracts	\$326,452 or 2.4%
Operational Expenses	\$2,747,243 or 19.9%
Salaries and Benefits	\$10,723,243 or 77.7%
(Sources of Funds)	
Local	\$6,024,029 or 43.4%
State	\$7,772,728 or 56.6%

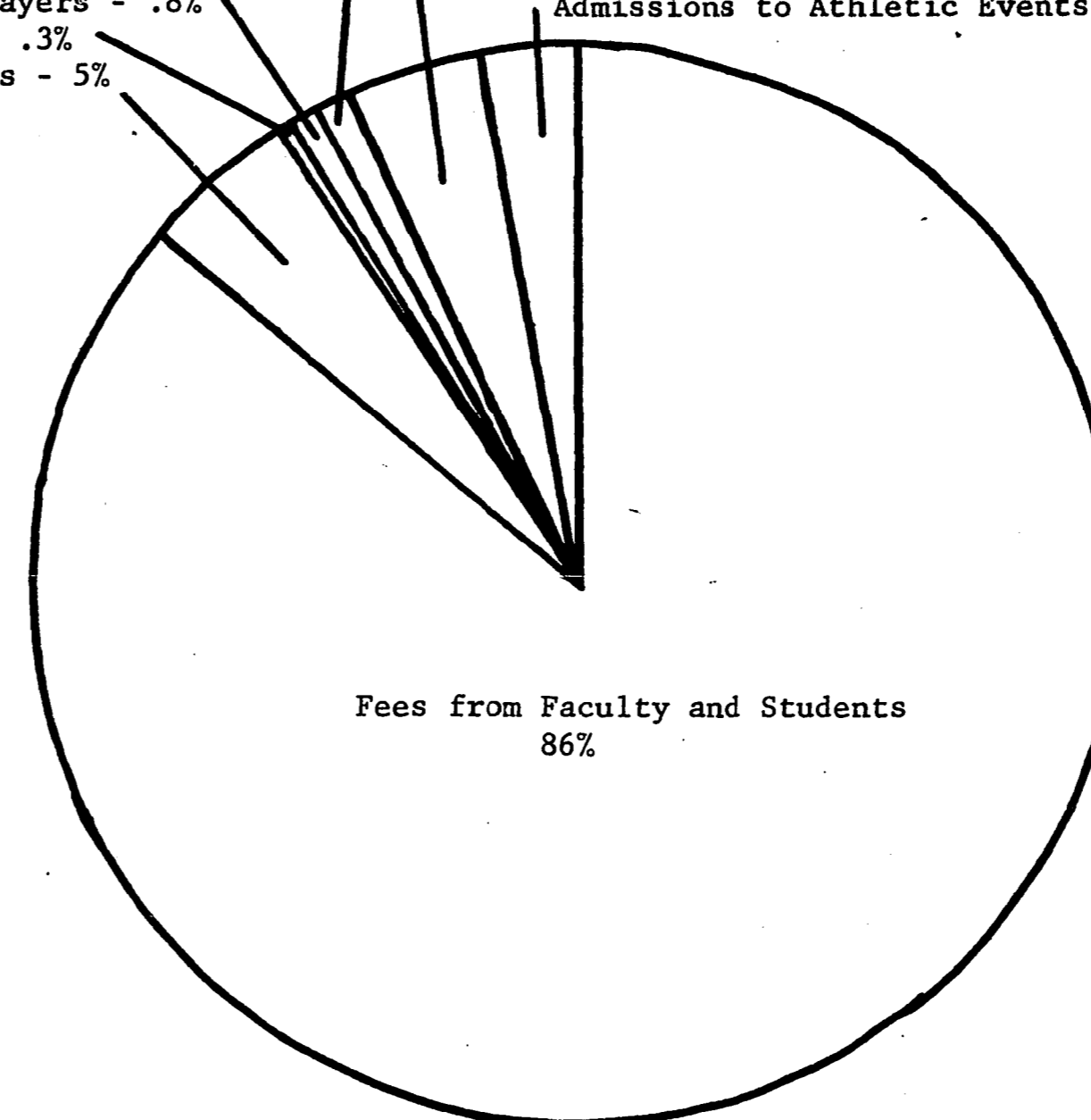
1975-76	
Total	\$16,922,330
Equipment and Construction Contracts	\$636,350 or 3.8%
Operational Expenses	\$3,495,550 or 20.6%
Salaries and Benefits	\$12,790,430 or 75.6%
(Sources of Funds)	
Local	\$6,518,350 or 38.4%
State	\$10,403,980 or 61.6%

Three-Year Budget Comparison for Objective 300 (Operational Expenses)



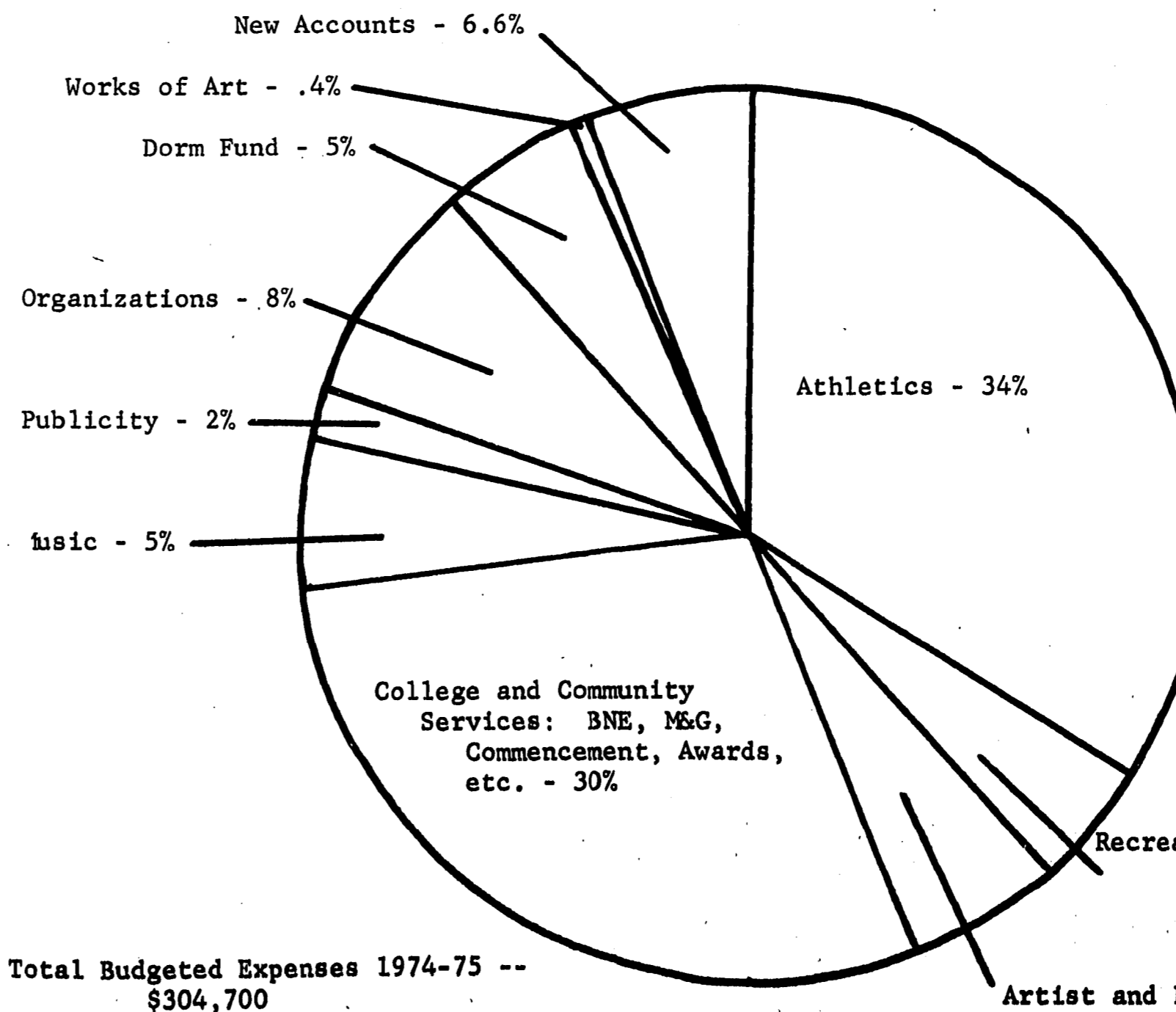
Community Activities Budget

Station Wagon Use - .9%
 Artist Series, Concert Choir and Bloomsburg Players - .8%
 Miscellaneous - .3%
 Vending Machines - 5%
 Big Name Entertainment Receipts - 4%
 Admissions to Athletic Events - 3%



Total Budgeted Income 1974-75 -- \$304,700

(All percentages are approximations.)



Total Budgeted Expenses 1974-75 -- \$304,700

(All figures are approximations.)

(from pg. 6)

(1) Approximately 86 per cent of the total income is derived from community activities fees paid by students and faculty. This fee normally provides free admission to most college-sponsored events on campus.

(2) Income from use of the CGA station wagon is based on mileage and charged to campus organizations using the vehicle.

(3) The athletic expenses are set at a maximum of 35 per cent of the total budget. However, only 34 per cent has been allocated for athletic events this year. (This does not include recreational sports, intramurals, or physical therapy.)

(4) The Dorm Fund is divided among all dormitories and the Commuters Association.

Although the total budget is 'distributed' to many organizations and-or uses, the money is maintained in one large account in the Community Activities office. When requested, bills are paid or funds dispersed, making bookkeeping as simplified and efficient as possible.

BSC Investment Portfolio

Any excess funds not considered as State revenue and not currently being used are not, however, left sitting in the BSC vault. On the contrary, any funds available are combined and put into the BSC Investment Portfolio, which was recently approved by the Board of Trustees on June 12, 1974.

This Investment Portfolio is a combination of the following accounts: Husky Contingency Fund (Reserve Fund), Community Activities Advancement Account, Student Bank Account, College Trust Fund, Kehr College Union account, Community Activities account, College Store, and the Class of 1973. (The Class of 1974 also will be included in the near future.)

The portfolio is managed by a six-member Investment Committee, comprised of Richard Walton and Frank Fay, Trustees; Paul Martin, Business Manager; Dr. Jerrold Griffis, Administration; and Charlie Bender and Kurt Matlock, representing CGA. John Trathen, Assistant Director of Student Activities and the College Union, is responsible for investments and general management of the portfolio.

At the present time this fund has a total of \$805,000, mostly invested in 90-day Certificates of Deposit at several local and regional banks. These CD's are currently providing an 11 1/2 per cent or higher interest rate which is held in an account and then proportionately divided among the accounts comprising the portfolio quarterly. If, however, cash is needed and the CD is withdrawn prior to the maturity date, no interest is earned.

So as not to forfeit interest that might be earned, prior to a CD maturity date, another contract is made with the highest bidder. On the maturity date, the funds are withdrawn and redeposited the same day to begin another investment period. Interest that could be lost in one day on a \$100,000 CD with a 10 per cent interest rate is a small fortune -- approximately \$28 a day! That can add up extremely fast if attention not given to maturity dates.

There are now 14 banks listed for bidding of the money to be invested, but any bank is allowed to request a bid. The bank providing the highest rate of interest is awarded the contract, always a minimum of \$100,000. If two banks submit identical high bids, the contract is divided between them. This division is possible only if the amount to be invested is \$200,000 or more.

In order that funds are provided the greatest safety, the bank must provide security in the form of public bonds worth a minimum of 120 per cent of the amount invested. The first \$20,000, however, is automatically guaranteed through the Federal Deposit Insurance Corporation much the same way your savings account is guaranteed.

In addition to the funds invested, a Savings Account is available for small cash withdrawals. The amount in this account is kept at a minimum in order that the maximum interest can be earned.

Budget Is Financial Plan

Budgets are normally taken for granted. But much hard work and many long hours are devoted to the process of planning and implementing these respective budgets. They are a guide to the total operation of the College. President McCormick's statement to the State Board of Education during the budget hearings indicated that the "Budget Request for Bloomsburg State College is the financial plan which supports the Two-Year Action Plan, 1974-76...."

Cross Country Opens

The BSC Huskies start their cross country season on Saturday, September 21 at Shippensburg. The Huskies will face Lock Haven, Clarion and Shippensburg in a quadrangular meet beginning at 2 p.m.

Coach Noble has hopes of bettering last years 5-5 mark with a nucleus of seven returning lettermen. Two of his top performers should be Jeff Brandt, a sophomore from Hershey and Rich Durbano, also a sophomore from Springfield. Other top people should be two freshmen, Steve Davis from Philadelphia and Rob Wintersteen from Selinsgrove and Lou Gun-

derman, a transfer senior from Ringtown. Several other untried newcomers could end up in the top five for BSC.

The BSC schedule follows the quad meet with dual meets against West Chester at West Chester, September 25; Mansfield at home, October 5; Kutztown at home, October 9; Cheyney and East Stroudsburg at essc October 19 and Millersville at Bucknell October 19.

This will mark Coach Noble's sixth year at the helm of his thin clads. His best records have been 11-1 in 1969 and 10-1 in 1970. He has posted a 43-28 record overall.



A BSC soccer player works on his control during practice. The Huskies are hoping for a strong season in their first year.

(Photo by Sipler)

Husky Club Membership Drive

The Husky Club, recently formed town and college booster organization, has attained 100 of its 200 member goal, according to Albert Bush, Treasurer.

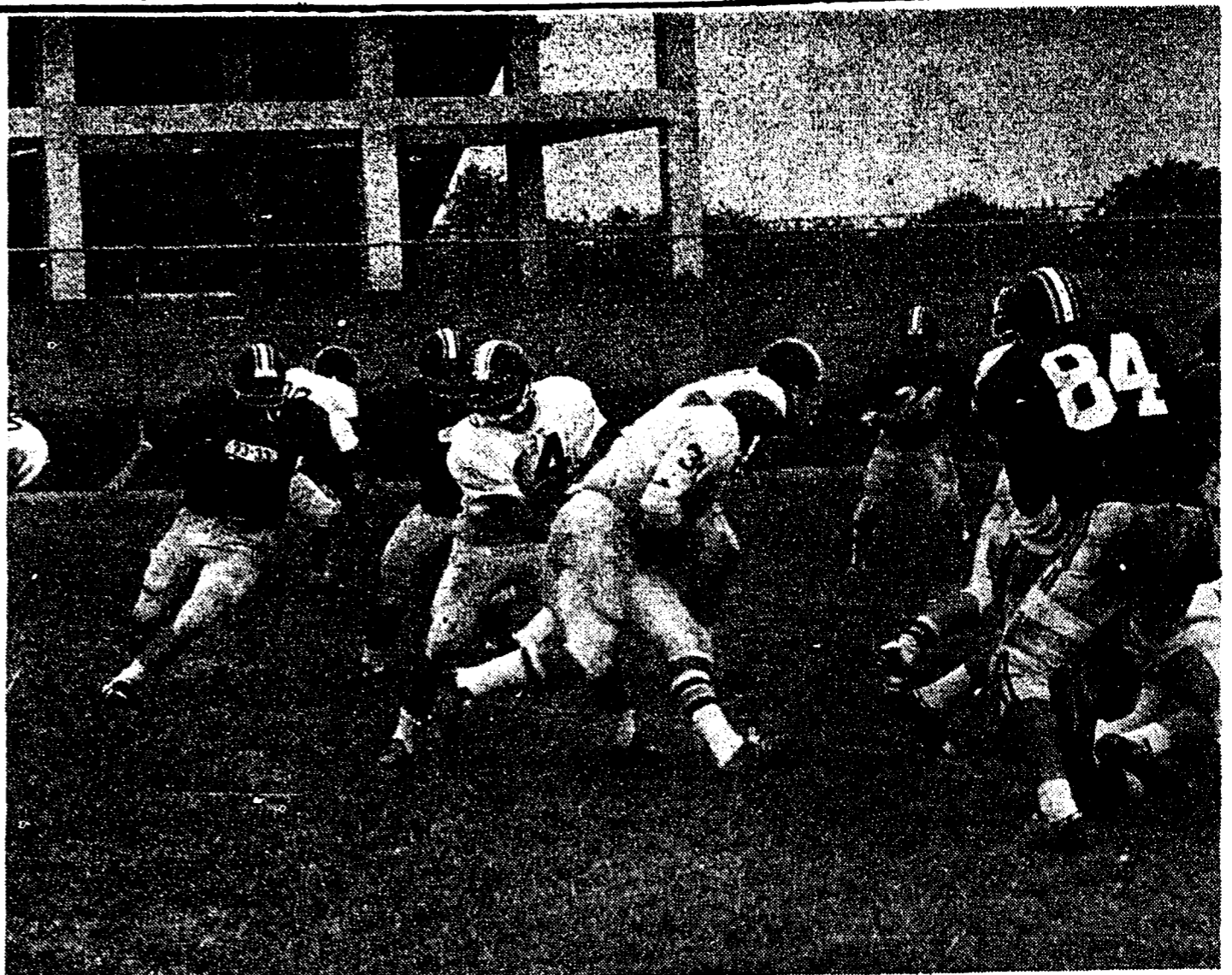
Formed last spring under the initiative of Chairman Fr. Bernard Petrina, the Club's basic purpose is "to establish a good, close relationship between the college and the surrounding community through athletics." By being open with the public as well as the college community, the club not only hopes to extend to everyone in the community opportunity to become involved with the club, but to aid various college varsity athletic programs, complying with the regulations established by the NCAA.

The types of memberships for the club are: social-\$10; varsity-\$25; and charter-\$50 or more. The \$10 and \$25 donations become part of the general athletic fund of the club.

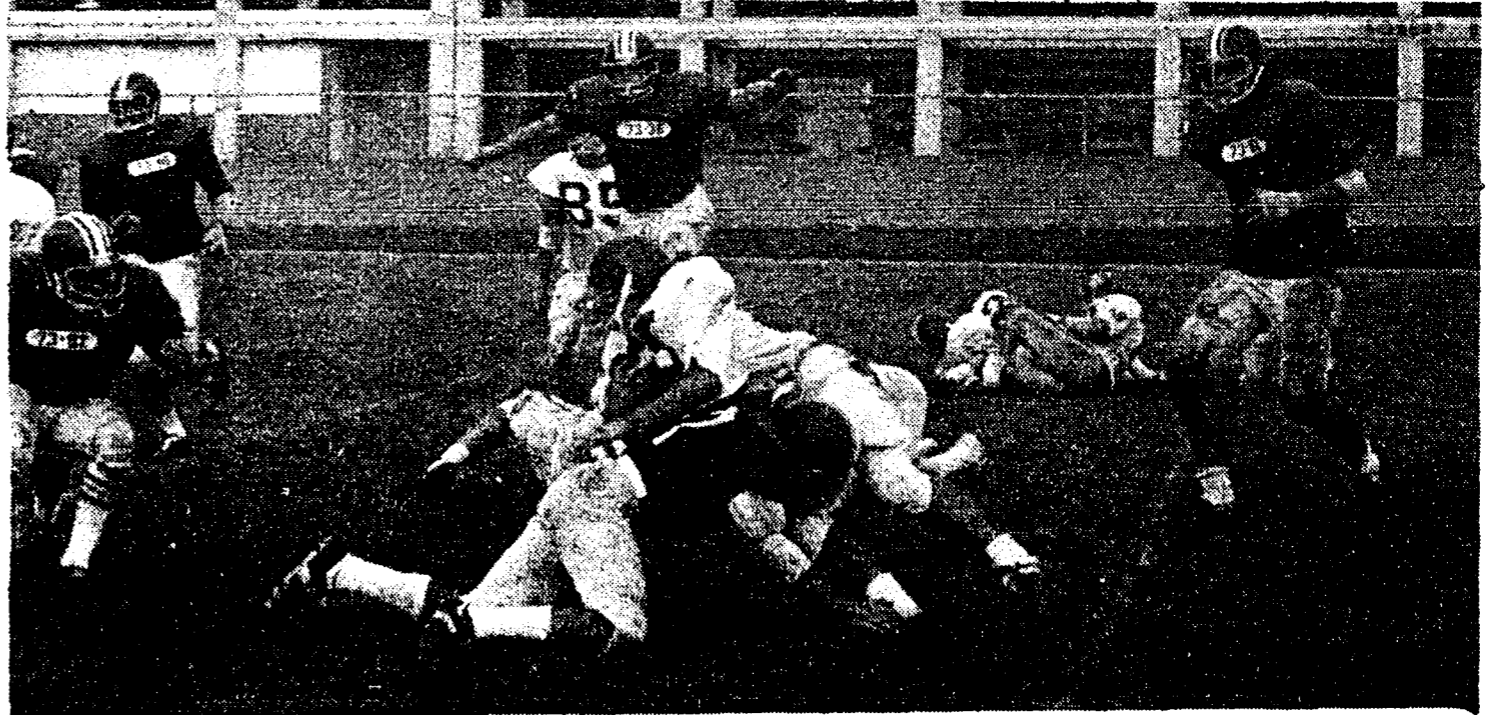
Persons who give a \$50 donation can give it to the general fund to be divided by percentages set up by the athletic director for the benefit of the college sports program or they may designate one half of it to the general fund and one half to a specific sport. Donations over \$50 can be designated but \$25 of this amount always goes to the general fund if given to the Scholarship Fund at the college if a person does not wish to be involved with the Husky Club.

It is interesting to note that one of the first \$50 donations, one-half of which to be designated for a specific sport (basketball), was given by William Calhoun, grandfather of Steve Bright, former Central High basketball player who is a freshman at BSC.

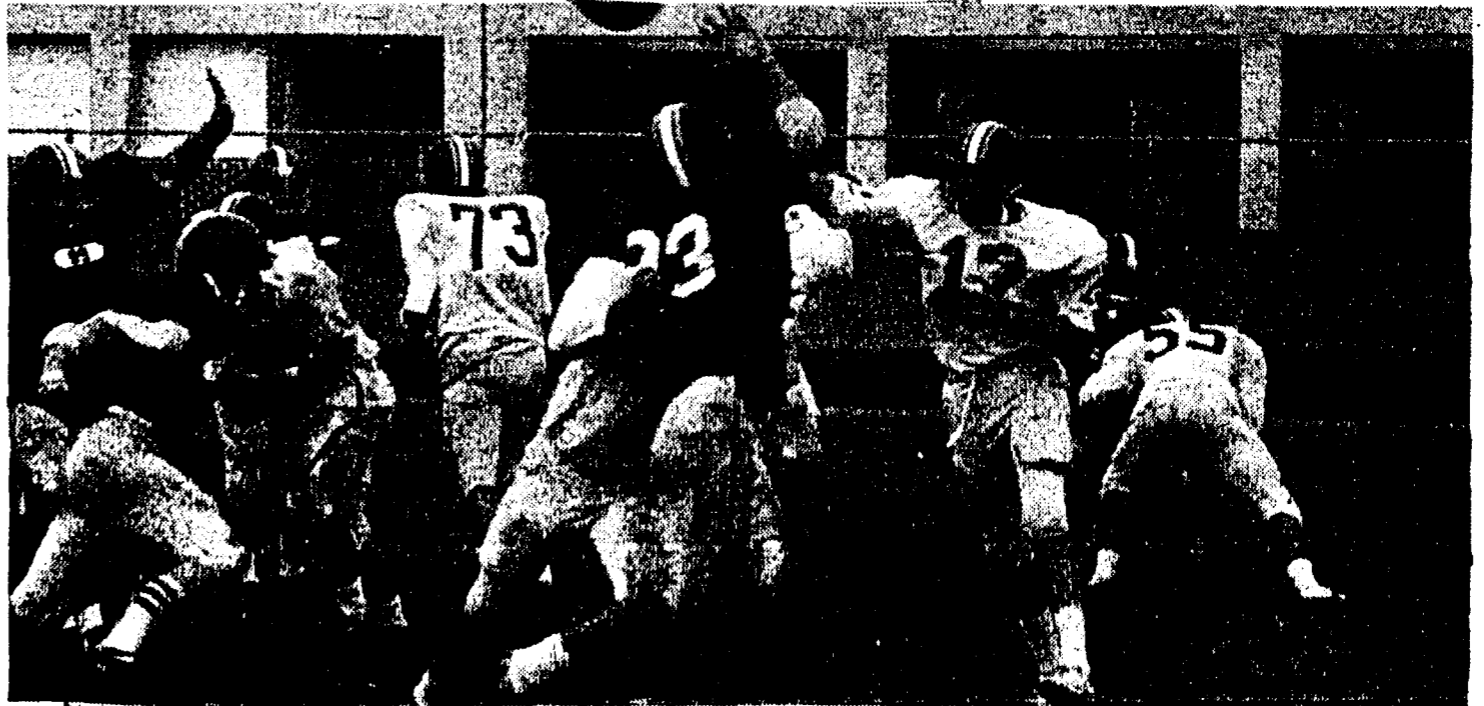
Anyone desiring an application blank or additional information on the club, should write to Husky Club, Box 4030,



The BSC football squad scrimages in preparation for their opening game against Shippensburg.



The Husky defense puts it to a running back during a scrimmage last week. The Huskies host Lock Haven this Saturday. (Photo by Sipler)



Ken Haynie attempts a pass under pressure from the defense. (Photo by Sipler)



Bill Jenkins appears at Numidia this weekend.

Borrowed Space

by Bill Sipler

This year baseball fans have had their share of surprises as the teams battle out in the standings. In the eastern half of the U.S. the fans have suffered with their favorites and gasped at the surprises in the standings. In the N.L., the Philadelphia Phillies led the Eastern Division at the all-star break by three games. And worse, yet, the Pittsburgh Pirates were in last place, trailing the Phils by ten games. But fate again struck and changed the oncoming tragedy. The Phils, the usual doormats of the east went into a slump and were slowly sinking into oblivion as this issue went to print. The Pirates, on the other hand, had seized first place in the division and should be on their way to another crown.

In the N.L. West, surprise number two was taking place. The Dodgers from Los Angeles had first place at the break but seers in every port predicted they'd fall to the much vanted Cincinatti Reds. The Dodgers struggled but at last look the Dodgers still had the lead. They could stay there and meet

the Pirates in the playoffs.

In the A.L., Ted Williams shook the world by announcing that he wasn't coming back as the head of the Oakland A's. Williams wanted to manage the Yankees but Charlie Finly, the A's boss, wanted compensation for Williams. The Yanks said no.

Williams got a job managing California around the middle of the summer. The Yankees overtook Boston for first place in the A.L. And the A's are in first place in the A.L. West and should stay there.

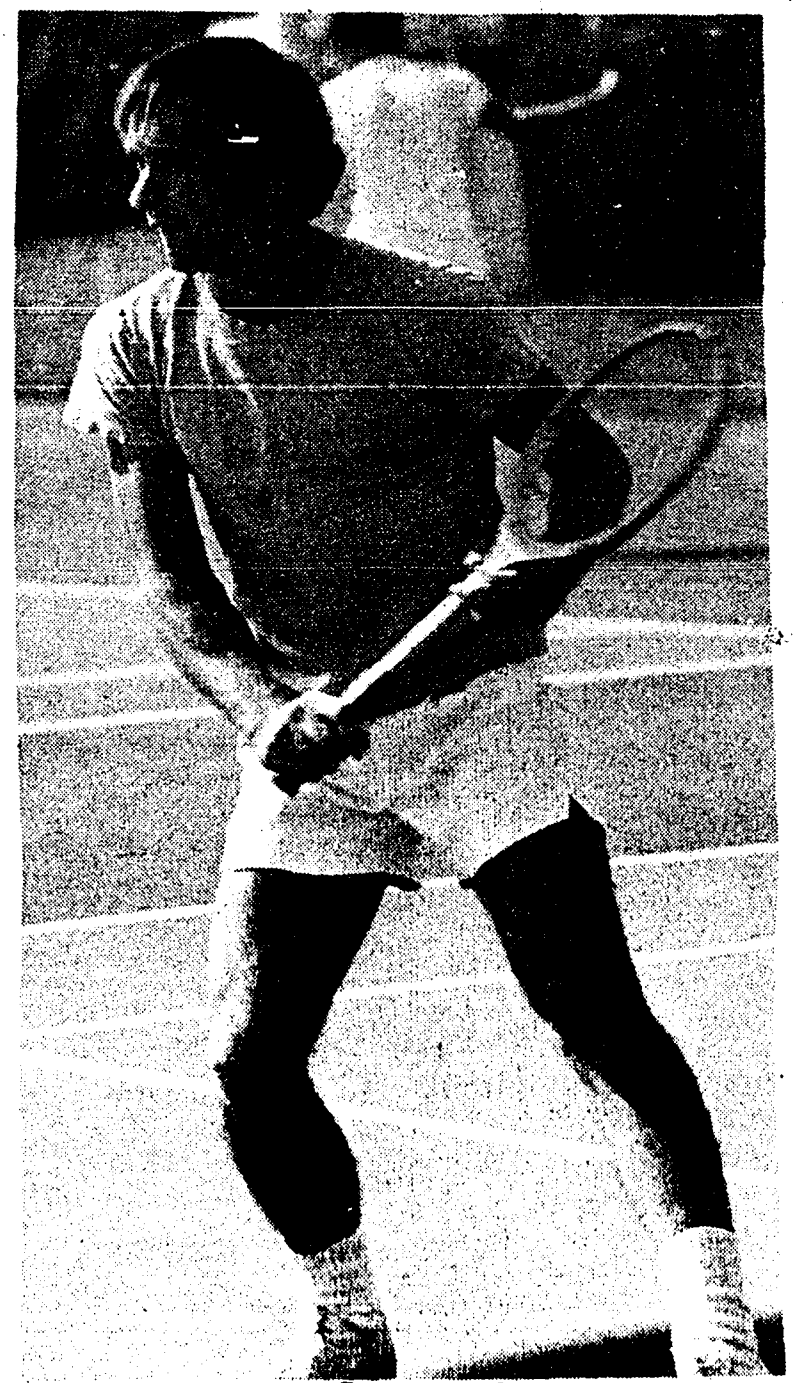
The Yanks should meet the A's in the playoffs.

The Yanks will probably lose to the A's in the playoffs. Oakland is the Miami of Baseball in that they are stronger than anybody else year after year. Over in the N.L., the Dodgers should knock off Pittsburg. L.A.'s pitching is stronger than the Pirates and should be able to control Pittsburg's power.

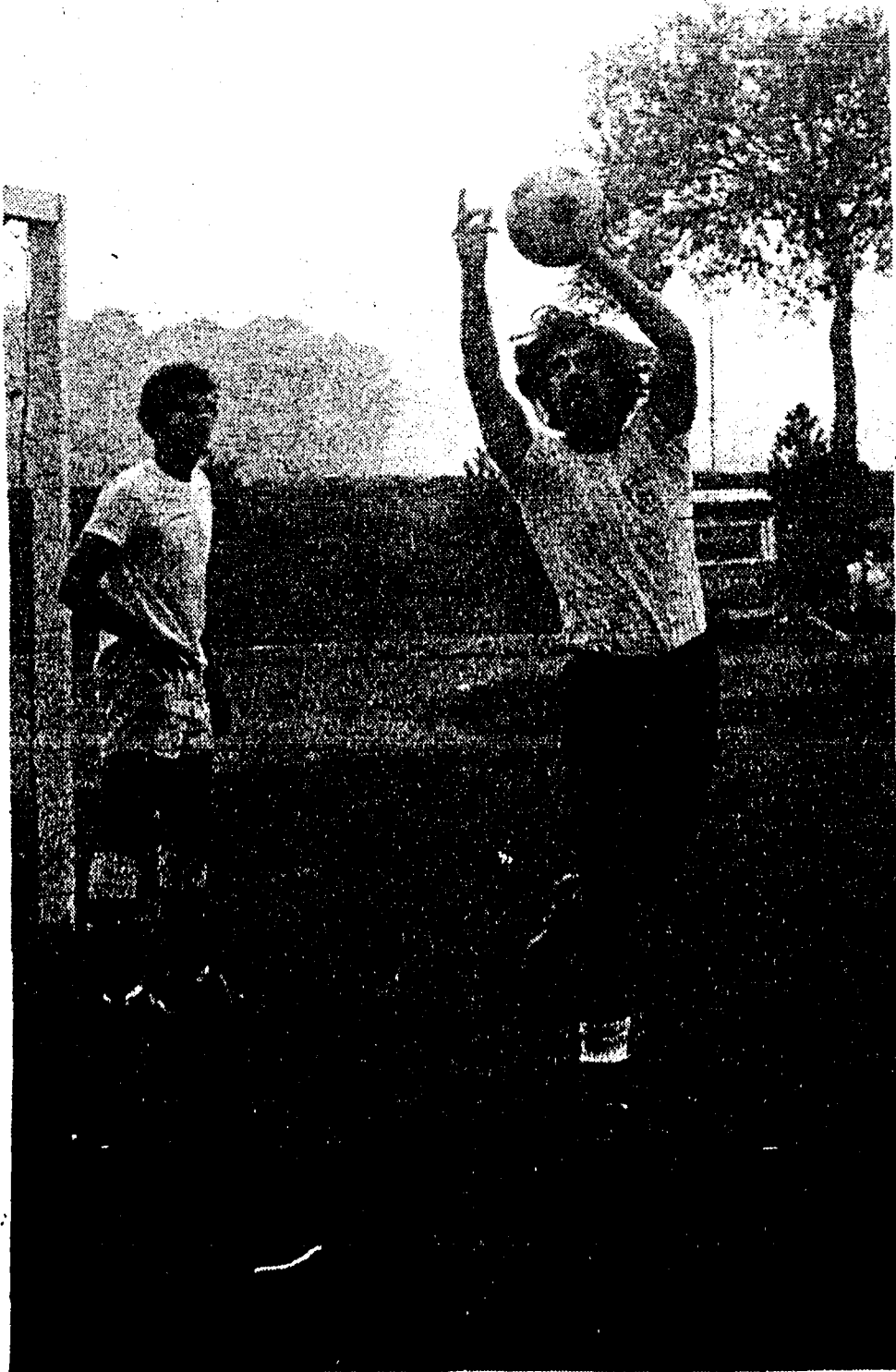
Oakland vs. L.A. should end with the A's on top. Oakland compares with the Dodgers in pitching and has more power. The outcome should be realized in five games.



Russ Sauralt works out in goal during a practice session for the Husky Soccer team. The team opens its season against Lock Haven on Oct. 14. (Photo by Sipler.)



The BSC Tennis team works out in preparation for their season. The Huskies under Coach Burt Reese hope to improve their season. (Photo by Troy)



The BSC goalies work out at practice. The Huskies hope to give VSC a winning season. (Photos by Sipler)



Stan Geurecki watches from the sidelines as the BSC football team goes through a scrimmage. Geurecki, number 18, was injured early in the season. (Photo by Sipler)



Cadet Colonel Paul Bush swears in the BSC ROTC cadets at ceremonies in Centennial. (N. Dietrich)

Like Lightning Striking

(from p. 5)

to produce such a contrast. A favorite Bach saying, "Playing the notes is not enough; they must be felt," could be seen in Couch's excellent mastery of feeling out the music on his instrument.

The second selection, Shumann's "Papillons", could be more appreciated after Couch's account of the emotionality of the composer. The long work, composed of short movements depicting a literary scene, was performed well.

But the best was saved for the last. Couch humorously described the composer Beethoven as a slob, uncouth, messy, rude and arrogant. It was only when he sat down to play that Couch convinced the audience of the man's genius. "Sonata No. 21" moved brilliantly along, and at

times it seemed Beethoven himself was inside the piano, screaming to get out.

The audience was spellbound. They offered a standing ovation, called him out for more, and left the auditorium, shaking their heads in wonder at Mr. Couch's ability to remember the whole evening's performance without a single sheet of music. His expertise at fast fingering on the piano was also an area of comment and awe.

Appreciation of the idea of a lecture series was evident in the comment of one audience member as he stepped out into the night, "I never knew Beethoven had buck teeth." If such a flaw creates such genius, perhaps we should all begin sucking our thumbs. Our asking John Couch for lessons, for he seems to know how to produce it

Grades

(from p. 4)

content of the course and the makeup of students in the class probably has a bearing on the results.

The answer to the last question came as no surprise. The summer is a time to relax and the highest grades overall were given then with an overall median grade of 2.88 as compared to 2.80 in the Fall and 2.84 in the Spring.

Each year the personnel in the Institutional Research Office author a number of research studies requested by other offices on campus. From time to time, with permission of the requesting office, the M&G will review and summarize bulletins of interest to the college community.

Waste Recovery Helps Ease Energy Shortage

Resource recovery—or reprocessing refuse—takes on top priority in St. Louis, New Orleans, Baltimore, San Diego County, Charleston, W. Va., and several other areas.

The St. Louis project, involving the Environmental Protection Agency, the steel industry and Union Electric Power Co. has been so successful that the power firm is now planning to build a \$70 million plant that will process all refuse in the metropolitan area.

Reprocessing systems recover valuable metallic wastes for recycling and can convert other trash into usable energy.

Interim Program

The Department of Communication Disorders at BSC is now taking part in a resident internship at the Institute for Logopedics in Wichita, Kansas.

The institute is an internationally known treatment and research center for children and adults having speech, hearing, or language disorders. The clinical programs are supported both nationally and locally as a Unified Service Project by the Society for the Preservation and Encouragement of Barbershop Quartet Singing in America.

The Columbia - Montour Chapter makes annual contributions to the Institute as well as to the training and clinical programs of the Department of Communication Disorders at the college.

Thomas E. Oliver of Plymouth has been awarded the Institute for Logopedics Fellowship.

Upon returning to BSC Mr. Oliver will resume his training as an assistant in the Speech, Hearing, and Language Clinic here.

DRAFT REGISTRATION

Male students who turn 18 should contact Mr. Guffrovich to register for the draft. Although the draft has been cancelled, it is still necessary to register. All registrants should bring two ID's such as a driver's license, Social Security card, birth certificate, etc.

Dracula

(from p. 5)

The immense frame of Alan Rosenbloom added to the typical style of his vampire attire, gave a true quality of scare to his appearance. His icy tones of speech completed the look of the vampire.

Duane Long as Renfield (an insane inhabitant of the sanatorium,) was in his glory. Long an admirer of the occult, he also contributed to the atmosphere of the stage with properties and special effects. (Such as blood-curdling screams and squeaking bats.)

Dan Demczko gave a convincing performance as the courageous fiancée of Lucy (Jonathan Harker), worrying at her strange sickness and willing to drive the stake into the heart of the sleeping vampire "with pleasure." Butterworth, the sanatorium attendant in the white coat, was played by John Mallin. His cockney accent held true at all times, giving the convincing impression of the character which he portrayed.

The remaining performers put forth an adequate effort to portray their drab roles with a measure of success. LuAnn Laudenslager (the maid), Allen Murphy as Dr. Seward and Kathy Walsh as Lucy completed the cast.

The final speech by Van Helsing reminded the audience to beware of "such things" when they returned home that evening. As the lights rose, a sigh of relief also rose from the auditorium and all who came returned to their cozy dwellings a bit more wise and a bit more wary than before they heard of the powers of the supernatural.

Vets

Veterans whose active duty terminated after October 1, 1972, may now apply for back pay.

The federal government has been ordered by a U.S. Court to pay a salary differential to all military personnel and veterans who served in active duty between October 1, 1972 and January 1, 1973.

Veterans applying for the back pay should make out a back pay claim; a short letter is all that is necessary.

The letter should include your full name, Social Security number, military service number (if assigned one), rank, current mailing address and duty station between October 1, 1972 and January 1, 1973.

All letters should be forwarded to the following addresses depending on branch of service.

ARMY: Commending General, U.S. Army Finance Support Agency, FINCS-A, Indianapolis, Indiana, 46249.

NAVY: Commanding Officer, Navy Finance Center, Anthony J. Cellebresse, Federal Building, Cleveland, Ohio, 44199.

AIR FORCE: Air Force Accounting and Finance Center, AFC, 3800 York Street, Denver, Colorado, 80205.

COAST GUARD: Commandant, U.S. Coast Guard, GFPA-2-71, Washington, D.C.

Play-Orchestra

(from pg. 5)

special adaptation of the farce for the Company, locating it in Saratoga Springs.

The orchestra "plays" salon music of the 1920's, which is actually recorded on tape. The actresses had to learn to imitate the bowing and fingering of the various instruments, and to synchronize those motions with the tapes. They were coached for weeks by musicologist and conductor Fritz Rikko, whose unique job was teaching people not to make musical sounds, but to look as if they were.

"We had to learn how to hold the instruments in every state, playing, relaxing, putting them down," says Gisela Caldwell, who is the wife in "Play" and then climbs out of her urn to take the first violin's chair in "Orchestra". "We broke the music down into what the bowing should be—how many notes on the down-bow and how many on the up-bow." The hardest thing of all? "To speak and play at the same time," she says, adding, "It's just like 'Play', although in a different way. It requires super, heightened concentration."

When the performance time comes, of course, none of the efforts show. Then there is only the smooth presentation of "Play-Orchestra."

Admission to this unusual piece of theatrical entertainment by student I.D. card or faculty Community Activities tickets or \$3.00 for adults and \$1.50 for students. Tickets are available in advance in Room 114 of Haas Auditorium or may be reserved by calling 389-2802.

FYI

(from p. 3)

Library Orientation

There will be a continuous showing of the Andruss Library slide-tape orientation in L-35 from 1:00 p.m. to 5:00 p.m. Monday, September 16.

International Relations Club

There will be a short meeting of the International Relations Club on Tuesday, September 17 in the Green Conference room of the Kehr Union at 8:00 p.m. Membership is open to all BSC students.

Senior Class Meeting

There will be a Senior Class Meeting, Thursday, September 19, at 7:30 p.m. in the Multipurpose Room in the Kehr Union to discuss Homecoming and class dues. All December graduates who have not paid their dues must pay them by November 15 at the Kehr Union Information Desk. Checks should be made payable to "Class of 1975".

Speed Reading Course

The Speed Reading Course starts today. There are a few openings still remaining. If you are interested, please stop by the Reading Clinic, first floor, Ben Franklin Building.

Career Development Open House

There will be an Open House of the Career Development Center located in Ben Franklin Building, on Wednesday, September 19, 1974 from 3:00 to 5:00 p.m. All classes are welcome to attend.

Lambda Rush

The Sisters of Lambda Alpha Mu would like to announce their open rush parties on Wednesday, September 18 and Thursday, September 19, beginning at 9 p.m. in Old Science. All girls of second semester freshman standing or above, with a 2.0 cumulative average or better are welcome to attend.

In addition to service projects, Lambda is also involved in intramural sports and various social events. The sisters are now living at 3834 Lightstreet Road but will soon be located at the new housing project on Honeysuckle Lane. So for some fun and relaxation come and meet the sisters of Lambda. Feel free to visit anytime—see what BSC's only service sorority is all about. You'll be glad you did!

ACADEMIC RESEARCH LIBRARY

Thousands of Topics
\$2.75 per page
Send for your up-to-date, 176-page, mail order catalog of 5500 topics. Enclose \$1.00 to cover postage (1-2 days delivery time).

519 GLENROCK AVE.
SUITE #203
LOS ANGELES, CA. 90024

Our materials are sold for research purposes only.

KISSIN' COUSINS RESTAURANT

7 A.M. to 12 Midnight
Breakfast - Lunch - Dinner

Daily Specials

Visit Our Delicatessen Downstairs
COLD CUTS, HOAGIES

Call 784-6813 For Delivery from 6 to 12

This Week's Answer

P	A	R	A	G	U	A	Y	E	N	T	R	A	P
A	N	A	C	O	N	D	A	N	O	V	E	N	A
R	E	P	E	A	T	E	R	T	R	A	D	A	L
I	C	I	P	O	N	D	E	R	S	E	D	T	
E	D	D	I	E	S	A	V	E	J	E	E	R	
T	O	E	D	G	I	N	R	U	M	M	Y		
A	T	S	E	A	F	E	N	C	E	S			
L	E	T	I	T	B	E	C	H	A	T	T	E	L
S	P	E	R	S	E	L	O	R	N	E			
D	O	N	T	S	A	V	E	N	A	G	A		
A	R	A	S	R	O	U	E	S	E	V	E	N	
N	I	B	P	A	R	S	N	I	P	I	N	N	
C	O	B	W	E	B	S	E	R	E	N	A	D	E
E	L	E	M	O	L	E	M	A	N	A	T	E	S
R	E	D	O	N	E	S	A	N	D	B	A	R	S

Trustees

(from pg. 2)

(2) academic faculty will receive a 4 percent salary increase effective immediately. (3) there will be no retrenchment through the academic year of 1975-1976 and (4) Bonuses will be awarded for exceptional merit to deserving state colleges and universities. BSC is eligible for at most 2 bonuses

Term Papers! Canada's largest service. For catalogue send \$2 to: — Essay Services, 57 Spadina Ave., No. 208, Toronto, Ontario, Canada.

Hartzel's Music Store
72 N. Iron St.
Over 300 Guitars and Amplifiers

RESEARCH

CANADA'S LARGEST SERVICE
\$2.75 per page

Send now for latest catalog. Enclose \$2.00 to cover return postage.

ESSAY SERVICES
57 Spadina Ave., Suite #208
Toronto, Ontario, Canada
(416) 366-6549
Our research service is sold for research assistance only.

Capitol Theater
Showing Today and Tomorrow Only
SHOWS AT 8 P.M. ONLY

Paramount Pictures presents
ROBERT REDFORD
and
MIA FARROW



PG In Color A Paramount Picture

Eppley's Pharmacy

MAIN & IRON STREETS
Prescription Specialist

- CHANEL
 - GUERLAIN
 - FABERGE
 - LANVIN
 - PRINCE MATCHABELLI
 - ELIZABETH ARDEN
 - HELENA RUBENSTEIN
 - DANA
 - COTY
 - MAX FACTOR
- Green Stamps

ROTC Offers Leadership Labs

(from pg. 3)
formations. On October 5, a training session will be held for the entire battalion (comprised of the area collegiate ROTC-COMPANIES). On November 15 and 16, a two day session will be held at the Indiantown Gap Military Reservation for the battalion, which numbers approximately one hundred cadets, male and female, this year.

THE STUDIO SHOP

59 E. MAIN ST.

Welcome Back Students
Stop To See Our Room Decor
Fish Nets - Bed Spreads
Lanterns - Furniture

Attention!

Any person desiring to work on the 1974-75 yearbook, must attend the organizational meetings that will be held on Thursday, Sept. 19 in the Obiter office. The office is located on the top floor of the Kehr Union and the meetings will be at 3:30 and at 7:30. If you are interested in working for the Obiter but cannot attend, please contact Bob O'Brien either through the Obiter ext. (389-2902) or drop a line through my mail-box (3806).

HOTEL MAGEE

Hotel Magee World Famous Restaurant Needs Energetic People To Fill These Positions.

Must Be Willing To Work Most Weekends.
Fair Wages Plus One Meal Each Working Day.

- DESK CLERKS
- BUSBOYS
- DISHWASHERS
- BELL BOYS
- COOK'S HELPERS

COLLEGE STORE

SUPERBOX
Welcome Students!

Your Superbox Is Now Available for Only 99¢
MALE & FEMALE SUPPLY IS LIMITED
ONE PER CUSTOMER

COLLEGE STORE

Ritter's Office Supply

112 E. Main St.
Bloomsburg
784-4323

CLASS OF '76

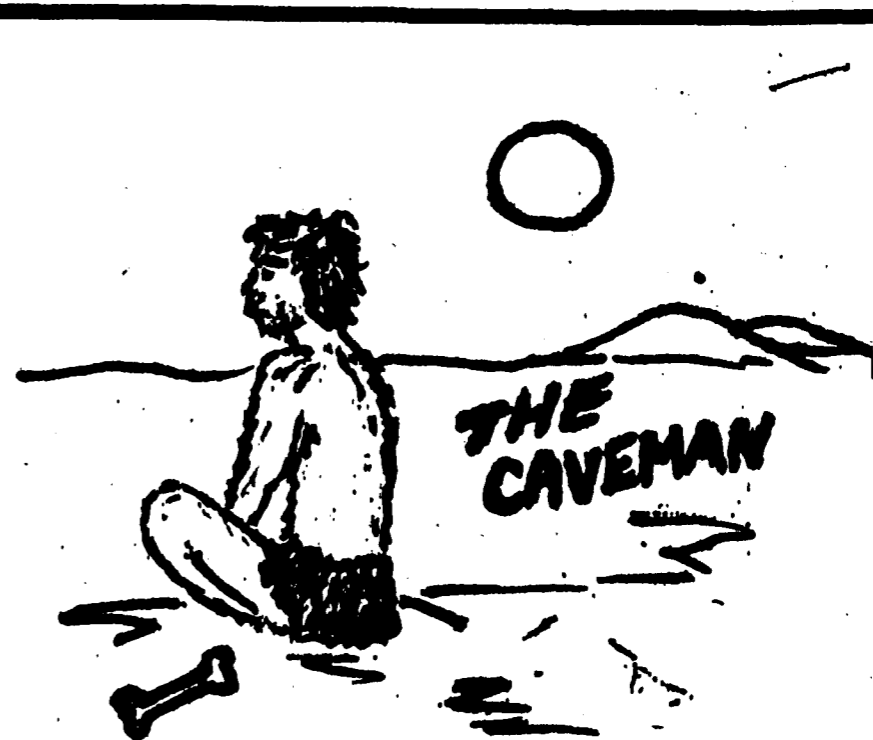
Josten's Factory Representative will be in the College Store on Monday, Sept. 16 from 9 a.m. 'til 4 p.m. to assist you in the selection of your visual diploma.

— THE OFFICIAL —

Bloomsburg State College Class Ring

\$10.00 Deposit

5 Week Delivery



ULTRA-LIGHT CAMPING AND BACKPACKING EQUIPMENT

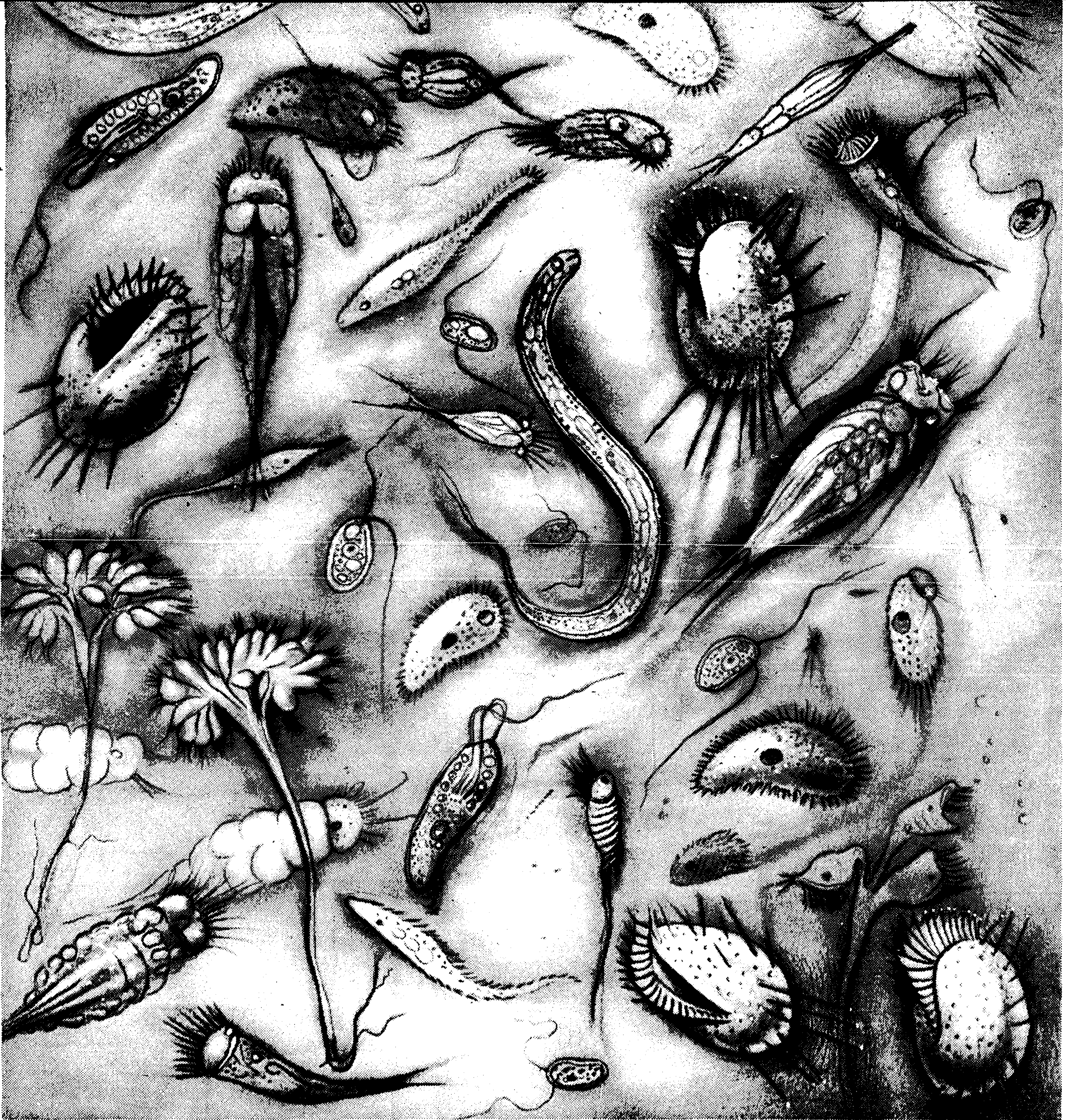
WILDERNESS SUPPLIES

- HIKING SHOES
- FRAME PACKS & RUCKSACKS
- NYLON TENTS
- SLEEPING BAGS
- FREEZE-DRIED FOOD

TOPOGRAPHIC MAPS

734 N. 4th St. (Rear)
SUNBURY
286-7339

11:00 - 6:00
Friday 'til 9:00
Closed Wed.



We invited a few friends for dinner and they helped clean up the Genesee River.

With the aid of a few thousand pounds of microorganisms, we're helping to solve the water pollution problem in Rochester. Maybe the solution can help others.

What we did was to combine two processes in a way that gives us one of the most efficient water-purifying systems private industry has ever developed.

One process is called "activated sludge," developed by man to accelerate nature's microorganism adsorption. What this means is that for the majority of wastes man can produce, there is an organism waiting somewhere that will happily assimilate it. And thrive on it.

The breakthrough came when Kodak scientists found a way to combine the activated sludge process with a trickling filter process and optimized the combination.

We tested our system in a pilot plant for five years.

(At Kodak, we were working on environmental improvement long before it made headlines.) And the pilot project worked so well, we built a ten-million-dollar plant that can purify 36-million gallons of water a day.

Governor Rockefeller called this "the biggest voluntary project undertaken by private industry in support of New York State's pure-water program."

Why did we do it? Partly because we're in business to make a profit—and clean water is vital to our business. But in furthering our own needs, we have helped further society's. And our business depends on society.

We hope our efforts to cope with water pollution will inspire others to do the same. And, we'd be happy to share our water-purifying information with them. We all need clean water. So we all have to work together.



Kodak
More than a business.