



BLOOMSBURG STATE COLLEGE

GENERAL PURPOSE TEST ANSWER SHEET

I
 1
 A B C D E
 2
 A B C D E
 3
 A B C D E
 4
 A B C D E
 5
 A B C D E
 6
 A B C D E
 7
 A B C D E
 8
 A B C D E
 9
 A B C D E
 10
 A B C D E
 11
 A B C D E
 12
 A B C D E
 13
 A B C D E
 14
 A B C D E
 15
 A B C D E
 16
 A B C D E
 17
 A B C D E
 18
 A B C D E
 19
 A B C D E
 20
 A B C D E
 21
 A B C D E
 22
 A B C D E
 23
 A B C D E
 24
 A B C D E
 25
 A B C D E
 26
 A B C D E
 27
 A B C D E
 28
 A B C D E
 29
 A B C D E
 30
 A B C D E
 31
 A B C D E
 32
 A B C D E
 33
 A B C D E
 34
 A B C D E
 35
 A B C D E
 36
 A B C D E
 37
 A B C D E
 38
 A B C D E
 39
 A B C D E
 40
 A B C D E
 41
 A B C D E
 42
 A B C D E
 43
 A B C D E
 44
 A B C D E
 45
 A B C D E
 46
 A B C D E
 47
 A B C D E
 48
 A B C D E
 49
 A B C D E
 50
 A B C D E
 51
 A B C D E
 52
 A B C D E
 53
 A B C D E
 54
 A B C D E
 55
 A B C D E
 56
 A B C D E
 57
 A B C D E
 58
 A B C D E
 59
 A B C D E
 60
 A B C D E
 61
 A B C D E
 62
 A B C D E
 63
 A B C D E
 64
 A B C D E
 65
 A B C D E
 66
 A B C D E
 67
 A B C D E
 68
 A B C D E
 69
 A B C D E
 70
 A B C D E
 71
 A B C D E
 72
 A B C D E
 73
 A B C D E
 74
 A B C D E
 75
 A B C D E
 76
 A B C D E
 77
 A B C D E
 78
 A B C D E
 79
 A B C D E
 80
 A B C D E
 81
 A B C D E
 82
 A B C D E
 83
 A B C D E
 84
 A B C D E
 85
 A B C D E
 86
 A B C D E
 87
 A B C D E
 88
 A B C D E
 89
 A B C D E
 90
 A B C D E
 91
 A B C D E
 92
 A B C D E
 93
 A B C D E
 94
 A B C D E
 95
 A B C D E
 96
 A B C D E
 97
 A B C D E
 98
 A B C D E
 99
 A B C D E
 100
 A B C D E
 101
 A B C D E
 102
 A B C D E
 103
 A B C D E
 104
 A B C D E
 105
 A B C D E
 106
 A B C D E
 107
 A B C D E
 108
 A B C D E
 109
 A B C D E
 110
 A B C D E
 111
 A B C D E
 112
 A B C D E
 113
 A B C D E
 114
 A B C D E
 115
 A B C D E
 116
 A B C D E
 117
 A B C D E
 118
 A B C D E
 119
 A B C D E
 120
 A B C D E
 121
 A B C D E
 122
 A B C D E
 123
 A B C D E
 124
 A B C D E
 125
 A B C D E
 126
 A B C D E
 127
 A B C D E
 128
 A B C D E
 129
 A B C D E
 130
 A B C D E
 131
 A B C D E
 132
 A B C D E
 133
 A B C D E
 134
 A B C D E
 135
 A B C D E
 136
 A B C D E
 137
 A B C D E
 138
 A B C D E
 139
 A B C D E
 140
 A B C D E
 141
 A B C D E
 142
 A B C D E
 143
 A B C D E
 144
 A B C D E
 145
 A B C D E
 146
 A B C D E
 147
 A B C D E
 148
 A B C D E
 149
 A B C D E
 150
 A B C D E
 151
 A B C D E
 152
 A B C D E
 153
 A B C D E
 154
 A B C D E
 155
 A B C D E

STUDENT LAST NAME		F	M	DEPT NO.	COURSE NO.
G	L	I	C	61	292
A	A	A	A	0	0
B	B	B	B	1	1
C	C	C	C	2	2
D	D	D	D	3	3
E	E	E	E	4	4
F	F	F	F	5	5
G	G	G	G	6	6
H	H	H	H	7	7
I	I	I	I	8	8
J	J	J	J	9	9
K	K	K	K		
L	L	L	L		
M	M	M	M		
N	N	N	N		
O	O	O	O		
P	P	P	P		

USE #2 PENCIL ONLY
ERASE COMPLETELY ANY MARKS YOU WISH TO CHANGE

Remember These?

Teacher Evaluations Get under wayfinally!

By KAREN KEINARD
 Due to delays caused by a changeover in the BSC computer system, the student evaluations of faculty are presently unavailable, according to Dr. J. Calvin Walker, chairman of the evaluation committee.
 He stated that a committee report on the evaluations, which were completed by the student body last semester, may be available by the end of this month if the data was run through the computer this week.
Delays
 Delay number one was due to a changeover in BSC's computer system, making it impossible to determine results at the end of the spring semester or during the summer, since the changeover was just completed this fall.
 There was a possibility of using facilities at Shippensburg State College, since they had permitted our using their computers before. However,

when the magnitude of the forms was realized, the amount of work was judged to be too great to request a free use of their facilities and the shortage of funds made paying for this service impractical, if not impossible.
 The next problem to slow the process down was the lack of a 17,000 plus answer form program that could be used with the new computer. Forms were recently obtained from Mansfield, so the results of the evaluations should go through this week.
Other Problems
 In the course of committee meetings, only one of the student representatives attended any of the 12 sessions held in the spring and summer, which were supposed to have an evenly balanced representation of three students, three faculty and three members of the administration. At some of the meetings, there was no student
 (please turn to page three)

Inside:

- 2. CGA Finally Meets
- 4. Nkombodzi
- 6. West Chester Invades
- 7. Tennis Ends Swimmers Start

College Council Holds Belated Meeting

By Barb Wanchisen

Homecoming, higher athletic admission prices and monies allotted this summer were discussed at the CGA meeting held in the Multi-purpose room of Kehr Union at 7:00 p.m. Monday.

President Steve Andrejack called the meeting to order and recognized co-chairperson Pat Kanouse to discuss the Homecoming agenda. The meeting was postponed to last week because of a lack of a quorum.

Homecoming

Homecoming 1973 officially began Wednesday with the movie "Carnal Knowledge" and a pep rally was held last night in the Centennial Gym. Tonight Dave Mason will perform in the Field House at 8:30 with the crowning of Homecoming Queen following the performance. Buses will start at 7:00 from Elwell and the Old Gym parking lot.

Judging of the residence halls will take place tomorrow at 8:00 a.m. and a parade starting at the hospital parking lot at 10:00 a.m. The Huskies will challenge West Chester at Athletic Park at 2:00 and there will be a dance in the Union featuring the Mellowphonics. Anyone over 21 may attend a dance in the American Legion with the Esquires Band.

Concert Choir will rap up Homecoming with a Pops Concert in Haas at 8:15 p.m. on Sunday.

Adult Admission Price Increase

A motion was passed to in-

crease the adult general admission charge for athletic events from 1.50 to \$2.00. The visiting student charge will remain \$1.00 upon presentation of I.D. card. This increase will affect football, basketball and wrestling events and will go into effect starting with the basketball season.

Reception for McCormick

CGA allocated \$100 for an informal reception to be held by the students to meet Dr. McCormick sometime in February. Students did have a chance to attend a reception after Dr. McCormick's inauguration but it was brought to the attention of the committee that this had been improperly publicized. The purpose of this reception is to give students a chance to talk with the President in an informal atmosphere.

Summer Finances

An additional \$280 was

granted to Coach Eli McLaughlin to renovate the speaker system at the pool this summer.

Also passed this summer was a grant of \$400 to be given to the Oklahoma wrestling match to be held here sometime in January. A profit of at least \$1000 is expected and this money will return to the CGA funds.

Positions Filled

The offices of Parliamentarian, held by Dan Burkholder, and Historian, held by Phil Brown have been approved as regular CGA officers.

The three Senate vacancies have been filled by Joe Romano, Claudia Chesney and Sue Sweigart. Also, the two new permanent executive council officers are Mary Beth Lech and Charlie Bender.

Ann Renn and Pat Kanouse were elected representatives to the Student Union Board.



Newly sworn-in Parliamentarian Dan Burkholder answers questions at last Monday's meeting of College Council. (Photo by T. Leahy)

Pops Concert to Feature sound of Jim Webb

By Dave Ambler

The popular sound of Jim Webb along with selections from five popular Broadway musicals will be featured in a pops concert to be presented by the BSC Concert Choir on Sunday, October 14th, at 8:15 p.m. in Haas Auditorium.

The music in the program ranges from the folk-rock sound of John Lennon & Paul McCartney's "Here There And Everywhere" to the popular rock musical "Godspell" to the moving spiritual sound of "Oh Happy Day".

Also included in the show are a pair of duets, "Mama Look Sharp" from 1776 and "I'll Never Fall In Love Again" from Burt Bacharach & Hal David's "Promises Promises". Music from the smash Broadway success "Pippin" is also featured.

Many of the numbers have been choreographed to provide for more expression and feeling.

Accompanists for the group will be Paula Bacchetta, guitarist, Andy Damiter on the

rock organ, Bill DeRose on bass, Donna Kroll, pianist and Fred Lupien on drums.

Director of the 80 member group, Mr. Richard Stanislaw describes the concert as being "filled with excitement and variety."

The choir has been rehearsing since the beginning of the semester for this annual homecoming weekend event. The group is also scheduled to

perform a Christmas Cantata, "This Day (Hodie)", by R. Vaughan Williams on December 6th and another major choral work, "Symphony of Psalms", by Stravinsky, on March 24, 1974.

The pops concert which is sponsored by the BSC music department is free of charge to all BSC students and the general public.



Concert Choir members relax during rehearsal for this Sunday's concert. (Photo by C. Ruble)

Christian Fellowship Meets

The Filial Soul, a gospel quartet made up of BSC faculty members Brian Johnson and Charles Jackson and their wives, entertained a crowd of approximately 80 students Monday night at a meeting of the Bloomsburg Christian Fellowship in Kehr Union.

Together for three years, the quartet has performed all over Pennsylvania for the purpose of giving glory and honor to God through the gifts of music he

has given them.

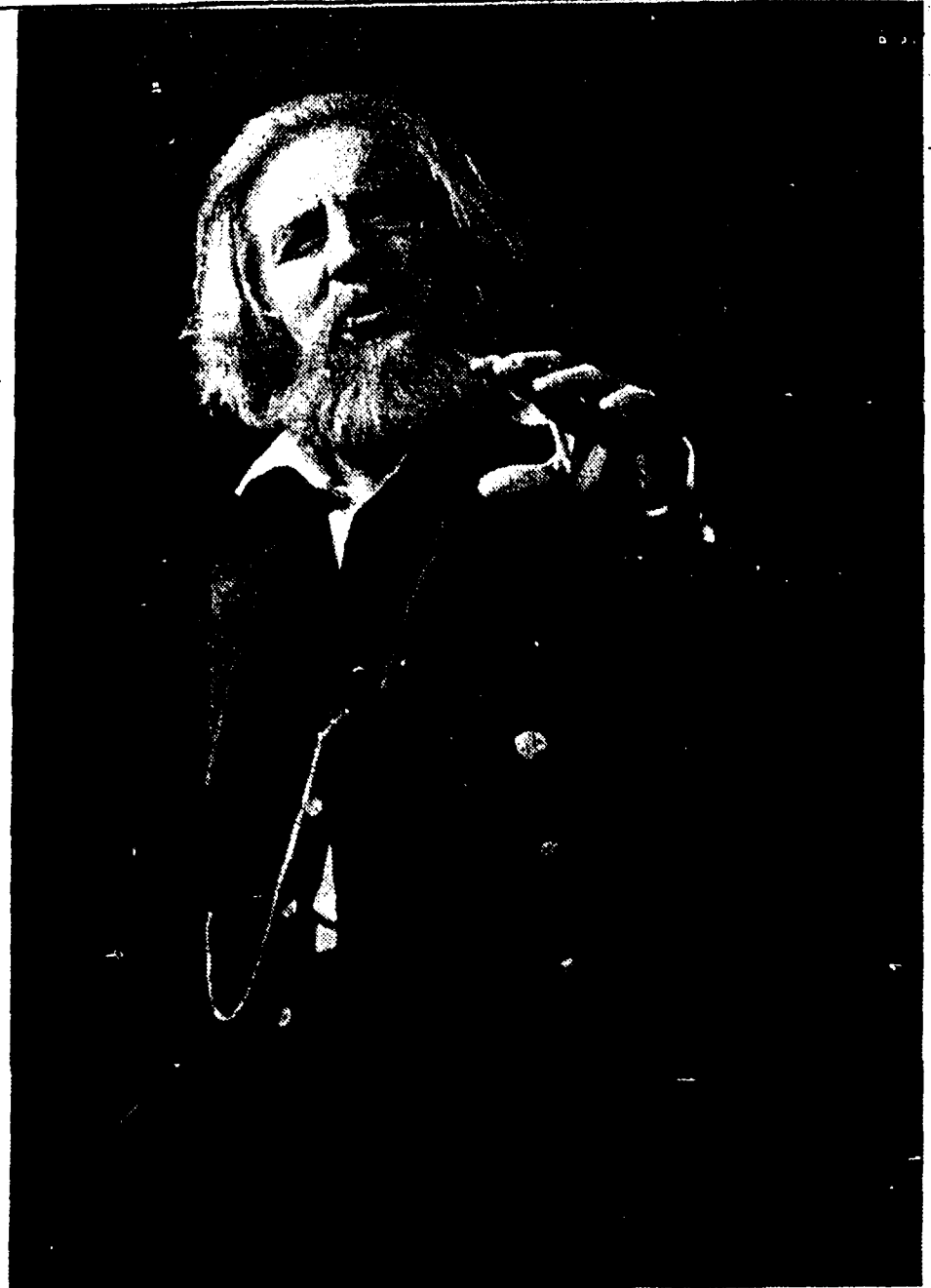
The Bloomsburg Christian Fellowship, a chapter of Inter-Varsity Fellowship, is made up of students and faculty members who are seeking a good relationship with God.

The group feels that such a relationship is to be found through study of the Bible, prayer and fellowship with other believers.

In addition to the gatherings every Monday night at 8 p.m. in

the Union Coffeehouse, the fellowship is conducting small Bible studies in each of the residence halls on campus.

The group would like to emphasize that they are not a club — they are a group of Christians meeting together in order to help each other grow spiritually according to God's will.



John Fields presented his interpretation of Walt Whitman's famous poem "Leaves of Grass" Tuesday evening in Carver. (Photo by P. White)

Fields Presents Whitman

The crowd was small, but their reception was warm.

John Fields, of the theatre at Monmouth gave his interpretation of Walt Whitman's poem "Leaves of Grass," Tuesday evening in Carver Auditorium.

Fields appeared before a crowd of approximately fifty after meeting Tuesday afternoon with members of the English Department and English majors in a coffee hour. Fields appeared as part of the Arts Council series for this year, which also sponsored Senator Eugene McCarthy's

speech, and the recent recital by faculty member John Couch.

Fields spent four years with the company of "Man of La Mancha" on Broadway. He had performed at the Champlain Shakespeare Festival, the Antioch Shakespeare Festival, the Hartford Stage Company, and Baltimore Center State.

Fields studied classical languages at the University of Chicago on a Woodrow Wilson fellowship.

The next event scheduled by the Arts Council is the Bloomsburg players' production of "No, No, Nanette," October 18-20.

Civil Liberties Seminar Scheduled

Where is legal aid available for people who cannot hire a lawyer? What roads are open to a juvenile declared delinquent? What should you do if you are arrested?

A civil liberties seminar on Wednesday, October 17 at 8:00 p.m. will deal with these and related topics. The seminar is co-sponsored by the Central

Scheduling Hints

Students have until October 17 to schedule for next semester. Most students have already seen their advisors or have arranged to do so.

Except those in Continuing Education or those planning to graduate in December, all students currently registered should have received the scheduling materials plus two "Area of Study" cards.

Following directions explicitly in scheduling courses for next semester will save you time and problems in the long run. Except those planning to student teach, two courses should be listed as alternates that can be used, not courses you can't use, or you may get them and have to pay or wait in line to have them changed.

(please turn to page three)

Susquehanna Chapter of the American Civil Liberties Union and Susquehanna University's Department of Sociology and Anthropology. The meeting will be held in room one of the student union at Susquehanna University.

Conducting the discussion groups will be representatives from the Northumberland Company Youth Services Bureau, the Susquehanna Valley Legal Services Bureau and Stephen Cohen, Sunbury Attorney.

A brief business meeting of the local ACLU chapter will precede the seminars at 7:30 p.m. On the agenda is selection of nine members to the steering committee for the five county (Union, Snyder, Northumberland, Montour and Columbia) chapter.

ACLU is a national non-partisan organization which provides advice and in some cases legal counsel for individuals and groups who believe their rights to freedom of inquiry and expression, privacy, due process of law and equality before the law, have been violated.

New members are welcome. For further information, write ACLU, P.O. Box Lewisburg, or contact Dick Brook (Philosophy Department) or Margaret Lauer (English Department).

Teacher Evaluations

(from page one)

input at all.

Also, when the same information was run onto two different tapes at separate times, 17 per cent of the answers were different as read by the optical scanner, making that much of the data unusable. This bad data was attributed to malingering on the part of the students answering the questionnaire. (An example of this might be a mark made between the two little boxes, instead of within them. The scanner could have read the mark as an answer in one box for one run and in another box for another run.)

There is, in addition, a likelihood that the middle section of the evaluation, questions 31-40, will have to be ignored, due to an inconsistency

in the numbers of answers. Some of the items had five possible answers and some had eight or some other number, so that the entire section cannot be evaluated in the same way as the first and last parts, which have one set of possible answers for all the questions.

What Has Been Done

So far, only a frequency distribution has been determined, which rated professors in general at BSC above average in student opinion.

The final report, will indicate the statistical reliability as well as the face and content validity of the evaluations and will probably be the decisive factor as to whether or not this particular document will be used again.

Whatever the committee decides will be attached in a

report with the results of the evaluation, then distributed to the faculty, so that each one can choose whether or not to release it for publication in a CGA booklet.

Regardless of what the faculty members choose to release to CGA, the evaluations will go into their personal files, with a statement about its validity attached. (APSCUF is supposed to decide who has the right to release results from the committee.)

The committee has received unfavorable feedback from about one quarter of the faculty, the rest not caring to comment.

According to Dr. Walker, there may still be some redeemable characteristics of BSC's own evaluation, but if there aren't enough to make it worthwhile, there will most likely be a search for an already proven form from another institution.

Scheduling Hints

(from page two)

Many are concerned that their "Area of Study" cards indicate an invalid "Area of Study". This means that the "Area of Study" as shown on the card is correct or not complete. Students should ask their advisor for help in correcting their card or they again may come to the Advisement Office for help. All Freshmen in Elementary Education have cards marked "invalid" merely because they have not chosen a "minor" yet. After talking to their advisor they may wish to choose one now or they may wish to wait. Some have their cards marked "invalid" for other reasons that are rather complicated and should see Dr. Jones in the Advisement Office.

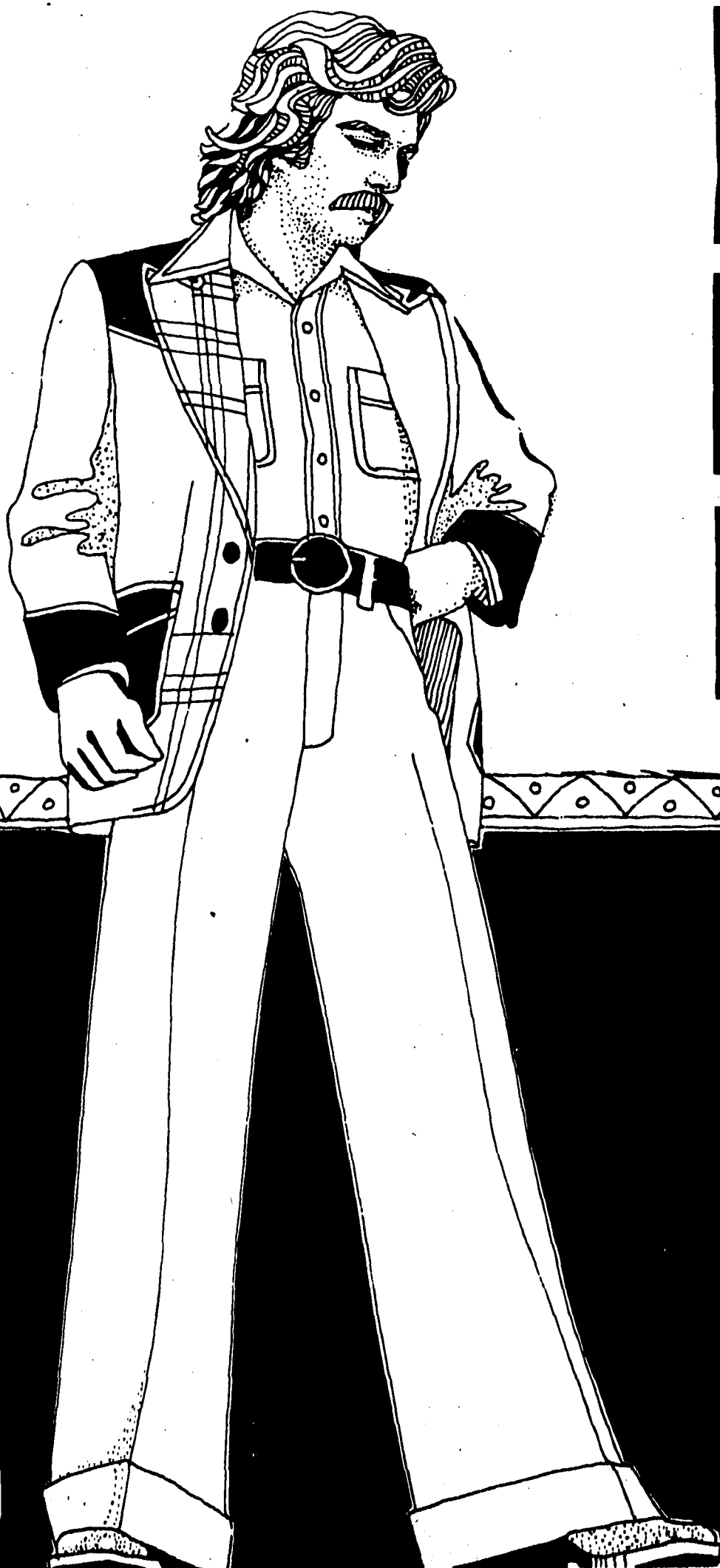
Those wishing to change their "Area of Study" may do so

during the scheduling period by notifying their old advisor or curriculum coordinator, changing their "Area of Study" cards accordingly and leaving these cards with their new advisors. Be sure to sign them. We are still having difficulty keeping our college records up-to-date and accurate concerning each student's "Area of Study". Please keep the Advisement Office informed if errors which continue to appear on your "Area of Study" card after you have made corrections.

Students experiencing difficulty with advisement should contact their Department Chairmen or Curriculum Coordinator. Dr. William Jones, Coordinator of Academic Advisement (Undergraduate) is also available in room 128 Waller Hall, telephone 389-2119.

We're it

The Tunnel Is Your Clothing Store For The New Fall Season

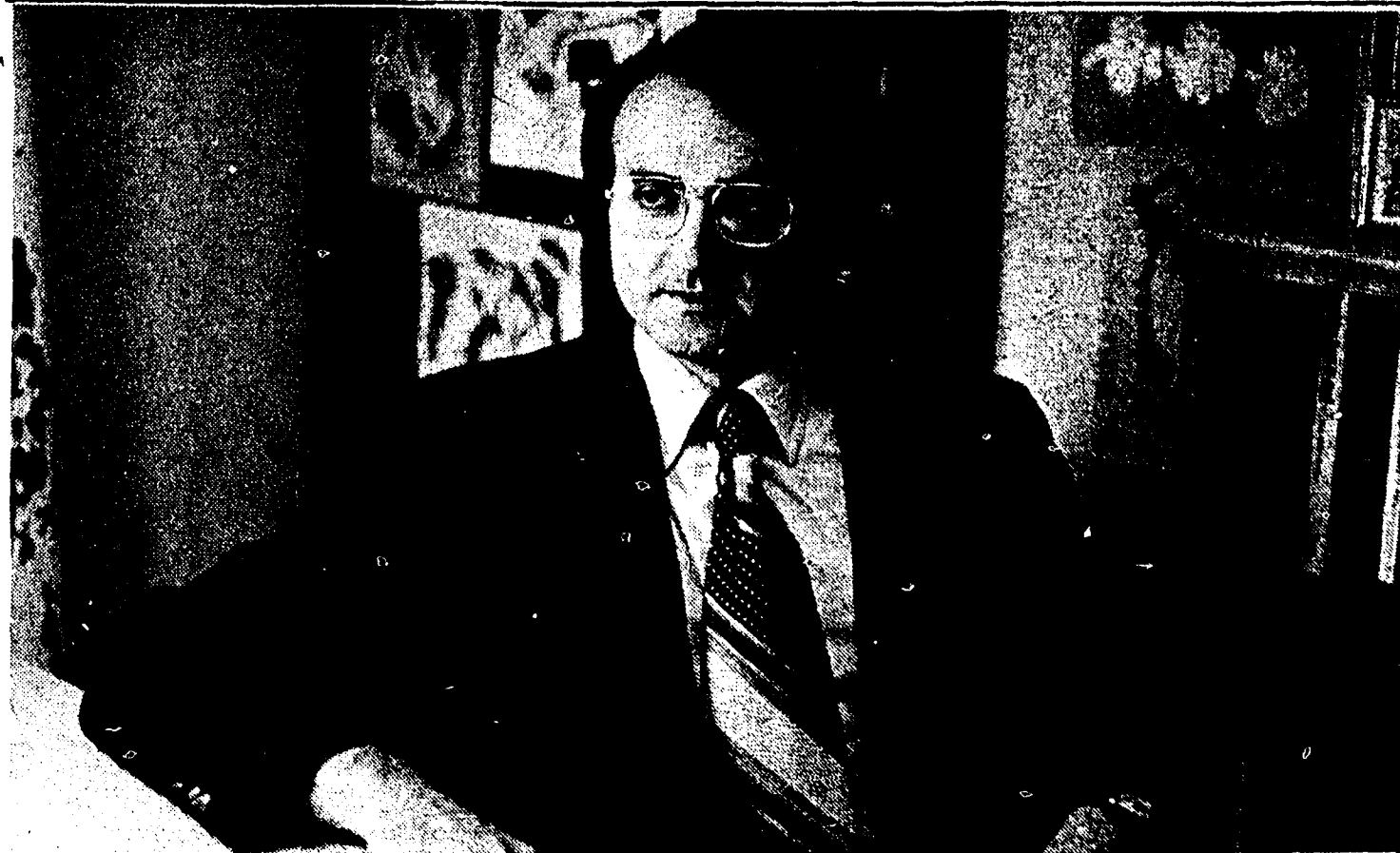


1000 AND MORE SLACKS
Cuffed Wide Styles, New Fall Plaids, Solids, Crushed Denims
Haggar Mustangs • Farah Young Men's

SHOES
•Platform stacked heels by Verde
•Casual crepe soles by Manley

BLAZERS
Casual Look by Braken
In Wool Plaids & Solid Velvets





Assistant Professor of Elementary Education Dr. William O'Bruba looks for enthusiasm and dedication in the student teachers he supervises. (Photo by P. White)

Simpson Curse

By Duane Long
On the night following his daughters' deaths, Sir Jonathan Simpson knew Garth would strike again, for another full moon would rise in the night sky. On the morning after the murders, he set out for the Adam's farm. He knew that a vampire and werewolf were responsible, and carried a mallet, wooden stake, and a pistol loaded with silver bullets.

It was a long journey to the Adam's farm. After two hours of steady riding, Sir Jonathan reached the ruined farm. He dismounted, and slowly made his way to the burned-out farmhouse. Brandishing his pistol, he crept through the charred doorway. He cautiously descended the basement stairs. In the peat bin lay an oaken coffin. Within the oblong box was the body of Carlotta.

Reaching into his gunney sack, Sir Jonathan withdrew a mallet and wooden stake. He opened the casket, exposing the body to the morning air. He gripped the sharp piece of wood firmly, and poised it over the woman's heart. With one swift stroke, the shaft was driven deep into her chest. She opened her eyes and tried to scream. A rasping sound and the gurgle of rank blood bubbled from her

mouth. Carlotta gasped her final breath. She was finally dead.

Sir Jonathan searched the basement, overlooking the hidden passageway behind the grind stone. There was no sign of Garth. Sir Jonathan assumed he was in town, procuring supplies.

Gathering all his strength, Sir Jonathan drug the coffin up the stairs and into the morning sunlight. The purifying rays of ultraviolet radiation from the sun struck Carlotta's body for the first time in over eighty years. Her skin darkened and began to blister. The odor emitted was like the stench of a slaughter house. The once lovely face degenerated into that of a rapidly mouldering corpse. Her shapely figure turned gaunt, with the emergence of bone from beneath the sizzling flesh.

When this sickening process was over, Sir Jonathan gave what was left a decent burial. He knew that Garth would become a wolf on the rising of the moon, and would seek him out. When he finished his grisley task, he mounted his horse and returned to Simpson House. He had no way of knowing, however, that there would be two creatures which would (please turn to page five)

Nkombodzi

By Eric Yamoah
"Anansem" (spider stories) are folktales that feature prominently during Nkombodzi sessions where many villagers gather around to listen.

These stories are normally told after dark, with one exception; they may be related in the daytime at the funeral of one who during his life was a famous storyteller. One interesting feature is the general use of animal names in these tales which seem otherwise to be wholly concerned with the lives and actions of human beings.

There are certain similarities between folktales in Africa and those of the United States. Slavery in West Africa was one of the very important factors in the spread of these tales, much as the blues of the American Negro slaves were spread across this country.

The nighttime stories were the only time that a period of license existed. Any servant could expose his bad master, any subject could tell of his wicked chief or any girl could report her unfaithful boyfriend. Up to a point the story teller was licensed — he took care, moreover, to protect himself by public declaration that what he was about to say was just a make-believe story. He would

change personal names to protect the innocent.

Here is an example of my own Anansem. For convenience sake, I will use the common American names of Eric, Bob, Rick and Bonita, which don't refer to any person living or deceased! My Anansem is a Mmoro, a riddle.

There were three very good friends who lived in the same village as the Chief. The Chief had a beautiful daughter and strangely enough each of these friends loved her. On her birthday the friends bought very expensive gifts for her and she became very embarrassed because she knew that her father would not allow her to marry any of those "common" people.

She neither wanted to meet them face to face nor send a maidservant to deliver any message and so she wrote letters and addressed them separately to each of them. The letters stated her feelings that she liked each of the boys but "for obvious reasons" their friendship could go no farther. "If you must get so serious, I cannot see you anymore."

These friends were so disappointed that they decided to leave the village and to seek their fortune somewhere. However, each of them had (please turn to page five)

Introducing Doctor William O'Bruba

By Mary Ellen Lesho
Another new addition to BSC's faculty this fall is Dr. William S. O'Bruba, Assistant Professor of Elementary Education. Originally from western Pennsylvania, he and his family now reside in Danville. Dr. O'Bruba graduated from California State College, California, Pennsylvania. He received his masters degree from Duquesne University, Pittsburgh, and his doctorate from Indiana University of Pennsylvania.
His duties as Assistant Professor of Elementary Education here at BSC mainly entail supervising student teachers in the Bloomsburg,

Danville and Shikellamy area. Qualities that he looks for in the students that he supervises are enthusiasm and dedication. These qualities, he feels, will make a student a success as a student teacher and later on in his profession.
Prior to his appointment here at Bloomsburg, Dr. O'Bruba taught in public schools in the states of California and Pennsylvania for five years. More recently he taught at Ohio State University and Indiana University of Pennsylvania.
A Phi Delta Kappan, Dr. O'Bruba has publications that appear in such elementary education journals as "Instructor", "Science and

Children", and "Learning Today". Outside of his office Dr. O'Bruba enjoys bicycling, fishing, and playing tennis. He and his wife Melva are the parents of two children, Christine, age five and Brian, age 21 months.
Dr. O'Bruba's main reason for coming to this area was to be in a smaller campus atmosphere, one of the things he enjoys most about Bloomsburg. He also likes the personal interaction with faculty and students that is possible only on a small-sized campus. To Dr. O'Bruba and his family may we say good luck and welcome to BSC!

Bits and Pieces

By Bob Oliver
When planning the teachers evaluation sheets last year, those writing it planned to be unique in their efforts. Unique they were.
The whole student evaluation of faculty is presently running through a computer. (Maybe) some six months after it was given. There is no logical reason in my mind why it has taken so long.
I realize that a delay occurred because BSC has had a changeover of its computer system; because BSC lacked a computer program for the 17,000 plus answer forms; because student input was lacking....
Planning?
But what I can't see is why none of these items were foreseen before the specific evaluation plans were made. Proper planning should have alleviated these problems.
As it turns out, if the forms are run through the computer this week, and if they are judged valid or invalid and if the individual faculty members consent to have them published, and if APSCUP decides who should release the report, and if CGA approves, then we might see the alleged evaluation forms in time for graduation.
Then at least we will know that we weren't the only ones that thought a prof was good or bad.
Unique ... maybe. Inefficient-for sure.

Letters

Dear Editor:
I want to take this opportunity to thank those who ripped off - literally - the COMMUNITY OF THE SPIRIT sign under cover of darkness last Friday night. Actually, I think a better job could have been done in the light, since two stubs of supporting stakes were left in rather crude form in the ground.
This sign was an eyesore, an obvious blight on the neighborhood and it needed to be replaced. I had intended to replace it with a new one in the near future and will now do so a bit sooner than I had planned.
So once again, thanks to my anonymous little helpers. Oh by the way, if you want to help out again, come by later and help me dig out the ground to erect a new sign.
Jay C. Rochelle
Protestant Campus Pastor

THE MAROON AND GOLD NEWS

Bob Oliver
Editor-in-Chief

Feature Editor Valery O'Connell Sports Editor Bill Stolar Associate Editor Karen Kelnard Photo Editor Pat White Senior Advisor Susan Sprague Copy Editor Kathy Joseph Business Manager Frank Lorah Advertising Manager George Garber Circulation Manager Nancy Van Pelt Director of Publications, Faculty Advisor Mr. K. Hoffman Photography Staff: Aianna Berger, Dan Maresh Jr., Becky Jones, Suzi White, John Andris, Barb Herbert, Paul Bixler, Debbie Schneider, Tom Leahy, Ron Troy, Matt Tydor General Staff: Tim Bossard, Marty Wenhold, Robert W. Gaglione, Duane Long, Joanne Linn, Tom Kurtz, Debbie Bull, Germaine Germeyer, Kim McNally, Anthony Creamer, Eric Yamoah, Lorna Richey, Scott Zahm, Sandra Millard, Sue Stiger, Sandy Risner, Dale Myers, Craig Winters, Linda Livermore, Barb Wanchison, Mark Haas, Mary Ellen Lesho, Beth Gibble, Peggy Moran	The M&G is located on the Top Floor, Kehr Union Building, tel. no. 389-3101. All copy must be submitted by no later than 6:00 pm on Tuesdays and Sundays for the Friday and Wednesday papers, respectively. The opinions voiced in the columns and feature articles of the M&G may not necessarily be shared by the entire staff. Final approval of all contents rests with the Editor-in-Chief. Letters should be legible — preferably typed — and received by the M&G no later than 6 pm on Tuesday and Thursday evenings to be eligible for printing. They should not be longer than 200 words, and must be accompanied by the writers name and phone number, although names will be withheld on request. The M&G retains the right to edit letters when necessary.
--	---

Nkombodzi

(from page four)

some kind of a supernatural power (voodoo or juju). Eric had a magic mirror through which he could see vents in other places. Bob had some powers which could transport people over distances of a thousand miles in a twinkle of an eye and Rick had a magic wand with which he could raise people from the dead.

One evening Eric looked into his mirror with the intention of finding out how his family was doing back home. To his astonishment, he saw that their beloved Bonita was dead and lay in state, with the tribespeople wailing around her casket.

It was necessary that they pay their last respects to their "One-time-loved-one" and Bob performed his magic. In a split second they were in the village. Rick got his wand ready and fighting his way through the crowd of mourners, touched Bonita's forehead and she immediately got up. All the people, including her parents, started running helter-skelter.

Later, after hearing the "Three Musketeers" story, the Chief held council with his elders at the Palace as to who of the three friends he should let Bonnie marry. My Anasesem ends here for I wouldn't mind marrying Bonita myself!

Omicron Epsilon Delta
Omicron Epsilon Delta, the International Honor Society of Economics, is now taking petitions for membership.

For further information concerning Omicron Epsilon Delta membership and petitions contact Dr. Philip H. Siegel at 257 Waller or by telephone at 389-2208.

MARKET ST. SUNOCO



SERVICE CENTER 784-8644

RESEARCH

Thousands of Topics
\$2.75 per page

Send for your up-to-date, 160-page, mail order catalog. Enclose \$1.00 to cover postage (delivery time is 1 to 2 days).

RESEARCH ASSISTANCE, INC.
11941 WILSHIRE BLVD., SUITE #2
LOS ANGELES, CALIF. 90025
(213) 477-8474 or 477-5493

Our research material is sold for research assistance only.

Miller Office
Supply Co.

18 West Main Street, Bloomsburg, Pa.
HEADQUARTERS OF
HALLMARK CARDS
AND GIFTS
Phone: 784-2561

National Testing Programs

Upon graduation, most students think their testing days are over. But many learn then, a little too late, of the national test that they could have taken, but passed up. Following is a listing and the test dates of those offered at Bloomsburg State College this school year.

The National Teacher Examinations will be offered on November 10, 1973 and again on April 6, 1974. It is recommended for students who need these scores as job conditions in certain school systems, or for certificates or certificate endorsements in some schools and certain states. The fee is \$18 for

the Common Examinations and one Area Examination taken on the same date.

The Graduate Record Examinations will be offered this school year on December 8, 1973 and April 27, 1974. The exams consist of the Aptitude Test and the subject-matter Advanced Tests and the fee is \$10 for each test.

The Miller Analogies Test is now available to those students who need this national test as applicants to graduate schools. The fee is \$6.

Other testing programs which are available at Bloomsburg State College include an Ad-

mission Test for Graduate Study in Business, the College Level Examination Program (CLEP) tests (this program is being developed now), Colleges of Podiatry Admission Tests, Graduate School Foreign Language Tests, Law School Admission Tests, and a Test of English as a Foreign Language.

The Office of Institutional Research, under the direction of Dr. Merritt W. Sanders, has more information available about these tests. Room 17, Carver Hall, is chockful of answers for any student who has a question about one of these tests.

The Simpson Curse

(from page four)

come to call on him. Markos, the son of the unholy pair, was sleeping peacefully in his coffin, unaware that his mother had just been destroyed.

Garth returned to the farm at noon, and saw the fresh mound of earth near the side of the house. He rushed to the basement and discovered that his wife's coffin was gone. Adams entered the root cellar to check on his son. Just as Sir Jonathan had killed his mother and sisters, he had killed his wife. At least his son was yet

alive. Together they would make Sir Jonathan pay dearly. First his wife would die, and then he.

It was almost dark when Sir Jonathan returned home. He had stopped at the mine to get some silver nuggets. His wife, Lady Margret Simpson, had retired early and was in bed.

Working feverishly, Sir Jonathan loaded an ornate, silver-inlaid double-barreled shotgun with silver nuggets. He had just finished when he heard a scream coming from the master bedroom. He dashed up the stairs, and flung the door open. He fired both barrels at the thing before him.

(to be continued)

John's Food Market
W. Main & Leonard St.
Open 8 a.m. to 12 mid-night Daily
Delicatessen
Full line of groceries & snacks

MUMS!
Homecoming
Regular \$2.00
Velvet Bow & Gold Football \$3.00

Ralph Dillon's
FLOWERS
Bloomsburg, Pa. 784-4406
WORLD WIDE DELIVERY

Eppley's Pharmacy
MAIN & IRON STREETS
Prescription Specialist

- CHANEL
- GUERLAIN
- FABERGE
- LANVIN
- PRINCE MATCHABELLI
- ELIZABETH ARDEN
- HELENA RUBENSTEIN
- DANA
- COTY
- MAX FACTOR

Green Stamps

exhibition & sale of original graphics for collectors

Bloomsburg State College
Haas Gallery of Art,
Outer Gallery
Wednesday, October 17
10 a.m. to 6 p.m.

CHAGALL, BASKIN, ROUAULT, DAUMIER, MATISSE, PICASSO AND MANY OTHERS.

PURCHASES MAY BE CHARGED

ARRANGED BY
FERDINAND ROTEN GALLERIES
BALTIMORE, MD

Ritter's Office Supply
112 E. Main St.
Bloomsburg,
784-4323

WELCOME BACK GRADS!

GO HUSKIES!?!

SEARS, ROEBUCK & CO.

22 West Main St.
Bloomsburg, Pa.

The Pizza House

WELCOME HOMECOMERS!

Open 11 a.m. - 2 a.m.

134 East Main St.
Bloomsburg, Pa.
Phone 784-1732

Homecoming Football Preview

By Bill Sipler

The BSC Husky football team plays host to the Rams of West Chester State College tomorrow in their annual Homecoming game at Athletic Park. The Huskies are coming off last week's disastrous loss to Westminster while the Rams are coming off a 6-3 squeaker over Cheney State College. Both teams are 3-1 with the Rams only loss coming at the hands of nationally ranked Delaware. This week's game could decide the Eastern Conference Championship.

The Huskies' offense looked feeble last week against the Titans. The Huskies, without George Gruber, were unable to move the ball effectively. Gruber should be back in the lineup this weekend against the Rams and will provide the Huskies with another grouping threat to complement Devereux, James and Gieger. The Huskies were able to gain only 130 yards rushing which is the least they have gained all year. So far the Huskies have gained 784 yards rushing for 196 yards per game average. Gruber is the leading rusher on the team despite the missed game with 208 total yards rushing so his presence will be felt.

Joe Gieger was only able to complete 5 of 19 passes for a total of 68 yards against Westminster. He was also intercepted 3 times bring his season total to 4 interceptions thrown. The Huskies have averaged 134 yards passing over the four games played so far. The Huskies were held almost 100 yards under their season average for a total offense of 330 yards.

Defensively the Huskies continued to perform

aggressively despite the loss. They were forced to play defense in extremely difficult circumstances due to errors on offense. Three of the Westminster scoring drives started inside the BSC five yard line. The Huskies held Westminster to a total of 276 yards on total offense and the Titans were only able to gain 72 yards against BSC's aggressive and dangerous secondary.

The Huskies will have to play as aggressively as they did last week if they hope to defeat the Rams. Last year the Huskies lost 62-10 and this years squad will be out to avenge that disaster. The Huskies have not beaten the Rams since Coach Sproule has been here and it would be a treat for him to win this weekend. The last Husky win over the Rams was under Coach Russ Houk six years ago.

The Rams will probably play straight un-fancy football. They had to replace part of last years starting backfield which has gone to the pros and so far appear to have done well.

Defensively the Rams are always tough. Last week's game was a good example of their durability. The Huskies will have to run on them to set up their passing game.

Husky Notes

Gieger is throwing the ball well this year. Until last game he had thrown only one interception as opposed almost two a game last year.

Career Statistics

George Gruber is over the 1000 yard rushing mark. He has 1124 career yards rushing. Joe Gieger needs 58 yards passing to go over the 2000 yard mark and 168 yards rushing to go over the 1000 yard mark.

Prediction

BSC by 3.



The Husky defense gangs up on a Westminster runner. The Huskies must continue to play strong defense if they wish to defeat the Rams of West Chester tomorrow. (Photo by D. Schnieder)



Joe Gieger attempts a pass last week against Westminster. Gieger must return to form shown earlier this year to keep the Husky championship hopes alive. (Photo by M. Tydor)



Forrest (82) and Devereux are two of the threats the Rams must be aware of tomorrow. Forrest is exceptionally effective in traffic. (Photos by M. Tydor and D. Schnieder)

Borrowed Space

By Bill Sipler

This week was the first week we have had all three predictors over 50 per cent since the series started. Bob Oliver and Dr. Cole were both 9-4 bringing their totals to 35-16-1 for Bob and 36-15-1 for Dr. Cole. My own record was 7-6 for 22-29-1 total so far this week I'll add why each team will win to the prediction.

Bill Sipler

Eagles over St. Louis by 3 Philadelphia will probably win two games this year, this is one of them.

Buffalo over Baltimore by 10; Bills are on their way to the playoffs, Baltimore to oblivion. Denver over Houston by 3 Denver needs this one to stay alive in the race in their division.

New England over the Jets by 3 The Jets need a quarterback badly, New England escapes the cellar.

Pittsburgh over Cincinnati by 3 Paul Brown needs this one but the Steelers will be too much. Oakland over San Diego by 10, Bubba Smith meets Johnny U head on.

Chicago over Atlanta by 3, Chicago has the running game, Van Brocklin still needs a quarterback.

Los Angeles over Dallas by 1, Rams going for five straight, Dallas trying to forget Washington.

Detroit over New Orleans by 6, Lions have too much for Archie. Minnesota over 49ers, the Vikings are trying to rap up

their division early, Frisco needs this one.

Washington over N.Y. Giants by 6, the Redskins are chasing Dallas, New York trying to get their season together.

Green Bay over Kansas City by 6, Green Bay trying to stay close, K.C. starting to slip.

Miami over Cleveland by 6; Miami is starting to get it all together.

Bob Oliver

Eagles over St. Louis by 3 Buffalo over Baltimore by 4 Denver over Houston by 3 New England over the Jets by 10

Steelers over the Bengals by 6 Oakland over San Diego by 7 Atlanta over Chicago by 3

Dallas over Los Angeles by 6 Detroit over New Orleans by 3 Minnesota over 49ers by 6

Washington over Giants by 7 Green Bay over Kansas City by 1

Miami over the Browns by 3 Dr. Cole

Buffalo over Baltimore by 7 Denver over Houston by 3 Green Bay over Kansas City by 3

New England over the Jets by 6 Steelers over the Bengals by 9

Oakland over San Diego by 7 Chicago over Atlanta by 9

L.A. Rams over Dallas by 3 Detroit over New Orleans by 10

Minnesota over 49ers by 8 Eagles over St. Louis by 6 Washington over The Giants by 7

Miami over Cleveland by 10

Swimming Preview

"This will be a very challenging year," stated swimming coach Eli McLaughlin when the Husky swimmers opened their practice earlier this week.

McLaughlin was referring to the tough schedule facing the Huskies, which includes Temple University and last years' powerhouses Clarion and Edinboro.

The coach is optimistic since many swimmers have been working out on their own since the beginning of the school year. He stated, "The fact that the boys have been working out for over a month on their own is most gratifying to me and certainly will prove very beneficial in preparing for our rugged schedule."

Defend Title

Opening the Husky schedule this year will again be the Millersville Relays where they are defending their swimming title. Many tough schools will be

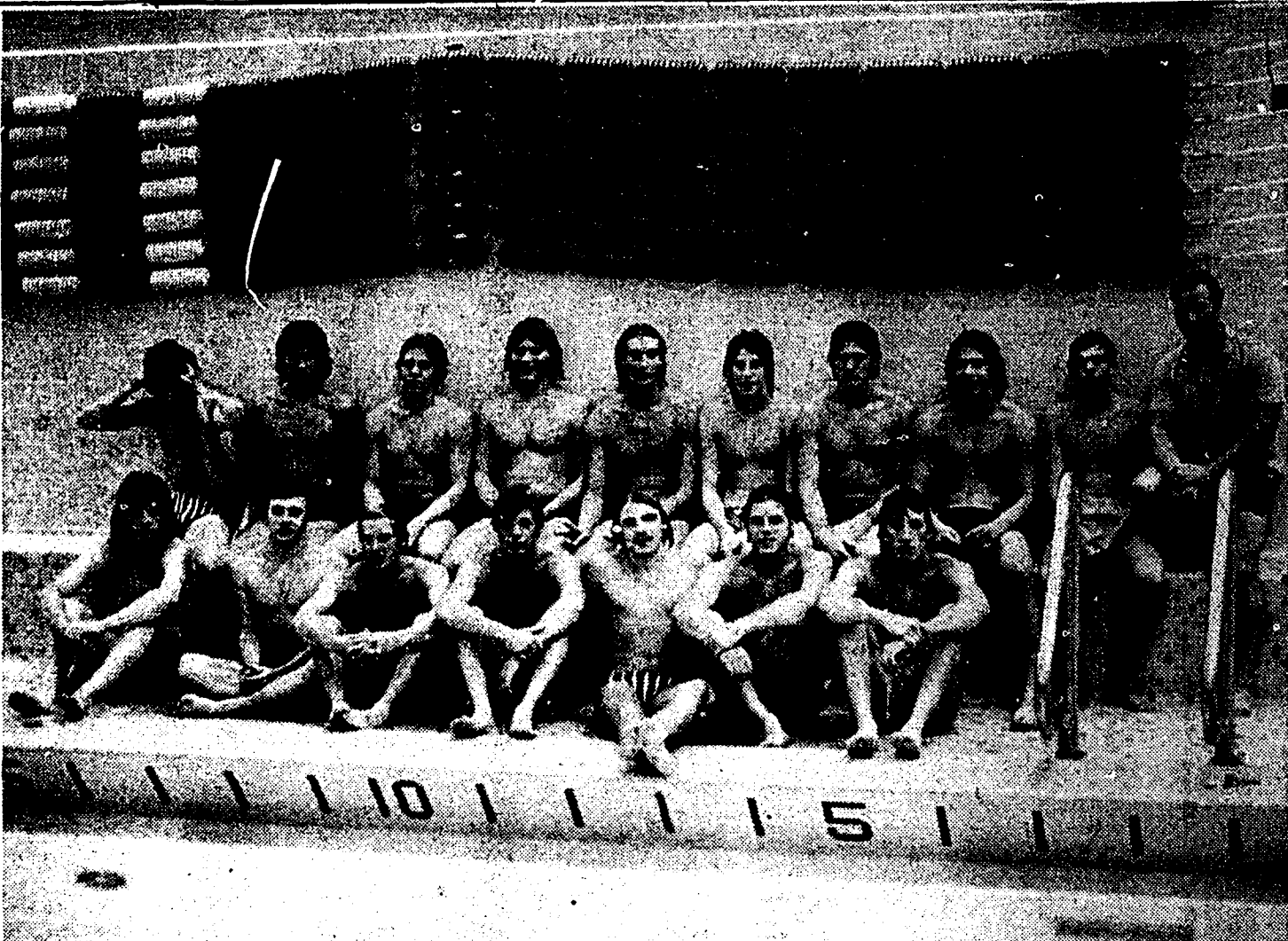
entered, including Franklin and Marshal, Elizabethtown and American University.

The home schedule opens with super-tough Temple, whom the Huskies have never beaten. Coach McLaughlin compares his present team with the 1967 squad which barely lost 53-51. The coach advises all to make plans early to attend this top meet.

Losses

Coach McLaughlin stated that he will miss those graduated seniors. "Let's face it — losing five seniors who helped us compile a 40-15 record will hurt . . . but this isn't the first time I've had this problem. Dave Gibas, in particular set records which will serve as great incentive for our sprinters."

"We have a young, talented team and will represent BSC well. Even though we have eight frosh and eight sophs, I feel we will be a team to watch."



The 1973-74 Husky Swimming Team, coached by Eli McLaughlin.

(Photo by R. Oliver)



Two Husky swimmers going through one of Coach McLaughlin's early season drills. (Photo by R. Oliver)



The Women's field hockey team dropped a tough game to Lycoming Monday, 2-1. Details are on page eight. (Photo by D. Marsh)

Fall Tennis Ends

By Bill Sipler

The Husky netmen concluded their season by bowing to Bucknell, 6-2. The Huskies' final fall record is 3-2-1 for the season and they placed second in the EC-AC tournament.

Drew Hosteter defeated Casey Jones of Bucknell 6-7, 7-5, 6-1. Hosteter was undefeated in dual meet competition for the season.

In the other singles matches: Mike Pichola lost to Bob Potdevin, 5-7, 6-2, 4-6; Tom Swietzer was dropped by John McManigal 6-3, 2-6, 3-6; Phil Christman was decisioned by Allan Jay 5-7, 6-3, 4-6; Dick Grace lost to Larry English 1-6, 4-6; and Steve Black lost 0-6, 1-6 to Neil Fleming.

In doubles Hosteter and Swietzer defeated Jay and

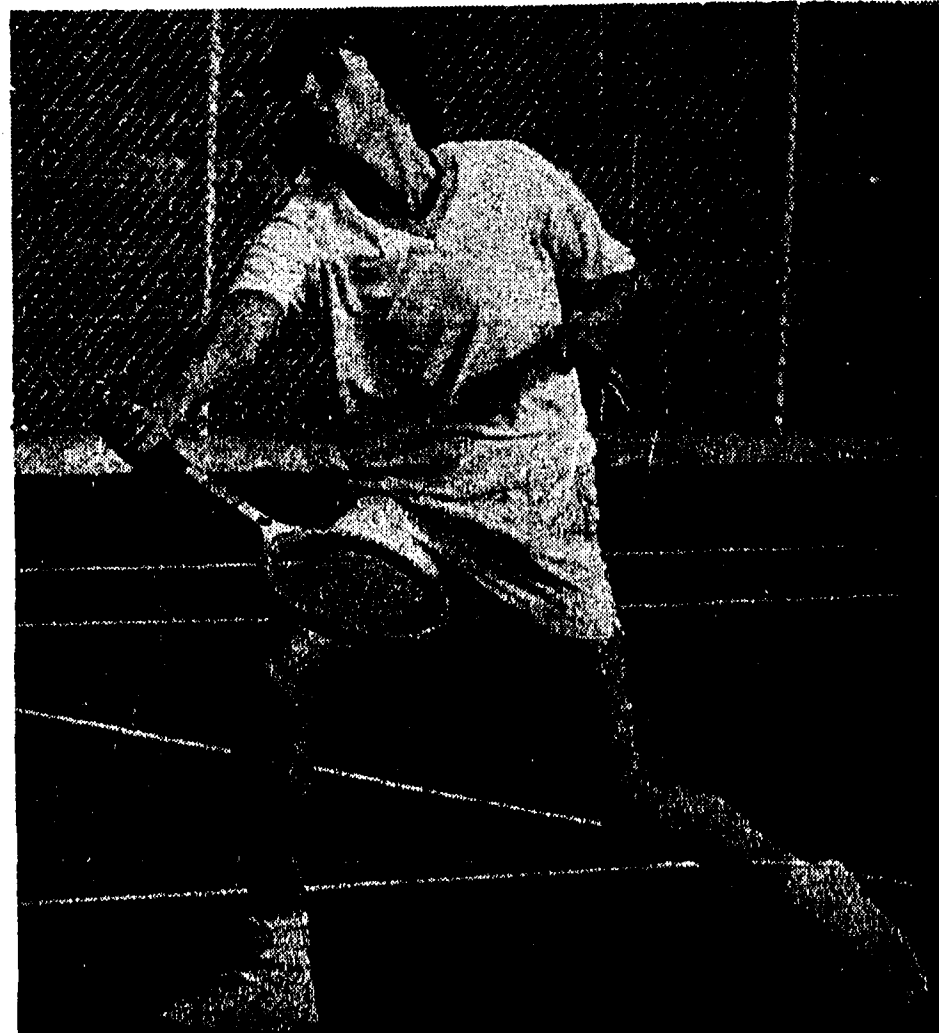
Potdevin 6-4, 3-6, 6-2, while Grace and Pichola were dropped by Wierbach and Willis 6-7, 6-3.

Coach Reese was extremely pleased with the fall season. Barring any unforeseen difficulties, the Huskies should have a very fine spring season. The fall schedule was tougher than the coming spring schedule is, which should help the team out.

The team played very well together. Hosteter was outstanding as a performer and should be back in the spring along with the rest of the squad.

Tennis Results

- BSC 5 Lehigh 4
- BSC 8 University of Scranton 1
- BSC 9 Mount St. Mary's 0
- BSC 3 Franklin and Marshal 6
- BSC 4 Lehigh 4
- BSC 2 Bucknell 6



Jim Overbaugh, one of BSC's fine Tennis players, practices before a recent match.

(Photo by P. White)

CANDLE CORNER BOUTIQUE
 Corner of Catherine & E. 6th St. Bloomsburg, Pa.
 Welcomes the Alumni.
 Stop in and browse on your way to or from the football game.
 Candles and Accessories for your every need
 Closed Mon., Open 10-5 Tues., Wed. & Thurs., Fri. 10-9

Classifieds

MENI - WOMEN!

JOBS ON SHIPS! No experience required. Excellent pay. Worldwide travel. Perfect summer job or career. Send \$3.00 for information. SEAFAX, Dept. BB-5 P.O. Box 2049, Port Angeles, Washington 98362.

WANTED!

Responsible College Girl to Babysit two pre-school children on reg. weekly basis. Hours flexible around schedule. Good pay. Transportation provided if needed. Home near upper campus. Please provide two references. 784-1284. Jane Gittler, Country Club Drive.

Immediate Opening Part-time Kitchen helpers and Diet aides

\$1.72/hr. to start

Must have transportation to and from Geisinger Medical Center. Must be able to work 4-7:30 p.m. Mon. thru Fri. and every other weekend.

Call 275-6005 or apply in person -

Personnel Office
Geisinger Medical Center
Danville, Pa.

PART-TIME HELP WANTED PACKAGE WORK

A.M. Shift - 5 a.m. to 8:30 a.m.

\$3.35/hr. to start

After 30 Working Days -
Seniority Rate \$3.70 hr.

Also paid holidays and vacation
UNITED PARCEL

Rt 11, Northumberland
Apply either at Northumberland or
State Employment Office, Sunbury

Sears

Wanted - Telephone Sales People

Catalog Package Attendants
to work part-time for the Fall
season.

Apply at Cashier's Office

Sears, Roebuck

22 West Main St.,
Bloomsburg, Pa.

AN EQUAL OPPORTUNITY EMPLOYER

SENIOR PICTURES

Any Seniors unable to get their picture taken this week can do so the week of October 22.

Check the Sign-up Lists at the Information Desk in the Kehr Union Building.

Women Drop Two

By Linda Livermore
Lycoming College outdid BSC's women varsity teams Tuesday by beating the hockey team 2-1 and the tennis squad 8-1 on Bloomsburg's home ground.

The BSC hockettes came close to tying up the game several times, but could never better the 2-1 Lycoming lead posted in the first half. Both teams were plagued with violations by swinging their sticks too high.

Lycoming had an edge before the game even started - the hockey team had a sheep dog as

their mascot.

The racketeers of Lycoming won their second match against BSC with an 8-1 score.

Sheryl Greiner posted the only win for the BSC women with a 6-0, 7-6 victory over Karen Lockwood in singles competition.

Ann McCoy, a veteran of last year's BSC tennis squad, will be out of competition for an indefinite period due to a knee injury.

The next hockey game is scheduled for Wednesday, October 17 at 3:30 p.m. at home

against Susquehanna. The team has a 9-2-1 record at the time the newspaper went to press.

The tennis team will meet Mansfield on Tuesday, October 16, at 3:30 p.m. on the away court. BSC's racketeers holds a 9-3 record.

Welcome

Homecomers!

**HARTZEL'S
MUSIC STORE**

72 N. Iron St.

Over 300 Guitars
and Amplifiers

Denby Stoneware for Dining
Handcrafted Hand Painted

Guaranteed for 2 yrs. Against chipping - cracking - grazing

for New & Old Homemakers

at the

STUDIO SHOP

CRACKER BARREL

ROCK BANDS

Tonight and Saturday

MANTIS

Main St., Catawissa 356-2076

GROWNING TOUCH COIFFURES

Rt. 11 - Bloomsburg-Danville Highway

Shampoo-trim style

\$2.75 with ID card

Original Cut Slightly Higher

Open 5 days a week 9 - 9, Sat. 9 - 3

Welcome Back BSC Alumni

EUDORA'S CORSET SHOP

1 East Main St.

Bloomsburg, Pa.

Kampus Nook

Welcomes Home the Alumni

Monday thru Thursday 9 a.m. - 11 p.m.

Friday 9 a.m. - 12 p.m.

Saturday 4:30 p.m. - 12 p.m.

Sunday 11 a.m. - 11 p.m.

ARCUS BROTHERS STEREO CENTERS, INC.

Bloomsburg * Sunbury * Williamsport * Hazleton

If you want to make a fantastic deal, bring two things -
Yourself and Your Cash.

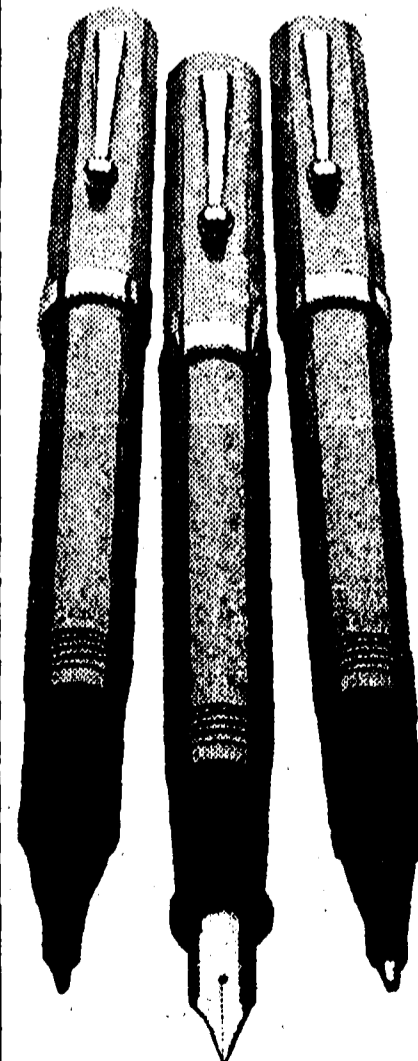
Cause Nobody walks and everybody talks about the fantastic
deals they get at Arcus Brothers.

If you want to get ripped off, don't buy here.



Simple,
straight-forward,
classic-out of step
with today's
throwaway culture.
Refillable cartridge,
ballpoint or fiber tip
marker in basic tan
or navy blue.
\$1.98: not bad for a pen
you may use the
rest of your life.

\$1.98



SHEAFFER, WORLD-WIDE, A COMPANY