

THE MAROON & GOLD

We make our fortunes and we call them fate.

—Disraeli

VOL. LI — NO. 42

BLOOMSBURG STATE COLLEGE

WEDNESDAY, MARCH 28, 1973



New College Council officers for next year are right to left, Steve Andrejack, President; Secretary; Barbara Bryson, Recording Secretary, and Bob Oliver, Treasurer. John James, Vice-President; Cathy Constable, Corresponding

(Photos by Berger and P. White)

APSCUF Pres. speaks on Tuition Increase

Martin Morand, President of APSCUF, spoke to a sparse crowd on the proposed tuition increase at a meeting held last Thursday at 2 p.m. in Kuster Auditorium. Mr. Morand stressed the inconveniences which will result from the state's refusal to allocate more funds to State Colleges.

Possible Inconveniences

Mr. Morand listed possible inconveniences which may result from the lack of funds available.

They include fewer professors or maintenance men, creation of bigger class sections, and a decrease in the number of course selections available.

Tuition Increase

Mr. Morand went on to urge everyone to take part in the fight against the pending \$50 per semester tuition increase.

In urging action, Mr. Morand stated that apathy results when "people think nothing they do will

change anything." He suggested writing letters to Harrisburg in protest.

Because there is no State College lobbyist in Harrisburg, Mr. Morand stated that it is up to employees, students, and faculty to have a voice in revising the proposed tuition increase. He reminds students and faculty that "if tuition goes through, Pennsylvania will pay the highest tuition fees for any State College in the country."

Housing contracts due soon

Housing reservations for students planning to live on campus for the 1973-74 academic year are now being accepted and must be returned by April 3. The lottery selection will take place on April 9.

Reservation Eligibility

All returning students may request a room for next year.

A change in the guidelines has been made which will now allow student teachers who will be here only one semester to go through room selection if they have someone else with them who will also be student-teaching the other semester or someone to live in

your room for the semester you will be student teaching. Each student will sign the contract for one semester. Student teachers may only request a roommate who has the same class standing. Current transfer students who have previously been refused on-campus housing and are now residing off-campus, may also go through room selection for a room on campus. They should see the Director of Housing.

However, students who were previous resident students and have since moved off campus may not go through room selection procedures to get back

on campus until all others have been assigned.

Selection Procedure

A.) First of all, the Residence Hall Document - Residence Hall Assignment Preference must be completed.

B.) A \$50.00 Room Reservation Deposit must be paid at the Business Office prior to April 3, 1973. Upon payment of this \$50.00, it is your responsibility to bring your document to the Business Office to get it stamped paid.

C.) The lottery selection process will take place only on Monday, April 9, 1973, from 10:00 a.m. to 7:00 p.m. in Columbia Hall (for women) and Elwell Hall (for men).

You may only participate in the lottery selection process if you have completed your document, which has been stamped paid by the Business Office.

Lottery System

A.) Upon presentation of your completed Residence Hall document, you will be allowed to draw a random lottery number according to your present class status. For example, Freshmen draw from numbers 1-1000; Sophomores draw from 1001-2000; Juniors draw from 2001-2500. Your document card will be stapled to your chosen lottery number and turned in. Final room assignments will be made by the Resident Deans by numerical order. You will be notified of your final room

(continued on page four)



Dr. Irving Gawley, Jr., the main speaker for Physical Science Day, said student volunteers help with his chemical equilibrium experiments.

(Photo by Maresh)

Phys. Sci. day held Saturday

by George Garber

An estimated 100 area high school students and their instructors attended the second annual Physical Science Day last Saturday in Hartline Science Center.

The program began with a number of workshops by the Departments of Chemistry, Earth Science and Physics and ended with a lecture by Dr. Irving H. Gawley, vice-president for Academic Affairs at Montclair State College. The Chemistry department conducted experiments Spectroscopy, Kinetics and Equilibrium, and isolation and characterization of caffeine from tea. The Earth Science Department illustrated the mechanics of stream flow, a

weather map analysis and the occurrence and Geochemistry of acid mine pollution. Demonstrations of the ballistic pendulum, Doppler Effect, and projectile motion were offered by the Physics Department.

The main feature of the activity was the lecture by Dr. Gawley. He conducted several experiments illustrating chemical equilibrium. Volunteer students at the address helped in two experiments involving the color changes of different chemical concentrations.

Dr. Clyde Noble was chairman of the faculty committee of the program which also consisted of Mr. Stephen Wukovitz, Mr. Lavere McClure and Dr. David Superdock.

Aid deadline extended

Financial Aid application deadlines have been extended to April 30, 1973, for Student Employment, National Defense Student Loans, Educational Opportunity Grants, Alumni Loans for the summer of 1973 and the 1973-74 academic year. Applications received after this deadline will be considered only, if additional funds remain when all other applications have been reviewed.

If you have not already submitted a Parents' or Student's Confidential Statement for the 1973-74 academic year, please do so immediately. Review of applications for students who have no Confidential Statement for

1973-74 on file will be delayed until their statement is received by our office.

There is no application deadline for the Student Guaranteed Loans. However, these loans cannot be approved until a 1973-74 Confidential Statement is on file.

PHEAA Scholarship applications for 1973-74 are subject to the following application deadline set by PHEAA in Harrisburg:

April 30, 1973 — 1972-73 award recipients who are applying for renewal of their awards, and May 31, 1973 — non-renewals who graduated from high school prior to 1973.

Letters

THERE ARE THOSE AMONG YOU

A man's ambition is mighty small to write his verse on a shithouse wall. And the readers' wit is smaller still to advocate this writer's will. The time it takes to convey his intent. Plus the time to read it is poorly spent. So this, together with the damage list. Adds up: A lot of bunk and plain bullshit.

How many of you who utilize the Library have noticed the increased acts of vandalism throughout the general areas of the Library...the filthy, sex-crazed and religious phrases etched on the walls, in the study carrels and in the Men's toilets? Some unstable "Nut" or "Jesus Freak", apparently on a religious kick needs help from someone other than the one he is consistently and vainly writing about...Jesus Christ. He has taken a lot of time and patience in his attempt to demonstrate his printing ability and to get his point across to those who might take the time to read his words of wit.

The study atmosphere of the Library is intended for those who have a need and a desire to use it...those who care...those who appreciate its appropriate and pleasant surroundings...those with concern enough to use it constructively and keep it that way. I'm sure the majority of those who utilize the Library facilities will agree and feel this way, or does apathy and fear exist among this majority? Surely someone must know or have an idea who this person is and could, if they would, anonymously provide his identification needed to stop these malicious acts. What about those exceptional few who ruin it for

Letters to the editor are an expression of the individual writer's opinion and do not necessarily reflect the views of the newspaper. All letters must be signed, names will be withheld upon request. The M&G reserves the right to abridge or withhold, in consultation with the writer, all letters over 400 words in length.

the rest of you...are you willing to help control this situation?

Security is only a telephone call away. Let's get together and rid our campus of this type of vandalism...and creatures like this.
D. Ruckle
Security

Ms. Sue Sprague,

This letter is in reference to your review of *The Roar of the Greasepaint...* Judging from this article I would have to say that you are a tasteless, uncultured, bigoted bore. Where were you sitting while the show was on? In the Ladies room? Although Mr. Matter's voice was slightly inaudible at times, his voice was far better than your article lets on. The entire show was much much better than you have conceded!!! Perhaps I can understand your attitude being what it is, as the humor and story was at a level that required a well-developed and actively thinking mind to fully understand and appreciate. Ms. Sprague, do you carry a grudge against the players?!

Gene Colebank

COMMUTER FILM FESTIVAL number 11 will feature "Love Pangs", Charlie Chaplin, "The Fatal Glass of Beer", W. C. Fields and "Have Badge, Will Chase", Abbott and Costello, Keystone Kops, and Speedy Gonzalez, "Here Today, Gone Tomales." Will be held in the Commuter Lounge tomorrow at 11:00, 12:00, and 1:00 p.m.

Book Review

The Revolutionary Year

by Frank Pizzoli

Liturgy, like theology, tries to relate the word of God and the experience of man. One of the basic theses of *The Revolutionary Year*, Jay C. Rochelle's latest book is that if the church is to survive, its liturgy or worship cannot limit itself to a historical and rational presentation. Contemporary experience, for Rochelle and others of the existential line, must find a place within the church's system.

In his book Rochelle argues that the church's liturgical year offers a model for the organization of individual religious experience into a meaningful whole. This idea builds on the control thesis of *CREATE AND CELEBRATE* published by the author in 1971. Correctly understood and used, the liturgical year can be a bridge between our historical rational background and the existential mystical

side of our experience.

What strikes the difference between Rochelle and others who expose the shortcomings of the church's purely historical perspective is that Rochelle offers significantly well thought out alternatives to traditional worship. His alternatives may fill the experience of the existential moment with meaning. The manuscript provides new spectacles for the reader to look through when tackling the major liturgical cycles of the church year. And for one who holds himself outside of such thoughts, I feel it is refreshing to see such a reality oriented perspective on religious matters.

Celebration, the term coined to replace what is usually called a religious service, is central to the core of a Christian life-style. A community of Christians, within the alternative framework, prepare themselves to celebrate the liturgical year rather than waiting around for a neatly

packaged religious service used once a year. Rochelle points out that Western Christianity has aborted participation within religious services by putting the responsibility for the worship in the hands of the few. Total involvement of celebration participants in a celebration is just one of the smart looking ideas suggested in the book. With a chance for such involvement one can see the church year from a widened perspective, from a revolutionary vantage point.

With the participant in mind, "The Revolutionary Year" offers a set of model liturgies for the church seasons along with a chapter indicating how they can be used. This book is a roadmap of concrete instructions — for all those lost in the maze of modern worship. It offers a challenging new way to celebrate the Christian seasons meaningfully in larger churches as well as in smaller groups.

Movie Review

The Silence

by Tim Bossard

Ingmar Bergman's *The Silence* will be presented by the Arts Council today in Kuster Auditorium. I haven't seen the film, but I want to discuss it and Bergman anyway, in hopes of encouraging student and faculty attendance.

More than any other contemporary director, Bergman is concerned with "large" matters. Can man believe in a God? What is man's relation or non-relation to this God, if he exists? If he doesn't exist, what way is there to live in peace? There are no clearcut answers, and if, as some have asserted, Bergman's films leave you groping, it may be because Bergman himself is not sure of the significance of what is happening. Nor is he as interested in conveying a pat "meaning" so much as he is in creating experiences. His films are sometimes quite challenging intellectually, but their net value must be considered both in terms of thought, content and emotion. And Bergman is a master of atmospheric creation.

Which brings us to *The Silence*. It is a dark, somber film with little dialogue and no music (except for some snatches of Bach heard on a radio.) Reportedly it is pessimistic in tone, like most of Bergman's other works, but not cynical. What follows here is a synopsis based on what I've heard or read about it.

Two sisters, Anna and Esther

arrive on a train with Anna's young son in a foreign city where an unknown language is spoken. They stay in a large hotel. Tanks rumble through the street. Anna, who is passionate and sensual, seeks sexual gratification from a waiter during the night. Esther,

who is seriously ill, takes a lesbian interest in her sister. The son, left on his own, roams the corridors, encountering other people who try vainly to talk to him. The next morning Anna and her son depart, leaving Esther to

(continued on page four)

Win a Buck!

MATH MAJORS

Recently installed in a garret room on the Left Bank, Painter was moodily staring out the window watching the darkness close over Paris at 9 p.m. Just then his one light bulb blinked feebly several times and went out, leaving him in almost total darkness. Luckily the concierge had left him a supply of two candles reserved for such emergencies, and he lit one immediately. An hour and a half later, Painter decided that he needed more light and put the second candle into use, remembering that it was an inch shorter than the first one had been originally.

After two and a half hours more, Painter suddenly noticed that the candles were of equal height. He mulled this fact over for an hour and a half before he concluded perhaps candles burn at different rates. Just then, out winked the candle which had originally been shorter. A half-hour later the other one went out, leaving Painter in complete blackness to contemplate Paris and his

NON-MATH MAJORS

How tall was each candle initially? At a factory fire a fireman stood on the middle rung of a ladder, directing water into the burning building. As the smoke diminished he stepped up three rungs and continued his work from that position. A sudden flare-up of flames forced him to descend five rungs. A few minutes later he climbed up seven rungs and worked there until the fire was out. Then he climbed the seven remaining rungs and entered the factory.

How many rungs were in the ladder?

WIN A BUCK is sponsored by the Math Club and all are eligible to compete in the contest except those on the designated committee.

Bring all solutions to one of the following post office box numbers: Dave Beyerle, Box 2466; Judy Beach, Box 2806; or Carol McMahon, Box 1038.

Deadline for the contest is April 1!

THE MAROON AND GOLD
Editor-in-Chief
Susan L. Sprague

Managing Editor Robert Oliver
News Editor Karen Keinard
Assistant News Editor Barb Wanchisen
Feature Editor Joe Miklos
Copy Editor Valery O'Connell
Cartoonist John Stugin
Contributing Editors Frank Pizzoli, Jim Sachetti

Staff: Don Enz, Linda Livermore, Mary Ellen Lesho, Tim Bossard, Kathy Joseph, Marty Weinhold, Bill Sipler, Mike Williams, George Garber, Mark Mehler

Business Manager Elaine Pongratz
Office Manager Ellen Doyle
Advertising Manager Frank Lorah
Circulation Manager Nancy Van Peil

Photographers: Dale Alexander, Tom Dryburg, Pat White, Suzi White, Sue Greef, Alanna Berger, John Andris, Jim Corrales, Dan Marech, Jr.

Advisor Ken Hoffman

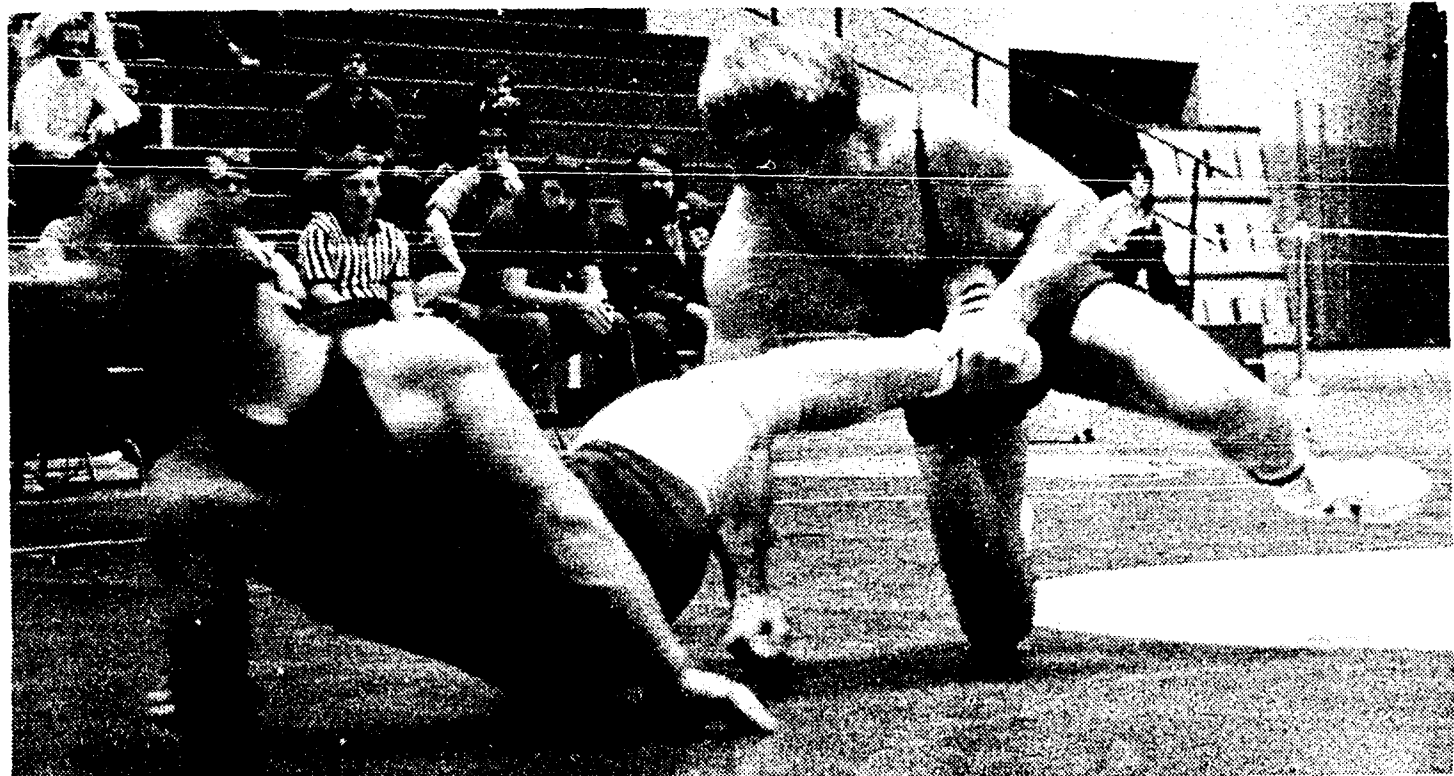
The M&G is located at 234 Waller, or call 389-3101. All copy must be submitted by no later than 5:00 p.m. on Tuesdays and Sundays for the Friday and Wednesday papers, respectively. The opinions voiced in the columns and feature articles of the M&G may not necessarily be shared by the entire staff. Final approval of all content rests with the Editor-in-Chief.



1,000 see Hitchcock and Burkholder triumph



Participants in the Bloomsburg Opera, Burkholder and Hitchcock are standing back row, center.



BSC's Shorty Hitchcock goes after his opponent in this weekend's Bloomsburg Open, sponsored by DOC.

(S. White Photo)

Tennis: Strong Year Predicted

The BSC tennis team will open its twelve-match schedule on March 31 at Kutztown State College at 2:00 p.m.

Coach Burt Reese has an eight-man squad comprised of one junior, four sophomores, and three freshmen. Although it is the youngest team to take the courts in many years at BSC, Reese has perhaps the best material in the history of the college.

Topping the list of formidable players will be freshman Drew Hostetter, Mr. Joy, a number

four ranked Middle-States junior and semi-finalist in the state high school tournament. Playing at the number two position will be sophomore Tom Sweitzer, a former ranked Middle-States junior who posted a 9-2 fall record. Bill Hoefel, also a ranked junior will play number three. Sophomore Dick Grace, who tallied an 11-0 record in the fall prior to performing on the basketball courts, will probably play number four. Filling out the final two positions will be sophomore Dennis Hartzell, at

number five and either freshman Jim Overbaugh or junior Tom Leedom, playing number six; the latter only lost one match at this position last year. Sophomore Richard Hillegas will be available for doubles competition.

This will be the first spring that the team will be playing on their 18 new grasstex courts nine of which are lighted for evening play. In the event of rain, the matches can be completed on the two indoor permanent Tartan courts in Nelson Fieldhouse which the team uses for winter play.

New additions to this year's spring schedule are Gettysburg, West Chester, and Lycoming. The Pennsylvania Conference Tournament will be hosted by Bloomsburg for the first time.

The schedule is as follows:
 3/31 - Kutztown - 2:00 p.m. - Away;
 4/3 - Scranton - 2:00 p.m. - Away;
 4/4 - Lock Haven - 2:00 p.m. - Home;
 4/7 - West Chester - 2:00 p.m. - Away;
 4/10 - Mansfield - 2:00 p.m. - Away;
 4/12 - Millersville - 2:00 p.m. - Away;
 4/28 - E. Stroudsburg - 2:00 p.m. - Home;
 4/30 - Susquehanna - 2:00 p.m. - Home;
 5/1 - Lycoming - 2:00 p.m. - Away;
 5/2 - Kutztown - 2:00 p.m. - Home;
 5/4 & 5 - PC Tournament - Home;
 5/9 - Shippensburg - 2:00 p.m. - Away;
 5/10 - Gettysburg - 2:00 p.m. - Away;
 5/12 & 13 - NAIA District 19 Tournament at Salisbury, Maryland.

Tennis Court Rules

- The courts will be used by (1) classes, (2) varsity teams, (3) intramurals, (4) recreation in that order. College personnel (students, faculty and staff) will have priority over the general public.
- TENNIS SHOES MUST BE WORN. No basketball shoes. Composition of the courts are very soft. Anything but tennis sneakers will mark the surface.
- The courts will be regulated during busy times and during those hours you must sign up for a court. Play will be restricted to one hour.
- Tennis racket presses will NOT be allowed on courts. Leave them at home.
- Racket throwing will NOT be allowed.

- Do NOT enter a gate while a point is in progress on the nearest court.
- Shut all gates after passing through them!
- Do NOT walk behind a court where a point is in progress.
- When waiting to play or lounging around, people must wait OUTSIDE the courts.
- Students and faculty must have I.D. cards to present at gate during busy hours. If the card is not presented then students or faculty which come later will have priority.
- Any individual violating the rules will be asked to leave the courts by the person in charge.
- Hours for recreational use of the courts will be published in the next issue of the Maroon and Gold.

State Champion 'Shorty' Hitchcock who wrestles at 190, and one of his BSC teammates, Dan Burkholder, 177, each won titles in the Bloomsburg Open Wrestling Tournament sponsored last weekend by Delta Omega Chi.

A total of 1,000 wrestling fans in the Nelson Field House saw Hitchcock pin West Chesters' Schneinberg in the semi-finals before outclassing Talanea's Knüll by a decision in the finals. 'Shorty' won the Tourney's Most Valuable Player Award for his efforts.

Burkholder decisioned Husky teammate Kevin Hays, who was wrestling for DOC, 6-4 in the finals of the 177 pound event. Burkholder earlier had pinned Lutz of Slippery Rock in the semi-finals.

Ron Sheehan, a BSC senior and tournament director, and Husky coach Roger Sanders presented awards following the competition.

Team Championship West Chester had three individual Champions and two second place finishers to lead the pack in overall scoring. Their 142

pound winner, Ray Johnson, won the "Russ Houk trophy" for recording the most falls in the least amount of time.

Other Action BSC's Lon Edmonds lost in the finals to Clarion's Davis, by a pin. In the semi-finals, Edmonds decisioned Slippery Rocks' Ferraro, 3-2. In other action, Rarich of West Chester won the 118 pound title. Brill of West Chester copped the 126 event. The other WC victor was Johnson at 142. At 150, Dings of Stevens Trade won, while at 158, Duke of Lock Haven captured the top spot. Stetler (Unaffiliated) won at 167 while the Hwt. crown was taken by Plance of Indiana U.

Tennis Hours

The Tennis courts will be open starting this week from:

- Mon. — 2:30 to 9:00
- Tues. — 2:30 to 6:00
- Wed. — 1:30 to 9:00
- Thurs. — 1:00 to 6:00
- Fri. — 1:30 to 6:00
- Sat. — 11:00 to 6:00
- Sun. — 1:00 to 9:00

Starting April 30, will be open until 8:00 p.m.



Nancy Barna shooting over an unidentified opponent.

(Maresh Photo)

Women's B-Ball Round-Up

Bloomsburg State's woman basketball team closed its 1973 season with a 7-3 record, outdoing its opponents in statistics.

Overall figures for the year proved BSC's Huskiettes a strong team with better averages than its rivals! Bloomsburg's varsity scored a total of 459 points while the other teams' scores added up to 366. That is an impressive 45.9 average per game for the Huskiettes and a 36.6 average for their opponents. Another figure which showed the team's ability was the 392 rebounds BSC earned compared to the rival's 290. The women basketballers controlled 147 jump balls, almost double the 78 of the other schools.

"These stats may appear meaningless, but in plain English they indicate our team 'put it altogether'", commented Coach Joanne McComb.

Debbie Artz led the team in assists throughout the season while Barb Donchez was the leading rebounder and leading

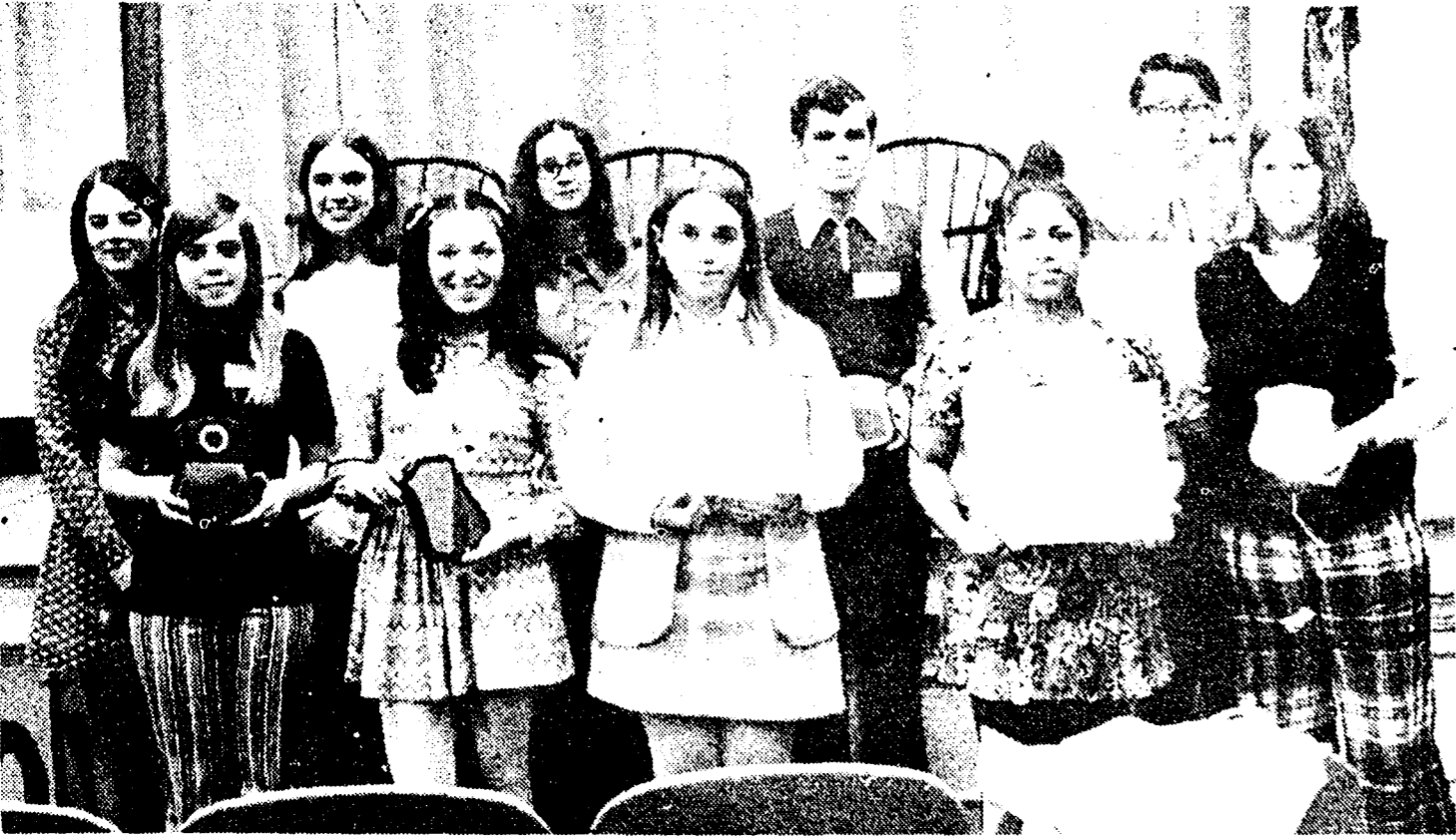
scorer with 101 and 119 points respectively.

Deb Artz, co-captain, Fran Holgate and Pat Pursell are seniors who played all four years. Three year players were Linda Shepherd, the second co-captain, and Marcia Wannemacher. Those in their second year as Huskiettes are Nancy Barna, Christy Fogel, Joan Heliger, Patty Lyons, Sandy Maurer, and Bev Shollenberger.

The other players making up the 19 woman squad are Cathy Constable, Lisa Cozzone, Barb Donchez, Georgia Georges, Jude Kovacs, Chris Reiner, Kathy Rhen, Sue Smith, Deb Vanblarcom, and Joanne Windesh.

Lorrie Roulston is team trainer and managers are Pam Richards, Sandy Shupp, and Sue Simirk.

The Junior Varsity posted a 1-1 record. Coach McComb was pleased with the team, stating that they were unified and "a leading rebounder and leading swell bunch of women".



Student winners from area high schools are pictured after participating in "International Day" held at BSC last weekend. The overall school winner was Danville high school.

(Photo by Alanna Berger)

BSC Exchange Progressing

Recently, eight BSC faculty and student members made a visit to the campus of Virginia State College, as part of the continuing exchange program between the schools. Charles Thomas, Director of Counseling Services; Robert Duncan, Director of Financial Aid; Helen Oetzel and Ken Peress, Resident Deans; and four students, Marcia Follweiler, Bette Lithgow, Henry Johnson and Norm Hipple, made a three day visit to predominately black VSC.

Arriving in Petersburg, the group was welcomed by Miss Marcia Chambers, a VSC Dean of Student Personnel staff member, who showed them to their respective residences. An evening buffet and social hour introduced the group members to VSC personnel and faculty members, followed by a tour of the new campus Counseling Center. An evening recital by Dr. Nathaniel Gatlin in Owens Hall was enjoyed by many members of the visiting group. Dr. Gatlin was familiar to some members since he had directed the VSC Orchestra during its visit to Bloomsburg as part of the cultural exchange program

earlier in the year.

Monday morning brought a press conference with members of the campus newspaper and the local Petersburg newspaper. BSC faculty members then met with personnel from the Resident Life, Financial Aid and Counseling Center Staffs and discussed common areas of interest.

A highlight of the visit occurred when all members were invited to attend a black history course entitled "America From Africa." For most it was their first exposure to a totally black-oriented course. A busy Monday ended with a slide tour of the campus and social hour.

The Virginia State College - Bloomsburg State College cooperative program was instituted in November of 1971 when a grant to the Department of Health, Education, and Welfare was requested to fund an exchange program between the two schools. The grant application was not approved, but the cooperative program has far from failed.

This three day visit emerged as the result of a four part plan to

"Ralph" will appear Thursday night at 8 P.M. in Centennial Gym. Admission is free with the presentation of a BSC ID card.

expand the educational techniques demanded by a growing body of black students of the BSC campus. The plan calls for 1) an exchange of two professional staff members from each campus by semester?; 2) a VSC graduate counselor, preferably black, in an interaction situation at BSC; 3) an exchange of three undergraduate students per semester and 4) a cultural program in which black artists, educators, musicians, statesmen and politicians will be introduced to the Bloomsburg State college community.

The first year of the program was devoted to planning and modifications; the second year saw the exchange of VSC cultural groups to BSC. The coming third year will focus on evaluation and plans for the future.

The three day BSC visit and the performance of the VSC Concert and Jazz Band at Black Student Society's "Black Experience" were the highlights of this exchange plan. Campus publications, handbooks and catalogs are also included in the exchange process.

The rooms will be announced at room selection.

Please remember that the lottery numbers are randomly selected, so it should not matter how early you select a number on selection day.

The \$50.00 deposit will be refunded only if we are not able to give you any room assignment at all. Otherwise, this deposit is non-refundable.

Resident Deans and the Director of Housing will have the final decision as to room assignments.

Kodak Pocket Instamatic 40 for Sale. 3x5 pictures. Easy drop-in film loading. Built-in lens cover. Dependable Magicube flash. Automatic electronic shutter. Special setting for close-ups. Retail for \$60.00 plus tax. Used less than 1 year. Will sell for \$35.00. Box 2321 Elwell Phone 389-2952

Miller Office Supply Co.
18 West Main Street, Bloomsburg, Pa.
HEADQUARTERS OF
HALLMARK CARDS
AND GIFTS
Phone 784-2561

News Briefs

MATH SEMINAR

Attention: Mathematics Majors and other interested persons. The Mathematics Department is sponsoring a seminar in Operations Research on Tuesday, April 3 at 7:00 p.m. in Hartline - Room 79. Dr. Wallace Growney of Susquehanna University will speak on "Operations Research: A Survey of the Field" at 7:00 p.m. and on "A Shortest Path Problem" at 8:30 p.m. Refreshments will be served between the lectures, from 8:00 to 8:30. All interested persons are welcome.

BSC BAND IN CONCERT

The BSC Concert Band will present its annual spring concert on Sunday, April 8, 1973 at 2:15 pm in Haas Center on the college campus. The program, entitled "a Spain Preview", will present a

portion of the repertoire to be utilized by the organization during its cultural tour of Spain in June.

The eighty-member ensemble is directed by Stephen C. Wallace of the College Music Department. Also appearing on the program will be the Brass Sextet and Studio Band.

The public is cordially invited to attend. There is no charge for admission.

MASS SCHEDULE

The schedule for future masses to be celebrated in Carver Auditorium is:

April 7 - Saturday - 6:30 p.m.
May 6 - Sunday - 11:15 a.m.
May 13 - Sunday - 11:15 a.m.
May 20 - Sunday - 11:15 a.m.

In addition Rev. Jay Rochelle, chaplain of the Protestant Campus Ministry will perform services in Kuster Auditorium Sunday, April 1 at 4:00 p.m.

"Don Juan" to be presented

Spanish play "Don Juan Tenorio de Zorrilla" will be presented on Sunday, April 1, at 4:00 p.m. in Haas Center, sponsored by the Department of Foreign Languages. It is the first time this play has been presented in Pennsylvania. This picturesque version of the Don Juan myth, presented completely in Spanish, is considered the most romantic as well as the most popular play in Latin America.

This production of "Don Juan Tenorio" opened at the Gramercy Arts Theatre in New York City on November 15, 1972 and received acclaim from audiences and critics.

The story of Don Juan, the Libertine, was eminently suited

to the talents and personality of Jose Zorrilla, the darling of Spanish literary society in the middle 19th century. Like his poetry, Zorrilla's plays are romantic and filled with ringing lines and spontaneous lyricism.

However improvable and exaggerated the play may seem, it remains immensely popular among Spanish-speaking audiences today.

Tickets for the presentation at Bloomsburg may be secured at the Box Office or by writing in advance to Dr. Alfred Tonolo, Department of Foreign Languages, Bloomsburg State College, Bloomsburg, Pennsylvania. Prices are \$1.50 for students and \$2.50 for adults.

Movie Review

(continued from page three)

follow later.

There is obviously not much of a plot. The concentration is on events, important in themselves, which illuminate for us various aspects of the "human condition" that Bergman wishes us to note. The film is a clarification.

Of what? I generally suspect critical studies because they tend to ignore the emotional aspect of such films, and in effect, "This film means this." However, Arthur Gibson, in his excellent book, *The Silence of God* observes that Bergman's films from 1956-66 (approximately 11 films) show a shift in tone away from the light of possible faith to the blackest atheism. Completed in 1963, *The Silence* falls into the latter years of this period.

This is not to say that Bergman is a high-minded, ivory-towered

fad-follower riding the crest of the God - is - dead wave; on the contrary, his movies are all personal, deeply felt probing that are chemically involved with life. Yet, like any worthy work of art, they have universal relevance.

In the final analysis, I cannot offer the prospective viewer "what to watch for" clues, nor do I feel any inclination to attempt to "explain" the movie once I've seen it. I can only urge anyone at all interested in contemporary film making to see this work by a troubled, talented and discerning artist.

Say Happy Birthday

or Happy Anniversary

with flowers from

Ralph Dillon's
FLOWERS
Delivery Worldwide
Down The Hill On East St.

Hartzel's Music Store

72 N. Iron St.
Over 300 Guitars
and Amplifiers

Browse Before Buying

at

THE STUDIO SHOP

59 E. Main St., Bloomsburg
784-2818

see our

Complete line of Around-the-World

Housing Contracts Due

(continued from page one)
assignment as soon as they have been completed.

All students may request a roommate, hall, floor and room preference. Your preferences will be honored as much as possible. Each student should designate more than one hall preference during room selection.

The alignment of the residence halls for the next year will be primarily the same as they are now, with the following exceptions: First of all, in Luzerne Hall the first and fourth floors will be designated for men and the second and third for women for next year. Secondly, since it appears likely that we will have vacancies in Elwell Hall next year and will have triples in the women's area, we might assign new freshmen and transfer students to the ground and possibly the first floor of Elwell Hall, if necessary. This would reduce the number of women we would have to triple and fill the anticipated vacancies. Any upperclass women who would like to consider moving into Elwell next year may designate such a request as one of her hall preferences during room selection.

All students requesting a space on campus for next year must have a roommate choice (who has agreed to room together) by the time of the lottery selection process. No one will be assigned to a room unless he has a roommate choice.

Returning students will not be assigned with new freshmen. However, returning students may request a new transfer student as a roommate, if the new transfer student has been accepted and is willing to pay his \$50.00 Advanced Deposit prior to April 3. Please see the Director of Housing if this applies to you.

Students who desire to triple next year will be allowed to do so, if all three roommates are in agreement. However, returning students will not be required to triple.

No one may draw a number for a friend. A pair of roommates may sign for their room according to the lowest number drawn between them. You may choose to live with a student not in your class status. However, please keep in mind that room assignments are final.

Each hall will have a proportion of its rooms frozen for assigning new resident students.