

THE EDINBORO QUARTERLY

Summer Term Number



Vol. VI

January, 1919

No. 1

COLLEGE ARCHIVES

The Edinboro Quarterly

THE EDINBORO QUARTERLY is issued in January, April, July, and October by the Edinboro State Normal School. The April number is the Catalog. The other three numbers are filled with announcements and general news matter.

"Entered as second-class matter, December 11, 1913, at the postoffice at Edinboro, Pennsylvania, under the Act of August 24, 1912."

Vol. VI.

Edinboro, Pa., January, 1919

No. 1

SUMMER TERM OF E. S. N. S.

For years there has been a demand for a Summer School that would fit the work of the Normal School to the needs of those teachers who cannot attend the regular sessions.

Edinboro heard the call and was reticent. Not because the call was not real. Not because we were not in sympathy with those



NORMAL AND RECITATION HALLS

teachers who are compelled to teach nine months of the year. We were slow to answer because we wished to offer a short course that really fitted into the lives of the teachers.

The **Summer Term** of the **Edinboro State Normal School** begins Monday, June 23rd, and ends August 1st, 1919.

The work of this term is arranged to meet the needs of teachers

who are preparing for Provisional, Professional or State Permanent Certificates.

The program offers all the work required for the three grades of certificates in Pennsylvania. Special care has been exercised to avoid all conflicts between the groups.

PROGRAM—EDINBORO STATE NORMAL SCHOOL—SUMMER TERM, 1919

7:45		Arithmetic								
8:30	Chapel			Chapel						
9:00		Plane Geometry	U. S. and Pa. History	Physics						
9:45	One Approved Book on Pedagogy		Physiology and Hygiene	Zoology						
10:30		English Grammar	General History	Physical Geography						
11:15		Geography			English Literature		Vocal Music			
12:00	NO ON			NO ON						
1:00	Two Books on Pedagogy	Algebra		Botany						Penmanship
1:45			Civics				Drawing			
2:30										School Management and Methods
3:15	One Approved Book on Pedagogy									

Upon the application of six, classes will be organized for work in subjects not mentioned in the program.



NEW DINING HALL



EDINBORO LAKE

SUMMER SCHOOL FACULTY

- Frank E. Baker, A. M.....Principal
 Clarence C. Crawford, Ph. B.....Vice Principal
 Mathematics and Science
 Annie Laurie Wilson.....Librarian
 H. Sackett, A. M.
 History and Civics
 David Miller Stancliff
 Geography
 Ada Evelyn Jones
 Methods and Penmanship
 Carrie Ethel Baker, A. B.
 English
 Cyrene Hays Dayton
 Music
 Department to be filled
 Drawing
 *Edward Sargent, A. M.....University of Chicago
 Superintendent Meadville Schools
 *Dallas W. Armstrong, A. B.....Grove City College
 Superintendent Venango County Schools
 *I. H. Russell, A. B.....Cornell University
 Superintendent Erie County Schools
 *H. O. Dietrick, A. M.....Bucknell University
 Superintendent Kane Schools
 *H. E. McConnell, A. B.....Thiel College
 Superintendent Mercer County Schools
 *P. D. Blair, Ph. B.....Grove City College
 Superintendent Crawford County Schools
 *Department of School Management and Philosophy of Educa-
 tion.

EXPENSES

- Board and room for Summer Term, six weeks.....\$33.00
 Registration fee.....\$ 6.00
 *Tuition, six weeks.....\$12.00
 *It is expected that the tuition during the Summer Term will
 be free to students who are seventeen years of age or over and who
 declare their intention to teach in the State of Pennsylvania for
 two years.

DORMITORIES

All students living away from home are required to room and board in the dormitories. This is a privilege rather than a restriction, and fosters a unified, happy school life. The rules of behaviour are merely such as are dictated by customary politeness and due social regard for the rights of other people.

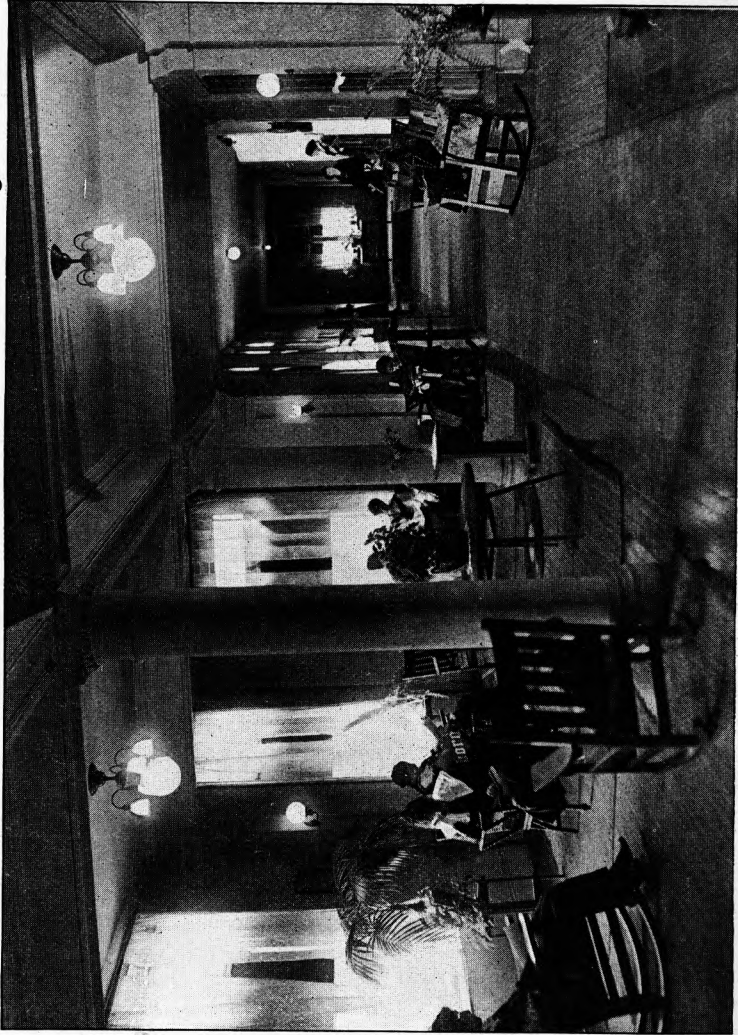
PRIVATE MUSIC LESSONS

The instructor in music will arrange periods for private lessons in either voice or piano at the following rates:

One lesson per week for six weeks.....	\$ 6.00
Two lessons per week for six weeks.....	10.00
Piano practice, one 45 minute period daily.....	1.50
Piano practice, each additional period.....	1.00



AT HOME IN REEDER HALL



CORRIDOR, HAVEN HALL

PRIVATE ART LESSONS

The instructor in art will arrange periods for private lessons or for club lessons at the following rates:

In drawing, crayon, etc.

One lesson per week for six weeks.....	\$ 6.00
Two lessons per week for six weeks.....	10.00
Three lessons per week for six weeks.....	14.00

In water color painting.

One lesson per week for six weeks.....	8.00
Two lessons per week for six weeks.....	14.00
Three lessons per week for six weeks.....	20.00

Two persons may have instruction at the same hour for half price, and three or more for one third price. Not more than five will receive club instruction in one period.

The period for a drawing or painting lesson will be as much of an hour and a half as is needed for the matter in hand.



WATER SPRITES



AFTER TENNIS

SCHOOL OF METHODS

Teachers expecting to teach in northwestern Pennsylvania next year will find of immediate value the courses offered in school management by the six superintendents of this section. Each superintendent will serve for one of the six weeks, and each will give what he most wants his teachers to know and observe. Teachers should plan to get the broader outlook for practical work that the teaching of these different men will give. The work will amount to a school of methods for each county in northwestern Pennsylvania.

HOW TO GET TO EDINBORO

Edinboro is on the Northwestern Pennsylvania Railway, an electric line providing frequent service. The line connects with the following roads:

- At Erie with the New York Central
Pennsylvania
Bessemer
- At Cambridge Springs with the Erie
- At Meadville with Erie, main line
Erie, Franklin branch
Bessemer

At Harmonsburg with the Bessemer

At Linesville with Pittsburgh and Erie Division of Pennsylvania

Bessemer

BAGGAGE

All baggage should be checked over the Northwestern Pennsylvania line to Normal School. This insures its being left at the Normal School entrance instead of down town.

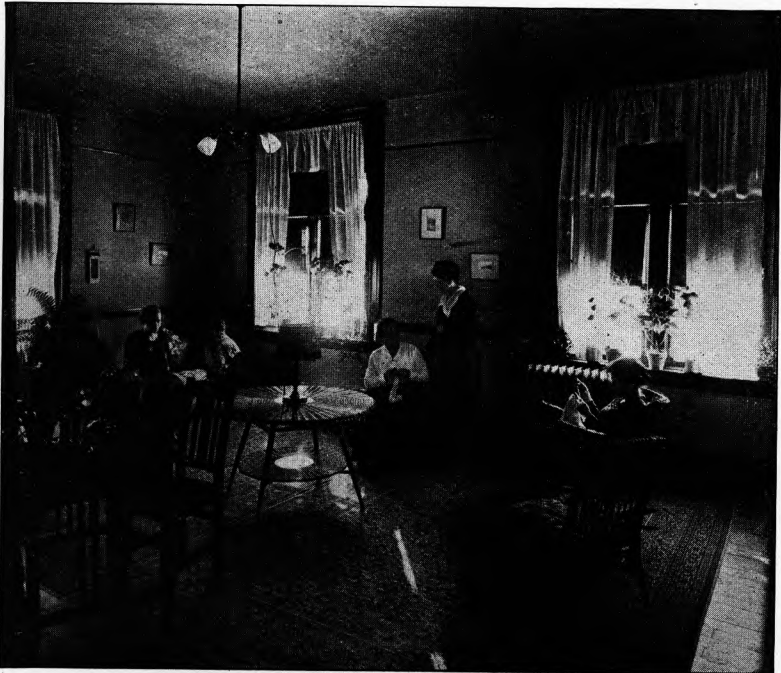
WHY GO TO SUMMER SCHOOL ?

Summer schools are not merely the fashionable thing these days; they are undoubtedly a necessity for the progressive teacher. There are at least three good reasons for going to summer school:

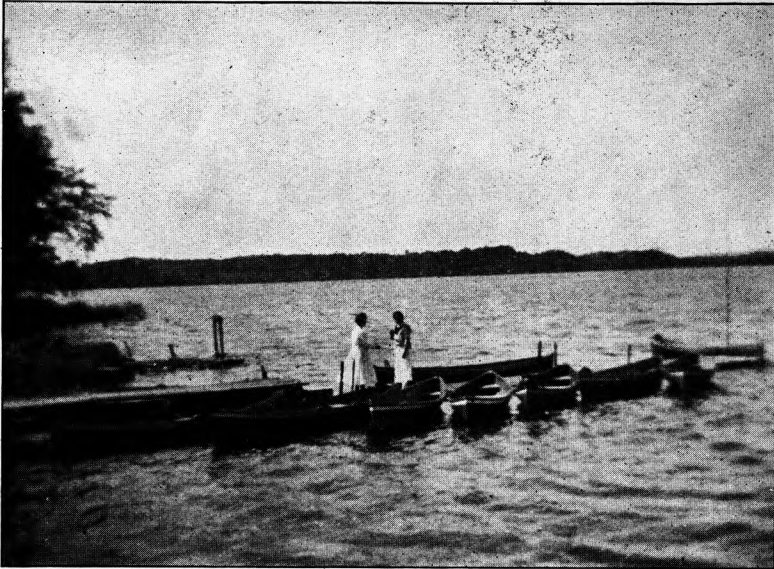
To get a stronger grasp on knowledge.

To acquire up-to-date methods.

To share, confirm, and elevate ideals.



MATRON'S ROOM—HAVEN HALL



BOATS TO LET

WHY COME TO EDINBORO ?

There are three good reasons for choosing Edinboro as the place to go to school:

The faculty is able and sympathetic.

The school spirit is one of joy in work.

The natural surroundings are lovely.

For purposes of summer enjoyment a school in direct contact with nature has the decided advantage.

The Edinboro State Normal School is not merely in a prosperous village; it is most delightfully situated on the south border of Edinboro. Though only a few minutes walk from the stores at the center and located on a residential street, its buildings overlook open country and give a view of distant woods.

The campus, with a long frontage on a street bordered with tall maple trees, is spacious and is planted with a variety of trees effectively placed. Numerous lawn settees are provided for the convenience of those who wish seats in the shade and there is always the grassy lawn for those more unconventional. The spa-



AT HOME IN HAVEN HALL

cious porch of Haven Hall with its benches also offers inviting outdoor rest.

Birds build in the trees of the campus and under the eaves of the buildings and add their life, color, and music to the scene. Last season the favorites were a pair of Baltimore orioles who built a well-concealed nest on the drooping end of an evergreen bough.

Art has aided nature by provision for outdoor sports. A spacious athletic field and a number of tennis courts adjacent to the gymnasium give ample opportunity for as strenuous outdoor sport as may be desired.

Delightful as these natural surroundings are, a prospective summer student would inquire also about material comforts. Here too the Edinboro Normal School is amply equipped. The buildings are brick, attractive architecturally, and well planned for their special uses. This year has seen the removal of two old frame buildings and their going has meant added beauty of view from Haven Hall.

Normal Hall is the largest recitation building and contains besides class rooms and laboratories, the offices, library and audi-



LAKESIDE COMPANIONS

torium. The library is a very large, airy room well furnished with books and current magazines and affords a pleasant, quiet place to study. A librarian is in attendance to loan books and to assist in reference work. The auditorium is the meeting place for chapel, lectures and entertainments. It is large enough to accommodate mass meetings of the community.

The dormitories are commodious, light, airy. There are no poor rooms; all are comfortable and pleasant. They are so fully furnished that little but added ornament is required. Reeder Hall affords suites of bedroom and sittingroom. Both dormitories have hot and cold water at all times. All rooms are electric lighted.

A modern laundry has recently been installed and students can readily arrange to use it. There are set tubs for washing and a number of electric irons.

Meals at the Edinboro Normal are promptly served from an up-to-date kitchen and are eaten in a large and beautiful new diningroom. It is a pleasure merely to be in the room and feel its beauty. The cooking is good and the provision is ample. A large garden makes possible a continuous supply of fresh vegetables.

Altogether, outdoors and in, the campus and buildings of Edin-

boro Normal make for a pleasant, profitable school life. One may both enjoy and study and the combination makes happy students.

The country surrounding Edinboro lends much enchantment to one who would be impressed with Nature's beauty and stillness. Skies were never so blue, sunrises so gorgeous, nor sunsets so alluring. After a day's work, the beauty of Edinboro Lake in its serene after-glow is a most restful and uplifting climax.

Bird lovers may feast to their hearts' content. The shores of the lake abound with specimens of rarity and beauty. The inlet is a continuous chorus of songsters from dawn to darkness.

Edinboro has been greatly favored in having the lake at its northern extremity. In summer the number, quantity and size of the fish have always attracted fishermen who have found it the most restful and pleasant way to get away from the business world. Muskalonge, yellow perch, black bass and crappie abound in plenty—and the joy of it is, they are catchable. Rods and lines are the style in Edinboro during the summer season.

Almost every spot along the shore could be made available for some style of recreation; already many summer homes have been built and natural picnic grounds placed. Oak Tree Landing is easily approached both from the road and from the lake, dry wood is found in the grove near by, and the "bacon bats" and "wiener roasts" prove a sure cure for tired minds and bodies.

The real picnic grounds with tables ready for use are at the top of the hill in the grove, and an excellent spring has been well piped, so that water facilities are not lacking.

Speaking of picnics and hikes to a grove, we must not neglect "Billings Grove." It is not too far and the natural beauties there lend many charms. The ravine is so full of adventure, it lures the lover of the wild.

Green Point, Lakeside, and many other unnamed points have been favorite rendezvous for many happy crowds, approached either by boat or by path from the main road. One favorite spot on the inlet, Taylor's Landing, is worthy of mention and here many an early breakfast has been ravenously devoured by earnest birdlovers. Beautiful it is in every sense of the word at that time of day!

The outlet has winding curves and is one of the favorite haunts of paddlers and rowers. Boats and canoes are for rent either at the Jervis boat-landing on the outlet or the "Allen Boat Livery" on the lake.

The lake is not Edinboro's only source of delight. The country is level enough to make hiking a real pleasure.

Along Perry Lane the trees form such an arch of shade, one has only to wander out Waterford street, turn to the right at the first country turn and find himself there—returning to Edinboro by way of the Darrow farm and thus completing the square. The Normal grounds are within eye's range from every point and yet one feels refreshed to have gone so far.

On the opposite side of town another walk of about the same



enjoyments of Edinboro students. Edinboro lies over similar geological veins and in some places valuable wells have been drilled. The water supply here is of a superior quality.

For one seeking healthful enjoyment and recreation as well as educational inspiration and advancement Edinboro offers many inducements. The spirit of recitation, recreation and study is most contagious and in truest harmony with the gladness of surrounding nature.

SPRING TERM

The spring term will begin Tuesday, April first. Students will be admitted as late as April 30.

Classes in all subjects required for a provisional certificate and the following subjects required for professional certificates will be offered: History of English Literature, Physical Geography, Vocal Music, Drawing, Zoology, Plane Geometry.

Students who enter late will be charged for the time from the date of enrollment to the end of the term only.

~~Passer. Oak Tree Landing is~~
easily approached both from the road and from the lake, dry wood is found in the grove near by, and the "bacon bats" and "wiener roasts" prove a sure cure for tired minds and bodies.

The real picnic grounds with tables ready for use are at the top of the hill in the grove, and an excellent spring has been well piped, so that water facilities are not lacking.

Speaking of picnics and hikes to a grove, we must not neglect "Billings Grove." It is not too far and the natural beauties there lend many charms. The ravine is so full of adventure, it lures the lover of the wild.

Green Point, Lakeside, and many other unnamed points have been favorite rendezvous for many happy crowds, approached either by boat or by path from the main road. One favorite spot on the inlet, Taylor's Landing, is worthy of mention and here many an early breakfast has been ravenously devoured by earnest birdlovers. Beautiful it is in every sense of the word at that time of day!

The outlet has winding curves and is one of the favorite haunts of paddlers and rowers. Boats and canoes are for rent either at the Jervis boat-landing on the outlet or the "Allen Boat Livery" on the lake.