

STATE TEACHERS  
COLLEGE  
AT EDINBORO



ANNUAL CATALOG

---

APRIL, 1928

Vol. XV

No. 2

EDINBORO TRAINS TEACHERS

# The Edinboro Quarterly

The Edinboro Quarterly is issued in January, April, July and October by the State Teachers College at Edinboro. The April number is the catalog. The other three numbers are filled with announcements and general news matter.

"Entered as second-class matter Dec. 11, 1913, at the postoffice at Edinboro, Pennsylvania, under the Act of Aug. 24, 1912."

---

Vol. XV

EDINBORO, PA., APRIL, 1928

No. 2

---

## Calendar, 1928-'29

Summer Term begins . . . . .	Monday, June 25
Summer Terms ends . . . . .	Friday, August 3
First Semester begins . . . . .	Monday, September 10
First Quarter ends . . . . .	Friday, November 9
Home Coming . . . . .	Saturday, November 17
Thanksgiving Recess begins . . . . .	Friday M., November 23
Thanksgiving Recess ends . . . . .	Monday, December 3
Christmas Recess begins . . . . .	Thursday, December 20
Christmas Recess ends . . . . .	Wednesday, January 2
First Semester ends . . . . .	Friday, January 18
Second Semester begins . . . . .	Friday, January 21
Third Quarter ends . . . . .	Friday, March 22
Easter Recess begins . . . . .	Friday, March 29
Easter Recess ends . . . . .	Monday, April 8
Second Semester work ends . . . . .	Thursday, May 23
Alumni Day . . . . .	Saturday, May 25
Baccalaureate Sermon . . . . .	Sunday, May 26
Commencement . . . . .	Tuesday, May 28

---

EDINBORO TRAINS TEACHERS

# The State Teachers College at Edinboro Greets You

*The Home of Work and Play*

A Strictly Professional School

## COURSES OF STUDY

Kindergarten and Primary (two and four years)  
Intermediate (two and four years)  
Rural (two and four years)  
Junior High School (four years)  
Arts and Crafts (four years)  
All four year courses lead to degree.

# The State Teachers College at Edinboro

Opens her door to serve you every month in the year

## ERIE BRANCH FOR RESIDENTS OF THE CITY OF ERIE

Extension Courses offered upon request

We Are Interested in You and Invite Your Co-operation  
in Behalf of the Schools and Homes of  
Northwestern Pennsylvania

C. C. CRAWFORD, Ph.B., L.L.D., Principal  
NELLE G. HUDSON, Ph.M., Director Erie Branch

## EDINBORO TRAINS TEACHERS

## OFFICERS OF ADMINISTRATION

1928-'29

Clarence C. Crawford, Ph.B., L.L.D. . . . .	Principal
Nelle G. Hudson, Ph.M. . . . .	Director of Erie Branch
F. S. Heinaman, A.B. . . . .	Dean of Instruction
S. Gordon Emery . . . . .	Dean of Men
Florence M. Kunkel, A.M. . . . .	Dean of Women
Harriet L. Chapman . . . . .	Secretary to the Principal and Assistant Dean of Women
Helen Gillis . . . . .	Nurse
Katherine Howland Sallee . . . . .	Bursar
Earl P. Campbell . . . . .	Treasurer
Frances King . . . . .	Secretary to Dean of Instruction
A. G. Sallee . . . . .	Superintendent of Grounds and Buildings

## BOARD OF TRUSTEES

C. C. Hill . . . . .	North East
A. A. Culbertson . . . . .	Erie
F. A. Loveland . . . . .	Corry
Mrs. Ramsay Burton . . . . .	Erie
H. E. McConnell . . . . .	Mercer
Mrs. Annette Grumbine . . . . .	Titusville
L. E. Torrey . . . . .	Erie
E. M. Gearhart . . . . .	Erie
J. A. McLaughrey . . . . .	Mercer



*C. C.*

PRINCIPAL C. C. CRAWFORD

# STATE TEACHERS COLLEGE FACULTY

1928-'29

C. C. Crawford, Ph.B., L.L.D. . . . .	Principal
James J. Jalmer, A.M. . . . .	Supervisor, Teacher Training
F. S. Heinaman, A.B. . . . .	Dean of Instruction, and Mathematics
Waldo F. Bates, Jr. . . . .	Dean of Art School
Aime H. Doucette, B.S., M.Ed. . . . .	Public School Art
Dorothy Skinner, B.S. . . . .	Public School Art
Nina L. Gleeten, B.S. . . . .	Public School Art
Katherine M. Cox, A.M. . . . .	Public School Art
W. A. Wheatley, A.M. . . . .	Introduction to Teaching
Bena K. Hansen, Ph.B., A.M. . . . .	Educational Measurements and Psychology
Mrs. Mary H. Palmer, A.M. . . . .	Primary Methods
Royce R. Mallory, A.B. . . . .	Secondary Education and English
E. Grace Graham, A.B. . . . .	English and Foreign Language
Bernice Huff, Ph.B. . . . .	English
Jane S. Ludgate, A.M. . . . .	Oral Expression and Dramatics
Hermion Sackett, A.M. . . . .	Head of Social Studies Department
S. Gordon Emery . . . . .	Head of Music Department
Esther L. Wilson, B.S.Mu. . . . .	Public School Music
Wallace J. Snyder, Sc.B. . . . .	Biology and Physical Science
Herbert W. McNees, A.M. . . . .	Science and Mathematics
B. Regis Harrison . . . . .	Boys' Health Education
Nettie Mai Ruttle, A.B. . . . .	Girls' Health Education
Mrs. Blanche Van Houten, A.B. . . . .	Health and Hygiene
Lillian Thomsen, B.S. . . . .	Nature Study and Geography
Mrs. Rohease B. Cook, A.B. . . . .	Handwriting
Mildred Forness, A.B. . . . .	Librarian
Nelle G. Hudson, Ph.M. . . . .	Director, Erie Branch, and Head of Geography Department
Samuel M. Robb, A.M. . . . .	Educational Measurements and Psychology
Myrtle Campbell, M.Di. . . . .	Education
E. C. Stillings, A.M. . . . .	Psychology
H. J. Barrett, A.M. . . . .	Social Studies
W. Vern Zahniser, A.B. . . . .	Oral Expression and Literature
Ellene M. Sullivan, A.B. . . . .	Oral Expression
Hazel May Ketcham, Ph.B. . . . .	Geography
Elfreda Littlejohn, B.S. . . . .	Public School Music
Justina Baron, A.B. . . . .	Librarian
Grace Brauning, B.S. . . . .	Girls' Health Department

---

 SPECIAL SUMMER SCHOOL INSTRUCTORS

H. E. McConnell, A.B. . . . .	Social Studies
Ralph S. Dewey, B.S., M.S., M.A. . . . .	Secondary Education
Blanche Howard, B.S. . . . .	Director, Demonstration School
John W. Ray, B.S., M.A. . . . .	Social Studies
Almeda Dayton, Ph.D. . . . .	Teaching of Reading
Ruth Barrett, B.S. . . . .	Primary Subjects
Theodora G. Pottle, Ph.B., M.A. . . . .	Public School Art
L. H. VanHouten, B.A., M.A. . . . .	Director, Teacher Training
Donna E. Sullivan, A.B. . . . .	Librarian
R. Signe Sletten, Ph.B. . . . .	Demonstration Teacher, First and Second Grades
Mrs. Phoebe Brugh Stuart, B.S. . . . .	Demonstration Teacher, Third and Fourth Grades
Maude Howard, B.S. . . . .	Demonstration Teacher, Fifth and Sixth Grades
Ruby G. Allen, B.S. Ed. . . . .	Public School Art
R. D. McCommons, B.S. . . . .	Public School Art
Florence E. Waller, B.S.Mu. . . . .	Public School Music

---

## State Teachers College at Edinboro with the Leading Teacher Training Institutions

---

The forward-looking citizens who had settled in Northwestern Pennsylvania from time to time met in small groups, sometimes in larger groups, to discuss the training of their boys and girls. They did not let the matter rest with discussion, however, but gave their ideals financial backing until in May, 1856, an institution of higher learning was located at Edinboro, Pennsylvania.

This institution prospered in such a way that on January 29, 1861, it was made a State Normal School, the center in Northwestern Pennsylvania for teacher training. At that time the school was financed on the basis of a stock company. Many men and women gave of their time, of their thought, and of their money to further the work of teacher training. In May, 1914, the State took over the entire financial obligation as well as the responsibility of teacher training.

In September, 1921, the Edinboro State Normal School opened a branch in Erie city in the Washington School building at Twenty-first and Sassafras streets. Since that time both the school at Edinboro and the branch school in Erie city have seen phenomenal growth in student enrollment, in faculty and in equipment.

Early in the year 1926, the State Council of Education approved the policy of four-year teacher training institutions in the Commonwealth of Pennsylvania upon condition that the institutions applying for this right qualify in respect to buildings, equipment, faculty and student personnel.

The Edinboro State Normal School applied for the right to offer four-year courses and grant degrees. The State Council of Education, after careful investigation "were satisfied that the course of instruction and the standards of admission to the Edinboro State Normal School and the composition of the faculty appeared to be sufficient, also that the educational needs of the particular locality in which the proposed institution is to be situated, and of the Commonwealth at large are likely to be met by the granting of the said application. Wherefore, the State Council, at its meeting held in Harrisburg, Pennsylvania, on June 4, 1926, passed a resolution authorizing the State Normal School at Edinboro, to confer degrees as follows:

The degree of Bachelor of Science in Education to graduates of the following four-year curriculum: Elementary Education, Junior High School."

In November, the Edinboro State Normal School again made application to the State Council of Education for the right to offer four-



year courses and grant the degree of Bachelor of Science in Public School Art. This application also met with the approval of the Council and was granted December 3, 1926.

The next step in Edinboro's progress, was symbolized when representatives of the State Council of Education, the Department of Public Instruction, the Teacher Bureau, the Board of Trustees of the Edinboro State Normal School, the Faculty, and the entire student body met on January 14, 1927, at which time the charters which make possible a greater Edinboro were formally presented to the Board of Trustees.

In accordance with the authority given by the General Assembly, the State Council of Education, at its regular meeting held on May 13, 1927, changed the name of the State Normal School at Edinboro to the STATE TEACHERS COLLEGE AT EDINBORO.

The State Teachers College at Edinboro now has the right to offer both two-year and four-year courses. Those who complete the two-year courses are granted a certificate to teach in the Commonwealth of Pennsylvania. Those who graduate in the four-year courses are granted diplomas carrying the Bachelor of Science degree with all the privileges that accrue from graduation from any baccalaureate institution.

The act of the State Council of Education in authorizing four-year degree-granting courses was a matter of addition rather than subtraction; nothing of the old Edinboro has been taken away. The door has been opened for a greater service to the teachers of Pennsylvania and to the 1,800,000 boys and girls of this great Commonwealth.

The State Teachers College at Edinboro still recognizes one supremely important function, EDINBORO TRAINS TEACHERS.

---

## LOCATION

Edinboro is a prosperous village on the south shore of Edinboro Lake, in the heart of the rich agricultural district of northwestern Pennsylvania. The village was founded about the end of the eighteenth century by New England people whose descendants constitute the chief element in the population today. Lying between the beautiful campus of the State Teachers College and the charming lake once known by the Indian name "Conneauttee," and with gentle slopes and forest clad hills to either side, Edinboro has a most delightful location.

The Northwestern Pennsylvania electric railway passes the College campus. This road provides excellent service to Erie, twenty miles away, where it connects with the New York Central, the Pennsylvania, the Nickel Plate and the Bessemer railroads. At Cambridge Springs, seven miles south of Edinboro, it connects with the Erie, and it connects with the Bessemer at Harmonsburg and Conneaut Lake. When coming through Erie one should deliver baggage checks to the Erie Transfer Company, which will transfer baggage to the Northwestern Pennsylvania station. On reaching the campus, the student should go at once to the administrative offices in Normal Hall for registration.

---

EDINBORO TRAINS TEACHERS

## EXPENSES

### EXPENSE IN ALL DEPARTMENTS

#### College and Arts Departments

	<i>School Year 36 Weeks</i>	<i>First Semester 18 Weeks</i>	<i>Second Semester 18 Weeks</i>	<i>Summer Term 6 Weeks</i>
Board, Home and Laundry*...	\$288.00	\$144.00	\$144.00	\$ 48.00
Registration Fee, Boarding Students .....	25.00	12.50	12.50	10.00
Registration Fee, Day Students .....	30.00	15.00	15.00	12.50
Laboratory:				
Agriculture .....	6.00	3.00	3.00	3.00
Chemistry .....	6.00	3.00	3.00	3.00
Arts and Crafts .....	6.00	3.00	3.00	3.00
Educational Biology .....	6.00	3.00	3.00	3.00

Board, Home and Laundry must be paid quarterly in advance. All other fees must be paid at time of registration.

#### Music--Special Students

Voice or any instrument \$1.00 per lesson.				
One lesson per week .....	36.00	18.00	18.00	6.00
Two lessons per week .....	72.00	36.00	36.00	12.00

#### Instruments for Practice

Piano—				
One hour daily 30c per week .....	10.80	5.40	5.40	1.80
Organ—				
Two hours weekly 30c per week .....	10.80	5.40	5.40	1.80

#### Rates for Transients

Meals .....	\$ .50
Lodging .....	.75

Advance registration should be addressed to the Principal, C. C. Crawford, and must be accompanied by a check for \$12.50 for students rooming in the dormitory, and \$15.00 for off-campus students. All checks should be made payable to the State Teachers College at Edinboro. In case the person who has advanced the registration fee is for reason unable to attend and we are notified at least one week before the date on which the term begins, the registration fee will be returned.

All students who desire to room in homes off campus must first secure permission from the Principal. Do not fail to communicate with the Principal regarding this privilege before plans to room off campus are made.

The Bursar, Katherine Howland Sallee, is the person designated as the official in charge of financial matters. In case of questions regarding the adjustment of bills or fees, the student should go direct to the Bursar.

An additional fee of \$1.00 will be charged for enrollment after the scheduled enrollment day.

After three days in the Infirmary, the school will charge an additional fee of 50c for each day.

Students taking Art courses where laboratory and hand work are required must pay for the material used or destroyed.

Persons desiring to room alone must pay the full amount the room or rooms would cost if filled to capacity. An extra charge may be made for special service.

Dormitory students are required to furnish their own towels, napkins, toilet articles, bed comforts, and wash curtains, if desired.

All fees must be paid on registration day.

Board, room and laundry must be paid quarterly in advance.

No deduction in charges will be made for student absence during the first two or the last two weeks of the semester or of the summer session.

Room and locker keys may be had for a deposit which will be refunded upon return of the key. All room and locker keys must be returned at the end of the school year or the summer session. The fee will be forfeited if the key is not returned within one week after the closing of the session.

The book room is run on a cash basis. No student accounts will be carried.

---

### REQUIRED FOR GYMNASIUM WORK

Regulation uniform for gymnasium classes.

High, white gymnasium shoes and black cotton stockings are also required.

All gymnasium clothing may be ordered through a local merchant who handles it for the school.

#### Suggested

Table napkins.

Towels and wash cloths.

Curtains and room decorations.

One comfortable or wool blanket.

Tennis racquet.

Bathing suit and rubber cap.

Skates.

Skis, snow-shoes, etc.

Kimona.

Bed-room slippers.

---

### INFIRMARY SERVICE

A graduate nurse lives in the dormitory and watches over the health of the students. A modern, well-equipped infirmary is maintained where all cases of illness are cared for. Here the students have the constant supervision of the nurse, have their meals served to them, and are kept away from the noise and disturbances of a dormitory.

---

## Requirements for Admission

---

Admission to a State Teachers College shall be on the basis of graduation from an approved four-year high school, or equivalent training in an approved private secondary school.

Graduates of senior high schools in a school district maintaining an approved junior high school organization will be admitted on evidence of twelve units of preparation.

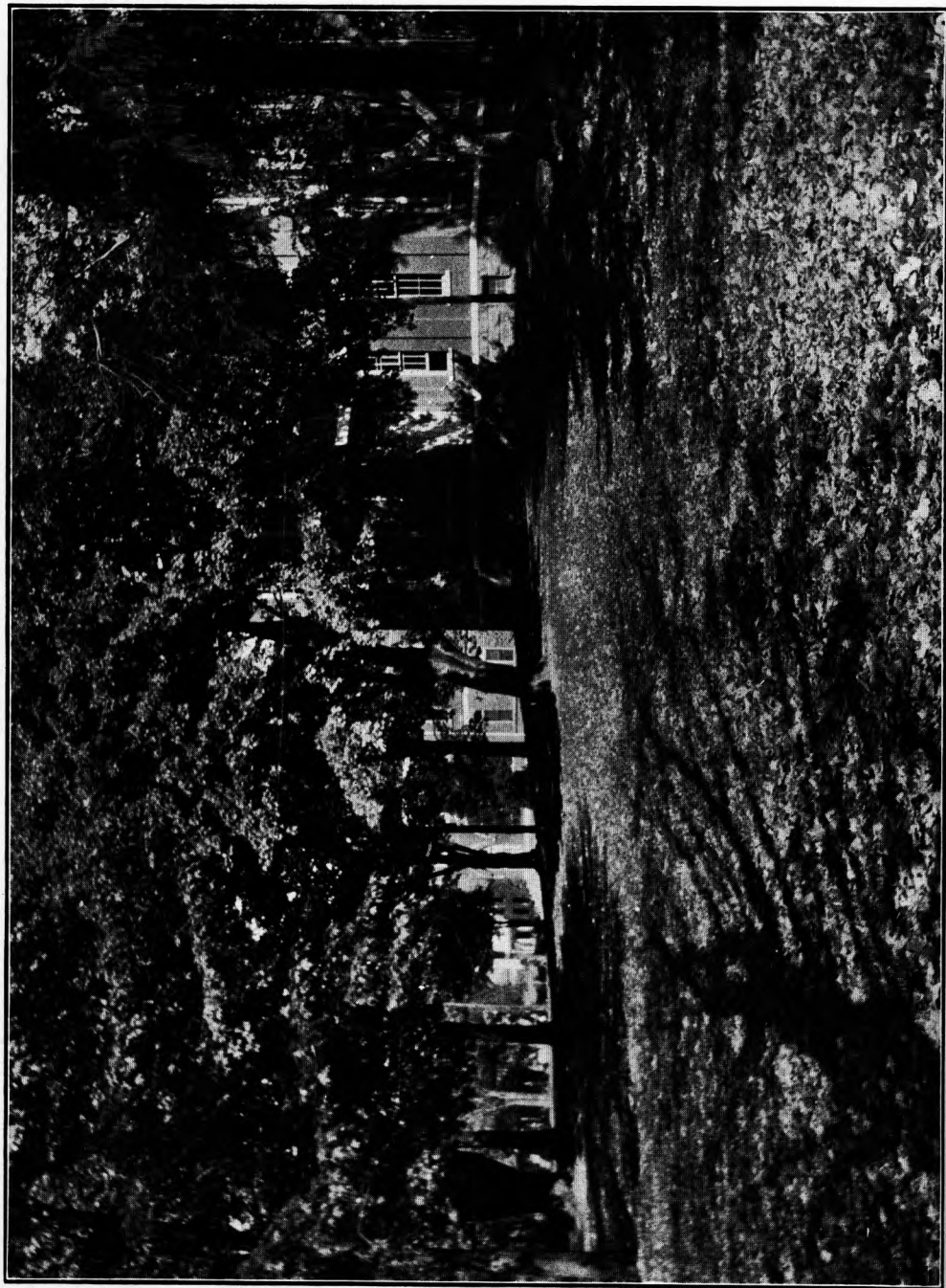
A unit represents a year of work in a high school subject of not less than 120 clock hours of work requiring preparation.

Graduates of approved two-year high schools are entitled to not more than eight units of credit and graduates of approved three-year high schools to not more than twelve units of credit toward the standard admission requirement; provided, however, that such students, or other students having irregular entrance qualifications, may take examinations in county superintendents' office in all counties having such students, at the close of the school year. These examinations will be given under the direction of the Credentials Bureau of the Department of Public Instruction, under a cooperative plan adopted by the Board of Normal School Principals, January 15, 1926. In case of failure in a subject, or subjects, the student, by additional study during the summer, may take a second examination in August at one of the normal schools or at any one of the centers where State examinations are regularly conducted, namely, Philadelphia, Harrisburg, Pittsburgh, and Scranton.

Under this arrangement students who complete the work of a four-year high school with a three year-rating may take examination in fourth-year subjects and thereby receive credit equivalent to that of a four-year high school graduates of three-year high schools with a two-year rating may take examinations in third-year subjects for credit in three years of approved high school work. All inquiries should be addressed to the Credentials Bureau, Department of Public Instruction, Harrisburg, Pennsylvania.

Credentials of all students entering the State Teachers College on the basis of an approved four-year preparation shall be received and evaluated by the normal school; students not having an approved four-year preparation or students whose preparation is irregular, shall have their credentials evaluated by the Credentials Bureau of the Department of Public Instruction.

Graduates of approved four-year high schools or of equivalent private secondary schools who desire admission to the State Teachers College without examination must present a detailed statement of all studies pursued, including the time devoted to such studies, and the grades received. Blanks for such purposes may be secured from the principal of the State Teachers College. These blanks should be filled out by the principal of the school which the student attended, or where this is impossible, by the local superintendent of schools.



"Where coaks together trod make memory dear."



Work and Play

Advanced credit will be given for equivalent courses in approved institutions of collegiate grade, but no student may obtain a normal school certificate without a minimum residence of one year. (Teachers who have been granted credit for experience may finish with a minimum residence of one-half year.)

The usual health certificate required by law for the certification of teachers shall be presented by all applicants for admission. Applicants disqualified, by reason of physical defects, from the successful performance of the duties of a teacher will not be admitted.

All applicants for admission shall present evidence of good moral character and ideals characteristic of the teaching service.

No candidate for a normal school certificate shall receive more than twenty semester hours of credit toward graduation for work done in extension classes or by correspondence.

## Two-Year Curriculum for Group I

### Kindergarten and Primary Grades, 1, 2, 3

Note: The first figure following a subject indicates the number of 50 minutes class periods per week. The second figure indicates the number of semester hours of credit allowed for the successful completion of the course. Figures in parentheses indicate sequential courses in a given subject.

#### First Semester:

Educational Biology .....	3	3
Introduction to Teaching .....	3	3
English (1) .....	3	3
Music (1) .....	4	2
Art (1) .....	4	2
Oral Expression .....	2	2
Handwriting .....	2	1
Physical Education (1) .....	3	1
	24	17

#### Second Semester:

Psychology and Child Study .....	3	3
English (2) .....	3	3
Music (2) .....	3	1½
Art (2) .....	3	1½
Nature Study .....	2	2
Teaching Primary Reading .....	3	3
Teaching of Number .....	2	2
Physical Education (2) .....	3	1
	22	17

#### Third Semester:

Educational Sociology .....	3	3
Children's Literature and Story Telling .....	3	3
Kindergarten-Primary Theory .....	2	2
Educational Measurements .....	2	2
Health and Hygiene in Primary Grades .....	3	3
Elective .....	3	3
Physical Education (3) .....	3	1
	19	17

#### Fourth Semester:

Student Teaching and Conferences .....	13	10
Teaching of Primary Subjects .....	4	4
Geography .....	1	1
Social Studies .....	1	1
Spelling and Language .....	2	2
Technique of Teaching .....	2	2
Physical Education (4) .....	3	1
	22	17

## Two-Year Curriculum for Group II

### Intermediate Grades, 4, 5, 6

#### First Semester:

Educational Biology .....	3	3
Introduction to Teaching .....	3	3
English (1) .....	3	3
Music (1) .....	4	2
Art (1) .....	4	2
Oral Expression .....	2	2
Handwriting .....	2	1
Physical Education (1) .....	3	1
	24	17

#### Second Semester:

Psychology and Child Study .....	3	3
English (2) .....	3	3
Nature Study .....	2	2
Teaching of Arithmetic .....	3	3
Teaching of Geography .....	3	3
Music (2) .....	3	1½
Art (2) .....	3	1½
Physical Education (2) .....	3	1
	23	18

#### Third Semester:

Educational Sociology .....	3	3
Teaching of Social Studies .....	3	3
Juvenile Literature and Silent Reading .....	2	2
Educational Measurements .....	2	2
Health and Hygiene in Intermediate Grades...	3	3
Elective .....	3	3
Physical Education (3) .....	3	1
	19	17

#### Fourth Semester:

Student Teaching and Conferences .....	13	10
Technique of Teaching .....	2	2
Teaching of English .....	3	3
Physical Education (4) .....	3	1
	21	16



## Two-Year Curriculum for Group III (Rural)

### First Semester:

Educational Biology .....	3	3
Introduction to Teaching .....	3	3
English (1) .....	3	3
Music (1) .....	4	2
Art (1) .....	4	2
Oral Expression .....	2	2
Handwriting .....	2	1
Physical Education (1) .....	3	1
	24	17

### Second Semester:

Psychology and Child Study .....	3	3
English (2) .....	3	3
Nature Study and Agriculture .....	2	2
Teaching of Arithmetic .....	3	3
Teaching of Geography .....	3	3
Music (2) .....	3	1½
Art (2) .....	3	1½
Physical Education (2) .....	3	1
	23	18

### Third Semester:

Rural Sociology .....	3	3
Teaching of Social Studies .....	3	3
Juvenile Literature and Silent Reading .....	2	2
Educational Measurements .....	2	2
Health and Hygiene in Rural Schools .....	3	3
Primary Methods for Rural Schools .....	3	3
Physical Education (3) .....	3	1
	19	17

### Fourth Semester:

Student Teaching and Conferences .....	13	10
Technique of Teaching .....	2	2
Teaching of Reading .....	3	3
Physical Education (4) .....	3	1
	21	15

Summary of Field Distribution for All Two-Year Curricula

	Group I		Group II		Group III	
	Sem. Hrs.	% of Total	Sem. Hrs.	% of Total	Sem. Hrs.	% of Total
Education .....	22	32.3	20	29.4	23	33.8
English .....	16	23.6	13	19.1	13	19.1
Science and Geography .....	9	13.2	11	16.2	11	16.2
Social Studies .....	4	5.9	6	8.8	6	8.8
Mathematics .....	2	2.9	3	4.4	3	4.4
Arts .....	12	17.7	12	17.6	12	17.6
Elective .....	3	4.4	3	4.4	0	0.0
Totals .....	68	100.0	68	99.9	68	99.9

Requirements for Graduation from Two-Year Curricula and Credential

The completion of the 68 required semester hours in a two-year curriculum entitles the student who meets all other legal requirements to the Normal School certificate which is a valid state license to teach in the elementary school for two years. On the completion of two years of successful teaching, the Normal School Certificate is made into the Normal School Diploma which is a valid life license to teach in the elementary schools of Pennsylvania.

## Advanced Two-Year Curriculum Leading to B. S. in Education

(Open only to Those who have Completed the Work of Groups I, II, or III, [rural])

Conditions of Entrance to the Third Year of the Four-Year Curriculum in Elementary Education

1. All persons who have completed the work of Groups I, II or III (rural, formerly IV) are admitted to third year standing provided they have previously completed the work of a four-year high school, and all such persons must complete 68 hours of work beyond graduation from Groups I, II, or III (rural, formerly IV) as these were, prior to September 1, 1926, organized and administered.
2. All credits for work less than that required at a State Normal School for graduation between September, 1920, and September, 1926, shall be evaluated by multiplying the number of semester hours already earned by .85.

The following table applies this ratio to enough typical cases to illustrate the principle:

Former Semester Hours		New Semester Hours
6	x .85 =	5.0
11	x .85 =	9.0
22	x .85 =	19.0
36	x .85 =	21.0
60	x .85 =	51.0

Rule: If the decimal is less than .5, disregard it; if it is .5 or more, count it as a unit.

3. All persons who graduated from a State Normal School prior to September, 1920, and who have had a four-year high school preparation, cannot be awarded more than 68 semester hours of credit for their normal school work.

4. Graduates of the State Normal Schools who have not had four years of high school preparation may apply to the Credentials Bureau, Harrisburg, Pennsylvania, for a high school equivalent certificate, which, when issued by the Credentials Bureau, will be accepted by the State Normal Schools as equivalent to graduation from a four-year high school and all credits earned at a State Normal School prior to September, 1926, will be evaluated as indicated above.
5. No credit for public or private school teaching experience, previously credited as high school equivalent or as equivalent professional credit toward graduation, shall be granted or counted toward meeting the requirements for entrance to or graduation from the advanced two-year curriculum.

**Fifth Semester:**

Opportunity is provided so that a student may complete in this semester the work of the first two years in the curricula which he did not pursue, as follows:

**1. Graduates of Group I will take:**

Teaching of Arithmetic .....	3	3
Teaching of Geography .....	3	3
Teaching of English .....	3	3
Teaching of Social Studies .....	3	3

	12	12
--	----	----

**2. Graduates of Group II will take:**

Teaching of Primary Reading .....	3	3
Teaching of Number .....	2	2
Teaching of Primary Subjects .....	4	4
Kindergarten-Primary Theory .....	2	2

	11	11
--	----	----

**3. Graduates of Group III will take:**

Teaching of English .....	3	3
Teaching of Number .....	2	2
Kindergarten-Primary Theory .....	2	2
Teaching of Primary Subjects .....	4	4

	11	11
--	----	----

Total taken by a Student as above ....	11	11	or	12	12
Economic Biology .....	4	3		4	3
Educational Psychology .....	3	3		3	3

	18	17	or	19	18
--	----	----	----	----	----

**Sixth Semester:**

History of Education .....	3	3
English Literature .....	2	2
Descriptive Astronomy .....	3	3
Economics .....	3	3
Physiography .....	4	3
Teaching and Supervision of Arithmetic in Elementary Schools .....	3	3

	18	17
--	----	----

**Seventh Semester:**

Principles of Education .....	3	3
American Literature .....	2	2
American Government .....	3	3
Principles of Human Geography .....	3	3
Nutrition .....	4	3
Civic Education in the Elementary School....	3	3
	18	17

**Eighth Semester:**

Advanced Composition .....	3	3
History and Appreciation of Art.....	4	2
History and Appreciation of Music.....	4	2
History and Organization of Education in Pennsylvania .....	2	2
Practical School Contacts .....	5	5
Supervision and Administration of Elementary School .....	3	3
	21	17

**Requirement for Graduation and Credential**

The completion of the 68 semester hours of required work in Groups I, II, and III as rearranged or equivalent evaluated credits, and 68 semester hours in the two-year curriculum indicated above, entitles a person to the degree of B. S. in Education which, after two years of successful teaching, is a life license to teach in the elementary field, or to serve as supervisor or principal in the elementary field.



Where We Give and Take

## Four-Year Curriculum in Elementary Education for Classroom Teachers

### First Semester:

Educational Biology .....	3	3
Introduction to Teaching .....	3	3
English (1) .....	3	3
Oral Expression .....	2	2
Art (1) .....	4	2
Music (1) .....	4	2
Handwriting .....	2	1
Physical Education (1) .....	3	1
	24	17

### Second Semester:

Psychology and Child Study .....	3	3
English (2) .....	3	3
Art (2) .....	3	1½
Music (2) .....	3	1½
Nature Study .....	2	2
Teaching of Primary Reading .....	3	3
Teaching of Number .....	2	2
Physical Education (2) .....	3	1
	22	17

### Third Semester:

Educational Psychology .....	3	3
Teaching Arithmetic .....	3	3
Teaching of Geography .....	3	3
Economic Biology .....	4	3
American Literature .....	2	2
Nutrition .....	4	3
Physical Education (3) .....	3	1
	22	18

### Fourth Semester:

Teaching of English .....	3	3
Descriptive Astronomy .....	3	3
Educational Measurements .....	3	3
Economics .....	3	3
Teaching of Primary Subjects .....	4	4
Geography .....	1	1
Social Studies .....	1	1
Spelling and Language .....	2	2
Physical Education (4) .....	3	1
	19	17

**Fifth Semester:**

Educational Sociology .....	3	3
Children's Literature and Story Telling .....	3	3
Health and Hygiene in the Elementary School .....	3	3
Teaching of Social Studies .....	3	3
American Government .....	3	3
Elective .....	2	2
	17	17

**Sixth Semester:**

History of Education .....	3	3
Physiography .....	3	3
Teaching and Supervision of Arithmetic in Elementary Schools .....	3	3
Advanced Composition .....	3	3
English Literature .....	2	2
Civic Education in Elementary School .....	3	3
	17	17

**Seventh Semester:**

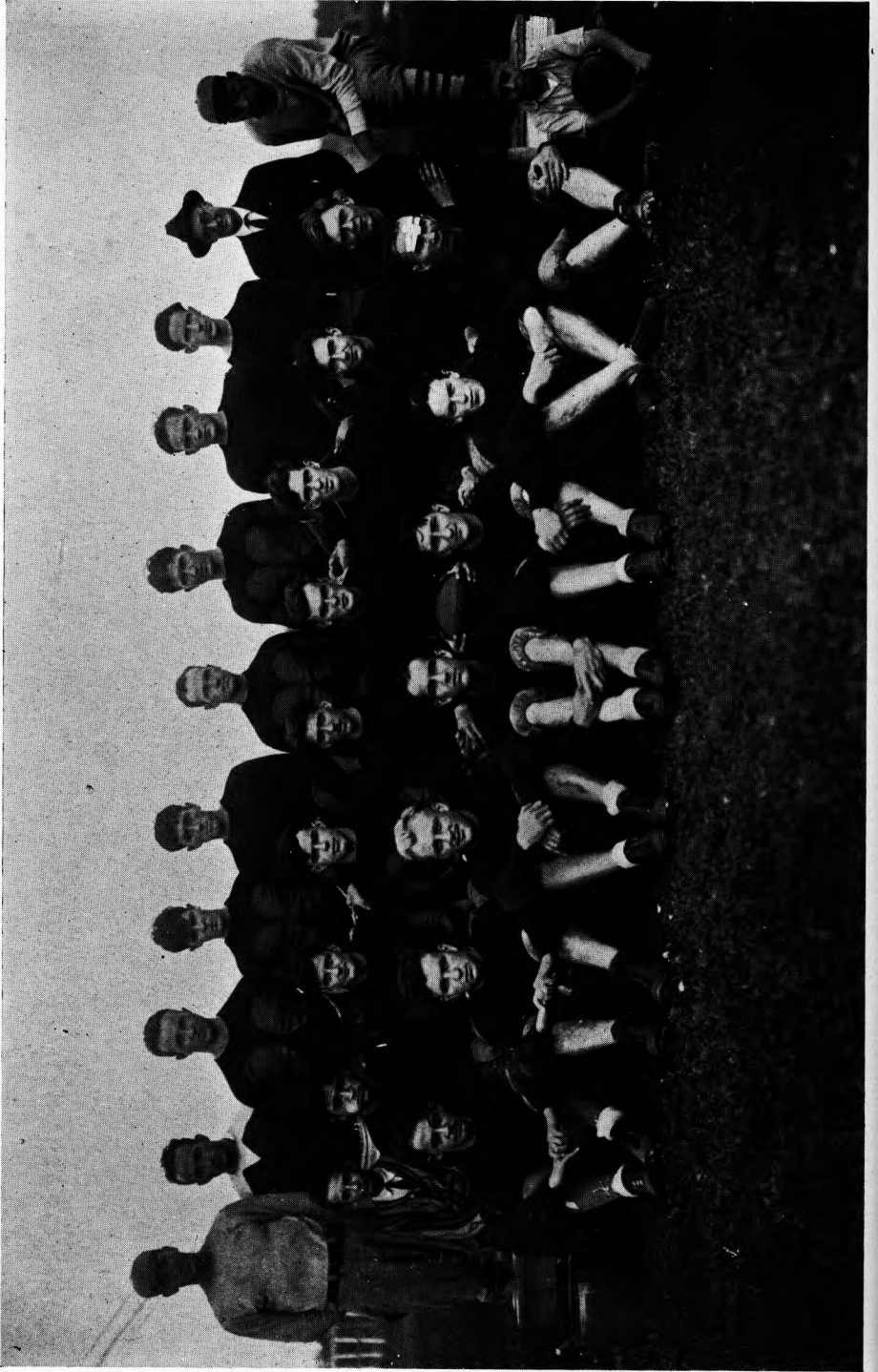
Student Teaching and Conferences .....	13	10
Technique of Teaching .....	2	2
Principles of Human Geography .....	3	3
Kindergarten-Primary Theory .....	2	2
	20	17

**Eighth:**

History and Appreciation of Art.....	4	2
History and Appreciation of Music.....	4	2
History and Organization of Education in Pennsylvania .....	2	2
Practical School Contacts .....	4	4
Supervision and Administration of Elementary School .....	3	3
Principles of Education .....	3	3
	20	16

**Requirement for Graduation and Credential**

The completion of the foregoing curriculum of 136 semester hours entitles a person to the degree of B. S. in Education which, after two years of successful teaching experience, becomes a life license to teach, supervise, or serve as principal in the elementary field.



OF SUCH AS THESE ARE THE FINEST TEACHERS MADE

## Four-Year Curriculum for Preparation of Junior High School Teachers

**First Semester:**

Educational Biology .....	3	3
English (1) .....	3	3
Oral Expression .....	2	2
Social and Industrial U. S. History .....	3	3
Human Geography .....	3	3
Appreciation and Application of Art .....	4	2
Physical Education (1) .....	3	1
	21	17

**Second Semester:**

Introduction to Teaching .....	3	3
English (2) .....	3	3
Everyday Science .....	3	3
Economics .....	3	3
Handwriting .....	2	1
World Problems in Geography .....	3	3
Physical Education (2) .....	3	1
	20	17

**Third Semester:**

Psychology and Adolescence .....	3	3
English Literature .....	2	2
*First Elective Field .....	3	3
*Second Elective Field .....	3	3
American Government .....	3	3
Physical Education (3) .....	3	1
*Free Elective .....	2	2
	19	17

**Fourth Semester:**

Educational Psychology .....	3	3
American Literature .....	2	2
*First Elective Field .....	3	3
*Second Elective Field .....	3	3
Educational Sociology .....	3	3
Physical Education (4) .....	3	1
History and Appreciation of Music .....	4	2
	21	17

\* For list of Electives, see pages 25 and 26.



**Fifth Semester:**

Purpose, Organization, and Development of Junior High School .....	3	3
Advanced Composition .....	3	3
Guidance .....	3	3
*Second Elective Field .....	3	3
*First Elective Field .....	3	3
*Free Elective .....	2	2
	<hr/>	<hr/>
	17	17

**Sixth Semester:**

History of Education .....	3	3
Educational Measurements .....	3	3
*First Elective Field .....	3	3
*Second Elective Field .....	3	3
Dramatic English .....	3	3
History and Organization of Education in Pennsylvania .....	2	2
	<hr/>	<hr/>
	17	17

**Seventh:**

Student Teaching, Conferences, and School Contacts .....	18	14
Technique of Teaching .....	2	2
	<hr/>	<hr/>
	20	16

**Eighth Semester:**

Principles of Education .....	3	3
Health and Hygiene in Junior High School...	3	3
*First Elective Field .....	6	6
*Second Elective Field .....	6	6
	<hr/>	<hr/>
	18	18

\* For list of Electives, see pages 25 and 26.

**Requirement for Graduation and Credential**

The credential to be awarded on the completion of the 136 semester hours of the foregoing curriculum is a B. S. in Education which entitles the holder to teach in any public school any subject in which he has earned 18 or more semester hours of credit. After two years of successful teaching a life license in the foregoing field is awarded.

### ELECTIVE FIELDS FOR PROSPECTIVE JUNIOR HIGH SCHOOL TEACHERS

The person who is to teach successfully in the junior high school must have, in addition to what has been prescribed, a special preparation in at least two fields. A third field, in which less preparation is possible, is also desirable. The Committee proposes electives in six fields.

#### (Six Semester Hours in Each of Two Fields for Three Years)

##### Electives in English

- 3— 3 Teaching of English in Junior High School
- 3— 3 Philology and Grammar
- 3— 3 Contemporary Poetry
- 3— 3 Short Story
- 3— 3 Modern Novel
- 3— 3 Elizabethan Drama

18+18 Required=36

##### Electives in Science

- 6— 6 Chemistry
- 6— 6 Physics
- 3— 3 Economic Biology
- 4— 3 Advanced Biology
- 3— 3 Descriptive Astronomy
- 3— 3 Teaching of Science in Junior High School
- 3— 3 Physiography

27+6 Required=33

##### Electives in Geography

- 3— 3 Economic Geography
- 3— 3 Physiography
- 3— 3 Geography of European Countries
- 3— 3 Geographic Influences in American History
- 3— 3 Geography of North America
- 3— 3 Geography of Latin America

18+6 Required=24

##### Electives in Social Studies

- 3— 3 Teaching of Social Studies
- 3— 3 Early European History
- 3— 3 Modern European History
- 3— 3 American History to 1865
- 3— 3 American History since 1865
- 3— 3 Political Science

18+15 Required=33

##### Electives in Mathematics

- 12—12 Mathematic Analysis  
(A practical two-year course in Algebra, Trigonometry, Analytical Geometry, the Differential, and Integral Calculus.)
- 3— 3 Teaching of Junior High School Mathematics
- 3— 3 Teaching of Algebra and Plane Geometry

18—18, and none required=18

##### Foreign Languages

- 15—15 in French or Latin  
After two years High School French or three years High School Latin
- 3— 3 Teaching of Languages

18—18, and none required=18

Electives, however, are particularly liable to misuse unless carefully safeguarded. The Committee has sought to safeguard the selection of electives by deferring the necessity for a choice by the student until the end of the first year and also by means of the following:

**Prerequisites for the Election of Fields in the Junior High School Curriculum**

1. To elect Science, a student must present a unit in Chemistry and a unit in Physics.
2. To elect Social Studies, a student must present two high school units in social studies.
3. To elect Mathematics, a student must present one high school unit in Algebra and one high school unit in Plane Geometry, or two units in Composite Mathematics, one of which at least must have been taken in the Senior High School.
4. To elect French, a student must present two high school units in French.
5. To elect Latin, a student must present three high school units in Latin.

When a student has chosen his elective fields, his curriculum becomes a closed series of courses not subject to change without loss of credit.



ScaRAB Club Officers

---

EDINBORO TRAINS TEACHERS

Four-Year Curriculum for the Preparation of Teachers and Supervisors of Art in Public Schools

Leading to the Degree of Bachelor of Science in Public School Art

	Hrs. per Week	Credit in S. H.
<b>First Semester:</b>		
Drawing (1) .....	12	6
Modeling .....	4	2
Physical Education (1) .....	3	1
Educational Biology .....	3	3
English (1) .....	3	3
Oral Expression (English 3) .....	2	2
	27	17
<b>Second Semester:</b>		
Elementary Industrial Arts .....	10	5
Media (Technique) .....	5	2½
Pottery .....	5	2½
Physical Education (2) .....	3	1
Introduction to Teaching .....	3	3
English (2) .....	3	3
	29	17
<b>Third Semester:</b>		
Design (1) .....	6	3
Color .....	6	3
Drawing (2) (Advanced) .....	10	5
Physical Education (3) .....	3	1
Psychology and Child Study .....	3	3
English (9) .....	2	2
	30	17
<b>Fourth Semester:</b>		
Design (2) .....	5	2½
Instrument Drawing .....	6	3
Costume Design .....	6	3
Home Planning .....	5	2½
Physical Education (4) .....	3	1
Educational Psychology .....	3	3
English (10) .....	2	2
	30	17
<b>Fifth Semester:</b>		
Advanced Design and Color (Applied to Pageantry, Stage Setting and Lighting, Commercial Art, Etc.) .....	6	3
Elements of Pictorial Expression and Illustration..	6	3
Education Through the Fine and Industrial Arts..	10	5
Economics .....	3	3
History of Education .....	3	3
	28	17

	Hrs. per Week	Credit in S. H.
<b>Sixth Semester:</b>		
Crafts .....	12	6
The Art Curriculum for the Public School .....	10	5
American Government .....	3	3
Educational Sociology .....	3	3
	28	17
<b>Seventh and Eighth Semesters:</b>		
Art History and Appreciation .....	6	6
Educational Tests and Measurements .....	3	3
Purpose, Organization, and Development of Junior High School .....	3	3
Secondary Education (Org.—Adm. Problems).....	3	3
The Technique of Teaching .....	2	2
Student Teaching .....	13	10
Elective (by the school) .....	7	7
	37	34

(The above arrangement is made so that a school may distribute student teaching throughout the year or have all of it in one semester.)

## The Professional Attitude

All art students are judged not only by their work and attitude in their art subjects but also by their accomplishments in their academic work and in their general school activities.

A fine art teacher or supervisor must know not only the art side but the education side of the art-education profession.

State Teachers College at Edinboro offers a well balanced curriculum in art education, established by the State Department of Public Instruction, and approved by the State Council of Education and many of the leading educators of the United States to whom the course was submitted for criticism.

Personality, poise, health, in addition to scholarship, which may be indicated by the student's participation in extra-mural activities, such as the Girls' Athletic Association, the boys' athletics, the glee clubs, the ScaRab Club, are some of the qualities by which a student is judged.

Graduates who have acquired or inherited a strong, vigorous, kindly, loyal, intelligent personality, have never lacked a position upon graduation. With but one or two exceptions our graduates have secured and held their positions at salaries ranging from \$1,200 to \$2,000 for the first year's work.

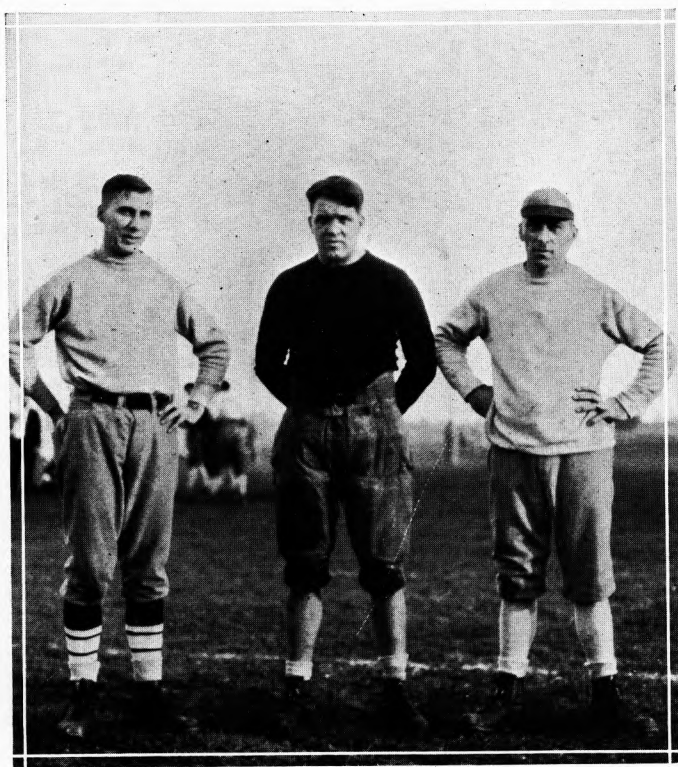
Success depends upon the professional attitude. Edinboro has a fine student group and a most friendly faculty who will help you to develop a professional attitude. Do your bit from the start.

### Supplies and Equipment

All necessary art supplies and equipment may be procured at Cooper-Swift's in Edinboro, not far from the campus.



Forward Pass



The Guiding Spirits

## The ScaRab Club

All art students become members of the ScaRab Club upon their entrance to the College. The Club may serve as a suggested model for school art organizations. The various activities of the ScaRab Club help to promote loyalty to the group and to the College.

Two evenings each week will be devoted to ScaRab Club activities, to sketch club, regular meetings, initiations, and such other undertakings as the President of the Club and the Dean of the Art School may suggest.

All art students are required to wear smocks: Frenchmen—green, Sophomores—blue, Juniors—gray, Seniors—tan. Students should have at least two smocks of the required color. Dark blue berets should be owned by every student, to which is affixed the ScaRab, after the first initiation.

---

## LIVING CONDITIONS AT EDINBORO

---

The school offers three dormitories for the use of students. These are conveniently located amidst beautiful surroundings of the campus. The rooms are large, well ventilated, every room having not less than two windows, electric lights and steam heat. Bath rooms on every floor.

The dining room is the most beautiful school dining room in the state, the kitchen modern, and the food excellent. The school raises fresh vegetables for use in season and cans and preserves for winter use.

The school provides all linen for the beds. Students need to furnish only an extra blanket or comfort and such personal linen as towels and table napkins and any room decorations, wash curtains and table covers which they may desire to use in their rooms.

The system of student government allows opportunity for the development of self control and as much liberty as is consistent with the culture and refinement which every teacher desires to possess and express.

A graduate nurse lives in the dormitory and watches over students and cares for them whenever necessary. Her skillful and prompt attention keeps the students in good physical condition.

---

## Standards of Scholarship for the State Teachers College at Edinboro

At the end of the first half of each semester, a preliminary grade report is made for each student showing his standing in each subject studied. At the end of each semester, the final report shows the standing in each subject as it is to appear on the permanent record card. The semester reports are mailed to the parents.

Standings are indicated by letters which represent five (5) different groups of students as follows:

The "C" group represents normal or standard accomplishment and is made up of about 0% of the substantial students of a class. This grade is not to be considered as third rate.

Better than "C", the standard or middle group, are the "A" and "B" groups. The "A" group is made up of all students who do exceptional work and is reserved for possibly 5 or 10% of the bright and industrious students.

"B" means superior and the 20 or 25% of the students who make this grade are clearly above the "C" group.

Inferior to the "C" group are the "D" and "F" groups, comprising about 25% of the class. "D" indicates inferior work but clearly above failure. This group consists of 15 to 20% of the students.

"F" is failure and a group of 0 to 5% of the entire class may be expected. Required subjects in which a student receives "F" must be taken again.

"E", not to be considered a grade, is given a student who, through sickness or other cause satisfactory to the instructor, has not completed the required work within the time limit. "E" is never to be used as indicating failure. Incomplete work must be made up within a semester's time.

Students are required not only to complete a certain quantity of work, but also to maintain a certain standard of quality. The grades above mentioned are given the following points of quality:

A—4 points; B—3, C—2, D—1, and F—0. In order to graduate it is necessary for a student to receive an average of 2 points of quality for his entire normal course.

The foregoing marks indicate one thing only, i.e., accomplishment or achievement in scholarship. For a rating on such factors as industry or effort or attitude or co-operation, etc., a rating card will be used.

If a student average less than "C" the first semester of his first year, he will be placed in a warned group. He must then have an average of "C" during his second semester. In case the average is below "C" for the year, the student must attend summer school to raise this average to "C" in the subjects already taken.

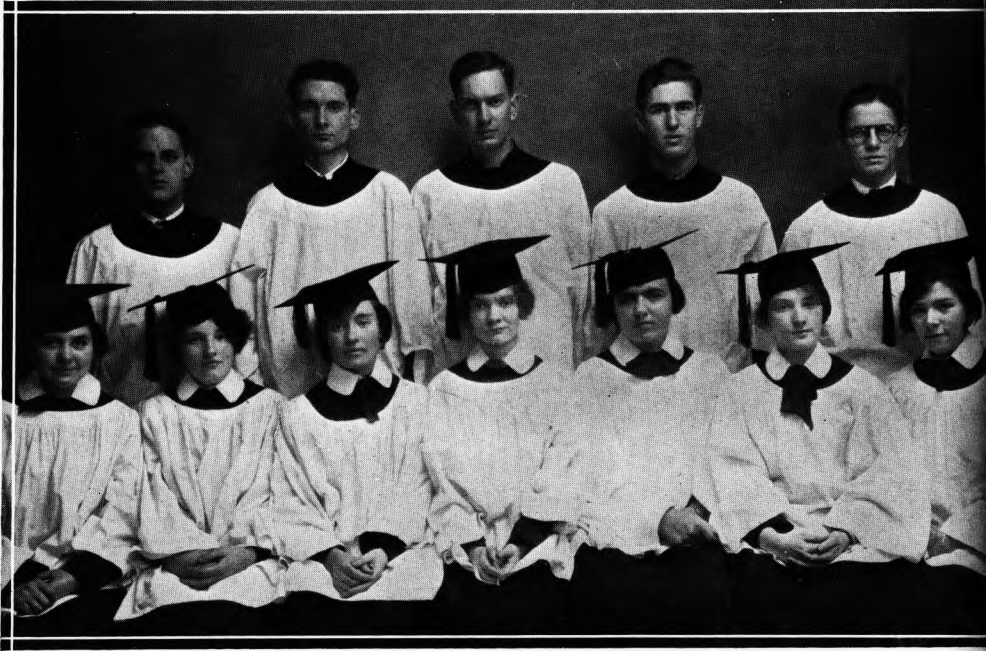


Those who fail in subjects must not take in a succeeding semester an extra number of subjects, i.e., more than the normal load. Unless students have an average of "B" they will not be allowed to take more than the normal load.

An average of "C" in all method subjects is required before the student is allowed to do practice teaching. A grade of "C" or better must be made in practice teaching.

As stated above, an automatic requirement for graduation is an average of "C" covering the entire course.

Where unusual conditions seem to warrant a deviation from the foregoing cases, such cases should come before the Committee of Standards.



The College Choir

---

EDINBORO TRAINS TEACHERS

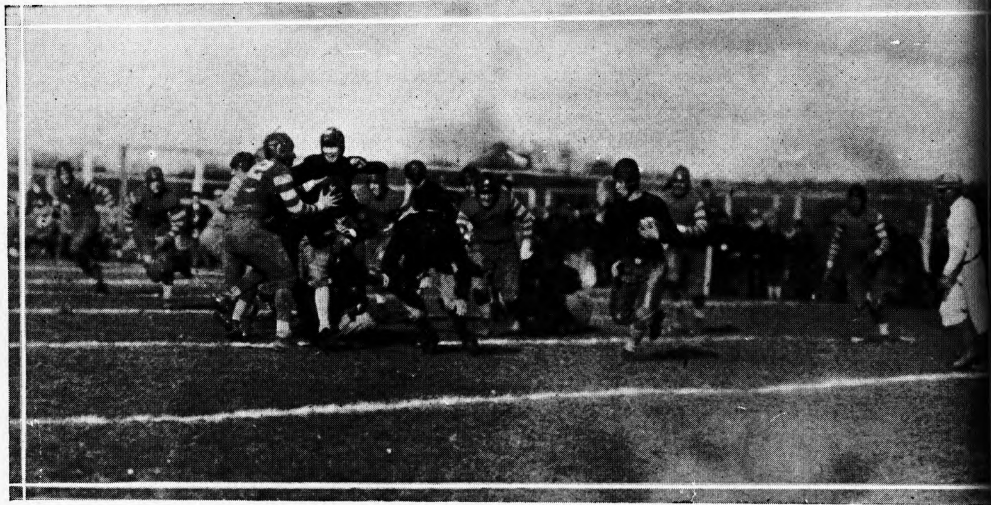
## Report of the Curricular Revision Committee on Correspondence and Extension Work

1. The Committee recommends:
  - (1) "That no correspondence work shall be given by any of the Pennsylvania State Normal Schools after September 1, 1927, and that no credit toward graduation shall be given by any Pennsylvania State Normal School for correspondence work courses commenced prior to July 1, 1927, shall be credited when completed within the time limits set by the institution giving the same.
  
2. The Committee recommends:
  - (1) That all work completed by extension or correspondence previous to September 1, 1927, be credited according to the regulations previously in effect. These regulations are:
    - a. A maximum of twenty semester hours credit allowed for extension and correspondence work in the two-year course toward graduation from the State Normal Schools.
    - b. Extension and correspondence courses are offered by regularly appointed full-time teachers of the State Normal Schools.
  - (2) That not more than eighteen semester hours of extension work be credited toward the requirements of the third and fourth years in a degree curriculum, and that this be listed entirely to the courses specified below:
    - a. This means that extension courses will be accepted from other institutions only when such courses are offered by regularly employed full-time members of a College or University faculty.
 

American Literature .....	2	semester	hours
History of Education .....	3	"	"
American Government .....	3	"	"
Teaching and Supervision of Arithmetic in Elementary Schools...	3	"	"
Civic Education in Elementary Schools .....	3	"	"
History and Organization of Education in Pennsylvania.....	2	"	"
Educational Psychology .....	3	"	"
Supervision and Administration of Elementary Schools .....	3	"	"
  - (3) That no person who matriculates on or subsequent to September 1, 1926, be allowed to offer more than eighteen semester hours of approved extension work in discharge of the requirement for the degree.
  - (4) That Normal Schools may accept courses completed by extension in other institutions of collegiate grade, provided these courses are equivalent to the courses listed above, and subject to the limitations provided above for extension work.
  - (5) That not more than nine semester hours of extension credit to be earned or credited within the limits of a school year.

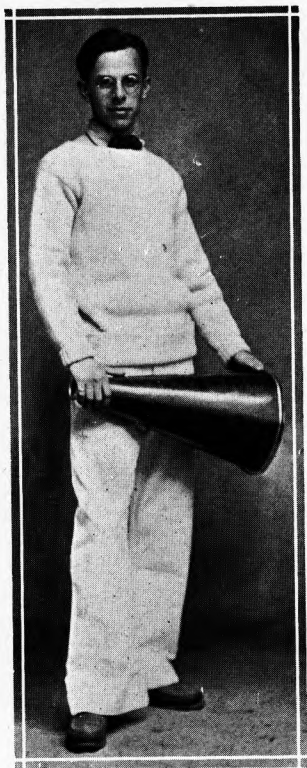


With the same spirit that is exhibited in a football game, so the students at Edinboro take active, enthusiastic part in their extra curricular activities, in the Girls' Athletic Association, the Y. M. C. A., the Y. W. C. A., the Glee Club, the Orchestra, the ScaRab Club, the College Club, the College Choir. Regular meetings of the organizations with constructive programs, com-



bined with a fine series of entertainments and weekly moving pictures in the Auditorium make the student program of "Work and Play" a busy one.

Edinboro Lake with its boating, fishing, duck hunting, swimming and winter sports; the surrounding country, ideal for hiking or horseback riding and sketching; above all, the fine spirit of friendliness among students and faculty make Edinboro the ideal school for you.





## Candidates for Degree of B. S. in Education

### FOUR YEAR COURSES

#### Public School Art

Britt, Urna Willis.....		Enfield, N. C.
Fellows, Max Henry.....	R. F. D. 5.....	Edinboro, Penna.
Kuhn, Henrietta Marie.....	Forest Park .....	Erie, Pennsylvania
Martin, Robert Wayne.....	E. Maiden St. Ext.....	Washington, Pa.
Mills, Helen Elizabeth.....	402 Newman St.....	Erie, Pennsylvania
Olmes, Hugh H.....	701 E. Second St.....	Oil City, Penna:
Sparks, Charles William.....	R. F. D. 3.....	Hubbard, Ohio

#### Junior High School

Baker, Claudia Gladys .....	3106 Maple St.....	Erie, Pennsylvania
DeLaura, Carmela Rose.....	516 West 19 St.....	Erie, Pennsylvania
Gillespie, Vernetta Geraldine...	1164 Browns Ave. ....	Erie, Pennsylvania
Hough, Ralph L.....	Homestead Ave. ....	Scottdale, Penna.
Kebert, Florence Lucille.....	59 West Fifth St.....	Erie, Pennsylvania
Mohney, Myrtle Pauline.....	3009 Chestnut St.....	Erie, Pennsylvania
Skelton, Helen Wade.....		Edinboro, Penna.
Wellman, Clyde D.....		Edinboro, Penna.

#### Elementary

McCabe, Mary Deane.....	810 Plum St.....	Erie, Pennsylvania
Pogorzelski, Helen Catherine...	1226 Parade St.....	Erie, Pennsylvania

## Candidates for Graduation

### THREE-YEAR COURSES

#### Public School Art

Birchard, Sabra Autumn.....	2156 Tuller .....	Columbus, Ohio
Galmish, Louise Ann.....	1326 West Ninth St.....	Erie, Pennsylvania
Hornish, Mary A.....	2008 North 7th St.....	Harrisburg, Pa.
Murphey, Sara Marjorie.....	105 Grant St.....	Uniontown, Pa.
Pettit, Gladys Lou.....	North Lake St.....	North East, Pa.
Purdie, Maude Gibson.....	460 Edgewood St.....	Sharon, Penna.
Ryder, Dorothy Louise.....	215 Park Ave.....	Punxsutawney, Pa.
Snyder, Viola Irene.....		Valley View, Pa.
Stegailov, Leonard G.....	1826 East 82 St.....	Cleveland, Ohio
Sunderland, Catherine Mary....	10 Smithman St.....	Oil City, Penna.
Tyler, Louise Elliot.....		Fort Bragg, N. C.

#### Junior High School

Anna, William P.....		Clarendon, Penna.
Bergstrom, Evelyn Anne.....	3823 Main St.....	Lawrence Park, Erie, Pa.
Bernard, Josephine .....	517 East Third St.....	Erie, Pennsylvania
Bryon, Esther Emily .....	424 West 29 St.....	Erie, Pennsylvania
Burns, John Joseph.....	119 East Second St.....	Erie, Pennsylvania
Carlson, Clara Emelia.....	313 East 22 St.....	Erie, Pennsylvania
Davies, Theodosia .....	215 Cushing Ave.....	Johnsontown, Pa.
Fiske, Myrtle .....		Edinboro, Penna.
Gillette, Frances Eloise.....		Townville, Penna.
Goodwin, Verna Arlene.....		Diamond, Penna.

Hamlett, Mabel	2705 Bird Drive	Erie, Pennsylvania
Heinaman, Harold G.		Edinboro, Penna.
Hoffman, Lynette Elizabeth	631 West Seventh St.	Erie, Pennsylvania
Johnson, Carl W.	R. F. D. 3	Tidioute, Penna.
Kaminsky, Dorothy Otilia	336 East 22 St.	Erie, Pennsylvania
Kearns, Willna Mae	Marshall St.	Imperial, Penna.
Kuerner, Margaret Catherine	914 West 10 St.	Erie, Pennsylvania
Kuhn, Margaret Anna	814 West Fifth St.	Erie, Pennsylvania
Lindblad, Anna E.	505 Abbott St.	Titusville, Penna.
Minadeo, Guy Anthony	520 West 17 St.	Erie, Pennsylvania
Minnig, Clara Olmstead	725 West 32 St.	Erie, Pennsylvania
Noonan, Mary Gertrude		Harbor Creek, Pa.
Oiler, Viola Catherine		Pleasantville, Pa.
Paul, Elvera Charlotte	927 East Eighth St.	Erie, Pennsylvania
Pieper, Eunice Jean		Monongahela, Pa.
Pieper, Pauline Elizabeth		Monongahela, Pa.
Pollock, Dorothy Mae	R. F. D. 6	Erie, Pennsylvania
Reynolds, Manley Lynn		Edinboro, Penna.
Rumsey, Genevieve Grace		E. Springfield, Pa.
Stubbe, Morris Russell	R. F. D. 3	Erie, Pennsylvania

## TWO-YEAR COURSES

### Group I—Primary

Ament, Helen Louise	107 West Fourth St.	Oil City, Penna.
Bahr, Henrietta Elizabeth	1316 West 24 St.	Erie, Pennsylvania
Beckman, Laura Augusta	2404 Liberty St.	Erie, Pennsylvania
Begley, Marguerite	Mellon Ave.	Baden, Penna.
Bennett, Alberta Iona		Espyville Sta., Pa.
Bennett, Blanche Ella		Atlantic, Penna.
Boyd, Ruth LaVona		Saegerstown, Pa.
Brown, Caroline Rodger	Cedar St.	Sharon, Penna.
Campbell, Mary Katherine	318 Central Ave.	Oil City, Penna.
Carter, Marjorie Esther		Bear Lake, Pa.
Chambers, Alice Sara	555 West Third St.	Erie, Pennsylvania
Chambers, Kathryn Dessie	555 West Third St.	Erie, Pennsylvania
Chandler, Amelia Mary		Sugar Grove, Pa.
Durbin, Laura Alberta	208 West 21 St.	Erie, Pennsylvania
Flynn, Juliana Ethel	122 East Sixth St.	Erie, Pennsylvania
Foster, Angela Mary	742 Maplewood Ave.	Ambridge, Penna.
Gane, Elizabeth Sara	Spruce St.	Sharon, Penna.
Grosch, Frances Elaine	416 Prospect St.	Warren, Penna.
Hendrickson, S. Evelyn	502 College St.	Youngsville, Pa.
Hurst, Ida Mabel	903 Summitt St.	McKeesport, Pa.
Irwin, Thelma Lee	639 Versailles Ave.	McKeesport, Pa.
Jervis, Gladys Cushman	12 West 30 St.	Erie, Pennsylvania
Jones, Adelaide		Centerville, Pa.
Kingsbury, Lura Helen	706 Plum St.	Erie, Pennsylvania
Light, Dorothy Lee	168 West Bloss St.	Titusville, Pa.
Liljenberg, Gladys Ann	1702 Sassafras St.	Erie, Pennsylvania
Mattocks, Dorothy Ellen		Clark, Penna.
Mays, Ruth Elizabeth	R. F. D. 2	Emlenton, Penna.
Miller, Ruth Kathryn		Camb. Spgs, Pa.
Mitchell, Lucille Elizabeth	320 Spruce St.	Sharon, Penna.
Morris, Hilda R.		Conneautville, Pa.
Murphey, Beatrice Cecilia	Fanny St.	McDonald, Pa.

Mytinger, Edythe Roberta.....	322 Glenwood Ave.....	Ambridge, Penna.
Neff, Isabel .....		Harbor Creek, Pa.
Nelson, Elsie M.....		Kane, Penna.
Rorig, Marion Catherine.....	1062 West 7th St.....	Erie, Pennsylvania
Scott, Mary Anabel.....	Box 186 .....	Oil City, Penna.
Seely, Verda Leora.....	Woodlawn Heights .....	Oil City, Penna.
Shreve, Eva Irene.....	South St. ....	Union City, Pa.
Sipe, Hazel Arlene.....	83 Jefferson St.....	Cattaraugus, N. Y.
Smith, Ruby LaRue.....	76 Orchard St.....	Erie, Pennsylvania
Stancliffe, Sarah Allene.....		New Sheffield, Pa.
Stoddard, Frances Berdetta.....	1236 Silliman St....	Lawrence Park, Erie, Pa.
Stump, Gwendolen Edith.....	210 West Eighth St.....	Erie, Pennsylvania
Tighe, Elizabeth Kathryn.....	Clifton Drive .....	Forest Park, Erie, Pa.
Troll, Gertrude Zita.....	Park Road .....	Ambridge, Penna.
Underwood, Martha Thompson.....	329 East 27 St.....	Erie, Pennsylvania
Valiska, Susan G.....	1204 Bell Ave.....	N. Braddock, Pa.
VanSlyke, Lulu Blanche.....		Springboro, Pa.
Waite, Evelyn Myrtle.....		Edinboro, Penna.
Wetherall, Wilda Gibson.....		Linesville, Pa.
Wetherbee, Alberta Louise.....	1027 East 36 St.....	Erie, Pennsylvania
Worden, Frances A.....		Springboro, Pa.
Young, Doris Fern.....		Russell, Penna.
Young, Marie.....		Conneautville, Pa.
Zolner, Daisy Ruth.....	Gress Apartments .....	Greensburg, Pa.

#### Group II—Intermediate

Amon, Madeleine Dolora.....	Box 277 .....	Polk, Penna.
Baker, Alice Grace.....		New Bethlehem, Pa
Baressi, Antoinette Rose.....	416 Smith St.....	Corry, Penna.
Bash, Harriet .....	170 S. Wade Et.....	Washington, Pa.
Bell, Edith E.....		Cochranon, Pa.
Bishop, Esther Mae.....		Springboro, Pa.
Blanchard, Emma Mae.....	R. F. D. 1.....	Loving, Texas
Bowes, Katherine .....	R. F. D. 2.....	Meadville, Penna.
Chapin, Doris Gertrude.....		Union City, Pa.
Clark, Mabel .....	421 East Walnut St.....	Titusville, Pa.
Clark, Ruth Mae.....	933 West 27 St.....	Erie, Pennsylvania
Cole, Mildred Irene.....		North East, Pa.
Cooper, Nettie Marguerite.....	R. F. D. 5.....	Corry, Penna.
Currens, Dorothy Louise.....	710 Spruce St.....	Titusville, Pa.
Davidson, Coral Isabel.....	349 West 20 St.....	Erie, Pennsylvania
Davis, Ruth Elizabeth.....	334 Fruit St.....	Farrell, Penna.
Dean, Dorothy E.....	R. F. D. 1.....	Meadville, Pa.
Dean, Fred Levi.....		Wattsburg, Pa.
DeVore, Myrna Lucille.....	1827 Holland St.....	Erie, Pennsylvania
Drake, Ruth Reynolds.....		Saegerstown, Pa.
Edwards, Clarissa Bull.....	1924 Peach St.....	Erie, Pennsylvania
Faber, Helen Pearl.....	414 Walnut St.....	Erie, Pennsylvania
Fitch, Ethel Gertrude.....	6 Prospect St.....	Union City, Pa.
Googe, Helen Marguerite.....	Maine St.....	W. Middlesex, Pa.
Habich, Ethel (Mrs. Hauptman) .....		Titusville, Penna.
Hannum, Katherine Gertrude .....		Clintonville, Pa.
Heilig, Kathryn Lucille.....		Sharpsville, Pa.
Henderson, Maybelle Virginia.....	7153 Thomas Blvd., E. End.....	Pittsburgh, Pa.
Hetra, Anna .....	1108 Lee Ave.....	Farrell, Penna.



Hetrick, Edith Irene.....		Distant, Penna.
Hildebran, Grace Roberts.....		Hadley, Penna.
Homan, Margaret Lucille.....		Cochranton, Pa.
Howe, Virginia.....		Edinboro, Penna.
Hummer, Gladys V.....	R. F. D. 2.....	Titusville, Pa.
James, Edith Una.....		Harmonsburg, Pa.
Kern, Catherine Elizabeth.....	702 Central Ave.....	Oil City, Penna.
Martin, Elizabeth Belle.....		Edinboro, Penna.
Martin, Thora Leona.....		Platea, Penna.
Matteson, Lena V.....		Spring Creek, Pa.
Mays, Myrna Vivian.....	R. F. D. 2.....	Emlenton, Pa.
McElhaney, Mabel Irene.....	R. F. D. 44.....	Greenville, Pa.
McKay, Ella Frances.....		Sugar Grove, Pa.
Mitchell, M. Lillian.....		Cooperstown, Pa.
Osborne, Virginia May.....	639 Downing Court.....	Erie, Pennsylvania
Paige, Doris.....		Union City, Pa.
Park, Alice Elizabeth.....	212 Henry Ave.....	Sewickley, Pa.
Parker, Neva Jeannette.....		Union City, Pa.
Parola, Josephine R.....	759 Baldwin Ave.....	Sharon, Penna.
Pence, Mary Lucille.....	R. F. D. 4.....	Washington, Pa.
Randall, Hazel Hope.....	Ridge Ave.....	Sharpsville, Pa.
Raymond, Lois G.....		Stoneboro, Pa.
Regner, Helen Mary.....	3139 Peach St.....	Erie, Pennsylvania
Rizzo, Sarah Helene.....	86 Clinton St.....	North East, Pa.
Sch lindwein, Louise M.....	918 West 26 St.....	Erie, Pennsylvania
Sferrazza, Phyllis Mary.....		North East, Pa.
Shattuck, Ruth Isabelle.....	338 East 21 St.....	Erie, Pennsylvania
Skinner, Marguerite C.....		Russell, Penna.
Smith, Florence Edna.....	R. F. D. 3.....	Meadville, Penna.
Sullivan, Agnes Madonna.....	918 West Tenth St.....	Erie, Pennsylvania
Thompson, Edith Odessa.....		Pittsfield, Penna.
Uller, Ruth Elnora.....	310 Brook St.....	Titusville, Pa.
Welsh, Margaret Frances.....	1342 East 20 St.....	Erie, Pennsylvania
Werner, Margaret Alice.....	Pine Ave.....	Kane, Penna.
White, Lenore Joanna.....	555 East Sixth St.....	Erie, Pennsylvania
Williams, Frances Elizabeth.....	R. F. D. 2.....	Guys Mills, Pa.

**Group III—Rural**

Martin, Edna Katherine.....	Clarks Mills, Pa.
-----------------------------	-------------------

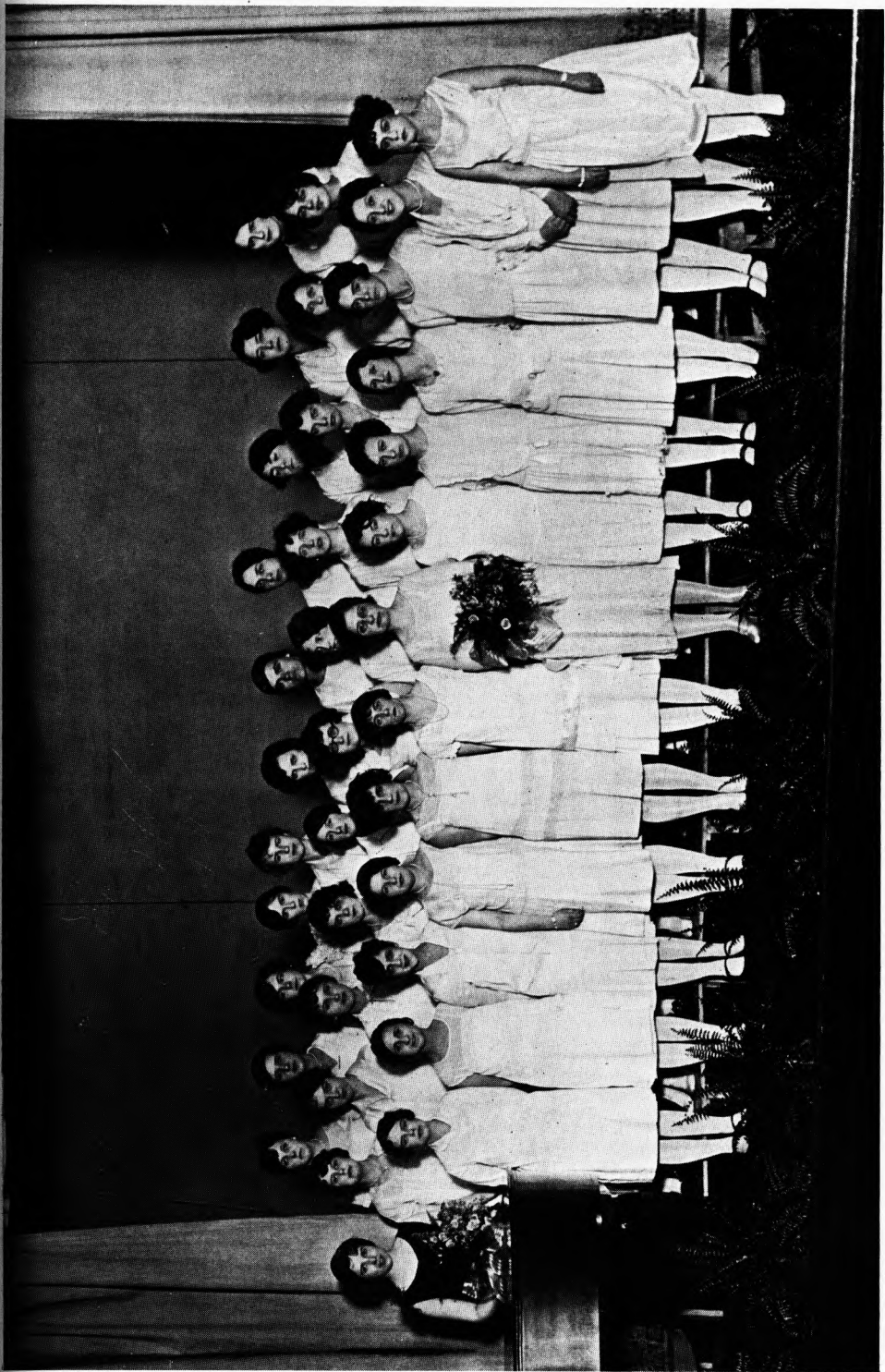
**FOURTH YEAR STUDENTS****Public School Art**

Fisher, Emma K.....	407 Walnut St.....	Mercer, Penna.
Melhuish, Fannie Elthera.....		Centerville, Pa.

**Junior High School**

Amy, Edna Winifred.....	2817 Raspberry St.....	Erie, Pennsylvania
Bobbitt, Lue Mattie.....	1617 Holland St.....	Erie, Pennsylvania
Deck, Ottomer William.....	332 Holland St.....	Erie, Pennsylvania
Geren, Jeannette.....	R. F. D.....	Erie, Pennsylvania
Magenau, Ruth.....	2323 Sassafras St.....	Erie, Pennsylvania
Reiman, Henry W.....		North East, Pa.
Treene, Dorothy Stoliker.....	2109 Myrtle St.....	Erie, Pennsylvania
Young, Kathryn Marie.....	405 Chestnut St.....	Erie, Pennsylvania

**EDINBORO TRAINS TEACHERS**



**Elementary**

Kane, Anna Blanche..... 821 West 29 St..... Erie, Pennsylvania

**THIRD YEAR STUDENTS****Public School Art**

Bartow, Harriet Ellen..... R. F. D. 4..... Punxsutawney, Pa  
 Halboth, Irma May..... 125 North Beaver St..... New Castle, Pa.  
 Hamm, Milly Belle..... R. F. D. 3..... Hubbard, Ohio  
 Hoffman, William..... 223 West 19 St..... Erie, Pennsylvania  
 Knarr, Emilie Henriette..... Pine St. .... Punxsutawney, Pa  
 Kraus, Carl Leonard..... 452 E. Broad St..... Hazleton, Penna.  
 Loveland, Ruth Eleanor..... 560 E. College St..... Oberlin, Ohio  
 Lusk, Margaret Catherine..... 2016 Beaver Ave..... McKeesport, Pa.  
 McClure, Annie Reed..... New Wilmington, Pa.  
 Storkel, Susan..... 3002 Reed St..... Erie, Pennsylvania

**Junior High School**

Alsdorf, Florence..... Spartansburg, Pa.  
 Anderson, Anton Emanuel..... R. F. D. 3..... Albion, Penna.  
 Barron, Harry Ilaid..... 114 East 17 St..... Erie, Pennsylvania  
 Bevilacqua, Julia Jelsey..... 1523 Walnut St..... Erie, Pennsylvania  
 Davis, Helen Dickinson..... 216 West 18 St..... Erie, Pennsylvania  
 Fisher, John True..... 250 West Fifth St..... Erie, Pennsylvania  
 Hall, Merle..... Edinboro, Penna.  
 Lang, John Karl..... R. F. D. 2..... Camb. Spgs, Pa.  
 Luzzi, Adella Maye..... 1716 Chestnut St..... Erie, Pennsylvania  
 Reddecliffe, John Robert..... Reynoldsville, Pa.  
 Schenker, Esther Ermina..... 920 East 7 St..... Erie, Pennsylvania  
 Stafford, Ann Genieve..... 450 East 10th St..... Erie, Pennsylvania  
 Sullivan, Isabel Geraldine..... 238 East 25 St..... Erie, Pennsylvania  
 Weining, Donald M..... 406 Dunn Ave..... Erie, Pennsylvania

**Elementary**

Causgrove, Jeannette Alice..... 922 East 24 St..... Erie, Pennsylvania  
 Crawford, Dorothy Evelyn..... 2668 Peach St..... Erie, Pennsylvania  
 Dalbey, Margaret Ruth..... R. F. D. 2..... Erie, Pennsylvania  
 Defoe, Dorothy..... 3519 Skellie Ave..... Wesleyville, Pa.  
 Fleming, Marguerite Dorothy..... Tionesta, Pa.  
 Hirsch, Arville Ann..... 321 East Ave..... Erie, Pennsylvania  
 Huckelberry, Helen Elva..... 530 East 21 St..... Erie, Pennsylvania  
 Leonetti, Matilda Altieri..... 201 German St..... Erie, Pennsylvania  
 Lewis, Helen Joanna..... R. F. D. 4..... Edinboro, Penna.  
 Rhodes, Mildred Irene..... 851 Rankin Ave..... Lawrence Park,  
 Zimmer, Myrna..... Edinboro, Penna.

**SECOND YEAR STUDENTS****Group I—Primary**

Atkinson, Violet Ruth..... Highland Ave..... Meadville, Penna.  
 Burrall, Grace Lucille..... 401 Peoples Bank Bldg..... Buffalo, N. Y.  
 Edwards, Margaret Mary..... R. F. D. 3..... Girard, Penna.  
 Foreman, Martha Wilhelmina..... 2686 Cherry St..... Erie, Pennsylvania  
 Graves, Edna Adelaide..... 3128 Elmwood Ave..... Erie, Pennsylvania  
 Holland, Dorothy Lenore..... 3108 Liberty St..... Erie, Pennsylvania  
 McCurdy, Hazel Louise..... Walnut St. .... Hydetown, Pa.



Dining Room Boys

Moore, Sarah E.....	Adams St. ....	Cochranton, Pa.
Porter, Isabel Martha.....	W. Mahoning St.....	Punxsutawney, Pa
Schafer, Ardamae .....	Pennsylvania St.....	Girard, Penna.
Torrance, Bernice Pearl.....	631 East 12 St.....	Erie, Pennsylvania
Weaver, Ruth Allison.....	296 Park St.....	Beaver, Penna.
Welch, Alice Lucille.....	815 West 29 St.....	Erie, Pennsylvania

Group II—Intermediate

Barber, Julia Elizabeth.....	.....	North East, Pa.
Barnes, Eleanor Grace.....	Highland Ave. ....	Meadville, Pnna.
Berman, Beatrice .....	314 West 10 St.....	Erie, Pennsylvania
Campbell, Celia Braidmas.....	Bolard St. ....	Camb. Spgs, Pa.
Daniels, Anna Florence.....	R. F. D. 8.....	Erie, Pennsylvania
Eaton, Lovisa .....	.....	Edinboro, Penna.
Elmer, Alice Catherine.....	Westminster .....	Erie, Pennsylvania
Fleming, Mabel Virginia.....	202 West 29 St.....	Erie, Pennsylvania

Glenn, Dorothy Mae.....	Mercer St. ....	Grove City, Pa.
Hendrick, Hazel Elizabeth.....	2223 Parade St.....	Erie, Pennsylvania
Illig, Ruth Margaret.....	342 West 25 St.....	Erie, Pennsylvania
Infeld, Pauline H.....		Jackson, Center, Pa.
Lees, Dorothy Elizabeth.....	R. F. D. 1.....	Mercer, Penna.
MacArthur, Margaret Elizabeth.....	Hone Ave. ....	Oil City, Penna.
Martin, Helen Marion .....	R. F. D. 1.....	Camb. Spgs, Pa.
Maynard, Doris Estella.....		Wattsburg, Pa.
McElhaney, Ruth J.....		Jamestown, Pa.
Mulligan, Helen Anna.....	653 West Fourth St.....	Erie, Pennsylvania
Russell, Louise Ada.....	R. F. D. 1.....	Hellam, Penna.
Schwahn, Irene Bernadine.....	653 West 4 St.....	Erie, Pennsylvania
Thornton, Dorothy May.....		Springboro, Pa.
Tobin, George Joseph.....	R. F. D. 2.....	Edinboro, Penna.
Zurick, Rose .....	337 East 12 St.....	Erie, Pennsylvania

### Junior High School

Allen, Mary Mildred.....	412 Cherry St.....	Erie, Pennsylvania
Bogdan, Nick .....	Spearman St. ....	Farrell, Penna.
Bollman, Dorothy Boshart.....	4115 Iroquois Ave., Lawrence Park, Erie, Pa.	
Brale, Luella Mae.....	619 West 29 St.....	Erie, Pennsylvania
Branch, Edna Lyon .....	2951 Poplar St.....	Erie, Pennsylvania
Buchner, Ella Marie.....	517 West Second St.....	Erie, Pennsylvania
Camp, Robert Earl.....	R. F. D. 2.....	Erie, Pennsylvania
Disterdick, Myra.....	342 West 10 St.....	Erie, Pennsylvania
Disterdick, Ruth .....	342 West 10 St.....	Erie, Pennsylvania
Duncan, Robert Bauer .....	R. F. D. 2.....	Fairview, Penna.
Easton, Wealthy Emma.....	119 Moran St.....	Oil City, Penna.
Ekdahl, Willard Carl.....	R. F. D. 3.....	Sugar Grove, Pa.
Fisher, Mary Elizabeth.....	250 West 5 St.....	Erie, Pennsylvania
Fleming, Homer Willard.....	11 East Columbus Ave.....	Corry, Penna.
Gibson, Lulu Geraldine.....	Kearney Ave. ....	Camb. Spgs, Pa.
Gillespie, Ruth Eleanor.....	742 East 24 St.....	Erie, Pennsylvania
Hand, Frank O.....	401 Greenwood Ave.....	Punxsutawney, Pa
Harrison, Carl Ross.....		Edinboro, Penna.
Haynes, Benjiman R.....		Edinboro, Penna.
Heberlein, Beatrice Margaret... 1602 West 26 St.....		Erie, Pennsylvania
Hertel, William T.....	338 Elizabeth Ave.....	Avalon, Penna.
Hollenbeck, Evelyn Grace.....		Edinboro, Penna.
Horak, Milton R.....	R. F. D. 2.....	Camb. Spgs, Pa.
Howe, Bertha Mary .....		Edinboro, Penna.
Laffey, Tekla Christine.....	161 East 12 St.....	Erie, Pennsylvania
Lewis, Emerson B.....		Linesville, Pa.
Michalski, Charles John.....	1305 Parade St.....	Erie, Pennsylvania
Miller, Lloyd Albert.....	401 Hill St.....	Belle Vernon, Pa.
Millison, Russell McClarin.....		Mercer, Penna.
More, Adelaide .....	2809 Schley St.....	Erie, Pennsylvania
Mullarkey, John Joseph.....	461 Quarry St.....	Quincy, Mass.
Neelans, Velma Elosia.....		Edinboro, Penna.
Neff, Burton Earl.....		Harbor Creek, Pa.
Quirk, Mary Catherine.....	2103 Liberty St.....	Erie, Pennsylvania
Remler, Elsa Marguerite.....	54 Orchard St.....	Erie, Pennsylvania
Sabatino, Rose Ida.....	W. 38 & Elmwood Ave.....	Erie, Pennsylvania
Schroeck, Martha Mary.....	2627 Chestnut St.....	Erie, Pennsylvania
Skelton, Ethel .....		Edinboro, Penna.

Stewart, Jean .....	860 East 21 St.....	Erie, Pennsylvania
Storm, Marian Isadora.....	754 East 6 St.....	Erie, Pennsylvania
Stout, Willella .....	721 East 24 St.....	Erie, Pennsylvania
Tefft, Emily Louise.....	411 Lighthouse St.....	Erie, Pennsylvania
Toohey, Clarence Park.....		Edinboro, Penna.
Waleski, Edmund Aloyisius....	125 Rossmore St.....	E. Pittsburgh, Pa.
Warfel, Ida Geraldine.....	523 East Fourth St.....	Erie, Pennsylvania

**Public School Art**

Bloser, Dorothy Mabel.....	301 Eighth St.....	New Kensington, Penna.
Braymer, Hazel Bernice.....	2 Laskell Ave.....	Erie, Pennsylvania
Clow, G. Anita.....		Edinboro, Penna.
Fetter, Julia Naomi.....	104 Cherry St.....	Punxsutawney, Pa
Fleming, Margaret M.....		Pleasantville, Pa.
Hallgren, Ingeborg Marion.....	511 Meyer Avenue.....	New Castle, Pa.
Knowlton, Lois Iva.....	450 Conewango Ave.....	Warren, Penna.
Mealy, Norris Holeman.....	311 W. Front St.....	Oil City, Penna.
Perry, Hazel W.....		Edinboro, Penna.
Randle, Mildred Robson.....	25 Grove St.....	Scottsdale, Penna.
Rogers, Ramsey C.....	24 East Main St.....	Corry, Penna.
Shissler, U. Marie.....	Market St.....	Camp Hill, Pa.
Simpson, Shirley .....	105 East Union St.....	Punxsutawney, Pa
Smith, Elizabeth McHenry.....	172 North Ave.....	Washington, Pa.
Sponsler, J. Henry.....	3107 North Second St.....	Harrisburg, Pa.
Sunderland, Mildred Tustin....	10 Smithman St.....	Oil City, Penna.
Toohey, Doris Louise.....		Edinboro, Penna.
Washabaugh, Alice Kathryn....	200 S. Central Ave.....	Canonsburg, Pa.
Welch, Thelma Frances.....		Camb. Spgs, Pa.
Williams, James Thomas.....	610 Twelfth St.....	Franklin, Penna.
Zoner, Elizabeth V.....	327 North Main St.....	Meadville, Penna.

**Elementary**

Argow, Marie Wanda.....	160 West 20 St.....	Erie, Pennsylvania
Peterson, Olga Myrtle.....	2402 Liberty St.....	Erie, Pennsylvania
Schutte, Evelyn Myrtle.....	619 West 4 St.....	Erie, Pennsylvania

**FIRST YEAR STUDENTS**

**Primary**

Allen, Elizabeth Louise.....		Spring Creek, Pa.
Amy, Marian .....	Church St.....	Camb. Spgs, Pa.
Arnold, Iola Mae.....		Townville, Penna.
Babe, Ethel Jane.....	3826 Cherry St.....	Erie, Pennsylvania
Baron, Bernadine Marie.....	R. F. D. 1.....	Erie, Pennsylvania
Bergdoll, Gladys Alice.....	1246 East 20 St.....	Erie, Pennsylvania
Boetcker, Rosamond .....	619 Vermont Ave.....	Erie, Pennsylvania
Brooks, Marian .....	424 Glenwood Ave.....	Ambridge, Penna.
Brown, Betty Edwina.....	First St.....	Duquesne, Penna.
Burgess, Mary Elizabeth.....	R. F. D.....	North East, Pa.
Burkhardt, Blanche Mildred....	Star Route .....	Franklin, Pa.
Chilcotte, Geneva Mae.....	614 Prospect St.....	Warren, Penna.
Clapsaddle, Grace Florence....	153 East 5 St.....	Erie, Pennsylvania
Cook, Dorothy Louise.....	663 Main St.....	Conneaut, Ohio
Cook, Lenoir Alston.....		Barnes, Penna.

Crouch, Lenoir Margaret.....	443 West Front St.....	Erie, Pennsylvania
Donovan, Mary Alice.....	1115 Poplar St.....	Erie, Pennsylvania
Doolittle, Margaret Caroline....	R. F. D. 1.....	Fairview, Penna.
Drexler, Regina Veronica.....	R. F. D. 2.....	Erie, Pennsylvania
Engels, Betty Louise.....	960 East Sixth St.....	Erie, Pennsylvania
Evans, Sara Lucille.....	3002 Ellsworth Ave.....	Erie, Pennsylvania
Finley, Charlotte Jane.....	36 South Emily St.....	Crafton, Penna.
Fosberg, Leona Geneva.....	.....	Russell, Penna.
Friggle, Ruth Elizabeth.....	R. F. D. 4.....	Franklin, Penna.
Gardner, Marion Anna.....	613 West 25 St.....	Erie, Pennsylvania
Glass, Isabel Elizabeth.....	217 West 21 St.....	Erie, Pennsylvania
Heilman, Dorothea F.....	Church St.....	Venango, Penna.
Hewit, Ruth Irene.....	Lincoln St.....	Camb. Spgs, Pa.
Hineman, Faye.....	.....	Townville, Penna.
Horsman, Lois.....	1006 Poplar St.....	Erie, Pennsylvania
Kearney, Elizabeth Gertrude....	704 Plum St.....	Erie, Pennsylvania
Kelly, Daisy Nichols.....	1243 West 24 Street.....	Erie, Pennsylvania
Lamb, Catherine M.....	.....	Rouseville, Pa.
Levine, Helen Kathryn.....	21 Second St.....	Tidioute, Penna.
Manson, Flossie A.....	R. F. D. 1.....	Oil City, Penna.
Martini, Margaret.....	460 Emerson St.....	Farrell, Penna.
Masiroff, Pauline.....	1032 West Eighth St.....	Erie, Pennsylvania
McClaren, S. Madeline.....	7 Deer St.....	Oil City, Penna.
McConnell, Grace Evelyn.....	R. F. D. 55.....	Sharpsville, Pa.
McGinness, Luella Rebecca....	Cor. Dohrman & Singer Ave.	McKees Rocks, Pa
McLenahan, Martha M.....	.....	Adamsville, Pa.
McMillin, Martha Virginia.....	435 Neshannock Ave.....	New Castle, Pa.
McNerney, Dorothy Louise.....	201 West Fourth St.....	Erie, Pennsylvania
Miller, Helen Mary.....	R. F. D. 4.....	North East, Pa.
Myers, Ella Mae.....	104 Forga Ave.....	Ashtabula, Ohio
Ott, Genevieve Arline.....	630 Church St.....	Meadville, Penna.
Park, Anna Margaret.....	832 East Hutchinson Ave....	Edgewood, Pa.
Pattan, Nelle Julia.....	592 Walnut St.....	Meadville, Penna.
Patton, Clarissa May.....	Farrell Terrace.....	Farrell, Penna.
Pittock, Elizabeth Selene.....	.....	Barnes, Penna.
Potter, Margaret Mae.....	Crary Ave.....	Sheffield, Penna.
Raymond, Arabel Virginia.....	.....	Albion, Penna.
Reighner, Helen Elizabeth.....	713 West 10 St.....	Erie, Pennsylvania
Reynolds, Louise Edna.....	669 North St.....	Meadville, Penna.
Roberts, Marian.....	Conestoga Road.....	Wilkinsburg, Pa.
Rogers, Eletha May.....	.....	Lundy's Lane, Pa.
Schell, Mildred Louise.....	506 Wallis St.....	Farrell, Penna.
Schiefferle, Leora Irene.....	South St.....	Wesleyville, Pa.
Schuler, Hazel Marjorie.....	.....	Barnes, Penna.
Sipple, Gladys Mae.....	.....	Russell, Penna.
Skelton, Mildred Elizabeth.....	.....	Edinboro, Penna.
Smth, Marian E.....	R. F. D. 7.....	Meadville, Penna.
Southworth, Alice Marie.....	659 West Eighth St.....	Erie, Pennsylvania
Staley, Thayer Virginia.....	Walnut St.....	Meadville, Penna.
Steffe, Doris Belle.....	110 Petroleum Ave.....	Oil City, Penna.
Summerton, Jeanetta Cora.....	R. F. D. 6.....	Union City, Pa.
Swartz, Gladys.....	40 Bank St.....	North East, Pa.
Tefft, Erma Grace.....	R. F. D. 4.....	North East, Pa.
Vanatta, Mary Elizabeth.....	231 W. Butler St.....	Mercer, Penna.
Williams, Thelma M.....	Jackson St.....	Albion, Penna.



Wilson, Ruth Gertrude..... 124 West Third St..... Erie, Pennsylvania  
 Wittman, Marjorie, Edith..... 750 East 25 St..... Erie, Pennsylvania

**Group II—Intermediate**

Abbott, Opal Dundon..... Edinboro, Penna.  
 Ague, Florence Lavine..... 483 Jefferson St..... Sharon, Penna.  
 Armstrong, Edith ..... R. F. D. 2..... Diamond, Penna.  
 Armstrong, Mabel ..... R. F. D. 2..... Diamond, Penna.  
 Briggs, Evelyn Jaunita..... Russell, Penna.  
 Brown, Helen Elizabeth..... 416 Dunn Blvd..... Erie, Pennsylvania  
 Chesley, Charlotte Janet..... 11 Colfax St..... North East, Pa.  
 Christy, Thelma Irene..... Springboro, Pa.  
 Clark, Ethel ..... 109 Stambaugh Ave..... Sharon, Penna.  
 Cook, Maron Elizabeth..... 816 Cherry St..... Erie, Pennsylvania  
 DeRocher, Dorothy Jen..... Jackson St. .... Parkers Landing, Pa.  
 Dundon, Geraldine M..... Edinboro, Penna.  
 Evans, Opal Vernita..... 2203 Wayne St..... Erie, Pennsylvania

---

EDINBORO TRAINS TEACHERS



Falconer, Isabell Jean.....	635 West Fourth St.....	Erie, Pennsylvania
Ferguson, Dorothy Adelaide....	464 Main Road.....	Conneaut, Ohio
Fogle, Cladys E.....		Pleasantville, Pa.
Gaut, Helen Isabel.....	R. F. D. 2.....	Meadville, Penna.
Gottlieb, Helen Blanche.....	1336 West Ninth St.....	Erie, Pennsylvania
Griffis, Mary Ridgen.....		Albion, Penna.
Hamot, Berdena Mae.....	R. F. D. 4.....	Waterford, Pa.
Hassel, Dorothy.....	227 Baldwin Ave.....	Sharon, Penna.
Hastie, Hannah Martin.....	North Water St.....	Sharon, Penna.
Henry, Josephine Maria.....	R. F. D. 5.....	Union City, Pa.
Henry, Lillie Edna.....	432 Smith St.....	Corry, Penna.
Himalsbaugh, Anna Helen.....	515 West Ninth St.....	Erie, Pennsylvania
Hoffman, Golda May.....		Kearsarge, Penna.
Hoffman, Hazel Vienna.....		Cochranon, Pa.
Horovitz, Ruth J.....	917 Darr Ave.....	Farrell, Penna.
Hotchkiss, Helen Vernetta....	443 West Front St.....	Erie, Pennsylvania
Kemp, Gertrude LeOra.....	329 Greeves St.....	Kane, Penna.
Kimmel, Barbara Florence.....	1625 Sassafra St.....	Erie, Pennsylvania
Kinsinger, Bessie Evelyn.....	R. F. D. 2.....	Erie, Pennsylvania
Lyons, Ruby Adah.....		North East, Pa.
MacDonald, Audrey Elizabeth..	110 West Second St.....	Erie, Pennsylvania
McCague, Mary Jeanne.....	1619 Ridge Ave.....	Coraopolis, Pa.
McClinton, John S. D.....		Conneautville, Pa.
McCommons, Margaret.....		Edinboro, Penna.
McDaniel, Bernice Heath.....	R. F. D. 6.....	Cochranon, Pa.
McGinley, Alice Harris.....	R. F. D. 55.....	Sharpsville, Pa.
McKemy, Mildred Louise.....	R. F. D. 2.....	North East, Pa.
Metcalf, Fausta Leola.....		Albion, Penna.
Miller, Hilda Amy.....	North Pearl St.....	North East, Pa.
Natcher, Bernice Elizabeth....	Alberta St.....	Homestead Pk, Pa
Neyman, Ruth G.....		Sheakleyville, Pa.
Parkhurst, Vella Emily.....	R. F. D. 2.....	Centerville, Pa.
Pifer, Leola Della.....		Edinboro, Penna.
Putnam, Lucile Dorlisca.....	2915 Raspberry St.....	Erie, Pennsylvania
Range, Dorothy L.....		Elgin, Penna.
Sabin, Helen Lucretia.....	Main St.....	Camb. Spgs, Pa.
Sawtelle, Inez Marian.....	2003 Whitley Ave.....	Erie, Pennsylvania
Schuller, Johanna Louise.....	1818 Buffalo Road.....	Erie, Pennsylvania
Sessamen, Charlotte Evelyn....	R. F. D. 6.....	Erie, Pennsylvania
Shilling, Marian Estella.....	270 Sherman St.....	Sharon, Penna.
Simpson, Lucille Octavia.....	128 Biddle St.....	Warren, Penna.
Sitter, Rena Maria.....	3019 Hazel St.....	Erie, Pennsylvania
Smith, Harold Kenneth.....		Waterford, Pa.
Snyder, Margaret Scott.....	133 West 13 St.....	Erie, Pennsylvania
Springer, Anna Mae.....		Riceville, Penna.
Still, Pauline Beatrice.....		Spartansburg, Pa.
Swan, Julia Lula.....	R. F. D. 6.....	Union City, Pa.
Todd, Nellie Marguerite.....		Centerville, Pa.
Turner, Jennie Irene.....		Meadville, Penna.
Waters, Doris Elaine.....		Albion, Penna.
Weed, Etella Agnes.....		Harbor Creek, Pa.
Whiting, Margaret Julia.....	110 Jefferson St.....	Warren, Penna.
Williams, Ida Ellen.....	1302 Buffalo Road.....	Erie, Pennsylvania
Williams, Irene Hazel.....		Hadley, Penna.

## Group III—Rural

Merchant, Nina Grace.....Conneautville, Pa.

## Junior High School

Alsdorf, Thelma Lucile.....Spartansburg, Pa.  
 Anderson, Henry Victor.....Pine St. ....Warren, Penna.  
 Andrews, Leo .....134 Wayne St.....Erie, Pennsylvania  
 Armagost, Ruth .....536 Vermont Ave.....Erie, Pennsylvania  
 Baker, Dorothy Carleen.....412 West 10 St.....Erie, Pennsylvania  
 Balla, John Harold.....R. F. D. ....Edinboro, Penna.  
 Benninghoff, Henry Norman....West College St.....Meadville, Penna.  
 Bernard, Andrew R.....Farrell, Penna.  
 Bolkey, Roy William.....R. F. D. 2.....Erie, Pennsylvania  
 Bower, William John.....Diamond, Penna.  
 Breckenridge, Jabes McComb...15 Bush St.....Jamestown, N. Y.  
 Christie, Arthur .....43 Edgemere Road.....Quincy, Mass.  
 Cramer, Howard Clair.....210 Church St.....Camb. Spgs, Pa.  
 Drozeski, Roland Gordon.....342 West 11 St.....Erie, Pennsylvania  
 Duff, Charles Alfred.....104 Irvine Ave.....Warren, Penna.  
 DuMars, Wilbur John.....Franklin St. ....Cochranton, Pa.  
 Ecker, Sam .....Dixon Ave. ....E. Pittsburgh, Pa.  
 Evans, Robert Kenneth.....Harbor Creek, Pa.  
 Everett, Joseph Bernard.....W. Springfield, Pa  
 Fellows, Harold .....R. F. D. ....Edinboro, Penna.  
 Foye, Isabel Marie.....R. F. D. 6.....North East, Pa.  
 Gerow, Frances Geraldine.....331 Venango Ave.....Camb. Spgs, Pa.  
 Grande, Frank Benedict.....1602 Cherry St.....Erie, Pennsylvania  
 Grove, Mary Lucille.....Edinboro, Penna.  
 Hale, Nelson Robert.....238 East 22 St.....Erie, Pennsylvania  
 Hall, John Vincent.....Edinboro, Penna.  
 Hallinan, Ruth Frances.....3305 Cascade St.....Erie, Pennsylvania  
 Hayes, Lynn Lewis.....R. F. D. 5.....Edinboro, Penna.  
 Hendricks, Dorothy Adelaide...357 West 22 St.....Erie, Pennsylvania  
 Hillyer, Robert Morse.....Edinboro, Penna.  
 Hoag, Merritt E.....222 East Falls St.....New Castle, Pa.  
 Hoover, Daniel B.....Park Ave. ....Meadville, Penna.  
 Howe, Gladys W.....Edinboro, Penna.  
 Jeffords, Norman Luther.....R. F. D. ....Edinboro, Penna.  
 Johnson, Robert Russell.....1107 West 25 St.....Erie, Pennsylvania  
 Jolly, Arnold Howard.....Pittsville, Penna.  
 King, Florence Koehler.....2129 Peach St.....Erie, Pennsylvania  
 Klaber, Clarence William.....21 North Lee Ave.....New Castle, Pa.  
 Lewis, George Gordon.....R. F. D. 4.....Edinboro, Penna.  
 Lupori, Alfred.....May St.....Belle Vernon, Pa.  
 MacLean, Munroe Deacon.....12 Carruth St.....Quincy, Mass.  
 Marshall, Margaret Bell.....620 West 11 St.....Erie, Pennsylvania  
 Martell, Edwin George.....243 East Squantum St.....Atlantic, Mass.  
 McAnallen, Geraldine Eloise.....Spartansburg, Pa.  
 McLallen, Lawrence Blake.....R. F. D. ....Edinboro, Penna.  
 Mershon, Malcolm Burton.....R. F. D. 1.....Springboro, Pa.  
 Moody, Alice Ilene.....Box 1472 .....Southern Pines, N. C.  
 Mott, Wallace H.....Delaware Ave. ....New Castle, Pa.  
 Nichols, Nathan Hale.....25 Saville St.....Quincy, Mass.  
 Osterberg, Gilbert Etton.....338 West 25 St.....Erie, Pennsylvania  
 Page, Kenneth Lawrence.....93 Orchard St.....Erie, Pennsylvania

Pearson, Helen Josephine.....	406 West 3 St.....	Erie, Pennsylvania
Peterson, Kathryn Elizabeth...	12 River St.....	Salamanca, N. Y.
Pilkington, John Vinton.....	201 Greenwood Ave.....	Punxsutawney, Pa
Pressel, Thomas Zurick.....	9 Conewango Place.....	Warren, Penna.
Proud, Ralph.....		Edinboro, Penna.
Raynor, Harriette Elizabeth...	"A" St.....	Sharon, Penna.
Reno, John Paul.....	R. F. D.....	Edinboro, Penna.
Renz, Earl P.....	347 East 13 St.....	Erie, Pennsylvania
Roberts, Howard Alanson.....		Camb. Spgs, Pa.
Ryan, Kenneth Stanley.....	R. F. D. 1.....	Camb. Spgs, Pa.
Shurrager, Valor Ruth.....	917 West 28 St.....	Erie, Pennsylvania
Siverling, Carl McKee.....	R. F. D.....	Edinboro, Penna.
Spencer, Robert Joe.....		Chandlers Valley, Penna.
Stanger, Marie Cecile.....	1203 West 27 St.....	Erie, Pennsylvania
Stauffer, Miriam Frances.....		Edinboro, Penna.
Stranahan, Leora Myrtle.....	R. F. D.....	Spartansburg, Pa.
Taft, Beatrice Emma.....	702 Brown Ave.....	Erie, Pennsylvania
Towns, Coston George.....	218 West 19 St.....	Erie, Pennsylvania
Ward, Homer Everett.....	376 Walnut St.....	Meadville, Penna.
Waite, Ruth Irene.....		Edinboro, Penna.
Wellman, Roy Arlo.....		Centerville, Pa.
White, Minnie.....	312 North St.....	Meadville, Penna.
Wilcox, Rose Mary.....		Akeley, Penna.
Wilson, Mildred Mary.....	836 East 21 St.....	Erie, Pennsylvania
Yochim, George Joseph.....	2636 Peach St.....	Erie, Pennsylvania
Yunker, Frieda Aris.....	R. F. D 2.....	Meadville, Penna.

#### Public School Art

Ache, Sarah Virginia.....	95 Pennsylvania Ave.....	Uniontown, Pa.
Anderson, Elmer Theodore.....		Camb. Spgs, Pa.
Axtell, Doris Alta.....	94 Erie St.....	Mayville, N. Y.
Bauman, Claudia Marie.....	816 Butler St.....	New Castle, Pa.
Chamberlain, Jean Elizabeth...	4328 Cherry St.....	Erie, Pennsylvania
Chiswell, Maisie Hilleary.....	2315 Walnut St.....	Camp Hill, Pa.
Clayton, Mary Esther.....	Holmes Ave.....	Baden, Penna.
Cox, Orlo Eugene.....	R. F. D. 3.....	Spartansburg, Pa.
Crawford, Stanley T.....		Edinboro, Penna.
Davison, Austin L.....		Centre Bridge, Pa.
Dechnik, Veronica.....	926 Laufer Ave.....	Bethlehem, Pa.
Eastwood, Lois Sarah.....	109 North Monroe St.....	Titusville, Pa.
Elliott, Margaret Genevieve.....		Camb. Spgs, Pa.
Emery, Gordon G.....		Lamoine, Maine
Fitzpatrick, Joe Cyril.....	132 East Market St.....	Williamstown, Pa.
Freeman, Gladys Ella.....		Edinboro, Penna.
Hay, Georgia Evelyn.....		Hartstown, Pa.
Howe, Albert Carr.....		Edinboro, Penna.
Howell, Marian Beryl.....	154 South Wade St.....	Washington, Pa.
Howland, Herman Floyd.....		Edinboro, Penna.
Huffman, Ralph Reynolds.....	719 County Line St.....	New Castle, Pa.
Hurley, Frances Gertrude.....	Mosiertown Road.....	Meadville, Penna.
Kelley, Amelia Elizabeth.....	609 South Maine St.....	Bradford, Pa.
Kyle, M. Louise.....	14 Gilfillan St.....	Franklin, Penna.
Lindsay, Claire Mae.....	701 County Line St.....	New Castle, Pa.
Matteson, Sue Emogene.....		Spring Creek, Pa.



Perry, Orla Wynona.....	Edinboro, Penna.
Proud, Arlene.....	Edinboro, Penna.
Pulling, Marian Mae.....	R. F. D. .... Edinboro, Penna.
Richards, Genevieve Violet.....	301 Sixteenth St..... Ambridge, Pa.
Sensebaugh, Lytle K.....	Springboro, Pa.
Shaffer, Coralie Grace.....	1204 Wade St..... Woodlawn, Pa.
Throop, Maude Emaline.....	713 Blaine St..... New Castle, Pa.
Willson, Jessie Carolyn.....	Conestoga Road ..... Wilkinsburg, Pa.
Winebrenner, Daniel Kenneth.....	1418 Ashland St..... Greensburg, Pa.
Young, Merrill Chemoun.....	R. F. D. 5..... Edinboro, Penna.
Zerfoss, Charlotte .....	6 West Fourth Ave..... Clearfield, Penna.

**Special Students**

Asmus, Eleanor M.....	139 West 18 St.....	Erie, Pennsylvania
Biddle, Emily B.....	658 West 24 St.....	Erie, Pennsylvania
Eyres, Mabel .....	650 Marne Road .....	Erie, Pennsylvania
Flinn, Morris C.....	631½ West 10 St.....	Erie, Pennsylvania

Gingenbach, Marie O.....	345 East 12 St.....	Erie, Pennsylvania
Gossman, Regina .....	2505 German St.....	Erie, Pennsylvania
Goulet, Marguerite .....	2302 Parade St.....	Erie, Pennsylvania
Kellberg, Ansee .....	2633 Wayne St.....	Erie, Pennsylvania
McKean, Annie .....	907 Poplar St.....	Erie, Pennsylvania
Minium, Velma Elaine.....		Edinboro, Penna.
Nunn, Grace Adelaide.....	138 West 28 St.....	Erie, Pennsylvania
Shave, Emma L.....	509 Walnut St.....	Erie, Pennsylvania
St. Clair, Ruby.....	454 East Sixth St.....	Erie, Pennsylvania
Waldron, Helen.....	332 West 21 St.....	Erie, Pennsylvania
Wallhauser, Flora A.....	216 East 23 St.....	Erie, Pennsylvania
Wetherall, Ethel .....	139 West 20 St.....	Erie, Pennsylvania

#### Music Students

Albright, Mildred .....		Edinboro, Penna.
Ghering, Elaine .....		Edinboro, Penna.
Ghering, Eleanora .....		Edinboro, Penna.
Heinaman, Annabelle Greene.....		Edinboro, Penna.
Pulling, Marian .....		Edinboro, Penna.
Reid, I. Helen.....		Edinboro, Penna.
Smith, Marian E.....	R. F. D. 7.....	Meadville, Penna.



## Summer School 1927

Acker, Alice May.....	Springboro, Pa.
Adsit, Evelyn .....	Conneaut Lake, Pa.
Alcorn, Dorothy Adell.....	Warren, Penna.
Allen, Elma Iretta.....	W. Middlesex, Pa.
Allen, Erma M..... 13 Jefferson St.....	Tidioute, Penna.
Alward, Madeleine Elvira.....	Edinboro, Penna.
Ames, Lucille Mildred..... 502 S. Franklin St.....	Titusville, Penna.
Ames, Marjory Almaretta..... 502 S. Franklin St.....	Titusville, Penna.
Anderson, Gertrude Nila..... South St. ....	Corry, Penna.
Anderson, Mrs. Mildred.....	Spring Creek, Pa.
Andre, Charles Williard..... Star Route .....	Franklin, Penna.
Armstrong, Helen Mae..... 330 Mt. Vernon St.....	Titusville, Penna.
Armstrong, Mildred Ethel.....	Corry, Penna.
Arthurs, Rachel .....	Meadville, Penna.
Atkinson, Violet Ruth..... Highland Ave. ....	Meadville, Penna.
Baccus, Doris Mildred.....	Spring Creek, Pa.
Bagott, Dorothy Rae..... 118 Rocky Grove Ave.....	Franklin, Penna.
Bailey, Florence Geneva.....	Bear Lake, Penna.
Baker, Nellie Genevieve..... 119 Park Ave.....	Franklin, Penna.
Baker, Sam .....	Erie, Pennsylvania
Baldoni, Rosina Julia.....	Kinzua, Penna.
Baressi, Antoinette Rose..... 416 Smith St.....	Corry, Penna.
Barnes, Eleanor Grace..... R. F. D. 9.....	Meadville, Penna.
Barnes, Margaret Louise..... R. F. D. 9.....	Meadville, Penna.
Barnett, Herbert R.....	Edinboro, Penna.
Barney, Raymond Charles.....	Cranesville, Pa.
Barron, Harry Iliad..... 17 St. ....	Erie, Pennsylvania
Bartholomew, Wesley L..... 452 Randolph St.....	Meadville, Penna.
Bateman, Alice Eleanore.....	Cranesville, Pa.
Bates, Arlene Gurtha.....	Columbus, Penna.
Bauer, Esther Marie.....	Conneautville, Pa.
Bedford, Geraldine .....	Franklin, Penna.
Beerbower, Vera Ethel.....	Edinboro, Penna.
Belding, Mary Ellen..... Broad St. ....	Salamanca, N. Y.
Bell, Edith E.....	Cochranon, Pa.
Bell, Helen Mae..... Prospect Park .....	Franklin, Penna.
Beneman, Katherine Mary.....	Springboro, Pa.
Bens, Dorothy Yvonne .....	Erie, Pennsylvania
Benson, Elsie .....	Erie, Pennsylvania
Berkman, Edith Lillian..... 122 Biddle St.....	Warren, Penna.
Beuchat, Audrey Felicia..... R. F. D. 2.....	Guys Mills, Pa.
Bevilaque, Julia Jelsey..... 1523 Walnut St.....	Erie, Pennsylvania
Birchard, Sabra Autumn..... West 11 St.....	Erie, Pennsylvania
Birchard, Nellie Margaret..... Central Ave. ....	Warren, Penna.
Bixler, Rae Oral.....	W. Middlesex, Pa.
Blair, Dorothea Mae.....	Geneva, Penna.
Blanchard, Emma May..... R. F. D. 4.....	Meadville, Penna.
Blanchard, Evelyn M..... 285 Loomis Ave.....	Meadville, Penna.
Blanchard, Margaret Leah..... R. F. D. 9.....	Meadville, Penna.
Blank, Alice Marie..... R. F. D.....	Baden, Penna.
Bleakley, Gerald Milton.....	Franklin, Penna.
Blood, Thelma Minnie.....	Conneaut, Ohio

Blount, Florence Leona.....		McKean, Penna.
Blum, Eva Laurella.....	1045 Kerr St.....	Titusville, Penna.
Bogardus, Madge.....		Cochranton, Pa.
Boggs, Opal Mina.....	R. F. D. 2.....	Meadville, Penna.
Boles, Florence Mildred.....	Chestnut St.....	W. Middlesex, Pa.
Bowell, Bernice Geraldine.....	122 South St.....	Warren, Penna.
Bower, Dorothy Letitia.....	Box 230.....	Larimer, Penna.
Bower, Elizabeth Emma.....		Larimer, Penna.
Bower, Bertha Iona.....		Diamond, Pa.
Bower, Isla Marie.....		Diamond, Pa.
Bowes, Helen Mable.....	R. F. D. 2.....	Meadville, Penna.
Bowes, Katherine Marie.....	R. F. D. 2.....	Meadville, Penna.
Boyd, Ruth LaVona.....		Sagerstown, Pa.
Boyles, Geraldine Gertrude.....	R. F. D. 1.....	Meadville, Penna.
Bradshaw, Beulah.....	760 Main St.....	Athens, Penna.
Brandlin, John Edwin.....	389 Brown St.....	Wapa, California
Britt, Urma Willis.....	127 Whitfield Ave.....	Enfield, N. C.
Brooks, Dean.....	Chestnut St.....	W. Middlesex, Pa.
Brown, Retha Harriett.....	309 McLallen St.....	Camb. Spgs, Pa.
Burch, Carolyn Cecilia.....	R. F. D. 4.....	Erie, Pennsylvania
Burkhardt, Anna Marie.....	Star Route.....	Franklin, Penna.
Burkhardt, Blanche Mildred.....	Star Route.....	Franklin, Penna.
Burns, John Joseph.....	119 East Second St.....	Erie, Pennsylvania
Bush, Irene Beatrice.....	521 Walnut St.....	Titusville, Penna.
Bush, Margaret Lucy.....	521 Walnut St.....	Titusville, Penna.
Cable, James William.....		Akeley, Penna.
Campbell, Celia Boardman.....	124 Bolard Ave.....	Camb. Spgs, Pa.
Carine, Mary Elizabeth.....	Fruit Ave.....	Farrell, Penna.
Carlson, Alma Marie.....	R. F. D. 1.....	Kane, Penna.
Carr, Mrs. Gurtha.....		Corry, Penna.
Carr, Hubert G.....		Girard, Penna.
Carroll, William.....	Atlantic St.....	Union City, Pa.
Carroll, Zella B.....	335 East Pleasant St.....	Corry, Penna.
Carson, Winifred Mae.....		Pleasantville, Pa.
Carter, Arthur Louis.....	R. F. D. 26.....	Sandy Lake, Pa.
Caughey, Dorothy.....	R. F. D. 2.....	Erie, Pennsylvania
Causgrove, Jeanette Alice.....	922 East 24 St.....	Erie, Pennsylvania
Chapin, Doris G.....		Union City, Pa.
Chapin, Harold Earl.....		Cranesville, Pa.
Chappell, Harvey Carl.....		Sandy Lake, Pa.
Christy, Thelma Irene.....		Springboro, Pa.
Cochran, Charles Marshall.....		Cochranton, Pa.
Cochran, Eva Frances.....	Miles St.....	Union City, Pa.
Cochran, Leah Eliza.....	P. O. Box 435.....	Oil City, Penna.
Coe, Eleanor M.....	2202 Tioga St.....	Philadelphia, Pa.
Cohell, Betty Elvira.....	17 Second St.....	Tidioute, Penna.
Cole, Charlotte Cleone.....		Conneautville, Pa.
Conklin, Donald Erwin.....		Sugar Grove, Pa.
Conn, Janice Elizabeth.....	R. F. D. 4.....	Titusville, Pa.
Connors, Pauline Rose.....	State St.....	Albion, Penna.
Cooke, M. Araleen.....		Tidioute, Pennt.
Cooper, Dorothy Ruth.....		Edinboro, Penna.
Cooper, Nettie Marguerite.....	R. F. D. 5.....	Corry, Penna.
Cordia, Gertrude.....		Corry, Penna.
Cowin, Florence Irene.....	222 Grant St.....	Franklin, Penna.

Crawford, Isabel Russell.....	Edinboro, Penna.
Crawford, Nina Naomi.....	Townville, Penna.
Crawford, Wayne.....	Edinboro, Penna.
Crosby, Fanny J..... R. F. D.2.....	Corry, Penna.
Culver, Gladys May.....	Garland, Penna.
Curry, Kenneth Vincent.....	Hydetown, Penna.
Damon, Florence Margaret.....	Spring Creek, Pa.
Davids, Paul A.....	Union City, Pa.
Davis, Harvey Augustus.....	Spartansburg, Pa.
Davis, John Booker..... Cedar Ave.....	New Castle, Pa.
Davis, Ruth Elizabeth..... 334 Fruit Ave.....	Farrell, Penna.
Davis, Victoria Susan..... 209 State St.....	Oil City, Penna.
Deal, Minnie E.....	Sharpsville, Pa.
Dean, Dorothy Elizabeth..... R. F. D. 1.....	Meadville, Penna.
Dean, Mary Elizabeth.....	Carlton, Penna.
Deming, Laura Irene..... 306 East St.....	Warren, Penna.
Dennis, Margaret Iola..... R. F. D.....	North East, Pa.
Dickson, Dorothy.....	Saegerstown, Pa.
Dingle, Charles Warren..... R. F. D. 6.....	Union City, Pa.
Dodge, Margaret I.....	Conneautville, Pa.
Dorman, Ella Mae..... R. F. D. 1.....	Waterford, Penna.
Driscoll, Elsie Eva..... Second St.....	Youngsville, Pa.
Driscoll, Helen Frances.....	Youngsville, Pa.
Dudgeon, Clarice Edna.....	Warren, Penna.
Dunton, Irene Elizabeth..... R. F. D. 8.....	Corry, Penna.
Eddy, Irma Lee.....	Diamond, Penna.
Edwards, Dorothy Helen.....	Girard, Penna.
Edwards, Frank Lowe..... R. F. D.....	Girard, Penna.
Edwards, Margaret Mary.....	Girard, Penna.
Ellison, Helen Lenore.....	Townville, Penna.
Ewing, Mary Violet..... 215 Grant St.....	Franklin, Penna.
Field, Grayce Florence..... 607 E. North 3rd.....	Sweetwater, Tex.
Findley, Pearl Elizabeth.....	Westford, Penna.
Fischer, Katherine R..... 250 West Fifth St.....	Erie, Pennsylvania
Fisher, John True..... Rich Hill.....	Oil City, Penna.
Fisher, Mary Elizabeth..... 250 West Fifth St.....	Erie, Pennsylvania
Fiske, Myrtle..... R. F. D.....	Wesleyville, Pa.
Fitch, Ethel Gertrude..... 38 East High St.....	Union City, Pa.
Fitzgerald, Charles Ira.....	Pigeon, Penna.
Flanigan, Mary Virginia.....	Ceres, N. Y.
Flaugh, Phyllis Arvilla.....	Camb. Spgs, Pa.
Flaugh, Sara Eleanor..... R. F. D. 6.....	Meadville, Penna.
Foley, Helen Mona..... West Bathurst.....	Brunswick, Canada.
Foley, Lillian Gladys.....	Spartansburg, Pa.
Forbes, W. Isabel.....	Albion, Penna.
Foster, Boyd William.....	Franklin, Penna.
Foster, Mabel Ileen..... 505 Grant St.....	Franklin, Penna.
Freyermuth, Ida Catharine..... R. F. D. 6.....	Meadville, Penna.
Freyermuth, Jerrine.....	Fredonia, Penna.
Fuessler, Margaret Sophia.....	Cranesville, Pa.
Garber, Laura Cornelia.....	Grand Valley, Pa.
Gates, Dorothy Marie..... R. F. D. 3.....	Corry, Penna.
Gates, Inez D.....	Springboro, Pa.
Gayle, Bess Turner..... 412 West Second St.....	Oil City, Penna.
Gaylord, Alice Elizabeth..... R. F. D.....	Jamestown, Pa.



<b>Genger, Arthur Kirk</b> .....	Maine St. ....	W. Middlesex, Pa.
<b>Gillette, F. Eloise</b> .....		Townville, Penna.
<b>Girardat, Carl H.</b> .....		Cochranton, Pa.
<b>Goe, Iva C.</b> .....		Grindstone, Pa.
<b>Goodell, Carrie</b> .....		Edinboro, Penna.
<b>Goodrich, Donna</b> .....	R. F. D. ....	Edinboro, Penna.
<b>Graff, Edna Elizabeth</b> .....	643 W. Market St. ....	York, Penna.
<b>Graft, Mrs. Eugenia Sherrick</b> ...	132 Park St. ....	Corry, Penna.
<b>Graham, Alice Geraldine</b> .....		Lundy's Lake, Pa.
<b>Greer, Martha Ruth</b> .....		Centerville, Pa.
<b>Griesemer, Frances Marie</b> .....	219 E. Scribner Ave. ....	DuBois, Penna.
<b>Grove, Evelyn Andelia</b> .....	R. F. D. 2. ....	Townville, Penna.
<b>Grove, Mary Lucille</b> .....		Edinboro, Penna.
<b>Guckes, Priscilla Irene</b> .....	R. F. D. 8. ....	Erie, Pennsylvania
<b>Habich, Nellie Gladys</b> .....	R. F. D. 2. ....	Titusville, Penna.
<b>Haggerty, Katherine</b> .....	Maplewood Ave. ....	Ambridge, Penna.
<b>Hagle, Evelyn Frances</b> .....		Pittsfield, Penna.
<b>Haley, Sarah Elizabeth</b> .....	R. F. D. ....	Cochranton, Pa.
<b>Halfast, Mildred Wave</b> .....		Spartansburg, Pa.
<b>Hall, Helen Harriette</b> .....		Clark, Penna.
<b>Hamilton William</b> .....		New Wilmington, Pa.
<b>Hancox, Ada Alvia</b> .....	R. F. D. 5. ....	Titusville, Penna.
<b>Hannon, Florence Aileen</b> .....	Flowers Ave. ....	Sharon, Penna.
<b>Harris, Harold Milton</b> .....		Kinzua, Penna.
<b>Harrison, Bernice Flora</b> .....		Edinboro, Penna.
<b>Harrison, Mildred</b> .....		McKean, Penna.
<b>Hart, Phoebe Eula</b> .....		Cochranton, Pa.
<b>Hart, Victor Smith</b> .....		Cochranton, Pa.
<b>Hartley, LeVenia Louise</b> .....	311 East 10 Ave. ....	Homestead, Pa.
<b>Haupin, Avis Marjorie</b> .....		Bear Lake, Pa.
<b>Haven, Edith Elizabeth</b> .....		Smethport, Penna.
<b>Hawkins, Glenda Mabel</b> .....		Edinboro, Penna.
<b>Hawley, Leah Josephine</b> .....		Wattsburg, Pa.
<b>Hecker, Mary Frances</b> .....	R. F. D. 2. ....	Edinboro, Penna.
<b>Hedglin, Hosack H.</b> .....	Box 148 ....	Sharon, Penna.
<b>Heile, Paul F.</b> .....		Transfer, Penna.
<b>Heilig, Kathryn Lucille</b> .....	29 East Ridge Ave. ....	Sharpsville, Pa.
<b>Heilman, Dorothea</b> .....	Church St. ....	Venango, Penna.
<b>Heinaman, Annabelle Greene</b> .....		Edinboro, Penna.
<b>Helmer, Laura Fae</b> .....	113 Brewster St. ....	Erie, Pennsylvania
<b>Henderson, Florence Ellen</b> .....	R. F. D. 3. ....	Wattsburg, Pa.
<b>Henry, Lillie Edna</b> .....	432 West Smith St. ....	Corry, Penna.
<b>Hertel, William Thomas</b> .....	338 Elizabeth Ave. ....	Pittsburgh, Penna.
<b>Hills, Helen Marie</b> .....	509 Poplar St. ....	Meadville, Penna.
<b>Himrod, Beatrice</b> .....	447 West Seventh St. ....	Erie, Pennsylvania
<b>Hineman, Faye Lillian</b> .....		Townville, Penna.
<b>Hineman, Fern Marguerite</b> .....	R. F. D. 2. ....	Townville, Penna.
<b>Hoffman, Golda May</b> .....		Platea, Penna.
<b>Hoffman, Josiah Gilbert</b> .....		Cochranton, Pa.
<b>Hoffman, Margaret Helen</b> .....	201 Center Ave. ....	Oakdale, Penna.
<b>Hillyer, Robert Morse</b> .....		Edinboro, Penna.
<b>Holdson, Charles Walter</b> .....		W. Springfield, Pa.
<b>Holt, Richard Stanley</b> .....		Akeley, Penna.
<b>Holtzman, Dorothy Clair</b> .....	167 Lincoln St. ....	Dauphine, Penna.
<b>Homan, Marion Isabell</b> .....		Cochranton, Pa.

## EDINBORO TRAINS TEACHERS

Horak, Milton Rudolph.....	R. F. D. ....	Camb. Spgs, Pa.
Hornish, Mary A.....	2208 North Seventh St.....	Harrisburg, Pa.
Hotchkiss, Norton.....		Conneautville, Pa.
Howe, Bertha Mary.....	West Normal St.....	Edinboro, Penna.
Howe, Gladys Wilhelmina.....		Edinboro, Penna.
Hughes, Anora Mae.....	15 Warden St.....	Union City, Pa.
Hull, Ruth L.....	80 Main St.....	Fair Oakes, Pa.
Hunter, M. Josephine.....		Verona, Penna.
Hurley, Josephine Pauline.....	R. F. D. 1.....	Meadville, Penna.
Hutch, Julia.....		Albion, Penna.
Illig, Ruth Margaret.....	342 West 25 St.....	Erie, Pennsylvania
Isackson, Milton Kenneth.....		Spring Creek, Pa.
James, Edith Mary.....	1214 Margaret St.....	Munhall, Penna.
Jamieson, Almira Virginia.....		Fredonia, Penna.
Jeunet, Alice Eleanor.....		Cochranton, Pa.
Jeunet, Pauline.....		Cochranton, Pa.
Johnson, Elsie Bertha.....	R. F. D. 3.....	Tidioute, Penna.
Johnson, Gladys.....	Munroe St.....	Northboro, Mass.
Johnson, Grace.....	Box 91.....	Warren, Penna.
Johnson, Ivy Benton, Mrs.....	61 East High St.....	Union City, Pa.
Johnson, Ruth Elizabeth.....	37 Boylston St.....	Bradford, Penna.
Johnson, Thelma Mary.....		N. Springfield, Pa.
Jones, Adelaide V.....		Centerville, Pa.
Jones, Gladys Jeannette.....		Kinzua, Penna.
Jones, Marie Elizabeth.....		Kinzua, Penna.
Jones, Nora E.....		Centerville, Pa.
Karpenski, Anna Madeline.....	2012 Ash St.....	Erie, Pennsylvania
Kearney, Mary Rita.....	1200 South Main St.....	Pittston, Penna.
Kearns, Elizabeth Aline.....		Imperial, Penna.
Kelch, Mildred Steidle.....	Lake St.....	Girard, Penna.
Kellberg, Ansee Naomi.....	2633 Wayne St.....	Erie, Pennsylvania
Kelley, Howard A.....	1446 Lewis Drive.....	Lakewood, Ohio
King, Julia M.....		Springboro, Pa.
Kinsey, Charles Ernest.....		Armagh, Penna.
Kirschner, Emma Ruth.....	461 West Seventh St.....	Erie, Pennsylvania
Kline, Elizabeth Evangeline.....	R. F. D. 1.....	Camb. Spgs, Pa.
Klingensmith, Margaret Agnes.....		Cochranton, Pa.
Kosanovic, Anna Goldia.....	1461 Green St.....	Woodlawn, Pa.
Kramer, Evelyn Josephine.....	527 Foote Ave.....	Duryea, Penna.
Krautter, Minnie Lucille.....		Edinboro, Penna.
Kreider, John L.....	610 Elm Court.....	Erie Pennsylvania
Kvle, Mabel Louise.....	14 Gilfillan St.....	Franklin, Penna.
Lambert, Martha.....	111 Maple Ave., Edgewood, Pittsburgh, Pa.	
Larson, Gertrude.....	Box 86.....	Mt. Jewett, Pa.
Lasko, Regina Pauline.....		Conneautville, Pa.
Lauer, Dorothy C.....	428 West Philadelphia.....	York, Penna.
LaVigne, Ruth Cecilia.....	R. F. D. 3.....	Warren, Penna.
Laving, Esther Almida.....	526 Second Ave.....	Johnsonburg, Pa.
Leacock, Alice Irene.....		Edinboro, Penna.
Lee, Anna Marian.....		Mill Village, Pa.
Lesh, Margaret Mabel.....	R. F. D. 2.....	Franklin, Penna.
Lesh, Mildred Metta.....	R. F. D. 2.....	Franklin, Penna.
Leuschen, Marian.....	118 West 25 St.....	Erie, Pennsylvania
Lewis, Emerson Baker.....		Linesville, Penna.
Lewis, George Gordon.....		Edinboro, Penna.

Lindberg, Anna Caroline.....	R. F. D. 6.....	Corry, Penna.
Lodge, Helen Berea.....	Main St.....	Tidioute, Penna.
Loomis, Madeline Maria.....		Grand Valley, Pa.
Luce, Aldora.....		McKean, Penna.
Luce, Frances Daisy.....		McKean, Penna.
Lydic, Geneva Mae.....		Edinboro, Penna.
Lynch, Gerald M.....		Linesville, Penna.
Lynch, Mildred Margaret.....	R. F. D. 4.....	Waterford, Penna.
MacArthur, Margaret Elizabeth.....	Hone Ave.....	Oil City, Penna.
MacFayden, Flora Campbell.....		Conneautville, Pa.
Magee, Charles E.....	25 Atlantic St.....	Oil City, Pa.
Mallery, Harold Truman.....	R. F. D. 1.....	Sugar Grove, Pa.
Mallory, Nancy Catherine.....		Edinboro, Penna.
Mann, Iva Glendora.....		Kinzua, Penna.
Martin, Edna Katherine.....		Clarks Mills, Pa.
Martin, Eileen Mary.....		Sharon, Penna.
Martin, Pearl Elizabeth.....	8 Peach St.....	Warren, Penna.
Marvin, Ida Lucille.....		Centerville, Pa.
Maxted, Louise Elizabeth.....	1047 West Tenth St.....	Erie, Pennsylvania
Maynard, Doris Estella.....		Wattsburg, Pa.
Maynard, George Elbert.....	R. F. D. 3.....	Saegerstown, Pa.
McClelland, Marian G.....		Polk, Penna.
McClelland, Sarah Ann.....	142 Grant St.....	Franklin, Penna.
McCommons, Helen.....	Meadville St.....	Edinboro, Penna.
McCommons, Russell Donald.....	Meadville St.....	Edinboro, Penna.
McConnell, Mary Helen.....	R. F. D. 9.....	Mercer, Penna.
McCoy, Helen Sara.....	R. F. D. 62.....	Pulaski, Penna.
McCracken, Robert William.....		Cochranton, Pa.
McCracken, Uda Ethel.....		Cochranton, Pa.
McCray, Beatrice Blanche.....	R. F. D. 3.....	Corry, Penna.
McCray, Lillian Angelina.....	R. F. D. 3.....	Corry, Penna.
McCray, Lucy Cornelia.....	R. F. D. 3.....	Corry, Penna.
McCrea, Hulda Katherine.....		Eagle Rock, Pa.
McCreary, Ronald Caughey.....	R. F. D. 2.....	Erie, Pennsylvania
McDaniel, Frances Elwood.....		Cochranton, Pa.
McDaniel, Vena Irene.....		Cochranton, Pa.
McIlhattan, Ethel Laurretta.....		Knox, Penna.
McIntyre, Elda R.....		Tidioute, Penna.
McKenzie, Argyl Leberta.....		Diamond, Penna.
McLaughlin, Eda Regina.....		McKean, Penna.
McMurray, Robert Lewis.....	415 Grant St.....	Franklin, Penna.
McNamara, Verna May.....	R. F. D. 7.....	Meadville, Penna.
McPheters, Ethel Altheda.....	R. F. D. 1.....	Cooperstown, Pa.
McWhirter, Charles C.....		W. Middlesex, Pa.
Mead, William Henry.....		Venango, Penna.
Messner, Jean McQueen.....		Cooperstown, Pa.
Metcalf, Fausta Leola.....		Albion, Penna.
Middleton, Isabel.....	R. F. D. 7.....	Waterford, Penna.
Miley, Ethel Lois.....		Clark, Penna.
Miller, Amos.....		Girard, Penna.
Miller, Elizabeth Moore.....		Seneca, Penna.
Miller, Grace Cecilia.....	R. F. D. 54.....	Sharpsville, Pa.
Miller, James Moore.....	Oil City Trust.....	Oil City, Penna.
Miller, Jane Woods.....		Seneca, Penna.
Miller, Hazel Gertrude.....	578 Main St.....	Camb. Spgs, Pa.
Miller, Helen Frances.....	578 South Main St.....	Camb. Spgs, Pa.



Miller, Thelma Alice.....	578 South Main St.....	Camb. Spgs, Pa.
Millison, Russell McClain.....		Mercer, Penna.
Mills, Luba S.....		Mill Village, Pa.
Mills, Mary Louise.....		Mill Village, Pa.
Minadeo, Guy Anthony.....	520 West 17 St.....	Erie, Pennsylvania
Mitchell, Lillian Margaret.....		Cooperstown, Pa.
Mitchell, Louise Evelyn.....	93 Carhart St.....	White Plains, N.Y.
Monroe, Ruth Eleanor.....		Pleasantville, Pa.
Mooney, Sara M.....	Box 486 .....	Warren, Penna.
Moore, Elsie Mae.....	4 Park St.....	Franklin, Penna.

---

EDINBORO TRAINS TEACHERS

Moore, Sarah Elizabeth.....		Cochranton, Pa.
Morris, Hilda R.....		Conneautville, Pa.
Morris, Jane.....		Spartansburg, Pa.
Morris, Lucy A.....		Spartansburg, Pa.
Morrison, Eisla Mae.....		Imperial, Penna.
Morrow, Anna Belle.....		Tidioute, Penna.
Morse, Floyd William.....	Jefferson St.	Tidioute, Penna.
Morton, Paul Freeman.....	11 Costello Ave.....	Kinzua, Penna.
Mosier, Gladys Bella.....		Springboro, Pa.
Mott, Gladys.....	226 Ross St.....	Camb. Spgs, Pa.
Muchler, Henrietta Augusta.....		Edinboro, Penna.
Mullalley, Mary E.....	210 Hoffman Ave.....	Oil City, Penna.
Murphy, Beatrice Cecelia.....	Fanny St.....	McDonald, Pa.
Murphy, Mary Catherine.....	Fanny St.....	McDonald, Pa.
Murray, Catherine Teresa.....	Merchant St.....	Ambridge, Penna.
Myers, Flora Lois.....		Waterford, Penna.
Neely, Tone E.....	R. F. D. 1.....	Oil City, Penna.
Neff, Isabel.....		Harbor Creek, Pa.
Neil, Evelyn Elizabeth.....	Prospect Park.....	Franklin, Penna.
Neil, Mary Belle.....		North Girard, Pa.
Newcomb, Lillian Cecelia.....	616 Washington St.....	Meadville, Penna.
Nickel, Dorothy Lorraine.....	1717 West 26 St.....	Erie, Pennsylvania
Nicolls, Gertrude Blanche.....		Conneautville, Pa.
Nobbs, Floyd James.....		Sugar Grove, Pa.
Nunn, Grace Adelaide.....	138 West 26 St.....	Erie, Pennsylvania
Ogren, Dorothy Isabel.....		Sugar Grove, Pa.
Ohle, Maebelle Kathryn.....		Fredonia, Penna.
Orton, Velma Sophia.....		Wattsburg, Pa.
Osborne, Jean Millicent.....		Tionesta, Penna.
Osborne, Marian Ethel.....	R. F. D. 2.....	Townville, Penna.
Otteni, Katherine Josephine.....	R. F. D. 2.....	McKean, Penna.
Oviatt, Mary Ellen.....		Bear Lake, Pa.
Owens, Vade Margaret.....		Mineral Spgs, Pa.
Palmer, Erma Elizabeth.....	606 East Spruce St.....	Titusville, Penna.
Parke, Alice Elizabeth.....	212 Henry Ave.....	Sewickley, Penna.
Parker, Clarice Lorita.....	234 Center Ave.....	Conneaut, Ohio
Parker, Mary Evaline.....		Grand Valley, Pa.
Partridge, Maree G.....		Hadley, Penna.
Paulson, Edna Marie.....	540 West Newton St.....	Greensburg, Pa.
Pearson, Ellen Victoria.....	522 Conewango Ave.....	Warren, Penna.
Pease, Betty Davis.....	Clarwin Ave.....	West View, Pa.
Peebles, Thelma Margaret.....	R. F. D. 4.....	Titusville, Penna.
Peffer, Berdena Cathryn.....		McKean, Penna.
Pegan, Robert Lee.....		Cochranton, Pa.
Peters, Arvilla Anna.....	Main St.....	Reynoldsville, Pa.
Peters, Charlotte Johanna.....	Main St.....	Eldred, Penna.
Peterson, Geraldene Violet.....	17 Bentley Ave.....	Greenville, Penna.
Peterson, Mabel.....	39 Graves St.....	Union City, Pa.
Peterson, Marie Elizabeth.....		Rennerdale, Pa.
Pettit, Gladys Lou.....	North Lake St.....	North East, Pa.
Philip, Frances Louise.....	Box 37.....	Edinboro, Penna.
Poole, Bernadine Ruth.....		Westford, Penna.
Pratt, Mildred Evelyn.....	275 Church St.....	Camb. Spgs, Pa.
Proper, Agnes Myrtle.....	17 Washington St.....	Union City, Pa.
Proud, Arlene.....		Edinboro, Penna.

Prussia, Grace Alice.....		Springboro, Pa.
Quirk, Mary Catherine.....	Liberty St. ....	Erie, Pennsylvania
Ranck, Emma .....	2317 Seventh Ave.....	Beaver Falls, Pa.
Raun, Vera Hawley.....		Wattsburg, Pa.
Ream, Ruth Geraldine.....	13 & Sassafras Sts.....	Franklin, Penna.
Ressler, Marian C.....		Bird-in-Hand, Pa.
Reynolds, Audrey Grace.....	R. F. D. 4.....	Union City, Pa.
Reynolds, Manley Lynn.....	Meadville St. ....	Edinboro, Penna.
Reynolds, Sara Elizabeth.....	Mackson Ave. ....	Albion, Penna.
Rhea, Olive Lyons.....		Hadley, Penna.
Rhodes, Harry K.....	851 Rankin Ave., Lawrence	Park, Erie, Pa.
Rhodes, Mrs. Iva M.....		Edinboro, Penna.
Rhodes, Mildred Irene, Mrs.....		Edinboro, Penna.
Richardson, Ralph William.....		Sugar Grove, Pa.
Ridge, Ruth Elmira.....	618 Ferree St.....	Coraopolis, Pa.
Ridgeway, Nellie Lucile.....		Cochrannton, Pa.
Rigby, Ellen Elizabeth.....		Titusville, Pa.
Riggs, Lillian M.....	56 Oakwood Road.....	Crafton, Penna.
Ritchie, Dorothy Jean.....	Horton Ave. ....	Sheffield, Penna.
Rodebaugh, Olive Mildred.....	578 South Main St.....	Camb. Spgs, Pa.
Rogers, Nellie Marie.....		Cranesville, Pa.
Rohrer, Mabel Elsie.....	Third Ave. ....	Albion, Penna.
Roman, Rachel .....	2902 Garbett Ave.....	McKeesport, Pa.
Rough, Mabel Leona.....		Utica, Penna.
Ruhlman, Mabel May.....		Youngsville, Pa.
Ryan, Edna Marie.....		Mt. Alton, Penna.
Sabin, Helen Lucretia.....	Main St. ....	Camb. Spgs, Pa.
Sanford, Elizabeth Lucina.....		Albion, Penna.
Sauers, Donald .....		Edinboro, Penna.
Schafer, Ardamae .....	Pennsylvania Ave. ....	Girard, Penna.
Schell, Florence Irene.....	508 Wallis Ave.....	Farrell, Penna.
Schenker, Esther Ermina.....	920 East Seventh St.....	Erie, Pennsylvania
Scholton, Olive .....		Corry, Penna.
Schubert, Florence .....	1103 Pierce Ave.....	Sharpsville, Pa.
Scott, Alice Elsie.....	R. F. D. 2.....	Albion, Penna.
Scott, Clyde A.....	615 Second Ave.....	Tarentum, Penna.
Scribner, Winifred Mae.....	R. F. D.....	Kingsville, Ohio
Seibert, E. Grace.....	714 Montour Ave.....	Coraopolis, Pa.
Sensebaugh, Lytle Kay.....		Springboro, Pa.
Shallenberger, George Benj.....		Waterford, Penna.
Shearer, Paul Myron.....	40 West Granada Ave.....	Hershey, Penna.
Shellito, Evelyn .....		Harmonsbury Pa.
Shreve, Eva Irene.....	12 South St.....	Union City, Pa.
Sibble, Mabel Mae.....	Star Route .....	Franklin, Penna.
Simpson, Alice Charlotte.....	422 East Fifth St.....	Erie, Pennsylvania
Sipe, Hazel Arlene.....	Franklin St.....	Cochrannton, Pa.
Sipe, Russell.....	R. F. D. 1.....	Latrobe, Penna.
Sipps, Leroy Dewey.....		Edinboro, Penna.
Skelton, Ethel Mae.....		Edinboro, Penna.
Skelton, Floyd Ernest.....		Edinboro, Penna.
Skelton, Helen Wade.....		Edinboro, Penna.
Skillen, Kathryn .....		New Wilmington, Pa.
Smith, Berdena .....	R. F. D. 3.....	Spartansburg, Pa.
Smith, Claudia Louise.....		Youngsville, Pa.
Smith, Floyd A.....		Cochrannton, Pa.

Smith, Huber Longstrath .....	Townville, Penna.
Smith, Laben Earl..... R. F. D. 1.....	Guys Mills, Pa.
Smith, Norma Lucille .....	Union City, Pa.
Snyder, Essie Margaret..... R. F. D. 1.....	Mercer, Penna.
Snyder, Eva Margaret..... 208 South Atlantic St., E. E.,	Pittsburgh, Pa.
Snyder, Mary Margaret..... 30 Elm St. ....	Tidioute, Penna.
Spencer, Helen Mary..... Wright St. ....	Corry, Penna.
Spetz, Mrs. Sara Vose..... 3118 Maple St.....	Erie, Pennsylvania
Spoon, Anna Pauline.....	Columbus, Penna.
Springer, Rachel Piccola.....	Russell, Penna.
Stambaugh, Sylvia Jean.....	Sharpsville, Pa.
Stancliffe, Allene Sarah.....	Edinboro, Penna.
Stanford, Evah Rebecca.....	Endeavor, Penna.
Stanford, Georgia Lucille.....	Springboro, Pa.
Steele, Eleanor Marie.....	Edinboro, Penna.
Steffee, Kathryn Cynthia.....	Linesville, Penna.
Stegailov, Leonard Gregory.... R. F. D. 3.....	Albion, Penna.
Steward, June Emiline.....	Lundy's Lane, Pa.
Still, Pauline Beatrice.....	Spartansburg, Pa.
Stout, Willella .....	721 East 24 St.....
Stowe, Leah Mary.....	Erie, Pennsylvania
Strawbridge, Helen Edith..... Star Route .....	Union City, Pa.
Stump, Frieda Doris..... R. F. D. 3.....	Titusville, Penna.
Stump, Phyllis, Gretchen..... R. F. D. 3.....	Greensburg, Pa.
Swaney, Leora Lillian.....	Greensburg, Pa.
Swanson, Carribelle .....	Edinboro, Penna.
Sweeney, Louise .....	Sugar Grove, Pa.
Swift, Cécil Adalbert..... R. F. D. 1.....	Springboro, Pa.
Swift, Eleanor Mildred.....	Saegerstown, Pa.
Tait, Esther Lenora..... North Main St.....	Edinboro, Penna.
Tait, Rachel Blanche..... R. F. D. 5.....	Grove City, Pa.
Tanner, Sara Virginia.....	Mercer, Penna.
Tharp, Ellen Ann.....	Cooperstown, Pa.
Thompson, Millie Bowen.....	Larimer, Penna.
Thornton, Dorothy May.....	Grand Valley, Pa.
Tobin, George Joseph..... R. F. D. 2.....	Springboro, Pa.
Toohey, Doris Louise.....	Edinboro, Penna.
Townley, James Drake..... 111 Pleasant Ave.....	Edinboro, Penna.
Townley, Mrs. Louise Theresa.....	Camb. Spgs, Pa.
Trout, Walter Curran.....	Pittsville, Penna.
Van Aken, Mildred Edith..... 118 Metoxet Ave.....	Stewartstown, Pa.
Van Cise, Blanche Mae.....	Ridgeway, Pa.
Van Slyke, Lula Blanche.....	Centerville, Pa.
Vivian, Rose Mary..... 610 Arch St.....	Springboro, Pa.
Vought, Agnes Hazel.....	Meadville, Penna.
Wagner, Clarence Robert..... R. F. D. 7.....	Girard, Penna.
Wagoner, Gertrude Elizabeth.....	Erie, Pennsylvania
Walbridge, Marian K.....	Colegrove, Penna.
Walker, Clarice Loretta.....	E. Springfield, Pa.
Walker, Helen Louise..... 917 West Sixth St.....	Guys Mills, Pa.
Wallace, Helen Virginia..... 1856 East Lake Road.....	Erie, Pennsylvania
Warner, Mary Emma..... R. F. D. 5.....	Erie, Pennsylvania
Washabaugh, Alice Katherine.. 200 South Central Ave.....	Titusville, Penna.
Washburn, Madeleine Lois.....	Canonsburg, Pa.
Wasson, Clara Blanche..... R. F. D. 1.....	Edinboro, Penna.
	Meadville, Penna.

Wasson, Laura May.....		Meadville, Penna.
Watson, Esther Elizabeth.....	R. F. D. 58.....	Sharon, Penna.
Webb, Nellie Goodrich.....	R. F. D.....	Edinboro, Penna.
Wehn, Alma Alice.....	434 East 24 St.....	Erie, Pennsylvania
Weining, Donald M.....	406 Dunn Boulevard.....	Erie, Pennsylvania
Wellman, Durward Vane.....		Centerville, Pa.
Wells, Frederic Edwin.....		Springboro, Pa.
Werner, Margaret Alice.....	125 Pine Ave.....	Kane, Penna.
Werner, Minnie Evelyn.....	125 Pine Ave.....	Kane, Penna.
Wheatley, Esther Mabel.....		Edinboro, Penna.
Wheeland, Alverna Fredericka.....		Liberty, Penna.
Wheelock, Ernestine Almira.....		Tryonville, Pa.
White, Delma May.....		Westford, Penna.
White, Ethel M.....		Clinton, Penna.
White, Imogene Viola.....	619 Washington St.....	Meadville, Penna.
Whiteley, Marjorie Evelyn.....	2109 Willow St.....	Wesleyville, Pa.
Whiteman, Evelyn Kathryn.....	R. F. D. 3.....	Erie, Pennsylvania
Whiteman, Wilmur Charles.....	R. F. D. 3.....	Erie, Pennsylvania
Whitman, Anna Mae.....	R. F. D. 1.....	Diamond, Penna.
Whitney, Beatrice May.....		North East, Pa.
Whitney, Ina Mae.....	R. F. D. 5.....	Corry, Penna.
Wiard, Edith Lillian.....		Springboro, Pa.
Wilcox, Amy Gertrude.....	Poplar St.....	Meadville, Penna.
Will, Evelyn Gertrude.....	R. F. D. 4.....	Erie, Pennsylvania
Williams, Frances Elizabeth.....	R. F. D. 2.....	Guys Mills, Pa.
Williams, Hugh Ernest.....		Wesleyville, Pa.
Williams, James T.....	619 Twelfth St.....	Franklin, Penna.
Williams, Miriam E.....		Pleasantville, Pa.
Willis, Myrna Evelyn.....		Niobe, N. Y.
Wilson, Catherine Louise.....		Meadville, Penna.
Wolozanski, Mary.....	R. F. D. 7.....	Erie, Pennsylvania
Wood, Ethel Marion.....		Edinboro, Penna.
Worden, Frances A.....		Springboro, Pa.
Wright, Eva Mary.....		Enterprise, Penna.
Wright, Marvel Beulah.....		Russell, Penna.
Young, Eva Pauline.....		Cranesville, Pa.
Young, Marie.....	R. F. D. 4.....	Conneautville, Pa.
Yunkers, Frieda Aris.....	R. F. D. 2.....	Meadville, Penna.
Zias, Pauline Magdalene.....		Mt. Alton, Penna.
Zinn, Mary Caroline.....	254 Locust St.....	Hanover, Penna.
Zolner, Daisy Ruth.....	Gress Apartments.....	Greensburg, Pa.

### Student Teaching (Summer Term 1927)

Anderson, Julia Charlotte.....		Albion, Penna.
Cage, Ethelda Bernice.....	14 Harvey St.....	New Colony, Erie, Pa.
Carpenter, Hazel Lois.....		East Hickory, Pa.
Double, Mildred Mary.....	R. F. D. 8.....	Butler, Penna.
Elston, Catherine Mary.....	104 East Park Place.....	Corry, Penna.
Hemphill, Dorothy Mary.....	1005 Warren Ave.....	Apollo, Penna.
Hicks, Winifred.....	1728 Meuse St.....	Erie, Pennsylvania
Kelso, Ora Belle.....	R. F. D. 4.....	Mercer, Penna.
Madison, A. Ruth.....	Star Route.....	Rew, Penna.
Maloy, Mary E.....	303 Second St.....	Monongahela, Pa.
McLaughlin, Helen Magdalen.....		McKean, Penna.



Mosher, Milda Ethelyn.....	Warden 20 .....	Union City, Pa.
Nevice, George R.....	520 East Eighth ESt.....	Erie, Pennsylvania
Siciliano, Claire Farrar.....	206 Riverview St.....	Blairsville, Pa.
Smith, Bertha Leuscher.....	108 Clay St.....	Kane, Penna.
Stevens, Leta Pauline.....	Excelsior St. ....	Akron, Ohio

## SUMMARY

	Boys	Girls	Total
<b>Candidates for Graduation—4 year courses:</b>			
Elementary .....	0	2	2
Junior High School .....	2	6	8
Public School Art .....	4	3	7
			—
<b>Candidates for Graduation—3 year courses:</b>			17
Junior High School .....	7	23	30
Public School Art .....	1	10	11
			—
<b>Candidates for Graduation—2 year courses:</b>			41
Group I—Primary .....	0	56	56
Group II—Intermediate .....	1	64	65
Group III—Rural .....	0	1	1
			—
<b>Fourth Year Students:</b>			122
Elementary .....	0	1	1
Junior High School .....	2	6	8
Public School Art .....	0	2	2
			—
<b>Third Year Students:</b>			11
Elementary .....	0	11	11
Junior High School .....	7	7	14
Art .....	2	8	10
			—
<b>Second Year Students:</b>			35
Group I—Primary .....	0	13	13
Group II—Intermediate .....	0	23	23
Elementary .....	0	3	3
Junior High School .....	18	27	45
Public School Art .....	4	17	21
			—
<b>First Year Students:</b>			105
Group I—Primary .....	0	72	72
Group II—Intermediate .....	2	65	67
Group III—Rural .....	0	1	1
Junior High School .....	51	26	77
Public School Art.....	12	25	37
			—
<b>Special Students</b> .....	1	15	16
			—
<b>Music:</b>			16
Piano .....	0	7	7
			—
Names Repeated .....	0	2	2
			—
			2
			—
			606
Summer Students 1927 .....	92	465	557